

THE
OAK

BY

H. MARSHALL WARD

nia
l



28

This book is DUE on the last date stamped below

~~_____~~ *Sp*

MAY 2 1925

MAY 2 1925

MAY 2 1925

SEP 9 1962

MAR 8 1972

MAR 8 1972



3567



Modern Science Series

EDITED BY SIR JOHN LUBBOCK, BART., M. P.

THE OAK

3567

MODERN SCIENCE SERIES.

Edited by Sir JOHN LUBBOCK, Bart., M. P.

I. The Cause of an Ice Age.

By Sir ROBERT BALL, LL. D., F. R. S.

II. The Horse:

A Study in Natural History.

By WILLIAM HENRY FLOWER, C. B.,
Director of the British Natural
History Museum.

III. The Oak:

A Popular Introduction to Forest
Botany.

By H. MARSHALL WARD, F. R. S.

In press:

**IV. The Laws and Properties of Mat-
ter.**

By R. T. GLAZEBROOK, F. R. S., Fellow
of Trinity College, Cambridge.

New York: D. APPLETON & Co., 1, 3, & 5 Bond St.





THE OAK IN SUMMER.

THE OAK

A POPULAR INTRODUCTION TO
FOREST-BOTANY

BY

H. MARSHALL WARD

M. A., F. R. S., F. L. S.

LATE FELLOW OF CHRIST'S COLLEGE, CAMBRIDGE,
PROFESSOR OF BOTANY AT THE ROYAL INDIAN ENGINEERING COLLEGE,
COOPER'S HILL

3567



NEW YORK
D. APPLETON AND COMPANY

1892

3567

COPYRIGHT, 1892,
BY D. APPLETON AND COMPANY.

All rights reserved.

55
397
O1W2

EDITOR'S INTRODUCTION.

THE works to be comprised in this Series are intended to give on each subject the information which an intelligent layman might wish to possess. They are not primarily intended for the young, nor for the specialist, though even to him they will doubtless be often useful in supplying references, or suggesting lines of research.

Each book will be complete in itself, care, however, being taken that while the books do not overlap, they supplement each other; and while scientific in treatment, they will be, as far as possible, presented in simple language, divested of needless technicalities.

The rapid progress of science has made it more and more difficult, and renders it now quite impossible, to master the works which appear, almost daily, on various branches of science, or to keep up with the proceedings of our numerous Scientific Societies.

A distinguished statesman has recently expressed the opinion, that we cannot expect in the next fifty years any advance in science at all comparable to that of the last half-century. Without wishing to dogmatise, I

should be disposed to hope that in the future the progress of science will be even more rapid.

In the first place, the number of students is far greater; in the second, our means of research—the microscope and telescope, the spectroscope, photography, and many other ingenious appliances—are being added to and rendered more effective year by year; and, above all, the circle of science is ever widening, so that the farther we advance the more numerous are the problems opening out before us.

No doubt there are other Scientific Series, but it is not believed that the present will exactly compete with any of them. The *International Scientific Series* and *Nature Series* are no doubt useful and excellent, and some of the volumes contained in them would well carry out the ideas of the Publishers, but, as a rule, they are somewhat more technical and go into minuter details.

The names of the Authors are a sufficient guarantee that the subjects will be treated in an interesting and thoroughly scientific manner.

HIGH ELMS, FARNBOROUGH :

November, 1891.

CONTENTS.

CHAPTER	PAGE
INTRODUCTION	1
I.—THE ACORN AND ITS GERMINATION—THE SEEDLING .	10
II.—THE SEEDLING AND YOUNG PLANT	24
III.—THE SEEDLING AND YOUNG PLANT (<i>continued</i>). ITS SHOOT-SYSTEM—DISTRIBUTION OF THE TISSUES .	39
IV.—THE SEEDLING AND YOUNG PLANT (<i>continued</i>). STRUCTURE OF THE VASCULAR TISSUES, ETC. .	52
V.—THE SEEDLING AND YOUNG PLANT (<i>continued</i>). THE BUDS AND LEAVES	72
VI.—THE TREE—ITS ROOT-SYSTEM	89
VII.—THE TREE—ITS SHOOT-SYSTEM	98
VIII.—THE TREE (<i>continued</i>). INFLORESCENCE AND FLOW- ERS—FRUIT AND SEED	121
IX.—OAK TIMBER—ITS STRUCTURE AND TECHNOLOGICAL PECULIARITIES	136
X.—THE CULTIVATION OF THE OAK, AND THE DISEASES AND INJURIES TO WHICH IT IS SUBJECT	147
XI.—RELATIONSHIPS OF THE OAKS—THEIR DISTRIBUTION IN SPACE AND TIME	167



THE OAK.

CHAPTER I.

INTRODUCTION.

FAMOUS in poetry and prose alike, the oak must always be for Englishmen a subject of interest, around which historical associations of the most varied character are grouped; but although what may be termed the sentimental aspect of the "British oak" is not likely to disappear even in these days of iron-clads and veneering, it must be allowed that the popular admiration for the sturdy tree is to-day a very different feeling from the veneration with which it was regarded in ancient times; and that, with the calmer and more thoughtful ways of looking at this and other objects of superstition, a certain air of romance seems to have disappeared which to so many would still present a tempting charm. It is not to these latter alone that our few existing ancient oaks are so attractive, however, and a slight acquaintance with the oaken roofs and carvings of some of our historical edifices affords ample proof that the indefinable charm exercised on us by what has proved so lasting, is a real one and deep-seated in the Saxon nature.

In fact, everything about the oak is suggestive of durability and sturdy hardiness, and, like so many objects of human worship in the earlier days of man's emergence from a savage state, the oak instinctively attracts us. The attraction is no doubt complex, taking its origin in the value of its acorns and timber to our early forefathers, not unaffected by the artistic beauty of the foliage and habit of the tree, and the forest life of our ancestors, to say nothing of the more modern sentiment aroused when ships of war were built almost entirely of heart of oak; for the Aryan race seems to have used and valued both the fruit and the wood from very early times, and both Celt and Saxon preserved the traditional regard for them. Memories of our Anglo-Saxon ancestors are still found in the English and German names for the tree and its fruit, as seen by comparing the Anglo-Saxon *āc* or *æc*, the name of the oak, with the English word, and with the German *Eiche* on the one hand, and with acorn (*Eichel*) on the other. In early days, moreover, there were vast oak forests in our island and on the Continent, and, although these have been almost cleared away so far as England is concerned, there are still ancient oaks in this country, some of which must date from Saxon times or thereabouts; and the oak is still one of the commonest trees in France, parts of Germany, and some other districts in Europe.

This is not the place to go further into what may be called the folk-lore of the oak—a subject which would

supply material for a large volume—but it may be remarked that giant or veteran oaks are still to be found (or were until quite recently) in Gloucestershire, Yorkshire, and on Dartmoor and other places, and a very fair idea of what an old oak forest must have been like may be gathered from a visit to the New Forest in Hampshire, or even to some parts of Windsor Forest.

As so often happens in the study of science, we have in the oak a subject for investigation which presents features of intense interest at every turn; and however much the new mode of looking at the tree may at first sight appear to be opposed to the older one, it will be found that the story of the oak as an object of biological study is at least not less fascinating than its folk-lore. With this idea in view, I propose to set before the reader in the following chapters a short account of what is most worth attention in the anatomy and physiology of the oak, as a forest tree which has been so thoroughly investigated that we may confidently accept it as a type.

In carrying out this idea there are several possible modes of procedure, but perhaps the following will recommend itself as that best adapted to the requirements of a popular book, and as a natural way of tracing the various events in the life-history of a plant so complex as is the tree.

First, the acorn will be described as an object with a certain structure and composition, and capable of behaving in a definite manner when placed in the

ground, and under certain circumstances, in virtue of its physiological properties and of the action of the environment upon its structure. The germinated acorn gives rise to the seedling or young oak, and we shall proceed to regard this, again, as a subject for botanical study. It consists of certain definite parts or organs, each with its peculiar structure, tissues, etc., and each capable of behaving in a given manner under proper conditions. The study of the seedling leads naturally to that of the sapling and the tree, and the at first comparatively simple root-system, stem, and leaves, now become complex and large, and each demands careful attention in order that we may trace the steps by which the tree is evolved from the plantlet. A section will therefore be devoted to the root-system of the tree, its disposition, structure, functions, and accessories; another section will be occupied in describing the trunk, branches, buds, and leaves, and their co-relations and functions; the inflorescence and flowers will demand the space of another chapter, and then it will be necessary to treat of various matters of importance in separate chapters as follows: The timber must be considered with respect to its composition, structure, uses, and functions; then the cortex and bark have to be described and their origin and development explained. These subjects naturally lead to that of the growth in thickness of the tree—a matter of some complexity, and not to be understood without the foregoing knowledge of structure. Following what has been said concerning the normal

structure and life-processes of the tree, we may turn to the investigation of its cultivation and the diseases which attack it, concluding with a necessarily brief chapter on the systematic position of the British oak and its immediate allies, and some remarks on its geographical distribution at the present time.

Of course, many points which will turn up in the course of the exposition will have to be shortly dealt with, as the object of the book is to touch things with a light hand; but it is hoped that, this notwithstanding, the reader may obtain a useful glimpse into the domain of modern botanical science and the problems with which forest botany is concerned, and with which every properly trained forester ought to be thoroughly acquainted.

The oak, as is well known, is a slow-growing, dicotyledonous tree of peculiar spreading habit, and very intolerant of shade (Plate I). It may reach a great age—certainly a thousand years—and still remain sound and capable of putting forth leafy shoots.

The root-system consists normally of a deep principal or tap root and spreading lateral roots, which become very thick and woody and retain a remarkably strong hold on the soil when the latter is a suitable deep, tenacious loam with rocks in it. They are intolerant of anything like stagnant water, however, and will succeed better in sandy loam and more open soils than in richer ones improperly drained.

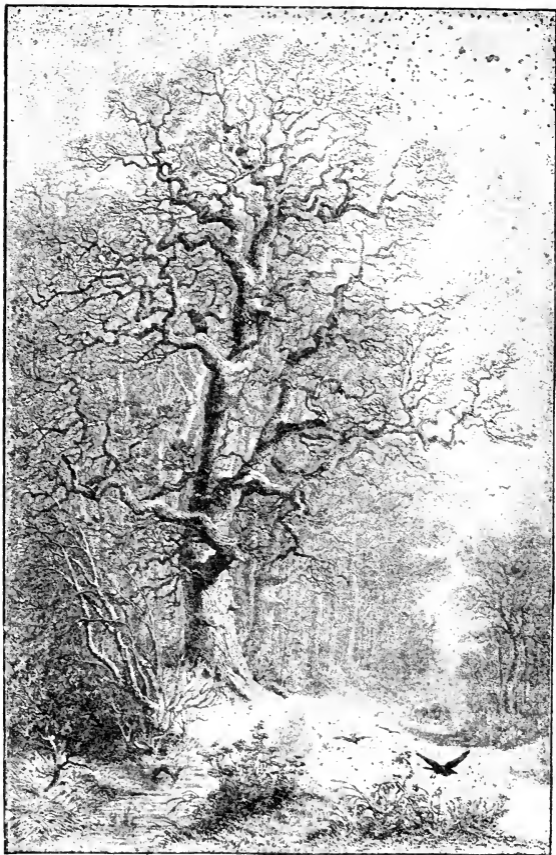
The shoot-system consists of the stem and all that it

supports. The stem or trunk is usually irregular when young, but becomes more symmetrical later, and after fifty years or so it normally consists of a nearly straight and cylindrical shaft with a broad base and spreading branches. The main branches come out at a wide angle, and spread irregularly, with a zigzag course, due to the short annual growths of the terminal shoots and the few axillary buds behind, and also to the fact that many of the axillary lateral buds develop more slowly than their parent shoot, and are cut off in the autumn. Another phenomenon which co-operates in producing the very irregular spreading habit of the branches is the almost total suppression of some of the closely-crowded buds; these may remain dormant for many years, and then, under changed circumstances, put forth accessory shoots. Such shoots are very commonly seen on the stems and main branches of large oaks to which an increased accession of light is given by the thinning out of surrounding trees.

The short ovoid buds develop into shoots so short that they are commonly referred to as tufts of leaves, though longer summer shoots often arise later. The latter are also called Lammas shoots. The crown of foliage is thus very dense, and the bright green of the leaves in early summer is very characteristic, especially in connection with the horizontal, zigzag spreading of the shoots.

While still young the tree is apt to keep its dead leaves on the branches through the winter, or at least





THE OAK IN WINTER.

until a severe frost followed by a thaw brings them down. The buds, leaves, and flowers are all much attacked by gall-forming insects, many different kinds being found on one and the same tree.

It is not until the oak is from sixty to a hundred years old that good seeds are obtained from it. Oaks will bear acorns earlier than this, but they are apt to be barren. A curious fact is the tendency to produce large numbers of acorns in a given favorable autumn, and then to bear none, or very few, for three or four years or even longer. The twisted, "gnarled" character of old oaks is well known, and the remarkably crooked branches are very conspicuous in advanced age and in winter (Plate II). The bark is also very rugged in the case of ancient trees, the natural inequalities due to fissures, etc., being often supplemented by the formation of "burrs."

A not inconsiderable tendency to variation is shown by the oak, and foresters distinguish two sub-species and several varieties of what we regard (adopting the opinion of English systematic botanists) as the single species *Quercus robur*.

Besides forms with less spreading crowns, the species is frequently broken up into two—*Q. pedunculata*, with the female flowers in rather more lax spikes, and the acorns on short stalks, the leaves sessile or nearly so, and not hairy when young; and *Q. sessiliflora*, with more crowded sessile female flowers, and leaves on short petioles and apt to be hairy. Other minute characters

have also been described, but it is admitted that the forms vary much, and it is very generally conceded that these two geographical race-forms may be united with even less marked varieties into the one species *Quercus robur*.

The amount of timber produced by a sound old oak is very large, although the annual increment is so remarkably small. This increment goes on increasing slightly during the first hundred years or so, and then falls off; but considerable modifications in both the habit of the tree and in the amount of timber produced annually, result from different conditions. Trees grown in closely-planted preserves, for instance, shoot up to great heights, and develop tall, straight trunks with few or no branches; and considerable skill in the forester's art is practiced in removing the proper number of trees at the proper time, to let in the light and air necessary to cause the maximum production of straight timber.

Oaks growing in the open air are much shorter, more branched and spreading, and form the peculiar dense, twisted timber once so valuable for ship-building purposes. Such exposed trees, other things being equal, develop fruit and fertile seeds thirty or forty years sooner than those growing in closed plantations.

The timber itself is remarkable for combining so many valuable properties. It is not that oak timber is the heaviest, the toughest, the most beautiful, etc., of known woods, but it is because it combines a good pro-

portion of weight, toughness, durability, and other qualities that it is so valuable for so many purposes. The richness of the cortex in tannin warranted the growing of young oaks at one time for the bark alone, and the value of the acorns for feeding swine has been immense in some districts.

CHAPTER II.

THE ACORN AND ITS GERMINATION—THE SEEDLING.

WHEN the acorns are falling in showers from the oaks in October and November, everybody knows that each of the polished leather-brown, long, egg-shaped bodies tumbles out from a cup-like, scaly investment which surrounded its lower third at the broader end. Perhaps everybody would not be certain as to whether the detached acorn is a seed or a fruit, so I anticipate the difficulty by stating at the outset that the acorn is the fruit of the oak, and contains the seed within its brown shell; and I propose to commence our studies by examining an acorn, deferring the explanation of some minute details of structure until we come to trace the origin of the fruit and seed in the flower.

The average size of the fruit is about 15 to 20 mm., or nearly three quarters of an inch, long, by 8 to 10 mm., or nearly one third of an inch, broad at the middle of its length; the end inserted in the cup or *cupule* is broad and nearly flat, and marked by a large circular scar (Fig. 2, *s*) denoting the surface of attachment to the cupule. This scar is rough, and exhibits a number of small points which have resulted from the breaking

of some extremely delicate groups of minute pipes, called vascular bundles, which placed the acorn in communication with the cup and the tree previous to the



FIG. 1.—Sprigs of oak, showing the habit and the arrangement of the acorns, etc., in September. (After Kotschy.)

ripening of the former. At the more pointed free end of the acorn is a queer little knob, which is hard and dry, and represents the mummified remains of what was the stigma of the flower, and which lost its importance several months previously, after receiving the pollen.

The outer hard coat of the acorn is a tough, leather-brown polished skin, with fine longitudinal lines on it, and it forms the outer portion of the true covering of the fruit, called the *pericarp* (Fig. 2, *p*). On removing it we find a thin, papery membrane inside, adhering partly to the above coat and partly to the seed inside. This thin, shriveled, papery membrane is the inner part of the pericarp, and the details of structure to be found in these layers may be passed over for the present with the remark that they are no longer living structures, but exist simply as protective coverings for the seed inside.

The centre of the acorn is occupied more or less entirely by a hard brown body—the seed—which usually rattles about loosely on shaking the ripe fruit, but which was previously attached definitely at the broad end. A similar series of changes to those which brought about the separation of the acorn from the cup—namely, the shriveling up of the tiny connecting cords, etc.—also caused the separation of the seed from the pericarp, and we may regard the former as a distinct body.

Its shape is nearly the same as that of the acorn in which it loosely fits, and it is usually closely covered

with a thin, brown, wrinkled, papery membrane, which is its own coat—the seed-coat, or *testa* (Fig. 2, *t*). The extent to which the testa remains adherent to the seed, or to the inner coat of the pericarp, and both together to the harder outer coat of the pericarp, need not be

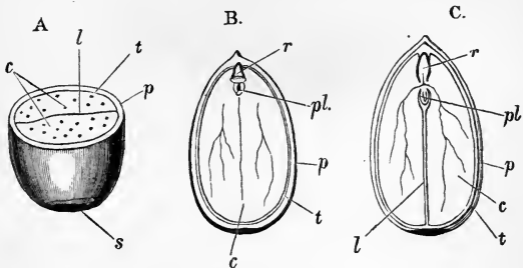


FIG. 2.—Sections of acorns in three planes at right angles to one another. A, transverse; B, longitudinal in the plane of the cotyledons, (*l*); C, longitudinal across the plane of the cotyledons; *c*, cotyledons; *t*, testa; *p*, pericarp; *s*, scar, and *r*, radicle; *pl*, plumule. The radicle, plumule, and cotyledons together constitute the embryo. The embryonic tissue is at *r* and *pl*. The dots in A, and the delicate veins in B and C, are the vascular bundles.

commented upon further than to say that differences in this respect are found according to the completeness and ripeness of the acorn.

Enveloped in its testa and in the pericarp, then, we find the long acorn-shaped seed, which seems at first to be a mere horn-like mass without parts. This is not the case, however, as may easily be observed by cutting the mass across, or, better still, by first soaking it in water for some hours; it will then be found that the

egg-shaped body consists chiefly of two longitudinal halves, separated by a median plane which runs through the acorn from top to bottom. These two halves, lying face to face so closely that it requires the above manipulation to enable us to detect the plane of separation (Fig. 2, *l*), are not completely independent, however; at a point near the narrower end each of them is attached to the side of a small peg-shaped body, with a conical pointed end turned towards the narrow end of the acorn. This tiny peg-shaped structure is so small that it may be overlooked unless some little care is exercised, but if the hard masses are completely torn apart it will be carried away with one of them.

The two large plano-convex structures are called the *cotyledons*, or seed-leaves (Fig. 2, *c*), and they, together with the small peg-shaped body, constitute the *embryo* of the oak. The peg-shaped body presents two ends which project slightly between the two cotyledons beyond the points of attachment to them; the larger of these ends has the shape of a conical bullet, and is directed so that its tip lies in the point of the narrower part of the acorn; the other, and much smaller end, is turned towards the broader extremity of the acorn. The larger, bullet-shaped portion is termed the *radicle* (Fig. 2, *r*), and will become the primary root of the oak-plant; the smaller, opposite end is the embryo bud, and is termed the *plumule* (Fig. 2, *pl*), and it is destined to develop into the stem and leaves of the oak. If the observer takes the trouble to carefully separate the two

large cotyledons, without tearing them away from the structures just described, he will find that each is attached by a minute stalk to a sort of ridge just beneath the tiny plumule; this ridge is sometimes termed the *collar*. He will also see that the plumule and radicle fit closely into a cavity formed by the two cotyledons, and so do not interfere with the very close fitting of their two flat faces.

Summing up these essential features of the structure of the ripe acorn and its contents, we find that the fruit contains within its pericarp (which is a more or less complex series of layers, of which the outermost is hard) the seed; that this seed comprises a membranous testa inclosing an embryo; and that the embryo is composed of two huge cotyledons, a minute radicle, and a still more minute plumule; and that the tip of the radicle is turned towards the pointed end of the acorn, lying just inside the membranes.

Leaving the details of structure of the membranes until a later period, when we trace their development from the flower, I must devote some paragraphs to a description of the minute anatomy and the contents of the embryo as found in the ripe acorn, so that the process of germination may be more intelligible.

Thin sections of any portion of the embryo placed under the microscope show that it consists almost entirely of polygonal chambers or cells, with very thin membranous walls, and densely filled with certain granule-like contents. These polygonal cells have not their

own independent walls, but the wall which divides any two of them belongs as much to one as to the other, and only here and there do we find a minute opening between three or more cells at the corners, and produced by the partial splitting of the thin wall. We may, if we like, regard the whole embryo as a single mass of material cut up into chambers by means of partition walls, which have a tendency to split a little here and there, much as one could split a piece of pasteboard by inserting a paper-knife between the layers composing it; what we must *not* do, is to suppose that these cells are so many separate chambers which have been brought into juxtaposition. In other words, the cell-wall separating any two of the chambers is in its origin a whole, common to both chambers, and the plane which may be supposed to divide the limits of each is imaginary only.

I have said that the embryo consists almost entirely of this mass of polygonal, thin-walled cells, and such is called *fundamental tissue*; but here and there, in very much smaller proportion, we shall find other structures. Surrounding the whole of the embryo, and following every dip and projection of its contours, will be found a single layer of cells of a flattened, tabular shape, and fitting close together so as to constitute a delicate membrane or skin over the whole embryo; this outer layer of the young plant is called the *epidermis*.

Whenever the cotyledons, or the radicle, or plumule are cut across transversely to their length, there are visible certain very minute specks, which are the cut

surfaces of extremely delicate strands or cords of relatively very long and very narrow cells, the minute structure of which we will not now stay to investigate, but simply mention that these extremely fine cords, running in the main longitudinally through the embryo, are termed "vascular bundles" (Fig. 2, A). It may be shown that there is one set of them running up the central part of the radicle, starting from just beneath its tip, and that these pass into the two cotyledons, and there branch and run in long strands towards the ends of the latter.

The three sets of structures which have been referred to are called "tissues," and although they are still in a very young and undeveloped condition, we may say that the embryo consists essentially of a large amount of thin-walled cell-tissue of different ages, which is limited by an epidermal tissue and transversed by vascular tissue. At the tips of the radicle and plumule the cell-tissue is in a peculiar and young condition, and is known as *embryonic tissue*.

As regards the contents and functions of these tissues, the following remarks may suffice for the present. The polygonal cells of the fundamental tissue of the cotyledons are crowded with numerous brilliant starch grains, of an oval shape and pearly luster, and these lie imbedded in a sort of matrix consisting chiefly of proteids and tannin, together with small quantities of fatty substances.

In each cell there is a small quantity of protoplasm

and a nucleus, but this latter is only to be detected with difficulty. Certain of the cells contain a dark-brown pigment, composed of substances of the nature of tannin; and small quantities of a peculiar kind of sugar, called *quercite*, are also found in the cells, together with a bitter substance.

In the main, the above are stored up in the thin-walled parenchyma cells as reserve materials, intended to supply the growing embryo or seedling with nutritious food; the starch grains are just so many packets of a food substance containing carbon, hydrogen, and oxygen in certain proportions; the proteids are similarly a supply of nitrogenous food, and minute but necessary quantities of certain mineral salts are mixed with these. The vascular bundles are practically pipes or conduits which will convey these materials from the cotyledons to the radicle and plumule as soon as germination begins, and I shall say no more of them here, beyond noting that each strand consists chiefly of a few very minute vessels and sieve-tubes. The young epidermis takes no part either in storing or in conducting the food substances; it is simply a covering tissue, and will go on extending as the seedling develops a larger and larger surface.

We are now in a position to inquire into what takes place when the acorn is put into the soil and allowed to germinate. In nature it usually lies buried among the decaying leaves on the ground during the winter, and it may even remain for nearly a year without any con-

spicuous change ; and in any case it requires a period of rest before the presence of the oxygen of the air and the moisture of the soil are effective in making it germinate—a fact which suggests that some profound molecular or chemical changes have to be completed in the living substance of the cells before further activity is possible. We have other reasons for believing that this is so, and that, until certain ferments have been prepared in the cells, their protoplasm is unable to make use of the food materials, and consequently unable to initiate the changes necessary for growth.

Sooner or later, however, and usually as the temperature rises in spring, the embryo in the acorn absorbs water and oxygen, and swells, and the little radicle elongates and drives its tip through the ruptured investments at the thin end of the acorn, and at once turns downward, and plunges slowly into the soil (Fig. 3). This peculiarity of turning downward is so marked that it manifests itself no matter in what position the acorn lies, and it is obviously of advantage to the plant that the radicle should thus emerge first, and turn away from the light, and grow as quickly as possible towards the center of the earth, because it thus establishes a first hold on the soil, in readiness to absorb water and dissolve mineral substances by the time the leaves open and require them.

The two cotyledons remain inclosed in the coats of the acorn, and are not lifted up into the air ; the developing root obtains its food materials from the stores

in the cells of the cotyledons, as do all the parts of the young seedling at this period. In fact, these stores in

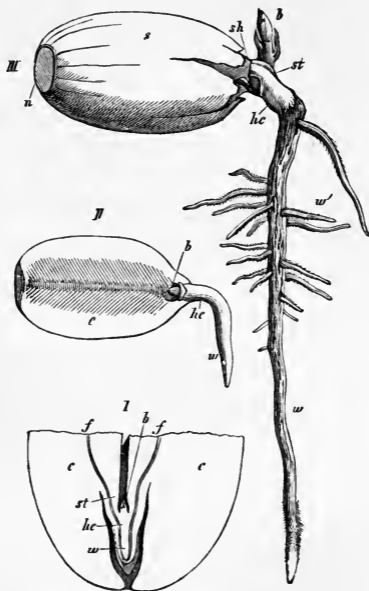


FIG. 3.—I. Longitudinal section through the posterior half of the embryo, in a plane at right angles to the plane of separation between the cotyledons (slightly magnified). II. Germinating embryo, with one cotyledon removed. III. Acorn in an advanced stage of germination. *a*, the scar; *s*, pericarp; *sh*, testa; *b*, plumule; *st*, petioles of cotyledons, from between which the plumule, *b*, emerges; *hc*, hypocotyl; *c*, cotyledons; *f*, vascular bundles; *w*, radicle (primary root); *w'*, secondary roots. Root-hairs are seen covering the latter and the anterior part of the primary root in III. (After Sachs.)

the cotyledons contribute to the support of the baby plant for many months, and even two years may elapse before they are entirely exhausted.

When the elongated radicle, or primary root, has attained a length of two or three inches in the soil, and its tip is steadily plunging with a very slight rocking movement deeper and deeper into the earth, the little plumule emerges from between the very short stalks of the cotyledons (Fig. 3, *st*), which elongate and separate to allow of its exit, and grows erect into the light and air above ground. It will be understood that this plumule also is living at the expense of the food stores in the cotyledons, the dissolved substances passing up into it through the tiny vascular bundles and cells, as they have all along been passing down to the growing root through the similar channels in its tissues.

The plumule—or, as we must now call it, primary shoot—differs from the root not only in its more tardy growth at first, but also in its habit of growing away from the center of gravitation of the earth and into the light and air; and here, again, we have obviously adaptations which are of advantage to the plant, which would soon be top-heavy, moreover, if the shoot were far developed before the root had established a hold-fast in the soil.

The little oak shoot is for some time apparently devoid of leaves (Fig. 4), but a careful examination shows that as it elongates it bears a few small scattered scales, like tiny membranes, each of which has a very

minute bud in its axil. When the primary shoot has attained a length of about three inches there are usually two of these small scale-leaves placed nearly opposite one another close to the tip, and a little longer and nar-



FIG. 4.—Germinating acorn, showing the manner of emergence of the primary shoot, and the first scales (stipules) on the latter. (After Rossmässler.)

rower than those lower down on the shoot; from between these two linear structures the first true green foliage leaf of the oak arises, its short stalk being flanked by them. This first leaf is small, but the tip of the shoot goes on elongating and throwing out others and larger ones, until by the end of the summer there are about four to six leaves formed, each with its minute stalk flanked by a pair of tiny linear scales ("stipules," as they are called) like those referred to above.

Each of the green leaves arises from a point on the young stem which is a little higher, and more to one side, than that from which the lowermost one springs; hence a line joining the points of insertion of the successive leaves describes an open spiral round the shoot axis—i. e., the stem—and this of such a kind that when the spiral comes to the sixth leaf up-

ward it is vertically above the first or oldest leaf from which we started, and has passed twice round the stem.

At the end of this first year, which we may term the period of germination, the young oak-plant or seedling has a primary root some twelve to eighteen inches long, and with numerous shorter, spreading side rootlets, and a shoot from six to eight inches high, bearing five or six leaves as described, and terminating in a small ovoid bud (Figs. 3 and 4). The whole shoot is clothed with numerous very fine soft hairs, and there are also numerous fine root-hairs on the roots, and clinging to the particles of soil. The tip of each root is protected by a thin colorless cap—the root-cap—the description of which we defer for the present.

About May, in the second year, each of the young roots is elongating in the soil and putting forth new root-hairs and rootlets, while the older roots are thickening and becoming harder and covered with cork; and each of the buds in the axils of the last year's leaves begins to shoot out into a branch, bearing new leaves in its turn, while the bud at the end of the shoot elongates and lengthens the primary stem, the older parts of which are also becoming thicker and clothed with cork. And so the seedling develops into an oak-plant, each year becoming larger and more complex, until it reaches the stage of the sapling, and eventually becomes a tree.

CHAPTER III.

THE SEEDLING AND YOUNG PLANT.

BEFORE proceeding to describe the further growth and development of the seedling, it will be well to examine its structure in this comparatively simple stage, in order to obtain points of view for our studies at a later period. For many reasons it is advantageous to begin with the root-system. If we cut a neat section accurately transverse to the long axis of the root, and a few millimetres behind its tip, the following parts may be discerned with the aid of a good lens, or a microscope, on the flat face of the almost colorless section. A circular area of grayish cells occupies the centre—this is called the axis cylinder of the young root (Fig. 5, A, *a*). Surrounding this is a wide margin of larger cells, forming a sort of sheathing cylinder to this axial one, and termed the *root-cortex*. The superficial layer of cells of this root-cortex has been distinguished as a special tissue, like an epidermis, and as it is the layer which alone produces the root-hairs, we may conveniently regard it as worthy of distinction as the piliferous layer (Fig. 5, *e*).

Similar thin sections a little nearer the tip of the

root would show a more or less loose sheath of cells in addition to and outside this piliferous layer. This is the *root-cap*, which is a thimble-shaped sheath of looser cells covering the tip of the root as a thimble covers the

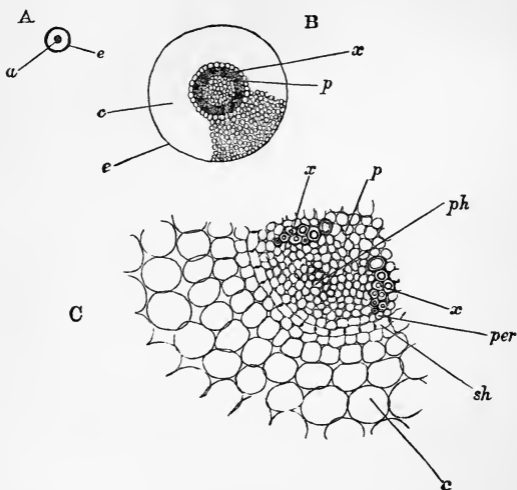


FIG. 5.—A. Transverse section of young root under a lens, showing the axis cylinder, *a*; epidermis or piliferous layer, *e*; and the cortex between. B. The same, more highly magnified: *c*, cortex; *p*, phloem; *x*, xylem; C. A portion still more highly magnified: *ph*, phloem; *p*, pith; *per*, pericycle; *sh*, sheath (endodermis); other letters as before.

nd of the finger, only we must imagine the extreme tip of the finger organically connected with the inside of the cap to make the analogy suitable (see Fig. 6). The

rest of the section would be much as before, excepting that the distinction between the axial cylinder and the root-cortex would be less marked.

Now contrast a section cut a couple of inches or so away from the tip, in the region where the root-hairs are well developed. Here we find the axial cylinder much more strongly marked than before, and the piliferous layer is very clearly distinguished by the fact that it gives off the root-hairs, each hair arising from one of its cells.

A little investigation shows that the axial cylinder is thus strongly marked because certain dark-looking structures have now been formed just inside its boundary—i. e., just inside the line which delimits it from the root-cortex. These dark structures are the sections of several fine cords or bundles, called vascular bundles, which can here be traced up and down in the root. As the section shows, these bundles are arranged at approximately equal distances in a cylinder; they form the vascular system of the root, and they always run along the region just inside the outer boundary of the axial cylinder (Fig. 5, B, *p* and *x*).

If we compare our successive transverse sections, and cut others at various levels along the young root, it will be clear that, as we pass from the tip of the root to parts farther behind, certain changes must be going on, which result first in the definite marking out of the axial cylinder, and then in the development of these vascular bundles and of other parts we will not describe in detail.

If, in addition to these successive transverse sections, we examine a carefully prepared longitudinal section, cut so as to pass accurately through the median plane of the root, the comparison not only establishes the above conclusion, but it enables us to be certain of yet other facts (Fig. 6). Such a section shows the root-cap covering the tip as a thimble the end of the finger, and the rim of this root-cap is evidently fraying away behind; the cells of which it is composed die and slough off as the root pushes its way between the abrading particles of soil. Obviously this loss of worn-out tissue must be made good in some way, and closer examination shows how this occurs. The extreme tip of the root proper fits closely into the cap, and evidently adds cells to the inside of the latter, and thus replaces the old ones which are worn away. At this true tip of the root, moreover, we make another discovery, namely, that all the cells are there *alike* in shape, size, and other peculiarities; and if we could take a

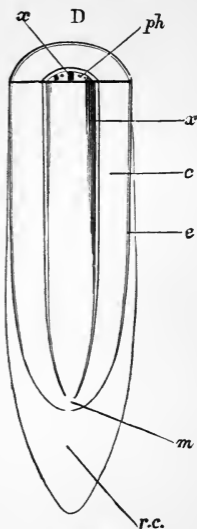


FIG. 6.—Diagrammatic section through the end of the root of the oak. *c*, root-cortex; *e*, piliferous layer; *rc*, root-cap; *m*, the true embryonic tissue (so-called "growing-point"); *ph*, phloëm; *x*, xylem.

transverse section exactly at this place we should see no differentiation into axial cylinder and root-cortex, etc.; the small circular mass would consist of cells all alike, and with very thin walls and full of dense protoplasm. This undifferentiated formative tissue is called the embryonic tissue of the root (Fig. 6, *m*). A little behind this we see the axis-cylinder and root-cortex already formed; still farther away we see the vascular bundles appearing, first as very thin cords, and then getting stronger and stronger as we recede from the tip (Fig. 6, *ph* and *x*); and similarly we trace the gradual development of the other parts in acropetal succession—i. e., the nearer we go to the apex the younger the parts are.

Now, there is a conclusion of some importance to be drawn from the putting together of these facts—namely, that all the structures found between the embryonic tissue at the tip of the root and the place where the root joins the stem have been gradually formed from the embryonic tissue in acropetal succession. We may picture this by marking a given level on the root, some distance away from the tip, where the axis-cylinder is sharply marked and has well-developed vascular bundles, the root-cortex is distinct, and the piliferous layer bears root-hairs, and remembering that so many days or weeks ago this very spot was in the then growing-point, and consisted of embryonic tissue with the cells all alike. Or we may put it in a different way thus: the present growing-point consists of embryonic

cells all alike; in a few days some of these cells will have changed into constituents of the axis-cylinder and cortex, and subsequently some of them will give rise to vascular bundles, etc. Not all, however; and it is necessary to understand that as the embryonic tissue moves onward and leaves the structures referred to in its wake, it does so by producing new embryonic cells in front—i. e., between the present ones and the root-cap.

We must now look a little more closely into the structure of the axial cylinder, at a level a little behind the region where the root-hairs are produced on the piliferous layer.

A thin transverse section in this region shows that the root-hairs have all died away, and the walls of the cells of the piliferous layer are becoming discolored, being, in fact, converted into a brown, cork-like substance impervious to moisture, or nearly so; consequently the piliferous layer is no longer absorptive, and it will soon be thrown off, as we shall see.

The cortex offers little to notice, except that its cells are being passively stretched or compressed by the growth and processes going on in the axial cylinder; and it is this cylinder that attracts our special attention, and several points not noticed before must now be examined in some detail.

In the first place, the cylinder is demarkated off from the cortex by a single layer of cells shaped like bricks, and with a sort of black dot on the radial walls; this is called the *endodermis*, and may be regarded as a

sheath limiting what belongs to the axis-cylinder (Fig. 5, c, *sh*). Inside this endodermis are about two rows of thin-walled cells full of protoplasm, and forming a continuous layer beneath the endodermis. This layer is termed the *pericycle* (Fig. 5, c, *per*), and it is a very important structure, because its cells give rise, by repeated divisions, to the lateral rootlets, which then grow out and burst their way through the endodermis, cortex, and piliferous layer, and so reach the soil. It is, of course, necessary to bear in mind that the endodermis and pericycle are concentric cylinders superposed on the axis of the root, as it were, and only appear as rings on the transverse section.

Inside the pericycle are arranged the vascular bundles, and we shall have to devote a few words of explanation to these remarkable and somewhat complex structures.

The section shows that there are about ten alternating groups of tissue constituting these bundles, and again the reader must bear in mind that each group is the transverse section of a long cord running up and down the root. Of these groups five are much more conspicuous than the other five, because they consist chiefly of more or less polygonal openings with firm, dark contours. These are the xylem vessels of the vascular bundles (Fig. 5, c, *x*), and we must note the following facts about them: In the first place, they are smaller nearer the pericycle than they are nearer the center of the axial cylinder, and the comparison of

numerous transverse sections at different levels of the root would prove that the smallest vessels are the first to develop; whence we learn two facts—namely, that the xylem vessels of the young root are developed in centripetal order, and that the later ones have a larger caliber than those formed earlier.

If longitudinal sections are compared with these transverse ones—and I may here observe that it is only by means of numerous such comparisons that these matters have been gradually discovered—it is found that each vessel is a long tube, usually containing air and water when complete, the lateral walls of which are curiously and beautifully marked with characteristic thick and thin ornamentation. It must suffice here to say that the small, outer, first-formed vessels are marked with a spiral thickening, reminding one of caoutchouc gas-tubing kept open by means of a spiral wire inside; while the larger ones, developed later, usually have numerous small pits on their walls, reminding one of mouths, and the structure of which is very curious. Consequently these groups of xylem vessels are said to consist of spiral and pitted vessels, and their chief function is to convey water up the root to the stem (*cf.* Fig. 16). Packed in between these vessels are certain cells known as the wood-cells.

Returning to the transverse section, we saw that between each xylem group described above there is a group of structures differing from the latter in their less distinct outlines; these alternate groups are known as

phloëm, and we may shortly examine the elements of which they are composed, as before, by comparing sections of various kinds.

Here, again, we find the chief structures in the *phloëm* are also vessels—i. e., long, tubular organs—but very different in detail from the vessels of the xylem.

In the first place, their walls are thin and soft, and composed of the unaltered cellulose which is so characteristic of young cells (instead of being hard, like the lignified walls of the xylem vessels); then, again, they contain protoplasm and other organized cell contents, instead of merely air and water. Finally, they are not so completely tubular as the typical xylem vessels are, because the transverse septa of the constituent cells are not absorbed, but are merely pierced by fine strands of protoplasm, and therefore look like sieves when viewed from above—whence the name “sieve-tubes.” In the *phloëm* also we find cells—*phloëm*-cells—packed in between the sieve-tubes.

If we shortly summarize the above we find that the root consists of an axis-cylinder surrounded by a cortex and the piliferous layer. At the tip the whole is covered by the root-cap, which is organically connected with the embryonic tissue which forms all these structures. The axis-cylinder is somewhat complex; it is sheathed by the endodermis and the pericycle, the latter of which gives origin to the new rootlets. Inside the pericycle are the vascular bundles running up and down as separate, alternate cords of xylem and *phloëm*;



FIG. 7.—Portion of young growing ends of more advanced root, with numerous rootlets. Some of the latter are much branched into tuft-like collections, *m*; these form the so-called *Mycorhiza*. Natural size.

the xylem consists of vessels and cells, the former developed centripetally, while the phloëm consists of sieve-tubes and cells. Any cell-tissue which may lie in the center of the axial cylinder, and surrounded by the vascular bundles, corresponds, in popular language, to pith; any that runs between the bundles corresponds to medullary rays.

We now turn to the root as a whole, and examine its behavior in the soil as the young seedling develops further, and in the light of the above anatomical facts.

Although the root-system of the young plant is regularly constituted of a series of lateral rootlets springing from the primary root, the orderly arrangement is soon disturbed when the tertiary and other rootlets begin to develop from the secondary rootlets; moreover, as the age of the tree increases, the tendency to irregularity is increased owing to the production of rootlets of the higher orders at different places, thus interfering with the acropetal succession of the younger rootlets.

At first the root-system is especially engaged in boring into the soil, and, provided the latter is sufficiently deep and otherwise suitable, the tap-root will go down a foot or more in the first year. As the roots thicken they exhibit considerable plasticity, as is especially evinced on rocky ground, where the older roots may often be found in cracks in the rocks, so compressed that they form mere flattened sheets many times broader than they are thick (Fig. 8).

It has already been mentioned that the tip of the young primary root circumnutates, and Darwin also found that the tip of the radicle is extremely sensitive to the irritation of small bodies in contact with it. It is also positively geotropic, directing itself vertically downward if the partially grown radicle is laid horizontally; and it may be assumed from the behavior of other plants of the same kind that the tip of the radicle is negatively heliotropic—i. e., it turns away from the source of light. Whether it is also sensitive to differences in the degree of moisture on different sides (hydrotropic), or to differences of temperature (thermotropic), is not known, but it may be inferred that such is the case; nor do we know whether it is affected by electric currents in the earth.



FIG. 8.—Portion of an older root of an oak, which had penetrated while young between two pieces of hard rock, and had to adapt its form accordingly as it thickened. (After Döbner.)

The root of the oak, speaking generally, is a typical root in the following respects: It consists, as we have seen, of a primary or tap root which develops secondary or lateral roots in acropetal succession, and these in their turn produce rootlets of a higher order. These secondary, tertiary, etc., rootlets arise endogenously, taking origin from the pericycle at the periphery of the strand of vascular bundles which traverse the central axis, and then bursting through the cortex to the exterior. The primary root, as well as the rootlets of all orders, are provided with a root-cap at the tips, and they all agree in being devoid of chlorophyll or stomata. From the outer layer of cells—the piliferous layer, corresponding to an epidermis—root-hairs are developed at some little distance behind the root-cap, and these superficial cellular outgrowths also rise in acropetal succession, the older ones behind dying off as the younger ones arise farther forward. If we bear in mind all that has been shortly stated above, it will be very easy to figure the behavior of the root-system as it penetrates the ground, and the following short description of the biology of the root may render the matter clear. When the radicle commences to bore down into the soil it puts forth a large number of root-hairs from the parts a few millimetres behind the tip, and these attach themselves to the particles of soil and supply points of resistance; the tip of the radicle is protected by the slippery root-cap, and it must be borne in mind that the embryonic tissue of the growing-point consists of

thin-walled cells full of relatively stiff protoplasm with very little water. Hence the growing-point is a firm body. The most active growth of the root takes place at a region several millimetres behind the root-cap, between it and the fixed point above referred to; hence the apex of the root is really driven into the ground between the particles of rock, etc., of which the latter is composed. This driving in is aided by the negative heliotropism, the positive geotropism, the circumnutation, and other irritabilities of the apical portions of the root, and it bores its way several centimetres downward. As it lengthens—by the addition of cells produced by the division of those of the embryonic tissue, and by their successive elongation—the older parts behind go on producing root-hairs, and thus a vertical cylinder of soil around the primary root is gradually laid under contribution for water containing dissolved salts, etc. In those parts of the root which are behind the growing region no further elongation occurs; hence the tips of the lateral rootlets (which have been developing in the pericycle at the circumference of the axial cylinder of vascular bundles) can now safely break through the cortex and extend themselves in the same manner from the parent root as a fixed base, without danger of being broken off by the elongation of the growing parts. Each of these secondary rootlets grows out at an obtuse angle from the primary root, and not vertically downward, and as it does so a similar wave of root-hairs is developed along it; thus a series of

nearly horizontal radiating cylinders of soil are placed under contribution as before. Then the secondary rootlets emit tertiary rootlets in all directions—these and the rootlets of a higher order growing without any particular reference to the direction of gravitation, light, etc.—and so place successive cylinders of soil in all directions under contribution as before. By this time, however, the symmetry of the root-system is being disturbed because some of the rootlets meet with stones or other obstacles, others get dried up or frozen, or gnawed off or otherwise injured, and the varying directions in which new growths start and in which the resistances are least, influence the very various shapes of the tangled mass of roots now permeating the soil in all directions.

These roots supply the ever-increasing needs for water of the shoot-system, the leaf-surface of which is becoming larger and larger, and as the greater volume of water from the gathering rootlets has all to enter the stem *via* the upper part of the main root, we are not surprised to find that the latter thickens, as does the stem; and so with all the older roots—they no longer act as absorbing roots, but become merely larger and larger channels for water, and girder-like supporting organs.

CHAPTER IV.

THE SEEDLING AND YOUNG PLANT (*continued*).

ITS SHOOT-SYSTEM—DISTRIBUTION OF THE TISSUES.

I NOW proceed to describe the chief features of importance in the structure of the shoot of the young oak-plant, premising that many of the remarks may here be curtailed in view of the facts already learned in connection with the root. The first object will be to bring out the differences in the shoot as contrasted with the root, and first we may examine the structure by means of transverse sections as before. The shoot consists of all the structures developed from the plumule.

Such sections show that we have here also various definitely grouped tissues, of which we may conveniently distinguish three systems. A series of vascular bundles grouped in a close ring constitutes one of these systems; another is represented by a single layer of cells at the periphery of the section, and this is called the epidermis; and the remainder of the section composes the third system, often termed the fundamental tissue, and divided arbitrarily into three regions—the pith, the cortex, and the primary medullary rays (Fig. 9). The

chief points of difference from the root are that the xylem and phloëm of these vascular bundles of the stem do not alternate on the section, as they did in the root, but the phloëm of each bundle is on the same radius as the xylem; and that there is no pericycle, for branches

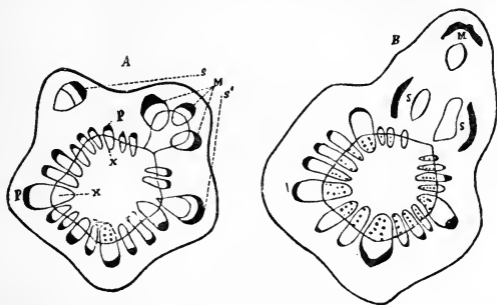


FIG. 9.—Transverse sections through very young twigs of oak, showing the vascular bundles of the stem (P and X), arranged in a ring round the pith, and joined by the cambium ring—the fine line passing through the bundles; M and s, the vascular bundles passing down from the leaves—M the median bundles and s the lateral bundles. The external outline is the epidermis; the letters P P stand in the primary cortex; the letters X X stand in the pith; the primary medullary rays separate the bundles. (After Müller.)

are not developed endogenously as rootlets are. Then there are some important differences in the mode of origin of these vascular bundles in space. We saw that in the root the first-formed spiral vessels are developed at the outer parts of the axis-cylinder, nearest the cortex, and the succeeding vessels are formed in centripetal order from these points. In the young stem the exact

converse occurs—the first spiral vessels arise near the center of the stem, and development proceeds centrifugally from the first. We may begin our study of the shoot by tracing the course of the vascular bundles, which, it must be remembered, are the channels of communication between the water-supply at the roots below and the leaves and young parts of the shoot above.

If we cut a transverse section of the terminal bud of the oak, as close to the tip as possible, we shall obtain a preparation of the young axis consisting entirely of embryonic tissue, all the cells of which are practically alike—small, polygonal, thin-walled cells, with large nuclei and much protoplasm, but without sap-vacuoles; these cells are in a state of active division, those in the interior dividing successively in all planes. Those which form the peripheral layer, however, are already distinguished by only dividing in the two planes at right angles to the periphery, and they constitute the primitive epidermis. There is no structure corresponding to a root-cap.

Transverse sections a little lower down show differences of the following nature: In the first place, the outline of the section tends to be somewhat pentagonal, the points of origin of the very young leaves being at the angles of the pentagon in accordance with their phyllotaxis—i. e., the order in which the leaves are arranged on the stem. This is of such a nature that each leaf stands some distance above and to one side of its

next neighbor below, and if a line be drawn from the insertion of any one leaf through the points of insertion of those above, it will describe a spiral, and will eventually come to a leaf standing directly above the leaf started from. In doing this the spiral line will pass twice round the stem, and through the points of insertion of five leaves. This is shortly expressed by two fifths.

The previously homogeneous embryonic tissue in the section now shows certain patches of grayer, closer tissue, arranged round the center in a peculiar manner; these are transverse sections of the young vascular bundles—strands which at present are distinguished chiefly by the small diameter of their cells, whence the darker gray appearance.

These strands when young are called procambium strands. Their cells are distinguished from the other embryonic cells around by growing more in length and dividing less frequently across their length, and by growing less in breadth and dividing more often by longitudinal walls.

On transverse sections a little lower down there may be seen a number of elongated and curved patches of procambium, as shown in Fig. 9. On the section it will be noticed that the larger strands are so arranged that they inclose a five-angled mass of central tissue (the pith), the five corners pointing to the angles of the young stem to which the leaves are attached. At the corners or ends of the rays just referred to are in some cases two or three smaller strands.

Now, the important point to apprehend first is that these strands at the corners (m, s) are the strands which pass directly into the leaves through the petioles, and it is necessary to be perfectly clear on this subject in order to understand much of what follows. For instance, the three strands marked m in Fig. 9, A (mm, ms , and ms in Fig. 10), pass directly into a given leaf, mm , in the middle, flanked by ms on either side; but this group is also accompanied on each side by another strand (marked s, s' in Fig. 9, A, and l, l in Fig. 10), so that five strands may be regarded as contributing to each corner of the section, the three middle ones running side by side up the midrib of the leaf and then branching out in a manner to be described subsequently.

It can be shown, moreover, that the larger curved strands, occupying the sides of the pentagon, are simply formed by the union of several of the smaller strands at different levels.

If, now, successively lower sections are cut of the very young shoot, and compared, or if the shoot is softened and dissected, it is possible to make out the course of these vascular bundle strands lower down; the course is somewhat complex, but the diagrammatic sketches in Fig. 11 will enable the reader to apprehend the chief points.

In the first place, the middle strand from a leaf, mm , passes vertically down in the angle of the young stem through five internodes (marked by the horizontal

lines), turning to one side and becoming continuous in the fifth internode with a strand coming off from another leaf situated at another of the angles at a different level. The strands which stand next to this median one—one on each side (*ms*)—at first also pass

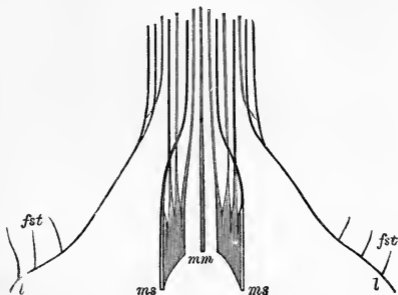


FIG. 10.—Diagram of the course of the bundles *M*, *s*, and *s'* of Fig. 10, as they pass out of the stem into the base of the leaf-stalk. *mm* is the median bundle, and *ms*, *ms* its two companions (*M* in Fig. 9, A); *l*, *l* are the lateral bundles *s* and *s'* of Fig. 9, A. The small branches *fst* go into the stipules. (After Frank.)

vertically down together with it, but at about the second or third internode below they break up into smaller strands, which again join with strands coming from other leaves situated at other nodes and angles.

If we again compare the figures, it will be seen that the three strands just traced come down in the angle of the stem, only turning aside lower down—the median strand *mm*, indeed, running actually in the angle through five internodes.

To right and left in Fig. 10 are seen two strands, marked l, l , and these run chiefly in what may be called the faces of the five-angled stem; only, at the node where the leaf we are considering is inserted, they turn in towards the leaf, and eventually they run into the sides of the petiole of the leaf as the so-called "lateral strands," or bundles.

Now, observation shows that these lateral strands (marked l, l^2, l^3 , etc., in the diagram,

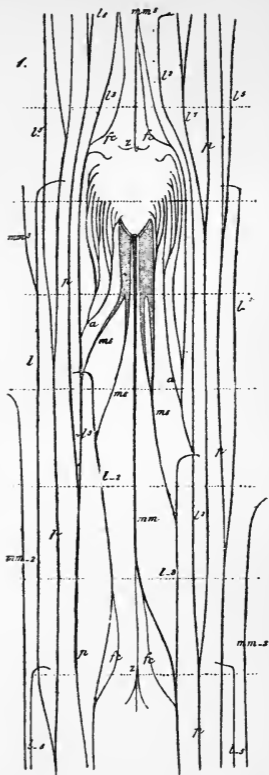


FIG. 11.—Diagram of the course of the vascular bundles as they come down from the leaves into the stem. The horizontal dotted lines represent the levels of successive leaves; the triangular white area beneath the upper letter z is the insertion of a leaf. Each group of bundles form a leaf, as mm ,

ms, ms , etc. (see text), descends into the stem, and joins with the bundles from other leaves after running through several internodes. The other letters refer to the bundles from other leaves. (After Frank.)

Fig. 11) receive contributions at successive nodes, and pass down as stronger and stronger strands through about seven internodes, their lower ends losing themselves by joining to others; and, in fact, the larger bundles seen on the transverse section (Fig. 9) are larger because they consist of so many contingents running parallel, or nearly so, down the stem.

It results from this that all the vascular bundles in the stem are simply composed of strands which run into the leaves on the one hand, and down the internodes on the other; and, as further comparison will show, all these bundles are continuous in the stem, since the lower ends of the strands are joined on to other strands.

Moreover, as an examination of the diagrams and figures shows, the main course of these bundles in the stem is approximately parallel—they run side by side down from the leaf insertion through two, three, or more internodes, and only bend aside to any great extent when they pass out into a leaf or to join with others. In the section (Fig. 9), for instance, all the little bundles at the angles and outside the ring are cut at levels where they have abandoned the larger bundles and are bending outward through the cortex to the leaves; lower down we should find them joining to the larger bundles at various levels, and running down with them, just as strands from leaves at higher levels are now conjoined to make up these larger bundles.

The group of vascular bundles which passes into the

stem from the insertion of a leaf is spoken of collectively as the "leaf-trace." Hence we see the leaf-trace of the oak consists of five bundles—one median, two lateral median, and two lateral; and since the phyllotaxis of the oak is two fifths, there will be twenty-five bundles in various stages of separation or conjunction coming down in the five internodes between any one leaf and the leaf vertically above it, as well as the parts of bundles from other leaves which are still continuing their course for a short time.

Now, since the main lengths of the course (in the stem) of these bundles is nearly vertically downward, with slight swerves to one side or another as the strands join, it is obvious that on the transverse section of the stem the bundles will appear arranged in a series round the center—in fact, they will form on the whole a more or less regular ring of bundles dividing off the pith from the cortical portions of the stem. Even in the very young condition (Fig. 9) we see bundles or groups of strands thus surrounding the pith, only the "ring" which they make is a sinuous one, so that the pith is five-rayed—a characteristic point in the oak. At a slightly later stage, as we shall see, this ring of bundles becomes more nearly circular from the gradual filling up of irregularities.

Before proceeding further it is necessary to make clear one or two other points. Since all the vascular bundles in the oak-stem are bundles which are common to the stem and leaf, they are termed "common bun-

dles." We have seen that a given strand or bundle may run for part of its course simply side by side with another and *separate* from it; at other parts of the course the bundles may be *united* with others. In the case of the oak it will be clearly borne in mind that the individual or separate bundles of the leaf-trace pass into the stem at the node of insertion of the given leaf, and then run down side by side at a practically constant distance from the surface of the epidermis on the one hand, and the longitudinal axis of the pith on the other. At different levels below, at or very near nodes, these bundles turn aside laterally—i. e., in the tangential plane, and hence, still keeping their mean distance from the epidermis and pith, join with others.

This being understood, it is also obvious that on the whole the collection of vascular bundles in a young branch form a nearly cylindrical trellis-work or mesh-work symmetrically disposed between the pith and the cortex, and that the latter (cortex and pith) are in connection through the meshes between the interpectinating and concomitant vascular bundles. These radial connections of the pith and cortex are the primary medullary rays.

It will now be clear why we observe on transverse sections of the young stem taken across an internode the arrangement shown in Fig. 9. The vascular bundles are grouped in a ring round the pith, separating it off from the cortex and its covering the epidermis, and with

those primary medullary rays which happen to have been cut running between the bundles.

If we now trace the vascular bundles of the leaf-trace in the other direction—that is, up into the leaf—their course is simple enough, as shown in Figs. 10 and 11. The five bundles run through the midrib and the stronger lateral ribs to the tips and edges of the leaf, first breaking up into several strands in the petiole and midrib, and then becoming finer and finer as they give off the lateral strands. The median bundle does little more than run directly through the leaf as the midrib, becoming finer and finer as it nears the apex. The two lateral median bundles behave in a somewhat curious way. We have already seen how large and flat they are at the leaf insertion (Fig. 10). Soon after entering the petiole they break up into several strands, two of which converge and take a course along the dorsal side of the midrib, thus nearly completing a cylinder of bundles inclosing a pith; moreover, the xylem portions of these bundles are all turned inward towards the pith.

The lateral bundles, coming obliquely into the leaf insertion, pass up the midrib side by side with the above, and, like them, break up into parallel strands. Before entering the midrib they give off small bundles (*fst* in Fig. 10) to the pair of minute stipules which flank the petiole. As the strands pass along the midribs and chief lateral ribs they interosculate in various degrees, and give off smaller side branches into the mesophyll of the leaf (see Chapter VI).

The veins which spring from the chief lateral ribs run towards one another and anastomose, giving off smaller veins which form a network in the area included by them. In the neighborhood of the leaf-margin, however, the smaller veins curve towards one another, and make arches convex towards the margin. In the finer meshes individual minute branches run to the center of a mesh and end there. Round the extreme edge of the leaf is a single vascular bundle; this receives small bundles from the above-mentioned arches, and also receives the ends of the midrib and the chief lateral ribs (cf. Fig. 1).

The vascular bundles of the axillary bud, which will eventually, of course, form a system like that already described on their own account, pass down and join the bundles of the parent axis as follows:

The bundles of each lateral half of the bud (Fig. 11, *a a*) pass down together between the bundles of the leaf-trace of the leaf from whose axil the bud arises, and the next lateral bundles of the stem with which the leaf-trace bundles are conjoined; the common strand formed by the bundles of each side of the bud then joins with a bundle coming down from another leaf. A few of the strands may also join to the bundles of the leaf-trace itself.

At the back or top side of the bud—i. e., the side next the stem which bears it—a few vascular bundles pass from the bud to the nearest strand (Fig. 11, *z*); this is the middle strand coming down from the leaf

vertically above the bud—i. e., the sixth leaf up the stem. Knowing this, we of course know how the branch is joined to the stem. Several other small strands also are formed, as at *z*, to complete the filling up the gap, and these may be called completing bundles. These connecting and completing bundles enable the young shoot as it develops from the bud to inclose its own pith in a cylinder of vascular tissue continuous with that of the parent shoot.

We thus see that the vascular bundles form a connected system in the leaves, buds (i. e., young branches), and stem, and it only remains to add that they are joined below to those of the root-system, with which, in fact, they took origin in the very young embryo. Hence, if we were to remove the whole of the softer tissues of the oak-plant, we should have a model of it left in the form of a more or less open basket-work of vascular bundles. It is necessary to bear this in mind, as some important conclusions follow from it subsequently.

CHAPTER V.

THE SEEDLING AND YOUNG PLANT (*continued*).

STRUCTURE OF THE VASCULAR TISSUES, ETC.

BEFORE plunging into the intricacies of the vascular bundles it will be well to obtain some idea of the general plan of structure which they present on transverse section (Fig. 9). As already seen, each of the bundles of the ring consists of a xylem portion on the side next the center of the stem, and a phloëm portion on the side next the periphery, and these portions are separated by the cambium layer. The tissue in the center of the stem, and surrounded by the ring of bundles, is called the pith; the tissue outside the ring, and between it and the epidermis, is called the cortex; and the tissue left between the bundles is termed the primary medullary rays (Fig. 9).

It will, of course, be remembered that the term "ring," as used above, always expresses the fact that a cylinder is here viewed in section. Now, the cambium of the individual bundles soon unites across the primary medullary rays, and thus a complete hollow cylinder of cambium is formed throughout the stem, and, as we shall see later, throughout the root also. For the pres-

ent it must suffice to notice that the cells of this cambium cylinder go on developing into new xylem, or phloëm, or medullary rays, according to position and circumstances; meanwhile we are only concerned with the vascular bundles of the young shoot.

On the transverse section through the very young shoot, provided the preparation is thin and examined with a high power of the microscope, the young vascular bundles are found to present a definite and symmetrical structure, easily distinguished from that of the fundamental cell-tissue in which they are, so to speak, imbedded (Fig. 12).

The cells of the medullary rays are seen in one, two, or several rows, each cell having the form of a parallelepiped or ordinary brick—the bricks being supposed standing on their narrow sides and with the long axes directed radially. The walls in contact with the vascular bundles are thickened, and soon become woody and beset with simple pits; the cells contain protoplasm and nuclei, and in winter become filled to crowding with starch grains. They also contain tannin.

The young vascular bundles, in section, project into the pith—like wedges with a rounded point—giving to the latter the five-rayed shape on the transverse section already referred to (Fig. 9).

The cells of the pith also have their walls thickened and pitted, and also contain protoplasm, nuclei, and tannin, and starch in winter. At the rounded angles of the vascular wedges the cells are smaller than else-

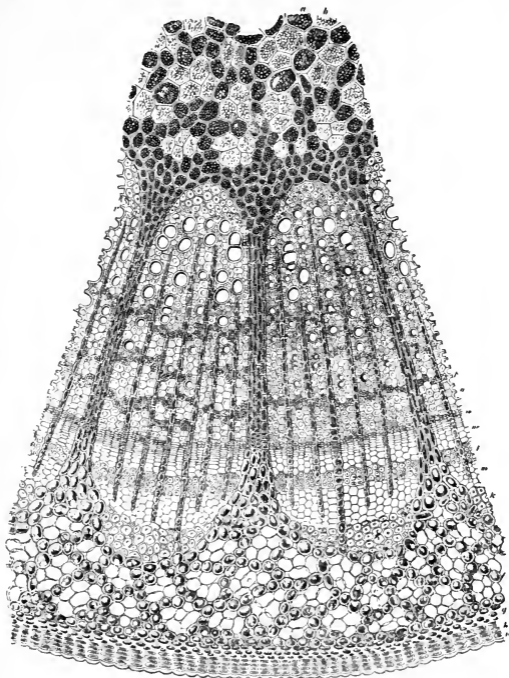


FIG. 12.—Transverse section of young stem, showing primary vascular bundles, etc., highly magnified. *a* and *b*, the pith; *c*, primary cortex; *i*, epidermis; *h*, periderm (cork); *g*, collenchyma. Two complete primary vascular bundles, and parts of two others, are shown, separated by the primary medullary rays. *r*, spiral vessels (protoxylem); *k*, bast-fibers (protophloem); *n*, *m*, cambium, separating the phloem from the xylem; *p*, wood-parenchyma. Secondary medullary rays are seen in the bundles, as also are pitted vessels of different sizes. (Th. Hartig.)

where in the pith, but otherwise their shape, etc., are similar; all the pith-cells are vertically twice or three times as long as broad. Thus the shape of the cells is that of short, polygonal prisms, standing on end and closely packed.

Imbedded, as it were, in the smaller pith-cells at the rounded angles of the vascular wedges are the oldest—i. e., first-formed—vessels, looking like small holes with very firm outlines (Fig. 12, *r*). These are the tracheæ, or vessels with unrollable spiral thickenings on their walls. From their shape and peculiarities they are called spiral vessels, and from their position and development they constitute the first-formed elements of the xylem or wood. They are of very narrow caliber, and stand in radial, short rows, single or branched; those first developed—i. e., nearest the pith—are the narrowest, their diameter being often even less than that of the smallest pith-cells among which they lie. As we pass radially out towards the cortex these vessels get wider and wider, but the true spiral vessels are always very narrow (Fig. 16, *sp*). Occasionally some of these vessels have annular instead of spiral thickenings.

Of course, their true characters are not elucidated until we compare longitudinal sections of the stem. It is then seen that the spiral thickenings are very closely wound, sometimes to the right, sometimes to the left, and occasionally double. Comparative studies of longitudinal sections also show that these vessels at first simply consist of longitudinal rows of very narrow, verti-

cally placed cylindrical cells, standing end to end; it is because the adjacent ends become resorbed and disappear that the rows of cells at length form long, continuous tubes—vessels, or tracheæ.

Turning once more to the transverse section, as the eye follows the bundle radially outward the lumina of the vessels in the radial rows are found to become wider and wider, until we meet with vessels with diameters many times greater than that of the pith-cells. The walls of these wider vessels, however, are not strengthened with spiral thickenings, but are thickened and furnished with bordered pits, the shape and characters of which are best seen from the illustrations (Figs. 14–16). These larger vessels are not always associated with the radial rows of spiral vessels, but may be scattered between them.

The vessels intermediate between the spiral and the pitted ones are thickened sometimes with reticulations. All these larger vessels have septa inclined towards the medullary rays, and perforated with several long, oval, parallel, horizontal holes: hence the segments are easily macerated and distinguished, and their lengths are found to be variable (Fig. 16, *pv*).

The large pitted vessels form groups with parenchyma and wood-cells scattered between, and are confined chiefly to the inner parts, forming radiating series side by side; in the outer parts of the bundle are various groups of smaller vessels—the groups being rounded, or in radial rows, or curved or oblique rows.

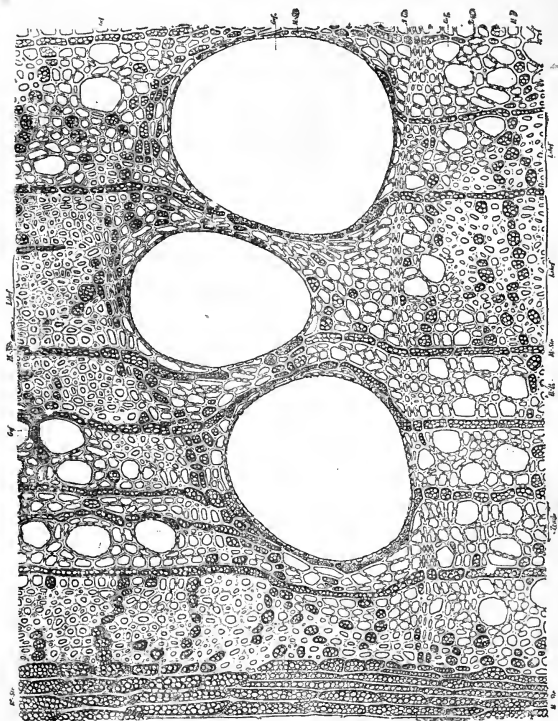


FIG. 13.—Highly-magnified transverse section of wood of oak, showing three of the large pitted vessels (*Gef*) and a number of smaller ones. *M.Str*, medullary rays, of which part of a large one is shown to the left; *Libry*, wood-fibers; *H.P.*, wood-parenchyma; *Trach*, tracheids; *J.Gr*, boundary of annual ring. (Kny.)

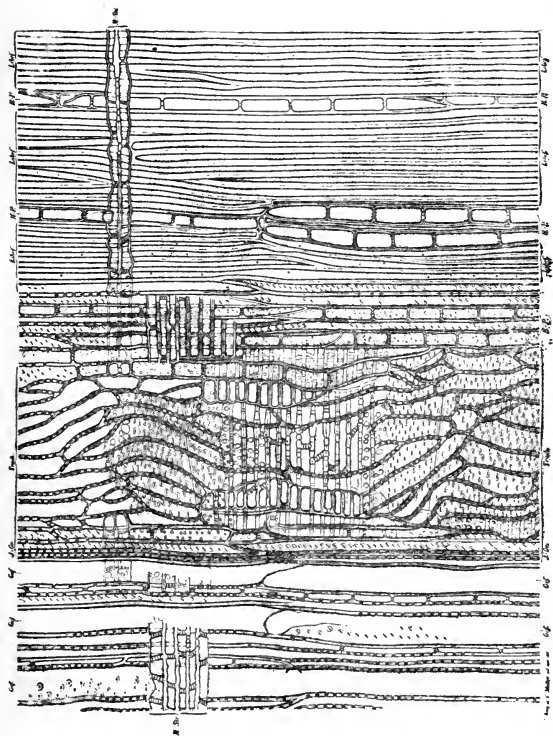


FIG. 14.—Radial longitudinal section of wood of oak (highly magnified). *M. Str.*, medullary rays; *Trach.*, tracheids; *Gef.* (to the left), smaller pitted vessels; *Libr.*, wood-fibers; *H. P.*, wood-parenchyma. The large mass of tracheids to the left of the center of the figure lies over one of the broad pitted vessels. *J. Gr.*, boundary of annual ring. (Kny.)

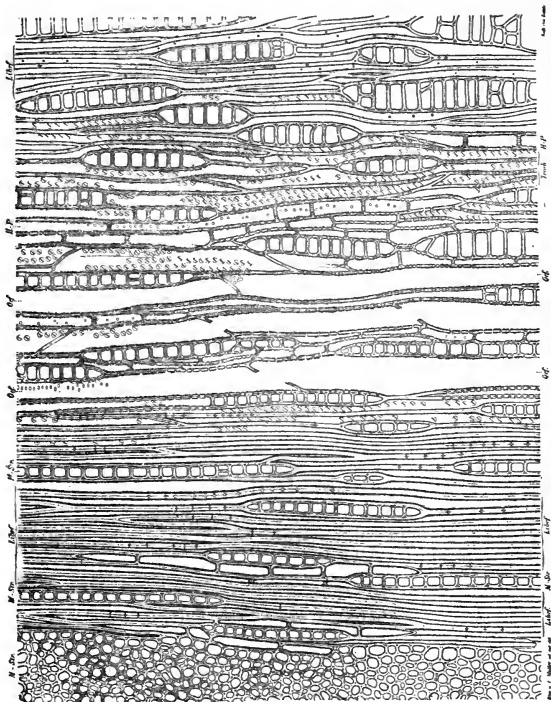


FIG. 15.—Tangential longitudinal section of wood of oak (highly magnified). To the left is a large medullary ray (*M.Dr.*), and numerous small ones are seen in various parts of the section—in course, in transverse section. *Libr.*, wood-fibers; *Gcf.*, smaller pitted vessels; *Trach.*, tracheids; *H.P.*, wood-parenchyma. (Kny.)

Successive sections prove that the vessels in the bundle change in number—i. e., there are fewer when passing from stem to leaf. A vessel may end in an interpectinating, pointed, terminal cell; or it may branch, as it were, dichotomously, owing to fusions with other similar elements; or such a fusion may occur lower down, the original vessel ending blindly.

In the vicinity of the reticulated and first pitted vessels, following on the spiral vessels, we find libriform fibers, tracheids, wood-parenchyma, and secondary rays of parenchyma; the tracheids are especially in the neighborhood of the vessels (see Fig. 14).

The tracheids are long cells with gradually tapering ends, and the walls rather thick but by no means obscuring the lumen; on the walls are numerous, usually elongated, oblique or horizontal bordered pits. These pits occur whether the next element is a tracheid, a vessel, or fibers or cells of any kind (Fig. 16, *tr*).

The length of the tracheids varies, and the diameter is also variable.

The libriform fibers are also long cells, but often more pointed at the ends, and their very thick walls almost obliterate the lumen (Fig. 16, *f*); their length is about that of the tracheids, but slit-like, small, simple pits are rare on their walls. In the wood of later years, however, the lengths may be different.

There are also elements which stand midway between the true fibers and tracheids; they occur in those parts where masses of true fibers abut on the groups consist-

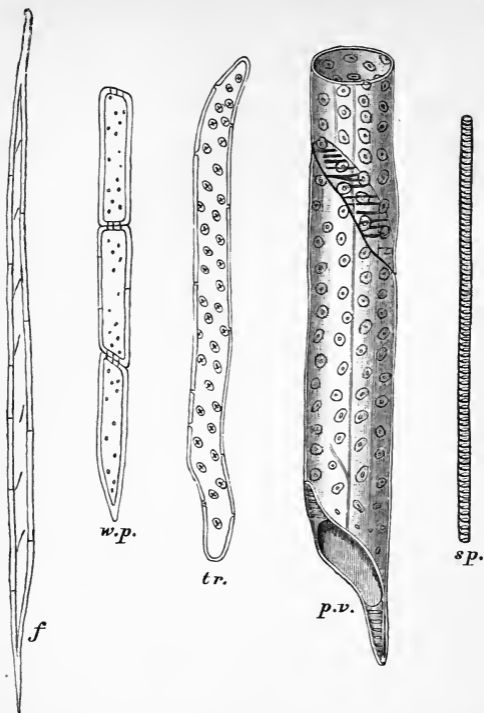


FIG. 16.—The various chief elements of the wood of the oak, isolated by maceration, and highly magnified. *f*, a fiber, distinguished by its thick walls, simple slit-like pits, and no contents; *w.p.*, part of a row of wood-parenchyma cells, with simple pits, and containing starch in winter; *tr.*, a tracheid, distinguished from the fiber especially by its bordered pits; *p.v.*, part of a rather large pitted vessel, made up of communicating segments, each of which corresponds to a tracheid, and has bordered pits on its walls; *sp.*, part of a spiral vessel.

ing of vessels and tracheids. They resemble tracheids, but have very few and small, scarcely bordered, oblique, slit-like pits: every stage can be detected between these and true fibers. They must be looked upon as, so to speak, abnormal, because their numbers are small compared with the typical elements among which they occur.

The wood-parenchyma consists of vertical groups of short cells, each group having the fusiform shape of a tracheid (Fig. 16, *w.p.*): hence the upper and lower cell of each group has a pointed end. Each group obviously arises from the transverse divisions of a long, prismatic cell, pointed at both ends—a cambium cell. The transverse section is round, and somewhat larger than that of a tracheid, and the walls are somewhat thinner. Where they abut on vessels and tracheids their walls have bordered pits, but where they stand in contact with similar groups, or with parenchyma rays, the pits are simple. During periods of rest they are loaded with starch grains.

The length of the groups—i. e., of the fusiform cells cut up into short cells—varies; the shorter ones have only one transverse division.

The wood-parenchyma is less abundant than the tracheids and fibers, and predominates in the more vascular parts; after two to four or more fibers in a radial row a single parenchyma cell may often be seen, but other arrangements occur. In the parts where fewer vessels occur it is not uncommon to find a series of radial rows of

about six to ten fibers end in a single parenchyma cell, and thus are formed short, tangential rows of wood-parenchyma cells, intercalated, as it were, between the radial rows of other elements (Fig. 12, *p*). It often happens, moreover, that reticulated and pitted vessels are closely surrounded by wood-parenchyma.

The secondary medullary rays exist as single radial rows of cells, agreeing in form, etc., with the cells of the primary medullary rays. In contact with one another or with wood-parenchyma their walls have simple pits, but they have bordered pits where they abut on tracheids or vessels. In winter these cells are filled with starch. On tangential sections (Fig. 15) it is easy to see how the vertical groups of cells have the same origin as the groups of wood-parenchyma cells—the difference being that the cambial cells which are going to be transformed by horizontal divisions, etc., into vertical rows of ray parenchyma, undergo repeated tangential longitudinal divisions, and so continued radial rows are formed. The cells of these rays are often much shorter than those of the wood-parenchyma, yet all gradations occur. The mother-cells may be very long, evidently corresponding to two, and they may also divide in the radial longitudinal plane, and the ray become biseriate.

These secondary rays start (on the transverse section) from the first large vessels, or from younger ones, or they may start from other points. The ray may sometimes cease within the first year's bundle; but the difficulty

comes in of deciding whether a continuation occurs at a higher or lower level.

The cells of the cambium, seen in transverse section, are rectangular in shape and arranged in regular radial rows, owing to the regular tangential divisions (Fig. 12, *n*, *m*). In longitudinal sections they are found to be like the tracheids in shape and size, so that they stand one behind the other at the same level. Regarding the tangential series in rings, however, they are less regular, because the tangential longitudinal divisions of two cells side by side do not lie in the same tangential plane. This regular radial arrangement would be found in the xylem also, and is so to a certain extent, but it is disturbed by the differences in diameter which the various elements attain later. The fibers are most apt to preserve the regularity, but in many cases growth in length, and the intercalation of oblique septa, disturb it.

In later years the length of the cambial cells increases, and hence the length of the elements in the wood.

The phloëm or bast of the individual bundle is separated from its neighbors by large rays of parenchyma, the cells of which agree with the secondary bast-parenchyma rays. As these pass into the cortex they widen, as they do at the pith (Fig. 12).

The oldest portion of the phloëm—that next the cortex—consists of a group of thick-walled bast fibers with their lumina nearly obliterated; these are long, spindle-shaped fibers much like the fibers of the wood.

As a rule, the outer and inner side of these bast groups are in contact with vertical rows of nearly cubical parenchyma cells, strongly thickened on the side next the bast, and each nearly filled with a crystalline clump or with an imperfectly formed crystal of oxalate of lime. Similar vertical rows of crystal cells may also occur within the groups of bast fibers, the walls of the cubical cells being more or less thickened and simply pitted. Occasionally a cell here and there retains thin walls. The vertical rows result from cross-divisions of prosenchymatous mother-cells, the conical ends being found in macerations.

Within the groups of bast fibers are yet other rows, similarly formed, of parenchyma (Fig. 17, *bp*), the cells of which are longer, however, attaining the length of the wood-parenchyma; like the latter also their walls are lignified and rather thick, and they contain starch in the winter. Thus we have parenchyma in the bast. Transitions between these two forms of parenchyma cells are also found.

The cells of the rays between the bast fibers are thickened and pitted; they are rounded, and not in vertical series as in the rest of the rays, but are scattered in no particular order. Sometimes they are few, and one or all with very thick walls perforated by pit-canals (Fig. 17, *bs*).

The remaining younger part of the bast consists chiefly of delicate, apparently irregular parenchyma cells with cellulose walls; this is easily traced to the

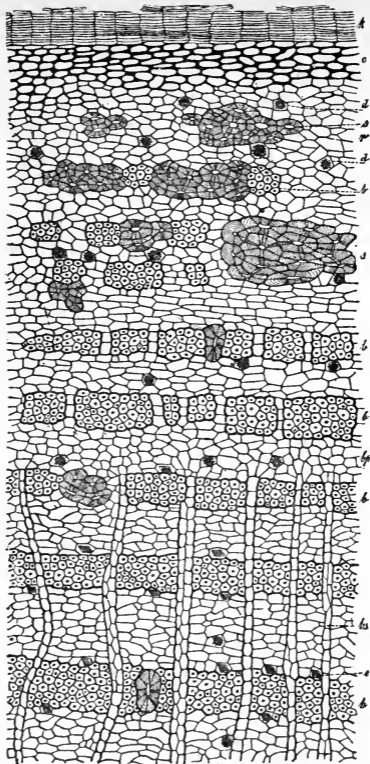


FIG. 17.—Transverse section of cortex and phloem of oak (highly magnified). *k*, the periderm (cork), which has replaced the epidermis; *c*, collenchyma; *d*, cells of cortex containing crystals of oxalate of lime; *s*, sclerenchyma cells. All these belong to the cortex proper. Below these come the phloem: *b*, *b*, groups of hard bast fibers; *bp*, phloem-parenchyma; *bs*, medullary ray; *e*, cells containing crystals of oxalate of lime. (Luerssen.)

cambium. The radial rows of the latter can be followed for some distance, the radial diameter of the cells increasing, the walls thickening, and the rectangular shape changing. Displacements from the radial arrangement then occur. A few cells assume a nearly circular form (i. e., in transverse section), and the larger ones are effective in causing displacements. The bast cells developed earlier, and therefore more distant from the cambium zone, now lie in the perceptibly large periphery, and thus undergo tangential extension or radial compression, and so undergo changes of form. Besides these alterations in form and position, the more delicate bast elements increase in numbers by the development of perpendicular division walls; this is quite clear in those parts nearest the cambium, but farther out, where great irregularity occurs, it is impossible to say which cells have arisen direct from the cambium and which by these later divisions. Still, certain thin septa betray their late origin.

On tangential sections we see elongated, pointed, interpectinating cells, with secondary rays of parenchyma between, showing that these are formed and continued by the cambium. Each pointed cell has proceeded from a cambium cell, and indeed only differs in its thicker walls and pits. These cells are still simple, or here and there have a transverse septum obliquely across. If the tangential section is in a slightly older portion, most of the above cells are found to be septate and cut up into parenchyma-like cells—irregular bast-parenchyma. The

walls, especially the longitudinal walls, are marked either with crowded small pits giving a reticulate appearance, or have sieve-plates; all intermediate stages occur also. The transverse walls are also pitted with sieve-plates.

All the cells of the soft bast contain tannin, and small grains which turn brown in iodine (leucoplasts?). Very little starch is found in them except in winter. Crystals occur in pitted cells here and there (Fig. 18, *d* and *e*).

Even in the first year the cambium may produce small groups of thick-walled bast fibers of exactly the same character as those of the primordial groups.

It is obvious that while the wood elements remain fixed in the cylindrical surface where they are developed, the bast elements formed outside the cambium, being driven outward in consequence of growth in thickness, come to lie in a layer of continually increasing radius. If these last elements were unyielding and lignified there would be a solid sheath of elements which refused to extend by mechanical distention, cell division, or growth of cell-walls; this would finally rupture under the pressure from within. This is prevented by the division and growth of the chief phloëm-elements.

In the vascular-bundle system of the stem there are no essential differences in structure as we pass from one region to another; the only variations are in the thickness or breadth of the bundles at different points, such as where other bundles join or leave them. As the leaf-trace passes into the venation of the leaf the ends be-

come thinner (Fig. 21), and the same is found as it tails off below ; changes in structure also appear in the leaves.

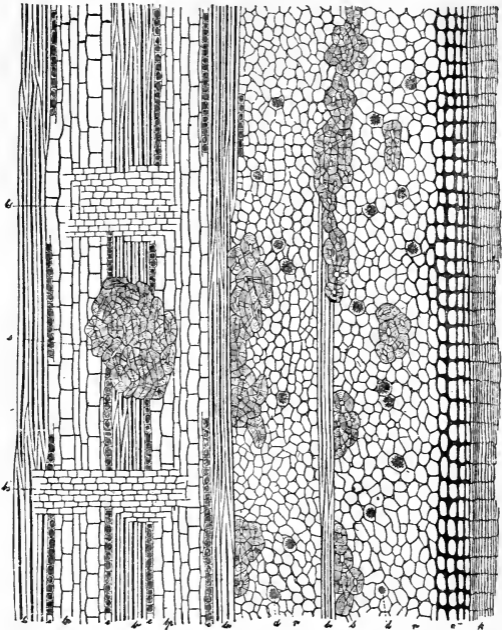


FIG. 18.—Longitudinal radial section of the cortex and phloëm of oak.
References as in Fig. 17. (Luerssen.)

The first noticeable change is the diminution in the number of wood fibers and the presence of narrow

vessels only. As the trace passes through the cortex to the leaf the actual number of both xylem- and phloëm-elements diminishes; hence it comes about that the bundles in the leaves consist to a relatively large extent of spiral vessels in the xylem and of sieve-tubes in the phloëm. As the bundles leave the midrib and larger veins the true continuous vessels disappear altogether, and only spindle-shaped tracheids with reticulated or spiral thickenings occur, fitting obliquely at their pointed ends, and which are shorter and shorter as we approach the ends of the bundles.

The phloëm also is at length reduced to little more than one or two sieve-tubes, the segments of which are shorter and shorter as we near the end. The shortening of the elements is in evident correlation with the early cessation of growth in length of the parts of the leaf, and the diminution of the number of elements with the decreased supply of fluids, etc., on the one hand, and the smaller weight and strains to be supported on the other.

We may sum up the changes in structure towards the ends of the vascular bundles thus: The thickening of the walls is less, and the elements become narrower and shorter; the xylem becomes simplified by the loss of fibers and vessels, until finally only delicate tracheids are left (Fig. 21), the thickenings of which are at length not spirals or nets for the most part, but irregular pittings. Moreover, they are nearly isolated. Nevertheless, the inner elements can be distinguished as primary

tracheal elements, because, being earlier formed, they partook more in what elongation occurred, and their spirals, for instance, are wider apart.

In the midrib, in proportion as the structural changes go on, the bundles approach one another, the separating parenchyma becoming narrower and narrower. The pith consists of parenchyma, chiefly un-lignified and with simple pits, but as the bundles are approached the cells become longer and lignified; the rays between the xylem groups are also lignified.

Towards autumn the cells of the pith and rays fill with starch; this is nearly, but not quite, all resorbed before the leaf falls.

The termination of the bundles in the leaf consists only of a few narrow spiral and reticulated cells, which at last become very short and variable in shape, and of a few small sieve elements and cells (see Chapter VI).

CHAPTER VI.

THE SEEDLING AND YOUNG PLANT (*continued*).

THE BUDS AND LEAVES.

THE buds of the oak—those in the leaf-axils as well as those at the tips of the young shoots—are characteristically short and broad ovoid bodies, consisting of numerous overlapping brown scales covered with short, silky hairs, especially at the margins (Fig. 19). These scales are really the stipules of arrested leaves, as is shown by the proper leaf-blades being developed as well under certain circumstances, such as when nutritive materials are directed to the young buds. The same morphological fact is also shown by the position of the inflorescences and young leaves higher up in the bud, for they spring from between the scales, and not from their axils proper (see Fig. 32). It is of the highest importance to understand that a bud is simply the young state of a shoot, and that it consists of the growing-point of the shoot enveloped by closely-folded leaf structures. In the oak the buds are already formed before the end of June, and on looking closely into the axils of the leaves on the young shoots—which have by

that time ceased to elongate to any considerable extent farther—they may be seen as small, green, hairy bodies. During the remainder of the summer the chief changes going on in these buds is a slow swelling, due to the

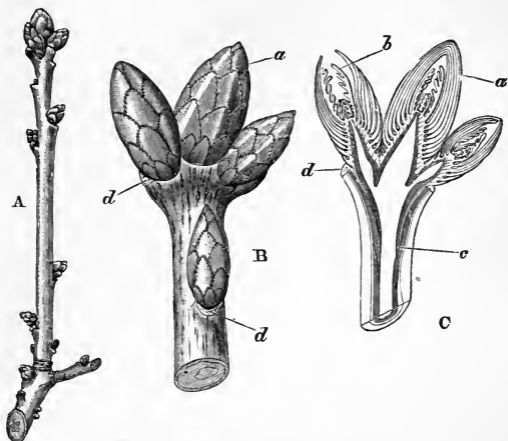


FIG. 19.—A. End of a branch of oak showing the characteristic winter buds. B. A group of buds (slightly magnified): *a*, bud-scales; *d*, leaf-scars. C. The same, in longitudinal section: *a*, bud-scales (stipules); *b*, young leaves; *c*, vascular bundles; *d*, leaf-scars. (Prantl and Hartig.)

gradual storing up of nutritive materials in the pith and growing-point and to the slow division of the cells.

A vertical section through the bud at the end of the autumn shows the following structures (Fig. 19, c): A conical growing-point, consisting of embryonic tissue,

occupies the center; around this, arranged in a close spiral, are several young rudiments of foliage leaves, each consisting of meristem, the cells of which are undergoing divisions. The youngest leaf is next the apex of the cone—i. e., the order of development is acropetal—and each is folded with the upper surfaces of each half in contact; two extremely minute stipules accompany each leaf. Lower down on the cone come the numerous (about thirty) overlapping scales, and between several pairs of the upper of these the male inflorescences develop. The female inflorescences are developed in the axils of two or three of the above-described true leaves in a terminal bud; they are not normally formed in the lateral buds of the shoot (see Chapter IX).

All the leaves of the shoot may have such buds formed in their axils during the summer, but only some of them develop in the following spring; it is the buds in the axils of the lower leaves of the shoot which usually come to nothing.

The normal course of events is that the bud-scales (stipules) become dry, and the protected growing-point, with its rudimentary leaves and flowers, passes into a dormant condition lasting through the winter; but it is a very common event, especially in a wet autumn following a dry, hot summer, to find the winter buds beginning to shoot out in August, and not passing into the prolonged state of dormancy. Such shoots are known as Lammas shoots. In some districts the oak

forms numbers of these Lammas shoots every year, and the tendency to produce them seems to be capable of being inherited.

The process of sprouting, or putting forth the shoot from the bud, is the same in all the cases. As the temperature and other conditions improve in the spring, for instance, the process of cell-division in the growing-point (and its derivatives, the young leaves, etc.) goes on rapidly, and the stores of nourishment already there and in the pith and other tissues close at hand are used up. This originates a series of currents of food materials setting slowly towards these centers of consumption from other parts of the tree, and very soon the numerous cells developed begin to absorb water with relatively enormous rapidity and vigor. This brings about two chief changes—the rapid elongation of the parts of the cone situated between the points of insertion of successive leaves (i. e., the internodes), and the almost simultaneous expansion of the hitherto small and folded leaves. Thus the rapid extension of the shoot is due almost entirely to the energetic absorption of water into cells for the most part already in existence. The chief changes which follow consist in the perfection of the structures—the development and thickening of vascular tissues, cell-walls, etc.

This process of rapid extension does not occur in the internodes between the bud-scales, or, at any rate, to a slight degree only, just sufficient to enable the shoot to throw the scales off; hence the base of the outgrown

shoot shows a number of small scars in a close spiral. These scars of the stipular bud-scales, like those of fallen leaves, exhibit the points of rupture of the vascular bundles which ran across from the bundles of the bud-axis. It only remains to point out that the buds vary in size and vigor according to the age and condition of the tree; the buds on oaks less than fifty years old very rarely have inflorescences developed in them, and I shall defer the consideration of these till we come to the flower.

The mature leaf of the oak (Fig. 20) is obovate in general outline, with rather deep sinuses cutting the margin on each side into about six or eight rounded lobes; the apex is rounded or blunt, and some variation occurs in the degree of incision between the lobes. The base either tapers slightly into an evident petiole, or it is prolonged on either side of a very short petiole so as to form small auricles. In the commonest variety the margins and surfaces of the leaf are quite smooth, but the raceform known as *Quercus sessiliflora* has the young leaves pubescent beneath.

The venation consists of a midrib running from base to apex, and pinnate lateral ribs running from the midrib at an angle of about forty-five degrees to the tip of each lobe, the points of origin being alternate or nearly opposite, and the angle referred to subtending forward. These principal ribs are prominent below, but not at all so above. The leaf-tissue (mesophyll) between these is permeated by numerous smaller vascular bundles united

into an irregular network, but so arranged that they leave between them nearly equal small areas not traversed by bundles.



FIG. 20.—Sprigs of oak, showing the habit and the arrangement of the acorns, etc., in September. (After Kotschy.)

When young, the leaves are red, gradually becoming a bright apple-green, and finally—in the autumn—becoming russet-brown in color. Young oaks retain their dead leaves till far into the winter, and even old trees usually have some leaves attached till January. The young leaves secrete small quantities of sweet liquid on

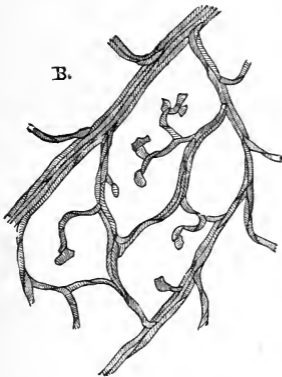


FIG. 21.—A portion of the ultimate ramifications of the vascular bundles, showing tracheids only, isolated from the leaf by maceration.

the superior face of the lamina, and are much visited by bees and wasps; this honey must come through the membrane. As the leaves approach maturity the lamina becomes bright and hard.

The arrangement of the leaves is expressed by the fraction two fifths, as already described, each node giving off one leaf at an open angle, the points of insertion being so arranged that a line drawn from the insertion of a given lower leaf, and joining it to the points of insertion of those above, passes twice round the twig before we arrive at the leaf situated vertically above the one started from, and this upper leaf is the sixth above. Although this is the commonest and normal arrange-

ment, however, other dispositions are occasionally met with on the same plant. The young leaves are folded in the bud in such a manner that the two halves of the lamina lie one on the other, the upper surfaces being in contact (conduplicate vernation), the margins being therefore turned upward.

In order to understand the structure of the leaf, let us look at a section cut neatly across the midrib and lamina, and examined with the microscope. It is found to consist of three principal parts—an epidermis above and below, and all round the margins, and therefore over the whole of the leaf; this epidermis is, in fact, a continuation of that of the young shoot-axis, and envelops the whole of the remaining leaf-tissues. Inside this we have the main mass of the leaf substance—called the *mesophyll*—consisting of thin-walled cells arranged in a peculiar manner, and containing (in addition to less obvious structures) large numbers of green chlorophyll corpuscles; it is the predominance of these corpuscles which causes the leaves to appear uniformly green. Here and there we see vascular bundles, imbedded, as it were, in the mesophyll, cut across in various directions; and when it is remembered that these vascular bundles constitute the venation of the leaf, this phenomenon is easily explained.

As we have already seen, the vascular bundles of the venation (Fig. 20) are simply the much-branched and thinned-off upper ends of the vascular bundles from the shoot-axis, the lower ends of which join the vascular sys-

tem of the latter lower down. Now the next point to be clearly apprehended is that these vascular bundles of the leaves have the double duty of supporting the flattened

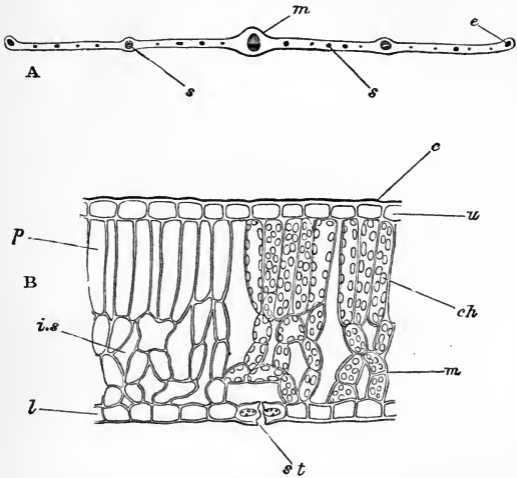


FIG. 22.—Sections across the leaf of oak. A. Slightly magnified and semi-diagrammatic, to show the general arrangement of the principal vascular bundles as seen cut across: *m*, midrib; *e*, marginal veins; *s*, lateral branches of midrib. Other smaller veins scattered between. B. A highly magnified vertical section of part of the above at a place free from vascular bundles: *u*, upper epidermis, with cuticle, *c*; *p*, palisade cells; *ch*, chlorophyll corpuscles, only drawn in a few cells; *m*, spongy tissue of mesophyll; *i.s.*, intercellular passages communicating with the stoma, *st*, in the lower epidermis, *l*.

mass of leaf-tissue, and of carrying to and from its cells the water from the roots and the organic substances

formed in the cells of the leaves. The water, with salts in solution, coming from the soil after it has been absorbed by the root-hairs, passes up the wood (xylem) of the roots and stem, through the vessels of the petioles and leaf-venation, and is finally distributed to the cells of the mesophyll; the substances formed in these cells then pass down by the phloëm (sieve-tubes, etc.) of the venation and leaf-stalk, and thence are distributed to other parts of the plant.

Now let us look at the mesophyll which these vascular bundles support and serve as conduits for. It consists of two distinct parts (Fig. 22). Beneath the upper epidermis, the cells of which are fitted closely together without intercellular spaces and are devoid of chlorophyll corpuscles, there are one or two rows of vertical sausage-shaped cells, closely arranged like the wooden railings of a complete palisade—consequently they are termed the palisade cells. The lower moiety of the mesophyll, on the other hand, is composed of irregular cells with large intercellular spaces between them, and this loose, spongy tissue, as it is aptly called, abuts below on the lower epidermis. Both the palisade cells and those of the spongy tissue contain numerous chlorophyll corpuscles, as said.

This lower epidermis is worth a few minutes' consideration. It, like the upper epidermis, is also composed chiefly of closely fitting cells devoid of chlorophyll corpuscles, excepting that here and there we notice pairs of smaller cells containing chlorophyll—each pair with

a minute gap between them, and the gap communicates with the intercellular air-cavities between the cells of the spongy mesophyll (Fig. 22, *st*). If we remove a piece of this epidermis, and look at it as laid flat (instead of in section) under the microscope, we find that these pairs of small cells are shaped somewhat like a small mouth, the two curved lips of which are formed by the two cells just mentioned, and the orifice of which is the gap just referred to (Fig. 23). These two lips are called the guard-cells, and the whole apparatus is termed a *stoma*. It is necessary to realize two great facts about these stomata on the under surface of the leaf: firstly, there are several hundreds of thousands of them on an oak-leaf, each square millimetre having from 300 to 350 of them scattered over it; and, secondly, each one can open or close its little aperture by the approximation or divarication of the inner concave sides of the curved guard-cells.

If this is clear, it will be readily understood that these stomata can regulate the amount of water passing off by evaporation from the walls of the millions of cells of the mesophyll, especially if the further fact is borne in mind that water-vapor scarcely passes at all through the close-fitting epidermis cells themselves.

We are now in a position to form a sort of picture of the mechanism of the shoot and root in regard to this matter. The root-hairs absorb water from the soil, and in this water there are dissolved small quantities of the soluble salts of the earth—chiefly sulphates, nitrates,

and phosphates of lime, magnesia, and potash—just as there are in ordinary well-water. This extremely dilute solution passes into the root-fibers and up through the

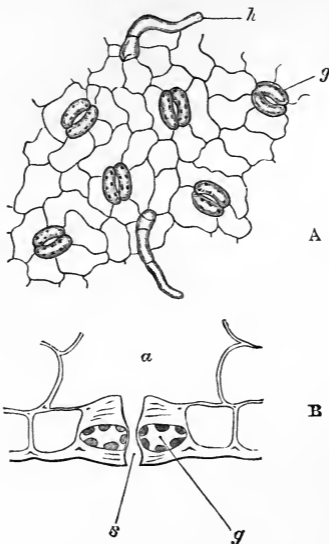


FIG. 23.—A. A small piece of the lower epidermis removed (and highly magnified) to show the stomata, *g*; *h*, minute hairs. The guard-cells contain chlorophyll corpuscles, whereas the ordinary epidermal cells do not. B. A stoma in vertical median section, cut across its longer axis: *a*, intercellular space: *g*, guard-cell with chlorophyll corpuscles; *s*, orifice of stoma.

vessels, etc., of the vascular bundles of the roots, collecting into the larger and larger channels until it reaches

the stem; here it passes up the xylem to the branches, petioles, and leaf-venation—always in the wood—and is finally distributed to the mesophyll cells, which absorb it and evaporate the greater part of the water into the intercellular passages communicating with the outer air through the stomata.

Two points need notice here. The first is that this absorption and evaporation in the mesophyll constitute a cause of the upward movement of the water in the vascular bundles—a movement which is propagated through the whole stem until it makes itself effective even in the roots. The exact mechanism of the movement in the stem itself is too complex for discussion here; but I may sum up the matter by saying that the disappearance of the water at the surfaces of the leaves starts a series of flows in directions of least resistance towards the mesophyll, and as long as the evaporation goes on more water flows into the cells, to replace that lost, from the vessels of the stem, when the water-columns are supported and moved partly by capillarity and by the air-bubbles in the cavities, and partly by a peculiar co-operation of the living cells of the medullary rays. The second point referred to above is that the evaporation from the mesophyll cells will be the more rapid in proportion as the air outside is drier and the stomata wide open; and the more energetic this evaporation is, the more salts the mesophyll cells will acquire in a given time, because, of course, the salts do not pass away in the evaporated water but are left in

the cells. It has been calculated that an oak-tree may have 700,000 leaves, and that 111,225 kilogrammes of water may pass off from its surface in the five months from June to October, and that 226 times its own weight of water may pass through it in a year.

Now comes the question, What are the salts needed for that so much mechanism should be expended on their accumulation? To answer this, we must look at the mesophyll cells a little more closely.

Each of these consists of a thin cellulose cell-wall, lined with colorless protoplasm, which incloses a large sap-cavity (vacuole); in the protoplasm are imbedded a number of bright-green, rounded chlorophyll corpuscles, a relatively large nucleus, and a few less conspicuous granules, etc. The cell-sap contains various substances dissolved in water. Some of these substances are salts and other materials ready to be made use of; others are, so to speak, waste products or worked-up materials that are going to be got rid of, or sent to places where they will be made use of, respectively.

In the colorless protoplasm which lines the interior of the cell-wall and surrounds the cell-sap we find a nucleus and the chlorophyll corpuscles, as said, and a few words must be devoted to the latter. Each chlorophyll corpuscle consists of a rounded mass of protoplasmic substance of somewhat spongy texture, containing the peculiar green body, chlorophyll, imbedded in it as in a matrix. These chlorophyll corpuscles are living organs, and they require food materials—water, oxy-

gen, etc.—for the support of their life processes, just as do the other living parts of the cell—e. g., the colorless protoplasm and nucleus. They obtain these from the cell-sap, through the agency of the colorless protoplasm in which they reside.

In order that they may perform their functions properly, however, it is essential that they be exposed to light; this is effected by their being in cells which are disposed in thin layers, such as we have seen the mesophyll of the leaf to be. In fact, the flat, thin, expanded form of the leaf is a direct adaptation to the end that these chlorophyll corpuscles shall be properly illuminated by the sunlight; moreover, the large intercellular passages which communicate by thousands of stomata with the atmosphere insure their being thoroughly aërated. In addition to allowing the free access of the oxygen of the air, moreover, these intercellular passages admit of the small quantities of carbon dioxide in the atmosphere also reaching the chlorophyll corpuscles. Oxygen and carbon dioxide, therefore, are found dissolved with the other materials in the cell-sap which saturates the protoplasm and reaches the chlorophyll corpuscles.

These facts premised, we are in a position to follow generally the astounding transformations which go on in these millions of chlorophyll corpuscles in the oak-leaf. Carbon dioxide and water exist side by side in the protoplasm of the chlorophyll corpuscle, and rays of sunlight—i. e., energetic vibrations of the ether which per-

vades the universe—penetrate into the system. By means of the energy thus derived from the sun, the molecules of carbon dioxide and water are broken up in the meshes of this chlorophyll corpuscle, and experiments prove that the chlorophyll substance plays the part of the “trap to catch a sunbeam.” We are not concerned with the hypothetical explanations offered for all the details of this remarkable process, but the present position of science enables us to say that, be these what they may, the chlorophyll corpuscle gains energy from the sun, and brings this energy to bear on the carbon dioxide and water in such a way that it does work in tearing asunder their molecules in the substance of the corpuscle. Then a curious series of results follow. The carbon, oxygen, and hydrogen undergo new re-arrangements, which amount finally to this—the substance known as starch, and consisting of carbon, hydrogen, and oxygen, is built up in the form of granules in the chlorophyll corpuscle, and the surplus oxygen escapes into the sap and finds its way to the intercellular passages, and thence through the stomata into the atmosphere.

It will be obvious from the foregoing that the granules of starch represent so much matter (especially carbon) obtained from the atmosphere outside the plant, and so much energy obtained from the sun; each granule may therefore be regarded as a packet of stored energy and matter won from the external universe.

The limits of this little book will not allow of my

going into details concerning the use which the plant makes of this starch, and it must suffice to say that the starch serves as the basis of all the constructive materials used by the tree. Thus it is converted into a soluble form, and combined with nitrogen, phosphorus, sulphur, etc. (obtained from the earth-salts), to make new protoplasmic materials, and it passes down from the leaves to nourish all the living cells that require it, in the embryonic tissue at the apex of the roots, and that at the apex of the stem and branches, buds, etc., and some of it passes to nourish the cambium cells, the developing flowers, acorns, etc.; in short, wherever new organic material is needed it is supplied from these stores formed by the green leaves waving in the sunshine. If we reflect that the little embryo in the acorn starts its life with only a minute store of starch and proteids in its cotyledon, and that all the tons of organic material (chiefly wood) found in an old oak-tree have been super-added to this by the action of the leaves—the small proportion of salts taken up by the roots being quite inconsiderable in comparison—we obtain some idea of the enormous gain of matter and energy from the outside universe which goes on each summer.

CHAPTER VII.

THE TREE—ITS ROOT-SYSTEM.

WE may now suppose the young oak-plant to be rapidly developing into a tree. Technically the seedling is said to be a plant after the first year, and when it reaches the height of a few feet the young tree is called a sapling; these ideas are by no means well defined, however, and we may regard them as arbitrary terms of little or no scientific value.

The principal changes which are noticeable as the little tree grows larger are the gradual increase in the length and thickness of the stem, and in the number and spread of the branches put forth year after year. Corresponding with these increments, each spring sees a greater number of leaves than the one before, and it is easy to prove that the roots also become more numerous and complex each season.

The above simply expresses certain facts of observation, but it is more accurate to link them together as follows:

In each successive season of growth the young oak develops more leaves than it did before—in other words, the total area of the leaf-surface exposed to the air and

sunlight is larger each successive summer than it was the previous one. Several very important consequences follow from this. In the first place, the larger area of leaf-surface evaporates more water than before, and as this water is derived from the soil the absorbing surface of the roots has to increase, or the larger supplies needed could not be obtained. In the second place, these larger and larger quantities of water require corresponding increase in the sectional area of the pipes or water conduits—i. e., the vessels of the wood—through which they have to pass in order to reach the leaves. This is insured by the increase in diameter of the stem and main root and their chief branches, a larger number of vessels, etc., being added each season. In the third place, as the leaf-crown enlarges its weight increases, and the surface it exposes to the swaying action of the wind is correspondingly greater; consequently the necessity arises for more strength and rigidity in the supporting stem, and for a larger hold on the soil on the part of the root-system, which has to withstand the lever action of the swaying tree. These needs, again, are met by the thickening of the woody parts of the shoot-axis and roots, and by the greater spread and increased number of points of contact in the soil of the latter.

Correlated with these phenomena we have the increased leaf-surface playing the part of an enlarging manufactory, which turns out increased supplies of constructive materials each summer; for it is in the leaves

that the substances for making new roots and shoots, new wood, and new leaves, etc., are constructed. It is in the increased area of this leaf laboratory that the larger supplies of salts, dissolved in the larger quantities of water from the soil, are brought into relations with the increased quantities of carbonaceous substance obtained from the air in the chlorophyll corpuscles, and consequently a larger yield of plant-forming materials is possible to meet the demands of the ever-growing organs.

My present purpose is to describe how the thickening process occurs in the older roots, for it is evident at a glance that the strong woody roots of a large tree have undergone many changes since they were the thin filiform rootlets we met with in the young plant (see Fig. 7). Not only have they increased in diameter, but they now consist almost entirely of wood, protected by a relatively thin, brown, corky covering, reminding one of certain kinds of bark.

The first changes which take place when the young, thin roots begin to thicken are—first the piliferous layer dies away and the outer cells of the cortex turn brown; then a cylindrical layer of cork is developed in the pericycle, and as this cork is impervious to water it cuts off the cortex from communication with the axis-cylinder, and consequently the cortex gradually shrivels up and is thrown off.

Meanwhile active divisions have been going on in the cells immediately inside the phloëm groups of the

axis-cylinder (see Fig. 5), and especially by means of tangential walls. The result of this activity is the development of a cambium layer, as it is called, immediately inside the five phloëm groups of the axis-cylinder, and this layer becomes continuous all round the axis-cylinder, but is so arranged that it runs *outside* the primary xylem groups and *inside* the primary phloëm groups (Fig. 24, *cam*). This cambium layer is a hollow cylindrical layer of thin-walled cells, full of protoplasm, and somewhat longer than they are broad or deep, and these cells have the peculiarity of dividing very rapidly, especially by tangential walls, so that cell multiplication goes on very rapidly, and the layer would soon become very thick if no other changes occurred. As the new cells are formed, however, those on the outer side of the cylinder—i. e., those nearest the phloëm—become for the most part converted into sieve-tubes and cells of the phloëm; while the much more numerous cells formed on the inner side—i. e., nearest the center of the axis-cylinder—are chiefly converted into vessels and cells of the xylem. This xylem and phloëm developed by the cambium are termed secondary xylem and secondary phloëm respectively, and it will be noticed that whereas the secondary phloëm is deposited radially on the inner side of the primary phloëm, the secondary xylem is placed *between* the primary xylem groups, and not radially outside them (Fig. 24, *se.x* and *se.ph*). Moreover, the youngest vessels are now nearest the cambium, whence the order of development has become the con-

verse of that of the primary xylem ; there are also no spiral vessels formed now. In fact, the structure of the vascular bundles of the root has now changed its character, and from this point forward the root increases in thickness exactly as the stem does, whence I refer the reader to the following chapter for further details.

The development of the layers of cork which now surround the thickening axis-cylinder go on forming year after year, as the cambium forms more xylem and phloëm and so thickens the root ; were this not the case, the layer of cork would soon be ruptured as the root increases in diameter. Such rupture, in fact, does occur, but the cork-forming tissue in the pericycle goes on growing and acts as a cork-cambium, and repeatedly develops more cork to make good the layers which are being split and worn off in the soil.

From what has been said it will be understood that a transverse section of an old root differs entirely in structure from that of a young one, although all the changes in the former can be correlated with the primary structures of the latter. In the first place, such a section shows no piliferous layer or cortex, both having been sloughed off long ago ; the protective function of these layers is now assumed by the cork jacket (often called periderm) developed by the cork-cambium cylinder in the pericycle, and even this will not show all the cork that the cambium has developed, because many outer layers will have flaked away, just as the present outer layers are doing.

Then, inside this periderm we shall find the phloëm forming an almost continuous ring (Fig. 24, *se.ph*), and

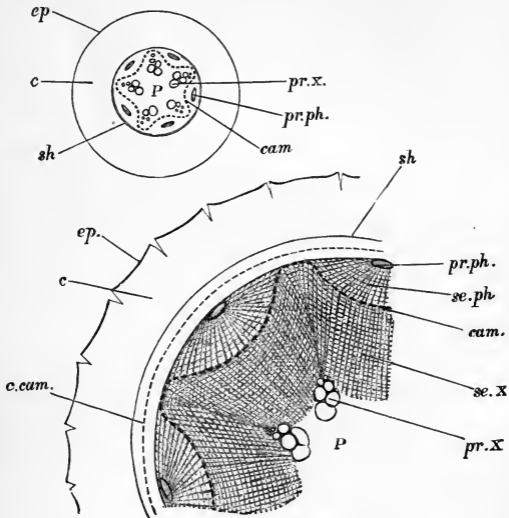


FIG. 24.—Transverse sections (semi-diagrammatic) of roots of oak, to be compared with Fig. 7. The smaller figure, above, shows the cambium ring, *cam*, now developed as a continuous layer running inside the primary phloëm, *pr.ph*, and outside the primary xylem, *pr.x*; and the larger figure shows the results of its activity in the formation of secondary phloëm, *se.ph*, inside the primary, and secondary xylem, *se.x*, between the primary xylem groups. In both cases, *ep.*, piliferous layer; *c*, cortex; *P*, pith; *sh*, endodermis. Within the latter lies the pericycle, in which the cork cambium, *c.cam*, is now developed.

consisting chiefly of the sieve-tubes and cells developed from the cambium cylinder, the small primary phloëm

masses being almost undistinguishably pressed into (*pr.ph*).

In the center of the section will be a small speck, around which the microscopic primary xylem groups (*pr.x*) are arranged; but these, again, are merged between the relatively huge masses of secondary xylem which makes up by far the major part of the whole (*se.x*). The thin cambium ring can be distinguished running between the xylem and phloëm as a fine line. Certain concentric annular lines may be seen on the section, and each of these marks the position in which the cambium rested during the winter of some previous year. They are the boundaries of concentric zones, termed annual rings, and the thickness of wood which makes up any one annual ring represents the activity of the cambium during that particular year.

Traversing these annual rings at right angles are fine medullary rays. About five broader ones may be found corresponding to the radii on which the primary xylem groups were formed, but these are not developed by the cambium as the finer ones are. As I shall have to speak of annual rings and secondary medullary rays at greater length when describing the thickening processes in the stem, and as they are formed in the same way in both cases, we may defer their consideration for the present.

Mention must now be made of a remarkable biological phenomenon in connection with the roots of the oak. This is the very common occurrence of young rootlets clothed by a fungus mycelium; the mycelium is found

as a thin sheet of closely-woven hyphæ continuous over the whole of the tip, and sending processes in between the cells of the dermatogen, but not into the cavities of the cells nor deeper into the tissues. Loose hyphæ also

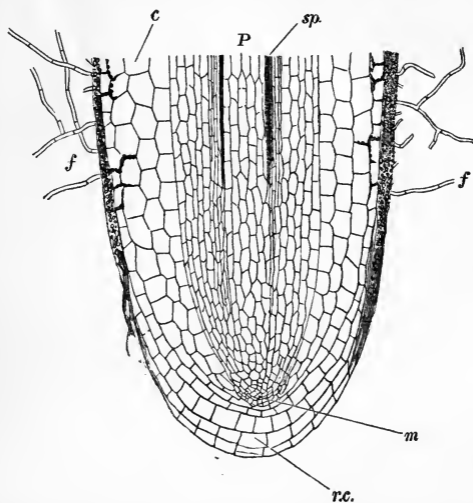


FIG. 25.—Longitudinal section of the tip of one of the roots marked *m* in Fig. 7, the outer layers of which are infested with fungus hyphæ, *f* (mycorhiza); *r.c.*, root-cap; *m*, embryonic tissue from which all originates; *P*, pith; *sp.*, spiral vessels of the primary xylem; *c.*, cortex.

radiate into the soil around, and often simulate the root-hairs of other plants, which, in fact, they are said to replace (Fig. 25, *f*). These hyphæ are extremely fine

tubes of a cellulose-like substance, filled with the living protoplasts of the fungus, and possess the remarkable property of being able to bore their way through or between the cellulose walls of the roots. The fungus attacks the plant about the second year, and it is not difficult to find true root-hairs on the young root-system when the apices are still free from the fungus mycelium. The parts of the root attacked alter their form slightly; they grow more slowly in length, and assume a fleshy, coral-like appearance (Fig. 7, *m*). Such a fungus-clothed root is called a *mycorrhiza*, and the view is gaining ground that the symbiosis between the fungus and the root is of advantage to the oak. It has even been suggested that the mycelium performs the functions of root-hairs to the root, absorbing water and nutritive materials from the soil and passing them on to the oak, in return for a certain small proportion of organic substance which the latter can well afford. At any rate, it may be that the fungus hurries the decomposition of vegetable remains in such a way that they become available to the root sooner than would otherwise be the case. The systematic position of these remarkable fungi is not yet ascertained, but there is some evidence for the view that the mycelium is that of a truffle, though the question is still an open one.

CHAPTER VIII.

THE TREE—ITS SHOOT-SYSTEM.

WHEN we cut into an old branch or stem of the oak (Fig. 26) it is at once obvious that considerable changes have been produced since it was a twig or young shoot-axis, such as exists in the young plant. Of these changes the two following are the most conspicuous. The pith, instead of being surrounded by a cylinder of small vascular cords, the diameter of which hardly exceeds its own, as was the case in the one-year-old shoot-axis (Fig. 9), is now a mere speck in the middle of a huge mass of wood many hundreds of times as broad as itself, and the cambium cylinder which was developed, as we saw, in the primary vascular bundles, is now a large (though still thin) layer encircling this huge wood mass. Again, in place of a delicate epidermis surrounding a soft, green, cellular cortex, as we had in the young stem, there is here a hard, brown, rugged bark, splitting off in thick ridges on the outside.

The two chief series of change may be inferred from comparing the two conditions, and taking into consideration all we have learned so far. The pith is the same

pith as before, and it is the cambium cylinder which has moved outwards, as it were, putting in all that solid-looking timber as it did so. The epidermis and



FIG. 26.—Photograph of the transverse section of a log of oak, about one sixth natural size. The cortex and bark are removed, and the outline is bounded by the cambium. The pith appears as a mere dot in the center; the medullary rays radiate from this, and the annual rings (about forty in number) are arranged concentrically around it. A large crack has formed along the plane of a medullary ray as the section dried. (Müller.)

the cortex of our young stem have disappeared, however, their place being taken by cork and bark. Closer inspection will show that a series of layers of phloëm

has also been formed between these outer protective layers and the cambium.

We have now to obtain some ideas as to these curious processes of increase in thickness of the stems and branches.

The first thing to insure this is to understand the constitution and behavior of the cambium cylinder, for it is principally this tissue which brings about the changes we have to study.

We saw in Chapter IV that the xylem of each primary vascular bundle is separated from the phloëm of the same bundle by a thin strand of cambium (Figs. 9 and 12); we also saw that the bundles are arranged in a closed ring round the pith, and are in their turn surrounded by the primary cortex, each being separated laterally from its neighbors by a primary medullary ray. The next point to bear in mind is that these medullary rays (like the pith and cortex) are merely parts of the general cell-tissue, or fundamental tissue, through which the vascular bundles run upwards and downwards with a tangentially sinuous course from the leaves. The primary medullary rays, therefore, are merely spokes, as it were, joining the pith and cortex; and if we could remove the whole of the vascular bundles and epidermis from the young stem we should have left a solid cylinder of cell (pith) in the center, a hollow cylinder (cortex) concentric to this, and a space between the two bridged over at numerous places by cellular spokes (medullary rays) radiating from the pith to the cortex. Each spoke

is very thin from side to side, and therefore stands out like a knife, with an upper and a lower edge (Fig. 27).

Now imagine the primary vascular bundles replaced.

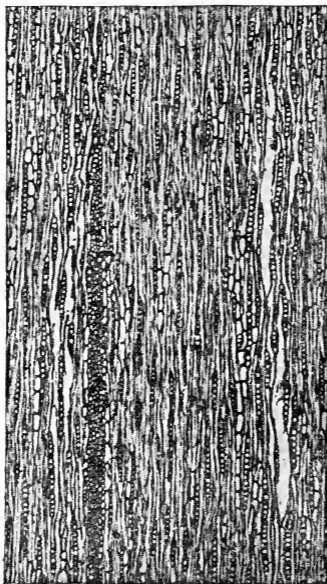


FIG. 27.—Tangential longitudinal section of oak wood, magnified fifty diameters, and showing the transverse sections of the medullary rays, cut as they project towards the observer. (Müller.)

The first change is that the cambium in the vascular bundles becomes continuous across through the medul-

lary rays, and so forms a complete thin cylinder, concentric to the pith—from which it is separated by the breadth of the xylem—and the cortex, from which it is separated by the breadth of the phloëm.

The cells of this cambium cylinder go on dividing continuously during the whole summer, until the cylinder is, say, ten times as thick as it was before. Now suppose it to rest during the winter and go on again next season, and so on during each successive period of growth. Obviously this would realize one fact in the process we are considering—namely, that the stem would grow in thickness year by year, its diameter being increased by twice the thickness of the added cylinder.

But to make the above supposition accord with the facts, we must further picture to ourselves that when the thickening cylinder has attained a certain thickness, a large proportion of those of its cells which lie on the inside—i. e., nearest the pith, and therefore abutting on, lose their cambial nature and the xylem—become converted into elements of the wood; while a smaller proportion of those on the outer side (beneath the phloëm) become new phloëm elements. In this way it will be seen that the thin cylinder of active cambium cell travels outwards; ever receding radially farther from the pith, and leaving xylem between itself and the primary vascular bundles next the pith, and ever driving outwards the primary phloëm and cortex, adding new phloëm elements (but in far less proportion) to the inside of the phloëm. Each winter it pauses in this process, and

each spring it renews its activity. Further peculiarities will be noticed as we proceed.

Now let us see what the cambium cells are, and how they change into new elements of the xylem and phloëm, etc., respectively.

Each cell of the cambium is a thin-walled prism, many times longer than broad or thick, and with its ends brought to an edge like that of a thick chisel, and so arranged that these edges run radially and fit in between those of cambium cells at higher and lower levels. As we have seen, the prism is oblong in transverse section. Each of these cells contains protoplasm and a nucleus, surrounding a sap-cavity, and they are nourished like other cells by the substances brought down from the leaves and up from the roots, taking what they need from the sap.

When a given cambium cell has taken into its protoplasm sufficient food materials, and has accomplished other life-processes under the action of oxygen, which it absorbs dissolved in the water of the sap, it grows larger, especially in the radial direction, and then it divides into two cells; then each of these may repeat these processes, and so on. At last the older ones can no longer grow and divide, but become changed into elements of the xylem or phloëm, according to their position. All the xylem thus produced by the cambium is called secondary xylem, and the phloëm secondary phloëm, and so on, to distinguish them from the primary structures found in the early stage.

I now proceed to some further details, which could only be rendered intelligible in the light of the preceding preliminary remarks.

After the cambium ring is once formed the daughter-cells cut off on the inside of the cambium always become transformed into one or more of the following elements:

(1) Some cambium cells which lie on the radial continuation of a medullary ray undergo a few horizontal divisions across the long axis, and then simply pass over as constituents of a medullary ray; as the cambium ring moves outward, in consequence of the repeated formation of thickening rings, the periphery of the cylinder of course increases, and this allows of more space tangentially. One consequence of this is the occasional and gradual widening of the medullary ray in process of lengthening; this takes place to a small extent only. Another consequence of the increased space is the occasional interpolation of new medullary rays. Radial rows of cambial cells at points which lie between the planes of two gradually diverging medullary rays suddenly commence to form new medullary rays. Hence, as the wood mass increases in radial thickness, more and more of these interpolated medullary rays appear, cutting up the wood proper into partial sections. In succeeding years the cambium keeps adding to the length of these rays, as it does to that of the older rays, and again forms new ones between as space increases. In the same ring about thir-

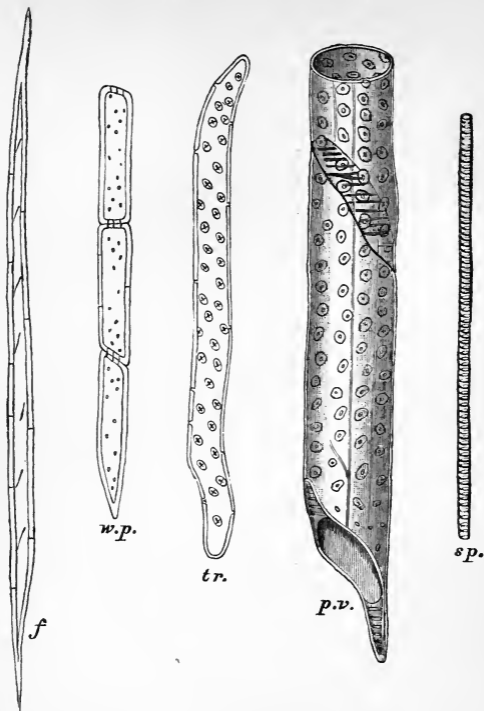


FIG. 28.—The various chief elements of the wood of the oak, isolated by maceration, and highly magnified: *f*, a fiber, distinguished by its thick walls, simple slit-like pits, and no contents; *w.p.*, part of a row of wood-parenchyma cells, with simple pits, and containing starch in winter; *tr.*, a tracheid, distinguished from the fiber especially by its bordered pits; *p.v.*, part of a rather large pitted vessel, made up of communicating segments, each of which corresponds to a tracheid, and has bordered pits on its walls; *sp.*, part of a spiral vessel.

teen rays to the millimetre may be counted on the transverse section of the wood.

(2) The cambium cells situated between the rays—except when they suddenly commence to form a new ray, as just described—pass over into one or more of the following elements of the wood proper—viz., wood-parenchyma, libriform fibers, tracheids, segments of the vessels (see Fig. 28).

When a cambium cell passes over into wood-parenchyma it first undergoes a few horizontal divisions transverse to its long axis, and then we have a vertical row of five or six parenchymatous cells, the walls of which do not thicken much, but obtain small simple pits, and retain part of their living contents—protoplasm, nucleus, starch-forming corpuscles, etc.—and indeed present much resemblance to the cells of the medullary rays themselves.

When the cambial cell becomes transformed into a libriform fiber it does this simply by thickening its walls at the expense of the living contents, etc., which soon disappear. The cell undergoes no horizontal divisions, and probably elongates very slightly. The thickened walls become pitted with minute simple pits, and are stratified and eventually lignified.

In the case of the transformation of a cambial cell into a tracheid everything is essentially as described in the last paragraph, except that the diameter increases and the thickening walls become marked with bordered pits, quite similar to those of the pine, except that they

are more numerous, are not confined to the radial walls, and they are not quite circular, but have an oval shape with a slit-like aperture to the border, the long axis of the slit being nearly transverse to the long axis of the tracheid.

In the conversion of cambium cells into vessels the chief point to note is that the vessel is essentially a vertical row of superposed tracheids—each of which has been developed from a cambium cell as just described—the oblique separating walls of which become almost entirely obliterated. The markings, thickening, and want of contents are as in the case of tracheids, the chief difference being the more pronounced growth in diameter of the vessel segments, especially those formed in the spring wood.

It will readily be understood that the growth in diameter of these vessel elements exerts a disturbing effect on the radial arrangement of the other elements of the wood, and the displacements and compression of the latter are considerable and various, so that, at length, very little trace of the original order is observable. It not unfrequently happens, however, that many successive rows of the fibers or tracheids are formed in the outer parts of the annual ring, and in such cases the original radial series can be detected.

There are several other points also to be noted in the development of secondary wood. In the first place, the various elements do not maintain an exact vertical position, but may lean over both in the radial and in the

tangential directions. These slight displacements from the vertical are chiefly due to the fact that the elements—fibers, tracheids, and vertical groups of wood-parenchyma—have not finished their growth in length when they pass over from the cambial condition; consequently the pointed ends of the elongating fibers, etc., push themselves between the ends of others which lie above and below them, and a slight tilting from the vertical results. This may be sufficient to produce a twisting of the stems and branches which is visible even to the unaided eye.

Another important point is that the length of the elements, as well as their diameters, vary at different periods in the life of the tree.

First as to the diameter. The fibers and tracheids developed in the autumn have a relatively smaller radial diameter than those formed earlier, and this, combined with the fact that those elements which develop in the spring have the relatively largest diameters, alone would suffice to mark the boundary between any two annual rings. But the same holds good for the vessels; those formed in the spring wood are very large compared with those formed later—the latter are also more sparsely developed—whence the contrast at the boundary between the annual rings is intensified. With the diminution in relative diameter of the tracheids and fibers a corresponding increase in the thickness of their walls is connected—a phenomenon which again intensifies the contrast between adjacent annual rings.

But, in addition to these differences in diameter within one and the same annual ring, a gradual increment in the average size of certain of the elements (both in length and diameter) occurs as the tree becomes older—in other words, the average width and length of the elements increases year by year up to a certain age; after reaching a definite size they enlarge no more. These changes differ according to the part of the tree concerned. In the stem of the oak the chief changes in this connection are:

The fibers increase in length as follows, according to Sanio's measurements: While they average 0.42 mm. in length in the first annual ring, they increase to 0.60 mm. in the second, 0.74 mm. in the fourth, and go up to 1.22 mm. after a great age (one hundred and thirty years?) The tracheids in the same annual rings were found to average 0.39, 0.43, 0.53, and 0.72 mm. respectively; and the individual members or segments of the larger vessels averaged 0.25 mm. in the second annual ring, 0.26 mm. in the fourth, and 0.36 mm. in the three outer rings. The mean radial diameter of these vessels also increased: in the third year it was 0.08 mm., and it rose year by year until in the sixth year the definitive width of 0.31 to 0.33 mm. was attained. After this the width of these vessels is practically constant. These increments in size appear to take place after the element has passed out of the strictly cambial condition.

The passage of the older wood in the center of the stem into the condition known as "heart-wood" (dura-

men) as opposed to "sap-wood" (alburnum) is not attended with any profound anatomical changes; the chief alterations are of the nature of infiltration by foreign chemical substances, and alteration in the physical properties of the cell-walls and in the contents. These changes are somewhat sudden, and the fact that starch ceases to be deposited in this altered wood helps to indicate that the change is one of degradation—the cells of the softer tissues have ceased to be "alive," and the "heart" commences to undergo degradation. At the same time, although we must regard the "heart" as dead, it is very resistant, perhaps owing to the preservative action of infiltrated bodies.

A remarkable phenomenon which may be noticed here is the filling up of the older large vessels with tyloses. These are thin-walled, bladder-like vesicles projecting into the cavity of the vessel from the bordered pits, and are, in fact, due to the protrusion into the cavity of the thin-walled parenchyma cells, which drive the pit membrane in and then swell up. At the planes of contact between various tyloses from opposite points on the wall of the vessel the tyloses are flattened, and the appearance is very like that of a parenchymatous tissue (Fig. 29, *d*). When young the tyloses are found to contain a nucleus, protoplasm, and cell-sap, and they are known to form division membranes and divide like cells of the pith or cortex; later on they lose their contents and form a sort of packing in the by this time functionless vessel.

During the whole time of the activity of the cambium ring and the formation of wood on its interior, it must not be forgotten that the outer rows of cambial cells are passing over into the tissue known as bast or secondary phloëm (also called secondary cortex); the chief differences in the process being (1) that much

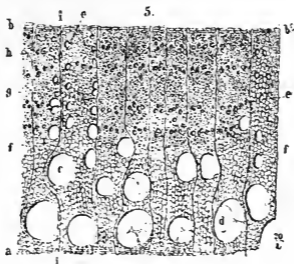


FIG. 29.—A small piece of one annual ring of old oak wood (magnified twenty diameters): *a*, boundary of the autumn wood of the preceding (older) ring; *b*, that between the zone shown and the next youngest ring. In the annual ring shown the spring wood begins with large vessels, *c* and *d*, some with tyloses, *d*, in them, and passes gradually into autumn wood, with smaller vessels, *e*, *e*, and more tracheids and fibers, *g*. Only small medullary rays, *i*, are shown. (Hartig.)

less phloëm than xylem is formed; (2) that the elements do not become lignified; and (3) that the disturbances in the arrangement of the elements are more profound from the continued pressure exerted upon them between the resistant wood and the elastic periderm and bark, on the one hand, and the increased extension tangentially which it undergoes as the thicken-

ing mass of wood drives it outwards, on the other. The other differences chiefly concern the individual elements now to be described.

All that was said of the medullary rays in the wood applies also to those in the bast; the cambium in keeping open or originating new medullary rays does so on both sides, and therefore the medullary rays are to be traced radially through the cambium from wood to cortex. The rays in the bast are termed "bast rays"; the broader ones contain isolated groups of sclerotic cells and cells containing crystals.

The changes which the radial rows of cells on the exterior of the cambium zone undergo to form the elements of the secondary phloëm are as follows :

(1) Bast parenchyma (Fig. 17, *b p*) is developed, like the wood parenchyma, from cambium cells which undergo a few transverse divisions and then pass over as longitudinal groups of cells, which retain their living contents, etc. From these longitudinal groups, accompanying the sieve-tubes as parallel series, they are called companion cells (cambiform cells).

(2) Sieve-tubes (Fig. 18, *b p*), which may be regarded as homologous with the vessels of the wood, and, like those, are constituted of series of segments. Each segment corresponds to a cambium cell, and is obliquely tapering at the end where it fits on to another segment. These dividing septa are not completely broken through, as in the case of the wood-vessels, however, but are pierced by a grating-like series of holes (the sieve)

through which the protoplasmic and other contents of the continuous segments pass uninterruptedly. Similar sieve-plates occur on the lateral walls of the segments also. The walls are not thickened and not lignified, and thus the morphological similarities between the sieve-tubes of the bast and the vessels of the wood (which only contain air and water, have their septa absorbed, and their walls lignified and covered with bordered and simple pits) depend almost entirely on the similar development. The sieve-pores are very fine, and easily overlooked.

(3) The bast fibers (Figs. 17 and 18 *b*), which are homologous with the libriform fibers of the wood, and are developed in the same way from single cells of the cambium. They are short, blunt, very thick-walled fibers, grouped in strands which appear on the transverse section of the bast as tangential bands 2-4 deep, alternating (in the radial direction) with broader bands of sieve-tubes and parenchyma. These bands of fibers (hard bast) are accompanied at their outer and inner boundaries by parenchyma-like cells arranged in vertical rows, each of which contains a large simple crystal of calcium oxalate imbedded in yellowish substance, and the walls of which are slightly sclerotic. Similar vertical series of cells are found in the soft bast, but they contain compound (clustered) crystals of the same salt (Figs. 17 and 18, *e*).

The soft bast also contains scattered roundish groups of short sclerenchyma cells, the thickened walls of which

are traversed by very numerous pit-canals; cells containing crystals also accompany these groups.

In consequence of the above arrangements the secondary cortex presents a more or less stratified appearance on the transverse section, the strata consisting chiefly of alternate tangential layers of hard bast and soft bast (Fig. 17); the elements of the latter also showing a decided tendency to be arranged in layers.

After the first year the young stem or branches covered with thin periderm are seen to be dotted with lenticels or cortical pores. Structures similar in every respect and subserving the same function—viz., the exchange of gases with the environment—are formed on the roots as soon as the periderm is developed.

The lenticel is a local interruption of the periderm, where the cells are loosened so as to allow air to pass between the loosened cells into the intercellular spaces between the cortical cells. Each lenticel may be described as a biconvex projecting swelling of the periderm, the swelling being caused by the increased radial diameter of the loosened cells. This is the condition during the spring and summer, but in the winter the cork-cambium is continuous across beneath the lenticel, and forms periderm in an uninterrupted sheet, to be ruptured again at the lenticel during the formation and swelling of the looser cells (complementary or packing cells) in the following spring. These loose packing-cells are at first quite similar to young cork-cells, and are developed as such, but they loosen and round off, and their

cell-walls do not become completely suberized for a long time, but are capable of swelling; in fact, the rounding off depends on the absorption of water by the cellulose walls and contents. The outer parts of the older lenticel openings are thrown off with the bark-scales, but the inner parts remain, and can be found between the scales in older branches, in the fissures.

The first points of origin of lenticels are usually beneath the stomata, and the lenticels may be regarded as devices for prolonging the passages of the stomata through the thickening periderm year by year. The cortical cells beneath the stoma become meristematic—in effect they continue the phellogen below the stoma, only they divide less regularly and in all directions. The daughter-cells thrown off externally swell up and protrude, driving the stomatic cells outwards and apart, and emerging between the ruptured guard-cells as the first packing-tissue. The phellogen or cambium of the lenticel forms phelloderm on its interior in continuation of that formed by the rest of the cork-cambium. The protruding packing-cells dry up eventually, and form the powdery substance seen between the gaping lips of older lenticels. In the autumn the cells formed by the meristem below the packing-cells do not separate, but are suberized and closely and radially arranged like the rest of the cork: in fact, they continue the cork layer as a closing layer beneath the lenticel, thus protecting the tissues beneath through the winter. In the following spring new layers of loose, swelling packing-cells

are developed again, and these absorb water and bulge, bursting the closing layer and reopening the lenticel for the season. As the branch ages and its surface increases new lenticels are developed between the earlier ones, and, of course, with no reference to stomata.

The exterior of the very young stem or branch is smooth or slightly pubescent, the green color gradually passing into a silver-gray as the periderm develops, and in a few years (when the shoot is from five to twenty years old, or thereabout) the gradually thickening bark is shining and turning browner, flecked with lenticels and lichens. Later still the bark is rugged, brown, and fissured, and usually covered with small lichens and fungi. Bark begins to exfoliate at about the thirtieth year.

The epidermis cracks and peels off when the twigs are a year old, and shreds of the dead membrane may be detected on the outside of the young cork, which begins to form very early during the first year. It is, in fact, owing to the impervious nature of this cork that the epidermis dies, and to the stretching of the cortex as the stem grows in thickness that the dead membrane cracks and peels off (see Figs. 17 and 18).

The first indication of the development of the cork is the conversion of the sub-epidermal layer of cortex-cells into a meristem—i. e., the cells become capable of active growth and division.

Each cell of the layer referred to may be termed an initial cell of the cork-cambium (or phellogen), and the

layer may be called the initial layer. This layer behaves essentially like the cambium of a fibro-vascular bundle, except that its daughter-cells become cork and phellogen instead of phloëm and xylem.

The first event to notice is that each of the initial cells grows radially, and divides by a tangential wall into an inner cell nearest the axis of the branch and an outer cell nearer the epidermis; the outer cell becomes forthwith a cork-cell—i. e., its contents die and mostly disappear, and the cellulose cell-wall becomes suberized—the inner cell remains capable of repeating the process. But this is not the only case. After the division, as before, of the initial cell, it may happen that the *inner* cell becomes transformed into a collenchymatous cortical cell containing chlorophyll, and it is the outer of the daughter-cells which retains the meristem character and acts again as a phellogen cell, cutting off daughter-cells sometimes on one side and at others on the other. Thus, in the oak, the phellogen gives rise to permanent tissue on both side, of the initial layer: those cells which lie on the inside become *phellogen* (cortical cells), those on the outside become transformed into *phellem* (cork). The three tissues, phellogen, phellogen, and phellem, are called the periderm.

It is obvious that the cork-cambium, by thus adding to the cortical parenchyma, is gradually driven radially outwards from the center of the stem. This means that it obtains room to extend tangentially, and it does this by its cells occasionally dividing by walls perpendicular

to the far more numerous tangential walls. It is also easy to see that the cork-cells must be arranged in radial rows, and this arrangement is very conspicuous (Fig. 18). The earlier cork-cells have very thin walls, later ones have the walls thicker.

After the development of the first layer of cork the stretched epidermis dies, and forms simply a dead membrane outside the thin cork. In succeeding years layers of phellogen are formed annually beneath the older ones, and thus the cork layers increase. Moreover, since the successive layers cut out thin, scale-like areas of cortex, trapping them, as it were, between the present and the preceding cork, the thickening corky covering is stratified—consists of successive and obliquely overlying thin sheets of dead cortex and cork proper (Fig. 30). Again, since the increase in thickness of the stem or branch is continually driving these corky and dead structures outwards, they at length crack, and form the fissured bark found on older parts. Bark is thus seen to be something more than cork, or even periderm, and it is defined to be all the dead tissues cut out by the phellogen.

It is also to be noticed that the successive phellogen layers of different years are not concentric, but the new ones cut the old ones at acute angles (Fig. 30), thus cutting out scale-like areas of cortex; the consequence of this is the formation of the very irregular scales of bark thrown off from the older stems and branches of the oak. It follows from what has been said that in older



FIG. 30.—Transverse section of bark of oak. The successive cork-layers (*Perid.*) cut out masses of the cortex, and since everything which is thus separated from the underlying tissues dices, scales of bark, consisting of various kinds of tissues, sclerenchyma, *z.* parenchyma, *z.* heart fibers, *z.* areolar cells, *z.* etc. are cut off

trees the phellogen layers may be formed so far down in the cortex that they cut out tissues of the secondary cortex—i. e., phloëm and bast fibers. It is, of course, this gradual exfoliation of the cut-out areas of bark that explains the relative thinness of the bark in very old stems and branches; the whole of the primary cortex, and most of that formed from the cambium, have been thrown off as bark long before.

CHAPTER IX.

THE TREE (*continued*). INFLORESCENCE AND FLOWERS—FRUIT AND SEED.

THE oak flowers in May in this country, the young inflorescences developing as the leaves unfold. The flowers are unisexual, both male and female appearing on the same branches—i. e., the tree is monœcious—and even on the same twigs of the current year. The rule is that the apical bud of a last year's twig produces a few male inflorescences from between the axils of the upper scales, and then grows out into a green twig bearing about six to ten normal leaves, the female inflorescences arising from the axils of two or three of the upper leaves (Figs. 31 and 32). Lateral buds below the terminal bud of the last year's twig usually produce male inflorescences only—a phenomenon in accordance with their feeble development generally. Thus the male inflorescences are produced first—a common occurrence in forest trees.

Since the inflorescences arise from the axils of leaves, their arrangement accords with the phyllotaxis of the tree—i. e., $\frac{2}{5}$ —so far as it goes. It should be borne in mind that the bud-scales are *stipules*.

The male inflorescences hang down from between the bud-scales as simple catkin-like spikes, each bearing about a dozen flowers. Each male flower springs



FIG. 31.—A sprig of oak in May, with the pendent male catkin below, and the minute spikes of female flowers just showing above. (Th. Hartig.)

from the axil of a tiny scale-like bract, and consists of a shallow perianth, unequally divided into about five to seven small linear-lanceolate lobes, inclosing about five to twelve stamens; there is no trace of an ovary. The number of lobes of the perianth varies, as also does the number of stamens; the former are covered with short hairs.

Each of the stamens consists of a slender thread (filament) bearing on its top a four-chambered swollen anther. This contains a yellow dust, the pollen, composed of round grains (pollen grains), each with three thinner spots in its otherwise thick wall. Each of these pollen grains consists of a membrane inclosing nucleated protoplasm and food materials. When ripe the wind blows the pollen as it scatters from the dangling stamens, and some of the grains reach the stigmas of the female flowers; here they germinate, each pollen grain sending a delicate pollen-tube down the style into the ovary of the flower. This process of application of the pollen grains to the stigma is termed pollination, and depends on the wind.

The female inflorescences are also spikes (Fig. 32, A), but they bear only one to five flowers, and stand off from the axils of the foliage leaves. In the commonest English variety (*Q. pedunculata*) the spikes are rather long, obliquely erect, and the flowers are scattered on the upper end of the rachis of the spike; in other varieties the flowers are more clustered in the axils of the leaves. Here, as in one or two other details, minute differences are apparent in different individuals; similar trifling differences are met with in the structure of the male flowers.

Each female flower springs (like the male) from the axil of a small bract: in other respects it is very unlike the male flower. In the first place, the ovary is inferior, being sunk in and fused into a six-partite perigone, the

teeth of which project some distance up and surround a trifid stigma (Figs. 33 and 34, *c*). One of the lobes of the perigone will be found opposite to the bract; the three lobes of the stigma are superposed on three alternate (outer) lobes of the perigone.

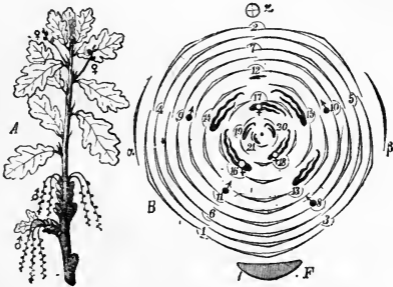


FIG. 32.—A, Flowering twig and inflorescences, male (♂), and female (♀), semi-diagrammatic. B, Diagram of plan of a similar but lateral twig. F, Leaf from axil of which the twig arises: α , parent stem; α and β , bracts. The numbers 1–11 denote pairs of stipules acting as bud-scales, some with male inflorescences (♂) springing from between them; the continued numbers 12–21 also denote pairs of stipules, but these have their accompanying leaves, with or without female inflorescences (♀) in the axils. (Eichler.)

There is yet a further covering to the female flower. The somewhat irregular margins of a minute cup-like investment are to be seen arising from beneath and around the perigone: this is the scaly cupula, the future “cup” in which the “acorn” is inserted (Fig. 34, *m*). If the young female flower is carefully bisected longi-

tudinally this cupule will be seen to consist of a ring of tissue, arising from beneath the ovary, and with its margin notched into scales. As the ovule enlarges the minute scales become more numerous, new ones arising at the inner margin of the up-growing cupule.

A transverse section across the female flower at a slightly later period shows that the inferior ovary is divided into three chambers (*loculi*), each corresponding to one of the lobes of the stigma, and each containing two ovules (Fig. 34). These ovules are inserted at the upper part of the inner angle of the chamber, and thus hang down in pairs. A curious

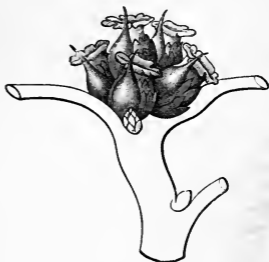


FIG. 33.—A group of female flowers (slightly magnified). Each has a spreading stigma above and the commencing cupule below, and arises from the axil of a pointed bract. (Th. Hartig.)

point arises here. It seems that at the period when the female flower has just opened, but has not yet received any pollen on its stigma, neither the ovules nor the chambers are as yet formed, and the segments of the perigone spring from the lower portion of the flower, and this condition is not altered until pollination occurs; then the tissue below the stigma becomes the three-chambered ovary sunk in the perigone.

The pollination takes place in May–June, and ferti-

lization soon afterwards; in July the young acorns can be made out peeping from the cupules in which they had hitherto been inclosed. The acorn reaches its full size towards the end of September, and ripens and falls in

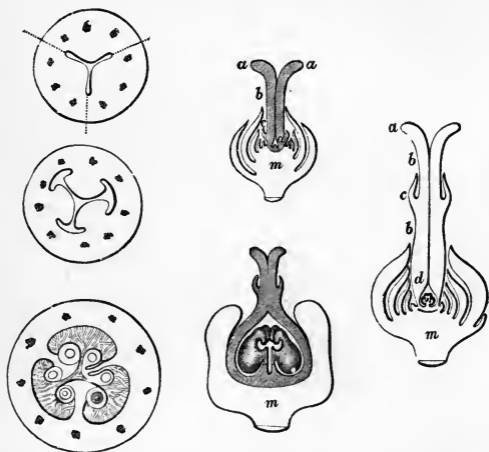


FIG. 34.—Female flower in section. To the left three transverse sections through the young ovary; the lower one showing the three placentas, each with two ovules. To the right, three longitudinal median sections through the whole flower at successive periods: *a*, stigma; *b*, carpel; *c*, perianth; *d*, cavity of ovary with ovules; *m*, the cupule. (Th. Hartig.)

October. When ripe the acorn is, as we have seen, an ovoid, smooth, olive-brown nut, with the broad end inserted into the cupule, and the narrower, somewhat tapering end projecting free.

It will be interesting, in the light of the foregoing remarks, to examine one of the stronger lateral buds of the oak towards the end of April, before it unfolds. A transverse section of such a bud shows the following structures: In the center is the axis of the young shoot, represented by the small central dot in the diagram (Fig. 32, B). Surrounding this are about eight to ten green leaves in section, and folded on their midribs in such a way that the two halves of the upper surface are face to face and somewhat crumpled; some of these are turned so that their edges are directed one way, others with them directed the other.

Each of these leaves has a pair of small stipules, also cut across, and rather difficult to identify (Fig 32, 12-20). Some of the foliage leaves bear female inflorescences in their axils, as indicated by the sign ♀ in the figure. Following on these stipulate leaves are a number of pairs of larger stipules, devoid of foliage leaves and constituting the bud-scales (Fig. 32, 1-11). Some of these bear male inflorescences (♂) between them—i. e., in the position corresponding to the axil of the leaf.

It will be understood that in this diagram the parts are all represented on a ground-plan, but that as the bud opens the inner leaves and stipules are on higher levels than the outer scales. In fact, proceeding in the order of the numerals, we pass in an ascending spiral from the outermost lower pair (1) of scales (stipules) to the innermost upper pair (21) with their leaf.

If we suppose the female inflorescences removed, the

above diagram will serve to represent the lateral buds which develop male inflorescences only, or if we suppose the three bracts F , α , and β away, it would serve for a terminal bud.

Each single female flower stands in the axil of a minute scale on the floral axis, as said, and its general structure has been described. When the pollen grains have been dusted on to the trifid stigma, about the end of May or beginning of June, each grain germinates and sends a minute tube down the style, and this pollen-tube soon reaches the cavity of the ovary, and its end becomes applied to one of the ovules. While the pollen-tube is descending the style, the ovules have arisen as minute cellular outgrowths from the angles of the three chambers of the ovary (Fig. 34, *d*). There are two in each chamber. Each ovule is at first a mere solid lump of cells (*nucellus*), which curves and becomes enveloped in two thin investing layers, called integuments, as shown in the figures A-D (in Fig. 35). Inside the solid nucellus, *n*, of the ovule there soon arises a small cavity filled with nucleated protoplasm, and termed the embryo-sac, *e*, because the embryo is to be developed in it.

This embryo-sac contains, among other structures, a minute, nucleated, naked mass of protoplasm, called the oöspore, or egg-cell. The pollen-tube has carried down in its apex also a nucleated mass of protoplasm, and it passes this over into the egg-cell in the embryo-sac; the union of the nucleus from the pollen-tube with the nucleus of the egg-cell constitutes the act of fertiliza-

tion, and the fertilized egg-cell is now termed the oöspore, and at once begins to grow into the embryo.

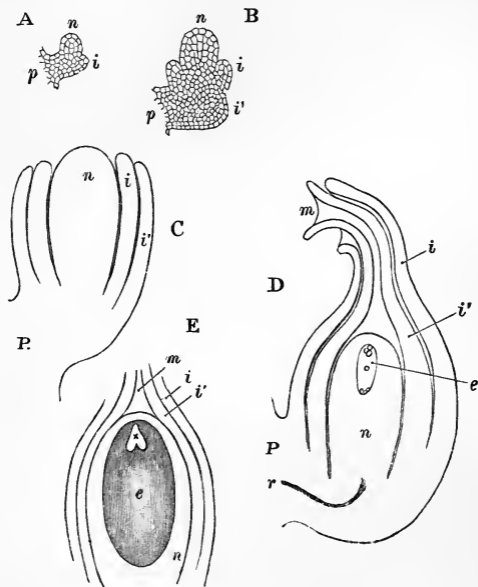


FIG. 35.—Various stages in the development of the ovule: *n*, nucellus; *i*, *i'*, integuments; *p*, point of attachment to placenta; *e*, embryo-sac; *r*, vascular cord supplying ovule; *m*, micropyle; *x*, young embryo. (Partly after Th. Hartig.)

It would be very interesting to describe at length all the remarkable details of these processes, and their

morphological meaning in the light of modern biology, but the limits and purpose of this little book will not admit of that, and I must content myself with this brief *résumé*.

During this process of fertilization the cupule has grown up like a scaly wall round the ovary (Fig. 34), and the tip of the latter is seen peeping out from its orifice.

We are now in a position to understand generally the changes that convert the female flower into the cupped acorn. The fertilized oöspore becomes the embryo (Fig. 35, *x*); it grows at the expense of the contents of the embryo-sac, and develops a radicle, a plumule, and two relatively large cotyledons, which soon become so big that they occupy the whole space in the sac (Fig. 36). Moreover, the embryo-sac increases to make more room for this growing embryo. And now comes in a curious point. We saw that the ovary consisted of three chambers, each containing two ovules; each of these six ovules also had its embryo-sac, containing an egg-cell, etc., and each of the total of six egg-cells may be fertilized by the contents of so many pollen-tubes coming from pollen grains on the stigmas. But the rule is that five of the ovules with their contents perish at an early period, because one strong one takes the lead in development, and starves the rest by taking all the available nourishment to itself. Consequently the advancing ovary is soon filled by *one* ovule—the other five and two of the chambers being pressed to one side by it.

In a few weeks the ovary and its cupule have increased considerably in size, and the one successful ovule, with the rapidly developing embryo in the embryo-sac in its interior, occupies nearly the whole of its cavity; the remains of the two aborted chambers and

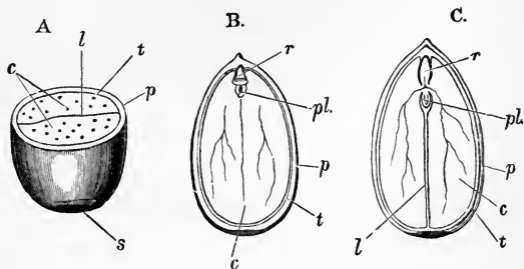


FIG. 36.—Sections of acorns in three planes at right angles to one another A, transverse; B, longitudinal in the plane of the cotyledons (*l*); C, longitudinal across the plane of the cotyledons; *c*, cotyledons; *t*, testa; *p*, pericarp; *s*, scar, and *r*, radicle; *pl*, plumule. The radicle, plumule, and cotyledons together constitute the embryo. The embryonic tissue is at *r* and *pl*. The dots in A, and the delicate veins in B and C, are the vascular bundles.

the five unsuccessful ovules being traceable as tiny, shriveled remnants in one corner. The walls of the ovary then gradually change into the polished brown walls (pericarp) of the fruit; the walls of the ovule become the coat (testa) of the seed; and the embryo developed from the fertilized egg-cell fills up the interior of the latter, as described in Chapter II.

The ripe fruit is the acorn, and we may regard it apart from the cupule; it contains the seed.

The acorn is an egg-shaped, nut-like fruit (*glans*), about 18 mm. long and 8–10 mm. broad (Fig. 36); the apex is somewhat pointed with a hard remnant of the stigma, the base is broader, and marked with the circular scar which denotes where it was inserted in the cupule. The trifid character of the stigma can often be observed even on the ripe fruit, which is smooth (or with fine longitudinal striæ), and olive-brown in color when ripe. The ripe acorn may thus be regarded as consisting of the pericarp (to which the calyx or perianth is fused) and the seed.

The pericarp (Fig. 36, *p*) is a thin, hard shell, comprised of four layers: (1) An epidermis of small, cuboidal cells with their external walls much thickened (Fig. 37, *E*). (2) Four or five series of very thick-walled and pitted sclerenchyma cells (Fig. 37, 1). (3) Then follow numerous rows of thin-walled parenchyma cells, comprising the chief thickness of the pericarp (Fig. 37). It is in this tissue that the small vascular bundles supplying the pericarp run, and here and there nests of sclerenchyma cells are scattered. The parenchyma cells may contain minute starch grains, in addition to the remains of chlorophyll corpuscles, even when ripe; they also contain tannin, and, here and there, crystals of calcium oxalate. (4) The internal epidermis consists of elongated cells in one layer.

The seed proper fills up the entire cavity inclosed by the fruit-wall above described. It consists of a relatively very thin testa, or seed-coat, closely enveloping the large,

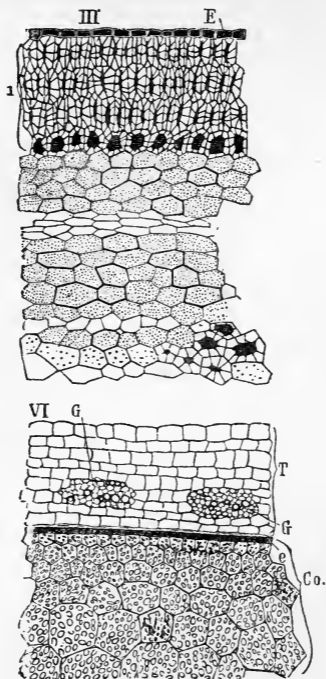


FIG. 37.—Transverse sections of the pericarp (III) and seed (VI) of the oak: E, epidermis; *i*, thick layer of sclerenchyma; under this come the parenchyma cells, with a few sclerenchyma cells here and there. T, testa of seed; G, vascular bundles; *e*, the outer layer or epidermis of the cotyledon; Co., thin-walled cells of cotyledons (*cf.* Figs. 35 and 36) filled with starch, etc. (Harz.)

straight embryo (Fig. 36, *t*). At the broad end the funicle can be observed attaching the seed to the base of the acorn; it is inserted laterally, and traces of the aborted ovules may sometimes be found at the point of insertion. The vessels from the funiculus branca at the chalaza and ramify in the testa.

The testa is a shining, pale-brown or yellowish skin, consisting only of a few rows of cuboidal, thin-walled parenchyma cells, the outer rows of which may be the integuments, and the innermost possibly belong to the remains of the nucellus; or the latter may be represented by the outer portion of the thin membrane which includes all that remains of the embryo-sac. A few feeble vascular bundles run through the testa (Fig. 37, *g*).

The testa is closely applied to the surface of the two stout cotyledons. These fill up by far the greater part of the space inclosed by the thin testa and pericarp, and their shape is almost described in saying that. Each is a colorless, hard, plano-convex body, face to face with the other by the flat surface (Fig. 36); a transverse section of the acorn shows each cotyledon occupying half the circle. At the more pointed end of the acorn these two cotyledons will be found to be joined to the very small embryo (plumule and radicle) by what will on germination lengthen into very short stalks (petioles), but which are at present mere bridges of tissue, across which minute vascular bundles run from the embryo into the cotyledons. If the shell-like investments de-

scribed above are removed from the embryo, it is then possible to gently separate the cotyledons and see the minute plumule and radicle to which they are joined (Fig. 36); on removing one cotyledon the plumule will be seen imbedded in a slight depression at the base. At this point there is a little room to spare, not quite filled up by the radicle and plumule; a minute remnant of endosperm may occasionally be found here, not having been entirely absorbed by the developing embryo.

The cotyledons and embryo are composed of a delicate epidermis inclosing the whole (Fig. 37, *e*), and very thin-walled cells forming the main mass of tissue in which the vascular bundles run. These bundles are scattered in the thickness of the cotyledons, ready to convey fluids to and fro on germination, and already contain lignified vessels in the xylem and sieve-tubes in the phloëm.

The iso-diametric, closely-packed cells of the cotyledons are filled with reserve materials, consisting of large quantities of starch grains imbedded in proteids and tannin. Here and there are scattered cells filled with brown pigments and containing tannin; some cells also contain oil-drops. Traces of sugar (quercite), certain bitter principles, acids, and mineral substances also occur in the tissues.

CHAPTER X.

OAK TIMBER—ITS STRUCTURE AND TECHNOLOGICAL PECULIARITIES.

It is now time to look at the timber of the oak as a material, and to examine its technical properties from the various points of view of those who employ such material. Oak timber may be described as follows:

(1) *Appearance and Structure*.—Pith pentangular, 1 to 4 mm. diameter, whitish at first, and then browner, formed of small, thick-walled cells.

Sap-wood narrow and yellowish-white; heart-wood varies in shades of grayish or yellow brown (fawn color) to reddish or very dark brown. It darkens on exposure, and works to a glossy surface if healthy.

Annual rings well marked by the one to four lines of large vessels in the spring wood, whence radiate outward tongue-like and branched groups of smaller and smaller vessels, tracheids, and cells, in a groundwork of darker fibers. Indistinct peripheral lines of parenchyma are also visible, especially in the broader annual rings. The annual rings are slightly undulating, bending outward between the large medullary rays (Fig. 38).

Medullary rays of two kinds, a smaller number of very broad, shining ones, from $\frac{1}{2}$ to 1 mm., or even a centimetre or more apart, and very numerous (about

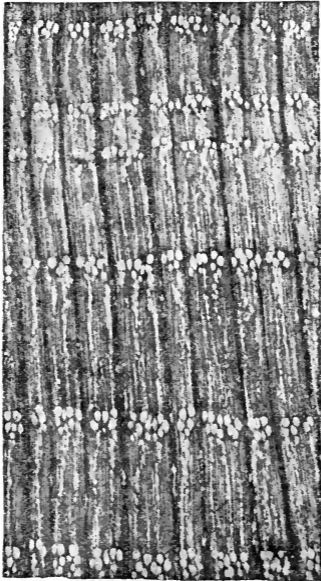


FIG. 38.—Transverse section of wood of oak (magnified five diameters), showing five annual rings, as denoted by the large vessels of the spring wood; the vessels become smaller in the summer and autumn wood, and are arranged in tongue-like groups. Nine broad medullary rays are shown, the rest are very narrow (*cf.* Fig. 27). The rest of the section is filled with tracheids, fibers, and wood-parenchyma. (Müller.)

twelve per mm.) fine ones between them, which undulate between the vessels. In slowly-grown close wood there is no vestige of radial arrangement left.

In the tangential section the small medullary rays are seen to consist each of a vertical row of a few cells, the large ones having numerous cells (see Fig. 27).

Wood-parenchyma cells broader than small medullary rays, and the color is chiefly due to pigment in these wood- and ray-cells. The wood-cells are pitted with oblique, slit-shaped, simple pits.

The vessels have bordered pits, and the septa are perforated each by one large circular opening. The smaller vessels have delicate spirals on their walls as well as bordered pits.

Nördlinger says that pith-flecks occur occasionally.

It is impossible to distinguish between the wood of the varieties *pedunculata* and *sessiliflora*.

(2) Its density varies considerably. Taking the weight of a given volume of water as unity, the weight of an equal volume of oak timber may weigh from 0.633 when air-dry to 1.280 when fresh cut. We may take the average density of green—i. e., newly-felled—oak with all its sap present, as about 1.075, and that of the seasoned wood as about 0.78.

It must be borne in mind, however, that these weights refer to the wood as a structure—that is, a complex of vessels and cells, etc., containing air and liquids—and do not give the specific gravity of the wood substance itself. The latter may be obtained by driving off all the air and

water from the wood, and is found to be 1.56, compared with an equal volume of water taken as unity. It is the varying quantities of this wood substance, and of air and water in the cavities, which make the density of different pieces of oak vary so much.

(3) The proportion of sap contained in the cavities of the vessels, cells, etc., of course differs at different times. In the spring, just as the buds are opening, the quantity of water increases more and more up to about July, when the maximum is attained; the proportion of water to solids then sinks until October, when the leaves fall; it increases again up to Christmas-tide, and then sinks to the minimum in the coldest part of the winter. The proportion of water to the total weight of the felled wood may vary from 22 to 39 per cent.

(4) Obviously the loss of water on drying causes shrinkage of the wood, and although oak shrinks very little in the direction of its length (0.028 to 0.435 per cent), the effect is very marked in other directions. In the radial direction—i. e., in the direction of the medullary rays—it may shrink from 1 to 7.5 per cent of its measurement when first felled; and in the direction vertical to this—i. e., parallel to a tangent to the cylindrical stem—the variation is from 0.8 to 10.6 per cent. Of course, green oak shrinks much more than seasoned and older wood, the process of seasoning being, in point of fact, the period of chief shrinkage. It is said that wood from the variety *sessiliflora* shrinks more than that of the variety *pedunculata*, but it may be doubted

how far the difference would hold if sufficiently numerous comparisons were made.

(5) Swelling may be regarded as complementary to shrinkage. It has been found that if oak wood is allowed to absorb water until thoroughly saturated it will increase from 0.13 to 0.4 per cent in length, and be distended radially from 2.66 to 3.9 per cent, or tangentially 5.59 to 7.55 per cent, according to age and condition, young wood swelling more than old. It has also been found that the total volume increased from 5.5 to 7.9 per cent, and the weight from 60 to 91 per cent, on complete saturation.

(6) *Elasticity and Tenacity.*—Oak is very elastic, and easily bent if steamed, and it does not readily splinter. When pulled in a direction parallel to the length of the structure the absolute tenacity = 2.23 to 14.51 kgr.—i. e., it took a pull equal to this weight per 1 sq. mm. of section to pull the wood asunder.

The limit of elasticity corresponds to a load of 2.72 to 3.5 kgr., according to various authorities, the specimen lengthening $\frac{1}{430}$ th in the former case.

The modulus of elasticity is given as 826 to 1,030 kgr., and the breaking limit as 4.66 to 6.85.

When the pull is in a direction across the length of the fibers, the results differ according as the load is applied so as to act radially or tangentially.

When acting radially the modulus of elasticity is given as 188.7 kgr., and the breaking limit as 0.582 kgr.

When acting parallel to a tangent the modulus of

elasticity = 129.8 kgr., and the breaking limit 0.406 kgr.

The absolute tenacity in the transverse direction is given as 0.44 to 0.61 kgr.

In the case where pressures are applied in the direction of the length of the fibers the limit of elasticity = 2.09 to 2.22 kgr.; the modulus of elasticity, 933 to 1,250 kgr.; and the absolute resistance, 2.58 to 3.64 kgr.

Flexibility.—The limit of elasticity = 1.77 to 2.71 kgr.; modulus of elasticity, 620 to 735 kgr.; resistance to bending, 4.53 to 6.18 kgr.

Torsion.—Oak warps considerably unless carefully seasoned. Limit of elasticity = 0.4 to 0.54 kgr.; modulus of elasticity, 612.5 to 785 kgr.; resistance to torsion, 0.75 to 0.97 kgr.

Resistance to shearing-stress, in the direction of the fibers = 0.61 to 0.97 kgr.; perpendicular to them, 1.9 to 3.49 kgr.

(7) *Resistance to Splitting.*—Oak is easily split into tolerably smooth and even staves, and is much employed for this purpose.

(8) *Hardness.*—Oak is neither the hardest and heaviest nor the most supple and toughest of woods, but it combines in a useful manner the average of these qualities. Good oak is hard, firm, and compact, and with a glossy surface, and varies much; young oak is often tougher, more cross-grained, and harder to work than older wood. According to Gayer, if we call the resistance which the beech offers to the saw, applied trans-

verse to the fibers, 1, then that of freshly felled oak = 1.09.

(9) *Durability*.—A mild climate and open situation produces the most durable oak, and it is extraordinarily durable under water, in the earth, or exposed to wind and weather, or under shelter; in the latter case it becomes more and more brittle as years roll by.

The alburnum becomes rotten usually in a few years if exposed, and is the prey of insects if under cover. The heart, if sound, may last for centuries under cover and well ventilated, and even in earth or water will endure for several generations. There are, for instance, in the museum at Kew, a portion of a pile from old London Bridge which was taken up in 1827, after having been in use for about 650 years, and a piece of a beam from the Tower of London, of which it is stated that it was “probably coeval with the building of the Tower by William Rufus”; and many other specimens of very old oak are known.

(10) *Burning Properties*.—The calorific power of oak wood is high, in accordance with its density, but it splutters and crackles and blackens too much. Nevertheless, it produces a valuable charcoal. Hartig says that if we call the cooking-power of a given volume of beech 1, that of an equal volume of oak = 0.92 to 0.96.

(11) *Peculiarities*.—Oak timber is apt to suffer from various diseases, and from frost-cracks and star-shakes, cup-shakes, etc., as we shall see in the next chapter. It often presents brittle wood, red-rot (foxiness), white-rot,

spottiness of various kinds, and is sometimes twisted. At the roots it is very often affected with burrs. It contains gallic acid, and so corrodes iron nails, clamps, etc.

(12) *Uses*.—Owing to its high price and great specific weight, oak has suffered in competition with spruce, larch, and pine so far as building is concerned; but its uses are very various and widespread nevertheless, and it is invaluable to the engineer and builder wherever strength and durability are aimed at.

As already said, its great value depends on its marvelous combinations of several average properties; and considerable variations in the density, durability, ease of working, and beauty when worked, and so forth, are met with according to the situation and climate in which the oak grows. Generally speaking, it is found that when the oak grows isolated in plains, in rich soil and a mild climate (habitat of *Q. pedunculata*), it grows rapidly, and produces a wood of very tough and horny consistency, which is regarded as the best for naval and hydraulic work, cartwrights, etc., and wherever strength, tenacity, and solidity are required in high degree (Fig. 39, top). The best should have broad and equal rings, but not broader than 7 to 8 mm., with narrow vascular zone and the smallest possible vessels, and with a pale, rather than dark, and even color on the fresh section. It should also have long fibers and a strong, fresh smell.

In close, high forest, on poor soil, and in a rougher climate, it may take 300 years to reach 0.6 metre diameter, and the wood is then softer and more porous, beau-

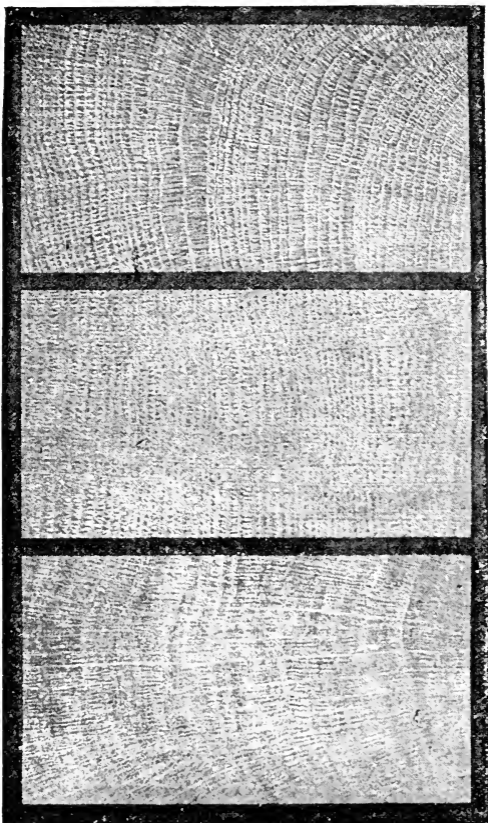


FIG. 39.—Three specimens of oak grown under different conditions.

tifully speckled, and shrinking little (Fig. 39, middle). Such wood is excellent for sculpture and carving, and is very pretty; it is also well adapted for cooperage.

In deep soil of moderate quality, in hilly country, and growing as coppice under standards, we have a wood of irregular growth and not very valuable, but useful in an all-round way for sawing and splitting (Fig. 39, bottom).

Speaking generally, it is found that, other things being equal, the most resistant, closest, and toughest timber comes from isolated trees growing in the open: straight and long timber, less marked for the above qualities, comes, on the contrary, from trees grown in close, high forest. This is the conclusion arrived at by the naval authorities in France and England, and may be accepted as according with the facts of structure, etc. Some differences may be put down to the varieties, but probably Boppe is right in concluding that rate of growth, etc., due to differences in the soil and climate, are the determining causes.

The builder employs oak for sills, staircase treads,

DESCRIPTION OF FIG. 39.—The upper one is from a rapidly-grown tree, in the open, and at a low altitude; the wood is very strong, hard, and heavy (density 0·827), because there is a preponderance of fibers in the broad rings. The middle specimen comes from a tree growing slowly in a forest at a considerable altitude; the narrow rings have too large a proportion of vessels, whence the wood is soft (density 0·691), porous, and weak. The lower section is from a tree which has grown very irregularly on poor soil, as shown by the variable rings; only the parts with broad rings are good—hence bad wood predominates (density 0·742). (Nanquette-Boppe.)

keys, wedges and treenails, gate-posts and doors, and superior joinery.

Railway-sleepers are best made of young oak, as it is denser, and the Austrians say such sleepers last from seven to ten years if not treated, and for as long as sixteen years if treated with zinc chloride and other preservatives.

On the Continent heavy oak is used in machines, for axletrees, spokes, stamps of mills, anvil-stocks, hammer-handles, etc.

Oak is much used for carving of all kinds, large furniture, paneling, parquetry, for the felloes, spokes, and axles of wheels, and for other parts of wagons, etc. In cooperage it is much used for the staves, etc., of casks, measures, sieves.

Split oak makes excellent palings and shingles, and oak vine-props are only second to those of *chestnut*. Walking-sticks are also made of oak, and even water-pipes have been used, but they taint the water.

CHAPTER XI.

THE CULTIVATION OF THE OAK, AND THE DISEASES AND INJURIES TO WHICH IT IS SUBJECT.

THE oak has been cultivated in all kinds of ways, but by far the best timber is produced in what is called "high forest"—that is, the young trees all start at the same age and planted much closer together than they will be later on, their number being lessened period after period by successive removals until there is left a forest of large trees at equal distances. As it takes from 140 to 200 years to bring such a crop of timber to maturity, we may easily understand that such are rarely met with except as State forests, and the governments of various countries keep them going at various ages: one set of plantations will be ten, another twenty, a third thirty years old, for instance, when a given set is ready to be finally cut over for heavy timber.

There are many difficulties, however, in cultivating pure oak woods, and the custom of mixing other trees is a common one, for the young oaks need much light; and yet, if each plant has the space given it necessary to allow of this light, it grows into a short and spreading tree instead of rising up into a tall, straight one. The

forester usually gets over these difficulties by planting beech, or silver fir, or some other species among the oaks, but in such a way that the oaks are never completely shaded by the other trees—that is to say, he keeps the trees at different ages, the beech, hornbeam, silver fir, spruce, etc., only being allowed to just close in the forest, leaving the leaf-crowns of the oaks to be fully exposed to the light above. The oak grows faster than the beech or spruce, for instance, while young, and so keeps its head easily above the others for a time. Very often the oak is cultivated pure at first, and then, when the oaks are becoming too crowded and he has to thin them, the forester puts in the silver fir or beech, which prevents the light coming in to the lower parts of the young oak-trees, and consequently prevents the development of lower branches, which would give the spreading, squat habit he wishes to prevent. For without light the leaves of the lower twigs of course can not make the materials to strengthen and thicken the latter into branches, and so they die off, and the trunk remains a straight, clean cylinder.

Although oaks are often raised from seed, a number of veteran trees being allowed to stand for many years in order to scatter the acorns, yet in by far the greater number of cases the plants are put in artificially, the long tap-roots being first cut in order to make them throw out lateral rootlets. It is also a common practice to cut back oaks, and allow them to sprout into what is known as coppice—that is to say, numerous buds which

would not have developed at all are impelled to grow up into twigs and branches (stool-shoots) from the lower parts of the cut tree. It was very usual at one time to grow oak in this way for the sake of the bark, which was employed in tanning, the trees being cut back again and again, and renewing the coppice growth after each cutting.

There are various other modes of growing oak in forests, but, whatever the system employed, the following facts have to be borne in mind and provided for: The oak is a tree that requires a soil of great depth, and sufficiently open to allow of the free penetration of air and water to the subsoil; consequently many soils, otherwise rich enough, are unsuited for the culture of this tree. Again, young seedlings and plants are apt to suffer from frost unless they are protected by suitable mixtures of other plants; but such mixtures must be chosen properly, for this tree demands light and space to a degree greater than most other European trees except the larch, birch, and one or two others, and rapidly suffers if shaded or unduly crowded. Further, as compared with other European trees, the oak is a tree of the plains, and requires a relatively high temperature. These requirements also accord with its adaptation to deep, rich, well-drained soil, and, taking it all round, we have to regard the oak as a tree which makes considerable demands on the locality (soil and climate) where it grows. In return for this, however, it yields the best of all temperate timbers.

As we have seen, the forester has to exercise considerable forethought—the outcome of long experience—in growing oak so as to obtain long, clean stems. The natural habit of the tree is to form a short, thick bole and a widely spreading crown, the main branches of which come off not far from the ground. To compel the stem to elongate into a long pole he has to plant other trees with it (as we have seen, beech, spruce, etc.), which, while they keep the light off the lower parts of the oaks, do not overtop them. This makes the trees long and spindly at first, as they run up their leaf-crowns higher and higher, and it is part of the forester's art to select the exact time when he may cut away some of the nurse trees and let in just enough, and not too much, light and air, so that the crowns of the oaks shall fill out more and thicken the stems. For it must never be forgotten that the timber is laid on from substance prepared in the leaves.

The natural shape, so to put it, of an oak-tree is that of a wide-spreading, short-stemmed mushroom, and such a shape is realized in the open; the forester compels it to lengthen its stem as much as possible *before* he lets it extend its crown. Hence he aims at length first, and then lets the tree put on timber in the mass. He does this, of course, by taking advantage of the tree's peculiarities, and one of these is that it grows very rapidly when young. It will be obvious that the skilled forester also has to aim at getting as much timber as possible on the ground in a given time, and in the case

of a tree like the oak his calculations have to be well made beforehand, for the tree may have to stand for from 120 to 200 years before it is cut. Left alone it may live for 1,000 years, but the proportion of good timber in trees after a certain age rapidly diminishes—a fact that has also to be reckoned with.

It is quite different, however, when trees are required for seed purposes. The oak hardly bears fruit at all before it is fifty to sixty years old, and seventy to eighty years is a better age for the purpose; but, as with other trees, to produce really good seed the oaks must be isolated, or nearly so, so that they get the maximum of light and air. Consequently a modification of procedure has to be made when seed-trees are required.

When the fruiting period has once been reached the tree goes on producing acorns every year; but it is noticed that heavy crops of good seeds only recur every five (or perhaps three) years or so, the yield in the intervals being inconsiderable. This is in accordance with Hartig's discovery that in the beech, for instance, the tree goes on storing up nitrogenous materials and salts of phosphorus and potassium during the first seventy or eighty years of its life, and then suddenly yields these stores to the seeds; the drain is so exhausting that it requires three to five years to re-store sufficient of these substances for another "seed-year." The season or weather is also concerned in the matter.

Of course there are very many other details to be

considered in the technical cultivation of the oak, but enough has been said to give the reader a general account of the procedure, and I now pass to the subject of the dangers and diseases which threaten the tree at various periods in its development, and the timber afterwards.

The diseases and injuries to which the oak is subject are very numerous and various, although, compared with some other indigenous trees, it suffers remarkably little from the different dangers which await it at all stages in the course of its long life from the seedling to the aged tree. Some of these are referable to the exigencies of the non-living environments—the climate, soil, etc.; others are due to the attacks of living organisms, both vegetable and animal—from the weeds which smother the young seedlings by keeping the light from them, to man himself, who injures the trees in various ways. The earliest struggles of the young seedling are with the weeds, slugs, and insects of various kinds that invade the territory on which the acorn has germinated; and of course the baby plant has also to contend against any inclemencies of climate or unsuitableness of soil that it may meet with. Owing to such vicissitudes very many of the seedlings never obtain the dimensions of a plant at all, and in some seasons the mortality is enormous. Other destructive agents during these early phases of the life of the oak are cattle and deer, which not only tread down the shoots but also nibble them off, and mice, squirrels, etc., do their share of injury, as also do

wood-pigeons and other birds. In the north of Europe the young plants suffer terribly from the ravages of a fungus named *Rosellinia*, the mycelium of which sends its branches into the roots and kills them, consequently entailing the death of the plant. The larvæ of various insects also damage the roots and bring about injuries which may prove fatal. *Cynips corticalis* produces galls on the lower parts of the stems.

When the plant has passed into the condition of a sapling its dangers are for the most part of quite other nature, the injurious fungi especially being different. The chief diseases of the roots now arise from their spreading into unsuitable soil, the drainage of which may be incomplete, and thus bring about a sodden, acid, ill-aërated condition. The want of oxygen and the low temperature combine to kill the root-hairs and young rootlets, and the leaves above part with their water faster than it can be supplied from below, and they turn yellow and die off, the branches dry up, and the tree dies.

Other dangers arise from the persistent overshadowing of other trees, which slowly kill the young oaks by depriving their leaves of light; the offending trees playing the same inimical part, in fact, that grass and weeds, etc., play towards the small seedlings. Or the roots may be too thickly set in the soil if the trees are too crowded, and each suffers from over-competition with others.

Much mischief is effected by the attacks of insects

of various kinds. The caterpillars of certain moths (especially *Cnethocampa* and *Tortrix*), for instance, eat off the leaves in June, and then form large masses of mingled *débris*, skins, etc., as they pass into the pupa stage in July. The denudation of the leaves brought



FIG. 40.—*Tortrix viridana*, the green oak-moth, the larvæ of which eat off the young leaves. (Altum.)

about by such caterpillars is apt to be very exhaustive to the trees, for although they put forth new foliage in July and August, it must not be forgotten that these new leaves are constructed from materials which should have gone to the general stores in the tree, and from which new wood, for instance, would have been developed.

Of other animals which injure oaks I may mention the various cattle, which bite off or rub the bark and buds; hares, squirrels, mice, etc., which nibble roots and buds and destroy the acorns, etc.; and a few birds; and certain beetles, which bore into the wood.

Among the pests belonging to the vegetable kingdom the following may be selected from a large number: The honeysuckle occasionally twists tightly round the young stem, and in course of time so compresses the cortex that the formative materials from the leaf-crown have to pass in a spiral course between the coils of the strangling plant, and the tightly-squeezed parts may be starved as the tree thickens, and even the death of the cambium may follow, especially if one or two of the honeysuckle coils come to lie nearly horizontally round the stem.

As a rare event the mistletoe is found on the oak. A much commoner parasite of the same family is *Loranthus europæus*, which does considerable damage to oaks in some parts of Europe. The sticky seeds are carried into the trees by thrushes. Here they germinate, and send their roots, or haustorial strands, into the cortex of a branch as far as the cambium, where they spread and feed on the contents of the young wood- and cambium-cells, causing malformations of the injured branch at the spot attacked, owing to the hypertrophy of the tissues, to which abnormal quantities of food materials now flow (Fig. 41); and frequently bringing about the death of the upper parts of the branches owing to the

paucity of water at those parts, the parasite taking much of that which reaches the injured place, and the impoverished wood allowing less to pass than it would normally have done.

Among the fungi there are several enemies to the oak-tree. The leaves are attacked by *Phyllactinia*, one

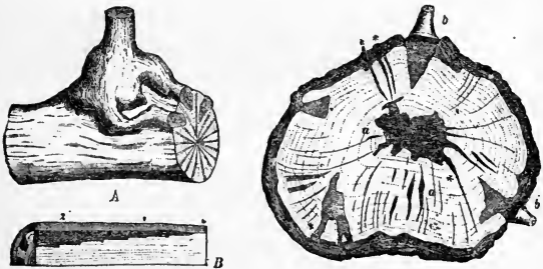


FIG. 41.—*Loranthus europæus*. A. Lower part of stem attached to branch of oak, both denuded of cortex. B. Longitudinal section through one of the haustorial strands, showing its progress year by year, as the branch thickens. C. Transverse section, through a branch which has long been badly infested with the *Loranthus*; *a a*, dead remains of old haustorial strands; *b b*, young *Loranthus* plants developed as buds from the older ones. The asterisks mark still younger specimens. (Hartig.)

of the mildews, which forms white networks, like spiders' webs, on their surfaces. Numerous small ascomycetous fungi are found on the dying and dead leaves, but these do not directly injure the living tree.

Other fungi are found in the cortex, and one of the most interesting of these is a red *Nectria*, the spores of

which germinate on the bark, but can not infect the tree unless there is a wound in the neighborhood. However, owing to the numerous small cracks and ruptures due to the injuries caused by insects, hail, frost, etc., the mycelium easily gains access to the cortex and cambium, and feeds on the contents of the cambium-cells, which it destroys. The consequence of the irritations set up is the formation of canker-like knots on the branches, and the injury may be great enough to destroy smaller ones, and occasionally even a large one.

Unquestionably the most important of the diseases to which the older oak-trees are subject are those which result in the destruction of the timber.

There are about six or eight of the fungi known popularly as toadstools—technically as *Hymenomycetes*—which are able to injure and even destroy the timber of standing oaks, and while each of these pests does the damage in its own peculiar way, they show considerable similarity in general behavior. In the first place, these fungi are unable to penetrate the bark of sound trees, and their hyphæ always gain access to the timber by means of actual wounds and exposed surfaces of wood, such as the cracks caused by frost or by the bending down of heavy branches under the weight of a load of snow, or the ruptured ends of broken branches blown off by strong gales or struck by falling trees, or places where animals have removed the bark, where cart-wheels have abraded the larger roots, and so on. Once inside, the hyphæ of these fungi pierce the vessels, cells, etc., of the

wood by excreting soluble ferments which dissolve the substance of their walls, and feed on the products of solution. Hence they damage the timber in two ways—they riddle it through and through by myriads of minute apertures, and thus ruin its structure, and they

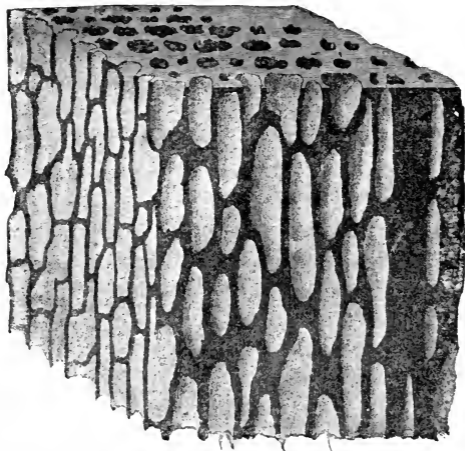


FIG. 42.—Piece of oak destroyed by *Thelephora Perdix*, showing the characteristic markings due to the action of the fungus. (R. Hartig.)

reduce its substance by dissolving it and converting it to their own uses. The wood, therefore, loses in strength and in weight, and becomes “rotten.” There are differences in detail as to the mode of destroying the elements of the wood, but the final result is much the same in all

cases : some of the fungi destroy the vessels, fibers, etc., by dissolving their walls from inside, while others destroy the part common to contiguous cells, etc., and thus first isolate the elements and then complete the destruction. A series of very interesting researches by

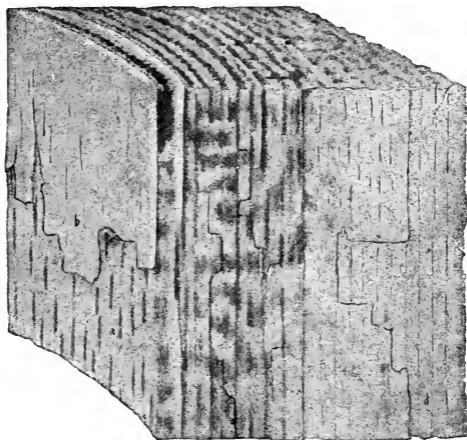


FIG. 43.—Oak timber destroyed by the fungus *Hydnum diversidens*: *a* shows the medullary rays on the tangential section; *b*, a mass of felted mycelium. (R. Hartig.)

Hartig has demonstrated that the presence of these timber-destroying fungi can be detected from the markings and discolorations they produce in the wood; those due to *Hydnum diversidens*, *Thelephora Perdix*, *Polyporus sulphureus*, *P. igniarius*, *P. dryadeus*, and *Stereum*

hirsutum being all different, and in some cases so characteristic that the merest glance suffices to diagnose the disease (cf. Figs. 42 to 45).

There is yet another disease of oak timber to be noticed, and one which causes great havoc in buildings

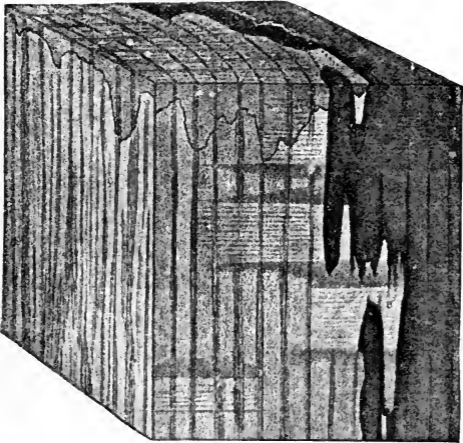


FIG. 44.—Oak damaged by *Polyporus igniarius*, a very common timber fungus. (R. Hartig.)

where the ventilation is bad and the air damp. This is the too well known dry-rot, due to the destructive action of the fungus *Merulius lacrymans*, a hymenomycete allied to the preceding, but differing from them in not attacking the standing timber. The spores of this

fungus are able to infect oak planks, beams, etc.; and the mycelium rapidly spreads on and in the wood, destroying the cell-walls, and causing the wood to shrink and crack and warp, and finally to fall to pieces. Thorough ventilation is fatal to the fungus and stops the rot.

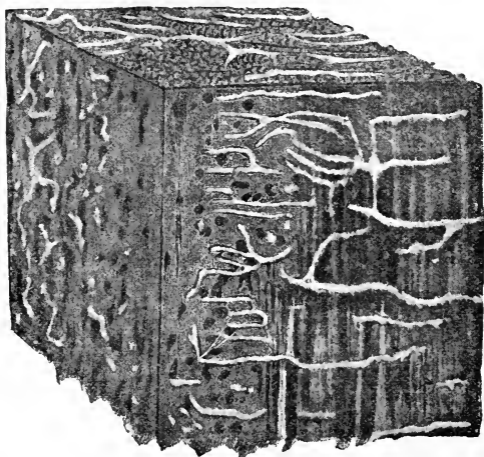


FIG. 45.—Oak wood destroyed by *Polyporus dryadeus*, showing the very characteristic markings, like insect tunnels in a deep red brown matrix. (R. Hartig.)

A series of enemies to the oak-tree not yet referred to are various gall-insects, so called because they pierce the young leaves or buds, etc., and lay their eggs in the wound; the irritation set up suffices to induce a flow of food materials to the stimulated spot, and the overfed

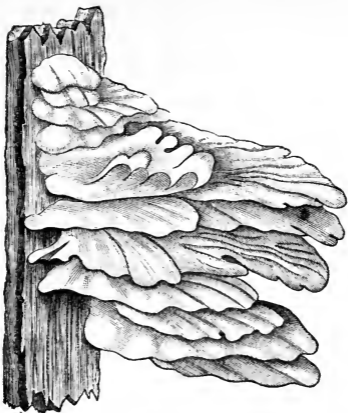


FIG. 46.—Piece of oak-bark with fruetification of *Polyporus sulphureus*.

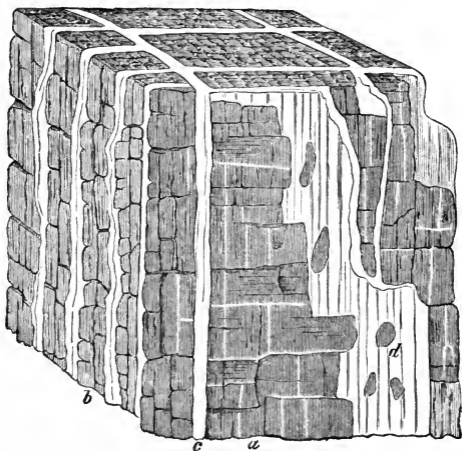


FIG. 47.—Piece of oak attacked by *Polyporus sulphureus*, the yellowish white mycelium of which is seen at *c* and *d*. (R. Hartig.)

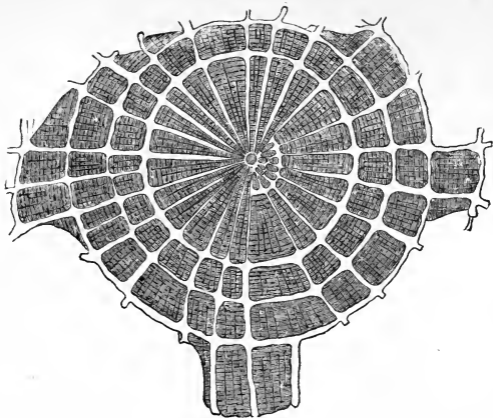


FIG. 48.—Transverse section of oak-timber destroyed by *Polyporus sulphureus*. (R. Hartig.)

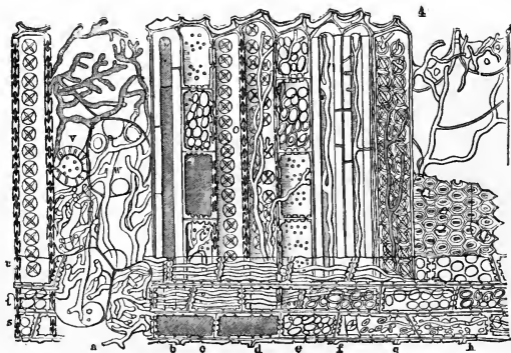


FIG. 49.—Highly magnified longitudinal radial section of a piece of oak destroyed by a timber fungus, showing the ravages of the hyphae in the various tissues. (R. Hartig.)

cells multiply and form the gall. This is a mere outline sketch of the matter, however, for the differences in behavior are enormous. Each insect causes the forma-

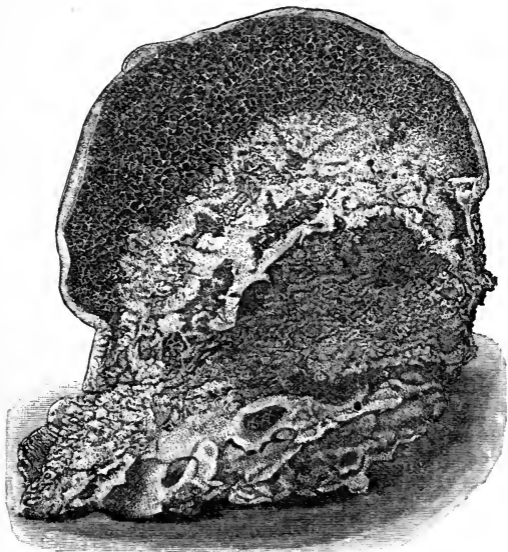


FIG. 50.—Portion of the spore-bearing hymenium of *Merulius lacrymans*, the fungus of "dry rot."

tion of a specific kind of gall, differing in shape, size, color, and other characters from those caused by other gall-insects. There are many kinds, and only a few can be mentioned here. Each species of oak may have its

own galls also, those on the American oaks differing from those on the European species, but some are common to more than one species. The insects which pro-

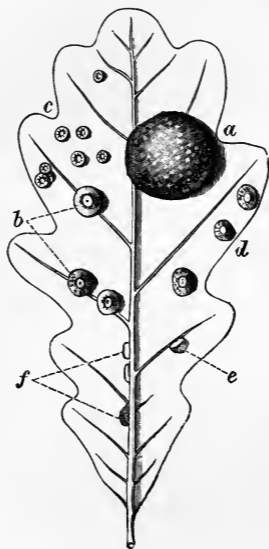


FIG. 51.—An oak-leaf with several kinds of *Cynips* galls on it: *a*, gall produced by *Cynips scutellaris*; *b*, *C. divisa*; *c*, *Neuroterus Reaumurii*; *e*, *Biorhiza renum*; *f*, *Neuroterus ostreus*. (Frank.)

duce the commonest English oak-galls are nearly all members of the *Cynipidae*, a group of hymenoptera which lay their eggs in the young tissues of various plants, especially oaks and roses.

Some of the resulting galls are discoid, such as the "oak-spangles" of our woods; others, again, are spherical, such as the common leaf-galls so well known in England, and the so-called oak-apple; then there are the "artichoke galls," produced by the partial metamorphosis of the buds of the oak in which the Cynips has laid its egg, and many others.

CHAPTER XII.

RELATIONSHIPS OF THE OAKS—THEIR DISTRIBUTION IN SPACE AND TIME.

THE oak is a member of a very large and ancient group of dicotyledonous flowering plants, embracing the beeches, chestnuts, hazel-nuts, etc., and many other forest trees of the Northern Hemisphere.

The number of species of oaks (*Quercus*) is very large, probably more than 300, of which the majority belong to North America, Europe, China, Japan, and other parts of Asia. There are none in Africa south of the Mediterranean region, nor in South America or Australasia. Some remarkable species are found in the Himalayas, and many in the Malayan Archipelago.

The various species of the genus *Quercus* are arranged into groups according to differences in the form and arrangement of the scales of the cupule, the characters of the leaves, and certain peculiarities in the acorns. Many oaks, especially those of warm countries, for instance, are "evergreen," with hard, leathery leaves, quite unlike the leaves of our common British oak.

The latter is denominated botanically as *Quercus*

Robur, but certain varietal forms of it have been distinguished, of which the commonest in this country are *Q. pedunculata*, a variety with the female flowers on long peduncles, and *Q. sessiliflora*, with the female flowers on short peduncles; but although numerous attempts have been made to define these forms, and while small differences in the petioles, lobing of the leaves, and the wood, etc., have been insisted upon at various times by observers, it appears that the two varieties graduate into one another by intermediate forms. In England, the variety *pedunculata* is the commonest over the country generally, but in the hilly districts of North Wales and the north of England the variety *sessiliflora* is said to prevail. Similarly, on the Continent the latter variety is found at higher elevations than the former, though its area of occurrence is more restricted. This pronounced variability of the oak was commented upon by the late Charles Darwin, who points out, in the *Origin of Species*, that more than a dozen species have been made by a certain author out of what other botanists regard as mere varieties of the common oak.

De Candolle, who made a special study of this group, found the variations so enormous that, although he made something like 300 species, he decided that the majority of these were merely provisional; and he concluded, as others have done, that we have, in the numerous varieties of the species of this old genus *Quercus*, series of incipient species. If the connecting forms were to die out, leaving certain varieties more isolated than they

are at present, systematists would elevate the latter to the rank of species.

It is interesting to observe that twenty-eight varieties of the common English oak (*Q. Robur*) have been described, and that the majority of these can be grouped around the three forms *pedunculata*, *sessiliflora*, and *pubescens*, the latter being a somewhat hairy variety found on the Continent. No doubt we have here, again, a case where the three varieties mentioned would be accorded specific rank if the connecting forms died out, as some of them appear to be doing.

I have already stated that the oaks are a very ancient family, and their great variability is in accordance with this. It probably implies that the genus has had time during its migrations over the Northern Hemisphere to vary immensely, and that some of the varieties have become adapted to given situations, others to others. On the whole, the oak family must be regarded as a northern type which has sent extensions southward.

Now let us glance at their geological history. Something like 200 forms of fossil oaks have been described from remains, chiefly of leaves and wood, found in various parts of the world. Some of the European fossil forms remind us of species now found only in hot countries near the tropics, others are peculiar, and some are very doubtful.

The earliest remains of oaks come from the Cretaceous strata, being coeval with the first undoubted dicotyledons that have been found. Many have been found

in the Tertiary also, and we have to conclude that the oaks were probably already a well-developed group of plants before the higher mammalia existed—i. e., so far as we can judge from the fragmentary records of the rocks. It seems that even the present species of oaks were already in existence in Tertiary times, and possibly some of their varieties also.

From the evidence of their fossil remains, together with the facts of their present distribution, it is at least exceedingly probable that the European oaks, including our English oak, came into existence somewhere in the East, and that, after spreading from Asia towards the West, they are now slowly retreating before competing forms—e. g., the beech. Meanwhile the English oak (*Q. Robur*) has been giving rise to several varieties, of which three at least (viz., *pedunculata*, *sessiliflora*, and *pubescens*) have become sufficiently marked to be regarded as species by those who do not consider the connecting forms.

It is not improbable that this migration of the European oaks from Asia was completed before the islands of Sicily, Sardinia, Corsica, and Britain were separated from the mainland of the Continent. Moreover, our English oak is not distantly related to certain species of Eastern Asia and of Western North America, and it has been surmised that all these related forms sprang from a common ancestor not unlike our English oak of to-day. Again, fossil leaves from Italy, found in diluvial deposits, are so like those of certain Californian

oaks now existing that a common origin is also suggested, and similar leaves have been discovered in Tertiary deposits in Northwest America. If all the evidence is put together, we may conclude with Asa Gray that "the probable genealogy of *Q. Robur*, traceable in Europe up to the commencement of the present epoch, looks eastward and far into the past on far-distant shores."

Many of the oaks yield products which are made use of in the arts, apart from their timber, the most valuable of which comes from our European oak, the white oaks of North America, and one or two Himalayan species. In several countries oaks are grown for the sake of the bark, cups, etc., as a tanning material, and these even form important articles of export. Quercitron, a yellow dye and tanning material, is obtained from *Q. tinctoria* in North America.

Cork, as used for bottling and other purposes, is obtained in Spain, the south of France, and in Algiers, from the thick periderm of *Q. Suber*.

Q. infectoria yields the chief galls of commerce. They are caused by the punctures of *Cynips gallæ tinctoriæ*, and are used for making ink and for dyeing. In these and similar galls the value depends on the presence of relatively large quantities of tannic and gallic acids which they contain.



INDEX.

- Accessory shoots, 6.
Acorn, 4, 7, 10-23, 130; figs. 1-3.
Age of oak, 151.
Alburnum, 110, 136.
Annual rings, 95-108, 136.
Axis-cylinder, 24, 28, 32, 91;
fig. 5.

Bark, 98, 111, 118-120; fig. 30.
Bast. See Phloëm.
Beech, 148, 151.
Biology of roots, 36.
Bud, 50, 72-76, 127; figs. 19, 32.
Burning of oak, 142.
Burrs, 7.

Cambium, 40, 52, 64, 92, 98, 100,
103, 111; figs. 9, 24.
Cattle, 155.
Cells, 15, 136.
Chlorophyll, 79, 85.
Cnethocampa, 154.
Common bundles, 47.
Coppice, 149.
Cork, 93, 116; figs. 17, 18.
Cortex, 52, 98; figs. 17, 18.
Cotyledons, 14, 130, 134; figs. 2,
3, 37.
Course of vascular bundles, 42-51,
68-71; figs. 10, 11.
Cultivation of oak, 147-152.
Cupule, 10, 124, 130.
Cynips, 153, 162; fig. 48.

Density of oak, 138.
Diseases of oak, 152-163.
Drainage, 153.
Dry-rot. See *Merulius*.
Durability of oak, 142.
Duramen, 109, 136.

Elasticity of oak, 140.
Embryo, 14.
Embryonic tissue, 17, 28, 41, 96;
figs. 2, 6, 25.
Embryo-sac, 128; fig. 35.
Endodermis, 30, 32; fig. 5.
Epidermis, 16, 39, 41, 52.

Fertilization, 130.
Fibers, 60, 106, 108, 113, 136;
fig. 16.
Flexibility of oak, 141.
Flowers of oak, 121; figs. 31, 32.
Folk-lore, 2, 3.
Fruit of oak, 10, 131.
Fundamental tissue, 16, 39.
Fungi, 96, 153, 156-163; figs. 25,
42-47.

Gall-insects, 161; fig. 48.
General description of oak, 5.
Germination, 10-23.
Growing-point, 37, 74, 96; figs. 6,
19.
Growth in thickness, 68, 91, 100-
103.

- Habit of oak, 150.
 Hardness of oak, 141.
 Heart-wood. See Duramen.
 High forest, 147.
 Honeysuckle, 155.
 Hornbeam, 148.
Hydnum diversidens, 159; fig. 43.
Hymenomyces, 157.
 Hyphæ, 97, 157; fig. 25.
 Hypocotyl, fig. 3.
- Inflorescence of oak, 121; figs. 31, 32.
 Injuries to which the oak is subject, 152-163.
 Insects, 154.
- Lammas shoots, 6, 74.
 Leaf, 21, 76-88; figs. 20, 21, 22.
 Leaf-trace, 47, 49, 69.
 Lenticels, 114.
Loranthus europæus, 155; fig. 41.
- Medullary rays, 34, 39, 48, 52, 54, 63, 95, 100, 104, 136; figs. 9, 12, 27, 38.
Merulius lacrymans, 160; figs. 46, 47.
- Mesophyll, 76, 79, 81, 85; fig. 22.
 Mistletoe, 155.
 Mixed woods, 148.
 Mycorhiza, 96; figs. 7, 25.
- Nectria*, 156.
- Oak-apple, 163.
 Oak-moth. See *Tortrix*.
 Ovary, 124, 130; figs. 33, 34.
 Overcrowding, 153.
 Ovules, 125, 128; figs. 34, 35.
- Parenchyma, 18.
- Peculiarities of oak, 142.
 Pericarp, 12, 131; figs. 2, 3, 37.
 Pericycle, 30, 32; fig. 5.
 Periderm, 93, 111, 117.
 Perigone, 124.
 Phellem. See Cork.
 Phelloderm, 117.
 Phellogen, 116.
 Phloëm, 32, 40, 52-71, 92, 99, 103, 111; figs. 5, 6, 9, 17, 18, 24.
Phyllactinia, 156.
 Phyllotaxis, 42, 47, 78, 122.
 Physiology of roots, 35.
 — of leaf, 83-87, 91.
 — of stem, 90.
- Piliferous layer, 24, 32, 91; figs. 5, 6.
 Pith, 39, 52, 55, 98, 136; figs. 5, 12, 99.
- Plasticity of roots, 35.
 Plumule, 14, 21, 130; figs. 2, 3.
 Pollen, 123, 128.
 Pollination, 123, 126.
Polyporus dryadeus, 159; fig. 45.
 — *igniarius*, 159; fig. 44.
 — *sulphureus*, 159.
- Primary root, 14, 22; fig. 3.
 Primary shoot, 21, 39; fig. 4.
 Procambium, 42.
 Properties of oak, 136-146.
 Proteids, 17, 18.
 Protoplasm, 17.
 Pure oak woods, 147.
- Qualities of oak, 144; fig. 39.
 Quercite, 18.
Quercus pedunculata, 7, 123, 138.
 — *Robur*, 7, 8.
 — *sessiliflora*, 7, 76, 138.

- Radicle, 14, 130; figs. 2, 3.
 Requirements of oak, 149.
 Rocking of root, 20, 35.
 Root-cap, 23, 25, 32; fig. 6.
 Root-cortex, 24, 28, 32, 91; figs. 5, 6.
 Root-hairs, 23, 28, 36, 82, 97; fig. 3.
 Root-system, 38, 91-97.
Rosellinia, 153.

 Sapling, 4, 89.
 Sap wood. See Alburnum.
 Scale-leaves, 21.
 Secondary roots, 34; fig. 3.
 Seed of oak, 10, 12, 132; figs. 36, 37.
 Seed-coat. See Testa.
 Seed-leaves. See Cotyledons.
 Seed-trees, 149, 151.
 Seedling, 4, 19-24, 89; fig. 3.
 Sheath, fig. 5.
 Shoot-axis, 22, 39, 75, 98; figs. 9, 26.
 Shoot-system, 6, 39, 98-120.
 Shrinkage of oak, 139.
 Sieve-tubes, 32, 112.
 Silver fir, 148.
 Splitting of oak, 141.
 Spruce, 148.
 Stamen, 123.
 Starch-grains, 17, 18, 87.
Stereum hirsutum, 159.
 Stigma, 12, 123.
 Stipules, 22, 74, 122, 127; figs. 4, 19, 32.
 Stomata, 82; fig. 23.
 Stores of food materials, 20, 88.

 Structure of oak, 136.
 — of root, 24; fig. 5.
 Swelling of oak, 140.

 Tannin, 9, 17, 68, 135.
 Technology of oak, 136-146.
 Tenacity of oak, 140.
 Testa, 13, 131; figs. 2, 3.
Thelephora Perdis, 159; fig. 42.
 Timber, 8, 136-146; figs. 26, 38, 39.
 Tissues, 17, 39.
 Torsion of oak, 141.
Tortrix viridana, 154; fig. 40.
 Tracheids, 60, 106, 108, 136; fig. 16.
 Tree-killing fungi, 157.
 Tyloses, 110; fig. 29.

 Uses of oak, 143.

 Vascular bundles, 11, 17, 18, 26, 41-51, 100; figs. 2, 3, 9, 10-12.
 — system, 51-71.
 Venation of leaf, 49, 70, 76, 79; fig. 21.
 Vessels, 30, 31, 40, 55-62, 90, 106, 108, 136; figs. 12-16, 38.

 Water in oak, 139.
 Winter state, 7.
 Wood. See Xylem.
 Wood-cells, 31, 62, 106; fig. 16.

 Xylem, 30, 40, 52-71, 92, 100, 103, 111; figs. 5, 6, 9, 13-15, 24.



SIR JOHN LUBBOCK'S (Bart.) WORKS.

THE ORIGIN OF CIVILIZATION AND THE PRIMITIVE CONDITION OF MAN, MENTAL AND SOCIAL CONDITION OF SAVAGES. Fourth edition, with numerous Additions. With Illustrations. 8vo. Cloth, \$5.00.

"This interesting work—for it is intensely so in its aim, scope, and the ability of its author—treats of what the scientists denominate *anthropology*, or the natural history of the human species; the complete science of man, body, and soul, including sex, temperament, race, civilization, etc."—*Providence Press*.

PREHISTORIC TIMES, AS ILLUSTRATED BY ANCIENT REMAINS AND THE MANNERS AND CUSTOMS OF MODERN SAVAGES. Illustrated. 8vo. Cloth, \$5.00.

"This is, perhaps, the best summary of evidence now in our possession concerning the general character of prehistoric times. The Bronze Age, The Stone Age, The Tumuli, The Lake Inhabitants of Switzerland, The Shell Mounds, The Cave Man, and The Antiquity of Man, are the titles of the most important chapters."—*Dr. C. K. Adams's Manual of Historical Literature*.

ANTS, BEES, AND WASPS. A Record of Observations on the Habits of the Social Hymenoptera. With Colored Plates. 12mo. Cloth, \$2.00.

"This volume contains the record of various experiments made with ants, bees, and wasps during the last ten years, with a view to test their mental condition and powers of sense. The author has carefully watched and marked particular insects, and has had their nests under observation for long periods—one of his ants' nests having been under constant inspection ever since 1874. His observations are made principally upon ants, because they show more power and flexibility of mind; and the value of his studies is that they belong to the department of original research."

ON THE SENSES, INSTINCTS, AND INTELLIGENCE OF ANIMALS, WITH SPECIAL REFERENCE TO INSECTS.

"International Scientific Series." With over One Hundred Illustrations. 12mo. Cloth, \$1.75.

The author has here collected some of his recent observations on the senses and intelligence of animals, and especially of insects, and has attempted to give, very briefly, some idea of the organs of sense, commencing in each case with those of man himself.

THE PLEASURES OF LIFE. 12mo. Cloth, 50 cents; paper, 25 cents.

CONTENTS.—THE DUTY OF HAPPINESS. THE HAPPINESS OF DUTY. A SONG OF BOOKS. THE CHOICE OF BOOKS. THE BLESSING OF FRIENDS. THE VALUE OF TIME. THE PLEASURES OF TRAVEL. THE PLEASURES OF HOME. SCIENCE. EDUCATION.

JOHN TYNDALL'S WORKS.

ESSAYS ON THE FLOATING MATTER OF THE AIR,
in Relation to Putrefaction and Infection. 12mo. Cloth, \$1.50.

ON FORMS OF WATER, in Clouds, Rivers, Ice, and Glaciers.
With 35 Illustrations. 12mo. Cloth, \$1.50.

HEAT AS A MODE OF MOTION. New edition. 12mo.
Cloth, \$2.50.

ON SOUND: A Course of Eight Lectures delivered at the Royal
Institution of Great Britain. Illustrated. 12mo. New edition.
Cloth, \$2.00.

FRAGMENTS OF SCIENCE FOR UNSCIENTIFIC PEOPLE. 12mo. New revised and enlarged edition. Cloth, \$2.50.

LIGHT AND ELECTRICITY. 12mo. Cloth, \$1.25.

LESSONS IN ELECTRICITY, 1875-'76. 12mo. Cloth, \$1.00.

HOURS OF EXERCISE IN THE ALPS. With Illustrations.
12mo. Cloth, \$2.00.

FARADAY AS A DISCOVERER. A Memoir. 12mo. Cloth,
\$1.00.

CONTRIBUTIONS TO MOLECULAR PHYSICS in the Do-
main of Radiant Heat. \$5.00.

SIX LECTURES ON LIGHT. Delivered in America in 1872-
'73. With an Appendix and numerous Illustrations. Cloth, \$1.50.

FAREWELL BANQUET given at Delmonico's, New York. Paper,
50 cents.

ADDRESS delivered before the British Association, assembled at Bel-
fast. Revised, with Additions. 12mo. Paper, 50 cents.

**RESEARCHES ON DIAMAGNETISM AND MAGNE-
CRYSTALLIC ACTION,** including the Question of Diamag-
netic Polarity. With Ten Plates. 12mo. Cloth, \$1.50.

NEW FRAGMENTS. 12mo. Cloth, \$2.00.

THOMAS H. HUXLEY'S WORKS.

SCIENCE AND CULTURE, AND OTHER ESSAYS. 12mo.
Cloth, \$1.50.

**THE CRAYFISH: AN INTRODUCTION TO THE STUDY
OF ZOOLOGY.** With 82 Illustrations. 12mo. Cloth, \$1.75.

MAN'S PLACE IN NATURE. 12mo. Cloth, \$1.25.

ON THE ORIGIN OF SPECIES. 12mo. Cloth, \$1.00.

**MORE CRITICISMS ON DARWIN, AND ADMINISTRATIVE
NIHILISM.** 12mo. Limp cloth, 50 cents.

**MANUAL OF THE ANATOMY OF VERTEBRATED
ANIMALS.** Illustrated. 12mo. Cloth, \$2.50.

**MANUAL OF THE ANATOMY OF INVERTEBRATED
ANIMALS.** 12mo. Cloth, \$2.50.

LAY SERMONS, ADDRESSES, AND REVIEWS. 12mo.
Cloth, \$1.75.

CRITIQUES AND ADDRESSES. 12mo. Cloth, \$1.50.

**AMERICAN ADDRESSES; WITH A LECTURE ON THE
STUDY OF BIOLOGY.** 12mo. Cloth, \$1.25.

**PHYSIOGRAPHY: AN INTRODUCTION TO THE STUDY OF
NATURE.** With Illustrations and Colored Plates. 12mo. Cloth,
\$2.50.

**THE ADVANCE OF SCIENCE IN THE LAST HALF-
CENTURY.** 12mo. Paper, 25 cents.

THE ICE AGE IN NORTH AMERICA, and its Bearings upon the Antiquity of Man. By G. FREDERICK WRIGHT, D. D., LL. D. With 152 Maps and Illustrations. Third edition, containing Appendix on the "Probable Cause of Glaciation," by WARREN UPHAM, F. G. S. A., and Supplementary Notes. 8vo. 625 pages, and complete Index. Cloth, \$5.00.

"Prof. Wright's work is great enough to be called monumental. There is not a page that is not instructive and suggestive. It is sure to make a reputation abroad as well as at home for its distinguished author, as one of the most active and intelligent of the living students of natural science and the special department of glacial action."—*Philadelphia Bulletin*.

THE GREAT ICE AGE, and its Relation to the Antiquity of Man. By JAMES GEIKIE, F. R. S. E., of H. M. Geological Survey of Scotland. With Maps and Illustrations. 12mo. Cloth, \$2.50.

A systematic account of the Glacial epoch in England and Scotland, with special reference to its changes of climate.

THE CAUSE OF AN ICE AGE. By Sir ROBERT BALL, LL. D., F. R. S., Royal Astronomer of Ireland, author of "Starland." The first volume in the MODERN SCIENCE SERIES, edited by Sir JOHN LUBBOCK. 12mo. Cloth, \$1.00.

"An exceedingly bright and interesting discussion of some of the marvelous physical revolutions of which our earth has been the scene. Of the various ages traced and located by scientists, none is more interesting or can be more so than the Ice age, and never have its phenomena been more clearly and graphically described, or its causes more definitely located, than in this thrillingly interesting volume."—*Boston Traveller*.

TOWN GEOLOGY. By the Rev. CHARLES KINGSLEY, F. L. S., F. G. S., Canon of Chester. 12mo. Cloth, \$1.50.

"I have tried rather to teach the method of geology than its facts; to furnish the student with a key to all geology; rough indeed and rudimentary, but sure and sound enough, I trust, to help him to unlock most geological problems which may meet him in any quarter of the globe."—*From the Preface*.

AN AMERICAN GEOLOGICAL RAILWAY GUIDE. Giving the Geological Formation along the Railroads, with Altitude above Tide-water, Notes on Interesting Places on the Routes, and a Description of each of the Formations. By JAMES MACFARLANE, Ph. D., and more than Seventy-five Geologists. Second edition, 426 pp., 8vo. Cloth, \$2.50.

"The idea is an original one. . . . Mr. Macfarlane has produced a very convenient and serviceable hand-book, available alike to the practical geologist, to the student of that science, and to the intelligent traveler who would like to know the country through which he is passing."—*Boston Evening Transcript*.



University of California
SOUTHERN REGIONAL LIBRARY FACILITY
405 Hilgard Avenue, Los Angeles, CA 90024-1388
Return this material to the library
from which it was borrowed.

REC'D LG 1994
APR 18 1994

MAR 18 1994

UC SOUTHERN REGIONAL LIBRARY FACILITY



A 001 105 564 7

Uni
S