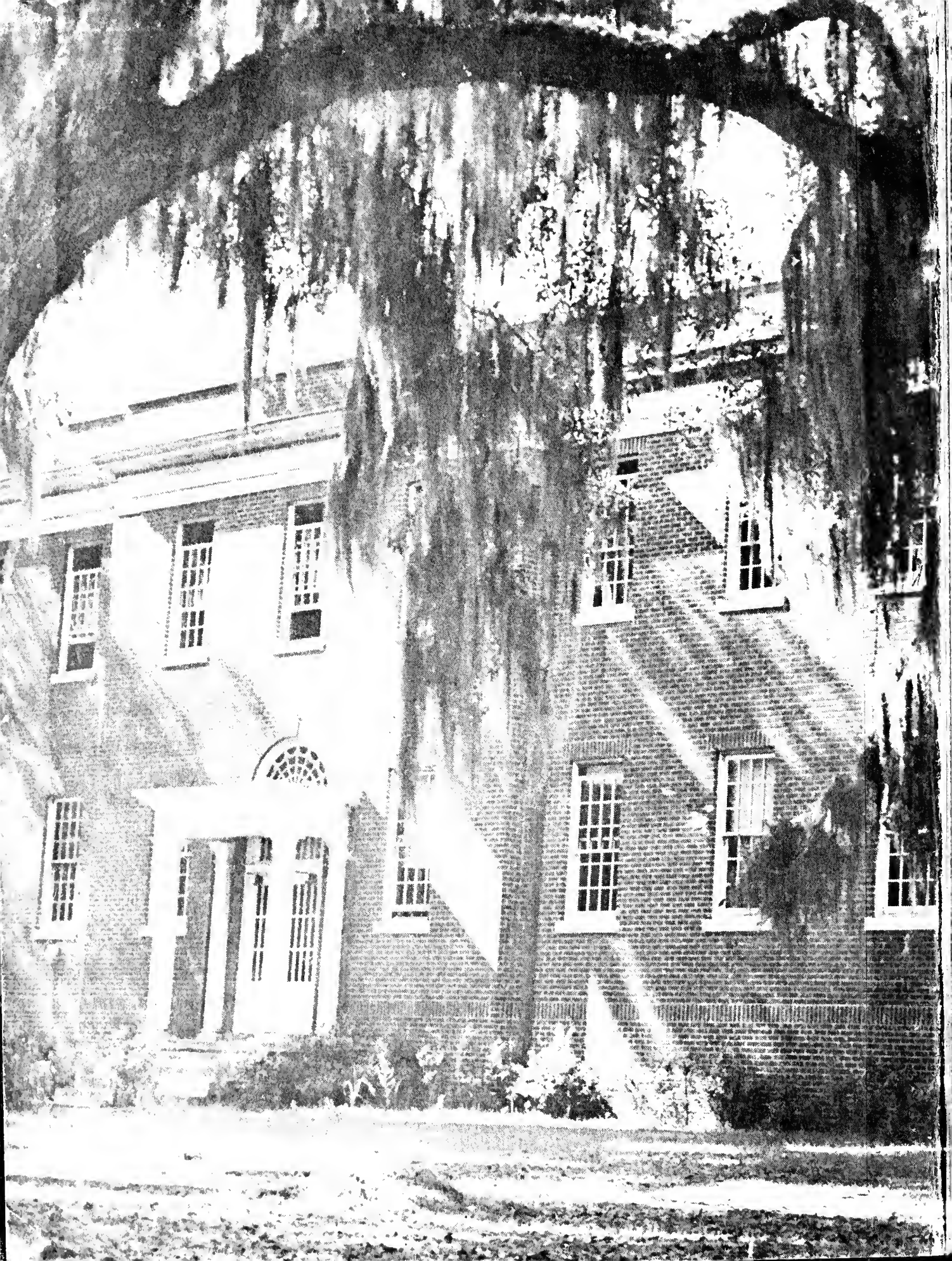




*The Tiger*





Copy 2



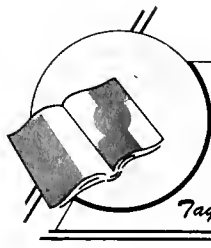
ANNAH STATE COLLEGE LIBRARY





Digitized by the Internet Archive  
in 2011 with funding from  
LYRASIS Members and Sloan Foundation





*Lithographed by*  
**TAYLOR**  
PUBLISHING COMPANY  
DALLAS, TEXAS  
*Taylor-made* MEANS BETTER YEARBOOKS

REFERENCE

op 2

The

# TIGER

PUBLISHED BY

THE STUDENTS OF

# Savannah State College



1952

A. H. GORDON LIBRARY  
SAVANNAH STATE COLLEGE  
STATE COLLEGE BRANCH  
SAVANNAH, GEORGIA





DR. HARMON W. CALDWELL  
*Chancellor*

REGENTS OF THE UNIVERSITY SYSTEM OF GEORGIA

### OFFICERS OF THE BOARD OF REGENTS

*Chairman*  
*Vice Chairman*  
*Chancellor*  
*Assistant to the Chancellor*  
*Executive Secretary*  
*Treasurer*  
*\*On leave*

Robert O. Arnold  
John J. McDonough  
Harmon W. Caldwell  
John E. Sims\*  
L. R. Siebert  
James A. Blissit



**WILLIAM K. PAYNE**  
*Fifth President*

A.B., Morehouse College; M.A., Columbia University; advanced study, University of Minnesota and University of Chicago; Litt. D., Allen University.

The apparent crisis through which our country has been passing for over a decade brings to the youth of today a challenge that is unique. The unprecedented development in the technological world has made our world a difficult place in which to live. Tools, machinery implements, and physical power are the results of our great systems of education: but as one looks at these, he is astounded that so little has been accomplished in development of the thinking and feeling of mankind. While the technological advances are desirable and should continue to advance, there is serious need of sound development of human relations. College men and women of this decade must rise to meet this situation if the onward march of democracy is not to be arrested.

It is my hope that the young men and women of Savannah State College, at this time, will be on the frontier developing ways of living with others that will inspire the cultivation of every individual's potentialities rather than their destruction. It is my hope that the fears which we face today may subside because you have understanding, faith, and confidence in such large measures that mankind can live and work together for the good of the human family.

*William K. Payne*

WILLIAM KENNETH PAYNE

President Payne speaks at the One Hundred Per Cent Wrong Club in Atlanta. Larry Doby, of the Cleveland Indians, is seated at the extreme right.

# President's Message



At no previous time in history has college education on the broad scale been more important in the development of our democratic ideals and aspirations. The growth of American ideals has been, in the main, dependent upon men and women who have attended the colleges and universities. In a similar manner, the growth and development of our way of life will continue to take place as a result of the interpretation and achievement of our present college generation.

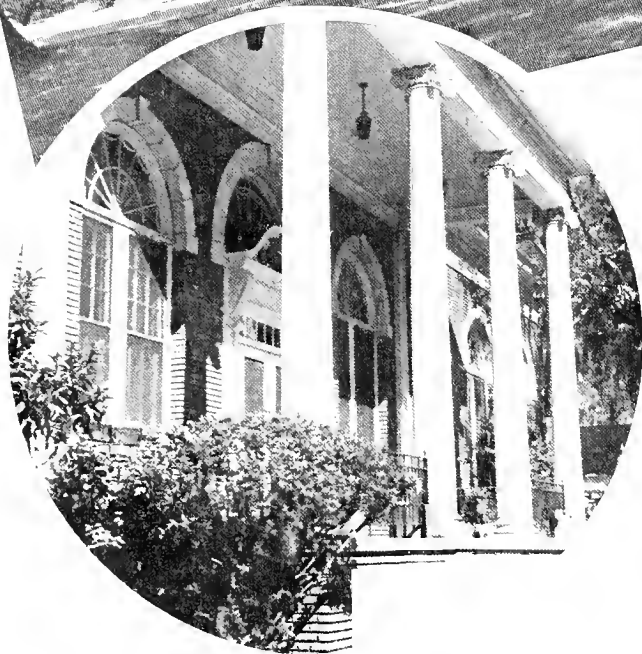


Mrs. Mattie B. Payne  
*First Lady of SSC.*

# Buildings

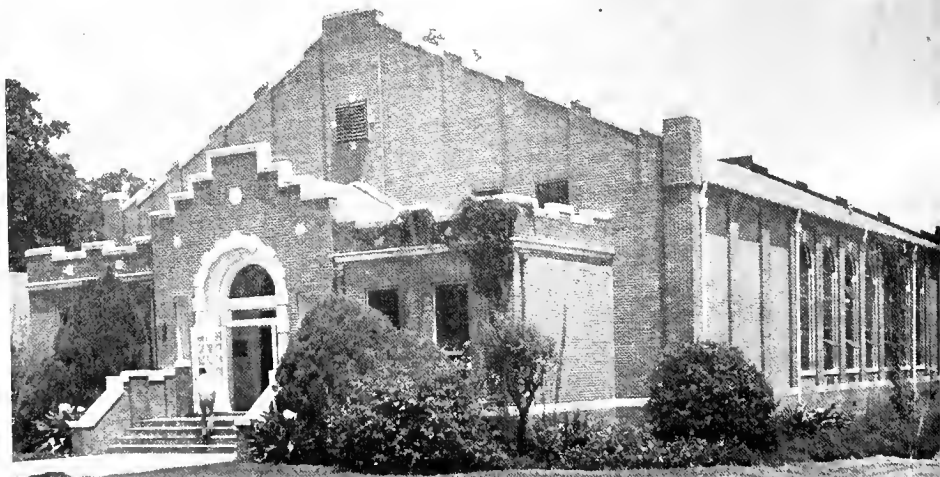


MELDRIM HALL



In our hearts we will build a Shrine for Thee . . . A Shrine of the many and many hours we spent working and watching and playing and learning within these walls . . . Once upon a fall evening we will return to gaze upon your stately buildings . . . But we shall carry in our hearts their larger symbolism forever . . .

These halls of learning where we lived with Jefferson and Lincoln and Lanier and Emerson . . . Where we talked with Payne and Meyers and Dean and Johnson . . . These halls are ours *ad infinitum* . . . Here is one in which we ate and laughed with one another . . . Here is one which recalls the night we almost shook the rafters yelling for the The Big Five in that thrilling cage contest. . .





# Foreword

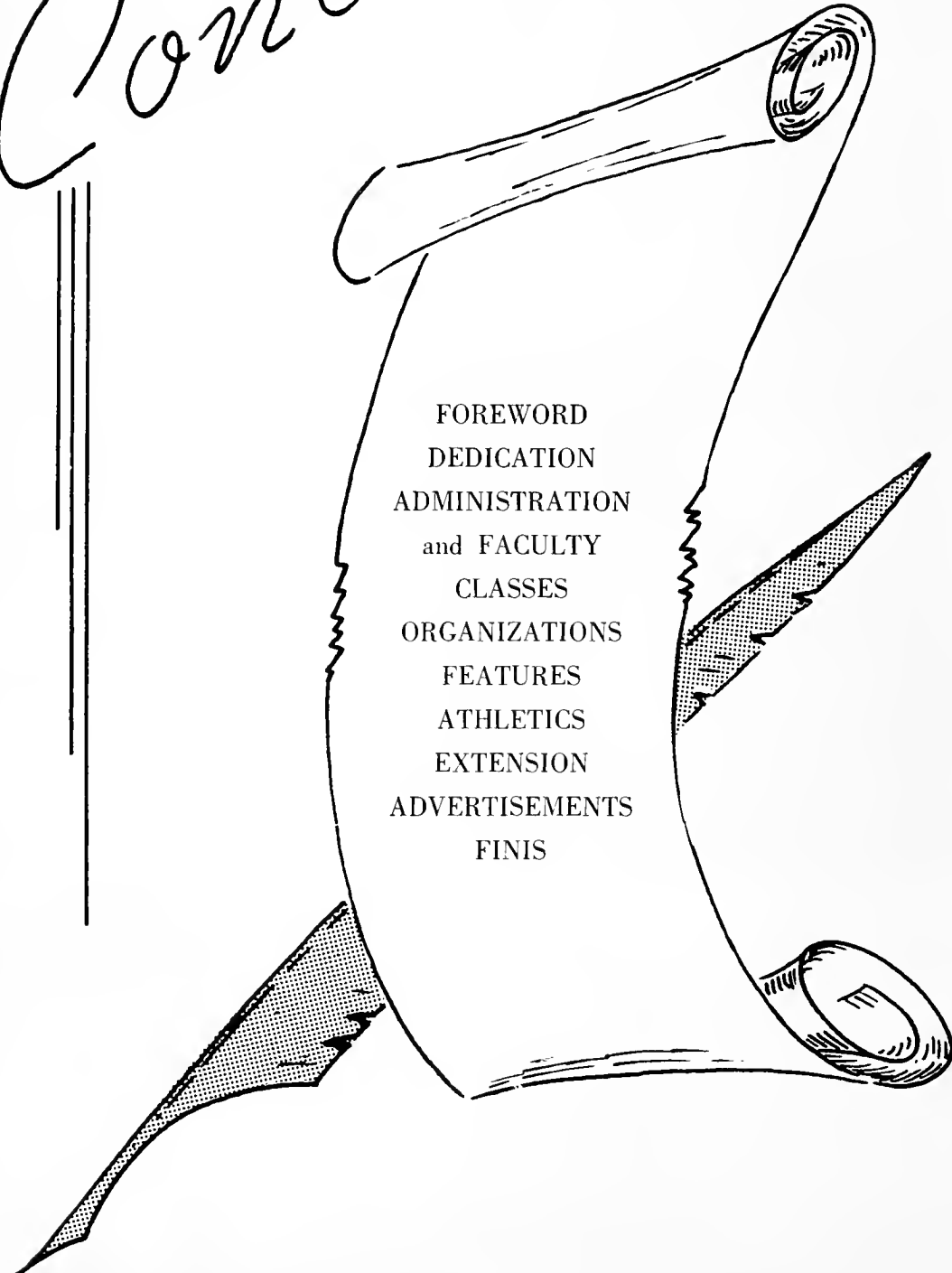


## A SCENE FROM THE ETERNAL DRAMA

Laughter, joys, heartaches, happiness, sorrows, tears! These are the things that formulate the character of our thinking when we commune with the events of our yesteryears on the Savannah State College campus. These are the things that form the foundation of our participation in God's wonderful creation — the eternal drama. These are the things that symbolize our shrine as it is being built from day to day. These are the things that have earned places in our albums of prized memoirs. Let this be your choice album while the incidents within shall be forever prized.

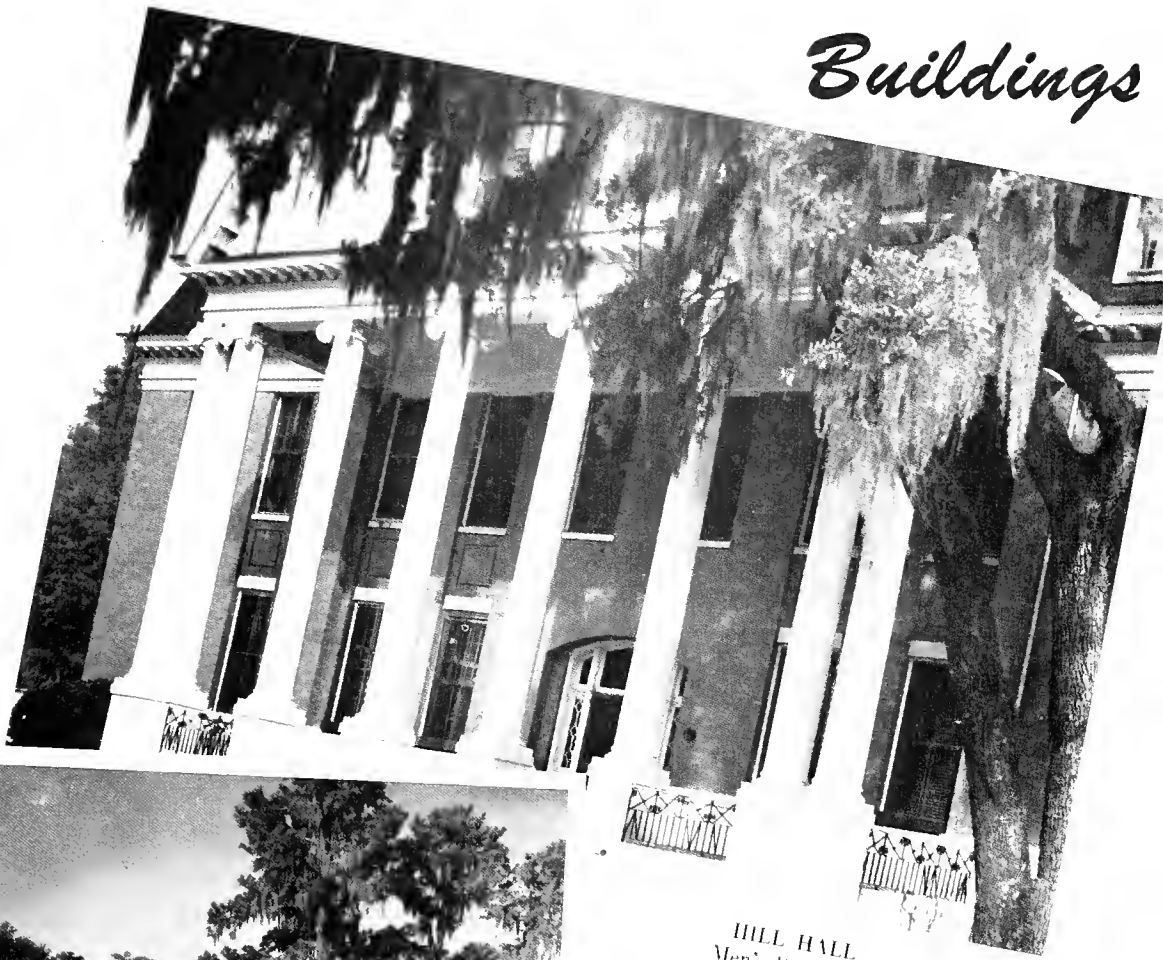
With compliments of the 1952 TIGER staff, we present you a verbal and pictorial review of your college days on Savannah State College campus — *A Scene from the Eternal Drama.*

# Contents



FOREWORD  
DEDICATION  
ADMINISTRATION  
and FACULTY  
CLASSES  
ORGANIZATIONS  
FEATURES  
ATHLETICS  
EXTENSION  
ADVERTISEMENTS  
FINIS

# Buildings



HILL HALL  
Men's Dormitory

Within these walls we have erected a Shrine to thee, SSC . . . For here we have wrestled with the very immediate problems of living . . . One is home for the men of SSC . . . One is where we work and fashion tangible symbols of our Shrine . . . Another is home for our First Family and receptive haven for us all . . .



MORGAN HALL  
Trades and Industries



COMMUNITY HOUSE  
President's Residence



# Dedication.

The 1952 TIGER staff dedicates this annual to the senior athletes, who, through their laudable sportsmanship and untiring efforts, have contributed much to the SSC family in its daily task of building a well-rounded educational shrine.

Despite national scandals in the world of sports, our athletes have maintained their integrity and honor. Thus, we feel that the least we can do is to pay homage to them in this manner.

Frank "The Rocket" Prince, international track star; Robert "Nancy Hanks" Slocum, All-American gridiron great; Curtis P. Harris, All-SEAC gridiron star, who led the nation's small colleges in punting during the 1951 gridiron season; Joe "The Jet" Hardy; Robert "Peter Rabbit" Sanders; James Neal; Thomas Vann; Bobbie Brown; Joe Turner; Horace Bowers; Vernon Mitchell; Ernest Tolbert; William S. "Al" Jackson; Maceo "Butch" Taylor; Phillip "P.C." Wiltz; Alvin "Rooster" Paige; Annie R. Howard; Margie Mercer; Bessie Williams; Doris Tharpe—these are the persons to whom we nobly dedicate the 1952 TIGER.

As the wheel of time continues to turn, may you build more and greater shrines in an effort to better the life of the communities into which your departure takes you.



# Dedication



**FRANK "THE ROCKET" PRINCE.** International Track Star, Member, New York Pioneer Club, Participant in the Bolivian Games three times, Panamanian representative to the Olympic Games in 1952, winner of numerous trophies and medals, Participator in the Drake Relays, Tuskegee Relays, Alabama State Relays and SEAC Meet, Basketball, Track Star.

To all Senior Athletes, we the TIGER staff, along with the Savannah State College family, bid you adieu. May your achievements in life equal and surpass those of your athletic careers. May you build shrines indicative of your training at Savannah State, shrines which will bring credit to your Alma Mater.

To you, Prince, Harris, and Slocum, the most outstanding of your colleagues, we say, "May your attainments, your purposes and your contributions to mankind in the years to come, be as indelibly written upon the pages of history as your accomplishments in the world of sports at SSC."



**CURTIS P. HARRIS,** sensational End, Back and Tackle, triple-threat punter, receiver and runner, winner of the 1951-52 punting crown for small colleges in the U. S. according to National Collegiate Athletic Association statistics, and All-SEAC for four years.



**ROBERT "NANCY HANKS" SLOCUM,** swivel-hipped All-SEAC back for four years, PITTSBURGH COURIER All-American, 1951-52, triple-threat, runner, passer and receiver, and SSC's chief ground gainer for four years.



# Buildings



CAMILLA HUBERT HALL  
Women's Dormitory



HAMMOND HALL  
Home Economics

There is the night when Camilla Hubert seemed aflame with light and radiance . . . A flaming Shrine in our hearts she'll always be, for this is home . . . The arched doorway of Hammond Hall is a favorite gathering place for friends . . . Once upon a warm day we'll remember the pointless and pointed chatter and say, "This is ours always." . . . Whenever we hear the unaffected laughter of little children and see the twinkle of little legs streaking across the green, we'll remember Powell Lab . . . We'll know that they have not yet found the final answers . . .

POWELL LABORATORY SCHOOL





# Buildings



BOGGS HALL  
Business and Public Relations



THE COLLEGE INFIRMARY

One-two-three; one-two-three . . . The sound of typewriters as they kept time with the triple cadence of The Blue Danube . . . The lights burning late at night in Boggs as the Staff labored to make the Yearbook deadline . . . The security we felt when we took our runny noses and cut fingers to Nurse at the Infirmary . . . We knew we were in good hands . . . Raphael, Rembrandt . . . all the sweetness and light that man has created in the arts . . . We remember the Fine Arts Building and our Shrine becomes a melody and a visible symbol . . .



THE FINE ARTS BUILDING

# The Tiger Staff



*Editor-in-Chief*  
Eddie Lindsey '52

*Associate Editor*  
A. G. Bussey '53

## *Editorial Assistants*

Jimmie Colley '52  
Dorothy McIver '52  
Joelene Belin '52  
Thelma Williams '53  
*Not shown*  
Fannie Lewis '54



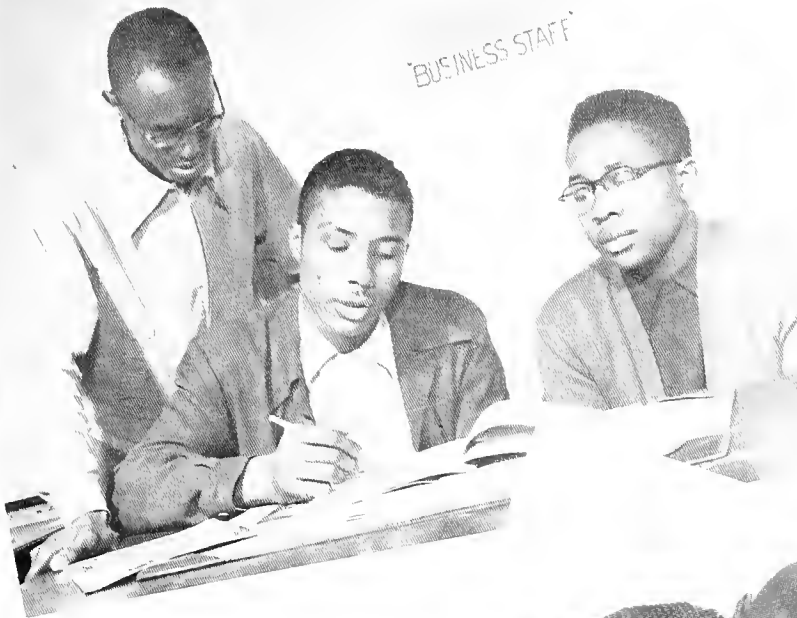
Here are the people mainly responsible for compiling this tangible tribute to our Shrine . . . Here are Annie Grace and Eddie, Joelene and Thelma, Raymond and Clarence, Fannie and Thelma, Jimmie and Dot, Hosea and Nannette, Anne and Charlie, James and Alethia, Clarence and Miss Colvin and Mr. Bowens . . . Here we are building, with our hands and minds, a shrine in our hearts for SSC . . .

## *Typists*

Joelene Belin '52  
Ruby Childers '52



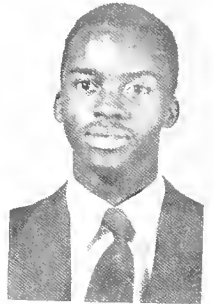
BUSINESS STAFF



*Business Staff*

Raymond Knight '53  
*Chairman*

Hosea Lefton '52  
James Douse '55  
Thomas Locke '55  
Dennis Williams '55



LAYOUT STAFF



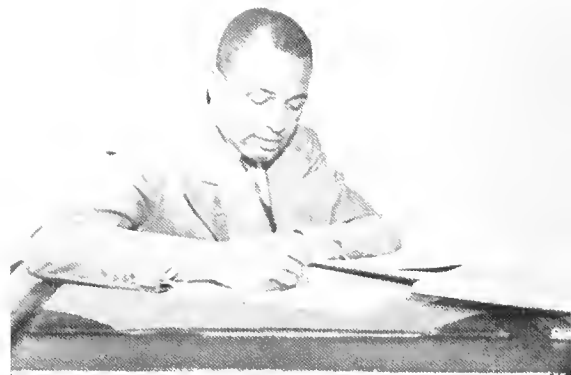
*Layout Staff*

Nannette McGee '52  
Charles McDaniels '52  
Annie Howard '52  
Alethia Sheriff '52  
Clarence Lofton '55



Miss Luetta B. Colvin  
*Advisor*  
A.B., Fort Valley State  
M.A., Atlanta University

William H. M. Bowens  
*Advisor*  
A.B., Morehouse  
M.A., Atlanta University



# Buildings

## PARSONS HALL

For some of us, this is home . . . For all of us the place of exchange . . . For here we send those bits of ourselves to those "back home" . . . And receive those important letters . . . You remember how we stood in line "the first of the month" . . .



## COLLEGE INN

The College Inn—A solid stone in the masonry of our Shrine . . . For the Inn is the hub of our campus activities . . . Here we laugh and play and talk and eat in happy fellowship.

## PRACTICE COTTAGE

We learn by doing . . . This is the philosophy and working motto of SSC . . . Here the cadet Home Economists practice what they learn . . . The Practice Cottage will ever be a part of our immortal Shrine . . .








*Administration  
And  
Faculty*







# Administration



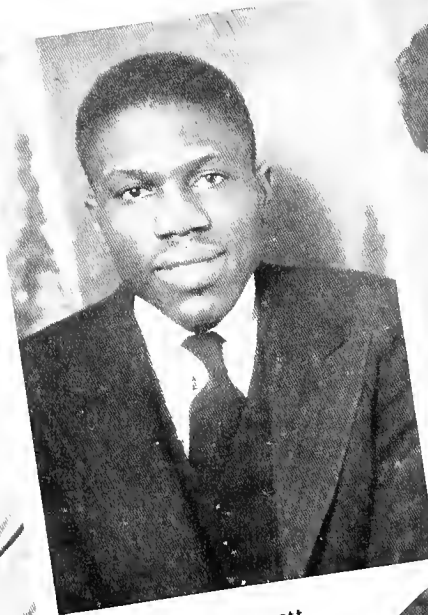
TIMOTHY C. MEYERS  
*Acting Dean of Faculty*  
A.B., Lincoln University  
M.A., Columbia University




Miss Luella Hawkins  
*Librarian*  
B.S., Wilberforce University  
B.S.L.S., Hampton Institute




Miss Loreese E. Davis  
*Counsellor for Women and  
Head Resident, Camilla Hu-  
bert Hall*  
A.B., W. Va. State



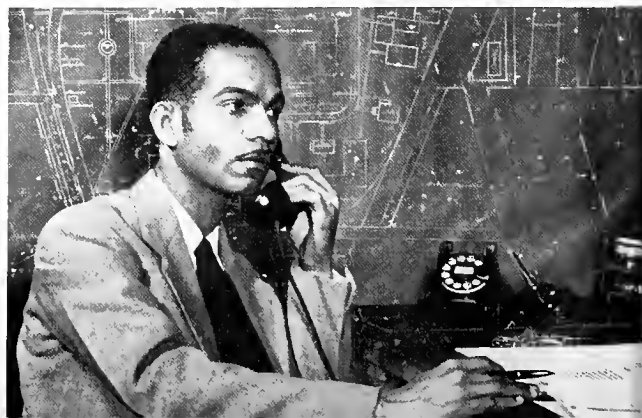
Andrew J. Hargrett  
*College Minister*  
B.S., Fla. A.&M.  
M.A., Atlanta Univ.  
B.D., Gammon  
Theological  
Seminary



Ben Ingersoll  
*Registrar*  
A.B., Morehouse  
M.A., Atlanta Univ.



William J. Holloway  
*Director, Student Person-  
nel Services*  
B.S., Hampton Institute  
M.A., Univ. of Michigan



Emanuel A. Bertrand  
*Comptroller*  
B.S., Hampton Institute



Wilton C. Scott, *Director of Public Relations*, A.B., Xavier University; LL.B., Blackstone Law College, and Mrs. Annie L. Beaton, *Secretary*, Savannah State College.



William H. M. Bowens, *Assistant in Public Relations*, A.B., Morehouse College; M.A., Atlanta University.

# Administration

## PUBLIC RELATIONS OFFICERS and STAFF



Moses Lightfoot, senior; Miss Bernita Spaulding, freshman, *Student Assistants*.

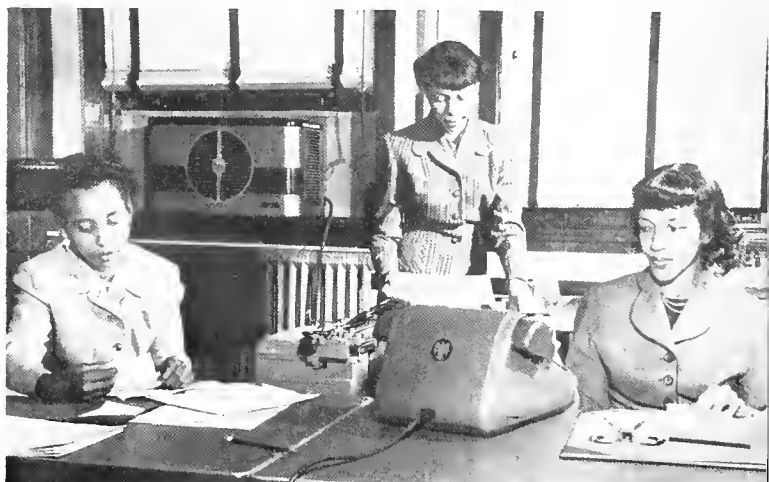


Ruth Chisholm Walker, junior, *Student Assistant*.



Mrs. Marjorie F. Wallace, *Admissions Clerk*, B.S., Savannah State.

## R E G I S T R A R ' S S T A F F



Left to right: Gwendolyn L. Bass, *Transcript Clerk*, Savannah State; Elma Joyce Chapman, *Transcript Clerk*, B.S., Savannah State; and Edna L. Ligon, *Secretary to the Registrar*, B.S., Savannah State College.



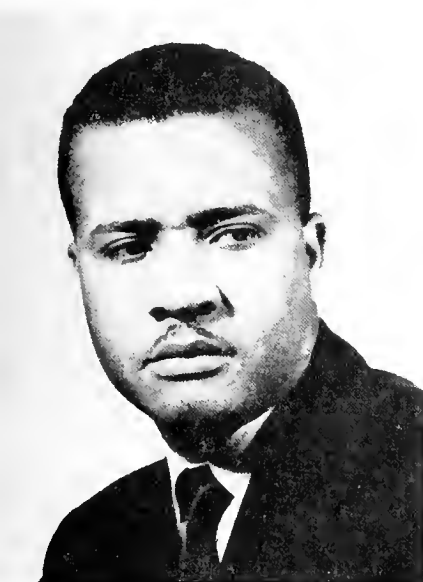
Felix J. Alexis, Superintendent  
*Buildings and Grounds*  
A.B., Xavier University



Mrs. Varnetta Frazier  
*Dietitian*  
Savannah State College



Seated:  
Amos Simpson  
*Campus Electrician*  
Standing:  
Reuben Beavers  
*Supply Clerk*



Nelson Freeman, Manager  
*College Bookstore and Inn*  
*Veterans Secretary*  
B.S., Savannah State College



Mrs. Eloria Gilbert  
*Postmistress*  
City College of New York

B  
U  
S  
I  
N  
E  
S  
S  
S  
T  
A  
F  
F



Mrs. Gertrude Holmes  
*College Nurse*  
R.N., Charity Hospital and  
Training School.

Clarence Wright, Assistant  
*Buildings and Grounds*  
Savannah State College



Standing:  
Arthur Hart, Cashier  
*Comptroller's Office*  
B.S., Savannah State College  
Seated:  
William T. Shropshire  
Chief Accountant  
*Comptroller's Office*  
A.B., Morehouse College





Mrs. Eugenia C. Scott  
*Secretary to the President*  
B.S., South Carolina State College



Miss Eunice M. Wright, Secretary  
*President's Office*  
B.S., Savannah State College

### CLERICAL, BUSINESS and LIBRARY STAFFS



Mrs. Iona Brooks  
*Secretary to the Dean of Faculty*  
B.S., Catholic College of Oklahoma



Mrs. Ann E. Turner, Secretary  
*Personnel Office*  
B.S., Savannah State College



Mrs. Johnnie M. Hill  
Budget Assistant  
*Comptroller's Office*  
B.S., Savannah State College

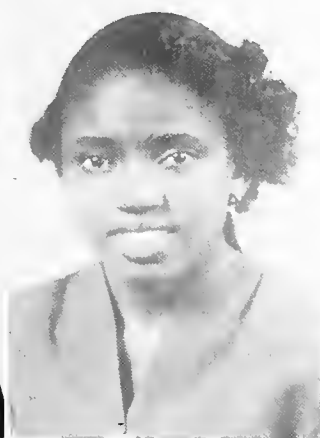


Miss Dorothy Harp  
Clerk  
*Business Office*  
B.S., Savannah State College

### LIBRARY STAFF



Miss Althea Williams  
*Assistant Librarian*  
A.B., Fort Valley State College  
B.S.L.S., Atlanta University



Miss Madeline Harrison  
*Assistant Librarian*  
A.B., Fisk University  
B.S.L.S., North Carolina College



Mrs. Helen Riley  
Secretary  
*Library*  
B.S., South Carolina State College

### SWITCHBOARD OPERATOR

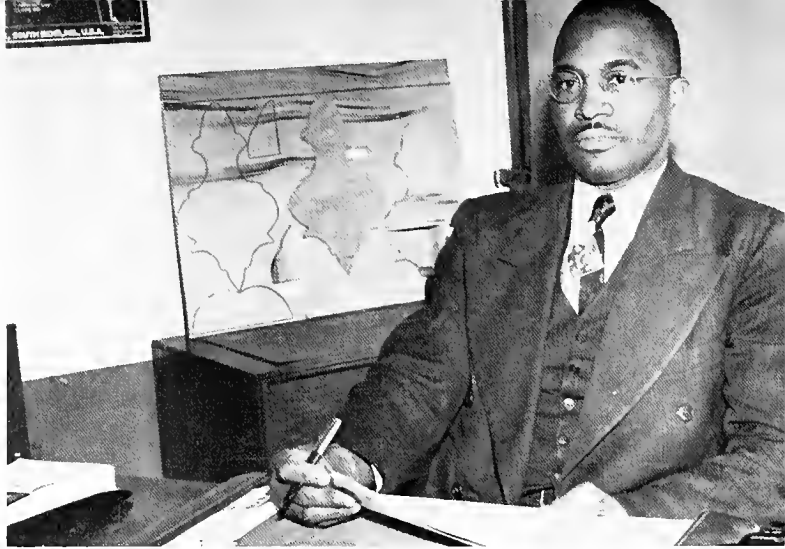


Mrs. Eleanor B. Williams  
*Switchboard Operator*  
A.B., Tennessee State College



Elson K. Williams, Director  
*Arts and Sciences*  
 A.B., Morgan State College  
 A.M., Columbia University  
 Ed.D., New York University

O  
F  
F  
I  
C  
E  
R  
S  
O  
F  
  
I  
N  
S  
T  
R  
U  
C  
T  
I  
O  
N  
  
and  
  
S  
T  
A  
F  
F



William B. Nelson, Director  
*Trades and Industries*  
 B.S., Alcorn A.&M. College  
 M.S., Iowa State College



Mrs. Evanel Renfrow Terrell, Director  
*Home Economics*  
 B.S., University of Iowa  
 M.S., University of Iowa

Below:

Amater Z. Taylor, Itinerant  
 Teacher Trainer  
*Industrial Education*  
 A.B., Morehouse College  
 M.A., Atlanta University

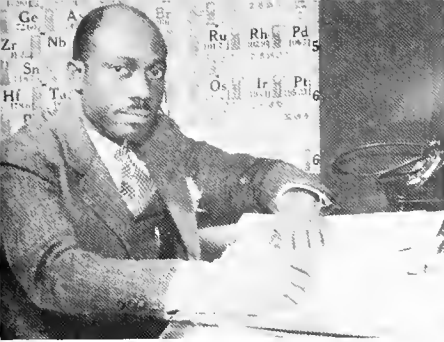
Miss Mildred Marquis, Secretary  
*Trades and Industries*  
 B.S., Hampton Institute



Miss Donella J. Graham  
 Principal  
*Powell Laboratory School*  
 A.B., Morris Brown College  
 M.A., Atlanta University



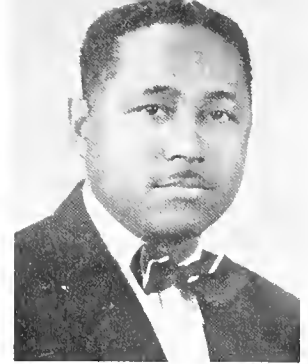




**C. Vernon Clay, Chairman**  
*Chemistry*  
B.S., Kansas State College  
M.S., Kansas State College



**John B. Clemmons, Acting Chairman**  
*Mathematics*  
A.B., Morehouse College  
M.S., Atlanta University



**Elmer J. Dean, Chairman**  
*Social Science*  
A.B., Kentucky State College  
M.A., Columbia University

**DEPARTMENT CHAIRMEN**



**J. Randolph Fisher, Acting Chairman**  
*Languages and Literature*  
A.B., Howard University  
M.A., Howard University



**Booker T. Griffith, Chairman**  
*Biology*  
B.S., University of Pittsburgh  
M.S., University of Pittsburgh  
Ph.D., University of Pittsburgh



**Hilliary R. Hatchett, Acting Chairman**  
*Fine Arts*  
B.S.M., Capital University  
M.A., Ohio State University



**Calvin L. Kiah, Chairman**  
*Education*  
A.B., Morgan State College  
M.A., Columbia University  
Ed.D., Columbia University

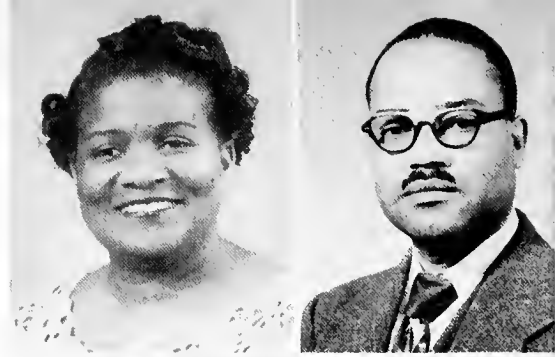


**Robert C. Long, Sr., Chairman**  
*Business*  
B.S., Hampton Institute  
M.A., New York University



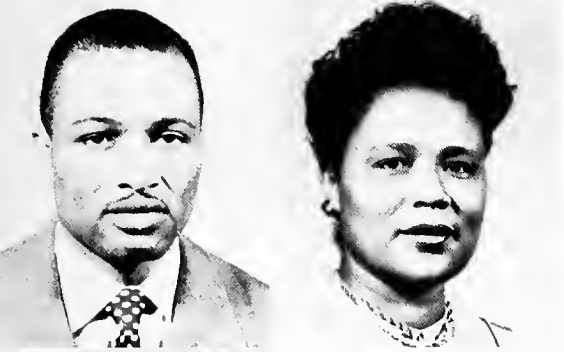
Mrs. Martha Avery  
*Home Economics*  
B.S., Princess Ann College  
M.S., Columbia University

Blanton E. Black  
*Social Science*  
A.B., Morris Brown College  
B.D., Turner Theological Seminary  
M.A., University of Chicago



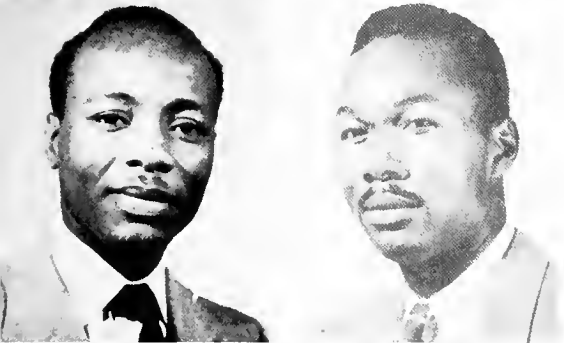
Miss Albertha Boston  
*Business*  
A.B., Howard University  
M.A., New York University

Mrs. Sylvia E. Bowen  
*Mathematics*  
A.B., Hunter College  
M.A., Columbia University



William H. M. Bowens  
*Business*  
A.B., Morehouse College  
M.A., Atlanta University

Mrs. Ethel J. Campbell  
*Languages and Literature*  
B.S., Savannah State College  
M.A., Atlanta University



John H. Camper  
*Education*  
B.S., Savannah State College  
M.A., New York University

Franklin Carr  
*Business*  
B.A., West Virginia State College  
M.B.A., New York University

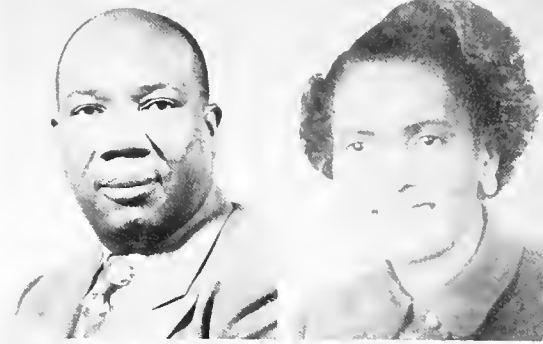


Arthur C. Carter  
*Masonry*  
B.S., Savannah State College

Miss Luetta B. Colvin  
*Languages and Literature*  
A.B., Fort Valley State College  
M.A., Atlanta University

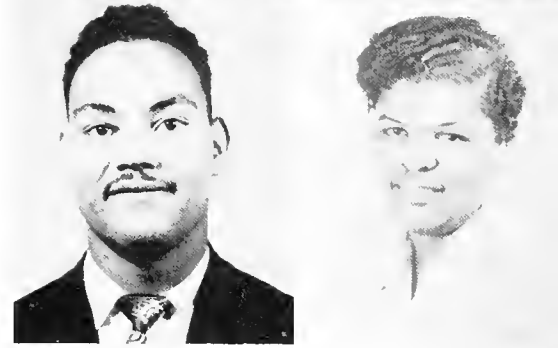
Sol Harden  
*Shoe Repair*  
Savannah State College

Mrs. Thelma M. Harmond  
*Education*  
B.S., Fort Valley State College  
M.Ed., Atlanta University



Robert Haygood  
*Shoe Repair*  
B.S., South Carolina State College

Miss Geraldine Hooper  
*Physical Education*  
B.S., Xavier University  
M.S., University of Wisconsin



Eugene Isaacs  
*Carpentry*  
B.S., Alcorn A.&M. College  
M.S., Iowa State College

Miss Beulah Johnson  
*Languages and Literature*  
A.B., Spelman College  
M.S., Tennessee State College



Miss Louise Lautier  
*Languages and Literature*  
B.S., Savannah State College  
M.A., University of Michigan

Miss Althea V. Morton  
*Languages and Literature*  
A.B., Spelman College  
M.A., Atlanta University



Amojogollo E. Peacock  
*Social Science*  
B.S., Wilberforce University  
B.D., Wilberforce University  
M.A., Howard University

William T. Perry  
*Auto Mechanics*

L. A. Pyke  
*Music*  
 B.S., Howard University  
 M.S., University of Michigan

Miss Juanita Sellers  
*Languages and Literature*  
 A.B., Spelman College  
 M.A., Columbia University



Mrs. Earline S. Smith  
*Fine Arts*  
 A.B., West Virginia State College  
 M.A., Columbia University

Benjamin Singleton  
*Radio Repair*  
 B.S., Savannah State College



Mrs. Jency H. Reeves  
*Education*  
 A.B., Philander Smith College  
 M.A., Atlanta University

Henry L. Ware  
*Automobile Repair*  
 Paine College



Vergil Winters  
*Physics*  
 A.B., State University of Iowa  
 M.A., Ohio State University

Mrs. Martha Wilson  
*Mathematics*  
 B.S., University of Minnesota  
 M.A., University of Minnesota



Mrs. Leanna T. Wilcox  
*Critic Teacher, Powell Laboratory School*  
 B.S., Savannah State College  
 M.A., Atlanta University

Joseph H. Wortham  
*Biology*  
 A.B., Howard University  
 M.A., Ohio State University

Mrs. Joan L. Gordon  
*Social Science*  
A.B., Jackson College  
M.A., Columbia University

Clifford Hardwick  
*General Science*  
B.S., Savannah State College



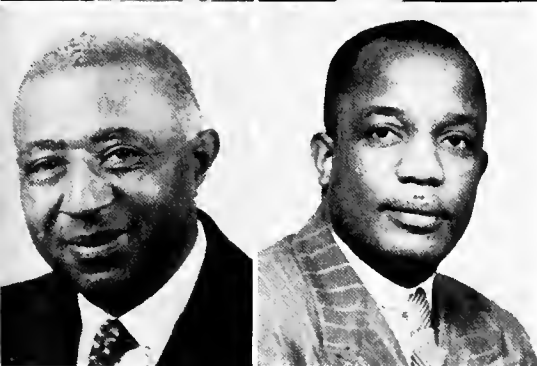
Mrs. Eldora Marks  
*Critic Teacher*  
B.S., Savannah State College

Rutherford Lockette  
*Industrial Education*  
B.S., Savannah State College  
M.S., New York University



Miss Christine Coleman  
*Home Economics*  
B.S., Arkansas A.&M. College  
M.S., Kansas State College

Mrs. Mollie Curtwright  
*Home Economics*  
B.S., Kansas State College  
M.S., University of Minnesota



William E. Griffin  
*Social Science*  
A.B., Morehouse College

Frederick E. Owens  
*Electrical Engineering*  
B.S., Savannah State College  
B.S.E.E., Howard University



*Classes*



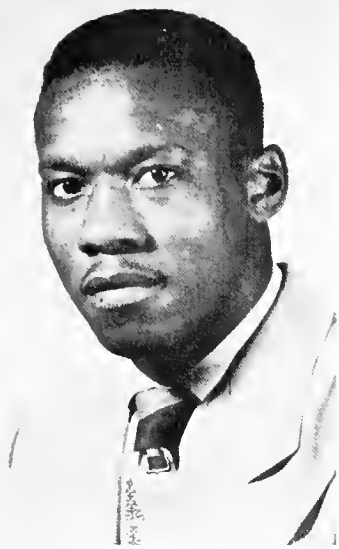
S  
E  
N  
I  
O  
R  
S

AND SO GOODBYE





# SENIOR CLASS OFFICERS



James Neal  
Columbus

*President*  
BENJAMIN QUATTLEBAUM  
Major—Social Science  
Social Science Club; Phi Beta Sigma.

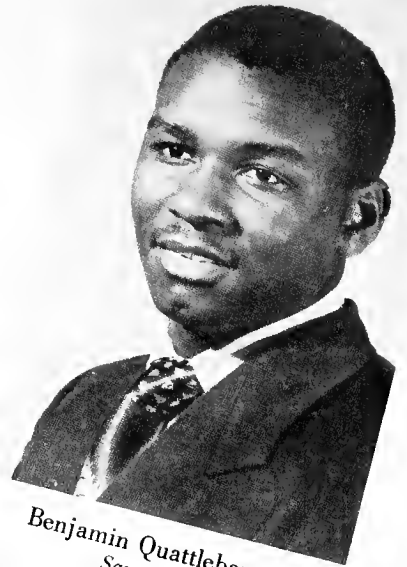
*Secretary*  
Rose Lotson  
Major—Business  
Business Club; Choir; Sigma Gamma Rho.

*Treasurer*  
Charles Moultrie  
Major—Mathematics  
Phi Beta Sigma; Sigma Mu Honor Society.

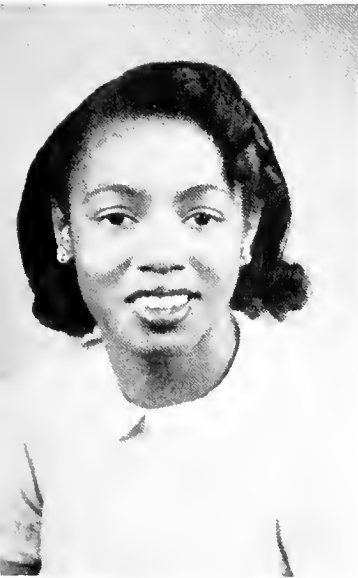
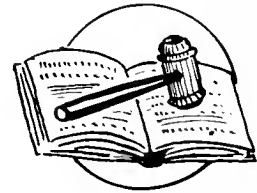
*Parliamentarian*  
Willie James Reid  
Major—Social Science  
Social Science Club; Phi Beta Sigma.

*Vice President*  
James Neal  
Major—Business  
Business Club; Varsity Football; Varsity Club.

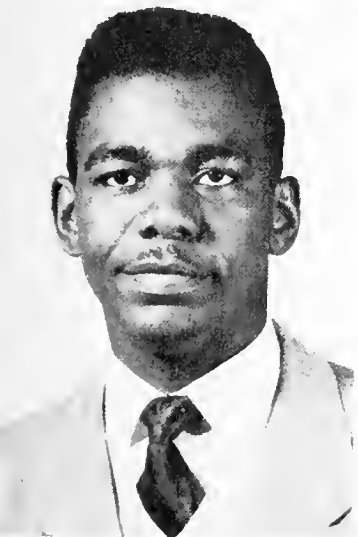
*Reporter*  
William Jackson  
Major—Business  
Business Club; Varsity Football; Varsity Club; Omega Psi Phi; Library Committee.



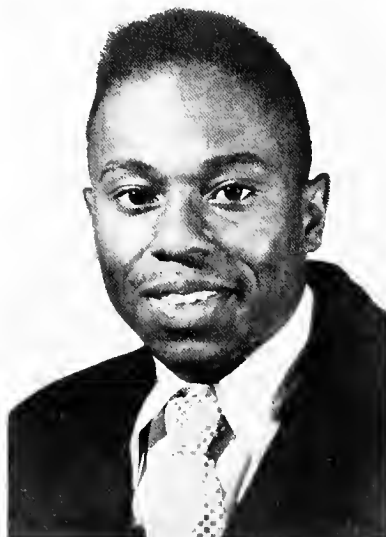
Benjamin Quattlebaum  
Savannah



Careta Rose Lotson  
Savannah



Charles Moultrie  
Savannah



Willie Reid  
Savannah



William Jackson  
Savannah

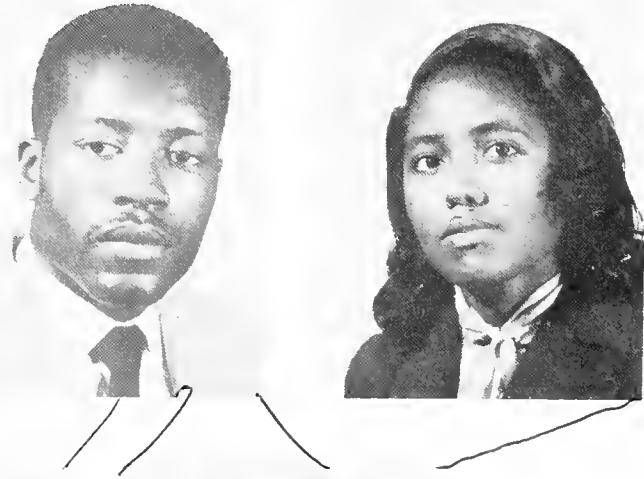
Willie Mae Baldwin  
Major—Home Economics  
Home Economics Club.

Claudia Baker  
Major—General Science  
General Science Club.



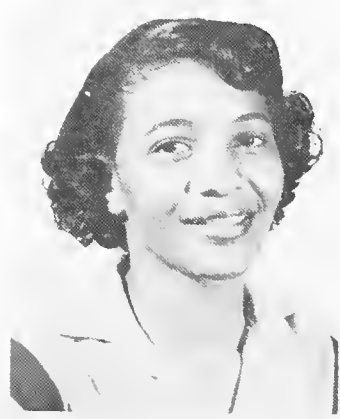
Claude Byers  
Major—Business  
Football; Business Club; Omega Psi  
Phi; Varsity Club.

Ruby Jean Childers  
Major—Business  
Business Club; Tigers Roar; Year-  
book Staff.



Martha Gleason Bryant  
Major—Mathematics  
Camera Club.

Adolphus Carter  
Major—Biology  
Alpha Phi Alpha.



Virginia B. Baker  
Major — Elementary Education  
Y. W. C. A.  
Tiger's Roar.

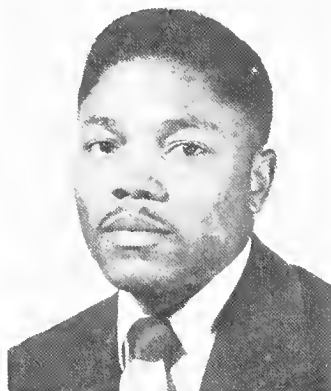
Jimmie B. Colley  
Major—Social Science  
Alpha Kappa Alpha; Yearbook  
Staff; Tigers Roar Staff; Collegiate  
Counsellors; Social Science Club.

**Margaret T. Chisholm**  
Major—Biology  
Alpha Kappa Alpha; Sigma Mu  
Mathematics Honor Society; Colle-  
giate Counsellors.



**Annie R. Clowers**  
Major—English  
Collegiate Counsellors; Alpha Kap-  
pa Alpha; Pan Hellenic Council.

**Thomas Daniels**  
Major—Physical Education  
Omega Psi Phi; Physical Educa-  
tion Club.



**Marie Dansby**  
Major—English  
Tiger's Roar.



**Gloria E. Deveaux**  
Major—Social Science  
Social Science Club; Women's Coun-  
cil.

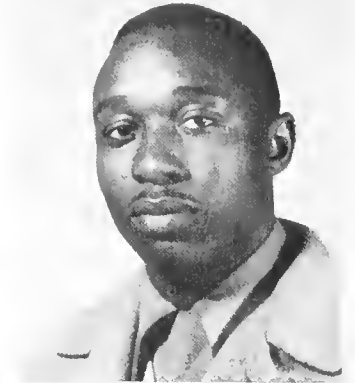
**Betty Douse**  
Major—Home Economics  
Home Economics Club.



**Helen M. Dunson**  
Major—Home Economics  
Home Economics Club.

**Elise Florence**  
Major—Home Economics  
Home Economics Club.

**Mabel Fortson**  
Major—Home Economics  
Home Economics Club; Alpha Kappa Alpha; Pan Hellenic Council;  
Y. W. C. A.



**Harold Fields**  
Major—Business  
Business Club.

**Mary Ford**  
Major—Home Economics  
Home Economics Club; Zeta Phi  
Beta; Y. W. C. A.



**Jewell Gamble**  
Major—Mathematics  
Alpha Kappa Alpha; Collegiate  
Counsellors; Sigma Mu Honor Society.



**Wesley Glover**  
Major—Mathematics

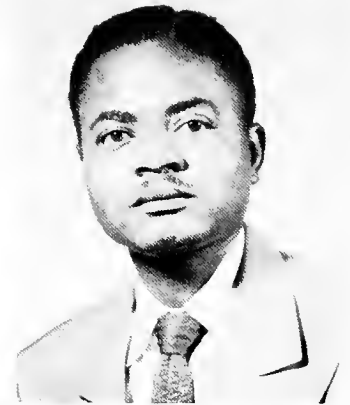
**Colleen Gooden**  
Major—Social Science  
Social Science Club.



**Marceline Holland**  
Major—Home Economics  
Home Economics Club; Zeta Phi  
Beta.

**Joe Hardy**  
Major—Physical Education  
Football; Varsity Club; Physical  
Education Club.

**Curtis P. Harris**  
Major—Physical Education  
Football; Basketball; Varsity Club;  
Physical Education Club.



**Daniel Hendrix**  
Major—Industrial Education  
Phi Beta Sigma; Sigma Mu Honor  
Society.

**Thelma Louise Hill**  
Major—Elementary Education  
FTA, College Choir.

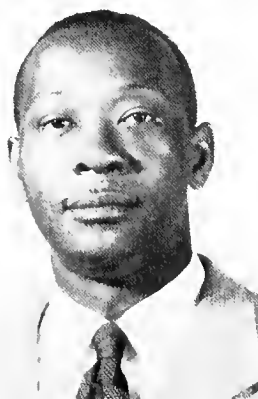
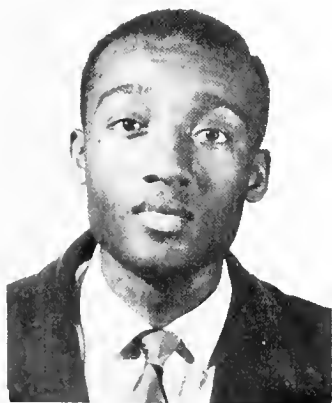


**Rethel Holmes**  
Major—Elementary Education  
House Council, FTA



**Theodore Holmes**  
Major—Physical Education  
Alpha Phi Alpha; Football; Varsity  
Club; Physical Education Club;  
Newman Club.

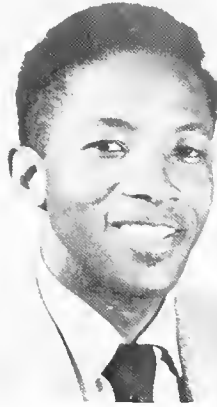
**Ann R. Howard**  
Major—English  
Tiger's Roar; Yearbook Staff.



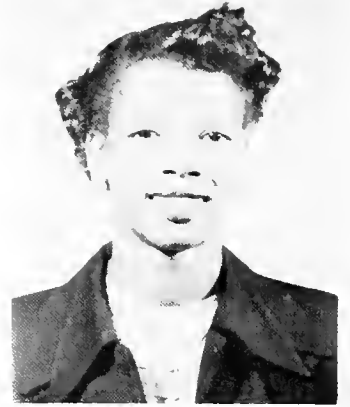
**Alfred Jackson**  
Major—Physical Education  
Basketball; Varsity Club; Physical  
Education Club.

**Eugene Jackson**  
Major—Industrial Education

James E. Jackson  
Major—Business  
Business Club; Alpha Phi Alpha.



Mary Jones  
Major—Home Economics  
Home Economics Club.



Lillie Belle Johnson  
Major—English  
Zeta Phi Beta.



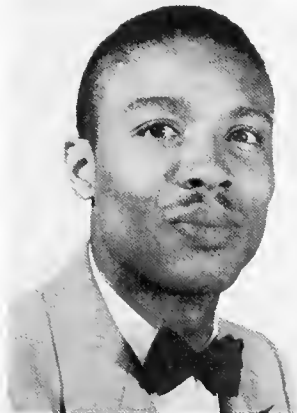
Marjorie Jones  
Major—Home Economics  
Home Economics Club; Sigma Gamma Rho.



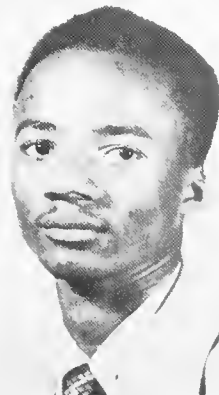
Ernest D. Kinsey  
Major—Business  
Omega Psi Phi.



Virgil Ladson  
Major—Chemistry  
Phi Beta Sigma.



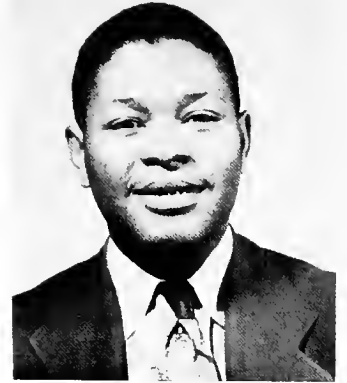
Warren Loadholt  
Major—Social Science  
Social Science Club.



Eddie T. Lindsey  
Major—English  
Alpha Phi Alpha; Yearbook Staff;  
Collegiate Counsellors; Student  
Council; Pan Hellenic Council.



Juanita Lonon  
Major—Social Science  
Social Science Club.

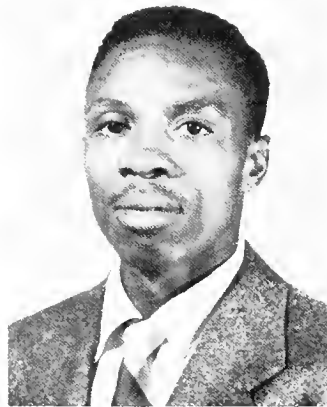


Calvin Lawton  
Major—Social Science  
Social Science Club; Phi Beta Sig-  
ma.

Hosea Lofton  
Major—English  
Tiger's Roar Staff; Yearbook Staff.

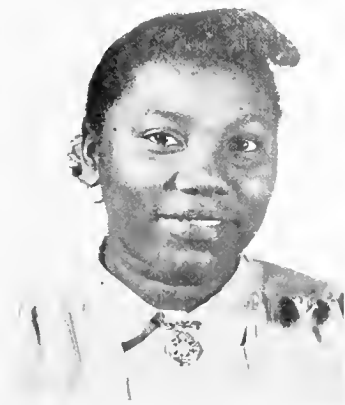


Mattie Manley  
Major—Elementary Education  
FTA; Newman Club; House Coun-  
cil.



Nannette McGee  
Major—Social Science  
College Choir; Tiger's Roar; Year-  
book Staff; Social Science Club;  
House Council.

Charlie McDaniels  
Major—Physical Education  
Alpha Phi Alpha; Camera Club;  
Varsity Club; Basketball; Physi-  
cal Education Club; Yearbook  
Staff; Tiger's Roar.

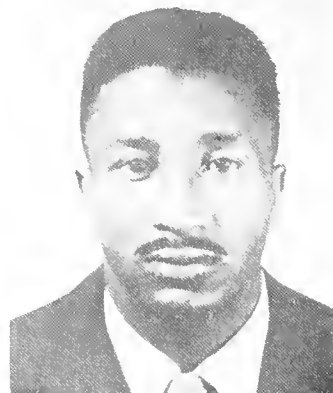


Wilhemina McPherson  
Major—Mathematics

Marjorie Mercer  
Major—Home Economics  
Home Economics Club.

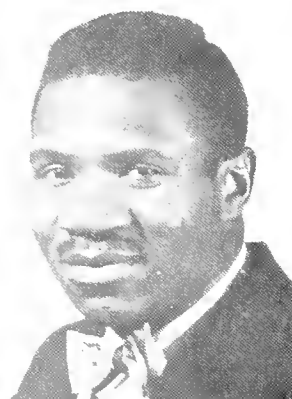
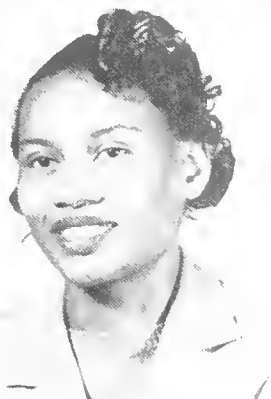
**Carolyn Manigo**  
Major—Elementary Education

**Vernon Mitchell**  
Major—Physical Education  
Football; Varsity Club; Physical  
Education Club.



**Viona O'Neal**  
Major—Elementary Education

**Clarence Pogue**  
Major—Physical Education  
Football; Physical Education Club.



**Ora Belle Prothro**  
Major—Elementary Education

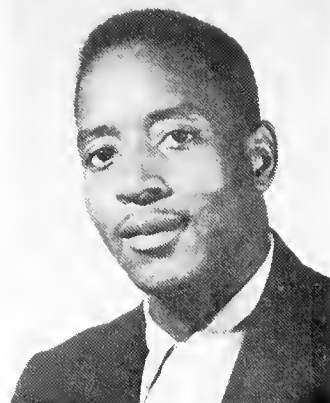
**Barbara Powell**  
Major—Elementary Education



**Jacqueline Pringle**  
Major—Home Economics  
Home Economics Club; House  
Council.

**Rita Quattlebaum**  
Major—Home Economics  
Home Economics Club; Zeta Phi  
Beta.

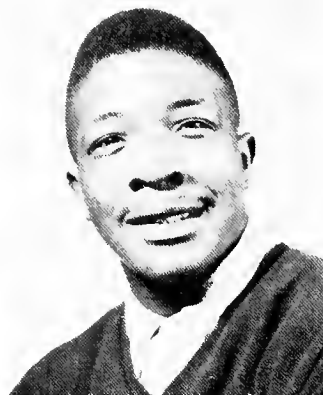
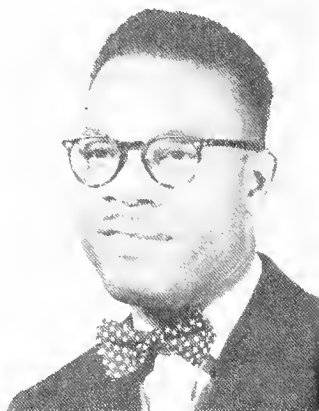
**Alethia Marie Sheriff**  
Major—English  
Tiger's Roar; Yearbook Staff; Y.  
W. C. A.; Future Teachers of  
America.



**Robert Sanders**  
Major—Physical Education  
Football; Varsity Club; Physical  
Education Club.

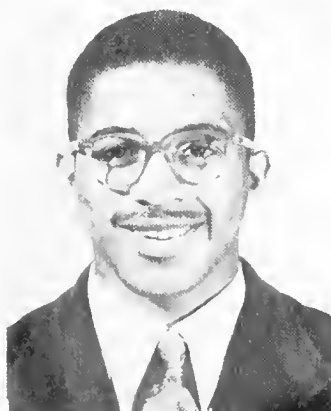
**Tharon Spencer**  
Major—Social Science  
Social Science Club.

**Alexander Speed**  
Major—Biology  
Kappa Alpha Psi.



**Robert Spencer**  
Major—Industrial Education.

**Mary Alyce Swanson**  
Major—Home Economics  
Home Economics Club; Zeta Phi  
Beta; FTA.



**Maceo Taylor**  
Major—Physical Education  
Alpha Phi Alpha; Pan Hellenic  
Council; Varsity Club; Collegiate  
Counsellors; Physical Education  
Club.

**Ernest Tolbert**  
Major—Physical Education  
Football; Marching Band.

**Joseph Turner**

Major—Physical Education  
Football; Basketball; Track; Physical Education Club; Varsity Club; Newman Club.



**Hattie Mae Thompson**

Major—Elementary Education  
Zeta Phi Beta; Future Teachers of America; Pan Hellenic Council.

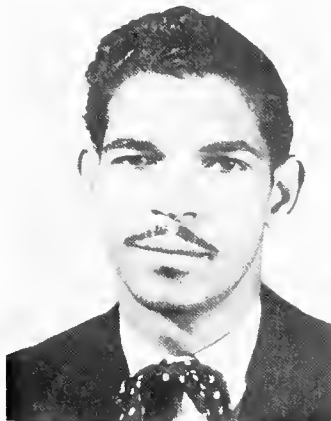
**Loretta Williams**

Major—Home Economics  
Major—Home Economics



**Lurinda Williams**

Major—Home Economics  
Home Economics Club.



**Phillip G. Wiltz**

Major—Physical Education  
Alpha Phi Alpha; Basketball; Newman Club; Varsity Club; Physical Education Club.

**Doretha Wells**

Major—Elementary Education  
Future Teachers of America.



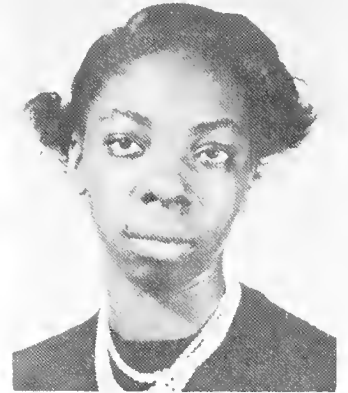
**Mildred LeGrier**

Major—Elementary Education  
Future Teachers of America.

**Geneva Mitchell**

Major—Home Economics  
Home Economics Club.

**Jolene Laverne Belin**  
 Major—English  
 Tigers Roar, Yearbook Staff; Col-  
 lege Choir; Y. W. C. A.; Collegiate  
 Counsellors; Women's Council.

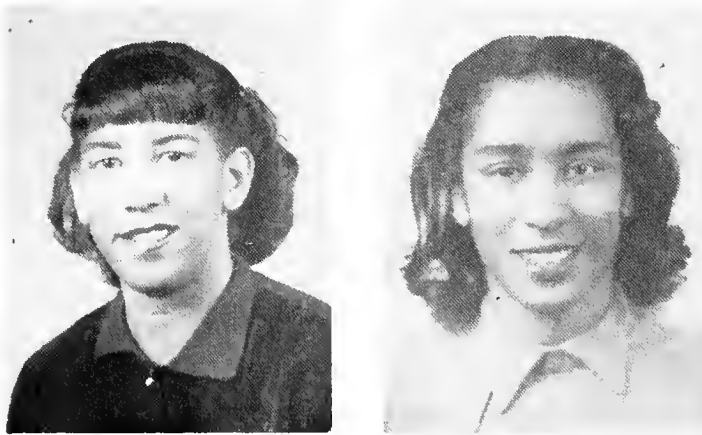


**Johnnie Mae Williams**  
 Major—Mathematics  
 FTA; Camera Club; Y. W. C. A.

**Pearl Rita Smith**  
 Major—Elementary Education  
 Camera Club; Newman Club.



**Heloyce Betty King**  
 Major—Physical Education  
 Physical Education Club; Newman  
 Club.



**Doris Anita Tharpe**  
 Major—Physical Education  
 Basketball; Physical Education  
 Club.

**Christine C. Wright**  
 Major—Elementary Education  
 FTA; Sigma Gamma Rho.



**Viola M. Hill**  
 Major—Home Economics  
 Home Economics Club.

**Evelyn M. Wright**  
 Major—Social Science  
 Social Science Club; Collegiate  
 Counsellors; Ivy Leaf Club.



# SENIOR CLASS DIRECTORY

## WOMEN

Baker, Claudia  
720 S. Madison Ave.  
Douglas

Baker, Margaret L.  
Rt. 1, Box 55  
McIntosh, Ga.

Baker, Virginia Belle  
P. O. Box 1007  
Sarasota, Fla.

✓ Baldwin, Willie Mae  
2110 Bulloch St.  
Savannah, Ga.

Belle, Lucy Mae  
P. O. Box 197  
Mims, Fla.

Browning, Georgia Adeline  
Rt. 1  
Watkinsville, Ga.

Bryan, Martha Gleason  
Rt. 3, Box 250  
Savannah, Ga.

Campbelle, Orlease Delores  
Rt. 5, Box 72  
Townsend, Ga.

Childers, Ruby Jean  
Rt. 2, Box 42  
Oliver, Ga.

✓ Chisholm, Margaret Theresa  
2231 Ogeechee Ave.  
Savannah, Ga.

Golley, Jimmie Beautine  
528 Price St.  
Savannah, Ga.

Darby, Idonia Johnson  
804 Waters Ave.  
Savannah, Ga.

Deveaux, Gloria E. Wilson  
950 W. 42nd St.  
Savannah, Ga.

Dotson, Lois Annie  
113 Jackson St.  
Baxley, Ga.

Douse, Betty Louise  
P. O. Box 341  
Statesboro, Ga.

Dunson, Helen Marion  
Rt. 2  
Franklin, Ga.

Finney, Geneva  
1012 Emery Highway  
Macon, Ga.

Florence, El ease  
Rt. 2, Box 18  
Statesboro, Ga.

Ford, Mary Agnes  
Omaha, Ga.

Fortson, Mabel P.  
446 Second Ave.  
Columbus, Ga.

Fuller, Elmus Elizabeth  
12½ Rothwell St.  
Savannah, Ga.

Gamble, Jewell  
312 Thompson St.  
Vidalia, Ga.

Gooden, Colleen Myrtle  
P. O. Box 321  
Pelham, Ga.

Green, Lillie Delores  
607 Jones St.  
Waycross, Ga.

Hill, Lucy Kate  
Shellman, Ga.

Hill, Thelma Louise  
311 7th Ave.  
Manchester, Ga.

Hill, Viola  
Rt. 3, Box 7  
Richland, Ga.

Holland, Marceline  
Rt. 1, Box 16  
Cobbtown, Ga.

Holmes, Rethel E.  
Rt. 2, Box 44  
Cuthbert, Ga.

Howard, Annie Ruth  
Box 32  
Ocilla, Ga.

Jackson, Alma Baker  
Rt. 1, Box 69  
McIntosh, Ga.

Jackson, Mattie Inez  
480 Chestnut Ave.  
Atlanta, Ga.

Johnson, Lillie Belle  
Claxton, Ga.

Jones, Mary Clyde  
804 Allen Ave.  
Savannah, Ga.

Kelsey, Susie Mae  
P. O. Box 301  
Savannah, Ga.

King, Betty H.  
25 Culver St.  
Savannah, Ga.

LeGrier, Mildred L.  
231 W. Gaston St.  
Savannah, Ga.

Lonon, Juanita  
2002½ Ogeechee Road  
Savannah, Ga.

Lonon, Mamie P.  
2002½ Ogeechee Road  
Savannah, Ga.

## SENIOR CLASS DIRECTORY

Lotson, Careta Rose  
540 E. Gordon St.  
Savannah, Ga.

McGhee, Nancy Nanette  
306 Bubwell Ave.  
Adel, Ga.

McIver, Dorothy D.  
708 Price St.  
Savannah, Ga.

McPherson, Wilhelmina V.  
Waters Road, E. St.  
Savannah, Ga.

Manigo, Carolyn Marie  
830 Yamacraw Village  
Savannah, Ga.

Manley, Mattie Ruth  
857 Little Short St.  
Macon, Ga.

Marchman, Mattie Louise  
3 Bolee St.  
Hogansville, Ga.

Martin, Alfreda Jones  
1018 W. 45th St.  
Savannah, Ga.

Martin, Minnie Kate  
Leslie, Ga.

Mercer, Margie  
Rt. 2  
Collins, Ga.

Mitchell, Geneva Marshall  
961 Yamacraw Village  
Savannah, Ga.

Mobley, Carrie L.  
411 Walker St.  
Waynesboro, Ga.

Mydell, Agnes  
Eden, Ga.

O'Neal, Viona  
Rt. 6, Box 192  
Dublin, Ga.

Powell, Barbara Joyce  
326 Winthrop Ave.  
Millen, Ga.

Powers, Dorothy Mae  
615 W. 23rd St.  
Savannah, Ga.

Pringle, Jacqueline  
408 Third Ave.  
Vidalia, Ga.

Prothro, Ora Belle

Quattlebaum, Rita Jones  
522 W. 40th St.  
Savannah, Ga.

Ridley, Ruby Jane  
14-D Tindall Heights  
Macon, Ga.

Rountree, Gladys M.  
Box 70  
Millen, Ga.

Ruff, Annie L.  
R. F. D. 2  
Mayfield, Ga.

Shank, Rether L.  
803 W. 40th St.  
Savannah, Ga.

Shaw, Alfreda Mae  
921 E. 38th St.  
Savannah, Ga.

Sheriff, Alethia Marie  
143 Greensboro Road  
Sparta, Ga.

Smalls, Gladys Myers  
536 E. Park Ave.  
Savannah, Ga.

Smith, Mary Jane  
Rt. 3, Box 86  
Glennville, Ga.

Sneed, Bobbie Mae  
Rt. 2, Box 49  
Smithville, Ga.

Swanson, Mary Alice  
403 Ross St.  
Douglas, Ga.

Tharpe, Doris Anita  
421 Third Ave.  
Hawkinsville, Ga.

Thomas, Gertrude Davis  
2219 Harden St.  
Savannah, Ga.

Thompson, Hattie Mae  
822 Washington St.  
Bainbridge, Ga.

Thompson, Mary Lee  
403 W. 56th St.  
Savannah, Ga.

Timmons, Irene B.  
R. F. D. Box 72  
Townsend, Ga.

Thompkins, Rosa M.  
Rt. 1, Box 159  
Danielsville, Ga.

Walthour, Dorothy Estella  
Rt. 1, Box 190  
McIntosh, Ga.

Wells, Doretha Kennedy  
Rt. 2, Box 48  
Claxton, Ga.

Williams, Bessie M.  
109 Edwards Dr.  
Marietta, Ga.

Williams, Johnnie Mae  
209 Everett St.  
Vidalia, Ga.

Williams, Lurinda M.  
Box 6  
Midville, Ga.

Williams, Lauretta B.  
1014 W. 41st St.  
Savannah, Ga.

## SENIOR CLASS DIRECTORY

Wright, Christine Cheryl  
Waters Ave. and E St.  
Savannah, Ga.

Young, Minnie Mae Z.  
1014 W. 39th St.  
Savannah, Ga.

### MEN

Amerson, James Edward  
515 W. Gwinnett St.  
Savannah, Ga.

Bowers, Horace Pherow  
Hampton, S. C.

Brown, Bobbie Maurice  
New Orleans, La.

Burns, Harold Dean  
3206 Hopkins St.  
Savannah, Ga.

Byers, Claude Reese  
Jacksonville, Fla.

Carter, Adolphus D.  
626 W. 40th St.  
Savannah, Ga.

Chriss, John E.  
New Orleans, La.

Clarke, Elbert G.  
505 E. Hall St.  
Savannah, Ga.

Cogswell, Edward Johnson  
2218 Harden St.  
Savannah, Ga.

Collier, Arthur  
507 W. 38th St.  
Savannah, Ga.

Daniels, Thomas F.  
Rt. 4, Box 97  
Athens, Ga.

Dingle, Elmore M.  
903 Crosby St.  
Savannah, Ga.

Fields, Harold B.  
742 Yamacraw Village  
Savannah, Ga.

Glover, Wesley B.  
Hardeeville, S. C.

Hall, S. T.  
Box 256  
Darien, Ga.

Hardy, Joe H.  
1000 11th Ave.  
Columbus, Ga.

Harris, Curtis P.  
209 5th St.  
Columbus, Ga.

Hendrix, Daniel W.  
1054 Yamacraw Village  
Savannah, Ga.

Holmes, Theodore  
5005 N. Derbigny St.  
New Orleans, La.

Jackson, Alfred  
Chicago, Ill.

Jackson, Eugene James  
509 W. 38th St.  
Savannah, Ga.

Jackson, James Emmett  
R. F. D. 4  
Forsyth, Ga.

Jackson, William Jr.  
Rt. 1, Box 69  
McIntosh, Ga.

Jackson, William Sims  
1412 E. 8th St.  
Columbus, Ga.

Kelliehan, Isaac W.  
807 Lynah St.  
Savannah, Ga.

Kinsey, Ernest Douglas  
623 W. 38th St.  
Savannah, Ga.

Ladson, Virgil Robert  
530 E. Gordon Lane  
Savannah, Ga.

Lawton, Calvin Coolidge  
1012 W. 37th St.  
Savannah, Ga.

Levy, John W.  
727 W. Victory Dr.  
Savannah, Ga.

Lewis, Benjamin F.  
949 W. 38th St.  
Savannah, Ga.

Lindsey, Eddie T.  
2825 Hood St.  
Columbus, Ga.

Loadholt, Warren  
157 Yamacraw Village  
Savannah, Ga.

Lofton, Hosea  
241 Lee St.  
Blackshear, Ga.

Ladson, Harry  
2201 Augusta Ave.  
Savannah, Ga.

McDaniels, Charles  
Chicago, Ill.

McLendon, Joseph  
2317 W. Broad St.  
Savannah, Ga.

McLeod, Wallace B.  
Box 92  
Baxley, Ga.

Marshall, Leo Albert  
730 Waters Ave.  
Savannah, Ga.

Mike, Thomas, Jr.  
Rt. 4, Box 374-L  
Savannah, Ga.

Mitchell, Vernon  
704 Russell Ave.  
Columbus, Ga.

## SENIOR CLASS DIRECTORY

Mosley, Benjamin J.  
Rt. 1, Box 90  
Summerville, Ga.

Neal, James F.  
207 4th St.  
Columbus, Ga.

Pogue, Clarence  
Chicago, Ill.

Quattlebaum, Benjamin J.  
522 W. 40th St.  
Savannah, Ga.

Reid, Willie James  
710 W. Gwinnett St.  
Savannah, Ga.

Roberts, German J.  
1010 Love St.  
Savannah, Ga.

Sanders, Robert Jr.  
637 Oakview Ave.  
Columbus, Ga.

Solomon, Joseph Henry  
1202 Lincoln St.  
Savannah, Ga.

Speed, Alexander Von  
236 Millen St.  
Savannah, Ga.

Spencer, Robert L.  
826 Wheaton St.  
Savannah, Ga.

Spencer, Theron  
623 Montgomery St.  
Savannah, Ga.

Taylor, Maceo II  
4612 S. Michigan Ave.  
Chicago, Ill.

Terry, Herman Clarke  
Beuna Vista, Ga.

Tolbert, Ernest  
82-B Tindall Heights  
Macon, Ga.

Turner, Joseph  
9418 Oleander St.  
New Orleans, La.

Walker, Emerson W.  
Apt. 2, Long Ct.  
Orlando, Fla.

Whitehead, Vernon  
803 Crosby St.  
Savannah, Ga.

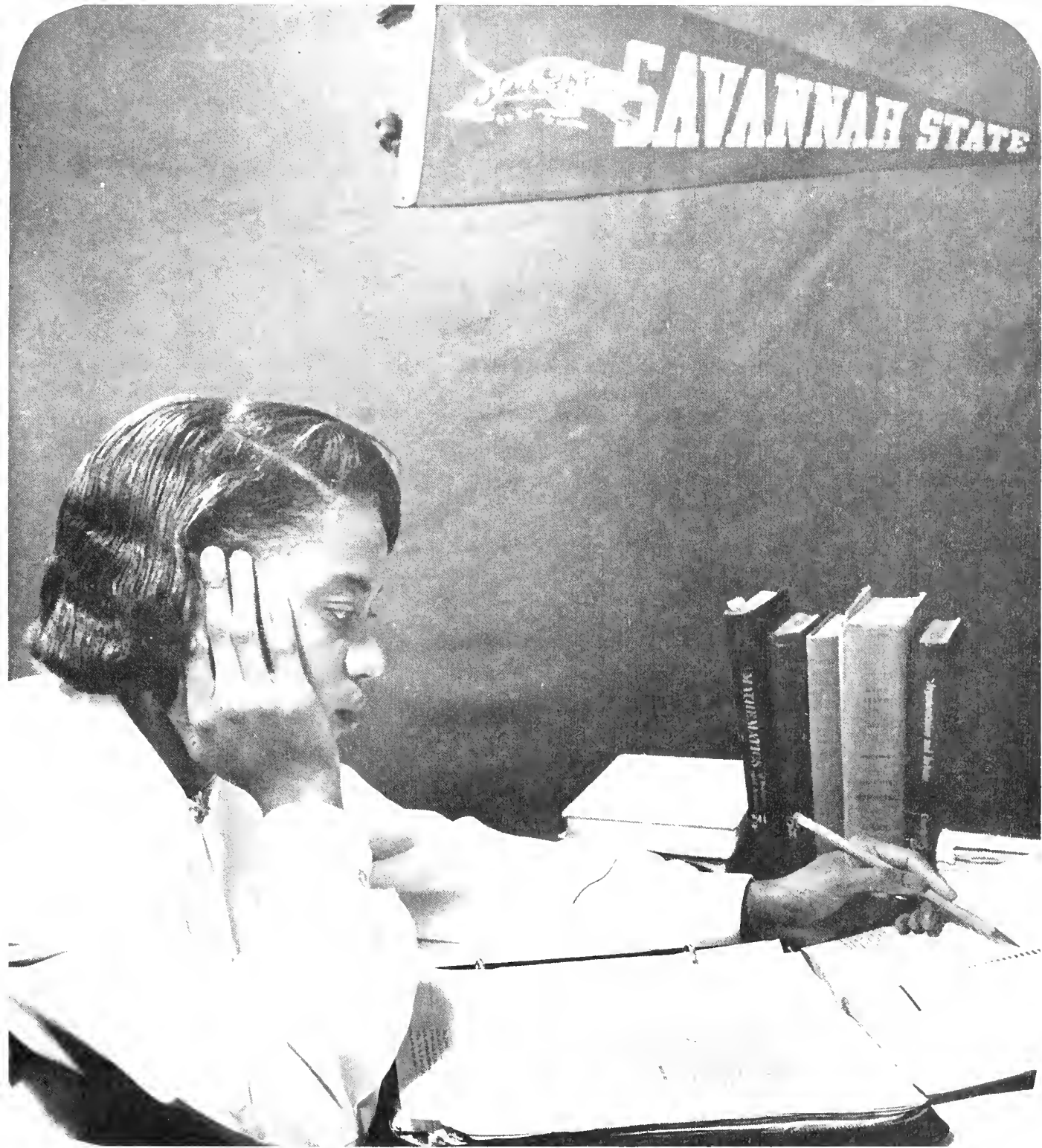
Wilson, Isadell Scott  
Eden, Ga.

Wiltz, Phillip G.  
4836 Coliseum St.  
New Orleans, La.

Wright, Ted Aurl Jr.  
Savannah State College  
Savannah, Ga.



We shall always re-  
member days like this  
. . . When we went hap-  
pily to class and built  
daily our Shrine to  
SSC . . .



*Juniors*





Alberta T. Adkins  
*Savannah*

Arnett Anderson  
*Hinesville*

Minnie Laura Bailey  
*Rome*

Maggie Battle  
*Mount Vernon*

James Donald Bentley  
*Vidalia*

J. Hue Blackwell  
*Savannah*

Talmadge Anderson  
*Dublin*

Beverly Ann Brown  
*Savannah*

Ruth Margaret Brown  
*Bainbridge*

Clifford E. Bryant  
*Savannah*

Burnette, Lottie  
*Alamo*

Ethel Lou Brown  
*McIntosh*

Frank D. Bacon  
*Riceboro*

Roscoe Brower  
*Thomasville*

Annie Grace Bussey  
*Savannah*

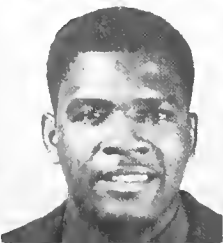
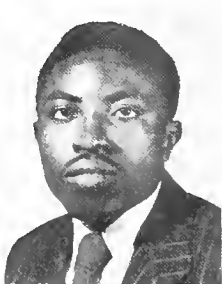
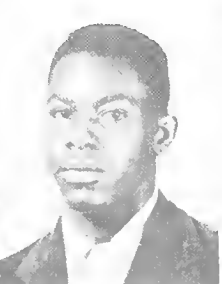
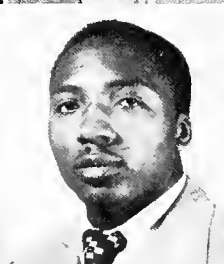
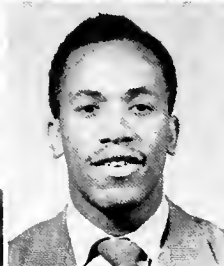
Majorie Bynes  
*Savannah*

Eloise Cainion  
*Donalsonville*

Mary E. Chatman  
*Savannah*

Ruth Hazel Chisholm  
*Savannah*

William H. Collins  
*Savannah*



Bessie Lou Coney  
*Dublin*

Chester Lee Conyers  
*Bainbridge*

Ophelia M. Cummings  
*Savannah*

Lee Mark Daniels  
*Moultrie*

Juanita C. Florence  
*Statesboro*

Rose Emma Gartrell  
*Savannah*

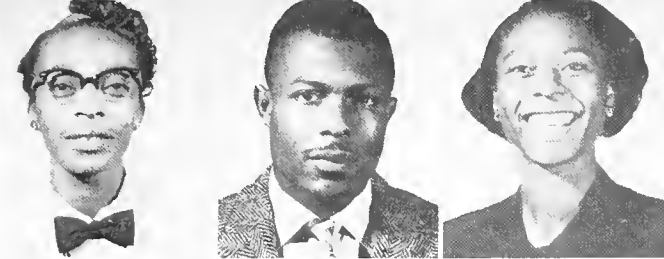
Randell Gilbert  
*New Orleans, La.*

Thelma L. Glenn  
*Nicholson*

Annie L. Henderson  
*Savannah*

Darnell R. Jackson  
*Camilla*

Alberta L. James  
*Savannah*



Juanita B. Jones  
*Savannah*

Marjorie Jones  
*Savannah*

Rosa Lee Jones  
*McIntosh*

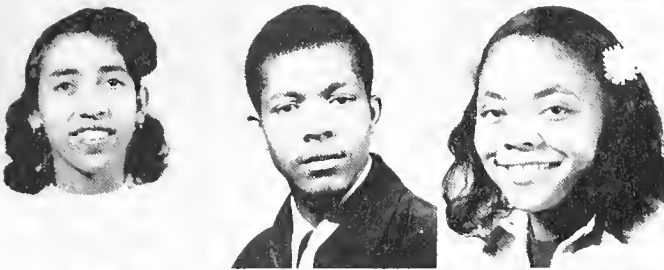
Raymond Knight  
*Savannah*



Marian Lewis  
*Sylvania*

Joe Henry Lang  
*Savannah*

Edith Macon  
*Savannah*



Lathrine Miller  
*Valdosta*

Prophet Dean Mitchell  
*Beaufort, S. C.*

Marge Etta Mitchell  
*Beaufort, S. C.*

Semon Vaughn Monroe  
*Quitman*

Marvin B. Pittman  
*Blakely*

Jason Ransby  
*Newnan*

Gloria C. Reid  
*Blackshear*

Doris Arnell Roberts  
*Millhaven*



Mary Louise Royal  
*Savannah*

Henry Scott  
*Savannah*

Wade Medicus Simmons  
*Savannah*

Irene Amelia Smith  
*Brunswick*



Juanita Phyllis Smith  
*McIntosh*

Robert Herman Smith  
*Millen*

James Henry Stapleton  
*Wrens*

Henry Thomas  
*Jesup*

Margaret E. Stephens  
*Egypt*

Archie L. Stevens  
*Dorchester*

Robert Thweatt  
*Savannah*

Leon Davis Wilson  
*Savannah*

Margaret Batchlor Wiltz  
*Savannah*

Leroy Warnock  
*Savannah*

Willie T. Williams  
*Savannah*

Harry C. German  
*Savannah*

Rudolph V. Hardwick  
*Savannah*

George Thomas  
*Valdosta*

Lottie T. Tolbert  
*Savannah*

Geneva Catherine Hill  
*Savannah*

Charles Bailey  
*Claxton*

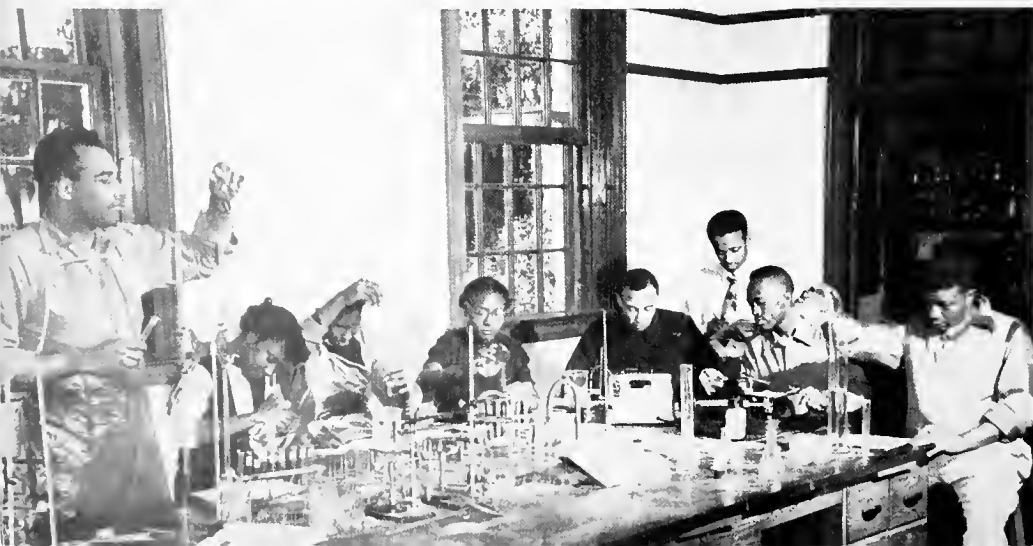
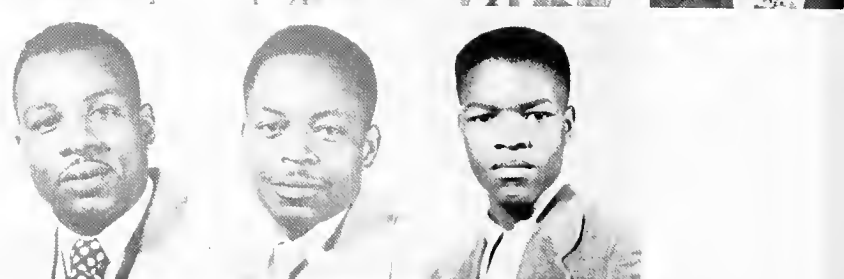
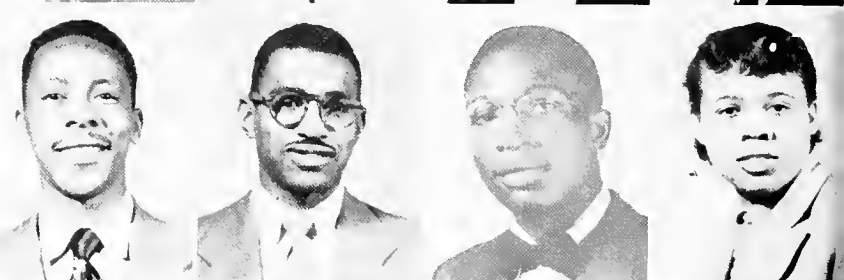
Ollie Washington  
*Jacksonville, Fla.*

John D. Watkins  
*Savannah*

Leroy P. Wesby  
*Waynesboro*

John Wesley  
*Waycross*

William Lumpkin  
*Waycross*



In Physiology we study life—living organisms; we study the functions of living organs and their parts.



*Sophomores*



Willie James  
Anderson



Alphonso  
Arnold



Eula  
Armstrong



Roy L.  
Allen



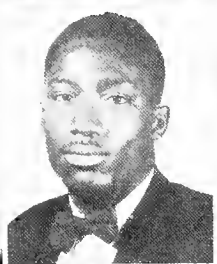
Beautine  
Baker



Oretha  
Barton



Dorothy Bess  
Ethel Brinson  
Earl Brown  
Annie Lee Brown



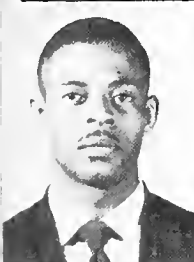
John Byrd  
Ernest Shelly Brown  
Johnny Carter  
Mattie Cliffin



Joseph Victor Coaxum  
Mytice Coley  
Kharn Collier  
Hazel Collier



Oliver Copeland  
Hilda Davis  
Lester Davis  
James Day



Nathan Dell  
Robert Denegal  
James Densler  
Martha Dunn



Rowena Edwards  
Eula Elleby  
Loretta Van Ellison  
Mary Faison





Callie  
Famble

Helen  
Florence

Alna  
Ford

Margaret  
Florence

Ruben  
Gamble

Carolyn  
Gladden



Rutha Mae Glover  
Arby Delores Gooden  
Mary Harvey  
Celestine Hamilton



James Eschol Hill  
Fred E. Hicks  
Betty Jean Horne  
Lucille Howard



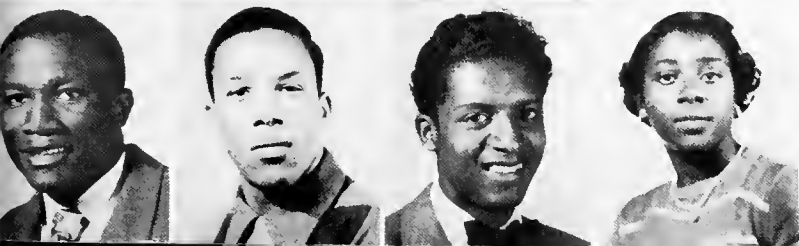
Perry Holmes  
Eula Mae Jackson  
Lester George Jackson  
Lillian Jackson



Pearl Jackson  
Evelyn James  
Virginia James  
Myrtice James



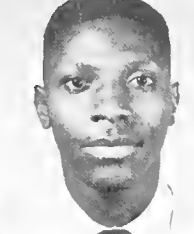
Corrie Johnson  
Eugene Johnson  
Fannie Lewis  
Lillie Belle Linder



Charles E. Locke  
William Howard Love  
Lewin Manley  
Naomi Mitchell



Carver Leon  
Mariano



John Benjamin  
Middleton



Willie Clarence  
Parker



Melvina Christine  
Paulin



Lois Janet  
Parrott



Rosa Lee  
Penn



LaVerne Perry  
Marvin Pittman  
Frances Mildred Pridgen  
Rosa B. Pusha



Anne Emmons  
Clarence Reed  
Julius Reeves  
Catherine Elizabeth Renfrow



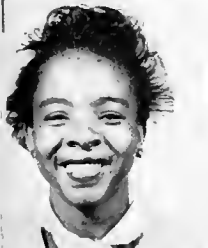
Bernice Roberts  
Curley Mae Roberts  
Doris Sessions  
Jacquelyn Seward



Martha Sullivan  
Bernice Ryals  
Timothy Ryals  
Flossie Rucker

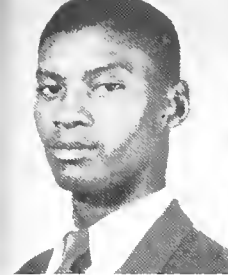


Lula Evelyn Ransby  
Almaritta Shatteen  
Bernita Sanders  
Betty Simmons



Evella Simmons  
Evelyn Simmons  
Audre Spells  
Ruby Stanley





Cleveland Stripling



Jestine Sullivan



Mary Sullivan



Henry Alonzo Sharpe



Rutha Surrency



Catherine Thomas



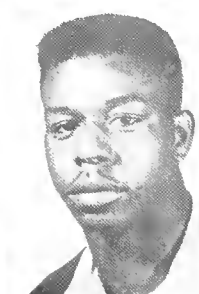
Hendris Thomas  
Magnolia Turner  
Bernita Washington  
Celestine Washington



Nell Delores Washington  
Myrtice Warrior  
Emma Louise Wiggins  
Juanita Wilcher



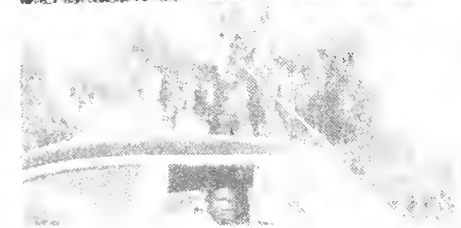
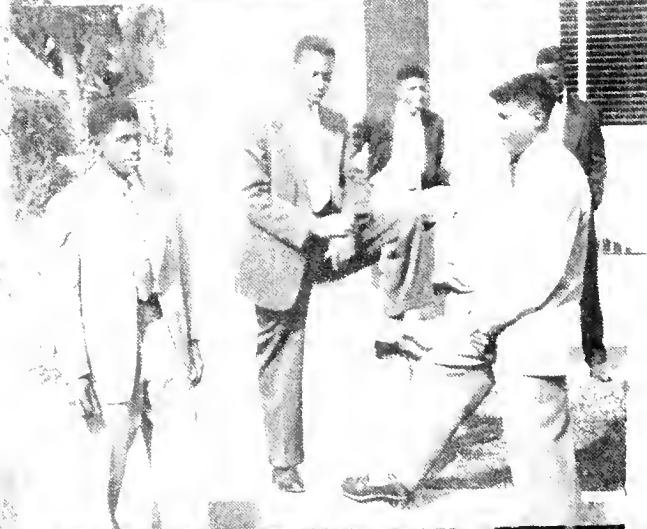
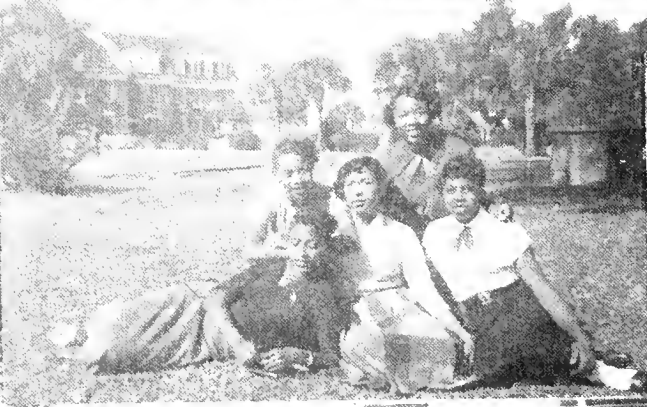
Dorothy Nell Wilcox  
Udell Wilcox  
Birdie Williams  
Curtis Williams



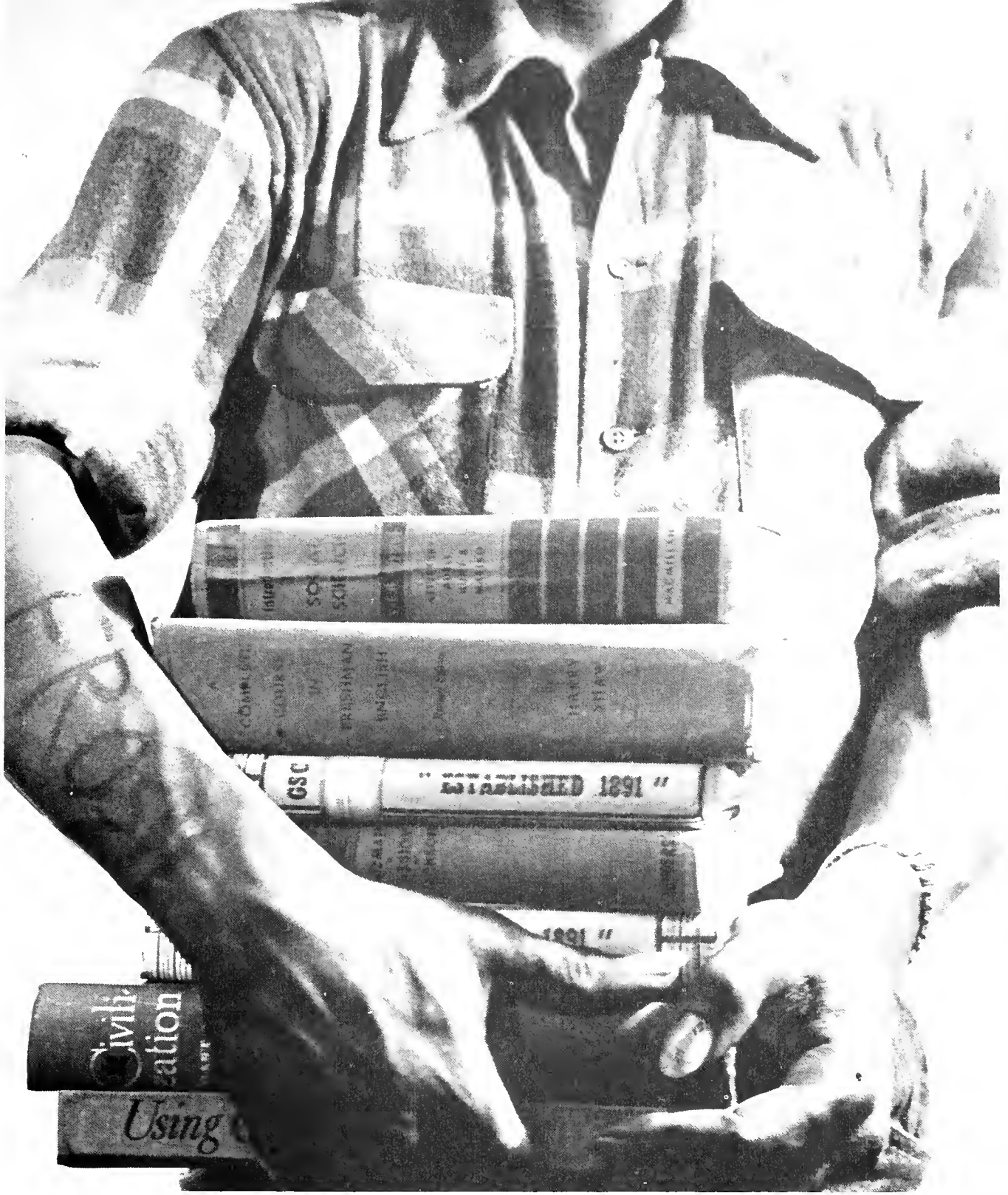
Laurine Williams  
Jeanette Willis  
William Weatherspoon  
Archie Robinson



AKAs enjoy a closed banquet during the celebration of Founder's Day. Mrs. Edna Over Gray, past grand basileus of Alpha Kappa Alpha, was guest speaker.







*Freshmen*



Walter Florence, Jr.  
Ella Mae Fortson



Frances Mae Baker  
Bernice Brooks



Sampson R. Frazier  
Juanita Frazier



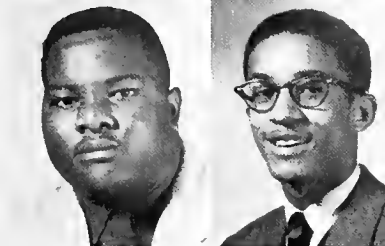
Mary Felicia Chapman  
Ola Belle Cobb



Roberta Glover  
Mildred Graham



Curtis Cooper  
Leon Cooper



Jimmie Habersham  
Floyd Harrell



James Huey Curtis  
Shirley Demons



Eloise Harris  
Julia C. Hendrix



James Douse  
Florence Evans



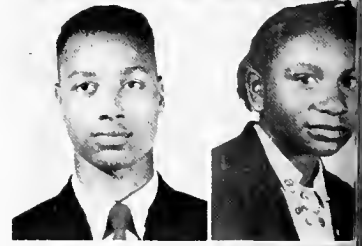
Genevieve L. Holmes  
David Hooks



Thomas R. Evans  
Mary Fagins



Farris M. Hudson  
Annie Mae Huggins



Lottie I. Ferguson  
Julia Lee Finney



Thelma C. Hughes  
Martha Jackson



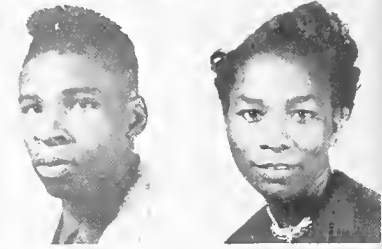
Alex H. Meeks  
Gussie Bell Mincy



Willie Bell Jackson  
Willie Mae Jackson



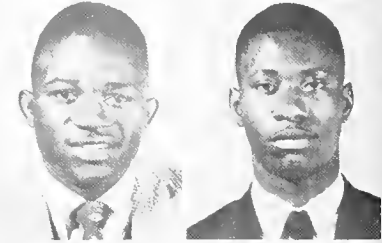
James C. Murray  
Madeline L. Pelote



Herbert Lee Jenkins  
Shirley L. Jenkins



Thomas J. Polite  
Johnnie R. Ponder



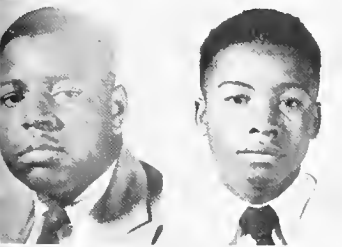
Arthur Johnson  
Frances Johnson



Lois O. Reeves  
Mildred Robinson



John Johnson  
Charles Jordan



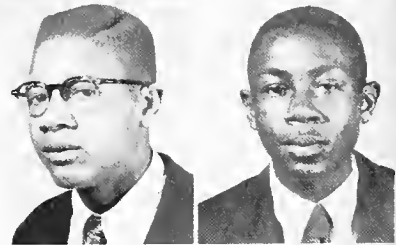
Hazel Scott  
Porter Screen



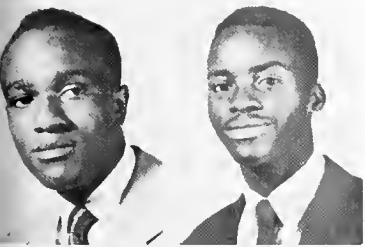
Elizabeth Jordan  
Laurine M. Lindsey



James Shaw  
Benjamin Singleton



Thomas Locke  
Clarence Lofton



Odessa Small  
Betty Snype



Alexander S. Luten  
Lillie Ruth Massey



Gracie Stroude  
Francis Tharpe



Dorothy Guiton



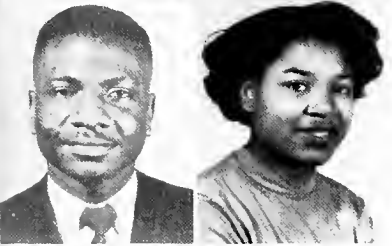
Annie R. Vauss  
Mae Veronica Walden



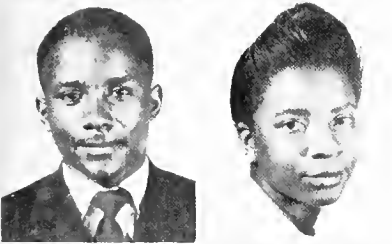
Beatrice C. Walker  
Elmer Warren



Willie D. Kent  
C. Latimer



Aresta Waters  
A. M. White



James Wiley  
Mary G. Williams



Vermell L. Williams  
Gloria V. Wynn



Louis Young  
Geneva Mae Young



*Organizations*



## THE TIGER'S ROAR STAFF

Hosea J. Lofton '52  
*Editor-in-Chief*

Annie Ruth Howard '52  
*Managing Editor*



Hosea J. Lofton, *Editor-in-Chief*

## EDITORIAL BOARD

Nannette McGee .....	<i>News</i>
Jolene Belin .....	<i>Assistant</i>
Annie Grace Bussey .....	<i>Copy</i>
Virginia B. Baker .....	<i>Society</i>
Sylvia W. Harris .....	<i>Assistant</i>
Charles McDaniels .....	<i>Sports</i>
Alethia Sheriff .....	<i>Feature</i>
Clarence Lofton .....	<i>Art</i>

MAKE-UP STAFF ..... Dorothy Melver, Timothy Ryals

REPORTORIAL STAFF ..... James Douse, Pauline Reid, Nathan Dell, Archie Robinson, C. Ester Freeman, Virginia Dansby, Beverly Brown, Carolyn Manigo, Jimmie Colley, Juanita Florence, Curtis P. Harris, Arthur Johnson.

BUSINESS and CIRCULATION ..... Raymond Knight, Chairman; Dennis Williams, Thomas Locke, James Douse.

TYPISTS ..... Ruby Childers, Acquilla Qattlebaum, Carolyn Gladden, Roberta Glover, Margaret Chisholm.

ADVISOR ..... Luetta B. Colvin



# PAN-HELLENIC COUNCIL



Left to right: Leon Wilson, *Sigma*; Careta Rose Lotson, *Sigma Gamma Rho*; Jewel Cutter, *Alpha Kappa Alpha*; Dorothy McIver, *Alpha Kappa Alpha*; Maceo Taylor, *Alpha Phi Alpha*.



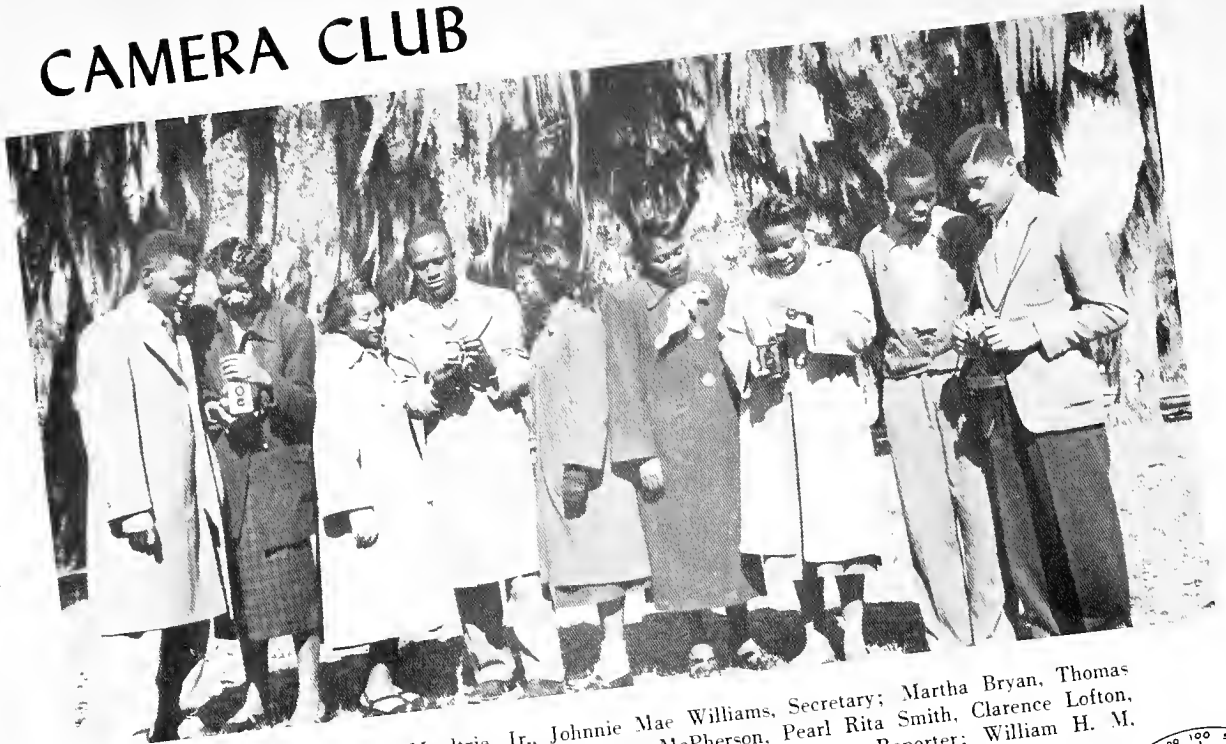
# NEWMAN CLUB



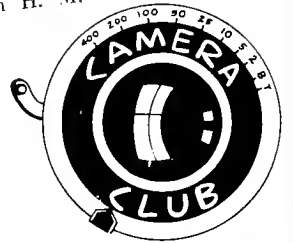
Seated, left to right: Clarence Pogue, Marie Connelly, Pearl Smith, Medicus Simmons, Juanita Lonon, Dean T. C. Meyers, Advisor. Standing: Joseph Turner, Betty King, Marie Mack, Bobbie Brown, Juanita Frazier, Beatrice Walker, Loretta Van Ellison, Celestine Hamilton, Helen Graham.



# CAMERA CLUB



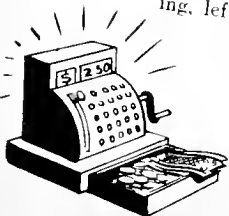
Left to right: Charles Moultrie, Jr., Johnnie Mae Williams, Secretary; Martha Bryan, Thomas J. Locke, President; Mary Bivens, Wilhelmina McPherson, Pearl Rita Smith, Clarence Lofton, Treasurer; and Willie Daniel Kent, Jr. Not shown: Hosea Lofton, Reporter; William H. M. Bowens, Advisor.



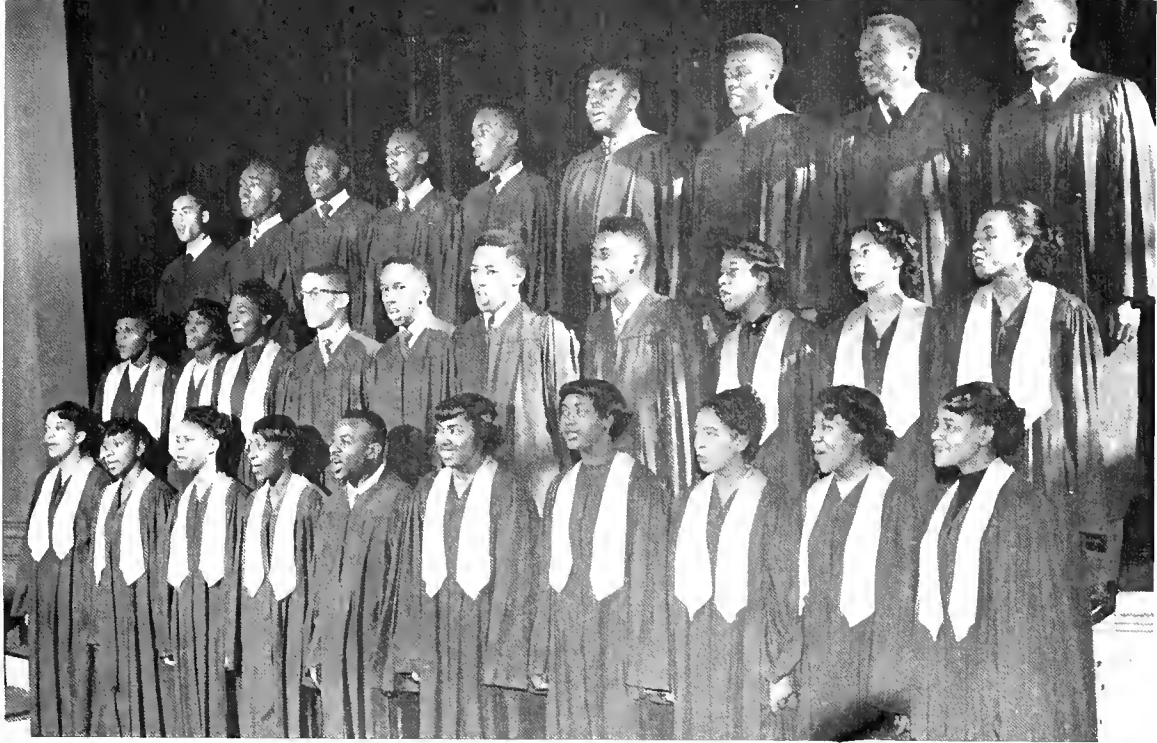
# student loan association



Seated, left to right: Miss Juanita Jones, Secretary; Talmadge Anderson, Vice President. Standing, left to right: Earnest W. Jones, Raymond Knight, and T. Franklin Carr, Advisor.



THE COLLEGE CHOIR



L. Allen Pyke, *Director*

"Ave Maria" . . . the resurrection of the sweetness and light which man has created in memorable music . . . "Victory March" . . . the stirring cadences which spurred the team on to victory . . . The sound of voices blended in unforgettable harmony shall be ever recorded in our hearts. . . The flash of the drum majors, the clash of resounding cymbals, the dash of precise formations at Homecoming . . . all these help us to erect our shrine to SSC.

THE COLLEGE MARCHING BAND

L. Allen Pyke, *Director*





## THE WOMEN'S GLEE CLUB

Hilliary R. Hatchett, *Director*

The Language which music speaks is the language of all mankind. We sing . . . and the melodious song of Man's hopes, aspirations, and dreams breaks forth . . . We sing . . . and the world becomes one . . . We sing . . . and the Shrine of SSC becomes a symphony in our hearts . . . Through Music, the universal language, we "build a Shrine to thee . . ."

## THE MEN'S GLEE CLUB





### THE SOCIAL SCIENCE CLUB

Elmer Dean, *Sponsor*

Benjamin Mosely, *President*

First row, left to right: Charlie Locke, John Byrd, Earl Brown, Fred Hicks, James Murray, John Middleton, Julius Reeves, Dennis Williams, James Hill. Second row: John Johnson, LeMark Daniel, William Weatherspoon, William Terrell, Elmer Warren, Odelia Carson, Henry Praylo, Mattie Marsham, Mamie Pickett, Helen Battiste. Third row: William Bloodworth, Stanley Whittley, Evelyn Wright, Whelder Bannamon, Fannie Lewis, Gloria DeVeaux, Benjamin Mosely, Prophet D. Mitchell, Marneise Jackson, Celestine Hamilton, Colleen Gooden, Eunice Primus.

### HOME ECONOMICS CLUB

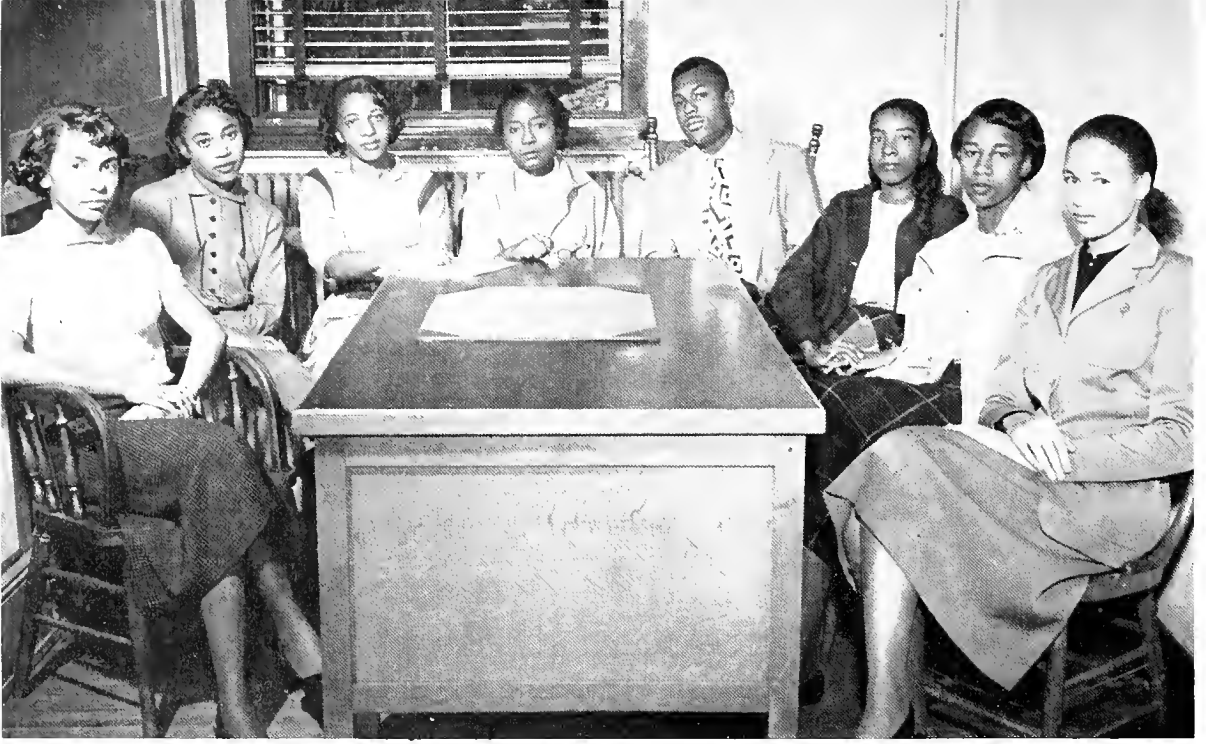
Mrs. Myrtle Mitchell, *Sponsor*

Mary Harvey, *President*

Kneeling, left to right: Elease Florence, Fannie Bryant, Mertie Warrior, Marjorie Bynes, Eula Mae Benton, Martha Dunn, Margaret Stephens, Seneya Slater, Rita Quattlebaum, Audrey Spells and Loretta Williams. Standing: Margia Mercer, Willie M. Baldwin, Glorious Reid, Elorinna McCall, Gladys Hart, Minnie Harley, Miss Christine Coleman, Helen Dunson, Mrs. Myrtle Mitchell, Mary Ford, Mary Swanson, Beautine Baker, Marceline Holland and Mrs. Martha Avery.







## THE COLLEGIATE COUNSELLORS

Mrs. Ann E. Turner, *Sponsor*

Margaret Chisholm, *President*

Left to right: Jewel Gamble, Annie Bussey, Jimmie Colley, Margaret Chisholm, Darnell Jackson, Evelyn Wright, Myrtice James, Beverly Brown.

## Y. W. C. A.

Kneeling, left to right: Latherine Miller, Odeal Carson, Eunice Primus, Elizabeth Jordan, Juanita Florence, Alna Ford, Flossie Rucker, Bertha Langford, Doris Session, Henrice Thomas, Sally Woods, Miss Madeline Harrison, Advisor; Elease Florence, Mary Harvey, Pauline Silas, Lydia King, Maggie Battle, Shirley Demons, LaVerne Perry, Bernita Spaulding, Mary Shepherd, Maeniese Jackson, Laurine Lindsey, Ruby Stanley, Colleen Gooden, Minnie Bailey.





## THE STUDENT COUNCIL

Seated, left to right: Joseph Turner, Foger Booker, Charles McDaniels, Lucile Brister, Secretary; Emerson Walker, Vice President; Hosea Lofton. Standing: James Campbell.



Eddie T. Lindsey, *President*

### . Preamble to the Constitution of the STUDENT COUNCIL

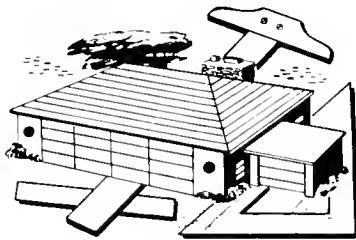
We, the students of Savannah State College, working cooperatively with the administration and the faculty of the College, responsible under the University System of Georgia for the proper direction of the institution in order to create a medium for the expression of liberty, equality and justice in accordance with the ideals of the College; to cooperate with the progressive movements of youth in general and to the traditions of the College which enrich our lives, do hereby adopt and promulgate these regulations for the government of the student body through the Student Council.





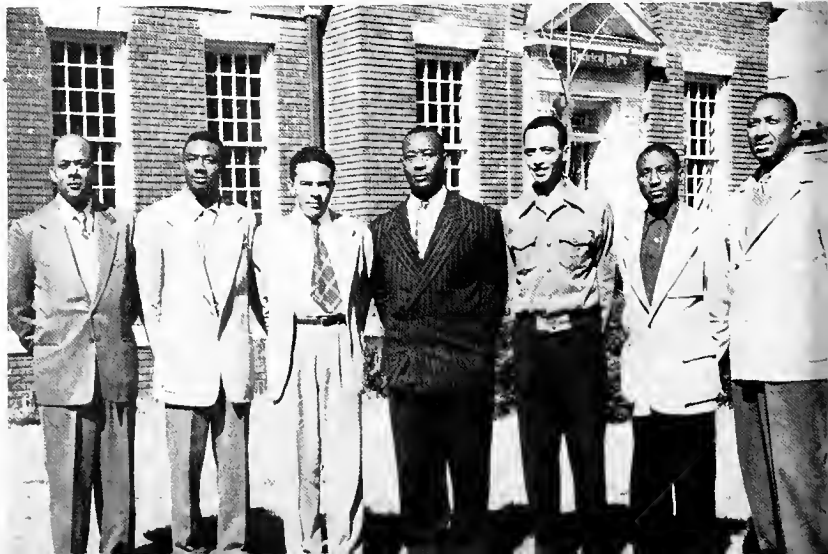
The Trade Association is composed of all students in the Division of Trades and Industries. At the extreme right (first row, standing) is Mr. William B. Nelson, Director of the Division of Trades and Industries.

## *Trades Association*



### TRADE ASSOCIATION OFFICERS

Left to right: Mr. Rutherford E. Lockette, Advisor; Leroy Varnedoe, Reporter; Leroy Warnock, Vice President; Eugene Jackson, President; Littleton Miller, Financial Secretary; Frank Bacon, Representative to the Student Council, and Mr. Benjamin R. Singleton, Advisor. Not shown: Johnnie Powers, Treasurer; James Floyd, Chaplain; Nathaniel Edwards, Recording Secretary; and James Campbell.





*Greek Letter Organizations*

Gamma Upsilon Chapter  
**ALPHA KAPPA ALPHA**  
**SORORITY**

Ascending, left: Margaret Chisholm, Phoebe Robinson, Myrtice James, Gloria DeVeaux, Jean Miller, Margaret Wiltz. Decending, right: Jewel Cutter, Mable Forston, Dorothy Melver, Jimmie Colley, Jewel Gamble, Annie Clowers.

*To capture a vision fair.*



**THE IVY**  
**LEAF CLUB**

Left to right: Virginia James, Hazel Collier, Henrice Thomas, Jewel Cutter, Dean of Pledges; Nell Washington, Jennie Hamilton, Evelyn Wright.

*O Ivy Leaf Club, we are  
proud to say,  
You grow more dear to us  
every day.*

Alpha Iota Chapter  
SIGMA GAMMA RHO SORORITY



Left to right: Christine Wright, Marjorie Jones, Rose Lotson.

*Greater Service; Greater Progress*

Sigma Gamma Rho Sorority was founded on November 12, 1922, in Indianapolis, Indiana, by Mary Lou Allison Gardner. The Alpha Iota Chapter was granted a charter at Savannah State College in November, 1949. Charter members were: Edna Ligon, Mattie Roberts, Julia Jones, Rose Lotson, and Christine Wright.

*Sigma Gamma Rho of thee we sing in chorus,  
Thy beacon bright shines clear before us  
Lighting the way to heights of great attainment  
Aims soaring upward until they reach the sky.*

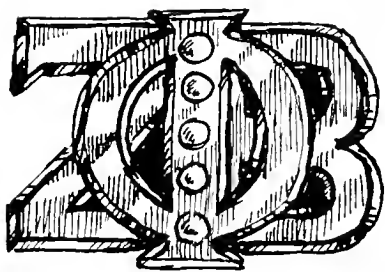
*Sigma Gamma Rho, to thee we'll cling forever  
Bound by ties of love and sisterhood  
Guarding each aim that will preserve our standards  
Lest we should prove unworthy of thy name.*



Rho Beta Chapter  
ZETA PHI BETA SORORITY



First row, left to right: Hattie Thompson, Acquilla Quattlebaum. Second row: Lottie Tolbert, Dorothy Purnell, Lois Hines.



ARCHONIAN CLUB

*Zeta, we gather here  
To pay our homage to  
thee . . .*

First row, left to right: Mary Alice Swanson, Eunice Primus, Pauline Reid. Second row: Minnie Harley, Mattie Manley, Beautine Baker, Marcelline Holland.



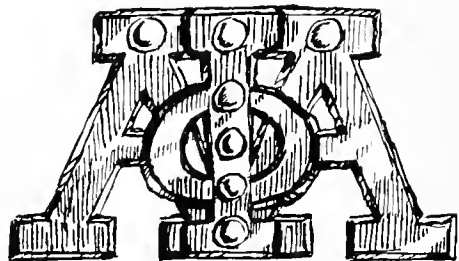


Delta Eta Chapter  
ALPHA PHI ALPHA FRATERNITY

*In our dear A Phi A fraternal spirit binds  
All the noble, the true, and courageous;  
Manly deeds, scholarship, and love for all mankind,  
Are the aims of our dear fraternity.*

Kneeling, left to right: Wade Simmons, Eddie Lindsey, Willie Williams, Arnett Anderson, Chester Conyers, and Raymond Knight. Standing: Charles McDaniels, Adolphus Carter, James Gibbons, Rudolph Hardwick, Lillie Linder, Attendant to Miss Alpha; Jennie Hamilton, Miss Alpha; Annie Clowers, Attendant; Frank Prince, Maceo Taylor, John Watkins, and John Felder.

THE SPHINX CLUB



*College days swiftly pass, imbued  
with mem'ries fond,  
And the recollection slowly fades  
away . . .*

Kneeling: Alonzo Sharpe. Standing, left to right: James Jackson, Thomas Vann, Alfred Jackson, Theodore Holmes, and Lawrence Shepard.



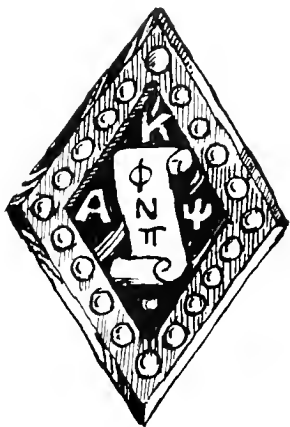


### Gamma Chi Chapter

### KAPPA ALPHA PSI FRATERNITY

Kneeling, left to right: John H. Camper, Advisor; Earl Brown, German Roberts, Alexander Speed, John Chriss, W. Virgil Winters, Advisor. Standing: Curtis Costellio, James Zachery, James Stapleton, Horace Bowers, Semon Monroe.

*When all our student days are done and  
we from school must go,  
Still we will honor, love, and sing thy  
praises o'er and o'er  
We'll live for thee, we'll strive, for thee,  
we'll all they ways adore:  
We'll long for thee and toil until we  
reach the Golden Shore,  
We'll long for thee and toil until we  
reach the Golden Shore.*



**THE SCROLLERS CLUB**  
Left to right: Oscar Dillard and James Densler.



Kneeling, left to right: John Wesley, Joseph Solomon, Thomas Daniels, Leroy Wesby, Claude Byers. Standing: Prof. Hilliary R. Hatchett, Talmadge Anderson, William Jackson, Stanley Whittley, Robert Thweatt, Leonard D. Stewart II, Earnest Kinsey.



Miss Omega and attendants, 1951-52. Left to right: Miss Bernita Spaulding, Miss Bertha Dillard (seated) Miss Omega, and Miss Evelyn James.



## Alpha Gamma Chapter of Omega Psi Phi Fraternity

### OFFICERS

Robert Thweatt .....	<i>Basileus</i>
Claude Byers .....	<i>Vice Basileus</i>
Talmadge Anderson .....	<i>Keeper of Records and Seal</i>
William S. Jackson .....	<i>Assistant Keeper of Records and Seal</i>
Joseph Solomon .....	<i>Keeper of Finance</i>
Earnest D. Kinsey .....	<i>Editor</i>
John Wesley .....	<i>Chaplain</i>
Leonard D. Stewart II .....	<i>Keeper of Peace</i>
Leroy Wesby .....	<i>Dean of Pledges</i>
Stanley Whittley .....	<i>Parliamentarian</i>
Hilliary R. Hatchett, Jr. ....	<i>Advisor</i>

COLORS—Purple and Gold

MOTTO—*Friendship is essential to the Soul.*

FLOWER—Chrysanthemums

### LAMPODAS PLEDGE CLUB



Kneeling, left to right: William Lumpkin, Earnest W. Jones. Standing: Joe Coaxum, John Byrd, Earnest P. Jones.

### ACHIEVEMENT WEEK RECEPTION AT THE COLLEGE COMMUNITY HOUSE.



RECEPTION LINE AT ACHIEVEMENT WEEK CELEBRATION—Left to right: President W. K. Payne, Mrs. Payne, Dr. E. B. Williams of Morehouse College; principal speaker for the week, Robert Thweatt, Mrs. Thweatt, and Miss Omega, Miss Bertha Dillard.

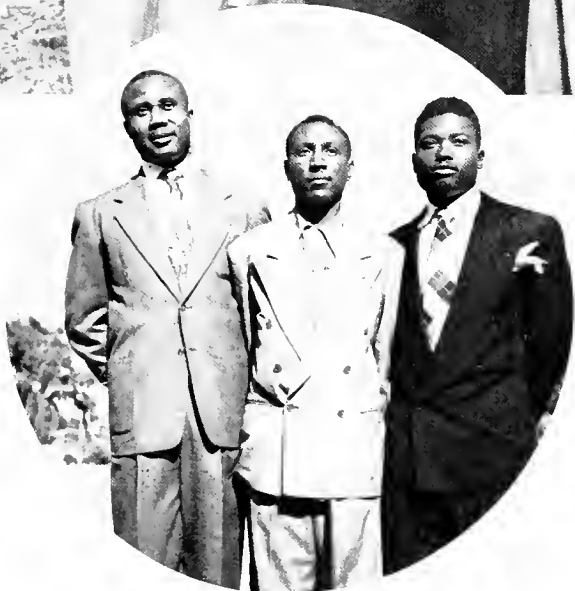


**Gamma Zeta Chapter  
PHI BETA SIGMA FRATERNITY**

Front row, left to right: Harold Burns, Eugene Jackson, Willie Scott, Joe Henry Lang, Leon Wilson, Second row: Willie James Reid, Virgil Ladson, Wallace McLeod, William Jackson, Jr., Charles Moultrie, Daniel Hendrix.

CULTURE FOR SERVICE: SERVICE FOR HUMANITY

*The founders of our wondrous band,  
In numbers though were three,  
Taught ideals high which soon  
Became a part of every Phi . . .*



**CRESCENT CLUB**

Left to right: Archie Stevens, Frank Bacon, Henry Thomas.





*F  
e  
a  
t  
u  
r  
e  
s*





Mary Ford



THE QUEEN

Jewel Gamble Sylvia Harris  
Attendants



THE ROYAL COURT

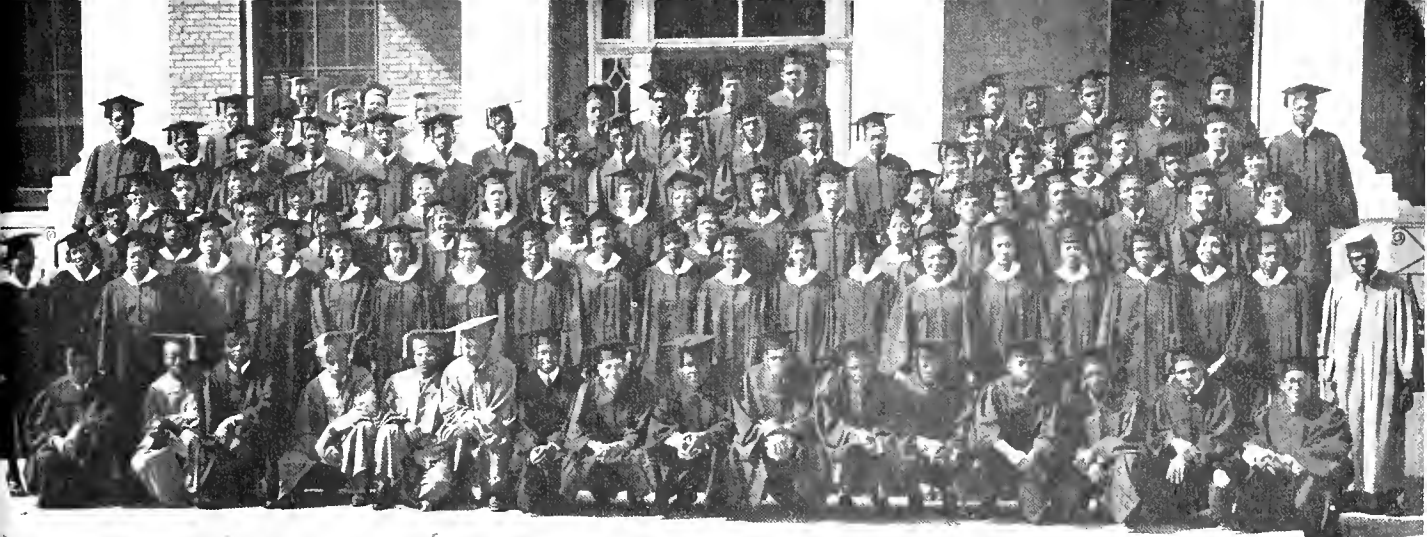
# Homecoming



The pomp and circumstance of the Coronation ceremony . . . the regal beauty of Mary and Sylvia and Jewel . . . the light in the eyes of the spectators as they watch the festive parade . . . the pride of SSC as she witnesses this latest pilgrimage to her Shrine . . .

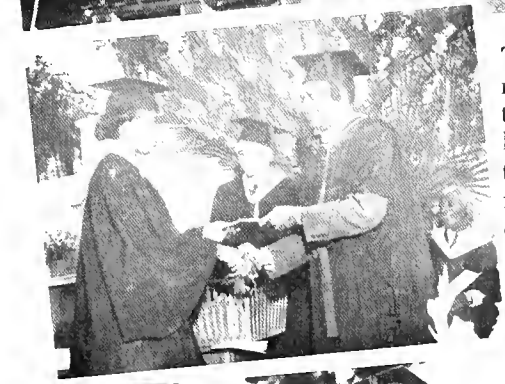
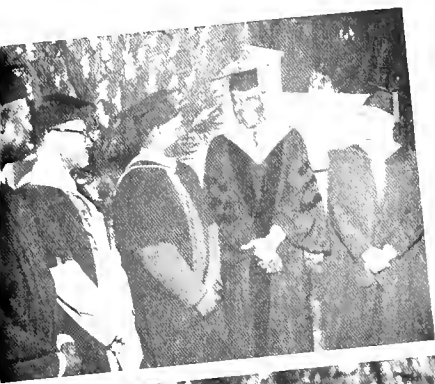
The hushed expectancy of the fans as they wait for C. P. to kick off . . . The hiss of the expelled breaths as the ball goes on "down the field." . . . Here it is . . . The gridiron clash is on! Football and festivity—here is essential timber for raising our shrine to our Alma Mater. . .





### SCENES FROM BACCALAUREATE AND COMMENCEMENT

The thrill of marching across SSC's spacious campus, robed in the traditional vestment . . . The inspiration brought by Mays and Dent and Lewis and Higgins . . . The joy of having the familiar faces of faculty members and friends who smiled and helped to quiet our racing hearts . . .



The ambivalent feelings of gladness and sadness when we realized that this was the ending and the beginning . . . Our epic struggles to make all these things, buildings, faces, emotions, our very own—our Shrine to SSC . . .







George William Allen, public relations representative for R. J. Reynolds Company, lectures to class.

Here is material for building our Shrine to SSC . . . We learn that education is not confined within four walls . . . We go to live with Shakespeare and Chaucer . . . We learn to manipulate machines that make communication easier . . . We study the science of computation so necessary to modern living . . . We hear the words of great personalities and are better able to understand the complex society which is ours . . . All, all these things help us erect a Shrine immortal to Alma Mater . . .



Business students watch demonstration of new Duplicator.



A group of music students make a recording under the supervision of Professor Hilliary Hatchett. Left to right: Bessie Williams, Delores Green, Leroy Wesby, Professor Hatchett.

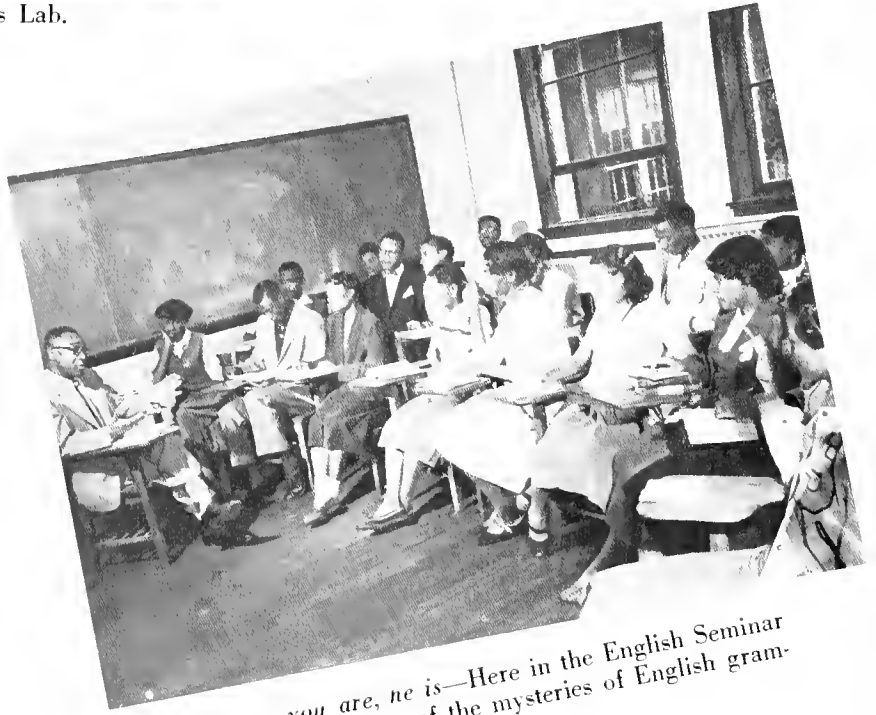
Students in mathematics learn about the quadratic function. Mrs. Sylvia Bowen, second from left, is instructor.





We work in the Physics Lab.

Sometimes a gleam of satisfaction will come into our eyes when we recall. "That was in our physics course." Once upon a night we shall again read the masterful prose of Swift and remember the respect in Mr. Fisher's voice as he introduced us to the Dean of English satire . . . Then will many things become clear to us. and we shall be living Shrines to SSC . . .



*I am, you are, he is—*Here in the English Seminar we unravel some of the mysteries of English grammar.



Chemical reactions are carefully observed and recorded by students in the Chemistry Lab.





Miss Careta Rose Lotson, Senior  
Savannah, Georgia

*... thy beauty is to me  
Like those Nicean barks of yore ...*

Miss Delores Perry, Freshman  
Savannah, Georgia

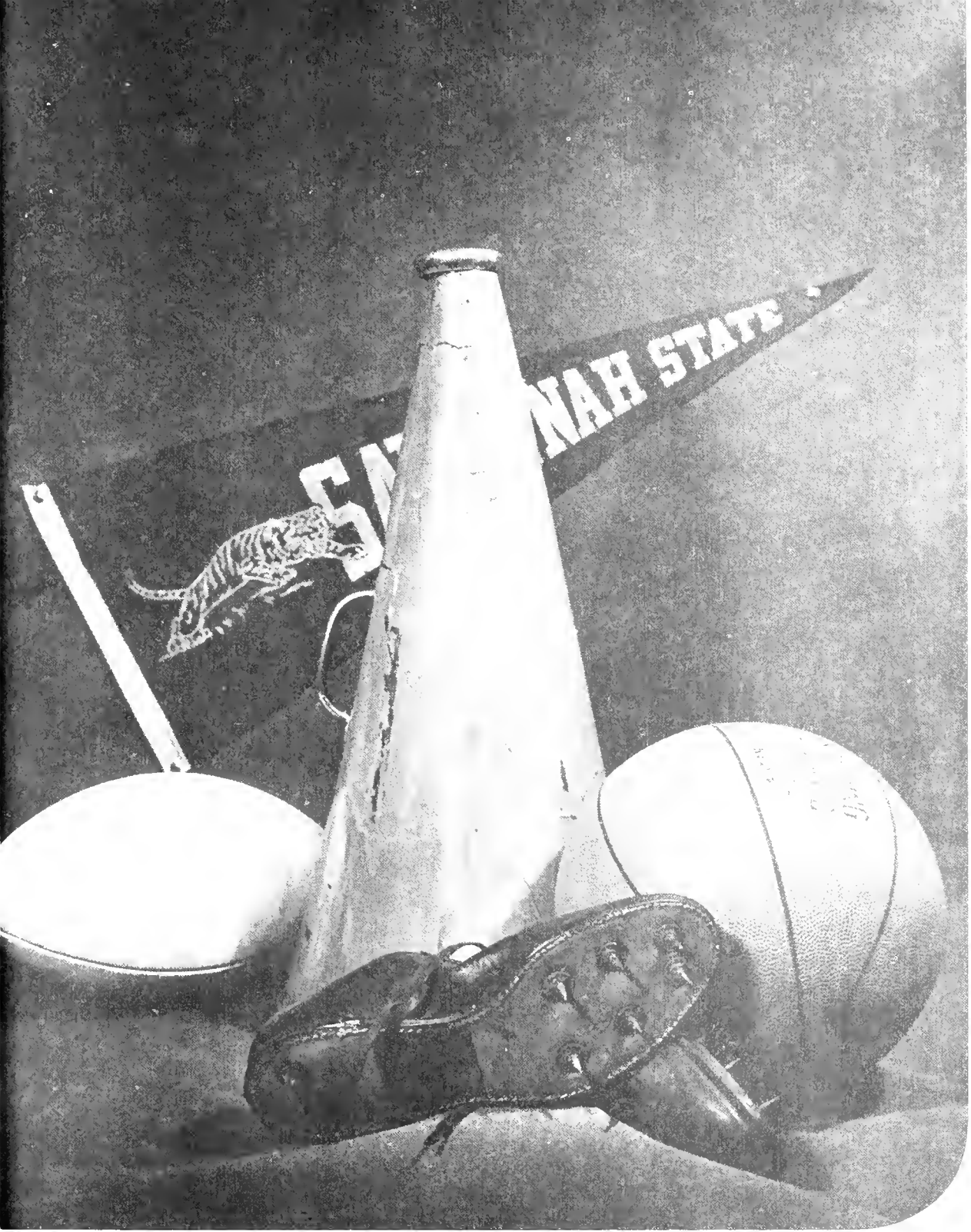


Miss Jennie Hamilton, Sophomore  
Savannah, Georgia

## *Beauty Parade*

Miss Gracie Stroud, Freshman  
Greensboro, Georgia





*Sports*







THE 1951-52 TIGERS, TRAINERS and COACHES

ATHLETIC DIRECTOR

OUR COACHING STAFF



Theodore A. "Ted" Wright, Sr.



Left to right: Al Frazier, Head Coach; John "Big John" Martin and H. F. Bowman.

"Hold that line, and hit 'em low, man."

# Football





# 1951-52 GRIDIRON RECORD

## Home Games

DATE	SSC	OPPONENT	
Sept. 28	26	Elizabeth City	7
Oct. 5	25	Alabama State	12
Oct. 26	26	Albany State	12
Nov. 10	48	*Florida Normal	6
Nov. 17	7	Clafin	14
Dec. 1	13	**Benedict	33

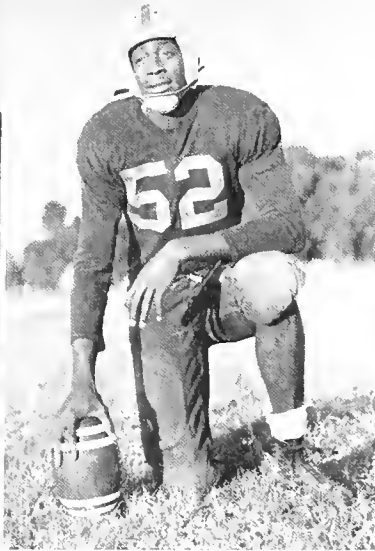
## Games Away

Oct. 13	15	Morris College	28
Oct. 20	0	Bethune-Cookman	51
Nov. 3	13	Morehouse College	6
Nov. 22	6	Paine College	6

\*Homecoming—Won 5, Lost 4, Tied 1.

\*\*Postseason

Conference Standing for the Year—4th

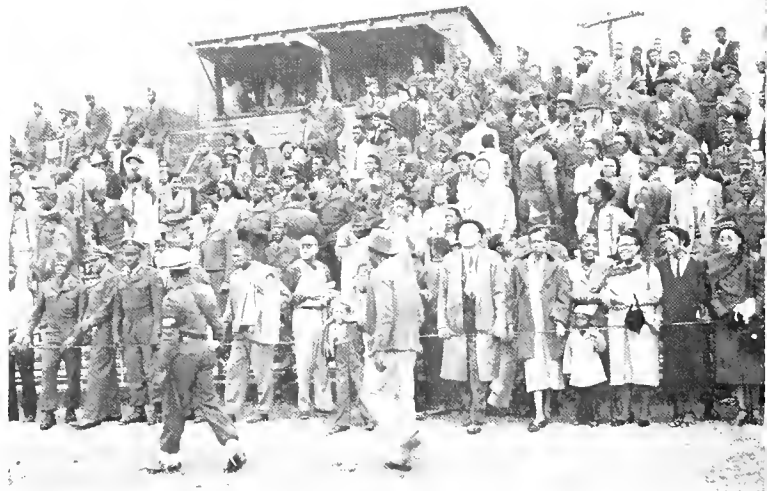


CURTIS P. HARRIS, E&T  
All SEAC End and Tackle, Tri-  
ple-threat punter, pass receiver  
and blocker.

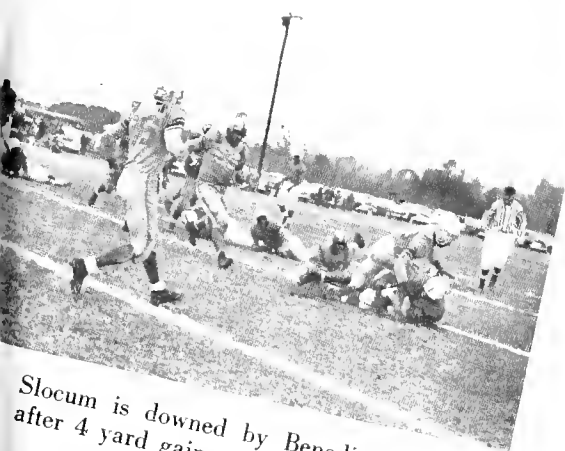
ROBERT SLOCUM, HB  
All-American Halfback, All-  
SEAC triple threat Halfback.



Harris is off for 15 yards against Al-  
bany State.



At the Moss Bowl Classic . . . what a game!



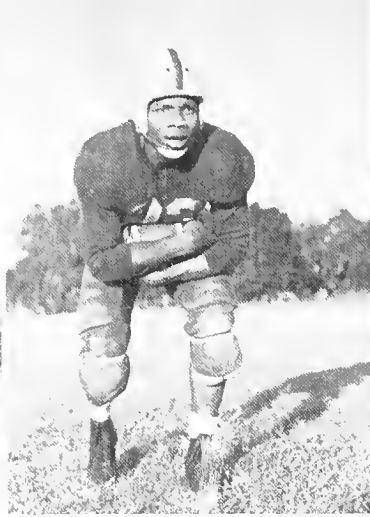
Slocum is downed by Benedict player  
after 4 yard gain.



RAH! RAH! On to Victory under the magnetic spell of SSC's  
vibrant Cheering Squad.



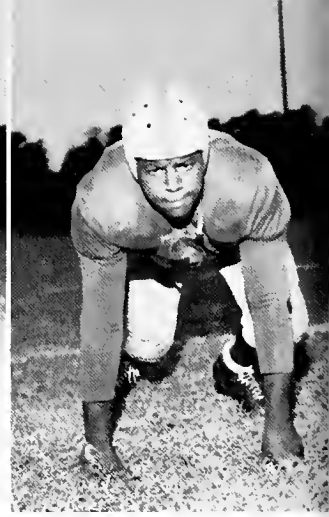
**BOBBIE BROWN, QB**  
Senior, New Orleans, La.  
*Letterman*



**JOSEPH HARDY, QB**  
Senior, Columbus, Ga.  
*Letterman*



**RANDELL GILBERT, C**  
Junior, New Orleans, La.  
*Letterman*



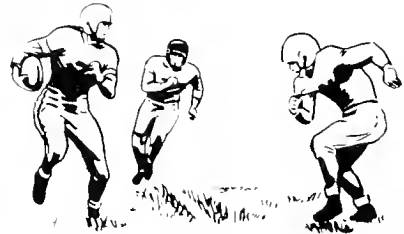
**JOHN JOHNSON, T**  
Freshman, Vidalia, Ga.

Co-captains Neal and Turner

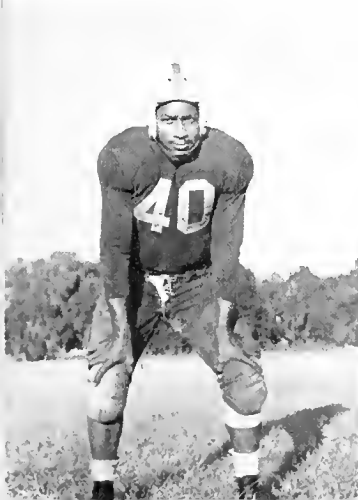


**JAMES NEAL** (left), HB, Columbus, Ga.  
Senior, *Letterman*.

**JOSEPH TURNER** (right) E, Senior, New Orleans, La., *Letterman*.



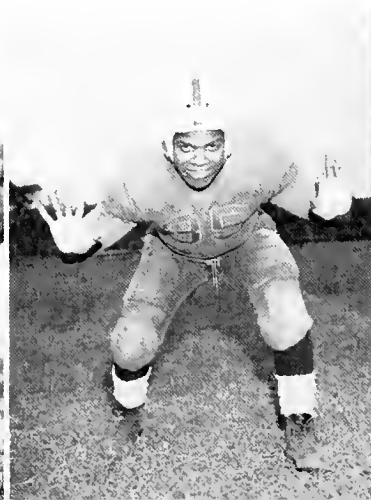
**WILLIE F. JOHNSON, FB**  
Junior, Bainbridge, Ga.  
*Letterman*



**ROBERT SANDERS, G**  
Senior, Columbus, Ga.  
*Letterman*



**HAROLD TAYLOR, G**  
Freshman, Durham, N. C.



**MORGAN THARPE, E**  
Sophomore, Hawkinsville, Ga.





## GIRLS' BASKETBALL SQUAD

(Scores to February 2, 1952)

First row, left to right: Mildred Graham, Audrey Spears, Francie Howard, Margie Mercer, Thelma Williams. Second row: Bessie Williams, Martha Rawls, Dorothy Baldwin, Clara Bryant, Elnora Wright, Ann Ruth Howard. Third row: Mrs. Ella W. Fisher, Co-coach: Neta Belle Staley, Edith Ray, Doris Tharpe, Mary Faison, Oretha Barton, Eloise Cainion, Barbara Matthews.

### 1952 SCHEDULE

January 17—SSC	37	Allen	43
January 18—SSC	42	Benedict	35
January 21—SSC	30	Benedict	22
January 22—SSC	45	Benedict	33
January 23—SSC	23	Allen	35
January 24—SSC	31	Allen	52
January 25—SSC	47	Fla. N&I	34
January 26—SSC	27	Bethune-Cookman	29
January 30—SSC	52	Albany	34
February 2—SSC	32	Fla. A&M	36
February 6—SSC		Fla. A&M	
February 8—SSC		Fla. N&T	
February 11—SSC		Clafin	
February 15—SSC		Ft. Valley	
February 19—SSC		Clafin	



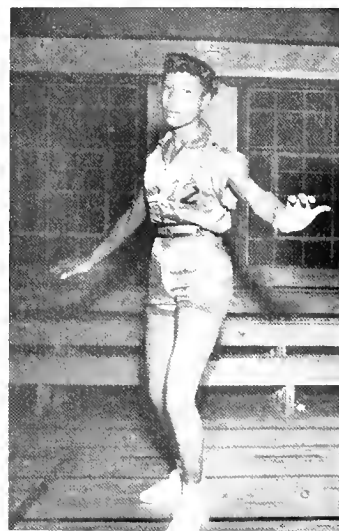
Co-coaches Ella W. Fisher and Geraldine Hooper finger the ball on the Gymn floor.



Varsity Players discuss techniques with Co-coach Fisher. Left to right: Ann Ruth Howard, Margie Mercer, Bessie Williams, Martha Rawls.



DOROTHY BALDWIN  
Guard



CLARA BRYANT  
Guard



ELOISE CAINION  
Guard



NETA STALEY  
Forward





## BOYS' BASKETBALL SQUAD

Front row, left to right: Ebbie Brazile, Forward; Chester Conyers, Forward; Lawrence Shepard, Forward; Earl Brown, Forward. Second row: Charles McDaniels, Forward; Alfred Jackson, Center; Henry Prayle, Guard; Bobbie Brown, Forward. Third row: Maceo Taylor, Center; Curtis Harris, Guard; Phillip Wiltz, Guard; Robert Slocum, Guard; Joseph Turner, Guard; Alvin Paige, Guard.

### 1951-52 BASKETBALL SCHEDULE

(Scores to February 2, 1952)

*Dec. 6—SSC.....62	Tuskegee .....	51	*Jan. 26—SSC.....30	Bethune-Cookman .....	53
*Dec. 7—SSC.....44	Clark College .....	68	Jan. 29—SSC.....53	Paine College .....	46
*Dec. 8—SSC.....47	Morris Brown .....	56	Jan. 30—SSC.....57	Albany State .....	56
Dec. 14—SSC.....56	Clark College .....	68	*Feb. 2—SSC.....58	Fla. A&M .....	76
Dec. 15—SSC.....48	Clark College .....	55	Feb. 6—SSC.....	Fla. A&M .....	
Dec. 19—SSC.....51	S. C. State .....	38	Feb. 8—SSC.....	Fla. Normal .....	
Dec. 20—SSC.....55	S. C. State .....	48	Feb. 11—SSC.....	Claflin .....	
Jan. 11—SSC.....63	Tuskegee .....	62	Feb. 15—SSC.....	Ft. Valley .....	
Jan. 15—SSC.....36	Morris Brown .....	47	*Feb. 19—SSC.....	Claflin .....	
*Jan. 18—SSC.....61	Allen Univ. ....	53	*Feb. 20—SSC.....	S. C. State .....	
*Jan. 19—SSC.....50	Benedict .....	57	*Feb. 23—SSC.....	Paine College .....	
Jan. 21—SSC.....49	Benedict .....	41			
Jan. 22—SSC.....74	Benedict .....	62			
Jan. 23—SSC.....56	Allen Univ. ....	48			
Jan. 24—SSC.....52	Allen Univ. ....	46			
*Jan. 25—SSC.....47	Fla. Normal .....	45			

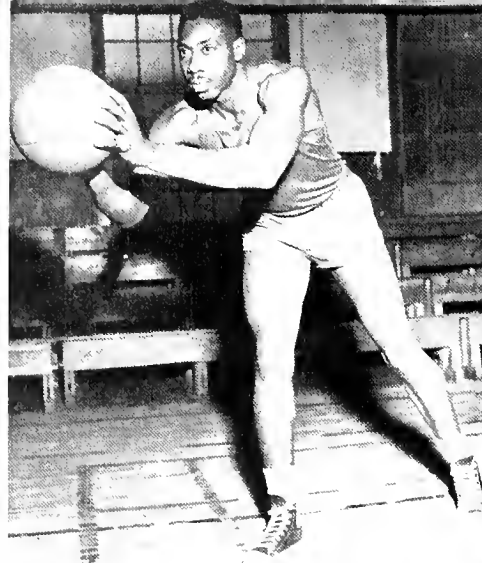
March 7-8 SEAC Tournament in  
Wilcox Gymnasium

\*Games away

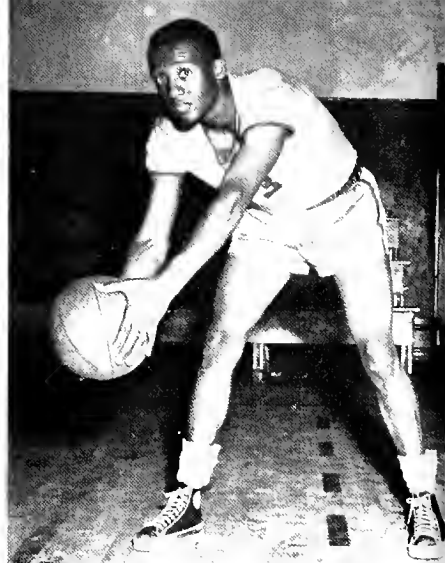




**BOBBIE BROWN, Senior**  
*New Orleans, Louisiana*



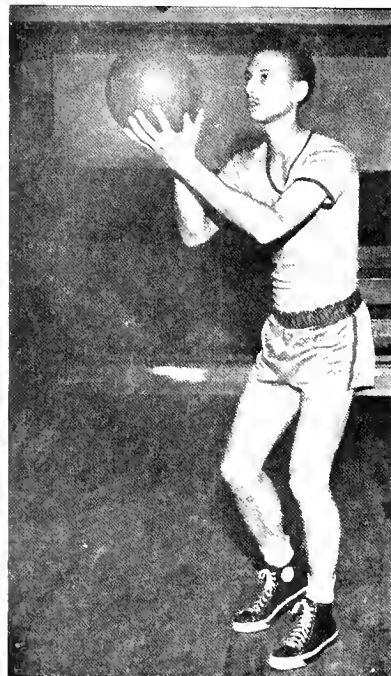
**CURTIS HARRIS, Senior**  
*Columbus, Georgia*



**ALFRED JACKSON, Senior**  
*Chicago, Illinois*



**CHARLES McDANIELS, Senior**  
*Chicago, Illinois*



**ALVIN PAIGE, Senior**  
*Jacksonville, Florida*



**ROBERT SLOCUM, Senior**  
*Columbus, Georgia*

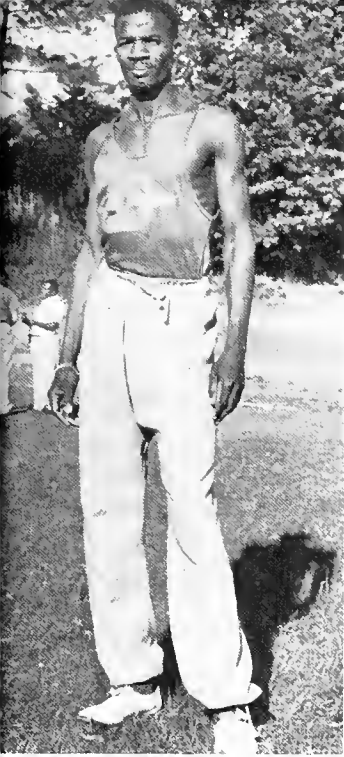
**MACEO TAYLOR, Senior**  
*Chicago, Illinois*

**JOSEPH TURNER, Senior**  
*New Orleans, Louisiana*

**EBBIE BRAZILE, Sophomore**  
*New Orleans, La.*

**LAWRENCE SHEPARD, Sophomore**  
*Chicago, Illinois*





Frank "The Rocket" Prince, internationally famous Panamanian runner and Olympic contender, pauses for the camera.



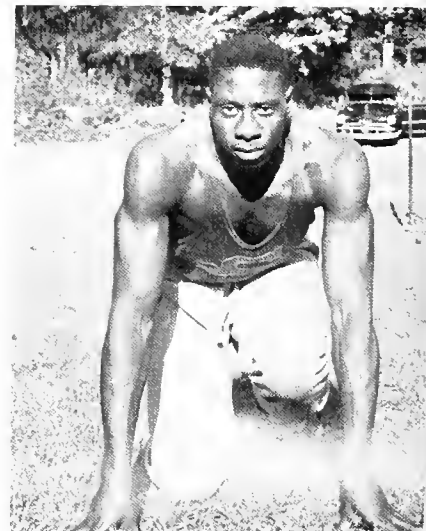
Frank Prince takes the mile relay at Alabama State Relays, Tuskegee.



THE SPEEDY CINDERMEN



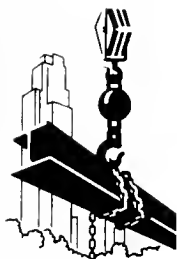
President Patterson of Tuskegee and Coach Wright pose with SSC thinclads at the Alabama Relays.



CURTIS P. HARRIS



To make the sound come forth true, we test on the Dynamic Demonstrator.



Carpentry cadets construct the Press Box, an integral part of public relations, and indispensable at the gridiron contests.



BODY CONSTRUCTION

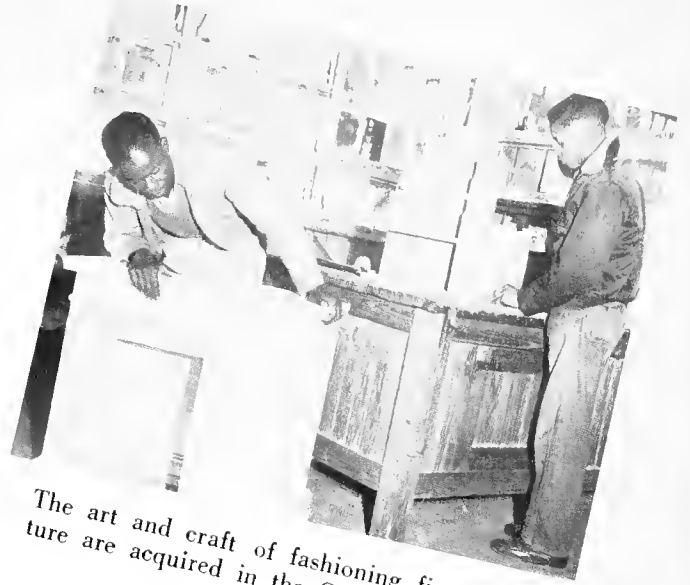
BODY and FENDER



## TRADES AND INDUSTRIES

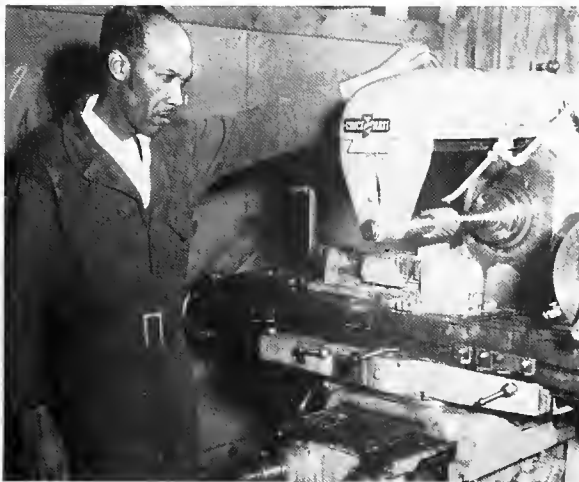


A material Shrine is built as Carpentry students exhibit their skill in construction.



The art and craft of fashioning fine furniture are acquired in the Cabinet Shop.

The purpose of the Division of Trades and Industries is to train men for employment: (1) as mechanics and technicians in the several skilled trades and in industry; (2) as teachers of vocational subjects and industrial arts in the secondary school; (3) as construction foremen and contractors. For those who desire to qualify as teachers of vocational subjects or industrial arts, or as technicians, skilled tradesmen, and contractors, this Division offers specialized training leading to the Bachelor of Science degree. For persons who want special terminal preparation, a special course is provided in the following: Automobile Overhaul and Repair; Automotive Body and Fender Repair; Electrical Maintenance and Installation; General Woodworking and Carpentry; Machine Shop Practice; Masonry; Painting and Decorating; Radio Repair; and Shoe Repair.



Learning how to operate intricate machines is a requisite in the Machine Shop.



What makes the automobile go? Answers to this question are found in the Auto Repair Shop.





#### THE STAFF OF THE GEORGIA AGRICULTURAL EXTENSION SERVICE

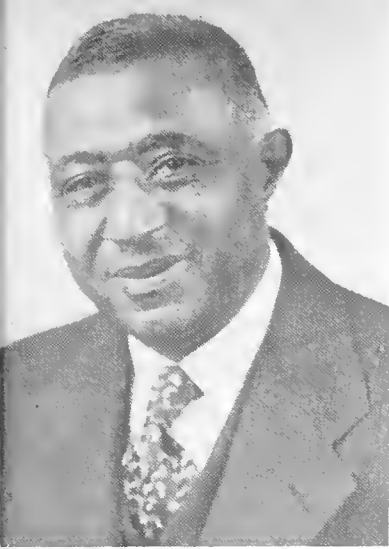
Seated, left to right: Mrs. Vera D. Brown, Clerk; P. H. Stone, State Agent for Negro Work; Mrs. Dora V. Martin, Clerk. Standing: A. S. Bacon, Assistant Supervisor, Negro Work; Alexander Hurse, State 4-H Club Agent; Augustus Hill, Special Negro Agent for rural housing; K. C. Childers, Special Negro County Agent.

The Georgia Agricultural Extension Service for Negroes has its office at Savannah State College. Since Savannah State College was the first institution to offer training in agriculture and related vocations for Negro youth, this Service has maintained its office here since its inception.

This Service directs all agricultural extension services for Negroes in Georgia. Among the areas of service directed by this office are 4-H Club work, rural housing, and farm and home improvement.







WILLIAM E. GRIFFIN  
*Director*  
*Division of General Extension and As-*  
*stant Professor of Social Sciences*

### PROGRAM OF THE DIVISION OF GENERAL EXTENSION

On October 15, 1947, the offices of the Division of General Extension of the University System of Georgia were closed, and administrative offices were moved to the campus of the University of Georgia in Athens. During this transition a number of changes were effected in the program for the Negro students of Georgia. There have been changes in the rules and regulations governing correspondence study, as indicated in the paragraphs which follow:

#### COURSE OFFERINGS

The following courses are offered by the Division: Principles of Economics, Labor Problems, Introduction to Education, Rural School Management, Nature Study, Children's Literature, Occupational Guidance, History of Education, Introduction to English Literature, Advanced Composition, American Literature, American Government, Health Education, United States History through the Civil War, History of the American Negro, Functional Mathematics, College Algebra, General Psychology, Introduction to Sociology, Rural Sociology, and the Family.

#### ADMISSIONS

Enrollments are accepted at any time during the year. Students are admitted to correspondence study on the same basis as residents at the institution. The Division reserves the privilege of cancelling the registration of any student whose first papers indicate insufficient background for the course. Students who desire to use correspondence study for degrees should clear with the Dean of the college of their choice to be sure that they are registering for the proper course. Students in residence at any institution may pursue correspondence courses only on written permission of the Dean of the college residence.

#### CREDITS

Undergraduate non-resident credit is recorded with the Registrar of the college from which the course is taken. A maximum of one-fourth of the total requirements for a degree may be non-resident credit. Students are urged to complete their major subjects in residence. No graduate work is offered by correspondence. The Division does not issue official transcripts.

#### TEACHER CERTIFICATES

The State Department of Education has established regulations covering the use of non-resident credit for certification. Those teachers seeking advancement of certificates should write the State Department of Education, Certification Division, for full instructions regarding their individual requirements.



MRS. MARY BEATON PEARSON  
*Supervisor, Division of General Ex-*  
*ension*  
B.S., Savannah State College

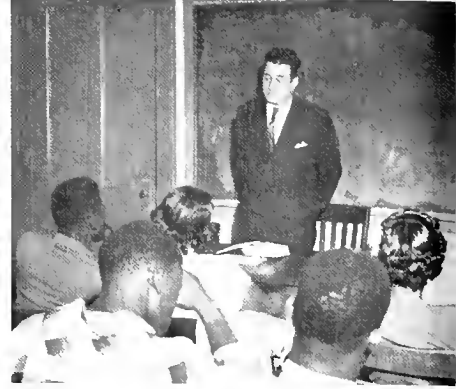
*In Our Hearts We Build A Shrine For Thee . . .*



Arna Bontemps, world famous poet and Fisk University librarian, lectures on the poetry of the Negro.



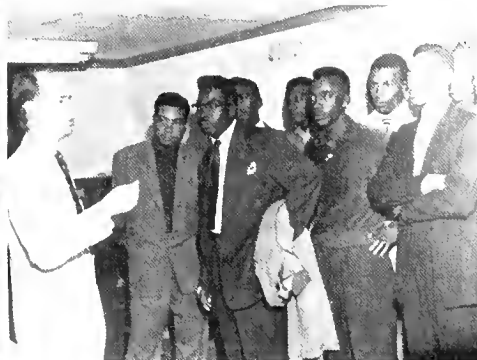
"Kazooka . . ." And the rope went right through Betty's waist, as Fetaque Sanders demonstrated his white magic in Mekdrim Auditorium. That's Careta Rose at the other end of the rope. By the way, Betty came out of the ordeal unscathed.



Attorney Sidney A. Jones, Jr., lectures to class on jurisprudence. An important facet of our Shrine is our everyday association with inspiring personalities.



"Noel, Noel . . ." Our voices blended in glad harmony at the Camilla Hubert Hall Christmas party.



At a local bank, we heard a banker talk on principles of money and banking.



Robert Charles Long, Tenor . . . After his January concert he stood in the receiving line and accepted with grace our sincere plaudits.



The Christmastide and the College Inn . . . A happy season and a popular campus haunt. Here we rest a bit from our exams and enjoy a final get-together before the holidays.



A leader of tomorrow speaks, while today's leaders await their turns at the Annual Leadership Institute.

# BEAUTY PARADE



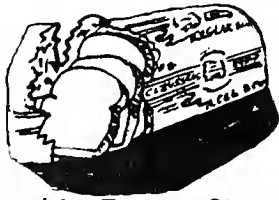
MISS JIMMIE COLLEY  
Senior  
*Ludowici*



MISS ANNE ROBINSON  
Junior  
*Savannah*

Call for

CLAUSSEN'S  
Bread                      Cake



The South's Finest Since 1841

A GREAT NAME IN CLOTHING



"Suits the South"

*Upchurch*  
PIANO  
*Company*



*Jimmie Duker*

COIN MACHINE OPERATORS  
PHONOGRAPHS

"We Serve All Chatham  
County"

PHONE 3-2555                      1209 WEST BROAD

Compliments of  
FOLTZ PHOTOGRAPHY

PHONE 3-1062

10 West Broughton                      Savannah, Ga.

Compliments of  
JOE GARDNER

Phone

110 East Broughton                      Savannah, Ga.

COMPLIMENTS OF  
McIVER BARBER SHOP

502 West Broad Street                      Savannah, Ga.

Compliments of  
FREDDIE'S HOUSE OF BEAUTY

708 WEST BROAD ST. SAVANNAH, GA.



The SSC Campus at midsummer,  
A scene of unrivalled beauty—  
Majestic nature at her best—  
Yes, even Mother Nature smiles  
Favorably upon our shrine . . .

## Keep Georgia Green

Help us grow more trees for tomorrow by being especially careful with lighted cigarettes and matches while in wooded areas. Thanks a lot.



## SAVANNAH TRANSIT COMPANY

824 East Gwinnett Street  
Phone 3-5767

SAVANNAH

GEORGIA





<p>Shop and Save At <b>KARPF'S</b> Everybody's Fashion Store 107 W. Broughton St. Savannah, Ga.</p>	<p>Compliments of <b>THE REVIEW CO.</b> 2 West Bay Street Savannah, Georgia Phone 5159</p>
<p>Compliments of <b>FRIEDMAN'S ART STORE</b> 116 WHITAKER STREET Phone 3-1321 Savannah, Ga.</p>	<p>CONGRATULATIONS <b>ALFRED E. BEACH HIGH SCHOOL</b> O. L. Douglas Savannah Georgia</p>
<p>COMPLIMENTS OF <b>Star Theater</b> 508 W. Broad St. Savannah, Ga.</p>	<p><b>MEN'S QUALITY SHOP</b> Joe Lesser 24 E. Broughton St. Savannah, Ga.</p>
<p>Compliments of <b>MORRIS LEVY'S</b> Savannah's Finest 8 - 14 Broughton St., E. Savannah, Ga.</p>	<p><b>CANN PARK SERVICE STATION</b> 1023 W. Victory Drive PHONE 9651 Savannah, Ga.</p>
<p>Compliments of <b>HALL DRY CLEANERS</b> 2325 Ogeechee Ave. PHONE 2-2454 Savannah, Georgia</p>	<p>Compliments of <b>DUKES RECORD SHOP</b> Phone 3-2555 327 West Broad Street Savannah Georgia</p>
<p><b>HEYMAN &amp; SON</b> Fashiontown Clothes for Men and Boys 311 West Broughton St. Savannah, Ga.</p>	<p>Compliments of <b>NORTH CAROLINA MUTUAL</b> Life Insurance Company 706 W. Broad Street Phone 2-1285 Savannah, Georgia</p>
<p>"Best Wishes for '52" <b>THE DUNBAR THEATER</b> and <b>THE EAST SIDE THEATER</b></p>	<p>Compliments of <b>THE VANITY RECORD SHOPPE</b> 465 W. Broad Street PHONE 3-9976 Savannah, Ga.</p>
<p>COMPLIMENTS OF <b>ASHER SHOE STORE</b> 22 W. Broughton Street PHONE 3-8733 Savannah, Ga.</p>	<p>COMPLIMENTS OF <b>LANG'S</b> Three Big Stores in One PHONE 2-0060 Savannah, Ga.</p>

**KENNICKELL  
Printing Company**

PRINTERS — PUBLISHERS  
Office Supplies



111 YORK ST. SAVANNAH, GA.

**Follow  
the crowd**

TO  
*B. J. James*  
VARIETY  
STORE

Located at entrance  
to the College  
PHONE 9321



*Guaranty  
Life*  
INSURANCE  
CO.

460 West Broad Street  
SAVANNAH GEORGIA



Leading Homefurnishers  
of the South  
Over 67 Years

301 W. BROUGHTON ST. SAVANNAH, GA.

Compliments of  
STOKES SHOE REBUILDERS  
Phone 9417

806 Montgomery St. Savannah, Ga.

Compliments of  
THE FRANK CORPORATION

PHONE 4-6661

322 W. Broughton St. Savannah, Ga.



## FINIS

"In our hearts we'll build a shrine for thee", are the words embodied in our Alma Mater. The essence of this statement has been carried throughout the foregoing pages. The 1952 Yearbook Staff has attempted to present to you in pictorial form the stepping stones which are so vitally necessary in the construction of this precious Shrine.

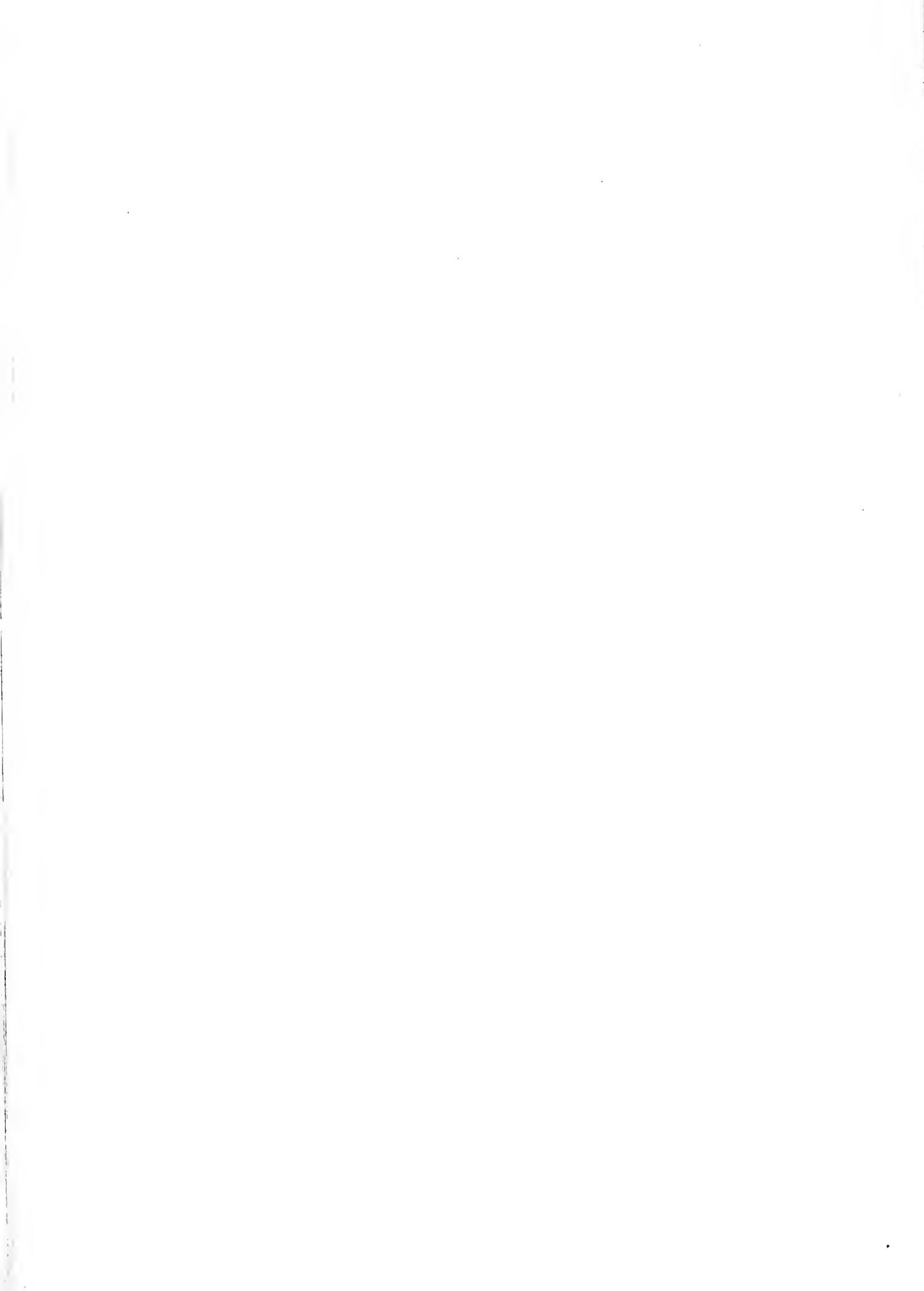
There is much to be derived from the intellectual and aesthetic features here at Savannah State College. These things will forever cling to the heart of every student. Each page expresses the sentiment on the part of every student enrolled at Savannah State College.

The most dynamic Faculty and Administration serve as contractors for each student in that they help lay the plans to be followed in building the Shrine. The students are considered laborers in this endeavor, due to the fact that they carry out the plans. In short, the two groups, working together harmoniously for a common cause, have built and will continue to build throughout the coming years a Shrine that will inevitably become a beacon light in all these United States.

The success of this edition, that is, anticipated success, depended upon cooperation on the part of every member of our vast college family. The Staff wishes to thank Mr. Hatchett for his beautiful strokes with the pen and brush. We also wish to express our sincere appreciation and gratitude to Mr. W. H. Bowens and Charles McDaniels for their photographic ability who have unquestionably produced some of the best photography that can be found anywhere. We doff our hats to Mr. W. C. Scott and Miss Luetta B. Colvin for their unceasing efforts toward the production of the 1952 TIGER. To these and many others too numerous to mention here, we say thanks for a job well done.

EDDIE T. LINDSEY  
*Editor-in-Chief*









Cap 2





