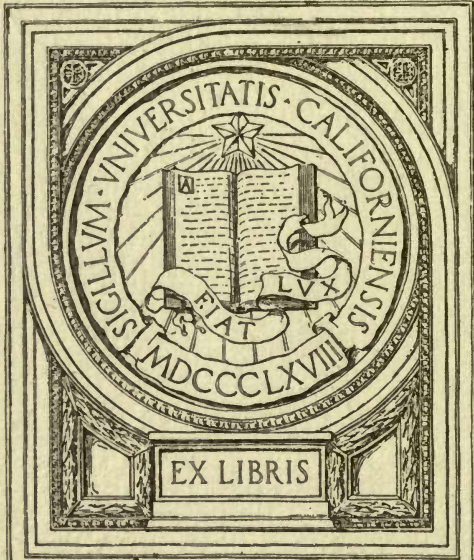


GIFT OF
Walter Mulford



Agric. Forestry Main Library.

570
F 1132
S 21

33

1861

Thomas B. Meehan
J. Franklin Meehan
S. Mendelson Meehan

W. Melford
Established 1854

CAPITAL STOCK, \$100,000

Tree, Shrub & Fruit **SEEDS**

Autumn, 1910

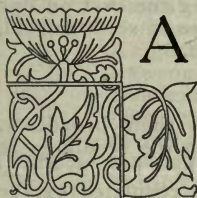
Spring, 1911

Thomas Meehan & Sons

Nurserymen and Tree Seedsmen

GERMANTOWN, PHILA., U. S. A.

Cable Address Meehan, Philadelphia, A, B, C Code, 4th edition



AS WE COLLECT but few more seeds than our usual sales warrant, those expecting to need large quantities for forestry or other purposes are solicited to write us early that we may arrange for collecting them.

We do our best to send out sound and perfect seeds, but in the case of oaks, hickories and chestnuts the seeds are sometimes wormy, a defect that cannot be detected until the worm eats its way out, often after the seeds leave our hands. There are trees, too, that never perfect all their seeds—the *Acer saccharinum* and *Liriodendron* are examples—and there is no way to separate the imperfect seeds.

Not less than one-quarter pound will be supplied at pound rates nor one-quarter bushel at bushel rates. Half ounces will be supplied at ounce rates where the price per ounce is not lower than 20c. Satisfactory arrangements for payment must accompany orders from unknown correspondents.

When seeds are to go by mail, the charge is 9c per pound additional. P. O. orders payable at Philadelphia. For Canada the postage is 18c per pound.

Germination of the Seeds

Seeds of deciduous trees and shrubs are best sown in Fall, pines and similar evergreens in Spring, but deciduous ones will grow very well sown in Spring if kept in good condition through the Winter. When sown in Spring seeds of a hard, bony nature, such as the yellow locust, are best soaked in hot water for a day or two and then sown at once. Seeds of maples, ash, magnolia, beech, all nut trees, as well as many other kinds, require to be kept slightly moist over Winter if not sown in Fall; on the other hand, catalpa and some others may be kept quite dry until Spring comes.

All Spring sowings should be early; even if the ground freezes later it won't injure the seeds at all.

Junipers, hollies and a few similar seeds remain a full year before sprouting. It is just as well, therefore, to keep them in a box of soil until the next Autumn, then sow them.

These directions should insure tolerable success in raising seedlings. The greater the experience, of course, the greater the success.

To germinate, seeds require certain conditions of moisture, temperature and time which they do not always meet with after sowing, hence fail to appear the first season. Examine them at the close of Spring, and if found sound do not disturb them, and their germination may be looked for the season following.

Notice

We wish to remind our customers that while using our best efforts to supply such seeds as will prove satisfactory we give no warranty as to quality or productiveness or percentage of growth, there being too many causes known and unknown which prevent good seeds from germinating. Orders are accepted and shipped on these terms. Samples will be furnished when applied for. Should shipments received prove unsatisfactory from any cause, customers will kindly notify us within seven days, otherwise it is understood the seeds are accepted.

Our Reputation

Our firm has been in the seed and nursery business for over fifty years and has correspondents all over the world. We have still customers buying from us whose names were among the first on our books. Having 250 acres in nursery, we can make use of seeds unsold, enabling us to have fresh seeds to offer every season.

Hints on Seed Sowing

The general practice in sowing seeds is to sow them broadcast, in beds three feet in width, which allows of weeding the seedlings as they grow. The young plants are transplanted when two or three years old. The covering of seeds with soil is to be regulated by the size of the seeds. An acorn or a hickory nut of a thickness of an inch should have a covering of two inches of soil, while those of dust-like size require but little more than a dusting of soil over them.

A light soil is better for seeds than a heavy one; in fact, sand alone has been found good for covering seeds, allowing the seeds to push freely through it.

Shade is a great help; in fact, almost necessary, as seeds germinate best in darkness. This is best afforded by a covering of forest leaves, kept in place by a skeleton frame or some other contrivance. The leaves should be removed gradually when the seedlings commence to appear above ground, as light is needed then.

We are often asked whether when walnuts and other nuts are wanted for forestry purposes the nuts can be set where trees are wanted. We do not recommend it. Rarely every nut grows, so that there would be many vacancies under the plan. Better to sow in beds and transplant later.

Evergreens

	Per lb.	Per oz.
Abies (Picea) amabilis, California Fir.....	\$4 00	\$0 40
“ “ Arizonica, Arizona Cork Fir.....	10 00	1 00
“ “ balsamea, Balsam Fir.....	1 25	15
“ “ brachyphylla	3 50	30
“ “ concolor, California Silver Fir.....	2 25	25
“ “ concolor, Colorado Silver Fir	2 00	25
“ “ firma, Japanese	2 50	25
“ “ Fraseri, Double Balsam.....	3 50	35
“ “ grandis, Pacific Coast Fir.....	3 00	30
“ “ magnifica “ “ “	4 00	50
“ “ nobilis “ “ “	3 50	35
“ “ Nordmanniana, Nordman Fir.....	1 50	15
“ “ pectinata, European Silver Fir.....	1 25	15
“ “ sub-alpina	4 50	50
“ “ Veitchii	2 50	25
Araucaria excelsa	2 00	20
Arctostaphylos glauca	1 50	15
“ pungens	1 50	15
“ tomentosa	2 50	20
Berberis Aquifolium (Mahonia).....	1 25	15
“ Japonica “	2 50	25
Brahea edulis Palm.....	1 25	15
“ filamentosa “	1 00	15
“ glauca “	2 00	20
“ robusta “	1 75	25
“ Sonoræ	3 00	30
Buxus sempervirens, Box.....	1 50	15
Cedrus Atlantica, Mt. Atlas Cedar	2 25	30
“ Deodara, Deodar Cedar	2 50	30
“ Libani, Cedar Lebanon	2 25	30
Cephalotaxus Fortunei	2 00	25
Cinnamomum Camphora, Camphor Tree.....	1 50	15
Crataegus Pyracantha, Evergreen Thorn.....	1 00	15
Cryptomeria Japonica, Japanese Cedar.....	1 50	20
Cupressus Arizonica	4 50	50
“ Goveniana	3 00	30
“ Guadalupensis	3 25	30
“ Benthamiana	3 00	30
“ Knightiana	3 00	30
“ Lawsoniana, Lawson's Cypress	3 00	30
“ Lindleyi	3 25	35
“ macrocarpa, Monterey “	1 25	20
“ McNabiana	3 00	30
“ sempervirens	1 50	15
“ thurifera	3 25	35
“ thyoides, White Cedar	3 75	30
Eucalyptus amygdalina	per packet, \$0 25	8 00
“ corynocalyx	25	8 00
“ globulus	25	4 50
“ Gunnii	25	6 00
“ leucoxyton	25	8 00
“ obtusifolia	25	10 00
“ resinifera	25	8 00
“ robusta	25	4 50
“ rostrata	25	4 50
“ viminalis	25	4 50
Garrya elliptica		75
Gaultheria procumbens, Winter Green, Tea Berry.....	2 00	25
“ Shallon	3 50	35

Evergreens---Continued

	Per lb.	Per oz.
Ilex Aquifolium, English Holly	1 00	10
“ opaca, American	75	10
Juniperus Chinensis, Chinese Juniper	1 75	15
“ Californica	3 00	30
“ communis, Common “	1 50	15
“ occidentalis, Western “	2 25	25
“ monosperma	1 25	15
“ pachyphlaea	1 50	15
“ prostrata	1 50	15
“ Pinchoti	2 50	25
“ Sabina, Savin “	1 50	15
“ sabinoides	2 25	25
“ scopulorum	1 50	15
“ suecica, Swedish “	1 50	15
“ Virginiana, Red Cedar	1 00	15
Kalmia angustifolia, Laurel	6 00	60
“ latifolia, Sheep Laurel	5 00	50
Laurus nobilis, Sweet Bay	1 25	15
Libocedrus decurrens	3 00	30
Magnolia grandiflora, Evergreen Magnolia	1 50	20
Nuttallia cerasiformis	4 50	40
Oreodaphne Californica, Cal. Nutmeg	1 25	15
Persea Carolinana	3 25	30
Photinia arbutifolia	1 00	15
Picea (Abies) alba	3 25	40
“ “ Alcoquiana, Japanese	3 50	35
“ “ aganensis	3 50	35
“ “ Engelmanni	4 25	50
“ “ excelsa, Norway “	1 25	15
“ “ Hookeriana	8 00	75
“ “ nigra, Black “	3 25	30
“ “ Orientalis, Oriental “	3 75	35
“ “ pungens, Colorado Blue “	3 50	35
“ “ polita	3 50	40
“ “ rubra, Red “	3 50	30
“ “ Sitchensis (Menziesii)	4 00	35
Pinus aristata, Colorado Fox-tail Pine	1 50	15
“ Austriaca, Austrian “	3 50	35
“ Banksiana, Jack “	2 50	25
“ Canariensis	1 50	15
“ cembra, Swiss “	4 25	50
“ cembroides, Mexican Stone “	6 00	60
“ contorta	3 00	30
“ Coulteri, Big Cone “	2 50	25
“ densiflora	1 75	20
“ edulis, Pinyon “	2 50	35
“ excelsa, Himalayan “	3 00	30
“ flexilis, Colorado “	2 50	30
“ insignis, Monterey “	3 00	30
“ Jeffreyi	2 00	20
“ Koraiensis	2 00	20
“ Lambertiana, Sugar “	2 25	25
“ Laricio	2 50	25
“ Massoniana	4 00	35
“ mitis	2 50	25
“ monophylla, Single Leaf “	4 50	50
“ monticola, Pacific Coast White Pine	2 50	30
“ mughus, Dwarf Mountain Pine	4 50	50
“ muricata	6 00	50
“ Murryana, Lodgepole “		

Where seeds are to go by mail, add 9 cts. per lb. to cover postage.

Evergreens---Continued

	Per lb.	Per oz.
Pinus Nelsoni	4 50	40
“ palustris, Yellow Broom	3 00	30
“ Parryana, Mexican Pinyon	4 00	40
“ Pinea	1 25	15
“ ponderosa, Heavy Wooded	2 25	25
“ “ (From Colorado) (scopulorum)	2 50	25
“ resinosa, Red, Norway Pine	2 75	25
“ rigida, Pitch	1 50	15
“ Sabiniana	2 25	25
“ Strobis, White	2 50	25
“ sylvestris, Scotch	4 25	40
“ taeda, Loblolly	2 00	25
“ Thunbergii	3 00	30
“ Torreyana	4 00	40
“ tuberculata	2 50	25
Podocarpus Chinensis	1 00	15
Prinos glaber, Ink Berry	1 00	15
Prunus (Cerasus) Caroliniana	1 50	15
“ “ ilicifolia	3 75	35
Pseudotsuga Douglasii, Douglas Spruce	3 75	35
“ “ “ (Colorado)	6 50	75
“ macrocarpa	1 75	20
Retinispora obtusa	1 75	20
“ pisifera	4 00	60
Rhododendron Catawbiense, Mountain Laurel	3 00	50
“ maximum	1 25	15
Sabal Adansoni, Palm	1 25	15
“ Palmetto, Palm	1 25	15
“ serrulata, Saw Palm	2 25	30
Sciadopitys verticillata, Umbrella Pine	6 50	60
Sequoia gigantea, California Big Tree	3 50	35
“ sempervirens, California Red Wood	1 50	15
Taxus baccata, English Yew	4 00	40
“ brevifolia, California Yew	2 00	25
Thuja gigantea, Western Arbor-vitae	1 00	15
“ occidentalis, American	1 50	15
“ orientalis, Chinese	1 50	15
“ “ aurea, Chinese Golden	1 50	15
Torreya Californica	4 25	40
Tsuga (Abies) Canadensis, Hemlock Spruce	7 50	75
“ heterophylla	7 50	75
“ Mertensiana, Western	3 00	30
“ Sieboldi, Japanese	1 50	15
Ulex Europaea, Furze	2 25	30
Yucca angustifolia, Adam's Needle	2 00	20
“ baccata	2 00	20
“ brevifolia	2 00	20
“ filamentosa	2 00	20
“ Whipplei	2 00	20

Deciduous Trees and Shrubs

	Per lb.	Per oz.
Acacia constricta	3 00	30
• Acer campestre, English Maple	75	10
“ circinatum	2 00	20
“ dasycarpum, Silver	1 00	15
“ Ginnale	2 00	25
“ glabrum	1 50	20
“ macrophyllum, Oregon	1 00	15
“ platanoides, Norway	1 00	10

Where seeds are to go by mail, add 9 cts. per lb. to cover postage.

Deciduous Trees and Shrubs---Continued

	Per lb.	Per oz.
Acer pseude-platanus, Sycamore	1 00	10
“ rubrum, Red	2 50	25
“ saccharinum, Sugar.	1 00	10
“ spicatum, Mountain	1 50	15
“ striatum, Striped	1 50	15
Ailanthus glandulosa, Tree of Heaven	1 00	15
Albizzia Julibrissin, Mimosa or Paradise Tree	1 50	15
Alnus glutinosa, Alder	75	10
“ serrulata, Swamp Alder	1 00	15
Amelanchier Botryapium	1 75	15
Amorpha fruticosa, Indigo Shrub	1 25	15
Andromeda axillaris		60
“ calyculata		60
“ Catesbaei		50
“ ligustrina		60
“ Mariana		60
“ nitida		50
“ racemosa		1 00
“ speciosa		1 00
Aralia spinosa, Angelica Tree	4 00	40
Arbutus Menziesii	2 00	25
Asimina triloba, Papaw	1 00	15
Atriplex lentiformis	2 50	25
Azalea arborescens		1 00
“ calendulacea		1 00
“ mollis		1 00
“ nudiflora		1 00
“ viscosa		1 00
Baccharis halimifolia, Groundsel Shrub		1 00
Berberis Fremonti, Silver-leaved Barberry	5 00	50
“ Thunbergii, Japanese Barberry	1 50	15
“ vulgaris, Common Barberry	1 00	15
“ purpurea, Purple Barberry	1 75	15
Betula alba, European White Birch	1 00	15
“ excelsa, Yellow	2 00	20
“ lenta, Sweet	1 50	15
“ papyracea, Paper	1 75	20
“ populifolia, Poplar	1 00	15
“ rubra, Red	2 00	20
Callicarpa Americana	1 00	15
“ purpurea	2 00	20
Calycanthus floridus laevigatus, Sweet Shrub	1 00	15
“ occidentalis, Western	2 50	25
Caragana arborescens, Siberian Pea	1 25	15
Carpenteria Californica		1 75
Carpinus Americana, Hornbeam	1 25	15
“ Betulus, European	1 00	15
Carya alba, Shellbark Hickory	per bushel, \$5 50	15
“ amara, Bitter-nut	“ “ “ 4 25	20
“ olivæformis, Pecan-nut	“ “ “ 8 00	40
“ porcina, Pig-nut	“ “ “ 4 25	15
“ sulcata, West'n Shellbark	“ “ “ 4 00	15
“ tomentosa, White	“ “ “ 4 00	15
Cassia Marilandica, Wild Senna	1 00	15
Catalpa bigonioides, Eastern Catalpa	1 50	15
“ speciosa, Western Catalpa. This is the true forest tree, speciosa, guaranteed true to name.	2 00	20
Ceanothus Americanus	2 25	20
“ divaricatus		1 00
“ thyriflorus	4 50	50

Where seeds are to go by mail, add 9 cts. per lb. to cover postage.

Deciduous Trees and Shrubs---Continued

	Per lb.	Per oz.
Ceanothus integerrimus	4 50	50
Celtis occidentalis, Nettle Tree	1 00	15
Cephalanthus occidentalis	1 00	15
Cercis Canadensis, Judas Tree	1 50	15
Cercocarpus parvifolius		75
Chilopsis linearis	2 00	25
Chionanthus Virginica, White Fringe	1 25	15
Citrus trifoliata, Hardy Orange	2 00	20
Cladrastis tinctoria, Virgilia	3 50	35
Clethra alnifolia, Sweet Pepper Bush	2 50	30
Colutea arborescens	1 00	15
Cornus alternifolia, Blue-berried Dogwood	1 00	10
" florida, Large White Dogwood	1 00	10
" Mas, Cornelian Cherry	1 00	10
" Nuttalli, Pacific Coast Dogwood	1 50	20
" paniculata		15
" sericea, Silky Dogwood	1 00	10
Corylus Americana, Hazel Nut	75	10
Cratægus coccinea, White Thorn, berries	75	10
" cordata, Washington "	1 00	10
" crus-galli, Cockspur "	75	10
" oxycantha, English Thorn, berries	75	10
Cyrilla racemiflora	1 25	15
Cytisus Scoparius, Scotch Broom	1 00	15
Diospyros Virginiana, Persimmon	1 00	15
Euonymus Americanus, Burning Bush	1 50	20
" atropurpureus, "	1 50	20
Fagus ferruginea, American Beech	1 00	10
" sylvatica, European "	1 25	15
" " purpurea, Blood-leaved	2 75	30
Fouquieria splendens	2 50	25
Fraxinus Americana, White Ash	1 00	15
" Arizona	2 00	20
" excelsior, European "	75	10
" Oregona,	2 00	20
" Ornus, Flowering "	1 00	15
" pubescens, Red "	1 25	15
" quadrangulata, Blue "	1 50	15
" sambucifolia, Black "	1 50	15
" viridis, Green "	1 00	15
Fremontia Californica		1 00
Garrya elliptica		75
Gaylussacia resinosa, Huckleberry	1 50	15
Gleditschia triacanthos, Honey Locust	75	10
Gymnocladus Canadensis, Kentucky Coffee	75	10
Halesia diptera, Snowdrop Tree	1 50	15
" tetraptera "	1 25	15
Hamamelis Virginica, Witch Hazel	1 50	20
Hibiscus Syriacus, Althæa	1 25	15
Hippophæa rhamnoides, Sea Buckthorn	1 50	15
Hydrangea arborescens	2 00	20
Itea Virginica	2 50	20
Juglans cinerea, Butternut	per bushel, \$2.75	15
" Californica		75
" nigra, Black Walnut	2 75	15
" regia, English "	5 00	30
" rupestris, Arizona Walnut		75
Koelreuteria paniculata, Varnish Tree	1 50	15
Larix Europæa, European Larch	2 50	25
" leptolepis, Japanese "	3 00	30

Where seeds are to go by mail, add 9 cts. per lb. to cover postage.

Deciduous Trees and Shrubs---Continued

	Per lb.	Per oz.
Larrea tridentata	3 00	30
Laburnum vulgare	1 25	15
Lindera Benzoin, Spice Bush	1 00	15
Lagerstroemia Indica		60
Ligustrum Iboia	1 00	15
Liquidambar styraciflua, Sweet Gum	2 75	30
Liriodendron tulipifera, Tulip Tree	1 00	15
Lonicera Tartarica	1 50	25
Maclura aurantiaca, Osage Orange	1 00	15
Magnolia acuminata	1 50	20
" Fraseri		50
" glauca, Sweet Bay	1 50	20
" grandiflora, Evergreen	1 50	20
" macrophylla	2 50	25
" tripetala	2 00	20
Melia umbraculiformis, China Tree	1 00	15
Morus alba, White Mulberry	1 50	20
" rubra		50
" tatarica, Russian "	2 50	25
Myrica Californica, Wax Myrtle	2 50	25
" cerifera	1 25	15
Negundo aceroides, Ash-leaved Maple (Western)	1 00	10
Nyssa aquatica, Sour Gum	1 50	15
" multiflora " "	1 00	15
" uniflora, Tupelo, Sour Gum	1 00	15
Ostrya Virginica, Iron Wood	2 00	20
Oxydendrum arboreum (Andromeda)	3 00	30
Parkinsonia aculeata	3 00	35
" Torreyana	3 00	30
Paulownia imperialis, Empress Tree	2 00	35
Phellodendron Amurense	1 00	15
Platanus occidentalis, American Plane	1 00	15
" orientalis, Oriental " "	1 00	15
" Wrightii	1 50	15
Populus Wislizeni	1 50	15
Prinos verticillatus, Deciduous Holly	1 00	15
Prosopis pubescens, pods, Tornio Bean	1 25	15
" juliflora, pods, Mesquite Bean	1 25	15
Prunus Americana, Wild Plum	1 00	10
" maritima, Beach " "	1 50	15
" serotina	75	10
Ptelea trifoliata, Hop Tree	1 25	15
Pyrus Americana, American Mountain Ash	1 50	15
" Aucuparia, European " "	1 00	15
" arbutifolia	1 25	15
Quercus alba, White Oak	per bushel, \$5 00	25
" agrifolia	" "	1 00
" aquatica	" "	6 00 50
" bicolor, Meadow " "	" "	5 00 25
" Catesbæi	" "	5 00 50
" Cerris, Turkey " "	" "	50
" chrysolepis		1 00
" cinerea, Upland Willow Oak	" "	7 00 50
" coccinea, Scarlet Oak	" "	6 00 25
" falcata, Spanish " "	" "	6 00 25
" Garryana		1 00
" ilicifolia, Scrub, " "	" "	7 00 40
" imbricaria, Laurel " "	" "	7 00 40
" laurifolia, Southern Laurel Oak	" "	7 00 50
" lyrata	" "	6 00 35

Where seeds are to go by mail, add 9 cts. per lb. to cover postage.

Deciduous Trees and Shrubs---Continued

	Per lb.	Per oz.
Quercus Michauxii	5 00	35
“ macrocarpa, Burr Oak	5 00	25
“ nigra, Black Jack	6 00	35
“ obtusiloba, Post	6 00	35
“ palustris, Pin	8 00	50
“ Phellos, Willow	7 00	50
“ Prinus, Chestnut	5 00	25
“ Robur, English		50
“ rubra, Red	4 50	25
“ Texana	7 00	50
“ tinctoria, Black	5 00	30
“ Wislizeni	1 00	
Rhamnus Caroliniana, Buckthorn	1 50	15
“ cathartica	1 25	15
“ Frangula	1 25	15
“ Purschiana	3 00	35
Rhus copallina, Shining Sumach	1 00	10
“ Cotinus, Mist Bush	1 75	20
“ glabra, Smooth Sumach	1 00	10
“ typhina, Stag's Horn Sumach	1 00	10
Ribes sanguineum, Flowering Currant		35
Robinia hispida		75
“ pseud-acacia, Yellow or Black Locust	60	10
Romneya Coulteri		1 25
Rosa setigera, Berries, Wild Prairie Rose	1 00	15
Salisburia adiantifolia, Ginkgo	1 00	15
Sambucus Canadensis, Elder	1 25	15
Sapindus Drummondi	2 00	20
“ marginatus, Soap-berry	1 50	20
Sassafras officinale	1 25	15
Sophora Japonica, Pagoda Tree	1 25	15
Spiræa opulifolia		30
“ tomentosa		30
Staphylea trifolia, Bladder-nut	1 25	20
Syringa villosa, Chinese Lilac	1 50	15
“ vulgaris, Common Lilac	1 50	15
Taxodium distichum, Deciduous Cypress	1 25	15
Tilia Americana, American Linden	1 00	15
“ Europæa, European	1 25	15
Ulmus Americana, American Elm	1 50	15
“ campestre, European	1 50	15
“ fulva, Slippery	2 25	25
“ montana, Scotch	1 50	15
Vaccinium arboreum, Bush Huckleberry	1 50	20
“ corymbosum	2 00	20
“ macrocarpon, Cranberry, clean seed		2 50
“ Pennsylvanicum, Huckleberry	1 50	15
“ stamineum	1 25	15
Viburnum acerifolium	1 25	15
“ dentatum	1 00	15
“ Lantana	1 25	15
“ Lentago	1 25	15
“ nudum	1 50	15
“ Oxycoccus	1 00	15
“ prunifolium	1 25	15
Zanthoxylon fraxinæfolium, Prickly Ash	1 50	20

Vines and Climbers

Ampelopsis heterophylla variegata, Variegated Grape ...	\$0 50
“ Veitchii, Japan Creeper	\$1 25
“ Virginica, Virginia	1 25

Where seeds are to go by mail, add 9 cts. per lb. to cover postage.

Vines and Climbers---Continued

	Per lb.	Per oz.
Celastrus scandens, Staff Vine	1 00	15
Clematis flammula, Sweet Clematis	1 50	25
“ coccinea, Scarlet Clematis		1 25
“ paniculata, Japanese Clematis	3 00	30
“ Virginiana	2 00	30
“ vitalba, English Clematis	1 50	15
Hedera Helix, Ivy	1 00	10
Menispermum Canadense, Moon Seed	1 50	20
Passiflora incarnata, Passion Flower	3 00	30
Smilax glauca	1 75	30
“ hispida	1 25	15
“ laurifolia	1 25	15
“ rotundifolia	1 25	15
“ tamnoides	1 25	15
“ Walteri	1 50	15
Tecoma radicans, Trumpet Vine	1 50	20
Vitis. See Fruits.		
Wistaria frutescens	1 50	20
“ magnifica	2 00	20
“ sinensis	2 75	30

Many of the foregoing seeds can be supplied in large quantities, and to those who order in 25-pound or 25-bushel lots, we will make a discount on the quoted prices.

If to be sent by mail, add 9c per lb. for postage.

Fruits

	Per lb.	per oz.
Apple, French Crab. Prices per bushel on application..	50	
Cherry Mahaleb, \$18.00 per bu.; 3 bus. at \$17.00 per bu..	50	
Chestnut, American	30	
“ Spanish	35	
Grape, Vitis æstivalis	1 00	15
“ “ cordifolia	1 00	15
“ “ labrusca	1 00	15
“ “ riparia	1 00	15
“ “ rotundifolia	2 00	20
Hazel Nut, American.....	75	
Mulberry, White	1 50	20
“ Russian	2 00	25
Peach pits. Natural, per bu., \$2.75.....	15	
Pear, French	1 50	
Pear, Japan	2 25	
Pear, Kieffer	3 25	30
Pecan Nut	per bushel, \$8.00	30
Quince	1 50	
Shellbark	per bushel, \$5 50	20
Walnut, Arizona	75	
“ Black	2 75	15
“ Butternut	2 75	15
“ California	75	
“ English	5 00	30

Inquiries for large lots solicited.

If to be sent by mail, add at the rate of 9c. per pound to cover postage.

Sacks and box and packing charged additionally.

THOMAS MEEHAN & SONS

NURSERYMEN AND TREE SEEDSMEN

Germantown, Philadelphia, U. S. A.

Cable Address Meehan, Philadelphia, A, B, C Code, 4th edition



301960

SD391

P3

v.1

★★

UNIVERSITY OF CALIFORNIA LIBRARY

