

S B  
113  
B7

# Brown Brothers Company

---

---

## *Continental Nurseries*

---

---

TREES AND PLANTS FOR  
THE WORLD OUT OF DOORS



Rochester, New York, U. S. A.

*The Flower City*



Class SB 113

Book B7

Copyright N<sup>o</sup> \_\_\_\_\_

COPYRIGHT DEPOSIT.

LIBRARY of CONGRESS  
Two Copies Received  
APR 28 1809  
Copyright Entry  
Apr. 28, 1909  
CLASS 0. XXC No.  
237913  
COPY 3.

1/1/07

SB113  
B7



# INTRODUCTION

It is with much pride that we issue this magnificent collection of illuminated illustrations of some of the choicest varieties of fruits, trees, shrubs and hardy flowers.

Never before has there been produced any collection of a like nature for commercial purposes. No expense has been spared to obtain the best possible results of artistic skill in producing effects absolutely true to nature.

The originals for each and every plate are studies from nature by the famous water-color artist, Mr. A. Lunzer of New York City and represent many months labor on his part in securing his subjects and portraying them.

For nearly three years, the artists of the Stecher Lithographic Company of Rochester, N. Y., have been engaged in the reproduction of Mr. Lunzer's paintings for our sole use in the compilation of this volume and we feel that it has been most faithfully done. We give particular credit to Mr. Thos. F. Brown, of said Company, who has looked after all details during this time.

We believe that upon consideration of the high class work in every detail in the production of this book, we have just claim to having achieved the acme of perfection in Plate Book style.

We know it will be found very instructive and most enlightening on the beauties of nature as found in her products that are here shown; there are no exaggerations of size or color. We can supply stock of fruits, trees, shrubs or flowers that will produce specimens equal to any illustrated here.

It will also prove to be invaluable in its assistance in making selections for orders. We can always be relied on to supply any of the varieties included here in high grade quality of stock.

We call particular attention to the grand showing of the beautiful hardy perennials and bulbs in the latter part of the book. We cannot say too much in urging the increased use of these splendid old-fashioned flowers; they cost but little, require but little care and constantly improve with age. No order-list should be complete without some of these.

It is necessarily impossible to illustrate, in a book of this character, more than a small number of the almost unlimited varieties of fruits, trees, shrubs and flowers that are grown by us in our several nurseries. We have, however, made a careful selection for this purpose of the best of such sorts as we have found in our forty years experience to be wholly desirable.

There are, too, many other varieties that are illustrated and described fully in our new 1909 catalogue, which embraces all varieties of fruits and ornamentals grown by us. This means a complete list of all fruits, trees and plants known to horticulturists that can be successfully grown in this latitude.

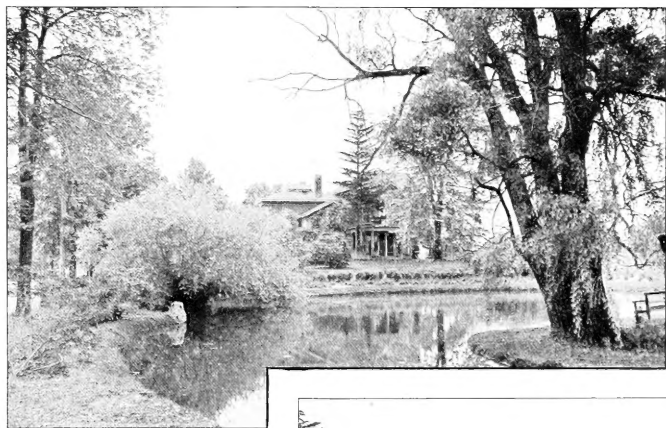
For many years, we have been growing and supplying a large proportion of the fruit stock planted in this famous fruit section of the Lake Region. During this time, we have been constantly adding varieties of deciduous ornamentals and evergreens. We have over 1200 acres of nursery stock and 50,000 square feet of glass for propagation. We grow and can supply any known hardy plant, tree or shrub.

Our extensive storage and packing cellars enable us to ship goods earlier and later than would otherwise be possible, as we pack all goods under cover. All orders, large or small, have equally prompt and careful attention; all shipments are carefully inspected and checked and every means taken to avoid errors and to give perfect satisfaction to our patrons.

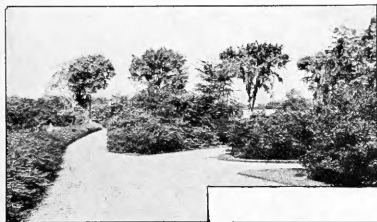
We solicit and will appreciate continued patronage and extend our compliments.

Very truly,

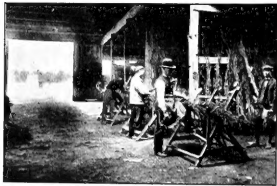
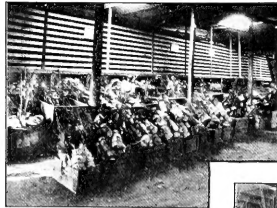
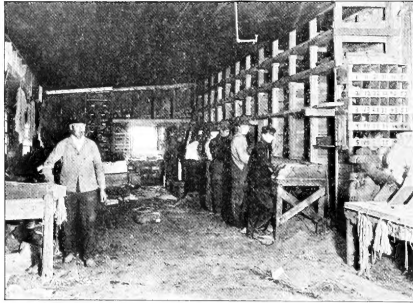
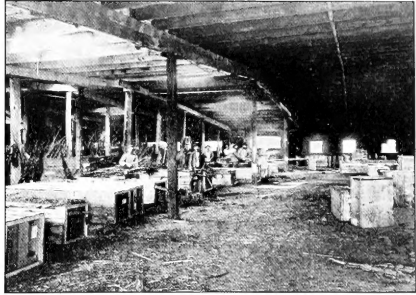
BROWN BROTHERS COMPANY.



Scenes from extensive office grounds—Formal garden  
—Artificial Lake—Drives, with border of Baby Rambler  
Roses, large expanse of lawn, etc.



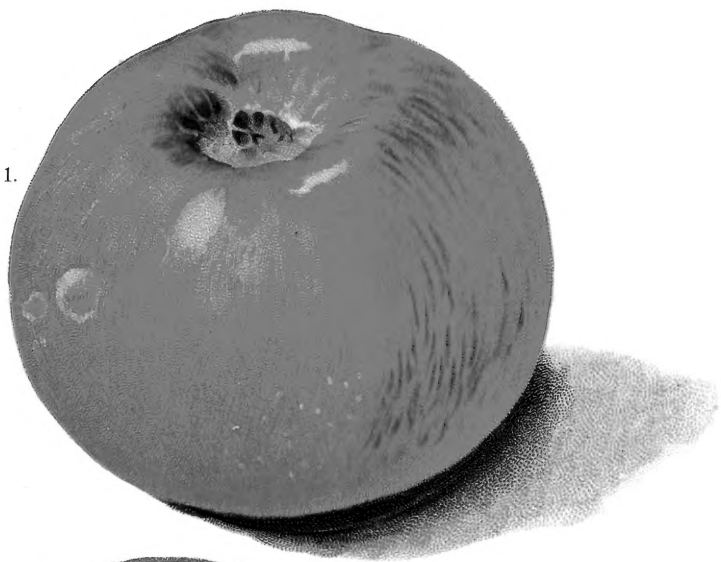
Further scenes from office grounds and nurseries adjoining.



Scenes at packing cellars; tying up trees, wrapping shrubs and Roses, boxing shipments, etc. All done under cover.



1.



2.



1. Apple, Crimson Beauty.  
2. " " North Star.

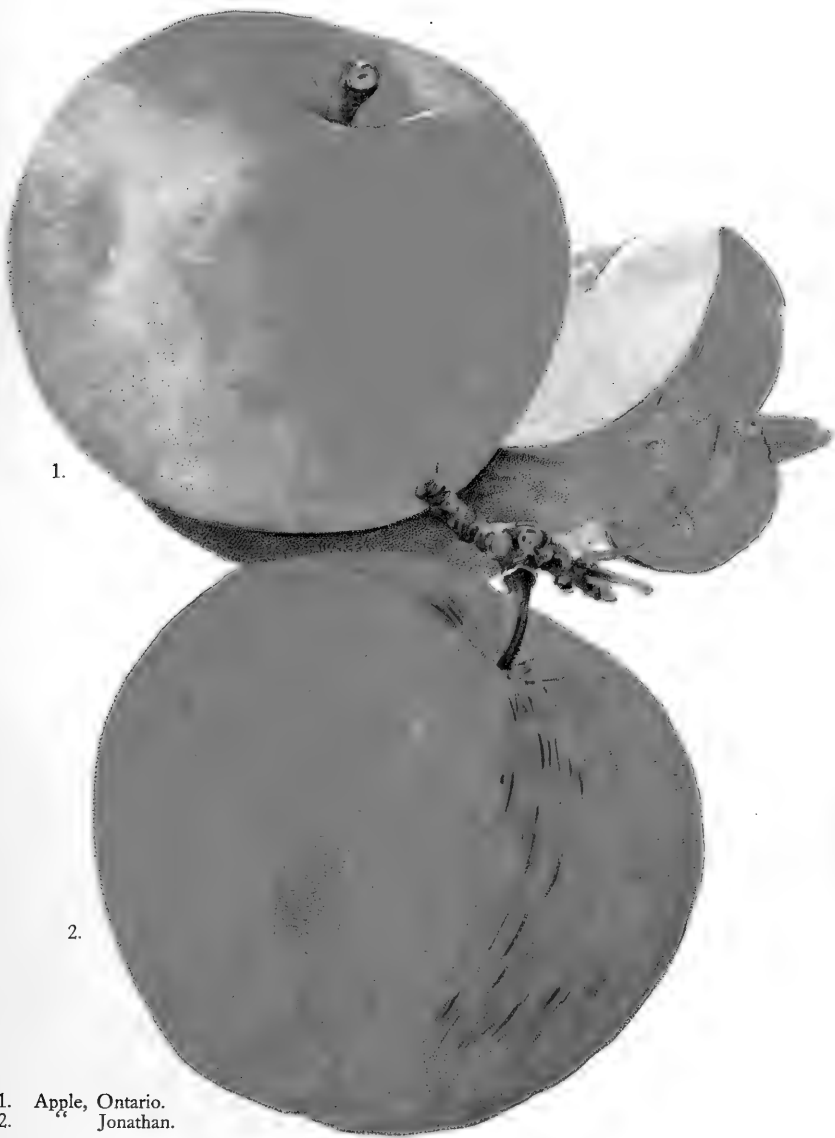


1.



2.

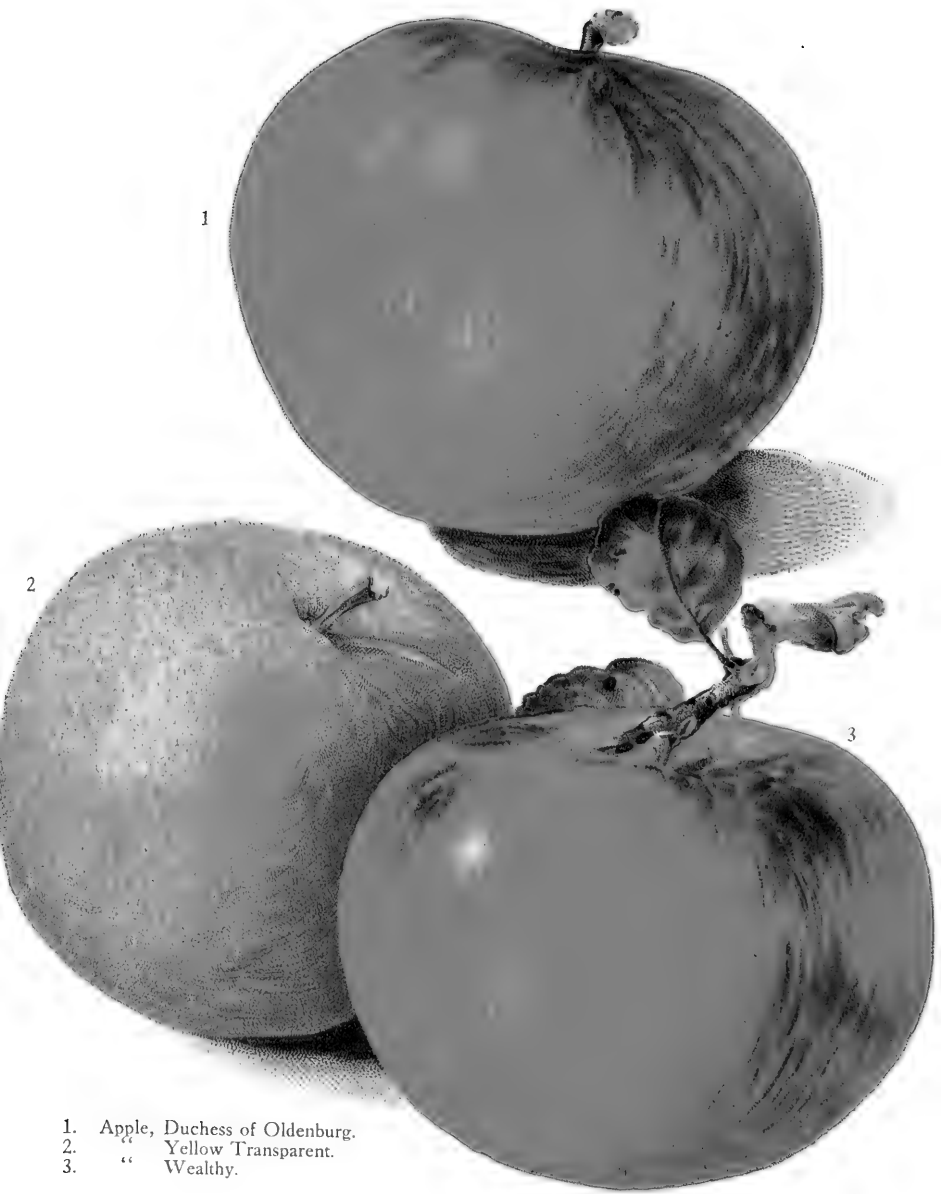
1. Apple, Boiken.  
2. Arctic.



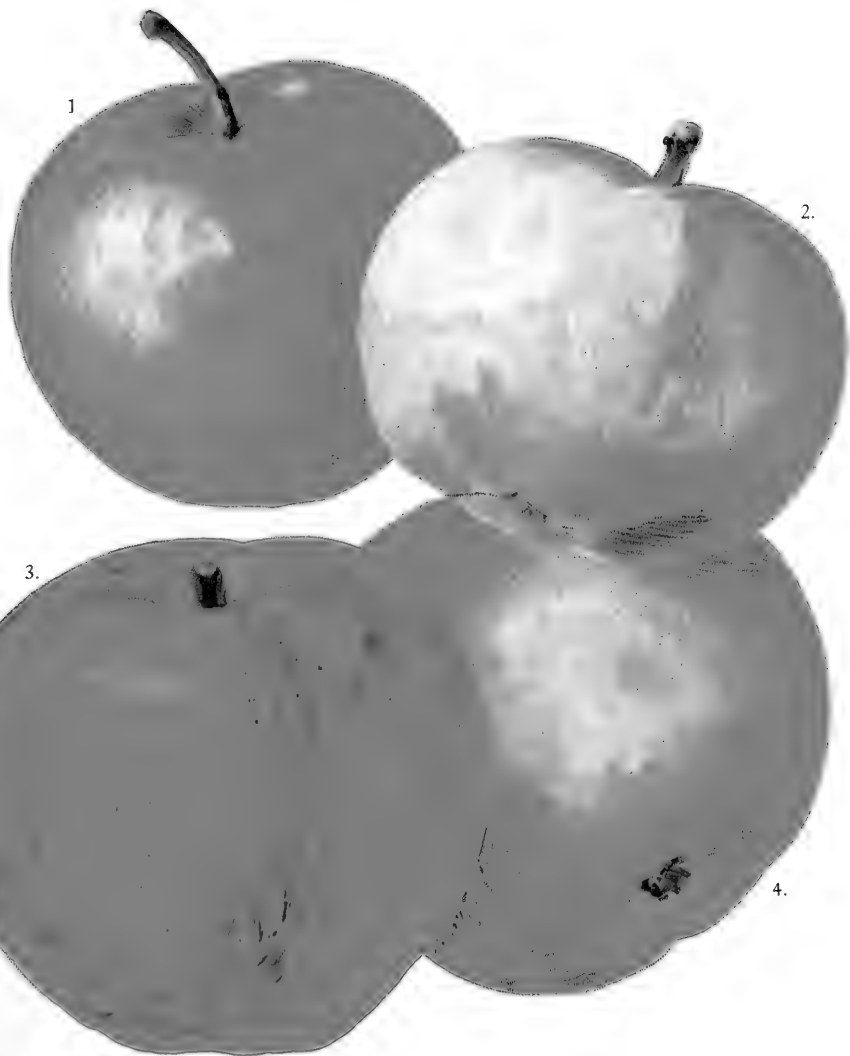
1.

2.

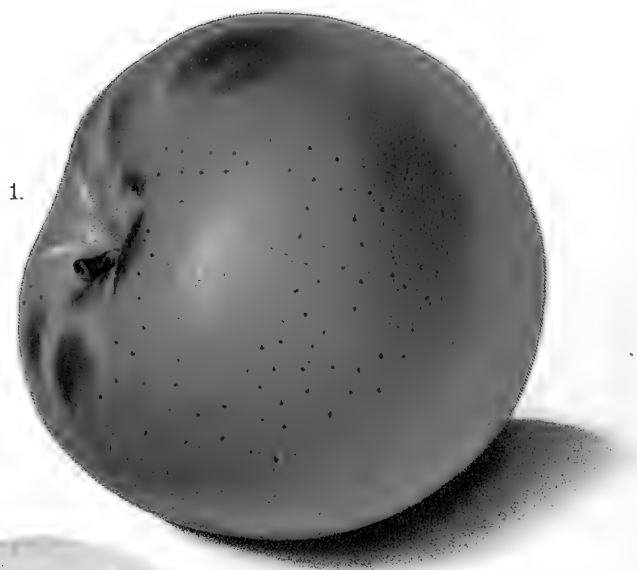
1. Apple, Ontario.  
2. Jonathan.



1. Apple, Duchess of Oldenburg.  
2. " Yellow Transparent.  
3. " Wealthy.



1. Apple, Golden Sweet.
2. " Talmon Sweet.
3. " Bailey Sweet.
4. " Sweet Bough.

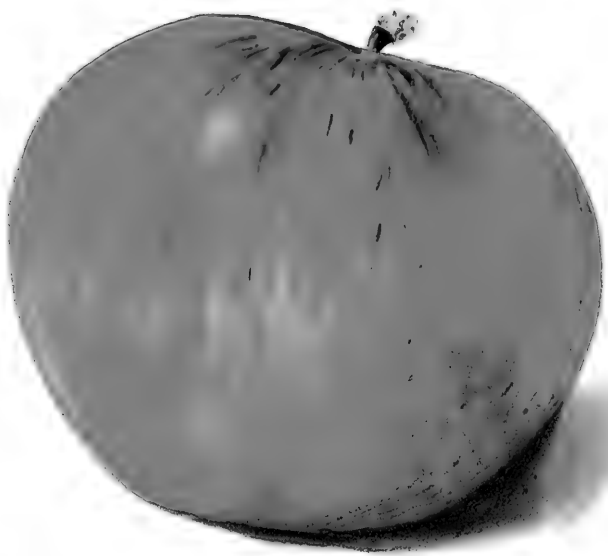


1. Apple, McIntosh Red.  
2. Grimes Golden.

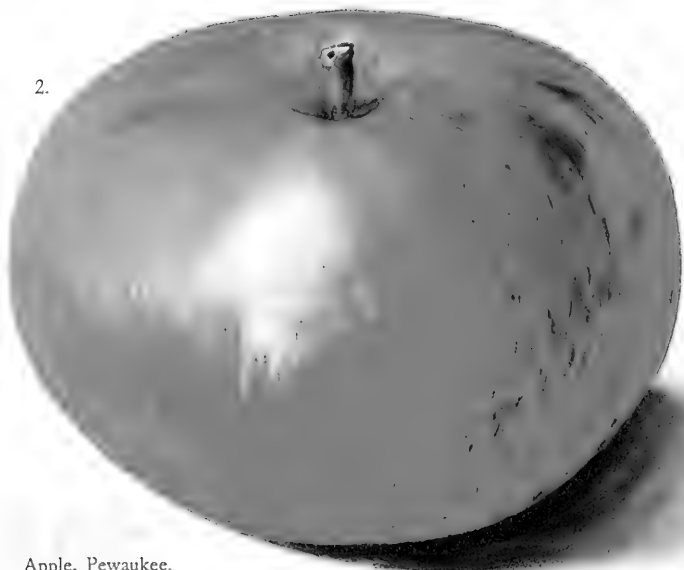


1. Apple, Baxter.  
2. Stark.

1.



2.

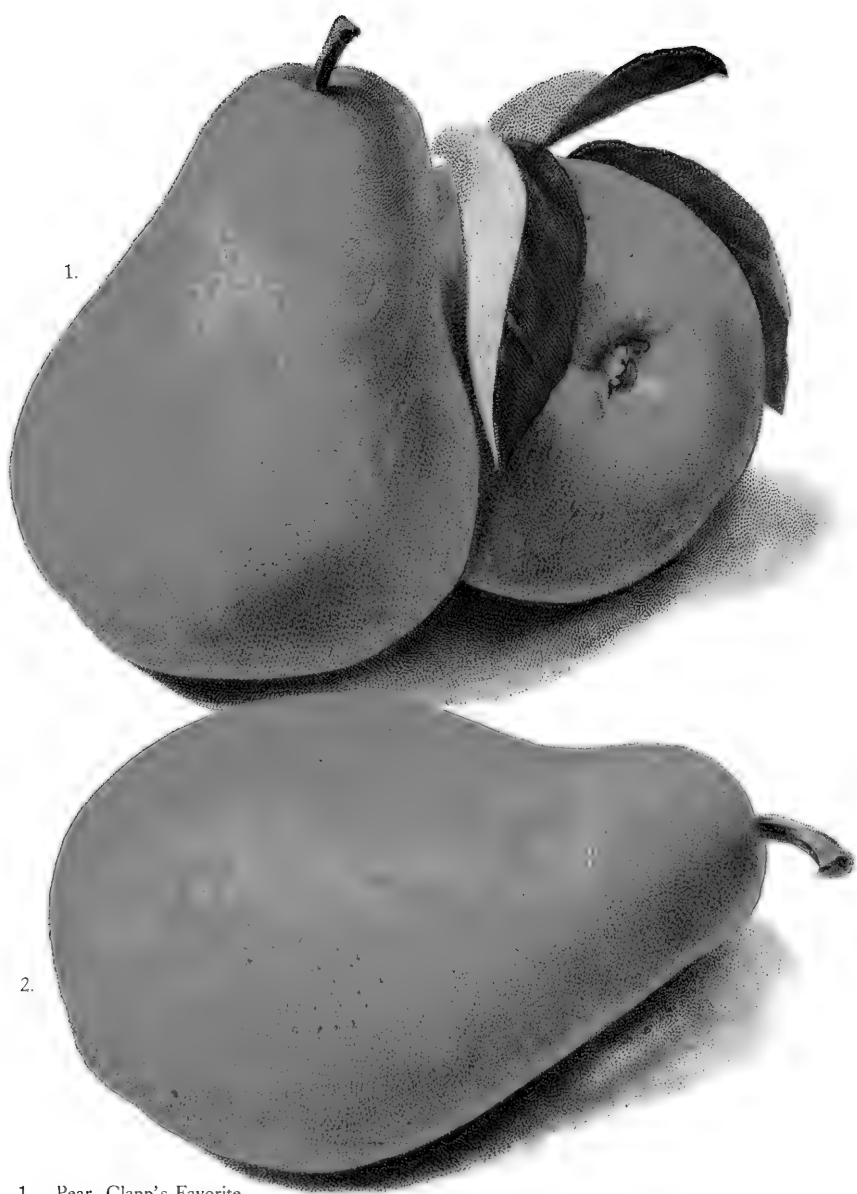


1. Apple, Pewaukee.  
2. " " Century.





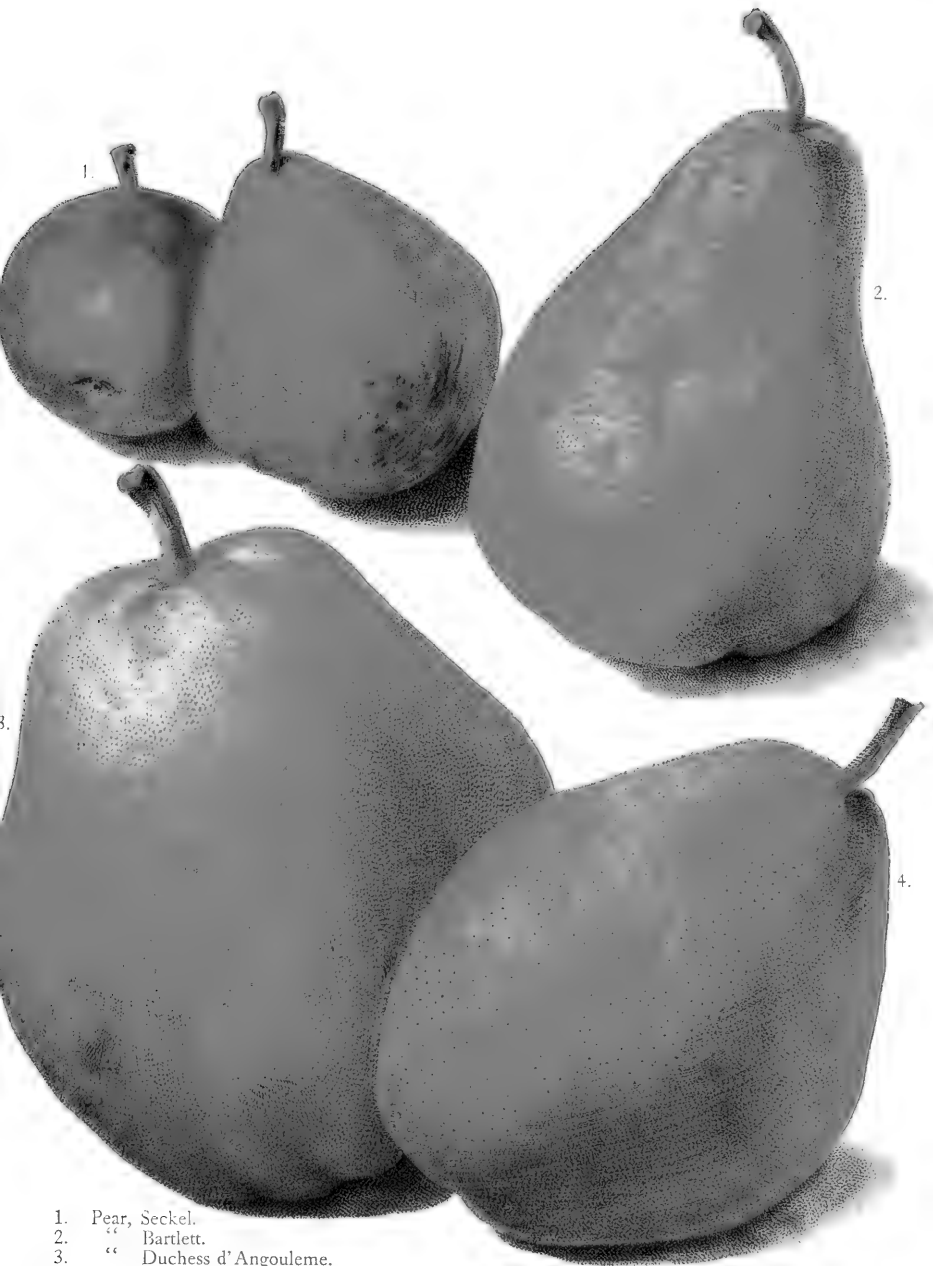
1. Crab Apple, Martha.  
 2. " " General Grant.  
 3. " " Large Red Siberian.  
 4. " " Hyslop.  
 5. " " Yellow Siberian.  
 6. " " Van Wyck Sweet.



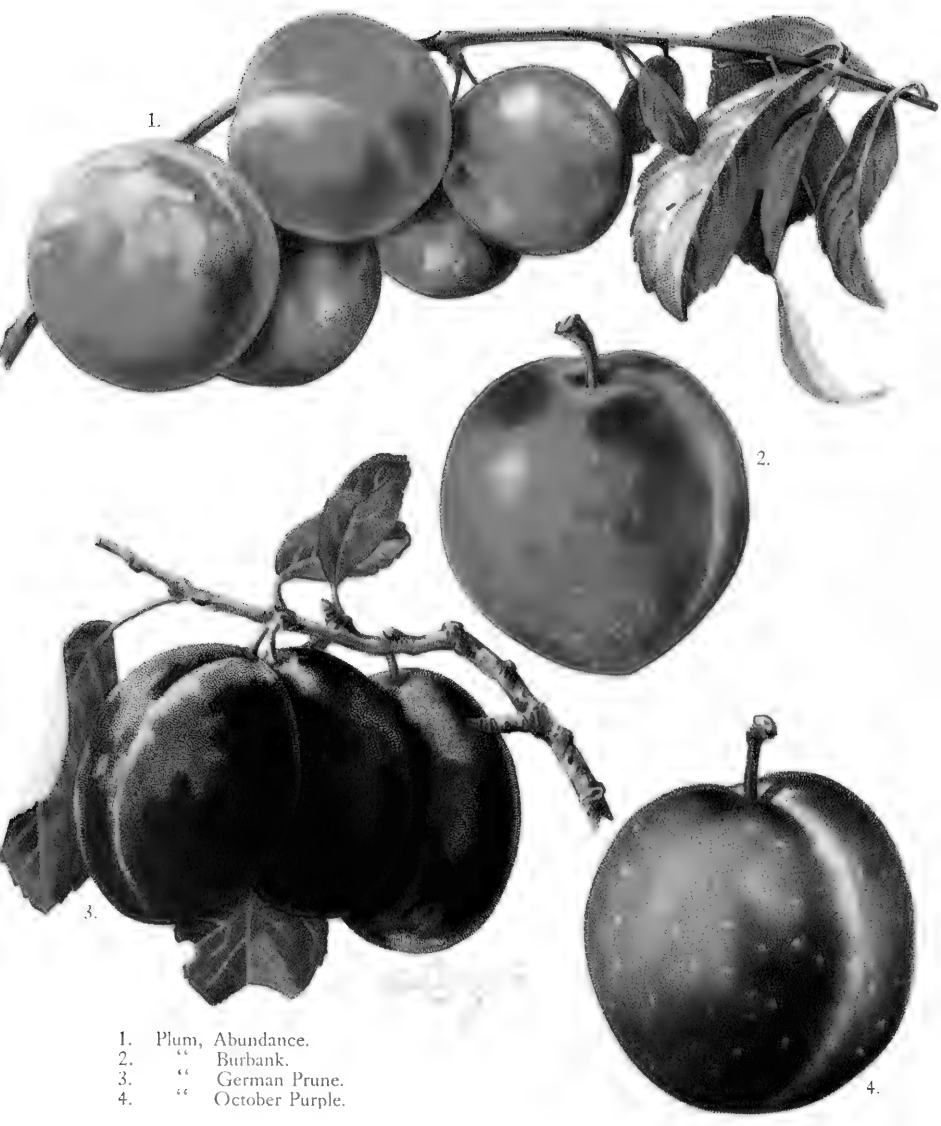
1.

2.

1. Pear, Clapp's Favorite.  
2. " Fayette Beauty.



1. Pear, Seckel.  
2. " Bartlett.  
3. " Duchess d' Angouleme.  
4. " Kieffer.



1. Plum, Abundance.  
2. " Burbank.  
3. " German Prune.  
4. " October Purple.

4.



1. Plum, French or Italian Prune.
2. " Moore's Arctic.
3. " Hungarian Prune.
4. " Niagara.



1. Plum, Imperial Gage.
2. " Shropshire Damson.
3. " Lombard
4. " Maynard.
5. " Yellow Egg.

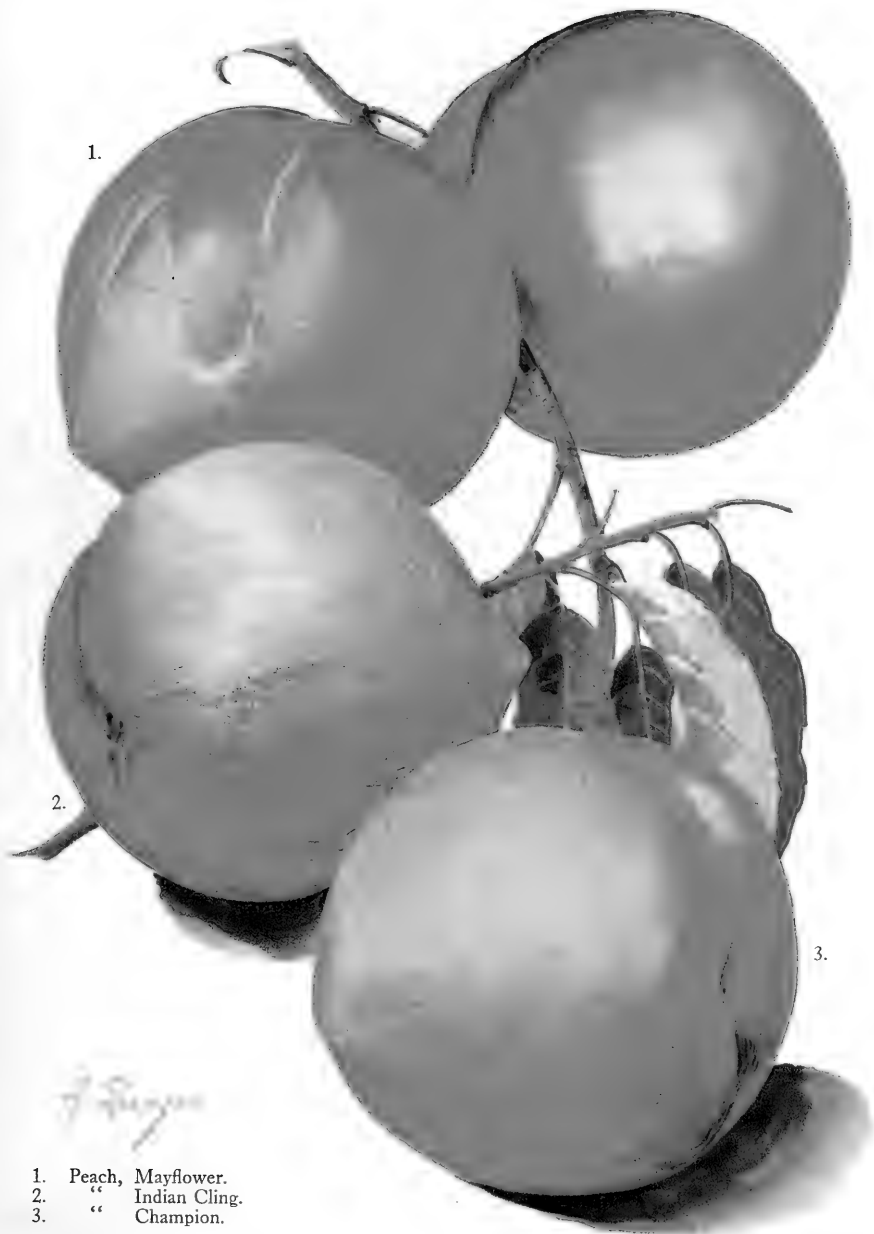


1. Cherry, Black Tartarian.  
 2. " Yellow Spanish.  
 3. " Windsor.  
 4. " Large Montmorency.  
 5. " Early Richmond.  
 6. " Napoleon Bigarreau.



1. Peach, Crosby.  
2. " Elberta.  
3. " Triumph. Our Klondyke Collection.





1. Peach, Mayflower.
2. " Indian Cling.
3. " Champion.



1. Quince, Rex's Mammoth.  
2. " Meech's Prolific.  
3. " Orange.  
4. " Champion.

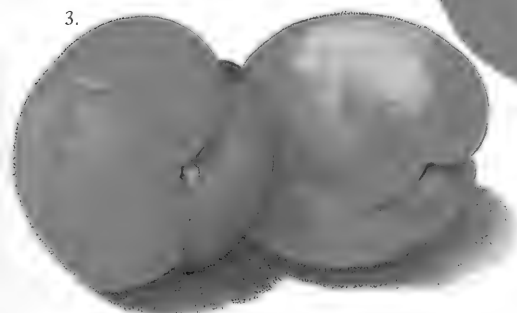
1.



2.



3.



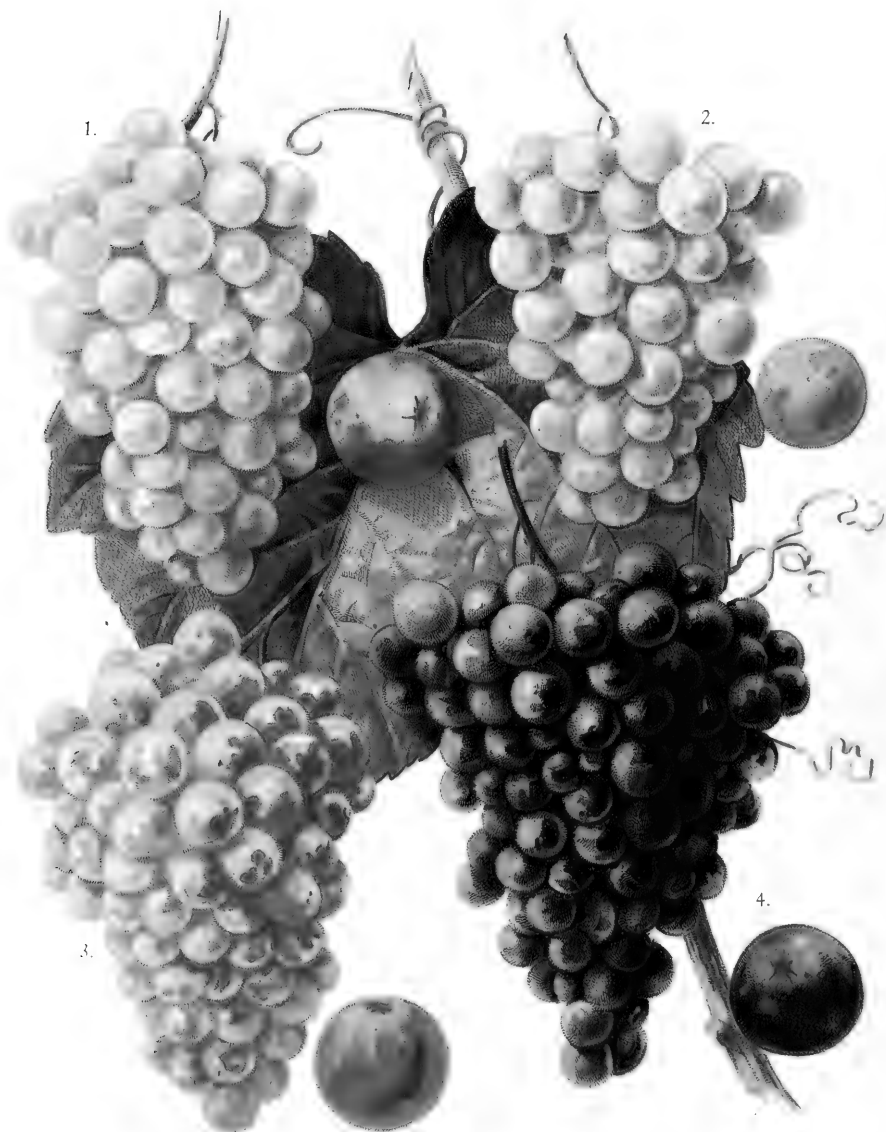
1. Apricot, St. Ambroise.
2. " Montgamet.
3. " Early Golden.



1. Grapes, Niagara.  
2. Moore's Early.



1. Grape, Brighton.  
2. " " Concord.



1. Grape, Agawam.
2. " Lindley.
3. " Salem.
4. " Wilder.



1. Grape, Green Mountain.
2. " " Campbell's Early.



1. Raspberry, Golden Queen.  
 2. " Black Diamond.  
 3. " Columbian.  
 4. " Cumberland.





1.	Blackberry, Snyder.	4.	Raspberry, Cuthbert.
2.	“ Erie.	5.	“ Herbert.
3.	“ Ancient Briton.	6.	“ Ohio.



1. Blackberry, Rathbun.  
2. Gooseberry, Houghton.  
3. " Downing.



The Ward Blackberry.

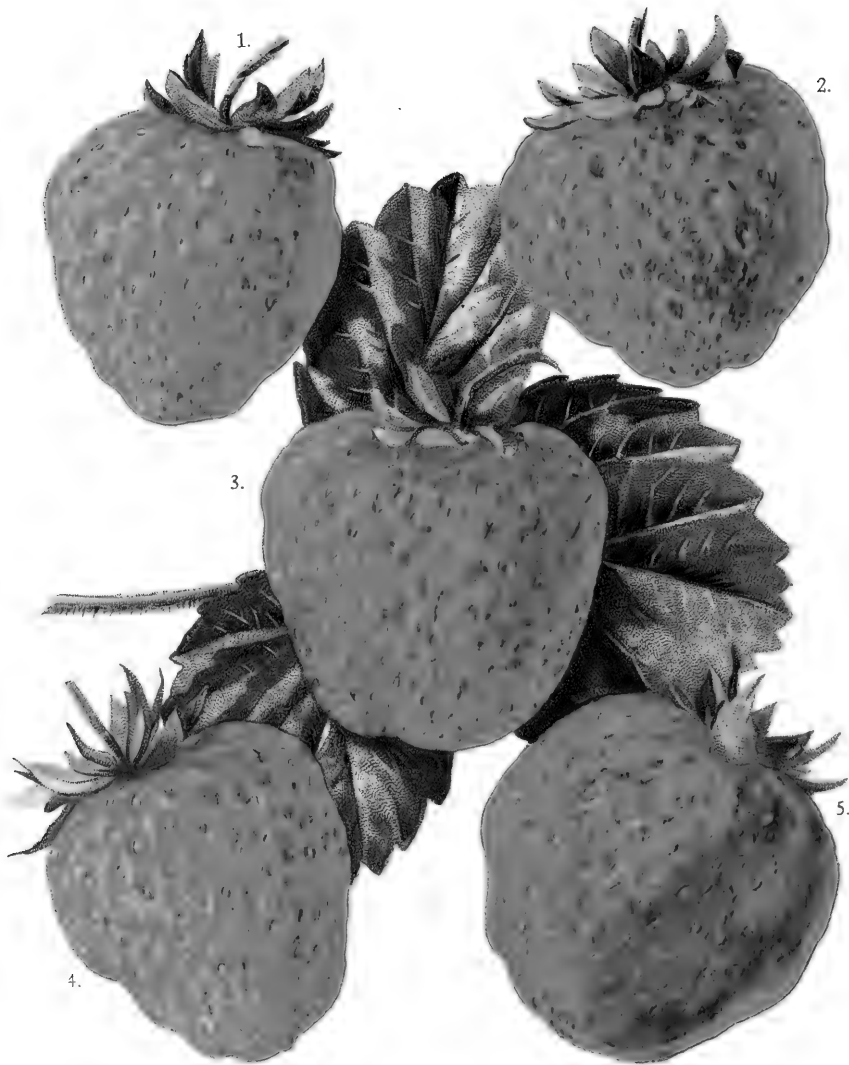


1. Currant, White Grape.  
2. " Black Champion.

3. Currant, Perfection.  
4. " Fay's Prolific.

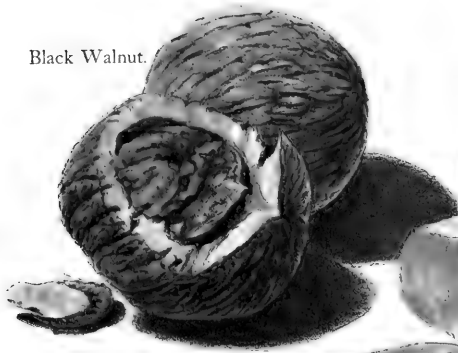


1. Asparagus, Conover's Colossal.
2. Rhubarb, Myatt's Linnæus.

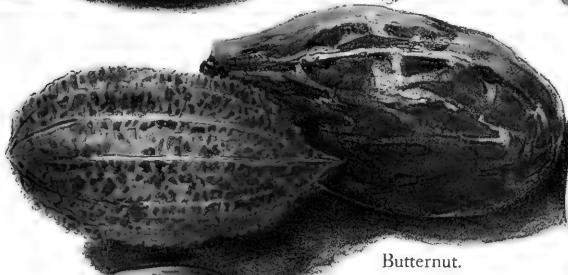
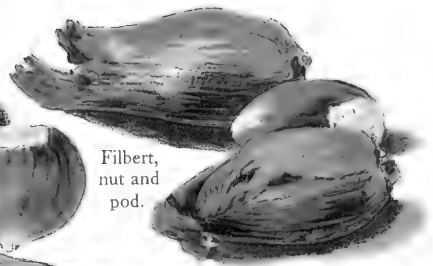


- 1. Strawberry, Great Scott.
- 2. " Brandywine.
- 3. " Glen Mary.
- 4. " Oregon Everbearing.
- 5. " Ryckman.

Black Walnut.



Filbert, nut and pod.



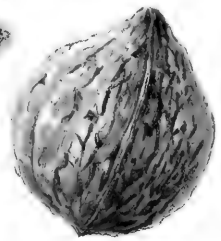
Butternut.



English Walnut.



Pecans.



Japan Walnut.



American Sweet Chestnut.



Hickory.

NUT BEARING TREES.

1.

2.



1. Willow, Wisconsin Weeping (*Salix Babylonica* var).
2. " Laurel-leaved (*Salix laurifolia*).
3. Maple, Silver (*Acer dasycarpum*).
4. " Norway (*Acer platanoides*).





1. Elm, American (*Ulmus Americana*).
2. Beech, Purple (*Fagus Sylvatica Purpurea*).
3. Elm, Camperdown (*Ulmus Camperdown Pendula*).



1.



2.



3.



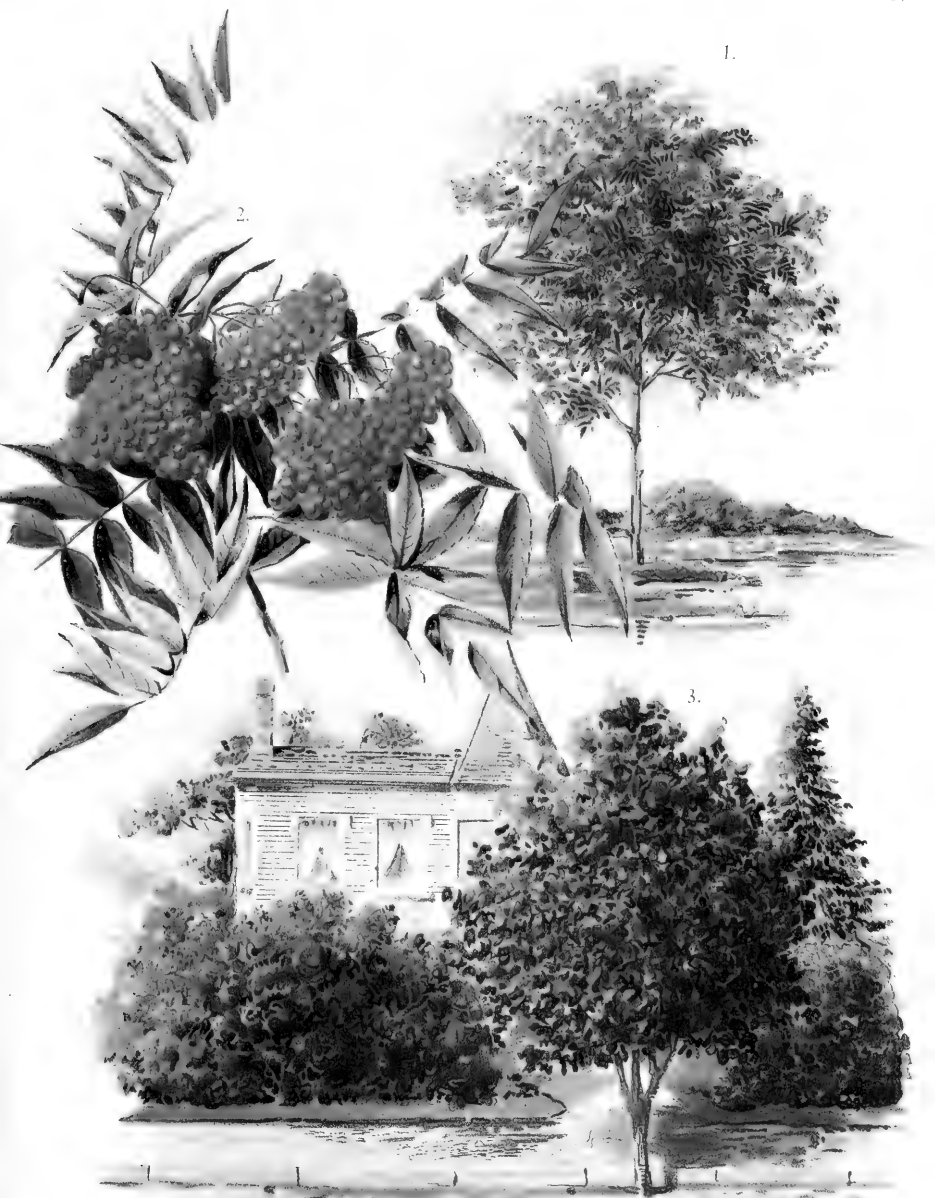
1. Willow Kilmarnock, (*Salix caprea pendula*).
2. Catalpa, Common (*Catalpa bignonioides*).
3. Mulberry, Tea's Weeping (*Morus Tartarica pendula*).
4. Hedge, Honey Locust (*Gleditschia triacanthos*).



1. Salisburia, Maiden Hair or Ginkgo. (*Salisburia adiantifolia*).
2. Catalpa, Chinese (*Catalpa Bungeii*).
3. Dogwood, White (*Cornus florida*).
4. " " Red (*Cornus florida flore rubra*).



1. Horse Chestnut, (*Aesculus hippocastaneum*).
2. European Bird Cherry, (*Prunus padus*).
3. Thorn, White (*Crataegus oxyacantha flore pleno*).
4. " Paul's New, (*Crataegus oxyacantha coccinea flore pleno Paulii*).



1. Mountain Ash, American. (*Pyrus Sorbus Americana*).
2. (Fruit)
3. Poplar, Carolina, (*Populus Carolina*).



1. Locust, Moss. -- Flower (*Robinia hispida*).  
2. " Black. -- " (*Robinia pseudo-acacia*).  
3. Laburnum or Golden Chain (*Cytisus laburnum*).



1. Ivy, Boston or Japan (*Ampelopsis Veitchii*).
2. Birch, Cut-leaf Weeping (*Betula laciniata pendula*).
3. Hedge, California Privet (*Ligustrum Ovalifolium*).
4. " Honey Locust (artistic trimming).



1. Sumach, Staghorn & fruit (Summer) *Rhus typhina*.
2. " " (Autumn) " "
3. " " Cut-leaf with fruit (*Rhus glabra laciniata*).



1.



2.



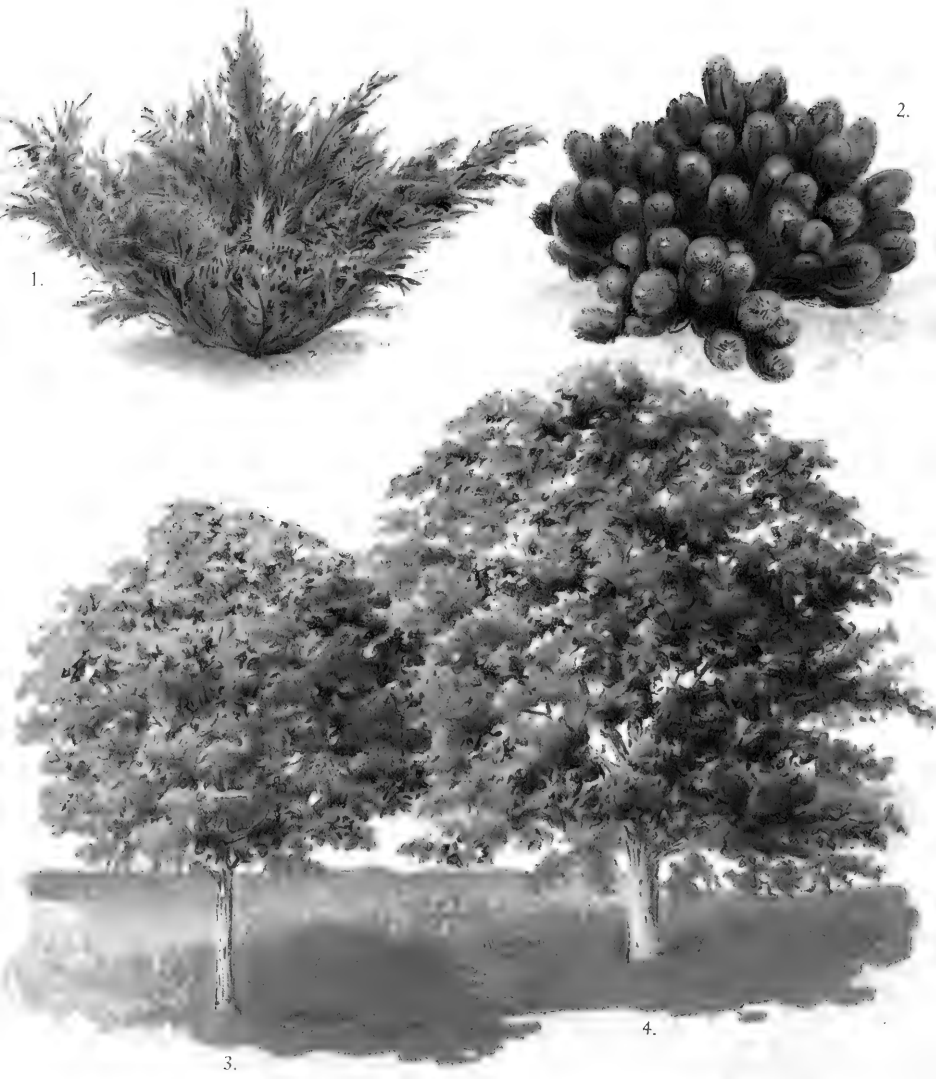
3.



4.



1. Maple, Ash-leaved (*Acer negundo fraxinifolium*).
2. Juniper, Irish (*Juniperus communis Hibernica*).
3. Arbor Vitae, American (*Thuja occidentalis*).
4. Plane, Oriental (*Platanus orientalis*).



1. Juniper, Savin's (*Juniperus Sabina*).
2. Pine, Mugho Dwarf (*Pinus Mugho*).
3. Oak, Pin (*Quercus palustris*).
4. Linden, American (*Tilia Americana*).



1. Pine, White, (*Pinus strobus*).
2. Pine, Scotch, (*Pinus sylvestris*).
3. Fir, Nordmann's, (*Abies Nordmanniann*).
4. Spruce, Norway, (*Picea excelsa*).
5. Pine, Austrian, (*Pinus Austriaca*).



1.

2.

5.

3.

4.

- 1. *Retinispora pisifera.*
- 2.     "    *plumosa aurea.*
- 3.     "    *squarrosa.*
- 4.     "    *filifera.*
- 5. *Thuja occidentalis aurea.*



Spruce, Koster's Blue, (*Picea pungens* Kosteriana).



Altheas, Double White, Red, Pink and Purple.



1. Forsythia or Golden Bell (*Forsythia viridissima*).
2. Red Bud or Judas Tree (*Cercis canadensis*).
3. Double-flowering Plum or Rose Tree of China (*Amygdalus communis flore roseo pleno*).



- |    |                                       |                           |
|----|---------------------------------------|---------------------------|
| 1. | Lilac, <i>Syringa vulgaris</i> , var. | Madame Lemoine.           |
| 2. | “ “ “ “                               | Frau Dammann.             |
| 3. | “ “ “ “                               | Prince Camille de Rohann. |
| 4. | “ “ “ “                               | Charles X.                |
| 5. | “ “ “ “                               | Rouge de Trianon.         |
| 6. | “ “ “ “                               | Ludwig Spaeth.            |





*Hydrangea paniculata grandiflora.*



1. *Azalea mollis* (Bush and Flower).  
2. " *amoena*.

1.



2.



2.a

3.



4.



1. Deutzia, Pride of Rochester.
2. Snowberry, White (*Symphoricarpos racemosus*).
- 2.a Red (*“ vulgaris*)
3. Weigelia in variety (*Diervilla candida, rosea, etc.*).
4. Kerria, Japanese (*Kerria Japonica*).



1. Mahonia or Ashberry (*Mahonia aquifolia*).
2. Currant, Flowering (*Ribes aureum*).
3. Spiraea, Thunbergs (*Spiraea Thunbergii*).
4. Cranberry, High bush (*Viburnum opulus*).



1.

2.



1. Japan Oleaster (*Elæagnus longipes*).
2. Thunberg's or Japan Barberry (*Berberis Thunbergii*).



1. Crab, Bechtel's Flowering (*Pyrus angustifolia*).
2. *Deutzia crenata* (Var *rosea flora pleno*).
3. *Spiraea Van Houttei*.
4. Cherry, Double-flowered (*Cerasus avium flore alba plena*).



1. Snowball, Japan (*Viburnum plicatum*).
2. Calycanthus or Sweet-scented shrub (*Calycanthus floridus*).
3. Halesia, Snowdrop or Silver Bell (*Halesia tetraptera*).



1. Clematis, Henryii.
2. " Madame Edward Andre.
3. " Jackmanni.





1. Clematis, Ramona.
2. " Duchess of Edinburgh.
3. " Montana.



1. Clematis, Paniculata.
2. " " Recta..
3. Yucca or Adams Needle (*Yucca filamentosa*).



1. Honeysuckle, Hall's Japan (*Lonicera halliana*).
2. " " Red and White Tartarian (*Lonicera Tartarica*).



1. Wistaria, Chinese Purple (*Wistaria sinensis*).  
2. " " White ( " " alba).



1. Hemerocallis or Day Lilly (*Hemerocallis fulva*).
2. Doronicum or Leopard's Bane (*Doronicum plantagineum*).
3. Primrose, Giant, (*Cœnothra glauca*).
4. Columbine, (*Aquilegia coerulea* (Blue), *Canadensis* Red, *Chrysantha* Yellow).



1. Columbine, (*Aquilegia Haylodgensis*)
2. Aster, Cornflower (*Stokesia cyanae*):
3. Oswego Tea or Horsemint, (*Monarda didyma*).



1. Flame-Flower (*Tritoma pfitzerii*).
2. Hardy Flowering Asters, in variety.



Hollyhocks, Perennial (assorted or by color).





1. *Lilium*, *elegans atropurpureum*.
2. " *Batemanni*.
3. " *Speciosum rubrum*.
4. " *Tigrinum*.
5. " *Speciosum album*.

The Gem Collection of Lillies.





Gladiolus, lighter shades.



Pinks, Hardy Double—Assorted colors.



1.



2.



3.

1. Hardy Pink, (*Dianthus Napoleon Third*).
2. Cardinal Flower, (*Lobelia Victoriae*).
3. Beard Tongue, (*Pentstemon Sensation*).



Larkspur, in various colors.



- |    |                             |
|----|-----------------------------|
| 1. | Phlox, Hardy, Miss Lingard. |
| 2. | “ “ Jeanne d'Arc.           |
| 3. | “ “ Coquelicot.             |
| 4. | “ “ Euclaireur.             |
| 5. | “ “ Pantheon.               |
| 6. | “ “ Coccinea.               |
| 7. | “ “ Size of Flower.         |



1. Violets, Double English.
2. " Large Single Purple.
3. " Single White.
4. Candytuft, Hardy—(*Iberis sempervirens*).
5. Lily of the Valley (*Convallaria majalis*).





1. Bleeding-Heart, (*Dicentra spectabilis*).
2. " " White (*Dicentra spectabilis alba*).
3. Edleweis, (*Leontopodium alpinum*).
4. Blue Gentian, (*Gentiana acaulis*).



1. Corn Flower, (*Centaurea montana alba*).
2. False Chamomile, (*Boltonia latisquama*).
3. Blanket Flower, (*Gaillardia grandiflora*).
4. Perennial Sunflower, (*Helianthus multiflorus maximus*).



1. Dahlias, assorted colors.  
2. " Cactus, assorted colors.



Iris Japan. Three varieties.



Campanula in variety, Canterbury Bell (Bellflower or Harebell).



1. Poppy, Oriental (*Papaver orientale*).  
2-3-4. Iceland, in variety (*Papaver nudicaule*).



1. *Chrysanthemum Maximum*.
2. False Dragon-Head (*Physostegia Virginica*).
3. Blazing Star or Gay Feather (*Liatrix Pycnostachya*).



1. Perennial Pea (*Lathyrus latifolius albiflorus*).
2. Golden Glow (*Rudbeckia laciniata* fl. pl.).





Shasta Daisies.



Tulips, in variety.



1. Anemone or Windflower (*Anemone Japonica rubra*).  
 2. " " " ( " *alba*).  
 3. " " " ( " *Queen Charlotte*).



1. Spiraea, Douglas's (*Spiraea Douglasii*).
2. "Japan Spiraea" (*Astilbe Davidii*).
3. Hardy Fern, (*Scolopendrium undulatum*).

1.

2.

3.

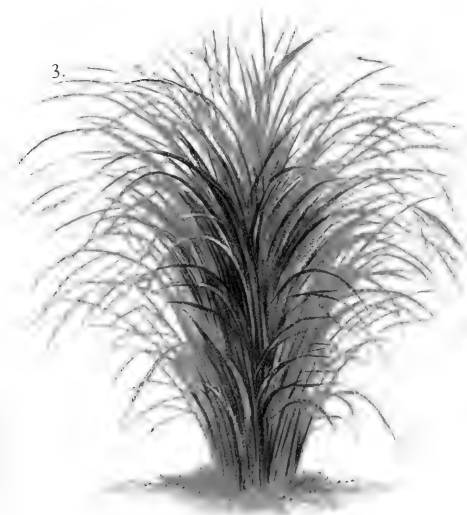
1. *Pæonia*, Herbaceous, (*P. officinalis*, var *Pomponia*).  
 2. " " (*P. " " The Mikado*).  
 3. " " (*P. " " Festiva*).



1. *Paeonia*, Herbaceous, (*P. officinalis*, var. *Rosea*).
2. " " " (*P. " " Rubra*).
3. " " " (*P. " " Edouard Andre*).

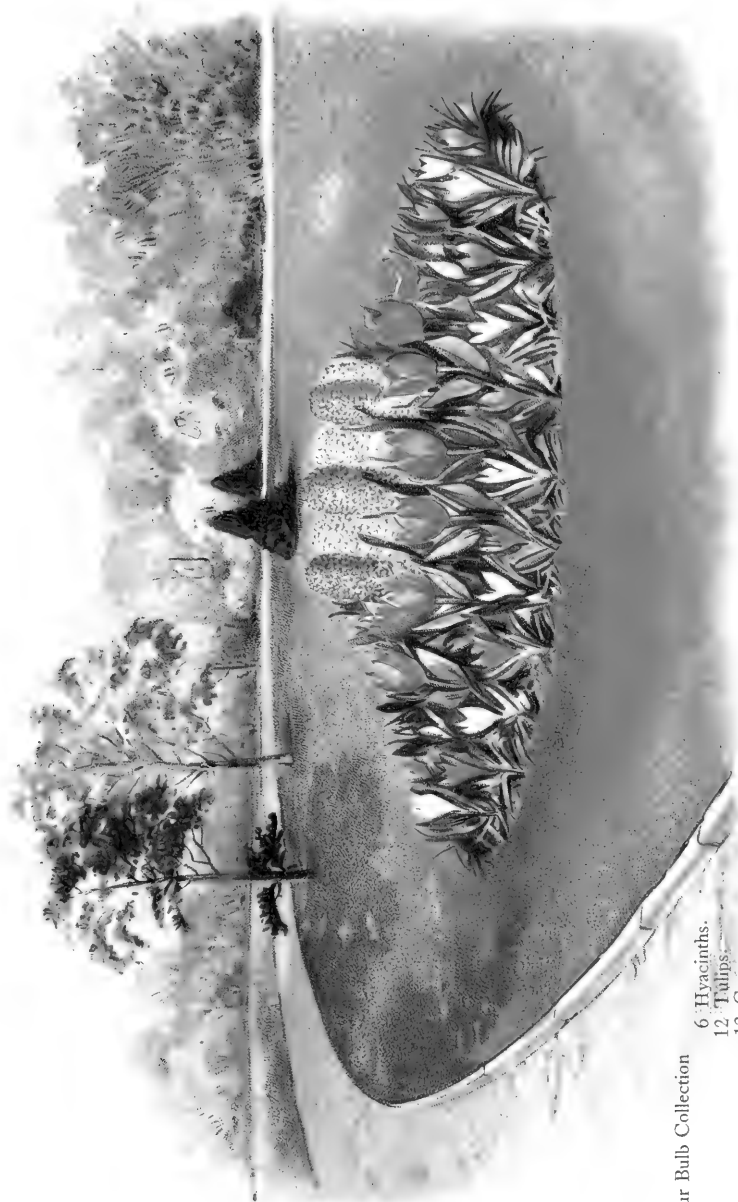


*Paeonia festiva maxima.*



1. Plume Grass (*Erianthus ravennae*).
2. Great Reed (*Arundo donax*).
3. Japanese Grass (*Eulalia gracillima univittata*).
4. Zebra Grass (*Eulalia Japonica zebrina*).





Our Bulb Collection

- 6 Hyacinths.
- 12 Tulips.
- 12 Crocus.



1. Rose, Sweet Brier, The old-fashioned variety.  
2. " Tausendschon, A great climber.  
3. " Baby Rambler, Ever-blooming.



Tree Roses in variety with border of Baby Rambler.



1. Rose, Madame Caroline Testout.
2. " Eugene Furst.
3. " Frau Karl Druschki.
4. " Baron de Bonstetten.



1. Rose, Mrs. J. H. Laing.
2. " LaFrance.
3. " Louise Van Houtte.
4. " Margaret Dickson.



1. Rose, Gen. Jacqueminot.
2. " Clio.
3. " Madame Gabriel Luizet.
4. " Marshall P. Wilder.



1. Rose, Coquette des Alps.
2. " Ulrich Brunner.
3. " Paul Neyron.
4. " Earl of Dufferin.



1. Rose, Soliel D'Or.
2. " Anne de Diesbach.
3. " Harrisons Yellow.
4. " Marchioness of Londonderry.
5. " Prince Camille de Rohan.





1. Rose, Crimson Rambler.
2. " Dorothy Perkins.
3. " Baltimore Belle.
4. " Queen of the Prairie.



1. Rose, Crested Moss.
2. " Princess Adelaide.
3. " Blanche Moreau.



1. Rose, *Rugosa alba*.
2. " *Rugosa rubra*.
3. " *Wichuriana*.



Crimson Rambler Branch and Flower.

# *LANDSCAPE DEPARTMENT.*

---

## *Engineering, Designing and Construction.*

---

This department, located right here in our own general offices and conducted by skilled and experienced men, is fully equipped with draughting and blue-printing rooms, surveying instruments and appliances, a reference library and every facility for treating with all matters appertaining to landscape development of any extent.

It is maintained for the benefit of our patrons, expressly to overcome the high rates for professional services that would, otherwise, have to be paid and places artistic and scientific landscape advice within the reach of all. It will cheerfully give advice and suggestions for the proper location of buildings, walks, drives, gardens, plantings of trees and plants. The department is thoroughly familiar with climatic conditions in different sections of the country and can intelligently advise what varieties of ornamental trees and plants are suitable to plant in any locality.

Our method of treatment of properties or grounds of medium size is as follows: First, we request that our agent, or the owner, give us the dimensions of the property to be treated, with all possible information regarding the grades, contours of the land and points of the compass; give outlines and dimensions of buildings, locating doors and windows and giving distance of buildings from front or back and side property lines; location of walks and drives, if any, and their width; indicate location of any existing trees or shrubs and all objects that are essential to give us a comprehensive idea of the situation. This will enable us to then make a plan, drawn to scale, that will show just where all improvements are to be located. The arrangement of proposed plantings are shown by key numbers. A list accompanies this plan, giving names of varieties of plants, their key numbers and the quantities to be used.

We also submit with this an estimate of the cost of the stock necessary for our plan, on which, by grouping in this way, we are able to make a much lower price than could be obtained in any other way.

By this method and the guidance of our plan the owner may carry out the work under his own direction or have it executed by a local gardener, but getting the benefit of our expert advice and design.

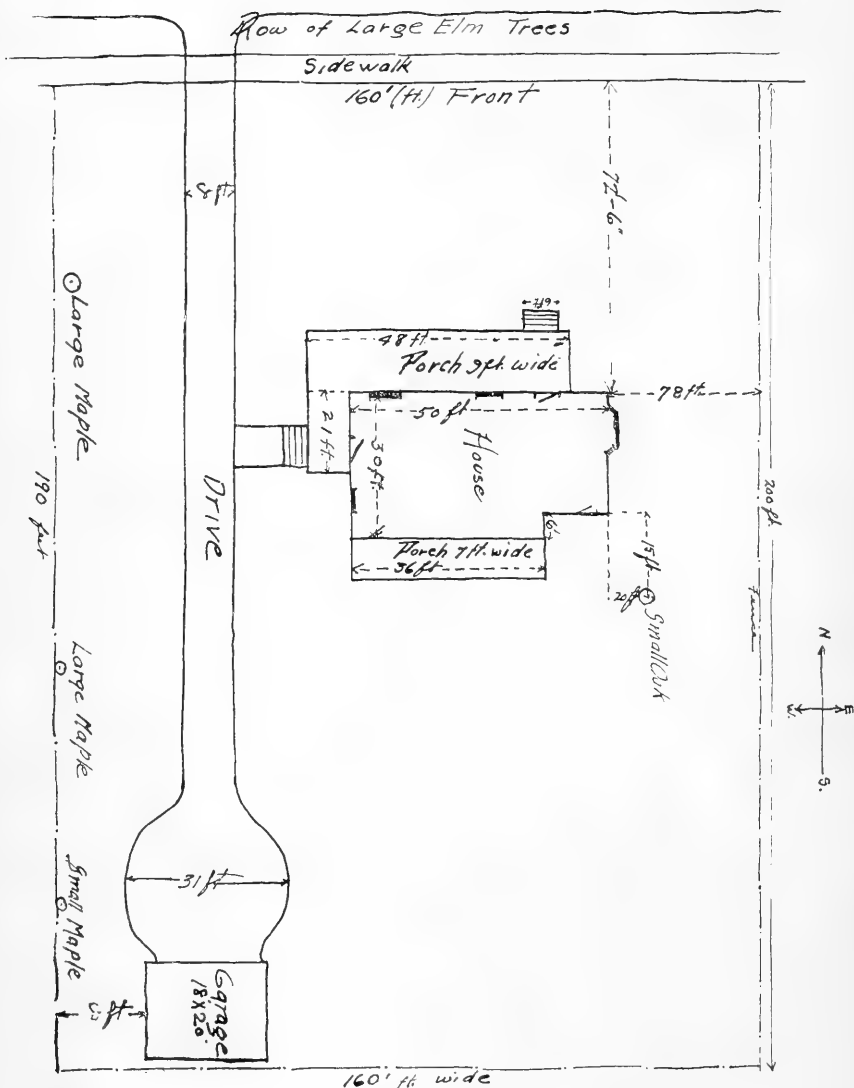
We are giving special attention to the designing of formal and old fashioned gardens in infinite variety. These gardens offer opportunities for planting quantities of all the beautiful perennials in masses which, when properly arranged, will afford a harmony of color and succession of bloom from early Spring to late Fall with an abundance of flowers for cutting throughout that period. Nearly every property has some ground in a warm, sunny location that could be well utilized for this purpose and thereby lend additional interest and pleasure to the home.

In regard to larger properties, the development of parks, cemeteries and extensive private estates which require personal inspection, we will send a representative of this department in consultation, charging only actual cost of time and expenses involved in such visits.

We are constantly receiving commendations from our patrons all over the country who have availed themselves of the advantages offered by this department. Undeveloped grounds have been improved in appearance and their values increased; ugly backyards have been transformed into attractive retreats during the summer months and vines grown on previously staring blank walls. No place is too small, if there is any room for planting, to be considered for landscape treatment. There is no limit to the advantages to be derived from a correspondence with us on this subject of landscape work.

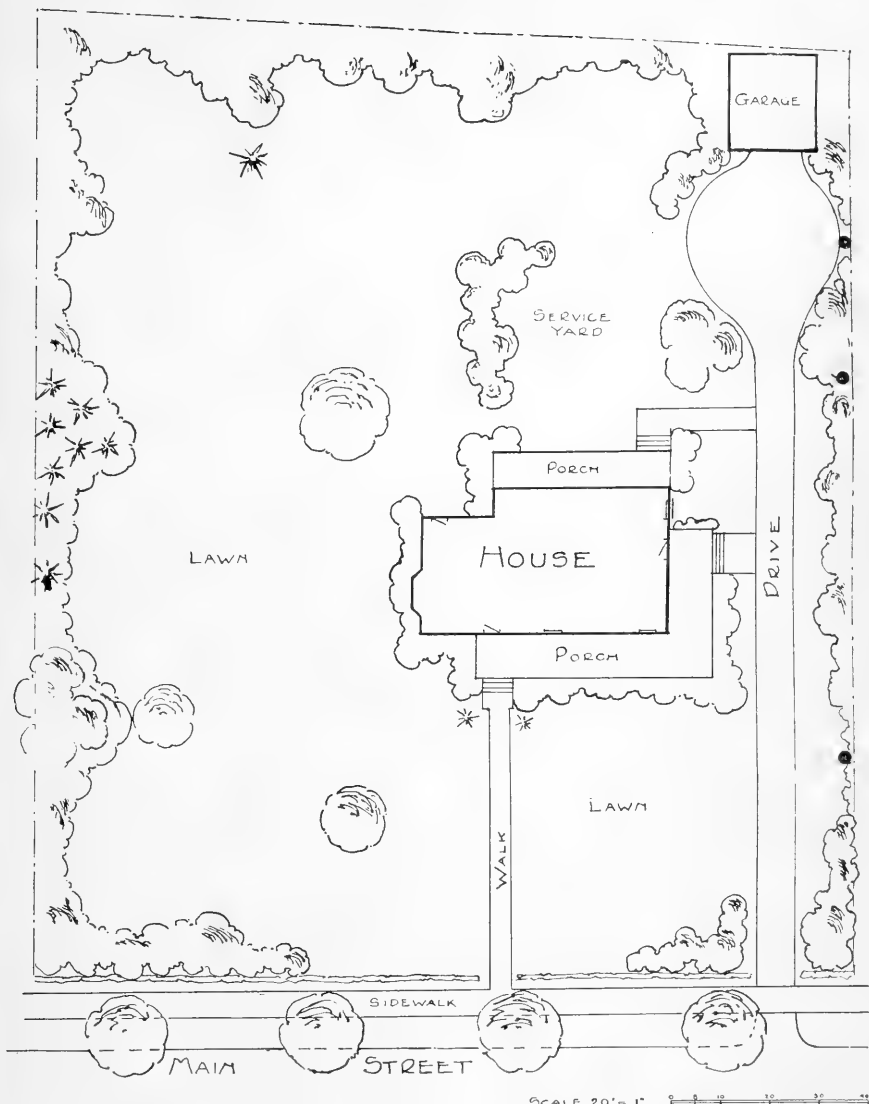
We will help you to improve your grounds, whether old or new, by showing how and what to plant to produce unbroken expanses of lawn, vistas, interesting views from given points, to enhance or reduce apparent distances and height and to make of the whole place a complete pleasing picture instead of an indiscriminate mass.

Main Street



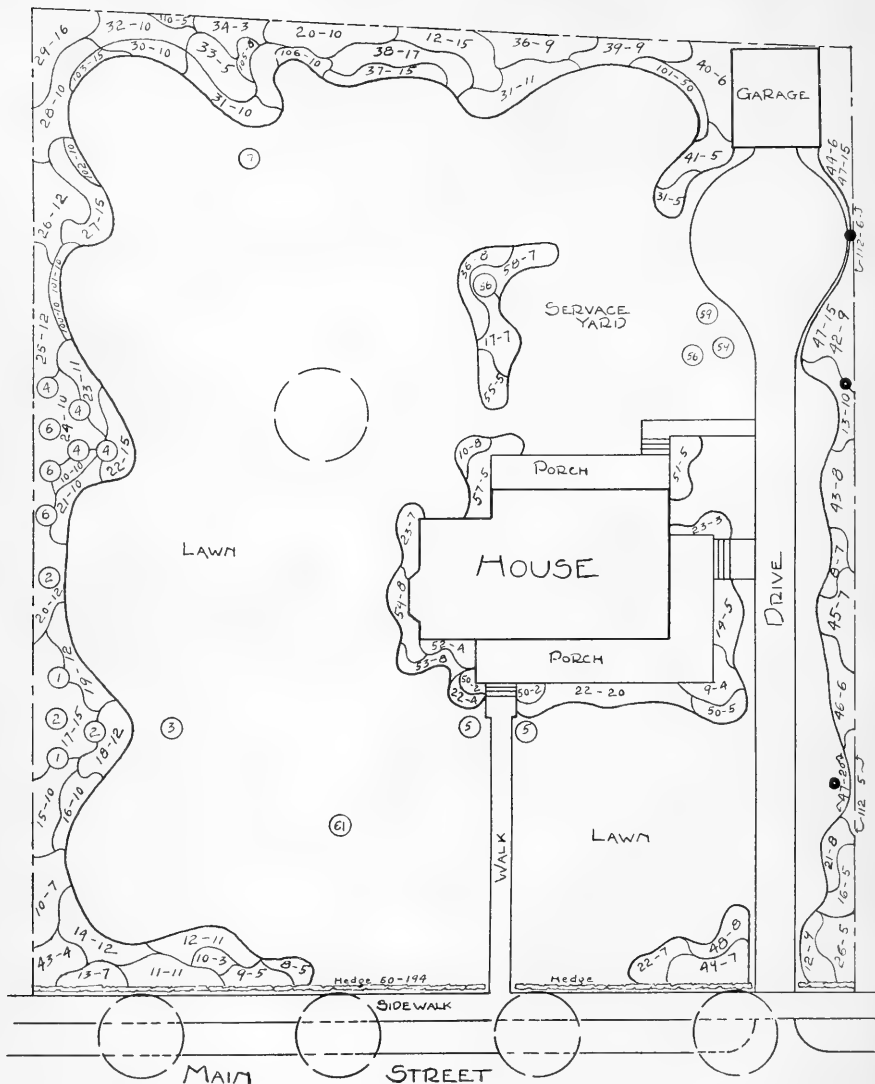
PLAN No. 1.

Sketch of property as sent in by one of our agents and giving information for a landscape plan, but not drawn to any scale.



PLAN No. 2.

Preliminary sketch of Plan No. 1, drawn to scale, indicating proposed landscape treatment, submitted to owner for approval.



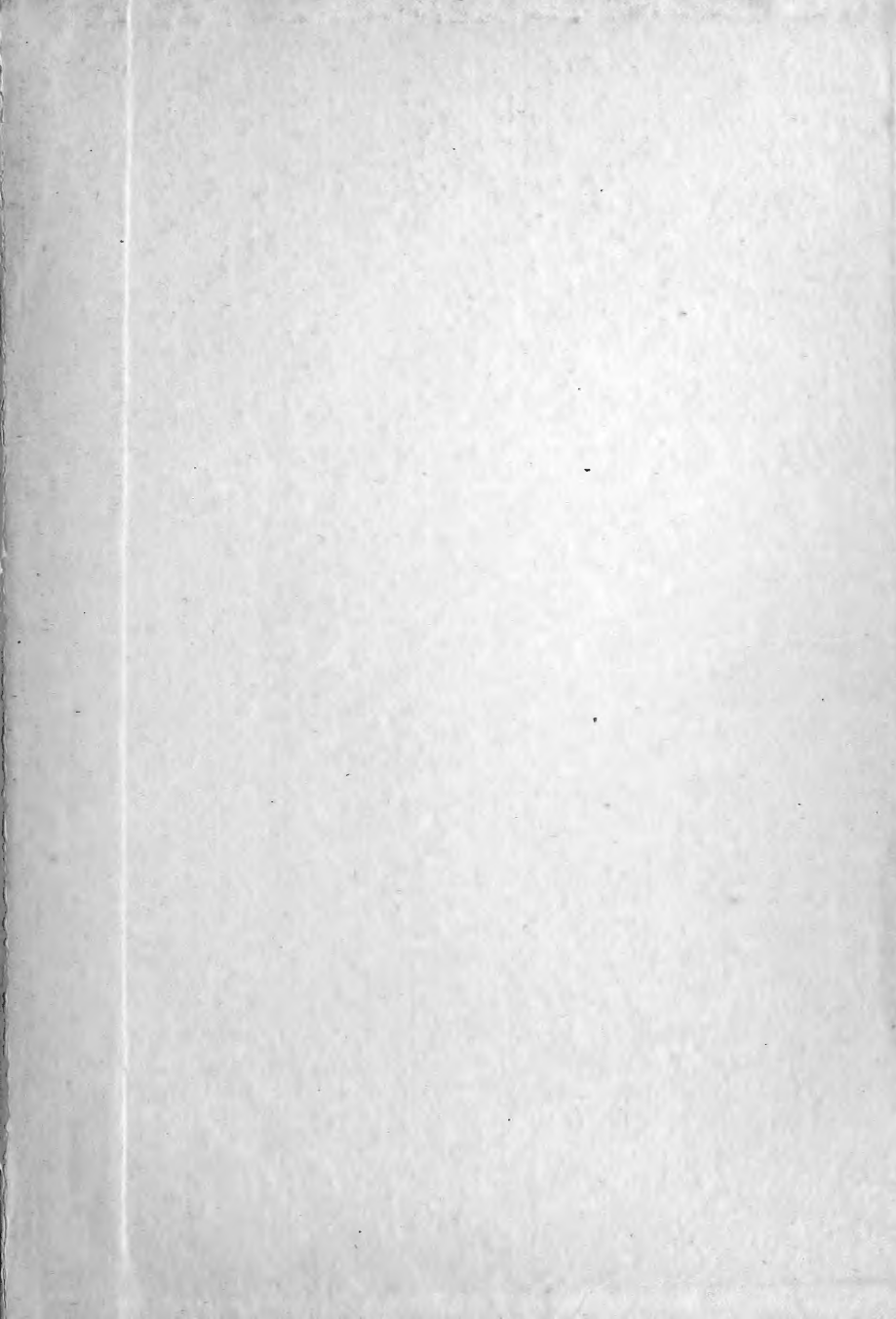
PLAN No. 3.

Detailed planting plan to develop design of Plan No. 2, upon its acceptance by owner. Gives location and quantities of plants, named on a planting list, which accompanies each plan.





APR 28 1909



LIBRARY OF CONGRESS



0002680355A