

128

TROLLEY TRIPS

About Los Angeles

F 868

.L8 P28

Copy 1



Looking off From Mt. Lowe

On the Lines of
The Pacific Electric Ry.

PARLOR OBSERVATION CARS
TO POINTS OF SCENIC
AND ROMANTIC INTEREST

Our Lines Reach from the Mountains to
the Sea and Penetrate the Valleys
that lie between



A Corner of the Ostrich Farm.

“The Mountain Route”

AT 10:30 A. M. every day one of our luxurious Parlor Observation Cars leaves the station at Sixth and Main Streets for a run to beautiful Rubio Canyon. A stop at the famous Cawston Ostrich Farm enables the tourist to study the great birds, and then a comprehensive tour of Pasadena is made, so that the visitor may have a complete idea of this idyllic city. Beyond, the way lies through Altadena and the Poppy Fields, at their season a glorious mass of color amid which the tourist may revel at will long enough to pick a generous boquet. The way ends at Rubio Canyon, the most romantic glen in all the Sierra Madre range. From the approaches to Rubio the passengers look out over Altadena and Pasadena — over many a fair home and fruited orchard—to the sea. The canyon itself extends a mile or more into the mountain, and is filled with points of romantic interest.

Fare for the Round Trip

\$1.00



The Old Adobe Restaurant, "Casa Verdugo"

"The Valley Route"

A DOUBLE daily parlor observation car service is maintained to North Glendale and the historic old home of the Verdugos, now converted into a typical Spanish restaurant. Car leaves Sixth and Main at 9:30 A. M. and 3 P. M. and the fare of \$1.00 includes full Spanish dinner at Casa Verdugo. Tally-ho meets each car and for 50 cents extra the passenger is taken on a charming ride through the valley to Brand's Caynon. The whole trip is picturesque and beautiful.



Eating "Hot Stuff" on the Broad, Cool Veranda,
Casa Verdugo.



A View of the Ostrich Farm.

"The Mountain Route"

AT 10:30 A. M. every day one of our luxurious Parlor Observation Cars leaves the station at Sixth and Main Streets for a run to beautiful Rubio Canyon. A stop at the famous Cavston Ostrich Farm enables the tourist to study the great birds, and then a comprehensive tour of Pasadena is made, so that the visitor may have a complete idea of this idyllic city. Beyond, the way lies through Altadena and the Poppy Fields, at their season a glorious mass of color amid which the tourist may revel at will long enough to pick a generous bouquet. The way ends at Rubio Canyon, the most romantic glen in all the Sierra Madre range. From the approaches to Rubio the passengers look out over Altadena and Pasadena — over many a fair home and fruited orchard — to the sea. The canyon itself extends a mile or more into the mountain, and is filled with points of romantic interest.

Fare for the Round Trip
\$1.00



The Old Adobe Restaurant, Casa Verdugo

"The Valley Route"

A DOUBLE daily parlor observation car service is maintained to North Glendale and the historic old home of the Verdugos, now converted into a typical Spanish restaurant. Car leaves Sixth and Main at 9:30 A. M. and 3 P. M. and the fare of \$1.00 includes full Spanish dinner at Casa Verdugo. Tally-ho meets each car and for 50 cents extra the passenger is taken on a charming ride through the valley to Brand's Canyon. The whole trip is picturesque and beautiful.



Using "Hot Stuff" on the Brand's Canyon Road, Casa Verdugo.



View of the Valley from the Trolley

A Final Word

IN the preceding pages we have outlined some of the distinctive trips which are likely to most satisfactorily direct the resident in, or visitor to, Los Angeles. They do not comprise all the points of interest reached by our lines—only a few, in fact. And so we would suggest that each reader of this provide himself with one of our little folders and time cards, believing that he will find it helpful and informing in many ways.

The Pacific Electric Railway
Sixth and Main Streets
Los Angeles

Passenger Dept. Tel. Main 66
Ticket Dept. Tel. Main 900

GEO. RILEY & SONS (INC.) PRINTERS, LOS ANGELES

TROLLEY TRIPS

F 868
.L8 P28
Copy 1

About Los Angeles



View of Mt. Low from the Trolley

On the Lines of
The Pacific Electric Ry.

PARLOR OBSERVATION CARS
TO POINTS OF SCENIC
AND ROMANTIC INTEREST

Our Lines Reach from the Mountains to
the Sea and Penetrate the Valleys
that lie between

LIBRARY OF CONGRESS



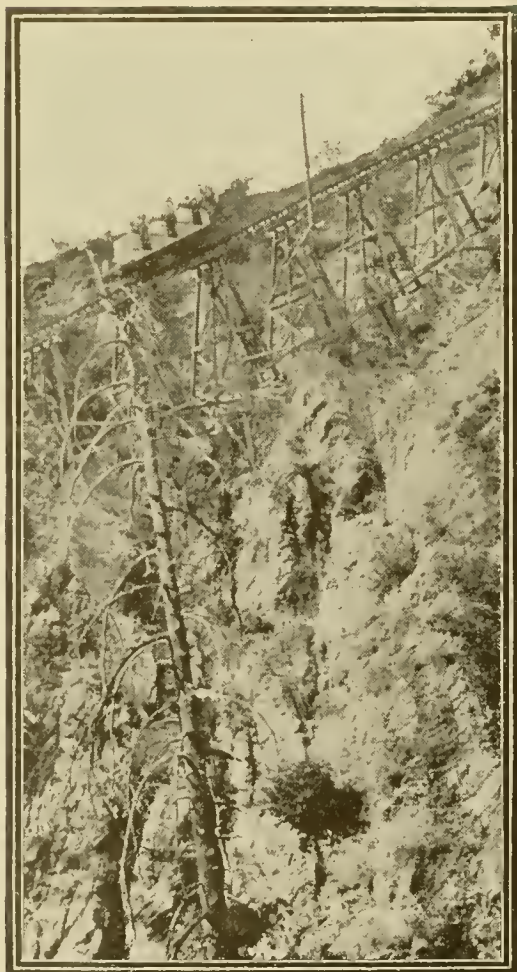
0 020 994 841 2



The Hospitable Fire Place at Alpine Tavern

TO MT. LOWE

The Most Marvelous Mountain Railway Journey
in the World



The Great Incline—Mt. Lowe

THE distance to Alpine is 25 miles, and the way lies via the Ostrich Farm, Pasadena, Altadena, the famous poppy fields and romantic Rubio Canyon. Then up the wonderful incline to Echo Mountain with its great search light and observatory, and beyond where the road climbs by many a devious turn, now skirting the edge of deep canyons, now circling bold prominences with far reaching views of mountain tops, valley and sea, through pillared walls of granite and bits of primeval oak and pine forest to stop at last at Alpine Tavern, nestling 5000 feet above the sea.

Through cars from 6th and Main Sts. at 8, 9, 10, a. m. and 1 and 3:30 p. m. Round trip fare \$2.50. Special excursions Saturday and Sunday.



Drawing the Nets at Huntington Beach.

“The Surf Route”

PARLOR Observation Car leaves Sixth and Main Streets daily at 10 A. M. and runs to Long Beach, where time is given for a plunge or a stroll on the magnificent new pier. After a trip to Seaside Park the car runs to Alamitos Bay where a complete fish dinner can be had. After a stop long enough to include all the attractions, the way lies to Huntington Beach, the extreme southern terminus. For miles the road lies right along the shore.

Fare for the Round Trip \$1.00



Children on the Sand at Long Beach.



The Hospitality Fire Place at a Pine Tavern

TO MT. LOWE

The Most Marvelous Mountain Railway Journey
in the World



The Great Incline—Mt. Lowe

THE distance to Alpine is 25 miles, and the way lies via the Ostrich Farm, Pasadena, Alhadena, the famous poppy fields and romantic Rubio Canyon. Then up the wonderful incline to Echo Mountain with its great search light and observatory, and beyond where the road climbs by many a devious turn, now skirting the edge of deep canyons, now circling bold prominences with far reaching views of mountain tops, valley and sea, through pillared walls of granite and bits of primeval oak and pine forest to stop at last at Alpine Tavern, nestling 5000 feet above the sea.

Through cars from 6th and Main Sts. at 8, 9, 10, a. m. and 1 and 3:30 p. m. Round trip fare \$2.50. Special excursions Saturday and Sunday.



A Glimpse of Ye Alpine Tavern, 5000 feet above the sea.

AT ye Alpine Tavern, a charming bit of Swiss architecture nestling in a romantic glen and overshadowed by great trees where squirrels frolic and birds sing, begins the trail to the summit. Let us hope the steel rails will never venture farther to rob us of the delights of the burro ride to the apex, only 1100 feet above us, but which winds by the devious path that skirts the highest peaks, where every turn breaks on our vision wide reaching panoramas that inspire and thrill us. From the summit, bald but for a few hardy shrubs and a single pinion pine that somehow found lodgment there, one looks off over thousands of square miles of serrated mountain tops, populous orange and vine clad valleys, and the blue, mysterious island-dotted sea.



The Track Amid the Pines—Mt. Lowe

Special rates by the week quoted on application.



The Famous Ancient Grapevine of San Gabriel

"The Orange Grove Route"

A PARLOR Observation Car of the most modern type and luxurious completeness leaves Sixth and Main streets daily at 9:40 a. m. on a sixty-mile trip which includes San Gabriel, with its old Mission and great grapevine; Baldwin's Ranch, the most famous and most charming of the great estates that have made California notable; Monrovia, the beautiful foot-hill town. The trip is through the most attractive of all this valley region, through groves of orange and lemon trees, through great vineyards and by homes embowered in shrubbery, and with always the majestic mountains close at hand to the north.

Fare for the round trip, \$1.00.



A Country Road Near Monrovia



Drawing the Net at Huntington Beach

"The Surf Route"

PARLOR Observation Car leaves Sixth and Main Streets daily at 10 A. M. and runs to Long Beach, where time is given for a plunge or a stroll on the magnificent new pier. After a trip to Seaside Park the car runs to Alamitos Bay where a complete fish dinner can be had. After a stop long enough to include all the attractions, the way lies to Huntington Beach, the extreme southern terminus. For miles the road lies right along the shore.

Fare for the Round Trip \$1.00



Children on the Sand at Long Beach



On a Country Road, Monrovia Way

A Final Word

IN the preceding pages we have outlined some of the distinctive trips which are likely to most satisfactorily divert the resident in, or visitor to, Los Angeles. They do not comprise all the points of interest reached by our lines---only a few, in fact. And so we would suggest that each reader of this provide himself with one of our little folders and time cards, believing that he will find it helpful and informing in many ways.

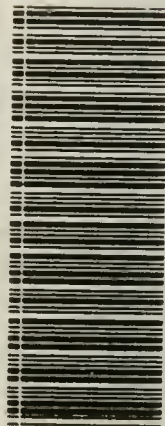
The Pacific Electric Railway

Sixth and Main Streets

Los Angeles

Passenger Dept. Tel. Main 66

Ticket Dept. Tel. Main 900



LIBRARY OF CONGRESS



0 020 994 841 2