

128

# TROLLEY TRIPS

About Los Angeles

F 868

.L8 P28

Copy 1



Looking off From Mt. Lowe

On the Lines of  
**The Pacific Electric Ry.**

PARLOR OBSERVATION CARS  
TO POINTS OF SCENIC  
AND ROMANTIC INTEREST

Our Lines Reach from the Mountains to  
the Sea and Penetrate the Valleys  
that lie between



A Corner of the Ostrich Farm.

## “The Mountain Route”

**A**T 10:30 A. M. every day one of our luxurious Parlor Observation Cars leaves the station at Sixth and Main Streets for a run to beautiful Rubio Canyon. A stop at the famous Cawston Ostrich Farm enables the tourist to study the great birds, and then a comprehensive tour of Pasadena is made, so that the visitor may have a complete idea of this idyllic city. Beyond, the way lies through Altadena and the Poppy Fields, at their season a glorious mass of color amid which the tourist may revel at will long enough to pick a generous boquet. The way ends at Rubio Canyon, the most romantic glen in all the Sierra Madre range. From the approaches to Rubio the passengers look out over Altadena and Pasadena — over many a fair home and fruited orchard—to the sea. The canyon itself extends a mile or more into the mountain, and is filled with points of romantic interest.

Fare for the Round Trip

\$1.00



The Old Adobe Restaurant, "Casa Verdugo."

## "The Valley Route"

**A** DOUBLE daily parlor observation car service is maintained to North Glendale and the historic old home of the Verdugos, now converted into a typical Spanish restaurant. Car leaves Sixth and Main at 9:30 A. M. and 3 P. M. and the fare of \$1.00 includes full Spanish dinner at Casa Verdugo. Tally-ho meets each car and for 50 cents extra the passenger is taken on a charming ride through the valley to Brand's Caynon. The whole trip is picturesque and beautiful.



Eating "Hot Stuff" on the Broad, Cool Veranda,  
Casa Verdugo.





A Corner of the Ostrich Farm

### "The Mountain Route"

AT 10:30 A. M. every day one of our luxurious Parlor Observation Cars leaves the station at Sixth and Main Streets for a run to beautiful Rubio Canyon. A stop at the famous Cawston Ostrich Farm enables the tourist to study the great birds, and then a comprehensive tour of Pasadena is made, so that the visitor may have a complete idea of this lovely city. Beyond, the way lies through Altadena and the Poppy Fields, at their season a glorious mass of color amid which the tourist may revel at will long enough to pick a generous bouquet. The way ends at Rubio Canyon, the most romantic glen in all the Sierra Madre range. From the approaches to Rubio the passengers look out over Altadena and Pasadena — over many a fair home and fruited orchard — to the sea. The canyon itself extends a mile or more into the mountain, and is filled with points of romantic interest.

Fare for the Round Trip

\$1.00



The Old Adobe Restaurant

### "The Valley Route"

A DOUBLE daily parlor observation car leaves for North Glen Dale and the historic old Lugo Adobe, now converted into a typical Spanish restaurant, at Sixth and Main at 9:30 A. M. and 3 P. M. The round trip includes full Spanish dinner at Casa Verdugo, 10¢ per person each car and for 50 cents extra the passenger is taken on a thrilling ride through the valley to Brand's Canyon. The whole trip picturesque and beautiful.



### A Final Word

It is a pleasure to have you on the lines of the Pacific Electric Railway. We are sure you will find our service and our scenery of interest. We are sure you will find our service and our scenery of interest.

The Pacific Electric Railway

Sixth and Main Streets

Los Angeles

Telephone Dept. 141 Main 101

1000 Broadway, Los Angeles, Cal.

THE PACIFIC ELECTRIC RAILWAY

LIBRARY OF CONGRESS



## TROLLEY TRIPS

F 868

.L8 P28

Copy 1

About Los Angeles



View of Rubio Canyon

On the Lines of  
**The Pacific Electric Ry.**

PARLOR OBSERVATION CARS  
TO THE MOST SCENIC  
POINTS OF SCENIC  
AND ROMANTIC INTEREST

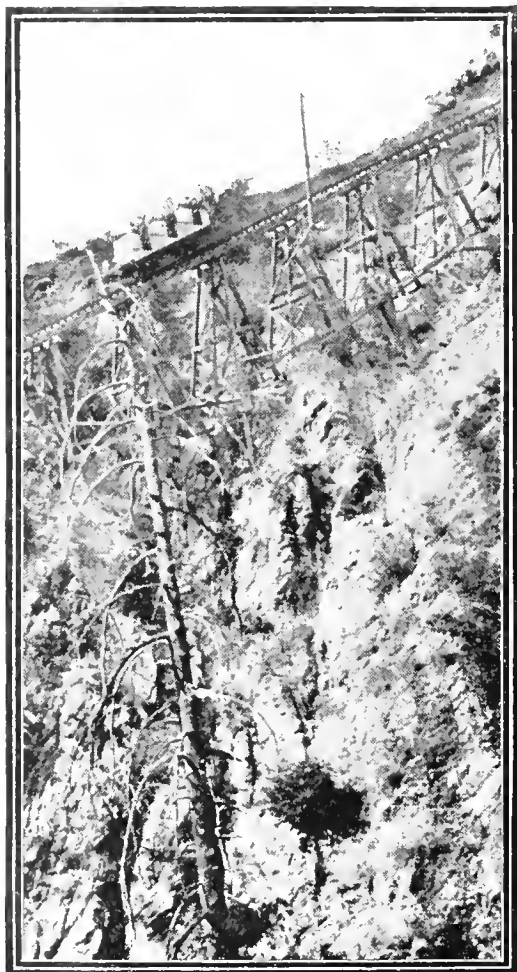
Our Lines Reach from the Mountains to  
the Sea and Penetrate the Valleys  
that lie between



The Hospitable Fire Place at Alpine Tavern

## TO MT. LOWE

The Most Marvelous Mountain Railway Journey  
in the World



The Great Incline— Mt. Lowe

**T**HE distance to Alpine is 25 miles, and the way lies via the Ostrich Farm, Pasadena, Altadena, the famous poppy fields and romantic Rubio Canyon. Then up the wonderful incline to Echo Mountain with its great search light and observatory, and beyond where the road climbs by many a devious turn, now skirting the edge of deep canyons, now circling bold prominences with far reaching views of mountain tops, valley and sea, through pillared walls of granite and bits of primeval oak and pine forest to stop at last at Alpine Tavern, nestling 5000 feet above the sea.

Through cars from 6th and Main Sts. at 8, 9, 10, a. m. and 1 and 3:30 p. m. Round trip fare \$2.50. Special excursions Saturday and Sunday.



Drawing the Nets at Huntington Beach.

## “The Surf Route”

**P**ARLOR Observation Car leaves Sixth and Main Streets daily at 10 A. M. and runs to Long Beach, where time is given for a plunge or a stroll on the magnificent new pier. After a trip to Seaside Park the car runs to Alamitos Bay where a complete fish dinner can be had. After a stop long enough to include all the attractions, the way lies to Huntington Beach, the extreme southern terminus. For miles the road lies right along the shore.

Fare for the Round Trip \$1.00



Children on the Sand at Long Beach.





The Hospitable Fire Place at Alpine Tavern

## TO MT. LOWE

The Most Marvelous Mountain Railway Journey in the World



View of the Mountain Railway

**T**HE distance to Alpine is 25 miles, and the way lies via the Ostrich Farm, Pasadena, Ahadena, the famous poppy fields and romantic Rufus Canyon. Then up the wonderful incline to Echo Mountain with its great search light and observatory, and beyond where the road climbs by many a devious turn, now skirting the edge of deep canyons, now circling bald prominences with far reaching views of mountain tops, valley and sea, through pillared walls of granite and bits of primeval oak and pine forest to top at last at Alpine Tavern, nestling 5000 feet above the sea.

Through car from 6th and Main St. at 8, 9, 10, 11 a. m. and 1 and 3:30 p. m. Round trip fare \$2.50. Special excursions Saturday and Sunday.



A Glimpse of the Alpine Tavern, 5000 feet above the sea

**A**Lpine Tavern, a charming bit of Swiss architecture, nestling in a romantic glen and overshadowed by great trees where squirrels frolic and birds sing, begins the trail to the summit. Let us hope the steel rails will never venture farther to rob us of the delight of the burro ride to the apex, only 1100 feet above us, but which winds by the devious path that skirts the highest peak where every turn breaks on our vision with reaching panoramas that inspire and thrill us. From the summit, had but for a few hardy huts and a single ponderosa pine that somehow found lodgment there, one looks all over thousands of square miles of crated mountain top, populous orange and vine-clad valleys, and the blue, misty seas island-dotted sea.

View of the Mountain Railway

Special rates by the week quoted on application.



View of the Orange Grove Route

## "The Orange Grove Route"

**A**PARLOR Observation Car of the most modern type and luxurious completeness leaves Sixth and Main street daily at 9:40 a. m. on a sixty mile trip which includes San Gabriel, with its old Mission and great grape vine, Baldwin's Ranch the most famous and most charming of the great estates that have made California notable, Montevia, the beautiful foot hill town. The trip is through the most attractive of all this valley region, through groves of orange and lemon trees, through great vineyard and by homes, encircled in tribulation and with all way the map to mountain peaks at hand to the north.

Fare for the round trip \$1.00.



View of the Orange Grove Route



View of the Surf Route

## "The Surf Route"

**P**ARLOR Observation Car leaves Sixth and Main Streets daily at 10 A. M. and runs to Long Beach, where time is given for a plunge or a stroll on the magnificent new pier. After a trip to Seaside Park the car runs to Alhambra Bay where a complete fish dinner can be had. After a stop long enough to include all the attractions the way lies to Huntington Beach, the extreme southern terminus. For miles the road lies right along the shore.

Fare for the Round Trip \$1.00



View of the Surf Route





On a Country Road - Monrovia Way

## A Final Word

**I**N the preceding pages we have outlined some of the distinctive trips which are likely to most satisfactorily divert the resident in, or visitor to, Los Angeles. They do not comprise all the points of interest reached by our lines---only a few, in fact. And so we would suggest that each reader of this provide himself with one of our little folders and time cards, believing that he will find it helpful and informing in many ways.

The Pacific Electric Railway

Sixth and Main Streets

Los Angeles

Passenger Dept. Tel. Main 66

Ticket Dept. Tel. Main 900



LIBRARY OF CONGRESS



0 020 994 841 2