

TT 520

. B97

TT 520

.B97

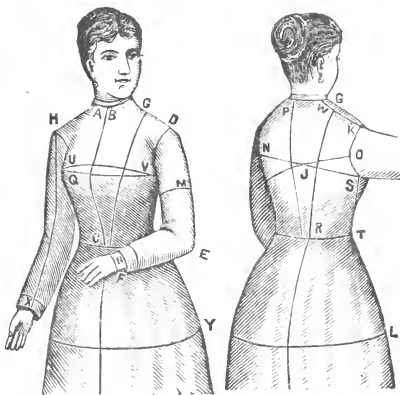
Copy 1

T. W. BYRNES'

NEW AND IMPROVED SYSTEM,

WITH THE

DRESS-MAKER'S MODEL MEASURE SHEET.

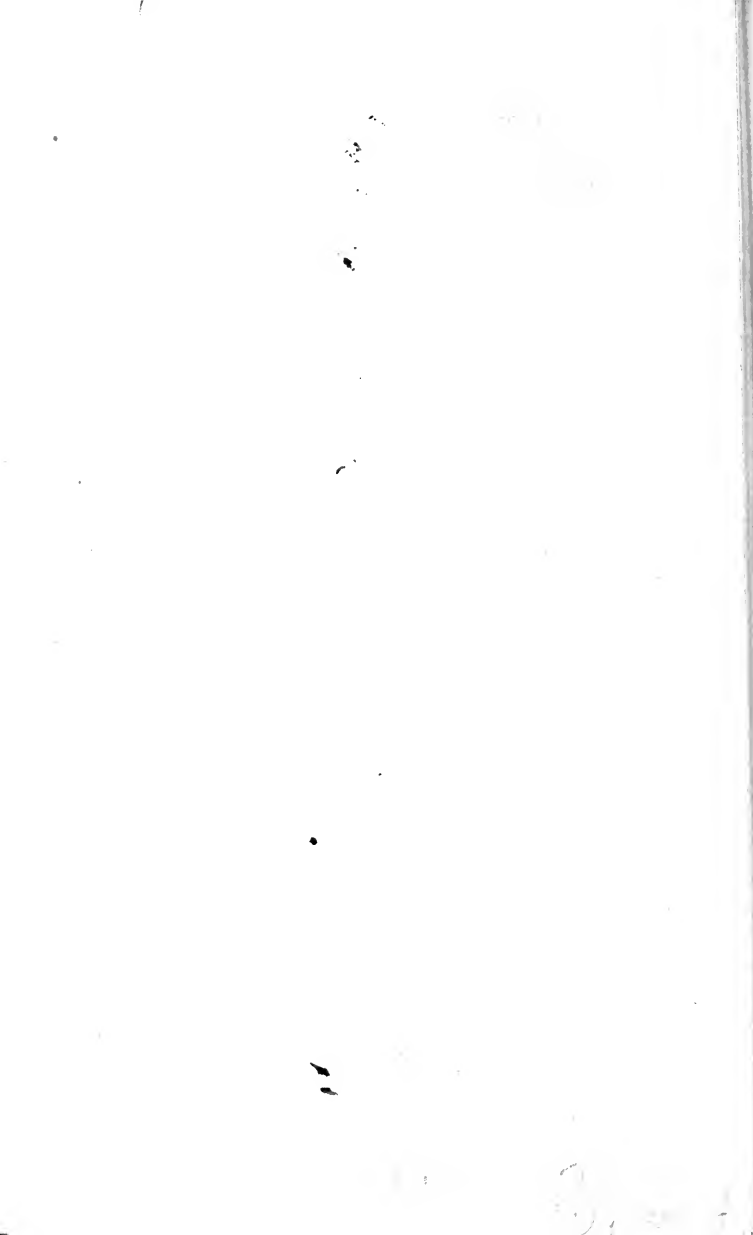


Price of System Complete with Printed Instructions, - \$10.00
Oral Instructions, Extra, from \$3.00 to - - - \$10 00

Reasonable Discounts allowed to Agents and Teachers.

For particulars, address

T. W. BYRNES,
MANITOWOC, WIS.



THE DRESS-MAKER'S
INSTRUCTION BOOK,

—AS INCLUDED IN—

T. W. BYRNES'
NEW AND IMPROVED SYSTEM,

WITH THE

DRESS-MAKER'S MODEL MEASURE SHEET.

BY THOMAS W. BYRNES.

This system is the result of several years' study and practical experience in Dress and Cloak-Making and includes the following articles:

A Draughting Apparatus in two parts, viz: Front and Back.

An Instruction Book containing a Model Measure Sheet with illustrations and directions for taking Measurements, directions for Draughting, with Charts and Figures for reference, and a Measuring Tape.

It is designed to supply a want generally acknowledged by the public, viz: a convenient and reliable system, at a moderate expense, by which every person of ordinary understanding can readily draught and cut Dresses, Cloaks, Coats, &c., from actual measurement.

The application of the Draughting Apparatus to practical use has been thoroughly tested and demonstrated by practical experiments, and nothing has been spared to render it at once the most perfect, convenient and reliable.

It will be found adapted to all the changes of Fashion as well as to all Measurements, and by carefully following the directions, a perfect fit can be obtained in every case, without alteration, where the figure is not positively deformed.

T. W. BYRNES, Inventor.

PRACTICAL SUGGESTIONS.

(1.) MEASUREMENTS.—Measures should not be taken over collars, waist trimmings, or any thing thick or clumsy.

The different measures should be always taken in their proper order according to the measure sheet and always in the same manner, so that accuracy may be attained by practice. All measures should be taken snug and easy, neither drawing the tape measure tight nor holding it slack.

Whether for dresses, sacks or cloaks, the dress measurement is all that is necessary.

For circulars and some other garments the chest measure over the arms is necessary and may be inserted on the measure sheet, in the same space with the chest measure.

(2.) LININGS.—It is economy to use a good quality of lining in dress-making, as the fit of a dress depends to some extent on the quality of the lining used, as well as the cut, and it is better to have the waist and sleeves lined with the same material.

(3.) DRAUGHTING AND CUTTING.—A good way to draught a lining is to unfold the lining, refold it crosswise and press it smoothly before commencing to draught.

When draughting, always bear in mind the fact that the different sections and parts of the draughting apparatus are not intended to serve as stereotyped models in all cases, but that something is left to the good taste and judgment of the dress-maker,

and that the proportion of the sections and parts of the draught may be varied, at pleasure, from that of the corresponding sections and parts of the apparatus by enlarging or diminishing any one or more of the sections or parts by the scales on the apparatus at the different points of measurement, and diminishing or enlarging one or more of the remaining sections or parts proportionately at the same points of measurement.

Draught the Front first on that portion of the goods near you; then change the lining end for end and draught the Back on the other portion, commencing as near the top or left hand edge as the side line of the first side form in the front draught will permit. (See chart No. 1.)

The bust form on the front line should be dispensed with in draughting cloaks, loose-fitting and children's garments. Should any measure exceed the largest measure included in the scale on the corresponding form of the draughting apparatus, add as many inches to the form, by the scales, as the measure exceeds the scale.

In draughting cloaks and over garments the dress measurement may be enlarged at every point excepting the neck, and at any time after the draught is completed the neck may be enlarged, re-draughted, or cut out any shape and size required.

Before commencing to cut, baste or pin the lining securely, so that like parts will be cut exactly alike. When cutting, allow for seam everywhere excepting at the neck and arms-eye.

It is better to cut out the bust darts and all shape seams.

(4.) BASTING.—Good basting is quite essential to success in dress-making.

In basting the lining on to the top or dress material, lay it smoothly and so that the top and the lining will be cut on the *same grain*, and the different sections of both top and lining should be *perfectly straight with the grain of the goods at the waist line*. In basting the lining on to the top, take cross stitches about one-fourth of an inch long and about one inch apart.

In basting up the seams, make short and substantial stitches.

In basting the shoulder seams, hold the back toward you and very full from the neck down about half way, and the front tight; then the back tight and the front full the remainder of the way.

Sleeves, collars, neck bands, dress braids, and gored sides should be held toward the person when basting.

The back should be held toward the person when basting the side seams, and before basting the side seams the garment should be tested at the chest, waist and hip lines, according to the measurement at these points.

The bias or gored sides of skirt breadths should always be turned toward the back.

(5.) WAIST SEAMS.—Clip the waist seams exactly on the waist line, trim the raw edges off evenly and over cast or bind them with narrow ribbon. The

edges of the shoulder seams should be turned toward the front and the edges of the side seams toward the back.

(6.) WHALEBONE PIECES.—Make the whalebone pieces about three or four inches in length and sew them in with the dart seams.

(7.) WHALEBONE CASINGS.—The whalebone casings should be made by hemming down bias strips of the lining on the seams, after the raw edges are finished.

(8.) HANGING LOOPS.—Every waist should be furnished with hanging loops well secured at the side seams.

(9.) DESIGNS.—In selecting designs, those with high collars, large sleeves, trimmed waists, basques and belts in general, full skirts, horizontal stripes and trimmings, outstanding ruffles, large sash bows, &c., will be found becoming to tall, slender figures, and those with opposite features becoming to short, stout figures, while as a general rule all designs are becoming to what are termed perfect figures.

TESTING THE DRAUGHTS.

(1.) *A front draught for close-fitting garments,* measured across on the line of the bust from the vertical line at the “chest” mark, to the front, exclusive of the bust form on the front line, should equal about one-third of the chest measure; and measured across from the side of the arm’s-eye to the front line, it should equal one-half of the exact width of the front.

The different sections measured across on the line of the waist and taken together, should equal about one-third of the "waist" measure.

The different sections measured across on the line of the hip, and taken together, should equal about one-third of the "hip" measure

The "front to waist," "waist to bust," "front to shoulder," "shoulder" and "under arm," should correspond with the measurement at these points.

(2.) *A back draught for close-fitting garments,* measured across on the line of the shoulder blades, from the vertical line on the "chest" mark, to the back line, should equal about one-sixth of the "chest" measure; and measured across from the side of the arm's-eye to the back line, it should equal one-half of the exact width of the back.

The different sections measured across on the line of the waist, and taken together, should equal about one-sixth of the "waist" measure.

The different sections measured across on the line of the hip, and taken together, should equal about one-sixth of the "hip" measure.

The side, measured from the lower end of the arm's-eye line to the mark at the lower end of the side line, should equal three-fourths of an inch more than the "under arm" measure.

The back to waist and back to shoulder measures should correspond with the measurement at these points.

DIRECTIONS FOR DRAUGHTING.

Directions for draughting Front (including under-arm gore) for dresses, cloaks, coats, &c., reference being had by letters and numbers to corresponding letters and numbers in Fig. 1 of Chart No. 1 herewith.

(1.) *The Chest and Neck.*—Lay the front part of the Draughting Apparatus lengthwise on the material to be draughted with all the sections unfolded and the neck and shoulder forms toward the left hand; fold sections "F" and "G" upward, place the edges of the large slot in section "A" straight to a thread, mark the chest measure by the scale on the bottom edges of "F" and "G," as folded, line the left edge of "A" from the neck form down to the mark on the edge, line the side edges of the slot in "A" and mark the lines 1, 2, and 3, (see point *a* and heavy lines 1, 2, 3,) with the scales on the top of the slot in "A," place the "neck" measure at the upper end of line "2," have the edges of the slot straight to a thread, mark the neck measure by the scale on the top of the neck form and line the neck. (See point *b* and heavy line 4.)

(2.) *The Front to Waist, Waist to Bust, Waist to Shoulder, and Shoulder.*—After lining the neck form, mark the Front to Waist measure by the scale on the left edge of the large slot in "A." Slide the bottom of the slot even with the mark, the side edges of the slot straight to a thread; mark the

waist line at the front by the bottom edges of sections "D" and "E." (See point *c* and heavy lines 5 and 6.) Mark the Waist to Bust measure by the scale on the left edge of the slot in "D;" mark the Front to Shoulder measure by the scale on the right edge of the slot in "A" (see points *d*, *e*); unfold "F" and "G;" slide the top of the slot even with the Front to Shoulder mark, the top of the neck form on a thread even with the side of the neck, the edges of the slot straight to a thread; mark the shoulder measure by the scale on the shoulder form; line the shoulder form from the "neck" mark even with the "shoulder" mark. (See point *f* and heavy line 7.)

(3.) *Arms-eye*.—Fold section "C" and with the straight edge draw a vertical line through the chest measure mark and straight to a thread; with the scale on the top of the arms-eye form, place the arms-eye measure at the end of the shoulder, place the same measure by the scale on the bottom of the arms-eye form, at the vertical line, and line the arms-eye from the end of the shoulder down to the bottom of section "C" (see heavy lines 8, 9); draw a cross line straight to a thread and extending to the right from the lower end of the arms-eye line for the bottom of the arms-eye (see heavy line 10); mark the vertical line up about three-fourths of an inch higher than the bottom of the arms-eye and with the curved edge on the left of "F," draw a curved line from this mark to the bottom of the arms-eye. (See point *g* and heavy line 11.)

(4.) *The Bust Darts.*—Fold “D,” place the lower edge of “A” up to the Waist to Bust mark, the side edges of the slot in “A” on lines “2” and “3;” unfold “D;” line the left edges of “A” and “D” from the mark on the left edge of “A” down to the bottom of “D” (see heavy line 12); fold “E;” line the right edge of “D” from the top down for the first dart line; line the lower edge of section “B” and mark the “dart’s taper” by the scale (see heavy lines 13, 14, and point *h*); slide the top of the second dart form up to the “dart’s taper” mark, the side edges of the slot in “A” straight to a thread, and line the left edge of section “F” for the second dart line; unfold “E,” place its lower edge on the waist line between the two dart lines so that the space on the waist line between the first dart line and the left edge of “E” will be a trifle narrower than the space on the waist line between the second dart line and the right edge of “E,” mark the width of “E” on the waist line and with the curved edges on the right and left of “E” complete the darts. (See heavy line 15, points *i*, *j*, and heavy lines 16, 17.)

(5.) *The Underarm Seam.*—Fold section “G,” place the top end of the scaled edge on the right of section “F” at the bottom of the arms-eye, the edge straight to a thread, mark the “under-arm” measure by the scale and line the edge from the bottom of the arms-eye down to the under-arm mark for the first seam-line (see point *k* and heavy line 18); with the straight edge on the left of the slot in “F,” draw a cross line extending to the right from the first

seam-line at the "under-arm" mark and straight to a thread, and a similar line from the end of the arms-eye line, at the same time marking off the desired width of seam, (which is usually about four inches by the scale on the edge of the slot,) on the cross line at the under-arm mark and on the cross-line at the bottom of the arms-eye and half the width of this seam on the cross line at the end of the arms-eye line (see lines 19, 20, 20, and points *l, m, n*); draw a second seam line from the mark denoting the width of seam, on the cross line at the bottom of the arms-eye, down even with the mark denoting the width of seam on the cross line at the under-arm mark, draw a curved line from the mark on the cross line, at the end of the arms-eye line, down to the upper end of the second seam line. (See heavy lines 21, 22.)

(6.) *The Waist and the Side Line.*—Place the point on the bottom and left of "F" as many inches, by the scale on the lower edge of "F," to the right of the second dart line as the under-arm seam is wide, the lower edges of "F" and "G" on a level with the Under-arm mark and mark the "Waist" measure by the scale on the bottom of "G" (see points *o, p*); place the upper part of the right hand edge of "G" at the end of the arms-eye line as extended to the right and even with the "Waist" mark below, and line the side. (See heavy line 23.)

(7.) When no seam is required under the arm: See dotted lines 1, 2, 3.

(8.) For a cross seam at the hip: See dotted

lines 4, 5, and in drawing the curved lines use the edges of the double dart form in "B."

(9.) *To extend the front line down:* Lap a straight edge on about one or two inches of the lower part of the front line and continue the same down as long as desired. See heavy lines 24, 25, 26, 27, 28, 29.

(10.) To complete the bust darts: With a straight edge extend the dart lines down about twice the length of the waist to hip measure. *See heavy lines*

(11.) To complete the Under-arm seam: With a straight edge draw a vertical line extending through the center of the seam down as long as desired; then place the top of the double dart in "B" at the lower end of the first seam-line, the right edge of the dart up near to the vertical line, and line the edge; then place the top of the dart at the lower end of the second seam-line, the left edge near the vertical line, and complete the seam. See heavy lines 30, 31, 32.

(12.) To extend the side line at the hip: Subtract the sum of one-half of the dart's taper, as draughted, plus one-half of the width of the under-arm seam at the waist line, from the "Gore's-taper" measure and with the scale on the edge of the slot in "F," measure on the difference to the right from the "Waist" mark at the end of the side line and mark the same (see point *q*,) with the straight edge on the right of "F" draw a vertical line extending downward from the "Gore s-taper" mark, mark the "Waist to hip" measure on this line by the scale on

the edge, draw a straight line extending from the waist mark at the end of the side line down through the "Waist to hip" mark (see point *r* and heavy lines 33, 34); extend this line down as long as desired. See point *s* and heavy line 35.

(13.) For a Front waist with one bust dart: See dotted lines 6, 7, 8, 9, and with the scale on the edge of the slot in "F" measure the dart's-taper on the waist line toward the right from the first dart line for the width of the dart.

(14.) For a Front straight and loose at the waist: See dotted line 10.

(15.) For a Front-waist with a seam to the shoulder: See dotted lines 11, 12, 13, ¹³14, 15, 16, 17, 17, 18

(16.) For Under-arm seam shaped for cloaks and loose-fitting garments: See dotted lines 18, 19.

(17.) For Under-arm seam shaped for dresses and close-fitting garments: See dotted lines 21, 19.

Directions for draughting Back of waist, including the side forms, for dresses, cloaks, coats, &c., reference being had by letters and numbers to corresponding letters and numbers in Fig. 2 of Chart No. 1 herewith:

(1.) *The Chest and Neck.*—Lay the back part of the Draughting Apparatus lengthwise on the material to be draughted with all the sections unfolded and the neck and shoulder forms toward the left hand, the edges of the large slot in section "W" straight to a thread; mark the chest measure by the lower scale on the bottom edges of sections "X"

and "Y;" line the left edge of "W" from the neck form down to the mark, line the side edges of the large slot in "W" and mark the lines 1, 2, 3. (See point *a* and heavy lines 1, 2, 3.) With the scale on the top of the slot in "W," place the "Neck" measure at the upper end of line "2," have the edges of the slot straight to a thread and line the neck form. (See heavy line 4.)

(2.) *The Back to Waist, Shoulder Blades, Back to Shoulder, and Shoulder.*—After lining the neck, mark the Back to waist measure by the scale on the left edge of the large slot in "W," (see point *b*,) slide the bottom of the slot even with the mark, the side edges of the slot straight to a thread, and mark the waist line at the back by the bottom edge of section "Z," mark the Shoulder Blades measure by the scale on the left edge of the slot in "Z," mark the Back to Shoulder measure by the scale on the right edge of the slot in "W" (see heavy line 5 and points *c*, *d*,) slide the top of the slot even with the Back to Shoulder mark, the top of the neck form on a thread even with the right hand end of the neck line, the edges of the slot straight to a thread, mark the "Shoulder" measure by the scale distinguished by the small figures on the shoulder form and with the edge on the shoulder form draw a line extending to the right from the end of the neck line and through the shoulder mark, to the shoulder measure in the scale distinguished by the large figures on the shoulder form and mark the same. (See points *e*, *f*, and heavy line 6.)

(3.) *The Arms-eye.*—With the straight edge draw a vertical line through the chest measure mark straight to a thread and extending from near the end of the shoulder down about six or seven inches, with the scale on the top of the arms-eye form place the arms-eye measure at the end of the shoulder, place the bottom of the arms-eye form on the vertical line and line the arms-eye from the end of the shoulder down to the vertical line. (See heavy lines 7, 8.)

(4.) *The Back Line, Waist, and Side Line.*—Fold “Z,” place the bottom of “W” even with the Shoulder Blades measure mark, the side edges of the large slot in “W” on lines “2” and “3,” unfold “Z” and line the left edges of “W” and “Z” from the mark on the edge of “W” down to the bottom of “Z” (see heavy line 9); mark the width of the bottom of “Z” on the waist line toward the right from the back line, fold “Z,” place the point on the bottom and left of “W” at the mark, the lower edge straight to a thread, and mark the waist measure by the scale, (see points *g* and *h*,) unfold “Z,” fold sections “X” and “Y,” place number “10” on “X” as folded, at the lower end of the arms-eye line, the right edge of “Z” on a thread even with the waist mark, mark the under-arm measure by the scale on the right edge of “Z,” slide the bottom of “Z” even with this mark, the right edge of “W” on the lower end of the arms-eye line, and line the side. (See point *i* and heavy line 10.)

(5.) To extend the back and side lines down :

Lap the straight edge on about one or two inches of the lower part of the back line and continue the same down as long as desired (see heavy lines 11, 12); with the upper scale on the bottom edges of "X" and "Y," measure the Gore's-taper toward the right from the mark at the end of the side line and mark the same (see heavy line 13 and point *j*); with the straight edge draw a vertical line extending downward from the "Gore's-taper" mark, measure the "Waist to hip" on this line with the scale on the right edge of section "F," of the Front, then draw a straight line from the mark at the end of the side line down through the "Waist to hip" mark on the vertical line and extend the same down as desired. (See heavy lines 14, 15, 16, and points *k*, *l*.)

(6.) For a back with seam to the shoulder: See dotted lines 1, 2, 3, 4, 5, 6, 7, 8, 9, 10, 11, 12, 13, 14.

(7.) For a back, with seam to the arms-eye: See dotted lines 15, 16, 17, 18. These seams are draughted similar to the under-arm seam in the Front and may be made any desired width. Use the curve on the left of "W" and "Z" when draughting the upper part of the seam to the shoulder. Use the curve on the lower left hand edge of "X" for the upper part and the curve on the left of "Z" for the lower part of the seam to the arms-eye.

(8.) For a back straight and loose at the waist: See dotted line 19.

(9.) For a yoke at the back: See dotted line 20.

When through draughting, always fold the Sections of the Draughting Apparatus in the following order :

Front (1.)—D, E, F, and G, upward.

(2.)—D and A to the right.

(3.)—G, F and C, to the left.

(4.)—G to the right, so that B will be at the bottom and G on the top, when folded.

Back—(1.)—X and Y to the left.

(2.)—Z upward, so that W will be at the bottom and Z on the top, when folded.

INDEX.

<i>Directions for Draughting Front.</i>	PAGE.
The chest and neck.....	8
Front to waist, waist to bust, Front to shoulder and Shoulder.....	8
Arm's-eye.....	9
Bust darts.....	10
Under-arm seam.....	10
The waist and the side line.....	11
When no seam is required under the arm.....	11
Front with cross-seam at the hip.....	11
To extend the Front line down.....	12
To complete bust darts.....	12
To complete the under-arm seam.....	12
To extend the side line at the hip.....	12
Front with one bust dart.....	13
Front straight and loose at the waist.....	13
Front with a seam to the shoulder.....	13
Under-arm seam shaped for cloaks, &c.....	13
Under-arm seam shaped for dresses, &c.....	13
 <i>Directions for Draughting Back.</i>	
The chest and neck.....	13
The back to waist, shoulder blades, back to shoul- der, and shoulder.....	14
Arm's-eye.....	15
The back line, waist, and the side line.....	15
To extend the Back and side lines down.....	15
Back, with a seam to the shoulder.....	16
Back, with a seam to the arm's-eye.....	16
Back, straight and loose at the waist.....	16
Back Seams.....	16
Yoke at the back.....	16

Illustrations.

Chart No. 1.....	21
Fig. 1....	24
Fig. 2.....	25
Measure sheet.....	27

Practical Suggestions.

Measurements.....	3
Linings.....	3
Draughting and cutting.....	3
Basting.....	5
Waist and shoulder seams.....	5
Whale-bone pieces.....	6
Whale-bone casings.....	6
Hanging loops.....	6
Designs.....	6

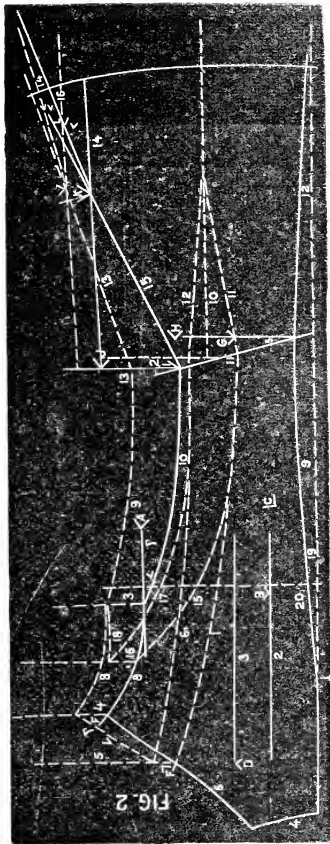
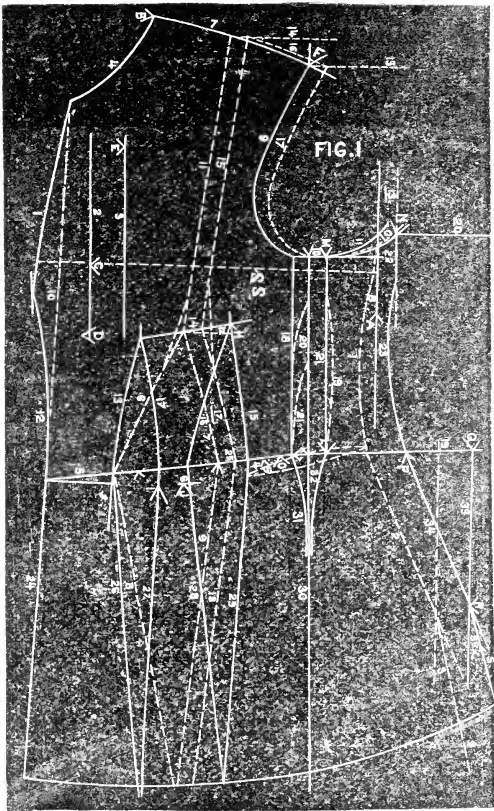
Testing the Draughts.

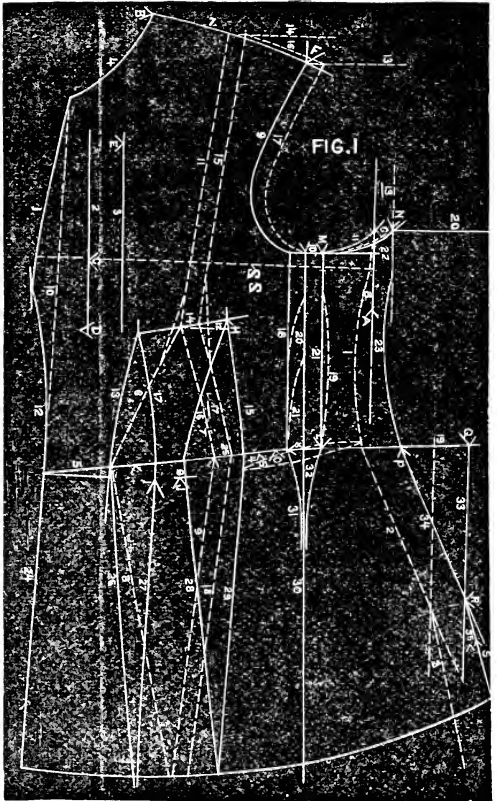
Front draught.....	6
Back draught.....	7

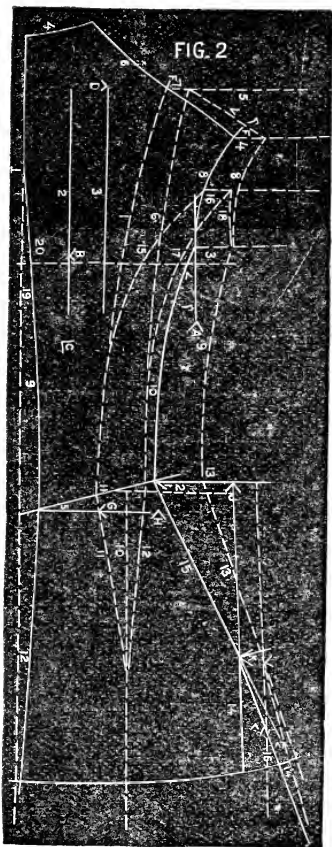
To fold the Draughting Apparatus.

Front.....	17
Back.....	17

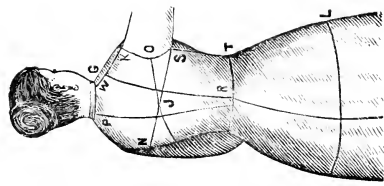
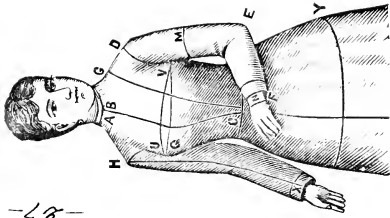
Chart no. 1.







Skirt-front : C to top of shoe at the toe,	39
Skirt-back : R to floor,	40
Skirt-sides : T to floor,	39½
Train : (as long as desired)	36



THE DRESS-MAKER'S MODEL MEASURE SHEET,

(COPYRIGHTED)

WITH INSTRUCTION BOOK,

BY THOS. W. BYRNES, 1882.

Chest, U, V & J: (all around).....36

Neck, A, P & B: (all around).....14

Front to waist, B & C:.....14

Waist to bust, C & Q: (up to the line of the bust)..... 5½

Front to shoulder, C & G: (over the shoulder to the back).....17½

Waist to waist, C, G & R: (not used in draughting).....32½

Dart's-taper, (chest, less waist).....	12
Under-arm, S & T: (to top of hip).....	7½
Waist, C, R & T: (all around).....	24
Back to waist, P & R: (from the upper part of neck bone).....	17
Shoulder-blades, R & J: (to the line of the shoulder-blades).....	13
Back to shoulder, R & G: (waist to waist less Front to Shoulder).....	15
Width of back, N & O: (test and correction measure).....	12
Width of front, U & V: (test and correction measure).....	15
Waist to hip, T & L:.....	6
Hip, L & Y: (all around).....	40
Gore's-taper, (Hip less Waist).....	16
Sleeve to elbow, D & E:.....	13
Elbow to hand, E & F:.....	9
Arm, M: (all around).....	11
Hand, Z: (all around).....	8

LIBRARY OF CONGRESS



0 014 061 893 7