

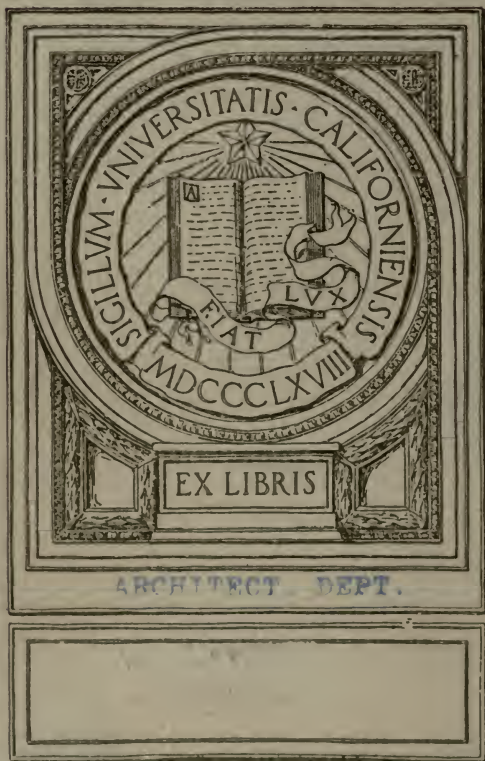
UC-NRLF

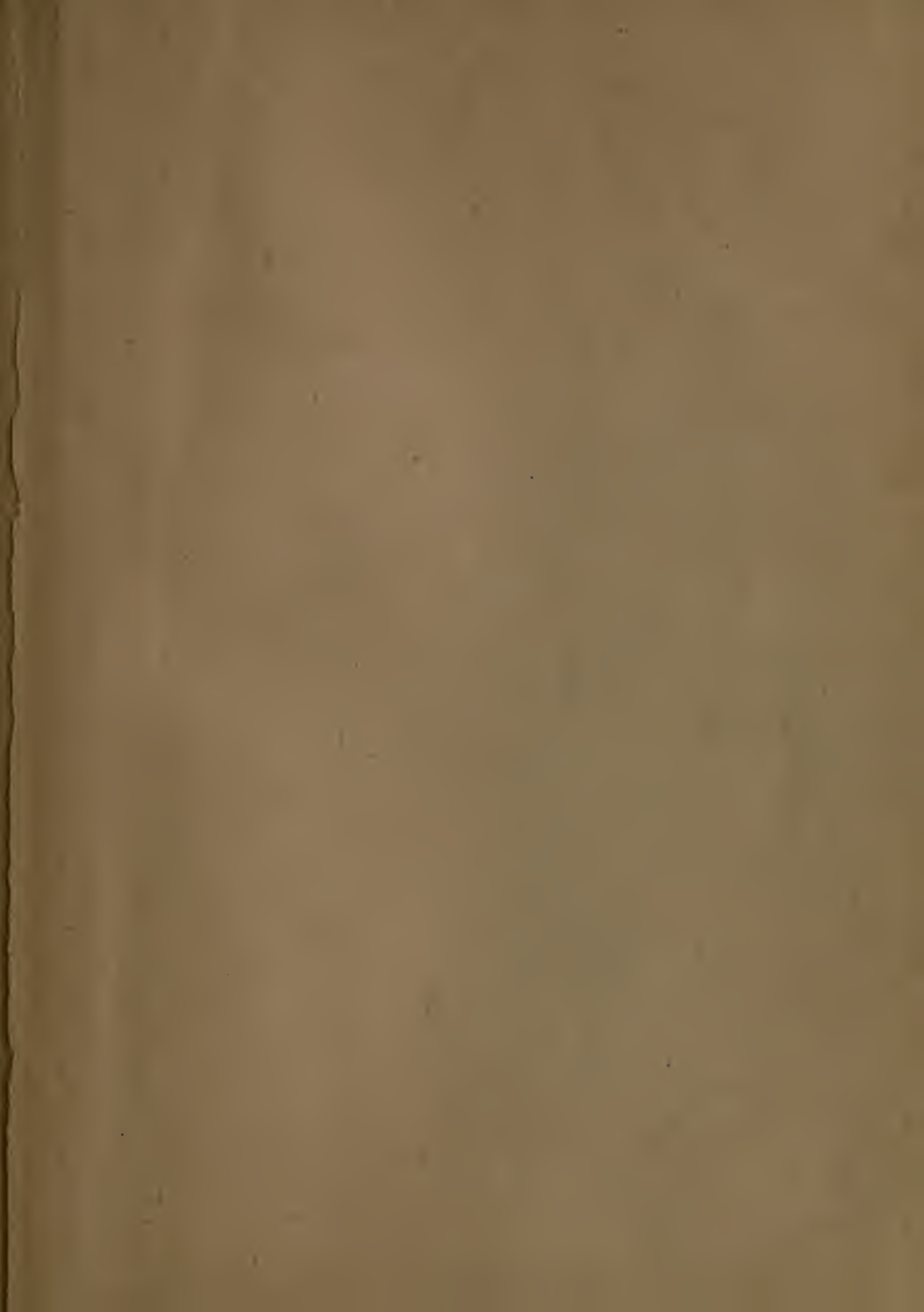


LB 116 949

UNIVERSITY OF CALIFORNIA
ARCHITECTURAL DEPARTMENT LIBRARY

CLASS





University prints, Boston

Volume 1

NE 900

U.S.

Arch.

Dept.

ARCHITECT. DEPT.



ST. CHRISTOPHER (WOODCUT)
 John Rylands Library, Manchester



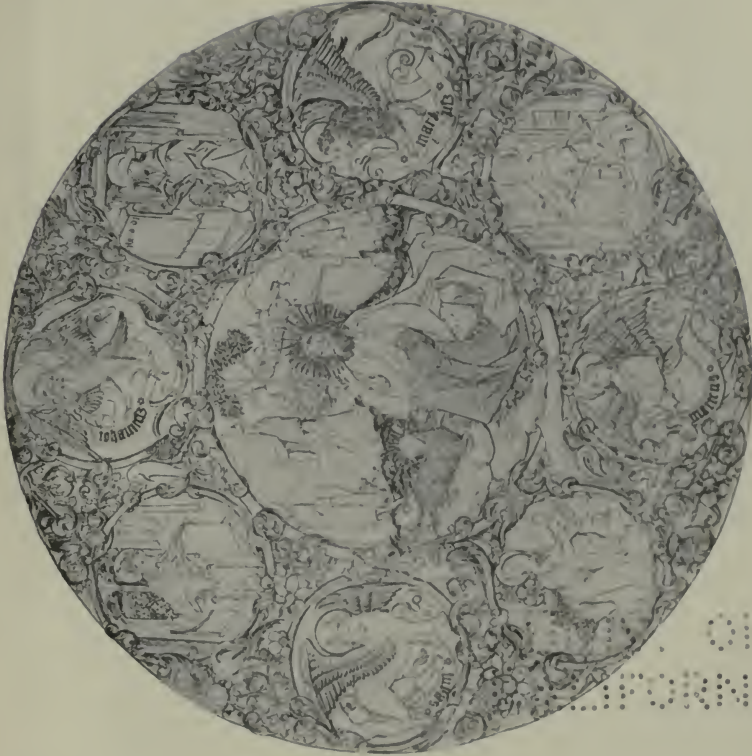
MADONNA, CHILD, AND SAINTS (WOODCUT)
Collection of Paul J. Sachs, Cambridge, Mass.



THE QUEEN OF BIRDS (ENGRAVING)
Bibliothèque Nationale, Paris

THE UNIVERSITY PRINTS
BOSTON

MASTER OF THE PLAYING CARDS. FL. 1445
GERMANY



ST. JOHN ON THE ISLAND OF PATMOS WITH SYMBOLS
OF THE FOUR EVANGELISTS (ENGRAVING)
Museum of Fine Arts, Boston

THE UNIVERSITY PRINTS
BOSTON

MASTER E. S. PL. 1450—1470
GERMANY



FLIGHT INTO EGYPT (ENGRAVING)

Fogg Art Museum, Cambridge



MADONNA IN THE COURTYARD (ENGRAVING)
Museum of Fine Arts, Boston



ST. GEORGE AND THE DRAGON (DRY-POINT)

British Museum, London

THE UNIVERSITY PRINTS
BOSTON

MASTER OF THE AMSTERDAM CABINET. FL. 1480
GERMANY

THE
UNIVERSITY OF
MICHIGAN



PORTRAIT OF A LADY (ENGRAVING)
Kupferstichkabinett, Berlin



OTTO PRINT (ENGRAVING. FINE MANNER)
Fogg Art Museum, Cambridge

THE UNIVERSITY PRINTS
BOSTON

UNKNOWN FLORENTINE. XV CENT.
ITALY

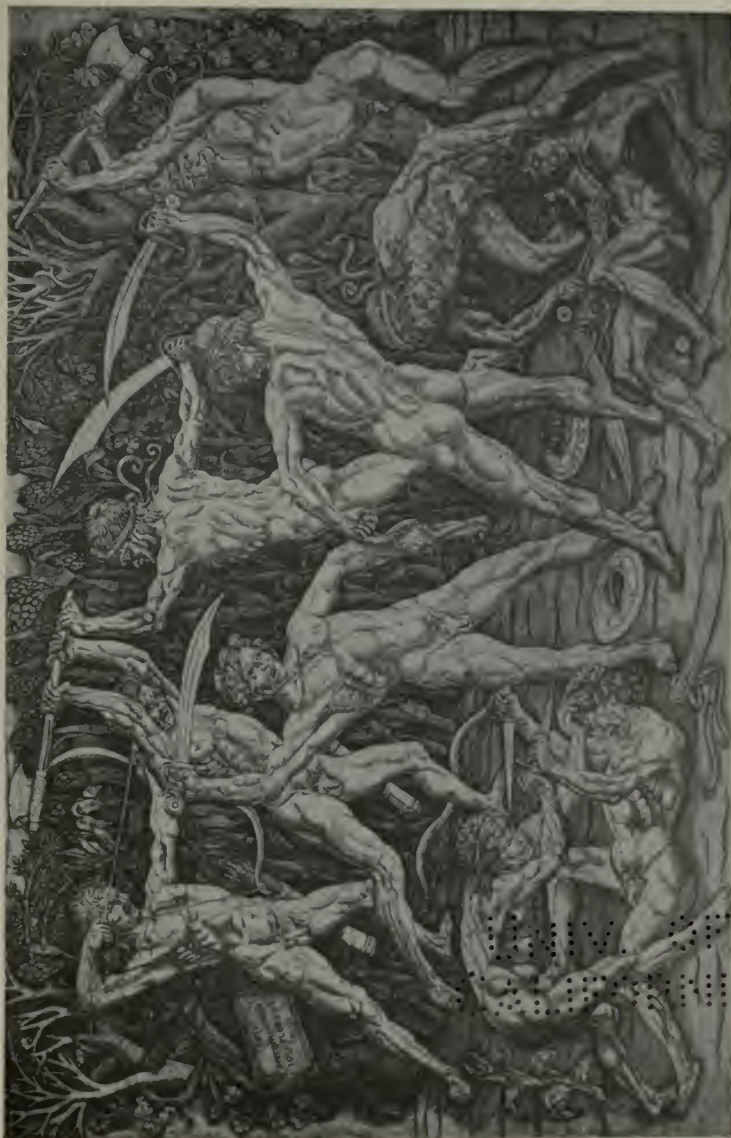
THE
UNIVERSITY OF
MICHIGAN LIBRARY



ASSUMPTION OF THE VIRGIN (ENGRAVING. BROAD MANNER)
Fogg Art Museum, Cambridge

THE UNIVERSITY PRINTS
BOSTON

UNKNOWN FLORENTINE. XV CENT.
ITALY



BATTLE OF THE NUDES (ENGRAVING)

Collection of Paul J. Sachs, Cambridge

THE UNIVERSITY PRINTS
BOSTON

A. POLLAIUOLO 1432 (?)—1498
ITALY



ABUNDANCE (ENGRAVING)
Museum of Fine Arts, Boston

THE UNIVERSITY PRINTS
BOSTON

ROBETTA. 1462-1522 (?)
ITALY



MADONNA AND CHILD (ENGRAVING)

Museum of Fine Arts, Boston

THE UNIVERSITY PRINTS
BOSTON

MANTEGNA. 1431—1506
ITALY



BATTLE OF SEA-GODS. LEFT PORTION OF A FRIEZE (ENGRAVING)
Museum of Fine Arts, Boston

THE UNIVERSITY PRINTS
BOSTON

MANTEGNA. 1431-1506
ITALY



FOUR WOMEN DANCING (ENGRAVING)
Museum of Fine Arts, Boston

THE UNIVERSITY PRINTS
BOSTON

SCHOOL OF MANTEGNA. XV CENT
ITALY



HOLY FAMILY WITH ST. JOHN (ENGRAVING)

Museum of Fine Arts, Boston

THE UNIVERSITY PRINTS
BOSTON

GIOVANNI ANTONIO DA BRESCIA. FL. 1500—1516
ITALY



THREE STAGS (ENGRAVING)
Museum of Fine Arts, Boston



APOLLO AND DIANA (ENGRAVING)
Museum of Fine Arts, Boston

THE UNIVERSITY PRINTS
BOSTON

JACOPO DE' BARBARI. CA. 1450—1516
ITALY

UNIV. OF
CALIFORNIA



JUDITH (ENGRAVING)
Museum of Fine Arts, Boston

THE UNIVERSITY PRINTS
BOSTON

MOCETTO. CA. 1458—1530
ITALY

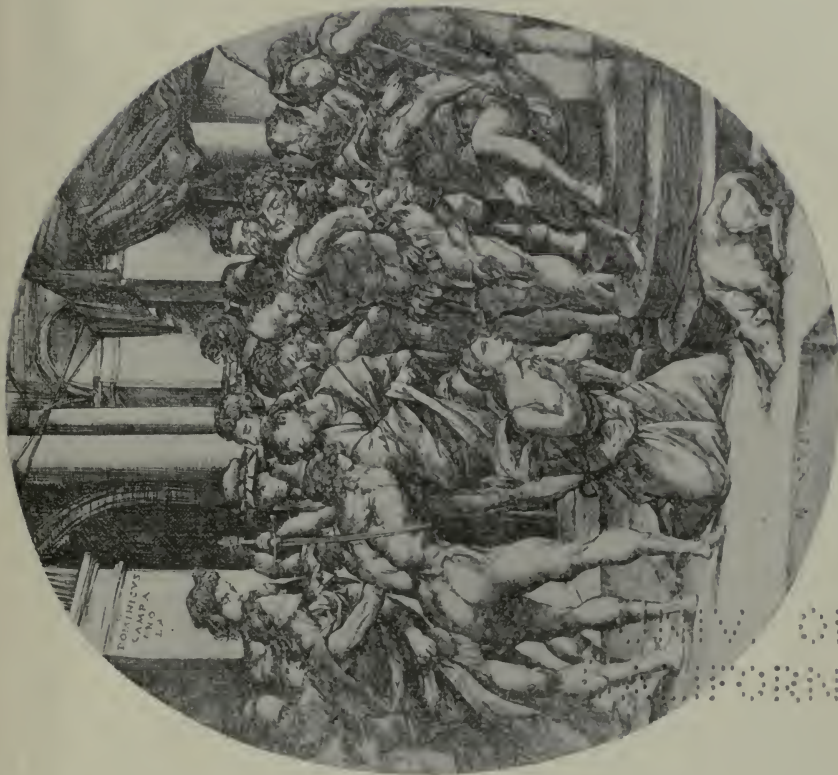
THE UNIVERSITY OF
CALIFORNIA



ST. JOHN THE BAPTIST (ENGRAVING)
Collection of Paul J. Sachs, Cambridge

THE UNIVERSITY PRINTS
BOSTON

G. CAMPAGNOLA. CA. 1482—1514
ITALY



DOMINICVS
CAMPAGNA
L'V
L'V

BEHEADING OF ST. CATHERINE (ENGRAVING)

Museum of Fine Arts, Boston

THE UNIVERSITY PRINTS
BOSTON

DOMENICO CAMPAGNOLA. CA. 1511—1563
ITALY



MADONNA AND CHILD (ENGRAVING)
Fogg Art Museum, Cambridge

THE UNIVERSITY PRINTS
BOSTON

BENEDETTO MONTAGNA. CA. 1470—1540
ITALY



DAVID AND GOLIATH. AFTER RAPHAEL (CHIAROSCURO)
Museum of Fine Arts, Boston

THE UNIVERSITY PRINTS
BOSTON

UGO DA CARPI. 1455—1523
ITALY



THE RIDERS ON THE FOUR HORSES: APOCALYPSE (WOODCUT)
Museum of Fine Arts, Boston



CHRIST APPEARING TO MARY MAGDALEN: SMALL PASSION (Woodcut)
Museum of Fine Arts, Boston

THE UNIVERSITY PRINTS
BOSTON

DÜRER. 1471—1528
GERMANY



THE FLIGHT INTO EGYPT: LIFE OF THE VIRGIN (Woodcut)

Fogg Art Museum, Cambridge



THE TRINITY (Woodcut)
Museum of Fine Arts, Boston

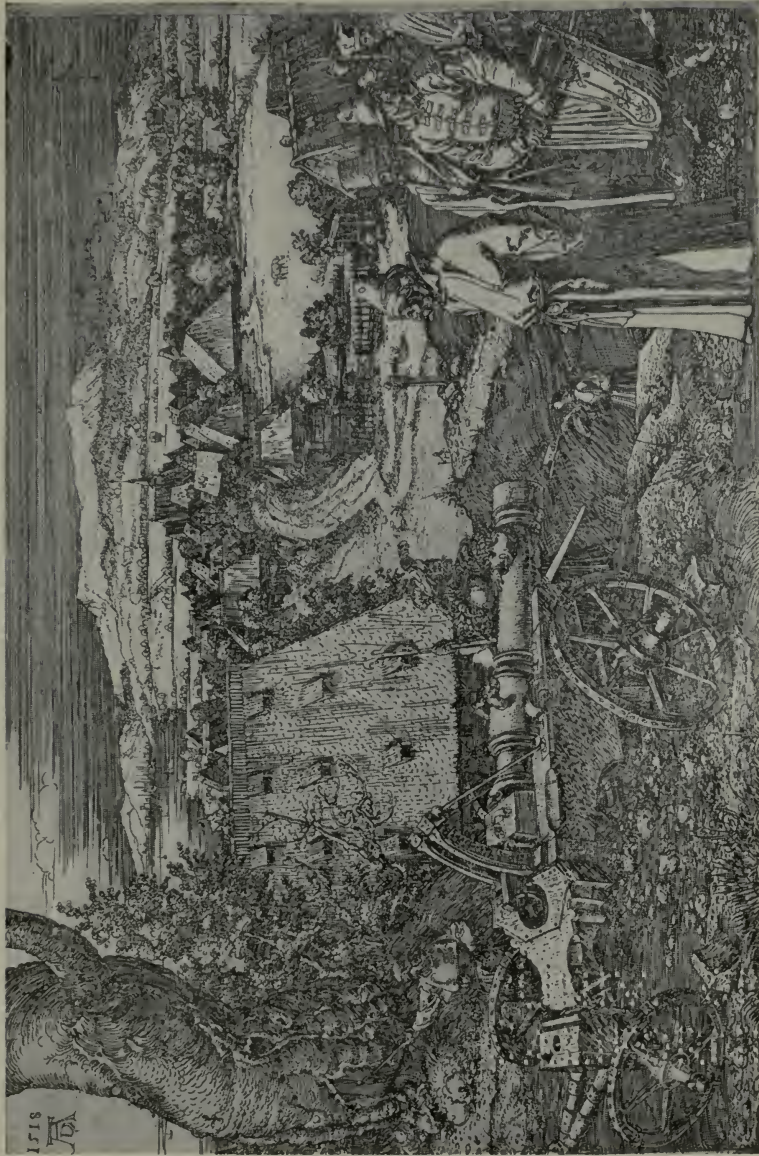


ST. JEROME IN HIS CELL (ENGRAVING)

Museum of Fine Arts, Boston

THE UNIVERSITY PRINTS
BOSTON

DÜRER 1471—1528
GERMANY



THE CANNON (ETCHING)
Museum of Fine Arts, Boston

THE UNIVERSITY PRINTS
BOSTON

DÜRER. 1471—1528
GERMANY



HOLY FAMILY (DRY-POINT)

Museum of Fine Arts, Boston

THE UNIVERSITY PRINTS
BOSTON

DÜRER, 1471-1528
GERMANY



EQUESTRIAN PORTRAIT OF MAXIMILIAN I (CHIAROSCURO)

Museum of Fine Arts, Boston



ST. GEORGE AND THE DRAGON (WOODCUT)

Museum of Fine Arts, Boston

THE UNIVERSITY PRINTS
BOSTON

CRANACH THE ELDER. 1472—1553
GERMANY



ST. CHRISTOPHER (CHIAROSCURO)
Museum of Fine Arts, Boston

THE UNIVERSITY PRINTS
BOSTON

CRANACH THE ELDER. 1472—1553
GERMANY



THE CRUCIFIXION (CHIAROSCURO)
Fogg Art Museum, Cambridge

THE UNIVERSITY PRINTS
BOSTON

GRIEN. 1476—1545
GERMANY

Der Acterman.



THE DANCE OF DEATH: THE PLOWMAN: THE YOUNG CHILD (Woodcuts)
Fogg Art Museum, Cambridge

Das Jungtint.



THE UNIVERSITY PRINTS
BOSTON

HOLBEIN THE YOUNGER. 1497-1543
GERMANY



LUCRETIA, AFTER RAPHAEL. (ENGRAVING)
Museum of Fine Arts, Boston



MASSACRE OF THE INNOCENTS, AFTER RAPHAEL (ENGRAVING)
Museum of Fine Arts, Boston

THE UNIVERSITY PRINTS
BOSTON

RAIMONDI. CA. 1480—1530
ITALY



DAVID PLAYING BEFORE SAUL (ENGRAVING)

Museum of Fine Arts, Boston

THE UNIVERSITY PRINTS
BOSTON

L. VAN LEYDEN. 1494—1533
NETHERLANDS



CHRIST ON THE MOUNT OF OLIVES: ROUND PASSION (ENGRAVING)
Museum of Fine Arts, Boston

THE UNIVERSITY PRINTS
BOSTON

L. VAN LEYDEN. 1494—1533
NETHERLANDS



THE MILKMAID (ENGRAVING)
Museum of Fine Arts, Boston



HENRI II AND DIANE DE POITIERS. (ENGRAVING)
Museum of fine Arts, Boston

THE UNIVERSITY PRINTS
BOSTON

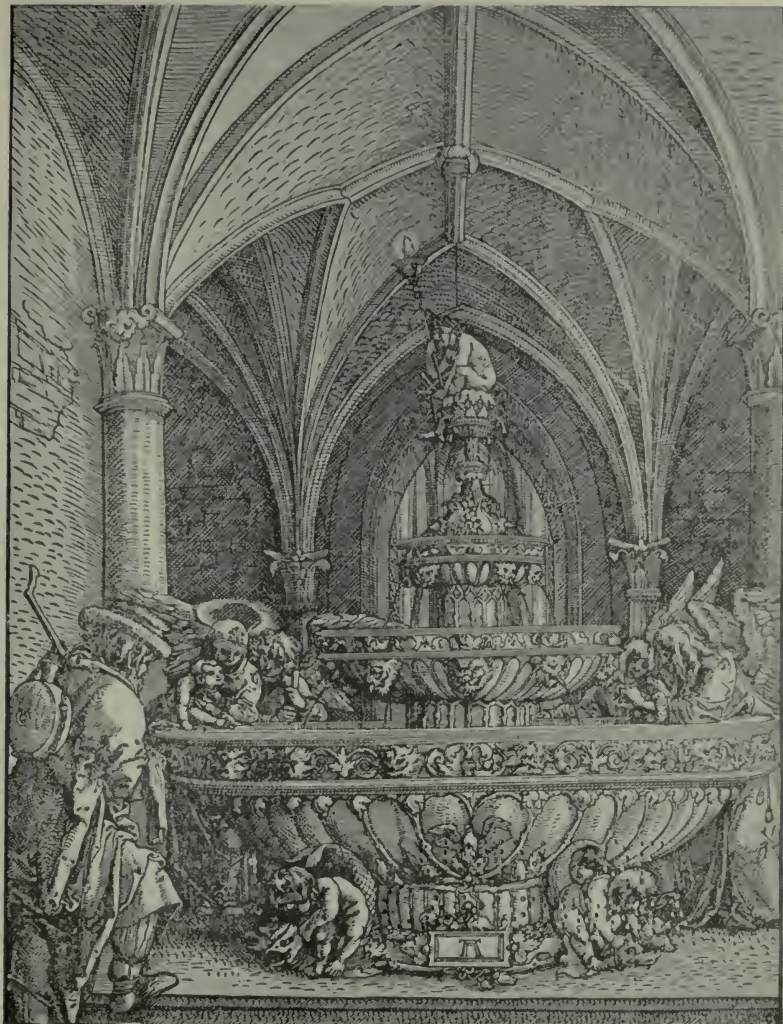
DUVET CA. 1485—1561
FRANCE



ST. CHRISTOPHER (ENGRAVING)
Museum of Fine Arts, Boston

THE UNIVERSITY PRINTS
BOSTON

ALTDORFER. CA. 1480—1538
GERMANY



HOLY FAMILY IN A CHAPEL (Woodcut)
Museum of Fine Arts, Boston

THE UNIVERSITY PRINTS
BOSTON

ALTDORFER. CA. 1480—1538
GERMANY



THE PRODIGAL SON GUARDING SWINE (ENGRAVING)
 Museum of Fine Arts, Boston

THE UNIVERSITY PRINTS
 BOSTON

H. S. BEHAM. 1500—1550
 GERMANY



PROGENIES · DIVVM · QVINTVS · SIC · CAROLVS · ILLE
 IMPERII · CAESAR · LYMINA · ET · ORA · TVLIT
 AET · SVAE · XXXXI
 ANN · M · D · XXXI

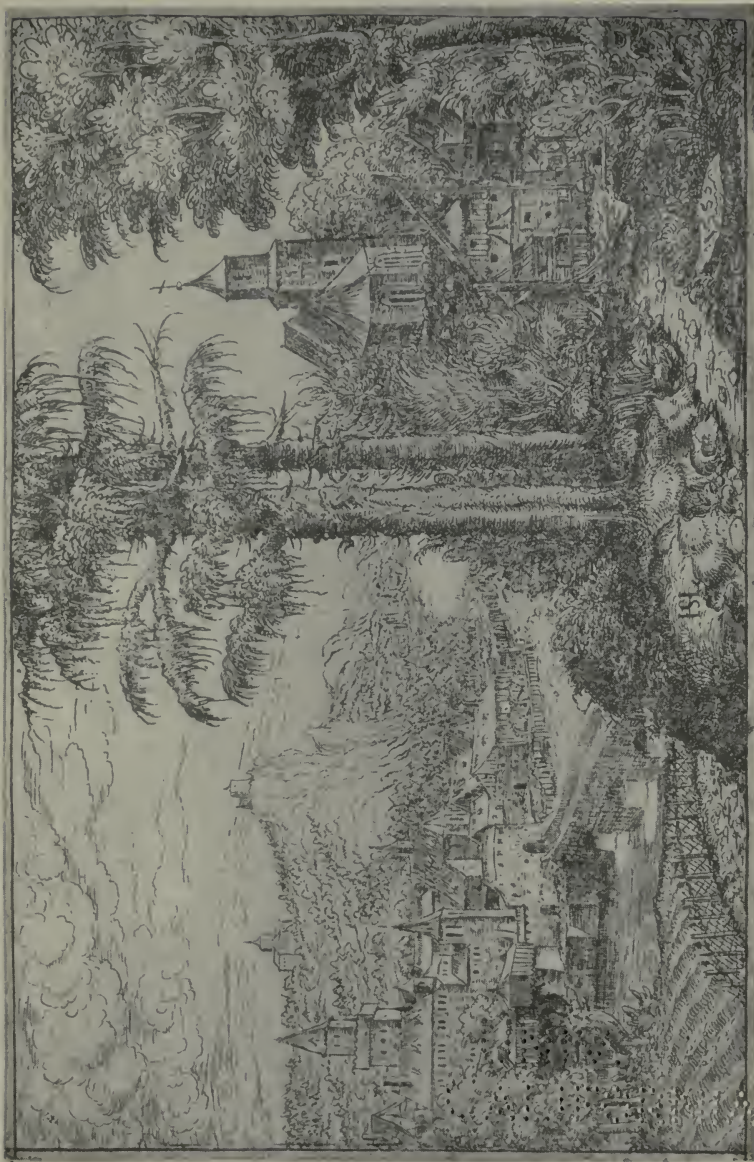
CHARLES V (ENGRAVING)
 Museum of Fine Arts, Boston



LANDSCAPE (ETCHING)
Museum of Fine Arts, Boston

THE UNIVERSITY PRINTS
BOSTON

HIRSCHVOGEL, 1503—1553 (?)
GERMANY



RIVER LANDSCAPE WITH CHURCH (ETCHING)
Museum of Fine Arts, Boston

THE UNIVERSITY PRINTS
BOSTON

LAUTENSACK, CA. 1524—1563
GERMANY



STANDARD BEARER (ENGRAVING)
Museum of Fine Arts, Boston



PARIS : VUE DU LOUVRE (ETCHING)
Museum of Fine Arts, Boston

THE UNIVERSITY PRINTS
 BOSTON

CALLOT. 1592—1635
 FRANCE



THE COWHERD (ETCHING)
Museum of Fine Arts, Boston

THE UNIVERSITY PRINTS
BOSTON

CLAUDE LORRAIN. 1600—1682
FRANCE

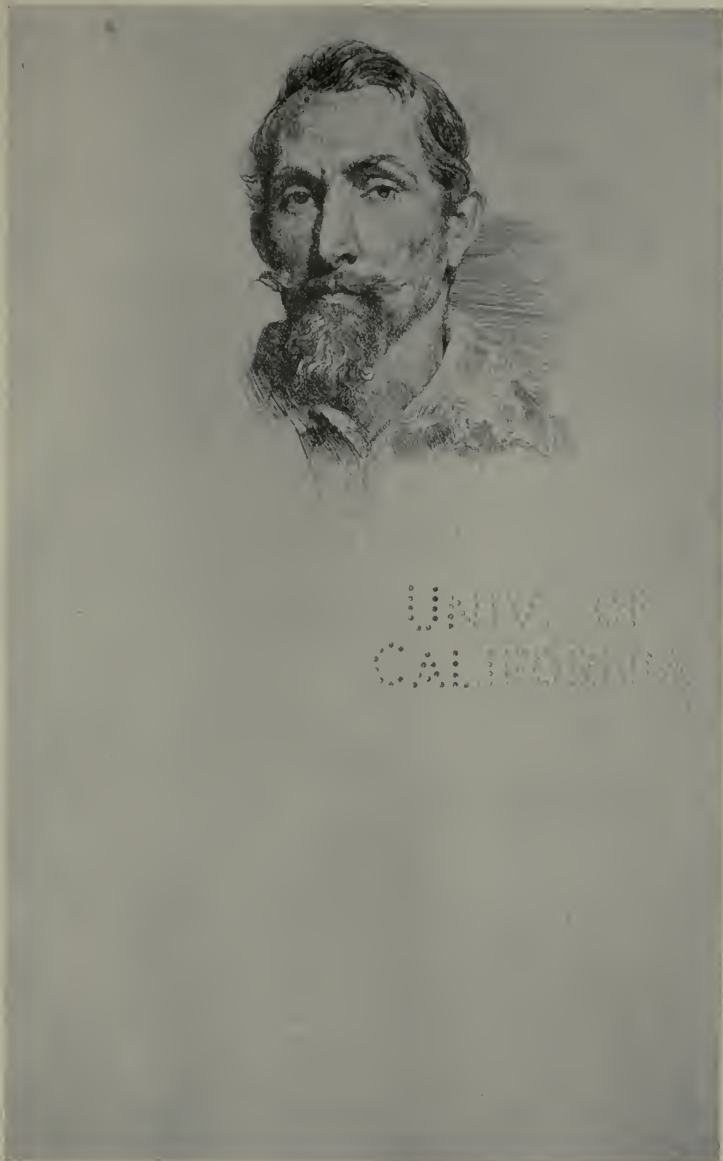


UNIV. OF
CALIFORNIA

PORTRAIT OF SELF (ETCHING)
Museum of Fine Arts, Boston

THE UNIVERSITY PRINTS
BOSTON

VAN DYCK. 1599—1641
NETHERLANDS



FRANZ SNYDERS (ETCHING)
Museum of Fine Arts, Boston

THE UNIVERSITY PRINTS
BOSTON

VAN DYCK. 1599—1641
NETHERLANDS



CLEMENT DE JONGHE (ETCHING)
Museum of Fine Arts, Boston

THE UNIVERSITY PRINTS
BOSTON

REMBRANDT. 1606—1669
NETHERLANDS



JAN LUTMA (ETCHING)
Museum of Fine Arts, Boston

THE UNIVERSITY PRINTS
BOSTON

REMBRANDT. 1606—1669
NETHERLANDS



TOBIT BLIND (ETCHING)
Museum of Fine Arts, Boston

THE UNIVERSITY PRINTS
BOSTON

REMBRANDT. 1606—1669
NETHERLANDS



THE RAISING OF LAZARUS (ETCHING)
Museum of Fine Arts, Boston

THE UNIVERSITY PRINTS
BOSTON

REMBRANDT. 1606-1669
NETHERLANDS



AMSTERDAM (ETCHING)
Museum of Fine Arts, Boston

THE UNIVERSITY PRINTS
BOSTON

REMBRANDT. 1606—1669
NETHERLANDS



THREE TREES (ETCHING)
Museum of Fine Arts, Boston

THE UNIVERSITY PRINTS
BOSTON

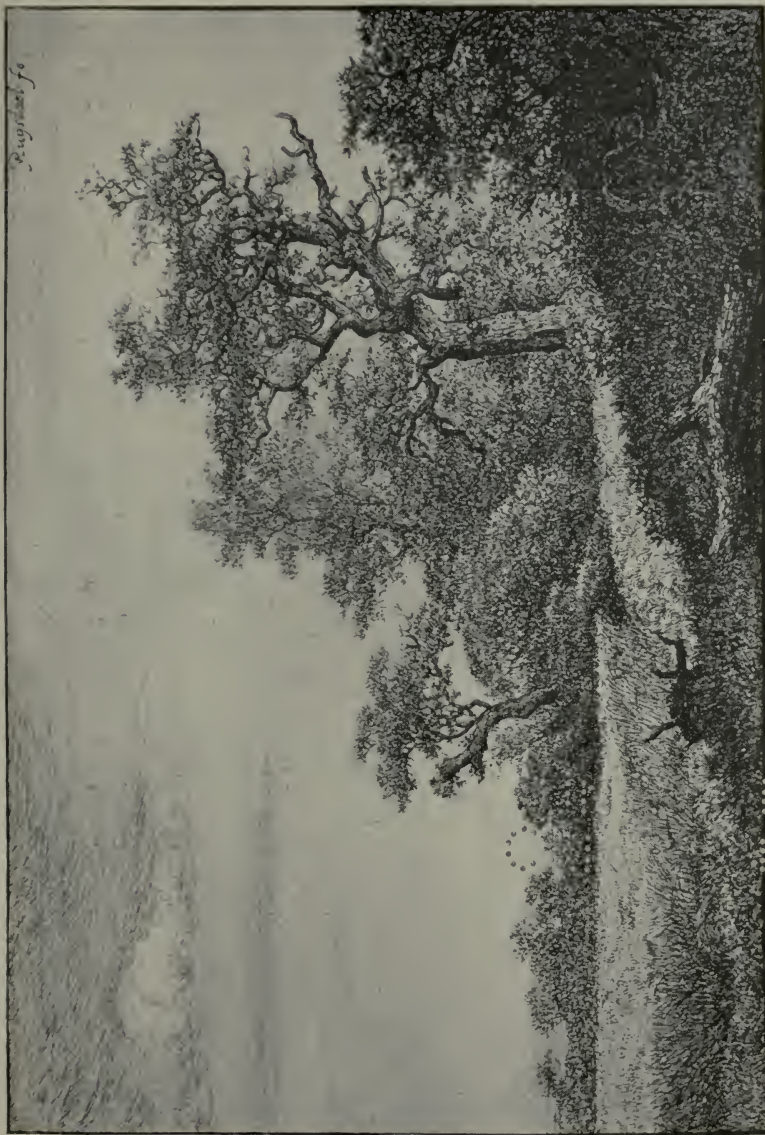
REMBRANDT. 1606—1669
NETHERLANDS



THE SPECTACLE SELLER (ETCHING)
Museum of Fine Arts, Boston

THE UNIVERSITY PRINTS
BOSTON

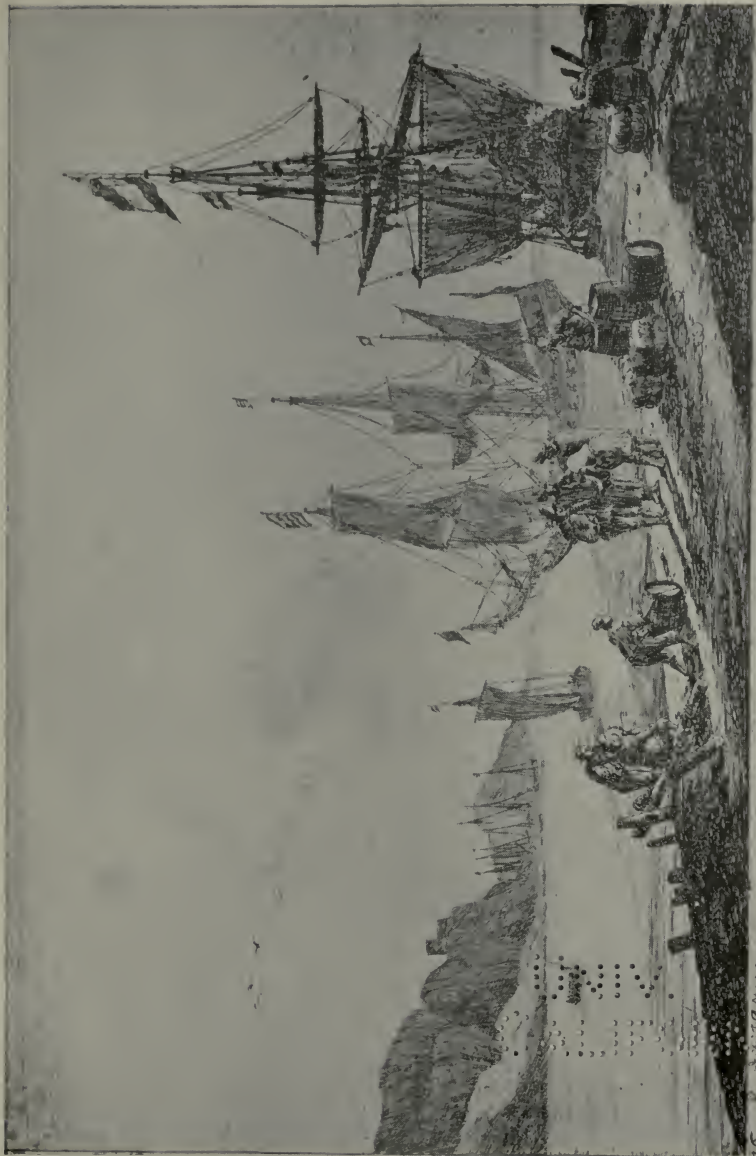
A. VAN OSTADE. 1610—1685
NETHERLANDS



WHEAT FIELD (ETCHING)
Fogg Art Museum, Cambridge

THE UNIVERSITY PRINTS
BOSTON

RUYSDAEL, 1628 (?)—1682
NETHERLANDS



COAST SCENE: MEN HANDLING MERCHANDISE (ETCHING)
Museum of Fine Arts, Boston

THE UNIVERSITY PRINTS
BOSTON

ZEEMAN. 1623—CA. 1663
NETHERLANDS



THE COWHERD (ETCHING)
Museum of Fine Arts, Boston

THE UNIVERSITY PRINTS
BOSTON

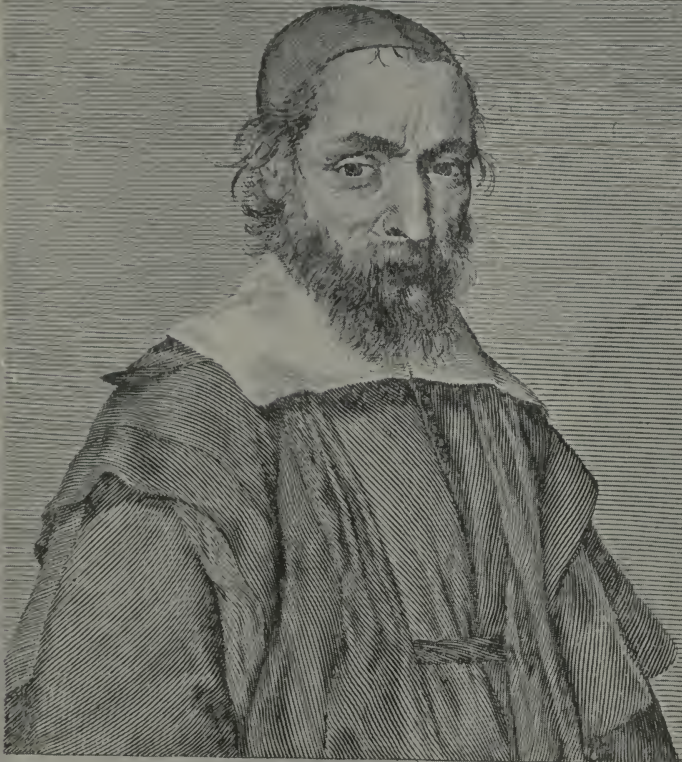
POTTER. 1625-1654
NETHERLANDS



THE LARGE TREE (ETCHING)
Museum of Fine Arts, Boston

THE UNIVERSITY PRINTS
BOSTON

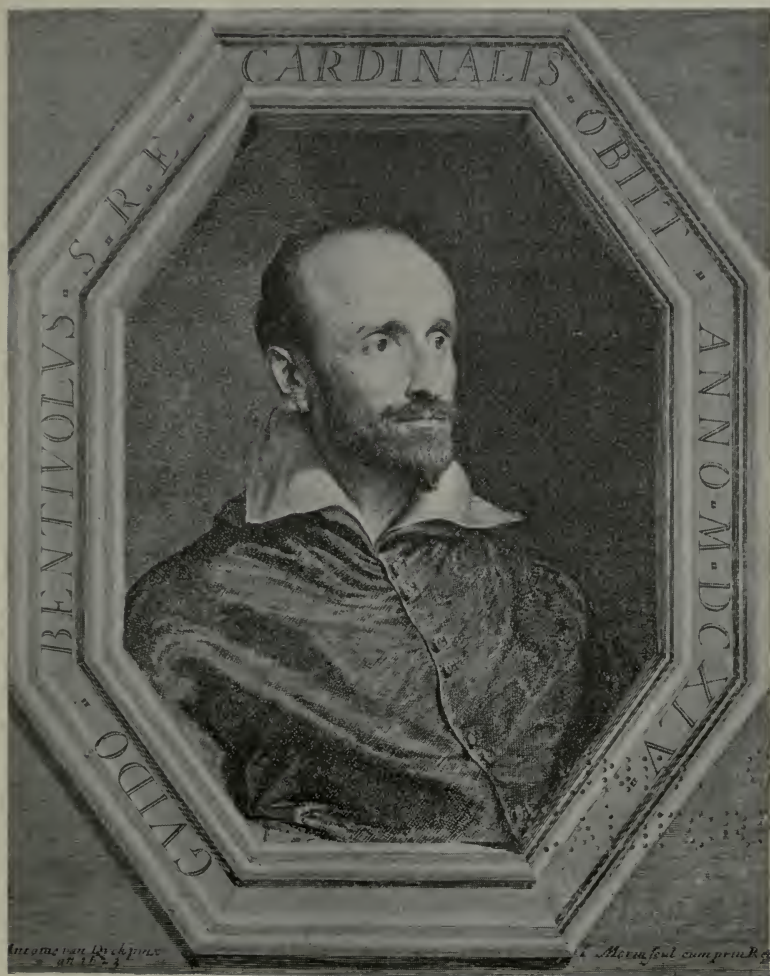
BOTH. CA. 1610—1652
NETHERLANDS



NICOLAVS CLAVDIVS FABRICIVS
DE PEIRESC SENATOR AQVENSIS

Et Mellan sc. del. et fudit.

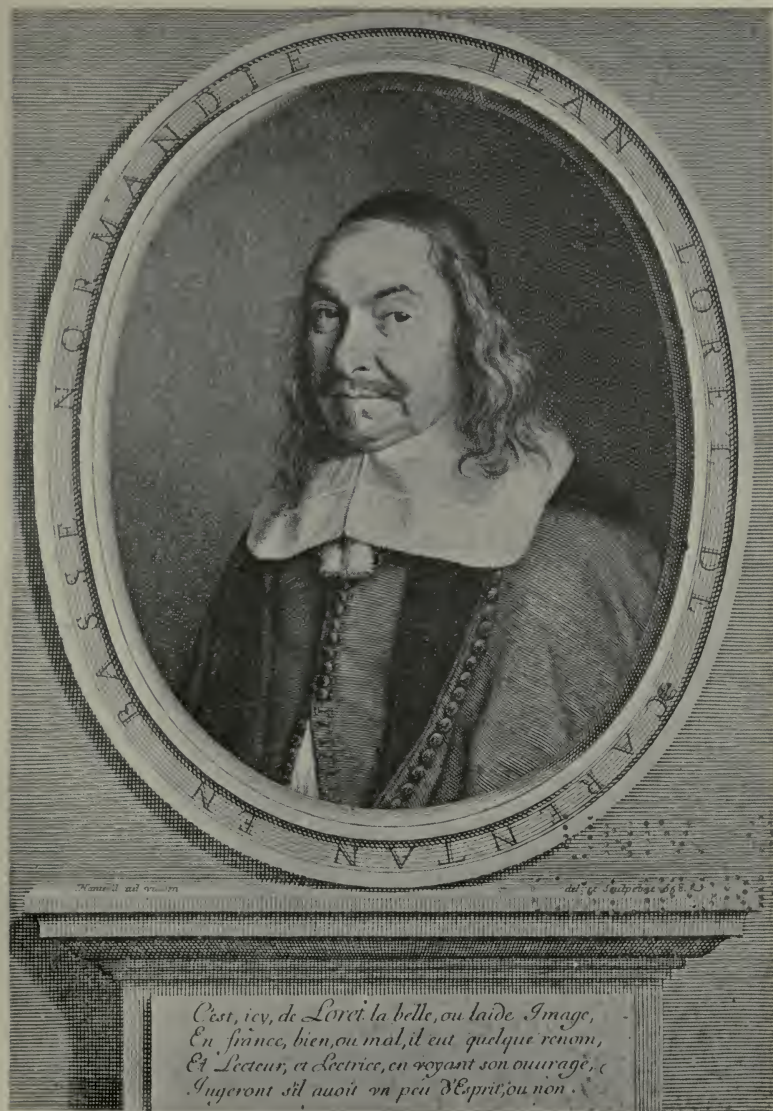
FABRI DE PEYRESC (ETCHING)
Museum of Fine Arts, Boston



CARDINAL BENTIVOGLIO: AFTER VAN DYCK (ETCHING)
Museum of Fine Arts, Boston

THE UNIVERSITY PRINTS
BOSTON

MORIN. 1590(?)—1650
FRANCE



JEAN LORET (ENGRAVING)

Museum of Fine Arts, Boston



PHILIPPE DE CHAMPAIGNE (ENGRAVING)
Museum of Fine Arts, Boston

THE UNIVERSITY PRINTS
BOSTON

EDELINCK. 1640 (41?)—1707
FRANCE



CARDINAL BOSSUET (ENGRAVING)
Museum of Fine Arts, Boston



LAUGHING AUDIENCE (ETCHING)
Museum of Fine Arts, Boston

THE UNIVERSITY PRINTS
BOSTON

HOGARTH. 1697—1764
ENGLAND

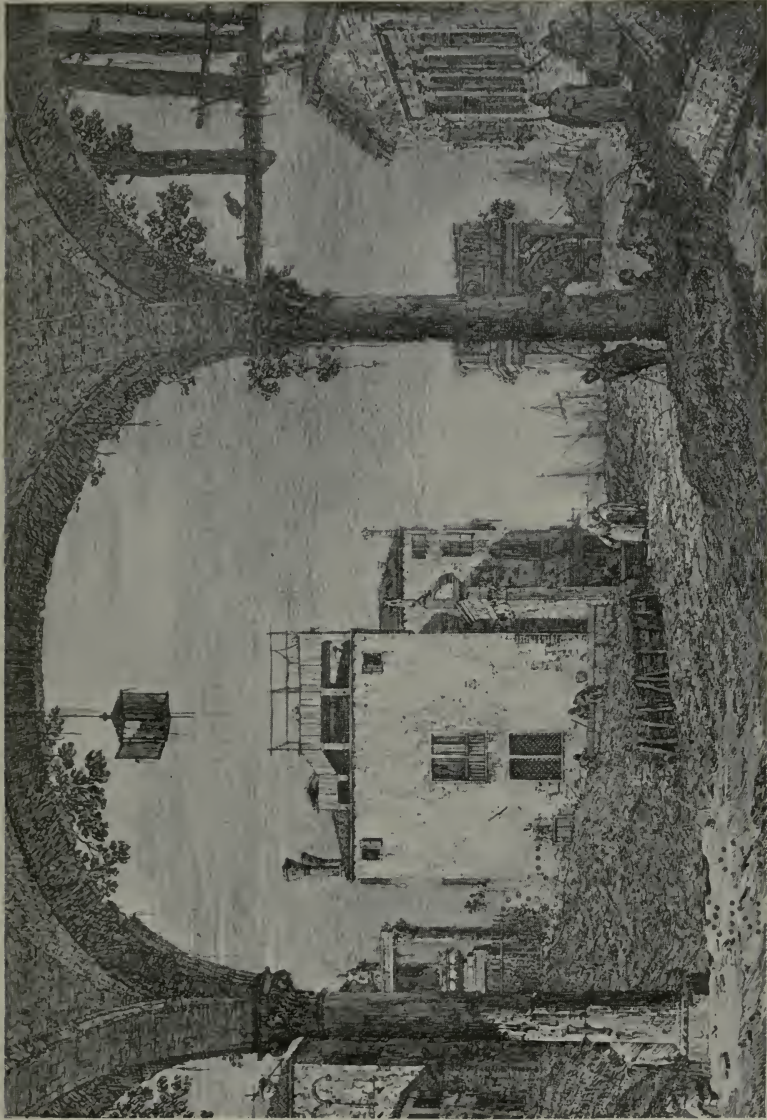


NYPH WITH A TAMBOURINE (ETCHING)

Museum of Fine Arts, Boston

**THE UNIVERSITY PRINTS
BOSTON**

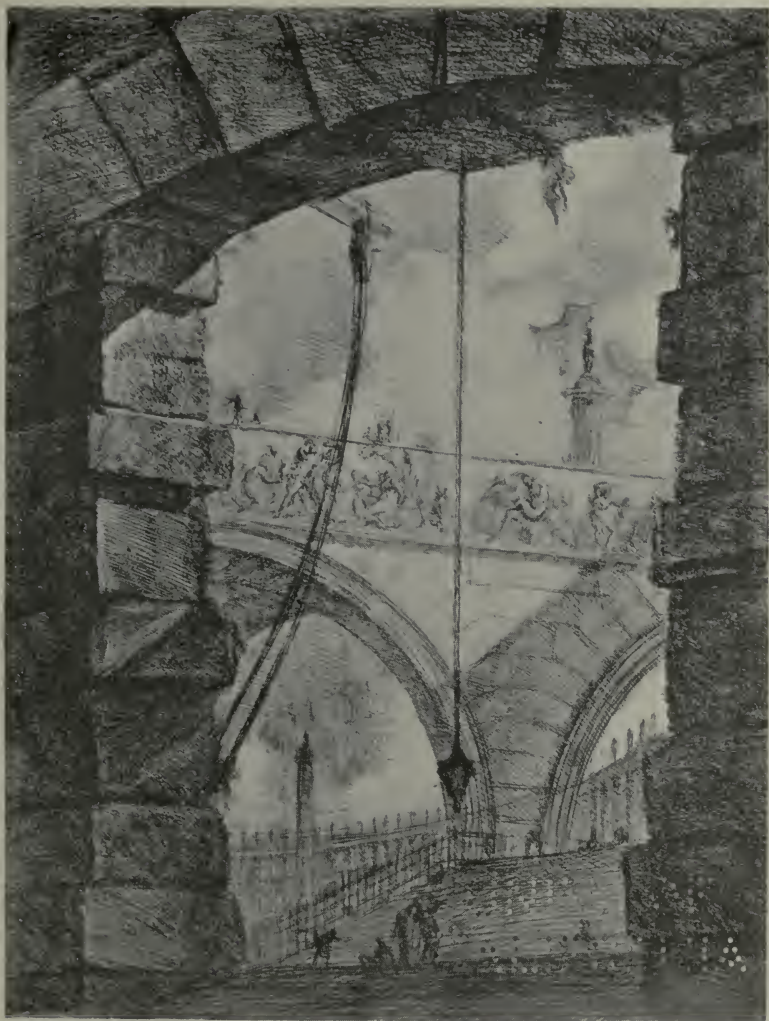
**TIEPOLO. CA. 1696—1770
ITALY**



PORCH WITH A LANTERN (ETCHING)
Museum of Fine Arts, Boston

THE UNIVERSITY PRINTS
BOSTON

CANALETTO. 1697—1768
ITALY



PRISON (ETCHING)
Museum of Fine Arts, Boston

THE UNIVERSITY PRINTS
BOSTON

PIRANESI. 1720—1778
ITALY



MAN STANDING — WOMAN SEATED (ETCHINGS)
Fogg Art Museum, Cambridge



THE UNIVERSITY PRINTS
BOSTON

WATTEAU, 1684—1721
FRANCE



BACCHANAL (ETCHING)
Museum of Fine Arts, Boston

THE UNIVERSITY PRINTS
BOSTON

FRAGONARD. 1732—1806
FRANCE



MR. PHILIP YORKE (STIPPLE)
Museum of Fine Arts, Boston

THE UNIVERSITY PRINTS
BOSTON

BARTOLOZZI. 1728—1813
ITALY (ENGLAND)



HUNTING FOR TEETH: CAPRICHOS (AQUATINT)
Museum of Fine Arts, Boston



THE DEAD BRANCH (ETCHING AND AQUATINT)
Museum of Fine Arts, Boston

THE UNIVERSITY PRINTS
BOSTON

GOYA. 1746—1828
SPAIN



THE STANDARD BEARER (MEZZOTINT)
Fogg Art Museum, Cambridge

THE UNIVERSITY PRINTS
BOSTON

PRINCE RUPERT. 1619-1682
GERMANY



LORDS JOHN AND BERNARD STUART, AFTER VAN DYCK (MEZZOTINT)
Museum of Fine Arts, Boston

THE UNIVERSITY PRINTS
BOSTON

MCARDELL. c. 1729—1765
ENGLAND



FRUIT PIECE, AFTER HUYSUM (MEZZOTINT)
Museum of Fine Arts, Boston

THE UNIVERSITY PRINTS
BOSTON

EARLOM. 1743—1822
ENGLAND



SIR JOSHUA REYNOLDS (MEZZOTINT)
Fogg Art Museum, Cambridge

THE UNIVERSITY PRINTS
BOSTON

GREEN. 1739—1813
ENGLAND



LADY CAROLINE MONTAGU (MEZZOTINT)
Museum of Fine Arts, Boston

THE UNIVERSITY PRINTS
BOSTON

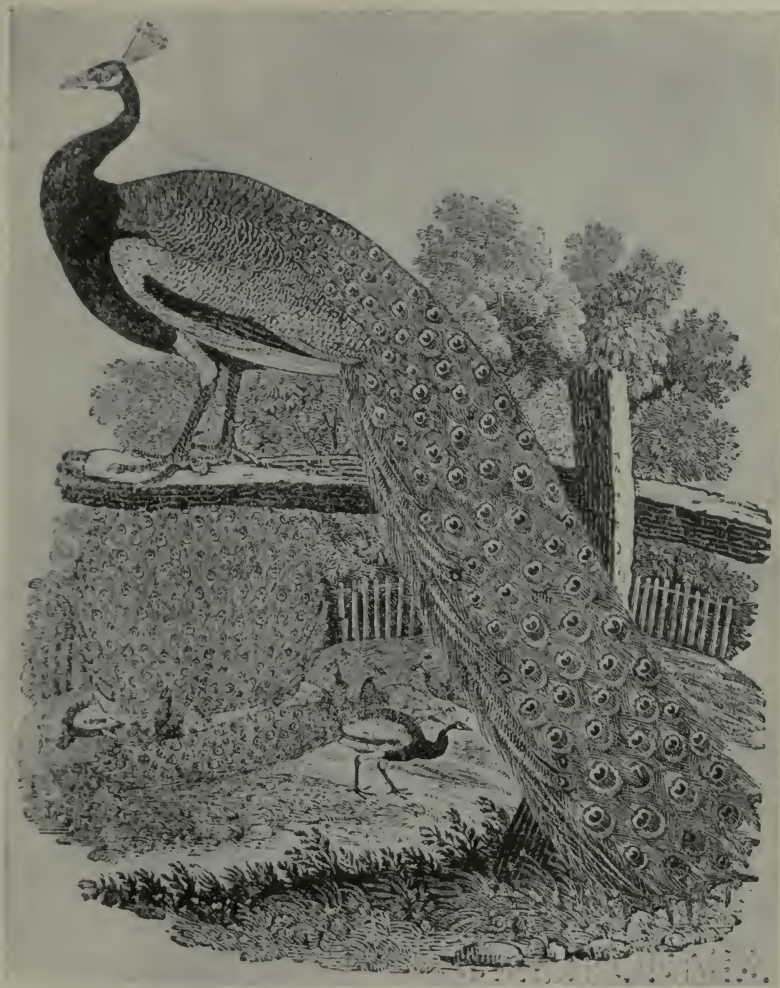
J. R. SMITH. 1752—1812
ENGLAND



LIBER STUDIORUM: BEN ARTHUR (ETCHING AND MEZZOTINT)
Museum of Fine Arts, Boston

THE UNIVERSITY PRINTS
BOSTON

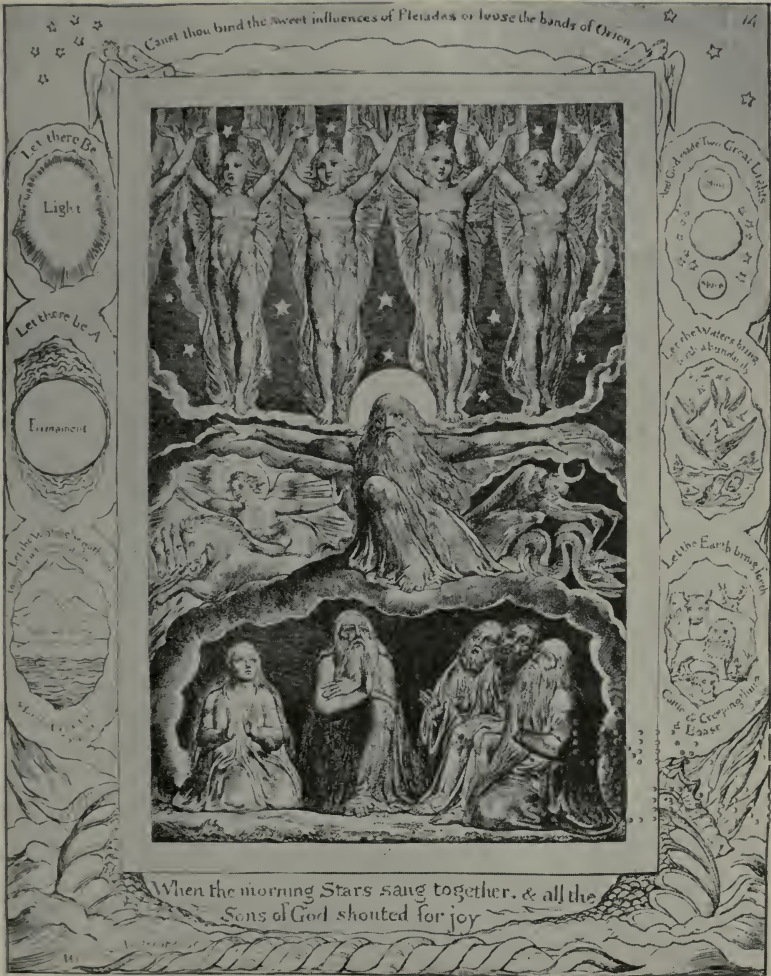
TURNER. 1775—1851
ENGLAND



BRITISH BIRDS: THE PEACOCK (WOOD-ENGRAVING)
Fogg Art Museum, Cambridge

THE UNIVERSITY PRINTS
BOSTON

BEWICK. 1753—1828
ENGLAND



"WHEN THE MORNING STARS SANG TOGETHER"
 BOOK OF JOB (ENGRAVING)
 Museum of Fine Arts, Boston

THE UNIVERSITY PRINTS
 BOSTON

BLAKE. 1757—1827
 ENGLAND

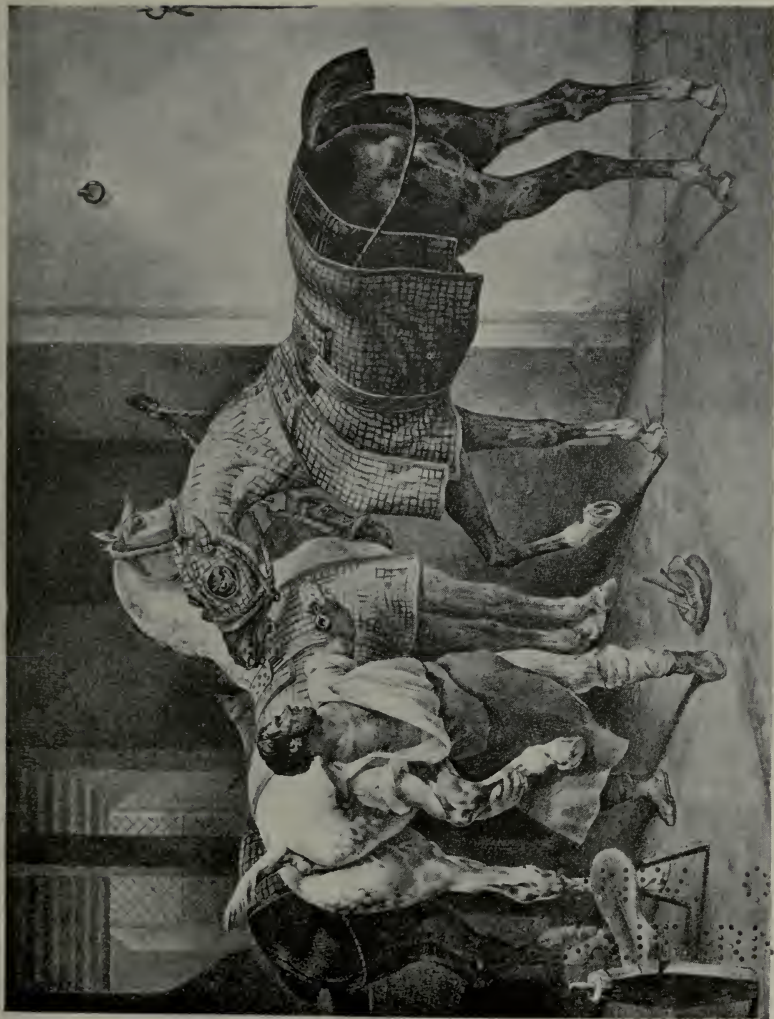


THE PIPER. FRONTISPIECE OF "SONGS OF INNOCENCE"
(RELIEF ETCHING)

Collection of Mrs. William Emerson, Cambridge

THE UNIVERSITY PRINTS
BOSTON

BLAKE. 1757—1827
ENGLAND



THREE HORSES IN A STABLE (LITHOGRAPH)
Museum of Fine Arts, Boston

THE UNIVERSITY PRINTS
BOSTON

GÉRICAULT 1791—1824
FRANCE



ROYAL TIGER (LITHOGRAPH)
Museum of Fine Arts, Boston

THE UNIVERSITY PRINTS
BOSTON

DELA CROIX. 1798—1863
FRANCE



MIDNIGHT REVIEW (LITHOGRAPH)
Museum of Fine Arts, Boston

THE UNIVERSITY PRINTS
BOSTON

RAFFET. 1804—1860
FRANCE



E. AND J. DE GONCOURT (LITHOGRAPH)
Museum of Fine Arts, Boston

THE UNIVERSITY PRINTS
BOSTON

GAVARNI. 1804—1866
FRANCE



LA RUE TRANSNONAIN (LITHOGRAPH)
Museum of Fine Arts, Boston

THE UNIVERSITY PRINTS
BOSTON

DAUMIER. 1808—1879
FRANCE



SCENE FROM "ACTUALITÉS" (LITHOGRAPH)
Museum of Fine Arts, Boston

THE UNIVERSITY PRINTS
BOSTON

DAUMIER. 1808—1879
FRANCE



INTERIOR OF A PORT (LITHOGRAPH)

Museum of Fine Arts, Boston

THE UNIVERSITY PRINTS
BOSTON

ISABEY. 1803—1886
FRANCE



SACHSENHAUSEN, FRANKFORT (LITHOGRAPH)
Museum of Fine Arts, Boston



PARK AND FOPF (LITHOGRAPH)
Museum of Fine Arts, Boston

THE UNIVERSITY PRINTS
BOSTON

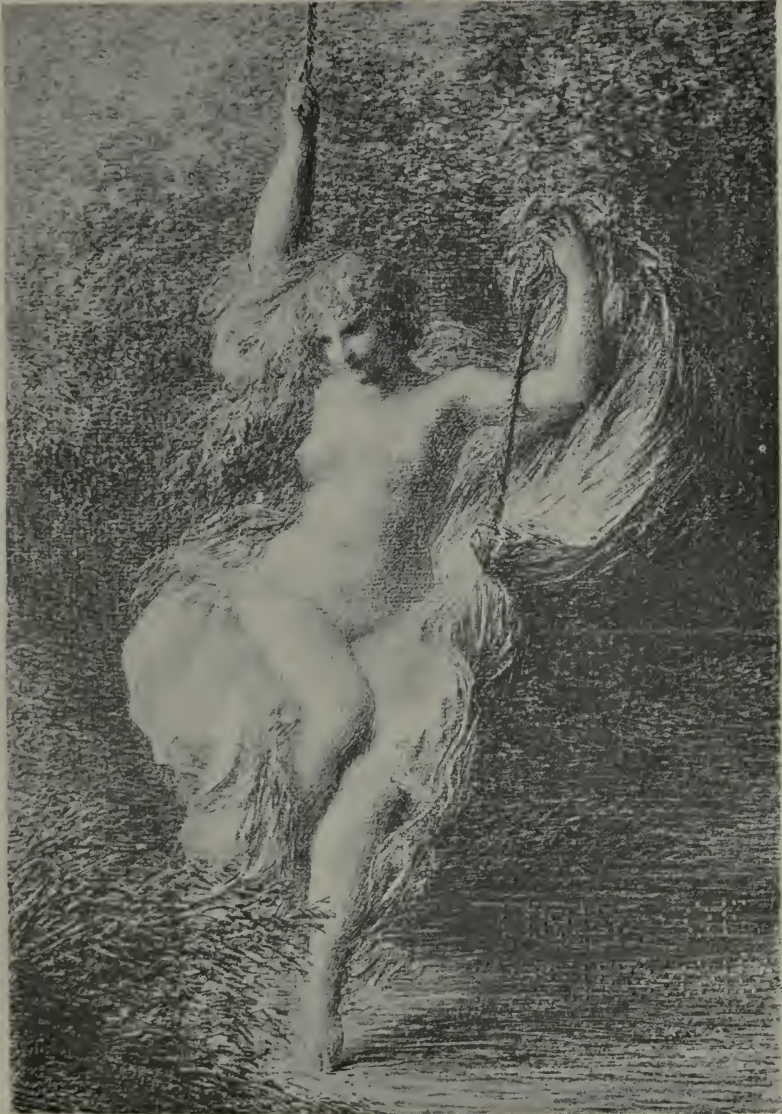
J. D. HARDING. 1798—1863
ENGLAND

UNIVERSITY OF
CALIFORNIA



TOUR DU GROS HORLOGE (LITHOGRAPH)

Museum of Fine Arts, Boston



SARA LA BAIGNEUSE (LITHOGRAPH)
Museum of Fine Arts, Boston



CONVOY OF PRISONERS (LITHOGRAPH)
Museum of Fine Arts, Boston

THE UNIVERSITY PRINTS
BOSTON

MENZEL. 1815—1905
GERMANY



TROUPEAU DE PORCS (ETCHING)
Museum of Fine Arts, Boston

THE UNIVERSITY PRINTS
BOSTON

JACQUE. 1813-1894
FRANCE

UNIVERSITY OF
CALIFORNIA



MARSH WITH STORKS (ETCHING)
Museum of Fine Arts, Boston

THE UNIVERSITY PRINTS
BOSTON

DAUBIGNY, 1817—1878
FRANCE



WOOL-CARDER (ETCHING)
Museum of Fine Arts, Boston

UNIVERSITY OF
CALIFORNIA



WOMAN CHURNING (ETCHING)
Museum of Fine Arts, Boston



THE SOWER (LITHOGRAPH)
Museum of Fine Arts, Boston

THE UNIVERSITY PRINTS
BOSTON

MILLET. 1814-1875
FRANCE



SOUVENIR D'ITALIE (ETCHING
Museum of Fine Arts, Boston

THE UNIVERSITY PRINTS
BOSTON

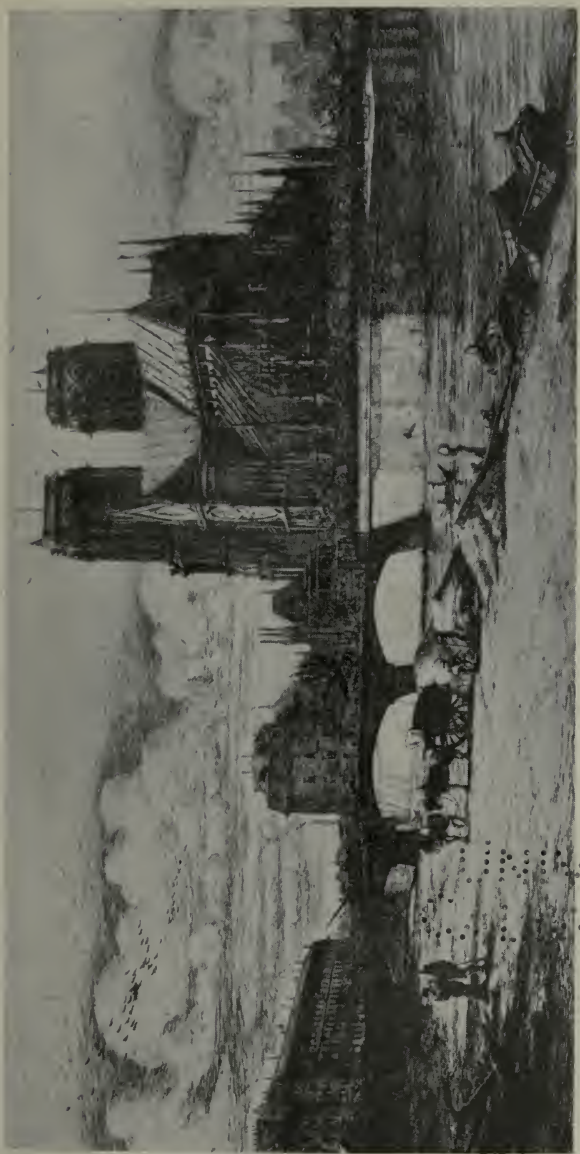
COROT. 1796—1875
FRANCE



THE TOWER OF ST. NICOLAS—LÈZ ARRAS (LITHOGRAPH)
Museum of Fine Arts, Boston

THE UNIVERSITY PRINTS
BOSTON

COROT. 1796—1875
FRANCE



THE APSE OF NOTRE DAME (ETCHING)
Fogg Art Museum, Cambridge

THE UNIVERSITY PRESS
 BOSTON

MERYON. 1821—1868
 FRANCE

70 VIVI
AMARILLAS



GALLERY OF NOTRE DAME (ETCHING)
Fogg Art Museum, Cambridge



LE STRYGE (ETCHING)
Fogg Art Museum, Cambridge

THE UNIVERSITY PRINTS
BOSTON

MERYON. 1821—1868
FRANCE



LE GAMIN (ETCHING)
Fogg Art Museum, Cambridge

NO. 100
AMSTERDAM



THE CROW (LITHOGRAPH)
Fogg Art Museum, Cambridge

THE UNIVERSITY PRINTS
BOSTON

MANET. 1832—1883
FRANCE



LES BOULEAUX (ETCHING)
Museum of Fine Arts, Boston

THE UNIVERSITY PRINTS
BOSTON

LEGROS, 1837—1911
FRANCE (ENGLAND)



BLACK LION WHARF (ETCHING)
Museum of Fine Arts, Boston

THE UNIVERSITY PRINTS
BOSTON

WHISTLER. 1834-1903
UNITED STATES



VENICE (ETCHING)
Museum of Fine Arts, Boston



BEQUET (DRY-POINT)
Museum of Fine Arts, Boston

THE UNIVERSITY PRINTS
BOSTON

WHISTLER. 1834-1903
UNITED STATES



LITTLE NUDE MODEL READING (LITHOGRAPH)
Museum of Fine Arts, Boston

THE UNIVERSITY PRINTS
BOSTON

WHISTLER. 1834—1903
UNITED STATES

TO VINCE
CALIFORNIA



THE THAMES AT BATTERSEA (LITHOGRAPH)
Museum of Fine Arts, Boston

THE UNIVERSITY PRINTS
BOSTON

WHISTLER. 1834—1903
UNITED STATES



SUNSET IN IRELAND (DRY-POINT)
Museum of Fine Arts, Boston

THE UNIVERSITY PRINTS
BOSTON

HADEN. 1818—1910
ENGLAND



OLD HOUSES AT AMIENS (ETCHING)
Museum of Fine Arts, Boston

THE UNIVERSITY PRINTS
BOSTON

LEPÈRE. 1849—1918
FRANCE



THE PRODIGAL SON (ETCHING)
Metropolitan Museum of Art, New York

THE UNIVERSITY PRINTS
BOSTON

FORAIN. 1853—
FRANCE



MME. SIMON (ETCHING)
Museum of Fine Arts, Boston

SERIES L

WOODCUTS AND ENGRAVINGS

W. Woodcut	Eng. Engraving	Et. Etching
		Lith. Lithograph

Fifteenth Century
Unknown Artist 1423

- L. 1 St. Christopher. (W) John Rylands Library,
Manchester
Unknown. 15th Century
- L. 2 Virgin, Child and Scints. Dotted print
(Maniere criblee)...Sachs Collection,
Cambridge
Master of the Playing Cards. fl. 1445
Germany
- L. 3 Queen of Birds ... Bibliotheque Nationale,
Paris
Master E.S. fl. 1450-1470. Germany
- L. 4 St. John on the Island of Patmos with Sym-
bols of the Four Evangelists. (Eng.)
Museum of Fine Arts, Boston
Martin Schongauer. 1440 (?) - 1491. Germany
- L. 5 Flight into Egypt. (Eng.) Fogg Art Museum,
Cambridge
- L. 6 Madonna in the Courtyard. (Eng.) Museum of
Fine Arts, Boston.
Master of the Amsterdam Cabinet. fl. 1480.
Germany
- L. 7 St. George and the Dragon. Dry-point.
British Museum, London
Unknown Florentine. 15th Century. Italy
- L. 8 Portrait of a Lady. (Eng.) . . Kupferstich-
kabinett, Berlin

Unknown Florentine. 15th Century. Italy

- L 9 Otto Print. (Eng. Fine Manner)
Fogg Art Museum, Cambridge

Unknown Florentine. 15th Century. Italy

- L 10 Assumption of the Virgin. After Botticelli.
(Eng. Broad Manner)...Fogg Art Museum, Cambridge

Antonio Pollaiuolo. 1432(?)–1498. Italy

- L 11 Battle of the Nudes. (Eng.)..Sachs Collection, Cambridge

Cristofano Robetta. 1462–1522(?) Italy

- L 12 Abundance. (Eng.).....Museum of Fine Arts, Boston

Andrea Mantegna. 1431–1506. Italy

- L 13 Virgin and Child. (Eng.)...Museum of Fine Arts, Boston
L 14 Battle of Sea Gods. Left portion of a frieze.
(Eng.).....Museum of Fine Arts, Boston

School of Andrea Mantegna. 15th Century. Italy

- L 15 Four Women Dancing. (Eng.)
Museum of Fine Arts, Boston

Giovanni Antonio da Brescia. fl. 1500–1516. Italy

- L 16 Holy Family with St. John. (Eng.)
Museum of Fine Arts, Boston

Nicoletto Rosex (da Modena). fl. 1490–1511. Italy

- L 17 Three Stags. (Eng.).....Museum of Fine Arts, Boston

Jacopo de' Barbari. c. 1450–1516. Italy

- L 18 Apollo and Diana. (Eng.)..Museum of Fine Arts, Boston

Girolamo Mocetto. 1458(?)–1530(?). Italy

- L 19 Judith. After Mantagna. (Eng.)
Museum of Fine Arts, Boston

Giulio Campagnola. 1482(?)–1514(?). Italy

- L 20 St. John the Baptist. (Eng.) . . Sachs Collection, Cambridge

SIXTEENTH CENTURY**Domenico Campagnola. fl. 1511–1563. Italy**

- L 21 Beheading of St. Catherine. (Eng.)
Museum of Fine Arts, Boston

Benedetto Montagna. c. 1470–1540. Italy

- L 22 Virgin and Child. (Eng.) . . Fogg Art Museum, Cambridge

Ugo da Carpi. 1455–1523. Italy

- L 23 David and Goliath. After Raphael.
Chiaroscuro Museum of Fine Arts, Boston

Albrecht Dürer. 1471–1528. Germany

- L 24 The Riders on the Four Horses (Apocalypse)
(W.) Museum of Fine Arts, Boston
- L 25 Christ Appearing to Mary Magdalen (Small
Passion). (W.) Museum of Fine Arts, Boston
- L 26 Flight into Egypt. (Life of the Virgin)
(W.) Fogg Art Museum, Cambridge
- L 27 The Trinity. (W.) Museum of Fine Arts, Boston
- L 28 St. Jerome in His Cell. (Eng.) Museum of Fine Arts, Boston
- L 29 The Cannon. (Et.) Museum of Fine Arts, Boston
- L 30 Holy Family. Dry-point . . . Museum of Fine Arts, Boston

Hans Burgkmair. 1473–1531. Germany

- L 31 Equestrian Portrait of the Emperor Maximilian I. Chiaroscuro . . . Museum of Fine Arts, Boston

Lucas Cranach, the elder. 1472–1553. Germany

- L 32 St. George and the Dragon. (W.)
Museum of Fine Arts, Boston
- L 33 St. Christopher. Chiaroscuro. Museum of Fine Arts, Boston

Hans Baldung Grün. 1476-1545. Germany

- L 34 Crucifixion. Chiaroscuro Sachs Collection, Cambridge

Hans Holbein, the younger. 1497-1543. Germany

- L 35 The Plowman. The Young Child. (Dance
of Death). (W.) Fogg Art Museum, Cambridge

Marcantonio Raimondi. c. 1480-1530. Italy

- L 36 Lucretia. After Raphael. (Eng.)
Museum of Fine Arts, Boston
L 37 Massacre of the Innocents. After Raphael.
(Eng.) Museum of Fine Arts, Boston

Lucas van Leyden. 1494-1533. Netherlands

- L 38 David Playing Before Saul. (Eng.)
Museum of Fine Arts, Boston
L 39 Christ on the Mount of Olives. (Round
Passion.) (Eng.) Museum of Fine Arts, Boston
L 40 Milkmaid. (Eng.) Museum of Fine Arts, Boston

Jean Duvet. 1485-c. 1561. France

- L 41 Henri II and Diane de Poitiers. (Eng.)
Museum of Fine Arts, Boston

Albrecht Altdorfer. 1480(?) - 1538. Germany

- L 42 St. Christopher. (Eng.) Museum of Fine Arts, Boston
L 43 Holy Family on the Flight into Egypt at a
Fountain. (W.) Museum of Fine Arts, Boston

Hans Sebald Beham. 1500-1550. Germany

- L 44 The Prodigal Son Guarding Swine.
(Eng.) Museum of Fine Arts, Boston

Barthel Beham. 1502-1540. Germany

- L 45 Portrait of Charles V. (Eng.) . Museum of Fine Arts, Boston

Augustin Hirschvogel. 1503-1553(?). Germany

- L 46 Landscape. (Et.) Museum of Fine Arts, Boston

Hans Sebald Lautensach. 1524(?)–1563(?). Germany

- L 47 River Landscape with Church seen between
Trees. (Et.) Museum of Fine Arts, Boston

SEVENTEENTH CENTURY**Hendrik Goltzius. 1558-1611. Netherlands**

- L 48 Standard Bearer. (Eng.) . . . Museum of Fine Arts, Boston

Jacques Callot. 1592-1635. France

- L 49 Paris: Vue du Louvre. (Et.) . . Museum of Fine Arts, Boston

Claude Lorrain (Claude Gellée). 1600-1682. France

- L 50 The Cowherd. (Et.) Museum of Fine Arts, Boston

Sir Anthony Van Dyck. 1599-1641. Netherlands

- L 51 Sir Anthony van Dyck. (Et.) . Museum of Fine Arts, Boston
L 52 Franz Snyder. (Et.) Museum of Fine Arts, Boston

Rembrandt van Rijn. 1606-1669. Netherlands

- L 53 Clement de Jonghe. (Et.) . . . Museum of Fine Arts, Boston
L 54 Jan Lutma. (Et.) Museum of Fine Arts, Boston
L 55 Tobit Blind. (Et.) Museum of Fine Arts, Boston
L 56 Raising of Lazarus. (Et.) . . Museum of Fine Arts, Boston
L 57 Amsterdam. (Et.) Museum of Fine Arts, Boston
L 58 Three Trees. (Et.) Museum of Fine Arts, Boston

Adriaen Van Ostade. 1610-1685. Netherlands

- L 59 Spectacle Seller. (Et.) Museum of Fine Arts, Boston

Jacob van Ruysdael. 1628-1682. Netherlands

- L 60 Wheat Field. (Et.) Fogg Art Museum, Cambridge

Reynier Zeeman (Reynier Nooms). 1623–1663(?). Netherlands

L 61 Coast Scene. (Et.) Museum of Fine Arts, Boston

Paul Potter. 1625–1654. Netherlands

L 62 Cowherd. (Et.) Museum of Fine Arts, Boston

Jan Both. 1610(?)–1652. Netherlands

L 63 The Large Tree. (Et.) Museum of Fine Arts, Boston

Claude Mellan. 1598–1688. France

L 64 Fabri de Peyresc. (Eng.) Museum of Fine Arts, Boston

Jean Morin. 1590(?)–1650. France

L 65 Cardinal Bentivoglio. After van Dyck. (Et.)
Museum of Fine Arts, Boston

Robert Nanteuil. 1623(?)–1678. France

L 66 Jean Loret. (Eng.) Museum of Fine Arts, Boston

Gerard Edelinck. 1640(?)–1707. France

L 67 Phillippe de Champagne. (Eng.) After
Champagne. Museum of Fine Arts, Boston

EIGHTEENTH CENTURY

Pierre Imbert Drevet. 1697–1739. France

L 68 Cardinal Bossuet. (Eng.) . . . Museum of Fine Arts, Boston

William Hogarth. 1697–1764. England

L 69 Laughing Audience. (Et.) . . . Museum of Fine Arts, Boston

Giovanni Battista Tiepolo. 1696(?)–1770. Italy

L 70 Nymph with a Tambourine. (Et.)
Museum of Fine Arts, Boston

Canaletto (Antonio Canale). 1697-1768. Italy

- L 71 Porch with a Lantern. (Et.) Museum of Fine Arts, Boston

Giovanni Battista Piranesi. 1720-1778. Italy

- L 72 Prison. (Et.) Museum of Fine Arts, Boston

Antoine Watteau. 1684-1721. France

- L 73 Lady Seated; Man Standing. (Et.)
Fogg Art Museum, Cambridge

Jean Honoré Fragonard. 1732-1806. France

- L 74 Bacchanal. (Et.) Museum of Fine Arts, Boston

Francesco Bartolozzi. 1727-1815. Italy (England)

- L 75 Mr. Philip Yorke. After Reynolds. Stipple.
Museum of Fine Arts, Boston

Francisco Goya y Lucientes. 1746-1828. Spain

- L 76 Hunting for Teeth (Caprichos). (Et. and
aquatint) Museum of Fine Arts, Boston
- L 77 Dead Branch (Proverbios). (Et. and
aquatint) Museum of Fine Arts, Boston

Prince Rupert. 1619-1682. Germany

- L 78 Standard Bearer. Mezzotint
Fogg Art Museum, Cambridge

James McArdell. c.1729-1765. England

- L 79 Lords John and Bernard Stuart. Mezzo-
tint. After Van Dyck Museum of Fine Arts, Boston

Richard Earlom. 1743-1822. England

- L 80 Fruit Piece. After Huysum. Mezzotint
Museum of Fine Arts, Boston

Valentine Green. 1739-1813. England

- L 81 Sir Joshua Reynolds. After Reynolds.
Mezzotint Fogg Art Museum, Cambridge

John Raphael Smith. 1752-1812 England

- L 82 Lady Caroline Montagu. Mezzotint
After Reynolds Museum of Fine Arts, Boston

NINETEENTH CENTURY

Joseph Mallord William Turner. 1775-1851. England

- L 83 Ben Arthur (Liber Studiorum). (Et. and
mezzotint) Museum of Fine Arts, Boston

Thomas Bewick. 1753-1828. England

- L 84 Peacock (British Birds). Wood-Engraving
Fogg Art Museum, Cambridge

William Blake. 1757-1827. England

- L 85 "When the Morning Stars Sang Together"
(Book of Job). (Eng.) . . . Museum of Fine Arts, Boston
L 86 The Piper (Frontispiece of Songs of Inno-
cence). Relief etching . . Emerson Collection, Cambridge

Théodore Géricault. 1791-1824. France

- L 87 Three Horses in a Stable. (Lith.)
Museum of Fine Arts, Boston

Eugène Delacroix. 1798-1863. France

- L 88 Tigre Royale. (Lith.) Museum of Fine Arts, Boston

Auguste Raffet. 1804-1860. France

- L 89 Midnight Review. (Lith.) . . Museum of Fine Arts, Boston

Gavarni (Guillaume Sulpice Chevallier). 1804-1866. France

- L 90 E. and J. de Goncourt. (Lith.)
Museum of Fine Arts, Boston

Honoré Daumier. 1808-1879. France

- L 91 La Rue Transnonain. (Lith.) Museum of Fine Arts, Boston
L 92 From "Actualités." (Lith.).. Museum of Fine Arts, Boston

Eugène Isabey. 1803-1886. France

- L 93 Intérieur d'un Port. (Lith.) Museum of Fine Arts, Boston

Samuel Prout. 1783-1852. England

- L 94 Sachsenhausen. (Lith.).... Museum of Fine Arts, Boston

James Duffield Harding. 1798-1863. England

- L 95 Larch (Park and Forest). (Lith.)
Fogg Art Museum, Cambridge

Richard Parkes Bonington. 1801-1828. England

- L 96 Tour du Gros Horloge. (Lith.)
Museum of Fine Arts, Boston

Henri Fantin-Latour. 1836-1904. France

- L 97 Sara la Baigieuse. (Lith.).. Museum of Fine Arts, Boston

Adolf Von Menzel. 1815-1905. Germany

- L 98 Convoy of Prisoners. (Lith.).. Museum of Fine Arts, Boston

Charles Émile Jacque. 1813-1894. France

- L 99 Troupeau de Porcs. (Et.) Museum of Fine Arts, Boston

Charles François Daubigny. 1817-1878. France

- L 100 Marsh with Storks. (Et.) Museum of Fine Arts, Boston

Jean François Millet. 1814-1875. France

- L 101 Wool-Carder. (Et.) Museum of Fine Arts, Boston
 L 102 Woman Churning. (Et.) Museum of Fine Arts, Boston
 L 103 Sower. (Lith.) Museum of Fine Arts, Boston

Jean Baptiste Camille Corot. 1796-1875. France

- L 104 Souvenir d'Italie. (Et.) Museum of Fine Arts, Boston
 L 105 Le Clocher de St. Nicholas-lèz-Arras.
 (Lith.) Museum of Fine Arts, Boston

Charles Meryon. 1821-1868. France

- L 106 Apsé of Notre Dame. (Et.) . Fogg Art Museum, Cambridge
 L 107 Gallery of Notre Dame. (Et.)
 Fogg Art Museum, Cambridge
 L 108 Le Stryge. (Et.) Fogg Art Museum, Cambridge

Édouard Manet. 1832-1883. France

- L 109 Le Gamin. (Et.) Fogg Art Museum, Cambridge
 L 110 The Crow. (Lith.) Fogg Art Museum, Cambridge

Alphonse Legros. 1837-1911. France (England)

- L 111 Les Bouleaux. (Et.) Museum of Fine Arts, Boston

James Abbott McNeill Whistler. 1834-1903. United States

- L 112 Black Lion Wharf. (Et.) Museum of Fine Arts, Boston
 L 113 Venice. (Et.) Museum of Fine Arts, Boston
 L 114 Becquet. Dry-point Museum of Fine Arts, Boston
 L 115 Little Nude Model Reading. (Lith.)
 Museum of Fine Arts, Boston
 L 116 Thames at Battersea. (Lith.)
 Museum of Fine Arts, Boston

Sir Francis Seymour Haden. 1818-1910. England

- L 117 Sunset in Ireland. Dry-point
 Museum of Fine Arts, Boston

Auguste Lepère. 1849-1918. France

L 118 Old Houses at Amiens. (Et.) . Museum of Fine Arts, Boston

Jean Louis Forain. 1853- France

L 119 Prodigal Son. (Et.) Metropolitan Museum, New York

Anders Zorn. 1860-1920. Sweden

L 120 Mme. Simon. (Et.) Museum of Fine Arts, Boston

14 DAY USE

RETURN TO DESK FROM WHICH BORROWED

~~RECALLABLE LIBRARY~~

This book is due on the last date stamped below, or
on the date to which renewed.

Renewed books are subject to immediate recall.

JUL 24 1962

JUL 1 1967

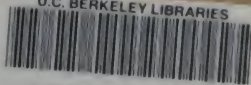
AUG 13 1980

REC'D ENW AUG '80

LD 21-50m-12,'61
(C4796s10)476

General Library
University of California
Berkeley

U.C. BERKELEY LIBRARIES



C034918610

