

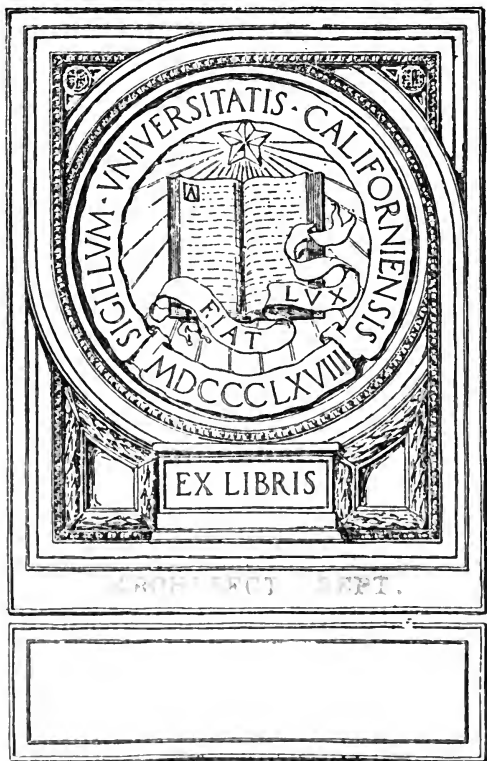
UC-NRLF



5B 116 949

UNIVERSITY OF CALIFORNIA
ARCHITECTURAL DEPARTMENT LIBRARY

CLASS







University prints, Boston

Series I

NE 900

U6

Arch.

dept.

ARCHITECT. DEPT.



ST. CHRISTOPHER (WOODCUT)
 John Rylands Library, Manchester

TO THE
ADDRESS



MADONNA, CHILD, AND SAINTS (WOODCUT)
Collection of Paul J. Sachs, Cambridge, Mass.

TO VINE
ALABONILAO



THE QUEEN OF BIRDS (ENGRAVING)

Bibliothèque Nationale, Paris

THE UNIVERSITY PRINTS
BOSTON

MASTER OF THE PLAYING CARDS. FL. 1445
GERMANY

NO 244
ANNALS



ST. JOHN ON THE ISLAND OF PATMOS WITH SYMBOLS
OF THE FOUR EVANGELISTS (ENGRAVING)
Museum of Fine Arts, Boston

THE UNIVERSITY PRINTS
BOSTON

MASTER E. S. FL. 1450—1470
GERMANY



FLIGHT INTO EGYPT (ENGRAVING)

Fogg Art Museum, Cambridge

1950
1951
1952
1953
1954
1955
1956
1957
1958
1959
1960
1961
1962
1963
1964
1965
1966
1967
1968
1969
1970
1971
1972
1973
1974
1975
1976
1977
1978
1979
1980
1981
1982
1983
1984
1985
1986
1987
1988
1989
1990
1991
1992
1993
1994
1995
1996
1997
1998
1999
2000
2001
2002
2003
2004
2005
2006
2007
2008
2009
2010
2011
2012
2013
2014
2015
2016
2017
2018
2019
2020
2021
2022
2023
2024
2025



MADONNA IN THE COURTYARD (ENGRAVING)
Museum of Fine Arts, Boston

70 VVVU
ANNONCIAO



ST. GEORGE AND THE DRAGON (DRY-POINT)

British Museum, London

THE UNIVERSITY PRINTS
BOSTON

MASTER OF THE AMSTERDAM CABINET. FL. 1480
GERMANY

NO. 1111
MAY 1911



PORTRAIT OF A LADY (ENGRAVING)
Kupferstichkabinett, Berlin

70 1980
1980 1980



OTTO PRINT (ENGRAVING, FINE MANNER)
Fogg Art Museum, Cambridge

THE UNIVERSITY PRINTS
BOSTON

UNKNOWN FLORENTINE. XV CENT.
ITALY

NO. 1000
1000000000

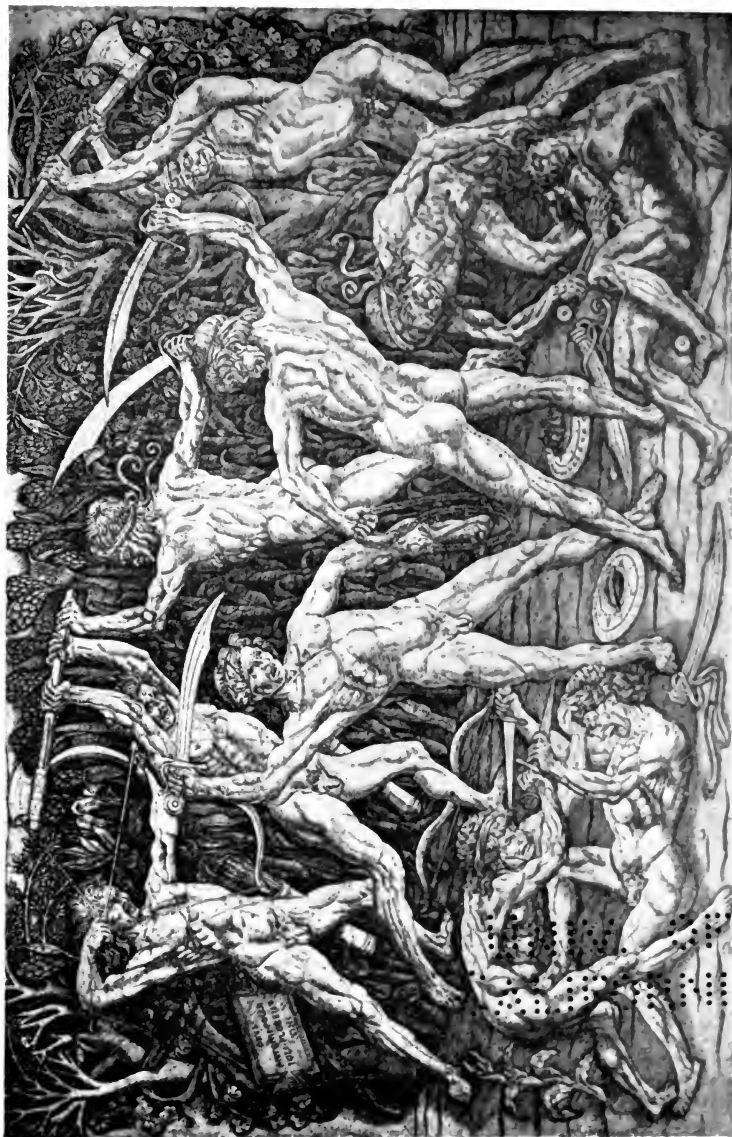


ASSUMPTION OF THE VIRGIN (ENGRAVING. BROAD MANNER)
Fogg Art Museum, Cambridge

THE UNIVERSITY PRINTS
BOSTON

UNKNOWN FLORENTINE. XV CENT.
ITALY

TO THE
AMERICAN



BATTLE OF THE NUDES ENGRAVING

Collection of Paul J. Sachs, Cambridge

THE UNIVERSITY PRINTS
BOSTON

A POLLAIUOLO 1432 ? 1498
ITALY

TO THE
DRIVE OF
CALIFORNIA



ABUNDANCE (ENGRAVING)
Museum of Fine Arts, Boston

THE UNIVERSITY PRINTS
BOSTON

ROBETTA. 1462-1522 (?)
ITALY

NO VNU
WISOTLIAO



MADONNA AND CHILD (ENGRAVING)
Museum of Fine Arts, Boston

THE UNIVERSITY PRINTS
BOSTON

MANTEGNA. 1431—1506
ITALY

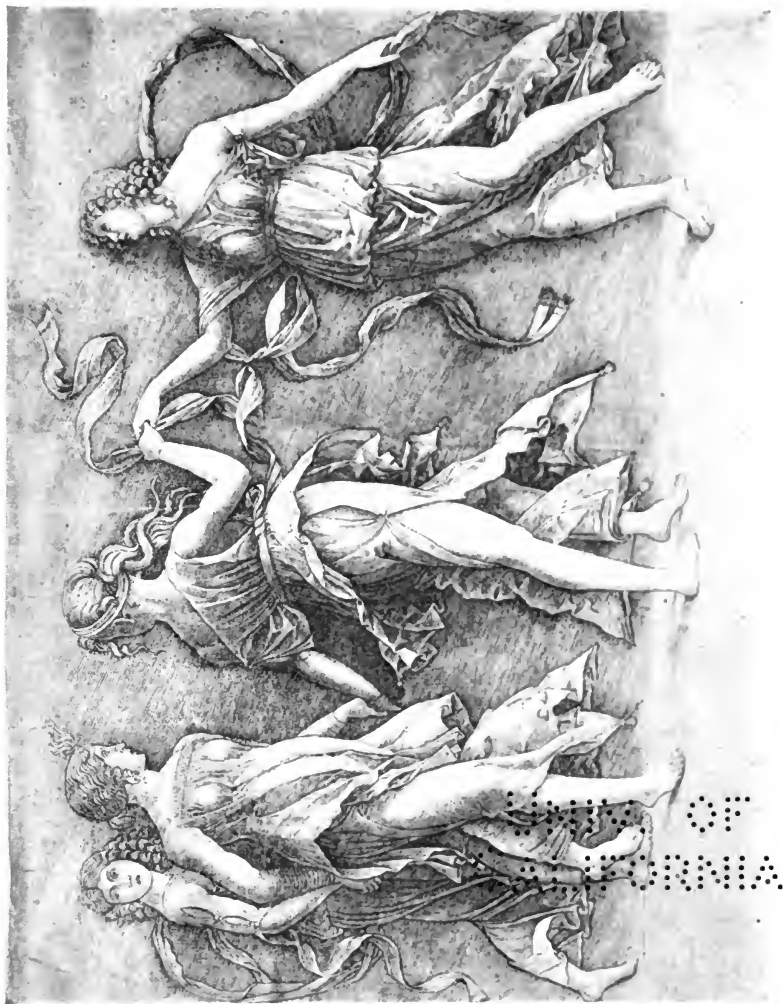


BATTLE OF SEA-GODS. LEFT PORTION OF A FRIEZE. ENGRAVING
Museum of Fine Arts, Boston

THE UNIVERSITY PRINTS
BOSTON

MANTEGNA. 1431. 1506
ITALY

UNIVERSITY OF
CALIFORNIA



FOUR WOMEN DANCING ENGRAVING
Museum of Fine Arts, Boston

THE UNIVERSITY PRINTS
BOSTON

SCHOOL OF MANTEGNA XV CENT
ITALY

TO WHOM IT MAY CONCERN



HOLY FAMILY WITH ST. JOHN (ENGRAVING)

Museum of Fine Arts, Boston

THE UNIVERSITY PRINTS
BOSTON

GIOVANNI ANTONIO DA BRESCIA. FL. 1500—1516
ITALY

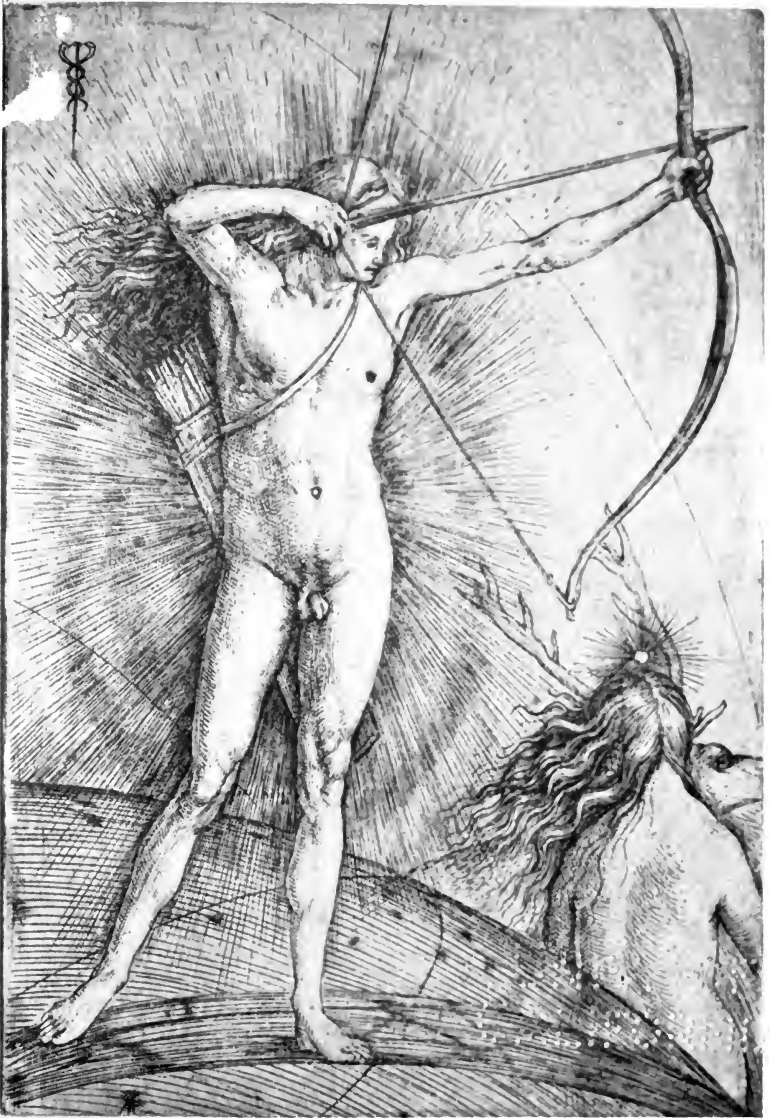
TO VVVU
AIBSOTLIAO



THREE STAGS [ENGRAVING]

Museum of Fine Arts, Boston

10 1941
1941



APOLLO AND DIANA (ENGRAVING)
Museum of Fine Arts, Boston

THE UNIVERSITY PRINTS
BOSTON

JACOPO DE' BARBARI. CA. 1450—1516
ITALY

1940
1941



JUDITH (ENGRAVING)
Museum of Fine Arts, Boston

THE UNIVERSITY PRINTS
BOSTON

MOCETTO. CA. 1458—1530
ITALY

100 VIII
ABRIL 1960

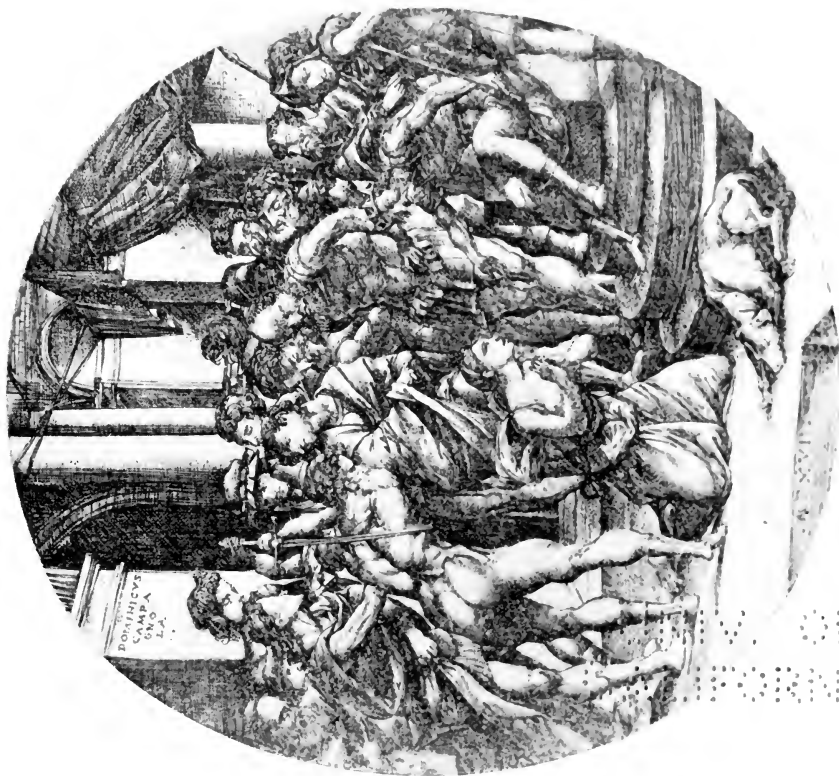


ST. JOHN THE BAPTIST (ENGRAVING)
Collection of Paul J. Sachs, Cambridge

THE UNIVERSITY PRINTS
BOSTON

G. CAMPAGNOLA. CA. 1482—1514
ITALY

NO. 1111
1111111111



DOMINICVS
CAMPAGNA
LAVO
LAVO

BEHEADING OF ST. CATHERINE (ENGRAVING)
Museum of Fine Arts, Boston

THE UNIVERSITY PRINTS
BOSTON

DOMENICO CAMPAGNOLA CA 1511-1563
ITALY

10 VIII
1901



MADONNA AND CHILD (ENGRAVING)
Fogg Art Museum, Cambridge

THE UNIVERSITY PRINTS
BOSTON

BENEDETTO MONTAGNA. CA. 1470-1540
ITALY



DAVID AND GOLIATH. AFTER RAPHAEL (CHIAROSCURO)
Museum of Fine Arts, Boston

THE UNIVERSITY PRINTS
BOSTON

UGO DA CARPI. 1455—1523
ITALY

UNIVERSITY
OF CALIFORNIA



THE RIDERS ON THE FOUR HORSES: APOCALYPSE (WOODCUT)
Museum of Fine Arts, Boston

70 1000
- 10000000



CHRIST APPEARING TO MARY MAGDALEN: SMALL PASSION (WOODCUT)
Museum of Fine Arts, Boston

THE UNIVERSITY PRINTS
BOSTON

DÜRER. 1471—1528
GERMANY

UNITED STATES
DEPARTMENT OF JUSTICE



THE FLIGHT INTO EGYPT: LIFE OF THE VIRGIN (Woodcut)

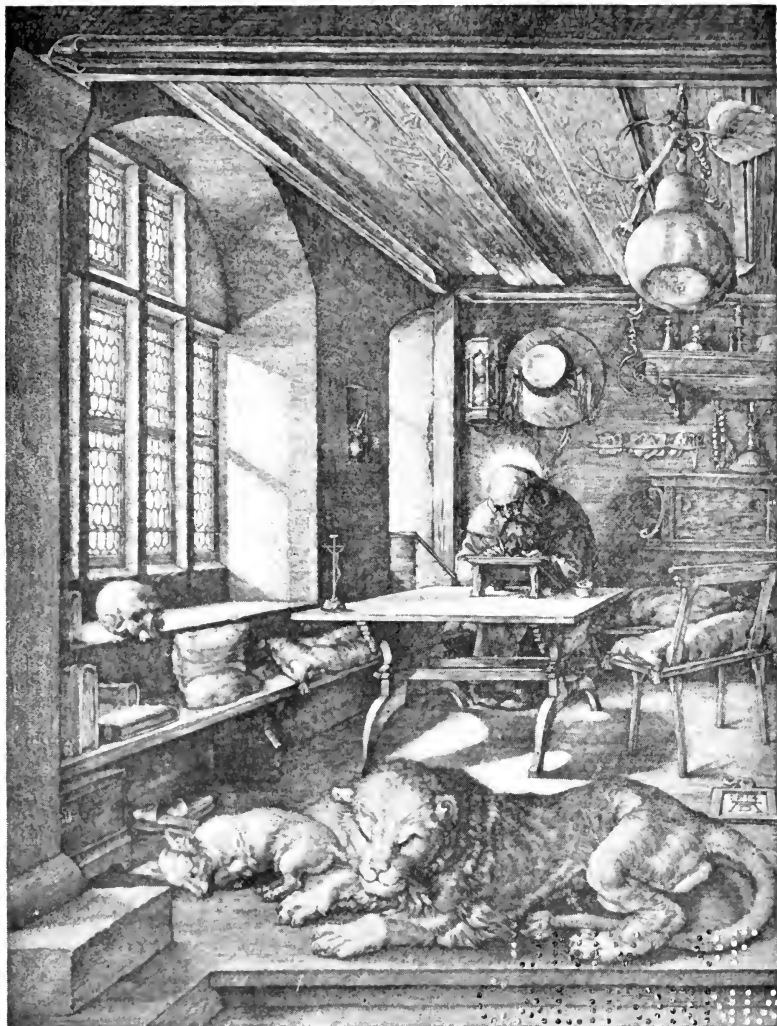
Fogg Art Museum, Cambridge

UNIVERSITY OF
CALIFORNIA



THE TRINITY (Woodcut)
Museum of Fine Arts, Boston

© 1994
LIVELY
LITERATURE



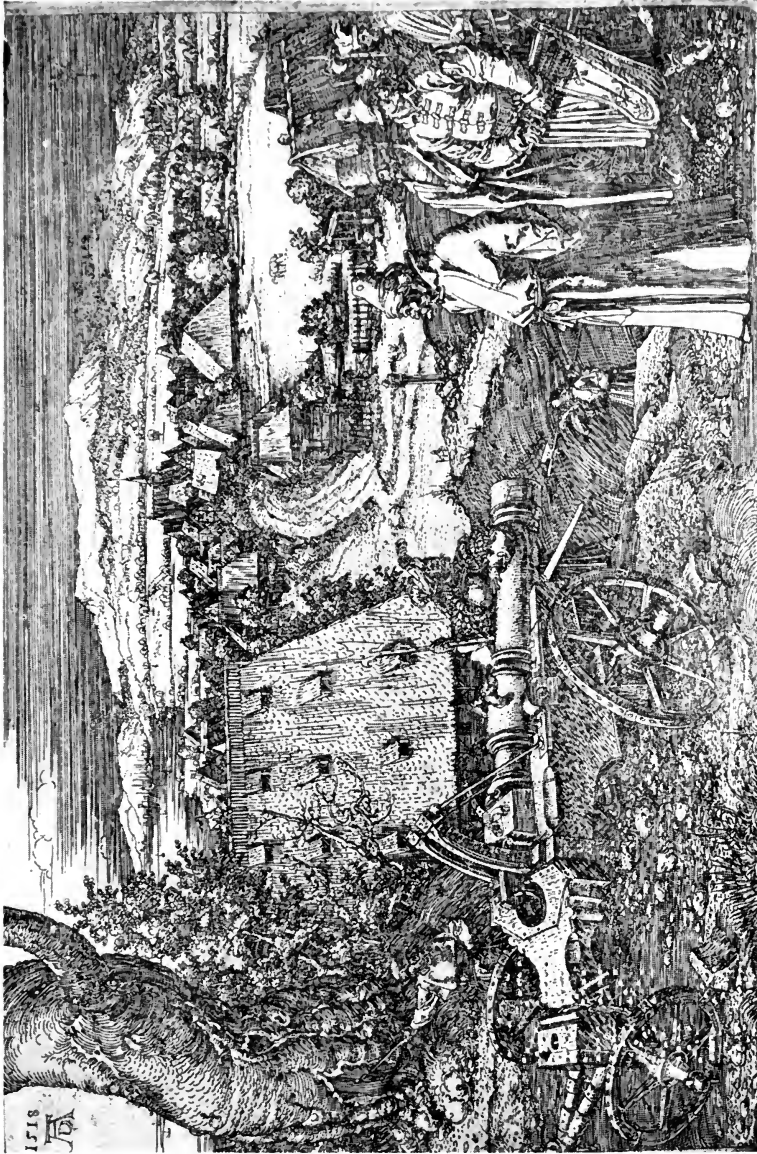
ST. JEROME IN HIS CELL (ENGRAVING)

Museum of Fine Arts, Boston

THE UNIVERSITY PRINTS
BOSTON

DÜRER 1471-1528
GERMANY

UNIVERSITY OF
CALIFORNIA



THE CANNON (ETCHING)
Museum of Fine Arts, Boston

THE UNIVERSITY PRINTS
BOSTON

DÜRER. 1471—1528
GERMANY

TO THE
LIBRARY OF
CONGRESS



HOLY FAMILY (DRY-POINT)
Museum of Fine Arts, Boston

THE UNIVERSITY PRINTS
BOSTON

DURER, 1471-1528
GERMANY

THE UNIVERSITY OF CHICAGO
LIBRARY



EQUESTRIAN PORTRAIT OF MAXIMILIAN I (CHIAROSCURO)

Museum of Fine Arts, Boston



ST. GEORGE AND THE DRAGON (WOODCUT)

Museum of Fine Arts, Boston

THE UNIVERSITY PRINTS
BOSTON

CRANACH THE ELDER. 1472—1553
GERMANY

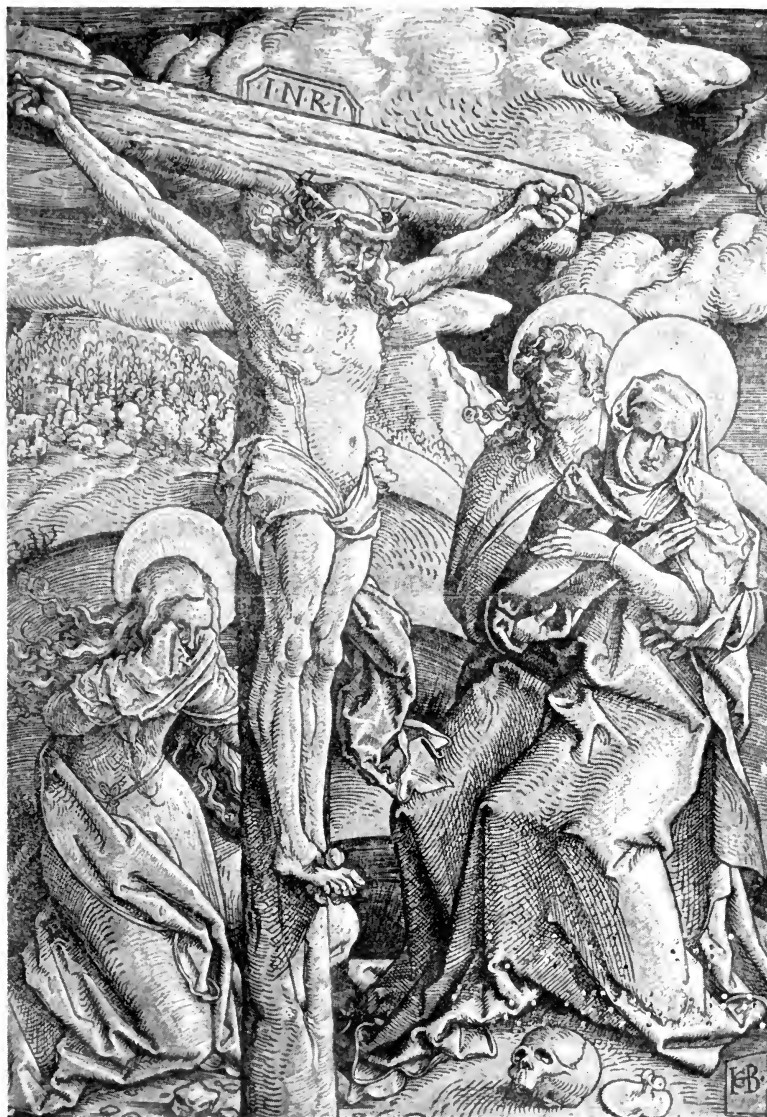


ST. CHRISTOPHER (CHIAROSCURO)
Museum of Fine Arts, Boston

THE UNIVERSITY PRINTS
BOSTON

CRANACH THE ELDER. 1472—1553
GERMANY

NO. 1000
LONDON, 1900



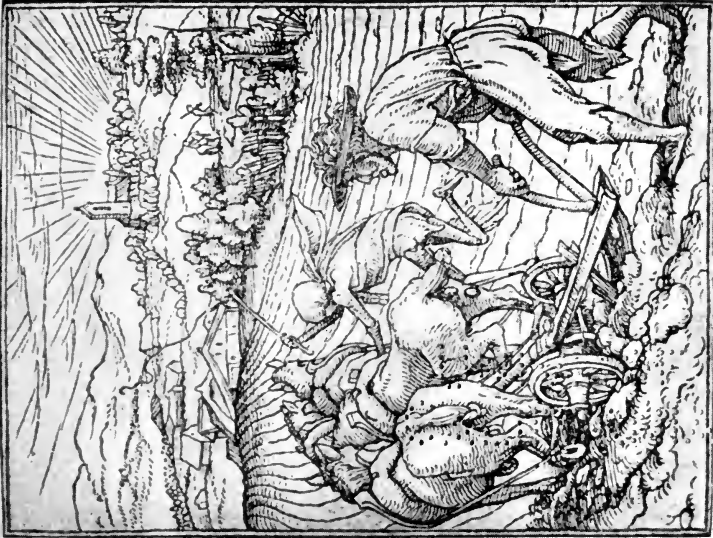
THE CRUCIFIXION (CHIAROSCURO)
Fogg Art Museum, Cambridge

THE UNIVERSITY PRINTS
BOSTON

GRIEN. 1476—1545
GERMANY

TO VIVI
ABROGLIAO

Der Acterman.



THE UNIVERSITY PRINTS
BOSTON

Das Jungtint.



THE DANCE OF DEATH: THE PLOWMAN; THE YOUNG CHILD (WOODCUTS)
Fogg Art Museum, Cambridge

HOLBEIN THE YOUNGER. 1497-1543
GERMANY



LUCRETIA, AFTER RAPHAEL. (ENGRAVING)
Museum of Fine Arts, Boston

UNIVERSITY OF
ALABAMA



MASSACRE OF THE INNOCENTS, AFTER RAPHAEL (ENGRAVING)
Museum of Fine Arts, Boston

THE UNIVERSITY PRINTS
BOSTON

RAIMONDI. CA. 1480—1530
ITALY

NO VIII
ANNUNCIATO



DAVID PLAYING BEFORE SAUL (ENGRAVING)
Museum of Fine Arts, Boston

THE UNIVERSITY PRINTS
BOSTON

L. VAN LEYDEN. 1494—1533
NETHERLANDS

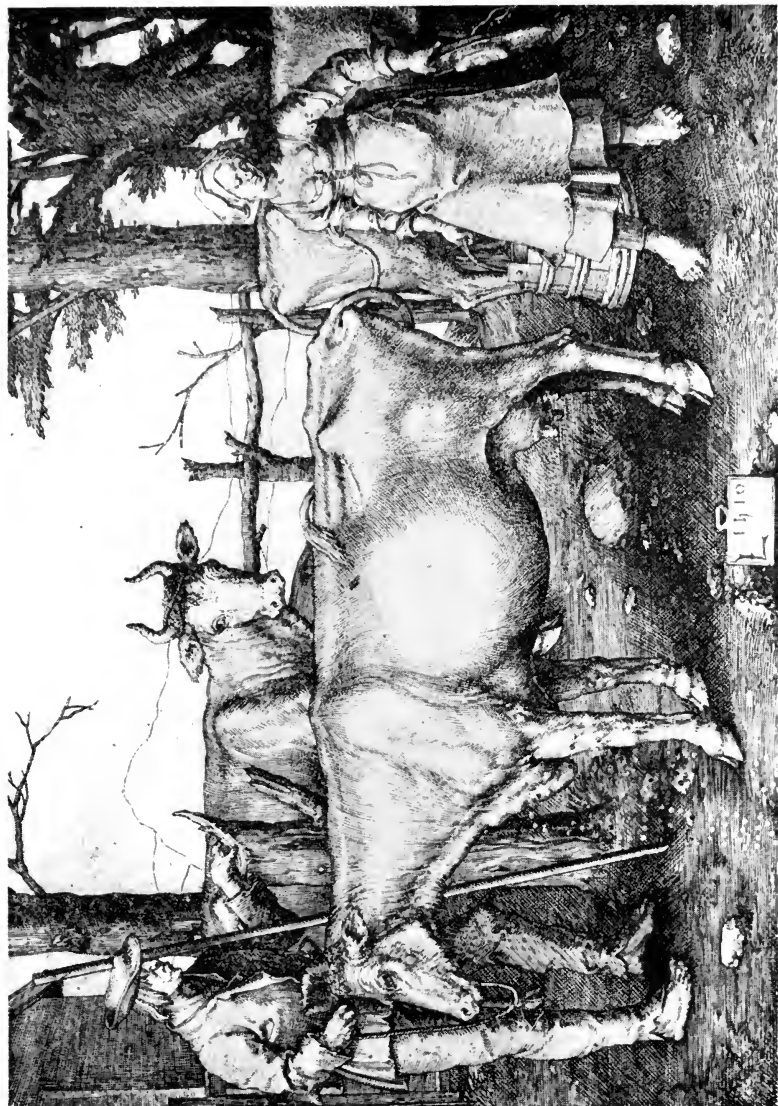
70 MIMU
AMBORLIAO



CHRIST ON THE MOUNT OF OLIVES: ROUND PASSION (ENGRAVING)
Museum of Fine Arts, Boston

THE UNIVERSITY PRINTS
BOSTON

L. VAN LEYDEN. 1494—1533
NETHERLANDS



THE MILKMAID (ENGRAVING)
Museum of Fine Arts, Boston

3

10 1111
1111111111



HENRI II AND DIANE DE POITIERS. (ENGRAVING)
Museum of Fine Arts, Boston

THE UNIVERSITY PRINTS
BOSTON

DUVET CA. 1485—1561
FRANCE

© 1994
© 1994

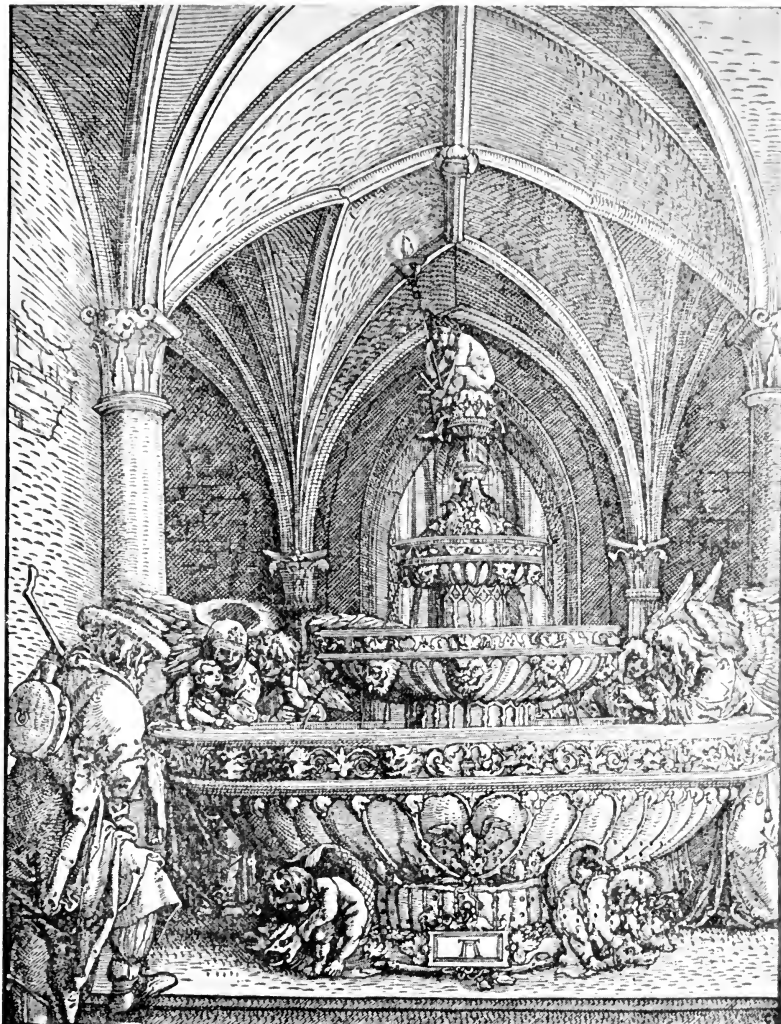


ST. CHRISTOPHER (ENGRAVING)
Museum of Fine Arts, Boston

THE UNIVERSITY PRINTS
BOSTON

ALTDORFER. CA. 1480—1538
GERMANY

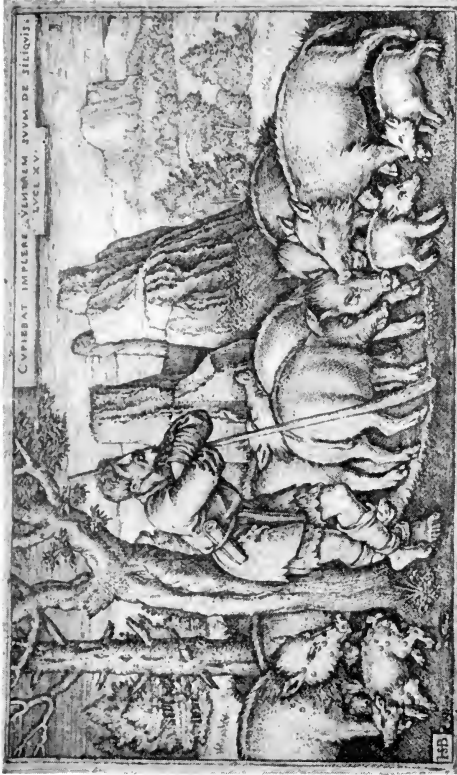
10 1111
11111111



HOLY FAMILY IN A CHAPEL (Woodcut)
Museum of Fine Arts, Boston

THE UNIVERSITY PRINTS
BOSTON

ALTDORFER. CA. 1480—1538
GERMANY



THE PRODIGAL SON GUARDING SWINE (ENGRAVING)
Museum of Fine Arts, Boston

THE UNIVERSITY PRINTS
 BOSTON

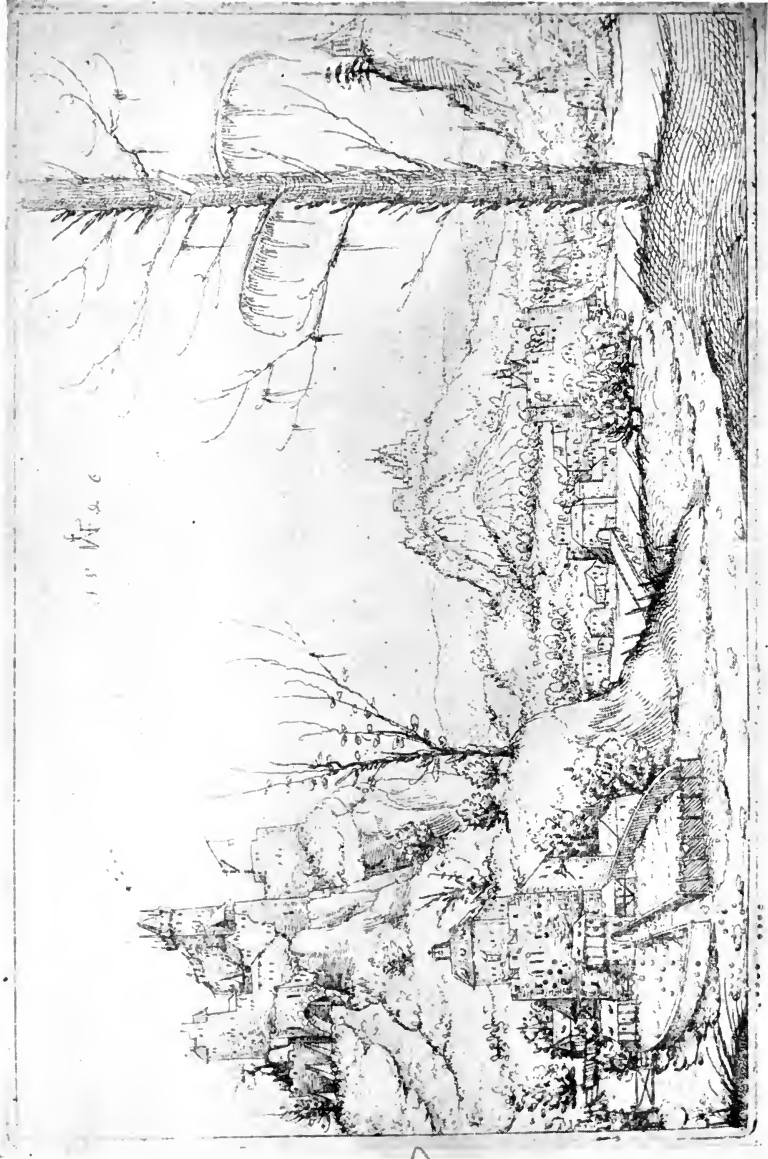
H. S. BEHAM. 1500—1550
 GERMANY

70 1111
A119011A0



PROGENIES · DIVVM · QVINTVS · SIC · CAROLVS · ILLE
 IMPERII · CAESAR · LVMINA · ET · ORA · TVLIT
 AET · SVAE · XXXI
 ANN · M · D · XXXI

CHARLES V (ENGRAVING)
 Museum of Fine Arts, Boston

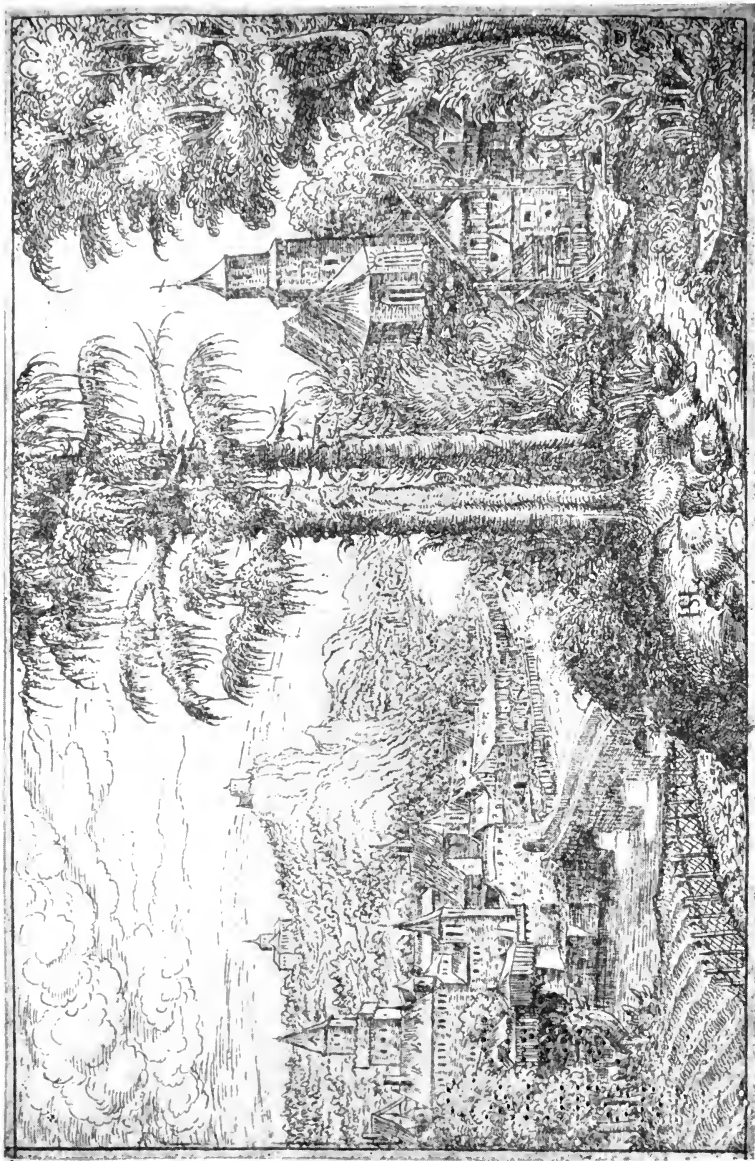


LANDSCAPE (ETCHING)
Museum of Fine Arts, Boston

THE UNIVERSITY PRINTS
BOSTON

HIRSCHVOGEL, 1503—1553 (?)
GERMANY

1910
-1911



RIVER LANDSCAPE WITH CHURCH (ETCHING)
Museum of Fine Arts, Boston

THE UNIVERSITY PRINTS
BOSTON

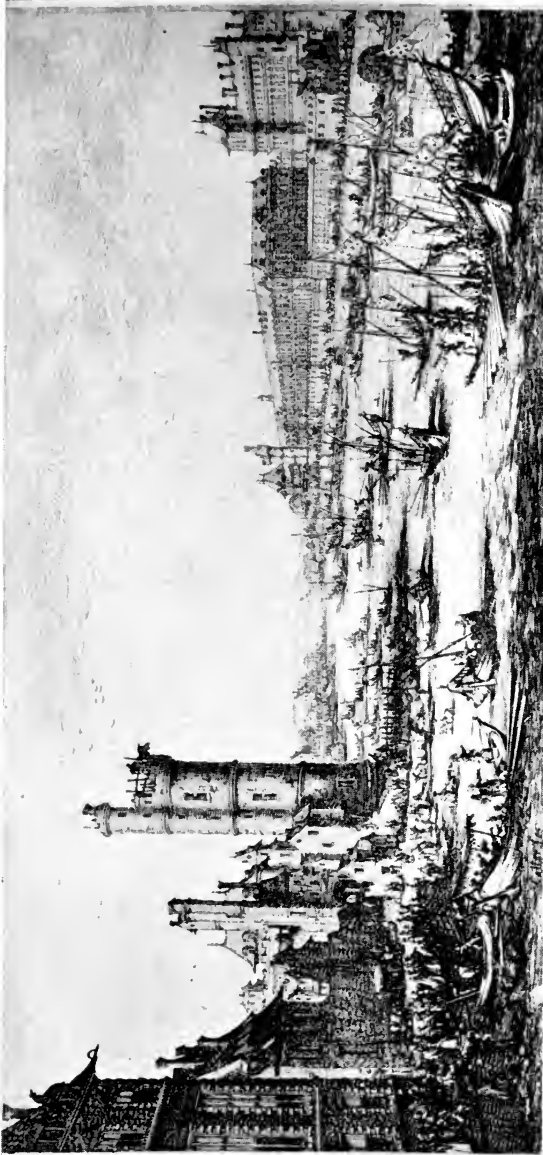
LAUTENSACK, CA. 1524-1563
GERMANY

UNIVERSITY OF
CALIFORNIA



STANDARD BEARER (ENGRAVING)
Museum of Fine Arts, Boston

70 11111
AMERICAN



PARIS: VUE DU LOUVRE (ETCHING)
Museum of Fine Arts, Boston

THE UNIVERSITY PRINTS
BOSTON

CALLOT. 1592—1635
FRANCE

UNIVERSITY OF
CALIFORNIA



THE COWHERD (ETCHING)
Museum of Fine Arts, Boston

THE UNIVERSITY PRINTS
BOSTON

CLAUDE LORRAIN. 1600—1682
FRANCE

UNIVERSITY OF
CALIFORNIA



UNIV. OF
CALIFORNIA

PORTRAIT OF SELF (ETCHING)
Museum of Fine Arts, Boston

THE UNIVERSITY PRINTS
BOSTON

VAN DYCK. 1599—1641
NETHERLANDS

NO. 1000
CALIFORNIA



FRANZ SNYDERS (ETCHING)
Museum of Fine Arts, Boston

UNIVERSITY OF
CALIFORNIA



CLEMENT DE JONGHE (ETCHING)
Museum of Fine Arts, Boston

THE UNIVERSITY PRINTS
BOSTON

REMBRANDT. 1606—1669
NETHERLANDS



JAN LUTMA (ETCHING)
Museum of Fine Arts, Boston

THE UNIVERSITY PRINTS
BOSTON

REMBRANDT. 1606—1669
NETHERLANDS

UNIVERSITY
OF CALIFORNIA



TOBIT BLIND (ETCHING)
Museum of Fine Arts, Boston

THE UNIVERSITY PRINTS
BOSTON

REMBRANDT. 1606—1669
NETHERLANDS

NO. 1111
ANNOUNCING

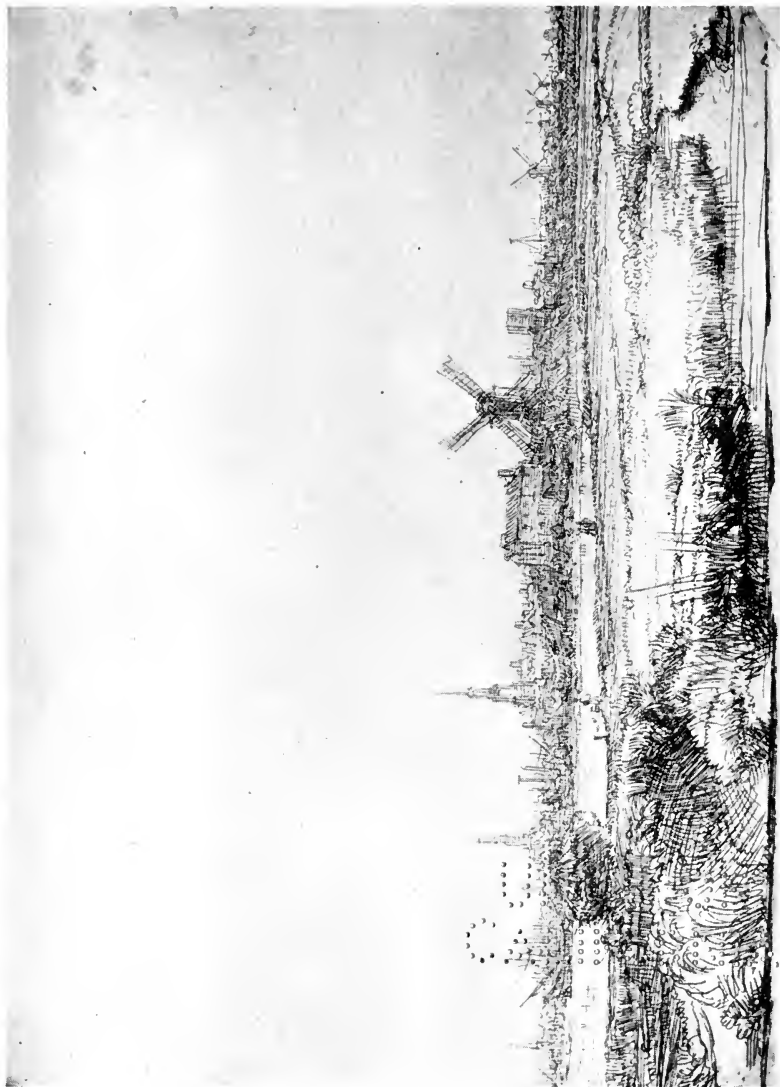


THE RAISING OF LAZARUS (ETCHING)
Museum of Fine Arts, Boston

THE UNIVERSITY PRINTS
BOSTON

REMBRANDT. 1606-1669
NETHERLANDS

UNIVERSITY
OF CALIFORNIA



AMSTERDAM (ETCHING)
Museum of Fine Arts, Boston

THE UNIVERSITY PRINTS
BOSTON

REMBRANDT. 1606—1669
NETHERLANDS

THE UNIVERSITY
OF CALIFORNIA



THREE TREES (ETCHING)
Museum of Fine Arts, Boston

THE UNIVERSITY PRINTS
BOSTON

REMBRANDT. 1606—1669
NETHERLANDS



THE SPECTACLE SELLER (ETCHING)
Museum of Fine Arts, Boston

THE UNIVERSITY PRINTS
BOSTON

A. VAN OSTADE. 1610—1685
NETHERLANDS

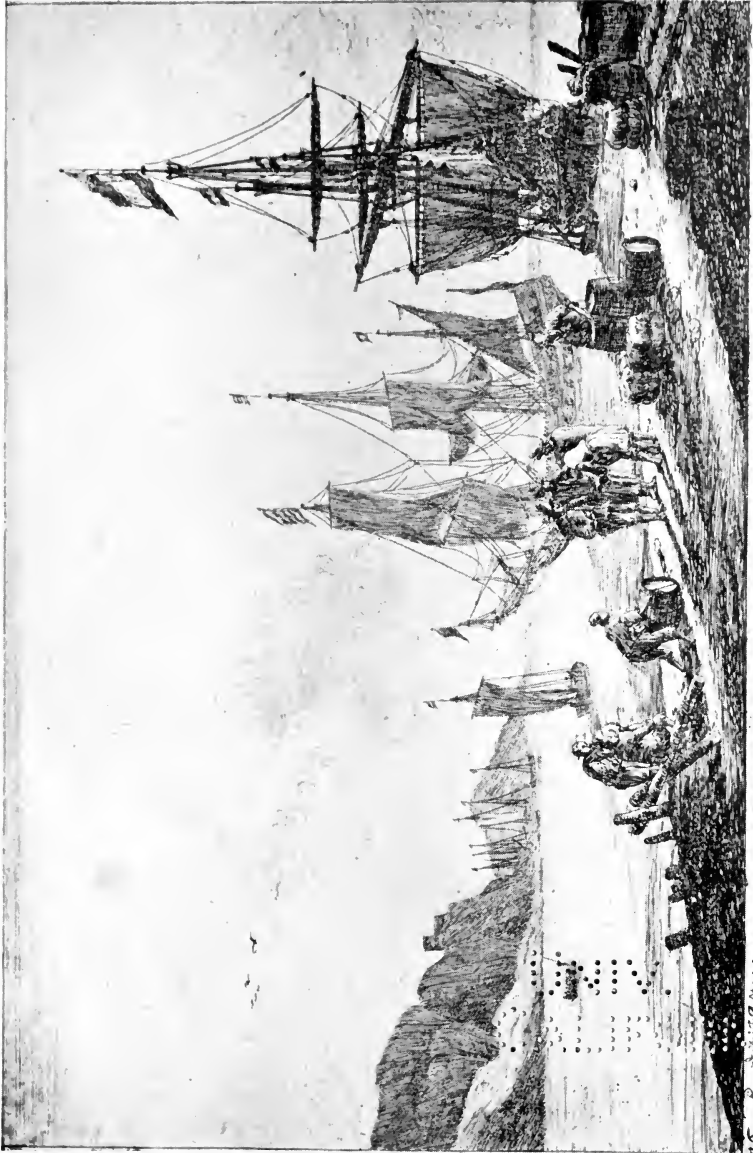
0 2411
0 2411



WHEAT FIELD (ETCHING)
Fogg Art Museum, Cambridge

THE UNIVERSITY PRINTS
BOSTON

RUYSDAEL, 1628 (?)—1682
NETHERLANDS



COAST SCENE: MEN HANDLING MERCHANDISE (ETCHING)
Museum of Fine Arts, Boston

THE UNIVERSITY PRINTS
BOSTON

ZEEMAN. 1623—CA. 1663
NETHERLANDS

© 1981
© 1981



THE COWHERD (ETCHING)
Museum of Fine Arts, Boston

THE UNIVERSITY PRINTS
BOSTON

POTTER, 1625-1654
NETHERLANDS

NO. 11111
CALIFORNIA



THE LARGE TREE (ETCHING)
Museum of Fine Arts, Boston

THE UNIVERSITY PRINTS
BOSTON

BOTH. CA. 1610—1652
NETHERLANDS

UNIVERSITY OF CALIFORNIA



NICOLAVS CLAVDIVS FABRICIVS
DE PEIRESC SENATOR AQVENSIS

Ch. Mellan sc. del. et fudit

FABRI DE PEYRESC (ETCHING)
Museum of Fine Arts, Boston

© 1994
AMERICAN



CARDINAL BENTIVOGLIO: AFTER VAN DYCK (ETCHING)
 Museum of Fine Arts, Boston

THE UNIVERSITY PRINTS
 BOSTON

MORIN. 1590(?) - 1650
 FRANCE

10 1111
A 11 1111111111



JEAN LORET (ENGRAVING)

Museum of Fine Arts, Boston



PHILIPPE DE CHAMPAIGNE (ENGRAVING)
Museum of Fine Arts, Boston

THE UNIVERSITY PRINTS
BOSTON

EDELINCK. 1640 (41?)—1707
FRANCE

TO THE
LIBRARY OF
CALIFORNIA



CARDINAL BOSSUET (ENGRAVING)
Museum of Fine Arts, Boston

UNIT OF
CALIFORNIA



LAUGHING AUDIENCE (ETCHING)
Museum of Fine Arts, Boston

THE UNIVERSITY PRINTS
BOSTON

HOGARTH. 1697—1764
ENGLAND

© 1994
CALIFORNIA



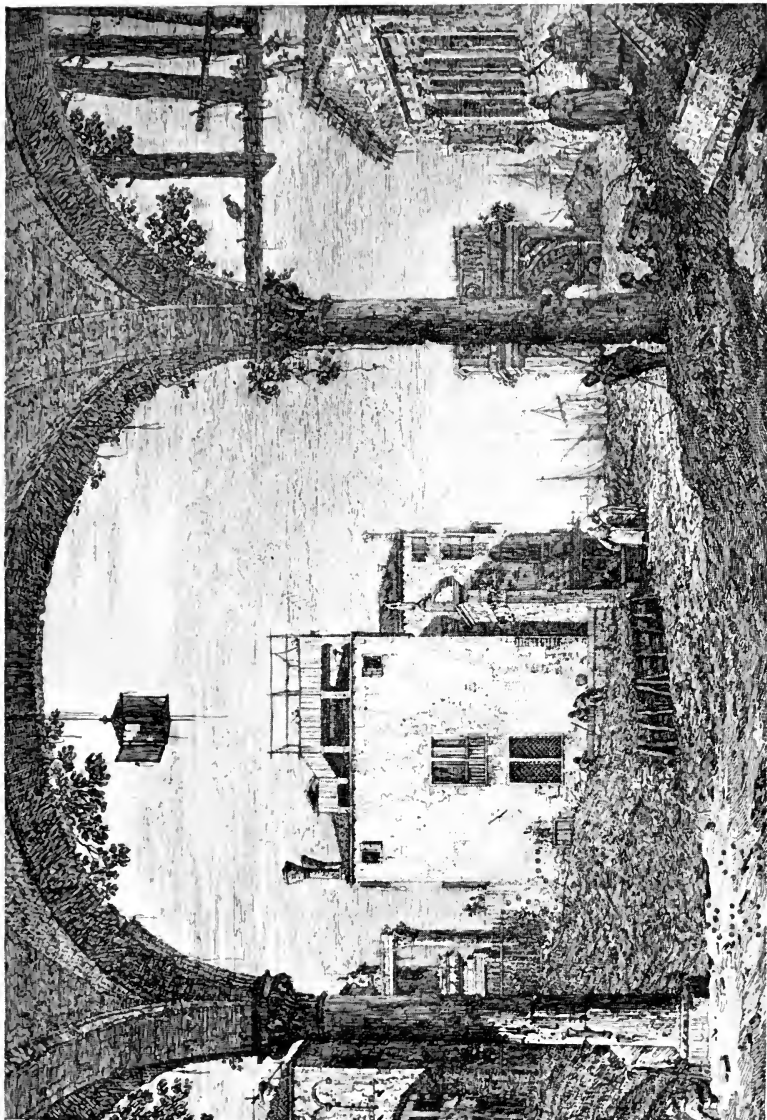
NYMPH WITH A TAMBOURINE (ETCHING)

Museum of Fine Arts, Boston

THE UNIVERSITY PRINTS
BOSTON

TIEPOLO. CA. 1696—1770
ITALY

UNIVERSITY OF
CALIFORNIA

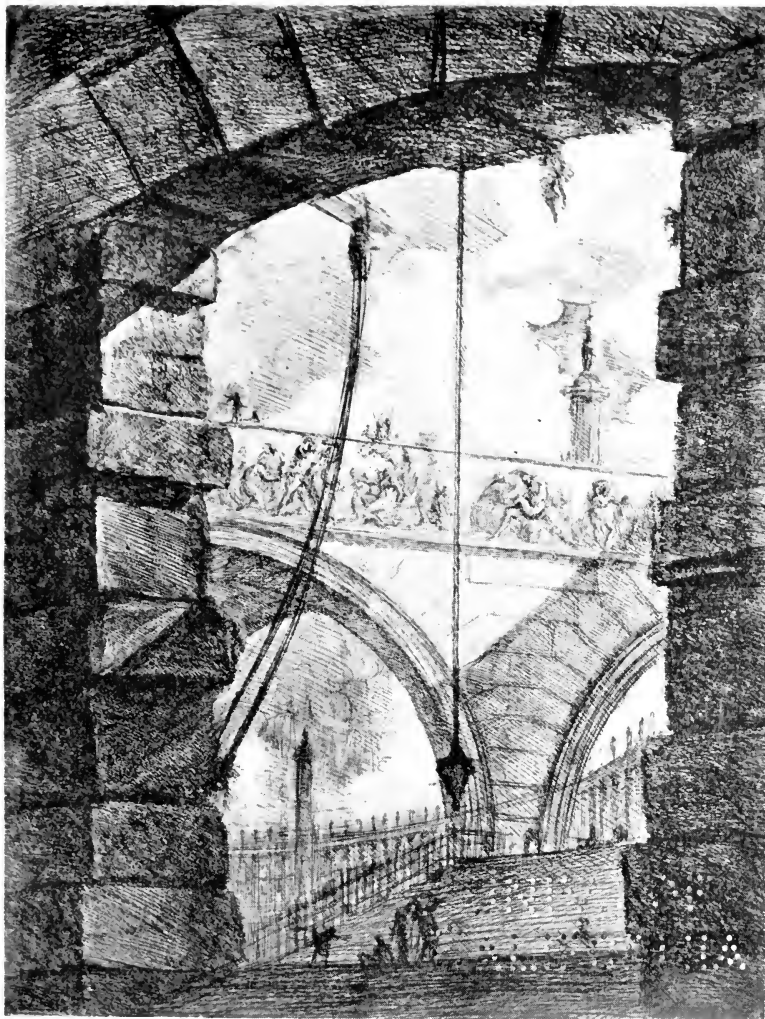


PORCH WITH A LANTERN (ETCHING)
Museum of Fine Arts, Boston

THE UNIVERSITY PRINTS
BOSTON

CANALETTO. 1697-1768
ITALY

NO. 1111
LIVRE DE
BIBLIOTHEQUE

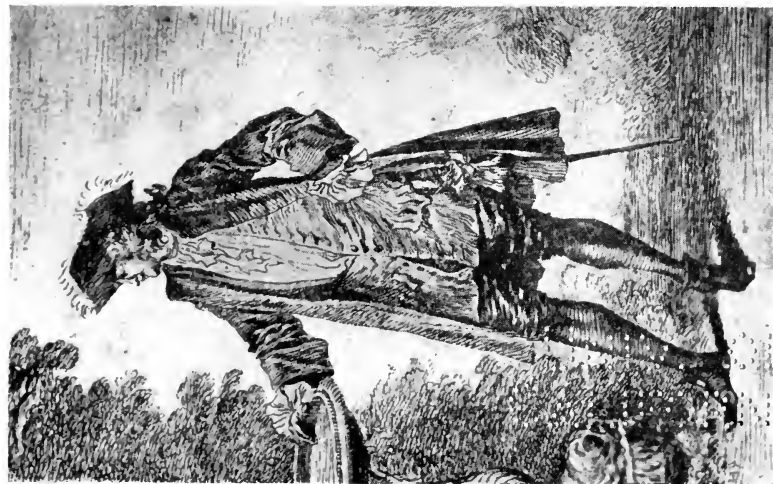


PRISON (ETCHING)
Museum of Fine Arts, Boston

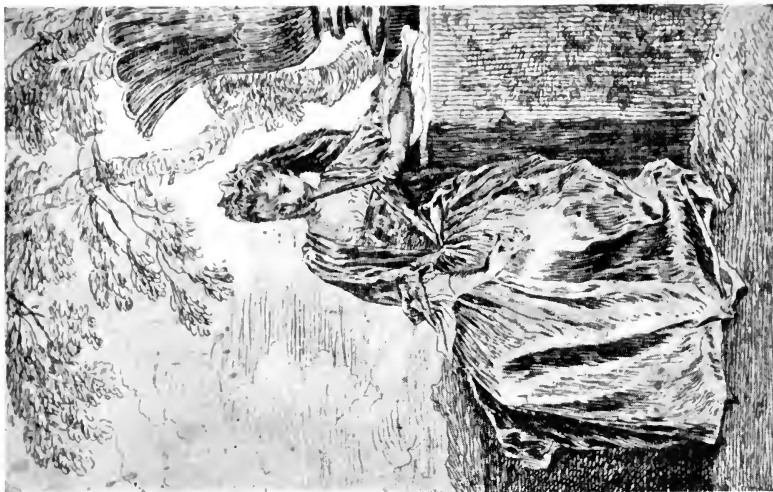
THE UNIVERSITY PRINTS
BOSTON

PIRANESI. 1720—1778
ITALY

NO. 1111
ANNOUNCED



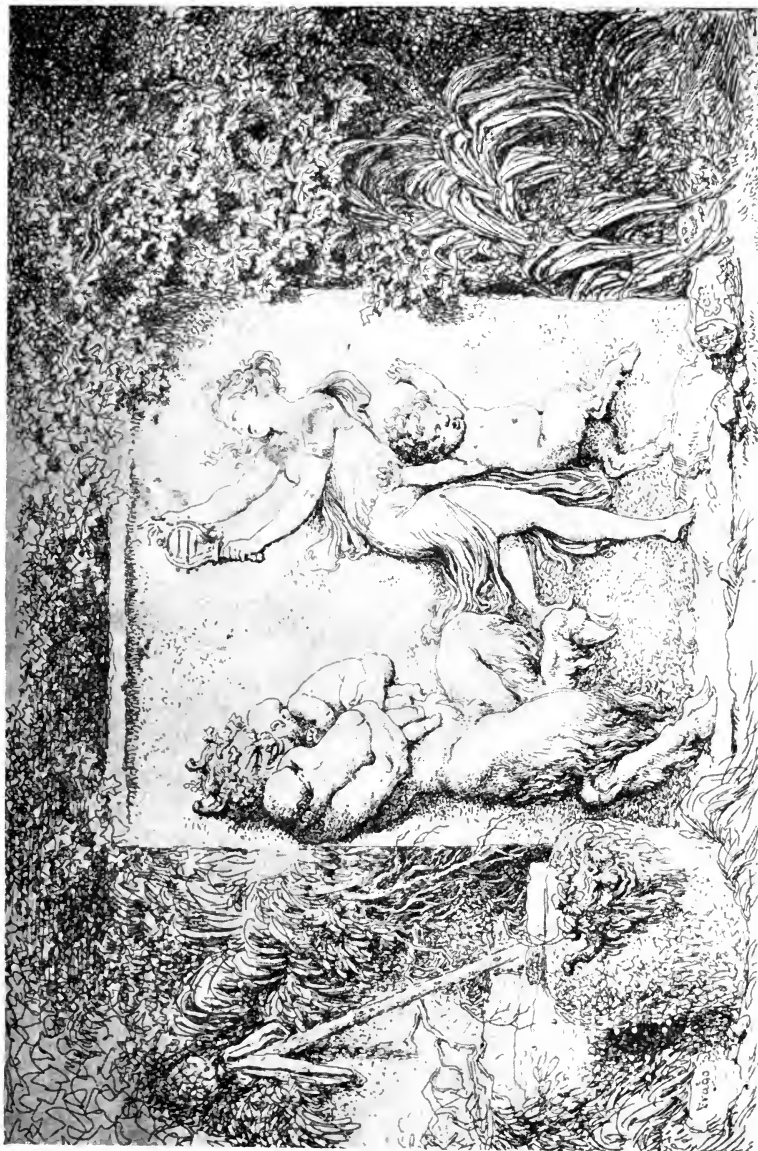
MAN STANDING — WOMAN SEATED (ETCHINGS)
Fogg Art Museum, Cambridge



THE UNIVERSITY PRINTS
BOSTON

WATTEAU, 1684—1721
FRANCE

NO MIMU
ABSORPLIAO



BACCHANAL (ETCHING)
Museum of Fine Arts, Boston

THE UNIVERSITY PRINTS
BOSTON

FRAGONARD. 1732—1806
FRANCE

TO THE
LIBRARY OF THE
UNIVERSITY OF TORONTO



MR. PHILIP YORKE (STIPPLE)
Museum of Fine Arts, Boston

THE UNIVERSITY PRINTS
BOSTON

BARTOLOZZI. 1728—1813
ITALY (ENGLAND)

UNIVERSITY OF
CALIFORNIA



HUNTING FOR TEETH: CAPRICHOS (AQUATINT)
Museum of Fine Arts, Boston

TO THE
DRIVE OF
CALIFORNIA



THE DEAD BRANCH (ETCHING AND AQUATINT)
Museum of Fine Arts, Boston

THE UNIVERSITY PRINTS
BOSTON

GOYA. 1746—1828
SPAIN

1949
1950



THE STANDARD BEARER (MEZZOTINT)
Fogg Art Museum, Cambridge

THE UNIVERSITY PRINTS
BOSTON

PRINCE RUPERT. 1619 1682
GERMANY

UNIVERSITY OF CALIFORNIA



LORDS JOHN AND BERNARD STUART, AFTER VAN DYCK (MEZZOTINT)
Museum of Fine Arts, Boston

THE UNIVERSITY PRINTS
BOSTON

MCARDELL. c. 1729-1765
ENGLAND

70 1941
OF
CALIFORNIA



FRUIT PIECE, AFTER HUYSUM (MEZZOTINT)
Museum of Fine Arts, Boston

THE UNIVERSITY PRINTS
BOSTON

EARLOM. 1743-1822
ENGLAND

UNIVERSITY OF
CALIFORNIA



SIR JOSHUA REYNOLDS (MEZZOTINT)
Fogg Art Museum, Cambridge

THE UNIVERSITY PRINTS
BOSTON

GREEN. 1739-1813
ENGLAND



LADY CAROLINE MONTAGU (MEZZOTINT)
Museum of Fine Arts, Boston

THE UNIVERSITY PRINTS
BOSTON

J. R. SMITH. 1752 - 1812
ENGLAND



LIBER STUDIORUM: BEN ARTHUR (ETCHING AND MEZZOTINT)
Museum of Fine Arts, Boston

THE UNIVERSITY PRINTS
BOSTON

TURNER, 1775-1851
ENGLAND

TO THE
LIBRARY OF
CALIFORNIA



BRITISH BIRDS: THE PEACOCK (WOOD-ENGRAVING)
Fogg Art Museum, Cambridge

THE UNIVERSITY PRINTS
BOSTON

BEWICK. 1753—1828
ENGLAND

DRIVE
CALIFORNIA



THE PIPER. FRONTISPIECE OF "SONGS OF INNOCENCE"
(RELIEF ETCHING)

Collection of Mrs. William Emerson, Cambridge

THE UNIVERSITY PRINTS
BOSTON

BLAKE. 1757—1827
ENGLAND



THREE HORSES IN A STABLE (LITHOGRAPH)
Museum of Fine Arts, Boston

THE UNIVERSITY PRINTS
BOSTON

GÉRICAULT 1791—1824
FRANCE

1. 1911
2. 1912
3. 1913
4. 1914
5. 1915
6. 1916
7. 1917
8. 1918
9. 1919
10. 1920
11. 1921
12. 1922
13. 1923
14. 1924
15. 1925
16. 1926
17. 1927
18. 1928
19. 1929
20. 1930
21. 1931
22. 1932
23. 1933
24. 1934
25. 1935
26. 1936
27. 1937
28. 1938
29. 1939
30. 1940
31. 1941
32. 1942
33. 1943
34. 1944
35. 1945
36. 1946
37. 1947
38. 1948
39. 1949
40. 1950
41. 1951
42. 1952
43. 1953
44. 1954
45. 1955
46. 1956
47. 1957
48. 1958
49. 1959
50. 1960
51. 1961
52. 1962
53. 1963
54. 1964
55. 1965
56. 1966
57. 1967
58. 1968
59. 1969
60. 1970
61. 1971
62. 1972
63. 1973
64. 1974
65. 1975
66. 1976
67. 1977
68. 1978
69. 1979
70. 1980
71. 1981
72. 1982
73. 1983
74. 1984
75. 1985
76. 1986
77. 1987
78. 1988
79. 1989
80. 1990
81. 1991
82. 1992
83. 1993
84. 1994
85. 1995
86. 1996
87. 1997
88. 1998
89. 1999
90. 2000
91. 2001
92. 2002
93. 2003
94. 2004
95. 2005
96. 2006
97. 2007
98. 2008
99. 2009
100. 2010
101. 2011
102. 2012
103. 2013
104. 2014
105. 2015
106. 2016
107. 2017
108. 2018
109. 2019
110. 2020
111. 2021
112. 2022
113. 2023
114. 2024
115. 2025
116. 2026
117. 2027
118. 2028
119. 2029
120. 2030



ROYAL TIGER (LITHOGRAPH)
Museum of Fine Arts, Boston

THE UNIVERSITY PRINTS
BOSTON

DELA CROIX. 1798—1863
FRANCE

© 1996
SUN MICROSYSTEMS



MIDNIGHT REVIEW (LITHOGRAPH)
Museum of Fine Arts, Boston

THE UNIVERSITY PRINTS
BOSTON

RAFFET. 1804—1860
FRANCE

70 MINU
ALFONSO LIAO



E. AND J. DE GONCOURT (LITHOGRAPH)
Museum of Fine Arts, Boston

THE UNIVERSITY PRINTS
BOSTON

GAVARNI. 1804—1866
FRANCE

NO. 1111
1111111111



LA RUE TRANSNONAIN (LITHOGRAPH)
Museum of Fine Arts, Boston

THE UNIVERSITY PRINTS
BOSTON

DAUMIER. 1808-1879
FRANCE



SCENE FROM "ACTUALITÉS" (LITHOGRAPH)
Museum of Fine Arts, Boston

THE UNIVERSITY PRINTS
BOSTON

DAUMIER. 1808-1879
FRANCE

70 1/2
ANATOMIA



INTERIOR OF A PORT (LITHOGRAPH)

Museum of Fine Arts, Boston



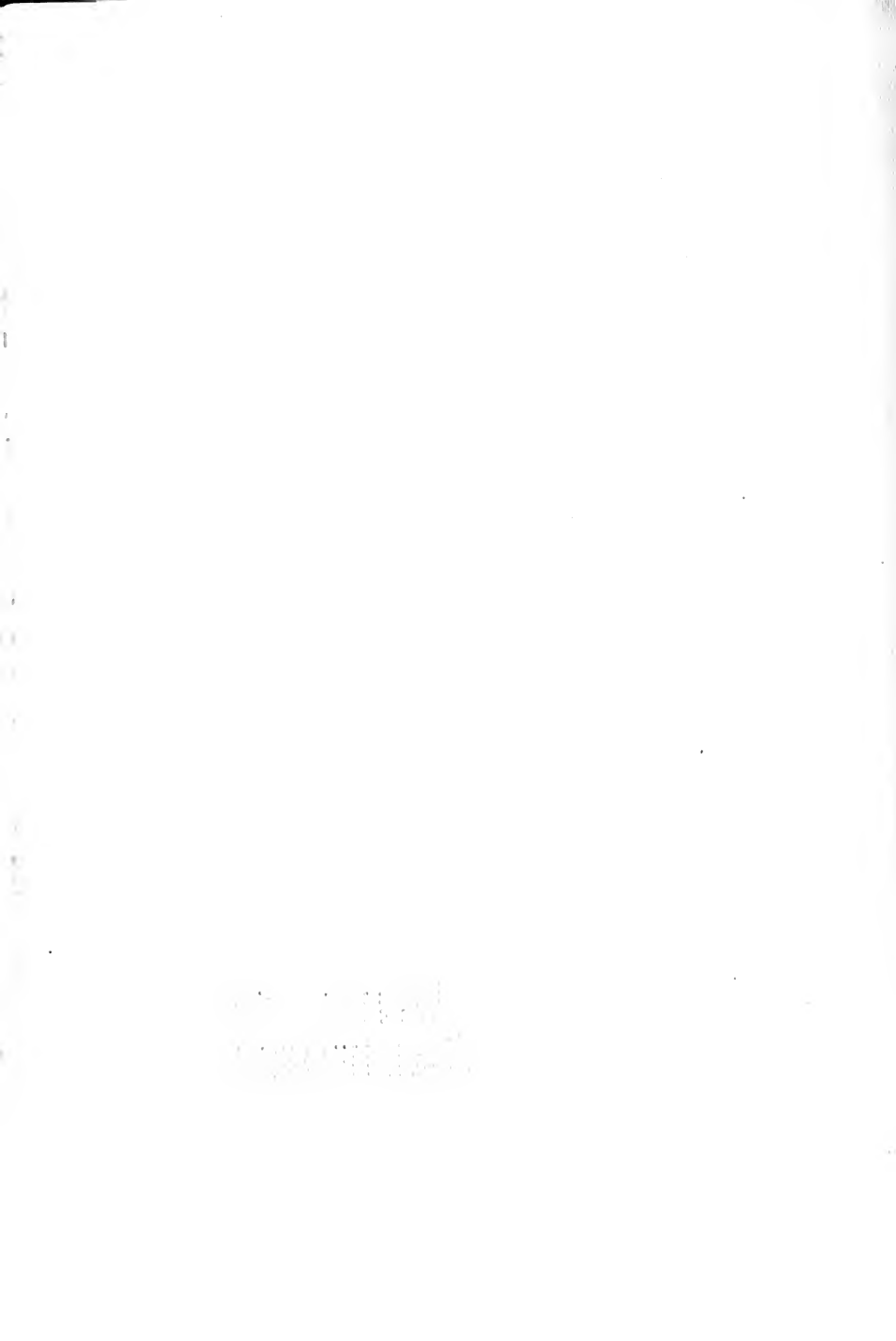
SACHSENHAUSEN. FRANKFORT (LITHOGRAPH)
Museum of Fine Arts, Boston



PARK AND FOP. (LITHOGRAPH)
Museum of Fine Arts, Boston

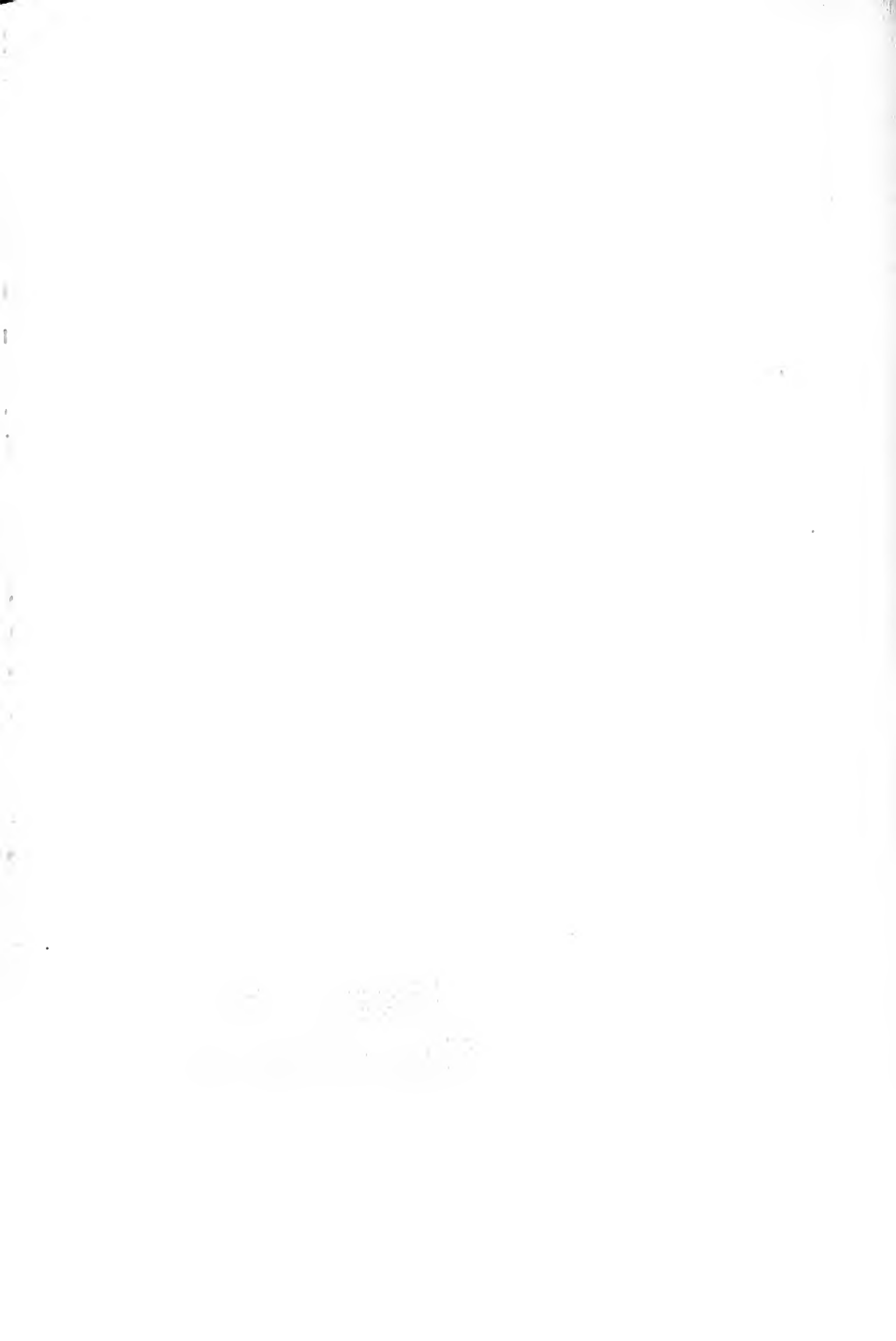
THE UNIVERSITY PRINTS
BOSTON

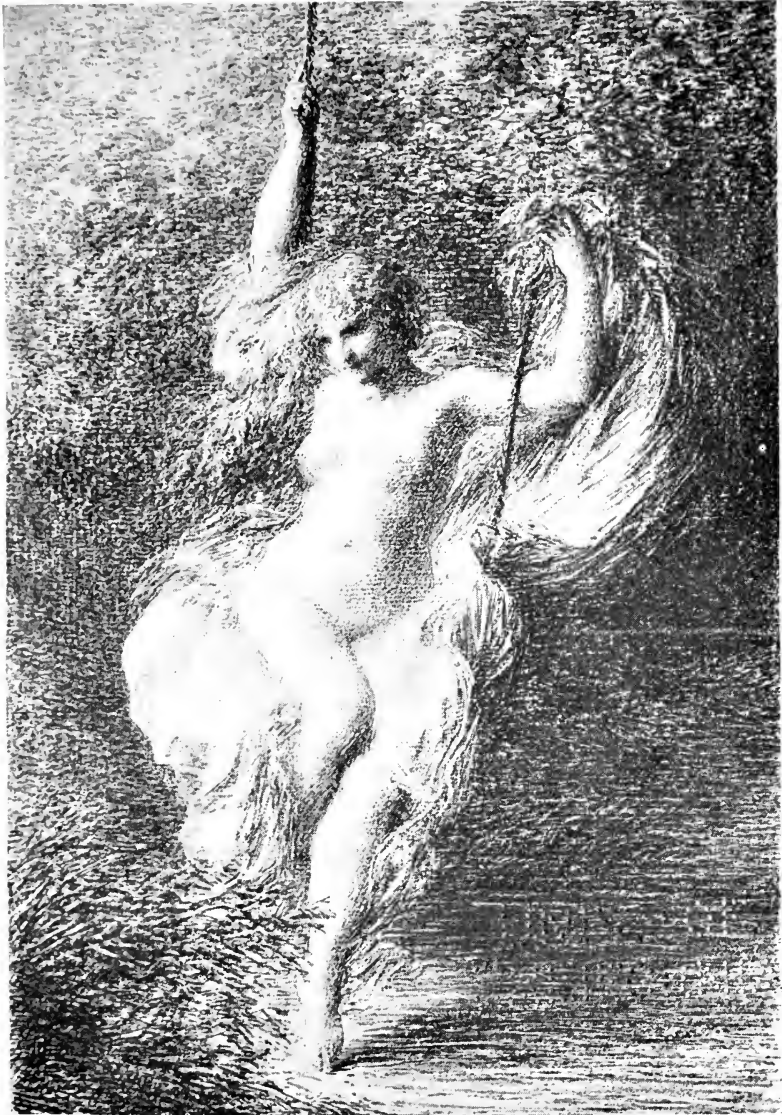
J. D. HARDING. 1798—1863
ENGLAND





TOUR DU GROS HORLOGE (LITHOGRAPH)
Museum of Fine Arts, Boston





SARA LA BAIGNEUSE (LITHOGRAPH)
Museum of Fine Arts, Boston

Digitized by Google

THE
PROCEEDINGS



CONVOY OF PRISONERS (LITHOGRAPH)
Museum of Fine Arts, Boston

THE UNIVERSITY PRINTS
BOSTON

MENZEL. 1815—1905
GERMANY



TROUPEAU DE PORCS (ETCHING)
Museum of Fine Arts, Boston

THE UNIVERSITY PRINTS
BOSTON

JACQUE. 1813 1894
FRANCE

1875
1876
1877
1878
1879
1880
1881
1882
1883
1884
1885
1886
1887
1888
1889
1890
1891
1892
1893
1894
1895
1896
1897
1898
1899
1900
1901
1902
1903
1904
1905
1906
1907
1908
1909
1910
1911
1912
1913
1914
1915
1916
1917
1918
1919
1920
1921
1922
1923
1924
1925
1926
1927
1928
1929
1930
1931
1932
1933
1934
1935
1936
1937
1938
1939
1940
1941
1942
1943
1944
1945
1946
1947
1948
1949
1950
1951
1952
1953
1954
1955
1956
1957
1958
1959
1960
1961
1962
1963
1964
1965
1966
1967
1968
1969
1970
1971
1972
1973
1974
1975
1976
1977
1978
1979
1980
1981
1982
1983
1984
1985
1986
1987
1988
1989
1990
1991
1992
1993
1994
1995
1996
1997
1998
1999
2000
2001
2002
2003
2004
2005
2006
2007
2008
2009
2010
2011
2012
2013
2014
2015
2016
2017
2018
2019
2020
2021
2022
2023
2024
2025



MARSH WITH STORKS (ETCHING)
Museum of Fine Arts, Boston

THE UNIVERSITY PRINTS
BOSTON

DAUBIGNY, 1817—1878
FRANCE



WOOL-CARDER (ETCHING)
Museum of Fine Arts, Boston

70 2510
AMMFIELD



WOMAN CHURNING (ETCHING)
Museum of Fine Arts, Boston



THE SOWER (LITHOGRAPH)
Museum of Fine Arts, Boston

THE UNIVERSITY PRINTS
BOSTON

MILLET. 1814 1875
FRANCE



SOUVENIR D'ITALIE (ETCHING
Museum of Fine Arts, Boston

THE UNIVERSITY PRINTS
BOSTON

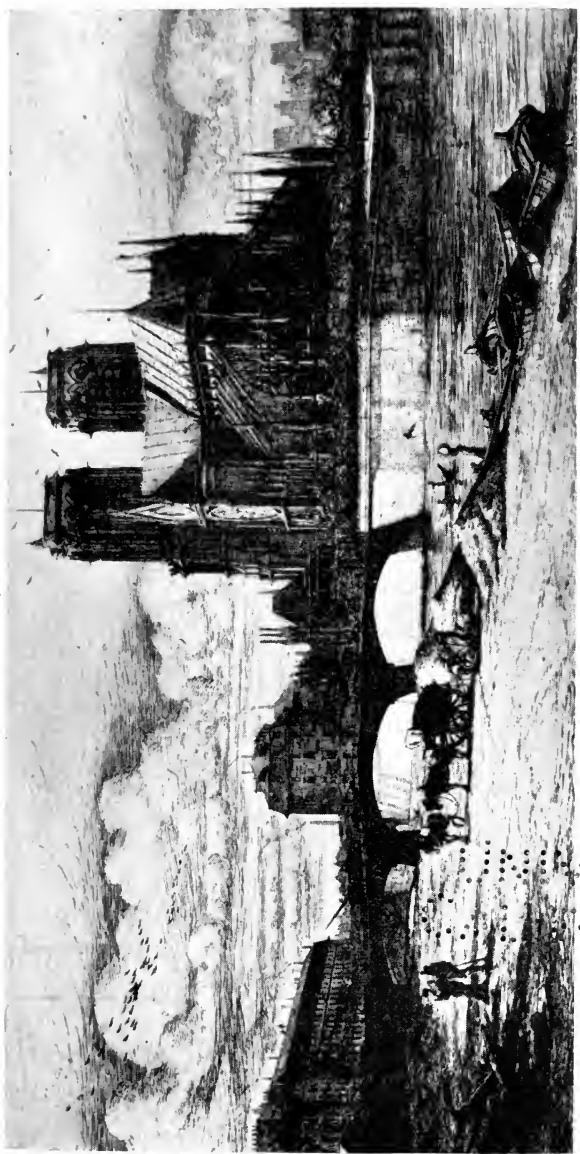
COROT. 1796 1875
FRANCE



THE TOWER OF ST. NICOLAS—LÈZ ARRAS (LITHOGRAPH
Museum of Fine Arts, Boston)

THE UNIVERSITY PRINTS
BOSTON

COROT. 1796—1875
FRANCE



THE APSE OF NOTRE DAME (ETCHING)
Fogg Art Museum, Cambridge

THE UNIVERSITY PRINTS
BOSTON

MERYON. 1821—1868
FRANCE

UNIVERSITY OF
ALABAMA



GALLERY OF NOTRE DAME (ETCHING)
Fogg Art Museum, Cambridge



LE STRYGE (ETCHING)
Fogg Art Museum, Cambridge

THE UNIVERSITY PRINTS
BOSTON

MERYON. 1821-1868
FRANCE

NO. 1110
ANNONIA



LE GAMIN (ETCHING)
Fogg Art Museum, Cambridge

THE UNIVERSITY PRINTS
BOSTON

MANET. 1832 1883
FRANCE

DRIVE
CALLING



THE CROW (LITHOGRAPH)
Fogg Art Museum, Cambridge

**THE UNIVERSITY PRINTS
BOSTON**

**MANET. 1832—1883
FRANCE**



LES BOULEAUX (ETCHING)

Museum of Fine Arts, Boston

**THE UNIVERSITY PRINTS
BOSTON**

**LEGROS, 1837—1911
FRANCE (ENGLAND)**

THE UNIVERSITY OF
CALIFORNIA



BLACK LION WHARF (ETCHING)
Museum of Fine Arts, Boston

THE UNIVERSITY PRINTS
BOSTON

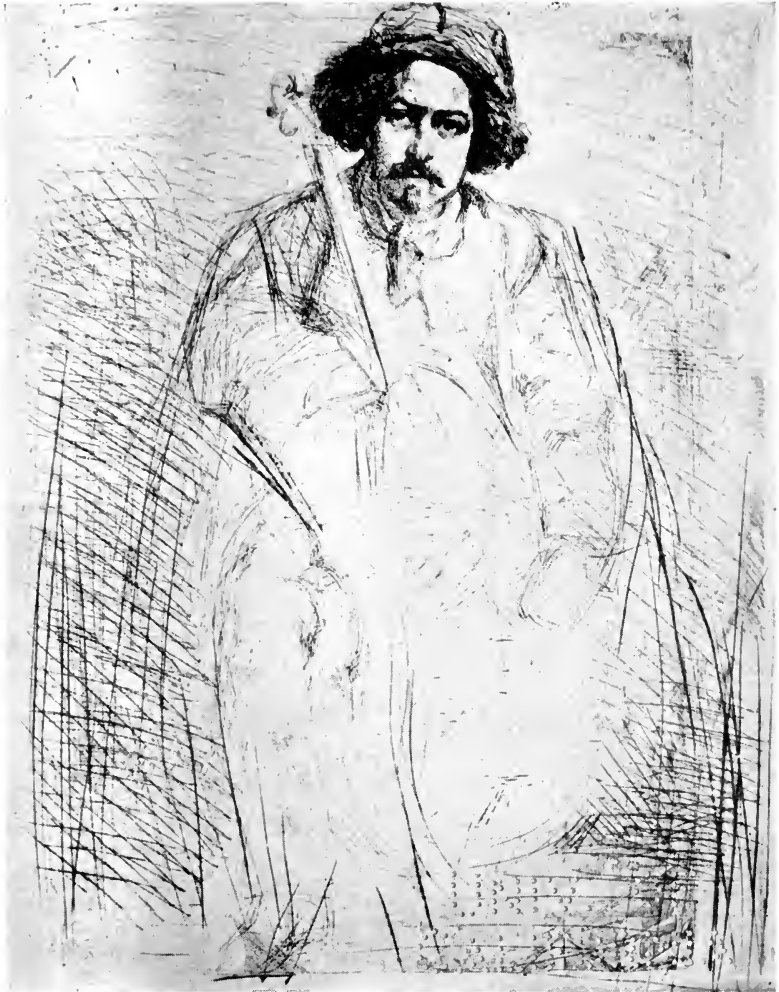
WHISTLER. 1834 - 1903
UNITED STATES

TO THE
LEGISLATURE
OF CALIFORNIA



VENICE (ETCHING)
Museum of Fine Arts, Boston

UNIVERSITY
OF
ALABAMA



BEQUET (DRY-POINT)
Museum of Fine Arts, Boston

THE UNIVERSITY PRINTS
BOSTON

WHISTLER. 1834 1903
UNITED STATES

TO WHOM
IT MAY COME



LITTLE NUDE MODEL READING (LITHOGRAPH)
Museum of Fine Arts, Boston

THE UNIVERSITY PRINTS
BOSTON

WHISTLER. 1834—1903
UNITED STATES

70 VINI
AMERICAN

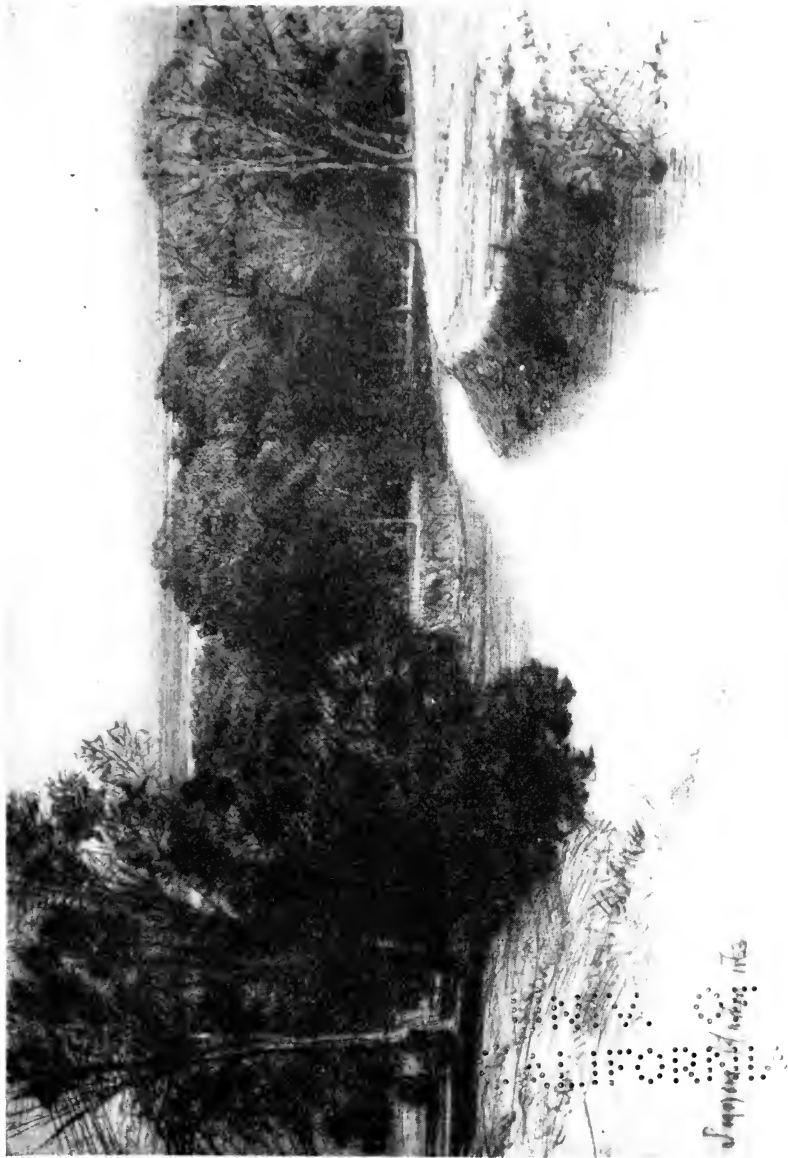


THE THAMES AT BATTERSEA (LITHOGRAPH)
Museum of Fine Arts, Boston

THE UNIVERSITY PRINTS
BOSTON

WHISTLER. 1834—1903
UNITED STATES

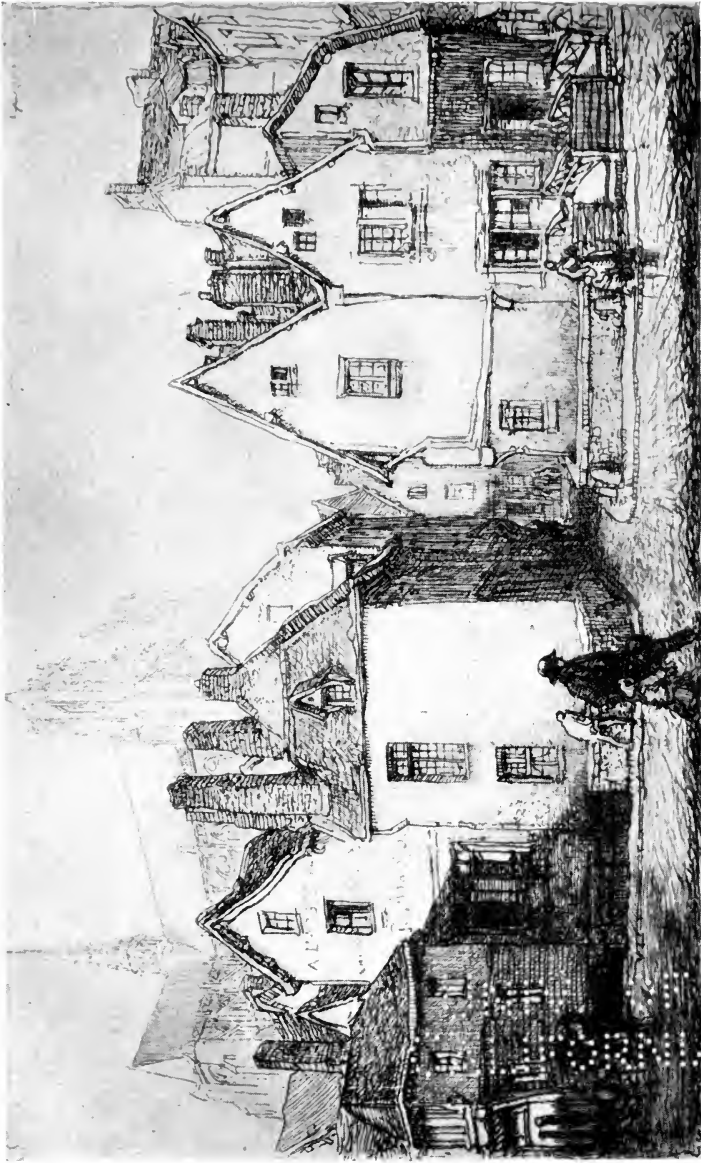
TO VINDI
ABSTRACTO



SUNSET IN IRELAND (DRY-POINT)
Museum of Fine Arts, Boston

HADEN. 1818-1910
 ENGLAND

THE UNIVERSITY PRINTS
 BOSTON



OLD HOUSES AT AMIENS (ETCHING)

Museum of Fine Arts, Boston

THE UNIVERSITY PRINTS
BOSTON

LEPÈRE. 1849-1918
FRANCE

NO. 1111
AMPHOTERIN B



THE PRODIGAL SON (ETCHING)
Metropolitan Museum of Art, New York

THE UNIVERSITY PRINTS
BOSTON

FORAIN. 1853—
FRANCE

TO THE
LIBRARY OF
CONGRESS



MME. SIMON (ETCHING)
Museum of Fine Arts, Boston

173
THE UNIVERSITY OF CALIFORNIA

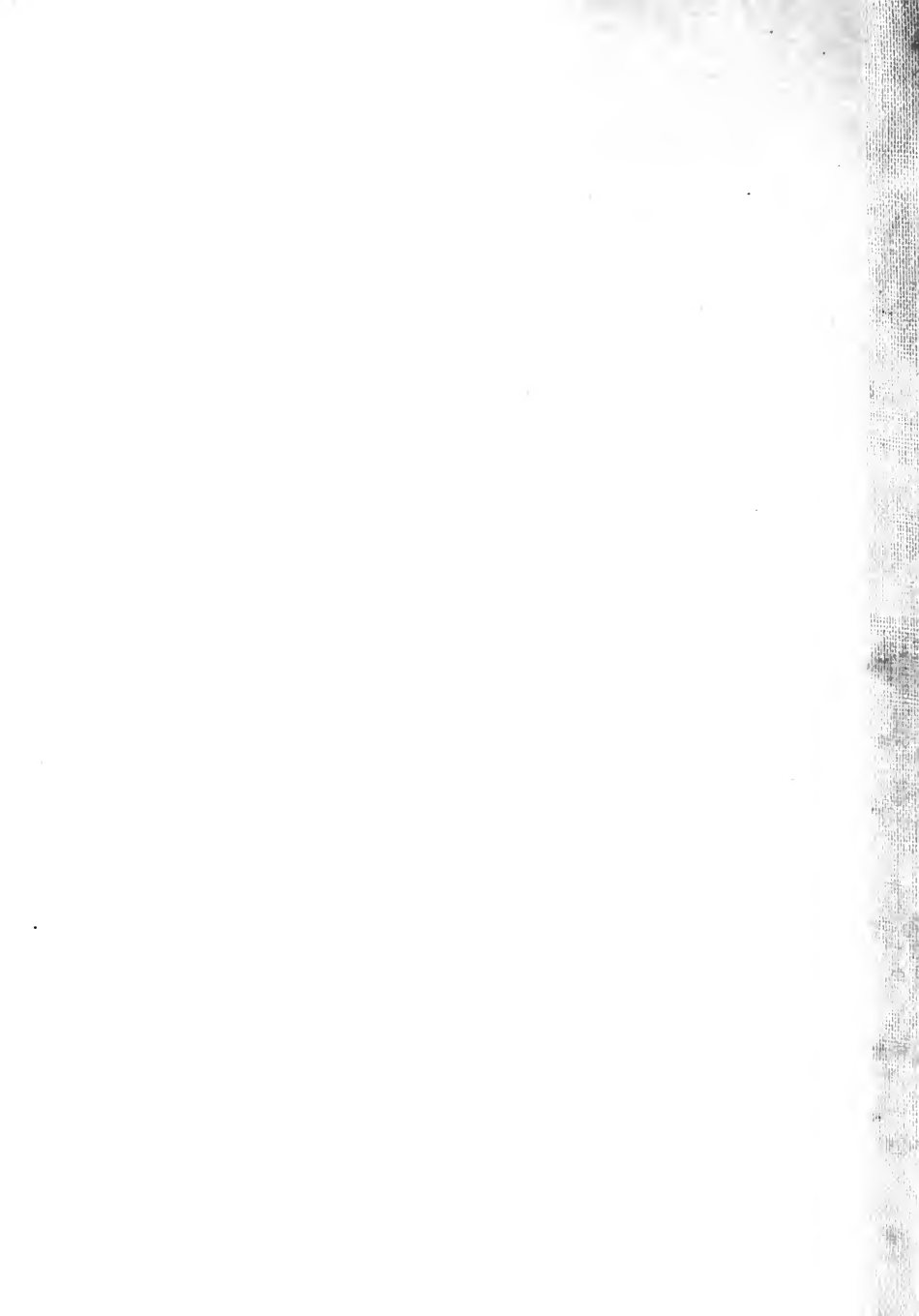
SERIES L

WOODCUTS AND ENGRAVINGS

W. Woodcut	Eng. Engraving	Et. Etching
		Lith. Lithograph

Fifteenth Century
Unknown Artist 1423

- L. 1 St. Christopher. (W) John Rylands Library,
Manchester
Unknown. 15th Century
- L. 2 Virgin, Child and Scints. Dotted print
(Maniere criblee)...Sachs Collection,
Cambridge
Master of the Playing Cards. fl. 1445
Germany
- L. 3 Queen of Birds ... Bibliotheque Nationale,
Paris
Master E.S. fl. 1450-1470. Germany
- L. 4 St. John on the Island of Patmos with Sym-
bols of the Four Evangelists. (Eng.)
Museum of Fine Arts, Boston
Martin Schongauer. 1440 (?) - 1491. Germany
- L. 5 Flight into Egypt. (Eng.) Fogg Art Museum,
Cambridge
- L. 6 Madonna in the Courtyard. (Eng.) Museum of
Fine Arts, Boston.
Master of the Amsterdam Cabinet. fl. 1480.
Germany
- L. 7 St. George and the Dragon. Dry-point.
British Museum, London
Unknown Florentine. 15th Century. Italy
- L. 8 Portrait of a Lady. (Eng.) . . Kupferstich-
kabinett, Berlin



Unknown Florentine. 15th Century. Italy

- L 9 Otto Print. (Eng. Fine Manner)
Fogg Art Museum, Cambridge

Unknown Florentine. 15th Century. Italy

- L 10 Assumption of the Virgin. After Botticelli.
(Eng. Broad Manner)...Fogg Art Museum, Cambridge

Antonio Pollaiuolo. 1432(?)–1498. Italy

- L 11 Battle of the Nudes. (Eng.)..Sachs Collection, Cambridge

Cristofano Robetta. 1462–1522(?) Italy

- L 12 Abundance. (Eng.).....Museum of Fine Arts, Boston

Andrea Mantegna. 1431–1506. Italy

- L 13 Virgin and Child. (Eng.)...Museum of Fine Arts, Boston

- L 14 Battle of Sea Gods. Left portion of a frieze.
(Eng.).....Museum of Fine Arts, Boston

School of Andrea Mantegna. 15th Century. Italy

- L 15 Four Women Dancing. (Eng.)
Museum of Fine Arts, Boston

Giovanni Antonio da Brescia. fl. 1500–1516. Italy

- L 16 Holy Family with St. John. (Eng.)
Museum of Fine Arts, Boston

Nicoletto Rosex (da Modena). fl. 1490–1511. Italy

- L 17 Three Stags. (Eng.).....Museum of Fine Arts, Boston

Jacopo de' Barbari. c. 1450–1516. Italy

- L 18 Apollo and Diana. (Eng.)..Museum of Fine Arts, Boston

Girolamo Mocetto. 1458(?)–1530(?). Italy

- L 19 Judith. After Mantagna. (Eng.)
Museum of Fine Arts, Boston

Giulio Campagnola. 1482(?)–1514(?). Italy

- L 20 St. John the Baptist. (Eng.) . . Sachs Collection, Cambridge

SIXTEENTH CENTURY**Domenico Campagnola. fl. 1511–1563. Italy**

- L 21 Beheading of St. Catherine. (Eng.)
Museum of Fine Arts, Boston

Benedetto Montagna. c. 1470–1540. Italy

- L 22 Virgin and Child. (Eng.) . . Fogg Art Museum, Cambridge

Ugo da Carpi. 1455–1523. Italy

- L 23 David and Goliath. After Raphael.
Chiaroscuro Museum of Fine Arts, Boston

Albrecht Dürer. 1471–1528. Germany

- L 24 The Riders on the Four Horses (Apocalypse)
(W.) Museum of Fine Arts, Boston
- L 25 Christ Appearing to Mary Magdalen (Small
Passion). (W.) Museum of Fine Arts, Boston
- L 26 Flight into Egypt. (Life of the Virgin)
(W.) Fogg Art Museum, Cambridge
- L 27 The Trinity. (W.) Museum of Fine Arts, Boston
- L 28 St. Jerome in His Cell. (Eng.) Museum of Fine Arts, Boston
- L 29 The Cannon. (Et.) Museum of Fine Arts, Boston
- L 30 Holy Family. Dry-point . . . Museum of Fine Arts, Boston

Hans Burgkmair. 1473–1531. Germany

- L 31 Equestrian Portrait of the Emperor Maximilian I. Chiaroscuro . . . Museum of Fine Arts, Boston

Lucas Cranach, the elder. 1472–1553. Germany

- L 32 St. George and the Dragon. (W.)
Museum of Fine Arts, Boston
- L 33 St. Christopher. Chiaroscuro. Museum of Fine Arts, Boston

Hans Baldung Grün. 1476-1545. Germany

- L 34 Crucifixion. Chiaroscuro Sachs Collection, Cambridge

Hans Holbein, the younger. 1497-1543. Germany

- L 35 The Plowman. The Young Child. (Dance
of Death). (W.) Fogg Art Museum, Cambridge

Marcantonio Raimondi. c. 1480-1530. Italy

- L 36 Lucretia. After Raphael. (Eng.)
Museum of Fine Arts, Boston
L 37 Massacre of the Innocents. After Raphael.
(Eng.) Museum of Fine Arts, Boston

Lucas van Leyden. 1494-1533. Netherlands

- L 38 David Playing Before Saul. (Eng.)
Museum of Fine Arts, Boston
L 39 Christ on the Mount of Olives. (Round
Passion.) (Eng.) Museum of Fine Arts, Boston
L 40 Milkmaid. (Eng.) Museum of Fine Arts, Boston

Jean Duvet. 1485-c. 1561. France

- L 41 Henri II and Diane de Poitiers. (Eng.)
Museum of Fine Arts, Boston

Albrecht Altdorfer. 1480(?)-1538. Germany

- L 42 St. Christopher. (Eng.) Museum of Fine Arts, Boston
L 43 Holy Family on the Flight into Egypt at a
Fountain. (W.) Museum of Fine Arts, Boston

Hans Sebald Beham. 1500-1550. Germany

- L 44 The Prodigal Son Guarding Swine.
(Eng.) Museum of Fine Arts, Boston

Barthel Beham. 1502-1540. Germany

- L 45 Portrait of Charles V. (Eng.) . Museum of Fine Arts, Boston

Augustin Hirschvogel. 1503-1553(?). Germany

- L 46 Landscape. (Et.) Museum of Fine Arts, Boston

Hans Sebald Lautensach. 1524(?)–1563(?). Germany

- L 47 River Landscape with Church seen between
Trees. (Et.) Museum of Fine Arts, Boston

SEVENTEENTH CENTURY**Hendrik Goltzius. 1558-1611. Netherlands**

- L 48 Standard Bearer. (Eng.) . . . Museum of Fine Arts, Boston

Jacques Callot. 1592-1635. France

- L 49 Paris: Vue du Louvre. (Et.) . . Museum of Fine Arts, Boston

Claude Lorrain (Claude Gellée). 1600-1682. France

- L 50 The Cowherd. (Et.) Museum of Fine Arts, Boston

Sir Anthony Van Dyck. 1599-1641. Netherlands

- L 51 Sir Anthony van Dyck. (Et.) . Museum of Fine Arts, Boston
L 52 Franz Snyder. (Et.) Museum of Fine Arts, Boston

Rembrandt van Rijn. 1606-1669. Netherlands

- L 53 Clement de Jonghe. (Et.) . . . Museum of Fine Arts, Boston
L 54 Jan Lutma. (Et.) Museum of Fine Arts, Boston
L 55 Tobit Blind. (Et.) Museum of Fine Arts, Boston
L 56 Raising of Lazarus. (Et.) . . Museum of Fine Arts, Boston
L 57 Amsterdam. (Et.) Museum of Fine Arts, Boston
L 58 Three Trees. (Et.) Museum of Fine Arts, Boston

Adriaen Van Ostade. 1610-1685. Netherlands

- L 59 Spectacle Seller. (Et.) Museum of Fine Arts, Boston

Jacob van Ruysdael. 1628-1682. Netherlands

- L 60 Wheat Field. (Et.) Fogg Art Museum, Cambridge

Reynier Zeeman (Reynier Nooms). 1623-1663(?). Netherlands

- L 61 Coast Scene. (Et.) Museum of Fine Arts, Boston

Paul Potter. 1625-1654. Netherlands

- L 62 Cowherd. (Et.) Museum of Fine Arts, Boston

Jan Both. 1610(?) - 1652. Netherlands

- L 63 The Large Tree. (Et.) Museum of Fine Arts, Boston

Claude Mellan. 1598-1688. France

- L 64 Fabri de Peyresc. (Eng.) Museum of Fine Arts, Boston

Jean Morin. 1590(?) - 1650. France

- L 65 Cardinal Bentivoglio. After van Dyck. (Et.)
Museum of Fine Arts, Boston

Robert Nanteuil. 1623(?) - 1678. France

- L 66 Jean Loret. (Eng.) Museum of Fine Arts, Boston

Gerard Edelinck. 1640(?) - 1707. France

- L 67 Phillippe de Champaigne. (Eng.) After
Champaigne. Museum of Fine Arts, Boston

EIGHTEENTH CENTURY

Pierre Imbert Drevet. 1697-1739. France

- L 68 Cardinal Bossuet. (Eng.) . . . Museum of Fine Arts, Boston

William Hogarth. 1697-1764. England

- L 69 Laughing Audience. (Et.) . . . Museum of Fine Arts, Boston

Giovanni Battista Tiepolo. 1696(?) - 1770. Italy

- L 70 Nymph with a Tambourine. (Et.)
Museum of Fine Arts, Boston

Canaletto (Antonio Canale). 1697-1768. Italy

- L 71 Porch with a Lantern. (Et.) Museum of Fine Arts, Boston

Giovanni Battista Piranesi. 1720-1778. Italy

- L 72 Prison. (Et.) Museum of Fine Arts, Boston

Antoine Watteau. 1684-1721. France

- L 73 Lady Seated; Man Standing. (Et.)
Fogg Art Museum, Cambridge

Jean Honoré Fragonard. 1732-1806. France

- L 74 Bacchanal. (Et.) Museum of Fine Arts, Boston

Francesco Bartolozzi. 1727-1815. Italy (England)

- L 75 Mr. Philip Yorke. After Reynolds. Stipple.
Museum of Fine Arts, Boston

Francisco Goya y Lucientes. 1746-1828. Spain

- L 76 Hunting for Teeth (Caprichos). (Et. and
aquatint) Museum of Fine Arts, Boston
- L 77 Dead Branch (Proverbios). (Et. and
aquatint) Museum of Fine Arts, Boston

Prince Rupert. 1619-1682. Germany

- L 78 Standard Bearer. Mezzotint
Fogg Art Museum, Cambridge

James McArdell. c.1729-1765. England

- L 79 Lords John and Bernard Stuart. Mezzo-
tint. After Van Dyck Museum of Fine Arts, Boston

Richard Earlom. 1743-1822. England

- L 80 Fruit Piece. After Huysum. Mezzotint
Museum of Fine Arts, Boston

Valentine Green. 1739-1813. England

- L 81 Sir Joshua Reynolds. After Reynolds.
Mezzotint Fogg Art Museum, Cambridge

John Raphael Smith. 1752-1812 England

- L 82 Lady Caroline Montagu. Mezzotint
After Reynolds Museum of Fine Arts, Boston

NINETEENTH CENTURY

Joseph Mallord William Turner. 1775-1851. England

- L 83 Ben Arthur (Liber Studiorum). (Et. and
mezzotint) Museum of Fine Arts, Boston

Thomas Bewick. 1753-1828. England

- L 84 Peacock (British Birds). Wood-Engraving
Fogg Art Museum, Cambridge

William Blake. 1757-1827. England

- L 85 "When the Morning Stars Sang Together"
(Book of Job). (Eng.) . . . Museum of Fine Arts, Boston
L 86 The Piper (Frontispiece of Songs of Inno-
cence). Relief etching . . Emerson Collection, Cambridge

Théodore Géricault. 1791-1824. France

- L 87 Three Horses in a Stable. (Lith.)
Museum of Fine Arts, Boston

Eugène Delacroix. 1798-1863. France

- L 88 Tigre Royale. (Lith.) Museum of Fine Arts, Boston

Auguste Raffet. 1804-1860. France

- L 89 Midnight Review. (Lith.) . . Museum of Fine Arts, Boston

Gavarni (Guillaume Sulpice Chevallier). 1804-1866. France

- L 90 E. and J. de Goncourt. (Lith.)
Museum of Fine Arts, Boston

Honoré Daumier. 1808-1879. France

- L 91 La Rue Transnonain. (Lith.) Museum of Fine Arts, Boston
L 92 From "Actualités." (Lith.).. Museum of Fine Arts, Boston

Eugène Isabey. 1803-1886. France

- L 93 Intérieur d'un Port. (Lith.) Museum of Fine Arts, Boston

Samuel Prout. 1783-1852. England

- L 94 Sachsenhausen. (Lith.).... Museum of Fine Arts, Boston

James Duffield Harding. 1798-1863. England

- L 95 Larch (Park and Forest). (Lith.)
Fogg Art Museum, Cambridge

Richard Parkes Bonington. 1801-1828. England

- L 96 Tour du Gros Horloge. (Lith.)
Museum of Fine Arts, Boston

Henri Fantin-Latour. 1836-1904. France

- L 97 Sara la Baigieuse. (Lith.).. Museum of Fine Arts, Boston

Adolf Von Menzel. 1815-1905. Germany

- L 98 Convoy of Prisoners. (Lith.).. Museum of Fine Arts, Boston

Charles Émile Jacque. 1813-1894. France

- L 99 Troupeau de Porcs. (Et.) Museum of Fine Arts, Boston

Charles François Daubigny. 1817-1878. France

- L 100 Marsh with Storks. (Et.) Museum of Fine Arts, Boston

Jean François Millet. 1814-1875. France

- L 101 Wool-Carder. (Et.) Museum of Fine Arts, Boston
 L 102 Woman Churning. (Et.) Museum of Fine Arts, Boston
 L 103 Sower. (Lith.) Museum of Fine Arts, Boston

Jean Baptiste Camille Corot. 1796-1875. France

- L 104 Souvenir d'Italie. (Et.) Museum of Fine Arts, Boston
 L 105 Le Clocher de St. Nicholas-lèz-Arras.
 (Lith.) Museum of Fine Arts, Boston

Charles Meryon. 1821-1868. France

- L 106 Apsé of Notre Dame. (Et.) . Fogg Art Museum, Cambridge
 L 107 Gallery of Notre Dame. (Et.)
 Fogg Art Museum, Cambridge
 L 108 Le Stryge. (Et.) Fogg Art Museum, Cambridge

Édouard Manet. 1832-1883. France

- L 109 Le Gamin. (Et.) Fogg Art Museum, Cambridge
 L 110 The Crow. (Lith.) Fogg Art Museum, Cambridge

Alphonse Legros. 1837-1911. France (England)

- L 111 Les Bouleaux. (Et.) Museum of Fine Arts, Boston

James Abbott McNeill Whistler. 1834-1903. United States

- L 112 Black Lion Wharf. (Et.) Museum of Fine Arts, Boston
 L 113 Venice. (Et.) Museum of Fine Arts, Boston
 L 114 Becquet. Dry-point Museum of Fine Arts, Boston
 L 115 Little Nude Model Reading. (Lith.)
 Museum of Fine Arts, Boston
 L 116 Thames at Battersea. (Lith.)
 Museum of Fine Arts, Boston

Sir Francis Seymour Haden. 1818-1910. England

- L 117 Sunset in Ireland. Dry-point
 Museum of Fine Arts, Boston

Auguste Lepère. 1849-1918. France

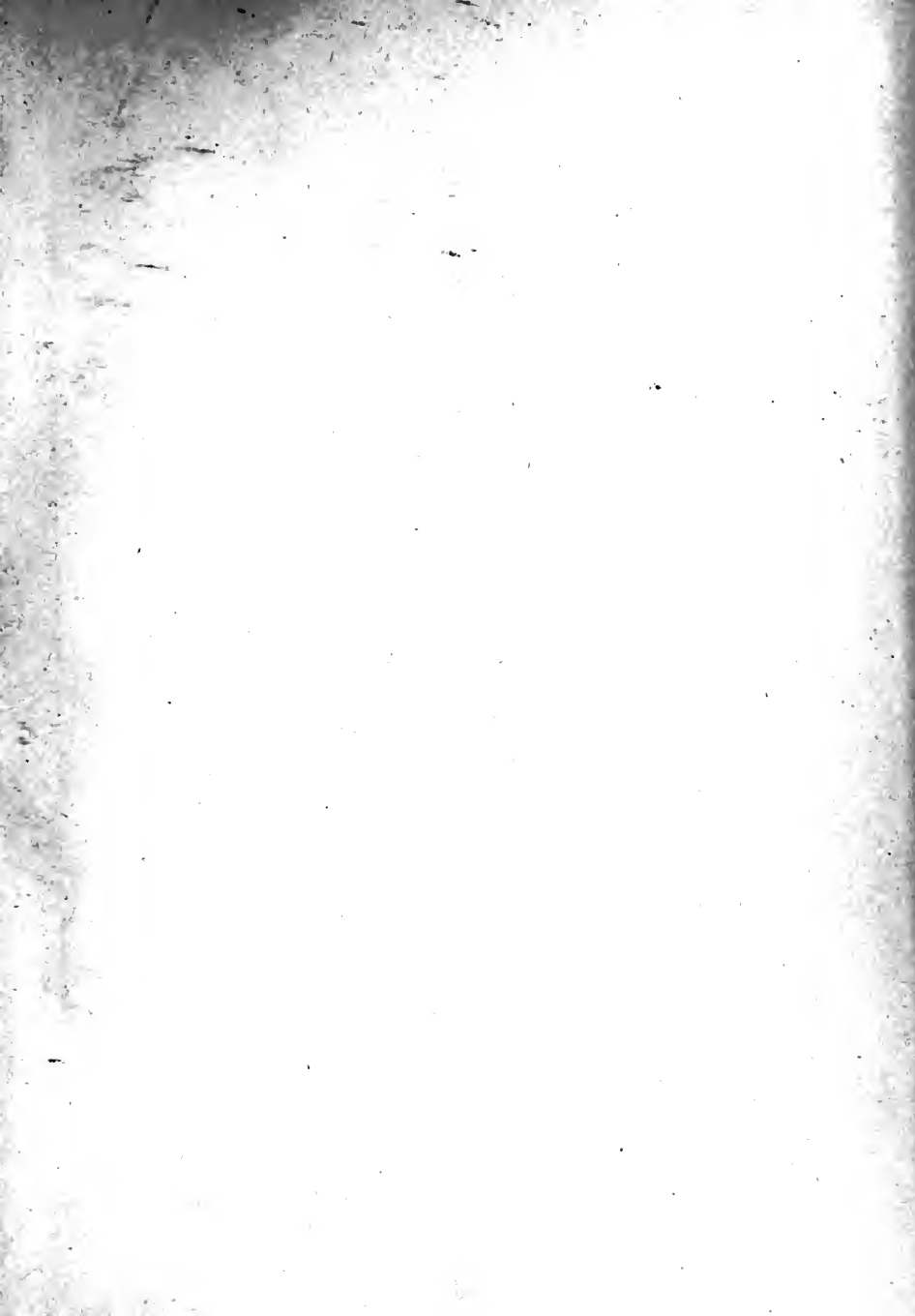
L 118 Old Houses at Amiens. (Et.). Museum of Fine Arts, Boston

Jean Louis Forain. 1853- France

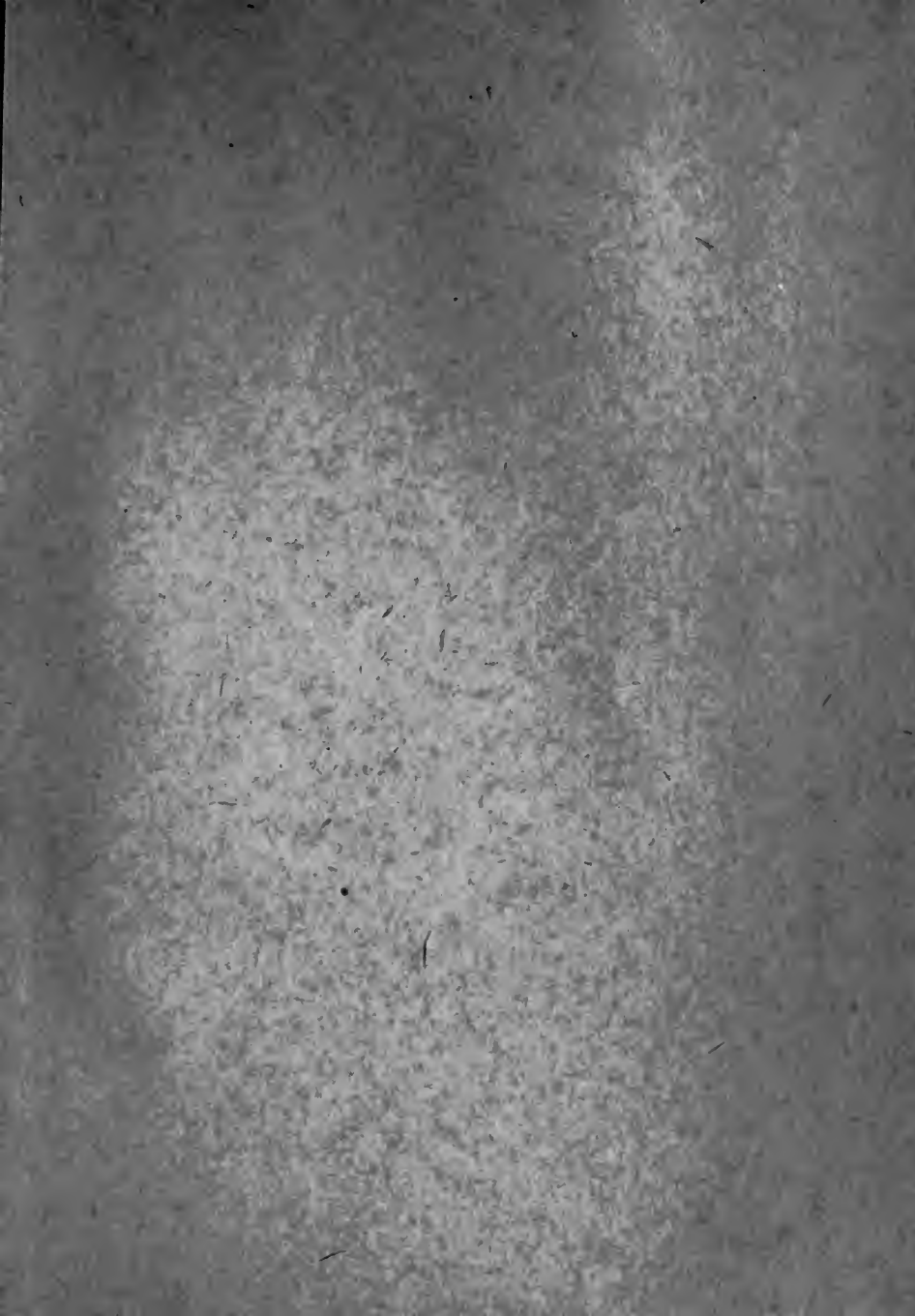
L 119 Prodigal Son. (Et.) Metropolitan Museum, New York

Anders Zorn. 1860-1920. Sweden .

L 120 Mme. Simon. (Et.) Museum of Fine Arts, Boston







14 DAY USE

RETURN TO DESK FROM WHICH BORROWED

ARCHITECTURE LIBRARY

This book is due on the last date stamped below, or
on the date to which renewed.

Renewed books are subject to immediate recall.

JUL 24 1962

JUL 1 1967

AUG 15 1980

REC'D ENVIRONMENTAL AUG '80

LD 21-50m-12,'61
(C4796s10)476

General Library
University of California
Berkeley

U.C. BERKELEY LIBRARIES



C034918610



