


No. 1  
DAYTON, OHIO  
TO  
UNIONTOWN, PA.  
1926

AND LATER REVISIONS

UNITED STATES  
AIR NAVIGATION MAPS  
(EXPERIMENTAL)

OCT 27 1928

Map  
G  
3701  
.P6  
S500  
U5  
No.1

		
STATE LIBRARY, - HARTFORD -		
CLASS.	BOOK.	DATE.
	91273	27 Oct 28
	no. 1	
ACCESSION NO 127717		
SOURCE.		







This map displays a network of roads and rail lines in the Dayton, Ohio region. Major highways are shown as thick red lines, including I-75 running north-south through Dayton, I-70 running east-west through Springfield, and I-275 running north-south through Hamilton. Numerous smaller roads are shown as thin black lines, many with route numbers. Major cities and towns are marked with red dots and labeled in bold black text, such as Dayton, Springfield, Urbana, Hamilton, and Middletown. The map also shows geographical features like Human Lake and various rivers. The map is oriented with North at the top and includes a grid of latitude and longitude lines.



This map displays a network of roads and rail lines in the Dayton, Ohio region. Major highways are shown as thick red lines, including I-75 running north-south through Dayton, I-70 running east-west through Springfield, and I-275 running north-south through Hamilton. Numerous smaller roads are shown as thin black lines, many with route numbers. Major cities and towns are marked with red dots and labeled in bold black text, such as Dayton, Springfield, Urbana, Hamilton, and Middletown. The map also shows geographical features like Human Lake and various rivers. The map is oriented with North at the top and includes a grid of latitude and longitude lines.





DAYTON OHIO, TO UNIONTOWN, PA.

30 Miles  
20  
10  
0  
500000

21 1917  
1928  
MAGNETIC DECLINATION SHOWN IN RED FIGURES  
ON EDGE OF MAP

**EXPLANATION**

- Railroad, one track
- Main highway
- Minor road
- Railroad, three tracks
- Railroad, four tracks
- Railroad, electric
- City of large town
- Town or village

**CONVENTIONS**

- Army Air Corps
- Naval Air Station
- Municipal or Commercial Landing Field
- Municipal or Commercial Landing Field
- Emergency or Unimproved Landing Field
- Seaplane Landing

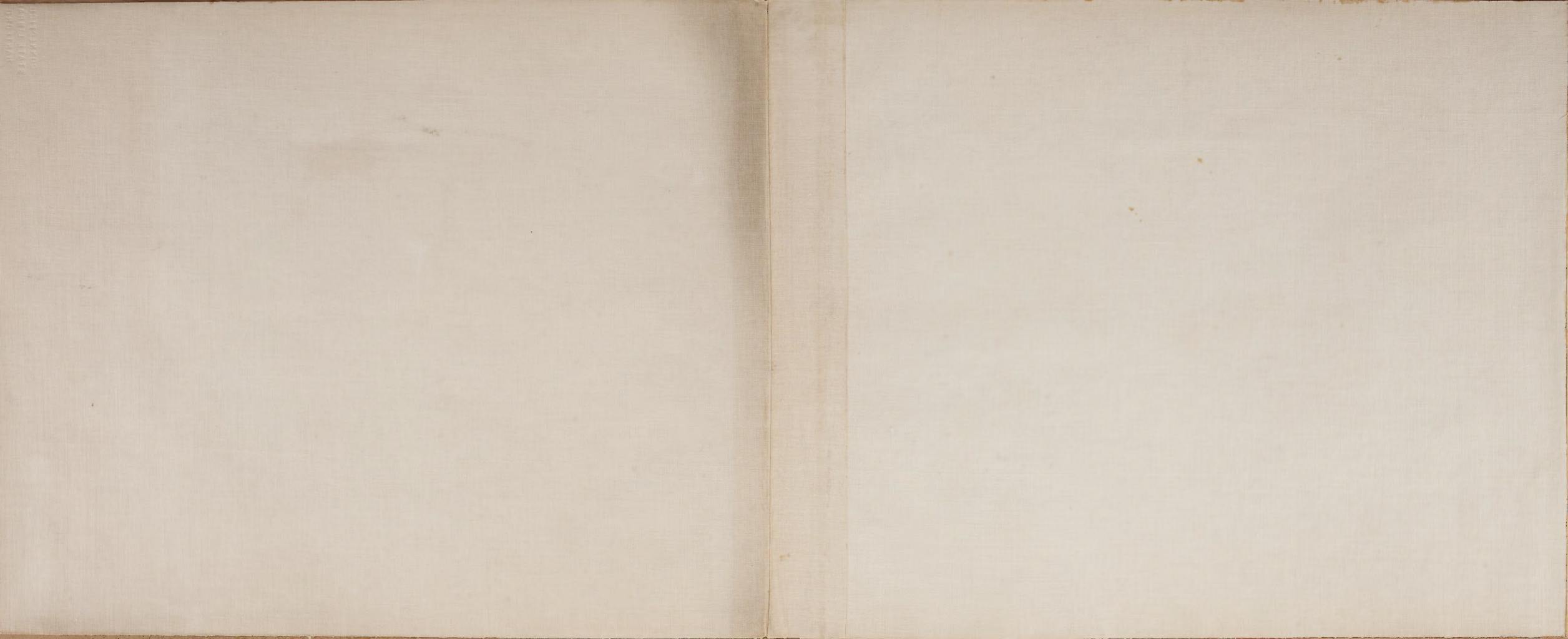
**GRADIENT OF ELEVATIONS**  
Scale in feet per foot

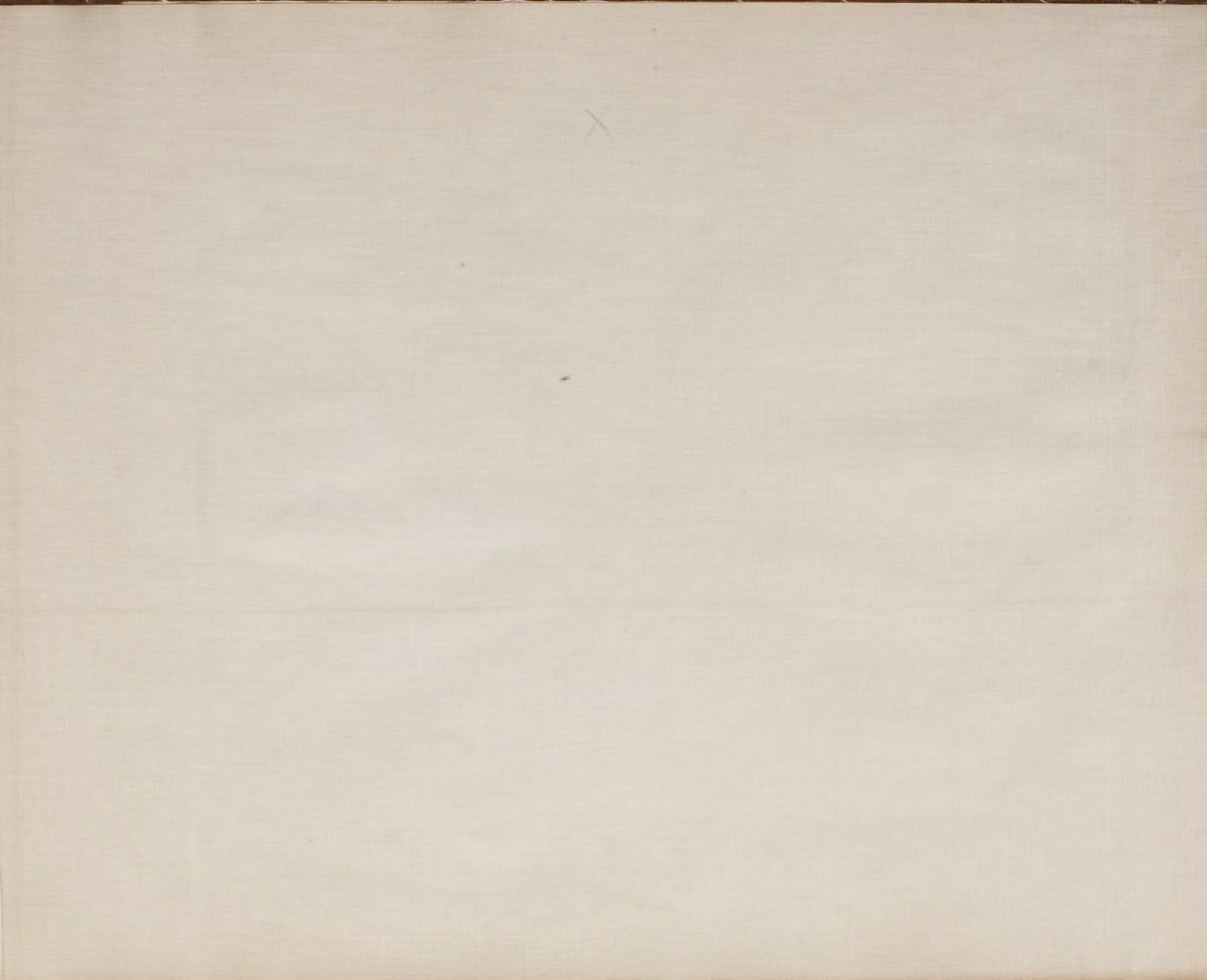
- 0 to 500
- 1000
- 1500
- 2000
- 2500
- 3000

AIR NAVIGATION MAP NO. 1

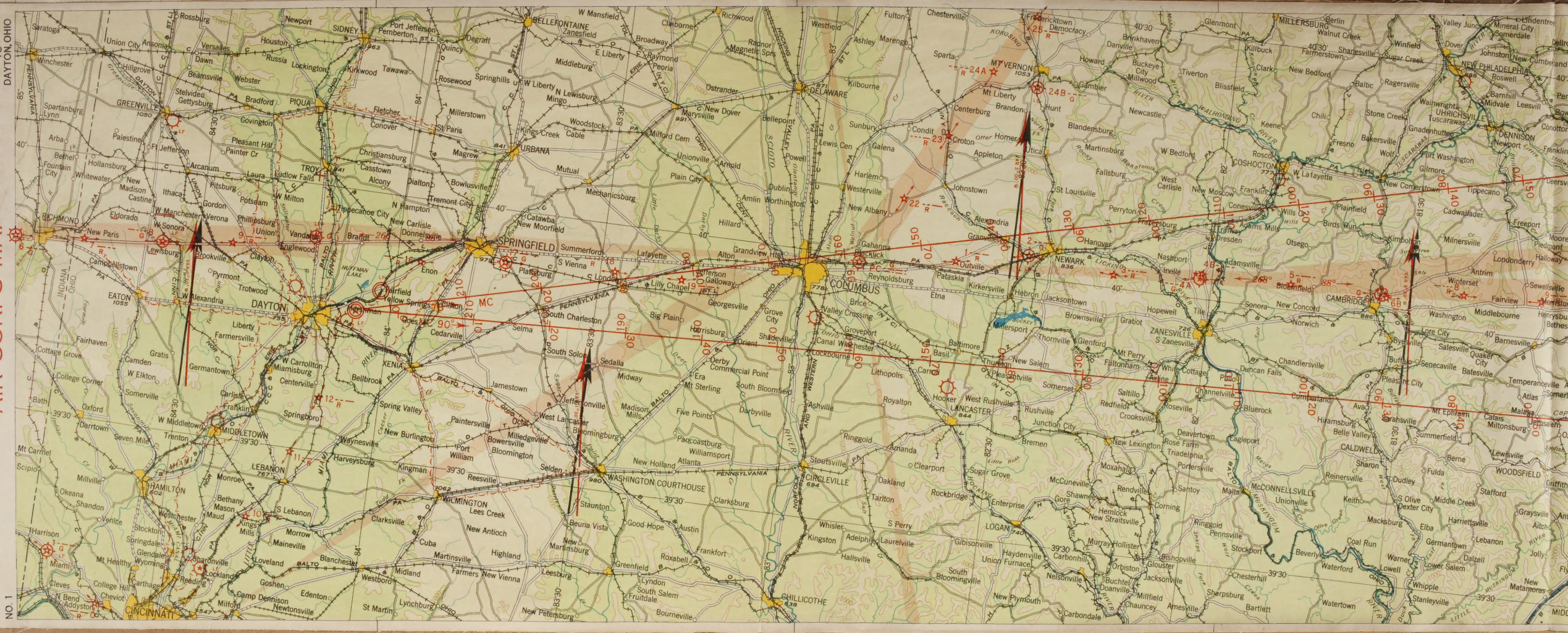
COMPILED AND REPRODUCED BY THE ENGINEER REPRODUCTION SERVICE, U.S. ARMY AIR CORPS











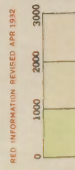




**AIR NAVIGATION MAP NO. 1**

**DAYTON, OHIO TO UNIONTOWN, PA.**

INFORMATION DIVISION,  
OFFICE OF CHIEF OF AIR CORPS  
**R-1930**  
ENGINEER REPRODUCTION PLANT, U. S. ARMY, WASHINGTON, D. C.



**RED INFORMATION BEHIND AIR 1932**

- Army Navy or Marine Corps Field
- Commercial or Municipal Field
- Department of Commerce Intermediate Field
- Marked Auxiliary Field
- Fishing Beacon
- Revolving Beacon
- Joint Coastwise Government Municipal or Commercial

- EXPLANATION**
- Railroad, one track
  - Railroad, two or more tracks
  - Railroad, electric
  - Cameron Air marked city
  - Transmission Line
  - Lighting facilities
  - Magnetic variations shown by red arrows
  - The flight courses are magnetic

- Main highway
- Minor road
- City or large town
- Town or village
- Marked Dam



