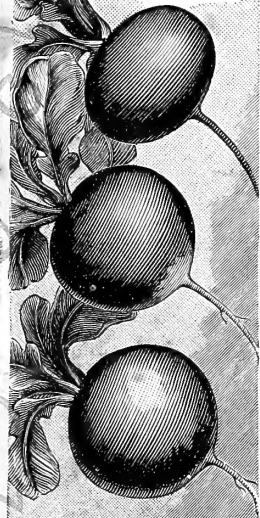


Historic, archived document

Do not assume content reflects current scientific knowledge, policies, or practices.

NOVELTIES AND SPECIALTIES for 1889

VAUGHAN'S NEW
EXTRA EARLY
TURNIP
RADISHES



VAUGHAN'S RADISH SEED.

THROUGH our large trade with market gardeners and florists of the West, we have met with a large demand for this vegetable, and in consequence have kept the largest variety of any seedsmen in the country, as our catalogues for the past five years will show. The result has been that we have obtained a sale of our Radish Seed to gardeners in nearly every large city in the Union. We deem the following (three being entirely new) worthy of special mention:

EXTRA EARLY FORCING RADISHES.

STRICTLY new, secured by us in Europe the past season; are worthy the attention of every Market Gardener. In earliness these varieties surpass our Very Early Olive shaped Deep Scarlet Short Top. They are admirably adapted for cultivation under glass, on account of the small size of their foliage. The upper one shown in the engraving is rather flat and of a carmine rose color, the two others are globular in shape; the white tip of the second is sharply delineated and gives a fine appearance to the bunches ready for marketing. The bright color and elegant shape of the third makes it very salable. Prices:

EXTRA EARLY CARMINE TURNIP, - Pkt., 10c.;
 EXTRA EARLY SCARLET GLOBE WHITE TIP, } oz., 20c.;
 EXTRA EARLY BRIGHT SCARLET, - } ¼ lb., 45c.;
 lb., \$1.50.

RADISH—Scarlet Turnip, White Tip, Select Stock.

A VERY fine strain of this well known kind, even in size, smooth and of a fine bright scarlet color.
 Per pkt., 5c.; oz., 15c.; ¼ lb., 35c.; lb., \$1.25.

RADISH—SURPRISE.

A NEW Spanish variety, medium in size, oval in shape and of a light brown color. Of very early, quick growth. It is remarkable for remaining longer in fine condition without becoming pithy than any other very early sort. It has also the same fine quality when sown in the middle of the summer.
 Per pkt., 5c.; oz., 15c.; ¼ lb., 40c.; lb., \$1.50.

RADISH—NON PLUS ULTRA.

THIS is a turnip sort of German origin; of fine round form, bright scarlet color, of tender flesh and delicate flavor; its remarkably quick growth and very short top render it specially valuable for forcing. Sent out by us first last year; it has given the greatest of satisfaction to our customers. We have secured the best stock of this new sort in the market and those who get it from us will not be disappointed.
 Per pkt., 5c.; oz., 15c.; ¼ lb., 35c.; lb., \$1.25.

RADISH—EARLIEST OLIVE, DEEP SCARLET SHORT TOP.

A NEW and very distinct type of the well-known olive shaped radish which is of perfect form, smooth skin, fine color, and with very short leaves. This, combined with its extremely quick growth, taking only three weeks to mature, renders it extraordinarily valuable for forcing, while it does equally well in the ground. The flesh is pure white, crisp and of very pleasant taste. A great favorite with gardeners at Chicago.
 Per pkt., 5c.; oz., 10c.; ¼ lb., 30c.; lb., \$1.00.

RADISH—SCARLET GLOBE.

NOT a new, but most desirable turnip sort for hot-bed forcing; very early and in flavor mild, crisp, juicy and tender. Top small and will stand the heat well without becoming pithy. Good for garden as well as forcing.
 Per pkt., 5c.; oz., 10c.; ¼ lb., 30c.; lb., \$1.00.

NEW RADISH—VAUGHAN'S MARKET.

A HALF-LONG white of quick growth, very smooth and regular in appearance, with very pure white skin and exceedingly delicate and brittle. It sells at sight. Forces quickly and is also desirable for open ground. Our stock is limited Per pkt., 10c.; oz., 20c.; ¼ lb., 50c.; lb., \$1.50.

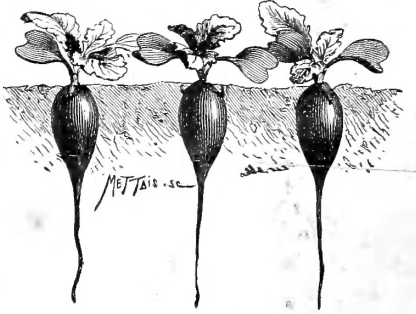
DeKalb, Ill., Oct. 23 '88 - I can testify in highest terms as to quality and yield of Earliest Olive, Deep Scarlet Radish and Vaughan's Pickling Onion.
 A. W. Sprague.
 LaPorte, Ind. - Non Plus Ultra Radish, shortest tops of any I ever tried, making it the very best for early forcing. If seed is not too high, will plant no other.
 John A. Erown.

MAMMOTH SANDWICH ISLAND SALSIFY.

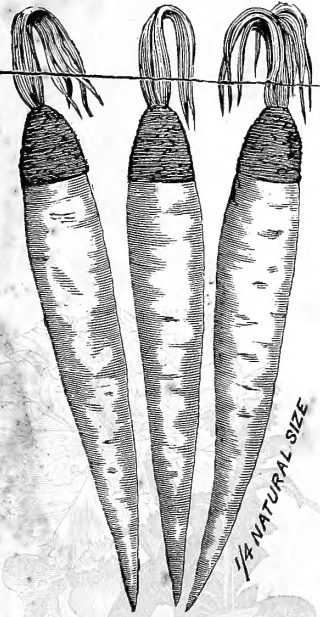
THIS variety is of enormous size, twice that of the ordinary French, pure white, very tender and delicious. Invaluable for the market gardener. Per pkt., 10c.; oz., 25c.; ¼ lb., 75c.; lb., \$2.60.



SCARLET GLOBE RADISH.



EARLIEST OLIVE DEEP SCARLET SHORT TOP.

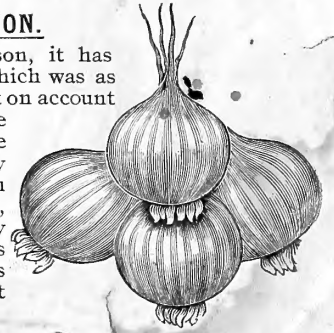


1/4 NATURAL SIZE

MAMMOTH SANDWICH ISLAND SALSIFY.

WHITE BARLETTA ONION.

INTRODUCED by us last season, it has proved all we claimed for it, which was as follows: this variety is most distinct on account of its great earliness; it is three weeks in advance of the White Queen. It is of a beautiful waxy white color and grows 1 ¼ inches in diameter and ¾ of an inch thick, with finely formed bulbs, slightly flattened at the top. Its earliness will highly recommend its use as a substitute for Onion sets and it is without a rival for pickles.
 Per pkt., 10c.; oz., 25c.; ¼ lb., 75c.



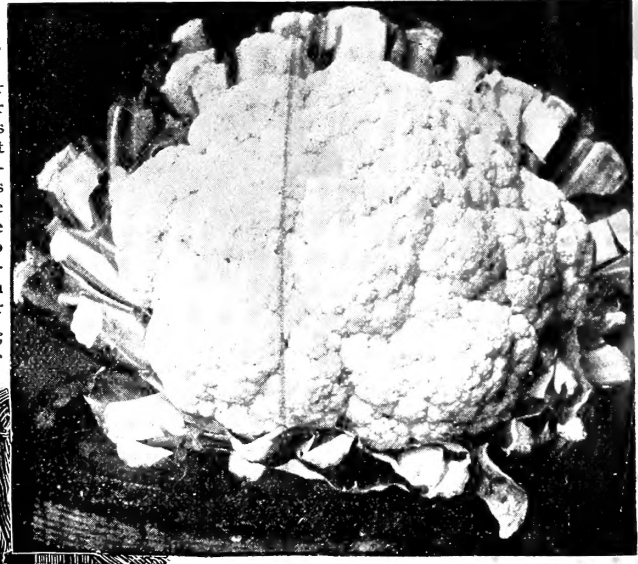
WHITE BARLETTA.

NOVELTIES AND SPECIALTIES FOR 1889

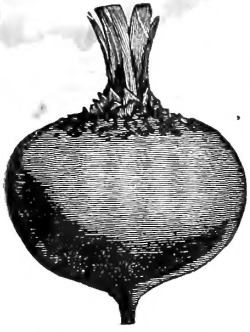
JUN 18 1925
U. S. Department of Agriculture

CAULIFLOWER EARLIEST DWARF ERFURT.

FOR at least 40 years and probably more, the city of Erfurt, Germany, has been renowned for its Cauliflower growing, and as a natural consequence its Cauliflower Seed; with the natural improvement which always follows large cultivation and selection, the Erfurters have brought their strains to the very highest perfection. We find in various seed catalogues scores of alleged NEW Cauliflowers under new and fancy titles, but the real truth is these are only a selection from the Erfurt strains, than which none better can be had. We have seen fit for several years to import direct from Erfurt the highest priced seed obtainable of the above strain, "Earliest Dwarf," and though others may have equally good, we believe none are better and find ours runs invariably true to type. Pkt., 50c., ¼ oz., \$2.00; oz., \$7.00; 2 oz., \$12.00; ¼ lb. \$20.00.



CAULIFLOWER, EARLIEST DWARF ERFURT.



EDMUND'S TURNIP BEET.

EDMUND'S TURNIP BEET.

A SELECTED strain which is very uniform and even in type; the flesh is deep blood red color and exceedingly sweet and tender in quality. It is round and smooth in shape and of good market size. It does not grow over large where room is permitted, as many kinds are apt to do. It grows a small top and but a single taproot, which fact commends itself to the gardener's attention who grows beets for bunching purposes. It is very early, and for marketmen's use, is justly popular and much called for wherever it has been sold. This is certainly one of the very best Beets in cultivation. Price, per pkt., 5c.; oz., 20c.; ¼ lb., 30c.; lb., \$1.00.

PEACH TOMATO.

THIS is the most delicious and handsomest Tomato ever introduced, having an appetizing fruity flavor not met with in any other. The fruit is of uniform size, and resembles a peach in shape, size and color, which is a deep rose and orange amber beautifully blended, and covered with a delicate bloom or furze like a peach. It is without a rival for eating from the hand, the flesh being of a rich and most delicious flavor. The skin is very thin and can be peeled off like that of a peach. The entire fruit is tender and free from core, even around the stem and taken in all this is a vegetable which should have a place in every garden. Per pkt., 10c.; 3 for 25c.; ¼ oz., 35c.



NEW PEACH TOMATO.

NEW DWARF CHAMPION TOMATO.

IT is entirely distinct in habit of growth and foliage from any sort ever produced. The vines are dwarf and compact in habit, grow stiff and upright, with thick and short-jointed stems. The compactness of habit is retained in all stages throughout the season; foliage dark green in color. Heavy manuring tends to increase the abundance and size of fruit instead of ruining the vine. It is remarkably early, ripening fruit as early as July 1st. It will yield double the quantity of extra early fruit per acre than can be obtained from any other tomato. As a cropper, it is probably unsurpassed, and will, owing to the smaller amount of space required between the plants, yield more to the acre than any other variety. In form and color the fruit closely resembles the Acme; it is always smooth, symmetrical and attractive in appearance; the skin is tough, and the flesh solid; ripens well close round to the stem, and is not so much subject to crack as some other sorts. Pkt., 10c.; oz., 50c.; ¼ lb., \$1.50.

SQUASH, White Bush Scallop. Private Stock.

WE have secured at a high price, some seed of an extra large strain of the above well-known kind,—that has been very carefully selected by a reliable Market Gardener for a number of years. A very select and profitable strain for market. Stock limited. Per pkt., 15c.; 5 for 50c.

PIKE'S PEAK OR SIBLEY SQUASH.

THE form is new, having the stem at the swelled end. The seed alone, being of very peculiar shape and color, brands the Squash as original and distinct. The shell is pale green in color, very hard and flinty, being at the same time so very thin and smooth as to occasion the least possible waste in baking. The flesh is solid, thick, a vivid brilliant orange in color, and is possessed of rare edible qualities, being dry, and really wonderful for fineness of grain and the rich and delicate flavor peculiarly its own. The weight ranges from eight to eleven pounds. It ripens with the Hubbard, and is more prolific, a long keeper and a good shipper. Price, pkt., 5c.; oz., 15c.; ¼ lb., 50c.; lb., \$1.65.



PIKE'S PEAK (OR SIBLEY) SQUASH.



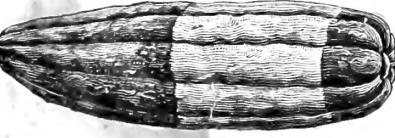
VAUGHAN'S SUMMER CROOKNECK SQUASH.

SQUASH—SUMMER CROOKNECK.

THIS is an old staple article of the Seedsman's stock, and though we DO NOT claim our seed to be the "BEST IN THE WORLD," yet it is as pure as we have seen and the product is as near to what the squashes should be as usually grow. Per pkt., 5c.; oz., 10c.; ¼ lb., 25c.; lb., 75c.

NEW SQUASH—ILLINOIS BEAUTY.

AN Autumn variety in season from September to December, average size 12 to 14 inches long, and 4 to 5 inches in diameter. Very thick meat, having almost no seed cavity; remarkably distinct and showy in appearance, one or both ends being of deep green color while the centre band is of rich deep orange, slightly ribbed, but of excellent shape for the market and of good quality. Very prolific and a strong grower. Pkt., 10c.; 3 for 25c.; oz., 40c.



ILLINOIS BEAUTY SQUASH.

East Portland, Oregon, Jan. 2, '89.—Last Spring I purchased of you a number of packets which were large and well filled with the very best seeds; it seemed as if they all grew and made nice thrifty plants. MRS. W. A. OGILBEE.

Greenville, Ill., Aug. 3, '88.—Your Dwarf Champion Tomato has proved all that was claimed for it in the following particulars: As early as any good Tomato; it has ripe fruit earlier than any other variety; perfect in form and color; satisfactory size; habit of plant compact and bushy. Planted 3 feet by 20 inches gave room to pass through without touching a vine. S. F. Minor.