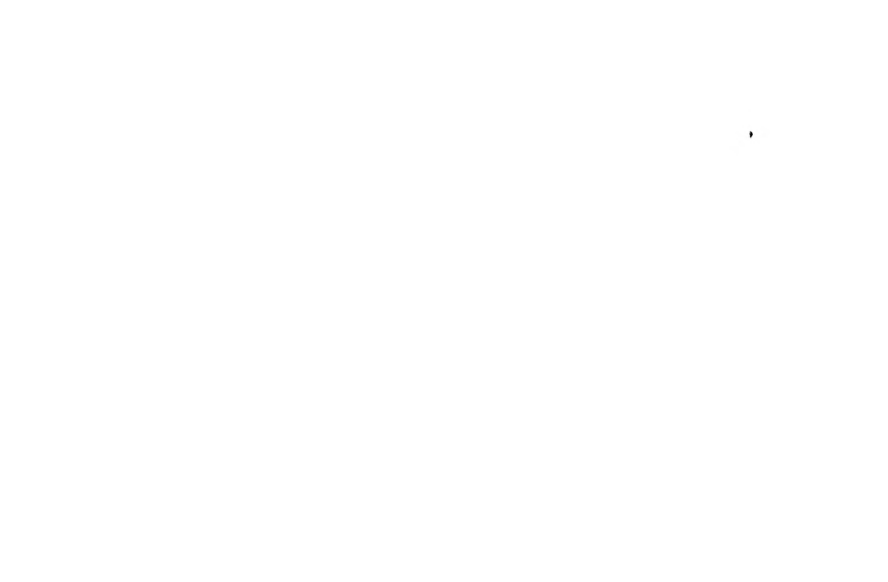


F 74

.58 V6



F 74
.58 V6
Copy 1

VIEW BOOK *&* SPRINGFIELD MASSACHUSETTS



STATUE OF DEACON SAMUEL CHAPIN

One of Springfield's first settlers. This world-famous statue by St. Gaudens is commonly known as "The Puritan."

FIELD

© 1994 by [illegible]

ALL RIGHTS RESERVED

PRINTED IN THE UNITED STATES OF AMERICA

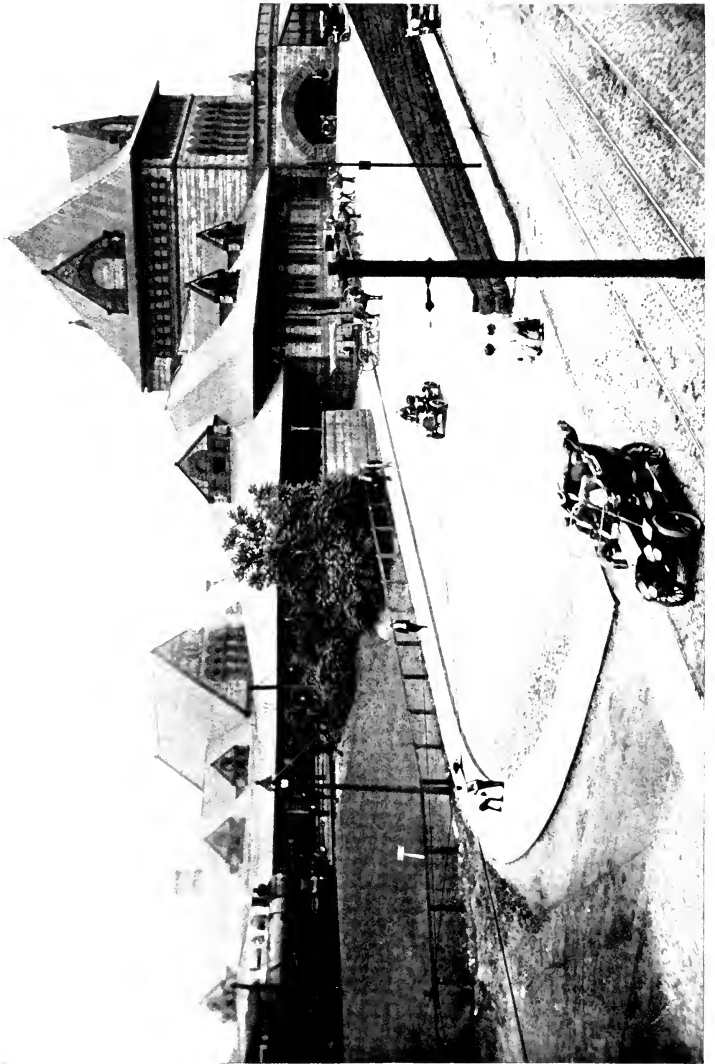
• [illegible]
[illegible]
[illegible]

[illegible]
[illegible]

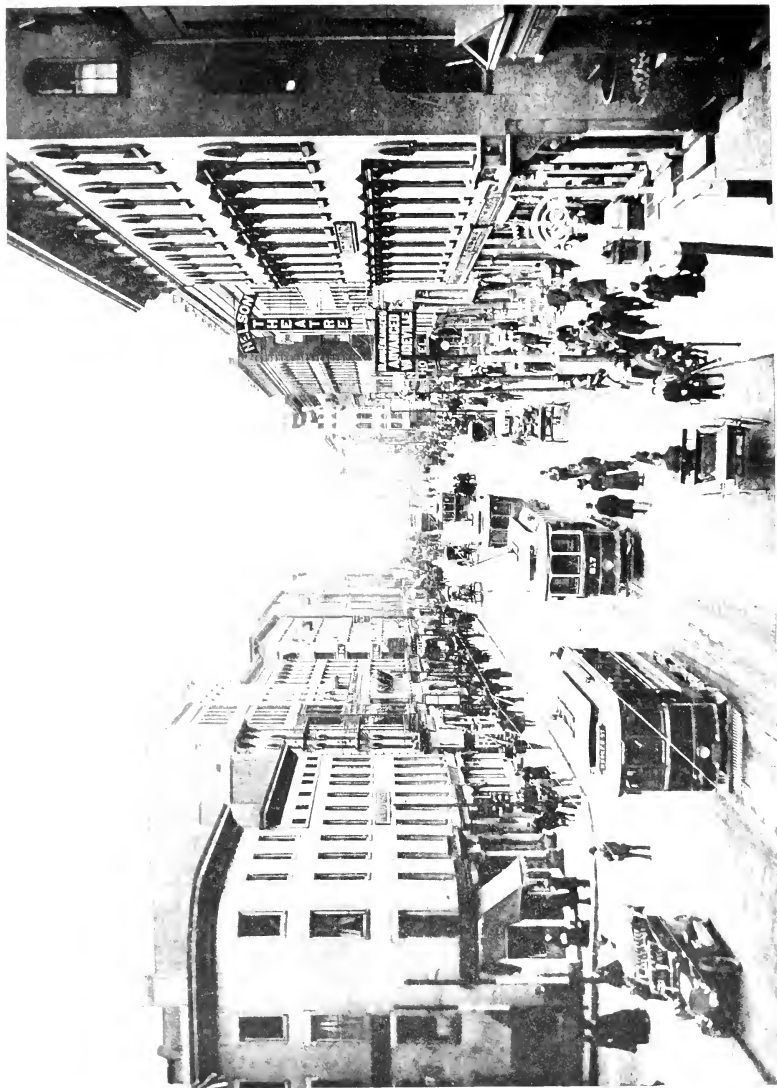
[illegible]

[illegible]
[illegible]
[illegible]

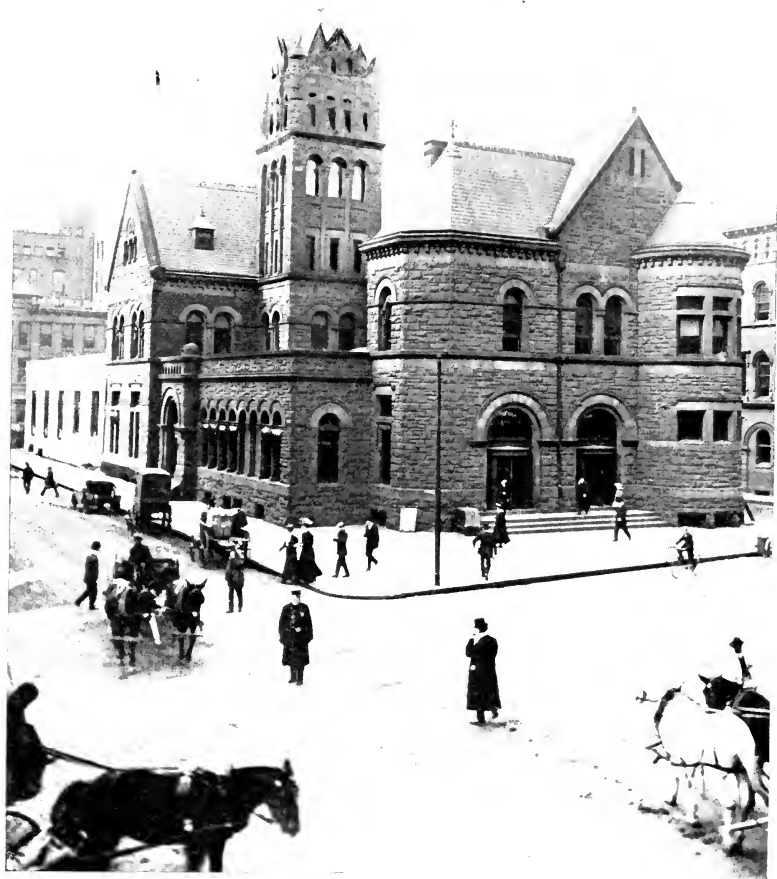




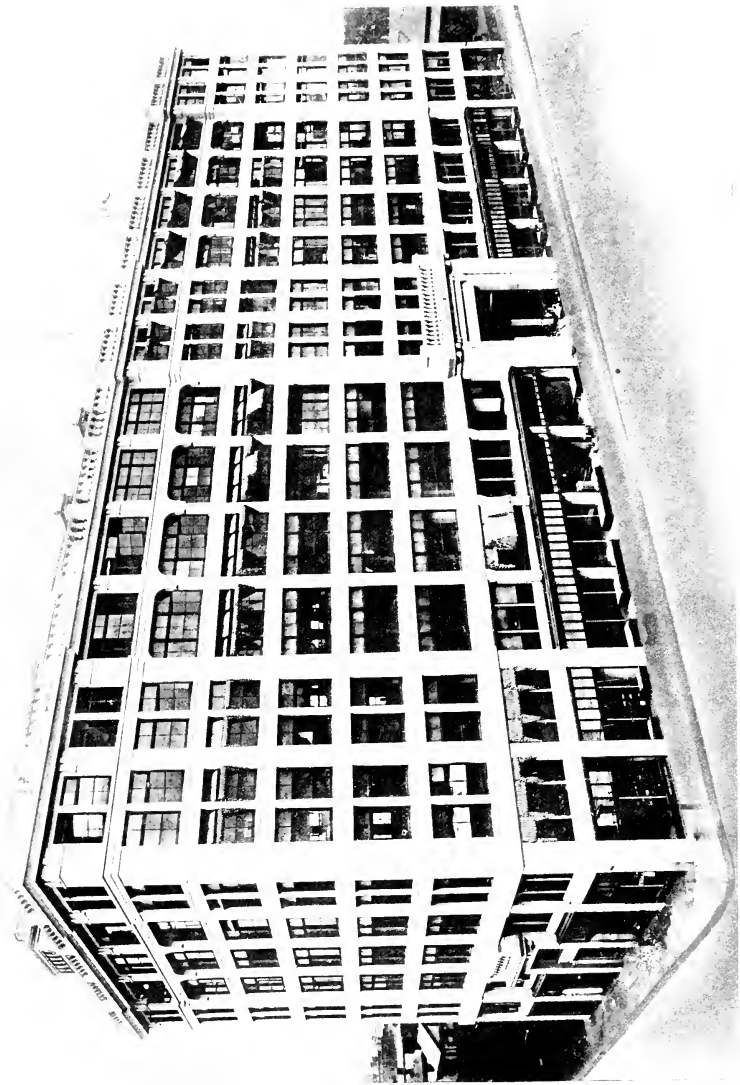
UNION RAILWAY STATION



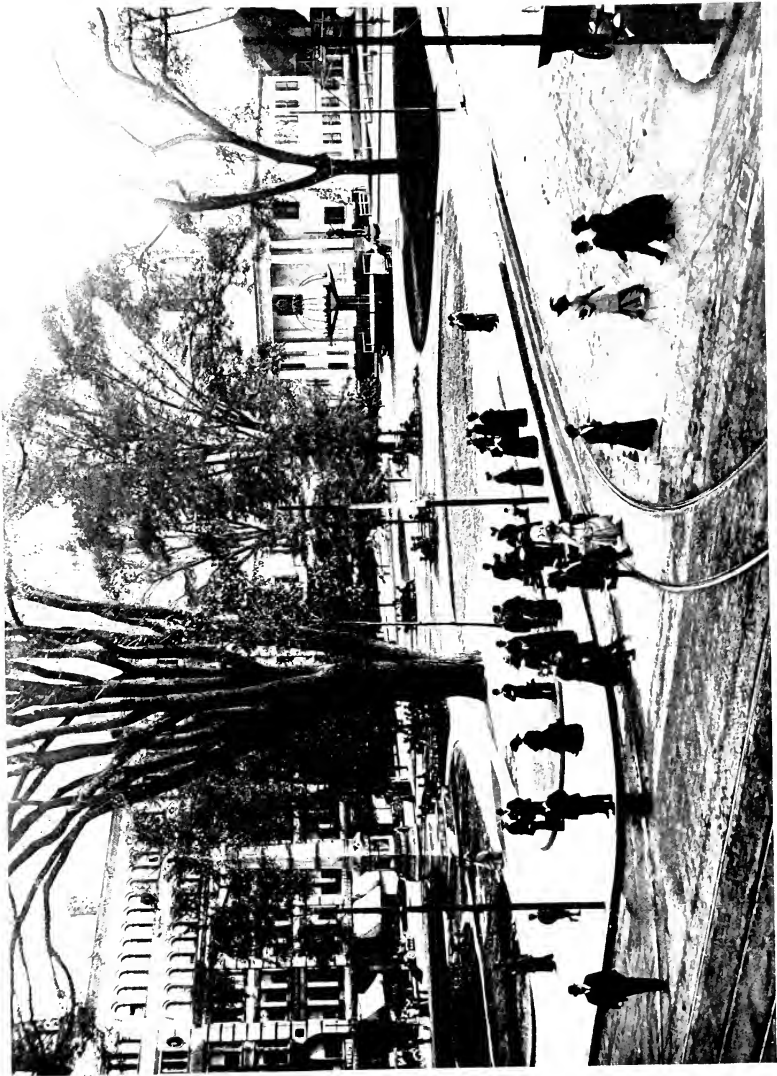
MAIN STREET FROM THE ARCH



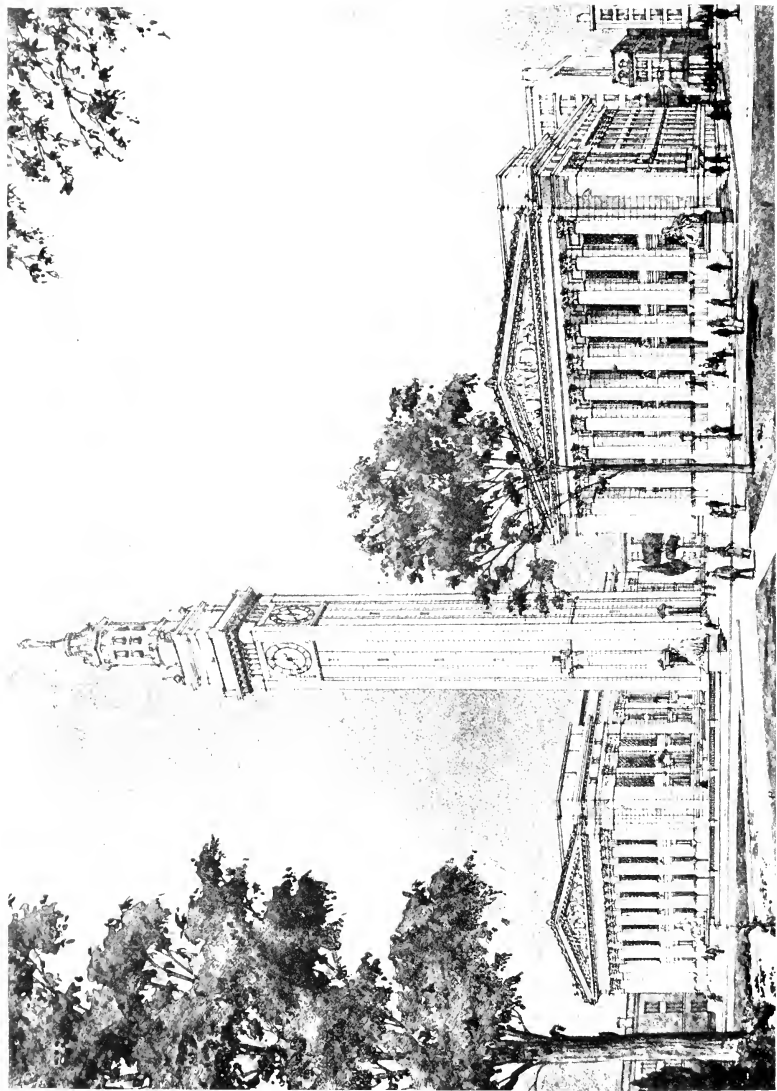
POST OFFICE AND CUSTOMS HOUSE



MYRICK BUILDING
Home of the "Good Housekeeping Magazine," the Phelps Publishing Company, and Springfield Board of Trade.



COURT SQUARE, SHOWING THE HISTORIC FIRST CHURCH



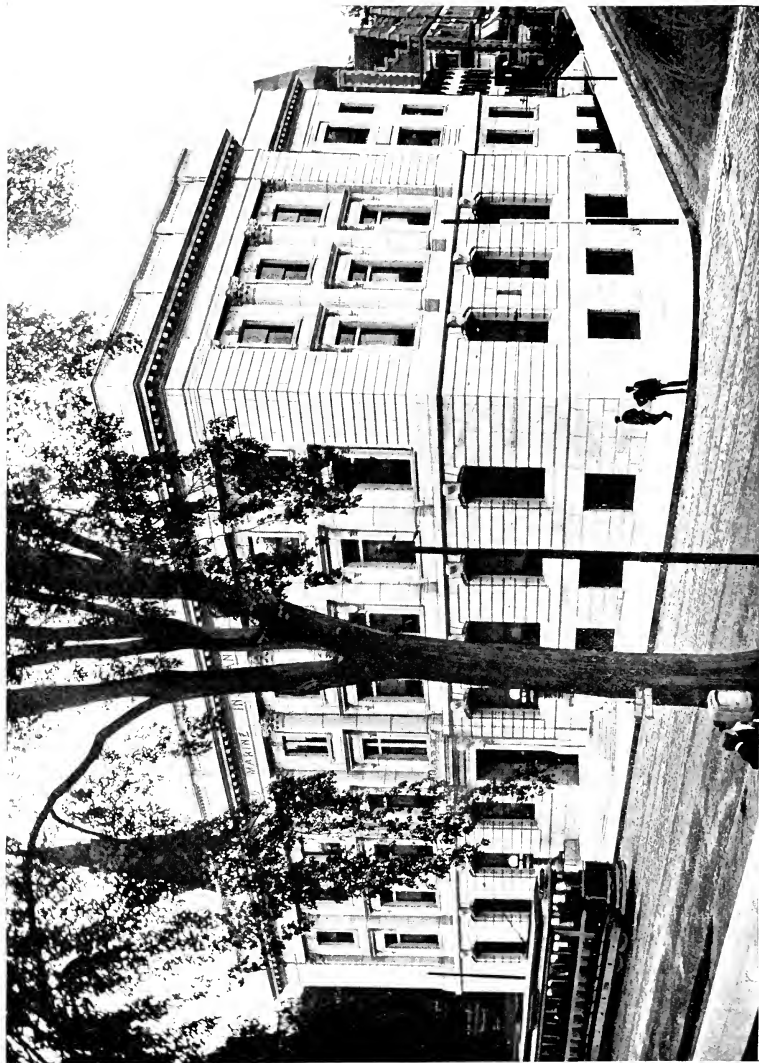
MUNICIPAL BUILDINGS
In process of construction. This magnificent group is to cost \$1,000,000.



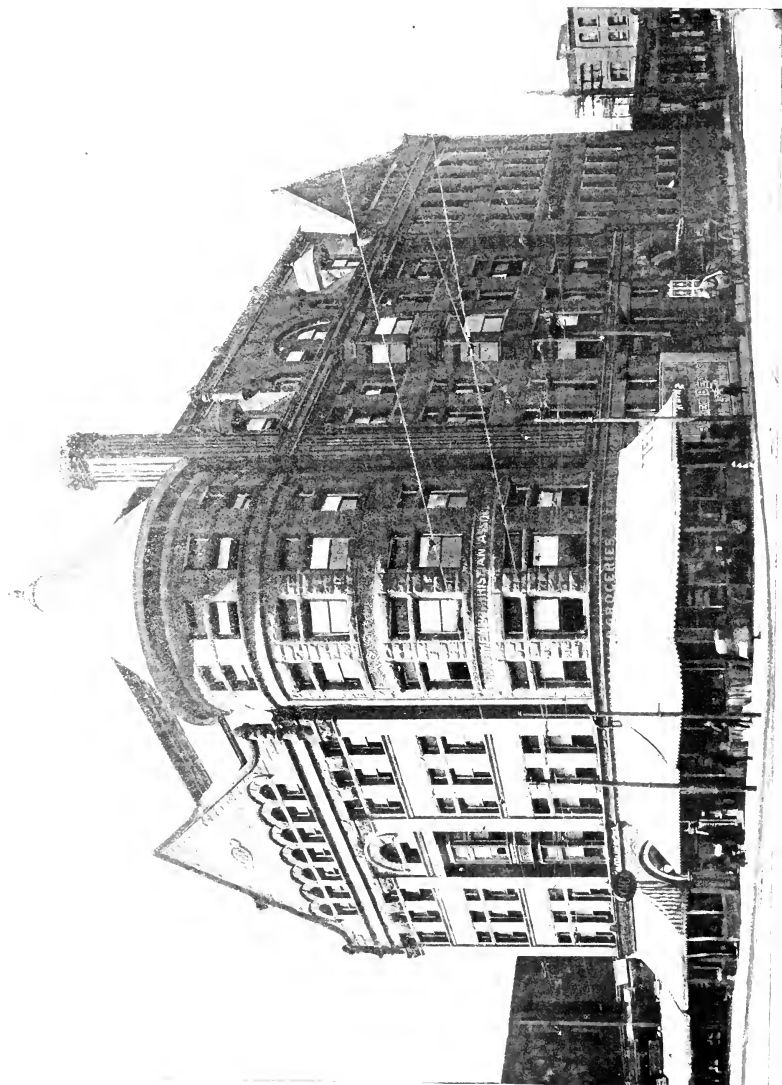
HAMPDEN COUNTY COURT HOUSE AND HALL OF RECORDS



HOME OF MASSACHUSETTS MUTUAL LIFE INSURANCE COMPANY
Springfield's strongest financial institution. Assets \$51,120,863. Surplus \$3,878,200.



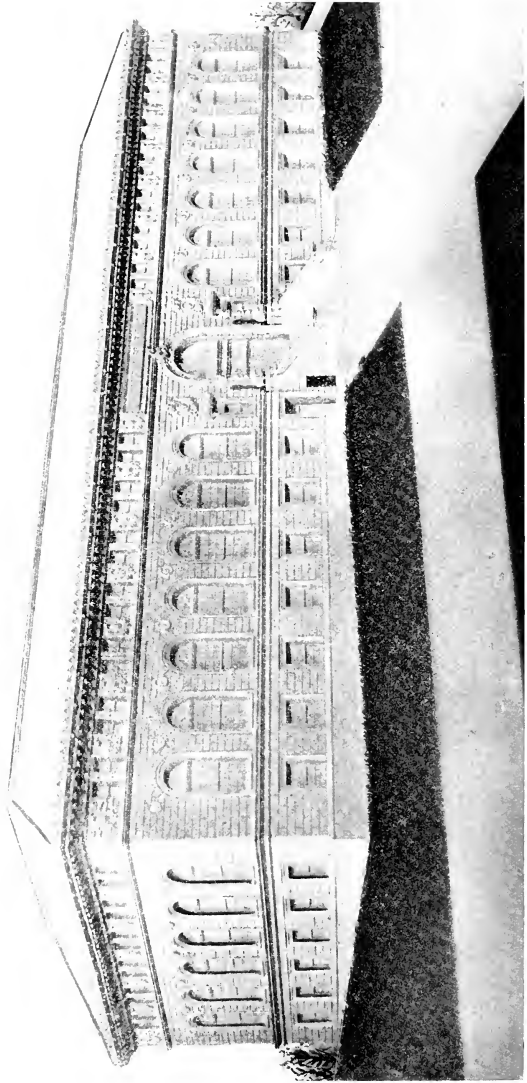
SPRINGFIELD FIRE & MARINE INSURANCE COMPANY
Known the world over for its able management.



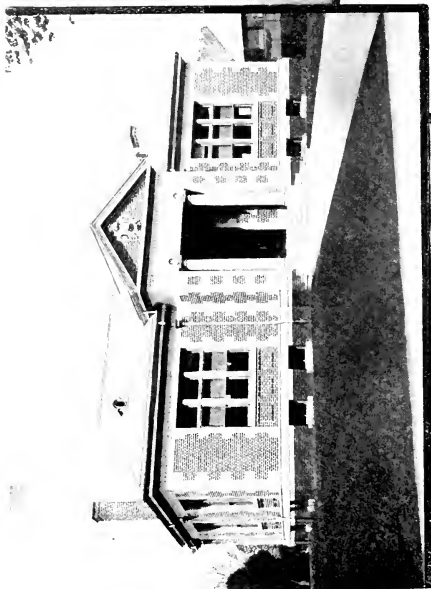
YOUNG MEN'S CHRISTIAN ASSOCIATION



YOUNG WOMEN'S CHRISTIAN ASSOCIATION



CITY LIBRARY
Cost \$325,000, contributed jointly by Andrew Carnegie and citizens of Springfield. Number of books 170,000.

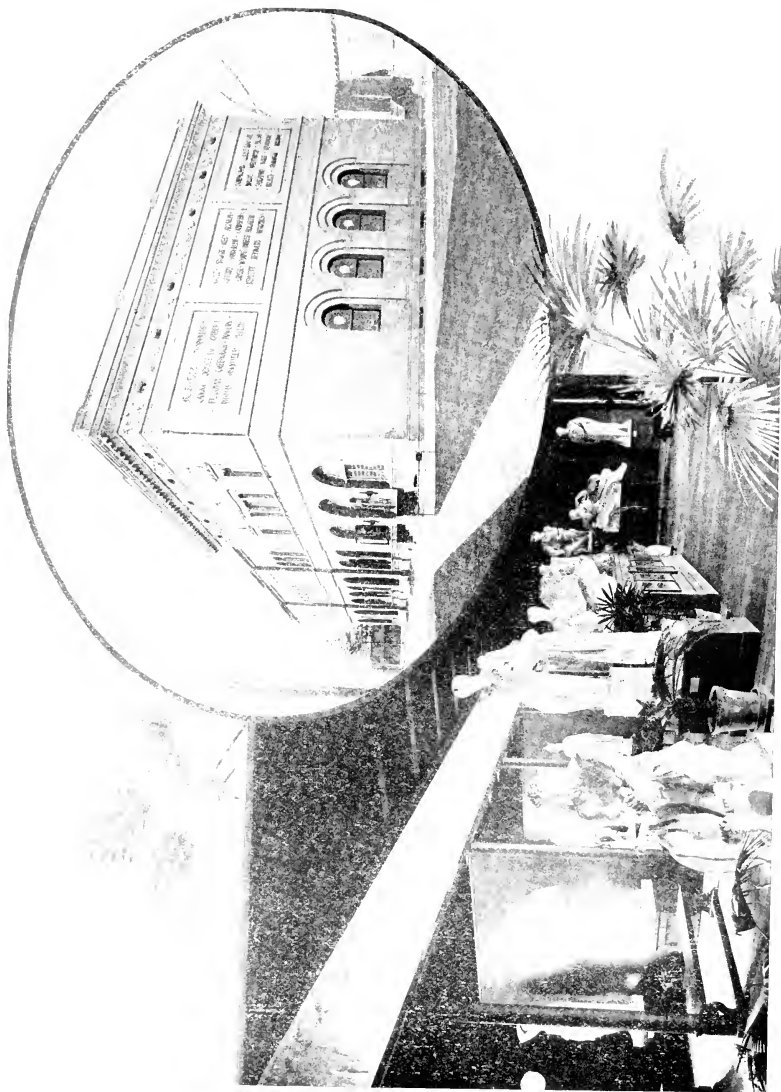


Indian Orchard.

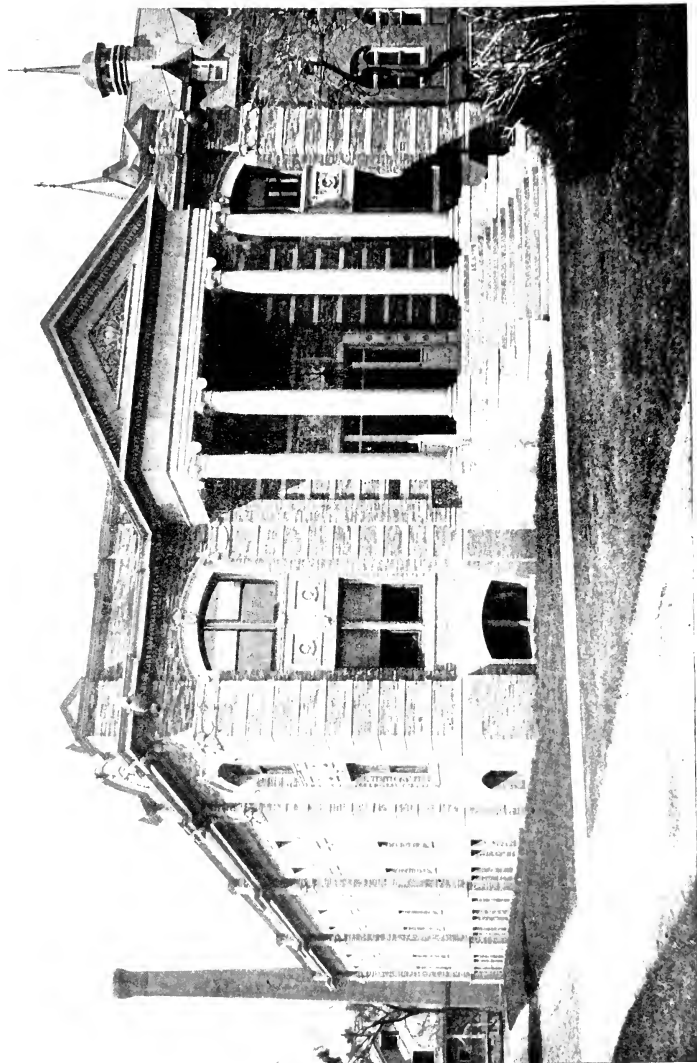


BRANCH LIBRARIES

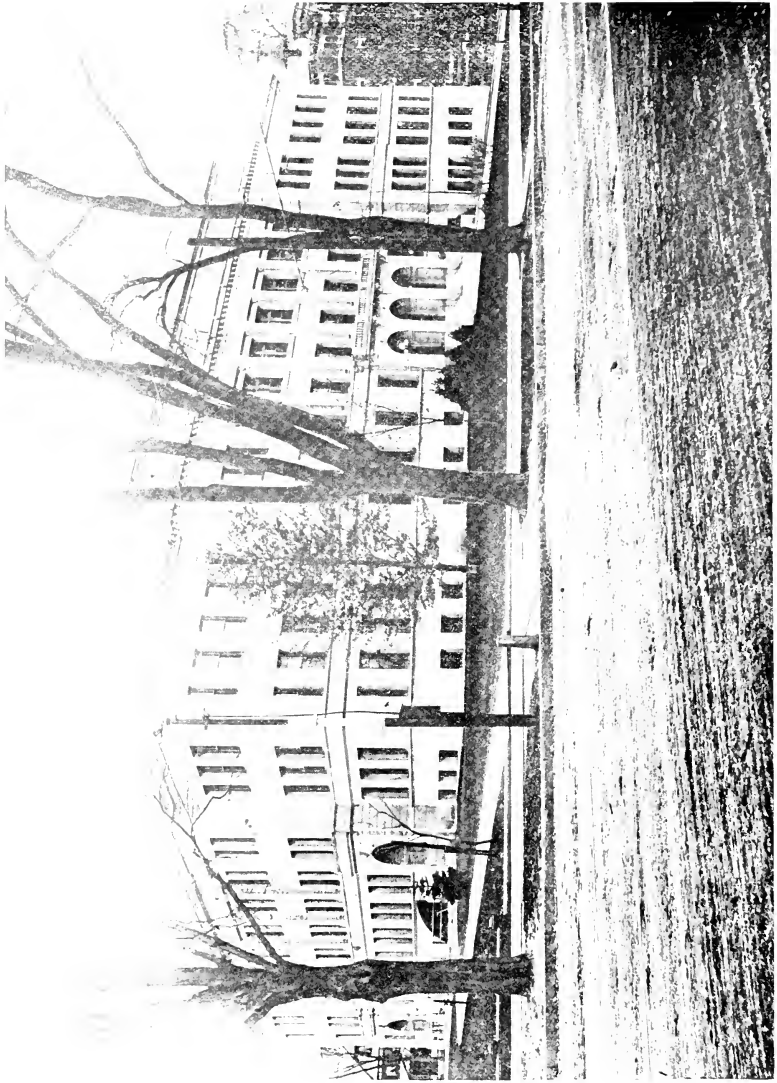
Forest Park.



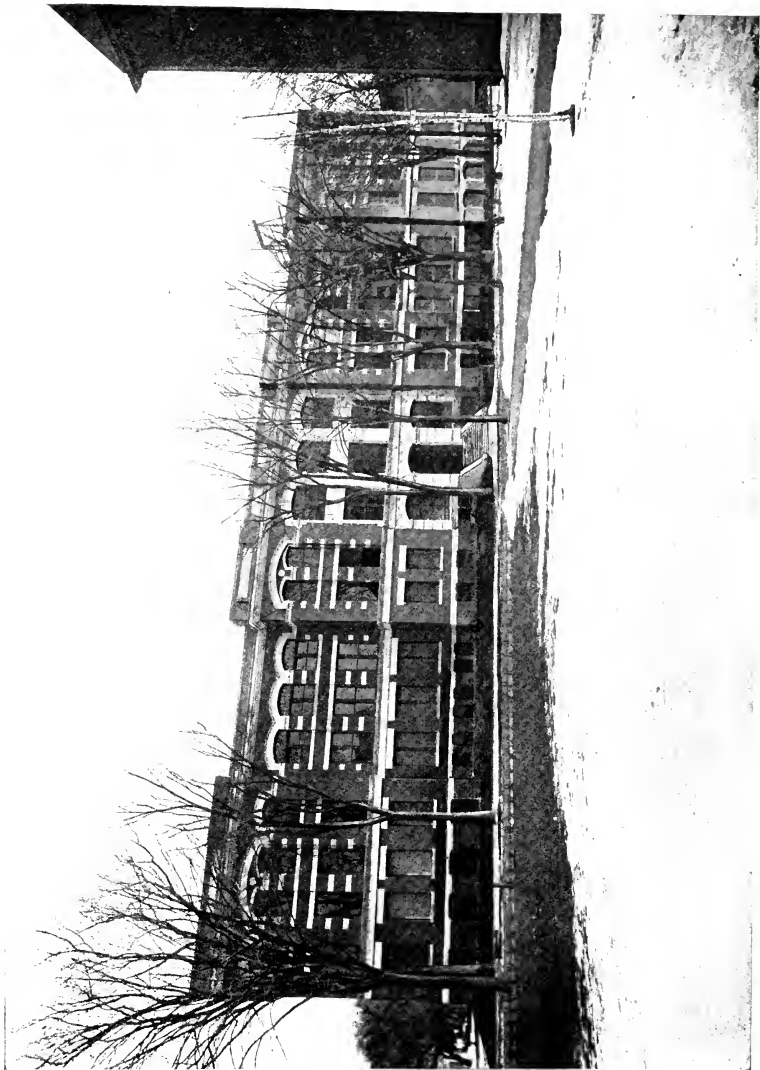
ART MUSEUM, IN CITY LIBRARY SQUARE
This handsome structure contains the George Walter Vincent Smith Collection of Art Treasures.



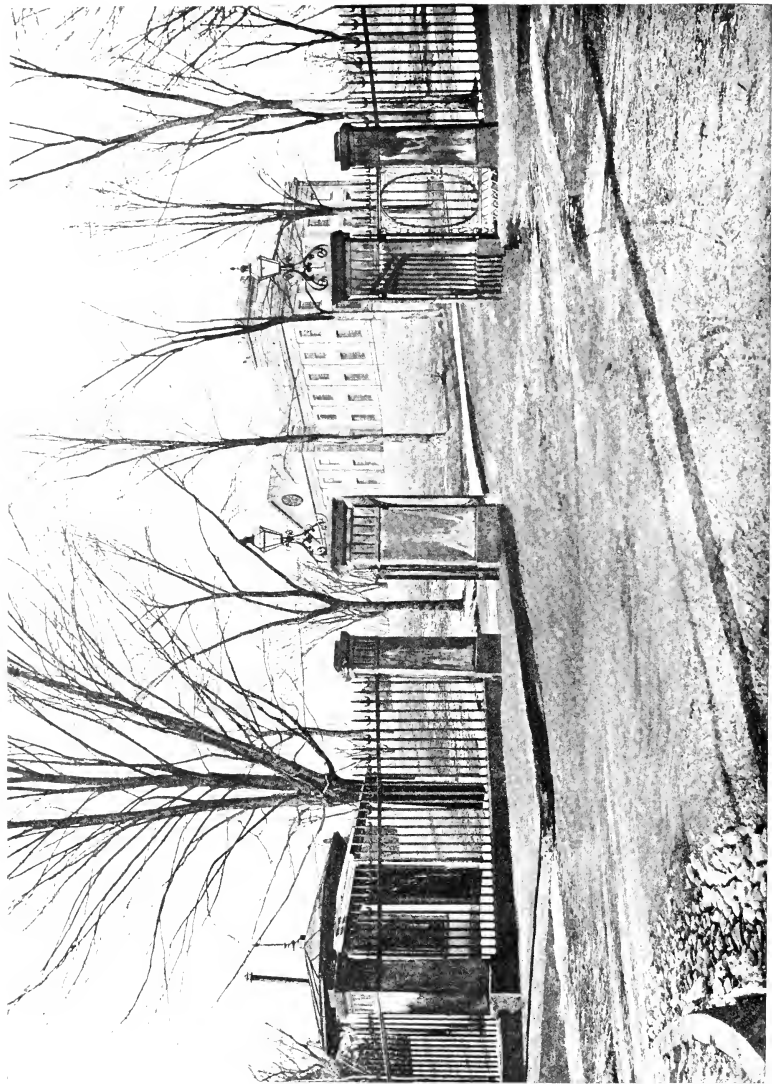
SCIENCE MUSEUM, ADJOINING ART MUSEUM
Devoted to exhibits representing various branches of Science.



CENTRAL HIGH SCHOOL.
A splendidly equipped school building, costing over \$400,000. Opposite City Library.



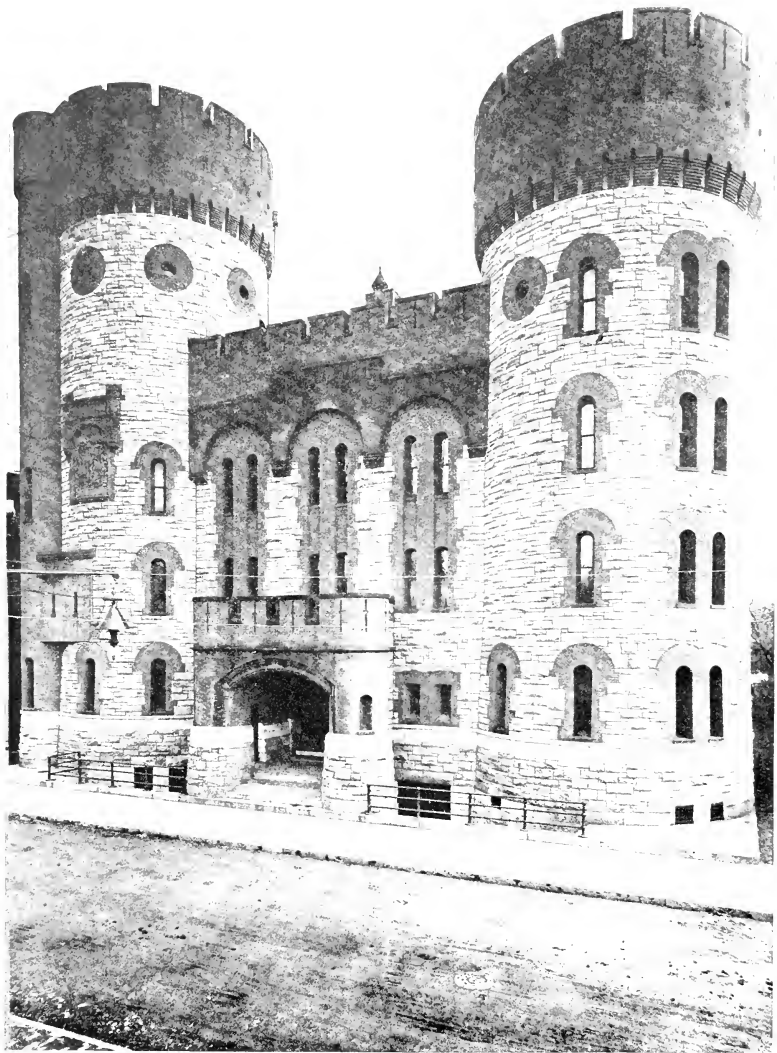
TECHNICAL HIGH SCHOOL.
Opportunity is here afforded to pursue any branch of technical training at the expense of the city.



ENTRANCE TO UNITED STATES ARMORY GROUNDS
Where the Springfield Rifle is manufactured.

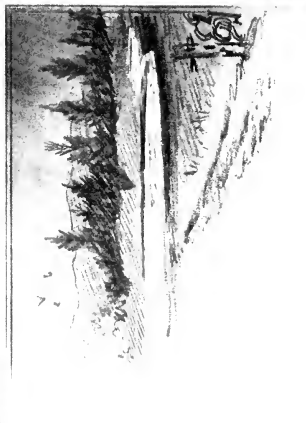
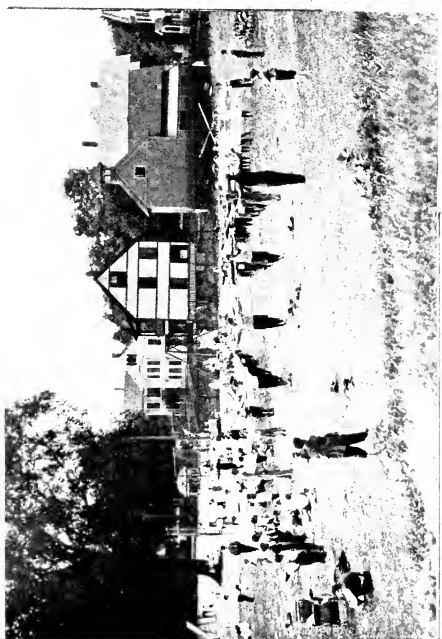


UNITED STATES WATER SHOPS
Here the forging and heavy work on the Springfield Rifle is done.

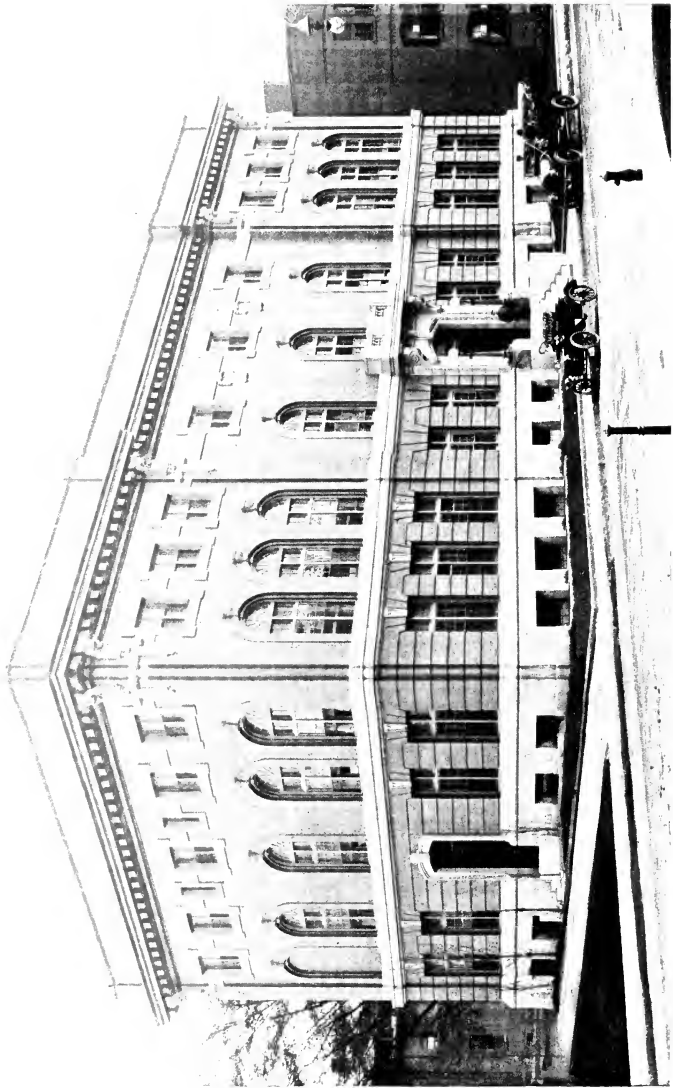


MASSACHUSETTS STATE ARMORY

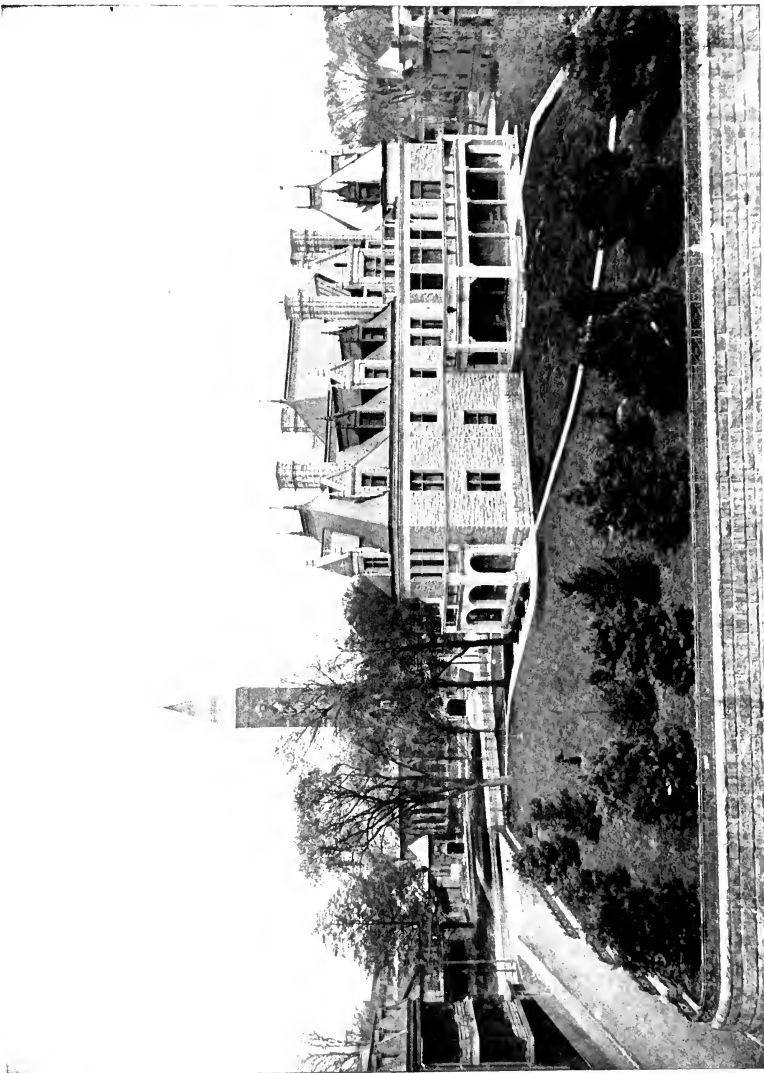
Headquarters of the Second Regiment M. V. M. and one company of the Massachusetts Naval Brigade.



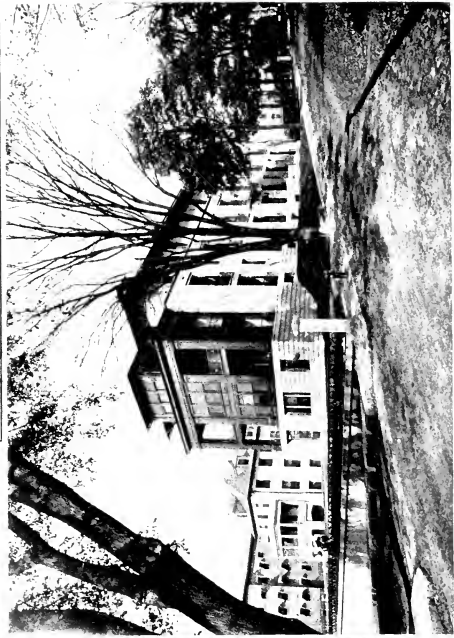
A GLIMPSE OF SPRINGFIELD'S PUBLIC PLAYGROUNDS



NEW HOME OF NASSET CLUB



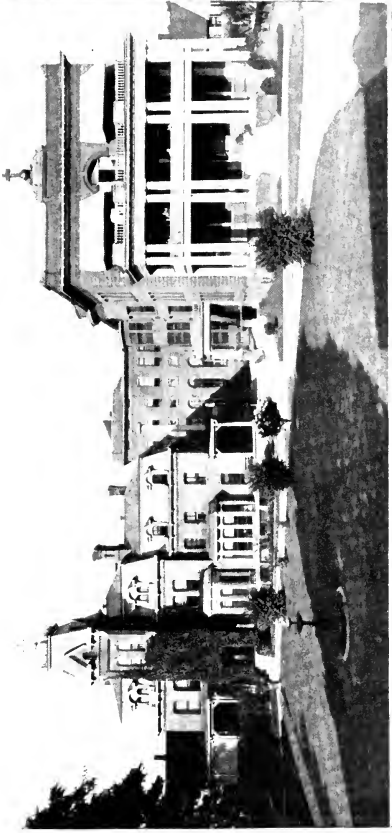
REAR VIEW OF WESSON MANSION
With a glimpse of the South Church.



NURSES' HOME AND WESSON HOSPITAL

CYNTHIA WESSON MATERNITY HOSPITAL

Both erected by Daniel B. Wesson.

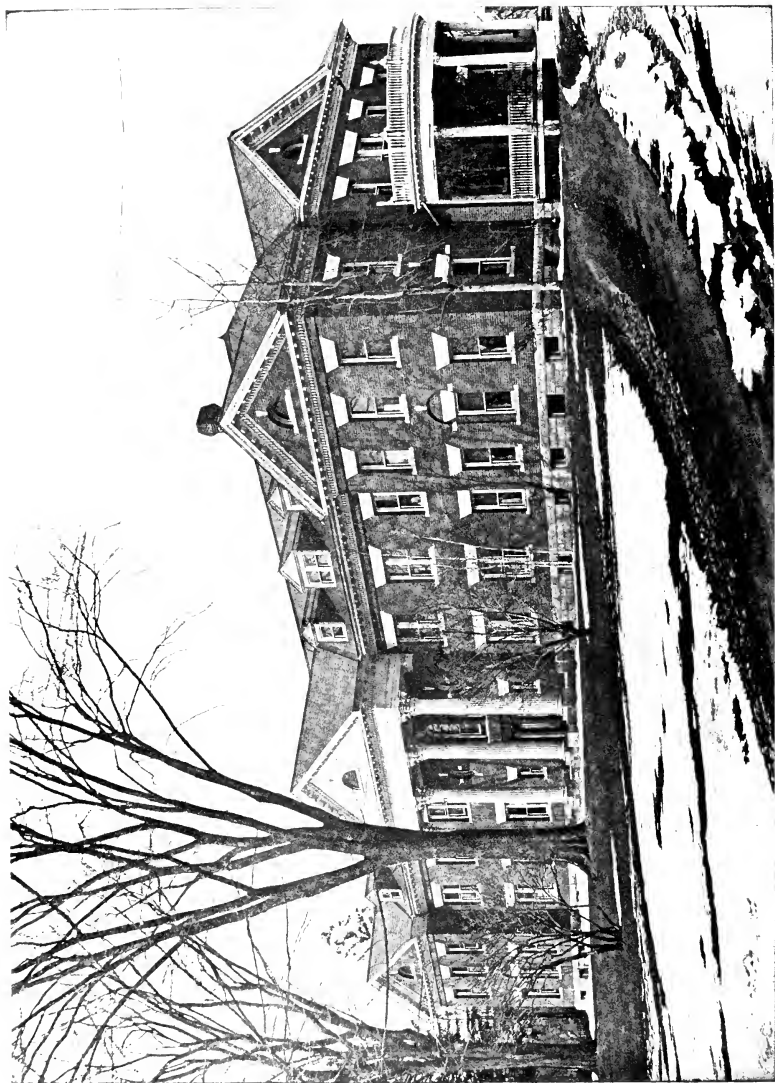


MERCY HOSPITAL

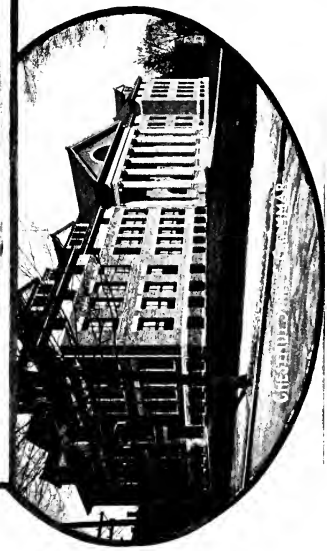
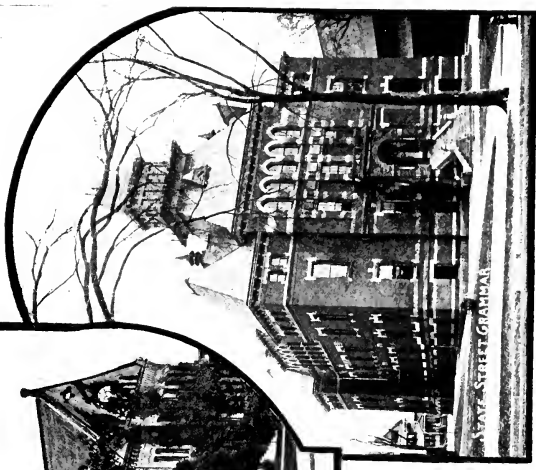
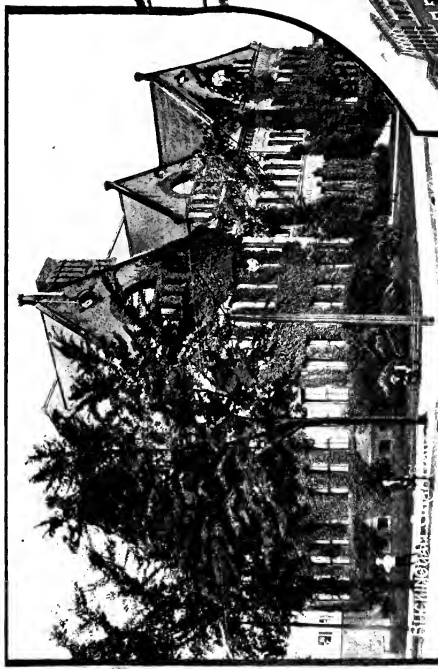


SPRINGFIELD HOSPITAL

Springfield's hospital facilities are unexcelled.



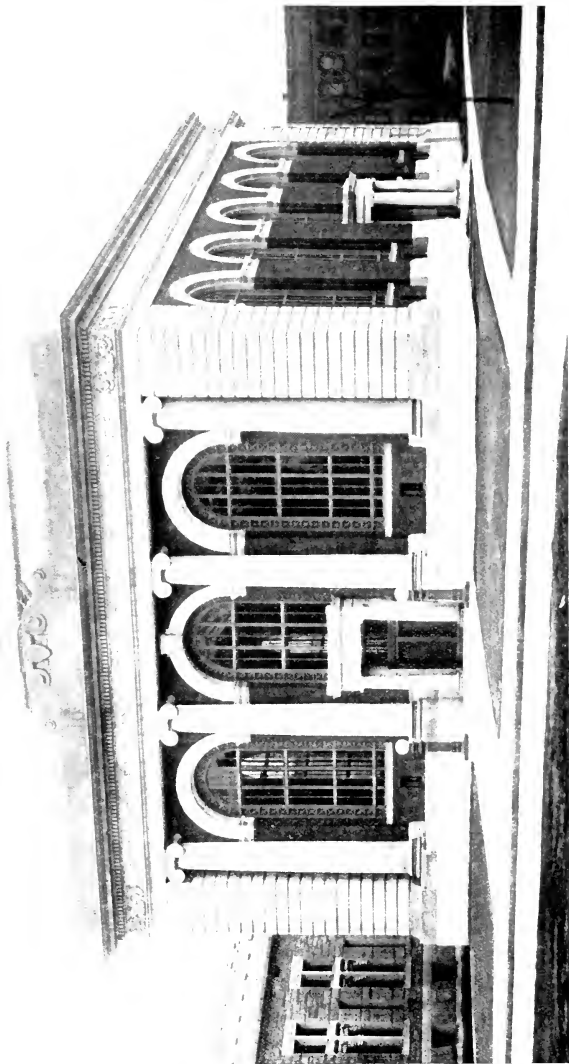
HOME FOR AGED WOMEN
This splendid institution does a noble work.



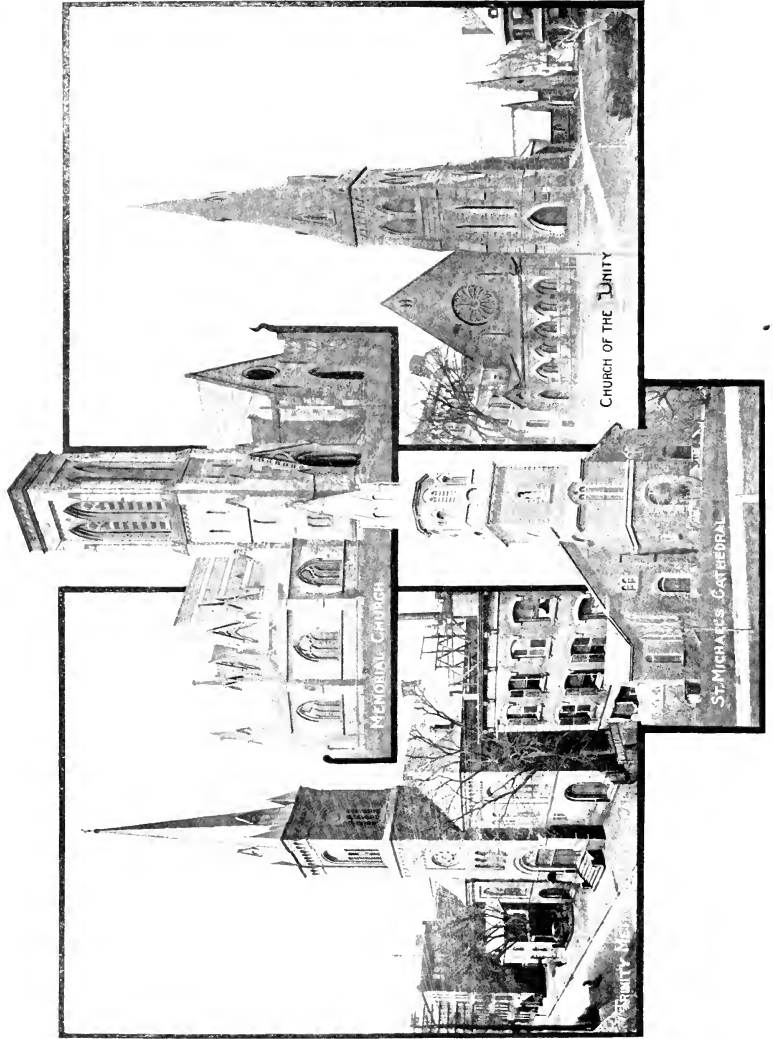
REPRESENTATIVE GRAMMAR SCHOOL BUILDINGS
The city has thirty-four such buildings.



COURT SQUARE THEATER BUILDING



SPRINGFIELD INSTITUTION FOR SAVINGS
This Savings Bank has deposits of over \$18,000,000.



SOME OF SPRINGFIELD'S CHURCHES



FIRST HIGHLAND BAPTIST.

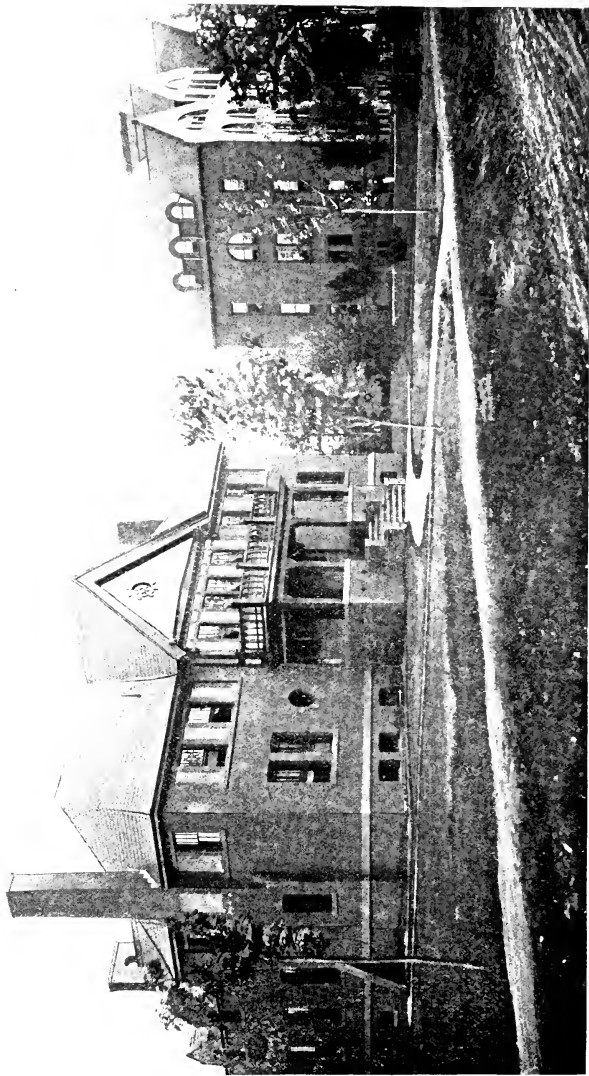
CHRIST EPISCOPAL

FIRST BAPTIST

MORE OF SPRINGFIELD'S CHURCHES



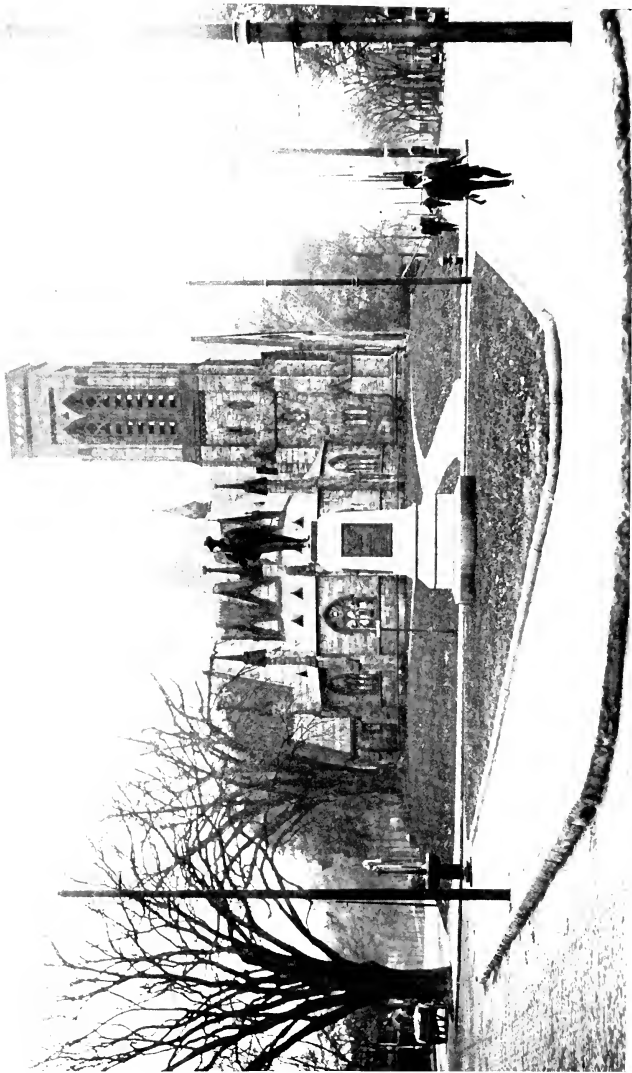
ADMINISTRATION BUILDING OF AMERICAN INTERNATIONAL COLLEGE
This college is exercising a great influence among the various nationalities represented in its student body.



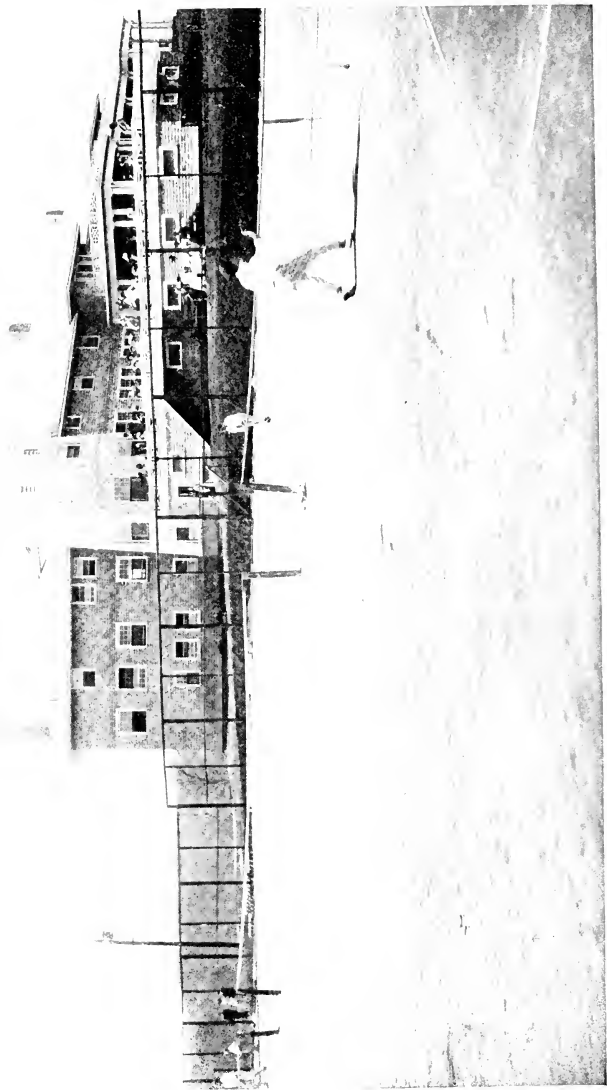
INTERNATIONAL YOUNG MEN'S CHRISTIAN ASSOCIATION TRAINING SCHOOL
Where the Young Men's Christian Association Secretaries and Physical Directors are trained for their work.



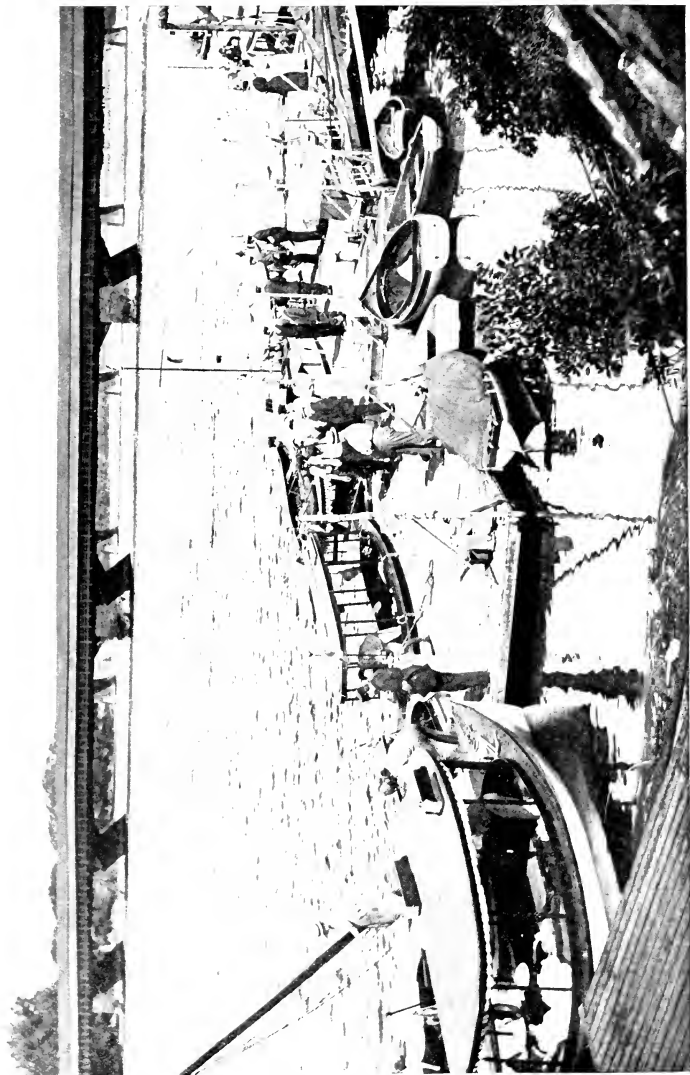
MASONIC BUILDING



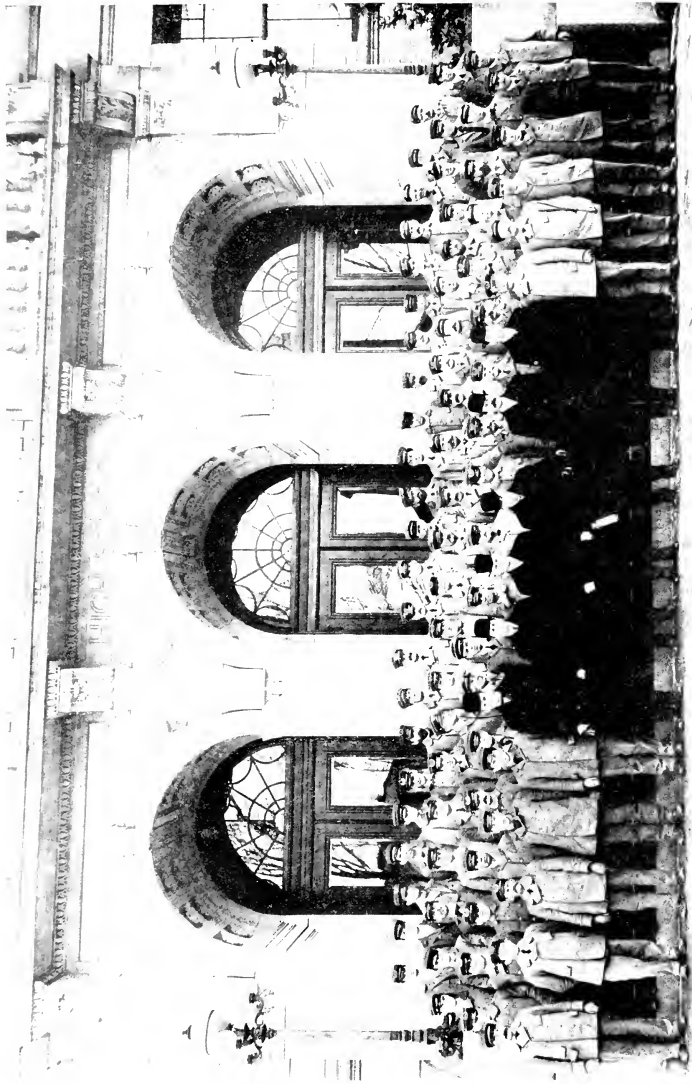
CAREW STREET TRIANGLE, SOLDIERS' MONUMENT, AND MEMORIAL CHURCH



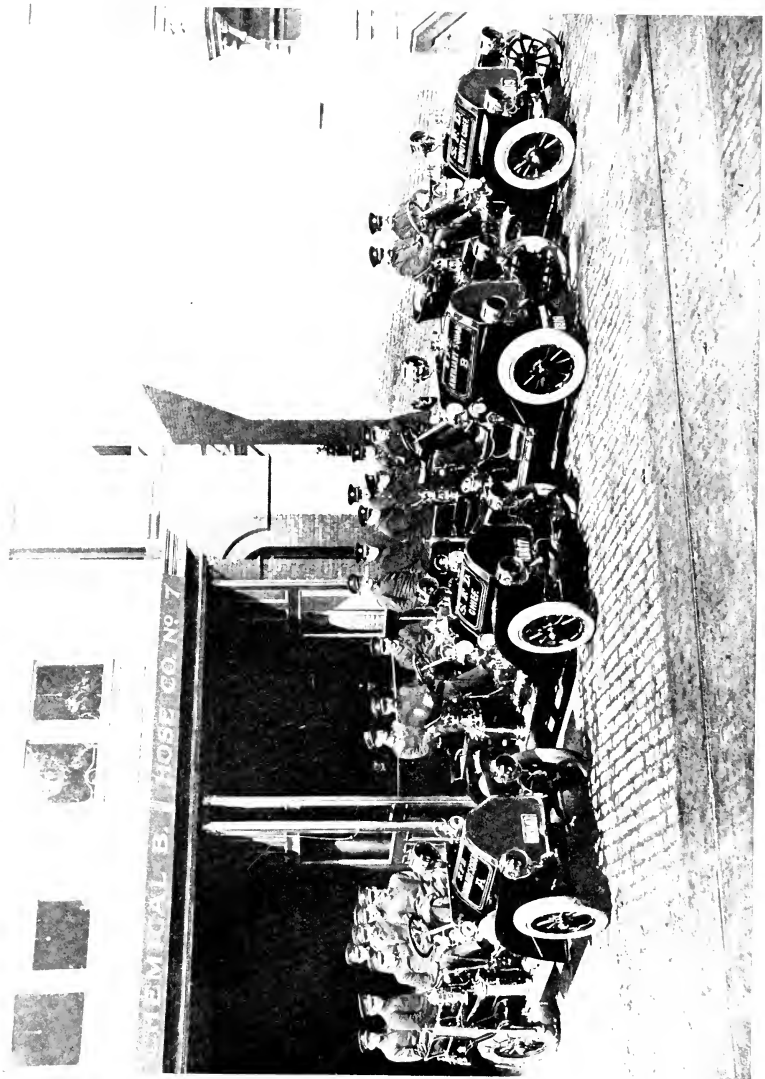
SPRINGFIELD COUNTRY CLUB HOUSE
This spot commands an extended view of the Connecticut River and the hills beyond.



BOAT CLUB WHARF ON THE CONNECTICUT RIVER



THE POST MASTER AND HIS CORPS



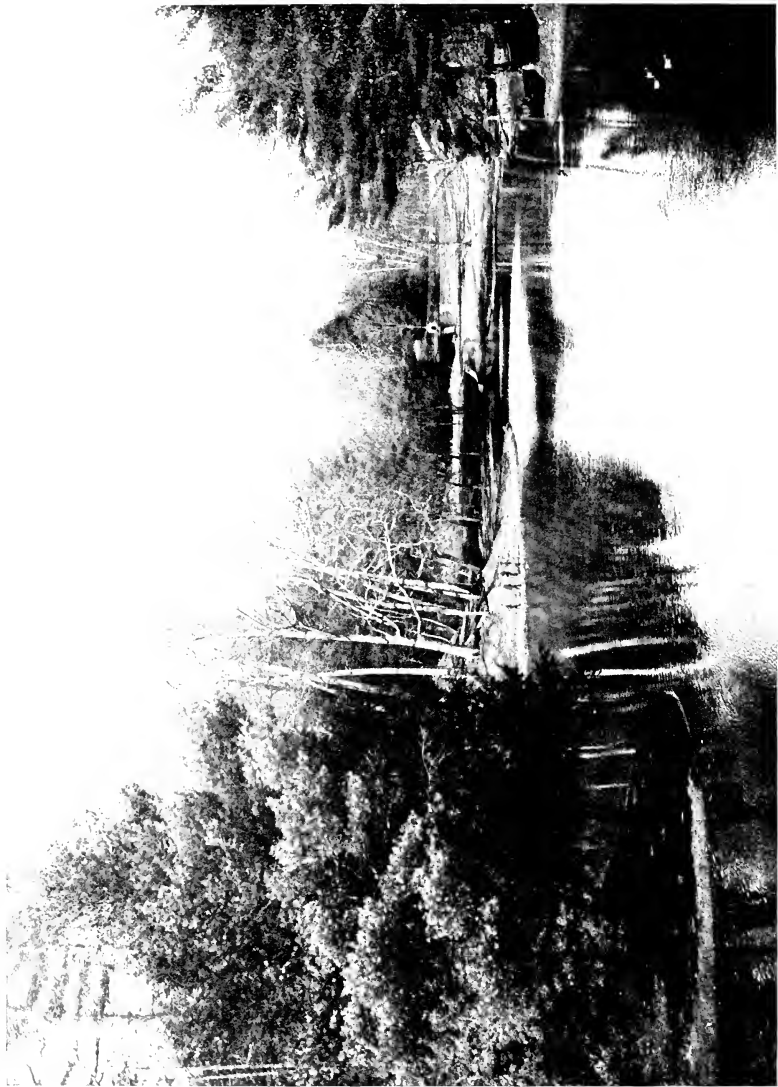
THE FLYING SQUADRON OF THE FIRE DEPARTMENT



ONE OF THE ATTRACTIVE STREETS ON THE "HILL"



STREET REPRESENTATIVE OF THE "PARK" DISTRICT



MIRROR LAKE IN FOREST PARK
This park covers an area of four hundred and sixty acres.



FOREST PARK IN WINTER



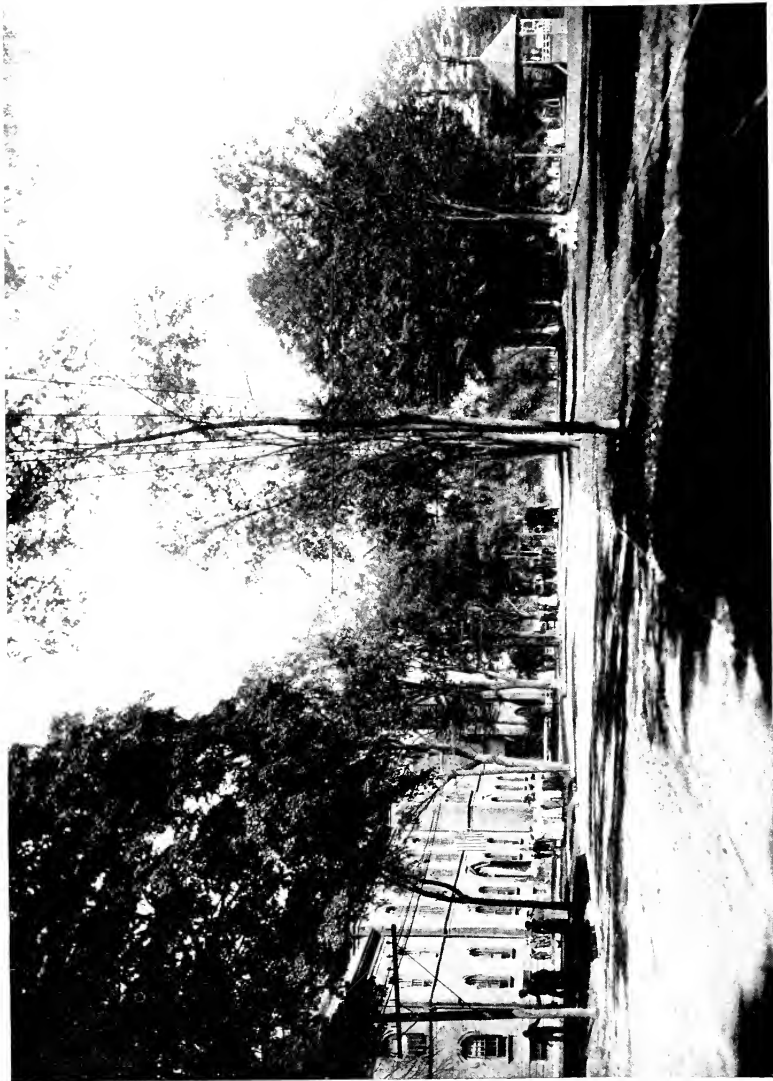
WADING POND IN FOREST PARK



SKATING AT FOREST PARK



BOOKSTORE BUILDING
New home of Johnson's Bookstore.



WEST SPRINGFIELD COMMON, SHOWING TOWN HALL AND HIGH SCHOOL

7 1910



LONGMEADOW STREET
A delightful suburb.

One copy del. to Cat. Div.

One copy del. to Cat. Div.