

**D. E. WALKER
SADDLES**

*World's Finest
Since 1870*

• *Condensed Catalog* •

SADDLES AND RIDING EQUIPMENT

• BOOTS • STETSONS • WESTERN WEAR •

FINE SILVERSMITHING AND LEATHER WORK

EVERYTHING FOR THE HORSEMAN FOR WORK OR PLEASURE

VISALIA

STOCK SADDLE CO.



2123 MARKET ST.
SAN FRANCISCO 14
CALIFORNIA

We Ship All Mail Orders Promptly!

You Can Depend on Visalia!

Since 1870, Visalia Stock Saddle Company has been meeting the needs of the cattlemen of the West, producing in its own shop Western saddles and riding equipment of the very highest quality. The *Visalia* stamp — or *D. E. Walker* trade mark upon your saddle — is the unmistakable mark of quality, the sure guarantee of the finest in workmanship and materials. It is your assurance that the saddle — or other equipment — you buy from this company will give years of fully satisfactory service under all conditions.

No matter whether you require a saddle of moderate price, or whether you want the very finest of silver-mounted equipment — of one thing you can be absolutely certain: There is no deviation in the basic quality of every *Visalia* saddle. Each is custom-made to your own individual measurements and specifications. Every *D. E. Walker* tree is made from No. 1 well-seasoned sugar pine, with special bronze horns, and covered with heaviest rawhide in our own tree shop. Only oak-bark tanned California leather of finest saddle grade is used. There is no substitute for *Visalia* quality. Every saddle that carries our stamp unconditionally meets *Visalia's* rigid quality standards!

Concerning prices, we make every effort to be competitive with other manufacturers, although — considering *Visalia's* outstanding quality — we can never hope to be the lowest priced saddle maker . . . Our new full-line catalog is now in preparation. We hope that this interim catalog, covering briefly the principal items in our line and the most popular saddle types — will meet your needs for the moment. Be sure to write us so that we may send you our new comprehensive catalog as soon as it is available.

See Inside Back Cover for information as to Prices and Terms, C.O.D. shipments, How to Order, Saddle Registry, and Delivery of saddles and other made-to-order merchandise. See also *Visalia's* Unconditional Guarantee.

Basic Price List For Saddles

Saddles are priced as shown in the illustrations. However, being primarily "custom-made" saddle makers, we encourage you to order your saddle exactly the way you want it. For your convenience in figuring cost, we provide the following table on a plain saddle with a regular horn and cantle, round skirts, one-piece fenders, single ring rig, Wyoming half-double stirrup leathers, galvanized stirrups and a mohair cincha. Add the following extras to the base price (see also, examples shown on Page 3)

BASE PRICE (No Stamping) \$175.00

Add to base price for the following:

Basket Stamp	\$18.00	Quilted Seat	\$18.00
No. 1079	33.60	Square Skirts, Plain	12.00
No. 154	75.60*	Square Skirts, Basket Stamp	13.00
(Includes lining throughout)*		Square Skirts, No. 1079	16.50
Mexican Horn	5.00	Square Skirts, No. 154	20.50
Horn Wrap Installed —		Leather Laced Stirrups	9.50
Latigo Leather	3.00	Leather Covered Stirrups	
Cotton Braided	3.50	Plain	14.00
Cheyenne Roll	5.75	Basket Stamp	16.00
D. E. Walker Flat Plate Rigging		No. 1580	16.00
Single	6.00	No. 1079	18.00
Double	10.00	No. 154	21.00
Double Ring Rig	3.75	Full Double Stirrup Leathers	4.50
Two-buckle Flank Cinch	9.00	Al Ray or Blevins Buckles	4.75
(Plain or roller stamp)			

FEDERAL EXCISE TAX — WHERE APPLICABLE — IS INCLUDED IN ALL PRICES GIVEN IN THIS CATALOG. WE PAY THE POSTAGE ON GENERAL MERCHANDISE (Except Saddles) WHEN FULL AMOUNT IS SENT WITH ORDER!

THE WARREN ROPER

SADDLE No. 4510



SPECIFICATIONS

Tree — Warren Roper.

Fork — 10½ in.

Horn — 3 in. High; 4 in. Head.

Cantle — 2¼ in. Cheyenne Roll.

Rigging — ¾ Double D. E. Walker.

Stirrup Leathers — 1 Piece Wyoming
Half Double.

Stirrups — No. 20 Bell Bottom.
3½ in.

Stamp No. — 154 Flower Carved.

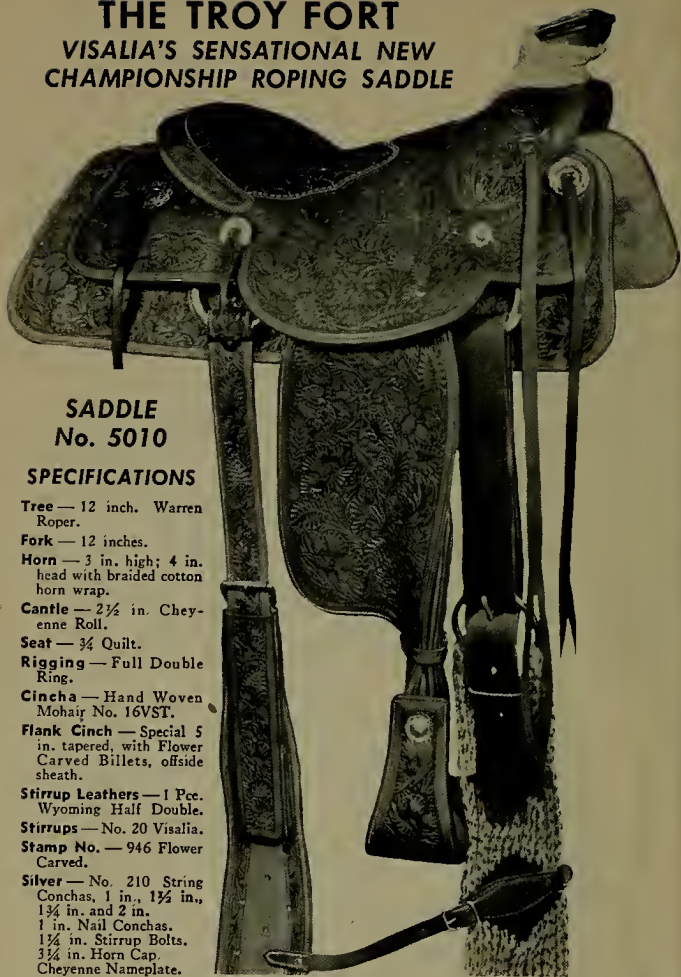
The Warren Roper is an ideal saddle for meeting the demand for a truly low-setting roper that still maintains clearance over the withers. This model — a comparatively new **D. E. Walker** tree — has met with immediate acceptance, as is demonstrated by its great popularity in the four years since introduction.

As with all Visalia trees, a quarter horse spread may be ordered in the Warren Roper. Although the height of this fork has been satisfactory on all types of horses, it is recommended that it be ordered slightly higher if intended for use on horses with extremely high thoroughbred type withers . . . As with our better type stamps, you will note from the photo that fenders and back jockeys are lined and stitched, the extra cost of which is included in the price of the stamping. For substitutions in standard equipment refer to base pricing schedule on opposite page.

o. 4510 — Stamp No. 154 (As shown)	\$302.75
o. 4510 — Stamp No. 1079.....	257.75
o. 4510 — Plain or Rough-Out	220.15

THE TROY FORT

VISALIA'S SENSATIONAL NEW CHAMPIONSHIP ROPING SADDLE



SADDLE No. 5010

SPECIFICATIONS

- Tree** — 12 inch. Warren Roper.
- Fork** — 12 inches.
- Horn** — 3 in. high; 4 in. head with braided cotton horn wrap.
- Cantle** — 2½ in. Cheyenne Roll.
- Seat** — ¾ Quilt.
- Rigging** — Full Double Ring.
- Cincha** — Hand Woven Mohair No. 16VST.
- Flank Cinch** — Special 5 in. tapered, with Flower Carved Billets, offside sheath.
- Stirrup Leathers** — 1 Pcc. Wyoming Half Double.
- Stirrups** — No. 20 Visalia.
- Stamp No.** — 946 Flower Carved.
- Silver** — No. 210 String Conchas, 1 in., 1½ in., 1¾ in. and 2 in. 1 in. Nail Conchas. 1¾ in. Stirrup Bolts. 3¾ in. Horn Cap. Cheyenne Nameplate.

Here's what the 1949 "Grand National" Calf Roping Champion Troy Fort has to say about this outstanding Visalia saddle . . .

"I consider this saddle to be the finest that I have ever used, especially as to material and workmanship. It's a real tribute to Visalia's policy of carrying on in the old tradition of hand made saddles to order — from the D. E. Walker trees on up . . . This saddle sets on horses' backs as if it were molded to them, and I have never ridden a saddle with a better seat. It's a real 'using' rig that can't be beat for roping or any other work."

(Signed) TROY FORT

THE TROY FORT

This is unquestionably an example of the finer work made possible by the knowledge handed down by Visalia craftsmen since 1870 when Dave Walker founded the company which was to become so famous for its superior quality custom-made saddles. Every Visalia saddle receives most careful attention to the finest details — from the individually fitted hand made D. E. Walker tree to the final shading of its exquisitely hand carved and flowered design.

We feel that here is a good place to explain our general policy in regard to the quality of all Visalia saddles and our base pricing system. Regardless of model, only genuine D. E. Walker trees — handcrafted in our own shop — and the finest quality materials and workmanship are put into our saddles. Now, as to base pricing system — (See Inside Front Cover) — all model prices start out from the same basic price, the final cost to the customer being determined by the extras and the style of stamping he selects. The following examples illustrate the pricing of the Troy Fort Saddle No. 5010.



THE TROY FORT — REAR VIEW

TROY FORT SADDLE PRICING

Showing how to figure price: Add STAMPING and ACCESSORIES to BASE PRICE.

STAMPING NO. SADDLE No. 5010	No. 946 As Shown	No. 154	No. 1079	Plain or Rough-Out
Base Price	\$175.00	\$175.00	\$175.00	\$175.00
Stamping	110.00	75.60	33.60
Mexican Horn.....	5.00	5.00	5.00	5.00
Horn Wrap (Cotton Braided).....	3.50
Cheyenne Roll.....	5.75	5.75	5.75	5.75
Cheyenne Roll — Flower Carved....	10.75	8.50
Double Ring Rigging.....	3.75	3.75	3.75	3.75
Cincha No. 16 VST				
(See Footnotes)	6.00*	6.00*****
Flank Cinch — 2 Buckle (Wide) with Lined and Stitched Sheath	18.00
Flank Cinch — 2 Buckle (Wide)	15.00
Flank Cinch — 2 Buckle (Standard 2 in.).....	9.00	9.00
Stamping on Flank Billets.....	3.00	3.00
Quilted Seat.....	18.00	18.00
Square Skirts (Includes Carving)	30.00	20.50	16.50	12.00
Stirrup Leather Buckles.....	4.75
Leather Covered Stirrups.....	24.00	21.00	18.00
Silver Trim (Includes Fed. Tax)	48.90
TOTAL PRICE as Equipped.....	\$466.40	\$357.10	\$266.60	\$210.50

(*) No. 16 VST Cincha lists at \$8.50. Less value of Standard Cincha at \$2.50.

(**) Standard Cincha is furnished and included in Base Price of saddle.

Any stamp No. from No. 154 up in price includes lining of jockeys and fenders.

This table illustrates the considerable price range of all Visalia model saddles.

Although The Troy Fort and other models are made to the most popular specifications, many an experienced rider has his own views regarding his tree and other fittings. Send in your own sketches and measurements and we will give you **exactly** what you prefer. Do not overlook this important feature of Visalia's personalized service.

THE CUTTING HORSE

SADDLE No. 5000



SPECIFICATIONS

- | | |
|--|---|
| Tree — DZ. | Rigging — $\frac{7}{8}$ Double, D. E. Walker. |
| Fork — 13 in. | Flank Cincha — Standard 2 Buckle. |
| Horn — 3 in. high; $3\frac{1}{2}$ in. head. | Stirrup Leathers — 1 Pce. Wyoming Half Double. Full forward. |
| Cantle — 3 in. Cheyenne Roll. | Stamp No. — 1054 Flower Carved. |
| Seat — Rough-Out $\frac{3}{4}$ Quilt. | |

Here is a saddle designed for a specific purpose — for use on the increasingly popular Cutting Horse. Especially designed bars of the tree — with the stirrup leather slots cut forward of the normal position, plus the flat plate leather rigging — eliminate all interference to the stirrup leathers, providing the maximum forward swing so necessary in a satisfactory cutting horse saddle. The slightly undercut fork, rough-out quilted seat, and the 3-inch, well-dished cantle provide a seat that is easy to stay down into . . . A new "D. E. Walker" which we are proud to add to our distinguished line . . .

No. 5000 — Stamp No. 154	\$303.60
No. 5000 — Stamp No. 1054 (As shown)	271.60
No. 5000 — Stamp No. 1079	261.60
No. 5000 — Plain or Rough-Out	225.00

THE BANTAM

SADDLE No. 1079



Saddle No. 1079 — Here is a saddle that has been one of our most popular sellers for many years — a saddle with a tried-and-true reputation for serviceability and all around usefulness. Constructed on our LL tree, with 12½-inch fork, 3-inch x 3-inch horn, 3-inch cantle, ⅜ ring rig, and our attractive **No. 1079** Flower Carved Stamp. The medium-swell fork, medium height cantle and short round skirt combine to make this a beautifully balanced outfit warranting the consideration of those who desire a good looking, general utility outfit.

No. 1079 — Stamp No. 154.....	\$250.60
No. 1079 — Stamp No. 1079 (As shown).....	208.60
No. 1079 — Stamp No. Basket.....	193.00
No. 1079 — Plain or Rough-Out.....	175.00

THE NEVADA

SADDLE No. 472



SPECIFICATIONS

Tree — 11-HH.

Fork — 11 in.

Horn — 3½ in. high; 3 in. head.

Cantle — 3½ in.

Rigging — ⅝ Ring.

Stirrup Leathers — Regular 2 Piece Full Double, with Twist.

Skirts — California Round.

Stamp No. — 1580 Acorn Carved.

We show this particular saddle to illustrate a number of the old-style features that are still popular in many sections of the country today. These include, notably: The steep-slope horn cap; steep-sloped fork; the 8-string seat; 2-piece fenders; the regular twist, full double stirrup leathers; and the full "California Round" skirts. This saddle can be furnished in various width forks, which in the 9-inch, is known as the old favorite — "The 3-B Slick Fork" — commonly known as the old **Visalia Tree**. Naturally, it is understood that this saddle may be ordered with any changes desired, which is true of all **Visalia** models.

No. 472 — Stamp No. 1079	\$213.10
No. 472 — Stamp No. 1580 (As Shown).....	197.50
No. 472 — Stamp No. Basket	197.50
No. 472 — Plain or Rough-Out.....	179.50

HEADSTALLS BREAST COLLARS MARTINGALES



No. 36678 Headstall — Hand sewn round leather. Drop piece and trim of Sterling silver, beautifully hand engraved.....**\$105.49**
Bit No. 402 — Visalia Humane Bit with No. 10S Sterling silver conchas.....**\$34.90**

• BREAST COLLARS •

(Below) A fine-fitting, roping breast collar that will not choke a horse down. Made from No. 1 California oak-tanned skirting leather and other top quality materials.

No. 1 — Plain, unlined.....**\$10.00**
No. 2 — Basket stamp, unlined..... **11.00**
No. 3 — Stamp No. 1079, unlined... **13.00**
No. 3X—As shown, Stamp No. 1079 with Sterling silver conchas..... **47.50**
 (All prices include Federal Excise Tax)

No. 3X

Our headstalls, breast collars and martingales, as well as reins and other bridle equipment, are hand made by master craftsmen, using Sterling silver and the finest of leathers and other materials. This equipment is unconditionally guaranteed against defects of any kind.

We show here a number of standard items normally carried in stock. When ordering any item, please specify whether it is to be used on an animal that varies greatly from the average 950 to 1150-lb. horse. Please also indicate the color of the equipment desired.

We call special attention to our unique custom-made service, outstanding in our field, through which we can provide exactly what you want in either plain or silver mounted equipment.

No. 550 Headstall (Center below) $\frac{5}{8}$ in. Double and stitched skirting leather; $1\frac{3}{4}$ in. nickel silver conchas. In russet or black**\$13.50**

No. 80 Headstall (Right below) $\frac{5}{8}$ in. Sewn-round skirting leather. $1\frac{3}{4}$ in. nickel silver conchas. Available in russet or black**\$7.75**

No. 550

No. 80



HEADSTALLS

No. 240 — (Upper left) Sewn round. Sterling silver trim. $\frac{3}{8}$ x $\frac{3}{4}$ in. ferrules. $1\frac{1}{4}$ in. concha buckles. $\frac{3}{8}$ in. bridle buckles\$35.00

No. 21 — (Upper right) $\frac{3}{8}$ in. wide doubled and stitched. Fine hand carved. Light weight. Trimmed with 1 Buckle and 1 Pair Screw Studs. Nickel silver or Sterling.

No. 21SL (Shown) Nickel silver ... \$12.50

No. 21S Sterling silver 17.46

No. 102 — (Lower left) $\frac{3}{8}$ in. wide doubled and stitched. Plain, select skirting leather. Sterling silver trimmed\$35.00

No. 18 — (Center below) Fine sewn, full-round, with $1\frac{3}{4}$ in. nickel silver conchas.

With noseband as shown\$13.50

Without noseband 10.00

No. 5440 — (Lower right) Beautifully hand-tooled leather with scaled sizes of No. 20S hand engraved Sterling silver conchas and horseshoe pattern Sterling silver buckles. A bridle of unusual distinction\$81.80

(Where applicable, prices include Federal Tax)

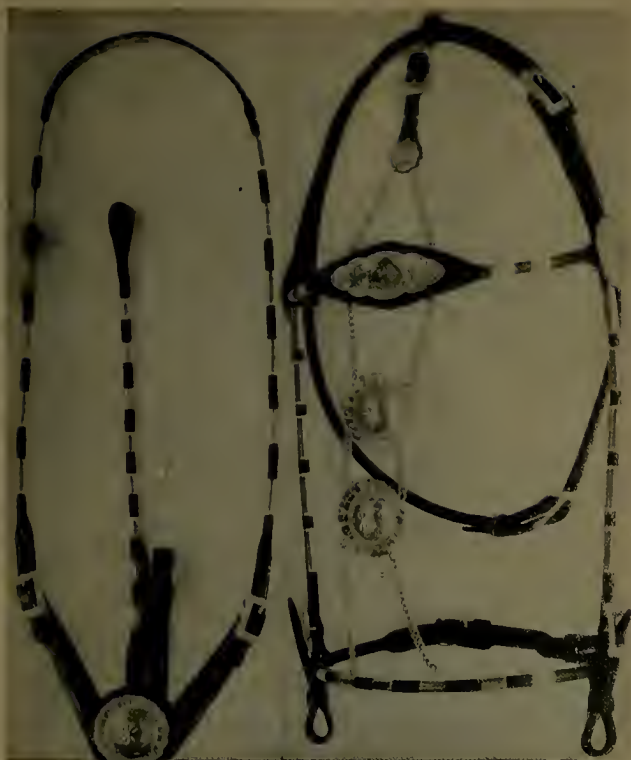
No. 21 SL
HEADSTALL



No. 18 HEADSTALL

◀ No. 102 — One of our most popular silver mounted bridles.

No. 5440 (Above) True distinction in a moderately priced bridle.



SILVER MOUNTED HEADSTALLS & MARTINGALES

No. 246X Headstall — As shown	\$110.09
No. 246X Headstall — Less Drop Piece	75.71
No. 246X Headstall — Add for matching noseplate	1.35
No. 246 Martingale — As shown	65.93
No. 8 Reins (Matching) — Shown on Page 13	18.77

(Federal Excise Tax included in above prices)

The equipment shown above is one of our outstanding and most popular silver mounted outfits for either parade or fine dress riding. Made of selected, sewn-round russet or black skirting leather; trimmed with Sterling silver ferules ($\frac{3}{8}$ in.), conchas (2 in. on bridle and $2\frac{1}{4}$ in. on drop piece), browplate and buckles. Bridle and martingale — with No. 8 reins shown on Page 13 — are a perfectly matched set, especially adapted for use on a horse with well-shaped head, since they in no way detract from the natural beauty of the animal. We invite inquiries for fine outfits custom made to your own individual design.

FINE SILVER MOUNTED SADDLES

Visalia has long been known for its individualistic silver mounted outfits. The combination of our skilled leather artisans and the operation of our own silver shop — with expert silversmiths — makes it possible for us either to make specially designed silver, or to put together outstanding decorative combinations utilizing our many varied concha designs.

Naturally, depending upon the amount of silver ornamentation and type of hand carving desired, there is a wide variation possible in the final price of an outfit. We shall be only too glad to submit to you photos of various outstanding silver mounted saddles we have made, and, either duplicate the one of your choice, or design one especially styled to your personal requirements. Price is always important, so it is well to keep in mind that in many cases, small changes in specifications frequently result in worthwhile savings.

In case you are considering the purchase of a fine silver mounted outfit, we invite you to take advantage of **Visalia's Custom-Made Service** by giving us the opportunity to submit sketches, pictures and quotations. On the opposite page are shown a number of our ornaments of standard designs, all of which can be installed on any saddle, with the exception of corner plates which should be made from actual patterns of the saddle corners on which they are to be installed.

EL CABALLERO — SADDLE No. 440



SPECIFICATIONS

- Tree** — DZ, 13 in. Fork.
- Horn** — 3 in. High; 4 in. Head.
- Cantle** — 2½ in. Cheyenne Roll.
- Rigging** — ¾ D. E. Walker.
- Stirrups** — 3-in. with Arabian Taps.
- Stamp No.** — 159 Flower Carved.

Silver — ¾-in. Horn Cap. No. 440 shoulder and corner plates. Cheyenne Roll Plate with ½-in. No. 80S Conchas. No. 80S string conchas, 1½, 1¾ and 2-in. No. 80S nail conchas, ¾-in. Stirrup Bolts, 1½-in.

A saddle of unusual beauty at a moderate price. The refinement of the heavy Sterling silver corner mountings with their unique scroll edges; the simplicity and perfection of design in every detail from the narrow black border to the tastefully-trimmed **Visalia Grandee** stirrups and silver cantle binding make this an extremely desirable saddle for the man who wants something out of the ordinary.

No. 440 — Stamp No. 159 (As shown) — **\$850.00**



PANEL 1

PANEL 2

PANEL 3

Panel 1 — (Top left) 20S Loop or rivet concha. (Center left) 10S Loop or rivet concha. (Lower left and right) Matching plain and rope strap plates. (Top right) 210 String concha. (Center right) 200 String concha. Panel 2 — (Top) Horn Cap. (Bottom) 50-HH Saddle corner plate. Panel 3 — (Top) Cheyenne Nameplate with concha bolts. (Center) Diamond Nameplate. (Bottom) Diamond Concha.

STERLING SILVER SADDLE TRIM
CONCHAS, ENGRAVED — PRICES ARE PER PAIR

Cat. No.	1/2 in.	5/8 in.	3/4 in.	7/8 in.	1 in.	1 1/4 in.
No. 20S	\$1.55	\$1.70	\$2.50	\$3.10	\$3.76	\$4.92
No. 10S	5.40
No. 210	4.14
No. 200	4.80

Cat. No.	1 1/2 in.	1 3/4 in.	2 in.	2 1/4 in.	2 1/2 in.	2 3/4 in.	3 in.
No. 20S	\$6.30	\$7.80	\$ 9.24	\$10.80	\$12.48	\$14.28	\$16.20
No. 10S	6.96	8.58	10.20	11.88	13.74	15.72	17.82
No. 210	5.22	6.72	8.46
No. 200	6.28	8.10	10.14

HORN CAPS — ENGRAVED

2 in.	2 1/4 in.	2 1/2 in.	2 3/4 in.	3 in.	3 1/4 in.	3 1/2 in.
\$9.72	\$10.32	\$10.92	\$11.52	\$12.12	\$12.72	\$13.32
For Silver Horsehead or Steer Head — Add Extra.....						\$1.00
For Gold Horsehead or Steerhead — Add Extra.....						4.50
For Engraved Initials — Add Extra per Initial.....						.78

SADDLE CORNER PLATES — No. 50 H.H. — PER PAIR

Front Jockey.....	\$21.60	Front Skirt.....	\$28.80
Back Jockey.....	28.80	Back Skirt.....	36.00
Rosaderos.....	31.20	Taps.....	28.80

CONCHA STIRRUP BOLTS — PER PAIR (Brass Bolts and Washers)

	1 in.	1 1/4 in.	1 1/2 in.	1 3/4 in.
No. 60 (No. 20S Conchas).....	\$5.94	\$7.08	\$ 8.88	\$10.38
No. 65 (No. 10S Conchas).....	7.14	8.52	10.68	12.48

NAMEPLATES — ENGRAVED

Cheyenne — With 1/2 in. Concha Bolts as shown.....	\$10.80
Diamond — 1 3/4 x 4 1/4 in., Without Initials (Shown).....	7.20
Diamond — 2 1/2 x 4 1/4 in., Without Initials	10.20
Scroll Banner — Size to Fit Your Cantele.....	30.00 to 35.00
ROPE STRAP PLATES — (Shown Panel 1, Bottom) 2 x 2 1/2 in., Per Pair.....	\$13.80

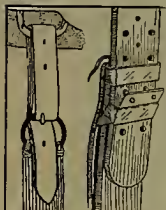
DIAMOND CONCHAS and many other special shapes. Available on order. Sized to meet your requirements. Prices on application.

WE MAKE A SPECIALTY OF FITTING BOTH OLD AND NEW SADDLES WITH SILVER BINDINGS, FRONTS, CANTLES, ETC. PRICES DEPENDING UPON INDIVIDUAL REQUIREMENTS.



CINCHAS Hand made hair or mohair in various assorted colors and choice of style of cinch rings. Visalia quality cinchas — of the finest raw mohair and hair — have been prized throughout the West for the past 80 years. Std. 5 in. wide x 28 in. long. Other sizes to order.

- No. 16 VST — (Shown above) Bronze or Nickel Rings.....\$8.50*
- No. 16 VSC — (Shown above) Cadmium Rings..... 7.40*
- (Above numbers — without tongues — 40 cents less)
- No. 6 VSB — Flat rings, center bars and tongues; bronze or nickel..... 8.70*
- No. 10 VSB — Flat bronze or nickel rings..... 9.75*
- No. 17 VSC — Factory cord mohair, 3 bars, Cadmium rings..... 3.25
- (*) Priced without tassel. With tassel.....\$1.00 Extra



FLANK CINCHAS

Made with highest quality materials and expert workmanship. Unlined.

	Plain	Roller Stamped	Flower Carved
Std. 2-Buckle — 2 in. wide skirting leather.....	\$ 8.15	\$ 8.15	\$12.50
Wide 2-Buckle — 2 in. billets, 5 in. tapered cinch.....	12.00	12.00	14.00
Latigo Lined — Add extra.....	2.50	2.50	2.50

LATIGOS

Highest quality chrome tanned Calif. latigo.

- No. L-10 — 1¾-inch\$2.15
- No. L-20 — 2-inch 2.40
- HALF BREED LATIGOS — No. HBL-20, 2-inch..... 2.00

DOUBLE BILLETS

Offside. No. 1 Skirting Leather.

	1¾-in.	2-in.
Plain.....	\$2.80	\$2.90
Roller Stamped.....	2.90	3.00
Flower Stamped.....	4.60	4.75
Double and Stitched Latigo Leather.....		1.50

AL RAY STIRRUP BUCKLES

Specify 2½ or 3 inch.

- Per Pair, Galvanized\$2.75
- Per Pair, Stainless 3.50

BLEVINS STIRRUP BUCKLES

3 inch width.

- Per Pair, Stainless\$4.50

STIRRUPS

1½-3 In. Over 3 In.

- No. 20 — Hand sewed skirting leather — 1½ to 3 In. Less Conchas.
 - Plain.....\$18.00
 - Basket Stamp..... 20.00
 - Flower Carved — Stamp No. 1079..... 22.50
 - Flower Carved — Stamp No. 154..... 27.50
- No. 1 — Heavy Stainless Nickel Silver..... 12.50 \$15.00
- No. 3 — Galvanized Bound. Bell Bottom..... 4.75 5.50
- No. 30 — Hand laced. No. 1 Skirting Leather..... 12.50 14.25
- No. 2 — Visalia Type. Galvanized bound..... 4.00 4.75



No. 20

No. 1

No. 3

No. 30

No. 2

REINS

No. 8 — Silver mounted 7 ft. reins (see cut). Russet or black. Hand sewn. 14 Sterling ferrules $5\frac{1}{2}$ x $3\frac{1}{4}$ in. Matches No. 246 Martingale and 246X Headstall, Page 9\$18.77

No. 50 — Hand braided roping rein (8 ft.). Finest Calif. Latigo with Conway Buckle ends. Shown at far right.
 $\frac{3}{8}$ in.\$2.50 $\frac{3}{4}$ in.\$3.00

No. 40 — Standard reins of best quality skirting and latigo leathers. 7 ft. with nickel buckles; hand sewn loops.

Widths	Skirting	Latigo
$\frac{3}{8}$ in.	\$2.70	\$2.00
$\frac{1}{2}$ in.	3.25	2.15
$\frac{5}{8}$ in.	3.90	2.35
$\frac{3}{4}$ in.	4.00	2.60
$\frac{7}{8}$ in.	4.30	2.85
1 in.	4.75	3.00
$1\frac{1}{4}$ in.	5.15	3.25

No. 60 — Standard Roping Rein. 8 ft. with Conway Buckles
No. 1 Latigo..... $\frac{1}{2}$ in.\$1.50 $\frac{3}{4}$ in.\$1.80

RAWHIDE REINS — Hand braided of the best quality rawhide; made to the **Old Visalia Standards** so long known in the West.

No. 70 — Rawhide — 4 plait.....\$20.00
No. 90 — Rawhide — 6 plait.....25.00
No. 100 — Rawhide — 8 plait.....30.00

BOSALS AND HACKAMORES

Visalia bosals and hackamores are hand braided with evenly matched strings of best rawhide handled in the old manner, thus assuring natural life and flexibility. Rawhide cores furnished unless cable is specified. No. 1 Latigo headpiece.

No. B1 — Bosal; pencil size.....8 plait.....\$ 8.50
No. H1 — Hackamore, light ($\frac{5}{8}$ in.).....8 plait.....13.50
No. H2 — Hackamore, medium ($\frac{3}{4}$ in.).....8 plait.....14.50
No. H3 — Hackamore, heavy ($\frac{7}{8}$ in.).....8 plait.....16.50

HAIR AND MOHAIR ROPES

Hand carded and braided from raw mohair and genuine horsehair in assorted colors, complete with end tassel. These are hard-twisted ropes that will give long service.

No. 70 — Mohair, 16 ft. \$5.50 **No. 80** — Hair, 16 ft. \$5.50
No. 71 — Mohair, 22 ft. 8.00 **No. 81** — Hair, 22 ft. 8.00

RAWHIDE REATAS All rawhide, hand scraped. Braided and pulled in the old-time fashion. The very finest reata that money can buy. Light, medium and heavy. 4-Strand. Lengths as ordered.....\$1.00 per Foot

LARIAT Plymouth's Silk Manila. The old favorite wherever roping is done. Top yacht grade.

$\frac{3}{8}$ in. — 27 Thread.....\$0.09 $\frac{1}{2}$ per Foot
 $\frac{3}{8}$ in. — 30 Thread......10 per Foot
 $\frac{1}{2}$ in. — 33 Thread......11 per Foot

No. B1 BOSAL

No. 70 and No. 71

No. H2 HACKAMORE



(Left above) Our No. 8 silver mounted reins are the ultimate in fine quality for the discriminating rider. See Page 9 for matching equipment.

(Right above) For fine quality at moderate cost it is impossible to beat the No. 50 Roping Rein.

VISALIA HUMANE BITS

PATENTED

**THE PERFECT ANSWER FOR A CORRECTLY BALANCED,
NON-PINCHING, LOOSE-JAWED BIT**

Combination of patented offset hinge points and swivel joint at bottom bar permits jaws to swivel freely without pinching.

Copper alloy cricket assures your horse a moist mouth condition . . . Sturdy, dependable construction from non-rusting steel alloy. Highly polished finish — beautiful, durable, practical, and humane!

These bits are available with or without conchas, plain or engraved cheeks, or silver overlaid engraved cheeks. Three mouthpieces available. Photo shows stock bit with standard half-breed style mouthpiece.



BIT No. 415 ▸

No. 415 — This attractive Visalia Humane Bit, with standard, stock mouthpiece, is decorated with one pair of 2½ in. and one pair of 5⁄8 in. No. 20S Sterling Silver Conchas and is silver overlaid and hand engraved.

\$51.60

ALTERNATE MOUTHPIECES

Where not shown as standard equipment, low-port, high-port and spoon-spade mouthpieces may be obtained at slight extra cost as indicated. At right is shown (Above) standard polo mouthpiece at \$1.00 extra; and (Below) spoon-spade mouthpiece at \$4.00 extra.



POLO BIT



This bit with cheeks having 4 leverage points is preferred for young, tender-mouthed horses. (No. 500.)

STOCK BITS

- No. 414** — Same as 415 but not overlaid.....\$35.00
- No. 410** — Silver conchas with plain cheeks..... 32.50
- No. 404** — With 1 Pr. 2½ in. nickel conchas.... 24.50
- No. 400** — Without conchas..... 24.00

POLO BITS

- No. 502** — With 1 Pr. 2½ in. Silver Conchas...\$32.50
- No. 501** — With 1 Pr. 2½ in. Nickel Conchas.... 24.50
- No. 500** — Plain (As Shown)..... 24.00

EXTRA QUALITY BITS

"SILVERLITE" • LIGHT • STAINLESS • DURABLE

VISALIA CUTTING HORSE—Short shanks, low half-breed port. Copper roller. Loose-jaw. Engraved conchas. Plain \$12.50
Engraved 16.50

EL TORO — Loose jaw. Choice of low port (shown), regular half-breed, or spade (\$5.00 extra) mouthpieces. Plain \$20.00
Engraved 25.00
Silver Overlaid 42.00*

SANTA BARBARA — Popular old stand-by Early California Spanish pattern. A spade bit of most satisfactory design. Plain \$30.00
Engraved 35.00
Silver Overlaid..... 60.00*



CUTTING HORSE

EL TORO

SANTA BARBARA

* Federal Excise Tax included.

HAND MADE • SILVER OVERLAID AND INLAID

One of our specialties — hand made to your order — are bits of the finest quality and workmanship. Your choice as to design; mouthpiece; plain steel or stainless; plain, silver overlaid or inlaid; to your specification.

The graceful **No. 704 Bit** (shown at left) is one of many patterns available. Silver overlaid and engraved. Complete with 2½-inch Sterling Silver Conchas. \$55.72



VISALIA BIT No. 704

KELLY HACKAMORE BIT

No. 1007 — One of the newest hackamore bits and also one of the most effective. Made with a leather-covered steel cable nose band. Made of light-weight steel. Graceful design. Popular with many of the best ropers \$11.95



EXTRA FINE SPURS

PLAIN • SILVER OVERLAID AND INLAID



No. 199 — THE TOOTS MANSFIELD ROPING SPUR

Visalia carries in stock a wide assortment of the best models and many styles and types of spurs by leading manufacturers, including **Crockett, Kelly, Colorado, North & Judd**, etc. Among the most popular are the following three stock numbers, although we invite you to write us concerning any other models you may have in mind . . .

No. 199 (Shown above) — A spur designed for the great roper, Toots Mansfield, one of today's biggest sellers. Ideal $1\frac{3}{4}$ in. roping shank and perfect-fitting $\frac{7}{8}$ in. band. 1 in. rowel. Raised overlay.....\$11.00

No. 422 — The Jerry Ambler Bronc Spur. Plain stainless. Swinging buttons. $1\frac{1}{2}$ in. band; $1\frac{3}{4}$ in. shank; $1\frac{1}{8}$ in. 5-pt. rowel with extra pair.....\$12.50

No. 440 — Kelly Ladies' and Youth lightweight, swinging button. Engraved Nickel silver overlay. $\frac{1}{2}$ in. band; $1\frac{3}{4}$ in. shank; 5-pt. star rowel.....\$9.00

CUSTOM-MADE TO YOUR DESIGN . . .

Or from one of our numerous patterns — Visalia custom spurs are the finest money can buy. Greatest attention is given to details of balance and finish. Custom spurs may be ordered plain, engraved, silver overlaid and engraved, or silver inlaid with blued steel. Choice of band, shank, rowel and buttons . . . Authentic reproductions of the old California Spanish blued steel spurs with inlaid silver (See No. 87 below) range from \$36.00 to \$75.00*. Silver overlaid spurs, such as No. 603, range from \$42.00 to \$65.00*. Please specify **Men's** or **Ladies'** and size of boots when ordering.

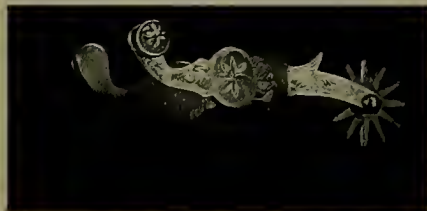
(*Federal Excise Tax Included)

No. 87 (At the Right)

A spur of unusual distinction. Blued steel, Sterling silver inlaid and engraved.

\$42.60

(Federal Tax Included)



No. 603 (At the Left)
Stainless steel with Sterling silver overlay. Hand engraved.....\$51.00



JUSTIN L6271
and **F6271**

JUSTIN N9201
and **R9201**

JUSTIN
R1110

JUSTIN
L5218

JUSTIN BOOTS

L6271 and F6271 — Made with Brown Kid Tops, 10 in. for women, 12 in. for men. Lustrous brown calf vamps. Full leather lined. Hand lasted. Narrow square toes.
L6271 (Ladies') — 1½ in. heel. Special women's last. 4 to 8 C.....\$30.75
F6271 (Men's) — 2 in. heel. 6 to 12 D..... 32.00
N9201 and R9201 — An old-time favorite. 1-piece 12 in. brown kid tops. Brown calf vamps. Full leather lined. Hand lasted. Roomy round toe.
N9201 (Ladies') — 1½ in. heel. Special women's last. 4 to 8 C.....\$30.00
R9201 (Men's) — 1½ in. walking heel. 6 to 12 D..... 32.00
R1110 — A real work boot with Black Retan leather vamps and tops. 1½ in. heel and round toe. Men's sizes 6 to 12 D. **12-in. Tops**.....\$22.50 **14-in. Tops**.....\$25.00
L5218 (Ladies') — Soft brown kid vamps and 10 in. tops. 1½ in. heel. Medium square toe. Plenty of service in this easy-feeling boot. 4 to 8 B and C.....\$25.75

HYER BOOTS

4837L (Ladies') — Burgundy kid vamp and leg. 4 rows of stitching and stitched vamp. 11 in. top. 1¾ in. heel. Medium square toe. 5 to 8 C.....\$35.00
4533 (Men's) — Brown dress calf vamp. Brown patent leg. Calf heart tip and scab. 4 rows of stitching. 12 in. leg. Medium square toe. Walking heel. 7 to 11 D.....\$36.50
2270B (Men's) — Brown American calf vamp; 12 in. kid leg. 1½ walking heel. Standard square toe. A medium-weight extra-duty work boot. 6 to 12 D.....\$26.50

ALL HYER BOOTS shown may be ordered in any width, style of toe and height of heel. Choice of 11 in. or 12 in. tops in Men's, and 10 in. or 11 in. tops in Women's at no extra charge. A charge of \$1.00 will be made for any other changes . . . We offer **Hyer's Custom Made Boots** in any style or type — guaranteed to fit — at an extra charge of \$1.50 over the list price of any model.

204 Child's (Kirkendall Make) — Fine brown kip with varied white inlays. Leather lined. Square box toe. Medium heel. **Sizes 10-2 D**.....\$9.45 **Sizes 2½-6 D**.....\$11.60

We carry a large selection of Children's boots in varied color combinations. Please indicate preference when ordering.



HYER
4837L

HYER
4533

HYER
2270B

KIRKENDALL
204



THE YEARLING



THE JUNIOR COWBOY



THE FIESTA

STETSON... FIRST CHOICE FOR WESTERN HEADWEAR OF DISTINCTION

STETSON JUNIOR COWBOY — A real honest-to-goodness Stetson Western for style-minded small fry. 5¾ in. crown. 3 in. pre-rolled brim. Color: Silver Belly and Brown...\$7.50

THE YEARLING

The new, popular, pre-rolled brim in a 3½ in. width, with raw edge, 5¾ in. crown and matching 3 cord band, silk lining.

No. 60 — 3X Quality. Color: Silver Belly\$20.00

No. 61 — Nutria Quality. Color: B. Belly\$17.00

THE AMARILLO

A genuine hand woven "Panama" by Stetson. An excellent light, cool hat for summer. Pre-shaped crown, 3½ in. brim, gro-grain 6 cord ribbon band. Color: Natural.

No. 102 — The Yearling, pre-creased flat crown (Not Shown).....\$10.00

THE SAN FRAN

The ever popular all purpose hat — 6¼ in. crown, 3½ in. brim, 3 cord band.

No. 12S — 7X Quality. Color: Silver Belly\$55.00

No. 155 — 3X Quality. Colors: Silver Belly, Sky Grey and White.....\$20.00

No. 18S — Nutria Quality. Colors: B. Belly and Brown.....\$17.00

THE FIESTA

Stetson's new Ladies' Western Style. A heavy bodied hat, same weight as men's. Made with a 5¾ in. pre-creased crown, slightly rolled 3½ in. raw edge brim, braided leather chin strap, stamped leather band.

No. 70L — 3X Quality. Color: Silver Belly\$20.00

THE RANCHER

One of Stetson's newest. A slightly open rolled 3 in. brim, 6 in. crown and a 3 cord band.

No. 1175 — 3X Quality. Colors: Silver Belly and Sky Grey.....\$18.00

No. 1165 — Nutria Quality. Colors: B. Belly, Brown and Black.....\$15.00

THE OPEN ROAD

The stockman's dress hat. 5½ in. silk lined crown, 2¾ in. bound edge brim, 3 cord band. One of Stetson's best in two colors: Silver Belly and Sky Grey.

No. 50 — 3X Quality\$16.50

No. 501 — Royal De Luxe Quality 12.50

(Center)

THE RANCHER

(Below)

THE SAN FRAN



THE OPEN ROAD



VISALIA'S FRONTIER CLOTHES

MEN'S FRONTIERS

No. 4710 — H&C all wool fine Cavalry Twill. Double seat. Beige ..	\$21.50
No. 4910 — H&C stockmen's dress trouser. 100% wool. Single seat. Beige. An outstanding value in Western dress wear ..	21.00
No. SJ4910 — H&C frontier jacket for Western dress wear. Matches trousers No. 4910. 100% wool. Zipper front. 2 slash pockets ..	25.00
No. 4712 — Hard finish. Part wool Cavalry Twill. Single or double seat. Dark beige color ..	12.50
No. 4600 — H&C Twist Gabardine. 100% Wool. A new gabardine of finest quality. Single seat. Pastel shades of Tan, Green, Blue ..	19.25
No. MJ 4600 — Matching jacket for No. 4600. Same material and colors. Button front. Medium length frontier style ..	22.50
No. 4715 — H&C heavy cotton gabardine. Sanforized. Easily washed. Double seat. Tan ..	8.75
No. 4915 — H&C — Same as No. 4715, except, Single seat ..	7.95

LADIES' FRONTIERS

No. 4750 — H&C all wool Cavalry Twill. Double seat. Colors: Beige, Grey-Beige, and Light Blue.....	\$18.50
No. 4950 — H&C — Same as No. 4750, except, Single seat ..	16.75
No. 4750A — H&C All Wool Cavalry Twill Ladies' Jacket to match No. 4750 and No. 4950. Beautifully tailored with braided leather buttons. A short jacket perfect for riding or dress. Beige or Light Blue ..	20.00
No. 14600 — H&C All Wool Twist Gabardine. A new gabardine of finest quality. Single seat. Pastel shades of Tan, Green, Blue ..	17.50
No. SJ 14600 — H&C All Wool matching Ladies' Jacket for No. 14600. A perfect short jacket for riding and dress. Leather buttons ..	20.00
No. 4753 — H&C Mercerized, Sanforized combed cotton gabardine. Double seat. Tan ..	7.50
No. 4953 — H&C — Same as No. 4753, except, Single seat ..	6.75

BOYS' FRONTIERS

No. 4960 — H&C 65% Wool Fine Cavalry Twill. Single seat. Tan ..	\$11.75
No. SJ 4960 — H&C 65% Wool Matching Jacket to No. 4960. Tan ..	15.00
No. 4760 — H&C Mercerized, Sanforized combed cotton gabardine. Tan. Double Seat ..	6.25
Single Seat ..	5.40

LEVI WAIST OVERALLS

No. 501 — Men's. Waist sizes 30 to 42 ..	\$ 3.45
No. 502 — Men's. Waist sizes 44 to 48 ..	3.75
No. 503B — Boys'. Waist sizes 27 to 29 ..	3.25
No. 503A — Boys'. Waist sizes 18 to 26 ..	3.05
No. 5299 — Ladies'. Sanforized; front zipper ..	3.95

LEVI DENIM JUMPERS

No. 506B — Boys'. Sizes 26 to 32 ..	\$ 3.35
No. 506 — Men's. Sizes 34 to 44 ..	3.70
No. 506E — Men's. Sizes 46 to 48 ..	3.90
No. 9297 — Ladies'. Sizes 12 to 20 ..	4.25

No. 331 LADIES' LEE RIDERS — 8-oz. Sanforized denim. Buttons. 12-20	\$ 3.35
No. 101J LEE DENIM JUMPER — Heavy 11½-oz. Sanforized shrunk. Form-fitted. Sizes 34 to 44 ..	4.50
No. 101LJ LEE DENIM LINED JACKET — Same as No. 101J, lined ..	6.95



(Above) No. 6000 Men's No. 7200 Men's No. 2702 Ladies'
 (Below) No. 7201 Men's No. 2500 Boys' No. 2971 Ladies'

LEVI WESTERN SHIRTS

No. 6000 Men's — Levi's De Luxe Label. Extra quality, 100% wool. One of the finest medium weight shirts available. Soft Shadow Plaids in: Maroon, Green, Brown or Grey. Also, 5shadow 5stripes in: Maroon, Green, or Grey.....\$10.75

No. 2702 Ladies' — An excellent dress shirt of fine corded Madras. Two-point yoke and pockets. Form fitting. Genuine pearl snaps. Sanforized. Colors: Grey, Brown, Blue, Green. Ladies' sizes 12 to 20.....\$6.15

No. 5702 Men's — Same as No. 2702. Men's sizes 14 to 17..... 6.95

No. 2971 Ladies' — Block plaid. Sanforized cotton. An easily-washed, lightweight shirt. Pearl snaps. Assorted in bright colors. Ladies' sizes 12 to 20.....\$4.95

No. 2500 Boys' — Attractive 2-tone fine cotton twill. Self-piped. Sanforized. Contrasting shank buttons. Colors: Maize and Brown; Grey and Maroon; Blue and Dark Blue; Tan and Brown. Boys' sizes 4 to 12.....\$3.25

No. 7200 Men's Work Shirt — Fine Western denim. Washable. Sanforized. With pearl snaps. A finely tailored, form-fitting, heavy duty shirt. Sizes 14 to 17.....\$6.25

No. 4205 Ladies' Work Shirt — Same as No. 7200. Ladies' sizes 12 to 20..... 4.95

No. 7201 Men's Work Shirt — Light blue Chambray. Two-point pocket and yoke. Metal snaps. Hard to beat for everyday shirt. Men's sizes 14 to 17.....\$3.95

No. 8201 Boys' Work Shirt — Same as No. 7201. Boys' sizes 4 to 12..... 3.25

No. 8202 Boys' Work Shirt — Denim. Metal Snaps. Boys' sizes 6 to 18..... 3.95

TEM-TEX SHIRTS —

MATCHING PAIRS

No. 437 (Shown at right) — Sanforized woven cotton chambray. Fine weave. Gambler stripe. Genuine pearl snaps. Colors: Teal Green, Gray.

No. 437 (Men's) 14 to 17.....\$6.95

No. 437L (Ladies') 12 to 20..... 6.95

No. 217 — Special woven heavy weight rayon cord; hand washable. Same pattern as No. 437 shown. Colors: Brown, Gray.

No. 217 (Men's) 14 to 17.....\$10.95

No. 217L (Ladies') 12 to 20..... 10.95

No. 221 — Same material and pattern as No. 217 except the Gambler Stripe is twice as fine. Hand washable. Colors: Nickel (Gray with Red Stripe), and Wine. Exceptionally smart, new colors.

No. 221 (Men's) 14 to 17.....\$10.95

No. 221L (Ladies') 12 to 20..... 10.95

No. 445 — Fine line Sanforized woven cotton cord. Genuine pearl snaps. Rich dark colors in solid Brown or Green with fine stripe. Style at moderate cost.

No. 445 (Men's) 14 to 17.....\$8.35

No. 445L (Ladies') 12 to 20..... 8.35



FINE BUCKSKIN HANDBAGS



No. 900 (Shown) Hand laced, genuine buckskin in all the beauty of its natural tan finish. $11\frac{1}{2} \times 8$ in. adjustable for over the shoulder wear. Zipper pocket. Unusually smart and distinctive. A bag you'll be proud to carry . . . Including Federal Excise Tax.....\$29.40

No. 946 (Not shown) Ladies' pouch purse, draw string style. Also of genuine tan buckskin in 8×8 in. size. Dark brown rayon lining and leather pocket. Incl. Federal Tax.....\$25.80

CUSTOM SERVICE — Send in your own deerskins, either tanned or untanned and have them made up into beautifully styled jackets, bags and gloves. We will be glad to quote prices on anything you might have in mind.

RIDING GLOVES

We carry what we believe is the finest made buckskin riding glove on the market today. True to size and beautifully styled. Natural buck.

Ladies' (Sizes 6 to 8)..... \$4.95

Men's (Sizes 8 to 11)..... 5.95

Boys' (Sizes 6 to 10)..... 3.95

Special gauntlet gloves, silver mounted gloves and gloves for posse groups priced upon application.



HAND LACED MOCCASINS

Our popular "Ponies" — California styled moccasins — are always in vogue with the younger set. Made of luxurious brown suede with tops of unborn calf. Hand laced with white latigo leather. Sturdy one-piece rubber sole and heel for wearability.

No. 1004 — Children's (10 to 2)..... \$4.45

No. 1007 — Ladies' and Youths' ($4\frac{1}{2}$ to 8)..... 4.95





CHILD'S No. 6924



MEN'S No. 6030

FINE BUCKSKIN JACKETS

No. 6924 (Children's) — Though low in price this garment for the small fry is as carefully and painstakingly made as the other fine buckskin jackets listed on this page. Made of selected, sueded deerskin, light in weight, but tough enough to give long wear. Patch pockets. Both front and back yokes fringed. Sleeve outseams fringed. Lustrous rayon lined throughout. Button front. Available in Autumn Gold color only.

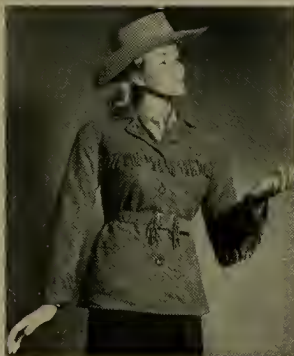
Children's Sizes 4-8.....\$10.00
 Children's Sizes 10-14..... 13.95

No. 6155 (Men's) (Not shown) — This is a plain zippered coat of the very finest genuine deerskin. A jacket of all-around serviceability for the man who wants the luxurious softness and comfort of deerskin, but who does not want a fringed garment.

Styled with wide plait in back below yoke. Take-up straps are a feature of the waist while the front is closed with a sturdy zipper. Deep inset pockets are serviceably lined with long-wearing fabric. Length overall, 28 inches. Men's sizes 38 to 48. Stocked in brown only. A value at.....\$42.50

No. 6030 (Men's) — This beautiful buckskin jacket combines the old frontiersman's coat with modern styling to make a most attractive garment. Length including fringe 28 inches. Front closed with five buttons, including one at throat. Sizes 38 to 48. Natural cream color in stock, Brown on special order.....\$45.00

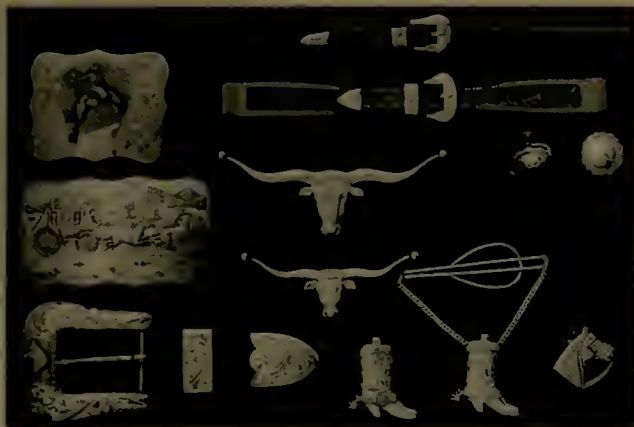
No. 6061 (Ladies') — In Women's styling this jacket is the complementing and matching number to No. 6030 (Men's) and has worlds of charm, comfort, serviceability and style appeal. Front closed with four buttons and double leather sash type belt with fringed ends. Patch pockets trimmed with fringe. Length including fringe is 28 inches. Women's sizes 32 to 40. Natural cream color stocked. Brown color available on special order.....\$42.50



LADIES' No. 6672 SUEDED DEERSKIN

No. 6672 (Ladies') — A lightweight sueded deerskin jacket of unusual durability (shown at lower left). Fringed across the back and front yokes and down the outseam of sleeves. Front closed with five buttons, including one at throat. All-around belt with adjustable buckle. Belt edges trimmed with overcast stitching. Jacket lined with excellent quality lustrous rayon. This outstanding value in casual Western jackets has all the distinction and style of garments of much higher price range. Overall length 26 inches. Women's sizes 32 to 42.

Choice of Colors — Jacket 6672 is available in **Forest Green, Sumac Red and Autumn Gold**. When ordering, please specify color including second choice color in case stocks of preferred colors are out. Only.....\$22.50



HAND ENGRAVED SILVER ACCESSORIES

(Prices Include Federal Excise Tax)

No. 305 Buckle (With figures, Bucking Bronc, Horsehead or Silver Initials). $2\frac{1}{2} \times 1\frac{7}{8}$ in. — Sized for $1\frac{1}{2}$ in. belt (Shown upper left).....	\$14.70
With Gold Overlaid Figures.....	21.42
No. 400 Buckle — Stage Coach — $3\frac{1}{2} \times 1\frac{7}{8}$ in. — Sized for $1\frac{3}{4}$ in. belt.....	15.00
With Gold Overlaid Coach and Horses.....	30.00

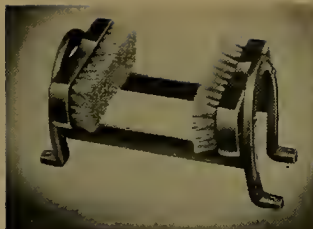
BUCKLE SETS

No. 108B (Lower left) — 1 in. Size — With gold overlaid horsehead.....	\$18.48
No. 108A — 1 in. Size. Same as 108B — But with gold overlaid horsehead and flowers.....	33.60
No. 108 — Varied sizes. With engraved initial space.....	Priced Below
Rope Buckle Sets. Varied Sizes. No. 108 Pattern, Rope Edged.....	Priced Below

Belt Size —	<u>$\frac{1}{4}$ in.</u>	<u>$\frac{3}{8}$ in.</u>	<u>$\frac{1}{2}$ in.</u>	<u>$\frac{5}{8}$ in.</u>	<u>$\frac{3}{4}$ in.</u>	<u>$\frac{7}{8}$ in.</u>	<u>1 in.</u>	<u>$1\frac{1}{4}$ in.</u>
No. 108	\$5.10	\$6.60	\$6.90	\$7.80	\$ 9.00	\$10.80	\$11.40	\$14.40
Rope Sets	7.55	7.80	8.80	11.90	13.80	15.90	20.40	

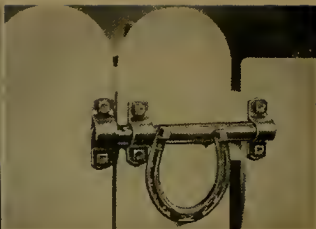
(Prices on Gold Overlaid Initials and special designs furnished on request.)

No. 52 Hat Band — $\frac{1}{4}$ Round Leather. $\frac{3}{4}$ in. Buckle Set (Shown Top Right).....	\$ 3.84
No. 3 Watch Band — Hand Carved. $\frac{7}{8}$ in. Buckle Set (Shown).....	9.40
No. 4 Watch Band — Ladies' Hand Carved. $\frac{7}{8}$ in. Buckle Set.....	9.50
No. J19 EARRINGS with	
No. 20S Conchas. Per Pair.....	<u>$\frac{1}{2}$ in.</u> <u>$\frac{5}{8}$ in.</u> <u>$\frac{3}{4}$ in.</u> <u>1 in.</u>
	\$3.00 \$4.20 \$5.40 \$6.60
No. J9 Steer Head — Thimble or Pin. Gold Tips. $3\frac{3}{4}$ in.....	\$ 5.20
No. J12 Steer Head — Thimble or Pin. Gold Tips. 3 in.....	4.80
No. J7 Cowboy Boot — Thimble or Pin (Shown).....	6.00
No. J7 Cowboy Boot — Thimble or Pin (Gold Overlaid Spur Strap).....	8.52
No. J21 Cowboy Boot — Tie Slide with Chain (Shown).....	10.50
No. J21 Cowboy Boot — Same as above with Gold Overlaid Spur Strap.....	12.66
No. J18 — Horsehead Scarf Thimble or Pin, Medium (Shown).....	4.20
No. J22 — Horsehead Scarf Thimble or Pin, Large.....	5.95



HORSESHOE BOOT SCRAPER

Keeps the mud outside. Brushes shoes and scrapes the soles. Horseshoe design is ornamental as well as symbolic of good luck.....\$5.45



LUCKY LATCH

A practical latch with self-locking feature. All hardware of heavy gauge. Standard 00 shoe. Drilled for padlock. Blk. Enam. or Grey prime coat.....\$2.50

SADDLE BLANKETS

GENUINE NAVAJOES — Hand loomed by the Navajo Indians with virgin tight weave in various designs. Amazing wearing qualities. Indicate color preference.

SINGLES — Approximately 30 x 30 in.....\$ 9.00 and \$12.00

DOUBLES — Approximately 30 x 60 in..... 17.00 and 20.00

KARAKUL — 100% pure hair of the Karakul sheep. Texture of wool, qualities of hair. An extra quality 2-fold, 3-lb. blanket. Colors: Dark shadow plaids of Red and Green. Solids: Black and Grey. Size: 30 x 30 in.....\$8.50

SHERIDAN — The popular old stand-by. 50% wool. Good quality. Long wearing. Blue with yellow stripes. No. 471 — Single 30 x 30 in.....\$3.30

No. 72 — Double 30 x 60 in.....\$6.50 No. 473 — Three-fold 28x81 in. 8.25

KING SWEAT PADS — A practical, loose-woven single hair pad. A perfect combination with a good top blanket. Easily washed. 28 x 28 in.....\$3.50

HORSE BLANKETS

No. 196 Sheet — Extra quality hosed duck. Bound around and down back; extra reinforcement at neck and breast; English brace at shoulders; 2 surcingles; sewed strap. Washable fast colors. Kelly Green, White trim; Wine, Gold trim; Blue, Gold trim. Size 68...\$9.25 Size 72...\$9.35 Size 76...\$9.50

No. 601 — Lined Blanket. Heavy Twill; printed lining. Same specifications as No. 196. Size 72..\$13.50 Size 76..\$14.25 Size 80..\$15.00

No. 115 — Genuine Baker — For over 50 years the superior lined blanket of special woven plaid fabric. Grey-Blue Plaid.

Size 72..\$25.50 Size 76..\$26.50

SPECIAL ORDERS — For other colors, 2 to 3 weeks. Block letters 45c each.

VISALIA HAND MADE SADDLE CORONAS

Custom-made. Leather-backed. Details on application.....\$52.50

Unconditional Guarantee

WE UNCONDITIONALLY GUARANTEE every article in this catalog to be exactly as represented, and we will replace or adjust to your complete satisfaction any article which proves to be defective.

Our VISALIA Saddles are definitely guaranteed to be free from inferior materials or doubtful workmanship, against hurting any average horse's back, and against breakage when roping or under everyday working conditions.

Highest Quality • Greatest Value • Complete Satisfaction

VISALIA STOCK SADDLE COMPANY

General Information

TERMS — Prices shown in this catalog are strictly net cash. Full amount of purchase price, plus applicable sales taxes, should accompany the order (In California, add 3% State Sales Tax). When full amount is received with order, we pay the postage on all items except saddles. A deposit of 25 per cent is required on all custom-made orders, including saddles.

C.O.D. SHIPMENTS — Where it is impractical for full payment to accompany order, C.O.D. shipments will be made when partial payment is received.

PRICES — Subject to change without notice. Should prices decline at any time, merchandise will be shipped at the then reduced price and the difference refunded to you. Our prices on items not listed or shown herein are competitive.

HOW TO ORDER — When ordering saddles, furnish as complete information as possible, making reference to numbers shown on various models. Be sure to state size of tree desired, your height and weight . . . In ordering general merchandise, order by **Catalog Number and Name**. In a condensed catalog of this kind we can show only a limited selection of the many articles we carry in stock. Do not hesitate to inquire as to items not shown or listed. Keep in mind also our "custom-made" service on boots, shirts, jackets, and plain and silver-mounted equipment, etc.

SADDLE REGISTER — All Visalia saddles are individually numbered and stamped either in back of the cantle or on the near side skirt under the rigging as a protection against loss or theft. These numbers are also a satisfactory reference to use in ordering a new saddle. If you know of a saddle that meets most of your requirements, be sure to advise us of its number.

DELIVERY — Shipments made as promptly as possible, usually within 24 hours on merchandise in stock. Saddle orders require from 45 to 60 days. Because of widely varying costs of delivery, we do not prepay shipping charges on saddles. All other shipping charges are prepaid, as above under "Terms."

FEDERAL EXCISE TAX — Included (where applicable) in all prices.

Sheldon E. Potter — Owner-Manager

E. Johnson — Asst. Manager

K. Kauser — Mail Order Manager

Art Hill — Field Representative

Wade Warren — Shop Supt.



VISALIA

STOCK SADDLE COMPANY

2123 MARKET STREET
SAN FRANCISCO 14, CALIF.



Sec. 34.66, P. L. & R.
U. S. POSTAGE
PAID
San Francisco, Calif.
Permit No. 5426

California State Library
Sacramento
California