

362.2
Ie6kv

A VISIT TO THE ILLINOIS EASTERN HOSPITAL FOR
THE INSANE



Return this book on or before the
Latest Date stamped below.

University of Illinois Library

DEC -6 1954

DEC 20 1954

MAY -3 1955

NOV -9 1957

DEC 16 1958

JUN 10 1969



2.2
Il 6kv.

A Visit
To

THE ILLINOIS EASTERN HOSPITAL FOR THE INSANE,



THE largest Cottage Hospital system and one of the largest and best equipped hospitals in the world is located fifty-six miles due south of Chicago, on the banks of the picturesque Kankakee* River, just up stream from and adjoining the city of the same name.

Its grounds, comprising nearly a thousand acres, and including two miles of river frontage, are divided into park, garden and farm.

Its buildings—sixty and more—are located in the park portion of the grounds, consisting of about one hundred and sixty acres, and are arranged along walks and drives which are lined with trees and bordered with grassy lawns—each building or cottage being surrounded with a lawn. Trees and numerous beds of flowers also adorn the park.

The buildings comprise "The Centre," in which are located the offices, and in which the subordinate officers reside; two large buildings on the north for women and two corresponding ones on the south for men patients. Two infirm-

*Kankakee—Indian for "Beautiful Valley."

B4438

aries — hospitals for the bodily sick — one for each sex. Twelve cottages for men and ten for women, each with capacities ranging from thirty to one hundred and sixty patients. In the interior of the plat are located the boiler and engine houses, laundry, kitchens, bakery, bath house, hose house, shops of various kinds, storehouses, library and chapel. In addition to the above are the superintendent's residence, general dining-rooms, quarters or residences for employes engaged in other than the direct work of caring for the insane, workrooms, nightwatch house, supervisor's residence, farmer's residence, slaughter house, soap house, vegetable house, ice houses, barns, waterworks and tower, gas house, etc.

A little city in a park is the Hospital in fact. A city of nearly 2,500 souls, of which 2,100 are patients, and the remainder officers and employes. This little city has its own waterworks; its own gas works; its own stores; its own electric light plants; its own church; its own theater and amusement places; its own orchestra and band; its own fire department; its own circulating library and reading room; its own club house; its own park; its own walks and drives; its own pleasant nooks by the river side; its own stores, in which nearly everything is kept in stock and from which everything is issued under strict system; its own shops, in which repairing of all kinds and manufacturing of many kinds are carried on; its own laundry and bakery and slaughter house, each large enough to do the work of a city; its own ice barns, with a capacity of ten thousand tons; its own farm, gardens and dairy, and many other conveniences.

Its waterworks has a capacity of 5,000,000 gallons daily, and actually pumps from 1,000,000 to 2,000,000 gallons daily.

Its streets are lighted with arc electric lights and its buildings with both gas and incandescent electric lights.

Its officers and employes consist of a board of trustees, a superintendent, seven assistant physicians, a pathologist, three female and two male supervisors, one hundred and eighty nurses of the insane, besides many other employes engaged in general work.

Some idea of the magnitude of the operations carried on may be had from the following facts: fuel costs from \$60 to \$200 per day; 1,300 pounds of meat suffice only for one day; thirteen barrels of flour are used daily; three times as many meals are served daily in the forty dining-rooms of the institution as in the largest restaurant in Chicago. The cost of maintenance of the institution and patients is from \$350,000 to \$375,000 per year.

The various departments, each with its separate head, comprise medical, pharmaceutical, pathological, engineering, electrical, musical, carpentering, masonry, manufacturing, farm, garden, housekeeping, nursing, library, culinary, mending, repairing, laundry, stores and clerical — all subordinated, however, to the one great work of the Hospital, viz: the care and treatment of human beings afflicted with that form of disease of the brain known as insanity.

The patients vary in number from 2,000 to 2,100, and consist of all classes of mental disease and come from the northeast portion of the State, including the city of Chicago, which alone is represented by nearly 1,200 cases.

The aim of the institution is to provide the best *Hospital facilities* for the treatment of the acute insane, and the best *Asylum care* for the chronic insane that the appropriations made for its support will allow.





SOUTH WING.

CENTRE BUILDING.

NORTH WING.



CENTRE—FROM THE SOUTH.





NORTH WING—B AND C WARDS—WOMEN.



INTERIOR OF ONE OF B WARDS NORTH—VIOLENT WOMEN PATIENTS



SOUTH WING—"A" WARDS—MEN.



INTERIOR WARD A 2 SOUTH—MALE.



SOUTH WING—B AND C WARDS — MALE.



VIEW WEST ON SOUTH AVENUE.



VIEW NORTHEAST—GROUNDS—WATERWORKS.



VIEW FROM CENTRE TOWER, LOOKING NORTHEAST.



KANKAKEE RIVER.

VIEW SOUTHEAST FROM CENTRE TOWER.

SUPERINTENDENT'S RESIDENCE



SUPERINTENDENT'S RESIDENCE.

VIEW SOUTH FROM CENTRE TOWER.

PORTIONS OF PARK AND HOSPITAL GARDENS.



VIEW OF COTTAGES SOUTHWEST FROM CENTRE TOWER.

MEN'S COTTAGES.

BATH HOUSE AND FIRE TOWER.

MEN'S SHOPS AND BOILER HOUSE.

BAKERY AND REAR KITCHEN.

LAUNDRY.



VIEW OF COTTAGES, ETC., NORTHWEST FROM CENTRE TOWER.

EMPLOYEES' QUARTERS AND WOMEN'S SHOPS.

STOREHOUSES.

LIBRARY.

LAUNDRY.

COTTAGES FOR WOMEN.

BOILER HOUSE.

REAR KITCHEN.

CHAPEL AND AMUSEMENT HALL.



BOARD OF TRUSTEES.

HON. EDMUND SILL, PRESIDENT.

HON. J. W. ORR.

HON. F. D. RADEKE.

A. L. GRANGER, SEC'Y AND TREAS.



Clarke G. G. G.
Sept



SUPERINTENDENT'S OFFICE.

TENOGRAPHER, MISS NETTIE CARLTON.

DR. CLARKE GAPEN, SUPT.

PRIVATE SECRETARY, L. A. BEARD.



MEETING OF THE MEDICAL STAFF.

GEO. C. BOODY.

DR. A. L. WARNER, CHIEF OF STAFF.

DR. ISABEL M. DAVENPORT.

DR. DELIA H. HOWE.

DR. C. G. BUFORD.

DR. WM. G. STEARNS.

DR. C. H. BRADLEY.



PATHOLOGICAL LABORATORY, CENTRE TOWER.

DR. ADOLPH MEYER, PATHOLOGIST.



INTERIOR OF WARD A, 2, NORTH—FEMALE.



ONE OF THE COTTAGES—NO. 2, NORTH.





J. HAN. A. CO. PHOT. & D. S.

ONE OF THE COTTAGES—NO. 7, NORTH.





INTERIOR OF ONE OF THE COTTAGES—No. 6, NORTH.



INTERIOR OF BEDROOM — CONVALESCENT MALE COTTAGE.



PARLOR IN CONVALESCENT MALE COTTAGE—No. 1, SOUTH.



INFIRMARY FOR WOMEN.



INFIRMARY FOR WOMEN—INTERIOR.



INFIRMARY FOR MEN.

COTTAGE NO. 3, SOUTH.

COTTAGE NO. 1, SOUTH

FIRE TOWER.



INFIRMARY FOR MEN—INTERIOR.





LIBRARY.



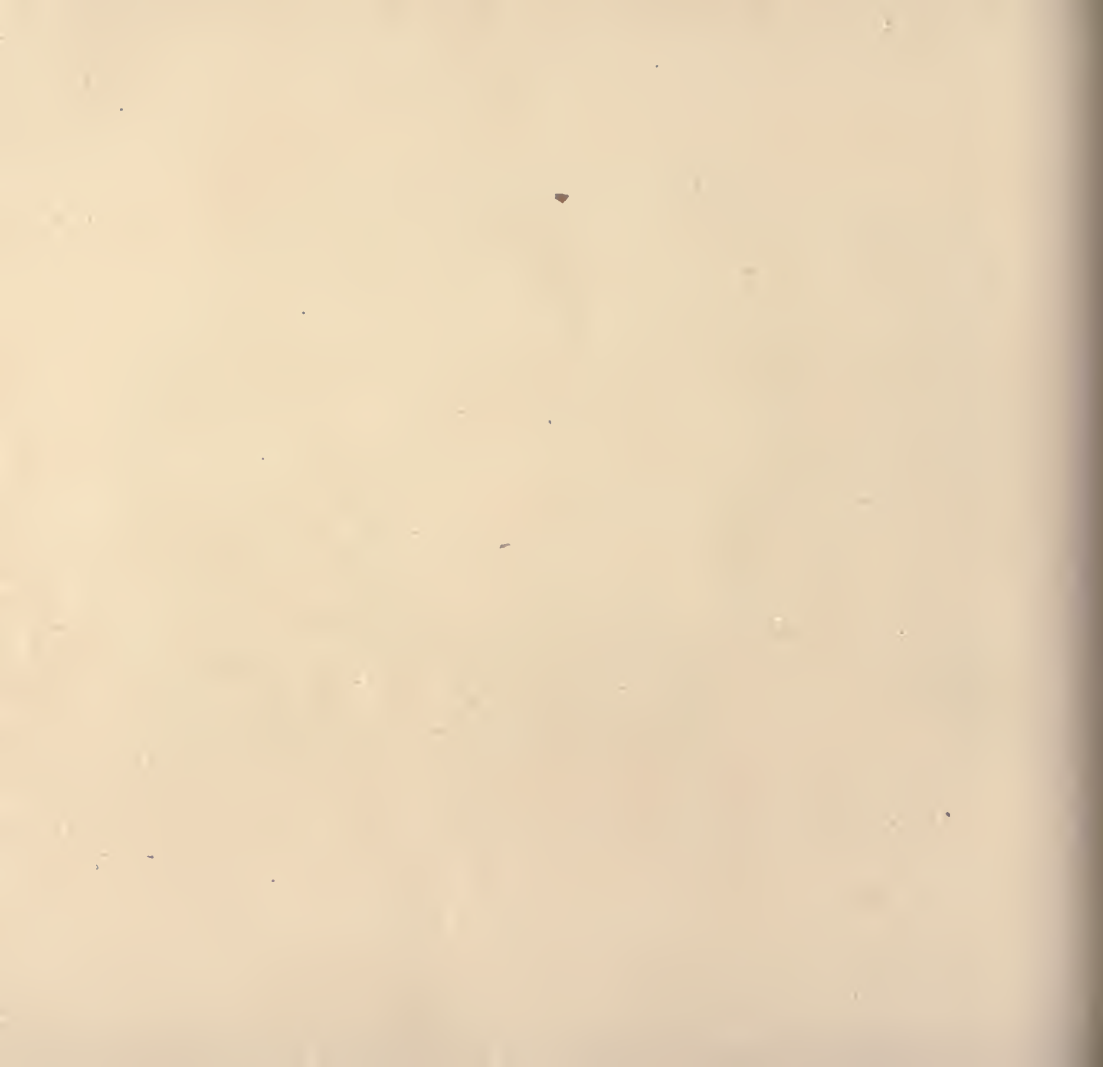


LIBRARY INTERIOR—READING ROOM.





INTERIOR OF COTTAGE NO. 5, NORTH—FOR WOMEN.





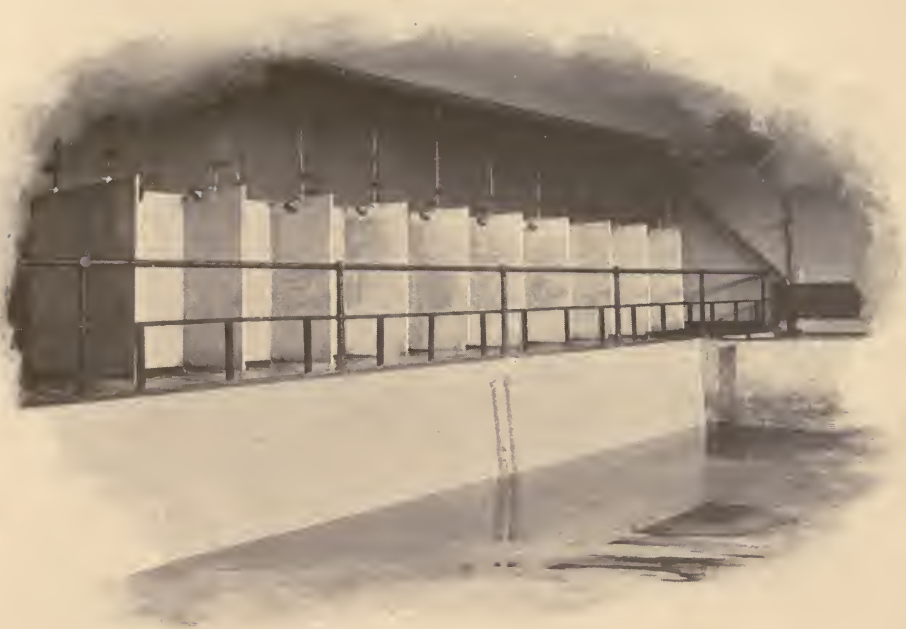
ILLINOIS EASTERN HOSPITAL BAND.
(COMPOSED ENTIRELY OF HOSPITAL EMPLOYES.)





FIRE TOWER AND BATH HOUSE.





BATH HOUSE—INTERIOR.

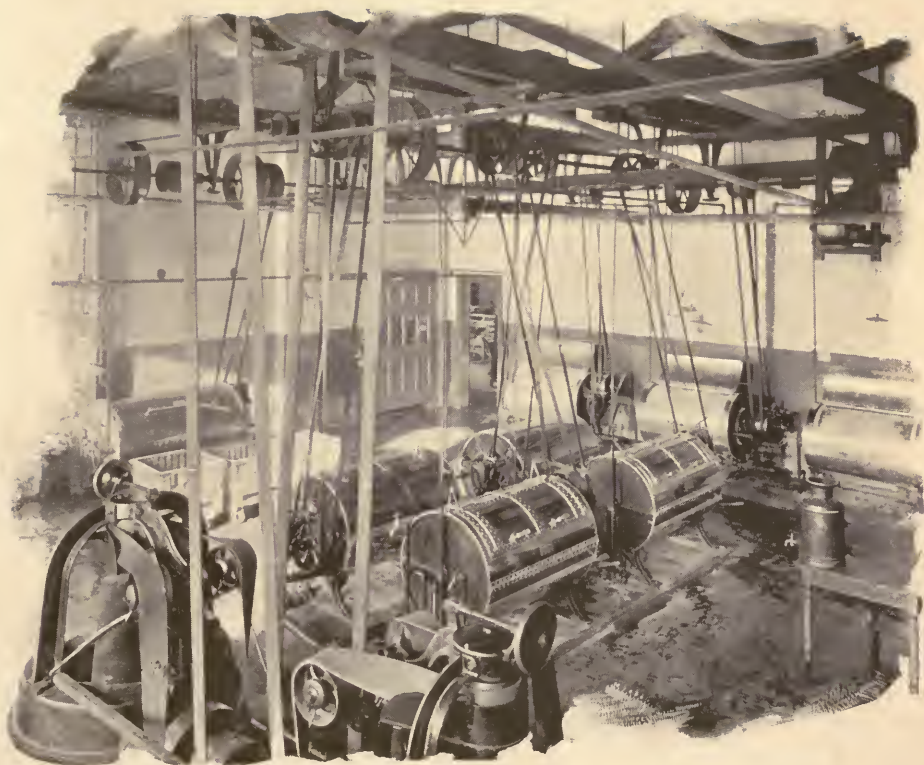
SHOWING SYSTEM OF SHOWER BATHS INVENTED BY DR. GAPEN. CAPACITY, 500 PATIENTS DAILY.
FILTERED WATER BATH AND PLUNGE.





INTERIOR FIRE-ENGINE HOUSE.





LAUNDRY INTERIOR.





INTERIOR REAR KITCHEN.

COOKING FOR 1,400 PERSONS DONE IN THIS KITCHEN DAILY.





INTERIOR MEN'S WORKSHOP.

TURNING, CARPET WEAVING, PRINTING, PICTURE FRAMING, HARNESS MAKING, MATTRESS MAKING, HAMMOCKS,
BRUSHES BROOMS, UPHOLSTERING, FURNITURE, SHOEMAKING AND REPAIRING,
WICKERWORK, BASKETS, SCROLLWORK, ETC.





SUMMER HOUSE—FRONT LAWN.

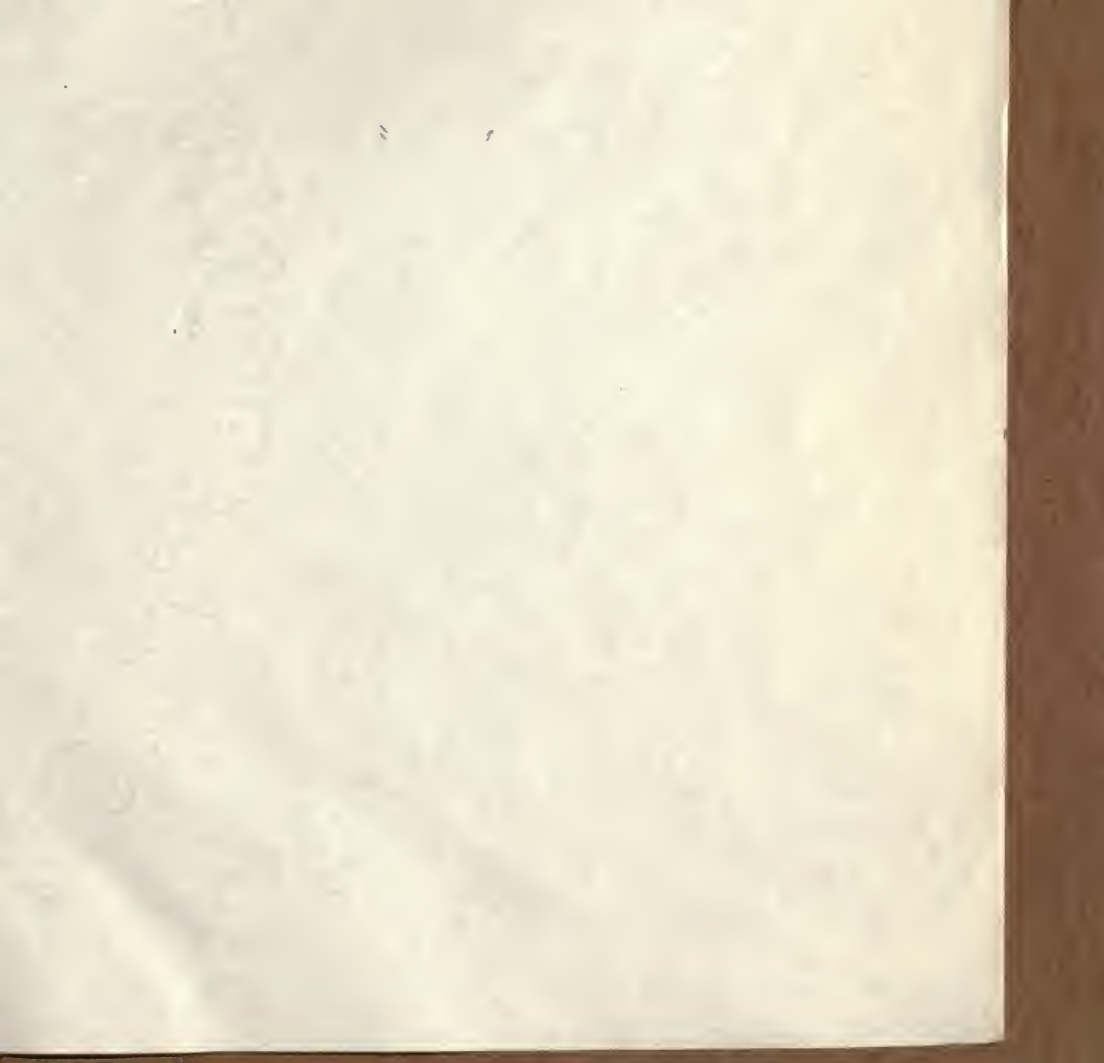














UNIVERSITY OF ILLINOIS-URBANA



3 0112 078704357