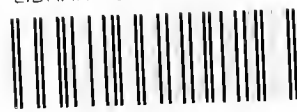


F 104
.W3 W28

LIBRARY OF CONGRESS



0 014 112 256 3

F 104

.W3 W28

Copy 1



Waterbury = Connecticut



WATERBURY, in the town of Middletown, was settled in 1674. Its early growth was rapid, and in the year of 1853, when it was incorporated as a city, it showed a population of only 2,180. Since that time its growth has been rapid, not only as a New England city, its present population being 10,000.

Waterbury is chiefly noted for the manufacture of brass goods for which it is one of the largest manufacturing centers in the country.

In addition to its brass manufactures, it has a variety of industries, which in their aggregate importance are possibly unequalled by any other city in the State.

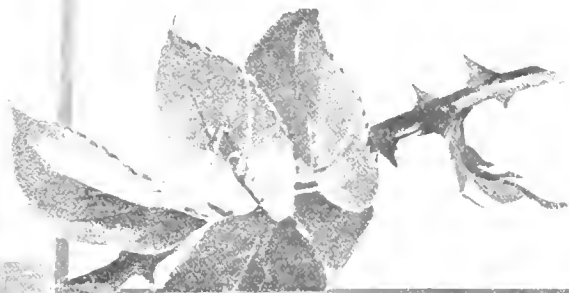
PUBLISHED BY L. H. NELSON, CORNER OF *Portland, Maine*
PUBLISHERS OF SOUVENIR BOOKS AND VIEWS OF PROMINENT CITIES AND SUMMER RESORTS

Copyrighted by L. H. NELSON 1897.



WATERBURY FROM HIGH ROCK

Waterbury is situated in the valley of the Naugatuck River and is nearly surrounded by hills from which fine views of the city and adjacent country may be obtained.



West Side

BANK STREET

East Side

As it looked before the Great fire of Feb. 3, 1902.





THE UNIVERSITY OF MICHIGAN

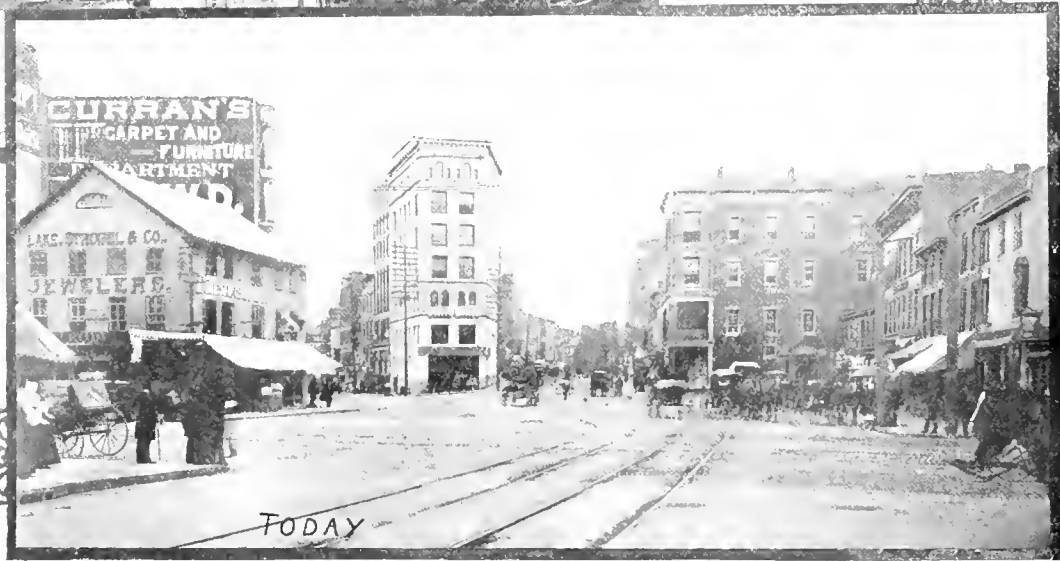
The picture
print with w

of the building
Ward

© 1910



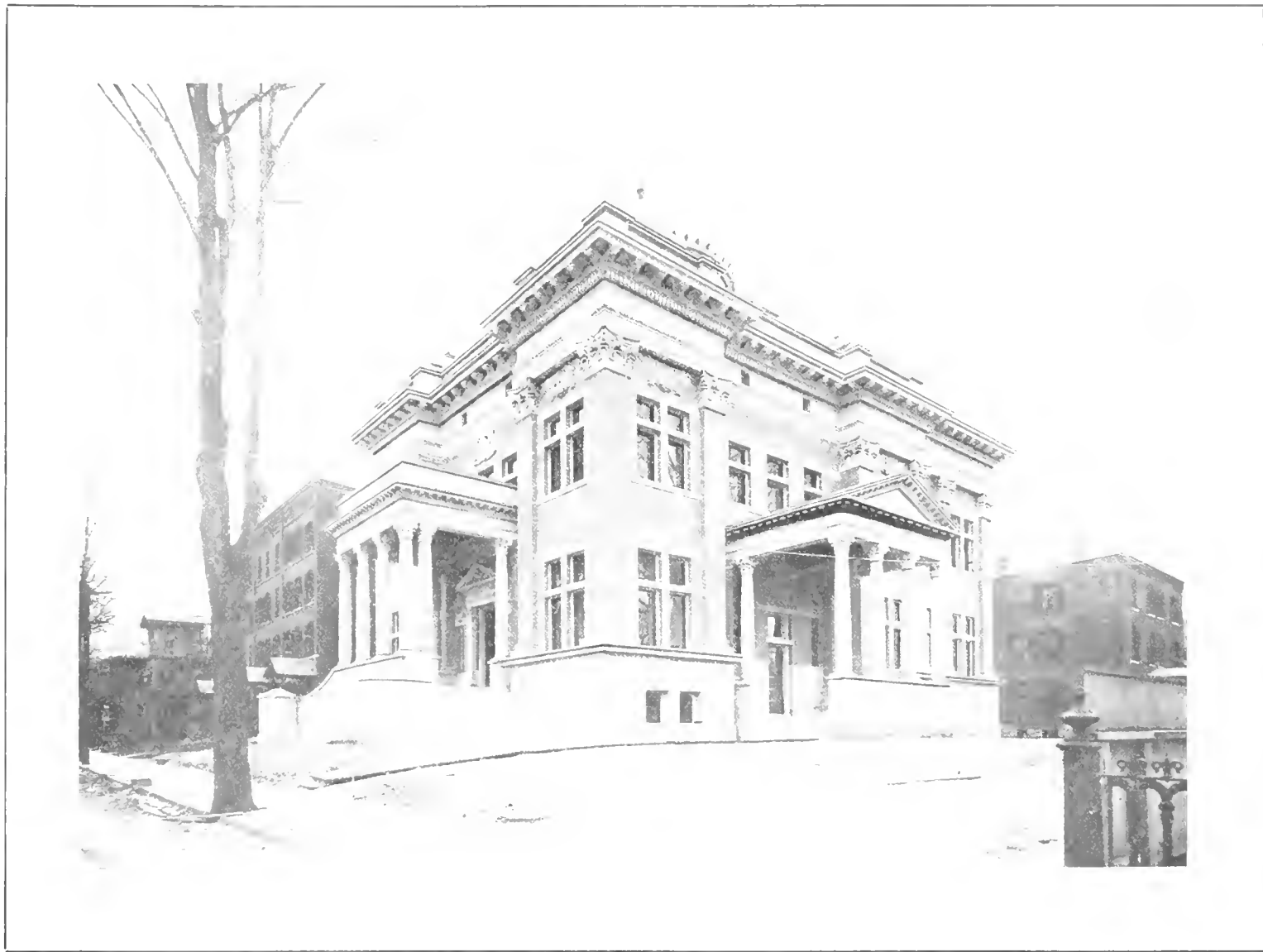
TWENTY YEARS AGO



TODAY

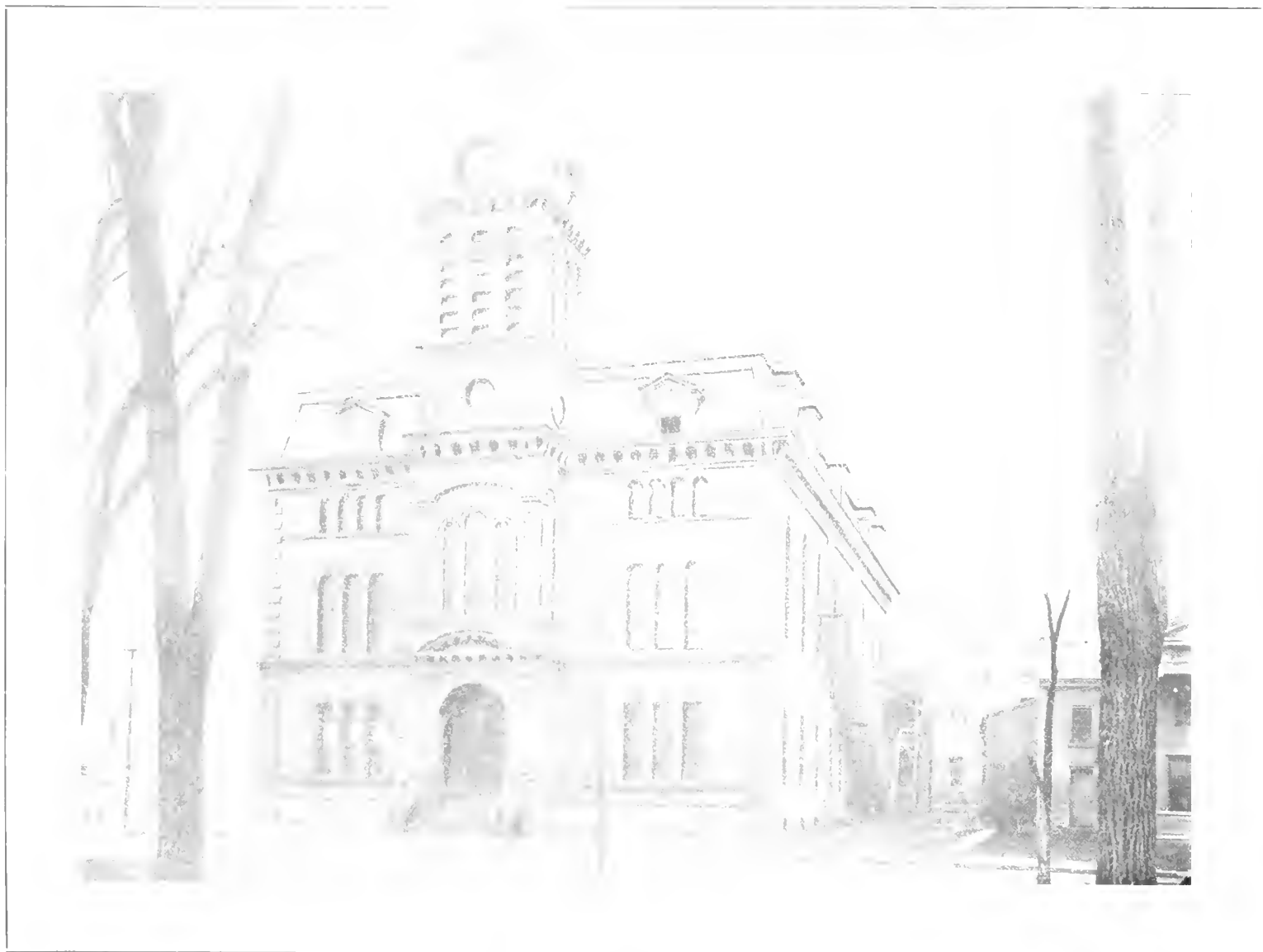
EXCHANGE PLACE

The principal change in the center is a splendid flat-iron shaped building erected and owned by the Apothecaries' Hall Company



THE COURT HOUSE

Situated on Leavenworth Street is, as the view shows, a fine piece of architecture.



Worcester, Mass.

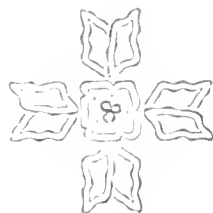
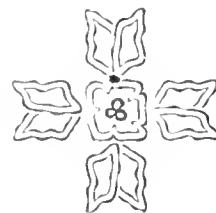
THE CITY HALL

1898-1900. Architect, George A. Wood.



THE SILAS BRONSON LIBRARY

This handsome and commodious building with its extensive grounds was the gift of Silas Bronson, one of Waterbury's most influential and public-spirited citizens.



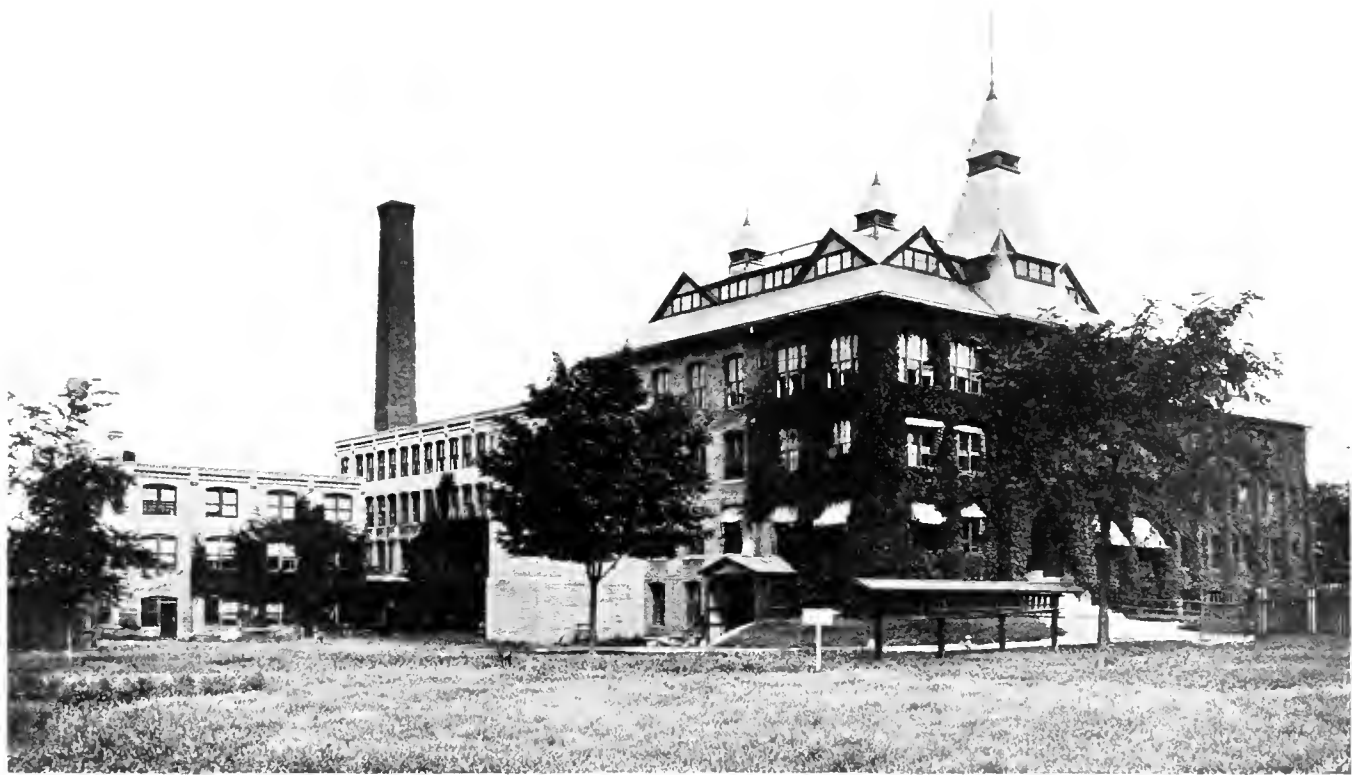
FLEMISH ROOM, THE ELTON

THE FOYER, THE ELTON



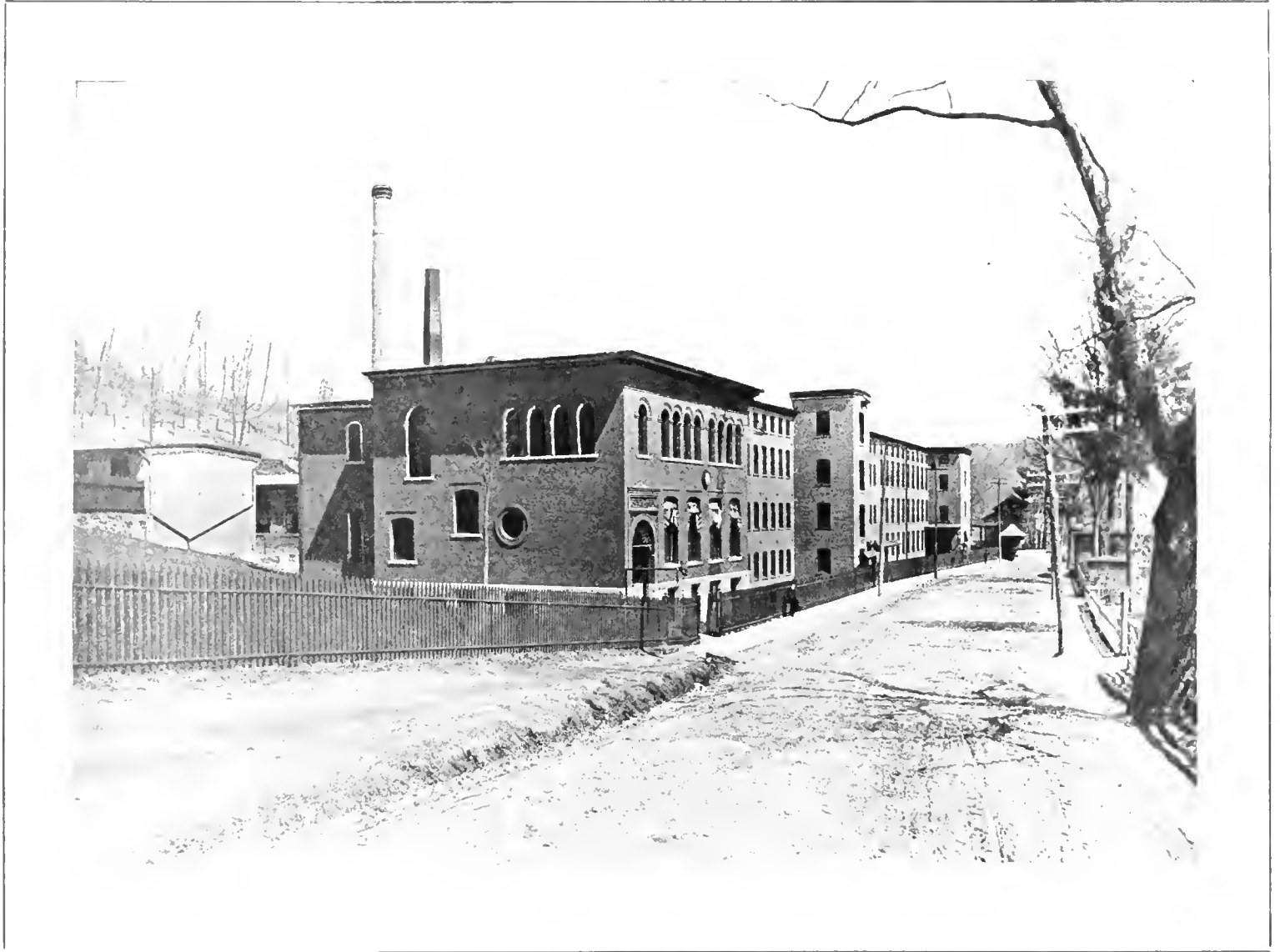
THE CITY

THE CITY OF NEW YORK, FROM THE BATTERY, LOOKING NORTH ALONG BROADWAY.



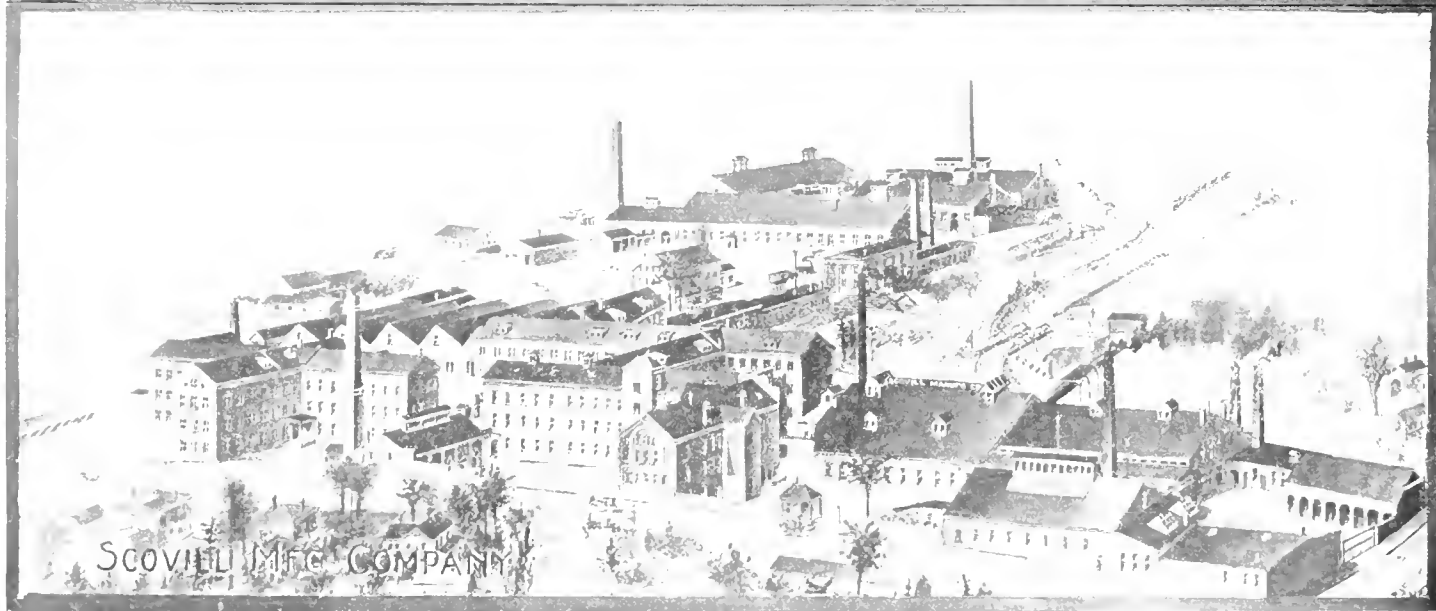
THE NEW ENGLAND WATCH COMPANY

Is the birthplace of the once famous "Waterbury Watch" of the long wind. That particular watch is no longer made but the company still prospers and is widely known for the time pieces it manufactures.



THE OAKVILLE PIN COMPANY

Is the life of Oakville, a suburb of Waterbury. This company manufactures a marvelous quantity of common pins and other small wares.

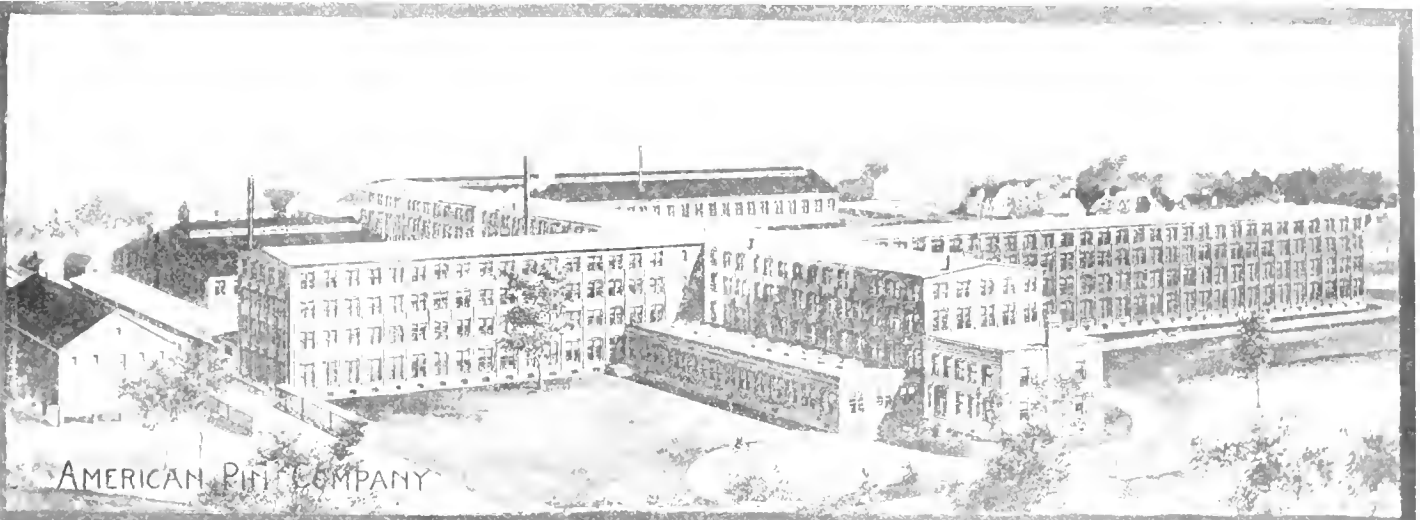


THE WATERBURY CLOCK COMPANY

OF THE WORLD OF THIS CLASS. It is one of the largest clock exporters in the United States.

THE SCOVILL MANUFACTURING COMPANY

OF THE WORLD OF THIS CLASS. It is one of the largest clock exporters in the United States. As in the large variety of its products are coin blanks for the manufacture of medals and coins, the Scovill Mfg. Co. in particular, other important items do not appear in this book because of the

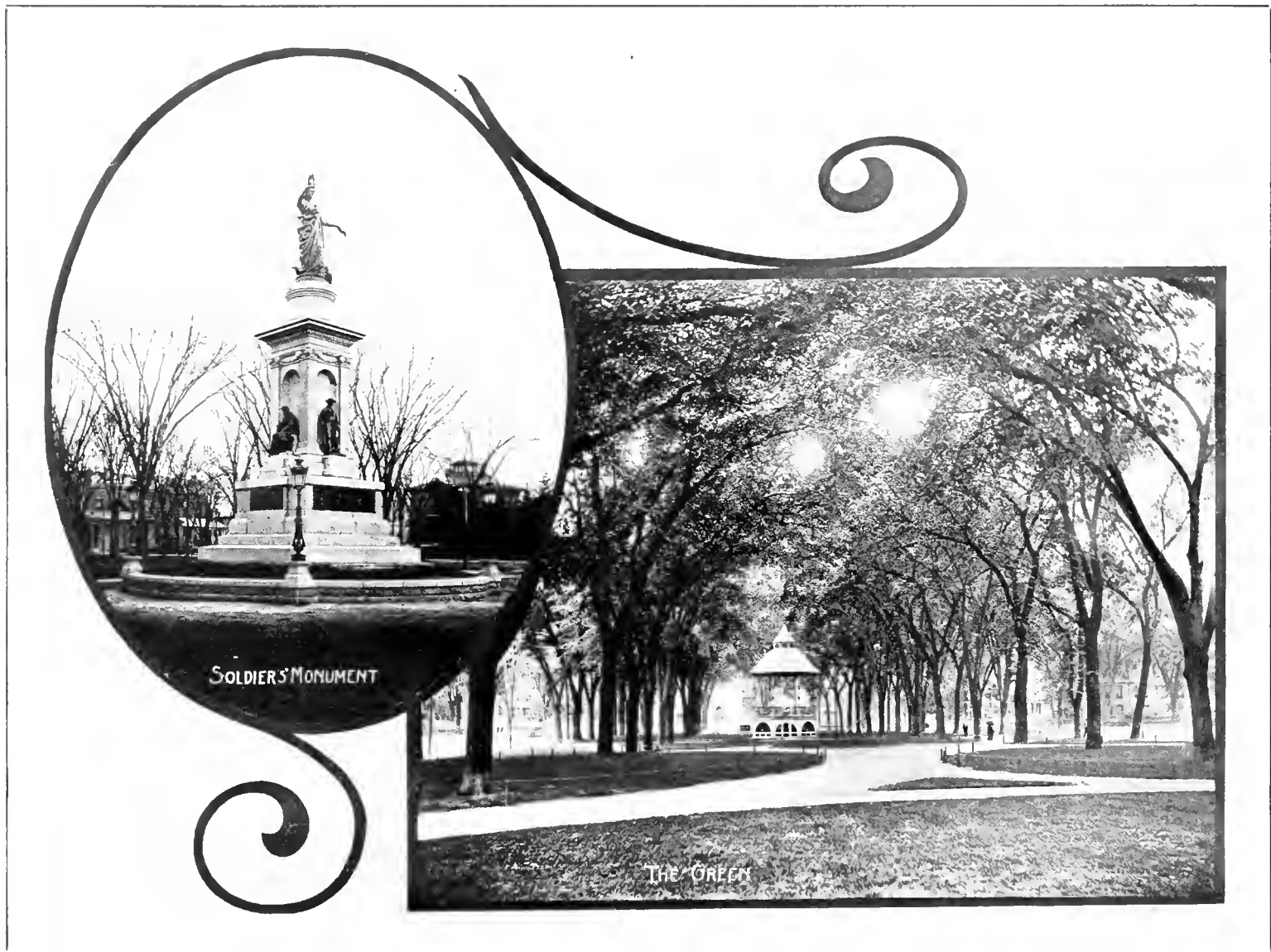


AMERICAN PIN COMPANY



HOLMES, BOOTH & HAYDEN MANUFACTORY

THE AMERICAN PIN COMPANY
 1000 W. 10th St., Waukegan, Ill.
 THE HOLMES, BOOTH & HAYDEN PLANT
 1000 W. 10th St., Waukegan, Ill.



"THE GREEN" AND THE SOLDIERS' MONUMENT

"The Green" is a small but ideal park in the heart of the city. One of its features is the Soldiers' Monument erected to the memory of the soldiers and sailors who gave their lives in the War of the Rebellion.



SECTION OF "THE GREEN"

The Y. M. C. A. and the First Congregational Church may be seen in the back ground.

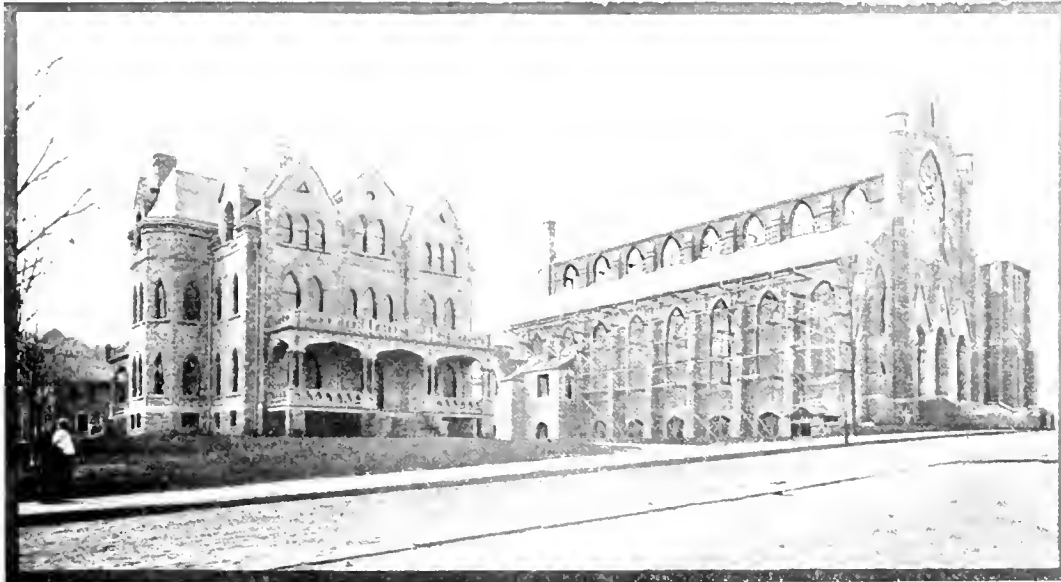


THE Y. M. C. A.

Is a handsome and commodious building excellently equipped and adapted for its religious, social and gymnastic work.

THE FIRST CONGREGATIONAL CHURCH

Is one of the oldest churches in the city. The interior is very artistically decorated.

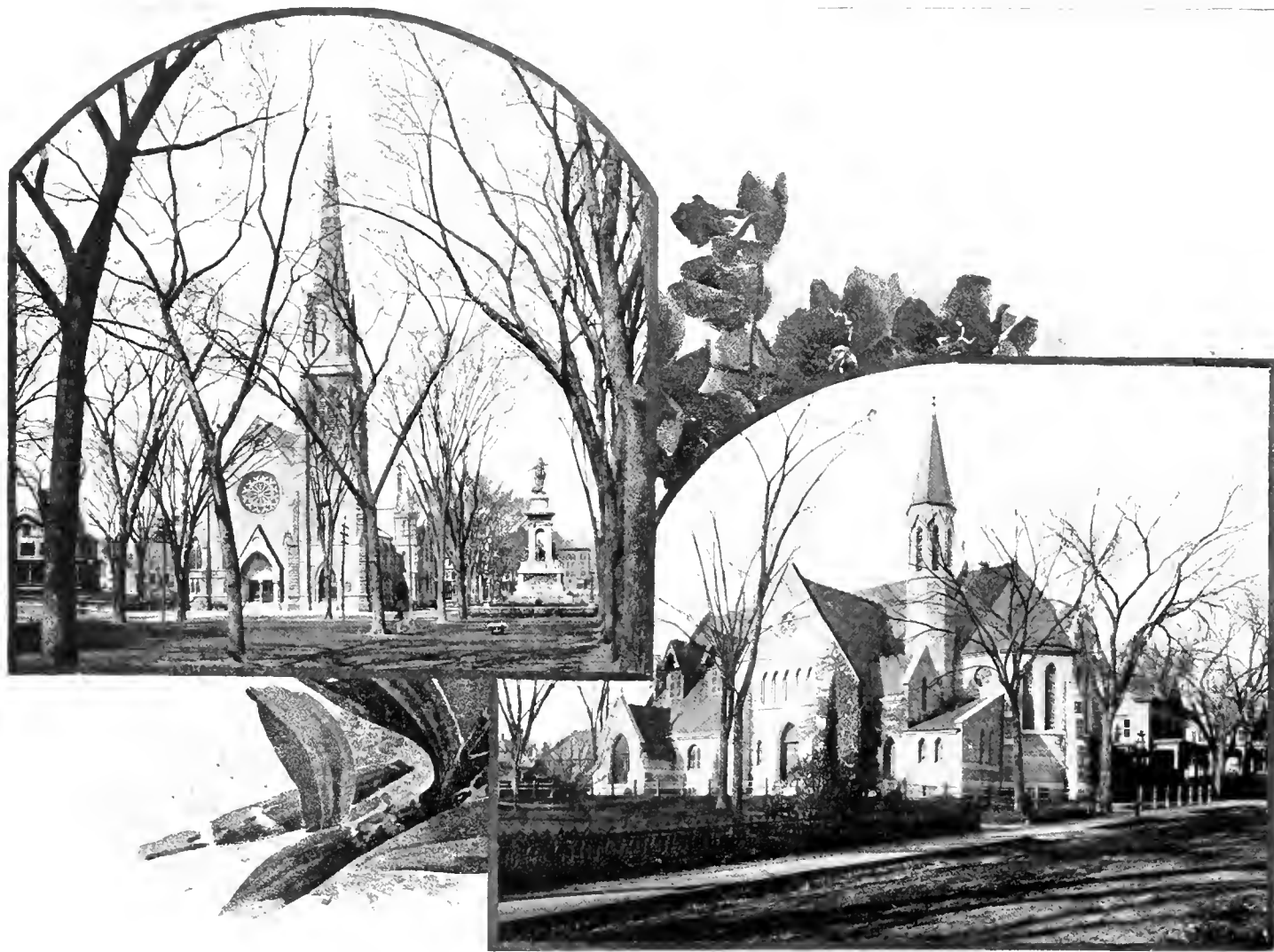


ST. PATRICK'S ROMAN CATHOLIC CHURCH

Located in Brooklyn, a suburb of Waterbury, is a great source of pride to its parishioners, who through devotion and self-sacrifice have made possible this splendid structure.

THE CHURCH OF THE IMMACULATE CONCEPTION

(Roman Catholic) The church building is a fine, some brick, white-fronted by a large, involved spire.



ST. JOHN'S AND TRINITY (BOTH EPISCOPAL)

Are among the finest examples of church architecture to be found in Connecticut.



SECOND CONGREGATIONAL CHURCH

Waterbury is noted for its handsome churches. The Second Congregational ranks among the first, both for size and architectural beauty.



HALL MEMORIAL CHAPEL

Hall Memorial Chapel is at the entrance of Riverside Cemetery.



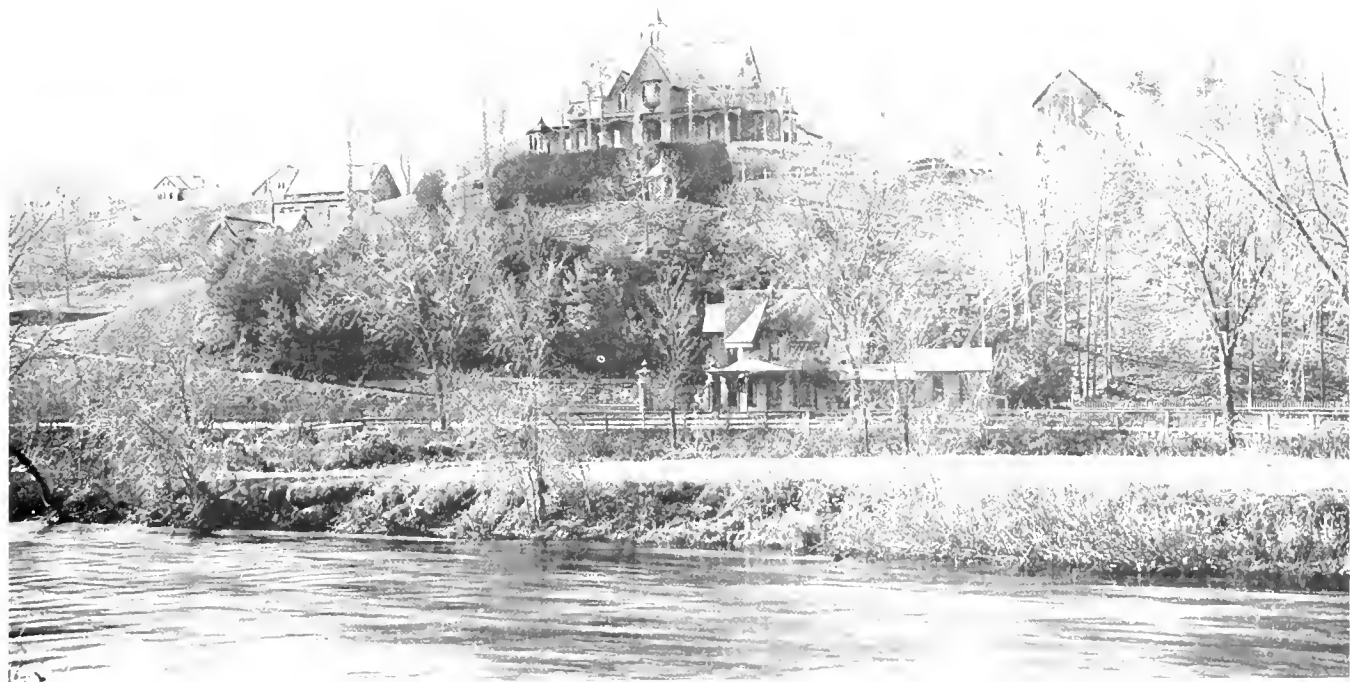
FIRST BAPTIST CHURCH

Situated on Grand Street. There is some talk of rebuilding on a larger scale to accommodate its growing parish.



THE FIRST METHODIST EPISCOPAL CHURCH

At the corner of North Main Street and Abbott Avenue. Recent improvements have added much to the beauty of the interior.



THE CITY HOSPITAL.

Is admirably situated on an eminence overlooking the Nauvoo River in the western part of the city.

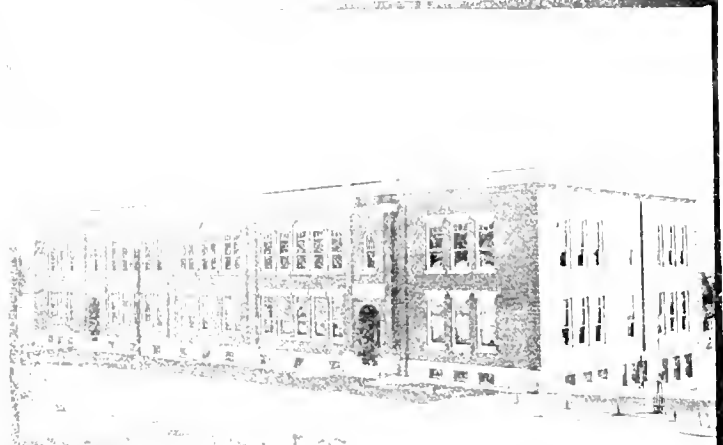


THE CITY HIGH SCHOOL

Called the Crosby High School in honor of a former superintendent of schools.



WEBSTER.



WASHINGTON



A GROUP OF WATERBURY SCHOOL BUILDINGS



CONVENT DE NOTRE DAME
A young ladies' school under the auspices of the Church of the Immaculate Conception.

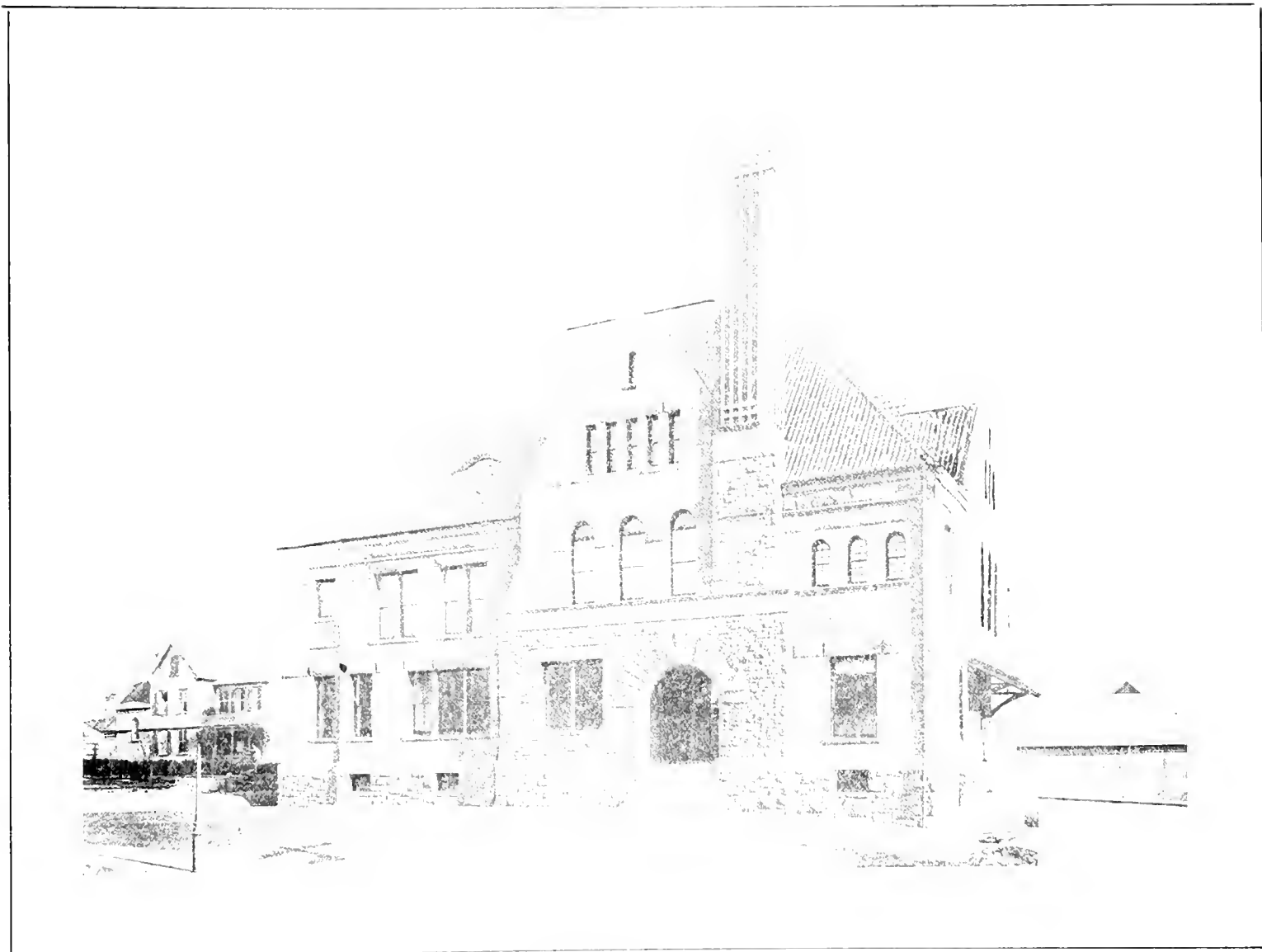


ST. MARGARET'S

A young ladies' seminary under the auspices of the Episcopal Diocese of Connecticut



UPROCKSIDE HOME
The city home of the "Old" Waterbury and "Old" Be



WATERBURY TOWN HALL

The home of the Waterbury Town Hall is a fine example of architecture. It is a very popular place for public entertainments for which it is well adapted.



THE WATERBURY CLUB HOUSE
A roomy and pleasant home for the club men of the city.



HILLSIDE AVENUE LOOKING EAST



HILLSIDE AVENUE LOOKING WEST



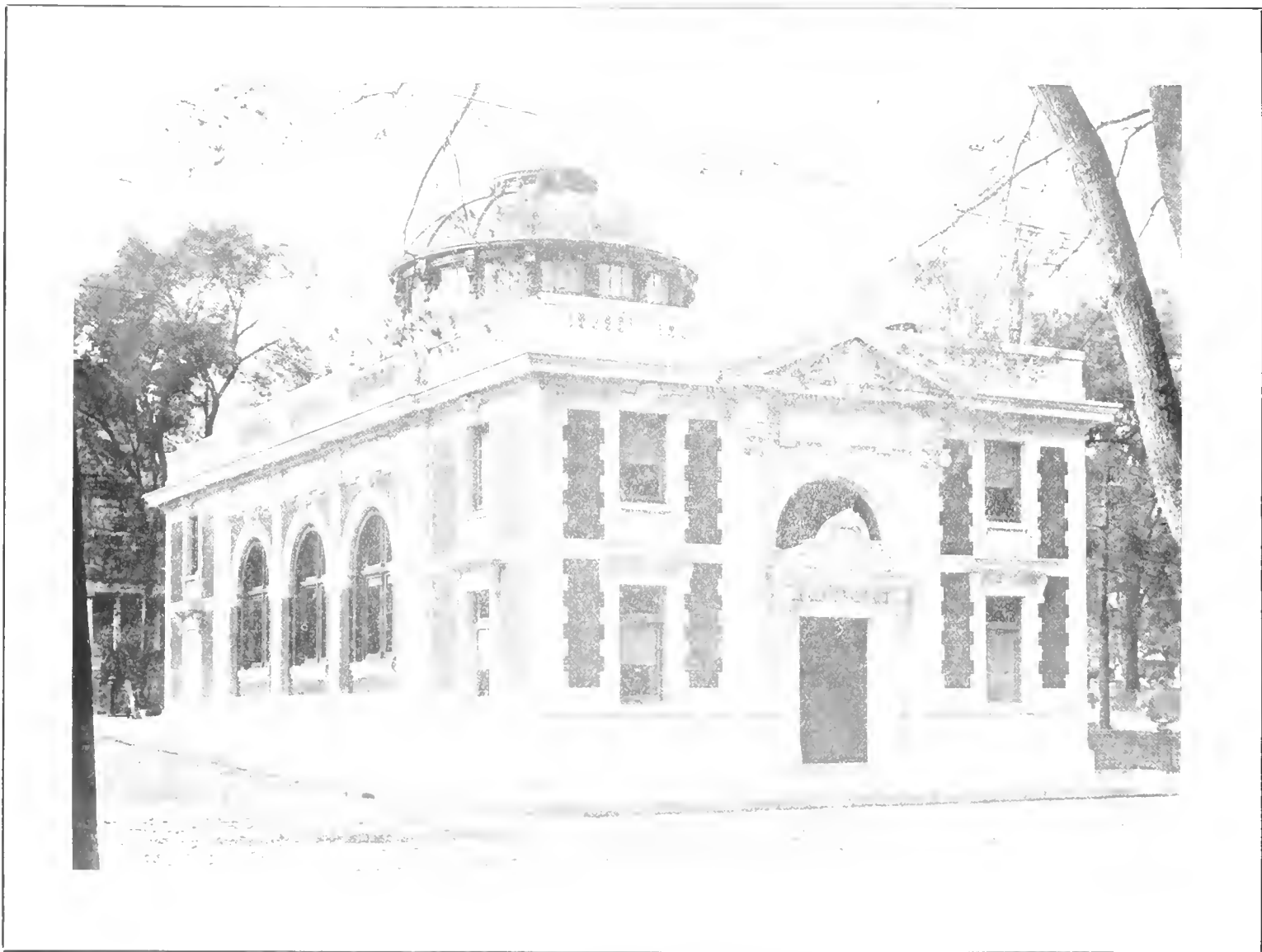
CHURCH STREET

HILLSIDE AVENUE

The finest residential street in the city. It is remarkable for its beautiful and spacious lawns.

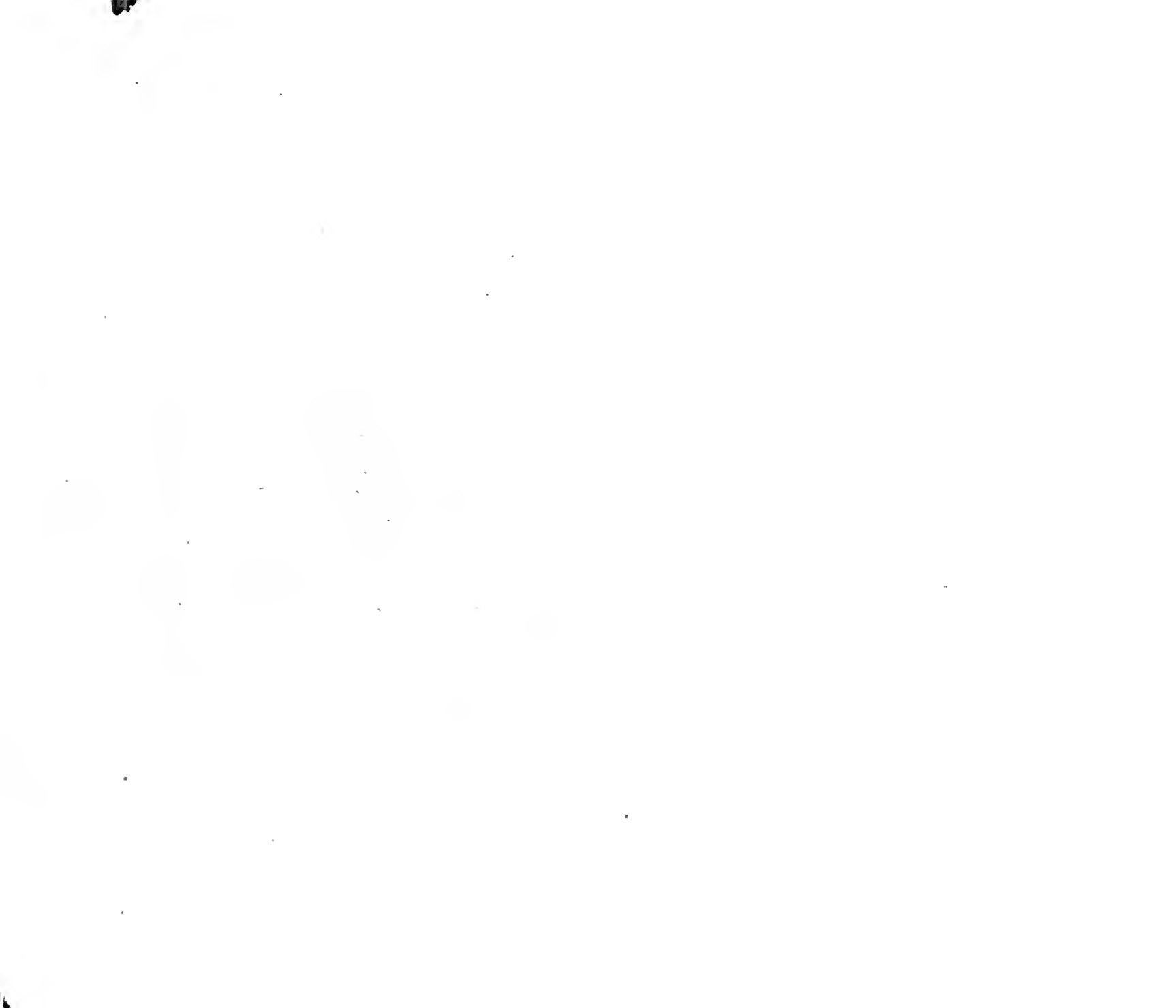
CHURCH STREET

Another residential street having several elegant homes. Mayor Elton's house is the first on the left.



THE COLONIAL TRUST COMPANY'S BUILDING

Might be termed an architectural gem. It is one of which Waterbury is justly proud.



LIBRARY OF CONGRESS



0 014 112 256 3