



1945 Legenda

WELLESLEY COLLEGE

Wellesley, Massachusetts





LEGENDA

Class of 1945

“Courage, Gaiety, and a Quiet Mind...”

At Baccalaureate Vespers last May, Captain McAfee spoke of these three things. We hope to show in this book that we have come a little closer to the understanding and attainment of them, and thus to prove that our time has not been wasted. We were not sure, many of us, that we should stay in college during these war years; we were not sure that we should spend either the time or the money. But now, as we approach the end, we feel that we were right to stay, that these four years are worth whatever they cost.

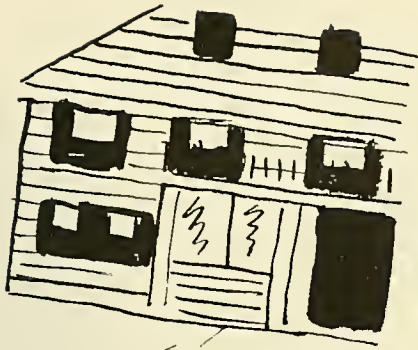




To Our Parents

Who have given us, among
other things, these four good years.





Remember Freshman Week?

...and how strange it all was when we first arrived.

Some of us were feeling anything but courageous, our gaiety was perhaps a bit forced, and we weren't even sure we *had* minds!



Our first Physical



They always knew



We stocked up for toils to come



Old Indispensables



Scene of everything from proms to Mock Academic Council and Mass Meetings



Freshman Vaudeville—we met the college

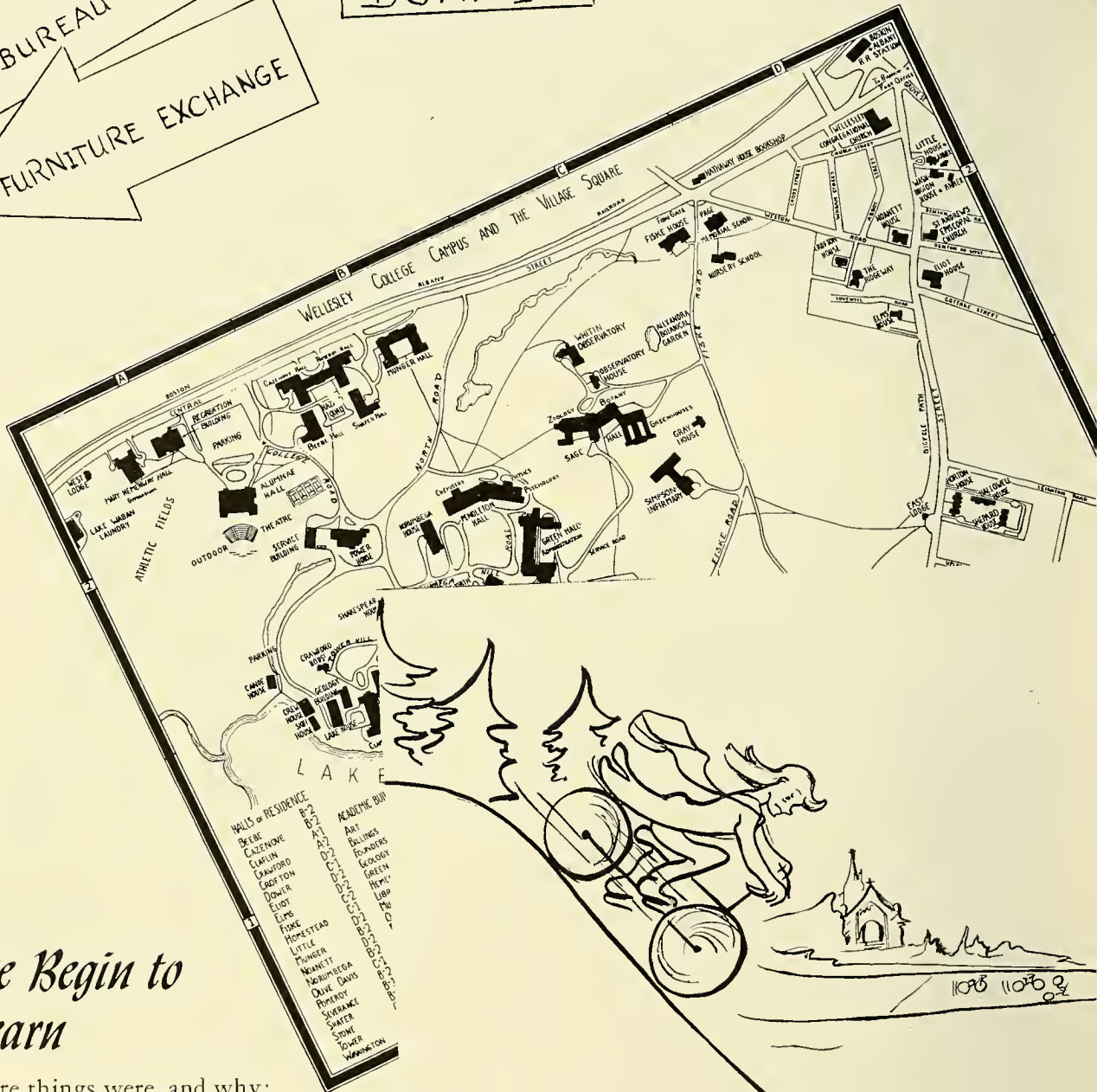
BOOK EXCHANGE

INFORMATION BUREAU

FURNITURE EXCHANGE

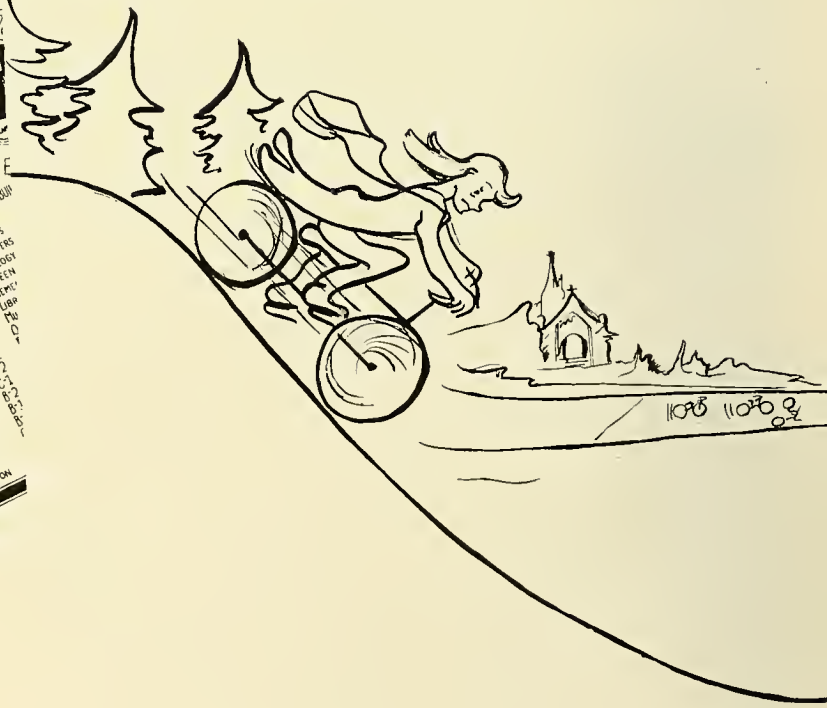
INDEX BOARD

COLLEGE GOVERNMENT OFFICE



We Begin to Learn

Where things were, and why; how to get from Green to Founders with a minimum of confusion, and how to get back to the Vil in time for lunch.





Men . . . remember them?



We Did the Things

That Wellesley Frosh have always done. We picnicked, and partied, "caught crabs" and were hazed, elected our first class officers, and gradually grew a little less green.



Our name and number

Us



Your guess is
as good as ours

Easy all, and look
at the sunset





... And then, all of a sudden

it was December 7th, and our new-found ivory tower began to rock. Some of us had to learn about courage in a hurry, but we proved we could learn, and could adapt ourselves, not only to double deckers and war work, but to co-education as well! We lost our President, but gained our Captain and some hundreds of the gentlemen on her team. We learned to wait on ourselves, and to do Useful Things during vacations, and we became increasingly aware of our own good fortune.



We sewed and rolled bandages at Workroom



Labs took on new importance

We Went to War

not over there, but here in our own back yard, where we found a few small things we *could* do.

We practiced First Aid





Blackout



We had to learn what to do in case we were bombed, spent long hours on hard floors, and tried to remember to keep our shades down.



Home Front Heroes—the Air Raid Wardens



Simpson acquired a new addition
Freshman year, and some of us
learned to be nurses' aides here
and elsewhere.

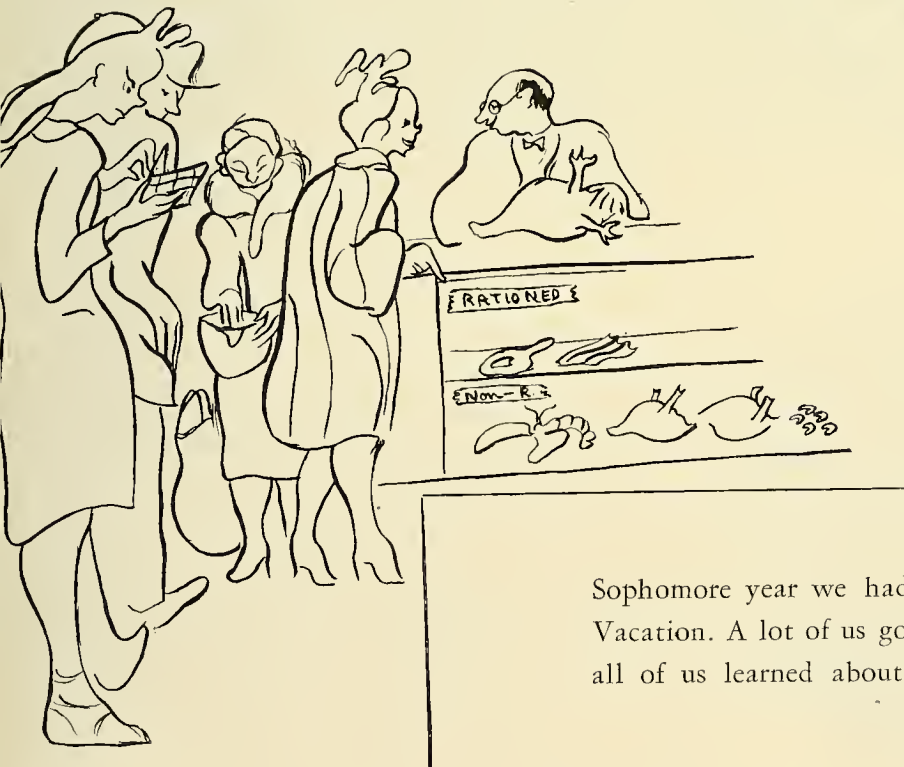




The Placement Office had some good ideas



We reverted to Shank's Mare



Sophomore year we had the Long Vacation. A lot of us got jobs, and all of us learned about rationing.



We became war bond conscious, set up a booth in front of the El table to sell bonds and stamps, and held auctions of everything from cigarettes to dates with the faculty.





They woke us up . . .

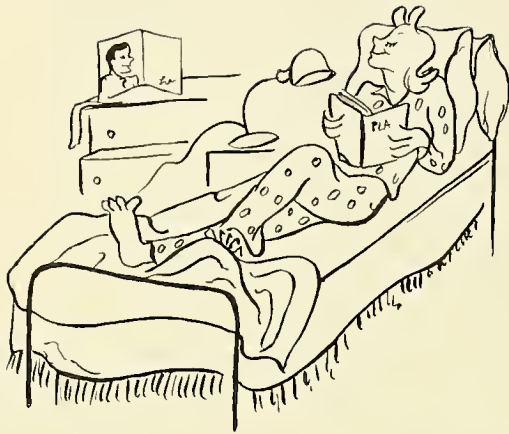


but also entertained us.

The Navy Invaded

Junior year, and took over half of the Quad. Wellesley shattered all precedents by becoming co-ed, and we grew used to the sound of marching, counting cadence, and a male chorus.





There were some

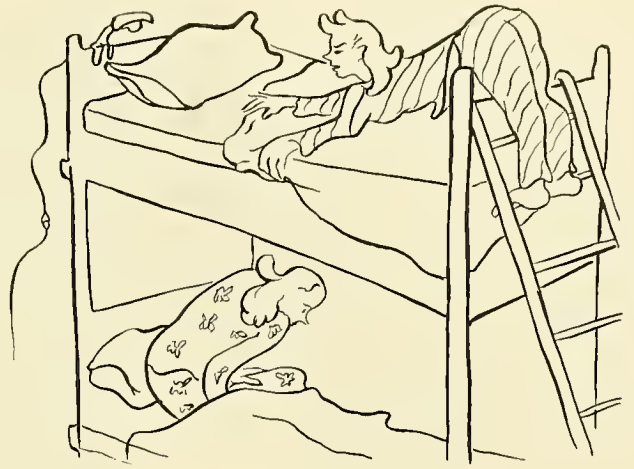
In the good old days, we slept in luxurious beds (?), put on glamour for our shiny pillared ballroom, and put on pounds at our juke-box haven, the nearby Well.



All's well...

changes made

But come Junior year, behold the Double-Decker!...we slept in layers. Our ballroom became the Navy Mess, and our Well served as the Galley, while we ate in AKX.



that ends well.

We took war courses

in the hope of becoming Useful as well as Educated females. We went to school at night and struggled with cartography, report writing, typing, and even elementary Russian. Some of us actually acquired a little practical knowledge.



Mechanics class taught us theories . . .



which we applied in the field . . .



and at home.

We donned blue jeans

(anybody want to make something of it?)
to work on farms—some of us full time during the summer, and many of us part time, to pick apples in the fall and plant potatoes in the spring. They say we're still eating the proceeds of our labors.



B. Schoonover—well camouflaged



Piggy-back ride







Not even a War

could deprive Wellesley of its gaiety, and we had our lighter moments... traditional and otherwise! We danced, and sang, and gamboled on the Green, and had more than our share of laughs.



Victory

Our first Tree Day

was a big success. Some of us helped to produce "Peter and the Wolf," and the rest of us sat on the hill watching, and waiting for the signal to start running. Needless to say, we beat the Sophs, and at long last we got to cheer our own cheer and sing our class song.



Before the fray





The black of dawn

May Day

when we arose at an unseemly hour to capture coveted places on Tower Hill for our Big Sisters. After the race we all marched to Chapel, then went through our blotter routine, and sang and cheered back and forth.



Roll, sister, roll!

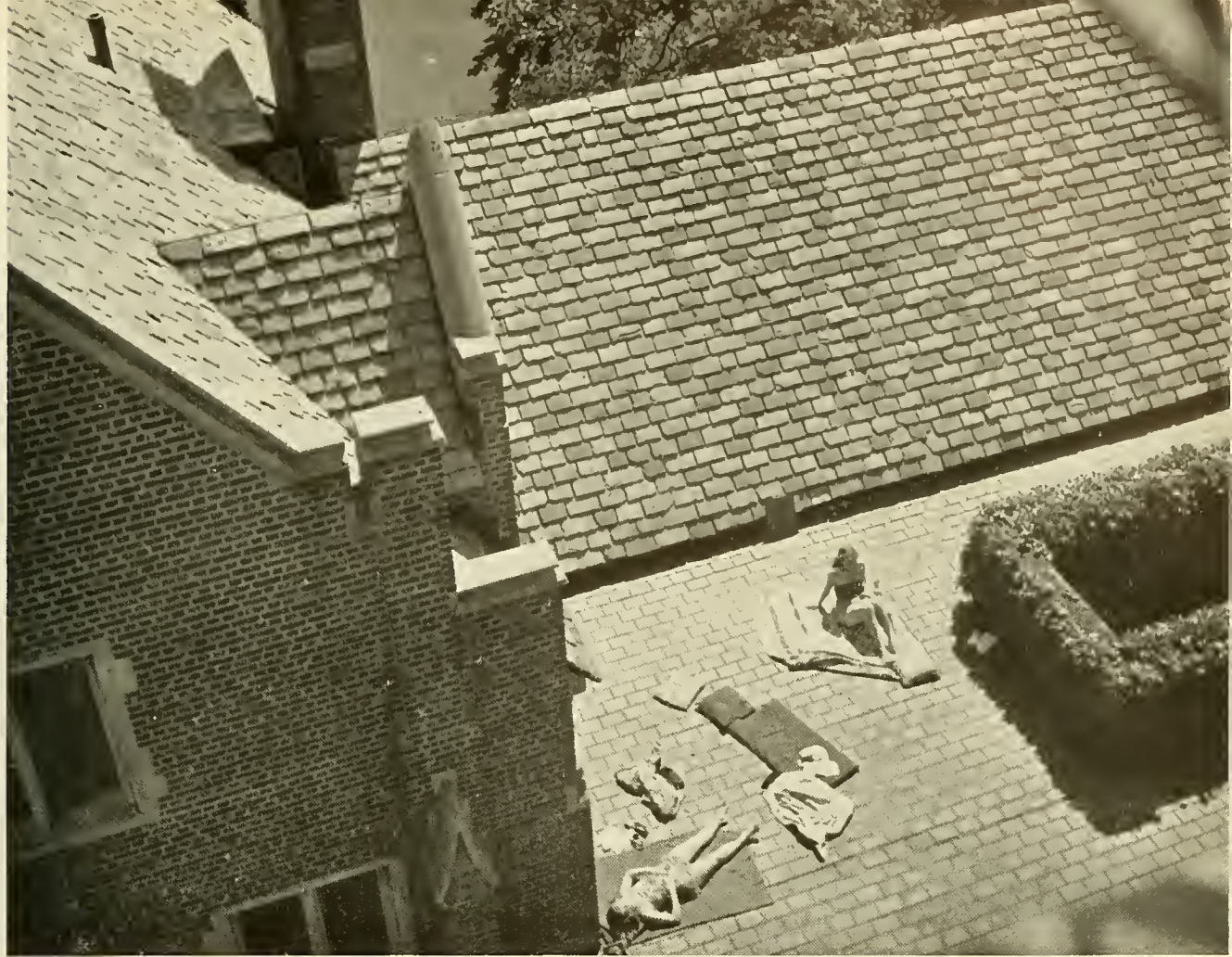


As it looked to us

The Winters

seemed long and cold, especially to the Southern Belles among us, but when there was snow or ice, things picked up—even if we fell down. We had winter sports carnivals, made snowmen deluxe, and argued the relative merits of Severance and Observatory Hills.





Our favorite sport



This can't be Waban!

But come Spring...

life took on a new glow — and we did our best to do likewise. We sunned ourselves whenever and wherever we could, and sometimes even went as far as the Cape.

Miss McAfee

At home

Tuesday, January thirtieth
Eight o'clock

Recital of Pen and Piano Portraits
by Florence Fraser

The social whirl

on campus: we went to concerts and receptions, and to teas to meet celebrated visitors, to chat with members of the faculty, and to discuss Major Issues.



Weekly house tea





Tickets home

We went a-journeying

by train, in the good old days, for distant weekends. On dreary Saturday nights we all went to the movies—by hook or by crook, and at all times, for business and pleasure, to Boston by bus.



Just practicing



Here it comes



Captain Lucy Harter

Junior Show...

our magnum opus, slightly nautical, but nice. Wellesley invaded the peace conference and, with *great* originality, prescribed love to cure the world's ills.



Officers and crew



A couple of high spots





The only living picture of the greatest show on earth

Faculty Show...

we came, we saw—we had hysterics. For three solid hours we laughed as we never had laughed before. The performance had been seven long years in coming, but it was worth the wait. Its theme evolved around the idea that the play's the thing with which to prove the faculty is human. They convinced us!



Junior Prom

our first dance since freshman year, was a tremendous success. We tripped the light fantastic in Tower's Great Hall, sat on the floor to watch a super floor show, and refreshed ourselves in the candlelit dining room below.



Chief executive Clair Phillips



The Harvard Octette



Winnie Herman — dancer extraordinaire



Dancers ordinaire



Election Parade

was the culmination of months of feverish argument and occasional battles royal. Ginny Guild took the part of Socialist candidate Norman Thomas; Mary Townsend was Tom Dewey, and Cissy Lee was F. D. R. The college, in a mock election, voted overwhelmingly Republican, but the seniors—many of whom were able to cast real ballots—favored Mr. Roosevelt.



Tree Day...

our senior year was presided over by Pat O'Brien Weisiger, assisted by B. A. Childs, Florrie Henderson, Mary Marchant and Helen Marchese.

Step Singing...

where we sang "the songs we love to sing on the old Chapel step." When we were frosh we felt that this was really college, and as we moved across, and up, and finally to *the* steps, we still kept some of this special feeling.



We walked away...

but we won't forget







The Quiet Mind

was by no means wholly neglected. We often remembered the real reason for coming to college, and spent quite a few hours with the books—though we'd never admit it. We delved deep into the past, trying to understand the present, and to equip ourselves to cope with the future.



Dreams of glory

Academic Procession

aroused in us our thirst for knowledge. At our first Chapel, we heard with wonder and admiration the accomplishments of the upperclassmen, and we hoped one day to do as well. Of course some of us did—and to them, three cheers—and some of us didn't, but we all learned the meaning of the word student, and eventually we all donned cap and gown and marched in the procession ourselves.





The Library...

hall of virtue; unenticing when we had to go, but comfortable and sometimes surprisingly agreeable once we got there.



Each Season

had its own beauty, but we found it much easier to stay inside with the books in winter than in spring, when we were lured outside to skip rope, play baseball, or just bask. We were even occasionally tempted to let the mind become a little too quiet.



November



January



May



An eager beaver

Tower East takes time out for tea



Gardeners

of Botany 101 practised farming on a small scale and undoubtedly proved invaluable to their home victory gardens. They sometimes had ideal labs—taking walks around the campus to study leaves and trees. They grew their own radishes and brightened their rooms with their own flowers, and even occasionally helped to produce food for the college.





Dear old Billings . . .

where we listened for 206 . . .



and had music lessons





Sage

The Halls

of learning, where we cultivated the mind in a more or less formal way, struggling to take in most of the time; struggling harder to give out twice yearly (not counting incidentals like quizzes, roll calls and papers).



The Art Libe



Pendleton

Here we spent

our serious hours in listening to lectures on everything from poetry to politics, or in afternoon labs in scientific inquiry, or in conference over the solution of knotty problems like that last quiz.



Perhaps another Madame Curie in the making here . . .



or a lady Luther Burbank . . .



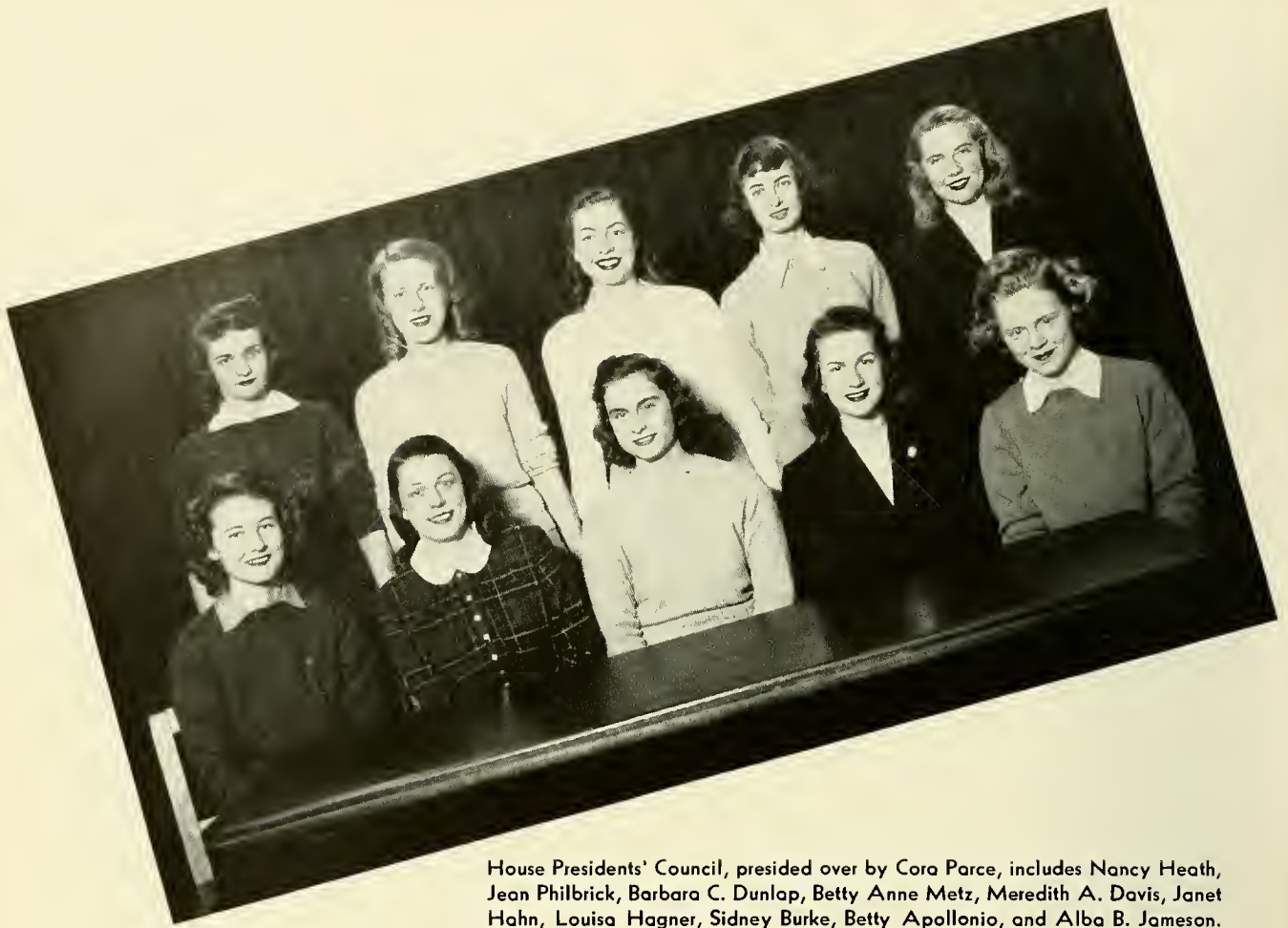
or something





It takes all kinds

to make a world, or a college, or a class, and '45 has samples of most, capable of performing a wide variety of tasks from government to radio broadcasting. We point with pride to those we chose to represent us in all such fields our senior year.



House Presidents' Council, presided over by Cora Parce, includes Nancy Heath, Jean Philbrick, Barbara C. Dunlap, Betty Anne Metz, Meredith A. Davis, Janet Hahn, Louisa Hagner, Sidney Burke, Betty Apollonio, and Alba B. Jameson.

College Government...



Caroline Hadley, President of C. G.



Cora Parce, Chairman of H. P. C.



Marianne C. Moore,
Senior Vice-President of C. G.



Bebe Reppert Wilmerding,
Chief Justice of Superior Court

Vil Juniors, with Suzanne Carreau as chairman, supported by Jean Benneyan, Marian McCuiston, Patricia Smith, Phyllis Kaempfer, Anne Demorest, Betty Ann Martin, Eleanor Platt, Patricia Brown, Margaret Torbert, Katherine Warner, Alice Dodds, Barbara Whitall, Elizabeth Davidson, Anne Tichener, Ann Osgood, Jane Gile, Sarah Binford, and Mary Edith Buckley.





Miss Lucy Wilson

Dean of students in general and, for three years, of 1945 in particular. Her firm hand guided some of us through physics, and most of us through crises of one sort or another. Her amiable smile and her unfailing interest in our affairs made it a pleasure to meet her office hours, or to visit with her and Daisy-May and the parrot at Oakwoods.



Planning one of the many services C. A. gives



Julie Burnet, President

Christian Association

In an off moment at Freshman Vaudeville. Officers, headed by Julie, are Doris King, Ann Demorest, Elinor Peck, Mary Alice Ross, Margo Downing, and Sally Powell





Barbara Whitmore, Chairman



W. A. C. in action

War Activities Committee

has worked hard to enable every girl in college to make some contribution to the war effort. Its members include Whit, Judy St. Clair, Sally Stetson, Chorale Cook, Jo Lamb, Nancy Keegan, Eileen Quigley, Helen Peck, Carter Catlett, and Gloria Downs.





Grace Morey, Chairman

Collecting money, perhaps to be distributed to Yenching

Service Fund

with Grace as senior chairman, has on its board Irene Peterson, Alice Meeker, Betty Bremer, Kathy Thayer, Frances Capron, Joyce Gulick, and Elizabeth Chalmers.





Campigning



Barbara Scott, President

Forum

in this year of elections, brought us pre-election speakers representing the major points of view. Members canvassed Boston to get the maximum voting power to the polls. Second semester we began to study some of the problems facing returning veterans.



Making posters for a coming lecture

The officers of Forum: Scotty, Marguerite Tatum, Alice Horton, Nayantara Pandit, Susan Finke, Nan Willits, Virginia Guild, Mary Ann Lewis, Jeanne Garcelan, Elizabeth Stevenson, Evelyn Wakefield, and Keith Freyhof.





Agora...

this year under the guidance of President Pat Southard and Vice-President Caroline Burnquist, is the meeting place for discussion of things political—and otherwise.





A scene from "Kind Lady," with Edith Glassenberg, Naomi Bucholz, Dee Stempf, and members of the Men's Acting Committee



Eunice Stunkard, President

Barnswallows

for the past three years under the direction of A. Eldon Winkler, has run up a record of striking performances to brighten our college career: *The Barretts*, *Liliom*, *Yellow Jacket*, *Watch on the Rhine*, *Kind Lady*, *Importance of Being Ernest*, *Hotel Universe*, and *Pygmalion*, as well as several freshman productions.

An industrious committee builds scenery for the next production





Zeta Alpha

with Margaret Johnston and Sally Russell presiding, gives its members the opportunity to exercise their dramatic talent, latent or otherwise, in the presentation of modern plays.





Karol Musa, President of Outing Club, outing on
Severance Hill

Athletic Association

offers almost as wide a variety of choice as there are people to choose, with all the facilities of the lake, the Rec Building, and the playing fields right here on campus. For those who seek a further range, there are the assorted kinds of expedition sponsored by Outing Club.

Jumping for a high one in Mary Hemenway





Lucile Peterson, President



Submarine view of the
Davenport Pool



The A. A. Board: Lu, Karo
Musa, Marilyn Peterson, Dorothy
Winchell, Camilla Chandler,
Mimi McCuiston, Sue Cassell,
Marjory Lent, Emily Hobart,
Helene de Lone, Margaret
Wyant, Mary McCrea, and Betty
Ann Childs.



Orchestra

under the baton of George Brown, has given delightful concerts. Its officers are Lucile Wetherbee, Marcia Morse, Ida Harrison, Patricia Smith, Marilyn Hoopes, and Jacqueline Pressey.



Choir

satisfies the college thirst for choral singing with Fall, Christmas, Spring, and Baccalaureate vespers on its own, and at other times in collaboration with Orchestra. Peggy MacDonald conducts; Floranne Henderson, Mary B. Morrison, Mary Marchant, Shirley Smalls, Cloire Phillips, and Mary Gove Griswald are its officers.



T. Z. E.

under the direction of President Margaret Williamson and Vice-President Liz Jones, provided an outlet for the talented and enjoyment for the laymen with its living pictures and informal concerts.





Radio

W. B. S.'s ambitious schedule of programs, made possible largely by the enthusiastic work of President Allaire Urban and the heads of committees, brought Radio the honor of major-organization status in our senior year.



Press Board

For those many reports of our college escapades found in the home town paper (to the delight of our fond parents) we may thank Gloria Gallic, Chairman of Press Board, and her super-sleuthing associates.



Shakespeare

Those who yearned to portray Lady Macbeth, Juliet, or even Hamlet, but feared Broadway might overlook their talents, found opportunity for expression in Shakespeare Society. There, under President Bobbie Withrow's supervision and Vice-President Dee Stempf's direction a merrie companie performed.





News

under the eagle eye of Editor-in-Chief Pat Lauber, kept us posted on events, both local and world, raised issues for our consideration, and gave us a chance to express our own opinions.



We

with Editor-in-Chief Alice Clark in charge, enabled us to air our views in a slightly different manner, as well as to see some of our precious *magna opera* put before the public.



Phi Sigma

this year under the direction of President Helen Marchese and Vice-President Isabel Luther, delves, in its more academic moments, into the changing fields of modern literature.





Mrs. George Justice Ewing

Mrs. Ewing was elected honorary member of '45 in our junior year, just before she retired. Although best known as Wellesley's understanding and cheerful Dean of Residence, she is also a member of the Wellesley class of 1898. Since that time she has held positions in America and abroad, working with the American Red Cross during the last war at a tubercular hospital in Passy and later at a relief station in Rumania. Returning to Wellesley in 1921, she became a head of house, and then Assistant Dean of Residence. Her genius became apparent to all when she managed to squeeze four hundred Navy men onto the already full campus. We are happy to have Mrs. Ewing on our steps.



Alpha Kappa Chi

President Gloria Downs and Vice-President Bebe Fichgrund were philosophical and modest in answer to praise for A. K. X's generous donation of their house to the Well while the Navy was with us. Moving may have had little to do with their study of Greek influence in our culture, they say, but it certainly was good domestic training.





C L A S S



C L A S S



C L A S S



OF 1948



OF 1947



OF 1946



Officers
Class of 1948

President Nancy Bartram, Vice-President Ansley Coe, Mary Alice Cary, Betsy Romig, Muriel Pfaelzer, Sandra Clark, Carol Bailey, Dorothy Turnbull, Barbara Hunt, Jean Abrams, Jane Parker, Phyllis Arlt, and Mary Snelling.



Officers
Class of 1947

President Hope Wilson, Vice-President Betty Lee Tucker, Katherine Thayer, Elizabeth Sullivan, Daris Getsinger, Rosalind Morgan, Mary Alice Rass, Camilla Chandler, Hester Spencer, and Mary McQuistan.

Officers
Class of 1946



President Judy Atterbury, Vice-President Nancy F. Dunn, Marie Bransfield, Caroline Southworth, Sally Binford, Phyllis Kaempfer, Elizabeth Somerville, Elizabeth Tucker, and Barbara Chapline.

Officers
Class of 1945



President Elizabeth Slaughter, Vice-President Anne Colcord, Laura Lou Bauer, Marian Moore, Mary Marchant, Sally Russell, Margaret Schlegel, and Hildegard Bair.



Stone-Davis court

Where we live...

There were dorms to suit all tastes: Tower Court, with its regal Tudor-Gothic architecture, the more homey Quad of simple Tudor, Munger, reviving the spirit of Flemish and Dutch building, and Stone-Davis, favoring the modern day with a Gothic Twentieth Century style. Decisions would have been simpler if we hadn't had to choose also between the convenient closeness to the bus, and the coveted view of the lake. But wherever we landed automatically became *the* place to live.



The Quad

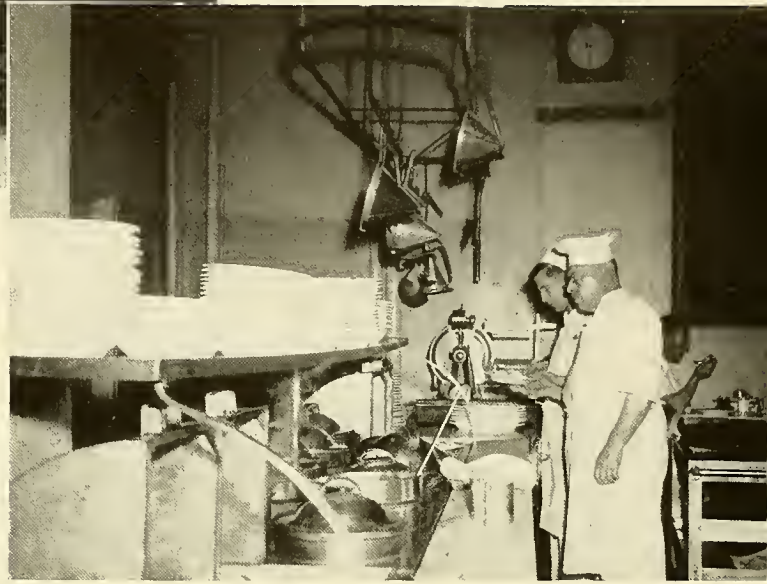


Munger



Stone entry

...and why...



The Tower Court group



Campus Clubs

Those of us who were interested in the other countries and languages of the wide, wide world and wanted to practice what was preached to us, worked with M. de Messieres in *Le Misanthrope* or presented *The Frogs* at the Rec Building pool in the classical manner. We sang Spanish songs on Monday evenings, or consumed exotic dishes prepared for us by the foreign members of Cos Club.



Cosmopolitan Club



Alliance Francaise



Deutscher Verein

President, Mary Louise Mayger



Circolo Italiano

President, Alba B. Jameson



Classical Club

President, Esther B. Clenott

Honor Students of the Class of 1945

Elected in Their Junior Year

DURANT SCHOLARS

ALICE BARRADALE ΦBK
JOAN CAUGHRAN ΦBK
MARJORIE FRANCES GOODMAN ΦBK
JOYCE GULICK ΦBK
JANE INGLEY
ELEANOR KOJASSAR ΦBK

SARAH JANE MANLEY ΦBK
JEAN PREBLE ΦBK
ARLENE ROSHkind ΦBK
JOYCE RUBENSTEIN ΦBK
JEAN RUBIN ΦBK
ALLAIRE URBAN ΦBK

BARBARA WHITMORE

WELLESLEY SCHOLARS

GLORIA BRADLEY
ELEANOR BROWN
HARRIET BROWN
FRANCES CAPRON
ESTHER CLENOTT
JEAN DEVEREAUX DOTEN
ELAINE ELKINS
GLORIA GALLIC
JEANNE GARCELON
NANCY HEATH
ELEANOR HERZ
DOROTHY MAY HUGHES
MILDRED DOROTHEA KEIL

PATRICIA KNAPP
LENORE LEHN
GLORIA LEVY
JOY COHEN LEVY
JEAN MALMSTEDT
ALICE MEEKER
MARIAN NEAL
GABRIELLE PETERS
ANNE PETTINGELL
CAROL RUBACK
KATE SENIOR
L. ELIZABETH SLAUGHTER
JOSEPHINE STANCISKO

DOROTHY SWEARINGEN

Elected in Their Senior Year

DURANT SCHOLARS

GLORIA GALLIC ΦBK
ELEANOR HERZ ΦBK
LENORE LEHN ΦBK

GLORIA LEVY ΦBK
JOY COHEN LEVY ΦBK
ALICE MEEKER ΦBK

WELLESLEY SCHOLARS

ANNE ADAMS
ELIZABETH BARBER
MARY ALICE BURGESS
SIDNEY BURKE
HELEN HUGHES CAHILL
ANNE COLCORD
ANNE DAVIS
TINKA DERECKTOR
JEAN EDWARDS
CHRISTINE FERGUSON
INEZ FRENCH

LOUISA HAGNER ΦBK
HELEN HALL
M. ELIZABETH JONES
PATRICIA LAUBER
SELMA LEVINE
MARGERY MILLER
CONSTANCE ELIZABETH NANGLE
HADASSAH RUTH SHAPIRO
PATRICIA SOUTHARD
FLORENCE GLORIA TRENCHER
ELIZABETH UNDERWOOD

The Class of 1945 takes pleasure in announcing the marriages of...

ESTHER BERMAN
TO
CPL. MARTIN CLENOTT
CONSTANCE N. CAMPBELL
TO
ENS. RICHARD E. SPRAGUE
BARBARA CHAPIN
TO
S/SGT. WALLACE P. DUNLAP, JR.
JOY AGNES COHEN
TO
LT. (JG) MARION LEVY
ROSEMARY CRANDALL
TO
JOHN P. WARTER, JR., U.S.N.R.
HELEN HUGHES
TO
LT. (JO) EDWARD JAMES CAHILL
ELIZABETH A. KUHN
TO
LT. RICHARD D. ROBINSON

KATHERINE M. REESE
TO
LT. THOMAS C. PEEBLES
MARY VIRGINIA REPERT
TO
JOHN VAN DYKE WILMERDING, U.S.N.R.
MARY LOUISE ROSE
TO
CAPT. WAYNE M. PARKS
IRENE SCHIFF
TO
LT. (JG) ROBERT GROBAN
ALICE SZE
TO
DR. CHIU-AN WANG
LUCILLE VAN SLYKE
TO
CAPT. MARTIN HARTER
O. ELIZABETH WILLIAMS
TO
LT. CLINTON C. KEMP

and the engagements of...

GRACE BARISH
TO
PAUL SAGALYN
BETTY K. BROWN
TO
LT. FREDERICK HOLLISTER CAMPBELL
GLORIA CAMPBELL
TO
LT. LOUIS MARINGO
JOAN CAUGHRAN
TO
RAY E. MILLER
ELIZABETH CHAPIN
TO
DAVID HEATH, F. A. U.
CYNTHIA DOANE
TO
DONALD E. NICKERSON, U.S.N.R.
JANET DRESSLER
TO
LT. (JG) CHARLES A. LISTER
EVE WILMA GRODNICK
TO
LT. ARNOLD HAROLD SCHUNMAN
MARION GROOT
TO
LT. COM. JOHN M. WATERS
JEAN M. KINEKE
TO
LT. DAVID T. McLAUGHLIN
CARYL KRIEGER
TO
LT. MARTIN HORWITZ
MARJORIE LENT
TO
PFC. STERLING GARRARD
JEAN MALMSTEDT
TO
LT. (JG) ROBERT E. SWEENEY
MARY P. MARCHANT
TO
LT. NELSON CAMPBELL

SHEILA G. MURPHY
TO
LT. JOHN G. FOX, II
CAROLYN NICKERSON
TO
CPL. CHARLES E. KITCHIN
NATALIE M. PIERCE
TO
ENS. WILLIAM F. WELLES
CAROL RUBACK
TO
DR. SANFORD LEWIS
SALLY RUSSELL
TO
PFC. WILLIAM SHOREY
HEATHER SAYRE
TO
LT. ROWLAND C. W. BROWN
JANE SEDDON
TO
LT. (JG) W. HARRY WILLSON
SHIRLEY SMAILS
TO
DR. JOHN F. PRUDEN
NANCY B. SMITH
TO
LT. PHILIP COLE, JR.
KATHERINE SUE SPENCER
TO
SGT. BRADLEY D. HARRIS
MARY HELEN STEINHEIMER
TO
LYNN McQUIDDY, U.S.N.R.
ANN STEUER
TO
GILBERT E. KLEIN
DOROTHY J. SWEARINGEN
TO
CARROLL HUNNEWELL
BETTY UNDERWOOD
TO
S/SGT. KEITH MOSLEY



The people to blame

Legenda for 1945



Linda Bolté, Editor



Peggy Bonsal, Business Manager
—the all too quiet mind

Legenda acknowledges with heartfelt thanks the
invaluable cooperation of...

the Editorial Staff

Junior Editor	MARIAN CAMPBELL
Associate Editor	MARGARET BROWN
Associate Editor	DORIS C. POWERS
Assistant Editor	MARGARET L. WILLIAMSON
Art Editor	ANNE NEWBERY
Photographic Editor	FRANCES COOKE
Assistant	VIRGINIA KOCH
Assistant	BETTY SHOREY

the Business Staff

Junior Business Manager	MARGARET WYANT
Advertising Managers	ADELAIDE CRAWLEY HELENE DE LONE
Circulation Manager	JEAN RUBIN
Publicity Manager	VIRGINIA STEWART

as well as

LAETITIA DICKINSON, for her sketches, and MARY A. LEE, for her caricatures;

the PUBLICITY OFFICE, for making its photographs available to us; students who have contributed snapshots;

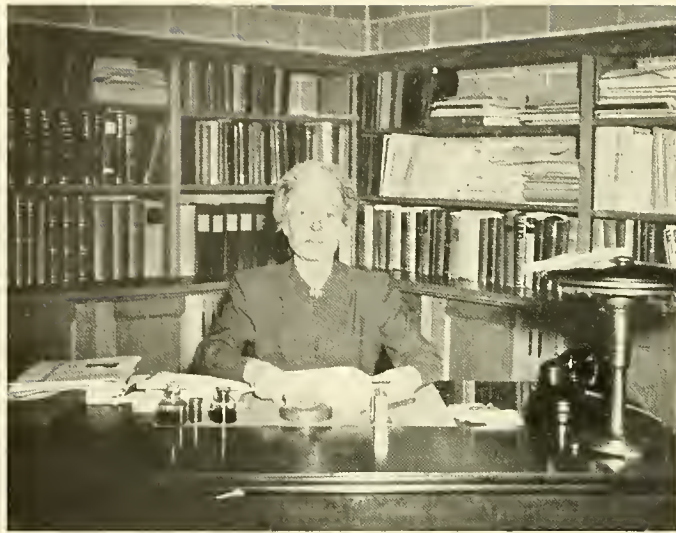
the INFORMATION BUREAU, and others, for information;

SARGENT STUDIO;

LEO HART Co.;

and Mr. PETER S. GURWIT, of the Jahn & Ollier Engraving Co., without whom there would probably have been no book.

LINDA BOLTE', *Editor*
MARGARET BONSAI, *Business Manager*



Miss McDowell



Miss Helen Jones



Miss Overacker



Mr. Pilley



Mr. Practer



Mr. Lehmann



Miss Manwaring

*A few of
our guiding
lights*



Here we are

after four years which seem, now, to have been very short.
We have acquired good friends, a little knowledge, and plenty
of dreams and theories, so look out world, here we come!

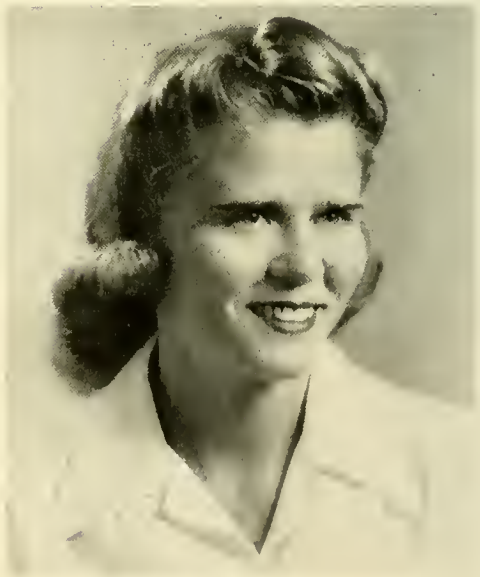


INA S. BURNES
60 W. Cedar St., Boston, Mass.
Sociology



ELIZABETH A. GOURDIN
68 Waumbeck St., Roxbury, Mass.
Chemistry

1945-A



DOROTHY M. HUGHES
Wyman Park Apartments, Baltimore, Md.
Zoology



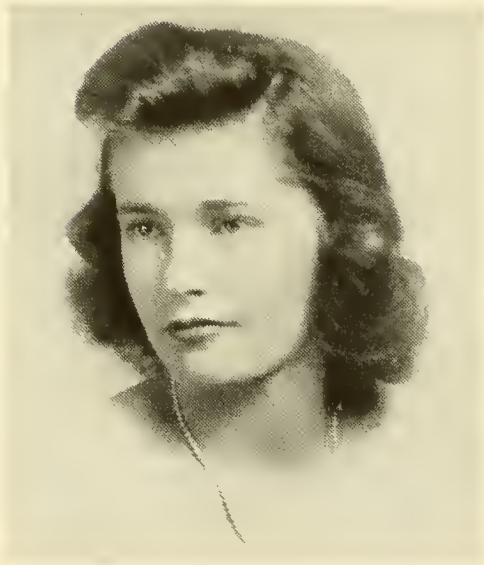
MARY R. HYDE
111 Clark St., Newton Centre, Mass.
Psychology



MARION J. KERR
109 Gainsborough St., Boston, Mass.
Psychology



FAITH LASSER SCHWARZ
79-12 19 Road, Jackson Heights, N. Y.
Economics



ROSEMARY MAKINSON FRANZ
3303 Macomb St. N. W., Washington, D. C.
French



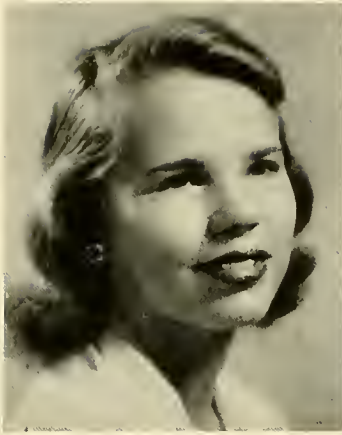
PATRICIA LEWIS
2031 Pine St., Philadelphia, Pa.
Chemistry



ANNA MEISTER
315 Riverside Dr., New York, N. Y.
Chemistry



SUSAN ROSENTHAL
148 Commonwealth Ave., Boston, Mass.
Chemistry



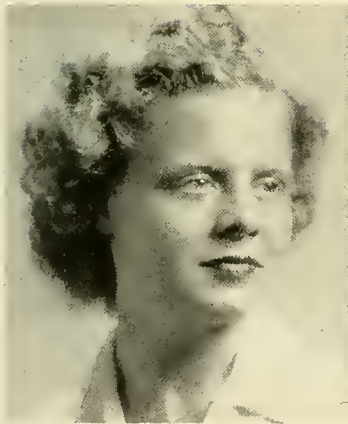
ANNE HALE ADAMS
321 Vernon Avenue West
Fergus Falls, Minn.
Zoology



BETTY M. ANDERSON
4050 Woodland Avenue
Western Springs, Ill.
Psychology



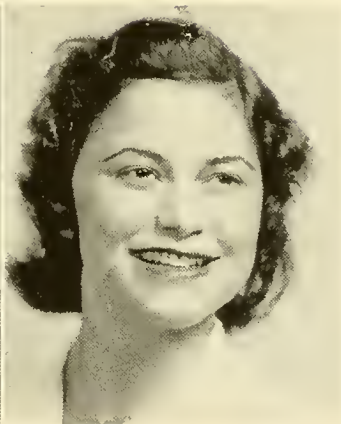
CALLIOPE ANES
87 Church Street
North Adams, Mass.
Zoology



ELIZABETH ANN APOLLONIO
10 Louise Road
Belmont, Mass.
Mathematics

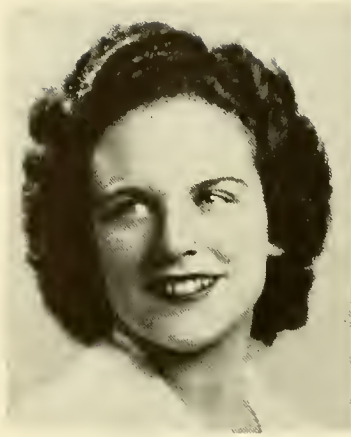


MARY PHYLLIS ARBUCKLE
7118 Washington Street
Saint Louis, Mo.
English Composition



JANE DE BEER AUFESSER
570 Providence Street
Albany, N. Y.
Physics

1945

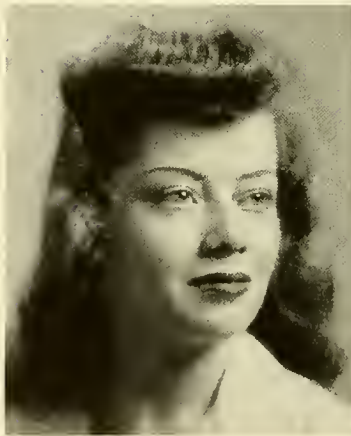


HILDEGARD BAIR
 22 Cornell Street
 Scarsdale, N. Y.
Sociology



ELIZABETH FRANCES BARBER
 102 Euclid Avenue
 Waterbury, Conn.
Zoology

CAROL BANKS
 Saw Mill Lane
 Greenwich, Conn.
History



HARRIET HOPE BARDING
 825 20th Avenue
 East Moline, Ill.
English Literature



ALICE H. BARRADALE
 178 Kilburn Place
 South Orange, N. J.
Spanish



GRACE BARISH
 995 Fifth Avenue
 New York, N. Y.
Art



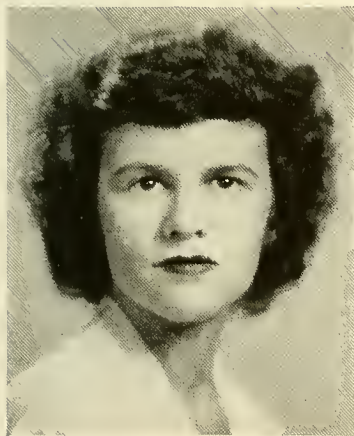
LAURA LOU BAUER
 154 Lakeview Terrace
 Highland Park, Ill.
Economics



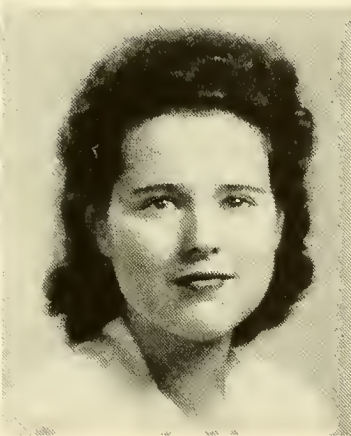
ELIZABETH POLK BENSON
 10 West Underwood Street
 Chevy Chase, Md.
English Composition



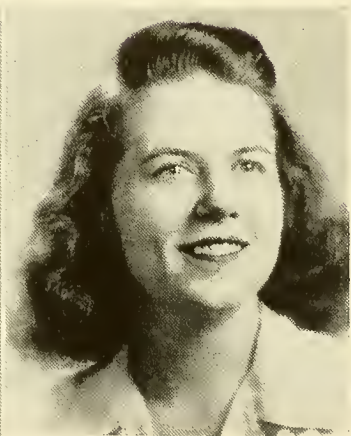
LUCY MORRIS BEMAN
 262 East Quaker Street
 Orchard Park, N. Y.
Chemistry



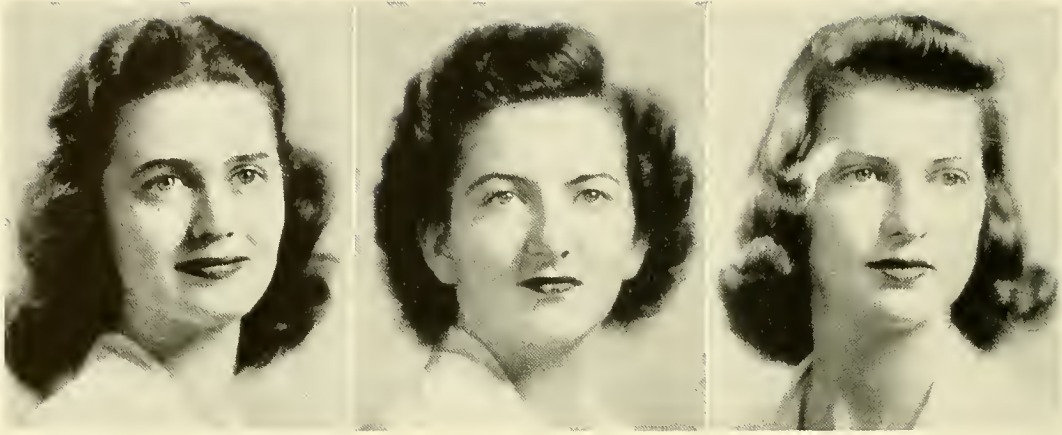
ALICE GLENN BIXLER
 2316 Canterbury Road
 University Heights, Ohio
Political Science



HELEN KETURAH BOGART
 110 Sylvan Drive
 Lookout Mountain, Tenn.
English Literature



BARBARA OPAL BLICK
 15 Sylvan Avenue
 Pleasant Ridge, Mich.
Sociology



EVELYN MARIE BOISE
21 Glen Oaks Avenue
Summit, N. J.
Political Science

MARGARET JANE BONSAI
288 Upper Mountain Avenue
Upper Montclair, N. J.
Art

PATRICIA JANE BOLAND
9 Montclair Avenue
Montclair, N. J.
Mathematics



GLORIA BRADLEY
109 Richmond Avenue
Worcester, Mass.
Political Science

ELIZABETH ANN BRIERLEY
99 Wooster Street
New Britain, Conn.
Economics

HELEN MARIE BRADSHAW
1315 Beechwood Boulevard
Pittsburgh, Pa.
Sociology



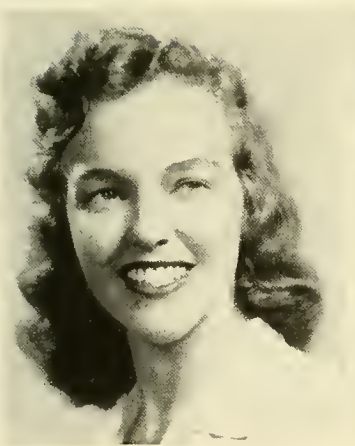
ELEANOR UPTON BROWN
57 Chestnut Street
Dedham, Mass.
Zoology



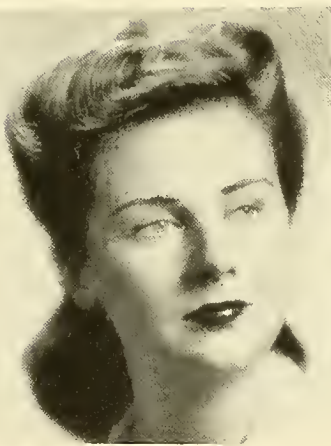
ELIZABETH K. BROWN
7 Warren Place
Montclair, N. J.
English Literature



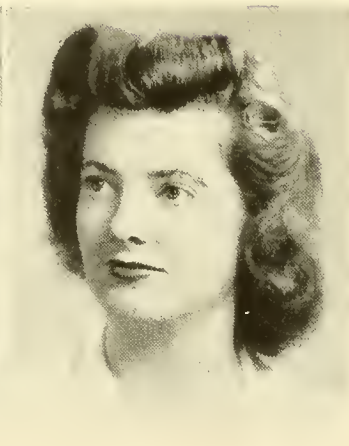
HARRIET MCAFEE BROWN
159 Chapin Street
Binghamton, N. Y.
History



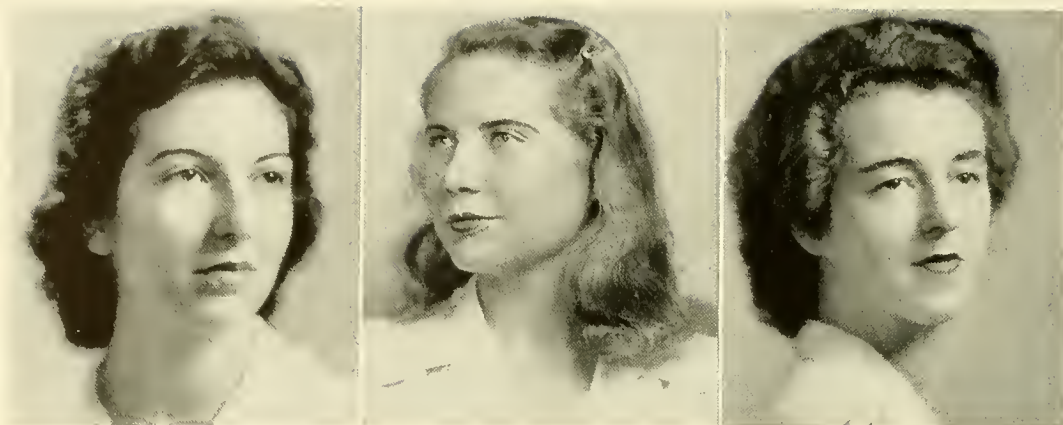
MARGARET HAMILTON BROWN
2 Park Lane
Mount Vernon, N. Y.
English Composition



NAOMI BUCHOLZ
6610 Prairie Road
Omaha, Nebr.
English Composition



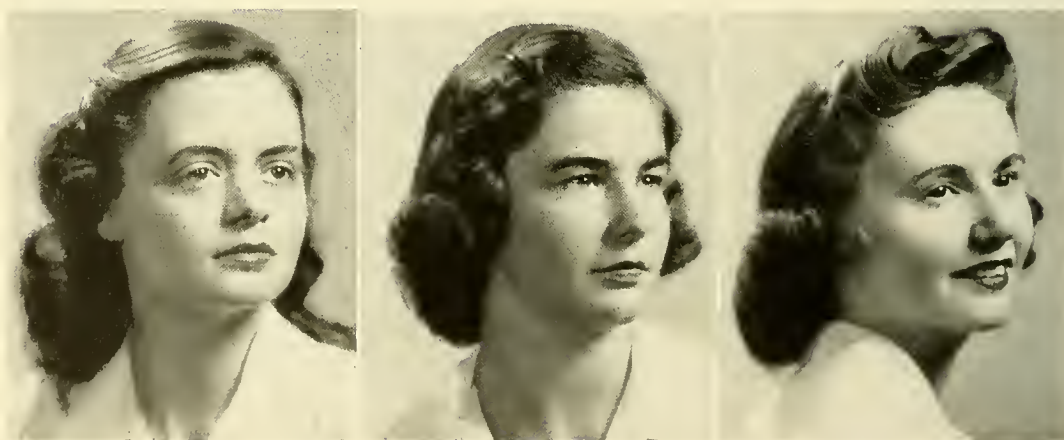
BARBARA BUCKLEY
20 Bassett Road
Brockton, Mass.
English Literature



MARY ALICE BURGESS
72 Fairmount Avenue
Chatham, N. J.
Political Science

JULIE ANN BURNET
Deephaven
Excelsior, Minn.
Biblical History

SIDNEY GERARD BURKE
43 Amherst Road
Wellesley, Mass.
Political Science



CAROLINE BURNQUIST
Warden Apartments
Fort Dodge, Iowa
Economics

BONITA JEAN BUTTREY
70 Gladstone Avenue
Aurora, Ill.
Economics

MARY TYLOR BURTON
930 Forest Avenue
Glendale, Ohio
Sociology



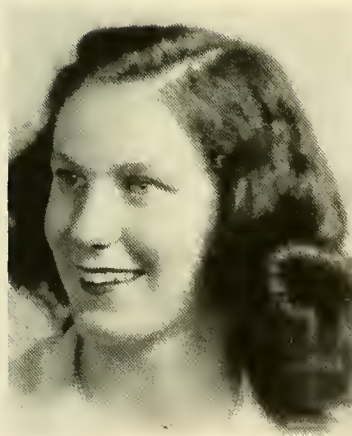
GLORIA J. BUZZELL
607 Lafayette Boulevard
Long Beach, Long Island, N. Y.
English Composition



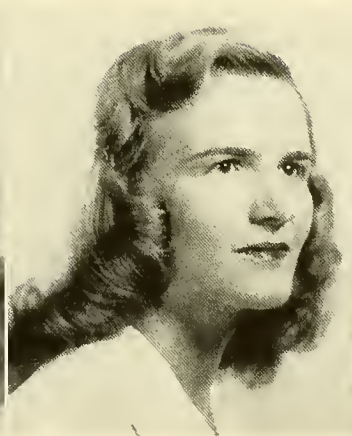
REBECCA CALECHMAN
101 Colony Road
New Haven, Conn.
Economics



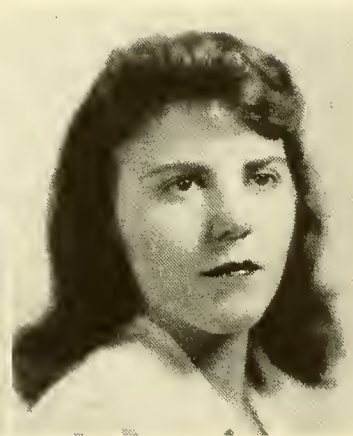
HELEN HUGHES CAHILL
160 Aycrigg Avenue
Passaic, N. J.
Political Science



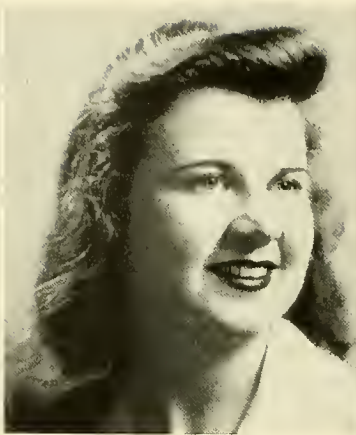
CONSTANCE NOBLE CAMPBELL
Emerson Road
Longmeadow, Mass.
Spanish



GLORIA CAMPBELL
Washington Avenue
Bayville, Long Island, N. Y.
Political Science



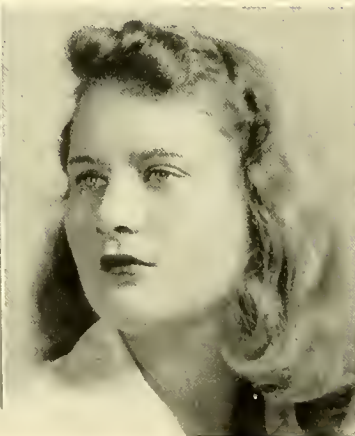
FRANCES MARGARET CAPRON
41 Bradford Avenue
Upper Montclair, N. J.
Physics



CATHARINE CARTER CATLETT
Nuttall Post Office
Gloucester County, Va.
History

ELIZABETH CHALMERS
140 West 58th Street
New York, N. Y.
History

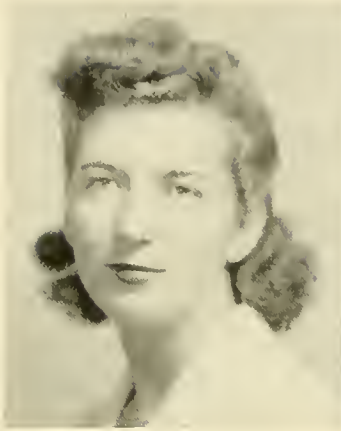
JOAN CAUGHRAN
5136 North Capitol Avenue
Indianapolis, Ind.
Mathematics



ELIZABETH CHAPIN
290 Pine Street
Lowell, Mass.
English Composition

BETTY ANN CHILDS
106 Broadmead
Princeton, N. J.
History

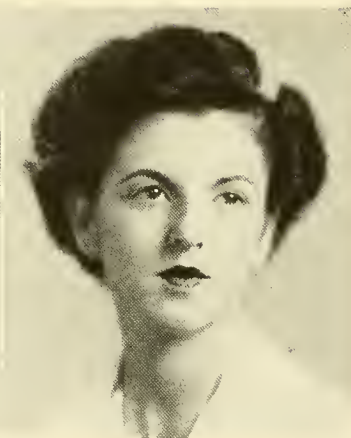
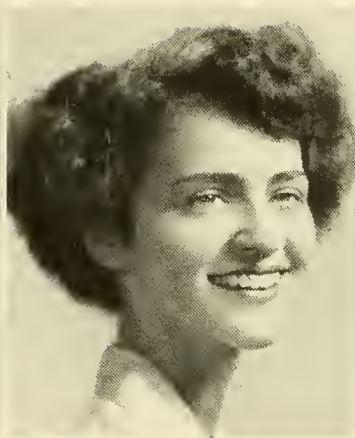
CONSTANCE CHENOWETH
959 Hereford Drive
Akron, Ohio
Political Science



DONA CHUMASERO
50 Midwood Street
Brooklyn, N. Y.
English Composition

ELIZABETH TURNER CLARK
534 Summit Avenue
St. Paul, Minn.
Economics

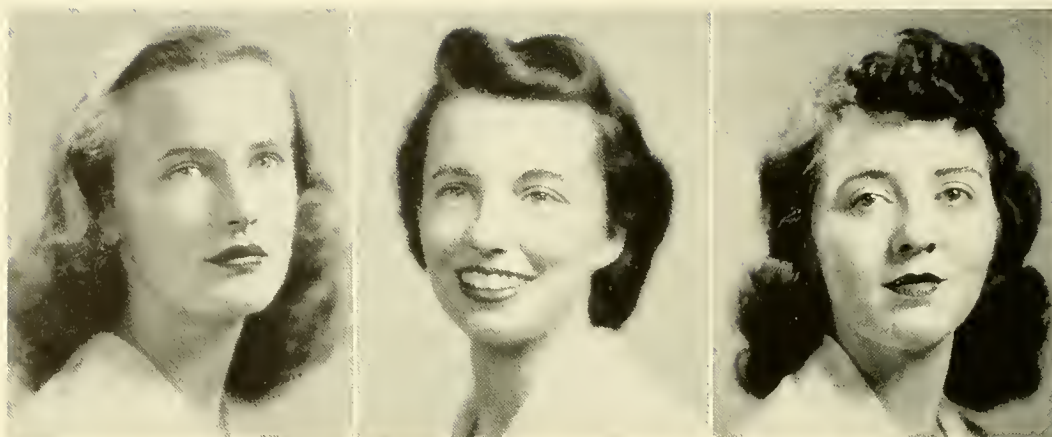
JEAN BEVERLY CLARIN
4715 Delafield Avenue
Riverdale, N. Y.
Economics



ALICE ANNE CLARKE
139 Sixth Avenue
La Grange, Ill.
English Composition

JOY AGNES COHEN
1718 31st Street
Galveston, Texas
Mathematics

ESTHER BERMAN CLENOTT
Bangor House
Bangor, Maine
Latin



ANNE ENGLISH COLCORD
1105 Park Avenue
New York, N. Y.
English Literature

FRANCES IRENE COOK
2193 Cottage Grove Drive
Cleveland Heights, Ohio
History

MARGARET MCNEILL CONROY
701 Glenburn Road
Clarks Summit, Pa.
English Composition



JEAN ESTHER CRAM
19701 Shelbourne Road
Shaker Heights, Ohio
Chemistry

ADELAIDE CRAWLEY
101 Ivy Way
Port Washington, N. Y.
Political Science

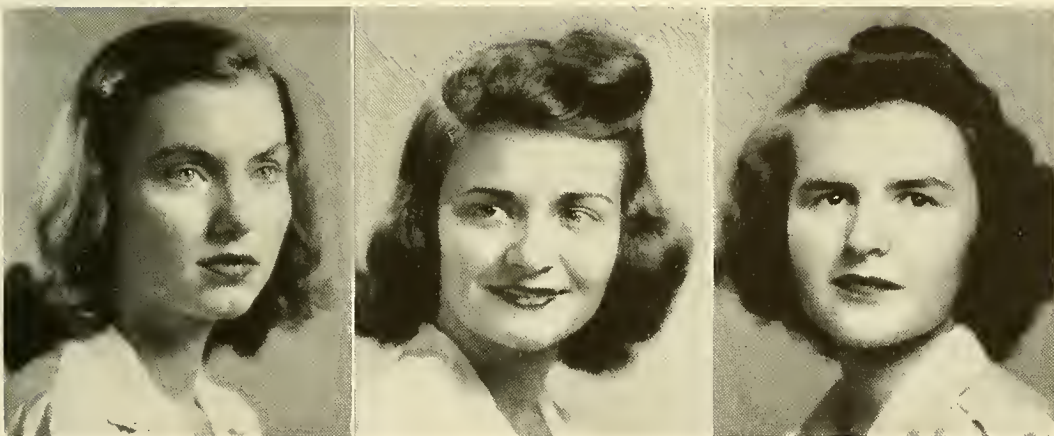
ROSEMARY SQUIRE CRANDALL
73 Morgan Place
Arlington, N. J.
Physics



JANET PATRICIA CROOKS
"Goyard," Cape Haitien
Haiti, West Indies
French

ANNABEL DANHOF
19381 Stratford Road
Detroit, Mich.
French

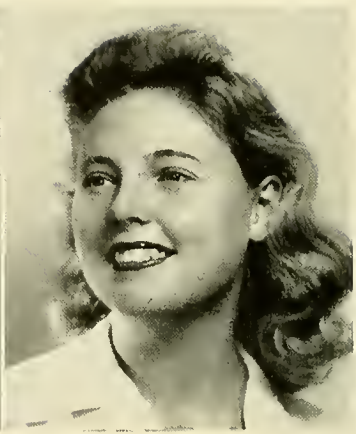
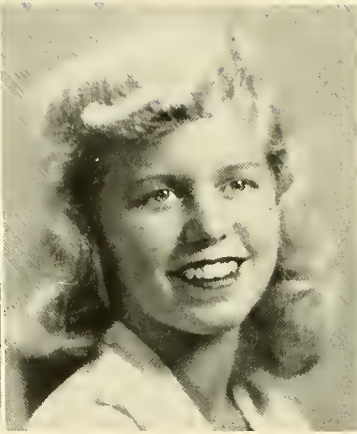
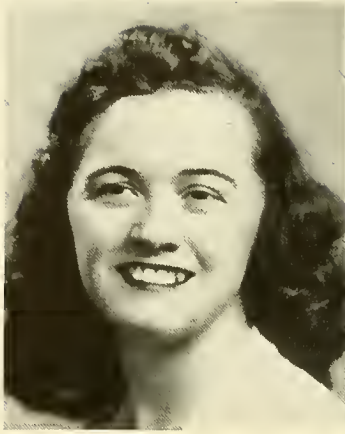
CHRISTINE CURTIS
21 Gammons Road
Waban, Mass.
Economics



ANNE LOGAN DAVIS
552 Union Street
Rahway, N. J.
Zoology

CHARLOTTE MACLEAN DAY
21 Klebart Avenue
Webster, Mass.
Geology

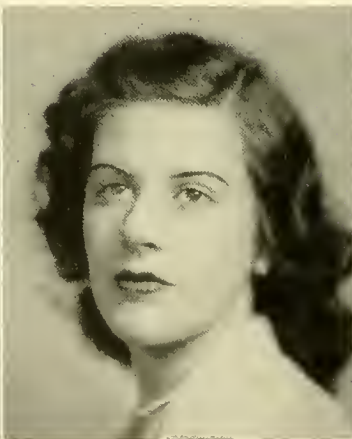
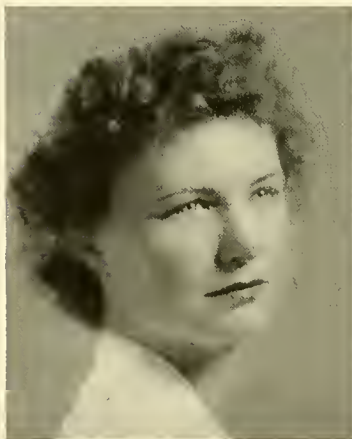
MEREDITH ALICE DAVIS
4901 North Lake Drive
Milwaukee, Wis.
Sociology



THERESE RITA-LOUISE DEGRACE
399 Silver Lake Street
Athol, Mass.
English Comp. & Lit.

TINKA DEREKTOR
4 Sycamore Lane
White Plains, N. Y.
Psychology

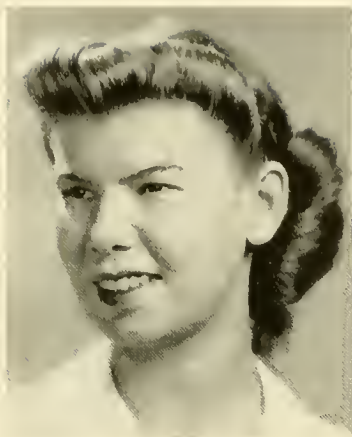
HELENE DELONE
6419 Drexel Road
Philadelphia, Pa.
Zoology



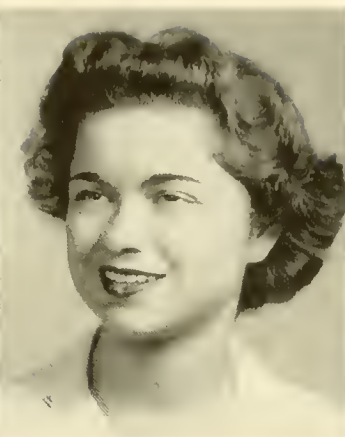
HARRIET LOUISE DICKE
180 Commonwealth Avenue
Boston, Mass.
Geology

LAETITIA SHELBY DICKINSON
2 Maryland Avenue, Cooper Apts.,
Annapolis, Md.
Art

BETTY DIXON
308 West 2nd Avenue
Gastonia, N. C.
English Composition



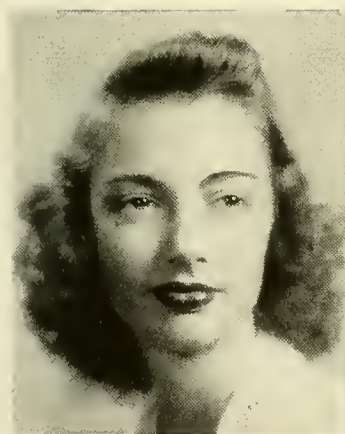
CYNTHIA GILBERT DOANE
112 Roby Road
Madison, Wis.
Chemistry



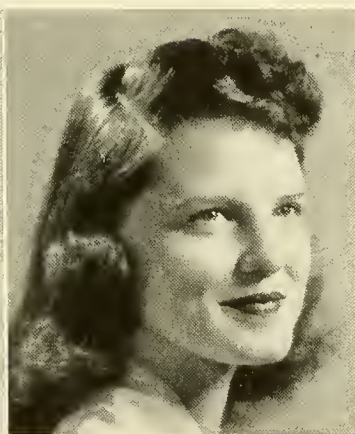
JANET MARCIA DONNET
26 Clifford Avenue
Pelham, N. Y.
English Composition



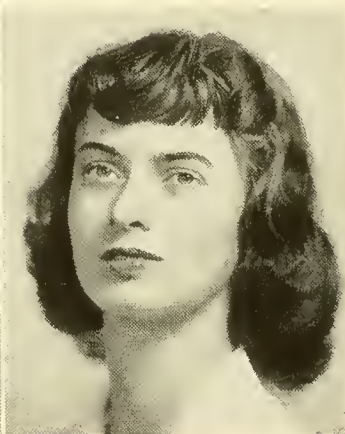
JEAN DEVEREAUX DOTEN
70 Page Road
Newtonville, Mass.
English Composition



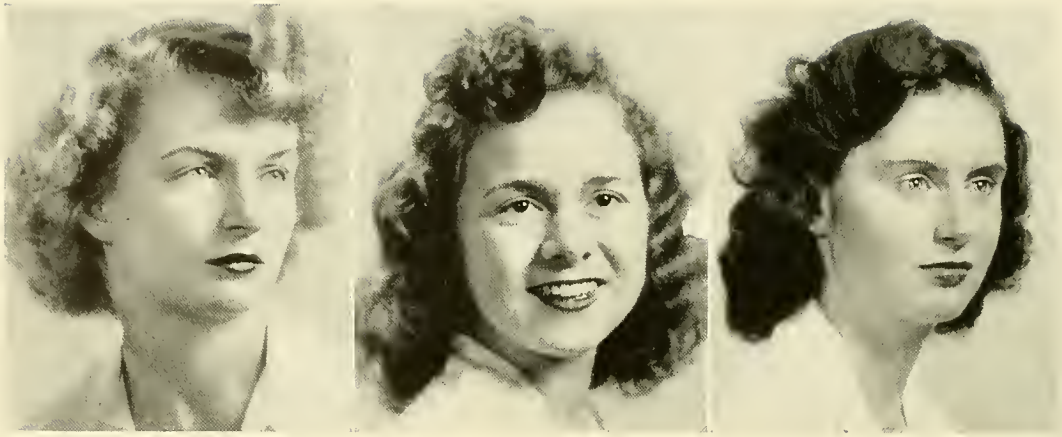
GLORIA DOWNS
2145 East 38
Tulsa, Okla.
Political Science



JANET ALBIN DRESSLER
3316 Daleford Road
Shaker Heights, Ohio
English Composition



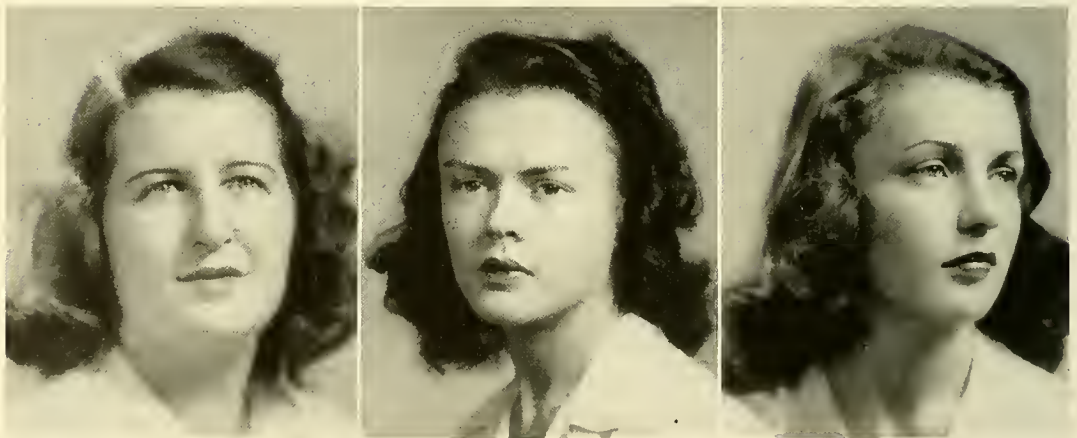
BARBARA CHAPIN DUNLAP
29 Hundreds Circle
Wellesley Hills, Mass.
Music



CAROL SCHUYLER EDGELOW
17 Oxford Street
Springfield, Mass.
English Literature

ELAINE ELKINS
3545 Biddle Street
Cincinnati, Ohio
Chemistry

JEAN SEAVER EDWARDS
202 Reedsdale Road
Milton, Mass.
Geography



MARTHA GRACE ELLIS
Lake Road
Basking Ridge, N. J.
Zoology

RUTH FERGUSON
1818 Washington Street
Canton, Mass.
Economics

CHRISTINE FERGUSON
1818 Washington Street
Canton, Mass.
Chemistry



BEBE MARIAN FISCHGRUND
 2303 University Avenue
 Canton, Ohio
Psychology



JESSIE L. FOSTER
 Muskoka Lodge, Chippewa Trail
 Medford Lakes, N. J.
French



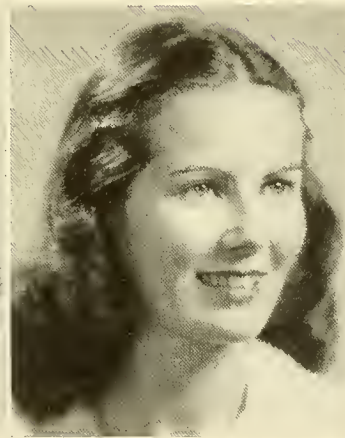
MARY JANE FOSTER
 4150 Grassmere Lane
 Dallas, Texas
English Composition



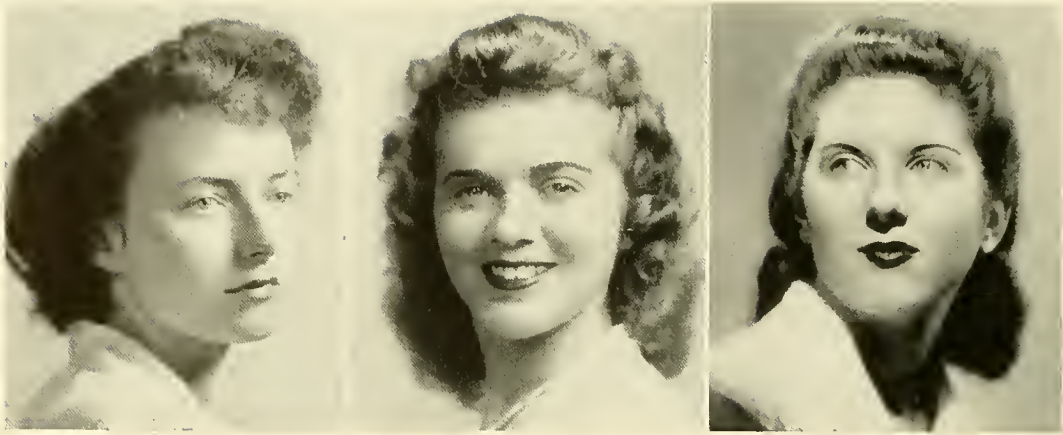
INEZ FRENCH
 2205 Madison Road
 Cincinnati, Ohio
Art



DOROTHY MARTHA FREYER
 501 Linden Avenue
 Oak Park, Ill.
Chemistry



GLORIA EADE GALLIC
 29 Wilton Road
 Windsor, Conn.
English Composition



JEANNE GARCELON
86 Falmouth Road
Arlington, Mass.
Mathematics

JANE GODLEY
18 Clarendon Road
Albany, N. Y.
Sociology

MARILYN JANE GARFIELD
31 Ray Street
Manchester, N. H.
History



DOROTHY GOING
Amherst
New Hampshire
Economics

ELOISE JOY GRAWOIG
4759 Greenwood Avenue
Chicago, Ill.
Economics

MARJORIE FRANCES GOODMAN
70 Remsen Street
Brooklyn, N. Y.
English Literature



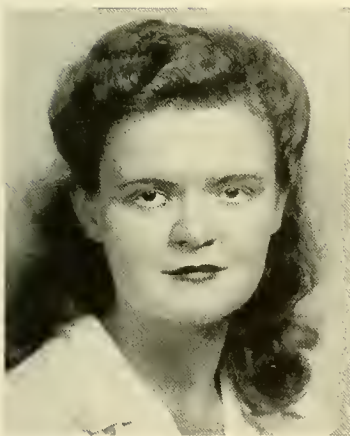
ELEANOR MEAD GRIESEMER
 115 West Underwood Street
 Chevy Chase, Md.
English Composition



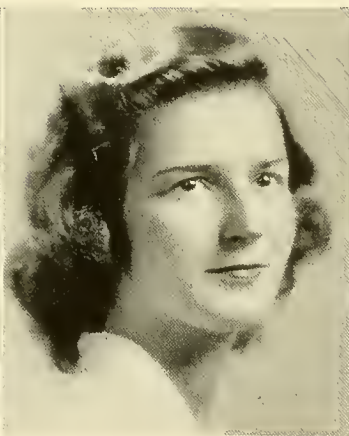
IRENE SCHIFF GROBAN
 211 South Cassingham Road
 Columbus, Ohio
Economics



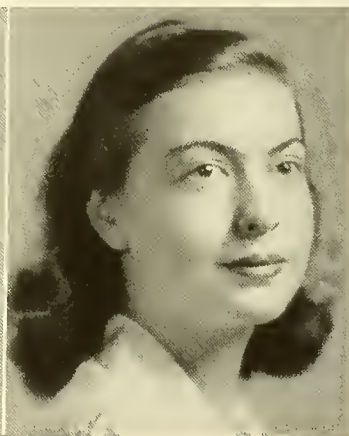
MARIAN PRINCE GROOT
 26 Vine Brook Road
 Lexington, Mass.
Geology



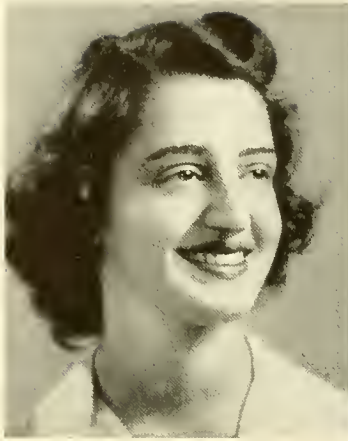
JOYCE MERRIMAN GULICK
 35-20 77th Street
 Jackson Heights, N. Y.
English Composition



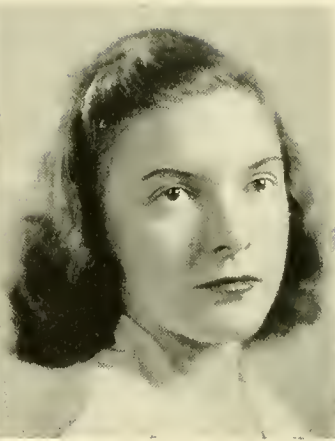
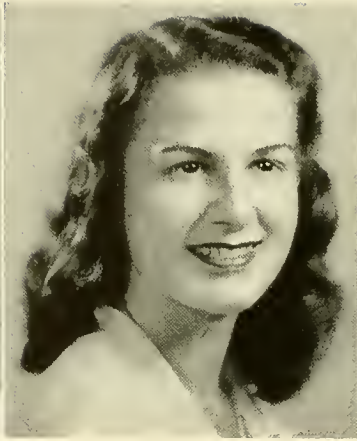
LOUISA HARRISON HAGNER
 1702 Park Avenue
 Richmond, Va.
English Composition



CAROLINE SCRANTON HADLEY
 9 Pearl Street
 New Hartford, N. Y.
Art



HELEN KOHAR HAGOPIAN
23 Fiske Road
Wellesley Hills, Mass.
Zoology



FAITH MARY HALFYARD
1056 Beacon Street
Brookline, Mass.
Economics

JANET RUTH HAHN
887 Greyton Road
Cleveland Heights, Ohio
English Literature



HELEN HALL
22 Andrew Street
Everett, Mass.
Biblical History



RACHEL HALL
5619 Fair Oaks
Pittsburgh, Pa.
Art



VIRGINIA HALL
80 Fairway Avenue
Rye, N. Y.
Mathematics



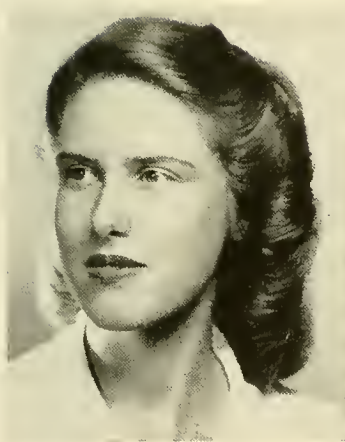
ELIZABETH ANN HANDY
126 Crafts Street
Newtonville, Mass.
Economics



LUCILLE VAN SLYKE HARTER
Cornwall-on-Hudson
New York
English Composition



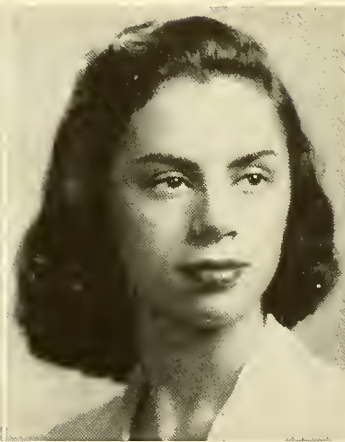
MARTHA HATCHER
College Grove
Tennessee
English Composition



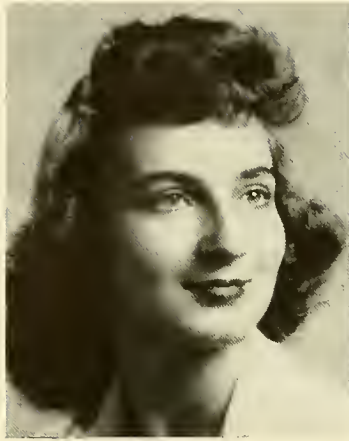
NANCY ELDER HEATH
1611 Harris Road
Chestnut Hill, Philadelphia, Pa.
Sociology



FLORANNE HENDERSON
Box 578
Chapel Hill, N. C.
Art



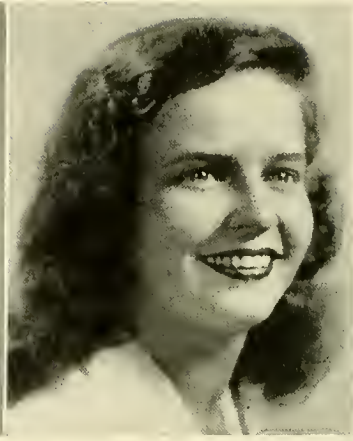
WINIFRED TEME HERMAN
333 Hawthorne Terrace
Mount Vernon, N. Y.
Art



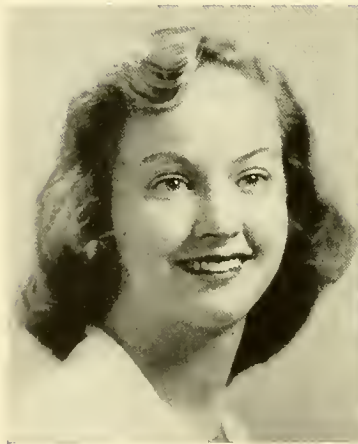
ELEANOR MARTHA HERZ
 211 Deer Path Drive
 Lead, South Dakota
English Composition



SARAH ANN HILL
 1136 East 25th Street
 Tulsa, Okla.
Chemistry



ANN R. HOFFMAN
 1530 East Jefferson
 South Bend, Ind.
Political Science



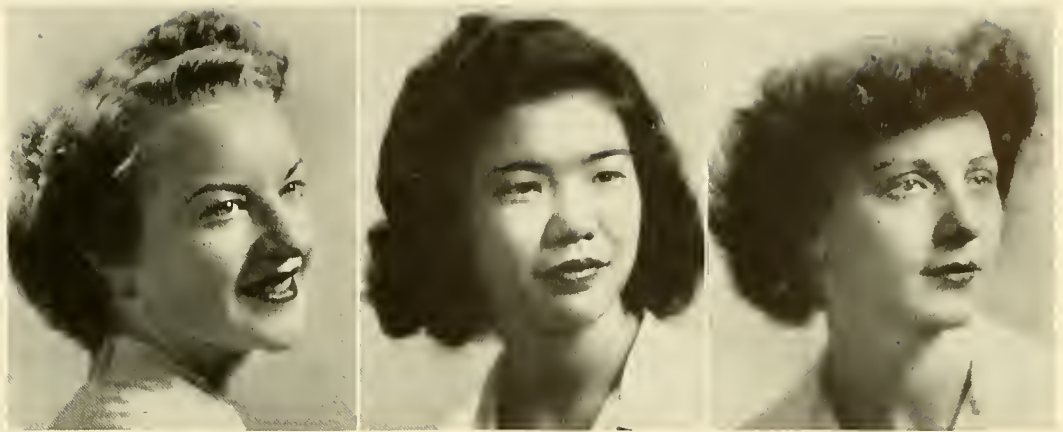
ALICE M. HORTON
 417 Riverside Drive
 New York, N. Y.
Political Science



JANET VAN RENSSELAER HORTON
 10 Elm Street
 Geneseo, N. Y.
English Comp. & Lit.



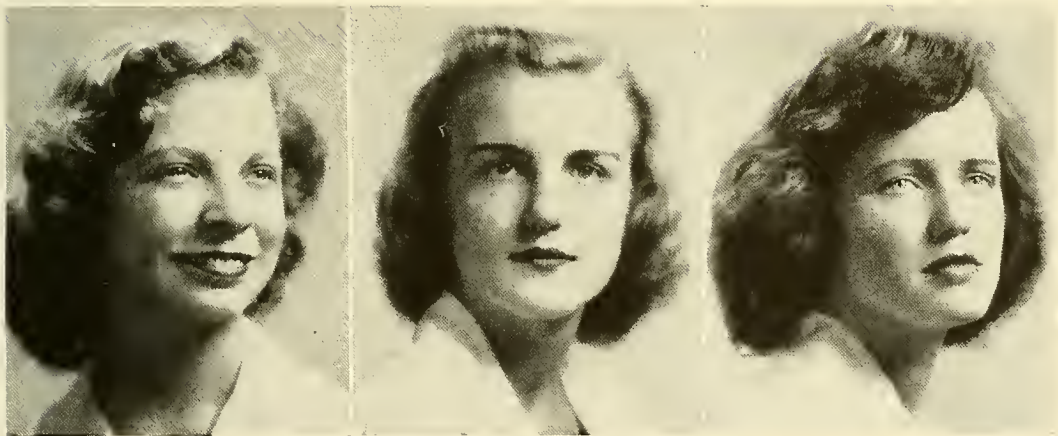
JEAN HOSKINS
 Quaker Road
 Chappaqua, N. Y.
Zoology



JANE INGLEY
165 Gilpin Street
Denver, Col.
Sociology

ALBA BERNARDI JAMESON
6 Sessions Street
Wellesley, Mass.
Italian

EMIKO ISHIGURO
449 Walnut Street
Milton, Pa.
Chemistry



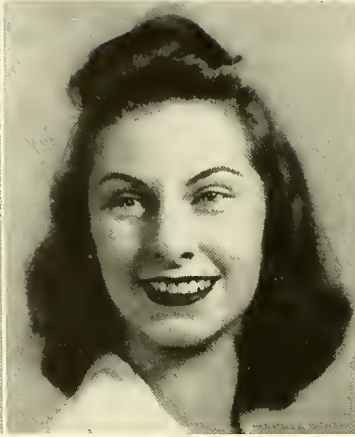
ANNA B. JOHNSTON
6310 Ridgeway Road
Richmond, Va.
English Literature

MABEL ELIZABETH JONES
580 Prospect Street
Maplewood, N. J.
Chemistry

MARGARET E. JOHNSTON
505 Waverly Road
Highland Park, Ill.
Chemistry



ANN JORDAN
19 Hanson Street
Greenwood, Mass.
Economics

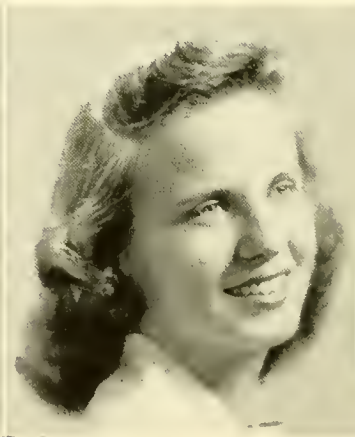


JEAN ELIZABETH KENNEDY
Old Mystic
Connecticut
Psychology

M. DOROTHEA KEIL
4705 Riverdale Avenue
New York, N. Y.
Political Science



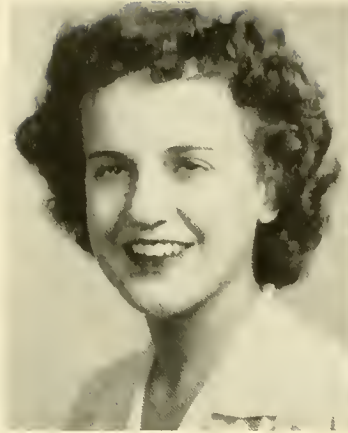
JEAN MARIE KINEKE
28 Oakland Road
Maplewood, N. J.
Economics



DORIS JANE KING
15 Fern Street
New Rochelle, N. Y.
Biblical History



NAOMI RUTH KISLAK
927 Hudson Street
Hoboken, N. J.
Economics



PATRICIA NEWMAKER KNAPP
11 Verback Street
Warren, Pa.
Economics



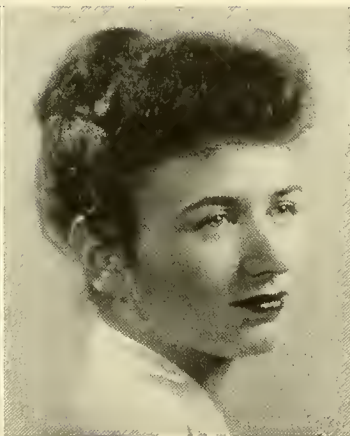
VIRGINIA HARRIET KOCH
325 White Oak Lane
Winnetka, Ill.
Chemistry



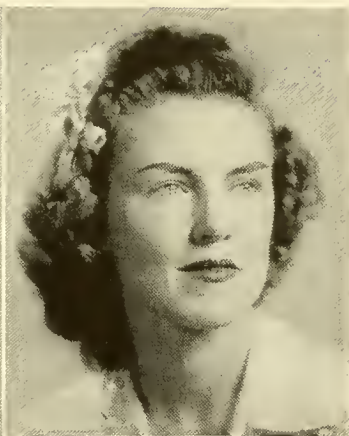
JANE M. KNICKERBOCKER
256 South Main Street
Torrington, Conn.
Economics



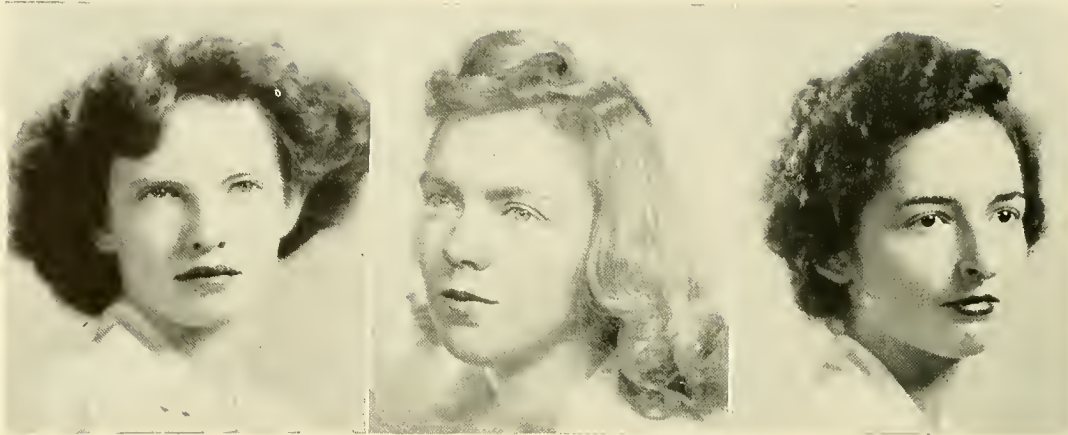
ELEANOR MAY KOJASSAR
213 Hazelwood Avenue
Bound Brook, N. J.
French



ELIZABETH ANN KUHN
1150 Berkshire Road
Grosse Pointe, Mich.
Psychology



CARYL KRIEGER
60 Plaza Street
Brooklyn, N. Y.
Art



EDITH MOORE KYNOR
560 North Laurel Street
Hazleton, Pa.
Geology

PATRICIA GRACE LAUBER
Sasqua Hills
East Norwalk, Conn.
English Composition

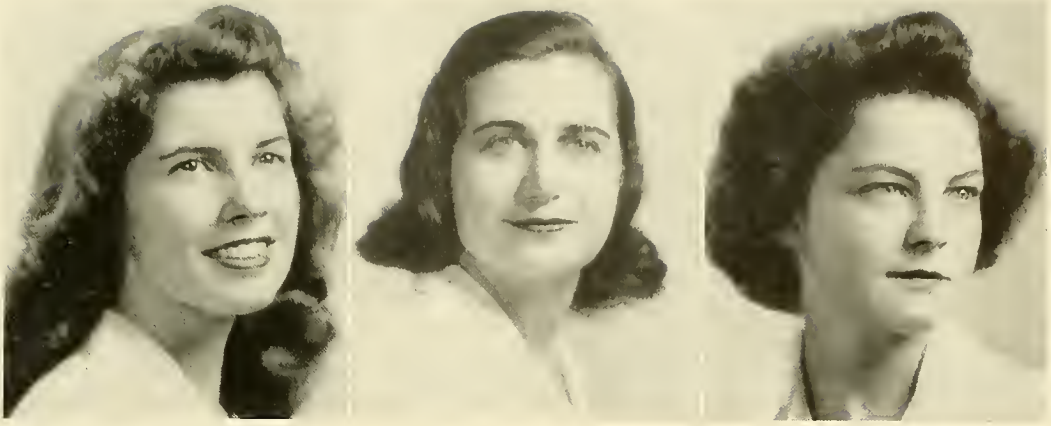
MARCIA LANE
6 Woodland Road
Westfield, Mass.
Zoology



MARY LOUISE LAWRENCE
30 Stockton Street
Bloomfield, N. J.
Zoology

LENORE LEHN
34 North Eighth Avenue
Highland Park, N. J.
Chemistry

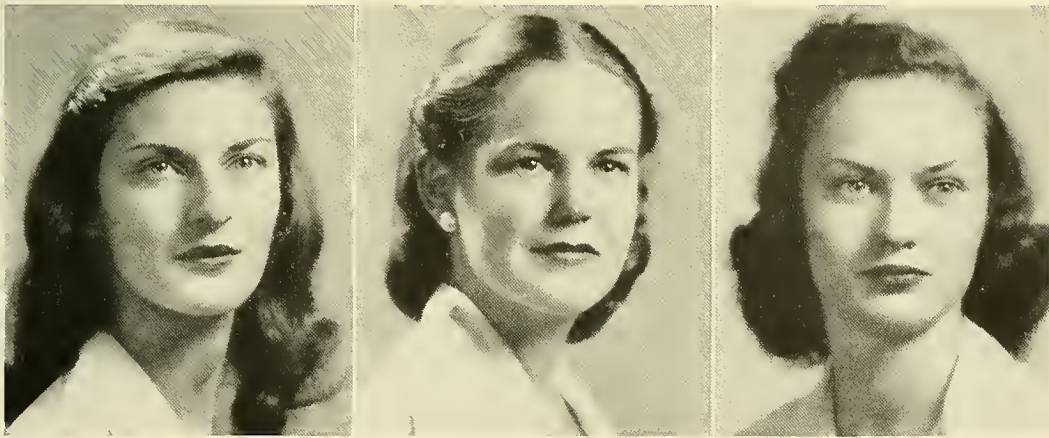
MARY ATTAWAY LEE
Emerson Road
Park Hills, Covington, Ky.
Biblical History



MARJORY LENT
1821 Second Street
Peru, Ill.
Spanish

GLORIA LEVY
3111 Avenue O
Galveston, Texas
Mathematics

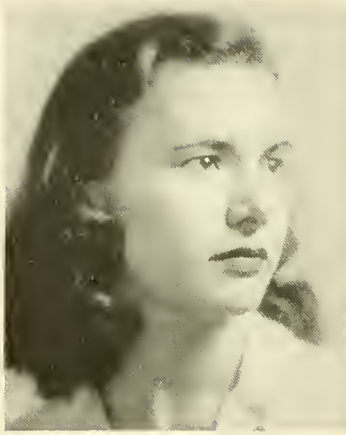
SELMA M. LEVINE
331 Winthrop Avenue
New Haven, Conn.
Political Science



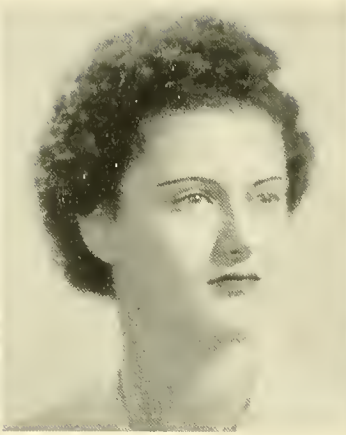
PHYLLIS MARIAN LIPSKY
357 Center Street
Bangor, Me.
English Composition

ISABEL T. LUTHER
1530 Mahantongo Street
Pottsville, Pa.
Psychology

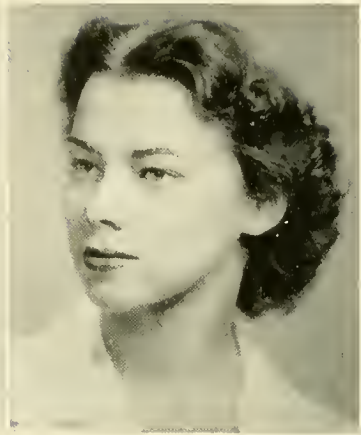
HARRIET HARLING LOTHROP
149 Pleasant Avenue
Portland, Me.
German



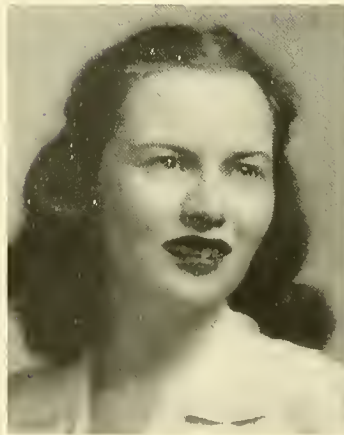
MARY FRANCES LYONS
4141 Glenwood Street
Little Neck, N. Y.
History



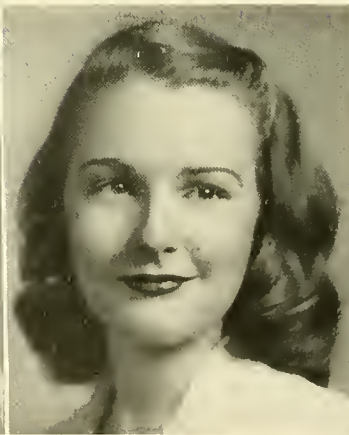
JEAN MALMSTEDT
61 Avon Place
Amityville, N. Y.
Economics



DESPINA MALAKOS
501 Main Street
Haverhill, Mass.
Physics



SARAH JANE MANLEY
1039 Murrayhill Avenue
Pittsburgh, Pa.
French



HELEN KATHRYNE MARCHESE
53 Palmyra Street
Springfield, Mass.
Economics



MARY PRISCILLA MARCHANT
75 North Quaker Lane
West Hartford, Conn.
History



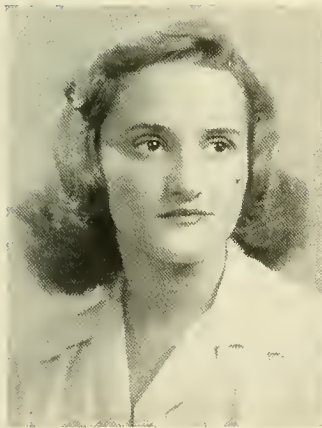
BARBARA MARTIN
4975 Riverdale Avenue
Riverdale-on-Hudson, N. Y.
Psychology



JOCELYN ENID MASON
Morningside Drive
Greens Farms, Conn.
English Composition



MARY LOUISE MAYGER
Shanghai,
China
German



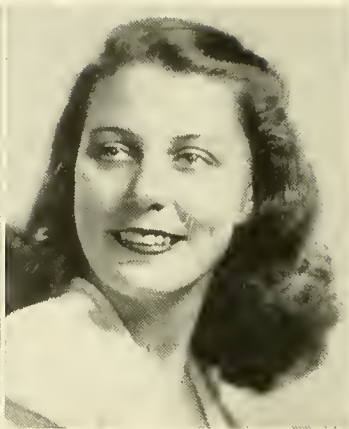
MARY ALICE MCGOUGH
5121 Irving Avenue, South
Minneapolis, Minn.
Botany



BETTY MCLAIN
4015½ Garden Avenue
Los Angeles, Calif.
English Composition



ALICE AYRES MEEKER
 19 Northview Avenue
 Upper Montclair, N. J.
Biblical History



LINDA BOLTE
 370 North Maple Avenue
 Greenwich, Conn.
English Composition



ELIZABETH ANNE METZ
 2800 Espy Avenue
 Pittsburgh, Pa.
Political Science



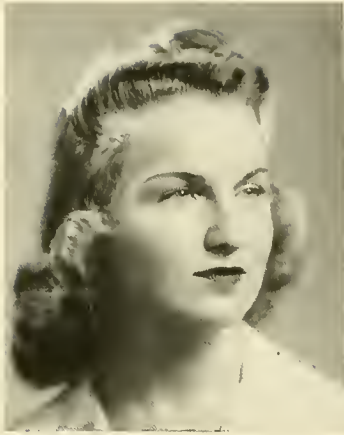
SHIRLEY FRIED MEYERS
 16 Beaver Hill Lane
 New Haven, Conn.
English Literature



MARGERY W. MILLER
 9 Elm Street
 Springfield, Vt.
English Composition



JANET MILLER
 Beldon Hill Road
 Wilton, Conn.
Zoology



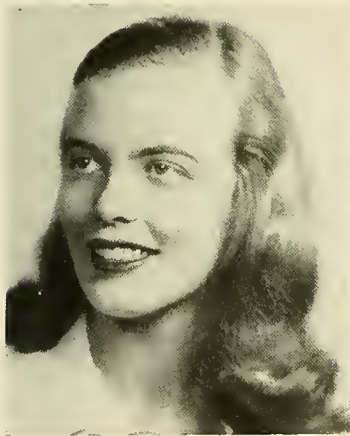
MARILYN E. MILLER
4274 Fullerton Avenue
Detroit, Mich.
Art



NORMA ELAINE MILLER
3 Fowell Avenue
Nashua, N. H.
Chemistry



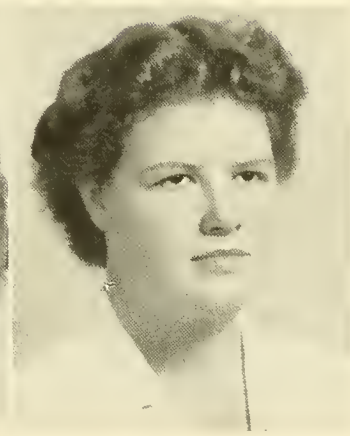
MARTHA JEANNE MONTGOMERY
c/o Col. Ray C. Montgomery,
Camp Hood, Texas
English Composition



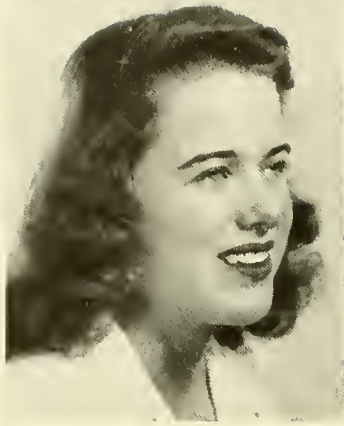
MARIAN MOORE
1431 Wood Avenue
Colorado Springs, Colo.
Sociology



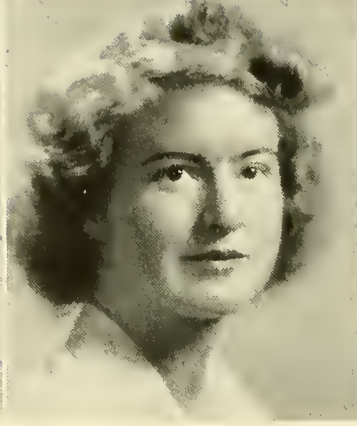
MARIANNE CRAIG MOORE
34 Chittenden Avenue
Crestwood, N. Y.
English Composition



GRACE ELIZABETH MOREY
69 East 82nd Street
New York City, N. Y.
Political Science



SARAH TERRILL MORRIS
505 Center Street
Eustis, Fla.
Psychology



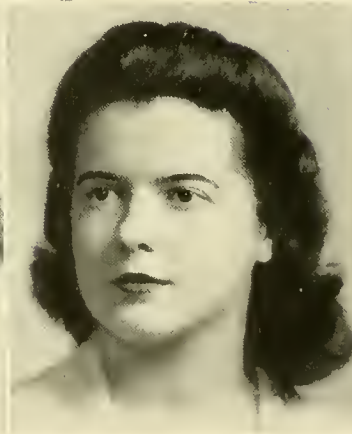
MARCIA MORSE
11 Seaver Street
Wellesley Hills, Mass.
English Composition



SHEILA GRIFFITHS MURPHY
1 Clark Street
Brooklyn, N. Y.
English Composition



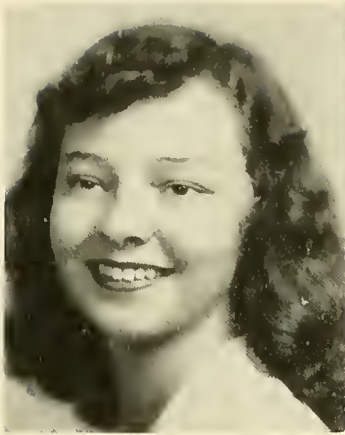
KAROL DAVIS MUSA
42 Oakdale Boulevard
Farmingdale, N. Y.
Psychology



CONSTANCE ELIZABETH NANGLE
8409 113th Street
Richmond Hill, N. Y.
Chemistry



ELIN NAUMBURG
Croton-on-Hudson
New York
Economics



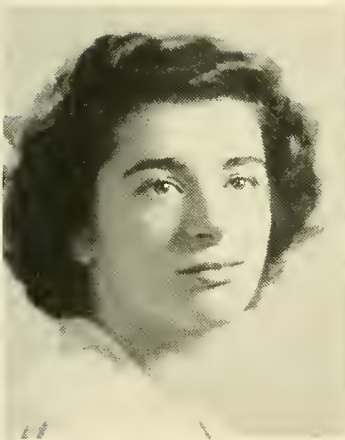
MARIAN NEAL
14 Park Street
Tenafly, N. J.
Political Science



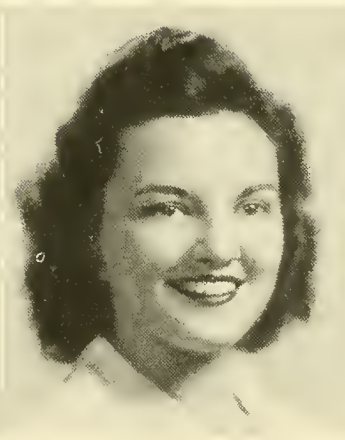
ANNE EDWARDS NEWBERY
160 Highland Avenue
Ridgewood, N. J.
Art



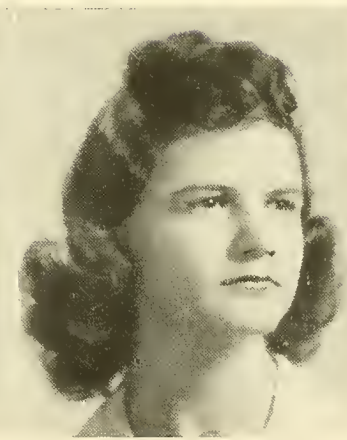
MONICA D. NEWMARK
523 West 121st Street
New York, N. Y.
Political Science



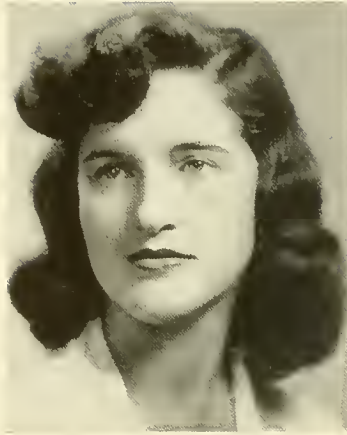
CAROLYN LUCIE NICKERSON
2198 Massachusetts Avenue
Lexington, Mass.
English Comp. & Lit.



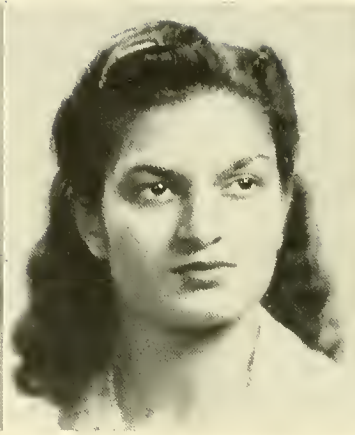
NANCY JEAN NILL
403 Cherry Road
Syracuse, N. Y.
Geography



LOUISE HAVEN NORTH
32 Badeau Avenue
Summit, N. J.
Biblical History



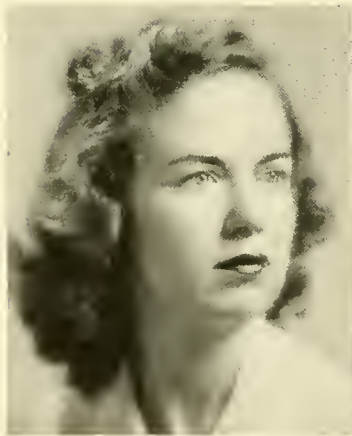
MARJORIE OLSEN
 34 Randolph Street
 Passaic, N. J.
Sociology



CHANDRALEKHA PANDIT
 Anand Bhawan,
 Allahabad, India
Political Science



CORA WARRANT PARCE
 160 Oak Lane
 Rochester, N. Y.
Sociology



MARY LOUISE ROSE PARKS
 136 Filbert Street
 Hamden, Conn.
Art



NANCY FORD PELGRIFT
 61 North Main Street
 West Hartford, Conn.
Mathematics



GABRIELLE JAYNE PETERS
 55 Greendale Road
 Scarsdale, N. Y.
English Composition



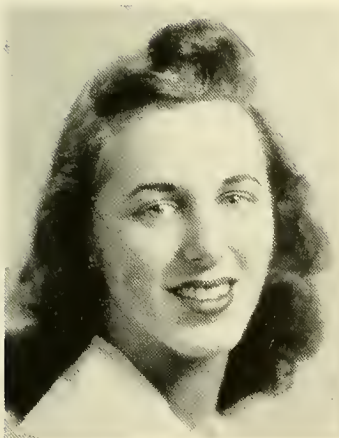
MARGARET CRAWFORD PETERS
20 Elm Street
Concord, Mass.
Music



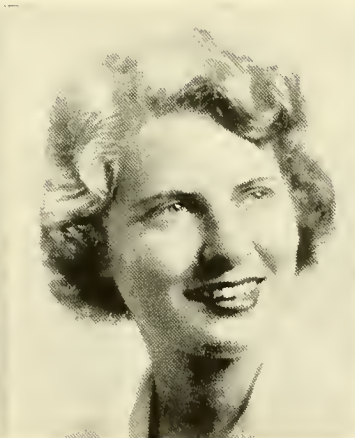
CHRISTINE PETERSON
11 Kneeland Avenue
Binghamton, N. Y.
Economics



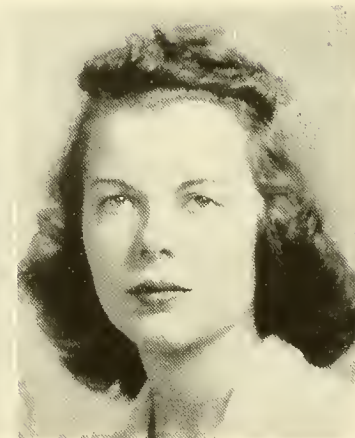
LUCILE PETERSON
Locust Avenue
Rye, N. Y.
Psychology



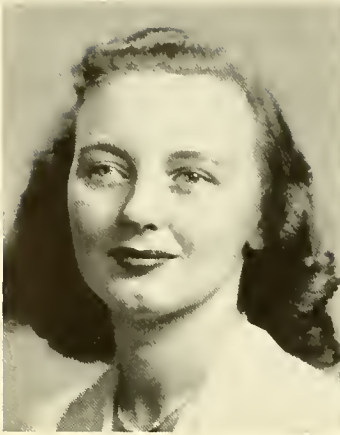
ANNE PETTINGELL
40 Temple Street
Belmont, Mass.
Mathematics



BECKY PFOUTS
133 Summit Avenue
Summit, N. J.
Chemistry



CLAIRE TANCRÉ PHILLIPS
3124 North Summit Avenue
Milwaukee, Wis.
Psychology



NATALIE PIERCE

5 Webb Rd., Sleepy Hollow Manor,
North Tarrytown, N. Y.

Psychology

DORIS COOPER POWERS

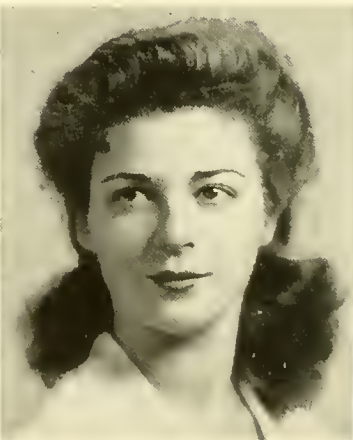
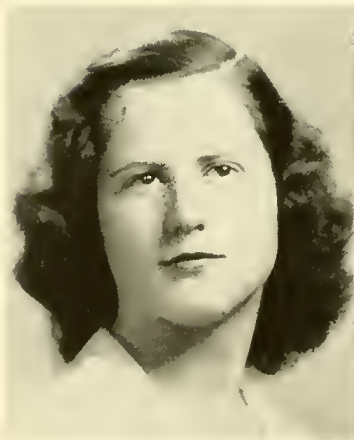
1359 Hill Drive
Los Angeles, Calif.

English Literature

PRISCILLA OGDEN PLUMB

Marilla Park
Streator, Ill.

Chemistry



JEAN MUIR PREBLE

471 Rivard Boulevard
Grosse Pointe, Mich.

Chemistry

KATHERINE MERLE REESE

93 Lakeview Avenue, N. E.
Atlanta, Ga.

English Composition

PATRICIA WINIFIELD PROCTOR

Winfield, Westview Avenue
Nashville, Tenn.

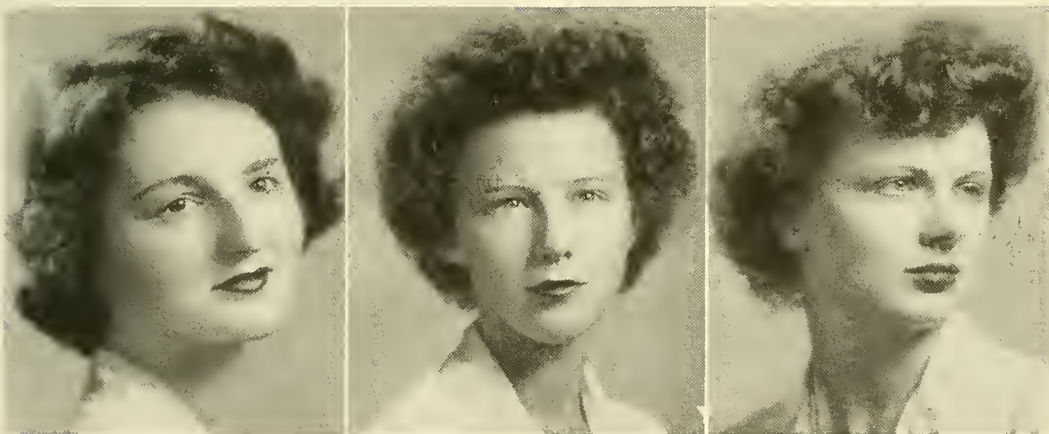
Chemistry



ESTHER LOUISE REMICK
632 Hinman Avenue
Evanston, Ill.
Sociology

JOAN REVILLE
7 Northway
Bronxville, N. Y.
Economics

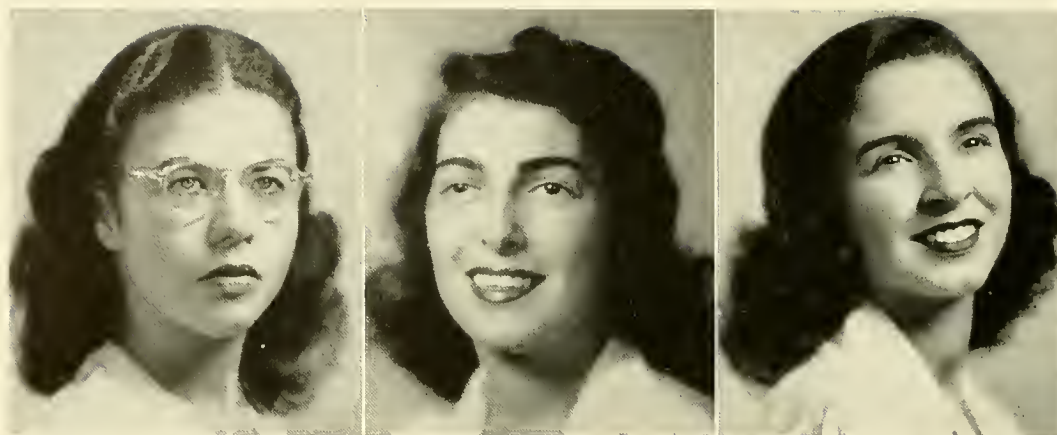
MARY VIRGINIA REPERT
1630 Mount Eagle Place
Alexandria, Va.
English Composition



ANN D. ROBBINS
1 Prospect Street
Southbridge, Mass.
French

MARILYN E. ROMER
6712 North Talman Avenue
Chicago, Ill.
English Composition

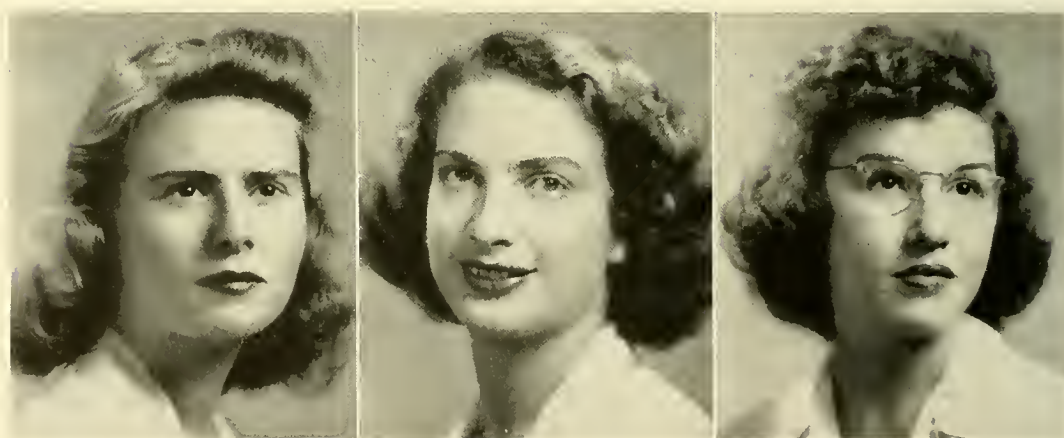
ELIZABETH A. ROBINSON
144 Hancock Street
Auburndale, Mass.
Art



SHIRLEY ROSENBLUM
229 Buhl Boulevard
Sharon, Pa.
Physics

CAROL DEBORAH RUBACK
356 Grove Road
South Orange, N. J.
Psychology

ARLINE ROSHKIND
110 35th Street, South East
Washington, D. C.
Political Science



JOYCE RUBENSTEIN
581 Richmond Avenue
Buffalo, N. Y.
Economics

BARBARA JANE RUDOLPH
228 Rockingham Street
Toledo, Ohio
English Literature

JEAN RUBIN
1120 Park Avenue
New York, N. Y.
Economics



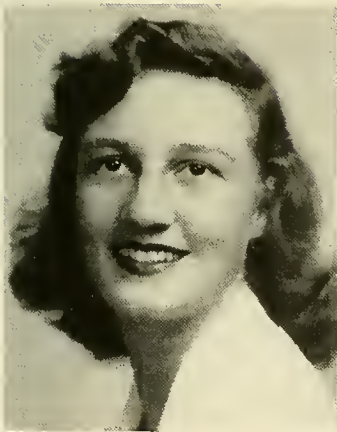
JOY RUSHMORE
971 Kensington Avenue
Plainfield, N. J.
Art



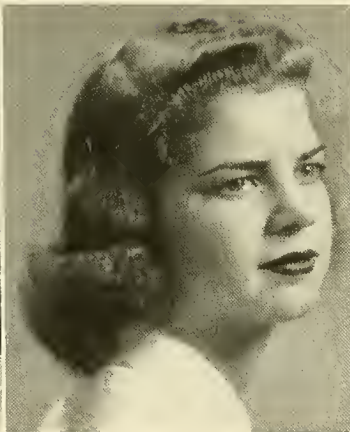
JANICE ETHEL RUSSELL
280 Main Street
Easthampton, Mass.
Art



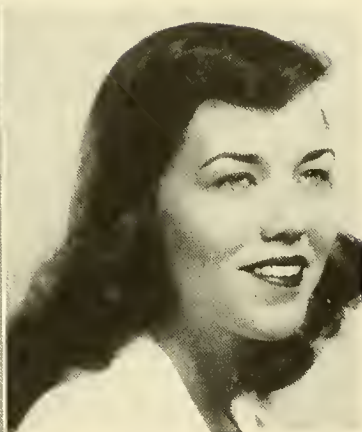
SARA ANNE RUSSELL
9 Hill Crest Circle
Waban, Mass.
Art



KATHLEEN HEATHER SAYRE
Orangeburg, R. F. D.
New York
Sociology



PAULINE SCHAAF
Split Rock Road
Boonton, N. J.
Psychology



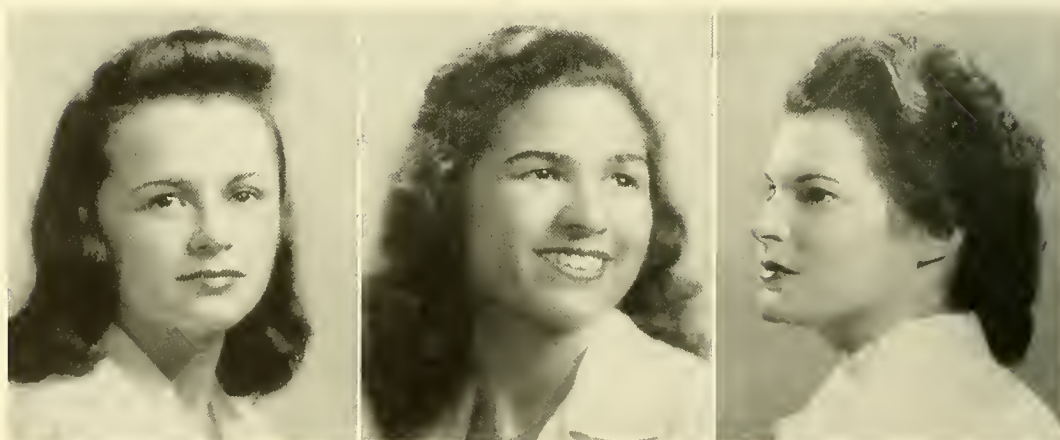
ELIZABETH SCHEER
1655 Fifth Avenue
Huntington, W. Va.
English Composition



MARGARET ANN SCHLEGEL
1040 Reading Boulevard
Wyomissing, Pa.
Zoology

BETTY SIMMONS SCHOONOVER
600 Eighth Avenue
Fort Worth, Texas
French

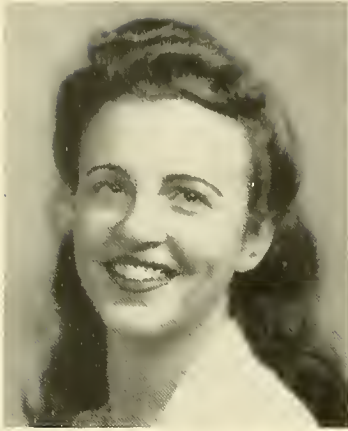
JUDITH ADELE SCHLENGER
57 Mayhew Drive
South Orange, N. J.
Mathematics



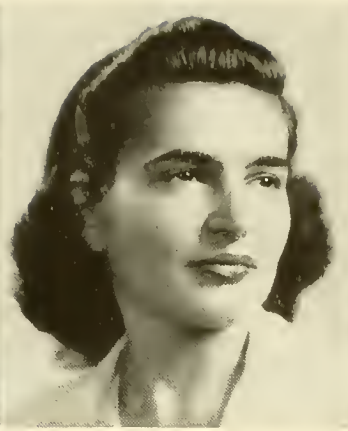
ELIZABETH JANE SCHROEDER
1114 Forest Avenue
River Forest, Ill.
Economics

JANE HALSTED SEDDON
Rivoli Drive
Macon, Georgia
Psychology

BARBARA ALMA SCOTT
1260 Irving Street, North East
Washington, D. C.
Political Science



EDITH SHAPERO SELIGMANN
56 Clinton Place
Newton Centre, Mass.
Chemistry



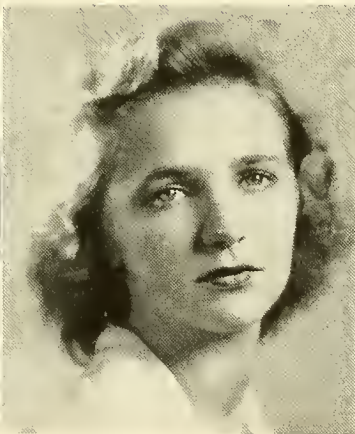
KATE SENIOR
5612 Kenwood Avenue
Chicago, Ill.
Philosophy



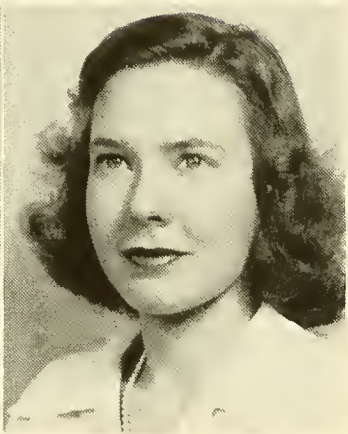
MARJORIE ALICE SEVERY
165 Atlantic Avenue
Marblehead, Mass.
Mathematics



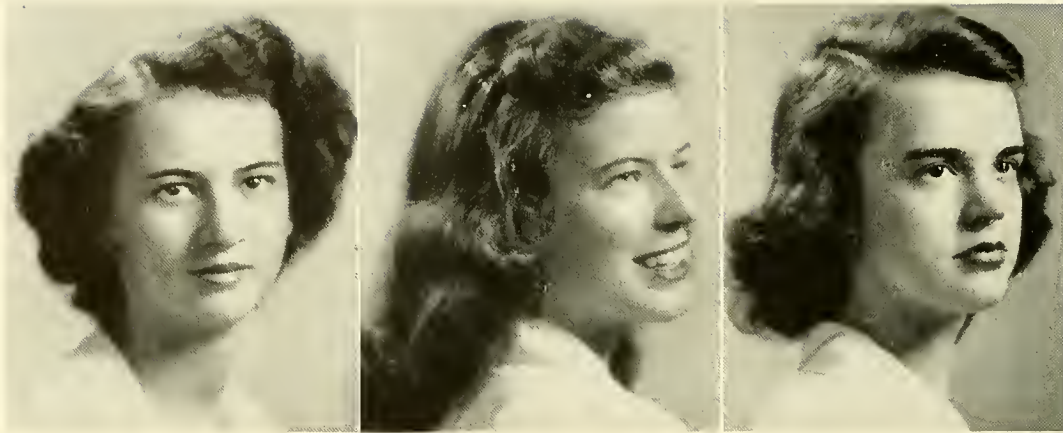
HADASSAH RUTH SHAPIRO
2045 East Fifth Street
Brooklyn, N. Y.
Economics



CAROLINE MARSHALL SHELLY
148 Bethlehem Pike
Ambler, Pa.
Economics



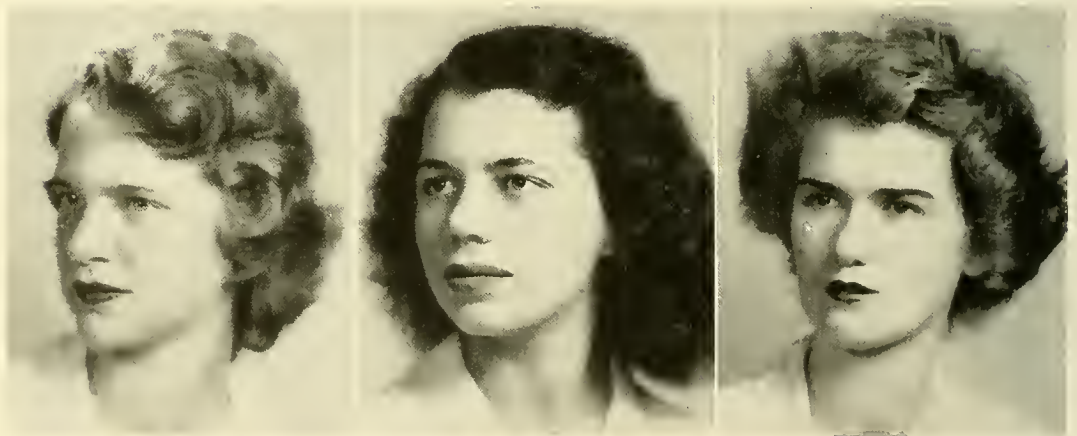
ELIZABETH DUN SHOREY
601 North Euclid Avenue
Oak Park, Ill.
History



ANN SILVERS
Richlands
Virginia
Economics

SHIRLEY SMAILS
5115 Lafayette Avenue
Omaha, Nebr.
Biblical History

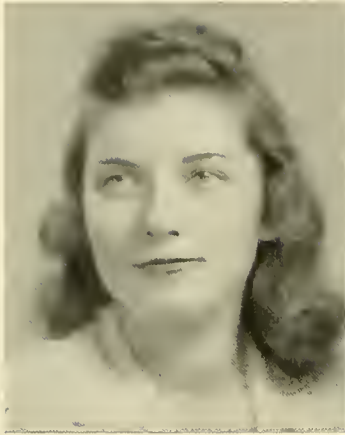
LILLIAN ELIZABETH SLAUGHTER
4511 South Sixth Street
Louisville, Ky.
Mathematics



ALICE ROBERTS SMEDLEY
Penncrest
Media, Pa.
Psychology

NANCY BARNEY SMITH
Franconia
New Hampshire
Art

BARBARA ANN SMITH
38 Westview Terrace
West Newton, Mass.
Zoology



PRISCILLA DOANE SMITH
Lighthouse Drive
Grosse Ile, Mich.
Sociology



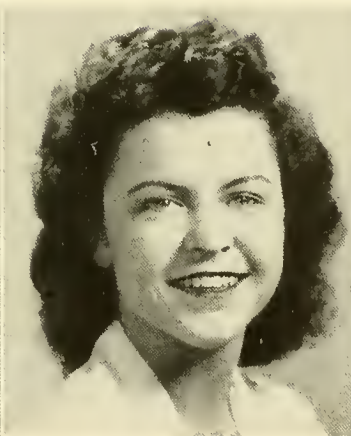
JANE REID SONENFIELD
2141 Arthur Avenue
Lakewood, Ohio
English Composition



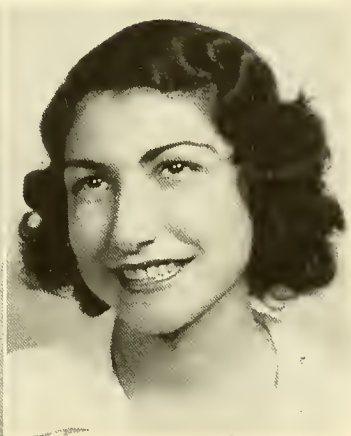
PATRICIA ANN SOUTHARD
1070 Abbieshire Avenue
Lakewood, Ohio
Greek



VIRGINIA ANN SPAKE
2000 Oakland Avenue
Kansas City, Kan.
Art



KATHERINE SUE SPENCER
117 Marvel Road
New Haven, Conn.
Physics



MYRTLE CLAIRE SROCHI
843 Springdale Road
Atlanta, Ga.
History



JOSEPHINE MORGAN STANCISKO
 126 Babcock Street
 Brookline, Mass.
English Literature



MARGARET WHITNEY STANLEY
 329 Lawn Ridge Road
 Orange, N. J.
Mathematics



MARY HELEN STEINHEIMER
 539 South 52nd Street
 Omaha, Nebr.
Economics



DOROTHY ELISE STEMPE
 38 Vine Road
 Larchmont, N. Y.
Psychology



ANN STEUER
 2900 Glengary Road
 Shaker Heights, Ohio
Chemistry



RUTH MERILYN STEVENS
 Ocean Avenue
 Kennebunkport, Me.
Sociology



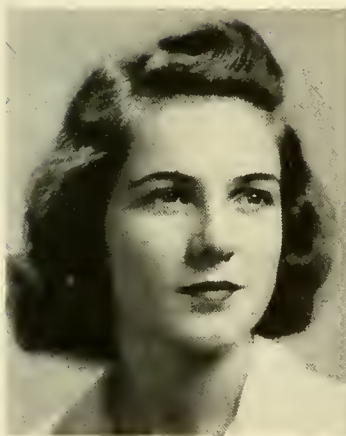
CYNTHIA M. C. STEWART
 Hotel Fourteen, 14 E. 60th Street
 New York, N. Y.
History



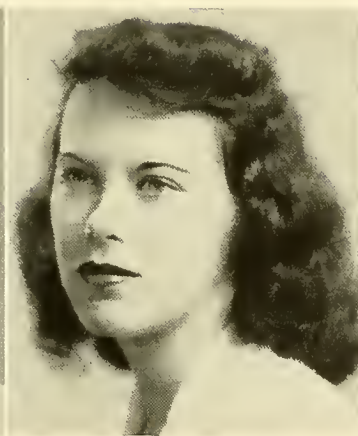
VIRGINIA ANNE STEWART
 Shoreham
 Vermont
Psychology



PRISCILLA STORER
 Waldeboro
 Maine
Zoology



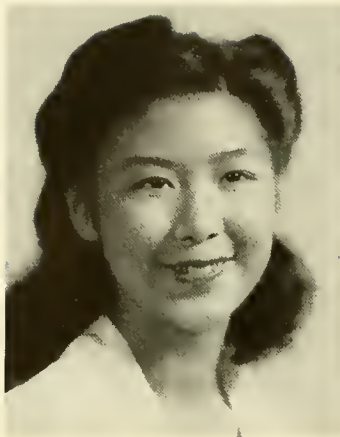
EUNICE STUNKARD
 5000 Waldo Avenue
 Riverdale, N. Y., N. Y.
German



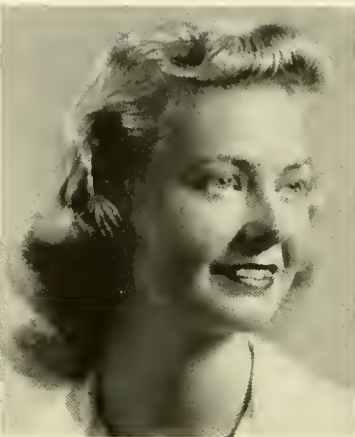
BARBARA SULLIVAN
 35 Hammond Road
 Belmont, Mass.
French



ELIZABETH SUMMERS
 37 Headley Place
 Maplewood, N. J.
History



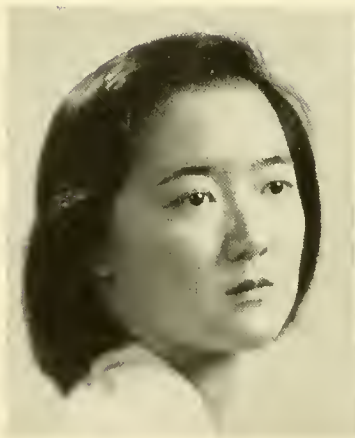
PEARL SUN
 Chungking
 China
Psychology



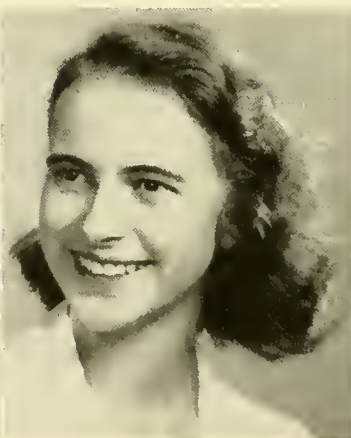
DOROTHY SWEARINGEN
 40 Fernwood Road
 West Hartford, Conn.
Political Science



JEAN SUNDERLIN
 1674 Highland Avenue
 Rochester, N. Y.
Zoology



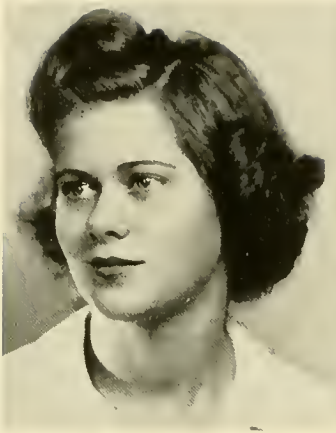
ALICE CHIACHENG SZE
 2400 16th Street, N. W.
 Washington, D. C.
English Composition



MARION McINTOSH THOMPSON
 The Manse
 Bedford, Mass.
Geography



MARGUERITE MARY TATUM
 309 Summit Avenue
 Wayne, Pa.
French



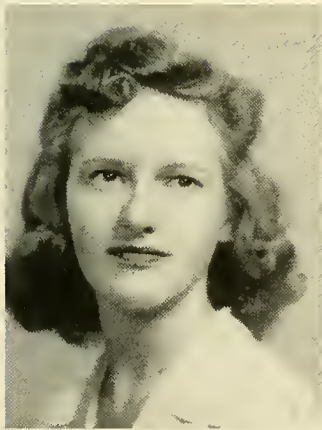
AVIS DORNIN THOMSON
Dillsburg
Pennsylvania
Philosophy



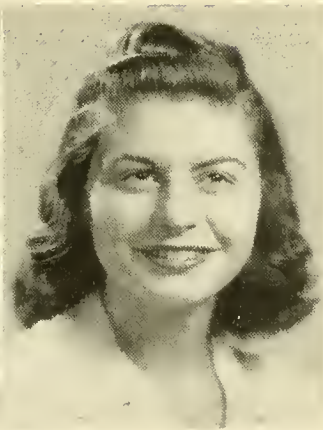
ELIZABETH ANN THORNTON
92 Beacon Street
Boston, Mass.
Spanish



MARIA JEAN THORNTON
Fort Fairfield
Maine
History



LUCILE SPAULDING TITUS
Binghamton
New York
Political Science



GLORIA F. TRENCHER
145 Wellington Avenue
New Rochelle, N. Y.
Economics



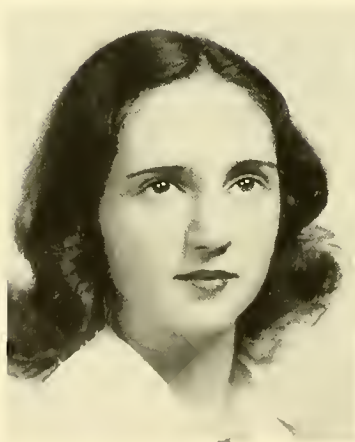
ELIZABETH S. UNDERWOOD
 54 Gates Circle
 Buffalo, N. Y.
English Literature



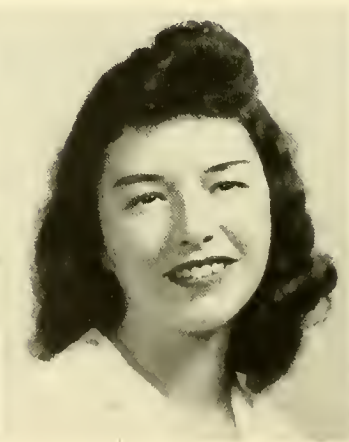
ALLAIRE URBAN
 745 Parker Street
 Newark, N. J.
English Literature



BETTY VADNER
 126 Dartmouth Road
 Cynwyd, Pa.
Botany



BARBARA VAN TASSEL
 111 Concord Street
 Waterbury, Conn.
Physics



MARY ELIZABETH VOGEL
 405 North Fullerton Avenue
 Upper Montclair, N. J.
Political Science



VIRGINIA ANN VOLCKER
 1301 Longfellow Avenue
 Teaneck, N. J.
Political Science



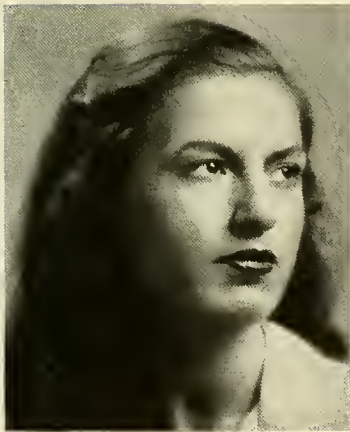
MEGAN VONDERSMITH
 344 Resor Avenue
 Cincinnati, Ohio
Political Science



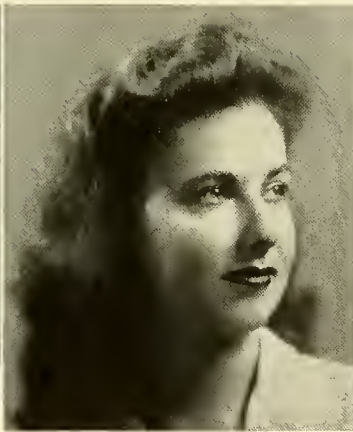
ANNE JOHNSTON WARING
 910 Gaylord Street
 Denver, Colo.
Sociology



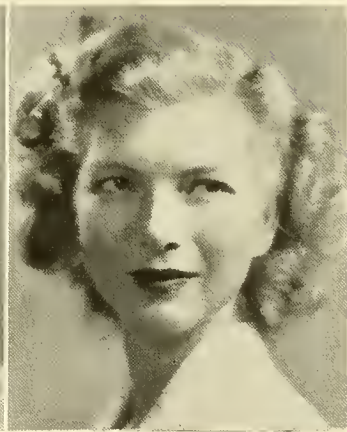
LOIS-MAY WATERS
 5 Parkinson Street
 Needham, Mass.
Latin



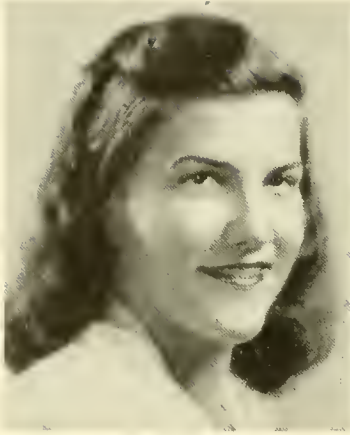
MARJORIE STURTEVANT WEBB
 163 Sycamore Avenue
 North Plainfield, N. J.
Political Science



NANCY BEATRICE WEBB
 Apt. 115, 1625 East Avenue
 Rochester, N. Y.
German



PATRICIA O'BRIEN WEISIGER
 946 Boylston Street
 Newton Highlands, Mass.
Sociology



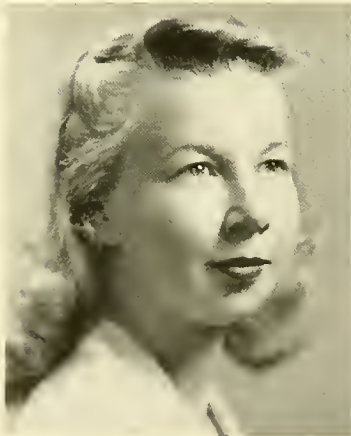
ELEANOR LOUISE WEISMAN
 Park Plaza Hotel
 St. Louis, Mo.
English Composition



THORA WESTERGAARD
 43 Summit Road
 Port Washington, Long Island, N. Y.
Sociology



MARY JOAN WELKER
 114 Wyllis Street
 Oil City, Pa.
Economics



LUCILE ARAMANTHA WETHERBEE
 Lyndonville
 Vermont
Music



BARBARA LIN WHITMORE
 140 Remington Road
 Manhasset, N. Y.
Economics

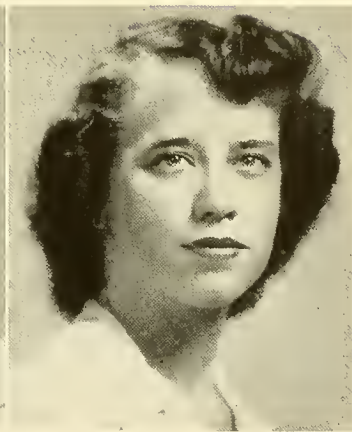
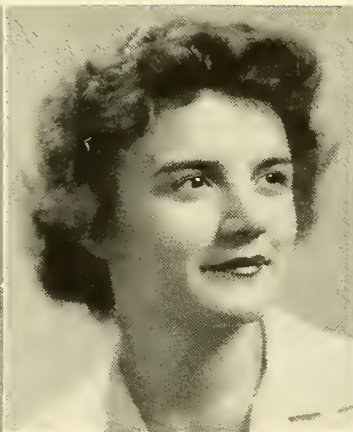
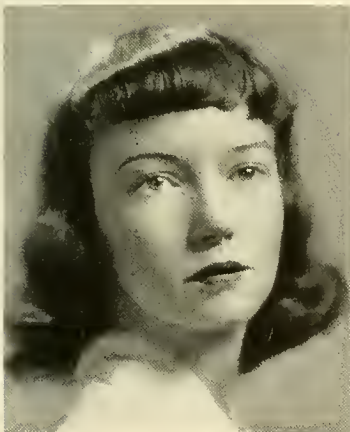
MARJORIE VIRGINIA WHEATLEY
 200 Ashland Street
 Abington, Mass.
Sociology



OLIVE ELIZABETH WILLIAMS
 15 Rokeby Place
 Staten Island, N. Y.
Chemistry

NAN WILLITS
 La Tourelle
 Haverford, Pa.
Political Science

MARGARET L. WILLIAMSON
 206 East Joppa Road
 Towson, Md.
English Comp. & Lit.



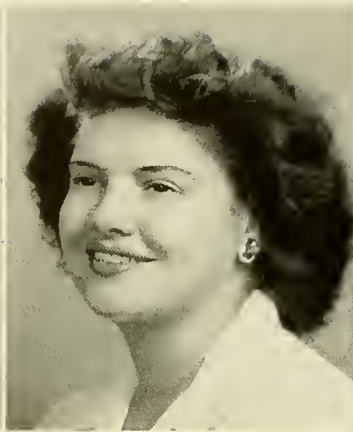
ELISE KIDDER WISHAR
 3025 Toledo Avenue
 Coral Gables, Fla.
English Comp. & Lit.

KATHRYN ELLEN WOLF
 Mount Wolf
 Pennsylvania
Economics

BOBBIE WITHROW
 2256 Robinwood Avenue
 Toledo, Ohio
Mathematics



E. KAY WOOD
8 South Part Street
Lebanon, N. H.
French



JACQUELYN J. YOUNG
Annandale
Newport, R. I.
English Composition



ALICE MARIE ZIEGLER
1040 Wilbert Road
Lakewood, Ohio
Economics

ESTHER C. TOMS
1629 Marion Street, North West
Washington, D. C.
Psychology



TOBE FRIEDMAN
159 Ruthven Street
Roxbury, Mass.
Zoology



BETTY A. GOLDEN
17115 Lomond Boulevard
Shaker Heights, Ohio
Political Science

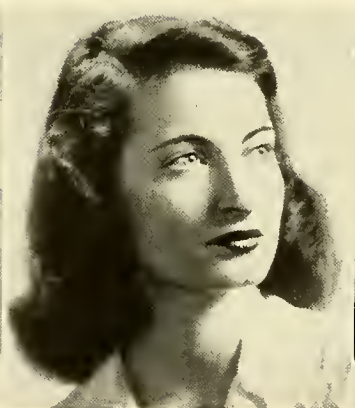


EVE W. GRODNICK
2 Clifton Terrace
Weehawken, N. J.
Economics

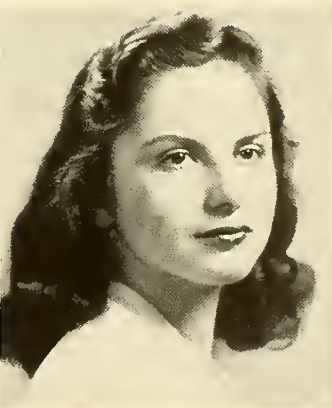
1946-A



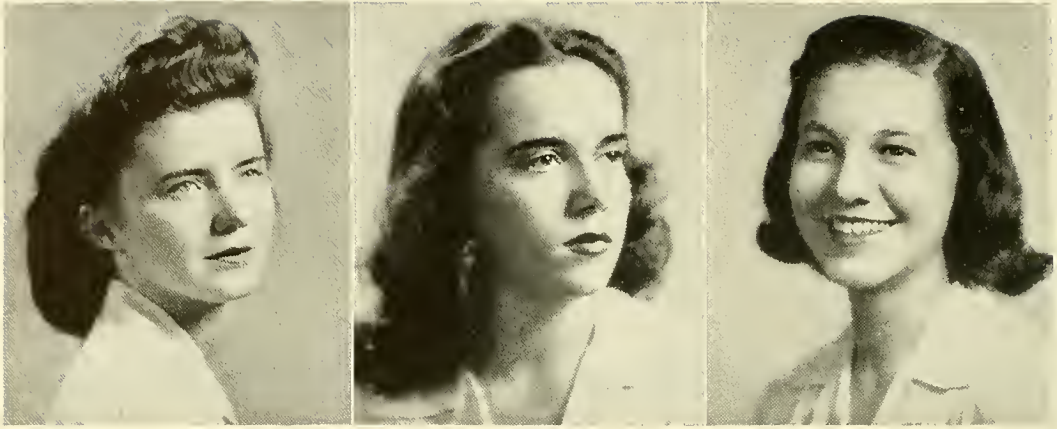
RUTH ANNE LEWIT
55 Warren Court
South Orange, N. J.
Art



JANE MARKS
17 Merrielees
Great Neck, N. Y.
Economics



AMY M. MUNSON-BARKSHIRE
130 East 75th Street
New York, N. Y.
Chemistry



MARILYN A. MURPHY
3384 Norwood Road
Shaker Heights, Ohio
Greek

NANCY J. POSTMANTUR
563 Richmond Avenue
Buffalo, N. Y.
Sociology

JOAN P. PIPER
186 Burns Street
Forest Hills, N. Y.
Philosophy



PHYLLIS J. ROSENTHAL
41 Quincy Street
North Adams, Mass.
Sociology



THERE GOES MY NEW HAT!

It doesn't take long for the expense of accident or sickness to click up a total that will dissolve plans for a new hat or much more than that. And yet a Wellesley student who has a Student's Reimbursement Policy through Connecticut General has such expenses largely taken care of for her.

Probably your family have signed up for you and you have this protection, but if they haven't, it would be a good idea to do it now. In case of accident or illness it's a big help to have an insurance company paying your bills.

Members of the graduating class... you may join the large group of Wellesley alumnae who continue their accident and health protection through individual Connecticut General policies after leaving college. There are Connecticut General representatives in almost every large community who will gladly help you.

CONNECTICUT-GENERAL
LIFE INSURANCE COMPANY
HARTFORD, CONN.

ADVERTISING INDEX

	Page
Agara, Wellesley College	147
Alpha Kappa Chi, Wellesley College	147
American Silk Mills, New York City, New York	148
Boston Pipe and Fittings Co., Inc., Cambridge, Mass.	144
C. Crawford Hollidge, Ltd., Wellesley, Mass.	144
Campus Pharmacy, Wellesley, Mass.	151
Clyde's, Wellesley, Mass.	145
Connecticut General Life Insurance Co., Hartford, Conn.	141
Dieges & Clust, Boston, Mass.	145
Filene's, Wellesley, Mass.	151
Fredley's, Wellesley, Mass.	150
Glenview Market, Wellesley, Mass.	146
Granville Leatherwood, Wellesley, Mass.	144
Gross Strauss, Wellesley, Mass.	151
Hathaway House Bookshop, Wellesley, Mass.	146
Helen Moore, Wellesley, Mass.	143
Hill and Dale, Ltd., Wellesley, Mass.	143
Hinckley & Woods Insurance Co., Boston, Mass.	146
Jahn & Ollier Engraving Co., Chicago, Ill.	153
Jennings Linen Co., Boston, Mass.	143
Le Blanc Taxi Co., Wellesley, Mass.	143
Makanna, Inc., Wellesley, Mass.	150
Morris' Tailor Shop, Wellesley, Mass.	143
Music Box, Wellesley, Mass.	151
Ola, Boston, Mass.	146
Phi Sigma, Wellesley, Mass.	147
S. S. Pierce Co., Boston, Mass.	149
Sargent Studio, Boston, Mass.	152
Schrafft's, Boston, Mass.	143
Shakespeare, Wellesley College	147
Sigrid's, Wellesley, Mass.	146
Talcoff's, Wellesley, Mass.	144
Tau Zeta Epsilon, Wellesley College	147
Viking Restaurant, Boston, Mass.	145
Walker Gordon, Charles River, Mass.	145
Wellesley Inn, Wellesley, Mass.	144
Wilbar's, Wellesley, Mass.	149
Wool Shop, Wellesley, Mass.	149
Zeta Alpha, Wellesley College	147



"BIBS" Sommerville wearing a
HELEN MOORE negligee

Tel. Wellesley 3696

HILL and DALE Ltd.

Sportswear, Hosiery and Accessories

Juniors and Misses

37-39 CENTRAL STREET
WELLESLEY, MASS.

Wel. 3427

MORRIS'

TAILORS • CLEANERS

62 CENTRAL STREET
WELLESLEY, MASS.

Phone—Liberty 4267-4268



Jennings Linen Company

76 Essex Street
BOSTON

*for Fine Quality
Bed and Table Linens*

LE BLANC TAXI

Wel. 1600

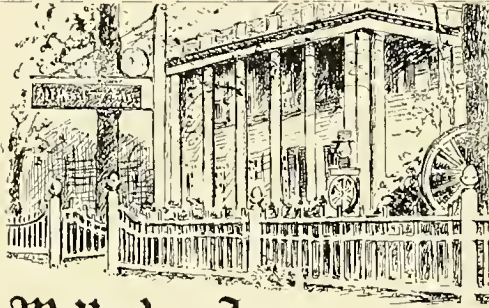

 "AND SO DO THE *sisters,*
 THE *cousins* 

 AND THE *aunts*"

THAT'S RIGHT—not only the men,
but their whole families prefer
SCHRAFFT'S restaurants, cakes and
candies.

SCHRAFFT'S

FRANK G. SHATTUCK COMPANY

New York • Boston • Syracuse • Philadelphia • Newark



Wellesley Inn
Wellesley, Mass.

Granville Leatherwood

GIFTS

575 WASHINGTON STREET
WELLESLEY, MASSACHUSETTS

WELLESLEY
Hyannis



SHOES

63A Central St.
Wellesley

COLLEGE
CLASSICS

BEAUTIFUL
FOOTWEAR



Eileen
McGuire
in a



**C. CRAWFORD
HOLLIDGE
Evening
Gown**

1944 • 1945 • 1946 • 1947

○
CLASS RINGS

made by

DIEGES & CLUST

Specialty Jewelers

○
BOSTON 8, MASS.
73 TREMONT ST.

hand sewn
moccasins
5.50



clyde's
67A CENTRAL ST.
WELLESLEY

WELLESLEY COLLEGE
DINING HALLS

serve

WALKER-GORDON
CERTIFIED MILK

Farm Located Three Miles from Wellesley
in
CHARLES RIVER, MASS.

**Keep Your RED CROSS
At His Side**

**G
I
V
E
!!**



Shirley Smails and fiancé Jack Prudden dining at the VIKING

The MISS and MRS.
HAT SHOP

81 CENTRAL STREET
WELLESLEY, MASS.

M. Stafford

GLENVIEW MARKET

595 WASHINGTON ST.
WELLESLEY, MASS.

Norwegian
Restaurant

Behind the Iron
"Smorgasbord"

OLA

14 CARVER STREET
BOSTON, MASS.

Luncheons • Dinners • Open Sundays

DRESSES • SUITS • COATS

"That are Different"

Sigrid's

WELLESLEY

MASS.



Fire... Liability... Automobile... Burglary and
Every Description of Insurance at Lowest Rates

HINKLEY & WOODS
INSURANCE

40 BROAD ST.

BOSTON

—Business Established 1868—



Nancy Steffens,
Pat Siegburt,
Pat Patterson
and Lee Tucker
browsing in
HATHAWAY
HOUSE
BOOKSHOP

☆ BUY WAR BONDS ☆

Agora

Phi Sigma

Zeta Alpha

Shakespeare

Alpha Kappa Chi

Tau Zeta Epsilon



ONE OF A SERIES OF "LUCKY PRINTS"

in American Silk Mills' crisp, cool, wrinkle-resistant Peek-a-Boo rayon mesh.

American Silk Mills 1400 BROADWAY • NEW YORK 18, N. Y.



BUY WAR BONDS
FOR VICTORY

Compliments of

**BOSTON
PIPE & FITTINGS CO., INC.**

149 SIDNEY STREET
CAMBRIDGE, MASS.



Jean Sunderlin wearing a three piece
suit from the **WOOL SHOP**



Jean Beaverson tries on a moccasin in
WILBAR'S, Wellesley



BOSTON'S DISTINCTIVE STORE

Famous

THROUGHOUT THE NATION FOR

Good Foods & Delicacies

S. S. PIERCE CO.

BOSTON

*Stores in Boston, Belmont,
Brookline & Newton
Mail and Telephone Orders*



VISIT
YOUR
BLOOD
DONOR
CENTER
TODAY!



Lucille and Marilyn Peterson dressed in suits from
FREDLEY'S, Wellesley

TROUSSEAUX • BRIDAL ENSEMBLES

HAND MADE LINGERIE

GIFTS FOR ENGAGEMENTS, WEDDINGS, SHOWERS



MAKANNA, Inc.

The Trousseau House of Boston

54 CENTRAL ST.

WELLESLEY

*Compliments
of an
Enemy*



Helene de Lone, Margy Williamson, and Adelaide Crawley shopping at the **CAMPUS PHARMACY**

*Compliments
of*



Nancy Penson in an evening gown from **GROSS STRAUSS**

Filene's
in WELLESLEY

**We're not
Forgetting...**

Four years is a long time... but when it comes to saying "goodbye," it seems like only yesterday when you came through our doors exploring the "Vil" for the first time. Remember how we helped you solve your problems then... Our Branch Shops and Main Store will look forward to continuing to serve you in the near future.

**Don't YOU
forget US!**

Complete Photographic Service

to the

1945 LEGENDA



SARGENT STUDIO

BOSTON • CAMBRIDGE

JAHN & OLLIER AGAIN



LOYAL

always, to the
cause of better
Yearbooks

JAHN & OLLIER
ENGRAVING CO.

Makers of Fine Printing
Plates for Black and Color.
Artists - Photographers

817 W. WASHINGTON BLVD.
CHICAGO





