



*1945 Legenda*









WELLESLEY COLLEGE

*Wellesley, Massachusetts*





# LEGENDA

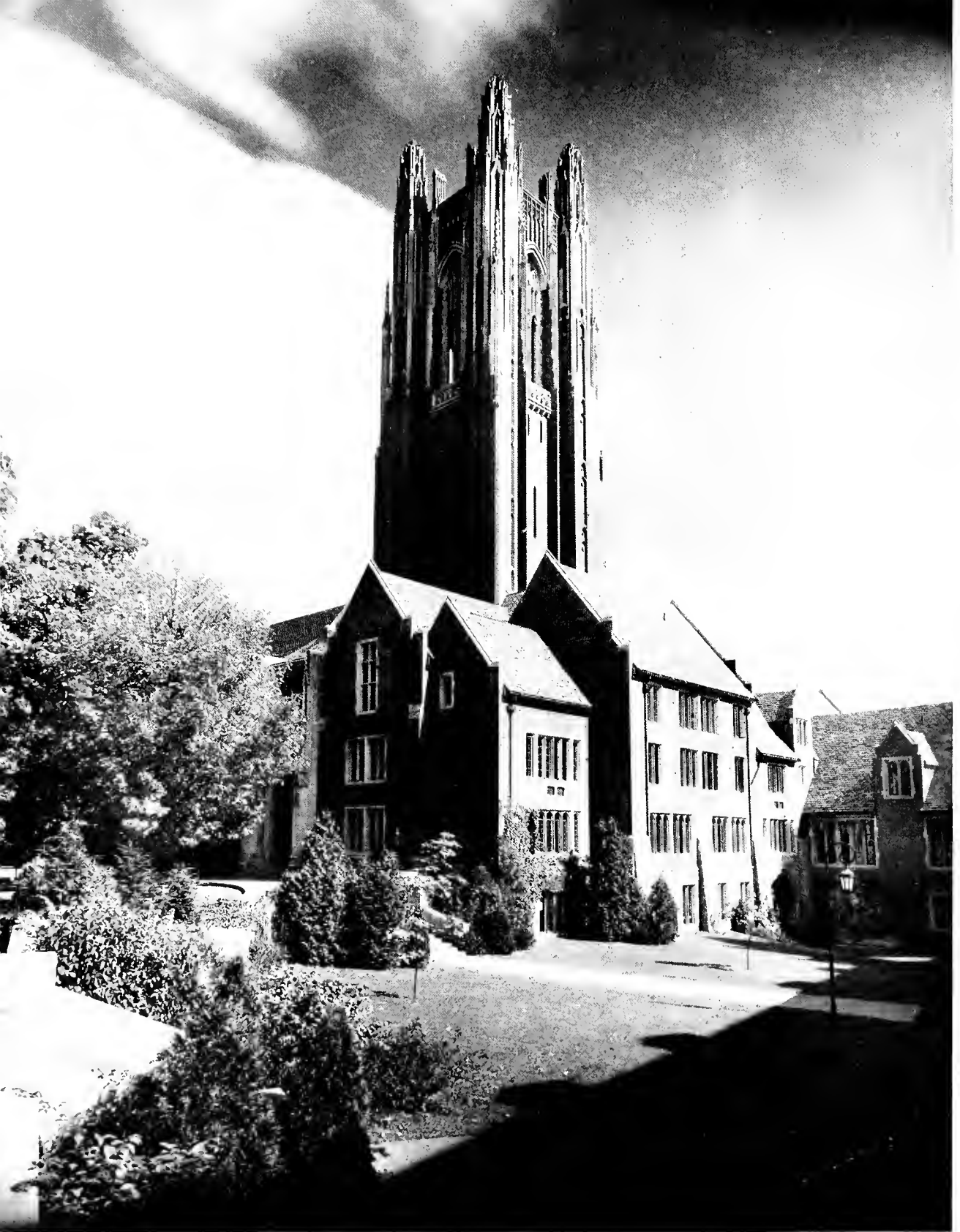
*Class of 1945*

## *“Courage, Gaiety, and a Quiet Mind...”*

At Baccalaureate Vespers last May, Captain McAfee spoke of these three things. We hope to show in this book that we have come a little closer to the understanding and attainment of them, and thus to prove that our time has not been wasted. We were not sure, many of us, that we should stay in college during these war years; we were not sure that we should spend either the time or the money. But now, as we approach the end, we feel that we were right to stay, that these four years are worth whatever they cost.

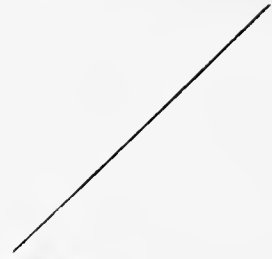
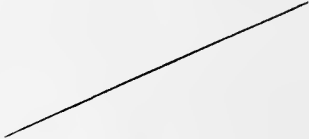
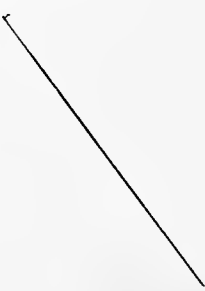
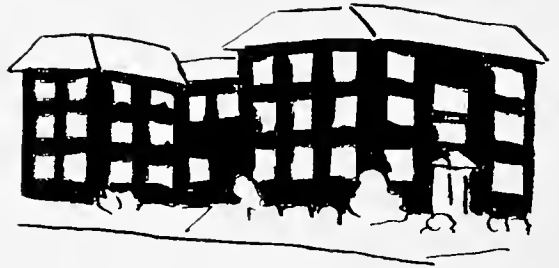
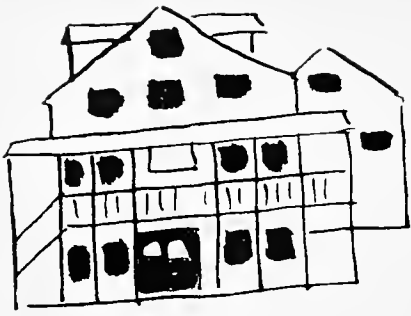




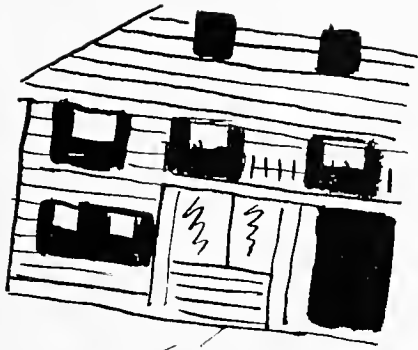


# *To Our Parents*

Who have given us, among  
other things, these four good years.



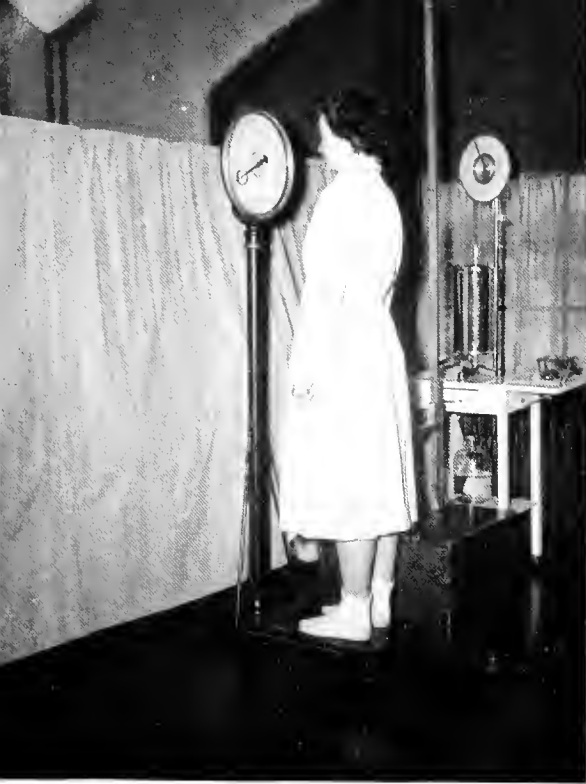




## *Remember Freshman Week?*

...and how strange it all was when we first arrived.

Some of us were feeling anything but courageous, our gaiety was perhaps a bit forced, and we weren't even sure we *had* minds!



Our first Physical



They always knew



We stocked up for toils to come



Old Indispensables





Scene of everything from proms to Mock Academic Council and Mass Meetings



Freshman Vaudeville—we met the college







Men . . . remember them?



## *We Did the Things*

That Wellesley Frosh have always done. We picnicked, and partied, "caught crabs" and were hazed, elected our first class officers, and gradually grew a little less green.



Our name and number

Us



Your guess is as good as ours

Easy all, and look at the sunset





## *... And then, all of a sudden*

it was December 7th, and our new-found ivory tower began to rock. Some of us had to learn about courage in a hurry, but we proved we could learn, and could adapt ourselves, not only to double deckers and war work, but to co-education as well! We lost our President, but gained our Captain and some hundreds of the gentlemen on her team. We learned to wait on ourselves, and to do Useful Things during vacations, and we became increasingly aware of our own good fortune.



We sewed and rolled bandages at Workroom



Labs took on new importance

We practiced First Aid

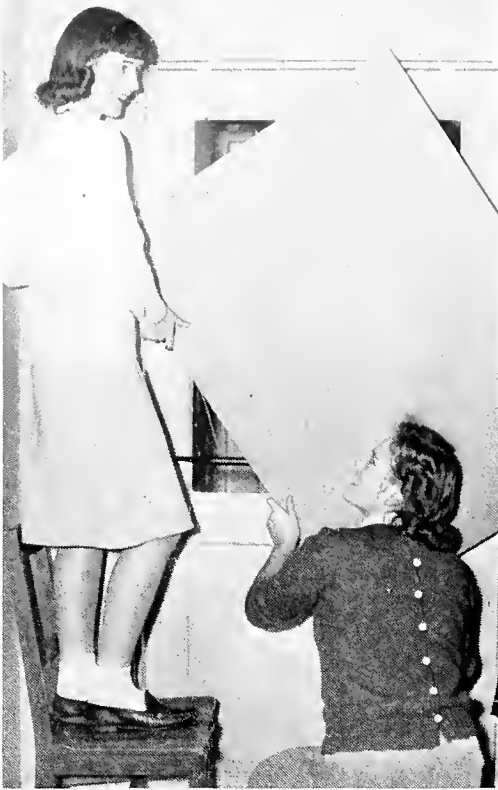
## *We Went to War*

not over there, but here in our own back yard, where we found a few small things we *could* do.





EXIT



Blackout



We had to learn what to do in case we were bombed, spent long hours on hard floors, and tried to remember to keep our shades down.



Home Front Heroes—the Air Raid Wardens



Simpson acquired a new addition  
Freshman year, and some of us  
learned to be nurses' aides here  
and elsewhere.

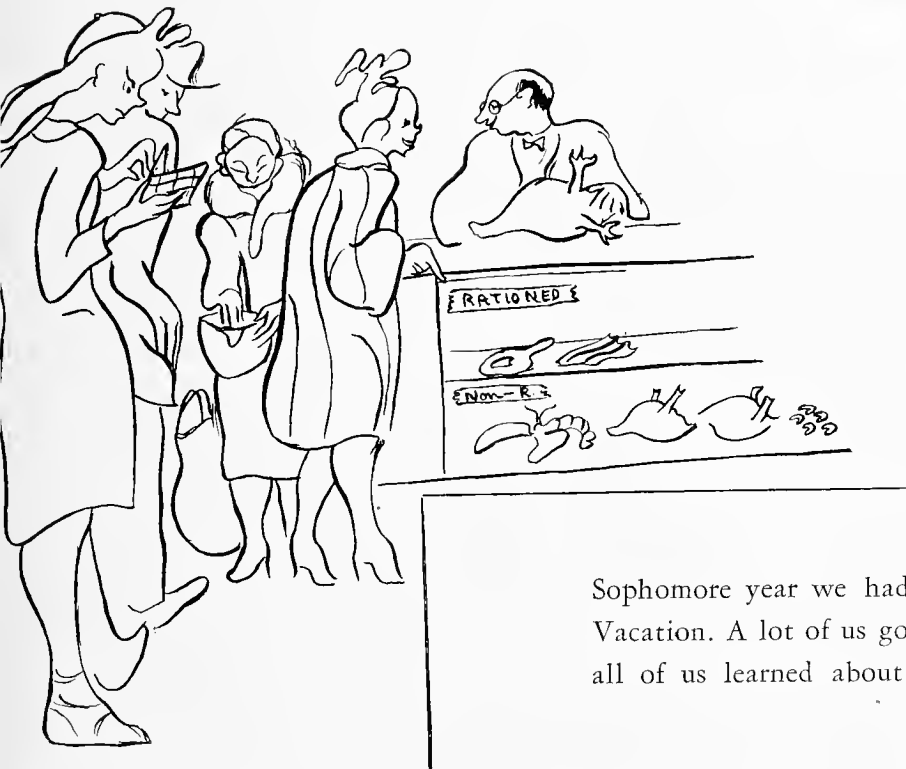




The Placement Office had some good ideas



We reverted to Shank's Mare



Sophomore year we had the Long Vacation. A lot of us got jobs, and all of us learned about rationing.



We became war bond conscious, set up a booth in front of the El table to sell bonds and stamps, and held auctions of everything from cigarettes to dates with the faculty.





They woke us up . . .



but also entertained us.

## *The Navy Invaded*

Junior year, and took over half of the Quad. Wellesley shattered all precedents by becoming co-ed, and we grew used to the sound of marching, counting cadence, and a male chorus.







## *There were some*

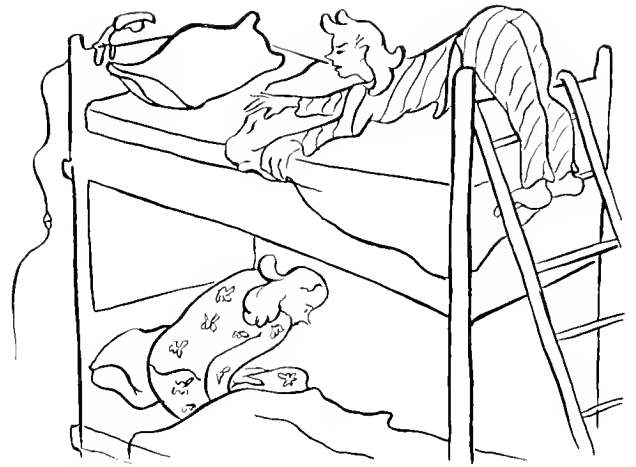
In the good old days, we slept in luxurious beds (?), put on glamour for our shiny pillared ballroom, and put on pounds at our juke-box haven, the nearby Well.



*All's well...*

## *changes made*

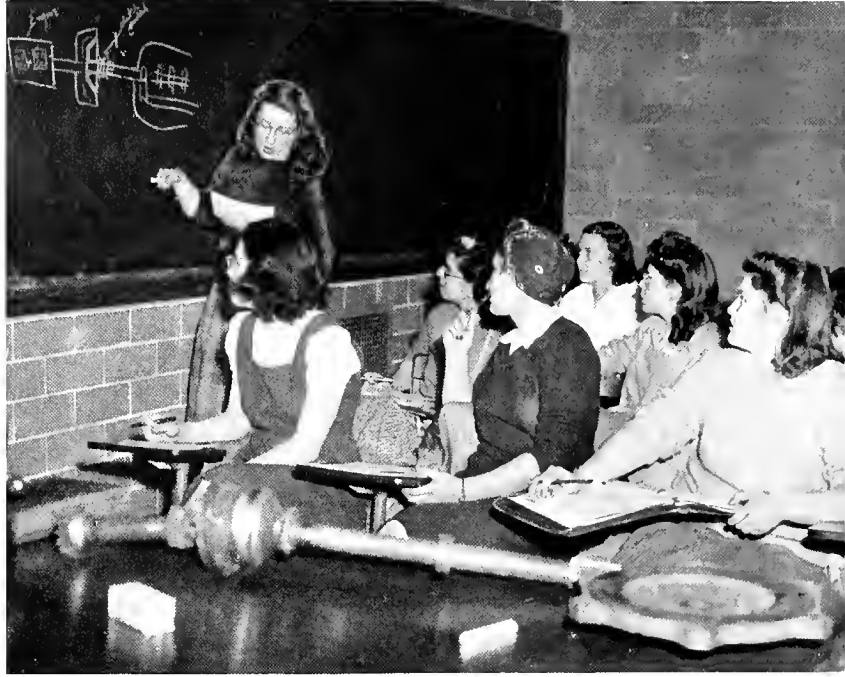
But come Junior year, behold the Double-Decker!...we slept in layers. Our ballroom became the Navy Mess, and our Well served as the Galley, while we ate in AKX.



*that ends well.*

## *We took war courses*

in the hope of becoming Useful as well as Educated females. We went to school at night and struggled with cartography, report writing, typing, and even elementary Russian. Some of us actually acquired a little practical knowledge.



Mechanics class taught us theories . . .



which we applied in the field . . .



and at home.

## *We donned blue jeans*

(anybody want to make something of it?)  
to work on farms—some of us full time during the summer, and many of us part time, to pick apples in the fall and plant potatoes in the spring. They say we're still eating the proceeds of our labors.



Piggy-back ride

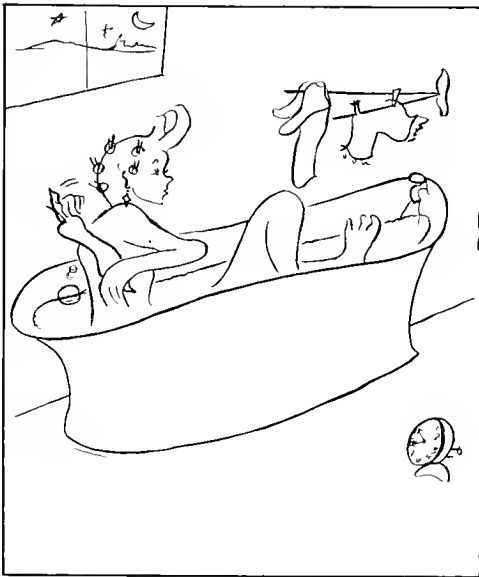


B. Schoonover—well camouflaged









## *Not even a War*

could deprive Wellesley of its gaiety, and we had our lighter moments... traditional and otherwise! We danced, and sang, and gamboled on the Green, and had more than our share of laughs.





Victory

## *Our first Tree Day*

was a big success. Some of us helped to produce "Peter and the Wolf," and the rest of us sat on the hill watching, and waiting for the signal to start running. Needless to say, we beat the Sophs, and at long last we got to cheer our own cheer and sing our class song.



Before the fray





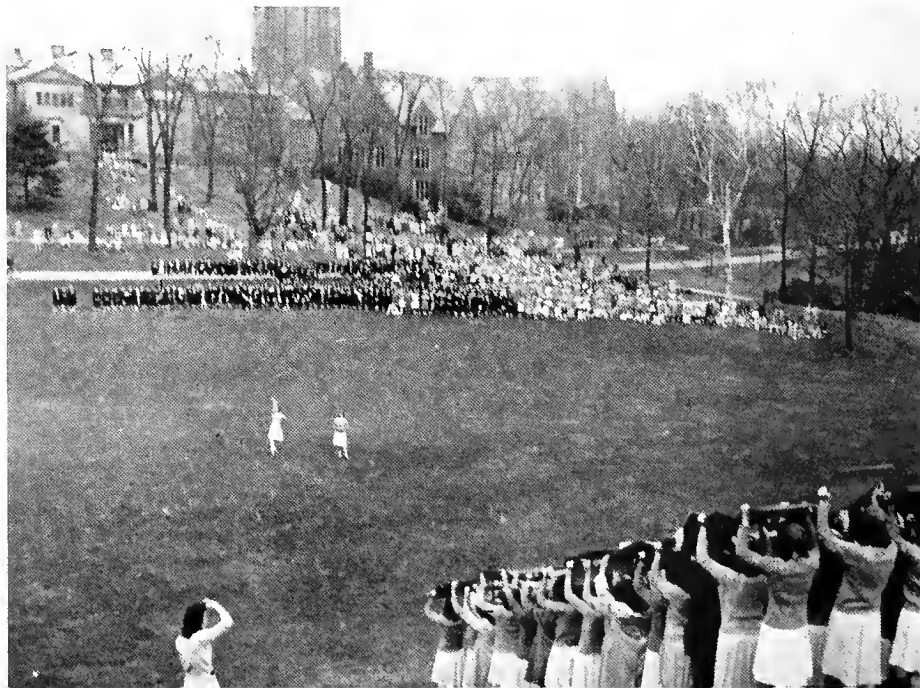
The black of dawn

## *May Day*

when we arose at an unseemly hour to capture coveted places on Tower Hill for our Big Sisters. After the race we all marched to Chapel, then went through our blotter routine, and sang and cheered back and forth.



Roll, sister, roll!



As it looked to us

## *The Winters*

seemed long and cold, especially to the Southern Belles among us, but when there was snow or ice, things picked up—even if we fell down. We had winter sports carnivals, made snowmen deluxe, and argued the relative merits of Severance and Observatory Hills.





Our favorite sport



This can't be Wabon!

## *But come Spring...*

life took on a new glow — and we did our best to do likewise. We sunned ourselves whenever and wherever we could, and sometimes even went as far as the Cape.

Miss McAfee

At home

Tuesday, January thirtieth  
Eight o'clock

Recital of Pen and Piano Portraits  
by Florence Fraser

## *The social whirl*

on campus: we went to concerts and receptions, and to teas to meet celebrated visitors, to chat with members of the faculty, and to discuss Major Issues.



Weekly house tea







Tickets home

## *We went a-journeying*

by train, in the good old days, for distant weekends. On dreary Saturday nights we all went to the movies—by hook or by crook, and at all times, for business and pleasure, to Boston by bus.



Just practicing



Here it comes





Captain Lucy Harter

## *Junior Show...*

our magnum opus, slightly nautical, but nice. Wellesley invaded the peace conference and, with *great* originality, prescribed love to cure the world's ills.



Officers and crew



A couple of high spots





The only living picture of the greatest show on earth

## *Faculty Show...*

we came, we saw—we had hysterics. For three solid hours we laughed as we never had laughed before. The performance had been seven long years in coming, but it was worth the wait. Its theme evolved around the idea that the play's the thing with which to prove the faculty is human. They convinced us!



## *Junior Prom*

our first dance since freshman year, was a tremendous success. We tripped the light fantastic in Tower's Great Hall, sat on the floor to watch a super floor show, and refreshed ourselves in the candlelit dining room below.



The Harvard Octette



Chief executive Clair Phillips



Winnie Herman — dancer extraordinaire



Dancers ordinaire



## *Election Parade*

was the culmination of months of feverish argument and occasional battles royal. Ginny Guild took the part of Socialist candidate Norman Thomas; Mary Townsend was Tom Dewey, and Cissy Lee was F. D. R. The college, in a mock election, voted overwhelmingly Republican, but the seniors—many of whom were able to cast real ballots—favored Mr. Roosevelt.



## *Tree Day...*

our senior year was presided over by Pat O'Brien Weisiger, assisted by B. A. Childs, Florrie Henderson, Mary Marchant and Helen Marchese.



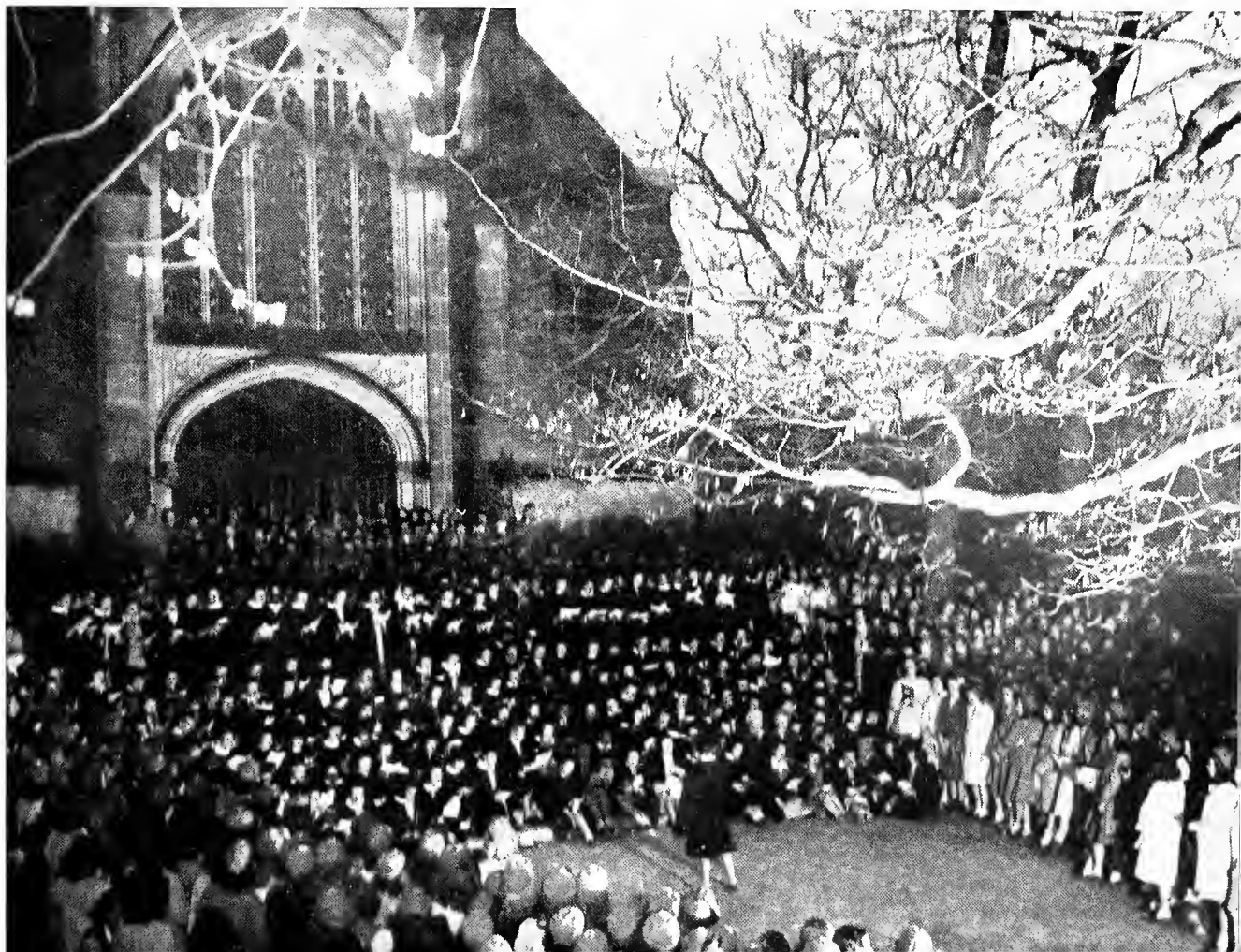
## *Step Singing...*

where we sang "the songs we love to sing on the old Chapel step." When we were frosh we felt that this was really college, and as we moved across, and up, and finally to *the* steps, we still kept some of this special feeling.



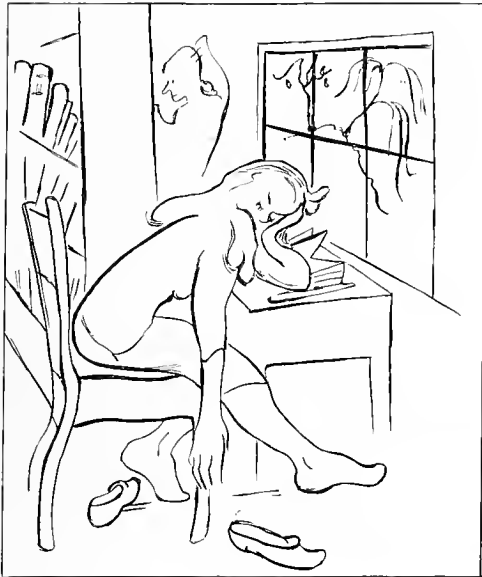
We walked away...

but we won't forget



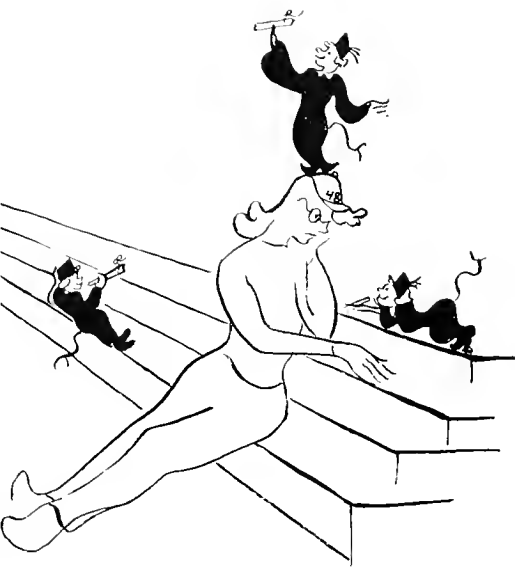






## *The Quiet Mind*

was by no means wholly neglected. We often remembered the real reason for coming to college, and spent quite a few hours with the books—though we'd never admit it. We delved deep into the past, trying to understand the present, and to equip ourselves to cope with the future.



Dreams of glory

## *Academic Procession*

aroused in us our thirst for knowledge. At our first Chapel, we heard with wonder and admiration the accomplishments of the upperclassmen, and we hoped one day to do as well. Of course some of us did—and to them, three cheers—and some of us didn't, but we all learned the meaning of the word student, and eventually we all donned cap and gown and marched in the procession ourselves.





## *The Library...*

hall of virtue; unenticing when we had to go, but comfortable and sometimes surprisingly agreeable once we got there.





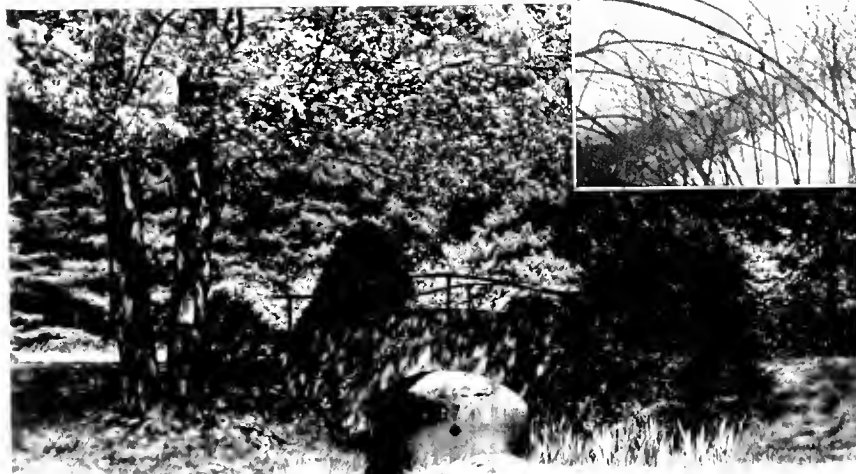
November

## *Each Season*

had its own beauty, but we found it much easier to stay inside with the books in winter than in spring, when we were lured outside to skip rope, play baseball, or just bask. We were even occasionally tempted to let the mind become a little too quiet.



January



May





An eager beaver

Tower East takes time out for tea





## *Gardeners*

of Botany 101 practised farming on a small scale and undoubtedly proved invaluable to their home victory gardens. They sometimes had ideal labs—taking walks around the campus to study leaves and trees. They grew their own radishes and brightened their rooms with their own flowers, and even occasionally helped to produce food for the college.





Dear old Billings ...

where we listened for 206 ...

and had music lessons

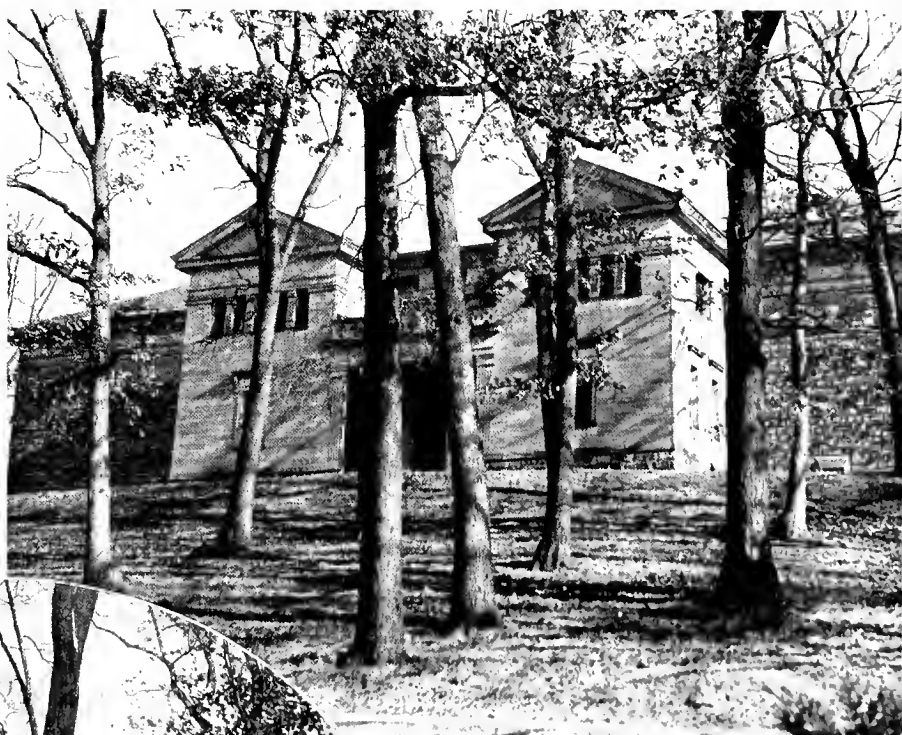




Sage

## *The Halls*

of learning, where we cultivated the mind in a more or less formal way, struggling to take in most of the time; struggling harder to give out twice yearly (not counting incidentals like quizzes, roll calls and papers).



The Art Libe



Pendleton

## *Here we spent*

our serious hours in listening to lectures on everything from poetry to politics, or in afternoon labs in scientific inquiry, or in conference over the solution of knotty problems like that last quiz.



Perhaps another Madame Curie in the making here . . .



or a lady Luther Burbank . . .



or something







## *It takes all kinds*

to make a world, or a college, or a class, and '45 has samples of most, capable of performing a wide variety of tasks from government to radio broadcasting. We point with pride to those we chose to represent us in all such fields our senior year.





House Presidents' Council, presided over by Cora Parce, includes Nancy Heath, Jean Philbrick, Barbara C. Dunlap, Betty Anne Metz, Meredith A. Davis, Janet Hahn, Louisa Hagner, Sidney Burke, Betty Apallonio, and Alba B. Jameson.

## *College Government...*



Caroline Hadley, President of C. G.



Cora Parce, Chairman of H. P. C.



Marianne C. Moore,  
Senior Vice-President of C. G.



Bebe Reppert Wilmerding,  
Chief Justice of Superior Court

Vil Juniors, with Suzanne Carreau as chairman, supported by Jean Benneyan, Marian McCuiston, Patricia Smith, Phyllis Kaempfer, Anne Demorest, Betty Ann Martin, Eleanor Platt, Patricia Brown, Margaret Torbert, Katherine Warner, Alice Dodds, Barbara Whitall, Elizabeth Davidson, Anne Tichener, Ann Osgood, Jane Gile, Sarah Binford, and Mary Edith Buckley.





## *Miss Lucy Wilson*

Dean of students in general and, for three years, of 1945 in particular. Her firm hand guided some of us through physics, and most of us through crises of one sort or another. Her amiable smile and her unfailing interest in our affairs made it a pleasure to meet her office hours, or to visit with her and Daisy-May and the parrot at Oakwoods.



Planning one of the many services C. A. gives

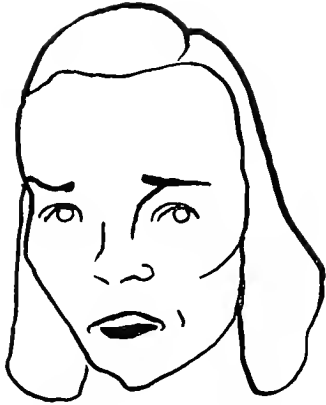


Julie Burnet, President

## *Christian Association*

In an off moment at Freshman Vaudeville. Officers, headed by Julie, are Doris King, Ann Demorest, Elinor Peck, Mary Alice Ross, Margo Downing, and Sally Powell





Barbara Whitmore, Chairman



W. A. C. in action

## *War Activities Committee*

has worked hard to enable every girl in college to make some contribution to the war effort. Its members include Whit, Judy St. Clair, Sally Stetson, Chorale Cook, Jo Lamb, Nancy Keegan, Eileen Quigley, Helen Peck, Carter Catlett, and Gloria Downs.





Grace Morey, Chairman

Collecting money, perhaps to be distributed to Yenching

## *Service Fund*

with Grace as senior chairman, has on its board Irene Peterson, Alice Meeker, Betty Bremer, Kathy Thayer, Frances Capron, Joyce Gulick, and Elizabeth Chalmers.







Campigning



Barbara Scott, President

## Forum

in this year of elections, brought us pre-election speakers representing the major points of view. Members canvassed Boston to get the maximum voting power to the polls. Second semester we began to study some of the problems facing returning veterans.



Making posters for a coming lecture

The officers of Forum: Scotty, Marguerite Tatum, Alice Horton, Nayantara Pandit, Susan Finke, Nan Willits, Virginia Guild, Mary Ann Lewis, Jeanne Garcelon, Elizabeth Stevenson, Evelyn Wakefield, and Keith Freyhof.





## *Agora...*

this year under the guidance of President Pat Southard and Vice-President Caroline Burnquist, is the meeting place for discussion of things political—and otherwise.





A scene from "Kind Lady," with Edith Glassenberg, Naomi Bucholz, Dee Stempf, and members of the Men's Acting Committee



Eunice Stunkard, President

## *Barnswallows*

for the past three years under the direction of A. Eldon Winkler, has run up a record of striking performances to brighten our college career: *The Barretts*, *Liliom*, *Yellow Jacket*, *Watch on the Rhine*, *Kind Lady*, *Importance of Being Ernest*, *Hotel Universe*, and *Pygmalion*, as well as several freshman productions.

An industrious committee builds scenery for the next production





## *Zeta Alpha*

with Margaret Johnston and Sally Russell presiding, gives its members the opportunity to exercise their dramatic talent, latent or otherwise, in the presentation of modern plays.





## *Athletic Association*

offers almost as wide a variety of choice as there are people to choose, with all the facilities of the lake, the Rec Building, and the playing fields right here on campus. For those who seek a further range, there are the assorted kinds of expedition sponsored by Outing Club.

Karol Musa, President of Outing Club, outing on Severance Hill

Jumping for a high one in Mary Hemenway







Lucile Peterson, President



Submarine view of the  
Davenport Pool



The A. A. Board: Lu, Karo  
Musa, Marilyn Peterson, Dorothy  
Winchell, Camilla Chandler,  
Mimi McCuiston, Sue Cassell,  
Marjory Lent, Emily Hobart,  
Helene de Lone, Margaret  
Wyant, Mary McCrea, and Betty  
Ann Childs.



## *Orchestra*

under the baton of George Brown, has given delightful concerts. Its officers are Lucile Wetherbee, Marcia Morse, Ida Harrison, Patricia Smith, Marilyn Hoopes, and Jacqueline Pressey.



## *Choir*

satisfies the college thirst for choral singing with Fall, Christmas, Spring, and Baccalaureate vespers on its own, and at other times in collaboration with Orchestra. Peggy MacDonald conducts; Floranne Henderson, Mary B. Morrison, Mary Marchant, Shirley Smalls, Claire Phillips, and Mary Gave Griswold are its officers.



## T. Z. E.

under the direction of President Margaret Williamson and Vice-President Liz Jones, provided an outlet for the talented and enjoyment for the laymen with its living pictures and informal concerts.





## *Radio*

W. B. S.'s ambitious schedule of programs, made possible largely by the enthusiastic work of President Allaire Urban and the heads of committees, brought Radio the honor of major-organization status in our senior year.



## *Press Board*

For those many reports of our college escapades found in the home town paper (to the delight of our fond parents) we may thank Gloria Gallic, Chairman of Press Board, and her super-sleuthing associates.





## *Shakespeare*

Those who yearned to portray Lady Macbeth, Juliet, or even Hamlet, but feared Broadway might overlook their talents, found opportunity for expression in Shakespeare Society. There, under President Bobbie Withrow's supervision and Vice-President Dee Stempf's direction a merrie companie performed.







## *News*

under the eagle eye of Editor-in-Chief Pat Lauber, kept us posted on events, both local and world, raised issues for our consideration, and gave us a chance to express our own opinions.



## *We*

with Editor-in-Chief Alice Clark in charge, enabled us to air our views in a slightly different manner, as well as to see some of our precious **magna opera** put before the public.



## *Phi Sigma*

this year under the direction of President Helen Marchese and Vice-President Isabel Luther, delves, in its more academic moments, into the changing fields of modern literature.





## *Mrs. George Justice Ewing*

Mrs. Ewing was elected honorary member of '45 in our junior year, just before she retired. Although best known as Wellesley's understanding and cheerful Dean of Residence, she is also a member of the Wellesley class of 1898. Since that time she has held positions in America and abroad, working with the American Red Cross during the last war at a tubercular hospital in Passy and later at a relief station in Rumania. Returning to Wellesley in 1921, she became a head of house, and then Assistant Dean of Residence. Her genius became apparent to all when she managed to squeeze four hundred Navy men onto the already full campus. We are happy to have Mrs. Ewing on our steps.



## *Alpha Kappa Chi*

President Gloria Downs and Vice-President Bebe Fichgrund were philosophical and modest in answer to praise for A. K. X's generous donation of their house to the Well while the Navy was with us. Moving may have had little to do with their study of Greek influence in our culture, they say, but it certainly was good domestic training.







C L A S S



C L A S S



C L A S S



OF 1948



OF 1947



OF 1946





*Officers*  
*Class of 1948*

President Nancy Bartram, Vice-President Ansley Coe, Mary Alice Cary, Betsy Romig, Muriel Pfaelzer, Sandra Clark, Carol Bailey, Dorothy Turnbull, Barbara Hunt, Jean Abrams, Jane Parker, Phyllis Arlt, and Mary Snelling.



*Officers*  
*Class of 1947*

President Hope Wilson, Vice-President Betty Lee Tucker, Katherine Thayer, Elizabeth Sullivan, Doris Getsinger, Rosalind Morgan, Mary Alice Ross, Camilla Chandler, Hester Spencer, and Mary McQuiston.

*Officers*  
*Class of 1946*



President Judy Atterbury, Vice-President Nancy F. Dunn, Marie Bransfield, Caroline Southworth, Sally Binford, Phyllis Kaempfer, Elizabeth Somerville, Elizabeth Tucker, and Barbara Chapline.

*Officers*  
*Class of 1945*



President Elizabeth Slaughter, Vice-President Anne Colcord, Laura Lou Bauer, Marian Moore, Mary Marchant, Sally Russell, Margaret Schlegel, and Hildegard Bair.



Stone-Davis court

## *Where we live...*

There were dorms to suit all tastes: Tower Court, with its regal Tudor-Gothic architecture, the more homey Quad of simple Tudor, Munger, reviving the spirit of Flemish and Dutch building, and Stone-Davis, favoring the modern day with a Gothic Twentieth Century style. Decisions would have been simpler if we hadn't had to choose also between the convenient closeness to the bus, and the coveted view of the lake. But wherever we landed automatically became *the* place to live.



The Quad



Munger



Stone entry

*...and why...*



The Tower Court group



## *Campus Clubs*

Those of us who were interested in the other countries and languages of the wide, wide world and wanted to practice what was preached to us, worked with M. de Messieres in *Le Misanthrope* or presented *The Frogs* at the Rec Building pool in the classical manner. We sang Spanish songs on Monday evenings, or consumed exotic dishes prepared for us by the foreign members of Cos Club.



Cosmopolitan Club



Alliance Francaise





*Deutscher Verein*

President, Mary Louise Mayger



*Circolo Italiano*

President, Alba B. Jameson



*Classical Club*

President, Esther B. Clenott

# *Honor Students of the Class of 1945*

## Elected in Their Junior Year

### DURANT SCHOLARS

ALICE BARRADALE ΦBK  
JOAN CAUGHRAN ΦBK  
MARJORIE FRANCES GOODMAN ΦBK  
JOYCE GULICK ΦBK  
JANE INGLEY  
ELEANOR KOJASSAR ΦBK

SARAH JANE MANLEY ΦBK  
JEAN PREBLE ΦBK  
ARLENE ROSHKIND ΦBK  
JOYCE RUBENSTEIN ΦBK  
JEAN RUBIN ΦBK  
ALLAIRE URBAN ΦBK

BARBARA WHITMORE

### WELLESLEY SCHOLARS

GLORIA BRADLEY  
ELEANOR BROWN  
HARRIET BROWN  
FRANCES CAPRON  
ESTHER CLENOTT  
JEAN DEVEREAUX DOTEN  
ELAINE ELKINS  
GLORIA GALLIC  
JEANNE GARCELON  
NANCY HEATH  
ELEANOR HERZ  
DOROTHY MAY HUGHES  
MILDRED DOROTHEA KEIL

PATRICIA KNAPP  
LENORE LEHN  
GLORIA LEVY  
JOY COHEN LEVY  
JEAN MALMSTEDT  
ALICE MEEKER  
MARIAN NEAL  
GABRIELLE PETERS  
ANNE PETTINGELL  
CAROL RUBACK  
KATE SENIOR  
L. ELIZABETH SLAUGHTER  
JOSEPHINE STANCISKO

DOROTHY SWEARINGEN

---

## Elected in Their Senior Year

### DURANT SCHOLARS

GLORIA GALLIC ΦBK  
ELEANOR HERZ ΦBK  
LENORE LEHN ΦBK

GLORIA LEVY ΦBK  
JOY COHEN LEVY ΦBK  
ALICE MEEKER ΦBK

### WELLESLEY SCHOLARS

ANNE ADAMS  
ELIZABETH BARBER  
MARY ALICE BURGESS  
SIDNEY BURKE  
HELEN HUGHES CAHILL  
ANNE COLCORD  
ANNE DAVIS  
TINKA DERECKTOR  
JEAN EDWARDS  
CHRISTINE FERGUSON  
INEZ FRENCH

LOUISA HAGNER ΦBK  
HELEN HALL  
M. ELIZABETH JONES  
PATRICIA LAUBER  
SELMA LEVINE  
MARGERY MILLER  
CONSTANCE ELIZABETH NANGLE  
HADASSAH RUTH SHAPIRO  
PATRICIA SOUTHARD  
FLORENCE GLORIA TRENCHER  
ELIZABETH UNDERWOOD

## The Class of 1945 takes pleasure in announcing the marriages of...

ESTHER BERMAN  
TO  
CPL. MARTIN CLENOTT  
CONSTANCE N. CAMPBELL  
TO  
ENS. RICHARD E. SPRAGUE  
BARBARA CHAPIN  
TO  
S. SGT. WALLACE P. DUNLAP, JR.  
JOY AGNES COHEN  
TO  
LT. (JG) MARION LEVY  
ROSEMARY CRANDALL  
TO  
JOHN P. WARTER, JR., U.S.N.R.  
HELEN HUGHES  
TO  
LT. (JO) EDWARD JAMES CAHILL  
ELIZABETH A. KUHN  
TO  
LT. RICHARD D. ROBINSON

KATHERINE M. REESE  
TO  
LT. THOMAS C. PEEBLES  
MARY VIRGINIA REPERT  
TO  
JOHN VAN DYKE WILMERDING, U.S.N.R.  
MARY LOUISE ROSE  
TO  
CAPT. WAYNE M. PARKS  
IRENE SCHIFF  
TO  
LT. (JG) ROBERT GROBAN  
ALICE SZE  
TO  
DR. CHU-AN WANG  
LUCILLE VAN SLYKE  
TO  
CAPT. MARTIN HARTER  
O. ELIZABETH WILLIAMS  
TO  
LT. CLINTON C. KEMP

## and the engagements of...

GRACE BARISH  
TO  
PAUL SAGALYN  
BETTY K. BROWN  
TO  
LT. FREDERICK HOLLISTER CAMPBELL  
GLORIA CAMPBELL  
TO  
LT. LOUIS MARINGO  
JOAN CAUGHRAN  
TO  
RAY E. MILLER  
ELIZABETH CHAPIN  
TO  
DAVID HEATH, F. A. U.  
CYNTHIA DOANE  
TO  
DONALD E. NICKERSON, U.S.N.R.  
JANET DRESSLER  
TO  
LT. (JG) CHARLES A. LISTER  
EVE WILMA GRODNICK  
TO  
LT. ARNOLD HAROLD SCHUNMAN  
MARION GROOT  
TO  
LT. COM. JOHN M. WATERS  
JEAN M. KINEKE  
TO  
LT. DAVID T. McLAUGHLIN  
CARYL KRIEGER  
TO  
LT. MARTIN HORWITZ  
MARJORIE LENT  
TO  
PFC. STERLING GARRARD  
JEAN MALMSTEDT  
TO  
LT. (JG) ROBERT E. SWEENEY  
MARY P. MARCHANT  
TO  
LT. NELSON CAMPBELL

SHEILA G. MURPHY  
TO  
LT. JOHN G. FOX, II  
CAROLYN NICKERSON  
TO  
CPL. CHARLES E. KITCHIN  
NATALIE M. PIERCE  
TO  
ENS. WILLIAM F. WELLES  
CAROL RUBACK  
TO  
DR. SANFORD LEWIS  
SALLY RUSSELL  
TO  
PFC. WILLIAM SHOREY  
HEATHER SAYRE  
TO  
LT. ROWLAND C. W. BROWN  
JANE SEDDON  
TO  
LT. (JG) W. HARRY WILLSON  
SHIRLEY SMAILS  
TO  
DR. JOHN F. PRUDEN  
NANCY B. SMITH  
TO  
LT. PHILIP COLE, JR.  
KATHERINE SUE SPENCER  
TO  
SGT. BRADLEY D. HARRIS  
MARY HELEN STEINHEIMER  
TO  
LYNN McQUIDDY, U.S.N.R.  
ANN STEUER  
TO  
GILBERT E. KLEIN  
DOROTHY J. SWEARINGEN  
TO  
CARROLL HUNNEWELL  
BETTY UNDERWOOD  
TO  
S. SGT. KEITH MOSLEY



The people to blame

## *Legenda for 1945*



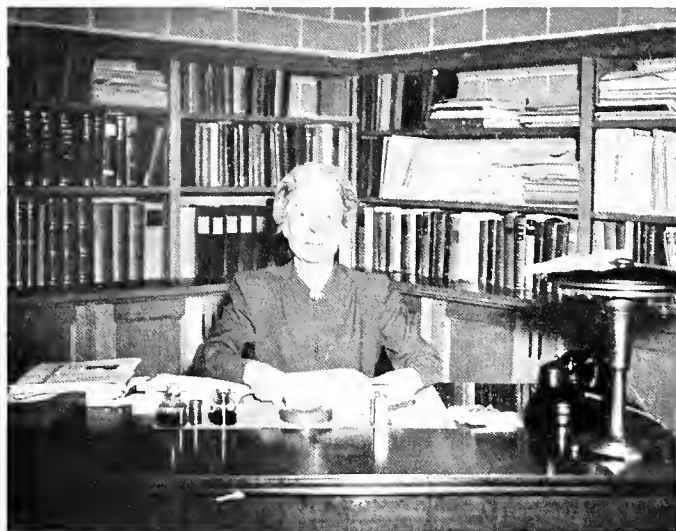
Linda Bolté, Editor



Peggy Bonsal, Business Manager  
—the all too quiet mind







Miss McDowell



Miss Helen Jones



Miss Overacker



Mr. Pilley



Mr. Practer



Mr. Lehmann



Miss Manwaring

*A few of  
our guiding  
lights*



## *Here we are*

after four years which seem, now, to have been very short.  
We have acquired good friends, a little knowledge, and plenty  
of dreams and theories, so look out world, here we come!



INA S. BURNES  
60 W. Cedar St., Boston, Mass.  
*Sociology*



ELIZABETH A. GOURDIN  
68 Waumbeck St., Roxbury, Mass.  
*Chemistry*

1945-A



DOROTHY M. HUGHES  
Wyman Park Apartments, Baltimore, Md.  
*Zoology*



MARY R. HYDE  
111 Clark St., Newton Centre, Mass.  
*Psychology*



MARION J. KERR  
109 Gainsborough St., Boston, Mass.  
*Psychology*



FAITH LASSER SCHWARZ  
79-12 19 Road, Jackson Heights, N. Y.  
*Economics*



ROSEMARY MAKINSON FRANZ  
3303 Macomb St. N. W., Washington, D. C.  
*French*



PATRICIA LEWIS  
2031 Pine St., Philadelphia, Pa.  
*Chemistry*



ANNA MEISTER  
315 Riverside Dr., New York, N. Y.  
*Chemistry*



SUSAN ROSENTHAL  
148 Commonwealth Ave., Boston, Mass.  
*Chemistry*





ANNE HALE ADAMS  
321 Vernon Avenue West  
Fergus Falls, Minn.  
*Zoology*



BETTY M. ANDERSON  
4050 Woodland Avenue  
Western Springs, Ill.  
*Psychology*



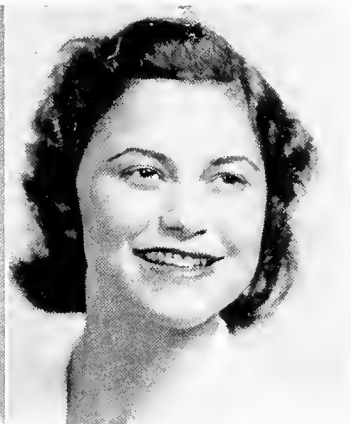
CALLIOPE ANES  
87 Church Street  
North Adams, Mass.  
*Zoology*



ELIZABETH ANN APOLLONIO  
10 Louise Road  
Belmont, Mass.  
*Mathematics*



MARY PHYLLIS ARBUCKLE  
7118 Washington Street  
Saint Louis, Mo.  
*English Composition*



JANE DE BEER AUFESSER  
570 Providence Street  
Albany, N. Y.  
*Physics*

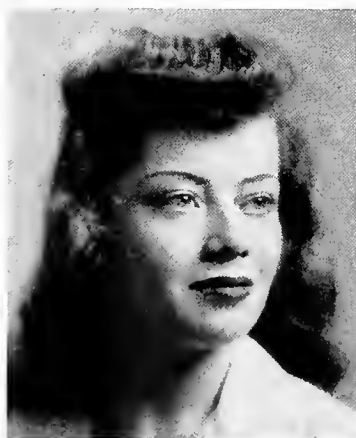
1945



HILDEGARD BAIR  
 22 Cornell Street  
 Scarsdale, N. Y.  
*Sociology*

ELIZABETH FRANCES BARBER  
 102 Euclid Avenue  
 Waterbury, Conn.  
*Zoology*

CAROL BANKS  
 Saw Mill Lane  
 Greenwich, Conn.  
*History*



HARRIET HOPE BARDING  
 825 20th Avenue  
 East Moline, Ill.  
*English Literature*

ALICE H. BARRADALE  
 178 Kilburn Place  
 South Orange, N. J.  
*Spanish*

GRACE BARISH  
 995 Fifth Avenue  
 New York, N. Y.  
*Art*

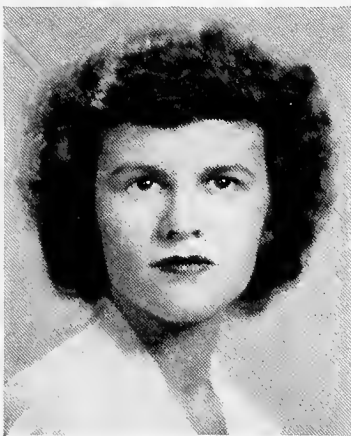


LAURA LOU BAUER  
 154 Lakeview Terrace  
 Highland Park, Ill.  
*Economics*

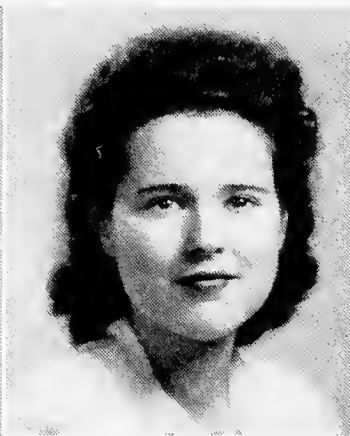


ELIZABETH POLK BENSON  
 10 West Underwood Street  
 Chevy Chase, Md.  
*English Composition*

LUCY MORRIS BEMAN  
 262 East Quaker Street  
 Orchard Park, N. Y.  
*Chemistry*



ALICE GLENN BIXLER  
 2316 Canterbury Road  
 University Heights, Ohio  
*Political Science*



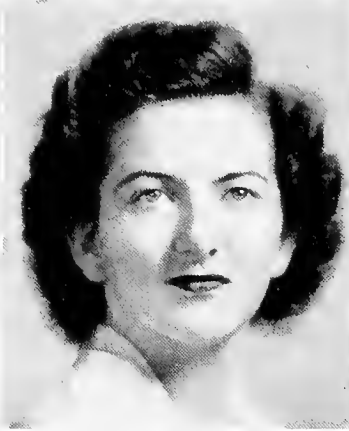
BARBARA OPAL BLICK  
 15 Sylvan Avenue  
 Pleasant Ridge, Mich.  
*Sociology*



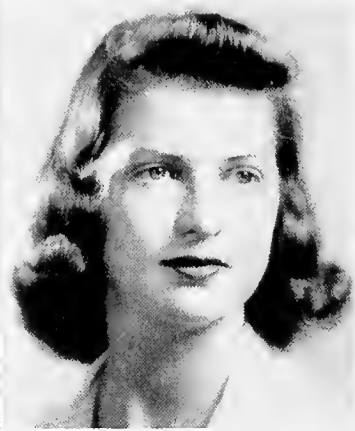
HELEN KETURAH BOGART  
 110 Sylvan Drive  
 Lookout Mountain, Tenn.  
*English Literature*



EVELYN MARIE BOISE  
21 Glen Oaks Avenue  
Summit, N. J.  
*Political Science*



PATRICIA JANE BOLAND  
9 Montclair Avenue  
Montclair, N. J.  
*Mathematics*



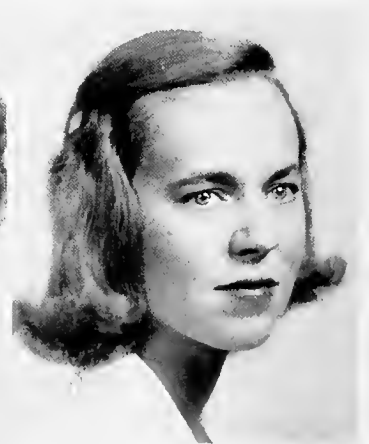
MARGARET JANE BONSAI  
288 Upper Mountain Avenue  
Upper Montclair, N. J.  
*Art*



GLORIA BRADLEY  
109 Richmond Avenue  
Worcester, Mass.  
*Political Science*



HELEN MARIE BRADSHAW  
1315 Beechwood Boulevard  
Pittsburgh, Pa.  
*Sociology*



ELIZABETH ANN BRIERLEY  
99 Wooster Street  
New Britain, Conn.  
*Economics*



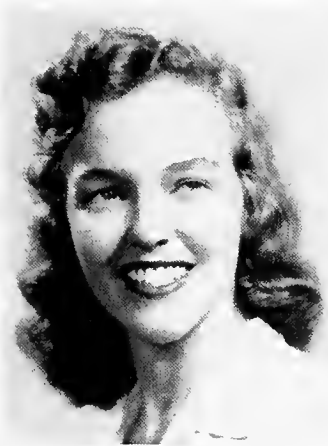
ELEANOR UPTON BROWN  
57 Chestnut Street  
Dedham, Mass.  
*Zoology*



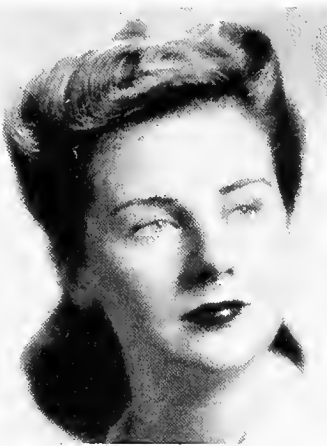
ELIZABETH K. BROWN  
7 Warren Place  
Montclair, N. J.  
*English Literature*



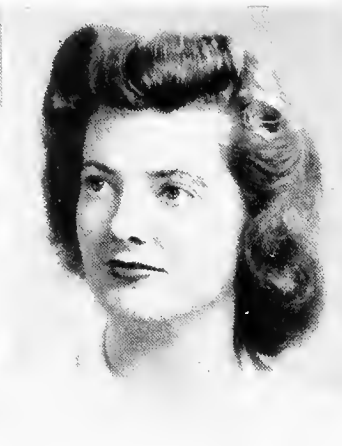
HARRIET McAFEE BROWN  
159 Chapin Street  
Binghamton, N. Y.  
*History*



MARGARET HAMILTON BROWN  
2 Park Lane  
Mount Vernon, N. Y.  
*English Composition*



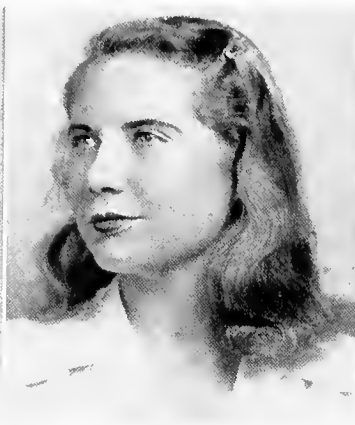
NAOMI BUCHOLZ  
6610 Prairie Road  
Omaha, Nebr.  
*English Composition*



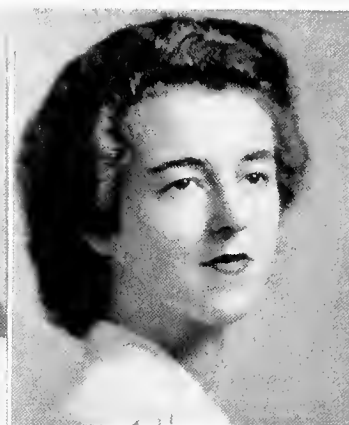
BARBARA BUCKLEY  
20 Bassett Road  
Brockton, Mass.  
*English Literature*



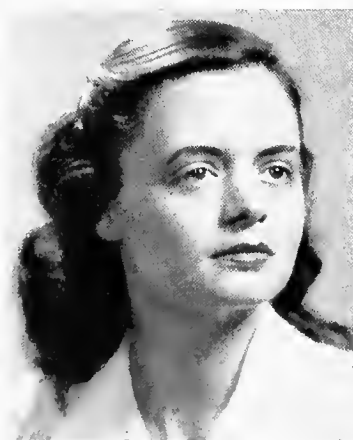
MARY ALICE BURGESS  
72 Fairmount Avenue  
Chatham, N. J.  
*Political Science*



SIDNEY GERARD BURKE  
43 Amherst Road  
Wellesley, Mass.  
*Political Science*



JULIE ANN BURNET  
Deephaven  
Excelsior, Minn.  
*Biblical History*



CAROLINE BURNQUIST  
Warden Apartments  
Fort Dodge, Iowa  
*Economics*



MARY TYLOR BURTON  
930 Forest Avenue  
Glendale, Ohio  
*Sociology*



BONITA JEAN BUTTREY  
70 Gladstone Avenue  
Aurora, Ill.  
*Economics*





GLORIA J. BUZZELL  
607 Lafayette Boulevard  
Long Beach, Long Island, N. Y.  
*English Composition*



HELEN HUGHES CAHILL  
160 Aycrigg Avenue  
Passaic, N. J.  
*Political Science*



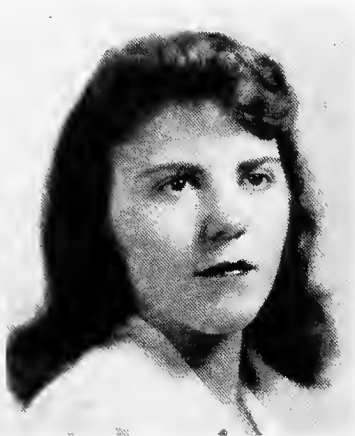
REBECCA CALECHMAN  
101 Colony Road  
New Haven, Conn.  
*Economics*



CONSTANCE NOBLE CAMPBELL  
Emerson Road  
Longmeadow, Mass.  
*Spanish*



GLORIA CAMPBELL  
Washington Avenue  
Bayville, Long Island, N. Y.  
*Political Science*



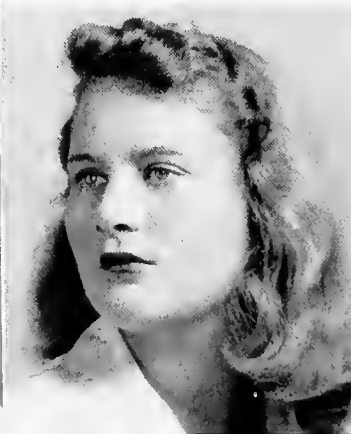
FRANCES MARGARET CAPRON  
41 Bradford Avenue  
Upper Montclair, N. J.  
*Physics*



CATHARINE CARTER CATLETT  
 Nuttall Post Office  
 Gloucester County, Va.  
*History*

ELIZABETH CHALMERS  
 140 West 58th Street  
 New York, N. Y.  
*History*

JOAN CAUGHRAN  
 5136 North Capitol Avenue  
 Indianapolis, Ind.  
*Mathematics*



ELIZABETH CHAPIN  
 290 Pine Street  
 Lowell, Mass.  
*English Composition*

BETTY ANN CHILDS  
 106 Broadmead  
 Princeton, N. J.  
*History*

CONSTANCE CHENOWETH  
 959 Hereford Drive  
 Akron, Ohio  
*Political Science*



DONA CHUMASERO  
50 Midwood Street  
Brooklyn, N. Y.  
*English Composition*

ELIZABETH TURNER CLARK  
534 Summit Avenue  
St. Paul, Minn.  
*Economics*

JEAN BEVERLY CLARIN  
4715 Delafield Avenue  
Riverdale, N. Y.  
*Economics*



ALICE ANNE CLARKE  
139 Sixth Avenue  
La Grange, Ill.  
*English Composition*

JOY AGNES COHEN  
1718 31st Street  
Galveston, Texas  
*Mathematics*

ESTHER BERMAN CLENOTT  
Bangor House  
Bangor, Maine  
*Latin*



ANNE ENGLISH COLCORD  
1105 Park Avenue  
New York, N. Y.  
*English Literature*

FRANCES IRENE COOK  
2193 Cottage Grove Drive  
Cleveland Heights, Ohio  
*History*

MARGARET MCNEILL CONROY  
701 Glenburn Road  
Clarks Summit, Pa.  
*English Composition*



JEAN ESTHER CRAM  
19701 Shelbourne Road  
Shaker Heights, Ohio  
*Chemistry*

ADELAIDE CRAWLEY  
101 Ivy Way  
Port Washington, N. Y.  
*Political Science*

ROSEMARY SQUIRE CRANDALL  
73 Morgan Place  
Arlington, N. J.  
*Physics*



JANET PATRICIA CROOKS  
"Goyard," Cape Haitien  
Haiti, West Indies  
*French*

ANNABEL DANHOF  
19381 Stratford Road  
Detroit, Mich.  
*French*

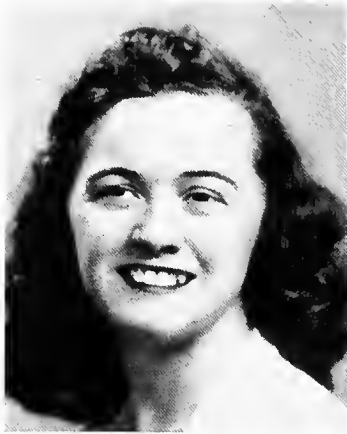
CHRISTINE CURTIS  
21 Gammons Road  
Waban, Mass.  
*Economics*



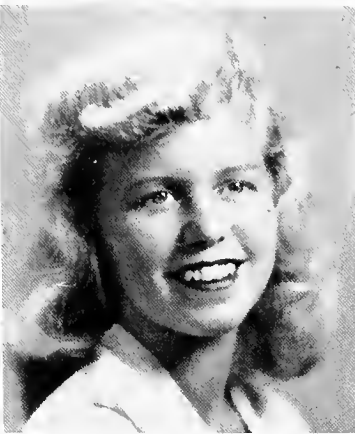
ANNE LOGAN DAVIS  
552 Union Street  
Rahway, N. J.  
*Zoology*

CHARLOTTE MACLEAN DAY  
21 Klebart Avenue  
Webster, Mass.  
*Geology*

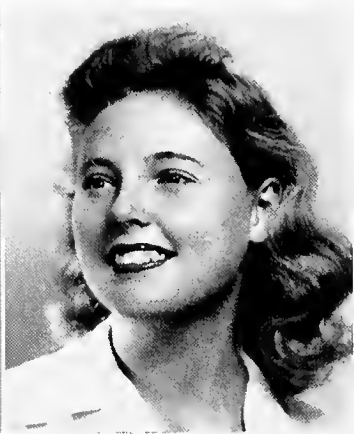
MEREDITH ALICE DAVIS  
4901 North Lake Drive  
Milwaukee, Wis.  
*Sociology*



THERESE RITA-LOUISE DEGRACE  
399 Silver Lake Street  
Athol, Mass.  
*English Comp. & Lit.*



HELENE DELONE  
6419 Drexel Road  
Philadelphia, Pa.  
*Zoology*



TINKA DERECKTOR  
4 Sycamore Lane  
White Plains, N. Y.  
*Psychology*



HARRIET LOUISE DICKE  
180 Commonwealth Avenue  
Boston, Mass.  
*Geology*

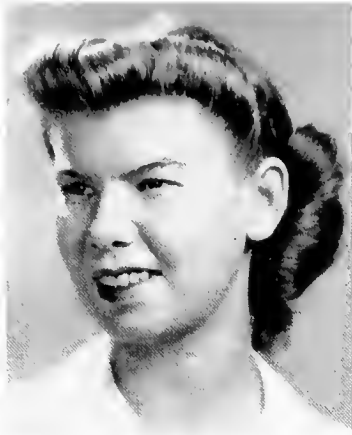


LAETITIA SHELBY DICKINSON  
2 Maryland Avenue, Cooper Apts.,  
Annapolis, Md.  
*Art*

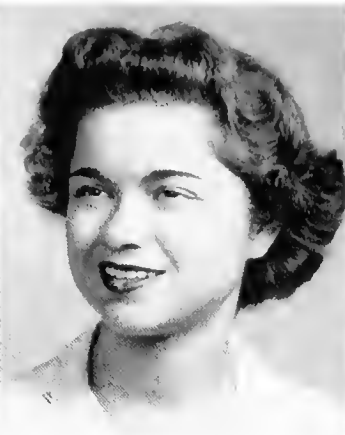


BETTY DIXON  
308 West 2nd Avenue  
Gastonia, N. C.  
*English Composition*





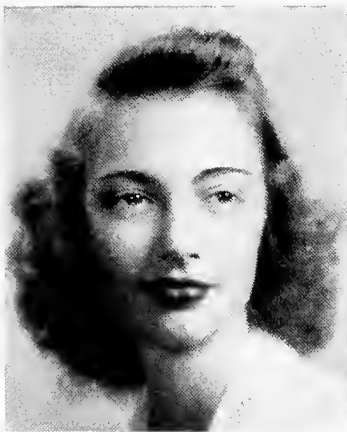
CYNTHIA GILBERT DOANE  
112 Roby Road  
Madison, Wis.  
*Chemistry*



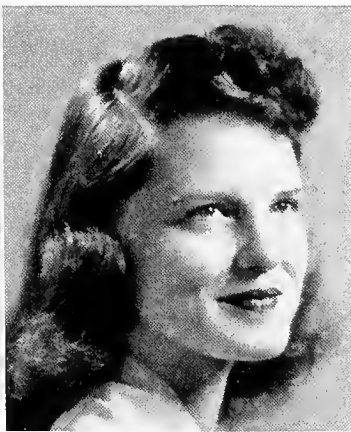
JANET MARCIA DONNET  
26 Clifford Avenue  
Pelham, N. Y.  
*English Composition*



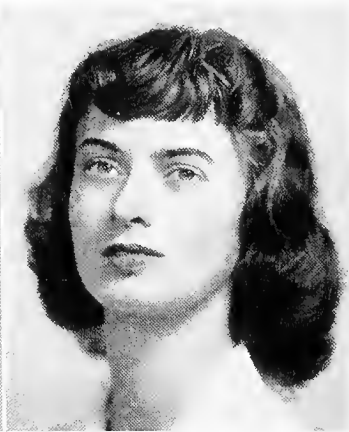
JEAN DEVEREAUX DOTEN  
70 Page Road  
Newtonville, Mass.  
*English Composition*



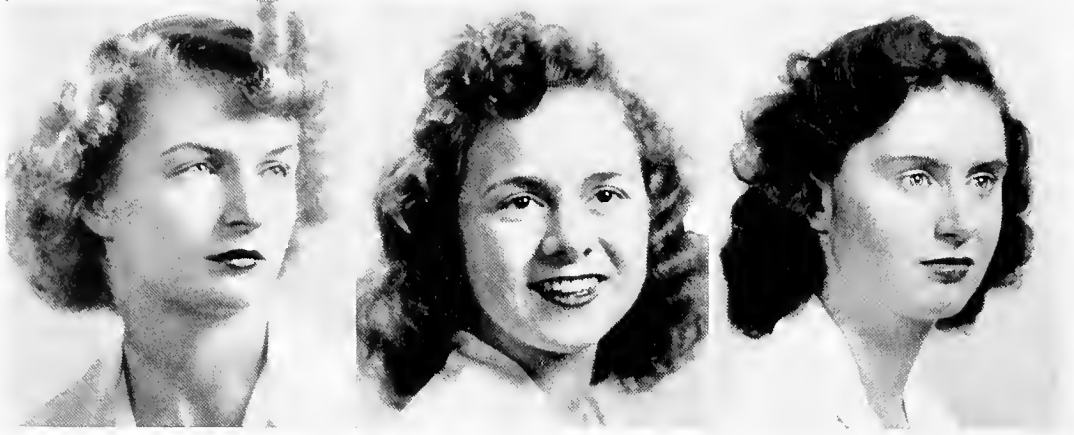
GLORIA DOWNS  
2145 East 38  
Tulsa, Okla.  
*Political Science*



JANET ALBIN DRESSLER  
3316 Daleford Road  
Shaker Heights, Ohio  
*English Composition*



BARBARA CHAPIN DUNLAP  
29 Hundreds Circle  
Wellesley Hills, Mass.  
*Music*



CAROL SCHUYLER EDGELOW  
17 Oxford Street  
Springfield, Mass.  
*English Literature*

ELAINE ELKINS  
3545 Biddle Street  
Cincinnati, Ohio  
*Chemistry*

JEAN SEAVER EDWARDS  
202 Reedsdale Road  
Milton, Mass.  
*Geography*



MARTHA GRACE ELLIS  
Lake Road  
Basking Ridge, N. J.  
*Zoology*

RUTH FERGUSON  
1818 Washington Street  
Canton, Mass.  
*Economics*

CHRISTINE FERGUSON  
1818 Washington Street  
Canton, Mass.  
*Chemistry*



BEBE MARIAN FISCHGRUND  
 2303 University Avenue  
 Canton, Ohio  
*Psychology*



JESSIE L. FOSTER  
 Muskoka Lodge, Chippewa Trail  
 Medford Lakes, N. J.  
*French*



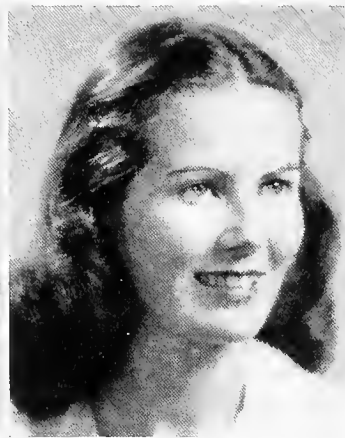
MARY JANE FOSTER  
 4150 Grassmere Lane  
 Dallas, Texas  
*English Composition*



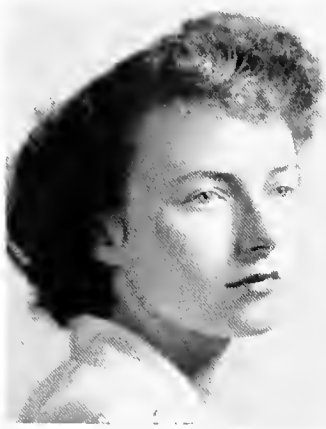
INEZ FRENCH  
 2205 Madison Road  
 Cincinnati, Ohio  
*Art*



DOROTHY MARTHA FREYER  
 501 Linden Avenue  
 Oak Park, Ill.  
*Chemistry*



GLORIA EADE GALLIC  
 29 Wilton Road  
 Windsor, Conn.  
*English Composition*



JEANNE GARCELON  
86 Falmouth Road  
Arlington, Mass.  
*Mathematics*



MARILYN JANE GARFIELD  
31 Ray Street  
Manchester, N. H.  
*History*



JANE GODLEY  
18 Clarendon Road  
Albany, N. Y.  
*Sociology*



DOROTHY GOING  
Amherst  
New Hampshire  
*Economics*



MARJORIE FRANCES GOODMAN  
70 Remsen Street  
Brooklyn, N. Y.  
*English Literature*



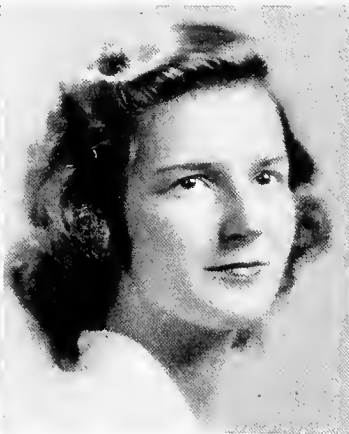
ELOISE JOY GRAWOIG  
4759 Greenwood Avenue  
Chicago, Ill.  
*Economics*



ELEANOR MEAD GRIESEMER  
 115 West Underwood Street  
 Chevy Chase, Md.  
*English Composition*

MARIAN PRINCE GROOT  
 26 Vine Brook Road  
 Lexington, Mass.  
*Geology*

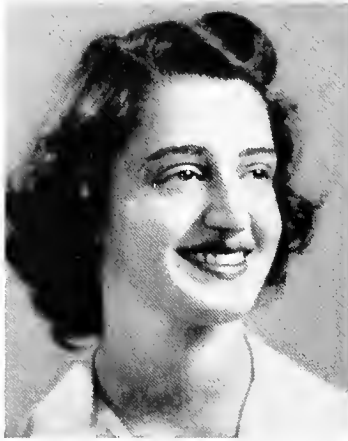
IRENE SCHIFF GROBAN  
 211 South Cassingham Road  
 Columbus, Ohio  
*Economics*



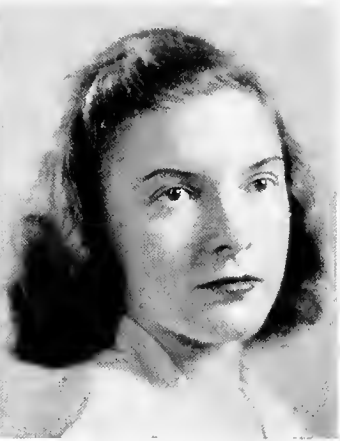
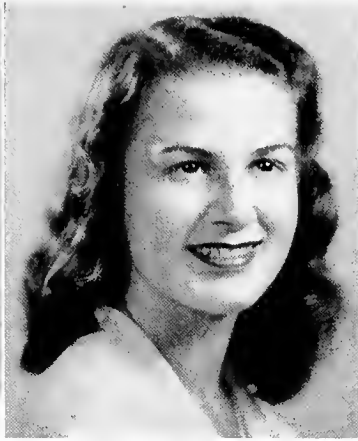
JOYCE MERRIMAN GULICK  
 35-20 77th Street  
 Jackson Heights, N. Y.  
*English Composition*

LOUISE HARRISON HAGNER  
 1702 Park Avenue  
 Richmond, Va.  
*English Composition*

CAROLINE SCRANTON HADLEY  
 9 Pearl Street  
 New Hartford, N. Y.  
*Art*



HELEN KOHAR HAGOPIAN  
23 Fiske Road  
Wellesley Hills, Mass.  
*Zoology*



FAITH MARY HALFYARD  
1056 Beacon Street  
Brookline, Mass.  
*Economics*

JANET RUTH HAHN  
887 Greyton Road  
Cleveland Heights, Ohio  
*English Literature*



HELEN HALL  
22 Andrew Street  
Everett, Mass.  
*Biblical History*



VIRGINIA HALL  
80 Fairway Avenue  
Rye, N. Y.  
*Mathematics*

RACHEL HALL  
5619 Fair Oaks  
Pittsburgh, Pa.  
*Art*





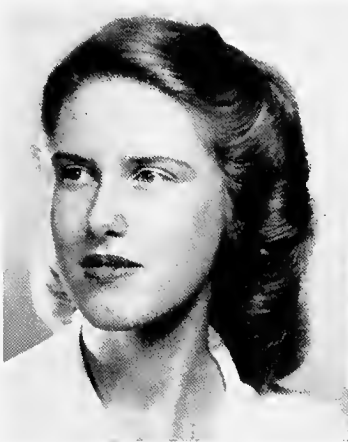
ELIZABETH ANN HANDY  
126 Crafts Street  
Newtonville, Mass.  
*Economics*



LUCILLE VAN SLYKE HARTER  
Cornwall-on-Hudson  
New York  
*English Composition*



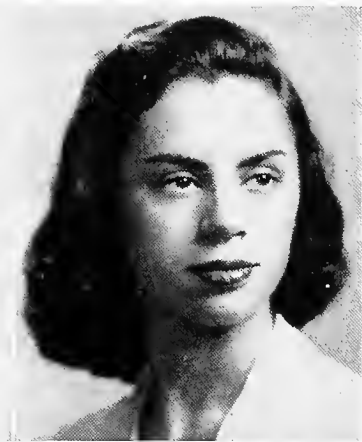
MARTHA HATCHER  
College Grove  
Tennessee  
*English Composition*



NANCY ELDER HEATH  
1611 Harris Road  
Chestnut Hill, Philadelphia, Pa.  
*Sociology*



FLORANNE HENDERSON  
Box 578  
Chapel Hill, N. C.  
*Art*



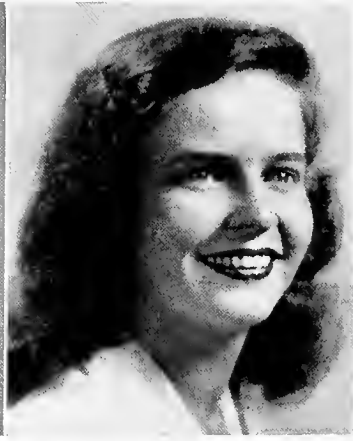
WINIFRED TEME HERMAN  
333 Hawthorne Terrace  
Mount Vernon, N. Y.  
*Art*



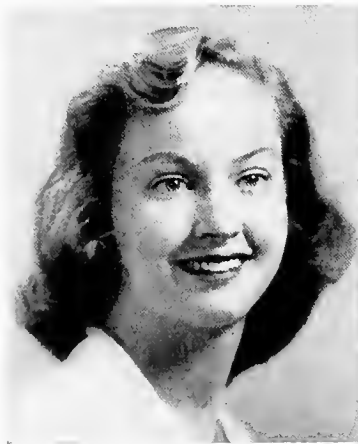
ELEANOR MARTHA HERZ  
 211 Deer Path Drive  
 Lead, South Dakota  
*English Composition*



SARAH ANN HILL  
 1136 East 25th Street  
 Tulsa, Okla.  
*Chemistry*



ANN R. HOFFMAN  
 1530 East Jefferson  
 South Bend, Ind.  
*Political Science*



ALICE M. HORTON  
 417 Riverside Drive  
 New York, N. Y.  
*Political Science*



JANET VAN RENSSELAER HORTON  
 10 Elm Street  
 Geneseo, N. Y.  
*English Comp. & Lit.*



JEAN HOSKINS  
 Quaker Road  
 Chappaqua, N. Y.  
*Zoology*



JANE INGLEY  
165 Gilpin Street  
Denver, Col.  
*Sociology*



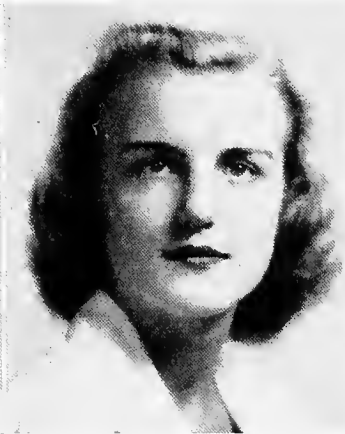
EMIKO ISHIGURO  
449 Walnut Street  
Milton, Pa.  
*Chemistry*



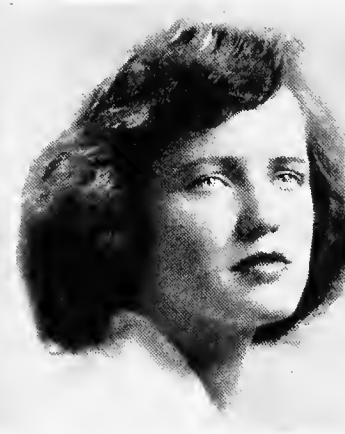
ALBA BERNARDI JAMESON  
6 Sessions Street  
Wellesley, Mass.  
*Italian*



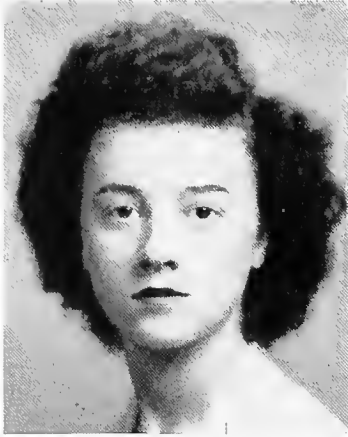
ANNA B. JOHNSTON  
6310 Ridgeway Road  
Richmond, Va.  
*English Literature*



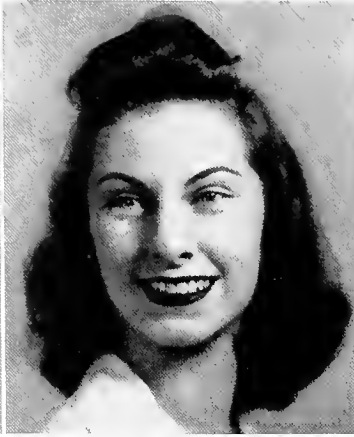
MARGARET E. JOHNSTON  
505 Waverly Road  
Highland Park, Ill.  
*Chemistry*



MABEL ELIZABETH JONES  
580 Prospect Street  
Maplewood, N. J.  
*Chemistry*



ANN JORDAN  
19 Hanson Street  
Greenwood, Mass.  
*Economics*

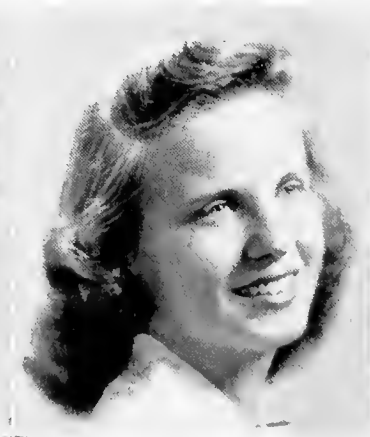


JEAN ELIZABETH KENNEDY  
Old Mystic  
Connecticut  
*Psychology*

M. DOROTHEA KEIL  
4705 Riverdale Avenue  
New York, N. Y.  
*Political Science*



JEAN MARIE KINEKE  
28 Oakland Road  
Maplewood, N. J.  
*Economics*



DORIS JANE KING  
15 Fern Street  
New Rochelle, N. Y.  
*Biblical History*



NAOMI RUTH KISLAK  
927 Hudson Street  
Hoboken, N. J.  
*Economics*



PATRICIA NEWMAKER KNAPP  
11 Verback Street  
Warren, Pa.  
*Economics*



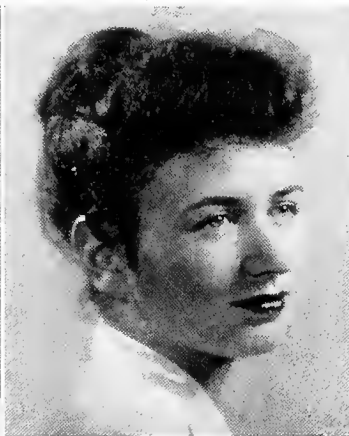
JANE M. KNICKERBOCKER  
256 South Main Street  
Torrington, Conn.  
*Economics*



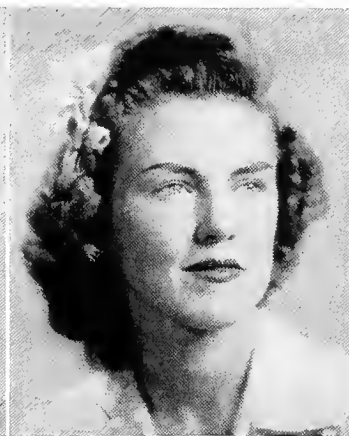
VIRGINIA HARRIET KOCH  
325 White Oak Lane  
Winnetka, Ill.  
*Chemistry*



ELEANOR MAY KOJASSAR  
213 Hazelwood Avenue  
Bound Brook, N. J.  
*French*



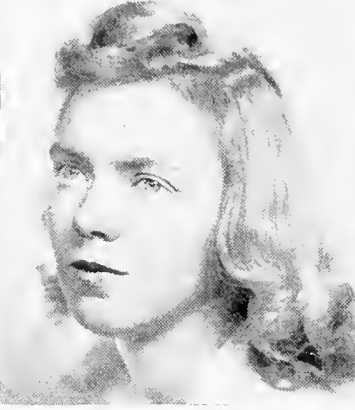
CARYL KRIEGER  
60 Plaza Street  
Brooklyn, N. Y.  
*Art*



ELIZABETH ANN KUHN  
1150 Berkshire Road  
Grosse Pointe, Mich.  
*Psychology*



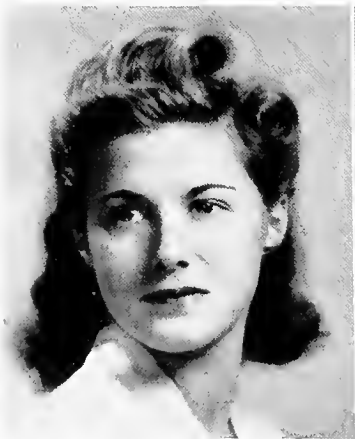
EDITH MOORE KYNOR  
560 North Laurel Street  
Hazleton, Pa.  
*Geology*



MARCIA LANE  
6 Woodland Road  
Westfield, Mass.  
*Zoology*



PATRICIA GRACE LAUBER  
Sasqua Hills  
East Norwalk, Conn.  
*English Composition*



MARY LOUISE LAWRENCE  
30 Stockton Street  
Bloomfield, N. J.  
*Zoology*



MARY ATTAWAY LEE  
Emerson Road  
Park Hills, Covington, Ky.  
*Biblical History*



LENORE LEHN  
34 North Eighth Avenue  
Highland Park, N. J.  
*Chemistry*





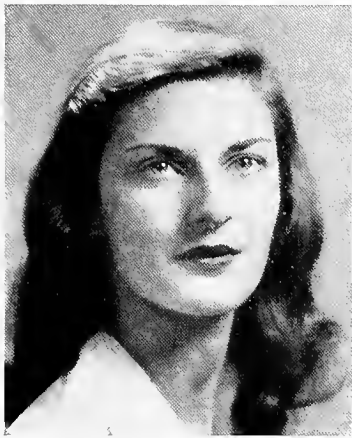
MARJORY LENT  
1821 Second Street  
Peru, Ill.  
*Spanish*



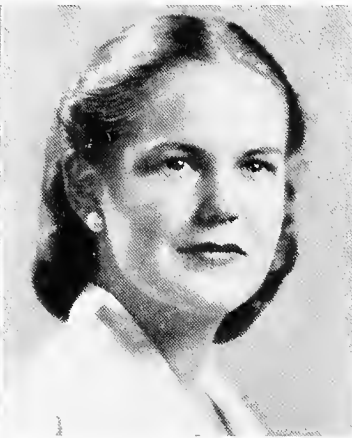
SELMA M. LEVINE  
331 Winthrop Avenue  
New Haven, Conn.  
*Political Science*



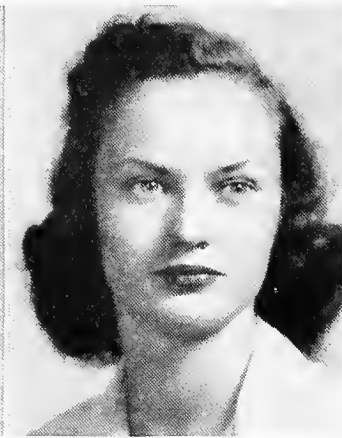
GLORIA LEVY  
3111 Avenue O  
Galveston, Texas  
*Mathematics*



PHYLLIS MARIAN LIPSKY  
357 Center Street  
Bangor, Me.  
*English Composition*



HARRIET HARLING LOTHROP  
149 Pleasant Avenue  
Portland, Me.  
*German*



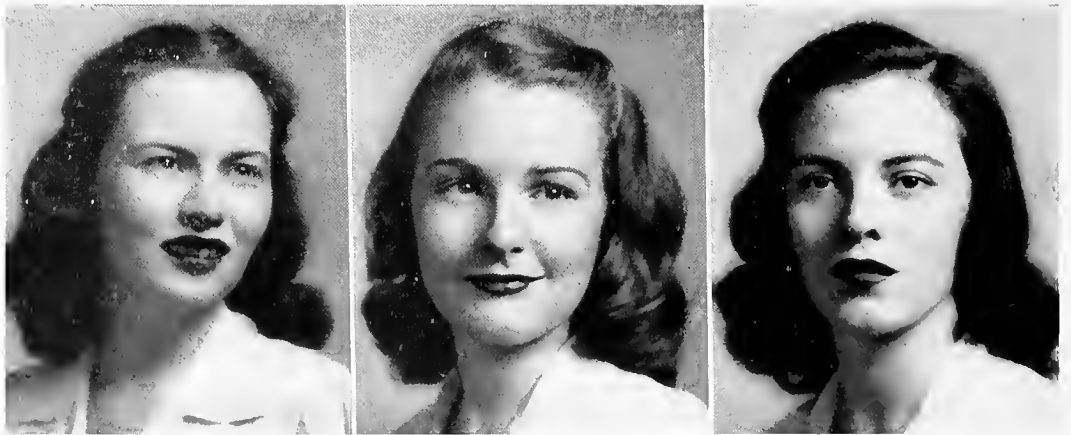
ISABEL T. LUTHER  
1530 Mahantongo Street  
Pottsville, Pa.  
*Psychology*



MARY FRANCES LYONS  
4141 Glenwood Street  
Little Neck, N. Y.  
*History*

JEAN MALMSTEDT  
61 Avon Place  
Amityville, N. Y.  
*Economics*

DESPINA MALAKOS  
501 Main Street  
Haverhill, Mass.  
*Physics*



SARAH JANE MANLEY  
1039 Murrayhill Avenue  
Pittsburgh, Pa.  
*French*

HELEN KATHRYNE MARCHESE  
53 Palmyra Street  
Springfield, Mass.  
*Economics*

MARY PRISCILLA MARCHANT  
75 North Quaker Lane  
West Hartford, Conn.  
*History*



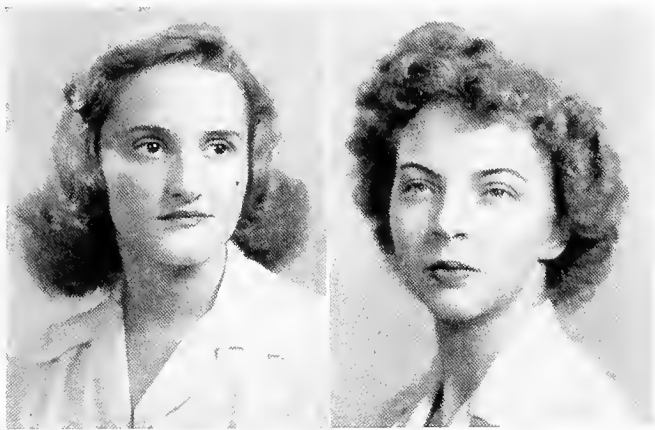
BARBARA MARTIN  
4975 Riverdale Avenue  
Riverdale-on-Hudson, N. Y.  
*Psychology*



JOCELYN ENID MASON  
Morningside Drive  
Greens Farms, Conn.  
*English Composition*



MARY LOUISE MAYGER  
Shanghai,  
China  
*German*

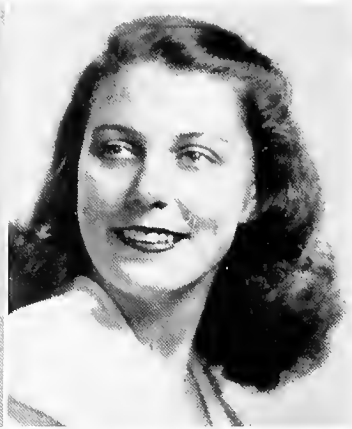


MARY ALICE MCGOUGH  
5121 Irving Avenue, South  
Minneapolis, Minn.  
*Botany*

BETTY MCLAIN  
4015 1/2 Garden Avenue  
Los Angeles, Calif.  
*English Composition*



ALICE AYRES MEEKER  
19 Northview Avenue  
Upper Montclair, N. J.  
*Biblical History*



ELIZABETH ANNE METZ  
2800 Espy Avenue  
Pittsburgh, Pa.  
*Political Science*



LINDA BOLTE  
370 North Maple Avenue  
Greenwich, Conn.  
*English Composition*



SHIRLEY FRIED MEYERS  
16 Beaver Hill Lane  
New Haven, Conn.  
*English Literature*



JANET MILLER  
Beldon Hill Road  
Wilton, Conn.  
*Zoology*



MARGERY W. MILLER  
9 Elm Street  
Springfield, Vt.  
*English Composition*



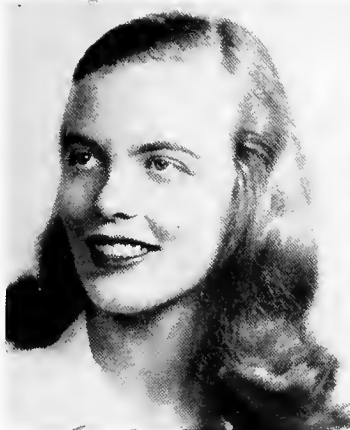
MARILYN E. MILLER  
4274 Fullerton Avenue  
Detroit, Mich.  
*Art*



NORMA ELAINE MILLER  
3 Fowell Avenue  
Nashua, N. H.  
*Chemistry*



MARTHA JEANNE MONTGOMERY  
c/o Col. Ray C. Montgomery,  
Camp Hood, Texas  
*English Composition*



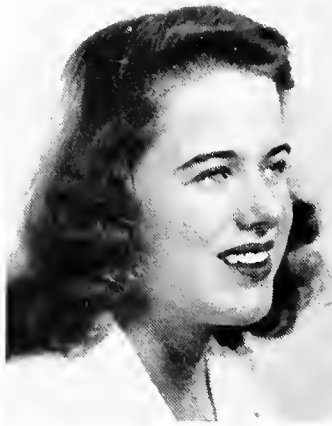
MARIAN MOORE  
1431 Wood Avenue  
Colorado Springs, Colo.  
*Sociology*



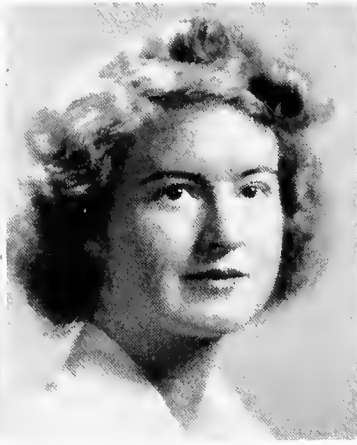
MARIANNE CRAIG MOORE  
34 Chittenden Avenue  
Crestwood, N. Y.  
*English Composition*



GRACE ELIZABETH MOREY  
69 East 82nd Street  
New York City, N. Y.  
*Political Science*



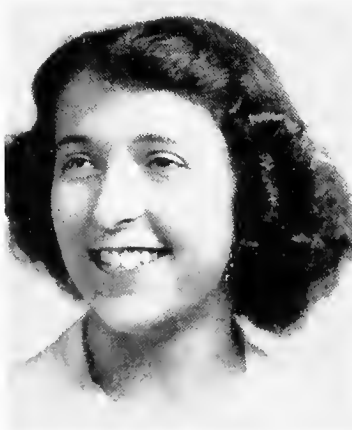
SARAH TERRILL MORRIS  
505 Center Street  
Eustis, Fla.  
*Psychology*



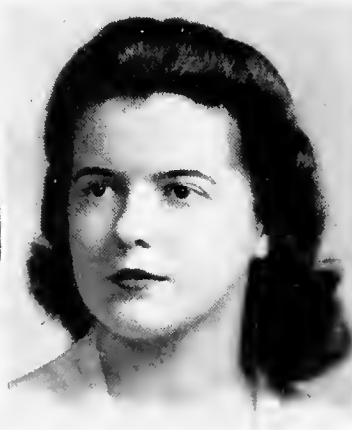
MARCIA MORSE  
11 Seaver Street  
Wellesley Hills, Mass.  
*English Composition*



SHEILA GRIFFITHS MURPHY  
1 Clark Street  
Brooklyn, N. Y.  
*English Composition*



KAROL DAVIS MUSA  
42 Oakdale Boulevard  
Farmingdale, N. Y.  
*Psychology*

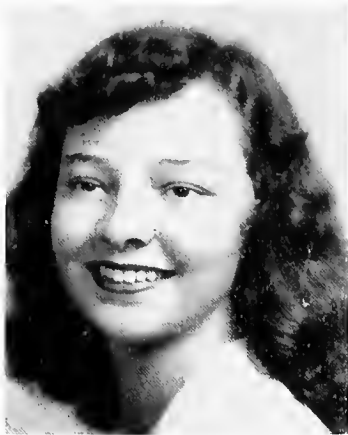


CONSTANCE ELIZABETH NANGLE  
8409 113th Street  
Richmond Hill, N. Y.  
*Chemistry*



ELLIN NAUMBURG  
Croton-on-Hudson  
New York  
*Economics*





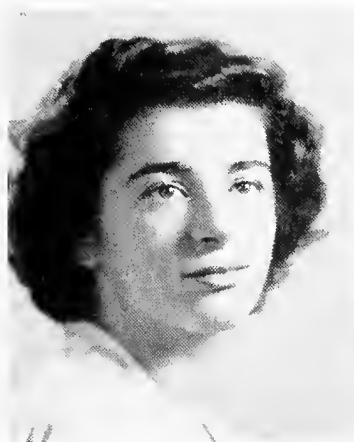
MARIAN NEAL  
14 Park Street  
Tenafly, N. J.  
*Political Science*



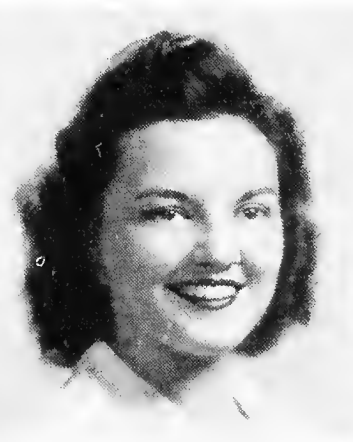
ANNE EDWARDS NEWBERY  
160 Highland Avenue  
Ridgewood, N. J.  
*Art*



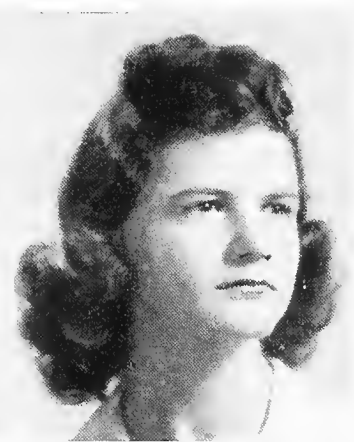
MONICA D. NEWMARK  
523 West 121st Street  
New York, N. Y.  
*Political Science*



CAROLYN LUCIE NICKERSON  
2198 Massachusetts Avenue  
Lexington, Mass.  
*English Comp. & Lit.*



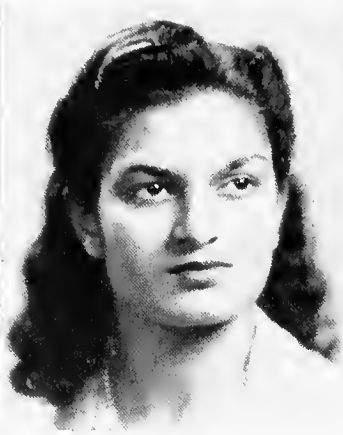
NANCY JEAN NILL  
403 Cherry Road  
Syracuse, N. Y.  
*Geography*



LOUISE HAVEN NORTH  
32 Badeau Avenue  
Summit, N. J.  
*Biblical History*



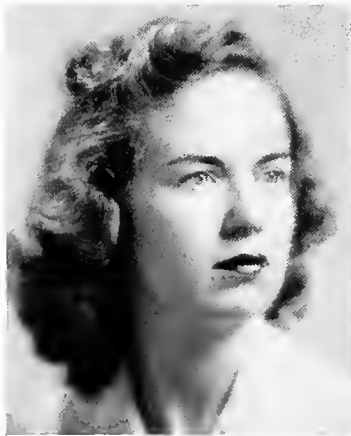
MARJORIE OLSEN  
34 Randolph Street  
Passaic, N. J.  
*Sociology*



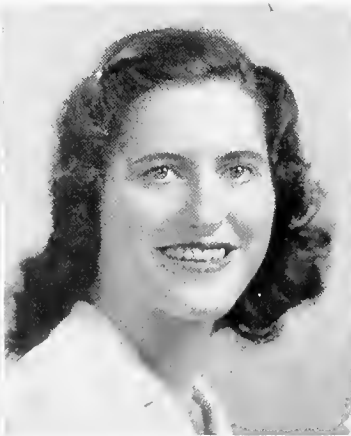
CHANDRALEKHA PANDIT  
Anand Bhawan,  
Allahabad, India  
*Political Science*



CORA WARRANT PARCE  
160 Oak Lane  
Rochester, N. Y.  
*Sociology*



MARY LOUISE ROSE PARKS  
136 Filbert Street  
Hamden, Conn.  
*Art*



NANCY FORD PELGRIFT  
61 North Main Street  
West Hartford, Conn.  
*Mathematics*



GABRIELLE JAYNE PETERS  
55 Greendale Road  
Scarsdale, N. Y.  
*English Composition*



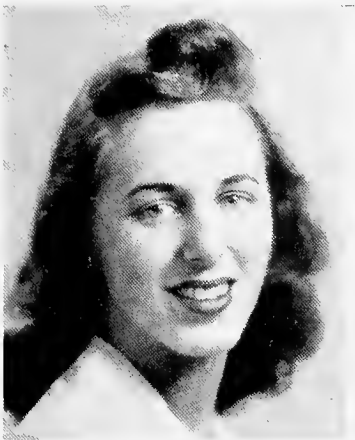
MARGARET CRAWFORD PETERS  
20 Elm Street  
Concord, Mass.  
*Music*



CHRISTINE PETERSON  
11 Kneeland Avenue  
Binghamton, N. Y.  
*Economics*



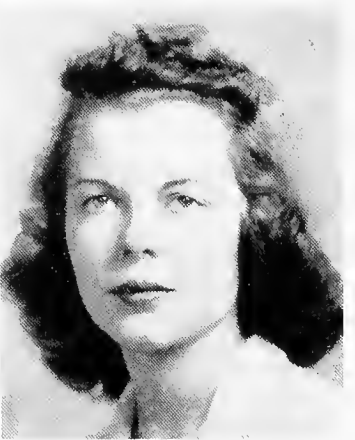
LUCILE PETERSON  
Locust Avenue  
Rye, N. Y.  
*Psychology*



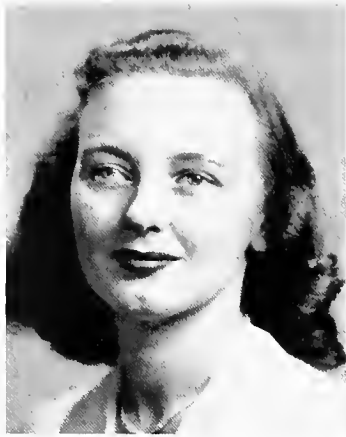
ANNE PETTINGELL  
40 Temple Street  
Belmont, Mass.  
*Mathematics*



BECKY PFOUTS  
133 Summit Avenue  
Summit, N. J.  
*Chemistry*



CLAIRE TANCRÉ PHILLIPS  
3124 North Summit Avenue  
Milwaukee, Wis.  
*Psychology*



NATALIE PIERCE

5 Webb Rd., Sleepy Hollow Manor,  
North Tarrytown, N. Y.

*Psychology*

DORIS COOPER POWERS

1359 Hill Drive  
Los Angeles, Calif.

*English Literature*

PRISCILLA OGDEN PLUMB

Marilla Park  
Streator, Ill.

*Chemistry*



JEAN MUIR PREBLE

471 Rivard Boulevard  
Grosse Pointe, Mich.

*Chemistry*

KATHERINE MERLE REESE

93 Lakeview Avenue, N. E.  
Atlanta, Ga.

*English Composition*

PATRICIA WINIFIELD PROCTOR

Winfield, Westview Avenue  
Nashville, Tenn.

*Chemistry*



ESTHER LOUISE REMICK  
632 Hinman Avenue  
Evanston, Ill.  
*Sociology*

JOAN REVILLE  
7 Northway  
Bronxville, N. Y.  
*Economics*

MARY VIRGINIA REPERT  
1630 Mount Eagle Place  
Alexandria, Va.  
*English Composition*



ANN D. ROBBINS  
1 Prospect Street  
Southbridge, Mass.  
*French*

MARILYN E. ROMER  
6712 North Talman Avenue  
Chicago, Ill.  
*English Composition*

ELIZABETH A. ROBINSON  
144 Hancock Street  
Auburndale, Mass.  
*Art*



SHIRLEY ROSENBLUM  
229 Buhl Boulevard  
Sharon, Pa.  
*Physics*

CAROL DEBORAH RUBACK  
356 Grove Road  
South Orange, N. J.  
*Psychology*

ARLINE ROSHKIND  
110 35th Street, South East  
Washington, D. C.  
*Political Science*



JOYCE RUBENSTEIN  
581 Richmond Avenue  
Buffalo, N. Y.  
*Economics*

BARBARA JANE RUDOLPH  
228 Rockingham Street  
Toledo, Ohio  
*English Literature*

JEAN RUBIN  
1120 Park Avenue  
New York, N. Y.  
*Economics*





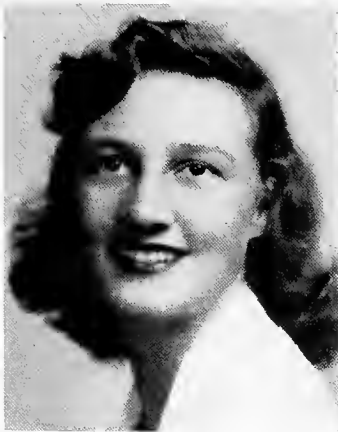
JOY RUSHMORE  
971 Kensington Avenue  
Plainfield, N. J.  
*Art*



JANICE ETHEL RUSSELL  
280 Main Street  
Easthampton, Mass.  
*Art*



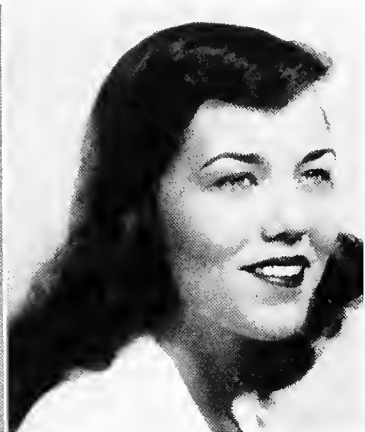
SARA ANNE RUSSELL  
9 Hill Crest Circle  
Waban, Mass.  
*Art*



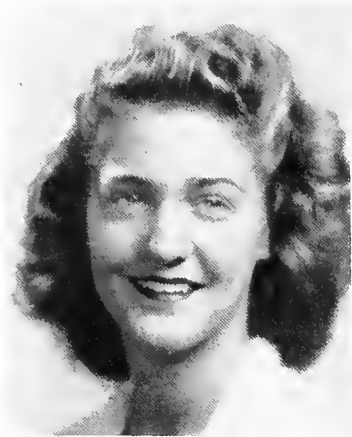
KATHLEEN HEATHER SAYRE  
Orangeburg, R. F. D.  
New York  
*Sociology*



PAULINE SCHAAF  
Split Rock Road  
Boonton, N. J.  
*Psychology*



ELIZABETH SCHEER  
1655 Fifth Avenue  
Huntington, W. Va.  
*English Composition*



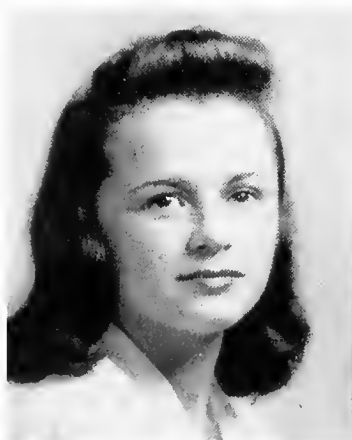
MARGARET ANN SCHLEGEL  
1040 Reading Boulevard  
Wyomissing, Pa.  
*Zoology*



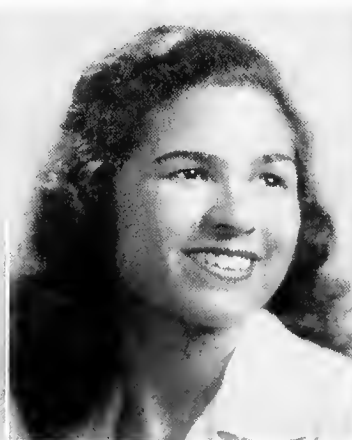
JUDITH ADELE SCHLENGER  
57 Mayhew Drive  
South Orange, N. J.  
*Mathematics*



BETTY SIMMONS SCHOONOVER  
600 Eighth Avenue  
Fort Worth, Texas  
*French*



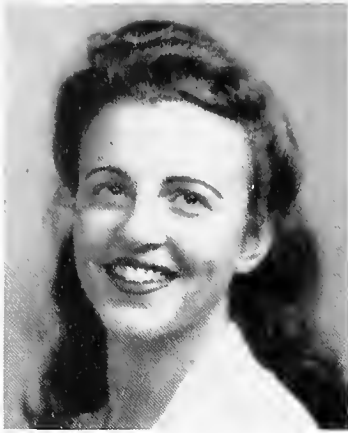
ELIZABETH JANE SCHROEDER  
1114 Forest Avenue  
River Forest, Ill.  
*Economics*



BARBARA ALMA SCOTT  
1260 Irving Street, North East  
Washington, D. C.  
*Political Science*



JANE HALSTED SEDDON  
Rivoli Drive  
Macon, Georgia  
*Psychology*



EDITH SHAPERO SELIGMANN  
56 Clinton Place  
Newton Centre, Mass.  
*Chemistry*



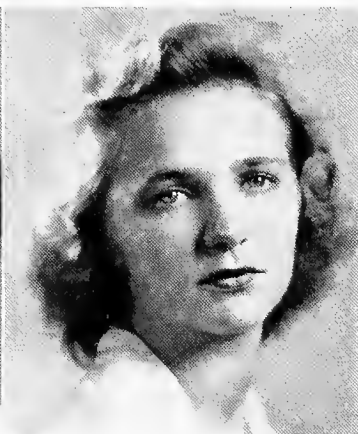
KATE SENIOR  
5612 Kenwood Avenue  
Chicago, Ill.  
*Philosophy*



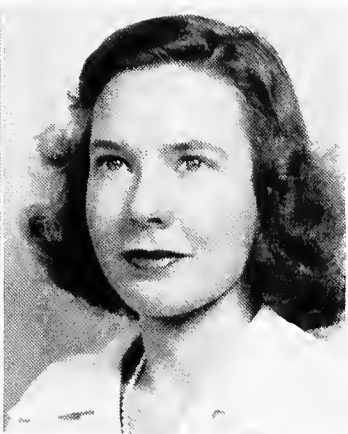
MARJORIE ALICE SEVERY  
165 Atlantic Avenue  
Marblehead, Mass.  
*Mathematics*



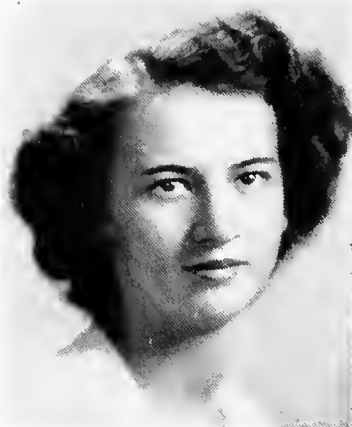
HADASSAH RUTH SHAPIRO  
2045 East Fifth Street  
Brooklyn, N. Y.  
*Economics*



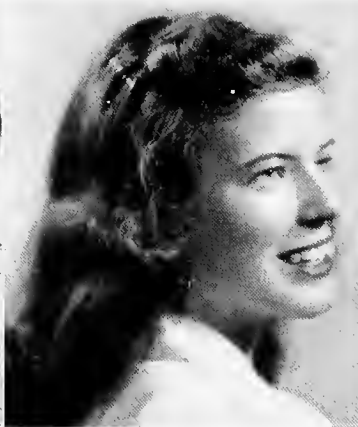
CAROLINE MARSHALL SHELLY  
148 Bethlehem Pike  
Ambler, Pa.  
*Economics*



ELIZABETH DUN SHOREY  
601 North Euclid Avenue  
Oak Park, Ill.  
*History*



ANN SILVERS  
Richlands  
Virginia  
*Economics*



LILLIAN ELIZABETH SLAUGHTER  
4511 South Sixth Street  
Louisville, Ky.  
*Mathematics*



SHIRLEY SMAILS  
5115 Lafayette Avenue  
Omaha, Nebr.  
*Biblical History*



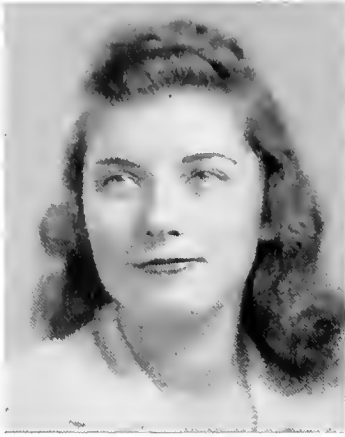
ALICE ROBERTS SMEDLEY  
Penncrest  
Media, Pa.  
*Psychology*



BARBARA ANN SMITH  
38 Westview Terrace  
West Newton, Mass.  
*Zoology*



NANCY BARNEY SMITH  
Franconia  
New Hampshire  
*Art*



PRISCILLA DOANE SMITH  
Lighthouse Drive  
Grosse Ile, Mich.  
*Sociology*



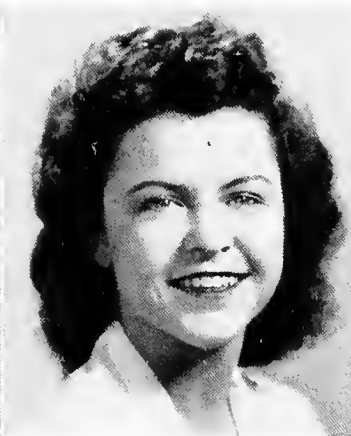
JANE REID SONENFIELD  
2141 Arthur Avenue  
Lakewood, Ohio  
*English Composition*



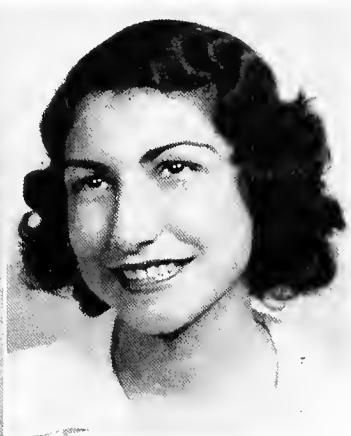
PATRICIA ANN SOUTHARD  
1070 Abbieshire Avenue  
Lakewood, Ohio  
*Greek*



VIRGINIA ANN SPAKE  
2000 Oakland Avenue  
Kansas City, Kan.  
*Art*



KATHERINE SUE SPENCER  
117 Marvel Road  
New Haven, Conn.  
*Physics*



MYRTLE CLAIRE SROCHI  
843 Springdale Road  
Atlanta, Ga.  
*History*



JOSEPHINE MORGAN STANCISKO  
126 Babcock Street  
Brookline, Mass.  
*English Literature*

MARY HELEN STEINHEIMER  
539 South 52nd Street  
Omaha, Nebr.  
*Economics*

MARGARET WHITNEY STANLEY  
329 Lawn Ridge Road  
Orange, N. J.  
*Mathematics*



DOROTHY ELISE STEMPE  
38 Vine Road  
Larchmont, N. Y.  
*Psychology*

RUTH MERILYN STEVENS  
Ocean Avenue  
Kennebunkport, Me.  
*Sociology*

ANN STEUER  
2900 Glengary Road  
Shaker Heights, Ohio  
*Chemistry*





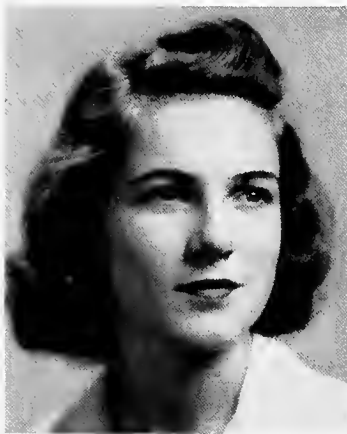
CYNTHIA M. C. STEWART  
 Hotel Fourteen, 14 E. 60th Street  
 New York, N. Y.  
*History*



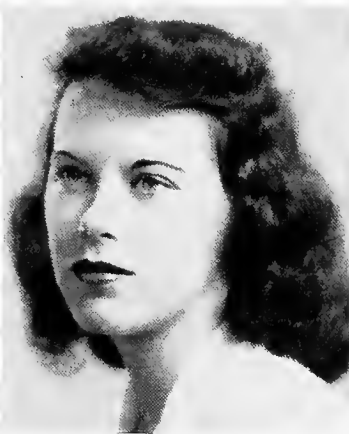
VIRGINIA ANNE STEWART  
 Shoreham  
 Vermont  
*Psychology*



PRISCILLA STORER  
 Waldeboro  
 Maine  
*Zoology*



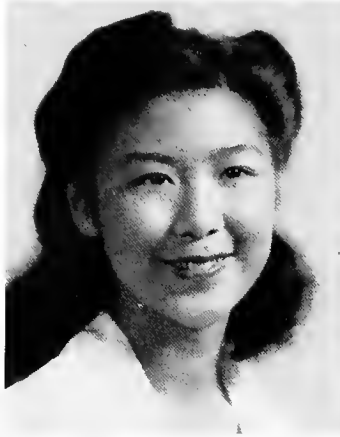
EUNICE STUNKARD  
 5000 Waldo Avenue  
 Riverdale, N. Y., N. Y.  
*German*



BARBARA SULLIVAN  
 35 Hammond Road  
 Belmont, Mass.  
*French*



ELIZABETH SUMMERS  
 37 Headley Place  
 Maplewood, N. J.  
*History*

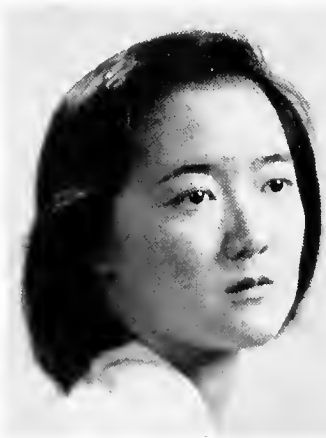


PEARL SUN  
Chungking  
China  
*Psychology*

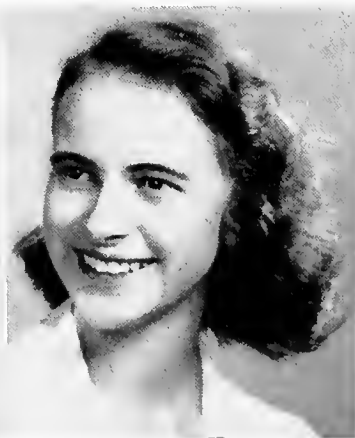


DOROTHY SWEARINGEN  
40 Fernwood Road  
West Hartford, Conn.  
*Political Science*

JEAN SUNDERLIN  
1674 Highland Avenue  
Rochester, N. Y.  
*Zoology*



ALICE CHIACHENG SZE  
2400 16th Street, N. W.  
Washington, D. C.  
*English Composition*



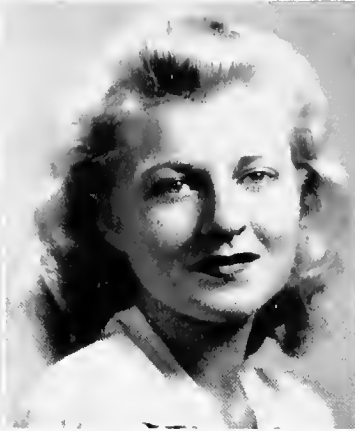
MARGUERITE MARY TATUM  
309 Summit Avenue  
Wayne, Pa.  
*French*



MARION McINTOSH THOMPSON  
The Manse  
Bedford, Mass.  
*Geography*



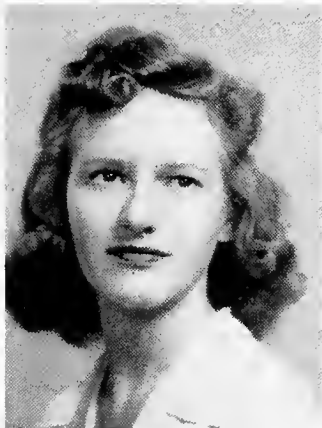
AVIS DORNIN THOMSON  
Dillsburg  
Pennsylvania  
*Philosophy*



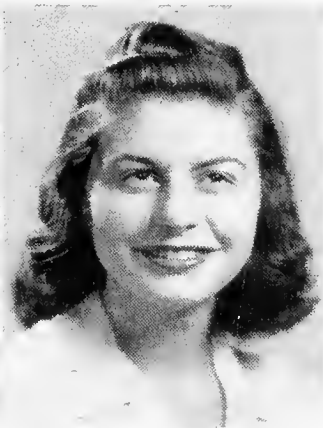
ELIZABETH ANN THORNTON  
92 Beacon Street  
Boston, Mass.  
*Spanish*



MARIA JEAN THORNTON  
Fort Fairfield  
Maine  
*History*



LUCILE SPAULDING TITUS  
Binghamton  
New York  
*Political Science*



GLORIA F. TRENCHER  
145 Wellington Avenue  
New Rochelle, N. Y.  
*Economics*



ELIZABETH S. UNDERWOOD  
 54 Gates Circle  
 Buffalo, N. Y.  
*English Literature*



ALLAIRE URBAN  
 745 Parker Street  
 Newark, N. J.  
*English Literature*



BETTY VADNER  
 126 Dartmouth Road  
 Cynwyd, Pa.  
*Botany*



BARBARA VAN TASSEL  
 111 Concord Street  
 Waterbury, Conn.  
*Physics*



MARY ELIZABETH VOGEL  
 405 North Fullerton Avenue  
 Upper Montclair, N. J.  
*Political Science*



VIRGINIA ANN VOLCKER  
 1301 Longfellow Avenue  
 Teaneck, N. J.  
*Political Science*



MEGAN VONDERSMITH  
344 Resor Avenue  
Cincinnati, Ohio  
*Political Science*



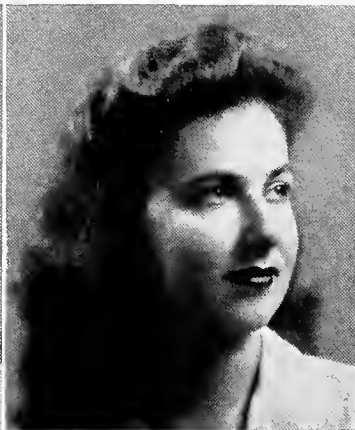
ANNE JOHNSTON WARING  
910 Gaylord Street  
Denver, Colo.  
*Sociology*



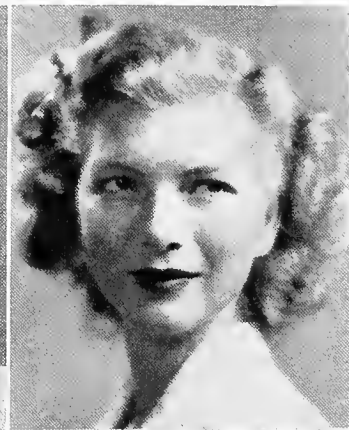
LOIS-MAY WATERS  
5 Parkinson Street  
Needham, Mass.  
*Latin*



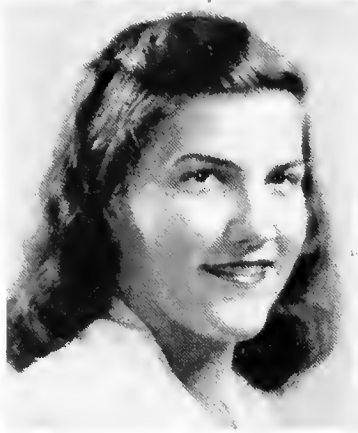
MARJORIE STURTEVANT WEBB  
163 Sycamore Avenue  
North Plainfield, N. J.  
*Political Science*



NANCY BEATRICE WEBB  
Apt. 115, 1625 East Avenue  
Rochester, N. Y.  
*German*



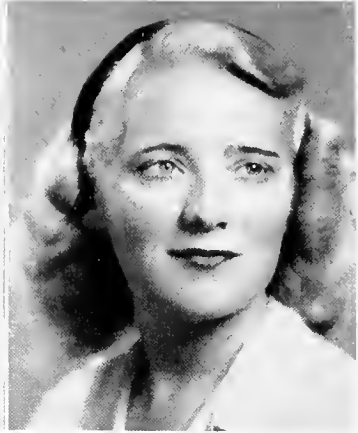
PATRICIA O'BRIEN WEISIGER  
946 Boylston Street  
Newton Highlands, Mass.  
*Sociology*



ELEANOR LOUISE WEISMAN  
 Park Plaza Hotel  
 St. Louis, Mo.  
*English Composition*



THORA WESTERGAARD  
 43 Summit Road  
 Port Washington, Long Island, N. Y.  
*Sociology*



MARY JOAN WELKER  
 114 Wyllis Street  
 Oil City, Pa.  
*Economics*



LUCILE ARAMANTHA WETHERBEE  
 Lyndonville  
 Vermont  
*Music*



BARBARA LIN WHITMORE  
 140 Remington Road  
 Manhasset, N. Y.  
*Economics*



MARJORIE VIRGINIA WHEATLEY  
 200 Ashland Street  
 Abington, Mass.  
*Sociology*





OLIVE ELIZABETH WILLIAMS  
 15 Rokeby Place  
 Staten Island, N. Y.  
*Chemistry*



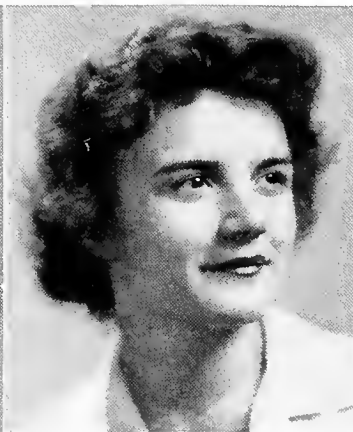
MARGARET L. WILLIAMSON  
 206 East Joppa Road  
 Towson, Md.  
*English Comp. & Lit.*



NAN WILLITS  
 La Tourelle  
 Haverford, Pa.  
*Political Science*



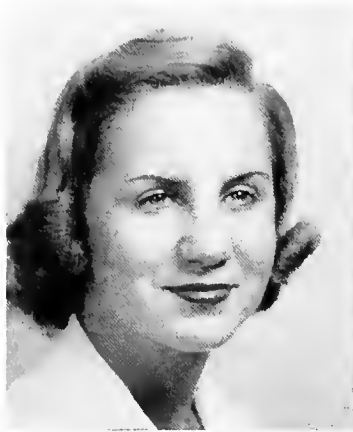
ELISE KIDDER WISHAR  
 3025 Toledo Avenue  
 Coral Gables, Fla.  
*English Comp. & Lit.*



BOBBIE WITHROW  
 2256 Robinwood Avenue  
 Toledo, Ohio  
*Mathematics*



KATHRYN ELLEN WOLF  
 Mount Wolf  
 Pennsylvania  
*Economics*



E. KAY WOOD  
8 South Part Street  
Lebanon, N. H.  
*French*



JACQUELYN J. YOUNG  
Annandale  
Newport, R. I.  
*English Composition*



ALICE MARIE ZIEGLER  
1040 Wilbert Road  
Lakewood, Ohio  
*Economics*

ESTHER C. TOMS  
1629 Marion Street, North West  
Washington, D. C.  
*Psychology*



TOBE FRIEDMAN  
 159 Ruthven Street  
 Roxbury, Mass.  
*Zoology*



BETTY A. GOLDEN  
 17115 Lomond Boulevard  
 Shaker Heights, Ohio  
*Political Science*



EVE W. GRODNICK  
 2 Clifton Terrace  
 Weehawken, N. J.  
*Economics*

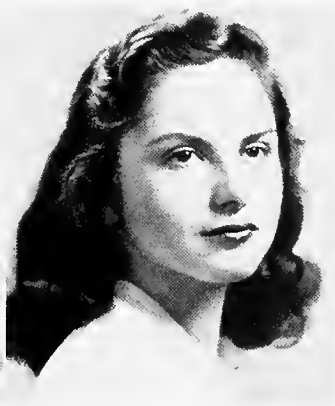
1946-A



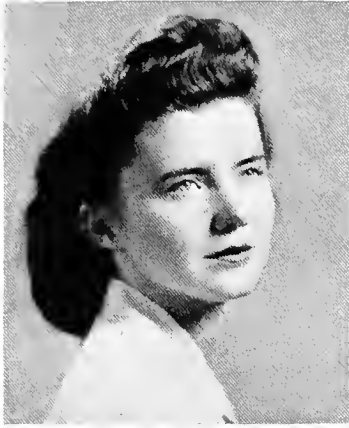
RUTH ANNE LEWIT  
 55 Warren Court  
 South Orange, N. J.  
*Art*



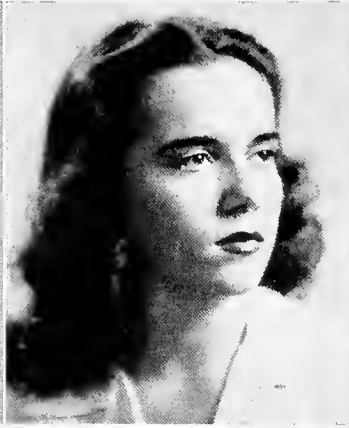
JANE MARKS  
 17 Merriclees  
 Great Neck, N. Y.  
*Economics*



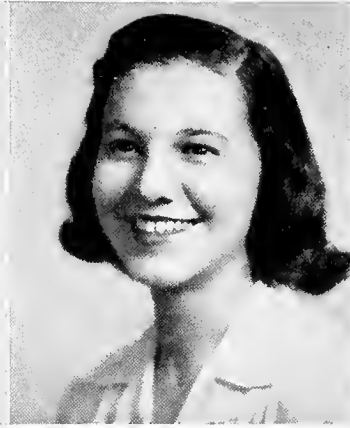
AMY M. MUNSON-BARKSHIRE  
 130 East 75th Street  
 New York, N. Y.  
*Chemistry*



MARILYN A. MURPHY  
3384 Norwood Road  
Shaker Heights, Ohio  
*Greek*



JOAN P. PIPER  
186 Burns Street  
Forest Hills, N. Y.  
*Philosophy*



NANCY J. POSTMANTUR  
563 Richmond Avenue  
Buffalo, N. Y.  
*Sociology*



PHYLLIS J. ROSENTHAL  
41 Quincy Street  
North Adams, Mass.  
*Sociology*



## THERE GOES MY NEW HAT!

It doesn't take long for the expense of accident or sickness to click up a total that will dissolve plans for a new hat or much more than that. And yet a Wellesley student who has a Student's Reimbursement Policy through Connecticut General has such expenses largely taken care of for her.

Probably your family have signed up for you and you have this protection, but if they haven't, it would be a good idea to do it now. In case of accident or illness it's a big help to have an insurance company paying your bills.

Members of the graduating class... you may join the large group of Wellesley alumnae who continue their accident and health protection through individual Connecticut General policies after leaving college. There are Connecticut General representatives in almost every large community who will gladly help you.

**CONNECTICUT-GENERAL**  
LIFE INSURANCE COMPANY  
HARTFORD, CONN.

## ADVERTISING INDEX

---

|  | Page |
|--|------|
| Agora, Wellesley College .....                               | 147  |
| Alpha Kappa Chi, Wellesley College .....                     | 147  |
| American Silk Mills, New York City, New York .....           | 148  |
| Boston Pipe and Fittings Co., Inc., Cambridge, Mass. ....    | 144  |
| C. Crawford Hollidge, Ltd., Wellesley, Mass. ....            | 144  |
| Campus Pharmacy, Wellesley, Mass. ....                       | 151  |
| Clyde's, Wellesley, Mass. ....                               | 145  |
| Connecticut General Life Insurance Co., Hartford, Conn. .... | 141  |
| Dieges & Clust, Boston, Mass. ....                           | 145  |
| Filene's, Wellesley, Mass. ....                              | 151  |
| Fredley's, Wellesley, Mass. ....                             | 150  |
| Glenview Market, Wellesley, Mass. ....                       | 146  |
| Granville Leatherwood, Wellesley, Mass. ....                 | 144  |
| Gross Strauss, Wellesley, Mass. ....                         | 151  |
| Hathaway House Bookshop, Wellesley, Mass. ....               | 146  |
| Helen Moore, Wellesley, Mass. ....                           | 143  |
| Hill and Dale, Ltd., Wellesley, Mass. ....                   | 143  |
| Hinckley & Woods Insurance Co., Boston, Mass. ....           | 146  |
| Jahn & Ollier Engraving Co., Chicago, Ill. ....              | 153  |
| Jennings Linen Co., Boston, Mass. ....                       | 143  |
| Le Blanc Taxi Co., Wellesley, Mass. ....                     | 143  |
| Makanna, Inc., Wellesley, Mass. ....                         | 150  |
| Morris' Tailor Shop, Wellesley, Mass. ....                   | 143  |
| Music Box, Wellesley, Mass. ....                             | 151  |
| Ola, Boston, Mass. ....                                      | 146  |
| Phi Sigma, Wellesley, Mass. ....                             | 147  |
| S. S. Pierce Co., Boston, Mass. ....                         | 149  |
| Sargent Studio, Boston, Mass. ....                           | 152  |
| Schrafft's, Boston, Mass. ....                               | 143  |
| Shakespeare, Wellesley College .....                         | 147  |
| Sigrid's, Wellesley, Mass. ....                              | 146  |
| Talcoff's, Wellesley, Mass. ....                             | 144  |
| Tau Zeta Epsilon, Wellesley College .....                    | 147  |
| Viking Restaurant, Boston, Mass. ....                        | 145  |
| Walker Gordon, Charles River, Mass. ....                     | 145  |
| Wellesley Inn, Wellesley, Mass. ....                         | 144  |
| Wilbor's, Wellesley, Mass. ....                              | 149  |
| Wool Shop, Wellesley, Mass. ....                             | 149  |
| Zeta Alpha, Wellesley College .....                          | 147  |





"BIBS" Sommerville wearing a  
HELEN MOORE negligee

Tel. Wellesley 3696

## HILL and DALE Ltd.

*Sportswear, Hosiery and Accessories*

*Juniors and Misses*

37-39 CENTRAL STREET  
WELLESLEY, MASS.

Wel. 3427

## MORRIS'

TAILORS • CLEANERS

62 CENTRAL STREET  
WELLESLEY, MASS.

Phone—Liberty 4267-4268

## Jennings Linen Company

76 Essex Street  
BOSTON

*for Fine Quality  
Bed and Table Linens*

## LE BLANC TAXI

Wel. 1600

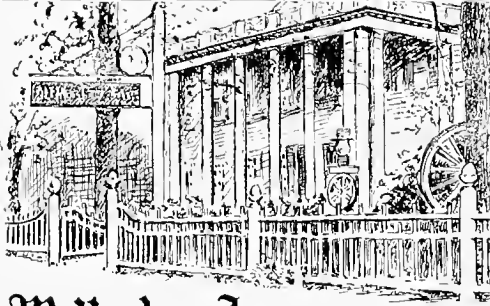
  
 "AND SO DO THE *sisters,*  
 THE *cousins*   
 AND THE *aunts*"

THAT'S RIGHT—not only the men,  
but their whole families prefer  
SCHRAFFT'S restaurants, cakes and  
candies.

# SCHRAFFT'S

FRANK G. SHATTUCK COMPANY

*New York • Boston • Syracuse • Philadelphia • Newark*



**Wellesley Inn**  
Wellesley, Mass.

*Granville Leatherwood*

**GIFTS**

575 WASHINGTON STREET  
WELLESLEY, MASSACHUSETTS

WELLESLEY  
Hyannis



SHOES

63A Central St.  
Wellesley

COLLEGE  
CLASSICS

BEAUTIFUL  
FOOTWEAR



Eileen  
McGuire  
in a



**C. CRAWFORD  
HOLLIDGE  
Evening  
Gown**

1944 • 1945 • 1946 • 1947

○

## CLASS RINGS

made by

## DIEGES & CLUST

*Specialty Jewelers*

○

BOSTON 8, MASS.  
73 TREMONT ST.

hand sewn  
moccasins  
5.50



**clyde's**  
67A CENTRAL ST.  
WELLESLEY

WELLESLEY COLLEGE  
DINING HALLS

serve

**WALKER-GORDON**  
CERTIFIED MILK

*Form Located Three Miles from Wellesley  
in  
CHARLES RIVER, MASS.*

# Keep Your RED CROSS At His Side

G  
I  
V  
E  
!!



Shirley Smails and fiancé Jack Prudden dining at the VIKING

The MISS and MRS.  
HAT SHOP

81 CENTRAL STREET  
WELLESLEY, MASS.

*M. Stafford*

GLENVIEW MARKET

595 WASHINGTON ST.  
WELLESLEY, MASS.

Norwegian  
Restaurant

Behind the Iron  
"Smorgasbord"

OLA

14 CARVER STREET  
BOSTON, MASS.

Luncheons • Dinners • Open Sundays

DRESSES • SUITS • COATS

"That are Different"

*Sigrid's*

WELLESLEY

MASS.



Fire...Liability...Automobile...Burglary and  
Every Description of Insurance at Lowest Rates

HINKLEY & WOODS  
INSURANCE

40 BROAD ST.

BOSTON

—Business Established 1868—



Nancy Steffens,  
Pat Siegburt,  
Pat Patterson  
and Lee Tucker  
browsing in  
HATHAWAY  
HOUSE  
BOOKSHOP

☆ BUY WAR BONDS ☆

*Agora*

*Phi Sigma*

*Zeta Alpha*

*Shakespeare*

*Alpha Kappa Chi*

*Tau Zeta Epsilon*



ONE OF A SERIES OF "LUCKY PRINTS"

in American Silk Mills' crisp, cool, wrinkle-resistant Peek-a-Boo rayon mesh.

*American Silk Mills* 1400 BROADWAY • NEW YORK 18, N. Y.

 BUY WAR BONDS  
FOR VICTORY



*Compliments of*

**BOSTON  
PIPE & FITTINGS CO., INC.**

149 SIDNEY STREET  
CAMBRIDGE, MASS.



Jean Sunderlin wearing a three piece  
suit from the **WOOL SHOP**



Jean Beaversan tries on a moccasin in  
**WILBAR'S, Wellesley**



BOSTON'S DISTINCTIVE STORE

*Famous*

THROUGHOUT THE NATION FOR

*Good Foods & Delicacies*

**S. S. PIERCE CO.**

BOSTON

*Stores in Boston, Belmont,  
Brookline & Newton  
Mail and Telephone Orders*



VISIT  
YOUR  
BLOOD  
DONOR  
CENTER  
TODAY!



Lucille and Marilyn Peterson dressed in suits from  
**FREDLEY'S, Wellesley**

TROUSSEAUX • BRIDAL ENSEMBLES

HAND MADE LINGERIE

GIFTS FOR ENGAGEMENTS, WEDDINGS, SHOWERS



**MAKANNA, Inc.**

*The Trousseau House of Boston*

54 CENTRAL ST.

WELLESLEY

*Compliments  
of an  
Enemy*



Helene de Lone, Margy Williamson, and Adelaide Crawley shopping at the **CAMPUS PHARMACY**

*Compliments  
of*



Nancy Penson in an evening gown from **GROSS STRAUSS**

**Filene's**  
in WELLESLEY

**We're not  
Forgetting...**

Four years is a long time... but when it comes to saying "goodbye," it seems like only yesterday when you came through our doors exploring the "Vil" for the first time. Remember how we helped you solve your problems then... Our Branch Shops and Main Store will look forward to continuing to serve you in the near future.

**Don't YOU  
forget US!**

Complete Photographic Service

to the

1945 LEGENDA



SARGENT STUDIO

BOSTON • CAMBRIDGE

# JAHN & OLLIER AGAIN

