

F  
721  
H62

HOOPER

---

CROSSING THE  
ROCKIES

BANCROFT  
LIBRARY


*The Bancroft Library*

University of California • Berkeley









Digitized by the Internet Archive  
in 2007 with funding from  
Microsoft Corporation

1905

Crossing  
the  
Rockies







WHAT MAY BE SEEN

# Crossing the Rockies

EN ROUTE BETWEEN

OGDEN, SALT LAKE CITY AND DENVER

ON THE LINE OF

## The Denver & Rio Grande System

---

E. T. JEFFERY, PRESIDENT,	. . . .	NEW YORK.
C. H. SCHLACKS, VICE-PRESIDENT,	. . . .	DENVER, COLO.
A. C. BIRD, VICE-PRESIDENT,	. . . .	CHICAGO, ILL.
A. S. HUGHES, GENERAL TRAFFIC MANAGER	. . . .	DENVER, COLO.
F. A. WADLEIGH, ASS'T GEN'L PASS'R AGENT,	. . . .	DENVER, COLO.
S. K. HOOPER, Gen'l Passenger and Ticket Agent,		Denver, Colo.

---

*Lodrick*

COPYRIGHT BY S. K. HOOPER.

1905. 11

M/F 10/14/84



COMPARATIVE CUT—DESERET VS. CANAAN.

A striking comparison between the Holy Land and the new State of Utah, aptly termed the "Mountain Walled Treasury of the Gods."

## EN ROUTE

## Rio Grande Western Railway

“Great Salt Lake Route.”

---

The object of this book is to supply our patrons with information generally desired by travelers regarding their routes, and to do it in a brief, business-like way, leaving the flights of fancy to builders of “Castles in Spain.”

---

Western terminus, Denver & Rio Grande System. Second city in Utah. Nine miles from the Great Salt Lake, at the base of the Wasatch Mountains. Surrounded by immensely rich

**Ogden**

Pop. 22,000  
Alt. 4,292 feet

agricultural and mineral resources. Railroad center of Utah. Denver & Rio Grande, Suthern Pacific, Oregon Short

Line & Utah Northern, Union Pacific. Second largest electrical power plant in the United States. Beet sugar factory. Destined to be an important manufacturing center. Ogden Hot Springs four miles. Growing sanitarium. Leaving Union Depot, you cross Ogden River in the city limits—flows into Great Salt Lake.

WASATCH THROUGHAB - 111

**Roy**

Alt. 4,392 feet  
Og. 8 miles

**Layton**

Alt. 4,320 feet  
Og. 15 miles

**Kaysville**

Alt. 4,264 feet  
Og. 18 miles

From Ogden to Salt Lake City the railway runs along the eastern shore of the Great Salt Lake, through the Salt Lake Valley, with the Wasatch Range in the distance. This valley is extremely fertile and on the high ground around Kaysville dry farming is profit-

ably followed, while the lower lands are generally irrigated.



CITY OF OGDEN.

The Island you see from the train, looking like a mountain range in the lake, is Antelope or Church Island. It abounds

**Farmington**

Alt. 4,232 feet  
Og. 22 miles

in fresh water springs and contains a valuable deposit of guano

On each side of the track are located

natural gas wells of high pressure, discovered in the spring of '92, and now piped into Salt Lake City and utilized both for heating and lighting purposes.

**Lake Shore**

Alt. 4,213 feet  
Og. 24 miles

**Woods Cross**

Alt. 4,260 feet  
Og. 28 miles

Lovely rural village two miles from station. Renowned for its fine fruits and vegetables.

Capital of Utah, historic, commercial, financial, mining and smelting center. Founded in

**Salt Lake City**

Pop. 65,000  
Alt. 4,225 feet  
Og. 37 miles

1847. Eighteen hotels, four daily papers. Beck's Hot Springs and White Sulphur Springs adjacent to the city.

Their waters equal in efficacy the waters of the Hot Springs, Arkansas.

Points of interest: Mormon Temple and Tabernacle; Fort Douglas United States Military Post, three miles; White Sulphur Springs, one mile; Beck's Hot Springs, three miles; Liberty Park, one mile; Calder's Park, three miles; together with other attractions and drives too numerous to mention. Thirteen miles from the city is located the magnificent bathing resort, Saltair Beach, on Great Salt Lake. It is the finest salt-water bathing resort in the world. During the bathing season trains leave every hour.

Great Salt Lake is ninety miles in length and forty-five miles wide, with numerous islands to add to the general interest. The bathing is superb, one cannot sink on account of the

density of the water, which contains twenty-two per cent solid matter, or sixteen and two-thirds per cent salt—greater than the Dead Sea of the Holy Land.

From seven to ten miles from Salt Lake City are located the large smelting and refining works at Murray and Sandy. Here the Denver



MORMON TEMPLE, SALT LAKE CITY.

& Rio Grande connects with the branch for Park City, one of the largest mining camps in the state. Tourists desiring to inspect a mining camp should make this side trip, which occupies but a few hours, and in addition to an inspection of the big Park City mines presents a delightful ride through beautiful Cottonwood Cañon.

From a rambling village a few years ago Salt Lake City is fast becoming a metropolitan city in every sense of the word. Bountifully endowed with parks, drives, magnificent streets and lovely homes, destined to become one of the greatest sanitariums of the world. The population is cosmopolitan and steadily increasing. There is no uncertainty in its future; it is bound to be a great inland city. Natural gas in abundant quantities now in use, both for lighting and heating purposes.

Largest camp in the Camp Floyd mining district. Well known as the Johannesburg of

### **Mercur**

Pop. 3,000  
Alt. 6,700 feet  
45 miles from Salt  
Lake City.

America, owing to a similarity in the ores and the immensity of the ore zone. The camp already possesses several big dividend payers and has the distinction of running the largest cyanide mill in America. New strikes are constantly being made and indications point to a development that will place Mercur in the van as a gold camp.

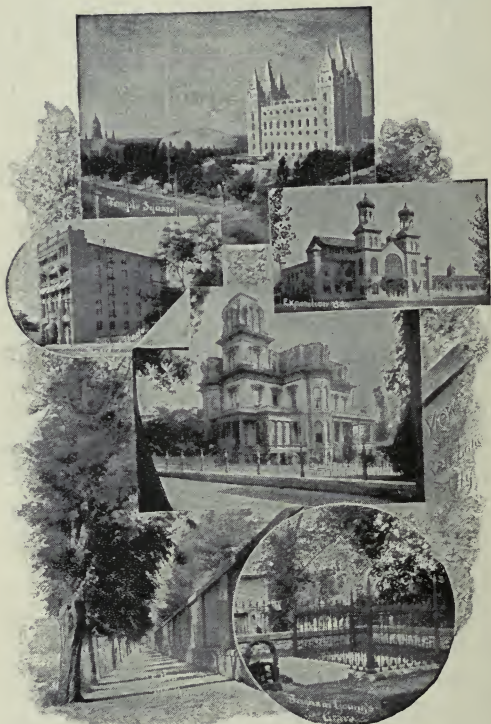
### **Murray**

Alt. 4,290 feet  
Og. 44 miles

Situated in the Salt Lake Valley. Location of three of the largest smelting and refining plants in the West. Here the gold, silver, lead and copper ores of Utah, Nevada, Idaho and Montana come for treatment.

From Bingham Junction a branch line runs fourteen miles west to Bingham, a prosperous





VIEWS OF SALT LAKE CITY.



**Bingham  
Junction**

Alt. 4,360 feet  
Og. 48 miles

and heavy producing gold, silver, lead and copper mining camp. Another branch runs easterly to Wasatch, a pleasant summer resort, and connected by tramway with the mining camp of Alta.

**Jordan  
Narrows**

Alt. 4,455 feet  
Og. 59 miles

**Riverton**

Alt. 4,408 feet  
Og. 54 miles

Near this point the train crosses the historic Jordan River twice. Here is located a plant furnishing electrical power for the mining camps of Bingham and Mercur. From the Narrows the line follows the Utah Valley, through which the Jordan River flows, supplying the irrigating ditches which have made it possible for man to transform the sage brush desert into well-cultivated and exceedingly productive ranches, fruit orchards and gardens.

**Lehi**

Pop. 3,000  
Alt. 4,533 feet  
Og. 65 miles

**American Fork**

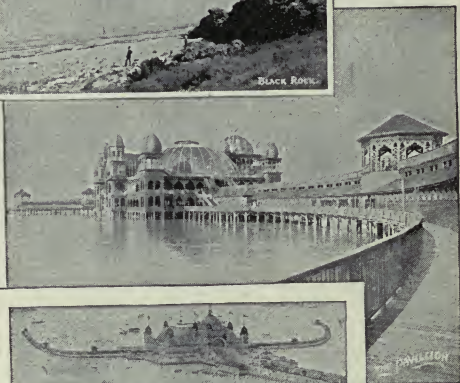
Pop. 3,000  
Alt. 4,555 feet  
Og. 69 miles

**Geneva**

Alt. 4,490 feet  
Og. 72 miles

Midway between Lehi and American Fork, both of which are promising little cities of 3,000 people, is located the Utah Beet Sugar Factory, which is one of the largest in the United States and cost nearly a million dollars.

On the shore of Utah Lake, a magnificent sheet of fresh water about thirty by fifteen miles in extent. Excellent fishing, shooting and boating. Here is located Geneva, a splendid bathing resort with good hotel.



## **Provo**

Pop. 6,000  
Alt. 4,517 feet  
Og. 82 miles

County seat of Utah County, has the largest woolen mill west of Mississippi River. The State Insane Asylum is also located here. View of Utah Lake both before and after passing Provo. Here a branch line extends through Provo River Cañon to Heber and the far-famed natural Hot Pots.

## **Springville**

Pop. 2,000  
Alt. 4,545 feet  
Og. 87 miles

A delightful rural town situated in a rich agricultural valley famous for its gardens and orchards. Here a branch leaves the main line for Eureka and the Tintic Mining District, the largest mining camp in the state.

## **Castilla**

### **Springs**

Alt. 4,920 feet  
Og. 98 miles

These are hot springs fast becoming famous for their medicinal qualities. Well appointed hotel and splendid fishing in vicinity.

Leaving Castilla Springs the line runs up Spanish Fork Cañon to Thistle, the junction point of the San Pete and Sevier Valley Branch, 124 miles

## **Thistle**

Alt. 5,060 feet  
Og. 102 miles

in length. This branch carries you through the entire length of the fertile San Pete and Sevier valleys, dotted here and there with prosperous towns.

## **San Pete and Sevier Branch**

The present terminus of this branch is Marysvale, the shipping point for the great Marysvale and Gold Mountain gold-mining districts, which are rapidly coming into prominence.

## **Tucker**

Alt. 6,200 feet  
Og. 120 miles

A small railway settlement at the foot of Soldier Summit.

**Soldier  
Summit**

Alt. 7,464 feet  
Og. 127 miles

Where the line crosses the Wasatch Range. Highest point on the line. On this point a soldier of Albert Sydney Johnston's army died and is buried. From that circumstance the place derived its name.



CASTLE GATE.

**Colton**

Alt. 7,180 feet  
Og. 134 miles

Junction point Scofield Branch, 18 miles through Pleasant Valley to the coal mines of Scofield. Good trout fishing.

**Kyune**

Alt. 6,960 feet  
Og. 140 miles

Extensive blue sandstone quarries of excellent building qualities. Here is one of the most striking points of scenic interest in Utah.

It is similar in many respects to the gateway in the Garden of the Gods. The two huge

### **Castle Gate**

Alt. 6,120 feet  
Og. 148 miles

pillars of rock rise (one 500 and the other 450 feet) above the track. They are separated only by a narrow space through

which runs the Price River and the railway, pressing closely one against the other. Near this point are the Castle Gate coal mines. Situated along the track can be seen 120 coke ovens.

### **Helper**

Alt. 5,840 feet  
Og. 152 miles

At the lower end of Price River Cañon. Here are located division headquarters, round-

house and repair shops. One of the best railroad eating houses in the West.

### **Price**

Alt. 5,547 feet  
Og. 159 miles

Named after Price River on which it is situated. Stages, southbound, leave daily, except

Sunday, for Cleveland, 18 miles; Castle Dale, 40 miles; Orangeville, 42 miles; Ferron, 54 miles. North bound, daily, Fort Duchesne United States Military Post, 90 miles; Ashley, 120 miles and Vernal, 135 miles. Price is the diverging point for the Uintah and Uncompahgre Indian reservations soon to be thrown open to settlement.

### **Wellington**

Alt. 4,950 feet  
Og. 165 miles

The desert between Price and Green River is being steadily but surely reclaimed by the introduction of irrigating ditches

### **Mounds**

Alt. 5,275 feet  
Og. 175 miles

and the persistent determination of the sturdy Utah

**Sunnyside  
Branch**

Mounds 17 miles

**Woodside**

Alt. 4,645 feet  
Og. 197 miles

ranchmen. These are all that are needed to turn the apparently worthless desert into fertile farms and orchards. All kinds of fruits, sweet potatoes, peanuts, etc., grow luxuriantly. At Sunnyside the new coal mines of the Utah Fuel Company have recently been opened and are turning out some 1,500 tons per diem.



CANON OF THE GRAND, UTAH. RIO GRANDE WESTERN RAILWAY.

**Green River**

Alt. 4,080 feet  
Og. 223 miles

A veritable oasis in the desert; a striking example of what water can produce from desert land.

The Green River, from which the town derives

its name, is a majestic and navigable stream which has its confluence with the Grand some ninety miles below, where they form the Colorado River. Seven miles from station, on the Green River, is located the famous placer ground on which a \$60,000 plant has been erected. The ground is very rich. This is the outfitting point for Henry Mountain mining district and the Colorado River gold fields, both of which promise great results in the near future.

**Thompson's**

Alt. 5,160 feet  
Og. 250 miles

**Cisco**

Alt. 4,380 feet  
Og. 274 miles

**Agate**

Alt. 4,350 feet  
Og. 279 miles

**Cottonwood**

Alt. 4,560 feet  
Og. 285 miles

**Westwater**

Alt. 4,340 feet  
Og. 290 miles

**Utaline**

Alt. 4,350 feet  
Og. 294 miles

Leaving Westwater we soon come to the boundary line of Utah and Colorado, which is denoted by a straight line marked on the rocks, thus: "UTAH | COLORADO," and may be seen from the car windows on the left, going east.

**Shale**

Og. 300 miles

**Ruby**

Og. 305 miles

From Green River, on past Thompson's, Cisco, Agate, Cottonwood and Westwater, enchanting views of the Book Cliffs and snow-capped peaks in the distance greet the eye. From Thompson's and from Cisco there are good wagon roads via Moab to Bluff City on the San Juan River. Thompson's is the outfitting point for the La Sal Mountain mining district, forty-five miles distant.

From Utaline on past Shale and Ruby to Crevasse the line follows up the Cañon of the Grand River, and is replete



**Mack**

Og. 309 miles.

**Crevasse**Alt. 4,585 feet  
Og. 310 milesetc. At Mack  
for the Uintah

with enchanting scenery. The principal points of interest are the Half Tunnel, Ruby Amphitheater, Flamingo Rocks, Mulligan Guards, Dodge's Bluff, etc. At Mack one takes the Uintah Railway for the Uintah Indian Reservation.

**Fruita**Alt. 4,510 feet  
Og. 318 miles

Near Crevasse, the line leaves the cañon and a short run brings us to Fruita in Grand Valley. Here the finest fruits



BATHING SCENE, GREAT SALT LAKE.

in Colorado are raised, and it is destined to become widely known as a fruit district.

Appropriately named. It is the junction of four lines of railway, viz: Denver & Rio Grande (narrow gauge), Colorado Midland, Denver & Rio Grande (standard gauge) and Rio Grande Western. Located

**Grand Junction**Pop. 4,000  
Alt. 4,583 feet  
Og. 328 miles



near the confluence of the Gunnison and Grand Rivers; a thrifty western city; the market town of an extensive surrounding territory. Famous for fruits, especially peaches.



ON THE MAIN LINE, RIO GRANDE WESTERN RAILWAY.

# Denver & Rio Grande Railroad

STANDARD GAUGE.

“Scenic Line of the World.”

---

GRAND RIVER SCENERY, GLENWOOD SPRINGS, ASPEN, EAGLE RIVER, STEAMBOAT SPRINGS, MOUNT OF THE HOLY CROSS, TENNESSEE PASS, FREMONT PASS, LEADVILLE, CALIFORNIA GULCH, MT. MASSIVE, TWIN LAKES, COTTONWOOD LAKE, SALIDA, ARKANSAS RIVER VALLEY, ROYAL GORGE, CANON CITY, FLORENCE, PUEBLO, COLORADO SPRINGS, MANITOU SPRINGS, ETC., PIKE'S PEAK, ETC., PALMER LAKE AND DENVER, ARE CHIEF POINTS OF INTEREST EN ROUTE TO TOURISTS.

---

**Grand Junction** Eastward the beautiful Grand river scenery is followed on the left side of the river, through

Alt. 4,583 feet  
Og. 328 miles

## De Beque

Alt. 4,104 feet  
Og. 361 miles

## Parachute

Alt. 5,400 feet  
Og. 374 miles

Junction immense quantities of exceedingly fine fruits are raised.

## Rifle

Alt. 5,310 feet  
Og. 391 miles

Stage runs to White River Plateau—60 miles.

## New Castle

Alt. 5,562 feet  
Og. 405 miles

Extensive coal deposits largely worked. The famous “Sunshine” coal is mined here.



GLENWOOD SPRINGS.

One of the greatest health and summer and winter resorts in the world. Possessing most remarkable and extensive hot springs—

### **Glenwood Springs**

Alt. 5,758 feet  
Og. 417 miles

ten great, and countless small ones of great curative properties. The large springs are estimated to send forth every minute 8,000 gallons of water, which is thirty times the outflow of the Hot Springs of Arkansas. The largest spring, named the Yampa, gives out 4,000 gallons of water per hour. The extreme temperature of the water is 124 degrees. The properties of the water are alkaline, saline, sulphuric, chalybeate, calic and thermal. Amid lawns, drives and terraces is situated Glenwood's magnificent bath house, constructed of red stone; the edifice having cost \$220,000. The "Big Pool" is unique among Glenwood's attractions. It is 750 feet long, from 65 to 110 feet in width, with a gradual

depth of from four to six feet. The pool's temperature is 95 degrees Fahrenheit, and all the year around hundreds throng here to enjoy a plunge in the warm waves open to the sky.

The one thing necessary to make Glenwood Springs the most magnificent summer resort in the world has been accomplished by the erection of the Hotel Colorado, at a cost of \$350,000. The Colorado is constructed of peach-blow colored stone and Roman brick. The hotel is built around three sides of a large court, 124 feet square. In locating the building, advantage was taken of the natural slope of the ground, thus enabling the court to be terraced and adorned with fountains, paths, grass plats and beds of flowers, affording delightful promenades and commanding extensive views.

### **Carbondale**

Alt. 6,181 feet  
Og. 430 miles

Are stations on the Aspen Branch from Glenwood Springs to Aspen—41 miles.

### **Emma**

Alt. 6,610 feet  
Og. 439 miles

Aspen, one of the greatest mining camps in the world. Population 4,500. Mollie Gibson, a most remarkable mine

### **Woody Creek**

Alt. 7,270 feet  
Og. 450 miles

of late years, is here. Other grand properties are being worked. Well worth a side trip to see these wonderful mines of silver.

### **Aspen**

Alt. 7,874 feet  
Og. 458 miles

A most picturesque, weird and majestic stretch of quickly changing panoramic scenes. "Flamingo Point," ruddy col-

### **Cañon of the Grand Shoshone**

Alt. 6,119 feet  
Og. 427 miles

## **Dotsero**

Alt. 6,154 feet  
Og. 435 miles

## **Gypsum**

Alt. 6,325 feet  
Og. 442 miles

## **Wolcott**

Alt. 6,976 feet  
Og. 459 miles

ored and graceful images of flamingoes perched high on the mountains. The resemblance of portions of this cañon to the grand architectural designs of ancient Egypt is very striking. Near Gypsum are immense beds of lava, thrown in its present position from a now extinct volcano, rising to the north.

Sixty springs, varying from cold to 160 degrees, Fahrenheit, make a puffing sound and clouds of steam. Reached by stage or carriage from Wolcott station—70 miles. Beautiful scenery en route.

## **Steamboat Springs**

Alt. 6,410 feet  
Og. 529 miles



TABERNACLE, SALT LAKE CITY.

## **Eagle River Cañon**

Alt. 7,825 feet  
Og. 475 miles

## **Rock Creek**

Alt. 8,311 feet  
Og. 481 miles

## **Mount of the Holy Cross**

Height 14,176 ft.  
Og. 487 miles

## **Red Cliff**

Alt. 8,608 feet  
Og. 484 miles

## **Pando Tunnel**

Alt. 9,489 feet  
Og. 490 miles

windings of the line up the mountain, constitutes a marvel of engineering.

Named for General John C. Fremont. The Denver & Rio Grande here has an altitude higher than that attained at any

## **Fremont Pass**

Alt. 11,330 feet  
Og. 493 miles

other point on the line. Mount of the Holy Cross plainly visible. (On Dillon Branch.)

## **Tennessee Pass**

Alt. 10,240 feet  
Og. 500 miles

Is one of the highest tunnels in North America. The summit of this pass is on the Sangre de Cristo Range, and is

the great Continental Divide.

The "City above the Clouds" was first known in 1859 as California Gulch. \$5,000,000 in gold dust was washed from placers in five years.

**Leadville**                      Nearly abandoned until 1878, when great deposits of carbonate silver-bearing ores were discovered; since 1893 camp has become more famous as a gold producer. Mines and smelters everywhere.

At the foot of Mt. Massive (14,368 feet) five miles from Leadville, are the **Soda Springs**, reached by 100-foot boulevard. Stage twice a day. Excellent fishing close by.

Beautiful sheets of water six miles southwest of Leadville. Great summer and fishing resort for Leadville people and others. A branch U.S. National Fish Hatchery is located here.

**Evergreen Lakes**  
Alt. 10,500 feet  
Og. 513 miles

At Granite may be seen the great flumes used in hydraulic mining. Gold has been discovered here in great quantities.

Two hours' ride from Granite station are "Twin Lakes." They are 14 miles southwest of Leadville. One is 2½ by 1½ miles in extent, and the other about half that size.

**Granite**  
Alt. 8,940 feet  
Og. 530 miles

**Buena Vista**  
Pop. 1,800  
Alt. 7,967 feet  
Og. 542 miles

They are 75 feet deep and well stocked with fish, as are also the mountain streams near this well-equipped summer resort.



**Cottonwood  
Lake**

Alt. 7,900 feet  
Og. 554 miles

Twelve miles southwest of here is the summer resort, Cottonwood Lake. Good fishing and hunting.

**Cottonwood  
Hot Springs**

Alt. 7,525 feet  
Og. 548 miles

Famous among the Indians for curing diseases; six miles from Buena Vista. Stage daily. Good hotels, good fishing and hunting.

**Salida**

Pop. 3,000  
Alt. 7,050 feet  
Og. 567 miles

Prosperous town on Arkansas River. Junction of Denver & Rio Grande standard and narrow gauge lines from Grand

Junction; also junction with narrow gauge for Santa Fé and Durango. Delightful scenery, drives, etc., and good fishing.

**Wellsville  
Hot Springs**

Alt. 6,873 feet  
Og. 572 miles

Five miles down the Arkansas River from Salida. Natural warm plunge. Great medicinal qualities.

Leaving Salida the road meanders down the Arkansas River through varying scenery of broad scope and gradually being closed in

**Howard**

Alt. 6,714 feet  
Og. 579 miles

upon, finds itself in the ponderous jaws of the gaping Royal Gorge, the most wonderful piece of scenery in this grand

transcontinental route, but is no more wonderful than the great achievement of the Denver & Rio Grande Railroad, in building, first of all, its



## Cotopaxi

Alt. 6,386 feet  
Og. 591 miles

passible gorge, where the rushing, roaring waters of the Arkansas River battle for room with the precipitous granite cliffs—thousands

## Parkdale

Alt. 5,800 feet  
Og. 618 miles

of feet high. From the car at the rear of the train, the best views of this wonderful scenery of tall pinnacles, rugged crags and a streak of blue sky are obtainable. At places the railroad

narrow-gauge line, and later in capping the climax by building its present standard-gauge line through this almost im-

views of this wonderful scenery of tall pinnacles, rugged crags and a streak of blue sky are obtainable. At places the railroad



ROYAL GORGE.

is suspended in mid air over a seething caldron of the rushing river, whose roar, coupled with the awful grandeur of the overhanging cliffs, makes one of the most awe-inspiring scenes and incidents to be found anywhere on the globe.

### **Royal Gorge**

Alt. 5,498 feet  
Og. 617 miles

royal gorge, whose roar, coupled with the awful grandeur of the overhanging cliffs, makes one of the most

### **West Cliff**

#### **Silver Cliff**

Alt. 7,816 feet  
Og. 625 miles

In Wet Mountain Valley. Good mining and agricultural section. By branch line from Texas Creek.

### **Cañon City**

Alt. 5,343 feet  
Og. 623 miles

Handsome residence and business city for mining and stockmen. All modern conveniences.

Splendid winter climate. It is at the mouth of the Royal Gorge. Colorado State Penitentiary located here. Junction with Florence & Cripple Creek Railroad.

### **Royal Gorge Hot Springs**

Alt. 5,343 feet  
Og. 623 miles

At Cañon City. Prof. Lowe, Government Chemist, has made an analysis of the water showing splendid medicinal properties.

### **Florence**

Alt. 5,199 feet  
Og. 631 miles

Florence is a junction point with the Florence & Cripple Creek Railroad to the famous gold camp, Cripple Creek. Oil wells may be seen in abundance on either side of the train, and several refineries are located here.

Cripple Creek is, perhaps, one of the most wonderful mining camps in the country. In the early part of 1893 the camp was practically a

### **Cripple Creek**

Alt. 9,396 feet  
Og. 672 miles

wilderness; to-day a promising town of 12,000 inhabitants, shipping gold ore from over a hundred paying mines. Three

railroads now reach the camp.

“The Pittsburg of the West.” Metropolis of Southern Central Colorado, and live business, supply and manufacturing

### **Pueblo**

Alt. 4,668 feet  
Og. 664 miles

town. Great junction point of all railways in Colorado. Most

extensive rolling mills and iron works west of Mississippi River. Large gold, silver, lead and copper smelters and reduction works.



ON TOP  
PIKE'S PEAK.

### **Gulf Junction**

Alt. 4,680 feet  
Og. 655 miles

At Pueblo the road turns north toward Denver—120 miles; From Pueblo to Colorado

## **Eden**

Alt. 4,480 feet  
Og. 672 miles

## **Wigwam**

Alt. 5,231 feet  
Og. 685 miles

## **Widfield**

Alt. 5,720 feet  
Og. 700 miles

## **Fountain**

Alt. 5,568 feet  
Og. 704 miles

## **Colorado Springs**

Alt. 5,992 feet  
Og. 709 miles

views of Rocky Mountains. Broad shaded streets. Magnificent hotel. Junction point with the Colorado Springs & Cripple Creek District Railway for points in the Cripple Creek district. Famous as a marvel of engineering and beautiful scenery.

## **Manitou Springs**

Pop. (Winter)  
1,300  
Pop. (Summer)  
5,000  
Alt. 6,318 feet  
Og. 714 miles

Famous the world over. On branch of the Denver & Rio Grande Railroad, six miles from Colorado Springs. Is visited by more people in search of either a health, a pleasure or a summer resort than is any other place in the West. It has magnificent hotels, elegant baths, delightful drives and grand scenery.



THE EAGLE GATE, SALT LAKE CITY.

**Garden of  
the Gods**

A short distance from either Manitou or Colorado Springs is the famous "Garden of the Gods," abounding in gigantic monoliths carved by nature from beautiful red sandstone into myriads of fantastic shapes.

The most renowned mountain in all the Rockies, climbed by a cog-wheel road eight and

**Pike's Peak**

Alt. 14,147 feet  
Og. 724 miles  
to summit

three-quarter miles long—from Manitou. Magnificent scenery, interesting points en route.

United States Signal Station and restaurant on the summit. Unparalleled view for 100 miles.

**Main Line  
Again**

Return to Main Line at Colorado Springs.

**Pikeview**

Alt. 6,201 feet  
Og. 713 miles

Last grand view of noble Pike's Peak.

## **Monument**

Alt. 6,974 feet  
Og. 728 miles

of the Gods, to be seen on the left of train.

Beautiful lake on summit of the "Divide," an east and west spur of the Rockies. Great summer resort for Denver people.

## **Palmer Lake**

Alt. 7,237 feet  
Og. 732 miles

Beautiful scenery. Some noted points of interest are Phœbe's Arch, Glen D'Eau, Bellevue Point, Ben Lomond and Perry Park. Good hotels and eating station.

## **Larkspur**

Alt. 669 feet  
Og. 741 miles

Perry Park, an hour's drive from here. Unique and fantastic rock formations. Delightful drives. Good hotel.

## **Castle Rock**

Alt. 6,220 feet  
Og. 751 miles

Named from remarkable promontory rising from the plain, and in whose shadow the village lies.

## **Fort Logan**

Alt. 5,394 feet  
Og. 774 miles

United States Military Post. Beautifully located. Ten miles from Denver.

## **Denver**

Alt. 5,198 feet  
Og. 784 miles

Metropolis for country west of Missouri River. Homes of scores of millionaires, mining men, stockmen and manufacturers. Grand public buildings, parks, boulevards, etc. Immense smelting and manufacturing industries.

# Denver & Rio Grande Railroad

NARROW GAUGE.

“Scenic Line of the World.”

---

LOWER GUNNISON VALLEY, DELTA, OURAY, MONTROSE, CEDAR CREEK, CEDAR DIVIDE, CERRO SUMMIT, CIMARRON, CANON OF THE GUNNISON, SAPINERO, CURECANTI NEEDLE, CHIPETA FALLS, VALLEY OF THE GUNNISON, KEZAR, GUNNISON, CRESTED BUTTE, PARLIN, WAUNITA HOT SPRINGS, TOMICHI RIVER, SARGENT, MARSHALL PASS, MOUNT OURAY, GRAY'S, PONCHA SPRINGS, SALIDA, ARE THE POINTS WHICH GO TO MAKE COMPLETE "THE GREAT SCENIC LINE OF THE WORLD."

---

From Grand Junction the Denver & Rio Grande narrow gauge starts in a south of easterly direction for its junction with the standard gauge at Salida—209 miles. When the idea of surmounting the Rocky Mountains in Colorado by a railroad was broached, the scheme was deemed visionary, impossible and unprofitable. Experience has demonstrated that people will travel for pleasure and information, and the expected drawbacks have proven the strongest attractions.





SOME UTAH MOUNTAIN VIEWS.



**UnawEEP**

Alt. 4,636 feet  
Og. 335 miles

**Whitewater**

Alt. 4,665 feet  
Og. 340 miles

**Kahnah**

Alt. 4,683 feet  
Og. 344 miles

**Deer Run**

Alt. 4,712 feet  
Og. 350 miles

**Bridgeport**

Alt. 4,755 feet  
Og. 354 miles

**Dominquez**

Alt. 4,801 feet  
Og. 361 miles

**Escalante**

Alt. 4,845 feet  
Og. 367 miles

**Stratter**

Alt. 4,880 feet  
Og. 372 miles

**Roubideau**

Alt. 4,900 feet  
Og. 374 miles

The towns, until Delta is reached, are small trading towns for the surrounding agricultural and mining sections, and are situated in the beautiful valley of the Lower Gunnison River, which empties into the Grand at Grand Junction. The scenery along this part of the route is beautiful, although not of that rugged and weird character which so awes the traveler in the Upper Gunnison, a little farther along. Excellent hunting and fishing are to be found in the mountains and streams contiguous to the stations.

Prosperous trading place, where the main railway and the Gunnison River part company

**Delta**

Alt. 4,980 feet  
Og. 379 miles

for a time, the route being up a tributary of the Gunnison. Delta is the center of a great area of fruit country, and immense quantities of apples, pears, grapes, peaches, etc., are shipped from here annually.

**Hotchkiss**

Alt. 5,369 feet  
Og. 404 miles

From Delta a branch line extends northeasterly through the beautiful and fertile Valley of the North Fork of the

**Paonia**

Alt. 5,694 feet  
Og. 412 miles

Gunnison. This valley is noted for the magnificent and abundant crops of the choicest fruits

and its generally superb scenery.

**Chipeta**

Alt. 5,173 feet  
Og. 384 miles

Has an Indian name, as have nearly all stations in this section.

**Olathe**

Alt. 5,352 feet  
Og. 389 miles

Trading station, in center of great fruit country.

**Montrose**

Alt. 5,811 feet  
Og. 400 miles

Population 2,500. Flourishing railroad and mining supply town. Junction point with

Ouray branch for famous tour "Around the Circle." Ridgway, on Ouray branch, is junction point with Rio Grande Southern Railroad into Southwestern Colorado. Is the distributing point for an agricultural region of great prominence and fertility.

Continuing to rise on its ascent to the Cedar Divide, the road reaches Fairview. Magnificent

**Fairview**

Alt. 6,165 feet  
Og. 405 miles

view of the Uncompahgre Valley and distant San Juan Mountains to the south.

**"Squaw Hill" or Cerro Summit**

Alt. 7,968 feet  
Og. 417 miles

Crossing Cedar Divide at Cerro Summit, the descent is made through Cimarron Cañon down to the Black Cañon of the

Gunnison, which had been left above Delta, because a line could not be obtained by following the stream.

**Cimarron**

Alt. 6,906 feet  
Og. 423 miles

Cimarron Creek empties into Gunnison River. During summer months observation car

put on here to go through Black Cañon—15 miles—and taken off at Sapinero.

**Black Cañon of the Gunnison** Begins one mile east of Cimarron and ends at Sapinero. For miles the railroad is upon a ledge blasted out of the rock cliff, whose walls are perpendicular for over 2,000 feet.



CURECANTI NEEDLE.

**Curecanti**

Alt. 7,075 feet  
Og. 431 miles

**Lake Junction**

Alt. 7,235 feet  
Og. 437 miles

Famous Curecanti Needle and Chipeta Falls. Junction for branch to Lake City, a thriving mountain town of 2,000 people, 36 miles to the south, where mining, hunting, fishing, etc., are prominent.

Eastern end of Black Cañon and the upper end of the Valley of the Gunnison. The rail-

**Sapinero**

Alt. 7,255 feet  
Og. 438 miles

road has reached the river level and winds and turns with it. Thirteen miles from Sapinero, to the southwest, lies the new gold camp of Goose Creek, a recent discovery which bids fair to rival the older and more

**Kezar**

Alt. 7,434 feet  
Og. 452 miles

promising camps. A railroad is projected. Observation car taken off here

**Aberdeen  
Junction**

Alt. 7,550 feet  
Og. 458 miles

Junction for branch to Aberdeen, 10 miles south.

**Gunnison**

Alt. 7,685 feet  
Og. 463 miles

Enterprising place of 3,000 people, is in the heart of gold, silver, lead, copper and coal country, and the junction for the line leading to famous Crested Butte bituminous and anthracite coal fields. Good fishing and hunting near here. Good hotels.

**Parlin**

Alt. 7,952 feet  
Og. 475 miles

After leaving Gunnison, a broad, level plateau is crossed (altitude 7,680 feet) and Tomichi Valley entered, and the Tomichi River, a splendid fishing stream, is followed toward Marshall Pass.

**Bonita**

Alt. 8,062 feet  
Og. 481 miles

**Doyle**

Alt. 8,062 feet  
Og. 482 miles

Ten miles from Doyle are Waunita Hot Springs, with wonderful curative qualities.

Good accommodations and grand scenery.

## **Crookton**

Alt. 8,168 feet  
Og. 486 miles

## **Elko**

Alt. 8,288 feet  
Og. 490 miles

## **Sargent**

Alt. 8,477 feet  
Og. 495 miles

Salida—43 miles—half taken up in crossing Marshall Pass.

Opposite here is a large dome-like mountain.

Foothills begin here and Tom-ichi Valley gradually rises.

The range of mountains looms up ahead and looks insurmountable. From here to



MARSHALL PASS.

## **Buxton**

Alt. 9,794 feet  
Og. 499 miles

## **Chester**

Alt. 9,412 feet  
Og. 503 miles

## **Shawano**

Alt. 10,082 feet  
Og. 507 miles

## **Hilden**

Alt. 10,278 feet  
Og. 508 miles

Are passed as the road begins its tortuous climb of the western slope of Marshall Pass.

Train is here divided in sections and two engines put on each section to pull to the summit.

From here four tracks—enterrace—may be counted, as a result of the road's zigzag course.

**Marshall Pass** The railroad here performed one of the greatest feats known to engineering science, and crossed the main range of the Rocky Mountains at a height of nearly 11,000 feet.

Alt. 10,856 feet  
Og. 511 miles

**Pocono** The descent is made by going round and round, and is not really completed until Poncha Junction is reached, 21 miles from Marshall Pass proper.

Alt. 10,316 feet  
Og. 514 miles

**Gray's** Splendid views between Gray's and Keene. The two trains play hide and seek around the curves.

Alt. 9,673 feet  
Og. 518 miles

**Keene**  
Alt. 9,301 feet  
Og. 520 miles

**Mear's Junction** The D. & R. G. Line to Alamosa, Creede, Durango and Silverton, Espanola and Santa Fé, New Mexico, branches off here.

Alt. 8,431 feet  
Og. 526 miles

**Poncha Junction** Arkansas Valley entered, and run of four miles reaches

Alt. 7,480 feet  
Og. 532 miles

**Salida** Mentioned in accompanying description of D. & R. G. standard gauge line, which here unites with the narrow gauge, and for description of remainder of this route see that given on standard gauge line from Salida eastward.

Alt. 7,050 feet  
Og. 537 miles

# Memorandum.



## FOR COPIES OF THIS AND OTHER ILLUSTRATED PAMPHLETS APPLY TO

- F. A. WADLEIGH, - Assistant General Passenger Agent,  
Denver, Colo.
- H. E. TUPPER, - General Agent Passenger Department,  
335 Broadway, New York, N. Y.
- R. C. NICHOL, - - - - - General Agent,  
RALPH J. VAN DYKE, - - - - - Traveling Passenger Agent,  
J. E. CLARK, - - - - - Traveling Freight and Passenger Agent  
242 South Clark Street, Chicago, Ill.
- L. D. KNOWLES, - - - - - General Agent,  
A. R. MALCOLM, - - - - - Traveling Passenger Agent,  
C. E. BOTSFORD, - - - - - City Passenger Agent,  
114 Wisconsin Street, Milwaukee, Wis.
- H. V. LUYSTER, - - - - - Traveling Passenger Agent  
315 N. Y. Life Building, Kansas City, Mo.
- F. B. SEMPLE, - - - - - City Passenger Agent,  
A. McFARLAND, - - - - - City Ticket Agent,  
Albany Hotel, Denver, Colo.
- W. H. CUNDEY, - - - - - Traveling Passenger Agent,  
Denver, Colo.
- J. M. ELLISON, - - - - - General Agent  
16 N. Tejon Street, Colorado Springs, Colo.
- H. F. KRUEGER, - - - - - General Agent,  
2nd and Main Streets, Pueblo, Colo.
- S. M. BROWN, - - - - - General Agent,  
401 Harrison Ave., Leadville, Colo.
- I. A. BENTON, - - - - - General Agent Passenger Department,  
Dooly Block, Salt Lake City, Utah.
- F. GROESBECK, - - - - - Traveling Passenger Agent,  
H. M. CUSHING, - - - - - Traveling Passenger Agent,  
Salt Lake City, Utah.
- G. W. FITZGERALD, - - - - - General Agent,  
A. B. AYERS, - - - - - City Ticket Agent,  
51 East Broadway, Butte, Mont.
- W. C. McBRIDE, - - - - - General Agent,  
M. J. ROCHE, - - - - - Traveling Passenger Agent,  
E. B. DUFFY, - - - - - Traveling Freight and Passenger Agent,  
124 Third Street, Portland, Ore.
- JOHN A. BECKWITH, - - - - - Passenger Agent,  
1118 Broadway, Oakland, Cal.
- JOHN T. SKELTON, - - - - - Passenger Agent,  
1017 Second Street, Sacramento, Cal.
- LEROY B. JOHNSON, 11 East Santa Clara St., San Jose, Cal.
- W. J. SHOTWELL, - - - - - General Agent.  
H. A. BUCK, - - - - - District Passenger Agent,  
W. B. TOWNSEND, Traveling Freight and Passenger Agent,  
F. T. BERRY, - - - - - Traveling Freight and Passenger Agent,  
BODE K. SMITH, - - - - - City Passenger Agent,  
625 Market Street, San Francisco, Cal.
- T. D. CONNELLY, - - - - - General Agent,  
T. F. FITZGERALD, - - - - - District Passenger Agent,  
TIMOTHY MEE, - - - - - Traveling Passenger Agent,  
230 South Spring Street, Los Angeles, Cal.

or

**S. K. HOOPER, - General Passenger and Ticket Agent,  
Denver, Colo.**







A MOST SUPERB  
**DINING-CAR SERVICE**

IS OPERATED ON ALL

**THROUGH TRAINS**

OF THE

**Rio Grande System**

~~~~~  
SERVICE À LA CARTE.













