



FLORENCE MACDONALD COLLEGE

1940





the white heather

Dorothy Brooks - Editor

Kate Helms - Business Manager





The White

nineteen hundred
and forty

published by
of the student body
flora macdonald college
red springs, n.c.

HEATHEN



dedication

To

DR. ALEXANDER B. STUMP

we the Student Body hereby dedicate
the 1940 WHITE HEATHER,

as an expression of gratitude for all he has done for the college in
the four years he has been here; for his friendship, his sportsman-
ship, and his interest in the students and their activities.



ALEXANDER B. STUMP, Ph.D.



HENRY GRAYBILL BEDINGER, B.A., B.D., D.D.
President
Flora Macdonald College, 1930—

CHARLES GRAVES VARDELL
President Emeritus

HAZEL MORRISON, B.A.
Dean of Faculty and Registrar

MARY JOHNSTON
Dean of Students

Administration



VARDELL



MORRISON



JOHNSTON



First row: Anderson, McPhaul, Stump, Bridgman, Glenn.
 Second row: Maphet, Eberly, Cooney, Robeson, Chapman.
 Third row: Jones, Scoggins, Conoly, Neighbors, Brown.

Faculty

- MISS V. ZOULEAN ANDERSON, B.A., M.A., *Professor of Bible.*
 MRS. ELIZABETH C. MCPHAUL, B.A., *Associate Professor of Bible.*
 DR. ALEXANDER B. STUMP, B.S., M.S., Ph.D., *Professor of Biology, Nature Study, and Geography.*
 MISS ANNA JOSEPHINE BRIDGMAN, B.A., M.A., *Associate Professor of Biology and Physics.*
 MRS. JANE COLSON GLENN, B.S., G.Ph., S.C., M.S., *Professor of Chemistry and Physics.*
 MISS PRINCIE MAPHET, B.A., *Assistant Professor of Commercial Subjects.*
 MR. J. WILGUS EBERLY, B.A., *Dean of Conservatory, Professor of Pianoforte and Organ.*
 MISS ESTELLE LOUISE COONEY, *Professor of Voice.*
 MRS. LILLIAN FARQUIAR ROBESON, *Professor of Violin.*
 MRS. LIDA LAW CHAPMAN, B.M., *Professor of Piano.*
 MISS EMMA LOUISE JONES, B.A., *Professor of Public School Music.*
 MISS HELEN SCOGGINS, B.M., *Instructor and Official Accompanist of the Conservatory of Music.*
 MISS MARY MACLEAN CONOLY, B.A., B.S., M.A., *Professor of Education and Psychology.*
 MRS. GENEVIEVE MACMILLAN NEIGHBORS, B.A., M.A., *Associate Professor of Education and Social Science.*
 MISS ELIZABETH E. BROWN, B.S., M.A., *Associate Professor of Elementary Education.*
 MR. F. C. EICHERS, B.A., M.A., *Associate Professor of Education and History.*
 MISS MARY LOGAN SANDERSON, B.S., M.A., *Professor of English.*
 MISS MARTHA LOIS SMITH, B.A., M.A., *Associate Professor of English.*
 DR. GAYNELL CALLOWAY SPIVEY, B.A., M.A., Ph.D., *Professor of English.*

Faculty

MISS ETTIE BROWN, *Professor of French.*
 MISS RUTH TOWNSEND, B.A., *Professor of French and German.*
 MR. ALEXANDER H. McLEOD, B.A., M.A., *Acting Professor of History.*
 MISS FRANCES ELIZABETH COMER, B.S., M.S., *Professor of Foods and Nutrition.*
 MRS. LOIS TALBERT HARDING, B.S., M.S., *Professor of Clothing and Textiles.*
 MISS JEAN DOUGLAS TAIT, B.S., *Dietitian and Assistant Professor of Home Economics.*
 MISS HARRIET N. MORRISON, B.A., M.A., *Professor of Latin.*
 MISS VERTIE D. PRINCE, B.A., M.A., *Professor of Mathematics.*
 MISS ETHEL BATEMAN, B.A., M.A., *Professor of Physical Education and Health.*
 MISS VIRGINIA CONNOR, R.N., *Resident Nurse.*
 MISS ELEANOR SAMPLE, *Librarian.*
 MISS ANNIE WILLIAMS, *Secretary to the President.*
 MISS ROBBIE LOU STUBBS, *Secretary of Development Program.*

NOT PHOTOGRAPHED

REV. LAWRENCE A. DAVIS, *Director of Development Program.*
 MISS NELL BARNARD BRISCOE, B.C.S., B.A., *Professor of Commercial Branches.*
 MRS. MARY L. SAUNDERSON, B.A., M.A., *Professor of English.*
 MISS BROWN MORRISON, *Treasurer.*

First row: Eichers, Saunderson, Smith, Spivey, Brown, Townsend.
Second row: McLeod, Comer, Harding, Tait, Morrison, Prince.
Third row: Bateman, Connor, Sample, Williams, Stubbs.



Orson Welles

Playwright, actor, producer, Orson Welles' diversified career should prove an inspiration to ambitious, talented youth. He has explored the talent possibilities in the realm of radio entertainment, and has soared to heights unclaimed ever before by one so young.



the classes



Campus Snapshots



Caroline. . . . Hilda. . . . Jane Bradford. . . . Eyon. . . . Maureen. . . . Marjie and Margaret. . . . Chris. . . . Off to the show. . . . Um, that's Ruthie back there. . . . And our little Edith. . . . Dottie. . . . Hazel.



Senior Class

Officers

GRACE McDOWELL.....	President
RUTH HART.....	Vice President
RUTH EMERSON.....	Treasurer
NELL McNAIR.....	Secretary
MARGARET LYTTON.....	Tea Room Manager
RUTH McLEMMORE.....	Assistant Tea Room Manager
MR. ALEXANDER H. McLEOD.....	Faculty Adviser



GERTRUDE LUELLE ALLEN, A.B.

Zebulon, N. C.

Z

Peace Junior College, '37, '38; Hockey; Basketball, '39;
Prayer Band Leader; Hockey; Basketball, '40.

Until you know her you see only a conscientious worker . . . in every phase of our life . . . it is true: Intellectual . . . social . . . athletic . . . spiritual. But there is also the personality who keeps us laughing at her wit, entertained with her constant chatter, which is unusually worthwhile. . . . The best of Peace. . . . The best of Flora Macdonald . . . a rare combination Luella.



ANNE JONES BELL, A.B.
Fayetteville, N. C.

Z

Pineland Junior College, '37, '38; Hockey, '39; Tennis, '40.

Laughter is the best tonic we know of. If you ever have spring fever, Anne Jones can break the spell and put you on the right track. With her genuine sense of humor and her good-nature she can get along with anybody. But her disposition springs from a deep well. She who might easily have majored in English or piano, also will make a splendid first grade teacher.

of nineteen forty



MARY LOVE BETTIS, B.M.

Earl, N. C.

E X

Hockey; Basketball; Glee Club; St. Cecelia Music Club, '37, '38; Tennis; Basketball; St. Cecelia Music Club; Glee Club; Fire Captain, '39; Tennis; Basketball; St. Cecelia Music Club; Glee Club, '40.

With head high and shoulders erect Mary Love enters a room, bringing with her cheerfulness and a pleasant word for everyone, very coöperative, she is always willing to help with everything whenever asked. With her musical talent and teaching ability she should go far in her profession.

the white heather



JANE BRADFORD BLAKE, B.S.

Baltimore, Maryland

Z

Home Economics Club; Hockey, '37; Glee Club; Home Economics Club; Hockey; May Court; Censor Zetesian Society; Associate Editor *Pine and Thistle*, '38; Glee Club; Hockey Team; Associate Editor *Pine and Thistle*; Second Vice President Zetesian Society, '39; Glee Club; Hockey; Associate Editor *Pine and Thistle*, '40.

With your droll wit you charmed us; your optimism made us envious; your frankness often misunderstood inspired deep admiration. On the hockey field you displayed your sportsmanship and dependability; in Chemistry, your perseverance; in Home Economics, your originality. Yours is a fascinating personality and should win a place of honor in whatever you attempt.

f nineteen forty



HILDA RAY BLUE, A.B.
Carthage, N. C.

Z

Appalachian State Teachers' College, '37; Hockey; Basketball; Business Editor WHITE HEATHER, '38; Hockey; Basketball; Class Cheer Leader; Vice President German Club; Dramatic Club; F.M.C.A. Cabinet; Assistant Editor-in-Chief WHITE HEATHER, '39; Hockey; Basketball; Dramatic Club; German Club; Senior Scribbler; Vice President F.M.C.A.; Assistant Editor Freshman *Handbook*, '40.

"Well, that's just the way I see it," and Hilda passes on her way unruffled. She has sandpapered many of the rough spots in our lines during her three years here. She also has a catalogue of games which she can utilize at a moment's notice. No wonder young people like her so much. She is perfect for camp or conference work. Her's will surely be a full and happy life.

the white heather



CATHERINE SOMERVILLE BOEGLI, A.B.
Wilmington, N. C.

William Bartram Scientific Society. '37; Vice President Dramatic Club; William Bartram Scientific Society; Program Chairman Dramatic Club. '38; Vice President Dramatic Club; Program Chairman Dramatic Club; William Bartram Scientific Society. '39; Vice President Dramatic Club; Chairman Senior Class Play; Program Chairman Dramatic Club. '40.

A charming idealist is Catherine. Often we have believed that she lives in a world all her own, where all human kind lives exuberantly, for the love of living. She has an artistic temperament, and a love of the esthetic which justifies it. But for one so idealistic we find Catherine surprisingly practical: she can write a sonnet, then stop to drive a nail. A dreamer of dreams, then a stage carpenter or an electrician. For the Dramatic club we thank her; its existence will stand as a tribute to her in the years which follow.

of nineteen forty



MARION GERTRUDE BONEY, A.B.

Blackstock, S. C.

Z

South Carolina Club; Hockey, '37; South Carolina Club; Prayer Band Leader, '38; South Carolina Club, '39; South Carolina Club, '40.

*"My tongue within my lips I rein,
For who talks much, must talk in vain."*

And we are convinced that Marion believes this, for seldom does she express her opinion; whenever she does, we listen intently, for it will be worthwhile. Persistence . . . patience . . . prudence . . . Marion: a born teacher of little children.

the white heather



ELIZABETH BOYD, A.B.
Moorestville, N. C.

E X

Queen's College, '37; Lee's McRae College, '38; Tennis Club, '39; Tennis Club, '40.

We feel honored that Elizabeth, after sampling two other Presbyterian Colleges, chose to finish at Flora Macdonald. Have you ever really found one of those gems of human nature who counts up to ten before she makes a move? Such is the calm and unruffled nature of "Lib" that we would say: "She fills the bill." We need a few steady and sane people like her to balance some of our more unruly spirits.

of nineteen forty



KATHERYNE FAYE BREWER, A.B.

Hemp, N. C.

Z

Treasurer Zetesian Society; St. Cecelia Music Club, '39;
Treasurer Zetesian Society; Archery; Basketball, '40.

Efficient Faye. Her ability as a business woman has been proved by her work in the Bursar's office. She does things so quietly that we gape. Never call her too serious, though, because many surprisingly witty and clever remarks come from her direction. Faye deserves and receives the deep respect, admiration, and love of all those who know her.



DOROTHY MARIE BROOKS, A.B.
Penn's Grove, N. J.

E X

Hockey; William Bartram, '37; Hockey; William Bartram; Corresponding Secretary Mathematics Club; Sophomore Editor WHITE HEATHER, '38; Hockey; Corresponding Secretary William Bartram; Treasurer Mathematics Club; Junior Editor WHITE HEATHER; Editor-in-Chief *Pine and Thistle*; German Club; Dramatic Club, '39; Hockey; William Bartram; Mathematics Club; Dramatic Club; Editor-in-Chief WHITE HEATHER, '40.

"Originality plus" is an excellent description of "Brooksie"! She is one of the clearest thinkers because she gets to the very bottom of it all. We all wonder how she does so much, so well, in such a short time. "Energy and persistence conquers all" surely is her motto. When we can slow her down long enough for a "bull session," her sense of humor, congeniality, and ready wit literally breaks loose.

of nineteen forty



ESTHER MAWN COBB, A.B.

Pinetops, N. C.

E X

Peace College, '37, '38; Fire Chief; Wake Forest Summer School, '40.

"Don't Worry About Me" is Cobb's favorite song, and we shall not worry about her because we are confident that when the band begins playing, she will be on the front row. Her lovely sweaters and ultra vivid combinations of colors have fascinated us and made us her followers. A delightful sense of humor, her fast and witty retorts, make her the life of our parties. Our best wishes to you, "Cobb," our most sought-after for pleasant companionship and our most worthy of commendation.



CHRISTINE DAIL, B.S.
Mount Olive, N. C.

E X

Home Economics Club, '37; Home Economics Club, '38; Home Economics Club; Tennis; Archery, '39; Home Economics Club; Tennis; Archery; Prize Winner in North Carolina State Textile Style Show, '40.

Here is one of our class beauties. Blonde hair, blue-grey eyes, lovely complexion, a flair for wearing clothes, and an air of nonchalance—these make Chris. Besides being lovely to look at, Chris is also utilitarian. Ask any of the "practice house" girls about her ability to play the chef in the kitchen or the hostess in the drawing-room. And she can make those lovely clothes she wears so well. Chris is not alone in being an ardent Wake Forest fan, but we believe that she stands well towards the top of the list of Flora Macdonald devotees.

of nineteen forty



NELL DeLoatch, B.S.

Shelby, N. C.

E X

Home Economics Club; Hockey; Basketball, '37; Home Economics Club; Hockey; Basketball; Secretary Sunday School Class, '38; Home Economics Club; Vice President Home Economics Club; Tennis, '39; William Bartram; President Home Economics Club; Basketball Team Captain; Table Hostess, '40.

Nell is a person who really puts first things in their rightful place . . . first. Perhaps that is the reason we have seen so little of her. Because she has made Home Economics first, she has spent many of her hours going from one laboratory to another. All respect is due Nell who entered her profession long before she entered college.



Lois Ector, A.B.
Florence, S. C.

Z

Music Club; Glee Club; South Carolina Club, '37; Music Club; Glee Club; South Carolina Club; Class Cheer Leader; Prayer Band Leader; Critic in Zetesian Society, '38; President of Glee Club; Vice President Music Club; Sextet; College Cheer Leader; Prayer Band Leader; Marshal; Dramatic Club; South Carolina Club, '39; President of Glee Club; Music Club; South Carolina Club; Cabinet Member; Senior Voice Recital; Trio; Sextet, '40.

She's a "Juggler with moods"—this young lady with her calm assurance, poise, and charm which she can change instantly into a gaiety that warms our hearts. Her expressiveness and her voice have won for Lois many admirers at concerts and recitals. Only her foresight and efficiency could have brought the splendid musical contributions to the Christian Association activities this year.

of nineteen forty



BERNICE EVELYN EDMUNDS, B.S.

Lumberton, N. C.

Z

Day Student; Home Economics Club, '37; Home Economics Club; Volley Ball; Basketball, '38; Day Student; Home Economics Club, '39; Home Economics Club; Wake Forest Club; Basketball, '40.

Has anyone ever seen Bernice's serenity ruffled, or heard her voice raised in anger? Of course not. She is, day in and day out, our good-natured Bernice; always ready for any situation that may arise, and perfectly capable of handling it with equanimity. When you first looked at Bernice you probably thought her eyes were the loveliest you had ever seen; and when she laughed and they started twinkling—then you knew they were the loveliest.

the white heather



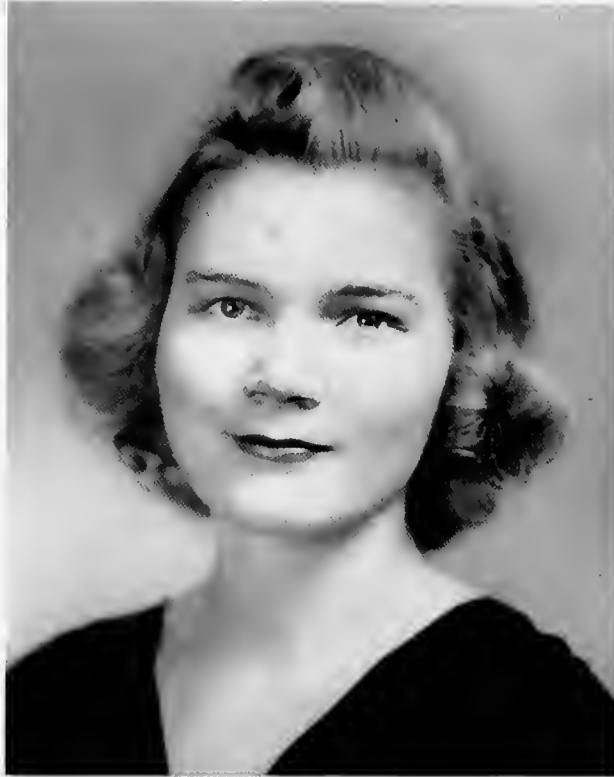
EVON VIRGINIA ELDRIDGE, A.B.
Glade Valley, N. C.

Z

Basketball; Glee Club; William Bartram. '37; Basketball Varsity; Hockey; Corresponding Secretary Zetesian Society; Prayer Band Leader; William Bartram. '38; Basketball Varsity; Hockey; President Zetesian Society; Student Council; Dramatic Club; William Bartram; Marshal. '39; Basketball; Hockey; President Zetesian Society; Dramatic Club; William Bartram; Music Club; Superaltive; May Court; Glee Club; Student Council. '40; Who's Who Among American University and College Students. '39, '40.

Quick steps—flashing smiles—sparkling dark eyes—this is Evon, our Most Beautiful. Much of the success of our hockey team was due to her alert and consistent good playing. Her charm, graciousness, and capability have won her a unique place in our student body.

of nineteen forty



RUTH ELLEN EMERSON, A.B.
Concord, N. C.

E X

Glee Club, '38; Glee Club; Class Treasurer; St. Cecelia Music Club; Tennis, '39; Glee Club; Class Treasurer; Tennis, '40.

You might call her the Solomon of our class. For intellect and good common sense, which go to make up good judgment, are two of her chief qualities. She has both dignity and ease of bearing. Would you expect her to have a sympathetic sense of humor? She does. A good student and a good friend she has proved herself.

the white heather



VIRGINIA GARRETT FROST, A.B.

Salisbury, N. C.

E X

Hockey: Tennis, '37; Volley Ball: Tennis, '38; Tennis:
German Club, '39.

"Frosty." . . . We call her name and she jumps . . . then giggles. A quaking aspen, in reality. . . . But she's not so nervous as she'd have you think . . . nor so afraid. Didn't she wrestle with German and Chemistry . . . and finish with an undying admiration for those professors? And so, because we've lived with her for four years, we believe we've found the real "Frosty" . . . good natured . . . and with an ambition which inspires her to work long and hard to attain the end.

of nineteen forty



LOUISE GIBSON, A.B.
Red Springs, N. C.

Z

William Bartram Scientific Society; Day Students Club; Granddaughters Club, '37; William Bartram Scientific Society; Archery; Day Students Club; Granddaughters Club, '38; William Bartram Scientific Society; Archery; Day Students Club; Granddaughters Club, '39; William Bartram Scientific Society; Archery; Day Students Club; Senior Scribbler; Granddaughters Club; St. Cecilia Music Club, '40.

Excellent in literary works and appreciation, a student of depth and thought, a highly cultured person. Her literary and journalistic ability have been seen in her clever book reviews for "The Pine and Thistle." She is gifted with a wit that enlivens any gathering. Her calm and well-poised manner indicates that she will be a success in whatever she undertakes.

the white heather



FLORA NASH GILCHRIST, A.B.
Red Springs, N. C.

Z

Mathematics Club; William Bartram Scientific Society, '37;
Mathematics Club; William Bartram Scientific Society, '38;
Mathematics Club; William Bartram Scientific Society,
'39; Mathematics Club; William Bartram Scientific Society,
'40.

Flora is one of those people whom but few know well; but those of us who have had that privilege are warmed by her generosity, amused by her wit, and by her comical impersonations. Well could one be envious of her keen mind and logical reasoning.

of nineteen forty



HENRIETTA GRAY, B.S.
Philippi, West Va.

Z

Home Economics Club, '37; Prayer Band Leader; Mission Study Leader; Home Economics Club, '38; Home Economics Club; Flora Macdonald Christian Association Cabinet; Fire Captain; Treasurer Home Economics Club, '39; Flora Macdonald Christian Association Cabinet, '40.

Efficiency personified is Henrietta. For if we have a formal tea or fireplace supper we always need her advice. And no little part of the success of our banquets for four years has been due to her. But often we misunderstand her frankness, which rightfully comes with her authority, and are hurt by it. Because her likes and dislikes are extreme, we try to win her friendship. Then we are overwhelmed with her generosity and thoughtfulness.

the white heather



SARA MAE GRIFFIN, A.B.
Lynchburg, S. C.

Z

South Carolina Club; Glee Club, '37; South Carolina Club; Tennis Club, '38; South Carolina Club; Tennis Club, '39; South Carolina Club; Tennis Club, '40.

Sara looks like a cool and remote goddess, far above her less stately classmates' earthly interests. Then she giggles half-apologetically and becomes warm and human. The complete adoration of the sixth grade is a good barometer of Sara's popularity with children. We also respect Sara for her determined and unflagging interest through hours of lectures—and for the fact that she always managed to gain something useful from these same lectures.

of nineteen forty



ALICE HAMLETT, A.B.

Mt. Gilcad, N. C.

E X

Hockey; Tennis, '37; Archery, '38; Marshal; Music Club; Dramatic Club; First Vice President Epsilon Chi Society, '39; Archery; Music Club; Dramatic Club; Vice President Epsilon Chi Society; May Court, '40.

Dependability — capability — originality — kindness — friendliness — attractiveness. She always shows her fun with others, keeping up a rapid fire of spicy remarks while she is doing a thousand and one other things. Her artistic nature and intellectuality are evidenced in her profound interest in our programs of visiting artists, especially Mischa Levitzki. Our best wishes go with one of Flora Macdonald's most promising daughters.

the white heather



RUTH ELIZABETH HART, A.B.
Rocky Mount, N. C.

Z

William Bartram Scientific Society, '37; Prayer Band Leader; Treasurer Zetesian Society; William Bartram Scientific Society; Glee Club; Sextette, '38; Prayer Band Leader; Secretary Zetesian Society; William Bartram Scientific Society; Glee Club; Sextette; Secretary Dramatic Club; Delegate to Davidson Conference, '39; Vice President Senior Class; Student Council; William Bartram Scientific Society; Glee Club; Sextette; Dramatic Club, '40.

A gracious smile

A genial sense of humor

Poise and tact

A talented musician

A fine friend—

All these and more have won

For Ruth our high commendation, sincere applause, and love.

of nineteen forty



MARJORIE HEATER, B.S.
Cary, N. C.

EX

Home Economics Club; Fire Captain, '38; Home Economics Club; William Bartram Scientific Society; Marshal; Dramatic Club; Prize Winner in North Carolina State Textile Style Show; Wake Forest Summer School, '39; Home Economics Club; William Bartram Scientific Society; Prayer Band Leader; Secretary Sunday School Class; Treasurer Dramatic Club; Vice President Home Economics Club, '40.

"Marg, did I get a letter in the last mail?" Patient Margie—how often has she been asked that question, and just as often she has smiled and answered "Yea" or "Nay." Her interest in the latest fashions and designs has made us all clothes conscious. Her frankness, ability as a conversationalist, and her intellectuality have cut a niche for her among all of us.

the white heather



KATE HELMS, A.B.
Bethune, S. C.

Z

Glee Club; Basketball, '37; Tennis; Basketball, '38; Tea Room Manager; Assistant Business Manager WHITE HEATHER; Secretary Sunday School Class; Dramatic Club; Tennis, '39; Business Manager WHITE HEATHER; Dramatic Club; Tennis, '40.

Kate is a lady of moods, but they are always interesting ones. Look Kate up sometime when she's feeling gay, and see if it doesn't brighten your whole day just to watch her infectious grin. Kate has a certain amount of reserve too, which might make her seem rather unapproachable at times; but when she does let down these reserves, Kate is the merriest of the merry. Kate's business acumen has made her a good manager of the annual, and it will make her a good manager of any work she undertakes.

of nineteen forty



DOLORES HUNSUCKER, B.S.
Newton, N. C.

EX

Hockey; Soccer; Basketball Varsity; Home Economics Club, '37; Hockey; Basketball Varsity; Captain of Basketball; Treasurer of Athletic Association; Home Economics Club, '38; Basketball Varsity; Captain Hockey; Vice President of Athletic Association; Home Economics Club, '39; Basketball; Hockey; F.M.C. Monogram; President of Athletic Association; Student Council; Home Economics Club; William Bartram; Who's Who Among American University and College Students; Camera Club, '40.

A quiet person in our midst; . . . never an idle moment. We cannot seem to understand what occupies her waking hours. But then we suddenly realized, . . . that it was she who has been silently, . . . unobtrusively, . . . oiling the machinery of our school, . . . our sincere admiration to Dolores, . . . one of the finest and truest.



SUSAN HALL INSCOE, A.B.
Nashville, N. C.

E X

Hockey; Granddaughters Club, '37; Hockey; Granddaughters Club; Secretary Student Volunteers; Prayer Band Leader; Mission Study Leader, '38; Music Club; Vice President William Bartram; Chairman of Highway of Publicity; Mission Study Leader, '39; President William Bartram; Music Club; Treasurer F.M.C.A.; Senior Scribbler; Superlative; Hockey, '40.

Quiet, unassuming Susan, we hardly know when she is around. With equal ability, she is able to discuss anything in the field of literature from Shakespeare's "Henry VIII," to "The Wimp and the Woodle." She has shown herself to be a thorough scholar, an apt executive, and an efficient business woman; what's more the lady is musical. The student body could not have made a better choice for the tribute "Most Versatile!"

of nineteen forty



MARGARET WINSTON LEONARD, A.B.

Rocky Mount, N. C.

Prayer Band Leader, '38; Prayer Band Leader; Mission Study Leader; Secretary Student Volunteers; Davidson Delegate; Temis, '39; Archery; Flora Macdonald Christian Association Cabinet; President Student Christian Association, '40.

In her quiet and peaceful way Margaret moves among us, smiling with her lovely brown eyes, encouraging us when we're down in the dumps, inspiring in us higher ambitions. She will always be remembered for her outstanding work as a Cabinet Member of our Christian Association.



RUTH HAZEL LONG, A.B.
Indian Trail, N. C.

Z

William Bartram Scientific Society. '37; William Bartram Scientific Society. '38; William Bartram Scientific Society: Prayer Band Leader. '39; William Bartram Scientific Society: Prayer Band Leader; Critic Zetesian Literary Society: Superlative. '40.

"Yes, I'll be glad to do it for you," we hear her say. It is just generally agreed upon that Hazel is a good sport. Her excellent report cards might deceive you into thinking that she is one of those "dry as dust" bookworms who studies all the time, but that is not Hazel. She uses all of her marvelous powers of concentration when it is time to work but she plays too. In her four years here old Morgan Hall has echoed with her laughter. It is not the laughter of "put-on" optimism, but genuine good humor and wit.

of nineteen forty



MARGARET LYTTON, B.S.
Gastonia, N. C.

E X

Home Economics Club; Hockey, '37; Archery Club; Home Economics Club, '38; Fire Captain; Assistant Tea Room Manager; Home Economics Club; Archery Club; Prize Winner in North Carolina State Textile Style Show, '39; Tea Room Manager; Home Economics Club, '40.

Vivacious personality,

Infectious smile,

Dancing blue eyes,

Coiffeurs that put Emile to shame. An innate ability to put just the right thing, in just the right place, at just the right time, when it will do the most good. A flare for concocting delicious morsels, an unmistakable air for wearing clothes . . . in short Mag just "has what it takes."

the white heather



ANNIE LOUISE MCCOLL, B.S.

McColl, S. C.

E X

Hockey: Prayer Band Leader, '39; Hockey: Prayer Band Leader, '40.

She has helped us out of many a difficult situation with her cryptic remarks. Her wit makes our cares and worries seem foolish . . . and we wonder why they ever bothered us. She never lets us know that she has a care in mind; but, somehow, she is always among the first to have her work done. Clever . . . hardworking . . . willing to help, but never assuming credit . . . entertaining. All these go to make Louise one of the characters in our class, one whom we can never forget.

of nineteen forty



CATHERINE McCONNAUGHEY, A.B.
Red Springs, N. C.

Z

Granddaughters Club; Day Students Club; Archery, '37; Granddaughters Club; Day Students Club; Archery, '38; Granddaughters Club; Day Students Club; Archery; Glee Club; Dramatic Club, '39; Granddaughters Club; Day Students Club; Glee Club; Dramatic Club, '40.

Cat, the unpredictable! One moment squalls, the next moment—sudden sunshine. Her dark red hair makes Catharin stand out, and her infectious gaiety makes her the proverbial life of the party. Catherine's giggles and wit have enlivened many a class. If she can pack as much fun into her life after she leaves college as she has through all the trials and tribulations of American History and French, Catharin certainly ought to be as happy as a lark.

the white weather

FLORA MACDONALD COLLEGE



GRACE McDOWELL, A.B.
Bluefield, West Virginia

Z

Class President four years. Glee Club; William Bartram; Hockey; Student Council, '37; Student Council; William Bartram; Mathematics Club, '38; Student Council; William Bartram; Mathematics Club; Commercial Club; Dramatics Club, '39; Student Council; Mathematics Club; William Bartram; Dramatic Club; Archery Club; Superlative; Who's Who Among American University and College Students, '40.

Dark curls, a brilliant dash of color, a sudden burst of laughter; here now, gone in an instant. For such a slip of a figure she has an astonishing combination of vivacity, originality, versatility, peppered with a sense of humor; for these, we voted her—"Personality." Through four years, she has been our president, an ingenious leader, and apt executive.

of nineteen forty



MARGARET McINNIS, A.B.

Red Springs, N. C.

Z

Secretary Sunday School Class; Tennis, '37; Prayer Band Leader; Glee Club; Tennis, '38; Prayer Band Leader; Glee Club; Tennis, '39; Prayer Band Leader; Glee Club; Tennis; William Bartram Scientific Society, '40.

Resolute as Gibraltar is the title for Margaret. She has been steadfast in her determination to acquire as much character and knowledge in her college life as any one person could squeeze into four years. And she has succeeded admirably. Margaret is decided in her opinions and stands firmly for what she believes is right. She has a lighter side, too—her quaint observations on persons and events are really rich.

the white heather



SARAH CATHERINE McINNIS, A.B.
West End, N. C.

Z

Basketball Team; William Bartram Scientific Society, '37; William Bartram Scientific Society; Volley Ball, '38; William Bartram Scientific Society; Basketball Team; Tennis, '39; William Bartram Scientific Society; Tennis, '40.

"And many a rose is born to blush unseen and waste its fragrance on the desert air." If we did search for it, we would never find the gold stored away in Sarah Catharine. However, hidden treasure is often the most sought after and cherished of all. There is a depth of understanding and humaneness about Sarah Catharine that makes contacts with her both refreshing and enlightening. Her steady, though easy-going pace, is bringing her up the ladder of success.

of nineteen forty



RUTH McLEMORE, B.S.
Godwin, N. C.

E X

Campbell Junior College, '37, '38; Home Economics Club; Hockey; Basketball, '39; Secretary Home Economics Club; William Bartram Scientific Society; Prayer Band Leader; Head of Basketball; Member of Athletic Board; Hockey Team; Basketball Team; Camera Club, '40.

Ruth came to us only last year, but in this short time she has found her place in our hearts; and we're wondering how we ever got along without her. Quite a seamstress and an excellent cook is Ruth, but her skills are not all domestic. She was indispensable to our hockey team, and a grand sport.

the white heather



NELL BATTLE McNAIR, A.B.
Tar Heel, N. C.

E X

Treasurer Freshman Class; William Bartram; Basketball, '37; Treasurer Sophomore Class; William Bartram; Basketball; Head of Hiking, '38; Secretary Junior Class; Corresponding Secretary Epsilon Chi Society; Glee Club; May Court; William Bartram; Marshal; Superlative; Basketball; Hockey; Prayer Band Leader, '39; Secretary Senior Class; Corresponding Secretary Epsilon Chi Society; William Bartram; Glee Club; Hockey; Prayer Band Leader; May Court, '40.

*"Sweet Highland Girl, a very shower
Of beauty is thy earthly dower."*

What an air of sophistication, and yet a naive personality. One of our best hockey players—and one of our most graceful dancers. An ideal student and a constant friend. Nell's quiet refinement, her intelligence, and her quiet smile make her an invaluable member of our group.

of nineteen forty



ELLEN COXE MERRITT, A.B.
Woodsdale, N. C.

E X

Epsilon Chi Society Chaplain; Hockey, '38; President Epsilon Chi Society; Student Council; Dramatic Club, '39; President Epsilon Chi Society; Student Council; Archery Club; Superlative; Dramatic Club, '40; May Court; Who's Who Among American Universities and Colleges, '39, '40.

Ellen Cox . . . always surrounded by friends who are seeking the secret of her personality and charm. They find an indescribable winsomeness which makes them eager for her companionship. Her wit attracts them; her true worth makes them ardent admirers. A twinkling mirth characterizes her every mood. But her gaiety is offset by a good intelligence. Add to that an Ellen Cox who is sympathetic, appreciative of others, and exceedingly generous, and you have that altogether too rare combination of student and playfellow.

the white heather



LOUISE CURRIE MOORE, A.B.
Madison, N. C.

Z

Basketball; May Court, '37; Archery; May Court; William Bartram, '38; Archery; May Day Character; William Bartram; Music Club, '39; Archery; William Bartram; Music Club; Senior Scribbler; Commercial Club; Senior Cheer Leader; Head of Archery; Athletic Association Board; May Queen, '40.

How can we describe her except as "just Lou"! To those who know her, this name expresses her jollity, her special brand of wit, her sophistication, her traits and quirks that make her dear to us. Lou has been a class leader for four years, taking part in all activities, and she has also studied seriously. There is nothing "half-way" about her and her likes and dislikes. And there is nothing "half-way" about the student body's liking for Lou.

of nineteen forty



VIRGINIA O'BERRY, A.B.
Dudley, N. C.

E X

Basketball Team; Swimming, '37; Basketball Team; Archery Club; Head of Volley Ball, '38; Basketball Team; Tennis; Head of Hiking, '39; Archery Club; Basketball Team; Wake Forest Club, '40.

Virginia's good nature bubbles over in all her relationships. She usually has a twinkle in her eyes and a laugh on her lips, but don't let Va's easy-going demeanor deceive you. She has the spunk to stand up for what she thinks is right, and she has had the nerve to do what we so often wished we might —politely, but firmly, disagree with someone's cherished opinion, and thereby start an interesting argument. We think that Virginia's open like for humanity will always win friends for her, just as this quality has won her friends throughout her four years with us.

the white heather



VENNIE MAUREEN PARROTT, A.B.
Florence, S. C.

Z

Secretary Freshman Class; Secretary-Treasurer Commercial Club, '37; Secretary Sophomore Class; William Bartram Archery, '38; Vice President Student Body; Student Council; Marshal; Edited Freshman *Handbook*; Hockey; William Bartram, '39; President Student Body; Student Council; Flora Macdonald Christian Association Cabinet; Hockey; William Bartram; Who's Who Among American University and College Students; May Court, '39, '40.

*"She walks in beauty, like the night
Of cloudless climes and starry skies;
And all that's best of dark and bright
Meet in her aspect and her eyes:
Thus mellowed to that tender light
Which heaven to gaudy day denies."*

of nineteen forty



MARY VIRGINIA PATTERSON, B.S.
St. Pauls, N. C.

E X

Home Economics Club; Granddaughters Club, '37; Home Economics Club; Granddaughters Club; Basketball, '38; Home Economics Club; Granddaughters Club; Basketball; Tennis; State Teachers College of Radford Virginia Summer School, '39; Home Economics Club; Granddaughters Club; Basketball; Tennis, '40.

Perseverance to the end is likely to win. And that's what it takes to graduate in Home Economics. Mary Virginia has stuck to the task which she thought could not be done. She is not a person who tries to show off to the world her accomplishments, and she has hidden some of her best qualities from us. But she has determination, and that is what it takes.



RACHEL PATTERSON, A.B.
Mooreville, N. C.

E. X.

William Bartram Scientific Society; Class Hockey; Basketball, '38; William Bartram Scientific Society; Fire Squad; Class Hockey; Basketball, '39; William Bartram Scientific Society; St. Cecelia Music Club; Glee Club; Class Hockey, '40.

Rachel is one of our quieter classmates. She has jogged along with us for four years without many of the class realizing her true worth. Rachel is the kind of girl who puts the best she has into a piece of work and then always forgets to mention what she has done. She even takes her glee club singing very seriously, trilling up and down the scales for minutes at a time with roommate Ruth. We are going to miss Rachel's little suppressed snicker that always papped out in class at unexpected moments. It has been the high spot of many an otherwise dull class.

of nineteen forty



ESTHER MORRISON PETERSON, A.B.
Dallas, Texas

E X

Freshman Editor WHITE HEATHER; William Bartram, '37; Business Manager *Pine and Thistle*; William Bartram Commercial Club, '38; William Bartram; Mathematics Club; Music Club; Tennis, '39; William Bartram; Mathematics Club; Business Manager *Pine and Thistle*, '40.

There are several adjectives that might be applied to "Pete," but "cleverness" and "efficiency" are the outstanding ones. Pete's high ideals go hand in hand with her brilliant mind. Anything that she undertakes seems to be merely a simple little job for her. Not only is this true in regard to her scholastic work, but it is equally true as regards her extra-curricular activities.



LINDA PORTIA PETERSON, A.B.
Clinton, N. C.

Z

William Bartram Scientific Society; Hockey; Basketball; Secretary Sunday School Class, '37; William Bartram Scientific Society; Hockey, '38; William Bartram Scientific Society; Hockey; Basketball, '39; William Bartram Scientific Society; St. Cecelia Music Club; Student Body Recorder of Points; Prayer Band Leader; Hockey; Basketball, '40.

A most surprising person is Linda: the essence of conscientiousness . . . her work done well . . . and at the right time. . . . A serious thing indeed, until it is finished. Then, and only then, does Linda go into her act; forgetting her cares, she is the gayest of our group. . . . Truly she is a surprise, for she is the only person we know who can laugh merrily, and at the same time be worried frantic.

of nineteen forty



JULIETTE POWE, A.B.
Red Springs, N. C.

Z

Hockey Team; Basketball, '37; Birmingham Southern College, '38, '39; Tennis, '40.

Although quiet and unassuming, she performs her work with assurance and patience. She has been with us only this year, but her calm, diminutive beauty and lovely disposition make Judy just the type of girl we like to have around. To her we give every good wish for happiness and success.

the white heather



EUNICE MARGUERITE SAUNDERS, A.B.

Willow Springs, N. C.

Z

Basketball; Hockey; Archery; Secretary Sunday School Class; Volley Ball; Wake Forest College Summer Session, '38; Basketball; Hockey; Prayer Band Leader; Treasurer Junior Class; Wake Forest College Summer Session, '39; Basketball; Archery; Prayer Band Leader; Fire Squad, '40.

Eunice is our most ambitious girl. She wants to be a lawyer and we all believe that she will be able to achieve whatever objective she aims for. Eunice claims to be a man-hater, but the devotion of half of the Wake Forest football squad should refute this pretended indifference. Just possible, her generosity and quiet good-sportsmanship and the merry little twinkle in her eyes have a lot to do with this.

f nineteen forty



AMANDA RUTH STEEDLY, A.B.
Smoaks, S. C.

Z

Hockey; Basketball; South Carolina Club, '37; Mathematics Club; Prayer Band Leader; South Carolina Club, '38; Hockey; Mathematics Club; South Carolina Club, '39; Recording Secretary Mathematics Club; William Bartram Scientific Society; South Carolina Club, '40.

Ruth, we will remember you for your beaming, happy smile that gave you such an air of optimism; your quick energetic step that made you seem always in a hurry, always going some place; and your South Carolina draxel. We admired you for the courage and ability it took to major in Mathematics. From what we have seen of you, we know yours will be a happy and successful life.

the white heather



MARGARET ELIZABETH STEPHENSON, A.B.
Angier, N. C.

E X

Hockey; Basketball, '37; Hookey; Volley Ball, '38; Archery;
Prayer Band Leader, '39; Tennis; Prayer Band Leader, '40.

Surprising is the word for Margaret. One moment she is the quiet and conscientious student; the next moment her merry giggle bursts out—and it is the kind of laugh that makes everyone join in spontaneously. Here is one of the rare creatures who is good-natured enough to laugh at her own mistakes and really mean it. Margaret is a classmate that one can depend upon to have ferreted out some obscure bit of information for herself that everyone else has overlooked. Always ready with warm sympathy and quiet good-humor, Margaret has been one of the gentler tones of our class tapestry, rather than a flashing color.

f nineteen forty



CAROLINE MACLEAN SUTPHEN, A.B.

Columbia, S. C.

Z

Glee Club; Tennis; Music Club, '37; Glee Club; Tennis; First Vice President Zetesian Literary Society; Music Club, '38; Tennis; Music Club; Dramatic Club; Corresponding Secretary Zetesian Society; Secretary-Treasurer Glee Club; University of South Carolina Summer School, '39; Tennis; Music Club; Dramatic Club; Recording Secretary Zetesian Society; Secretary-Treasurer Glee Club; Senior Scribbler; Prayer Band Leader; Chairman of Prayer Band Leaders, '40.

Caroline . . . the unpredictable . . . a personality filled with surprises! With ability in so many fields, only time will tell in which she will be most successful. She has an appreciation for the fine and beautiful. With her mind and still more unusual ability to use it wisely we know success awaits her.

the white heather



DOROTHY JANE TICE, A.B.

Blackey, Ky.

Z

Hockey, '37; Hockey; Cabinet Member, '38; Hockey: Vice President Junior Class; Student Council; Secretary and Treasurer Student Body, '39; Hockey; Head of Tennis; Prayer Band Leader; Captain of Hockey; Tea Room Manager; Athletic Board, '40.

Bouncing, Bubbling, Energetic Dottie!

You may be small, however, it isn't quantity that counts, but quality. You just have "what it takes." We will never forget the invigorating hockey game you played; in the same manner you played the game of life loyal, coöperative, dependable.

f nineteen forty



NINA FRANCES TOLAR, B.S.
Lumber Bridge, N. C.

E X

Home Economics Club, '37; Home Economics Club, '38; Home Economics Club; Fire Captain, '39; Home Economics Club; Second Vice President Epsilon Chi Literary Society; William Bartram Scientific Society, '40.

Her person radiates energy and accomplishment. With a few more good managers like Nina some solution might be found for feeding the world. There is a firmness about her that stands like a protecting wall in front of difficulties. If you ever need any friendly "advice," you might go to almost anybody; but if you would like to have some real help, Nina is the person you need. She is well informed on subjects relating to the home—from a good fly spray to entertaining at teas and banquets.

the white heather



ALICE GARDEN VENABLE, A.B.
West Nottingham, Md.

Z

Tennis; Basketball; Music Club. '37; Tennis; Basketball; Recording Secretary Mathematics Club; William Bartram. '38; Vice President Mathematics Club; William Bartram; Hockey Team; Basketball; Glee Club. '39; President Mathematics Club; Vice President William Bartram; Hockey; Basketball; Glee Club; Tennis; Senior Editor WHITE HEATHER, '40.

Where is Alice? Late again!—Yes, we teased you about invariably turning up just after the appointed hour; nevertheless, when you got there you always had something fine to offer in sports, in social, and in religious activities. We will never forget the picture you made as goal guard, with those grotesque looking shin guards; the lift you had on the hockey ball equalled the push you put behind everything else you do.

of nineteen forty



MARY SIEWERS WALL, B.S.
Madison, N. C.

Z

Home Economics Club, '37; Hockey; Home Economics Club, '38; Prayer Band Leader; Home Economics Club; Hockey; Treasurer Student Volunteers, '39; Tennis; President Student Volunteers; Second Vice President Zetesian Society; Treasurer Home Economics Club, '40.

Quiet and sincere . . . dependable and steady. Willing to help . . . no matter what the task may be. Even though Mary remains in the background, she accomplishes a great deal. She deserves the finest things in life, and she's sure to get them.

the white heather



CARRIE LEE WARD, A.B.

Wampee, S. C.

Z

"For beauty dwells with kindness."

Generosity is to be admired above gold and rubies. With Carrie Lee this attribute is genuine. It is a natural out-put of her amiable disposition. She has something to give, too—a good example, for she is hardworking and conscientious, willing to help when called upon. A naturally quiet and self-possessed young woman, she makes a good neighbor.

of nineteen forty



MARY FRANCES WELLS, A.B.
Teachey, N. C.

E X

Basketball; Hockey; William Bartram Scientific Society, '37; Hockey; Basketball; William Bartram Scientific Society, '38; Hockey; Basketball Team; Captain of Basketball; William Bartram Scientific Society, '39; Athletic Board; Head of Hockey; Hockey; Corresponding Secretary of William Bartram Scientific Society, '40.

Potential power is what she has! That calm serenity hides her dynamite until she gets on the hockey field and then something breaks loose—Mary Frances plays the game. And if you need any lessons in sportsmanship, don't ask, but just watch her. The student in this case goes hand in hand with the athlete. We do more than admire Mary Frances—we respect and honor her.

the white weather



KATHRYNE JEFFERSON WHITE
Fayetteville, N. C.

Z

Virginia Intermont College, '37, '38; Glee Club; St. Cecilia Music Club, '39; Glee Club; St. Cecilia Music Club, '40.

Kathryne Jefferson is a young lady of aesthetic tastes a characteristic which makes her an interesting person. Though she has been with us only two years and has lived outside the building during that time, she has made herself well-known in the school chiefly through the music department. She has been an outstanding voice student. As a person of decided opinions, she usually wins her point.

of nineteen forty



EDITH MCGRAW WILLIAMS, A.B.
Alderson, W. Va.

E X

William Bartram; Basketball, '37; Associate Editor *Pine and Thistle*; Prayer Band Leader; William Bartram; Tennis, '38; F.M.C.A. Cabinet; Assistant Business Manager *Pine and Thistle*; Recording Secretary William Bartram; Dramatic Club; Tennis, '39; President F.M.C.A.; Who's Who Among American University and College Students; Student Council; Dramatic Club; William Bartram; Hockey, '40.

Brisk. Spirited. Sprightly. Never walks if she can run. . . . But to say that Edith is a lady of great vivacity is insufficient, for when we know her we realize her sprightliness consists in doing little things for others. . . . We shall remember her in the years to come for her work in the Christian Association, for her contribution to the "Pine and Thistle," and for her ability to do well anything she undertakes.



EVELYN EPPS WILSON, A.B.
Covington, Va.

Lee's McRae College, '37, '38; Virginia Club; Hockey, '39;
Virginia Club; Hockey; Prayer Band Leader; Basketball, '40.

You can spot her by that soft, truly drawled southern voice which expresses outwardly the mellowed sweetness of her inner self. Such a disposition by itself would be insipid but in Evelyn it is enriched and colored by an active enthusiasm which reveals itself in the tilt of her eyebrows. On the athletic field she seems bursting with energy and her powerful stroke on a hockey ball sends it flying down the field. She is so much a part of us that it doesn't seem possible that she could have been here only two years. Her class spirit has awakened some of us from our lethargy to impart a greater zeal for coöperation. I have never seen her without a smile and I leave her now smiling back at us with twinkling eyes under a cluster of soft brown curls.

of nineteen forty



Emily and Betty. . . . Who is the little corn flower? Why, it's Cromartie. . . . Edna Seal. . . . "Pick". . . . Ruby and Hazelgrove, trying to make us think they're going to play Hockey. . . . "Lilly." with "Fitzzy" in the background. . . . Hello, Eleanor. . . . The three "stooges" looking for—not horses, you guess. . . . See the finished product on the opposite page?

Junior Class

MARY BLUE..... President
MADELYN PARKS..... Vice President
DOROTHY PICKARD..... Treasurer
JANET CAPEL..... Secretary
MAUDE ERWIN..... Tea Room Manager
CHARLOTTE APSTIN..... Assistant Tea Room Manager
DR. A. B. STUMP..... Faculty Adviser





First row:
 CHARLOTTE McBRIDE AUSTIN
 Bartow, Fla.

Second row:
 MARY BIRD
 Parkton, N. C.

Third row:
 CLAUDE BROOKS
 Evergreen, N. C.

MARGERITH BAIN
 Wade, N. C.

JEAN McNEILL BOYER
 Woodstock, Va.

JEANETTE CAPLE
 Mt. Gilead, N. C.

MARY FRANCES BINGHAM
 Smithfield, N. C.

MARY BELLOCK BRACY
 Rowland, N. C.

ELIZABETH COOPER
 Saluda, N. C.

First row:

MARGARET HELEN CORBETT
Middlesex, N. C.

MARGARET CROMBIE
Garland, N. C.

ROSALIE DASHLE
Pembroke, N. C.

Second row:

MADEE ERWIN
Pineville, N. C.

JEAN FLEZPATRICK
Ford, Va.

DILL FLOWERS
Mt. Olive, N. C.

Third row:

ANNE CLEBETH GATLEY
Red Springs, N. C.

PAULET GOFORTH
Kings Mountain, N. C.

NINA HASELL GREEN
Conway, S. C.





First row:
 LORISE DORRIS HILD
 West Chester, Pa.

Second row:
 NANCY McISTYRE LESCOE
 Nashville, N. C.

Third row:
 DORIS JOHNSON
 St. Pauls, N. C.

GRACE HOLLAND
 Clayton, N. C.

JOSEPHINE JEROME
 Coats, N. C.

MARY MERCER JOHNSON
 Winnabow, N. C.

RETH HELCHER
 Wilkesboro, N. C.

BERNICE JOHNSON
 Willow Springs, N. C.

TALITHA LEMMON
 Myrtle Beach, S. C.

Juniors

First row:

ALBERTA LEWIS
Leland, N. C.

Second row:

MARY EMILY MACMILLAN
Parkton, N. C.

Third row:

GESE MACLAREN
Red Springs, N. C.

LAURA LOWRY
Jefferson, S. C.

LILLIAN McARTHUR
Wakulla, S. C.

JEAN MURPHY
Red Springs, N. C.

ALFONSE MARTIN
Whiteville, N. C.

FRANCIS JEAN McFADYEN
Raeford, N. C.

CATHERINE PARKER
Clinton, N. C.





First row:
 MADELYN PARKS
 Weaverville, N. C.

Second row:
 DOROTHY PICKARD
 Mebane, N. C.

Third row:
 PATTIE SCOTT
 Charlotte Court House, Va.

EDNA NLAJ PAUL
 Fayetteville, N. C.

REBECCA PALMER ROGERS
 Whiteville, N. C.

FLORA SMITH
 Wakulla, N. C.

ERTIE PUMPS
 Greensboro, N. C.

ESTHER REED RYBURN
 South Charleston, W. Va.

REBY SPAINSHOR
 Morganton, N. C.

Juniors

First row:

JOSEPHINE STEPHENSON
Willow Springs, N. C.

Second row:

EMITH USSERY
Sanford, N. C.

Third row:

EMITH ABEY WONGM
Wagram, N. C.

MARGARET STRONG
Kingstree, S. C.

GLADYS WALTERS
Wakulla, N. C.

CATHERINE YATES
Hwaiianfu, Ku., China

BETH STUART
Troy, N. C.

SARAH KNOX WILSON
Charlotte, N. C.

HILDA YLVERTON
Eureka, N. C.

ELFANOR YOUNG
Charlotte, N. C.





Betty and "Biddy", . . . Nicholson, . . . Mary Lib, . . . Don't you shush me, Mildred, . . . Virginia, . . . Another Virginia and Grace, . . . What are you studying so diligently, Angella? . . . The first sign of Spring, . . . Gladys Faye, . . . Rachel and Mary Alice, . . . Betty, . . . Lucille,



Sophomore Class

MARY HALL.....	<i>President</i>
GLADYS FAYE BARNES.....	<i>Vice President</i>
CATHERINE NICKOLSON.....	<i>Treasurer</i>
VIRGINIA BOGUE.....	<i>Secretary</i>
MISS JOSEPHINE BRIDGMAN.....	<i>Faculty Adviser</i>

sophomores

First row:

KELSIE NEILL ADAMS, Laurel Hill, N. C.
MARTHA ADAMS, Bowling Green, S. C.
MARJORIE ADDY, Lexington, S. C.
MARIE ANDERSON, Hertford, N. C.
SARAH META BAGGETT, St. Stephens, S. C.
HILDA BAILLY, Woodleaf, N. C.
GLADYS FAYE BARNES, Kenly, N. C.
KATHLEEN BLACK, Red Springs, N. C.



Second row:

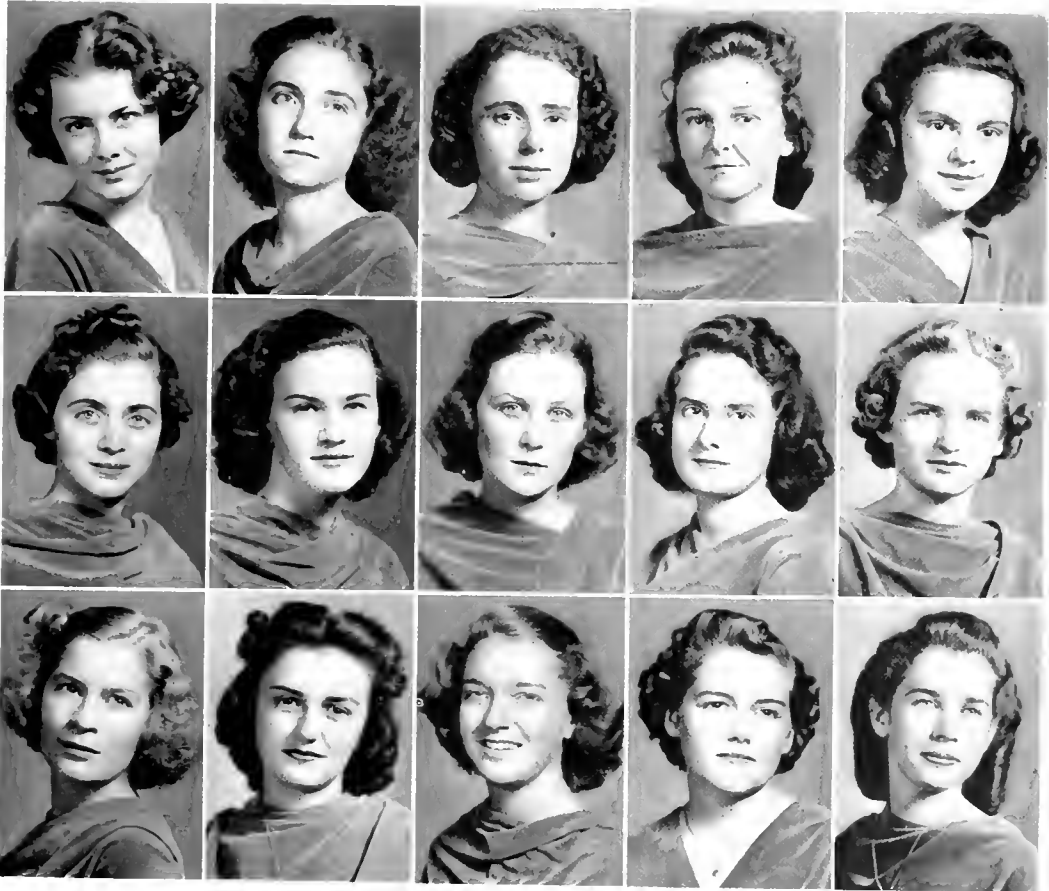
VIRGINIA BOGUE, Tampa, Fla.
MARY BOWEN, Burgaw, N. C.
ELIZABETH BOYKIN, Bluefield, W. Va.
EDITH ARLEEN BUGG, Roanoke Rapids, N. C.
CAROLINE BUE, Red Springs, N. C.
GRACE BUE, Denmark, S. C.
MIRIAM BULLARD, Chadbourne, N. C.
NETTIE GRACE CAMERON, Polkton, N. C.



Third row:

KATHRYN CHARLES, Aberdeen, N. C.
AGNES CHAVIS, Shannon, N. C.
ALICE MORING CHERRY, Windsor, N. C.
HELEN CLONTZ, Fayetteville, N. C.
MARY FRANK COLERIDER, Hickory, N. C.
ELIZABETH CROSSMAN, Greenfield, Mass.
CLARA DAVID, Bennettsville, S. C.
EVELYN DAVIS, Manteo, N. C.





sophomores

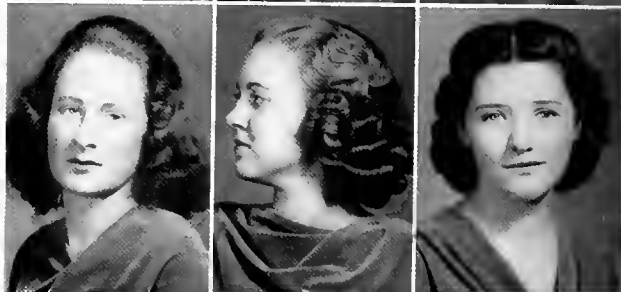
First row:

KATHRYN DAVIS, Red Springs, N. C.
 AGNES SARA EDENS, Wakulla, N. C.
 ELAINE ELLIS, Hampton, S. C.
 MARY EMMA FOLGER, Pembroke, N. C.
 NELL FORLAW, Teachey, N. C.
 MARY ALICE FULK, Lewiston, N. C.
 MARGARET GILLAM, Windsor, N. C.
 GERALDINE GRADY, Seven Springs, N. C.



Second row:

MARIELLE GREEN, Taylors, S. C.
 DAUINE GRIFFIN, Bailey, N. C.
 LUCILLE GRIGGS, Sheffield, Mass.
 MARGARET E. HANSLIP, Hamilton, N. C.
 MARY HALL, Hickory, N. C.
 PATSY HARPER, Pinetops, N. C.
 CATHERINE HARRINGTON, Plainfield, Ga.
 ANGELA HUBBARD, Clio, S. C.



Third row:

MARY HUDSON, Ruffin, N. C.
 ESTELLE HUGGINS, Fayetteville, N. C.
 MARY JENNETTE, Calypso, N. C.
 NELLIE JOHNSON, Barium Springs, N. C.
 HAZEL MAY JONES, Red Springs, N. C.
 KATE COOVER JONES, Fayetteville, N. C.
 MARGARET KORNEGAY, Warsaw, N. C.
 MARY LEAGUE, Greenville, S. C.





sophomores

First row:

VIRGINIA LEATHERMAN, Winchester, Va.
 CAROLINE TICE LONG, Salters, S. C.
 MILDRED MASON, Roanoke, Va.
 NELLIE GRAY MATHIS, Warsaw, N. C.
 BETTY MACLAURIN, Columbia, S. C.
 ELIZABETH MACPHERSON, Fayetteville, N. C.
 RUTHMARY MCCOLL, Manchester, N. C.
 PATTIE McDANIEL, Bennettsville, S. C.



Second row:

ALINE McDONALD, Homer, S. C.
 MARGARET VIRGINIA McDONALD, Macon, Va.
 MARJORIE McKAY, St. Pauls, N. C.
 JOHNSIE M. McKELAR, Red Springs, N. C.
 CAROLYN McLEAN, Raeford, N. C.
 CATHERINE LOUISE McLEAN, Stanford, Ky.
 MARGARET McLEOD, Aberdeen, N. C.
 MARJORIE McMANUS, Red Springs, N. C.



Third row:

JANE McNAIR, Tar Heel, N. C.
 CLARA BELLE McNEILL, Archer, Fla.
 SARAH M. McPHERSON, Red Springs, N. C.
 MINNIE MYERS, Tar Heel, N. C.
 CATHERINE NICHOLSON, Troy, N. C.
 RACHEL ORR, Robertsburg, W. Va.
 EMILY MARIE PASCAL, Valdese, N. C.
 RACHEL PEARSALL, Wilmington, N. C.

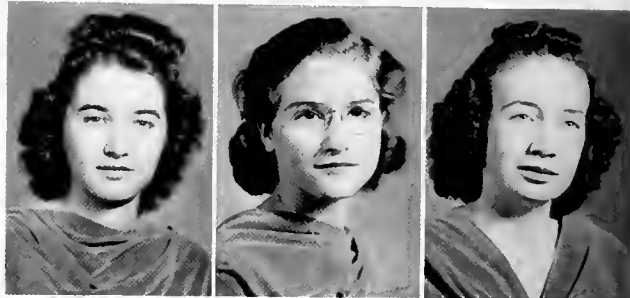




sophomores

First row:

MARGARET PONS, Valdese, N. C.
JANIE NELSON POPE, Edisto Island, S. C.
RUTH PREVATT, Lumberton, N. C.
MAY PRICE, Wilmington, N. C.
EVELYN ROBERTSON, Ahoskie, N. C.
BETTY RUTH ROBINSON, Charlotte, N. C.



Second row:

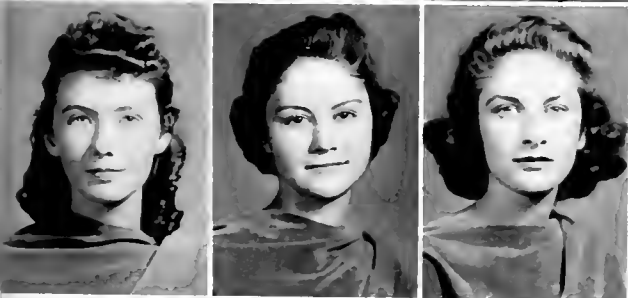
JEAN RYBURN, South Charleston, W. Va.
HAZEL SANDERS, Four Oaks, N. C.
ALMA LOU SPIVEY, Elizabethtown, N. C.
MIRIAM MCCOY STOUT, Sanford, N. C.
GERALDINE STROUD, Pink Hill, N. C.
NELL ELIZABETH THOMAS, Florence, S. C.



Third row:

MARY LEE TRAWICK, Raeford, N. C.
JOSIE TROTT, Chesterfield, S. C.
MARY MAC WATSON, Red Springs, N. C.
ANGELLE WILLIAMSON, Chadbourne, N. C.
GRACE WITHERS, Spence, N. C.







Why so wistful, Bonnie? . . . Martha, what are you telling Whaley? . . . Ruth and Leila (with the Cherub between) . . . Lucy and Mary Lib. . . Sue, ready for battle. . . . Caroline looks like Aladdin about to take off. . . . There's that Pate child. . . . Hazel, why didn't you look at the birdie? . . . Hello, Kitty.

Freshman Class

MARGARET JENKINS.....*President*
MIRIAM TELFORD.....*Vice President*
ELIZABETH BROWN.....*Secretary*
SUE McPHERSON.....*Treasurer*
MRS. ELIZABETH MCPHAUL.....*Faculty Adviser*



fresh



First row:

- MARY EVELYN ALLEN
Greenville, S. C.
BETTY LEE ANDREWS
Tryon, N. C.
BETTY BAGLEY
Greensboro, N. C.
FRANCES BALDWIN
Raleigh, N. C.

Second row:

- CELESTE BARNETT
Bartow, Fla.
FLORENCE BOINBAU
Beaufort, S. C.
SARAH BULLOCK BOWDEN
Warsaw, N. C.
JEAN BRISCOE
Bristol, Tenn.

Third row:

- ELIZABETH BRITTAIN
Summerfield, N. C.
ELIZABETH BROWN
Wytheville, Va.
RACHEL BROWN
Bethel, N. C.
KATHERINE BRENER
Cleveland, N. C.

Fourth row:

- MARIAN BULLARD
Wagram, N. C.
WYATTE BULLARD
Hope Mills, N. C.
ALYCE BAILEY BYNUM
Hope Mills, N. C.
LOUISE CABLE
Madison, N. C.

Fifth row:

- MARY LOUISE CAMERON
Southern Pines, N. C.
JANE CRAIG
Jacksonville, Fla.
ANNE CREGG
Pollocksville, N. C.
HAZEL LOUISE CYDE
Winston-Salem, N. C.

M E N

First row:

- REBECCA DAVIS
McDonald, N. C.
ELEANOR DOUGLAS
Pensacola, Fla.
IRENE EBIENS
Red Springs, N. C.
ROSA LEE ELAM
Rural Hall, N. C.



Second row:

- ANNE RUTH ENNIS
Dunn, N. C.
JESSAMINE FLEMING
Mebane, N. C.
MARTHA ADRIAN GALLIV
Red Springs, N. C.
CATHERINE GIBCHRIST
Red Springs, N. C.



Third row:

- MARY CATHERINE GORMAN
Wilmington, N. C.
HARRIET GRAHAM
Dunn, N. C.
LOUISE PREVOST HALL
Rowland, N. C.
EFFIE KATHRYN HIGHSMITH
Rocky Point, N. C.



Fourth row:

- NANCY HILT
Bristol, Tenn.
MARY ELLA INGRAM
Wagram, N. C.
MARY MONICA JACKSON
Wilmington, N. C.
MARGARET EUGENE JENKINS
Mayesville, N. C.

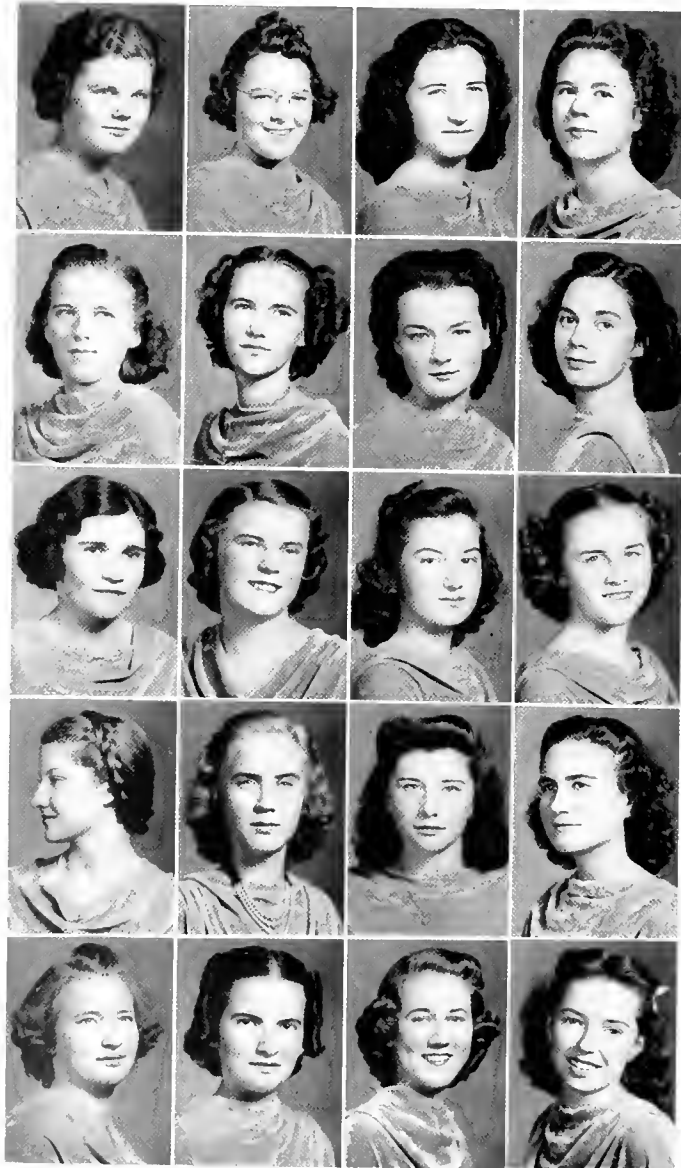


Fifth row:

- MAYO JENKINS
Laurinburg, N. C.
CHRISTELLE JOHNSON
Coats, N. C.
MARY ELIZABETH JOHNSON
Fayetteville, N. C.
MARY ELEANOR JOHNSON
Cornelius, N. C.



fresh



First row:

FRANCES JUSTICE
Ona, West Va.

MARTHA KENBRICK
Gastonia, N. C.

KATHLEEN LEONARD
Vandemere, N. C.

BUNNY LINGLE
Salisbury, N. C.

Second row:

BARBARA LYTCH
Laurinburg, N. C.

JEAN MCKAY LYTCH
Rowland, N. C.

DOROTHY MARTIN
Whiteville, N. C.

KATHRYN MCBRYDE
Lumberton, N. C.

Third row:

ANNIE WILSON McCALL
Red Springs, N. C.

LEILA McCORMICK
Rowland, N. C.

BONNIE McCUBBINS
Florence, S. C.

CAROL McDANIEL
Bennettsville, S. C.

Fourth row:

VIRGINIA McDANIEL
Red Springs, N. C.

PEGGY MCKAY
Wagram, N. C.

MARGORIE MCKENZIE
Red Springs, N. C.

CAROLYN McNEILL
Racford, N. C.

Fifth row:

KATHLEEN GAYLE McPHERSON
Shiloh, N. C.

SUE HARBEN MacPHERSON
Fayetteville, N. C.

JOYCE McQUAGE
Clio, S. C.

DOROTHY McRAISEY
Red Springs, N. C.

M E N

First row:

- MARION JEAN MCPHAUL
Parkton, N. C.
KATHARINE MEANS
Greenville, S. C.
RUTH MONROE
Eagle Springs, N. C.
FLORENCE TEMPLE MOORE
Ashland, Va.



Second row:

- MARY LOU MOORE
Fairmont, N. C.
HAZEL MORELAND
Greensboro, N. C.
MARGARET MORRISON
Clinton, N. C.
DOROTHY NARRON
Smithfield, N. C.



Third row:

- OPHELIA O'BRIANT
Red Springs, N. C.
HAZEL OLIPIANT
Mooreville, N. C.
LOIS PARKER
Clinton, N. C.
NELL PARKER
Warsaw, N. C.



Fourth row:

- LAURET PARLER
Red Springs, N. C.
MARY PARROTT
Florence, S. C.
BILLY PATE
Gibson, N. C.
WHALEY PHILLIPS
Laurinburg, N. C.

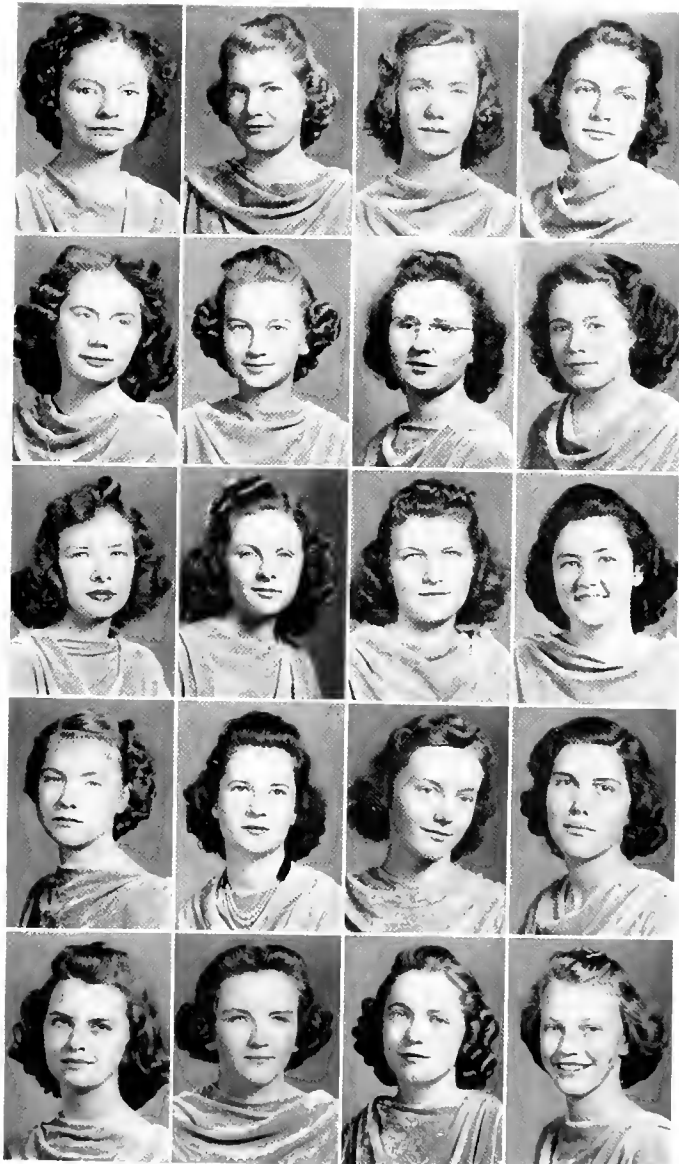


Fifth row:

- MARGARET PIPER
Kupanga, Dist. du Elisabethville
Belgian Congo, Africa
PEGGY PORTER
Sanford, N. C.
LOUISE POWERS
St. Pauls, N. C.
PHYLLIS POWERS
St. Pauls, N. C.



fresh



First row:

- RACHEL POWERS
St. Pauls, N. C.
HELEN LOVE PRICE
Barium Springs, N. C.
FRANCES JEAN RADCLIFFE
Pantego, N. C.
JEAN McRAE ROSS
Patzcuaro, Mexico

Second row:

- JEFF ROWE
Rural Retreat, Va.
MARGIE ELLEN RUSSELL
Granite Falls, N. C.
GLADYS SANDERS
Raeford, N. C.
LOIS SHOOK
Red Springs, N. C.

Third row:

- NANCY HOPE SILLS
Greensboro, N. C.
MARY FRANCES SIMMONS
Lumberton, N. C.
MARGARET SINCLAIR
Wilmington, N. C.
MABEL McNEILL SMITH
Red Springs, N. C.

Fourth row:

- RUTH SMITH
Mitoto, A.P.C.M.
Belgian Congo, Africa
SARAH BELLE SMITH
Elizabeth City, N. C.
ELEANOR WARD STATION
Bethel, N. C.
VIRGINIA STEGALL
Lubondai, A.P.C.M.
Belgian Congo, Africa

Fifth row:

- CAROL STILES
Red Springs, N. C.
GARY PAGE STONE
Sweet Hall, Va.
GRACE STONE
Rowland, N. C.
MARTHA SUTHERLAND
Laurinburg, N. C.

M E N

First row:

MARJORIE SUTTON
Goldsboro, N. C.

EVELYN TEACHEY
Rose Hill, N. C.

MIRIAM TELFORD
Miami, Fla.



Second row:

HELEN THOMAS
Barham Springs, N. C.

LUCILLE THOMAS
Florence, S. C.

CAROLYN VIDAL
Gainesville, Fla.



Third row:

MARY OLIVE WALKER
Gaffney, S. C.

LILLON WARREN
Clinton, N. C.

FLORA WATSON
Rowland, N. C.



Fourth row:

MARY WEINBERG
Kingsree, S. C.

JUNE WELLS
Hamlet, N. C.

CATHERINE WILCOX
Carthage, N. C.



VIOLA WILLIAMS
Eagle Springs, N. C.

ERNESTINE WILLIAMSON
Lumberton, N. C.

KAY WILLIAMSON
Charlotte, N. C.



Nathalie Crane

What better challenge can the life of Nathalie Crane offer than her own inspiring words:

"You cannot choose your battlefield
The gods do that for you,
But you can plant a standard
Where a standard never flew."

"THE COLORS."



activities



Senior Scribblers

Scribblers

Hilda Blue
Susan Inscoc
Carolyn Sutphen
Louise Moore
Louise Gibson



DOROTHY BROOKS
Chief Scribe



Blue

Inscoc

Sutphen

Gibson

Moore

The White Heather

The staff, the faculty, and the student body have cooperated to make this, the 1940 WHITE HEATHER, a reality. With successful modern youth in a world of opportunities as our theme, we have compiled this book, a parting tribute to the Seniors, an everlasting record of the year's activities for the under classmen, and an inspiration to all.

DOROTHY BROOKS
Editor-in-Chief
KATE HELMS
Business Manager
MISS MARTHA LOIS SMITH
Faculty Adviser





MacLeod
Bundy
Crossman

Goforth
Inscoc
Brown

Anstin
Venable
Pascal

Heed
Ryburn
Pons

The Staff

Gene MacLeod.....Assistant Editor
 Polly Goforth.....Asst. Business Mgr.
 Charlotte Anstin.....Business Editor
 Louise Heed.....Literary Editor
 Margaret Bundy.....Snapshot Editor
 Nancy Inscoc.....Snapshot Editor

Alice Venable.....Senior Editor
 Emily Ryburn.....Junior Editor
 Betty Crossman.....Sophomore Editor
 Elizabeth Brown.....Freshman Editor
 Emily Pascal.....Typing Editor
 Margaret Pons.....Typing Editor

Pine and Thistle

A literary magazine, sponsored by the Epsilon Chi and Zetesian Literary Societies, the *Pine and Thistle* is published quarterly. For this year four distinctive themes were chosen: contemporary poetry, art, drama, and modern opportunities for young people. In addition to contributions by students and faculty, there appeared in each issue an article by a connoisseur in the particular field chosen as a theme.

MARY FRANCES BINGHAM
Editor-in-Chief

ESTHER PETERSON
Business Manager

DR. GAYNELL SPIVEY
Faculty Adviser





Parker
Boykin
Lemmon

Nickolson
Black
Charles

Scott
Blake
MacLaurin

Moore
Cherry
McNair

The Staff

Catherine Parker...Asst. Editor, EX
 Catherine Nicholson, Asst. Bus. Mgr., Z
 Pattie Scott...Circulation Mgr., Z
 Florence Moore...Freshman Editor, Z
 Betty Boykin...Associate Editor, Z
 Kathleen Black...Associate Editor, Z

Jane Blake...Associate Editor, Z
 Alice Cherry...Typing Editor, Z
 Talulah Lemmon...Associate Editor, EX
 Kathryn Charles...Associate Editor, EX
 Betty MacLaurin...Associate Editor, EX
 Jane McNair...Typing Editor, EX

Student



MAUREEN PARROTT
President

JEAN BOYER
*Vice President of
the Student Body*

MADLYN PARKS
*Vice President
Junior Class*

MARY BLUE
President Junior Class

MARY EMILY MACMILLAN
President of Day Students

Officers

MAUREEN PARROTT
President

JEAN BOYER
Vice President

MADLYN PARKS
Secretary

MARY BLUE
Chairman of Proctors



Boyer
Blue

Parks
MacMillan

Government Association

Student Council

The purpose of this association is to unite the students of Flora Macdonald College in an earnest and loyal effort to hold personal honor as the only true standard for efficient social living; to emphasize the importance of self-control; and to develop the sense of personal responsibility.

Members of the council are elected by the student body and act as their representatives in the government. Student government has proved successful since its inauguration, and it is hoped that in the future it will become still more efficient and effective.

GRACE McDOWELL...*Pres. Senior Class*
RUTH HART...*Vice Pres. Senior Class*
MARY HALL...*Pres. Sophomore Class*
MARGARET JENKINS
President Freshman Class
ELLEN COX MERRITT
President Epsilon Chi Society

EVON ELDRIDGE
President Zetesian Society
DOLORES HUNSUCKER
President Athletic Association
EDITH WILLIAMS
President Christian Association



McDowell
Merritt

Hart
Eldridge

Hall
Hunsucker

Jenkins
Williams



EDITH WILLIAMS
President

Officers

EDITH WILLIAMS
President

HILDA BLUE
Vice President

FRANCES McFADYEN
Secretary

SUSAN INSCOE
Treasurer

MISS ZOU'LEAN ANDERSON
Faculty Adviser

Flora Macdonald Christian Association

The Flora Macdonald Christian Association seeks to promote growth in Christian faith, character, and fellowship. It strives to influence students to devote themselves to making the will of God effective in human society.

The Christian Association brings students into closer fellowship with other students, and presents the deeper, truer meaning of Christianity. It affords training for a beautiful life of service in the Kingdom of the Master. The Association strives constantly to make the college life richer. The membership is divided into ten highways for more intimate work. Devotional life grows stronger and more vital through the prayer bands which meet once each week. Throughout the year a number of guest speakers are brought to the college. The Christian Association also participates in community social service activities.

"Let no man despise thy youth; but be thou an example to them that believe, in word, in manner of life, in faith, in purity." I Timothy 4:12.

Cabinet

HILDA BLUE
Highway of Enlistment and Training
 SUSAN INSCOE and FRANCES McFADYEN
Highway of Stewardship
 SARAH WILSON
Highway of Life Enrichment
Religious Meetings
 LOIS ECTOR
Highway of Life Enrichment, Music
 VIRGINIA LEATHERMAN
Highway of World Fellowship

RUTH STUART
Highway of Learning, Sunday School
 LUCILLE GRIGGS
Highway of Learning, Publicity
 CATHERINE YATES
Highway of Camradeship
 HENRIETTA GRAY
Highway of Leisure Time, Social
 MARGARET LEONARD
Highway of Leisure Time, Library
 MAUREEN PARROTT
President of the Student Body



Blue
 Wilson
 Griggs

McFadyen
 Ector
 Yates

Inscoe
 Leatherman
 Gray

Parrott
 Stuart
 Leonard

Epsilon Chi Literary Society

Officers

- ELLEN COX MERRITT.....*President*
 ALICE HAMLETT.....*First Vice President*
 NINA TOLAR.....*Second Vice President*
 TALULAH LEMMON.....*Recording Secretary*
 NELL MCNAIR.....*Corresponding Secretary*
 BETTY RUTH ROBINSON.....*Treasurer*
 JEANNETTE CAPEL.....*Censor*
 ELIZABETH COOPER.....*Critic*
 TILDA LEAGUE.....*Chaplain*
 MRS. LOIS HARDING.....*Faculty Sponsor*



Hamlett
Capel

Lemmon
Cooper

McNair
League

Robinson
Tolar

Marshals

CHARLOTTE AUSTIN
MARY BLUE

ELIZABETH COOPER
POLLY GOFORTH



Zetesian Literary Society

Officers

EYON ELDRIDGE.....*President*
 MARGARET CROMARTIE.....*First Vice President*
 MARY SIEWERS WALL.....*Second Vice President*
 CAROLYN SUTPHEN.....*Recording Secretary*
 GLADYS FAYE BARNES....*Corresponding Secretary*
 FAYE BREWER.....*Treasurer*
 SANDY YATES.....*Censor*
 HAZEL LONG.....*Critic*
 BETTY BOYKIN.....*Chaplain*
 MISS HELEN SCOGGINS.....*Faculty Sponsor*



Cromartie
Brewer

Wall
Yates

Sutphen
Long

Barnes
Boykin

Marshals

JEAN BOYER

MARGARET CROMARTIE



RUTH STUART
Chief Marshal



JEAN FITZPATRICK

MADelyn PARKS





MARY EMILY MACMILLAN
President

Day Students

The Day Students, with Mary Emily Macmillan as their president and representative to the Student Council, have been an indispensable part of our student body. Their friendliness and their willingness to participate in social activities, are essential to the makeup of the campus spirit.



*Anna Spencer Daniels
Home Economics Club*

Officers

NELL DELOATCH
President

MARJORIE HEATER
Vice President

RUTH McLEMORE
Secretary

MARY SEWERS HALL
Treasurer



NELL DELOATCH
President





ALICE VENABLE
President

Mathematics Club

Officers

ALICE VENABLE	<i>President</i>
SARAH WILSON	<i>Vice President</i>
RUTH STEEDLY	<i>Recording Secretary</i>
MAY PRICE	<i>Corresponding Secretary</i>
JOSEPHINE STEPHENSON	<i>Treasurer</i>
MISS VERTIE PRINCE	<i>Faculty Adviser</i>

Membership in the Mathematics Club is determined on the basis of high scholastic standing in some Mathematics course. It has been the aim of the club to foster a genuine appreciation for past and contemporary developments in "the pure science" among those members who continue in this field of study; to serve as a means of expression and a method of perpetuation of interest for those members who no longer take courses in Mathematics.



William Bartram

Officers

SUSAN INSCOE *President*
ALICE VENABLE *Vice President*
CATHERINE PARKER *Recording Secretary*
MARY FRANCIS WELLS *Corresponding Secretary*
MINNIE MYERS *Treasurer*
BETTY MACLAURIN *Chairman of Camera Club*
DR. A. B. STUMP
MISS JOSEPHINE BRIDGMAN } *Faculty Advisers*
MISS VERTIE PRINCE }



SUSAN INSCOE
President

Members are elected to the William Bartram Scientific Society on the basis of academic merit in Mathematics and Science. At the monthly meetings this year, a series of studies were made on the gardens of North and South Carolina. A separate division of the club was organized, with Betty MacLaurin as chairman, for those interested in photography. This group met bi-monthly for discussion, and, whenever possible, to develop and print pictures.

Scientific Society





MILDRED MASON
President

Dramatic Club

Officers

- MILDRED MASON.....*President*
CATHERINE BOEGLI....*Vice President*
LOUISE HEED.....*Secretary*
MARJORIE HEATER.....*Treasurer*
MISS EMMA JONES...*Faculty Adviser*

The Dramatic Club since its inauguration last year has become one of the most active organizations on the campus. Membership, although limited, is open to those girls interested and talented in dramatics. The programs of the bi-monthly meetings serve as a means of bringing notice to the current professional productions, as well as a means of self expression.

In February, two one-act plays, "When the Whirlwind Blows" and "Manikin and Minikin," were produced. The club has made a brilliant beginning, in the face of many handicaps, and it is hoped that it will become a more integral and vital part of the campus life.

LOUISE HEED as Josefa and BETTY BOYKIN as Anna in *When the Whirlwind Blows*. POLLY GORORTH played the part of Madam Androya.





Top row: Bingham, Nicholson, Mason, McLaurin, Blue, Head, Clontz, Young.
Second row: Williams, Heather, Eldridge, Boykin, Spainhour, Bugg, Goforth.
Bottom row: Saunders, McDowell, Hart, Griggs, Brooks, Jerome, Ryburn.



RUTH HART and LUCILLE GRIGGS in *Mannikin and Minnikin*.



GRANDDAUGHTER CLUB



VIRGINIA CLUB



WEST VIRGINIA CLUB



SOUTH CAROLINA CLUB

Commercial Club

ALICE CHERRY.....*President*
EMILY PASCAL.....*Vice President*
MIRIAM STOUT.....*Secy.-Treas.*

Membership in the Commercial Club is open to all students in the Commercial department. Organized for the purpose of creating a feeling of fellowship among the group, it gives the members an opportunity to discuss problems and modern trends in business.



ALICE CHERRY
President





MADELYN PARKS
President

Music Club

Officers

MADELYN PARKS
President

JEAN FITZPATRICK
Vice President

VIRGINIA LEATHERMAN
Secretary

MARY BLUE
Treasurer

All students of the conservatory are eligible for membership in the St. Cecilia Music Club. It has been the purpose of the organization to broaden the student's knowledge and increase her appreciation for the lives and works of the masters.





Glee Club

Try outs are held early in the fall for membership in the Glee Club. The members are required to attend two rehearsals a week as they receive academic credit for taking part. This year the Glee Club, in addition to

the traditional part of the Candle Light Service and the Dome Service at Christmas, gave a concert here at the college, and some programs in nearby towns.

Scatette

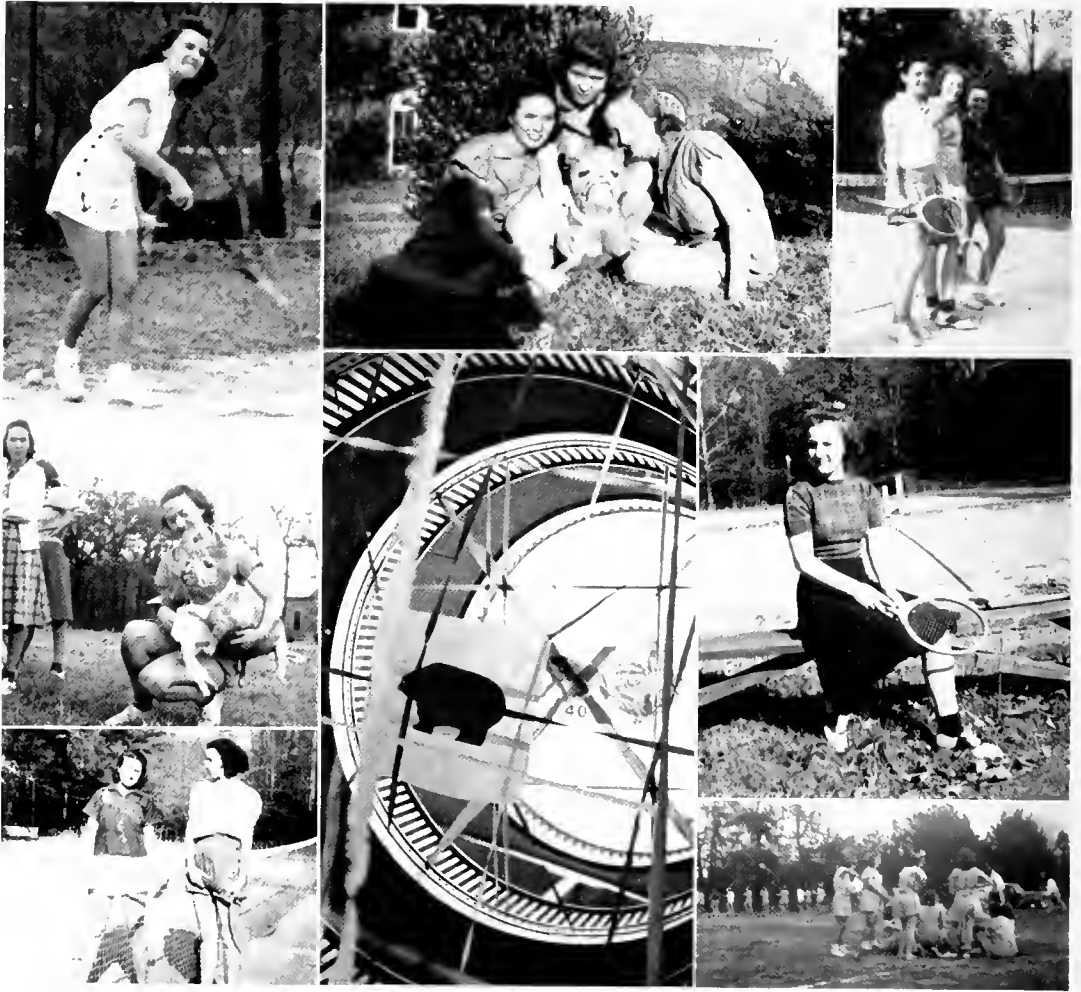
Back row: Patsy Harper, Jean Fitzpatrick, *Accompanist:* Lillian McArthur.

Front row: Lois Ector, Ruth Hart, Caroline Bule.

Not pictured: Edith Bugg.



Campus Highlights



Serve your ace, Emily. . . . The "Champ" and three of his supporters. . . . Ruby, Dotsie, and Pascal. . . . Mary and Aphrodite. . . . The Rotunda during hockey tournament. . . . Mary Parrott. . . . Miriam and Hilda. . . .The Freshmen hockey team.



*Top row, left to right: Betty Crossman, HIKING; Louise Moore, ARCHERY; Dorothy Tice, TENNIS;
Mary Frances Wells, HOCKEY.
Bottom row, left to right: Ruth McLemmore, BASKETBALL; Maude Erwin, SOCCER; Emily Ryburn,
PING PONG.*

Heads of Sports



Thomas

Bailey

Hunsucker

Bain

Athletic Association

DOLORES HUNSUCKER
President

HELEN THOMAS
Secretary

MARGUERITE BAIN
Vice President

HILDA BAILEY
Treasurer

"The purpose of the Flora Macdonald Athletic Association is to uphold and carry out the high ideals of sportsmanship, to foster a spirit of genuine service to the school, and to offer to all the opportunity to participate in athletics."

With Dolores Hunsucker as chief executive, this aim became an actuality. The highlights of the years program were the interclass hockey and basketball tournaments, and the ping pong and tennis tournaments. In addition the association sponsored a Hallowe'en carnival.

To aid her in carrying out her plans, Dolores chose seven girls as Heads of Sports. Through their able leadership, and capable management the program proved vigorous and beneficial as well as a lot of fun for all.

Cheer Leaders

Left to right:

RUTH STUART.....*Junior Cheer Leader*

LUCY THOMAS...*Freshman Cheer Leader*

MILDRED MASON, *Sophomore Cheer Leader*

LOUISE MOORE.....*Senior Cheer Leader*

MARGARET CROMARTIE, *Head Cheer Leader*





Senior Basketball

In spite of the fact that they were unable to attend practice regularly because of the various other time demanding activities, the Seniors had a remarkably fine team. With Faye Brewer as high scoring forward, and Evon Eldridge as star guard, backed by spunky Louella Allen, the group put up a stiff fight. However, their well coordinated pass work was not quite good enough to stop the Sophomores.



NELL DELOATCH
Captain

SCORES IN THE TOURNAMENT

Freshmen	14	Seniors	17
Sophomores	29	Seniors	10
Juniors	13	Seniors	21



Senior Hockey

Leaving a remarkable record of clean playing and fine sportsmanship behind them, the Seniors quit the hockey field "with no valor lost," although they did not win the tournament. The swift cooperative work of the backfield, especially that of Eldridge, Wells, and Tice, to say nothing of Venable and her shin guards, caused many an opponent worry.

The "Wildcats" fought to the last, but the "Bulldogs" had them treed.

SCORES IN THE TOURNAMENT

Seniors	1	Sophomores	2
Seniors	2	Juniors	0
Seniors	4	Freshmen	0



DOROTHY TICE
Captain



EDNA NEAL PATE
Captain

Junior Basketball

SCORES IN THE TOURNAMENT

Freshmen	18	Juniors	16
Sophomores	22	Juniors	11
Seniors	21	Juniors	13

Early in the season, the Juniors looked as though they were going to be a championship team. However, at the time of the tournament they were severely handicapped, due to the illness of two of their best players. In addition, their captain was injured in one of the earlier games. For their spirit, their sportsmanship, and their perseverance the Juniors should be commended. Better luck next year, girls.



Junior Hockey

SCORES IN THE TOURNAMENT

Juniors	2	Sophomores	4
Juniors	5	Freshmen	1
Juniors	0	Seniors	2



MAUDE ERWIN
Captain

With Maude Erwin as captain, the "game cocks" put up a stiff fight in the tournament. The smooth work of those on the forward line, McFadyen, Erwin, and Young, backed by the well timed, powerful, wallops of Wilson as center half back, made them a team to be envied as well as feared. Here's to them, may they have better luck in next year's tournament.





Sophomore Basketball

Need more be said of the ability of the Sophomores than that they won the tournament and had four players elected to the honorary varsity?

Hilda Bailey could pick the ball out of the air at heights unattainable by anyone else. She, Betty Crossman, and Mary Hall were an undefeatable trio. When the ball came into their possession, it was only a matter of seconds until it fell through the rim of the basket for a goal.



HILDA BAILEY
Captain

SCORES IN THE TOURNAMENT

Freshmen	20	Sophomores	33
Juniors	11	Sophomores	22
Seniors	10	Sophomores	29



Sophomore Hockey

They had spirit, they had pep, but what's more, they had a team that set things on fire. In spite of the fact that they had only one year's experience, they won the tournament, and little wonder. Their forward line knew just what ought to be done to get the ball down the field and into the goal. If they missed, their hard hitting half backs stopped any progress the opponents tried to make.

SCORES IN THE TOURNAMENT

Sophomores	2	Seniors	1
Sophomores	4	Juniors	2
Sophomores	5	Freshmen	0



JOSIE TROTTI
Captain



VIOLA WILLIAMSON
Captain

Freshman Basketball

SCORES IN THE TOURNAMENT

Sophomores	33	Freshmen	20
Juniors	16	Freshmen	18
Seniors	17	Freshmen	14

Fresh from high school, full of vigor, vitality, and enthusiasm, the young "polar bears" stuck by their guards and showed the stuff they were made of. Fast, well-timed passing, clean, accurate shots at the goal, and a real sense of coöperation and team work made theirs a team any class should be proud to own.



Freshman Hockey

SCORES IN THE TOURNAMENT

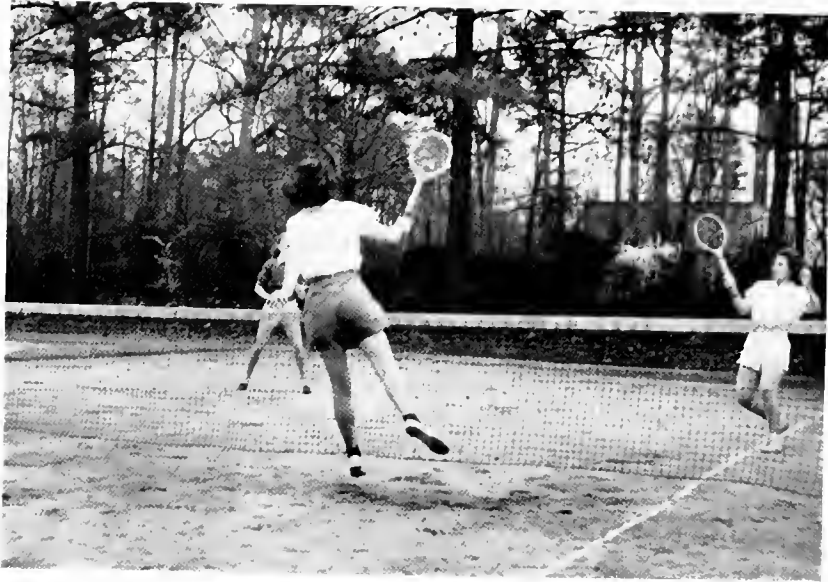
Freshmen	0	Sophomores	5
Freshmen	1	Juniors	5
Freshmen	0	Seniors	4



HELEN THOMAS
Captain

The Freshmen made a grand showing in the tournament this year, although they were at a disadvantage in that a number of them had never played the game before. Their plucky little captain, Helen Thomas, played like a veteran, to say nothing of Bullard and Rowe. Give them time and they will be the best yet.





Cherry

Spainhour

Pous



ALICE MORING CHERRY

Tennis

This year large numbers of students went out for tennis as a part of their required gymnasium work. Instruction as to the techniques of good playing were given by Miss Bateman, head of the Physical Education department.

In addition to the informal competition among the students, a tournament was planned for the late spring.

Archery

Although it is not as invigorating as the other campus sports, archery has won a number of highly enthusiastic supporters. Archery trains the eye as does no other sport, aids in the development of good posture and poise through the necessity for developing proper form as a basis of accuracy, and is therefore highly beneficial as well as lots of fun.

Louise Moore, as head of archery, did a great deal to increase and develop enthusiasm for this particular phase of our athletic program.



Yehudi Menuhin

Artist, scholar, genius, Yehudi Menuhin has, through hard work and a complete realization of the responsibility he owes to the talent with which he has been endowed, become one of the most brilliant musicians of all time.

The beauty of his life, the perfection of his artistry, and the place he has made for himself should be a challenge to any American youth, regardless of the life work chosen.



features



EVON ELDRIDGE

ELLEN COXE MERRITT

HAZEL LONG

MARY HALL

GRACE McDOWELL

SUSAN INSCOE

LOUISE MOORE



Miss Evon Eldridge

BEAUTY





Miss Ellen Coxe Merritt

FRIENDLIEST

Miss Hazel Long

CAPABILITY





Miss Mary Hall

SPORTSMANSHIP

Miss Grace McDowell

PERSONALITY





Miss Susan Inscoc

VERSATILITY

Miss Louise Moore

MAY QUEEN



MAY DAY

The people from the surrounding countryside, gathered at Old Carolina Plantation, to crown their Queen of the May, and to celebrate the day with dancing and singing. A crowd of pioneers, on their way West, stopped to pay homage to the Queen, and joined in the festivities. The darkies on the plantation, came up to the house to enjoy the celebration, and they too joined in the dancing. The children brought in the May Pole added their bit to the entertainment of the Queen and her Court.

LOUISE MOORE

May Queen

ELLEN COXE MERRITT

Maid of Honor

Attendants

Alice Hamlet

Evon Eldridge

Polly Goforth

Charlotte Austin

Alice Cherry

Louise Hall

Maureen Parrott

Elizabeth Cooper

Nell McNair

Jean Fitzpatrick

Train Bearers

Emily Ann Harding

Sally McArthur

Crown Bearer

Garnet Brooks, Jr.

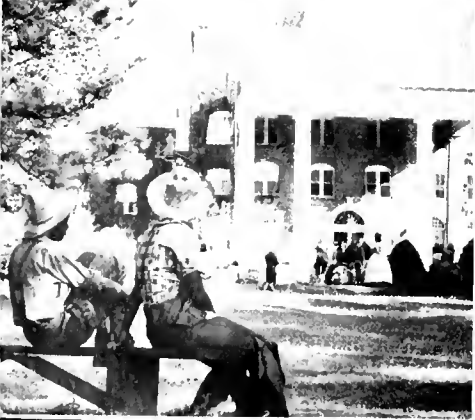


Louise Moore

MAY QUEEN



Mary





Day Scenes





Marie, where are you going? . . . No, we won't; not many . . . Guess who? . . . SO-OO-OO
 tired! . . . We are little Freshmen, can't you see? . . . Ruth and Lois, what are you up to?
 . . . Sandy must be explaining about the Irish potato to Ellen Coxe and Alice . . . The
 dome, from the archery range . . . Three Yankees and a Westerner . . . Edith, Hilda, Susan,
 and Frankie, they made the wheels go 'round in the Christian Association.



Off to Clemson for the week-end . . . Hello there' . . . "If a body meeta body comin' thru the rye" . . . Betcha can't get to the top, Marie . . . Ruthie and Cromartie . . . Paul Green is camera shy . . . there that's better: John Parker and Paul Green . . . What is so perplexing, Bing? . . . Charge me a dope, Polly? . . . Carolyn McGill and Dot Narron.



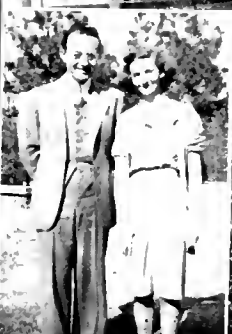
Catherine and Vivian . . . Waiting for the Freshmen . . . Clara, is it a weighty problem?
. . . Dolores . . . Egon Patri . . . We're going to miss you when we are gone, Dr. Vardell. . .
And a hilarious time was had by all . . . Lib, what is the idea? . . . Yeh, I had to pay twenty
cents for shirts.



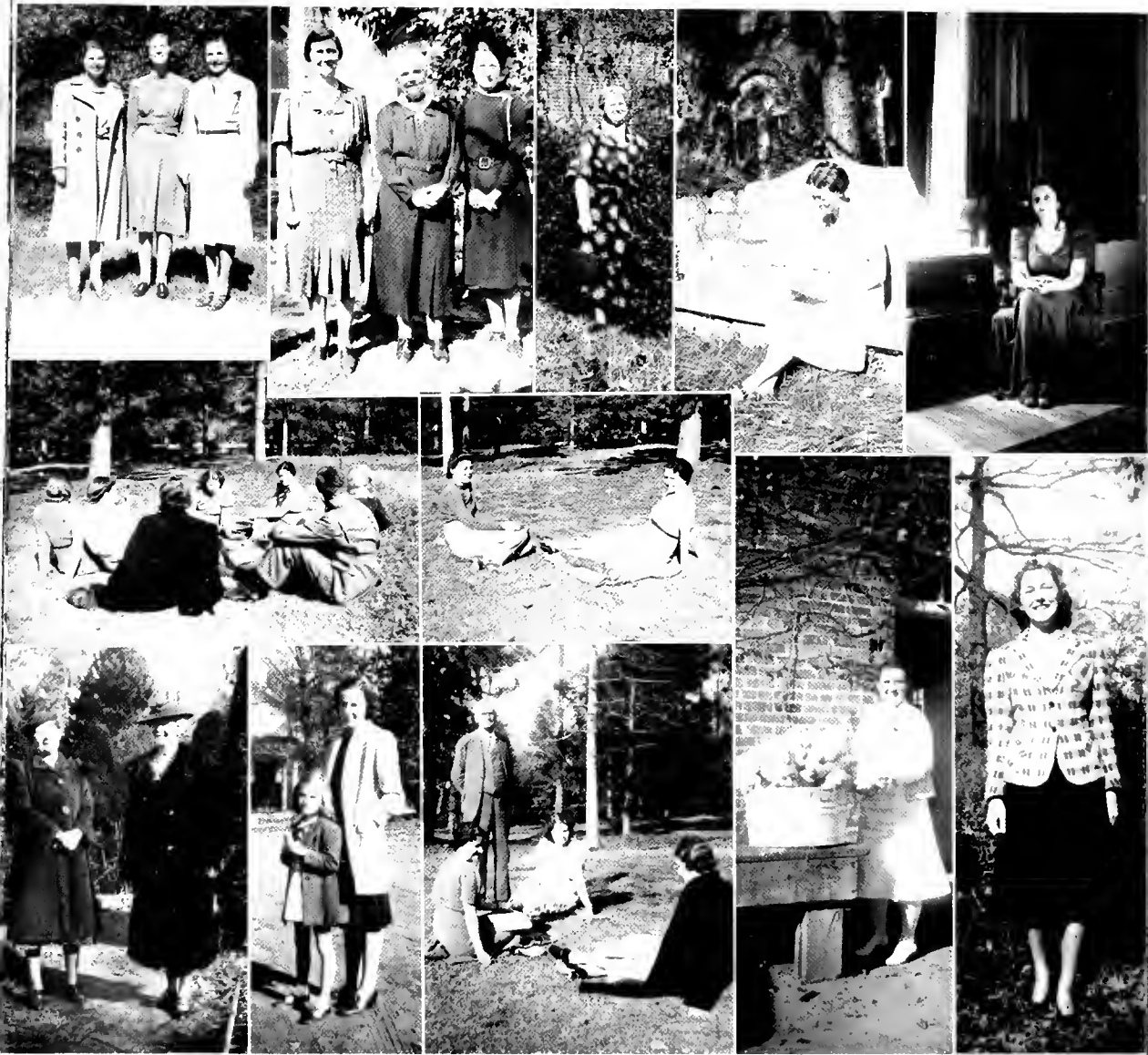
Through the doorway . . . Save me a bite, Kitty . . . Rose Dirmaid . . . Hey there! . . . Betty Ruth and Jo . . . Sunday afternoon stroll . . . Mr. Eberly, Miss Dirmaid, and Miss Cooney . . . Where are you going, my little maid? . . . Ah, skipping chapel for a bit o' lunch . . . Mildred and Aphrodite, alias Press.



Virginia, Grace, and Madelyn . . . Sandy and Raggedy Ann . . . "You in the pink sweater, move to the left"; Leonard, stop yawning . . . Three little lassies . . . Hey, three on one isn't fair . . . Claire, I want that red history book, by a man whose name starts with a B or a C . . . Back from the battle, but we loved it . . . Margaret, Bonnie, and Mary . . . Five pretty maids, all in a row . . . "Move over and let me in on this," says Jeff.



Marion, Carol, and Angella: looks mighty serious . . . Becky and Janet, what goes on? . . . Miss Seaggins and Lois, Senior recital . . . Now, Kate and Madelyn, we knew you were posing . . . Dr. Spivey, you're almost lost . . . Viola . . . Miss Smith and Rachel Brown, off to school . . . Mr. Yelanjian and Ruthie . . . Mrs. McPhaul . . . A quintet of day students.



Miss Prince, Miss Bridgman, and Miss Bateman . . . Mrs. Bedinger, her mother, and Mrs. Chapman . . . Miss Dew . . . Miss Anderson, are you enjoying that letter? . . . We miss you, Miss Morton . . . Is Miss Conoly telling a story? or is it Mr. McLeod? . . . Miss Scoggins and Dr. Spivey, sunning . . . Two Miss Browns . . . Emily Ann and Mrs. Harding . . . Time out to read the news . . . Miss Tait, I believe we are going to have turkey . . . Miss Cooney.

<p style="text-align: center;"><i>Compliments of</i></p> <p style="text-align: center;">Huggins Shoe Shop</p>	<p style="text-align: center;">Maxton Oil & Fertilizer Company</p> <p style="text-align: center;">Maxton, N. C.</p>
<p style="text-align: center;">Boatwright Chevrolet Co.</p> <p style="text-align: center;">RED SPRINGS, N. C.</p>	<p style="text-align: center;"><i>When in Maxton Stop at the</i></p> <p style="text-align: center;">AUSTIN DRUG CO.</p>
<p style="text-align: center;">SAUNDERS DRUG STORE</p> <p style="text-align: center;"><i>Fayetteville's Exclusive Cut-Rate Drug Store</i></p> <p style="text-align: center;">FAYETTEVILLE, N. C.</p>	<p style="text-align: center;">HUNTER BROTHERS (Incorporated)</p> <p style="text-align: center;">Electrical Merchandising</p> <p style="text-align: center;">RADIO - REFRIGERATORS - GIFTS CHINA - GLASSWARE FAYETTEVILLE, N. C.</p>
<p style="text-align: center;">BLAKE FLORIST</p> <p style="text-align: center;"><i>Prince Charles Hotel Building</i></p> <p style="text-align: center;">FAYETTEVILLE, N. C.</p> <p style="text-align: center;">Day Phone 2683 Night Phone 2834</p>	<p style="text-align: center;"><i>Compliments of</i></p> <p style="text-align: center;">H. R. HORNE & SONS</p> <p style="text-align: center;">FAYETTEVILLE, N. C.</p> <p style="text-align: center;">Druggists Since 1865</p>
<p style="text-align: center;">PERKINS</p> <p style="text-align: center;">Cleaning & Dye Works</p> <p style="text-align: center;">State License No. 131 122 Maxwell Street</p> <p style="text-align: center;">PHONE 4134 FAYETTEVILLE, N. C.</p>	<p style="text-align: center;"><i>Compliments of</i></p> <p style="text-align: center;">THE ROBESONIAN</p> <p style="text-align: center;"><i>"Your County Newspaper"</i></p> <p style="text-align: center;">Lumberton, North Carolina</p>
<p style="text-align: center;">Gifts for All Occasions</p> <p style="text-align: center;">HENEERY & SONS</p> <p style="text-align: center;"><i>Jewelers</i></p> <p style="text-align: center;">110 Hay Street Fayetteville, N. C.</p>	<p style="text-align: center;">ELECTRICITY IS CHEAP</p> <p style="text-align: center;">... and so, it is TIME to CHANGE to Better ELECTRICAL LIVING!</p> <p style="text-align: center;">●</p> <p style="text-align: center;">CAROLINA POWER & LIGHT CO.</p>

**RED SPRINGS
THEATRE**

It is the policy of this theatre
to provide the best pictures
obtainable especially for our
Flora Macdonald patrons.



Pleasure by the Hour

Compliments of
SANDLIN & CO., Inc.

Wholesale Grocers

FAYETTEVILLE, N. C.

Compliments of
**THE
FAYETTEVILLE
OBSERVER**

Compliments of
**SOUTHERN FRUIT
COMPANY**

CHARLOTTE, N. C.

*Compliments
of*
**TOWN OF
RED SPRINGS
NORTH CAROLINA**

M. H. McLEAN, JR.

—
Wholesale

**CANDIES
and
GROCERIES**

—
LUMBERTON, N. C.

Compliments of
THE CAPITOL
DEPARTMENT STORE
FAYETTEVILLE, N. C.
We Invite Your Patronage

Anne Green's
Permanent Wave Shoppe
We Serve You to Serve Again
RED SPRINGS, N. C.

— USE —
Merita
BREAD and CAKES

•
AMERICAN
BAKERIES COMPANY
Fayetteville, N. C.

NEW YORK OFFICE
450 Seventh Avenue

BELK - HENSDALE
COMPANY
FAYETTEVILLE, N. C.

Congratulates the
White Heather Staff

Remember: "You Always Save at
Belk's"
Make Our Store Your Headquarters
When in Fayetteville
Your Patronage Appreciated

Compliments
of
SINCLAIR SERVICE
STATION

A WELCOME
Always Awaits the Faculty
and Students at
B. C. MOORE AND SONS

You Will Be Pleased With Our
QUALITY and SERVICE

RED SPRINGS DRUG COMPANY
HEADQUARTERS FOR FLORA MACDONALD GIRLS

RED SPRINGS : NORTH CAROLINA

"Meet Your Friends at Our Fountain"

**Complete Supplies for
Every Need of the
College Girl**



TOWNSEND'S PHARMACY

The Rexall Store

RED SPRINGS : NORTH CAROLINA

DRINK

Coca-Cola

It's the Refreshing thing to do

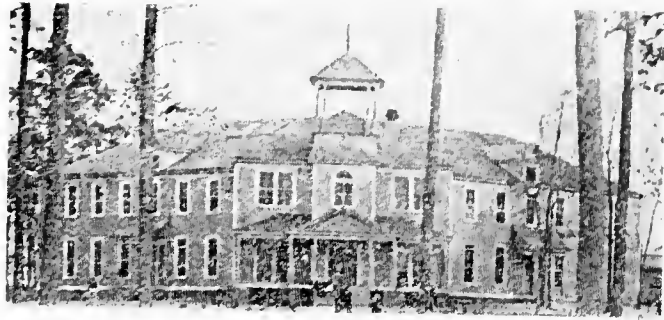
FAYETTEVILLE COCA-COLA BOTTLING CO.
Fayetteville, North Carolina

THE CAROLINA'S LARGEST
PHOTOGRAPHIC STUDIO

SIDDELL STUDIO
RALEIGH, N. C.

OFFICIAL PHOTOGRAPHERS
THE WHITE HEATHER

1896 - 1903



Red Springs Seminary

1903 - 1914



Southern Presbyterian College and
Conservatory of Music

1914 - 1940



Flora Macdonald College

1945



The Flora Macdonald Development Program

CORNER GROCERY

A Complete Line of
GROCERIES and MEATS

LESTER'S ESSO SERVICE

Telephone 16
Red Springs, N. C.

McNEILL SHOP

Laurinburg, N. C.

- There is a close relationship between the athlete's physical perfection and his diet. The Olympic Stars at Los Angeles in 1932 averaged one serving of Ice Cream each day . . . or five times as much as the average American.
- Be sure to include plenty of Southern Dairies Ice Cream in your diet, for it is especially rich in the food elements that build healthy bodies.



We Have What Your Car Needs
Complete Line Accessories

We Live to Serve and Serve to Live

GULF SUPER SERVICE

Telephone 9171
A.A. One Stop Service
RED SPRINGS, NORTH CAROLINA

FAYETTEVILLE WHOLESALE CO.

Successors to the Howard-Bobbitt Co.

In Fayetteville Since Nov. 1, 1938

Corner Orange and Chance Sts.

PHONE 2131

Fayetteville, N. C.

**Featuring Fresh
FRUITS AND
VEGETABLES**

Let Liberty Manufacturing Company
Help Your Farm

GOLD MEDAL FERTILIZER

Liberty Premium for Tobacco
Modern Gin System

Liberty Manufacturing Company

RED SPRINGS, N. C.

Insist on . . .

LANCE'S

PEANUT BUTTER SANDWICHES
and CANDIES

Always Fresh - Always Delicious

*Travel Luxuriously . . .
Yet Economically*

●
**FAST BUT
SAFE**

●
**QUEEN CITY
COACH CO.**

**MACK'S 5, 10, and 25c
STORES**

The Friendly Place

Red Springs, N. C.

SPRING SIDE DAIRY

GRADE A MILK
CREAM

Phone 43

The . . .

SCOTTISH BANK

LUMBERTON - PEMBROKE
RED SPRINGS

Member
Federal Deposit Insurance Corporation

D. M. McMILLAN

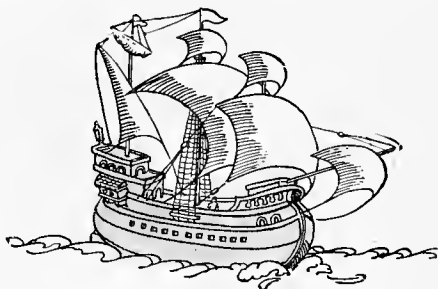
"Ford Products Since 1912"

Red Springs, N. C.

PATRONIZE

OUR

ADVERTISERS



The Store of Satisfaction is Particularly Proud to have among its Clientele the Flora Macdonald Faculty and Girls. Latest Styles Reasonably Priced.

Graham Company

"Where Style and Quality Outlive Price"

RED SPRINGS

..

NORTH CAROLINA



CHARLOTTE ENGRAVING CO.

School Annual Engravers

Charlotte, North Carolina



BUILDERS DREAMS

VISIONS created by the imagination precede the achievement of any really great accomplishment. The ability to weave the threads of imagination into the finished fabric is equally important.

It has been the privilege of the EDWARDS & BROUGHTON COMPANY to cooperate with the staff in creating their vision into material form.

Such cooperation is one of the "visions" which precede the building of a successful business, and is a part of the working policy of the EDWARDS & BROUGHTON COMPANY.

To those Staffs desiring complete cooperation, we offer unexcelled service.

You, too, may be proud of your annual.

Correspondence is Invited

EDWARDS & BROUGHTON CO.
RALEIGH, NORTH CAROLINA

Autographs

Autographs



