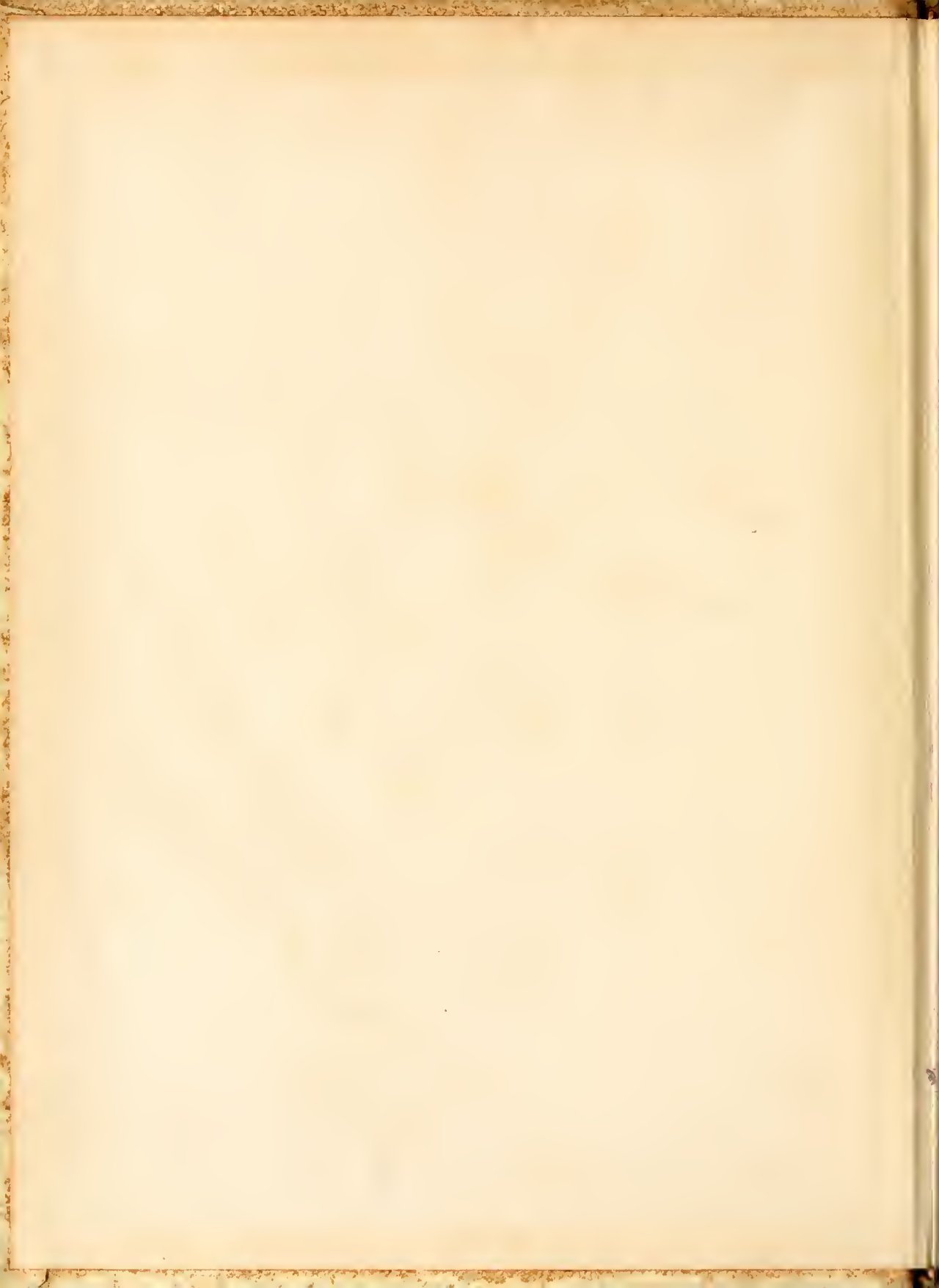
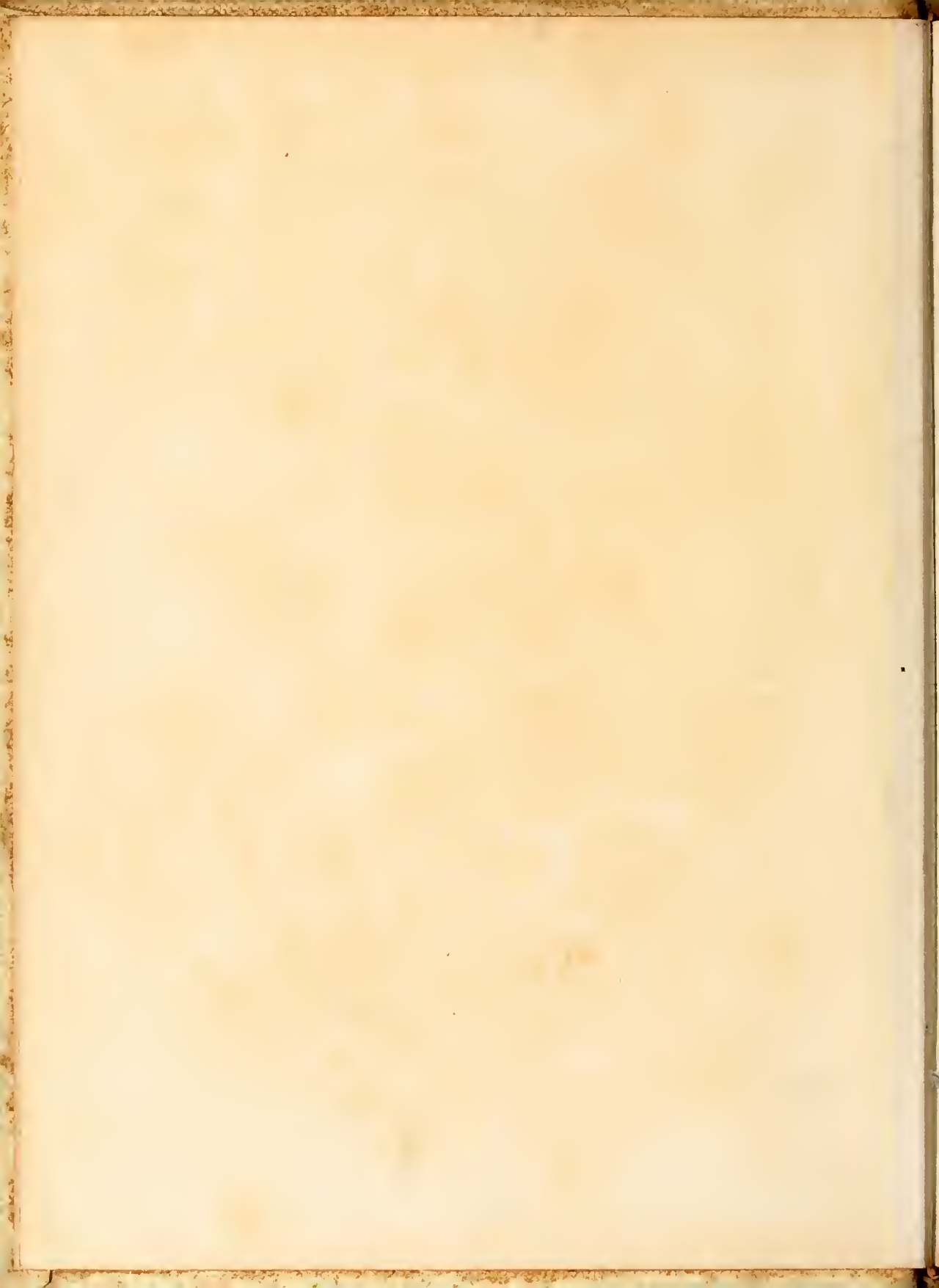




Jan 1942
White Heather



Helen Little



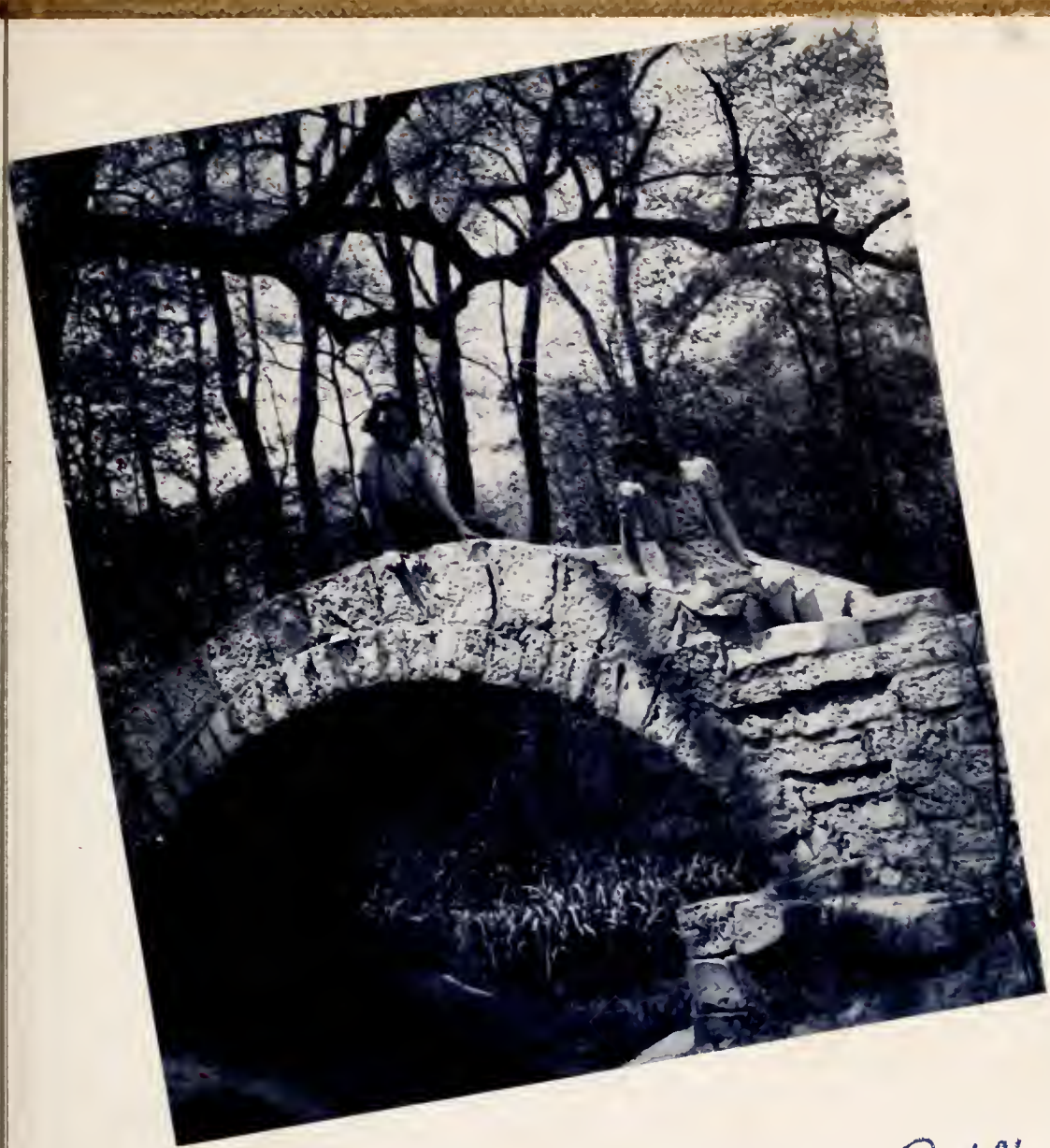
Helen Little

"CAMPUS DAYS
at Flora Macdonald"

Mildred Mason **EDITOR**
Betty Robinson **BUSINESS MGR.**



Presenting the **1942**



WHITE HEATHER *A Student Body Publication*



FLORA MACDONALD COLLEGE

Within these portals our dreams have become realities. When as Freshmen we entered the gates of Flora Macdonald, our sight was blurred by bewilderment—a new world had opened to us. Now, as we leave it, we take with us memories of the spirit of our college, and the inspiration which Christian fellowship has brought us.

We, the Seniors, are leaving college to enter a world of strife. We are facing uncertain tomorrows; we will meet new and difficult problems. We feel our inexperience, and it is with misgivings that we begin to take up our duties. Our success will depend upon our achievements of the past four years; the knowledge we have assimilated; the personalities we have become. If we have caught the spirit that Flora Macdonald offers, we can go forth to meet the future with courage and with faith.

The pages of this book are filled with our memories of this year; we hope it will be representative of your experiences. We offer it as a memorial to the Class of 1942. May its pages serve to help keep foremost the high ideals and aspirations we take with us.

With this aim, we present the 1942 WHITE HEATHER.



"DISCIPLINA FEMINARUM CHRISTO"



SOMETHING MORE THAN



ALMA MATER

Far away from noisy tumult
And the city's throng
Stands our cherished Alma Mater,
Worthy of our song.

Chorus

Now we lift our joyous chorus,
Full of love for Thee,
Hail to thee, O Alma Mater!
Hail, O, F.M.C.

On her wide and spacious campus
Springs of crystal rise,
Which for joy and health and beauty
She shall ever prize.

Stately vines wavering o'er her,
Proud her guards to be,
Whisper faith and hope and courage,
Faithful listens she.



KNOWLEDGE



Dedication

To

Miss Zoulean Anderson

We, the student body, with admiration and respect, dedicate

THE 1942 WHITE HEATHER

in appreciation of her constant friendship and guidance, and of the true ideals of Christian living with which she inspires us.



MISS ZULEAN ANDERSON



The PRESIDENT

HENRY GRAYBILL BEDINGER, B.A., B.D., D.D.
Flora Macdonald College, 1930—

DEANS of Flora Macdonald College

LUCILLE SHAW WILSON, *Dean of Students*

HAZEL MORRISON, *Dean of Faculty and Registrar*

J. WILGUS EBERLY, *Dean of Conservatory*



*with love Wilson to Helen
Dean Wilson*



Morrison



Eberly



Mary Conoly

H. Morrison
Anderson
Briscoe

Robeson
McPhaul
Maphet

Glenn
Neighbors
Stump

Chapman
Bateman
Prince

Conoly
Jones
Comer

Faculty

- MISS HARRIET N. MORRISON, B.A., M.A., Professor of Latin.
 MRS. LILLIAN FARQUHAR ROBESON, Professor of Violin.
 MRS. JANE COLSON GLENN, B.S., G.Ph., M.S., Professor of Chemistry and Physics.
 MRS. LIDA LAW CHAPMAN, B.A., B.M., Professor of Piano and Organ.
 MISS MARY MACLEAN CONOLY, B.A., B.S., M.A., Professor of Education.
 MISS V. ZOULEAN ANDERSON, B.A., M.A., Professor of Bible.
 MRS. ELIZABETH CLARKE MCPHAUL, B.A., Associate Professor of Bible.
 MRS. GENEVIEVE MACMILLAN NEIGHBORS, B.A., M.A., Associate Professor of Education and Social Science.
 MISS ETHEL BATEMAN, B.A., M.A., Professor of Physical Education and Health.
 MISS EMMA LOUISE JONES, B.A., Professor of Public School Music.
 MISS NELL BARNARD BRISCOE, B.C.S., B.A., Professor of Commercial Branches.
 MISS PRINCIE MAPHET, B.A., Assistant Professor of Commercial Subjects.
 DR. ALEXANDER BELL STUMP, B.S., M.S., Ph.D., Professor of Biology and Bacteriology.
 MISS VERTIE D. PRINCE, B.A., M.A., Professor of Mathematics.
 MISS FRANCES ELIZABETH COMER, B.S., M.S., Professor of Home Economics.

MISS HELEN SCOGGINS, B.M., Instructor and Official Accompanist of the Conservatory of Music.

MISS ESTELLE LOUISE COONEY, Professor of Voice.

DR. MARGARET AMELIA STIREWALT, B.A., M.A., Ph.D., Associate Professor of Biology and Physics.

MISS VERA BURNETTE, B.S., M.S., Professor of Home Economics.

MISS MARY CORNELIA HAMILTON, B.A., Professor of French.

MISS HELEN BURCH, B.A., M.A., Associate Professor of Education.

MISS MARY AMELIA MAGGINIS, B.A., M.A., Associate Professor of English.

DR. EUGENE ASHBY HAMMOND, B.A., M.A., Ph.D., Professor of History.

MISS ANNIE WILLIAMS, Secretary to the President.

MISS S. BROWN MORRISON, B.L., Bursar and Treasurer.

MISS ELEANOR SAMPLE, Librarian.

MISS VIRGINIA CONNOR, R.N., Resident Nurse.

MRS. ETHEL KESTLER PARSONS, Dietitian.

MISS ZELLA AVON DEW, Superintendent of Laundry Department.

Not Pictured:

MRS. MARY LOGAN SANDERSON, B.A., M.A., Professor of English.

MRS. CHRISTINE W. EWING, Professor of Spanish and German.

MR. JUNIUS ELMORE DOVELL, B.A., M.A., Acting Professor of History.

MRS. LOIS DAANE DOVELL, B.A., Instructor in Business English.



Scoggins
Burch

Sample

Cooney
Magginis

Connor

Stirewalt
Hammond

Parsons

Burnette
Williams

Dew

Hamilton
B. Morrison

In Memoriam

MISS HATTIE MCBRYDE

Born November 17, 1855

Died October 30, 1941



GRACE COOLEY

Born May 7, 1923
Died November 10, 1941



JANE BLACK

Born January 1, 1923
Died November 14, 1941



"OFF TO Classes"



SENIORS . . . *Dignity . . . Wisdom . . . Perse*



CATHERINE NICHOLSON
President

MARY ALICE FULK
Vice President

ALMA LOU SPIVEY
Secretary

MARY LIB TRAWICK
Treasurer

MARIBELLE GREEN
Tea Room Manager

MARJORIE MCKAY
Assistant Tea Room Manager

Freshmen: First impressions: Gray stone gates and tall pines—energetic girls in white, wearing blue ribbons on their dresses, smiled at us and showed us our rooms—ten pigtailed girls tied with red and green ribbons—submission to the Superior Sophomores—homesickness—learning to play hockey amidst undisciplined sticks and flying balls—first spring; renaissance of spirits that comes with wisteria and azaleas.

Sophomores: supercilious attitude toward the Frosh—increasing class spirit—hockey champs—open study hour—getting our egos deflated in English Literature—basketball champs—the war across the ocean.

Juniors: protective attitude toward our “little sisters”—Willkie vs. Roosevelt—Marshal dresses—corsages and men in tux.

Seniors: Realization of responsibilities—application forms—practice teachers’ conferences—Pearl Harbor—defense courses—knitting—serious discussions of the future—“For all the saints . . .”—goodbyes.

CATHERINE NICHOLSON . . .

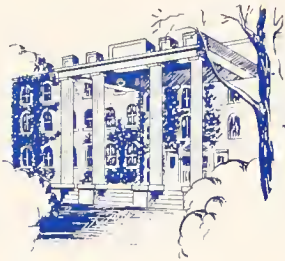
verance . . . and Personality . . . Success



MARTHA LEWIS ADAMS, B.A.
Robersonville, North Carolina
E. X.

South Carolina Club; Archery '40, '41.

*Crepe myrtle, polo coats and pigskin gloves,
deep red drapes, determined . . . individual . . .
accommodating.*



SARA META BAGGETT, B.S.
St. Stephens, South Carolina
Z.

Home Economics Club '39, '40, '41, '42; Tennis
'39, '40, '41, '42; Hockey, Archery, Basketball
'39, '40, '41.

*Garden parties, dinner rings, placid composure,
brown fur coats, sagacity in disguise.*





MARGARET BARKER, B.S.
Milton, North Carolina
E. X.

Woman's College U.N.C. '39, '40; Home Economics Club '39, '40; Tennis '39; Adelpian Society '39, '40; Basketball '40; Y.W.C.A. '39, '40; William Bartram Scientific Society '41, '42; Home Economics Club '41, '42.

Blue iris, reflections in clear water, crystal glasses, starched linen, mellow pears; warm, inner sunshine.



VIRGINIA NELL BOGUE, B.M.
Tampa, Florida
Z.

Glee Club '39, '40, '41, '42; Music Club '39, '40, '41, '42; Vice President Freshman Class '39; Secretary Sophomore Class '40; Archery '40, '41; Athletic Board, Head of Archery '41; Marshal '41; Recording Secretary Zetesian Society '41; President Zetesian Society, Student Council '42; Junior Organ Recital '41; Graduate Organ Recital '42; Dancer in "Highland Call" '41; Superlative '42; *Who's Who Among Students in American Colleges and Universities* '42; May Court '42.

Sand dunes, a gold locket, handboxes, fraternity pins, mellow organ tones, an amiable Beauty.



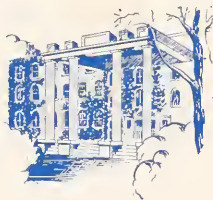
*the most
of the
of the
Virginia*

EDITH AILEEN BUGG, B.M.
Roanoke Rapids, North Carolina

Z.

Glee Club '39, '40, '41, '42; Music Club '39, '40, '41, '42; Dramatic Club '39, '40, '41, '42; Hockey '39, '40; Sextette '40, '41, '42; Sophomore Voice Recital '40; Dancer in "Highland Call" '41; Junior Voice Recital '41; Piano Recitals '41, '42; Prayer Band Leader '42; Student Volunteers '42; Treasurer Music Club '42; Graduate Voice Recital '42.

Prima Donna, Chinese gongs, dahlias, Hugo Wolf, earnestness, "Music, among the gifts that God hath sent, one of the most magnificent."



MARY CAROLINE BUIE, B.M.
Red Springs, North Carolina

Z.

Music Club '39, '40, '41, '42; President Music Club '42; Glee Club '39, '40, '41; Sextette '39, '40, '41, '42; Day Students Club '39, '40, '41; Sophomore Voice Recital '40; Junior Voice Recital '41; Graduate Voice Recital '42.

Concerts, blue satin, tea roses, Jessica Dragonette, fluted tones, "Music's golden tongue."





MIRIAM BULLARD, B.A.
Chadbourn, North Carolina
Z.

Music Club '39; Hockey '39, '42; Glee Club '40, '41, '42; Tennis '39, '40, '41; William Bartram Scientific Society '41, '42; Camera Club '41, '42; Vice President Camera Club '42; Basketball '42.

Candlelight and wine, gold picture frames, shadows, camera studies, "Thy voice to us is wind among still woods."



ANNIE MARGARET BUNDY, B.A.
Clio, South Carolina
Z.

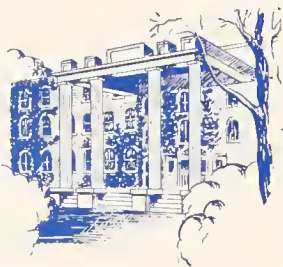
Prayer Band Leader '40, '41, '42; Mission Study Leader '40, '41; William Bartram Scientific Society '41, '42; Student Volunteers '39, '40, '41, '42; President Student Volunteers '42; Snapshot Editor WHITE HEATHER, '40, '41, '42.

Lilacs, open fires, Emily Dickinson, strawberry jam, "Her spirit is the harmony of truth."

NETTIE GRACE CAMERON, B.S.
Polkton, North Carolina
E. X.

Brevard Junior College '39; President of Anson
County Club; Home Economics Club '40, '41,
'42.

*Well-kept lawns, ruffled aprons, pink rosebuds,
fragile vases, an irresistible gentleness.*



ROBERTA DANAHO, B.A.
Durham, North Carolina
Z.

Mitchell College '39, '40; Volley Ball '41; Bas-
ketball '41; Prayer Band Leader '42; Fire
Squad '42; Mission Study Leader '42.

*White lilies, midnight, carved ivory, bonfires,
red toboggans, lively laughter that warms the
air.*





CLARA FOLGER DAVID, B.A.
Bennettsville, South Carolina
E. X.

South Carolina Club; Hockey '39; Tennis '40, '41; Glee Club '40, '41, '42; William Bartram Scientific Society '41, '42; Junior Class Editor WHITE HEATHER '41; Prayer Band Leader '41; Dancer in "Highland Call" '41; F.M.C.A. Cabinet '42; Sextette '42; Music Club '42; Literary Editor WHITE HEATHER '42.

Pink azaleas, white kittens, Baby Snooks, rain-boxes, vested choirs, the graciousness of a southern lady.



SARA AGNES EDENS, B.S.
Wakulla, North Carolina
E. X.

Day Students Club '39, '40, '41, '42; Basketball '39; Home Economics Club '39, '40, '41, '42.

Red apples, kerchiefs, cinnamon toast, sewing baskets, wicker chairs, sparkling eyes and merry laughter.

MARY EMMA FOLGER, B.S.

Pembroke, North Carolina

Z.

Day Students Club '39, '40, '41, '42; Home Economics Club '39, '40, '41, '42; Archery '39, '42; Tennis Club '40; William Bartram Scientific Society '41.

Short brown curls, valentines, animal crackers, moccasins, an unusual blend of the practical and the sentimental.



MARY ALICE FULK, B.A.

Lewisville, North Carolina

E. X.

Pine and Thistle Staff '41; Camera Club '41, '42; William Bartram Scientific Society '40, '41, '42; Archery Club '42; Dramatic Club '42; French Club '42; Commercial Club '42; Vice President Senior Class, Secretary Student Body, Student Council '42; Who's Who Among Students in American Colleges and Universities '42.

Lighted lamps, minced maxims, patterns of pine needles, emeralds; clear, vibrant insight—refreshing naturalness.





GERALDINE ISABELLE GRADY, B.A.

Seven Springs, North Carolina

Z.

Basketball '39; Tennis '40; Student Volunteers '40, '41, '42; Student Volunteers Secretary '40, '42; Student Volunteers Librarian '41; Prayer Band Leader '41, '42; Senior Sunday School Class President '42; Dramatic Club '42; Fire Squad '42.

Larkspur, dormer windows, soft woolens, ink wells; wise, unassuming sincerity.



MARIBELLE GREEN, B.A.

Greenville, South Carolina

E. X.

Tennis '39, '40, '41, '42; Volley Ball '39; South Carolina Club; Fire Squad '40; Furman University Summer School '40; Tea Room Manager '41, '42; Marshal '41; Treasurer Epsilon Chi '41, '42; Dramatic Club '42; Senior Hockey Team '42.

Charm bracelets, pink angora, college pennants, brick bungalows; well groomed in appearance, resolute in action.

*Helena -
I wish I had
known you a little
(even intended) to her -
You're okay - Maribelle
P.S. But I could do nothing about it!*

CLARA LUCILLE GRIGGS, B.A.

Sheffield, Massachusetts

Z.

Class President, Student Council '39; Delegate to Davidson Conference '39, '41; Glee Club '39, '40, '41, '42; Dramatic Club '39, '40, '41, '42; William Bartram Scientific Society '39, '40, '41, '42, Vice President '41; Mathematics Club '39, '40, '41, '42; Hockey Team '39, '40, '41, '42; Hockey Varsity '42; Basketball '40, '41, '42; Camera Club '40, '41, '42; Marshal '41; F.M.C.A. Cabinet '40, '41, '42, President '42; May Court '41; May Queen '42; *Who's Who Among Students in American Colleges and Universities* '42; Student Council '42.

Cathedral windows, white tapers, red roses, rhinestone clips, Easter Parade, "One to whom was given, so much of earth—so much of heaven."



*Love to a
fine girl!
Lucille*



SCOTT HALE, B.A.

Baton Rouge, Louisiana

Z.

Louisiana State Normal College '39, '40; Glee Club '41, '42; Mathematics Club '41, '42; William Bartram Scientific Society '41, '42; Dramatic Club '41, '42, Vice President '42; Snapshot Editor WHITE HEATHER '41; Exchange Editor *Pine and Thistle* '42; Senior Scribbler '42.

Newspaper clippings, Walt Whitman, footlights, Fruit cake, Lockheed flyers, the best proof of ability is action.





MARY GAFFNER HALL, B.M.

Hickory, North Carolina

Z.

Music Club '39; Treasurer Freshman Class '39; May Court '39; Basketball Varsity '39, '40, '41; President Sophomore Class '40; Glee Club '40, '41, '42; Superlative '40, '41, '42; Vice President Student Body '41; Student Council '40, '41, '42; Marshal '41; Editor College *Handbook* '41; F.M.C.A. Cabinet '42; President Student Body '42; Junior Piano Recital '41; Senior Piano Recital '42; Sextette '42; Hockey Varsity '42; *Who's Who Among Students in American Colleges and Universities* '41, '42.

Sunlight on azure lakes, April, blue hyacinths, symphonies and swing, platinum, expressive blue eyes reflecting sincerity and truth.



PATSY WIGGINS HARPER, B.M.

Pinetops, North Carolina

Z.

Glee Club '40, '41; Music Club '40, '42; Dramatic Club '42; Class Secretary '41; Archery '40, '41, Sextette '40; Zetesian Society Critic '41, First Vice President '42; College Cheer Leader '42.

English tweed, Harper's Bazaar, Gershwin rhapsody, Venetian blinds, pungent wit, an artistic touch that is charmingly individual.

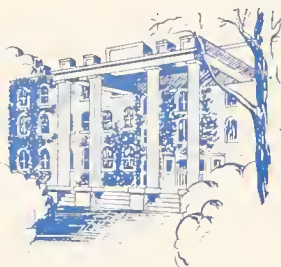
ANGELIA HUBBARD, B.A.

Clio, South Carolina

Z.

Limestone College '39; William Bartram Scientific Society '40, '41, '42; Mathematics Club '40, '41, '42; Prayer Band Leader '41; Mission Study Leader '42; Student Volunteers '42.

Robins, brown suede, tapestries, leatherbound books, white cliffs, generosity and understanding that warm the heart.



MARY HUDSON, B.S.

Ruffin, North Carolina

Z.

Home Economics Club '39, '40, '41, '42; William Bartram Scientific Society '41, '42; Sponsor of College and Prize Winner in North Carolina State Textile Style Show '41; Atlantic Christian College Summer School '41; Second Vice President Zetesian Society '42.

Patchwork quilts, March, ocean spray, wreathed smiles, capable of doing all things well.





HAZEL MAY JONES, B.S.
Red Springs, North Carolina

Z.

Home Economics Club '39, '40, '41, '42; Day Students Club '39, '40, '41, '42; Glee Club '39, '40, '41, '42; William Bartram Scientific Society '40, '41.

Pink carnations, lunchcons, airline luggage, trench coats, a clever way of expression.



MARGARET Z. KORNEGAY, B.A.
Warsaw, North Carolina

Z.

Basketball '39, '40, '41, '42; Hockey '39, '40, '41, '42; Captain Hockey Team '39; William Bartram Scientific Society '40, '41, '42; Tennis '39, '40, '41; Camera Club '42.

Chestnuts, polo, autumn leaves, maple furniture, slacks and sweaters, independence and non-chalance.

Laura Frances Lowry, B.S.

Jefferson, South Carolina

E. X.

Basketball '39, '40, '41, '42; Hockey '39, '42;
Tennis '39, '40; South Carolina Club; Archery
'40; Hiking '41; Wake Forest Summer School
'40; Home Economics Club '39, '40, '41, '42.

*Pink geraniums, hand-painted china, twill rain-
coats, willow trees, powder blue, quiet smiles and
pensive moods.*



Mildred Hope Mason, B.A.

Roanoke, Virginia

Z.

William Bartram Scientific Society '39, '40, '41,
'42, President '42; Mathematics Club '39, '40,
'41, '42; Social Chairman Mathematics Club
'41; Dramatic Club '39, '40, '41, '42, President
'40; Music Club '40, '41, '42, Secretary '42;
Glee Club '40, '41, '42; Virginia Club; Class
Cheer Leader '39, '40, '41, '42; Home Economics
Club '39; Camera Club '40, '41, '42; *Pine and
Thistle* Staff '41; Delegate to North Carolina
Collegiate Press Association '41, '42; Editor-in-
Chief *WHITE HEATHER*, and Chief Scribe '42.

*White sea gulls, eversharp pencils, thorough-
breds, fox grapes, superlative . . . , a unique
combination of intellect, craftsmanship, and
artistry.*





*Heaven
I certainly
enjoyed showing
you and I hope you
the best of love
Love
Mell*

NELLIE GRAY MATTHIJS, B.A.
Warsaw, North Carolina
Z.

Scotch Dancer in "Highland Call" '41; Wake Forest Summer School '41.

Turntables, Concord grapes, russet chrysanthemums, Easter baskets, a strand of pearls, thorough—studious.



MINNIE ELIZABETH MYERS, B.A.
Tar Heel, North Carolina
E. X.

William Bartram Scientific Society '39, '40, '41, '42. Treasurer '40; Mathematics Club '39, '40, '41, '42; Music Club '39, '40; Treasurer Junior Class; Marshal '41; Vice President Student Body. Student Council '42; Editor *College Handbook* '42; Glee Club '42; College Superlative '42; *Who's Who Among Students in American Colleges and Universities* '42.

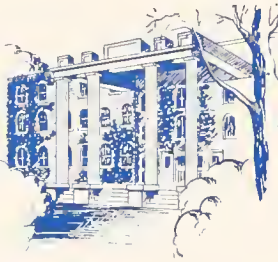
Station wagons, a square-cut diamond, shasta daisy, picnics; strength . . . , wisdom . . . , a genuine love of living.

PATTIE McDANIEL, B.A.
Bennettsville, South Carolina

Z.

Prayer Band Leader '40; William Bartram
Scientific Society '41, '42; F.M.C.A. Cabinet
'41, '42.

*Falling snow at twilight, spruce trees, wisteria,
quiet chapels, "Her soft smile attracts the
soul."*



*Low. high - success
and happiness
is what I
wish for
you -
Pattie*

SARA ALINE MacDONALD, B.S.
Hamer, South Carolina

Z.

Home Economics Club '39, '40, '41, '42; Bas-
ketball '40; Day Students Club '39, '40, '41, '42;
Flora Macdonald Summer School '40.

*Primroses, leather belts, mixing bowls, station-
ery, kindness and faithfulness are the essence of
friendship.*





MARJORIE JANE MCKAY, B.A.

St. Pauls, North Carolina

E. X.

Day Students Club '39; Granddaughters Club; Hockey '40, '41, '42; Hockey Varsity '42; William Bartram Scientific Society '40, '41, '42; Treasurer '41; Camera Club '40, '41, '42; Basketball '41; Tennis '41; Prayer Band Leader '42; Mission Study Leader '42; Assistant Tea Room Manager '42.

White violets, peasant scarves, Mother Goose rhymes, book ends, friendliness . . . poised reserve and dignity.



JEANNE COURTNEY MCKENZIE, B.A.

Rockingham, North Carolina

E. X.

Woman's College U.N.C. '39, Fall '40; Wake Forest Summer School '41; Fire Captain '42.

Contagious smiles, sprays of spirea, candlewick bedspreads, quiet dignity coupled with good nature.

*Dearest Helen
It has been all I
year knowing all I
your girls from Monday
I think you are a
small bunch of
girls. Love
Jeanne*

CAROLYN BALDWIN MACLEAN, B.S.

Racford, North Carolina

E. X.

Montreat College '39; Home Economics Club '39, '40, '41, '42; William Bartram Scientific Society '41, '42; Camera Club '42; Dramatic Club '42; Marshal '41; Prayer Band Leader '42.

Marigolds, camels' hair coats, "Mickey Mouse pic," butterscotch, "spontaneous wisdom and truth breathed by cheerfulness."



MARJORIE AGATHA McMANUS, B.S.

Red Springs, North Carolina

Z.

Home Economics Club '39, '40, '41, '42; Day Students Club '39, '40, '41, '42. Secretary-Treasurer '41; Glee Club '40, '41, '42.

Gardenias, football games, black wool suits, finger boxes, a look of freshness like the dawn.





DOROTHY SINGLETON McMILLAN, B.A.

Red Springs, North Carolina

Z.

Commercial Club '41; Day Students Club '41, '42.

Figuriness; dewdrops and crocuses; cool, clear springs; fragile grace with gentle ways and charm.



SARAH MARGARET MCPHAUL, B.A.

Red Springs, North Carolina

Z.

Day Students Club '39, '40, '41, '42. Vice President '42.

Dogwood, dark green corduroy, diaries, brown thrushes; the calm, unruffled stillness of a summer twilight.

ELIZARETH WETMORE MACPHERSON, B.A.

Fayetteville, North Carolina

E. X.

Hockey '39, '40, '41, '42; Tennis '39, '41, '42; Captain Junior Tennis Team '41; Basketball '40, '41, '42; Archery Club '41; William Bartram Scientific Society '41, '42. Recroding Secretary '42; Camera Club '41, '42; Fire Chief '42; Vice President Athletic Association '42; Prayer Band Leader '42; Mission Study Leader '42; Hockey Varsity '42.

Fireflies, black-eyed susans, wooden beads, keepsakes, scholarliness . . . ; in soul sincere, in action faithful, in honor clear.

luck and success!

Bye Beth



MARGARET RAY NEWTON, B.A.

Red Springs, North Carolina

Z.

Mathematics Club '40, '41; William Bartram Scientific Society '40; Day Students Club '39, '40, '41, '42.

Flower petals, a minuet, rick-rack braid and pinafores, quiet efficiency that lends poise.





CATHERINE NICHOLSON, B.A.

Troy, North Carolina

Z.

William Bartram Scientific Society '39, '40, '41, '42; Dramatic Club '39, '40, '41, '42. President '42; Hockey '39; Assistant Business Manager *Pine and Thistle* '40; Class Treasurer '40, President '41, '42; Member Student Council '41, '42; Camera Club '40, '41, '42; *Who's Who Among Students in American Colleges and Universities* '41, '42; Senior Scribbler '42; College Superlative '42.

Quilled pens, Shakesperian sonnets, mahogany, rollicking good times, a sense of the truly artistic.

*Best wishes and
love,
Catherine*



CLEO OSBORNE, B.A.

Vannoy, North Carolina

Z.

Montreat College '39, '40; Vice President Student Volunteers '42; Prayer Band Leader '42.

Clover, gray stone churches, pine cones, amethyst, a quiet and gentle smile.

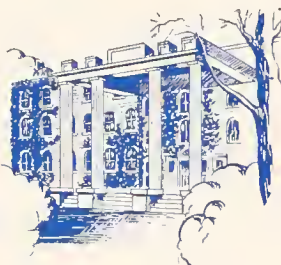
DOROTHY RUTH PACE, B.A.

Jacksonville, Florida

Z.

Mitchell College '39, '40; Prayer Band Leader '41; Mission Study Leader '41; William Bart-ram Scientific Society '41, '42; Treasurer Zetesian Literary Society '42; F.M.C.A. Cabinet '42; Student Volunteers '41, '42.

Mountain laurel, white roads, accordions, green foliage, quiet faith and steadfastness of purpose.



RUTH WILSON PREVATT, B.S.

Red Springs, North Carolina

Z.

Day Students Club '39, '40, '41, '42; Basketball '40; Tennis '41; Home Economics Club '39, '40, '41, '42.

Pin stripes, rows of tulips, red cardigans, white enamel; humor, warm and all-embracing like the sunshine.





JULIA ANN PROCTOR, B.A.
Wilson's Mills, North Carolina
E. X.

Peace Junior College '38, '39; Meredith College
'40; William Bartram Scientific Society '42.

*Yellow sweaters, Maltese kittens, etchings, win-
dow boxes; calm, even tempered, adept with
paint and brush.*



EVELYN ROBERTSON, B.S.
Ahoskie, North Carolina
E. X.

Archery '39; Hockey '39, '40; Home Economics
Club '39, '40, '41, '42, Vice President '41, Presi-
dent '42; Chief Marshal '41; Basketball '40.

*"Fils," water lilies, Mademoiselle, portfolios,
iced tea, smiles like sudden sunshine.*

BETTY RUTH ROBINSON, B.A.

Charlotte, North Carolina

E. X.

Fire Squad '39, '40; Treasurer Epsilon Chi '40; Censor Epsilon Chi '41; Secretary Sunday School Class '41; Tea Room Manager '41; Assistant Business Manager WHITE HEATHER '41; Delegate to North Carolina Collegiate Press Association '41, '42; Dramatic Club '42; Business Manager WHITE HEATHER '42.

"Slug," jonquils, pale yellow wool, staff pens, carnivals and confetti; lively and fun-loving, radiant smiles.



JEAN KEYS RYBURN, B.A.

South Charleston, West Virginia

E. X.

West Virginia Club '39, '40; Hockey '39, '40, '42; Mission Study Leader '40, '41; Dramatic Club '40, '41, '42, President '41, Treasurer '42; Prize Winner in North Carolina State Textile Style Show '40; Second Vice President Epsilon Chi '41; Assistant Editor-in-Chief WHITE HEATHER '41; Marshal '41; Delegate to Davidson Conference and P.S.A. Conference '41; Secretary F.M.C.A. '42; French Club '42; Delegate S.C.A. Conference '42; Mathematics Club '41, '42; William Bartram Scientific Society '41, '42.

Buttercups, perky hair ribbons, Shelley, tea parties, bald-headed puppy dogs, conscientious keezpie with mischief in her eye.





HAZEL MAE SANDERS, B.S.

Four Oaks, North Carolina

E. X.

Home Economics Club '39, '40, '41, '42; Wake Forest Summer School '40, '41.

Ginger snaps, tea kettles, nasturtiums, humming birds, a frankness peppered with jollity.



MARY CLYDE SHEPHERD, B.A.

Lansing, North Carolina

Z.

Lees McRae Junior College '39, '40; Prayer Band Leader '41; Dramatic Club '41, '42; William Bartram Scientific Society '41, '42, Vice President '42; Vice President F.M.C.A. '42; Senior Scribbler '42; *Who's Who Among Students in American Colleges and Universities* '42.

Blue skies and clear mountain streams, delphiniums, collies, sapphires, paths through the woods, "Seeing beauty in all things is perhaps the secret of her lovely temperament."

ALMA LOU SPIVEY, B.A.
Elizabethtown, North Carolina

E. X.

Tennis '39; Hockey '39, '40, '41, '42. Head of Hockey, Hockey Varsity, Captain Senior Hockey Team '42; William Bartram Scientific Society '40, '41, '42, Treasurer '42; Mathematics Club '40, '41, '42, Vice President '42, Corresponding Secretary '41; Camera Club '40, '41, '42, Vice President '41, President '42; Dancer in "Highland Call" '41; Monogram Club '42; Class Secretary '42; Basketball '42; French Club '42.

Coffee shops, spices, frisky squirrels, sun tan, blue morning glories, as refreshing as a cool breeze.



WILLIE FRANK STUBBS, B.A.

Gibson, North Carolina

Z.

Mars Hill Junior College '39, '40; Flora Macdonald College '41, '42.

Peppermint candy sticks, red cardigans, hope chests, black scotties, school books, seriousness tempered with flashes of merriment.





ELIZABETH THOMAS, B.S.

Beaufort North Carolina

E. X.

Meredith College '39; Wake Forest Summer School '40; Home Economics Club '41, '42.

Black velvet, walnut paneling, magnolias, tea towels, still pools, a calm and well-poised manner.



NELL THOMAS, B.A.

Florence, South Carolina

Z.

Class Hockey Team '39; Class Basketball Team '39, '42; Basketball Varsity '40; Class Tennis Team '42; Treasurer Student Body, Student Council '41; Marshal '41; May Court '41; William Bartram Scientific Society '39, '40, '41, '42; Mathematics Club '39, '40, '41, '42; Dramatics Club '42; French Club '42; Editor *Pine and Thistle* '42.

Study lamps, Turkish coffee, infectious laughter, japonicas, hunters' green, bittersweet; fresh, casual good looks.

MARY ELISABETH TRAWICK, B.A.

Raeford, North Carolina

E. X.

Basketball '39, '40, '41, '42, Captain '42;
Hockey '39, '41, '42; Hockey Varsity '41, '42;
Tennis '39, '40; Assistant Tea Room Manager
'41; Monogram Club '42; Class Treasurer '42;
Head of Table Tennis '42.

*Roller skates, leather jackets, convertibles,
varsity monograms; a rare compound of sin-
cerity, indifference, and vivacity.*



EDITH USSERY, B.A.

Sanford, North Carolina

E. X.

Archery '39, '40, '41; Wake Forest Summer
School '39.

*Small gold watches, powder puffs, periwinkle,
pastel plaids, baby fores, a piquant charm.*





MARY McNEILL WATSON, B.A.

Red Springs, North Carolina

Z.

Day Students Club '39, '40, '41, '42; Mathematics Club '39, '40, '41, '42; Granddaughters Club '39, '40, '41, '42; William Bartram Scientific Society '39, '40; Day Students, Vice President '41, President '42; Student Council '42.

Dresden china, blue forget-me-nots, dainty white linen handkerchiefs, book shelves, clipped phrases . . . reserve . . . knowledge.



ANGELLE WILLIAMSON, B.S.

Chadbourn, North Carolina

Z.

Meredith College '39; Granddaughters Club '39; Wake Forest Summer School '41; Home Economics Club '39, '40, '41, '42; Hiking '40; William Bartram Scientific Society '41, '42.

Windmills, date-nut bread, Mexican pottery, tiny pink and white checks, a generosity flavored with candor.

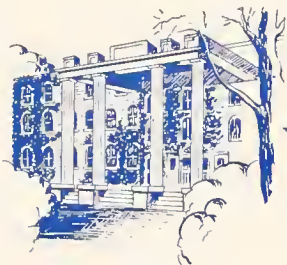
GRACE ELIZABETH WITHERS, B.M.

Spencer, North Carolina

E. X.

Music Club '39, '40, '41, '42, Secretary '41, Vice President '42; Glee Club '40, '41, '42, President '42; F.M.C.A. Cabinet '41, '42; Delegate to Davidson Conference '40, '41; Senior Editor WHITE HEATHER '42; Senior Scribbler '42; Junior Piano Recital '41; Graduate Piano Recital '42.

Forsythia, cameos, Liszt Etudes, hot chocolate, good books, lighted windows, "And 'tis my faith, that every flower enjoys the air it breathes."



EDITH AREY WOMBLE, B.A.

Wagram, North Carolina

E. X.

Montreat Junior College '38, '39; Volley Ball, Hiking, Basketball '41; Prayer Band Leader '42.

Frosted window panes, sprigged dainty, yellow tulips, quiet hills, the warmth of pastoral sunshine.



The FRIENDSHIP SONG

*Our college friendship is the finest,
Worth any price that you can pay.
May bonds of friendship ne'er be broken
As through this world we wend our way.
But yet, whatever be life's fortune,
In God our trust shall ever be.
Those good old days won't be forgotten,
And the girls at F.M.C.*

JUNIORS . . . *Amiability* . . . *Competence*



SARAH BELLE SMITH
President

MARGARET JENKINS
Vice President

LOIS PARKER
Secretary

MARY MONICA JACKSON
Treasurer

MRS. ELIZABETH McPAUL
Faculty Adviser



"They just aren't typical freshmen! Why they are not green at all!" That's what we heard when as freshmen we entered the doors at F.M.C. to an entirely new world for us; and rightly was it said. We were carefree, happy, and proud; and throughout our first year we showed a class spirit that cannot be rivaled. Then we were promoted to the rank of sophomores, and became the largest class of the four. It was a wonderful year. We cannot brag of the tournaments or the hockey and basketball games we won, for they were only three in all; but we showed our sportsmanship and looked forward to our junior year with a challenge to the other classes. As we look back, we see that we have not accomplished as much as we had wished; but we still have another chance; and it is with great excitement that we are looking forward to our senior year.

MARY MONICA JACKSON.

Dear Co-eds -
I bet I miss
all for you coz
I see you.

... Loyalty . . . Aspiration. *Chromatic ???* "Big Four"





BARNETT, CATHERINE CELESTE

Raleigh, N. C.

BLACK, JANE

York, S. C.

BOWDEN, SARAH BULLOCK

Warsaw, N. C.

BRITTAIN, ELIZABETH

Summerfield, N. C.

BRUNER, KATHERINE

Cleveland, N. C.

BULLARD, MARIAN

Wagram, N. C.

BUNN, LOUISE

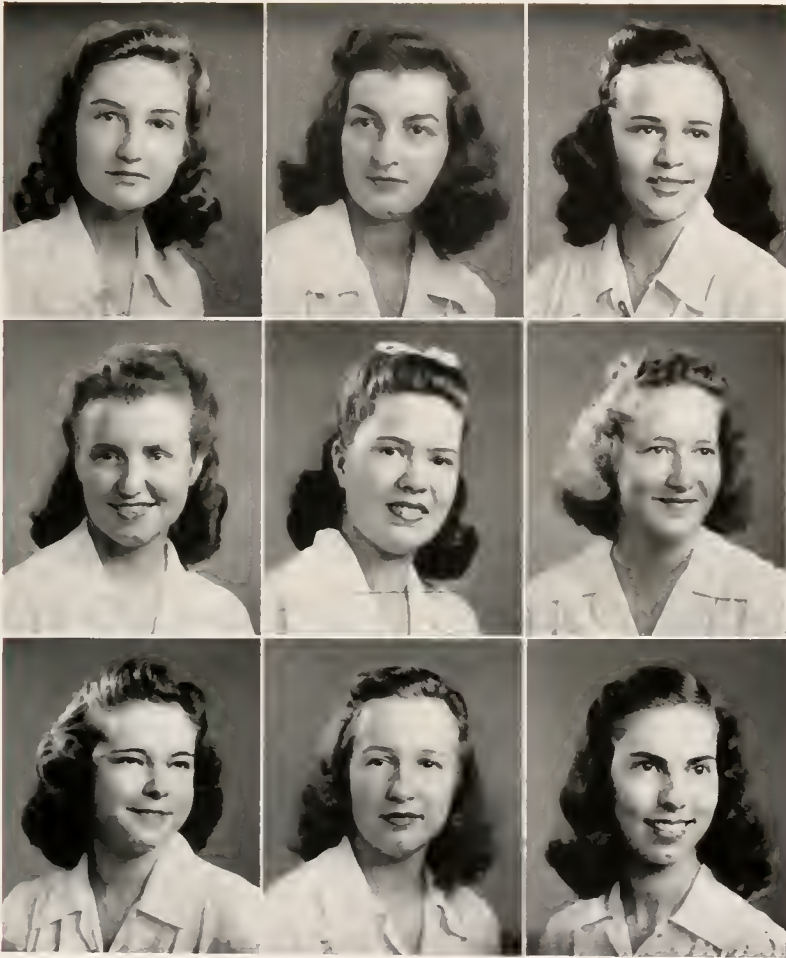
Rocky Mount, N. C.

CABLE, LOUISE

Madison, N. C.

CAMPBELL, MARGARET

Parkton, N. C.



COLE, MARGARET McIVER, Woodleaf, N. C.
 CRAIG, JOSEPHINE Marion, N. C.
 CREAGH, ANNE Pollocksville, N. C.

EDENS, IRENE. Red Springs, N. C.
 GAITLEY, MARTHA Red Springs, N. C.
 HEFNER, MARGARET ROSE Hanlet, N. C.

HIGSMITH, KATHRYN, Rocky Point, N. C.
 INGRAM, MARY ELLA Wagram, N. C.
 JACKSON, MARY MONICA, Wilmington, N. C.

*Luck always,
Margaret -*



*Well, you're
well and I
wouldn't give
anything for
this past
year - right?
Hello,
I've enjoyed living
on Morgan with you
this year a lot. I am
seeing you over to
next year. I look to
a sweet girl - always
with love*

JENKINS, MARGARET
KLUSMEIER, CAROLYN
LANCASTER, MERLE ETTA

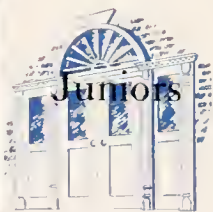
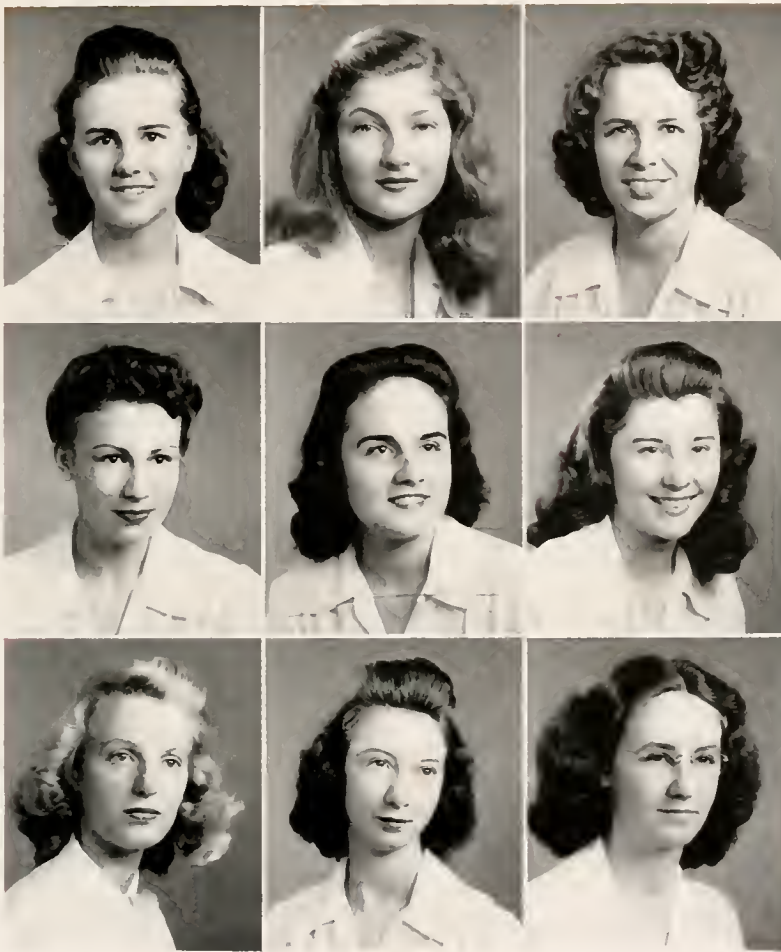
Mayesville, S. C.
Charlotte, N. C.
Parkton, N. C.

LYTCH, BARBARA
LYTCH, JEAN MCKAY
MARTIN, DOROTHY

Laurinburg, N. C.
Rowland, N. C.
Whiteville, N. C.

MONROE, RUTH
MOORE, FLORENCE TEMPLE
McbRYDE, KATHRYN

Eagle Springs, N. C.
Ashland, Va.
Lumberton, N. C.



McDANIEL, CAROL
 McDANIEL, VIRGINIA
 McDONALD, JANET

Bennettsville, S. C.
 Red Springs, N. C.
 Cameron, N. C.

McFADYEN, HELEN
 McKENZIE, GRACE
 McKENZIE, MARJORIE

Hsuehowfu, Kiangsu, China
 Rockingham, N. C.
 Red Springs, N. C.

McKETHAN, REBECCA
 McLAUGHLIN, MARY
 McLEOD, MARGARET

Fayetteville, N. C.
 Vass, N. C.
 Aberdeen, N. C.

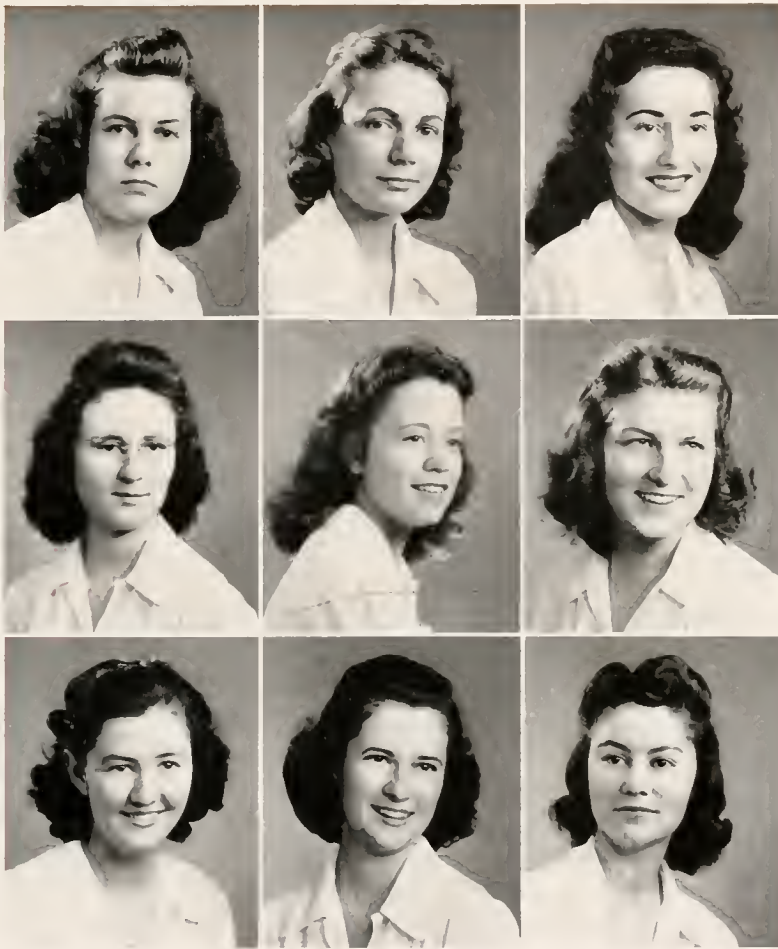


McPhaul, Marion Jean Parkton, N. C.
 McPherson, Kathleen Gayle Shiloh, N. C.
 MacPherson, Sue Harden Fayetteville, N. C.

Oliphant, Hazel Mooresville, N. C.
 Parker, Lois Clinton, N. C.
 Pate, Billy Gibson, N. C.

Powers, Louise St. Pauls, N. C.
 Powers, Phyllis St. Pauls, N. C.
 Powers, Rachel Elizabeth St. Pauls, N. C.

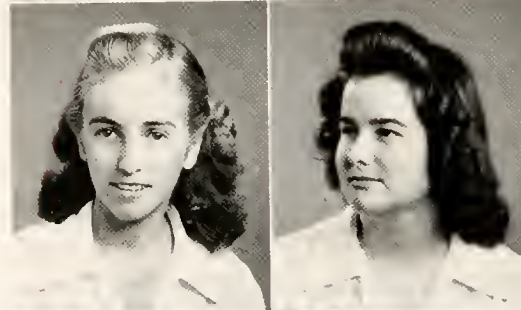
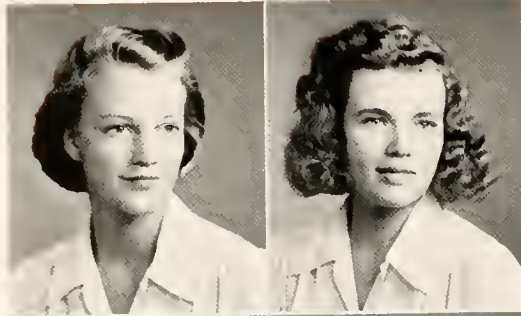
*Make
 Wash
 history
 think
 These
 the
 Love
 To
 you
 do
 step
 of
 it
 Phyllis*



PROCTOR, LUCILLE Wilson's Mills, N. C.
 ROSS, JEAN Patzcuaro, Mexico
 ROWE, VAUNE Lumberton, N. C.

SANDERS, GLADYS Raeford, N. C.
 SHOOK, LOIS Red Springs, N. C.
 SINCLAIR, MARGARET Wilmington, N. C.

SMITH, MABLE MACNEILL Red Springs, N. C.
 SMITH, SARAH BELLE Elizabeth City, N. C.
 STROUD, GERALDINE Pink Hill, N. C.



*Do nothing
 run at these learn two
 years - these have to
 see more of you
 next year!
 Love from another
 Helen*

SUTHERLAND, MARTHA
 TATE, LILLIAN

TEACHEY, EVELYN
 TESTER, HELEN

THOMAS, HELEN
 THOMAS, LUCY

Laurinburg, N. C.
 Gastonia, N. C.

Rose Hill, N. C.
 Bennettsville, S. C.

Barium Springs, N. C.
 Florence, S. C.



VIDAL, CAROLYN
WALKER, MARY OLIVE

Gainesville, Florida
Greelyville, S. C.

WARREN, LELLON
WEAVER, ELIZABETH HOPE

Clinton, N. C.
Red Springs, N. C.

WILLIAMS, VIOLA

Eagle Springs, N. C.

SOPHOMORES . . . *Self-Assurance* . . . *Quips*



JANE TEMPLE GRAHAM
President

FRANCES LIFRAGE
Vice President

LILLIAN BELL
Secretary

LUCILLE JONES
Treasurer

MISS MARY MAGGINIS
Faculty Adviser

The Sophomore Class had its dim beginnings in the fall of 1940 when seventy-three freshmen enrolled. After hobbling around on Rat Day with one high-heeled and one low-heeled shoe, we felt we had been duly initiated. Margaret Lewis was elected our president and Miss Magginis our adviser. Under the able leadership of Eloise Penny, the freshmen won the basketball tournament. Our Freshman-Sophomore Banquet showed much ingenuity in the theme, Underwater Paradise. We eagerly took part in May Day and were proud to have one of our class dance the leading role in the pageant, Stravinsky's "The Firebird."

Jane Temple Graham was elected our sophomore president. We felt proud to cross the aisle to take our seats in chapel. Our banquet this year was built around "Stardust" and proved very successful. The sophomores placed second in the hockey tournament, with Eloise Penny as our captain. Nancy Ellis is head of basketball this year.

These two years here have meant much to us, and we know we shall enjoy the next two equally as well.

LILLIAN BELL.

"So nothing hoping
Here's hoping
you have fun
this year with hope
& all your gain
& something "Jovial"

and Quirks . . . Eloquence . . . Resourcefulness





ADAMS, KELSIE NEILL Laurell Hill, N. C.
 AREY, MARY LILY Raleigh, N. C.
 BANKS, MARY ELIZABETH Richlands, N. C.
 BARKER, LAURA BELLE Milton, N. C.
 BARNES, EDNA MAE Lumberton, N. C.

BAUCOM, NELDA IMOGENE Red Springs, N. C.
 BAUCOM, FRIEDA YVONNE Red Springs, N. C.
 BAXLEY, DORIS WINIFRED St. Pauls, N. C.
 BELL, LILLIAN CAROL Eustis, Florida
 BRITT, SUE ELLA Lumberton, N. C.

CAMPBELL, COLLEEN Kings Mountain, N. C.
 CARNEY, ALICE Pulaski, Virginia
 COLE, FRANCES ELIZABETH Timmonsville, S. C.

COOLEY, GRACE Wagram, N. C.
 COX, MAGDALENE Mayodan, N. C.



*No-nother
 This acco-ry ale
 got hurt a little
 Hoops - Be sweet
 I have fun that in
 daily
 "Coney"*

*Love,
 "Maggie"
 (552 back)*



EASTRIDGE, GWENDOLEN Charlotte, N. C.
 ELLIOTT, PAXTON Monroe, N. C.
 ELLIS, NANCY JEANNETTE Goldston, N. C.
 GILCHRIST, CATHERINE Red Springs, N. C.
 GRAHAM, JANE TEMPLE Blountville, Tenn.

GRANTHAM, JANE MCBRYDE St. Pauls, N. C.
 GRIFFIN, DAPHNE Bailey, N. C.
 HARRINGTON, LUCY RUTH Broadway, N. C.
 HELMS, SARAH FRANCES Bethune, S. C.
 HENRY, MARY BELLE Rocky Point, N. C.

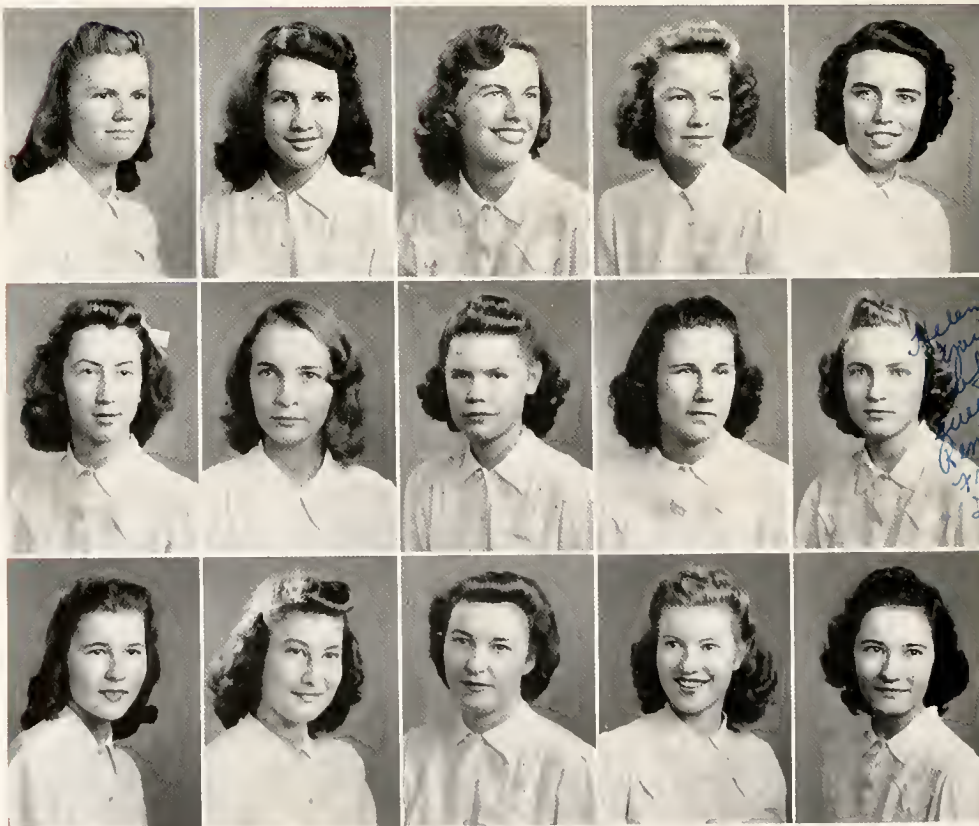
HERRING, "JACKIE" Fayetteville, N. C.
 HOLMES, ELIZA Fayetteville, N. C.
 HORTON, HARRIETT Monroe, N. C.
 HUGHES, MARY LEE Wilmington, N. C.
 JONES, LUCILLE St. Pauls, N. C.



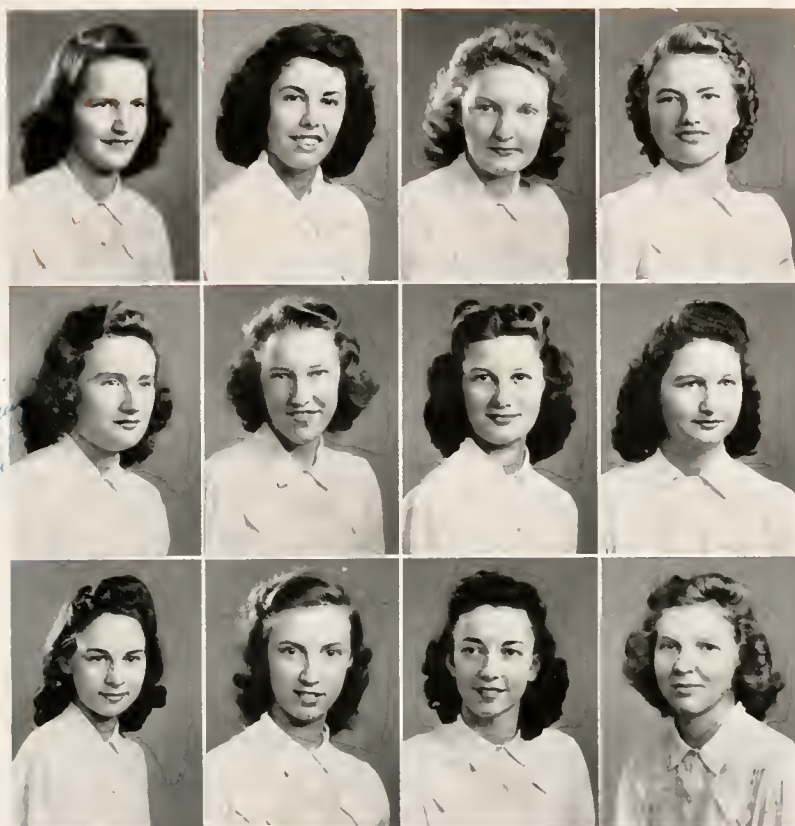
KALLAM, ANYCE LORENE Stoneville, N. C.
 LEWIS, MARGARET Hemp, N. C.
 LIFRAGE, FRANCES Salters, S. C.
 LITTLE, HELEN Charlotte, N. C.
 LOY, FRANCES Fayetteville, N. C.

MARTIN, GLORIA Raleigh, N. C.
 MILLS, RUTH MCKAY Red Springs, N. C.
 MORRISON, HELEN ELIZABETH
 Luebo, Belgian Congo, Africa
 McCULLOCH, LAYNE KATHERINE Sanford, N. C.
 McDUFFIE, ANNIE CATHERINE Hemp, N. C.

McNAIR, ELIZABETH THOMAS Tar Heel, N. C.
 PARROTT, CAROLYN MEES Florence, S. C.
 PEARSALL, MARGARET Wilmington, N. C.
 PENNY, ELOISE Coats, N. C.
 POPHAL, DOROTHY BERTHA St. Pauls, N. C.



*Helena
 You are
 the
 sweetest girl.
 Remember
 Mrs. C. W.
 Love, A. K. W.*



Well, it'll be a real nice day's out. I've enjoyed it very much. I'll be in the...

ROBESON, JEANNE
 SKINNER, MARION
 SMITH, DINIÉ McQUEEN
 STOWE, MILDRED LEE

Tar Heel, N. C.
 Elliot, S. C.
 Raeford, N. C.
 Clover, S. C.

TEABEAUT, MARGARET M.
 TYREE, VIRGINIA OWEN
 WALKER, HELEN MARY
 WALL, MARGARET

Fayetteville, N. C.
 Rocky Mount, N. C.
 Hemp, N. C.
 Morven, N. C.

WHITE, LUGENE
 WILKERSON, LOLETA
 WILLIAMSON, CHRISTINE
 WORLEY, MASON

Barium Springs, N. C.
 Lumberton, N. C.
 Lumberton, N. C.
 Pink Hill, N. C.



FRESHMEN. . . *Jollity* . . . *Enthusiasm* . . .



CLAIRE WILCOX

President

MARTHA PENCE

Vice President

HELEN GARRISON

Secretary

MARY JOHNSON

Treasurer (not pictured)

MISS MARY CORNELIA HAMILTON

Faculty Adviser

When some two hundred and fifty upper-classmen arrived at Flora Macdonald September 9, they slipped off their shoes and waded in quietly through the streams of tears that were lubricating their hallowed floors. "The freshmen," they whispered, "are here." The month that followed is history that should never repeat itself. By November 26, however, the freshmen had achieved self-possession, and on that day became a class by electing officers.

On Friday of the first week in December, the freshman rooster reversed his habits by crowing long and lustily at sundown to herald an epoch-making event. The freshman hockey team, captained by Jane Latham and cheered by Betty Barringer, had won a game in the annual tournament for the first time in history, with a win over the juniors.

The next important day was December 19, a date every freshman memorized first after the Alma Mater—Christmas Holidays. Closest to her heart when she returned from the holidays was the Freshman-Sophomore. February 21 was her day of days when she took her place beside her rat day tormentors as an equal. Her classification was no longer a distinction but a title. She was a Freshman and a potential Sophomore.

JOANNA HOUCINS.

*Here's to
you & all
best wishes
and love
(Klein)*

Novelties . . . Inquisitiveness . . .





*Best wishes
Luck & happiness
I'll be
standing around
on the 3rd week
of all of you are
O.K.
See you
next year
Betty*

Remember me

*Hello! I don't enjoy
knowing you left. I
think you are plenty
cute and smart.
Come to see me.
Best wishes and
Love, Willene*



Freshmen

- ACKER, MARY CATHERINE.....Pickens, S. C.
- ATKINS, JO ANNE.....Kernersville, N. C.
- AUTRY, JOHNNIE.....Raeford, N. C.
- BANKHEAD, RUTH.....Monroe, N. C.
- BARRER, LYNNE.....Sanford, N. C.
- BARRINGER, BETTY.....Carthage, N. C.

- BEDINGER, JUNE.....Asheville, N. C.
- BLAKE, MARGARET CAROLYN.....Chadbourn, N. C.
- BOND, WINIFRED.....Oriental, N. C.
- BOWDEN, MARTHA NELL.....Warsaw, N. C.
- BRITTEN, ELIZABETH MARY.....Kinston, N. C.
- BRODIE, PAIGE LEWIS.....Dumfries, N. C.

- BURNS, MARY LEE.....Goldsboro, N. C.
- CALVERT, MARGARET ROSE.....Red Springs, N. C.
- CAMPBELL, WILLENE.....Paw Creek, N. C.
- CHAPIN, MARION ETHEL.....Sheffield, Mass.
- CLARK, DOROTHY.....Clarkton, N. C.
- CLARK, ROSA LEE.....Clarkton, N. C.

*Back to
cute girl!
Iris Lee*



COBB, ELLEN GRAY.....Smithfield. N. C.
 COX, IRIS LEE.....Asheboro. N. C.
 CREDLE, ELLA LOUISE.....Washington. N. C.
 CROUT, SARA CLAY.....Columbia. S. C.
 CULLER, RUTH.....High Point, N. C.
 CULBERTSON, ALMA VIVIAN.....Glen Alpine. N. C.

DAVIS, MARTHA ELIZABETH.....Sumter. S. C.
 DEW, ALMA LEE.....Lumber Bridge, N. C.
 DILLING, ELIZABETH ANN.....Gastonia. N. C.
 DUKE, NOVELLA.....Falkland. N. C.
 EDENS, ANN MARIE.....Red Springs. N. C.
 EDNEY, KATHEY.....Hendersonville. N. C.

EVANS, ELIZABETH HERIOT.....Bennettsville. S. C.
 FENNELL, DOROTHY.....Loris. S. C.
 FERGUSON, MARY ALICE.....Charleston. S. C.
 FIELDS, HELEN LOUISE.....Pinehurst, N. C.
 GARRISON, HELEN FRANCES.....Burlington, N. C.
 GORDON, DORIS.....Rye, N. Y.





*lots of love to
a extra girl - I
with you could
be very
day of love
Pamela*



Freshmen

GORE, FRANCES.....Tabor City, N. C.
 GOODWILL, PAMALA.....Roanoke, Va.
 GRAVES, SARAH.....Kernersville, N. C.
 GRIFFIN, ELEANOR.....Goldsboro, N. C.
 GRIGGS, MARTHA ELIZABETH.....Cheraw, S. C.
 HARPER, MARY CAROLYN.....Florence, S. C.

HASTY, JEWEL.....Buie, N. C.
 HAYWOOD, WINIFRED.....Burlington, N. C.
 HEATER, DOROTHY LEE.....Cary, N. C.
 HIGHTOWER, GEORGIA.....Palm Beach, Fla.
 HIPPI, AILEEN CLARKE.....Charlotte, N. C.
 HODGIN, ELIZABETH.....Red Springs, N. C.

HONEYCUTT, RUTH CHASE.....Kenansville, N. C.
 HOCHINS, JOANNA KATHRYNE.....Charlotte, N. C.
 HUGGINS, ERNESTINE.....Aynor, S. C.
 HUNTLEY, MARY ANNA.....Peachland, N. C.
 HURLEY, MIRIAM.....Troy, N. C.
 INNES, ALICE.....Rocky Mount, N. C.

*Love,
mmp*



IVEY, NANCY ASHLEY.....Hamlet, N. C.
 JOHNSON, MARY ALLENE.....Kenly, N. C.
 JOHNSON, MARY ELIZABETH.....Elizabethtown, N. C.
 JORDAN, MARGARET DOWNING.....Sanford, N. C.
 KING, MARY REESE.....Asheboro, N. C.
 KIRKPATRICK, KATIE MAC.....Maxton, N. C.

LATHAM, JANE.....Leaksville-Spray, N. C.
 LEE, VIRGINIA PITTMAN.....Dunn, N. C.
 LOVETT, RUTH.....Fair Bluff, N. C.
 LUTZ, MARY EDNA.....Lenoir, N. C.
 LYTTON, CATHERINE.....Gastonia, N. C.
 MATHESON, BETTY ROSS.....Conover, N. C.

MELVIN, JANE.....Aberdeen, N. C.
 MOORE, ELEANOR BIDDLE.....Wilmington, N. C.
 MOORE, EMMA LOUISE.....Yanceyville, N. C.
 MOORE, MELBA LEE.....Fairmont, N. C.
 MOORE, WEYBURN.....Madison, N. C.
 MORENE, SYLVIA.....Gibsonville, N. C.



Dear D... nothing...
 I...
 ...
 ...
 ...
 ...
 ...



More nose
 More fun
 More fun
 Love of...

Love to you
 Love to you

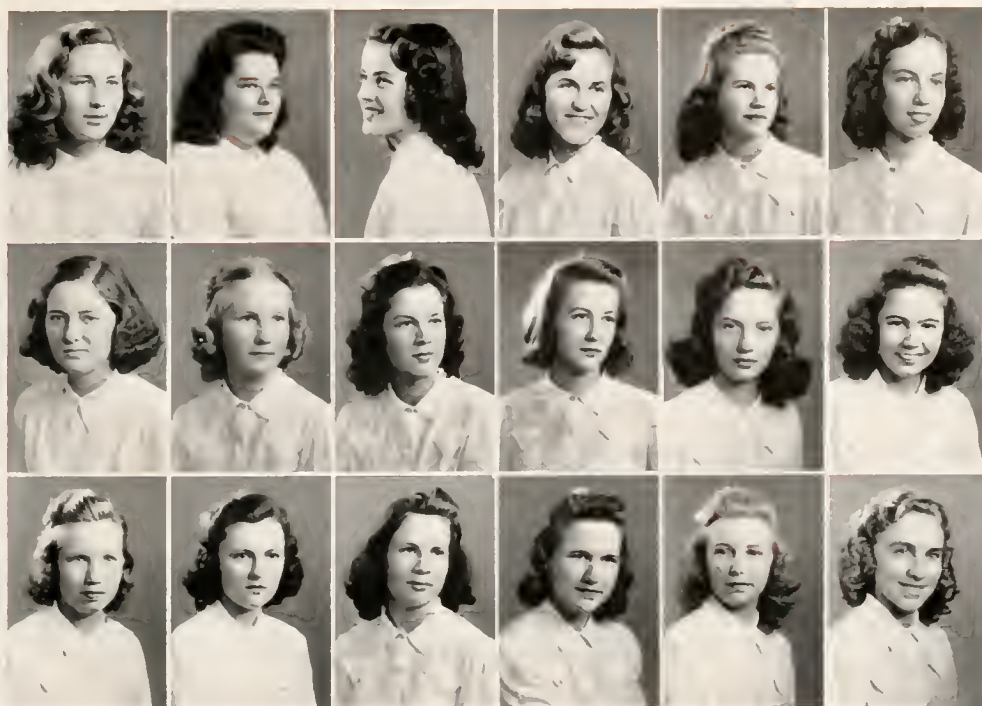
I'm glad I had the
 chance! ...
 you this year. ...
 do have fun ...
 ...
 ...



- MORRIS, DOROTHEA.....Greensboro, N. C.
- MORRISON, ELIZABETH.....Newton, N. C.
- MOSS, R. MARTHA.....Spring Hope, N. C.
- MULLEN, CHRISTEENE.....Durham, N. C.
- MUSSELWHITE, FLORA ELIZABETH.....Lumberton, N. C.
- MUSSELWHITE, VIRGINIA MAE.....Lumberton, N. C.

- McCONNAUGHEY, JANE.....Red Springs, N. C.
- McCORKLE, BETTY LOCKE.....Lenoir, N. C.
- McCORMICK, MARY CATHERINE.....St. Pauls, N. C.
- McDANIEL, ALICE ALENE.....Acme, N. C.
- McDONALD, JEANNETTE.....Red Springs, N. C.
- MACDONALD, MURPHY.....Maxton, N. C.

- McEACHERN, SARA MARGARET.....St. Pauls, N. C.
- McEACHIN, ELLA ROSE.....Red Springs, N. C.
- McINNIS, DELPHINE.....Clio, S. C.
- McKAY, CAROLYN.....St. Pauls, N. C.
- McKAY, JANE GRAHAM.....Maxton, N. C.
- McKNIGHT, ERMINIE.....Florence, S. C.



KNIGHT, LOUISE.....Maxton. N. C.
 McLELLAND, PEGGY TOMLIN..... Mooresville. N. C.
 McMILLAN, MILDRED ELIZABETH.....Red Springs. N. C.
 McNAIR, MARY.....Hartsville, S. C.
 McNEILL, MYRTLE LEE.....Red Springs, N. C.
 O'BRIEN, KATHERINE.....Laurinburg. N. C.

OLIVER, JEAN.....Fairmont, N. C.
 PENCE, MARTHA.....Tatum, S. C.
 PRICE, ELIZABETH.....Charlotte, N. C.
 PRIDGEN, MARTHA.....Warsaw, N. C.
 RANDLE, EVELYN.....Clarksville, Tenn.
 RAY, LILY KATE.....Lake View, S. C.

REAVES, ALICE CAMERON.....Hamlet. N. C.
 SANDERS, MILDRED ELIZABETH.....Rae ford. N. C.
 SANDERSON, RUTH.....Magnolia, N. C.
 SANSRURY, ELIZABETH ANN.....Darlington, S. C.
 SCOTT, FLORINE.....Columbia, S. C.
 SHINN, PEGGY JANE.....Leaksville-Spray, N. C.



*Lots of
luck,
Anna Lee*



*Sister,
Don't forget
we & my best class
together enjoy you
sitting side of you
Luck to you
Kitty*



Freshmen

SHOOK, DOROTHY.....Red Springs, N. C.
 SIMPSON, ANNA LEE.....Glen Alpine, N. C.
 SMITH, ANGELYN.....Kenansville, N. C.
 SMITH, MARTHA CAROLYN.....Lexington, N. C.

TOLAR, MARTHA POOLE.....Lumber Bridge, N. C.
 TONTZ, JUANITA.....Baltimore, Md.
 TOWNSEND, MARY LINDA.....Red Springs, N. C.
 TURNER, MILDRED.....Fair Bluff, N. C.

USHER, KITTY.....Gibson, N. C.
 VANHOOK, GLADYS FRANCES.....Reidsville, N. C.
 WALDROP, ANNA EARLE.....Hamlet, N. C.



WALKER, KAY LEE.....Elkin, N. C.
 WEAVER, FRANCES HARRIET.....Red Springs, N. C.
 WEBSTER, MARGARET.....Little Rock, S. C.
 WESTBROOK, IRIS GREY.....Dunn, N. C.

WHISNANT, SARAH EVELYN.....Leaksville, N. C.
 WHITMORE, ELOISE.....Natural Bridge, Va.
 WILCOX, CLAIRE.....Carthage, N. C.
 WORLEY, FANNIE GREY.....Pink Hill, N. C.

WRIGHT, DORIS.....Lumber Bridge, N. C.
 ZEMP, ELIZABETH HALE VAN WYCK.....Sumter, S. C.



PRESENTING THE CONSERVA T



TORY OF MUSIC



J. WILGUS EBERLY
 Dean of Conservatory
 Professor of Piano and Organ



ESTELLE LOUISE COONEY
 Professor of Voice



LILLIAN FARQUHAR ROBESON Professor of Violin



LIDA LAW CHAPMAN Professor of Piano and Organ



EMMA LOUISE JONES Professor of Public School Music



HELEN SCOGGINS Professor of Piano, College Accompanist

GRADUATES OF CONSERVATORY

MARY HALL, B.M.

Piano

I	
Suite No. V.....	<i>Handel</i>
Sonata Opus 13.....	<i>Beethoven</i>
II	
Rhapsody in g minor.....	<i>Brahms</i>
Transcendental Etude No. 2.....	<i>Liszt</i>
Transcendental Etude No. 3.....	<i>Liszt</i>
III	
Polka.....	<i>Weinberger</i>
Etude in c sharp minor.....	<i>Scriabine</i>
March (from "The Love of Three Oranges").....	<i>Prokofieff</i>

GRACE WITHERS, B.M.

Piano

I	
Air tendre.....	(1633-1687) <i>Lully</i>
Gigue (from Suite in g minor).....	(1660-1732) <i>Locilly</i>
Toccata and fugue in d minor.....	<i>Bach-Taustig</i>
II	
Nocturne in F Major.....	<i>Chopin</i>
Les tierces alternees.....	<i>Debussy</i>
La Puerta del Vino.....	<i>Debussy</i>
Etude (Un Sospiro).....	<i>Liszt</i>
III	
Concerto No. 4 in d minor.....	<i>Rabinstein</i>
Moderato assai	

VIRGINIA BOGUE, B.M.

Organ

I	
Passacaglia and Fugue.....	<i>Bach</i>
II	
Four Chorale Preludes.....	<i>Bach</i>
Alle Menschen Müssen Sterben	
Von Himmel kam der Engel Schaar	
Wachet auf, ruft uns die Stimme	
In dir ist freude	
III	
Rhapsodie No. 3.....	<i>Saint-Saens</i>
Cantabile.....	<i>Franck</i>
Scherzo.....	<i>Widor</i>
IV	
Evening Harmonies.....	<i>Karg-Elert</i>
Toccatto.....	<i>Pietro Yon</i>



Harper



Withers



Hall

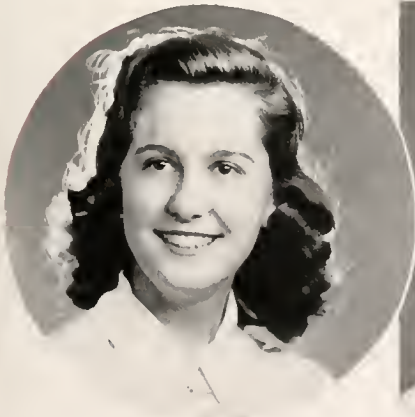
EDITH BUGG, B.M.
Voice

I	
Venez, agreable printemps	Old French
Lisette	Old French
Dormi bella, dormi tu?	Bassani
Gia il sole dal Gange	Scarlatti
II	
Lied der Mignon	Schubert
Gretchen am Spinnrade	Schubert
Wanderers Nachtlied	Schubert
Heiden-Roeslin	Schubert
III	
Elsa's dream	Wagner
IV	
With Verdure Clad	Haydn
Clouds	Ernest Charles
Go, Lovely Rose	John Alden Carpenter
Strictly Germ-proof	John Sacco

CAROLINE BUIE, B. M.
Voice

I	
Have you seen but a whyte lillie grow?	Old English
The Gypsy and the Bird	Sir Julius Benedict
Lo, Here the Gentle Lark	Sir Henry Bishop
II	
Beau Soir	Debussy
Il pleure dan mon coeur	Debussy
En prière	Fauré
L'Heure Exquise	Hahn
La Charmante Marguriete	Old French
III	
Una voce poco fa	Rossini
(from "The Barber of Seville")	
IV	
Hymn to the Sun (Le Coq d'Or)	Rimsky-Korsakov
Slumber Song	Gretchaninoff
The Nightingale and the Rose	Rimsky-Korsakov
Pastorale	Stravinsky
V	
I Follow Thee Also (St. John Passion)	Bach
Silent Noon	Williams
Come Unto These Yellow Sands	La Forge
Cupid Captive	La Forge

GRADUATES OF CONSERVATORY



Bogue



Buie



Bugg



MUSIC CLUB

The purpose of the Music Club is to stimulate and develop an appreciation for good music and to encourage students to enjoy playing and singing for each other. Music lovers are brought together in a social way for delightful musical programs and evenings of genuine enjoyment.

The officers are:

CAROLINE BUIE
President

GRACE WITHERS
Vice President

MILDRED MASON
Secretary

EDITH BUGG
Treasurer



Buie

Bugg

Withers

Mason

GLEE CLUB

The Glee Club is composed of students chosen by tryout. Special emphasis is placed on the study of music originally written for women's voices. During the year the Glee Club gives concerts and programs throughout the state.

Mr. Eberly is the Glee Club director, and Miss Scoggins is the accompanist. Grace Withers is president.



SEXTETTE

The college sextette is one of the most active of the conservatory organizations, and is composed of Caroline Buie and Clara David, first sopranos; Edith Bugg and Alice Carney, second sopranos; and Mary Hall and Frances Lifrage, altos.

Organized and directed by Miss Estelle Cooney, the Sextette has enjoyed a successful year, giving many programs in nearby towns and assisting with Glee Club concerts. The climax of the Sextette season was reached with its presentation in a concert at the College.

" AND NOW
the features "



SUPERLATIVE RUNNERS-UP

Standing: EVELYN ROBERTSON, May Queen; BETTY RUTH ROBINSON, Friendliness; GRACE WITHERS, Personality. Sitting: MARTHA SUTHERLAND, Versatility; ELIZABETH PRICE, Beauty.

MINNIE MYERS

Friendliness





Helin, I don't forget me. Come
to see Mary and me
some time - Good
love always -
Catherine

CATHERINE NICHOLSON
Personality

MILDRED MASON

Versatility





MARY HALL

Capability

JACKIE HERRING

Sportsmanship





VIRGINIA BOGUE

Beauty



WHO'S WHO

In American Colleges and Universities

MARY GAITHER HALL
MARY CLYDE SHEPHERD
MARY ALICE FULK
SARAH BELLE SMITH
CATHERINE NICHOLSON

CLARA LUCILLE GRIGGS
MINNIE ELIZABETH MYERS
LOIS PARKER
VIRGINIA NELL BOGUE
VIOLA WILLIAMS

May Day

Lucille
Griggs
May Queen

Helen,
I'll remember
you and your
sweet smile - Hope
to see you next
year - Be good!
Love,
Lucille



MAY DAY
at
Flora Macdonald

JEAN RYBURN, *Maid-of-Honor*

MAY COURT

Virginia Bogue
Martha Griggs
Patsy Harper
Kathryn McBryde
Phyllis Powers

Elizabeth Price
Evelyn Robertson
Nell Thomas
Helen Walker
Christine Williamson



MAY DAY ACTIVITIES



THE GARDENER'S GARDEN PARTY

Afternoon—in a garden.

The Gardener entertains friends at his garden party. They dance and make merry until interrupted by thunder and lightning, whereupon they hastily leave to get home before the rain comes.

The Gardener, left alone, soon falls asleep and dreams that his beautiful flowers come to life. The Flower Queen crowns him King of the Flowers and there is gaiety, dancing, and revelry.

Later, the Gardener awakes to find that he has on his old clothes, that the roses are in their places, and that everything is as it has always been. He realizes that it was only a dream, his being King of the Flowers.

The main characters are: Barbara Lytch, Gardener; Lillian Bell, Flower Queen; and Lugene White and Colleen Campbell, Boys.





May Day at FLORA MACDONALD



"ACTIVITIES
at Flora Macdonald"



The Candlelighting Service



The WHITE HEATHER

The WHITE HEATHER is the annual publication of the students of Flora Macdonald College. The Editor-in-Chief and the Business Manager are elected from the Senior Class. The Assistant Editor-in-Chief and the Assistant Business Manager are elected from the Junior Class. The other staff members are appointed by the Editor.

This year a theme was not used, and all space possible was allotted to pictures of the students and their interests and activities. We hope the book is representative, and in the years to come will recall many pleasant memories of Flora Macdonald.

MILDRED MASON, *Editor*

BETTY RUTH ROBINSON
Business Manager

MISS MARY CORNELIA HAMILTON
Faculty Adviser

The WHITE HEATHER STAFF

SUE MACPHERSON,

Assistant Editor-in-Chief

BILLY PATE, *Asst. Business Manager*

GRACE WITHERS, *Senior Class Editor*

KATHRYN HIGSMITH,

Junior Class Editor

JACKIE HERRING,

Sophomore Class Editor

ELOISE WHITMORE,

Freshman Class Editor

CLARA DAVID, *Literary Editor*

CAROLYN VIDAL, *Snapshot Editor*

MARGARET BUNDY, *Snapshot Editor*

DOROTHY MARTIN, *Business Editor*

FRANCES LOY, *Typing Editor*

MARY LILY AREY, *Typing Editor*



MacPherson
Herring
Bundy

Pate
Whitmore
Martin

Withers
David
Loy

Highsmith
Vidal
Arey

Nell, you're a swell
kid and I like you
plenty! Come so see
me sometime this
summer. "The Thistle"



NELL THOMAS
Editor

BARBARA LYTCH
Business Manager
MISS MARY MAGGINIS
Faculty Adviser

PINE AND THISTLE

The Pine and Thistle is the college magazine, published every quarter by the staff of the magazine in collaboration with the student body. Articles are submitted for consideration and possible publication not only by the members of the staff, but by other members of the student body as well.

The editorial staff is elected by the two literary societies, with the exception of the editor-in-chief and the business manager. These are elected by the student body. Other staff members are appointed by the editor.

The Pine and Thistle provides an incentive for the development of literary talent in the school. Its purpose is to edify as well as to entertain the students at F.M.C.

PINE AND THISTLE STAFF

Lillian Bell, *Assistant Editor-in-Chief*
 Colleen Campbell, *Assistant Business Mgr.*
 Mary Monica Jackson,
Zetesian Associate Editor
 Frances Loy, *Zetesian Associate Editor*
 Helen Morrison, *Zetesian Associate Editor*
 Sue McPherson, *Epsilon Chi Asso. Editor*
 Peggy Teabeaut, *Epsilon Chi Asso. Editor*

Alice Carney, *Epsilon Chi Asso. Editor*
 Joanna Houchins, *Freshman Editor*
 Scott Hale, *Exchange Editor*
 Lucille Jones, *Typing Editor*
 Kelsie Neill Adams, *Asst. Typing Editor*
 Dr. Stump and the Camera Club,
Photographic Editors
 Miss Mary Magginis, *Faculty Adviser.*



Bell
 Morrison
 Houchins

Campbell
 Teabeaut
 Jones

Jackson
 MacPherson
 Adams

Loy
 Carney
 Hale



Two class editors . . . Frances types for both publications . . . The new editor of the *Pine and Thistle* . . . Editor "Mildew" . . . Editor Nell . . . Freshman Editor Eloise . . . Clara finds Annual work pleasant . . . Next year's Editor . . . Off with the old, on with the new . . . Three cheers for the *Pine and Thistle* . . . Lillian,



Fulk, Withers, Nicholson, Shepherd, Hale

SENIOR SCRIBBLERS

In 1921, the first editor of the *WHITE HEATHER* asked for assistance in writing personality sketches of the seniors. At the end of each year the graduating Scribblers tap new Scribblers from the rising senior class. With the editor acting as Chief Scribe, they endeavor to write representative characterizations of their classmates.

Mary Alice Fulk

Scott Hale

Mildred Mason

Catherine Nicholson

Mary Shepherd

Grace Withers



MILDRED MASON, *Chief Scribe*



MARY HALL

THE STUDENT

The purpose of the Student Government Association is to unite the students of Flora Macdonald College in an earnest effort to hold personal honor as the true standard for efficient social living, and to develop the sense of personal responsibility.

The president and vice president of the association are elected by the student body; the other members are elected by the organizations which they represent.



Myers
Fulk

Nicholson
Smith

GOVERNMENT ASSOCIATION

The officers of the association are: Mary Hall, President of the Student Body; Minnie Myers, Vice President of the Student Body; Catherine Nicholson, President of the Senior Class; Mary Alice Fulk, Secretary of the Student Body and Vice President of the Senior Class; Sara Belle Smith, President of the Junior Class; Margaret Jenkins, Treasurer of the Student Body and Vice President of the Junior Class;

Jane Temple Graham, President of the Sophomore Class; Claire Willcox, President of the Freshman Class; Mary Mae Watson, President of the Day Students; Lucille Griggs, President of the Christian Association; Virginia Bogue, President of the Zetesian Literary Society; Lois Parker, President of the Epsilon Chi Literary Society; Viola Williams, President of the Athletic Association.



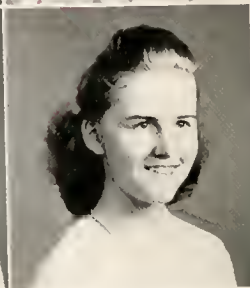
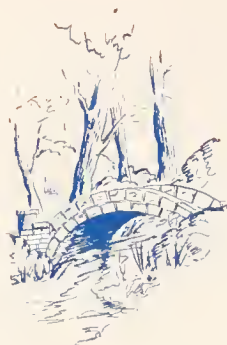
Jenkins
Griggs

Graham
Bogue

Willcox
Parker

Watson
Williams

Handwritten signature: "Cecily" with a flourish.



Shepherd
P. McDaniel

Ryburn
C. McDaniel

FLORA MACDONALD



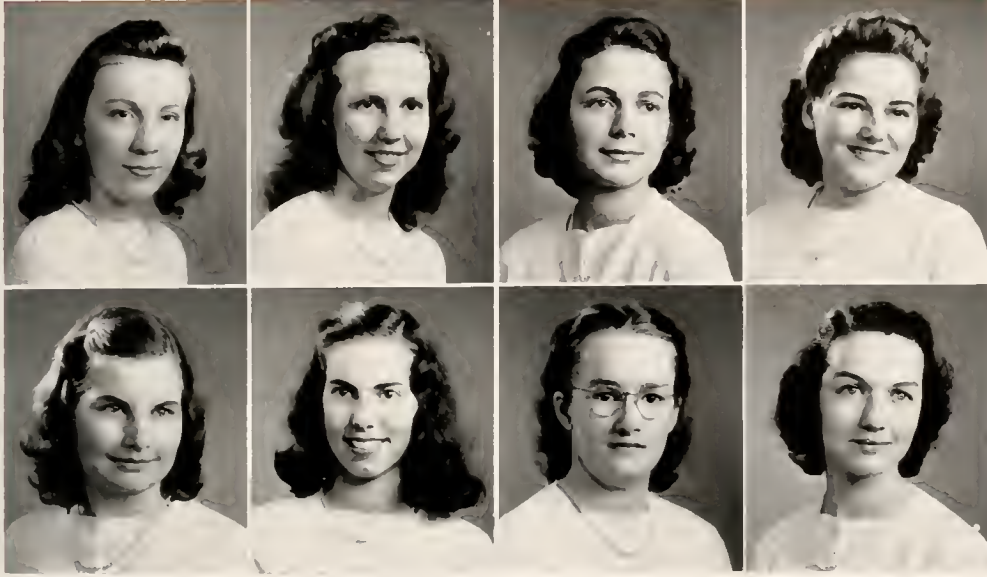
LUCILLE GRIGGS
President

"Let no man despise thy youth, but be thou an example of the believers, in word, in conversation, in charity, in spirit, in faith, in purity."—*I Timothy 4:12.*

The Flora Macdonald Christian Association seeks to promote growth in Christian faith, character, and fellowship. It strives to influence the students to devote themselves to seeking the will of God for their own lives.

The Christian Association brings the students into closer fellowship with each other and presents the true, vital meaning of Christianity. The membership is divided into ten highways for the purpose of more

Save ya!
Helen



Withers
Pace

Thomas
Jackson

Ross
Walker

David
Hall

CHRISTIAN ASSOCIATION

intimate work. The Chairmen of these Highways are:

- Carol McDaniel, *Life Enrichment, Religious Meetings*
Grace Withers, *Life Enrichment, Music*
Helen Thomas, *World Fellowship*
Mary Shepherd, *Enlistment and Training*
Jean Ross, *Learning, Sunday School*
Clara David, *Learning, Publicity*
Jean Ryburn, *Stewardship*
Pattie McDaniel, *Stewardship*
Dorothy Pace, *Comradeship*
Mary Monica Jackson, *Leisure Time, Social Activities*
Mary Olive Walker, *Leisure Time, Library*

Miss Zoulean Anderson, *Faculty Adviser*

The Christian Association takes an active part in social service activities on the campus and in the community. A series of special services, conducted by an outside speaker, is held each fall and spring. This year Dr. A. L. Currie of Huntington, West Virginia, was our fall speaker, and Dr. J. M. Gettys of Charlotte, North Carolina, conducted our spring services. Other guest speakers are brought to the college throughout the year.

"Remember now thy Creator in the days of thy youth."

—Ecclesiastes 12:1.



STUDENT VOLUNTEERS

“Not by might, nor by power, but by my spirit, saith the Lord of hosts.”
—*Zechariah 4:6.*

The “Student Volunteers” is an organization composed of girls who plan to give their lives to full or part-time work on the home or foreign mission field, and of girls who are interested in the work in these fields. This organization strives to stimulate among the students an interest in the work that is being done in the mission fields, and to bring to them a realization of the ever-increasing needs of missions. It also endeavors to build up material on missions in the F.M.C.A. library, and to encourage the reading of this material.

Miss Princeie Maphet is the faculty adviser, and the officers are: Margaret Bundy, President; Cleo Osborne, Vice President; Geraldine Grady, Secretary; Anyce Kallam, Treasurer; and Florence Moore, Librarian.



MARGARET BUNDY



PRAYER BAND LEADERS

Knowing the power of prayer in a needy world, groups of girls meet together each Wednesday morning for a period of prayer and meditation. Each member of the student body belongs to one of these groups, which we call our Prayer Bands.

The close personal contact afforded by our Prayer Bands is one of the strongest spiritual forces on our campus. It is the priceless privilege of every Prayer Band leader to help the members of her group to a reality of the Presence as a Power in individual daily living.

Christ has promised that "where two or three are gathered together in my name, there am I in the midst of them." (Matthew 18:20.) Remembering this promise, we find refreshment and spiritual strength in our morning watches.

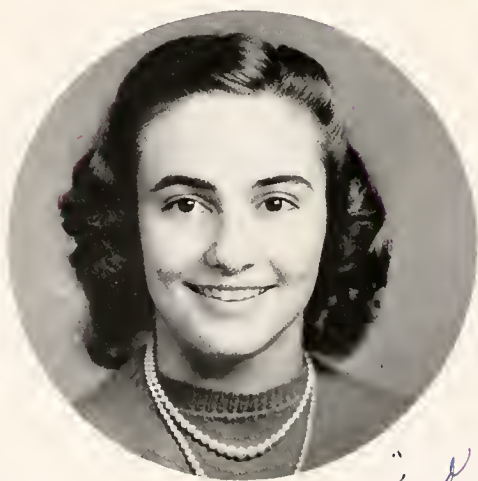
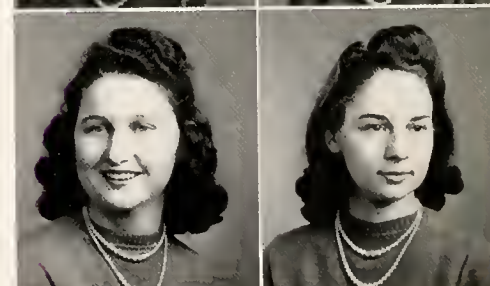
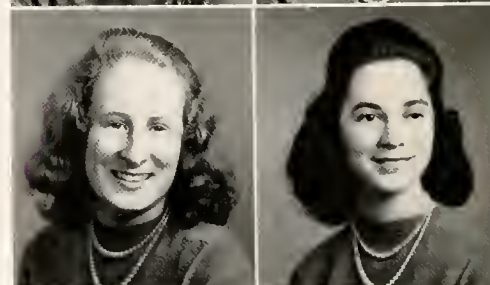
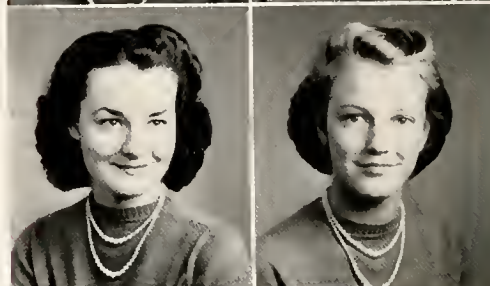
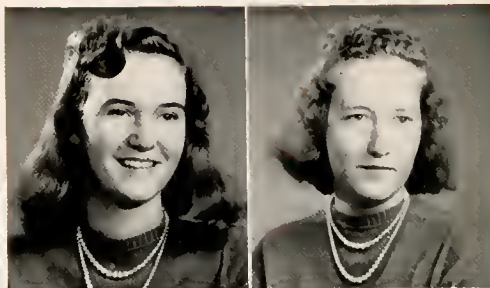


FLORENCE MOORE

EPSILON CHI

OFFICERS

- Lois Parker
President
- Jean Lytch
First Vice President
- Bobby Hefner
Second Vice President
- Dorothy Martin
Recording Secretary
- Martha Sutherland
Corresponding Secretary
- Maribelle Green
Treasurer
- Catherine McBryde
Censor
- Peggy Wall
Critic
- Lugene White
Chaplain



Lois Parker

Lytch
Martin
Green
Wall

Hefner
Sutherland
McBryde
White

"So Nothing"
Be good this
summer and don't
forget to come back
next year. Miss
Lain

ZETESIAN

OFFICERS

Virginia Bogue
President

Patsy Harper
First Vice President

Mary Hudson
Second Vice President

Margaret Lewis
Recording Secretary

Helen Walker
Corresponding Secretary

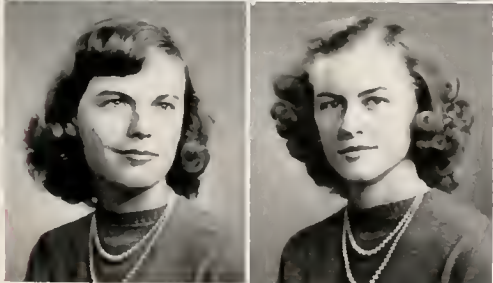
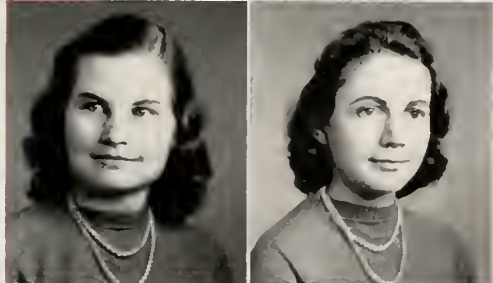
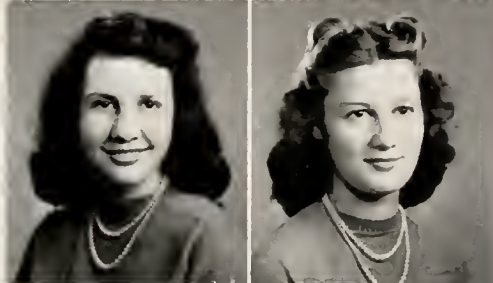
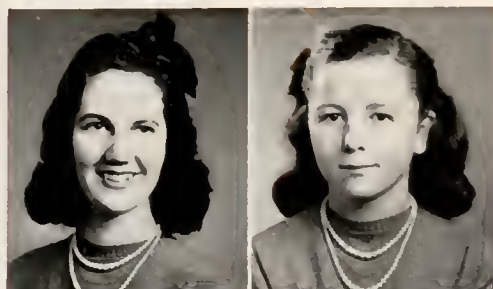
Dorothy Pace
Treasurer

Frances Lifrage
Censor

Katherine Bruner
Critic

Jean Ross
Chaplain

*Wells,
I hope you
will be walking
I like the look
Best of luck
- one
Wells*



Harper
Lewis
Pace
Lifrage

Hudson
Walker
Ross
Bruner



Virginia Bogue

PHYLLIS POWERS
Chief Marshal
Zetesian



Thomas



McFadyen

LUCY THOMAS
Zetesian
 HELEN McFADYEN
Zetesian

SARAH BELLE SMITH
Epsilon Chi
 MARTHA SUTHERLAND
Epsilon Chi



Smith



Sutherland

MARSHALS

JEAN LYTCH
Epsilon Chi

KATHRYN MCBRYDE
Epsilon Chi

MARY MONICA JACKSON
Zetesian

JEAN ROSS
Zetesian

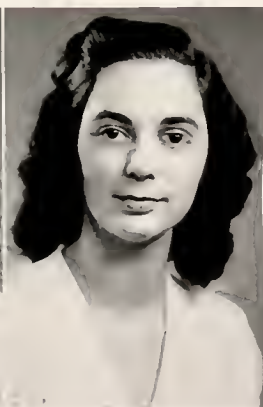
MARGARET CAMPBELL
Day Student



Campbell



Lytch



McBryde



Jackson



Ross



Wm. Bartram Scientific Society

Membership in the *William Bartram Scientific Society* is awarded for outstanding scholastic achievement in Mathematics and Science, and upon recommendation from one of the club's faculty advisers: Dr. Stump, Dr. Stirewalt, and Miss Prince.

This year the club has been studying the uses of science in war, and what we as individuals can contribute to the national defense program.

The officers are:

- Mildred Mason, *President*
Mary Shepherd, *Vice President*
Alma Lou Spivey, *Recording Secretary and Treasurer*
Helen Morrison, *Corresponding Secretary*



Mildred Mason



CAMERA CLUB

The Camera Club has grown out of the interest shown in photography by members of the William Bartram Scientific Society. Any member of this society may join the camera group. The club members take pictures of various activities of the college and beautiful scenes on the campus, develop and print these pictures, and at regular meetings display and discuss them. In the fall and spring the club takes trips and hikes for the purpose of making interesting pictures. The Camera Club is very fortunate in having Dr. Stump and Miss Prince as advisers.



Alma Lou Spivey

The officers are:

Alma Louise Spivey, *President*
Miriam Bullard, *Vice President*



HOME ECONOMICS CLUB

The Home Economics Club is affiliated with the National and State Home Economics Clubs of America. The Club is composed of all girls majoring in this subject. The purpose is to develop poise, personality, and good taste.

At the first of the year the club had a party for the new members. Kathryn Highsmith is Vice President of State Home Economics Clubs of North Carolina.

The officers are:

Evelyn Robertson, *President*
Martha Sutherland, *Vice President*
Kathryn Highsmith, *Treasurer*



Evelyn Robertson



MATHEMATICS CLUB

The membership of the Mathematics Club includes those students who have achieved high scholastic rating in some mathematics course. The purpose of the club is to increase interest in mathematical knowledge through study and discussion, and to promote fellowship among students of mathematics

At the annual monthly meetings there are interesting and informative programs on mathematics in the modern world.

The officers are:

Sue MacPherson, *President*
Alma Lou Spivey, *Vice President*
Gladys Sanders, *Recording Secretary*
Paxton Elliott, *Corresponding Secretary*
Jane Temple Graham, *Treasurer*
Jean Ryburn, *Social Chairman*
Miss Princee, *Faculty Adviser*



Sue McPherson



L'ALLIANCE FRANÇAISE

L'Alliance française was organized to develop a greater proficiency in and enjoyment of the living French language. It emphasizes conversational French through the use of French games and songs and the production of French plays. This club endeavors to give its members a deep appreciation of what French civilization, culture and literature have meant to the world.

The officers of *L'Alliance française* are:

NELL THOMAS, *President*
MARGARET JENKINS, *Vice President*
FLORENCE MOORE, *Secretary*
ANYCE KALLAM, *Treasurer*



Nell Thomas

about 22
members
in 1939



DRAMATICS CLUB

The Dramatics Club is still in its infancy, but it is fast becoming one of the most popular organizations on the campus. Membership, although limited, is open to those girls interested and talented in dramatics.

The club members participate in all phases of dramatic arts: make-up, costuming, set designing, directing, as well as acting. It is the aim of the group to present either a three-act play or three one-act plays each school year.



Catherine Nicholson

The officers are:

- Catherine Nicholson, *President*
- Scott Hale, *Vice President*
- Marion Skinner, *Secretary*
- Jean Ryburn, *Treasurer*



COMMERCIAL CLUB

Membership in the Commercial Club is open to all students in the Commercial Department. This department provides training for students who desire a business career as a profession, and for those who wish to use the work to attain some desired goal. Business and pleasure have been combined in the meetings of this organization which binds together all business students.

The officers are:

MARY LILY AREY, *President*
LOLETA WILKERSON, *Vice President*
VIRGINIA TYREE, *Secretary-Treasurer*



Mary Lily Arey

RECEIVING COMMERCIAL CERTIFICATES

KELSIE NEILL ADAMS

MARY LILY AREY

COLLEEN CAMPBELL

LUCILLE JONES

LOLETA WILKERSON



Adams

Jones

Arey

Wilkerson

Campbell



DAY STUDENTS CLUB

This year the day student body has been large, numbering forty-eight in all. They have continued their organization as a club, and have become increasingly active on the campus.

For the first time the day students have had a marshal as a representative at the college entertainments. The president of the day students is a member of the student council.



Mary Mac Watson

The officers of the club are:

MARY MAC WATSON, *President*
SARAH MARGARET MCPHAUL, *Vice President*
MARJORIE MCMANUS, *Secretary-Treasurer*
MISS MARY CONOLY, *Faculty Adviser*



GRANDDAUGHTERS
CLUB



VIRGINIA
CLUB



FLORIDA
CLUB



SOUTH CAROLINA
CLUB

" ON THE
Field of Sport



Cheer leaders: Lucy Thompfs, Jr. stior; Mildred Mason, Sexton; Jackie Herring, Sorotomone; Patsy Harper, Colledge; Betty Barringer, Fuesstman.

*Best wishes!
Helen*



Weaver

Penny

MacPherson

Morrison

Thomas

Williams

ATHLETIC ASSOCIATION

Every school needs adequate provision for recreation and physical exercise. The Athletic Association meets this need very efficiently with its sponsorship of sports and other entertainments throughout the year. A keen spirit of rivalry and class loyalty is promoted by the inter-class hockey, basketball, and tennis tournaments. The Association offers these major sports

with many others: archery, swimming, ping-pong, hiking, volley ball, skating, horseshoes, and baseball. Every student is encouraged to participate in at least one of these sports. In every game the highest ideals of good sportsmanship are carried out. Viola Williams is president of the Athletic Association.

Heads of Sports

ALMA LOU SPIVEY	Hockey
MARY LIB TRAWICK	Basketball
FRANCES LOY	Horseshoes
LUGENE WHITE	Archery
MARTHA SUTHERLAND	Tennis
KATHRYN HIGHSMITH	Hiking



Varsity Captains

HOCKEY

SENIORS	ALMA LOU SPIVEY
JUNIORS	HELEN THOMAS
SOPHOMORES	ELOISE PENNY
FRESHMEN	JANE LATHAM

BASKETBALL

SENIORS	MARY LIB TRAWICK
JUNIORS	VIOLA WILLIAMS
SOPHOMORES	NANCY ELLIS
FRESHMEN	FLORA MUSSELWHITE



Hockey



JUNIOR-SENIOR



Senior Varsity



Junior Varsity



Hockey

FRESHMAN-SOPHOMORE



Sophomore Varsity



Freshman Varsity



Basketball

JUNIOR-SENIOR

Senior Varsity



Junior Varsity

Basketball



FRESHMAN-SOPHOMORE



Sophomore Varsity

Freshman Varsity





TENNIS

Tennis is a favorite outdoor sport at Flora Macdonald. Unusual enthusiasm was displayed at the fall and spring tournaments this year. The most outstanding players were: Nell Thomas, Lucy Thomas, Nancy Ramseur, and Georgia Hightower.





ARCHERY



Archery is one of the favorite sports at Flora Macdonald. On almost any pretty afternoon a group of girls can be seen displaying their skill with the bow and arrow. Robin Hood and Wilhelm Tell may have been a bit more proficient in this art, but it is doubtful that they received any more genuine pleasure from this fine sport.



Blonde or brunette, Dr. Stump? . . . She makes May Day a success . . . Cousin Annie . . . Miss Magginis . . . Miss Cooney . . . That eventful beach trip . . . Miss Jones really has two feet . . . Gone but not forgotten . . . Why don't you paddle your own gnu? . . . Papa pro tem . . . Our newcomer from Florida enjoying the icy north.



Virginia, what *are* you doing? Candid be true? . . . Patsy, hard at her usual labor . . . How Martha crams for exams . . . Dance of Spring . . . Going somewhere, Jo Anne? . . . Follow the arrow, children . . . Kornegay . . . Gracing our front campus . . . Who threw that snowball?



We miss you, Jane . . . Waiting for laundry . . . Photograph of a photographer photographing a photograph . . . Claire . . . Our incomparable Peggy . . . Waiting at the gate . . . Moiphy gets her man . . . Carolyn is enjoying that one, Tontz . . . Hurry up with those hamburgers.



"Woonie" . . . Pam . . . Ruth, in the snow . . . Where did that council member go? . . . Fiddler Carolyn . . . Mary Acker, getting atmosphere for May Day . . . Life presents a serious problem . . . The height of industry . . . Looks like the Seniors might have bungled that shot . . . Knickerhocker lectured on his experiences at Flora Macdonald College.

"AND NOW
THE

Ads"



The Business Staff

TOWNSEND'S PHARMACY

THE REXALL STORE

WE CARRY A COMPLETE LINE OF THE
COLLEGE GIRL'S NEEDS

Meet Your Friends at Our Fountain

Dependable Druggists : Let Us Serve You

Red Springs, North Carolina

Use

MERITA

BREAD and CAKES

AMERICAN
BAKERIES COMPANY
FAYETTEVILLE, N. C.

GRAHAM COMPANY



*Where Style
and
Quality
Outlive Price*

RED SPRINGS THEATRE

It is the policy of this theatre to provide the best pictures obtainable especially for our Flora Macdonald patrons.

Pleasure by the Hour

A WELCOME

*Always Awaits the Faculty
and Students at*

B. C. MOORE AND SONS

Anne Green's Permanent Wave Shoppe

We Serve You to Serve Again

Red Springs, N. C.



Fayetteville, N. C.

BEN FRANKLIN STORE

5, 10, \$1.00 and Up

Home Owued Five and Ten

Red Springs, N. C.

You Will Be Pleased
With Our
QUALITY
and
SERVICE

RED SPRINGS DRUG COMPANY

*Headquarters for
Flora Macdonald Girls*

Red Springs, N. C.

M. H. McLEAN, JR.

—
Wholesale
CANDIES
and
GROCERIES
—

LUMBERTON, N. C.

Insist on . . .

LANCE'S

PEANUT BUTTER SANDWICHES
and CANDIES

Always Fresh - Always Delicious

Compliments of

**SOUTHERN FRUIT
COMPANY**

CHARLOTTE, N. C.

Compliments of

WFNC

FAYETTEVILLE, N. C.

HUNTER BROTHERS

(Incorporated)

ELECTRICAL MERCHANDIZING

RADIO - REFRIGERATORS - GIFTS

CHINA - GLASSWARE

FAYETTEVILLE, N. C.

Compliments of

Pender Food Stores

Red Springs, N. C.

ELECTRICITY—

a GREAT Service
Yet It's CHEAP!

Carolina Power & Light Company

**Maxton Oil & Fertilizer
Company**

Maxton, North Carolina

**BELLWOOD FOOD PRODUCTS
FOR INSTITUTIONS**

Distributed by

W. H. WILLIAMS & CO., Inc.

Richmond, Virginia

*Congratulations
to the
White Heather Staff*

**BELK-HENSDALE
COMPANY**

Fayetteville, N. C.

Remember: "*You always save at
Belk's*"

Make Our Store Your
Headquarters
When In Fayetteville

NEIGHBORS

Red Springs' Exclusive
Shoe Store

McNEILL'S

CLEANERS - TAILORS

Dependable Service Since 1928

RED SPRINGS and RAEFORD, N. C.

Compliments of

**McKEITHAN
HARDWARE**

RED SPRINGS, N. C.

BLAKE FLORIST

Prince Charles Hotel Building

Fayetteville, N. C.

Day Phone 2683 Night Phone 2834

Compliments of

Town of Red Springs
NORTH CAROLINA

SAUNDERS DRUG STORE

*Fayetteville's Exclusive
Cut-Rate Drug Store*

FAYETTEVILLE, N. C.

Compliments of

**FAYETTEVILLE
WHOLESALE
COMPANY**

FAYETTEVILLE, N. C.

FEATURING

FRESH FRUITS

and

VEGETABLES

Compliments of
**THE CAPITOL
Department Store**

FAYETTEVILLE, N. C.

We Invite Your Patronage

Compliments of
**The
Fayetteville
Observer**

D. M. McMILLAN
"Ford Products Since 1912"
Red Springs, N. C.

HIGHLAND CAFETERIA

Fayetteville's New and Best

Fayetteville, N. C.

Garrett and McNeill
*The Oldest and Best
Grocery in Town*
PHONE 227-1

Compliments of
Huggins Shoe Shop

Red Springs, N. C.

Boatwright Chevrolet Co.

RED SPRINGS, N. C.

Compliments of
H. R. HORNE & SONS

Foyetteville, N. C.

DRUGGISTS SINCE 1865

**MACK'S 5, 10, and 25c
STORES**

The Friendly Place

Red Springs, N. C.

We Have What Your Car Needs

Complete Line Accessories

We Live to Serve and Serve to Live

GULF SUPER SERVICE

Telephone 9107

A.A. ONE STOP SERVICE

RED SPRINGS, NORTH CAROLINA

Compliments of

**ODOM'S
GROCERY**

•

**Where Quality
and
Service
Predominate**

•

RED SPRINGS, N. C.

Spring Side Dairy

—
GRADE A MILK
CREAM

—
Phone 2431

—
Gold Medal Fertilizers
Liberty Premium Fertilizers
Modern Gin System
Modern Seed Cleaning Equipment

—
**Liberty Manufacturing
Company**

Red Springs, N. C.

**THE . . .
SCOTTISH BANK**

LUMBERTON - PEMBROKE
RED SPRINGS

*Member Federal Deposit
Insurance Corporation*

Compliments of

SANDLIN & CO., Inc.

—
Wholesale Grocers

—
FAYETTEVILLE, N. C.

**Travel Luxuriously
... Yet Economically**

**FAST BUT
SAFE**

—
**Queen City
Trailways**

*"This is the way
to feel refreshed"*



Bottled Under Authority of The Coca-Cola Company by
FAYETTEVILLE COCA-COLA
BOTTLING COMPANY, INC.

Photographs

for the

White Heather

By

Dunbar Studio



Portraits

College and School Annuals



Charlotte, North Carolina

• There is a close relationship between the athlete's physical perfection and his diet. The Olympic Stars at Los Angeles in 1932 averaged one serving of Ice Cream each day . . . or five times as much as the average American.

• Be sure to include plenty of Southern Dairies Ice Cream in your diet, for it is especially rich in the food elements that build healthy bodies.



City Optical Company

Wilmington - Fayetteville
and Greensboro, N. C.

H. M. SMITH, *Mgr.* TELEPHONE 2357

**Patronize
Our Advertisers**

FLORA MACDONALD COLLEGE

Red Springs, N. C.

A SENIOR COLLEGE FOR WOMEN

Near Fayetteville, Southern Pines and Pinehurst. Delightful climate, healthful mineral springs and remarkable health record. Bus and Railway connections.

A Standard Senior Grade A College for Women. Strong faculty. Graduates accepted for graduate work by leading universities. Class A teacher's certificates. Homelike atmosphere. Personal attention to students by teachers.

Courses offered: Bachelor of Arts, Bachelor of Music, Bachelor of Science (Home Economics) degrees. A Secretarial Course.

Athletics. Skillful physical director and coach has general supervision of sports and physical training. Archery, basketball, hockey, swimming, tennis, hiking, etc., are enjoyed in season.

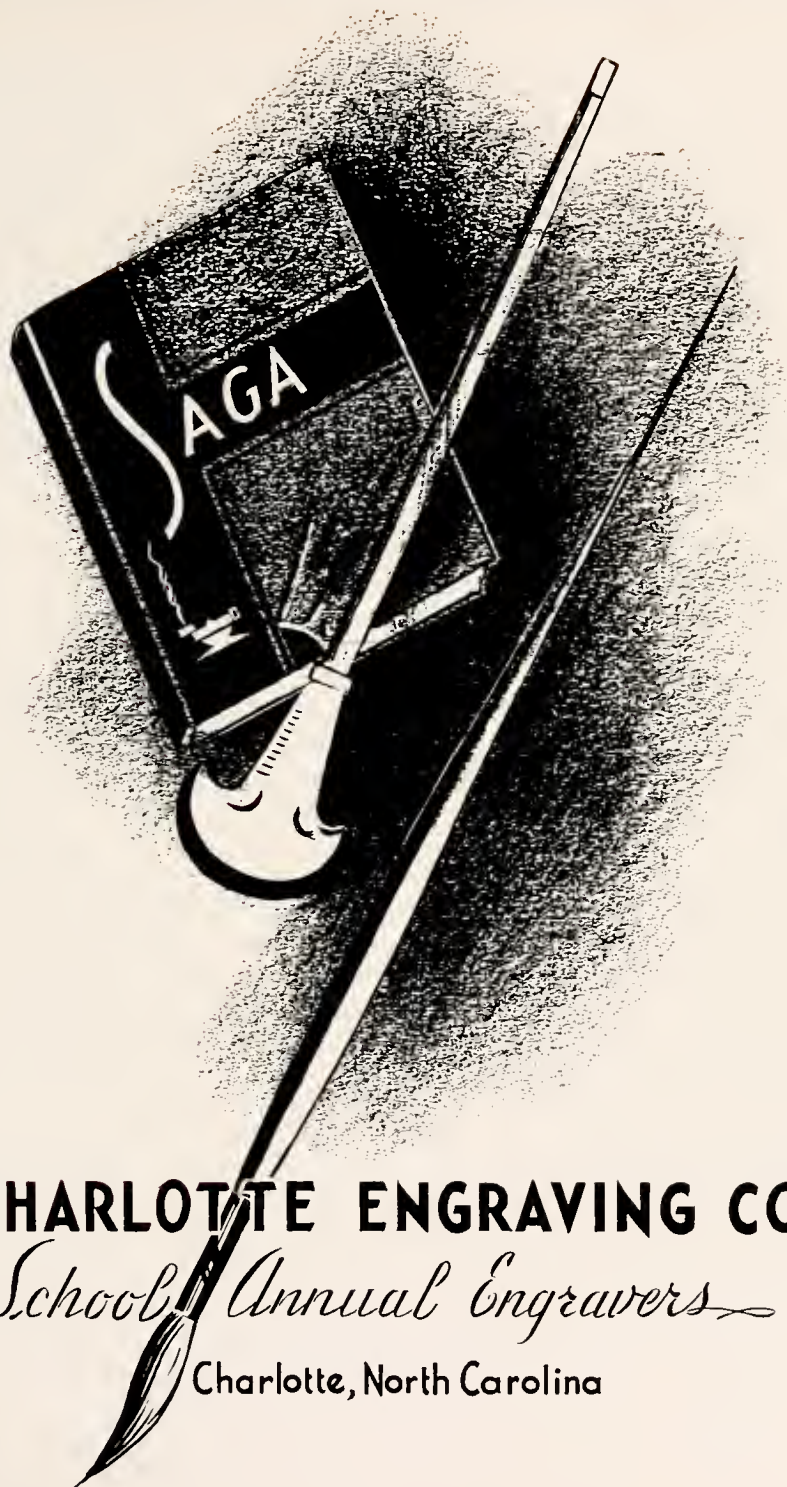
Social Activities. Receptions, teas, and many other social functions are provided at the college, while many hospitable and delightful homes of the citizens of Red Springs are open to the students.

Wide Patronage. Patronized at present by eleven states and four foreign countries. Four thousand alumnae are engaged successfully as home-makers, nurses, teachers, dietitians, home demonstration agents, social workers, missionaries, and in many other useful professions.

MODERATE CHARGES : FOR CATALOGUE WRITE

HENRY C. BEDINGER, *President*

FLORA MACDONALD COLLEGE : Red Springs, N. C.



CHARLOTTE ENGRAVING CO.

School Annual Engravers

Charlotte, North Carolina

When we've had
some good times together.
I'm looking forward to seeing
you lots next year. Be good this
summer and remember that I like
you best. Please write me - I'll answer.
Maybe I'll even see you at the beach.
I love you.
"Dad"

BUILDERS DREAMS

VISIONS created by the imagination precede the achievement of any really great accomplishment. The ability to weave the threads of imagination into the finished fabric is equally important.

It has been the privilege of the EDWARDS & BROUGHTON COMPANY to cooperate with the staff in creating their vision into material form.

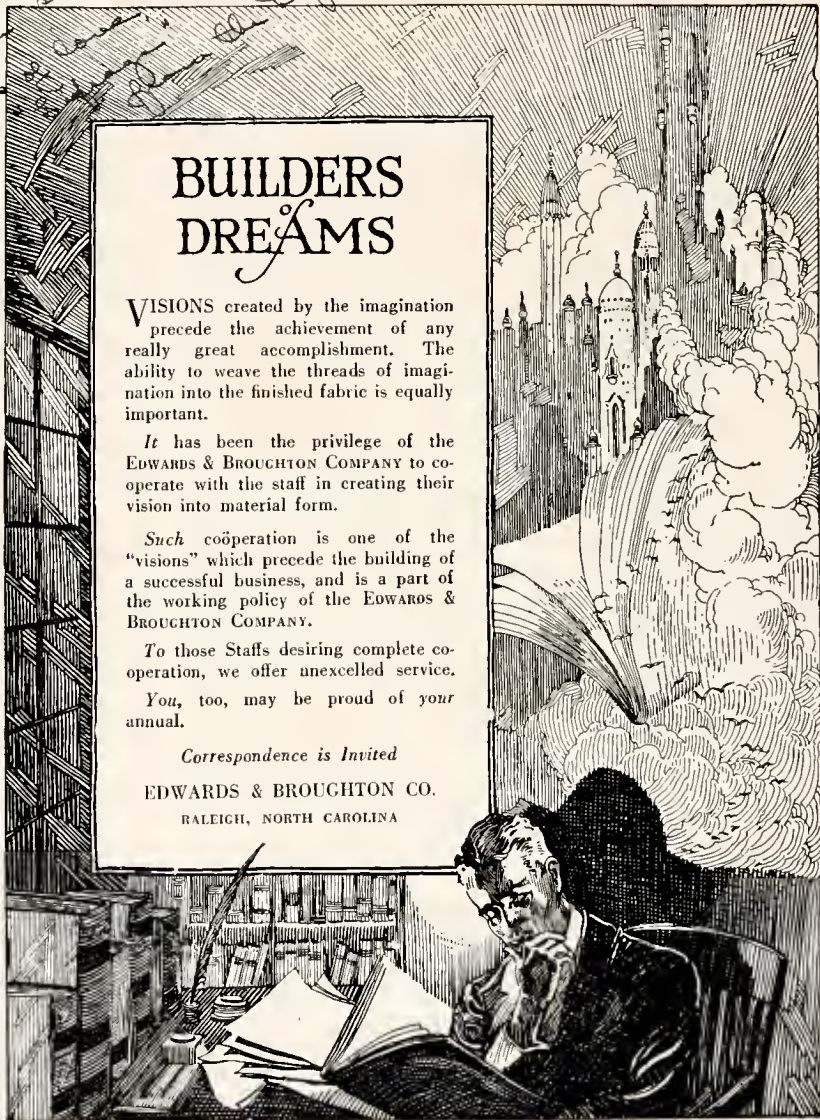
Such cooperation is one of the "visions" which precede the building of a successful business, and is a part of the working policy of the EDWARDS & BROUGHTON COMPANY.

To those Staffs desiring complete cooperation, we offer unexcelled service.

You, too, may be proud of your annual.

Correspondence is Invited

EDWARDS & BROUGHTON CO.
RALEIGH, NORTH CAROLINA



AUTOGRAPHS

Hello; Helen -

Hasn't it been fun here? I've really enjoyed knowing you. I'll never forget the crazy times we've had. Be good and stay as much fun as you are now.

Love,
Spivey

Dear Do-Nothing,

I & Mully has been such knowing, seen a cute girl as you are. Haven't we had some swell times together?!! Do-nothing I want to wish in my best of ways, always to a wonderful girl. How about missin' us just a little next year? Be good this summer and write real! - (a command!)

Love
Mully Lieb.

Dear "Do-Nothing",

It's been so good to have worked with you at telephone and you've helped me lots. Looking forward to seeing you next year and there's hoping we will be together then again. Have fun this summer & write me!!!

Love,
Mung Johnson

Do. Nothing

I have really enjoyed knowing
you very much this. We really
have had fun messing with
water. too bad I had to see myself
instead of you. We had fun making
may day costumes together, didn't we. Come
to see "me and my Beeli" as the rest
at Wake Forest this ^{summer} if you don't well.
I might knock on you. anyway write to us.
Have fun and I'll see you later -
Love,
Arlia

AUTOGRAPHS

Hebeu how -
Have enjoyed
knowing you very much.
Keep sweet and keep
Smiling!

Arlia
Beeli

Hebeu, I have enjoyed knowing you.
You're sweet. I miss for you
Much success and happiness.
As ever
Mary Alice

Do nothing.
It's been two years, hasn't
these two really enjoyed
it? I have you, and I think
you are a sweet girl, and
a lot of fun. Be good this
summer and write me.
Don't tell anybody this.

AUTOGRAPHS

(you best pussy) ha!
Love,
Luzine

AUTOGRAPHS

AUTOGRAPHS

AUTOGRAPHS

AUTOGRAPHS

Dearest Alice,

I have enjoyed rooming with you more than I can say in words. I wish I had time and could use flowery language to express my thoughts but in a crude form you know how I feel. You're a sweet roommate. I hope to see you this summer. Write me and please be good.

Love always,
Mary Belle

AUTOGRAPHS

Dearest Little Nut,
I'll miss ~~the~~ making ugly faces at you next year - and who will make them for me? But we'll make up for all year when I come back to see you all. Love and always.

Love,
Mary

Helen,

I have enjoyed knowing you.

Good luck.

Frances Elizabeth Cole

Helen -
I have enjoyed knowing you so much - Be sweet & don't forget us -
Love,
Minnie Myers

"Do Nothing" done to call you "Do Nothing", but I just don't know why. I guess 'cause it's so appropriate. You are such a sweet girl tho' and I admire you a lot.
Be good this summer and I'll see you next year.
Lots of Love,
Violet

