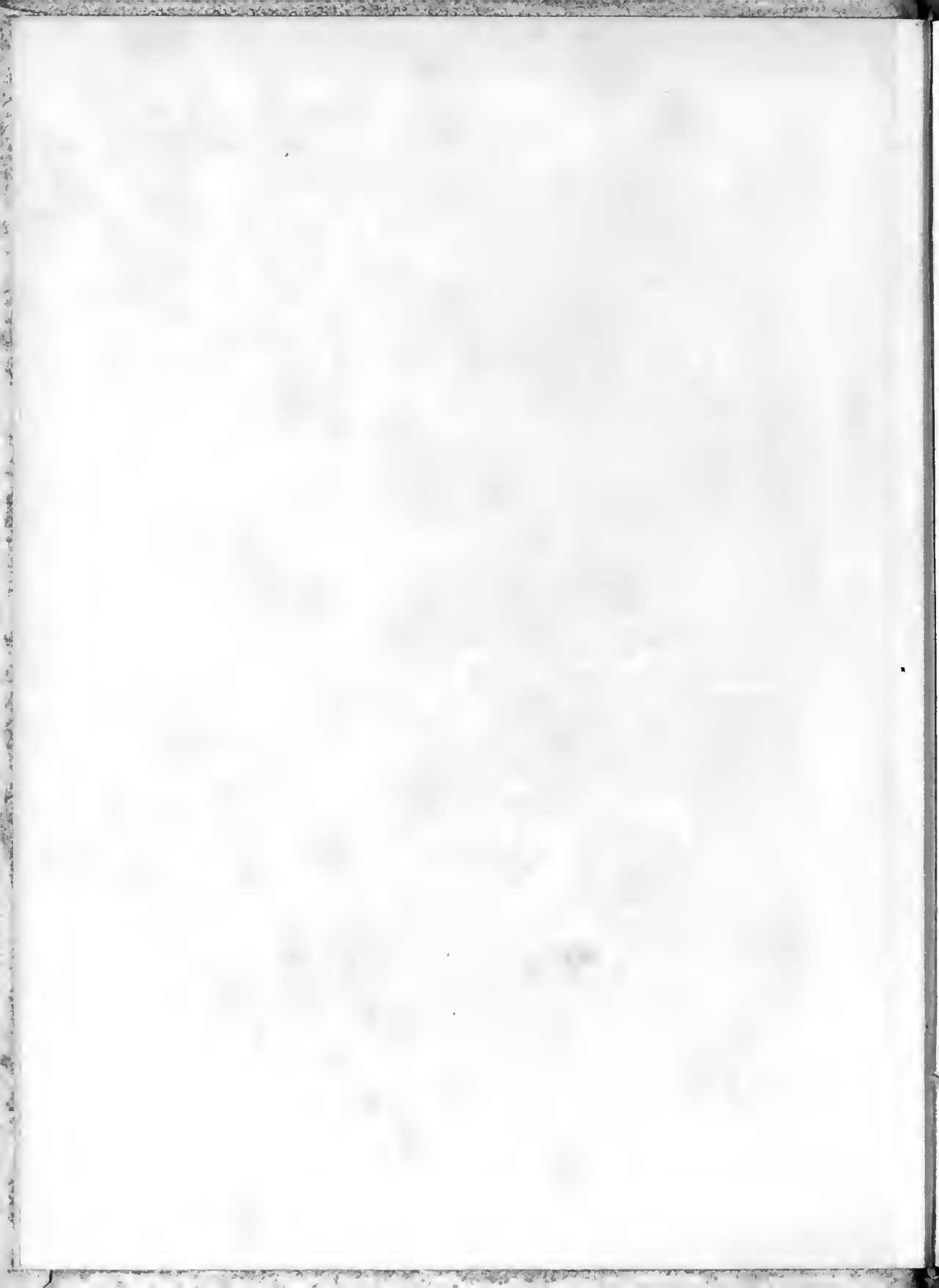




Jan 1942  
White Heather



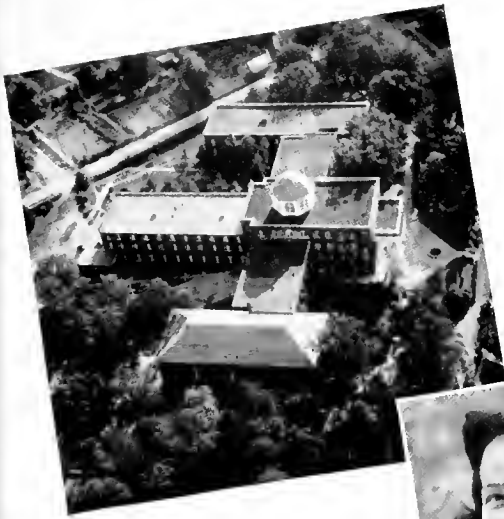
Herin Little



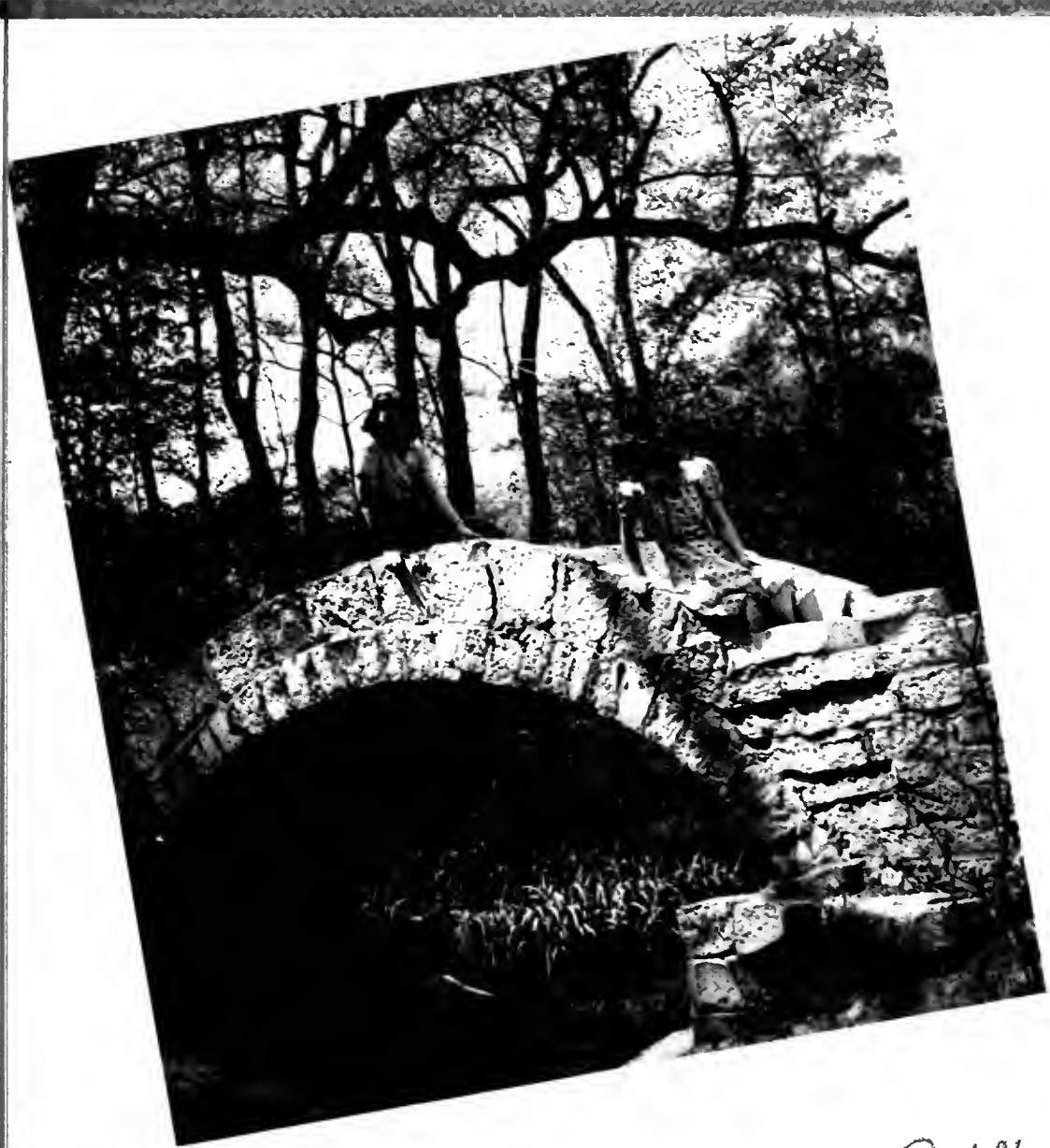
Helen Little

**"CAMPUS DAYS**  
*at Flora Macdonald"*

Mildred Mason **EDITOR**  
Betty Robinson **BUSINESS MGR.**



Presenting the **1942**



**WHITE HEATHER** *A Student Body Publication*



# FLORA MACDONALD COLLEGE

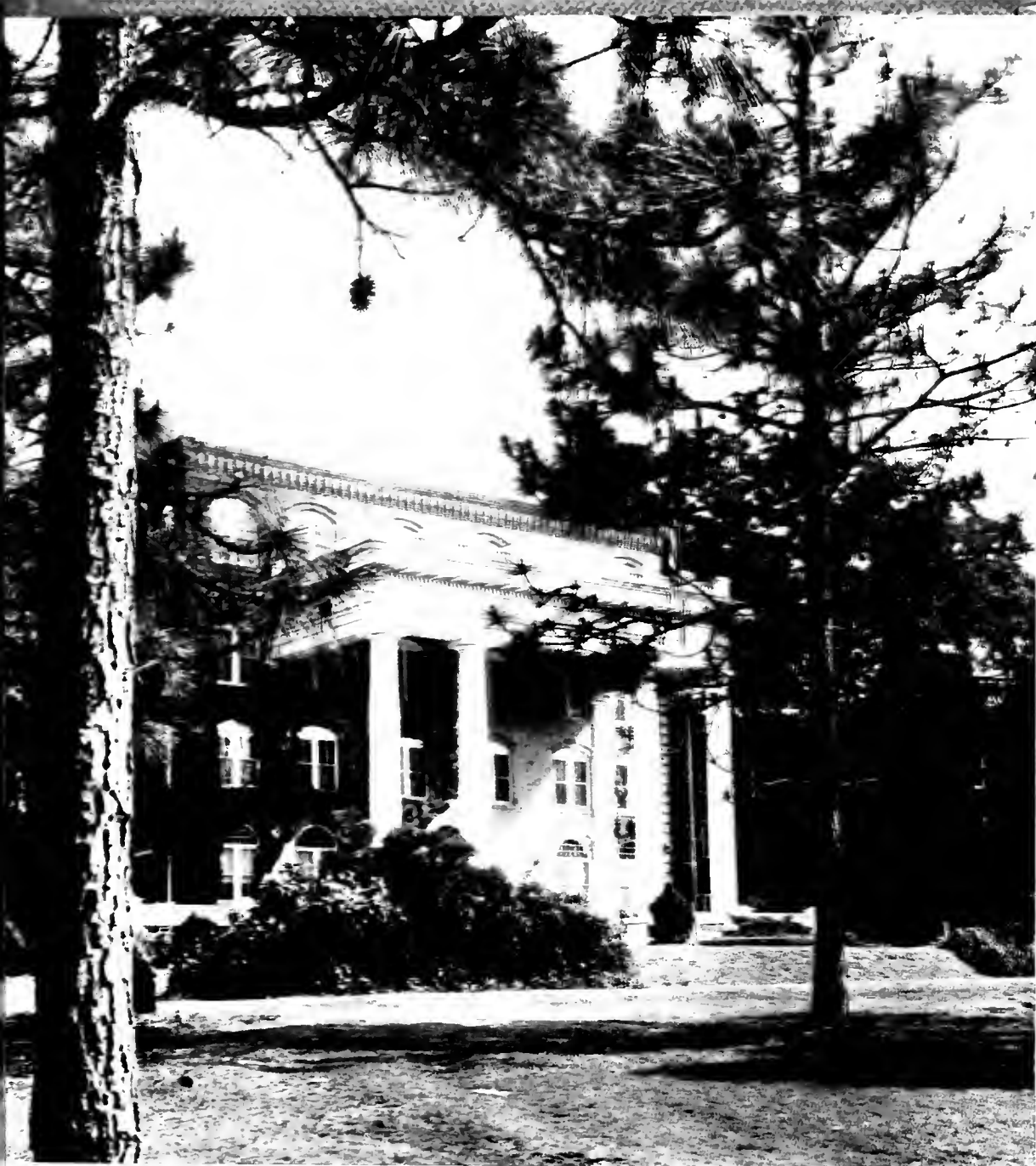
Within these portals our dreams have become realities. When as Freshmen we entered the gates of Flora Macdonald, our sight was blurred by bewilderment—a new world had opened to us. Now, as we leave it, we take with us memories of the spirit of our college, and the inspiration which Christian fellowship has brought us.

We, the Seniors, are leaving college to enter a world of strife. We are facing uncertain tomorrows; we will meet new and difficult problems. We feel our inexperience, and it is with misgivings that we begin to take up our duties. Our success will depend upon our achievements of the past four years; the knowledge we have assimilated; the personalities we have become. If we have caught the spirit that Flora Macdonald offers, we can go forth to meet the future with courage and with faith.

The pages of this book are filled with our memories of this year; we hope it will be representative of your experiences. We offer it as a memorial to the Class of 1942. May its pages serve to help keep foremost the high ideals and aspirations we take with us.

With this aim, we present the 1942 WHITE HEATHER.





"DISCIPLINA FEMINARUM CHRISTO"



SOMETHING MORE THAN



## ALMA MATER

Far away from noisy tumult  
And the city's throng  
Stands our cherished Alma Mater,  
Worthy of our song.

### *Chorus*

Now we lift our joyous chorus,  
Full of love for Thee,  
Hail to thee, O Alma Mater!  
Hail, O, F.M.C.

On her wide and spacious campus  
Springs of crystal rise,  
Which for joy and health and beauty  
She shall ever prize.

Stately vines wavering o'er her,  
Proud her guards to be,  
Whisper faith and hope and courage,  
Faithful listens she.



## KNOWLEDGE



# *Dedication*

*To*

Miss Zoulean Anderson

We, the student body, with admiration and respect, dedicate

THE 1942 WHITE HEATHER

in appreciation of her constant friendship and guidance, and of the true ideals of Christian living with which she inspires us.



MISS ZOULEAN ANDERSON



*The* PRESIDENT

HENRY GRAYBILL BEDINGER, B.A., B.D., D.D.

Flora Macdonald College, 1930—

# DEANS of *Flora Macdonald College*

LUCILLE SHAW WILSON, *Dean of Students*

HAZEL MORRISON, *Dean of Faculty and Registrar*

J. WILGUS EBERLY, *Dean of Conservatory*



*with love Wilson to Helen  
Dean Wilson*



Morrison



Eberly



*Mary Conoly*

H. Morrison  
Anderson  
Briscoe

Robeson  
McPhaul  
Maphet

Glenn  
Neighbors  
Stump

Chapman  
Bateman  
Prince

Conoly  
Jones  
Comer

## Faculty

- MISS HARRIET N. MORRISON, B.A., M.A., Professor of Latin.  
 MRS. LILLIAN FARQUHAR ROBESON, Professor of Violin.  
 MRS. JANE COLSON GLENN, B.S., G.Ph., M.S., Professor of Chemistry and Physics.  
 MRS. LIDA LAW CHAPMAN, B.A., B.M., Professor of Piano and Organ.  
 MISS MARY MACLEAN CONOLY, B.A., B.S., M.A., Professor of Education.  
 MISS V. ZOULEAN ANDERSON, B.A., M.A., Professor of Bible.  
 MRS. ELIZABETH CLARKE MCPHAUL, B.A., Associate Professor of Bible.  
 MRS. GENEVIEVE MACMILLAN NEIGHBORS, B.A., M.A., Associate Professor of Education and Social Science.  
 MISS ETHEL BATEMAN, B.A., M.A., Professor of Physical Education and Health.  
 MISS EMMA LOUISE JONES, B.A., Professor of Public School Music.  
 MISS NELL BARNARD BRISCOE, B.C.S., B.A., Professor of Commercial Branches.  
 MISS PRINCIE MAPHET, B.A., Assistant Professor of Commercial Subjects.  
 DR. ALEXANDER BELL STUMP, B.S., M.S., Ph.D., Professor of Biology and Bacteriology.  
 MISS VERTIE D. PRINCE, B.A., M.A., Professor of Mathematics.  
 MISS FRANCES ELIZABETH COMER, B.S., M.S., Professor of Home Economics.



MISS HELEN SCOGGINS, B.M., Instructor and Official Accompanist of the Conservatory of Music.

MISS ESTELLE LOUISE COONEY, Professor of Voice.

DR. MARGARET AMELIA STIREWALT, B.A., M.A., Ph.D., Associate Professor of Biology and Physics.

MISS VERA BURNETTE, B.S., M.S., Professor of Home Economics.

MISS MARY CORNELIA HAMILTON, B.A., Professor of French.

MISS HELEN BURCH, B.A., M.A., Associate Professor of Education.

MISS MARY AMELIA MAGGINIS, B.A., M.A., Associate Professor of English.

DR. EUGENE ASHBY HAMMOND, B.A., M.A., Ph.D., Professor of History.

MISS ANNIE WILLIAMS, Secretary to the President.

MISS S. BROWN MORRISON, B.L., Bursar and Treasurer.

MISS ELEANOR SAMPLE, Librarian.

MISS VIRGINIA CONNOR, R.N., Resident Nurse.

MRS. ETHEL KESTLER PARSONS, Dietitian.

MISS ZELLA AVON DEW, Superintendent of Laundry Department.

*Not Pictured:*

MRS. MARY LOGAN SANDERSON, B.A., M.A., Professor of English.

MRS. CHRISTINE W. EWING, Professor of Spanish and German.

MR. JUNIUS ELMORE DOVELL, B.A., M.A., Acting Professor of History.

MRS. LOIS DAANE DOVELL, B.A., Instructor in Business English.



Scoggins  
Burch

Sample

Cooney  
Magginis

Connor

Stirewalt  
Hammond

Parsons

Burnette  
Williams

Dew

Hamilton  
B. Morrison

# In Memoriam

MISS HATTIE MCBRYDE

Born November 17, 1855

Died October 30, 1941



GRACE COOLEY

Born May 7, 1923  
Died November 10, 1941



JANE BLACK

Born January 1, 1923  
Died November 14, 1941



"OFF TO Classes"



# SENIORS . . . *Dignity . . . Wisdom . . . Perse*



CATHERINE NICHOLSON  
*President*

MARY ALICE FULK  
*Vice President*

ALMA LOU SPIVEY  
*Secretary*

MARY LIB TRAWICK  
*Treasurer*

MARBELLE GREEN  
*Tea Room Manager*

MARJORIE MCKAY  
*Assistant Tea Room Manager*

Freshmen: First impressions: Gray stone gates and tall pines—energetic girls in white, wearing blue ribbons on their dresses, smiled at us and showed us our rooms—ten pigtails tied with red and green ribbons—submission to the Superior Sophomores—homesickness—learning to play hockey amidst undisciplined sticks and flying balls—first spring; renaissance of spirits that comes with wisteria and azaleas.

Sophomores: supercilious attitude toward the Frosh—increasing class spirit—hockey champs—open study hour—getting our egos deflated in English Literature—basketball champs—the war across the ocean.

Juniors: protective attitude toward our "little sisters"—Willkie vs. Roosevelt—Marshal dresses—corsages and men in tux.

Seniors: Realization of responsibilities—application forms—practice teachers' conferences—Pearl Harbor—defense courses—knitting—serious discussions of the future—"For all the saints . . ."—goodbyes.

CATHERINE NICHOLSON . . .

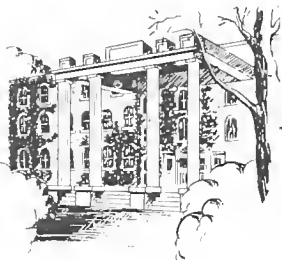
*Perseverance . . . and Personality . . . Success*



MARTHA LEWIS ADAMS, B.A.  
Robersonville, North Carolina  
E. X.

South Carolina Club; Archery '40, '41.

*Crepe myrtle, polo coats and pigskin gloves,  
deep red drapes, determined . . . individual . . .  
accommodating.*



SARA META BAGGETT, B.S.  
St. Stephens, South Carolina  
Z.

Home Economics Club '39, '40, '41, '42; Tennis  
'39, '40, '41, '42; Hockey, Archery, Basketball  
'39, '40, '41.

*Garden parties, dinner rings, placid composure,  
brown fur coats, sagacity in disguise.*







MARGARET BARKER, B.S.  
Milton, North Carolina  
E. X.

Woman's College U.N.C. '39, '40; Home Economics Club '39, '40; Tennis '39; Adelpian Society '39, '40; Basketball '40; Y.W.C.A. '39, '40; William Bartram Scientific Society '41, '42; Home Economics Club '41, '42.

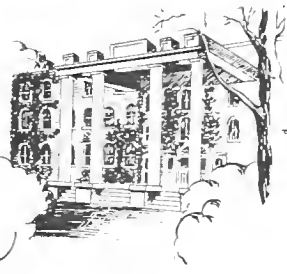
*Blue iris, reflections in clear water, crystal glasses, starched linen, mellow pears; warm, inner sunshine.*



VIRGINIA NELL BOGUE, B.M.  
Tampa, Florida  
Z.

Glee Club '39, '40, '41, '42; Music Club '39, '40, '41, '42; Vice President Freshman Class '39; Secretary Sophomore Class '40; Archery '40, '41; Athletic Board, Head of Archery '41; Marshal '41; Recording Secretary Zetesian Society '41; President Zetesian Society, Student Council '42; Junior Organ Recital '41; Graduate Organ Recital '42; Dancer in "Highland Call" '41; Superlative '42; *Who's Who Among Students in American Colleges and Universities* '42; May Court '42.

*Sand dunes, a gold locket, handboxes, fraternity pins, mellow organ tones, an amiable Beauty.*



*she's the most  
of the best  
always!  
Virginia*

EDITH AILEEN BUGG, B.M.

Roanoke Rapids, North Carolina

Z.

Glee Club '39, '40, '41, '42; Music Club '39, '40, '41, '42; Dramatic Club '39, '40, '41, '42; Hockey '39, '40; Sextette '40, '41, '42; Sophomore Voice Recital '40; Dancer in "Highland Call" '41; Junior Voice Recital '41; Piano Recitals '41, '42; Prayer Band Leader '42; Student Volunteers '42; Treasurer Music Club '42; Graduate Voice Recital '42.

*Prima Donna, Chinese gongs, dahlias, Hugo Wolf, earnestness, "Music, among the gifts that God hath sent, one of the most magnificent."*



MARY CAROLINE BUIE, B.M.

Red Springs, North Carolina

Z.

Music Club '39, '40, '41, '42; President Music Club '42; Glee Club '39, '40, '41; Sextette '39, '40, '41, '42; Day Students Club '39, '40, '41; Sophomore Voice Recital '40; Junior Voice Recital '41; Graduate Voice Recital '42.

*Concerts, blue satin, tea roses, Jessica Dragonette, fluted tones. "Music's golden tongue."*





MIRIAM BULLARD, B.A.  
Chadbourn, North Carolina  
Z.

Music Club '39; Hockey '39, '42; Glee Club '40, '41, '42; Tennis '39, '40, '41; William Bartram Scientific Society '41, '42; Camera Club '41, '42; Vice President Camera Club '42; Basketball '42.

*Candlelight and wine, gold picture frames, shadows, camera studies, "Thy voice to us is wind among still woods."*



ANNIE MARGARET BUNDY, B.A.  
Clio, South Carolina  
Z.

Prayer Band Leader '40, '41, '42; Mission Study Leader '40, '41; William Bartram Scientific Society '41, '42; Student Volunteers '39, '40, '41, '42; President Student Volunteers '42; Snapshot Editor WHITE HEATHER, '40, '41, '42.

*Lilacs, open fires, Emily Dickinson, strawberry jam, "Her spirit is the harmony of truth."*

NETTIE GRACE CAMERON, B.S.  
Polkton, North Carolina  
E. X.

Brevard Junior College '39; President of Anson  
County Club; Home Economics Club '40, '41,  
'42.

*Well-kept lawns, ruffled aprons, pink rosebuds,  
fragile vases, an irresistible gentleness.*



ROBERTA DANAHO, B.A.  
Durham, North Carolina  
Z.

Mitchell College '39, '40; Volley Ball '41; Bas-  
ketball '41; Prayer Band Leader '42; Fire  
Squad '42; Mission Study Leader '42.

*White lilies, midnight, carved ivory, bonfires,  
red toboggans, lively laughter that warms the  
air.*





CLARA FOLGER DAVID, B.A.  
Bennettsville, South Carolina  
E. X.

South Carolina Club; Hockey '39; Tennis '40, '41; Glee Club '40, '41, '42; William Bartram Scientific Society '41, '42; Junior Class Editor WHITE HEATHER '41; Prayer Band Leader '41; Dancer in "Highland Call" '41; F.M.C.A. Cabinet '42; Sextette '42; Music Club '42; Literary Editor WHITE HEATHER '42.

*Pink azaleas, white kittens, Baby Snooks, rain-boxes, vested choirs, the graciousness of a southern lady.*



SARA AGNES EDENS, B.S.  
Wakulla, North Carolina  
E. X.

Day Students Club '39, '40, '41, '42; Basketball '39; Home Economics Club '39, '40, '41, '42.

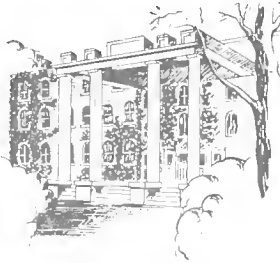
*Red apples, kerchiefs, cinnamon toast, sewing baskets, wicker chairs, sparkling eyes and merry laughter.*

MARY EMMA FOLGER, B.S.  
Pembroke, North Carolina

Z.

Day Students Club '39, '40, '41, '42; Home Economics Club '39, '40, '41, '42; Archery '39, '42; Tennis Club '40; William Bartram Scientific Society '41.

*Short brown curls, valentines, animal crackers, moccasins, an unusual blend of the practical and the sentimental.*



MARY ALICE FULK, B.A.  
Lewisville, North Carolina  
E. X.

*Pine and Thistle Staff '41; Camera Club '41, '42; William Bartram Scientific Society '40, '41, '42; Archery Club '42; Dramatic Club '42; French Club '42; Commercial Club '42; Vice President Senior Class, Secretary Student Body, Student Council '42; Who's Who Among Students in American Colleges and Universities '42.*

*Lighted lamps, minced maxims, patterns of pine needles, emeralds; clear, vibrant insight—refreshing naturalness.*





GERALDINE ISABELLE GRADY, B.A.

Seven Springs, North Carolina

Z.

Basketball '39; Tennis '40; Student Volunteers '40, '41, '42; Student Volunteers Secretary '40, '42; Student Volunteers Librarian '41; Prayer Band Leader '41, '42; Senior Sunday School Class President '42; Dramatic Club '42; Fire Squad '42.

*Larkspur, dormer windows, soft woolsens, ink wells; wise, unassuming sincerity.*



MARIBELLE GREEN, B.A.

Greenville, South Carolina

E. X.

Tennis '39, '40, '41, '42; Volley Ball '39; South Carolina Club; Fire Squad '40; Furman University Summer School '40; Tea Room Manager '41, '42; Marshal '41; Treasurer Epsilon Chi '41, '42; Dramatic Club '42; Senior Hockey Team '42.

*Charm bracelets, pink angora, college pennants, brick bungalows; well groomed in appearance, resolute in action.*

*Helena -  
I wish I had  
known you a little  
(you intended) to be -  
you're okay - Maribelle  
P.S. But I could do nothing about it!*

CLARA LUCILLE GRIGGS, B.A.

Sheffield, Massachusetts

Z.

Class President, Student Council '39; Delegate to Davidson Conference '39, '41; Glee Club '39, '40, '41, '42; Dramatic Club '39, '40, '41, '42; William Bartram Scientific Society '39, '40, '41, '42, Vice President '41; Mathematics Club '39, '40, '41, '42; Hockey Team '39, '40, '41, '42; Hockey Varsity '42; Basketball '40, '41, '42; Camera Club '40, '41, '42; Marshal '41; F.M.C.A. Cabinet '40, '41, '42, President '42; May Court '41; May Queen '42; *Who's Who Among Students in American Colleges and Universities* '42; Student Council '42.

*Cathedral windows, white tapers, red roses, rhinestone clips, Easter Parade, "One to whom was given, so much of earth—so much of heaven."*



*Love to a  
fine girl!  
Lucille*



SCOTT HALE, B.A.

Baton Rouge, Louisiana

Z.

Louisiana State Normal College '39, '40; Glee Club '41, '42; Mathematics Club '41, '42; William Bartram Scientific Society '41, '42; Dramatic Club '41, '42, Vice President '42; Snapshot Editor WHITE HEATHER '41; Exchange Editor *Pine and Thistle* '42; Senior Scribbler '42.

*Newspaper clippings, Walt Whitman, footlights, Fruit cake, Lockheed flyers, the best proof of ability is action.*







MARY GAITTER HALL, B.M.

Hickory, North Carolina

Z.

Music Club '39; Treasurer Freshman Class '39; May Court '39; Basketball Varsity '39, '40, '41; President Sophomore Class '40; Glee Club '40, '41, '42; Superlative '40, '41, '42; Vice President Student Body '41; Student Council '40, '41, '42; Marshal '41; Editor College *Handbook* '41; F.M.C.A. Cabinet '42; President Student Body '42; Junior Piano Recital '41; Senior Piano Recital '42; Sextette '42; Hockey Varsity '42; *Who's Who Among Students in American Colleges and Universities* '41, '42.

*Sunlight on azure lakes, April, blue hyacinths, symphonics and swing, platinum, expressive blue eyes reflecting sincerity and truth.*



PATSY WIGGINS HARPER, B.M.

Pinetops, North Carolina

Z.

Glee Club '40, '41; Music Club '40, '42; Dramatic Club '42; Class Secretary '41; Archery '40, '41, Sextette '40; Zetesian Society Critic '41, First Vice President '42; College Cheer Leader '42.

*English tweed, Harper's Bazaar, Gershwin rhapsody, Venetian blinds, pungent wit, an artistic touch that is charmingly individual.*

ANGELIA HUBBARD, B.A.

Clio, South Carolina

Z.

Limestone College '39; William Bartram Scientific Society '40, '41, '42; Mathematics Club '40, '41, '42; Prayer Band Leader '41; Mission Study Leader '42; Student Volunteers '42.

*Robins, brown suede, tapestries, leatherbound books, white cliffs, generosity and understanding that warm the heart.*



MARY HUDSON, B.S.

Ruffin, North Carolina

Z.

Home Economics Club '39, '40, '41, '42; William Bartram Scientific Society '41, '42; Sponsor of College and Prize Winner in North Carolina State Textile Style Show '41; Atlantic Christian College Summer School '41; Second Vice President Zetesian Society '42.

*Patchwork quilts, March, ocean spray, wreathed smiles, capable of doing all things well.*





HAZEL MAY JONES, B.S.  
Red Springs, North Carolina

Z.

Home Economics Club '39, '40, '41, '42; Day Students Club '39, '40, '41, '42; Glee Club '39, '40, '41, '42; William Bartram Scientific Society '40, '41.

*Pink carnations, luncheons, airline luggage, trench coats, a clever way of expression.*



MARGARET Z. KORNEGAY, B.A.

Warsaw, North Carolina

Z.

Baskethall '39, '40, '41, '42; Hockey '39, '40, '41, '42; Captain Hockey Team '39; William Bartram Scientific Society '40, '41, '42; Tennis '39, '40, '41; Camera Club '42.

*Chestnuts, polo, autumn leaves, maple furniture, slacks and sweaters, independence and non-chalance.*

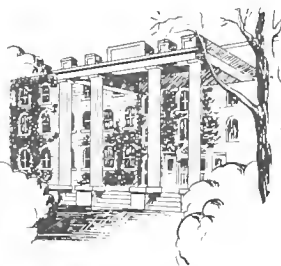
Laura Frances Lowry, B.S.

Jefferson, South Carolina

E. X.

Basketball '39, '40, '41, '42; Hockey '39, '42;  
Tennis '39, '40; South Carolina Club; Archery  
'40; Hiking '41; Wake Forest Summer School  
'40; Home Economics Club '39, '40, '41, '42.

*Pink geraniums, hand-painted china, twill rain-  
coats, willow trees, powder blue, quiet smiles and  
pensive moods.*



Mildred Hope Mason, B.A.

Roanoke, Virginia

Z.

William Bartram Scientific Society '39, '40, '41,  
'42, President '42; Mathematics Club '39, '40,  
'41, '42; Social Chairman Mathematics Club  
'41; Dramatic Club '39, '40, '41, '42, President  
'40; Music Club '40, '41, '42, Secretary '42;  
Glee Club '40, '41, '42; Virginia Club; Class  
Cheer Leader '39, '40, '41, '42; Home Economics  
Club '39; Camera Club '40, '41, '42; *Pine and  
Thistle* Staff '41; Delegate to North Carolina  
Collegiate Press Association '41, '42; Editor-in-  
Chief *White Heather*, and Chief Scribe '42.

*White sea gulls, eversharp pencils, thorough-  
breds, fox grapes, superlative . . . , a unique  
combination of intellect, craftsmanship, and  
artistry.*





*Helena  
have  
you  
the  
best of  
love  
Mell*

NELLIE GRAY MATTHEWS, B.A.  
Warsaw, North Carolina

Z.

Scotch Dancer in "Highland Call" '41; Wake Forest Summer School '41.

*Turntables, Concord grapes, russet chrysanthemums, Easter baskets, a strand of pearls, thorough—studious.*



MINNIE ELIZABETH MYERS, B.A.  
Tar Heel, North Carolina

E. X.

William Bartram Scientific Society '39, '40, '41, '42; Treasurer '40; Mathematics Club '39, '40, '41, '42; Music Club '39, '40; Treasurer Junior Class; Marshal '41; Vice President Student Body; Student Council '42; Editor *College Handbook* '42; Glee Club '42; College Superlative '42; *Who's Who Among Students in American Colleges and Universities* '42.

*Station wagons, a square-cut diamond, shasta daisy, picnics; strength . . . , wisdom . . . , a genuine love of living.*

PATTIE McDANIEL, B.A.  
Bennettsville, South Carolina

Z.

Prayer Band Leader '40; William Bartram  
Scientific Society '41, '42; F.M.C.A. Cabinet  
'41, '42.

*Falling snow at twilight, spruce trees, wisteria,  
quiet chapels, "Her soft smile attracts the  
soul."*



SARA ALINE MacDONALD, B.S.  
Hamer, South Carolina

Z.

Home Economics Club '39, '40, '41, '42; Bas-  
ketball '40; Day Students Club '39, '40, '41, '42;  
Flora Macdonald Summer School '40.

*Primroses, leather belts, mixing bowls, station-  
ery, kindness and faithfulness are the essence of  
friendship.*



*Love, luck - success  
and happiness  
is what I  
wish for  
you -  
Pattie*





MARJORIE JANE MCKAY, B.A.  
St. Pauls, North Carolina  
E. X.

Day Students Club '39; Granddaughters Club;  
Hockey '40, '41, '42; Hockey Varsity '42; Wil-  
liam Bartram Scientific Society '40, '41, '42;  
Treasurer '41; Camera Club '40, '41, '42;  
Basketball '41; Tennis '41; Prayer Band Leader  
'42; Mission Study Leader '42; Assistant Tea  
Room Manager '42.

*White violets, peasant scarves, Mather Goose  
rhymes, book ends, friendliness . . . poised re-  
serve and dignity.*



JEANNE COURTNEY MCKENZIE, B.A.  
Rockingham, North Carolina  
E. X.

Woman's College U.N.C. '39, Fall '40; Wake  
Forest Summer School '41; Fire Captain '42.

*Contagious smiles, sprays of spiraea, candlewick  
bedspreads, quiet dignity coupled with good  
nature.*

*Dearest Helen  
It has been all of  
your giving all of  
I think you are a  
sweet bunch of kids  
Love  
Jeanne*

CAROLYN BALDWIN MACLEAN, B.S.

Racford, North Carolina

E. X.

Montreat College '39; Home Economics Club '39, '40, '41, '42; William Bartram Scientific Society '41, '42; Camera Club '42; Dramatic Club '42; Marshal '41; Prayer Band Leader '42.

*Marigolds, camels' hair coats, "Mickey Mouse pic," butterscotch, "spontaneous wisdom and truth breathed by cheerfulness."*



MARJORIE AGATHA McMANUS, B.S.

Red Springs, North Carolina

Z.

Home Economics Club '39, '40, '41, '42; Day Students Club '39, '40, '41, '42, Secretary-Treasurer '41; Glee Club '40, '41, '42.

*Gardenias, football games, black wool suits, finger boxes, a look of freshness like the dawn.*







DOROTHY SINGLETON McMILLAN, B.A.

Red Springs, North Carolina

Z.

Commercial Club '41; Day Students Club '41, '42.

*Figuriness; dewdrops and crocuses; cool, clear springs; fragile grace with gentle ways and charm.*



SARAH MARGARET MCPHAUL, B.A.

Red Springs, North Carolina

Z.

Day Students Club '39, '40, '41, '42. Vice President '42.

*Dogwood, dark green corduroy, diaries, brown thrushes; the calm, unruffled stillness of a summer twilight.*

ELIZARETH WETMORE MACPHERSON, B.A.

Fayetteville, North Carolina

E. X.

Hockey '39, '40, '41, '42; Tennis '39, '41, '42; Captain Junior Tennis Team '41; Basketball '40, '41, '42; Archery Club '41; William Bartram Scientific Society '41, '42, Recording Secretary '42; Camera Club '41, '42; Fire Chief '42; Vice President Athletic Association '42; Prayer Band Leader '42; Mission Study Leader '42; Hockey Varsity '42.

*Fireflies, black-eyed susans, wooden beads, keepsakes, scholarliness . . . ; in soul sincere, in action faithful, in honor clear.*

*luck and success!*

*Beth*



MARGARET RAY NEWTON, B.A.

Red Springs, North Carolina

Z.

Mathematics Club '40, '41; William Bartram Scientific Society '40; Day Students Club '39, '40, '41, '42.

*Flower petals, a minuet, rick-rack braid and pinafores, quiet efficiency that lends poise.*





*Best wishes and  
love,  
Catherine*

CATHERINE NICHOLSON, B.A.

Troy, North Carolina

Z.

William Bartram Scientific Society '39, '40, '41, '42; Dramatic Club '39, '40, '41, '42. President '42; Hockey '39; Assistant Business Manager *Pine and Thistle* '40; Class Treasurer '40, President '41, '42; Member Student Council '41, '42; Camera Club '40, '41, '42; *Who's Who Among Students in American Colleges and Universities* '41, '42; Senior Scribbler '42; College Superlative '42.

*Quilled pens, Shakesperian sonnets, mahogany, rollicking good times, a sense of the truly artistic.*



CLEO OSBORNE, B.A.

Vannoy, North Carolina

Z.

Montreat College '39, '40; Vice President Student Volunteers '42; Prayer Band Leader '42.

*Clover, gray stone churches, pine cones, amethyst, a quiet and gentle smile.*

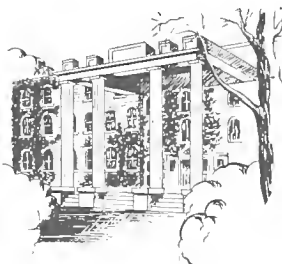
DOROTHY RUTH PACE, B.A.

Jacksonville, Florida

Z.

Mitchell College '39, '40; Prayer Band Leader '41; Mission Study Leader '41; William Bart-ram Scientific Society '41, '42; Treasurer Zetesian Literary Society '42; F.M.C.A. Cabinet '42; Student Volunteers '41, '42.

*Mountain laurel, white roads, accordions, green foliage, quiet faith and steadfastness of purpose.*



RUTH WILSON PREVATT, B.S.

Red Springs, North Carolina

Z.

Day Students Club '39, '40, '41, '42; Basketball '40; Tennis '41; Home Economics Club '39, '40, '41, '42.

*Pin stripes, rows of tulips, red cardigans, white enamel; humor, warm and all-embracing like the sunshine.*





JULIA ANN PROCTOR, B.A.  
Wilson's Mills, North Carolina  
E. X.

Peace Junior College '38, '39; Meredith College  
'40; William Bartram Scientific Society '42.

*Yellow sweaters, Maltese kittens, etchings, win-  
dore boxes; calm, even tempered, adept with  
paint and brush.*



EVELYN ROBERTSON, B.S.  
Aboskie, North Carolina  
E. X.

Archery '39; Hockey '39, '40; Home Economics  
Club '39, '40, '41, '42, Vice President '41, Presi-  
dent '42; Chief Marshal '41; Basketball '40.

*"Fils," water lilies, Mademoiselle, portfolios,  
iced tea, smiles like sudden sunshine.*

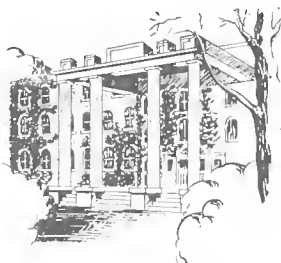
BETTY RUTH ROBINSON, B.A.

Charlotte, North Carolina

E. X.

Fire Squad '39, '40; Treasurer Epsilon Chi '40; Censor Epsilon Chi '41; Secretary Sunday School Class '41; Tea Room Manager '41; Assistant Business Manager WHITE HEATHER '41; Delegate to North Carolina Collegiate Press Association '41, '42; Dramatic Club '42; Business Manager WHITE HEATHER '42.

*"Slug," jonquils, pale yellow wool, staff pens, carnivals and confetti; lively and fun-loving, radiant smiles.*



JEAN KEYS RYBURN, B.A.

South Charleston, West Virginia

E. X.

West Virginia Club '39, '40; Hockey '39, '40, '42; Mission Study Leader '40, '41; Dramatic Club '40, '41, '42, President '41, Treasurer '42; Prize Winner in North Carolina State Textile Style Show '40; Second Vice President Epsilon Chi '41; Assistant Editor-in-Chief WHITE HEATHER '41; Marshal '41; Delegate to Davidson Conference and P.S.A. Conference '41; Secretary F.M.C.A. '42; French Club '42; Delegate S.C.A. Conference '42; Mathematics Club '41, '42; William Bartram Scientific Society '41, '42.

*Buttercups, perky hair ribbons, Shelley, tea parties, bald-headed puppy dogs, conscientious keepee with mischief in her eye.*





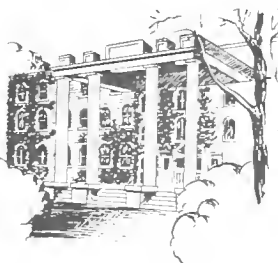
HAZEL MAE SANDERS, B.S.

Four Oaks, North Carolina

E. X.

Home Economics Club '39, '40, '41, '42; Wake Forest Summer School '40, '41.

*Ginger snaps, tea kettles, nasturtiums, humming birds, a frankness peppered with jollity.*



MARY CLYDE SHEPHERD, B.A.

Lansing, North Carolina

Z.

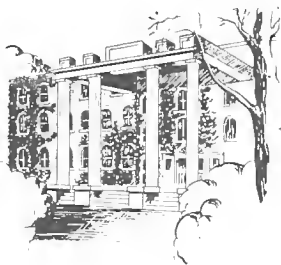
Lees McRae Junior College '39, '40; Prayer Band Leader '41; Dramatic Club '41, '42; William Bartram Scientific Society '41, '42. Vice President '42; Vice President F.M.C.A. '42; Senior Scribbler '42; *Who's Who Among Students in American Colleges and Universities* '42.

*Blue skies and clear mountain streams, delphiniums, collies, sapphires, paths through the woods, "Seeing beauty in all things is perhaps the secret of her lovely temperament."*

ALMA LOU SPIVEY, B.A.  
Elizabethtown, North Carolina  
E. X.

Tennis '39; Hockey '39, '40, '41, '42, Head of Hockey, Hockey Varsity, Captain Senior Hockey Team '42; William Bartram Scientific Society '40, '41, '42, Treasurer '42; Mathematics Club '40, '41, '42, Vice President '42, Corresponding Secretary '41; Camera Club '40, '41, '42, Vice President '41, President '42; Dancer in "Highland Call" '41; Monogram Club '42; Class Secretary '42; Basketball '42; French Club '42.

*Coffee shops, spices, frisky squirrels, sun tan, blue morning glories, as refreshing as a cool breeze.*



WILLIE FRANK STUBBS, B.A.  
Gibson, North Carolina  
Z.

Mars Hill Junior College '39, '40; Flora Macdonald College '41, '42.

*Peppermint candy sticks, red cardigans, hope chests, black scotties, school books, seriousness tempered with flashes of merriment.*







ELIZABETH THOMAS, B.S.

Beaufort North Carolina

E. X.

Meredith College '39; Wake Forest Summer School '40; Home Economics Club '41, '42.

*Black velvet, walnut panelling, magnolias, tea towels, still pools, a calm and well-poised manner.*



NELL THOMAS, B.A.

Florence, South Carolina

Z.

Class Hockey Team '39; Class Basketball Team '39, '42; Basketball Varsity '40; Class Tennis Team '42; Treasurer Student Body, Student Council '41; Marshal '41; May Court '41; William Bartram Scientific Society '39, '40, '41, '42; Mathematics Club '39, '40, '41, '42; Dramatics Club '42; French Club '42; Editor *Pine and Thistle* '42.

*Study lamps, Turkish coffee, infectious laughter, japonicas, hunters' green, bittersweet; fresh, casual good looks.*

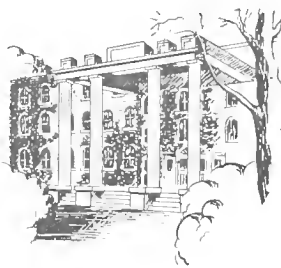
MARY ELISABETH TRAWICK, B.A.

Raeford, North Carolina

E. X.

Basketball '39, '40, '41, '42, Captain '42;  
Hockey '39, '41, '42; Hockey Varsity '41, '42;  
Tennis '39, '40; Assistant Tea Room Manager  
'41; Monogram Club '42; Class Treasurer '42;  
Head of Table Tennis '42.

*Roller skates, leather jackets, convertibles,  
varsity monograms; a rare compound of sin-  
cerity, indifference, and vivacity.*



EDITH USSERY, B.A.

Sanford, North Carolina

E. X.

Archery '39, '40, '41; Wake Forest Summer  
School '39.

*Small gold watches, powder puffs, periwinkle,  
pastel plaids, baby foxes, a piquant charm.*





MARY McNEILL WATSON, B.A.

Red Springs, North Carolina

Z.

Day Students Club '39, '40, '41, '42; Mathematics Club '39, '40, '41, '42; Granddaughters Club '39, '40, '41, '42; William Bartram Scientific Society '39, '40; Day Students, Vice President '41, President '42; Student Council '42.

*Dresden china, blue forget-me-nots, dainty white linen handkerchiefs, book shelves, clipped phrases . . . reserve . . . knowledge.*



ANGELLE WILLIAMSON, B.S.

Chadbourn, North Carolina

Z.

Meredith College '39; Granddaughters Club '39; Wake Forest Summer School '41; Home Economics Club '39, '40, '41, '42; Hiking '40; William Bartram Scientific Society '41, '42.

*Windmills, date-nut bread, Mexican pottery, tiny pink and white checks, a generosity flavored with candor.*

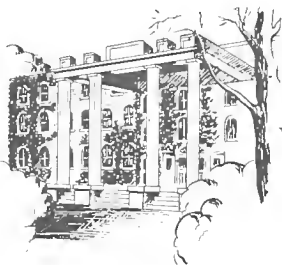
GRACE ELIZABETH WITHERS, B.M.

Spencer, North Carolina

E. X.

Music Club '39, '40, '41, '42, Secretary '41, Vice President '42; Glee Club '40, '41, '42, President '42; F.M.C.A. Cabinet '41, '42; Delegate to Davidson Conference '40, '41; Senior Editor WHITE HEATHER '42; Senior Scribbler '42; Junior Piano Recital '41; Graduate Piano Recital '42.

*Forsythia, cameos, Liszt Etudes, hot chocolate, good books, lighted windows, "And 'tis my faith, that every flower enjoys the air it breathes."*



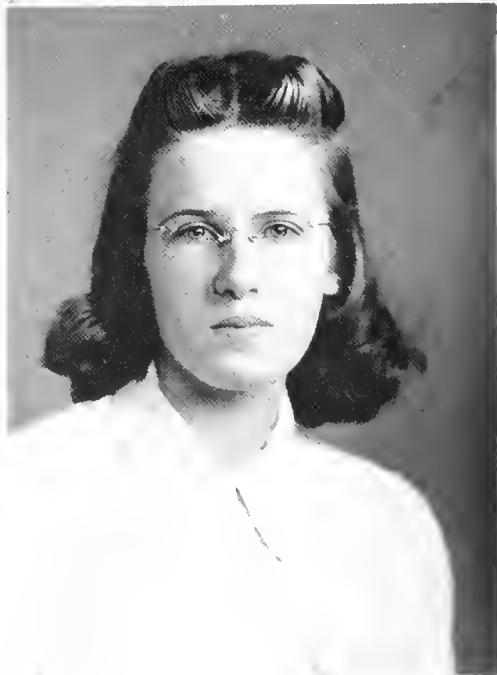
EDITH AREY WOMBLE, B.A.

Wagram, North Carolina

E. X.

Montreat Junior College '38, '39; Volley Ball, Hiking, Basketball '41; Prayer Band Leader '42.

*Frosted window panes, sprigged dainty, yellow tulips, quiet hills, the warmth of pastoral sunshine.*



## *The* FRIENDSHIP SONG

*Our college friendship is the finest,  
Worth any price that you can pay.  
May bonds of friendship ne'er be broken  
As through this world we wend our way.  
But yet, whatever be life's fortune,  
In God our trust shall ever be.  
Those good old days won't be forgotten,  
And the girls at F.M.C.*

## JUNIORS . . . *Amiability* . . . *Competence*



SARAH BELLE SMITH  
*President*

MARGARET JENKINS  
*Vice President*

LOIS PARKER  
*Secretary*

MARY MONICA JACKSON  
*Treasurer*

MRS. ELIZABETH McPAUL  
*Faculty Adviser*

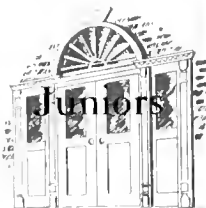


"They just aren't typical freshmen! Why they are not green at all!" That's what we heard when as freshmen we entered the doors at F.M.C. to an entirely new world for us; and rightly was it said. We were carefree, happy, and proud; and throughout our first year we showed a class spirit that cannot be rivaled. Then we were promoted to the rank of sophomores, and became the largest class of the four. It was a wonderful year. We cannot brag of the tournaments or the hockey and basketball games we won, for they were only three in all; but we showed our sportsmanship and looked forward to our junior year with a challenge to the other classes. As we look back, we see that we have not accomplished as much as we had wished; but we still have another chance; and it is with great excitement that we are looking forward to our senior year.

MARY MONICA JACKSON.

... Loyalty . . . . Aspiration.





BARNETT, CATHERINE CELESTE

Raleigh, N. C.

BLACK, JANE

York, S. C.

BOWDEN, SARAH BULLOCK

Warsaw, N. C.

BRITAIN, ELIZABETH

Summerfield, N. C.

BRUNER, KATHERINE

Cleveland, N. C.

BULLARD, MARIAN

Wagram, N. C.

BUNN, LOUISE

Rocky Mount, N. C.

CABLE, LOUISE

Madison, N. C.

CAMPBELL, MARGARET

Parkton, N. C.





COLE, MARGARET McIVER, Woodleaf, N. C.  
 CRAIG, JOSEPHINE Marion, N. C.  
 CREAGH, ANNE Pollocksville, N. C.

EDENS, IRENE Red Springs, N. C.  
 GAITLEY, MARTHA Red Springs, N. C.  
 HEFNER, MARGARET ROSE Hanlet, N. C.

HIGHSMITH, KATHRYN, Rocky Point, N. C.  
 INGRAM, MARY ELLA Wagram, N. C.  
 JACKSON, MARY MONICA, Wilmington, N. C.

*Luck always,  
Margaret*



*Mrs. yours  
well and  
will it give  
this for  
you - 1954*

*Allen,  
I've enjoyed living  
on major with you  
this year a lot. I am  
looking forward to  
see you next  
year. I'll be  
a sweet  
to  
you*

**Juniors**

JENKINS, MARGARET  
KLUSMEIER, CAROLYN  
LANCASTER, MERLE ETTA

Mayesville, S. C.  
Charlotte, N. C.  
Parkton, N. C.

LYTCH, BARBARA  
LYTCH, JEAN MCKAY  
MARTIN, DOROTHY

Laurinburg, N. C.  
Rowland, N. C.  
Whiteville, N. C.

MONROE, RUTH  
MOORE, FLORENCE TEMPLE  
McbRYDE, KATHRYN

Eagle Springs, N. C.  
Ashland, Va.  
Lumberton, N. C.



McDANIEL, CAROL  
 McDANIEL, VIRGINIA  
 McDONALD, JANET

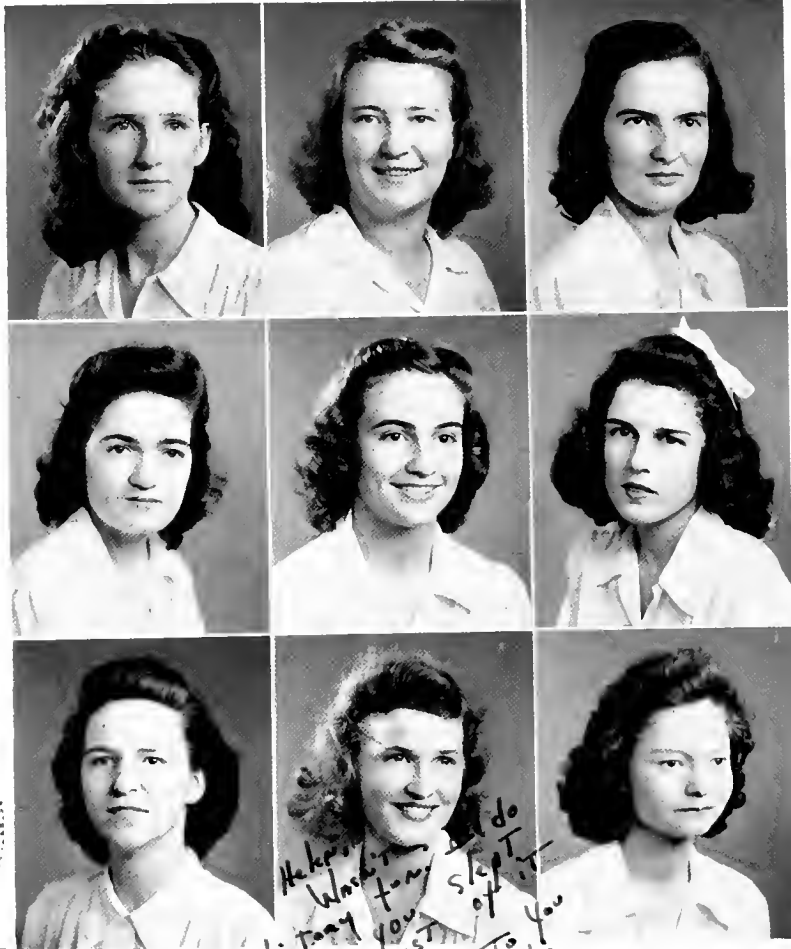
Bennettsville, S. C.  
 Red Springs, N. C.  
 Cameron, N. C.

McFADYEN, HELEN  
 McKENZIE, GRACE  
 McKENZIE, MARJORIE

Hsuehowfu, Kiangsu, China  
 Rockingham, N. C.  
 Red Springs, N. C.

McKETHAN, REBECCA  
 McLAUGHLIN, MARY  
 McLEOD, MARGARET

Fayetteville, N. C.  
 Vass, N. C.  
 Aberdeen, N. C.



McPhaul, Marion Jean

McPherson, Kathleen Gayle

MacPherson, Sue Harden

Oliphant, Hazel

Parker, Lois

Pate, Billy

Powers, Louise

Powers, Phyllis

Powers, Rachel Elizabeth

Parkton, N. C.

Shiloh, N. C.

Fayetteville, N. C.

Mooreville, N. C.

Clinton, N. C.

Gibson, N. C.

St. Pauls, N. C.

St. Pauls, N. C.

St. Pauls, N. C.

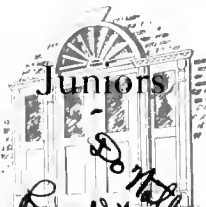
*Make  
Wash  
History  
Think  
These  
the - host  
Love To you  
Phyllis*



PROCTOR, LUCILLE ..... Wilson's Mills, N. C.  
 ROSS, JEAN ..... Patzcuaro, Mexico  
 ROWE, VAUNE ..... Lumberton, N. C.

SANDERS, GLADYS ..... Raeford, N. C.  
 SHOOK, LOIS ..... Red Springs, N. C.  
 SINCLAIR, MARGARET ..... Wilmington, N. C.

SMITH, MABLE MACNEILL ..... Red Springs, N. C.  
 SMITH, SARAH BELLE ..... Elizabeth City, N. C.  
 STROUD, GERALDINE ..... Pink Hill, N. C.



Juniors

SUTHERLAND, MARTHA

TATE, LILLIAN

TEACHEY, EVELYN

TESTER, HELEN

THOMAS, HELEN

THOMAS, LUCY

Laurinburg, N. C.

Gastonia, N. C.

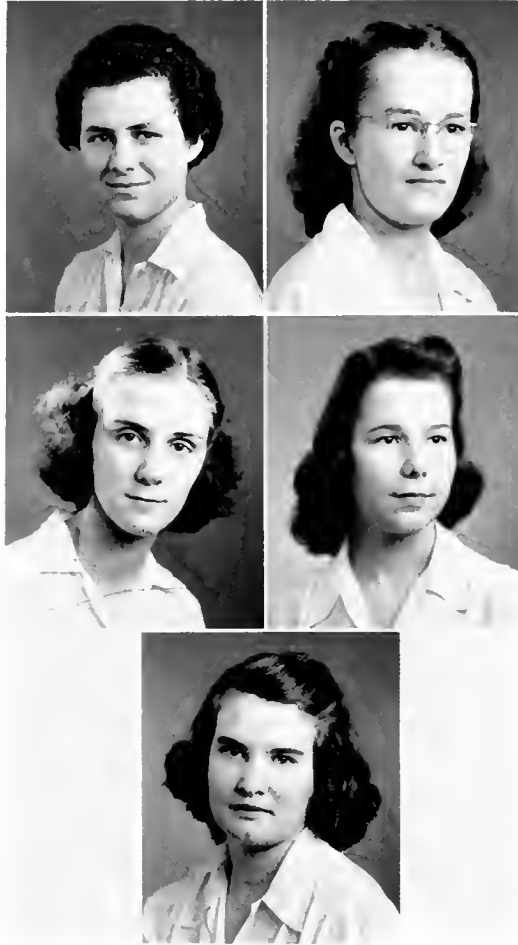
Rose Hill, N. C.

Bennettsville, S. C.

Barium Springs, N. C.

Florence, S. C.

*Do nothing -  
 Run at this hour  
 years - these have  
 see - have to  
 next more of you  
 year! you  
 Love from another  
 Helen*



VIDAL, CAROLYN  
WALKER, MARY OLIVE

Gainesville, Florida  
Greelyville, S. C.

WARREN, LELLON  
WEAVER, ELIZABETH HOPE

Clinton, N. C.  
Red Springs, N. C.

WILLIAMS, VIOLA

Eagle Springs, N. C.

## SOPHOMORES . . . *Self-Assurance* . . . *Quips*



JANE TEMPLE GRAHAM  
*President*

FRANCES LIFRAGE  
*Vice President*

LILLIAN BELL  
*Secretary*

LUCILLE JONES  
*Treasurer*

MISS MARY MAGGINIS  
*Faculty Adviser*

The Sophomore Class had its dim beginnings in the fall of 1940 when seventy-three freshmen enrolled. After hobbling around on Rat Day with one high-heeled and one low-heeled shoe, we felt we had been duly initiated. Margaret Lewis was elected our president and Miss Magginis our adviser. Under the able leadership of Eloise Penny, the freshmen won the basketball tournament. Our Freshman-Sophomore Banquet showed much ingenuity in the theme, Underwater Paradise. We eagerly took part in May Day and were proud to have one of our class dance the leading role in the pageant, Stravinsky's "The Firebird."

Jane Temple Graham was elected our sophomore president. We felt proud to cross the aisle to take our seats in chapel. Our banquet this year was built around "Stardust" and proved very successful. The sophomores placed second in the hockey tournament, with Eloise Penny as our captain. Nancy Ellis is head of basketball this year.

These two years here have meant much to us, and we know we shall enjoy the next two equally as well.

LILLIAN BELL.



Wishing  
to say  
you have me  
and I am  
I will be  
I will be  
I will be

and Quirks . . . Eloquence . . . Resourcefulness





ADAMS, KELSIE NEILL	Laurell Hill, N. C.
AREY, MARY LILY	Raleigh, N. C.
BANKS, MARY ELIZABETH	Richlands, N. C.
BARKER, LAURA BELLE	Milton, N. C.
BARNES, EDNA MAE	Lumberton, N. C.

BAUCOM, NELDA IMOGENE	Red Springs, N. C.
BAUCOM, FRIEDA YVONNE	Red Springs, N. C.
BAXLEY, DORIS WINIFRED	St. Pauls, N. C.
BELL, LILLIAN CAROL	Eustis, Florida
BRITT, SUE ELLA	Lumberton, N. C.

CAMPBELL, COLLEEN	Kings Mountain, N. C.
CARNEY, ALICE	Pulaski, Virginia
COLE, FRANCES ELIZABETH	Timmons ville, S. C.

COOLEY, GRACE	Wagram, N. C.
COX, MAGDALENE	Mayodan, N. C.



*No nothing  
 This accor to  
 job but at the  
 Chicago - Be  
 I have fun this  
 daily  
 "Coney"*

*Love,  
 "Maggie"  
 (552 back)*



EASTRIDGE, GWENDOLEN Charlotte, N. C.  
 ELLIOTT, PAXTON Monroe, N. C.  
 ELLIS, NANCY JEANNETTE Goldston, N. C.  
 GILCHRIST, CATHERINE Red Springs, N. C.  
 GRAHAM, JANE TEMPLE Blountville, Tenn.

GRANTHAM, JANE MCBRYDE St. Pauls, N. C.  
 GRIFFIN, DAPHNE Bailey, N. C.  
 HARRINGTON, LUCY RUTH Broadway, N. C.  
 HELMS, SARAH FRANCES Bethune, S. C.  
 HENRY, MARY BELLE Rocky Point, N. C.

HERRING, "JACKIE" Fayetteville, N. C.  
 HOLMES, ELIZA Fayetteville, N. C.  
 HORTON, HARRIETT Monroe, N. C.  
 HUGHES, MARY LEE Wilmington, N. C.  
 JONES, LUCILLE St. Pauls, N. C.



KALLAM, ANYCE LORENE Stoneville, N. C.  
 LEWIS, MARGARET Hemp, N. C.  
 LIFRAGE, FRANCES Salters, S. C.  
 LITTLE, HELEN Charlotte, N. C.  
 LOY, FRANCES Fayetteville, N. C.

MARTIN, GLORIA Raleigh, N. C.  
 MILLS, RUTH MCKAY Red Springs, N. C.  
 MORRISON, HELEN ELIZABETH  
 Luebo, Belgian Congo, Africa  
 McCULLOCH, LAYNE KATHERINE Sanford, N. C.  
 McDUFFIE, ANNIE CATHERINE Hemp, N. C.

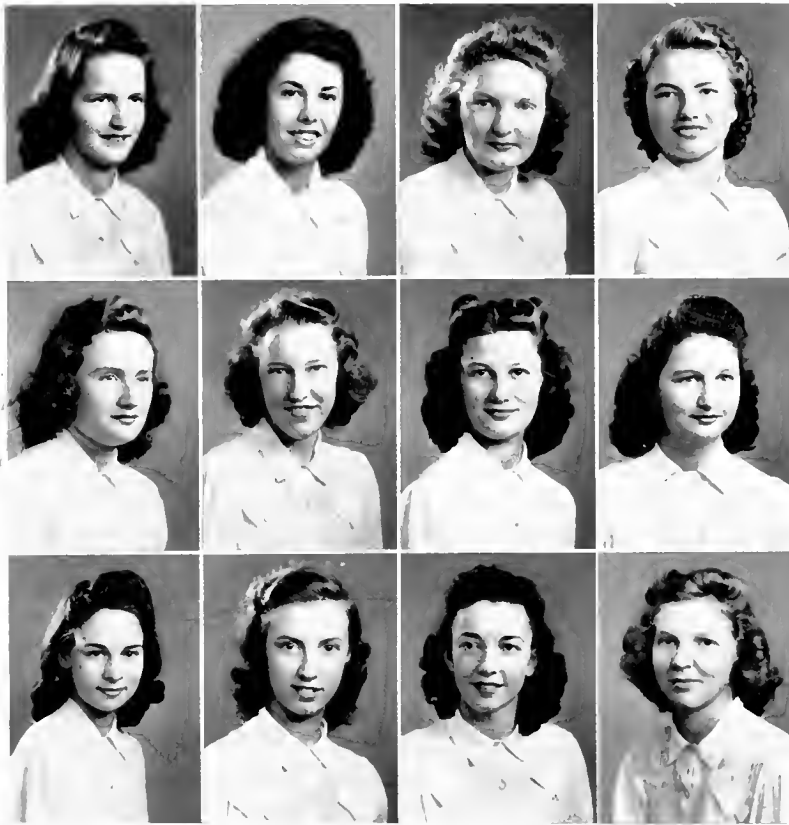
McNAIR, ELIZABETH THOMAS Tar Heel, N. C.  
 PARROTT, CAROLYN MEERS Florence, S. C.  
 PEARSALL, MARGARET Wilmington, N. C.  
 PENNY, ELOISE Coats, N. C.  
 POPHAL, DOROTHY BERTHA St. Pauls, N. C.



Sophomores



*Yellow  
 flowers are  
 sweet girl.  
 Remember  
 your  
 Love, A. K. King*



*Isle of  
the  
Day's outer  
rind.  
ripped  
a part  
of it*

ROBESON, JEANNE  
SKINNER, MARION  
SMITH, DIXIE McQUEEN  
STOWE, MILDRED LEE

Tar Heel, N. C.  
Elliot, S. C.  
Raeford, N. C.  
Clover, S. C.

TEAREAUT, MARGARET M.  
TYREE, VIRGINIA OWEN  
WALKER, HELEN MARY  
WALL, MARGARET

Fayetteville, N. C.  
Rocky Mount, N. C.  
Hemp, N. C.  
Morven, N. C.

WHITE, LUGENE  
WILKERSON, LOLETA  
WILLIAMSON, CHRISTINE  
WORLEY, MASON

Barium Springs, N. C.  
Lumberton, N. C.  
Lumberton, N. C.  
Pink Hill, N. C.



## Sophomores

# FRESHMEN... *Jollity*... *Enthusiasm*...



CLAIRE WILCOX

*President*

MARTHA PENCE

*Vice President*

HELEN GARRISON

*Secretary*

MARY JOHNSON

*Treasurer (not pictured)*

MISS MARY CORNELIA HAMILTON

*Faculty Adviser*

When some two hundred and fifty upper-classmen arrived at Flora Macdonald September 9, they slipped off their shoes and waded in quietly through the streams of tears that were lubricating their hallowed floors. "The freshmen," they whispered, "are here." The month that followed is history that should never repeat itself. By November 26, however, the freshmen had achieved self-possession, and on that day became a class by electing officers.

On Friday of the first week in December, the freshman rooster reversed his habits by crowing long and lustily at sundown to herald an epoch-making event. The freshman hockey team, captained by Jane Latham and cheered by Betty Barringer, had won a game in the annual tournament for the first time in history, with a win over the juniors.

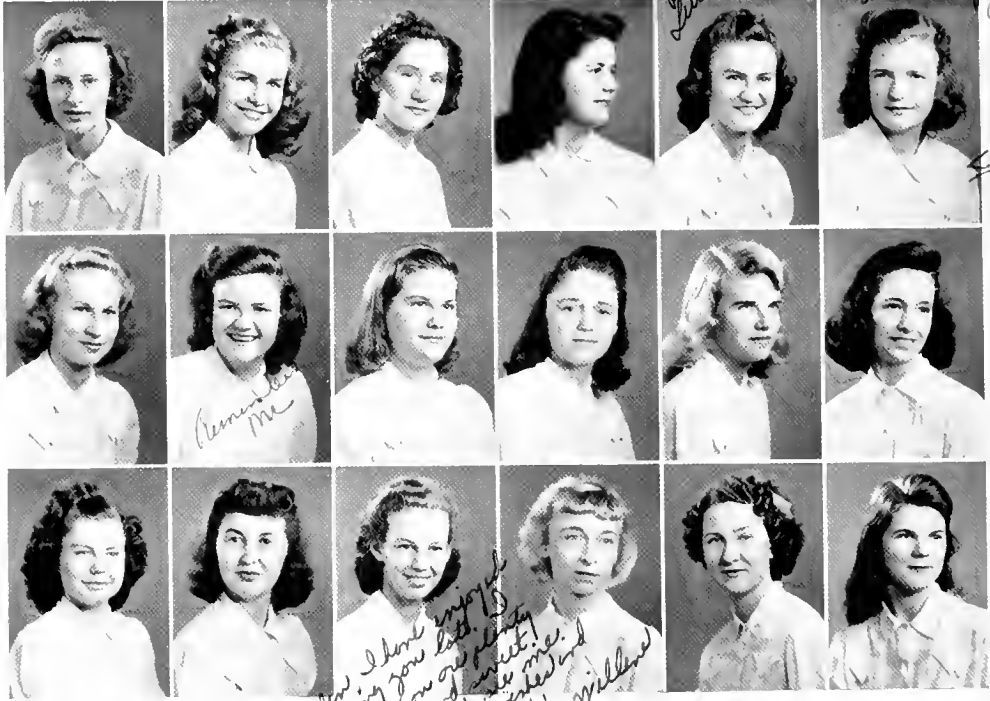
The next important day was December 19, a date every freshman memorized first after the Alma Mater—Christmas Holidays. Closest to her heart when she returned from the holidays was the Freshman-Sophomore. February 21 was her day of days when she took her place beside her rat day tormentors as an equal. Her classification was no longer a distinction but a title. She was a Freshman and a potential Sophomore.

JOANNA HOUCHEMS.

*Here's to  
you & no kidding,  
Best wishes  
and love  
(Kleen)*

*Novelties . . . Inquisitiveness . . .*





*Best wishes  
Love & sympathy  
Dorothy  
I'll miss  
you all  
You are  
O.K.  
See you  
next year  
Betty*

*Remember me*

*Hello! I don't enjoy  
knowing you left.  
I think you are plenty  
cute and we miss  
you. Come to see me.  
Best wishes and  
Love,  
Willie*



**Freshmen**

- ACKER, MARY CATHERINE.....Pickens, S. C.
- ATKINS, JO ANNE.....Kernersville, N. C.
- AUTRY, JOHNNIE.....Rae ford, N. C.
- BANKHEAD, RUTH.....Monroe, N. C.
- BARBER, LYNNE.....Sanford, N. C.
- BARRINGER, BETTY.....Carthage, N. C.
  
- BEDINGER, JUNE.....Asheville, N. C.
- BLAKE, MARGARET CAROLYN.....Chadbourne, N. C.
- BOND, WINIFRED.....Oriental, N. C.
- BOWDEN, MARTHA NELL.....Warsaw, N. C.
- BRITTEN, ELIZABETH MARY.....Kinston, N. C.
- BRODIE, PAIGE LEWIS.....Dunn, N. C.
  
- BURNS, MARY LEE.....Goldsboro, N. C.
- CALVERT, MARGARET ROSE.....Red Springs, N. C.
- CAMPRELL, WILLENE.....Paw Creek, N. C.
- CHAPIN, MARION ETHEL.....Sheffield, Mass.
- CLARK, DOROTHY.....Clarkton, N. C.
- CLARK, ROSA LEE.....Clarkton, N. C.



*back to  
cute girl!  
Iris Lee*

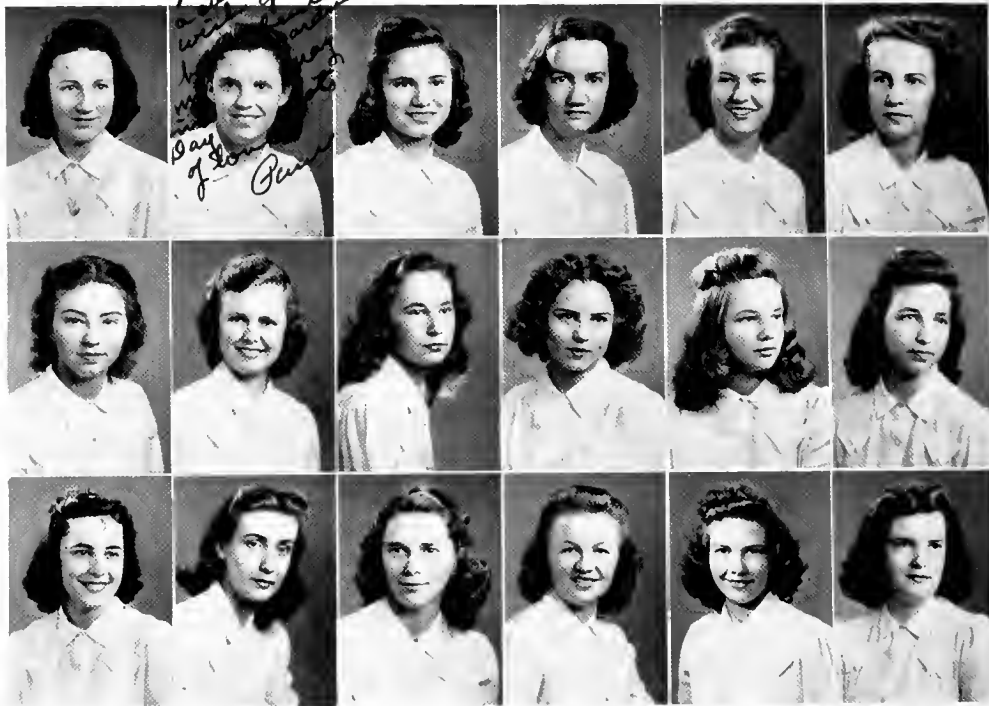


COBB, ELLEN GRAY.....Smithfield, N. C.  
 COX, IRIS LEE.....Asheboro, N. C.  
 CREDLE, ELLA LOUISE.....Washington, N. C.  
 CROUT, SARA CLAY.....Columbia, S. C.  
 CULLER, RUTH.....High Point, N. C.  
 CULBERTSON, ALMA VIVIAN.....Glen Alpine, N. C.

DAVIS, MARTHA ELIZABETH.....Sumter, S. C.  
 DEW, ALMA LEE.....Lumber Bridge, N. C.  
 DILLING, ELIZABETH ANN.....Gastonia, N. C.  
 DUKE, NOVELLA.....Falkland, N. C.  
 EDENS, ANN MARIE.....Red Springs, N. C.  
 EDNEY, KATHEY.....Hendersonville, N. C.

EVANS, ELIZABETH HERIOT.....Bennettsville, S. C.  
 FENNELL, DOROTHY.....Loris, S. C.  
 FERGUSON, MARY ALICE.....Charleston, S. C.  
 FIELDS, HELEN LOUISE.....Pinehurst, N. C.  
 GARRISON, HELEN FRANCES.....Burlington, N. C.  
 GORDON, DORIS.....Rye, N. Y.





*lots of love to  
aunts & grand - I  
wish you could  
see me any  
day of the year  
Pamela*



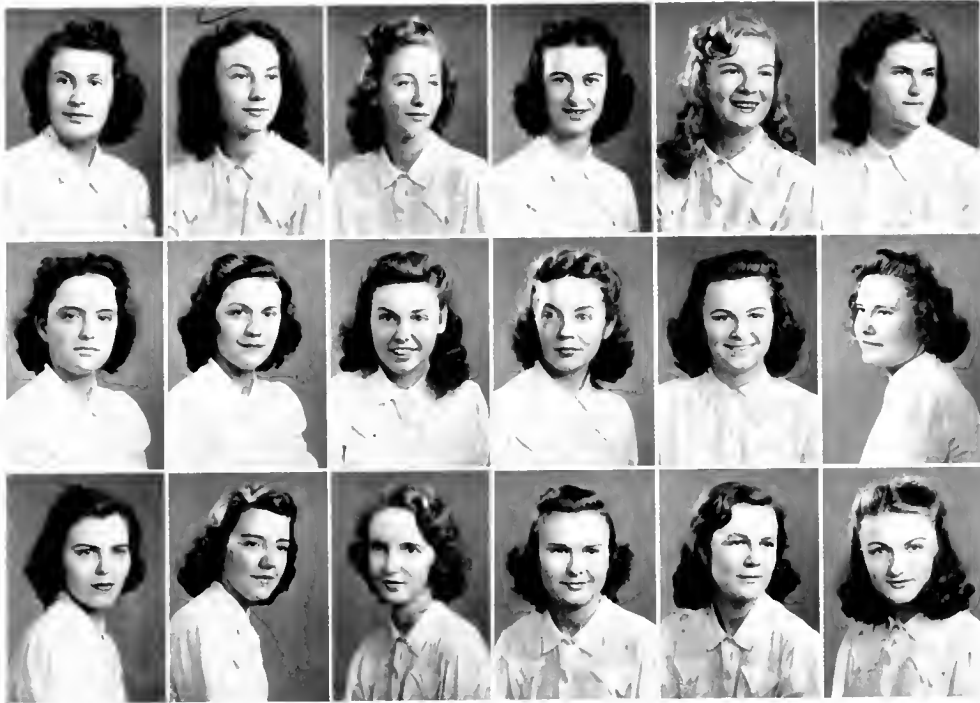
**Freshmen**

GORE, FRANCES.....Tabor City, N. C.  
 GOODWILL, PAMALA.....Roanoke, Va.  
 GRAVES, SARAH.....Kernersville, N. C.  
 GRIFFIN, ELEANOR.....Goldsboro, N. C.  
 GRIGGS, MARTHA ELIZABETH.....Cheraw, S. C.  
 HARPER, MARY CAROLYN.....Florence, S. C.

HASTY, JEWEL.....Buie, N. C.  
 HAYWOOD, WINIFRED.....Burlington, N. C.  
 HEATER, DOROTHY LEE.....Cary, N. C.  
 HIGHTOWER, GEORGIA.....Palm Beach, Fla.  
 HIPPI, AILEEN CLARKE.....Charlotte, N. C.  
 HODGIN, ELIZABETH.....Red Springs, N. C.

HONEYCUTT, RUTH CHASE.....Kenansville, N. C.  
 HOCHINS, JOANNA KATHRYNE.....Charlotte, N. C.  
 HUGGINS, ERNESTINE.....Aynor, S. C.  
 HUNTLEY, MARY ANNA.....Peachland, N. C.  
 HURLEY, MIRIAM.....Troy, N. C.  
 INNES, ALICE.....Rocky Mount, N. C.

*Love,  
magg*



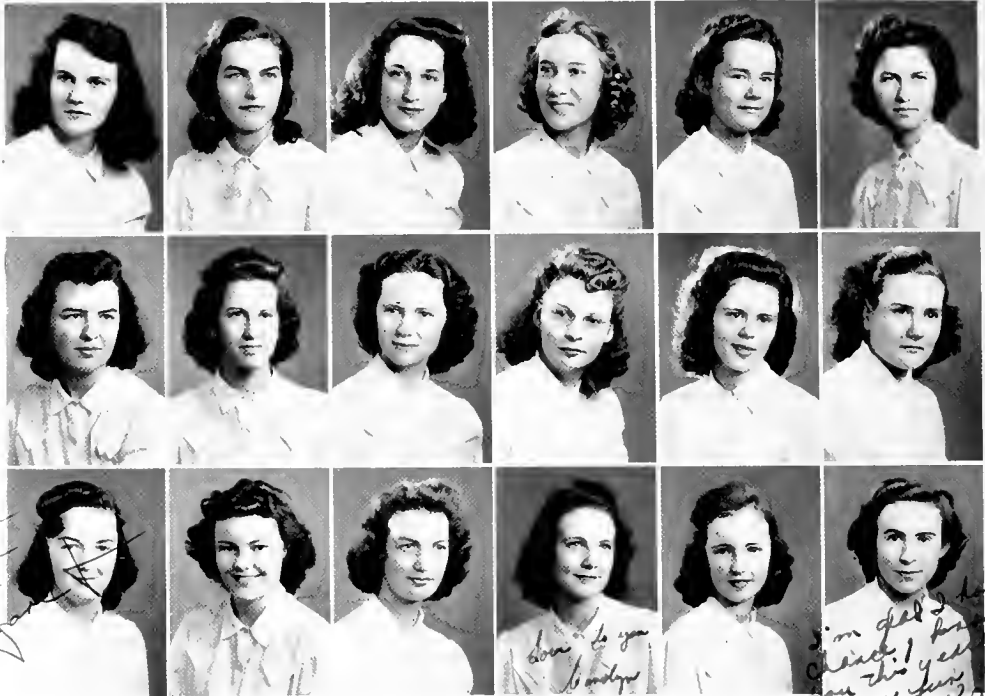
IVEY, NANCY ASHLEY.....Hamlet, N. C.  
 JOHNSON, MARY ALLENE.....Kenly, N. C.  
 JOHNSON, MARY ELIZABETH.....Elizabethtown, N. C.  
 JORDAN, MARGARET DOWNING.....Sanford, N. C.  
 KING, MARY REESE.....Asheboro, N. C.  
 KIRKPATRICK, KATIE MAC.....Maxton, N. C.

LATHAM, JANE.....Leaksville-Spray, N. C.  
 LEE, VIRGINIA PITTMAN.....Dunn, N. C.  
 LOVETT, RUTH.....Fair Bluff, N. C.  
 LUTZ, MARY EDNA.....Lenoir, N. C.  
 LYTTON, CATHERINE.....Gastonia, N. C.  
 MATHESON, BETTY ROSS.....Conover, N. C.

MELVIN, JANE.....Aberdeen, N. C.  
 MOORE, ELEANOR BIDDLE.....Wilmington, N. C.  
 MOORE, EMMA LOUISE.....Yanceyville, N. C.  
 MOORE, MELBA LEE.....Fairmont, N. C.  
 MOORE, WEYBURN.....Madison, N. C.  
 MORENE, SYLVIA.....Gibsonville, N. C.



Dear D. - rollie!!  
 I'm sure you  
 will find me  
 in the fall  
 in the  
 woods  
 in the  
 woods  
 in the  
 woods



More noise  
 More fun  
 More fun  
 More fun

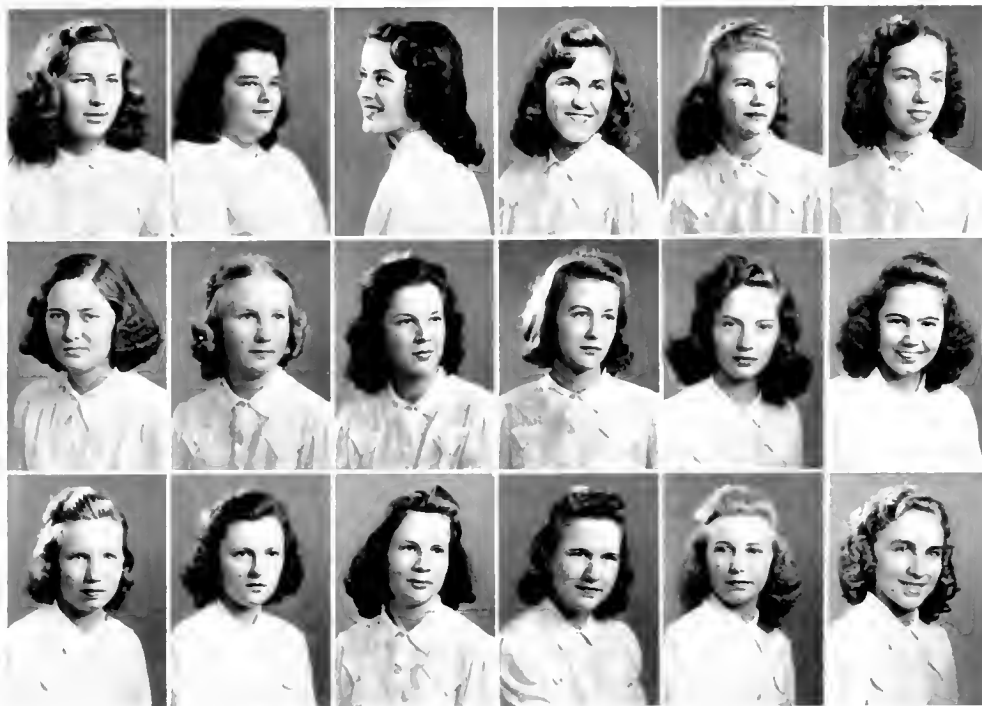
Love to you  
 Love to you

I'm glad I had the  
 chance! I'm having  
 you this year. It  
 do have fun  
 do have fun? Always,  
 Ermine



**Freshmen**

- MORPHIS, DOROTHEA.....Greensboro, N. C.
- MORRISON, ELIZABETH.....Newton, N. C.
- MOSS, R. MARTHA.....Spring Hope, N. C.
- MULLEN, CHRISTEENE.....Durham, N. C.
- MUSSELWHITE, FLORA ELIZABETH.....Lumberton, N. C.
- MUSSELWHITE, VIRGINIA MAE.....Lumberton, N. C.
  
- McCONNAUGHEY, JANE.....Red Springs, N. C.
- McCORKLE, BETTY LOCKE.....Lenoir, N. C.
- McCORMICK, MARY CATHERINE.....St. Pauls, N. C.
- McDANIEL, ALICE ALENE.....Acme, N. C.
- McDONALD, JEANNETTE.....Red Springs, N. C.
- MACDONALD, MURPHY.....Maxton, N. C.
  
- McEACHERN, SARA MARGARET.....St. Pauls, N. C.
- McEACHIN, ELLA ROSE.....Red Springs, N. C.
- McINNIS, DELPHINE.....Clio, S. C.
- McKAY, CAROLYN.....St. Pauls, N. C.
- McKAY, JANE GRAHAM.....Maxton, N. C.
- McKNIGHT, ERMINIE.....Florence, S. C.



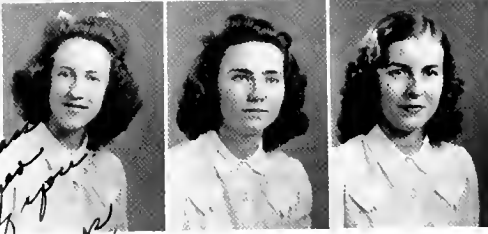
KNIGHT, LOUISE.....Maxton, N. C.  
 McLELLAND, PEGGY TOMLIN..... Mooresville, N. C.  
 McMILLAN, MILDRED ELIZABETH..... Red Springs, N. C.  
 McNAIR, MARY.....Hartsville, S. C.  
 McNEILL, MYRTLE LEE..... Red Springs, N. C.  
 O'BRIEN, KATHERINE.....Laurinburg, N. C.

OLIVER, JEAN.....Fairmont, N. C.  
 PENCE, MARTHA.....Tatum, S. C.  
 PRICE, ELIZABETH.....Charlotte, N. C.  
 PRIDGEN, MARTHA.....Warsaw, N. C.  
 RANDLE, EVELYN.....Clarksville, Tenn.  
 RAY, LILY KATE.....Lake View, S. C.

REAVES, ALICE CAMERON.....Hamlet, N. C.  
 SANDERS, MILDRED ELIZABETH.....Rae ford, N. C.  
 SANDERSON, RUTH.....Magnolia, N. C.  
 SANSRCRY, ELIZABETH ANN.....Darlington, S. C.  
 SCOTT, FLORINE.....Columbia, S. C.  
 SHINN, PEGGY JANE.....Leaksville-Spray, N. C.



*Lots of  
luck,  
Anna Lee*



*Don't forget  
to sit on either side of you  
Lucky to have you  
Kitty*

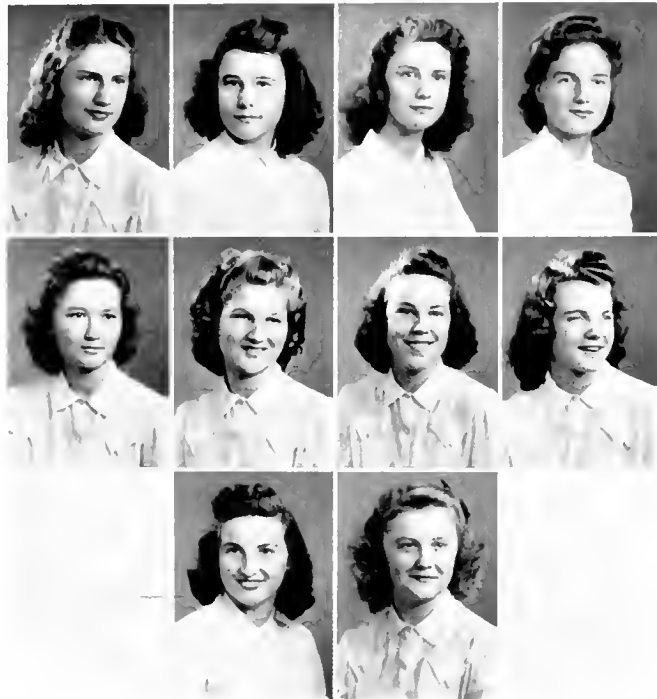


**Freshmen**

- SHOOK, DOROTHY..... Red Springs, N. C.
- SIMPSON, ANNA LEE..... Glen Alpine, N. C.
- SMITH, ANGELYN..... Kenansville, N. C.
- SMITH, MARTHA CAROLYN..... Lexington, N. C.

- TOLAR, MARTHA POOLE..... Lumber Bridge, N. C.
- TONTZ, JUANITA..... Baltimore, Md.
- TOWNSEND, MARY LINDA..... Red Springs, N. C.
- TURNER, MILDRED..... Fair Bluff, N. C.

- USHER, KITTY..... Gibson, N. C.
- VANHOOK, GLADYS FRANCES..... Reidsville, N. C.
- WALDROP, ANNA EARLE..... Hamlet, N. C.



WALKER, KAY LEE.....Elkin, N. C.  
 WEAVER, FRANCES HARRIET.....Red Springs, N. C.  
 WEBSTER, MARGARET.....Little Rock, S. C.  
 WESTBROOK, IRIS GREY.....Dunn, N. C.

WHISNANT, SARAH EVELYN.....Leaksville, N. C.  
 WHITMORE, ELOISE.....Natural Bridge, Va.  
 WILCOX, CLAIRE.....Carthage, N. C.  
 WORLEY, FANNIE GREY.....Pink Hill, N. C.

WRIGHT, DORIS.....Lumber Bridge, N. C.  
 ZEMP, ELIZABETH HALE VAN WYCK.....Sumter, S. C.



# PRESENTING THE CONSERVA





# TORY OF MUSIC



J. WILGUS EBERLY  
*Dean of Conservatory  
 Professor of Piano and Organ*



ESTELLE LOUISE COONEY  
*Professor of Voice*



LILLIAN FARQUHAR ROBESON  
*... . Professor of Violin*



LIDA LAW CHAPMAN  
*... . Professor of Piano and Organ*



EMMA LOUISE JONES  
*Professor of Public School Music*



HELEN SCOGGINS  
*Professor of Piano, College Accompanist*

# GRADUATES OF CONSERVATORY

MARY HALL, B.M.

*Piano*

	I	
Suite No. V.....		Handel
Sonata Opus 13.....		Beethoven
	II	
Rhapsody in g minor.....		Brahms
Transcendental Etude No. 2.....		Liszt
Transcendental Etude No. 3.....		Liszt
	III	
Polka.....		Weinberger
Etude in e sharp minor.....		Scriabine
March (from "The Love of Three Oranges").....		Prokofieff

GRACE WITHERS, B.M.

*Piano*

	I	
Air tendre.....	(1633-1687)	Lully
Gigue (from Suite in g minor).....	(1660-1732)	Lovilly
Toccata and fugue in d minor.....		Bach-Taubsig
	II	
Nocturne in F Major.....		Chopin
Les tierces alternees.....		Debussy
La Puerta del Vino.....		Debussy
Etude (Un Sospiro).....		Liszt
	III	
Concerto No. 4 in d minor.....		Rubinstein
Moderato assai		

VIRGINIA BOGUE, B.M.

*Organ*

	I	
Passacaglia and Fugue.....		Bach
	II	
Four Chorale Preludes.....		Bach
Alle Menschen Müssen Sterben		
Von Himmel kam der Engel Schaar		
Wachet auf, ruft uns die Stimme		
In dir ist freude		
	III	
Rhapsodie No. 3.....		Saint-Saens
Cantabile.....		Franck
Scherzo.....		Widor
	IV	
Evening Harmonies.....		Karg-Elert
Toccatto.....		Pietro Yon



Harper



Withers



Hall

EDITH BUGG, B.M.

Voice

I

Venez, agreable printemps .....	Old French
Lisette .....	Old French
Dormi bella, dormi tu? .....	Bassani
Gia il sole dal Gange .....	Scarlatti

II

Lied der Mignon .....	Schubert
Gretchen am Spinnrade .....	Schubert
Wanderers Nachtlid .....	Schubert
Heiden-Roeslin .....	Schubert

III

Elsa's dream .....	Wagner
--------------------	--------

IV

With Verdure Clad .....	Haydn
Clouds .....	Ernest Charles
Go, Lovely Rose .....	John Alden Carpenter
Strictly Germ-proof .....	John Sacco

CAROLINE BUIE, B. M.

Voice

I

Have you seen but a whyte lillie grow? .....	Old English
The Gypsy and the Bird .....	Sir Julius Benedict
Lo, Here the Gentle Lark .....	Sir Henry Bishop

II

Beau Soir .....	Debussy
Il pleure dan mon coeur .....	Debussy
En prière .....	Fauré
L'Heure Exquise .....	Hahn
La Charmante Marguriete .....	Old French

III

Una voce poco fa .....	Rossini
(from "The Barber of Seville")	

IV

Hymn to the Sun (Le Coq d'Or) .....	Rimsky-Korsakov
Slumber Song .....	Gretchaninoff
The Nightingale and the Rose .....	Rimsky-Korsakov
Pastorale .....	Strawinsky

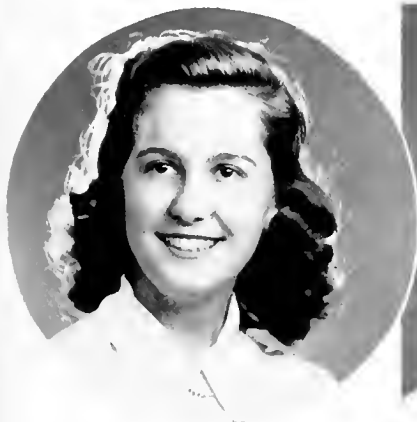
V

I Follow Thee Also (St. John Passion) .....	Bach
Silent Noon .....	Williams
Come Unto These Yellow Sands .....	La Forge
Cupid Captive .....	La Forge

# GRADUATES OF CONSERVATORY



Bugg



Bogue



Buie



## MUSIC CLUB

The purpose of the Music Club is to stimulate and develop an appreciation for good music and to encourage students to enjoy playing and singing for each other. Music lovers are brought together in a social way for delightful musical programs and evenings of genuine enjoyment.

The officers are:

CAROLINE BUIE  
*President*

GRACE WITHERS  
*Vice President*

MILDRED MASON  
*Secretary*

EDITH BUGG  
*Treasurer*



Buie

Bugg

Withers

Mason

# GLEE CLUB

The Glee Club is composed of students chosen by tryout. Special emphasis is placed on the study of music originally written for women's voices. During the year the Glee Club gives concerts and programs throughout the state.

Mr. Eberly is the Glee Club director, and Miss Scoggins is the accompanist. Grace Withers is president.



## SEXTETTE

The college sextette is one of the most active of the conservatory organizations, and is composed of Caroline Buie and Clara David, first sopranos; Edith Bugg and Alice Carney, second sopranos; and Mary Hall and Frances Lifrage, altos.

Organized and directed by Miss Estelle Cooney, the Sextette has enjoyed a successful year, giving many programs in nearby towns and assisting with Glee Club concerts. The climax of the Sextette season was reached with its presentation in a concert at the College.

" AND NOW  
the features "



SUPERLATIVE RUNNERS UP

*Standing: EVELYN ROBERTSON, May Queen; BETTY RUTH ROBERTSON, Friendliness; GRACE WITHERS, Personality. Sitting: MARTHA SUTHERLAND, Versatility; ELIZABETH PRICE, Beauty.*

MINNIE MYERS

*Friendliness*







Helin, I don't forget to see some time -  
Mr. Conk and me  
good  
Catherine

CATHERINE NICHOLSON  
*Personality*

MILDRED MASON

*Versatility*





MARY HALL

*Capability*

JACKIE HERRING

*Sportsmanship*





VIRGINIA BOGUE

*Beauty*



## WHO'S WHO

*In American Colleges and Universities*

MARY GAITHER HALL  
MARY CLYDE SHEPHERD  
MARY ALICE FULK  
SARAH BELLE SMITH  
CATHERINE NICHOLSON

CLARA LUCILLE GRIGGS  
MINNIE ELIZABETH MYERS  
LOIS PARKER  
VIRGINIA NELL BOGUE  
VIOLA WILLIAMS

John Day

Lucille  
Griggs  
*May Queen*



*Helen,  
I'll remember  
you and your  
sweet smile - Hope  
to see you next  
year - Be good!  
Love,  
Lucille*



MAY DAY  
at  
Flora Macdonald



JEAN RYBURN, *Maid-of-Honor*

Virginia Bogue  
Martha Griggs  
Patsy Harper  
Kathryn McBryde  
Phyllis Powers

Elizabeth Price  
Evelyn Robertson  
Nell Thomas  
Helen Walker  
Christine Williamson

# MAY COURT



# MAY DAY ACTIVITIES



## THE GARDENER'S GARDEN PARTY

*Afternoon—in a garden.*

The Gardener entertains friends at his garden party. They dance and make merry until interrupted by thunder and lightning, whereupon they hastily leave to get home before the rain comes.

The Gardener, left alone, soon falls asleep and dreams that his beautiful flowers come to life. The Flower Queen crowns him King of the Flowers and there is gaiety, dancing, and revelry.

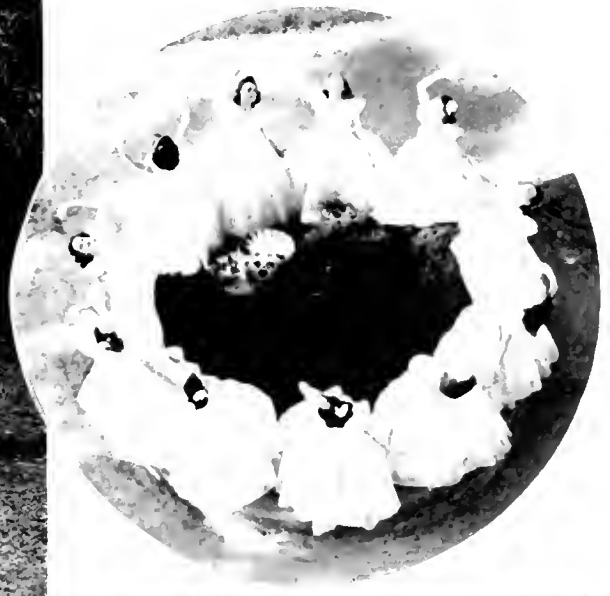
Later, the Gardener awakes to find that he has on his old clothes, that the roses are in their places, and that everything is as it has always been. He realizes that it was only a dream, his being King of the Flowers.

The main characters are: Barbara Lytch, Gardener; Lillian Bell, Flower Queen; and Eugene White and Colleen Campbell, Boys.

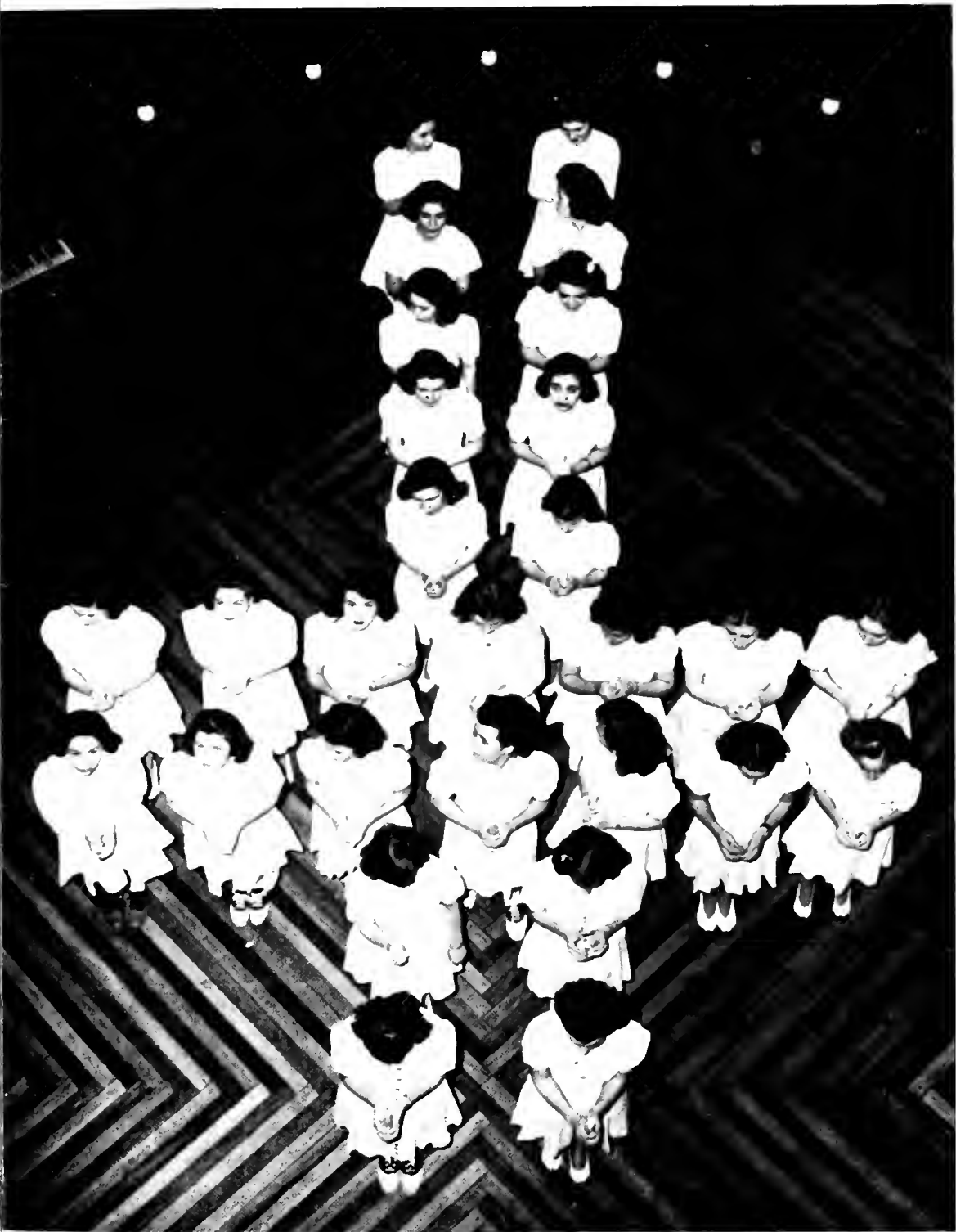




*May Day at FLORA MACDONALD*



"ACTIVITIES  
at Flora Macdonald"



The Candlelighting Service



## *The* WHITE HEATHER

The WHITE HEATHER is the annual publication of the students of Flora Macdonald College. The Editor-in-Chief and the Business Manager are elected from the Senior Class. The Assistant Editor-in-Chief and the Assistant Business Manager are elected from the Junior Class. The other staff members are appointed by the Editor.

This year a theme was not used, and all space possible was allotted to pictures of the students and their interests and activities. We hope the book is representative, and in the years to come will recall many pleasant memories of Flora Macdonald.

MILDRED MASON, *Editor*

BETTY RUTH ROBINSON  
*Business Manager*

MISS MARY CORNELIA HAMILTON  
*Faculty Adviser*

# The WHITE HEATHER STAFF

SUE MACPHERSON,

*Assistant Editor-in-Chief*

BILLY PATE, *Asst. Business Manager*

GRACE WITHERS, *Senior Class Editor*

KATHRYN HIGHSMITH,  
*Junior Class Editor*

JACKIE HERRING,  
*Sophomore Class Editor*

ELOISE WHITMORE,

*Freshman Class Editor*

CLARA DAVID, *Literary Editor*

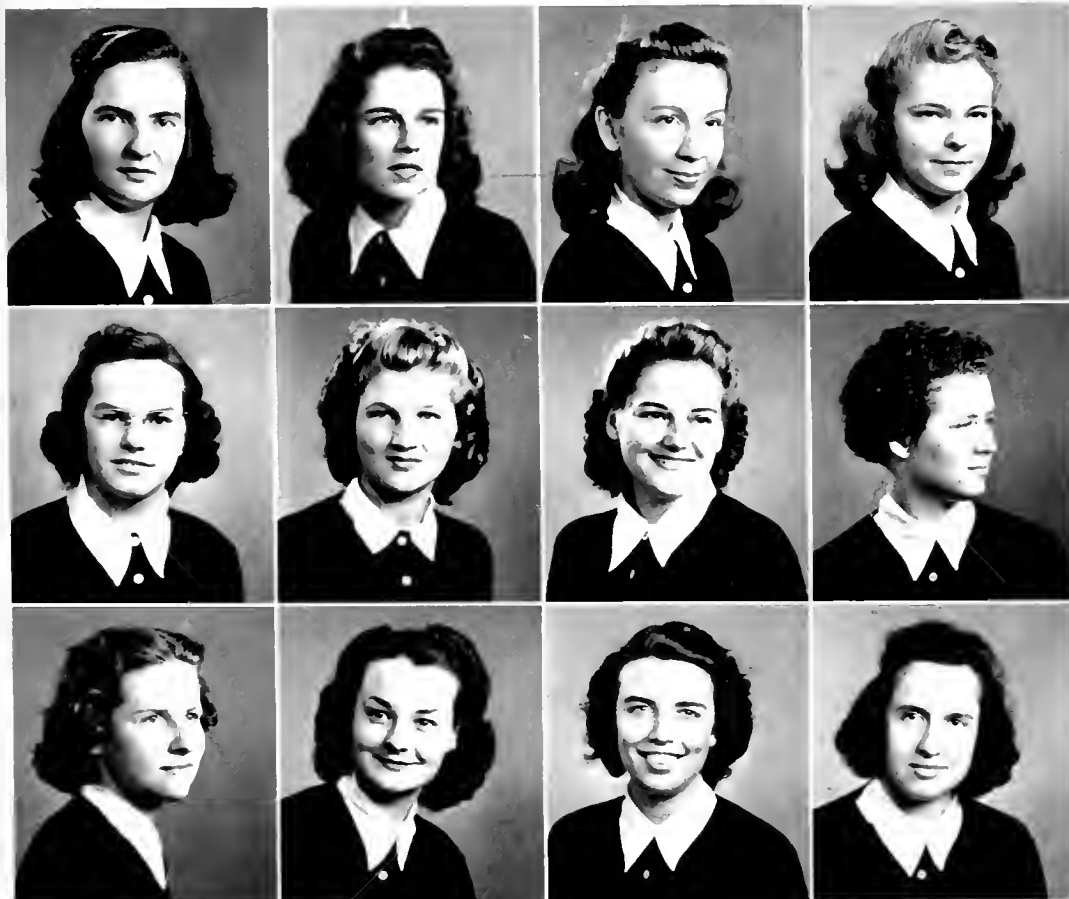
CAROLYN VIDAL, *Snapshot Editor*

MARGARET BUNDY, *Snapshot Editor*

DOROTHY MARTIN, *Business Editor*

FRANCES LOY, *Typing Editor*

MARY LILY AREY, *Typing Editor*



MacPherson  
Herring  
Bundy

Pate  
Whitmore  
Martin

Withers  
David  
Loy

Highsmith  
Vidal  
Arey

Nell, you're a swell  
kid and I like you  
plenty! Come to see  
me sometime this  
summer. "The Thistle"



NELL THOMAS  
*Editor*

BARBARA LYTCH  
*Business Manager*

MISS MARY MAGGINS  
*Faculty Adviser*

## PINE AND THISTLE

*The Pine and Thistle* is the college magazine, published every quarter by the staff of the magazine in collaboration with the student body. Articles are submitted for consideration and possible publication not only by the members of the staff, but by other members of the student body as well.

The editorial staff is elected by the two literary societies, with the exception of the editor-in-chief and the business manager. These are elected by the student body. Other staff members are appointed by the editor.

*The Pine and Thistle* provides an incentive for the development of literary talent in the school. Its purpose is to edify as well as to entertain the students at F.M.C.



# PINE AND THISTLE STAFF

Lillian Bell, *Assistant Editor-in-Chief*  
 Colleen Campbell, *Assistant Business Mgr.*  
 Mary Monica Jackson,  
*Zetesian Associate Editor*  
 Frances Loy, *Zetesian Associate Editor*  
 Helen Morrison, *Zetesian Associate Editor*  
 Sue McPherson, *Epsilon Chi Asso. Editor*  
 Peggy Teabeaut, *Epsilon Chi Asso. Editor*

Alice Carney, *Epsilon Chi Asso. Editor*  
 Joanna Houchins, *Freshman Editor*  
 Scott Hale, *Exchange Editor*  
 Lucille Jones, *Typing Editor*  
 Kelsie Neill Adams, *Asst. Typing Editor*  
 Dr. Stump and the Camera Club,  
*Photographic Editors*  
 Miss Mary Magginis, *Faculty Adviser.*



Bell  
 Morrison  
 Houchins

Campbell  
 Teabeaut  
 Jones

Jackson  
 MacPherson  
 Adams

Loy  
 Carney  
 Hale



Two class editors . . . Frances types for both publications . . . The new editor of the *Pine and Thistle* . . . Editor "Mildew" . . . Editor Nell . . . Freshman Editor Eloise . . . Clara finds Annual work pleasant . . . Next year's Editor . . . Off with the old, on with the new . . . Three cheers for the *Pine and Thistle* . . . Lillian.



Fulk, Withers, Nicholson, Shepherd, Hale

## SENIOR SCRIBBLERS

In 1921, the first editor of the *WHITE HEATHER* asked for assistance in writing personality sketches of the seniors. At the end of each year the graduating Scribblers tap new Scribblers from the rising senior class. With the editor acting as Chief Scribe, they endeavor to write representative characterizations of their classmates.

Mary Alice Fulk

Scott Hale

Mildred Mason

Catherine Nicholson

Mary Shepherd

Grace Withers



MILDRED MASON, *Chief Scribe*

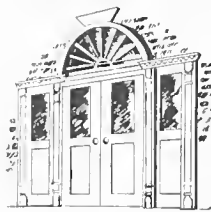


MARY HALL

## THE STUDENT

The purpose of the Student Government Association is to unite the students of Flora Macdonald College in an earnest effort to hold personal honor as the true standard for efficient social living, and to develop the sense of personal responsibility.

The president and vice president of the association are elected by the student body; the other members are elected by the organizations which they represent.



Myers  
Fulk

Nicholson  
Smith

# GOVERNMENT ASSOCIATION

The officers of the association are: Mary Hall, President of the Student Body; Minnie Myers, Vice President of the Student Body; Catherine Nicholson, President of the Senior Class; Mary Alice Fulk, Secretary of the Student Body and Vice President of the Senior Class; Sara Belle Smith, President of the Junior Class; Margaret Jenkins, Treasurer of the Student Body and Vice President of the Junior Class;

Jane Temple Graham, President of the Sophomore Class; Claire Willcox, President of the Freshman Class; Mary Mac Watson, President of the Day Students; Lucille Griggs, President of the Christian Association; Virginia Bogue, President of the Zetesian Literary Society; Lois Parker, President of the Epsilon Chi Literary Society; Viola Williams, President of the Athletic Association.



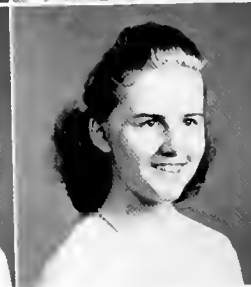
Jenkins  
Griggs

Graham  
Bogue

Willcox  
Parker

Watson  
Williams

*early '20s*



Shepherd  
P. McDaniel

Ryburn  
C. McDaniel

## FLORA MACDONALD



LUCILLE GRIGGS  
*President*

"Let no man despise thy youth, but be thou an example of the believers, in word, in conversation, in charity, in spirit, in faith, in purity."—*1 Timothy 4:12.*

The Flora Macdonald Christian Association seeks to promote growth in Christian faith, character, and fellowship. It strives to influence the students to devote themselves to seeking the will of God for their own lives.

The Christian Association brings the students into closer fellowship with each other and presents the true, vital meaning of Christianity. The membership is divided into ten highways for the purpose of more

Save ya!  
Helen



Withers  
Pace



Thomas  
Jackson



Ross  
Walker



David  
Hall



## CHRISTIAN ASSOCIATION

intimate work. The Chairmen of these Highways are:

Carol McDaniel, *Life Enrichment, Religious Meetings*

Grace Withers, *Life Enrichment, Music*

Helen Thomas, *World Fellowship*

Mary Shepherd, *Enlistment and Training*

Jean Ross, *Learning, Sunday School*

Clara David, *Learning, Publicity*

Jean Ryburn, *Stewardship*

Pattie McDaniel, *Stewardship*

Dorothy Pace, *Comradship*

Mary Monica Jackson, *Leisure Time, Social Activities*

Mary Olive Walker, *Leisure Time, Library*

Miss Zoulean Anderson, *Faculty Adviser*

The Christian Association takes an active part in social service activities on the campus and in the community. A series of special services, conducted by an outside speaker, is held each fall and spring. This year Dr. A. L. Currie of Huntington, West Virginia, was our fall speaker, and Dr. J. M. Gettys of Charlotte, North Carolina, conducted our spring services. Other guest speakers are brought to the college throughout the year.

"Remember now thy Creator in the days of thy youth."

—*Ecclesiastes 12:1.*



## STUDENT VOLUNTEERS

“Not by might, nor by power, but by my spirit, saith the Lord of hosts.”  
—*Zechariah 4:6.*

The “Student Volunteers” is an organization composed of girls who plan to give their lives to full or part-time work on the home or foreign mission field, and of girls who are interested in the work in these fields. This organization strives to stimulate among the students an interest in the work that is being done in the mission fields, and to bring to them a realization of the ever-increasing needs of missions. It also endeavors to build up material on missions in the F.M.C.A. library, and to encourage the reading of this material.

Miss Princie Maphet is the faculty adviser, and the officers are: Margaret Bundy, President; Cleo Osborne, Vice President; Geraldine Grady, Secretary; Anyce Kallam, Treasurer; and Florence Moore, Librarian.



MARGARET BUNDY





## PRAYER BAND LEADERS

Knowing the power of prayer in a needy world, groups of girls meet together each Wednesday morning for a period of prayer and meditation. Each member of the student body belongs to one of these groups, which we call our Prayer Bands.

The close personal contact afforded by our Prayer Bands is one of the strongest spiritual forces on our campus. It is the priceless privilege of every Prayer Band leader to help the members of her group to a reality of the Presence as a Power in individual daily living.

Christ has promised that "where two or three are gathered together in my name, there am I in the midst of them." (Matthew 18:20.) Remembering this promise, we find refreshment and spiritual strength in our morning watches.

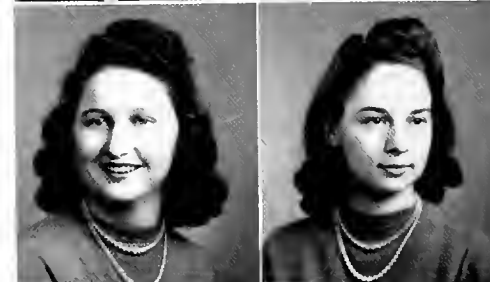


FLORENCE MOORE

# EPSILON CHI

## OFFICERS

- Lois Parker  
*President*
- Jean Lytch  
*First Vice President*
- Bobby Hefner  
*Second Vice President*
- Dorothy Martin  
*Recording Secretary*
- Martha Sutherland  
*Corresponding Secretary*
- Maribelle Green  
*Treasurer*
- Catherine McBryde  
*Censor*
- Peggy Wall  
*Critic*
- Lugene White  
*Chaplain*



Lois Parker

Lytch  
Martin  
Green  
Wall

Hefner  
Sutherland  
McBryde  
White

"So Nothing"  
Be good this  
summer and don't  
forget to come back  
next year.

# ZETESIAN

## OFFICERS

Virginia Bogue  
*President*

Patsy Harper  
*First Vice President*

Mary Hudson  
*Second Vice President*

Margaret Lewis  
*Recording Secretary*

Helen Walker  
*Corresponding Secretary*

Dorothy Pace  
*Treasurer*

Frances Lifrage  
*Censor*

Katherine Bruner  
*Critic*

Jean Ross  
*Chaplain*

*Handwritten notes:*  
 1. ...  
 2. ...  
 3. ...  
 4. ...  
 5. ...  
 6. ...



Harper  
Lewis  
Pace  
Lifrage

Hudson  
Walker  
Ross  
Bruner



Virginia Bogue

PHYLLIS POWERS  
*Chief Marshal*  
*Zetesian*



Thomas



McFadyen

LUCY THOMAS  
*Zetesian*  
HELEN McFADYEN  
*Zetesian*

SARAH BELLE SMITH  
*Epsilon Chi*  
MARTHA SUTHERLAND  
*Epsilon Chi*



Smith



Sutherland

# MARSHALS

JEAN LYTCH  
*Epsilon Chi*

KATHRYN MCBRYDE  
*Epsilon Chi*

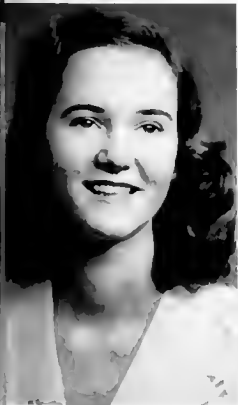
MARY MONICA JACKSON  
*Zetesian*

JEAN ROSS  
*Zetesian*

MARGARET CAMPBELL  
*Day Student*



Campbell



Lytch



McBryde



Jackson



Ross



## Wm. Bartram Scientific Society

Membership in the *William Bartram Scientific Society* is awarded for outstanding scholastic achievement in Mathematics and Science, and upon recommendation from one of the club's faculty advisers: Dr. Stump, Dr. Stirewalt, and Miss Prince.

This year the club has been studying the uses of science in war, and what we as individuals can contribute to the national defense program.

The officers are:

Mildred Mason, *President*  
Mary Shepherd, *Vice President*  
Alma Lou Spivey, *Recording Secretary and Treasurer*  
Helen Morrison, *Corresponding Secretary*



Mildred Mason



## CAMERA CLUB

The Camera Club has grown out of the interest shown in photography by members of the William Bartram Scientific Society. Any member of this society may join the camera group. The club members take pictures of various activities of the college and beautiful scenes on the campus, develop and print these pictures, and at regular meetings display and discuss them. In the fall and spring the club takes trips and hikes for the purpose of making interesting pictures. The Camera Club is very fortunate in having Dr. Stump and Miss Prince as advisers.



Alma Lou Spivey

The officers are:

Alma Louise Spivey, *President*

Miriam Bullard, *Vice President*



## HOME ECONOMICS CLUB

The Home Economics Club is affiliated with the National and State Home Economics Clubs of America. The Club is composed of all girls majoring in this subject. The purpose is to develop poise, personality, and good taste.

At the first of the year the club had a party for the new members. Kathryn Highsmith is Vice President of State Home Economics Clubs of North Carolina.

The officers are:

Evelyn Robertson, *President*  
Martha Sutherland, *Vice President*  
Kathryn Highsmith, *Treasurer*



Evelyn Robertson





## MATHEMATICS CLUB

The membership of the Mathematics Club includes those students who have achieved high scholastic rating in some mathematics course. The purpose of the club is to increase interest in mathematical knowledge through study and discussion, and to promote fellowship among students of mathematics

At the annual monthly meetings there are interesting and informative programs on mathematics in the modern world.

The officers are:

Sue MacPherson, *President*  
Alma Lou Spivey, *Vice President*  
Gladys Sanders, *Recording Secretary*  
Paxton Elliott, *Corresponding Secretary*  
Jane Temple Graham, *Treasurer*  
Jean Ryburn, *Social Chairman*  
Miss Prince, *Faculty Adviser*



Sue McPherson



## L'ALLIANCE FRANÇAISE

*L'Alliance française* was organized to develop a greater proficiency in and enjoyment of the living French language. It emphasizes conversational French through the use of French games and songs and the production of French plays. This club endeavors to give its members a deep appreciation of what French civilization, culture and literature have meant to the world.

The officers of *L'Alliance française* are:

NELL THOMAS, *President*  
MARGARET JENKINS, *Vice President*  
FLORENCE MOORE, *Secretary*  
ANYCE KALLAM, *Treasurer*



Nell Thomas

about as  
many as  
we had 99



## DRAMATICS CLUB

The Dramatics Club is still in its infancy, but it is fast becoming one of the most popular organizations on the campus. Membership, although limited, is open to those girls interested and talented in dramatics.

The club members participate in all phases of dramatic arts: make-up, costuming, set designing, directing, as well as acting. It is the aim of the group to present either a three-act play or three one-act plays each school year.



Catherine Nicholson

The officers are:

- Catherine Nicholson, *President*
- Scott Hale, *Vice President*
- Marion Skinner, *Secretary*
- Jean Ryburn, *Treasurer*



## COMMERCIAL CLUB

Membership in the Commercial Club is open to all students in the Commercial Department. This department provides training for students who desire a business career as a profession, and for these who wish to use the work to attain some desired goal. Business and pleasure have been combined in the meetings of this organization which binds together all business students.

The officers are:

MARY LILY AREY, *President*  
LOLETA WILKERSON, *Vice President*  
VIRGINIA TYREE, *Secretary-Treasurer*



Mary Lily Arey

# RECEIVING COMMERCIAL CERTIFICATES

KELSIE NEILL ADAMS

MARY LILY AREY

COLLEEN CAMPBELL

LUCILLE JONES

LOLETA WILKERSON



Adams

Jones

Arey

Wilkerson

Campbell



## DAY STUDENTS CLUB

This year the day student body has been large, numbering forty-eight in all. They have continued their organization as a club, and have become increasingly active on the campus.

For the first time the day students have had a marshal as a representative at the college entertainments. The president of the day students is a member of the student council.



Mary Mac Watson

The officers of the club are:

MARY MAC WATSON, *President*  
SARAH MARGARET MCPHAUL, *Vice President*  
MARJORIE MCMANUS, *Secretary-Treasurer*  
MISS MARY CONOLY, *Faculty Adviser*



GRANDDAUGHTERS  
CLUB



VIRGINIA  
CLUB



FLORIDA  
CLUB



SOUTH CAROLINA  
CLUB

" ON THE ~~field~~ of Sport





*Cheerleaders: Lucy Thomas, Jr. (left); Mildred Mason, Sylvia; Jackie Herring; Sorastown; Patsy Harper, Corina; Betty Barringer, (right).*

*Best wishes!  
Helen*



Weaver

Penny

MacPherson

Morrison

Thomas

Williams

## ATHLETIC ASSOCIATION

Every school needs adequate provision for recreation and physical exercise. The Athletic Association meets this need very efficiently with its sponsorship of sports and other entertainments throughout the year. A keen spirit of rivalry and class loyalty is promoted by the inter-class hockey, basketball, and tennis tournaments. The Association offers these major sports

with many others: archery, swimming, ping-pong, hiking, volley ball, skating, horseshoes, and baseball. Every student is encouraged to participate in at least one of these sports. In every game the highest ideals of good sportsmanship are carried out. Viola Williams is president of the Athletic Association.

## Heads of Sports

ALMA LOU SPIVEY	Hockey
MARY LIB TRAWICK	Basketball
FRANCES LOY	Horseshoes
LUGENE WHITE	Archery
MARTHA SUTHERLAND	Tennis
KATHRYN HIGHSMITH	Hiking



## Varsity Captains

### HOCKEY

SENIORS	ALMA LOU SPIVEY
JUNIORS	HELEN THOMAS
SOPHOMORES	ELOISE PENNY
FRESHMEN	JANE LATHAM

### BASKETBALL

SENIORS	MARY LIB TRAWICK
JUNIORS	VIOLA WILLIAMS
SOPHOMORES	NANCY ELLIS
FRESHMEN	FLORA MUSSELWHITE



# Hockey



JUNIOR-SENIOR



Senior Varsity



Junior Varsity



## Hockey

FRESHMAN-SOPHOMORE



Sophomore Varsity



Freshman Varsity



# Basketball

JUNIOR-SENIOR

Senior Varsity



Junior Varsity

# Basketball



FRESHMAN-SOPHOMORE



Sophomore Varsity

Freshman Varsity





## TENNIS

Tennis is a favorite outdoor sport at Flora Macdonald. Unusual enthusiasm was displayed at the fall and spring tournaments this year. The most outstanding players were: Nell Thomas, Lucy Thomas, Nancy Ramseur, and Georgia Hightower.



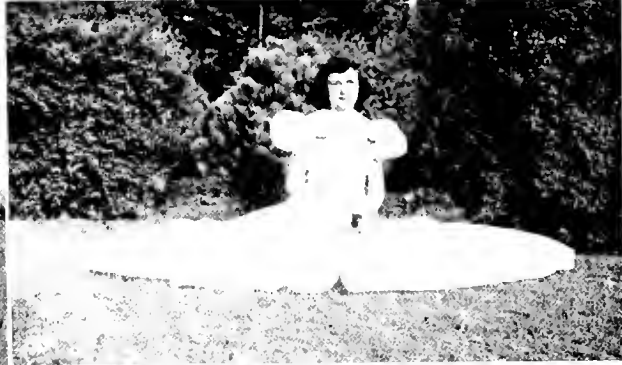




## ARCHERY



Archery is one of the favorite sports at Flora Macdonald. On almost any pretty afternoon a group of girls can be seen displaying their skill with the bow and arrow. Robin Hood and Wilhelm Tell may have been a bit more proficient in this art, but it is doubtful that they received any more genuine pleasure from this fine sport.



Blonde or brunette, Dr. Stump? . . . She makes May Day a success . . . Cousin Annie . . . Miss Magginis . . . Miss Cooney . . . That eventful beach trip . . . Miss Jones really has two feet . . . Gone but not forgotten . . . Why don't you paddle your own gnu? . . . Papa pro tem . . . Our newcomer from Florida enjoying the icy north.



Virginia, what *are* you doing? Candid be true? . . . Patsy, hard at her usual labor . . . How Martha crams for exams . . . Dance of Spring . . . Going somewhere, Jo Anne? . . . Follow the arrow, children . . . Kornegay . . . Gracing our front campus . . . Who threw that snowball?



We miss you, Jane . . . Waiting for laundry . . . Photograph of a photographer photographing a photograph . . . Claire . . . Our incomparable Peggy . . . Waiting at the gate . . . Moiply gets her man . . . Carolyn is enjoying that one, Tontz . . . Hurry up with those hamburgers.



"Woonie" . . . Pam . . . Ruth, in the snow . . . Where did that council member go? . . . Fiddler Carolyn . . . Mary Acker, getting atmosphere for May Day . . . Life presents a serious problem . . . The height of industry . . . Looks like the Seniors might have bungled that shot . . . Knickerbocker lectured on his experiences at Flora Macdonald College.

"AND NOW  
THE

Ads"



The Business Staff

# TOWNSEND'S PHARMACY

*THE REXALL STORE*

---

**WE CARRY A COMPLETE LINE OF THE  
COLLEGE GIRL'S NEEDS**

*Meet Your Friends at Our Fountain*

**Dependable Druggists : Let Us Serve You**

---

**Red Springs, North Carolina**

*Use*

## MERITA

*BREAD and CAKES*

---

**AMERICAN  
BAKERIES COMPANY  
FAYETTEVILLE, N. C.**

## GRAHAM COMPANY

★

**Where Style  
and  
Quality  
Outlive Price**



## RED SPRINGS THEATRE

It is the policy of this theatre to provide the best pictures obtainable especially for our Flora Macdonald patrons.

---

*Pleasure by the Hour*

## A WELCOME

*Always Awaits the Faculty  
and Students at*

---

**B. C. MOORE AND SONS**

## Anne Green's Permanent Wave Shoppe

---

*We Serve You to Serve Again*

---

Red Springs, N. C.



Fayetteville, N. C.

## BEN FRANKLIN STORE

5, 10, \$1.00 and Up

*Home Owned Five and Ten*

Red Springs, N. C.

You Will Be Pleased  
With Our  
QUALITY  
and  
SERVICE

---

## RED SPRINGS DRUG COMPANY

*Headquarters for  
Flora Macdonald Girls*

---

Red Springs, N. C.

**M. H. McLEAN, JR.**

—  
*Wholesale*  
**CANDIES**  
*and*  
**GROCERIES**

—  
LUMBERTON, N. C.

**Insist on . . .**

**LANCE'S**

PEANUT BUTTER SANDWICHES  
and CANDIES

*Always Fresh - Always Delicious*

*Compliments of*

**SOUTHERN FRUIT  
COMPANY**

CHARLOTTE, N. C.

Compliments of

**WFNC**

FAYETTEVILLE, N. C.

**HUNTER BROTHERS**

(Incorporated)

**ELECTRICAL MERCHANDIZING**

RADIO - REFRIGERATORS - GIFTS

CHINA - GLASSWARE

FAYETTEVILLE, N. C.

Compliments of

**Pender Food Stores**

Red Springs, N. C.

**ELECTRICITY—**

a GREAT Service  
Yet It's CHEAP!

Carolina Power & Light Company

**Maxton Oil & Fertilizer  
Company**

Maxton, North Carolina

**BELLWOOD FOOD PRODUCTS  
FOR INSTITUTIONS**

Distributed by

**W. H. WILLIAMS & CO., Inc.**

Richmond, Virginia

*Congratulations  
to the  
White Heather Staff*

**BELK-HENSDALE  
COMPANY**

Fayetteville, N. C.

Remember: *"You always save at  
Belk's"*

Make Our Store Your  
Headquarters  
When In Fayetteville

**NEIGHBORS**

Red Springs' Exclusive  
Shoe Store

**McNEILL'S**

CLEANERS - TAILORS

Dependable Service Since 1928

RED SPRINGS and RAEFORD, N. C.

Compliments of

**McKEITHAN  
HARDWARE**

RED SPRINGS, N. C.

**BLAKE FLORIST**

Prince Charles Hotel Building

Fayetteville, N. C.

Day Phone 2683

Night Phone 2834

*Compliments of*

**Town of Red Springs**

NORTH CAROLINA

**SAUNDERS DRUG STORE**

*Fayetteville's Exclusive  
Cut-Rate Drug Store*

FAYETTEVILLE, N. C.

*Compliments of*

**FAYETTEVILLE  
WHOLESALE  
COMPANY**

FAYETTEVILLE, N. C.

FEATURING

FRESH FRUITS

and

VEGETABLES

Compliments of  
**THE CAPITOL  
Department Store**

FAYETTEVILLE, N. C.

*We Invite Your Patronage*

Compliments of

**The  
Fayetteville  
Observer**

**D. M. McMILLAN**

"Ford Products Since 1912"

Red Springs, N. C.

**HIGHLAND CAFETERIA**

*Fayetteville's New and Best*

Fayetteville, N. C.

**Garrett and McNeill**

*The Oldest and Best  
Grocery in Town*

PHONE 227-1

Compliments of  
**Huggins Shoe Shop**

Red Springs, N. C.

**Boatwright Chevrolet Co.**

RED SPRINGS, N. C.

Compliments of  
**H. R. HORNE & SONS**

Foyetteville, N. C.

DRUGGISTS SINCE 1865

**MACK'S 5, 10, and 25c  
STORES**

*The Friendly Place*

Red Springs, N. C.

*We Have What Your Car Needs*

**Complete Line Accessories**

We Live to Serve and Serve to Live

**GULF SUPER SERVICE**

Telephone 9107

**A.A. ONE STOP SERVICE**

**RED SPRINGS, NORTH CAROLINA**

*Compliments of*

**ODOM'S  
GROCERY**

•

**Where Quality  
and  
Service  
Predominate**

•

RED SPRINGS, N. C.

**Spring Side Dairy**

—  
GRADE A MILK  
CREAM  
—

Phone 2431

—  
Gold Medal Fertilizers  
Liberty Premium Fertilizers  
Modern Gin System  
Modern Seed Cleaning Equipment  
—

**Liberty Manufacturing  
Company**

Red Springs, N. C.

**THE . . .  
SCOTTISH BANK**

LUMBERTON - PEMBROKE  
RED SPRINGS

*Member Federal Deposit  
Insurance Corporation*

*Compliments of*

**SANDLIN & CO., Inc.**

—  
*Wholesale Grocers*  
—

FAYETTEVILLE, N. C.

**Travel Luxuriously  
... Yet Economically**

**FAST BUT  
SAFE**

—  
**Queen City  
Trailways**

---

*"This is the way  
to feel refreshed"*



---

Bottled Under Authority of The Coca-Cola Company by  
FAYETTEVILLE COCA-COLA  
BOTTLING COMPANY, INC.

Photographs

*for the*

White Heather

*By*

Dunbar Studio



Portraits

College and School Annuals



Charlotte, North Carolina

• There is a close relationship between the athlete's physical perfection and his diet. The Olympic Stars at Los Angeles in 1932 averaged one serving of Ice Cream each day . . . or five times as much as the average American.

• Be sure to include plenty of Southern Dairies Ice Cream in your diet, for it is especially rich in the food elements that build healthy bodies.



## City Optical Company

Wilmington - Fayetteville  
and Greensboro, N. C.

H. M. SMITH, *Mgr.* TELEPHONE 2357

**Patronize  
Our Advertisers**

# FLORA MACDONALD COLLEGE

Red Springs, N. C.

## A SENIOR COLLEGE FOR WOMEN

Near Fayetteville, Southern Pines and Pinhurst. Delightful climate, healthful mineral springs and remarkable health record. Bus and Railway connections.

*A Standard Senior Grade A College for Women.* Strong faculty. Graduates accepted for graduate work by leading universities. Class A teacher's certificates. Homelike atmosphere. Personal attention to students by teachers.

*Courses offered:* Bachelor of Arts, Bachelor of Music, Bachelor of Science (Home Economics) degrees. A Secretarial Course.

*Athletics.* Skillful physical director and coach has general supervision of sports and physical training. Archery, basketball, hockey, swimming, tennis, biking, etc., are enjoyed in season.

*Social Activities.* Receptions, teas, and many other social functions are provided at the college, while many hospitable and delightful homes of the citizens of Red Springs are open to the students.

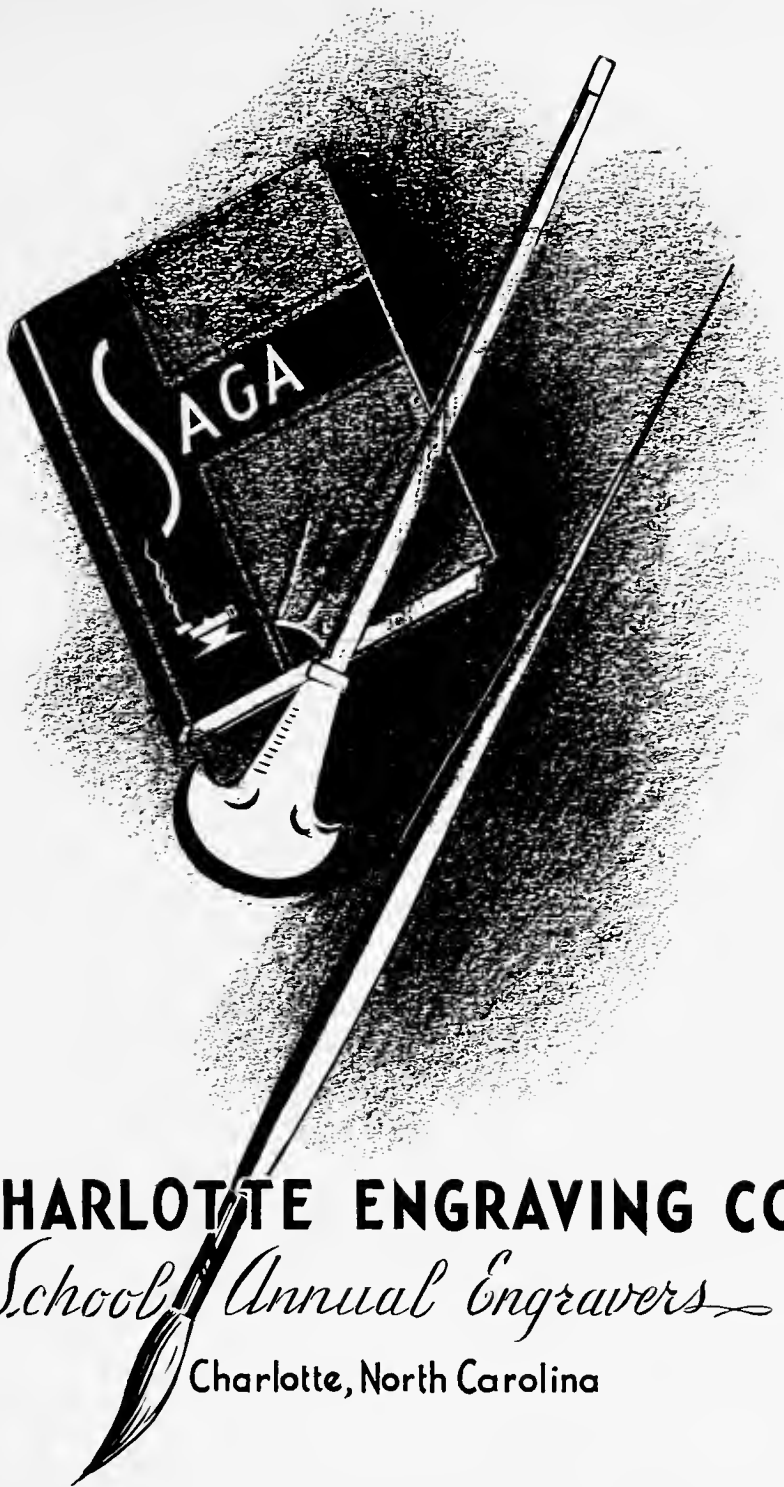
*Wide Patronage.* Patronized at present by eleven states and four foreign countries. Four thousand alumnae are engaged successfully as home-makers, nurses, teachers, dietitians, home demonstration agents, social workers, missionaries, and in many other useful professions.

MODERATE CHARGES : FOR CATALOGUE WRITE

HENRY C. BEDINGER, *President*

**FLORA MACDONALD COLLEGE : Red Springs, N. C.**





**CHARLOTTE ENGRAVING CO.**

*School Annual Engravers*

Charlotte, North Carolina

When we've had  
some good times together.  
I'm looking forward to seeing  
you lots next year. Be good this  
summer and remember that I like  
you best. Please write me - I'll answer.  
Maybe I'll even see you at the beach.  
I love you.  
"Dad"

## BUILDERS DREAMS

VISIONS created by the imagination precede the achievement of any really great accomplishment. The ability to weave the threads of imagination into the finished fabric is equally important.

It has been the privilege of the EDWARDS & BROUGHTON COMPANY to cooperate with the staff in creating their vision into material form.

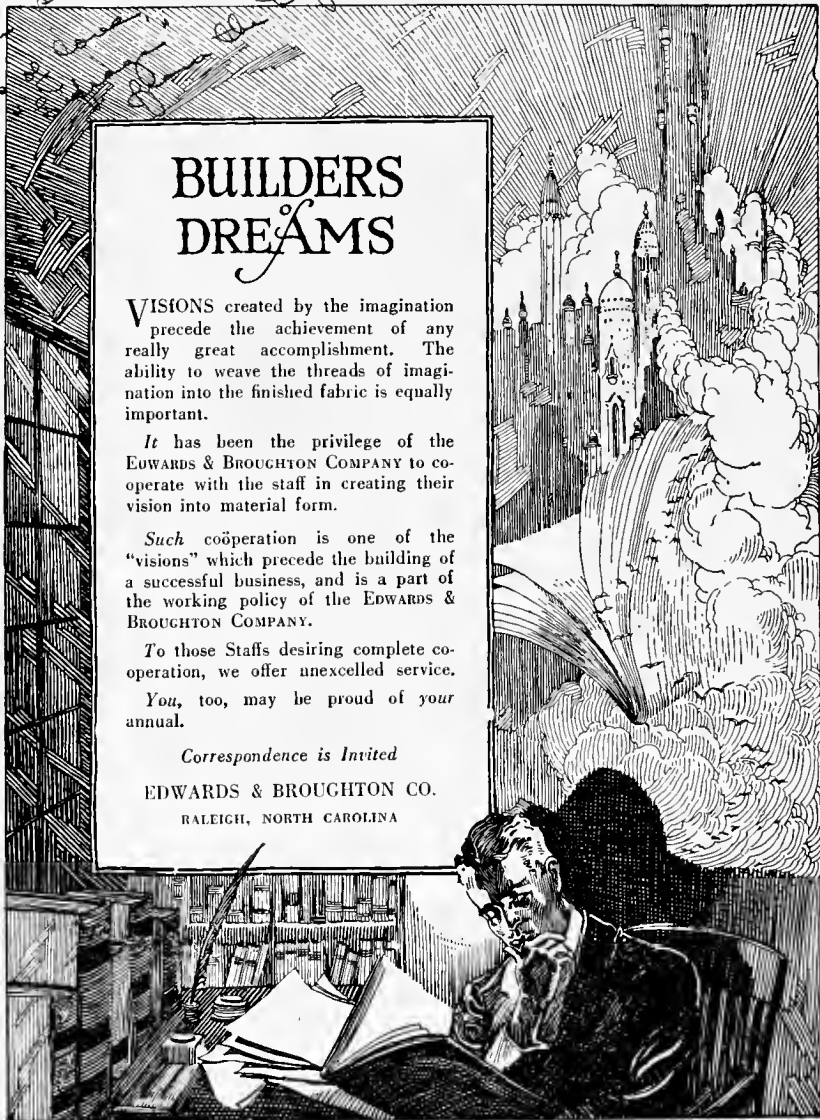
Such cooperation is one of the "visions" which precede the building of a successful business, and is a part of the working policy of the EDWARDS & BROUGHTON COMPANY.

To those Staffs desiring complete cooperation, we offer unexcelled service.

You, too, may be proud of your annual.

*Correspondence is Invited*

EDWARDS & BROUGHTON CO.  
RALEIGH, NORTH CAROLINA



it has been  
awfully knowing the  
you & hope you are  
best of luck.  
With love

Since I'm first  
to say. I don't know what  
you care. I'll always remember  
you've been sweet.  
Love, Alice Peases

### AUTOGRAPHS

Selen -  
I'll always remember you

Morgan 3rd - Come to see us  
Love Nancy Thunlet

John  
I have enjoyed knowing  
you so much. I'll  
always remember you.  
Love, Nancy

Do Nothing!  
I have enjoyed meeting you  
Morgan is a with you. You  
are a sweet girl -  
like you lots.  
Best! Luck!  
Chase

Dear "Do-Nothing,"

I think you are a cute, sweet girl. It  
has been so much fun knowing you for the  
past two years! Please come to see me this  
summer! At least, you can write me: try to  
do better than you did last summer. Be good  
and miss me a little next year!

Lots of Love  
Frapp

AUTOGRAPHS

Hello; He er -

Hasnt it been fun here? I've really enjoyed knowing you. I'll never forget the crazy times we've had. Be good and stay as much fun as you are now.

Love,  
Spivey

Dear S. - Melony,

I really miss you and miss seeing you. I'd like to see you as you are. Haven't we had some great times together?!! Do - nothing I want to miss the very best of myself always to a wonderful girl. How about missing us just a little next year. Be good this summer and write soon! - (a command!)

Love  
Mingie

Dear "Do - Nothing"

It's been so good to have worked with you at telephone and you've helped me lots. Looking forward to seeing you next year and there's hoping we will be together then again. Have fun this summer & write me!!!

Love  
Mingie Johnson

AUTOGRAPHS

When Helen, Helen, Helen  
 have had fun years ago  
 you had fun years ago  
 old Margaret & I will miss  
 going to see me this summer  
 memorial and Margaret & I  
 you all come to see me  
 think I will come to see  
 be sure to come to see me  
 don't forget we are going to  
 with me!! Road of Luck and Love  
 (Larkin and Lane)

"Do Nothing",

We've had a lot of fun  
 this year. I've enjoyed  
 rooming next door to you  
 and part of the time with  
 you! I'm not going to write  
 an epistle because I'm going  
 to see you this summer. Remember  
 to write me!

Love,

"Maggie"

(Box 246 Mayodan, N.C.)

we. Nothing

I have really enjoyed knowing  
you very much this. We really  
have had fun messing with  
water. too bad I had to use myself  
instead of you. We had fun making  
MAY DAY costumes together, didn't we. Come  
to see "me and May Belle" and the rest  
at Wake Forest this <sup>summer</sup> if you don't well.  
I might knock on you. anyway write to us.  
Have fun and I'll see you later -  
Love,  
Arlan

AUTOGRAPHS

Hebeu how -  
Have enjoyed  
knowing you very much.  
Keep sweet and keep  
Smiling!  
Arlan  
Bea

Hebeu, I have enjoyed knowing you.  
You're sweet. I miss you  
Much success and happiness -  
As ever  
Mary Alice

"Do nothing."  
I've been fine  
these two years, hasn't  
it? I have really enjoyed  
knowing you, and I think  
you are a sweet girl, and  
a lot of fun. Be good this  
summer and write me.  
Don't tell anybody! This is your  
penny!

AUTOGRAPHS

Love,  
Eugene

AUTOGRAPHS



AUTOGRAPHS

AUTOGRAPHS

AUTOGRAPHS

Dearest Alice,  
I have enjoyed rambling  
with you more than I can  
say in words. I wish I had time  
and could use illogical language  
to express my thoughts but in a crude  
manner you know how I feel. You're a  
sweet roommate. I hope to see  
you this summer. Write me and please  
be good.  
Love always,  
Mary Belle

Helen,  
I have enjoyed knowing you.  
Good luck.  
Francis Elizabeth Cole

Dearest Little Nut,  
I'll miss ~~the~~ making  
ugly faces at you  
next year - and  
who will make them  
for me? But we'll  
make up for all  
year when I come  
back to see you all.  
Love - and always,  
Love,  
Mary

Wish you  
were here -  
I've enjoyed  
knowing you so much -  
Be sweet & send  
love to us -  
Love,  
Minnie Myra

"Do Nothing"  
I just done to call you "Do Nothing", but  
I don't know why I guess 'cause  
it's so appropriate. You are such a  
sweet girl tho' and I admire you  
a lot.  
Be good this summer and I'll see  
you next year.  
Lots of Love,  
Violet







