



THE 1945

WHITE HEATHER







Memories of 1945

The
WHITE HEATHER

Published by the
Flora Macdonald College



Student Body of

Red Springs, North Carolina



FOREWORD

ONLY FOUR short years have passed since Flora Macdonald began for

us a new era. There have been numerous impressions, since our first—

brick buildings—beautiful gardens—friendly people—Dr. Vardell—classes

—professors—dirty saddle shoes—huge plaid shirts (how the faculty must
have suffered)—student council meetings—midnight snacks—hours and
hours of parallel reading—bull sessions—birthday parties in the dining
room—hockey tournaments—the triumphant winners—the gay and laugh-
ing losers—War Bond Drives—breakfast in bed—Capsule Day—Monday
jaunts to Fayetteville—our new recreation room—cotton picking—cokes
in the T-Room—Saturday night dates—soldiers—chicken on Sunday—

concerts and lectures—theatre parties—hamburgers at the cafe—Conrad

Thibault—last minute cramming—sun baths on the roof—May Day—

White Gift Service—Vespers—Christmas holidays—Our hundreds of ban-

quets—lights 'til twelve—all this and more, too, will never be forgotten by

those of us who are leaving.

We have enjoyed working on your yearbook. We had high aims and we

have reached some of them. It has been difficult, but it has been fun. We

have a good staff and it deserves a large amount of the credit. You as a student body, have been most coöperative. With all this in mind, we present to you, its most loyal supporters, this nineteen hundred forty-five **WHITE HEATHER**. Enjoy it, and may it in the future remind you of things which may bring a few tears, but more often, a great deal of laughs.

JANE and FANNIE GREY.

DEDICATION

BECAUSE she is kind, because she has been patient and cheerful in the face of our overbearance; because she has been so generous with constructive criticism and suggestions; because she has been our ideal adviser in every way, we respectfully and with a great deal of admiration, dedicate this nineteen hundred forty-five WHITE HEATHER to Miss Katherine Cameron.





MISS KATHERINE CAMERON

VIEWS

SOMETIMES when studying gets us down, we find the gardens, the naturalism of Flora Macdonald, an inspiration. We have enjoyed these elements of our college during our four years' stay and we won't forget them, or their beauty.



Entrance



The Garden



The Fish Pool



Main Building from Garden

VIEWS

Paradise Walk



The Columns



DR. CHARLES G. VARDELL

President Emeritus

IN THE FACE of a world upheaval, of which we are so vital a part, we are most fortunate to have a person like Dr. Charles G. Vardell, to guide us through our four years here at Flora Macdonald. We are grateful to him for all the advice he has given, and for all the successful planning he has done. We shall miss him, but we shall never forget him.



FACULTY

THE FACULTY—a necessity sometimes unappreciated by the student body. They are a group, enveloped by grades, discipline, and intellect.

We feel that we are quite fortunate at Flora Macdonald, in that we have the privilege of knowing our faculty, personally, and knowing that beneath all the dignity of a college professor, lies genuine friendliness. We are proud of our professors and in future years, we can look back upon our friendships with them with fondest memories.



MISS SAMPLE, *Dean* STEPHENS, MISS BAILEY, MISS STEWART, MISS McADAMS



HENRY GRAYBILL BEDINGER, B.A., B.D., D.D.

the President . . .



THE THREE DEANS

MARY HAMILTON STEPHENS, B.A., M.A.
Dean of Students

HAZEL MORRISON, B.A.
Dean of Faculty and Registrar

ROBERT REUTER, M.Mus.
Dean of Conservatory



Faculty

CLARA TARRANT BAILEY, B.A., B.S.
Professor of Voice
 Bursts of laughter . . . attractive-french songs
 . . . "a gift of fascination and the power to
 charm."

ETHEL BATEMAN, B.A., M.A.
Professor of Physical Education and Health
 Graceful . . . Energetic . . . Charming . . .
 May Day . . . Tournaments.

VIRGINIA BARRON, B.S., M.S.
Dietitian
 Efficient . . . business-like . . . helpful . . .
 exact.

ORA BLACKMUN, A.B., M.A.
Professor of English
 Shakespeare . . . quiet . . . merry eyes . . .
 dainty . . . interesting.

LIDA LAW CHAPMAN, B.A., B.M.
Professor of Piano and Organ
 History of music . . . dignity and charm . . .
 reserved . . . "sincere and constant devotion
 to art and all things lovely."

KATHERINE CAMERON, B.S., M.S.
Professor of Home Economics
 Blue . . . charming personality . . . striking
 . . . nylons . . . altogether lovely . . . "the
 beauty of handiwork."

ANNIE MOORE CHERRY, B.A., M.A.
Professor of Education
 Gracious . . . inspirational . . . lavender . . .
 Peter Rabbit.



Top to bottom: Robertson-Blackmun, Conoly-Cherry-Cameron, Dunlap-Lambie. Right: McPhaul-Moffett-Neighbors.

FRANCES ELIZABETH COMER, B.S., M.S.
Professor of Home Economics
 Hard-working . . . precise . . . thoughtful . . .
 furge . . . quiet smile . . . "mid-night
 snacks."

VIRGINIA CONNOR, R.N.
Resident Nurse
 Charming wit . . . dignified . . . pink pills . . .
 white uniforms . . . navy blue.

MARY MacLEAN CONOLY, B.A., B.S., M.A.
Professor of Education
 Progressive . . . achievement tests . . . tele-
 phone calls . . . bikes . . . philosophies.

MARY ELIZABETH DUNLAP, B.S., M.A.
Associate Professor of Piano and Theory
 Gracious . . . red . . . charming . . . well-read
 . . . poised.

EDITH EARNHART
Secretary to the Dean of Faculty
 Quiet manner . . . feather cuts . . . arm full
 of books . . . Fort Bragg booster . . . petite.

OTTO WALTER FERRENE, B.S., M.A.
Associate Professor of Biology
 Definite . . . witty . . . teasing . . . scientific-
 minded . . . undaunted.

JANE COLSON GLENN, B.S., G.Ph., M.S.
Professor of Chemistry and Physics
 Brilliant . . . lovable . . . "a scientific mind,
 encompassed with true kindness."

MABEL R. HAMER, B.S.
Professor of Business Subjects
 Typing . . . poised . . . suits . . . serenity
 . . . casual.



Top to bottom: Shelton-Comer-McAdams-Morrison, Ferrene-Stump, Hamer-Stewart-McIntyre. Left: Glenn.

Faculty

VERTIE PRINCE KING, B.A., M.A.

Professor of Mathematics

Jennings . . . tennis . . . frank . . . Georgia
. . . square roots and triangles.

LOIS J. LAMBIE, B.A., M.A.

Professor of Public School Music

Pennsylvania . . . P.S. Music . . . blue . . .
enthusiasm . . . frankness . . . "Efficiency
and poise are the true marks of her character."

LAURA JEAN McADAMS, A.B., A.M.

Professor of Modern Languages

Unique . . . "lo, lady" . . . hockey tourna-
ments . . . red and black . . . mail . . . artistic.

LETA WELTHA McINTYRE, B.S.

Professor of Business Subjects

Sweet . . . coöperative . . . suits . . . tea and
sandwiches.

ELIZABETH CLARKE McPHAUL, B.A.

Associate Professor of Bible

Punch and Judy . . . Dr. Caldwell . . . witty
. . . capable . . . calm.

NATALIE CRAWFORD MOFFETT, B.A.

Professor of Bible

China . . . genuine . . . thoughtful . . . fun-
loving . . . original . . . chocolate.

BROWN MORRISON, B.L.

Bursar

Efficient . . . bills . . . office hours . . . bus
tickets . . . exact . . . helpful.

HARRIET N. MORRISON, B.A., M.A.

Professor of Latin

Sincere . . . blue . . . "Adeste Fideles" . . .
Sunday school.

HAZEL MORRISON, B.A.

Dean of Faculty and Registrar

Kind . . . thoughtful . . . understanding . . .
traditions . . . conferences.

GENEVIEVE MacMILLAN NEIGHBORS,
B.A., M.A.

*Associate Professor of Education and Social
Sciences*

Cordial . . . considerate . . . stylish . . .
lovable . . . child psychology.

ROBERT REUTER, M.Mus.

Dean of Conservatory

Tennis . . . Bach . . . unusual ties . . . friendly
ivory keys . . . concerts.

CAROL ROBERTSON, B.A., M.A.

Professor of History

Vivacious . . . intellectual . . . purposeful
. . . dry wit . . . I.R.C.

LILLIAN FARQUHAR ROBESON

Professor of Violin

Canada . . . long heads . . . Chapel . . . tea
room . . . violins . . . "vibrant with love of
life."

ELEANOR SAMPLE

Librarian

Kind . . . quiet . . . meditative . . . sincere
. . . devoted.

EDNA EARL SHELTON, B.A., M.A.

Associate Professor of English

Gay . . . humorous . . . broad A's . . . a true
knowledge of the works of art.

Left: Connor-Barron. Right: King-Bateman.



MARY HAMILTON STEPHENS, B.A., M.A.

Professor of French

Animated . . . conscientious . . . fun-loving . . .
versatile . . . knitted suits . . . "Jim" . . .
navy.

KATE STEWART, A.B.

Professor of Business Subjects

Acquiescent . . . helpful . . . unobtrusive . . .
books . . . daintiness.

ALEXANDER BELL STUMP, B.S., M.S.,

Ph.D.

Professor of Biology and Bacteriology

Deliberate . . . understanding . . . good-
natured . . . earnest.

MARIE TOWNSAND, A.B., B.S.

Secretary to the President

Efficient . . . versatile . . . journalistic . . .
airplanes . . . harmonious.



Not photographed:

MORRISON, BROWN, B.L.

Bursar

WRAY, JOE W., B.S., M.S.

Professor of Mathematics



Right, top to bottom: Robeson-Bailey-
Chapman, Earnhart-Townsend, Sample.



and then **CLASSES**

A Day of Books



Graphite and Chalk

SENIOR




CLASS

IT MAY HAVE OCCURRED to some of us that one day we might be seniors. But we were so busy working and playing toward that goal, we were a little doubtful of ever reaching it. Being a senior would mean so much—movies at night (of course, that's the first thing we thought of), practice teaching for most of us, practice house for some of us. It would mean taking a leading part in activities of our college, as some of our seniors have done. It would mean, too, that we would be a guiding light

to so many bewildered underclassmen. Having so recently stepped from the category of underclassmen into our present category, we could well understand their situation. Then, too, it would mean our last year at Flora Macdonald. That soon, perhaps too soon, we would be taking our places in the world, no longer depending upon teachers and friends for advice. We are beginning to be more serious about things. We have enjoyed our four years' stay here and now, we are seniors. Soon we will be leaving—in body, perhaps, but never in spirit. For we will never forget the things we've learned here—not just from books, but from people as well. Yes, we feel quite capable of taking up a life work now. We have four years at Flora Macdonald to remember.





Senior Class Officers

CAROLYN MCKAY, *President*

As president of our class for the past two years, Carolyn has quite successfully undertaken all our projects. She has listened to our griping (and we did plenty of it) and encouraged us. We are proud of you, Carolyn, and you have done a grand job.

MARY NIBLOCK, *Vice President*

A Woman's College transfer, Mary has, in her unobtrusive manner, won our confidence in many ways. Keeping the ball down business going, is no easy job, but we think Mary has proven her capability. She is a good leader and friend.

BETTY BLONIAK, *Secretary*

Betty has had a hard position to fill this year, as secretary of our class. It's no fun wondering whether or not the invitations will get here in time, besides keeping the numerous records required of her. She has lived up to our expectations in every way.

CATHERINE LYTTON, *Treasurer*

Kat must have an over supply of patience and tolerance. She's the gal who collected dues, paid our bills, and, generally kept the senior class above board. Good work, Kat.

CARRIE LEE JONES, *Tea Room Manager*

Carrie Lee has all the business ability that we wanted and needed in a tea room manager. She has worked hard and deserves all our praise.

CORETTA THOMPSON, *Assistant Tea Room Manager*

Coretta worked hard, too, and we don't mean maybe. She has a natural efficiency which is a necessity to making a success of anything. She has made a good assistant.

MARY HAMILTON STEPHENS, *Adviser*



*Left to right: LYTON, NIBLOCK, STEPHENS, McKAY, JONES, BLONIAK, THOMPSON,
BENDER.*

JO ANNE ATKINS, B.M.

Public School Music

Kernersville, N. C.

Zetesian, Corresponding Secretary 3, 4; Glee Club 1, 2, 3, 4; College Sextet 2, 3, 4; Music Club 1, 2, 3, 4, Vice President 3, 4; Sophomore Voice Recital 2; Junior Voice Recital 3; Senior Voice Recital 4; Dramatics Club 3, 4; Marshal 3; May Court 2; Maid of Honor in May Court 4; Zetesian Associate Editor of *Pine and Thistle* 4; Christian Association Cabinet 4.

Truitt . . . dreamy eyes . . . musical . . .
"Arias" . . . rare blonde beauty . . . blue
. . . daily letters . . . genuine.

*"The music in her heart she bore,
Long after it was heard no more."*



Senior Class

ELIZABETH BARRINGER BLONIAK, B.A.

Primary Methods

Carthage, N. C.

Epsilon Chi, Corresponding Secretary 3, 4; Class Cheer Leader 1; William Bartram Scientific Society 1, 2, 3, 4; Head of Volleyball 2; Athletic Board 2; Class Treasurer 3; Class Secretary 4; Hockey 3, 4; Hockey Varsity 4; Dramatics Club 4; Camera Club 4.

"Kids' Lit" . . . effervescence . . . happy-go-lucky . . . "Beethoven's Seventh."

*"Full of laughter—full of pep—
Never quiet—that's her rep."*





NELL BOWDEN, B.A.

French and History

Warsaw, N. C.

Epsilon Chi: French Club 1, 2, 3, 4; William Bartram Scientific Society 1, 2, 3, 4; Archery Club 2, 3.

Reserved . . . tall . . . willowy . . . intellectual . . . "Sweet-Pea" . . . kind.

*"Zealous yet modest, innocent, though free,
Patient of toil, serene amidst alarms."*

White Heather

MARY BRITTEN, B.A.

Primary Methods

Kinston, N. C.

Epsilon Chi: Dramatics Club 2, 3, 4, Vice President 4; Basketball 1, 2, 3, 4; *Pine and Thistle* Staff, Exchange Editor 4; WHITE HEATHER Staff, Snapshot Editor 3; William Bartram Scientific Society 4; Hockey 4; Tennis 1, 2, 3, 4; Mathematics Club 1; Archery 1, 2; Atlantic Christian College Summer School 3; May Court 3.

"Hawk" . . . striking . . . care-free . . . fun-loving . . . sweeping lashes . . . Lucky . . . yellow sweaters . . . collegiate . . . S. F.

"There was a certain distance in her look that made us look again."



MARY LEE BURNS, B.S.

Home Economics

Goldsboro, N. C.

Zetesian; Home Economics Club 1, 2, 3, 4, Reporter 3; William Bartram Scientific Society 2, 3, 4, Corresponding Secretary 3; Camera Club 2, 3, 4; Hockey 1, 2; Basketball 1, 2, 3, 4; Glee Club 3, 4.

Pan-cake make-up . . . furs . . . long hair . . . practical . . . self-reliant.

"Manner of deceptive seriousness belied by twinkling eyes that seem to smile at life."



Senior Class



EVELYN COLLIER, B.S.

Home Economics

Wade, N. C.

Zetesian; W.C.U.N.C. Summer School 4; Home Economics Club 1, 2, 3, 4, Secretary and Treasurer 4; Prayer Band Leader 3, 4; William Bartram Scientific Society 2, 3, 4; Student Volunteers 1, 2.

Home Ec. . . . fun-loving . . . efficient . . . industrious . . . gentle.

"There's nothing so kingly as kindness."



SARAH McLELLAND CRAVEN, B.A.

Primary Methods

Mooreville, N. C.

Zetesian; Mitchell College 1, 2; Prayer Band Leader 3; Student Volunteers 3, 4; Christian Association Cabinet 4; Westminster Fellowship of Students Conference 4.

Sunday school . . . "Graa-vey" . . . Boogie . . . pleasant . . . congenial . . . composed and even-tempered.

"Her spirit is the harmony of truth."

White Heather

NOVELLA DUKE, B.A.

English and History

Greenville, N. C.

Zetesian; William Bartram Scientific Society 2, 3, 4; L'Alliance Francaise 1, 2; International Relations Club 4.

Library . . . unusual . . . loyal . . . studious . . . understanding . . . quiet dignity.

"She hath a natural wise sincerity, a simple truthfulness."



NAN FARLOW, B.A.
Grammar Grade Methods

Sophia, N. C.

Zetesian; W.C.U.N.C. 1, Summer School 1;
 William Bartram Scientific Society 2, 3, 4;
 Guilford College Summer School 3; Camera
 Club 4; International Relations Club 4.

Cute . . . unusual coiffures . . . collegiate
 . . . pinafores . . . tailored suits . . . Navy
 . . . W.C. . . . week-ends . . . "Dark Eyes."

*"A little nonsense now and then,
 Is relished by the best of men."*



Senior Class



DOROTHY FENNEL, B.S.

Home Economics

Loris, S. C.

Zetesian; Home Economics Club 1, 2, 3, 4;
 William Bartram Scientific Society 3, 4; Secretary
 of Sunday school Class 2, 3; Music Club
 1, 2; Atlantic Christian College Summer School
 3.

Shiny apples . . . black suit . . . frills . . .
 angora socks . . . Home Ec. dinners . . .
 persistence.

"The best proof of ability is action."



KATHERINE FINLEY, B.A.

Biology

North Wilkesboro, N. C.

Epsilon Chi; Mary Washington College 1, 2;
Pine and Thistle Staff 4; Prayer Band Leader
2, 3; William Bartram Scientific Society 3, 4;
Mathematics Club 2, 3, 4; Head of Tennis 3, 4;
Camera Club 3, 4.

Tennis tournaments . . . ; Wilson . . . exact
. . . industrious . . . willing . . . feature
writing.

*"When she will she will and you may
depend upon her."*

White Heather



MARTHA ADRIAN GAITLEY, B.A.

Primary Methods

Red Springs, N. C.

Zetesian; Day Students Club 1, 2, 3, 4; Grand-
daughters Club 1, 2, 3, 4; Dramatics Club 1, 2.

Gay . . . helpful . . . unobtrusive . . . pub-
licity . . . office . . . friendly.

*"There was not one among us, but could
call her friend."*



MARGUERITE VENSON GASKIN, B.A.

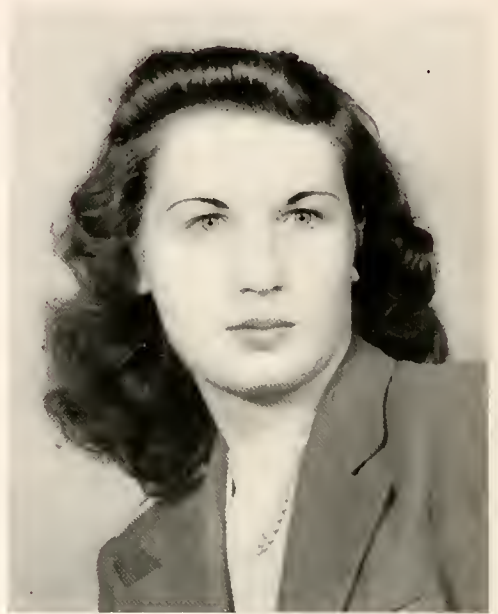
Primary Methods

Smithfield, N. C.

Zetesian; Peace 1; Hockey 2, 3, 4; Granddaughters Club 1, 2; William Bartram Scientific Society 1.

Peace . . . suits . . . dates . . . "Miss Cherry"
. . . candy and flowers . . . pictures . . .
willow.

"A frankness peppered with jollity."



Senior Class



AGNES GOODMAN, B.A.

Primary Methods

Marion, N. C.

Zetesian; Asheville College 1, 2, 3; International Relations Club 1.

Sweaters and skirts . . . fun-loving . . .
dinner rings . . . good natured . . . unselfish.

*"The most manifest sign of wisdom is
continued cheerfulness."*



PAM GOODWILL, B.S.

Home Economics and Mathematics

Roanoke, Va.

Zetesian; W.C.U.N.C. Summer School 3; Home Economics Club 1, 2, 3, 4; William Bartram Scientific Society 1, 2, 3, 4; Camera Club 1, 2, 3, 4, Vice President 4; Mathematics Club 1, 2, 3, 4, Vice President 4; Monogram Club 4; Hockey Varsity 2, 3; Hockey 1, 2, 3, 4; Basketball 1, 2, 3, 4; Archery 1, 2, 3.

Henry . . . fudge . . . making fires . . . dependable . . . seamstress . . . Math.

"Strong in will—to strive, to seek, to find, and not to yield."

White Heather

FRANCES GORE, B.A.

Primary Methods

Tabor City, N. C.

Zetesian; William Bartram Scientific Society 2, 3, 4; Camera Club 2, 3, 4; Prayer Band Leader 2, 3; Secretary of Sunday School Class 4.

Sweet . . . dainty . . . practice teaching . . . West Hall . . . virtuous.

*"A sweet attractive kind of grace,
Continual comfort in her face."*



ELIZABETH HALL, B.A.

English

Plumtree, N. C.

Epsilon Chi; Mitchell College 1, 2; Associate Editor *Pine and Thistle* 3, Editor 4.

"Lib" . . . *Pine and Thistle* . . . Shakespeare . . . eternally busy . . . energetic . . . frank.

"As independent as the day is long."



Senior Class



ELIZABETH FOXWORTH HODGIN, B.A.

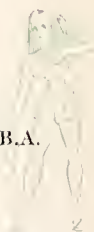
English and History

Red Springs, N. C.

Day Students Club 1, 3, 4, President 4; George Washington University 2; Student Council 4; William Bartram Scientific Society 2, 3; International Relations Club 4; *Who's Who in American Colleges and Universities* 4.

"Lib" . . . neat . . . studious . . . Day Students Club . . . dark green sweaters . . . brown eyes . . . courteous . . . good sport.

"For she was just the quiet kind, whose nature never varied."





ERNESTINE HUGGINS, B.S.

Home Economics

Aynor, S. C.

Epsilon Chi; Home Economics Club 1, 2, 3, 4; Dramatics Club 2, 3, 4; Archery Club 1, 2; Assistant Editor *WHITE HEATHER* 3; South Carolina Club 1, 2, 3, 4; Assistant Business Manager Tea Room 3; Senior Editor *Pine and Thistle* 4; Tennis 1, 2; Atlantic Christian College Summer School 2, 3.



Raven red lipstick . . . saddle shoes . . . sweaters and shirts . . . bangs . . . hair ribbons . . . wicked eyes . . . flippant . . . lively.

"A genuine love of living."

White Heather



MARY ANNA HUNTLEY, B.A.

English and History

Peachland, N. C.

Zetesian; William Bartram Scientific Society 2, 4; Camera Club 2, 4; International Relations Club 4.

Vardell . . . week-ends . . . hamburgers and onions . . . cokes . . . T-room . . . jesting . . . jolly . . . determined.

"To be free to walk on and on over the round earth,

Free of little strings tying you to little things."



MIRIAM HURLEY, B.M.

Public School Music

Troy, N. C.

Zetesian, Chaplain 3; Glee Club 2, 3, 4, Secretary 3; Music Club 1, 2, 3, 4; Secretary Junior Class 3; College Marshal 3.

Johnny . . . specials . . . winsome smile . . . friendly . . . rhythmical . . . yellow suits . . . green shoes . . . food.

"The thing that goes the farthest toward making life worth while, That costs the least and does the most, is just a pleasant smile."



Senior Class



MARY ELIZABETH JOHNSON, B.A.

Bible and Social Science

Elizabethtown, N. C.

Epsilon Chi; Flora Macdonald Christian Association Cabinet 3, 4; Mathematics Club 2, 3, 4, Vice President 3; William Bartram Scientific Society 2, 3, 4; Prayer Band Leader 2; War Bond Committee 3; College Marshal 3; *Pine and Thistle* Staff 4; Camera Club 4; Fire Squad 3; Mission Study Leader 2; Senior Scribbler 4.

"Mary Lib" . . . refined . . . literary . . . dependability . . . studious . . . winsome . . . fine qualities.

"The sun itself has scarcely been more diligent than she."



MARY ALLENE JOHNSON, B.M.

Piano and Public School Music

Kenly, N. C.

Zetesian; Glee Club 1, 2, 3, 4, Vice President 4; St. Cecilia Music Club 1, 2, 3, 4, Treasurer 2; Dramatic Club 2, 3, 4; Prayer Band Leader 2; Treasurer Class 1; Sophomore Editor Annual 3; Vice President Class 2; Chief Marshal 3; Student Council 3, 4; Vice President Student Body 3, 4; Double Sextet 4; May Queen 4; Member Mademoiselle College Board 4; *Who's Who in American Colleges and Universities* 3, 4.

Sweet . . . sincere . . . friendly . . . reliable . . . shades of red . . . "The Harmonica Player" . . . piano recitals.

"A rare and lovely character."

White Heather



CARRIE LEE JONES, B.A.

Primary Methods

Beaufort, N. C.

Zetesian; W.C.U.N.C. 1; *Pine and Thistle* Staff 3; William Bartram Scientific Society 3, 4; College Cheer Leader 4; Tea Room Manager 4; Senior Scribbler 4; International Relations Club 4.

Coke bottles . . . individual . . . banquet decorations . . . good conversationalist . . . ability . . . cheerful.

"Better than all measures of delightful sound.

Better than all treasures that in books are found."



KATIE McNEILL KIRKPATRICK, B.A.

English and History

Maxton, N. C.

Zetesian; Prayer Band Leader 1, 2; French Club 1, 2; Christian Association Cabinet 3, 4; International Relations Club 1; Granddaughters Club 1, 2, 3, 4.

Cabinet . . . plaid skirts . . . caustic . . . subtle wit.

"Works while she works and plays while she plays."



Senior Class



LOUISE KNIGHT, B.S.

Home Economics

Maxton, N. C.

Epsilon Chi; Home Economics Club 1, 2, 3, 4; Basketball 1, 2, 3, 4; Hockey 1, 2, 3, 4; Hockey Varsity 2; Atlantic Christian College Summer School 3.

Flight officers . . . Maxton Air Base . . .
Army jewelry . . . long hair . . . red . . .
frivolous . . . gay.

"Quick agile merriment."



JANE LATHAM, B.A.

English and History

Spray, N. C.

Epsilon Chi; Hockey 1, 2, 3, 4, Captain 1; Varsity 2, 3, 4; Basketball 3; Athletic Board 1, 2, 3; Vice President Athletic Association 3; Monogram Club 3, 4; Assistant Tea Room Manager 3; College Fire Chief 3; Mathematics Club 1, 2, 3, 4; L'Alliance Française 4; William Bartram Scientific Society 1; International Relations Club 4; Editor-in-Chief WHITE HEATHER 4; Chief Scribe 4; Superlative 1; *Who's Who Among Students in American Colleges and Universities* 4.

Unique . . . refined . . . pen and ink . . . pluck . . . efficient . . . scholarly . . . loyal . . . energetic.

"True to her word, her work, and her friends."

White Heather



ALMA LAWSON

Primary Methods

Leaksville, N. C.

Epsilon Chi; Mitchell College 1, 2; Mathematics Club 3, 4; Prayer Band Leader 4; William Bartram Scientific Society 3, 4.

Mitchell . . . studious . . . tweed . . . eyes . . . conscientious.

"True as the swiftly certain flight of birds."



VIRGINIA LEE, B.M.

Piano and Public School Music

Dunn, N. C.

Zetesian, First Vice President 2, Recording Secretary 3, 4; Glee Club 1, 2, 3, 4, Accompanist 3, President 3, 4; St. Cecelia Music Club 1, 2, 3, 4; College Sextet 1, Accompanist 2, 3; Dramatics Club 2, 3, 4, Secretary-Treasurer 4; College Marshal 3; Zetesian Associate Editor *Pine and Thistle* 4; Senior Scribbler 4; Freshman Piano Recital 1; Sophomore Piano Recital 2; Junior Piano Recital 3; Graduate Piano Recital 1.

"Ginny" . . . talented . . . piano recitals . . . sport clothes . . . Debussy and Chopin . . . Rotary . . . willing . . . rich harmony . . . sparkling melody.

*"Lightlier move the minutes, fledged
with music."*



Senior Class



RUTH LOVETT, B.A.

Grammar Grade Methods

Fair Bluff, N. C.

Zetesian; Basketball 2, 4; William Bartram Scientific Society 4; Camera Club 4; Snapshot Editor WHITE HEATHER 1.

Good-natured . . . straight-forward . . . progressive . . . fried ham . . . spasm . . . Cafe.

*"A little laughter, love, and leisure
lengthen life."*



CATHERINE LYTTON, B.A.

Primary Methods

Gastonia, N. C.

Epsilon Chi, Treasurer 1; Vice President Class 3; Treasurer Student Body 3; Student Council 3; Archery Club 1, 2, 3, 4; Camera Club 2, 3, 4; William Bartram Scientific Society 2, 3, 4; Dramatics Club 1; College Marshal 3; Exchange Editor *Pine and Thistle* 4; Treasurer Class 4; Senior Scribbler 1; Atlantic Christian College Summer School 3; May Court 4.

"Kat" . . . dignity . . . spontaneous laughter . . . bull sessions . . . an inner wisdom . . . "Libby and Smitty" . . . spasm . . . a mind of her own.

"Who mixed reason with pleasure and wisdom with mirth."

White Heather

BETTY MATHESON, B.S.

Home Economics

Conover, N. C.

Epsilon Chi; Home Economics Club 1, 2, 3, 4; Prayer Band Leader 2; Student Volunteers 1, 2; Christian Association Cabinet 3, 4; Camera Club 2, 3, 4; Tennis 1, 2, 3, 4; Granddaughters Club 1, 2, 3, 4.

Intellectual . . . book room . . . illustrative material . . . determined . . . helpful.

*"Scatter thus your seeds of kindness,
All enriching as you go."*



MURPHY MACDONALD, B.A.

Science

Maxton, N. C.

Zetesian; William Bartram Scientific Society 1, 2, 3, 4; Vice President 3; President 4; Camera Club 2, 3, 4; Mathematics Club 1; Hockey 1, 2, 3, 4, Captain 3; Varsity 4; Basketball 3, 4; L'Alliance Francaise 2; Tea Room Manager 3; Monogram Club 4; President Athletic Association 4; Student Council 4; Superlative 4; *Who's Who Among Students in American Colleges and Universities* 4.

"Murph" . . . dry wit . . . sports . . . black robes . . . Bible classes . . . hospitals . . . personality.

"An interest in the small and happy things that make a life."



Senior Class



JANE MCCONNAUGHEY, B.S.

Home Economics

Red Springs, N. C.

Epsilon Chi; Day Students Club 1, 2, 3, 4; Hockey 1; Basketball 1, 2, 3; Archery 1, 2, 3; Home Economics Club 1, 2, 3, 4; Wake Forest Summer School 2.

Unusual . . . "Ish Kabibble" . . . artistic . . . soldiers . . . chocolate cake . . . Wake Forest . . . mysterious.

*"And the forest's life was in her,
And its mystery and its magic."*



MARY CATHERINE MCCORMICK, B.A.

English and Organ

St. Pauls, N. C.

Epsilon Chi; Prayer Band Leader 3; William Bartram Scientific Society 1, 2, 3, 4, Recording Secretary 4; Mathematics Club 1, 2, 3, 4, Corresponding Secretary 2; Social Chairman 3; Music Club 2, 3, 4; Student Volunteers 1, 2, 3, 4; Glee Club 3, 4; Christian Association Cabinet 2, 3, 4, Treasurer 3, President 4; Student Council 4; International Relations Club 4; *Who's Who Among Students in American Colleges and Universities* 4; Senior Organ Recital.

"Mac" . . . steady . . . organ . . . Religious Emphasis Week . . . sincere . . . industrious . . . dependable.

"The path of duty was the way to glory."

White Heather



CAROLYN MCKAY, B.S.

Home Economics and Voice

St. Pauls, N. C.

Epsilon Chi, Chaplain 2; Treasurer Class 2; Assistant Business Manager *Pine and Thistle* 2; Prayer Band Leader 2; Mission Study Leader 2, 3; Basketball 1, 2, 3; Hockey 1, 2, 3; Glee Club 1, 2, 3, 4; Dramatics Club 1, 2, 3, 4; Home Economics Club 1, 2, 3, 4; Music Club 1, 2, 3, 4; William Bartram Scientific Society 4; Monogram Club 4; College Sextet 2, 3, Double Sextet 4; College Marshal 3; President Class 3, 4; Student Council 3, 4; Senior Voice Recital 4; Wake Forest Summer School 2, 3; *Who's Who Among Students in American Universities and Colleges* 3, 4.

Pinafore . . . dimples . . . "My Task" . . . versatile . . . Army wings . . . dignified . . . a capacity to enjoy life.

*"You are cool, like silver—
I think the Canterbury bells are playing little tunes."*



JANE GRAHAM MCKAY, B.A.

Grammar Grade Methods

Maxton, N. C.

Zetesian; William Bartram Scientific Society 1, 2, 3, 4; Camera Club 3, 4; French Club 1, 2, 3, 4; Music Club 1.

Red hair . . . freckles . . . quiet . . . yellow . . . sixth grade . . . domestic . . . perseverance.

"Rich are those who possess her friendship."



Senior Class



WEYBURN MOORE, B.A.

Grammar Grade Methods

Madison, N. C.

Zetesian; French Club 2, 3; William Bartram Scientific Society 2, 3, 4; Archery 1, 2, 3, Head of Archery 3; Associate Editor *Pine and Thistle* 3; Business Manager 4; Fire Squad 2, 3; College Marshal 3; Athletic Board 3; Dramatics Club 3, 4; War Bond Committee 3; Granddaughters' Club 1, 2, 3, 4; May Court 4.

Clay . . . dimples . . . petite . . . beauty sleep . . . Progressive education . . . May Day . . . Texas . . . blue stationery.

"An amazing blend of gravity and mischief."



VIRGINIA MUSSELWHITE, B.S.

Home Economics

Lumberton, N. C.

Zetesian; Atlantic Christian College Summer School 2, 3; Home Economics Club 1, 2, 3, 4; William Bartram Scientific Society 4; Student Volunteers 1, 2; Basketball 1, 2, 3, 4; Hockey 1, 2, 3, 4.

Charles . . . athletic . . . unassuming . . . sympathetic . . . independent . . . calm.

"A good sport and a friend worth having."

White Heather

MARY NIBLOCK, B.S.

Home Economics

Concord, N. C.

Zetesian; Montreat Junior College 1, 2; W.C. U.N.C. 3; Student Council 5; Home Economics Club 4, 5; International Relations Club 5; Vice President Senior Class 5; Secretary Student Body 5.

. . . genuine . . . tactful . . . courteous.
. . . genuine . . . tactful . . . courageous.

"The sweetest, the dearest, the most lovable too,

Best kind of sport and a pal true blue."



ELSIE OLIVER, B.A.

Primary Methods

Fairmont, N. C.

Zetesian; Montreat 1, 2; William Bartram Scientific Society 4; Camera Club 4.

Montreat . . . reserved . . . sincere . . . unassuming . . . kind.

"Selfless love of quiet unobtrusive giving."



Senior Class



MARTHA BOGGAN PENCE, B.A.

Primary Methods

Tatum, S. C.

Zetesian; Vice President Class 1, Secretary 2; Basketball 1, 2, 3, 4; Hockey 1, 2, 3, 4, Hockey Varsity 4, Head of Hockey 4; Athletic Board 4; Monogram Club 4; South Carolina Club 1, 2, 3, 4; William Bartram Scientific Society 1, 2, 3, 4; Senior Editor WHITE HEATHER 4.

Hockey . . . blond hair . . . mischievous eyes . . . Practice teaching . . . Tatum . . . Cologne . . . Indians . . . mannerly.

"A style that breathes perfection and a love of all things fine."



MARTHA PRIDDEN, B.S.

Home Economics

Warsaw, N. C.

Glee Club 1, 2, 3; Home Economics Club 1, 2, 3;
William Bartram Scientific Society 1, 2, 3;
Camera Club 1, 2, 3; Atlantic Christian College
Summer School 3.

Colored glasses . . . Practice House . . .
sarcastic wit . . . subtle . . . original . . .
talented.

*"Happy am I, from care I'm free,
Why aren't they all contented like
me?"*

White Heather

PEGGY SHINN, B.A.

History and Mathematics

Leaksville, N. C.

Epsilon Chi, Critic 3; Christian Association
Cabinet 3; Prayer Band Leader 3, 4; Art Editor
Pine and Thistle 2, 3; Home Economics Club 1;
Mathematics Club 2, 3, 4; French Club 3;
Camera Club 2, 3, 4, President 3, 4; William
Bartram Scientific Society 1, 2, 3, 4; Head
Tennis 2; Archery 1.

Mail . . . versatile . . . snapshots . . . slacks
. . . East 12 . . . airplanes . . . intelligent
. . . debates . . . frank.

*"Fearless in expressing her beliefs and
opinions."*



DOROTHY JANE SHOOK, B.A.

Primary Methods

Red Springs, N. C.

Epsilon Chi; Day Students Club 1, 2, 3, 4,
Secretary-Treasurer 2, Vice President 3; Pres-
byterian Junior College Summer School 2.

Bangs . . . chic . . . cute . . . dainty . . .
understanding . . . warm, brown eyes.

"Infinite riches in a little room."



Senior Class



NANCY SUMMERS, B.S.

Home Economics

Davidson, N. C.

Epsilon Chi; W.C.U.N.C. 1, 2, 3; Home Econom-
ics Club 4; International Relations Club 4.

Needle and thread . . . gaiety . . . neat . . .
bow ribbons . . . fashionable.

*"Not too sober, not too gay,
But a good, true girl in every way."*



CORETTA CLARK THOMPSON, B.S.

Home Economics

Morehead City, N. C.

Epsilon Chi; W.C.U.N.C. 1; Home Economics Club 1, 2, 3, 4, President 4; Glee Club 2, 3, 4; May Court 3; Assistant Tea Room Manager 4.

Opinnated . . . striking . . . black . . . sea food . . . measles . . . dependable . . . frivolous.

*"She's pretty to walk with,
And witty to talk with
And pleasant to think on, too."*

White Heather

RACHEL THOMPSON, B.A.

History

Colerain, N. C.

Epsilon Chi; Meredith College 1; Assistant Business Manager WHITE HEATHER 3, Business Editor 4; Senior Cheer Leader 4; Basketball 2, 3, 4, Varsity 2; Manager Tea Room 3; International Relations Club 4; Atlantic Christian College Summer School 2.

Wings . . . talkative . . . Virginia Beach . . . boys' jackets . . . well-dressed . . . flighty . . . sparkling eyes . . . flirtatious.

"Talking, not knowing why, nor caring what."



JANET TOMLINSON, B.A.
Grammar Grade Methods
 Black Creek, N. C.

Epsilon Chi, First Vice President 2; Peace Junior College 1; Glee Club 2, 3, 4; Basketball 3, 4; Hockey 3, 4.

"Connie" . . . Whitman's Sampler . . . perfumed pillows . . . diets . . . Peace . . . sports . . . poetry . . . "Red" . . . jolly.

"A charm that overflows in song and irrepressible bursts of wit."



Senior Class



JUANITA TONTZ, B.A.
History
 Baltimore, Md.

Zetesian, First Vice President 4; Glee Club 2, 3, 4; Dramatics Club 2, 3, 4, President 4; Home Economics Club 1, 4; Music Club 4; International Relations Club 4; Junior Editor WHITE HEATHER Staff 3; Exchange Editor *Pine and Thistle* 4; Basketball 1, 2, 3, 4, Captain 4; Hockey 1, 2, 3, 4, Captain 4, Varsity 4; Superlative 3, 4; May Court 2, 3, 4; Senior Scribbler 4; Monogram Club 3, 4.

"Tontz" . . . animated . . . enthusiastic . . . charming personality . . . "harmonizer" . . . dramatic . . . athletic . . . "Moonlight Sonata" . . . intelligent . . . cooperative.

"A quick vivacity that sparkles like fountains in the sun."



KITTY USHER, B. A.
Grammar Grade Methods
 Gibson, N. C.

Zetesian; South Carolina Club 1, 2, 3, 4.

Beautician . . . classroom management . . .
 Florida . . . V-Mail . . . gum . . . natural
 . . . generous.

*"Nonchalance of carefree winds in
 April."*

White Heather



SARAH EVELYN WHISNANT, B.S.
Home Economics
 Leaksville, N. C.

Epsilon Chi; Home Economics Club 1, 2, 3, 4;
 Prayer Band Leader 2; Snapshot Editor WHITE
 HEATHER 2; Hockey 1, 2, 3, 4; Basketball 1, 2,
 3, 4. Captain 3; Hockey Varsity 2; Flora Mac-
 donald Christian Association Cabinet 3, 4;
 Monogram Club 4; Student Council 4; Presi-
 dent Student Government 4; Superlative 4;
*Who's Who Among Students in American
 Colleges and Universities* 4.

"Whis" . . . fritter . . . capable . . . friendly
 . . . saddle shoes . . . decisive . . . Yardell
 . . . conscientious.

*"A rare combination of quality, noble
 and true,
 Plenty of wit, and good sense too."*



FANNIE GREY WORLEY, B.S.

Home Economics

Pink Hill, N. C.

Zetesian, Treasurer 3; Basketball 1, 2, 3, 4, Varsity 3; Hockey 1, 2, 3, 4, Varsity 3; Monogram Club 3, 4; Treasurer Athletic Association 3; Athletic Board 3; Business Manager WHITE HEATHER 4; Home Economics Club 1, 2, 3, 4; Music Club 1.

Cool green . . . Home Ec. . . shepherd's check . . . annual ads . . . non-chalance . . . "Boogie Woogie" . . . cooperative.

*"She is gentle, she is shy,
But she has mischief in her eye."*

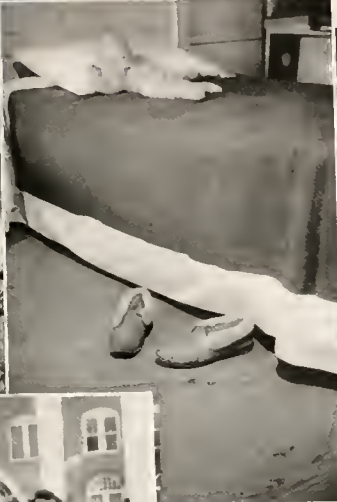
Not photographed: CALDWELL, MILDRED
STOWE, B.A., Clover, S. C.



Senior Class



Jimmie and Jane, posing . . . O.K., it's 7:30, get up . . . Ruth and Betty plus Ipana grins . . . where is the rest of you? . . . come out from under that bed . . . well, it's better than nothing, huh, Teenie? . . . Carolyn and our mascot . . . Vardell second, ready for anything . . . our tea room managers, without the T-Room . . . aw, you wouldn't dare . . . seniors, in an evening of fun . . . Kit and Alma . . . where'd you get him, Carolyn?





Junior Class Officers

BETTY COOK, *President*

A music major, Betty has coupled her unusual talents, along this line, with her executive ability and has proven to be exceptional as president of her class.

SARAH BRITTON, *Vice President*

"Figuratively speaking," because when we speak of Sarah, we think of her success as a Math major, we also realize how much it has meant to us to have such a good treasurer of our student body this year.

MARY ADAMS, *Secretary*

Petite, but dynamic, Mary has worked faithfully with her fellow officers to keep the junior class running smoothly.

BILLIE ESTES, *Treasurer*

"One in a million," Billie slaved feverishly, uniting her efforts with the other officers of her class. She couldn't be better!

HURLEY ANTHONY, *Tea Room Manager*

It takes a lot of energy and all the good-will in the world to tackle the tea room. Hurley had plenty of what it took and she is to be congratulated on her success as manager.

MARY LOIS WILKERSON, *Assistant Tea Room Manager*

Although we don't usually realize it, the assistant manager pitches just as long and hard as the manager. Mary Lois has proven to be a valuable assistant with her contributions of business ability and energetic personality.

MRS. JANE COLSON GLENN, *Adviser*



Standing: ANTHONY, BRITTON, COOK. *Sitting:* ESTES, GLENN, WILKERSON, ADAMS.

The 1945 White Heather



Juniors

First row, left to right:

ADAMS, MARY ELIZABETH, Kannapolis, N. C.

ANTHONY, HURLEY, Wilson, N. C.

ATKINSON, LAURA SHAW, Fairmont, N. C.

AUSTIN, SARA JEAN, Albemarle, N. C.

BRITTON, SARAH VIRGINIA, Whiteville, N. C.

Second row:

BROCKINTON, FRANCES DAVIS, Kingstree, S. C.

BROWN, JANE, Montvale, Va.

BROWN, JULIA LEE, Myrtle Beach, S. C.

BYNUM, LINDA VINIA, Pine Tops, N. C.

CALDWELL, FRANCES PAULINE, Carthage, N. C.

First row, left to right:

- CLARKE, DOROTHY ALBERTINE, Oxford, N. C.
COUSINS, HAZEL LEONA, Enfield, N. C.
CURRIE, SARAH LOUISE, Red Springs, N. C.
ESTES, BILLIE ELEANOR, York, S. C.
FARLOW, LYDIA LUE, Sophia, N. C.

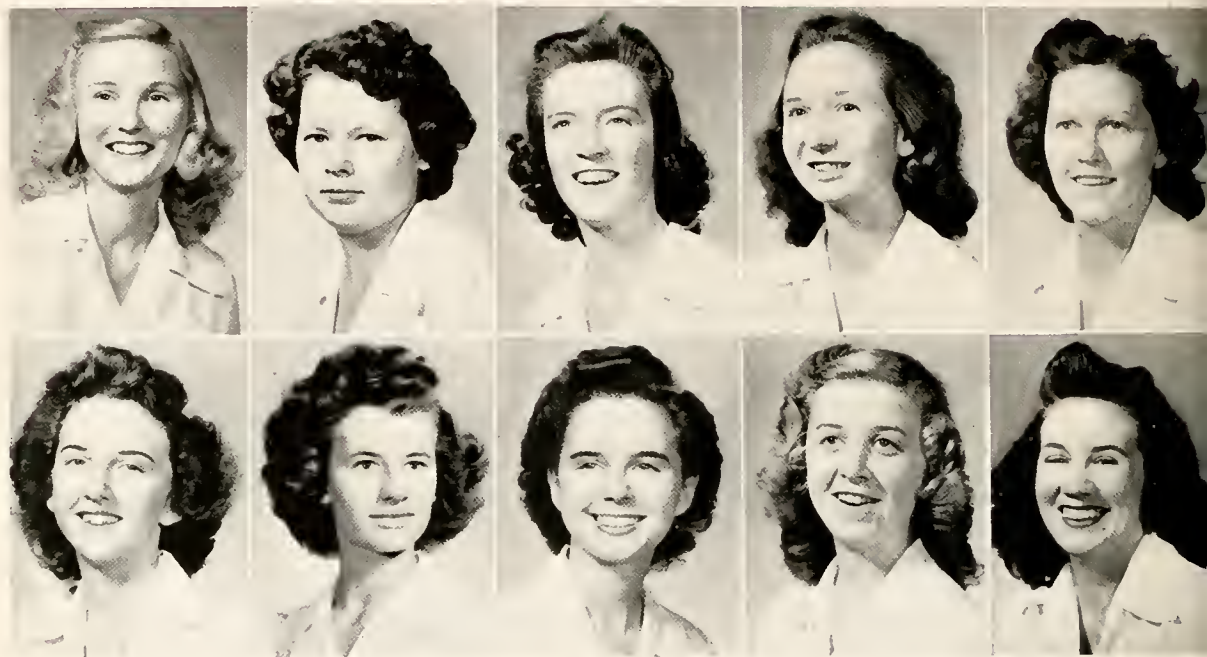
Juniors

Second row:

- FLEMING, MARGARET NELL, Woodleaf, N. C.
FLEMING, RUTH BRUNER, Hillsboro, W. Va.
GARRELL, HELEN LOUISE, Clarendon, N. C.
GILLIS, FRANCES BETHEA, Fayetteville, N. C.
GRIER, ESTHER MAE, Charlotte, N. C.



The 1945 White Heather



Juniors

First row, left to right:

- HARRELSON, FLETA, Clarkton, N. C.
HOLDER, ELIZABETH, Broadway, N. C.
HOYT, VIRGINIA CARLISLE, Millboro, Va.
JORDAN, MARY AUGUSTA, Kinston, N. C.
LANCASTER, NELL COSBY, Shelfar, Va.

Second row:

- LEWIS, ELENA ANN, Bartow, Fla.
LEWIS, NORMA ANN, Bessemer City, N. C.
MANESS, MARGARET FAYE, Biscoe, N. C.
MCDANIEL, ANNIE MAE, Bennettsville, S. C.
MCINNIS, KATHRYN McEACHERN, Little Rock, S. C.

First row, left to right:

McINNIS, VIOLET, Clio, S. C.

McINNIS, VIVIAN, Shabbon, N. C.

WILDER, RUBY MAE, Lillington, N. C.

McLEOD, ELIZABETH, Lumberton, N. C.

McPAUL, FRANCES, Red Springs, N. C.

Juniors

Second row:

MEEKINS, NANCY SPRULL, Columbia, N. C.

MILLS, KATHLEEN, Durham, N. C.

MOGER, HANNAH LEWIS, Pine Bluff, N. C.

OGLIVIE, BARBARA FORSYTH, North Wilkesboro, N. C.

POWELL, MARJORIE, Elizabethtown, N. C.



The 1945 White Heather



First row, left to right:

COOK, BETTY ROGERS, Whiteville, N. C.
SHAW, ANN McDUFFIE, Wagram, N. C.
SHAW, HAZEL POCAHONTAS, St. Pauls, N. C.
SPENCE, DOROTHY MARJORIE, Lillington, N. C.
STEVENSON, VIRGINIA, Hamilton, N. C.

Juniors

Second row:

TERRELL, ROBERTA FRANCES, Buckner, Va.
WARREN, MABEL, Clinton, N. C.
WARREN, MAYLENE, Salemburg, N.C.
WAKEFIELD, ZUNITA HOYTEENE, Barnardsville, N. C.
WAYNE, MARGARET, Hallsboro, N. C.



WILDER, RUBY MAE, Lillington, N. C.

WILKERSON, MARY LOIS, Lumberton, N. C.

WILLCOX, MARY GEE, Carthage, N. C.

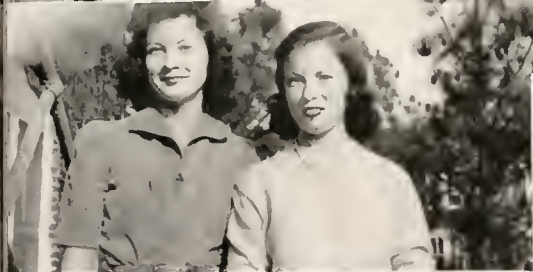
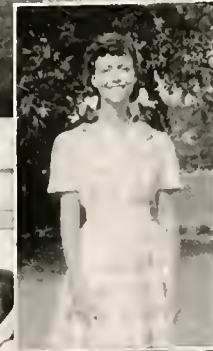
Juniors

Another year gone by! Can it be possible? Has this long awaited time finally come? Yes! Now we may put aside our titles of Juniors and don those more wonderful ones of Seniors!

We look forward to the first seats in chapel—the privileges that are to be ours as The Class—the deeper appreciation of Flora Macdonald that each new year brings—the honors that will come our way as the Semi-Centennial class—but most of all, we look forward with earnest anticipation to the satisfaction that our work here soon will be done, and “For All Thy Saints” will be echoing through these halls for us.

Yet, we are reluctant to give up all the happy times this year has shown us.

Is it really funny, Wayne? . . . Epsilon Chis, after an hilarious banquet . . .
having fun, girls? . . . West III, "hoofing it" . . . aw, Sara Jean, don't be
bashful . . . the day students and their men . . . Epsilon Chi president Nancy,
looking demure . . . how often does this happen, girls? . . . day student Dot,
pigtails et al . . . Sara and Betty . . . roommates Laura Shaw and Lulu . . .
Mary Gee and Mary Lois, gracing the roof . . . now, where do you think
you're going? . . . the Brockintons, having a drink . . . Judy, Kicking high.





Sophomore Class Officers

MARY MARGARET HARRIS, *President*

Conscientious and capable, sporty and fun-loving, Peggy has proved to be everything we had hoped for, in our president.

ANNE YOUNGBLOOD, *Vice President*

Anne is certainly true to the cliché, "little but loud," and do we love her!

EVELYN LYTTON, *Secretary*

A home ec. major, Lytton is as capable in that capacity as she is in her secretarial position. Records just don't seem to phase her.

VIVIAN McQUEEN, *Treasurer*

To leave out the "Mc" in her last name would describe Vivian adequately. She has been a grand treasurer.

LAURA JEAN McADAMS, *Adviser*



LYTTON, McADAMS, McQUEEN, HARRIS, YOUNGBLOOD

The 1945 White Heather

ASKEW, VIRGINIA, Kenly, N. C.

ATKINSON, LULU LITTLE, Kenly, N. C.

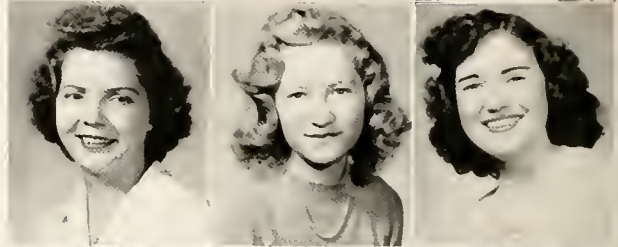
AUTRY, JUDITH ELLA, Charlotte, N. C.



BAILEY, ISABEL FIELDS, Carthage, N. C.

BALDWIN, RUBY IRENE, Lansing, N. C.

BARKER, FRANCES CRAIG, Milton, N. C.



BOGGAN, MITTIE ISABELL, Pee Dee, N. C.

BOYD, ELEANOR WILKERSON, Durham, N. C.

BRINSON, CATHERINE, New Bern, N. C.



BRISSON, MARZELLE VIRGINIA, Fayetteville, N. C.

BROADAWAY, COLLEEN, Asheboro, N. C.

BROCKINGTON, MARGARET L. Kingstreet, S. C.



BULLOCK, LETHA CAROLYN, Fairmont, N. C.

CLARK, TRUDIE, Clarkton, N. C.

CLINE, MILDRED, Hickory, N. C.

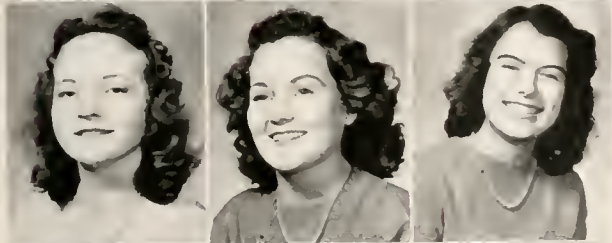




COOLEY, FRANCES JOHNSON, Wagram, N. C.

ERVIN, ELLA STEPHENNA, Catawba, N. C.

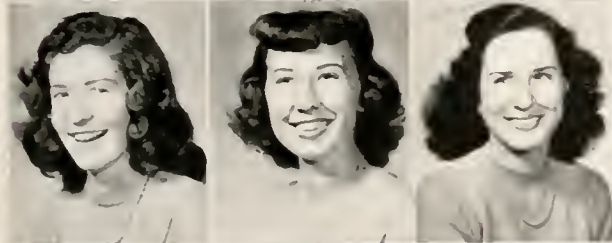
GAITLEY, HELEN, Red Springs, N. C.



GAY, MARY JORDAN, Jackson, N. C.

GIBSON, VIRGINIA DARE, Hoffman, N. C.

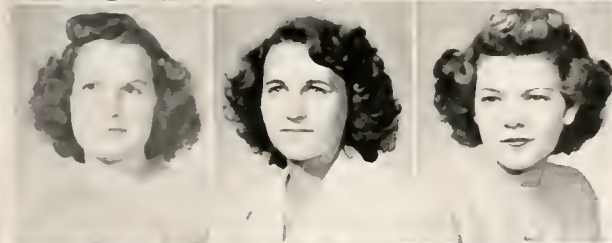
HALL, MARGABET, Plumtree, N. C.



HARRIS, MARY MARGARET, Concord, N. C.

HUGHES, MILDRED LOUISE, Wilmington, N. C.

HURT, NANCY JANE, North Tazewell, Va.



HURT, SUZANNE, North Tazewell, Va.

KANNON, DOROTHY GRACE, Roxboro, N. C.

KINNEY, RUTH, Charlotte, N. C.



KNOWLES, GOLDIE LOIS, Wadesboro, N. C.

LYTTON, EVELYN SUE, Gastonia, N. C.

MCCALLUM, ELIZABETH, Rowland, N. C.

Sophomores

The 1945 White Heather

MACDONALD, WANDA VIRGINIA, St. Pauls, N. C.

McINNIS, MARY, Red Springs, N. C.

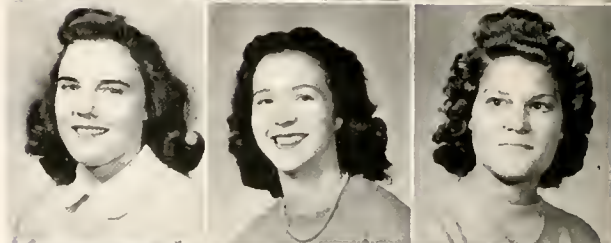
McNETT, ELIZABETH, II, Narbeth, Pa.



McQUEEN, VIVIAN, Mullins, S. C.

NEWMAN, SALLIE GAYLE, Clinton, N. C.

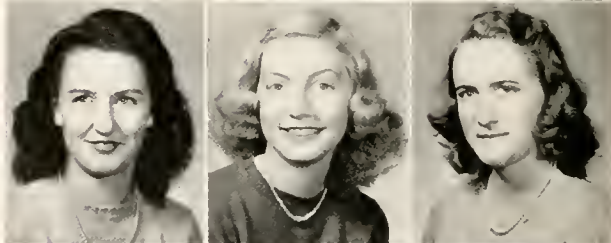
NURNBERGER, JUDY, Red Springs, N. C.



NYE, SARAH POWELL, Fairmont, N. C.

PARKER, MARY ELEANOR, Clinton, N. C.

PARKS, DOROTHY MAE, Laurinburg, N. C.



PARRISH, ELEANOR SUE, Smithfield, N. C.

PENDLEY, LEE FRANCES, Fort Bragg, N. C.

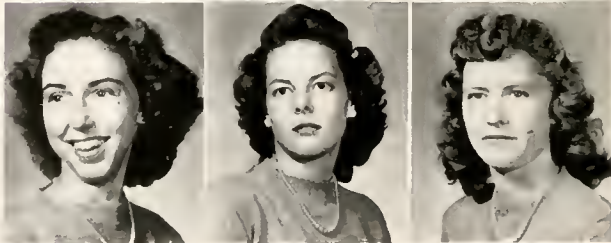
PERKINS, AGNES GORDON, Morganton, N. C.



POWERS, EDNA WINIFORD, Fayetteville, N. C.

PRIDGEN, FRANCES, Chadbourne, N. C.

PURSLEY, ETHEL LEE, Clover, S. C.





QUINN, LAURA EUGENIA, Chinquapin, N. C.

RHYNE, JANET PEGRAM, Stanley, N. C.

ROWE, ERNA, Arapahoe, N. C.

SHIELDS, PAULINE, Norfolk, Va.

SPENCE, SARAH E., Fuquay Springs, N. C.

SPIVEY, CLARA G., Elizabethtown, N. C.

T EW, MARY HELEN, Clinton, N. C.

TOWNSEND, CAROLYN LOUISE, Buie, N. C.

WALKER, ALICE IDA, Forest City, N. C.

WALKER, DORIS EVELYN, Currie, N. C.

YOUNGBLOOD, ANNE E., Smithfield, N. C.

Not photographed: COLEMAN, MARY HELEN,
Red Springs, N. C.



Sophomore Class



Local talents' contribution . . . you'd better hang on, girls . . . oh, my, must
be exam week . . . why don't you try it, Alice? . . . horse and buggy-minded
sophs . . . East Third's raison d'être . . . aren't they cute? . . . and here we
have—well, you guess the rest . . . Zibbie, jest relaxing . . . now, how did
that get in here . . . Peggy, you're doing fine, so far . . . Sunday, after
dinner, no doubt? . . . Janet, how'd you get up there? . . . aw, why don't
you smile for us? . . . this was another slip-up, s'cuse, please.





Freshmen Class Officers



MIRIAM WATSON, President

Miriam is another of our "very busy" music majors, who is just the type to lead her class through its first year of college. She has been a splendid president.

SARA JANE MCINTYRE, Vice President

There is no doubt that Miriam had a grand substitute this year. Sara Jane has a rare sense of responsibility and one likes to look at her, too!

AUDREY FULCHER, Secretary

Audrey, being a commercial, quite naturally, was very much depended upon, as all commercials are. She has certainly been an asset to her staff of class officers, and we hear she really put out the work on the Freshman-Sophomore entertainment.

Jo COLLINS, Treasurer

Jo was the gal who had all the Freshman money, for a little while. Hailing from Florence, and proud of it, she has been of valuable assistance to her class, and to the commercial department.



McINTYRE, COLLINS, WATSON, FULCHER. *Not photographed:* MRS. GENEVIEVE NEIGHBORS, *Adviser.*

Freshmen

First row, left to right:

ADAMS, NAN FLETCHER, McColl, S. C.
 AMIS, HARRIET ANN, Norfolk, Va.
 ANDREWS, BETTY WEBB, Rocky Mount, N. C.
 ARNETTE, MARY FRANCES, Loris, S. C.
 ARWOOD, MIRIAM, Edfield, N. C.
 AUSTIN, LOUISE, Albemarle, N. C.
 AUSTIN, SARA ALICE, Maxton, N. C.
 BALLARD, MARY LORENA, Tarboro, N. C.

Second row:

BARDEN, ALICE IRENE, Fairmont, N. C.
 BARROW, THELMA JEANNETTE, La Grange, N. C.
 BEST, KATHRYN LEE, Hallsboro, N. C.
 BLACK, EUGENIA GILLESPIE, York, S. C.
 BOWDEN, REBEKAH SUE, Durham, N. C.
 BROWN, DOROTHY HELMS, Loris, S. C.
 BURNETT, MARY ELLEN, York, S. C.
 COLLIER, MARGARET LORRAINE, Wade, N. C.

Third row:

CRAWFORD, GLADYS, Greenville, N. C.
 DABBS, SARAH CHRISTINE, Lexington, N. C.
 DAVIS, JUANITA JANE, Boardman, N. C.
 DRINKARD, LOU ELLA MAY, Lynchburg, Va.
 DULL, FRANCES MAE, Cameron, N. C.
 DUNCAN, SUSAN, Red Springs, N. C.
 DUNLAP, JANIE PENCI, Wagram, N. C.
 ENNIS, WILMA ELIZABETH, Coats, N. C.



The 1945

First row, left to right:

EPPS, KATHLEEN, Kingslee, S. C.
FARRELL, DOROTHY Jo, Fayetteville, N. C.
FISLER, MARION, Ivaahoe, N. C.
GASTON, ANNIE STEE, Lowell, N. C.
GAYLORD, MARY GRACE, Winterville, N. C.
GRAHAM, NELL, Pembroke, N. C.
HARDIN, WILMA GRACE, Fairmont, N. C.
HARRIS, FRANCIS CAVELLIE, Tarboro, N. C.

Second row:

HAYWOOD, CATHERINE DAVIS, Mt. Gilead, N. C.
HEATH, EVELYN RHEM, Kinston, N. C.
HERRING, REBECCA WIGGINS, Wilson, N. C.
HOBBS, JANE STEVENS, Wilmington, N. C.
HODGIN, JACQUELINE, Red Springs, N. C.
HODGIN, FLORA CHRISTINE, Red Springs, N. C.
HOUSE, MARGARET FULLER, Beaufort, N. C.
INDL, BETTY JEAN, Clinton, N. C.

Third row:

JOHNSON, CATHERINE, Red Springs, N. C.
KNIERIM, CATHERINE, Red Springs, N. C.
KORNGAY, AUDRY ESTON, Warsaw, N. C.
KUCHN, PEGGY, Watha, N. C.
LANE, ELOISE, Wagram, N. C.
LEGGETTE, DORIS COVINGTON, Prctorville, N. C.
LEWIS, ELEANOR, Fairmont, N. C.
LEWIS, LINDA, Bessemer City, N. C.

Freshmen



White Heather

Freshmen

First row, left to right:

McCANTS, MARGARET TURNER, Asheville, N. C.
 McCASKILL, ALICE JEAN, Carthage, N. C.
 McCORMICK, MARY IMOGENE, Whiteville, N. C.
 McDANIEL, PEGGY, Red Springs, N. C.
 McDOWELL, CAROLYN, Elizabethtown, N. C.
 McINTOSH, BONNIE LEE, Kings Mountain, N. C.
 McINTYRE, SARA JANE, Dillon, S. C.
 McKay, KATHERINE HILL, Maxton, N. C.

Second row:

McLEAN, MARGARET PATTERSON, Woodstock, Va.
 McLEOD, MARY EVELYN, McBee, S. C.
 McRAINEY, EDNA MITCHELL, Parkton, N. C.
 MURRAY, JANE DICKSON, Lexington, Va.
 NEWMAN, SARA FRANCES, Landrum, S. C.
 NEWTON, JEAN RICHARDS, McColl, S. C.
 NORTON, DOBIS LEE, Raeford, N. C.
 PARE, DAPHNE OLENA, Beaufort, N. C.

Third row:

PARSONS, ELEANOR EUNICE, Mt. Gilead, N. C.
 PLEASANTS, SUSIE OLENE, Augier, N. C.
 ROBERTSON, NANCY PRICE, Mayodan, N. C.
 SMITH, ORA ELIZABETH, Durham, N. C.
 SNEED, LILLIAN PARKS, Petty, Fla.
 SPAIN, TRISCA WRAY, Durham, N. C.
 SQUIER, MARY LOU, Atlanta, Ga.
 STONE, MARY KATHERINE, Iumberton, N. C.



The 1945

First row, left to right:

SUTTON, ALICE ELIZABETH, Dublin, Va.
TAYLOR, MILDRED MAIE, Ahsokie, N. C.
TILLINGHAST, MARY SUE, Dilloo, S. C.
TINNEY, MARY CARSON, Birmingham, Ala.
TURNER, HELEN GENEVA, Fair Bluff, N. C.
TURNER, JOYCE CARLOTTA, Tarboro, N. C.
VANN, IDA RAY, Clinton, N. C.
VANNOY, FRANCES, Reddies River, N. C.

Freshmen

Second row:

WADDELL, EVALYN OGLESBY, Fair Bluff, N. C.
WALLACE, JULIA CHRISTOBEL, Norfolk, Va.
WALL, JANE FORD, Ridgeland, N. C.
WATSON, MIRIAM CONSTANCE, Jonesboro, N. C.
WAYNE, BETTY JOYCE, Hallsboro, N. C.
WILSON, HARRIET EASLEY, News Ferry, Va.
WOMBLE, MARY ATWATER, Wagram, N. C.
WOOD, RUBY LORENE, Rockfish, N. C.

Not photographed: CAISON, LOU UNDERWOOD, Roseboro, N. C.; CARTER, NANCY RANDOLPH, Lenoir, N. C.; CRECH, CLARICE, Salemburg, N. C.; HARRIS, AGNES CLYDE, Roseboro, N. C.; JACOBS, FLORA, Waycross, Ga.; LEWIS, MARGARET LOUISA, Fayetteville, N. C.; MELVIN, PATRICIA, Parkton, N. C.; McDONALD, EDITH, Cameron, N. C.; MCGILL, ANN, Lumberton, N. C.



White Heather

Freshmen in a loafing mood . . . now, really, Miss McNeill . . . Mary Carson, plus an added attraction . . . we miss you Becky . . . our immortal "rat" . . . look what Hollywood's missed . . . more loafers . . . Joyce and Perk and the bicycle built for two . . . reading from left to right, Tresea, Harriet, and M. A. . . Martha Ann, again, this time with the male element . . . this must be a freshman . . . highway party, perhaps? . . . roommates Hazel and Jean . . . Ida Ray, you're putting our eyes out . . . Sara Jane, you're really something to look up to.





COMMERCIAL DEPARTMENT

WITH TYPEWRITERS and dictaphones as their life, the Commercials live in a world of efficiency and hard work. Being essential to the War effort, we feel that these girls are a most important group at Flora MacDonald. They are preparing to play a very real part in our present world and we know they will be well-qualified. Then, too, they have the knack of having fun. Most any night you may come upon a group planning something other than shorthand. Yes, we have a grand group of Commercials and we're proud of them!

COMMERCIAL CLASS

TWO-YEAR GIRLS



MARY RUTH BAKER



JULIETTE DAVIS



JOSEPHINE LEE



RACHEL MILLS

Commercial Department



First row, left to right:

AVERY, ARNETTE HATHAWAY, Southern Pines, N. C.
 BAKER, MARTHA ANNE, Rocky Mount, N. C.
 BARLOW, MARY CATHERINE, Parkton, N. C.
 BLAIR, ALICE NEWMAN, Norlina, N. C.
 BRINSON, HILDA MAE, Beulaville, N. C.
 COLLINS, ALMA JO, Florence, S. C.

Second row:

COPPEDGE, CHRISTINE EULALIA, Rocky Mount, N. C.
 COX, EMILY FLORRA, Albemarle, N. C.
 EDENS, EARLINE BANLEY, Red Springs, N. C.
 FERGUSON, ELEANOR KYLES, Ferguson, N. C.
 FREEMAN, MARY, Dillon, S. C.
 FELCHER, AUDREY LANE, Rocky Mount, N. C.

Third row:

GADDY, FLORA BELL, Morven, N. C.
 GRANT, BETTY MARIE, Wilmington, N. C.
 HEISS, ANNA LOU, Greelyville, S. C.
 HELMS, MARTHA FERDIS, Montoc, N. C.
 HENDERSON, CECILE MAE, News Ferry, Va.
 HOWARD, NANNIE JACQUELYN, Jonesboro, N. C.

The 1945 White Heather

Commercial Department



First row, left to right:

HUNDLEY, ALICE FLEMING, Norlina, N. C.
 JARMAN, MARGARET NEAL, Morven, N. C.
 LANE, FANNY MAY, Rocky Mount, N. C.
 LARKIN, JUANITA ELIZABETH, Kingsport, Tenn.
 LEWIS, GLADYS EDITH, Florence, S. C.
 LEWIS, MARTHA JANE, Chadbourne, N. C.

Second row:

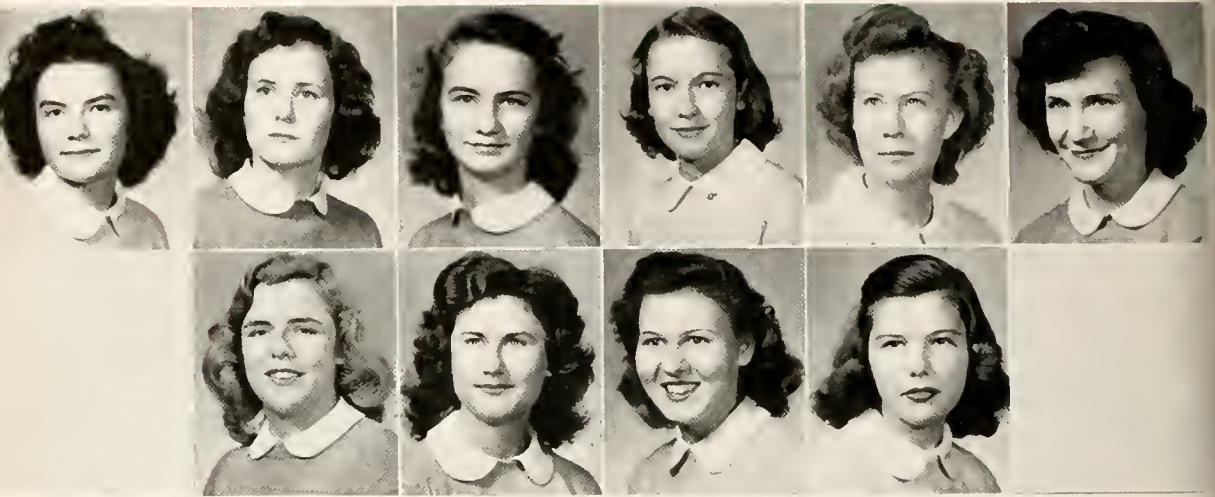
MAY, ELIZABETH, Farmville, N. C.
 MASSEY, HARRIET LOUISE, Chapel Hill, N. C.
 McNEILL, NANCY KATHERINE, Greensboro, N. C.
 PADGETT, ANNE ELIZABETH, Wilmington, N. C.
 PANTHER, ALICE JOSEPHINE, Salisbury, N. C.
 PASCHALL, ELIZABETH ROSE, Manson, N. C.

Third row:

PUCKETT, LUCY MARIE, Oxford, N. C.
 RUSSELL, HELEN PAYNE, Kinston, N. C.
 SEALEY, MILDRED JOYCE, Fairmont, N. C.
 SMITH, ZERMA PLINIA, Cramerton, N. C.
 SPAIN, AMY ROSE, Manson, N. C.
 SPIVEY, DOROTHY, Elizabethtown, N. C.

The 1945
 White Heather

The 1945 White Heather



Commercial Department

First row, left to right:

TAYLOR, EDNA EARLE, Kinston, N. C.
THAMES, BETTY JO, Laurinburg, N. C.
THOMAS, NELL CAROL, Florence, S. C.
BEAVERS, KATHLEEN WALK, Tazewell, Va.
WALL, JANE FORD, Ridgeland, N. C.
WEEKS, GEORGIA, Fayetteville, N. C.

Second row:

WHITE, ANNA THORALDSEN, Rocky Mount, N. C.
CHAPIN, MARI WICKER, Sanford, N. C.
WILSON, MARY FRANCES, Gastonia, N. C.
WOODALL, JANE CAROLINE, Smithfield, N. C.

Isn't she darling? . . . going for a stroll . . . hey, don't you believe in signs? . . . umm, how lovely! . . . Jo and Virgie plus leg art . . . more commercials . . . how about your shoe stamp, huh? . . . Kit, this couldn't be you . . . how's this for a pyramid? . . . Aw, Em, what's the matter? . . . day students and interests . . . cotton picking or cotton loading.




Music




Standing: CLARK, COOK, JOHNSON, ATKINS, JORDAN, AMIS, LEE, POWELL.
Sitting: McKay, McNett, AUTREY, HOBBS.

Conservatory Graduates



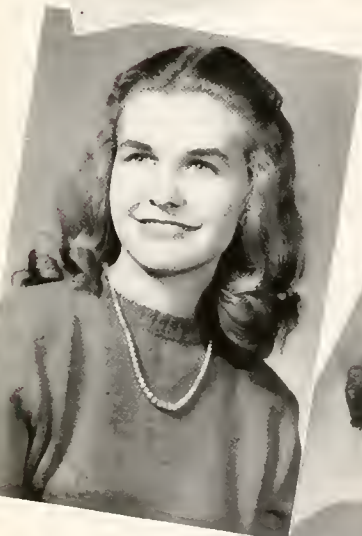
MARY ALLENE JOHNSON B.M.
Graduation recital in piano



VIRGINIA PITTMAN LEE, B.M.
Graduation recital in piano



MIRIAM FRANCES HURLEY, B.M.



JO ANNE ATKINS, B.M.
Senior recital in voice

MARY CATHERINE McCORMICK
Senior recital in organ

CAROLYN McKAY
Senior recital in voice



Visiting Artists



EGON PETRI

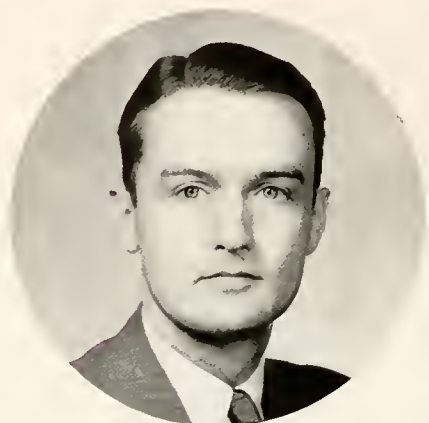
UNDER the sponsorship of the concert-lecture committee, we had some quite outstanding artists at Flora Macdonald this year. We are indebted to the committee for their interest and effort. Mr. Petri appeared at a benefit concert in the interest of the Linda Vardell Scholarship Fund, which was established this year. Mr. Thibault and The LeRoy Trio appeared on the concert series.



CONRAD THIBAUT



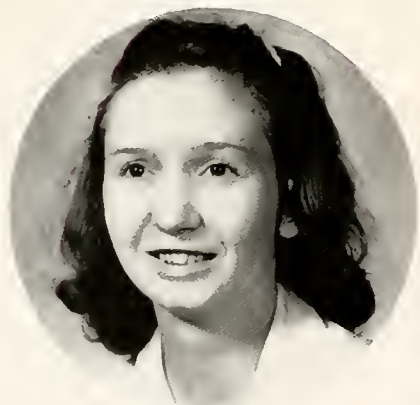
THE LEROY TRIO



ROBERT REUTER
Director

Double Sextet

TAKE ONE LOOK, on page 89, and then you don't wonder that the soldiers at Maxton were so impressed with our Double Sextet. So are we!



MARY JORDAN
President

St. Cecelia Music Club

WITH MARY JORDAN as their guiding light, and music in their hearts, this group sang and played their way through this year. They're the girls who keep the pianos out of tune, play for vespers, and most anything else. What would we do without them?





GLEE CLUB



VIRGINIA LEE
President

GRIND, GRIND, GRIND—On Tuesday and Thursday nights, Director Reuter is quite definite about it—the Glee Club must rehearse, en masse. And then, at Christmas and other special occasions, “the angels sing.”

ACTIVITIES



FARLAW, TOMLINSON, CURRIE, BLACK.

CLUBS AND ORGAN-



IZATIONS

AS FAR AS CLUBS and organizations are concerned, at Flora Macdonald we have the usual ones. Except that the spirit is different, we think. We feel that along with our studies, there should be a minimum amount of what modern educators call "extra-curricula" activities. That is where we differ from most schools. Our "extra-curricula" activities are not really extra, at all. They fit in with our weekly studies and daily playing. We become a part of some organization and from the day we join, we consider our duties as seriously as we do our classes. We work together because we

like it. We sponsor drives and go over the top, because we think that is the way it should be done. We give bangup society programs, because we consider those programs of vital importance to our education. We back our student council, because we think they're swell people and, when we elected them, we promised to stand behind them. Although it is a hackneyed expression, the spirit of our organizations denotes the true spirit of Flora Macdonald and its students. We are proud of our organizations, just as we are proud of the girls who form them.

THE 1945



WORLEY

LATHAM

PICTURE APPOINTMENTS, ideas, late hours, snapshot blues, unceasing work, an energetic staff, rainy weather, clattering typewriters— out of all this plus a few headaches, comes the 1945 WHITE HEATHER—Strange!

WHITE HEATHER

JANE LATHAM
Editor-in-Chief

MARY GEE WILLCOX
Assistant Editor-in-Chief

FANNIE GREY WORLEY
Business Manager

SARAH CURRIE
Assistant Business Manager

RACHEL THOMPSON
Business Editor

MARTHA PENCE
Senior Editor

MARY LOIS WILKERSON
Junior Editor

SALLIE GAYLE NEWMAN
Sophomore Editor

JULIA WALLACE
Freshman Editor

SUZANNE HURT
Literary Editor

RUTH LOVETT
Snapshot Editor

IRENE BALDWIN, JULIETTE DAVIS
Typing Editors

MISS KATHERINE CAMERON
Adviser



the PINE and THISTLE

THE LITERARY geniuses of Flora Macdonald—and how they blossomed this year—getting our four copies and such good ones too! Congratulations to Lib Hall and her most capable staff!



HALL
MOORE
STUMP

ELIZABETH HALL
Editor-in-Chief

BARBARA OGILVIE
Assistant Editor

WEYBURN MOORE
Business Manager

HAZEL SHAW
Assistant Business Manager

CATHERINE LYTTON
MARY BRITTON
JUANITA TONTZ
Exchange Editors

BILLIE ESTES
SARA JEAN AUSTIN
Feature Editors

LILLIAN SNEED
Freshman Editor

KATHERINE FINLEY
MARY ELIZABETH JOHNSON
Art Editors

HAZEL COUSINS
VIVIAN McQUEEN
Typing Editors

EVELYN LYTTON
RUTH KINNEY
ESTHER MAE GRIER
Epsilon Chi Associate Editors

LUCY PUCKETT
JO ANNE ATKINS
VIRGINIA LEE
Zetesian Associate Editors

ERNESTINE HUGGINS
ELIZABETH McLEOD
ELIZABETH McNETT
News Editors

ANNE YOUNGBLOOD
NANCY HURT
Sports Editors

ANNE SHAW
Proofreading Editor

DR. ALEXANDER STUMP
Adviser





Watson, Harris, Britton, Cook, McKay, Johnson, Whisnant, Niblock, McCormick, Meekins, McLunis, Hodgins, McDonald.

THE STUDENT



WHISNANT, *President*

LONG ROBED, they sat in the darkness of their meeting place, planning our upheavals and downfalls. With stern faces, they reprimanded us when we needed it, and praised us, too, just as we praise them now for their fine work throughout the year.

EVELYN WHISNANT, *president of student body*; MARY JOHNSON, *vice president of student body*; MARY NIBLOCK, *secretary of student body, vice president senior class*; SARAH BRITTON, *treasurer of student body, vice president of junior class*; CAROLYN McKAY, *president of senior class*; BETTY COOK, *president of junior class*; MARY MARGARET HARRIS, *president of sophomore class*; MIRIAM WATSON, *president of freshman class*; NANCY MEEKINS, *president of Epsilon Chi Literary Society*; VIVIAN McQUEEN, *president of Zetesian Literary Society*; MURPHY McDONALD, *president of athletic association*; ELIZABETH HODGIN, *president of Day Students*; MARY CATHERINE McCORMICK, *president of Christian Association.*

GOVERNMENT

FLORA MACDONALD CHRISTIAN ASSOCIATION



McCORMICK, *President*

WITH KINDNESS, patience, a natural tendency toward good-will—so many traits we wish we had, the 1944-45 Christian Association Cabinet, headed by Mae McCormick, has been an inspiration to us. Their untiring efforts to cheer and help will always be remembered by those of us who are leaving.

THE CABINET

MARY CATHERINE McCORMICK, *president*; NELL LANCASTER, *vice president*; ESTHER MAE GRIER, *secretary*; MARY ELIZABETH JOHNSON, *treasurer*; FAYE MANESS, *chairman of prayer bands*; NELL LANCASTER, *highway of enlistment and training*; SAHAI CRAVEN, *highway of learning, Sunday school*; BARBARA OGILVIE, *highway of publicity, learning*; GOLDIE KNOWLES, *highway comradeship*; ALICE WALKER, *highway of world fellowship*; ESTHER MAE GRIER, MARY ELIZABETH JOHNSON, *highway of stewardship*; KATIE MAC KIRKPATRICK, *highway of leisure time, library*; BETTY MATHESON, *highway of leisure time, social activities*; ANNIE MAE McDANIEL, *highway of life enrichment, religious meetings*; JO ANNE ATKINS, *highway of life enrichment, music*; MISS NATALIE MOFFETT, *faculty adviser*.





LATHAM, *Chief*; LEE, JONES, JOHNSON, LYTTON, TONTZ.

SENIOR SCRIBBLERS



SCRIBBLING late into the night, coining phrases, and, finally coming out with personality sketches of their classmates, the Senior Scribblers really worked hard this year, dreading the day when they must face their foe with their enlightening writings.

SEVEN STUDENTS were selected by a committee for their ability to work and lead—then, to have fun and play like the rest of us. They have their biographies listed in a big book that no one ever sees, but they all know it's there. This year five seniors: Elizabeth Hodgkin, Mary Catherine McCormick, Murphy McDonald, Jane Latham, Evelyn Whisnant, and two juniors: Betty Cook and Nell Lancaster, were selected. Selected with the group last year were Mary Johnson and Carolyn McKay.

WHO'S WHO

McKAY, COOK, LATHAM, LANCASTER, HODGIN, McCORMICK, McDONALD, JOHNSON, WHISNANT.



EPSILON CHI

NANCY MEEKINS, *President*
ELIZABETH MCNETT, *First Vice President*
BILLIE ESTES, *Second Vice President*
MARY GEE WILCOX, *Recording Secretary*
BETTY BLONIAK, *Corresponding Secretary*
CATHERINE LYTTON, *Treasurer*
CORETTA THOMPSON, *Critic*
JULIETTE DAVIS, *Censor*
FAYE MANESS, *Chaplain*



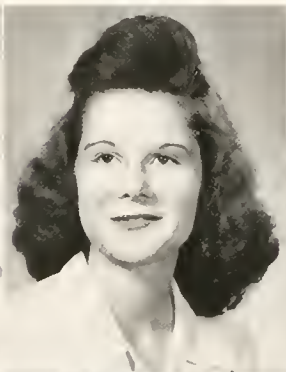
MEEKINS, *President*

McNett
Lytton

Estes
Thompson

Willecox
Davis

Bloniak
Maness



EPSILON CHI MARSHALS

BETTY COOK, *Chief*



Frances McPhaul



Bille Estes



Sarah Britton



Nancy Meekins

ZETESIAN



McINNIS, *President*

- VIVIAN McINNIS, *President*
- JUANITA TONTZ, *First Vice President*
- JANE BROWN, *Second Vice President*
- VIRGINIA LEE, *Recording Secretary*
- MARY ADAMS, *Corresponding Secretary*
- LAURA SHAW ATKINSON, *Treasurer*
- DOROTHY CLARKE, *Critic*
- PEGGY HARRIS, *Censor*
- NELL LANCASTER, *Chaplain*

Tontz
Atkinson

Brown
Clarke

Lee
Harris

Adams
Lancaster



ZETESIAN MARSHALS

Julie Lee Brown



Vivian McInnis



Annie Mae McDaniel



Nell Lancaster

THOSE THAT LEAD AT

ANNE MAE McDANIEL
President Student Volunteers

FAYE MANESS
Chairman Prayer Bands

CORETTA THOMPSON
President Home Economics Club

SARAH BRITTON
President Mathematics Club

ANNE WHITE
President Commercial Club



McDANIEL



MANESS

MURPHY McDONALD
President William Bartram Scientific Society

PEGGY SHINN
President Camera Club

JUANITA TONTZ
President Dramatics Club

KATHILEEN MILLS
President L'Alliance Francaise

ELIZABETH HODGEN
President Day Students Club

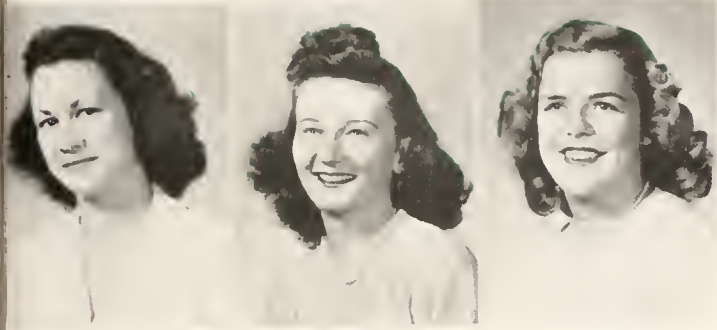


McDONALD



SHINN

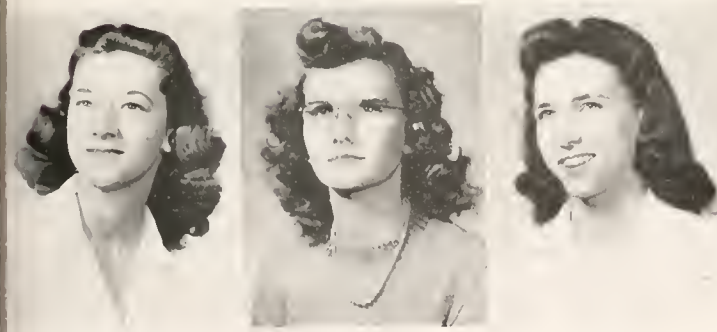
FLORA MACDONALD



THOMPSON

BRITTON

WHITE



TONTZ

MILLS

HODGIN



STUDENT VOLUNTEERS

THIS GROUP is composed of girls who are interested in home or foreign missions. They meet every Sunday night to discuss the work being done in these fields. They are another contribution to our spiritual growth on the campus.

“WHERE TWO OR THREE are gathered together in my name there
am I in the midst of them.”

Matthew 18:20

Remembering this promise, we meet in one of these groups every Wednesday morning to realize the Presence as a Power in our daily living and to renew our spiritual strength.

PRAYER BAND LEADERS



MANESS, BALDWIN, COOLEY, COLLIER, HARRIS, LAWSON, JORDAN, BROUGHTON,
COUSINS, BYNUM, NEWMAN, ATKINSON, LEWIS, HURT, N., HURT, S., BROWN.

SCIENTIFIC-MINDED, the members of the William Bartram keep their heads in the clouds, and with such good grades, they can afford to star gaze too!

THE WILLIAM BARTRAM SCIENTIFIC SOCIETY





CAMERA CLUB

WE HAVE PHOTOGRAPH hounds at Flora Maedonald too. Branching off from the William Bartram, and headed by Peggy Shinn, the members of the Camera Club have really worked hard this year. In the dark room, with Dr. Stump as demonstrator, they have done a great deal toward learning the art of developing pictures.



HOME ECONOMICS

THESE "HOME MAKERS" are developing pleasing personalities, good taste, and poise for their membership. The club is composed of girls majoring in Home Economics and is affiliated with the National and State Home Economics Clubs of America. The way to a man's heart, so they say, and you know the rest—

THE MEMBERS of the Math Club are wonders of the age. They're the girls who make A's on Math and like stuff. With a new adviser, Mr. Wray, they discuss their beloved subject as an asset to winning the War and they're good too!

MATHEMATICS CLUB



COMMERCIAL CLUB



AS THE MOST versatile group in school, the Commercial Club has combined pleasure with studies of modern business trends, and isn't that what we call a "well-rounded" education?

DRAMATICS CLUB

Even though the activities of this club are a little vague, the talent is there. All it needs is a Hollywood scout, and the entire club could go west. Well, maybe we are being a little fantastic, but President Tontz has a grand bunch of actresses, and we hope someday, we can see their acting ability demonstrated.





DAY STUDENTS

THE DAY STUDENTS, envied by us all because of their freedom, participate frequently in campus affairs and have contributed much to our social life.

THE MEMBERS of L'Alliance Francaise just can't refrain from letting folks know about themselves. They have a unique way of being very impolite to you without your knowing what the whole thing's about. That's what they call French, but we wouldn't know.

L' ALLIANCE FRANCAISE





GRAND DAUGHTERS CLUB

Britton, May, Matheson, Moore, McKay

Drinkard, Goodwill, Shields, Terrell, Lancaster, Brown

VIRGINIA CLUB



STATE CLUBS

It has always flattered us that so many out-of-state girls come to Flora Macdonald. We always have a large number from Virginia and South Carolina, and not such a large number from the other states. We're always glad to have them, and they are quite an asset to our student body.



SOUTH
CAROLINA
CLUB

ATHLETICS



WE HAD A GOOD YEAR, athletically speaking. The Freshmen ran away with both the basketball and hockey tournaments. Of course, the upperclassmen tried everything, but to no avail. There were just too good for us. Tennis has been popular and, when there was breathing space in the pool, we took advantage of that. We have had a really outstanding athletic board and they are certainly to be commended for everything they have done. Congratulations!

MCDONALD, HOYT, BALDWIN, BROWN, PURSLEY, HERRING.





MOTION

Betty and Murph "beating it out."

The "sophs." in a victorious moment.

Our unsurpassed freshmen—they're really wonderful.

"Stevie" and "Spivey," each hoping.

The seniors in their last hockey tournament. But did you notice "Chanticleer," still kicking?



STILL LIFE



Our beloved mascot again—this time in its rightful place.

Here's luck to you, juniors! Perhaps you'll have the victories that we didn't have.

Our muscle-bound hockey varsity! You played a grand tournament.



CHEER LEADERS

RUTH FLEMING, '46; RACHEL THOMPSON, '45; BETTY IDOL, '47; CARRIE LEE JONES;
COLLEGE LEADER, LINDA LEWIS, '48.



Head of Sports

MARTHA PENCE
Head of Hockey

HAZEL COUSINS
Head of Volleyball

KATHERINE FINLEY
Head of Tennis

VIVIAN McQUEEN
Head of Basketball

FRANCES COOLEY
Head of Archery

MARJORIE POWELL
*Head of Horseshoes and
Ping-Pong*

HAZEL SHAW
Head of Hiking

VIRGINIA STEVENSON
Head of Softball



THERE IS A CERTAIN group at Flora Macdonald who excel, not only in athletics (they're the strong, muscular souls), but also in bossing our organizations and classes—generally telling people what to do. They are awarded points for this delicate handling of their classmates. When they reach the necessary 500, with all the grace and ceremony, they are received into the Monogram Club. It is strictly honorary, no meetings to attend, no dues to pay. Some fun, really!

Monogram Club

Left to right: Tontz, Goodwill, McDonald, Lancaster, Pence, McKay, Latham, Not photographed: Fannie Grey Worley, Evelyn Whisnant.



Senior Hockey



Standing: Britten, Musselwhite, McDonald, Gaskin, Goodwill.
Kneeling: Knight, Tontz, Latham.

Not photographed: Fannie Grey Worley, Evelyn Whisnant, Martha Pence, Betty Bloniak.



TONTZ, Captain

Junior Hockey



ADAMS, *Captain*

Standing: Brown, Hoyt, McInnis, Brown, Lancaster, Currie, McDaniel, Garrell. *Kneeling:* Stevenson, Grier, Adams, Lewis, Boggan.





BARKER, *Captain*

Sophomore Hockey

Standing: Pursley, Lyttou, Parrish, Hurt, S., Erwin, Clark, Cline, Walker, Knowles, Townsend, Broadway, McInnis, Spivey, McQueen, Idol. *Kneeling:* Rhyne, Hurt, N., Cox, Barker, McDonald, Youngblood, Baldwin.





Standing: Knierim, Vannoy, Kuhn, Hobbs, Wilson, Rowell, Taylor, Womble, Fisler, Drinkard, Fulcher, McDowell. *Kneeling:* McLean, Wilson, H., Woodall, Howard, Helms, Panther, Lewis, White, Spain, Amis, Herring.

Freshman Hockey



PANTHER *Captain*



Worley, Pence, McKay, Goodwill, Britten, Burns, Musselwhite, Tontz,
Knight, Thompson.



TONTZ, Captain

SENIOR BASKETBALL

JUNIOR BASKETBALL



BROWN, Captain

Lancaster, McDaniel, Shaw, McInnis, Powell, Hoyt, Estes, Brown, Currie,
Shaw, H.





McQUEEN, *Captain*

Sophomore Basketball

Cox, Clark, Powers, Townsend, Ervin, Cline, Harris, Kinney, McQueen, Pursley,
Knowles, Baldwin.





Lewis, Hobbs, Barlow, Chapin, Harris, Pake, Weeks, White, Robertson, Smith, Amis.

Freshman Basketball



ROBERTSON, *Captain*

THERE ARE A FEW tennis experts at F.M.C. These we dodge, because all they do is hurt our feelings and wish and wish there was someone who could play a good game of tennis. Most of us, however, are just getting on to the game and we really have high hopes of becoming one of those "hard-hitting" players.

TENNIS





ARCHERY

ARCHERY is holding its own this year. We're awfully careful about keeping on good terms with the wielders of the bows and arrows. They're getting good!

FEATURES

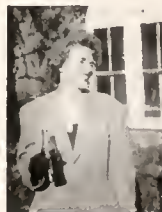


COOK, WHISNANT, NIBLOCK, MEEKINS.



ONCE A YEAR at Flora Macdonald, we select girls whom we consider to be super in their various activities. We always have a difficult time electing, because we have so many outstanding girls. This year, such girls as the following, were elected: Murphy McDonald (whom we shall all

remember for her oratorical speeches in chapel), Evelyn Whisnant (the girl who chased around after rules. Remember?), Jane Brown (we can't forget her superior hockey and basketball playing and her grand sportsmanship), Nell Lancaster (she smiles before breakfast. Can you imagine!), Juanita Tontz (her beauty, to us, is unexcelled), Jane Latham (who was "just elected," and wonders why). This is the group this year. Another feature here at Flora Macdonald is our annual May Day. Mary Johnson was elected queen of the May and we were really proud of her! She looked exquisite in traditional white, and her court, in pastels, gave the true effect of spring at Flora Macdonald.





Miss Juanita Tontz

BEAUTY



Miss Nell Lancaster

FRIENDLINESS



Miss Evelyn Whisnant

CAPABILITY



Miss Jane Latham

VERSATILITY



Miss Jane Brown

SPORTSMANSHIP



Miss Murphy McDonald

PERSONALITY



Mary Johnson

MAY QUEEN

Jo Anne Atkins

MAID-OF-HONOR



MAY DAY 1945



WEYBURN MOORE, SARA JANE McINTYRE, DOROTHY CLARKE, MARY GEE WILL-
COX, ELEANOR FERGUSON, MARY JOHNSON, BETTY COOK, JO ANNE ATKINS,
CATHERINE LYTTON, TRUDIE CLARK, JUANITA TONTZ, FRANCES McPHAIL.

MAY DAY



THE COURT



MAY DAY FROM THE ROOF



BALLERINAS

AT FLORA MACDONALD



HIGHLAND FLING



THE BALLET

M. M. SMITH STORAGE WAREHOUSE
BONDED FIREPROOF WAREHOUSES
Local and Long Distance Hauling



M. M. SMITH FURNITURE CO.
FURNITURE FOR EVERY HOME
Wholesale and Retail

325 Hay Street
Fayetteville, North Carolina

RED SPRINGS SUPPLY COMPANY, Inc.
GENERAL MERCHANTS



Fertilizers and Cotton

Livestock

Hardware

Grocery

Market



Dial 3701

RED SPRINGS, NORTH CAROLINA

TOWNSEND'S PHARMACY

The Rexall Store



**WE CARRY A COMPLETE LINE OF THE
COLLEGE GIRL'S NEEDS**

Dependable Druggists : Let Us Serve You

Meet Your Friends at Our Fountain



RED SPRINGS : NORTH CAROLINA

• There is a close relationship between the athlete's physical perfection and his diet. The Olympic Stars at Los Angeles in 1932 averaged one serving of Ice Cream each day . . . or five times as much are the average American.

• Be sure to include plenty of Southern Dairies Ice Cream in your diet, for it is especially rich in the food elements that build healthy bodies.



Compliments of

**FLEISHMAN'S
BIG STORE**

FAYETTEVILLE, N. C.

SPRING SIDE DAIRY

GRADE A MILK
CREAM

Phone 2431

Compliments of

**THE
FAYETTEVILLE
OBSERVER**

Travel Luxuriously
...Yet Economically

**FAST BUT
SAFE**



Queen City
Trailways

*Congratulations
to the
White Heather Staff*

**BELK-HENSDALE
COMPANY**

Fayetteville, N. C.

Remember: "*You always save
at Belk's*"

Make Our Store Your
Headquarters
When in Fayetteville

College Girls!

Shop at

SEARS
and Save

**Buy War Bonds
and
Stamps**



**SEARS ROEBUCK
& COMPANY**

Fayetteville, N. C.

Phone 6171 420 Hay Street

Compliments of
SANDLIN & CO., Inc.

Wholesale Grocers

FAYETTEVILLE, N. C.

Compliments of
THE CAPITOL
Department Store



FAYETTEVILLE, N. C.

We Invite Your Patronage

Compliments

of

**PEPSI-COLA
BOTTLING
CO.**

FAYETTEVILLE, N. C.

You Will Be Pleased
with Our Quality
and Service



**RED SPRINGS
DRUG STORE**

*Headquarters for
Flora Macdonald Girls*

RED SPRINGS, N. C.

McNEILL'S

Cleaners : Tailors

Dependable Service Since 1928

RED SPRINGS and RAEFORD, N. C.

**WE APPRECIATE
SERVING
YOU**



Compliments of

Western Auto Store

GRAHAM'S

RED SPRINGS, N. C.

D. M. McMILLAN

"Ford Products Since 1912

RED SPRINGS, N. C.

Compliments of
**McKEITHAN
HARDWARE**
RED SPRINGS, N. C.

Compliments of
Huggins Shoe Shop
Red Springs, N. C.

Compliments of
**SOUTHERN FRUIT
COMPANY**
CHARLOTTE, N. C.

A WELCOME

Always Awaits

the

Faculty and Students

at

**B. C. MOORE
& SONS**

RED SPRINGS, N. C.

USE

MERITA

BREAD and CAKES



**AMERICAN
BAKERIES COMPANY**

FAYETTEVILLE, N. C.

RIVERSIDE THEATRE

"The Home of Better Pictures"

LUMBERTON, N. C.

City Optical Company

Wilmington - Fayetteville
and Greensboro, N. C.

H. M. SMITH, Mgr. Telephone 2357

Compliments of

Bender's Drug Store

A Real Drug Store

201 Hay St. : Fayetteville, N. C.

“Have a Coke”



It's the
friendly
high-sign

BOTTLED UNDER AUTHORITY OF THE COCA-COLA COMPANY BY

FAYETTEVILLE COCA-COLA BOTTLING CO., INC.

RED SPRINGS THEATRE

It is the policy of this theatre
to provide the best pictures
obtainable especially for our
Flora Macdonald patrons.



Pleasure by the Hour

Compliments

of a

Friend

IDEAL DRESS SHOP WOMEN'S WEAR

Where
"Cash Works Wonders"

LUMBERTON, N. C.

HUNTER BROTHERS (Incorporated) ELECTRICAL MERCHANDIZING

Radio - Refrigerators - Gifts
China - Glassware
Fayetteville, N. C.

Compliments of

AMOS FURNITURE CO.

Raeferd Red Springs Asheboro

Gold Medal Fertilizers
Liberty Premium Fertilizers
Modern Gin System
Modern Seed Cleaning Equipment

Liberty Manufacturing Company

Red Springs, N. C.

GEORGE'S MARKET

*Quality Meats
and Groceries*

RED SPRINGS, N. C.

DIAL 227-1

FLORA MACDONALD COLLEGE

RED SPRINGS, N. C.

A SENIOR COLLEGE FOR WOMEN

Near Fayetteville, Southern Pines and Pinchurst. Delightful climate, healthful mineral springs and remarkable health record. Bus and Railway connections.

A Standard Senior Grade A College for Women. Strong faculty. Graduates accepted for graduate work by leading universities. Class A teacher's certificates. Homelike atmosphere. Personal attention to students by teachers. Courses offered: Bachelor of Arts, Bachelor of Music, Bachelor of Science (Home Economics) degrees. A Secretarial Course.

Athletics. Skillful physical director and coach has general supervision of sports and physical training. Archery, basketball, hockey, swimming, tennis, hiking, etc., are enjoyed in season.

Social activities. Receptions, teas, and many other social functions are provided at the college, while many hospitable and delightful homes of the citizens of Red Springs are open to the students.

Wide patronage. Patronized at present by eleven states and four foreign countries. Four thousand alumnae are dietitians, home demonstration agents, social workers, missionaries, and in many other useful professions.

MODERATE CHARGES : FOR CATALOGUE WRITE

HENRY C. BEDINGER, President

FLORA MACDONALD COLLEGE : Red Springs, N. C.

PHOTOGRAPHS of Excellence

- Advertising
- Commercial
- Kodachromes
- Aerials
- Portraits
- News

“School Annuals”



PHONE 3-8230

“Assignments Anywhere”



DUKE PHOTO CO.

404 West Trade Street

Charlotte, N. C.



CHARLOTTE ENGRAVING CO.

School Annual Engravers

Charlotte, North Carolina



BUILDERS DREAMS

VISIONS created by the imagination precede the achievement of any really great accomplishment. The ability to weave the threads of imagination into the finished fabric is equally important.

It has been the privilege of the EDWARDS & BROUGHTON COMPANY to cooperate with the staff in creating their vision into material form.

Such cooperation is one of the "visions" which precede the building of a successful business, and is a part of the working policy of the EDWARDS & BROUGHTON COMPANY.

To those Staffs desiring complete cooperation, we offer unexcelled service.

You, too, may be proud of your annual.

Correspondence is Invited

EDWARDS & BROUGHTON CO.
RALEIGH, NORTH CAROLINA

AUTOGRAPHS

AUTOGRAPHS





