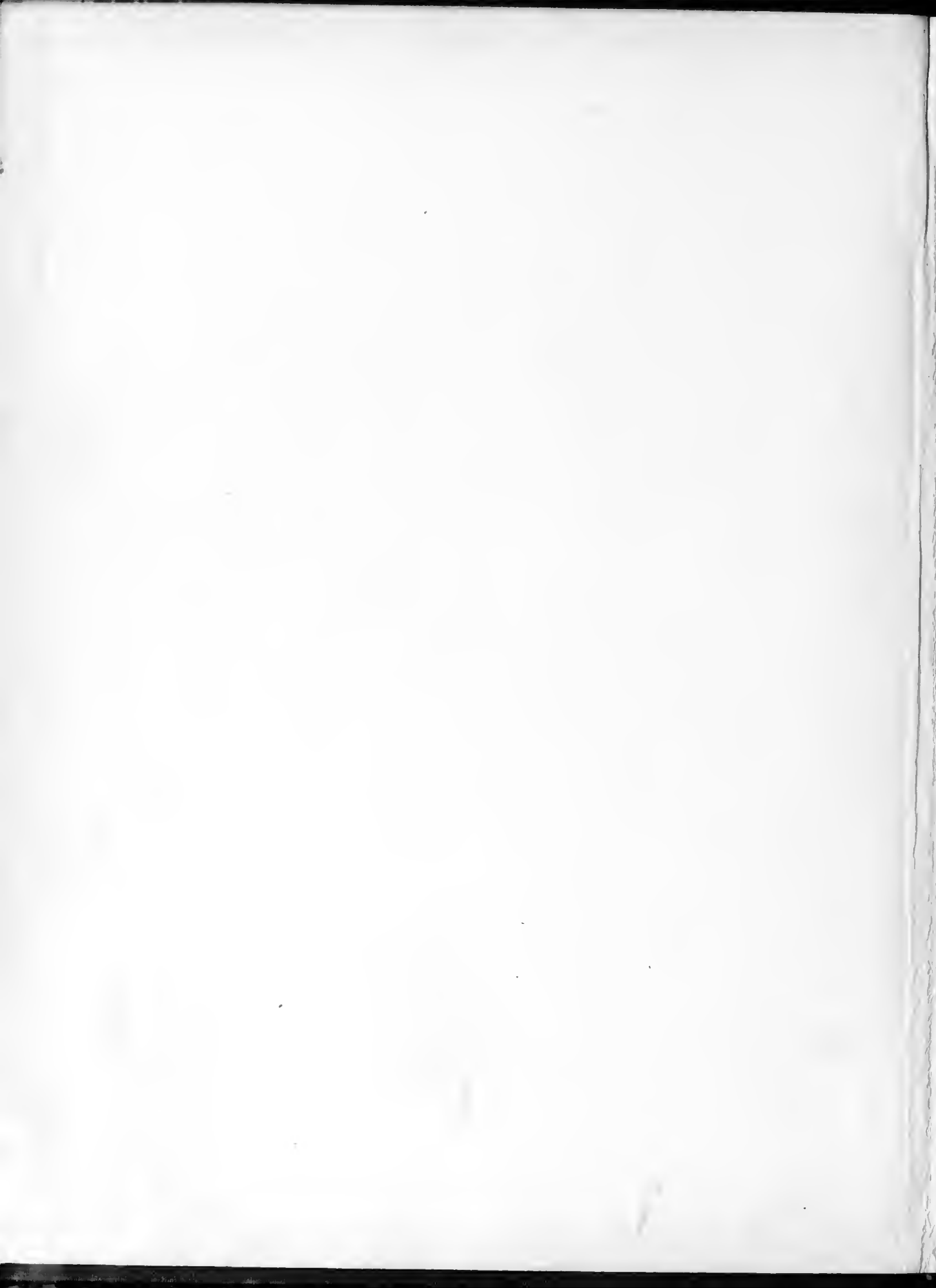





*White Heather*  
1949

ANN ELIZABETH McNEELY









**1949**

**WHITE HEATHER**

... Just a book of WHITE HEATHER—but you can be sure we'll keep it  
always

For this keepsake does constantly remind us of the most wonderful,  
most varied of experiences, and the real warmth of the welcome  
we found at Flora Macdonald College

Just a book of WHITE HEATHER but it calls up so many pleasant memo-  
ries. . . .

**THE 1949**

*White Feather*

**PUBLISHED ANNUALLY**

**BY THE STUDENTS OF FLORA**



**MACDONALD . . . RED SPRINGS, NORTH CAROLINA**

||

... presents

# Through this Door

BETTE McNEELY, *Editor-in-Chief*

ELIZABETH CHAPPELL,

IN THIS BOOK . . . THE CLASSES . . . ACTIVITIES . . .





Orway  
Flora Macdonald

||

*Business Manager*

**ATHLETICS . . . FEATURES . . . ADVERTISEMENTS**



AT THE ENTRANCE . . .

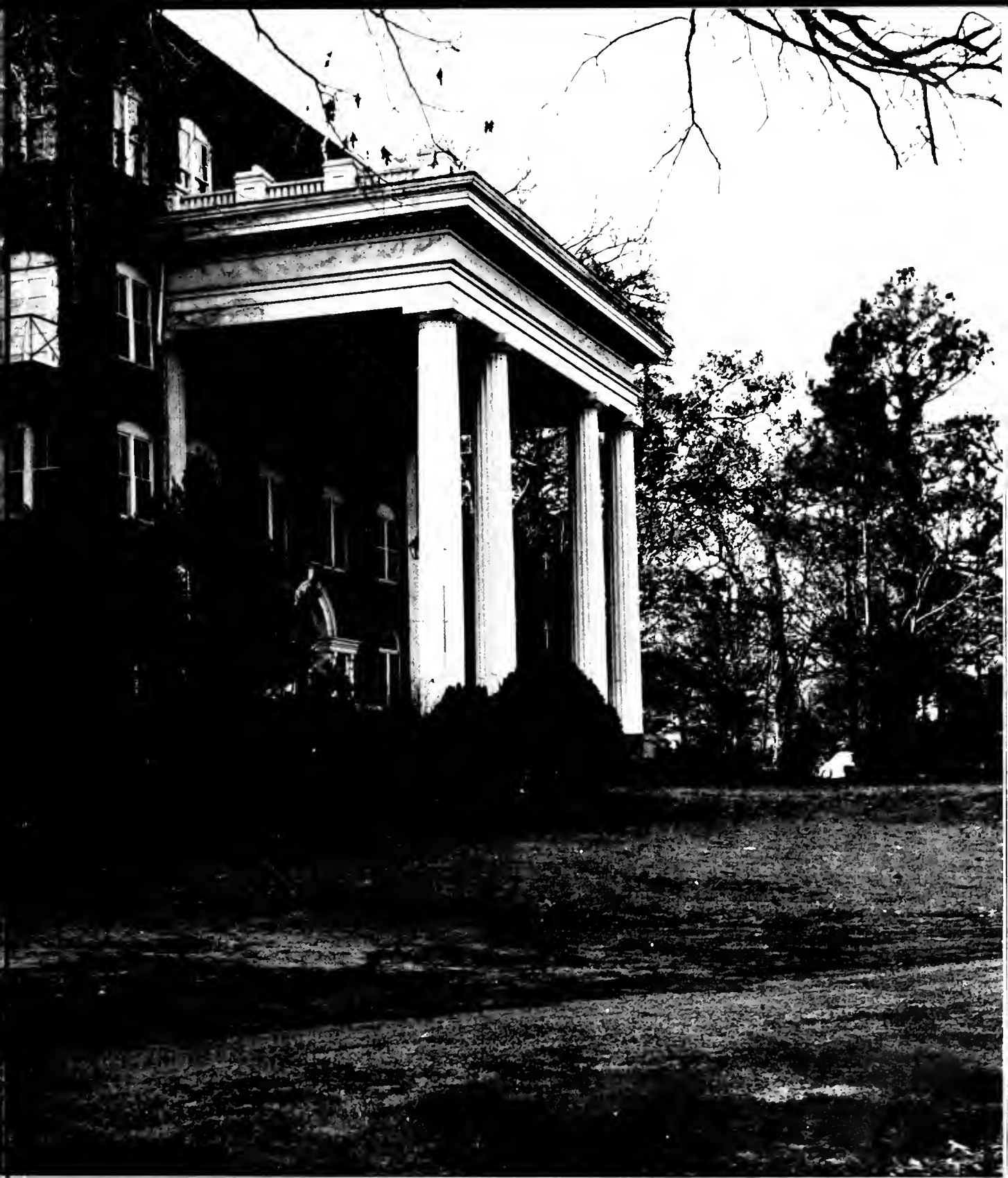


. . . WE COME AND GO





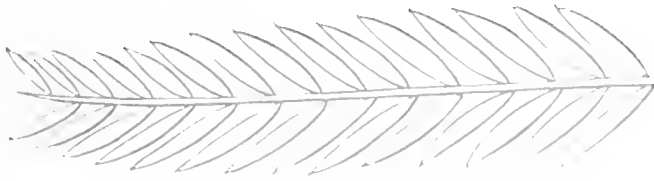
**SHADOWS**



**STILLNESS**

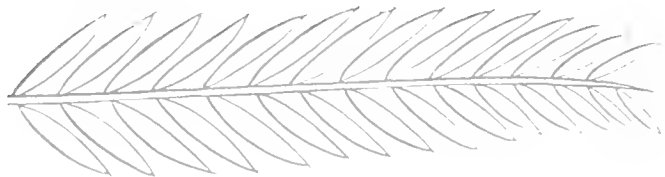


**THROUGH THE PINES**



## DEDICATION

We, the students of Flora Macdonald College, dedicate this annual to someone who is not with us but whose work helped to make this **WHITE HEATHER** possible, and whose charming and winning personality will ever remain with us—our business manager, classmate, and friend, Katharyne Prudence Herring.





HALBERT M. JONES  
*PRESIDENT*

Mr. Jones has long been associated with Flora Macdonald College in the capacity of trustee and chairman of the board of trustees. This year he was called upon to act in the new role of president in the absence of a permanent one.

Progressive in viewpoint and decisive in action, Mr. Jones is a valuable asset to the administration of Flora Macdonald College.



## ADMINISTRATION AND FACULTY

Flora Macdonald College is greatly indebted to the members of its administration and faculty who have taken such an interest in the girls. They have done their best to promote Christian ideals and a liberal education for all the students.



DR. CHARLES GRAVES VARDELL,  
B.B., D.D.  
*President Emeritus*

He is the very "guardian angel" of Flora Macdonald College. Dr. Vardell's sympathy, understanding, and quiet wit make him a dearly loved figure about the campus.

MISS HAZEL MORRISON, B.A.  
*Dean of the Faculty and Registrar*

She bears the responsibility of seeing us safely through our four years to graduation. However, in spite of her continual rush, she always has an endless store of patience and a friendly smile for everyone.

MRS. FRANCES ALFAXANDER McLEOD, B.A.  
*Dean of Women*

Equipped with dry wit, patience, and understanding, she is a favorite among the girls. She is liked not only as our Dean but as a friend to everyone.



## FACULTY

### BIBLE:

LESLIE BULLOCK, Th.M., *Professor*  
 ELIZABETH CLARKE MCPHAUL, B.A., *Assistant Professor*

### BIOLOGY:

ETHEL HANSEN, B.A., M.A., Ph.D., *Professor*  
 FANNIE R. HARMON, M.A., *Assistant Professor*

### CHEMISTRY:

JANE COLSON GLENN, B.S., G.Ph., M.S. *Associate Professor*

### EDUCATION:

MARY MACLEAN CONOLY, B.A., B.S., M.A. *Professor*  
 GENEVIEVE McMILLAN NEIGHBORS, B.A., M.A. *Assistant Professor*  
 ANNIE MOORE CHERRY, B.A., *Assistant Professor*

### ENGLISH:

ELEANOR B. SCOTT, B.A., M.A., Ph.D., *Professor*  
 ANN SHEALY, B.A., M.A., *Assistant Professor*

### HISTORY AND SOCIAL SCIENCE:

CAROL ROBERTSON, B.A., M.A., *Professor*  
 GENEVIEVE McMILLAN NEIGHBORS, B.A., M.A., *Assistant Professor*

### HOME ECONOMICS:

FRANCES E. COMER, B.S., M.S., *Professor*  
 JOSEPHINE BERLY BETTS, B.S., M.A., *Associate Professor*

### LATIN:

HARRIET M. MORRISON, B.A., M.A., *Professor*

### MATHEMATICS:

LOUISA VAN DYKE, B.A., M.A., Ph.D., *Professor*

### MODERN LANGUAGES:

ELEANOR MARKS, B.A., M.A., Ph.D., *Associate Professor*  
 MARIE ALMA TURNER, B.A., M.A., *Assistant Professor*

Bateman  
Morrison

Betts  
McMillan

Bullock  
McPhaul

Chapman  
Perry

Cherry  
Robertson

Comer  
Rowland





DEAN ROBERT REUTER, B.Mus., M.Mus.  
*Dean of the Conservatory*

Known throughout the state as a very able Dean of Conservatory, Mr. Reuter is an outstanding faculty member not only for his musical skill but for his well-known teaching ability as well.

MR. WILLIAM G. CONHEAD  
*Acting Vice-President and Business Manager*

This is that "Florida Man" about whom you hear so much. Entertaining and fun to be around, he is recognized as much as a friend as our very capable business manager.

# 1949

## MUSIC:

ROBERT REUTER, B.A., M.Mus., *Dean of Conservatory and Professor of Organ and Piano.*  
LILLIAN FARGCHAR ROBESON, *Assistant Professor of Violin and Theoretical Subjects*  
LIDA LAW CHAPMAN, B.A., B.M., *Assistant Professor of Organ Piano and Theoretical Subjects*  
LOIS J. LAMBIE, B.M., M.Mus., *Assistant Professor*  
ETHEL M. ROWLAND, B.S., *Assistant Professor of Voice*  
AILEEN McMILLIAN, B.Mus., *Assistant Professor*

## PHYSICS:

LOUISA VAN DYKE, B.A., M.A., Ph.D., *Professor*

## PHYSICAL EDUCATION:

ETHEL BATEMAN, B.A., M.A., *Assistant Professor*  
VIRGINIA CONNOR, R.N., *Nurse and Assistant Professor of Home Nursing*

## BUSINESS SUBJECTS:

LETA WELIHA MCINTYRE, B.S., *Associate Professor*  
ELIZABETH STENHOUSE, B.J., *Assistant Professor*

## BURSAR:

BROWN MORRISON, B.L.

## OFFICE:

JOAN ELLIOT, *Secretary to Business Manager*  
MARTHA HELMS, B.A., *Secretary to Dean of Faculty*

## LIBRARY:

FLORA PERRY, A.B., B.S. in L.S., *Librarian*  
EVA BOWDEN, A.B., A.B. in L.S., *Catalogist*

## PUBLICITY:

MRS. WALTER BULLOCK, *Editor of College Bulletin*

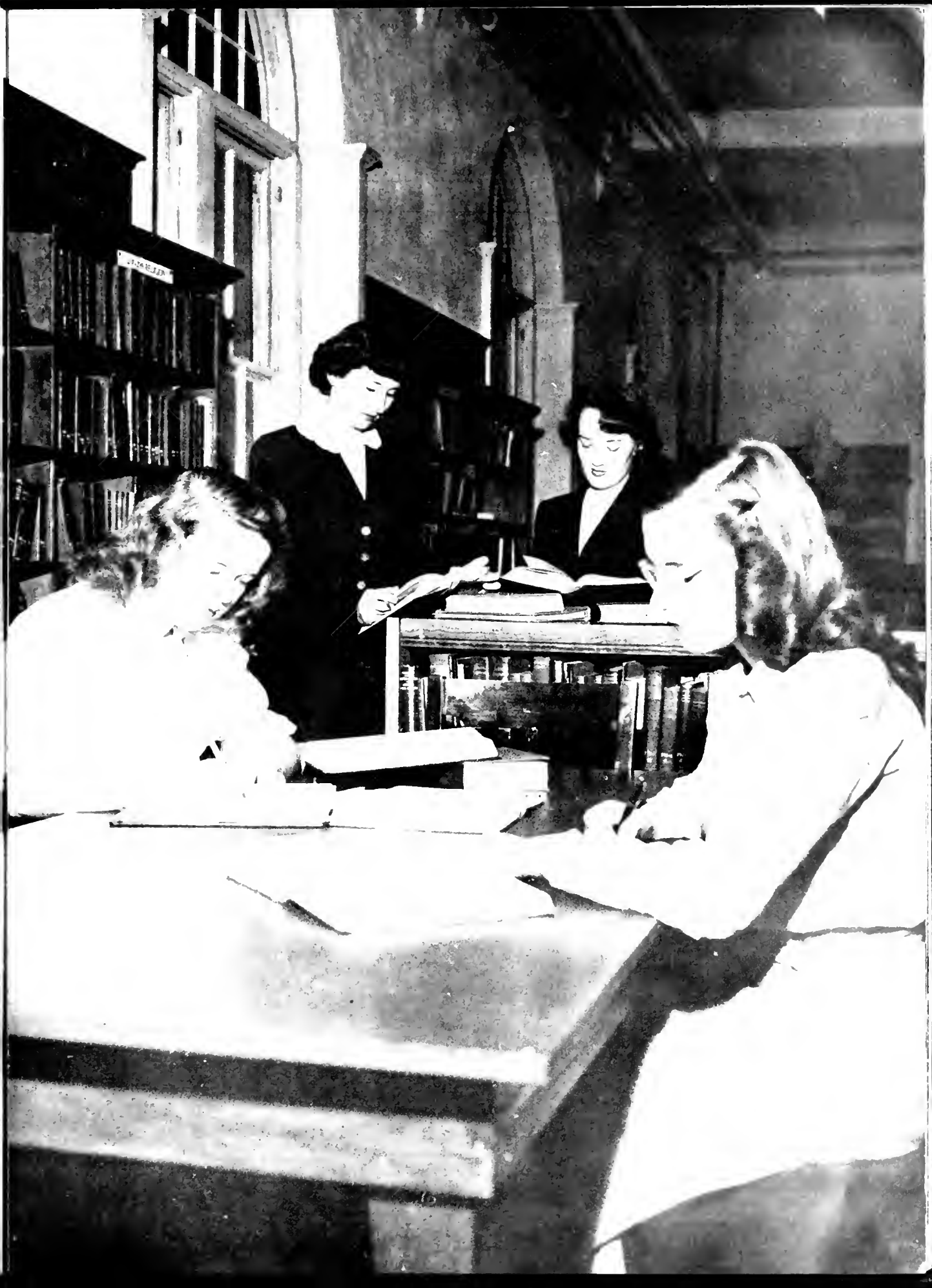
Connor      Scott      Conoly      Shealy      Dorrah      Stenhouse      Helms      Turner      Lambie      Van Dyke      Marks





# Classes

Seniors, Juniors, Sophomores, and Freshmen, they are the student body of Flora Macdonald. It is through their united zeal and effort that the F. M. C. spirit is maintained. Their friendship and loyalty are unique; their fun and enjoyment of life are to be envied; their steadfast outlook on life is to be admired.



# Seniors

These are the Seniors who, although a bit woe-be-gone at leaving, will take with them such pleasant memories as Senior privileges, the long afternoon siestas—for the fortunate few, the late-at-night bull sessions over a coke or coffee, and on the more serious side, the crammed schedules, practice teaching, and the headaches following exams. Without them, Senior Hall and the “tea-hole” will be strangely desolate.

## OFFICERS

NANCY BISHOP, *President*

FLORA ED RIGGAN, *Vice-President*

MIRIAM KNIGHT, *Secretary*

NAOMI CONKLING, *Treasurer*

FRANCES NASSIF, *Tea Room Manager*

CAROLYN GREENE, *Asst. Tea Room Manager*

MRS. ELBERT MCPHAUL, *Adviser*

# 1949





# White Heather

ADA MARIAN ALLRFD, B.A.  
*General Science and Biology*  
 Savannah, Ga.

*Miscellaneous . . . idealist . . . attractive . . . artistic . . . nonchalant . . . "Georgia Belle."*  
 Epsilon Chi Literary Society; Armstrong Junior College 1; Class Editor WHITE HEATHER 3, May Court 3, 4; Marshal 3; William Bartram Scientific Society 3, 4; Math Club 3, 4; St. Cecilia Music Club 4; Spanish Club 4; Glee Club 3, 4; Bowling 3, 4; Wake Forest Summer School 3.

GAYNELL ARNETTE, B.A.  
*Primary Education*  
 Fairmont, N. C.

*Neat . . . genteel . . . earnest . . . likable . . . "Dry wit" . . . Loyal . . .*  
 Zetesian Literary Society, Chaplain 4; Tennis 2, 3; Prayer Band Leader 4; Atlantic Christian College Summer School 2; Presbyterian Junior College Summer School 3.

FRANCES REBECCA BACON, B.A.  
*Biology and History*  
 Hillsboro, N. C.

*Reserved beauty . . . immaculate . . . agreeable . . . natural . . . remote . . . "Becky."*  
 Epsilon Chi Literary Society, Atlantic Christian College Summer School 2; Wake Forest Summer School 3; International Relations Club 4; May Court 3; Maid of Honor 4.

DORIS ANN BAIN, B.A.  
*French and Bible*  
 Lenoir, N. C.

*Versatile . . . original . . . reliable . . . sparkling . . . artistic . . . "D. B."*  
 Zetesian Literary Society, First Vice-President 3; Glee Club 1, 2, 3, 4; St. Cecilia Music Club 1, 2; Highland Players 2, 3, 4; President 4; Christian Association Cabinet, Chairman Highway of Comradeship 3; Chairman Circle of Publicity 4; Marshal 3; May Court 2; Art Editor of *Pine and Thistle* 3, 4; William Bartram Scientific Society 1, 2, 3, 4; International Relations Club 4; Alliance Francaise 2, 3, 4; Vice-President 3; Chairman Dance Committee 4; Social Committee 3; Basketball 1, 2, 3, 4; Varsity 2; Captain 4; Hockey 2, 3; Monogram Club 3, 4.

EVA MAE BEAM, B.S.  
*Home Economics*  
 Rutherfordton, N. C.

*Cute . . . twinkling giggles . . . "Yarf" . . . effervescent . . . winsome personality . . . "Exc!"*  
 Epsilon Chi Literary Society, 2nd Vice-President 4; Student Volunteer 3, 4; Secretary 4; Home Economics Club 1, 2, 3, 4; Vice-President 4; International Relations Club 2, 3; Basketball 1, 2, 3; Hockey 2, 3; Prayer Band Leader 4; French Club 3; Senior Scribe 4; Atlantic Christian College Summer School 1.

MYRTIE WINIFRED BEASLEY, B.M.  
*Church Music and Organ*  
 Lumberton, N. C.

*Conservatory . . . energetic . . . Bob . . . stubborn . . . dependable . . . speedy gait*  
 Zetesian Literary Society, President 4; St. Cecilia Music Club 1, 2, 3, 4; President 4; Tennis Club 2, 3; Glee Club 1, 2, 3, 4; Secretary 3, 4; Student Council 4.

# SENIOR CLASS





Alfred



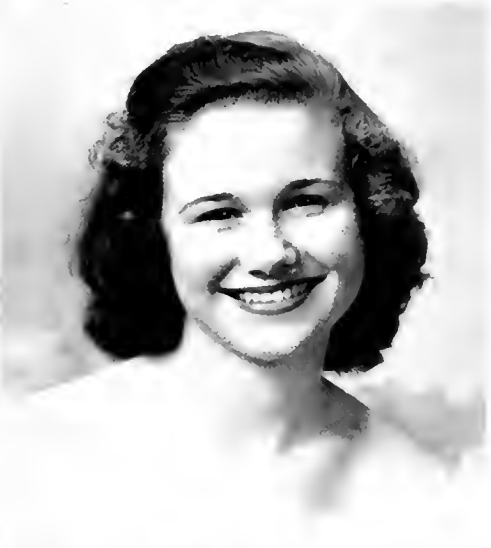
Arnette



Bacon



Bain



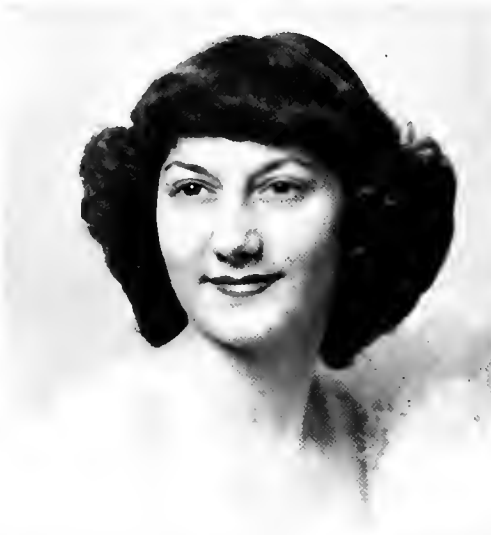
Beam



Beasley



Berryhill



Bishop



Brewer



Bullock



Caudell



Chappell



# White Heather

NINA GOIT BERRYHILL, B.A.

*Bible*

Charlotte, N. C.

*Friendly . . . teasing . . . cheerful . . . "C.A." . . . noble . . . outstanding.*

Zetesian Literary Society; William Bartram Scientific Society 4; Student Volunteers 1, 2, 3, 4, Treasurer 2; International Relations Club 2, 3; L'Alliance Francaise 2, 3; Highland Players 2, 3, 4, Marshal 3; Class Treasurer 3; Prayer Band Leader 2; Christian Association Cabinet, Chairman of Highway of Learning, Sunday School 3; President Christian Association 4; Student Council 4.

NANCY ELIZABETH BISHOP, B.A.

*Bible and Social Science*

Greenville, S. C.

*Independent thinker . . . campus minded . . . leader . . . ambitious . . . capable . . . "Bish."*

Zetesian Literary Society; Class President 3, 4; Student Council 3, 4; William Bartram Scientific Society 3, 4; Highland Player 3, 4; International Relations Club 2, 3, 4; Collegiate Council for United Nations 3, 4; Prayer Band Leader 2; Hockey 2, 3; Basketball 2, 3, 4; Volleyball 4; Monogram Club 3, 4; Student Volunteer 2, 3; Glee Club 4; *Who's Who in American Colleges and Universities* 4.

ANNIE MARGARET BREWER, B.A.

*Social Science and Biology*

Carthage, N. C.

*Reliable . . . business-like . . . "Chief" . . . rare . . . traveler . . . smiling eyes.*

Zetesian Literary Society; Tennis 1, 2, 3; International Relations Club 3, 4; *Pine and Thistle* Staff 3; Prayer Band Leader 4; University of North Carolina Summer School 3.

CATHERINE JAMES BULLOCK, B.A.

*Primary Education*

Fairmont, N. C.

*Carefree . . . lovely . . . understanding . . . unlucky . . . men . . . "Kitty."*

Epsilon Chi Literary Society; Home Economics Club 1, 2; Glee Club 2, 3, 4; International Relations Club 2, 3, 4, Vice-President 4; Archery 2; Tennis 3; Exchange Editor *Pine and Thistle* 3, 4; Snapshot Editor *WHITE HEATHER* 4; Prayer Band Leader 4; May Court 4; Atlantic Christian College Summer School 2, Presbyterian Junior College 3.

MARGARET JANE CAUPELL, B.A.

*English and Bible*

St. Pauls, N. C.

*Leadership . . . moody . . . conscientious . . . friendly . . . conferences . . . "St. Pauls."*

Zetesian Literary Society; Class Vice-President 3; Treasurer Student Council 3; International Relations Club 2, 4; Program Committee 4; Christian Association Cabinet, Chairman of Sunday School 4; Student Volunteers 1, 2; Prayer Band Leader 2; Highland Players 2, 3, 4; Vice-President 3; Alpha Psi Omega 4; Vice-President 4; *Pine and Thistle* Staff 4; Glee Club 1, 2, 3, 4; Tennis 3.

NARCIE ELIZABETH CHAPPELL, B.S.

*Home Economics*

Candor, N. C.

*Giggles . . . tenderhearted . . . inward beauty . . . immaculate . . . Mexico . . . "Lib Narcissus."*

Epsilon Chi Literary Society; Second Vice-President 3; Vice-President 4; Marshal 3; Home Economics Club 1, 2, 3, 4; President 4; Archery 2, 3; Head of Archery 3; Athletic Board 3; Prayer Band Leader 3; Christian Association Cabinet, Chairman of Circle of Religious Meetings, Atlantic Christian College Summer School 1, 2.

## SENIOR CLASS



# White Heather

DORIS McNATT CLARK, B.A.

*Primary Education*  
Fayetteville, N. C.

*Neat . . . candy . . . sincere friend . . . "I'm dumb" . . . drawl . . . movies.*

Zetesian Literary Society, Critic 3; Recorder of Points 3, Tennis 2, 3; Atlantic Christian College Summer School 2; High Point College Summer School 3.

CARRIE NAOMI CONKLING, B.M.

*Voice*  
Jacksonville, N. C.

*Spontaneous laughter . . . emotional . . . dancer . . . lilting soprano . . . lovable . . . "Tollie."*

Epsilon Chi Literary Society; St. Cecilia Music Club 1, 2, 3, 4; Class Treasurer 4; Senior Scribe 4; Glee Club 1, 2, 3; Tennis 2, 3; Assistant Business Manager *Pine and Thistle* 4; Atlantic Christian College Summer School 2; Appalachian State Teachers College 3.

NINA GERTRUDE COX, B.M.

*Public School Music*  
Tabor City, N. C.

*Coöperative . . . pastels . . . beautician . . . dry wit . . . white shoes and socks . . . always busy.*

Zetesian Literary Society, Glee Club 2, 3, 4, Treasurer 4, St. Cecilia Music Club 1, 2, 3, 4; Sappho Poetry Club 2, 3, 4; Tennis 1, 2, 3, 4; Poetry Editor *Pine and Thistle* 4; Methodist Youth Fellowship President 3; Wake Forest College Summer School 1.

HELEN BEATRICE CROWELL, B.A.

*Bible and French*  
Atlanta, Georgia

*Good hearted . . . boozing . . . blouses and skirts . . . poetry club . . . quiet vigor . . . reliable.*

Zetesian Literary Society, Basketball 1; Bowling 2, 3, 4; L'Alliance Francais 2, 3, 4; Sappho Poetry Club 2, 3, 4, President 4; Student Volunteers 1.

DOVIE NAOMI DAVIS, B.A.

*Bible and Social Science*  
Lumberton, N. C.

*Sympathic . . . faithful . . . gentle . . . China . . . good natured . . . unaffected.*

Zetesian Literary Society, Basketball 2, 3, 4, Volleyball 4, Student Volunteers 2, 3, 4; International Relations Club 4, Mars Hill Junior College 1, 2.

JOLINE DAVIS, B.A.

*Grammar Grade Education*  
Bladenboro, N. C.

*Laughing eyes . . . generous . . . "my little sister" . . . radio-fan . . . Appalachian . . . "Jo."*

Epsilon Chi Literary Society; William Bartram Scientific Society 2; Highland Players 2, 3, 4; Student Volunteers 1, 2, 3, 4, Bowling 3; International Relations Club 4, L'Alliance Francaise 4; Appalachian State Teacher's College Summer School 3.

# SENIOR CLASS



Clark



Conkling



Cox



Crowell



Davis



Davis



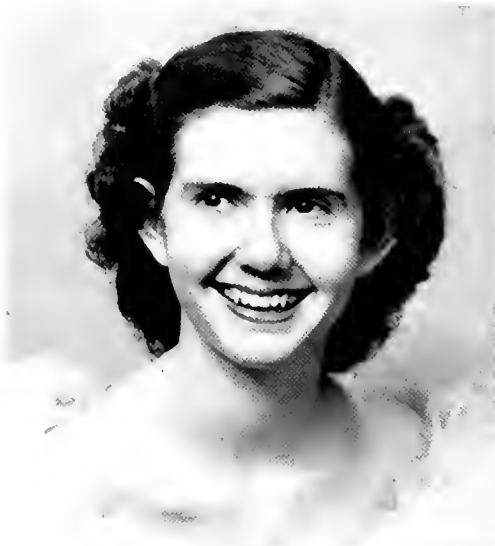
Fields



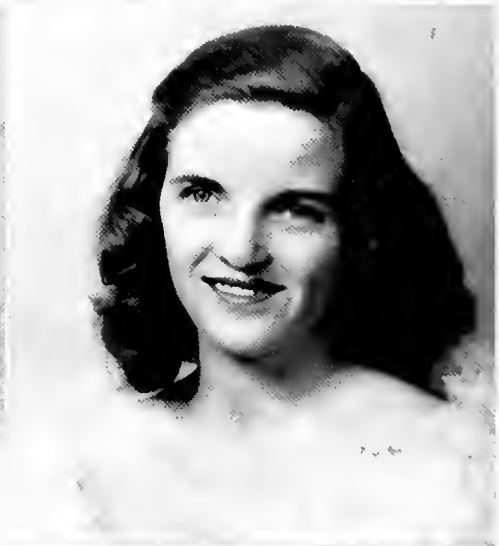
Fisher



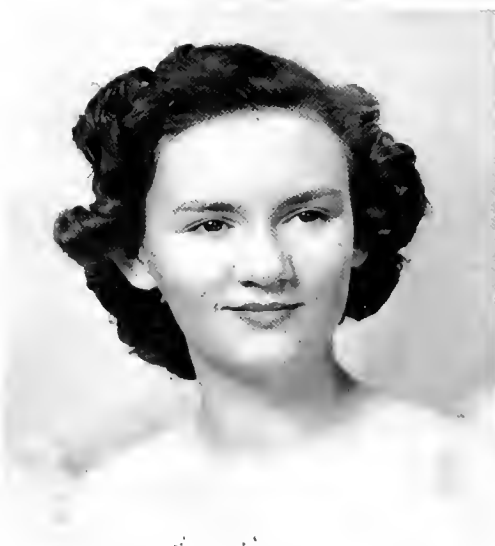
Fonvielle



Gaylord



Graham



Greene



# White Heather

DOROTHY MAE FIELDS, B.S.

*Home Economics*  
Carthage, N. C.

*Sports . . . tardy . . . unpredictable . . . notes . . . congenial . . . "Dot."*

Epsilon Chi Literary Society; Home Economics Club 1, 2, 3, 4; International Relations Club 2, 3, 4; Student Volunteers 1, 2, 3; Hockey 1, 2, 3; Captain 3; Athletic Board 3; Basketball 1, 2, 3, 4; Varsity Basketball 3; Monogram Club 3, 4; President Athletic Association 4; Student Council 4.

PHYLLIS LEE FISHER, B.A.

*Primary Education*  
Kannapolis, N. C.

*Taffy hair . . . "Choog" . . . dependable . . . "kind, sweet 'n petite" . . . green . . . "Little Red."*

Epsilon Chi Literary Society; Critic 3; Home Economics Club 1; L'Alliance Francaise Club 2; Highland Players 2, 3, 4; Hockey 2, 3; Prayer Band Leader 3; Marshal 3; *Pine and Thistle* Staff 3; Business Manager *Pine and Thistle* 4; Atlantic Christian College Summer School 2.

ANITA LOUISE FONVIELLE, B.M.

*Piano*  
Tabor City, N. C.

*Musical . . . never in a hurry . . . devoted . . . industrious . . . "Nita."*

Zetesian Literary Society; St. Cecilia Music Club 1, 2, 3, 4; Glee Club 4; Piano Recital 3, 4; Granddaughter's Club 1, 2, 3, 4.

MARY GRACE GAYLORD, B.A.

*Grammar Grade Education*  
Greenville, N. C.

*Fayetteville, good taste . . . "something wide" . . . dependable . . . pessimistic . . . "I kid you not."*

Epsilon Chi Literary Society; Hockey 3; Archery 2; Student Volunteer 3; International Relations Club 3, 4; L'Alliance Francaise 2, 3; Atlantic Christian College Summer School 2; Eastern Carolina Teacher's College Summer School 3.

JULIA MAE GRAHAM, B.A.

*English and Bible*  
Jackson Springs, N. C.

*Thoughtful . . . Jackson Springs . . . "282-I" . . . efficient worker . . . Iris . . . Refreshing optimism*

Epsilon Chi Literary Society; Montreat College 1, 2; Tea Room Manager 3; Assistant Business Manager the *WHITE HEATHER* 3; Sappho Poetry Club 3; Student Volunteers 3, 4; Exchange Editor *Pine and Thistle* 4; Highland Players 3, 4; International Relations Club 4; Prayer Band Leader 4.

CAROLYN GREENE, B.M.

*Voice and Public School Music*  
Norwood, N. C.

*Temperamental . . . kleenex . . . contralto . . . "aw-sha" . . . inquisitive . . . talented.*

Zetesian Literary Society; Glee Club 1, 2, 3, 4; St. Cecilia Music Club 1, 2, 3, 4; International Relations Club 2; Voice Recital 3, 4; Fire Chief 4; Assistant Tea Room Manager 4; Voice Monitor 4.

## SENIOR CLASS



# White Heather

SARAH ELIZABETH GREEN, B.A.  
*Social Science and Piano*  
Henderson, N. C.

*Chocolate Fudge . . . knitting . . . modest . . . Peace . . . music lover . . . solemn.*  
Epsilon Chi Literary Society; Peace College 1, 2; St. Cecilia Music Club 3, 4; International Relations Club 4; W.C.U.N.C. Summer School 2; Flora Macdonald College Summer School 3.

CARY ELIZABETH GRIFFIN, B.A.  
*Grammar Grade Education*  
Unionville, N. C.

*Unconcerned . . . bubbling laughter . . . "Let me tell you" . . . skirts . . . amiable . . . pleasing . . . "Blossom"*  
Zetesian Literary Society, Glee Club 1, 2, 3, 4, St. Cecilia Music Club 2; Tea Room Manager 3; WHITE HEATHER Staff 3, 4; Senior Scribe 4, Atlantic Christian College Summer School 2, Lenoir Rhyne College Summer School 3.

MARIAN BARRETT HALL, B.A.  
*Mathematics and General Science*  
Fayetteville, N. C.

*Genuine . . . obliging . . . Charles . . . scholar . . . determination . . . non-gossiper.*  
Epsilon Chi Literary Society; Presbyterian Junior College 1, 2; Math Club 3, 4; Sallie Southall Cotten Scholarship Award; Day Student's Club 3, 4, President 4; Student Council 4.

RACHEL DARDEN HALL, B.A.  
*Primary Education*  
Marion, S. C.

*Adorable . . . lady-like . . . notes . . . sensible . . . serene . . . excellent council member.*  
Zetesian Literary Society, Recording Secretary 3; Marshal 3; William Bartram Scientific Society 3, 4; Zetesian Editor *Pine and Thistle* Staff 3; Math Club 2; St. Cecilia Music Club 4; International Relations Club 2; Prayer Band Leader 3; Bowling 2, 3; Senior Scribe 4; Class President 2; Vice-President Student Body 4; Student Council 2, 4.

MARIAN OLIVER HAMILTON, B.A.  
*Primary Education*  
Fairmont N. C.

*Stately . . . "sharer" . . . lustrous hair . . . Fairmont . . . quiet manners well-dressed.*  
Zetesian Literary Society, Treasurer 3; Tennis 2, 3; Chief Marshal 3; May Court 2, 3; Presbyterian Junior College Summer School 2, 3.

MINNIE GRACE HERNDON, B.M.  
*Public School Music*  
Sanford, N. C.

*Precise . . . checkbook . . . aloof . . . angora . . . neatness personified . . . "Minnie Grace."*  
Epsilon Chi Literary Society; Peace Junior College 1; Woman's College of UNC 2; St. Cecilia Music Club 3, 4; Glee Club 3, 4.

# SENIOR CLASS





Green



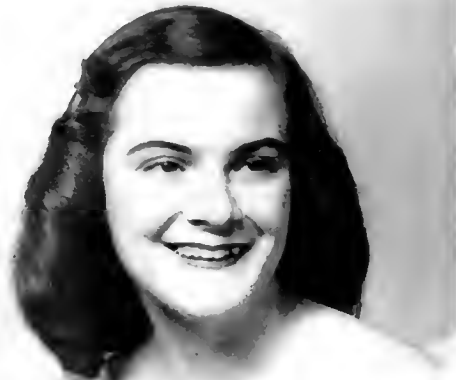
Griffin



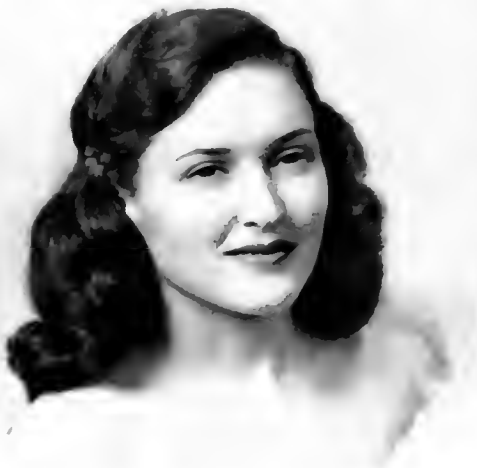
Hall



Hall



Hamilton



Herndon



Herring



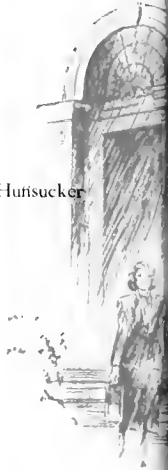
Hines



Hoover



Hufisucker



Knight



Knight



KATHARYN PRUDENCE HERRING, B.A.

Primary Education  
Clinton, N. C.

*Creative . . . fun-loving . . . captivating . . . White Lake . . . Johnson . . . tearoom.*

Zetesian Literary Society, Censor 2, Math Club 2, Glee Club 4, St. Cecilia Music Club 4, William Bartram Scientific Society 2, 3; Commerical Club 3; Junior Dance Committee 3, Tea Room Manager 3; Snapshot Editor WHITE HEATHER 3; Business Manager WHITE HEATHER 4, Secretary of Class 2; Basketball 1, 2; Hockey 3.

ANNA MARGARET HINES, B.A.

Music and Social Science  
Washington, N. C.

*Studios . . . unique . . . diligent . . . artist . . . delicate . . . quiet personality.*

Zetesian Literary Society; Math Club 1, 2; St. Cecilia Music Club 1, 2, 3, 4, Vice-President 4, International Relations Club 3, 4, Secretary-Treasurer 4; Piano Recitals 1, 2, 3, 4.

CLEO FLORENCE HOOVER, B.A.

English and Social Science  
Batesburg, S. C.

*Striking . . . "What did I do" . . . gay . . . prowler . . . mischievous . . . unlimited talker.*

Zetesian Literary Society, Treasurer 2; Highland Players 1, 2, 3, 4, Treasurer 2, Alpha Psi Omega Dramatic Fraternity 3, 4, President 3; Glee Club 2, 3, 4, Pine and Thistle Staff 2; William Bartram Scientific Society 1, 2; Math Club 1, 2; L'Alliance Francaise 2, 3; Prayer Band Leader 2; Volleyball 2; Tennis 3; WHITE HEATHER Staff, Class Editor 4; Class Cheerleader 4, Senior Dance Committee.

REBEKAH NELL HUNSUCKER, B.S.

Home Economics  
Newton, N. C.

*Understanding . . . easy-going . . . Pfeiffer . . . economical . . . Home Ec . . . "Becky."*

Epsilon Chi Society; Pfeiffer Junior College 1, 2; Home Economics Club 3, 4, Appalachian State Teacher's College Summer School 3.

HELEN JOY KNIGHT, B.A.

Bible and General Science  
Roanoke Rapids, N. C.

*Joyful . . . schedules . . . "P and T" . . . Lepidoptera . . . zestful . . . nature lover.*

Zetesian Literary Society; Math Club 1, 2, 3, 4, Corresponding Secretary 3; William Bartram Scientific Society 1, 2, 3, 4; Highland Players 3, 4, Student Volunteers 1, 2, 3, 4; Hockey 1; Tennis 2, 3, Head of Tennis 3; Athletic Board 3; Volleyball 4; Basketball 3, 4; Monogram Club 4; Pine and Thistle Staff 2, 3, 4, Zetesian Editor 2, 3, Editor-in-chief 4.

MIRIAM EDWARDS KNIGHT, B.A.

English and Organ  
Orlando, Fla.

*Orlando . . . Scott-ish wedding bells . . . organist . . . "That wry look" . . . sincerely good . . . "Mimi."*  
Epsilon Chi Literary Society, Chaplain 3, 4, Class Treasurer 2; Pine and Thistle Staff 2; Highland Players 1; Glee Club 1, 2, 3, 4; Prayer Band Leader 3, 4; Literary Editor WHITE HEATHER 3; Secretary of Class 4; *Who's Who in American Colleges and Universities* 4.

# White Heather

## SENIOR CLASS



# White Heather

NANCY LUCILLE LEDBETTER, B.S.  
*Home Economics*  
Norman, N. C.

*Well-groomed . . . excitable . . . efficiency plus . . . praise worthy . . . essential . . . "Let's get organized."*  
Epsilon Chi Literary Society; Basketball 1, 2, 3, 4; Basketball Varsity 2, 3; Athletic Board 2, 3; Monogram Club 3, 4; President Athletic Association 3; William Bartram Scientific Society 1, 2, 3, 4; Home Economics Club 1, 2, 3, 4; Christian Association Cabinet 4; Student Council 3, 4; President 4; President of Student Body 4; *Who's Who in American Colleges and Universities* 4.

BOBBIE MARIE LONG, B.A.  
*Grammar Grade Education*  
Wadesboro, N. C.

*Orderly . . . talker . . . "early to bed" . . . dry wit . . . "Really?" . . . authentic.*  
Epsilon Chi Literary Society; Mars Hill College 1, 2; Tennis 3; Prayer Band Leader 4; Baptist Student Union Council 4.

DONNIE MAE LYTTLE, B.A.  
*Social Science and English*  
Red Springs, N. C.

*Spirited . . . commuter . . . true friend . . . good student . . . drug store . . . conversationalist.*  
Epsilon Chi Literary Society; Day Student's Club 1, 2, 3, 4; Math Club 2; L'Alliance Francaise 1, 2; William Bartram Scientific Society.

MYRA ANNE MANESS, B.S.  
*Home Economics*  
Biscoe, N. C.

*Dimpled smile . . . quiet mannerisms . . . fun loving . . . changeable moods . . . competent . . . inspires "poetry?"*  
Epsilon Chi Literary Society; Glee Club 1, 2, 3, 4; Home Economics Club 1, 2, 3, 4; Secretary and Treasurer 4; St. Cecilia Music Club 1; Prayer Band Leader 2, 3; Christian Association Cabinet 4; Chairman of Circle of Social Activities, Marshal 3; Archery 3; Elon College Summer School 1; Atlantic Christian College Summer School 2.

EMILYN CARLEEN MAULDIN, B.A.  
*Social Science*  
Chesterfield, S. C.

*Vero . . . tom-boy . . . unlimited helper . . . storehouse of knowledge . . . "the handbook says" . . . indispensable.*  
Zetesian Literary Society; Highland Players 2; Glee Club 2, 3, 4; Hockey 1, 2, 3; Basketball 1, 2, 3, 4; Athletic Board, Salesman Athletic Association 2; Treasurer Athletic Association 2; Math Club 1, 2, 3.

IRIS FAYE MORRISON, B.A.  
*Primary Education*  
Roseboro, N. C.

*Good-looking . . . charming . . . lost glasses . . . St. George . . . never on time . . . naughty.*  
Zetesian Literary Society; William Bartram Scientific Society 1, 2; L'Alliance Francaise 3, 4; International Relations Club 1, 2; Basketball 1, 2, 3; Varsity 2; Volleyball 2; Glee Club 3; Day Student's Club 4; Atlantic Christian College Summer School 1; Wake Forest Summer School 2.

## SENIOR CLASS



Ledbetter



Long



Lytle



Maness



Mauldin



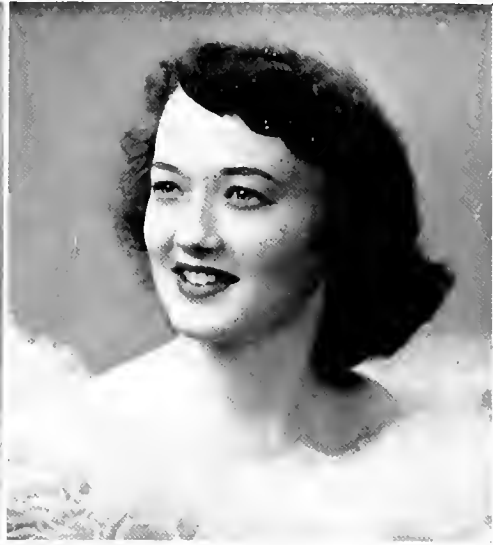
Morrison



Musc



McCaskill



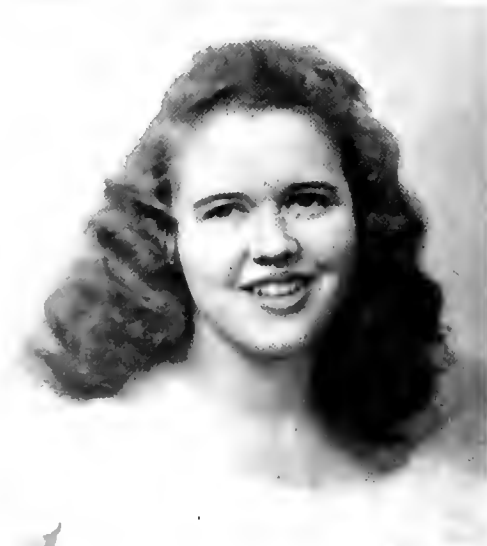
McFadyen



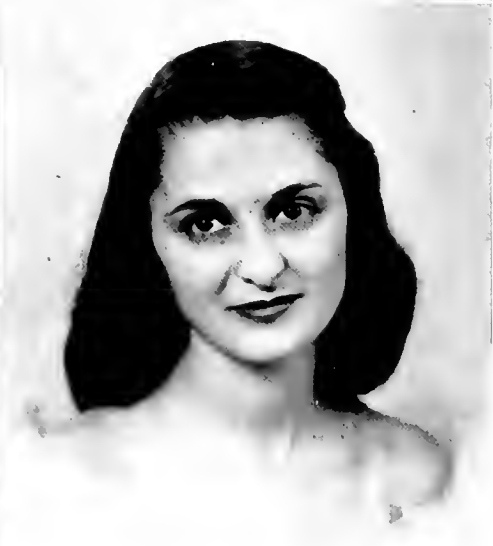
McNeely



McLeod



Nassif



# White Heather

LOIS CARMICHAEL MUSE, B.A.  
*Social Science and English*  
Laurinburg, N. C.

*Competent . . . school teacher . . . diets . . . on the go . . . accommodating . . . Johnnie.*  
Epsilon Chi Literary Society, Coker College 1, 2, Day Student's Club 3, 4.

BETTY JO McCASKILL, B.A.  
*General Science and Mathematics*  
Carthage, N. C.

*Sweet . . . lads . . . well-mannered . . . "Dear Gussie" . . . studious . . . sincere.*  
Epsilon Chi Literary Society, Mathematics Club 1, 2, 3, 4, President 4, L'Alliance Francaise 1, 2, 3, International Relations Club 2, Student Volunteers 2, Treasurer of Christian Association 4, Cabinet 4, Hockey 2, 3, William Bartram Scientific Club 4; Wake Forest Summer School 3.

CLYDE IRIS McFADYEN, B.A.  
*English and Bible*  
Vass, N. C.

*Full of pep . . . bangs . . . carefree . . . Ervin . . . Golf Course . . . Lohelia.*  
Zetesian Literary Society, Montreat College 1, 2, Tea Room Manager 3; Assistant Editor, WHITE HEATHER 3, Student Volunteers 3, 4, Sappho Poetry Club 4, William Bartram Scientific Society 4.

SARA CRANOR McLEOD, B.A.  
*General Science and Bible*  
Aberdeen, N. C.

*Scientific minded . . . rarely angry . . . Eck . . . unobtrusive . . . In love . . . long tresses.*  
Epsilon Chi Literary Society; Prayer Band Leader 3, 4, *Pine and Thistle* Staff 3, 4, Sappho Poetry Club 2, 3, 4, President 3; Student Volunteers 2, 3, 4, Vice-President 3, William Bartram Scientific Society 2, 3, 4, International Relations Club 2, Hockey 1, 2, 3; Volley ball 4, Archery 2.

ANN ELIZABETH McNEELY  
*General Science and Social Science*  
Elkin, N. C.

*Individuality . . . "simply wild" . . . Carolina . . . zoguish . . . notable . . . refreshing.*  
Epsilon Chi Literary Society; International Relations Club 3, 4, Reporter and Custodian of Scrapbook 4, L'Alliance Francaise 3, 4; William Bartram Scientific Society 4, Math Club 4, Feature Editor *Pine and Thistle* 3; Junior Dance Committee; Chairman Senior Dance Committee; Athletic Board 3, Chief Scribe 4, Editor-in-chief WHITE HEATHER 4, *Who's Who in American Colleges and Universities* 4, University of North Carolina Summer School 1, 2, 3, 4.

MARY FRANCIS NASSIF, B.M.  
*Voice*  
Laurinburg, N. C.

*Song bird . . . unpredictable . . . efficient . . . "Once in a While" . . . devilish . . . Coke bottles.*  
Epsilon Chi Literary; Glee Club 1, 2, 3, 4, First Soprano Monitor 2, 3, 4, President 4, St. Cecilia Music Club 1, 2, 3, 4, Secretary 2, 3, President 4; College Cheerleader 3, 4, Manager of Tea Room 4, Recital 3; Graduation Recital 4.

## SENIOR CLASS





# White Heather

FAYE PLEMONS, B.S.  
*Home Economics*  
Lynn, N. C.

*Curly lashes . . . "argue-er" . . . nervous giggles . . . Sat. night candy . . . wasp waist . . . likable.*  
Zetesian Literary Society; Meredith College 1; Home Economics Club 2, 3, 4; Spanish Club 4; Tennis 2; Student Volunteers 2, 3; Prayer Band Leader 4; Devotional President Baptist Student Union 3.

EDNA WINIFORD POWERS, B.M.  
*Public School Music*  
Fayetteville, N. C.

*Happy . . . Chapel Hill . . . "heart of gold" . . . admirable . . . energetic . . . "Winnie."*  
Zetesian Literary Society; St. Cecilia Music Club 1, 2, 3, 4; Basketball 2, 3; Student Volunteers 1, 2, 3; Baptist Student Union 4; Meredith College Summer School 1; University of North Carolina Summer School 3; Flora Macdonald Summer School 1, 3.

MARY DELL PREVATTE, B.A.  
*Primary Education*  
Fairmont, N. C.

*Saddles . . . cool and unruffled . . . Baker . . . punctual . . . thorough . . . prim.*  
Epsilon Chi Literary Society; Tennis 2, 3; Presbyterian Junior College Summer School 2, 3.

BETTY PRICE  
*Primary Education*  
Charlotte, N. C.

*Bright eyes . . . friendly . . . tolerant . . . meek . . . home loving . . . poetry*  
Epsilon Chi Literary Society; Student Volunteers 1, 2, 3, 4; Librarian 3; Math Club 2, 3, 4; Treasurer 3; L'Alliance Francaise 2; Volleyball 4.

LUCY BELLE PRUITT, B.A.  
*Grammar Grade Education*  
Fuquay Springs, N. C.

*Shy . . . curly hair . . . freckles . . . always smiling . . . kind . . . pancake.*  
Epsilon Chi Literary Society; Campbell College 1, 2; Baptist Student Union 3, 4; Vice-President Sunday School 3.

ADA LEE RANDALL, B.A.  
*English and Social Science*  
Ensonville, N. C.

*Composed . . . loyal . . . Senorita . . . grace . . . indescribable beauty . . . "just plain good."*  
Epsilon Chi Literary Society; High Point College 1; Spanish Club 4; Tennis 3; International Relations Club 4; Sappho Poetry Club 4; Prayer Band Leader 4; Feature Editor *Pine and Thistle* Staff 4; Basketball 4; Senior Scribe; May Court 4; W.C.U.N.C. Summer School 2; Wake Forest Summer School 3.

## SENIOR CLASS





Plemmons



Powers



Prevatte



Price



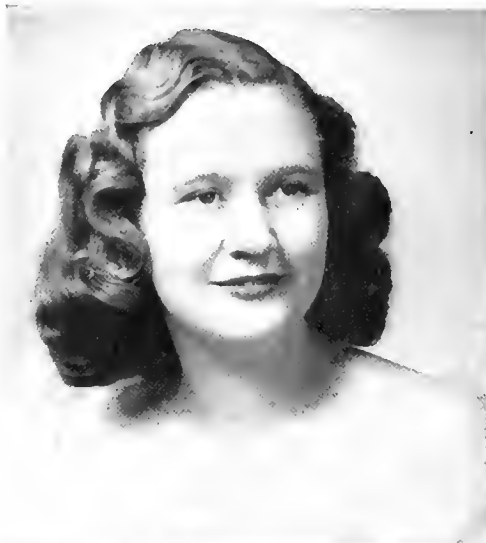
Pruitt



Randall



Riggan



Rogan



Rohanna



Russell



Scarboro



Smith



# White Heather

FLORA EDWARD RIGGAN, B.A.

*Social Science and Bible*  
Townesville, N. C.

*"Mental activity . . . I.R.C. . . just checking" . . . clear thinker . . . orator . . . "Flo."*  
Zetesian Literary Society; Christian Association Cabinet, Chairman of the Highway of Life Un-  
richment; Religious Meetings 3; Glee Club 3, 4; International Relations Club 2, 3, 4; Reporter and  
Custodian of Scrapbook 3; President 4; Collegiate Council for United Nations, Class Vice-Pres-  
dent 4; Secretary Student Council 4; *Who's Who in American Colleges and Universities* 4.

FLORENCE EDELYN ROGAN, B.A.

*Social Science and English*  
Greeleyville, S. C.

*"Greeleyville brogue" . . . a dear . . . food . . . cheerful . . . discrete . . . "Little bit."*  
Zetesian Literary Society; William Bartram Scientific Society 2, 3, 4; Vice-President 4; St. Cecilia  
Music Club 1, 2, 3, 4; Student Volunteers 1, 2; L'Alliance Francaise 2, 3, 4; International Relations  
Club 4; Prayer Band Leader 4.

JASMINE BARBARA ROHANNA, B.A.

*English and Social Science*  
Elizabeth City, N. C.

*Determined . . . vivacious . . . B.S.U. . . sailor . . . works . . . "Jazz."*  
Epsilon Chi Literary Society, Recording Secretary 3, 4; Dance Chairman 3; International Relations  
Club 4; Baptist Student Union Vice-President 3; President 4; Prayer Band Leader 4; Alpha Psi  
Omega Dramatic Fraternity 3, 4; Secretary-Treasurer 4; Highland Players 1, 2, 3, 4; Reporter 3;  
Math Club 2, 3, 4; Reporter 3; Make-up Ed. *Pine and Thistle* 3; Athletic Board; Monogram Club 3, 4.

MARY ANN RUSSELL, B.A.

*Bible and History*  
Sanford, N. C.

*Original . . . self-assured . . . devoted . . . refined . . . sunny . . . "Kitten."*  
Epsilon Chi Literary Society; Glee Club 2, 3, 4; *Pine and Thistle* Staff, Art Editor 2, 3; Christian As-  
sociation Cabinet 3, 4; Chairman of Publicity 3; Vice-President of Christian Association 4; Chairman  
of Enlistment and Training Circle 4; Senior Scribe.

AUDREY FULCHER SCARBORO, B.A.

*Social Science and Bible*  
Rocky Mount, N. C.

*Conversationalist . . . frankness . . . handsome beauty . . . admirable . . . woodhne . . . "Don and Cid."*  
Epsilon Chi Literary Society, Secretary 3; Class Secretary 1; Commercial Club 1; Hockey Team  
1, 2, 3; Glee Club 1, 2, 3, 4; Highland Players 2, 3, 4; Vice-President 2; Math Club 2, 3, 4; Interna-  
tional Relations Club 2, 3, 4; Basketball 2, 3; William Bartram Scientific Club 2, 3, 4; WHITE HEATHER  
Staff 3; St. Cecilia Music Club 3, 4; May Court 3; May Queen 4.

JANET SMITH, B.A.

*Social Science and Bible*  
Whitsett, N. C.

*Attentive . . . promising . . . serious minded . . . deserving . . . hidden talents . . . "Epsilon Chi."*  
Epsilon Chi Literary Society, President 4; International Relations Club 2, 3, 4; Secretary and Treasurer  
3; Class Secretary 3; Glee Club 1, 2, 4; L'Alliance Francaise 4; Collegiate Council for United Na-  
tions 3, 4; Publicity Chairman 3, 4; Prayer Band Leader 3; Student's Social Committee 4; Chairman  
4; Student Council 4; *Who's Who in American Colleges and Universities* 4.

## SENIOR CLASS



# White Heather

RUBY NELL SPIVEY, B.A.  
*English and Bible*  
Elizabethtown, N. C.

*Fun contributing . . . changeable . . . alert . . . unforgettable . . . plain spoken . . . "Easy on the Eye."*  
Zetesian Literary Society, First Vice-President 4; William Bartram Scientific Society 1, 2, 3, 4; International Relations Club 2; L'Alliance Francaise 1, 2, 3, 4; Hockey 1, 2, 3; Basketball 1; Feature Editor *Pine and Thistle* 4; Wake Forest Summer School 3.

NINA RUTH TUGWELL, B.A.  
*French and Social Science*  
Farmville, N. C.

*Pleasant . . . tactful . . . quiet . . . French . . . contented . . . book-lover.*  
Epsilon Chi Literary Society; International Relations Club 2; Hockey 2, 3; Archery 2; Volleyball 4; L'Alliance Francaise 2, 3, 4; President 4; Student Volunteers 3.

MARY ANN TURNAGE, B.S.  
*Home Economics*  
Farmville, N. C.

*Concerned . . . lovely skin . . . day dreamer . . . informative . . . "Our oil stove" . . . good cook.*  
Epsilon Chi Literary Society; Home Economics Club 1, 2, 3, 4; Program Chairman 4; Volleyball 2; Tennis 3; Atlantic Christian College Summer School 2, 3.

## SENIOR CLASS

MARGARET McKAY WATT, B.A.  
*English and Social Science*  
Nashville, Tenn.

*Versatile . . . Davidson . . . frank . . . contagious laughter . . . independent . . . unpredictable remarks.*  
Epsilon Chi Literary Society; Highland Players 2, 3, 4; Secretary and Treasurer 3, 4; Alpha Psi Omega Dramatic Fraternity 3, 4; Vice-President 3; President 4; International Relations Club 2; Assistant Editor *Pine and Thistle* 2, 3, 4; Superlative 4; Christian Association Cabinet, Chairman of World Fellowship 4.

SALLIE WHITAKER, B.S.  
*Home Economics*  
Rockford, N. C.

*Sympathetic . . . Pfeiffer . . . "Honey" . . . never-ending chatter . . . assistant . . . flaming hair.*  
Epsilon Chi Literary Society; Pfeiffer Junior College 1, 2; Home Economics Club 3, 4; L'Alliance Francaise 4; A. S. T. C. Summer School 3.



Spivey



Tugwell



Turnage



Watt



Whitaker



Williams



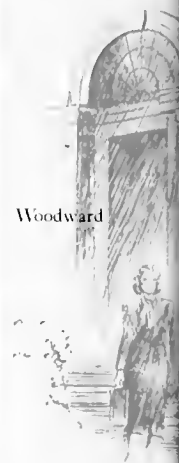
Wilson



Wilson



Woodward



## White Heather

MARGARET WILLIAMS, B.A.  
*Bible and Church Music*  
Indian Valley, Va.

*Music room . . . organist . . . genuine . . . particular . . . trustworthy . . . solemnity.*

Zetesian Literary Society; St. Cecilia Music Club 1, 2, 3, 4, Student Volunteers 1, 2, 3, 4, President 4, Home Economics Club 1, Math Club 2, William Bartram Scientific Society 2, Cabinet 3, 4, Glee Club 2, 3, 4, Secretary 4, Prayer Band Leader 2, Hockey 1.

MARIE WILSON  
*Bible and Social Science*  
Oxford, N. C.

*Brevard . . . easy going . . . modest . . . conferences . . . noiseless . . . sleepy.*

Epsilon Chi Literary Society; Brevard College 1, 2, William Bartram Scientific Society 4, Student Volunteers 3, 4; Prayer Band Leader 3, 4.

SUE WILSON, B.M.  
*Public School Music*  
Fayetteville, N. C.

*Conservatory . . . Pedro . . . plaids . . . likable . . . commendable . . . responsible.*

Zetesian Literary Society; Tennis 2, 3; Commercial Club 1; St. Cecilia Music Club 1, 2, 3, 4, Glee Club 1, 2, 3, 4, Wake Forest Summer School 2; Flora Macdonald College Summer School 3.

VERNIESE WOODWARD, B.M.  
*Voice*  
Murrell's Inlet, S. C.

*"Carmen" . . . sophisticated beauty . . . superficial . . . coffee and tea . . . melodramatic . . . "Woody."*

Zetesian Literary Society; St. Cecilia Music Club 1, 2, 3, 4, Glee Club 1, 2, 3, 4, L'Alliance Francaise 2, 3, 4, Pine and Thistle Staff 3, 4, Highland Players 1, 2, 3, 4, Alpha Psi Omega 3, 4.

## SENIOR CLASS





# JUNIORS

---

Here are the Juniors who, though few in number, more than make up for it by their class spirit and team work. They leave no doubt whatsoever as to the success of the class of '50.

## OFFICERS

JO SNELL, *President*

DOROTHY WILLIAMS, *Vice-President*

CAROLYN ELLIOTT, *Secretary*

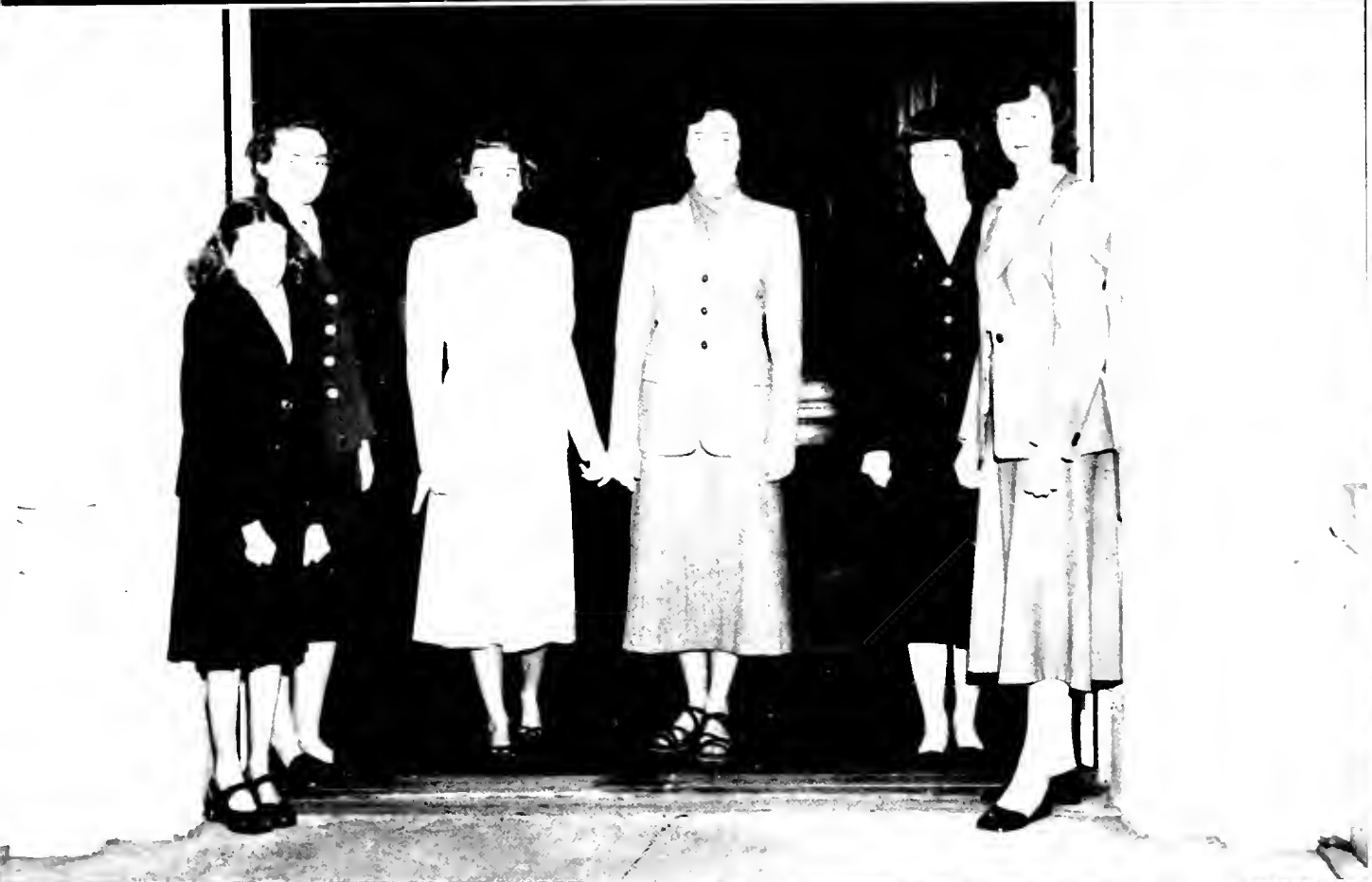
MADLINE CARSWELL, *Treasurer*

ANN YELVINGTON, *Tea Room Manager*

MARY ALICE PARKS, *Asst. Tea Room Manager*

DR. ELEANOR SCOTT, *Adviser*

# 1949





## JUNIORS

*First row, left to right:*

BLACKWELL, JACQUELINE ADELE  
Florence, S. C.

BRIDEWELL, CHARLOTTE  
Donaldsonville, La.

BUIE, DEWIE  
Norfolk, Va.

CARSWELL, MADELINE MAPP  
Sanford, N. C.

ELLIOTT, CAROLYN LEE  
Edenton, N. C.

*Second row:*

FREEMAN, MARY RAYE  
Racford, N. C.

GREGORY, MARY  
Kershaw, S. C.

GODWIN, EULA ESTELLE  
Kenly, N. C.

HOOKER, FRANCES VIRGINIA  
Bayboro, N. C.

JORDAN, ANNA ALFHA  
Bishopville, S. C.

*Third row:*

KINLAW, LOIS  
Lumberton, N. C.

MOULDER, CARLEEN  
Hope Mills, N. C.

MCCAIN, DELORIS  
Effingham, S. C.

MCCUBBINS, NANCY ELIZABETH  
Florence, S. C.

MCLEAN, BETTY CULBRETH  
Racford, N. C.





**OF 1949**

*First row, left to right:*

MELVIN, SARA OCTAVIA  
Kerr, N. C.

PARKS, MARY ALICE  
Charlotte, N. C.

PATTERSON, UNA FRANCES  
Huntersville, N. C.

PEARCE, EMMA JO  
Corpus Christi, Texas

PHELPS, LEAH CAROLYN  
Ash, N. C.

*Second row:*

POWERS, JUDITH ANN  
St. Pauls, N. C.

SMITH, MARGARET  
Pageland, S. C.

SMITH, EDITH SUSAN  
Pink Hill, N. C.

SNELL, JO  
Charlotte, N. C.

TURNER, LILLIAN BERTHA  
Trenton, N. J.

*Third row:*

WILLIAMS, DOROTHY MAE  
Indian Valley, Va.

YEVINGTON, ELIZABETH ANNE  
Clayton, N. C.

# SOPHOMORES

---

Meet the Sophomores! This is the class that is noted for its ability to put over successfully anything it attempts. The "Up and coming" younger generation of F. M. C., its members are looking forward to grand and glorious times as upperclassmen.

## OFFICERS

PHYLLIS DYER, *President*

CAROLINA OGILVIE, *Vice-President*

BETTE WALL, *Secretary*

PAT McRAE, *Treasurer*

MR. COXHEAD, *Adviser*

# 1949



# SOPHOMORES



ARRINGTON, PAT  
Southport, N. C.

ASCOUGH, RAMONA  
Cummock, N. C.

BARROW, AGNES  
La Grange, N. C.



BLACKWELL, VERIDA  
Florence, S. C.

BROWNE, SARA JANE  
Red Springs, N. C.

BUIE, MARY VARDELL  
Clarkton, N. C.



BYRD, DORIS YVONNE  
Erwin, N. C.

CANTLEY, MARY EMMA  
Kingstree, S. C.

COVINGTON, MARY STEWART  
Racford, N. C.



DAVENPORT, MARTHA MAE  
Charlotte, N. C.

DORSEY, GENEWOOD  
Gurley, S. C.

DYER, PHYLLIS  
Leaksville, N. C.



FIELDS, LLEWELLYN  
Darlington, S. C.

FOUST, IDA TATE  
Ramscur, N. C.

GRANTHAM, ZELMA  
Fairmont, N. C.



HARRIS, PATRICIA ANNE  
Concord, N. C.

HATLEY, MARY  
Hudson, N. C.

HUBBLE, KATRINA  
Bland, Va.



HUNEYCUTT, CAROLYN  
Blackstock, S. C.

HUNT, MARY SUSAN  
Wake Forest, N. C.

JACKSON, LOIS  
Fair Bluff, N. C.





JAMES, CHARLOTTE  
Durham, N. C.  
JOHNSON, ROBERTA  
Rupert, West Va.  
JORDAN, MARY ANN  
Wilmington, N. C.



JOSEY, BEVERLEY  
Manning, S. C.  
KELLY, BERT  
Carthage, N. C.  
KITTRELL, ELSA JANIS  
Lumberton, N. C.



LANIER, ELEANOR  
Elizabeth City, N. C.  
LAFFA, BETSY  
Hillsboro, N. C.  
LEE, MATTIE LOU  
Willow Springs, N. C.



LITTLE, MARGARET  
St. Pauls, N. C.  
LOWE, NELL  
Clinton, N. C.  
LOVETT, MARJORIE  
Fair Bluff, N. C.



MELVIN, BETTY GREY  
Kerr, N. C.  
MILLER, MAYSIE  
Chadbourn, N. C.  
MORRISON, MARY JANETTE  
Atlanta, Ga.



MCDONALD, JEAN  
Charthage, N. C.  
MCMILLAN, BETTY JO  
Selma, N. C.  
McRAE, PAT  
Lillington, N. C.



OGLIVIE, CAROLINE  
North Wilkesboro, N. C.  
OLIVER, MARGARET  
Whiteville, N. C.  
POWELL, MARGARET  
Smithfield, N. C.





PRICE, HANNAH  
Charlotte, N. C.  
RATCHFORD, BETTY  
Gastonia, N. C.  
RATCHFORD, WILMA  
Bessemer City, N. C.

REDMAN, JANE  
Pilot Mountain, N. C.  
REYNOLDS, CAROLYN  
Smithfield, N. C.  
RIVENBARK, FLORENCE  
Willard, N. C.

RUSS, JOY  
Shallotte, N. C.  
RUSSELL, ANN  
Rocky Mount, N. C.  
SHAVER, LULA  
Fishersville, Va.

SHERRILL, HELEN  
Fayetteville, N. C.  
SMITH, PATRICA  
Red Springs, N. C.  
SOUTHERLAND, PATTY  
Wilmington, N. C.

STEVENS, CYNTHIA  
Smithfield, N. C.  
SUMMERS, CATHERINE  
Norfolk, Va.  
SULLIFF, FAYE  
Leaksville, N. C.

TAYLOR, JEANINE  
Robersonville, N. C.  
THOMPSON, SYLVIA  
Chadbourn, N. C.  
WALKER, CAROLYN  
Wilmington, N. C.

WALKER, NANCY  
Baltimore, Md.  
WALL, BETTIE ANN  
Wadesboro, N. C.  
WATSON, SARANEL  
Greenville, S. C.



... a coke at Townsend's



... mad rush at 10:20



... Student Council gives formal



... they help us in the Library



# FRESHMEN

---

Having survived the rigors of Rat Court and semester exams the Freshman Class stands ready to make a name for itself, not only scholastically but in leadership and originality as well.

## OFFICERS

ELAINE PIERCE, *President*

EMILY NAN GRIER, *Vice-President*

JEANNE FULLER, *Secretary*

HARRIETT WATSON, *Treasurer*

MISS ETHEL BATEMAN, *Adviser*

1949





## FRESHMEN

*First row, left to right:*

Barrow, Lindley Anne, La Grange, N. C.  
 Brown, Emily Lois, Hamlet, N. C.  
 Brunson, Betty Ann, Fayetteville, N. C.  
 Charles, Mary Kathryn, Winston-Salem, N. C.  
 Clark, Barbara Ann, Daytona Beach, Fla.  
 Clarke, Clara Revers, Roanoke Rapids, N. C.  
 Comer, Margaret Ruth, Ellerbe, N. C.  
 Farrior, Jean, Morehead, N. C.

*Second row:*

Fuller, Edith Jeanne, Ft. Bragg, N. C.  
 Goodman, Margaret Ann, Chadbourn, N. C.  
 Grady, Enid Long, Charlotte, N. C.  
 Grier, Emily Nan, Charlotte, N. C.  
 Hall, Frances, Rose Hill, N. C.  
 Hearne, Allison Reynolds, Greenville, N. C.  
 Hobbs, Frances, Council, N. C.  
 Hopkins, Ann Lee, Cameron, N. C.

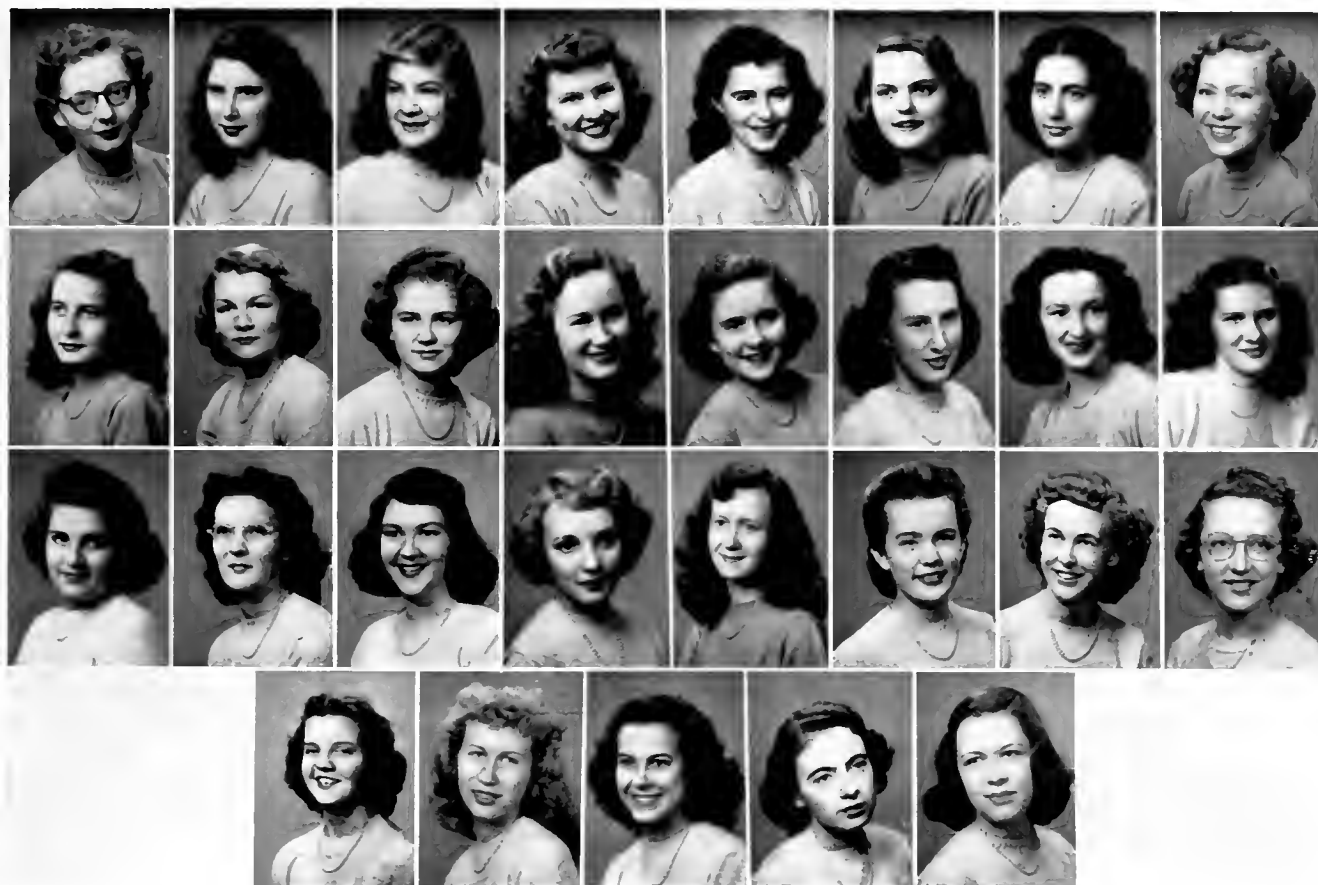
*Third row:*

Hulak, Nadya Dorothy, Burgaw, N. C.  
 Hussey, Artense, Fayetteville, N. C.  
 Ledbetter, Betty Ann, Norman, N. C.  
 Lovick, Janice, Wade, N. C.  
 Martin, Marianne, Charlotte, N. C.  
 Monroe, Mildred Elizabeth, Fayetteville, N. C.  
 Murdoch, Janice Lee, Wildwood, N. C.  
 Murphy, Priscilla Elaine, Arlington, Va.

*Fourth row:*

McDowell, Alma Gene, Elizabethtown, N. C.  
 McIntyre, Mary Elizabeth, Godwin, N. C.  
 McPhaul, Faye, Parkton, N. C.  
 McArthur, Mildred Louise, Red Springs, N. C.  
 McCallum, Dorothy, Rowland, N. C.  
 McCaskill, Rachel, Carthage, N. C.





OF 1949

*First row, left to right:*

Nester, Patsy Mae, Wake Forest, N. C.  
 Padgett, Betty Louise, Burgaw, N. C.  
 Partin, Jeanne, Petersburg, Va.  
 Pearce, Ann Frances, Corpus Christi, Texas  
 Pierce, Elaine, Evergreen, N. C.  
 Poff, Barbara, Christiansburg, Va.  
 Raston, Junette, Elizabethtown, N. C.  
 Ritchie, Nora Emalyne, Raleigh, N. C.

*Second row:*

Rogers, Ethel Council, Whiteville, N. C.  
 Rummage, Gloria Ann, Ellerbe, N. C.  
 Rumple, Audrey, Westfield, N. J.  
 Shaw, Ann, St. Pauls, N. C.  
 Smith, Amanda Grey, Petersburg, Va.  
 Singletary, Hattie, Bladenboro, N. C.  
 Shaw, Emily, St. Pauls, N. C.  
 Tarrant, Love Leonore, Fayetteville, N. C.

*Third row:*

Taylor, Frances Burke, New Bern, N. C.  
 Thomas, Rebecca, Beulaville, N. C.  
 Thompson, Janie, Rocky Mount, N. C.  
 Tisdale, Nellie, New Bern, N. C.  
 Townsend, Doris, Red Springs, N. C.  
 Watson, Harriett, Parkton, N. C.  
 West, Fannie Belle, Fayetteville, N. C.  
 White, Cora Eleanor, Lenoir, N. C.

*Fourth row:*

White, Helen, Wilmington, N. C.  
 Whitfield Angeline, Rocky Mount, N. C.  
 Williamson, Joan, Atlanta, N. C.  
 Workman, Betsy Ann, Mebane, N. C.  
 Zea, Sophia McLeod, Strasburg, Va.





The White

## COMMERCIAL DEPARTMENT

To the tune of clicking typewriters these girls are working eagerly towards the time when they will be declared competent business women and go out to represent F. M. C. in the world of business. This year six girls will receive their diplomas for completing a two year course.



## SECOND YEAR BUSINESS

*First row, left to right:*

LECKIE, HELEN  
Charlotte, N. C.

MAY, ELIZABETH ANN  
Pink Hill, N. C.

SMITH, ELSIE JANE  
Kenansville, N. C.

*Second row:*

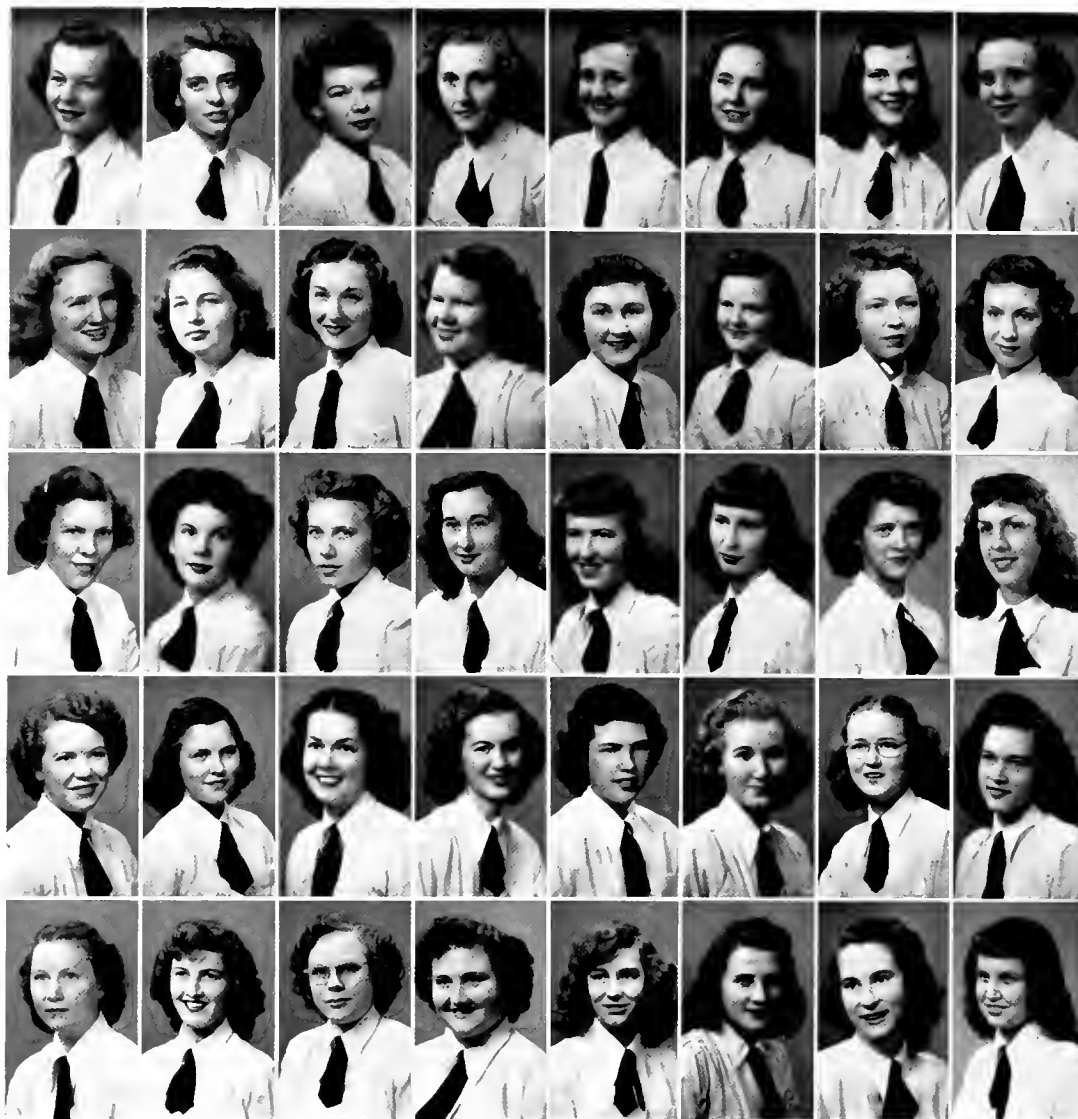
WATSON, ROSA LEE  
Red Springs, N. C.

WHITE, ALICE  
Timmonsville, N. C.

WILLIAMS, ROSA LUCILLE  
Fayetteville, N. C.

Heather 1949





## FIRST YEAR BUSINESS

*First row, left to right:*

Adams, Lucy Joyce, Mount Olive, N. C.; Anderson, Kay, Wilmington, N. C.;  
Anderson, Louise, Wadesboro, N. C.; Bailes, Anita Stewart, Mount Holly, N. C.;  
Baldwin, Ernestine, Whiteville, N. C.; Barnes, Peggy Ann, Rocky Mount, N. C.;  
Buie, Sadie, Norfolk, Va.; Cole, Nancy Lee, Raeford, N. C.

*Second row:*

Cox, Sue Lee, Franklinton, N. C.; DeVane, Donnice, Chadbourn, N. C.; Elliott,  
Margaret Elizabeth, Green Sea, S. C.; Gooden, Mary Eleanor, Elizabethtown, N. C.;  
Hardee, Peggy, Lumberton, N. C.; Harrington, Betty Lucille, Broadway, N. C.;  
Highsmith, Anne Beatrice, Burgaw, N. C.; Jarrell, Betty Ruth, Rockingham, N. C.

*Third row:*

Jones, Mary Isabel, Rowland, N. C.; Kerr, Doris Jean, Mount Airy, N. C.; Kil-  
patrick, Jean, Greensboro, N. C.; Kornegay, Dorothy Jean, Pine Level, N. C.;  
Manus, Bradley Jean, Charlotte, N. C.; Moore, Jane Lea, Wilmington, N. C.; Mor-  
gan, Jacqueline, Red Springs, N. C.; Morrison, Peggy, Clinton, N. C.

*Fourth row:*

Mullis, Patricia, Salisbury, N. C.; McCulloch, Sarah Louise, Elkton, N. C.; Mc-  
Eachin, Marjorie, Maxton, N. C.; McPhail, Hettie Lee, Rowland, N. C.; Parker,  
Jean Hudgins, Pollocksville, N. C.; Patrick, Marion Joyce; Roper, N. C.; Rhodes,  
Betty Lou, Fairmont, N. C.; Robinson, Fredia Joy, Boone, N. C.

*Fifth row:*

Slate, Sarah Ella, Wagram, N. C.; Squier, Elizabeth Ann, Atlanta, Ga.; Stevens,  
Annie Ruth, Fayetteville, N. C.; Taylor, Lila Blondell, Lumberton, N. C.; Thomas,  
Violet, Broadway, N. C.; Tipton, Eunice, Chadbourn, N. C.; Townsend, Blanche  
Geneva, Rowland, N. C.; Underwood, Dorothy Alease, Stoneville, N. C.

# THERE SHALL BE MUSIC





---

## MUSIC

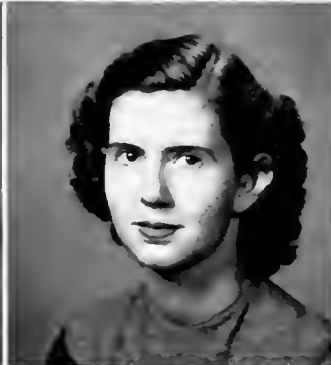
The conservatory, noted throughout this section of the South for its high standards and exceptional faculty, is one of the most outstanding and important departments of the college. The faculty, under the able guidance of Dean Robert Reuter, has proven its ability by the excellent quality of the students' work.

Each year, the college is particularly proud to present its Senior music recitals, as the performances of these girls best express the fine training of the conservatory. Through such public performances, the girls learn stage control, poise, and ease. There were eight recitals in 1949, given by: Carolyn Greene, Contralto; Frances Nassif, Soprano; Sarah Green, pianist; Verniese Woodward, Soprano; Anna Hines, pianist; Winifred Beasley, pianist; Miriam Knight, organist; Anita Fonvielle, pianist.

Beasley  
Green



Fonvielle  
Nassif



Hines  
Woodward



Greene





# GLEE CLUB

Drop around any Tuesday or Thursday afternoon and you will hear the auditorium resounding with "heavenly music." The 70 members of the Glee Club chosen by voice tests from every college department, are noted for their outstanding choral work. The work of sectional and the twice-weekly regular rehearsals really bears fruit at the Christmas and Spring Concerts of sacred and secular music. Because of its popularity and success our Glee Club has gone on tours throughout the state. The Club is under the able and expert direction of our Dean of Music, Robert Reuter.



# ST. CECILIA MUSIC CLUB

Miss McMillan and Anita Fonville

The St. Cecilia Music Club holds its meeting the first Friday night of every month. Anyone who has taken an applied or theoretical course in music is eligible to belong.

During the year, projects are carried on to improve the conservatory. This year the projects were: enlargement of the record library, curtains for practice rooms, and the teaching of music appreciation in the colored school each week.

## OFFICERS

FRANCES NASSIE, *President*

ANNA HINES, *Vice-President*

MARTHA DAVENPORT, *Sec. and Treas.*



St. Cecilia Music Club



# ACTIVITIES

---

A large part of each girl's time is spent in extra-curricular activities as well as in class work. Here is a scene-by-scene portrayal of some of the busy organizations within the doorway.

1949



# STUDENT GOVERNMENT



NANCY LUCILLE LEDBETTER  
*President*

The Student Council holds an important place in the life of a Flora Macdonald girl. From the first night of hearing pledges repeated by each student until the end of school, the council is busily at work. Tuesday nights, others if necessary, they hold their weekly meetings and over a pot of coffee discuss the current problems of the day as concerns Flora Macdonald. The Council strives to instill in each student the importance of having and abiding by rules in order that we might all live harmoniously together. With a mighty force of thirteen members and the Dean of Women as adviser, the council moves forward for an "ever-growing" student body.

# . . Nineteen Hundred Forty-nine



RACHEL HALL, *Vice-President of Student Body*

NINA BERRYHILL, *President of Christian Association*

NANCY BISHOP, *President of Senior Class*

FLORA ED RIGGAN, *Vice-President of Senior Class*

JO SNELL, *President of Junior Class*

DOT WILLIAMS, *Vice-President of Junior Class*

PHYLLIS DYER, *President of Sophomore Class*

ELAINE PIERCE, *President of Freshman Class (not pictured)*

JANET SMITH, *President of Epsilon Chi Society*

WINIFRED BEASLEY, *President of Zetesian Society*

DOT FIELDS, *President of Athletic Association*

MARIAN HALL, *President of Day Students*

MARY ANN RUSSELL, *Vice-President*  
 BETTY MCLEAN, *Secretary*  
 JO McCASKILL, *Treasurer*  
 NANCY LEDBETTER, *Ex Officio, President of Student Body*  
 ELIZABETH CHAPPELL, *Circle of Religious Meetings*  
 MARGARET WILLIAMS, *Circle of Music*  
 JO PEARCE, *Circle of Home Missions*  
 MARGARET WATT, *Circle of Foreign Missions*  
 MYRA MANESS, *Circle of Social Activities*  
 DORIS ANN BAIN, *Circle of Publicity*  
 SARA MELVIN, *Circle of Hospitality*  
 BETTY GREY MELVIN, *Circle of Library*  
 LOU FIELDS, *Circle of Comradeship*  
 JANE CAUDELL, *Circle of Sunday School*  
 DEWIE BUIE, *Circle of Christian Growth* (not pictured)

# F. M. C. CHRISTIAN





NINA COIT BERRYHILL  
*President of Flora Macdonald*

## ASSOCIATION . . . 1949

The Flora Macdonald Christian Association has as its aim to promote the growth of Christian faith, character, and fellowship among its students.

The outstanding events of the year are the installation service, the candlelight service, the White Gift service, the Dome service, and a special series of services conducted by capable speakers in both fall and spring—known as Religious Emphasis Week.

The cabinet which consists of the President of the Christian Association, the adviser—Mrs. Elbert McPhaul, and the circle chairman has been an invaluable guide to the Association in carrying out its great program of work.

Our theme for the year, “Remember now thou Creator in the days of thy Youth” has been a challenge to many students for growing in faith and maintaining a closer fellowship with our Creator.





JANET SMITH  
*President*

# EPSILON CHI LITERARY SOCIETY

“Epsilon Chi, we sing to you”—our society strives to develop poise and literary enlightenment among our members, as well as providing such entertainment as the yearly picnics and dance.

ELIZABETH CHAPPELL  
*First Vice-President*

EVA MAE BEAM  
*Second Vice-President*

JASMINE ROHANNA  
*Recording Secretary*

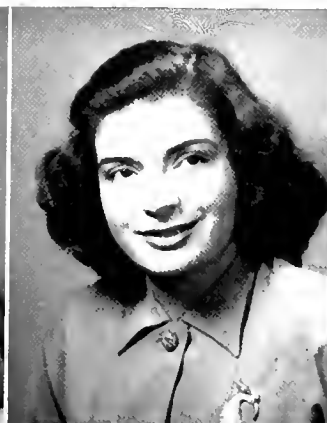
CAITRINE SUMMERS  
*Corresponding Secretary*

EFFANOR LANIER  
*Treasurer*

ANN YELVINGTON  
*Critic*

ZELMA GRANHAM  
*Chaplain*

MIRIAM KNIGHT  
*Censor*



# ZETESIAN LITERARY SOCIETY

With friendship as our motto, the members of our society strive to carry out the spirit and tradition of Flora Macdonald friendship, and at the same time promote higher intellectual achievements among its members. The highlights of the year are the society dance, parties, and informal meetings.



WINIFRED BEASLEY, *President*

NEIL SPIVEY  
*First Vice-President*

JUDITH POWERS  
*Second Vice-President*

BETSY LATHY  
*Recording Secretary*

JEAN McDONALD  
*Corresponding Secretary*

HELEN SHERRILL  
*Treasurer*

BETTY JO McMILLIAN  
*Critic*

HANNAH PRICE  
*Censor*

GAYNELL ARNOLD  
*Chaplain*





KATHARYNE PRUDENCE HERRING  
*Business Manager*



ANN ELIZABETH MCNEELY  
*Editor-in-chief*

## THE 1949

In the 1949 WHITE HEATHER, the staff has tried to portray the daily life of Flora Macdonald girls. If you follow us through the open doorway, you will see the gay campus scenes and take part in our unending college activities. We hope that this record will preserve some of our priceless memories, and that when we re-read our annual the best years of our lives will be brought back to us—our Flora Macdonald College Days.



Herring, McNeely, Conoly

CAROLYN LEE FELLIOTT, *Assistant Editor*  
 MARY GREGORY, *Assistant Business Manager*  
 FLO HOOVER, *Senior Class Editor*  
 DEWIE BUIE, *Junior Class Editor*  
 BETTIE WALL, *Sophomore Class Editor*  
 JEANIE PARTIS, *Freshman Class Editor*  
 KELLY BULLOCK, *Snapshot Editor*  
 ELEANOR LA NIER, *Snapshot Editor*  
 PAUL ARRINGTON, *Literary Editor*  
 BARBARA CLARK, *Literary Editor*  
 BLOSSOM GRIFFIN, *Business Editor*  
 HELEN LICKIE, *Typing Editor*  
 MISS MARY CONOLY, *Adviser*



ELIZABETH CIAPPELLI  
*Acting Business Manager*

# WHITE HEATHER



# PINE and

Creative writing: stories, poems, essays—the best the Flora Macdonald students are capable of producing, is found in the college literary magazine. *The Pine and Thistle*, which is published quarterly, has set for its goals the encouragement of creative writing, and the development of an appreciation of good literature on the part of the Flora Macdonald students.



HELEN JOY KNIGHT  
*Editor*

Knight, Shealy, Fisher



# THISTLE

MARGOT WALL, *Assistant Editor*  
NAOMI CONKLING, *Assistant Business Manager*  
CAROLYN LEE ELLIOTT, HELEN SHERRILL, *Literary Editors*  
PAV ARRINGTON, VERNISE WOODWARD, NEIL SPIVLY, NANCY  
McCUBBINS, ADA LEE RANDALL, *Feature Editors*  
ROBERTA JOHNSON, SUE HUNT, *Epsilon Chi Editors*  
SYLVIA THOMPSON, *Zetesian Editor*  
SARAH McLEOD, NINA CO., *Poetry Editors*  
ROSA WILLIAMS, ROSA WATSON, FISH SMITH, *Typing Editor*  
DORIS BAIN, MARGARET OLIVER, *Art Editors*  
JULIA MAE GRAHAM, CATHERINE BULLOCK, *Exchange Editors*  
JANE CAUDELL, *Book Reviewer*  
CARLEEN MOULDER, BETTE WALL, *Make-up Editors*  
MISS ANN SHEALY, *Adviser*



PHYLLIS FISHER  
*Business Manager*



# WHO'S WHO

Six of the outstanding seniors of Flora Macdonald are chosen each year to be registered in *Who's Who Among Students in American Colleges and Universities*. In 1949 the girls chosen were Nancy Ledbetter, Nancy Bishop, Flora Ed Riggan, Bette McNeely, Miriam Knight, and Janet Smith. These girls combine the traits of leadership, scholarship, and character.

BISHOP  
MCNEELY



KNIGHT  
RIGGAN



LEDBETTER  
SMITH







HALL  
 RUSSELL  
 GRIFFIN  
 McNEELY  
 CORKLING  
 BEAM

## SENIOR SCRIBBLERS

Closely to depict in a few phrases a true and unforgettable picture of each of their classmates, these five senior Scribes with the WHITE HEATHER Editor as Chief Scribe, use their ingenuity through the year to prepare these sketches for the annual. The scribes are selected and "tapped" by the retiring scribes at the end of each year.



### OFFICERS

- PAT ARRINGTON, *President*  
 BETTY JO McMILLAN, *Vice-President*  
 LLEWELLYN FIELDS, *Secretary-Treasurer*  
 MISS ALMA MARIE TURNER, *Adviser*

## EL CIRCULO ESPANOL

Habla Vd. Espanol? Then you are probably a member of El Circulo Espanol. The aim of the Spanish Club is to familiarize its members with all phases of Spanish life and to help them develop better knowledge of the language itself.

## MATH CLUB

The Math Club is composed of students who have made an average of B or above on their first semester course of math or physics. The Head of the Mathematics Department always serves as the club's faculty adviser. The programs usually include a discussion of a famous mathematician and his contribution to mathematics. This aids in promoting our objective which is to promote a greater interest in math among the members.

### OFFICERS

JO McCASKILL  
*President*

DOT WILLIAMS  
*Vice-President*

MADELINE CARSWELL  
*Secretary*

ANN RUSSELL  
*Treasurer*

DR. LOUISA VAN DYKE  
*Adviser*



### OFFICERS

DOROTHY WILLIAMS  
*President*

FLORENCE ROGAN  
*Vice-President*

LOIS KINLAW  
*Corresponding Secretary*

MARGARET SMITH  
*Recording Secretary*

BETTE WALL  
*Treasurer*

DR. HANSEN  
MISS HARMON, *Advisers*



## WILLIAM BARTRAM SCIENTIFIC SOCIETY

The purpose of the William Bartram Scientific Society is to encourage among the students an interest in and a better understanding of science. The Club endeavors to accomplish this purpose through scientific programs presented at the monthly meetings through various projects held throughout the year. Our Club forms a "nucleus" from which we hope will "fission" future energetic "atomic" experts.



## STUDENT VOLUNTEERS

The Student Volunteer Organization is composed of girls interested in foreign and home missions. Their informal meetings are held on Sunday nights, when there is a study of missions. This group contributes to the spiritual growth on the campus and its work is inspirational.

### OFFICERS

MARGARET WILLIAMS  
*President*

MADILINE CARSWELL  
*Vice-President*

EVA MAE BEAM  
*Secretary*

WILMA RATCHFORD  
*Treasurer*

CATHERINE SUMMERS  
*Librarian*

## PRAYER BANDS

Realizing the power and need of prayer in our daily lives, groups of girls meet together each Wednesday morning for a period of prayer, meditation, inspiration, and devotion. Our prayer bands afford one of the most effective means of making personal religious contact. Each member of the student body is placed in one of these groups.

The treasured opportunity of a prayer band leader is to help each member of her small group to realize the privilege that is hers.



DEWIE BUIE  
*Chairman of Prayer Bands*

#### OFFICERS

HELEN CROWELL  
*President*

LILLIAN TURNER  
*Vice-President*

SARA McLEOD  
*Secretary-Treasurer*

DR. ELEANOR SCOTT  
*Adviser*



## SAPPHO POETRY CLUB

The purpose of the poetry club is to cultivate greater understanding and enjoyment of poetry through well-organized and entertaining programs. Creative work among the club members is encouraged.

## FRENCH CLUB

The singing of the "Marseillaise" opens many of the monthly meetings of the French Club. Here, an attempt is made to motivate enthusiasm in the French language and to become better acquainted with French civilization through games, drama, and informal talks. Recordings, also, are used as an aid to familiarize the members with French culture and in perfecting pronunciation.

#### OFFICERS

RUTH TUGWELL  
*President*

JO PEARCE  
*Vice-President*

DEWIE BUIE  
*Secretary-Treasurer*

DR. ELEANOR MARKS  
*Adviser*



## INTERNATIONAL RELATIONS CLUB

Never before has an organization of this sort had such a challenge as now. This inter-collegiate organization sponsored by the Carnegie Endowment of the advancement of peace, brings before the students of American Colleges the problems facing the United Nations. Through active participation and interest, the I. R. C. serves to promote an understanding of these problems so that young people can prepare to take their places in and do their share of the world's business.



### OFFICERS

FLORA ED RIGGAN  
*President*

KATHERINE BULLOCK  
*Vice-President*

ANNA HINES  
*Secretary-Treasurer*

BETTE McNEELY  
*Reporter-Custodian of  
Scrapbook*

MISS CAROL ROBERTSON  
*Adviser*



### OFFICERS

DORIS ANN BAIN  
*President*

CAROLYN LEE ELLIOT  
*Vice-President*

MARGARET WATT  
*Secretary-Treasurer*

CATHERINE SUMMERS  
*News Reporter*

BETTY JO McMILLIAN  
*Scrapbook Custodian*

## HIGHLAND PLAYERS

The show must go on! The Highland Players, with their limited facilities, are often doubtful as to whether the show will go on. However, their hard work and intense interest never fails—and instead has made the club one of the most enjoyable for the other students as well as for its members.

## HOME ECONOMICS CLUB

Any Home Economics major is eligible for membership in the Home Economics Club. At their monthly meetings they strive to further their knowledge in their own and in related fields. Interesting lectures, demonstrations, and exhibits are characteristic of their programs.

### OFFICERS

ELIZABETH CHAPPELL  
*President*

EVA MAE BEAM  
*Vice-President*

MYRA MANESS  
*Secretary-Treasurer*

ANN TURNAGE  
*Program Chairman*

SARA MELVIN  
*Scrapbook Custodian*

MISS FRANCES COMER  
*Faculty Adviser*



### OFFICERS

MARION HALL  
*President*

## DAY STUDENTS' CLUB

Cars, spaghetti suppers, scavenger hunts, cokes at Townsend's—that's the life of the Day Students at F. M. C. Their club is the most active and the most envied on the campus. Its activities are restricted only to the hours 1-12 A.M. and 1-12 P.M. It boasts only the finest alumnae, among whom is Miss Mary Conoly, the capable and patient adviser of the Day Students Club.





## ALPHA PSI OMEGA

The Kappa Lambda Chapter of Alpha Psi Omega national dramatic fraternity is a new organization on our campus. It is an honorary group of the students who have acquired a minimum of fifty points for their work in dramatics.

### OFFICERS

MARGOT WATT  
*President*

JANE CAUDELL  
*Vice-President*

JASMINE ROHANNA  
*Secretary-Treasurer*

## COMMERCIAL CLUB

The Flora Macdonald Commercial Club is made up of about fifty girls who are either regularly enrolled in the commercial classes or taking subjects taught in that department. Meetings are held monthly featuring guest speakers, who talk on subjects pertaining to the business world. The social highlights of the club's activities include weiner roasts, Christmas parties, and teas.



### OFFICERS

ROSA WATSON  
*President*

PEGGIE HARDIE  
*Vice-President*

ROSA WILLIAMS  
*Secretary-Treasurer*

MISS LEIA MCINTYRE  
AND MISS ELIZABETH  
SIENHOUSE, *Advisers*



# ATHLETICS

---

One of the aims of Flora Macdonald College is to help each student build a sound body as well as a sound mind and spirit. The girls attain physical development and qualities of sportsmanship through their enthusiastic participation in sports.

1949



The members of the Athletic Board show outstanding ability and leadership in each sport on the campus. They are chosen as leaders of their respective sports.

MARY ALICE PARKS  
*Vice-President*

KATRINA HUBBLE  
*Secretary*

JO PEARCE  
*Treasurer*

ELEANOR LANIER  
*Salesman*

LOIS KINLAW  
*Tennis*

HELEN CROWELL  
*Bowling*

JO PEARCE  
*Volley Ball*

ELSIE SMITH  
*Basketball*

MADLINE CARSWELL  
*Table Tennis*

MISS ETHEL BAILEMAN  
*Adviser*



DOROTHY FIELDS

## ATHLETIC ASSOCIATION



# CHEERLEADERS

The girls chosen to lead the college in cheers for the various teams must possess bubbling personalities, enthusiasm, and school spirit. Those selected for 1949 were: Flo Hoover, Senior; Jac Adele Blackwell, Junior; Caroline Ogilvie, Sophomore; Ernestine Baldwin, Freshman; and Fran Nas-sif, College cheerleader.



The Monogram Club is an honorary organization. Girls are chosen for membership because of outstanding achievements in athletics, fine qualities of sportsmanship, good health, and all-round development. They must have a high scholastic record and twenty points for leadership in student activities. Those representing the monogram club were: Dorothy Fields, Nancy Ledbetter, Flora Ed Riggan, Doris Ann Bain, Jasmine Rohanna, Nancy Bishop. *Not pictured:* Helen Knight, and Audrey Fulcher Scarboro.



# MONOGRAM CLUB

# VOLLEYBALL



## SENIORS

Betty Price  
Do: Fields  
Flora Ed Riggan  
Nancy Bishop  
Doris Ann Bain  
Dovic Davis

### *Seated*

Carleen Moulder  
Jo Pearce  
Dewie Buie  
Lois Kinlaw  
Margaret Smith  
Ann Yelvington

### *Standing*

Jae Adele Blackwell  
Mary Alice Parks  
Nancy McCubbins  
Betty McLean  
Mary Gregory  
Judith Powers  
Doloris McCain  
Dot Williams

## JUNIORS



# 1949

*Seated:*

Ann Highsmith  
Elsie Smith  
Peggy Hardee  
Burt Kelly  
Maysie Miller

*Standing*

Pete Hubble  
Carolyn Reynolds  
Cynthia Stevens  
Phyllis Dyer  
Faye Sutliff



## SOPHOMORES

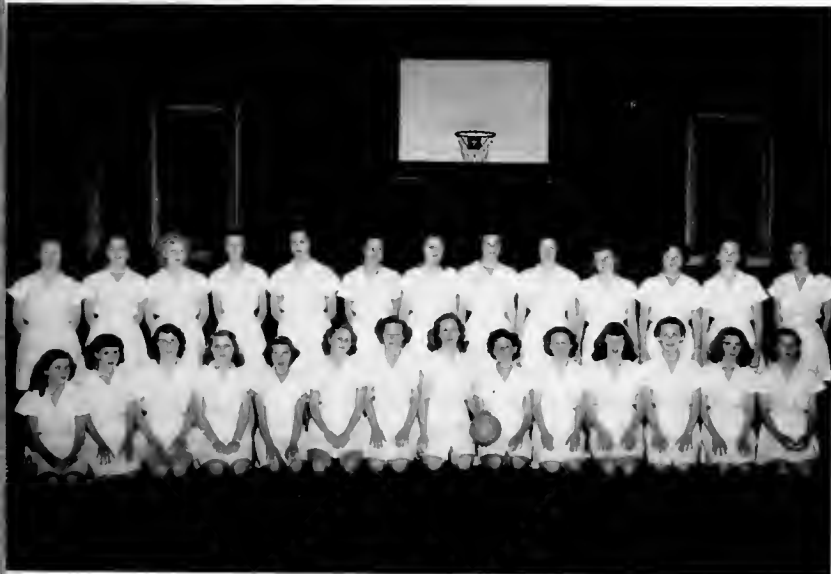
*Seated*

Betty Ann Squire  
Priscilla Murphy  
Geneva Townsend  
Barbara Poff  
Jean Kilpatric  
Audrey Ruple  
Emily Richie  
Ann Shaw  
Jean Fuller  
Betty Ann Brunson  
Jane Moore  
Harriett Watson  
Frances Hall  
Joyce Adams

*Standing*

Emily Shaw  
Mary Ann Martin  
Lois Brown  
Enid Grady  
Sophia Zea  
Jo Ann Williams  
Donnice De Vane  
Janice Murdoek  
Emily Grier  
Ann Pearce  
Jean Farrior  
Rachel McCaskill  
Jeanie Partin

## FRESHMEN



## SENIOR BASKETBALL

Betty Price  
Dorothy Fields  
Flora Ed Riggan  
Nancy Bishop  
Doris Ann Bain, *Captain*  
Dovie Davis  
Nancy Ledbetter  
Ada Lee Randall  
Emilyn Mauldin  
Helen Knight  
Rebekah Hunsucker



## BASKETBALL

Anne Yelvington  
Dorothy Williams  
Judith Powers  
Mary Alice Parks, *Captain*  
Betty McLean  
Lee Elliot



## JUNIOR BASKETBALL



## SOPHOMORE BASKETBALL



Jean McDonald, *Captain*  
 Peggie Hardie  
 Margie Lovett  
 Margaret Elliott  
 Lois Jackson  
 Genewood Dorsey  
 Bert Kelly  
 Nancy Walker  
 Sue Hunt  
 Pete Hubble  
 Elsie Smith  
 Anne Highsmith

- 1949



Betsy Workman  
 Barbara Poff  
 Mary Anne Martin  
 Janie Thompson  
 Enid Grady  
 Sophia Zea  
 Rebecca Thomas  
 Janice Murdoch  
 Pat Nester  
 Emily Nan Grier  
 Harriett Watson  
 Anne Shaw  
 Frances Hall  
 Betty Ann Squire  
 Pricilla Murphy  
 Geneva Townsend  
 Donnice De Vane  
 Jean Kilpatric  
 Audrey Rumble  
 Emily Richie  
 Jeannie Partin  
 Jean Fuller  
 Jane Moore  
 Annie Lee Hopkins  
 Joyce Adams  
 Lucille Harrington  
 Violet Thomas

## FRESHMAN BASKETBALL



Tennis offers a year around sport at Flora Macdonald. Many students participate in and enjoy this sport.

## TENNIS

## BOWLING

Much enthusiasm is shown for bowling on our newly equipped alleys. This popular sport is a favorite pastime for many students.



Judith Powers

Lillian Turner

Mary Gregory



## ARCHERY

## ATHLETIC CAPTAINS



DOROTHY FIELDS  
*Senior Volley Ball*

DEWIE BUE  
*Junior Volley Ball*

PEGGY HARDIE  
*Sophomore Volley Ball*

ANN SHAW  
*Freshman Volley Ball*

DORIS ANN BAIN  
*Senior Basketball*

MARY ALICE PARKS  
*Junior Basketball*

JEAN McDONALD  
*Sophomore Basketball*

JEANIE PARTIN  
*Freshman Basketball*

# FEATURES

---

It is such extra-curricular features as these that make life at Flora  
Macdonald complete.

1949



---

# MAY QUEEN

AUDREY FULCHER SCARBORO





REBECCA BACON

MAID OF  
HONOR

## MAY DAY

One of the highlights of the year is May Day. The beauty of the queen and her bevy of attendants, combined with the beauty of the campus and the presentation of folk dancers and songs, make the ceremony a statewide attraction.



# MAY DAY NINETEEN

*May Queen*

AUDREY FULCHER SCARBORO

*Maid of Honor*

REBECCA BACON

*Senior Attendants*

ADA LEE RANDALL

MARION ALLRED

CATHERINE BULLOCK

*Junior Attendants*

JAC ADELE BLACKWELL

MARY GREGORY

LOIS KINLAW

*Sophomore Attendants*

ANN MAY

PAT McRAE

*Freshman Attendants*

ANN PEARCE

HARRIET WATSON



# HUNDRED FORTY NINE

The May Day celebration at Flora Macdonald is its most colorful and varied single event. Many people come to join us in our celebration of the coming of Spring. Every girl takes part in May Day; thus, it is a joyous and thrilling occasion. Whether presented on the stately front lawn, or in the rustic outdoor theatre, the pageant is a beautiful spectacle. The celebration is presented before the splendor of the court, under the excellent direction of Miss Ethel Bateman.





**CHIEF MARSHAL**

**BETTY McLEAN**

# MARSHALS 1949

To represent the students of Flora Macdonald in the numerous social events during the year, four marshals are chosen from each of the two literary societies and a chief marshal representing each society in alternate years. These girls serve as receptionists and hostesses, planning the entertainment and decoration for all social functions. They are elected from the Junior Class and are chosen carefully to present a pleasing example of the Flora Macdonald girl to our guests.

*Epsilon Chi Literary Society Marshals: Sara Melvin, Mary Gregory, Jo Pearce, Jo Snell.  
Zetesian Literary Society Marshals: Dewie Buie, Lois Kinlaw, Anna Jordan, Judith Powers.*



# GUEST ARTISTS



Ophelia and Polonius in a scene  
from "Hamlet"



EUGENE CONLEY, *tenor*



HENRIETTAT SCHUMANN, *pianist*

The guest artists of the concert-lecture series are some of the greatest attractions of the school year. This year we enjoyed tenor Eugene Conley, pianist Henrietta Schumann, organist Marcel Dupre, Dr. Luther Gable, lecturer on the atomic theory, Ellis Arnall, former governor of Georgia, and the Abingdon Barter Theater's interpretation of "Hamlet." These concerts and lectures are an important part of our school activities.

MARCEL DUPRE, *organist*





BEAUTY . . . Ann May, inner and outer loveliness



# SUPERLATIVES

CAPABILITY . . . NANCY BISHOP, leadership and ability to hold responsible positions.

VERSATILITY . . . MARGARET WATT, unusual ability to do many things well.





PERSONALITY . . . PHYLLIS DYER, great personal charm and warmth.

SPORTSMANSHIP . . . CAROLYN WALKER, a true spirit of honor and  
fairness in daily life.

FRIENDLINESS . . . NINA BERRYHILL, a spirit that reaches out to others in sincerity.

WHITE HEATHER FEATURE GIRL . . . MARION HALL, selected by the Staff as the best all around student.





Crows in a row



Best hand forward

Happy days at the Practice House



Run girls, council members

Dr. Hansen and botany interns



In the good ol' summer time

Two inseparables

Posing one Sunday afternoon



No, this can't be true



Thirty trips a day

I hope there's not a fire

Flipping, who won Phyllis??



Roommates

It's all over now!!



It's not that bad, is it???

Yeah, co-ed College . . .

Gosh, don't we miss them??





Dome Service with Flossie  
Mac angels

We're forever blowing bub-  
bles!!

"Mother McLeod" and  
some of her girls

'Twas the night before  
Christmas . . . holidays

Main Street of down town,  
Red Springs

No escalator in the garden,  
sorry

Look a' there ain't she Purty?

They don't look green, do  
they???

"Wink'em "Blink'em . . .  
Where's Nod

Having fun, eh Sandy?

High I. Q.

Up and coming leaders of  
"Flossie Mac"

Spring Holidays, Myrtle  
Beach

There's Santa, but where's  
the snow???

Vero and Emilyn!!

Christmas Banquet



"HERE ENDS YOUR WHITE HEATHER"



**RED SPRINGS SUPPLY COMPANY, INC.**  
**GENERAL MERCHANTS**

*The Friendly Store*

---

Fertilizers and Cotton  
Livestock                      Hardware  
Grocery                      Market  
Building Material

---

DIAL 3701 and 3271

RED SPRINGS, NORTH CAROLINA

**NEIGHBORS  
SHOE STORE**

---

*Red Springs' Exclusive  
Shoe Store*

---

Phone 3981

RED SPRINGS, NORTH CAROLINA

GOLD MEDAL FERTILIZERS  
LIBERTY PREMIUM FERTILIZERS  
MODERN GIN SYSTEM  
MODERN SEED CLEANING EQUIPMENT



**LIBERTY  
MANUFACTURING  
COMPANY**

RED SPRINGS, NORTH CAROLINA

# TOWNSEND'S PHARMACY

*The Rexall Store*

---

WHERE THE COLLEGE GIRLS MEET

DEPENDABLE DRUGGISTS

---

RED SPRINGS, NORTH CAROLINA

*You Will Be Pleased  
With Our Quality  
and Service*



## RED SPRINGS DRUG STORE

*Headquarters for  
Flora Macdonald Girls*



RED SPRINGS, NORTH CAROLINA

## General Auto Sales, Inc.

---

OLDSMOBILE and G.M.C. TRUCKS  
Full Line of Parts : Expert Mechanics

---

Phone 2381

RED SPRINGS, NORTH CAROLINA

## LENOIR'S JEWEL SHOP

---

*Quality Jewelers*

---

RED SPRINGS, NORTH CAROLINA

M. & S. MOTOR CO.

CHRYSLER and PLYMOUTH CARS  
*Sales and Service*

RED SPRINGS, NORTH CAROLINA  
Phone 248-1

*Compliments of*

**RED SPRINGS  
CAFE**

RED SPRINGS, N. C.

*Compliments of*

**McKEITHAN  
HARDWARE**

RED SPRINGS, NORTH CAROLINA

*Compliments of*

**MAXTON SUPPLY CO.**

MAXTON, N. C.

**RED SPRINGS FLORIST**

*"Flowers are love's sweetest language"*

MRS. R. B. McCracken      PHONE 3691  
RED SPRINGS, NORTH CAROLINA

*Compliments of*

**Kennedy's Jewelry and Gift Shop**

**FINE WATCH REPAIRING**

RED SPRINGS, NORTH CAROLINA

**SARAMAC  
FURNITURE STORE**

Phone 4381

RED SPRINGS, N. C.

**D. M. McMILLAN**

*"Ford Products Since 1912"*

RED SPRINGS, NORTH CAROLINA

*Compliments of*

**BAXLEY-JOHNSON  
CHEVROLET CO., INC.**

RED SPRINGS, N. C.

*Compliments of*

**MACKS' 5-10-25c STORES**

RED SPRINGS, NORTH CAROLINA

Pontiac  
Studebaker  
International Harvester

*Sales and Service*

---

**SINGLETON AND  
McMILLAN, INC.**

---

Phone 3971

RED SPRINGS, NORTH CAROLINA

Bud's  Service

GLENN PARLER - WATSON McNEILL

GAS - OIL - WASHING - GREASING

Phone 3921

RED SPRINGS, NORTH CAROLINA

---

**AUTO SERVICE CENTER**

AND

**RED SPRINGS FUEL OIL CO.**

AUTO PARTS AND REPAIR - WELDING

*Gasoline - Fuel Oils - Tires*

Phone 3061

RED SPRINGS, NORTH CAROLINA

TRAVEL BY

**TRAILWAYS**

---

**CHARTER BUSES**

To

ANY POINT IN THE  
UNITED STATES  
CANADA and MEXICO

---

**QUEEN CITY TRAILWAYS**

CHARLOTTE, NORTH CAROLINA

**Emblem of Economy . . .**



**The CS Rooster**

*He's your personal guide to Colonial  
Stores and grand things inside*



**COLONIAL STORES**

INCORPORATED

*Compliments of*

**HOOD MOTORS, INC.**

*Your DODGE - PLYMOUTH Dealer*

Est. 1933

LUMBERTON, NORTH CAROLINA

Phone 21

**A. WEINSTEIN & SONS**

LUMBERTON, NORTH CAROLINA

*Compliments of*

**HONEY DEW SODA SHOP**

Phone 1017

LUMBERTON, NORTH CAROLINA

**LUMBERTON OPTICAL CO.**

415 North Elm Street

LUMBERTON, NORTH CAROLINA

*High Quality Prescription Service*

*Compliments of*

**SHAW FURNITURE COMPANY**

West Second Street

LUMBERTON, NORTH CAROLINA

**LUMBERTON FLORAL CO.**

*Flowers for All Occasions*

Phone 320

LUMBERTON, NORTH CAROLINA

**MODERN FURNITURE  
COMPANY**

LUMBERTON, NORTH CAROLINA

*"Where You Enjoy  
Shopping"*

*Compliments of*

**LUMBERTON BAKERY**

LUMBERTON, NORTH CAROLINA

**"SINCE 1912"**



**THE**

*Capitol*

**OF**

**FAYETTEVILLE**

*Compliments of*

**POLLY ANN DRESS SHOP**

LUMBERTON, NORTH CAROLINA

FAYETTEVILLE, NORTH CAROLINA

# PRESBYTERIAN JUNIOR COLLEGE

GREETINGS

THE WHITE HEATHER

*In recognition of the cordial relations between the two colleges*

WE OFFER

Standard Two-Year College Courses leading to the A.A. and A.S. degrees. Preparatory Courses in the tenth, eleventh, and twelfth grades. Business Administration. One- and Two-Year Commercial Courses. Flying. Two Terms of Summer School.

Small classes, individual attention, athletics, student activities, Christian emphasis, thorough instruction, excellent faculty. Apartments for married students.

Box BH - :--Maxton, North Carolina

*Compliments of*

**HALLUM FURNITURE CO.**

ROCKINGHAM, NORTH CAROLINA

**R. W. GOODMAN COMPANY**

FURNITURE and CLOTHING

=====

Phone 81

South Lee Street

=====

ROCKINGHAM, NORTH CAROLINA

*Compliments of*

**GRAHAM'S**

**Department Store, Inc.**

=====

**Phones**

308-1

257-1

=====

RED SPRINGS, NORTH CAROLINA

**CROWDER BROTHER'S  
SINCLAIR SERVICE STATION**

Phone 9191

RED SPRINGS, N. C.

**McDONALD'S CLEANERS  
QUALITY CLEANING**

Phone 4111

RED SPRINGS, N. C.

*Compliments of*

**WOODS 5-10-25c STORES, INC.**

RED SPRINGS, NORTH CAROLINA

**BURROUGHS CUT-RATE STORE**

Phone 4271

RED SPRINGS, NORTH CAROLINA

SCHOOL SUPPLIES

STATIONERY : SANDWICHES

CANDY : TOILET ARTICLES : DRINKS

**EDEN'S FLOWER SHOP**

RED SPRINGS, N. C.

Dial 2241

*"We Wire Flowers Anywhere"*

*Compliments of*

**COLONIAL FROZEN FOODS**

RED SPRINGS, NORTH CAROLINA

**ALLEN BUILDERS SUPPLIES**

Inc.

LUMBER : BUILDING MATERIAL  
PLUMBING and HEATING

Phone 2396

RED SPRINGS, N. C.

**McNEILL'S  
CLEANERS and TAILORS**

RED SPRINGS, NORTH CAROLINA

Phone 2941

**HOME FURNITURE COMPANY**

*A Complete Line of  
Home Furnishings*

RED SPRINGS, NORTH CAROLINA

*Compliments of*

**WESTERN AUTO STORE**

RED SPRINGS, N. C.

*Compliments of*

**ROSE'S 5-10-25c STORE**

ROCKINGHAM, NORTH CAROLINA

*"Always First with the Finest"*



BEST WISHES FROM  
**ROBBINS CLOTH MILLS, INC.**

---

Red Springs Division

---

MAXTON ROAD

PHONES 228-1 and 448-1

*Compliments of*

**JOHN F. McNAIR, INC.**

---

**A MODERN  
DEPARTMENT STORE**

---

LAURINBURG, NORTH CAROLINA

**LAURINBURG  
MILLING COMPANY**

*Manufacturers of*  
HIGH GRADE FLOUR AND  
MIXED FEEDS

LAURINBURG, NORTH CAROLINA

---

*Compliments of*

**FLEISHMANS**

317 North Elm Street

•  
LUMBERTON, NORTH CAROLINA

**FREDDIE'S SUPPER CLUB**

PIT COOKED BAR-BE-CUE  
STEAKS : FRIED CHICKEN

*Curb Service*

*Dine and Dance*

OPEN 4 P.M. to 1 A.M.

*Closed Mondays*

DIAL 211-0

LUMBER BRIDGE, N. C.

*Compliments of*

**McLAUHLIN CO., INC.**

RAEFORD, NORTH CAROLINA

**W. A. McCORMICK & SONS**

*Complete Self-Service Food Store*

DISTRIBUTORS OF

BALLARD'S INSURANCE FEEDS

SAINT PAULS, NORTH CAROLINA

*Compliments of*

**GRANTHAM DRUG COMPANY**

SAINT PAULS, NORTH CAROLINA

*Compliments of*

**Z. V. PATE, INC.**

LAUREL HILL, NORTH CAROLINA

**HOTEL RAEFORD**

MR. AND MRS. O. W. HOLTZCLAW, *Lessee Owners*

U. S. HIGHWAY 15-A

AND N. C. 211

RAEFORD, N. C.

**THE ROBESONIAN**

*Robeson County's Daily Newspaper*

Established 1870



PUBLISHED FIVE DAYS EACH WEEK

AT

LUMBERTON, NORTH CAROLINA

**Johnson Cotton Company  
of Raeford, Inc.**

*Everything for the Home and Farm*

*Compliments of*

**COLLINS DEPARTMENT STORE**

RAEFORD, NORTH CAROLINA

*When better Automobiles are built*

**BUICK**

*will build them*

**COMMUNITY MOTOR CO.**

Phone 1099

LUMBERTON, NORTH CAROLINA

*Compliments of*  
**AUSTIN DRUG COMPANY**  
*The Rexall Store*

MAXTON, NORTH CAROLINA

*Compliments of*  
**LIBERTY CAFE**

MAXTON, NORTH CAROLINA

**FIRESTONE HOME &  
AUTO SUPPLIES**

A. C. GREENE, *Owner*

Phone 206-W

MAXTON, NORTH CAROLINA

*Compliments of*  
**McGIRT'S PLUMBING AND  
ELECTRICAL SERVICE**  
SUPPLIERS and CONTRACTORS

MAXTON, NORTH CAROLINA

If You Live in Southeastern North Carolina.

It's the

**FAYETTEVILLE OBSERVER**

*"North Carolina's Oldest Newspaper"*

For Complete

NEWS COVERAGE

**SERVICE TRADING  
COMPANY, INC.**

MAXTON, NORTH CAROLINA

COMPLETE LINE  
HOME FURNISHINGS



WESTINGHOUSE APPLIANCES  
REFRIGERATORS : RANGES

VACUUM CLEANERS

EVANS OIL HEATERS

RCA - PHILCO - WESTINGHOUSE  
RADIOS



CASH or TERMS

PHONE 265

**MAXTON CAFE**

*Specializing Western Branded Steaks - Chops  
and Best of Seafood in Season*

MAXTON, NORTH CAROLINA

*Compliments of*

**CATO'S DRESS SHOP**

*More Style for Your Money*

LUMBERTON, NORTH CAROLINA

**FREEMAN PRINTING COMPANY**

*"Over Fifty Years of Quality Printing"*

D. T. LAMBETH, *Manager*

LUMBERTON, NORTH CAROLINA

**HOTEL  
PRINCE CHARLES**

---

**AIR-CONDITIONED DINING ROOM**

---

FAYETTEVILLE, NORTH CAROLINA

---

*Compliments of*

**QUINN-MILLER COMPANY**

FAYETTEVILLE, NORTH CAROLINA

*Compliments of*

**HENEBRY'S of Fayetteville, Inc.**

*Registered Jewelers, American Gem Society*

110 Hay Street

FAYETTEVILLE, NORTH CAROLINA

---

*Compliments of*

**NEW YORK RESTAURANT**

FAYETTEVILLE, NORTH CAROLINA

---

*Compliments of*

**CENTRAL RESTAURANT**

FAYETTEVILLE, NORTH CAROLINA

---

*Compliments of*

**PEPSI-COLA  
BOTTLING  
CO.**



FAYETTEVILLE, NORTH CAROLINA

---

*Compliments of*

**EFIRD'S  
DEPARTMENT STORE**

FAYETTEVILLE, NORTH CAROLINA

---

*Compliments of*

**FIELDS COMPANY**

FAYETTEVILLE, NORTH CAROLINA

**BELK-HENSDALE COMPANY**  
**DEPARTMENT STORES**

LUMBERTON : FAYETTEVILLE : RAEFORD  
RED SPRINGS

---

The 275 Belk Stores Are the South's  
Largest Distributors of  
Reliable Merchandise

---

“SHOP AND SAVE AT BELKS”

**USE  
MERITA  
BREAD and CAKES**

---

**AMERICAN  
BAKERIES COMPANIES**

---

FAYETTEVILLE, NORTH CAROLINA

**COLLEGE GIRLS!**

Shop at  
**SEARS ROEBUCK  
AND CO.**

FAYETTEVILLE, NORTH CAROLINA



Phone 6171  
420 Hay Street

*Compliments of*  
**BENDER'S DRUG STORE**  
*A Real Drug Store*  
201 Hay Street  
FAYETTEVILLE, NORTH CAROLINA

---

**BAUCOM APPLIANCE COMPANY**  
RAEFORD, NORTH CAROLINA  
FRIGIDAIRE PRODUCTS  
MAYTAG WASHERS      EASY WASHERS  
ELECTRICAL SUPPLIES  
SMALL APPLIANCES, ETC.  
*QUALITY IS OF FIRST IMPORTANCE*

---

*Compliments of*  
**HUNTER BROTHERS, Inc.**  
467-469 Hay Street  
FAYETTEVILLE, NORTH CAROLINA

**CITY OPTICAL COMPANY**  
Wilmington : Fayetteville : Greensboro  

---

304 Hay Street  
Phone 7179  

---

FAYETTEVILLE, NORTH CAROLINA

*Compliments of*  
**Fayetteville Office Supply Co.**

PRINTERS : STATIONERS  
OFFICE OUTFITTERS  
513 HAY STREET : DIAL 2768  
FAYETTEVILLE, NORTH CAROLINA

*Compliments of*

# FAYETTEVILLE WHOLESALE COMPANY

Featuring

FRESH FRUITS and VEGETABLES

---

PHONE 2131

---

FAYETTEVILLE, NORTH CAROLINA

## M. M. SMITH FURNITURE COMPANY



FURNITURE  
FOR EVERY HOME

*Wholesale and Retail*



325 Hay Street  
FAYETTEVILLE, NORTH CAROLINA

## M. M. SMITH STORAGE WAREHOUSE

BONDED  
FIREPROOF WAREHOUSES  
Agt. ALLIED VAN LINES, Inc.

---

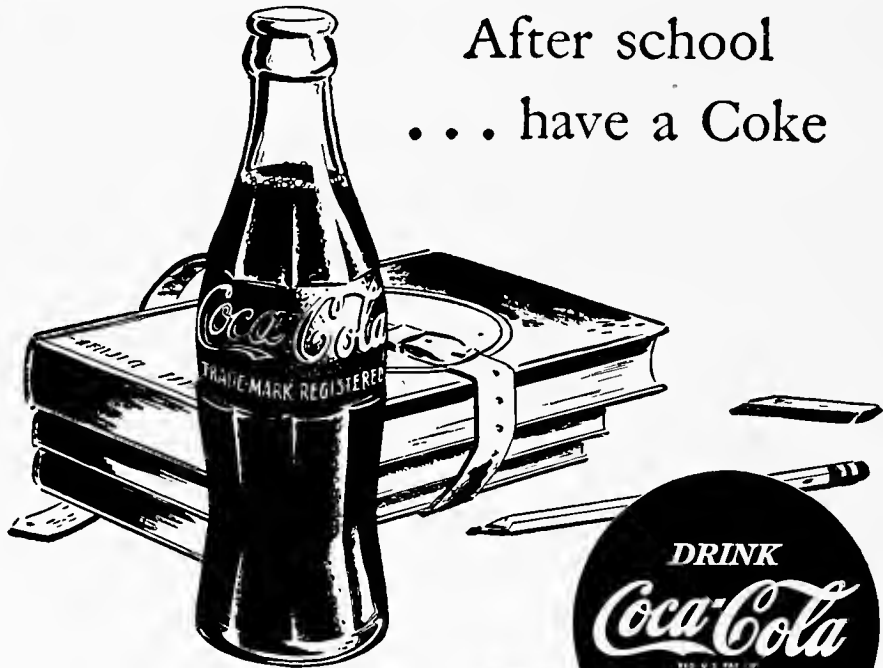
LOCAL and LONG DISTANCE  
HAULING

---

Phone 2194  
FAYETTEVILLE, NORTH CAROLINA



After school  
... have a Coke



BOTTLED UNDER AUTHORITY OF THE COCA-COLA COMPANY BY  
FAYETTEVILLE COCA-COLA BOTTLING CO., Inc.

*Compliments of*

**BUTTERCUP ICE CREAM**

HAMLET, NORTH CAROLINA

**B. C. MOORE and SONS, Inc.**

Phone 243-6

---

*"Buy from Moore and Save More"*

---

*Compliments of*

A FRIEND

RED SPRINGS, NORTH CAROLINA

# FLORA MACDONALD COLLEGE

RED SPRINGS, NORTH CAROLINA

53<sup>rd</sup> YEAR

UNDER THE AUSPICES OF THE PRESBYTERIAN CHURCH

---

A small, high-grade Liberal Arts College with Conservatory of Music, granting B.A., B.S. in Home Economics, and B.Mus. Degrees.

One- and two-year Business Courses.

Good Faculty, small classes, assuring personal attention to individual students.

*Adequate, comfortable buildings —*

*Attractive campus, lovely gardens —*

*Healthful surroundings —*

*Competent Dietitian, good food —*

*Emphasis on health and physical education —*

*Sports: Hockey, Basketball, Volley Ball, etc. —*

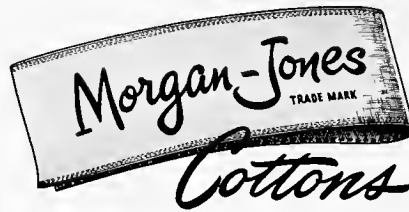
*Parties, dances, teas, receptions —*

A variety of extra-curricular activities, to engage the talents of all — Christian Association, Glee Club of eighty voices, Dramatics Club, Literary Magazine, International Relations Club, Epsilon Chi and Zetesian Societies open to all students, Concert and Lecture Course, etc.

*Outstanding for friendly, Christian atmosphere*

Moderate Charges

HALBERT M. JONES, *Acting President*



Are

“Yours for a Lovely Home”

---

BEDSPREADS

BATH SETS

DRAPES

DISH CLOTHS

SCATTER RUGS

DISH TOWELS

PRODUCED IN NORTH CAROLINA

*Sold by fine stores everywhere*

---

**MORGAN-JONES, INC.**

58 Worth Street

NEW YORK, N. Y.

# REDMON'S STUDIOS

ELKIN, NORTH CAROLINA

•

Official Photographers

for

## THE WHITE HEATHER

•

All Pictures Personally Made By

T. A. REDMON



**CHARLOTTE ENGRAVING CO.**

*School Annual Engravers*

Charlotte, North Carolina

A black and white illustration of a hand pointing upwards towards a globe. The globe is cracked and has a map of the United States on it. The background is a dark space with several planets and orbits, including Saturn with its rings. The text "Will we..." is written in the upper left corner of the illustration.

Will we...

## ... keep our place in the world?

UNITED STATES OF AMERICA—first among nations in national income! First in production of wheat, corn, cotton, petroleum, coal, and iron! First in communications, in motor vehicles per capita—first in many essentials to good living and prosperity.

And directly related to that position of leadership is our standard of education—for it has been shown that a country's wealth and welfare rise along with its educational standards. And countries rich in natural resources *can be poor and backward* without the benefits of education.

Yes, the United States is a leader in the field of education too—but *for how long?* Appalling conditions prevail today in many of our schools. Many of our most brilliant teachers are working against

odds—crowded classrooms, shortages of equipment and textbooks, long hours. . . . *Thousands* have left the profession for other work.

*You, and every United States citizen, will suffer from this situation, because it cannot help affecting our national prosperity before long.*

### WHAT TO DO?

Today—make it your business to take these two steps: 1. Check up on educational conditions in your local schools; 2. Back up and work with organizations seeking to improve teachers' working and living conditions. For only by *keeping* our educational standards high can we hold our place in the world—and assure a prosperous future for our children.

*Printed as a public service by*

**EDWARDS & BROUGHTON COMPANY**

Printers : Stationers : Lithographers : Engravers

Raleigh, North Carolina



**AUTOGRAPHS**



AUTOGRAPHS

**AUTOGRAPHS**





