









Flora McDonald



*the*

WHITE  
HEATHER

1950

*Published annually by the students of Flora Macdonald College  
Red Springs, North Carolina*

DEWIE BUIE, *Editor-in-Chief*

ANN YELVINGTON, *Business Manager*



"Mony a

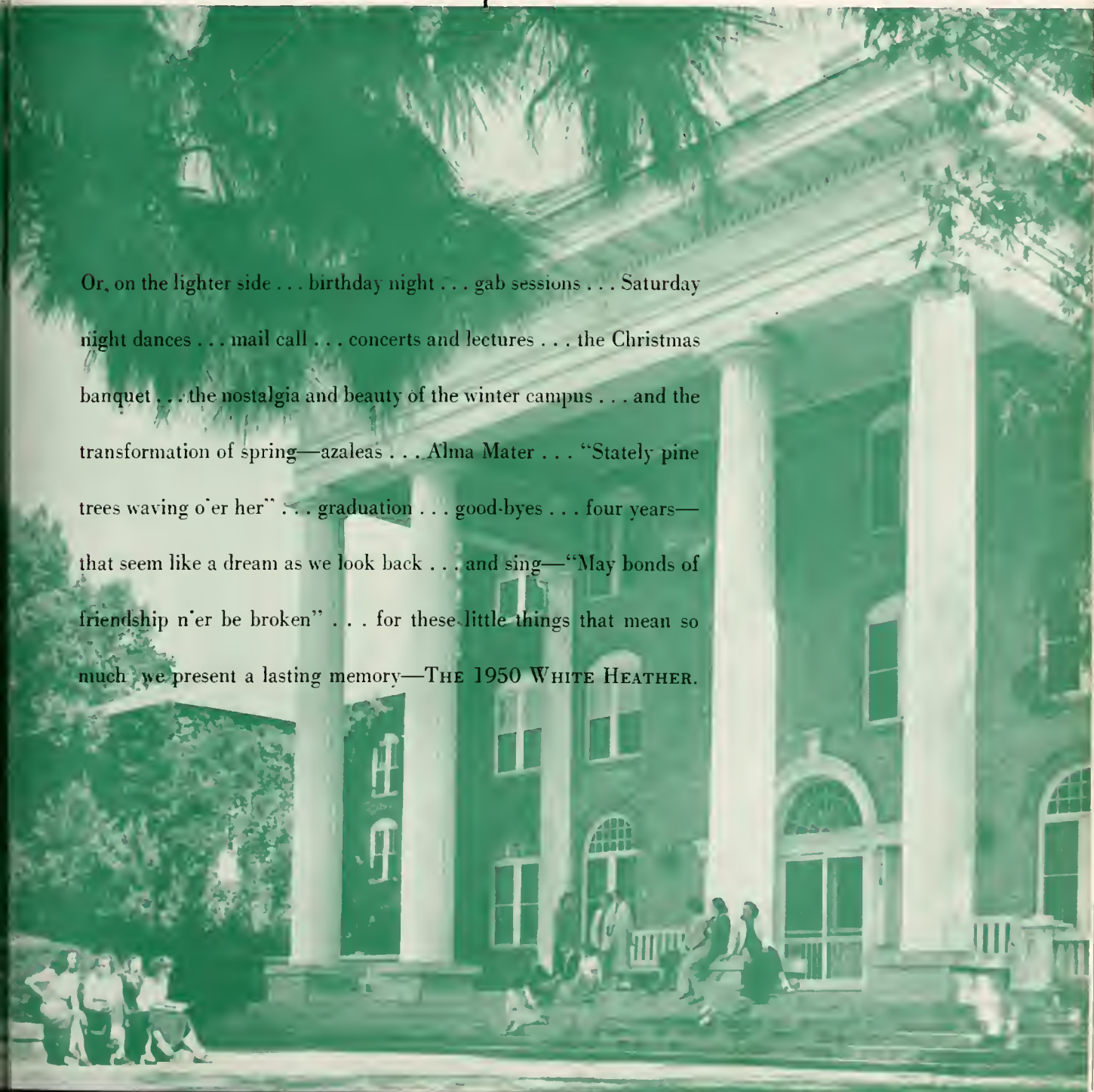
## FOREWORD

We present—in a Highland setting—the WHITE HEATHER . . . four years devoted to the merging of the dignity of traditional ideals with the informality and laughter of daily living, which form the plaid pattern of Flora Macdonald life . . . our School Spirit—made up of so many things: friendship everywhere, small student body with close faculty-student relationships, sportsmanship, sharing—in the mutual despair of exams, seemingly impossible assignments, term papers, hours and hours of parallel, and those endless labs. . .



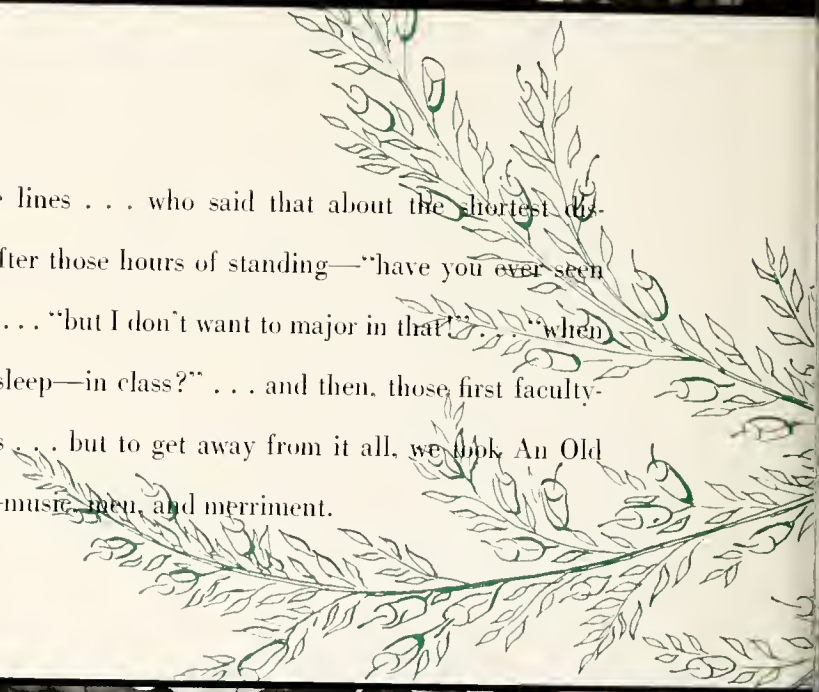
# bonnie day"

Or, on the lighter side . . . birthday night . . . gab sessions . . . Saturday night dances . . . mail call . . . concerts and lectures . . . the Christmas banquet . . . the nostalgia and beauty of the winter campus . . . and the transformation of spring—azaleas . . . Alma Mater . . . “Stately pine trees waving o’er her” . . . graduation . . . good-byes . . . four years—that seem like a dream as we look back . . . and sing—“May bonds of friendship n’er be broken” . . . for these little things that mean so much we present a lasting memory—THE 1950 WHITE HEATHER.





Lines, lines, more lines . . . who said that about the shortest distance? . . . and, after those hours of standing—"have you ever seen such a schedule?" . . . "but I don't want to major in that!" . . . "when am I supposed to sleep—in class?" . . . and then, those first faculty-student encounters . . . but to get away from it all, we took An Old Fashioned Walk—music, men, and merriment.





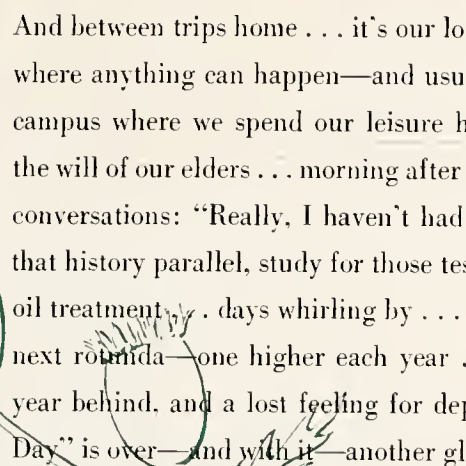
The joy we gained in sharing . . . worship . . . Sunday night hymn  
sings . . . Thanksgiving baskets . . . birthday parties . . . Christmas  
caroling . . . White Gift Service . . . vacation eve festivities—laughter,  
excitement, friendship . . . and piles of work . . . until we created that  
wonderful School Spirit.



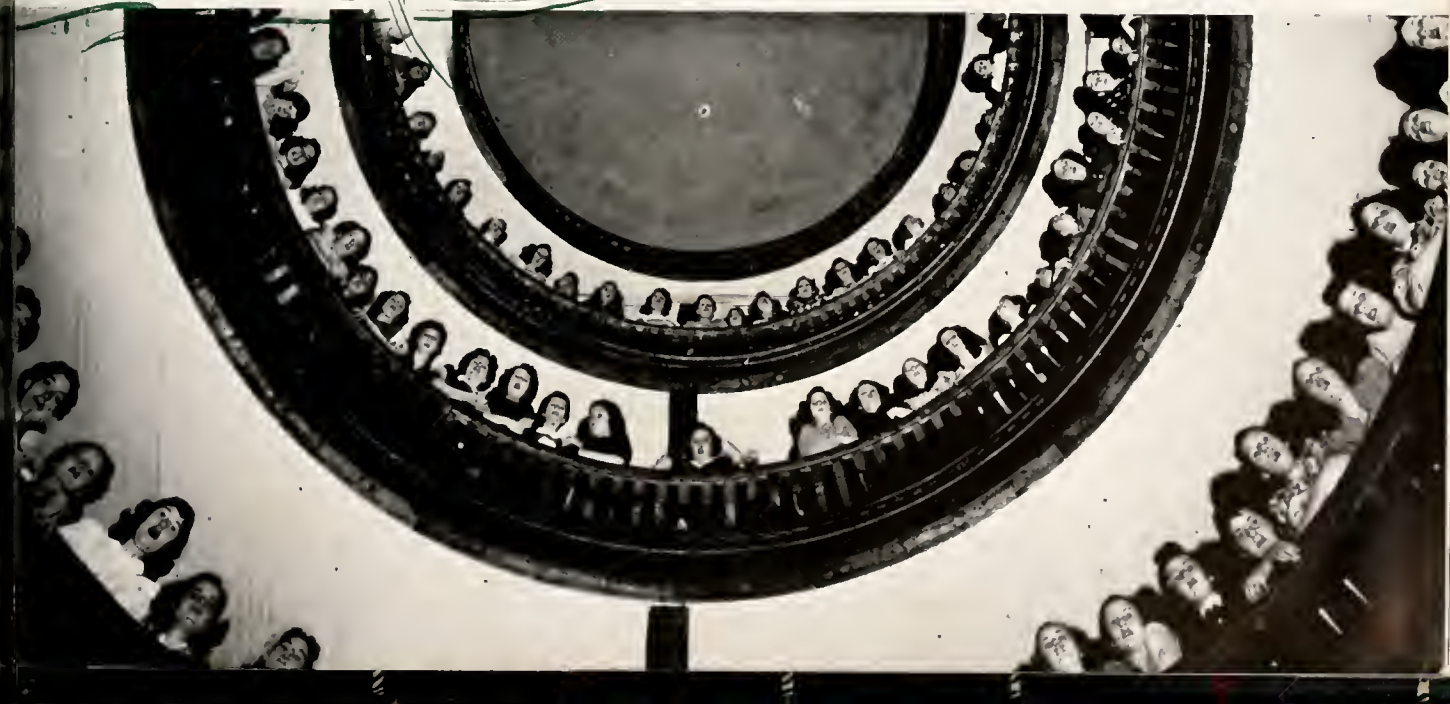


Any time, any morning . . . the last bell . . . you could tell the Freshmen—they got there on time . . . the smiles that appeared with first cups of coffee . . . 8:20—the inevitable . . . and we assemble for one reason or another: the sleep we missed the night before—social correspondence—reminiscing that past week end—and then, there are always the eager few . . . time out for a coke—eat, drink and be merry, for tomorrow you may diet . . . but in bigger moments we meet the public—with neon charm—and, concealing our pride, we assume the role of Sinatra's fans and await our turn.





And between trips home . . . it's our local rendezvous, the Milk Bar—where anything can happen—and usually does . . . then, back to the campus where we spend our leisure hours basking and baking—vs. the will of our elders . . . morning after morning of sun plus the typical conversations: “Really, I haven’t had time to write that paper, read that history parallel, study for those tests”—as she sits up for another oil treatment . . . days whirling by . . . a tremendous stampede for the next round—a one higher each year . . . the satisfaction of another year behind, and a lost feeling for departing seniors . . . “Going up Day” is over—and with it—another glorious year.





# DEDICATION

---

. . . because she has inspired us to love and appreciate the simple with the noble.

. . . because she has expressed a genuine interest and friendliness toward every student.

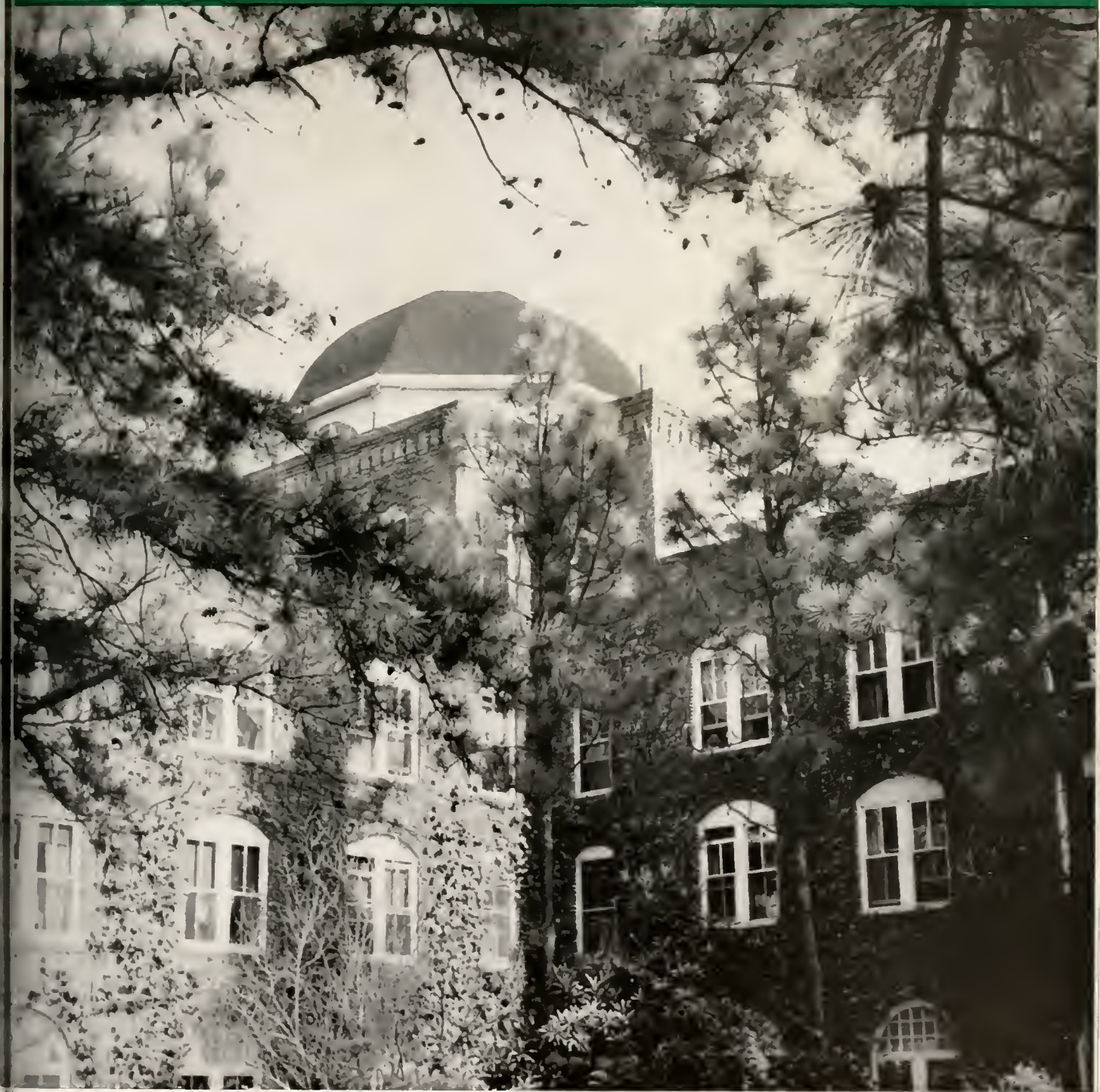
. . . because she has combined successfully the responsibilities of a home and a classroom.

We, with great respect and admiration, dedicate the

1950 WHITE HEATHER

to

MRS. ELBERT McPHAUL





DR. MARSHALL S. WOODSON, *President*

Our new president, Dr. Woodson, has very efficiently taken his place at the head of our college. His high ideals and capabilities set an example greatly to be admired in the educational and business world. We are looking forward to our future associations with him.

Jones



Vardell



Coxhead





# Administration and Faculty

The administration and faculty guide us safely through our college life. With an eye to the future they instill not only high ideals but habits of practical thinking.

MR. HALBERT M. JONES, *Acting President*

Progress and Mr. Jones go together. After his coming as Acting President, things began to move forward at Flora Macdonald. It was indeed our privilege to claim him as our leader in the field of education.

DR. CHARLES G. VARDELL, *President Emeritus*

There is a glory about him, here with his school and his memories of past years at Flora Macdonald. He went a-grailing—and succeeded.

MR. WILLIAM G. COXHEAD, *Acting Vice-President and Business Manager*

Our capable and much admired Vice-President, Mr. Coxhead, has won the respect and friendship of everyone with whom he has come in contact. During the absence of our regular president his many responsibilities were performed willingly and with great efficiency.

MISS HAZEL MORRISON, *Dean of Faculty*

In spite of worries of semester hours, schedules, and grades, Dean Morrison has seen us through another academic year, with her friendly smile and unending patience.

MR. ROBERT SMITH, *Dean of Music*

He is our dynamic Scotsman with a distinctive talent and love not only for music but for organization and progress as well.

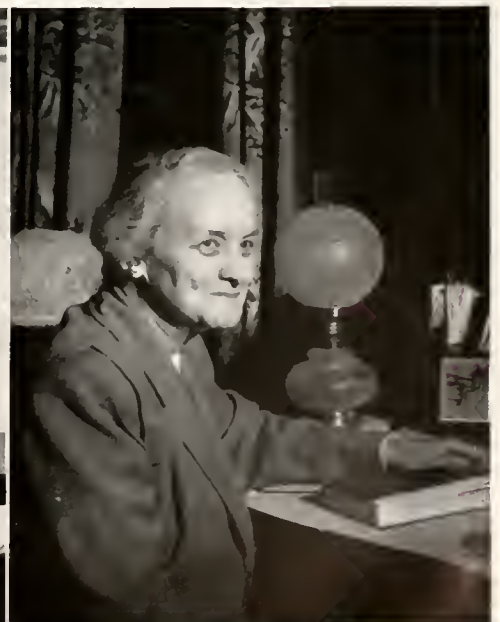
MRS. FRANCES ALEXANDER McLEOD, *Dean of Women*

She is a ready counselor, characterized by sympathy with understanding and a smile for everyone.

Morrison

Smith

McLeod



HARRIET N. MORRISON  
B.A., M.A.  
*Professor of Latin*

ELEANOR BRYCE SCOTT  
B.A., M.A., Ph.D.  
*Professor of English*

ANN SHEALY  
B.A., M.A.  
*Assistant Professor of English*

ETHEL BELLE HANSEN  
B.A., M.A., Sc.D.  
*Professor of Biology*

ANNIE MOORE CHERRY  
B.A., M.A.  
*Assistant Professor of Education*

FRANCES ELIZABETH COMER  
B.S., M.S.  
*Professor of Home Economics*

T. E. WRIGHT  
B.A., M.A.  
*Professor of French*



Morrison, Scott, Shealy, Hansen, Cherry, Comer, Wright

HELEN T. DORROH  
*Supervisor of Dormitories*

LIDA LAW CHAPMAN  
B.A., B.M.  
*Assistant Professor of Piano and Organ*

ELIZABETH STENHOUSE  
B.L.  
*Assistant Professor of Business Subjects*

AILEEN McMILLAN  
B.Mus.  
*Assistant Professor of Piano*

FLORA MCKINNON PERRY  
B.A., B.S.L.S.  
*Librarian*

LOIS J. LAMBIE  
B.M., M.Mus.  
*Assistant Professor of Public School Music*

LETA WELTHA MCINTYRE  
B.S.  
*Assistant Professor of Business Subjects*

ETHEL M. ROWLAND  
B.S.  
*Assistant Professor of Voice*



Seated: Dorroh and Chapman: Standing: Stenhouse, McMillan, Perry, Lambie, McIntyre, Rowland



Morrison, McPhaul, Harris, Hardee, Elliott, Bateman

S. BROWN MORRISON  
B.L.  
*Bursar*

ELIZABETH C. MCPHAUL  
B.A.  
*Assistant Professor of Bible*

PEGGY HARRIS  
*Field Representative*

PEGGY HARDEE  
*Assistant Librarian*

JOAN ELLIOTT  
*Secretary to the Acting Vice-President and Business Manager*

ETHEL BATEMAN  
B.A., M.A.  
*Director of Physical Education and Assistant to the Dean of Women*

## Faculty



Robertson, Robeson, Neighbors, Bullock, Conoly, Turner, Van Dyke, Connor

CAROL ROBERTSON  
B.A., M.A.  
*Professor of History*

LILLIAN FARQUHAR ROBESON  
*Assistant Professor of Violin*

GENEVIEVE M. NEIGHBORS  
B.A., M.A.  
*Assistant Professor of Education and Social Science*

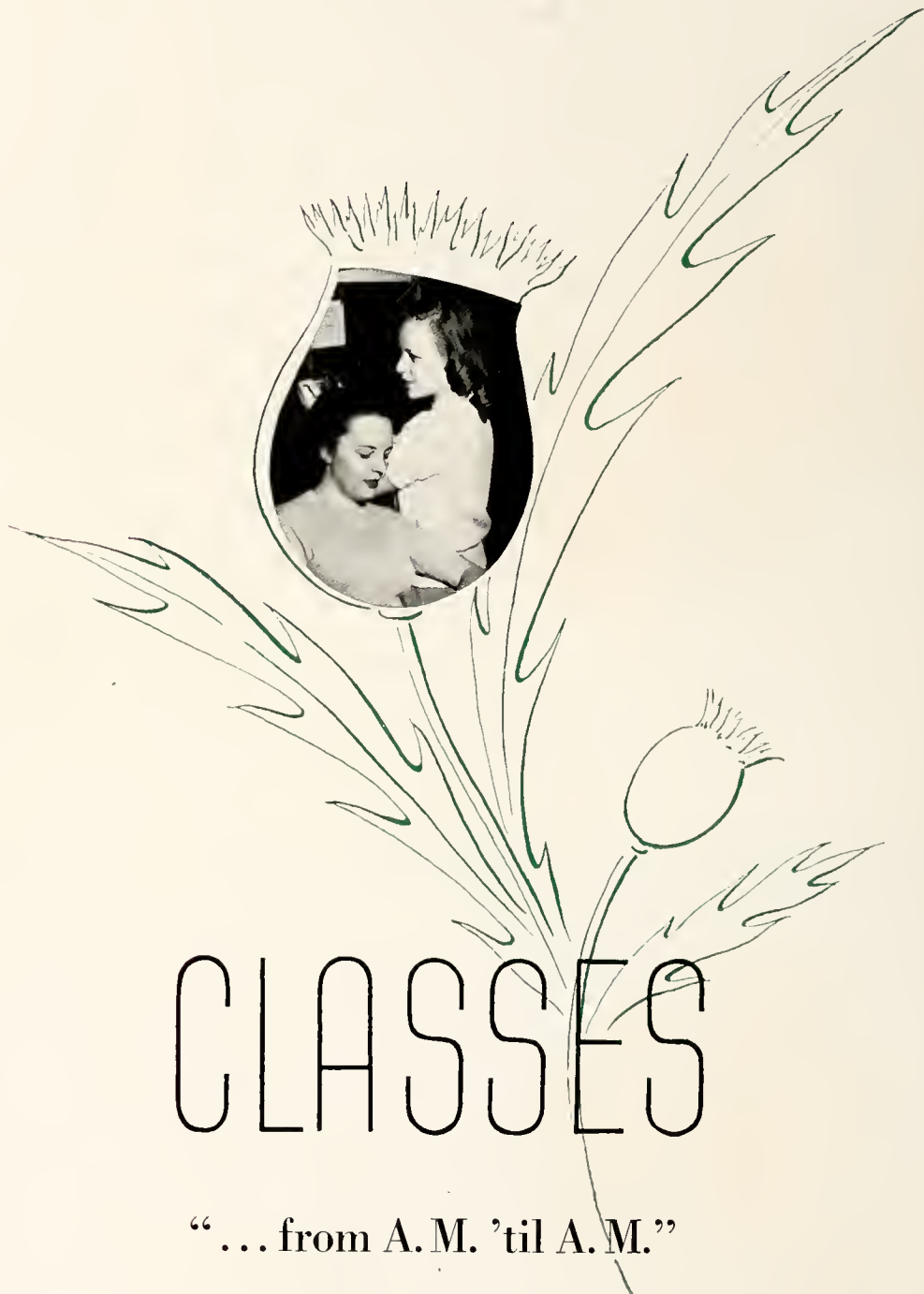
PHILIP LESLIE BULLOCK  
B.A., B.D., Th.M.  
*Professor of Bible*

MARY MACLEAN CONOLY  
B.A., B.S., M.A.  
*Professor of Education*

MARIE ALMA TURNER  
B.A., M.A.  
*Assistant Professor of French and Spanish*

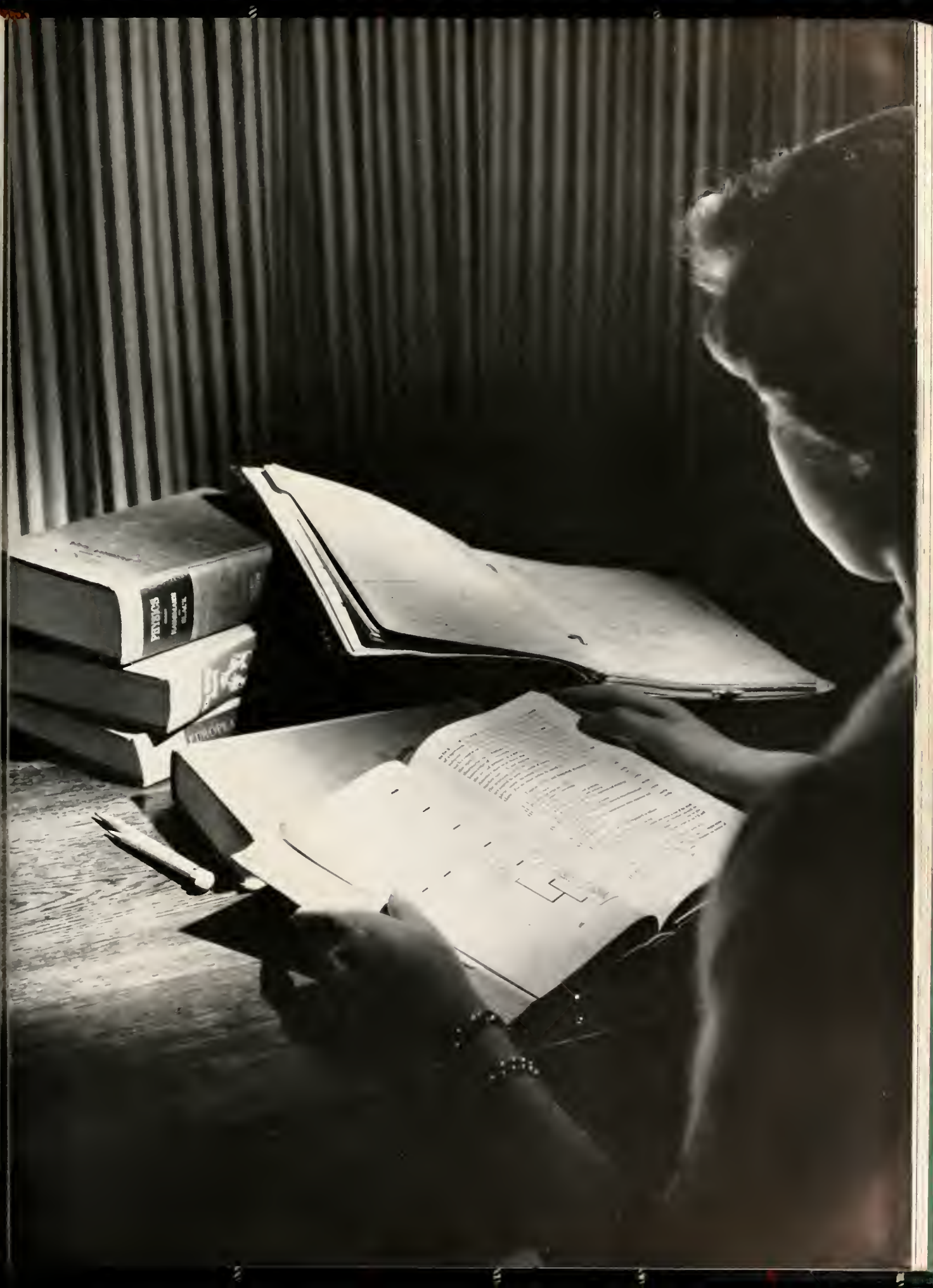
LOUISA A. M. VAN DYKE  
B.A., M.A., Ph.D.  
*Professor of Mathematics and Physics.*

VIRGINIA CONNOR  
R.N.



# CLASSES

“... from A. M. 'til A. M.”





## Senior Class

### Officers

LOIS KINLAW	.....	<i>President</i>
JO SNELL	.....	<i>Vice-President</i>
JUDITH POWERS	.....	<i>Secretary</i>
MADLINE CARSWELL	.....	<i>Treasurer</i>
JAC ADELE BLACKWELL	.....	<i>Tea Room Manager</i>
MARY ALICE PARKS	.....	<i>Assistant Tea Room Manager</i>

"Oh, the joys of senior living," quote the underclassmen until—they, too, have conferences, practice teaching, lesson plans, or lessons, period! . . . socialite Seniors—the silver tea, dinner out, orchids 'n men 'n nights out . . . plus other privileges and responsibilities—flag duty, a morning and afternoon performance; college hostesses for dates and dignitaries; Friday night devotions . . . and with it all—a bit of dignity—matched by the charm of our mascot . . . the great anticipation for that "passport to independence"—exceeded only by the regret of those final good-byes.



# Seniors

JACQUELINE ADELE BLACKWELL, B.A.

English

Florence, S. C.

*Candid . . . night owl . . . depth . . . "simply hi-larious" . . . vivacious . . . Southern Belle.*

Epsilon Chi Literary Society; Peace College 1, 2; Highland Players 3, 4, Secretary-Treasurer 4; Volley Ball 3, 4, Varsity 3; Cheerleader 3, 4; Tea Room Manager 4; May Court 3; Maid of Honor 4; Spanish Club 3; Senior Scribe 4; Dance Chairman 4.

CHARLOTTE BRIDEWELL, B.S.

Home Economics

Donaldsonville, La.

*Blinking eyes . . . spiritual . . . Montreat . . . agreeable . . . industrious . . . traveler.* Zetesian Literary Society; Montreat College 1, 2; Vice-President Student Body 4; Student Volunteers 3, 4; Home Economics Club 3, 4; Basketball 3; Glee Club 3, 4; International Relations Club 3, 4.

Blackwell

Bridewell



Buie

Carswell



1950





DEWIE BUIE, B.A.

*Grammar Grade Education*

Norfolk, Va.

*"et cetera, et cetera" . . . distinctive contributions . . . New York . . . delightful sarcasm . . . ingenious . . . "just one game of bridge."*

Zetesian Literary Society: Vice-President Class 1; Granddaughters' Club: International Relations Club 2, 3, 4. Vice-President 4; L'Alliance Francais 2, 3. Secretary-Treasurer 3; Volley Ball 2, 3, 4. Captain 3, 4; Varsity 3; Monogram Club 4; Appalachian State Teachers College Summer School 2; Marshal 3; Chairman Prayer Band Leaders 3; Christian Association Cabinet 3; Chairman Junior Dance Committee 3; College Social Committee 3; Class Editor WHITE HEATHER 3; Chief Scribe 4; Editor-in-Chief WHITE HEATHER 4.

MADLINE MAPP CARSWELL, B.A.

*Primary Education*

Manchester, N. C.

*Consecrated . . . keen mind . . . gentle . . . hamburger fries . . . optimistic . . . Sunday School.*

Epsilon Chi Literary Society: Christian Association Cabinet, Chairman of Sunday School 4; Prayer Band Leader 2, 3; Circle Treasurer 4; Mathematics Club 1, 2, 3, 4. Recording Secretary 3; International Relations Club 3, 4, Program Committee 4; Student Volunteers 1, 2, 3, 4. Vice-President 3; Athletic Board 3, 4; Sallie Southall Cotten Scholarship Award; Class Treasurer 3, 4; Superlative; *Who's Who in American Colleges and Universities.*



# Seniors

CAROLYN LEE ELLIOTT. B.A.

*Music and English*

Edenton, N. C.

*Artistic temperament . . . capable . . . English essays . . . self-assured . . . glasses . . . tantalizing perfumes.*

Epsilon Chi Literary Society; Highland Players 1, 2, 3, 4, Vice-President 3; Alpha Psi Omega 2, 3, 4; St. Cecilia Music Club 1, 2, 3; French Club 2, 3; Assistant Editor WHITE HEATHER 3; Class Secretary 3; Quill Club 4; Class Editor *Pine and Thistle* 1, Literary Editor 2, 3, Editor-in-Chief 4; Wake Forest Summer School 2, 3; Hockey 1; Basketball 3, 4; William Bartram Scientific Society 3, 4; Council Dance Committee 4; Glee Club 1, 2, 4; Voice Recital 3, 4; *Who's Who in American Colleges and Universities*.

MARY RAYE FREEMAN. B.A.

*Bible*

Raeford, N. C.

*Contagious laughter . . . "My soul" . . . gracious . . . rhymes . . . radiant . . . versatile musician.*

Epsilon Chi Literary Society; Columbia College 1, 2; Glee Club 4; Christian Association Cabinet 4; Chairman Home Mission Circle 4; Volley Ball 4.



Elliott

Freeman



Godwin

Gregory



1950



EULA ESTELLE GODWIN. B.A.

*Primary Education*

Kenly, N. C.

*Good-hearted . . . "the laundry will be open" . . . coöperative . . . saddle shoes . . . steady . . . avid interest in children.*

Epsilon Chi Literary Society: Montreat College 1, 2; Student Volunteers 3, 4. President 4; Treasurer. William Bartram Scientific Society 4; Prayer Band Leader 4; Recorder of Points 4; Sappho Poetry Club 3; Class Secretary 4.

MARY GREGORY. B.A.

*French and Biology*

Kershaw, S. C.

*Striking . . . South Carolina drawl . . . fun loving . . . Appalachian . . . giggle box . . . unsophisticated.*

Epsilon Chi Literary Society; Class Treasurer 2; William Bartram Scientific Society 1, 2, 3, 4; L'Alliance Francaise 2, 3, 4; Assistant Business Manager WHITE HEATHER 3; Marshal 3; Snapshot Editor WHITE HEATHER 4; Archery 2, 3; Volley Ball 3; May Court 2, 3; Glee Club 3; Appalachian State Teachers College Summer School 3.



# Seniors

ANNA ALETHEA JORDAN, B.S.

*Home Economics*

Bishopville, S. C.

*Stylish . . . barber . . . "Olive" . . . clever . . . poised . . . Bucking Chevy.*

Zetesian Literary Society; Coker College 1; Tennis 2; Coker Summer School 2; Wake Forest Summer School 3; Glee Club 2, 3, 4; Home Economics Club 2, 3, 4, Vice-President 4; Marshal 3; International Relations Club 3, 4, President 4; Secretary-Treasurer Circle of Social Service 3; Dance Committee 3; L'Alliance Francaise 3, 4; Christian Association Cabinet 4; Chairman Circle of Hospitality 4; Senior Scribe 4; Delegate South Atlantic International Relations Club Conference 3.

LOIS KINLAW, B.A.

*English and Social Science*

Lumberton, N. C.

*LaVern . . . dignified . . . "yawl" . . . admirable . . . accommodating . . . kittens.*

Zetesian Literary Society; Louisburg College 1; Student Council 4; Class President 4; Student Volunteers 3; Sappho Poetry Club 2, 3, Vice-President 3; William Bartram Scientific Society 2, 3, 4, Recording Secretary 3; Athletic Board 3; Basketball 2, 3, 4; May Court 3, 4; Appalachian State Teachers College Summer School 3; Spanish Club 3; Tennis 2, 3; Volleyball 3, 4.



Jordan

Kinlaw



1950

Melvin

Moulder





SARA OCTAVIA MELVIN, B.S.

*Home Economics*

Kerr, N. C.

*Immaculate . . . in a hurry . . . thorough . . . Betty Gray . . . "Let me tell you" . . . invaluable.*

Epsilon Chi Literary Society: Marshal 3; William Bartram Scientific Society 1, 2; Home Economics Club 1, 2, 3, 4; Reporter 3; President 4; Senior Scribe 4; Christian Association Cabinet 2, 3, 4; Chairman Highway of Social Activities 2; Chairman Circle of Hospitality 3; Treasurer 4; Sallie Southall Cotten Scholarship Award 3; Volleyball 3, 4. *Who's Who in American Colleges and Universities.*

CARLEEN LESLIE MOULDER, B.A.

*Primary Education*

Hope Mills, N. C.

*"Ginger peachy" . . . dramatic . . . enthusiastic . . . detailed . . . "Yes, teacher" . . . competent.*

Epsilon Chi Literary Society; W.C.U.N.C. 1; Highland Players 1, 2, 3, 4; President 4; William Bartram Scientific Society 2, 3, 4; Secretary 4; Mathematics Club 2, 3, 4; Spanish Club 3; *Pine and Thistle* Staff 2, 3, 4; Make-up Editor 2, 3; Literary Staff 4; Volley Ball 4; Alpha Psi Omega 2, 3, 4.



# Seniors

NANCY ELIZABETH McCUBBINS, B.A.

*Primary Education*

Florence, S. C.

"Cubby" . . . "That do make it nice" . . . original . . . generous . . . "More coffee, Miss Shenly?" . . . sparkling personality.

Epsilon Chi Literary Society; Highland Players 3, 4; Pine and Thistle Staff 3. Business Manager 4; Spanish Club 3; Archery 4; Greensboro College 1; Tennis 2.

BETTY CULBRETH McLEAN, B.A.

*Bible and Social Science*

Raeford, N. C.

Inner loveliness . . . black memo pad . . . understanding . . . "I gotta run" . . . Cabinet meetings . . . lofty ideals.

Epsilon Chi Literary Society, Treasurer 2; Chief Marshal 3; Student Volunteers 1, 2, 3, 4; Christian Association Cabinet 2; Chairman Library Highway 2; Secretary Christian Association 3, President 4; Mathematics Club 1, 2; Social Activities Chairman 2; William Bartram Scientific Society 2, 3, 4; Volley Ball 3, 4; Basketball 2; Hockey 2; Monogram Club 4; Glee Club 3; Student Council 4; Senior Scribe 4; May Queen 4; *Who's Who in American Colleges and Universities*.



McCubbins

McLean



1956

Parks

Patterson





MARY ALICE PARKS. B.A.

*Social Science*

Charlotte. N. C.

*"M.A." . . . "Let's go to the cafe" . . . unlimited source of jokes . . . sleepy time gal . . . rotunda vigils . . . individual.*

Epsilon Chi Literary Society: Hockey 1. 2: Basketball 1. 2. 3. 4. Captain 3: Varsity Basketball 2. 3: Volleyball 3. 4: Vice-President Athletic Association 3: Mathematics Club 1. 2. 3. 4: International Relations Club 3: Assistant Tea Room Manager 3. 4: Class Editor WHITE HEATHER 4.

UNA FRANCES PATTERSON. B.A.

*Bible and Mathematics*

Huntersville. N. C.

*"Patty" . . . classroom giggles . . . helpful . . . dry wit . . . feather cuts . . . loyal.*

Epsilon Chi Literary Society: Mitchell Junior College 1. 2: Prayer Band Leader 4: Student Volunteers 4: Vice-Chairman Circle of Home Missions 4: Queens College Summer School 3: Mathematics Club 3. 4. Corresponding Secretary 4: Volleyball 4.



# Seniors

EMMA JO PEARCE, B.A.

*Bible and French*

Corpus Christi, Texas

*Texas . . . volleyball enthusiast . . . congenial . . . "Just plain Bill" . . . school spirit . . . "My Sister."*

Epsilon Chi Literary Society; Prayer Band Leader 2; Christian Association Cabinet 3, 4; Athletic Association Treasurer 3, Vice-President 4; Varsity Volleyball 3; Hockey 2; Monogram Club 4; Highland Players 1, 2, 3, 4; L'Alliance Francaise 2, 3, 4. Vice-President 3. President 4; Mathematics Club 1, 2, 3, 4. Reporter 3; William Bartram Scientific Society 3, 4; Glee Club 2, 3; Superlative 4. Alpha Psi Omega 4.

LEAH CAROLYN PHELPS, B.A.

*French and English*

Ash, N. C.

*Studios . . . unobtrusive . . . French zealot . . . dark, wavy tresses . . . earnest . . . B. S. U.*

Zetesian Literary Society; W.C.U.N.C. 1; L'Alliance Francaise 2, 3, 4.; Bowling 2; Secretary-Treasurer Home Missions Circle 4; Wake Forest Summer School 1; Lenoir Rhyne Summer School 3.



Pearce

Phelps



Powers

Smith



195





JUDITH ANN POWERS, B.S.

*Home Economics*

St. Pauls, N. C.

*Braids . . . 1, 2 bend; 3, 4 ov-er!* . . . *easy going . . . conservative . . .*  
*Yvonne . . . sunny.*

Zetesian Literary Society, Second Vice-President 3, 4; Marshal 3; Student Volunteers 1, 3; Home Economics Club 1, 2, 3, 4; Athletic Board 2; Hockey 2; Volleyball 3, 4; Basketball 3; William Bartram Scientific Society 3, 4; International Relations Club 3, 4; Atlantic Christian College Summer School 1; Secretary Student Council 4.

MARGARET SMITH, B.A.

*Bible and French*

Pageland, S. C.

*Dependable . . . good-natured . . . "Gandy" . . . afternoon coffee . . . modest . . .*  
*"Mr. ? Do-Flump."*

Zetesian Literary Society; Basketball 2, 3, 4; Hockey 2; Volleyball 3, 4; William Bartram Scientific Society 2, 3, 4. Corresponding Secretary 3; L'Alliance Francaise 2, 3, 4, Vice-President 4; Mathematics Club 1, 2; Prayer Band Leader 3, Chairman Library Circle 4; Cabinet 4; Vice-Chairman Home Mission Circle 3; Student Volunteers 1, 2, 3, 4.



# Seniors

PEARL LANE SNELL, B.A.

*Primary Education*

Charlotte, N. C.

*To . . . "When you go, fly; when you fly, go Piedmont!" . . . voguish . . . tender-hearted . . . "Fran's coming" . . . excitable.*

Epsilon Chi Literary Society; W.C.U.N.C. 1: Marshal 3; William Bartram Scientific Society 3, 4; Mathematics Club 3, 4. Corresponding Secretary 3; St. Cecilia Music Club 3, 4; Bowling 3; Archery 4; Highland Players 4; Class Vice-President 2, 4; Class President 3; Student Council 3, 4; Glee Club 3.

LILLIAN BERTHA TURNER, B.A.

*English and Bible*

Trenton, N. J.

*"Penny" . . . ambitious . . . appreciation of artists . . . diligent . . . wholesome simplicity . . . car bobs.*

Zetesian Literary Society; Student Volunteers 1, 2, 3, 4; Christian Association Cabinet 4; Sappho Poetry Club 1, 2. Vice-President 2; Hockey 1; Archery 2; Athletic Board 3; International Relations Club 3, 4. Secretary-Treasurer 4; Highland Players 3, 4.



Snell  
Turner



Williams  
Yelvington



1956



DOROTHY MAE WILLIAMS, B.A.

*Bible and Social Science*

Indian Valley, Va.

*"Dot" . . . reliable . . . temperamental appetite . . . "Good gravy" . . .  
sincere . . . praiseworthy.*

Zetesian Literary Society: Student Volunteers 1, 2, 3, 4; Prayer Band Leader 2;  
Christian Association Cabinet 4; Mathematics Club 1, 2, 3, 4, Vice-President 3;  
William Bartram Scientific Society 2, 3, 4, President 3; Glee Club 3; Volleyball 3,  
4; Basketball 2, 3, 4; Hockey 2; Student Council 3, 4; Student Body Treasurer 3;  
Student Body President 4; Class Vice-President 3; Monogram Club 4; Superlative  
4; *Who's Who in American Colleges and Universities.*

ELIZABETH ANNE YELVINGTON, B.A.

*Mathematics*

Clayton, N. C.

*"Hop in, Bone" . . . mischievous . . . aggressive . . . "Hey gir-rels" . . . sport  
clothes . . . unforgettable.*

Epsilon Chi Literary Society: Mathematics Club 1, 2, 3, 4; Basketball 1, 2, 3, 4;  
Captain 2; Hockey 1, 2; Volleyball 1, 2, 3, 4; Salesman Athletic Association 2;  
Tea Room Manager 3; Highland Players 1, 2, 3, 4; William Bartram Scientific  
Society 1, 2, 3, 4; Alpha Psi Omega 4; Atlantic Christian College Summer School  
1; Wake Forest Summer School 3; Senior Scribe 4; Business Manager WHITE  
HEATHER 4; Monogram Club 4.





## Junior Class Officers

PHYLLIS DYER	.....	<i>President</i>
JEANINE TAYLOR	.....	<i>Vice-President</i>
RAMONA ASCOUGH	.....	<i>Secretary</i>
MARGARET POWELL	.....	<i>Treasurer</i>
NELL LOWE	.....	<i>Tea Room Manager</i>
ELEANOR LANIER	.....	<i>Assistant Tea Room Manager</i>

## Juniors

Upperclassmen, at last!!! . . . that important feeling as they: properly instruct their little sisters, take over the tea room, and send forth their best to represent the college in social affairs . . . with great efficiency—they manage to multiply those spare moments into shows, extra week ends, nights out, just sleeping and taking it easy . . . 'til spring . . . when recitals, elections, and class rings brought them into the high lights and their prominence was exceeded only by their anticipation of senior privileges . . . just one more year . . . and then!!!



ASCOUGH, RAMONA  
Cumnock, N. C.

BARROW, AGNES  
LaGrange, N. C.

BROWNE, JANE  
Red Springs, N. C.

BYRD, YVONNE  
Bunnlevel, N. C.

CANTLEY, MARY EMMA  
Kingstree, S. C.

CASHWELL, EMILY  
Hope Mills, N. C.

COVINGTON, MARY STEWART  
Raeford, N. C.

DAVENPORT, MARTHA  
Charlotte, N. C.

DEDMON, LOU JEAN  
Shelby, N. C.

DORSEY, GENEWOOD  
Loris, S. C.





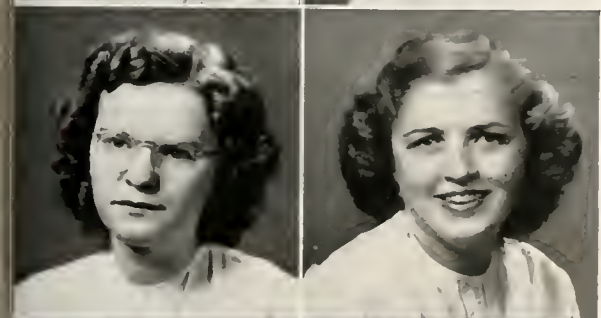
DYER PHYLLIS  
Leaksville, N. C.

GRANTHAM, ZELMA  
Fairmont, N. C.



HARRIS, PATRICIA  
Concord, N. C.

HUBBLE, KATRINA  
Bland, Va.



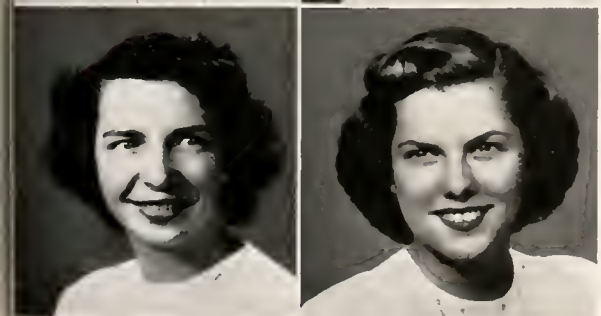
HUNEYCUTT, CAROLYN  
Blackstock, S. C.

JACKSON, LOIS  
Fair Bluff, N. C.



JORDAN, ANN  
Wilmington, N. C.

JOSEY, BEVERLY  
Manning, S. C.



KELLY, EVA BERT  
Southern Pines, N. C.

LANIER, ELEANOR  
Elizabeth City, N. C.

LITTLE, MARGARET  
Parkton, N. C.



LOVETT, MARJORIE  
Nichols, S. C.

LOWE, NELL  
Clinton, N. C.



MELVIN, BETTY GRAY  
Kerr, N. C.

MILLER, MAYSIE  
Chadbourn, N. C.



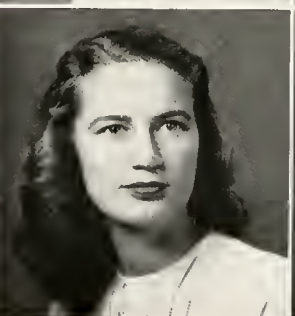
MCCAIN, DELORIS  
Effingham, S. C.

MCDONALD, JEAN  
Carthage, N. C.



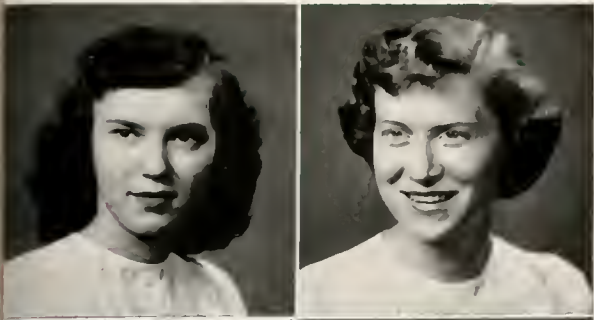
McMILLAN, BETTY Jo  
Selma, N. C.

McRAE, PATRICIA  
Lillington, N. C.



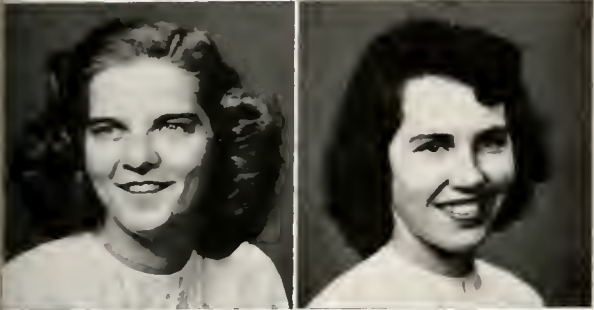
OGILVIE, CAROLINE  
North Wilkesboro, N. C.





POWELL, MARGARET  
Smithfield, N. C.

PRICE, HANNAH  
Charlotte, N. C.



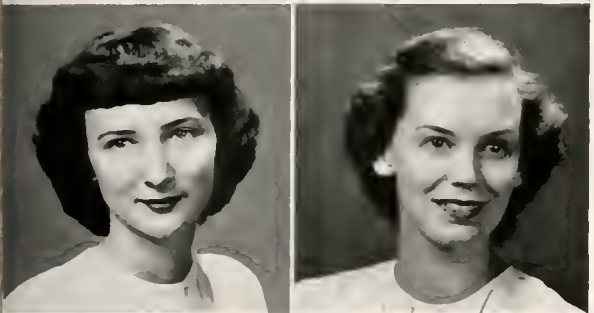
RATCHFORD, WILMA  
Dallas, N. C.

RIVENBARK, FLORENCE  
Willard, N. C.



Russ, JOY  
Shalotte, N. C.

RUSSELL, ANN  
Rocky Mount, N. C.



SHERRILL, HELEN  
Fayetteville, N. C.

SMITH, PATRICIA  
Red Springs, N. C.



TAYLOR, JEANINE  
Robersonville, N. C.

WALKER, CAROLYN  
Wilmington, N. C.

WALKER, NANCY  
Washington, D. C.



## Sophomore Class Officers

EMILY NAN GRIER ..... *President*

MARGARET COMER ..... *Vice-President*

SOPHIA ZEA ..... *Secretary*

JEAN PARKER ..... *Treasurer*

## Sophomores

Screams (and we do mean screams) of recognition . . . "say, it's good to be back!" . . . we preside at Rat Court this year . . . "all right, you tell all" . . . the mighty cat . . . such fun to enforce rules . . . there's work too . . . majoring in Sophomore Lit—"it ain't easy" . . . then down the railroad track—to get away from it all . . . and at last one night out a week . . . yes, we have acquired some knowledge too, but with a natural talent for evading rules, and getting caught red-handed . . . ends a year . . . that added swagger—"We're now upperclassmen."





## Sophomore

# 19

*First row, left to right:*

Barrow, Lindley Ann, LaGrange, N. C.; Brown, Lois, Hamlet, N. C.; Brunson, Betty Ann, Fayetteville, N. C.; Charles, Mary Kathryn, Winston-Salem, N. C.; Clark, Barbara, Daytona Beach, Fla.

*Second row:*

Comer, Margaret, Ellerbe, N. C.; Deaton, Kathryn, Aberdeen, N. C.; Evans, Anne, Middlesex, N. C.; Fuller, Jeanne, Ft. Bragg, N. C.; Goodman, Margaret, Chadbourne, N. C.

*Third row:*

Grady, Enid, Charlotte, N. C.; Grier, Emily Nan, Charlotte, N. C.; Hobbs, Frances, Council, N. C.; Landis, Martha, Oxford, N. C.; Lovick, Janice, Wade, N. C.



Class  
50

*First row, left to right:*

Monroe, Mildred, Fayetteville, N. C.: Murdoch, Janice, Wildwood, N. C.: Murphy, Priscilla, Arlington, Va.: McArthur, Mildred, Wakulla, N. C.: McCallum, Dorothy, Rowland, N. C.

*Second row:*

McDowell, Gene, Elizabethtown, N. C.: McIntyre, Mary Elizabeth, Godwin, N. C.: McPhaul, Faye, Parkton, N. C.: Pearce, Ann, Corpus Christi, Texas: Pierce, Elaine, Evergreen, N. C.

*Third row:*

Rastom, Junette, Laurinburg, N. C.: Rogers, Ethel, Whiteville, N. C.: Rummage, Gloria, Ellerbe, N. C.: Shaw, Emily, St. Pauls, N. C.: Singletary, Hattie, Bladenboro, N. C.



## Sophomore Class

*First row, left to right:*

Smith, Amanda, Petersburg, Va.; Tarrant, Love, Fayetteville, N. C.; Taylor, Frances, New Bern, N. C.; Watson, Harriet, Parkton, N. C.; West, Fannie, Fayetteville, N. C.

*Second row:*

Whitaker, Claudine, Kannapolis, N. C.; White, Eleanor, Lenoir, N. C.; Williams, Helen Mercer, Chadbourn, N. C.; Williamson, Joan, Atlanta, Ga.; Workman, Betsy, Mebane, N. C.

*Third row:*

Zea, Sophia, Strasburg, Va.





## Freshman Class Officers

VIRGINIA BUHLER ----- *President*

MARY WATT ----- *Vice-President*

JEAN SANDIFER ----- *Secretary*

ELSIE MAY ----- *Treasurer*



# Freshmen

So this is college . . . nice, these girls in white . . . but such an empty room! . . . discouraging—isn't it? . . . a little paint will do wonders . . . the latest for rat day . . . "just wait until next year" . . . back to civilization—dresses and make-up—this time the Freshman reception . . . what is that room number? . . . remember: four call downs—the handbook says . . . watery knees, trembling hands. "oh gosh, why didn't I study!". "it'll all be over in a matter of hours—don't worry"—all a part of those first college exams . . . high school was never like this!



# Freshman



Abernethy, Evelyn, Charlotte, N. C.; Armstrong, Doris, Pollockville, N. C.; Armstrong, Janet, Pineville, N. C.; Barham, Mary, Red Springs, N. C.

Billingsley, Betty, Hamlet, N. C.; Bishop, Betty, Aberdeen, N. C.; Booker, Nancy, Leaks-ville, N. C.; Boyd, Evelyn, Burlington, N. C.

Brinn, Ann, Creswell, N. C.; Broome, Sally, Danville, Va.; Buhler, Virginia, Graham, N. C.; Calloway, Doris, Concord, N. C.

Cashwell, Margaret, Hope Mills, N. C.; Cross, Betty, Laurel Hill, N. C.; Dudley, Frances, Wilmington, N. C.; Duncan, Eunice, Red Springs, N. C.

Elliott, Peggy, Darlington, S. C.; Ferrell, Julia, Richland, N. C.; Fields, Evelyn, Wal-stonburg, N. C.; Garrison, Madge, Waxhaw, N. C.

Grantham, Joyce, Goldsboro, N. C.; Gray, Virginia, Arlington, Va.; Hammond, Nancy, Cerro Gordo, N. C.; Heyer, Mary Frances, Rose Hill, N. C.

Hill, Barbara, Graham, N. C.; Holland, Ruth, Aberdeen, N. C.; Hughes, DeLena, New Bern, N. C.

# Class 1950

Ives, Kathryn, Arlington, Va.: Jenkins, Gabrielle, Charleston, S. C.: Keisler, Rachel, Conover, N. C.: Leggette, Sara Margaret, Lumberton, N. C.



May, Elsie, Farmville, N. C.: Myers, Lois Ann, Lake View, S. C.: McArthur, Ann, Wakulla, N. C.: McDuffie, Frances, St. Pauls, N. C.



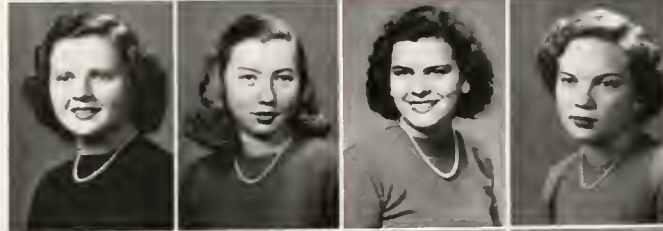
McGoogan, Elizabeth, Hamlet, N. C.: McKenzie, Mary Lucille, Laurinburg, N. C.: McNeill, Doris Whyte, Raeford, N. C.: Petree, Mrs. Betty June, Red Springs, N. C.



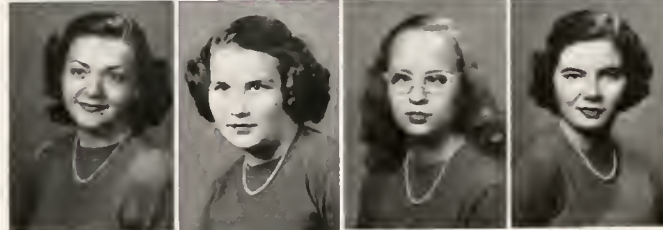
Phillips, Doris, Mebane, N. C.: Pickett, Jane, Newark, Delaware: Plyler, Frances, Charlotte, N. C.: Ratchford, Marie, Dallas, N. C.



Register, Mary Ann, Clinton, N. C.: Russell, Alice, Matthews, N. C.: Sandifer, Jean, Charlotte, N. C.: Shealy, Betty, Hamlet, N. C.



Shillinglaw, Ramona, Sharon, S. C.: Smith, Julia Marie, Wilmington, N. C.: Smith, Ruth, Rowland, N. C.: Stanland, Mary Morrison, Wilmington, N. C.



Underwood, Margaret Jean, Chadbourn, N. C.: Wagner, Mary Jo, Lumberton, N. C.: Watt, Mary, Belgian-Congo, Africa.





## Commercial Officers

JEAN PARKER ----- *President*

ANNE HIGHSMITH ----- *Vice-President*

PEGGY HENDERSON ----- *Secretary and Treasurer*

# Business Department

The first of the year, obviously . . . later we are submerged by assignments . . . by typing . . . by office practice . . . addressing bulletins . . . "Dear Sir" . . . until those few brief—oh, so brief—hours when . . . we dance . . . we picnic . . . we have club meetings . . . we celebrate Valentine's—inviting the faculty to tea . . . and the year passes swiftly on until . . . we second-year girls don our white suits for commencement and say good-byes.



Barnes  
Highsmith  
McPhail



Moore  
Parker



## Second Year Business

*First row, left to right:*

Barnes, Peggy Ann, Rocky Mount, N. C.; Highsmith, Anne, Rocky Point, N. C.;  
McPhail, Hettie Lee, Rowland, N. C.

*Second row:*

Moore, Jane, Wilmington, N. C.; Parker, Jean, Pollocksville, N. C.

*First row, left to right:*

Barnes, Betty Van, Rocky Mount, N. C.; Bulluck, Betty Jean, Rocky Mount, N. C.;  
Campbell, Jacqueline, Wilmington, N. C.; Clarke, Clara, Roanoke Rapids, N. C.;  
Coble, Shannon, Mt. Ulla, N. C.; Cox, Peggy, Ellerbe, N. C.

*Second row:*

Graham, Grace, Red Springs, N. C.; Hall, Frances, Rose Hill, N. C.; Harding, Wynona,  
Fayetteville, N. C.; Henderson, Peggy, Charlotte, N. C.; Keirn, Mary Ellen, Ports-  
mouth, Va.; Maxwell, Lelia Elizabeth, Rocky Mount, N. C.

*Third row:*

Moody, Patricia, Lake View, S. C.; Morgan, Betsy, Red Springs, N. C.; McBryde,  
Betty Ann, Fayetteville, N. C.; O'Briant, Mary Etta, Red Springs, N. C.; Perry,  
Margaret, Fairmont, N. C.; Richardson, Margaret, Jackson Springs, N. C.

*Fourth row:*

Shaw, Ann, St. Pauls, N. C.; Strole, Elizabeth, Chadbourn, N. C.; Sutton, Mary  
Bryan, Cove City, N. C.; Wright, Bitsie, Red Springs, N. C.

## First Year Business



Barnes  
Bulluck  
Campbell  
Clarke  
Coble  
Cox

Graham  
Hall  
Harding  
Henderson  
Keirn  
Maxwell

Moody  
Morgan  
McBryde  
O'Briant  
Perry  
Richardson

Shaw  
Strole  
Sutton  
Wright

# MUSIC

"Without a Song..."







Miss Carolyn Elliott. *Voice*

## Senior Recital

"The public is cordially invited" . . . 8:15 . . . curtain calls . . . baskets of flowers . . . reception . . . smiles and congratulations . . . but behind it all . . . hours of practice . . . closed sessions in the auditorium . . . constant polishing . . . that final rehearsal and last minute instructions . . . and then it is over much too quickly.



Tryouts for membership . . . Tuesdays, Thursdays, and in between . . . SMILE . . .  
concerts . . . Bach with a Scottish burr . . . Join the Glee Club and see the world.

## Glee Club

### OFFICERS

MARGARET GOODMAN, *President*

HARRIETT WATSON, *Secretary*

MARY KATHRYN CHARLES, *Treasurer*

# Conservatory

Practice rooms . . . eighteen pianos going at one time . . .  
"blended harmony" of many voices singing different tunes  
. . . afternoon recitals . . . quarterlies . . . "we are pleased to  
present" . . . concert-lecture artists . . . Junior and Senior  
recitals . . . that certain last look . . . watching the big clock.



Miss Chapman and Carolyn Huneycutt

## OFFICERS

ELAINE PIERCE, *President*

JANICE LOVICK, *Vice-President*

JUNETTE RASTON, *Secretary and Treasurer*

## St. Cecelia Music Club

High note of enjoyment . . . studio E . . .  
projects . . . Conserve Hall . . . the musically  
minded.





# ACTIVITIES

“And in Our Lighter Moments...”





Dorothy Williams, *President*

## Student Government

White dresses and bus station . . . pajama party for Freshmen . . . "I promise that I will respect" . . . Tuesday p.m., Wednesday a.m., black robe and coffee sessions . . . our first dance . . . that not-so-vacant Thursday chapel period . . . "Mother McLeod" . . . elections . . . hall meetings for "reminders" . . . handbooks . . . developing character through an honor system.

CHARLOTTE BRIDEWELL  
*Vice-President of Student Body*

BETTY McLEAN  
*President of Christian Association*

LOIS KINLAW  
*President of Senior Class*

JUDITH POWERS  
*Vice-President of Senior Class*

PHYLLIS DYER  
*President of Junior Class*

JEANINE TAYLOR  
*Vice-President of Junior Class*

EMILY NAN GRIER  
*President of Sophomore Class*

MARY VIRGINIA BUHLER  
*President of Freshman Class*

PATRICIA HARRIS  
*President of Zetesian Society*

ZELMA GRANTHAM  
*President of Epsilon Chi Society*

KATRINA HUBBLE  
*President of Athletic Association*

PATRICIA SMITH  
*President of Day Students*

Not pictured: *Mary Virginia Buhler*

## Nineteen Hundred Fifty





Betty McLean, *President*

## Flora Macdonald

O Let Me Grow . . . Follow the Gleam . . . by candlelight . . . workshop week end  
. . . Thanksgiving and our "adopted" families . . . White Gift . . . glowing expressions  
at servants' Christmas party . . . capsule day . . . Korea, Alaska—abroad and at  
home . . . spiritual enrichment . . . Cabinet installation . . . vespers . . . circles . . .  
music fills the air . . . hymn sings around the rotunda . . . meditations.



BETTY JO McMILLAN  
*Vice-President*

HELEN SHERRILL  
*Secretary*

SARA MELVIN  
*Treasurer*

MARY RAYE FREEMAN  
*Circle Home Missions*

LILLIAN TURNER  
*Circle Foreign Missions*

JO PEARCE  
*Circle Christian Social Service*

MARGARET SMITH  
*Circle of Library*

BETTY GRAY MELVIN  
*Circle of Social Activities*

BETSY WORKMAN  
*Circle of Religious Meetings*

ANNA JORDAN  
*Circle of Hospitality*

ANN JORDAN  
*Circle of Prayer Bands*

JAN WILLIAMSON  
*Circle of Publicity*

MADELINE CARSWELL  
*Circle of Sunday School*

WILMA RATCHFORD  
*Circle of Music*

DOROTHY WILLIAMS  
*Ex-Officio*

MRS. ELBERT MCPHAUL  
*Adviser*

## Christian Association



DEWIE BUIE  
*Editor-in-Chief*

ANN YELVINGTON  
*Business Manager*

MR. LESLIE BULLOCK  
*Adviser*



Buie, Bullock, Yelvington

## 1950 White



Buie



Yelvington

It all began last spring . . . phone calls, appointments, contracts, innumerable letters . . . and continued through the summer . . . climaxing in an autumn obstacle course: plaguing thoughts of deadlines to be met, the wording and rewording of one hundred and four pages of copy, the clattering of typewriters in the still of night, scheduling Annual pictures—and to the persistent few “Yes, we are on schedule!”, pleading for snapshots, omni-present budget difficulties, and getting the last pictures to the engraver . . . but there were the brighter aspects too: the support and coöperation of an efficient staff, the satisfaction of meeting our deadlines, those ad expeditions in that seemingly impossible “Chevy” . . . these and many other things that will always go unmentioned have resulted in the 1950 WHITE HEATHER.

## Staff



Ogilvie, Blackwell

HANNAH PRICE  
*Assistant Editor*

JAC ADELE BLACKWELL and CAROLINE OGILVIE  
*Assistant Business Managers*

MARY ALICE PARKS  
*Senior Class Editor*

EMILY CASHWELL  
*Junior Class Editor*

ELAINE PIERCE  
*Sophomore Class Editor*

BETTY BARNES  
*Freshman Class Editor*

JEAN PARKER  
*Business Department Editor*

BARBARA CLARK and ANN PEARCE  
*Literary Editors*

ENID GRADY and MARY GREGORY  
*Saapshot Editors*

JEAN PARKER  
*Typing Editor*

## Heather

---



CAROLYN ELLIOTT  
*Editor-in-Chief*

NANCY McCUBBINS  
*Business Manager*

MISS ANN SHEALY  
*Adviser*



Elliott, Shealy, McCubbins

Pine and



Elliott, McCubbins

"Keeping up with the times here and abroad" . . . coaxing contributions from the students . . . deadlines for copy . . . rejections and corrections . . . printers and galley-proofs . . . long sessions after light bell . . . coffee, scissors, and "where's the rest of galley four?"

. . . in Watkins Hall . . . steaks for the staff . . . Christmas mailing list and senior supplement . . . the pride and satisfaction that comes with accomplishing the seemingly impossible.



Watson and Fuller

ELEANOR WHITE  
*Assistaat Editor*

ANN PEARCE  
*Assistant Business Manager*

PEGGY BARNES, JEANNE FULLER, ANN HIGHSMITH, JANE  
MOORE, HARRIET WATSON  
*Busiaess Staff*

RAMONA ASCOUGH, BARBARA CLARK, ETHEL ROGERS,  
AMANDA SMITH, WILMA RATCHFORD, CARLEEN  
MOULDER.  
*Literary Staff*

CAROLYN HUNEYCUTT  
*Art Editor*

MISS ANN SHEALY  
*Adviser*

# Thistle



# Epsilon Chi Literary Society

"You open wide for those who seek" . . . Mardi Gras . . . can-can . . . fun . . . food . . . frolic . . . originality . . . "So brave, so true, so fine a crew" . . . EX = Hand in Hand.

## OFFICERS

ZELMA GRANTHAM, *President*  
PAT McRAE, *First Vice-President*  
ELEANOR LANIER, *Second Vice-President*  
SOPHIA ZEA, *Corresponding Secretary*  
JEANNE FULLER, *Recording Secretary*  
MAYSIE MILLER, *Treasurer*  
ENID GRADY, *Critic*  
FRANCES HOBBS, *Censor*  
LOIS BROWN, *Chaplain*  
ANN JORDAN, *Pianist*



Zelma Grantham, *President*





Patricia Harris, *President*

## Zetesian Literary Society

Friendship . . . Page's Lake or bust!! . . . jolly fellowship . . .  
candlelight and Russian Tea . . . green and white our emblem . . .  
Christmas party . . . societies' dance . . . "Zetesian. to Thee!"

### OFFICERS

PATRICIA HARRIS, *President*  
HELEN SHERRILL, *First Vice-President*  
JUDITH POWERS, *Second Vice-President*  
ELAINE PIERCE, *Corresponding Secretary*  
HARRIETT WATSON, *Recording Secretary*  
ELEANOR WHITE, *Treasurer*  
GINNIE BUHLER, *Chaplain*  
MARY K. CHARLES, *Critic*  
BETSY WORKMAN, *Pianist*

*Not Pictured: Watson and White.*  
ARMANDA SMITH, *Censor*



# WHO'S WHO

The honored few . . . selected by an anonymous faculty . . . student committee . . . scholarship . . . leadership . . . character.

MADELINE CARSWELL

CAROLYN ELLIOTT

SARA MELVIN

BETTY McLEAN

DOROTHY WILLIAMS





## Scribblers

*Left to right:*

MCLEAN  
MELVIN  
JORDAN  
YELVINGTON  
BLACKWELL  
BUE, *Chief*



Revealing the true personalities of our classmates . . . coining phrases . . . dictionary hounds . . . late hours . . . many laughs . . . "Is that kind?" . . . tantalizing classmates with what might have been said.

"Cascabels" . . . 5 o'clock in Epsilon Chi Hall . . . Pinata Christmas party . . . tongued in Mexico . . . to become acquainted with the Spanish language and customs.



## Spanish Club

### OFFICERS

BETTY ANN BRUNSON  
*President*

EVELYN FIELDS  
*Vice-President*

MARTHA LANDIS  
*Secretary and Treasurer*

# Mathematics Club

Anniversary luncheon . . . atomic lectures . . . hamburgers . . . right front parlor  
 . . . Dr. Van Dyke . . . yearbooks.

## OFFICERS

- HELEN SHERRILL  
*President*
- ELEANOR LANIER  
*Vice-President*
- JEANNE FULLER  
*Recording Secretary*
- FRANCES PATTERSON  
*Corresponding Secretary*
- SOPHIA ZEA  
*Treasurer*
- JEAN McDONALD  
*Press Correspondent*
- JAN WILLIAMSON  
*Social Activities Chairman*



## OFFICERS

- ELEANOR LANIER  
*President*
- WILMA RATCHFORD  
*Vice-President*
- CARLEEN MOULDER  
*Recording Secretary*
- SOPHIA ZEA  
*Corresponding Secretary*
- EULA GODWIN  
*Treasurer*



# William Bartram Scientific Society

Nucleus of girls interested in science . . . B or above . . . quizzes on science . . . atomic energy . . . open discussions . . . socials after meetings.

## Student Volunteers

Teaching Bible at Colored School . . . study of great missionaries and Christians . . . 2nd and 4th Sundays—Watkins Hall . . . "Not by might nor by power, but by my Spirit."



### OFFICERS

EULA GODWIN

*President*

ANN PEARCE

*Vice-President*

JAN WILLIAMSON

*Secretary and Treasurer*

DELORIS McCAIN

*Librarian*



ANN JORDAN

*Chairman*

MISS HAZEL MORRISON

*Adviser*

## Prayer Bands

Thursday mornings . . . inspiration . . . meditation . . . rotunda meetings . . . prayer . . . privilege of being a Prayer Band Leader.

OFFICERS

BARBARA CLARK  
*President*

JAC ADELE BLACKWELL  
*Vice-President*

SOPHIA ZEA  
*Secretary and Treasurer*



## Writer's Club

Dr. Scott, our capable adviser . . . that literary atmosphere . . . the pain of writing: criticism . . . stories . . . research articles . . . sonnets . . . struggles . . . "But my characters just won't behave" . . . "Be specific" . . . program committee troubles.

## L'Alliance Francais

"Marseillaise" . . . games . . . drama . . . recordings . . . enthusiasm . . . "Gaiete pour toutes."

OFFICERS

JO PEARCE  
*President*

MARGARET SMITH  
*Vice-President*

GLORIA RUMMAGE  
*Secretary and Treasurer*





CARLEN MOULDER  
*President*

SOPHIA ZLA  
*Vice-President*

JACADELE BLACKWELL  
*Secretary and Treasurer*

MARY EMMA CANTLEY  
*Reporter, Custodian of Scrapbook*

## Highland Players

"The play's the thing" . . . initiation . . . backstage antics . . . grease paint . . .  
Si Rhi Si . . . we learned to laugh . . . dress rehearsals . . . committees . . . big  
productions.

## International Relations Club

Right front parlor . . . those U. N. headaches . . . birthday party . . . conference  
delegates—the lucky few . . . attractive yearbooks . . . Miss Robertson . . . scrapbook  
of college activities.



### OFFICERS

ANNA JORDAN  
*President*

DEWIE BUE  
*Vice-President*

LILLIAN TURNER  
*Secretary and Treasurer*

NELL LOWE  
*Custodian of Scrapbook and  
Service Reporter*

## Home Economics Club

Fancy food . . . teas . . . after-dinner coffee . . . Home Management House . . . workshops . . . money raising campaigns . . . guest speakers . . . clippings for the scrapbook . . . Miss Comer.

### OFFICERS

SARA MELVIN  
*President*

ANNA JORDAN  
*Vice-President*

BETTY GRAY MELVIN  
*Secretary and Treasurer*



PATRICIA SMITH  
*President*



## Day Students Club

Hurry, hurry, hurry! . . . car trouble . . . noise . . . fun . . . halloween party . . . left back parlor . . . we're left out . . . late for class again . . . 10:20—drugstore bound.

# Alpha Psi Omega

National Honorary Dramatics Fraternity . . . Kappa Lambda Chapter . . . points  
recognition of dramatic achievement . . . initiation.



## OFFICERS

HELEN SHERRILL  
*President*

ANN YELVINGTON  
*Vice-President*

JO PEARCE  
*Secretary and Treasurer*



## OFFICERS

JEAN PARKER  
*President*

ANNE HIGHSMITH  
*Vice-President*

PEGGY HENDERSON  
*Secretary and Treasurer*

# Commercial Club

Clicking typewriters . . . those office practice hours . . . Valentine Tea . . . watch-  
word: efficiency . . . spring picnic . . . catalogues . . . tomorrow's businesswomen.



“Loyalty through Cooperation . . .”







## Athletic Association

Saturday night dances . . . practice, practice, practice!!! . . .  
 tournaments . . . Varsity letters and aching muscles . . . Highland  
 Fling . . . from basketball to folk dancing . . . May Day.

### OFFICERS

- KATRINA HUBBLE, *President*  
 JO PEARCE, *Vice-President and Head of Volleyball*  
 JANICE MURDOCH, *Secretary*  
 MAYSIE MILLER, *Treasurer and Head of Tennis*  
 GLORIA RUMMAGE, *Salesman*  
 MADELINE CARSWELL, *Head of Table Tennis*  
 CAROLINE OGILVIE, *Head of Bowling*  
 JEAN McDONALD, *Head of Basketball*



Katrina Hubble, *President*

## Cheerleaders

PHYLLIS DYER  
*College Cheerleader*

JAC ADELE BLACKWELL  
*Senior*

CAROLINE OGILVIE  
*Junior*

ENID GRADY  
*Sophomore*

SHANNON COBLE  
*Freshman*

2-4-6-8, who do we appreciate . . . Cheerleaders! cheerleaders! cheerleaders! . . . what would a game be without them!

*Left to right:*  
Coble  
Grady  
Ogilvie  
Dyer  
Blackwell



## Monogram Club

*Left to right:*  
Betty McLean  
Dewie Buie  
Dorothy Williams  
Mary Alice Parks  
Ann Yelvington  
Lois Kinlaw  
Jo Pearce  
Margaret Smith



500 points . . . scholarship . . . vim, vigor, and sportsmanship . . . the sought-after "M."

## Senior Basketball



*Left to right:*

Kinlaw  
Williams  
Powers  
McCain  
Freeman  
Smith  
Elliott

## Junior Basketball

*Left to right:*

*Seated:*  
Walker  
Dedmon  
Lovett  
McDonald

*Standing:*

Dorsey  
Taylor  
Cashwell  
Kelly  
Jackson  
Price  
Highsmith



# Sophomore Basketball

*Left to right:*

*First row:*

Murphy  
Clarke  
Murdoch  
Monroe  
Brown

*Second row:*

Shaw  
McPhaul  
Fuller  
Grier



# Freshman Basketball

*Left to right:*

*First row:*

McGoogan  
McNeil  
Barham  
Buhler  
Hill  
Heyer

*Second row:*

Cashwell  
McArthur  
Duncan  
Sandifer  
Grantham  
Richardson

*Third row:*

Henderson  
Abernathy  
McKenzie  
Moody  
Harding  
Coble  
Maxwell  
Sutton  
Russell

## Senior Volleyball



*Left to right:*

Moulder  
Pearce  
Buie  
Kinlaw  
McCain  
Melvin  
Freeman  
McLean  
Williams  
Smith

## Junior Volleyball

*Left to right:*

*Seated:*  
Dorsey  
McRae  
Hubble

*Second row:*

McMillan  
Dyer  
Sherrill  
Walker  
McDonald  
LaNier  
Davenport  
Cantley



## Sophomore Volleyball



*Left to right:*

*First row:*

Fuller  
McDowell  
Williamson  
Murdoch  
Brown  
Grier

*Second row:*

Murphy  
Shaw, A.  
Shaw, E.  
Brunson  
Grady  
Parker  
West



## Freshman Volleyball

*Left to right:*

*First row:*

Coble  
Abernathy  
Williams  
Harding  
Maxwell  
Henderson

*Second row:*

Shealy  
Richardson  
Cashwell  
Hill  
Buhler  
Sandifer

*Third row:*

Smith  
McArthur  
Elliott  
Crantham  
Barham

*Fourth row:*

Duncan  
McGoogan  
Pickett  
McBryde

## Captains



CAROLYN ELLIOTT  
*Senior Basketball*

DEWIE BUIE  
*Senior Volleyball*

MARJORIE LOVETT  
*Junior Basketball*

PAT McRAE  
*Junior Volleyball*

JANICE MURDOCH  
*Sophomore Basketball*

BETTY ANN BRUNSON  
*Sophomore Volleyball*

LIB McGOOGAN  
*Freshman Basketball*

MARGARET RICHARDSON  
*Freshman Volleyball*

## Archery

Nancy McCubbins

Zelma Grantham

Jo Snell





# Tennis

*Left to right:*

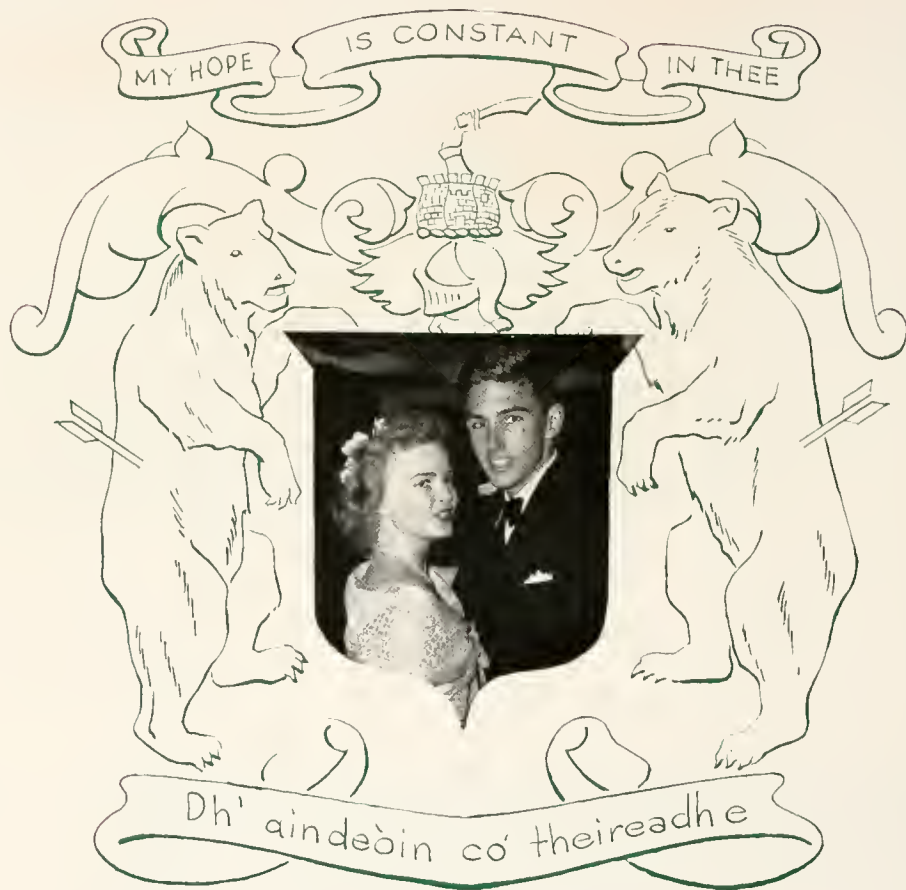
Pierce  
Hall  
Clarke  
Smith  
Monroe  
Watson  
Rogers  
McPhaul  
Landis  
LaNier  
Sherrill  
Hubble  
Goodman



# Bowling

*Left to right:*

McRae  
Kelly  
Whitaker  
Dorsey  
Goodman  
Byrd  
McPhail  
Harris  
Moore  
Dedmon  
Taylor  
Lovett  
Jackson  
Russ



# FEATURES

"Our Best to You..."



MAY



MAY QUEEN . . . 1950

BETTY McLEAN



MAID OF HONOR

JAC ADELE BLACKWELL



## May Court

BETTY MCLEAN  
*May Queen*

JAC ADELE BLACKWELL  
*Maid-of-Honor*

MARY RAYE FREEMAN, LOIS KINLAW, JUDITH  
POWERS, *Senior Attendants*

ELEANOR LANIER, PAT McRAE, MARGARET POWELL  
*Junior Attendants*

LOIS BROWN, MARTHA LANDIS  
*Sophomore Attendants*

ANN BRINN, LIB McGOOGAN  
*Freshman Attendants*



## May Day

Highland fling . . . freshman drill . . . oh, my aching back! . . . a breathless hush—  
the queen . . . beauty, beauty, beauty.





CHIEF MARSHAL

BETTY JO McMILLAN



# Marshals

Poise . . . charm . . . those white dresses . . . presiding at the punch bowl . . .  
welcoming committee for dignitaries.



EPSILON CHI LITERARY SOCIETY:

Maysie Miller  
Pat McRae  
Margaret Powell  
Phyllis Dyer

ZETESIAN LITERARY SOCIETY:

Pat Harris  
Marjorie Lovett  
Jean McDonald  
Helen Sherrill



BEST ALL-ROUND

ANN JORDAN

PERSONALITY

ANN PEARCE





CAPABILITY

MADELINE CARSWELL

DEPENDABILITY

DOROTHY WILLIAMS





SPORTSMANSHIP

JO PEARCE

BEAUTY

BETTY JO McMILLAN



# Snapshots



1. "Monkey" shines . . . 2. going to the dogs . . . 3. in ye ole swimming hole . . . 4. second childhood . . . 5. waiting for the convertible to come in . . . 6. what—no more church cuts left? . . . 7. solarium on Vardell roof . . . 8. tennis champ—yeah, who says so? . . . 9. "commercialized somewhat" . . . 10. the civilized mingling with the uncivilized.



# Snapshots



1. it *could* happen to you . . . 2. expecting someone. Carleen? . . . 3. where there's Ann, there's Jo . . . 4. "it walks—it talks" . . . 5. "but I didn't hear the light bell" . . . 6. hired help here at Angel Farm . . . 7. put your shoes on, Lucy—I mean Anna . . . 8. "just like a fool I stop and stare" . . . 9. every morning at 8:15 . . . 10. more milk than bar . . . 11. our first coed—BACHELOR of arts, BACHELOR of Divinity, but not otherwise.

# Snapshots

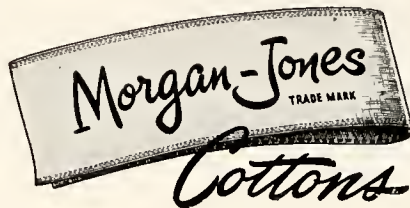


1. "for he's a jolly-good fellow" . . . 2. Zetesian threw a whopper . . . 3. and Epsilon Chi followed suit . . . 4. careful, it may be loaded . . . 5. it's cheaper on wings of song . . . 6. effect of English drama on everyday life . . . 7. "just for fun"—she says . . . 8. lookout for the windows! . . . 9. another freshman bites the dust . . . 10. wot hopped?

# Snapshots



1. the editorial "we" . . . 2. ain't nobody here but us chickens . . . 3. see something, Frances? . . . 4. off the record with Booker and Boyd . . . 5. all dressed up and nowhere to go . . . 6. there must be a man in the picture . . . 7. come to the Mardi Gras! . . . 8. back to Harrell's Store . . . 9. and search for dignity in every CUBBY hole . . . 10. a perfect advertisement! . . . 11. the last straw.



Are

“Yours for a Lovely Home”

---

BEDSPREADS

BATH SETS

DRAPES

DISH CLOTHS

SCATTER RUGS

DISH TOWELS

PRODUCED IN NORTH CAROLINA

*Sold by fine stores everywhere*

---

**MORGAN-JONES, INC.**

58 Worth Street

NEW YORK, N. Y.

# TOWNSEND'S PHARMACY

*The Rexall Store*

---

WHERE THE COLLEGE GIRLS MEET

DEPENDABLE DRUGGISTS

---

RED SPRINGS, NORTH CAROLINA

M. & S. MOTOR CO.

---

CHRYSLER and PLYMOUTH CARS

*Sales and Service*

---

RED SPRINGS, NORTH CAROLINA

Phone 248-1



"SINCE 1912"

THE

*Capitol*

OF

FAYETTEVILLE

FAYETTEVILLE, NORTH CAROLINA

*Compliments of*

McKEITHAN  
HARDWARE

---

RED SPRINGS, NORTH CAROLINA

*Compliments of*

MAXTON SUPPLY CO.

MAXTON, N. C.

*Best Wishes From*

**ROBBINS  
CLOTH MILLS, INC.**

RED SPRINGS DIVISION



Maxton Road  
Phones 228-1 and 448-1

**LAURINBURG  
MILLING COMPANY**

*Manufacturers of*

HIGH GRADE FLOUR AND  
MIXED FEEDS

LAURINBURG, NORTH CAROLINA

*Compliments of*

**McGIRT'S PLUMBING AND  
ELECTRICAL SERVICE**

SUPPLIERS and CONTRACTORS

=====  
MAXTON, NORTH CAROLINA

**B. C. MOORE AND  
SONS, Inc.**

Phone 243-6

=====  
*"Buy from Moore and Save More"*  
=====

RED SPRINGS, NORTH CAROLINA

**CITY OPTICAL COMPANY**  
Wilmington : Fayetteville : Greensboro

=====  
Prince Charles Hotel  
Phone 7179

=====  
FAYETTEVILLE, NORTH CAROLINA

*Compliments of*

**FIELDS**  
for Juniors Exclusively

FAYETTEVILLE, NORTH CAROLINA

Pontiac  
Studebaker  
International Harvester

*Sales and Service*

---

**SINGLETON AND  
McMILLAN, Inc.**

---

Phone 3971

RED SPRINGS, NORTH CAROLINA

Bud's  Service

GLENN PARLER - WATSON McNEILL

GAS - OIL - WASHING - GREASING

Phone 3921

RED SPRINGS, NORTH CAROLINA

---

**AUTO SERVICE CENTER**

— and —

**Red Springs Fuel Oil Co.**

AUTO PARTS AND REPAIR - WELDING

*Gasoline - Fuel Oils - Tires*

Phone 3061

RED SPRINGS, NORTH CAROLINA

TRAVEL BY  
**TRAILWAYS**

---

**CHARTER BUSES**

To

ANY POINT IN THE  
UNITED STATES  
CANADA and MEXICO

---

**QUEEN CITY TRAILWAYS**

CHARLOTTE, NORTH CAROLINA

*Compliments of*

**HOOD MOTORS, INC.**

*Your DODGE - PLYMOUTH Dealer*

Est. 1933

LUMBERTON, NORTH CAROLINA

Phone 21

---

**LUMBERTON OPTICAL CO.**

415 North Elm Street

LUMBERTON, NORTH CAROLINA

---

*High Quality Prescription Service*

*Compliments of*

**Woods 5-10-25c Stores, Inc.**

RED SPRINGS, NORTH CAROLINA

**EDEN'S FLOWER SHOP**

RED SPRINGS, NORTH CAROLINA

Dial 2241

*"We Wire Flowers Anywhere"*

**General Auto Sales, Inc.**

OLDSMOBILE and G.M.C. TRUCKS

FULL LINE OF PARTS

*Expert Mechanics*

Phone 2381

RED SPRINGS, NORTH CAROLINA

**LENOIR'S JEWEL SHOP**

*Quality Jewelers*

RED SPRINGS, NORTH CAROLINA

*Compliments of*

**BAXLEY-JOHNSON  
CHEVROLET CO., INC.**

RED SPRINGS, NORTH CAROLINA

**ALLEN BUILDERS SUPPLIES**

Inc.

LUMBER : BUILDING MATERIAL  
PLUMBING and HEATING

Phone 2396

RED SPRINGS, N. C.

*Compliments of*

**WESTERN AUTO STORE**

RED SPRINGS, N. C.

**A. WEINSTEIN & SONS**

LUMBERTON, NORTH CAROLINA

**D. M. McMILLAN**

*"Ford Products Since 1912"*

RED SPRINGS, NORTH CAROLINA

*Compliments of*

**MACKS' 5-10-25c STORES**

RED SPRINGS, NORTH CAROLINA



# RED SPRINGS SUPPLY COMPANY, INC.

GENERAL MERCHANTS

*The Friendly Store*

---

Fertilizers and Cotton  
Livestock                      Hardware  
Grocery                      Market  
Building Material

---

DIAL 3701 and 3271

RED SPRINGS, NORTH CAROLINA

---

NEIGHBORS  
SHOE STORE

---

*Red Springs' Exclusive  
Shoe Store*

---

Phone 3981

RED SPRINGS, NORTH CAROLINA

GOLD MEDAL FERTILIZERS  
LIBERTY PREMIUM FERTILIZERS  
MODERN GIN SYSTEM  
*Modern Seed Cleaning Equipment*



LIBERTY  
MANUFACTURING  
COMPANY

RED SPRINGS, NORTH CAROLINA

Friendly gesture...Have a Coke



© 1946 The C-C Co.

BOTTLED UNDER AUTHORITY OF THE COCA-COLA COMPANY BY  
FAYETTEVILLE COCA-COLA BOTTLING CO., INC.

5¢

*Compliments of*  
**JOHN F. McNAIR, INC.**

—  
**A MODERN  
DEPARTMENT STORE**

—  
LAURINBURG, NORTH CAROLINA

Hotel  
**PRINCE CHARLES**

AIR-CONDITIONED DINING ROOM

FAYETTEVILLE, NORTH CAROLINA

*Compliments of*  
**QUINN-MILLER COMPANY**

*Furniture of Quality*

FAYETTEVILLE, NORTH CAROLINA

**W. A. McCORMICK & SONS**

*Complete Self-Service Food Store*

DISTRIBUTORS OF  
BALLARD'S INSURANCE FEEDS

SAINT PAULS, NORTH CAROLINA

*Automobile - Fire - Life Insurance*  
**WILLIAM L. POOLE, Agency**

Main Street  
RAEFORD, N. C.

*Compliments of*

**GRANTHAM DRUG COMPANY**

SAINT PAULS, NORTH CAROLINA

*Compliments of*

**HENEBRY'S of Fayetteville, Inc.**

*Registered Jewelers. American Gem Society*

110 Hay Street  
FAYETTEVILLE, NORTH CAROLINA

*Compliments of*

**Z. V. PATE, INC.**  
*"A Modern Department Store"*

LAUREL HILL, NORTH CAROLINA

*Compliments of*

**NEW YORK RESTAURANT**

FAYETTEVILLE, NORTH CAROLINA

**THE ROBESONIAN**

*Robeson County's Daily Newspaper*

Established 1870

PUBLISHED FIVE DAYS EACH WEEK

AT  
LUMBERTON, NORTH CAROLINA

**HOTEL RAEFORD**

Mr. and Mrs. O. W. Holtzclaw. *Lessee Owners*

MODERN COFFEE SHOP

U. S. HIGHWAY 15-A AND N. C. 211

Telephone 2691  
RAEFORD, NORTH CAROLINA

**FREEMAN PRINTING COMPANY**

*"Over Fifty Years of Quality Printing"*

D. T. LAMBETH. *Manager*

LUMBERTON, NORTH CAROLINA

*When better Automobiles are built*

**BUICK**

*will build them*

**COMMUNITY MOTOR CO.**

Phone 1099

LUMBERTON, NORTH CAROLINA

*Compliments of*

**AUSTIN DRUG COMPANY**

*The Rexall Store*

MAXTON, NORTH CAROLINA

# PRESBYTERIAN JUNIOR COLLEGE

GREETINGS  
THE WHITE HEATHER

*In recognition of the cordial relations between the two colleges*

## WE OFFER

Standard Two-Year College Courses leading to the A.A. and A.S. degrees. Preparatory Courses in the tenth, eleventh, and twelfth grades. Business Administration. One- and Two-Year Commercial Courses. Flying. Two Terms of Summer School.

Small classes, individual attention, athletics, student activities, Christian emphasis, thorough instruction, excellent faculty. Apartments for married students.

Box BH : Maxton, North Carolina

*Compliments of*

**HALLUM FURNITURE CO.**

ROCKINGHAM, NORTH CAROLINA

**HOME FURNITURE COMPANY**

*A Complete Line of  
Home Furnishings*

RED SPRINGS, NORTH CAROLINA

**BURROUGHS CUT-RATE STORE**

Phone 4271

RED SPRINGS, NORTH CAROLINA

SCHOOL SUPPLIES  
STATIONERY : SANDWICHES  
CANDY : TOILET ARTICLES : DRINKS

*Compliments of*

**FLEISHMANS**

317 North Elm Street

LUMBERTON, NORTH CAROLINA

*Compliments of*

**COLONIAL FROZEN FOODS**

RED SPRINGS, NORTH CAROLINA

# BELK-HENSDALE COMPANY

DEPARTMENT STORES

LUMBERTON : FAYETTEVILLE : RAEFORD  
RED SPRINGS

---

The 275 Belk Stores Are the  
South's Largest Distributors  
of Reliable Merchandise

---

*"SHOP AND SAVE AT BELK'S"*

## DIANA SHOPS

*Smartest in Feminine  
Apparel*

123-25 Hay Street  
FAYETTEVILLE, NORTH CAROLINA

## ROBESON OFFICE SUPPLIES

STATIONERS : OFFICE OUTFITTERS  
PRINTERS

LUMBERTON, NORTH CAROLINA

*Compliments of*

## MATTHEWS PHARMACY

Pittman Hospital Building  
FAYETTEVILLE, NORTH CAROLINA

## HEDGPETH PHARMACY

*Two Registered Druggists*

---

Lorraine Hotel Building  
LUMBERTON, NORTH CAROLINA

*Compliments of*

## TRU-ADE BOTTLING CO.

FAYETTEVILLE, NORTH CAROLINA

*Compliments of*

**PEPSI-COLA  
BOTTLING  
COMPANY**



FAYETTEVILLE, NORTH CAROLINA

If You Live in Southeastern  
North Carolina

*It's the*

**FAYETTEVILLE OBSERVER**

*"North Carolina's Oldest Newspaper"*

For Complete  
**NEWS COVERAGE**

*Compliments of*

**BENDER'S DRUG STORE**  
*A Real Drug Store*

201 Hay Street  
FAYETTEVILLE, NORTH CAROLINA

**BAUCOM APPLIANCE COMPANY**

RAEFORD, NORTH CAROLINA  
FRIGIDAIRE PRODUCTS  
MAYTAG WASHERS      EASY WASHERS  
ELECTRICAL SUPPLIES  
SMALL APPLIANCES, ETC.

*Quality is of First Importance*

*Compliments of*

**COLLINS DEPARTMENT STORE**

RAEFORD, NORTH CAROLINA

*Compliments of*

**McLAUGHLIN CO., INC.**

RAEFORD, NORTH CAROLINA

*Compliments of*

**Fayetteville Office Supply Co.**

PRINTERS : STATIONERS  
OFFICE OUTFITTERS

513 Hay Street : Dial 2768  
FAYETTEVILLE, NORTH CAROLINA

CONGRATULATIONS, SENIORS!

THE WHITE HEATHER

IS A REAL CREDIT TO YOU AND TO  
FLORA MACDONALD COLLEGE

WHAT A MEMORY BOOK IT WILL  
BE THROUGH THE YEARS! MAY  
IT BIND YOU EVER CLOSER TO YOUR  
ALMA MATER

OUR PROUD THOUGHTS AND PRAYERS  
WILL FOLLOW YOU. WE KNOW THAT YOU  
WILL MEASURE UP TO THE HIGHEST  
AND BEST



FLORA MACDONALD COLLEGE

RED SPRINGS, N. C.

MARSHALL SCOTT WOODSON

*PRESIDENT*

*Compliments of*

# FAYETTEVILLE WHOLESALE COMPANY

Featuring

FRESH FRUITS and VEGETABLES

---

PHONE 2131

---

FAYETTEVILLE, NORTH CAROLINA

## M. M. SMITH FURNITURE COMPANY



FURNITURE  
FOR EVERY HOME

*Wholesale and Retail*



325 Hay Street  
FAYETTEVILLE, NORTH CAROLINA

## M. M. SMITH STORAGE WAREHOUSE

BONDED

FIREPROOF WAREHOUSES

Agt. ALLIED VAN LINES, Inc.



LOCAL and LONG DISTANCE  
HAULING



Phone 2194  
FAYETTEVILLE, NORTH CAROLINA



# REDMON'S STUDIOS

ELKIN, NORTH CAROLINA



PHOTOGRAPHERS



All Pictures Personally Made by

T. A. REDMON

---

## **BILL BELCHE**

PHOTOGRAPHER



Commercial Photography : Custom Framing



137 Robeson Street    :-:    Phone 5468

FAYETTEVILLE, NORTH CAROLINA



**CHARLOTTE ENGRAVING CO.**

*School Annual Engravers*

Charlotte, North Carolina

*Compliments of*

**GRAHAM'S**  
**Department Store, Inc.**

=====

Phones

308-1

257-1

=====

RED SPRINGS, NORTH CAROLINA

*Compliments of*

**KINLAW'S JEWELRY STORE**

RAEFORD, NORTH CAROLINA

**ROWLAND DRUG CO.**

*The Rexall Store*

•

ROWLAND, NORTH CAROLINA

To Please Your Family

Stop at

**ELK RESTAURANT**

RAEFORD, NORTH CAROLINA

AUTOGRAPHS

# BUILDERS DREAMS

THE WHITE HEATHER STAFF  
and the  
EDWARDS & BROUGHTON  
COMPANY

Cooperated to produce this Annual.

•  
WRITE FOR OUR  
ANNUAL REPRESENTATIVE  
TO CALL AT YOUR SCHOOL.

•  
Letter Press and Lithographed  
Annuals produced in our  
plant in Raleigh.

•  
EDWARDS & BROUGHTON  
COMPANY

Established in 1871

