









Flora McDonald



the
WHITE
HEATHER

*Published annually by the students of Flora Macdonald College
Red Springs, North Carolina*

1950

DEWIE BUIE, Editor-in-Chief

ANN YELVINGTON, Business Manager



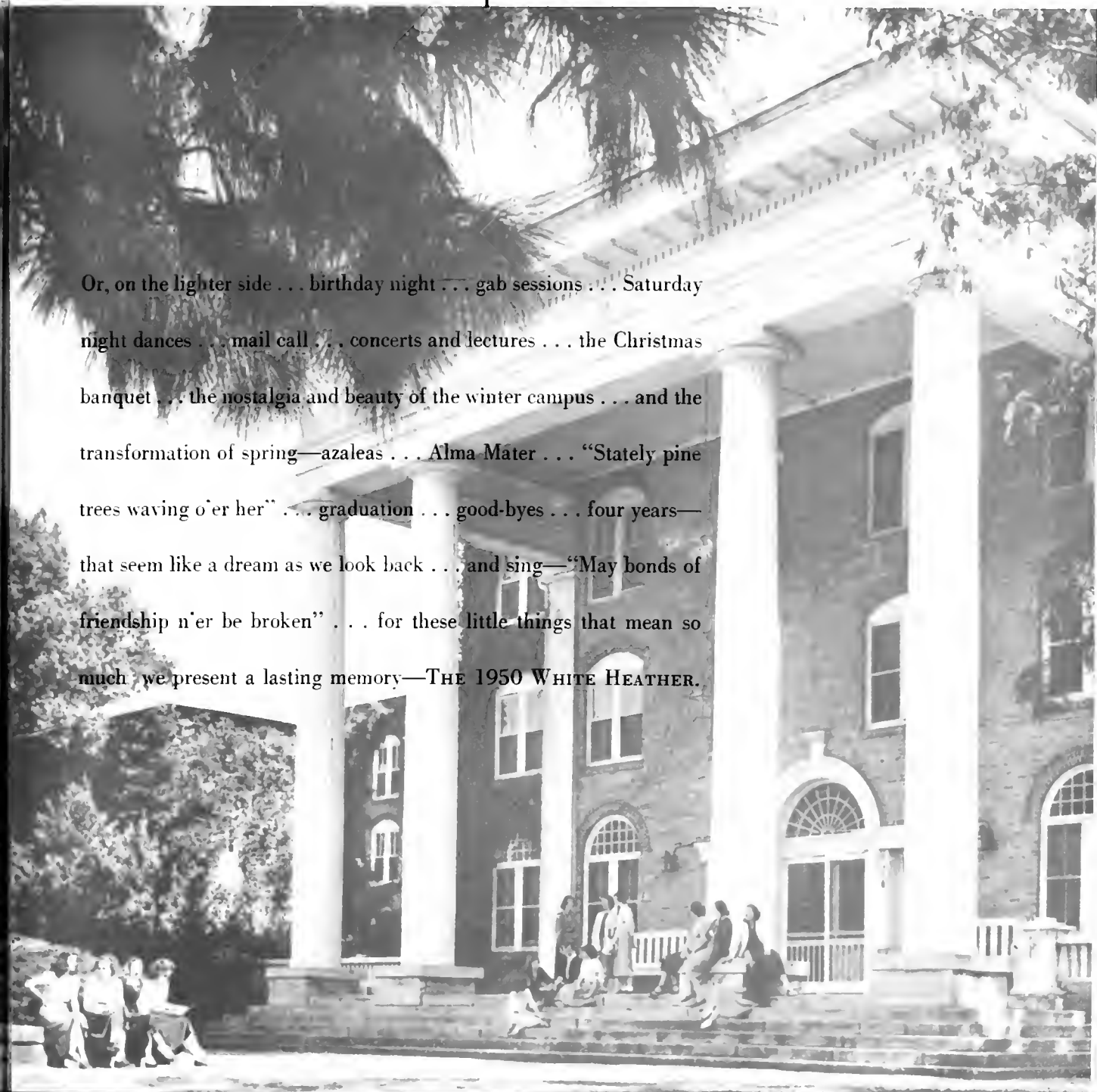
"Mony a

FOREWORD

We present—in a Highland setting—the WHITE HEATHER . . . four years devoted to the merging of the dignity of traditional ideals with the informality and laughter of daily living, which form the plaid pattern of Flora Macdonald life . . . our School Spirit—made up of so many things: friendship everywhere, small student body with close faculty-student relationships, sportsmanship, sharing—in the mutual despair of exams, seemingly impossible assignments, term papers, hours and hours of parallel, and those endless labs. . .

bonnie day"

Or, on the lighter side . . . birthday night . . . gab sessions . . . Saturday night dances . . . mail call . . . concerts and lectures . . . the Christmas banquet . . . the nostalgia and beauty of the winter campus . . . and the transformation of spring—azaleas . . . Alma Mater . . . “Stately pine trees waving o’er her” . . . graduation . . . good-byes . . . four years—that seem like a dream as we look back . . . and sing—“May bonds of friendship n’er be broken” . . . for these little things that mean so much, we present a lasting memory—THE 1950 WHITE HEATHER.





Lines, lines, more lines . . . who said that about the shortest distance? . . . and, after those hours of standing—"have you ever seen such a schedule?" . . . "but I don't want to major in that!" . . . "when am I supposed to sleep—in class?" . . . and then, those first faculty-student encounters . . . but to get away from it all, we took An Old Fashioned Walk—music, merriment, and merriment.





The joy we gained in sharing . . . worship . . . Sunday night hymn
sings . . . Thanksgiving baskets . . . birthday parties . . . Christmas
casoline . . . White Gift Service . . . vacation eve festivities—laughter,
excitement, friendship . . . and piles of work . . . until we created that
wonderful School Spirit.



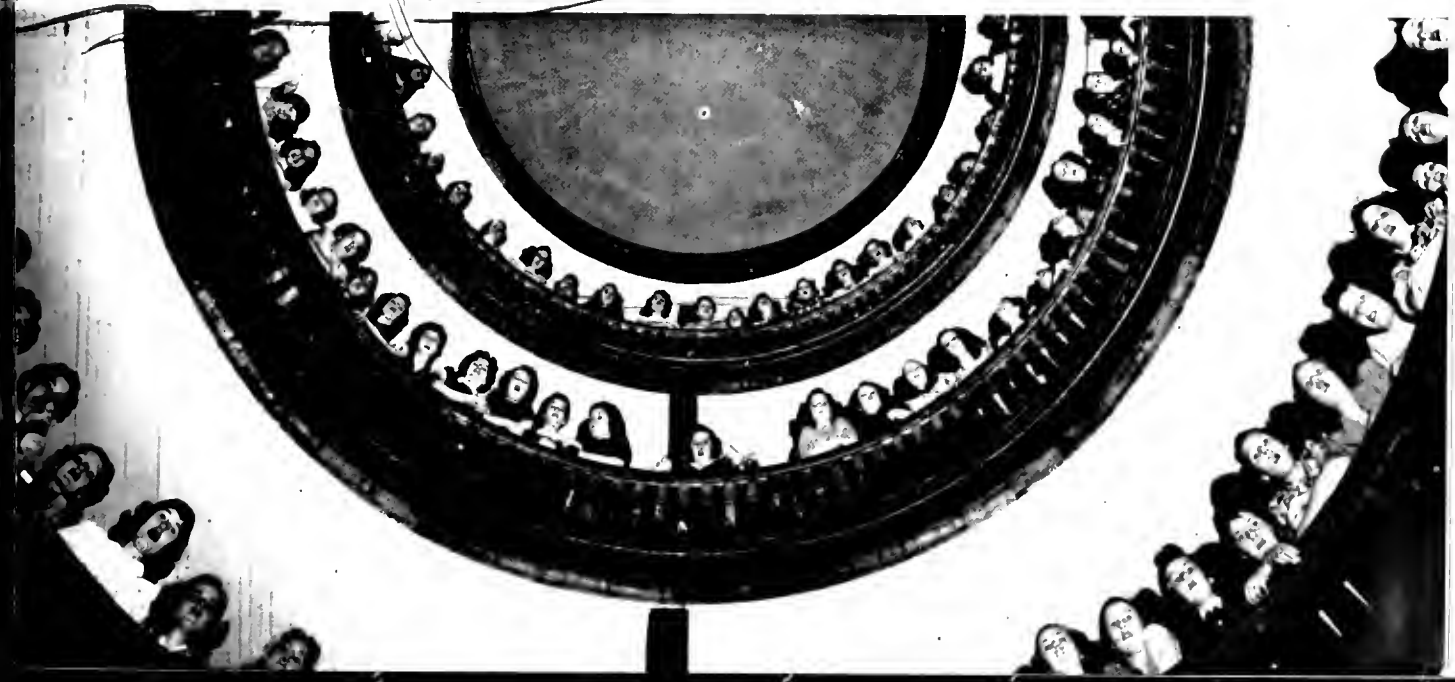


Any time, any morning . . . the last bell . . . you could tell the Freshmen—they got there on time . . . the smiles that appeared with first cups of coffee . . . 8:20—the inevitable . . . and we assemble for one reason or another: the sleep we missed the night before—social cor-respondance—reminiscing that past week end—and then, there are always the eager few . . . time out for a coke—eat, drink and be merry, for tomorrow you may diet . . . but in bigger moments we meet the public—with neon charm—and, concealing our pride, we assume the role of Sinatra's fans and await our turn.





And between trips home . . . it's our local rendezvous, the Milk Bar—where anything can happen—and usually does . . . then, back to the campus where we spend our leisure hours basking and baking—vs. the will of our elders . . . morning after morning of sun plus the typical conversations: "Really, I haven't had time to write that paper, read that history parallel, study for those tests"—as she sits up for another oil treatment . . . days whirling by . . . a tremendous stampede for the next round—a one higher each year . . . the satisfaction of another year behind, and a lost feeling for departing seniors . . . "Going up Day" is over—and with it—another glorious year.





DEDICATION

. . . because she has inspired us to love and appreciate the simple with the noble.

. . . because she has expressed a genuine interest and friendliness toward every student.

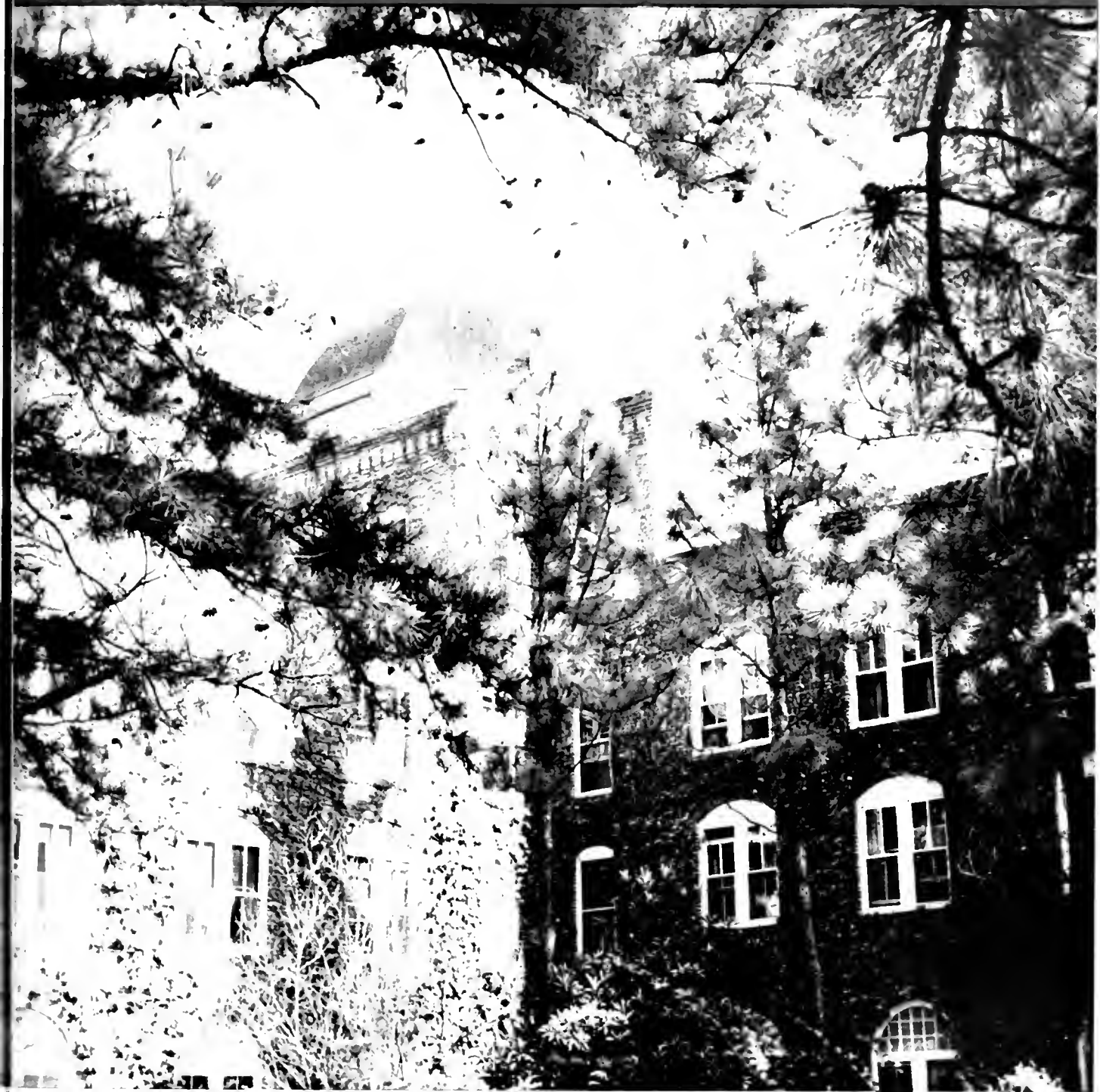
. . . because she has combined successfully the responsibilities of a home and a classroom.

We, with great respect and admiration, dedicate the

1950 WHITE HEATHER

to

MRS. ELBERT McPHAUL





DR. MARSHALL S. WOODSON, *President*

Our new president, Dr. Woodson, has very efficiently taken his place at the head of our college. His high ideals and capabilities set an example greatly to be admired in the educational and business world. We are looking forward to our future associations with him.

Jones



Vardell



Coxhead



Administration and Faculty

The administration and faculty guide us safely through our college life. With an eye to the future they instill not only high ideals but habits of practical thinking.

MR. HALBERT M. JONES, *Acting President*

Progress and Mr. Jones go together. After his coming as Acting President, things began to move forward at Flora Macdonald. It was indeed our privilege to claim him as our leader in the field of education.

DR. CHARLES G. VARDELL, *President Emeritus*

There is a glory about him, here with his school and his memories of past years at Flora Macdonald. He went a-grailing—and succeeded.

MR. WILLIAM G. COXHEAD, *Acting Vice-President and Business Manager*

Our capable and much admired Vice-President, Mr. Coxhead, has won the respect and friendship of everyone with whom he has come in contact. During the absence of our regular president his many responsibilities were performed willingly and with great efficiency.

MISS HAZEL MORRISON, *Dean of Faculty*

In spite of worries of semester hours, schedules, and grades, Dean Morrison has seen us through another academic year, with her friendly smile and unending patience.

MR. ROBERT SMITH, *Dean of Music*

He is our dynamic Scotsman with a distinctive talent and love not only for music but for organization and progress as well.

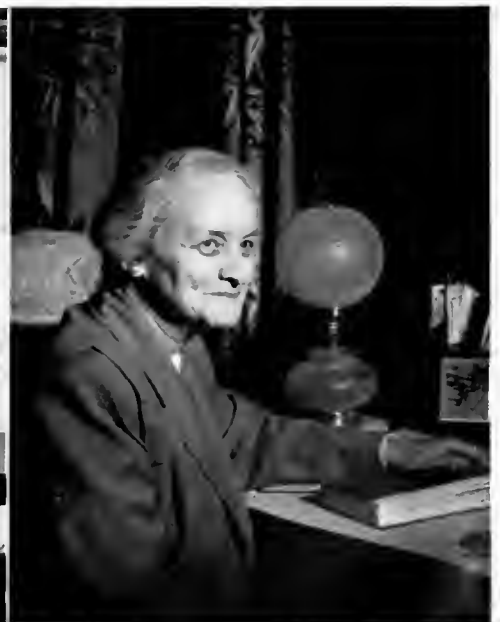
MRS. FRANCES ALEXANDER McLEOD, *Dean of Women*

She is a ready counselor, characterized by sympathy with understanding and a smile for everyone.

Morrison

Smith

McLeod



HARRIET N. MORRISON
B.A., M.A.
Professor of Latin

ELEANOR BRYCE SCOTT
B.A., M.A., Ph.D.
Professor of English

ANN SHEALY
B.A., M.A.
*Assistant Professor of
English*

ETHEL BELLE HANSEN
B.A., M.A., Sc.D.
Professor of Biology

ANNIE MOORE CHERRY
B.A., M.A.
*Assistant Professor of
Education*

FRANCES ELIZABETH COMER
B.S., M.S.
*Professor of Home Eco-
nomics*

T. E. WRIGHT
B.A., M.A.
Professor of French



Morrison, Scott, Shealy, Hansen, Cherry, Comer, Wright

HELEN T. DORROH
Supervisor of Dormitories

LIDA LAW CHAPMAN
B.A., B.M.
*Assistant Professor of
Piano and Organ*

ELIZABETH STENHOUSE
B.L.
*Assistant Professor of
Business Subjects*

AILEEN McMILLAN
B.Mus.
*Assistant Professor of
Piano*

FLORA MCKINNON PERRY
B.A., B.S.L.S.
Librarian

LOIS J. LAMBIE
B.M., M.Mus.
*Assistant Professor of
Public School Music*

LETA WELTHA MCINTYRE
B.S.
*Assistant Professor of
Business Subjects*

ETHEL M. ROWLAND
B.S.
*Assistant Professor of
Voice*



Seated: Dorroh and Chapman; Standing: Stenhouse, McMillan, Perry, Lambie, McIntyre, Rowland



Morrison, McPhaul, Harris, Hardee, Elliott, Bateman

S. BROWN MORRISON
B.L.
Bursar

ELIZABETH C. MCPHAUL
B.A.
Assistant Professor of Bible

PEGGY HARRIS
Field Representative

PEGGY HARDEE
Assistant Librarian

JOAN ELLIOTT
Secretary to the Acting Vice-President and Business Manager

ETHEL BATEMAN
B.A., M.A.
Director of Physical Education and Assistant to the Dean of Women

Faculty



Robertson, Robeson, Neighbors, Bullock, Conoly, Turner, Van Dyke, Connor

CAROL ROBERTSON
B.A., M.A.
Professor of History

LILLIAN FARQUHAR ROBESON
Assistant Professor of Violin

GENEVIEVE M. NEIGHBORS
B.A., M.A.
Assistant Professor of Education and Social Science

PHILIP LESLIE BULLOCK
B.A., B.D., Th.M.
Professor of Bible

MARY MACLEAN CONOLY
B.A., B.S., M.A.
Professor of Education

MARIE ALMA TURNER
B.A., M.A.
Assistant Professor of French and Spanish

LOUISA A. M. VAN DYKE
B.A., M.A., Ph.D.
Professor of Mathematics and Physics.

VIRGINIA CONNOR
R.N.



CLASSES

“... from A. M. 'til A. M.”





Senior Class

Officers

LOIS KINLAW	<i>President</i>
JO SNELL	<i>Vice-President</i>
JUDITH POWERS	<i>Secretary</i>
MADLINE CARSWELL	<i>Treasurer</i>
JAC ADELE BLACKWELL	<i>Tea Room Manager</i>
MARY ALICE PARKS	<i>Assistant Tea Room Manager</i>

"Oh, the joys of senior living," quote the underclassmen until—they, too, have conferences, practice teaching, lesson plans, or lessons, period! . . . socialite Seniors—the silver tea, dinner out, orchids 'n men 'n nights out . . . plus other privileges and responsibilities—flag duty, a morning and afternoon performance; college hostesses for dates and dignitaries; Friday night devotions . . . and with it all—a bit of dignity—matched by the charm of our mascot . . . the great anticipation for that "passport to independence"—exceeded only by the regret of those final good-byes.



Seniors

JACQUELINE ADELE BLACKWELL, B.A.

English

Florence, S. C.

Candid . . . night owl . . . depth . . . "simply hi-larious" . . . vivacious . . . Southern Belle.

Epsilon Chi Literary Society: Peace College 1, 2; Highland Players 3, 4, Secretary-Treasurer 4; Volley Ball 3, 4, Varsity 3; Cheerleader 3, 4; Tea Room Manager 4; May Court 3; Maid of Honor 4; Spanish Club 3; Senior Scribe 4; Dance Chairman 4.

CHARLOTTE BRIDEWELL, B.S.

Home Economics

Donaldsonville, La.

Blinking eyes . . . spiritual . . . Montreat . . . agreeable . . . industrious . . . traveler.
Zetesian Literary Society: Montreat College 1, 2; Vice-President Student Body 4; Student Volunteers 3, 4; Home Economics Club 3, 4; Basketball 3; Glee Club 3, 4; International Relations Club 3, 4.

Blackwell

Bridewell



Buie

Carswell



1950



DEWIE BUIE, B.A.

Grammar Grade Education

Norfolk, Va.

"et cetera, et cetera" . . . distinctive contributions . . . New York . . . delightful sarcasm . . . ingenious . . . "just one game of bridge."

Zetesian Literary Society: Vice-President Class 1; Granddaughters' Club: International Relations Club 2, 3, 4; Vice-President 4; L'Alliance Francais 2, 3; Secretary-Treasurer 3; Volley Ball 2, 3, 4; Captain 3, 4; Varsity 3; Monogram Club 4; Appalachian State Teachers College Summer School 2; Marshal 3; Chairman Prayer Band Leaders 3; Christian Association Cabinet 3; Chairman Junior Dance Committee 3; College Social Committee 3; Class Editor WHITE HEATHER 3; Chief Scribe 4; Editor-in-Chief WHITE HEATHER 4.

MADLINE MAPP CARSWELL, B.A.

Primary Education

Manchester, N. C.

Consecrated . . . keen mind . . . gentle . . . hamburger fries . . . optimistic . . . Sunday School.

Epsilon Chi Literary Society; Christian Association Cabinet, Chairman of Sunday School 4; Prayer Band Leader 2, 3; Circle Treasurer 4; Mathematics Club 1, 2, 3, 4; Recording Secretary 3; International Relations Club 3, 4; Program Committee 4; Student Volunteers 1, 2, 3, 4; Vice-President 3; Athletic Board 3, 4; Sallie Southall Cotten Scholarship Award; Class Treasurer 3, 4; Superlative: *Who's Who in American Colleges and Universities.*

Seniors

CAROLYN LEE ELLIOTT. B.A.

Music and English

Edenton, N. C.

Artistic temperament . . . capable . . . English essays . . . self-assured . . . glasses . . . tantalizing perfumes.

Epsilon Chi Literary Society: Highland Players 1, 2, 3, 4, Vice-President 3; Alpha Psi Omega 2, 3, 4; St. Cecilia Music Club 1, 2, 3; French Club 2, 3; Assistant Editor WHITE HEATHER 3; Class Secretary 3; Quill Club 4; Class Editor *Pine and Thistle* 1, Literary Editor 2, 3, Editor-in-Chief 4; Wake Forest Summer School 2, 3; Hockey 1; Basketball 3, 4; William Bartram Scientific Society 3, 4; Council Dance Committee 4; Glee Club 1, 2, 4; Voice Recital 3, 4; *Who's Who in American Colleges and Universities*.

MARY RAYE FREEMAN. B.A.

Bible

Raeford, N. C.

Contagious laughter . . . "My soul" . . . gracious . . . rhymes . . . radiant . . . versatile musician.

Epsilon Chi Literary Society: Columbia College 1, 2; Glee Club 4; Christian Association Cabinet 4; Chairman Home Mission Circle 4; Volley Ball 4.



Elliott

Freeman



1950

Godwin

Gregory





EULA ESTELLE GODWIN, B.A.

Primary Education

Kenly, N. C.

Good-hearted . . . "the laundry will be open" . . . cooperative . . . saddle shoes . . . steady . . . avid interest in children.

Epsilon Chi Literary Society: Montreat College 1, 2; Student Volunteers 3, 4. President 4; Treasurer. William Bartram Scientific Society 4; Prayer Band Leader 4; Recorder of Points 4; Sappho Poetry Club 3; Class Secretary 4.

MARY GREGORY, B.A.

French and Biology

Kershaw, S. C.

Striking . . . South Carolina draud . . . jun loving . . . Appalachian . . . giggle box . . . unsophisticated.

Epsilon Chi Literary Society: Class Treasurer 2; William Bartram Scientific Society 1, 2, 3, 4; L'Alliance Francaise 2, 3, 4; Assistant Business Manager WHITE HEATHER 3; Marshal 3; Snapshot Editor WHITE HEATHER 4; Archery 2, 3; Volley Ball 3; May Court 2, 3; Glee Club 3; Appalachian State Teachers College Summer School 3.



Seniors

ANNA ALETHEA JORDAN, B.S.

Home Economics

Bishopville, S. C.

Stylish . . . barber . . . "Olive" . . . clever . . . poised . . . Bucking Chevy.

Zetesian Literary Society; Coker College 1; Tennis 2; Coker Summer School 2; Wake Forest Summer School 3; Glee Club 2, 3, 4; Home Economics Club 2, 3, 4, Vice-President 4; Marshal 3; International Relations Club 3, 4, President 4; Secretary-Treasurer Circle of Social Service 3; Dance Committee 3; L'Alliance Francaise 3, 4; Christian Association Cabinet 4; Chairman Circle of Hospitality 4; Senior Scribe 4; Delegate South Atlantic International Relations Club Conference 3.

LOIS KINLAW, B.A.

English and Social Science

Lumberton, N. C.

LaVern . . . dignified . . . "yawl" . . . admirable . . . accommodating . . . kittens.

Zetesian Literary Society; Louisburg College 1; Student Council 4; Class President 4; Student Volunteers 3; Sappho Poetry Club 2, 3, Vice-President 3; William Bartram Scientific Society 2, 3, 4, Recording Secretary 3; Athletic Board 3; Basketball 2, 3, 4; May Court 3, 4; Appalachian State Teachers College Summer School 3; Spanish Club 3; Tennis 2, 3; Volleyball 3, 4.



Jordan

Kinlaw



Melvin

Moulder



1950



SARA OCTAVIA MELVIN, B.S.

Home Economics

Kerr, N. C.

Immaculate . . . in a hurry . . . thorough . . . Betty Gray . . . "Let me tell you" . . . invaluable.

Epsilon Chi Literary Society: Marshal 3; William Bartram Scientific Society 1, 2; Home Economics Club 1, 2, 3, 4; Reporter 3; President 4; Senior Scribe 4; Christian Association Cabinet 2, 3, 4; Chairman Highway of Social Activities 2; Chairman Circle of Hospitality 3; Treasurer 4; Sallie Southall Cotten Scholarship Award 3; Volleyball 3, 4. *Who's Who in American Colleges and Universities.*

CARLEEN LESLIE MOULDER, B.A.

Primary Education

Hope Mills, N. C.

"Ginger peachy" . . . dramatic . . . enthusiastic . . . detailed . . . "Yes, teacher" . . . competent.

Epsilon Chi Literary Society: W.C.U.N.C. 1; Highland Players 1, 2, 3, 4; President 4; William Bartram Scientific Society 2, 3, 4; Secretary 4; Mathematics Club 2, 3, 4; Spanish Club 3; *Pine and Thistle* Staff 2, 3, 4; Make-up Editor 2, 3; Literary Staff 4; Volley Ball 4; Alpha Psi Omega 2, 3, 4.



Seniors

NANCY ELIZABETH McCUBBINS, B.A.

Primary Education

Florence, S. C.

"Cubby" . . . "That do make it nice" . . . original . . . generous . . . "More coffee, Miss Shealy?" . . . sparkling personality.

Epsilon Chi Literary Society; Highland Players 3, 4; Pine and Thistle Staff 3. Business Manager 4; Spanish Club 3; Archery 4; Greensboro College 1; Tennis 2.

BETTY CULBRETH McLEAN, B.A.

Bible and Social Science

Raeford, N. C.

Inner loveliness . . . black memo pad . . . understanding . . . "I gotta run" . . . Cabinet meetings . . . lofty ideals.

Epsilon Chi Literary Society, Treasurer 2; Chief Marshal 3; Student Volunteers 1, 2, 3, 4; Christian Association Cabinet 2; Chairman Library Highway 2; Secretary Christian Association 3, President 4; Mathematics Club 1, 2; Social Activities Chairman 2; William Bartram Scientific Society 2, 3, 4; Volley Ball 3, 4; Basketball 2; Hockey 2; Monogram Club 4; Glee Club 3; Student Council 4; Senior Scribe 4; May Queen 4; *Who's Who in American Colleges and Universities.*



McCubbins

McLean



1950

Parks

Patterson





MARY ALICE PARKS, B.A.

Social Science

Charlotte, N. C.

"M.A." . . . "Let's go to the cafe" . . . unlimited source of jokes . . . sleepy time gal . . . rotunda vigils . . . individual.

Epsilon Chi Literary Society: Hockey 1, 2; Basketball 1, 2, 3, 4, Captain 3; Varsity Basketball 2, 3; Volleyball 3, 4; Vice-President Athletic Association 3; Mathematics Club 1, 2, 3, 4; International Relations Club 3; Assistant Tea Room Manager 3, 4; Class Editor WHITE HEATHER 4.

UNA FRANCES PATTERSON, B.A.

Bible and Mathematics

Huntersville, N. C.

"Patty" . . . classroom giggles . . . helpful . . . dry wit . . . feather cuts . . . loyal.

Epsilon Chi Literary Society: Mitchell Junior College 1, 2; Prayer Band Leader 4; Student Volunteers 4; Vice-Chairman Circle of Home Missions 4; Queens College Summer School 3; Mathematics Club 3, 1, Corresponding Secretary 4; Volleyball 4.



Seniors

EMMA JO PEARCE, B.A.

Bible and French

Corpus Christi, Texas

Texas . . . volleyball enthusiast . . . congenial . . . "Just plain Bill" . . . school spirit . . . "My Sister."

Epsilon Chi Literary Society; Prayer Band Leader 2; Christian Association Cabinet 3, 4; Athletic Association Treasurer 3, Vice-President 4; Varsity Volleyball 3; Hockey 2; Monogram Club 4; Highland Players 1, 2, 3, 4; L'Alliance Francaise 2, 3, 4. Vice-President 3. President 4; Mathematics Club 1, 2, 3, 4. Reporter 3; William Bartram Scientific Society 3, 4; Glee Club 2, 3; Superlative 4. Alpha Psi Omega 4.

LEAH CAROLYN PHELPS, B.A.

French and English

Ash, N. C.

Studios . . . unobtrusive . . . French zealot . . . dark, wavy tresses . . . earnest . . . B. S. U.

Zetesian Literary Society; W.C.U.N.C. 1; L'Alliance Francaise 2, 3, 4.; Bowling 2; Secretary-Treasurer Home Missions Circle 4; Wake Forest Summer School 1; Lenoir Rhyne Summer School 3.



Pearce

Phelps



Powers

Smith



195



JUDITH ANN POWERS, B.S.

Home Economics

St. Pauls, N. C.

Braids . . . 1, 2 bend; 3, 4 over! . . . *easy going . . . conservative . . .*
Yvonne . . . sunny.

Zetesian Literary Society, Second Vice-President 3, 4; Marshal 3; Student Volunteers 1, 3; Home Economics Club 1, 2, 3, 4; Athletic Board 2; Hockey 2; Volleyball 3, 4; Basketball 3; William Bartram Scientific Society 3, 4; International Relations Club 3, 4; Atlantic Christian College Summer School I; Secretary Student Council 4.

MARGARET SMITH, B.A.

Bible and French

Pageland, S. C.

Dependable . . . good-natured . . . "Gandy" . . . afternoon coffee . . . modest . . .
"Mr. ? Do-Flump."

Zetesian Literary Society; Basketball 2, 3, 4; Hockey 2; Volleyball 3, 4; William Bartram Scientific Society 2, 3, 4; Corresponding Secretary 3; L'Alliance Francaise 2, 3, 4; Vice-President 4; Mathematics Club 1, 2; Prayer Band Leader 3; Chairman Library Circle 4; Cabinet 4; Vice-Chairman Home Mission Circle 3; Student Volunteers 1, 2, 3, 4.



Seniors

PEARL LANE SNELL, B.A.

Primary Education

Charlotte, N. C.

Jo . . . "When you go, fly; when you fly, go Piedmont!" . . . voguish . . . tender-hearted . . . "Fran's coming" . . . excitable.

Epsilon Chi Literary Society; W.C.U.N.C. 1: Marshal 3; William Bartram Scientific Society 3, 4; Mathematics Club 3, 4. Corresponding Secretary 3; St. Cecilia Music Club 3, 4; Bowling 3; Archery 4; Highland Players 4; Class Vice-President 2, 4; Class President 3; Student Council 3, 4; Glee Club 3.

LILLIAN BERTHA TURNER, B.A.

English and Bible

Trenton, N. J.

"Penny" . . . ambitious . . . appreciation of artists . . . diligent . . . wholesome simplicity . . . car bobs.

Zetesian Literary Society; Student Volunteers 1, 2, 3, 4; Christian Association Cabinet 4; Sappho Poetry Club 1, 2, Vice-President 2; Hockey 1; Archery 2; Athletic Board 3; International Relations Club 3, 4. Secretary-Treasurer 4; Highland Players 3, 4.



Snell
Turner



Williams
Yelvington



1956



DOROTHY MAE WILLIAMS, B.A.

Bible and Social Science

Indian Valley, Va.

*"Dot" . . . reliable . . . temperamental appetite . . . "Good gravy" . . .
sincere . . . praise-worthy.*

Zetesian Literary Society; Student Volunteers 1, 2, 3, 4; Prayer Band Leader 2;
Christian Association Cabinet 4; Mathematics Club 1, 2, 3, 4, Vice-President 3;
William Bartram Scientific Society 2, 3, 1, President 3; Glee Club 3; Volleyball 3,
4; Basketball 2, 3, 4; Hockey 2; Student Council 3, 4; Student Body Treasurer 3;
Student Body President 4; Class Vice-President 3; Monogram Club 4; Superlative
4; *Who's Who in American Colleges and Universities.*

ELIZABETH ANNE YELVINGTON, B.A.

Mathematics

Clayton, N. C.

*"Hop in, Bone" . . . mischievous . . . aggressive . . . "Hey gi-rels" . . . sport
clothes . . . unforgettable.*

Epsilon Chi Literary Society; Mathematics Club 1, 2, 3, 4; Basketball 1, 2, 3, 4;
Captain 2; Hockey 1, 2; Volleyball 1, 2, 3, 1; Salesman Athletic Association 2;
Tea Room Manager 3; Highland Players 1, 2, 3, 4; William Bartram Scientific
Society 1, 2, 3, 4; Alpha Psi Omega 1; Atlantic Christian College Summer School
1; Wake Forest Summer School 3; Senior Scribe 1; Business Manager WHITE
HEATHER 4; Monogram Club 4.





Junior Class Officers

PHYLLIS DYER	<i>President</i>
JEANINE TAYLOR	<i>Vice-President</i>
RAMONA ASCOUGH	<i>Secretary</i>
MARGARET POWELL	<i>Treasurer</i>
NELL LOWE	<i>Tea Room Manager</i>
ELEANOR LANIER,	<i>Assistant Tea Room Manager</i>

Juniors

Upperclassmen, at last!!! . . . that important feeling as they: properly instruct their little sisters, take over the tea room, and send forth their best to represent the college in social affairs . . . with great efficiency: they manage to multiply those spare moments into shows, extra week ends, nights out, just sleeping and taking it easy . . . 'til spring . . . when recitals, elections, and class rings brought them into the high lights and their prominence was exceeded only by their anticipation of senior privileges . . . just one more year . . . and then!!!



ASCOUGH, RAMONA
Cumnock, N. C.

BARROW, AGNES
LaGrange, N. C.

BROWNE, JANE
Red Springs, N. C.

BYRD, YVONNE
Bunnlevel, N. C.

CANTLEY, MARY EMMA
Kingstree, S. C.

CASHWELL, EMILY
Hope Mills, N. C.

COVINGTON, MARY STEWART
Raeford, N. C.

DAVENPORT, MARTHA
Charlotte, N. C.

DEDMON, LOU JEAN
Shelby, N. C.

DORSEY, GENEWOOD
Loris, S. C.





DYER PHYLLIS
Leaksville, N. C.

GRANTHAM, ZELMA
Fairmont, N. C.



HARRIS, PATRICIA
Concord, N. C.

HUBBLE, KATRINA
Bland, Va.



HUNEYCUTT, CAROLYN
Blackstock, S. C.

JACKSON, LOIS
Fair Bluff, N. C.



JORDAN, ANN
Wilmington, N. C.

JOSEY, BEVERLY
Manning, S. C.



KELLY, EVA BERT
Southern Pines, N. C.

LANIER, ELEANOR
Elizabeth City, N. C.

LITTLE, MARGARET
Parkton, N. C.



LOVETT, MARJORIE
Nichols, S. C.

LOWE, NELL
Clinton, N. C.



MELVIN, BETTY GRAY
Kerr, N. C.

MILLER, MAYSIE
Chadbourn, N. C.



MCCAIN, DELORIS
Effingham, S. C.

MCDONALD, JEAN
Carthage, N. C.

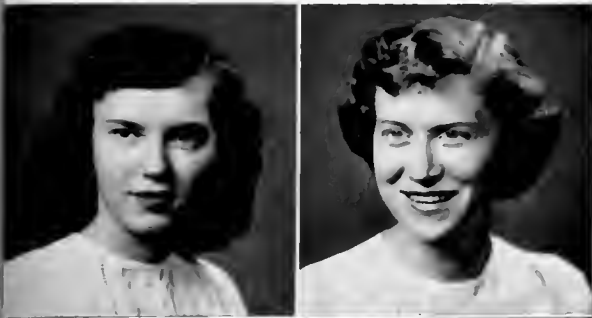


McMILLAN, BETTY JO
Selma, N. C.

McRAE, PATRICIA
Lillington, N. C.



OGILVIE, CAROLINE
North Wilkesboro, N. C.



POWELL, MARGARET
Smithfield, N. C.

PRICE, HANNAH
Charlotte, N. C.



RATCHFORD, WILMA
Dallas, N. C.

RIVENBARK, FLORENCE
Willard, N. C.



RUSS, JOY
Shallotte, N. C.

RUSSELL, ANN
Rocky Mount, N. C.



SHERRILL, HELEN
Fayetteville, N. C.

SMITH, PATRICIA
Red Springs, N. C.



TAYLOR, JEANINE
Robersonville, N. C.

WALKER, CAROLYN
Wilmington, N. C.

WALKER, NANCY
Washington, D. C.



Sophomore Class Officers

EMILY NAN GRIER ----- *President*

MARGARET COMER ----- *Vice-President*

SOPHIA ZEA ----- *Secretary*

JEAN PARKER ----- *Treasurer*

Sophomores

Screams (and we do mean screams) of recognition . . . "say, it's good to be back!" . . . we preside at Rat Court this year . . . "all right, you tell all" . . . the mighty cat . . . such fun to enforce rules . . . there's work too . . . majoring in Sophomore Lit—"it ain't easy" . . . then down the railroad track to get away from it all . . . and at last one night out a week . . . yes, we have acquired some knowledge too, but with a natural talent for evading rules, and getting caught red-handed . . . ends a year . . . that added swagger. "We're now upperclassmen."





Sophomore

19

First row, left to right:

Barrow, Lindley Ann. LaGrange, N. C.; Brown, Lois, Hamlet, N. C.; Brunson, Betty Ann. Fayetteville, N. C.; Charles, Mary Kathryn. Winston-Salem, N. C.; Clark, Barbara, Daytona Beach, Fla.

Second row:

Comer, Margaret. Ellerbe, N. C.; Deaton, Kathryn, Aberdeen, N. C.; Evans, Anne, Middlesex, N. C.; Fuller, Jeanne, Ft. Bragg, N. C.; Goodman, Margaret, Chadbourn, N. C.

Third row:

Grady, Enid, Charlotte, N. C.; Grier, Emily Nan, Charlotte, N. C.; Hobbs, Frances, Council, N. C.; Landis, Martha, Oxford, N. C.; Lovick, Janice, Wade, N. C.



Class
50

First row, left to right:

Monroe, Mildred, Fayetteville, N. C.: Murdoch, Janice, Wildwood, N. C.: Murphy, Priscilla, Arlington, Va.: McArthur, Mildred, Wakulla, N. C.: McCallum, Dorothy, Rowland, N. C.

Second row:

McDowell, Gene, Elizabethtown, N. C.: McIntyre, Mary Elizabeth, Godwin, N. C.: McPhaul, Faye, Parkton, N. C.: Pearce, Ann, Corpus Christi, Texas: Pierce, Elaine, Evergreen, N. C.

Third row:

Rastom, Junette, Laurinburg, N. C.: Rogers, Ethel, Whiteville, N. C.: Rummage, Gloria, Ellerbe, N. C.: Shaw, Emily, St. Pauls, N. C.: Singletary, Hattie, Bladenboro, N. C.



Sophomore Class

First row, left to right:

Smith, Amanda, Petersburg, Va.; Tarrant, Love, Fayetteville, N. C.; Taylor, Frances, New Bern, N. C.; Watson, Harriet, Parkton, N. C.; West, Fannie, Fayetteville, N. C.

Second row:

Whitaker, Claudine, Kannapolis, N. C.; White, Eleanor, Lenoir, N. C.; Williams, Helen Mercer, Chadbourn, N. C.; Williamson, Joan, Atlanta, Ga.; Workman, Betsy, Mebane, N. C.

Third row:

Zea, Sophia, Strasburg, Va.





Freshman Class Officers

VIRGINIA BUHLER *President*

MARY WATT *Vice-President*

JEAN SANDIFER *Secretary*

ELSIE MAY *Treasurer*

Freshmen

So this is college . . . nice, these girls in white . . . but such an empty room! . . . discouraging—isn't it? . . . a little paint will do wonders . . . the latest for rat day . . . "just wait until next year" . . . back to civilization—dresses and make-up—this time the Freshman reception . . . what is that room number? . . . remember: four call downs—the handbook says . . . watery knees, trembling hands, "oh gosh, why didn't I study!"; "it'll all be over in a matter of hours—don't worry"—all a part of those first college exams . . . high school was never like this!



Freshman



Abernethy, Evelyn, Charlotte, N. C.; Armstrong, Doris, Pollockville, N. C.; Armstrong, Janet, Pineville, N. C.; Barham, Mary, Red Springs, N. C.

Billingsley, Betty, Hamlet, N. C.; Bishop, Betty, Aberdeen, N. C.; Booker, Nancy, Leaks-ville, N. C.; Boyd, Evelyn, Burlington, N. C.

Brinn, Ann, Creswell, N. C.; Broome, Sally, Danville, Va.; Buhler, Virginia, Graham, N. C.; Calloway, Doris, Concord, N. C.

Cashwell, Margaret, Hope Mills, N. C.; Cross, Betty, Laurel Hill, N. C.; Dudley, Frances, Wilmington, N. C.; Duncan, Eunice, Red Springs, N. C.

Elliott, Peggy, Darlington, S. C.; Ferrell, Julia, Richland, N. C.; Fields, Evelyn, Wal-stonburg, N. C.; Garrison, Madge, Waxhaw, N. C.

Grantham, Joyce, Goldsboro, N. C.; Gray, Virginia, Arlington, Va.; Hammond, Nancy, Cerro Gordo, N. C.; Meyer, Mary Frances, Rose Hill, N. C.

Hill, Barbara, Graham, N. C.; Holland, Ruth, Aberdeen, N. C.; Hughes, DeLena, New Bern, N. C.

Class 1950

Ives, Kathryn, Arlington, Va.: Jenkins, Gabrielle, Charleston, S. C.: Keisler, Rachel, Conover, N. C.: Leggette, Sara Margaret, Lumberton, N. C.



May, Elsie, Farmville, N. C.: Myers, Lois Ann, Lake View, S. C.: McArthur, Ann, Wakulla, N. C.: McDuffie, Frances, St. Pauls, N. C.



McGoogan, Elizabeth, Hamlet, N. C.: McKenzie, Mary Lucille, Laurinburg, N. C.: McNeill, Doris Whyte, Raeford, N. C.: Petree, Mrs. Betty June, Red Springs, N. C.



Phillips, Doris, Mebane, N. C.: Pickett, Jane, Newark, Delaware: Plyler, Frances, Charlotte, N. C.: Ratchford, Marie, Dallas, N. C.



Register, Mary Ann, Clinton, N. C.: Russell, Alice, Matthews, N. C.: Sandifer, Jean, Charlotte, N. C.: Shealy, Betty, Hamlet, N. C.



Shillinglaw, Ramona, Sharon, S. C.: Smith, Julia Marie, Wilmington, N. C.: Smith, Ruth, Rowland, N. C.: Stanland, Mary Morrison, Wilmington, N. C.



Underwood, Margaret Jean, Chadbourn, N. C.: Wagner, Mary Jo, Lumberton, N. C.: Watt, Mary, Belgian-Congo, Africa.





Commercial Officers

JEAN PARKER *President*

ANNE HIGHSMITH *Vice-President*

PEGGY HENDERSON *Secretary and Treasurer*

Business Department

The first of the year, obviously . . . later we are submerged by assignments . . . by typing . . . by office practice . . . addressing bulletins . . . "Dear Sir" . . . until those few brief—oh, so brief—hours when . . . we dance . . . we picnic . . . we have club meetings . . . we celebrate Valentine's—inviting the faculty to tea . . . and the year passes swiftly on until . . . we second-year girls don our white suits for commencement and say good-byes.



Barnes
Highsmith
McPhail



Moore
Parker



Second Year Business

First row, left to right:

Barnes, Peggy Ann, Rocky Mount, N. C.; Highsmith, Anne, Rocky Point, N. C.;
McPhail, Hettie Lee, Rowland, N. C.

Second row:

Moore, Jane, Wilmington, N. C.; Parker, Jean, Pollockville, N. C.

First row, left to right:

Barnes, Betty Van, Rocky Mount, N. C.; Bulluck, Betty Jean, Rocky Mount, N. C.;
Campbell, Jacqueline; Wilmington, N. C.; Clarke, Clara, Roanoke Rapids, N. C.;
Coble, Shannon, Mt. Ulla, N. C.; Cox, Peggy, Ellerbe, N. C.

Second row:

Graham, Grace, Red Springs, N. C.; Hall, Frances, Rose Hill, N. C.; Harding, Wynona,
Fayetteville, N. C.; Henderson, Peggy, Charlotte, N. C.; Keirn, Mary Ellen, Ports-
mouth, Va.; Maxwell, Lelia Elizabeth, Rocky Mount, N. C.

Third row:

Moody, Patricia, Lake View, S. C.; Morgan, Betsy, Red Springs, N. C.; McBryde,
Betty Ann, Fayetteville, N. C.; O'Briant, Mary Etta, Red Springs, N. C.; Perry,
Margaret, Fairmont, N. C.; Richardson, Margaret, Jackson Springs, N. C.

Fourth row:

Shaw, Ann, St. Pauls, N. C.; Strole, Elizabeth, Chadbourn, N. C.; Sutton, Mary
Bryan, Cove City, N. C.; Wright, Bitsie, Red Springs, N. C.

First Year Business



Barnes
Bulluck
Campbell
Clarke
Coble
Cox

Graham
Hall
Harding
Henderson
Keirn
Maxwell

Moody
Morgan
McBryde
O'Briant
Perry
Richardson

Shaw
Strole
Sutton
Wright

MUSIC

“Without a Song...”





Miss Carolyn Elliott. *Voice*

Senior Recital

"The public is cordially invited" . . . 8:15 . . . curtain calls . . . baskets of flowers . . . reception . . . smiles and congratulations . . . but behind it all . . . hours of practice . . . closed sessions in the auditorium . . . constant polishing . . . that final rehearsal and last minute instructions . . . and then it is over much too quickly.



Tryouts for membership . . . Tuesdays, Thursdays, and in between . . . SMILE . . .
concerts . . . Bach with a Scottish burr . . . Join the Glee Club and see the world.

Glee Club

OFFICERS

MARGARET GOODMAN, *President*

HARRIETT WATSON, *Secretary*

MARY KATHRYN CHARLES, *Treasurer*

Conservatory

Practice rooms . . . eighteen pianos going at one time . . .
"blended harmony" of many voices singing different tunes
. . . afternoon recitals . . . quarterlies . . . "we are pleased to
present" . . . concert-lecture artists . . . Junior and Senior
recitals . . . that certain last look . . . watching the big clock.



Miss Chapman and Carolyn Huneycutt

OFFICERS

ELAINE PIERCE, *President*

JANICE LOVICK, *Vice-President*

JUNETTE RASTON, *Secretary and Treasurer*

St. Cecelia Music Club

High note of enjoyment . . . studio E . . .
projects . . . Conserve Hall . . . the musically
minded.





ACTIVITIES

“And in Our Lighter Moments...”





Dorothy Williams, *President*

Student Government

White dresses and bus station . . . pajama party for Freshmen . . . "I promise that I will respect" . . . Tuesday p.m., Wednesday a.m., black robe and coffee sessions . . . our first dance . . . that not-so-vacant Thursday chapel period . . . "Mother McLeod" . . . elections . . . hall meetings for "reminders" . . . handbooks . . . developing character through an honor system.

CHARLOTTE BRIDEWELL
Vice-President of Student Body

BETTY McLEAN
President of Christinn Association

LOIS KINLAW
President of Senior Class

JUDITH POWERS
Vice-President of Senior Class

PHYLLIS DYER
President of Junior Class

JEANINE TAYLOR
Vice-President of Junior Class

EMILY NAN GRIER
President of Sophomore Class

MARY VIRGINIA BUHLER
President of Freshman Class

PATRICIA HARRIS
President of Zetesian Society

ZELMA GRANTHAM
President of Epsilon Chi Society

KATRINA HUBBLE
President of Athletic Association

PATRICIA SMITH
President of Day Students

Not pictured: *Mary Virginia Buhler*

Nineteen Hundred Fifty





Betty McLean, *President*

Flora Macdonald

O Let Me Grow . . . Follow the Gleam . . . by candlelight . . . workshop week end
. . . Thanksgiving and our "adopted" families . . . White Gift . . . glowing expressions
at servants' Christmas party . . . capsule day . . . Korea. Alaska—abroad and at
home . . . spiritual enrichment . . . Cabinet installation . . . vespers . . . circles . . .
music fills the air . . . hymn sings around the rotunda . . . meditations.

BETTY JO McMILLAN
Vice-President

HELEN SHERRILL
Secretary

SARA MELVIN
Treasurer

MARY RAYE FREEMAN
Circle Home Missions

LILLIAN TURNER
Circle Foreign Missions

JO PEARCE
Circle Christian Social Service

MARGARET SMITH
Circle of Library

BETTY GRAY MELVIN
Circle of Social Activities

BETSY WORKMAN
Circle of Religious Meetings

ANNA JORDAN
Circle of Hospitality

ANN JORDAN
Circle of Prayer Bands

JAN WILLIAMSON
Circle of Publicity

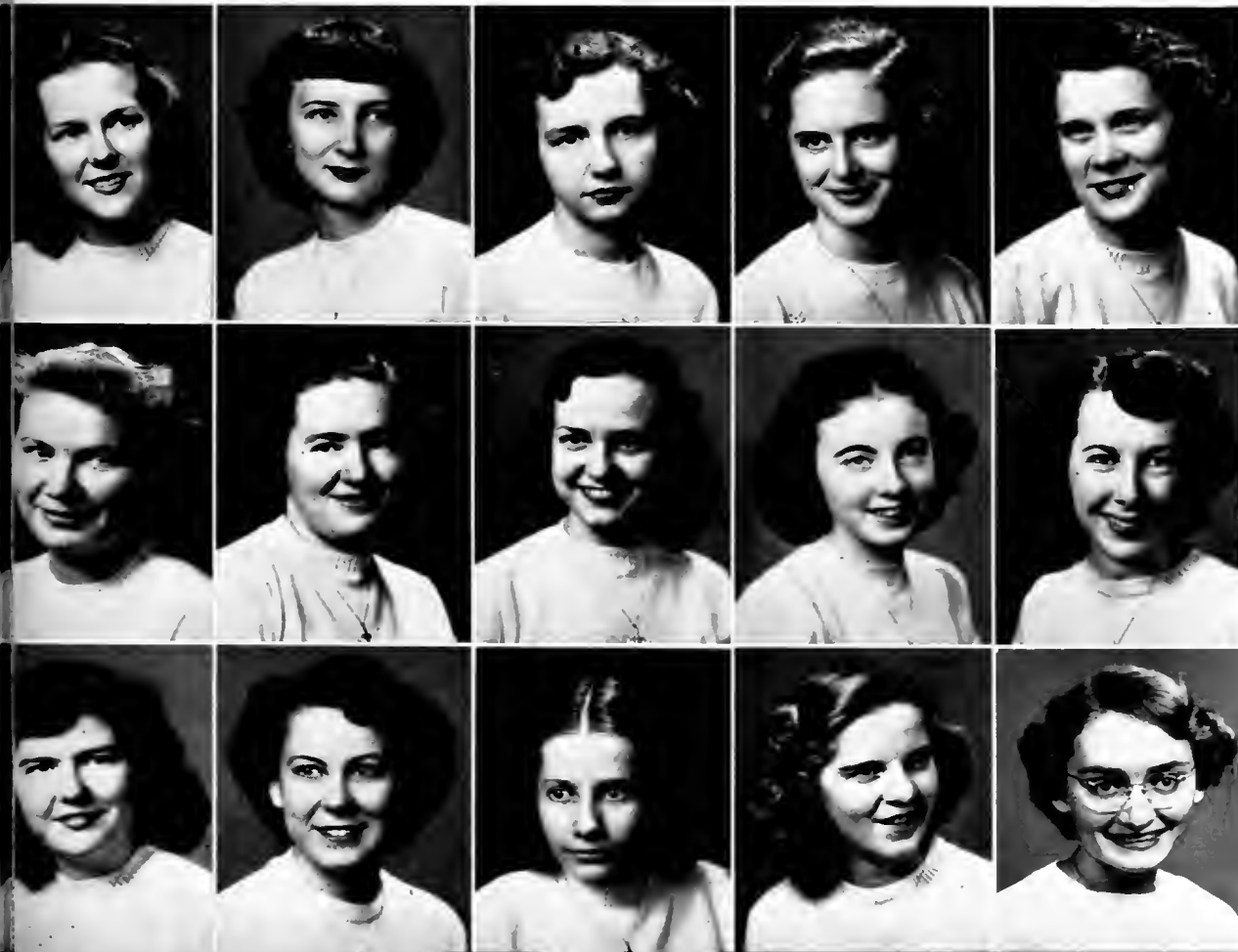
MADELINE CARSWELL
Circle of Sunday School

WILMA RATCHFORD
Circle of Music

DOROTHY WILLIAMS
Ex-Officio

MRS. ELBERT MCPHAUL
Adviser

Christian Association



DEWIE BUIE
Editor-in-Chief

ANN YELVINGTON
Business Manager

MR. LESLIE BULLOCK
Adviser



Buie, Bullock, Yelvington

1950 White



Buie



Yelvington

It all began last spring . . . phone calls, appointments, contracts, innumerable letters . . . and continued through the summer . . . climaxing in an autumn obstacle course: plaguing thoughts of deadlines to be met, the wording and rewording of one hundred and four pages of copy, the clattering of typewriters in the still of night, scheduling Annual pictures—and to the persistent few “Yes, we are on schedule!”, pleading for snapshots, omni-present budget difficulties, and getting the last pictures to the engraver . . . but there were the brighter aspects too: the support and cooperation of an efficient staff, the satisfaction of meeting our deadlines, those ad expeditions in that seemingly impossible “Chevy” . . . these and many other things that will always go unmentioned have resulted in the 1950 WHITE HEATHER.

Staff



Ogilvie, Blackwell

HANNAH PRICE
Assistant Editor

JAC ADELE BLACKWELL and CAROLINE OGILVIE
Assistant Business Managers

MARY ALICE PARKS
Senior Class Editor

EMILY CASHWELL
Junior Class Editor

ELAINE PIERCE
Sophomore Class Editor

BETTY BARNES
Freshman Class Editor

JEAN PARKER
Business Department Editor

BARBARA CLARK and ANN PEARCE
Literary Editors

ENID GRADY and MARY GREGORY
Snapshot Editors

JEAN PARKER
Typing Editor

Heather



CAROLYN ELLIOTT
Editor-in-Chief

NANCY McCUBBINS
Business Manager

MISS ANN SHEALY
Adviser



Elliott, Shealy, McCubbins

Pine and



Elliott, McCubbins

"Keeping up with the times here and abroad" . . . coaxing contributions from the students . . . deadlines for copy . . . rejections and corrections . . . printers and galley-proofs . . . long sessions after light bell . . . coffee, scissors, and "where's the rest of galley four?"

. . . in Watkins Hall . . . steaks for the staff . . . Christmas mailing list and senior supplement . . . the pride and satisfaction that comes with accomplishing the seemingly impossible.



Watson and Fuller

ELEANOR WHITE
Assistant Editor

ANN PEARCE
Assistant Business Manager

PEGGY BARNES, JEANNE FULLER, ANN HIGHSMITH, JANE MOORE, HARRIET WATSON
Business Staff

RAMONA ASCOUGH, BARRARA CLARK, ETHEL ROGERS, AMANDA SMITH, WILMA RATCHFORD, CARLEEN MOULDER.
Literary Staff

CAROLYN HUNEYCUTT
Art Editor

MISS ANN SHEALY
Adviser

Thistle



Epsilon Chi Literary Society

"You open wide for those who seek" . . . Mardi Gras . . . can-can
. . . fun . . . food . . . frolic . . . originality . . . "So brave, so true,
so fine a crew" . . . EX = Hand in Hand.

OFFICERS

ZELMA GRANTHAM, *President*
PAT McRAE, *First Vice-President*
ELEANOR LANIER, *Second Vice-President*
SOPHIA ZEA, *Corresponding Secretary*
JEANNE FULLER, *Recording Secretary*
MAYSIE MILLER, *Treasurer*
ENID GRADY, *Critic*
FRANCES HOBBS, *Censor*
LOIS BROWN, *Chaplain*
ANN JORDAN, *Pianist*



Zelma Grantham, *President*





Patricia Harris, *President*

Zetesian Literary Society

Friendship . . . Page's Lake or bust!! . . . jolly fellowship . . .
candlelight and Russian Tea . . . green and white our emblem . . .
Christmas party . . . societies' dance . . . "Zetesian, to Thee!"

OFFICERS

PATRICIA HARRIS, *President*
HELEN SHERRILL, *First Vice-President*
JUDITH POWERS, *Second Vice-President*
ELAINE PIERCE, *Corresponding Secretary*
HARRIETT WATSON, *Recording Secretary*
ELEANOR WHITE, *Treasurer*
GINNIE BUHLER, *Chaplain*
MARY K. CHARLES, *Critic*
BETSY WORKMAN, *Pianist*

*Not Pictured: Watson and White,
ARMANDA SMITH, Censor*



WHO'S WHO

The honored few . . . selected by an anonymous faculty . . . student committee . . . scholarship . . . leadership . . . character.

MADLINE CARSWELL

CAROLYN ELLIOTT

SARA MELVIN

BETTY McLEAN

DOROTHY WILLIAMS



Scribblers

Left to right:

MCLEAN

MELVIN

JORDAN

YELVINGTON

BLACKWELL

BYE, *Chief*



Revealing the true personalities of our classmates . . . coining phrases . . . dictionary hounds . . . late hours . . . many laughs . . . "Is that kind?" . . . tantalizing classmates with what might have been said.

"Cascabels" . . . 5 o'clock in Epsilon Chi Hall . . . Pinata Christmas party . . . tongued in Mexico . . . to become acquainted with the Spanish language and customs.



Spanish Club

OFFICERS

BETTY ANN BRUNSON
President

EVELYN FIELDS
Vice-President

MARTHA LANDIS
Secretary and Treasurer

Mathematics Club

Anniversary luncheon . . . atomic lectures . . . hamburgers . . . right front parlor
. . . Dr. Van Dyke . . . yearbooks.

OFFICERS

HELEN SHERRILL
President

ELEANOR LANIER
Vice-President

JEANNE FULLER
Recording Secretary

FRANCES PATTERSON
Corresponding Secretary

SOPHIA ZEA
Treasurer

JEAN McDONALD
Press Correspondent

JAN WILLIAMSON
Social Activities Chairman



OFFICERS

ELEANOR LANIER
President

WILMA RATCHFORD
Vice-President

CARLEEN MOULDER
Recording Secretary

SOPHIA ZEA
Corresponding Secretary

EULA GODWIN
Treasurer



William Bartram Scientific Society

Nucleus of girls interested in science . . . B or above . . . quizzes on science . . . atomic energy . . . open discussions . . . socials after meetings.

Student Volunteers

Teaching Bible at Colored School . . . study of great missionaries and Christians . . . 2nd and 4th Sundays—Watkins Hall . . . "Not by might nor by power, but by my Spirit."



OFFICERS

EULA GODWIN
President

ANN PEARCE
Vice-President

JAN WILLIAMSON
Secretary and Treasurer

DELORIS McCAIN
Librarian



ANN JORDAN
Chairman

MISS HAZEL MORRISON
Adviser

Prayer Bands

Thursday mornings . . . inspiration . . . meditation . . . rotunda meetings . . . prayer . . . privilege of being a Prayer Band Leader.

OFFICERS

BARBARA CLARK
President

JAC ADELE BLACKWELL
Vice-President

SOPHIA ZEA
Secretary and Treasurer



Writer's Club

Dr. Scott, our capable adviser . . . that literary atmosphere . . . the pain of writing: criticism . . . stories . . . research articles . . . sonnets . . . struggles . . . "But my characters just won't behave" . . . "Be specific" . . . program committee troubles.

L'Alliance Francais

"Marseillaise" . . . games . . . drama . . . recordings . . . enthusiasm . . . "Gaiete pour toutes."

OFFICERS

JO PEARCE
President

MARGARET SMITH
Vice-President

GLORIA RUMMAGE
Secretary and Treasurer





CARLEN MOULDER
President

SOPHIA ZEA
Vice-President

JACADELE BLACKWELL
Secretary and Treasurer

MARY EMMA CANTLEY
*Reporter, Custodinn of Scrap-
book*

Highland Players

"The play's the thing" . . . initiation . . . backstage antics . . . grease paint . . .
Si Rhi Si . . . we learned to laugh . . . dress rehearsals . . . committees . . . big
productions.

International Relations Club

Right front parlor . . . those U. N. headaches . . . birthday party . . . conference
delegates—the lucky few . . . attractive yearbooks . . . Miss Robertson . . . scrapbook
of college activities.



OFFICERS

ANNA JORDAN
President

DEWIE BUE
Vice-President

LILLIAN TURNER
Secretary and Treasurer

NELL LOWE
*Custodian of Scrapbook and
Service Reporter*

Home Economics Club

Fancy food . . . teas . . . after-dinner coffee . . . Home Management House . . . workshops . . . money raising campaigns . . . guest speakers . . . clippings for the scrapbook . . . Miss Comer.

OFFICERS

SARA MELVIN
President

ANNA JORDAN
Vice-President

BETTY GRAY MELVIN
Secretary and Treasurer



PATRICIA SMITH
President



Day Students Club

Hurry, hurry, hurry! . . . car trouble . . . noise . . . fun . . . halloween party . . . left back parlor . . . we're left out . . . late for class again . . . 10:20—drugstore bound.

Alpha Psi Omega

National Honorary Dramatics Fraternity . . . Kappa Lambda Chapter . . . points
recognition of dramatic achievement . . . initiation.



OFFICERS

HELEN SHERRILL
President

ANN YELVINGTON
Vice-President

JO PEARCE
Secretary and Treasurer



OFFICERS

JEAN PARKER
President

ANNE HIGHSMITH
Vice-President

PEGGY HENDERSON
Secretary and Treasurer

Commercial Club

Clicking typewriters . . . those office practice hours . . . Valentine Tea . . . watch-
word: efficiency . . . spring picnic . . . catalogues . . . tomorrow's businesswomen.



“Loyalty through Cooperation . . .”





Athletic Association

Saturday night dances . . . practice, practice, practice!!! . . .
 tournaments . . . Varsity letters and aching muscles . . . Highland
 Fling . . . from basketball to folk dancing . . . May Day.

OFFICERS

KATRINA HUBBLE, *President*
 JO PEARCE, *Vice-President and Head of Volleyball*
 JANICE MURDOCH, *Secretary*
 MAYSIE MILLER, *Treasurer and Head of Tennis*
 GLORIA RUMMAGE, *Salesman*
 MADELINE CARSWELL, *Head of Table Tennis*
 CAROLINE OGILVIE, *Head of Bowling*
 JEAN McDONALD, *Head of Basketball*



Katrina Hubble, *President*

Cheerleaders

PHYLLIS DYER
College Cheerleader

JAC ADELE BLACKWELL
Senior

CAROLINE OGILVIE
Junior

ENID GRADY
Sophomore

SHANNON COBLE
Freshman

2-4-6-8, who do we appreciate . . . Cheerleaders! cheerleaders! cheerleaders! . . . what would a game be without them!

Left to right:

Coble
Grady
Ogilvie
Dyer
Blackwell



Monogram Club

Left to right:

Betty McLean
Dewie Buie
Dorothy Williams
Mary Alice Parks
Ann Yelvington
Lois Kinlaw
Jo Pearce
Margaret Smith



500 points . . . scholarship . . . vim, vigor, and sportsmanship . . . the sought-after "M."

Senior Basketball



Left to right:

Kinlaw
Williams
Powers
McCain
Freeman
Smith
Elliott

Junior Basketball

Left to right:

Seated:
Walker
Dedmon
Lovett
McDonald

Standing:

Dorsey
Taylor
Cashwell
Kelly
Jackson
Price
Highsmith



Sophomore Basketball

Left to right:

First row:

Murphy
Clarke
Murdoch
Monroe
Brown

Second row:

Shaw
McPhaul
Fuller
Grier



Freshman Basketball

Left to right:

First row:

McGoogan
McNeil
Barham
Buhler
Hill
Heyer

Second row:

Cashwell
McArthur
Duncan
Sandifer
Grantham
Richardson

Third row:

Henderson
Abernathy
McKenzie
Moody
Harding
Coble
Maxwell
Sutton
Russell

Senior Volleyball



Left to right:

Moulder
Pearce
Baie
Kinlaw
McCain
Melvin
Freeman
McLean
Williams
Smith

Junior Volleyball

Left to right:

Seated:
Dorsey
McRae
Hubble

Second row:

McMillan
Dyer
Sherrill
Walker
McDonald
LaNier
Davenport
Cantley



Sophomore Volleyball



Left to right:

First row:

Fuller
McDowell
Williamson
Murdoch
Brown
Grier

Second row:

Murphy
Shaw, A.
Shaw, E.
Brunson
Grady
Parker
West



Freshman Volleyball

Left to right:

First row:

Coble
Abernathy
Williams
Harding
Maxwell
Henderson

Second row:

Shealy
Richardson
Casswell
Hill
Buhler
Sandifer

Third row:

Smith
McArthur
Elliott
Grantham
Barham

Fourth row:

Duncan
McGoogan
Pickett
McBryde

Captains



CAROLYN ELLIOTT
Senior Basketball

DEWIE BUE
Senior Volleyball

MARJORIE LOVETT
Junior Basketball

PAT McRAE
Junior Volleyball

JANICE MURDOCH
Sophomore Basketball

BETTY ANN BRUNSON
Sophomore Volleyball

LIB McGOOGAN
Freshman Basketball

MARGARET RICHARDSON
Freshman Volleyball

Archery

Nancy McCubbins

Zelma Grantham

Jo Snell



Tennis

Left to right:

Pierce
Hall
Clarke
Smith
Monroe
Watson
Rogers
McPhaul
Landis
LaNier
Sherrill
Hubble
Goodman



Bowling

Left to right:

McRae
Kelly
Whitaker
Dorsey
Goodman
Byrd
McPhail
Harris
Moore
Dedmon
Taylor
Lovett
Jackson
Russ



FEATURES

"Our Best to You..."



MAY



MAY QUEEN . . . 1950

BETTY McLEAN

DAY



MAID OF HONOR

JAC ADELE BLACKWELL



May Court

BETTY McLEAN
May Queen

JAC ADELE BLACKWELL
Maid-of-Honor

MARY RAYE FREEMAN, LOIS KINLAW, JUDITH
POWERS, *Senior Attendants*

ELEANOR LANIER, PAT McRAE, MARGARET POWELL
Junior Attendants

LOIS BROWN, MARTHA LANDIS
Sophomore Attendants

ANN BRINN, LIB McGOOGAN
Freshman Attendants



May Day

Highland fling . . . freshman drill . . . oh, my aching back! . . . a breathless hush—
the queen . . . beauty, beauty, beauty.





CHIEF MARSHAL

BETTY JO McMILLAN

Marshals

Poise . . . charm . . . those white dresses . . . presiding at the punch bowl . . .
welcoming committee for dignitaries.



EPSILON CHI LITERARY SOCIETY:

Maysie Miller
Pat McRae
Margaret Powell
Phyllis Dyer

ZETESIAN LITERARY SOCIETY:

Pat Harris
Marjorie Lovett
Jean McDonald
Helen Sherrill



BEST ALL-ROUND

ANN JORDAN

PERSONALITY

ANN PEARCE





CAPABILITY

MADLINE CARSWELL

DEPENDABILITY

DOROTHY WILLIAMS





SPORTSMANSHIP

JO PEARCE

BEAUTY

BETTY JO McMILLAN



Snapshots



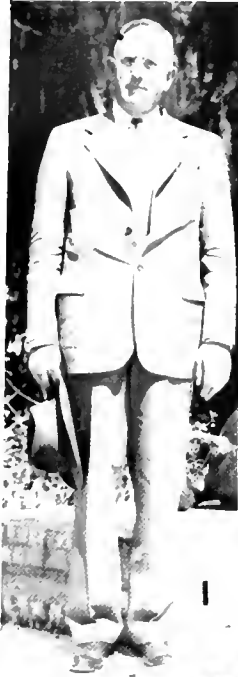
1. "Monkey" shines . . . 2. going to the dogs . . . 3. in ye ole swimming hole . . . 4. second childhood . . . 5. waiting for the convertible to come in . . . 6. what no more church cuts left? . . . 7. solarium on Vardell roof . . . 8. tennis champ—yeah, who says so? . . . 9. "commercialized somewhat" . . . 10. the civilized mingling with the uncivilized.

Snapshots



1. it *could* happen to you . . . 2. expecting someone, Carleen? . . . 3. where there's Ann, there's Jo . . . 4. "it walks - it talks" . . .
 5. "but I didn't hear the light bell" . . . 6. hired help here at Angel Farm . . . 7. put your shoes on, Lucy - I mean Anna . . .
 8. "just like a fool I stop and stare" . . . 9. every morning at 8:15 . . . 10. more milk than bar . . . 11. our first coed - BACHELOR
 of arts, BACHELOR of Divinity, but not otherwise.

Snapshots

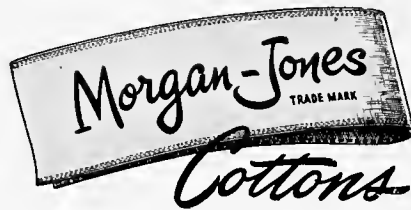


1. "for he's a jolly-good fellow" . . . 2. Zetesian threw a whopper . . . 3. and Epsilon Chi followed suit . . . 4. careful, it may be lodged . . . 5. it's cheaper on wings of song . . . 6. effect of English drama on everyday life . . . 7. "just for fun"—she says . . . 8. lookout for the windows! . . . 9. another freshman bites the dust . . . 10. wot happened?

Snapshots



1, the editorial "we" . . . 2, ain't nobody here but us chickens . . . 3, see something, Frances? . . . 4, off the record with Booker and Boyd . . . 5, all dressed up and nowhere to go . . . 6, there must be a man in the picture . . . 7, come to the Mardi Gras! . . . 8, back to Harrell's Store . . . 9, and search for dignity in every CUBBY hole . . . 10, a perfect advertisement! . . . 11, the last straw.



Are

"Yours for a Lovely Home"

BEDSPREADS

BATH SETS

DRAPES

DISH CLOTHS

SCATTER RUGS

DISH TOWELS

PRODUCED IN NORTH CAROLINA

Sold by fine stores everywhere

MORGAN-JONES, INC.

58 Worth Street

NEW YORK, N. Y.

TOWNSEND'S PHARMACY

The Rexall Store

WHERE THE COLLEGE GIRLS MEET

DEPENDABLE DRUGGISTS

RED SPRINGS, NORTH CAROLINA

M. & S. MOTOR CO.

CHRYSLER and PLYMOUTH CARS

Sales and Service

RED SPRINGS, NORTH CAROLINA

Phone 248-1



"SINCE 1912"

THE

Capitol

OF

FAYETTEVILLE

FAYETTEVILLE, NORTH CAROLINA

Compliments of

McKEITHAN
HARDWARE

RED SPRINGS, NORTH CAROLINA

Compliments of

MAXTON SUPPLY CO.

MAXTON, N. C.

Best Wishes From

**ROBBINS
CLOTH MILLS, INC.**

RED SPRINGS DIVISION



Maxton Road
Phones 228-1 and 448-1

**LAURINBURG
MILLING COMPANY**

Manufacturers of

HIGH GRADE FLOUR AND
MIXED FEEDS

LAURINBURG, NORTH CAROLINA

Compliments of

**McGIRT'S PLUMBING AND
ELECTRICAL SERVICE**

SUPPLIERS and CONTRACTORS

=====
MAXTON, NORTH CAROLINA

**B. C. MOORE AND
SONS, Inc.**

Phone 243-6

=====
"Buy from Moore and Save More"
=====

RED SPRINGS, NORTH CAROLINA

CITY OPTICAL COMPANY
Wilmington : Fayetteville : Greensboro

=====
Prince Charles Hotel
Phone 7179

=====
FAYETTEVILLE, NORTH CAROLINA

Compliments of

FIELDS
for Juniors Exclusively

FAYETTEVILLE, NORTH CAROLINA

Pontiac
Studebaker
International Harvester

Sales and Service

**SINGLETON AND
McMILLAN, Inc.**

Phone 3971

RED SPRINGS, NORTH CAROLINA

Bud's  Service

GLENN PARLER - WATSON McNEILL

GAS - OIL - WASHING - GREASING

Phone 3921

RED SPRINGS, NORTH CAROLINA

AUTO SERVICE CENTER

— and —

Red Springs Fuel Oil Co.

AUTO PARTS AND REPAIR - WELDING

Gasoline - Fuel Oils - Tires

Phone 3061

RED SPRINGS, NORTH CAROLINA

TRAVEL BY
TRAILWAYS

CHARTER BUSES

To

ANY POINT IN THE
UNITED STATES
CANADA and MEXICO

QUEEN CITY TRAILWAYS

CHARLOTTE, NORTH CAROLINA

Compliments of

HOOD MOTORS, INC.

Your DODGE - PLYMOUTH Dealer

Est. 1933

LUMBERTON, NORTH CAROLINA

Phone 21

LUMBERTON OPTICAL CO.

415 North Elm Street

LUMBERTON, NORTH CAROLINA

High Quality Prescription Service

Compliments of

Woods 5-10-25c Stores, Inc.

RED SPRINGS, NORTH CAROLINA

EDEN'S FLOWER SHOP

RED SPRINGS, NORTH CAROLINA

Dial 2241

"We Wire Flowers Anywhere"

General Auto Sales, Inc.

OLDSMOBILE and G.M.C. TRUCKS

FULL LINE OF PARTS

Expert Mechanics

Phone 2381

RED SPRINGS, NORTH CAROLINA

LENOIR'S JEWEL SHOP

Quality Jewelers

RED SPRINGS, NORTH CAROLINA

Compliments of

**BAXLEY-JOHNSON
CHEVROLET CO., INC.**

RED SPRINGS, NORTH CAROLINA

ALLEN BUILDERS SUPPLIES

Inc.

LUMBER : BUILDING MATERIAL
PLUMBING and HEATING

Phone 2396

RED SPRINGS, N. C.

Compliments of

WESTERN AUTO STORE

RED SPRINGS, N. C.

A. WEINSTEIN & SONS

LUMBERTON, NORTH CAROLINA

D. M. McMILLAN

"Ford Products Since 1912"

RED SPRINGS, NORTH CAROLINA

Compliments of

MACKS' 5-10-25c STORES

RED SPRINGS, NORTH CAROLINA

RED SPRINGS SUPPLY COMPANY, INC.

GENERAL MERCHANTS

The Friendly Store

Fertilizers and Cotton
Livestock Hardware
Grocery Market
Building Material

DIAL 3701 and 3271

RED SPRINGS, NORTH CAROLINA

NEIGHBORS
SHOE STORE

*Red Springs' Exclusive
Shoe Store*

Phone 3981

RED SPRINGS, NORTH CAROLINA

GOLD MEDAL FERTILIZERS
LIBERTY PREMIUM FERTILIZERS
MODERN GIN SYSTEM
Modern Seed Cleaning Equipment



LIBERTY
MANUFACTURING
COMPANY

RED SPRINGS, NORTH CAROLINA

Friendly gesture...Have a Coke



BOTTLED UNDER AUTHORITY OF THE COCA-COLA COMPANY BY
FAYETTEVILLE COCA-COLA BOTTLING CO., INC.

Compliments of
JOHN F. McNAIR, INC.

—
**A MODERN
DEPARTMENT STORE**

—
LAURINBURG, NORTH CAROLINA

Hotel
PRINCE CHARLES

AIR-CONDITIONED DINING ROOM

FAYETTEVILLE, NORTH CAROLINA

Compliments of
QUINN-MILLER COMPANY

Furniture of Quality

FAYETTEVILLE, NORTH CAROLINA

W. A. McCORMICK & SONS

Complete Self-Service Food Store

DISTRIBUTORS OF
BALLARD'S INSURANCE FEEDS

SAINT PAULS, NORTH CAROLINA

Automobile - Fire - Life Insurance
WILLIAM L. POOLE, Agency

Main Street
RAEFORD, N. C.

Compliments of

GRANTHAM DRUG COMPANY

SAINT PAULS, NORTH CAROLINA

Compliments of

HENEBRY'S of Fayetteville, Inc.

Registered Jewelers. American Gem Society

110 Hay Street
FAYETTEVILLE, NORTH CAROLINA

Compliments of

Z. V. PATE, INC.
"A Modern Department Store"

LAUREL HILL, NORTH CAROLINA

Compliments of

NEW YORK RESTAURANT

FAYETTEVILLE, NORTH CAROLINA

THE ROBESONIAN

Robeson County's Daily Newspaper

Established 1870

PUBLISHED FIVE DAYS EACH WEEK

AT
LUMBERTON, NORTH CAROLINA

HOTEL RAEFORD

Mr. and Mrs. O. W. Holtzclaw, *Lessee Owners*

MODERN COFFEE SHOP

U. S. HIGHWAY 15-A AND N. C. 211

Telephone 2691
RAEFORD, NORTH CAROLINA

FREEMAN PRINTING COMPANY

"Over Fifty Years of Quality Printing"

D. T. LAMBETH, *Manager*

LUMBERTON, NORTH CAROLINA

When better Automobiles are built

BUICK

will build them

COMMUNITY MOTOR CO.

Phone 1099
LUMBERTON, NORTH CAROLINA

Compliments of

AUSTIN DRUG COMPANY

The Rexall Store

MAXTON, NORTH CAROLINA

PRESBYTERIAN JUNIOR COLLEGE

GREETINGS
THE WHITE HEATHER

In recognition of the cordial relations between the two colleges

WE OFFER

Standard Two-Year College Courses leading to the A.A. and A.S. degrees. Preparatory Courses in the tenth, eleventh, and twelfth grades. Business Administration. One- and Two-Year Commercial Courses. Flying. Two Terms of Summer School.

Small classes, individual attention, athletics, student activities, Christian emphasis, thorough instruction, excellent faculty. Apartments for married students.

Box BH : Maxton, North Carolina

Compliments of

HALLUM FURNITURE CO.

ROCKINGHAM, NORTH CAROLINA

HOME FURNITURE COMPANY

*A Complete Line of
Home Furnishings*

RED SPRINGS, NORTH CAROLINA

BURROUGHS CUT-RATE STORE

Phone 4271

RED SPRINGS, NORTH CAROLINA

SCHOOL SUPPLIES

STATIONERY : SANDWICHES

CANDY : TOILET ARTICLES : DRINKS

Compliments of

FLEISHMANS

317 North Elm Street

LUMBERTON, NORTH CAROLINA

Compliments of

COLONIAL FROZEN FOODS

RED SPRINGS, NORTH CAROLINA

BELK-HENSDALE COMPANY

DEPARTMENT STORES

LUMBERTON : FAYETTEVILLE : RAEFORD
RED SPRINGS

The 275 Belk Stores Are the
South's Largest Distributors
of Reliable Merchandise

"SHOP AND SAVE AT BELK'S"

DIANA SHOPS

*Smartest in Feminine
Apparel*

123-25 Hay Street
FAYETTEVILLE, NORTH CAROLINA

ROBESON OFFICE SUPPLIES

STATIONERS : OFFICE OUTFITTERS
PRINTERS

LUMBERTON, NORTH CAROLINA

Compliments of

MATTHEWS PHARMACY

Pittman Hospital Building
FAYETTEVILLE, NORTH CAROLINA

HEDGPETH PHARMACY

Two Registered Druggists

Lorraine Hotel Building
LUMBERTON, NORTH CAROLINA

Compliments of

TRU-ADE BOTTLING CO.

FAYETTEVILLE, NORTH CAROLINA

Compliments of

**PEPSI-COLA
BOTTLING
COMPANY**



FAYETTEVILLE, NORTH CAROLINA

If You Live in Southeastern
North Carolina

It's the

FAYETTEVILLE OBSERVER

"North Carolina's Oldest Newspaper"

For Complete
NEWS COVERAGE

Compliments of

BENDER'S DRUG STORE
A Real Drug Store

201 Hay Street
FAYETTEVILLE, NORTH CAROLINA

BAUCOM APPLIANCE COMPANY

RAEFORD, NORTH CAROLINA
FRIGIDAIRE PRODUCTS
MAYTAG WASHERS EASY WASHERS
ELECTRICAL SUPPLIES
SMALL APPLIANCES, ETC.

Quality is of First Importance

Compliments of

COLLINS DEPARTMENT STORE

RAEFORD, NORTH CAROLINA

Compliments of

McLAUGHLIN CO., INC.

RAEFORD, NORTH CAROLINA

Compliments of

Fayetteville Office Supply Co.

PRINTERS : STATIONERS
OFFICE OUTFITTERS

513 Hay Street : Dial 2768
FAYETTEVILLE, NORTH CAROLINA

CONGRATULATIONS, SENIORS!

THE WHITE HEATHER

IS A REAL CREDIT TO YOU AND TO
FLORA MACDONALD COLLEGE

WHAT A MEMORY BOOK IT WILL
BE THROUGH THE YEARS! MAY
IT BIND YOU EVER CLOSER TO YOUR
ALMA MATER

OUR PROUD THOUGHTS AND PRAYERS
WILL FOLLOW YOU. WE KNOW THAT YOU
WILL MEASURE UP TO THE HIGHEST
AND BEST



FLORA MACDONALD COLLEGE

RED SPRINGS, N. C.

MARSHALL SCOTT WOODSON

PRESIDENT

Compliments of

FAYETTEVILLE WHOLESALE COMPANY

Featuring

FRESH FRUITS and VEGETABLES

PHONE 2131

FAYETTEVILLE, NORTH CAROLINA

M. M. SMITH FURNITURE COMPANY



FURNITURE
FOR EVERY HOME

Wholesale and Retail



325 Hay Street
FAYETTEVILLE, NORTH CAROLINA

M. M. SMITH STORAGE WAREHOUSE

BONDED

FIREPROOF WAREHOUSES

Agt. ALLIED VAN LINES, Inc.



LOCAL and LONG DISTANCE
HAULING



Phone 2194
FAYETTEVILLE, NORTH CAROLINA

REDMON'S STUDIOS

ELKIN, NORTH CAROLINA



PHOTOGRAPHERS



All Pictures Personally Made by

T. A. REDMON

BILL BELCHE

PHOTOGRAPHER

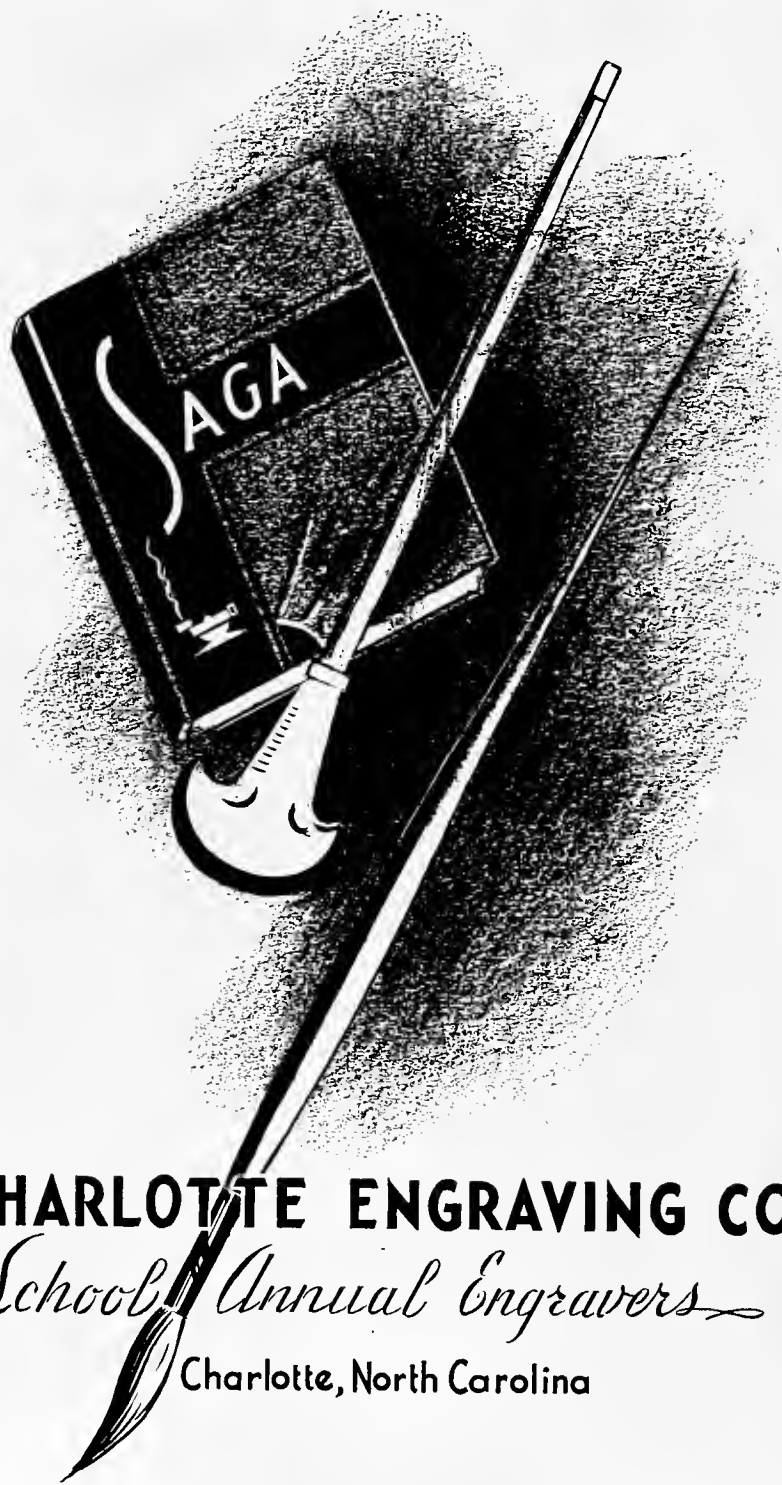


Commercial Photography : Custom Framing



137 Robeson Street :-: Phone 5468

FAYETTEVILLE, NORTH CAROLINA



CHARLOTTE ENGRAVING CO.

School Annual Engravers

Charlotte, North Carolina

Compliments of

GRAHAM'S
Department Store, Inc.

=====

Phones

308-1

257-1

=====

RED SPRINGS, NORTH CAROLINA

Compliments of

KINLAW'S JEWELRY STORE

RAEFORD, NORTH CAROLINA

ROWLAND DRUG CO.

The Rexall Store

●

ROWLAND, NORTH CAROLINA

To Please Your Family
Stop at

ELK RESTAURANT

RAEFORD, NORTH CAROLINA

AUTOGRAPHS

BUILDERS DREAMS

THE WHITE HEATHER STAFF
and the
EDWARDS & BROUGHTON
COMPANY

Cooperated to produce this Annual.

•
WRITE FOR OUR
ANNUAL REPRESENTATIVE
TO CALL AT YOUR SCHOOL.

•
Letter Press and Lithographed
Annuals produced in our
plant in Raleigh.

•
EDWARDS & BROUGHTON
COMPANY

Established in 1871

