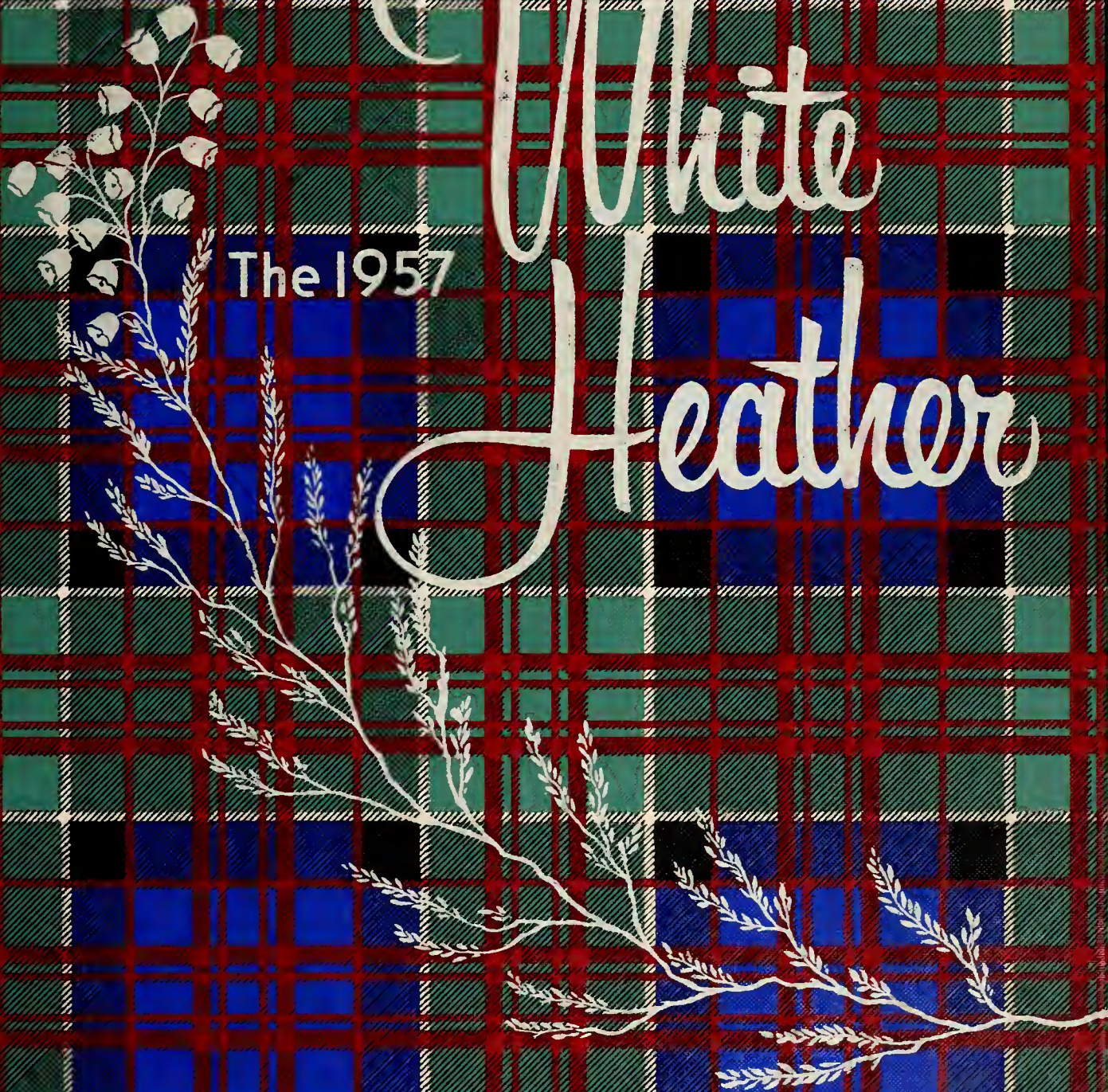
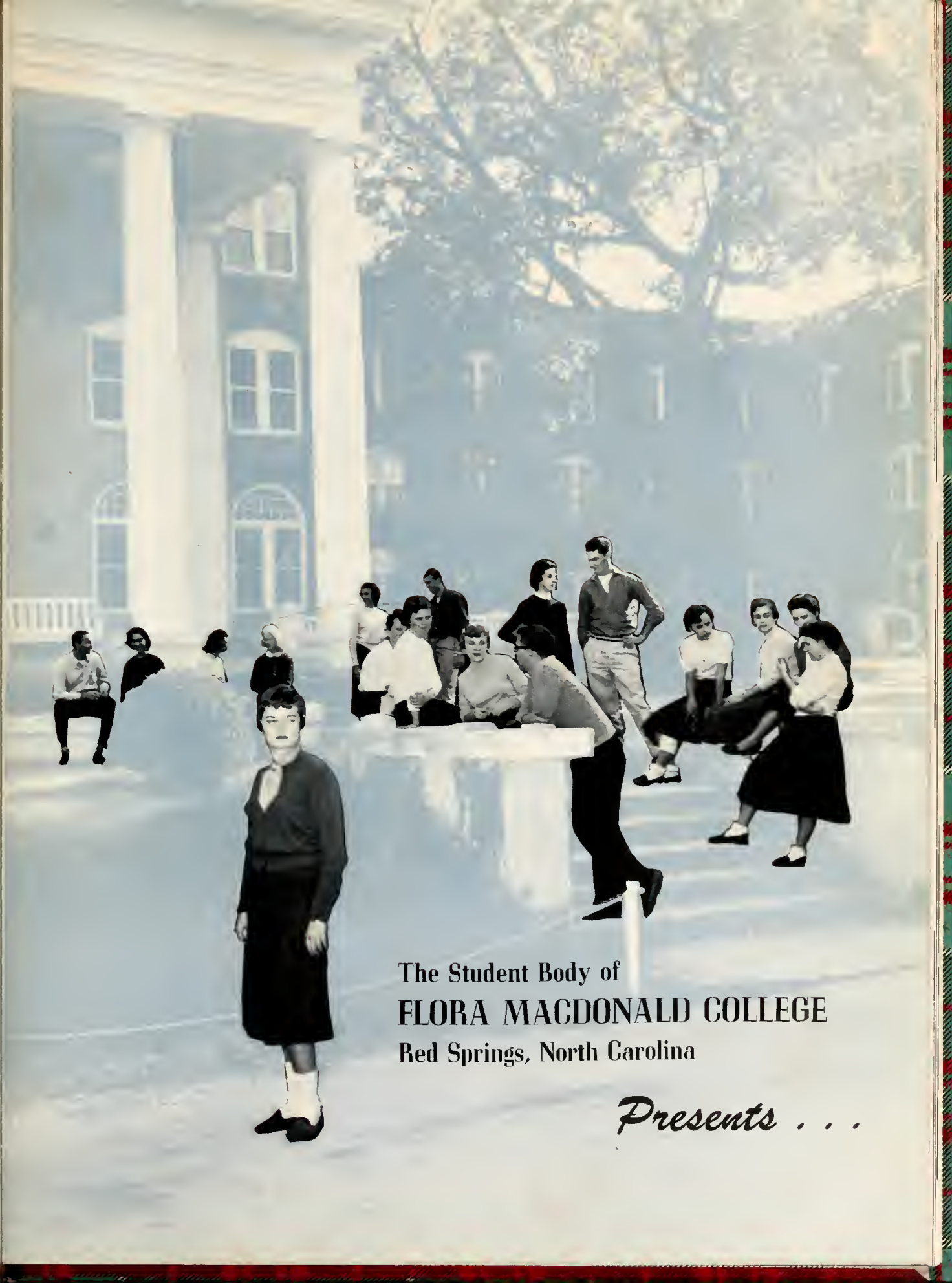


White
Feather

The 1957







The Student Body of
FLORA MACDONALD COLLEGE
Red Springs, North Carolina

Presents . . .



The 1957

White Heather

Betsy Fleshman
Editor

Jane Wood
Business Manager



Our college is a living memorial . . .
to a spirit of fresh courage and warmth of heart,
to a life, symbol of that spirit that cannot die
as long as it lives in the hearts of a people,
to a name long treasured in the heart of every true
Scotsman and of all who know the spirit and
the vision of . . .

Flora Macdonald.



Patterson Yeargin, Senior, begins the first step of the Highland Fling.

Life in Our Flora

Inherent in Scottish life is a love of tradition, perhaps the oldest of which is the clan organization with its remarkable spirit of unity and tribal pride. Strangest of the ties that unite these clansmen is their loyalty to the highlands. There is a nostalgic air about the brown ruin of a castle, a church spire rising from a village surrounded by the wistful blue of hills, towering mountaintops, and the valleys of the Tweed and Till that touches the heart of loyal true Scotsmen. Here, too, as in the Land of the Cheviots, we learn to savor sentiment and relish the eccentric, to love truth and worship beauty.

Our way is not easy and the time is not long. Not forever do we remain, yet there is a great intermingling, a changing, and a rebuilding. Every-day

Learning basic Fling positions are members of the Junior class, which traditionally performs for many college celebrations.



Macdonald Clan

events do more than the special marked-out days in this our building ground. It takes many classes and early bells, many walks, periods of meditation, soulful music, glory in tradition, and the strange evolution of many friendships. It takes the sharp accent of the new and unexplainable. Most of all, it is the combination of the unexpected and the traditional that shapes and adds variety to clan life.

Eventually, the hour for leave-taking arrives—an hour of joy and victory, of sadness and farewell. Though they leave their hearts in the highlands, the clansmen look up with stout hearts as the door swings wide and, seeing far into the blue and the distance, walk toward a western dream.



Vivian Morrison's bagpipes lend a Scottish atmosphere to our college functions.

Lorraine Williams, member of the library staff, points out to freshman Sandra Abbott the replica of Stirling Castle, famous in Scottish history

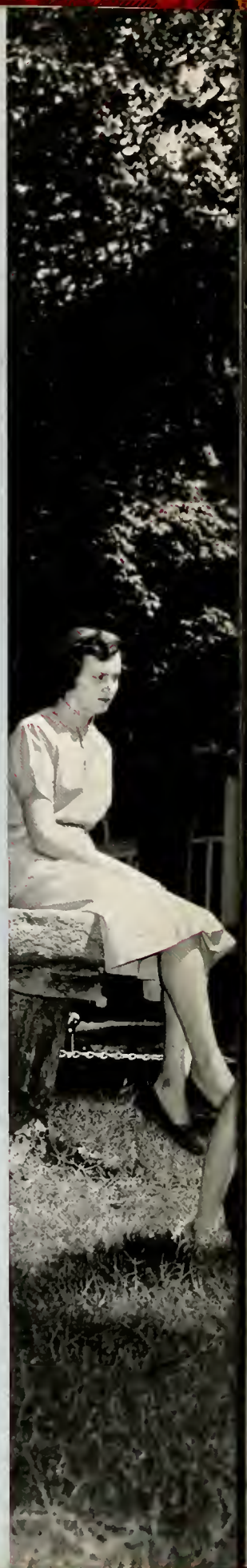




Dedication

In 1896 a vigorous and energetic young minister came to Red Springs to become the first president of our college, then called Red Springs Seminary. Facing almost insurmountable obstacles with faith and fortitude, he erected an institution which glorified God and exalted womanhood. The college gained rapidly in prestige under his leadership, and the work of his wife in the department of music was so widely recognized that in 1903 "Conservatory of Music" was added to its name. After thirty-four years of dedicated service and sacrifice he resigned to become President Emeritus. Although for several years he has been on our campus only for very special occasions, his faith and courage have remained an inspiration to us. He had a purpose and, having it, threw into his work his whole strength of mind and body. Because his was a task with a vision, he became the founder of our clan and the sacred embodiment of our clan spirit. We therefore dedicate the 1957 WHITE HEATHER to

DR. CHARLES GRAVES VARDELL,
President Emeritus







Chiefs of Clan



MARSHALL SCOTT WOODSON
B.A., B.D., M.A., Th.D.,
LL.D.
President

Administration

PRICE H. GWYNN, JR.
B.A., B.D., M.A., Ph.D.
Dean of the College



DR. CHARLES G. VARDELL
President Emeritus





SADIE McBRAYER McCAIN, B.S.
Dean of Students



CHARLES GILDERSLEEVE VARDELL, B.A., M.A., Ph.D.
Dean of Conservatory



HAZEL MORRISON, B.A.
Dean of Admissions and Registrar



E. GLENN OVERTON, B.A., M.A.
Business Manager



Faculty

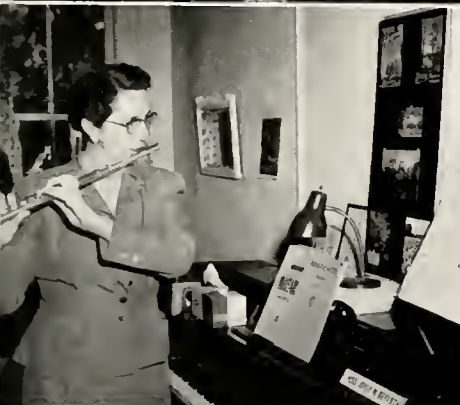
Ethel Bateman, B.A., M.A.
Director of Physical Education and Assistant to Dean of Students

Robert M. Clifton, B.S., M.A.
Assistant Professor of Spanish



Margaret Bowen, B.A., M.A.
Associate Professor of Bible and Christian Education

Mary M. Conoly, B.A., B.S., M.A.
Professor of Education



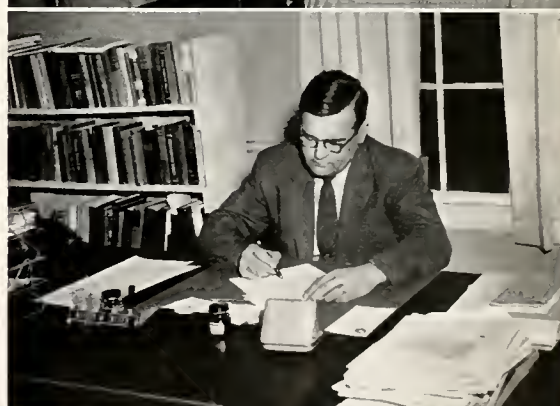
Joyce M. Bryant, B.S. in Ed., M.M.Ed.
Assistant Professor of Music Education and Voice

Elizabeth C. Currie, B.S.
Assistant Professor of Home Economics



Philip Leslie Bullock, B.A., B.D., Th.M., Th.D.
Professor of Bible

Rodger Decker, B.A., M.A.
Director, Guidance and Counseling Center



Annie M. Cherry, B.A., M.A.
Assistant Professor of Education

Sarah M. Gabriel, B.A., M.A.
Assistant Professor of English



Faculty

Ethel B. Hansen, B.A., M.A., Sc.D.
Professor of Biology

Jean B. Mobley, B.A., M.A.
Assistant Professor of Mathematics

Doris H. Hawse, B.A., M.A.
Assistant Professor of Biology

Harriet N. Morrison, B.A., M.A.
Professor of Latin

Thomas H. Johnson, B.S., M.A.
Associate Professor of English

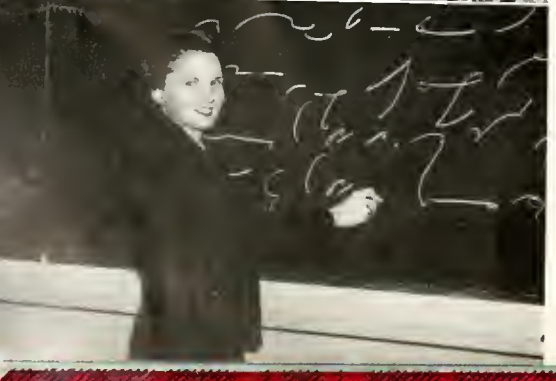
Leta W. McIntyre, B.S., M.Ed.
Associate Professor of Business Education

Joseph N. LeConte, A.B., M.S., Ph.D.
Professor of Chemistry

Elizabeth C. McPhaul, B.A.
Assistant Professor of Bible

Nina T. Lineberry, B.S., M.Ed.
Assistant Professor of Business Education

Genevieve M. Neighbors, B.A., M.A.
Professor of Education and Social Science





Faculty

Flora M. Perry, B.A., B.S., L.S.
Librarian

Eleanor B. Scott, B.A., M.A., Ph.D.
Professor of English



Arlette Marie Poole, B.M., M.M.
Assistant Professor of Piano

Lawrence M. Skinner, B.S., B.M., M.A.
Assistant Professor of Voice

Patricia D. Skinner, B.F.A.
Instructor of Fine Arts



William F. Reagan, B.A., M.A.
Assistant Professor of French

Elizabeth Stenhouse, B.L.
Assistant Professor of Business Subjects



Carol Robertson, B.A., M.A.
Professor of History

John E. Williams, B.M., M.M.
Assistant Professor of Organ



Helen Rogers, R.M., M.M., Ph.D.
Professor of Music Theory

Charlotte Womble, B.A., M.S.
Professor of Home Economics



Administrative Staff

NAN H. BULLOCK

Alumnae Secretary and Publicity Director

ANN MARKS

Secretary, Office of Dean of Admissions

DORIS CAIN

Secretary, Office of the President

MARY HELEN MERRITT

Secretary, Office of the Bursar

ELIZABETH S. DEAREN

Manager of Laundry

BROWN MORRISON, B.L.

Bursar

MARY PEDEN, R.N.

Resident Nurse

HELEN T. DORRAH

Supervisor of Dormitories

AUDREY TUCKER

Secretary, Office of the Dean

G. C. LANG

Superintendent of Buildings and Grounds

MRS. MARSHALL S. WOODSON, B.A.

Admission Counselor

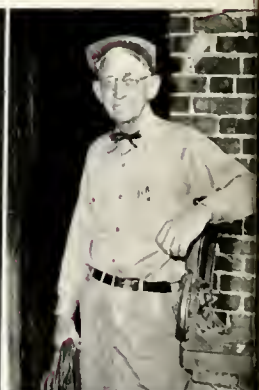
Bullock
Marks

Cain
Merritt
Morrison

Dearen
Peden

Dorrah
Tucker

Lang
Woodson



In Memoriam

MR. THOMAS E. WRIGHT

On June 22, 1956, our college lost one beloved by faculty and students alike, Professor Thomas E. Wright. Mr. Wright taught French and Spanish at Flora Macdonald College for the past seven years. His interest in the students and his companionship with them endeared him to all who knew him. His death was a distinct loss to the academic and personal life of our college.

MISS ANNIE WILLIAMS

The death of Miss Annie Williams was announced by Dr. Leslie Bullock during our chapel service on Friday morning, September 28. Miss Williams had been a member of the college staff for many years and at the time of her death was secretary to Miss Hazel Morrison, Registrar and Dean of Admissions. All who knew her loved her and mourn the passing of this faithful servant.



Lads and Lassies



Joanne Ross is seen in a familiar pose in the Conservatory.



Shirley Thomas chats with Becky Taylor as she buys her books during registration.

Inspired by the high regard of our forefathers for sound learning, the search for knowledge and a means of self-expression became the focal point for our classroom activities. Through them, minds are enlarged, new ideas take root, and a taste for finer things is developed. Students learn to look at life creatively, to see beauty in the unbeautiful, and to reverence truth. The end result of this mental, spiritual, and aesthetic growth is not blind, but purposeful living.



Grading papers during those hectic student teaching days are Sarah Brawley and Katherine Ray, while Sue Owen does her homework.

The Tea Hole, frequented by Day Students, is a busy place after classes.

Is it or isn't it? Liz Dawson and Joyce Owens wonder as they search for leaves for their botany class.





Far from grim judges are our robed Council members as they assemble for their regular Tuesday meeting to discuss important issues and make necessary decisions.

Student Government

The Student Council is composed of thirteen members. They become a part of the Council by virtue of the office to which they are elected in the spring of the year, taking office in March.

ANNE TURNER, *President, Student Body*

NORMA PITTARD
Vice-President, Student Body

HAZEL McLEAN
Secretary, Student Body

ROSALYNDE GIBSON
Treasurer, Student Body

PEGGY GRAHAM
President, Christian Association

PAT POWELL
President, Athletic Association

MAC CALHOUN
President, Zeta Theta Psi

JULIA LEE RIBET
President, Epsilon Chi

BETSY LITTLE
President, Day Students

BARBARA ARRINGTON
President, Senior Class

SARAH GOODMAN
President, Junior Class

BOOTS PRIDGEN
President, Sophomore Class

JO CAMPBELL
President, Freshman Class

Hazel McLean performs a necessary but unpleasant duty of Council members as she gives a call down to Emily Williams.



All associations, societies, and classes are represented in our Student Council. Working through administration, faculty, and student these clan leaders start into motion the machinery which underlies every day's activities. Many plans are initiated, some to be rejected and others to be written into the Student Handbook. This year's Handbook included many innovations which were the result of hours of consultation of council members, executive committee, and administration. This revolutionary work is further proof of the attitude of Scotsmen toward progress. Other major projects were Orientation Week, operation of the student store, the council scrapbook, exam week, the fall House Party, and the first dance of the year. The Christmas banquet, and Mrs. McCain's party provided opportunities for fun and fellowship. Daily duties of council members include checking cards and chapel, working with hall proctors, and answering numerous requests for privileges. Election to a council position is a high honor and carries with it great responsibility. In donning her robe each member pledges herself to uphold the aim of the council—keeping of the rule and instilling a sense of honor and fair play throughout our student body.



Checking cards at the sign-out desk are Sarah Goodman and Mac Calhoun. Both seem to have "caught" some unlucky student.

Riding in state on their float for the Fall Festival are tartan-bedecked Council members.



Seen presiding at our weekly Student Body meeting is Anne Turner as she pauses for discussion of the question at hand.





One of the spots on campus with which fondest memories are associated is Senior Bridge. Gathered here are the Senior Class officers, as their days at Flora Macdonald near an end.

Seniors

Barbara Arrington, *president*; Shirley Kearns, *vice-president*; Sarah Brawley, *secretary*; Lucy Richardson, *treasurer*; Betsy Brewer, *Tea Room manager*; Jessie Ruth Honeycutt, *assistant Tea Room manager*.

Off to another day of student teaching are Seniors, Helen Maness and Margaret Williams.

Norma Pittard, performing one of her more important duties as vice-president of the Student Association, types a first draft of the new Student Handbook.

Getting practical experience in the art of home-making are Senior Home Economics majors, as they go about their duties in the Home Management House.





Fitting robes for that important event are Jane Sheets, Susie Parsons, and Lucy Richardson. A little long, isn't it, Jane?

Taking the initiative in clan organizations and activities were members of the senior class as they assumed with pride their new duties and privileges. Unlimited lights and extra breakfast cuts were especially welcome, while flag duty, student teaching, senior recitals, and interviews were reminders that the long-awaited day was approaching. The Silver Tea, capping, and Senior Devotions are things of the past, leaving us to face the future with courage and optimism.

Engaging in a traditional Senior "privilege," the raising of the Flag, are Anna Webb and Judy Rogan.



Julia Gibbs and Yvonne Brumbles know that January is not too early to order invitations, for busy Senior days are ahead.

One of the most enjoyable events of the Senior year is the traditional Christmas party and the decorating of the tree in the Rotunda.



Senior Class



Arrington

Blalock

Brawley



Brewer

Brock

Brumbles



Butler

Chadwick

Coleman

... 1957

Anne Turner, *Who's Who in American Colleges and Universities*.



BARBARA LOUISE ARRINGTON, B.A.

Elementary Education

Rowland, North Carolina

"Hey, Ladies" . . . words of one "sill" . . . flowers and curls . . . "Mother McCain's little helper" . . . competence . . . nonsense without loss of dignity.

Epsilon Chi Society, Secretary 2, President 3, Marshal 3, Student Council 3, 4; Class President 4; *Skirl* 1; Business Club 1, Treasurer 1; Choral Club 1; Dance Committee 1; Spanish Club 2, 3, Treasurer 3; Highland Players 2, 3; Classical Club 2; William Bartram Science Club 2, 3; May Court 3, 4; WHITE HEATHER Staff, Scribbler; *Who's Who Among Students in American Colleges and Universities*.

JEAN MARSH BLALOCK, B.S.

Home Economics

Bunnlevel, North Carolina

"Blay-luk" . . . nightly phone calls . . . luminous eyes and lovely hands . . . momentarily addled . . . interested worker . . . cooperative and congenial . . . 4th floor devotee.

Zeta Theta Psi Society; Home Economics Club 1, 2, 3, 4, Treasurer 4; Spanish Club 1, 2, Treasurer 2; Dance Committee 3; Mathematical Honor Society 1; Student Volunteers 1, 2.

SARAH MILLS BRAWLEY, B.A.

English

Troutmans, North Carolina

Immaculate beauty . . . raven hair . . . Shakespeare and Bach . . . intelligent wit . . . unaffected and unruffled . . . genteel.

Epsilon Chi Society; WHITE HEATHER Staff, Literary Editor 4; Class Secretary 4; St. Cecilia Music Club 3, 4; Guild Student Group of Organists 3, 4; Organ Recital 4; *Pine and Thistle*, Literary Staff 4; Dance Committee 3; May Court, Maid of Honor 4; Mitchell College 1, 2; University of North Carolina Summer School 1956.

LILLIE BETSY BREWER, B.A.

Elementary Education

Sanford, North Carolina

Brewster the prankster . . . articulate eyebrows . . . words from the West . . . early to bed, late to rise . . . Tea Room dietitian . . . college car chauffeur.

Zeta Theta Psi; Class Officer, Tea Room Manager 3, 4; Mathematical Honor Society 1, 2, 3, Finance Chairman 3; Granddaughter's Club 1, 2, 3, 4, Vice-President 3, President 4; William Bartram Science Club 1, 2, Treasurer 2; French Club 1, 2; Choral

Club 1, 2; Highland Players 1, 2; St. Cecilia Music Club 1, 2; *Skirl* 1, 2, 3.

FRANCES ANN WILLIAMS BROCK, B.A.

History and Bible

Red Springs, North Carolina

"Mrs." . . . extremely capable . . . "Wilton says" . . . fair is her cheek and dark is her hair . . . perfectionist . . . expressive eyebrows . . . she sings, she cooks, and she makes A's.

Zeta Theta Psi Society, Marshal 3; Class President 3, Student Council 3; French Club 1, 2; Choral Club 1, 2, 3, 4, Choral Ensemble 4; Basketball 1, 2, 3; Volleyball 2, 3; Virginia Club 1, 2, 3, 4; St. Cecilia Music Club 1, 2; Mathematical Honor Society 1, 2; Student Volunteers' 1, 2; Day Students Club 4; Flora Macdonald Honor Society 1, 2.

YVONNE DARLENE BRUMBLES, B.A.

History

Whiteville, North Carolina

"Arvo" . . . scintillating eyes . . . amateur analyst . . . versatile impersonator . . . a plan for everything . . . "Wyeville" . . . meticulous grooming.

Zeta Theta Psi Society; Mathematical Honor Society 1, 2, 3; Spanish Club 1, 2, 3, Secretary 2; I.R.C. 1, Treasurer 4; Classical Club 3; *Skirl* 2; Dance Committee 4.

ELDRIDGE DEON BUTLER, B.A.

History

Fayetteville, North Carolina

Cool black hair . . . Baptist . . . studentpreacherhusbandandfather . . . both wise and witty . . . laughter-crinkled eyes . . . meetings, meetings, meetings.

Wake Forest 1, 2, 3; Day Students Club 4.

SHIRLEY GRAY CHADWICK, B.A.

History

Fayetteville, North Carolina

Rosy cheeks . . . colorful cashmeres . . . Fayetteville commuter . . . "lovely to look at" . . . nonchalant . . . collegiate.

Zeta Theta Psi Society; Day Students Club 1, 2, 3, 4, Secretary 2, President 3, Student Council 3; May Court 2; Presbyterian Junior College Summer School 1953.

ANNE ODOM COLEMAN, B.S. *Biology* Red Springs, North Carolina

Wife, mother and student . . . inexhaustible . . . sling-shoes and suede jacket . . . unusual earrings . . . amicable . . . velvet eyes.

Epsilon Chi Society; Day Students Club 4; Greensboro College 1, 2, 3.

Senior Class



Fleishman

Flowers

Gathings



Gibbs

Gibson

Graham



Hall

Honeycutt

Johnson

. . . 1957

Peggy Graham, *Who's Who in American Colleges and Universities*.



BETSY ROSS FLESHMAN, B.A.

Bible and History

Brookneal, Virginia

Brilliance immersed in quietness . . . theater-goer . . . A's with ease . . . classnotes in shorthand . . . The W.H.'s '57 Mama . . . efficiency expert . . . an imp with a hula.

Zeta Theta Psi Society; WHITE HEATHER Staff, Assistant Business Manager 3, Editor 4; Scribbler 4; *Skirl* 2, 3; Prayer Band Leader 3; Student Volunteers 1, 2; Virginia Club 1, 2, 3, 4, Vice-President 2; Spanish Club 1, 2, Vice-President 2; Mathematical Honor Society 1; Flora Macdonald Honor Society 3, 4, President 4; Superlative Capability 4; *Who's Who in American Colleges and Universities*.

MAY DEE FLOWERS, B.S.

Business Education

Hartsville, South Carolina

Three short years . . . prissy pace . . . sews a fine seam . . . musical aspirations . . . blonde bob . . . Mary-dee.

Epsilon Chi Society; Future Business Leaders of America 1, 2, 3; Spanish Club 2; South Carolina Club 2, 3; I.R.C. 3; Coker College Summer School 1955; Wingate College Summer School 1956.

JOHN THOMAS GATHINGS, B.A.

History and Social Studies

Rockingham, North Carolina

"Race" . . . fraak . . . charter member of Tea Hole Crew . . . yes, ma'am . . . Goody's Headache Powders . . . old style Southern politician.

Epsilon Chi Society; I.R.C. 4; Day Students Club 3, 4; Presbyterian Junior Club 1, 2.

JULIA GIBBS, B.S.

Home Economics

Clayton, Georgia

"Jupie" . . . serene beauty . . . startling humor . . . gentle voice . . . siacere friend . . . arresting little-girl quality.

Epsilon Chi Society; Class Secretary 3, Treasurer 2; Mathematical Honor Society 1, 2, Treasurer 2; *Pine and Thistle* Literary Staff 2, 3; Home Economics Club 3, 4; WHITE HEATHER Staff 3, 4; Volleyball 2, 3.

EDNA MARLENE JOHNSON, B.A.

Bible and Christian Education

Burlington, North Carolina.

Mobile mouth . . . musically inclined . . . loyal C.A. worker . . . distinctive walk . . . delicacy of appearance . . . serious attitude toward vocation.

Epsilon Chi Society; Christian Association Cabinet, Chairman of Worship 3, Treasurer 4; Choral Club 2, 3, 4, Vice-President in Charge of Tours 4; St. Cecilia Music Club 2; Student Volunteers 2, 3, 4; Westminster Fellowship Council 3; Highland Players 2; French Club 2, President 3; Elon College 1.

RUBY LOUISE GIBSON, B.A.

Elementary Education

Marston, North Carolina

A little gem . . . determination plus . . . Campbell alumna . . . speedy seamstress . . . conversation sprinkled with laughter . . . flutophonist for Yardell Court.

Epsilon Chi Society; Campbell College 1, 2.

PEGGY ANN GRAHAM, B.M.

Piano

Lake Waccamaw, North Carolina

"Pegasus" . . . controlled disposition . . . innate sincerity . . . consecrated worker . . . quietly compelling speaker . . . spontaneous mimicry.

Zeta Theta Psi Society, Marshal 3; Christian Association Cabinet, Worship Chairman 2, Secretary 3, President 4, Student Council 4; Choral Club 1, 2, 3, 4, Chaplain 2, Treasurer 3; *Who's Who in American Colleges and Universities*.

ANN HERRING HALL, B.A.

Elementary Education

Rose Hill, North Carolina

Week-end traveler . . . "her voice was low and sweet" . . . graceful dancer . . . four years with Jamie . . . ideal 1st grade teacher . . . winged hair cut.

Zeta Theta Psi Society; Proctor 2; Volleyball 3; Future Business Leaders of America; Wilmington College Summer School 1955.

JESSIE RUTH HONEYCUTT, B.S.

Business Education

Wadesboro, North Carolina

"Jr." . . . The Charleston . . . "maiden with a mind for business" . . . tiny and efficient . . . a big little cut-up . . . "Lady."

Zeta Theta Psi Society; Assistant Tea Hole Manager 4; Business Club 1; Future Business Leaders of America 1, 2, 3, 4, Treasurer 4; I.R.C. 3, 4, Secretary 4; WHITE HEATHER Staff 4; Spanish Club 3.

Senior Class



Johnson

Kearns

Lamm



Lewis

Little

Maness



Martin

Matthews

Morrison

.. 1957

Pat Powell, *Who's Who in American Colleges and Universities*.



ELIZABETH CAROLYN JOHNSON, B.A.

Mathematics

Fayetteville, North Carolina

Charlie-letters . . . leisurely Indy . . . February bride . . . rare beauty . . . early graduate . . . innumerable coffee breaks.

Epsilon Chi Society, Treasurer 2, Marshal 3; Class Officer, Vice-President 2; Dance Chairman 3; *Pine and Thistle* Literary Staff 2; *Skirl* 1; Mathematical Honor Society 2, 3, 4, Vice-President 3; Highland Players 2; French Club 2; William Bartram Science Club 2; Student Volunteers 1, 2; May Court 2; Superlative Beauty 4; Flora Macdonald College Honor Society 3, 4; George Peabody College Summer School 1956.

SHIRLEY ANNE KEARNS, B.M.

Piano

Asheboro, North Carolina

"Kirley Shearns" . . . wha-who-who! . . . power at the keyboard . . . cat-eyed glasses . . . non-procrastinator . . . blue suede shoes . . . that's fun.

Epsilon Chi Society, Pianist 3, 4; Class Officer, Vice-President 4; Choral Club 1, 2, 3, 4, Accompanist 3, 4; St. Cecelia Music Club 1, 2, 3, 4, Secretary-Treasurer 2; Choral Ensemble 3, 4; *Pine and Thistle* Staff 4; Methodist Student Movement, President 4; Senior Piano Recital.

MIRIAM BARROW LAMM, B.S.

Home Economics

Lucama, North Carolina

Straightforward . . . 3 year graduate . . . August bride . . . "Ahsokie calling the Home Management House" . . . "idee" . . . distinctive glasses.

Zeta Theta Psi Society; Home Economics Club 1, 2, 3, Vice-President 2, President 3, Delegate to State College Home Economics Club 2; William Bartram Science Club 1, 2, Secretary 2, Delegate to N. C. Collegiate Science Academy 1; Dance Committee 1, 2; B.S.U. Secretary 2; Cheerleader 2; Atlantic Christian College Summer School 1955, 1956.

MYRA PHYLLIS LEWIS, B.A.

History

Fairmont, North Carolina

Perennial worrier . . . Harper's Bazaar book . . . admirer of all things beautiful . . . all A's . . . multitudinous petticoats . . . Ynnkee-to-be.

Epsilon Chi Society, Marshal 3; Spanish Club 2; Classical Club

MARION OPHELIA MORRISON, B.M. *Piano* McColl, South Carolina

Unlimited home visits . . . "Ophilly Jane" . . . well, uh . . . conversational head shaker . . . soft voice and gentle manner . . . immaculate precision.

Epsilon Chi Society; St. Cecilia Music Club 3; Choral Club 3, 4; B.S.U.; Senior Recital; South Carolina Club; North Greenville Junior College 1, 2.

2, 3; I.R.C. 2, 3; Highland Players 1, 2, 3, Vice-President 3; *Skirl* 3; Day Students Club 3, 4; Flora Macdonald Honor Society 3, 4, Vice-President 3, 4; Woman's College of the University of North Carolina.

ELIZABETH WATSON LITTLE, B.A.

Elementary Education

Red Springs, North Carolina

Thanksgiving bride . . . little Betsy . . . precise placidity . . . gentle firmness . . . surprise package . . . gracious.

Epsilon Chi Society; Day Students Club 3, 4, President 4, Student Council 4; Mathematical Honor Society 3, 4; Granddaughter's Club 3, 4; Queens College 1, 2.

HELEN FRANCES MANESS, B.A.

Elementary Education

Indian Trail, North Carolina

Little black book . . . "are these vacancies?" . . . long week-end dates . . . unruffled complacency . . . mistress of the dining room . . . striped skirt and white blouse.

Zeta Theta Psi Society, Vice-President 4; Prayer Band Leader 3; French Club 1; Spanish Club 1; Superlative Dependability 4.

MARY JANE MARTIN, B.A.

Elementary Education

Reidsville, North Carolina

"Meri" . . . "Whadda ya say, boys?" . . . those piano roll blues . . . "When you walk through a storm" . . . Flossie's Pony-Express . . . abundant friendliness . . . "FMC tradition."

Epsilon Chi Society, Censor 2; Choral Club 1, 2, 3; Spanish Club 1, 2, 3; Classical Club 1; St. Cecilia Music Club 1, 2; Superlative Personality 3, 4; Appalachian State Teachers' College Summer School 1, 2.

JANIE ANN BRYANT MATTHEWS, B.S.

Business Education

Clinton, North Carolina

"Doc" . . . petite and powerful . . . "y'all-lissen" . . . perky greetings . . . neat and efficient . . . four years with Ann . . . surprise!

Zeta Theta Psi Society; Future Business Leaders of America 2, 3, 4, Vice-President 3, President 4.

Senior Class



McDonald

McNeill

Nimocks



Owen

Page

Pamplin



Parsons

Pittard

Powell

Barbara Arrington, *Who's Who in American Colleges and Universities*.



GADDIS MARION McDONALD, B.M.

Church Music

Hope Mills, North Carolina

Hilarious army experiences . . . conservatory coed . . . a whiz-bang at modulation . . . practical joker . . . "little-boy" laugh . . . chivalry's not dead.

Epsilon Chi Society; St. Cecilia Music Club 1, 2, 3, 4; Organ Guild 3, 4; Day Students Club 1, 2, 3, 4; Superlative 1; Senior organ recital.

JOHN THOMAS PIERSON McNEILL, B.A.

English

Lumberton, North Carolina

Myriad disguises . . . sweet and sour . . . creativity with an odd twist . . . expressive specs . . . a sensitive creature in a world of beasts . . . accommodating.

Epsilon Chi Society; Day Students Club 1, 2; *Pine and Thistle* Staff 4; Davidson College 1, 2; University of South Carolina Summer School 1956.

ANN THOMPSON NIMOCKS, B.A.

Elementary Education

Fayetteville, North Carolina

Virginia-bound . . . Debutante . . . "Kashmere Kid" . . . uninhibited friendliness . . . sunny drawl . . . 10 o'clock scholar.

Epsilon Chi Society; Day Students Club 3, 4, Secretary-Treasurer 4; Classical Club 3; St. Mary's Junior College 1, 2; University of North Carolina Summer School 1954, 1955.

SUE WASHINGTON OWEN, B.S.

Bible and Chemistry

Cluster Springs, Virginia

A song unsung . . . lab-dweller . . . medical aspirations . . . to think long thoughts . . . second love—music . . . lilting little voice.

Zeta Theta Psi Society; Class Officer, Treasurer 1; Student Council, Treasurer 2; WHITE HEATHER Staff, Assistant Editor 3; Student Volunteers 1, 2, 3, 4, Vice-President 3, President 4; Prayer Band Leader 4; Virginia Club 1, 2, 3, 4, Vice-President 3; Basketball 3, 4, Captain 4; Volleyball 4; Flora Macdonald Honor Society 3, 4.

PATRICIA ANNE POWELL, B.A. *Bible and History* South, Boston Virginia

"Ish" . . . Virginian and proud of it . . . fresh and youthful beauty . . . blue, blue eyes . . . helping hands . . . wit that backfires.

Zeta Theta Psi Society; Athletic Association Board 1, 2, 4, Freshman Representative 1, Salesman 2, President 4, Student Council 4; Christian Association Cabinet, Social Service Chairman 3; Prayer Band Leader 2; Volleyball 1, 2, 3, 4, Honorary Varsity 2, 4; Basketball 1, 3, 4; Tennis Champion 3; Superlative 3, 4, Sportsmanship 3, Best-All-Around 4; Virginia Club 1, 2, 3, 4, President 2; Spanish Club 1, 2; Classical Club 1; Writers Club 1; *Who's Who in American Colleges and Universities*.

MARY RACHEL PAGE, B.A.

Elementary Education

Clarkton, North Carolina

"Rache" . . . week-ends with Worth . . . Sr. transfer . . . organist in the making? . . . hidden humor . . . just nonchalant . . . June bride.

Epsilon Chi Society; Dance Committee 4; May Court 4; Meredith College 1, 2, 3.

MARGARET MEADORS PAMPLIN, B.A.

English

Clio, South Carolina

Four alma maters . . . 3 years . . . Harry and little Harry . . . suits and shoulder bag . . . cameo appearance . . . questioner.

Epsilon Chi Society; Day Students Club 1, 2, 3; Granddaughters' Club 1; Presbyterian Junior College Summer School 1955; University of South Carolina Summer School 1956.

SUSIE MARIE PARSONS, B.S.

Home Economics

Elizabeth City, North Carolina

Personalized nicknames . . . precise movements . . . cropped curls . . . sleepy-time gal . . . junior transfer . . . the ever present saddle oxfords.

Zeta Theta Psi Society; Home Economics Club 3, 4; Student Volunteers 3; Peace College 1, 2; Atlantic Christian College Summer School 1956.

NOBMA BLANCHE PITTARD, B.A.

Bible and Christian Education

Warrenton, North Carolina

"Pitt" . . . Council Member Supreme . . . on the Raleigh road . . . Tiffany setting . . . gentility of speech . . . serious student.

Epsilon Chi Society, Marshal 3; Class Officer, President 1, Secretary 3, Student Council 1, 3, 4, Vice-President 4; Prayer Band Leader 2; Volleyball 1, 2, 3, 4, Honorary Varsity 4; Basketball 1, 2, 3, 4, Captain 2, Honorary Varsity 3; Mathematical Honor Society 2; I.R.C. 2, 3, Treasurer 2, 3; Monogram Club 3, 4, President 4; Spanish Club 1; *Skirl* Staff, Typist 1, 2; WHITE HEATHER Staff, Scribbler 4; Highland Players 1, 2, Secretary-Treasurer 2; Dance Committee 3; May Court 3; *Who's Who in American Colleges and Universities*.

Senior Class



Ray

Ribet

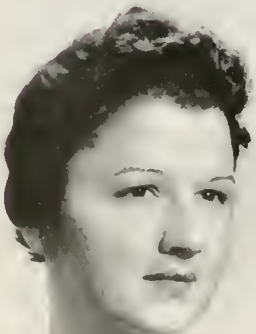
Richardson



Rogan

Shannon

Sheets



Sherrill

Smith

Stacy

... 1957

Norma Pittard, *Who's Who in American Colleges and Universities*.



KATHERINE EDITH RAY, B.A.

English and French

Newland, North Carolina

Literary individualist . . . full of the music of words . . . uncompromising opinions expressed softly . . . Appalachian painter and poet . . . a hunger to know and to impart . . . infinitely varied.

Zeta Theta Psi Society; *Skirl* Staff 1; *Pine and Thistle* Literary Staff 1, 2, 3, 4; French Club 1, 2, 3, Vice-President 2; Prayer Band Leader 4; Dance Committee 3; Appalachian State Teachers College Summer School 1955; University of North Carolina 1956.

JULIA LEE RIBET, R.M.

Voice

Valdese, North Carolina

"Ribbit" . . . Waldensian . . . sweater peddler . . . languorous lids . . . he, he, he . . . always an alliteration.

Epsilon Chi Society, President 4, Student Council 4; Dance Chairman 1; Choral Club 1, 2, 3, 4, Historian 3; St. Cecilia Music Club 1, 2; The Organ Guild 3, 4; Choral Ensemble 2; Cast of "The Mad Woman of Chaillot" 3; Student Volunteers 1; Prayer Band Leader 2; *Pine and Thistle* Staff 1, 2, 3, 4, Assistant Editor 3; WHITE HEATHER Staff 4, Scribbler 4; Lenoir Rhyne College Summer School 1955; *Voice* Recital 4.

LUCY ANNIE RICHARDSON, B.A.

Mathematics

Whiteville, North Carolina

Infectious laughter . . . Math solves all her problems . . . warm-hearted . . . impish . . . breakfast cuts . . . amiable aggressiveness.

Zeta Theta Psi Society, Censor 2, Treasurer 3; Class Officer, Vice-President 3, Treasurer 4; Prayer Band Leader 2; Athletic Association Board, Treasurer 3, Head of Recreation Room, Bowling, and Ping-Pong 4; Mathematical Honor Society, Secretary-Treasurer 3, President 4; French Club 1, 2, Secretary-Treasurer 2; Monogram Club, Secretary-Treasurer 4; Volleyball 1, 2, 3, 4; Basketball 1, 2, 3, Captain 3; Cast of "Our Town" 1; Highland Players 2; Proctor 3; *Skirl* 1.

HAZEL LULU ROGAN, B.S.

Business Education

Greeleyville, South Carolina

"Judy" . . . "The I.R.C. will meet" . . . Little Lulu . . . confined movements . . . private pnatry.

Zeta Theta Psi Society; Business Club 1; Future Business Leaders

MARILYN COOK STACY, B.A.

Lumberton, North Carolina

"Stacy" . . . monkey-business and Stacy-face . . . the little colonel . . . second Alma Mater—U.N.C. . . unexpected eruptions . . . cashmeres unlimited . . . Deb.

Epsilon Chi Society; Dance Chairman 4; Classical Club 3; Spanish Club 3, 4; Prayer Band Leader 4; Highland Players 3, 4; *The Mad Woman of Chaillot* 3; Salem College 1, 2; University of North Carolina Summer School 1955, 1956.

of America 2, 3, 4, Vice-President 4; I.R.C. 2, 3, 4, Secretary 3, President 4; South Carolina Club 3, 4.

EDNA EARLE SHANNON, B.A.

Elementary Education

Gastonia, North Carolina

"Shannon" . . . explosive laughter . . . unpredictable . . . midnight phone duty . . . private hairdresser . . . "Shan-hend."

Zeta Theta Psi Society; Spanish Club 1, 2; Prayer Band Leader 4; Dance Committee 4; Queens College Summer School 1955; High Point College Summer School 1956.

JANE WALLACE SHEETS, B.A.

Bible and Christian Education

Staunton, Virginia

"Y'all, he's so-o-o-o sweet" . . . DKA . . . little-boy haircut . . . nice and neat . . . "we're no angels" . . . pint-sized loafers.

Zeta Theta Psi Society, Marshal 3; Christian Association Cabinet, Chairman of Worship 4; Choral Club 1, 2; Spanish Club 1, 2; Mathematical Honor Society 1, 2; *Skirl* Staff, Reporter 2; Virginia Club 1, 2, 3, 4; WHITE HEATHER Staff, Picture Editor 4; Dance Chairman 3; Class Cheerleader 3.

JEAN CARROLL SHERRILL, B.A.

Elementary Education

Fayetteville, North Carolina

Trio of Alma Maters . . . gray loafers and shoulder bag . . . early shampoo . . . Tea Hole Club . . . genuine concern for people . . . what n wit!

Epsilon Chi Society; Woman's College University of North Carolina; Peace College 2.

LUCY CATHERINE SMITH, B.A.

Elementary Education

Wilmington, North Carolina

"Goodykoontz" . . . summer sun-tans . . . giggles and gab . . . almond eyes . . . "panic" . . . stage struck . . . Jancy Flinger.

Zeta Theta Psi Society, Censor 3; Choral Club 3; Highland Players 3, 4; *The Mad Woman of Chaillot* 3, *Night of January Sixteenth* 4; Fire Warden 4; Proctor 4; Cheerleader 4.

Senior Class



Steppe
Stuckey
Tedder



Turner, B.
Turner, M.
Webb



West
Whatley
Williams, R.

... 1957

Betsy Fleshman, *Who's Who in American Colleges and Universities*.



MARTHA VIRGINIA STEPPE, B.M.

Church Music
Marion, North Carolina

Red-headed "Steppe" child . . . 4 years in Vardell 16 . . . junior Vesuvius . . . willing worker . . . musician par excellence . . . turned-up toes . . . springy step.

Zeta Theta Psi Society, Pianist 2, Marshal 3; St. Cecilia Music Club 1, 2, 3, 4; Choral Club 1, 2, 3, 4, Second Vice-President 2, Assistant Accompanist 3, Student Director 4, President 4; Organ Guild 3, 4, Dean 3, 4; Organ Recital 4.

MARY KIMBALL STUCKEY, B.S.

Home Economics
Nesmith, South Carolina

"Stooky" . . . in 3 short years . . . Vardell III dweller . . . sincerity . . . twin . . . Future Homemaker.

Zeta Theta Psi Society; Home Economics Club 1, 2, 3, Secretary 1; William Bartram Science Club 1, 2, Treasurer 2; Prayer Band Leader 2; Dance Committee 1; Basketball 1; South Carolina Club 2, 3; Coker College Summer School 1956.

MOLLIE STEVENS TEDDER, B.A.

Elementary Education
Whiteville, North Carolina

100 miles a day . . . "my children" . . . studious . . . "Dick" . . . little Tedder bear . . . and full of fun.

Zeta Theta Psi Society; Day Students Club 3, 4; Mars Hill College 1; Chaffey College 2.

BETTY JEAN TURNER, B.S.

Business Administration
Charlotte, North Carolina

Powder-puff hair cut . . . movies, movies, movies . . . consideration plus . . . expressive hands . . . gobs of gab . . . listening eyes.

Epsilon Chi Society; Athletic Association Board, Head of Swimming 2; Classical Club 1, 2; Mathematical Honor Society 1; Basketball 4; Charlotte Club 4; Future Business Leaders of America 4; May Court 1; Superlative Sportmanship 2, 4; Queens College 3.

MARIANNE FROST TURNER, B.A.

Bible and Christian Education
Mayesville, South Carolina

"The Student Association will please come to awdnh . . ." . . . terrific tease . . . "apple polisher" . . . Roman holiday . . . golly, bun . . . rolled-up sleeves . . . natural loveliness.

Epsilon Chi Society, Marshal 3; President of Student Body 4, Class President 2, Student Council 2, 4; Class Vice-President 1; South Carolina Club 2, 3, 4; French Club 1, 2, 3, Secretary-Treasurer 3; Student Volunteers 1, 2, 3, 4; Best Athlete Award 2; Monogram Club 3, 4; Volleyball 1, 2, 3, 4, Captain 1, Varsity 2, 3; Basketball 1, 2, 3, 4, Varsity 3; Vice-President of Christian Association 3; Superlative Best All Around 3; May Court 1, 3, May Queen 4; *Who's Who in American Colleges and Universities*.

ANN ELIZABETH WEBB, B.S.

Business Education
Wadesboro, North Carolina

"Annie Rooney" . . . dolorous eyes . . . home-sick freshman . . . dependability . . . absent on weekends . . . quiet manner.

Epsilon Chi Society; Future Business Leaders of America 2, 3, 4; I.R.C. 3, 4, Reporter and Scrapbook Custodian 4; Spanish Club 1; Typist for *Pine and Thistle*.

ELLA MAE WEST, B.A.

Elementary Education
Warsaw, North Carolina

"Mae West" . . . off-hand manner . . . Cupid . . . tall teacher . . . devotee of Vardell III . . . major problems.

Zetesian Society; Future Business Leaders of America 2; Volleyball 3; Mathematical Honor Society 2.

DALE WHATLEY, B.A.

Elementary Education
Fort Bragg, North Carolina

Studious . . . international accent . . . indescribable walk . . . "well, honey" . . . enthusiastic . . . proverbially absent-minded.

Epsilon Chi Society; Highland Players 3, 4; *The Mad Woman of Chmiltot* 3; I.R.C. 3, 4, Vice-President 4; William Bartram Science Club 4; Student Volunteers 3; A.A., Stephens College 1, 2; Cincinnati Art Academy 1955.

ISOLA REBECCA WILLIAMS, B.S. *Home Economics* Miami, Florida

"Becky" . . . 4-year transfer-planner . . . "Miamuh" . . . expressive features . . . "Robert's Rules of Order" . . . painful frankness . . . flair for fashion.

Epsilon Chi Society; Highland Players 1, 2, 3, 4; *Skirl* Staff 2, 3, 4; Home Economics Club 3, 4; I.R.C. 2, 3, 4; Volleyball 1, 2, 3; Basketball 3, 4; Dance Committee 4.

Senior Class

MARGARET HAMILTON WILLIAMS, B.A.

Elementary Education

Ararat, Virginia

"Topper" . . . Westward, Ho! . . . surveyor of Presbyterian Colleges . . . quiet wit . . . a ring on her finger . . . perennial tordiness.

Zeta Theta Psi Society; Virginia Club 4; Peace College 1, 2; Queens College 3.

JANE ALICE WOOD, B.A.

Bible and Christian Education

Draper, Virginia

"I hope I ma' never!" . . . Tommy-orchids . . . eternal chocolate drops . . . aidlight ad salesman . . . loyal worker . . . appreciative . . . happy-nappy time.

Zeta Theta Psi Society, Chaplain 2, President 3, Treasurer 4; Student Council 3; WHITE HEATHER Staff, Business Manager 4; Class Officer, Secretary 2; Spanish Club 1, 2; Mathematical Honor Society 1; I.R.C. 3, 4; Student Volunteers 1, 2, Secretary 2; Classical Club 3; Virginia Club 1, 2, 3, 4; Volleyball 2, 3, 4; Basketball 2, 3, 4.

PATTERSON LOUISE YEARGIN, B.M.

Piano

Thomasville, Georgia

"La Yeargin" . . . extensive vocabulary . . . "sub?" . . . Chopin and Debussy . . . artistic originality with a flair for the original . . . tailored shirts and tiny waist . . . poise and self-assurance.

Epsilon Chi Society; Pine and Thistle Staff 2, 3, 4, Editor, 4; WHITE HEATHER Staff, Scribbler 4; Highland Players 1, 4, Our Town 1, Night of January Sixteenth 4; Choral Club 1, 2, 3, 4, Historian 4, Assistant Accompanist 4; St. Cecilia Music Club 1; French Club 2, 3; Writers Club 1; Organ Guild 3, 4, Treasurer 4; Skirl Staff, Conservatory Editor 3; Prayer Band Leader 4; Senior Piano Recital 4; May Court 4; Flora Macdonald College Honor Society 3, 4; Lenoir Rhyne College Summer School 1956.

Not pictured:

ELIZABETH B. PARMELE, B.A.

Elementary Education

Lumberton, North Carolina

Betsy Watson Little, *Who's Who in American Colleges and Universities.*





Enjoying a cool day in early spring are seniors Gaddis McDonald, Sarah Brawley, and Ophelia Morrison.

Morgan II Seniors enjoy an hour of relaxation, records, fun, and food.



Becky Williams entertains a miscellaneous crew in Vardell 27, as members of the Senior Gift Committee gather for another session.



Seniors Ella Mae West and Janie Matthews stand by as Shirley Kearns posts another announcement of importance to Seniors.



Juniors

It's an old Scottish custom to climb mountains. The way has been long but not unpleasant for these Juniors as only one "hill" remains before them. No helping hand was ever more appreciated than was the one they offered their "little sisters," the incoming Freshmen. White-gowned marshals from

their midst added social grace and elegance to teas and receptions. The learning of the Fling and pride in their new class rings gave each of them a new feeling of importance, but nothing could equal the thrill of looking down from the top floor on "going-Up" Day.

Sarah Goodman, *president*; Sue Blakely, *vice-president*;
Jane Carson, *secretary*; Vivian Morrison, *treasurer*; Jean
Quinn, *Tea Room manager*; Shirley Evans, *assistant Tea
Room manager*.

Chatting in Vardell 38 are Junior class officers as they plan some of the activities for this busy year.



The arrival of class rings, looked forward to with so much anticipation, gives a new feeling of pride to these Juniors.



Take courage, little Sis. the first days are always the hardest.

Dressed for a first performance of the Highland Fling after long hours of drill are Juniors Margaret Thompson, Thelma Cameron, and Jane Carson.



Spending a busy hour at the phone desk, Yvonne Bennett finds little time for her homework.



Juniors

ALLEN, HELEN
Lumberton, North Carolina

AMAN, VIVIAN FAYE
Dumfries, North Carolina

AMMONS, JOHN GRAHAM
Red Springs, North Carolina

AUSTIN, CAROLYN
Hamlet, North Carolina

BENNETT, YVONNE
Clinton, South Carolina

BLAKELY, CORA SUE
Rockingham, North Carolina

BRYANT, DOROTHY
Roseboro, North Carolina

CALHOUN, ELIZABETH McNAIR
Lavras Minas, Brazil

CAMERON, THELMA
Lillington, North Carolina

CAPPS, JEAN WEST
Red Springs, North Carolina

CARSON, MARTHA JANE
Commerce, Georgia

CHOI, UN HI
Seoul, Korea

COVINGTON, MARGARET SHIRLEY
Ellerbe, North Carolina

COX, MACEL
Tabor City, North Carolina

CULLUM, BARBARA
Darlington, South Carolina



Juniors

DALRYMPLE, NANCY JANE
Laurinburg, North Carolina

ELLER, ANN
Fayetteville, North Carolina

EVANS, SHIRLEY
Walkertown, North Carolina

FOYLES, RUBY GAIL
LaGrange, North Carolina

GILCHRIST, DORIS GERTRUDE
Lillington, North Carolina

GODWIN, MATTIE RUTH
Dunn, North Carolina

GOODMAN, SARAH LEE
Churchville, Virginia

GRAINGER, ROSIE
Aynor, South Carolina

GRAINGER, SARAH B.
Linden, North Carolina

HARRISON, ALMA ALESE
Lexington, Virginia

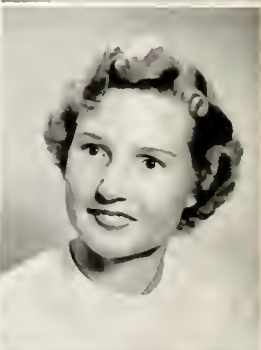
HINDS, SYBIL JEAN
Lumberton, North Carolina

HOUGH, BETTY JANE ATCHLEY
Red Springs, North Carolina

MELVIN, JEFFERY
Fayetteville, North Carolina

MORRISON, VIVIAN MARIE
Baddeck, Nova Scotia, Canada

MCDONALD, BETSY JANE
Fayetteville, North Carolina



Juniors

McGIRT, PEGGY RUTH
Laurinburg, North Carolina

McLEAN, HAZEL RAYE
Raeford, North Carolina

McLEOD, JANE McCALLUM
Carthage, North Carolina

McPHAIL, PEGGY ANN
Wade, North Carolina

NASH, NANCY
Tarboro, North Carolina

NEWCOMER, CAROLYN ROSE
Atlanta, Georgia

NURNBERGER, JUANITA
Red Springs, North Carolina

PARKER, JEAN
Wadesboro, North Carolina

PEELE, MARY H.
Raeford, North Carolina

PETERS, CLOE MARIE
Nebo, North Carolina

POTTER, MARIE
Wilmington, North Carolina

QUINN, JEANNETTE
Kenansville, North Carolina

RAY, JOANNE
Loris, South Carolina

ROGERS, ANNE
Mullins, South Carolina

RUDD, BETTY FRANCES
Mebane, North Carolina

Juniors

SNYDER, DOROTHY ALLRED
Ellerbe, North Carolina

STALVEY, JOY JUANITA
Asheboro, North Carolina

STEGALL, IRMA RINGGOLD
St. Pauls, North Carolina

SWEET, SANDRA HUGHES
Summerville, South Carolina

TARRANT, ANN
Fayetteville, North Carolina

TAYLOR, REBEKAH LOU
Tatboro, North Carolina

THOMPSON, WILLIE MARGARET
Blanche, North Carolina

TOLAR, BETTY BROWN
Lumberton, North Carolina

TOPPING, RUTH EVELYN
Greenville, North Carolina

WEST, CYNTHIA COLLINS
Conway, South Carolina

WILKIE, MARILYN ELIZABETH
Gulf, North Carolina

WILLIAMS, ELISE DELANO
Greenville, North Carolina

WILLIAMS, EMILY ROSE
Lumberton, North Carolina

WINGATE, BARBARA ANN
Charlotte, North Carolina



Sophomores

Loyalty and perseverance, innate characteristics of Scotsmen, aptly describe our Sophomores. With much of the road still ahead, they plunged with renewed spirits into the year's activities. The struggle with Sophomore lit and second year theory took no small amount of fortitude. Feeling more a part of the Clan, they did not hesitate to offer worried Freshmen "the voice of experience" and assurance that they would survive. Hospitality Week-end, in which they entertained their future "little sisters" with a tea gave them their first real opportunity for taking initiative and a glimpse ahead to the time in which they would assume leadership of the clan.

Boots Pridgen, *president*; Linda Hill, *vice-president*; Joanne Ross, *secretary*; Nancy Jo Thompson, *treasurer*.

Sophomore class officers enjoy an hour of friendly chatter in Vardell Court.



Cooking in the student kitchen provides fun and relaxation for these Sophomores.



"The anonymous cat" waits for Adalyn Burrows and Betty Jo Trent to don robes and masks as they prepare for the Hour of Reckoning for those disobedient rats.



Going through a last minute rehearsal of their "Tennessee Wig Walk" song and dance routine are the Layton twins, Manette and Marilyn.



Sophomore



Abernathy, Margaret Ann
Charlotte, N. C.

Allen, Cora Frances
Clinton, S. C.

Baker, Irene Carter
Sao Paulo, Brazil

Barnes, Elizabeth
Plant City, Fla.

Barnette, Phyllis J.
Charlotte, N. C.

Beck, Jennie Lou
Wadesboro, N. C.

Bigger, Elizabeth
Charlotte, N. C.

Blackwell, Betty Lou
Oxford, N. C.

Boyd, Marilyn
Mooresville, N. C.

Brady, Adeline
Cerro Gordo, N. C.

Brown, Ann Edwina
Charlotte, N. C.

Burrows, Adalyn
Salters, S. C.

Carter, Martha Jean
Wilson, N. C.

Clark, Elizabeth Ann
Jackson Springs, N. C.

Cole, Marguerite
Dillon, S. C.

Cope, Margaret Sue
Gastonia, N. C.

Cox, Etta Kathryn
Gastonia, N. C.

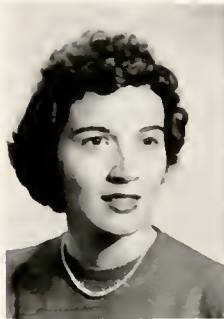
Currie, Susan
Jackson Springs, N. C.

Cuttino, Jerry Jane
Baltimore, Md.

Dawson, Elizabeth Ann
Fort Bragg, N. C.

Class

Evans, Della Mae
Fayetteville, N. C.



Flournoy, Jeanne
Elizabethtown, N. C.



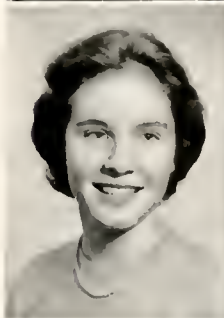
Floyd, Jane C.
Fairmont, N. C.



Foscue, Bettye
Maysville, N. C.



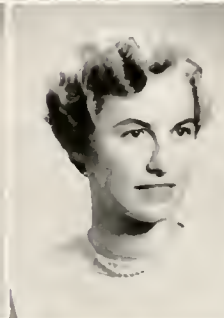
Gates, Jacqueline
Thomaston, Ga.



Gibson, Rosalynde
Red Springs, N. C.



Hall, Dorothy
Linden, N. C.



Harrell, Thelma Sue
Fairmont, N. C.



Hatcher, Sarah
Garner, N. C.



Hayes, Betty Gale Floyd
Fairmont, N. C.



Hill, Lynda
Mayesville, S. C.



Holder, Ruth Marion
Lillington, N. C.



Hood, Patricia
Dunn, N. C.



Huggins, Clara Ann
Red Springs, N. C.



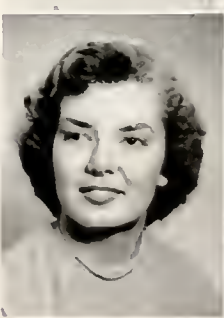
Johnson, Betty Lou
Fayetteville, N. C.



Jones, Patricia Josephine
Raleigh, N. C.



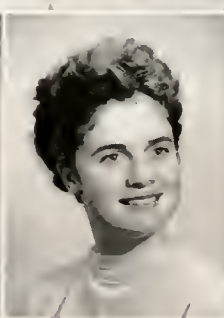
Jordan, Sarah Strobel
Mullins, S. C.



Kinion, Verna Ruth
Clinton, S. C.



Layton, Manette
Marion, S. C.



Layton, Marilyn
Marion, S. C.



Sophomore



- Lee, Lillian Rose
Clinton, N. C.
- Love, Betty Juanita
Wilmington, N. C.
- Maness, Levonne
Indian Trail, N. C.
- Morton, Frances Virginia
New Bern, N. C.
- Mothershed, Gay Dawn
Concord, N. C.
- Murchison, Margaret Faye
Red Springs, N. C.
- McRae, Jean Carol
Maxton, N. C.
- Nisbet, Mary Leighton
Jacksonville, Ala.
- Owens, Myra Joyce
Burlington, N. C.
- Ponds, Edith
Ansonville, N. C.
- Powell, Pearl Louise
Cheraw, S. C.
- Powers, Geraldine
Lumberton, N. C.
- Price, Loucen
Lilesville, N. C.
- Pridgen, Julia Ann
Elm City, N. C.
- Ritter, Nancy
Pinchurst, N. C.
- Ross, Joanne
Roanoke, Va.

Class

Rouse, Mary Delora
Burgaw, N. C.

Shaffer, Anne Johnson
Matthews, N. C.

Shipman, Ann Delano
Whiteville, N. C.

Simmons, Janice
Ash, N. C.

Stone, Vandaleen
Lumberton, N. C.

Sullivan, Betty Jane
Pittsboro, N. C.

Thomas, Louise
Durham, N. C.

Thomas, Shirley
Lillington, N. C.

Thompson, Nancy Jo
Burlington, N. C.

Timberlake, Frances Ann
Louisburg, N. C.

Trent, Betty Jo
Reidsville, N. C.

Watkins, Billie Jean
Henderson, N. C.

Wells, Sara Lane
Haw River, N. C.

Williams, Edna Lorraine
Marshville, N. C.

Williams, Sylvia
Salisbury, N. C.

Witherspoon, Betty Ann
Gable, S. C.



Freshmen

During Orientation Week, Freshmen were initiated into clan membership, and Rat Day gave them an opportunity to prove their mettle. Their spunk and good spirits more than compensated for what they lacked in experience. In keeping with Scottish traits they soon displayed a will to create, invent,

and discover. Compiling material for Botany lab, tackling those first quadratic equations, and writing descriptive themes for Freshman Composition presented real challenges but were not enough to quell their enthusiasm or make less enjoyable these days of preparation for future leadership.

Jo Campbell, *president*; Sally Day, *vice-president*; Carolyn Whitley, *secretary*; Debbie MacLeod, *treasurer*.

Sitting on the front steps, the freshman class officers plan together to lead their classmates in this new experience.





This group of Freshmen gather for fun and relaxation after closed study. Martha's new permanent makes her the center of attention.



The first open week-end saw the exodus of most of the members of the Freshman class.

Betty Snoddy, Mae Davis, and Patsy Putnam stop by the Tea Hole as they come in from the movie.



Four Freshmen in the foreground along with many others found the Student Council Dance a most enjoyable occasion.



Freshmen



Abbott, Sandra Jean
 Vinton, Va.
 Adams, Doris Rae
 Richmond, Va.
 Adcock, Dorothy Mae
 Holly Springs, N. C.
 Anderson, Jo Ellen
 Lake City, S. C.
 Arnette, Jacqueline Grace
 Kings Mountain, N. C.
 Arrington, Sally
 Rowland, N. C.
 Baker, Betty Jean
 Willow Springs, N. C.
 Beamon, Ann
 Charlotte, N. C.
 Bennett, Carolyn Frances
 Polkton, N. C.
 Berry, Gaynell
 Fayetteville, N. C.
 Bracy, Nancy
 Rowland, N. C.
 Brisson, Louise
 St. Pauls, N. C.
 Britt, Thomas R.
 Red Springs, N. C.
 Britton, Beverly Jean
 Mayesville, S. C.
 Caldwell, Virginia Kaye
 Fayetteville, N. C.
 Campbell, Ann Josephine
 Laurinburg, N. C.
 Carruth, Elizabeth Ervin
 Red Springs, N. C.
 Cole, Jeanette M.
 Dillon, S. C.
 Copeland, Johnelle
 Rockingham, N. C.
 Cox, Jo Rita
 Gastonia, N. C.
 Cribb, Nellie Faye
 Laurel Hill, N. C.
 Culp, Betsy Ann
 Lake Alfred, Fla.
 Daniel, Lois Jane
 Danville, Va.
 Davis, Clara Mae
 Rocky Mount, N. C.
 Davis, Marion Ruth
 Lumberton, N. C.
 Day, Sally Ann
 Washington, N. C.
 Dukes, Mary DeWitt
 Mobile, Ala.
 Dunn, Margaret G.
 Charlotte, N. C.
 Edwards, Peggy Anderson
 Allmarle, N. C.
 Elvington, Mildred E.
 Dillon, S. C.

Freshmen

Formy Duval, Alease
Nakina, N. C.
Foster, Zona Gayle
Landrum, S. C.
Galloway, Grace Arial
Bishopville, S. C.
Gibson, Beverly
Hamlet, N. C.
Goodwin, Theresa
Clio, S. C.



Greene, Ann Bolyen
Waxhaw, N. C.
Harrell, Jane Palmer
Florence, S. C.
Heins, Margaret Cecelia
Greenville, S. C.
Herman, Caryl Rae
Valrico, Fla.
Hester, Nancy
Bladenboro, N. C.



Holder, Bonnie Jean
Sanford, N. C.
Holden, Pauline
Supply, N. C.
Hults, Mary Louise
Goldshoro, N. C.
Ivey, Phyllis
Fairmont, N. C.
Jackson, Marian
St. Pauls, N. C.



Jones, Barbara Ann
Florence, S. C.
Jordan, Llewellyn Pope
Charleston, S. C.
Kanoy, Johnsie Rose
West End, N. C.
Kessler, Martha Ann
Lexington, Va.
King, Frances Marie
Wilmington, N. C.



King, Kathleen
Ashland, Va.
King, Wanda Faye
Kinston, N. C.
Lahr, Sue
Goldsboro, N. C.
Lewis, Emma
Bladenboro, N. C.
Lewis, Nan
Fairmont, N. C.



Long, Punky
Burlington, N. C.
MacLeod, Flora Deborah
Kemptonville, Ontario, Can.
Miller, Fay
Fayetteville, N. C.
Mitchell, Barbara
Kenansville, N. C.
Mitchell, Betty
Fairmont, N. C.



Freshmen



Moore, Mary Louise
Rougemont, N. C.
Muldrow, Beverly Ann
Bishopville, S. C.
McArthur, Ruth Marie
Wakulla, N. C.
McCaskill, Alice Potts
Carthage, N. C.
McDonald, Carolyn Ann
Fayetteville, N. C.

McKenzie, Carol Louise
West End, N. C.
McLaughlin, Eura Lois
Effingham, S. C.
McLaurin, Jeri W.
Clio, S. C.
McPhaul, Nancy Laney
Red Springs, N. C.
Nation, Carole
Montgomery, Ala.

Newton, Sylvia
Fayetteville, N. C.
Northrup, Carolyn Ruth
Dade City, Florida
Pearce, Linda Mae
Fairmont, N. C.
Penick, Margaret Elva
Prospect, Va.
Pigott, Janis M.
Shallotte, N. C.

Poole, Betty Milton
Raleigh, N. C.
Powell, Clara F.
Whiteville, N. C.
Pritchett, Patricia Frances
Fayetteville, N. C.
Putnam, Patsy Ruth
Kernersville, N. C.
Ratliffe, Phyllis Ann
Radford, Va.

Reaves, Joyce
Florence, S. C.
Reid, Virginia Dare
Waxhaw, N. C.
Richardson, Doris Ann
Nakina, N. C.
Sanderson, Floranell
Dillon, S. C.
Shaw, Frances
Ft. Bragg, N. C.

Freshmen

Shepherd, Sarah M.
Rockingham, N. C.
Shoemaker, Virginia Carroll
Virginia Beach, Va.
Smith, Hazel Agnes
Rockingham, N. C.
Snoddy, Betty Lou
Charlotte, N. C.
Stanton, Joseph Peyton
Red Springs, N. C.



Stevenson, Martha Mac
Statesville, N. C.
Stokes, Judith
Kenbridge, Va.
Taylor, Sarah Ashley
Winston-Salem, N. C.
Thompson, Bertha
Red Springs, N. C.
Tindall, Judith
Orangeburg, S. C.



Walters, Aurelia Jane
Wilmington, N. C.
Ward, Evelyn
Nakina, N. C.
Washburn, Phyllis B.
Alexandria, Va.
Watkins, Nancy Scott
Orangeburg, S. C.
Watson, Jack Alexander
Red Springs, N. C.



Weir, Derice
Kings Mountain, N. C.
Whitley, Frances Carolyn
Charlotte, N. C.
Williams, Carole Elaine
Charlotte, N. C.
Williams, Joyce L.
Ararat, Va.
Wolfe, Carole Ann
Southport, N. C.



Womack, Virginia Gail
Savannah, Ga.
Wood, Jo Ann
Norfolk, Va.
Wood, Pearl
Cove City, N. C.





*Lads and Lassies
after Classes*



Cathy Smith and Rachel Page play hostess to a group of busy Seniors after study hour.



Gay Mothershed enceeds entertainment for the Fall House Party.

Nothing is so important to the clan's well being as is the unity of its members. Only through constant association and co-operative working toward a common goal can this unity be achieved. Extra-curricular activities are all important in forming and strengthening friendship ties and in contributing to social growth. Through them each clan member acquires an awareness of and respect for the unique quality of each individual personality and a growing sense of his own social responsibility.

The Faculty Reception provided an opportunity for students and faculty to get acquainted.



The afternoons find many F.M.C. students patronizing the downtown stores.





Cabinet members linger in Vardell Court after a service in the prayer chapel.

Spiritual Life of Clan

Christian Association Officers

Peggy Graham, President

Sandra Sweet, vice-president; Elise Williams, secretary; Marlene Johnson, treasurer; Carolyn Newcomer, chairman of prayer bands; Gay Mothershed, fellowship chairman; Jane Sheets, worship chairman; Barbara Wingate, social service chairman; Ruth Evelyn Topping, outreach chairman; Anne Turner, ex-officio member.



Carolyn Northrup lends her artistic talent to the decorating of the C. A. Blackboard.



Students and faculty gather in the Rotunda to hear Dr. Dick speak at an evening service during Spiritual Enrichment Week.



Christian Association

Ingrained in the soul of every Scotsman is a love for religion. This heritage continues on our campus through the work of the Christian Association. An atmosphere is fostered which permeates every aspect of our life here. Our theme, "Add to Your Faith with Knowledge," sounded the keynote for this year's activities. Watkins Hall now has a small library of its own and is a most pleasant and comfortable place to spend a quiet hour. Other activities sponsored by the C. A. include Wednesday vespers, prayer bands, Thanksgiving baskets, the White Gift Service, and the toy workshop and Christmas pageant. Chapel services were more varied and included a series of interesting discussions of prominent world religions and Protestant sects. One concentrated week of Spiritual Enrichment was conducted by Dr. Anthony W. Dick, who had for his topic, "The Truth Will Make You Free."

Frances Morton catches Martha Kessler in the act as she brings a gift for her "capsule."

Jane Carson and Barbara Wingate mend toys in Watkins for the Christmas workshop.





Prayer Bands

Prayer bands, held each Thursday night, provide an opportunity for small, intimate groups of students to meditate and hear inspiring passages of scripture or other writings that hold some significant truth for us. Leaders of these groups work together on such projects as Thanksgiving baskets and filling Christmas stockings. Prayer band leaders are: Nancy Ritter, Sue Blakely, Irene Baker, Sue Owen, Phyllis Barnette, Dina Brown, Patterson Yeargin, Marie Potter, Marilyn Stacy, Becky Browning, Ruby Foyles, Carolyn Newcomer, *chairman of prayer bands*, Carolyn Austin, Frances Morton, Jean McRae, Edna Shannon, Jeanne Flournoy, Joyce Owens, Mary Rouse, Vivian Morrison, Betty Barnes, Margaret Thompson, and Katherine Ray.

Student Volunteers

The Student Volunteers meets informally twice a month for study and fellowship, emphasizing worship and prayer for world missions. Among the outside speakers are foreign and home missionaries. Interesting projects include teaching Bible at the Negro school in Red Springs, writing letters to missionaries, and assisting in meeting local needs. Leading the group's activities were Sue Owen, president; Patty Jo Jones, vice-president; Lorraine Williams, secretary; and Vivian Morrison, treasurer.





Some A.A. Board members prepare for afternoon practice on the tennis court, while others will watch from the sidelines.

Athletic Association



Ruth McArthur, Day Student Representative on the A.A. Board, takes another look at the sample before sending her order for a F.M.C. shirt.

As the Scots were a fun-loving people and full of the love of life and admiration for a good performance, just so our clan members find time for a varied athletic program. The Athletic Association organizes these activities, and through them a more wholesome, unified spirit is evolved which gives each student a sense of fair play and respect for his associates.

PAT POWELL, *President*

Alese Harrison, *vice-president*; Mary Leighton Nisbet, *secretary*; Jane McLeod, *treasurer*; Betty Ann Witherspoon, *head cheerleader*; Becky Browning, *head of swimming*; Jane McDonald, *head of volleyball*; DeWitt Dukes, *Freshman representative*; Lucy Richardson, *head of Rec Room*; Shirley Evans, *head of basketball*. Ruth McArthur, *Day Student representative*; Edith Ponds, *head of tennis*.



FRESHMEN: Betsy Carruth, Captain; *Bottom to top, left to right:* Caldwell, Reaves, W. King, Carruth, Culp, Davis, Stokes, Daniel, Weir, F. King, Jordan, Dukes, Washburn, Arnette, Beaman. *Not pictured:* Dunn, McArthur, and Ratcliffe.



SOPHOMORE: Mary Leighton Nisbet, Captain; *Bottom to top, left to right:* Ritter, Clark, Nisbet, Sullivan, McRae, Currie, Mothershed, Gibson, Browning, Thomas, Brown. *Not pictured:* Barnes, Williams, Hood, Aman, and Morton.

Volleyball

War Within

JUNIOR: Jane McLeod, Captain; *Bottom to top, left to right:* McLean, McLeod, Capps, Newcomer, Harrison, Goodman, McDonald, Choi, Evans, Calhoun. *Not pictured:* Godwin, Stalvey, and Sweet.



SENIOR: Jane Wood, Captain; *Bottom to top, left to right:* Wood, Pittard, Richardson, Powell, Owen, Turner.





FRESHMEN: Ruth McArthur, Captain; *Bottom to top, left to right:* Tindall, Carruth, Reaves, Northrup, Adcock, Whitley, Smith, Stokes, Baker, Weir, Arnette, McArthur, Dukes, Washburn. *Not pictured:* Campbell, Cox, Kessler, and Miller.



SOPHOMORE: Susan Currie, Captain; *Bottom to top, left to right:* Ponds, Currie, Sullivan, Brown, Evans, Clark, Browning, Gibson, McRae. *Not pictured:* Jordan, Hood, and Witherspoon.

Basketball

the Clan

JUNIOR: Faye Jordan, Captain; *Bottom to top, left to right:* McLeod, Evans, McLean, McDonald, Goodman, Harrison, Jordan, Choi. *Not pictured:* Godwin.



SENIOR: Sue Owen, Captain; *left to right:* A. Turner, Pittard, Owen, Wood, Powell. *Not pictured:* B. Turner.



Monogram Club



Membership in the Monogram Club is a distinct honor and is the climax of several years of participation in sports. All members earned their emblem by the accumulation of a specified number of points. Club members are: Alese Harrison, Sarah Goodman, Anne Turner, Lucy Richardson, Norma Pittard, and Pat Powell.

Cheerleaders

Spirits soar and teams rise to greater feats at the display of tremendous energy and enthusiasm on the part of our cheerleaders. Class cheerleaders lead the support of their class teams, and the college cheerleader leads song sessions in the rotunda and the singing of the "Friendship Song" in the dining hall.



Left to right, they are: Betty Poole, freshman; Verna Kinion, sophomore; Becky Taylor, junior; Catherine Smith, senior; and Betty Ann Witherspoon, college cheerleader.



High-stepping Baton Club members go through their paces in an afternoon drill.

Among the activities sponsored by the Athletic Association are tournaments in basketball and in volleyball. Trophies are presented in the various sports. One of the biggest projects each year is planning for and participating in the May Day program. The swimming pool was one of the most popular places on campus in the fall and spring, and softball, bowling, and tennis found many enthusiasts. Saturday night "hobo" parties in the Rec Room relieved tension and provided opportunity for fellowship.

Pat Powell, Dee Jordan, and Mary Leighton Nisbet prepare the Rec Room for a Saturday night "hobo" party.



Becky Browning takes a big swing while Betty Barnes and Edith Ponds watch the show.



Jane McDonald, A.A. Board member, presents the volleyball trophy to Jane McLeod, captain of the victorious junior team.

Zeta Theta Psi



MAC CALHOUN, *president*



Phyllis Baraette, censor; Boots Pridgen, pianist; Nancy Jo Thompson, secretary; Helen Maness, vice-president; Jane Wood, treasurer; Mary Rouse, chaplain.

"Friendship our motto" was proved again this year. The contagious Zetesian spirit "hubbled over" into song and fellowship, as new friendships were made and old ones renewed. Rush week was a gay round filled with activities . . . picnic at Lakewood, swimming, dancing, singing, games, the Chi Psi Follies, and making and distributing favors for the Freshmen and Transfers. And who will ever forget the excitement in the air on Decision Night as enthusiastic Zetesians gathered around the rotunda reminding the Freshmen to "Go to the Right, the Right Tonight"? Zetesians then turned their attention to the project for the year, painting the hall and making new curtains. It turned out to be more fun than work. The Christmas Dance proved to be one of the most successful dances Flora Macdonald has seen. In Senior Takeoffs, planned with Epsilon Chi, the interesting characteristics of each Senior were portrayed in skits. Wherever help is needed or something is being done you can be sure a girl of Zeta Theta Psi will be there to lend a helping hand and a friendly smile.

These dance committee members put the finishing touches on the Christmas tree before the Society Dance.

Sign-up night found many Freshmen "going right."





JULIA LEE RIBET, *president*

"Fun, Fellowship, and Furnishings" was the theme again this year. The fun began when Epsilon Chi entertained all Freshmen and Transfers at a party during orientation week. A very interesting "drama," "Rat on a Hot Tin Roof," was presented. Jointly with Zetesian Society, Epsilon Chi entertained the new students with the "Chi-Psi Follies." Fellowship was enjoyed by again working with Zetesian in sponsoring entertainment for the guests during the Fall House Party. A highlight of the year was the Christmas dance, "Holiday Inn," sponsored by the societies, the largest dance ever to be held at F. M. C. Monthly meetings, the annual spring picnic, and planning Senior Takeoffs provided other opportunities for fellowship. The project of redecorating the Society Hall has made furnishings another highlight of this year. A sectional sofa and new drapes were purchased and plans made to continue with our decorations next year. To end a successful year our sixtieth anniversary was celebrated with a Tea Dance in the Spring.

Epsilon Chi



Mary Leighton Nisbet, treasurer; Shirley Kearns, pianist; Lynda Hill, secretary; Vivian Morrison, first vice-president; Betty Ann Witherspoon, second vice-president; Beth Bigger, chaplain; Jane McDonald, censor.

Epsilon Chi extends a cordial welcome to the new students during Orientation Week.



"No college, university, or school has ever known so brave, so true, so fine a crew. . ."





Short nights and weary feet from picture-taking and selling ads were more than compensated by the thrill of looking at proofs, pasting pictures in the dummy, selecting a cover design, and those last weeks of awaiting the arrival of the finished product. Members of this year's efficient staff were: Jessie Ruth Honeycutt, typist; Carolyn Northrup, freshman class editor; Jane Sheets, snapshot editor; Macel Cox, junior class editor; Thelma Cameron, typist; Julia Gibbs, senior class editor; Frances Morton, sophomore class editor; and Sarah Brawley, literary editor.

The White

A series of "mountains" and "valleys" would aptly describe this year's activities of the 1957 WHITE HEATHER Staff. The "mountains" were not insurmountable, however, nor the "valleys" far between. Our working together has been an unforgettable and most rewarding experience. As our work progressed, our eyes were opened to a new awareness of the greatness of our heritage and



BETSY FLESHMAN, Editor



Betsy Brewer chauffeurs members of the WHITE HEATHER staff on one of their many trips to sell ads in near-by towns.

The afternoon before Deadline Day found six seniors assembled in the society hall to add finishing details to verbal portraits of their classmates. The end result was the completion of a fine-lined etching of each senior's personality to be recorded in our family album. The Scribblers of 1956-57 are: Julia Lee Ribet, Marlene Johnson, Patterson Yeargin, Betsy Freshman, Norma Pittard, and Barbara Arrington.



Heather

of that something indefinable that penetrates every aspect of our clan life. It is our hope that through these pages you, too, can in future years relive your "Life in the Flora Macdonald Clan" and recapture something of the spirit and the vision that is our heritage and our challenge.



JANE WOOD, *Business Manager*

Jean Quinn, Assistant Business Manager, Sybil Hinds, Assistant Editor.





PATTERSON YEARGIN, *Editor*
MARIE POTTER, *Business Manager*

The *Pine and Thistle*, published four times a year, is the literary magazine to which students and faculty alike contribute. Original short stories, essays, poems, and plays in each issue make its arrival an occasion for much excitement and words of well-deserved praise for worthy contributions. Its aim of achieving literary expression on our campus awakens sparks of originality and humor, stimulates imaginations and quickens senses. Much thought, careful planning, and the creative muse combine to bring us to a realization of the infinite beauty of words and an appreciation for aesthetic values. Dr. Eleanor B. Scott is the interested advisor for staff members Patterson Yeargin, Joyce Owens, Marie Potter, Pearl Powell, Katherine Ray, Sarah Brawley, Sue Owen, John Thomas McNeill, Rosalynde Gibson, Jackie Gates, Betty Jo Trent, Martha Steppe, Shirley Kearns, Jennie Beck, Shirley Evans, Martha Stevenson, Sally Day, and Ann Webb.

The Pine and Thistle

The literary staff collaborates in the English classroom just before publication of another issue of the *P. and T.*



Considering financial affairs are members of the *P. and T.* business staff.



The Skirl, official voice of our student body, is aptly named for the sound of bagpipes in keeping with Scottish tradition. It is published twelve times yearly and is in its fifth year of publication. Articles of interest to students and faculty include announcement of social events, concert, plays, student body elections, and conservatory news. Bits of humor, pointed essays, and inspiring lines from great writers add spice and variety to its many features. Through its capable staff it keeps in touch with every aspect of campus life. For the time and energies expended in the steady grind of production we highly commend this year's Staff headed by Dot Hall, and Marie Potter. Other staff members are Jeanne Flournoy, Pearl Powell, Joyce Owens, Betty Jo Trent, Frances Morton, Sarah Jordan, Becky Browning, and other reporters, typists, and members of the business staff.



MARIE POTTER, *Business Manager*
DOT HALL, *Editor*

The Skirl

The business staff of *The Skirl* plans a trip to sell ads at one of its regular meetings in Marie Potter's room.



Looking over the latest issue of *The Skirl* are members of the literary staff.





Henri Deering



Goya and Matteo

Concert Lecture Series

Goya and Matteo, Dance Team
October 23, 1956

Henri Deering, Pianist
November 19, 1956

Alard String Quartet
February 1, 1957

Vienna Choir Boys
March 25, 1957

Alard Quartet with Vivian Morrison, Chief Marshal



Vienna Choir Boys





The Choral Club under the direction of Mr. Lawrence Skinner presented an interesting and varied program for our Thanksgiving chapel service.

The Flora Macdonald Conservatory of Music

To promote appreciation and enjoyment of good music among its members and its audience is one of the primary aims of our Choral Club. It provides choral training for its members and represents Flora Macdonald in the surrounding area. Highlights of this year were the annual spring tour and the performance of Britten's *Ceremony of Carols* at the White Gift Service. The first constitution of the Choral Club was worked out by a committee composed of the club officers and its

director, and adopted early in the school year. Serving as officers this year are: Martha Steppe, *president*; Marlene Johnson, *vice-president in charge of tours*; Ann Eller, *vice-president in charge of robes*; Betty Jo Trent, *vice-president in charge of music*; Ophelia Morrison, *secretary*; Ruth Evelyn Topping, *treasurer*; Patterson Yeargin, *historian*; Barbara Wingate, *chaplain*; Shirley Kearns, *accompanist*; Martha Steppe, *student director*.

Martha Steppe, student director, conducts a rehearsal of the Choral Club Ensemble.





The Organ Guild

The Flora Macdonald Guild Student Group of the American Guild of Organists, which was organized only last year, is a branch of the Cape Fear Valley Chapter. It seeks to promote interest in worthy religious music and to increase the efficiency of church musicians. Entering guild competition from the Fayetteville Chapter this year was Martha Steppe, dean of the Guild Student Group. Other officers for the year are: Ann Eller, subdean; Patterson Yeargin, secretary-treasurer; Mr. John E. Williams, supervisor.

St. Cecelia Music Club

In its second year of membership in the North Carolina and National Federation of Music Clubs, St. Cecelia was led by Betty Jo Trent, president; Joanne Ross, vice-president; Sylvia Williams, secretary-treasurer; and Miss Joyce Bryant, sponsor. A project for the year was the redecoration of the listening room, and a concert by James Stroud, promising young cellist, was sponsored.



Senior recitals were presented in the spring by organ students Gaddis McDonald and Martha Steppe; piano, Patterson Yeargin, Ophelia Morrison, Peggy Graham, and Shirley Kearns; voice, Julia Lee Ribet.



Classical Club

Members of the Classical Club are students of Latin and Classical Civilization who are interested in the life and culture of the ancient Greeks and Romans. Their aim is to recognize and appreciate the contributions these civilizations have made to our own. A highlight in the club's activities is the annual party given by its sponsor, Miss Harriet Morrison. Officers for this year: Frances Allen, *president*; Lorraine Williams, *vice-president*; Shirley Thomas, *secretary-treasurer*.



French Club

"*Parlez-vous français?*" If your answer is "*Oui*," then you must belong to the French Club. In order to promote more interest in French life, culture, and language, the club chose as its theme for the year, "French in Everyday Life." This theme was carried out in the monthly meetings. The holiday season found the members of the club blending their voices in melodious French carols in preparation for the Christmas Banquet. The highlight of the year was a tea given by Mr. and Mrs. Reagan before Christmas. *Officers*: Patty Jo Jones, *president*; Jennie Lou Beck, *vice-president*; Adalyn Burrows, *secretary-treasurer*; and Mr. William Reagan, *advisor*.



Spanish Club

Members of the Spanish Club are interested in acquiring a knowledge of the people of Latin American countries as well as in learning the Spanish language. Through records, games, discussions, and guest speakers, they become familiar with various aspects of the daily life of these neighbors. *Officers*: Jane Carson, *president*; Mary Leighton Nisbet, *vice-president*; Bettye Foscue, *secretary*; Frances Morton, *treasurer*; and Mr. Robert Clifton, *advisor*.





Granddaughters Club

The Granddaughters of the college were organized into a club only two years ago. For some time, however, they have functioned as a group at Dr. Vardell's birthday reception and other important occasions. The club is composed of girls whose mothers or grandmothers attended Flora Macdonald. Officers are: Betsy Brewer, *president*; Mary Leighton Nisbet, *secretary and treasurer*; Miss Mary Conoly, *advisor*.

The Highland Players

The Highland Players, official dramatic organization of the college, provides entertainment, develops dramatic talent, and encourages appreciation of the best in drama. This year *The Night of January 16th* was presented late in the fall, and several one-act plays were presented for the Fall House Party. This year's officers are Sybil Hinds, *president*; Edith Ponds, *vice-president*; Gay Mothershed, *secretary-treasurer*; Mary Rouse, *reporter-custodian*; Mr. Thomas H. Johnson, *advisor*.



The Home Economics Club

One of the most active organizations on campus is the Home Economics Club. A variety of programs and projects for the year included sending a delegate to the AHEA Convention in Washington, making articles for the Christmas bazaar, and entertaining for the College Clubs Workshop in April. Again this year the club has in its membership a state officer, Jane McLeod, who is treasurer. The officers for the club are: Miriam Lamm, *president*; Della Evans, *vice-president*; Jane McLeod, *secretary*; Jean Blalock, *treasurer*; Elizabeth Clark, *reporter*; Miss Charlotte Womble and Mrs. Worth Currie, *sponsors*.



The Honor Society

The Flora Macdonald Honor Society recognizes the scholastic achievement of members of the junior and senior classes. Students having completed five semesters at Flora Macdonald and having an average of 93.5 per cent and students having completed six, seven, or eight semesters and having an average of 92.5 per cent are eligible for membership. Officers chosen on the basis of scholastic average are: Betsy Fleshman, *president*; and Myra Lewis, *secretary-treasurer*; Dr. Price H. Gwynn, *advisor*.



Future Business Leaders of America

Both business and pleasure are featured in the activities of the F. B. L. A. The annual tea for the faculty, the Christmas party, the Parliamentary Procedure Contest, and the F. B. L. A. Convention were highlights of the year. For the first time, freshman members were organized into a smaller group within the club. Sally Day was elected president of this group. Officers for the club this year are: Janie Bryant Matthews, *president*; Judy Rogan, *vice-president*; Pearl Powell, *secretary*; Jessie Ruth Honeycutt, *treasurer*; and Miss McIntyre, Mrs. Lineberry, and Miss Stenhouse, *advisors*.



International Relations Club

The purpose of the I.R.C. is two-fold. Its members study and discuss affairs of national and international interest in order that they may gain a broader perspective of the world situation. Its interest also lies in the heritage, customs, and attitudes of the peoples of other nations. This year members of the club attended the annual AIRC Convention. Officers: Judy Rogan, *president*; Dale Whately, *vice-president*; Jessie Ruth Honeycutt, *secretary*; Yvonne Brumbles, *treasurer*; Ann Webb, *reporter and scrapbook custodian*; and Miss Carol Robertson, *advisor*.





South Carolina Club

"Owah eahs" couldn't fail to recognize that "Hi! you awl!"—familiar salutation of our South Carolina girls. Organized only two years ago, their club has taken great strides in membership. Their great pride in the Palmetto state and loyalty to it add enthusiasm and spirit to the club's activities and our campus life. Officers are: Adalyn Burrows, *president*; Grace Galloway, *vice-president*; Peggy Cole, *secretary*; and Miss Bateman, *advisor*.



Charlotte Club

The Charlotte Club was organized last fall and is made up of eleven girls who call the "Queen City" home. It has been active this year, and members of the group were asked to represent F.M.C. in the Christmas Carousel. The club looks forward to an increase in membership next year. Officers are: Barbara Wingate, *president*; Phyllis Barnette, *secretary*; and Carolyn Whitley, *treasurer*.



Virginia Club

The Virginia Club, the first of our state clubs to be organized, provides "a family away from home" for our Virginia girls and foreign students, their adopted sisters. These girls love to "Sound Off" about the Old Dominion State, and Virginia Club pennants are in evidence on every hall. This active and spirited organization is led by: Judy Stokes, *president*; Carroll Shoemaker, *vice-president*; Sandra Abbott, *secretary*; Martha Kessler, *treasurer*; and Mrs. Elbert McPhaul, Mrs. Walter Bullock, Miss Doris Hawse, and Mr. T. H. Johnson, *advisors*.

Mathematical Honor Society

Outstanding ability and achievements in the field of Mathematics are requirements for membership in the Mathematical Honor Society. It aims to create and encourage interest in Mathematics. Leading the club in this year's activities are: Lucy Richardson, *president*; Ruth Evelyn Topping, *vice-president*; Thelma Sue Harrell, *recording secretary*; Marilyn Boyd, *corresponding secretary*; Jennie Lou Beck, *treasurer*; Adalyn Burrows and Jeanne Flournoy, *finance co-chairmen*; and Mrs. C. Wade Mobley, *advisor*.



Writers Club

Interest in creative writing is stimulated and encouraged by the Writers Club through the discussion of ideas and problems relating to the field of writing. The possibility of publication in the *Pine and Thistle*, with which the club works hand-in-hand, proves an incentive to creative writing. Officers are: Ruth Evelyn Topping, *president*; Rosalynde Gibson, *vice-president*; Patty Hood, *secretary-treasurer*; and Dr. Eleanor B. Scott, *advisor*.



William Bartram Science Club

Interest in scientific experiments and developments is stimulated through the discussions, movies, reports, and studies of this group. Keeping abreast of recent developments and gaining a deeper insight into this valuable, interesting field are its central aims. Officers this year are: Juanita Nurnberger, *president*; Frances Allen, *vice-president*; Jean Quinn, *secretary*; Irene Baker, *treasurer*; and Dr. Hansen, Miss Hawse, and Dr. LeConte, *advisors*.



Baptist Student Union

Each year the B.S.U. plans a well-balanced campus program for all Baptist students with the hope that they will be encouraged to take a more active interest in church life. It serves as a connecting link between the local Baptist church and the college. Leading the group's activities this year are: Joanne Ross, *president*; Edith Ponds, *vice-president*; Billie Jean Watkins, *secretary*; Frances Timberlake, *treasurer*; Gayle Foster, *Training Union representative*; and Ann Shipman, *Sunday School representative*.



Methodist Student Movement

The Methodist Church has a full program of worship and activities in which the college students participate. The Student Movement meets on Sunday mornings at the Church under the leadership of an excellent teacher. Members of our F.M.C. group work with other Methodist College students throughout the state at retreats and conferences. *Officers*: Shirley Kearns, *president*; Bettye Foscoe, *vice-president*; Ann Beamon, *secretary-treasurer*.



Westminster Fellowship

The Westminster Fellowship offers the college students who attend the Presbyterian Church an opportunity to worship together. Through their discussions and fellowship they are brought into a closer relationship, and the ties between the local church and the college are strengthened. Leading its activities are: Alese Harrison, *president*; Jeanne Flournoy, *program chairman*; Jane Carson, *secretary*; Mary Leighton Nisbet, *treasurer*; Mr. and Mrs. Robert Marr, *advisors*. Ex-officio members of the Council are: Hazel McLean, *secretary of W.F. Synod*; and Elise Williams, *editor of Synod Newsletter*.



Day Students Club

This year's Day Students Club is the largest in the club's organization, and—of even greater interest—it has the largest number of co-eds. The group has its own prayer band and column in *The Skirl* and makes a vital contribution to our campus life through its activities. Weekly meetings are held in Epsilon Chi Society Hall during the Student Body meetings. *Officers:* Betsy Little, *president;* Juanita Nurnberger, *vice-president and secretary;* Helen Allen, *reporter;* and Geraldine Powers, *prayer band leader.*



The defense attorney questions Karen Andre as she takes the stand during the trial for her employer's murder, in a major production of the Highland Players.



Some members of the Granddaughter's Club chat with Dr. Vardell in the parlors after his birthday reception.



Working on the banner for their float in the Charlotte Carousel parade are Phyllis Barnette, Dina Brown, and Beth Bigger.



Traditional Honors

Marshals

VIVIAN MORRISON, *Chief Marshal*

Marshals chosen from the Junior class by Epsilon Chi and Zeta Theta Psi Societies for 1956-1957 are: *left to right, seated:* Hazel McLean and Vivian

Morrison; *standing:* Ruth Evelyn Topping, Elise Williams, Un Hi Choi, Jane McDonald, Shirley Evans, Barbara Wingate, and Macel Cox.





Anne Turner MAY QUEEN

SARAH BRAWLEY
Maid of Honor



The whine of bagpipes, the frantic hurry of dancers to don costumes and assume their places, seniors in white dresses, and the flash of tartans signal the beginning of a colorful Pageant on Flora Macdonald campus. Crowds of spectators throng the front lawn to watch the traditional celebration that

climaxes the year's activities. The growing tension reaches its peak as the stately march begins, the court enters, and a queen is crowned. As rhythmic dancers follow the lively rhythms of folk tunes, admiring subjects do homage to their much-beloved queen.





Seniors

Patterson Yeargin
Rachel Page
Barbara Arrington

MAY

Sophomores

Jean McRae
Joanne Ross



Juniors

Cynthia West
Carolyn Newcomer
Dorothy Bryant



COURT



Freshmen

Jo Rita Cox
Carroll Shoemaker



Helen Maness

Dependability

SUPERLATIVES

Carolyn Johnson

Beauty



Betsy Fleshman
Capability



... 1957



Pat Powell
Best All Around

Betty Turner
Sportsmanship



SUPERLATIVES



Mary Jane Martin
Personality

WED THUR

• NOW SHOWING •

The Wrong Man

SAT. NITE - LATE SHOW





Are

"Yours for a Lovely Home"

The Minuet Bedspread

Textur Tuft Bedspreads

Hobnail Bedspreads

Kitchen Cottons

Scatter Rugs

Bath Sets

Produced in North Carolina

Sold by Fine Stores Everywhere

MORGAN-JONES, INC.

402 Fifth Avenue
NEW YORK, N. Y.
and
LAURINBURG, N. C.

Compliments of

**AMEROTRON
CORPORATION**

From fibre to fabric—

Amerotron serves America

RED SPRINGS DIVISION

Compliments of

**LIBERTY
MANUFACTURING
COMPANY**

RED SPRINGS, NORTH CAROLINA

Compliments of

EDEN'S FLORIST & GIFT SHOP

"We Wire Flowers Anywhere"

East 4th Avenue Phone 2241

RED SPRINGS, NORTH CAROLINA

*Graduate To Greater Food Savings
At Your Friendly*

COLONIAL STORE

3rd and Main Streets

RED SPRINGS, NORTH CAROLINA

THE QUALITY SHOP

Clothing for the Family

129 S. Main Street DIAL 5116

RED SPRINGS, NORTH CAROLINA

Compliments of

AUTO SERVICE CENTER

Phone 3061

RED SPRINGS, NORTH CAROLINA

Compliments of

**KENNEDY'S JEWELRY AND
GIFT SHOP**

FINE WATCH REPAIRING

RED SPRINGS, NORTH CAROLINA

"We Serve to Serve Again"

McNEILL CLEANERS

Since 1928



Phone 2941

116 South Main Street

RED SPRINGS, NORTH CAROLINA

**RED SPRINGS
SUPPLY CO., INC.**

GENERAL MERCHANTS

The Friendly Store

Fertilizers and Cotton

Hardware

Grocery :- Market

Building Material

Allis-Chalmers Farm Machinery

DIAL 3701 and 3271

RED SPRINGS, NORTH CAROLINA

Compliments of
WESTERN AUTO STORE

RED SPRINGS, NORTH CAROLINA

*Shop in Red Springs
the Home of*

FLORA MACDONALD COLLEGE

and

Wood's 5-10-25c Stores, Inc.

RED SPRINGS, NORTH CAROLINA

McNEILL and McPHAUL

GROCERIES AND MEATS

Phone 4601

RED SPRINGS, NORTH CAROLINA

YOU WILL BE PLEASED WITH OUR
QUALITY AND SERVICE

RED SPRINGS DRUG CO.

*Headquarters for
Flora Macdonald College Students*

RED SPRINGS, NORTH CAROLINA

BURROUGHS CUT-RATE STORE

Phone 4271

RED SPRINGS, NORTH CAROLINA

SCHOOL SUPPLIES

STATIONERY : SANDWICHES

Nunnally's and Pangburn's Candy

TOILET ARTICLES : DRINKS

Nationwide Mutual Insurance Co.

AUTO — FIRE — LIFE

EARLE A. WATSON, *Representative*

Phone 431-1



RED SPRINGS, NORTH CAROLINA

**SHOP AND SAVE
THE SELF-SERVICE WAY**

— at —

MACK'S 5-10-25c STORE

RED SPRINGS, NORTH CAROLINA



**B. C. MOORE AND
SONS, INC.**

*Air-Conditioned for Your
Shopping Comfort*

PHONE 6211

RED SPRINGS, NORTH CAROLINA

"Buy From Moore and Save More"

Compliments of

**McKEITHAN
HARDWARE**

RED SPRINGS, NORTH CAROLINA

*Compliments
of*

RED SPRINGS THEATER

LENOIR'S JEWEL SHOP
INTERNATIONAL SILVER
QUALITY JEWELERS
TIFFIN CRYSTAL
RED SPRINGS, NORTH CAROLINA

Compliments of

**STEPHENSON'S
FIRESTONE STORE**

RED SPRINGS, NORTH CAROLINA

NEIGHBORS SHOE STORE

*Red Springs' Exclusive
Shoe Store*

RED SPRINGS, NORTH CAROLINA
PHONE 3981

*Compliments
of*

The Red Springs Citizen

RED SPRINGS BAKERY

*Everything in Bakery Products
Specializing in All Social Gatherings*

RED SPRINGS, NORTH CAROLINA

ELLIS JACKSON

Phone 6121

Red Springs, N. C.

DISTRIBUTORS

TOM'S TOASTED PEANUTS

TOM'S PEANUT BUTTER SANDWICHES
& TOM'S CANDIES

TOWNSEND'S PHARMACY
The Rexall Store

●

DEPENDABLE DRUGGIST

Where the College Girls Meet

●

RED SPRINGS, NORTH CAROLINA

Graham's
Department Store Co.

Phone 257-1

●

RED SPRINGS, NORTH CAROLINA

General Auto Sales, Inc.

OLDSMOBILE and G.M.C. TRUCKS

Full Line of Parts
Expert Mechanics

Phone 2381

RED SPRINGS, NORTH CAROLINA

D. M. McMILLAN

"Ford Products Since 1912"



RED SPRINGS, NORTH CAROLINA

The Bargain House

REX FINANCE CO.

Phone 2956

P. O. Box 149

RED SPRINGS, NORTH CAROLINA

M. & S. MOTOR CO.
CHRYSLER and PLYMOUTH CARS

Sales and Service

RED SPRINGS, NORTH CAROLINA

Phone 248-1

SMITH'S GRILL

REGULAR DINNERS

SANDWICHES

FOUNTAIN SERVICE

RED SPRINGS, NORTH CAROLINA

*Compliments
of*

**McNAIRS
DEPARTMENT
STORE**



LAURINBURG, N. C.

Our Lumberton Sponsors

THE ROBESONIAN, INC.

SHAIN'S JEWELRY

Belk's Department Store

Home of Better Values



LAURINBURG, NORTH CAROLINA

THE ALL AMERICAN CITY

Compliments of

TEXTILE MOTOR FREIGHT, Inc.

LAURINBURG, NORTH CAROLINA

MARKET FURNITURE CO., INC.

"Complete Home Furnishers"

Phone 113

LAURINBURG, NORTH CAROLINA

ROBERT'S JEWELERS

LAURINBURG, NORTH CAROLINA

GLAMOR SHOP

GO GLAMOR -- DRESS WELL

Save Money

Phone 1151

LAURINBURG, NORTH CAROLINA

FRANCHISED
DEALERS IN CONN
AND LEBLANC
BAND
INSTRUMENTS

MUSIC CENTER

Telephone 645
232 Main Street
LAURINBURG, N. C.

PHONOGRAPHS
AND A
COMPLETE
SELECTION OF
RECORDS

OWNED AND OPERATED BY THE SCOTLAND BROADCASTING COMPANY



OPEN DAILY AT 9:00 A. M. —

Belk-Hensdale



— USE OUR EASY LAY-AWAY PLAN

FAYETTEVILLE
ELIZABETHTOWN

LUMBERTON
WHITEVILLE

RAEFORD
ABERDEEN

RED SPRINGS
DUNN

*Belk Stores Are the Carolina's Largest
Distributors of Reliable Merchandise*

Compliments of

Fleishman's Big Store

106-108 Hay Street
FAYETTEVILLE, NORTH CAROLINA

*"Always for the School
and Community"*

RAYLASS DEPT. STORE

202 Hay Street
FAYETTEVILLE, NORTH CAROLINA

Compliments of

CITY OPTICAL COMPANY OPTICIANS

Fayetteville — Prince Charles Hotel
PHONE 2-4228
FAYETTEVILLE, NORTH CAROLINA



FAYETTEVILLE, NORTH CAROLINA

DINE AT THE SIGN OF THE Green Lantern Restaurant

Modern *Air-Conditioned*
Phone 2-4028 Highway 301 South
FAYETTEVILLE, NORTH CAROLINA

"Schools Aid for Every Grade"



Hatcher's Office Supply

Try Trailways Thru-Liners

*Same Coach — Same Seat
All the Way*

Daily Thru-Liner Service from Red Springs to:

| | |
|-------------|------------|
| Charlotte | Nashville |
| Asheville | Memphis |
| Chattanooga | Wilmington |
| Knoxville | Kinston |

and many other cities.



Charter Trips a Specialty

Let us help you and your group plan a trip in your own "private" coach. New air-conditioned buses are available for special trips to any point in North America. Charter rates are often less than individual fares.

Write or Telephone

QUEEN CITY TRAILWAYS

CHARLOTTE, N. C.

HOWARD JOHNSON'S



2 Miles South
of
FAYETTEVILLE, N. C.
on 301



Ice Cream—28 Flavors

PENNEY'S

ALWAYS FIRST QUALITY!

*Clothing for the Entire Family
At a Savings*

New Penney's Corner Hay & Pittman Sts.
FAYETTEVILLE, NORTH CAROLINA

Highland Lumber Company

LUMBER AND BUILDING SUPPLIES

Plant and Offices 325 Blount
Phone 3191



FAYETTEVILLE, NORTH CAROLINA

FLEISHMAN'S STYLE SHOPS

Exclusive But Not Expensive

COATS : SUITS : DRESSES

Three Locations

114 Hay Street Bragg Blvd. Malonee Village
FAYETTEVILLE, NORTH CAROLINA

Bender's Drug Stores

Your Friendly Rexall Druggists

Three Stores To Serve You

Hay Street Haymount

Fayetteville

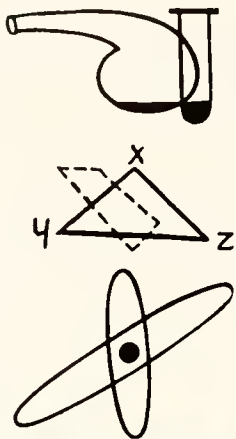
Malonee Village — Ft. Bragg

NEW YORK RESTAURANT

226 Hay Street

39 Years Under Same Management

FAYETTEVILLE, NORTH CAROLINA



GOOD FORTUNE

to the Class of '57

BOTTLED UNDER AUTHORITY OF THE COCA-COLA COMPANY BY
FAYETTEVILLE COCA-COLA BOTTLING COMPANY

Compliments of

GOLD HOUSE Restaurant

South on U.S. 301
FAYETTEVILLE, NORTH CAROLINA

Hotel PRINCE CHARLES

**AIR-CONDITIONED
DINING ROOM**

FAYETTEVILLE, NORTH CAROLINA

WHERE ARE YOU GOING?

In only a few years now you will be establishing your *own* home—somewhere.

Will you settle somewhere else or come back home?

Before you decide, be sure to look around carefully at the advantages of the Carolinas—the opportunities for a full and profitable life—the chance to live and work in a growing and progressive area and to help build an even Finer Carolina in the years ahead!

Carolina Power & Light Company

THE HOUGHTON HOUSE

Southern Cooking at Its Best -- On U.S. 301 South
Featuring - Chicken 'N Basket - Charcoal Broiled Steaks - Prime Ribs of Beef
Serving Breakfast - Lunch and Dinner, 7 Days a Week.

Post Office Box 4142 - Fayetteville, N. C.



If You Live in Southeastern
North Carolina

It's

THE FAYETTEVILLE OBSERVER

"North Carolina's Oldest Newspaper"

"Est. 1817"

For Complete
NEWS COVERAGE

Nance Wholesale Confections, Inc.

Distributors of
QUALITY FOOD PRODUCTS

154 McIver Street P. O. Box 851
SANDFORD, NORTH CAROLINA

BEL-AIRE MOTEL

Highway 301-South of Fayetteville

Modern Reasonable Rates

McMillan Furniture Store, Inc.

"Home of Fine Furniture"

Bragg Blvd. at the City Limits
Phone 3-3333

FAYETTEVILLE, NORTH CAROLINA

TODAY'S HOME

Furniture of Distinction

Dial 7-1498 3722 Bragg Blvd.
FAYETTEVILLE, NORTH CAROLINA

**Pontiac
International Harvester**

Sales and Service

R. D. McMILLAN, Inc.

Phone 3971

RED SPRINGS, NORTH CAROLINA

THE BANK of ROWLAND

DIAL 3732

ROWLAND, NORTH CAROLINA

Organized 1904

*Member of Federal Deposit
Insurance Corporation*

Good Food

Air-Conditioned

Blanchard's Restaurant

"In the Heart of Tobaccoland"

On U.S. Highway 301

Phone 3136

LUMBERTON, NORTH CAROLINA

LEWIS'

*Clothing for All —
from tiny tots to grown-ups!*

RED SPRINGS, NORTH CAROLINA

LUMBERTON JEWELRY
LEADING JEWELERS AND SILVERSMITHS
PHONE 5155 415 ELM ST

LUMBERTON, NORTH CAROLINA

BAUCOM APPLIANCE COMPANY

RAEFORD, NORTH CAROLINA

FRIGIDAIRE PRODUCTS
MAYTAG WASHERS EASY WASHERS
ZENITH RADIO AND TELEVISION
SMALL APPLIANCES, ETC.

Quality Is of First Importance

**JOHNSON COTTON COMPANY
of Raeford, Inc.**

NATHANE

Furniture, Electric and Gas Appliances
Nathane Gas Service

John Deere Farm Equipment
RAEFORD, NORTH CAROLINA

RAEFORD LUMBER CO.

LUMBER : BUILDING MATERIALS

RAEFORD, NORTH CAROLINA

Compliments of

HOKE CONCRETE WORKS

RAEFORD, NORTH CAROLINA

Get The Best, Get
SEALTEST

Riverside Dairies
Distributors

Lumberton, N. C.

Box 881

PHONE 5555

**HEDGPETH
PHARMACY, INC.**

TWO REGISTERED DRUGGISTS
Lorraine Hotel Building

LUMBERTON, NORTH CAROLINA

**SCARBOROUGH BUILDERS
SUPPLY COMPANY**

Complete Building Service

Fayetteville Road

LUMBERTON, NORTH CAROLINA

FREEMAN MOTOR COMPANY

Chrysler - Plymouth

NEW AND USED CARS

Second and Chestnut Streets
LUMBERTON, NORTH CAROLINA

INSURE WITH US
FIRE -:- AUTO -:- HAIL
PROTECTIVE AGENCY, INC.

Phone 3217

LUMBERTON, NORTH CAROLINA

PHILLIPS SHOE STORE

"Known Quality"

LUMBERTON, NORTH CAROLINA

FREEMAN PRINTING COMPANY

"Over Fifty Years of Quality Printing"

D. T. LAMBETH, Manager

Dial 3925

LUMBERTON, NORTH CAROLINA

K. M. BIGGS, INC.

"The Friendly Family Store"

Established 1903

Elm Street

LUMBERTON, NORTH CAROLINA

Compliments of

**JIMMIE PAYNE
ESSO SERVICE STATION**

LUMBERTON, NORTH CAROLINA

LUMBERTON DRUG COMPANY

The Friendly Drug Store
LUMBERTON, NORTH CAROLINA
Phone 5685

St. Pauls Drug Co., Inc.

The Rexall Store
PRESCRIPTION DRUGGISTS
Phone 223-6
ST. PAULS, NORTH CAROLINA

JACK PAIT FURNITURE CO.

Furniture - Radios - Appliances
Phone 572
Chestnut Street
LUMBERTON, NORTH CAROLINA

Compliments of

Austin-Gilbert Drug Company

The Rexall Store
MAXTON, NORTH CAROLINA

Compliments of

**CARO-MAID
ICE CREAM
COMPANY**

DILLON, S. C.

**HESTER-KINLAW
FURNITURE COMPANY, INC.**

Box 206 Phone 258
MAXTON, NORTH CAROLINA
"Complete Home Furnishings"

Compliments of

MAXTON SUPPLY CO.

MAXTON, N. C.

Compliments of

THE JOHNSON COMPANY

Cotton, Fertilizer, Seed, Insurance
RAEFORD, NORTH CAROLINA

**WILLIAM L. POOLE
INSURANCE AGENCY**



RAEFORD, NORTH CAROLINA

Dr. Pepper

The Friendly Pepper Upper That Never Lets You Down

LAURINBURG, NORTH CAROLINA

EUBANKS 5-10 and 25c STORE

Main Street

LAURINBURG, N. C.

"See Us First"

BOWMAN'S RESTAURANT

Highway 74 and 52 East

WADESBORO, N. C.

We doze but never close

THE PHOTO SHOP

COMMERCIAL PHOTOGRAPHY

PHONE 549-1

WILLIAM T. McGOOGAN

MARGARET L. McGOOGAN



Scottish Heights

RED SPRINGS, NORTH CAROLINA

FLORA MACDONALD COLLEGE

RED SPRINGS, NORTH CAROLINA

61st Year

ACCREDITED SENIOR COLLEGE AND CONSERVATORY

B.A., B.S., and B.M. DEGREES

Flora Macdonald College has "that something." You can't quite describe it. You feel it — just as soon as you step on the campus. It's "something" intangible but real. Ask any student who has lived in the elevating and energizing atmosphere of the college. You will be told it's "something" that gets into one's heart, mind, and soul — "something" that awakens the best — "something" that lays hold of the best — "something" that brings out the best. It's "something" a student feels when studying in the library or listening to a lecture in the classroom or playing basketball in the gym or walking through the college gardens. It's "something" that makes a student want to work and play and live with zest and joy and abandonment. It's "something" a student finds at Flora Macdonald — "something" that lives in her and with her during her college years — "something" which goes with her out into life and makes her a unique person, radiant in personality, unselfish in spirit, and successful in her career as a teacher or nurse or pastor's assistant or technician or secretary or wife and mother or leader in her church and community. "That something" is the plus in education which Flora Macdonald offers you. It's "that something" which money cannot buy but which no girl who has found it would exchange for all the wealth of India.

MARSHALL SCOTT WOODSON, *President*

OFFICIAL PHOTOGRAPHERS

for the

1957 WHITE HEATHER

Colonna Studios, Inc.

114 Park Row : New York 7 : New York



CHARLOTTE ENGRAVING CO.

School Annual Engravers

Charlotte, North Carolina

BUILDERS DREAMS

THE ANNUAL STAFF
and the
EDWARDS & BROUGHTON
COMPANY

Co-operated to produce this Annual

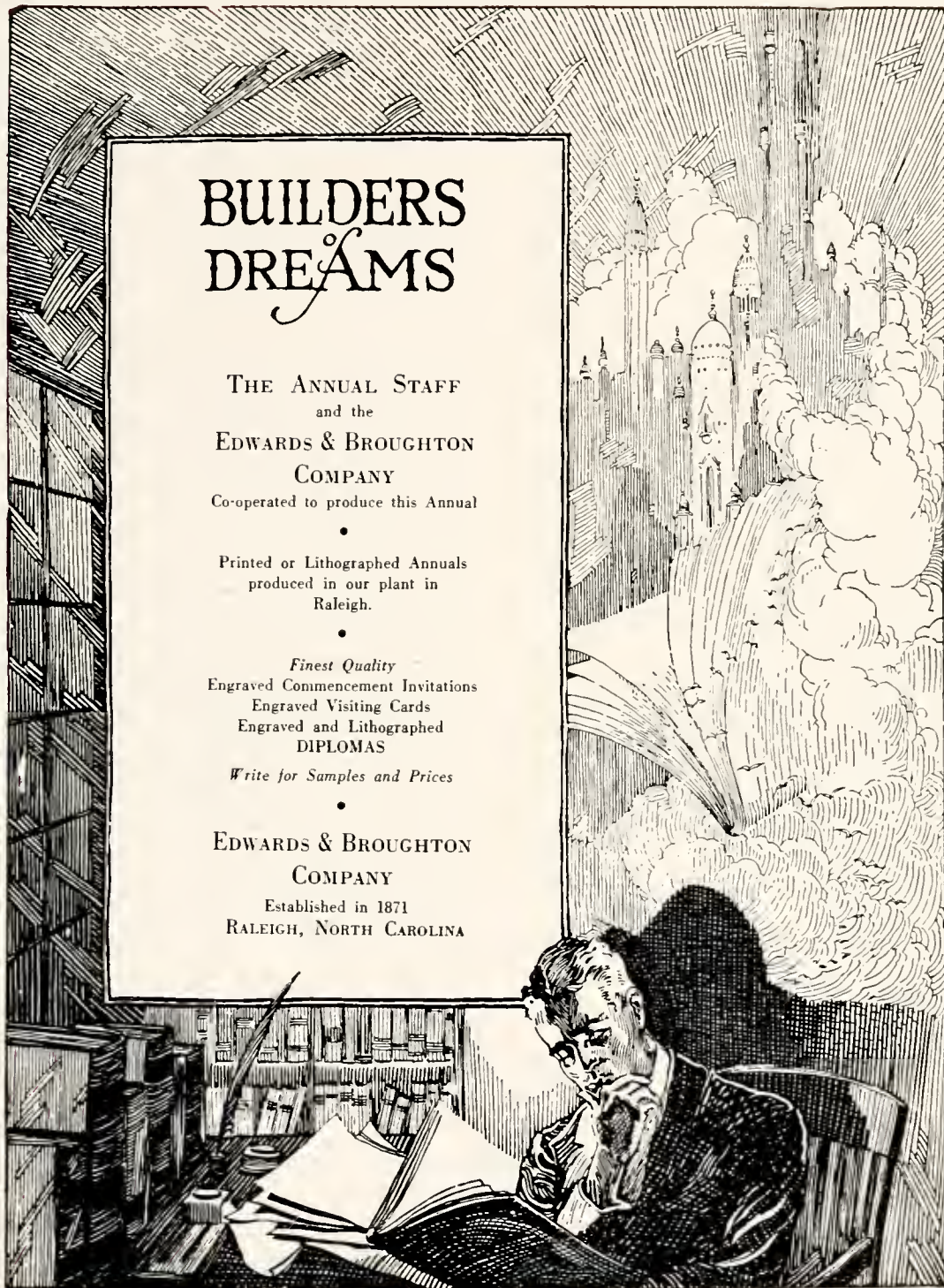
Printed or Lithographed Annuals
produced in our plant in
Raleigh.

Finest Quality
Engraved Commencement Invitations
Engraved Visiting Cards
Engraved and Lithographed
DIPLOMAS

Write for Samples and Prices

EDWARDS & BROUGHTON
COMPANY

Established in 1871
RALEIGH, NORTH CAROLINA



Student Directory

- Abbott, Sandra, Rt. 2, Vinton, Va.
Abernathy, Margaret, Rt. 10, Box 562, Charlotte, N. C.
Adams, Doris, 322 N. 36th St., Richmond, Va.
Adcock, Dorothy, Rt. 1, Holly Springs, N. C.
Allen, Frances, Box 60, Clinton, S. C.
Allen, Helen, 1902 W. Fifth St., Lumberton, N. C.
Aman, Faye, Rt. 1, Dunn, N. C.
Ammons, Jack, Red Springs, N. C.
Anderson, Jo Ellen, Lake City, S. C.
Arnette, Jacqueline, Shelby Road, Kings Mountain, N. C.
Arrington, Barbara, Rowland, N. C.
Arrington, Nancy, Rowland, N. C.
Arrington, Sally, Rowland, N. C.
Austin, Carolyn, 228 Austin St., Hamlet, N. C.
Baker, Betty Jean, Rt. 1, Willow Springs, N. C.
Baker, Irene, 1265 Avenida Brasil, Caixa 133, Campinas, E. de Sao Paulo, Brazil
Barnes, Betty, 1001 W. Baker St., Plant City, Fla.
Barnette, Phyllis, 1119 Randolph Circle, Charlotte, N. C.
Beamon, Ann, 1824 Kenwood Ave., Charlotte, N. C.
Beck, Jennie, 316 Morven Road, Wadesboro, N. C.
Bennett, Carolyn, Rt. 1, Polkton, N. C.
Bennett, Yvonne, Box 60, Clinton, S. C.
Berry, Gaynell, 201 Ledbetter St., Fayetteville, N. C.
Bigger, Elizabeth, Rt. 3, Box 394, Charlotte, N. C.
Blackwell, Betty Lou, 326 Kingsbury St., Oxford, N. C.
Blakely, Sue, Rt. 3, Rockingham, N. C.
Blalock, Jean, Bunn Level, N. C.
Bowen, Virginia, Red Springs, N. C.
Boyd, Marilyn, Rt. 3, Mooresville, N. C.
Bracey, Nancy, Rowland, N. C.
Brady, Adeline, Cerro Gordo, N. C.
Brawley, Sarah, Troutmans, N. C.
Brewer, Betsy, 317 E. Main St., Sanford, N. C.
Brisson, Louise, St. Pauls, N. C.
Britt, Thomas, Rt. 2, Red Springs, N. C.
Britton, Beverly, Mayesville, S. C.
Brock, Mrs. Wilton (Frances Ann), Red Springs, N. C.
Brock, Mary, 110 N. Highland St., Raeford, N. C.
Brown, Dina, 1617 Westbury Road, Charlotte, N. C.
Browning, Rebecca, 328 N. Maple St., Graham, N. C.
Brumbles, Yvonne, Rt. 3, Box 121, Whiteville, N. C.
Bryant, Dorothy, Rt. 1, Roseboro, N. C.
Burrows, Adalyn, Salters, S. C.
Butler, Deon, 515 Quality Road, Fayetteville, N. C.
Caldwell, Kaye, 310 Richmond Drive, Gallup Acres, Fayetteville, N. C.
Calhoun, Elizabeth, Caixa 17, Lavras, Minas, Brazil
Cameron, Thelma, Rt. 3, Box 227, Lillington, N. C.
Campbell, Jo, East Covington St., Laurinburg, N. C.
Capps, Mrs. Glenn (Jean Stuart), Red Springs, N. C.
Carruth, Betsy, Red Springs, N. C.
Carson, Jane, Rt. 3, Commerce, Ga.
Carter, Martha, Rt. 1, Wilson, N. C.
Chadwick, Shirley, Rt. 3, Fayetteville, N. C.
Choi, Un Hi, No. 1-22 Chung-Dong, Seoul, Kyungi, Korea
Clark, Elizabeth Ann, Jackson Springs, N. C.
Cole, Jeanette, 500 E. Dargan, Dillon, S. C.
Cole, Peggy, 500 E. Dargan, Dillon, S. C.
Coleman, Mrs. Anne O., Red Springs, N. C.
Cope, Margaret, Ranlo Station, Gastonia, N. C.
Copeland, Johnelle, 123 Steele, Rockingham, N. C.
Covington, Margaret, Box 174, Ellerbe, N. C.
Cox, Jo Rita, Rt. 2, Gastonia, N. C.
Cox, Kathryn, Rt. 2, Gastonia, N. C.
Cox, Macel, Rt. 3, Box 279, Tabor City, N. C.
Cribb, Nellie, Box 325, Laurel Hill, N. C.
Culbreth, Barbara, 1007 Brook St., Fayetteville, N. C.
Cullum, Barbara, 263 E. Hampton St., Darlington, S. C.
Culp, Betsy, Box 544, Lake Alfred, Fla.
Currie, Susan, Jackson Springs, N. C.
Cuttino, Jerry, 1840 Loch Schiel Road, Towson 4, Md.
Dalrymple, Nancy, Yadkin Ave., Laurinburg, N. C.
Daniel, Lois, 745 Martinsville Road, Danville, Va.
Davis, Mae, 1026 W. Haven Blvd., Rocky Mount, N. C.
Davis, Marion, Rt. 4, Lumberton, N. C.
Dawson, Elizabeth, Quarters 6, Main Post, Fort Bragg, N. C.
Day, Sally, 815 N. Market, Washington, N. C.
Dukes, DeWitt, 805 Farnell Lane, Mobile, Ala.
Dunn, Peggy, 1104 Waterman Ave., Charlotte, N. C.
Eckhoff, Harry, Church St., Clio, S. C.
Edwards, Peggy, 239 N. Fourth St., Albemarle, N. C.
Eller, Ann, 125 Rowan St., Fayetteville, N. C.
Elvington, Mildred, 806 N. Tenth Ave., Dillon, S. C.
Evans, Della, Rt. 5, Box 410, Fayetteville, N. C.
Evans, Shirley, Rt. 1, Walkertown, N. C.
Fleshman, Betsy Ross, Rt. 1, Brookneal, Va.
Flourmoy, Jeanne, Rt. 1, Box 52-A, Elizabethtown, N. C.
Flowers, May Dee, Rt. 1, Society Hill, S. C.
Floyd, Jane, 123 Iona St., Fairmont, N. C.
Fordham, Janet, 4813 Lansing Drive, Winston-Salem, N. C.
Formy Duval, Alease, Nakina, N. C.
Foscue, Bettye, Maysville, N. C.
Foster, Gayle, Landrum, S. C.

Foyles, Ruby, Rt. 1, La Grange, N. C.
 Galloway, Grace, 306 Cousar St., Bishopville, S. C.
 Gates, Jacqueline, 803 S. Center St., Thomaston, Ga.
 Gathings, John S., 905 Sixth St., Rockingham, N. C.
 Gibbs, Julia, Rt. 3, Bristol, Tenn.
 Gibson, Beverly, 509 McDonald Ave., Hamlet, N. C.
 Gibson, Ruby, Rt. 1, Box 130, Marston, N. C.
 Gibson, Rosalynde, Red Springs, N. C.
 Gilchrist, Doris, Rt. 3, Lillington, N. C.
 Godwin, Mattie Ruth, 306 W. Harnett St., Dunn, N. C.
 Goodman, Sarah, Churchville, Va.
 Goodwin, Theresa, Box 142, Clio, S. C.
 Graham, Peggy, Lake Waccamaw, N. C.
 Grainger, Rosie, Aynor, S. C.
 Grainger, Mrs. Sarah, Linden, N. C.
 Greene, Ann, Rt. 2, Waxhaw, N. C.
 Hall, Ann, Rose Hill, N. C.
 Hall, Dorothy, Rt. 1, Linden, N. C.
 Hall, Fred, Box 91, Stedman, N. C.
 Hamilton, William, Lakeview Road, Fairmont, N. C.
 Harrell, Jane, Rt. 3, Florence, S. C.
 Harrell, Thelma Sue, 201 E. Pine St., Fairmont, N. C.
 Harrison, Alese, 529 Taylor St., Lexington, Va.
 Hatcher, Sarah, Rt. 1, Garner, N. C.
 Hayes, Mrs. Betty Gale, 103 Iona St., Fairmont, N. C.
 Heins, Cecilia, Greeleyville, S. C.
 Herman, Caryl Rae, Box 95, Valrico, Fla.
 Hester, Nancy, Rt. 2, Bladenboro, N. C.
 Hill, Lynda, Box 82, Mayesville, S. C.
 Hinds, Sybil, 809 E. Third St., Lumberton, N. C.
 Holden, Pauline, Rt. 1, Box 129, Supply, N. C.
 Holder, Bonnie Jean, Rt. 6, Sanford, N. C.
 Holder, Ruth, Rt. 2, Box 197, Lillington, N. C.
 Honeycutt, Jessie Ruth, Rt. 2, Wadesboro, N. C.
 Hood, Patricia, 303 W. Pearsall St., Dunn, N. C.
 Hough, Mrs. J. W. (Betty Jane), Red Springs, N. C.
 Howell, Louise, 218 Woodcrest Road, Fayetteville, N. C.
 Huggins, Ann, Red Springs, N. C.
 Hults, Mary Louise, 106 N. Herman St., Goldsboro, N. C.
 Ivey, Phyllis, Fairmont, N. C.
 Jackson, Mrs. Marian, St. Pauls, N. C.
 Johnson, Betty Lou, 610 Hubbard St., Fayetteville, N. C.
 Johnson, Carolyn, 304 Hillsboro St., Fayetteville, N. C.
 Johnson, Marlene, 1104 S. Church St., Burlington, N. C.
 Jones, Barbara, 402 S. Irby St., Florence, S. C.
 Jones, Patty Jo, 1314 Mayfair Road, Raleigh, N. C.
 Jordan, Llewellyn, 296 Congress St., Charleston, S. C.
 Jordan, Faye, 4203 David St., Fayetteville, N. C.
 Jordan, Sarah, N. Park St., Mullins, S. C.
 Kanoy, Johnsie, Rt. 1, West End, N. C.
 Kearns, Shirley, 1031 W. Salisbury St., Asheboro, N. C.
 Kessler, Martha, Rt. 5, Lexington, Va.
 King, Frances, 3823 Market St., Wilmington, N. C.
 King, Kathy, 503 Myrtle St., Ashland, Va.
 King, Wanda, Rt. 5, Box 25, Kinston, N. C.
 Kinion, Verna, Box 60, Clinton, S. C.
 Lahr, Sue, 608 N. Jackson St., Goldsboro, N. C.
 Lamm, Mrs. Gerald (Miriam), 1012 First St., Ahsokie, N. C.
 Lancaster, Kenneth C., 1518 W. Long Ave., Fayetteville, N. C.
 Layton, Manette, 608 Willcox Ave., Marion, S. C.
 Layton, Marilyn, 608 Willcox Ave., Marion, S. C.
 Lee, Lillian, Rt. 1, Clinton, N. C.
 Lewis, Emma, 108 Elm St., Bladenboro, N. C.
 Lewis, Myra, 127 Market St., Fairmont, N. C.
 Lewis, Nan, Rt. 2, Fairmont, N. C.
 Little, Mrs. W. D. (Betsy), Red Springs, N. C.
 Long, Punky, Rt. 7, Burlington, N. C.
 Love, Juanita, 1912 Ann St., Wilmington, N. C.
 Maness, Helen, Indian Trail, N. C.
 Maness, Levonnie, Indian Trail, N. C.
 Martin, Mary Jane, 1214 Richardson Road, Reidsville, N. C.
 Matthews, Mrs. Carey (Janie Ann), Clinton, N. C.
 Melvin, Jeffery, 604 Cape Fear Ave., Fayetteville, N. C.
 Miller, Fay, 2933 Breezewood Ave., Fayetteville, N. C.
 Mitchell, Barbara, Kenansville, N. C.
 Mitchell, Mrs. Elizabeth, 104 Floyd St., Fairmont, N. C.
 Moore, Louise, Rougemont, N. C.
 Morris, Nora, Raeford, N. C.
 Morrison, Ophelia, 201 N. Church St., McColl, S. C.
 Morrison, Vivian, Box 46, Baddeck, Nova Scotia, Canada
 Morton, Frances, 2110 Trent Blvd., New Bern, N. C.
 Mothershed, Gay, Rt. 9, Box 723, Concord, N. C.
 Muldrow, Beverly, Fairview Ave., Bishopville, S. C.
 Murchison, Faye, Red Springs, N. C.
 MacLeod, Debby, Dunvegan Acres, Kemptville, Ontario, Canada
 McArthur, Ruth, Wakulla, N. C.
 McCaskill, Alice, Rt. 3, Carthage, N. C.
 McDonald, Jane, Rt. 2, Box 265, Fayetteville, N. C.
 McDonald, Gaddis, Red Springs, N. C.
 McDonald, Carolyn, Rt. 5, Box 190, Fayetteville, N. C.
 McGirt, Peggy, 110 Caledonia Road, Laurinburg, N. C.
 McKenzie, Carol, Rt. 1, West End, N. C.
 McLaughlin, Lois, Rt. 1, Effingham, S. C.
 McLaurin, Jeri, Box 453, Clio, S. C.
 McLean, Hazel, Box 38, Raeford, N. C.
 McLeod, Jane, Rt. 2, Carthage, N. C.
 McNeill, John Tom, 1002 Maple St., Lumberton, N. C.
 McPhail, Peggy, Wade, N. C.
 McPhaul, Nancy, Red Springs, N. C.

McRae, Jean, Elrod, N. C.
 Nation, Carole, 306 Calloway St., Montgomery, Ala.
 Nash, Nancy, 310 E. Church St., Tarboro, N. C.
 Newcomer, Carolyn, 1605 Piedmont Ave., N. E., Atlanta, Ga.
 Newton, Sylvia, Rt. 3, Fayetteville, N. C.
 Nimocks, Ann, 208 Highland Ave., Fayetteville, N. C.
 Nisbet, Mary Leighton, 310 E. Ladiga St., Jacksonville, Ala.
 Northrup, Carolyn, Rt. 2, Box 39, Dade City, Fla.
 Nurnberger, Juanita, Red Springs, N. C.
 Owen, Sue, Cluster Springs, Va.
 Owens, Joyce, 1030 Rainey St., Burlington, N. C.
 Page, Rachel, Rt. 2, Clarkton, N. C.
 Pamplin, Mrs. Margaret, Clio, S. C.
 Parker, Jean, Rt. 1, Wadesboro, N. C.
 Parmele, Mrs. A. T. (Betsy), 302 E. Eighteenth St., Lumberton, N. C.
 Parsons, Susie, Rt. 4, Elizabeth City, N. C.
 Pearce, Linda, S. Main St., Fairmont, N. C.
 Peele, Mary, Raeford, N. C.
 Penick, Margaret, Prospect, Va.
 Peters, Cloe, Rt. 1, Nebo, N. C.
 Pigott, Janis, Shallotte, N. C.
 Pittard, Norma, Box 158, Warrenton, N. C.
 Ponds, Edith, Box 313, Ansonville, N. C.
 Poole, Betty, 308 Colleton Road, Raleigh, N. C.
 Potter, Marie, Rt. 2, Box 450, Wilmington, N. C.
 Powell, Patricia, 608 Main St., South Boston, Va.
 Powell, Pearl, West Greene, Cheraw, S. C.
 Powers, Geraldine, 503 E. Tenth St., Lumberton, N. C.
 Prevatte, Mrs. Mable P., Rt. 4, Lumberton, N. C.
 Price, Loueen, Rt. 1, Lilesville, N. C.
 Pridgen, Julia Ann, Rt. 2, Elm City, N. C.
 Pritchett, Patricia Frances, 2805 Raeford Road, Fayetteville, N. C.
 Putnam, Patsy, Rt. 3, Box 228, Kernersville, N. C.
 Quinn, Jean, Kenansville, N. C.
 Ratcliffe, Phyllis, Rt. 2, Radford, Va.
 Ray, Joanne, Rt. 3, Loris, S. C.
 Ray, Katherine, Newland, N. C.
 Reaves, Joy, Rt. 3, Box 432, Florence, S. C.
 Reid, Virginia, Rt. 3, Waxhaw, N. C.
 Ribet, Julia Lee, Box 205, Valdese, N. C.
 Richardson, Doris, Nakina, N. C.
 Richardson, Lucy, Rt. 4, Box 7A, Whiteville, N. C.
 Ritter, Nancy, Box 191, Pinehurst, N. C.
 Rogan, Judy, Greeleyville, S. C.
 Rogers, Anne, 115 Northside Ave., Mullins, S. C.
 Ross, Joanne, 2015 Eighth St., N. W., Roanoke, Va.
 Rouse, Mary, Box 515, Burgaw, N. C.
 Rudd, Betty, Mebane, N. C.
 Sanderson, Floranell, 903 E. Cleveland St., Dillon, S. C.
 Seymour, Mrs. Anna, 939 Chester Circle, Fayetteville, N. C.
 Shaffer, Johnnie, Rt. 2, Matthews, N. C.
 Shannon, Edna, Rt. 4, Gastonia, N. C.
 Shaw, Frances, Quarters 214, Ft. Bragg, N. C.
 Sheets, Jane, 939 W. Beverley St., Staunton, Va.
 Shepherd, Sarah, Box 2015, Rockingham, N. C.
 Sherrill, Jean, 301 Oakridge Ave., Fayetteville, N. C.
 Shipman, Ann, Rt. 2, Box 87, Whiteville, N. C.
 Shoemaker, Carroll, Cavalier Hotel, Virginia Beach, Va.
 Simmons, Janice, Ash, N. C.
 Smith, Agnes, Rt. 3, Rockingham, N. C.
 Smith, Catherine, 611 Dock St., Wilmington, N. C.
 Snoddy, Betty Lou, 2318 Overhill Road, Charlotte, N. C.
 Snyder, Mrs. Dorothy A., Ellerbe, N. C.
 Stacy, Marilyn, 1705 N. Elm St., Lumberton, N. C.
 Stalvey, Joy, Pine Tree Ave, Asheboro, N. C.
 Stanton, Joseph Peyton, Red Springs, N. C.
 Stegall, Mrs. Irma, Rt. 1, St. Pauls, N. C.
 Steppe, Martha, 50 Oak St., Marion, N. C.
 Stevenson, Martha, Rt. 8, Statesville, N. C.
 Stokes, Judy, 1118 Broad St., Kenbridge, Va.
 Stone, Clyde, Stone St., Hope Mills, N. C.
 Stone, Vanda, Fifteenth and Walnut St., Lumberton, N. C.
 Stuckey, Mary, Rt. 1, Box 74, Nesmith, S. C.
 Sullivan, Betty Jane, Box 312, Pittshoro, N. C.
 Sweet, Sandra, Richardson Ave., Summerville, S. C.
 Tarrant, Ann, Rt. 5, Box 406, Fayetteville, N. C.
 Tate, James H., 910 Sunset Ave., Clinton, N. C.
 Taylor, Rebekah, 144 Church St., Henderson, N. C.
 Taylor, Sally, 363 W. Fifth St., Winston-Salem, N. C.
 Tedder, Mrs. Mollie, Rt. 4, Box 86, Whiteville, N. C.
 Thomas, Louise, 1410 Bivins St., Forest Hills, Durham, N. C.
 Thomas, Shirley, Rt. 3, Box 306, Lillington, N. C.
 Thompson, Bertha, Red Springs, N. C.
 Thompson, Margaret, Blanche, N. C.
 Thompson, Nancy Jo, 906 Rainey St., Burlington, N. C.
 Timberlake, Frances, Rt. 1, Louisburg, N. C.
 Tindall, Judy, Rt. 3, Box 452, Orangeburg, S. C.
 Tolar, Betty, 202 E. Thirteenth St., Lumberton, N. C.
 Topping, Ruth Evelyn, 401 E. Ninth St., Greenville, N. C.
 Trent, Betty Jo, Rt. 5, Box 25-A, Reidsville, N. C.
 Turner, Betty, 430 Wonderwood Drive, Charlotte, N. C.
 Turner, Anne, Mayesville, S. C.
 Walters, Jane, 2115 Brandon Road, Wilmington, N. C.
 Ward, Evelyn, Nakina, N. C.
 Washburn, Phyllis, 501 Wolfe St., Alexandria, Va.
 Watkins, Billie Jean, Rt. 1, Box 277, Henderson, N. C.
 Watkins, Scott, 182 Raysor N. E., Orangeburg, S. C.
 Watson, Jack, Rt. 1, Box 46, Red Springs, N. C.

Webb, Ann. Rt. 3. Wadesboro, N. C.
 Weir, Derice. 404 Railroad Ave., Kings Mountain, N. C.
 Wells, Sara Lane. Rt. 1. Haw River, N. C.
 West, Cynthia, Box 604. Conway, S. C.
 West, Ella Mae, Box 254. Warsaw, N. C.
 West, Mrs. Wayne (Joyce I.), Box 291, Elizabethtown,
 N. C.
 West, Peggy, 1014 Richmond St., Brunswick, Ga.
 Whatley, Dale, Quarters 41, Main Post, Ft. Bragg, N. C.
 Whitley, Carolyn, 3629 Country Club Dr., Charlotte, N. C.
 Wilkie, Marilyn, Box 15, Gulf, N. C.
 Williams, Carole, 3012 Somerset Dr., Charlotte, N. C.
 Williams, Elise, 604 E. Ninth St., Greenville, N. C.
 Williams, Emily, 110 W. Tenth St., Lumberton, N. C.
 Williams, Joyce, Ararat, Va.
 Williams, Lorraine, Rt. 2, Marshville, N. C.
 Williams, Margaret, Ararat, Va.
 Williams, Sylvia, 500 S. Jackson St., Salisbury, N. C.
 Williams, Rebecca, 783 N. W. 39th St., Miami, Fla.
 Williamson, Mrs. J. M., Jr. (Katie Lee), Rt. 5, Lumber-
 ton, N. C.
 Wingate, Barbara, Rt. 11, Box 435, Charlotte, N. C.
 Witherspoon, Betty Ann, Gable, S. C.
 Wolfe, Carol, West St., Southport, N. C.
 Womack, Gail, 1916 Skidaway Road, Savannah, Ga.
 Wood, Jane, Draper, Va.
 Wood, Jo Ann, 6120 Eastwood Terrace, Norfolk 8, Va.
 Wood, Pearl, Cove City, N. C.
 Wood, Rex, Maxton, N. C.
 Yeargin, Patterson, 436 Hansell St., Thomasville, Ga.

AUTOGRAPHS



