

REFERENCE

Storage

Reference Department



Scranton Public Library
Scranton, PA

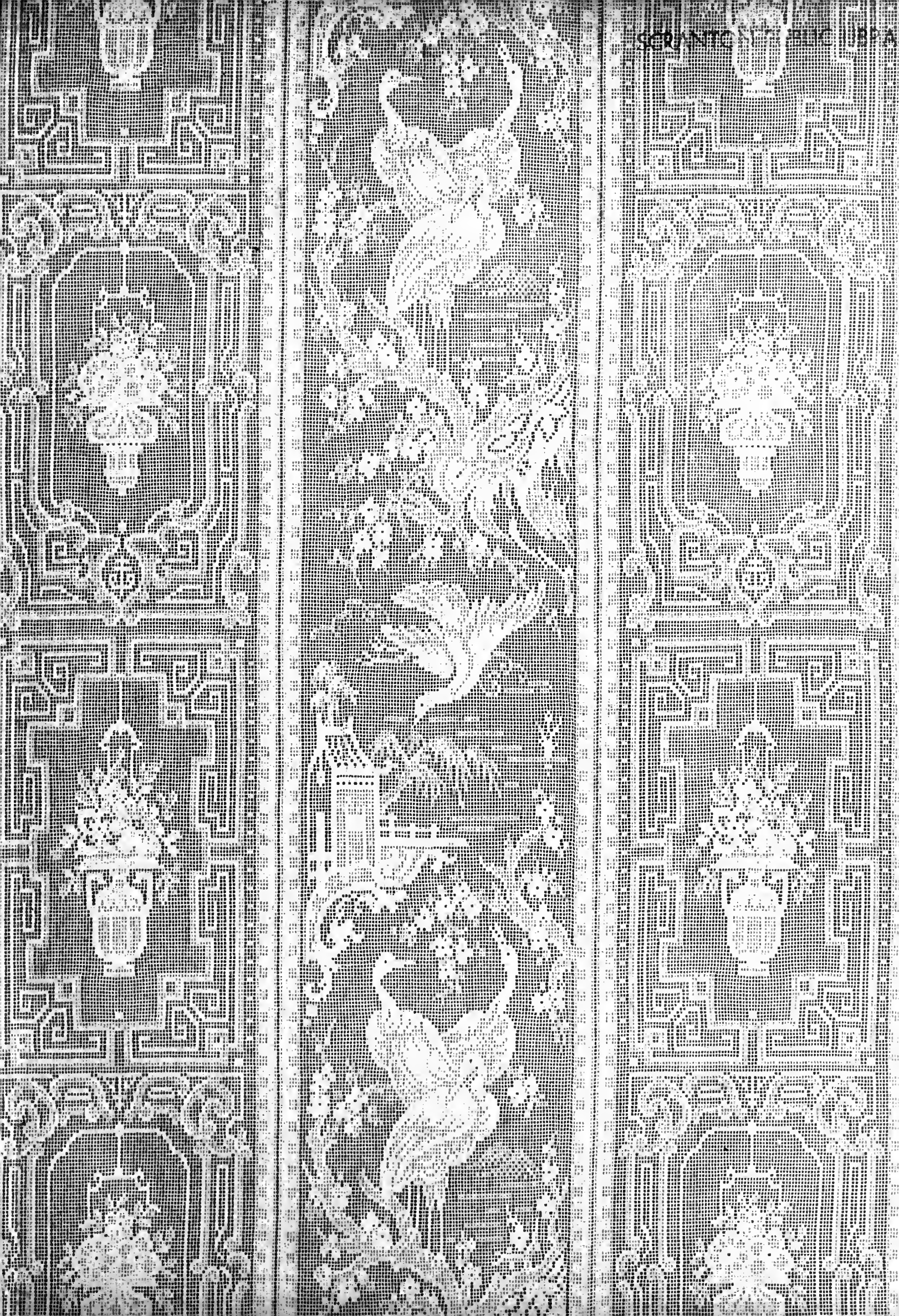
SCRANTON
PUBLIC LIBRARY

Albright Memorial Building

REFERENCE DEPARTMENT

NOT FOR GENERAL CIRCULATION

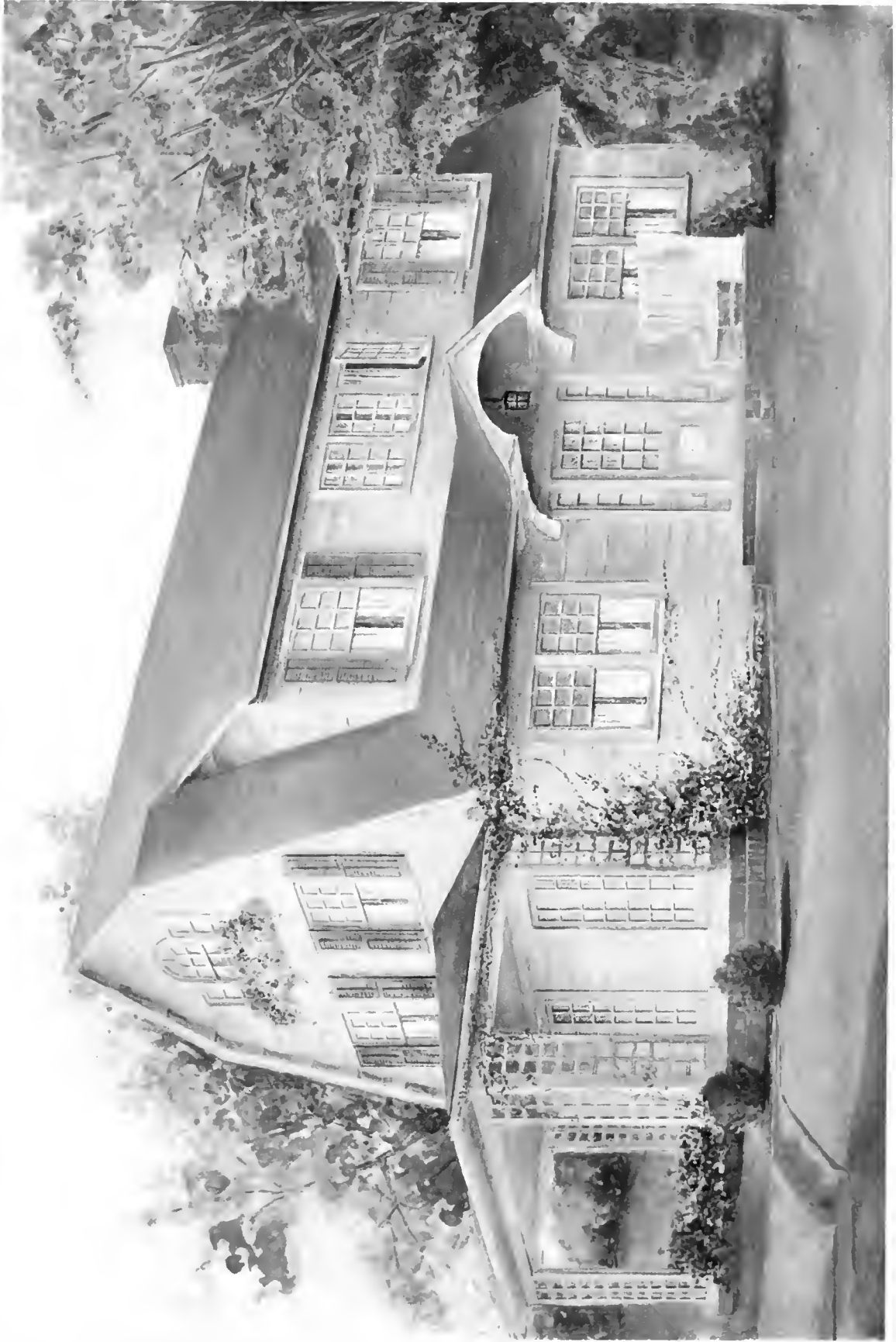
PRESENTED BY



On Account of the War

Plans for this book had been made prior to our country's entry into the war. At that time there was no question of our being able to fill orders. Since then conditions in the lace industry, as in every other industry, have changed considerably. So today, war orders take precedence over all other business, of course, and right now one-third of the output of our mills is going to the Government. We shall, however, have an excess of materials for commercial use and we expect to maintain our deliveries as usual.

THE SCRANTON LACE COMPANY.



THE WINDOWS ARE THE EYES OF THE HOUSE

WINDOW DRAPING WITH NET AND LACE

PRACTICAL SUGGESTIONS
FOR EVERY ROOM IN
THE HOUSE



THE SCRANTON LACE COMPANY
SCRANTON, PENNSYLVANIA

NEW YORK,
212 FIFTH AVENUE

CHICAGO,
REPUBLIC BUILDING

TORONTO
108 WELLINGTON STREET, WEST
(JAMES B. JAMESON)

WASH STATE
UNIVERSITY

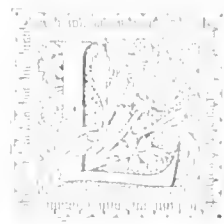
Copyright, 1918, by
The Scranton Lace Company



The Windows Are the Eyes of the House	<i>Frontispiece</i>
The Art of Window Draping	4
Halls and Entrance Doors	
An Entrance With Character	6
The Colonial Entrance Hall	8
An Adam Corner in the Hall	10
Libraries	
The Window in the Library	12
Over the Built-In Bookcases	14
Net Shades for the Library	16
Living-Rooms	
A Colonial Living-Room	18
When the Windows are Wide	20
Living-Room Casements	22
The Average Living-Room	24
A Nook in the Living-Room	26
Solving a Double Problem	28
A Suggestion of the Orient	30
Dining-Rooms	
An Excellent Dining-Room	32
When Simplicity is Best	34
The Windows Over the Buffet	36
The Cheerful Breakfast Room	38
For the Model Kitchen	40
The Stairway and Upper Hall	
On the Stairway Landing	42
Brighten Up the Hallway	44
Bedrooms	
For the Cretonne Boudoir	46
Just the Average Bedroom	48
A Boudoir in Light Colors	50
Improving Awkward Windows	52
A Pleasing Dormer Window	54
The Upstairs Sitting-Room	56
Completing the Bathroom	58
Nurseries	
For the Nursery Windows	60
Sunshine for the Nursery	62
Leadership in Lace	64
The Growth of The Scranton Lace Company	65

Gift "The Publisher"

THE ART OF WINDOW DRAPING



LIKE all other arts, the art of window draping consists, chiefly, of putting the right thing in the right place. Perhaps no other item of home decoration offers such wide scope for the exercise of good taste within the limits of moderate cost. For the beauty of a curtain is not in its intrinsic value but in its design and in the skill with which it is draped to meet the two-fold requirements of serving its purpose usefully, and harmonizing with the room.

Points to be Considered

In choosing the material and determining the style of hanging, several points must be considered. The architecture of the window is important; so also is the interior decoration of the room. If the room is dark the curtain must let in daylight. If there is a flood of sunlight, it will be necessary to tone down the glare. A window directly on the street or commanded by the windows of near neighbors must be screened to secure privacy without excluding light. There are appropriate styles for living-rooms, others for dining-rooms, still others for bedrooms. It is to assist in the solution of such problems that this volume has been prepared.

Characteristic Windows

Obviously, it is impossible to show every variety of window in every room in the house. It is equally impossible to show all of the many attractive ways of hanging curtains, or the thousands of beautiful designs offered by Scranton Laces and Filet Nets.

In these pages the attempt has been rather to illustrate the most general types of windows, and to suggest for each, one good up-to-date method of draping curtains, together with three Scranton designs which would be suitable for such a window.

It is our hope that not only will the actual illustrations be of direct assistance to many women in deciding upon the draping of their own windows, but also that the book as a whole will serve to demonstrate the fact that *it is always possible to find the right curtain for any window.*

Write to our Service Department

For those who have unusual problems for which they cannot find specific suggestions in this book, The Scranton Lace Company maintains a Service Department which is always ready to answer inquiries and make suggestions through the mails. Experts in interior decoration will give you the benefit of their practical experience. This service is rendered without charge. All you need to do is to write to the Service Department of The Scranton Lace Company, Scranton, Pa., stating your problem in careful and complete detail, and you will receive prompt and full reply.

You can also obtain from us, or from the merchant who shows you this book, a copy of our booklet entitled, "New Outlooks For Every Home," which contains the same material as this volume, but printed in handy size for use at home.

Scranton Embroideries

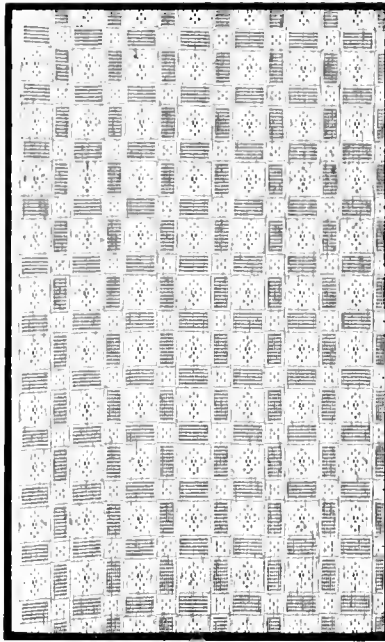
Those who have learned to rely upon Scranton Laces and Filet Nets will be interested to know that we are now offering a wide and beautiful line of Scranton Embroideries. The same excellence of design, the same high quality of materials and fine workmanship which have distinguished other Scranton productions will be found in these exquisite embroideries. Ask your merchant to show them to you.

THE SCRANTON LACE COMPANY

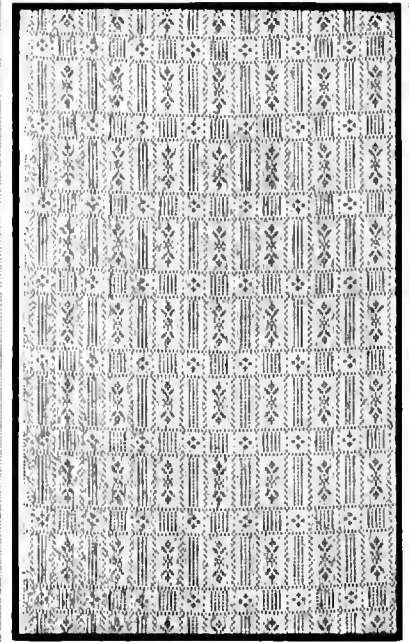




No. 10765.—A pleasing allover pattern of the better medium regular weave; 45 inches wide; white, ivory or natural.



No. 10232.—Another popular allover pattern of the same quality; 42 inches wide; white, ivory or natural.



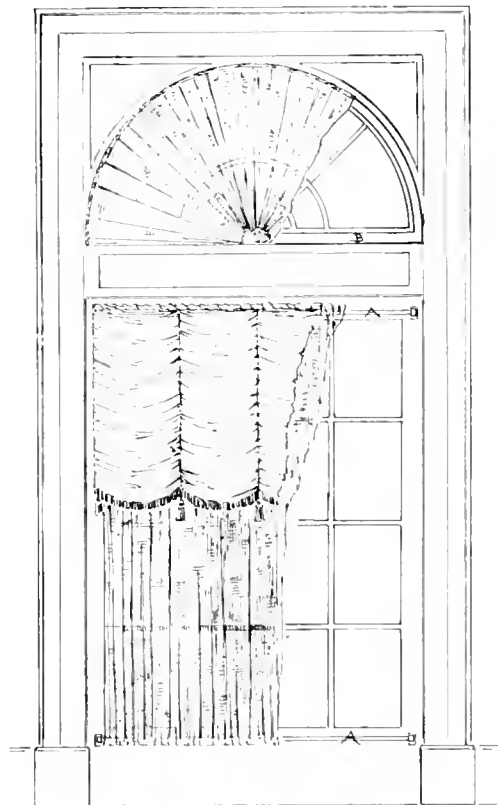
No. 10230.—Still another choice, of same quality, in charming pattern; 42 inches wide; white, ivory or natural.

An Entrance with Character

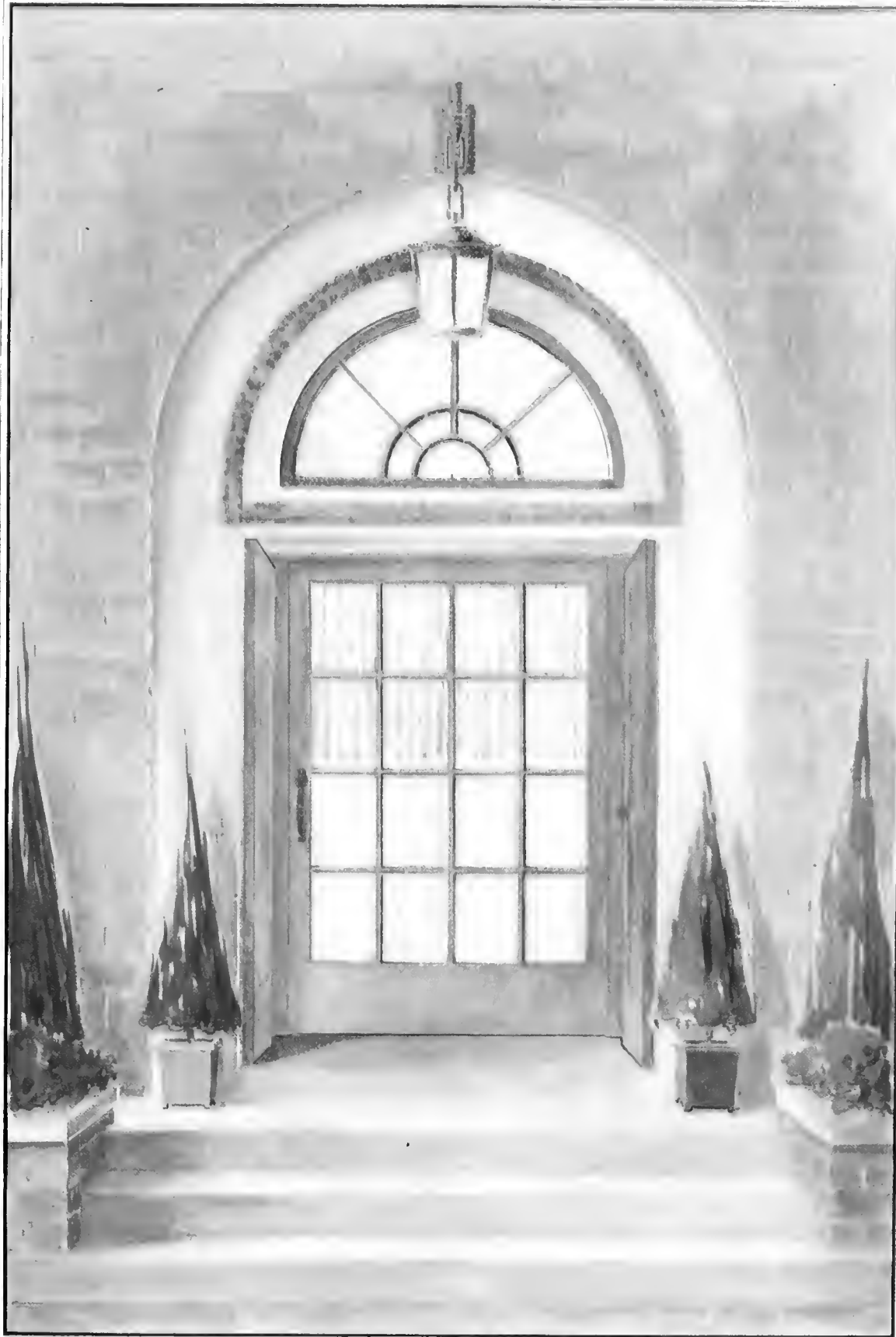
Character and dignity are as desirable in the outward appearance of the home, as they are essential to the bearing of a self-respecting person. Here is a treatment of an entrance door that has both of these qualities. It is of English derivation.

A simple net is drawn tautly on a $3\frac{1}{2}$ -inch brass rod placed just above and below the glass (See A in the diagram). Back of this is hung a puffed shade made of soft silk which can be raised or lowered as occasion demands.

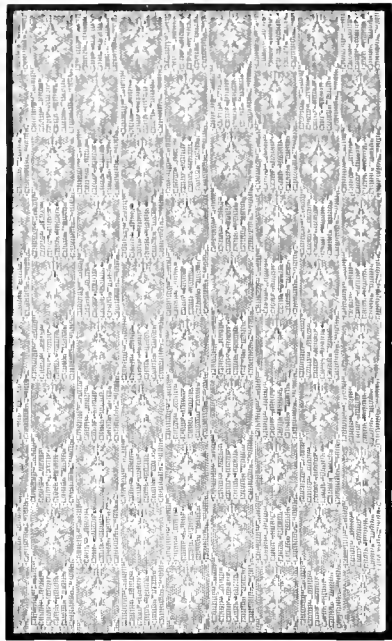
The fan-shaped glass panel above the door is screened with a shirring of net of the same design as used on the door. A light wooden frame about two-and-one-half inches wide is made the exact shape and size of the opening (See B). The net is tacked to the curved edge of the frame and then drawn to the center where a small rosette of the net is used to cover the uneven edges.



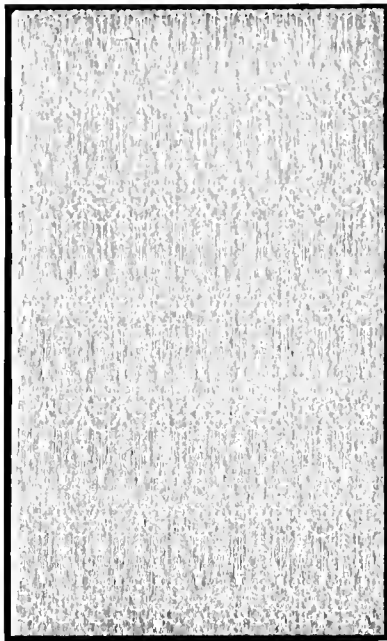
SCRANTON LACE



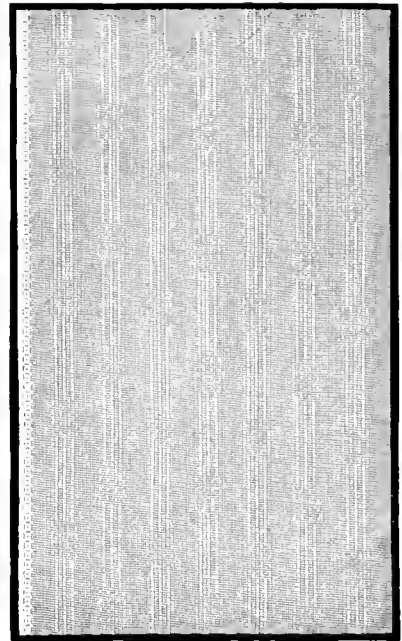
DOORWAY WITH FANLIGHT
Simple net with adjustable puffed shade



No. 9710.—A very charming pattern in regular weave, floral and festoon; 50 inches wide; white, ivory or natural.



No. 9716. Of the popular festoon and pendant order, in the better quality; 42 inches wide; white, ivory or natural.



No. 10132.—Unusual stripe effect in the medium grade Filet Net; 42 and 80 inches wide; white, ivory or natural.

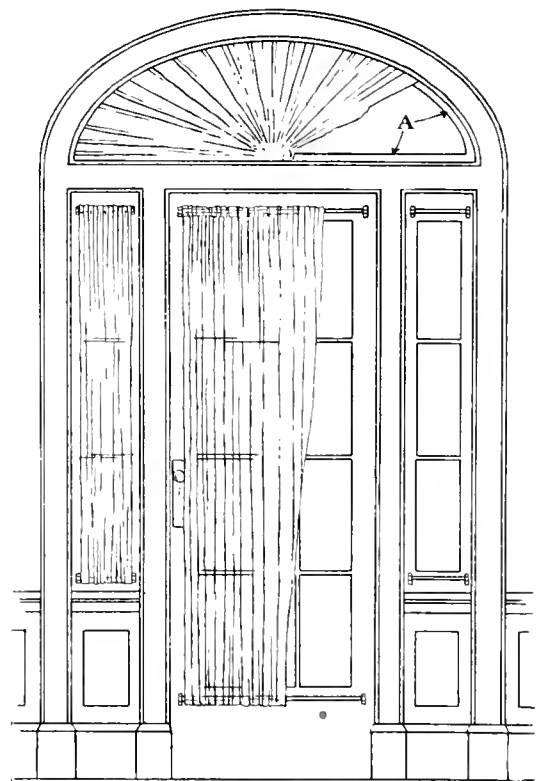
The Colonial Entrance Hall

First impressions of people are lasting, and are often the determining factors in friendships. So first impressions of our homes give a keynote to the tastes of the occupants.

For this reason it is of paramount importance that the nets or laces selected for the entrance door be of a character that will lend a pleasing dignity to the entrance.

When small patterned nets are shirred top and bottom on rods as shown, about 75 per cent. should be allowed for fullness. A one-inch heading is used above and below the casing in which the 3/4-inch brass rod is slipped.

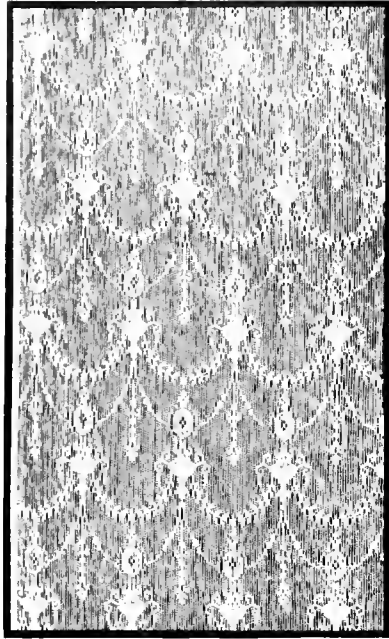
A light, wooden frame (see A in the diagram) is made which exactly fits inside the trim of the fan-shaped transom. The net is tacked to the outer edge of this frame and drawn tautly to the center of the lower edge where it is finished with a rosette of the net.



SCRANTON LACE



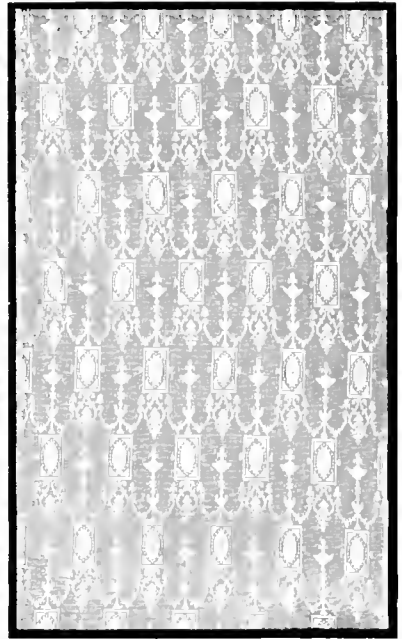
COLONIAL HALLWAY
Patterned net shirred top and bottom



No. 10209.—A pleasing Adam design of the better medium grade: 46 inches wide; white, ivory or natural.



No. 10763.—Another Adam design in the regular weave of the better quality: 45 inches wide; white, ivory or natural.



No. 10820.—Unusually good medium priced Filet Net, Adam design; 47 and 76 inches wide; white, ivory or natural.

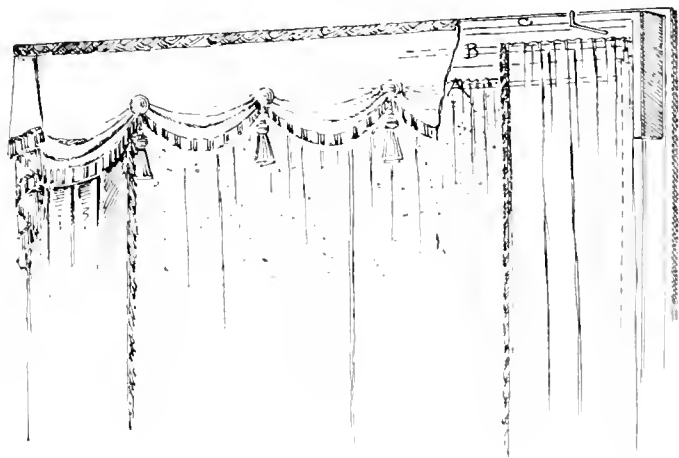
An Adam Corner in the Hall

A corner in the hall, next to the entrance, probably plays a more important role in creating a favorable first impression than any other part of the house. And when the furnishings are suggestive of the Adam Style, the curtains should be sheer and delicate in design to secure the best effect.

Two lengths, 45 inches in width, are used and hang straight to the sill from a 3/4-inch brass rod placed just inside the window shade (see A in the diagram). Each curtain is made with a one-inch casing at the top through which the brass rod is slipped—a one-inch hem down the center edge and a two-inch hem across the bottom. A simple roll hem is all that is necessary at the back edges.

The overdrapery of silk or vel-

vet is hung from a one-inch brass tubing, fastened to the window trim (See B). One width of material should be used for each curtain which falls straight to the floor. The valance is fastened to a wooden cornice, (See C), which is held in place by wire supports placed just above the one-inch tube.



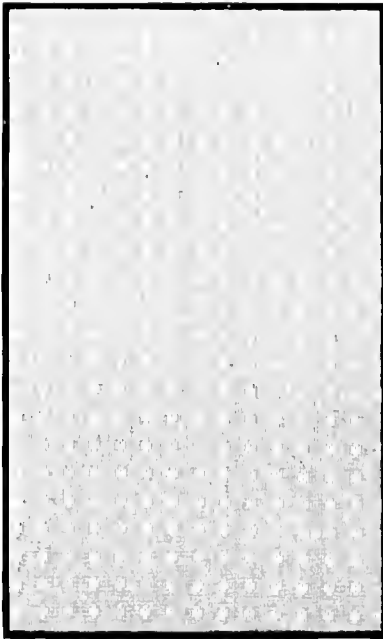
SCRANTON LACE



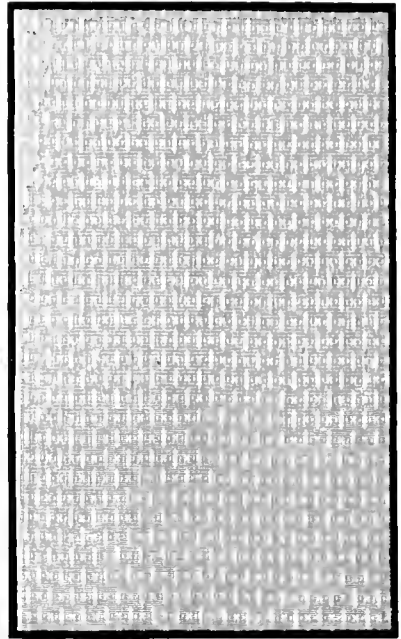
AN ADAM HALLWAY
Delicate curtains with overdrapery of silk or velour



No. 9220.—A popular, plain Filet Net, lower priced grade: 36 and 40 inches wide; white, ivory or natural.



No. 10834. Good figured design in medium priced Filet Net; 40 inches wide; white, ivory or natural.

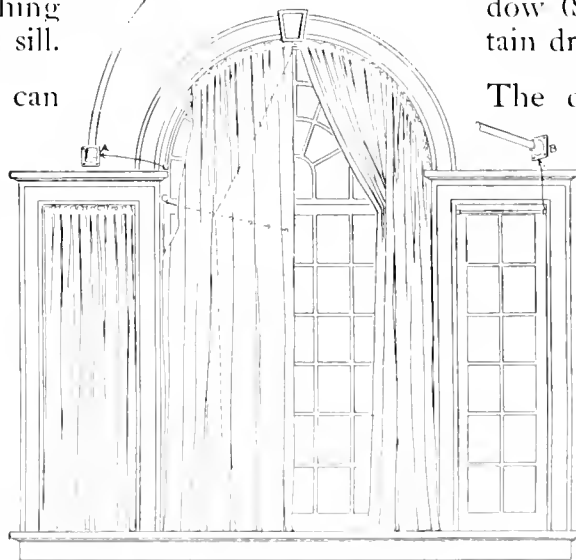


No. 10790. Pleasing pattern in medium priced Filet Net; in 42 and 80 inch widths; white, ivory or natural.

The Window in the Library

The net for this type of library window should be plain or very simple in design. At the large central window the semi-draped treatment may be effectively used, while at the small side windows the net should fall perfectly straight reaching just to the window sill.

A 3/4-inch brass rod can be bent to conform with the top of the circular window. A bracket fixture is needed to hold the rod at the central window (See A in the diagram) while a socket fixture is used at the small side windows (See B). A semi-draped



effect is obtained at the central window by running a small cord, the color of the net, through small ivory rings sewed to the back of the curtains. The cord is slipped through a ring screwed to the jamb of the window (See C) and the curtain drawn back as desired.

The dotted line indicates the curtain when adjusted. The curtains at the top are made with a one-inch heading above the casing. The center edges should have a one-inch hem and the bottom a two-inch hem—75 per cent. being allowed for fullness.



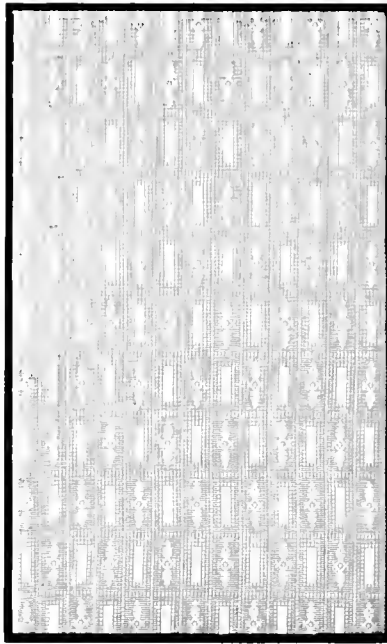
SCRANTON LACE



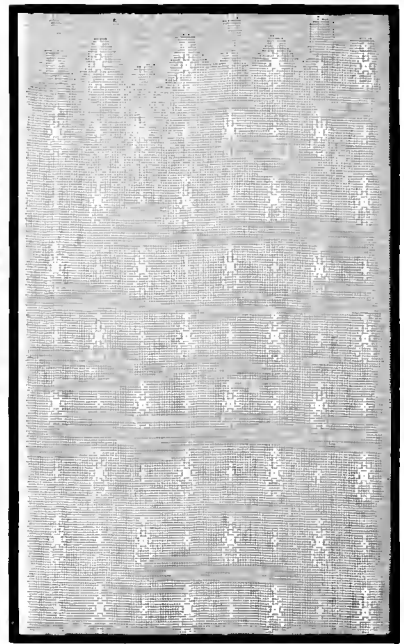
THE LARGE LIBRARY WINDOW
Semi-draped treatment with net



No. 10531.—Sunburst pattern, Filet Net, of the cheaper grade; 30 and 36 inches wide; white, ivory or natural.



No. 10133.—An unusual Filet Net, geometrical and ornate in design; 42 and 80 inches wide; white, ivory or natural.



No. 10622.—An especially popular Filet Net, Egyptian in design; 30 and 36 inches wide; white, ivory or natural.

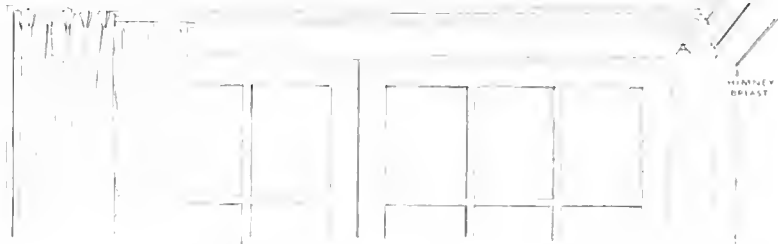
Over the Built-in Bookcases

The best choice of nets for casement windows above built-in bookcases are those showing small patterns. The curtains should hang perfectly straight and just clear the top of the bookcase.

The net shown in the illustration is woven with a strong edge so well designed that no other finish is necessary. A loose casing made at the top through which the rod is run, and a two inch hem at the bottom is all the sewing required before the curtains are ready to hang. Frequently the sides of the net are finished with simply a selvedge edge. When such a net is chosen, a one-inch hem should be made at the center edge of the curtain and a roll hem at the back edge.

Overdraperies at this type of casement window are almost indispensable. First,—they take the place of shades and should be wide, so that when drawn they will cover the entire window. Second,—they add a charming bit of color and decoration to the room. These overdraperies are made with a pinch pleated heading, back of which are sewed brass rings, which slip easily on the rod.

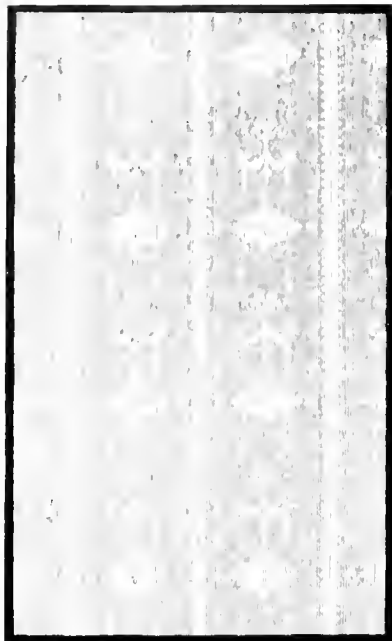
The fixture carries two rods (See A in the diagram) from which the net and overdraperies are hung.



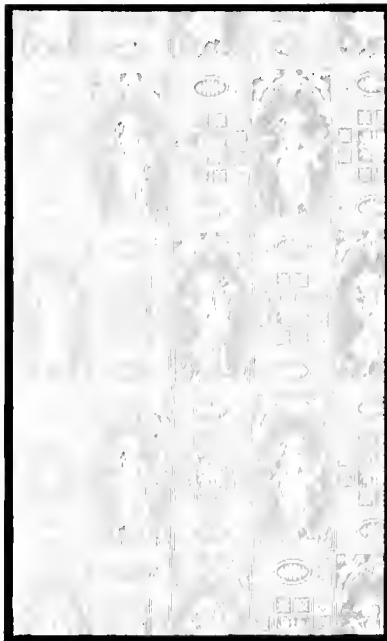
SCRANTON LACE



HIGH CASEMENT WINDOWS
Where roller shades are not practical



No. 10914. An exceptional Adam pattern with 9 inch stripe effect; 45 inches wide; white, ivory or natural.



No. 10723. Very fine reproduction of French tapestry in file; 45 inches wide; white, ivory or natural.



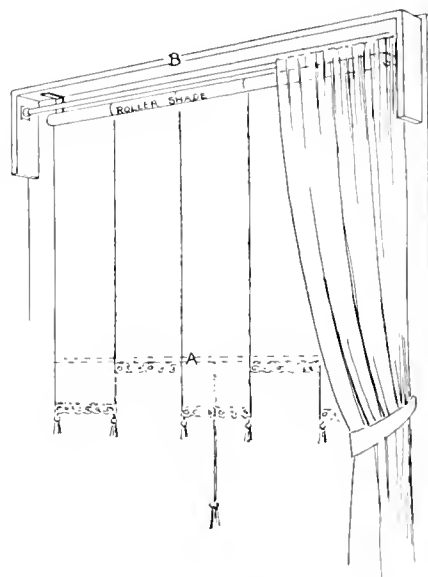
No. 10725. Fine Filet Net, reproducing real Italian filet of block design; 45 inches wide; white, ivory or natural.

Net Shades for the Library

Many nets are most attractive when used as roller shades. These are mounted and operated exactly the same as the linen shades. A flat tape is stitched down the sides to ensure a very strong edge, and across the lower edge where indicated by a dotted line (see A in the diagram), a brass rod is placed. This is held in position by a casing made of the net and stitched to the back of the shade. The brass rod, which should be covered with muslin, is of sufficient weight to hold the shade well in place. The pattern in the net should be used as a guide when shaping the bottom edge. A pleasing effect is obtained by finishing with lace and tassels.

The overdraperies are of a sheer sunfast material but the valance is made of a heavier fabric.

The valance is tacked to a wooden cornice (see B) which is held in place



with angle-irons screwed to the trim of the window. Sockets carrying a 3/8-inch brass rod are fastened to the inside of the cornice, and the overdraperies hang from this rod.



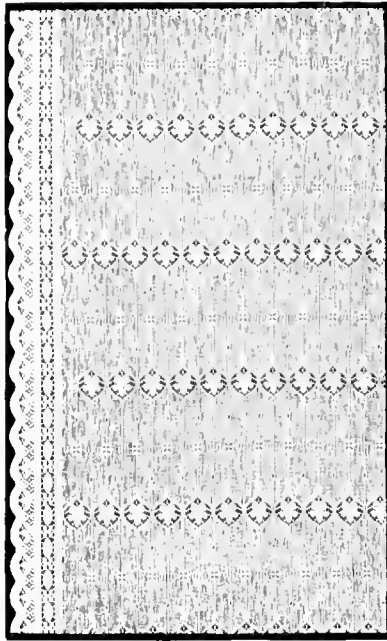
SCRANTON LACE



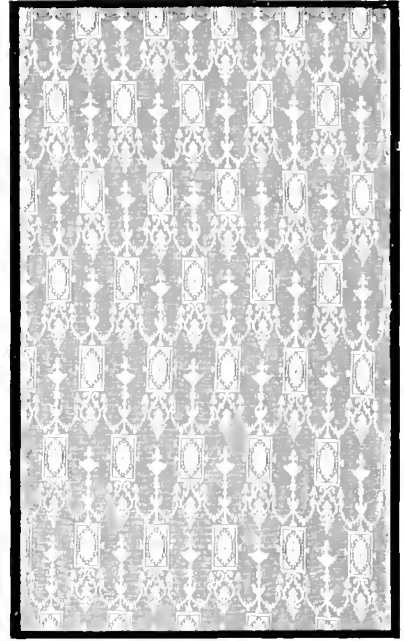
ROLLER SHADES OF NET
Finished with lace and tassels. Heavy valance, and sheer overdraperies



No. 7050.—Good conventional pattern, in the better grade of Filet Net; 52 inches wide; white, ivory or natural.



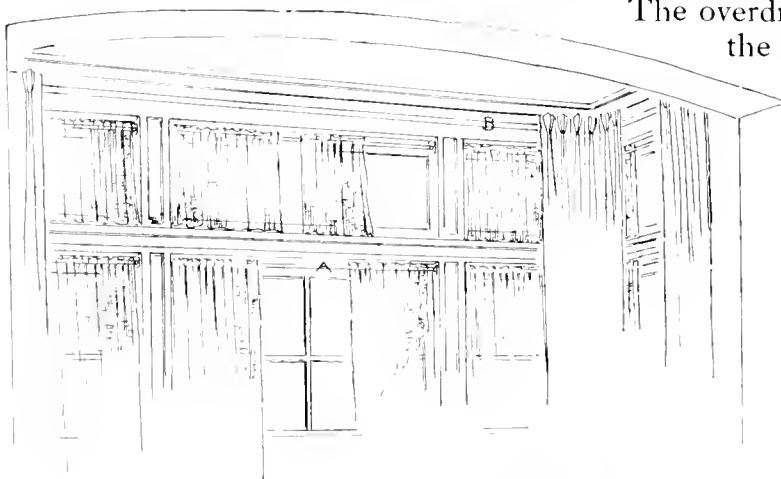
No. 8395.—Unique double bordered net, Egyptian design; good quality; 36 inches wide; white, ivory or natural.



No. 10820.—Unusually good medium priced Filet Net, Adam design; 47 and 76 inches wide; white, ivory or natural.

A Colonial Living-Room

The ivory tones of the woodwork in this Colonial living-room furnish a setting for the simplest of hangings. The net curtains fall straight to the sill from a $\frac{3}{8}$ -inch brass rod (See A in the diagram). The rod is run through a one-inch casing at the top, above which is a one-inch heading.



Two widths are used at the center window, and one width only at the side windows. A one-inch hem is used down the center edges, a two and one-half inch hem at the bottom and a simple roll hem at the back edges. The transom curtains are made in the same manner.

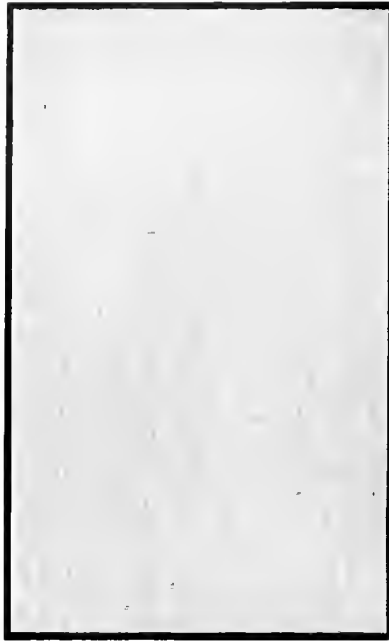
The overdraperies are meant to take the place of shades, and are made with a $2\frac{1}{2}$ -inch pinch pleated heading. Back of the pleats are rings which slip easily upon the pole, making it simple to operate the curtain, which should cover the entire window when drawn. The brass rod carrying the overdraperies is placed on the trim (See B).



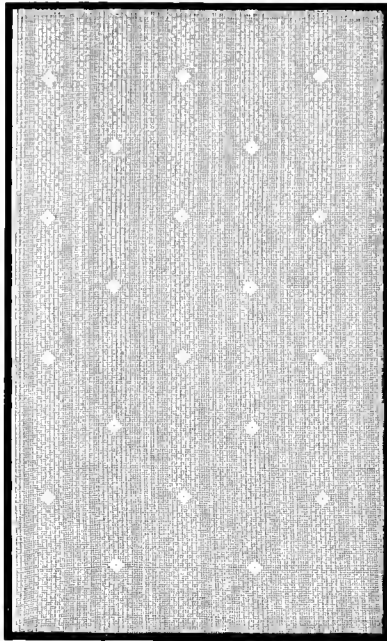
SCRANTON LACE



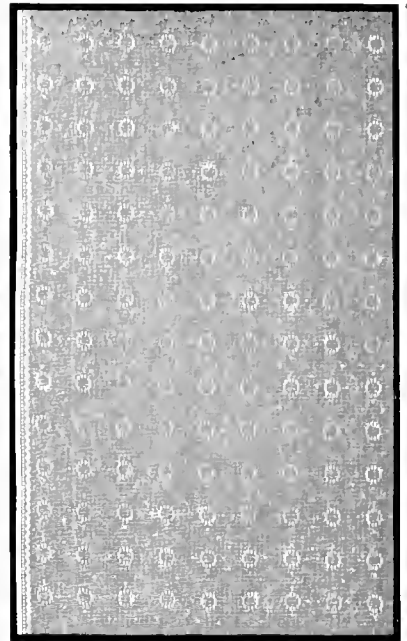
COLONIAL LIVING-ROOM
Simple nets falling straight, with overdraperies in place of shades



No. 9101.—One of the staple numbers in medium priced plain Filets; 42 and 80 inches wide; white, ivory or natural.



No. 10121.—The new stripe effect in the lower priced Filet Net; 36 inches wide; white, ivory or natural.

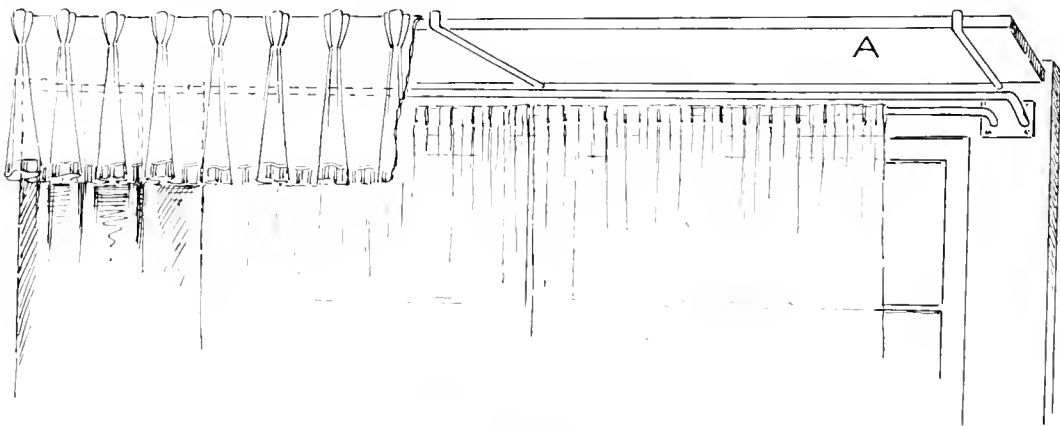


No. 9522.—A popular pattern in the lower priced Filet Nets; 40 inches wide; white, ivory or natural.

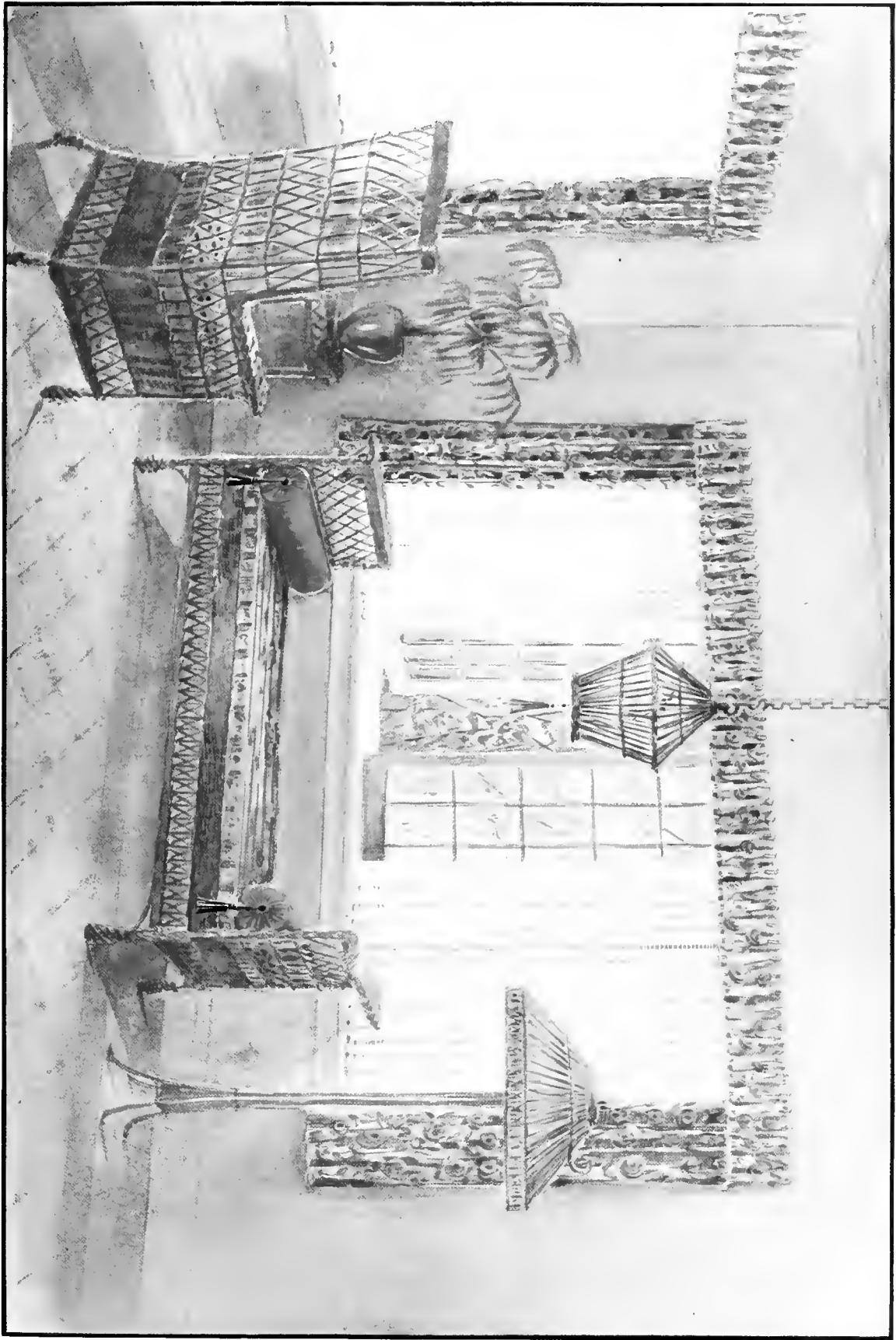
When the Windows Are Wide

The treatment of the living-room of the solarium type should be particularly simple if the most desirable effect is to be obtained. The wide window expanses of such rooms, admitting as they do a veritable flood of sunlight, afford an excellent opportunity for the hanging of simple nets. A fixture carrying two rods is placed

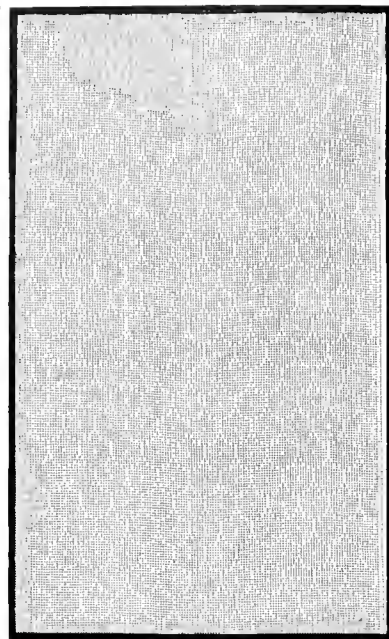
upon the trim of the windows. On the inside rod is hung the decorative Filet Net and on the outer the over-drapery of gaily colored cretonne. The pinch pleated valance is tacked to a flat wooden board, which is placed on the window trim just above the rods carrying the nets and side curtains. (See A in the diagram).



SCRANTON LACE



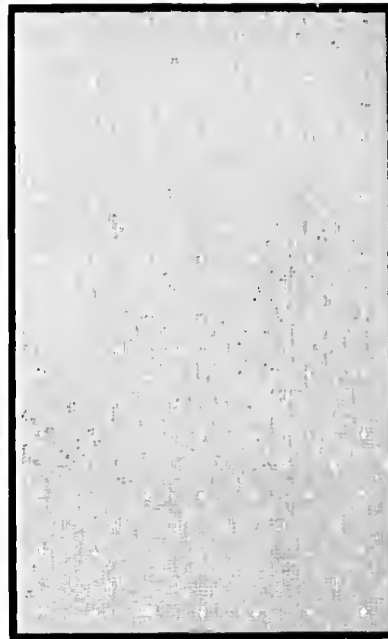
THE SOLARIUM
For wide windows, Fillet Net with cretonne overdraperies and valance



No. 10648.— Popular lower priced Filet Net; in 30- and 36-inch widths; white, ivory or natural.



No. 10319.— Another good lower priced Filet Net; in 30- and 36-inch widths; white, ivory or natural.



No. 10326.— Especially attractive lower priced Filet Net, in small figures; 40 inches only; white, ivory or natural.

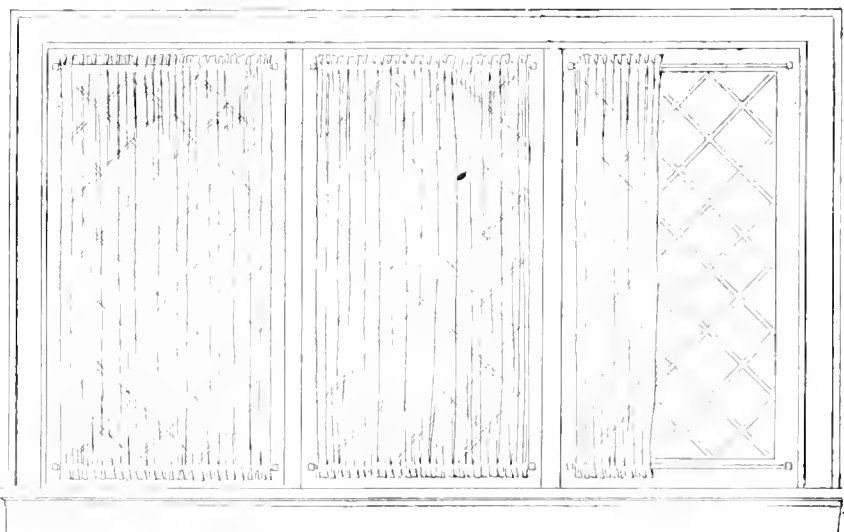
Living-Room Casements

One has very little choice in the way to treat casement windows which are hung to open into the room. If the windows are to be operated with ease the curtains must be held firmly in place. This can be done by shirring the net on $\frac{3}{4}$ -inch brass rods placed at the top and bottom of the window frame.

If a Filet Net is chosen, allow 75 per cent. for fullness. A one-inch heading is made above and below the casing in which the rod is run and the net drawn in place.

It is true that over-

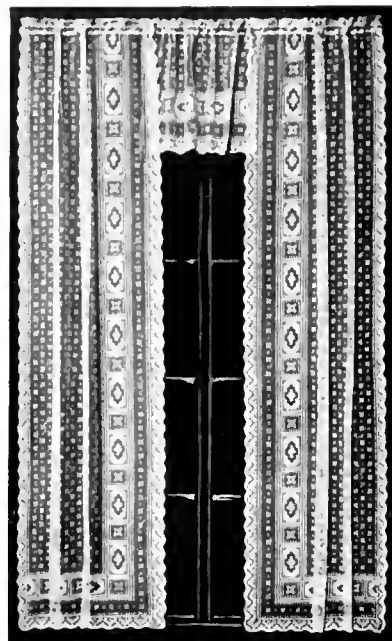
draperies always add a charming bit of color to any room and these are sometimes used at the ends of a casement group. But as a rule, one should rely upon upholstery materials, table runners, lamp shades, etc. for the touches of color.



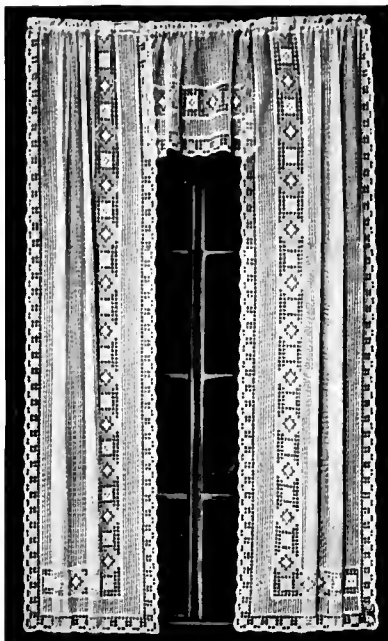
SCRANTON LACE



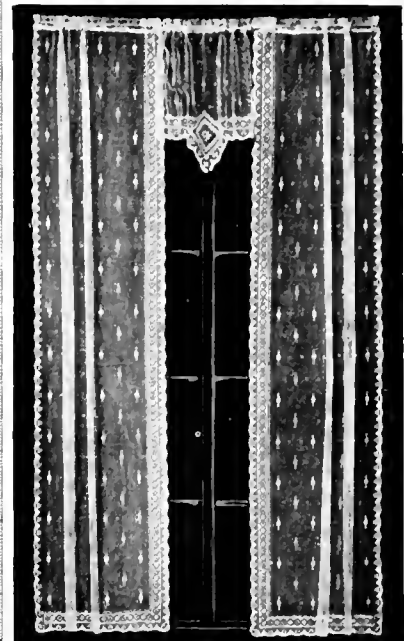
CASEMENTS OPENING INWARD
Filet Net shirred top and bottom, without overdraperies



No. 9979.—Popular Dutch style Filet weave, moderate price; 3 pieces ready to hang; about 2½ yards long, 75 inches wide; white, ivory or natural.



No. 9300.—Good lower priced Dutch style, 3 pieces ready to hang; about 2½ yards long, 82 inches wide; white, ivory or natural.



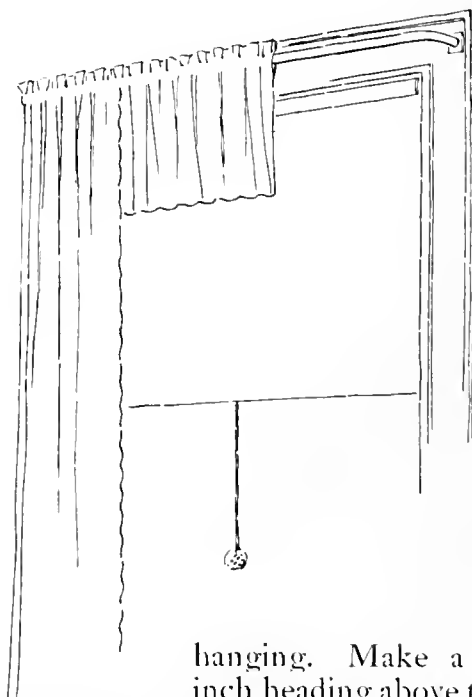
No. 9983.—Fine Dutch style medium priced Filet weave, 3 pieces ready to hang; about 2½ yards long, 75 inches wide; white, ivory or natural.

The Average Living-Room

In many living-rooms are to be found the straight up and down, rectangular windows that, because of their very simplicity, often present considerable of a problem. And yet a little thought and an equally small amount of work, make possible a treatment that is highly satisfactory and pleasing.

When surrounding conditions are such that overdraperies must be eliminated, the Dutch window treatment solves the problem. The valance hanging between the curtains serves to cover the otherwise exposed curtain rod and shade roller, giving a soft, finished appearance to the upper part of the window and leaving the lower portion well exposed.

These curtains are manufactured 2¼ yards in length with firm edges. All the sewing required on such curtains is heading up the top preparatory to



hanging. Make a 1-inch heading above the casing and hang from a ¾-inch brass rod with goose-neck bracket fixture.

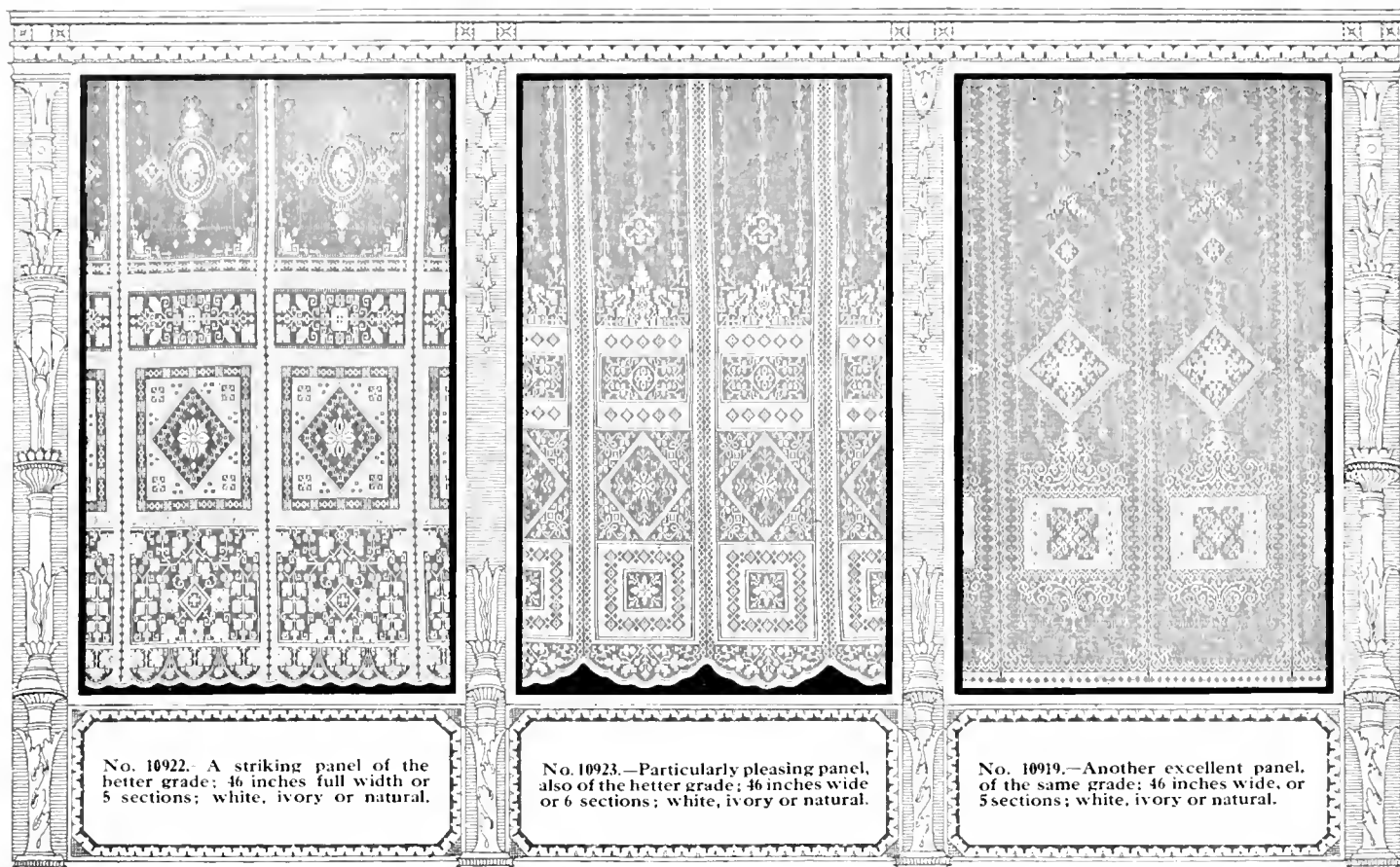


SCRANTON LACE



DUTCH CURTAINS

For the plain window. These curtains come already made up



No. 10922. A striking panel of the better grade; 46 inches full width or 5 sections; white, ivory or natural.

No. 10923.—Particularly pleasing panel, also of the better grade; 46 inches wide or 6 sections; white, ivory or natural.

No. 10919.—Another excellent panel, of the same grade; 46 inches wide, or 5 sections; white, ivory or natural.

A Nook in the Living-Room

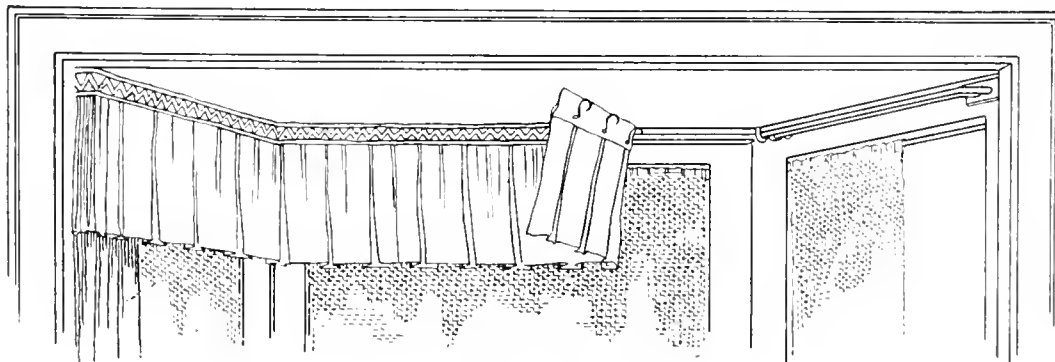
For groupings of various sized windows the panel curtains are particularly adaptable. The design is so carefully wrought out that the width of the curtain may be adjusted to many sizes of windows, while the length may be similarly adjusted up to three yards.

These are hung from 3/4-inch brass rods placed on the window jamb, or they may be placed on the trim if it is advantageous to cover the woodwork.

All the sewing required upon such curtains is making a loose casing at the top through which the rod is slipped.

The plain overdrapery, which hangs straight to the apron of the sill, serves to accentuate the beauty of the net.

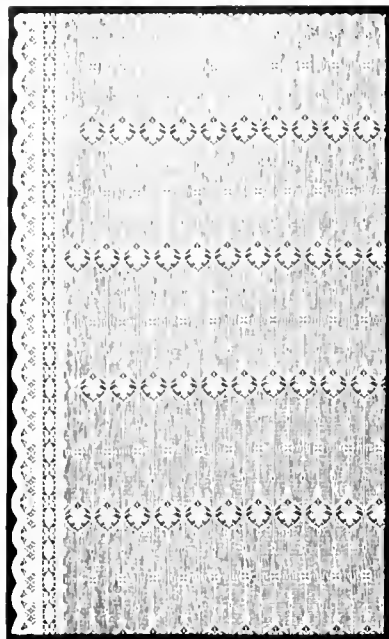
The fixture carrying the valance and side drapery holds two rods. From the inner one hangs the side curtains. To the outer, the valance is attached by means of hooks.



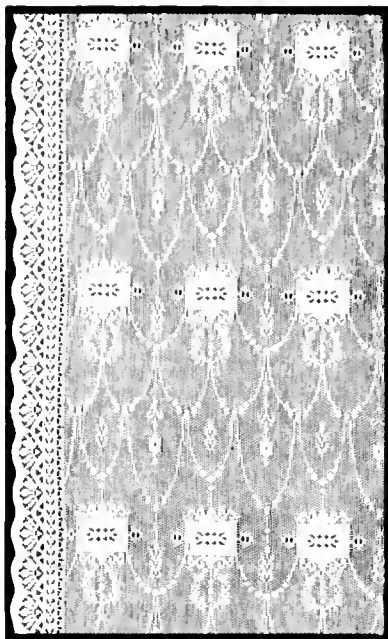
SCRANTON LACE



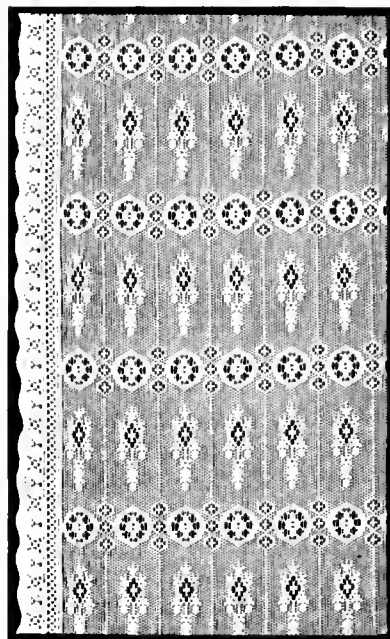
GROUPED WINDOWS
Panel designs, with plain overdraperies



No. 8395.—Double bordered net, Egyptian design; good quality; 36 inches wide; white, ivory or natural.



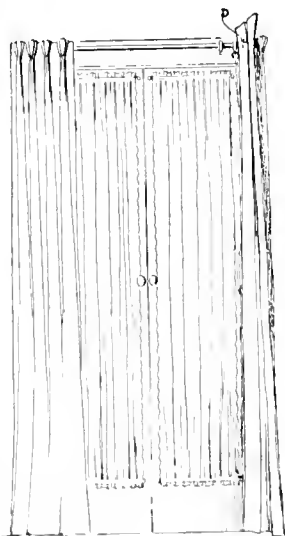
No. 9621.—Ornate festoon design with finished double border; 36 inches wide; white, ivory or natural.



No. 9623.—Pleasing double border, somewhat after the Egyptian style; 46 inches wide; white, ivory or natural.

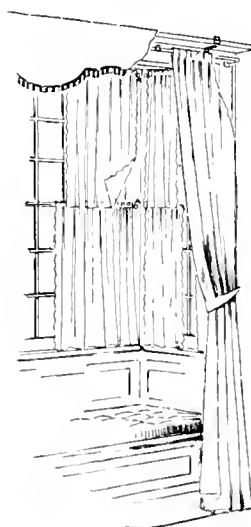
Solving a Double Problem

A novel treatment for a double-hung window is a separate set of curtains for the upper and lower sashes. These are hung from $\frac{3}{4}$ -inch brass rods placed on the trim of the window (see A in the diagram) and each is made with a 1-inch heading above the casing at the top, with a 2-inch hem at the lower edge. The net suitable for this use is 36 inches in width and is finished at both sides with a strong, well proportioned bordered edge. One width of this net is used on each of the



French doors, being shirred at top and bottom and drawn in place on a $\frac{3}{4}$ -inch rod.

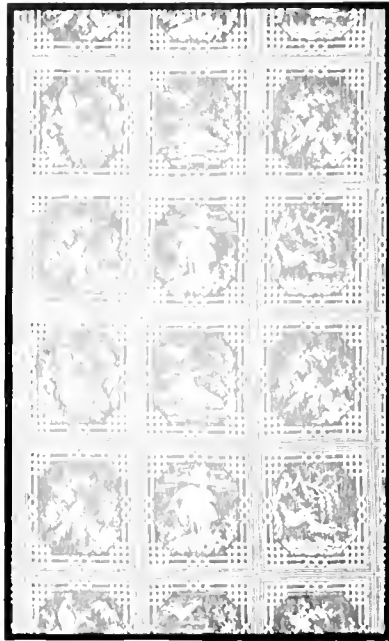
The drapery valance is mounted upon a flat wooden cornice placed on the trim and held fast by angle irons (see B). The draperies proper are hung from a $\frac{1}{2}$ -inch brass rod (see C) placed just beneath the cornice, and held back with tie-backs of the same material. Omit the valance at the doors. Make the drapery with a pinch pleated heading. Hooks sewed back of the pleats (See D), slip into the eyes of the rings that slide on a brass pole.



SCRANTON LACE



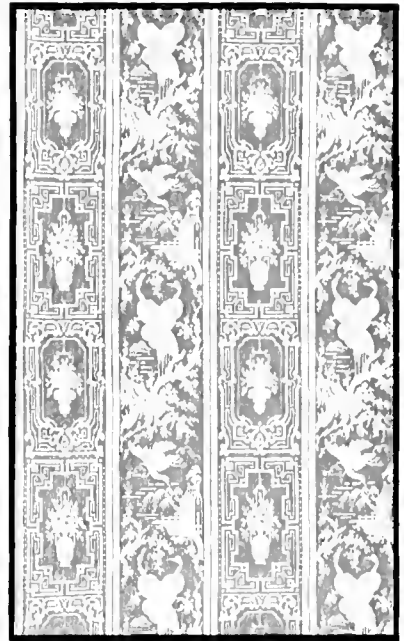
DOUBLE-HUNG WINDOWS
With French doors curtained to match



No. 10903.—Japanese panel effect, in the finer Filet Net; for shades or panels or regular draping; 5 panels wide or 45 inches; white, ivory or natural.



No. 10868.—Also Japanese, in best Filet Net; for shades, door panels and general draping; width and colors same as No. 10903.



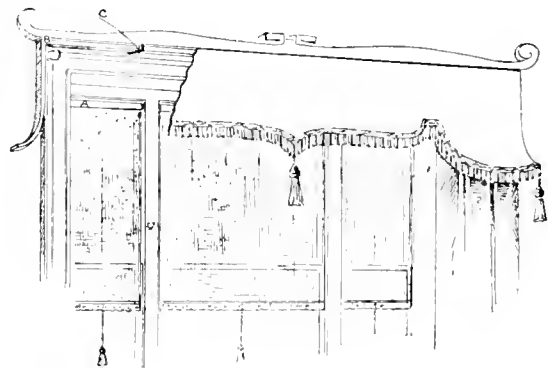
No. 10869.—Another Japanese pattern of the best Filet Net; treatment same as No. 10868; six panels wide or 45 inches; white, ivory or natural.

A Suggestion of the Orient

The vogue for furnishings from the Far East affords an opportunity for a distinct variation from conventional treatment, and if not overdone adds a decidedly artistic touch to the well-furnished home.

For this particular window a Filet Net with characteristic Oriental design is suggested. The net is mounted upon a wooden shade roller (See A in the diagram) and operates the same as the ordinary shade. A flat tape is stitched down the side edges in order to give the necessary strength. At the lower edge of the shade, just above the finishing edge, a small brass rod is placed in a casing which serves as a weight to hold the shade in place. The tassel pulls add much to the finished effect of the shade.

The valance of unique Oriental design is made of plain green velvet and



mounted upon a wooden frame (See B) which is held in place on the trim of the window with wire supports (See C). The exposed portion of this frame is painted black like the standing woodwork in the room.

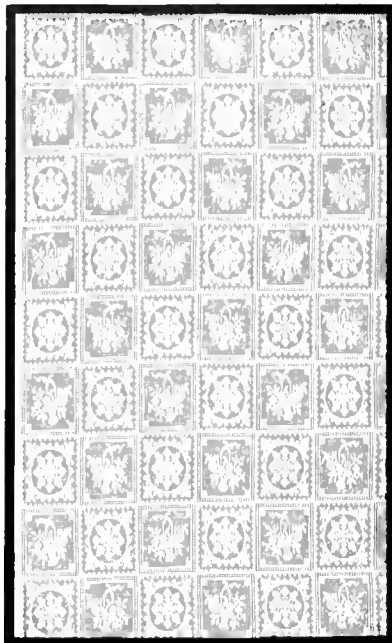
The rich and decorative overdraperies of green and gold brocade fall straight to the floor from a one-inch brass tubing placed on the trim of the window just below the wooden frame holding the valance.



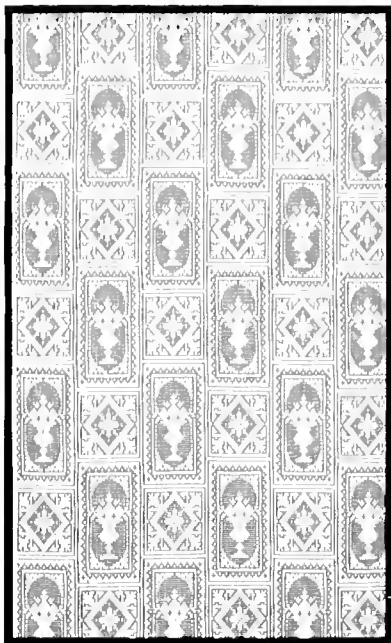
SCRANTON LACE



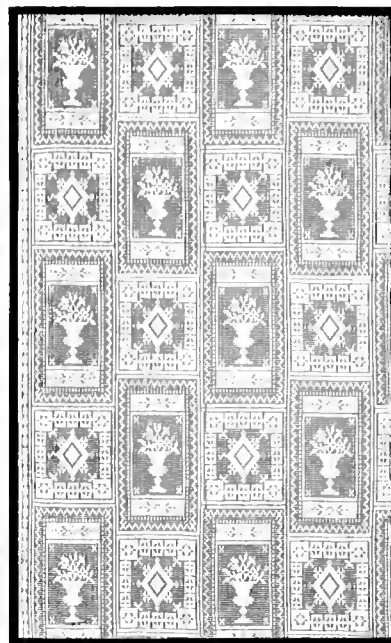
JAPANESE SHADES OF NET
With rich, decorative overdraperies and valance



No. 10233. Conventional pattern of the popular Filet Net block type; 45 inches wide; white, ivory or natural.



No. 10651. Good filet block, Italian style, better medium grade; 40 inches wide; white, ivory or natural.

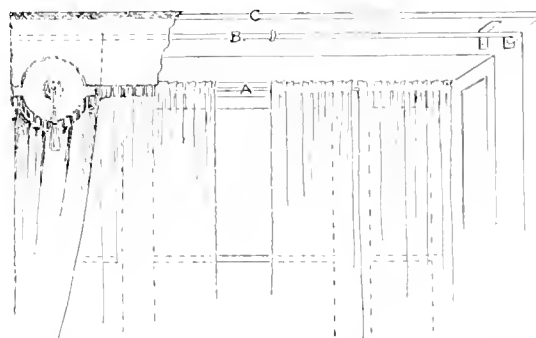


No. 10865. Popular pattern of Filet Net block, conventional design; 45 inches wide; white, ivory or natural.

An Excellent Dining-Room

The treatment of this dining-room is sure to make a strong appeal, because to the discriminating taste, the combination of crystal, damask and fine nets is always irresistible.

The windows above the recessed seat are curtained with a Filet Net showing a block pattern. On account of the pronounced design, very little fullness should be allowed. Two lengths are used at the center window and one length at each of the narrow side windows. These should hang straight and just clear the window sill. At the top a one-inch heading is made above the loose casing which holds the rod. A one-inch hem is turned at the center edges, there is a two-and-one-half-inch hem across the bottom and a roll hem at the back edges. These are hung from a $\frac{3}{8}$ -inch brass rod placed on the window trim (See A in the dia-



gram). The overdraperies are hung from the casing of the recess. The side curtains of a figured fabric are caught back in soft folds with bands of plain green velvet, the same as used for the valance.

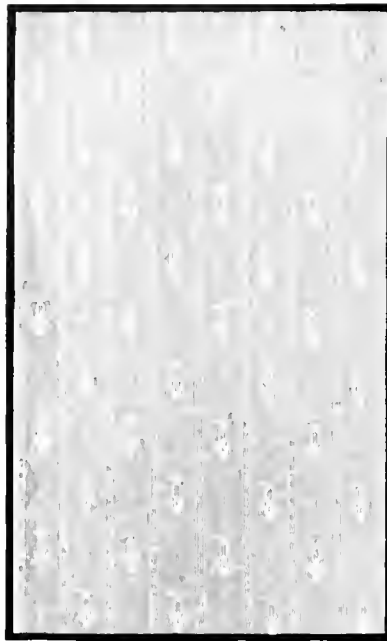
The overdrapery is hung from a one-half-inch brass rod (See B). The valance is tacked to a flat wooden cornice (See C), which is supported by angle irons and placed just above the rod holding the over-curtain.



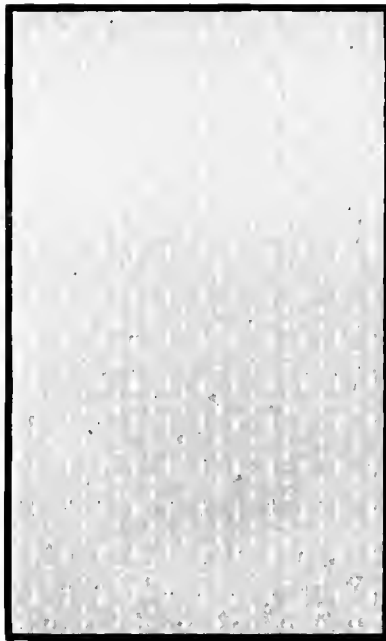
SCRANTON LACE



A DINING-ROOM
Block pattern of pronounced design



No. 10219. - New novelty stripe effect; better grade Filet Net; 46 and 70 inches wide; white, ivory or natural.



No. 10717. Particularly pleasing Filet Net of the better grade; 42 and 70 inches wide; white, ivory or natural.



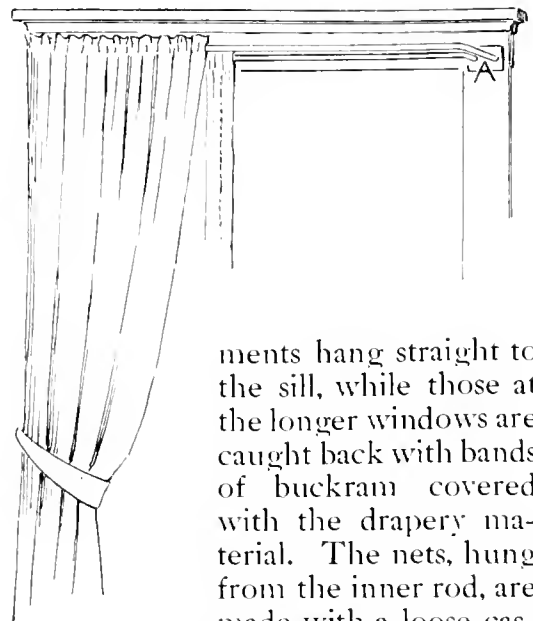
No. 9568. - Pleasing stripe effect in the better grade Filet Net; 42 and 70 inches wide; white, ivory or natural.

When Simplicity is Best

One of the most frequent problems met with in the dining-room is the row of several casement windows, flanked on either side by a long window. In such cases the most satisfactory results are obtained by strict adherence to dainty patterns and by making the curtains and overdraperies as simple as possible.

The Filet Net curtains are shirred on a $\frac{3}{8}$ -inch brass rod and hang straight to the sill. These are drawn back slightly though the panes may be covered if one wishes.

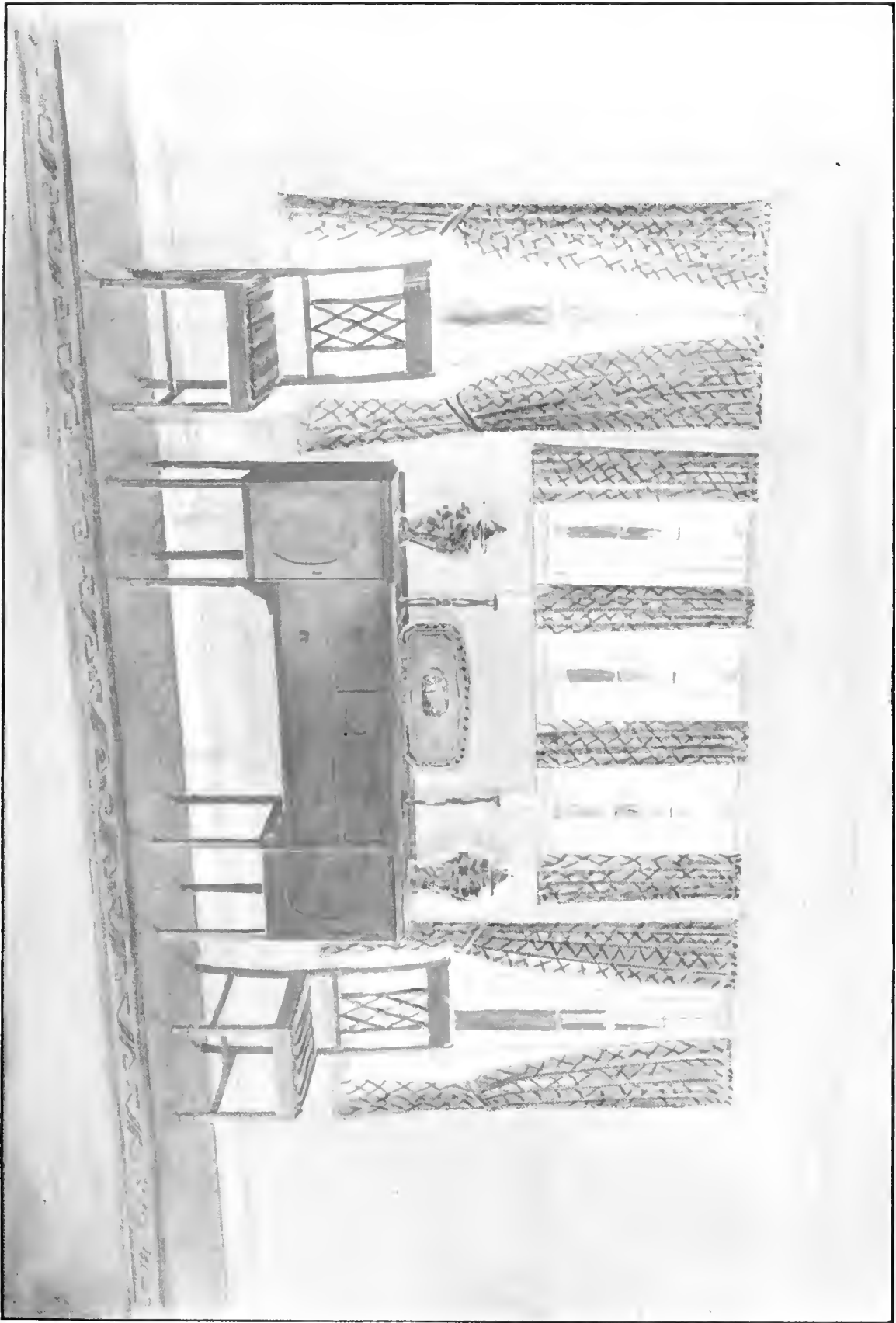
The fixture used holds two rods and therefore, carries both sets of curtains (See A in the diagram). Upon the outside rod is hung the overdrapery, which is made with a 1-inch heading above the casing, a 1-inch hem at the sides and a 3-inch hem across the bottom. The draperies at the case-



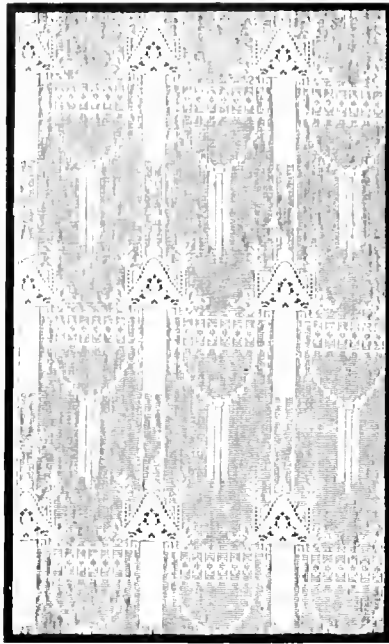
ments hang straight to the sill, while those at the longer windows are caught back with bands of buckram covered with the drapery material. The nets, hung from the inner rod, are made with a loose casing at top without heading, a 1-inch hem at the center edges, a 2-inch hem at the bottom and a simple roll hem at the back edges.



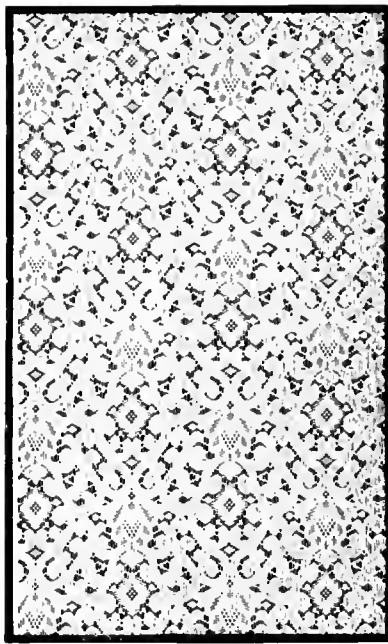
SCRANTON LACE



FOR VARIED WINDOWS
Casements hanked by long windows demand simple treatment



No. 9721.—Striking Egyptian pendant pattern, better grade, regular weave; 45 inches wide; white, ivory or natural.



No. 8281.—Exceptionally good old lace design, better grade, regular weave; 46 inches wide; white, ivory or natural.



No. 10707.—A dainty butterfly design of the better quality Filet Net; 45 inches wide; white, ivory or natural.

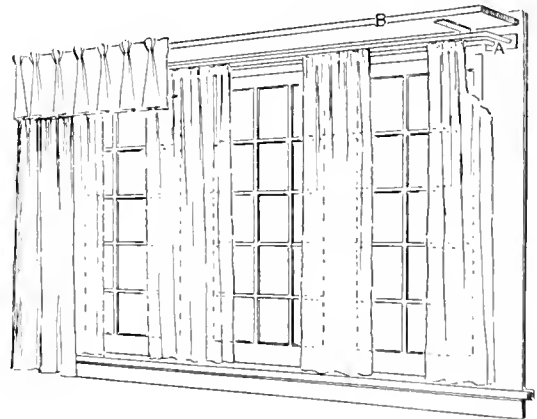
The Windows Over the Buffet

In the dining-rooms of a great many modern dwellings the architects have placed a group of windows above built-in furniture. Such windows frequently offer an opportunity for pleasing decorative effects.

The group of casement windows above the built-in buffet in this dining-room has been curtained with one width of net at either end and one width over each mullion. These curtains hang straight to the sill and are made with a loose casing at the top which is to hold the rod, a 1-inch hem at the sides and a 2½-inch hem across the bottom edge.

The overdrapery is used simply to outline the window and add a needed bit of color. One width of mulberry material is hung at either end of the group. A shallow pinch pleated valance carries the color across the

top and forms an attractive frame. The overdraperies and nets are hung from a fixture carrying two ¾-inch



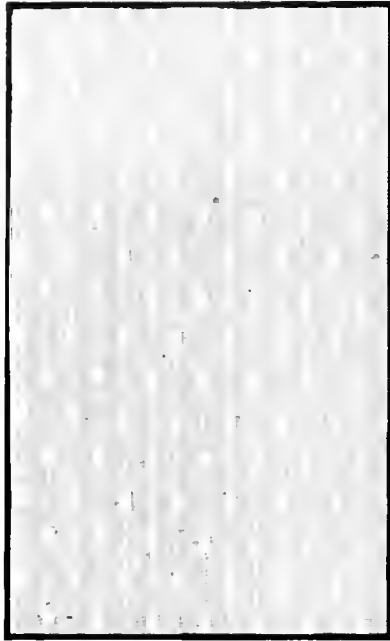
brass rods (see A in the diagram) which are fastened to the trim of the window. On the inner rod hang the net curtains and on the outer the overdrapery. The pinch pleated valance is tacked to a wooden cornice (see B).



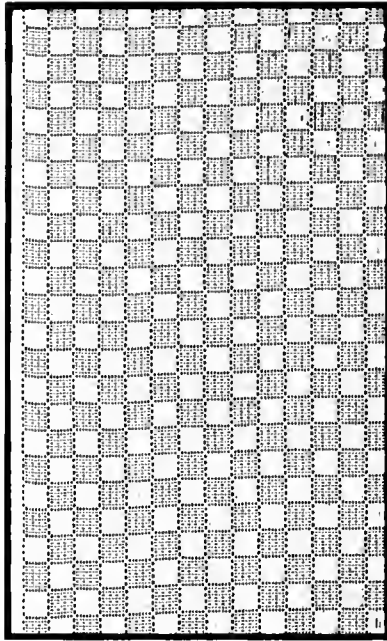
SCRANTON LACE



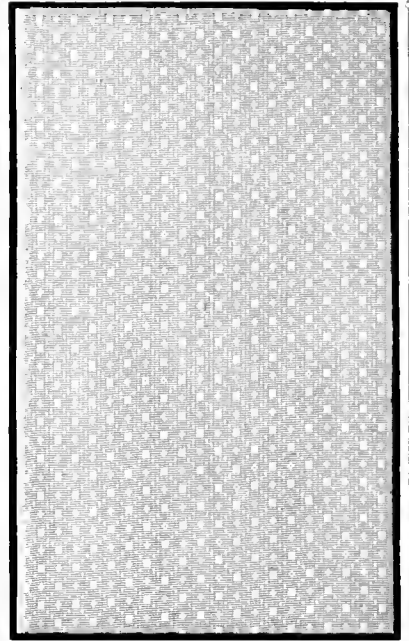
OVER THE BUILT-IN BUFFET
Straight-hung nets, with colored overdraperies and valance



No. 10136.—A popular Filet Net, stripe effect, medium price; 42 and 80 inches wide; white, ivory or natural.



No. 9652. Pleasing allover small square Swiss weave effect; 40 inches wide; white, ivory or natural.



No. 10756.—A favorite small design, of lower priced Filet Nets; 36 and 40 inches wide; white, ivory or natural.

The Cheerful Breakfast-Room

Owing to the diversity in size, shape and grouping of windows in the majority of breakfast and dining-rooms, an excellent opportunity is offered for the display of originality and individuality in the hangings.

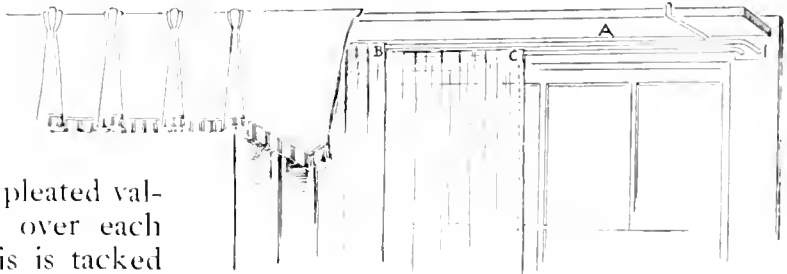
Rooms of this character should, above all else, radiate cheerfulness. The wall spaces are, as a rule, small, so one must depend largely upon the hangings and furnishings for color. It is for just such rooms that the painted and decorated furniture has been found to be so helpful and pleasing.

A pair of net curtains is hung at each window. Between the windows, as well as at the ends, is hung one width of gaily figured cretonne. A shaped and pleated valance is made to extend over each group of windows. This is tacked

to a flat wooden board (See A in the diagram) which is placed on the trim of the window just above a fixture carrying two $\frac{1}{2}$ -inch brass rods, one for the overdrapery (See B) and one for the net (See C).

The net curtains are made with a loose casing at the top through which the rod is slipped. A one-inch hem should be used down the center edge. A two-inch hem at the bottom and a roll hem at the back edge.

This treatment will produce a very attractive and desirable effect.



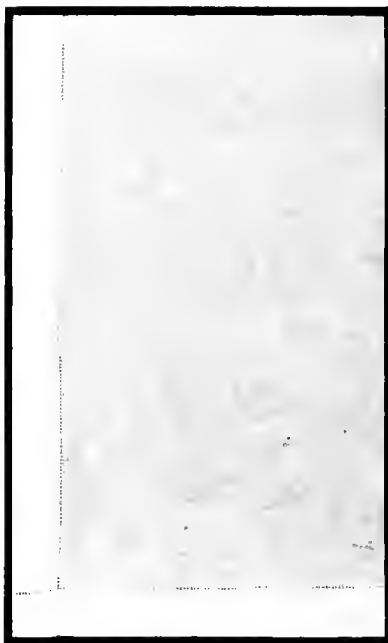
SCRANTON LACE



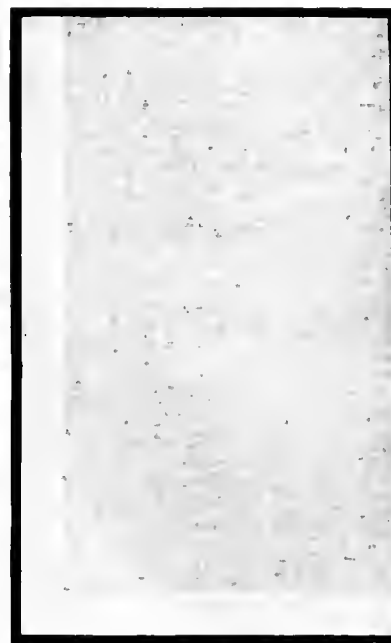
THE BREAKFAST ROOM
Filet Net with bright cretonnes



No. 269. An exceptionally good plain hemstitched voile curtain; 2½ yards long; white, ivory or natural.



No. 238. A very popular plain hemstitched marquisette curtain; 2½ yards long; white, ivory or natural.

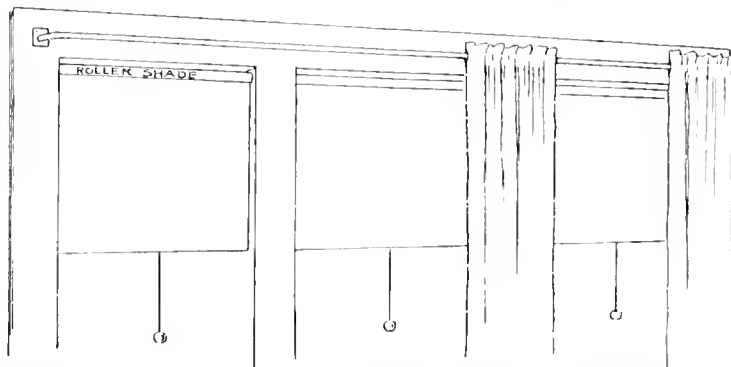


No. 422. A good scrim curtain for inexpensive use, plain hemstitched; 2½ yards long; white, ivory or natural.

For the Model Kitchen

Any room in which a woman must necessarily spend so much time as she spends in the kitchen, is deserving of the very best planning. The architects of today are giving much thought to the architectural details of the kitchen and are helping to solve the problem of sanitation and convenience, and to some extent, the question of light. But the latter is still largely the housewife's problem while the equally important matter of affording a restful center for the eyes, is entirely so. The kitchen window affords just such a center and it is important, therefore, that the treatment be right. Sturdy curtains of scrim, voile or marquisette will withstand the inevitable steam vapors and frequent tubbings.

These are made from 32 to 35 inches in width and two-and-one-half yards long. The center and bottom edges are finished with a two-inch hemstitched hem. All the sewing required



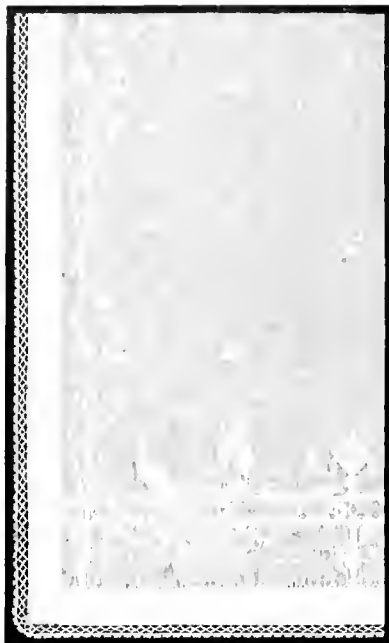
is the making of a loose casing at the top, above which is a one-inch heading. The curtains should hang straight to the sill from a 3/8-inch nickel rod supported by projecting brackets.



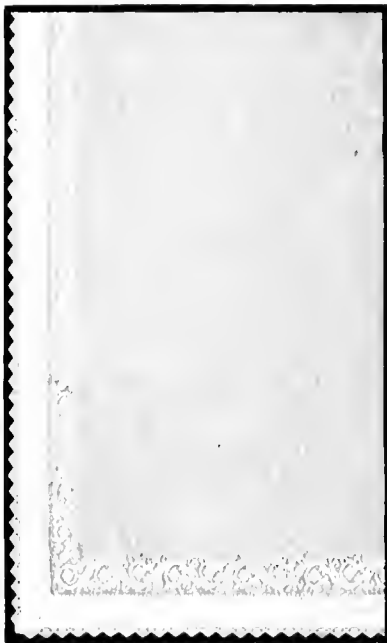
SCRANTON LACE



A BRIGHT KITCHEN
Plain hemstitched voile, scrim or marquisette



No. 1116.—Popular best grade, MAID-O-NET, in fine Filet Net with lace edge; 2½ yards long, 40 inches wide; white, ivory or natural.



No. 1116. Another exceptional MAID-O-NET, fine grade of Filet Net with lace edge; 2½ yards long, 40 inches wide; white, ivory or natural.

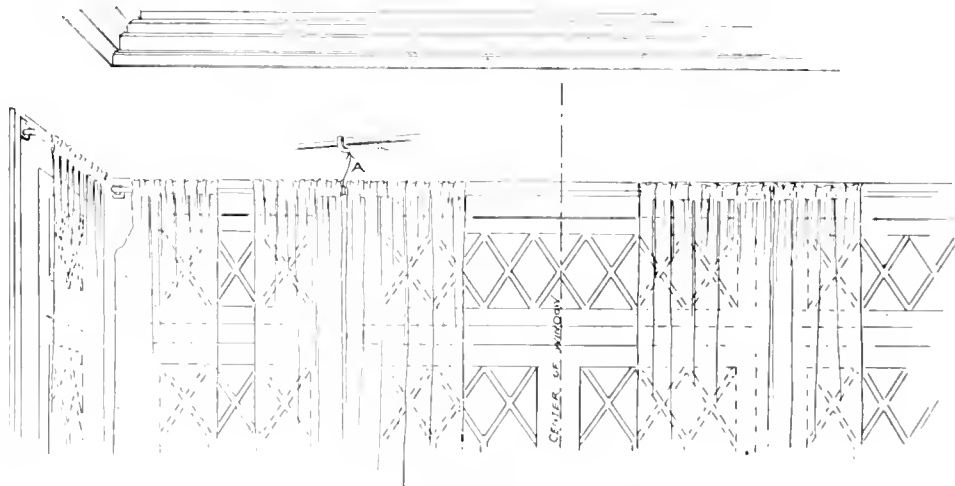


No. 1117. Equally good MAID-O-NET, fine Filet Net border of Adam design, lace edge; 2½ yards long, 40 inches wide; white, ivory or natural.

On the Stairway Landing

The curtains for casement windows having a stationary transom, are hung straight to the sill from 3½-inch projection brackets. To prevent the rod from sagging across the broad sweep, a support should be used at either side of the central windows (See A in the diagram).

A single curtain is hung at the side windows and one pair hung at each of the other windows in the recess. At top the curtains have a one-inch heading above the casing carrying the rod. A two-inch hem is used at the center edge and across the bottom. On the edge is placed a narrow lace.

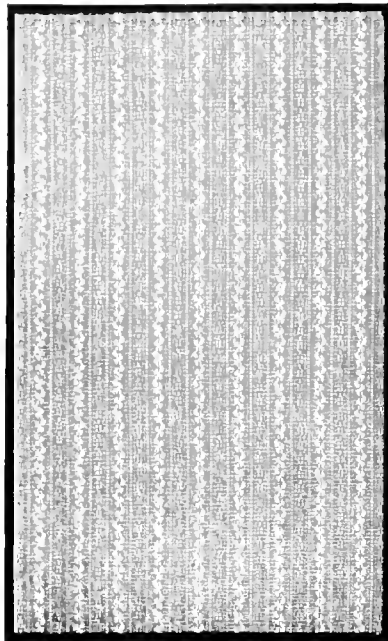


SCRANTON LACE

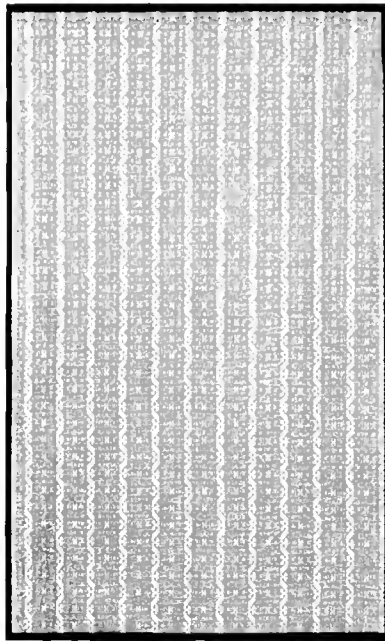


STAIRWAY CASEMENTS

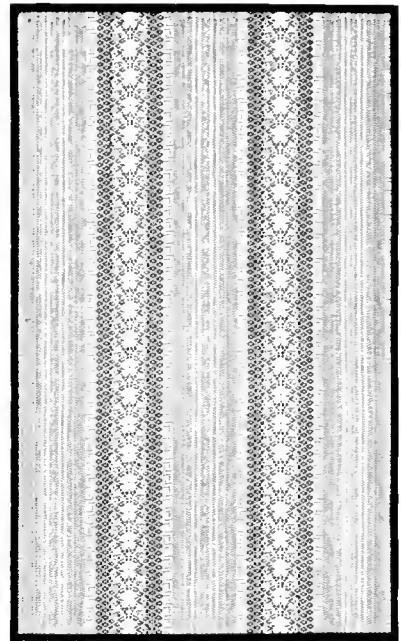
With stationary transom. Maid-o-Net curtains, hung straight to sill



No. 1074.—Popular striped effect in medium priced Filet Net; 40 inches wide; white, ivory or natural.



No. 9550.—Fine striped effect in medium priced Filet Net; 40 inches wide; white, ivory or natural.

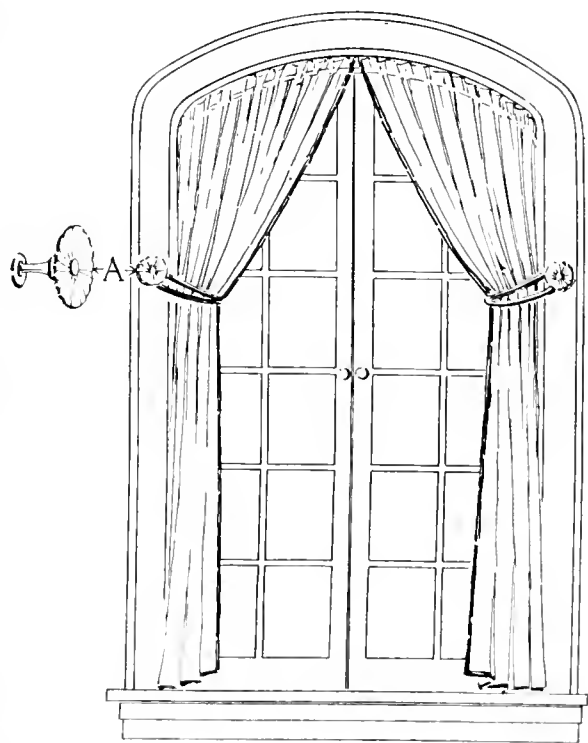


No. 9717.—Stylish stripe net, in the regular weave, better grade; 42 inches wide; white, ivory or natural.

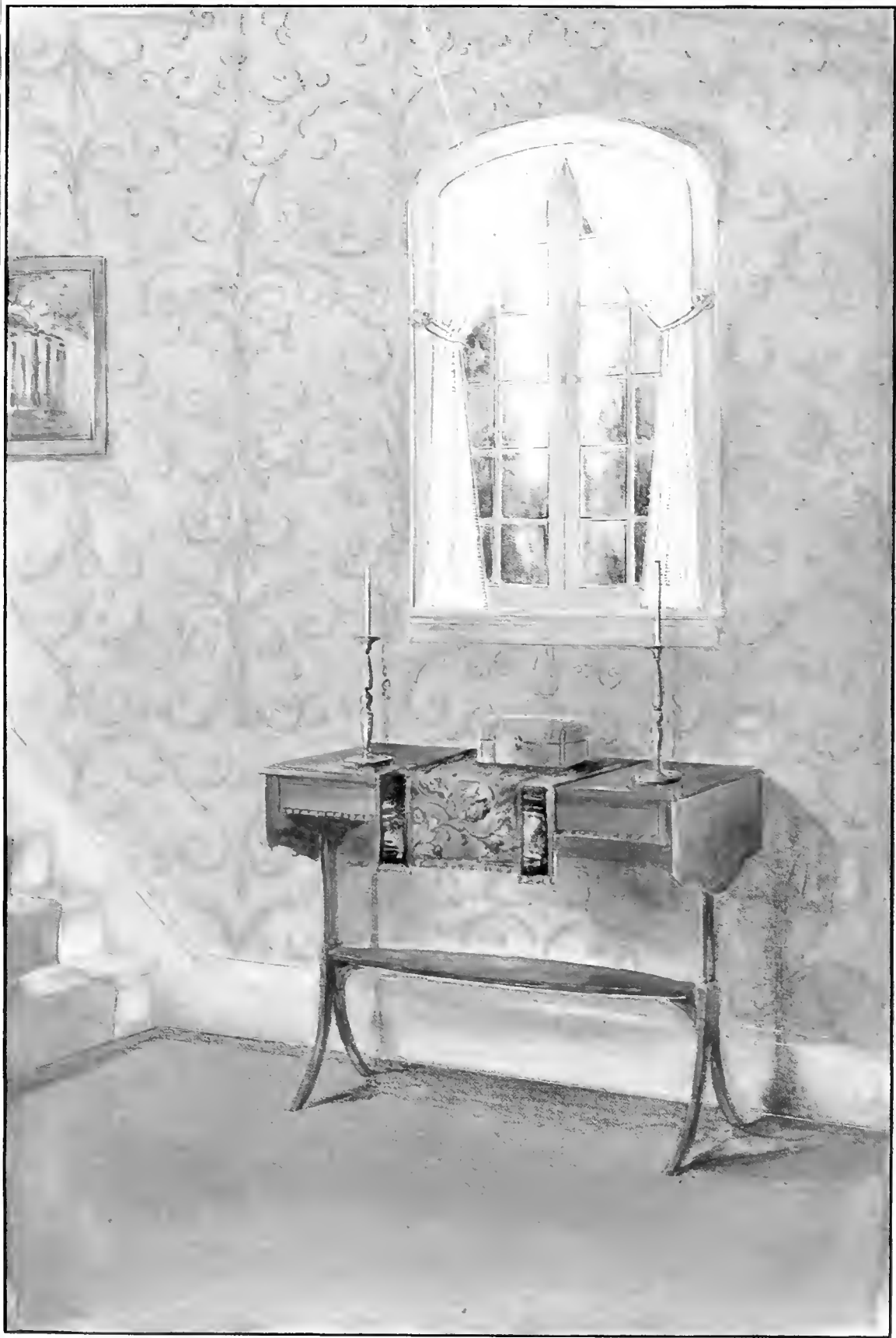
Brighten Up the Hallway

Special thought should be given the treatment of every hallway window, in order that a maximum amount of light may be admitted. This object can best be attained by omitting the overdraperies, and taking especial care to select the right kind of net.

At this particular window a sheer net is shirred on a $\frac{3}{8}$ -inch brass rod with a one-inch heading above the casing, and is caught back about one-third of the distance from the top in soft folds. A touch of color is added by binding the center edges and bottom with a colored taffeta about one-inch in width. The tie-backs are made of the same taffeta. A metal rosette (See A in the diagram) will also give an individual touch if used in the place of the ordinary invisible hook. A simple roll hem is used at the back edges of the curtains. Seventy-five per cent. should be allowed for fullness.



SCRANTON LACE



IN THE UPSTAIRS HALL.

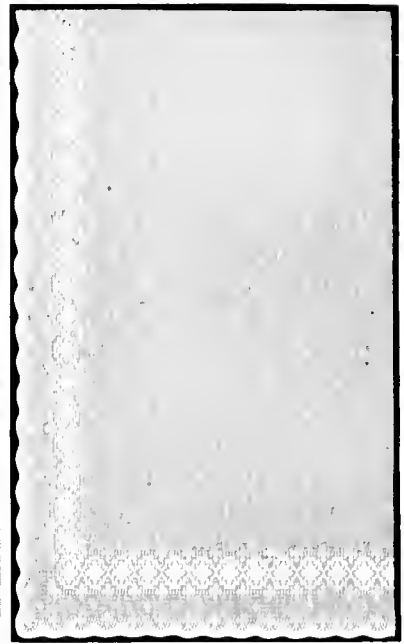
Where plenty of light is needed. Sheer net caught back and bound with colored taffeta



No. 10355.—A very pleasing Filet Net curtain, dainty floral border, and plain net center; 36 inches wide by 2½ yards long; white, ivory or natural.



No. 10523. Popular Filet Net curtain, dainty border and dot and small figured center; 40 inches wide by 2½ yards long; white, ivory or natural.

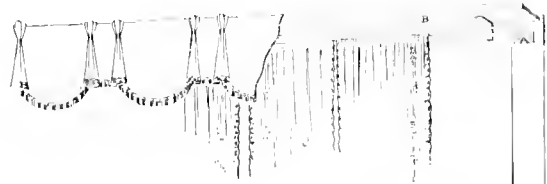


No. 10519. Fine Filet Net curtain, conventional border, dot and small figured center; 40 inches wide by 2½ yards long; white, ivory or natural.

For the Cretonne Boudoir

The charm of the boudoir with panelled walls and cretonne covered furniture, is centered about the broad windows. These may be so draped as not to exclude the sunlight and yet give the needed touch of color to enhance the opening and take away the bare effect of the frame work, by using a shaped and pleated valance of the same cretonne as is used for the furniture covering. For the down curtains at either end use a fabric showing a solid color which will emphasize one of the predominating colors in the cretonne. These are caught back with bands covered with the curtain material.

One pair of bordered Filet Net curtains is used at each window. These are manufactured 36 inches in width and two-and-one-half yards in length. All that is required is the making of a loose casing at the top through



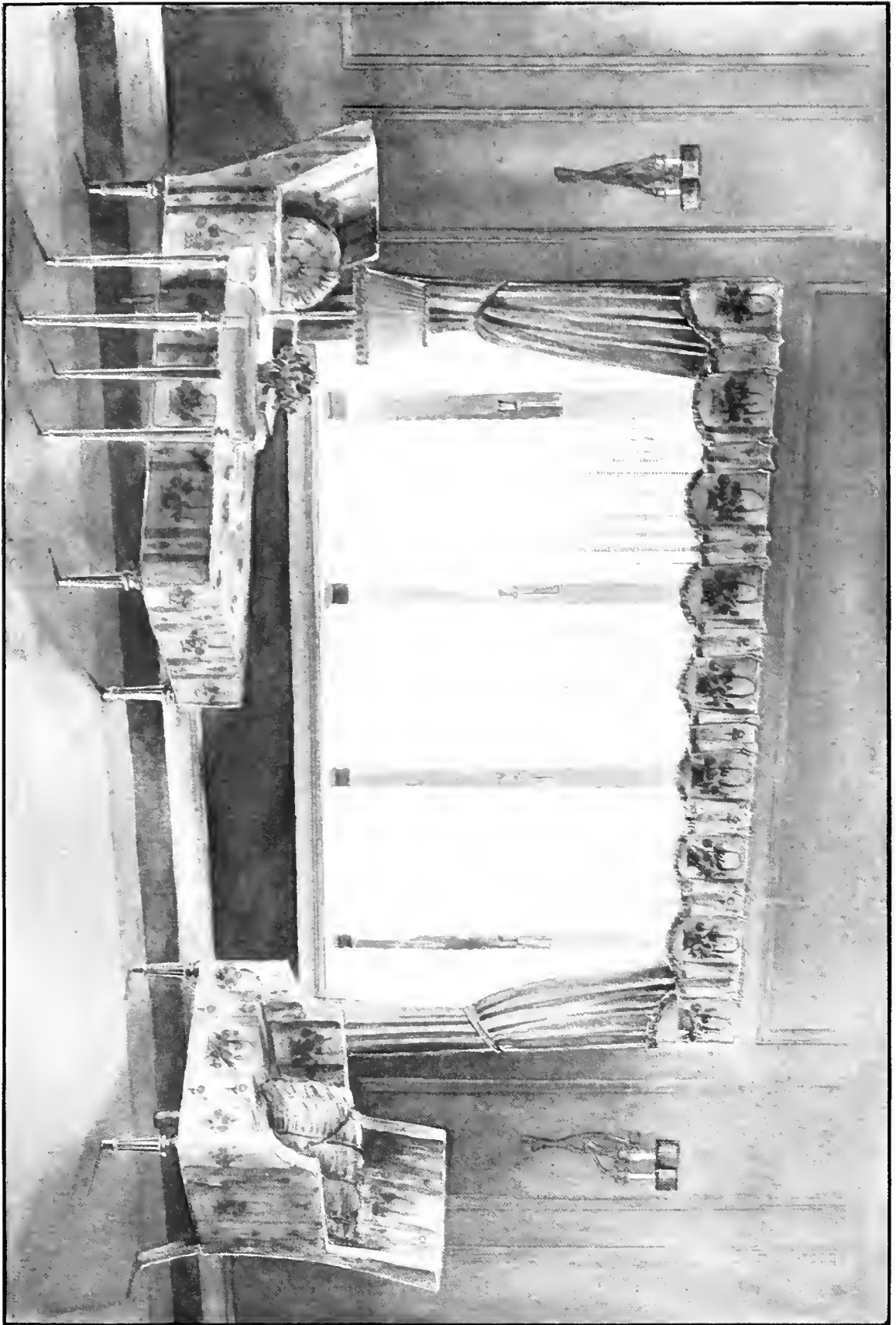
which the rod is run. The net curtains should reach to the sill only.

The down curtains at either end of the group should reach to the apron of the sill. A loose casing for the rod is made at the top—a one-inch hem at the sides and a three-inch hem across the bottom. The bands which hold back these curtains are made of stiff buckram covered with the same material as the curtains. One fixture holding two rods carries both curtains (See A in the diagram).

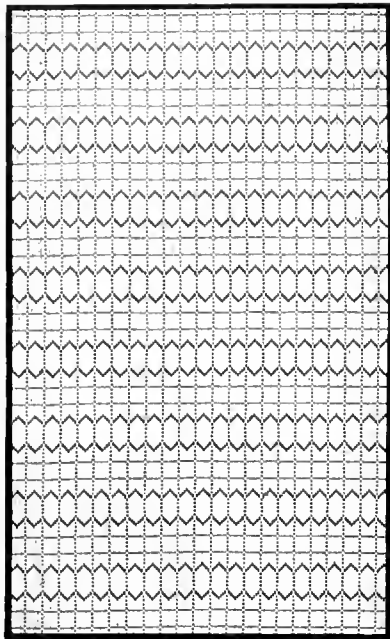
The shaped and pleated valance is mounted upon a flat board which is held in place by angle-irons attached to the frame of the window (See B).



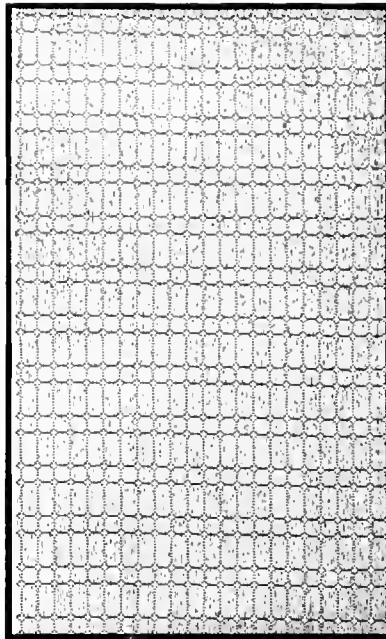
SCRANTON LACE



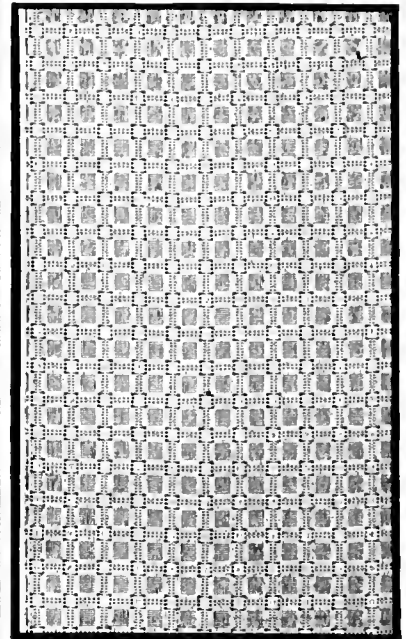
A WELL-LIGHTED BOOBY
Net, shaped and pleated valance to match furniture coverings



No. 9651.—Especially good cathedral glass effect, all-over net. Swiss weave; 40 inches wide; white, ivory or natural.



No. 10792.—Exceptionally attractive, all-over small square, Swiss weave; 40 inches wide; white, ivory or natural.

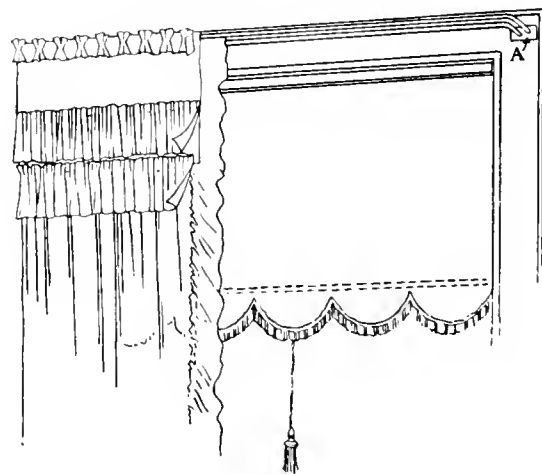


No. 10157.—Very neat and popular, all-over small square. Swiss weave; 40 inches wide; white, ivory or natural.

Just the Average Bedroom

Nets frequently serve a two-fold purpose in bedrooms. The same design used at the windows may often be converted into attractive bedcoverings. For the average size window, one width of material is sufficient for each curtain. A three-inch ruffle with a one-half-inch heading is used down the center edge with two ruffles across the bottom. The valance is finished with a ruching at the top and two ruffles across the bottom. The foundation of the valance upon which the ruffles are mounted is made with a casing at the top through which the rod is run. This section of the valance is practically plain, there being just enough fullness allowed to make it fall from the rod without drawing. This design requires eight yards of material for the average window.

The fixture upon which the curtains and valance are mounted carries two $\frac{3}{4}$ -inch brass rods. (See A in the diagram).



A bedcover, for a full size bed, will require six and one-half yards.

The window shade is made of cretonne and is mounted and operated the same as an ordinary shade. When the lower edge of the shade is shaped as shown, sew a casing at the back, where indicated by dotted line, in which a $\frac{3}{4}$ -inch brass rod is placed.



SCRANTON LACE



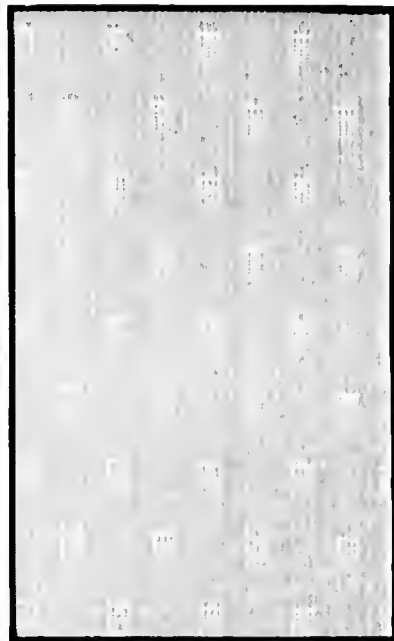
A DAINY BEDROOM WINDOW
Allover net, Swiss weave, with ruffled valance and edges, and
cretonne shade. Bedcoverings to match



No. 9120.—Filet point d'esprit net of fine quality; 42 inches wide; white, ivory or natural.



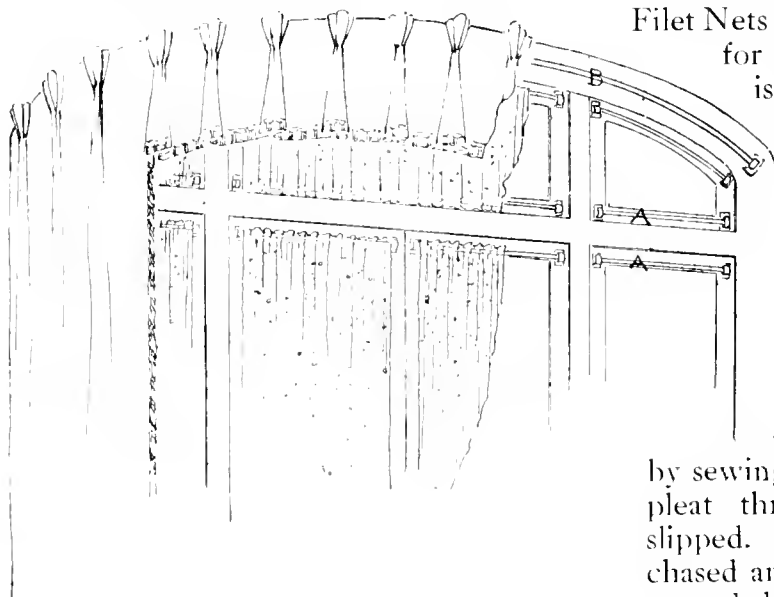
No. 10716.—An exceptionally good figured pattern of Filet Net; 52 inches wide; white, ivory or natural.



No. 10714.—A very pleasing stripe effect in fine quality Filet Net; 52 inches wide; white, ivory or natural.

A Boudoir in Light Colors

In boudoirs where the color scheme is delicate and the furnishings light in character, plain fine Filet Nets, or those showing small patterns, are best suited for the windows.



A $\frac{3}{8}$ -inch brass rod is placed at the top and bottom of the casement windows as well as on the transoms (See A in the diagram) upon which the net is tautly drawn. Where fine Filet Nets are used, allow 100 per cent.

for fullness. A one-inch hem is used at the sides and a one-inch heading is made above and below the casing which holds the rod.

The overdrapes, which have a pleated valance between the side hangings, are hung upon a $\frac{1}{2}$ -inch brass rod placed on the trim (See B), and are held in place

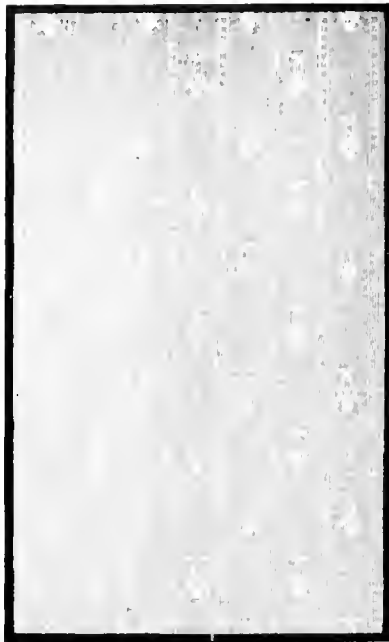
by sewing a brass ring back of each pleat through which the rod is slipped. A straight rod must be purchased and bent to conform to the curved shape of the windows.



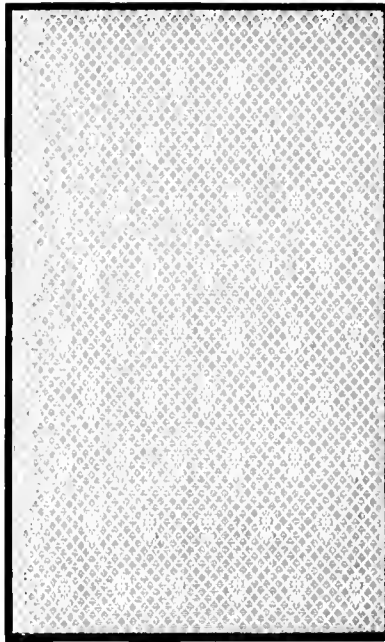
SCRANTON LACE



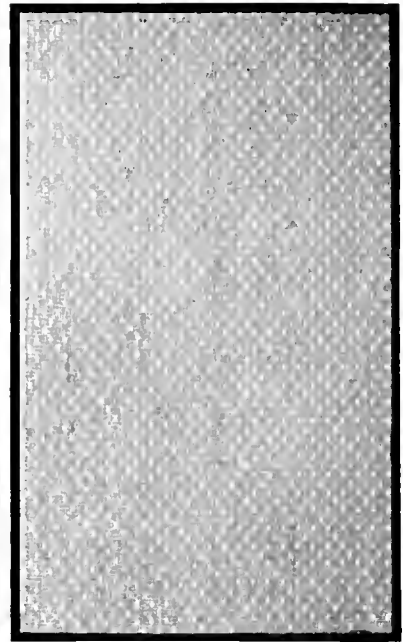
A DELICATE COLOR SCHEME
Plain Filet Net, drawn taut on casements, with valance
and overdraperies



No. 10219. New novelty stripe effect; better grade Filet Net; 46 and 70 inches wide; white, ivory or natural.



No. 10823. Striking pattern in Filet Net of the better medium grade; 46 inches wide; white, ivory or natural.



No. 10800. Popular small figured pattern, better medium grade Filet Net; 40 inches wide; white, ivory or natural.

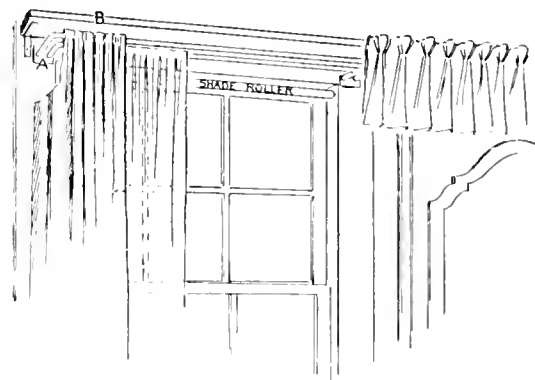
Improving Awkward Windows

Windows which are often awkwardly grouped may be made attractive features if properly curtained.

In this room, for instance, the interest is centered within the boundary of the two windows. The overdraperies, which reach to the floor, and the valance which extends across the windows and intervening space, serves to make a unit of the two separate windows, forming an attractive setting for the cretonne-covered dressing table and mirror.

The net curtains are made with a one-inch heading above the casing which holds the rod; a one-inch hem at the center edges, a 2½-inch hem across the bottom and a simple roll hem at the back edges. Two widths of net are used at each window and hang straight to the apron of the sill.

A fixture carrying two rods is used to

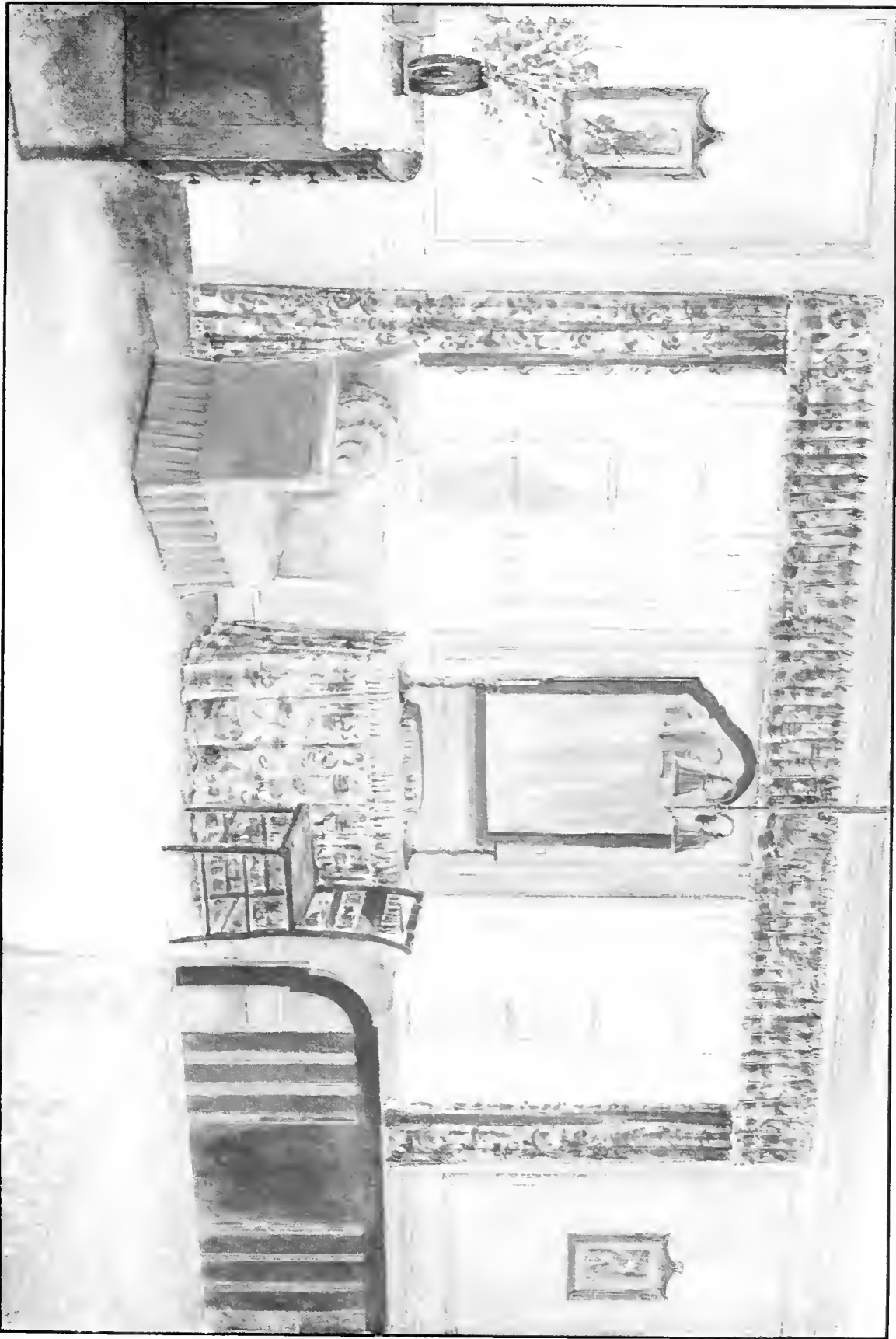


hold the net curtains and side draperies (See A in the diagram). The net is hung from the inner rod and the side drapery from the outer one. The valance is tacked to a flat wooden cornice (See B) which is held in place with angle irons.

The bedcover and bureau scarf of lace are placed over a soft rose color. For the bedcover there are a number of attractive Scranton designs.



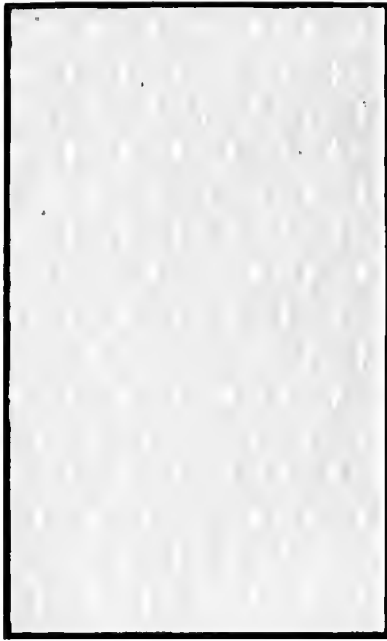
SCRANTON LACE



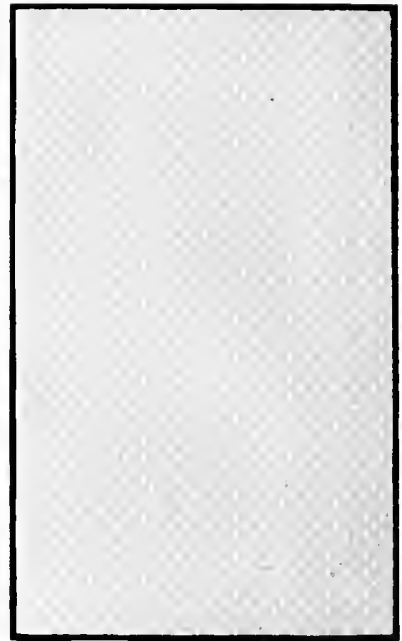
A BROAD SWEEP OF WINDOWS
Overdraperies reaching floor, with wide valance, unite two separated windows



No. 10175.—A pleasing design in the medium priced Filet Nets; 47 and 76 inches wide; white, ivory or natural.



No. 10174. Another popular style in the medium priced Filet Nets; 47 and 76 inches wide; white, ivory or natural.



No. 10825.—Of the better medium priced small figured Filet Nets; 47 and 76 inches wide; white, ivory or natural.

A Pleasing Dormer Window

The familiar dormer window frequently presents a problem that lends itself to a very happy solution, providing a simple treatment is decided upon, and due care is exercised in selecting the nets and overdraperies.

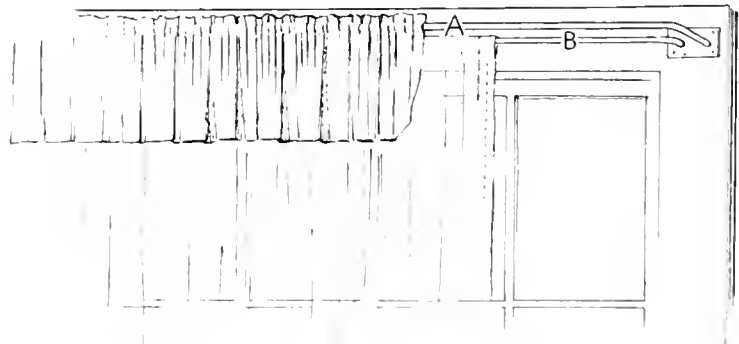
One fixture carrying two rods is all that is necessary for hanging curtains at windows treated as this group.

One width of 36-inch material is used at either end of the group with a Shirred valance extending *between* the side curtains.

The valance and side curtains are placed on the outside rod (See A in the diagram) and the net curtains are hung from the inside rod (see B). The overdraperies and valance are made with a one-inch heading above the casing, through which the brass rod is

slipped. A one-inch hem is used at the bottom of the valance and down the inside edges of the side curtains. A two-inch hem is used at the bottom of the side curtains, which hang to the apron of the sill.

The net curtains are made with a loose casing at the top (without heading) through which the brass rod is slipped; a one-inch hem at the sides and a two-inch hem at the bottom. These curtains reach just to the sill.



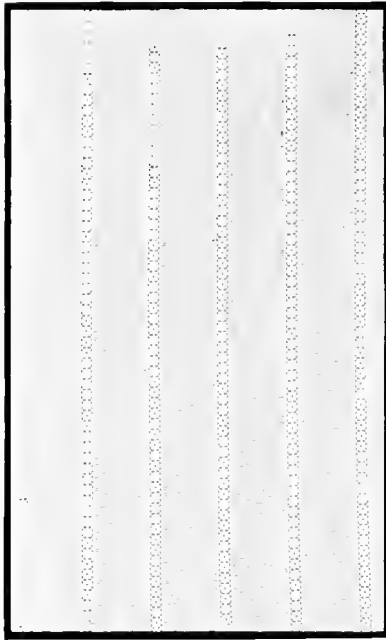
SCRANTON LACE



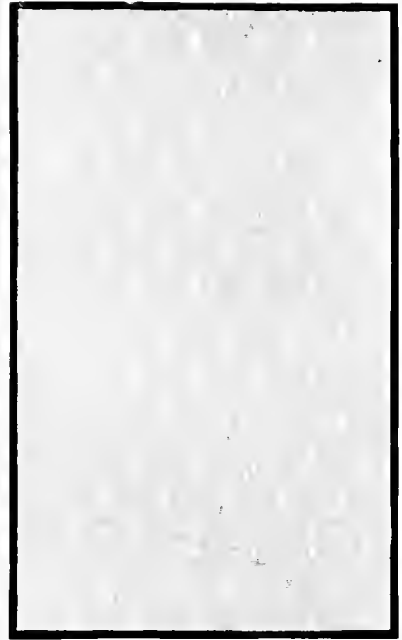
FOR THE DIFFICULT DINNERERS
Inexpensive Fillet Net with simple valance and overdraperies



No. 1044. Good imitation Filet, geometrical figure, moderate price; 42 inches wide; white, ivory or natural.



No. 9616.—Moderate priced imitation Filet weave, popular stripe effect; 42 inches wide; white, ivory or natural.



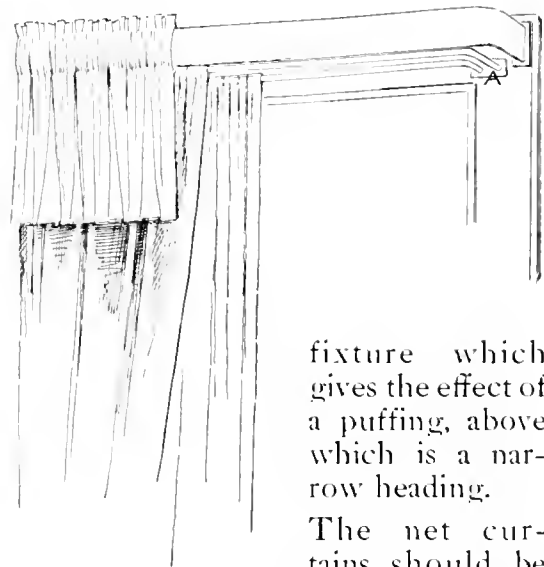
No. 9648.—Another style of imitation Filet, moderate price, oriental figure; 42 inches wide; white, ivory or natural.

The Upstairs Sitting-Room

The plain, ordinary sitting-room window that at first glance appears to have no particular individuality, really offers very excellent decorative possibilities. For when it is curtained with suitable laces, in combination with overdraperies which emphasize the beauty of the net, such a window becomes decidedly attractive.

For the average size window one width of net is sufficient for each curtain—a one-inch hem is used down the center edge, a two-inch hem across the bottom and a simple roll hem at the bottom edge. A loose casing, without heading, is made at the top which holds the rod.

A fixture carrying two rods is used (See A in the diagram). The overdrapery hangs from the outside rod and the nets from the inner rod. The valance is mounted on a broad metal



fixture which gives the effect of a puffing, above which is a narrow heading.

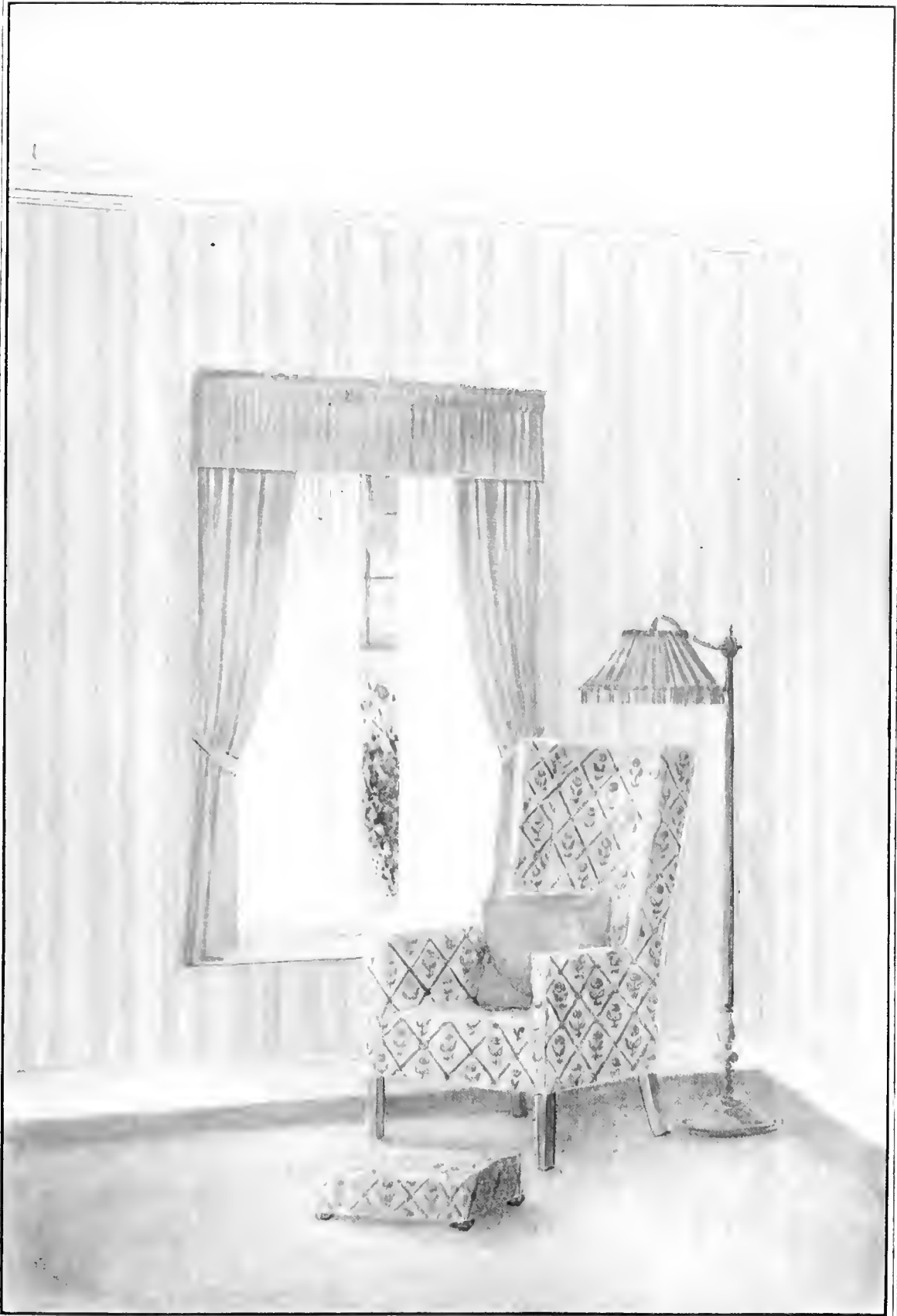
The net curtains should be

made to reach to the sill only, while the overdraperies should reach to the apron of the sills.

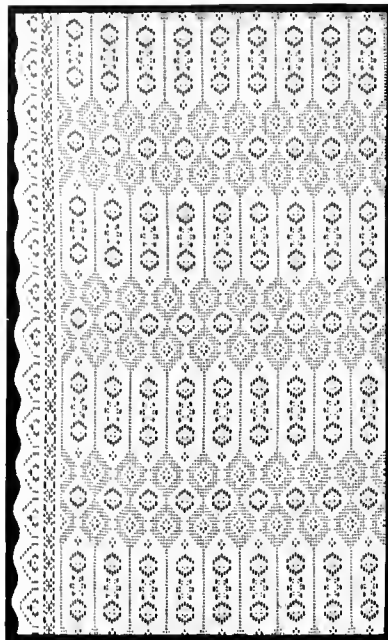
This treatment will improve not only the window but the whole room.



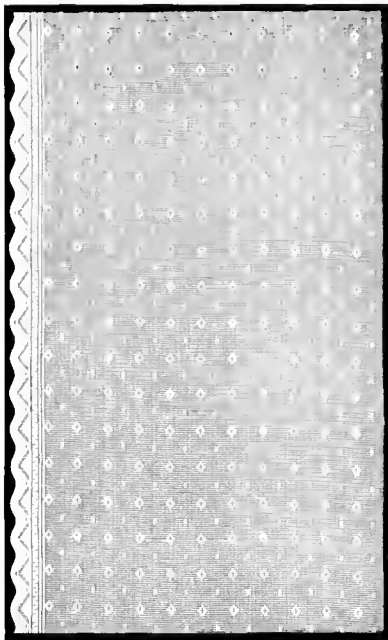
SCRANTON LACE



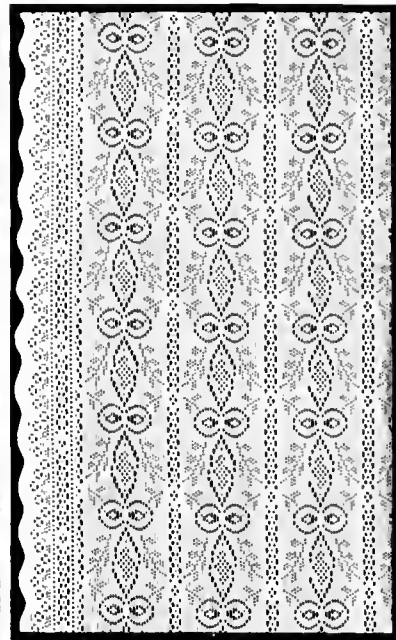
A SIMPLE TREATMENT
Imitation Filet, with overdraperies and valance



No. 10873 Double border sash net, oriental type, regular weave, better medium price: 40 inches wide: white, ivory or natural.



No. 10841. An attractive double edged filet design, of the medium price range: 36 inches wide: white, ivory or natural.



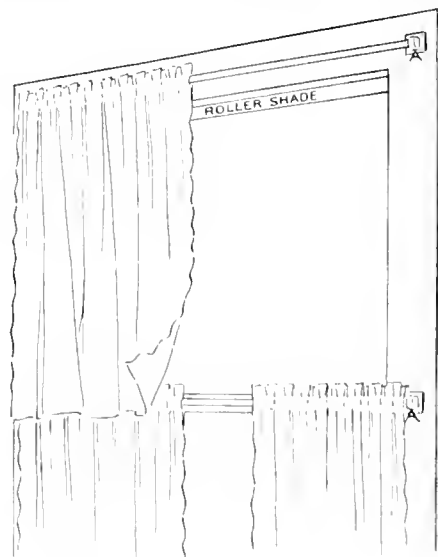
No. 10872. Unusual double border sash net, regular weave, better medium grade: 42 inches wide: white, ivory or natural.

Completing the Bathroom

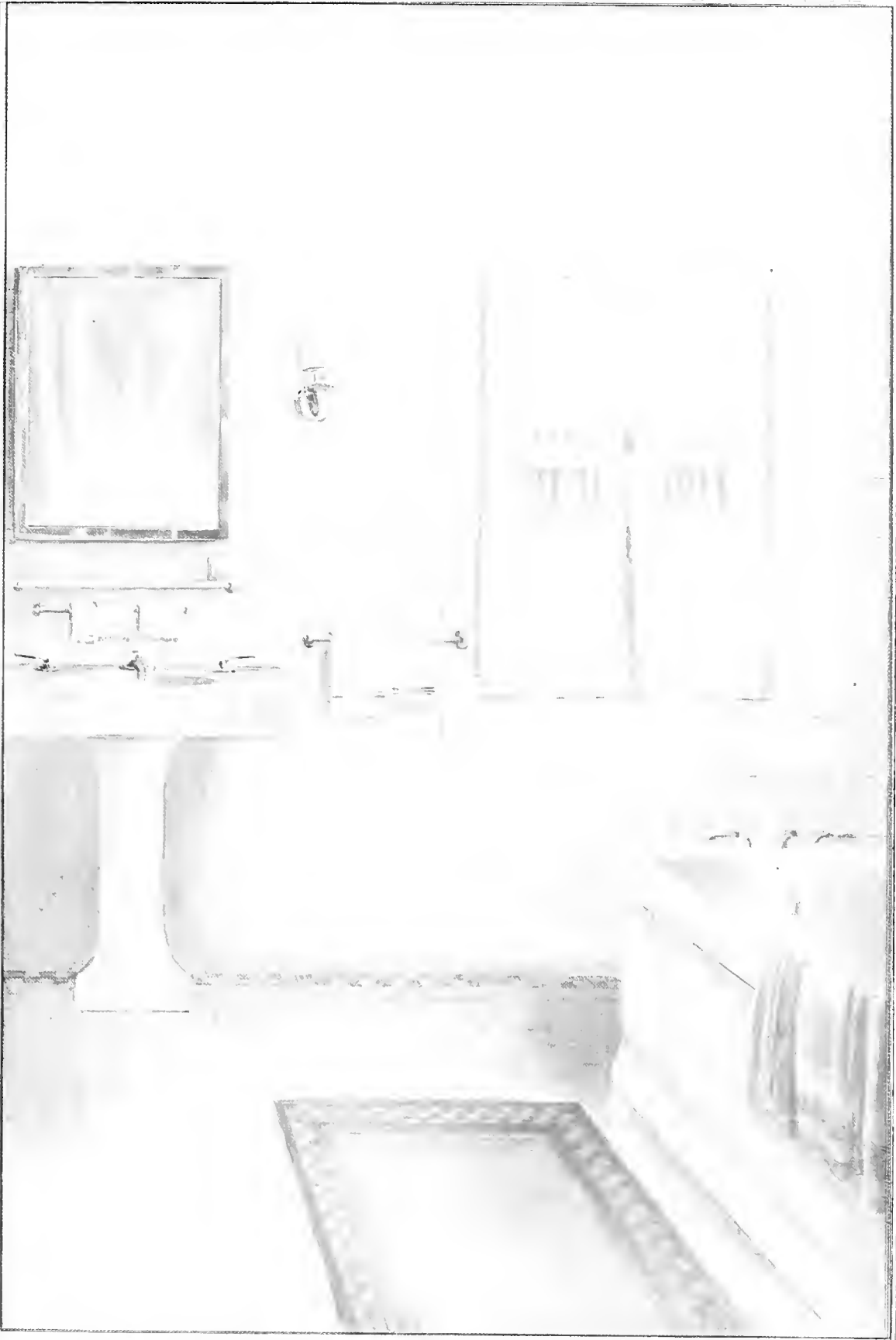
Perfect sanitation is, of course, the first requirement of the bathroom. But the windows need not be sacrificed to utter bareness.

The treatment used at this window shows two sets of curtains. The upper is operated independently from the lower. Both sets are hung upon 3/4-inch nickel rods supported by short projecting nickel brackets placed on the trim of the window (see A in the diagram). The nets selected are woven with a strong edge which simplifies the making. All the sewing required is the making of a loose casing at the top to hold the rod, above which is a 1-inch heading, and a 2-inch hem at the lower edge. It is not always feasible to cover the upper sash. Where this is the case the upper set of curtains may be eliminated as the roller shade will give the necessary protection. Other

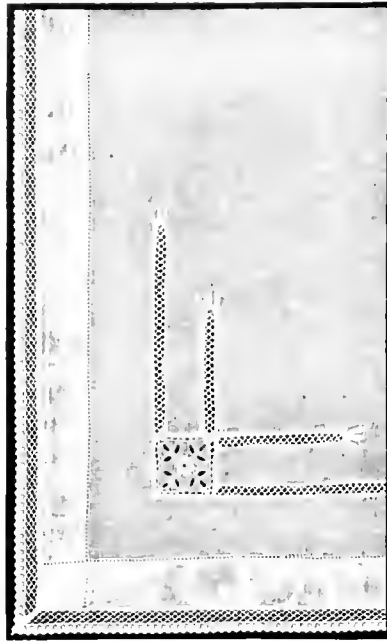
nets than those having the woven border are practical to use in this way. When such a net is chosen a 1-inch hem should be used at the center edge and a roll hem at the back. Otherwise the making is the same.



SCRANTON LACE



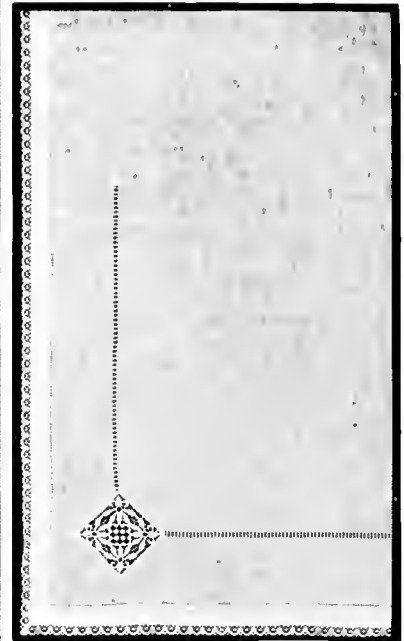
A PRACTICAL ARRANGEMENT
Separate curtains for each sash. Double border sash net



No. 1039. Hemstitched marquisette, crocheted edge, embroidered corner motif with inserts of crochet lace; 2½ yards long; white, ivory or natural.



No. 1137. A dainty filet marquisette curtain, with mercerized Barmen lace edge; 2½ yards long; white, ivory or natural.



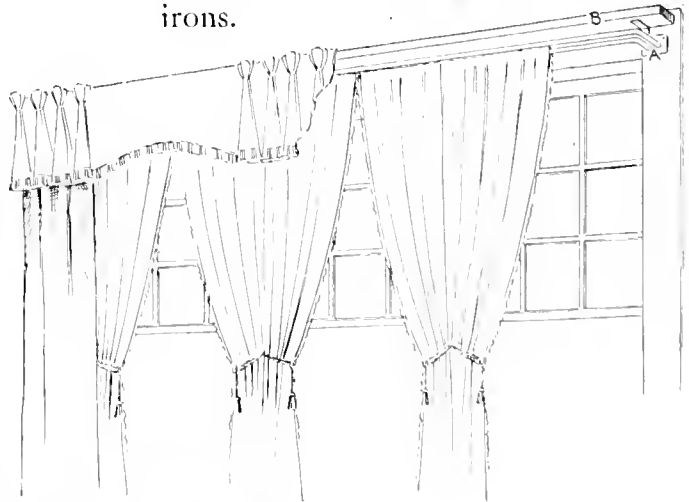
No. 1273. A dainty voile curtain, hemstitched, Torchon lace edge, Venise corner motif, with hand drawn work; 2½ yards long; white, ivory or natural.

For the Nursery Windows

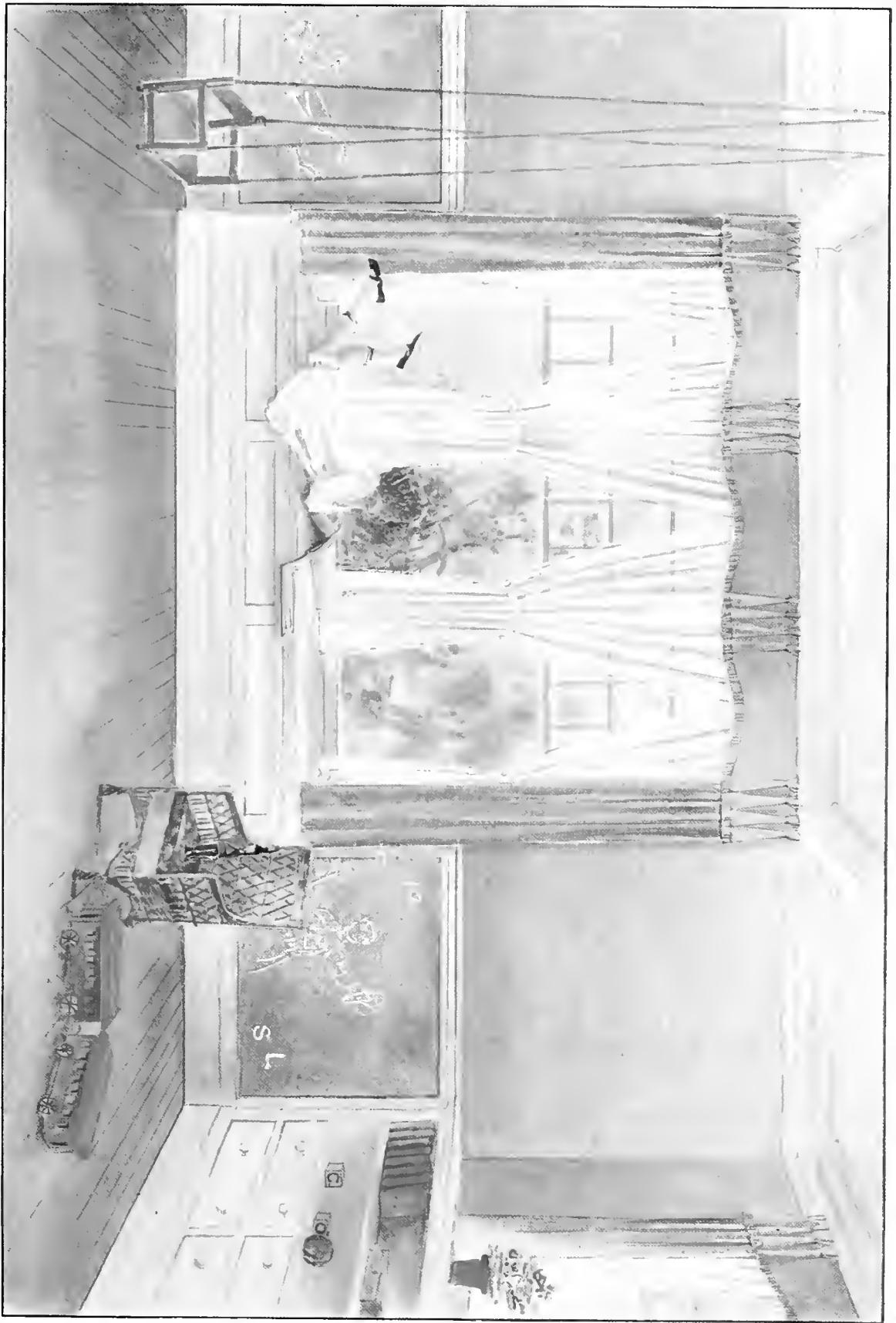
Cheerful, sunshiny expanses of window are perhaps of greater value in the children's nursery than in any other room of the house. Also there is probably no window that requires a more serviceable curtain.

Marquisettes are particularly adapted to nursery use. These are made 32 to 36 inches wide by two-and-one-half yards long and have a 2-inch hem-stitched hem at the center edge and across the bottom are finished with an attractive narrow lace edge. Many of these have inserts of lace medallions and insertion which take away the severely plain effect of the marquisette. These are shown caught back in soft folds with cord and tassel loops—an attractive arrangement.

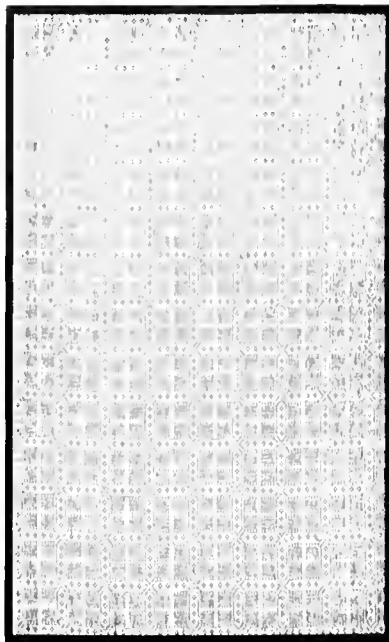
The rods holding the marquisette curtains and overdraperies are attached to one fixture (see A in the diagram). The marquisettes hang from the inner rod and the over curtain from the outer rod. The valance is tacked to a flat wooden cornice (see B) fastened to the window trim with angle irons.



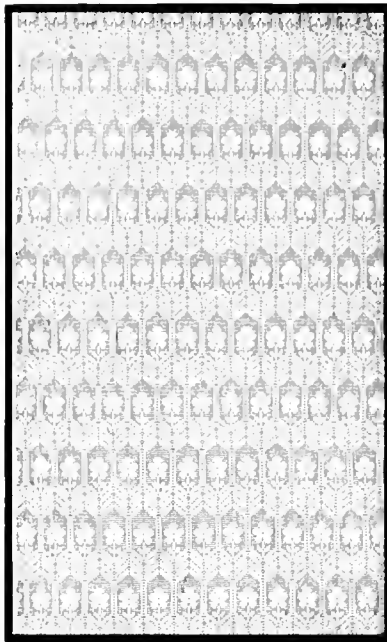
SCRANTON LACE



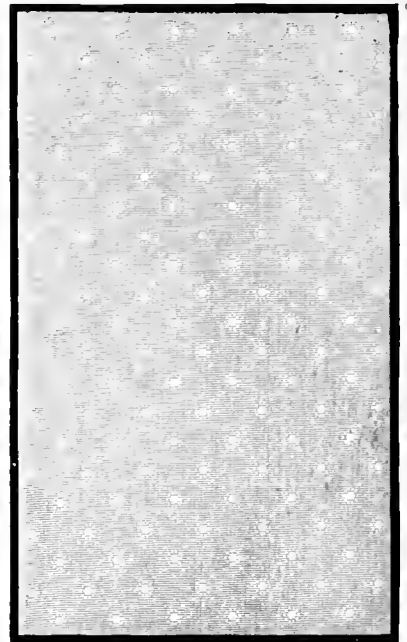
A CHEERFUL NURSERY.
Serviceable marquissette curtains caught back with cord and tassel loops



No. 10267. A dainty crossbar net in the medium priced grade; 40 inches wide; white, ivory or natural.



No. 9713. Popular all-over Swiss pattern, medium priced grade; 42 inches wide; white, ivory or natural.



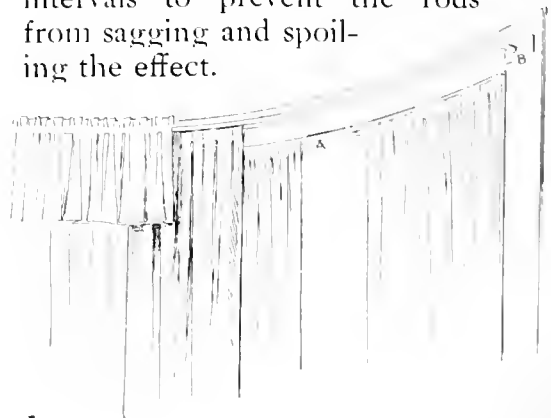
No. 10142. Fine imitation Filet Net with sunburst and dots; 42 inches wide; white, ivory or natural.

Sunshine for the Nursery

Sunshine should be the first consideration in the household nursery. At the same time we need to keep in mind the value of harmonious surroundings in the early environment of the child. Simplicity should be the keynote for the furnishings. While the window is the great essential in this particular room, so likewise is the curtaining, for the window becomes a focal point in the decoration of the room.

The net curtains which should be sheer and simple in design are made to hang straight to the sill from a 3/4-inch brass rod, placed between the casings of the windows (See A in the diagram). The net curtains are made with a loose casing at the top through which the rod is run, a one-inch hem at the center edge, a two-inch hem across the bottom and a simple roll hem at the back edge.

The overdraperies of cretonne are hung from a rod placed on the trim of the window and supported by a fixture carrying two rods (See B). From the inner one hangs the cretonne curtain and upon the outer one the valance is shirred. The brass rods may be bent to conform with the curve of the window. It is, of course, necessary to use rod supports at close intervals to prevent the rods from sagging and spoiling the effect.





SCRANTON PUBLIC LIBRARY



50686000429261

Scranton Lace Compan Window draping with
LOCAL HISTORY 747 5 SCRANTON C 1 LOCAL-H