





# THE WORK OF EMIL FUCHS



AAA

ARGOSY GIFT 1958





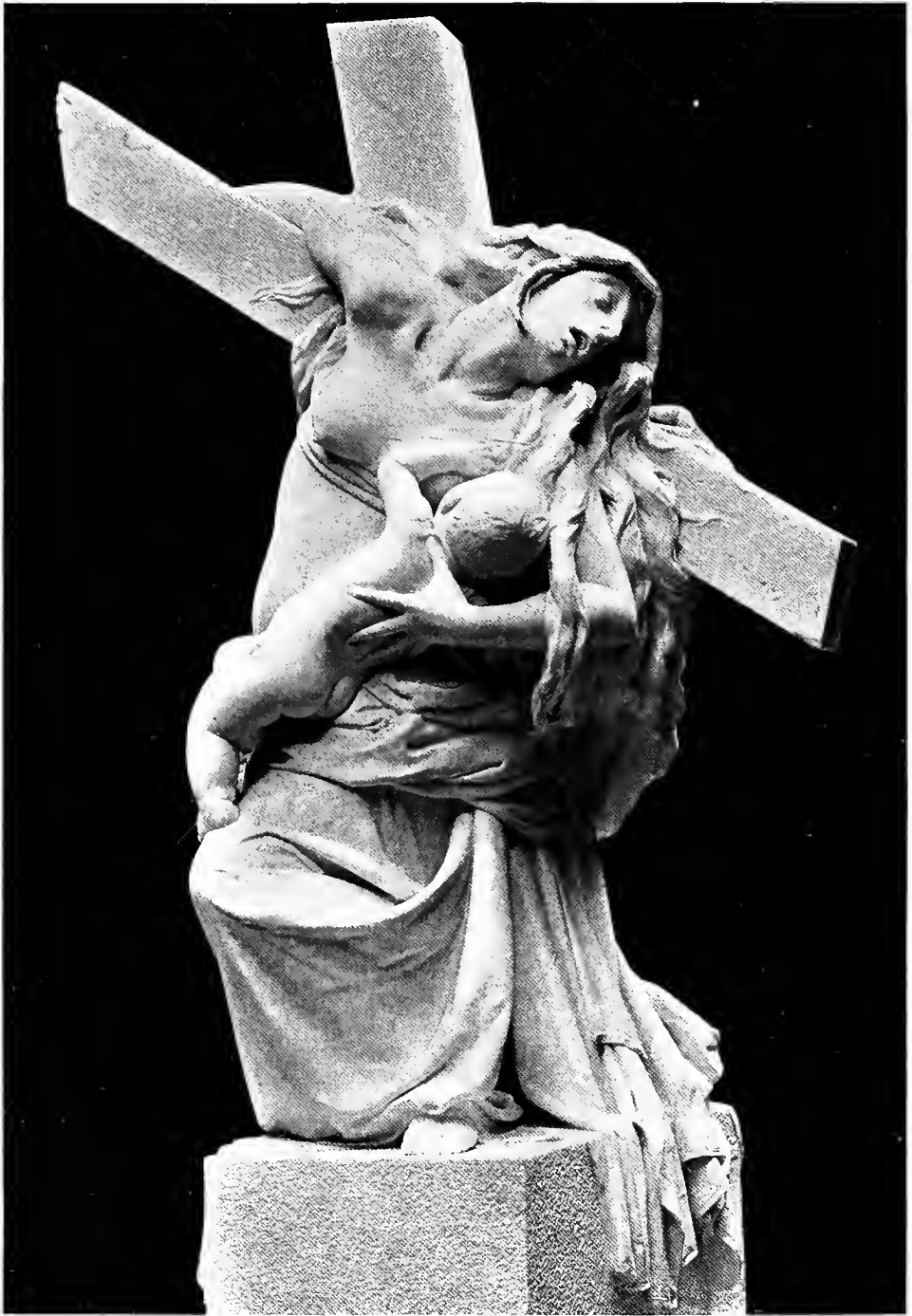












*Mother's Love*

197  
81135

# THE WORK OF EMIL FUCHS

ILLUSTRATING SOME OF HIS  
REPRESENTATIVE  
PAINTINGS SCULPTURE MEDALS  
AND STUDIES



*Issued on the Occasion of an Exhibition  
of his works under the Auspices of*  
MESSRS CARTIER  
*February 7th to March 5th 1921*  
NEW YORK CITY

C O P Y R I G H T 1 9 2 1 B Y E M I L F U C H S  
*Designed Engraved and Printed by* BARTLETT ORR PRESS *New York*

## PREFACE

---

WHEN I went to Italy, now almost thirty years ago, encouraged by a traveling-scholarship, I carried with me all the buoyancy and self-confidence, which is the privilege of youth—

*“with thousand masts saileth forth the boy.”*

A government studio, a life free from care, amid surroundings, every inch of which breathed Art and Poetry—no wonder, all of us, while toiling along the path of life, would look back upon these years with indescribable delight.

These are the years when we dare anything, and I was no exception to the rule, trying my hand at different branches of Art and in different mediums.

These are the years responsible for our most ambitious attempts, prompted only by lofty ideals.

But the day comes, and it comes soon, when we recognize the wide gap between ambition, which would carry us beyond our dreams, and realization, the fruit of sincere efforts. Our attitude toward Art and Life becomes more humble and if today I venture to show my work, I show it in that spirit.

Many of us share these feelings; few are able to give them more appropriate expression than in the following lines, which are so beautiful and true, that I may call them the guiding thought of my life:

*“then it is better to die, struggling for the Supreme,  
than perish in the dust among the Commonplace.”*



*The Grip of Death*

BRONZE

DETAIL OF THE GROUP "MOTHER'S LOVE"

*Frontispiece*



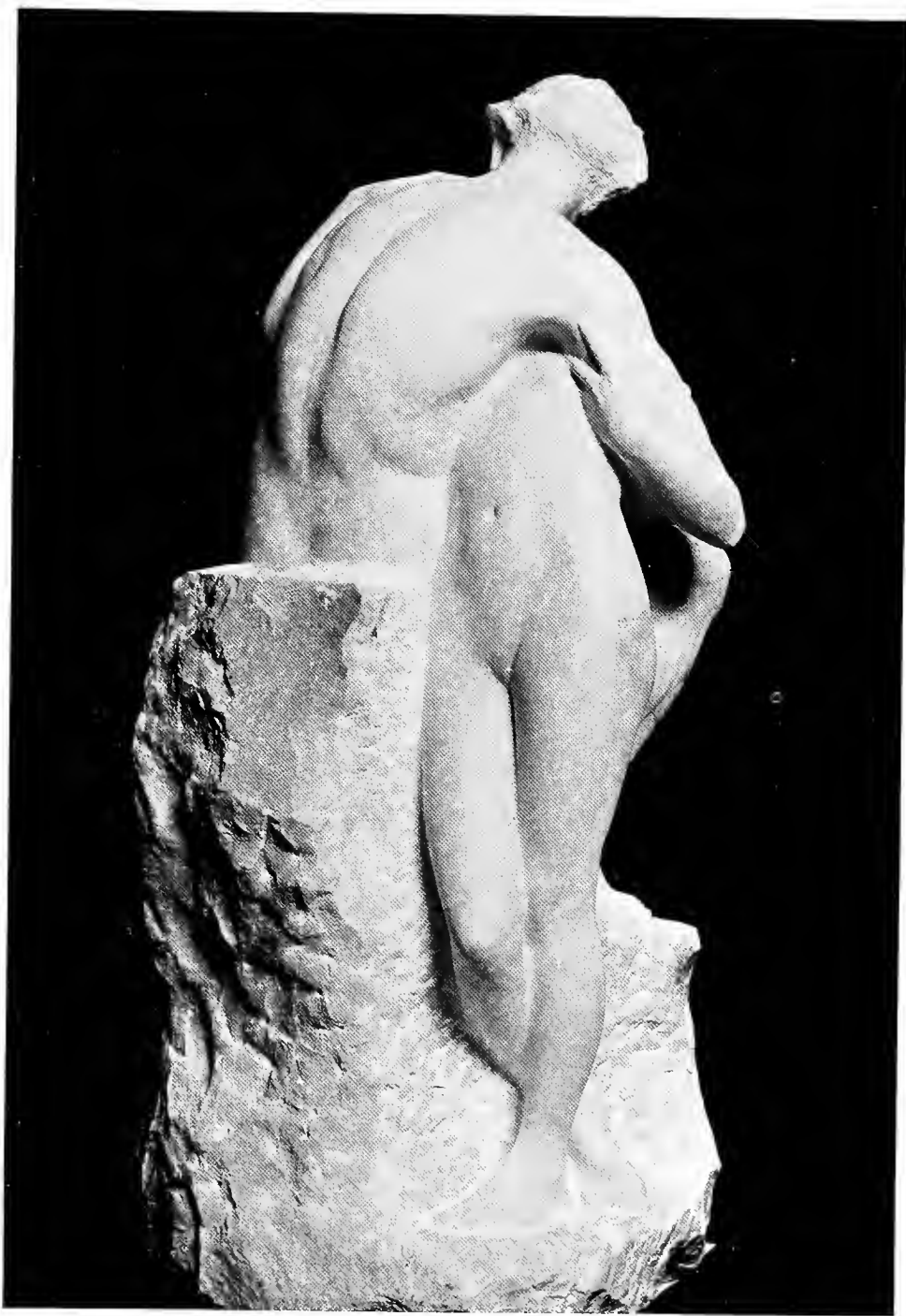
*Bas Relief on Base of Group "Mother's Love"  
See Frontispiece*



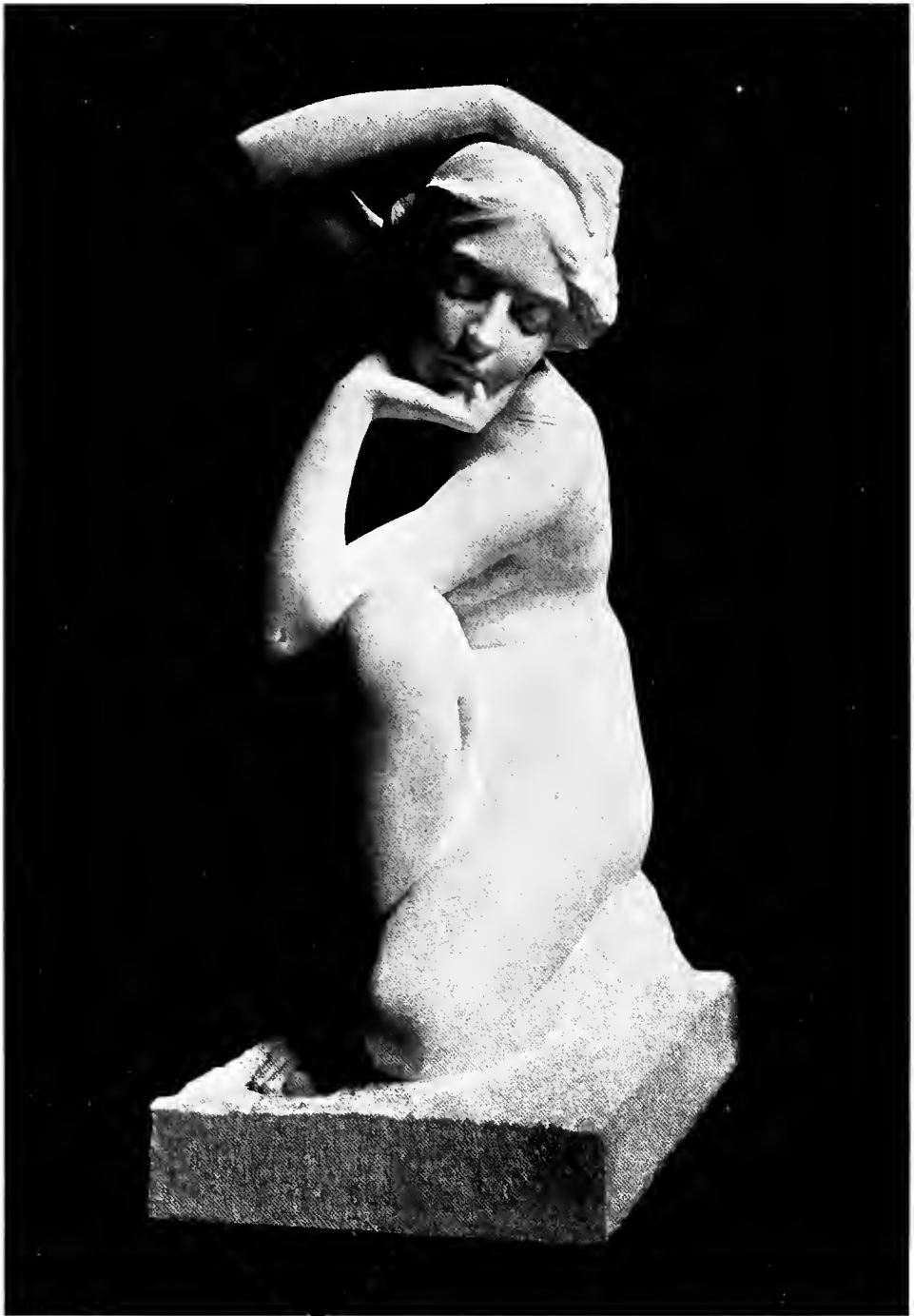
*The Group*

*But where Strength and Tenderness Unite, there sound the truest Harmonies*

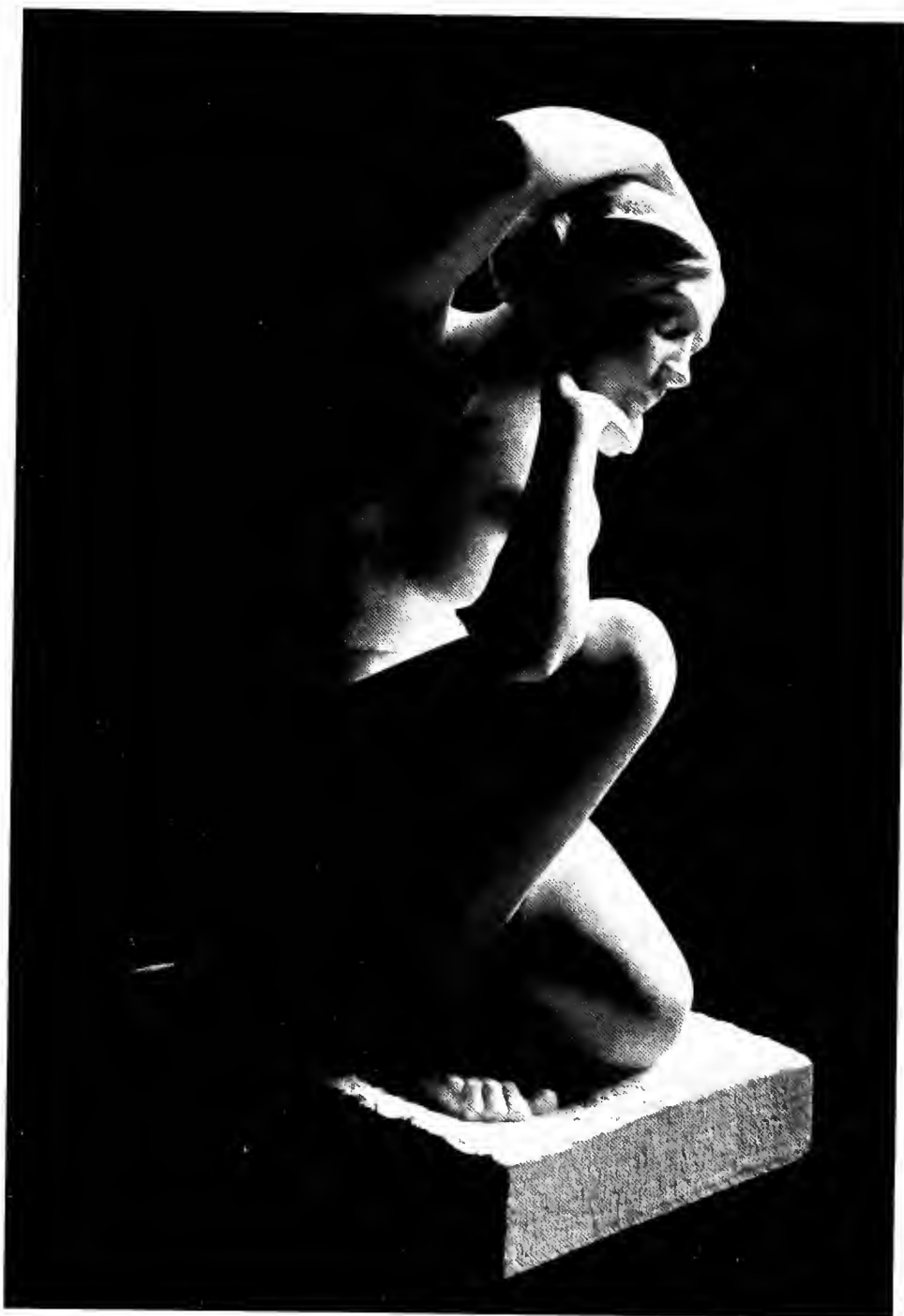




*The Group*



*Maiden Meditation*



*Maiden Meditation*

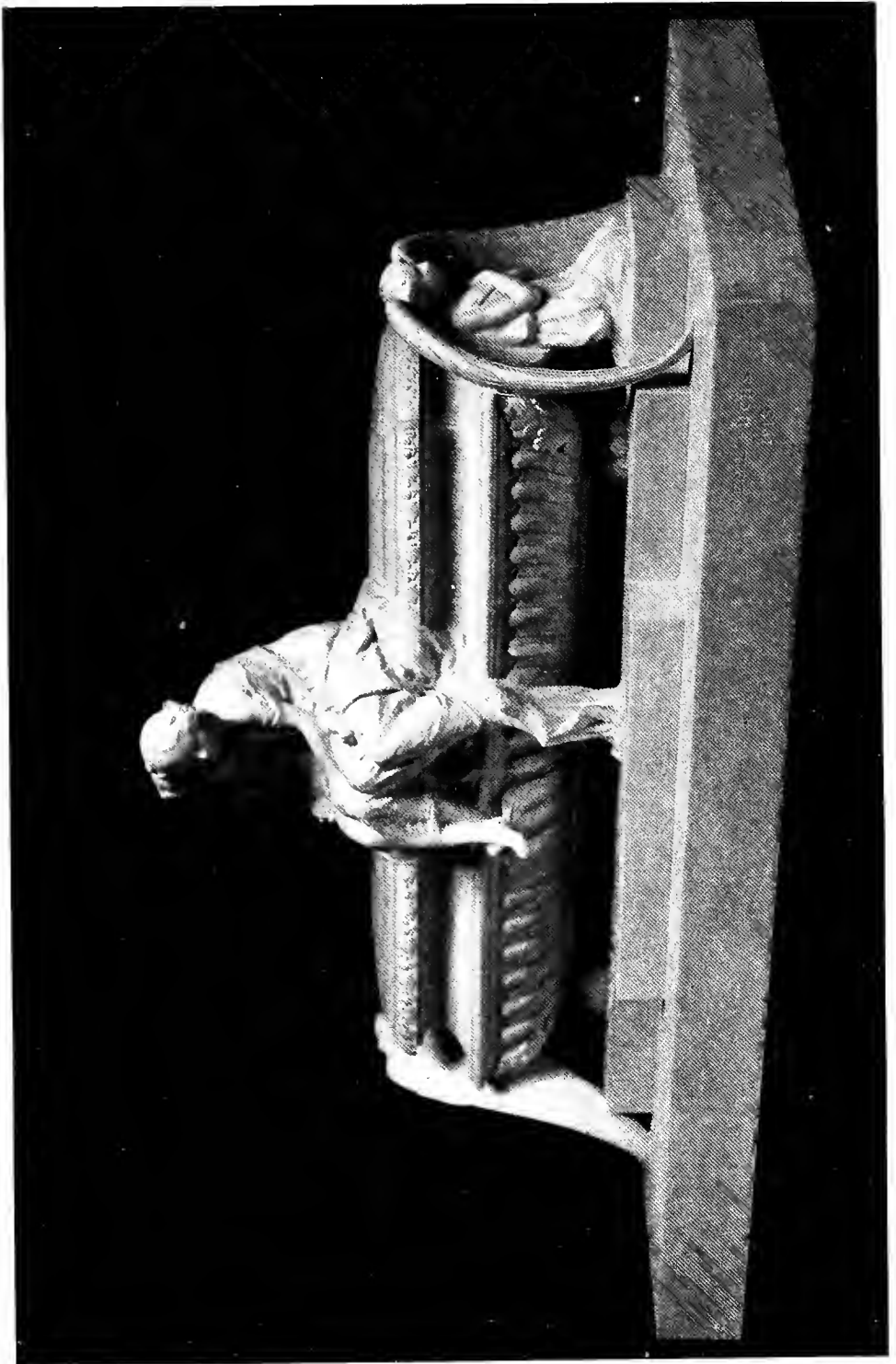


*The Call from Beyond*



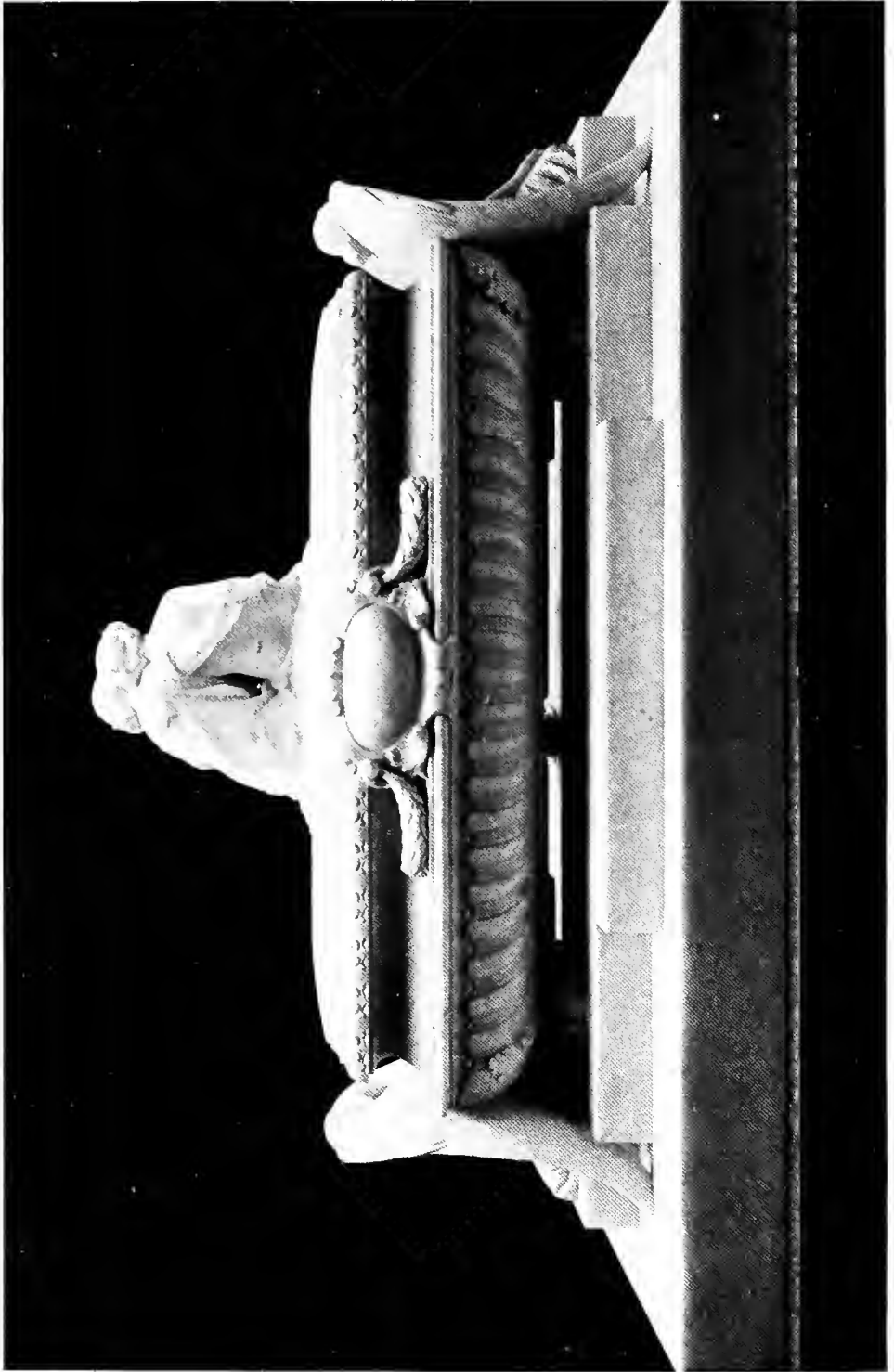
*The Call from Beyond*

*Listen, through the woodland valleys,  
Comes a whisper to my ear,  
Like some fairy-voices calling,  
From a wondrous higher sphere.  
Calling softly, ever softly;  
Let me follow, oh my heart,  
For a tale of mystic beauty.  
Why this world is but a part.  
Let me follow and respond,  
To "the calling from beyond."*



*The Sisters*

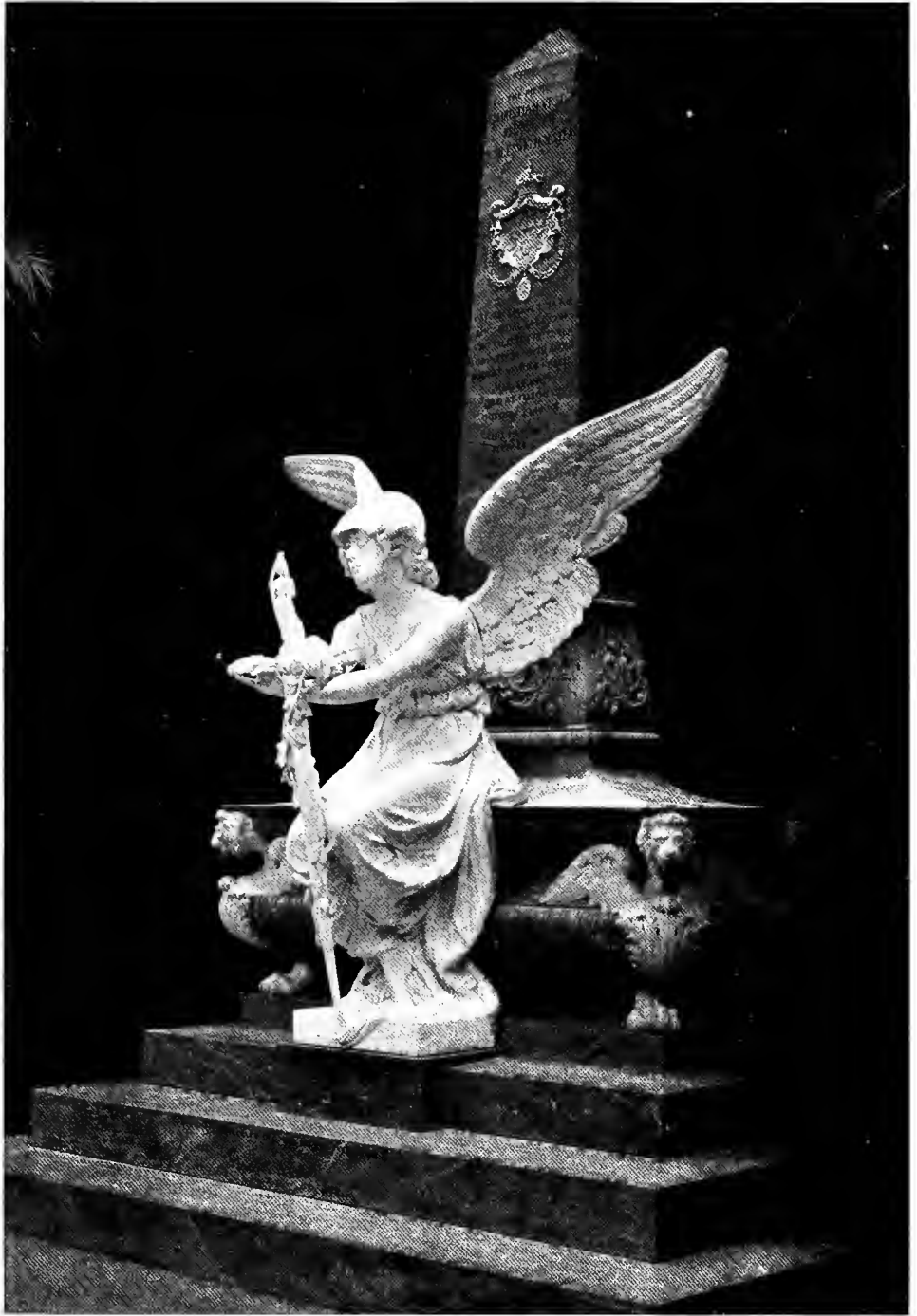
MEMORIAL IN MARBLE IN THE WALKER ART GALLERY—LIVERPOOL





*The Sisters*

MEMORIAL IN MARBLE IN THE WALKER ART GALLERY—LIVERPOOL



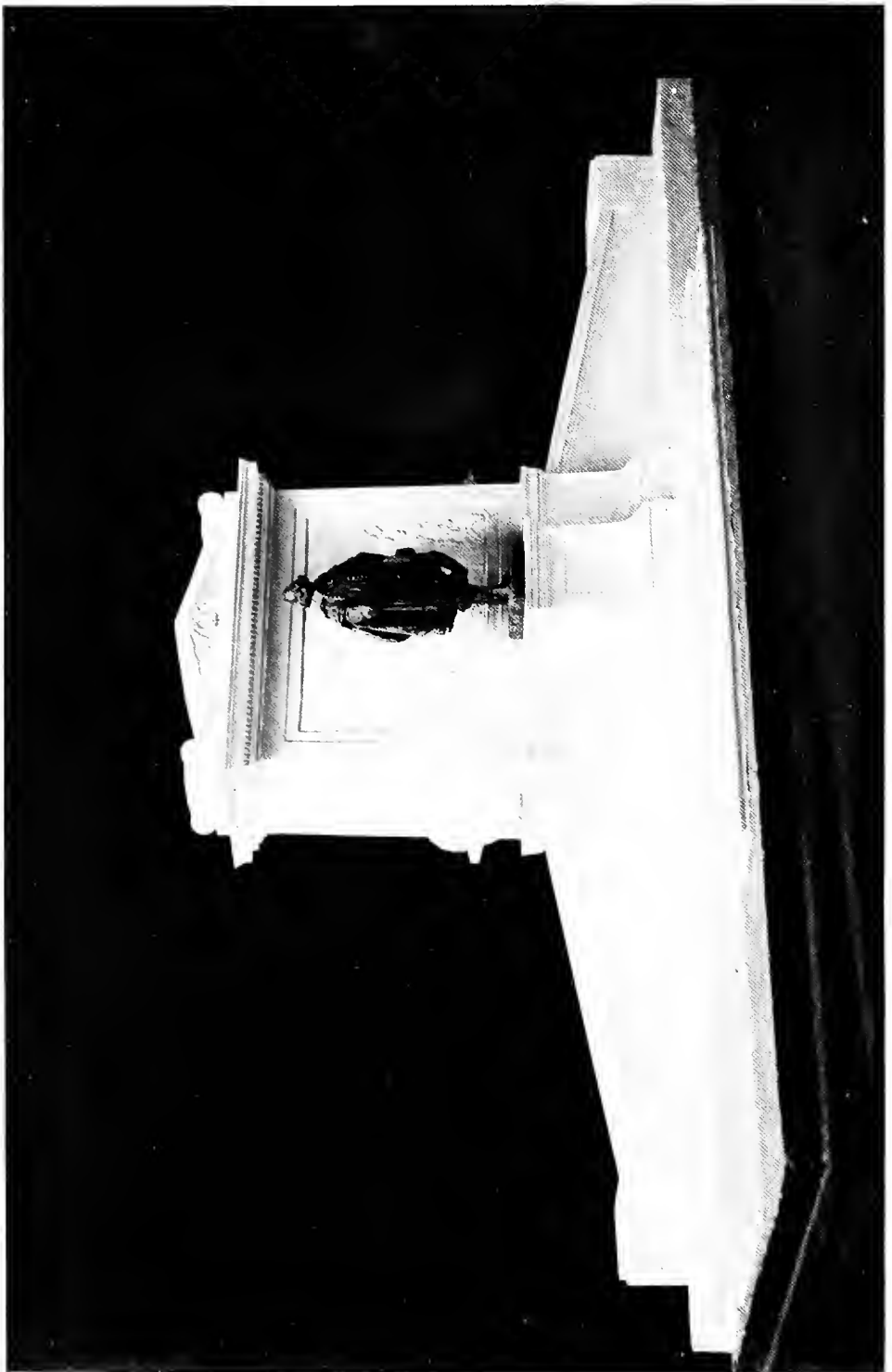
*Prince Christian Memorial*

ERECTED AT THE ROYAL CHAPEL IN WINDSOR  
EXECUTED FOR QUEEN VICTORIA

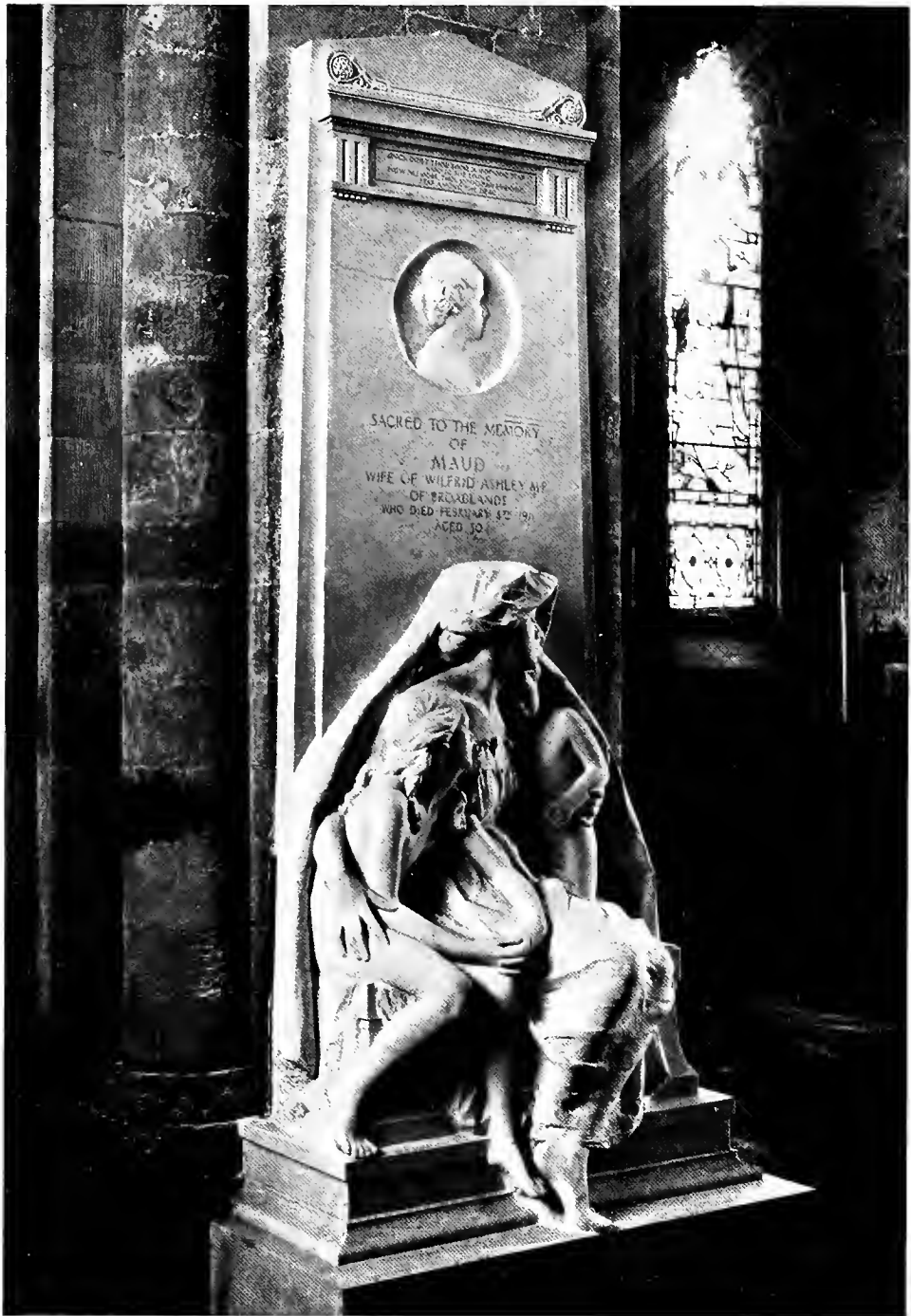


*Sancta Cecilia*

IN THE COLLECTION OF EDWARD D. ADAMS, ESQ.



*Design for a Champlain Memorial*



*Asbly Memorial at Ramsey Cathedral*

*"Once didst thou shine a morning star amongst the living. Now, no more,  
thou shinest an evening star among the dead."*



*Details of the Ashley Memorial*



*Mother and Child*







*Study of a Nude*

BRONZE

*In the Cleveland Museum of Art*



*La Pensierosa*

BRONZE

*In the Metropolitan Museum of Art, New York*



*The Dancer*

BRONZE



*Dawn*

BRONZE



*Memories*

BRONZE



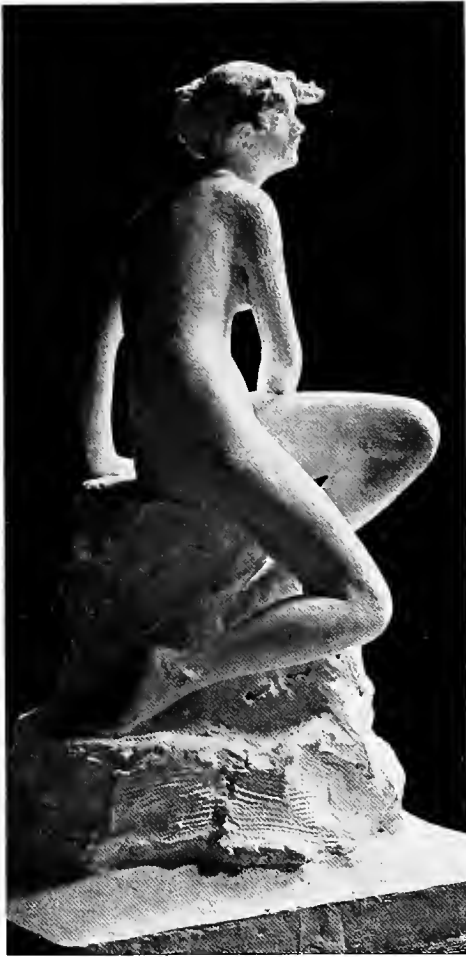
*Eva*  
BRONZE



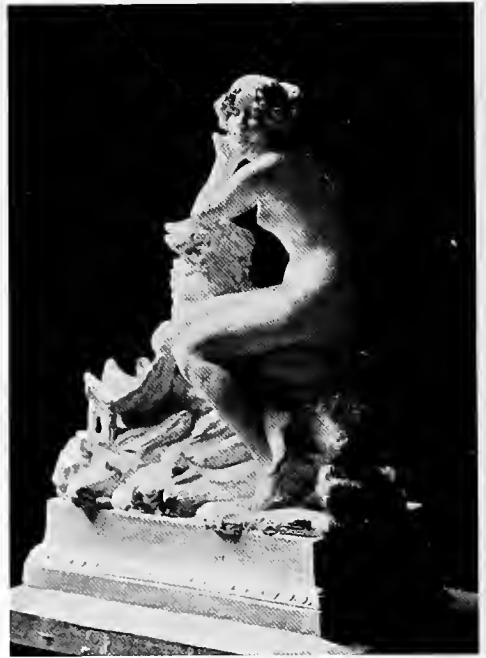


*Betty*

MARBLE



*Study*  
BRONZE



*The Nymph*  
A SKETCH IN MARBLE





*The Reader*

MARBLE.



*Reclining Nude*

BRONZE



*Tamara*  
PINK MARBLE



*Phryne*  
BRONZE



*Rita*

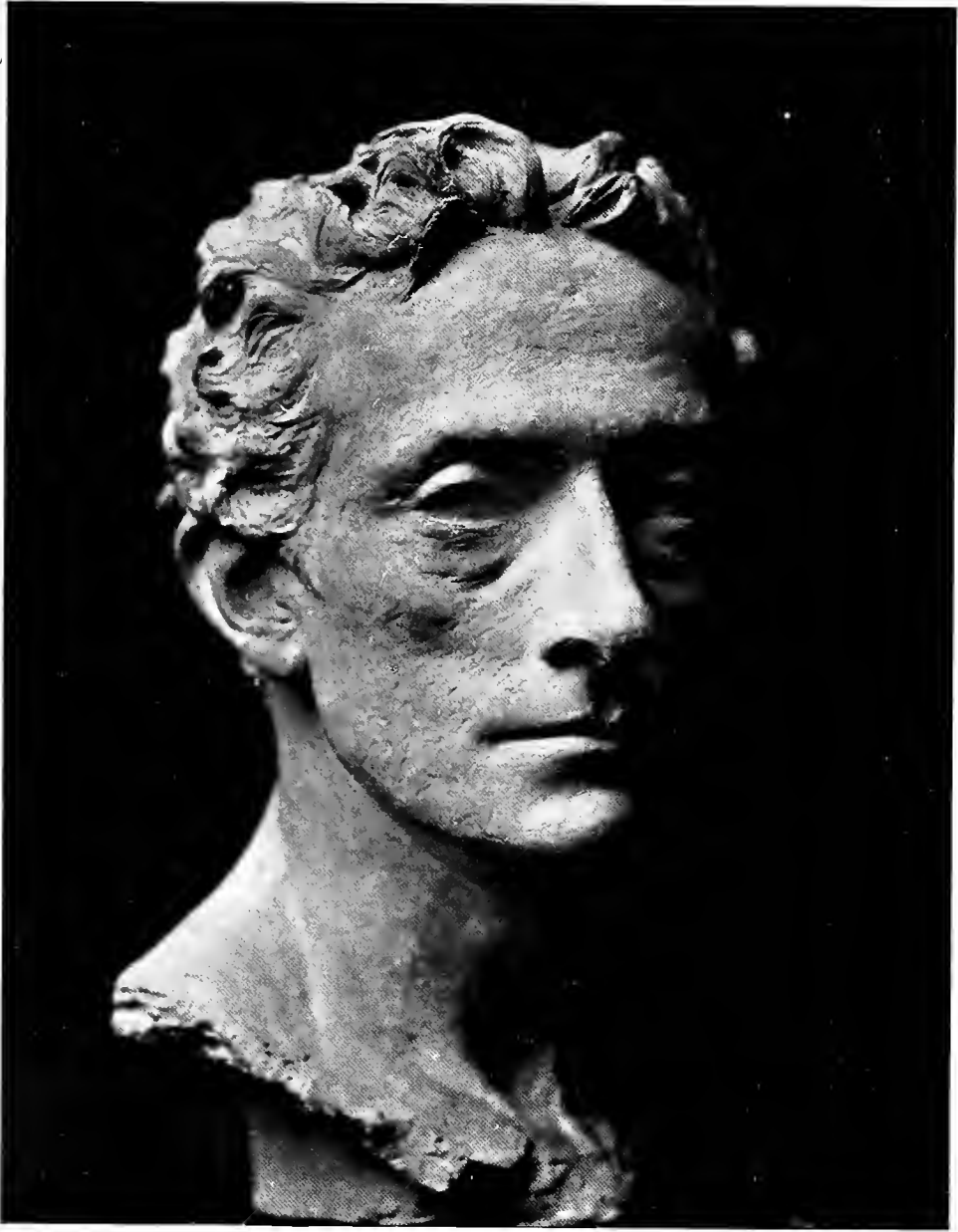
BRONZE



*Carmella*  
BRONZE



*The Butterfly*  
BRONZE



*Sir Johnstone Forbes-Robertson*

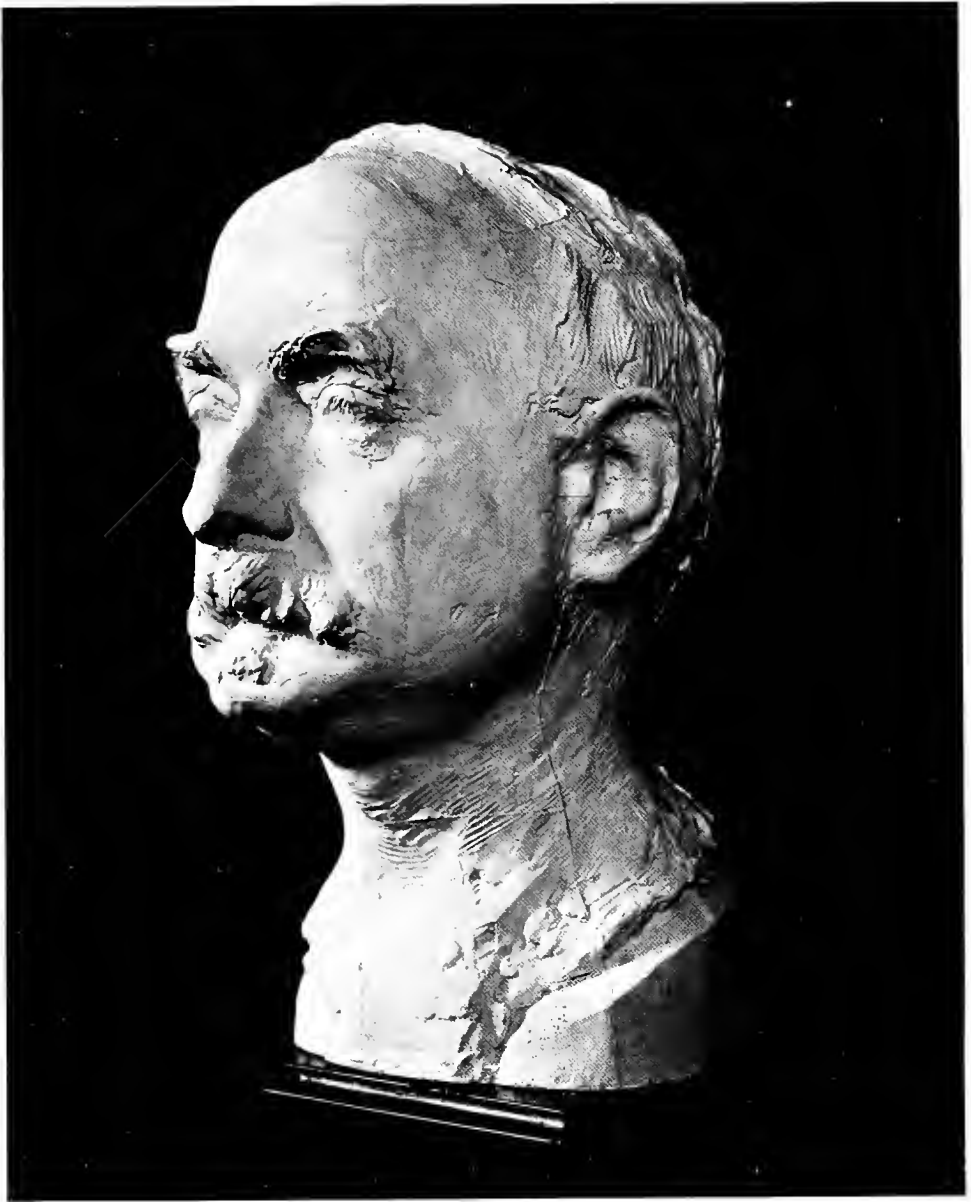
BRONZE



*Sir David Murray*

MEMBER OF THE ROYAL ACADEMY OF ARTS — ENGLAND

BRONZE



*Gari Melchers*

BRONZE



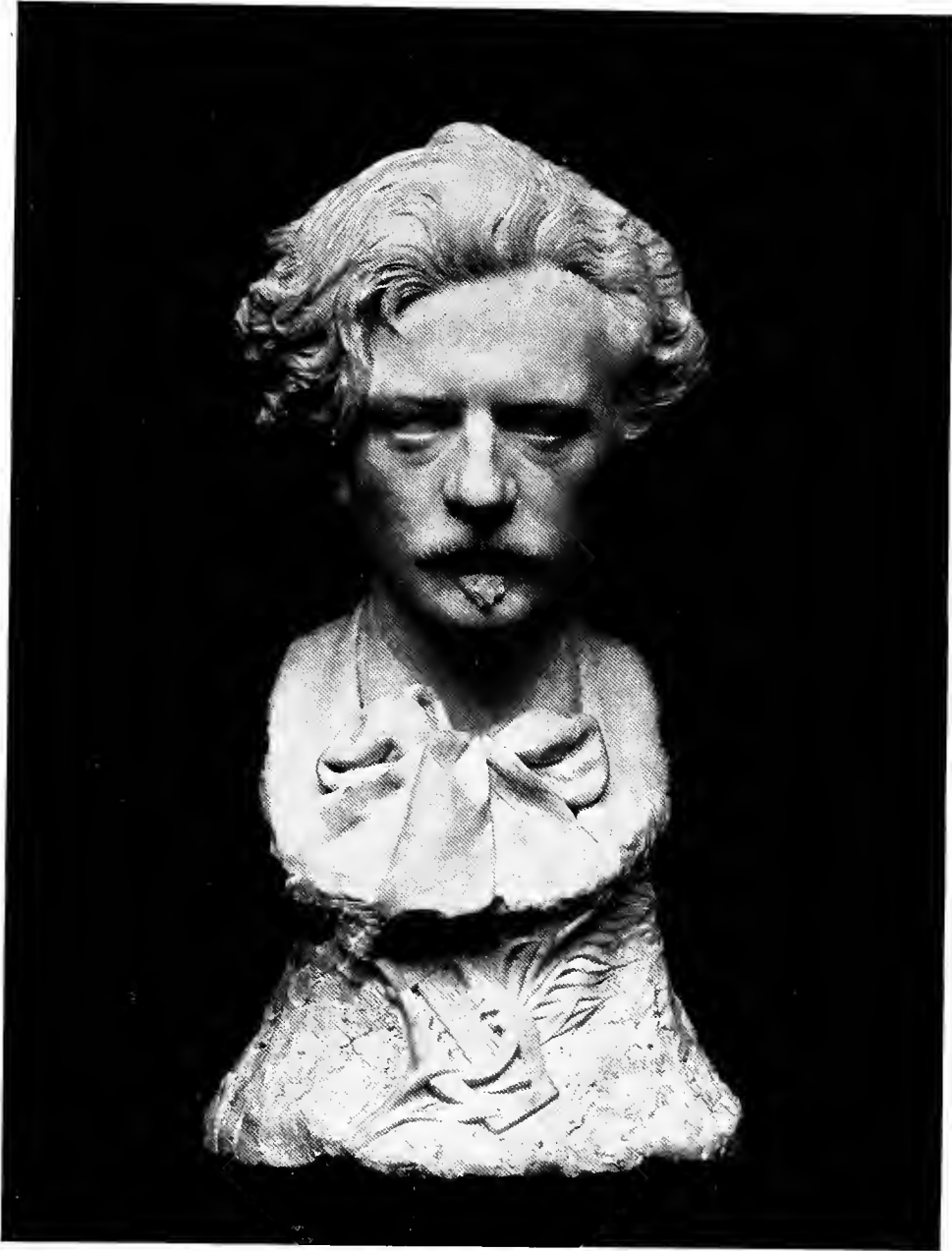


*Pinero*  
MARBLE



*Paderewski*

MARBLE



*Paderewski*

MARBLE



*A Mask*

BRONZE

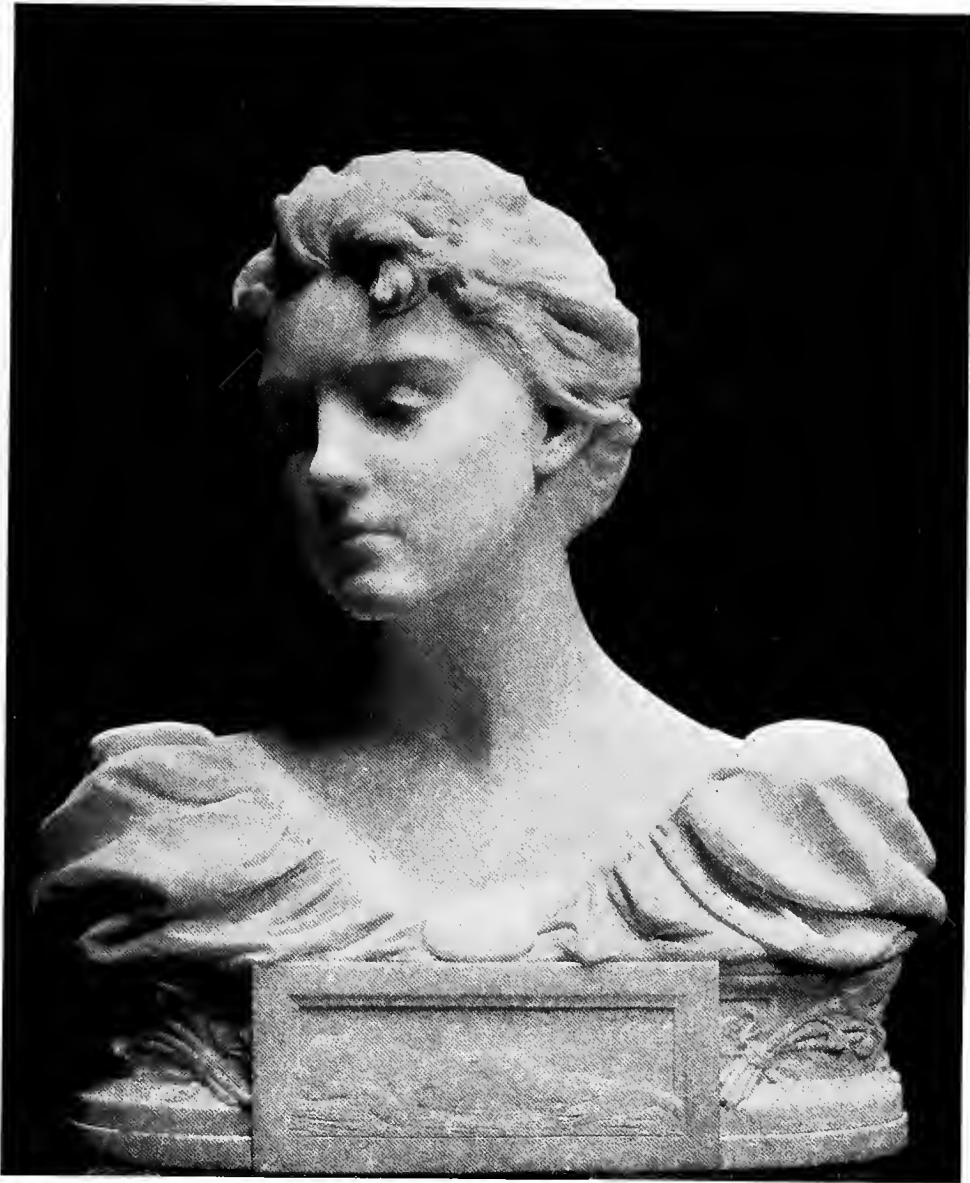




*A Portrait Bust*

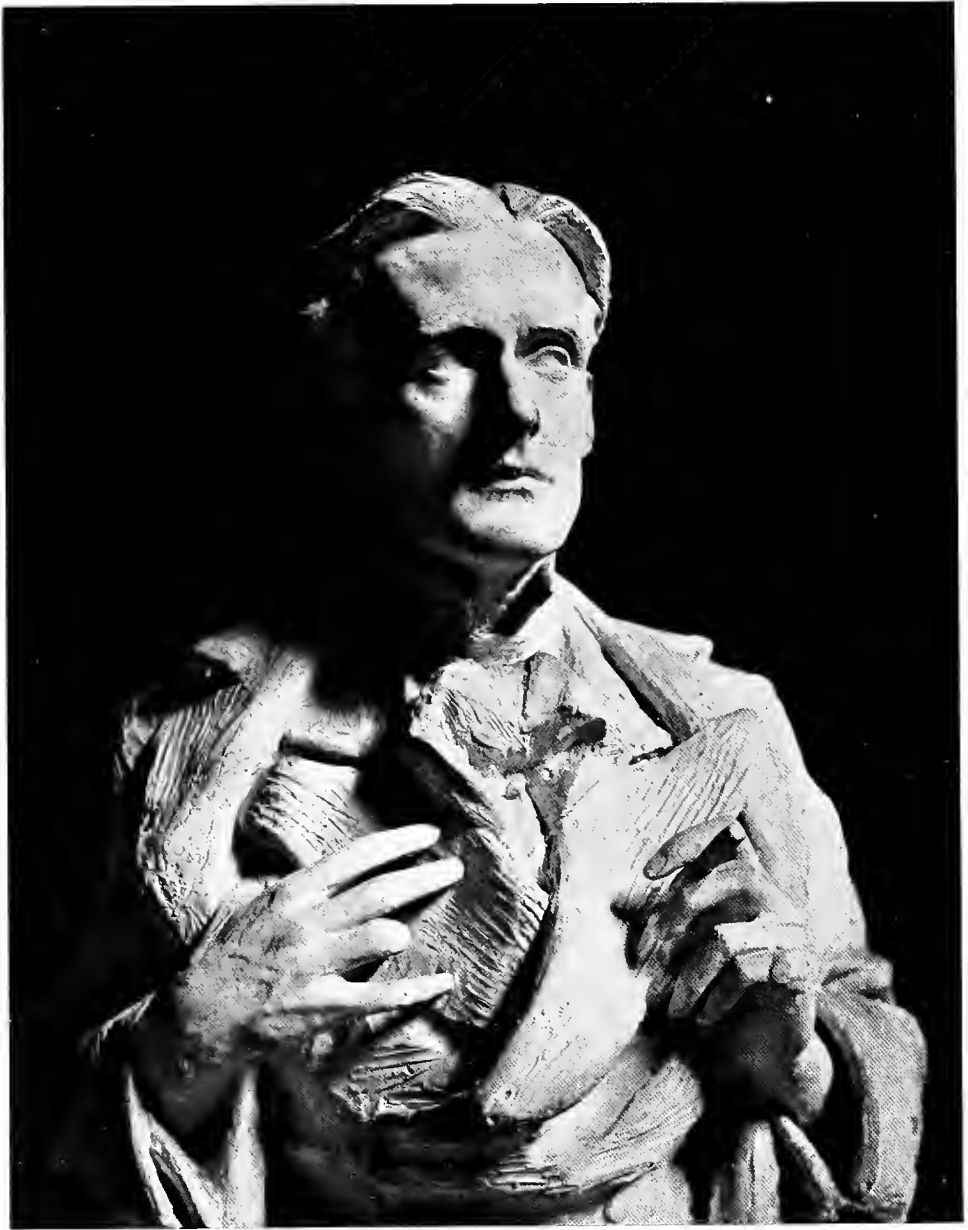


*Mabel*



*Lady Alice Montague*

*The Sister of the Duke of Manchester, Executed in Marble  
for the Late Queen Victoria*



*Portrait of an Artist*

(GEORGE DRINKWATER)

BRONZE

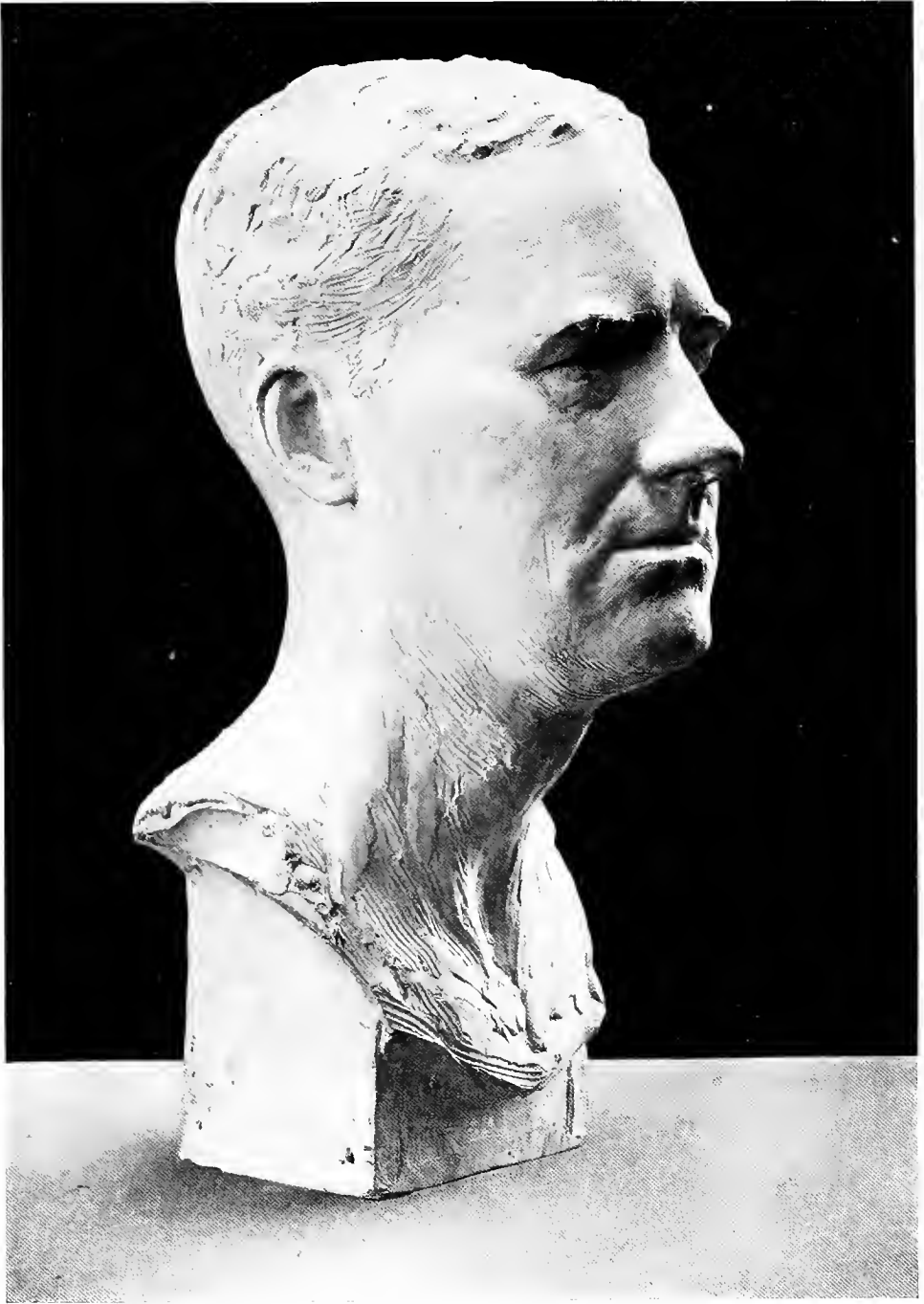




*Portrait of an Artist*

(GEORGE DRINKWATER)

BRONZE



*Portrait of Liston L. Lewis*

BRONZE



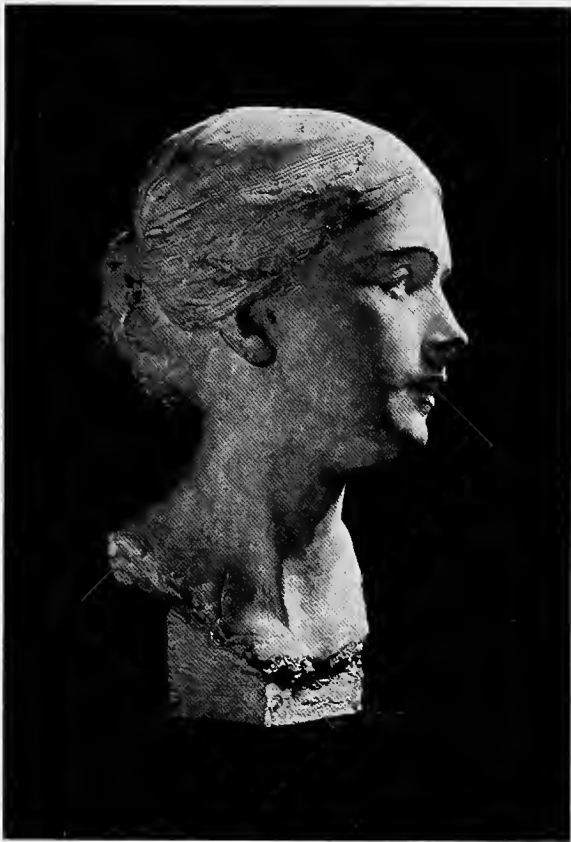
*Plaquette in the Pedestal for the Lewis Portrait*



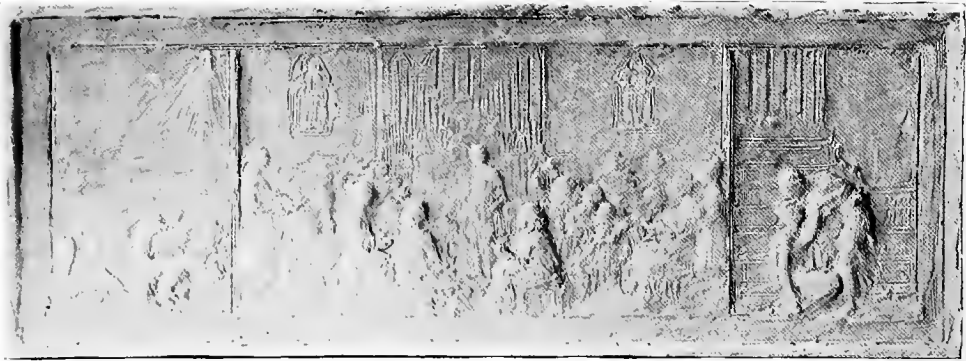


*The Lesson*

BRONZE



*Girlhood*  
(PHYLLIS)  
MARBLE



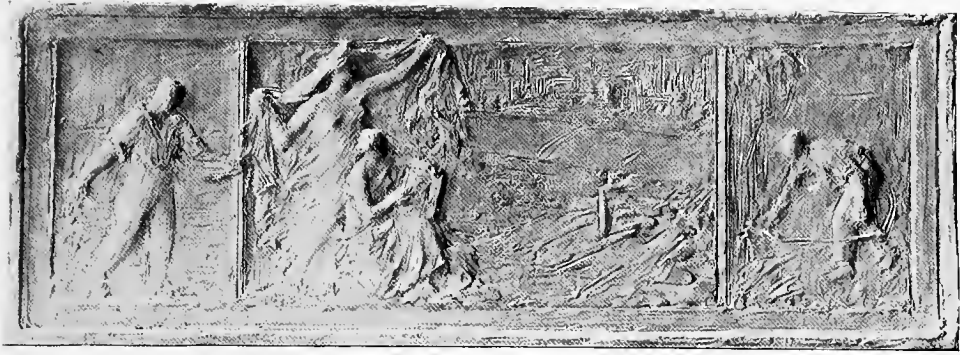
*Devotion*

*Work for the Sunday School*

*Charity*



*Sketches for the Bas Relief  
in the H. J. Heinz Memorial  
PITTSBURGH*



*The Sower*

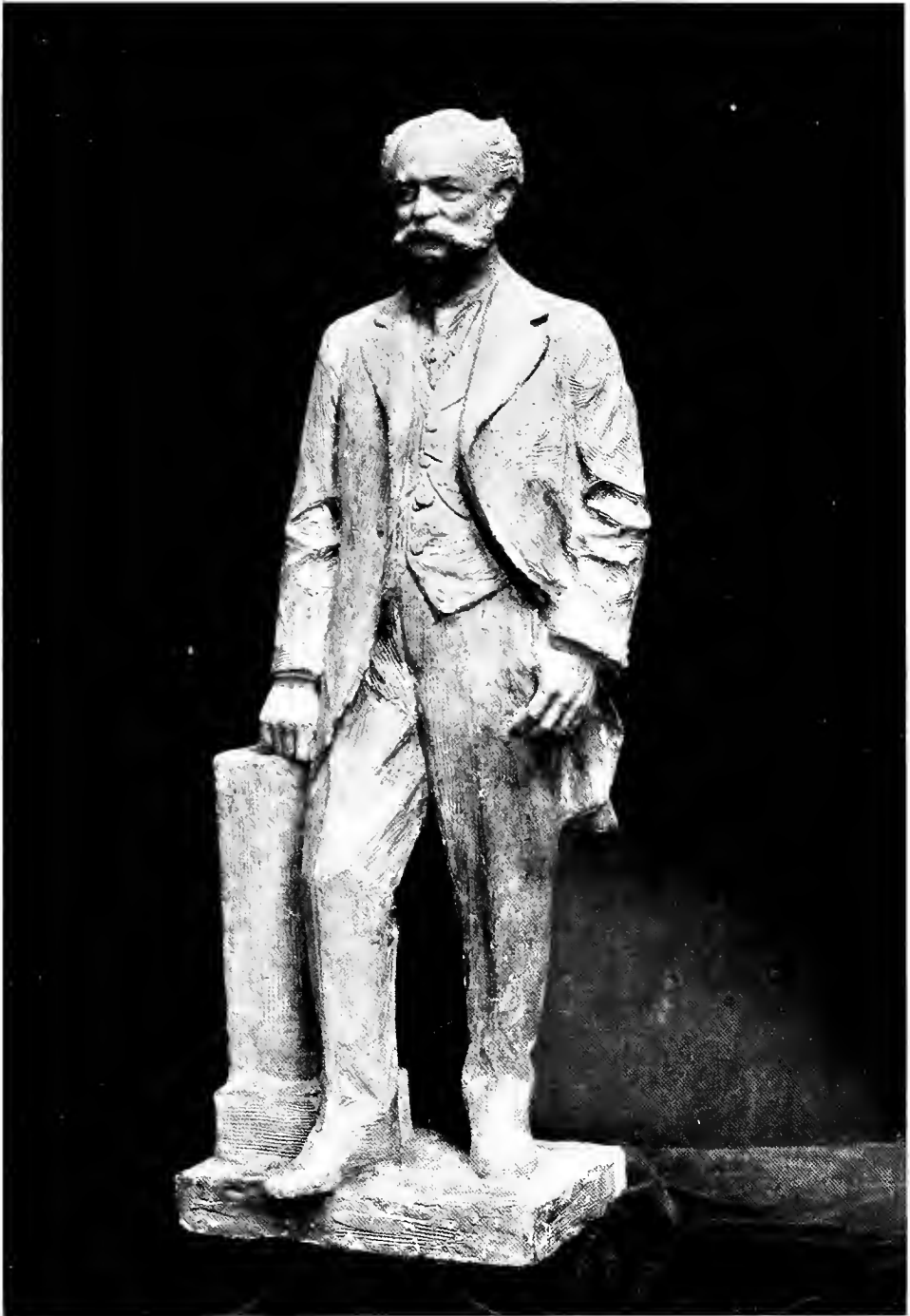
*The Vision*

*The Mower*



*Sketches for the Bas Relief  
in the H. J. Heinz Memorial*

PITTSBURGH



*Henry J. Heinz*

*Model for the Portrait Statue to be executed in bronze in Pittsburgh, given by the Employees to commemorate the Fiftieth Anniversary of the founding of H. J. Heinz Company*





*Sylvana*

GESSO

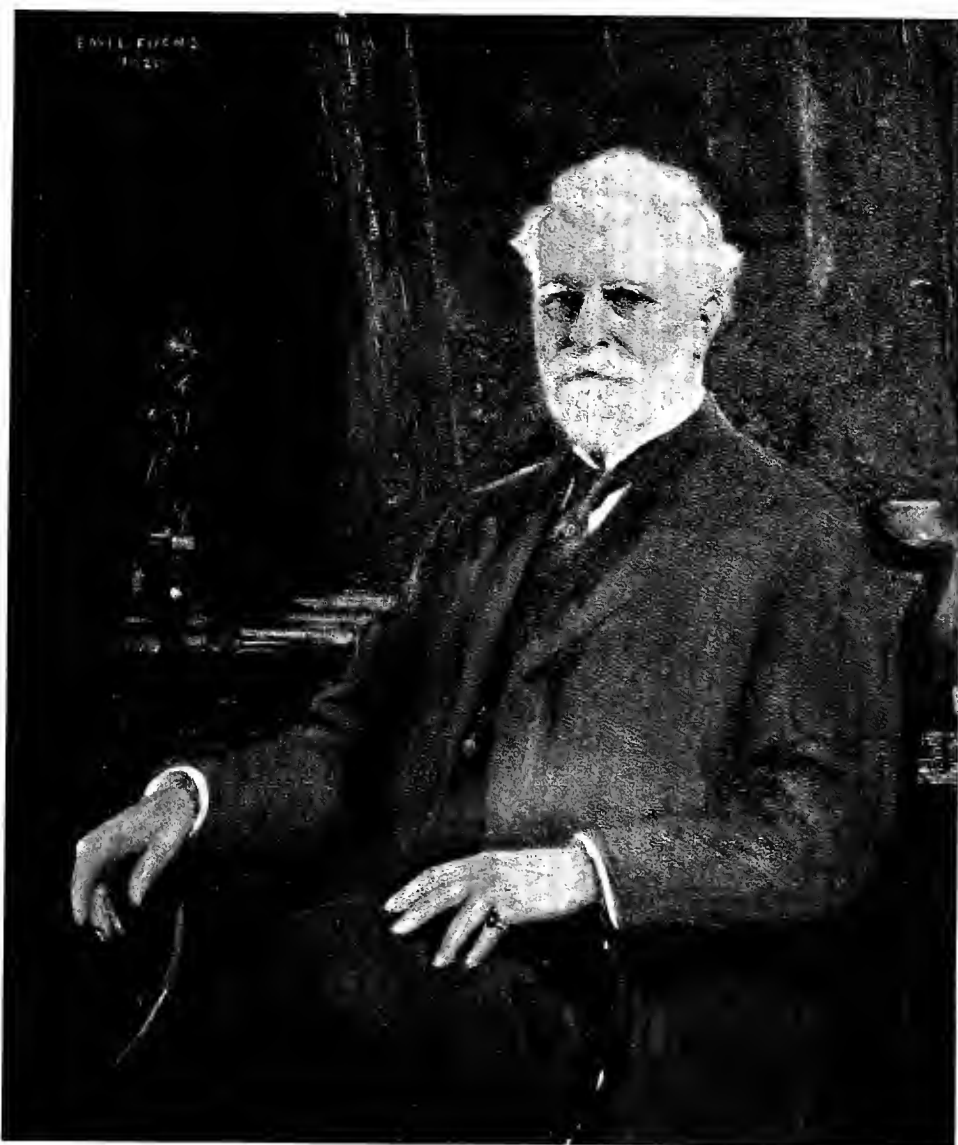


*The Slave*

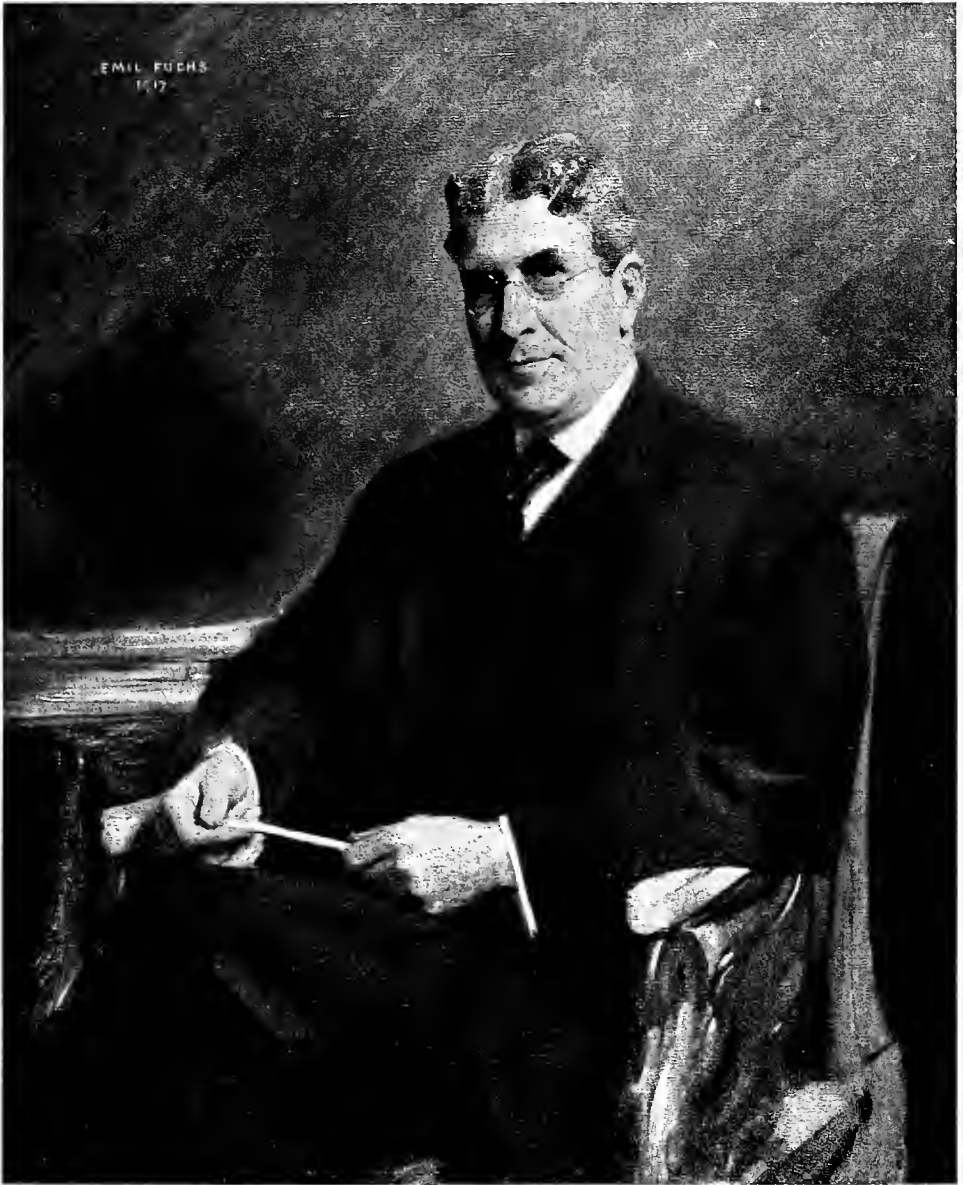
BRONZE

# PAINTINGS





*Ambrose Swasey*



*Lindley M. Garrison*  
PAINTED FOR THE WAR DEPARTMENT  
WASHINGTON



*George J. Gould*



*Sir Johnstone Forbes Robertson*

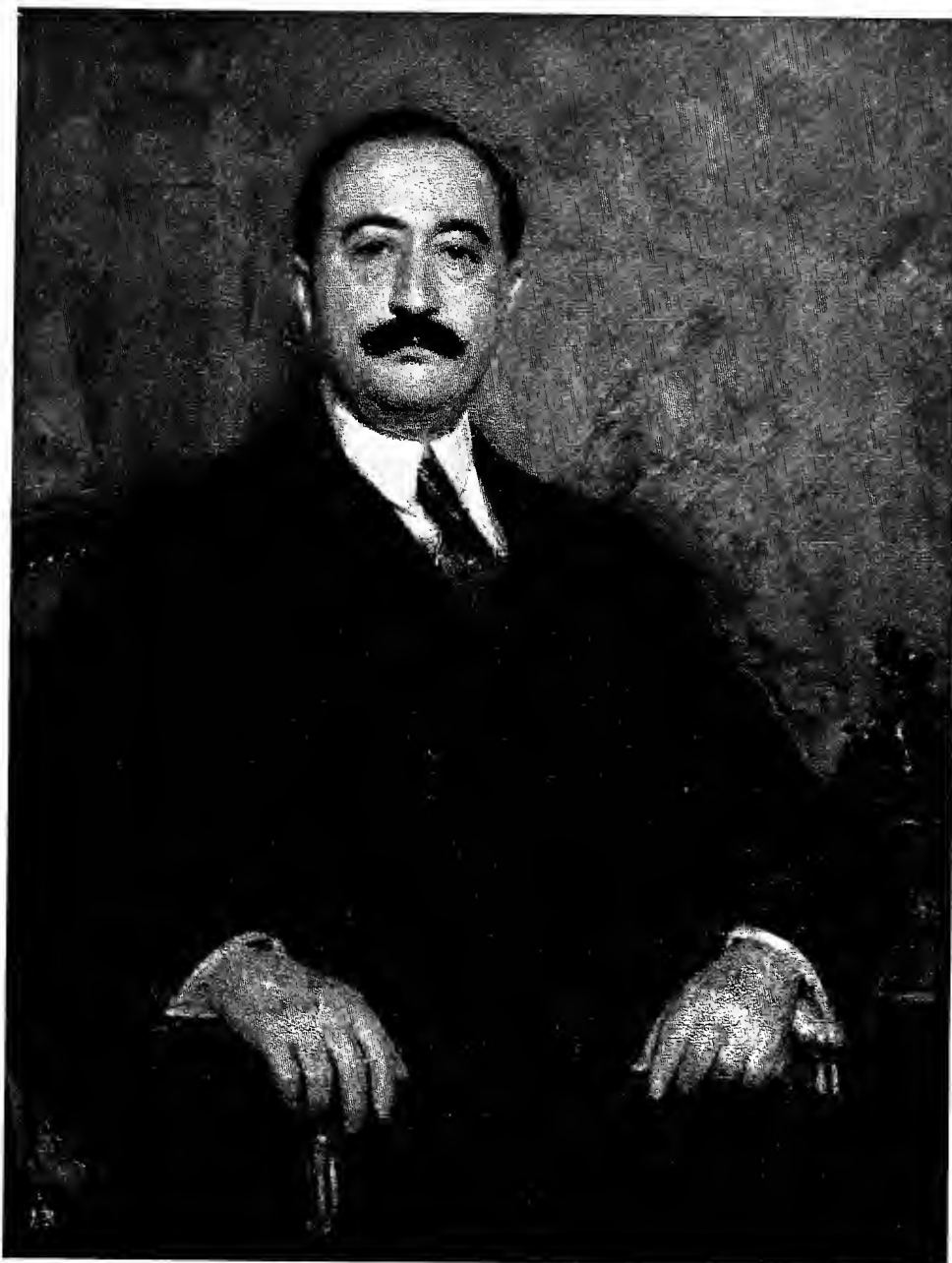




*Henry M. Earle*



*Edward E. Bartlett*



*Orestes Ferrara*

PROFESSOR OF THE NATIONAL UNIVERSITY OF HAVANA AND EX-SPEAKER  
OF THE HOUSE OF REPRESENTATIVES



*The Architect*

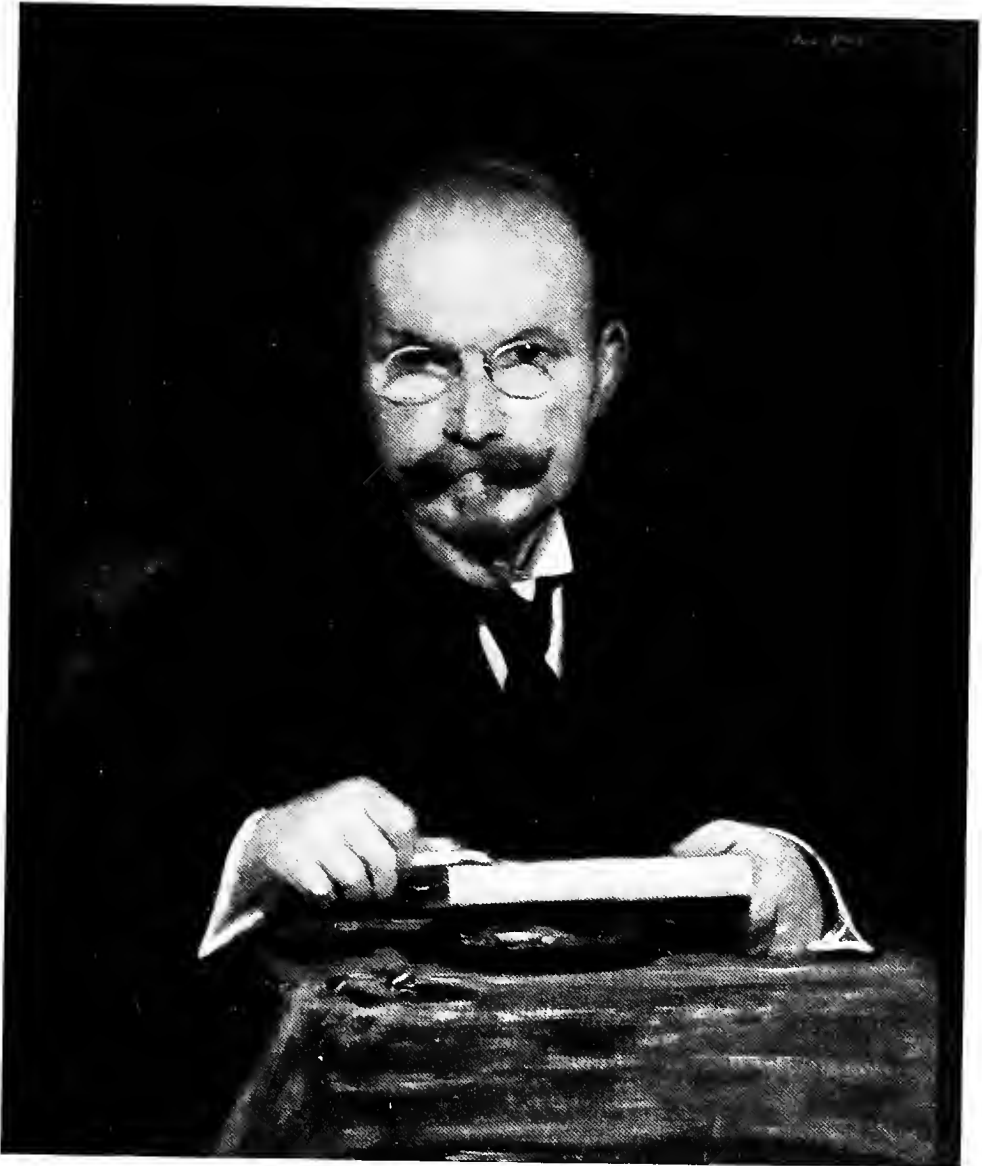


*The late Howard M. Beal, M.D.*

HEAD OF THE AMERICAN RED-CROSS HOSPITAL, PAYNTON, ENGLAND

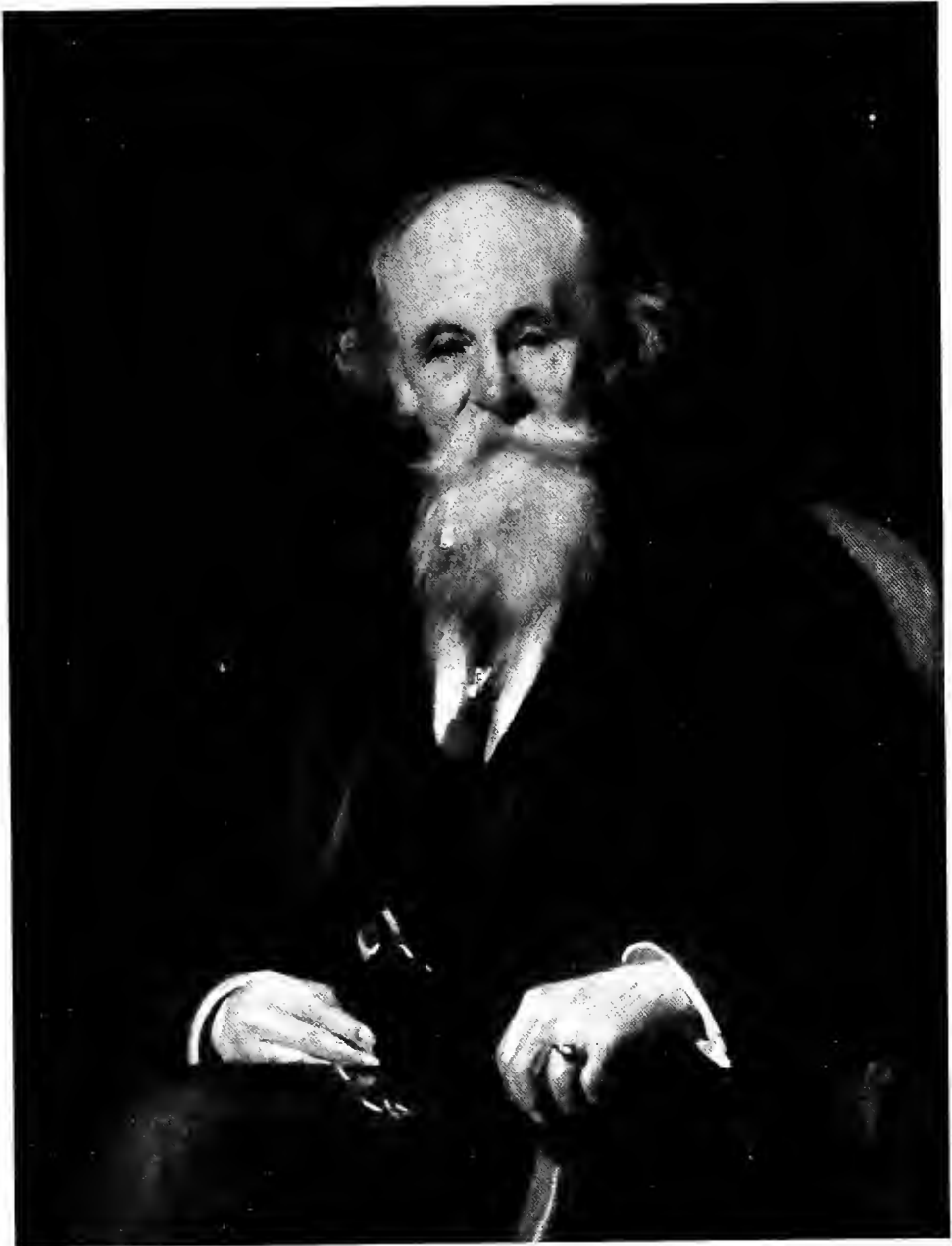


*Emil Fuchs*



*The Wood Engraver*

HENRY WOLF



*The Art Dealer*

MARTIN COLNAGHI



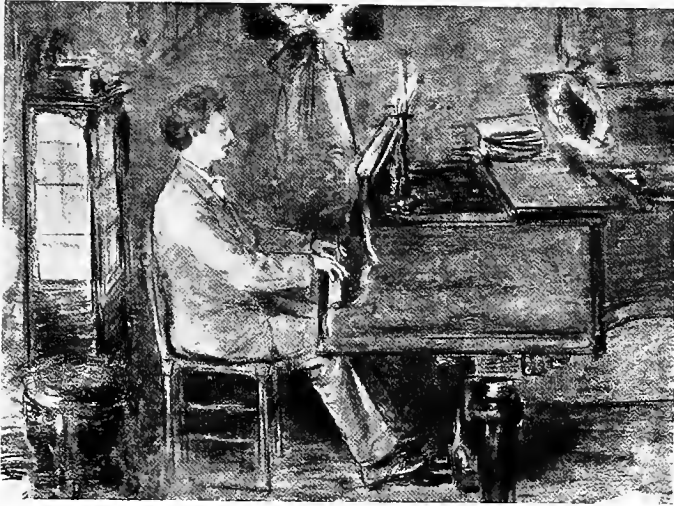


*Melville E. Stone*

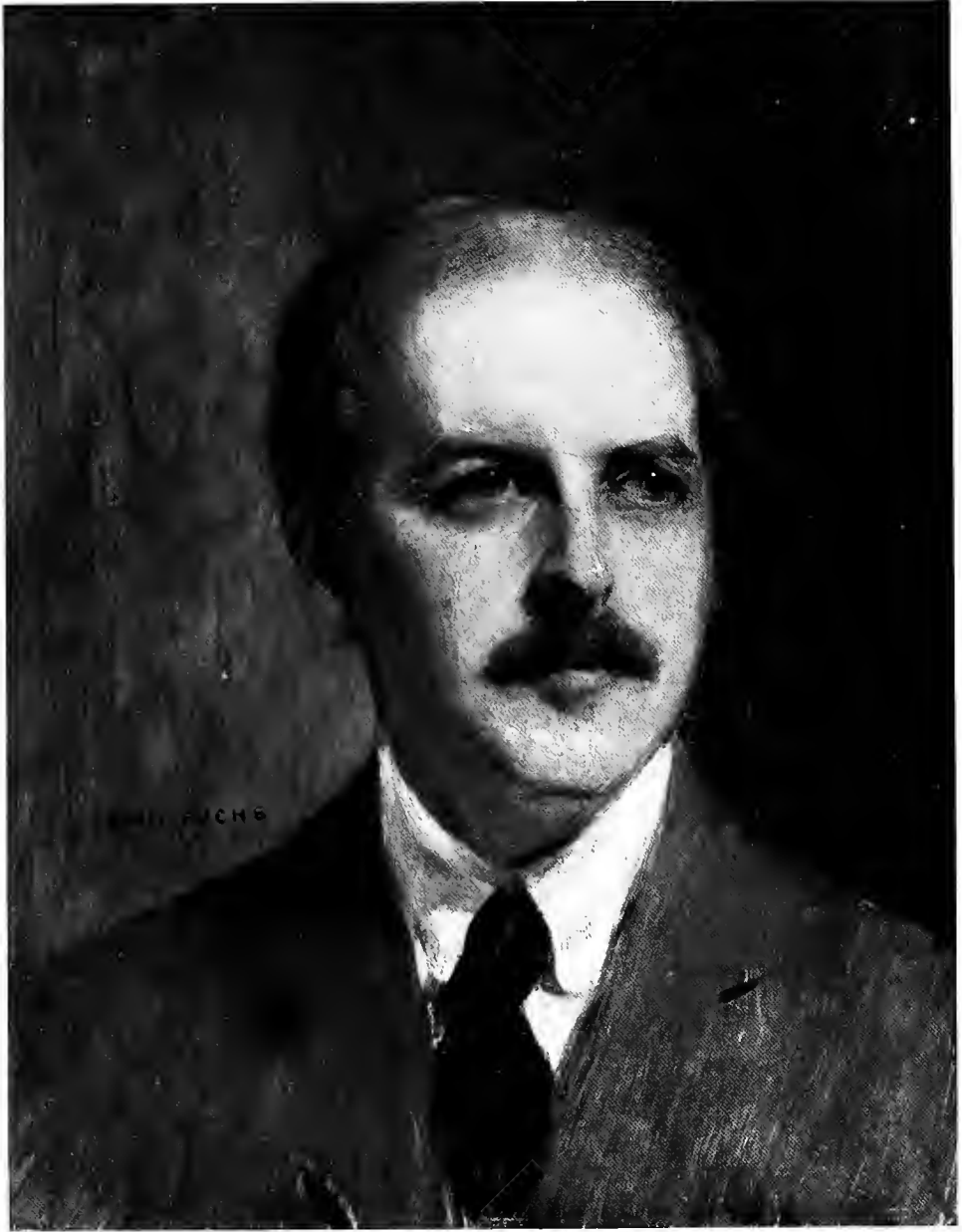
GENERAL MANAGER OF THE ASSOCIATED PRESS



*Paderewski*



*Paderevski at Home*



*William A. Evans*



*Kingdon Gould*







*Rosbanara*





*An English Girl*



*Little Jane*



*A Study in Blue and Gold*



*Little Jane and Her Mother*



*Mrs. Courtlandt Nicoll*



*Mrs. Henry Clews, Jr.*



*Adrienne de Carrière*



*Mrs. Allan Wellman*



*Mrs. Jaffrey*





*Ethelmary Oakland*

THE CHILD ACTRESS



*Mrs. Edmund C. Randolph*



*Mrs. Marshall Field III*



# MEDALS





*Drawing of the Head of King Edward VII  
for postage stamp*

FROM THE ORIGINAL AT SOMERSET HOUSE, LONDON



*Queen Victoria*

MEDAL COMMEMORATING HER REIGN IN THE TWENTIETH CENTURY





*Official Coronation Medal  
King Edward VII and Queen Alexandra*

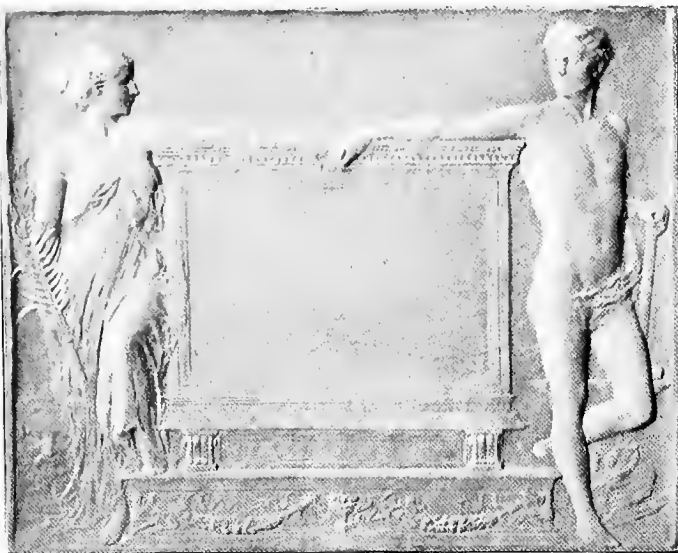


*The Hudson-Fulton Commemoration Medal*

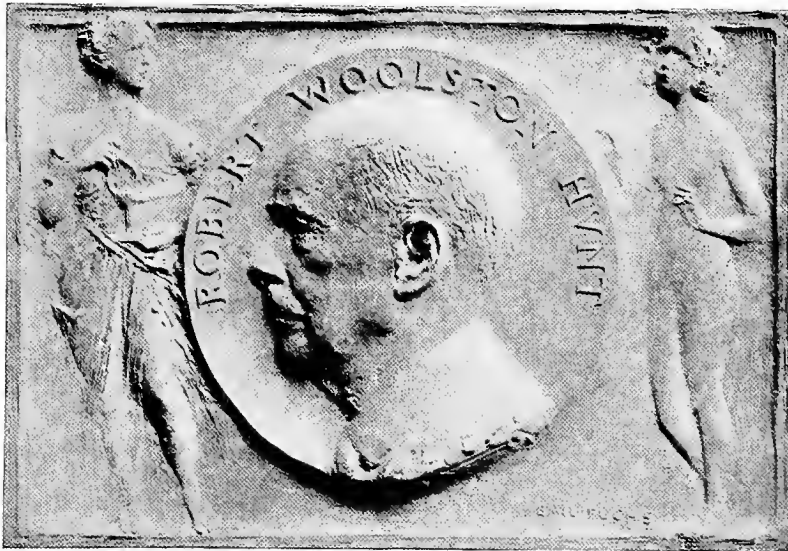
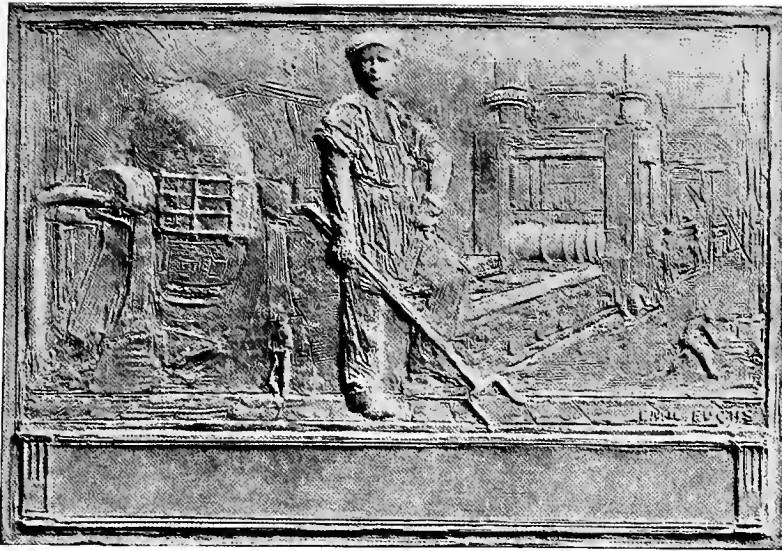


*Medal for Distinguished Achievements in Science,  
 Art and Music*

DESIGNED FOR MR. ARCHER M. HUNTINGTON OF NEW YORK



*John Pierpont Morgan Medal*



*Robert W. Hunt Medal*

DESIGNED FOR THE AMERICAN SOCIETY OF MINING AND  
METALLURGICAL ENGINEERS



*Medal—Motor Yacht Club of England*



*Queen Alexandra as Princess of Pity  
Reverse (Faith, Hope and Charity)*



*Membership Medal for  
American Numismatic Society*



*Membership Medal for the Hispanic Society  
of America*



*Medal Commemorating  
the Termination of the South African War*



*Lord Charles Beresford*



*Sir Ernest Cassel*



*King Edward VII*



*Lord Roberts Medal*  
REVERSE



*Mrs. M. V.*



*General Sir Arthur Ellis*  
EQUERRY TO KING EDWARD VII



*Field Marshal Lord Roberts*



*Anthony de Rothschild*



*Evelyn de Rothschild*



*Madame Ephrussi*





*Medal Designed for King Edward VII  
for Art, Science and Music*



*John S. Churchill*



*Princess Henry of Battenberg*



*Winston S. Churchill*  
SECRETARY FOR THE COLONIES



*P. H.*



*M. C.*



*S. H.*



*King George and Queen Mary*  
COMMEMORATING THEIR JOURNEY AROUND THE WORLD  
AS THE PRINCE AND PRINCESS OF WALES



*Count S.*



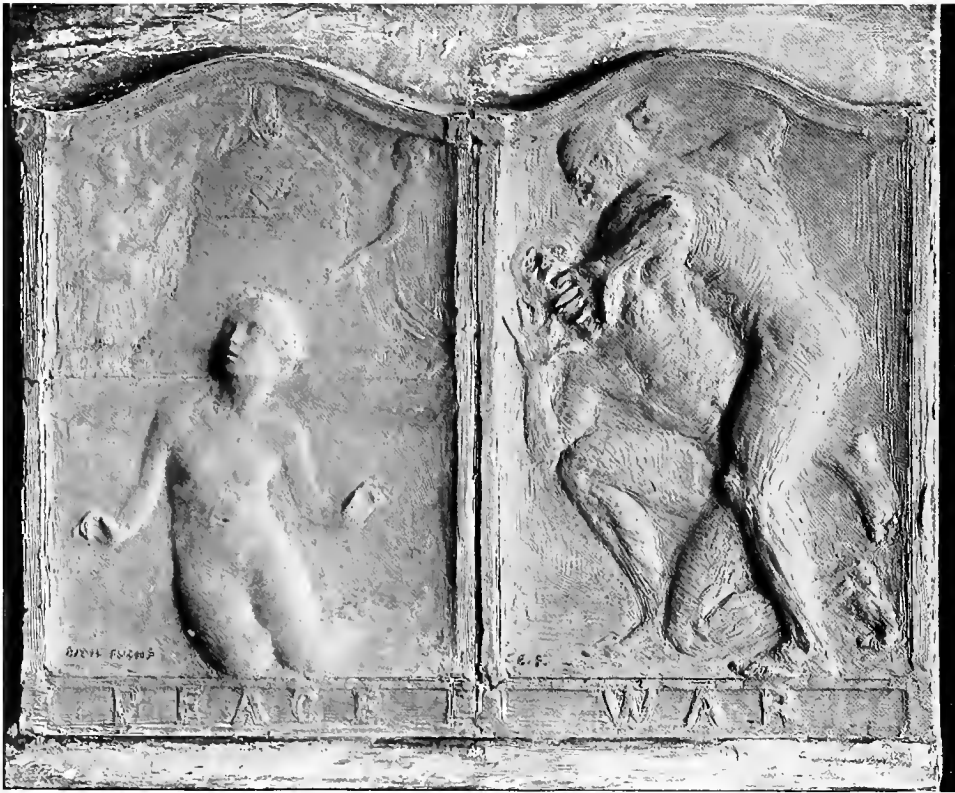
*Queen Victoria*



*Miss W.*



*General Sir George White*  
DEFENDER OF LADYSMITH, SOUTH AFRICAN WAR



*Medal Commemorating the Signing of the Peace Treaty*

JUNE 28, 1919

DESIGNED FOR AND ISSUED BY MESSRS. CARTIER

# STUDIES





*Ysaye*



*Beatrix*



*Molly*



*Italian Peasant*





Blanca V. B.  
Casalvier  
aun. 50  
Roma Aprile 1892  
E. P.







*Italian News Vendor*



*Baroness Aliotti*













*Design for Medal for the Committee  
for Devastated France*

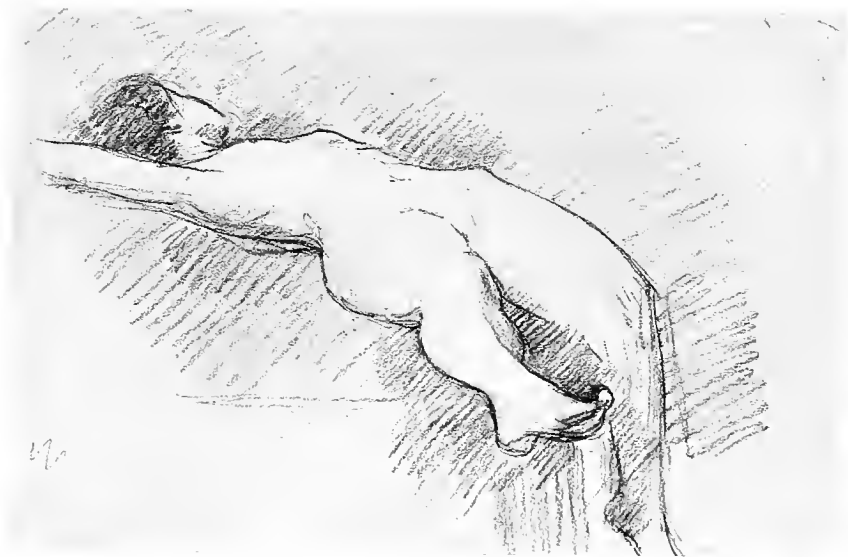


*‘Birthday Spoon  
Designed for Howard Heinz, Esq.*

PITTSBURGH











MOST of the assembled Exhibits have never been shown before, except for the following:

*The Bust of an Artist*  
*Maiden Meditation*  
*Lady Alice Montague*  
*Betty*

which were shown at different years at the Royal Academy, London, also the National Academy of Design exhibited at various times:

*Portrait Bust of a Lady*  
*Memories*  
*Dawn*  
*Reclining Nude*  
*Bust of an Artist*  
*Gari Melchers*  
*Forbes-Robertson*  
*The Peace Medal*

The *Peace Medal* and the *Bust of a Lady* were exhibited by special invitation at the Albright Galleries in Buffalo, and *Memories* at the Pennsylvania Academy of Fine Arts.

All of the works are Originals with the exception of *Lady Alice Montague* which is a replica of the bust in the Royal collection in England.

Of *La Pensierosa* at The Metropolitan Museum of Art (also an Original), the proof-cast is in the collection of Lord Harcourt, London.

The issue of *Butterfly* is limited to twenty copies, of which seven are unissued, and *Eva, Study of a Nude* to six copies, three unissued.

A record is kept of the names of the owners of these copies, so as to prevent indiscriminate reproduction, which can only be injurious to the quality of the work.

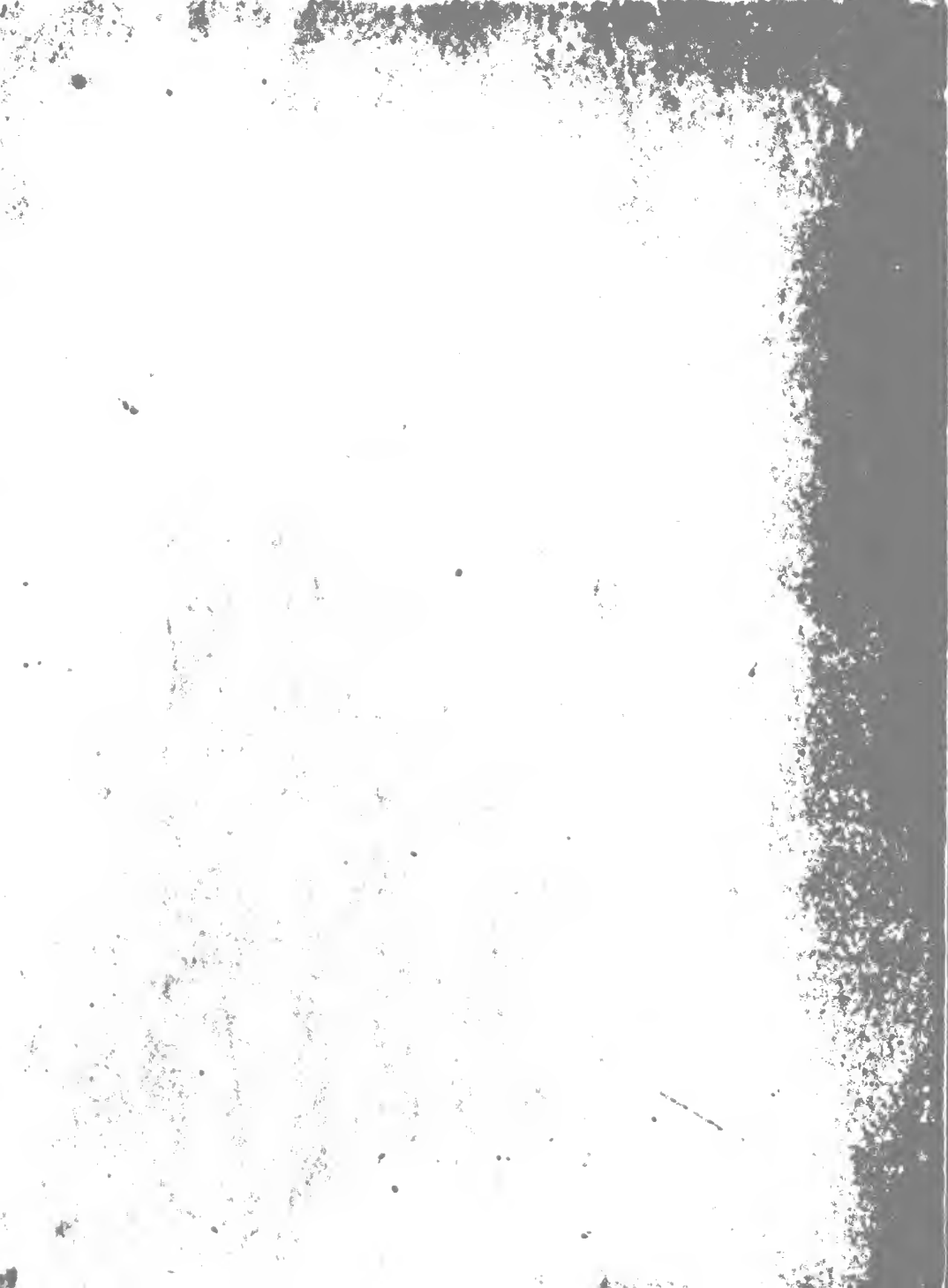
EMIL FUCHS













SMITHSONIAN INSTITUTION LIBRARIES



3 9088 01104 0847