

Peacock
Dahlia
Farms
1918

THE

1918 date inside

WORLD'S BEST DAHLIAS

New Creations and Old Friends



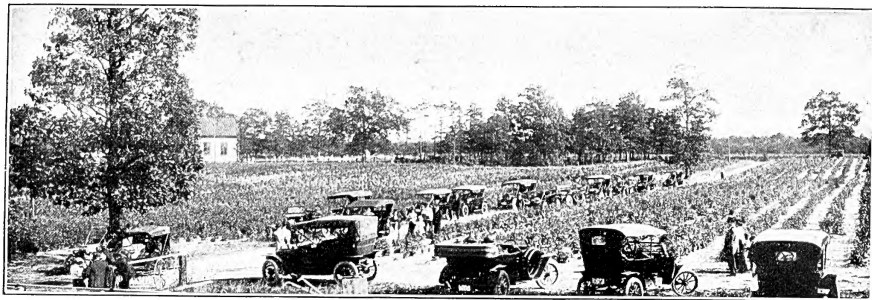
PEACOCK DAHLIA FARMS

*Farms, Williamstown Junction
New Jersey*

*Post Office,
Berlin, New Jersey*

DAHLIAS IN AMERICA

A FEW FACTS About This Wonderful American Flower



THE Dahlia, at last, occupies a position second to no other plant in our gardens, and it is exceedingly gratifying to us as it bears out our prediction made in 1884 that, "Owing to a dearth of flowers during the summer and early autumn months, a proper development of the possibilities of this beautiful flower would give it a place of honor in every garden. Owing to its free growing habits, freedom from serious disease, and ease of safeguarding from the few insects that attack it, it can and will be universally grown." It is specially gratifying to us that our prediction of 34 years ago is being realized to the fullest extent.

During this time we have devoted our entire time and energy to aid in the development of the Dahlia, and bring about the present most gratifying results. During this time, regardless of vicissitudes, our keynote has been "Quality" which has resulted in our not only having been the original American Dahlia specialists, but the enviable position of the largest Dahlia growers in the world.

As a large proportion of existing varieties have been originated in other countries, the development was along lines suited to local conditions, there; and, are entirely unsuited to American conditions. This is particularly the case with Dahlias for decorative purposes. We grow the best and most reliable varieties in immense quantities, and as we are not dealers but growers we know that our stock is the best that experience and eternal vigilance can produce.

OUR FARMS embracing 172 acres are located at Williamstown Junction, New Jersey, on the Atlantic City Branch of the Reading R. R., only 17 miles from Chestnut Street Ferries, Philadelphia, and we extend a most cordial invitation to our customers and all interested in Dahlias to visit us and inspect our fields while in bloom, during August, September and October. We have 32 trains daily and 16 trains on Sundays during summer. Time tables will be sent on request.

ORDER EARLY It will greatly facilitate shipments if orders are sent in early. We aim to send out orders the same or the next day after receipt, but during the rush season this is impossible—hence the advisability of ordering early.

Guarantee. We guarantee every plant, bulb or root sent out by us to be just as represented, absolutely true to name, reach destination placed in perfect condition, and prove entirely satisfactory; we will cheerfully replace any that should prove otherwise.

Terms. Cash with order. Remittances may be made by Bank Draft, Post Office or Express Money Order, or Registered Letter at our expense and our risk.

Forwarding. Dahlia Roots and Plants are sent by mail postpaid at prices named herein; but larger stock will be sent by express, charges collect, and "Extras" are added to help cover charges. Dahlias are billed at "2nd class" rates and in most cases are one-third ($\frac{1}{3}$) or $33\frac{1}{3}$ per cent. less than regular merchandise rates which now are much lower.

Errors. While we exercise every care, errors may occur occasionally. In such a case kindly notify us at once, and correction will be promptly and cheerfully made.

Name and Address. Be sure and write name and address plainly on each order or communication.

Address all orders or communications to

PEACOCK DAHLIA FARMS,
Post Office, Berlin, N. J.

DAHLIAS *for* 1918

We realize that there are too many varieties and while we test thousands each year, we offer only the very best. We have still further reduced our list this year by omitting many of the older varieties that have been superseded by similar but better ones.

At the request of many of our customers we have used large type to designate the very best. This will greatly simplify the selection for beginners and those with small grounds.

Classification and Culture

We will send free on request our eight-page pamphlet on culture and classification.

New Book "The Dahlia"—Fifth Edition

By Laurence K. Peacock, 80 pages, 7 $\frac{3}{4}$ by 10 $\frac{3}{4}$, beautifully illustrated. 5th and revised edition. A practical treatise on its habits, characteristics, classification, culture and history, by one who for 34 years has never failed to have a crop of the finest blooms, in their season regardless of conditions. Price 50c. postpaid. FREE on request with all orders amounting to \$5.00 or more.

ORANGE BEAUTY One of the handsomest decorative varieties that has ever been introduced. It is a beautiful glistening orange, deep and rich, the clearest and richest of this popular color. The plant is a very sturdy healthy grower, of medium height, branching habit and produces the flowers freely on good stiff stems.

The flowers are of good size and splendid form, the outer petals reflexing to the stem. A splendid cut flower, very striking and effective, both under natural and artificial light, also very effective in the garden. Strong plants, \$2.00 each. A few roots until exhausted at same price.

MRS. HOWARD M. EARL The most remarkable and valuable paeony Dahlia in existence. It is a *glorified Geisha*. Larger, finer form, longer and stiffer stem, and a much stronger and more vigorous grower. The foliage is much darker.

The color is a brilliant coppery red, with a soft golden yellow base and tips. The petals are longer, narrower, and more incurved than *Geisha*. It is a much larger and handsomer flower and attracted the greatest attention on the exhibition table and on our grounds. An acquisition for the garden, exhibition table and decorative purposes, being a splendid keeper after cutting. Price, strong plants, \$5.00 each.

TANSBORO A ball seedling of Mrs. Chas. Seybold. A most striking new show or ball Dahlia. Color, white suffused pink, heavily suffused and tipped crimson and maroon. It is of perfect form, full and round and a strong vigorous and free bloomer on long stiff stems, \$1.00 each.

16 New Decorative Dahlias for 1918

This is a truly wonderful collection that will please every flower lover, and is indispensable to the exhibitor or amateur who wants Dahlias just a little better than ever before.

AYESHA A wonderfully handsome, clear light yellow dahlia, that has attracted great attention. The flowers are of immense size; beautiful, regular form, with large shell like petals, and borne on long stiff stems. The plant is a strong vigorous grower and a most profuse bloomer, considering its large size. Excellent for garden, exhibition and commercial purposes. Price 75 cents each.

BLOEMHOVE Another immense flower that attracted attention, similar in form to Bertha Von Suttner, but a beautiful clear lilac rose color. The plant is a sturdy grower and extremely profuse bloomer. The form is beautifully irregular with long reflex petals, resembling a huge broad leaved, reflexed chrysanthemum. Price \$1.00 each.

BREEZE LAWN A grand variety of great promise, that is claimed to surpass Minnie Burtle, but it is different and entirely distinct. A grand exhibition, 8 inches and over in diameter, when properly grown. Color vivid vermillion; of splendid form and full center. Strong plants, \$1.50 each.

CARMEN A new variety that will be extensively grown. It is large, splendid form, and a most pleasing shade of orange red. An early, profuse and continuous bloomer. A great acquisition. Strong plants, 50 cents each.

CLIO A most pleasing new decorative that will become a great favorite. It is large, dark lilac in color and an early, continuous and profuse bloomer. Strong plants, 50 cents.

FANTASIE A new acquisition that promised to become a universal favorite. The flowers are very large, exquisite form and coloring. The color is entirely new and distinct, being salmon shaded blue. It is a very profuse bloomer. Strong plants, 75 cents each.

FLAMINGO This is the genuine Flamingo and red as it should be. Besides being a brilliant red, it is of immense size with long twisted and curled petals, giving it a most uniquely irregular form. The immense flowers are borne on long stiff stems. It is a strong vigorous grower, an early and free bloomer. The flowers are very double, being always with a full long center. Strong roots, 75 cents each.

GOLDMINE At last we have the ideal, pure golden yellow Decorative Dahlia. It is large, with stiff stems; an extremely early bloomer, and perfectly full at the center until frost. The plant is a strong vigorous grower of medium to dwarf branching habit, while the flowers are of regular form with flat or slightly reflex outer petals. The foliage is dark green with dark stems. We guarantee this variety to have a strong rugged constitution and to be the ideal golden yellow decorative, without a fault. Strong plants, 75 cents each.

GUILLAUME DE ST. VICTOR A most striking and pleasing new decorative. White, suffused soft mauve rose; delicate and chaste. Strong plants, 50 cents each.

HOHENZOLLERN It is a new variety that will be grown universally as soon as the large, dark velvety red flowers are seen. \$1.00 each.

KING ALBERT In this we have a magnificently royal flower. Large, finely formed, rich royal purple. It is a strong vigorous grower and free bloomer. Strong plants, \$1.00 each. A few roots until exhausted.

L. KRAMER PEACOCK In this new decorative, we have an ideal white. The flowers are pure white, of splendid form, with slightly cupped petals, something of the shape of Ayesha and of the greatest substance, being thick, leathery and keeping longer, than any other white. It is of strong branching habit and produces the flowers on stiff rigid stems. It is an early, free and continuous bloomer. We have tested this variety most rigidly for the past four years and it has proven itself the most reliable and best white decorative to date; surpassing such varieties as Mont Blanc, Princess Juliana and Hortulanus Witte in size, form and keeping qualities. Strong plants, \$2.00 each.

MARIANNE A most pleasing and distinct variety that is greatly admired. Color a rich purple and white; very striking. Strong plants, 50 cents.

PINK FLAMINGO While the name is a misnomer, the flower is a beauty, being of fine form, sometimes showing an open center. Color violet rose, overlaid Tyrian rose; very early and free flowering. Strong plants, 50 cents.

PRINCE OF ORANGE This is what has been wanted for a long time. A first class orange, and this variety will most satisfactorily fill the want. Rich orange, of fine form, large size and a fine bloomer. Strong plants, 75 cents each. A few roots until exhausted.

ROEM VAN NIJKERK A fine dark rich purple or plum; an early and free bloomer. Large size, fine form and good grower. Strong plants, 50 cents each.

One each of above 16 New and Rare Decorative Dahlias, a superb collection, for \$12.00.

New and Rare Cactus Dahlias

BIANCA A magnificent new cactus dahlia that has attracted the greatest attention and favorable comment. It is not only new, but of gigantic size and splendid form. Color an exquisite rose. A strong vigorous grower, of splendid habit and a very free bloomer. Strong plants, 50 cents.

DELICAT A fine cactus of good form and fine habit; a strong, vigorous grower, early and free bloomer; color, dark rich purple or plum. Strong plants, 50 cents. A few roots until exhausted.

DUCHESS OF MARLBORO A magnificent cactus, most pleasing and effective; rich golden orange, overlaid solferino. The flowers are of splendid form, with long, narrow, twisted incurved petals; large size and produced freely on long graceful stems. Strong plants, 50 cents.

FRANCES WHITE A splendid new white cactus, of exquisite form, large size, on long stems. Color pure white, shading to sulphur white at the center. One of the finest. Strong plants, 50 cents each.

GLUCK AUF A pleasing cactus of dwarf branching habit; early and free; color rich orange. Strong plants, 50 cents.

HEDWIG SEVERIN A grand flower of large size, splendid form, with full high center, and an early, profuse and continuous bloomer. The flowers are clear silvery rose and borne on long slender, but stiff, stems. A great acquisition. Strong roots, 50 cents each.

MME. DESMARIS A most distinctive new cactus, that is most pleasing and effective. Color bright rosy scarlet, tinting lighter at tips, with a golden suffusion, petals long and gracefully twisted. Strong plants, 50 cents.

MME. ESCHENAUER An ideal dahlia of exceptional merit. Most pleasing and effective color, being yellow at base of petals, passing to creamy white, suffused and tipped pale lilac. Delicate and chaste. Strong plants, 75 cents.

MODEL A beautiful cactus of exquisite form and coloring, being a clear yellow, passing to rose; very distinct and effective. A strong grower and an early, free and profuse bloomer. Strong plants, 75 cents each. A few roots until exhausted.

PROF. LAUDER A new introduction. Color rich crimson carmine, striped red, and tipped white. An early, free and continuous bloomer, on long erect stems. Petals artistically curled and twisted. Strong plants, \$1.00.

WACHT AM RHINE Soft hydrangea pink, tinting to white at center. A large, striking flower, with deeply cleft petals. Strong plants, 75 cents.

YELLOW KING Probably the largest of all cactus dahlias, being of gigantic size and one of the finest new cactus. Color light yellow. The immense flowers are borne on long stems; the plant is a strong vigorous grower and free and early bloomer. Strong plants, \$1.00 each.

One each of above New and Rare Cactus Dahlias, 12 in all, for \$7.00.

New and Rare Paeony Dahlias

AMERICA A new variety of exceptional merit. Color soft golden copper; large and extremely free flowering; distinct and effective. 50 cents each.

BERCH. VAN HEEMSTED A new paeony variety that will be generally grown as soon as its good qualities become known; color pure yellow, large size, fine form and free bloomer. Strong plants, 50 cents.

DIEMONT VON BYSTEIN A new shade of a popular color, being a deep blue lilac. Large and fine; a strong grower and free bloomer. Strong plants, 50 cents. A few roots until exhausted.

DOCTOR A. KUYPER A grand variety; color rich orange, a strong grower, early and free bloomer. Strong roots, 50 cents each.

LEO XIII Deep rich yellow, shaded darker; entirely distinct in form; large, splendid form, and an early and free bloomer on long stems. Strong plants, 75 cents each. A few roots until exhausted.

MME. VON LOON Rich glowing orange, large, fine form and free bloomer. Strong roots, 50 cents each.

MONDSCHIEBE A rich primrose yellow of large size and splendid form; entirely distinct from Leo XIII; being still larger in size and considered the finest of its shade. Strong plants, 75 cents.

PEACE This new pure white paeony variety is the best of all the white sorts to date; splendid form, early, free and continuous bloomer; should be in every collection. Strong plants, \$1.00 each. A few roots until exhausted.

PEACOCK'S YELLOW This is the last word in yellow paeony dahlias. It is of immense size, great substance, true paeony form and a rich canary yellow color. It is an early, free and continuous bloomer. The plant is of medium dwarf habit, branching, and producing the gigantic flowers on long stiff stems. After two years' critical test we can guarantee it to be the ideal yellow for garden, exhibition, and commercial purposes. The color is absolutely pure and clear without tint or bluish. Strong plants, \$5.00 each.

One each of above grand Paeony Dahlias for \$9.00.



Dahlia cactus (Chrysanthemum-shaped Dahlia). Another New Break in the Dahlia

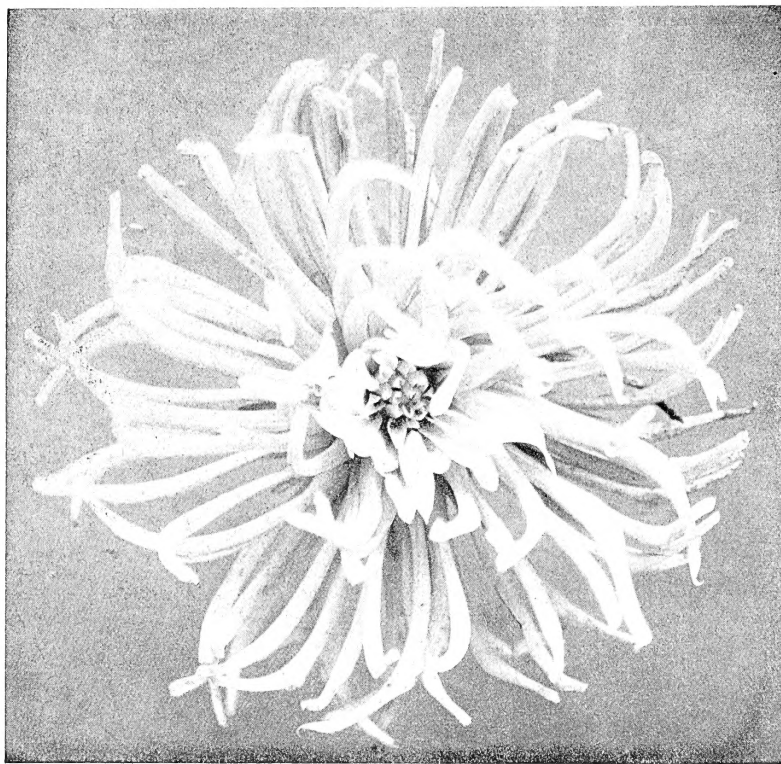
Superb Cactus Dahlias

	Each		Each
A. D. Stoop. Rich crimson with darker center, an excellent garden variety with good stems.....	\$.25	Crystal. One of the very finest, clear, soft pink cactus; flowers are of enormous size, with long, narrow incurved petals and full center, a strong, vigorous grower, excellent exhibition variety.....	\$.75
Bosnia. A most unique form, with cleft or stag-horn petals; rich orange.....	.50	Claudius. One of the very best; bright, bold crimson, of largest size, with long narrow petals.....	.35
Butterfly. Well named, large, well formed flowers; deep crimson, tipped white.....	.25	Dahlia cactus. (See illustration.) Another new break in Dahlias, the large very full flower is borne on long slender wiry stems. Color is a rich creamy white, shading to primrose at the center and tinting to white at the tips. Plants.....	.50
Bridal Robe. One of the very best white cactus , very large full flowers with great substance and keeping qualities. The flowers are six or eight inches across with great depth and are borne on long rigid stems; a strong, vigorous grower and continuous bloomer.....	.50	Debutante. Soft pink, tinting to white, a fine exhibition variety.....	.25
Clara. Soft mauve tipped yellow.....	.25	Dr. Kendall. An excellent autumn shade variety, bright yellow, shaded rich orange; an improved Wm. Marshall	.25
Crescent. Bright coral red, shaded yellow; a fine exhibition flower.....	.25	Echo. A beautifully formed cactus with long slender incurved petals; color rose suffused crimson.....	.25
Colada. A very fine garden variety, free and continuous bloomer; color bright carmine cerise.....	.25		
Celia. Rich pink, a fine free bloomer.....	.25		

Minnie Burtle is the great red Decorative; strong roots, 50 cents prepaid

*New Fancy Cactus Dahlia, Jupiter*

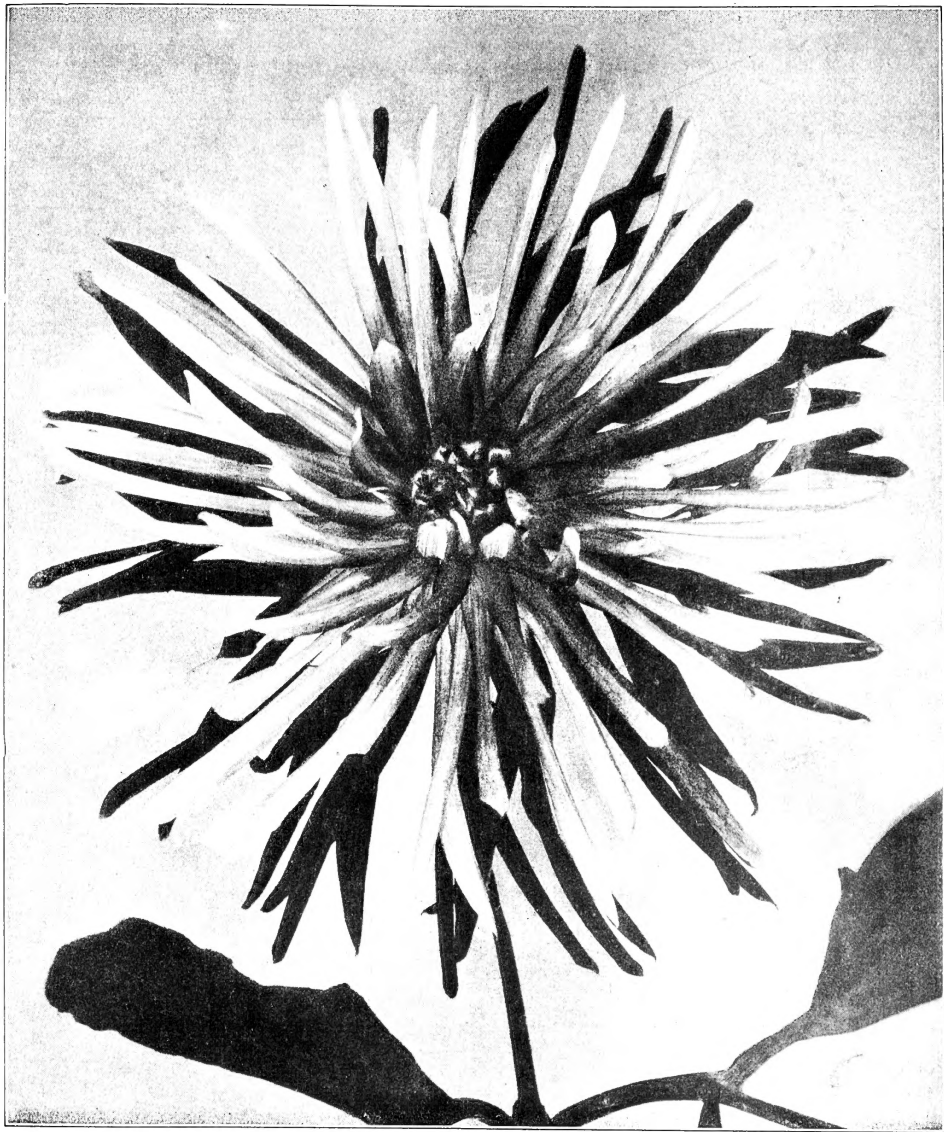
Electric. This is one of the most charming varieties. The color is rich, clear canary yellow, each petal heavily tipped white; delicate and chaste. The flowers are large and finely formed with incurved petals. A strong, vigorous grower.....	Each \$.50	Germiston. Dark glowing crimson, flowers large, with long narrow petals, an early and free bloomer.....	Each \$.50
Empress. An immense flower; valuable for exhibition, color of a striking shade of purplish crimson.....	.50	Golden Eagle. Very large, bright yellow, suffused rose and fawn, one of the best.....	.50
Emu. Rose base, shaded crimson; very fine form.....	.30	Golden Plover. Golden yellow, shaded bronze toward the tips, large and fine, with long narrow petals.....	.50
Erecta. Very large, erect, rosy lavender. Plants.....	.35	Great Western. Very large, bright purple; entirely distinct.....	.50
Eureka. Distinctively beautiful, bright purple; a splendid flower, with long narrow petals.....	.25	Gwen Tucker. An exquisite cactus of finest form, with long incurved petals; color soft flesh pink.....	.50
Evening Star. A fine "Autumn shade" variety; beautiful golden center, shading to bright terra-cotta.....	.25	Harlequin. Bright carmine, edged and tipped white, distinct and striking.....	.30
Excelsior. A splendid garden and exhibition variety, color rich velvety maroon.....	.50	Iolanthe. Deep coral red, tipped gold; a large well-formed flower with long stiff stems.....	.30
Fairy Queen. Pure white, beautifully formed.....	.35	John Woolman. Scarlet, shaded rose; a large finely formed flower, early and free bloomer.....	.30
Flagstaff. A fine cut-flower variety, carmine tipped rosy mauve, yellow center; long stiff stems.....	.30	Jupiter. (See illustration.) The best of its type. Yellow at base, passing to salmon rose at tips, the whole striped and penciled bright crimson.....	.50
Florid. Bright scarlet, beautiful flowers, with long narrow petals, borne on long stems.....	.50	Killarney. An excellent cut-flower variety, large, fine form and a free bloomer on long stiff stems; color bright orange.....	.50
Fortschritt. Large, rich bordeaux red.....	.35		
Gelber Prinz. New clear yellow cactus.....	.50		



New Cactus Dahlia, Crystal. See page 4

Kingfisher. Color distinct, pure lilac; beautiful form; a splendid exhibition flower.....	Each \$.50	Masterpiece. Pale lilac rose at tips gradually passing to soft sea amber at base of petals; large and fine. Plants.....	Each \$.50
Lacemaker. Deep carmine, suffused and often tipped white, very free flowering, distinct. Plants.....	.50	Mauve Queen. An exquisite flower with long slender incurving petals, color clear rosy mauve; a profuse bloomer with long stems.....	.25
Lady Fair. Primrose tinged soft pink; a large, full deep flower with long, incurved, finely cleft or stag-horn petals; very distinct. Plants.....	.50	Mercury. Yellow striped and penciled crimson.....	.25
Lady Swathling. Very large, clear yellow, shading to deep salmon pink; a fine exhibition flower; distinct....	.50	Miss Barrow. Lilac tinting to white at center.....	.25
Leda. Cream, shading to deep violet rose.....	.25	Millicent. Orange carmine, very free.....	.25
Lustre. Scarlet vermillion, shading to crimson; an excellent variety for garden or exhibition; an early free and continuous bloomer, one of the best.....	.50	Miss Stredwick. A magnificent flower, very large, beautifully formed, and exquisitely colored, being a beautiful rose tinting lighter at the center.....	.50
Magnet. Salmon buff, fine.....	.25	Mme. Henri Cayeaux. Clear pink, long slender petals; a strong vigorous grower and profuse bloomer.....	.35
Magpie. A very distinct and striking flower that has attracted the greatest attention; the color varies from delicate pink, to rich maroon, as shown in photograph, sometimes solid pink with white tips, maroon tipped white and solid maroon flowers are not only on same plant, but are on same spray.....	.50	Mrs. Brandt. Very large, yellow shading to salmon buff; splendid form.....	.50
Marathon. Very large, a splendid exhibition variety; color yellow suffused bronze, shaded rosy carmine.....	.30	Mrs. D. Fleming. (See illustration, page 9.) The best exhibition white and fine for cutting. The immense flowers 8 to 9 inches across are borne on long stiff stems; the long narrow petals are arranged in a distinct and pleasing way. Plants.....	.50
Marg. Bouchon. A charming, bright, lively pink, tinting to flesh pink at center, splendid form.....	.35	Mrs. F. C. Stoop. Fine yellow, good stem.....	.25
Mary Purrier. Large, with long quilled petals, color rich red, shading darker.....	.50	Mrs. Seal. Deep maroon, tipped light rose.....	.30
		Mrs. Stephens. Soft primrose, very large.....	.50

We wish every flower lover could see our fields. It would more than verify everything in this catalogue



New Cactus Dahlia, Maggie. See page 6

Monarch. Bright bronzy red, yellow center; large, fine exhibition flower..... \$.30
Nancy Mae. Dark, rich cardinal red..... \$.35
Nellie Riding. The best of this class; deep crimson, each petal tipped pure white. The flowers are large, produced freely on good stems..... .50

New York. Very large, orange yellow shading to rosy salmon..... \$.30
Prima Donna. A finely formed, pure white..... .50
Primrose Queen. A splendid flower with long narrow incurved petals, clear primrose yellow..... .50



New Snow White Cactus Dahlia, Snowden

Regularity. An exquisitely formed flower, with long narrow incurved petals; the color bronzy yellow at base, shading to rich red.....	Each \$.50	Sunset. The best of the bronzy Autumn shades, yellow at base, shading to bright apricot; full and free, with stiff stems. A fine garden and commercial cut flower variety.....	Each \$.30
Reine Cayeux. Rich glowing red, an early and extremely profuse bloomer, with good stems. A grand garden or cut flower variety.....	.25	Snowden. A beautiful pure white; of largest size, borne on long slender stems.....	.35
Rev. T. W. Jamison. Very large, with long incurved petals; a strong vigorous grower with long stems, color soft salmon pink, suffused lilac.....	.25	Sunshine. Rosy pink, tipped lighter.....	.30
Richard Box. A superb yellow, of large size and splendid form; clear light yellow.....	.30	Stormer. Very large, deep scarlet; long narrow pointed petals.....	.35
Sherlock. Bright orange cinnamon; an early, free and continuous bloomer on long stems; large; one of the best	.50	Sweet Briar. One of the loveliest shades of clear soft pink; very long narrow incurved petals.....	.50
Signal. Rich red of perfect form.....	.30	The Bride. Pure white, medium size, splendid form and an early, profuse and continuous bloomer.....	.25
Splendour. Very fine rich crimson.....	.30	Thos. Oberlin. Very fine, large flower with long incurved petals; color intense scarlet.....	.25
Stability. Carmine rose, tinting lighter toward center; a finely formed flower with long slender petals.....	.25	Uranus. White striped crimson.....	.50
Success. One of the best for garden or exhibition. Clear yellow, with long pointed petals; an early, free and continuous bloomer on long stem.....	.30	Vedette. Scarlet tipped white, fine.....	.25
		W. E. Dickson. Brilliant crimson.....	.25
		Wellington. Rich crimson scarlet, fine for exhibition....	.25
		W. T. Rodgers. Crimson shaded velvety maroon.....	.25
		White Ensign. Fine white garden cactus; good stems..	.25

One each of the 87 Superb Cactus Dahlias for \$30.00

With your order for \$5.00 worth or more ask for book "The Dahlia" FREE



New Giant White Cactus Dahlia, Mrs. D. Fleming. See page 6

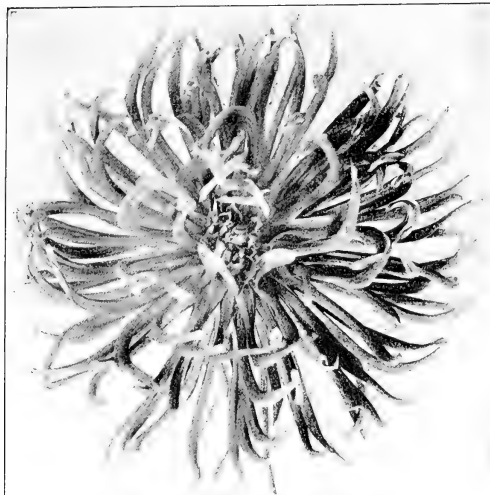
COLOSSAL CACTUS DAHLIAS

- Etenderd de Lyon.** Rich carmine rose, shaded darker, very large and entirely distinct.....
Golden Gate. A very large hybrid cactus of a rich deep golden yellow, suffused and shaded fawn, lights up well under artificial light. Long stiff stems, very free.....
Kalif. Very large, pure scarlet. A strong plant producing the giant flowers freely on long stiff stems.....
Nerthus. Bronzy orange yellow, tipped carmine rose....
Nibelungenhort. Immense flowers, 7 to 8 inches across, rich golden apricot, suffused old rose; long stiff stems..

These grand varieties are of giant size, having long, rather broad petals approaching the Hybrid Cactus in form. We offer these in strong plants.

- | | | |
|--------|--|-------------|
| Each | Rheinkoenig. A large and very early free-blooming pure white cactus..... | Each \$.25 |
| \$.75 | Vater Rhein. Yellow, suffused salmon rose; flowers are very large and borne erect on long stems..... | .50 |
| | Walkure. Sulphur yellow, shading to golden yellow at center; large, strong, vigorous grower; free bloomer.. | .75 |
| .50 | Woodan. Old gold at center shading to salmon rose; flowers very large and beautifully formed..... | .25 |
| .35 | Wolfgang von Goeth. Large, apricot shaded carmine.. | .50 |
| .75 | One each of the 10 Colossal Cactus Dahlias for \$4.50 | |

Our customers confirm all we say about our Dahlias



C. H. Curtis

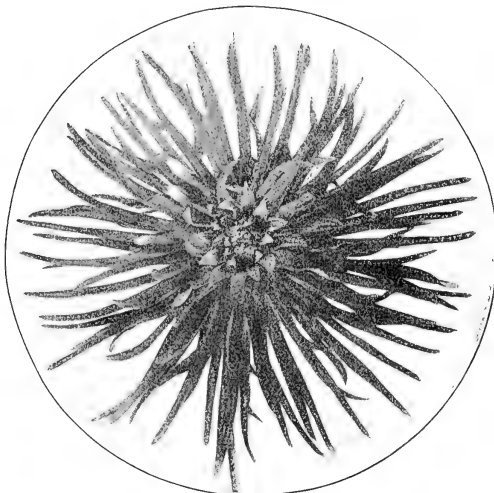
Exquisite Cactus Dahlias

The following embraces the very best Cactus to date. We have grouped them as the highest types of perfection in Cactus Dahlias, and from our observations in the fields we offer them with the utmost confidence that they will give the greatest satisfaction to Dahlia lovers who want the very best to be had.

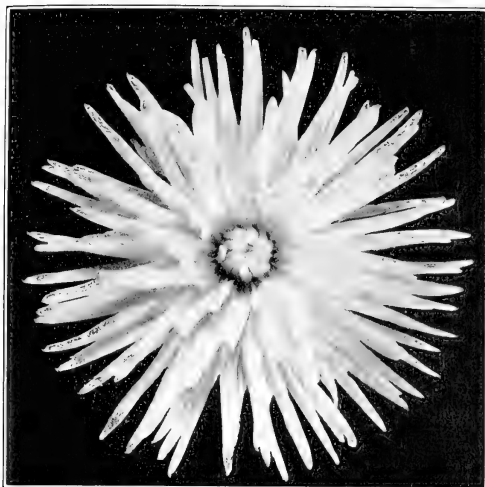
The photographs reproduced speak more eloquently than words.

	Each
Aegir. Bright vermillion crimson. Unique, distinct form.	\$.20
Amos Perry. Brightest vermillion-scarlet.	.20
Arthur Picquart. A beautiful soft salmon color; with long slender quilled petals.	.35
Auburn Beauty. An exquisitely formed autumn shade variety; yellow, shaded bronze red. Very distinct.	.50
Blitz. Rich velvety cardinal, flower of medium size and exquisite form. Extremely profuse bloomer.	.15
Brittania. Soft salmon, suffused pink.	.20
Burbank. Vivid vermillion scarlet. Tall grower, but rather late bloomer. Fine form, with long stems.	.20
Brigadier. Large, bright crimson.	.25
Candeur. Large, white; a strong vigorous grower and an early and profuse bloomer on long stiff stems.	.25
Chas. Clayton. Dazzling red, very free.	.20
Chas. H. Curtis. Rich scarlet crimson, very large incurved petals.	.50
Citizen. Rich dark red; fine.	.25
Comedy. The best of this type; yellow striped and penciled red. The flowers are of good size and fine form. A very profuse bloomer.	.25
Conquest. One of the very best, dark rich crimson maroon.	.35
Charm. Yellow, shaded darker; tipped white.	.25
Cockatoo. Clear yellow, tinted fawn, tipped white. Sometimes solid fawn and solid white flowers are produced not only on the same plant, but on the same branches. The flowers are very large, of beautiful form, and always full to the center. Extremely profuse bloomer.	.25
Comet. Very large, silvery lake, penciled and spotted crimson.	.20
Comrade. Clear salmon pink.	.20

Country Girl. Large, deep golden yellow, tipped bright amber. Beautifully incurved petals.	Each \$.25
Coronation. Dwarf, branching, medium size, profuse. Brightest vermillion.	.20
Crepuscle. Yellow shaded deep orange; large, splendidly formed flowers.	.25
Dainty. Yellow, shaded salmon, suffused and overlaid pink.	.35
Daisy Easton. Splendidly formed, deep rich yellow.	.25
Effective. A very distinct primrose, shaded amber.	.20
Elsa. White, suffused and edged pink.	.15
Etruria. A beautiful Autumn shade variety. Golden, shaded to reddish salmon. Very large, with long slender petals, on long slender stems. Height 4 feet.	.20
Exquisite. Shades of gold and amber.	.20
Flame. Bright orange scarlet; bright and effective. Height 3 feet.	.20
Faunus. Yellow shading to rosy scarlet; long narrow petals. Height 4 feet.	.25
F. A. Wellesley. Fine rosy carmine.	.35
Flag of Truce. A splendid large, pure white. Height 4 feet.	.25
Floradora. Beautiful pure garnet. Splendid form and free bloomer.	.15
Gabriel. Bright salmon, tipped white. Beautifully formed, incurved flowers.	.15
Gaillard. Bright vermillion red, large with long slender petals.	.15
General Buller. Rich velvety maroon, tipped white. Sometimes called the cactus, "Frank Smith".	.20
Galathea. Soft violet rose, with mauve shadings. An early profuse and continuous bloomer; neat, effective.	.25
Gouldland. An extremely early and profuse bloomer, clear, light canary yellow, strong and vigorous.	.30
Goliath. Yellow, suffused and shaded salmon.	.30
Harbor Light. Immense size, with long incurved petals; deep yellow, margined crimson; very effective.	.15
H. Shoesmith. Brilliant vermillion scarlet. Splendid form, long slender quill petals. The best bright red cactus.	.20
H. W. Sillem. Large, bright crimson.	.20
H. F. Robertson. Pure, deep yellow; fine.	.15
H. H. Thomas. Beautiful deep rich crimson; very large, splendid incurved form.	.50
Humming Bird. Yellow tipped white.	.25
Hyacinth. Yellow, shading to mauve pink.	.25



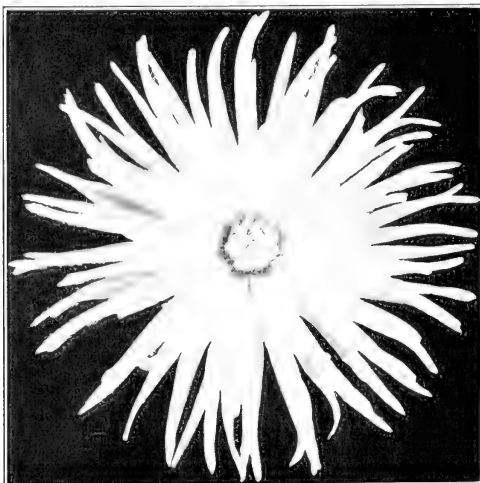
H. Shoesmith



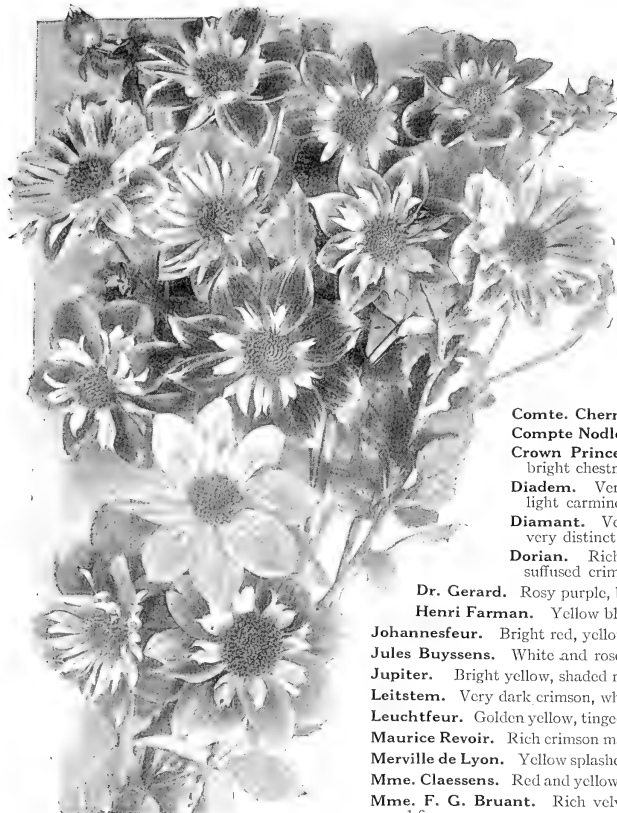
Marjorie Castleton

Indomitable. A magnificent flower with long, narrow, incurved petals; color rosy mauve, tinting lighter toward the tips.	Each \$.35
J. B. Fry. Primrose yellow, shading delicate lilac rose toward tips; very fine.	.35
Jeanette. Fine clear yellow.	.25
J. B. Ridings. Golden yellow, shaded darker.	.35
Johannesburg. Immense size, deep yellow, with bronze shading; a free bloomer on long stems.	.25
J. H. Jackson. Very large, rich velvety maroon, a strong vigorous grower and free bloomer.	.20
Juliet. Rosy pink, tinting lighter toward the center. Very large, with long, incurved petals.	.15
J. B. Briant. Rich yellow, of immense size, one of the best exhibition flowers. Petals long, narrow and beautifully incurved.	.20
J. W. Wilkinson. Very large, bright violet crimson.	.15
Kriemhilde. Deep rosy pink with lighter center. A distinct and valuable variety as the flowers keep a long time after cutting.	.15
Lawine. A magnificent flower of largest size, white suffused blush.	.25
Libelle. Beautifully formed, dark purple, profuse bloomer. Always full to the center.	.25
Liberty. A superb variety of most approved incurved form. Rich velvety maroon heavily tipped bright crimson.	.25
Leuchfeuer. Fine form, bright red, shaded darker.	.25
Lucia. Yellow, shaded buff, tipped white.	.25
Lyric. Large, rich yellow, shaded bronzy red, early and profuse bloomer.	.25
Mary Farnsworth. Pure yellow, heavily tipped pure white; distinct.	.20
Mary Service. Bright salmon, edged and overlaid lilac, an improved Countess of Lonsdale.	.20
Master Carl. Bright orange salmon, the largest cactus dahlia grown.	.25
Marjorie Castleton. Rosy pink, tinted lighter toward center and tips.	.20
Miss D. Oliver. Soft primrose shading to light yellow. Daintily formed and profuse bloomer.	.15
Morning Glow. Soft golden yellow, tipped amber. Very large and profuse bloomer.	.20
Mrs. H. J. Jones. Scarlet tipped white. Bright and effective.	.20
Mrs. George Stevenson. Very large, clear canary yellow, the best yellow cactus.	.20

Mrs. F. Gristed. Very large, rich crimson. Slightly overlaid violet.	Each \$.25
Mr. Moore. Bright crimson, margined maroon.	.15
Mrs. C. G. Wyatt. An exquisite pure white cactus; with long narrow incurved petals; early and profuse.	.50
Mrs. C. Page. Rich crimson.	.25
Mrs. DeLuca. Golden yellow tipped orange; very fine.	.25
Mrs. H. Shoesmith. The best pure white Cactus Dahlia.	.25
Mrs. McMillan. A splendid cactus, color, soft silvery pink. Profuse bloomer.	.25
Mrs. Reginald Bailey. Immense size, splendid form with long, narrow, incurved petals; color, brilliant glistening crimson; early and continuous bloomer on long stems. The finest crimson cactus.	.50
Mrs. Winstanley. Orange red.	.25
Perle Hilde. A delicatesshell pink sport of Kriemhilde.	.15
Pink Pearl. Soft rosy pink. An early and profuse bloomer.	.25
Pius X. A superb snow white; a strong grower and free bloomer.	.20
Phoenix. Large, rich cardinal red with carmine markings. Plants.	.25
Portola. Clear orange, heavily tipped blush white. Very distinct and pleasing.	.35
Primrose. Large, clear primrose yellow.	.25
Queen of Hearts. A beautiful pure white, with yellow at the base of petals.	.25
Red Admiral. Rich fiery scarlet; large fine form and a profuse bloomer.	.50
Rev. Arthur Bridge. A remarkably beautiful variety; color bright yellow, heavily tipped bright pink.	.25
Reliable. Salmon yellow, shading darker. Very profuse.	.20
Rev. D. R. Williamson. Rich velvety crimson.	.25
Rosy Morn. Bright carmine rose, tinting lighter toward the base of the petals.	.15
Roland von Berlin. Bright cardinal red, very fine.	.15
Ruby. Bright ruby red, very free.	.15
Ruth Forbes. Large, deep pink, a strong grower with long stems.	.25
Sequoia. Large golden bronze; fine form; long, stiff stems.	.25
Striped Kriemhilde. A striped sport of Kriemhilde. Color, white, striped pink.	.25
Snowden. The grandest white cactus for exhibition or the garden; very large, an early and profuse bloomer. Stock limited. (See page 8).	.35



Mrs. C. G. Wyatt



Collection of 12 Collarette Dahlias showing beautiful new types

Collarette Dahlias

This uniquely distinct class or type is rapidly gaining in popularity. The flowers are single with a row of smaller or collar petals around the center. These collar petals are generally distinct in color from the rest of the flower.

The accompanying illustration of twelve varieties will show their forms and variations far better than words, and will be a pleasing surprise to many who have not seen the newer and larger type. We know these will please you and add to the beauty and attractiveness of your collection.

Superb Collarette Dahlias

Spotless Queen. A splendid, small snow white cactus; of dwarf branching habit.	Each \$.25
Standard Bearer. Bright, clear scarlet. Very profuse.15
The Imp. Probably the darkest Dahlia grown, at least by far the largest and finest formed, very dark, Cactus Dahlia. Color, richest maroon shaded black; long incurved petals.50
The Lion. Probably the largest of all Cactus Dahlias, of immense size, and borne above the foliage on long, stiff stems; color, yellow, shading to reddish salmon.35
The Pilot. Yellow, heavily tipped bright terra-cotta.15
T. G. Baker. Very large, finely formed flowers on long, stiff stems. The best clear bright yellow cactus.25
Thos. Wilson. Amber shaded brownish terra-cotta.25
Tricolor. Ground color yellow with blotch of red in center of petals; tipped white. A distinct and pleasing combination of colors.35
Uncle Tom. Dark, maroon shaded black.15
White Swan. A beautiful pure white cactus.20
White Kriemhilde. A white sport of Kriemhilde.20
Wunderkind. An exquisitely shaded variety that is most pleasing and effective; primrose, shaded yellow, overlaid salmon rose.25
Albert Maumene. Velvety crimson purple, margined white, collarette white.	Each \$.25
Arden. Very rich and effective deep golden yellow blotched vivid orange crimson, collar pure yellow, strong plants ready May 1st.50
Comte. Chermetteff. Cream suffused red; light collar.25
Compte Nodler. Large, deep purple, white collar.25
Crown Princess Charlotte. Very large and distinct; bright chestnut red, with long, yellow collar.40
Diadem. Very large, carmine rose, collar white with light carmine markings.25
Diamant. Very large, velvety violet, collar light rose; very distinct and effective.75
Dorian. Rich crimson, shaded maroon; collar white suffused crimson. Plants.50
Dr. Gerard. Rosy purple, bordered and splashed white; white collar.25
Henri Farman. Yellow blotched red, cream collarette.25
Johannesfeur. Bright red, yellow collarette.25
Jules Buysens. White and rose; collar white suffused rose.25
Jupiter. Bright yellow, shaded red; straw colored collarette.25
Leitstem. Very dark crimson, white collarette.25
Leuchteur. Golden yellow, tinged with orange red; sulphur yellow collarette.25
Maurice Revoir. Rich crimson maroon; white collarette.25
Merville de Lyon. Yellow splashed red, yellow collarette.25
Mme. Claessens. Red and yellow; collar yellow with red markings.25
Mme. F. G. Bruant. Rich velvety maroon, with white collarette; large and fine.25
Mme. Pile. Red with citron yellow tips; long, white and yellow collarette.25
Mme. E. Wauters. Crimson tipped gold, yellow base, with yellow collarette.25
Mons. Bourguignon. Wine red, buff collarette.25
Mons. L. Ferard. Rich rosy crimson, edged and marked white; very large collar of same color.25
Prince de Venosa. Beautiful shade of purple, white collar.25
Princess Louise. An exquisite new variety; large; carmine and white; collar white suffused carmine.	1.00
Radlyn. The most beautiful yet; color clear soft pink; collar pink with lighter marking. The plant is a vigorous grower, with long slender erect stems. An acquisition for cut flowers, strong plants May 1st.	1.00
Regularity. A most striking new variety; large and fine. Color scarlet and white, most effective for all purposes.	1.00
Souv. de Bernadeau. Beautiful shade of old rose, cream collar; very distinct.25
Souv. de Chabanne. Lemon yellow with coral markings; collar lemon yellow, tipped white.25

One each of 108 Exquisite Cactus Dahlias for \$25.00

One each of 29 Collarette Dahlias for \$10.00



New Decorative Dahlia Melody. A Lovely Flower Without a Fault. See Description, page 14

Superb Decorative Dahlias

A remarkable collection of new and rare varieties that elicited the unbounded enthusiasm of our thousands of visitors; some of the flowers are 8 and 9 inches across, all are large and the very best to date.

One John Wanamaker and 15 beautiful Cactus Dahlias for \$2.25



New Hybrid Decorative Dahlia, Mrs. C. H. Brock. See page 15

A. C. Ide. Very large, rich velvety maroon; a fine garden and exhibition variety; an early and free bloomer.	Each \$.50
American Beauty. Very large, bright crimson; the giant flowers are perfectly double with great depth and are borne on long stiff stems.	.50
Armentine Desblains. A large beautifully formed decorative, that is a great favorite; color soft pink, tinting lighter toward the center.	.30
Bertha Von Suttner. Beautiful soft mauve pink, very large; plant is dwarf, an early bloomer.	.35
Chanoine Ducrot. Immense; vivid scarlet, pointed petals	.30
Dr. Tyrrell. Originated by F. R. Austin, treasurer of the American Dahlia Society. The flower is substantial in form and prolific. We have had disbudded flowers more than eight (8) inches across. It is an immense flower, with a good sturdy stem and fine keeping qualities. The color is a rich golden bronze, with bronzy red at base of petals, giving the flower that rich bronzy effect. The two shades are most effective. The plant is a very sturdy, healthy grower, with dark luxurious foliage, showing its hardy constitution. Stock limited; strong roots.	1.00
Esmeralda. An exquisitely formed, full, deep flower; pale pink, heavily tipped deep rich carmine pink; large, with long stiff stems.	.35

Fireburst. An immense flower; soft red, with long stems.	Each \$.50
Hallebarde. This has been called a double Geisha, with stiff stems and dwarf, sturdy plant. Very large clear yellow suffused scarlet, distinct and striking, plants.	.50
Hortulanus Fiet. Immense size, with full, well formed center. Flowers often measuring more than 9 inches across and borne on stiff stems. The most striking and admired flower on our farms the past year on account of the lovely shades and tints of rich salmon pink, as well as the enormous size. Must be seen to be fully appreciated. Should be in every collection. Strong roots.	.75
Hortulanus Witte. Very large, pure white; with good stems, one of the best.	.35
Jan Olieslager. Clear yellow; very large, fine form. A strong grower of medium height and an early and free bloomer.	.35
J. Lidden Pennoch. A dwarf branching plant, producing immense rich plum colored flowers freely; the flowers are 6 inches across and 4 inches deep. An extra fine variety.	.50
John Wanamaker. (See illustration on cover.) This, as the photograph shows, is the most beautiful of all Dahlias, having a formation entirely its own in its charming irregularity. The flowers are alike, and yet not exactly alike, one of its charms. Awarded first prize as the best pink Dahlia, any class, by the American Dahlia Society at the New York exhibition. A substantial corroboration of all our claims. The plant is a strong, vigorous, branching grower, and the earliest, most constant and profuse bloomer.	.50
Melody. (See illustration page 13.) One of the finest, being of splendid regular form with full high center and reflexed outer petals. Color clear canary yellow, tinting to creamy white at the tips; an effect so delicate and pleasing as to suggest the name. Strong roots.	.25
Mephisto. Rich velvety crimson.	.30
Minnie Burtle (Mina Burtle). Another year has again demonstrated that this is the best red dahlia in the world. The plant is a strong, vigorous grower, with dark glossy foliage and an early free and continuous bloomer. The flowers are of large size, perfect form and produced on long stiff stems. The color is a vivid vermilion red. It has no faults, and requires no special care or attention. By this we mean it is the flower that will grow anywhere, in any kind of soil. We grew it the past four years in both clay, gravel and sandy soil and it was equally fine in all. It was, owing to its erect stems, vivid color, large size and freedom of bloom, the most conspicuous variety in our trials the past season. MINNIE BURGLE should be in every collection. We stake our reputation on all our claims that it is the best red for amateurs in the garden, for exhibition, and for all purposes. Strong roots.	.50



Decorative Dahlia, Minnie Barge. See page 14

Miss Alice Roosevelt. Very large; white suffused rosy lilac.....	Each \$.50
Mont Blanc. A splendid large white, with long stiff stems.....	.30
Morocco. Rich maroon tipped white; very large, with long stiff stems. (See illustration page 16).....	.40
Mrs. C. H. Breck. (See illustration page 14.) A beautiful variety of the Hybrid class; soft yellow suffused carmine, very distinct and pleasing.....	.50

Old Gold. One of the richest of Autumn shades, especially valuable for decorations. Old gold shading to orange; splendid form on long slender, but stiff, stems. A grand acquisition.....	Each \$.50
Perle de Ocean. Primrose suffused soft pink.....	.25
Perle de Parc. Very large white with long stiff stems, profuse bloomer.....	.25
Pink Jack Rose. Rose pink sport of Jack Rose.....	.30
President Falliers. Bright orange red, distinct.....	.35

If you have never grown Peacock Dahlias send us \$2.00 and get a surprise bargain in Dahlias



New Decorative Dahlia, Mrs. J. Gardner Cossatt. See page 17

Propaganda. Primrose yellow, lightly suffused crimson on reverse of petals.....	Each \$.35
Queen Mary. In this we have a great improvement over Delice; a much stronger grower; larger flower, with full rounded center and a softer shade of pink.....	.50
Richmond. A new seedling of Jack Rose; it has a full high rounded center, an improved Jack Rose. An early, profuse bloomer with stiff stems; color rich glowing crimson.....	.50
Sherlock Holmes. A new shade, being a deep blue blue; large and fine.....	.50
The Giant. Very large, of perfect form; color rich velvety red. A strong vigorous grower.....	.75
Ulysses. Very large; deep rich crimson.....	.50
Zeppelin. An extra fine free flowering, that is entirely distinct. Color a pleasing soft shade of violet mauve, with silvery suffusion.....	.50

One each of 33 Superb Decorative Dahlias for \$13.50.

Select Decorative Dahlias

These are all large, profuse bloomers and will give greatest satisfaction.

Admiral Togo. Bright wine red, margined velvety maroon.....	Each \$.20
American Flag. Small cherry red, striped white.....	.25
Autumn Glory. A soft golden terra-cotta color that is rich and pleasing by day, and entrancingly lovely under artificial light.....	.20
Black Beauty. Deep velvety maroon, shading black.....	.20
Blue Oban. Soft lavender blue; nearest to blue in dahlias.....	.15
Bronze Beauty. Yellow suffused bronze red.....	.15
Claribel. Bright imperial purple.....	.15
Constancy. Golden terra-cotta, shaded reddish brown.....	.15
Corrona. A miniature pure white of perfect form, and extremely free flowering.....	.20

Clifford W. Bruton. Very large, clear canary yellow.....	Each \$.15
Crimson Giant. Richest glowing red; large size, and a very strong vigorous grower.....	.25
Crown of Gold. Rich orange scarlet, edged gold; very effective.....	.25
Delice. The best pure bright rose pink, entirely distinct, beautiful form.....	.20
Enterprise. Very large, rich scarlet.....	.15
Eugene Teale. An improved Lyndhurst.....	.25
Eureka. Deep rose pink; quilled petals.....	.15
Flora. Pure white, large, early, profuse and continuous.....	.20
Frank L. Bassett. Very profuse; blue shaded purple.....	.15
Gov. Wilson. New 1912. Bright glowing cardinal red; destined to supplant Lyndhurst, as it is large, richer colored and more profuse bloomer.....	.25
Grand Duke Alexis. White edged lavender, quilled petals.....	.25
Henry Patrick. Large snow-white flowers, beautiful form and great substance.....	.15
Innocence. A small flower; purest white, of beautiful form and remarkably profuse bloomer on long stems.....	.30
Jack Rose. The best crimson for garden or cutting; that brilliant crimson red that makes the "Jack" Rose popular and suggested the name. (See illustration, page 20).....	.15
Jean Wood. White suffused violet mauve, petals gracefully twisted.....	.25
Jumbo. Deep red, shaded maroon.....	.15
Kaiserin Augusta Victoria. Large snow-white, early and profuse bloomer.....	.25
Kinds Pink. Soft pink, with lighter center.....	.20
Lemon Beauty. Beautifully formed, soft lemon yellow, large, on long stems.....	.15
Lemon Giant. Immense lemon flowers on long pendant stems.....	.25
Lord Penn. Large, purple quilled petals.....	.25
Lyndhurst. Brightest vermillion; the best bright red for cutting. An early, free and continuous bloomer, with long straight stems.....	.15
Maid of Kent. Rich cherry red, tipped white.....	.15
Manzonola. Fiery crimson; large, early, profuse bloomer.....	.25



Morocco. See page 16

A PEACOCK HINT. Don't pinch out your plants, but disbud; fully described in our cultural directions; send for copy free



New Peacock Flowered Dahlia, Mrs. Wm. Kerr. Showing its natural habit of blooming in clusters of three; showing bud half opened and fully-developed flower. Comparison with foliage shows the large size; you can conceive the result when disbudbed

Minnie McCullough. Very striking. Soft golden yellow, tipped bronzy red; effective under artificial light, perfect form, on long, erect stems. Fine.....	Each \$.15	Perle de Lyon. Splendid pure white. Similar to Perle d'Or, but better.....	Each \$.25
Mme. A. Lumiere. White, tipped bright violet red.....	.25	Perle d'Or. A splendid pure white, for garden or cutting.....	.15
Mme. Aymond. Very fine shade of mauve.....	.25	Professor Mansfield. A giant decorative of most unique coloring; a pleasing combination of yellow, red and white.....	.20
Mrs. Charles Turner. Very large, clear canary yellow.....	.15	Red Duke. Very large, rich dazzling cardinal red; splendid form with quilled petals. A red Grand Duke Alexis....	.50
Mrs. J. Gardner Cassatt. Very large, bright cerise pink. (See illustration, page 16).....	.25	Souvenir de Gustav Doazon. Soft scarlet red.....	.20
Mrs. Roosevelt. Very large, soft pink.....	.25	Sylvia. Deep pink tinting to flesh pink at center; large, perfect form, on long stiff stems. One of the best....	.15
Oban. Very large, rosy lavender, overlaid silvery fawn.....	.15	Wm. Agnew. Very large, dazzling crimson scarlet. Early and profuse bloomer.....	.20
Orange King. Richest shade of orange, very profuse bloomer.....	.15	Yellow Duke. Canary yellow, quilled petals, a giant flower on long stems.....	.15
Oregon Beauty. Intense oriental red, carmine suffusion, a magnificent red. Plants.....	.25	Zulu. "The Black Dahlia." A great favorite. Velvety maroon, shaded black.....	.15
Papa Charmet. Bright coral red, overlaid dark velvety crimson. The flowers are large, beautifully formed and an early and free bloomer.....	.50		

One each of 52 Select Decorative Dahlias for \$10.00.

Give us a trial order that we can prove to you the superiority of Peacock Dahlias



Mme. J. Coissard, the ideal type of Duplex Dahlias and the best variety to date. See Description, page 80

Paeony Flowered Dahlias

This is one of the newer types, also called the Art or Artistic Dahlias. The true type resembles the Japanese Pacony; yet several of the most valuable and popular varieties differ from the true type.

	Each		Each
Andrew Carnegie. Large, bright cherry red; fine.....	\$.30	Geisha. The most striking color combination, golden yellow, changing to bright scarlet at the center of the petal and back to gold at the tip. Giant flowers on long wiry stems. Strong plants.....	\$.40
Ant. Rivoire. Very large, rich crimson, fine long stems....	.30	Gypsy Weaver. A rich shade of bronzy yellow with pointed twisted petals.....	.50
Bayard. Vivid orange scarlet; veins and base yellow....	.30	Hampton Court. Large pale hydrangea pink, with bright mauve pink shadings.....	.25
Caesar. Large, clear canary yellow.....	.30	H. J. Lovink. Very large, soft lilac; fine form.....	.35
Duke Henry. Large, vivid, cardinal red.....	.30	Holman Hunt. Very dark rich crimson, large and fine, one of the best.....	.30
F. R. Austin. (See illustration on last cover page.) One of the most striking and valuable paeony dahlias in existence. The beautifully colored flowers are of large size averaging 6 to 8 inches across, while the illustration on the last cover page shows its fine form. Color, the outer petals are very long creamy yellow suffused, banded and shaded rich crimson; the inner petals are yellow at base tinting lighter, and suffused pink and crimson. The plant is a very strong vigorous grower, an extremely early and free bloomer, and continues to bloom the entire season, making it the most valuable for garden, exhibition, or cut flower purposes. Strong roots.....	1.00	Konigen Emma. A charming shade of mallow or hollyhock pink, the inner petals banded with gold.....	.25
		Konigen Wilhelmina. Immense fluffy flowers of pure white, with yellow center.....	.25
		Landseer. Very large, rich crimson shaded maroon, with velvety sheen.....	.25

We have a magnificent lot of new Dahlias; visit our farms and see Dahlias you can see nowhere else



New Pink Show Dahlia, Dorothy Peacock. See Description, page 21

	Each
La Riente. Bright lilac, very large, beautiful flowers...	\$.25
Mrs. G. Gordon. Beautiful creamy white; immense size; very fine.....	.25
Mrs. McMundy. Lilac mauve, long stems, very free....	.35
Monarch. A New American variety of enormous size, often 7 to 8 inches, rich crimson shaded darker; very deep flowers on long stems.....	.50
Mrs. Robt. Bates. Pink white on long stiff stems; early and profuse bloomer.....	.50
Mrs. Seybold. Very striking; white suffused pink, heavily tipped carmine pink and crimson.....	.25
Mrs. T. G. Baker. Beautiful pure white, large and fine..	.50
Mrs. Wm. Kerr. (New Paony.) One of the very handsomest. The flowers are very large, of beautiful, twisted, irregular formation and a most exquisite coloring; rich cream, suffused pink, and an overlaid, bright carmine; the blending of shades and tints is most attractive and pleasing. The flowers are of great substance, borne on long stems in clusters of 3 if not disbudded. The plant is strong, vigorous and an early and free bloomer. (See illustration page 17).....	1.00
Phidias. A lovely shade of salmon pink; long stiff stems.....	.30

	Each
Poinsettia. Rich geranium lake, shading to carmine pink at tips.....	\$.35
Porcupine. White, suffused and mottled tyrian rose....	.35
Salome. Large and fine; a lovely shade of apricot.....	.30
Selma. Color clear rose, large and attractive.....	.35
Sunset. Yellow shaded and tipped scarlet.....	.25
One each 28 Paeony Dahlias for \$10.00	

Duplex Dahlias

A type of two or more rows of petals, mostly broad and flat, not noticeably twisted or curled. Formerly included in the paony class, we offer a few of the very best only.

	Each
Big Chief. Enormous size, rich crimson margined maroon. A very strong, vigorous plant, with fern-like foliage.....	\$.15
Canary. Pure canary yellow of very largest size; an early, free and continuous bloomer on long slender stems; the best yellow.....	.30
Double Fringed Century. White suffused pink, shaded crimson, with white tips, a double fringed 20th century..	.35

100 new and beautiful Dahlias, all distinct, including Burtle, Wanamaker and Melody, and book, "The Dahlia," for \$15.00, our special selection



3 Rows Peacock's New Yellow Show Dahlia, Princess Victoria, showing Flora on the left and John Walker on the right. See Description

- Mme. J. Coissard.** (See illustration page 18.) Very large, with two to three rows of immense petals of great substance. The color effect is most distinct and charming; bright rosy crimson, with lighter markings, and a pure white zone around the yellow disc. \$.50
- Sensation.** Vermilion red, tipped snow white.25
- Souv. de Fraz Liszt.** Very large, crimson richly shaded with white markings.25
- Variegated Liszt.** Dark oriental red, with yellow tips and markings. A superior variety for decorations, especially where a bronzy effect is wanted.25

One each 7 Duplex Dahlias for \$1.85.

New and Rare Giant Ball Dahlias

This is a superb collection that attracted the greatest attention from thousands of visitors on account of the distinct coloring, large size and long stems.

- | | |
|---|-------------|
| Arthur Le Favour. Very large, buff striped dark red. | Each \$.50 |
| Chieftain. Purplish lilac, large, distinct. | .30 |
| Della Dorsheimer. Large, soft shrimping quilled petals; long slender stems. | .30 |
| Dreers Yellow. An immense clear yellow, with full center and quilled petals. The best yellow ball dahlia. Strong plants. | .75 |
| Eccentric. Buff shaded red. | .30 |
| Gov. Guild. Very large, pure white with long stiff stems; extra. | .50 |
| Hannah. Large, soft pink tinting to cream center; strong plants with fern-like foliage and long stems. | .30 |
| Isabel. New and distinct; primrose, shading to buff, overlaid and tipped rose. | .50 |
| Le Armour. Very large, bright lively pink on long stiff stems; very fine. | .50 |
| Mrs. Lloyd Brigg. Large, rich red. | .30 |
| Mme. von Tomme. Very large, yellow and red. | .50 |
| Mme. H. Furtado. Very large, pure white; a free bloomer, with long stems. | .25 |
| Paul Bert. Immense scarlet red flowers; very long stems | .50 |
| Rose. An exquisite ball dahlia of full regular form and a bright lively carmine rose color; it is very distinct, large on long, stiff stems. | .50 |
| Tom Jones. Cream yellow, edged mauve pink. | .30 |
| W. W. Rawson. Very large with semi-quilled petals, long upright stems, color white, delicately flushed and suffused lilac. | .25 |

One each 16 Giant Ball Dahlias for \$6.00.

Superb Ball Dahlias

Being of largest size, fine form, early and continuous bloomers.

- | | |
|---|-------------|
| Agent. Delicate, soft pink. | Each \$.35 |
| A. D. Livoni. Clear, bright pink, quilled petals, the best pink show dahlia. | .15 |
| Apollyon. Brightest scarlet. | .15 |
| Arabella. One of the loveliest; soft primrose, shaded and tipped rose. | .15 |
| Aurora. Yellow, tipped red. | .15 |
| Bird of Passage. White, heavily tipped crimson. | .15 |
| Bonton. Rich crimson, very fine. | .15 |
| Black Hussar. Rich maroon, fine form; a strong, vigorous grower with long stems. | .25 |
| Caleb Powers. Shell pink, large and fine. | .25 |
| Colonist. Coral red, edged lighter. Splendid form. | .25 |
| Chas. Lanier. Very large, golden yellow, shaded amber. | .25 |
| Champion Rollo. Large, soft salmon, suffused with rose | .15 |
| Crimson Ball. Deep crimson. | .15 |
| Crimson Globe. Rich cardinal red. | .15 |
| David Johnson. Fawn or salmon, shaded rose, quilled, fine. | .25 |



New Decorative Dahlia, Jack Rose. See page 16

One John Wanamaker and 100 distinct Dahlias, all classes, all named, 100 kinds, our selection, for \$12.00



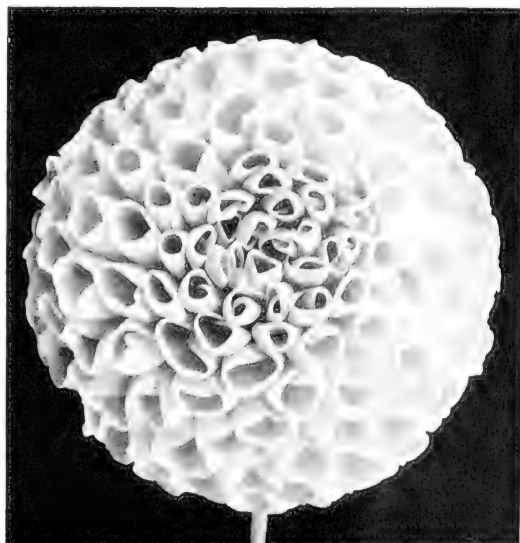
Field view showing Ball Dahlias

Fancy Ball Dahlias

Fancy Dahlias are of the same form, type, etc., as Show Dahlias, only are spotted, penciled or striped two or more colors or tipped lighter than the ground color.

Admiral Schley. Rich garnet, tinting to carmine and white at tips of petals, splendid form. Strong plants.	Each \$.20
Emily May. Yellow, blotched bronzy red.	.25
Fern Leaved Beauty. Red tipped white; fern-like foliage	.15
Frank Smith. Rich maroon, tipped white.	.25
Gold Medal. Yellow, spotted vermillion. Strong plants	.25
Gold Smith. Yellow edged and striped bright crimson.	.25
Jamaica. Crimson maroon, tipped white, quilled petals.	.15
Lucy Fawcett. Very large, pale yellow penciled carmine.	.20
Miss Browning. Clear rich canary yellow, tipped white.	.25
Mrs. Saunders. Yellow, tipped white, large and fine.	.25
Olympia. Large, deep pink, penciled and striped crimson	.15
Penelope. White flaked, rosy lake, beautiful and chaste	.15
Progress. Soft rosy lake, penciled crimson.	.15
Uncertainty. Color varies from blush pink to dark red, with all the intermediate variations, no two flowers alike.	.20
Varnum's Variegated. Bright red, tipped white.	.15

One each 15 Fancy Dahlias for \$2.75.



Quilled Show Dahlia, A. D. Liveoni

Daniel Cornish. Fine, terra-cotta red.	Each \$.25
Dr. Keynes. Buff, tipped red, fine.	.25
Dutchess of York. Yellow, flushed salmon pink, edged red	.25
Dreers White. A pure white of large size and formation of Grand Duke Alexis. An acquisition. Strong plants.	.50
Dorothy Peacock. The world's best pink. (See illustration, page 19.) Strong field grown roots.	.25
Ethel Britton. Blush White, edged rosy purple.	.25
George Rawlings. Rich velvety maroon.	.25
Goldfinch. Yellow and red.	.25
Goldfinder. Yellow, tipped red.	.25
Geo. Smith. Large, deep red.	.15
Imperial. Dark rich purple.	.25
John Rawlings. Rich crimson.	.25
John Thorpe. Large, deep lilac pink.	.25
John Walker. Splendid, snow-white show dahlia, perfect form and free bloomer.	.20
John Bennett. Fine form, yellow, tipped bright red.	.15
Kaiser Wilhelm. Yellow, shaded scarlet.	.20
Meteor. Immense size, bright vermillion.	.20
May Lomas. White, suffused soft lavender, edged blue.	.15
Miss Dodd. Large, canary yellow.	.15
Miss Florence M. Shearer. A lovely variety, deep pink with light tips, giving it a soft, warm effect.	.25
Maud Fellows. A delicately beautiful flower, soft pink, of splendid form.	.25
Marjorie. Buff, tipped carmine, very fine.	.25
Merlin. Very early. Soft scarlet, fine.	.25
Mrs. Fisher. White edged rose.	.25
Muriel Hobbs. Yellow, lightly tipped crimson	.25
Norma. Yellow, shaded golden amber.	.15
Pink Dandy. A crimson pink sport of White Dandy.	.20
Pink Swan. A silvery pink sport of White Swan.	.35
Plesance. Intense vermillion red, very large and fine.	.25
Prince Bismarck. Rich velvety purple.	.25
Princess Victoria. (See illustration page 20.) The finest, pure yellow show dahlia in existence. Clear, pure canary yellow without shade or blemish, from bud to old age. Perfect form. on long slender stems. An extremely early and profuse bloomer.	.25
Queen Victoria. Rich golden yellow.	.15
Red Hussar. Richest dazzling cardinal red. Strong, vigorous grower and free bloomer on long stems. Best red show dahlia for cutting.	.15
Ruby Queen. Ruby red, richly shaded.	.15
Snow. Large, snow-white.	.15
Susan. Soft blush pink, medium size, splendid form and free bloomer.	.25
Triomphe de Solferino. Dwarf, intense solferino red.	.15
White Dandy. A large, snow-white dahlia, of perfect ball form on very long stems.	.15
White Swan. Large, pure white, reliable.	.15
Yellow Livonia. Soft yellow quilled petals.	.25

One each 55 Superb Ball Dahlias for \$11.50.



Queen of Hearts. See page 11

Pompon Dahlias

This class is a miniature form of the Show and Fancy Dahlias, having the same round, ball like form, but much smaller in size. The plants are also smaller, of branching habit, producing the flowers in endless profusion. As they can be cut in sprays they are valuable for bouquets and for small grounds.

New and Rare Pompon Dahlias

	Each
Adrienne. Crimson tipped scarlet	\$.25
Adelaide. Blush, edged lavender.	.25
Arthur West. Rich crimson.	.25
Belle of Springfield. Very small, soft red, sometimes tipped white	.25
Bob. Yellow, edged scarlet.	.25
Cheerfulness. Old gold tipped crimson.	.25
Clarissa. Pale primrose.	.25
Daisy. Pleasing shade of amber salmon.	.25
Glow. Very fine, rich coral.	.25
Girle. Pinkish mauve.	.25
Helen Lambert. Clear yellow.	.25
Little Frank. Amber, shaded salmon.	.25
Little Prince. Crimson, tipped white.	.25
Little Sweetheart. Red, tipped white.	.25
Laddie. Light crimson edged rose.	.25
Lassie. Yellow, edged and tipped white.	.25
Lilian. Primrose, edged pink.	.25
Madeline. Primrose, edged rosy purple.	.25
Mars. Very bright scarlet.	.25
Nerissa. Soft rose pink.	.25

Neatness. Salmon pink.	Each \$.25
Phoebe. Deep orange.	.25
Rosebud. Light ground, edged bright rose.	.25
San Toy. White, heavily edged rosy carmine.	.25
Seashell. Soft shell pink.	.25
Violet. Pure White.	.25

One each 26 New and Rare Pompon Dahlias for \$5.75.

Select Pompon Dahlias

Alewine. White suffused pink.	Each \$.15
Allie Mourey. Light pink, tipped deep pink.	.15
Catherine. Clear canary yellow.	.15
German Favorite. Red, tipped white.	.15
Guiding Star. Pure White, serrated petals.	.15
Elfin. Soft creamy white.	.15
Fairy Queen. Yellow-edged rose.	.15
Hedwig Pollig. Distinct, shades of red, tipped white	.15
Klein Domitea. Bright golden terra-cotta. Profuse.	.15
Little Beauty. Silvery pink, closely quilled petals	.15
Little Bessie. Creamy white, quilled petals.	.15
Little Herman. Cardinal red, tipped white.	.15
Little Mary. Clear yellow.	.15
Rougieri Chauviere. Crimson, pink and white	.25
Snowclad. The best pure white pompon.	.15
Splendens Imbricata. Brightest scarlet.	.20
Star of the East. Pure white, long stems.	.15
Sunshine. Vermilion scarlet, splendid little flowers.	.15
Tom. Soft creamy yellow.	.15

One each 19 Select Pompon Dahlias for \$2.75.



Vase Pompons

Fifteen Dahlias, all classes, our selection, \$1.50. Ten for \$1.00, postpaid



Peacock's Century Dahlias

This entirely new race of single Dahlias was originated by us in the form of 20th Century and introduced in 1901, since which time we have originated and introduced the succeeding varieties.

We consider that Peacock's New Century Dahlias occupy first place, where beauty of coloring and artistic effect is desired. Owing to their immense size, long stems, and graceful carriage, combined with their purity of color, or the blending of colors, shades and tints, they entirely outclass the older and smaller types.

Blush Century. Very large, soft blush pink, height 4½ feet.....	Each \$.25	Fringed 20th Century. The first of a new race, with cleft or serrated petals. A great improvement of 20th Century, much larger, brighter color, while the stems are long, slender and stiff. Color bright rosy crimson, with lighter markings. Height 4 feet.....	Each \$.20
Cardinal Century. Very large, rich cardinal red, the best deep red. Height 5 feet.....	.15	Geisha Century. This is an intensified Mrs. Wendell Reber. The inner half of the petal is a rich yellow, the outer half is an intensely rich scarlet—the Geisha colors—hence the name. This is one of the most striking of the Century Dahlias and attracted marked attention in the fields, also was one of the most popular as a commercial cut flower. It gives you the Geisha color and the long stiff stem for decorative effect that is lacking in the Geisha. The giant flowers are of perfect regular form, and borne on the long stiff stems, with the cut or fern foliage of the century it is one of the most striking acquisitions to this most popular class. Invaluable for cutting, decorations, or the garden. Height, 6 feet. Price, strong roots.....	.50
Cream Century. Another delicately colored giant flower. Color a rich cream which suggested the name. A fine companion to Mrs. Wendell Reber. It has the same giant size, regular form, long stiff stems, robust habit of growth. The plants are 5 feet high and bloom early, profusely and continuously until frost. Strong roots...	.25		
Crimson Century. Rich crimson, rose band around disc. Height 4 feet.....	.15		
Eckford Century. Probably the largest single Dahlia in existence; the immense flowers, pure white, spotted pink and penciled crimson, are produced in abundance on long stiff stems. Height 5 feet.....	.20		



Photograph of Group of Peacock's Superb Dahlias that Bloom. These flowers were grown and arranged by us and photographed on our farms

- | | | | |
|---|--------|---|---------------|
| Josephine. The acme of perfection in snow white. The flowers are very large, splendid regular form, but unlike so many white single Dahlias, the long wiry stems hold the flowers erect, which, with their great substance, make them especially long keepers and valuable for all cut flower purposes. The plant is a very strong grower, with dark, heavy foliage which testifies to its health and vigorous constitution..... | Each | 20th Century. The original century originated and introduced by us in 1901. Early in the season, intense rosy crimson, shading to white at tips and base of petals; but as the season advances the flowers open lighter until by October they are nearly white, a bright pink blotch in the center of the petals. Height 4 feet..... | Each |
| Mrs. Joseph Lucas. A combination of shades. Rich yellow overlaid bronzy scarlet, lightened, suffused and edged salmon rose. The flowers are immense in size, splendid substance, lasting a week after cutting. The form of the flowers are particularly pleasing as the huge petals have an artistic irregularity in contour. Mrs. Joseph Lucas is not only one of the handsomest and very largest Century Dahlias but a very early and profuse bloomer. The plant is a model; of medium height (4 feet) and blooms so freely as to resemble a huge bouquet. As a cut flower it is unexcelled on account of size, form, keeping qualities, coloring, and stiff slender stems. Price, strong roots..... | \$1.00 | Wildfire Century. Century size, with the brilliant, rich scarlet of the old Wildfire. Acknowledged the best commercial scarlet. Height 3 feet..... | \$.15
.20 |
| Mrs. J. C. Hance Century. Bright carmine pink, with bluish white disc. An exquisitely lovely flower, of largest size, with long stems. Height 4 feet..... | .50 | One each of above 15 Century Dahlias for \$3.50. | |
| Mrs. Wendell Reber. A blending of soft tints, suffused and tipped lightly soft scarlet. The flowers are of immense size, regular form with stiff stems 2½ to 3 feet long, making them invaluable for decoration. The plants are large, strong, vigorous with beautiful, healthy foliage. This is a variety that must be seen to be fully appreciated, and once seen, the fancy lingers. It is one of the strongest Century Dahlias growing—6 feet high—a giant in every way and such delicate coloring. Strong roots..... | .50 | | |
| Poppy Century. Uniquely distinct. The most brilliantly rich of any Dahlia, as the bright garnet color is so livened by the wonderful satiny sheen, that the flowers fairly glow in the sunshine. The center is dark maroon instead of yellow as in other varieties. Height 4 feet..... | .50 | | |
| Rose Pink Century. The largest and best deep pink; enormous flowers on long 3 feet stems; sure and continuous bloomer, vigorous plant. Height 5 feet..... | .15 | | |
| | | Best Single Dahlias | |
| | | The ordinary single Dahlias have been superseded by the Century Dahlias, yet a few of the most beautiful or distinctive are appreciated, especially where color effects, smaller flowers or dwarf plants are desired. | |
| | | Edith Lemon. Lemon yellow, reflex amber, distinct and pleasing..... | Each \$.15 |
| | | Gaillardia. Golden yellow, with a broad band of red around the yellow center..... | .20 |
| | | Praxitelles. The color is a deep velvety violet maroon, each petal tipped white. The plants are dwarf branching and profuse bloomers; the colors distinct and striking. This is undoubtedly the richest and most effective of all fancy single Dahlias. Strong roots..... | .50 |
| | | Rantendelein. Another fancy single. Color pure white, each petal has a narrow margin of deep crimson on each side. A very profuse bloomer. Plant dwarf and branching. Height 3 feet. Strong roots..... | .50 |
| | | Sardanapol. A fancy single that attracted much attention the past season on account of the rich color combination; rich deep red, with a band of orange scarlet running lengthwise through the petals..... | .30 |
| | | St. George Improved. A seedling of the St. George and similar in every way, but a larger, stronger plant with heavier foliage. Flowers clear canary yellow and twice the size of St. George, on longer stems..... | .30 |
| | | St. George. The best clear canary yellow single Dahlia..... | .20 |
| | | One each of 6 Singles for \$1.75. | |

Bargains in Dahlias

Special Offer No. 1. Dorothy Peacock, Jack Rose, White Swan and Melody. One strong root each for 75 cents.

Special Offer No. 2. A. D. Livoni, Arabella, Lyndhurst, Sylvia, Crimson Giant and Minnie McCullough. One strong root each for 75 cents.

Special Offer No. 3. John Wanamaker, Minnie Burtle, Mont Blanc and Richmond. One strong root each for \$1.25.

Special Offer No. 4. Crystal, L. Kramer Peacock, Flamingo, Richard Box, Dr. Tyrrell and Canary. Six handsome Dahlias and book "The Dahlia" for \$5.00.

Special Offer No. 5. Preceding 4 collections complete for only \$7.50 postpaid, or stronger roots by express (charges collect) at same price.

Peacock's Dahlias are acknowledged the best that can be grown and are absolutely true to name.

Send us a trial order and be convinced. We guarantee our stock. You run no risk.

Special Introduction Offer

To thoroughly introduce our superb "Dahlias that bloom," we will send a complete collection of 15 of the best new and standard varieties, embracing all classes, including the new Paeony Flowered and beautiful Cactus, 15 distinct kinds, each labeled, absolutely true to name, by mail postpaid, for \$1.50.

For \$1.00 we will send 10 distinct varieties, each carefully labeled, by mail postpaid. Larger roots by express (charges collect) same price.

FREE To every customer sending \$5.00 or more for anything in this catalogue and requesting the book, we will send the book absolutely free. We make this offer as we want our customers to have the greatest success and we know this book will be of greatest value to them. Price 50 cents postpaid; but **FREE** on request with all orders for \$5.00 or more.

Dahlia Seed

Of our own growing, saved from the named varieties in this catalogue while it lasts.

Cactus Dahlia Seed. Saved from the best named varieties. While it lasts (stock limited owing to dry season), 25 cents per packet.

Decorative Dahlia Seed. The decorative class is the most interesting to raise from seed, owing to the immense size and various forms. This is the class from which the Paeony flowering type sprang. We offer a limited amount of seed of our own growing as long as it lasts at, per packet..... \$.25

Pompon Dahlia Seed. From best named varieties, per packet..... .10

Paeony Dahlia Seed. We offer seed of the best varieties, per packet..... .25

Collarette Dahlia Seed. From best named varieties, per packet..... .15

New Century Dahlia Seed. Saved from all the best varieties, per packet..... .15

Single Dahlia Seed. Saved from fine varieties, per packet, 10 cents, 3 packets for 25 cents.

One packet each of above while they last for \$1.00.

Book "The Dahlia"

By Lawrence K. Peacock.—The original American Dahlia Specialist, who since 1884 has never failed to have a crop of blooms when Dahlia time came. Clear, concise and practical; it makes the path to successful Dahlia growing easy. This is the 5th and revised edition (four editions having been long exhausted). It is a book of 80 pages, same size as this page, with a color insert of Minnie Burtle, the greatest red Dahlia from California, and 58 beautiful half-tone illustrations showing the various types and views of interest to Dahlia growers, with full instructions of how to grow, history, classification, etc. Price, 50 cents, postpaid.

Choice Gladioli

America. New, very large delicate shell of flesh pink, 5c. each, 40c. per dozen, \$2.50 per 100.

Attraction. Dark crimson, pure white centre and throat, 10c. each, 75c. per dozen, \$6.00 per 100.

Andese. Light scarlet, straight stiff stem, 10c. each, 75c. per dozen, \$6.00 per 100.

Augusta. Good commercial white, 5c. each, 50c. per dozen, \$3.00 per 100.

Baron Hulot. Darkest purple, striking flower, 5c. each, 50c. per dozen, \$3.00 per 100.

Blanche. Large pure white Childs, 10c. each, \$1.00 per dozen, \$6.00 per 100.

Blue Hybrids. Clematis, lilac and heliotrope shades, 5c. each, 40c. per dozen, \$2.50 per 100.

Brenchleyensis. The best scarlet for cutting or massing, 5c. each, 40c. per dozen, \$2.50 per 100.

Childs No. 1. Reddish salmon, tall straight stems, 5c. each, 40c. per dozen, \$3.00 per 100.

Childs Mixed. 4c. each, 40c. per dozen, \$2.50 per 100.

Flairie. Light flesh pink, 10c. each, \$1.00 per dozen, \$6.00 per 100.

Gaiety. Bright russet orange, white throat, 30c. each, \$3.00 per dozen, \$20.00 per 100.

Groffs Hybrids. Large flowered, many colored mixture, 5c. each, 50c. per dozen, \$3.00 per 100.

Jean Dieulafoy. Creamy white, lower petals stained maroon, 20c. each, \$2.00 per dozen, \$15.00 per 100.

Klondyke. Light yellow, crimson maroon blotch, 10c. each, 75c. per dozen, \$5.00 per 100.

Kunderdi Glory. Ruffled, cream pink, crimson stripe, 10c. each, 75c. per dozen, \$6.00 per 100.

Mrs. Beecher. Deep rosy crimson, white throat, 10c. each, 75c. per dozen, \$5.00 per 100.

Mrs. Francis King. Light scarlet, 5c. each, 40c. per dozen, \$2.50 per 100.

Mephistophelese. Large dark red, stained black and yellow, 10c. each, 75c. per dozen, \$5.00 per 100.

Peace. Grand pure white, lower petals stained lilac, 10c. each, \$1.00 per dozen, \$8.00 per 100.

Pink Augusta. Similar to White Augusta except in color, 6c. each, 60c. per dozen, \$4.00 per 100.

Principes. Rich crimson, lower petals blotched white, 10c. each, 75c. per dozen, \$4.00 per 100.

Primulinus Hybrids. Delicate colored, varying from light yellow to bright red, 15c. each, \$1.50 per dozen, \$10.00 per 100.

Rosella. Lilac rose, stained purple, white throat, 10c. each, \$1.00 per dozen, \$7.50 per 100.

Snowbank. Large white flowers, 10c. each, 75c. per dozen, \$5.00 per 100.

Taconic. New, immense flowers, color clear rich pink with crimson throat, 10c. each, 75c. per dozen, \$5.00 per 100.

War. Pure dark cardinal, 50c. each, \$5.00 per dozen, \$40.00 per 100.

Peacock's Peerless Mixture. An exceptionally fine strain, containing all the best varieties, including American and other new varieties, 5c. each, 40c. per dozen, \$2.50 per 100.

White and Light. Good florists mixture, light varieties, 5c. each, 40c. per dozen, \$2.50 per 100.

Standard Mixed. Our own collection of mixed stock containing many named varieties, 30c. per dozen, \$2.00 per 100.

THE WORLD'S BEST DAHLIAS



See Description, page 18

NEW PAEONY DAHLIA, "F. R. AUSTIN"

PEACOCK DAHLIA FARMS : BERLIN
NEW JERSEY