



*Yamacran*  
41





Digitized by the Internet Archive  
in 2010 with funding from  
Lyrasis Members and Sloan Foundation

<http://www.archive.org/details/yamacraw194114ogle>







*The*  
**YAMACRAW**  
*Nineteen forty-one*

*Published  
By  
The Students  
of  
Oglethorpe  
University*

EDITOR

ANTHONY ZELENICK  
OGLETHORPE UNIVERSITY,  
GEORGIA

# Foreword *and* Theme

*As I thumbed through a book one day  
A picture stared out at me;  
I saw a youngster hard at play—  
Funny, he looked like me!*

The editors of most college yearbooks often make attempts at formal pictorial and literary composition—something that will come up to the standards of their college training. But in doing this they have destroyed genial contact with the students and missed the purpose of the book entirely. The Yamacraw staff has prepared your annual with no regard for national or local boards of critics—in short, we have published *your* annual for you and about you by dropping formality and emphasizing

*SCHOOL ACTIVITIES*

# C O N T E N T S

**T H E C O L L E G E**

**A C T I V I T I E S**

**A T H L E T I C S**

**S N A P S**

# We Dedicate Our Book

, because of our frank admiration for able leadership, impartial decision, unimposing good nature, effective instruction, and spontaneous sympathy,

## JOHN W. PATRICK

A.B., and M.A., Oglethorpe University; Dean of Oglethorpe University; Assistant Football Coach in 1933; Head Football Coach since 1933; Dean of the School of Health and Physical Education; Director of Intramural Sports; Professor in the School of Physical Education; Member Alpha Lambda Tau; *Who's Who in Georgia*; Advisory Board of Southern Coaches and Athletes; American Football Coaches' Association.



'41 Yamacraw



*to-*

**JOHN W. PATRICK**



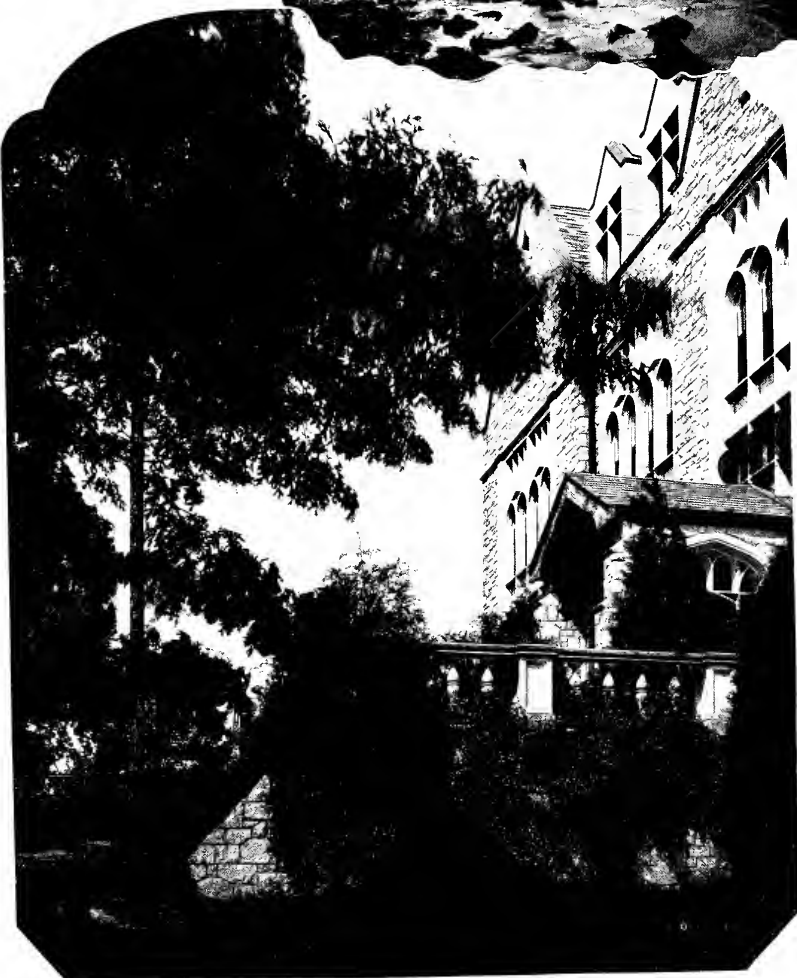
*Of all the beauty in this world,  
Of all the things there are to see,  
I will always love this place the most:  
It will always mean the most to me.*

*Here the sun is so friendly and warm  
And the sky so clear and bright,  
Where the stars watch over the tall proud  
trees  
With their soft, kind blanket of night.*



—Martin Kelly, 41





# Cosmic History . . . and

Since Dr. Jacobs reestablished Oglethorpe University in 1913, he has taught a course called Cosmic History which is, at present, required of all seniors, and is so designed to better associate the student with the problems that he will face when he leaves the University. Dr. Jacobs believes that the only way people can rid the world of conflict is by a clear understanding of present-day problems in terms of the past so that we, as individuals, may be able to solve these problems by past experience and a clearly developed foresight. To develop this power of introspection in the college student, Dr. Jacobs has impressed upon him that one must realize the complexity of the elements which have gone into the making of Man and his environment.

Throughout the past ages, Man has undergone a series of changes in adjusting himself to the increasing complexity of his surroundings, and through a process of steady development and acclimation; he has become an ever-developing Knower in an ever-developing Known, waxing more and more complex and specialized as he meets the new obstacles with which he is faced. This summarizes Man's situation as it is seen today: a highly specialized creature beset upon all sides by a maze of primitive emotions. Dr. Jacobs holds to the theory that Man will ever continue to progress and will never become an element in the process of retardation.

The text used for the study of Cosmic History was written by Dr. Jacobs in which he presents the growth of Man through the composite eye of all the natural sciences. Through this procedure not one aspect of human life and its associations is omitted; a clear picture of the Universe as a whole is considered.

Once a week Dr. Jacobs conducts a lecture for his class, bringing into the lecture many interesting observations of his own along with the textual material. At the close of the year, the members of the class meet before a board of examiners and are required to pass an oral examination before they receive credit for the course.





## Dr. Thornwell Jacobs

A.B., Presbyterian College of South Carolina, Valedictorian and Medalist; A.M., P. C. of S. C.; Graduate of Princeton Theological Seminary; A.M., Princeton University; LL.D., Ohio Northern University; Litt.D., Presbyterian College of South Carolina; Pastor of Morganton (N. C.) Presbyterian Church; Vice-President of Thornwell College for Orphans; Author and Editor; Founder and Editor of *Westminster Magazine*; Author of *The Law of the White Circle* (novel); *The Midnight Mummer* (poems); *Sinful Saddy* (story for children); *Life of William Plumer Jacobs*; *The New Science and the Old Religion*; *Not Knowing Whither He Went*; *Islands of the Blest*; *Red Lanterns on St. Michael's*. Editor of *The Oglethorpe Book of Georgia Verse*; Member Graduate Council of the National Alumni Association of Princeton University; President of the University.



POROHOVSHIKOV, NICOLASSEN, AVILES PEREZ

THE SCHOOL OF LIBERAL ARTS could well be named the Cosmopolitan School because the course of study is intended to encourage especially the study of languages, ancient and modern. Doctor George F. Nicolassen, dean of the school and one of the oldest members of the university faculty, has long been endeared to all students as "Doctor Nick." Doctor Nicolassen, professor of ancient languages, directs his staff of language professors consisting of Professor Pierre S. Porohovshikov, professor of French and German; Doctor Herman Gaertner, professor of German; and Doctor Luis Aviles Perez, professor of Spanish and Italian. Because of language requirements in other schools, all students of the university at one time or another come under the influence of this department.



HARDWICK, GAERTNER, WOODWARD

# LIBERAL

# ARTS

# EDUCATION

DR. HERMAN J. GAERTNER is dean of the School of Education which is both an undergraduate and a graduate school. A number of graduates from this school in Oglethorpe University as well as other colleges have entered the teaching profession. Since much of the work is psychological and humanistic, the discipline of this school is a preparation for dealing with all forms of human contact sides of life work, as well as for the teaching profession. Dr. Gaertner is professor of general psychology; Dr. Thomas B. Meadows, educational psychology; Professor Hugh A. Woodward, orientation in education, secondary education and school and social order; Professor Morris J. Hardwick, teaches in the extension school.



WALLACE, MOSTELLER

## LITERATURE AND JOURNALISM

THE WORK in the School of Literature and Journalism is based upon two groups of courses, English major and Journalism major. The group of courses which centers in the study of English has the two-fold purpose of giving students command over the use of their own tongue in both speaking and writing, and of familiarizing them with those aspects of English literature which are usually treated in undergraduate courses. Dean Leonard DeLong Wallace, Professor Pierre S. Porohovshikov, and Professor J. D. Mosteller teach the subjects in this group. The journalism group has been designed as a professional course for students of journalism who are expected to follow basic courses in literature, history, economics, political science, and sociology. Mr. Hines, of the *Atlanta Constitution* editorial staff, is the instructor in the Technique of Journalism. Attached to the School of Literature and Journalism are courses in Bible and Mythology, taught by Dr. Niclassen; public speaking by Professor Mosteller, and radio and stage production by Professor Paul Carpenter, Jr.

## SCIENCE

THE SCHOOL OF SCIENCE, under the direction of Dean J. A. Aldrich, is organized to build a solid foundation for future work in such professions as agriculture, engineering, medicine and dentistry, and to prepare for industrial occupations not yet organized into professional groups. Besides giving their students practical work in the natural sciences, the professors of this school have done much to build a true prospective and its corollary, a sane judgement of relative values—attainments which are basic in any liberal culture. Dean Aldrich is the professor of astronomy, mathematics, and physics; Professors Harding Hunt and David W. Davis, of biology; and Professor Harold L. Jones, of chemistry and geology.



HUNT, JONES, ALDRICH



DAVIS



LESKOSKY, HUNT, PATRICK



ANDERSON

## PHYSICAL EDUCATION

THE TASK of the School of Physical Education, under Dean John William Patrick, is the training of the students enrolled in this school for positions as physical directors and coaches in other schools, colleges and universities, in Y. M. C. A's, and the Army; and the development of the bodies of all students of the University. With his associates, Professors Harding Hunt, David W. Davis, and Louis Leskosky, Dean Patrick directs his students through three groups of studies: exhaustive anatomical research and investigation, teaching methods, and the theory and practice of athletic games. In order to extend the benefits of organized athletic competition to all students of Oglethorpe University, instead of only to those who take part in intercollegiate competition, the Department of Physical Education sponsors the program of Intramural Athletics. The purpose of the intramural department is to encourage every student to participate in some or all intramural sports, to provide facilities for this participation, to organize and promote intramural competition, and to stand for fair play and true sportsmanship. This program includes competitive sports for every student on the campus—volleyball, basketball, baseball, badminton, tennis, fencing, shuffleboard, and archery.



SPRINGER

## FINE ARTS

THE RESPONSIBILITY for the entire Art Department rests upon Professor James M. Springer, acting dean. The curriculum of the department has been divided into two classifications. One of these is designed to train students who intend to follow Commercial Art, and the other to give instructions in the fundamentals of the various fields of arts with an ultimate specialization in one particular field. Professor Springer, a graduate of the University of Tennessee and the Art Institute of Pittsburgh, is widely known throughout Atlanta in art circles, and is President of the Artist Guild of Atlanta.



MRS. SANDERS, ANDERSON, EASON

## COMMERCE

THE COMMERCE department of Oglethorpe University embraces two schools, the School of Banking and Commerce and the School of Secretarial Preparation. Dr. Mark Burrows is the dean of both schools.

The Lowry School of Banking and Commerce furnishes the student with a general basis of business facts, standards and theory and stresses particularly accounting, finance, economics, and business law.

The secretarial course has been designed for those persons who



BURROWS

wish to enter the business world in the capacity of skilled assistants to those in executive positions, teachers of commercial subjects in schools, office managers, and those persons who desire positions as social secretaries.

Members of the faculty included within these schools are Professors Mark Burrows, S. B. Fenster, Charles M. Anderson, W. N. Eason, Hugh A. Woodward, and Mrs. Ruth Wells Sanders.



MRS. CARPER

## LIBRARY

The Oglethorpe Library, under the supervision of Mrs. Myrta Thomas Carper, librarian, is a popular retreat for both the studious and those seeking entertainment in books. Its 60,000 volumes include many rare books, such as the "Book of the Dead," book autographed by well-known persons, and foreign books, as well as those for research and general reading. The Family Tree of Man, prepared by the American Museum of Natural History, is the only one of its kind in the South and one of several in the United States. It is a tree of skulls giving a picture of the whole story of the evolution of man. On the walls are original oil paintings of General and Oglethorpe, Sidney Lanier, John Thomas Lupton, and many others.

# GRADUATE



LOUIS EDWARD LESKOSKY : : East Chicago, Indiana

*M. A. Science*

A. B. Science, '40; Delta Sigma Phi Chaplain; Assistant Football Coach; Professor of Directed Teaching; Assistant Director of Intra-Mural Sports; Blue Key; Le Conte; "O" Club; Ugly Club; *Who's Who*; Intra-mural Sports; Football '38, '39, '40; Honor Roll '37, '38, '39, '40, '41; Coat of Arms; K D cup—1940.

'41 *Yamacraw*



# STUDENTS

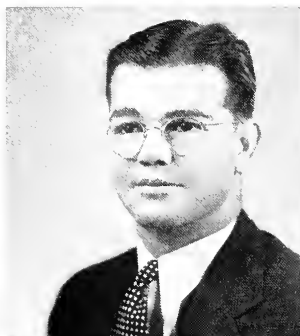
J. D. MOSTELLER : : : : Mount Dora, Florida

*M. A. Literature and Journalism*

Freshman Football '34; Freshmen Baseball '34; Football '37; Coat of Arms; *Who's Who*; President Baptist Student Union; Library Assistant; Phi Kappa Delta; Assistant Instructor, English Department; Professor of English; Director of Debating; A. B., Liberal Arts'40.



# Student Government



*President* . . . . . E. O. SHEFFIELD  
*Vice President* . . . . . MARY BISHOP  
*Secretary* . . . . . MILDRED MCKAY  
*Student Advisor* . . . . . ROBERT O'DELL



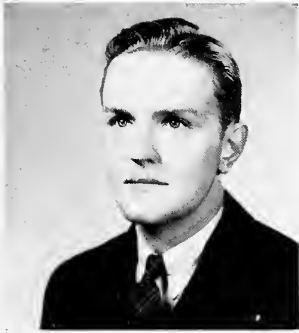
*The College*



*Edith*  
1901 7-3

# Seniors

## CLASS OFFICERS



PHILIP SCALES . . . . . *President*

L. T. LAWSON . . . . . *Vice President*

ANNA MCCONNEGHY . . . . . *Secretary and Treasurer*



# THE CLASS



MILTON CHAUNCEY AUSTIN : : Erie, Pennsylvania

*A. B. Science*

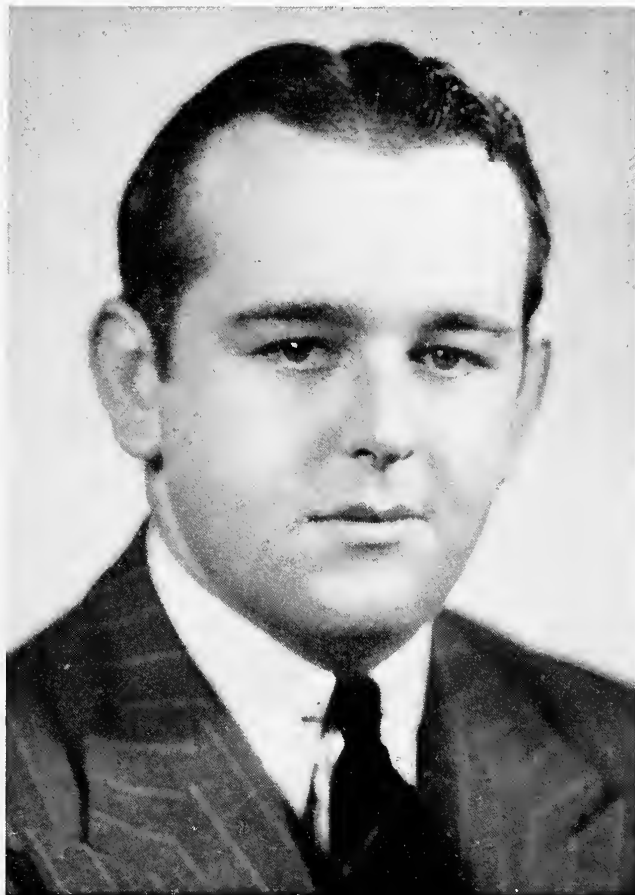
Glee Club; Orchestra; Fencing; Le Conte; Vice President, 4 F Club;  
Chemistry Laboratory Instructor.

'41 *Yamacraw*

HERBERT PHILIP BECKETT : Providence, Rhode Island

*A. B. Physical Education*

Managing Editor, '39, Editor-in-Chief, '40, '41, Stormy Petrel; Secretary, Pledge Club, Pi Kappa Phi; Blue Key; *Who's Who* 1940.



# THE CLASS



BETTY VIRGINIA BENEFIELD : : Atlanta, Georgia

*A. B. Literature and Journalism*

President, Beta Phi Alpha; Treasurer, Duchess Club; Basketball; Secretary, Pan Hellenic; Glee Club; Intramural Sports; Sponsor, Homecoming, 1940.

'41 *Yamacraw*



0 F 1 9 4 1

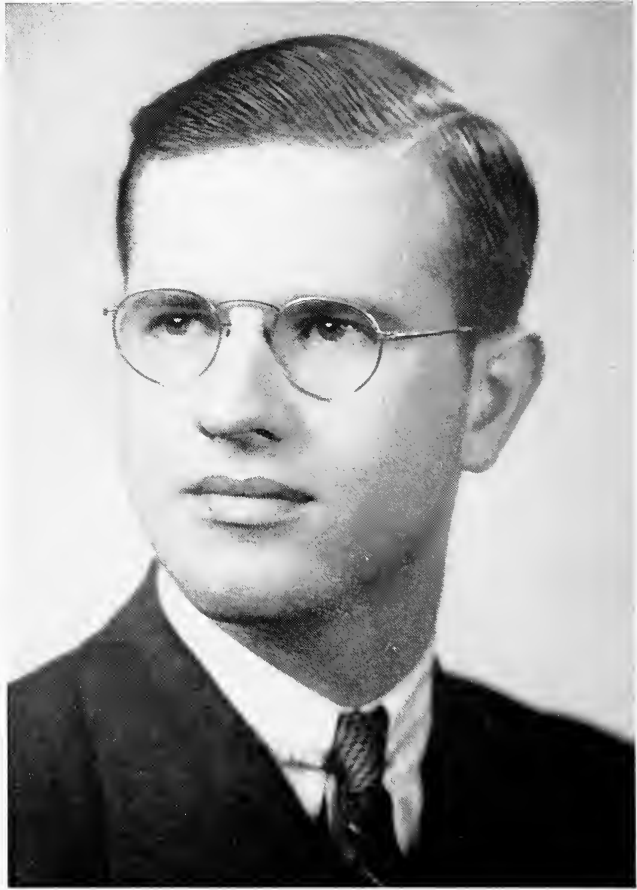
FRANK FRODOLFO CASTELLUCCIO : Newark, New Jersey

*A. B. Education*

4 F Club; Baseball, '41; Intramural Basketball; Transfer from University of Minnesota.



# THE CLASS



JOHN MARK COWN : : : Fairburn, Georgia  
*A. B. Science*

President, 4 F Club.

'41 *Yamacraw*

MARTHA DEFRESE : : : Atlanta, Georgia

*A. B. Fine Arts*

Kappa Delta; Duchess Club; Glee Club; Basketball; Fencing; Treble Clef Club.



# THE CLASS



HARRIETTE DEAS HAMILTON : : Atlanta, Georgia

*A. B. Literature and Journalism*

Chapter Correspondent, Chi Omega; Petrel Staff; Radio Play Production Group.

'41 *Yamacraw*

# O F 1941

LUTHER HARBEN : : : Stone Mountain, Georgia

*A. B. Science*

4 F Club; Blue Key; President. LeConte.



# THE CLASS



MIRIAM HIGHNOTE : : : Columbus, Georgia

*A. B. Liberal Arts*

Pledge, Beta Phi Alpha; Transfer from Shorter College (2 years), Alabama Polytechnic Institute (1 year).

'41 *Yamacraw*

# OF 1941

GEORGE HOPKINS : : : : Norcross, Georgia  
*A. B. Commerce*

Pledge, Pi Kappa Phi; Honor Scholarship Student, '39, '40.



# THE CLASS



MARTIN LAWRENCE KELLY : : Atlanta, Georgia

*A. B. Education*

Football, '37, '38, '39, '40; Intramural Basketball; Broad Jump Record; Yamacraw Staff; Alpha Lambda Tau; Ugly Club; "O" Club; Glee Club.

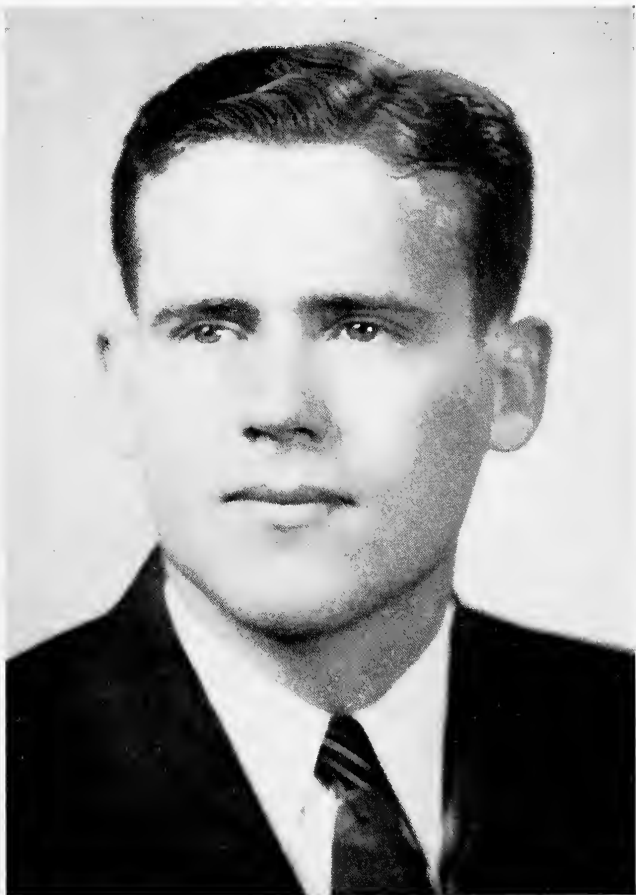
'41 *Yamacraw*



LONNIE THOMPSON LAWSON : Clinton, South Carolina

*A. B. Commerce*

Literary Society; Football, '39; Pi Kappa Phi Pledge; Coach, Freshman Football, '40; Transfer from University of South Carolina.



# THE CLASS



PATSY CHARLES LOCASCIO : East Chicago, Indiana

*A. B. Physical Education*

Football, '37, '38, '39, '40; Intramural Sports; Vice President, Delta Sigma Phi; Play Production.

'41 *Yamacraw*

ANNA CATHERINE MCCONNEGHEY : Atlanta, Georgia

*A. B. Literature and Journalism*

President, Chi Omega; President, Duchess Club; Phi Kappa Delta; Pan Hellenic Council; Secretary, Senior Class; Basketball; Petrel Staff; Sponsor, Homecoming, '40.



# THE CLASS



MILDRED EVELYN MCKAY : : Atlanta, Georgia

*A. B. Literature and Journalism*

Secretary, Kappa Delta; Duchess Club; Phi Kappa Delta; Glee Club; Secretary-Treasurer, Spanish Club; Basketball; Intramural Sports Director; Yamacraw; Secretary-Treasurer, Student Council; Baptist Union.

'41 *Yamacraw*

OF 1941

FRANCES ANDERSON MALONEY : Atlanta, Georgia

*A. B. Literature and Journalism*

Transfer from University of Georgia.



# THE CLASS



REVA MURPHY : : : Mount Sterling, Kentucky

*A. B. Fine Arts*

Treasurer, Kappa Delta Pledge Club; Glee Club; Intramural Sports;  
Transfer M. S. T. C.

'41 *Yamacraw*

GENE NORTH : : : : Atlanta, Georgia

*A. B. Secretarial Preparation*

Treasurer, Beta Phi Alpha; Intramural Sports; Petrel Staff; Treasurer,  
Senior Class; Duchess Club; President, Baptist Student Union.



# THE CLASS



ROBERT O'DELL : : : Keeseville, New York

*A. B. Literature and Journalism*

Delta Sigma Phi Pledge; Student Advisor; Associate Editor, Stormy Petrel; Director of Publicity; Fencing Instructor; Yamacraw Staff; Student Council; Transfer from Green Mountain Junior College.

'41 *Yamacraw*



JACQUELINE PARTAIN : : : Atlanta, Georgia

*A. B. Literature and Journalism*

Secretary, Chi Omega; Glee Club; Basketball; Intramural Sports.



# THE CLASS



JAMES HENRY POPE : : : Villa Rica, Georgia

*A. B. Commerce*

Freshman Football; Secretary-Treasurer, Ugly Club; Head Manager, Football; "O" Club; Delta Sigma Phi; Blue Key; *Who's Who*; Business Manager, Football Program; Proctor Lowry Hall.

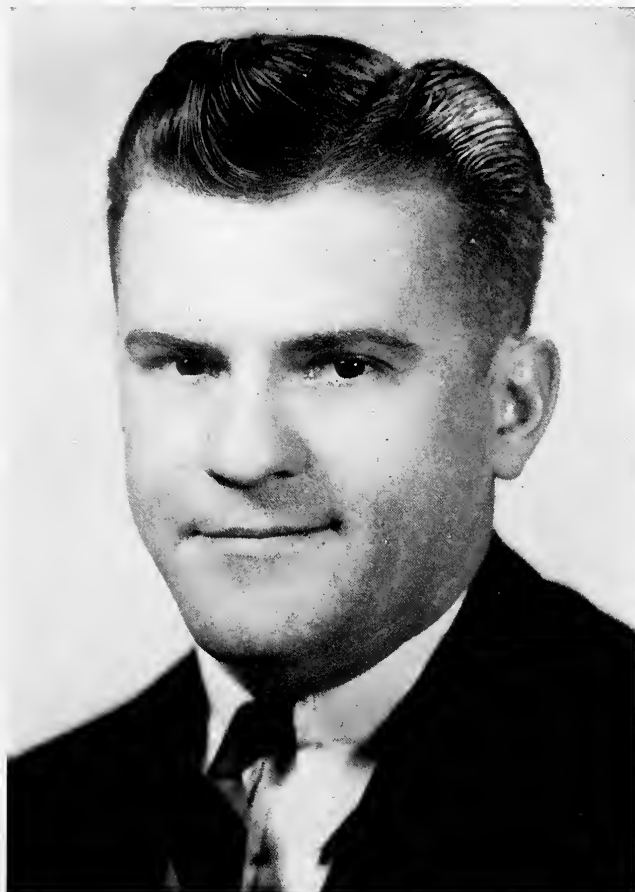
'41 *Yamacraw*

OF 1941

HAROLD WHITE POWERS : Gibbstown, New Jersey

*A. B. Science*

Freshman Football; Freshman Football Trainer; Delta Sigma Phi  
Pledge; Ugly Club; Transfer from Gettysburg.



# THE CLASS



CHARLES PHILIP SCALES : : : Griffin, Georgia

*A. B. Literature and Journalism*

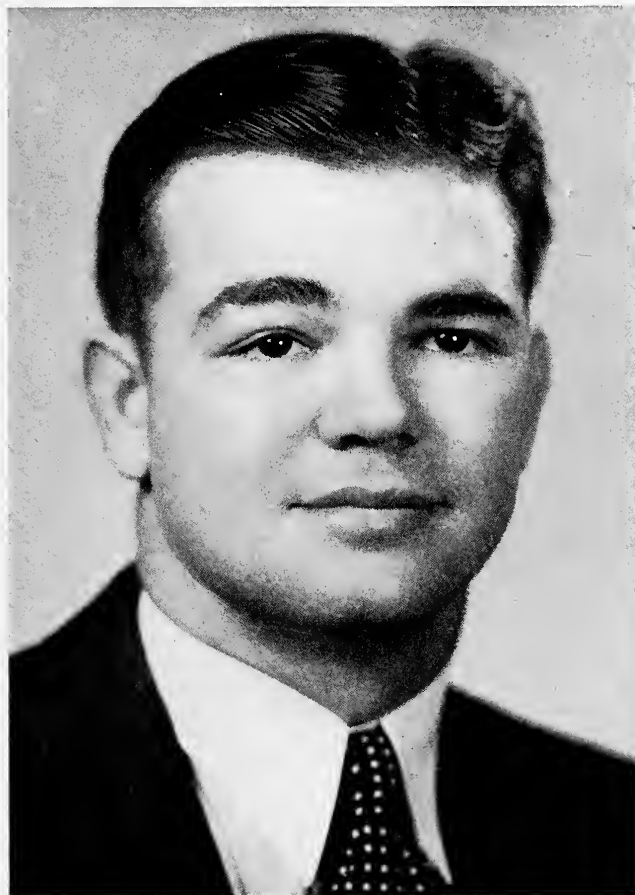
Secretary, Kappa Alpha; Vice President, Kappa Alpha; Business Manager, Stormy Petrel; Football Manager; Glee Club; Campus Correspondent, Atlanta Papers; Secretary, Blue Key; President Blue Key; President, Senior Class; *Who's Who*; Ugly Club; Intramural Sports; Student Representative.

'41 *Yamacraw*

ERNEST O. SHEFFIELD : : Fort Pierce, Florida

*A. B. Physical Education*

Football, '38, '39, '40; Captain, '40; Intramural Sports; President, Delta Sigma Phi; President, "O" Club; President, Student Body; Executioner, Ugly Club; Blue Key; *Who's Who*.



# THE CLASS



ALBERT SPROUSE : : : : Atlanta, Georgia

*A. B. Commerce*

Freshman Football; Freshman Baseball, '38; Varsity Baseball, '39, '40, '41; "O" Club.

'41 *Yamacraw*

# OF 1941

JACKSON STEPHENS : : : Newnan, Georgia

*A. B. Commerce*

President, Pi Kappa Phi; Transfer from Georgia Junior College, Georgia Evening College.



# THE CLASS



MARCUS H. WILSON : : : Villa Rica, Georgia  
*A. B. Science*

Freshman Football; Manager, Football; Ugly Club; Assistant Instructor, Physics Laboratory; President, Alpha Lambda Tau; Intramural Basketball.

'41 *Yamacraw*

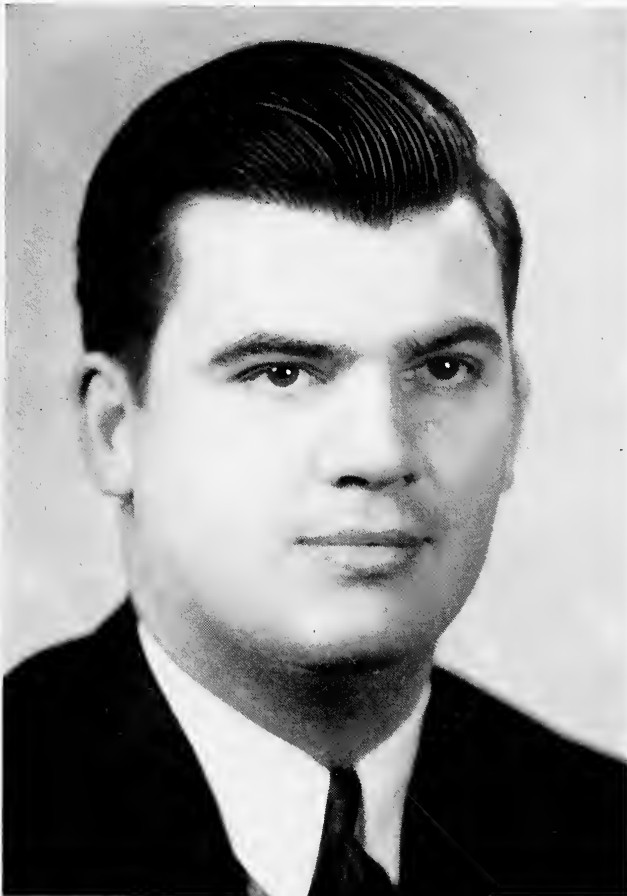


OF 1941

SAM WORTHINGTON : : : Lumpkin, Georgia

*A. B. Physical Education*

"O" Club; Ugly Club; Baseball; Alpha Lambda Tau.



# THE CLASS



ROSS WYROSDICK : : : : Ellaville, Georgia

*A. B. Literature and Journalism*

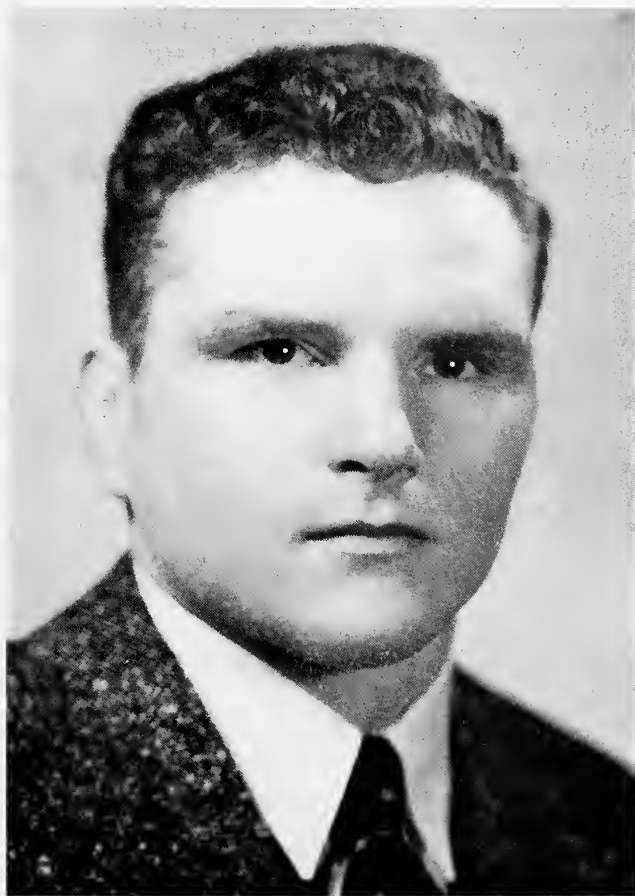
Football, '37, '38, '39, '40; Intramural Sports; Sports Editor, Stormy Petrel; Sports Editor, Yamacraw; Radio Play Production Group; Grand Wiser, Ugly Club; "O" Club.

'41 *Yamacraw*

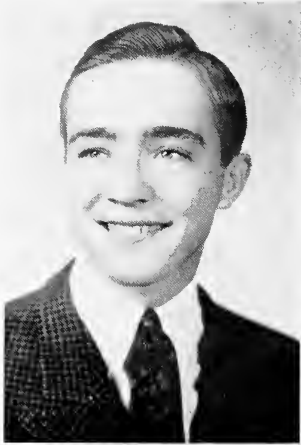
ANTHONY STEPHEN ZELENCIK : East Chicago, Indiana

*A. B. Science*

Editor-in-Chief, Yamacraw; Pledge, Le Conte; Blue Key; Pledge President, Alpha Lambda Tau; Ugly Club; "O" Club; Football, '38, '39, '40; Intramural Sports; School Discus Record; Student Council; Transfer from St. Viator College.



# TRIP



MARSHALL ASHER : : Athens, Texas  
Spanish Club

FREDERICK GOSS : : Proctor, Vt.  
"Guiding Don" of Triple-E's. Le Conte, "Who's Who in  
American Colleges and Universities," Phi Kappa Delta.



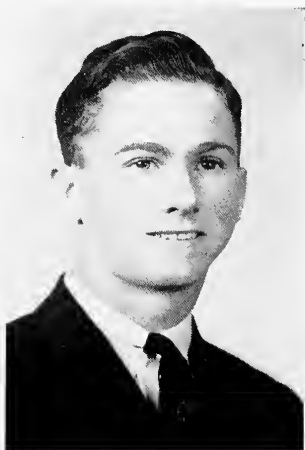
JOHN GOLDTHWAIT : Mt. Lebanon, Pa.  
Spanish Club, Yamacraw Staff

# LEE'S

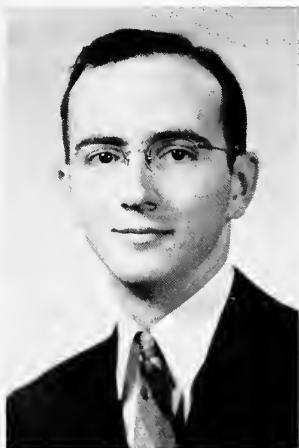
The Triple-E's have already finished four years' college work in less than two, but they will continue studies at Oglethorpe for another four years. They will take every course the University offers, and after six years here will receive a specially-created degree, Doctor of Arts and Sciences. They will have maintained averages above ninety in their classwork, but the real test of the efficiency of their education will be to teach successfully every subject they have taken. They will begin teaching next fall.



KEITH LANE : : Mountainair, N. M.  
Spanish Club



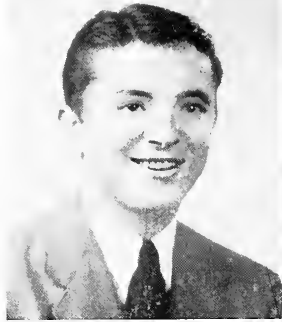
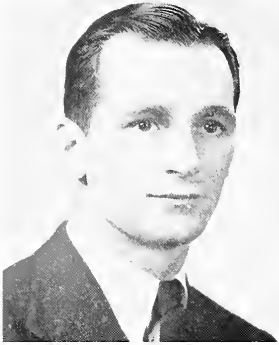
JOHN MEACHAM : : Scooba, Miss.



EDGAR VALLETTE : : Dallas, Texas



# Juniors



## CLASS OFFICERS

*President* . . . . . PETE MAMAN

*Vice President* . . . . . NICK POPA

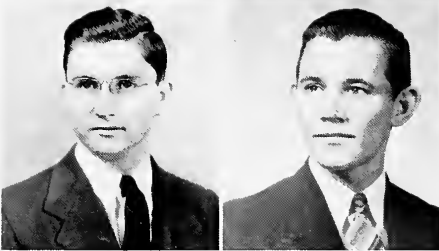
*Secretary-Treasurer* . . . . . MARY BISHOP

# Class of 1942



JANE ALDRICH : : : Oglethorpe University  
*Science*

MARY EMMA BISHOP : : : Atlanta, Georgia  
*Science*



EDWARD BLACK : : : : : Lee, Florida  
*Commerce*

JOHN G. BRACKETT : : East Point, Georgia  
*Science*



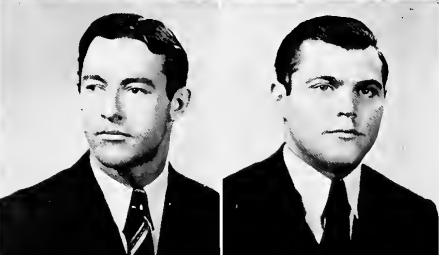
VICTOR RUDOLPH CEGOY : : Gary, Indiana  
*Literature and Journalism*

WILHELMINA DURHAM : Avondale Estates, Ga.  
*Literature and Journalism*



ROBERT ARTHUR ELLIOTT : Lakeworth, Florida  
*Commerce*

GUS HENDRY : : : : Arcadia, Florida  
*Science*



C. RUDY HORNE : : : : Griffin, Georgia  
*Literature and Journalism*

THOMAS JOHN HOUSE : : : Omaha, Georgia  
*Physical Education*



# Juniors



LORAINÉ JACKSON : : : Decatur, Georgia  
*Education*



Hazel Josey : : : : Atlanta, Georgia  
*Education*



EVELYN LOWRY : : : : Atlanta, Georgia  
*Education*



JAMES W. MCGRORY, JR. : Lansdowne, Penn.  
*Education*



PETER PIERPONT MAMAN : Hammond, Indiana  
*Physical Education*



JOHN WILLIAM MOCKABEE : Dade City, Florida  
*Physical Education*



CHARLES MONSOUR : : : Atlanta, Georgia  
*Physical Education*



CHARLES E. NEWTON : East Chicago, Indiana  
*Commerce*

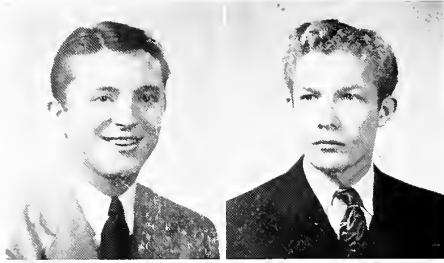


EDWARD NORVELL : : : Augusta, Georgia  
*Commerce*



ANTONIO MICHAEL PALMA : : Milford, Mass.  
*Education*

# Class of 1942



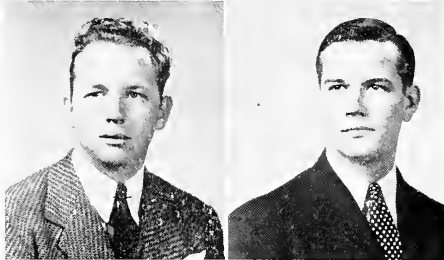
NICK CLAUDE POPA : East Chicago, Indiana  
*Commerce*

ROBERT E. RIVENBARK : Savannah, Georgia  
*Literature and Journalism*



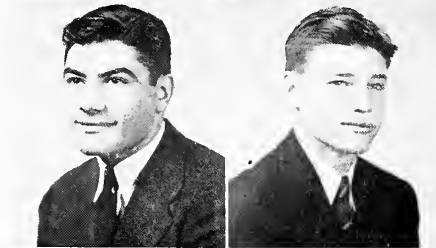
ERNEST WILLIAM ROBERTI : Milford, Mass.  
*Education*

JEAN ROGERS : Decatur, Georgia  
*Literature and Journalism*



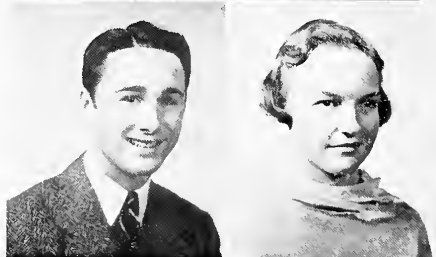
JOHN WILSON SMITH : Cumming, Georgia  
*Education*

JAMES L. TIMBERLAKE : Atlanta, Georgia  
*Physical Education*



JOSEPH NICHOLAS TOSCHES : Milford, Mass.  
*Science*

CHARLES FLETCHER WALLER : Griffin, Georgia  
*Physical Education*



PAUL WHALEY, JR. : Augusta, Georgia  
*Science*

MARGARET YOUNG : Atlanta, Georgia  
*Secretarial Preparation*

# *Juniors*

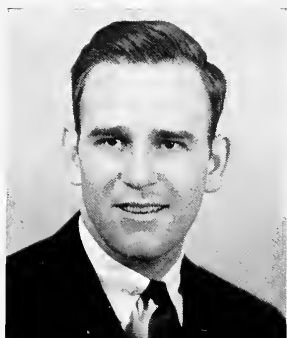


CLIFTON MCCLANAHAN : Hartsville, Tenn.

JOSEPH DRAKE : : : : Atlanta, Georgia

ANGELO FERRARIO : : : : Milford, Mass.

# Sophomores



## CLASS OFFICERS

<i>President</i>	. . . . .	THOMAS HUNTER
<i>Vice President</i>	. . . . .	GEORGE TALBOTT
<i>Secretary</i>	. . . . .	AUDREY MOORE
<i>Treasurer</i>	. . . . .	DAVID EAVENSON



'41 Yamacraw



ROBERT BOOTH : : : : Atlanta, Georgia  
*Fine Arts*

RAY DAVIS : : : : Mansfield, Georgia  
*Education*



ROY DAVIS : : : : Mansfield, Georgia  
*Education*

ROBERT DILLARD : : : : Cornelia, Georgia  
*Science*



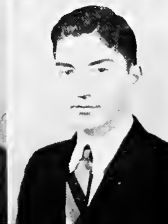
LARRY DODD : : : : East Point, Georgia  
*Physical Education*

DAVID EAVENSON : : : : Kingston, Penn.  
*Physical Education*



BILL FLEURY : : : : Upper Falls, Maryland  
*Science*

HUGH FLOYD : : : : Kershaw, South Carolina  
*Physical Education*



JOHN GASAWAY : : : : Decatur, Georgia  
*Banking and Commerce*

MAX GASTON : : : : Lindale, Georgia  
*Banking and Commerce*



MARIAN GILLOOLEY : : : : Atlanta, Georgia  
*Fine Arts*

GENE HARRIS : : : : East Point, Georgia  
*Banking and Commerce*



BEULA MAE HIGHTOWER : Atlanta, Georgia  
*Commerce*

THOMAS M. HUNTER : : Oak Park, Illinois  
*Literature and Journalism*



MAX IVEY : : : : : Atlanta, Georgia  
*Physical Education*

CLAUDIE JOHNSON : : : Atlanta, Georgia  
*Commerce*



JOE JULIANA : : : Moorestown, New Jersey  
*Physical Education*

GEORGE KOLOWICH : : Grosse Point, Mich.  
*Commerce*



EDWARD LINK : : : : Chicago, Illinois  
*Literature and Journalism*

GEORGE LIPTAK : : Bridgeport, Connecticut  
*Banking and Commerce*



Elizabeth Longworth : : Decatur, Georgia  
*Commerce*

VERNA LEE MILLER : : : Atlanta, Georgia  
*Secretarial Preparation*



AUDREY MOORE : : : : Atlanta, Georgia  
*Fine Arts*

BEATRICE NIX : : : : : Atlanta, Georgia  
*Secretarial Preparation*

# Sophomores

RHETT PINSON : : : : Atlanta, Georgia  
*Secretarial Preparation*

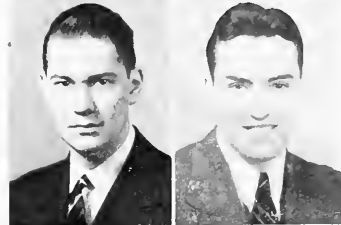


ROBERT POWELL : : Columbia, South Carolina  
*Literature and Journalism*



BETTYE RAY : : : : Atlanta, Georgia  
*Education*

WALTER ROSS : : : : Rome, Georgia  
*Commerce*



YANCEY SHAVER : : : : Atlanta, Georgia  
*Liberal Arts*

ROLAND SHEETS : : : : Valparaiso, Ind.  
*Physical Education*



WILLIAM SIGMAN : : : : Atlanta, Georgia  
*Fine Arts*

FRANK SINGER : : : : Lumpkin, Georgia  
*Commerce*



HILLIARD STEELE : : : East Point, Georgia  
*Banking and Commerce*

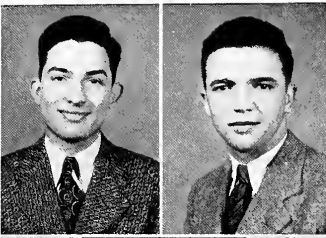
LUCY SUTTLES : : : : Atlanta, Georgia  
*Commerce*



FRED VIHLEN : : : : Homestead, Florida  
*Physical Education*

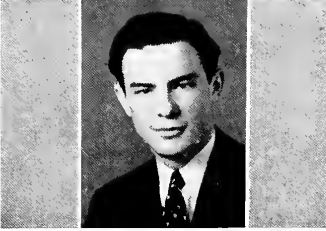
GEORGE TALBOTT : : Portsmouth, Virginia  
*Literature and Journalism*





' 4 3  
JIMMY VOCALIS : : : : Atlanta, Georgia  
*Banking and Commerce*

WILLIAM WHITAKER : : Tuskegee, Alabama  
*Physical Education*

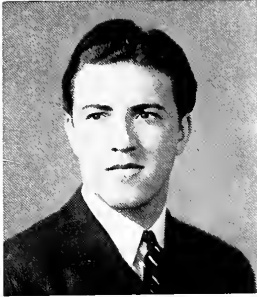


OTIS WHITE : : : : Atlanta, Georgia  
*Literature and Journalism*



'41 *Yamacraw*

---



# Freshmen



## CLASS OFFICERS



BRUNO BLASH  
*President*

ARVEL BROUSE  
*Vice President*

GLORIA WARREN  
*Secretary-Treasurer*



'41 *Yamacraw*

JANE ADDAMS : : : : Atlanta, Ga.  
 C. L. ALLEN : : : : LaGrange, Ga.  
 JAMES ALLEN : : : : Atlanta, Georgia



JANE ANDERSON : Oglethorpe U., Ga.  
 RICHARD ARNOLD : : Groveland, Fla.  
 EMMA JEAN BALDWIN : Atlanta, Ga.



BRUNO BLASH : : : : Gary, Ind.  
 ARVEL BROUSE : : : : St. Louis, Mo.  
 ANN BRAY : : : : Columbus, Ga.



NAN BROGDON : : : : Lawrenceville, Ga.  
 HAROLD CAMPBELL : : : : Lavonia, Ga.  
 THOMAS CANTRELL : : : : Penfield, Ga.



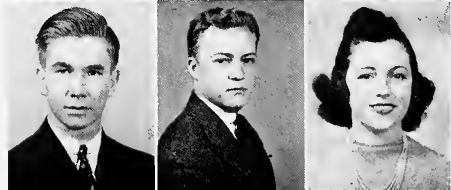
CHLOE COCHRAN : : : : Decatur, Ga.  
 RODNEY CONE : : : : Thomasville, Ga.  
 MARY COOKE : : : : Atlanta, Ga.



WILLIAM CROWELL : : : : Portendale, Ga.  
 EUDORA DOAN : : : : Covington, Ga.  
 DANIEL DOUGLASS : : : : Jefferson, S. C.



EUGENE DOYAL : : : : Villa Rica, Ga.  
 HENRY FARRIS : : : : Augusta, Ga.  
 KATHERINE GILLOOLEY : : : : Atlanta, Ga.



# Freshmen

ELLEN GOTTENSTRATER : Atlanta, Ga.  
 JAMES GREEN : : : Dublin, Ga.  
 WILLIAM HILL : : : Zonesville, Ohio



JOSEPH HOOKS : : Lake Worth, Fla.  
 JACK HORNER : : : Lowell, Ind.  
 WILLIAM JONES : : : Augusta, Ga.



ROBERT LAWRENCE : : Decatur, Ga.  
 CHARLES LORENS : Vero Beach, Fla.  
 FRANCES LOYD : : : Atlanta, Ga.



JUANITA MAILEY : : : Atlanta, Ga.  
 SHIRLEY MASSELL : : : Atlanta, Ga.  
 ELEANOR MATTHEWS : : : Atlanta, Ga.



EARL MOORE : : : : Winder, Ga.  
 WILLIAM NIEMAN : Cliff Side Park, N. J.  
 BARBARA PERRIN : : : Atlanta, Ga.



MARIAN ROSENBERG : : Atlanta, Ga.  
 MARY LOU SCHICK : : Fort Knox, Ky.  
 ROBERT SCHOALES : Fitchburg, Mass.



JEROME SILVERMAN : St. Petersburg, Fla.  
 CHARLOTTE SIMMONS : Atlanta, Ga.  
 CHARLES SMITH : Brookhaven, Ga.



# Freshmen



MARGARET STEWART : : Atlanta, Ga.  
MARY STURDEVANT : : Atlanta, Ga.  
LYDIA VIHLEN : : : Homestead, Fla.



ALICE WALKER : : : Atlanta, Ga.  
ANNE WALLACE : : : Atlanta, Ga.  
SHERMAN WARD : : : Lorain, Ohio



GLORIA WARREN : : : Atlanta, Ga.  
CHARLIE WILLIAMS : Thomasville, Ga.  
HARRIS WILSON : : : Villa Rica, Ga.



FEROL WING : : : : Decatur, Ga.  
NORMAN WOOD : Chattanooga, Tenn.  
DORIS YARBROUGH : : Atlanta, Ga.





# *Activities*

---

'41 *Yamacraw*





The Glee Club, under the direction of Professor David W. Davis includes Doris Yarbrough, Cloe Cochran, Charlotte Simmons, Reva Murphy, Ferol Wing, Mary Lou Sturdivant, Evelyn Cook, Marian Rosenberg, Bettye Ray, Hazel Josey, Bee Nix, Mary Glenn Spears, Shirley Davis, Audrey Moore, Eudora Doan, Eleanor Matthews, Mildred McKay, Gloria Warren, Jane Aldrich, Mary Lou Schick, Martha DeFreese, Jacqueline Partain, Betty Benefield, Alice Walker, Herbert Beckett, Sherman Ward, Yancey Shaver, William Neiman, Pete Cunningham, Robert Booth, Edward Black, George Liptak, and Charles Newton.



## TREBLE CLEF

The Treble Clef Group is composed of seven singers and the pianist and has contributed color and variety to the Glee Club concerts and programs. The members are Eudora Doan, Ferol Wing, Mary Lou Sturdivant, Mary Lou Schick, Martha DeFreese, Gloria Warren, Bee Nix and Alice Walker, pianist.

# DELTA SIGMA PHI

## OFFICERS

ERNEST SHEFFIELD  
*President*

PATSY LOCASCIO  
*Vice President*

ROBERT ELLIOTT  
*Secretary*

GEORGE KOLOWICH  
*Treasurer*

LOUIS LESKOSKY  
*Chaplain*



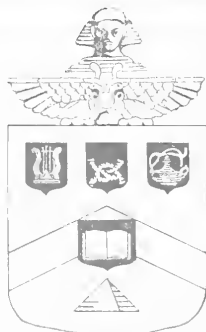
Founded at College of the City of New York, 1899  
Alpha Nu Chapter 1922

## ACTIVE MEMBERS

ERNEST SHEFFIELD	JAMES MCGRORY
PATSY LOCASCIO	CHARLES NEWTON
ROBERT ELLIOTT	JACK HORNER
GEORGE KOLOWICH	JAMES PRESSLEY
LOUIS LESKOSKY	GENE HARRIS

## PLEDGES

NICK POPA	FRANCIS ADAMS
PETER MAMAN	HUGH KOLOWICH
NORMAN WOOD	WILLIAM CROWELL
ARVEL BROUSE	JAMES POPE
ROBERT SCHOALES	JACK MOCKABEE
C. L. ALLEN	ROBERT O'DELL



# KAPPA DELTA



Founded at Virginia State Normal 1897

Alpha Tau Chapter 1930

*Colors*

Green and White

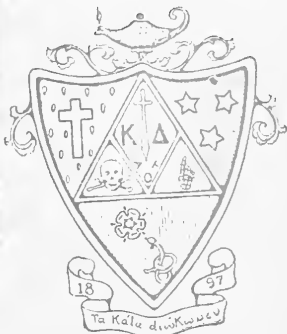
*Flowers*

White Rose



## OFFICERS

- MARY BISHOP  
*President*
- MARIAN GILLOOLEY  
*Vice President*
- MILDRED MCKAY  
*Secretary*
- JANE ALDRICH  
*Treasurer*
- MARTHA DEFRESE  
*Parliamentarian*

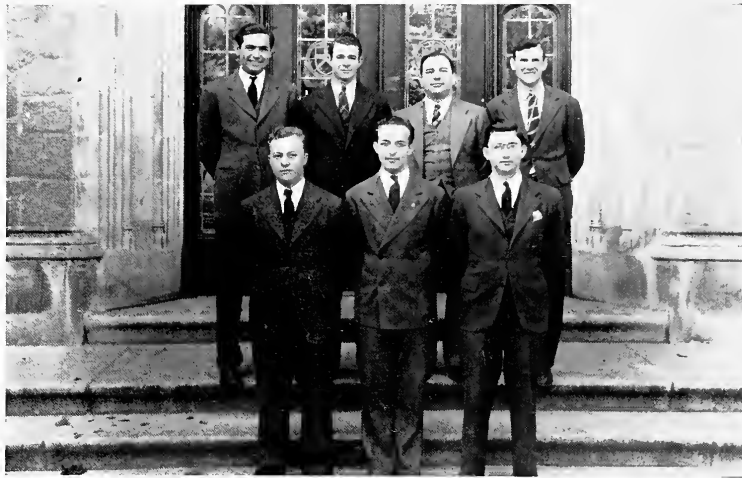


## MEMBERS

- |                  |               |
|------------------|---------------|
| MARY BISHOP      | JANE ALDRICH  |
| MARIAN GILLOOLEY | MILDRED MCKAY |
| MARTHA DEFRESE   |               |

## PLEDGES

- |               |                     |
|---------------|---------------------|
| CHLOE COCHRAN | EVELYN LOWRY        |
| FEROL WING    | ELLEN GOTTENSTRATER |
| REVA MURPHY   | MARY LOU SCHICK     |
| BETTYE RAY    | MARGARET STEWART    |
| ANN BRAY      | FRANCES LOYD        |
| EVELYN COOK   | JUANITA MAILEY      |



# ALPHA LAMBDA TAU

MEMBERS  
MARCUS WILSON  
*President*

SAM WORTHINGTON  
*Vice President*

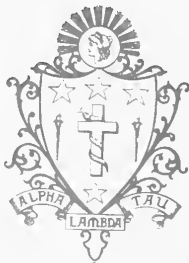
CLIFTON McCLANAHAN  
*Sec-Treasurer*

DAVID EAVENSON  
MAX IVEY  
JOHN W. PATRICK  
HENRY FARRIS  
WILLIAM NIEMAN  
EDWARD BLACK

Alpha Lambda Tau was founded by a group of men who first organized as the Alpha Lambda Tau Club, the first fraternal organization at Oglethorpe University. After its reorganization in 1916, the fraternity soon became a power on the campus and numbered on its rolls some of the most influential of the students. Its purpose had been to maintain good fellowship and understanding among the club groups at Oglethorpe; but with T. V. Morrison, C. C. Mason, Marion Gaertner (the first freshman to enter the University), O. M. Cobb, William Nunn, H. F. Whitehead, and Carl Stokes as officers and through the efforts of Doctor H. J. Gaertner, it was decided that the organization should become a national order. Consequently the fraternity was incorporated under the laws of the State of Georgia; the name was registered as Alpha Lambda Tau; and the members determined that the new national should grow with the new Oglethorpe. It was once thought that the fraternity would never go north of the Mason-Dixon Line, but today it has twenty-one chapters.

Two official songs have been adopted: "The Sweetheart of A. L. T." by Tom Ellis of Eta Chapter and "The Dream Girl of A. L. T." by Paul Crumbaugh of Omicron Chapter. The colors of the fraternity are old gold and black. The flower is the American Beauty Rose.

Prominent Alumni include: Dr. William Lee Nunn, an Oglethorpe graduate, editor of several text books on economic sociology and professor at Dana College; Dr. Marc C. Leager, professor of economics at North Carolina State College; John Randolph Hearst, graduate of Oglethorpe, editor of *Harper's Bazaar*, vice president of *Cosmopolitan* and *Good Housekeeping* magazines; and Dr. M. D. Collins, Oglethorpe graduate and State Superintendent of Education of Georgia.



# PLEDGE CLUB OFFICERS

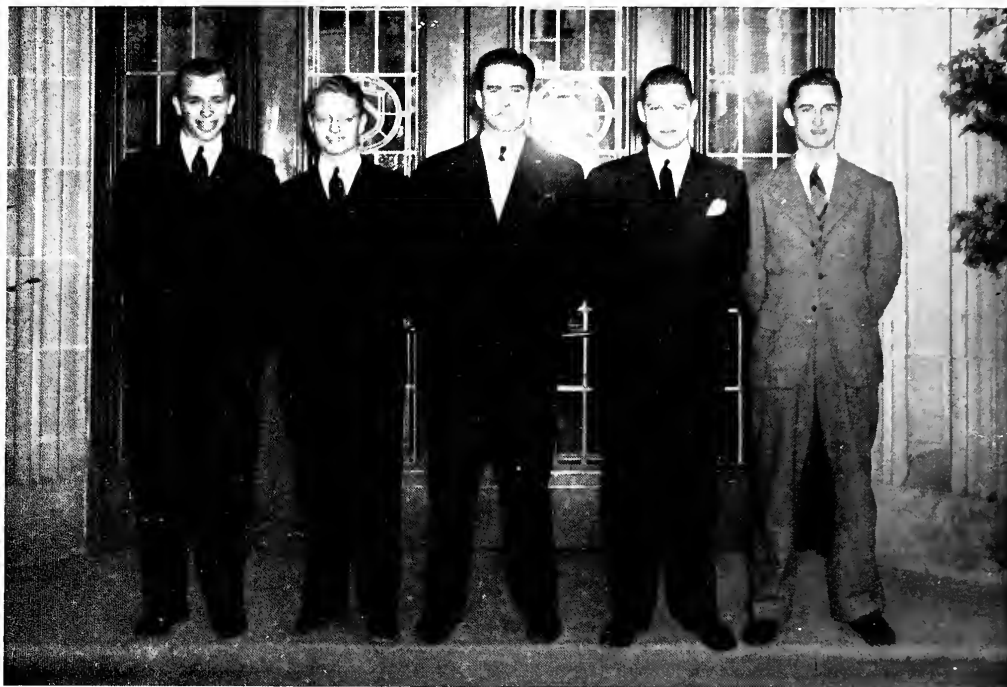
ANTHONY ZELENCIK.  
*President*  
HUGH FLOYD  
*Secretary*  
THOMAS HUNTER  
*Treasurer*



# ALT PLEDGES

Joseph Juliana, Robert Dillard, Winton Laslie, Ben Lorenz, John O'Brien, Daniel Douglas, Edward Link, Thomas House, Thomas Smith, Fred Vihlen, Charles Waller, Joseph Hooks, Edward Norvell, Alfred Langford, Roland Sheets, Roy Carter, John Mouchet, William Fletcher, Paul Whaley, Hugh Floyd, Thomas M. Hunter, Anthony Zelencik, Larry Dodd, and William Fleury.





## PI KAPPA PHI

JACKSON STEPHENS  
YANCEY L. SHAVER  
JERRY HASTINGS  
ROBERT BOOTH  
GUS HENDRY  
BILL SIGMAN

Pi Kappa Phi Fraternity was founded on December 10, 1904, in Charleston, South Carolina, to perpetuate the ideals of Andrew Alexander Kroeg, Jr., Anthony Wagner, Lawrence Mixon, and James Fogarty.

This young fraternity was incorporated as a national college fraternity on December 23, 1907, under the laws of the State of South Carolina.

At the ninth supreme convention in 1916, Oglethorpe University was granted a charter and designated as Pi Chapter.

The fraternity has grown from a small club to one of 8,300 members embracing 40 chapters in colleges and universities throughout the country.

The red rose is the fraternity flower, and the colors are gold and white.

The officers of the Pi Chapter are: Yancey L. Shaver, President; Robert Booth, Secretary; Jack Stephens, Treasurer; Jerry Hastings, Historian; and Augustus Hendry, Warden.



## PLEDGES AND ACTIVES

Front Row. Jerry Hastings, David McCormack, William Sigmon, James Allen, and Jack Stephens.  
Second Row. Robert Booth, Phillip Simmons, and George Liptak.  
Third Row. Walter Erikson, Robert Monroe, Herbert Beckett, and Yancy Shaver.





Founded at the University of Southern California 1909  
Chi Chapter 1930

*Colors*  
Kelly Green

*Flower*  
Tea Rose

**MEMBERS**

- BETTY BENEFIELD
- BEATRICE NIX
- LORRAINE JACKSON
- GENE NORTH
- RHETT PINSON
- ANNE WALLACE
- DORIS YARBROUGH
- JANE ADAMS
- MIRIAM HIGHNOTE

## BETA PHI ALPHA

**OFFICERS**

- BETTY BENEFIELD . . . . . *President*
- BEATRICE NIX . . . . . *Vice President*
- LORRAINE JACKSON . . . . . *Secretary*
- BEATRICE NIX . . . . . *Treasurer*







# CHI OMEGA

## OFFICERS

- ANNA MCCONNEGHEY . . . *President*  
 BEULA HIGHTOWER . . . *Vice President*  
 JACQUELINE PARTAIN . . . *Secretary*  
 AUDREY MOORE . . . . . *Treasurer*

Founded at the University of Arkansas  
 1895

Sigma Gamma Chapter 1924

*Colors*  
 Cardinal and Straw

*Flower*  
 White Carnation

### MEMBERS

- |                    |                  |
|--------------------|------------------|
| ANNA MCCONNEGHEY   | BETTY LONGWORTH  |
| BEULA HIGHTOWER    | ELEANOR MATTHEWS |
| JACQUELINE PARTAIN | SHIRLEY DAVIS    |
| AUDREY MOORE       | CLAUDIE JOHNSON  |
| DEAS HAMILTON      |                  |

### PLEDGES

- |              |                   |
|--------------|-------------------|
| VERNA MILLER | WILHELMINA DURHAM |
| EMMA BALDWIN |                   |





## PHI KAPPA DELTA

Phi Kappa Delta is Oglethorpe's only national honorary society for both men and women. It was organized to encourage high scholarship among students and participation of the individual in campus activities.

Members of the Oglethorpe Chapter are chosen in the Spring of each year. Only those members of the Junior and Senior Classes who have a scholastic average of 90 or above and who are active in club groups are eligible.

Active members on the campus this year are: J. D. Mosteller, Regent; Fred Goss, Vice Regent; Mildred McKay, Scribe; Anna McConneghey, Historian; and John Brackett, Sergeant-at-arms.





## LE CONTE

The aim of the Le Conte Honorary Society is the advancement of scientific study and research at the University and the encouragement of individual work among the students. The Society was organized at Oglethorpe in 1920.

Faculty members are Dr. John A. Aldrich, Dr. M. H. Hunt, and Professor Harold L. Jones.

Student members are Luther Harben, president; John Brackett, vice president; Paul Whaley, secretary-treasurer; Gus Hendry, sergeant-at-arms; Louis Leskosky, Milton C. Austin, and Frederick Goss; and Anthony Zelencik, pledge.





# BLUE KEY

PHILIP SCALES . . . . . *President*

ANTHONY ZELENCIK . . . . . *Vice President*

CHARLES NEWTON . . . . . *Secretary-Treasurer*

HERBERT BECKETT . . . . . *Corresponding-Secretary*

The local chapter of the Blue Key, national honorary fraternity, was installed at Oglethorpe in 1926. The men who are selected for membership must have a high scholastic average, interest in campus activities, qualities of leadership and a desire to render service to the student body as a whole. The organization conducts the Orientation Program at the beginning of each year, sends telegrams to the football team at games away from home, and makes the Homecoming Day award to the best player of the day.

Paul Whaley, Luther Harben, Louis Leskosky, Philip Scales, John Brackett, Herbert Beckett, Joseph Tosches, Charles Newton, Anthony Zelencik, James McGrory, and Jeter Maman are members of the group.





Sitting. Patsy LoCascio, Paul Whaley, Coach John Patrick, Ernest Roberti, Sam Worthington, Augustus Hendry, Louis Leskosky, Charles Monsour.

Standing. Clifton McClanahan, John Brackett, John Smith, Anthony Zelencik, Peter Maman, Thomas House, James Pope, Ross Wyrosdick, Ernest Sheffield, Joseph Tosches, Alfred Sprouse.

## “O” CLUB

ERNEST SHEFFIELD . . . . . *President*

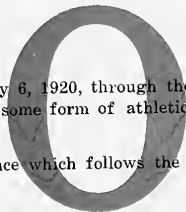
ANTHONY ZELENICK . . . . . *Vice President*

SAM WORTHINGTON . . . . . *Treasurer*

CLIFTON MCCLANAHAN . . . . . *Secretary*

The “O” Club was founded on February 6, 1920, through the efforts of Mr. Frank B. Anderson. Only men who have made the varsity “O” in some form of athletics, recognized by the athletic council, are eligible for membership in the club.

The club is especially noted for its dance which follows the Homecoming Football Game every year.





## FOUR F'S CLUB

The Four F Club was founded on October 15, 1940, and it is already active as a member of campus organizations. The name stands for Four Fine Friendly Fellows and as the name indicates, the club was founded by four men from the student body. The club motto is *Bono Vincit Malum* (Overcome Evil with Good). The organization is founded on the principles of chivalry and its aim is to promote honesty, courtesy, and friendship in the University. The four charter members were John Cown, President; Milton Austin, vice president; William Hill, secretary-treasurer; and Alvaro Gonzalez, chief justice. Ed Black was elected second justice; and Paul Meadows, third justice. Other members are R. E. Arnold, Frank Castelluccio, Rodney Cone, Daniel Douglas, James Greene, Luther Harbin, R. C. Lawrence, Clifton McClanahan, William Nieman, Ed Norvell, Jerome Silverman, Paul Whaley, and Charles Williams.



## SPANISH CLUB

The Circulo Simon Bolivar, generally known as the Spanish Club, was founded in the fall of 1940 for students who are interested in the language and customs of the Latin-American countries. The group is a member of the Atlanta chapter of the Pan-American Forum, and its ultimate aim is membership in the national honorary Spanish fraternity, Sigma Delta Pi.

Alvaro Gonzales, of Bogota, Columbia, is president; Mildred McKay, secretary-treasurer; and Mary Bishop, corresponding secretary. Members include Marian Rosenberg, Keith Lane, Betty Longworth, Beula Mae Hightower, Tom Hunter, Evelyn Cooke, Margaret Morris, Marshall Asher, Robert Pitts, John Goldthwait, William Nieman, Mrs. John W. Patrick, Daniel Douglas, Jack Mockabee, Margaret Stewart, Mr. and Mrs. C. M. Anderson, Bruno Blash, Robert Elliott, Marian Gillooley, Martin Kelly, Walter Ross, and James Vocalis. Honorary members of the club are Dr. Thornwell Jacobs, Mr. George T. Bush, and Mr. Edward Austin, of Atlanta. Dr. Luis Aviles Perez is the faculty advisor.





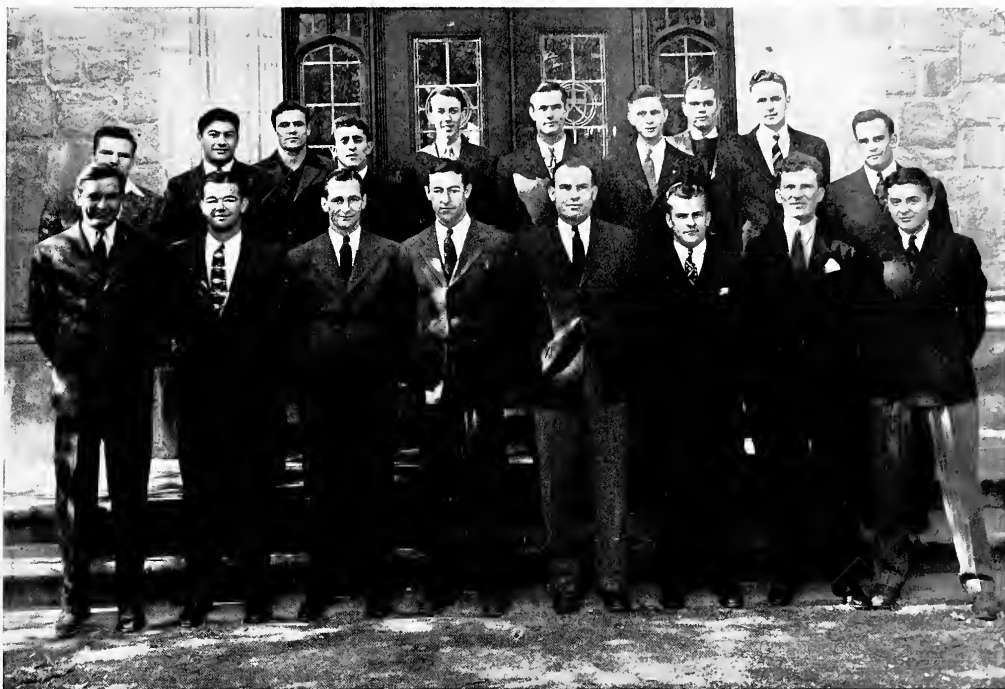
## DUCHESS CLUB

The Duchess Club was organized at Oglethorpe to encourage a spirit of friendship and co-operation among the campus clubs and sororities and to promote social, scholastic, and extra-curricular activity. Bids for membership are issued each fall to sixteen girls, four to each sorority and four to non-sorority girls.

It awards two trophies annually—one for the best-all-round girl, and another for the best play presented by a sorority in an annual contest.

Members are: Anna McConneghey, president; Mary Bishop, vice president; Jean Rogers, secretary; Betty Benefield, treasurer; Gene North, Jane Aldrich, Mildred McKay, Marian Gillooley, Beula Mae Hightower, Betty Longworth, Hazel Josey, Jane Anderson, Lydia Vihlen, Verna Miller, Martha De-Freese, Bettye Ray, Chloe Cochran, Ferol Wing, Audrey Moore, Eleanor Matthews, Claudie Johnson, Rhett Pinson, Ann Wallace, and Jane Adams.





## UGLY CLUB

An exclusive male organization, the Ugly Club was organized on the Oglethorpe campus in 1933 by a group of men who were interested in promoting and sponsoring student activity.

The club has a membership of twenty students, carefully selected from the student body. Membership can be attained only by a unanimous vote of invitation by active members. Each year, the club sponsors chapel programs of special interest to the students.

The officers are: Harold Powers, President and Grand Wiser; Rudolph Horne, Vice President; and James Pope, Secretary-Treasurer. The Active roll also includes Frank Singer, E. O. Sheffield, Larry Dodd, Nick Popa, James McGrory, Louis Leskosky, Marcus Wilson, Joseph Tosches, Peter Maman, Samuel Worthington, Anthony Zelencik, David Eavenson, Ross Wyrosdick, Philip Scales, James Timberlake, Martin Kelly, and Wayne Melton.

# THE STORMY PETREL

HERBERT BECKETT . . . *EDITOR-IN-CHIEF*

GEORGE TALBOTT . . . *MANAGING EDITOR*

LOUIS LESKOSKY . . . *ASSOCIATE EDITOR*

ROSS WYROSDICK . . . . . *SPORTS EDITOR*

THOMAS M. HUNTER . . . . . *SPORTS EDITOR*

GEORGE LIPTAK . . . . . *CIRCULATION MANAGER*

PHILIP SCALES . . . *BUSINESS MANAGER*

ROBERT O'DELL . . . *ASSOCIATE EDITOR*

D'ARMON ALLEN . . . *ASSOCIATE EDITOR*



Reporters Anna McConneghey, Jean Rogers, Hazel Josey, Jean North, Marian Gillooley, Charles Newton, James McGrory, Gloria Warren, Marian Roseberg, Jack Horner, Victor Cagoy, and Robert Riv-enbark.



# Yamacraw Staff

ANTHONY ZELENCIK  
*EDITOR-IN-CHIEF*



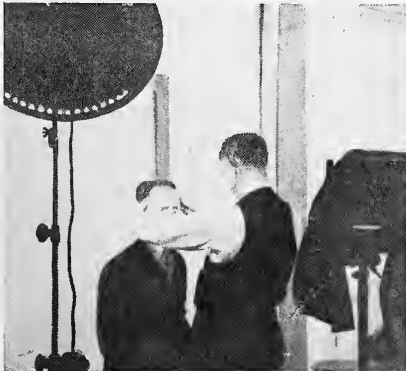
RUDY HORNE  
*BUSINESS MANAGER*



GEORGE TALBOTT  
*MANAGING EDITOR*



MR. J. D. MOSTELLER	FACULTY ADVISOR
BILL SIGMAN	ART EDITOR
ROBERT O'DELL	MAKEUP EDITOR
THOMAS M. HUNTER	SPORTS EDITOR
JOHN GOLDTHWAIT	PHOTOGRAPHER
JOSEPH JULIANA	ASSOCIATE EDITOR
MARIAN ROSENBERG	ASSOCIATE EDITOR



---

'41 *Yamacraw*



*Athletics*

# Football



Front Row. Pope, Manager; LoCascio, Roberti, Hendry, Abney, Horne, Peppy Patrick, Mascot; Timberlake, Pressley, Thomason, Coach Patrick.

Second Row. Whitaker, Sheets, Leatherwood, Waller, Floyd, Wyrosdick, Captain Sheffield, Mockabee, Monsour, Tosches, Ferrario.

Back Row. Leskosky, Asst. Coach; Dodd, Hunter, Lawson, Zelencik, Kelly, House, Eavenson, Reid, Cegoy, Link.

## 1940 SEASON RESULTS

OGLETHORPE	0	GEORGIA	53
OGLETHORPE	14	WOFFORD	26
OGLETHORPE	20	TROY TEACHERS	7
OGLETHORPE	0	CITADEL	25
OGLETHORPE	7	NEWBERRY	28
OGLETHORPE	0	TAMPA	52
OGLETHORPE	28	ERSKINE	0
OGLETHORPE	6	PRESBYTERIAN	20

In the sweltering heat of the first week in September, Coach John Patrick faced the job of developing a starting eleven from the thirty-five candidates who reported for the first day of practice.

With veterans Captain Ernie Sheffield, a guard, Tony Zelencik, a tackle, Martin Kelly, a back, a number of seasoned reserves augmented by a few promising sophomores, the task of shaping up a team to face Georgia's Bulldogs on September 27, at Ponce de Leon ball park, was not a too pessimistic-looking one.

The early workouts progressed smoothly, if slowly, never seriously impeded by injuries. Pounds rolled off as the Stormy Petrels sweated themselves into condition. The coaching staff decided to taper off during the last week, after a workout under the lights at the North Fulton High School field, everything was in readiness for the big test.

The biggest Oglethorpe team in several seasons was conceded at least a fighting chance to stop the 1940 edition of the "flaming sophomores" of Georgia.

ASSISTANT COACH LOU LESKOSKY

PEPPY PATRICK

HEAD COACH JOHN PATRICK



'41 *Yamacraw*

Under the arc lights of Ponce de Leon park, 25,000 spectators were amazed as they watched a highly-touted Oglethorpe team absorb the decisive defeat at the hands of the Bulldogs. In bitter disappointment the Stormy Petrel bowed down to a much greater machine which lacked nothing. The Petrels' uppermost thought was to give Georgia a good game, this they did as far as their limits allowed. Oglethorpe believed that they could give the Bulldogs a fight as long as the "big team" held out, but a lack of reserves proved to be the weakest spot in the Oglethorpe armor. Georgia, on the other hand, showed speed, power, stamina, running, and kicking, and passing with the greatest precision. Coach Patrick had started one of the biggest Oglethorpe lines in history, with Ernie Roberti, James Timberlake at ends, Tony Zelencik, Vic Ceroy at tackles, Captain Ernie Sheffield, Dave Eavanson at guards, Joe Reid at center. The line averaged 205 pounds, with 170 pound Ernie Roberti the smallest man, 225 pound Joe Reid the biggest. In the starting backfield were Pete Maman, 175 pound tailback, Trig Thomason, 175 pound fullback, Charlie Monrour, 165 pound former Commercial High star, 180 pound Joe Tosches at the wing back posts.

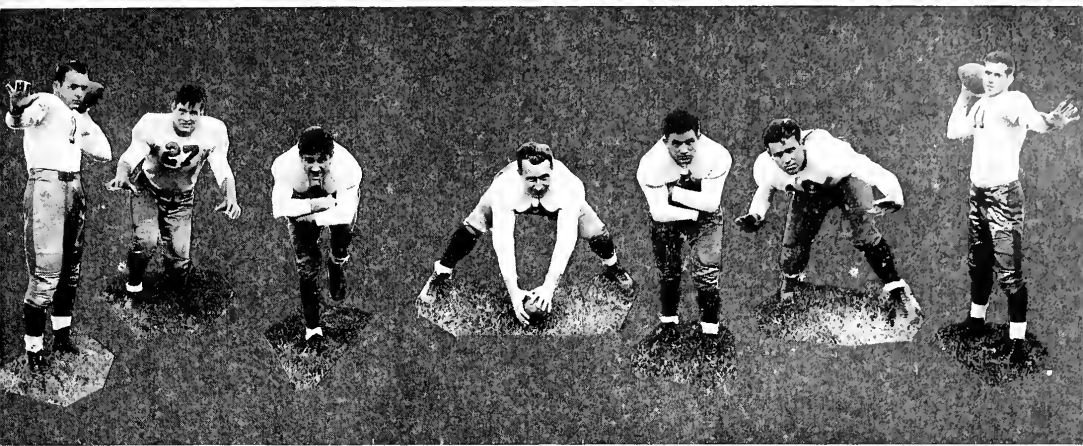
A bad break of the Petrels came in the first quarter when Georgia intercepted a shovel pass on the Birds' own 15 yard line, carried the ball over from that point in the first five minutes of play. From that point on the game was all Georgia. Sophomores Lamar Davis, Frank Sinkwich spurred their team-mates on to great efforts as they tore gaping holes in the fighting Petrel line. Davis' 65 yard return of a punt at the start of the third period was the longest run of the evening, however, and it was necessary for the Bulldogs to capitalize on breaks, long sustained drives to run up their score.

Ernie Sheffield, the only man on either team to go the route, never once lacked the fight and drive which characterized his play all through his career at Oglethorpe. Big tackle Tony Zelencik was all in the iron man class until a twisted knee in the fourth quarter removed him from the game. Center Joe Reid and end Jamie Timberlake gave the last ounce of their strength to stem the tide, and backs Maman, Tosches, and Kelly gave the only Oglethorpe offensive spark, but their efforts were in vain. Sophomores Dave Eavenson, Ed Link, Tom Hunter, Charlie Waller, Bill Whitaker got their first taste of varsity competition, gave good accounts of themselves.



James Pressley Ross Wyrosdick Rudy Horne Angelo Ferrar Dave Eavenson Ernie Sheffield, (c) Charles Waller





Hugh Floyd Jamie Timberlake Harry Leatherwood Jack Mockabee Ross Abney L. T. Lawson Larry Dodd

WOFFORD 26

OGLETHORPE 14

Oglethorpe's Stormy Petrels opened their conference season at home, October 4, against a Wofford College team which came from behind to outscore the Birds in a nip and tuck see-saw battle. The Terriers came to Hermance Field with Jack Taggart, one of the surest passers in the conference, and James Hilton a pint-sized seatback, both the envy of enemy coaches. It was these two Woffordites who just about spelled the difference of victory for the Terriers.

OGLETHORPE 20 ALABAMA STATE TEACH. 7

Oglethorpe's Stormy Petrels flew wild as they spoiled the annual homecoming for the Alabama Teachers, 20-7. This was the first win of the season for the Birds.

In the final minutes of play the Teachers hanging on in a defensive game, Shifty Little Charlie Monsour brought the crowd to its feet with a spectacular run of 65 yards behind some beautiful blocking to score the climactic goal. Sheffield's successful conversion capped the evening.

CITADEL 25

OGLETHORPE 0

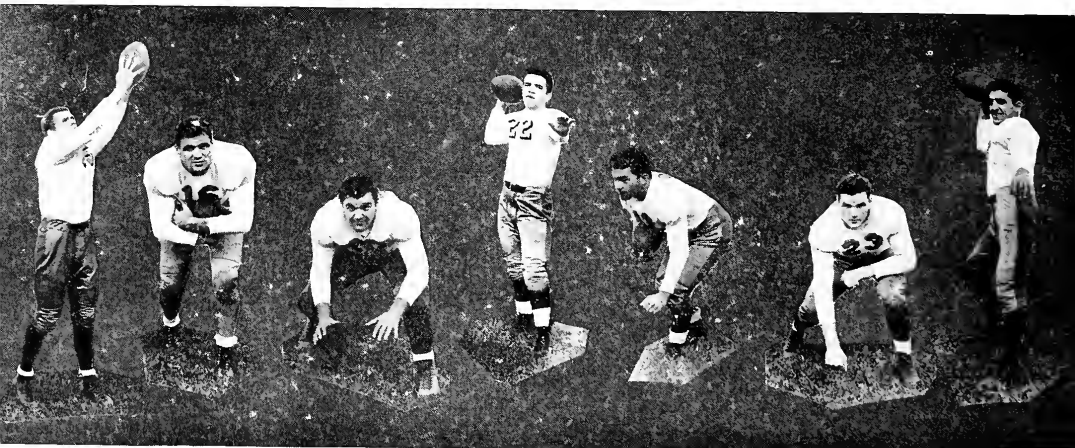
Injuries to key Petrels and a host of fast-stepping Citadel backs spelled defeat to the Petrel's invasion attempt on the Charleston, S. C. stronghold on October 25. Fullback Bolduc and tailback Hank Foster were the thorns in the Bird's sides throughout the day.

It was Parents' Day at the Battery School, and the Bulldogs were out to impress their guests. A second period 52 yard march, a 48 yard punt return by Foster in the third quarter, another Bolduc-Foster sustained drive in the third, and finally a 34-yard march following a blocked kick recovery by Ben Suitt, Citadel flankman.



TOP—Joe Tosches and Pete Maman

BOTTOM—Joe Juliana



Ed Link      Martin Kelly      Vic Cegoy      Bill Whitaker      Pat LoCascio      Tony Zelencik      Charles Monsour

'41 *Yamacraw*

# UNCROWNED KINGS

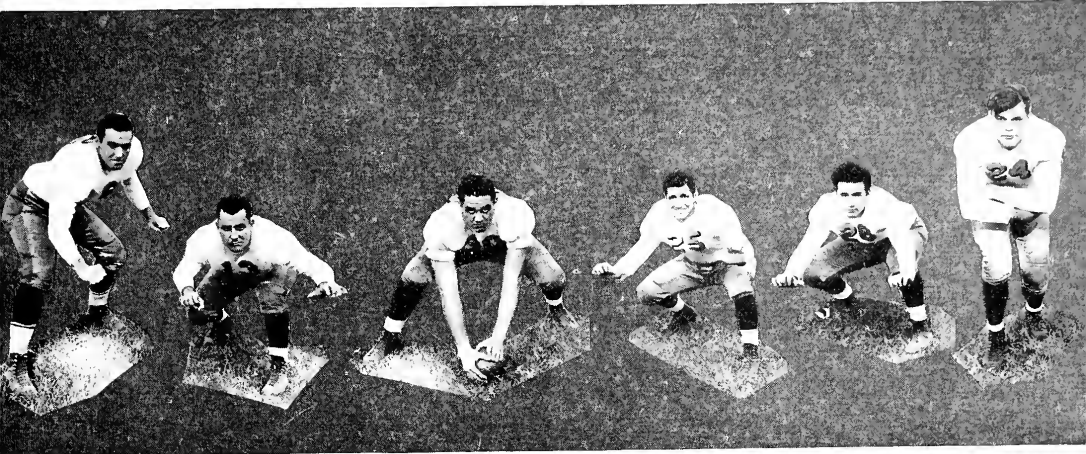
The man who kicks the field goal  
That wins the hard fought game,  
He kicks his way to glory,  
The thousands cheer his name.  
But what about the center  
Who passes him the ball?  
He makes or breaks the kicker, but  
He isn't cheered at all.

The back who crashes through the line,  
For ten or maybe more,  
And makes the final touchdown  
That proves the winning score,

He's hailed the college hero  
Amidst a wild hurray—  
But what of guard or tackle  
Who opened up the way?

Oh, football has its heroes,  
Some of the gifted toe,  
And others who can smash a line  
And strike the winning blow.  
But as in every game on earth,  
Including that of life,  
Its greatest heroes often pass  
Unnoticed through the strife.

—Anonymous



Randy Sheets

Gus Hendry

Joe Reid

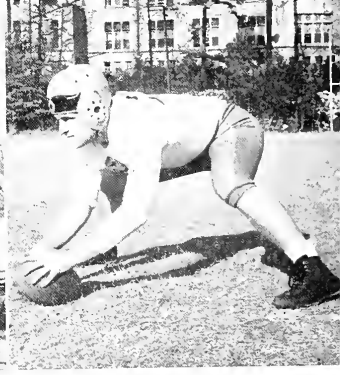
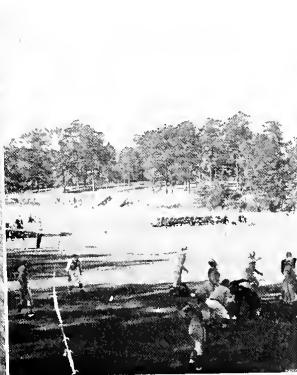
Ernie Roberti

Tom Hunter

Tom House



Coach and "E. O."



Walter Ross



NEWBERRY 28 OGLETHORPE 7

It was a case of a "jinx" working against the Petrels as they took the field on November 2, in the thirteenth Homecoming tilt, and lost to the Newberry Indians, the first time in history that an Oglethorpe team had ever dropped a Homecoming game. It was the fourth period onslaught of Little-All-American Dominick Collangelo that spelled the difference between victory and defeat.

After the Indians had made their first seven points the Petrels took over, for a period and a half. They got their scoring chance when Jack Mockabee, who played a whale of a game at center, subbing for the injured Joe Reid, intercepted one of Dominick's

passes on the Newberry 20 and went to the 15. The Birds fritted away three downs, but on the fourth try Joe Tosches dropped back and passed beautifully to Charlie Monsour at the goal line, 11 yards away.

Joe Tosches gained about as much ground as did Collangelo, and it was his sweeps of the Newberry flanks that cheered Oglethorpe supporters midway in the game. Ernie Sheffield stayed for 60 minutes of ball, later was awarded the Blue Key medal as the outstanding Homecoming player, by a vote of the press box. Tosches' great game led the Blue Key officers to duplicate the award to Sheffield, an unprecedented move.





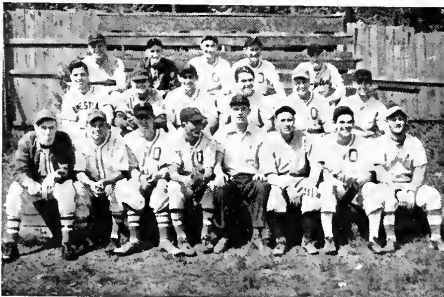
# Baseball



Front Row. Manager Singer, Melton, Smith, Waller, Sprouse.  
 Second Row. Palma, Whaley, Worthington, Ferrario, Dodd, Whitaker, Coach Anderson  
 Back Row. Wilson, Monsour, Gassaway, Brackett, Taylor, Maman

## SEASON RECORD

Oglethorpe	3	Auburn	2
Oglethorpe	1	Auburn	1
Oglethorpe	1	Auburn	6
Oglethorpe	3	Auburn	8
Oglethorpe	1	Presbyterian College	15
Oglethorpe	2	Presbyterian College	4
Oglethorpe	9	Fort Benning	6
Oglethorpe	2	Fort Benning	3
Oglethorpe	1	University of Georgia	10
Oglethorpe	5	University of Georgia	4
Oglethorpe	4	University of Georgia	11
Oblethorpe	0	Newberry	8
Oglethorpe	3	Newberry	2
Oglethorpe	3	Piedmont College	9
Oglethorpe	9	Piedmont College	2
Oglethorpe	12	Piedmont College	2
Oglethorpe	2	Piedmont College	10



## THE REGULAR LINE-UP

Melton, ss  
 Waller, 2b  
 Brackett, 2b  
 Dodd, 3b  
 Farrar, 1b,p  
 Gasaway, cf  
 Taylor, cf

Monsour, lf  
 Sprouse, rf, c  
 Whitaker, c  
 McClanahan, p  
 Worthington, p  
 Whaley, p  
 Palma, p

## SUBS

Maman  
 Smith, J.  
 Tosches

Gaston  
 Vihlen

'41 Yamacraw

1  
9  
4  
1







'41 *Yamacraw*





Nub Floyd



Charles Waller



Joe Juliana



Rudy Horne

Hugh "Nub" Floyd, featherweight, Golden Gloves, 1940, went to quarterfinals where he lost a close decision. He won his first fight on a 3rd round knockout.  
 Charles Waller, lightweight, Golden Gloves, 1940, advanced to finals, lost a split decision.  
 Rudy Horne, light heavyweight, Golden Gloves, 1940, won the novice championship of his division. Knocked out his first opponent.  
 Joe Juliana, middleweight, Golden Gloves, 1940, won first fight by 1st round knockout. Lost in quarter finals on a split decision. Golden Gloves, 1941, won first fight by a decision, but lost in quarterfinals to a previous Golden Gloves champion, Azalea Festival, Charleston, S. C.



Tony Zelencik  
WRESTLING



Josey  
O'Dell

Schick  
Talbot

DeFreese  
Hunter



Talbot

O'Dell

Shaver

FENCING

The Fencing Club is one of the organizations which were begun this year. It was founded by a group of students who saw that they must organize in order to make possible the enjoyment of this sport. Among them are, George Talbot, coach; Mary Lou Schick, women's instructor; Bob O'Dell, men's instructor; Hazel Josey, Jane Anderson, Martha DeFreese, Margaret Stewart, Keith Lane, Yancey Shaver, Bruno Blash, Nick Popa, d'Armon Allen, and George Kolowich.

Heavyweight Southeastern Y. M. C. A. champion in 1940 and 1941. In 1940 he placed third in the National Y. M. C. A. tournament held in Detroit, Mich. Won City of Atlanta championship in 1940 and 1941.

Tony has never lost a match in which he wrestled below the Mason-Dixon line.



'41 *Yamacraw*



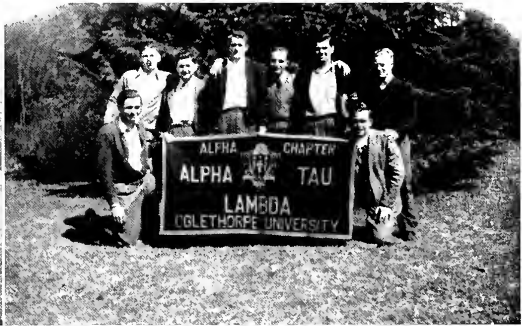
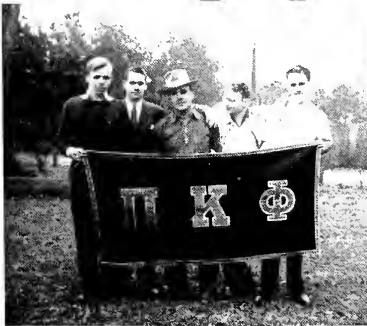
*Snaps*



### RADIO PLAY PRODUCTION

Our Radio Play Production class, directed by Paul Carpenter, Jr., provided a new scope of school activity. Here is a picturization of a radio drama in the making. Top left, Nick Popa at the control board. Top right, the silhouetted hand of Paul Carpenter gives the signal for a mystery play to start. At left, Jane Adams at the "mike" with Catherine Gillooley. Bottom left Jimmy Vocalis and "Newscaster" Ross Wyrosdick at a sound effects table. Below right, Marion Gillooley, Ed Link, and Deas Hamilton, in a "DRAMA."







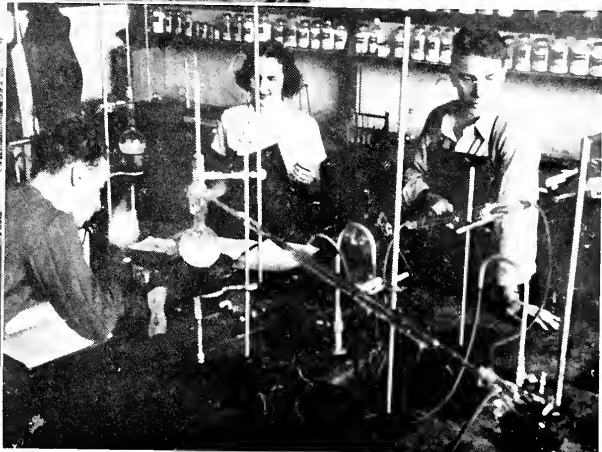
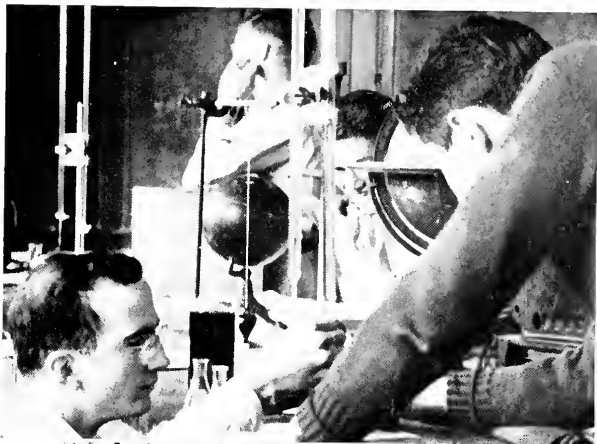
DEBATE CLUB

1  
9  
4  
1

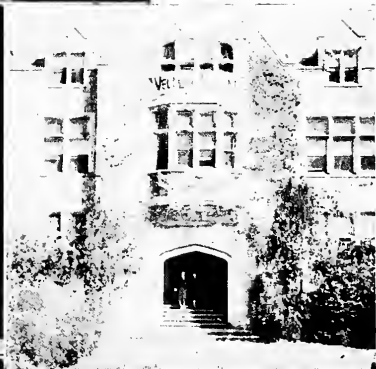














1. Court officials make last-minute preparations.

# BLASH TRIAL

Biggest horseplay of the year was "the case of the people of Lupton City vs. Bruno V. Blash," a trial for "vagrancy." Court convened Tuesday evening, February 11, with Judge Zelencik on the bench. After a dignified ceremony and much wise-cracking, the jury retired for one minute and twenty seconds to bring in a verdict of "guilty." An appeal was granted and a retrial took place the following Thursday in student chapel.



4. "Do you swear?" "Yeh! I swear."



5. Sheriff Eavenson wishes luck to Prosecutor McGrory.



8. The witness charges, "You're too broadminded!"

9. Coach Pat gets a kick out of the proceedings.





2. Bailiff Hendry is unaffected by the drama.



3. The jury gravely weighs the evidence.



6. McGrory demands, "Tell me what 'ex-post facto' means!"

7. The witness replies, "There are two answers to that question!"



10. Defense attorney Niemann takes the witness.

11. Judge Zelencik sentences Blash to banishment from Lupton City.

---

# THE PAUSE THAT REFRESHES



*Compliments of*

**Dr. L. N. Turk**

*Compliments of*

**Dr. John C. Ivey**

COMPLIMENTS OF

**BROOKHAVEN**

**SODA CO.**

**Scarratt's**  
GARAGE INC.

**Automotive Specialist**

TEL. HE. 4665

588 SPRING ST., N. W.

COMPLIMENTS OF

**BUCKHEAD  
BARBER  
SHOP**

**G. V. Nix, Mgr.**

**Johnnie Scarrett**

G A R A G E

Special Rates To Student Body

C O M P L E T E  
S E R V I C E

24 Baker St., N. E. Tel. Wa. 6243

**D. E. PINKARD**

GARMENT CLEANERS

CLEANING  
PRESSING  
REPAIRING  
DYEING

"Where the Charm of Newness is  
Restored"

LAUNDRY SERVICE

PLANT AND OFFICE (BUCKHEAD)  
3112 PEACHTREE RD. Phone Ch. 2187

# DID YOU KNOW?

Did you know that Oglethorpe is a \$2,000,000 plant with a six hundred acre campus?

Did you know that Lowry Hall is a replica of Corpus Christi, the alma mater of General Oglethorpe at Oxford, England?

Did you know that President Jacobs, single-handed, raises the annual deficit of the college each year which amounts to \$40,000?

Did you know that Oglethorpe has graduated one-fourth of the teachers in the Atlanta Public School System and that one-third of all of them have either attended or been graduated by Oglethorpe?

Did you know that Oglethorpe is the only college in America that has preserved for posterity in its famous Crypt a complete picture of modern civilization?

Did you know that Oglethorpe is the first University to demonstrate that the average college student is doing just one-half of the work he could take without excess strain on his physical and mental faculties?

Did you know that Oglethorpe has one of the few University presses in the country on which are printed text books, stationery, catalogues and other literature?

Did you know that THE WESTMINSTER, one of the oldest and most internationally known poetry and prose journals is printed by the University Press?

Did you know that Oglethorpe numbers among its honorary alumni a hundred or more of America's most illustrious citizens?

Did you know that during the depression not one of the members of Oglethorpe's faculty was discharged?

Did you know that Oglethorpe possesses the only authenticated portrait of General James Edward Oglethorpe as a mature man?

Did you know that Oglethorpe has in its library over 60,000 volumes?

Did you know that Oglethorpe is one of the few universities in the South having a complete carrillon of chimes played daily?

Did you know that the professor of Journalism at Oglethorpe is one of the finest newspaper men in the country and is city editor of the Atlanta Constitution?

Did you know that Oglethorpe is one of the very few universities in America today that requires all Freshmen to take Bible courses for a degree in the School of Liberal Arts?

Did you know that Oglethorpe's buildings are as fire proof as human skill can make them?

Did you know that 1941 was the Silver Anniversary of the opening of Oglethorpe?

Did you know that President Jacobs is the author of THE NEW SCIENCE AND THE OLD RELIGION, ISLANDS OF THE BLEST, THE OGLETHORPE BOOK OF GEORGIA VERSE, DIARY OF WILLIAM PLUMER JACOBS, LIFE OF WILLIAM PLUMER JACOBS, SINFUL SADDAY, AND RED LANTERNS ON ST. MICHAEL'S the latter published by E. P. Dutton and Co., of New York now in its sixth printing?

Did you know that Oglethorpe has a W. E. Hopper Memorial and that in this memorial there is one of the finest flag collections to be found in the South?

Did you know that every flower bulb in the Oglethorpe rock garden was donated by an internationally known florist?





ENGRAVED

BY

WRIGLEY

ATLANTA

ALL PORTRAITS  
IN  
*The 1941 Yamacraw*  
BY  
THE WHITEHALL STUDIOS

86 WHITEHALL STREET

ATLANTA

*Your tongue  
tells when you  
need . . . . .*



Coated tongue, dry mouth,  
bad breath, muddy skin  
groggy nerves and sour  
stomach suggest its use.

*A Product of Unusual Merit  
Consistently Advertised*

**CALOTABS COMPANY, Inc.**  
**ATLANTA, GEORGIA**

**O Sibile, Si Ergo,  
Fortibus Essin Ero.  
Nobile, Themis Trux.  
Votis Enim, Causan Dux.**

**--G. Ubitezy**

# *Autographs*













