

YAMMAORAWI

1949

DIGITAL DUKE UNIVERSITY LIBRARY



PHOTO BY PARSIFAL COBB



Digitized by the Internet Archive  
in 2010 with funding from  
Lyrasis Members and Sloan Foundation

<http://www.archive.org/details/yamacraw194918ogle>

*The* **1949 YAMACRAW**

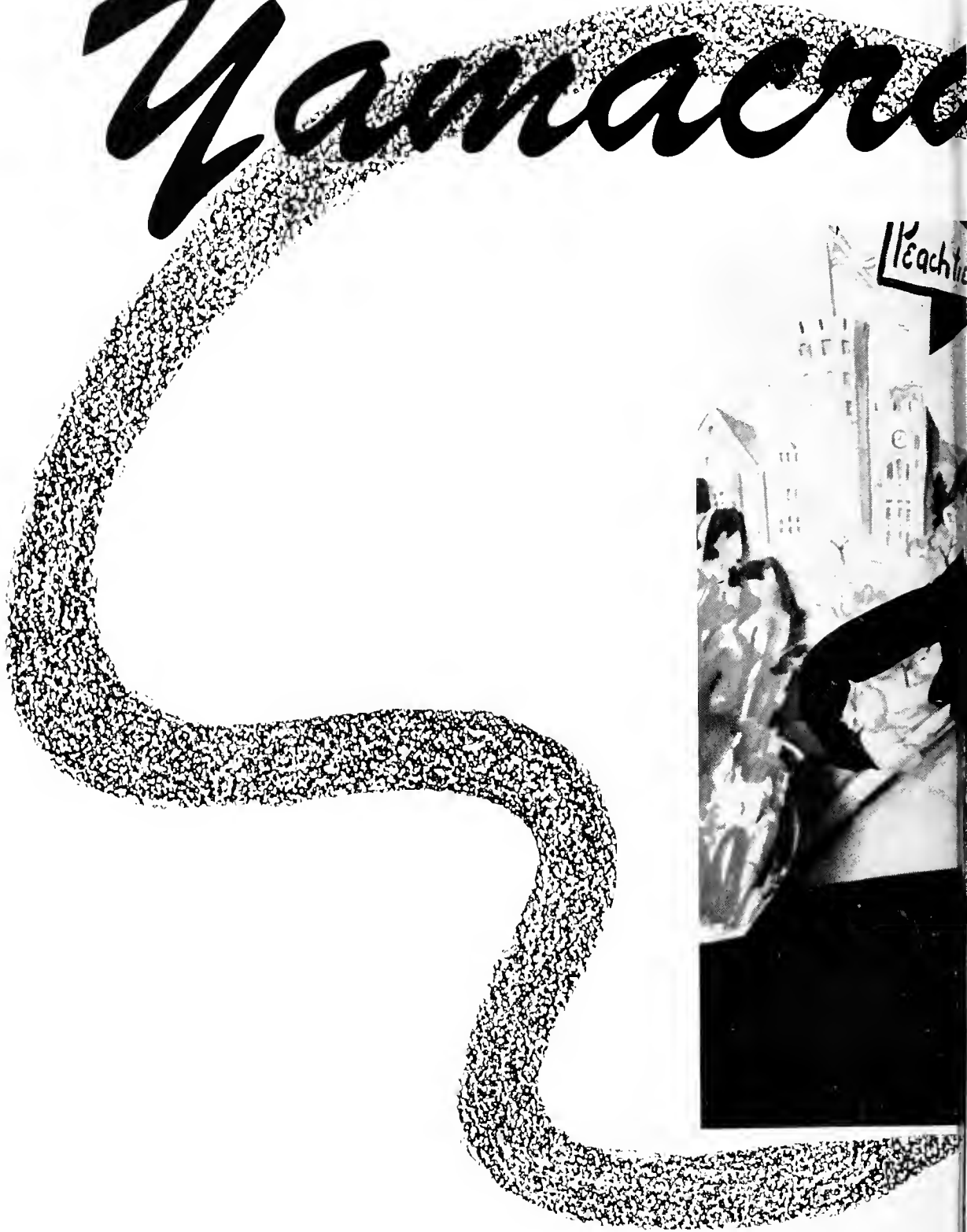
Yearbook of Oglethorpe University  
Oglethorpe University, Georgia

BILL RHODES, *Editor*

BOB BOGGUS, *Associate Editor*

HENRY LANHAM, *Business Manager*

*Zanacra*



all



1949



## Foreword

This is the 1949 story of Oglethorpe. For those of you who are members of the Oglethorpe family, we hope the YAMACRAW will provide you with pleasant memories of a year well spent. For those of you who are friends of Oglethorpe, we hope that the YAMACRAW will give you a true glimpse of our school and thereby a better understanding of what we are trying to do. Oglethorpe is not just a school, but also an idea. The idea is to embody the principle that you cannot divide life into unrelated departments, but rather that life is a unit and must be seen as a whole. There are three things that we believe are essential to life: an understanding of yourself, creative citizenship and the ability to make a living. We have tried to incorporate these talents into our program of education, as well as our campus life.

This is our story for 1949 and it is dedicated to the participants in that story, the Oglethorpe Family.



# **Table of Contents**


ADMINISTRATION

CLASSES

ACTIVITIES

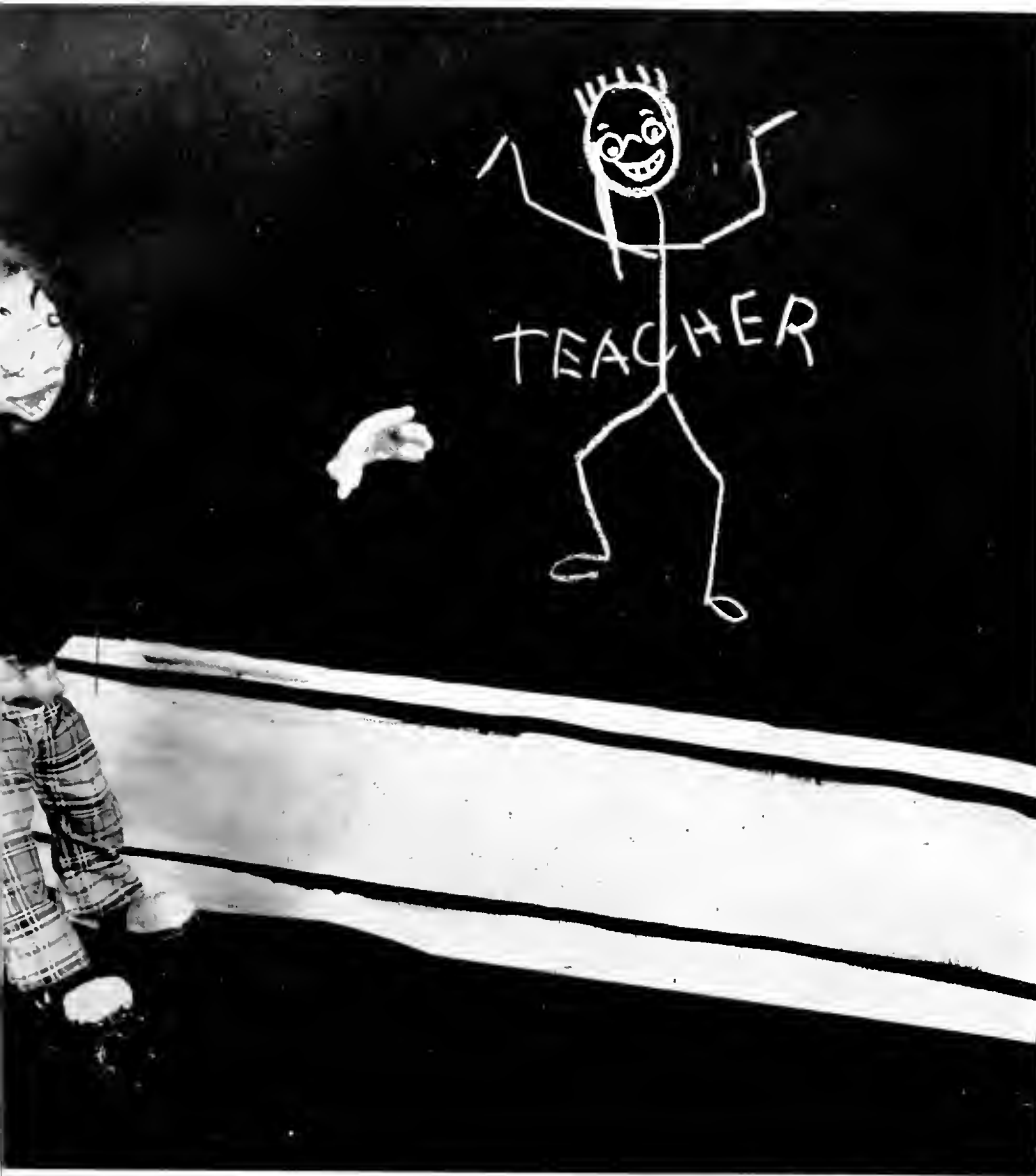
ORGANIZATIONS

ATHLETICS



The Administration includes the Staff, the Faculty and the Student Government. The people of the Administration are the guides and executors of the Oglethorpe Idea.

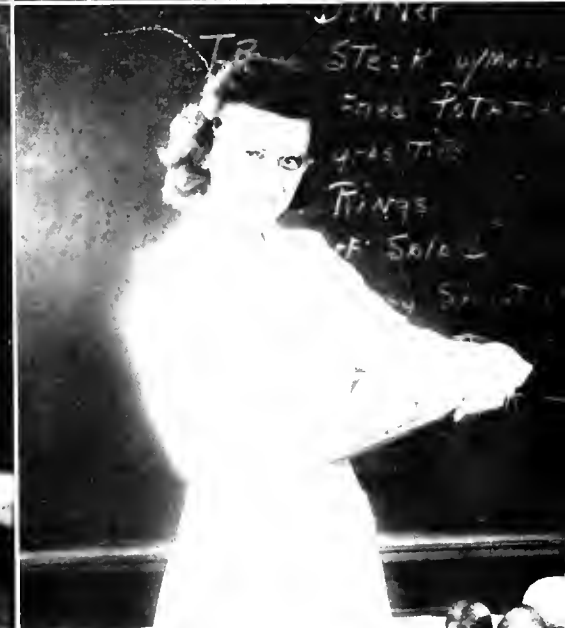




*Administration*



The President, Dr. Weltner, and Vice President, Dr. Seward,—to whom we all owe a debt of gratitude for their tireless efforts on behalf of Oglethorpe and that for which it stands.



## ADMINISTRATION

RUTH SANDERS  
*Registrar*  
MARTHA POPE BROWN  
*Field Representative*  
MARGARET NORRIS  
*Secretary*

CLYDE WOLF  
*Comptroller*  
CAROL TECKER  
*Bursar*  
BERNICE HILLARD  
*House Mother*

SEE MOSS  
*Treasurer*  
RUTH LOVELL  
*Cashier*  
DELTA DICKENS  
*Dietician*



WENDELL H. BROWN  
*Human Understanding*

FIRST ROW  
WALTER CARTER  
*Science*

ARTHUR L. COHEN  
*Science*

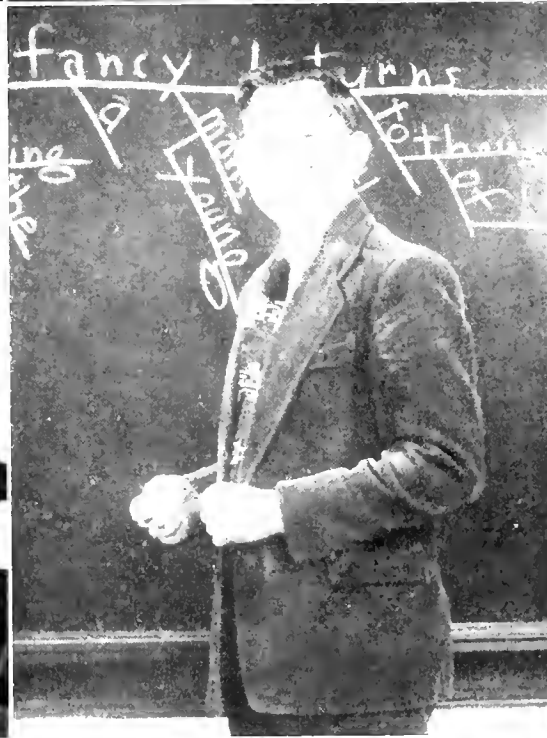
W. A. L. COLBORN  
*Citizenship*

SECOND ROW  
GUILFORD COLFISON  
*Community Service*

FRANCIS X. CARBERRY  
*Business*

THIRD ROW  
NEWTON CRAIG  
*Business*

# FACULTY



FIRST ROW

STANLEY DAIGERT  
*Human Understanding*

HARRY DOBSON  
*Music*

GERTRUDE EHRICH  
*Science*

SECOND ROW

SOL J. GOLDEN  
*Business*

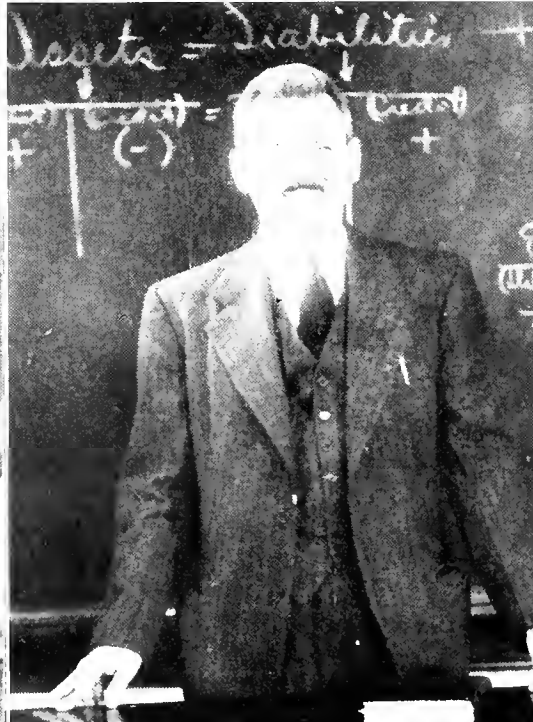
JOHN GOLDTHWAIT  
*Human Understanding*

ROY N. GUSTIN  
*Science*

RIGHT

HILDA HOFFMAN  
*Music*

# FACULTY



FIRST ROW

JOHN KELLY  
*Science*

R. CRAWFORD LIVINGSTON  
*Fine Arts*

CHARLES M. MACCONNELL  
*Community Science*

SECOND ROW

GERHART NIEMEYER  
*Citizenship*

M. CECIL PADGETT  
*Business*

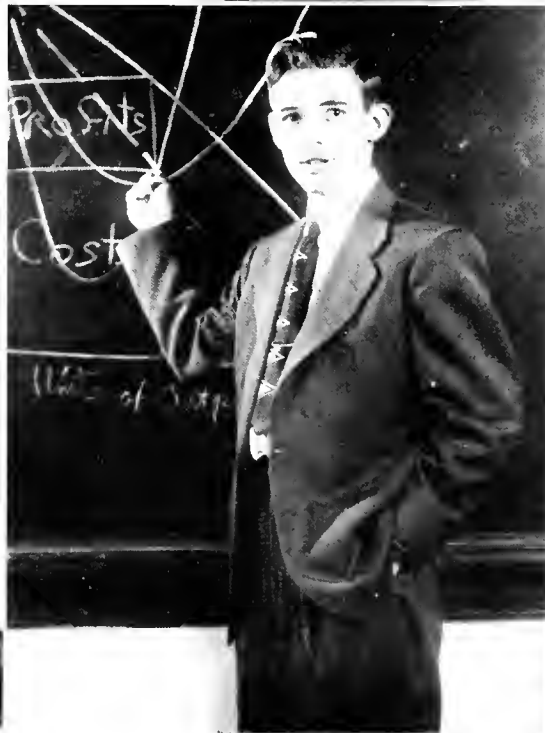
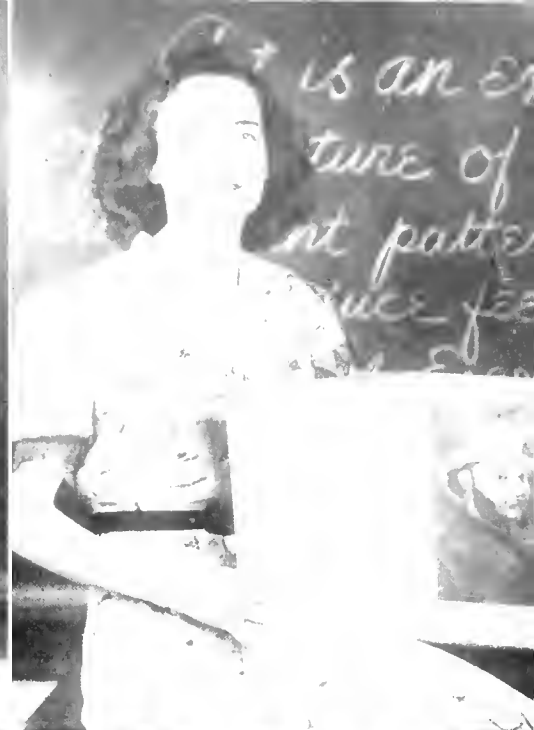
BENJAMIN PARKER  
*Business*

LEFT

AUBERT H. PINE  
*Citizenship*

# FACULTY





RICHARD RISER  
*Community Science*

FIRST ROW  
GEORGE SEWARD  
*Human Understanding*

VERA TOWNSEND  
*Human Understanding*

EDGAR VAILLETTE  
*Citizenship*

SECOND ROW  
THEODORE WALTER  
*Citizenship*

LOIS DOUGLAS WILLIAMSON  
*Science*

# FACULTY

# STUDENT

SAM HIRSCH  
*President*

JOHN R. FISHER  
*Treasurer*



EDWARD CHANDLER  
*Vice President*



ELIZABETH STEPHENS  
*Secretary*

*Student Body Officers*

# GOVERNMENT



EARL C. O'SHIELDS  
*Senior Class Representative*

BOB LEWIS ELLIS  
*Sophomore Class Representative*

PAUL CONIMNELLI  
*Junior Class Representative*

CATHERINE WATSON  
*Freshman Class Representative*

*Student Council*

Here we present the Oglethorpe Family in their various stages of achievement. There are the Seniors who are bidding farewell to their close relationship with the Oglethorpe Family and the Sophomores and Juniors who are in the midst of enjoying their experience at Oglethorpe. And, of course, the Freshmen who said "hello" to us this year.





# *Classes*



*Senior Class*



## CLASS OFFICERS

PRESIDENT

WILLIAM WRIGHT  
*Atlanta, Georgia*  
BACHELOR OF ARTS

VICE-PRESIDENT

JAMES HOLLIDAY  
*Pelzer, South Carolina*  
BACHELOR OF SCIENCE

SECRETARY

ELIZABETH STEPHENS  
*Atlanta, Georgia*  
BACHELOR OF ARTS

TREASURER

JOLT CHANDLER  
*Marietta, Georgia*  
BACHELOR OF ARTS



EMMETT H. ALBIA  
*Atlanta, Ga.*  
BACHELOR OF ARTS

GRACE ALBERT  
*Tampa, Fla.*  
BACHELOR OF ARTS

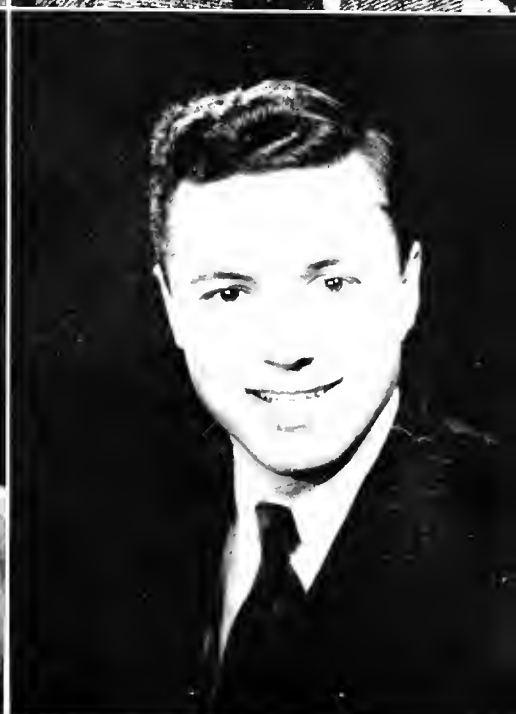
JACK F. R. ALBERISON  
*Ovadell, N. J.*  
BACHELOR OF ARTS

EDGAR BODIFORD  
*Atlanta, Ga.*  
BACHELOR OF ARTS

ROBERT L. BOGGUS, JR.  
*Atlanta, Ga.*  
BACHELOR OF ARTS

WILLIAM B. BOND, JR.  
*Atlanta, Ga.*  
BACHELOR OF ARTS





JACK BROOKS  
*Atlanta, Ga.*  
BACHELOR OF ARTS

JOE E. BROWN, JR.  
*Atlanta, Ga.*  
BACHELOR OF ARTS

EDWARD CHANDLER  
*Shively, Ga.*  
BACHELOR OF ARTS

WILLIAM E. CHEVAL  
*Atlanta, Ga.*  
BACHELOR OF ARTS

WALLACE CRIDER  
*Atlanta, Ga.*  
BACHELOR OF ARTS

HAROLD E. DORSON  
*Atlanta, Ga.*  
BACHELOR OF SCIENCE



GORDON DUSAGAN  
*Atlanta, Ga.*  
BACHELOR OF ARTS

ELMER ETTING, JR.  
*Atlanta, Ga.*  
BACHELOR OF ARTS

ROBERT JONES FINDLEY  
*Atlanta, Ga.*  
BACHELOR OF SCIENCE

DAVID POYTBRESS HEILNER  
*Chester Springs, Penn.*  
BACHELOR OF ARTS

JAMES H. HINSON, JR.  
*Atlanta, Ga.*  
BACHELOR OF ARTS

WILLIAM R. HOLLEY  
*Atlanta, Ga.*  
BACHELOR OF ARTS



MARJORIE HOLLIDAY  
*Clearwater, Fla.*  
BACHELOR OF SCIENCE

JOYCE HOVIS  
*Atlanta, Ga.*  
BACHELOR OF ARTS

KINT HOVIS  
*Atlanta, Ga.*  
BACHELOR OF SCIENCE

EUGENE WALKER IVY  
*Atlanta, Ga.*  
BACHELOR OF ARTS

WILLIAM R. KELLY, JR.  
*Atlanta, Ga.*  
BACHELOR OF ARTS

JOHN PETER KNUDSEN  
*Atlanta, Ga.*  
BACHELOR OF SCIENCE



HENRY LANHAM  
*Atlanta, Ga.*  
BACHELOR OF ARTS

NAI WEN LIU  
*Soochow, China*  
BACHELOR OF ARTS

BEN LORENZ  
*Vero Beach, Fla.*  
BACHELOR OF ARTS

BETTY LORENZ  
*Oglethorpe University, Ga.*  
BACHELOR OF SCIENCE

JACK LORENZ  
*Oglethorpe University, Ga.*  
BACHELOR OF SCIENCE

WESLEY MARTIN  
*Atlanta, Ga.*  
BACHELOR OF ARTS



ANN MASON  
*Atlanta, Ga.*  
BACHELOR OF ARTS

STEPHEN C. MAY, JR.  
*Atlanta, Ga.*  
BACHELOR OF SCIENCE

EDWARD M. NORTH  
*Oglethorpe University, Ga.*  
BACHELOR OF SCIENCE

BETTY RAE OIDS  
*Atlanta, Ga.*  
BACHELOR OF ARTS

EARL C. O'SHIELDS  
*Birmingham, Ala.*  
BACHELOR OF ARTS

DORIS PICKINS  
*Stone Mountain, Ga.*  
BACHELOR OF ARTS



WILLIAM C. RHODES, JR.  
*Chamblee, Ga.*  
BACHELOR OF ARTS

JOHN R. SMITH  
*Atlanta, Ga.*  
BACHELOR OF ARTS

WALLACE SMITH  
*Hogansville, Ga.*  
BACHELOR OF ARTS

JUDD SPURLING  
*Feanock, N. J.*  
BACHELOR OF ARTS

RENA STEINBERG  
*Atlanta, Ga.*  
BACHELOR OF ARTS

RICHARD STOLLER  
*Atlanta, Ga.*  
BACHELOR OF ARTS



MARVIN M. THOMPSON  
*Palmetto, Fla.*  
BACHELOR OF ARTS

SHIRLEY THOMPSON  
*Atlanta, Ga.*  
BACHELOR OF ARTS

PAUL VAUGHN  
*Williamson, Ga.*  
BACHELOR OF ARTS

FRANK WALLS  
*Brookhaven, Ga.*  
BACHELOR OF ARTS







## CLASS OFFICERS

PRESIDENT

PAUL M. SMITH, JR.  
*Atlanta, Georgia*

VICE-PRESIDENT

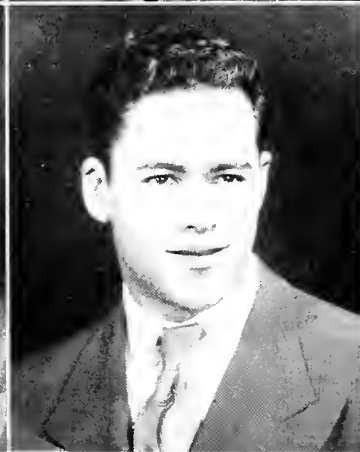
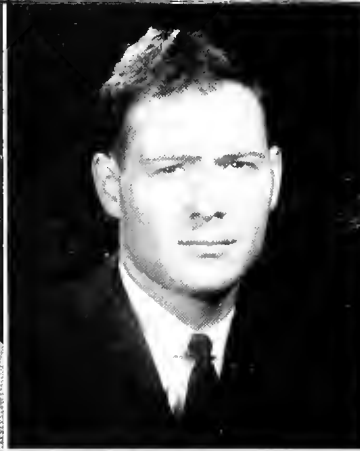
BEN TILLER  
*Atlanta, Georgia*

SECRETARY

JANE GALLER  
*Hoboken, New Jersey*

TREASURER

JEWELL FISHER  
*Brooklyn, New York*



THOMAS W. AIOLA  
*Atlanta, Ga.*

JAMES E. BAKER  
*Austell, Ga.*

HUNTER J. BASSETT  
*Atlanta, Ga.*

ELIZABETH BATTLE  
*Atlanta, Ga.*

DONALD R. BRENNAN  
*Chamblee, Ga.*

EDWARD BRYSON, JR.  
*Atlanta, Ga.*

GORDON C. BYNUM  
*Cedar Springs, Ga.*

ALICE CALLAWAY  
*Atlanta, Ga.*

KENNETH L. CHRISTY  
*New Kensington, Pa.*

RONALD ROBERT COLBY  
*Woodmere, L. I., N. Y.*

SANFORD COLBY  
*Woodmere L. I., N. Y.*

PAT COMMUNALE  
*Bronx, N. Y.*



ALLAWAY COX  
*Atlanta, Ga.*

WILLIAM CROWL  
*Atlanta, Ga.*

ALBERT DRAKE  
*New Bedford, Mass.*

VINCENT FARAONE  
*Bronx, N. Y.*

JOHN FLANIGAN  
*Atlanta, Ga.*

FLOYD GREER  
*Atlanta, Ga.*

IMOGENE BROWN GOSS  
*Atlanta, Ga.*

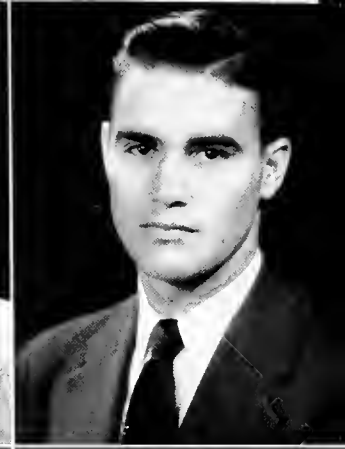
DEAN HAGGERTY  
*Sussex, N. J.*

STUART HERMAN  
*Englewood, N. J.*

DIANE HIMMER  
*Mountain Lakes, N. J.*

SAM HIRSCH  
*Atlanta, Ga.*

CLARE ISANHOOR  
*Atlanta, Ga.*



A. Z. JOHNSON  
*Tucker, Ga.*

UNO KASK  
*Sodola, Estonia*

MARION LOCKLEER  
*Sea Island, Ga.*

HARRY MARTIN  
*Water Valley, Miss.*

ROSEMARY OLLIFF  
*Waycross, Ga.*

WILLIAM OLLIFF  
*Waycross, Ga.*

VIRGINIA PATTERSON  
*Atlanta, Ga.*

MARGUERITE PEARSON  
*Evanston, Ill.*

JAMES PHILLIPS  
*Milstead, Ga.*

ERNEST PROCALO  
*East Rutherford, N. J.*

JERROLD QUIN  
*Staten Island, N. Y.*

WALTER BERT ROBINSON  
*Juniper, Ga.*



DONALD SCARBORO  
*Dublin, Ga.*

GEORGE SCOTT  
*Atlanta, Ga.*

PAUL SHEPPARD  
*Atlanta, Ga.*

WALTER SLACK  
*Lambertville, N. J.*

J. E. P. SMITH  
*Hackensack, N. J.*

ROY SPIER  
*Atlanta, Ga.*

JOE STANSLAND  
*Atlanta, Ga.*

MARION TAYLOR  
*Atlanta, Ga.*

VIRGIL TRITT  
*Atlanta, Ga.*

RICHARD WALDRON  
*Atlanta, Ga.*

BARBARA WELTER  
*Evanston, Ill.*

TURAN YOLAC  
*Istanbul, Turkey*

# Phomore Class





## CLASS OFFICERS

PRESIDENT

HERBERT LISCH  
*East Orange, N. J.*

VICE-PRESIDENT

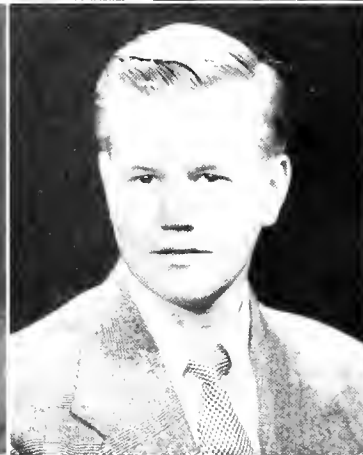
AL DILUCIDO  
*Lambertville, N. J.*

SECRETARY

LOUISE WATKINS  
*Atlanta, Ga.*

TREASURER

JOHN HALL  
*Saddle River, N. J.*



ANN ADAMS  
*Atlanta, Ga.*

MITCHELL BISHOP  
*College Park, Ga.*

DOUGLAS COOK  
*Atlanta, Ga.*

J. BEN DOAR  
*Brookhaven, Ga.*

JOHN AMICO  
*New York, N. Y.*

DOROTHY BLAIR  
*New Rochelle, N. Y.*

ALVIN CURKIN  
*Middletown, Conn.*

KARIN EIDI  
*Oslo, Norway*

HENRY C. ATCHISON  
*Browns, Ala.*

WILLIAM R. BROWN  
*Dillard, Ga.*

ALAN DICKSON  
*Evanston, Ill.*

JEROME ELLIOTT  
*Atlanta, Ga.*

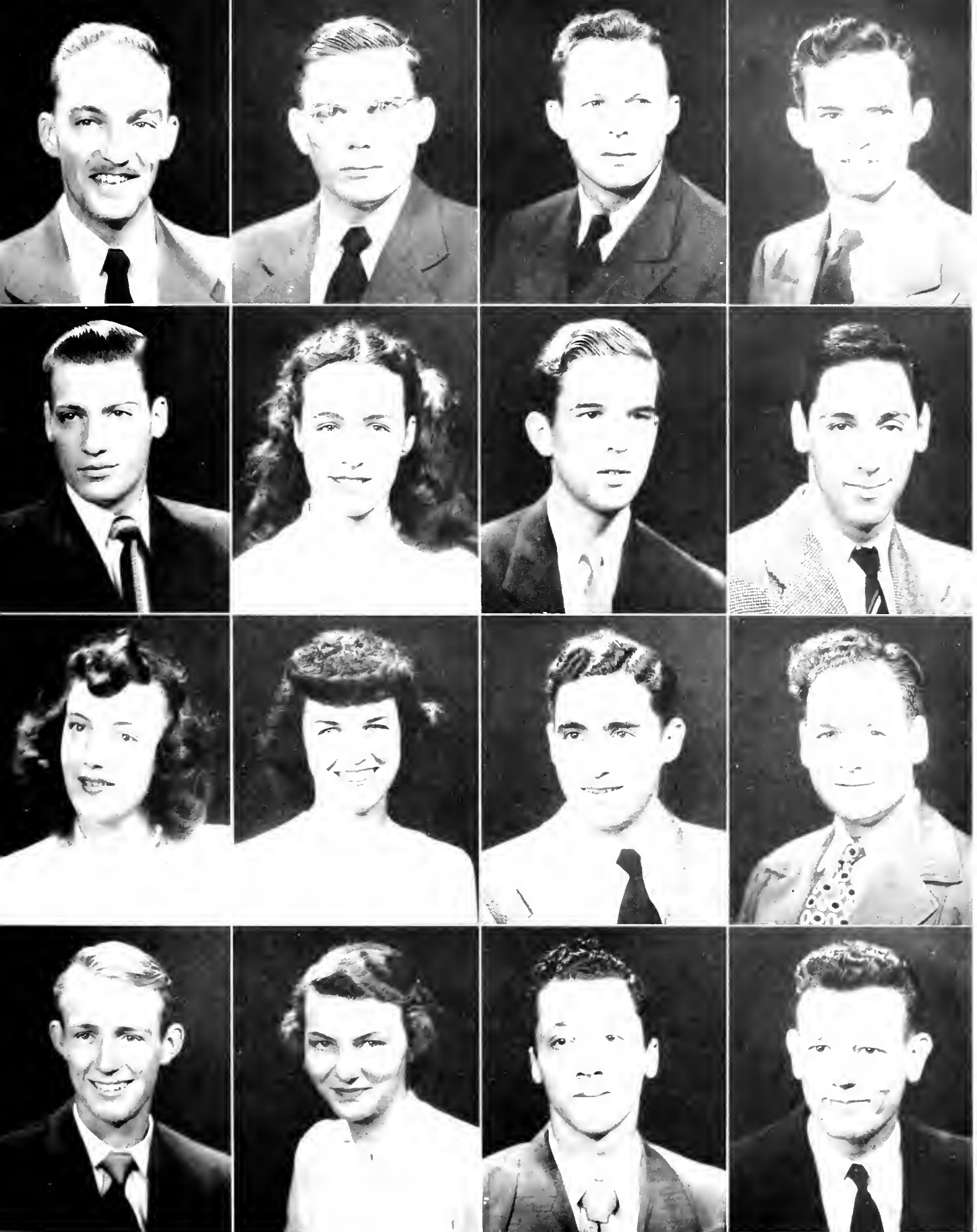
BEVERLY BECHIEL  
*Atlanta, Ga.*

CHARLES CLACK  
*Brookhaven, Ga.*

CAROLYN DICKSON  
*Evanston, Ill.*

BOB LEWIS ELLIS  
*Chattanooga, Tenn.*





JOHN R. FISHER  
*Ridgewood, N. J.*

DOUGLAS FORBIS  
*Lambertville, N. J.*

JACK FUSSELL  
*Nashville, Tenn.*

ERNEST GAINES  
*Brookhaven, Ga.*

RAYMOND GIBHARDI  
*Teaneck, N. J.*

ALICE GORI  
*Fanwood, N. J.*

RICHARD GRIFFITHS  
*New York, N. Y.*

DAVID HESSI  
*Hewlett Bay Park, N. Y.*

ROSEMARY HILL  
*Washington, Ga.*

BETTY HOGAN  
*Lake Mohawk, N. J.*

CHARLES V. HOLLINGSWORTH  
*Jacksonville, Fla.*

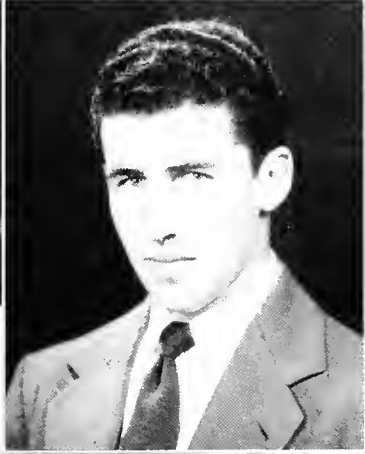
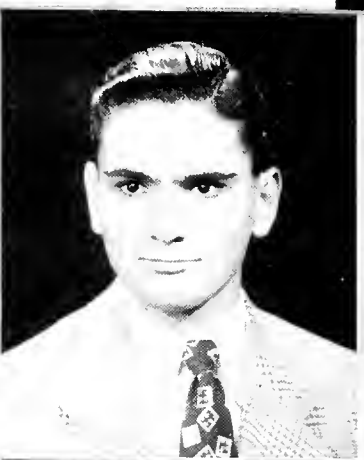
JACK HOSFORD  
*Atlanta, Ga.*

LARRY KNAPP  
*Manchester, Vt.*

ANNI KNUDSEN  
*Atlanta, Ga.*

ROBERT KOEBER  
*Hewlett, L. I., N. Y.*

ROBERT LARSON  
*Lambertville, N. J.*



BRUCE LEAVITT  
*Evanston, Ill.*  
 BETTY LITTLE  
*Atlanta, Ga.*  
 JOAN MILLER  
*West Palm Beach, Fla.*  
 VERLYN PREWITT  
*Dallas, Ga.*

MARY JAYNE LESLIE  
*East Orange, N. J.*  
 DONALD MACNEIL  
*Middletown, Conn.*  
 BEN F. MOORI  
*Atlanta, Ga.*  
 CHARLES REYNER  
*Columbia, S. C.*

JORDAN LEVINSON  
*Woodmere, L. I., N. Y.*  
 HAROLD MCKAY  
*Tampa, Fla.*  
 PAT MUELLER  
*Atlanta, Ga.*  
 TELETE RICHARDS  
*Jasper, Ga.*

IRWIN LEWIS  
*New Rochelle, N. Y.*  
 MARTHA MAYSON  
*Atlanta, Ga.*  
 BOB OWEN  
*Cartersville, Ga.*  
 HARRIETT GERTRUDE SCOTT  
*Atlanta, Ga.*



OTTO SHIVER  
*Hastings, Fla.*

RONALD SINKWAY  
*Ridgewood, N. J.*

DAVID SMITH  
*Fairlawn, N. J.*

JOHN TAGGABERRY  
*Allendale, N. J.*

WALTER TANNER  
*Brookhaven, Ga.*

BLECKER TOFFEN  
*Allendale, N. J.*

ALAN VAN GELDER  
*Sussex, N. J.*

WEBB VERMILYA  
*West Palm Beach, Fla.*

JEANNE VIENN  
*Evanston, Ill.*

DAY WALKER  
*New York, N. Y.*

WENDELL WEAVER  
*Rome, Ga.*

WILLIAM BASS WILLIAMSON, JR.  
*Atlanta, Ga.*

# Freshman Class





## CLASS OFFICERS

PRESIDENT

CHARLES WALLACE WHITE  
*Pensacola, Fla.*

VICE-PRESIDENT

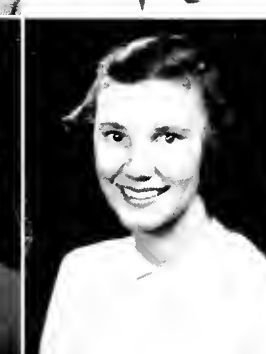
ALBERT BURNS  
*Brooklyn, N. Y.*

SECRETARY

NANCY SPEICHER  
*Evanston, Ill.*

TREASURER

CAROLYN SHEFFIELD  
*Atlanta, Ga.*



J. FRIDERICK AGLI  
*Ridgewood, N. J.*

RAYMOND BACKES  
*Wellington, Conn.*

ASHER BENATOR  
*Atlanta, Ga.*

IRA BOTTOMS  
*Norcross, Ga.*

JAMES R. BROWN  
*Thomasville, Ga.*

OATHIE BYRAM  
*Atlanta, Ga.*

R. WINSTON BYRAM  
*Cedar Springs, Ga.*

RICHARD CAGLI  
*East Orange, N. J.*

ROBERT CARSON  
*Atlanta, Ga.*

JOANNE COLE  
*Atlanta, Ga.*

FRIDERICK DARDEN  
*Lake Orion, Mich.*

JOHNNY DAVIS  
*Atlanta, Ga.*

RUSSELL DELAY  
*Chville Center, N. Y.*

NANCY DOWNS  
*Atlanta, Ga.*

CAROLINE DRAWDY  
*Walterboro, S. C.*

RONALD DUNN  
*Turtle Point, Pa.*

JOANNE GAUSS  
*Evanston, Ill.*

SHELDON GODKIN  
*Forest Hill, N. Y.*

SEMARY HARIRAMPE  
*Atlanta, Ga.*

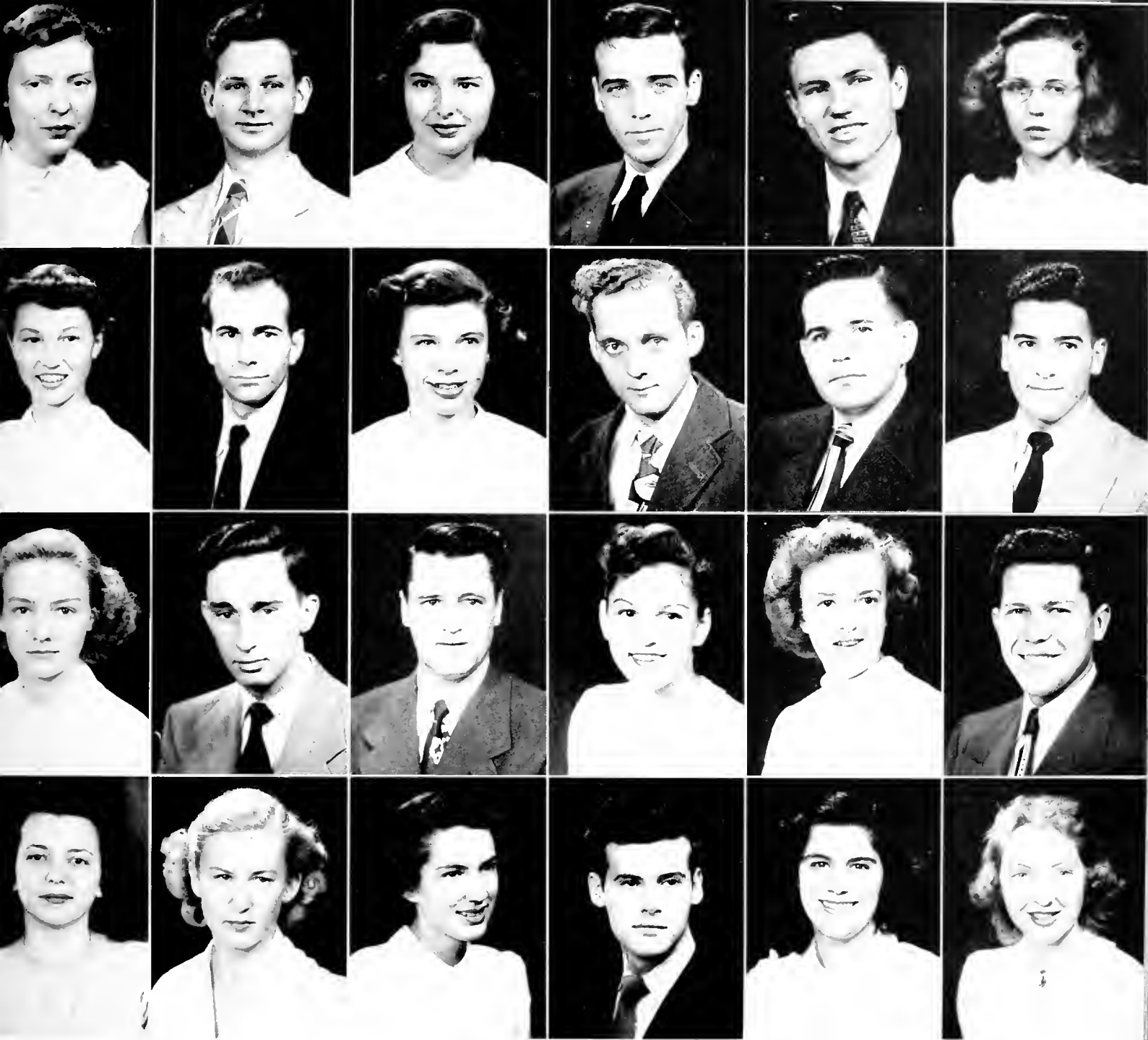
FRIDERICK HILLIARD  
*Lake Mohawk, N. J.*

SU HOW HWA  
*Shanghai, China*

WILLIAM JACKSON  
*Austell, Ga.*

SUZANNE JONES  
*Garden City, N. Y.*

BARBARA KISSLER  
*Atlanta, Ga.*



MONIE HELEN KEY  
*Brookhaven, Ga.*

JAMES KOONIZ  
*Atlanta, Ga.*

MURIEL LEWIS  
*Brooklyn, N. Y.*

ROBERT W. McELLEN  
*Teaneck, N. J.*

EDWARD McRAE  
*Brookhaven, Ga.*

DOROTHY MAULDING  
*Powder Springs, Ga.*

IRLANE MICKOW  
*Chicago, Ill.*

ROBERT MOSKOWITZ  
*Mount Vernon, N. Y.*

ABELINE O'MALLEY  
*Willmette, Ill.*

JOSEPH OVERTON  
*Atlanta, Ga.*

MARVIN PALMER  
*Middletown, Conn.*

ANOLE M. RIVERA  
*Guantanamo, Cuba*

QUELYNN ROBERTS  
*Hilledgerille, Ga.*

JOHN RUNYON  
*Sussex, N. J.*

HARRY SHRAD  
*Brewton, Ala.*

MARJORIE SMITH  
*Port St. Joe, Fla.*

VIRGINIA SMITH  
*Oak Park, Ill.*

DONALD SPENCER  
*Ridgecroft, N. J.*

MARION SHILES  
*Atlanta, Ga.*

KARI SUNDI  
*Oslo, Norway*

CATHERINE WATSON  
*Atlanta, Ga.*

JOHN WHITE  
*Atlanta, Ga.*

MABELINE WHITE  
*Pensacola, Fla.*

VICTORIA WRIGHT  
*Atlanta, Ga.*

This is our life. We devote this part of our book to informal views of our social and everyday living. We dance, we play, and we work.







# *Activities*



JUDD SPURLING  
Chairman



TELFIE RICHARDS  
JODY CHANDLER  
JEANNE VIENNE



MARGUERITE PEARSON  
J. E. P. SMITH  
BEVERLY BECHTEL



### *Social Calendar of 1948-49*

MASQUERADE BALL

October 29, 1948

CHRISTMAS FORMAL

December 10, 1948

OGLETHORPE BALL

February 12, 1949

BLACK AND WHITE BALL

March 25, 1949

SPRING FORMAL

June 3, 1949

The social committee has a job to do throughout the year. Their work, which includes anything from stirring a bowl of punch to engaging an orchestra, can by no means be completely described. The results of their widespread activities are exhibited in the numerous snapshots of gala events contained in this book.



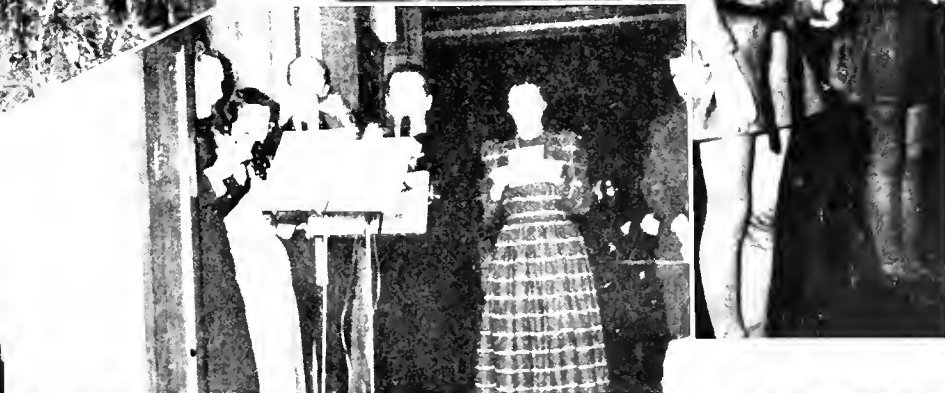
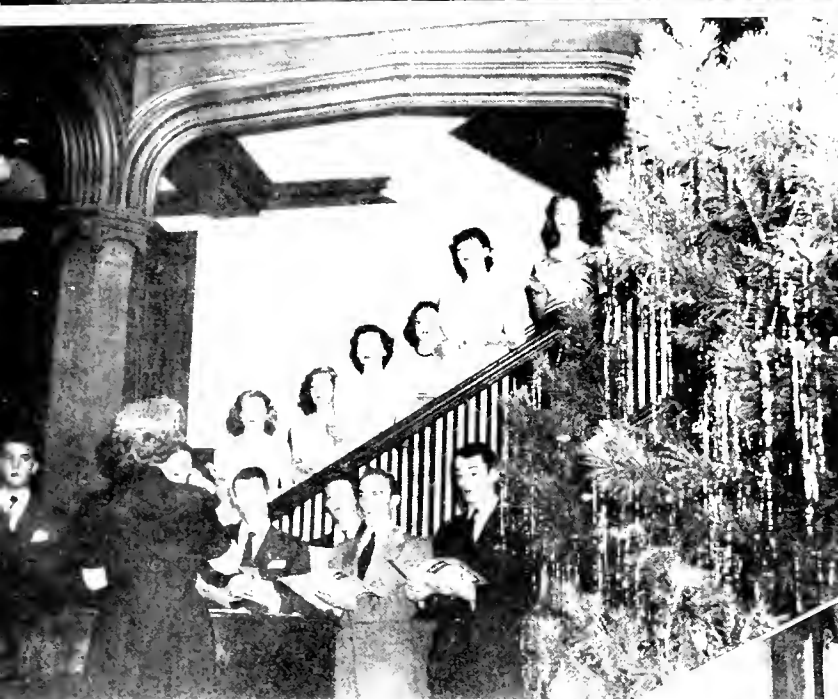
## *Social Committee*



*Masquerade Ball*



*Christmas Form*





*Lord and Lady Oglethorpe*

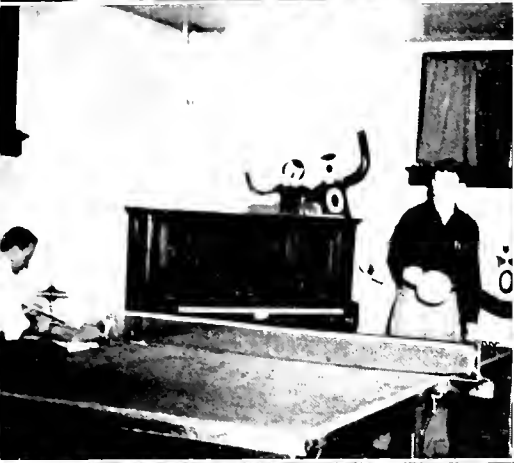


*Oglethorpe Ball*

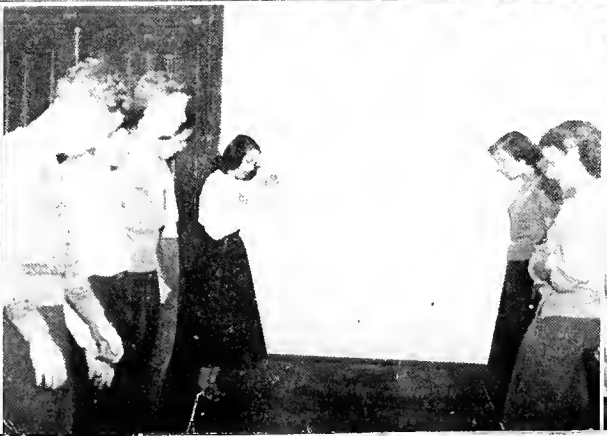


*Blair's White Ball*






*General Activities*







In any full life, there are interests lying outside of the main task. These interests find their outlet in the various organizations, enabling the students to express their particular whims, hobbies and interests.





# *Organizations*



ED NORTH

Business Club '46; Le Conte Honorary Science Society '47, '48, '49, President '49; Herman D. Jones Science Award '48; Boar's Head Fraternity '49.

BILL WRIGHT

Stormy Petrel staff '48; Director of Publicity for Student Government '48; President of the Senior Class '49; Business Club '49; Boar's Head Fraternity '49.

## Who's Who Among Students in



BILL RUODES

Vice President Junior Class '48; Track '48; Oglethorpe Award of Merit '48; Stormy Petrel Advertising Manager '47, Editor '48.



JACK LORENZ

Stormy Petrel Editor '46; Cross Country '46; Boar's Head Fraternity '47, '48, '49, President '47; LeConte Society '47, '48, '49, Secretary '47; Student Council Representative for Junior Class '48; Blue Key Honor Fraternity '47, '48, '49, Corresponding Secretary '47.

**American Universities and Colleges**



## **BLUE KEY NATIONAL HONOR FRATERNITY**

Oglethorpe's chapter of Blue Key was accepted by the Blue Key's National Honorary Fraternity in 1926. After a period of wartime inactivity, Blue Key was revived in May 1947. Selection for membership stamps a man as one of all-round ability, good character, and possessing the qualities of leadership and the confidence of his fellow students.





BILL RHODES  
*President*

BOB BOGGUS  
*Vice President*

ED CHANDLER  
*Secretary-Treasurer*

STEVE MAY  
*Corresponding Secretary*

DAVE HEHNER  
*Alumni Secretary*

JOEL BROWN

ED BRYSON

PAT COMMISALL

ELMER FELLING

JOHN GOLDTHWAIT

SAM HIRSCH

RAY HOLLY

EUGENE IVY

JACK LORENZ

AL PIKE



## **BOAR'S HEAD HONOR FRATERNITY**

The Boar's Head Honorary Fraternity was founded at Oglethorpe in January, 1920. The title of the organization is taken from the coat of arms of Oglethorpe University, a boar's head being a prominent feature of the escutcheon.

Membership is limited to the Junior and Senior Classes. Selection for membership is based on a high scholastic average, participation in campus activities, and qualities of leadership. The group sponsors the annual Boar's Head Ceremony at Christmas time and renders various services to the campus and the student body.



BILL RHODES <i>President</i>	BOB BOGGS <i>Vice President</i>	ED CHANDLER <i>Secretary Treasurer</i>	STAN MAY <i>Corresponding Secretary</i>	DAVID HEINER <i>Alumni Secretary</i>	JACK ALBERSON
JOE BROWN	ED BRYSOX	PAI COMMUNALI	ELMER THING	JOHN GOLDBWALT	JIM HINSON
SAM HIRSCH	RAY HOLLEY	EUGENE IVY	JOHN KNUDSEN	JACK LORENZ	ED NORTH
AL PIKE	BERL ROBINSON	GEORGE SCOTT	ED VALLETTI	ED WALTER	BILL WRIGHT



The Duchess Club, honor Society for women on the Oglethorpe Campus, has functioned since 1920. It is composed of girls who are outstanding in scholastic achievement and extra-curricular activities.

In order to be elected to the organization the girls must be either of the Junior or Senior classes, must have a high scholastic average, and take active part in more than one school activity. Their attitude must be that of a cooperative nature and a willingness to be of assistance whenever and wherever possible.

Duchesses sponsor fund-raising drives for charities and serve as hostesses at formal teas and the President's Reception.



SHIRLEY THOMPSON  
*President*

BETTY RAE OLDS  
*Vice President*

GRACE ALBERT  
*Secretary*

ALICE CALLAWAY  
*Treasurer*

SARAH BAGEN

JEWELL FISHER

DIANE HIMMER

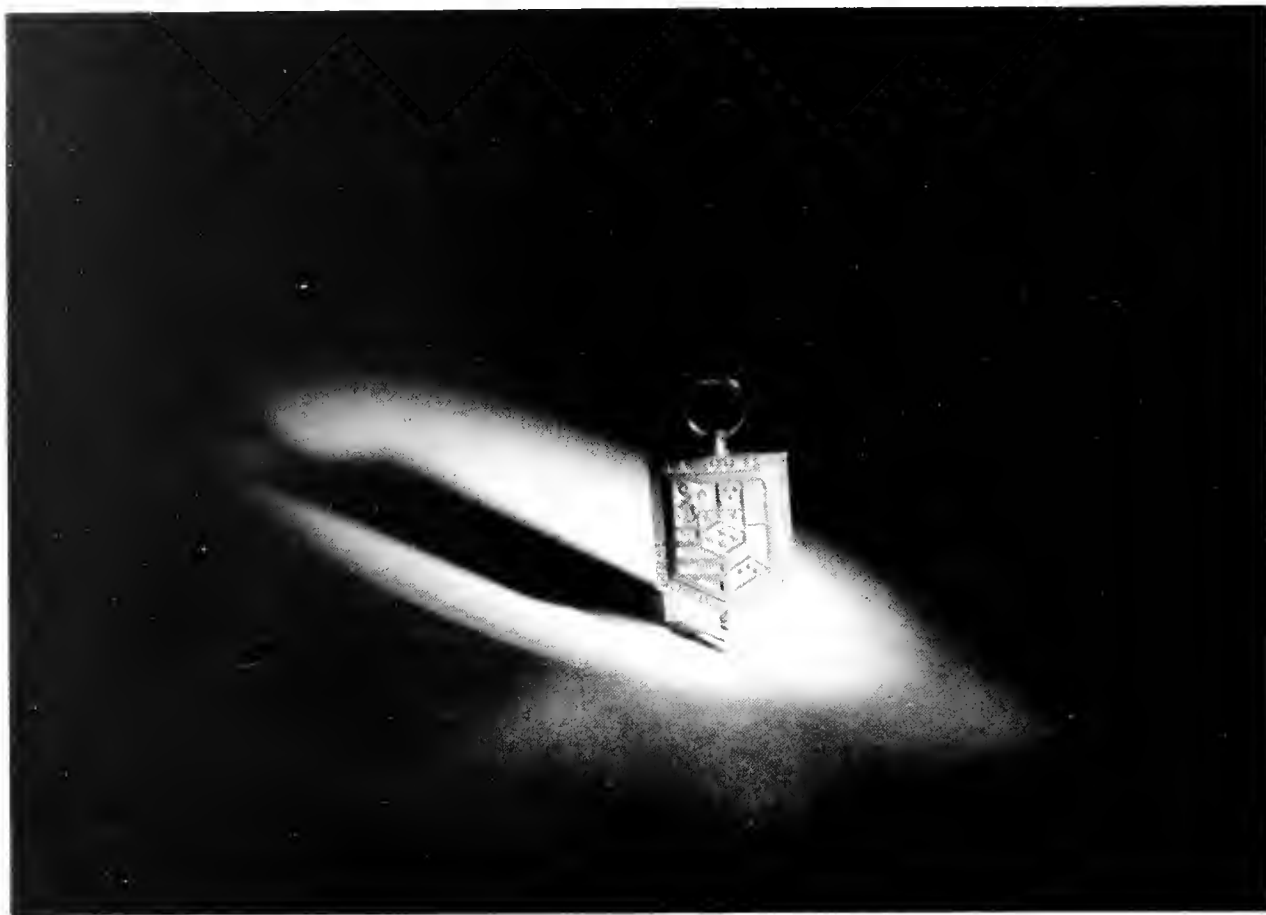
CLARE ISAHOUR

ANN MASON

DOT PICKENS

BARBARA WELLER

BETTY GOLDSWALL  
*Faculty Advisor*



## **LE CONTE SOCIETY**

The Le Conte Society aims at the advancement of scientific study and research at the University, sponsors the Science Seminars, and directs field trips in the interest of science. Its members are the leaders scholastically in their chosen field of Science. The Society was organized in 1920 and reactivated in 1917.



JOSEPH LeCONTE  
*President*

ALBERT FINSTEIN  
*Vice President*

LAL GERH  
*Secretary*

LOUIS PASTER  
*Treasurer*

AL DICKSON

BEN DOAR

JIM HOLIDAY

JOHN KNUDSEN

MARION LOCKEER

JACK LORENZ

WALTER CARTER

STEVE MAY

HAROLD MCKAY

DON SCARBORO

JOHN KELLY

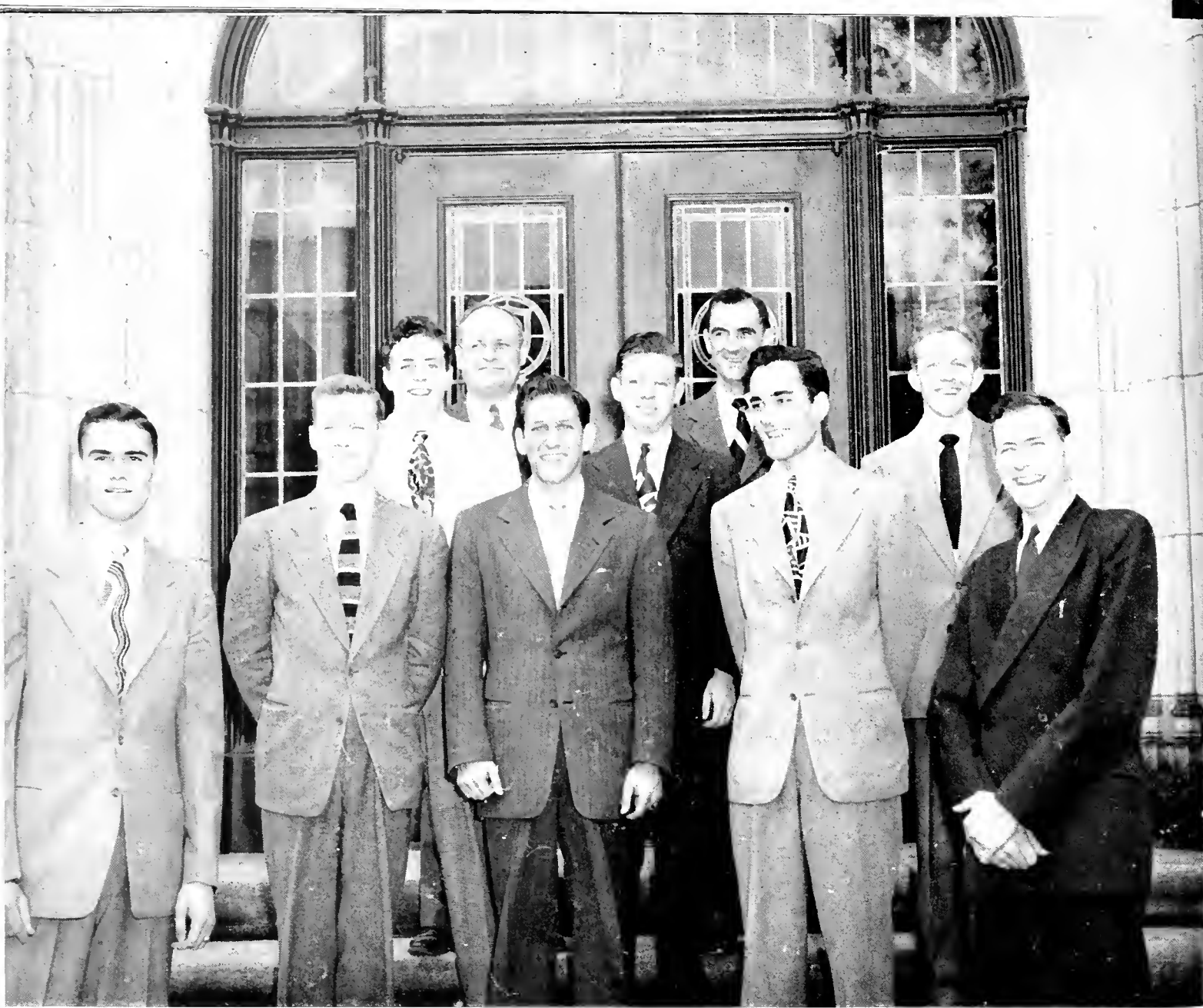
ARTHUR COHEN

GERTRUDE FUREIGH

ROY GOSLIN

BERNICE HILLIARD

LOIS WILLIAMSON



*First row: Harry Martin, Ed Bivson, Sam Hirsch, John Hanigan (Chairman), Hunter Bassett.  
... Second row: Bleecker Totten, Roy Goslin, Bert Robinson, Judd Sparling, Ray Holley.*

## **CHAPEL COMMITTEE**

The Oglethorpe plan strongly encourages each student to develop for himself a practical and well rooted relationship with his God. The students sponsor the Chapel Committee, which is composed of members of the Faculty and students who believe that the ideals of religion are valid. The committee invites noted laymen, clergymen, students and faculty members of all faiths to speak at weekly chapel services in order to give the Student Body as many views as possible. From these the student chooses his way of life with God.





## *The Chorus*

Some people call it art and others refer to it as music, but the Chorus calls it fun. The Chorus is a group of students from the music division who are interested in singing and do a lot of it in the interest of Oglethorpe University.



O'SHEEDS  
*President*

# GUN CLUB

The Oglethorpe Gun Club was organized in May 1918. The organization is dedicated to the furtherment of friendship and understanding among students. Weekly meetings are held at which business matters of the club are discussed and plans are made for sponsoring dances and parties at the school.

The Gun Club constructed and maintains a firing range which is used by the members and is at the disposal of other interested students. The sportsmanship displayed on the firing range by participants is indicative of the unity prevailing at Oglethorpe.



ADAMS  
*Secretary-Treasurer*

SINKWAY  
*Vice President*  
AIOIA

GRIFFITHS  
WATSON

CARSON  
ELLING



# EL CLUB ESPAÑOL

*El Club Español* was originally founded as *El Círculo Simon Bolívar* in 1910 for those students interested in Latin American countries, their language and their customs.

The 1948-49 club sponsored the Sadie Hawkins dance. Other club activities include programs musical y círculos de conversacion. The purpose of the club is to promote fellowship with our Latin American neighbors.

*El, que comprende mucho vive bien.*

TOMMY THOMPSON  
*Director*



JOHN GOLDIHWALL  
*Faculty Advisor*



NANCY DOWNS



TONI WHITE

ADELINI O'MALLEY

CAROLINE DRAWDY



# OGLETHORPE PLAYERS

The Oglethorpe Players, under the direction of Mr. Brown, got back into full swing this year. Five of the remaining eight members spent the first quarter studying plays and making plans for a bigger and better dramatic club. The substance of the plans was a desire not only to put on productions, but to have meetings in which the various phases of dramatics might be studied and discussed.

In early January, Jack F. R. Albertson was elected President; Shirley Thompson, Secretary-Treasurer; and Diane Himmer, Manager. On March 1, the club presented its first plays:

"The Man Who Married a Dumb Wife," starring Jack F. R. Albertson, Ann Adams, and Robert Larison. Other members of the cast were Jeanne Vienne, Maxin Thompson, Rosemary Hartnupf, Rosemary Hill, Ed Chandler, John E. P. Smith, Al Burns, and Edgar Bodilord.

"Helena's Husband," starring Marvin Thompson, Julianne Hartnupf, Diane Himmer, George Scott, and Edgar Bodilord.

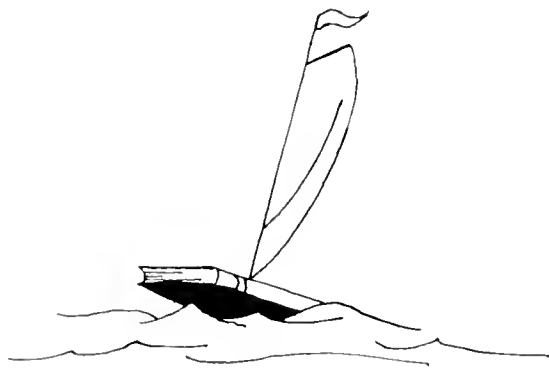
Stage Managers were: Dick Griffiths, lights; Tom Aiola, curtain; Al Dickson and Ann Knudsen, sets; Fye Brown, make-up.



# SAILING CLUB

A new organization appeared on the campus of Oglethorpe University this year, and although it has not made any astounding progress, it is hoped that it will remain with us and continue to grow. Designed to bring out the best in the would-be seafarers of our school, plans have been laid for building a twelve-foot catboat of the "penguin" class. From building the boat (or boats) to learning how to handle them the members are trying to partake of a growing and interesting form of recreation which is becoming very popular in the United States and thereby add one more facet to their developing character.

The activities this year have been limited to sponsoring campus movies and a dance in an attempt to raise the funds required for the building of their boat.



AL DICKSON  
*Commodore*

JAYNE LUSCH  
*Prosm*

HERB LUSCH  
*Shipfitter*

MICKY BISHOP  
*Shipfitter*

JOAN MILLER  
*Yeoman*

ANN ADAMS

CAROLYN DICKSON

KARLEN EIDI

JEWEL FISHER

DICK GRIFFITHS



J. HALL    S. HIRSCH    M. MAYSON    H. MCKAY    T. RICHARDS    K. SUNDT



# BUSINESS CLUB

The Oglethorpe Business Club was formed in November, 1918 for the purpose of promoting activities for the benefit of the students following the business sequence at Oglethorpe. The club promotes such activities as field trips and movies, and brings outstanding speakers to the campus.

## CLUB MEMBERS

Backes, Benator, Boggus, Brown, Burns, Cheves, Colby, Communate, Cox, Crider, Deevy, Dorsen, Dunagan, Eide, Elliott, Etling, Fisher, Hesse, Hollingsworth, Lanham, Martin, O'Shields, Pearson, Procalo, Sinkway, J. E. P. Smith, J. Smith, P. Smith, W. Smith, Steinberg, Stoller, Tiller, Vaughn, T. White, W. White, Wright.

JOLI CHANDLER  
*President*



EUGENE IVY  
*Vice President*

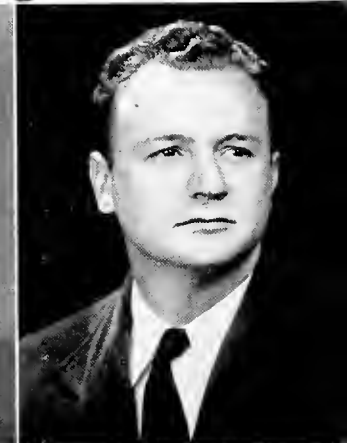


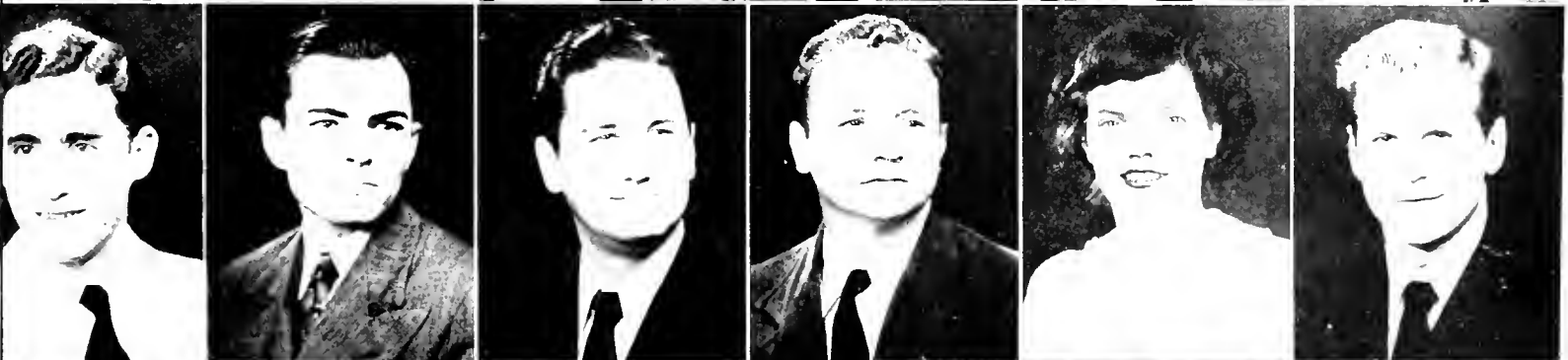
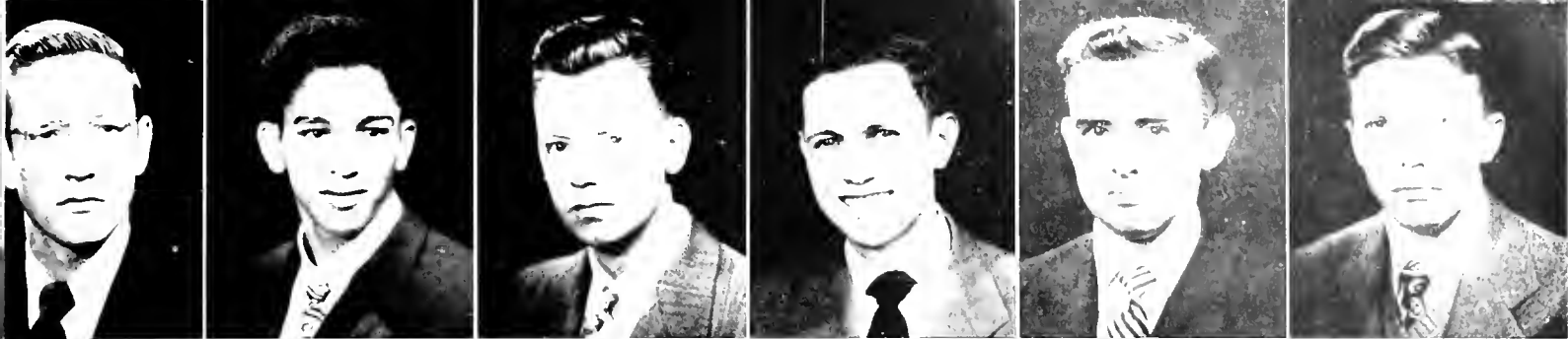
BETTY RAE OLDS  
*Secretary*



CECIL PADGETT  
*Faculty Advisor*

EARL O'SHIELDS  
*Treasurer*





# STORMY PETREL

The Fall of 1948 found the *Stormy Petrel* ready, willing and eager to carry on the policy set down by the staff last year — to give a fair and adequate coverage of the affairs and concerns of our school; to reflect student and faculty opinion; and to promote the welfare of Oglethorpe University through a definite editorial program. The paper has tried to build a finer spirit and loyalty to Oglethorpe and closer ties of friendship among all members of the Oglethorpe family.

The make-up work, proof reading, *deadlines* and jingling nerves — all have had their contribution in making work on the school paper fun, fascinating and successful.

We hope the students have enjoyed their paper this year and have fully appreciated the efforts of the staff of *The Stormy Petrel* to contribute to the collegiate life of Oglethorpe University.

CHARLES HOLLINGSWORTH

DOUGLAS FORBES  
ELMER EYLING

HAROLD MCKAY  
KITTY SHEFFIELD

RAY HOLLEY  
STUART HERMAN





GEORGE SCOTT  
*Editor*



ALICE CALLAWAY  
*Associate Editor*



JACK ALBERTSON  
*Editorial Editor*

ELIZABETH STEPHENS  
*Feature Editor*



TOMMY THOMPSON  
*News Editor*

JEWEL FISHER

BOB MOSKOWITZ  
*Sports Editor*

EUGENE IVY  
*Business Manager*

BOB BOGGUS  
*Assistant Business Manager*

DONALD SPENGER



FRANK WALIS

PAI COMMUNALE

CLARE ISANHOUR  
*Exchange Editor*

ANN MASON

DIANE HIMMER

BOB ELLIS



# THE YAMACRAW

Operation "Yamacraw 1919" has now been completed. The High Command is pleased with the fine work done by the staff and faculty in making this operation a success and hopes the students in general will fully appreciate the work, sweat, and tears (mostly sweat, though) that has made this operation a success.

The operation began towards the end of May 1918 when the Student Government appointed the leaders of the operation. The leaders were inexperienced, a little doubtful as to the outcome, but willing to try. During the summer the plans for the operation "Yamacraw 1919" were made at several important conferences held in the day room of the barracks. In September the staff was appointed and the first phase of the operation, advertising, began in October. In November the High Command recalled the forces as they had been badly beaten in the first phase due to inexperience under fire and insufficient quantities of material. In January the second phase of the operation, photography, was completed after a rather lengthy struggle.

In the latter part of January we were honored by the visit of some very distinguished guests from the GHQ in Lupton Hall to our theater of action. Generals Seward, Brown, Pope, Livingston, and Daugert were highly pleased with the plans and phases of the operation that they observed during their stay.

"IF" Hour (Deadline) arrived and passed. Operation "Yamacraw 1919" had to be recalled on "D plus one" due to the excessive interference from GHQ in the form of efficiency tests and inspections (examinations) and the dereliction of duty on the part of the material and supply command (Art editors).

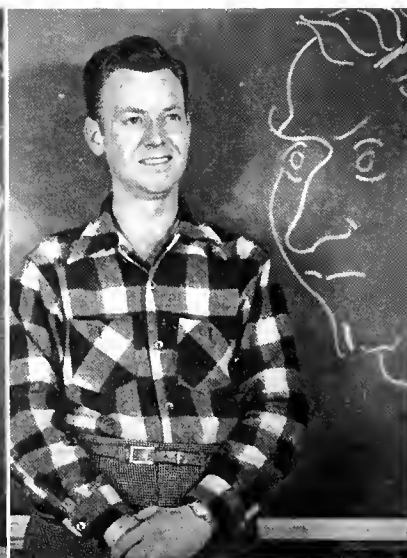
A new date was set and though the struggle was rough and drawn out, success was ours. The casualties from the operation were small in number but a great loss to the cause. Bob McMillan, Art Editor; Russell Borgstede, Assistant Art Editor; and Dr. Peters, Advisor, were lost in December, but not forgotten is their time and energy spent in making this operation a success.

BILL RHODES  
*Editor*

BOB BOGGUS  
*Associate Editor*

HENRY LANHAM  
*Business Manager*

MARTHA MAYSON  
*Art Editor*



DAVID HOLT  
*Editor-in-Chief*



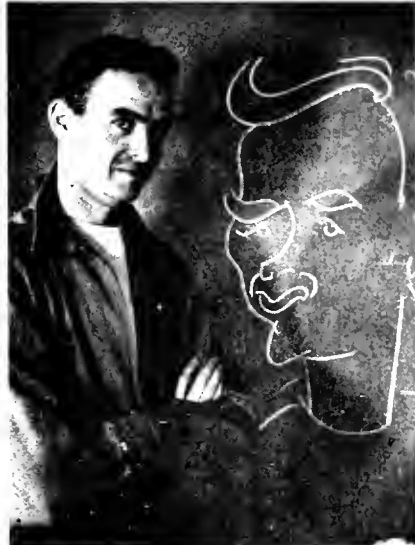
CLARE ISANDOLL  
*Organization Editor*



BOB ELLIS  
*Circulation Editor*



AL BURNS  
*Business Manager*



ADDIE CALAWAY  
*Staff Editor*



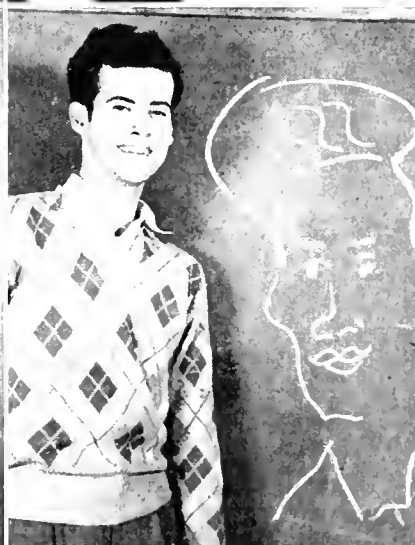
THOMAS THOMPSON  
*Staff Editor*



RAY HOLLEY  
*Staff Editor*



JACK WHITE  
*Staff Editor*



ELIZABETH STEPHENS  
*Business Manager*



ALBERT DEAKI  
*Photography Editor*



J. E. P. SMITH  
*Business Manager*




ANNE MASON  
*Organization Editor*



JAY HALL  
*Assistant Photographer*





Oglethorpe does not stop with academic learning, but also believes in physical fitness. To this end we have a year-round sports program in which everyone has the opportunity to participate.





# *Athletics*

# BASKETBALL

Under the able leadership of student-coach A. Z. Johnson, the fighting Petrel Hoopsters completed their 27 game schedule against strong competition in fine fashion. Although the return of 7 lettermen was a tremendous help to the squad, the boys were faced with two important handicaps. The first was the presence of strong competition, mainly in the larger schools, such as Howard, Wofford, Mercer, and Florida State, all of which have at least 6 times as many male students to choose from as we do. Second, we are unfortunate in having to work in our small gym which will always leave the boys helpless at the hands of any last-breaking competition on large courts. The over-all record in our first year of Dixie Conference play was 11 and 16.

Several of these losses, however, came in the early part of the season when the Petrels were playing in a confusing and disappointing manner. On January 14 at Newberry, S. C., the team suddenly found itself, as it surprised a highly favored Newberry five by emerging victorious in a squeaker, 14-11. After that, a different team

seemed to take the floor, as the Petrels played the slow conservative type ball in which they were so effective. Although the squad began to function more and more as a unit and not as individuals, it is probably more than just a coincidence that it was about this time that Johnson seemed to find his shooting eye. After a slow start, he eventually piled up 363 points to pace the squad with a 14 point average in 26 games. Behind him was Jimmy Hinson with 208 tallies. Don Brennan and Jim Phillips both played a fine brand of ball and often dropped in points when they were needed most. It was also pleasing to observe the superb backboard control which Bob Findley and Ben Lorenz constantly supplied us.

Although they have not been a sensation via the statistics, the fine play and steady improvements of freshmen Shelly Godkin and Fred Agel and juniors Jerry Quinn, Harry Martin, and Wally Smith have been a note of good cheer to all. They will certainly go a long way in filling the shoes of the men who graduate this year.

COACH A. Z. JOHNSON



## BASKETBALL SCHEDULE - 1918-1919

\* Dixie Conference Games  
† Overtime

Nov. 13 Naval Air Station	31-44	Jan. 22 Berry	56-62
Nov. 23 Berry	68-43	Jan. 25 Piedmont	32-41
Dec. 1 Tech Institute	28-60	*Jan. 27 Florida State	52-61
Dec. 3 Atlanta Christian College	32-63	Jan. 29 David Lipscomb	50-37
*Dec. 6 Lambuth College	60-36	*Feb. 1 Mercer	81-48
Dec. 10 College of Charleston	60-37	†Feb. 4 North Georgia	76-72
Dec. 11 North Georgia	64-57	Feb. 8 Piedmont	45-50
*Jan. 7 Howard	81-60	*Feb. 9 Mercer	75-57
Jan. 10 Naval Air Station	39-73	*Feb. 12 Florida State	47-46
Jan. 13 Presbyterian	75-36	Feb. 15 Wofford	65-60
Jan. 14 Newberry	41-44	*Feb. 19 Mississippi College	104-83
Jan. 15 Wofford	75-45	Feb. 21 Clarksdale (AAU)	55-46
Jan. 19 Tech Institute	19-69	Feb. 23 Presbyterian	55-63
		*Feb. 26 Howard	72-48



FINDLEY



JOHNSON



LORENZ



AGEL



SMITH



BRENNAN

Wofford



Florida State



Freshman Team

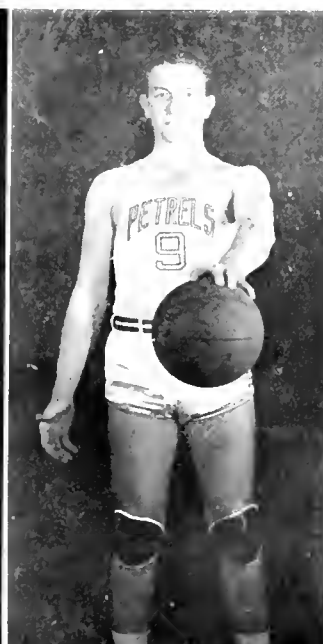
Mercei



HINSON



QUIN



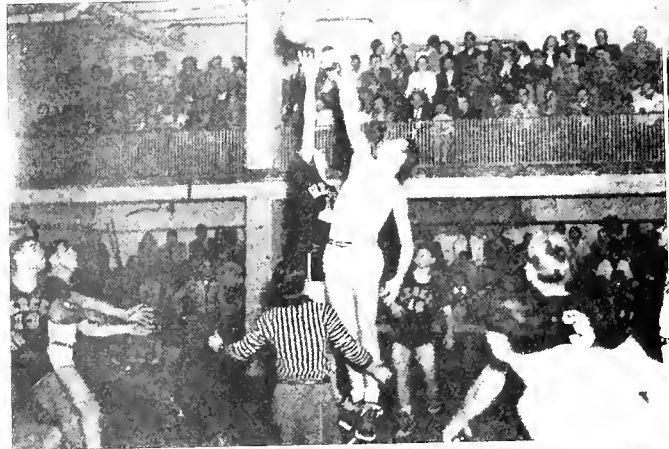
PHILLIPS



GODKIN



MARTIN





# CHEERLEADERS

Gone are the yells, cheers, and songs which have vibrated throughout Oglethorpe during basketball season, but memory of them lingers on as we recount our team's victories and remember the part the cheerleaders played in arousing the spirit of the team to greater heights to make those victories possible.

DICKSON

HALL



BLAU

SMITH



BCHTEL  
SPEICHER

MICKOW

VIENNE



HIMMER  
*Captain*



# BASEBALL

On paper the Petrels are headed for a great season. The return of practically all the members of last season's team assures a bright future for 1949.

Contrary to expectations and against much larger schools, the Petrels won 14 games in 1947, losing only 4. In 1948 they won 17 games, losing only 3, enjoying a winning streak of 11 games. As the YAMACRAW goes to press the Petrels have won the first two games of the 1949 season. Considering all things, the Petrels appear capable of winning the Dixie Conference Championship.

Player-Coach Don Brennan's unheralded ability, both as a coach and player, was responsible for a good share of the successful seasons. The load is again on Brennan's shoulders but lightening the burdens are veterans, Harold Crowe, first base; Jerry Quinn, shortstop; Ernie Procalo, third base; A. Z. Johnson, Eddie Baker and Jim Hinson, outfielders; Ronnie Sinkway, Floyd Greer, and Paul Sheppard, pitchers; and Bob Findley, catcher.

Promising rookies "Red" Hilliard, a pitcher, and Fred Agel, catcher, will perhaps come through with tremendous performances.

Opening with traditional Piedmont College, Oglethorpe edged the Mountaineers 3-2. Brennan sewed up the game in the eighth with a double following a pinch-hit double by Ronnie Sinkway and a single by Jerry Quinn. Pitcher Floyd Greer allowed only four hits.

The Petrels settle down after a shaky first inning in their second game to defeat the Florida State University Seminoles 7 to 5. The Seminoles tallied five times on four hits in the first, aided by three Petrel errors. After that, pitcher Ronnie Sinkway settled down and allowed only two hits. Oglethorpe again came back strong in the late innings, getting 4 runs in the seventh, and pushing 2 more across in the ninth to put the game on ice.



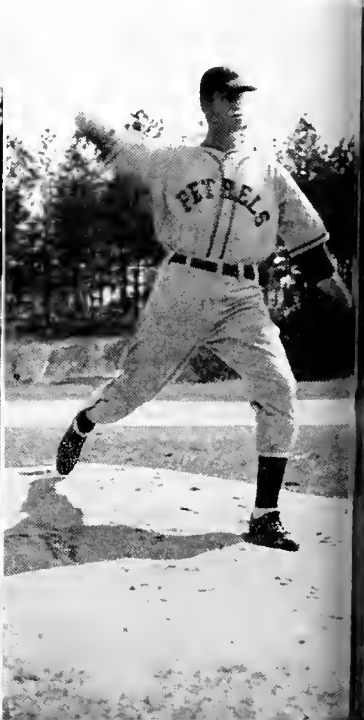
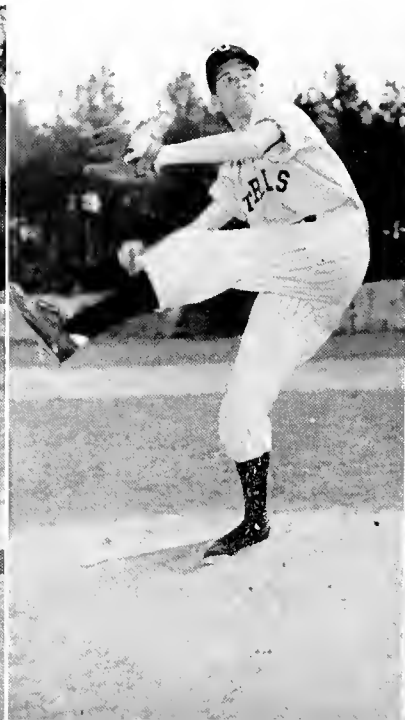
COACH BRENNAN

SINKWAY  
Pitcher

BRENNAN  
Second Base

GREER  
Pitcher-Right Field

SHEPPARD  
Pitcher-Right Field



SCHEDULE

(Fill in the scores)

<i>Oglethorpe</i>	<i>Team</i>	<i>Opponents</i>
3	Piedmont College	2
7	* Florida State College	5
	Erskine	
	* Mercer University	
	North Georgia	
	Berry College	
	Piedmont College	
	Presbyterian	
	North Georgia	
	Erskine	
	Presbyterian	
	Georgia	
	Georgia	
	* Florida State College	
	North Georgia	
	Berry College	
	North Georgia	
	* University of Tampa	
	* Mercer University	

\* Indicates Dixie Conference games

ELTING  
Manager

JOHNSON  
Outfield

CROWL  
First Base

HINSON  
Left Field

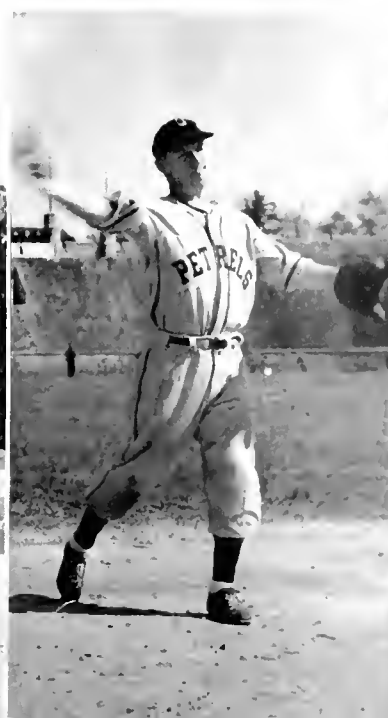
PROVATO  
Third Base

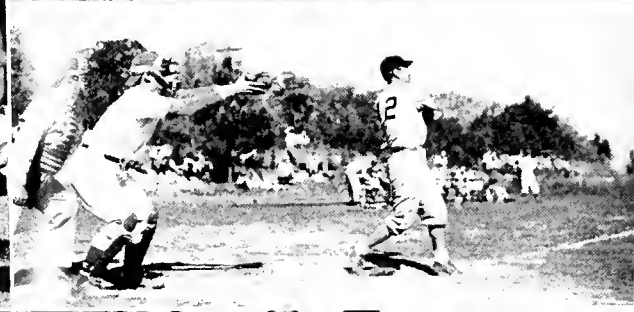
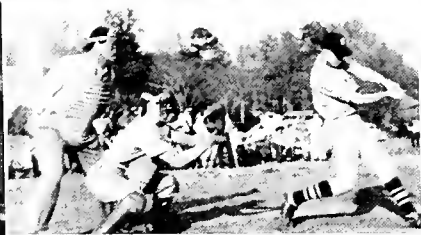
BAKER  
Center Field

HILLIARD  
Pitcher

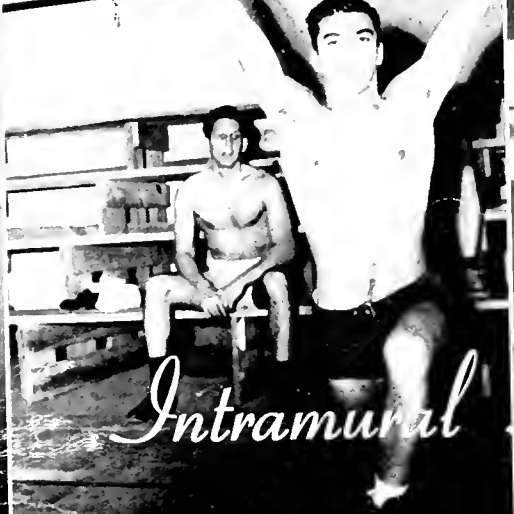
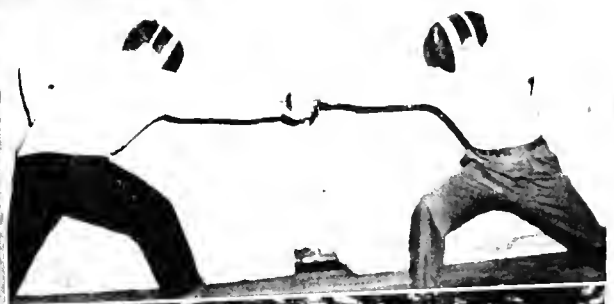
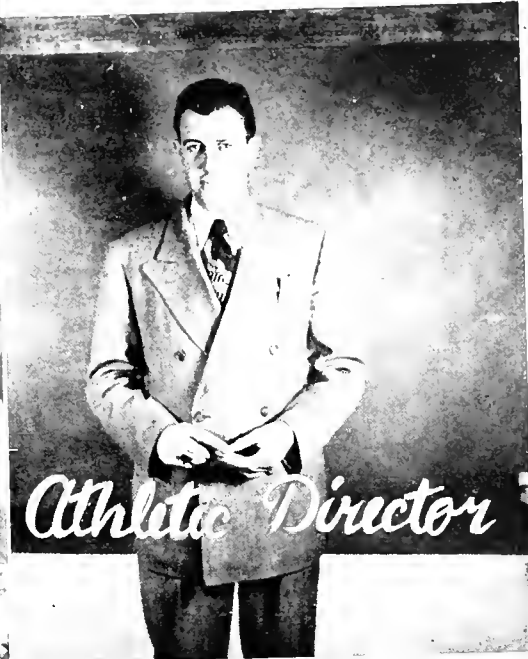
QUINN  
Shortstop

FINDLEY  
Catcher





# BASEBALL



*Intramural Sports*

# TRACK AND CROSS COUNTRY

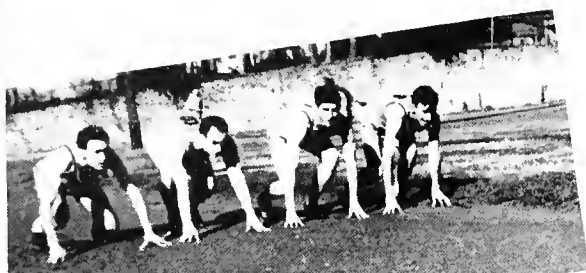
This year marks our first year in intercollegiate track competition in the Dixie Conference. Although the sport is rather new at Oglethorpe we feel sure that our team will represent us among the best in our class.

## TRACK SCHEDULE - 1949

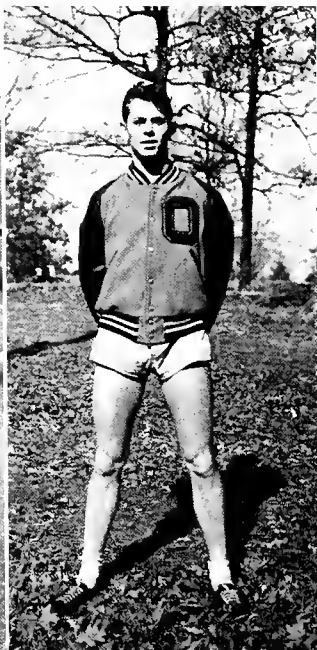
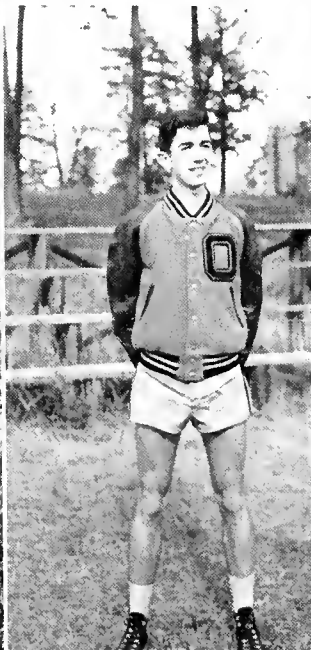
April 12 G.M.A.  
 April 16 Emory  
 April 23 Mercer  
 April 29 U. of Georgia Frosh  
 May 6 Tech Institute  
 May 20, 21 Dixie Conference meet at Macon

## CROSS COUNTRY SCHEDULE - 1949

Mercer  
 Sewanee  
 Georgia  
 Georgia Tech Frosh  
 G.M.A.



TANNER



BYNUM

MCWHORTER

COLBY  
 Captain

COOK

SPEIR

# TENNIS

Tennis at Oglethope is an up and coming sport as shown by the fine play of the team and the large crowds of students who turn out for the matches. Under the able leadership of Coaches Coulborn and Daugert the Petrels have taken on the heaviest schedule since the war.

## TENNIS SCHEDULE 1949

- April 2 Florida State
- April 8 Mercer
- April 12 Emory
- April 22 Gordon Military
- April 23 Mercer
- April 29 Gordon Military
- May 6 Florida State
- May 7 North Georgia
- May 11 Atlanta Federal Penitentiary
- May 17 North Georgia
- May 20, 21 Dixie Conference Tournament at Macon

JOHN SMITH  
*Captain*



BISHOP



CRIDER

STOLLER



DAUGERT  
*Coach*



J. E. P. SMITH

SCOTT



BACKUS

DARDEN



COULBORN  
*Coach*

# WOMEN'S ATHLETICS

Women's Athletics at Oglethorpe have been under the capable direction of Mrs. "Cuz" Lorenz for the past two years. Equipment and facilities for a well rounded women's athletic program have been expanded so that there is now available a choice of some twelve activities for Oglethorpe women (golf, swimming, horseback riding, softball, tumbling, volley ball, tennis, archery, horse shoes, ping pong, basketball, badminton and hiking).

The athletic program so far has been mostly on an intramural level, however, in basketball, softball and tennis Oglethorpe has entered intercollegiate teams who have well represented the university.

This year's basketball team entered the local YWCA league to gain a full schedule since most colleges in Georgia lack women's teams in intercollegiate competition. However, games were played with Piedmont College and the University of Georgia Atlanta Division.

## SCHEDULE FOR 1949

"Y" Blues	First National Bank
Grady	St. Joseph
Y.W.C.A.	A.G.W.A.
Pilots	Lorelei Ladies
Churches Home for Girls	Piedmont College
University of Georgia Atlanta Division	

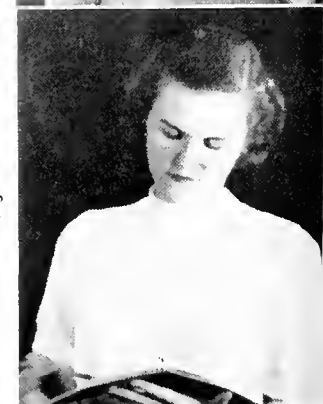
LORENZ  
*Couch*



STIEPHENS  
*Manager*



RICHARDS  
*Manager*



WALKER

WATSON

BLAU

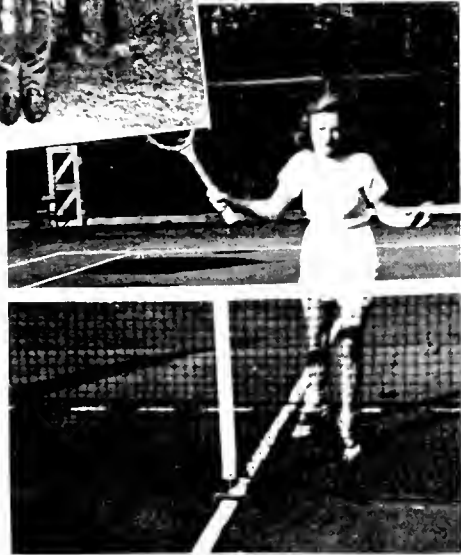
VIENNE

LORENZ

PICKENS







# INTRAMURALS

GORI

O'MALLEY

MILLER

HIMMER

SMITH

KNUDSEN



# CAMERA SHY

*Junior Class*  
MARTHA JO CRAVENS  
IRVING J. OENICK

*Sophomore Class*  
ANN TRUNIS  
THOMAS RONAN  
DELORES GRAHAM  
MARY POUTOS  
COLQUHILL JOINER  
BRONSTON CASS  
MARGARET HAUG  
MILDRED G. TOWNSON  
RAYMOND BURDICK

*Freshman Class*  
MYRON JOHNSON  
JULIANNE HARTRAMPF  
THOMAS HULL  
JULIUS A. HUGLENIN  
LOUIS A. ROSSWAG  
CARLA PRIGL

SAMUEL ZIMMERMAN  
JAMES HENDERSON

*Girls' Basketball*  
CARL DICKSON  
MARTHA MAYSON

*Sailing Club*  
TUD WALTER, *Admiral*  
JULIANNE HARTRAMPF

*Chapel Committee*  
ELIZABETH STEPHENS  
SHIRLEY THOMPSON (SECRETARY)

*Oglethorpe Players*  
JOE BROWN  
BETTY RAY OLDS  
SHIRLEY THOMPSON  
HARRY MARTIN  
MICKY BISHOP

*Chorus*  
DIANE HINSMER  
DORIS PICKENS

*Gun Club*  
DON MCNEIL

*Spanish Club*  
DAVID SMITH

*Business Club*  
COLQUHILL JOINER

*Track*  
JAMES HENDERSON

*Baseball*  
FRED AGUI

## SENIOR ACTIVITIES

EMMELETTE HARVEY ALBIA  
Graduate Atlanta Law School.

GRACE ALBERT  
Chorus '45 to '48; Dramatic Club '45, '46; Social Committee '46, '47; Secretary Junior Class; Duchess Club '48, '49; Secretary '49.

JACK F. R. ALBERTSON  
Boar's Head Fraternity '46 to '49; Secretary-Treasurer '46; Dramatic Club '46 to '49; Secretary-Treasurer '46; President '49; Stormy Petrel '47, '49; Editorial Editor '49; Chairman Graduation Committee.

EDGAR BODIFORD  
Chorus '45 to '48; Dramatic Club '45 to '49; Stormy Petrel '46 to '48.

ROBERT L. BOGGUS, JR.  
Constitution Committee '46; Student Council '46; Treasurer of Student Body '46; Blue Key Fraternity '47 to '49; Intramural Council '47, '48; Lord Oglethorpe '48; Boar's Head Fraternity '47 to '49; President Junior Class; Business Club '49; Stormy Petrel Business Manager '48, '49; YAMACRAW Associate Editor '49; Intramural Sports—Softball, football.

WILLIAM B. BONE, JR.  
Transfer University of Georgia Atlanta Division.

JACK BROOKS  
Stormy Petrel Assistant Editor '47, Editor '47.

JOSEPH EMERSON BROWN, JR.  
Social Committee '45, '46; Chorus '45, '46; Dramatic Club '45 to '47; Lord Oglethorpe '47; Boar's Head Fraternity '46 to '49; Blue Key Fraternity '47 to '49.

EDWARD LEWIS CHANDLER  
Stormy Petrel Art Editor '46; Treasurer Student Government '48; Boar's Head Fraternity President '48; Secretary-Treasurer '49; French Club '47, '48; Social Committee '47, '48; YAMACRAW Art Editor '48; Who's Who '48; Dra-

matic Club '47 to '49; Blue Key Fraternity President '48; Secretary-Treasurer '49; Vice President Student Government '49.

JOEL WARREN CHANDLER  
Stormy Petrel '47, '48; Feature Editor '48; Lord Oglethorpe Court '48, '49; Social Committee '48, '49; Public Relations Committee '48, '49; Business Club President '49; Treasurer Senior Class; Intramural Sports—Softball.

WILLIAM E. CHEVES  
Transfer Georgia Tech; Folklore Club Vice President '47, '48; Business Club '49.

WALLY R. CRIDER  
Basketball Assistant Manager '46, '47; Stormy Petrel Sports Editor '46 to '48; Tennis Team '46 to '49; Business Club '49; Intramural Sports—Softball; Campus Correspondent for Journal and Constitution '46, '47.

HAROLD E. DORSEN  
Transfer Georgia Tech; Business Club '49; Chairman Anti-Communist League '48, '49.

GORDON RICHARD DUNAGAN  
Baseball Team '48; Intramural Sports—Football Softball; Business Club '49; Intramural Council '48, '49; Member of "O" Club '48, '49.

ELMER HENRY ETLING, JR.  
Stormy Petrel '46 to '49; Business Manager '48; Business Club '49; Intramural Sports, Football, Fencing, Softball; Baseball Manager '49; Public Relations Committee '47, '48; Blue Key Fraternity '48, '49.

ROBERT JONES FINDLEY  
Transfer Auburn; Basketball '47 to '49; Baseball '48, '49; Track '48, '49; Intramural Sports, Football; "O" Club '48, '49.

**DAVID POYTHRESS HEINER**

Stormy Petrel '47; Treasurer of Junior Class '48; Blue Key Fraternity '47 to '49; Alumni Secretary '49; YAMCRAW Literary Editor '49; Boar's Head Fraternity '48, '49; International Relations Club President '46 to '49.

**JAMES HARRY HINSON, JR.**

Basketball '47 to '49; Baseball '47 to '49; Cross County '46; Boar's Head Fraternity '49; "O" Club '47 to '49; Chorus Master of Ceremonies '48.

**WILLIAM R. HOLLEY**

Chorus '46, '47; Stormy Petrel '46, '47, '49; Dramatic Club '46 to '49, President '47; Chapel Committee '46 to '49; Blue Key Fraternity '47 to '49; Corresponding Secretary '47; Edward J. Link Award '48; Boar's Head Fraternity '46 to '49; Corresponding Secretary '47; YAMCRAW Assistant Literary Editor '49.

**JAMES HOLIDAY**

Secretary-Treasurer of Sophomore Class; Vice President of Senior Class; LeConte Society '48, '49; Lord Oglethorpe '49; Intramural Council '47, '48.

**MARJORIE McCLUNG HOLIDAY**

Lady Oglethorpe Court '48; Lady Oglethorpe '49.

**JOYCE SELMA HOVIS**

Transfer Mercer; Lady Oglethorpe Court '49; Wife of the proud title holder "the Ugliest Man at Oglethorpe."

**WILLIAM KENT HOVIS**

Transfer Auburn; Intramural Sports—Softball, Football; Designed Oglethorpe Decal '48; Lord Oglethorpe Court '49.

**EUGENE W. IYV**

Stormy Petrel Business Manager '48, '49; Business Club Vice President '49; Boar's Head Fraternity '49; Intramural Sports—Football, Softball; Blue Key Fraternity '49; Boar's Head Fraternity '48, '49.

**WILLIAM R. KELLY, JR.**

Stormy Petrel '47; Business Club '49.

**JOHN PETER KNUDSEN**

Transfer Georgia Tech; Stormy Petrel '49; Boar's Head Fraternity '49; LeConte Society '49; Intramural Sports—Softball, Volleyball.

**HENRY LANHAM**

Stormy Petrel '45, '46; YAMCRAW Business Manager '48, '49; Business Club '49.

**NAI WEN CHOU IHI**

Transfer University Shanghai; International Relations Club '49.

**BEN LORENZ**

Basketball '46 to '49, Captain '49; Intramural Sports; "O" Club '46 to '49.

**BETTY LORENZ**

Chapel Committee '46; Stormy Petrel Circulation Manager '46; Basketball '47 to '49; Operator of Petrel Stables '47 to '49; Intramural Sports—Volleyball.

**WESLEY JOSEPH MARTIN**

Business Club '49; Consistently ran for four years for title of "The Ugliest Man at Oglethorpe" but never succeeded.

**ANNE BALLARD MASON**

Fashion Show '47; Stormy Petrel '47 to '49; Feature Editor '48; Duchess Club '49; YAMCRAW Assistant Organizational Editor '49.

**STEPHEN CLIFFBERT MAY**

Chorus '45, '46; Men's Free Press; Boar's Head Fraternity '46 to '49; Vice President '47; Corresponding Secretary '49; Basketball '47, '48; "O" Club '47, '48; LeConte Society '48, '49; Intramural Sports—Basketball; Blue Key Fraternity '47 to '49; Vice President '47; Corresponding Secretary '49.

**BETTY RAE OLDS**

Lady Oglethorpe '46; Folk Lore Club '47, '48; Secretary '47; Dramatic Club '47; Duchess Club '48, '49; Vice President '49; Business Club Secretary '49.

**FARE C. O'SHELD**

Transfer University of Alabama; Com Club Chairman '49; Business Club Treasurer '49; Student Council Representative '49.

**DORIS MARIE PICKENS**

Duchess Club '47 to '49; Basketball '47 to '49; Chorus '46 to '49; Dramatic Club '46.

**JOHN ROBERTSON SMITH**

Tennis '46 to '49, Captain '47, '48; French Club '47; Intramural Sports—Softball, Ping Pong Champ '48, '49; "O" Club '46 to '49.

**WALLACE SMITH**

Basketball '47 to '49; "O" Club '48, '49; Tennis '48; Owner of Petrel Shop '48, '49; Intramural Sports—Football, Volleyball.

**JUDSON G. SPARKING**

Lord Oglethorpe Court '49; Chapel Committee '49; Social Committee '48, '49; Chairman '49.

**RENA ELLYNN STEINBERG**

Chorus '46 to '48; Dramatic Club '46, '49; Business Club '47, '49.

**ELIZABETH STEPHENS**

Transfer University of Georgia Atlanta Division; Folklore Club '48; Student Council Secretary '48, '49; Chorus '48, '49; Senior Class Secretary; YAMCRAW '49; Stormy Petrel '49; Chapel Committee '49; Lady Oglethorpe Court '49; Basketball Manager '49.

**RICHARD HOFFMAN STOTLER**

Business Club '49; Stormy Petrel '46, '48; Feature Editor; Tennis '49; Intramural Sports—Softball.

**MARVIN MOCKBEE THOMPSON**

Art Club '46; Sophomore Class Treasurer; YAMCRAW '49; Stormy Petrel News Editor '49; Spanish Club '48, '49; Director '49; Dramatic Club '49.

**SHIRLEY SANDERS THOMPSON**

Chorus '45 to '47; Dramatic Club '45 to '48; Stormy Petrel '45 to '47; Business Manager '47; Duchess Club '47 to '49; President; Chapel Committee '48, '49; Secretary '49; Lady Oglethorpe Court '49.

**PAUL WILLIAM VAUGHN, JR.**

Transfer North Georgia College; Owner of the most progressive peach orchard in Georgia; artist and only student in Oglethorpe who attended before P.W.

**EDWARD FRANKLIN WATTS, JR.**

Folk Lore Club '48; Stormy Petrel '48, '49; Intramural Sports—Football.

# YANKEE EXPRESS



The End



# WAGSTAFF MOTOR COMPANY, INC.

881 to 901 SPRING ST. — Corner 8th • ATwood 2751

**DESOTO** AND **PLYMOUTH**

ONE OF THE SOUTH'S NEWEST AND MOST MODERN  
AUTOMOBILE ESTABLISHMENTS

Complete Service for Your Automobile —  
BUMPER TO BUMPER

*Wholesalers for Chrysler Corporation engineered MO-PAR Parts and Accessories*

• Our Station Wagon will take you to your office and bring you back



**D. E. PINKARD**

GARMENT CLEANERS

Cleaning. Pressing. Repairing. Dyeing

*"Where the Charm of Newness is Restored"*

Plant and Office (Buckhead)  
3112 Peachtree Rd. Phone Ch. 2137

**W B G E** 1340 KC.

**W B G E — F M** 95.5 MC.

ATLANTA

*Compliments of*

**Davis Service Station**

*"Good Gulf Gas"*

3145 P'tree Rd. N. E. Ch. 6544

*Compliments of*

**Northside  
Building and Loan  
Association**

3102 Roswell Road (Buckhead)  
ATLANTA, GEORGIA

# BEAUDRY

Established 1916



*Atlanta's Oldest Dealer*

*BETTER SERVICE IS OUR SPECIALTY*

Day and Night

*Service and Parts*  
150 CARNEGIE WAY

*Main Office*  
143 CONE ST.

*Truck Division*  
355 LUCKIE ST.

CYPRESS 3424

# GOLD SHIELD



# LAUNDRIES

**American Laundry**  
**Capital City - Trio Laundry**  
**Decatur Laundry**  
**Excelsior Laundry**  
**Guthman Laundry**  
**May's - Troy Laundry**  
**Piedmont Laundry**  
**Marietta Laundry**

*There Is No Substitute For Quality*

*Compliments*

*of*

**LEE'S MEN'S SHOP**

Buckhead

*Fine Dress Fabrics*

*McCall Patterns — Sewing Notions*

**Walter J. Penny, Inc.**

In Buckhead

Theater Block

CH. 4061

*Compliments*

**THE PLANTATION**

*Good Food - - - Curb Service*

1985 Buford Highway

AT. 9380

*FOR SURPRISE PARTIES . . . .*

*Get the Cakes*

*That Vincent Bakes*

**VINCENT'S  
BAKE SHOP**

3141 Peachtree Road

*Sales*



*Service*

*"Better Buy From BURKE*

*At Buckhead"*

**BURKE MOTOR CO.**

3167 PEACHTREE ROAD

Exchange 1551

**PRESTON ROSE  
COMPANY**

*Commercial Printers*

111 Tenth Street, N. E.

Atlanta, Ga.

VE. 2585

**ROSE BOWL  
DINING ROOM**

(Air-Conditioned)

FINEST FOOD IN BUCKHEAD

3166 Peachtree Road

*Compliments*

*of*

**VOCALIS INC.**

79 Forsyth Street, N. W.

JAMES C. VOCALIC

Class of '43



*Compliments  
of*

**Independent  
Towel and Linen  
Service**

511 Elm Street, N. W.  
Atlanta, Ga. LA. 0562

*Compliments  
of*

**STEWART & GREENE  
PRODUCE CO.**

57-58 Ga. State Market  
Atlanta, Ga. RA. 2103

Telephone Cherokee 6701

**BROOKHAVEN  
PHARMACY**

*Colbert & Weathersby*

4003 Peachtree Road Brookhaven, Ga.

**HOPPE'S  
DELICATESSEN**

Monday—Saturday  
10:00 A.M.—9:00 P.M.

Sunday  
12:00 M.—8:00 P.M.

Atlanta, Ga. CH. 9461  
3139 PEACHTREE ROAD

**ABRAHAM'S  
DELICATESSEN**

*FOR THE BEST VARIETY  
OF FOOD*

2833 Peachtree Road

*Compliments  
of*

**CHOP HOUSE**

Buckhead

*Compliments  
of a*

**FRIEND**

Save 20% on Diamonds  
See Lawrence Holzman

AT

**GEORGIA DIAMOND  
MERCHANTS**

301 Healey Building

**PERSHING  
HOTEL**

1428 Peachtree Street  
AT. 8621

**COLONIAL TERRACE  
HOTEL**

2140 Peachtree Road  
HE. 5700

*CADILLAC  
OLDSMOBILE*

**CAPITAL AUTOMOBILE CO.**

*ELWYN TOMLINSON, President*

*Compliments*

*of*

**SOL I. GOLDEN**

Class of '23

PEST CONTROL

and

***Bonded***

TERMITE CONTROL

Bonded by Massachusetts Bonding  
and Ins. Co.



SINCE 1901

591 Peachtree St., N. E.

**HE. 4321**

*Compliments*

*of a*

**FRIEND**

*Compliments*

*of the*

**FACULTY & STAFF**

*of*

**OGLETHORPE UNIVERSITY**

*COMPLIMENTS*

*OF A*

**FRIEND**

**THE VARSITY**

*Fresh Food - - - Curb Service*

ATLANTA

ATHENS

*Compliments  
of*

**DIXIE WHOLESALE  
COMPANY**

*Serving  
Institutions for many years*

980 Marietta Street

HE. 3787-8-9

**NORTON'S STUDIOS**

*"PHOTOGRAPHS OF DISTINCTION"*

122 CLAIRMONT AVENUE

DECATUR, GEORGIA

DE. 5858

**HARRY SOMMERS**

CHRYSLER -- PLYMOUTH

*Since 1925*

*Sommer's best . . . .*

*. . . . but cost no more*

SPRING STREET AT HUNNICUT

Telephone CY. 4611

*COMPLIMENTS*

*OF*

•

*Olds*

ICE CREAM COMPANY

•

325 CAPITOL AVENUE, S. W.

ATLANTA, GA.

*Compliments  
of a*

**Business Friend**

and

**Neighbor**

*Compliments  
of*

**THE ECONOMY  
DRUG CO.**

**FLOWERLAND  
FLORIST,  
Inc.**

2775 Peachtree Road

CHerokee 1168

Atlanta, Ga.

*Compliments  
of*

**CRISWELL BAKING  
COMPANY**

*Bakers of*

PIES, BREAD & CAKE

ATLANTA

GEORGIA

*Compliments  
of*

**TWELVE OAKS**

*Dining Room - Curb Service*

1879 Piedmont Road, N. E.

VE. 9355

*Monogrammed Stationery —  
Engraved Invitations For Any Occasion*

**J. P. STEVENS  
Engraving Company**

110 Peachtree Street, Atlanta, Ga.

*Visit Our Gift Department  
for Unusual Items*

**BRUCE TERMINIX  
COMPANY**



1101 Spring St., N. W.

VE. 7746

**ATLANTA GROCERY  
COMPANY**

148 Piedmont Avenue

ATLANTA

WA. 9980

**W. E. BROWNE DECORATING CO.**

443 Peachtree Street, N. E.

ATLANTA, GEORGIA

INTERIORS — ANTIQUES — REPRODUCTIONS

**NORTHSIDE PHARMACY, INC.**

*Welcomes the fine students of Oglethorpe  
to refresh with us*

3465 Peachtree Rd., N. E. CH. 4476 Atlanta, Georgia



*Compliments of*

**WriteRight**

*School Supplies*  
ATLANTA, GA.



*Compliments*

*of*

**Lawrence D. Cook Insurance Agency, Inc.**

609 Henry Grady Building

ATLANTA

GEORGIA

*Compliments*

*of*

**M. C. BISHOP**

**ETHERIDGE AND VANNEMAN**

*REALTY DEVELOPERS*

**GEORGIAN VILLAGE  
CORPORATION**

*BUILDING CONSTRUCTION*

*Across the Street from Oglethorpe University*

4411 PEACHTREE ROAD  
CH. 0261

CANDLER BUILDING  
CY. 1526

ATLANTA, GEORGIA

**J.N. HIRSCH**  
*Established 1899*  
**CIGARS**

144 Marietta St., N. W. Atlanta 1, Ga.  
CYPRESS 7461

ADMIRATION  
ANTONIO & CLEOPATRA  
LA CORONA  
EL TRELLES  
EL PRODUCTO  
GARCLA GRANDE  
JOHN RUSKIN  
FLOR DE MELBA  
MURIEL  
OPTIMO  
WEBSTER

- ★ BELL & HOWELL
- ★ EASTMAN KODAK
- ★ DU PONT
- ★ CASTLE

*. . . . Only a few of the  
Great Names available at*

**BATES CAMERA SHOP**

283 East Paces Ferry Road, N. E.  
Buckhead CH. 1291

- ★ One-Day Photo Finishing Service
- ★ Cameras and Supplies
- ★ Hallmark Greeting Cards

*Remember . . . .*

*It's Bates for the Best*

*School Supplies*

*Art Supplies*

**MILTON BRADLEY  
COMPANY**

384 Forrest Avenue, N. E.

ATLANTA, GEORGIA

*Games - Novelties - Toys*



*Compliments  
of*

**GOULDMAN-TABER  
PONTIAC,  
INC.**

*Your Down Town  
PONTIAC  
Dealer*

161 Ivy Street, N.E. Atlanta, Georgia  
Entrance Corner Cain and Ivy Sts.  
Phone CYPRESS 7366

*Compliments  
of*

**A L U M N I**

Mr. William H. Faver '48	Mr. Edgar Vallette '43
Miss Julia Mitchell '45	Mrs. Ruth Sanders '37
Mr. Frank M. Inman, Jr.	Mr. and Mrs. John Kelly '47
Mrs. George C. Ransom '47	Mr. John Goldthwait '44
Mr. E. B. Penn '44	Mrs. Betty Goldthwait '41

*Compliments  
of*

**LEON FROHSIN**

*You will enjoy dining where friends meet  
and eat in an atmosphere  
of brotherhood and fellowship  
at*

**SMITH'S  
RESTAURANT**

In  
Buckhead

**NORTH SIDE  
LAUNDRY**

*And Cleaners*

271 East Paces Ferry Road  
CH. 2133  
BUCKHEAD

*Compliments  
of*

**HAVERTY  
FURNITURE CO.**

*Distributors*  
"SNOW CROP" and "DEWKIST"  
*Frozen Fruits and Vegetables*

**AMERICAN  
SERVICE COMPANY**

878 Memorial Drive, S. E.  
Atlanta, Ga.

*For the Best  
In Dairy Products  
Be Sure to Choose*  
**Minnie Quarts**

MILK  
ICE CREAM - COTTAGE CHEESE

**IRVINDALE FARMS**

*Congratulations and Best Wishes to the Class of 1919*

**NORTH ATLANTA REALTY COMPANY**

*Insurance of all kinds*  
"THE HARTFORD LINE"

WELDON SHOWS, *President*  
LOUIS DETTELBACH, *Vice-President*  
ROLAND NEESON, *Legal Advisor*



**YOUR ONLY REAL SECURITY . . .**

**A HOME OF YOUR OWN**



***Buy or Build a Home Now***

**HOME BUILDERS ASSOCIATION**

**Volunteer Bldg. OF ATLANTA WA. 1366**

EDITOR'S NOTE:

To those who served so well though not members of the YAMACRAW staff:

Getting together material for the YAMACRAW wasn't nearly as hard as securing the money to pay for it. You will never know how much the YAMACRAW Staff appreciates your help in selling ads.

We hope that after you have seen this book, you will feel that your time and effort were well spent.

DOUGLAS COOK  
CHARLES HOLLINGSWORTH  
MITCHELL BISHOP  
STEVE MAY  
ED CHANDLER  
HERBERT LESLIE  
WALTER SLACK  
STUART HERMAN  
PAT COMMUNALE  
ED BRYSON  
JUDD SPARLING  
BILL BONE  
DON McNEIL  
RAY GEBHARDT

BERT ROBINSON  
WALLY SMITH  
GEORGE SCOTT  
SANDY COLBY  
RONALD COLBY  
HAROLD MCKAY  
BOB OWEN  
RONALD DUNN  
EARL O'SHIELDS  
SAM HIRSCH  
Bill Rhodes  
Bob Boggus  
*Editors*

*Going on a trip?  
Take a boat,  
take a plane, take a  
bus . . . but by  
all means, take  
along a cotton  
wardrobe from . . .*



**THE  
YAMACRAW  
STAFF**

*Expresses its deep gratitude  
for the invaluable assistance  
from*

MISS MARGARET NORRIS  
*in making this publication  
possible.*

*Compliments of*

**CRESENT MARKET**

3055 Peachtree Rd.

*COMPLIMENTS*

*OF*

THE PEOPLES BANK

58 MARIETTA ST., N. W.

ATLANTA

*Member of the Federal Deposit Insurance Corporation*

*Compliments*

*of a*

**FRIEND**

*Enjoy*

**Zesto**

*It's Good*

ZESTO PRODUCTS

1695 Peachtree Road

WATCH FOR THE LOVABLE-GIRL-OF-THE-MONTH

IN ALL YOUR LEADING FASHION MAGAZINES

**Lovable Brassiere Co.**

ATLANTA

COMPLIMENTS OF

**NuGrape**

**Soda**

740 FORREST RD. N. E.

ATLANTA





**FOOTE & DAVIES, INC.**  
ATLANTA

*Creators and Producers of  
Distinctive Annuals*

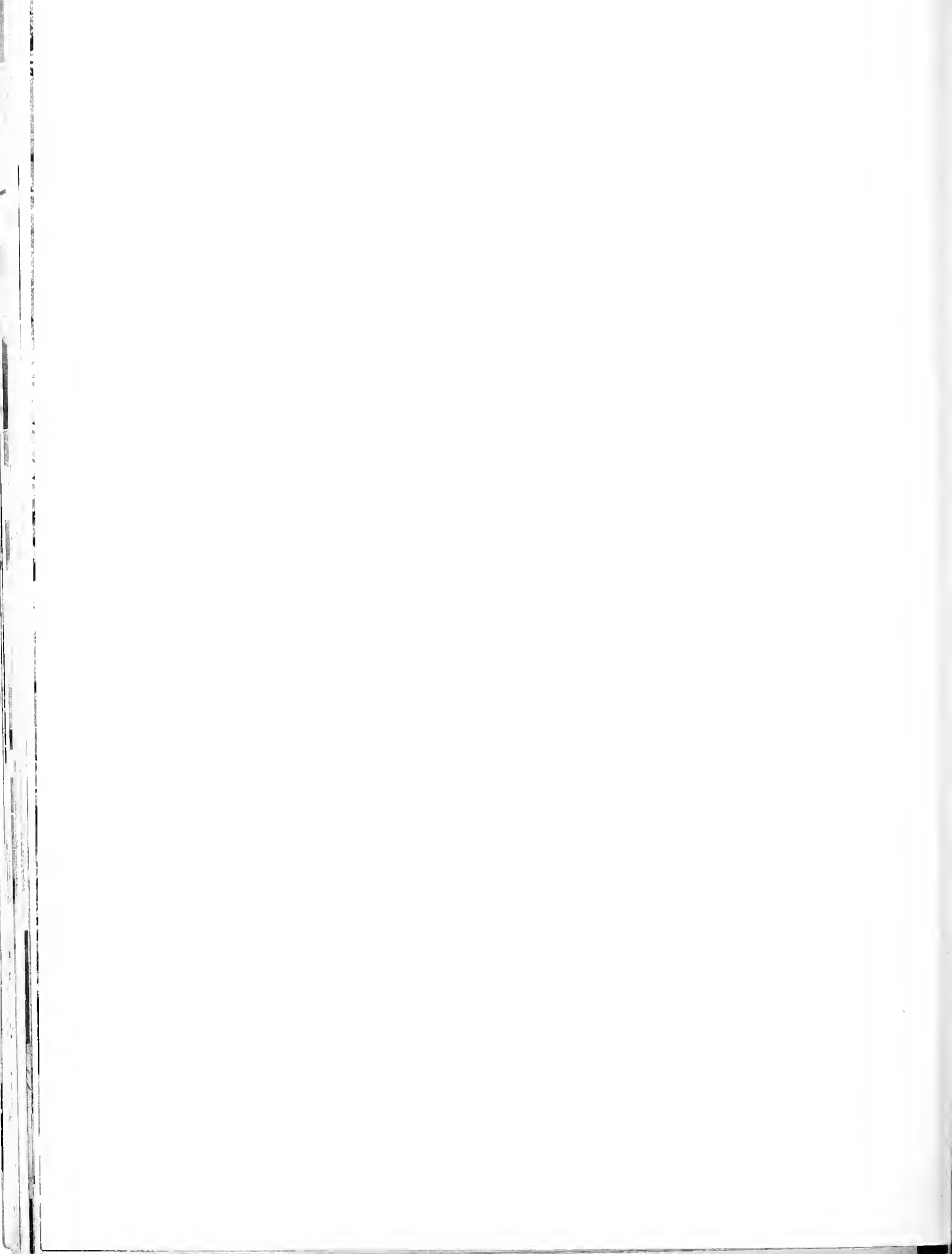
FOR OVER 60 YEARS

A black and white photograph of a classical building with a large archway and a walkway lined with trees. The building features a prominent archway on the right side, supported by a column. The walkway is lined with trees and a fence. The overall scene is a well-maintained campus or park area.

# BEAUTY

IN SCHOOL  
ANNUALS









*Beautiful homes and home sites  
along the trails of Atlanta's future.*

ETHERIDGE & VANNEMAN REAL ESTATE

Peachtree Road at Oglethorpe

PHOTO  
BY PARSIFAL COBB



