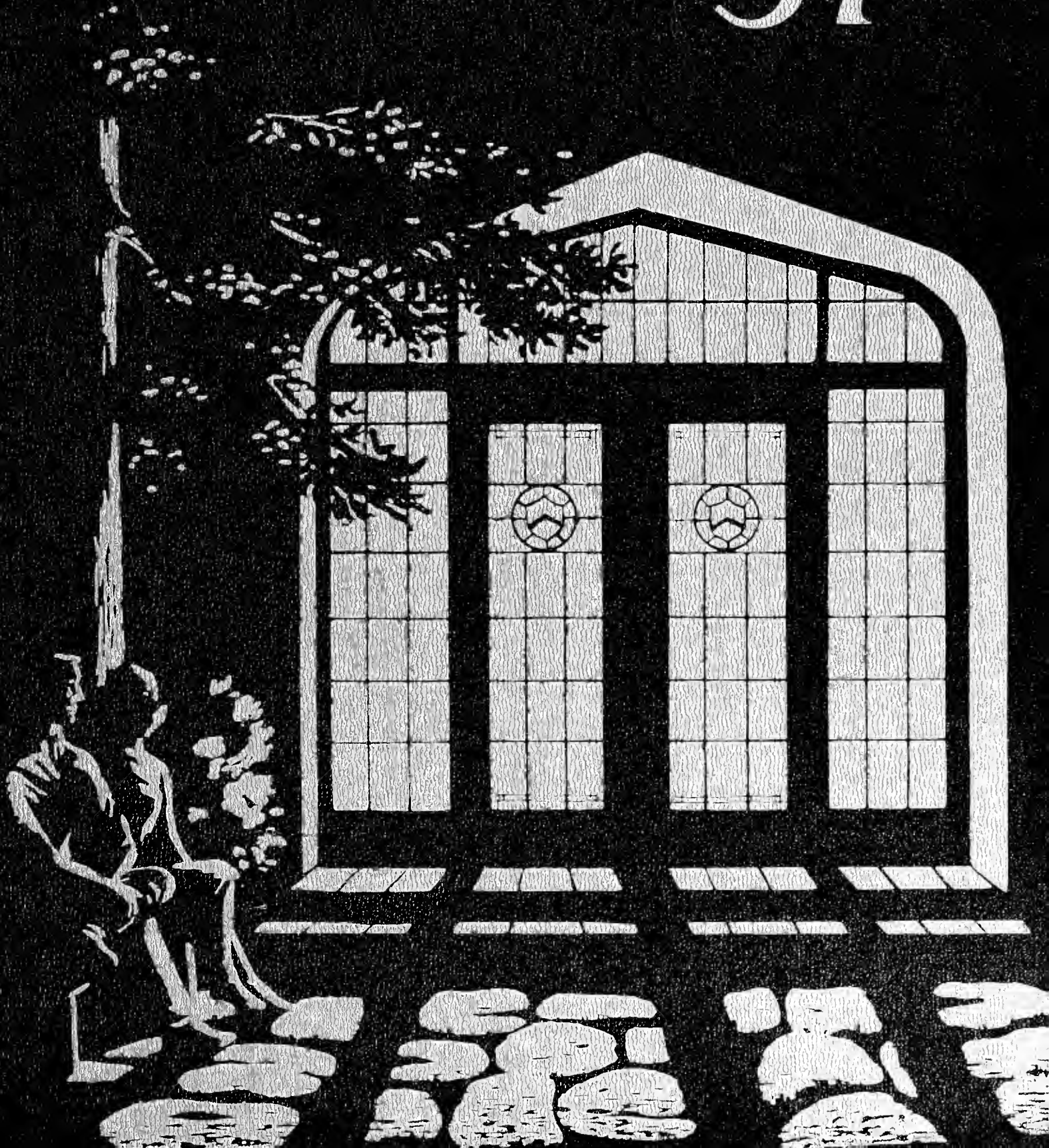


YAMACRAW '57



W. R. Coulborn,

9 June, 1957.

Digitized by the Internet Archive
in 2010 with funding from
Lyrasis Members and Sloan Foundation

<http://www.archive.org/details/yamacraw195726ogle>



1957

YAMACRAW

OGLETHORPE UNIVERSITY

ATLANTA, GEORGIA

ellen kinsey, editor

DEDICATION

to the student

We sit in the sun and dream of a future that will be brighter because of Oglethorpe.

The dorm is a great part of our college life . . . "our" room is something special . . . where we study, write home and find that extra bit of security . . .



Where companionship is the warmest.





We sing with our voices, and we sing with our faces, which often reflect the song in our hearts

The lighter moments

The seriousness of our effort is reflected by the long hours of study





The mood comes with the extra cup of coffee . . .



The show must go on, come high water, that "other" thing, or tomorrow's quiz



Another mood . . .



We eat . . . we converse . . . we think . . . but mostly we eat



Parties and dances give us the change-of-pace that gives balance to our college life



The dancing is often slow, with that smooth beat that sets a mood . . .



But just as often we swing it, with a beat.



Our hope for the future can be seen in faces that reflect the vitality of youth, the energy of our generation, and its strong conviction for a good tomorrow. We accept the responsibility before us with confidence and humility; and we are grateful for the education that will make our tomorrow richer in understanding, richer in accomplishment, and richer in service. "To live is to learn, to learn is to know, and to know is to live."





ACTIVITIES





New and old acquaintances enjoy dancing

The Get-Acquainted Party

At the Get-Acquainted Party, the first event of the year, Freshmen and new students were introduced to the social life of Oglethorpe University. Music was provided by Charlie Smith and his boys. The dance was co-sponsored by the Social Committee and the Student Council.



Dennis performs his juggling act

Nancy, Bob and Barbara get acquainted



Ellen hands out the brooms for the broom dance





The chow line



Returning students at the Barbeque

The Barbeque

The Barbeque is traditional at Oglethorpe University. Each year the students and their parents, along with the faculty, are invited to attend. The function of the Barbeque is to familiarize the students and their families with the Oglethorpe campus, the students, and the faculty.



Everyone enjoys the meal



George serves barbecue to Eddie and Lee

Mrs. Coulborn is introduced to Oglethorpe life





Rat Week

Upon the head of each freshman, be they male or female, a cap of unmistakable identification is placed. And before him lies the week to be remembered above all others. Just to make him feel at home on the Oglethorpe campus the "Rat" goes through Rat Week by experiencing from the funniest to the wildest degradations. He must "hop, skip, and jump" at the slightest beckoning of an honorable upperclassman. Despite tired bones and weary muscles, he manages to come through, but definitely not alone, for the lasting friendships made are countless.

As one "Rat" who made it through the trials said—

"The chairs of highest glory—
held by upperclassmen;
The sentences of utter gory—
given by upperclassmen;
Combine to make a friendship
offered by upperclassmen."







The Capping Ceremony

The Senior Capping Ceremony, held in October, marks the beginning of that "final year"; designates the Seniors, and this year introduced Oglethorpe's new President, Donald R. Wilson. Though the actual capping is enhanced by formality it still clings to the individuality Oglethorpe proposes. The President's stressing point man's understanding of his fellow-man only furthers the goals sought by the University.

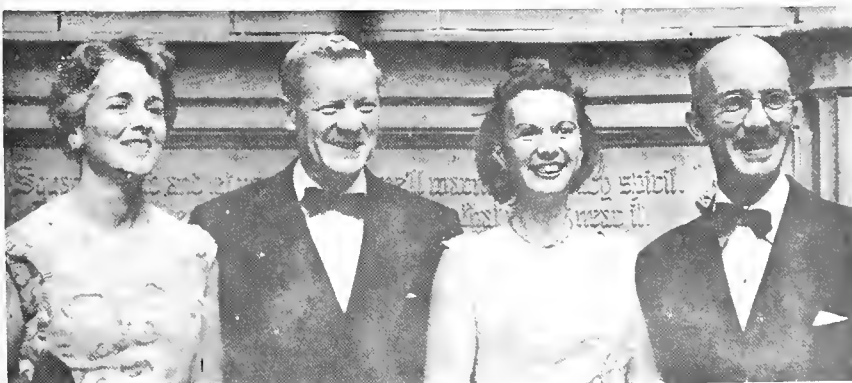
Bob Oliver, President of the Class of 1957, is capped by Dr. George C. Seward, Dean of the University





The President's Reception

In honor of President and Mrs. Wilson and the new members of the faculty and the administrative staff, a reception was given in Phoebe Hearst's Great Hall. This was held following the Capping Ceremony, and served as a rather informal introduction for all "new faces."





Indian chief John Harms and clown Dennis Michael

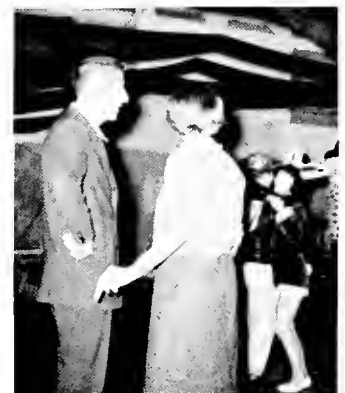


The Masquerade Party

The Masquerade Party on October twenty-sixth turned out to be a re-enactment of Custer's Last Stand, for the Indians proved victorious over the vanquished whiteman. In a contest to choose the most original costumes John Harms and Sandy Carter, dressed as an Indian chieftain and his squaw, defeated all opponents, including cowboys, ghosts, and Romans.

A juggling act by Dennis Michael enhanced the atmosphere of the Masquerade Party which contributed to the Halloween spirit on Oglethorpe campus.

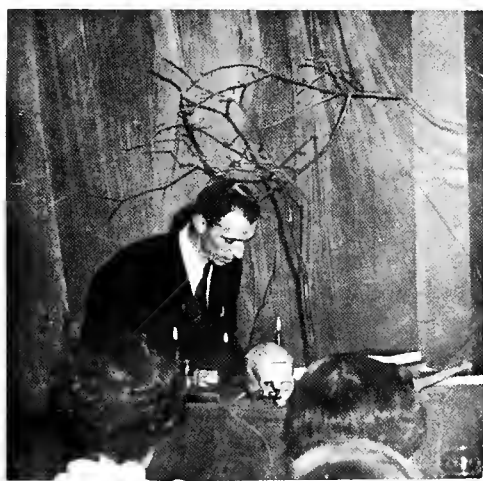
Oh goodie . . .





The Ghost Story Readings

To add to the Halloween spirit the Ghost Story Readings were cleverly and weirdly handled by members of the Arts Club. The readings were definitely declared an eerie success as expressions of shock and horror were witnessed by those more stable students.



Dr. Stanley Daugert reading



The Freshman Hayride

Hay, harmony, and hotdogs kept the spirits high at the traditional Freshman Hayride which was threatened by rain and cold weather. The destination was a picnic area at Austell, Georgia, where the frostbitten hayriders toasted marshmallows, hotdogs, with fingers and toes.



"Where are you?"



Guaranteed, untouched by human hands

The Sadie Hawkins' Day Dance



Sadie Hawkins' Day provides those of the supposed weaker sex with the opportunity to openly pursue the objects of their affections—MEN. To accommodate the female students of Oglethorpe University, a Sadie Hawkins Dance was held in the game room on November sixteenth.

Entertainment, other than the cat and mouse chase, included the triumphant marriage ceremony of Daisy Mae and Li'l Abner, performed by the "Reverend" Dr. Hodges.

"I now pronounce you . . ."

Daisy Mae and her catch





The Christmas Formal

Always a favorite among school functions is the Christmas Formal. This year was no different, as the Christmas spirit was really evident at the Biltmore Ball Room. The music of Arnold Hyde provided the atmosphere, and the students supplied the fun.



The Boar's Head Ceremony



The traditional Boar's Head Ceremony, annually held at Christmas-tide, was the occasion for the initiation of new members of the Boar's Head Honorary Fraternity for 1956-1957. The title of the Fraternity is taken from the coat of arms of Oglethorpe University, the Boar's Head being a prominent part of the escutcheon.

The ceremony included the presentation of the new Boar's Head members, singing by the choral group and Ila Varelmann, and other musical performances by members of the faculty and faculty wives.



The Freshmen Sin Den



Troubles, we've got troubles; we've got stacks and stacks of troubles



Dancing to the rhythm of the jukebox

"What's behind the Green Door?" This question was fired at the Freshman Class officers for an entire week preceding the Freshman Sin Den. Amid the atmosphere of a cellar tavern, Oglethorpe students poured out what troubles they had to a bartender, danced, and enjoyed a skit presented by the Literary Society wherein the queen of that "notorious" group was crowned.



Annie, Queen of the Literary Society



The Sin Den

Mountain music, full skirts, straw hats, and apple cider—the atmosphere for a good ole country hoe-down. Even well-rounded Oglethorpe students came to the square dance, do-se-do and prominaded.

In between the square dances, soft lights and sweet music gave the dancers a chance to cool off and catch their breath for the next round of swinging partners.

THE SENIOR SQUARE DANCE



Swing your partner.





The Victory . . .



The Dance.

VICTORY DANCE

The Petrels were honored the night of their win over Valdosta State by a jubilant crowd at a Victory Dance given by the Humanities Student Association.

LORD AND LADY OGLETHORPE BALL

The Lord and Lady Oglethorpe Ball was held in the Pompeian Room at the Biltmore Hotel.

Friday, February 14 was the day the Student Body made their selection of Lord and Lady Oglethorpe and their court.

That night the results of the election were made known as the Processional started and the Lord and Lady were crowned.



Lord and Lady Oglethorpe, Jim Magee and Ellen Kinsey.



Jim Milton, Charles Gipson, Bill Davis, Page Barbara Ramsden, Page Francine Klein, Jim Magee, President Charlie Smith, Ellen Kinsey, Page Sandy Davis, Page Sandy Carter, Lois Weems, Nancy Denton. Not Pictured: Court Member Marie Therrell.



STUNT NIGHT



The Literary Society.



The Girls' Dorm.

Stunt Night is sponsored by the Student Council in conjunction with the Yamacraw staff. Skits were presented by various groups and organizations on campus. The purpose of Stunt Night is to raise funds for the yearbook. The Student Council had the winning skit.

Bob and Sandy.



THE PLAYS

"Angel Street" was the smashing success of the season. The outstanding performance of the entire cast showed a remarkable sensitivity and understanding of the characters portrayed.

The comedy of "Blithe Spirit," in direct contrast with the melodrama of "Angel Street," indicated the versatility of the ability of the Players.



Kitty and Mac Willis



Barbara Ramsden and Dean Dobson.



Leading Man Paul Metzger and Leading Lady Kitty Kincaid.

BLACK AND WHITE FORMAL

On April 5 the Freshman Class proved once again that they know how to give a "real party." The dance was held at Robinson's Tropical Gardens with the largest turn out of any previous Black and White Formal. "Congratulations" to the Freshman Class.



A good time was had by all.



U. M. O. C. CONTEST

Through Alpha Phi Omega's stunt to raise money for campus improvement, Alan Moore was elected the Ugliest Man on Campus.



Our ugly man "Pizon the Peon."



Pat and Pua getting ready for the big day.

CLEAN UP DAY AND OPEN HOUSE

May 4—All dorms and buildings were open for inspection by the public in the Student Council sponsored Open House. On the preceding day, students turned out to give the campus a final face-lifting.



Candidate for President, Ted Bayley.



Candidate for Treasurer, Tom Deacon.

STUDENT COUNCIL ELECTIONS AND AWARD NIGHT

The election of Student Council officers is perhaps the most exciting part of the year to many of us. Everyone has a favorite candidate for which to campaign. The campus is changed for a week preceding elections by posters, bulletins, and motorcades.

Award Night is the night of elections. At this time various students are recognized for accomplishment in athletics, organizations, and studies. The culmination of Award Night is the installation of the new Student Council.



Charlie Smith, presiding at award night.

SPRING FORMAL

The Spring Formal was held in the Main Ball Room of the Biltmore Hotel the Friday night before Graduation.

The banquet, in honor of the Seniors, was followed by the final and most wonderful dance of the year.



Anxious Ina is ready for Frank.



Patient Alan signs Ina out.



We made it!

GRADUATION

FACULTY AND ADMINISTRATION





DONALD RANDOLPH WILSON
President

"We must forever be mindful that education, in order to be true to itself, must be a progressive experience for the learner, in which interest gives rise to inquiry, inquiry is pursued to mastery, and mastery at one point occasions interest at others. The cycle is never closed, but is a spiral which always returns upon itself at some higher level of insight. Growth in everything which is human must remain the dominant objective for the individual and for Society."

The Oglethorpe Book



GEORGE C. SEWARD, *Dean of the College*

Administration



MARJORIE MAC CONNELL
Registrar



DAN UFFNER
Assistant to the President



HARRY DOBSON
Resident Counselor for Men



CAROL TUCKER, Bursar



RUTH LOVELL, Cashier



ILA M. BOATWRIGHT, Dietitian



SARA REID, Nurse



DELLA PIERCE, Dietitian



ROY GOSLIN
Director of Admissions



JANIS REYES, Librarian



BERNICE HILLIARD
Resident Counselor for Women



JENNIE BUFORD GARDNER
B.A. Southwestern, Memphis, Tenn.
M.A. University of Illinois

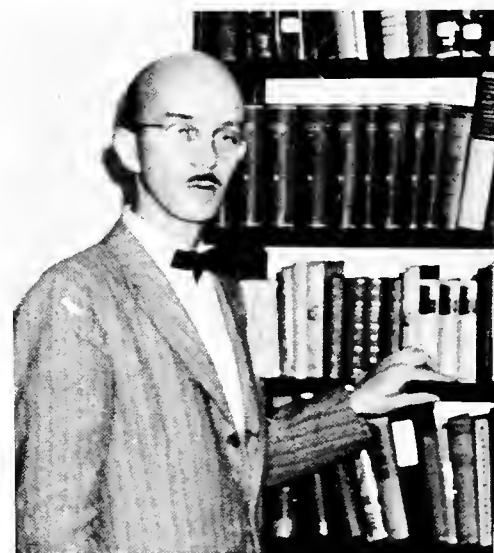


GEORGE MARION O'DONNELL
B.A., M.A. Vanderbilt

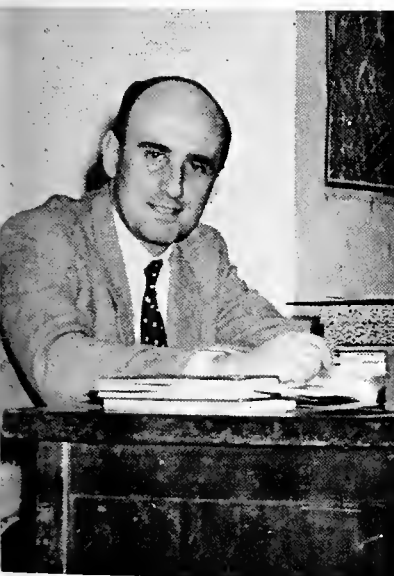


STANLEY M. DAUGERT
B.A., M.A., Ph.D. Columbia
University

Human Understanding



GEORGE C. SEWARD
B.A. Amherst; Ph.D. Tübingen



AUTHUR BIELER
B.A. New York University
M.A. Middlebury
Docteur del' Universite Paris



LUCILE B. AGNEW
B.A. Furman; M.A. Duke



WENDELL H. BROWN
B.S. Puget Sound
M.A. Columbia University

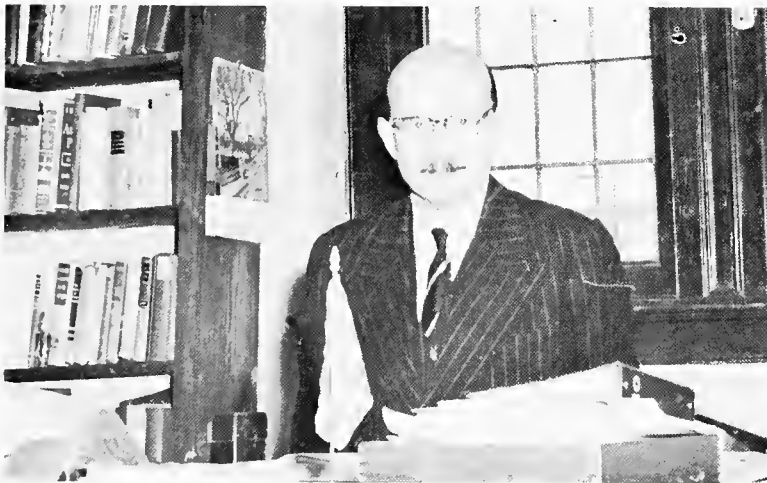
Citizenship



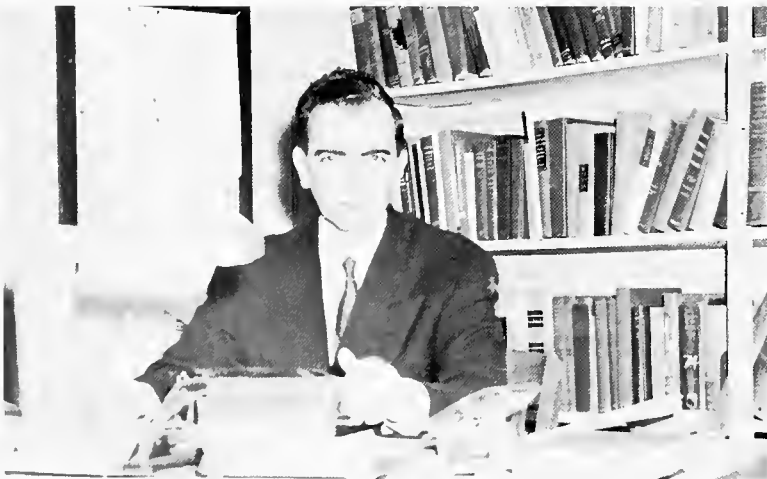
MARTIN L. ABBOTT
B.A. Presbyterian College
M.A., Ph.D. Emory



MAY S. RINGOLD
B.A. Mississippi State College for Women
M.A. University of Mississippi
Ph.D. Emory



W. A. L. COULBORN
B.Sc., MEB University of London



A. CHEEVER CRESSY, JR.
B.A. Tufts
M.A., Ph.D. Fletcher School of Law & Diplomacy



ROBERT A. SHANLEY
B.A., M.A. Columbia University
Ph.D. Georgetown

Science



ROY N. GOSLIN
B.A. Nebraska Wesleyan
M.A. Wyoming



WALTER STRICKS
Chem.E., Ph.D., Vienna



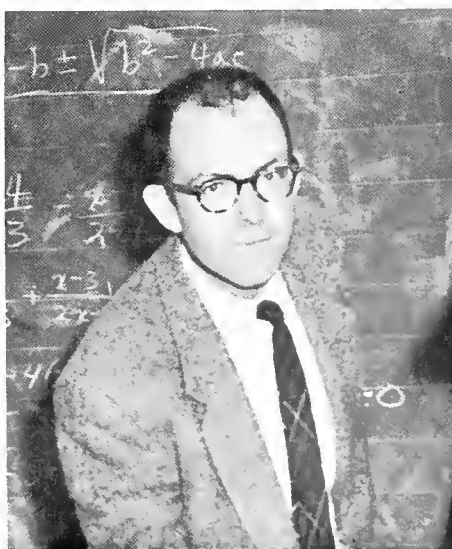
BERNICE R. HILLIARD
B.A., M.Ed. Oglethorpe University



J. KENNEDY HODGES
B.A. Wofford; M.A. Duke
Ph.D. North Carolina



GEORGE F. WHEELER
B.A. Ohio State
M.S. California Institute of
Technology



LANE HARDY
B.S. Oglethorpe University



LOIS WILLIAMSON
B.A., M.A. Oglethorpe University



PHILIP WELTNER
B.A. University of Georgia
LL.B. Columbia University
LL.D. Oglethorpe University



WILLIAM A. EGERTON
University of Tennessee Law School



RANDOLPH HAYES
B.A., LL.B. Emory

Business and Fine Arts



HARRY DOBSON
Institute of Musical Arts, N. Y.
Study—Berlin, Fontainebleau, London



JAMES R. MILES
B.A., B.S., University of Alabama
M.B.A. Ohio State



RICHARD VALENTE
B.A., M.A. Harvard



GARLAND F. PINHOLSTER
B.S. North Georgia College
M.A. Peabody



L. CROW
B.A. Nebraska

Community Service



NELL WINN MCGLOTHLIN
B.S. Georgia Teachers College
M.A. University of Georgia



BEN A. BOHNHORST
B.A. U.C.L.A.
M.Ed., Ed.D. Harvard



RICHARD M. RESER
B.A. King College; M.A. Peabody
Ph.D. University of North Carolina



CHARLIE SMITH, *President*

Student

Student Government, popularly called the Student Council, consists of five Executive Officers and the Class Presidents. It represents and promotes the interest and activity of the Student Body in campus affairs.

The "constitutional" functions are the introduction of legislation and the preparation of the Student Activity Budget. After hearing recommendations, the Council appoints the chairmen of the Honor Court, Honor Committee, Social Committee, Public Relations Committee, Chapel Committee; the president of the Players; and the editors of the Literary Magazine, *The Stormy Petrel*, and the *Yamacraw*.



JIM MAGEE, *Vice President*

Government

In recognition of a primary responsibility to the new student, the Council provides the "O" Book, campus orientation, and co-sponsors the annual Get Acquainted Party.

It assists in the planning of Rat Week, and sponsors Clean Up Day, Open House, Award Night, Book Day, Stunt Night, and Student Government Elections.

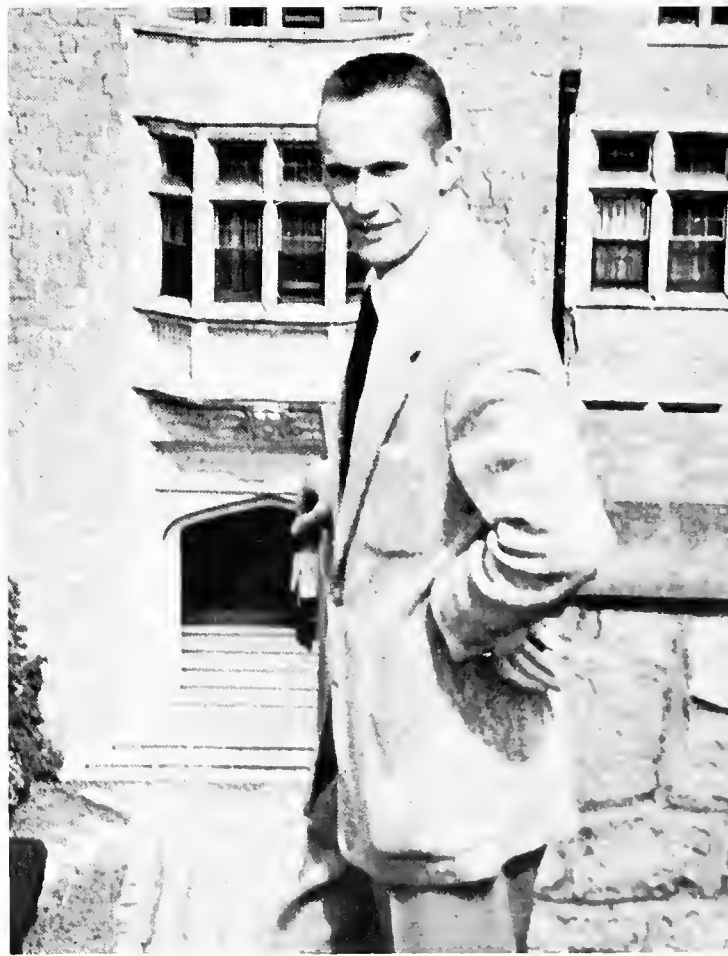
The Council endeavors to assist the faculty, administration, and campus organizations in meeting student needs through its contribution to the Advisory and Interactivity Committees. Participation in civic and inter-collegiate meetings enables the Student Council to represent the wider interests of the University.



PEGGY COMPTON, *Secretary*



ELLEN KINSEY, *Parliamentarian*



BOB WALTERS, *Treasurer*

CLASSES





FRANCES SHEDD, *Parliamentarian*; CHARLES GIPSON, *Treasurer*; BILLY CAMP, *Vice President*; NANCY DENTON, *Secretary*;
BOB OLIVER, *President*

SENIOR CLASS

"A Search is the thing He hath taught you, for Height, and for Depth, and for Wideness." These words have followed the Senior the four years he has come; for his looking into himself, into his friends, into his school, and into his world has been this "search." The Seniors began the year by the annual capping ceremony, sponsored the Square Dance, but even amid the rush of the rings and the confusion of invitations, time was taken to leave a gift of remembrance to the school.



JOE ACCARDI



BONNIE ANDERSON



GEORGE ARGER

ACCARDI, JOSEPH JAMES
Atlanta, Ga.
A.B.

Entered from University of Houston, '57.

ANDERSON, BONNIE
Atlanta, Ga.
A.B.

Entered from Kansas University, '56.

ARGER GEORGE
Portsmouth, Va.
B.A.

Circle K '55, '56, '57—President '57; Interactivity Committee '57; Student Faculty Council '56, '57; LeConte Society '55, '56, '57.

BENSON, JANIS
Atlanta, Ga.
A.B.

Entered from University of Texas, '56.

BETHEA, CHARLES
Atlanta, Ga.
A.B.

Entered from Georgia South Western, '56.
Manager of Basketball Team '57.

CAMP, BILLY POWELL
Atlanta, Ga.
B.A.

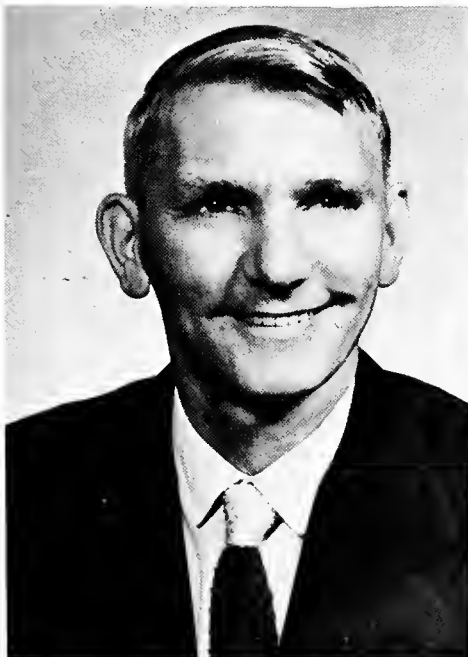
Entered from Atlanta Division, University of Georgia, '55. Vice President, Senior Class '57; Senior Invitation Committee '57; Senior Party Committee '57; Intramural Basketball '56, '57; Intramural Volleyball '57; LeConte Society '56, '57—Treasurer '57; Boar's Head '57.

CLOW, ROBERT LOUIS GODFREY
Atlanta, Ga.
B.A.

Honor Court '56; Circle K '57.



JANIS BENSON



CHARLES BETHEA



WILLIAM CAMP



BOB CLOW



FRANCES CREEKMORE



WILLIAM DAVIS



NANCY DENTON



LEW DE ROSE

CREEKMORE, LULA FRANCES
South Norfolk, Va.
B.A.

Entered from Atlanta Christian College, '56. Chorus '56, '57; Boar's Head Ceremony '56, '57.

DAVIS, WILLIAM BAKER
Atlanta, Ga.
B.A.

Entered from Alabama Polytechnic Institute, '55. Stormy Petrel '57; Public Relations Committee '57; Circle K '57; Variety Show '57; Toastmasters Club '57; Literary Magazine '57; Intramural Volleyball '57; Wrestling Team '57; Court of Lord and Lady Oglethorpe '57.

DENTON, NANCY ELIZABETH
Dallas, Ga.
B.A.

Entered from West Georgia College, '54. Humanities Student Association '56, '57; Secretary of Junior Class '56; Secretary of Senior Class, '57; High Priestess, Rat Court '57; Senior Invitation Committee '57; Intramural Tennis '57; Intramural Volleyball '57; Basketball '55, '56; Court of Lord and Lady Oglethorpe '57.

DEROSE, LEWIS BENEDICT
Balwin Place, New York
B.S.

Yamacraw '56, '57; Student Council, Treas-

urer '53; Honor Court '52; Interactivity Committee '57; Players '52, '53, '56, '57; Vice President of Junior Class '53; Baptist Student Union '57; LeConte Society '52, '53, '56, '57—Vice President '53; Blue Key Fraternity '53, '56, '57—Vice President '57; Boar's Head '53, '56, '57—President '57; Boar's Head Award '52.

DUFFEY, FRIEDA
Atlanta, Ga.
A.B.

Entered from Georgia State College of Business Administration.

DUPUY, JOHN LOUIS
Elizabeth, N. J.
B.S.

Players, Stage Manager, '55, '56, '57; Arts Club '56, '57; LeConte Society '54, '55, '56, '57—President '55; Boar's Head '57; Boar's Head Freshman Award '54; Who's Who in American Colleges and Universities '57.

EASON, RICHARD BRANTON
Conyers, Ga.
B.A.

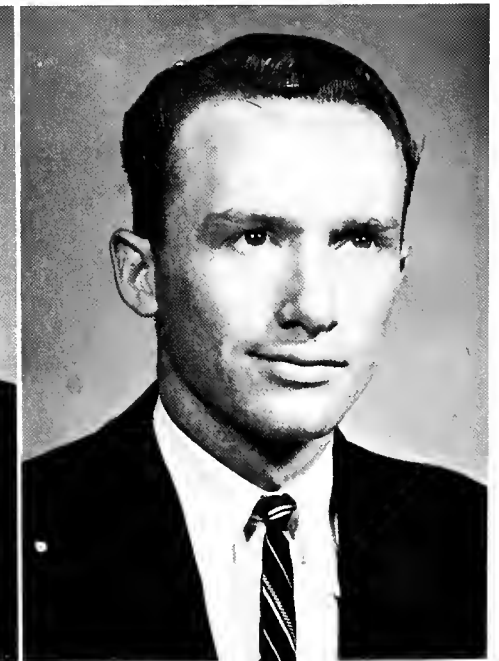
Yamacraw '56, '57; Circle K '54, '55, '56, '57; Blue Key Fraternity '56, '57; Stormy Petrel, Business Manager '54; Senior Social Committee Chairman '57; Wrestling Team '57; Baseball '54, '55, '56; Parker Law Award '54; Honor Committee '57.



FRIEDA DUFFEY



JOHN DUPUY



BRANTON EASON



SAM EDLEMAN



MARIANNE EPSTEIN



MARTIN ETHERIDGE

EDLEMAN, SAMUEL WARREN, JR.
Savannah, Ga.

B.A.

Arts Club '54; Canterbury Club '54, '55, '56, '57—Treasurer and Vice President '55, Vice President and President '56, President '57; Circle K '55, '56, '57; Stormy Petrel '55, '56, '57, News Editor '56, Editor '57; Blue Key '56, '57; President '57; Yamacraw '56; Senior Ring Committee '56; Honor Court, Chairman '57; Interactivity Committee '57; Donation Committee, Senior Class '57; Student Faculty Advisory Committee '56; Student Council, Treasurer '56; All Intramural Teams '54; Cross Country '54, '55; Baseball '54; Assistant Manager of Basketball Team '54, '55; Official Scorer '57; Basketball '56; Tennis '55, '56, '57; Intramural Director '55; David Hesse Award '56; Who's Who in American Colleges and Universities '57.

EPSTEIN, MARIANNE FAULK
Atlanta, Ga.

B.S.

Entered from Malwida von Meysenbug School, Kassel, Germany, '55. Duchess Club '57; LeConte Society '57.

ETHERIDGE, MARTIN C.
Milledgeville, Ga.

B.A.

Entered from Atlanta Christian College, '56.

FERRELL, CLAUDE
Atlanta, Ga.

A.B.

Entered from Georgia State College, '56.

FISHER, DAVID G.
Atlanta, Ga.

B.A.

Entered from Georgia State College, '56. Ghost Story Readings '56; Literary Magazine '57; Senior Invitation Committee '57; Blue Key Fraternity '57.

FREE, EDWIN
Atlanta, Ga.

B.A.

Entered from Atlanta Division, University of Georgia, '55. Honor Committee '57.

FREEMAN, CHRISTINA RICE
Atlanta, Ga.

B.A.

Entered from University of Georgia, '56.



CLAUDE FERRELL



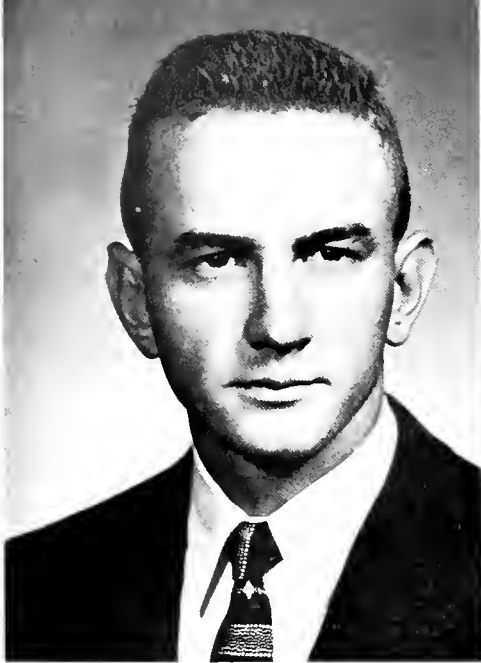
DAVID FISHER



ED FREE



CHRISTINE FREEMAN



CHARLES GIPSON



HARRY GREENE



PEGGY GUILLEBEAU



CARLA HANCOCK

GIPSON, CHARLES RAY
Philadelphia, Miss.
B.A.

Entered from Millsaps College, '55. Humanities Student Association '56, '57—President '56, Treasurer '57; Chapel Committee '56, '57—Chairman '57; Methodist Student Movement '56—Publicity Chairman '56; Westminster Fellowship '57; Circle K '57; Alpha Phi Omega '57—Treasurer '57; Honor Court '57; Interactivity Committee '57; Senior Class Treasurer '57; Intramural Football '56, '57; Intramural Basketball '56, '57; Intramural Volleyball '57; Bear's Head '57; Court of Lord and Lady Oglethorpe '57; Who's Who in American Colleges and Universities '57.

GREENE, HARRY
Atlanta, Ga.
A.B.

Entered from St. Andrew's, '53.
Tennis Manager '55.

GUILLEBEAU, PEGGY
Atlanta, Ga.
A.B.

Entered from Georgia State College.

HANCOCK, CARLA
Atlanta, Ga.
A.B.

Entered from Georgia State College. Duchess Club '55, '57; Stormy Petrel '56; Yamacraw '56.

HAWKINS, DAVID JACKSON, JR.
Atlanta, Ga.
B.A.

LeConte Fraternity '55, '56, '57; Boar's Head '56, '57—President '57.

HERSMAN, MARY JOHNSTON
Richmond, Virginia
B.A.

Entered '56.

HIATT, MARCIA
Atlanta, Ga.
A.B.



JACK HAWKINS



MARY HERSMAN



MARCIA HIATT



JOE HILBERT



GORDON HILES



SARAH HOPKINS

HILBERT, JOE B.
Atlanta, Ga.
B.S.
LeConte Society '55, '56, '57.

HILES, GORDON, JR.
Atlanta, Ga.
B.A.
Entered from Georgia Tech, '55. Canterbury Club '56—President '56; Honor Court '56; Law Award '56.

HOPKINS, SARAH SIMS
Atlanta, Ga.
A.B.

HOPPER, CAROLYN
Atlanta, Ga.
A.B.
Public Relations '55, '56—Chairman '56.

HOPPER, TOMMY WESLEY
Atlanta, Ga.
B.A.
Baptist Student Union '54, '55, '56—Vice

President '54, '55, President '56; Chorus '54, '55; M. C. for Stunt Night '55, '56, '57; Humanics Student Association '56, '57—Vice President '56; Freshman Class Social Committee '54; Sophomore Class Social Committee '55; President Junior Class '56; Student Council '56; Chairman Senior Ring Committee '56; Student Faculty Committee '56; B Team Basketball '55; Intramural Basketball '55, '56; Blue Key '56, '57—Secretary '57.

HOUSE, EVELYN
Atlanta, Ga.
A.B.

Entered from Georgia State College, '56.

HURST, JAMES
Atlanta, Ga.
A.B.

Entered from Savannah Division of the University of Georgia.



CAROLYN HOPPER



TOMMY HOPPER



EVELYN HOUSE



JAMES HURST



TOMMIE JONES



ELLEN KINSEY



ROLAND LEE

JONES, TOMMIE HODGES
Atlanta, Ga.

B.S.
Entered from Georgia State College for Women, '56. Honor Court, Summer of '56.

KINSEY, ELLEN MARIE
Atlanta, Ga.

B.A.
Westminster Fellowship '54, '55, '56, '57—Secretary '55, President '56; Social Committee '55, '56, '57; Public Relations Committee '57; Faculty Council '56; Humanities Student Association '56, '57—Secretary '56; Interactivity Committee '57; Yamacraw '56, '57—Editor '57; Senior Ring Committee '56; Freshman Class Party Committee '54; Sophomore Class Party Committee '55; Treasurer of Sophomore Class '55; Student Council '56, '57—Secretary '56, Parliamentarian '57; Cheerleader '57; Duchess Club '56, '57; Lady Oglethorpe '57; Who's Who in American Colleges and Universities '57.

LEE, ROLAND VIRGIL
Atlanta, Ga.

B.A.
Entered from Georgia State College '56. Humanities Student Association '57.

MAGEE, JAMES ALEXANDER
Atlanta, Ga.

B.A.
Entered from Alabama Polytechnic Institute '55. Student Faculty Council '56; Circle K '57; Stormy Petrel '56, '57—Sports Editor '57; Humanities Student Association '56, '57—Vice President '56, President '57; Interactivity Committee '57; Alpha Phi Omega '57; West-

minster Fellowship '56, '57; Social Committee '57; Varsity Baseball '56; Varsity Basketball '57; Intramural Basketball '56; Boar's Head '57; Blue Key '57; Lord Oglethorpe '57.

MILTON, JAMES PAUL
Atlanta, Ga.

B.A.
Entered from Georgia Tech '55. Literary Magazine '57; Business Manager '57; Stormy Petrel '57; Yamacraw '57; Westminster Fellowship '57; Toastmaster Club '57—President '57; Intramural Director '57; Intramural Football '56, '57; Intramural Basketball '56, '57; Intramural Tennis '57; Intramural Volleyball '57; Wrestling Team '57; Tennis Team '57; Blue Key '57; Court of Lord and Lady Oglethorpe '57.

NORTON, JOHN WILLIAM
Atlanta, Ga.

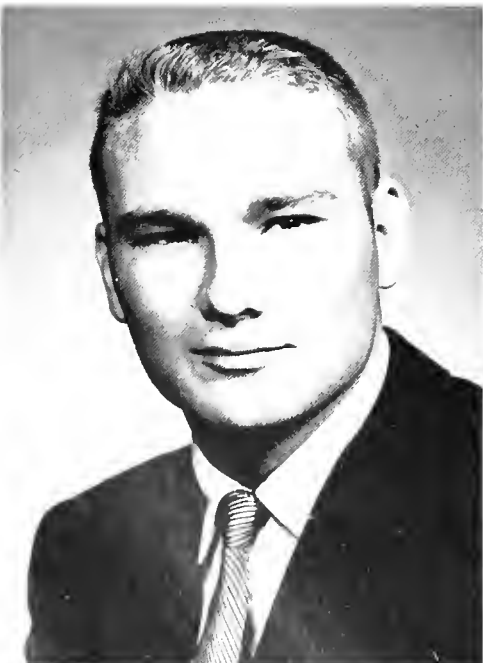
A.B.
Entered from Georgia State College '56. Intramural Football '56.

OLIVER, ROBERT BOYD
Atlanta, Ga.

B.A.
Entered from University of Georgia '55. Honor Court '57; Student Council '57; President Senior Class '57; Student Interactivity Committee '57; Senior Ring Committee '57; Student-Faculty Advisory Committee '57; Golf Team '57; Sports Publicity Director '57; Boar's Head '57; Blue Key '57; Who's Who in American Colleges and Universities '57.



JIM MAGEE



JAMES MILTON



JOHN NORTON



ROBERT OLIVER



PAUL RAGSDALE



HAROLD ROLAND



FRANCES SHEDD

RAGSDALE, CALTON PAUL

Atlanta, Ga.

B.A.

Entered from Georgia State College '56.

ROLAND, HAROLD EUGENE, JR.

Atlanta, Ga.

B.A.

Entered from University of Georgia '56.
Humanics Student Association '56, '57.

SHEDD, FRANCES G.

College Park, Ga.

A.B.

Entered from Georgia State College '55.
Stormy Petrel '56, '57—Assistant Editor
'56, '57; Literary Magazine '56, '57—Editor
'57; Arts Club '56, '57; Canterbury
Club '55, '56, '57—Treasurer '56, President
'57; Players '56, '57; Parliamentarian Senior
Class '57; Interactivity Committee '56,
'57; Duchess Club '56, '57—Vice President
'57.

SMITH WILLIAM CHARLES

Hapeville, Ga.

A.B.

Social Committee '53, '56; Honor Court
'53, '54; Honor Committee '54, '55; Play-
ers '54, '55; Circle K '56, '57; Freshman
Class Party Committee '54; Interactivity
Committee '57; Sophomore Class Party
Committee '55; Student Council—President
'57; Cross Country Team '54; Blue Key
'56, '57; Who's Who in American Colleges
and Universities '57.

SMITH, JOSEPH

Newnan, Ga.

B.S.

Entered from Southern Georgia '56.

SMOLEN, PHYLLIS

Atlanta, Ga.

A.B.

Entered from University of Cincinnati '56.



CHARLES SMITH



JOE SMITH



PHYLLIS SMOLEN



MARGIE STANFIELD



KAREN STEPHENSON

STANFIELD, MARGIE

East Point, Ga.

A.B.

Entered from Georgia State College '56.

STEPHENSON, KAREN KEITH

Atlanta, Ga.

B.S.

Entered from Georgia State College '56.

STANFORD, JOHN

Decatur, Ga.

B.S.

Entered from Georgia State College '56.

SULEIMAN, DAVE

Atlanta, Ga.

A.B.

Entered from Tennessee Temple College '55.

SWEET, DOROTHY

Columbus, Ohio

A.B.

Entered from Ohio State '55.



JOHN STANFORD



DAVE SULEIMAN



DOROTHY SWEET



JEFF TARRER



MARIE THERRELL



PEARL TODD

TARRER, JEFF
Decatur, Ga.
B.S.
Entered from Georgia State College '56.
Yamacraw '57.

THERRELL, MARIE
Columbus, Ga.
A.B.
Lord and Lady Oglethorpe Court '57.

TODD, PEARL
Atlanta, Ga.
A.B.
Entered from Georgia State College '56.

WEEMS, LOIS ASKEW
Dover Plains, New York
A.B.
Stormy Petrel '54, '55—News Editor '55;
Cheerleader '54, '55; Social Committee '54,
'55, '56, '57—Chairman '56; Executive
Member of Student Loan Fund '56, '57;
Interactivity Committee '57; Senior Class
Social Committee '57; President of Girls'
Dormitory '57; Honor Committee '57—
Chairman '57; Duchess Club '56, '57—
President '57; Duchess Club Award '54;
Junior Class Treasurer '56; Court of Lord
and Lady Oglethorpe '57; Who's Who in
American Colleges and Universities '57.

WOOD, CAROLE MACKOOL
Atlanta, Ga.
B.S.
Entered from Alabama Polytechnic Insti-
tute '56.



LOIS WEEMS



CAROLE WOOD

Not Pictured:
HAVA BITAN, ROBERT HAWKINS,
ED McDADE, CARL ROPER, EVA WILLIAMS,
VASHTI WOODRUFF



RAYMOND WEBB, *President*; JIMMIE CLOWER, *Vice President*; ANN KLEIN, *Secretary*; CATHERINE LEONARD, *Parliamentarian*; TED BAYLEY, *Treasurer*

JUNIOR CLASS

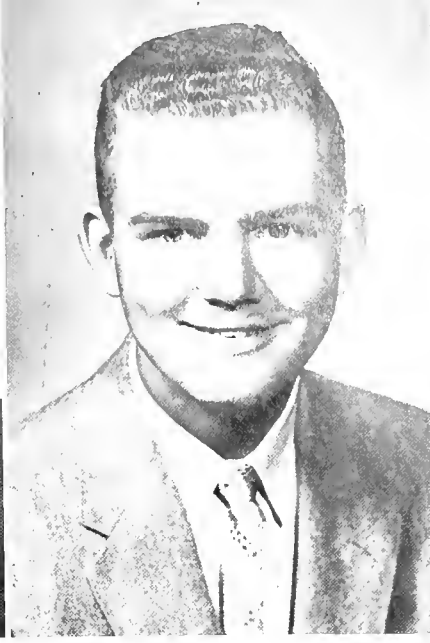
Two years behind them, and graduation in the very near future, the Junior Classman realizes that he cannot limit himself to looking into his school and his friends around him, but must also look into the world as a whole. With the Senior year in mind, the Junior Class decided to buy their rings early this year. Funds were also allotted for one-half page in the Yamacraw.



PAT BAKER



HOWARD BARBER



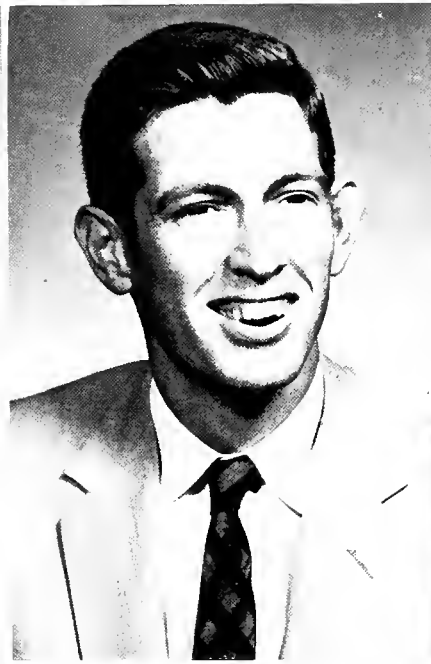
TED BAYLEY



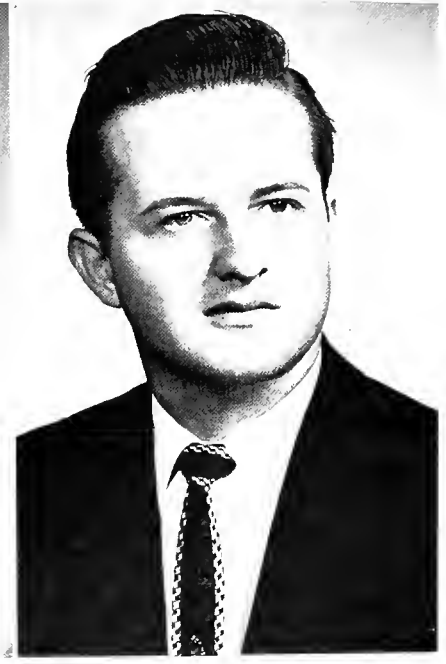
PAUL BEEBE



SHIRLEY BENEFIEL



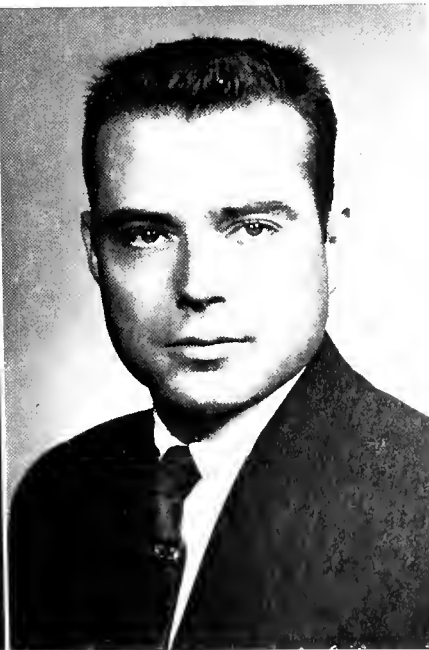
TOM BLALOCK



LARRY BOYERS



JIMMY CLOWER



GENE COKER



PEGGY COMPTON



AL DISMAR



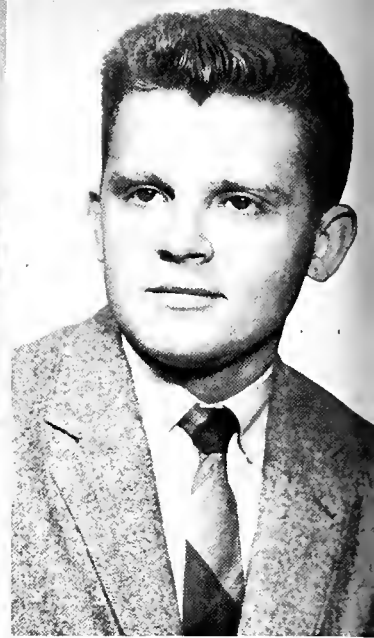
CLINTON FINCHER



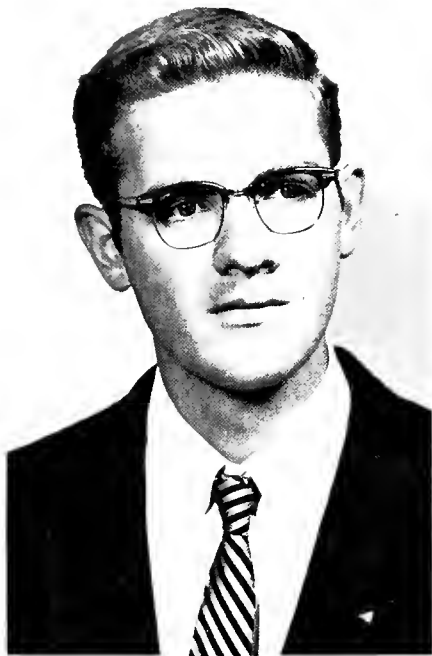
INA FOSTER



ESTELLE FRANCO



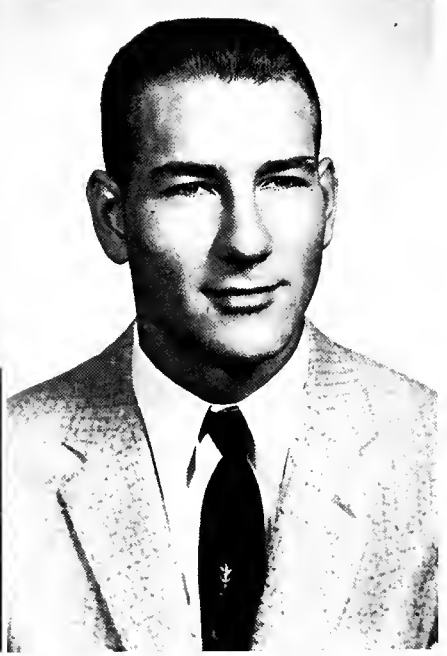
ROBERT GARBUTT



BUCK GARDNER



JOHN HARMS



BRUCE HAUCK



LINDA HOFFMAN



TREVIS INGRAM



JACK JOHNSON



ANN JONES



MARIAN KELLEY

ALICE KINCAID

ANN KLEIN

JACK LANE



MARVIN LAWSON

CATHERINE LEONARD

PIANG LOH



ANN MCCALLUM

ANN MCGEADY

JACQUELINE MAPP

DIANA MARSH



PAUL METZGER



EDWARD MILLIKAN



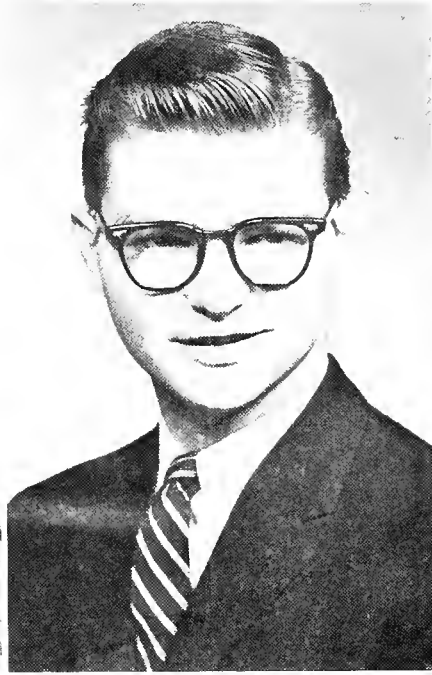
JOYCE MINORS



ALAN MOORE



CAROLYN MORRIS WEBB



DAN MUNN



MARY ANN SHARP



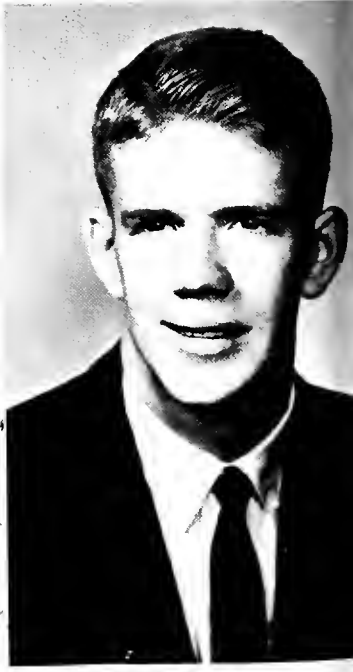
AL SHEPPARD



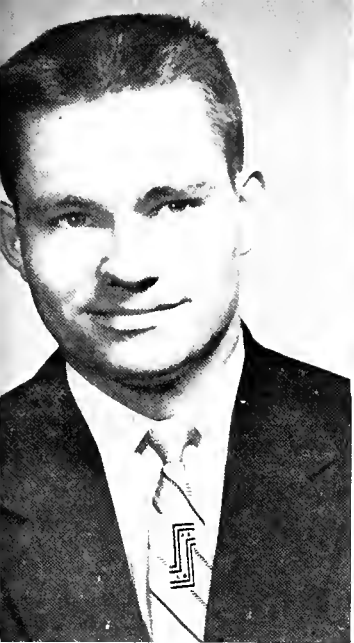
FRANCIS SHIPTON



ANNETTE SMITH



EDDIE STARNES



ERNEST STONE



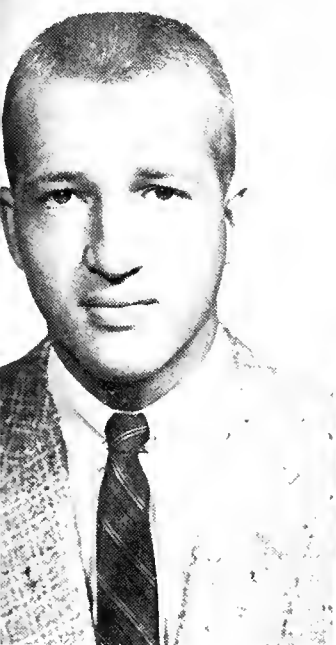
JOHNNIE TURNER



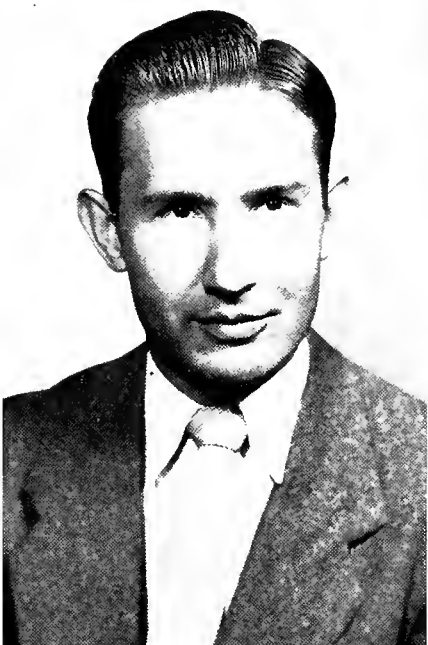
ILA VARELMAN



BOB WALTERS



RAYMOND WEBB



HINES WOMMACK



HAL WOODYARD



ROSALIE YOUNG

Not Pictured:
FRANCES BARTLETT
DOLORES CAGLE
WILLENE HYERS
ROBERT LIPHAM
RAY PLYMALE
CHARLES SCOTT
MILDRED SPEIGHTS





JANNE JOLLEY, *Vice President*; SYDNEY MOBLEY, *Secretary*; JOE GREEN, *Treasurer*; PAT DANIELS, *Parliamentarian*; CAROLYN MORRIS WEBB, *President*

SOPHOMORE CLASS

The beginning of the Sophomore year brings a new outlook to a student of that category. He begins to look into himself, into his class-mates, and into his school. The MacConnell Cup is given in recognition by the class for an outstanding Senior who has appeared active on campus but at the same time has received little recognition for his or her interests.



EUGENE BALES



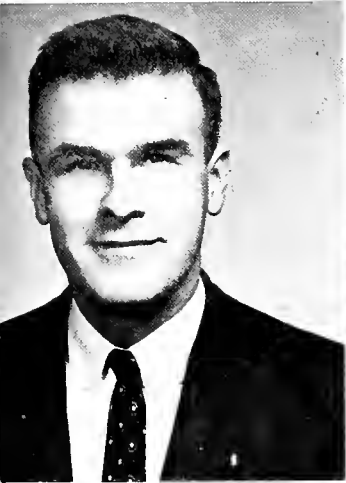
VIRGINIA BARRETT



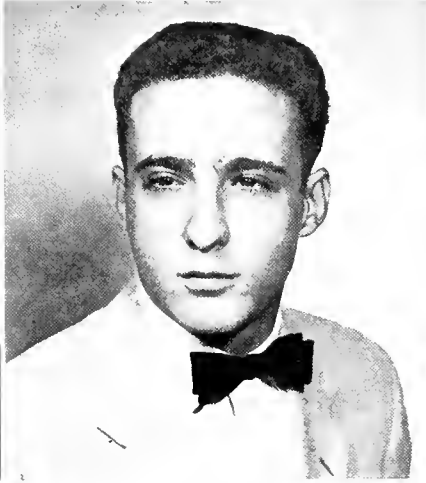
LLOYD BRITT



HAROLD BUCK



BILL BULLARD



BILLY CARTER



BILL CHRISTIAN



PATRICIA DANIEL



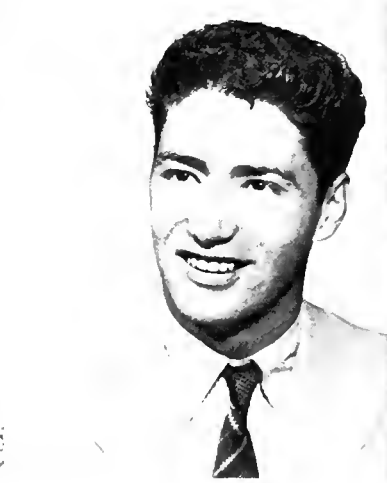
GENE DAVENPORT



RONNIE DICKENS



SHIRLEY DOLGOFF



JOE DUCKWORTH



GENE DUNN



DOTTIE EISENBERG



JACK ETHERIDGE



JANE FORCE



MARIAN FOSTER



RAE FULLER



JOE GREEN



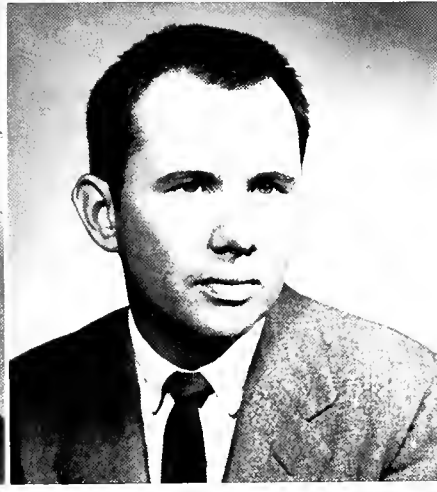
LEROY HAYDEN



MELVIN HEROD



FRANK HOLLEY



HAROLD INGLE



JOSEPHINE JOHNSON



JANNE JOLLEY



BETTY KNOX



CHARLES LA FLAUR



SYDNEY MOBLEY



LESTER MCGUKIN



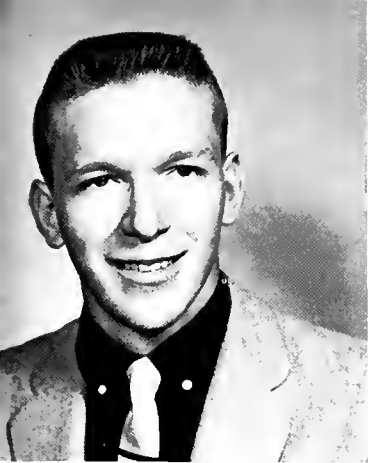
ELEANOR MACKENZIE



ELEANOR MACKENZIE



CLARENCE NORMAN



ANDY OLSON



PAM PAYNTER



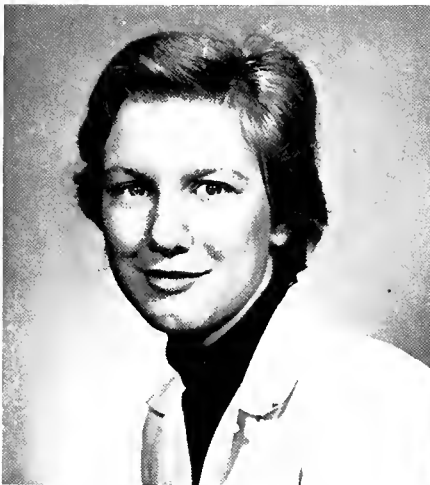
MARY POOL



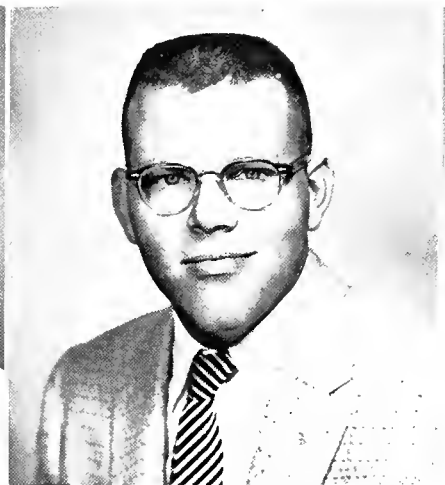
AL ROSENSTRETER



BETTY SCHUNEMANN



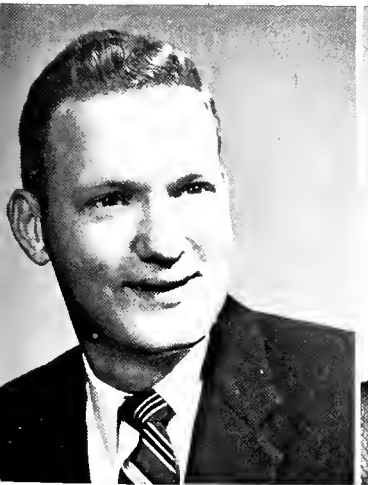
BARBARA SIBLEY



FRANK SIMMONS



BOBBIE JEAN SMITH



JOEL TAYLOR



CONNIE THIERY



JOAN VOLK



MARY DELL WELDON



LOUIS WUCHET



MEG YOUNG

Not Pictured: WILLIAM FOSTER





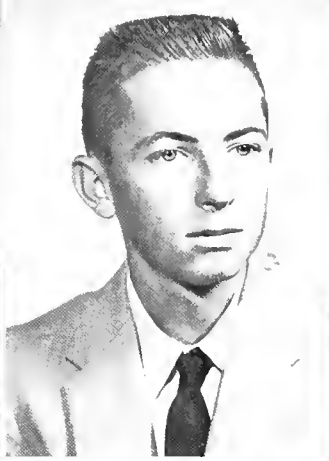
TOM DEACON, *President*; PENNYE WILSON, *Vice President*; FRANCINE KLEIN, *Secretary*; BOB BOOKER, *Treasurer*

FRESHMAN CLASS

The leadership of the Freshman Class is carried by the Vice President of the Student Body until the Freshman establishes himself academically, and until he comes to know his class-mates and school well enough to take over. Nonetheless, the projects and activities of the Freshman Class this year have been representative of the enthusiasm of its members. They sponsored the Freshman Hay Ride, the Sin Den, and the Black and White Formal.



GEORGE ABERCROMBIE



HAROLD ADAIR



JOE ALEXANDER



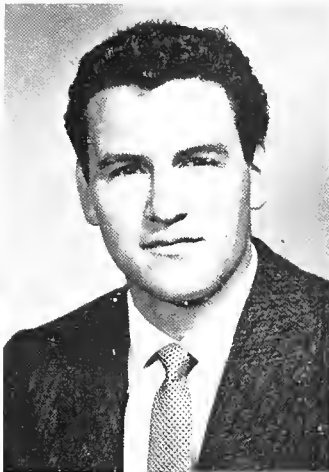
PATRICIA ALEXANDER



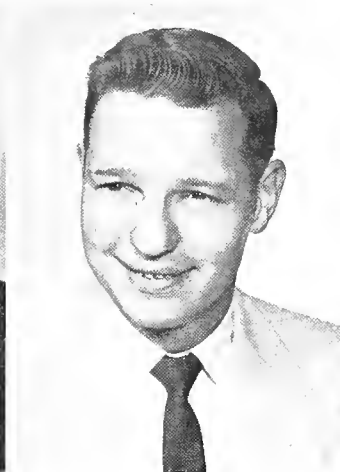
GEORGE ANDERSON



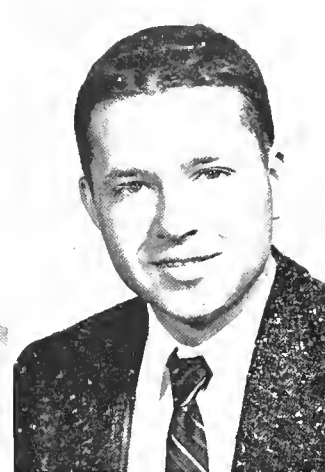
THOMAS BISHOP



BILL BLITZER



TED BLOMQUIST



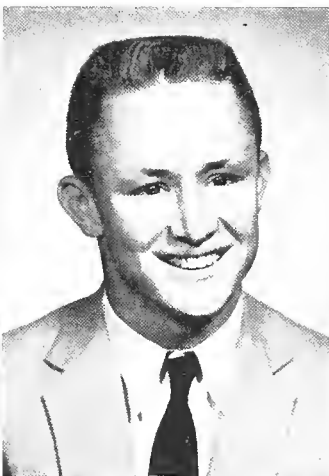
FRED BONNER



BOB BOOKER



JIMMIE ANDERSON



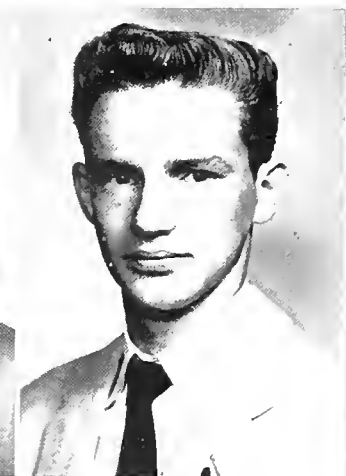
LEE BARRETT



ROCHELLE BECK



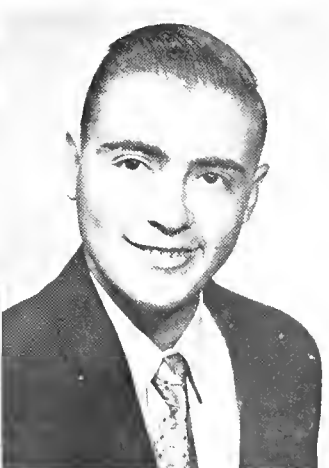
BECKY HUNTLEY



CLYDE BENNETT



J. T. BRISCOE



JOHN BURNOS



JOEL BURROW



VINCENT BUTTIGLIERI



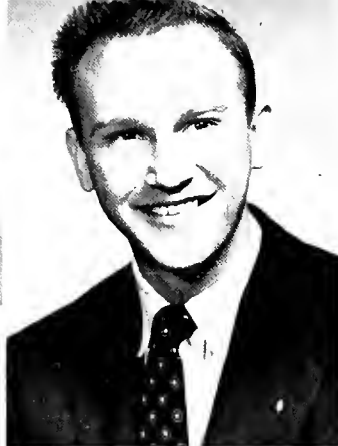
MARY ANN BYROM



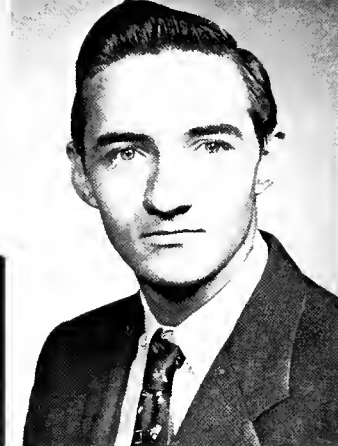
DAVID CAMP



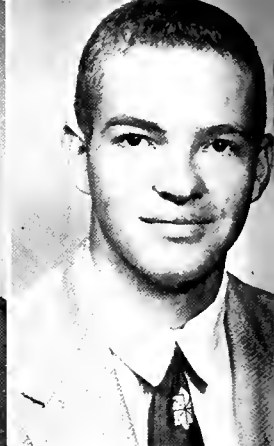
SANDRA CARTER



FRANK COLE



SILAS CONNER



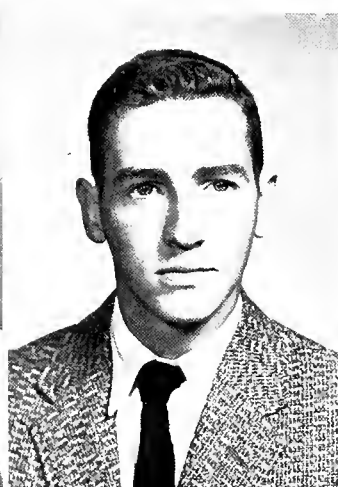
DEAN COX



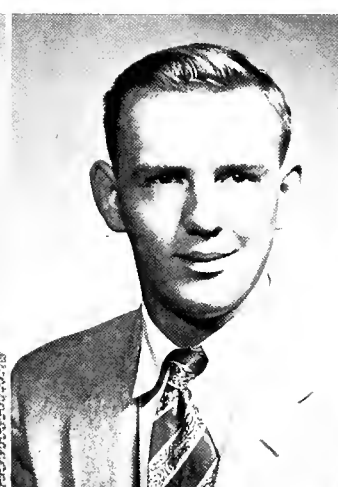
JOHN DAVIS



SANDRA DAVIS



TOM DEACON



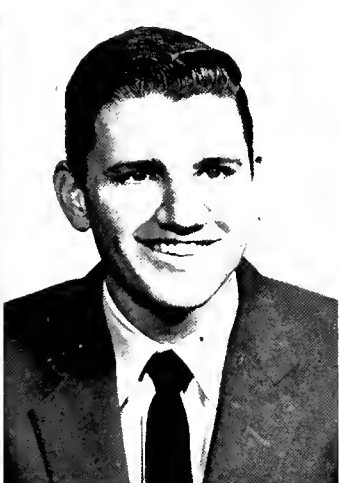
DEAN DOBSON



DELORES DOBYMS



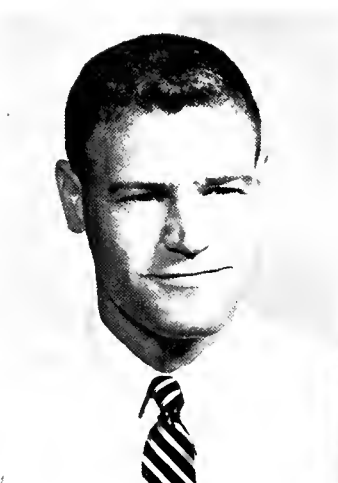
TAYLR DOMINY



JOHN FIELDS



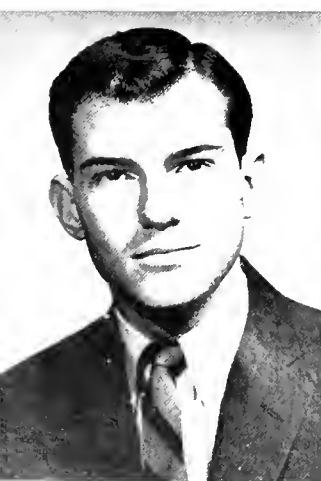
MAUREEN FRANKS



BOB GLEASON



GREG GREGORY



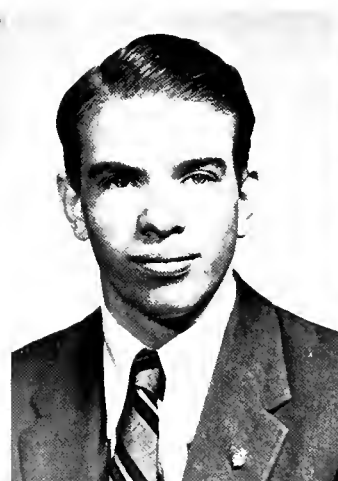
JAMES GRIFFIN



MARY ANN GRISWOLD



RAY HADDEN



DENNIS HEAGERTY



JUNE HIGHTOWER



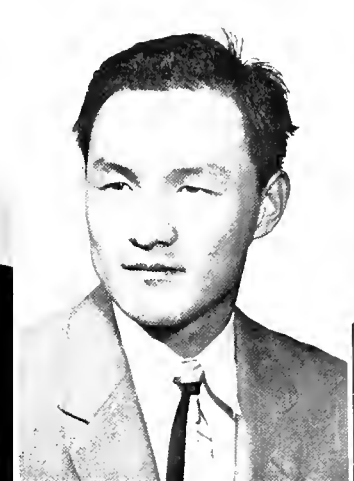
LOUIS HUTCHINSON

BARBARA INGALLS

CHARLES JACKSON

DON JONES

TAYLOR JONES



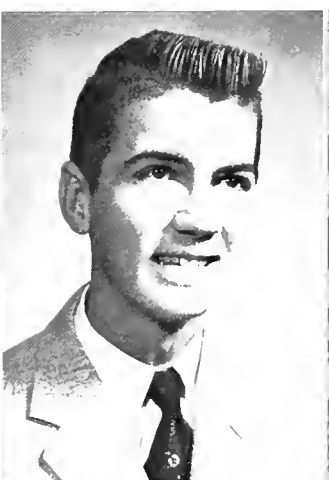
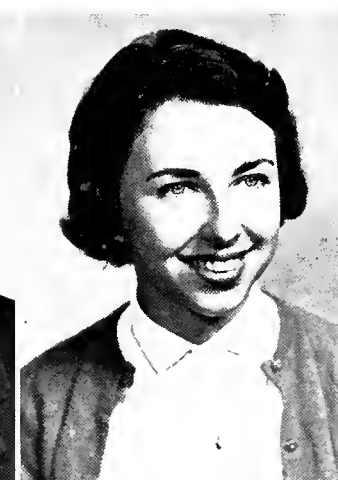
DAN KEITH

BILL KELLEY

HARRY KELLEY

KOO SUN KIM

RAY KLAUDT



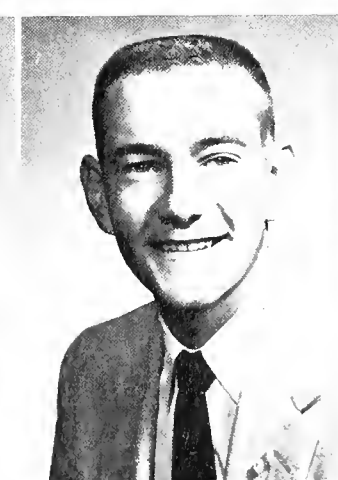
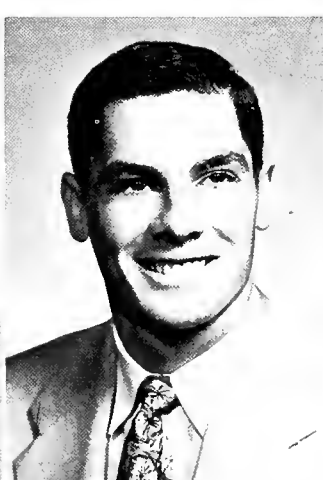
FRANCINE KLEIN

CHARLES LEFEVER

SANDRA LANGLEY

GAYLE LANGLEY

JACK LANE



ROLAND LARSON

TOM LASTRINGER

ROBERT LOFTIN

RUTH MCKAY

BARBARA MARSH



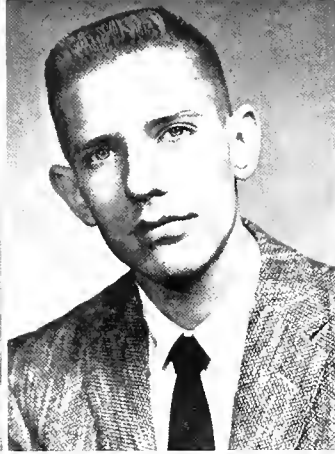
ANNE MATTHIAS



SANDRA MITCHELL



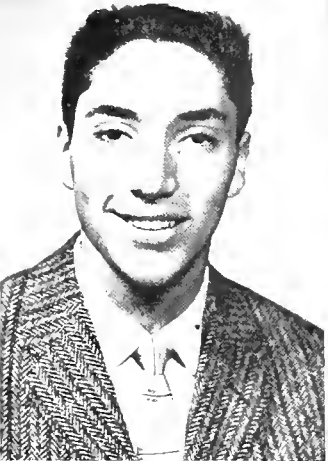
HOLLI NEESON



JAMES O'BRIEN



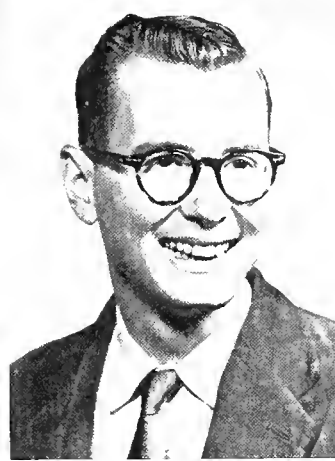
CAREY PARKMAN



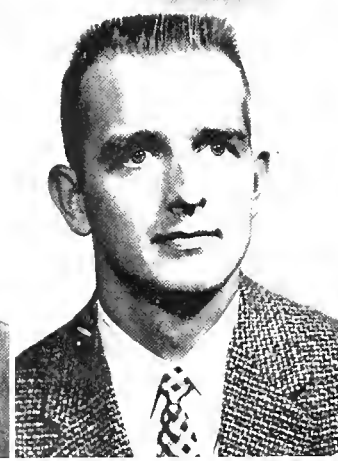
DAVE PLATKIN



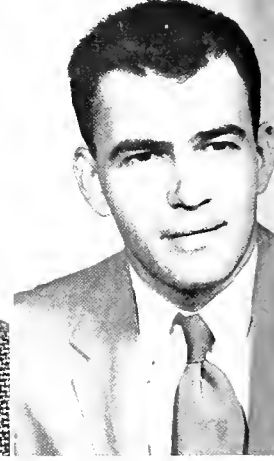
JUDITH PROSSER



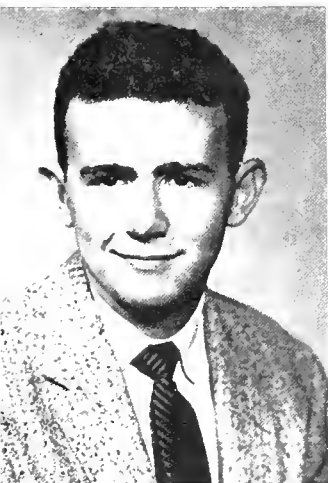
MIKE PRUETT



EDDIE QUINLAN



BOBBY RABB



HOWELL RAGDALE



BARBARA RAMSDEN



JOAN ROPA



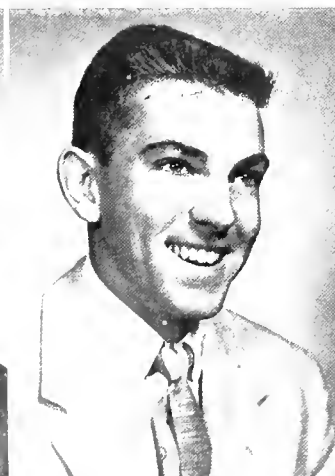
ELLEN RUSSELL



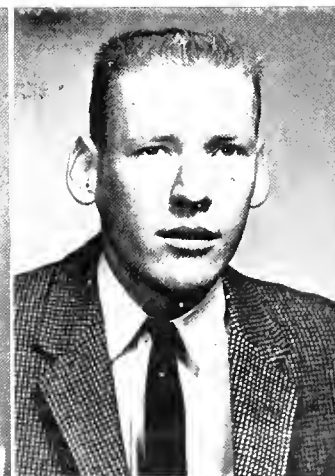
YVONNE SCALES



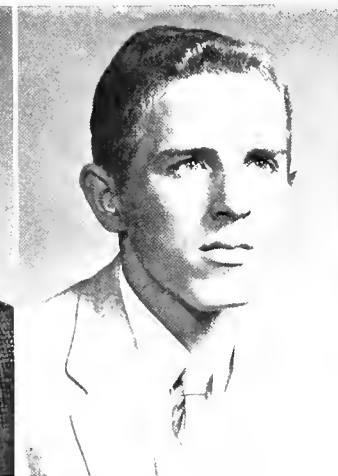
NANCY SCHALLER



LAMAR SEALS



JOE SEWELL



SCOTT SHAMP



DOLORES SIMPSON



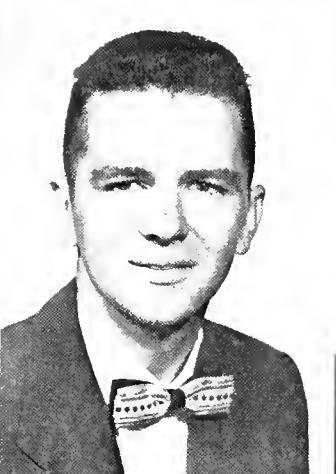
PATSY SPENCE

SUSAN STRICKLAND

DONALD SULLIVAN

ROBERT SUMRALL

NANCY TARRANT



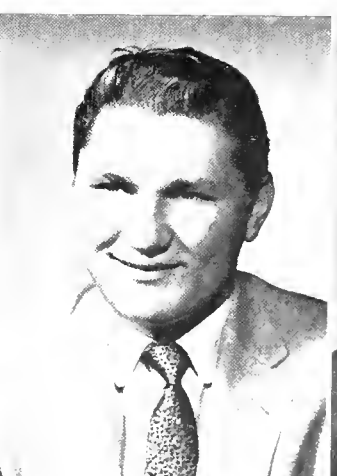
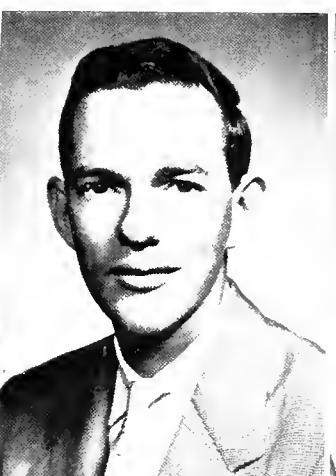
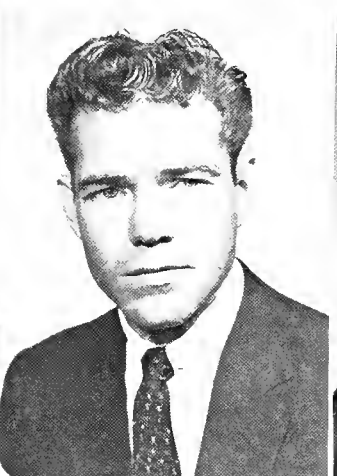
FRED TRAMMELL

DAN TROY

JOE WALKER

CALVIN WALL

DAVID WALL



CHARLES WEATHERS

HOWARD WELCH

JAMES WELLS

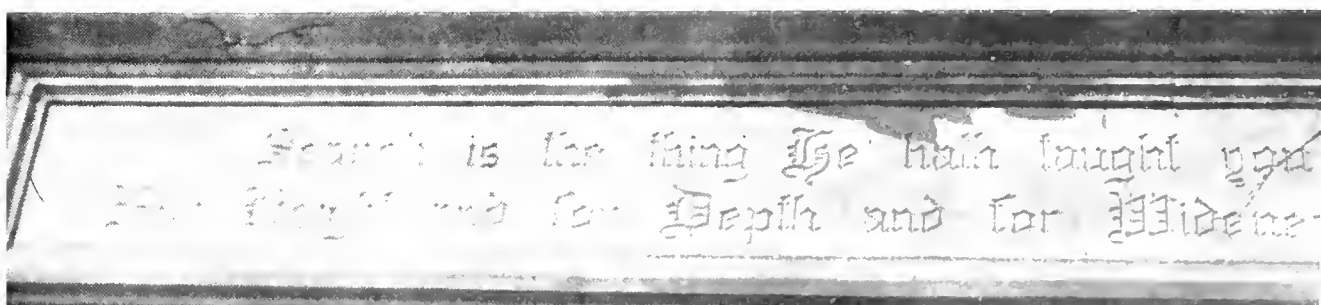
GARY WENGER

MCDONALD WILLIS



PENNY WILSON

Not Pictured: ROGER ADAIR, JOHN BELL, MAX BOWMAN, JOHN CHANDLER, DONALD CRITCHETT, ROSE HARDWICK, MARCELLE HOWARD, TOM MCCORMACK, DENNIS MICHAEL, BOBBY MOODY, JAN MUNDORFF, ANNA NORRIS, JAMES WILLIAMS.



HONORS





LOIS WEEMS
Oglethorpe Cup

The Oglethorpe Cup is a merit award given by the faculty to the woman who has most realized the ideals of an Oglethorpe education.



CHARLES SMITH
Oglethorpe Cup

The Oglethorpe Cup is a merit award given by the faculty to the man who has most realized the ideals of an Oglethorpe education.



ROBERT WALTERS
*The Oglethorpe University Trustees Award
for Scholarship*

The Oglethorpe University Trustees present annually an award for scholarship to the Senior man who has attended the University for two years and who has attained the highest average of any man in his class.



LOIS WEEMS
The Sally Hull Weltner Award for Scholarship

The Sally Hull Weltner Award for Scholarship presented by the Oglethorpe University Woman's Club, is given each year to the Senior girl who has been at Oglethorpe for two years and has achieved the highest average of any girl in her graduating class.



JIM MILTON

MacConnell Award

Presented by the Sophomore Class, the MacConnell Award is given to that Senior who the class feels has participated cooperatively in many phases of campus life, and has not been fully recognized for it.



BOB OLIVER

David Hess Award

The qualifications for the David Hess Award are the winning of a letter in an inter-collegiate sport in the year that the award is given, and the ability to face failure as well as success. He must be a gracious winner as well as a gracious loser. He must have furthered the athletic ideals of Oglethorpe through participation and assistance in the success of the over-all athletic program.



TOM DEACON

Board's Head Award

The Boar's Head Honorary Fraternity presents an annual award to that freshman boy whom they feel deserves recognition for his achievements and participation in his studies and extra-curricular activities.



FRANCINE KLEIN

Duchess Club Award

To the Freshman girl who best exemplifies the ideal of an Oglethorpe student, both in scholarship and campus activities, the Duchess Club Award is presented.



BOB OLIVER



CHARLES GIPSON



JOHN DUPUY



SAM EDLEMAN

Who's Who in American Colleges and Universities

This honor comes in recognition of the merit and accomplishment of the student who is officially recommended by the Student Council, the Faculty Council, and meets the requirements of the publication.



CHARLIE SMITH



ELLEN KINSEY



LOIS WEEMS

BLUE KEY

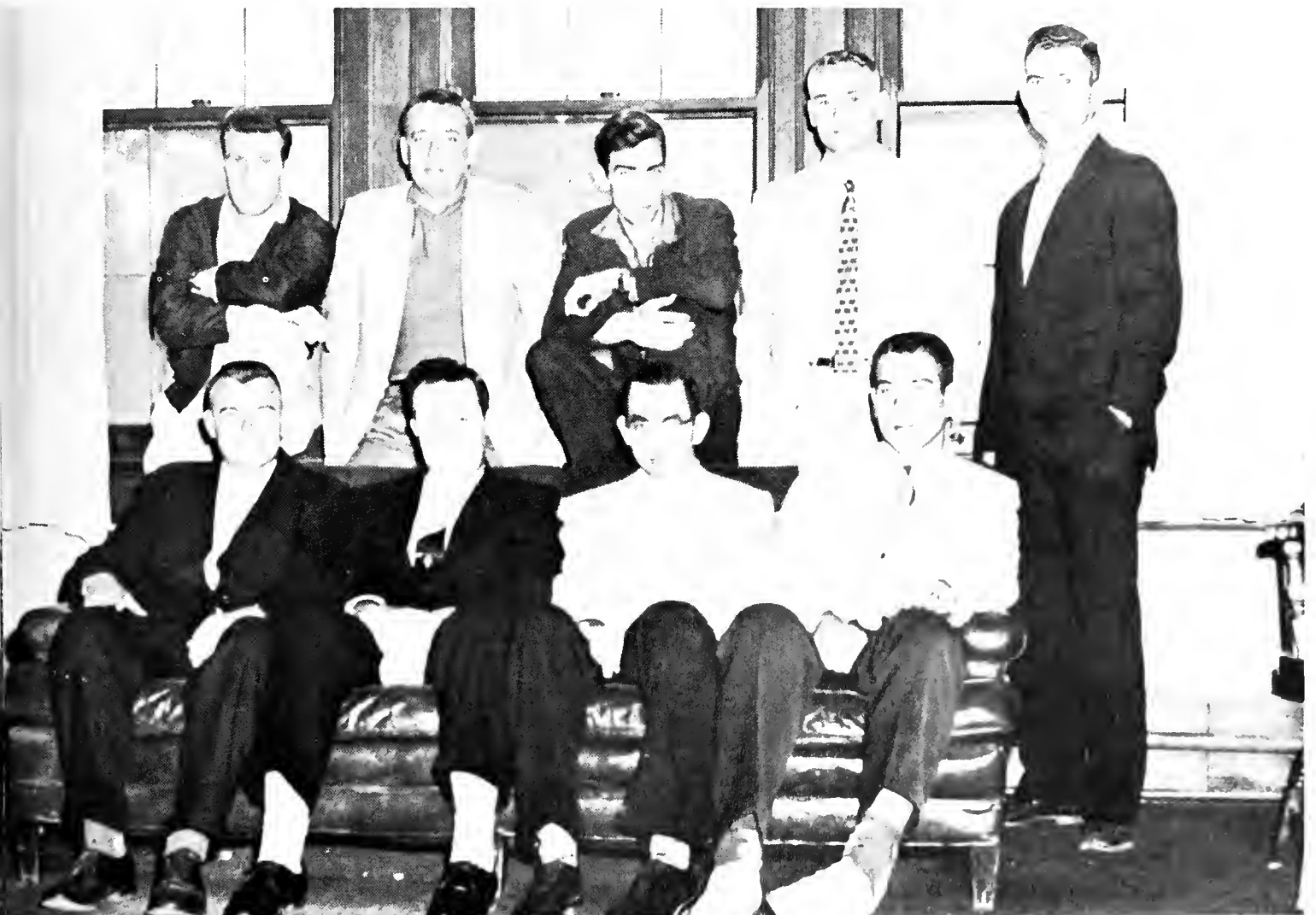
Blue Key, National Honor Service Fraternity, is composed of male students who have shown not only superior scholarship, but also definite leadership ability and a desire to serve their school.

Fulfilling its purpose, Blue Key has brought together the leaders of the campus and has participated in, and engineered several projects toward the general goal of campus improvement.

The 1957 officers were: Sam Edleman, President; Lew DeRose, Vice President; Tommy Hopper, Secretary; Hines Womack, Treasurer; Harry Dobson, Advisor.



Blue Key members enjoying a night out: Hines Womack, Lew DeRose, Charlie Smith, Jim Magee, Tommy Hopper, Sam Edleman.



Row one: Jim Clower, Marvin Lawson, Al Sheppard, Bruce Hauck. Row two: Jack Lane, Bob Oliver, Dave Fisher, Jim Milton, Ted Bayley. Not pictured: Branton Eason, Ernest Stone.

BOAR'S HEAD

Boar's Head Honorary Fraternity is made up of Junior and Senior men with an average of eighty-five.

Acting as a service organization when needed as such, the fraternity plays host to and is responsible for the traditional Boar's Head Ceremony. Lewis DeRose and Jack Hawkins have acted as co-presidents this year.



First row: John Dupuy, Lew DeRose, Charles Gipson. *Second row:* Gene Coker, Jim Magee, Bob Oliver, Bill Camp, Bob Walters, Jack Hawkins, Ernest Stone, Al Sheppard. *Not pictured:* Francis Shipton.

DUCHESS CLUB

The purpose of the Duchess Club is to uphold the high standards of the school, to encourage high scholastic standards and to promote a co-operative spirit among the students.

Always ready to act as hostess to any Oglethorpe festivity, this organization also sponsors the annual Sadie Hawkins Day Dance and purchases magazines for the Great Hall.

The officers are: Lois Weems, President; Frances Shedd, Vice President; Pat Baker, Secretary-Treasurer; Peggy Compton, Parliamentarian.



First row: Pat Baker, Lois Weems, Marianne Epstein, Ann Klein, Ellen Kinsey, Ila Varelmann. Second row: Mrs. Bernice Hilliard and Mrs. Lois Williamson, honorary members; Mrs. Wendell Brown, advisor. Third row: Carla Hancock, Peggy Compton. Not pictured: Linda Hoffman, Frances Shedd.

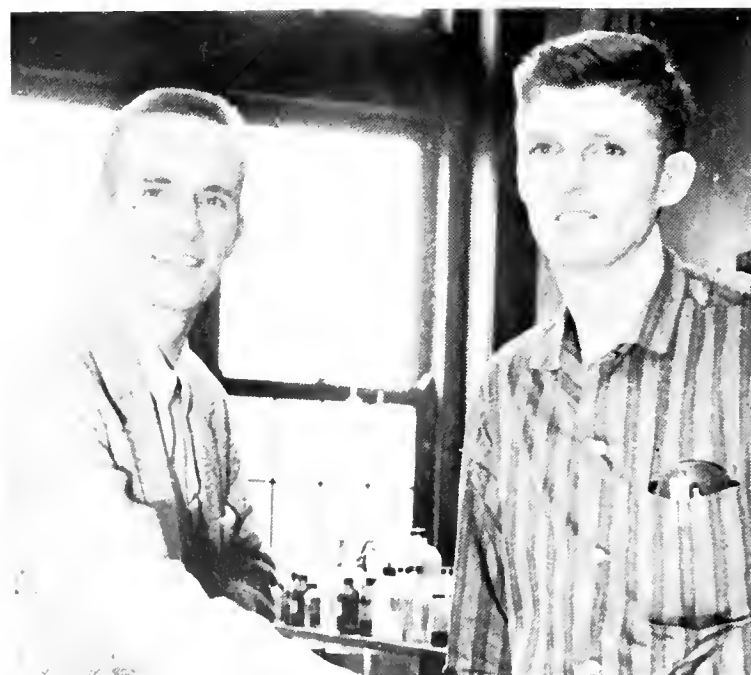
LE CONTE SOCIETY



LEW DEROSE *and* PAT BAKER



JOE GREEN *and* GENE COKER



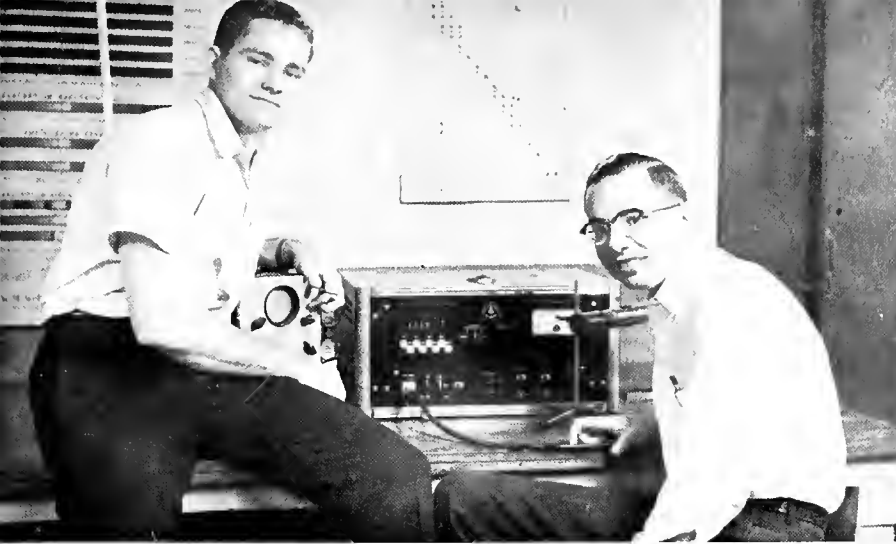
BOB WALTERS *and* BILL CAMP



JOHN DUPUY *and* PAT DANIELS

The Le Conte Society is for those students who have attained an average of 85 in their science courses, 80 in their other courses, and who have a genuine interest in the progress of science. Any science student in his Sophomore, Junior or Senior year is eligible for membership.

The 1957 officers are: Gene Coker, President; Bob Walters, Vice President; Pat Baker, Secretary; Bill Camp, Treasurer. Dr. George F. Wheeler was selected as advisor.



ERNEST STONE *and* AL SHEPPARD



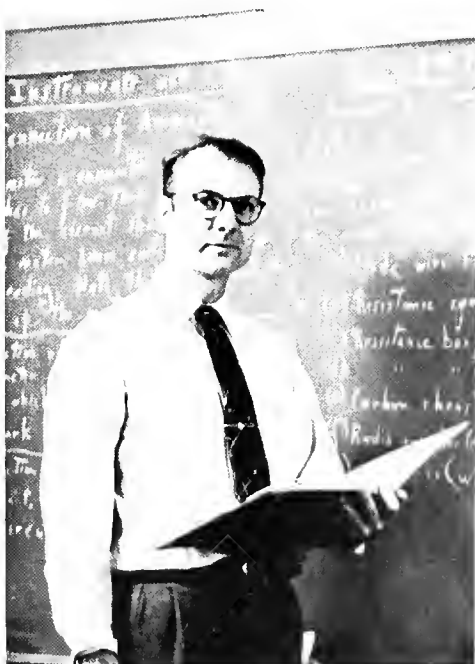
TREVIS INGRAM



JOE HILBERT *and* MARIANNE EPSTEIN



CAROLYN MORRIS WEBB



MR. GEORGE F. WHEELER



LINDA HOFFMAN *and* RAE FULLER

ORGANIZATIONS

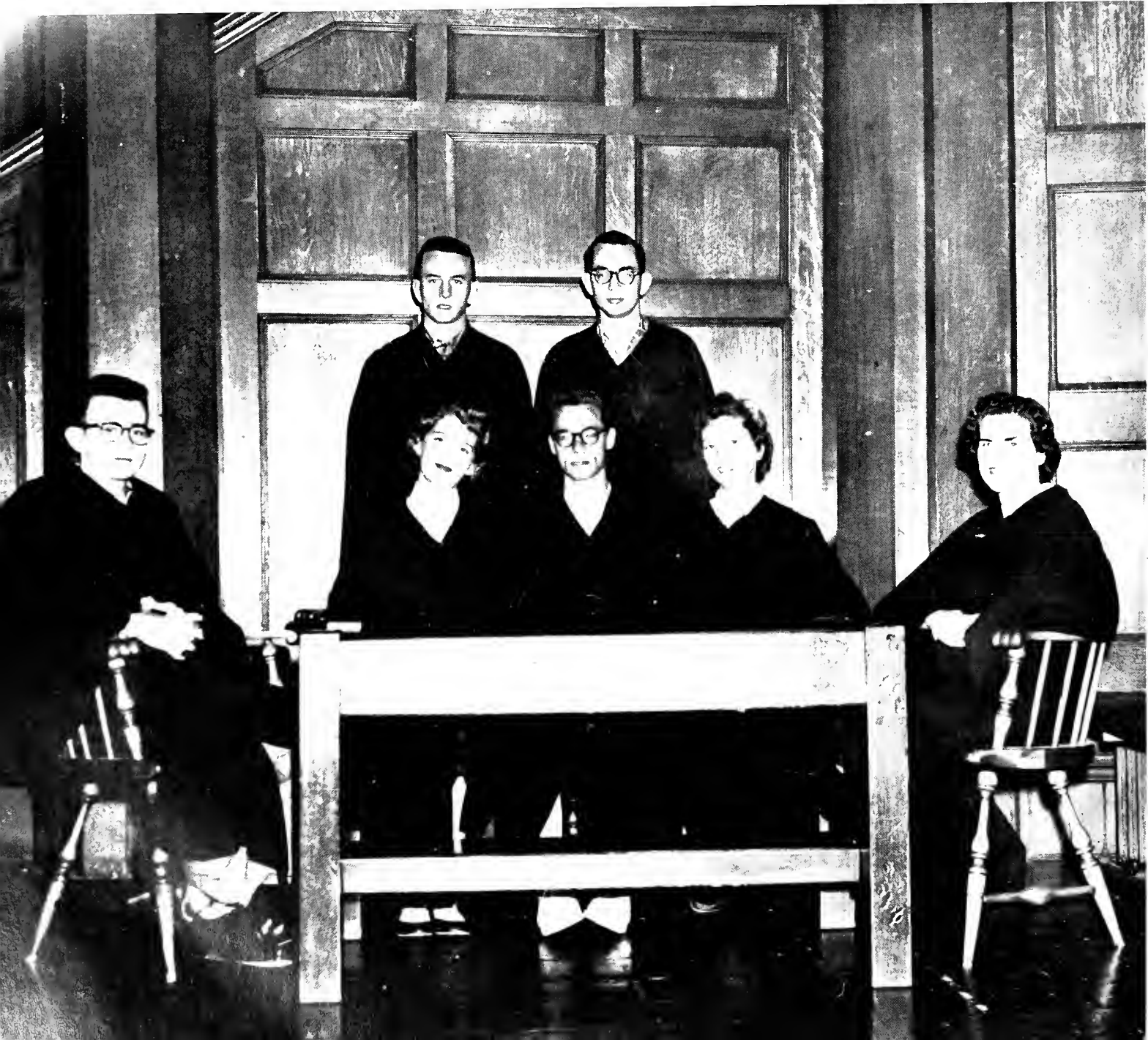


HONOR COURT

The Honor Court is composed of nine students, a chairman appointed by the Student Council and two representatives from each class elected by their fellow students. They are chosen for their sense of responsibility and honor in belief that such students are thoroughly capable of judging infractions of the Honor Code.

The efficient functioning of the Honor Code, Court, and Committee, however, lies ultimately with each and every student. Honor depends upon each individual maintaining a desire to associate himself only with honest persons.

Row one: Howell Ragsdale, Janne Jolley, Chairman Sam Edleman, Carolyn Webb, Nancy Tarrant. *Row two:* Charles Gipson, Al Sheppard. *Not pictured:* Bob Oliver, Marvin Lawson.





HONOR COMMITTEE

The Honor Code is an integral part of University life. The Code is a document drawn up by the students themselves in the conviction that college students are capable of establishing and maintaining honesty among their number.

The Honor Committee, composed of one elected student from each class and a chairman appointed by the Student Council, has as its function the investigation of violations of the Honor Code and the reporting of the facts to the Honor Court.

BRANTON EASTON, BRUCE HAUCK, SANDY CARTER, SYDNEY MOBLEY,
Chairman :LOIS WEEMS.

SOCIAL COMMITTEE

The Social Committee is responsible for five dances per year. These are: The Get Acquainted Party, The Masquerade Ball, The Christmas Formal, The Lord and Lady Oglethorpe Formal, and The Spring Formal. Funds for these dances are allotted from the Student Activity Budget.

Chairman Olsen reorganized the Committee in February into seven specialized committees, giving a specific job to each person. This, he feels, will insure even better dances in the future.



The Executive Staff, in charge of business: Shirley Benefiel, Secretary; Bruce Hauck, Treasurer; Andy Olsen, Chairman; pictured below, Sydney Mobley, Vice-Chairman.



Publicity Committee: Jim Griffin and Nancy Schaller.



Chaperone Committee: Lois Weems and Ellen Kinsey.



Assistant Decoration Committee: Raymond Webb, Bob Booker, Ann Mathias, Jim Magee.



Invitations Committee: Janne Jolley, Pat Daniels.



Public Relations Committee: Mary Pool, Bill Davis.



Decoration Committee: Penny Wilson, Ra Fuller, Meg Young.



CHARLES GIPSON, *Chairman*

CHAPEL COMMITTEE

The Chapel Committee has the job of providing and promoting a weekly, interdenominational chapel period for those who wish to attend. In this period faculty members and guest speakers from the surrounding area, invited personally by members of the Committee, talk on subjects keyed toward helping the student establish his relationship with God. Special programs are given during the Thanksgiving, Christmas, and Easter seasons, in observance of the spiritual meaning of each.



Ted Bayley, Shirley Benefiel, Sandy Carter, Nancy Tarrant, Rosalie Young, Pat Daniels, Bette Schuenemann, Ina Foster, Charles Gipson.

PUBLIC RELATIONS COMMITTEE

The Public Relations Committee is a standing committee of the Student Body of Oglethorpe University. It is organized to publicize the activities and accomplishments of the students as a whole, or in part, in Atlanta and their home towns.

Another function of the committee is to serve as host to visitors on the Oglethorpe campus. The members work under the leadership of Dan Uffner, Public Relations Director.



JOHN DUPUY, DAN UFFNER



ELLEN KINSEY, BILL DAVIS



SHIRLEY BENEFIEL, PUA PROSSER

BAPTIST STUDENT UNION

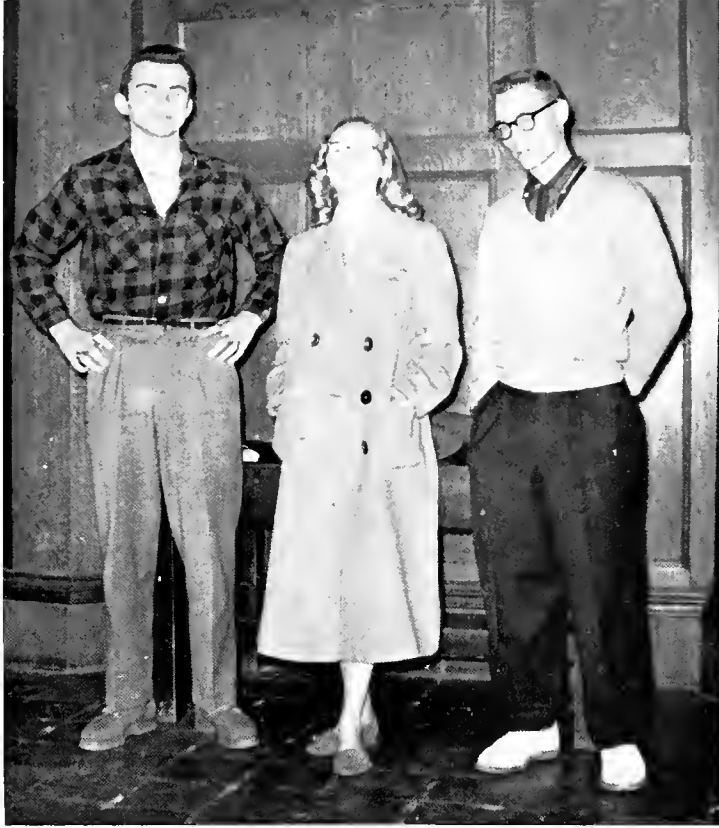
The membership of Baptist Student Union is composed mostly of Baptists, but students of other denominations are welcome to join. The club meets once a week to discuss religious problems and to worship together.



PEGGY COMPTON, *President*



Row one: Peggy Compton, June Hightower, Kitty Kincaid, Howell Ragsdale. *Row two:* Raymond Webb, Carolyn Webb, Pat Baker, Lew DeRose, Ann Mathias. *Not pictured:* Sandy Carter, Gail Langley, Al Sheppard.



CANTERBURY CLUB

The Canterbury Club of Oglethorpe is primarily a worship organization. The Episcopalian students composing the Club meet every Tuesday night. At this time they have a worship period, a fellowship period, and a period to plan services, such as baby-sitting for the faculty and decoration of Christmas trees for Grady Hospital. New officers are elected every quarter.

GORDON HILES, *President*, Fall Quarter
FRANCES SHEDD, *President*, Winter Quarter
SAM EDLEMAN, *President*, Spring Quarter



Pam Paynter, Sam Edleman, Meg Young, Fred Bonner, Frances Shedd, Gordon Hiles.



TED BAYLEY, *President*

WESTMINISTER FELLOWSHIP

Westminster Fellowship was organized on the Oglethorpe campus four years ago for the Presbyterian students. It is just what its name implies. The students gather once a week in Christian fellowship to worship God.

Meetings and activities are planned by officers elected once a year. This year Westminster Fellowship held its annual retreat in May at Lake Burton.



Ina Foster, Alan Moore, Sandy Langley, Lew Lou Wuichet, Bob Garbutt, Shirley Benefiel, Ellen Kinsey, Larry Boyers, and Ted Bayley. *Not pictured:* Paul Beebe, Charles Gipson, Jim Milton, and Janne Jolley.

JUNIOR TOASTMASTERS

The Junior Toastmasters Club is devoted to improving the public speaking ability of its members. Membership is open to any male Oglethorpe student.

The Club was organized in the early part of 1957. It meets bi-monthly for supper and to hear speeches from the membership.



JIM MILTON, *President*



Raymond Webb, Ted Bayley, Larry Boyers, Charles Gipson, Advisor Pop Crow, Dennis Michael, Charlie Smith, McDonald Willis, George Arger, John Harms, Bill Davis, Paul Beebe, Joe Duckworth, and Paul Metzger. *Not pictured:* Lou Wuichet.

THE OGLETHORPE PLAYERS

The Players have a two-fold purpose, the first is to entertain the students and faculty of Oglethorpe, and the second is to provide practical training for students interested in dramatics. The members learn everything from the business of the stage crew to the development of their acting ability.

The Stage Manager for the Players this year was John Dupuy, and the Business Manager was Hines Wommack.



President Ila Varelmann and Director Richard Valente



Above: Paul Metzger, Ila Varelmann, Hines Wommack, Frances Shedd, Shirley Benefiel, and Kitty Kincaid.



Left: Barbara Sibley, Meg Young, Jayne Force, Bill Christian, Mary Pool, Dottie Eisenberg, and Pam Paynter.

Not pictured: John Dupuy, Charles Gipson, Bruce Hauck, Barbara Ramsden, and McDonald Willis.



Row one: Bob Booker, Nancy Denton, Ruth McKay, Ellen Kinsey, Shirley Benefiel, Fred Bonner, Larry Boyers. Row two: Sandra Mitchel, Dan Troy, Mac Trammel, Jimmie Clower, Paul Beebe, Ted Bayley, Mike Pruett. Row three: John Burnos, Billy Christian, John Harms, Buck Gardner, Bill Bullard, Frank Cole. Row four: Eddie Quinlan, Marvin Lawson, Dean Dobson, Harold Roland, Jim Magee, Ted Blomquist, Tommy Hopper, Jan Mundorff, Charles Gipson, Lou Wuichet. Not pictured: Shirley Dolgoff, Bob Loftin, Dennis Michael.



Shirley Benefiel, Secretary; Pop Crow, Advisor; Jimmie Clower, First Vice President; Jim Magee, President; Ted Bayley, Second Vice President. Not pictured: Charles Gipson, Treasurer.

HUMANICS STUDENT ASSOCIATION

The purpose of Humanics Student Association is to bring together all students of Humanics and to broaden their knowledge of the youth work field. This is achieved through field trips, retreats, monthly business meetings, and bi-monthly seminars with speakers from the youth work field.

At the beginning of the year the Association set up an information booth for new students and arranged for help in carrying luggage to the dormitory rooms. After basketball season the Humanics students sponsored a victory dance honoring the basketball team, the cheerleaders, and the pep band.

ALPHA PHI OMEGA

Alpha Phi Omega is a national service fraternity, composed of college and University men who are or have been previously affiliated with the Boy Scouts of America. The purpose of the fraternity is to assemble college men in fellowship under the Scout Oath and Law, to develop friendship, and to promote service to the student body, the faculty, the community, and the nation.

The Oglethorpe chapter of Alpha Phi Omega was founded in October of 1956, but even in this short period of time it has left a mark of improvement around the campus.



A. P. O. officers: Bob Booker, Chaplain; Larry Boyers, Secretary; Edward Quinlan, President. *Not pictured:* Charles Gipson, Treasurer.



Bob Loftin, painting the flag pole



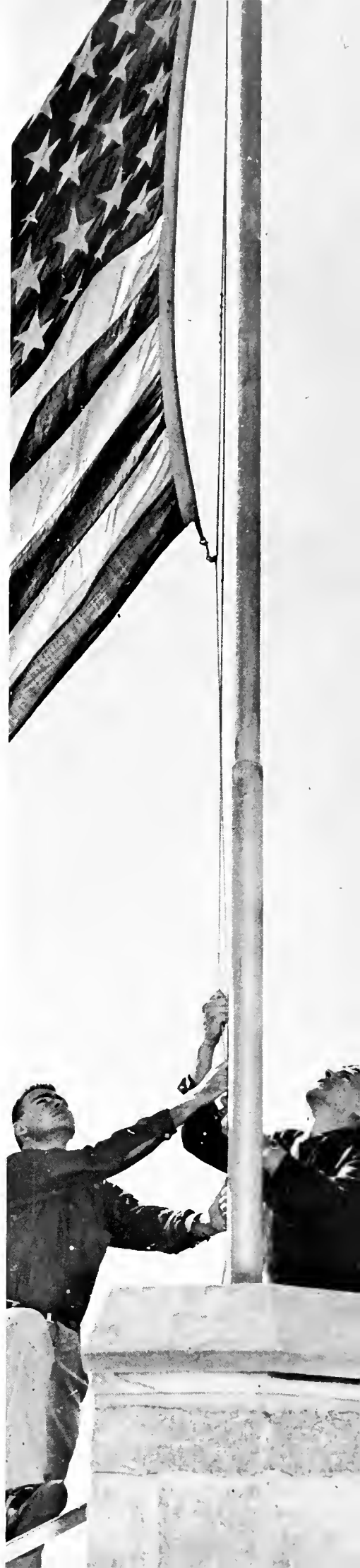
Dean Dobson and Bill Christian, mimeographing programs for the basketball games



Buck Gardner, Jim Magee, Mike Pruett, Ted Blomquist



Ted Bayley, Paul Beebe, Dennis Michael. *Not pictured:* Fred Bonner, Tom Deacon, Jan Mundorff, Lew Wuichet



John Burnos and John Harms, raising the flag



GEORGE ARGER, *President*

CIRCLE K

Circle K is the college Kiwanis organization. It is a service organization which devotes its time to improving the Oglethorpe campus.

This year Circle K conducted a survey of the clubs and committees on campus to find ways of improving the organizational set up. Among other projects, they were one of the sponsors of campus clean up.



Row one: Bobby Garbutt, Alan Moore, Jim Clower, Raymoond Wedd, George Arger. Row two: Charles Gipson, Ernest Stone, Ted Bayley, Andy Olsen, Bill Davis, Bob Clow, Jim Milton. Not pictured: Jack Lane, Joe Duckworth, Bob Walters, Jim Magee, Charlie Smith.



FRANCES SHEDD, *Editor*

THE OGLETHORPE LITERARY MAGAZINE

The Oglethorpe Literary Magazine is an annual publication by a small student staff.

The articles for the magazine are furnished by the students, faculty, and alumni.

Each year there is a contest among the students for the best single piece of writing. Three judges, usually faculty members, choose the winner, who is awarded a prize. Other awards are given for the best short stories, essays, and poems.

The Literary Magazine gives the Oglethorpe student a chance to exhibit his talent in the literary field.



Jim Milton, Business Manager, and Paul Metzger



Resalie Young and Bill Davis



SAM EDLEMAN, *Editor-in-Chief*

STORMY PETREL

The Stormy Petrel is the official newspaper of the Oglethorpe University student body.

An important part of campus life, the Stormy Petrel is dedicated to the best interest of the students. Besides giving the students a chance to express their ideas and goals, the Stormy Petrel serves as an avenue of the latest matters of news interest to students and faculty.



FRANCES SHEDD, *Assistant Editor*



JIM MAGEE, *Sports Editor*



AL ROSENTRETER *and* JACK LANE



NANCY TARRANT *and* JOAN ROPA



JIM MILTON *and* BILL DAVIS



AL SHEPPARD



HOLLI NEESON, McDONALD WILLIS, ROSALIE YOUNG
and ANNE MCGEADY

THE YAMACRAW

The Yamacraw is the yearbook of Oglethorpe University. The staff seeks each year to enclose between two pieces of cardboard all the memorable places, events, and people encountered within the year.

Each year the yearbook is something the staff can look back upon with feelings of accomplishment, pride, and relief that it all is in the past.

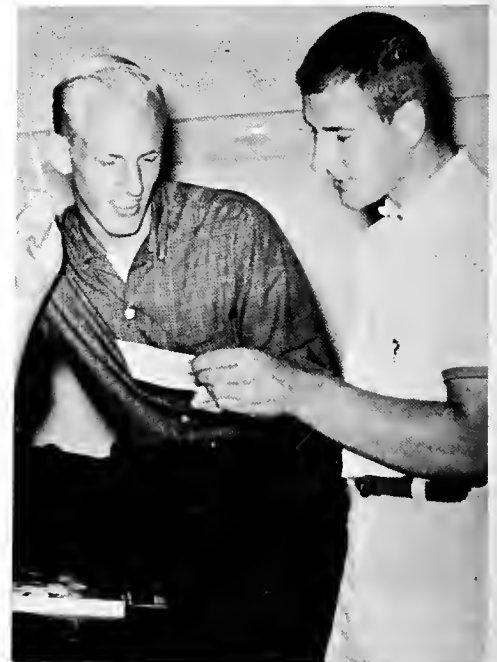
Each year the Yamacraw presents a key to the most valuable staff member and to the Freshman who sold the most ads. In that order, Lou Wuichet and Roland Larson were the winners.



Ellen Kinsey, Editor-in-Chief



Photography Staff: Tom Deacon; John Harms; Lou Wuichet, Head of Staff; Ted Blomquist, Lew DeRose.



Business Staff: Roland Larson; Bruce Hauck. Not pictured: Branton Eason; Bob Loftin, Mary Pool, Diana Marsh.



Sports Section: Editor Sandy Langley, Tom Deacon.



Class Section: Editor Shirley Benefield, Dottie Eisenberg, Ann McGeady.



Organizations Section: Editor Sandra Mitchel, Penny Wilson. Not Pictured, Pat Alexander.



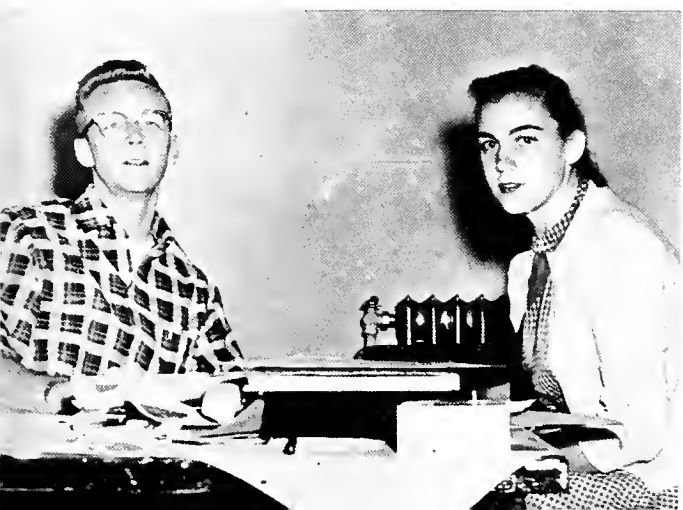
Honors Section: Jim Milton, Editor Janne Jolley.



Typist: Rae Fuller, Ruth McKay. Not pictured: Pat Alexander.

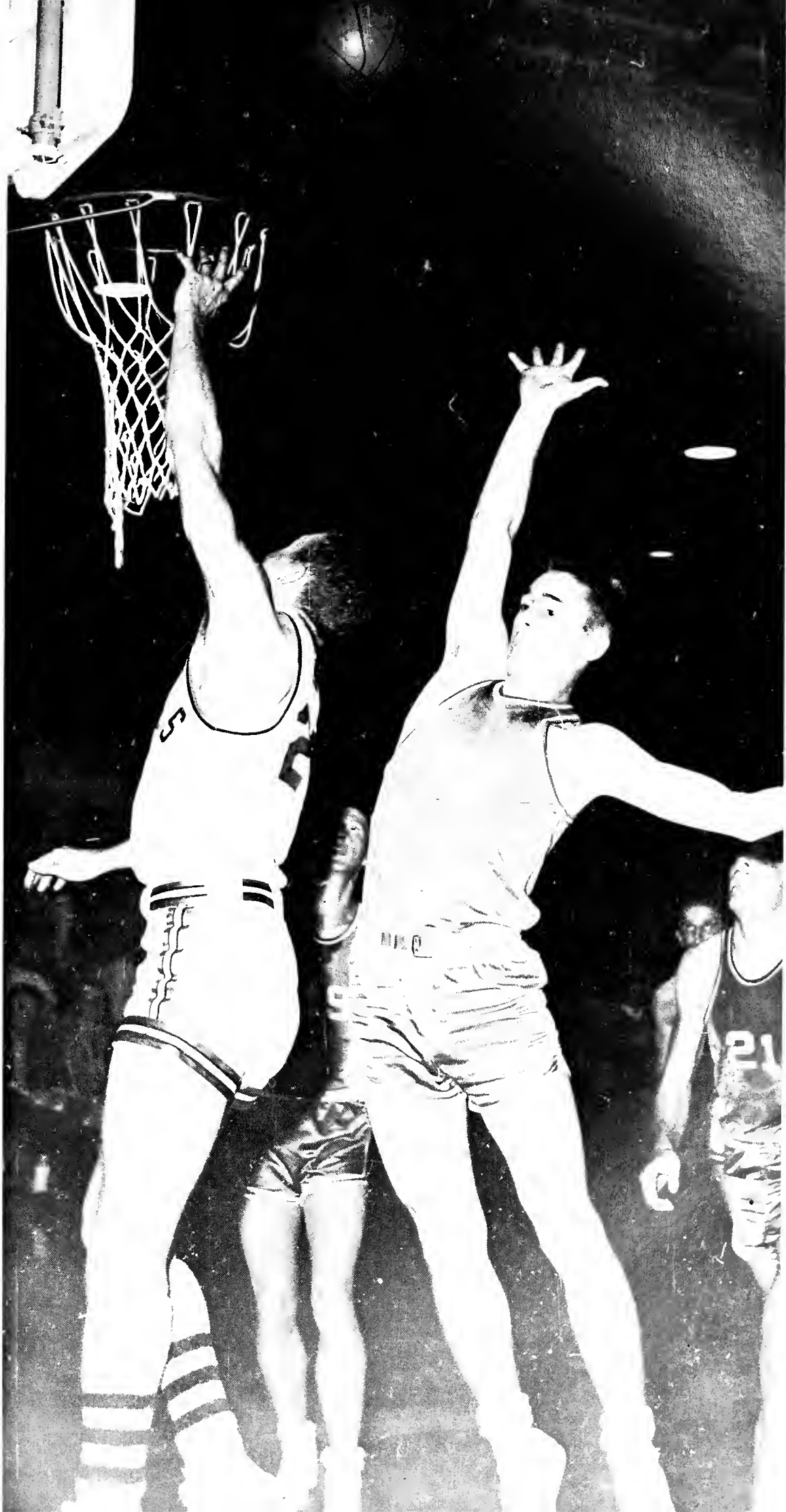


Activities Section: Francine Klein, Nancy Tarrant, Editor Joan Ropa.



Faculty and Administration Section: Editor Ina Foster, Alan Moore.

SPORTS





Garland Pinholster expresses the feelings that plague a first-year college coach; displeasure, despair, and wonder.

Eddie Starnes is surrounded by Lions as he inspects another Petrel goal.

BASKETBALL

Into a basketball team goes work, sweat, courage, hope, spirit, and skill. It takes months of practice and more practice—learn that pattern—work that pattern—play that pattern.

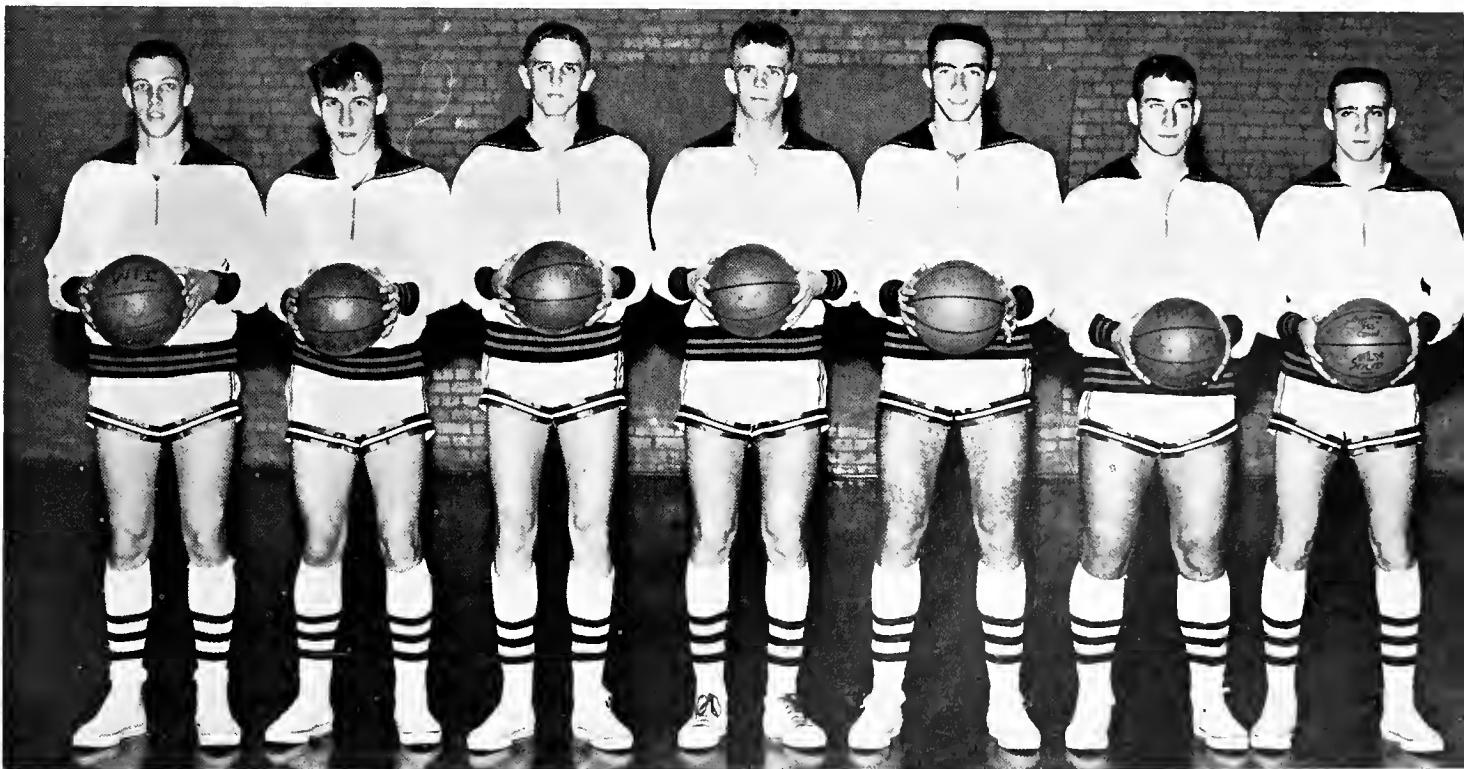
Take the courage against overpowering odds; the hope in the coach's heart; the spirit of the students, Cheerleaders, and pep band; and a young, fighting ball club. Put them together and you have the 1957 basketball season.

SEASON'S RESULTS

Season's Results	
Oglethorpe U. 53	Berry 69
Oglethorpe U. 49	Piedmont 60
Oglethorpe U. 49	Sewanee 62
Oglethorpe U. 62	North Georgia 67
Oglethorpe U. 56	Ga. State 48
Oglethorpe U. 75	Jacksonville State 67
Oglethorpe U. 48	Valdosta 57
Oglethorpe U. 79	Piedmont 95
Oglethorpe U. 63	Howard 59
Oglethorpe U. 64	Birmingham Southern 79
Oglethorpe U. 60	Ga. State Teachers 93
Oglethorpe U. 72	North Georgia 81
Oglethorpe U. 71	Berry 59
Oglethorpe U. 66	Howard 111
Oglethorpe U. 50	Birmingham Southern 68
Oglethorpe U. 68	Chattanooga 61
Oglethorpe U. 69	Valdosta 45
Oglethorpe U. 67	Jacksonville State 80
Oglethorpe U. 62	Chattanooga 57
Oglethorpe U. 61	Ga. State 57



The squad takes a breather and Coach Pinholster gives them the final strategy for their win over Howard.



Jim Magee, Calvin Wall, Scott Schamp, Eddie Starnes, Donn Sullivan, Bruce Hauck, Billy Carter. Joining the team later: Scooter Buck, Jimmy O'Brien, and Joe Sewell. Behind-the-scenes heroes: Managers, Charles Bethea and Bob Booker; Score-keeper, Sam Edleman; Publicity, Bob Oliver.



An anxious moment occurs as the ball is tipped and the game begins.

Some clown, some catch up on their studies on the road to an out-of-town game.



Donn Sullivan fires a jump shot from 10 feet out and Scotty Schamp hovers for the rebound.



GAME NIGHT



The Cheerleaders Pose . . .

Top row: Ellen Kinsey, Barbara Marsh, Nancy Schaller, Sandy Carter, Sandy Langley, Ina Foster, Captain.

Bottom row: Ann Mathias, Janne Jolley, Carolyn Morris Webb, Gail Langley.



The Saints play . . .

Joel Burrow, trumpet; Dennis Michael, drums; Vinnie Buttiglieri, washboard; Lee Barrett, bass washtub; Charlie Smith, clarinet and sax; David Wall, guitar; Tom Deacon, clarinet (in cheerleader shot). *Hidden:* Bob Loftin, guitar.



. . . and Bruce Hauck scores on a hook shot in the Petrel's victory over Valdosta State.



There's no pressure on the band.



Scotty concentrates as he lays up another two points.



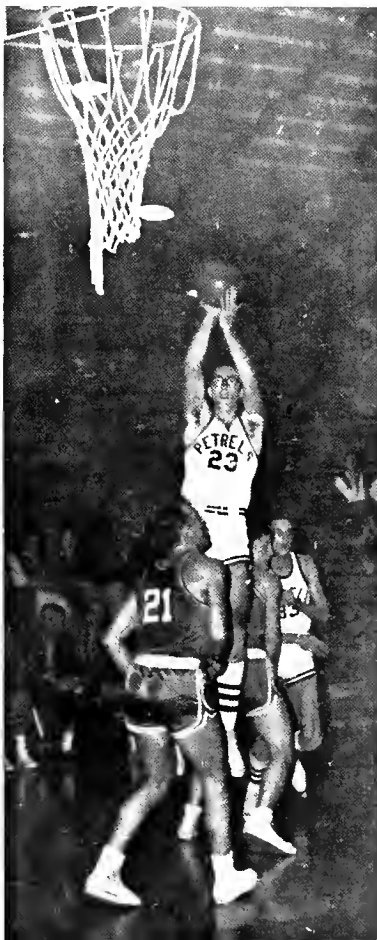
Scouter Buck gets two free throws as he and his hook shot are broken up.



Captain Ina at work.



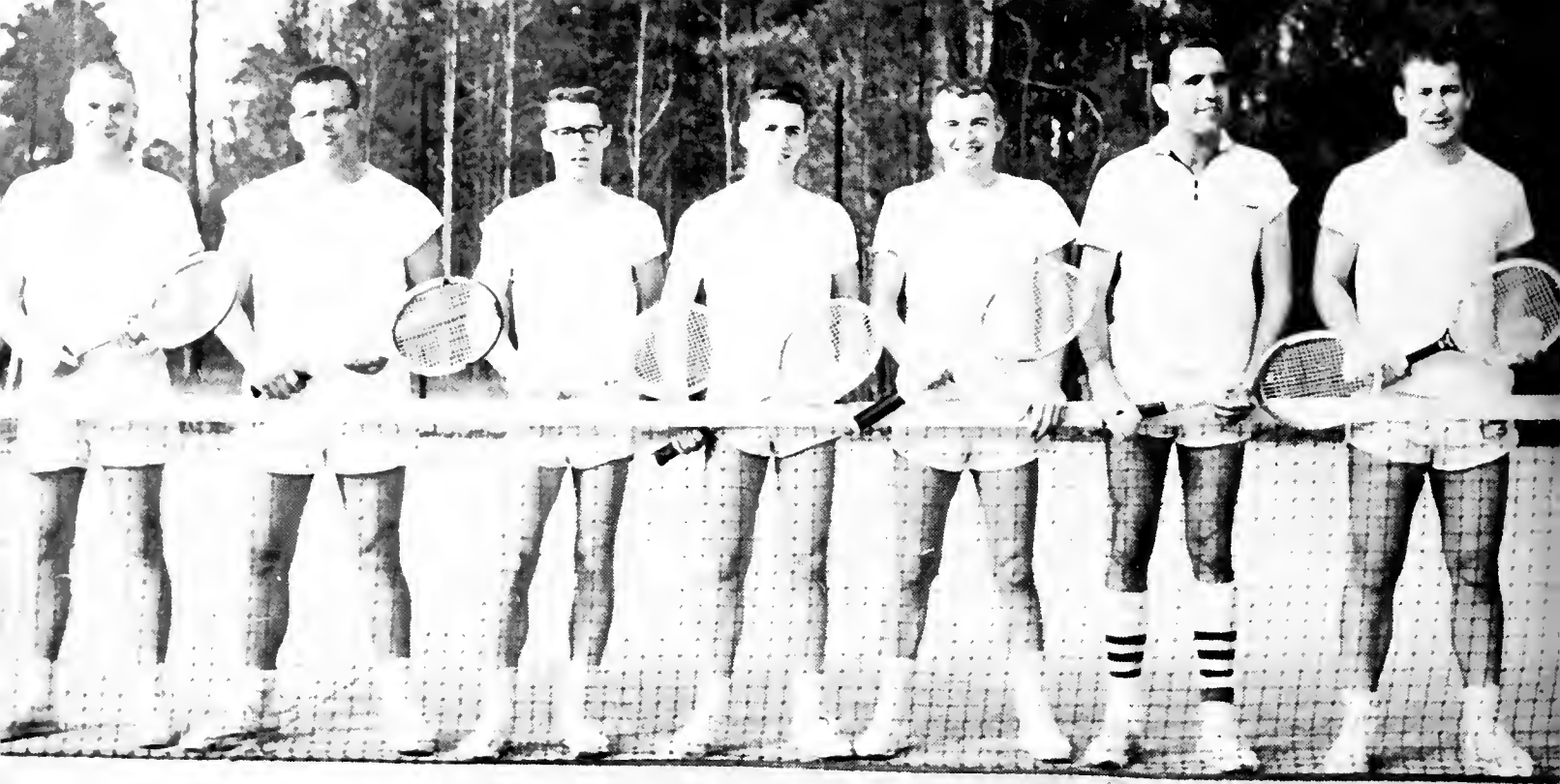
Some people say it was the Oglethorpe spirit that won our games . . .



Some say it was jump shots like this . . .



Others feel sure it was Buddah.



TENNIS TEAM



TREVIS INGRAM



SAM EDELMAN



SCOOTER BUCK



JIM MILTON

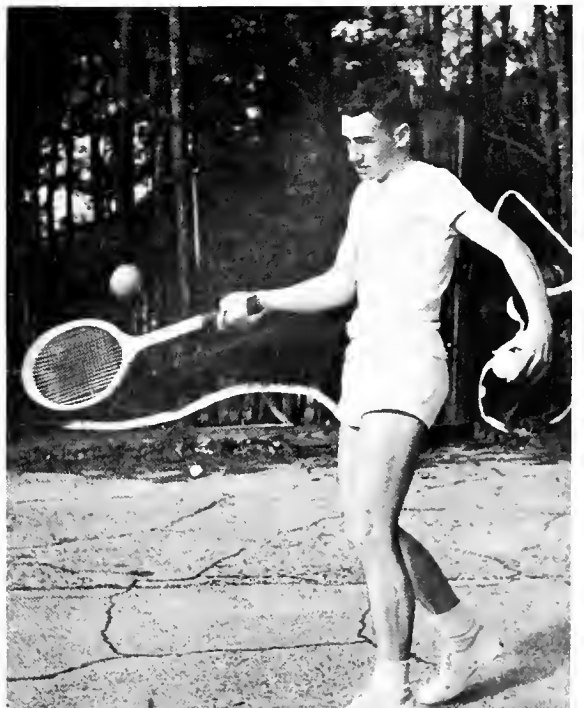


- JIMMIE CLOWER
- BRUCE HAUCK
- TOM DEACON

Not pictured, Eddie Starnes



FRANK SIMMONS





Spirited competition is the rule on the intramural football field.



Tom LaStringer picks up good yardage for the Goodman and Day Students' team.

INTRAMURALS

Intramural sports plays a vital part in the Oglethorpe extra-curricular life. Touch football, basketball, volleyball, and tennis, gives students a chance at rugged but friendly competition, and clean sportsmanship.

Good direction and participation made 1957 a great year for the non-varsity sports.

CHAMPIONS

Football	Goodman and Day Students
Basketball	Lowry Hall
Volleyball	"Jungle Bunnies" (Pharmacy Majors)
Softball	"Latimore Saints"

Day Students vs. Lowry Hall.



Lowry vs. Goodman Dorm.



Teammates jump for joy as Nancy Denton spikes the ball for Phoebe Hearst.



Over eighty students participated in volleyball, by far the most popular sport in the intramural program.



Set it up, Sandy!



Jim Milton, Intramural Director



Coach Pinholster referees a game.



GOLF TEAM

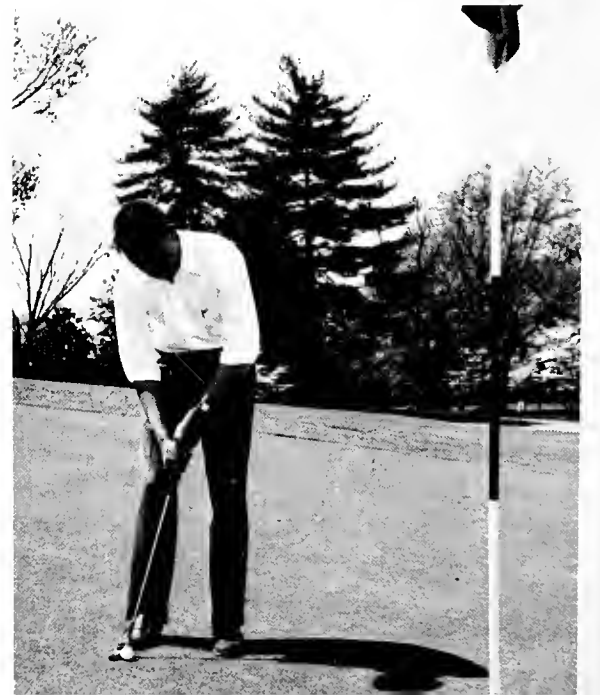
JACK LANE

JACK HAWKINS

BRUCE HAUCK

BOB OLIVER

ED MARKS



SNAPS



Who's falling behind?



Ugh!



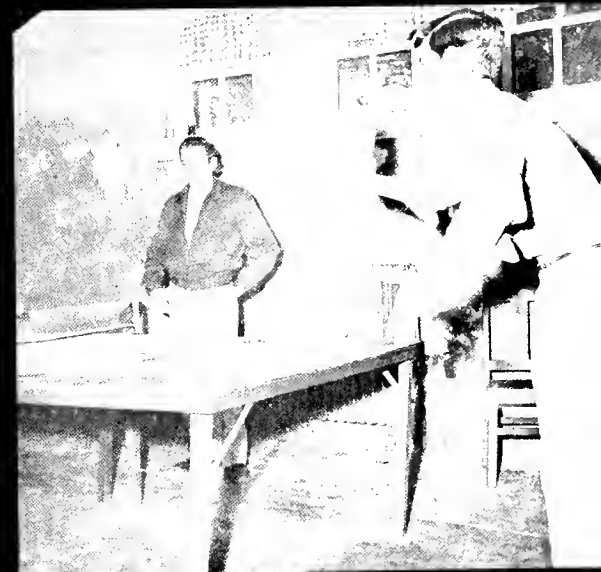
"I know women, and . . ."



Swan Lake



Burp!



Daily exercise in that cheery room.



The Line-Up



Friendly Persuasion



A quiet evening in the game room



Innocence



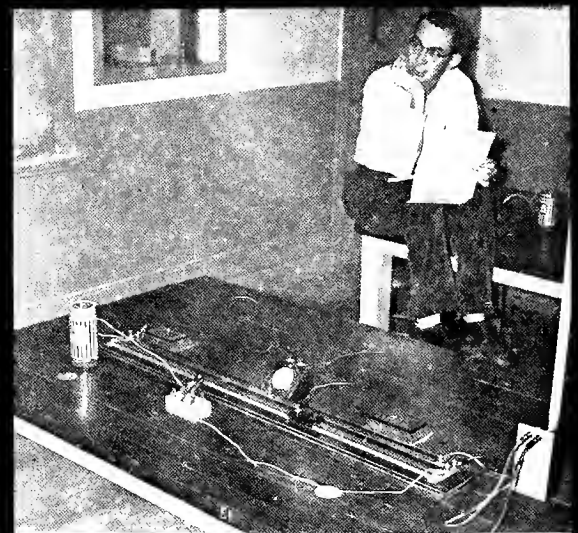
"Just once more, please?"



Exchange students



"Are you really a bear?"



"But Doc, surely it's good for something"



"Do love those romantic T. V. shows!"



Our leaders?



But Shirley, you don't look dead!



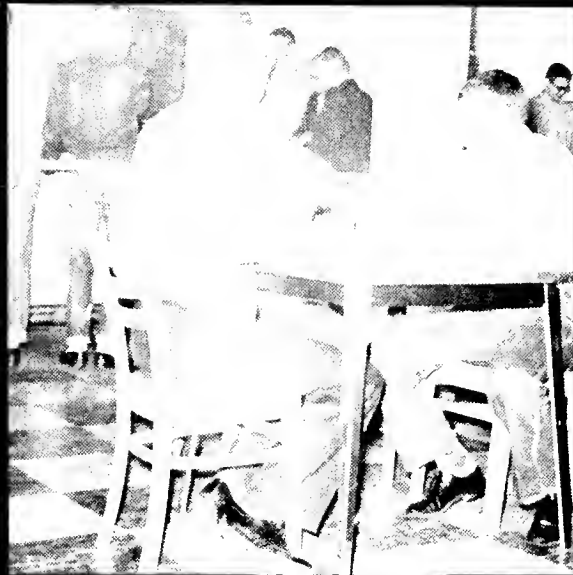
Well, shut my mouth



Understanding of Man . . . cla



"You've had it, little tree!"



"But the hash *did* move!"



"She promised me first!"



"Can't anyone follow instructions?"



"Did she say that?"



"Ah, your mother drives a beer truck"



Must we always watch T. V.?"



The pause that refreshes!



Sightseeing



This is my finest hour



"A wicked book gathers no dust"



"I'm sure we've met before"



She had the right of way



"Hurry, here comes Bob!"



He stepped on my toe"



"But he wants to see my room"



"Shocking!"



Professionals?



Unusual setting.



May we hear too?



That's life?



The Petrels gone South.



Taste good?



All the comforts of the cafeteria.



Too pooped to pop.



It's the black Planet.



Who is it Rae?



But Mr. Brown says . . .



Calypso Cars.

**SHOP WITH
CONFIDENCE**



Consistent Savings

Courteous Service

Complete Satisfaction

Compliments of

SOUTHERN BREAD

ETHERIDGE AND VANNEMAN

7201 Peachtree Road

Oglethorpe University, Georgia

REAL ESTATE

RENTALS

LOANS

INSURANCE

BIUSO'S RESTAURANT

BEST PIZZA

Baked in Brick Oven

ON THIS SIDE OF HEAVEN

Open Daily from 5 p.m. to 3 a.m.

2969 Peachtree Road



BE BUSINESSLIKE

Keep accurate records of your spending.

Mail a personal check for all bill payments.

OPEN A CHECKING ACCOUNT

**DeKALB NATIONAL BANK
of Brookhaven**

Member of Trust Company of Georgia Group

4050 Peachtree Road, N. E.

Member F. D. I. C.

ATLANTA, GEORGIA

A MESSAGE TO THE CLASS OF '57

Soon, you will leave Oglethorpe University bearing a diploma sought by many, but received by a few. The memory of the campus may wane, though we hope your visits will be frequent, but the warm, friendly spirit found here will remain with you always.

You have received the finest undergraduate education obtainable—for a purpose. You have an obligation to yourselves and society, which can be satisfied by applying your attained skills, understanding and moral direction, to improve the lot of us all.

However, you are not alone in this task, for the more than 5,000 alumni who have preceded you are sharing your burden, and they make themselves available to you, should you need them.

We congratulate you for your academic prowess and welcome you into the exclusive ranks of the National Alumni Association of Oglethorpe University.

THE ALUMNI

The Alumni

Morgan's Dry Cleaning

"Shirt Service" "Washerette"
"Flatwork"

4053 Peachtree Road

CE. 3-0076

We Serve



50-56 Alabama Street, S.W.

Brookhaven Pharmacy

Colbert & Weathersby

4003 Peachtree Road

Brookhaven, Georgia

CE. 3-6701

Underwood's Peachtree Garden

Texaco Service

4290 Peachtree Road, N.E.

Chamblee Pharmacy

(Next to Fire Station & City Hall)

Revlon — Rubenstein

Max Factor — Coty

Registered Pharmacist always on duty

For Fashion Sake, Sew!

Lovely Fabrics

Vogue — McCall

Advance — Simplicity

Butterick Patterns

Drapery Fabrics

Sewing Supplies

Gasoline Alley No. 2

4490 Peachtree Road
North Atlanta, Georgia

EX. 0144

"It's So Right
to Sew"

In Buckhead — CE. 3-4061



Oglethorpe

SENIOR SONG

WITH LAGGING STEP WE LEAVE THESE HALLS
THE CRADLE OF OUR NEW FOUND STRENGTH.
BUT OFT WITH LONGING BACKWARD GLANCE
STILL LOATHE TO SIGH A LAST FAREWELL.

THE SENIOR CLASS

Compliments Of

CREST MOTOR COMPANY
3167 Peachtree Road

L. B. FINDLEY COTTON CO.
Duluth, Georgia

ROTH'S MEN AND BOYS DEP'T STORE
4067 Peachtree Road

NORTH SIDE PHARMACY, INC.
3465 Peachtree Road

BARBECUE KITCHEN
4083 Peachtree Road

JACK HUNTON'S BEAUTY SALON, INC.
Buckhead

PEACHTREE ROAD PHARMACY
4084 Peachtree Road

CATHY AND MARLENE
Class of '56

H. W. LAY AND COMPANY
4520 Peachtree Industrial Blvd.

HAYSSON MANUFACTURING CO.
2387 Peachtree Road

HAMRICK'S SUPERMARKET
Duluth, Georgia

ZEP MANUFACTURING CORPORATION

NORTH SIDE NEWS

Permacel Tape Corporation
New Brunswick, N.J.
1080 Dill Avenue, S.W.
Atlanta, Georgia
Hale S. Dant
Manager, Southern Division

Compliments of the

Lovable Brassiere Company

North Atlanta Realty Co.
North Atlanta Insurance Co.
John E. Wickham
4260 Peachtree Road
North Atlanta, Georgia



Compliments of the Junior Class

Compliments of the

**FIRST BAPTIST CHURCH
OF ATLANTA**

Dr. Roy McClain
Pastor

754 Peachtree, N.E.

**ATLANTA'S
FOUR-MOST
RESTAURANTS**



Town & Country

Most luscious steak you've ever tasted — 1 lb. Sirloin Char-Broiled over the open hearth and served with baked Idaho, all the salad you can eat and coffee by candlelight . . . *all for only \$3.75.* It's the greatest dining treat in Atlanta. Open for luncheon and dinner.



Petite Lounge

Most attractive setting for pleasant relaxation. Your favorite beverages sipped to a background of mood music. Open from 11:30 a.m.



knife & fork

Most any time of day you'll enjoy a snack or meal in this quick service restaurant. Moderate prices. Delectable take home products. Open all day.



the Stirrup

Most picturesque spot for tasty seafood delicacies is this oyster bar and delicatessen. Au gourmet snacks to take home. Open from 10:30 a.m.

The DINKLER PLAZA

Compliments of

TWELVE OAKS

1895 Piedmont Road, N.E.

Compliments of

P. E. DAIRY PIERCE DAIRY

Suppliers of

Oglethorpe's Dairy Products



Whoever you are
whatever you do

BOTTLED UNDER AUTHORITY OF THE COCA-COLA COMPANY BY

THE ATLANTA COCA-COLA BOTTLING COMPANY



Hapeville Photo Service & Service

"Your Yamacraw Photographers"

3396 Stewart Ave. Hapeville, Ga.

PO. 7-7011

J .J. Allen

C. E. Strickland



BOOTE & DAVIES, INC.
ATLANTA

Drawing with the South - Serving the Nation



