

YAMACRAW — 63

Prof. Wendell H. Brown

Digitized by the Internet Archive
in 2010 with funding from
Lyrasis Members and Sloan Foundation

<http://www.archive.org/details/yamacraw196332ogle>





OGLETHORPE



ATLANTA



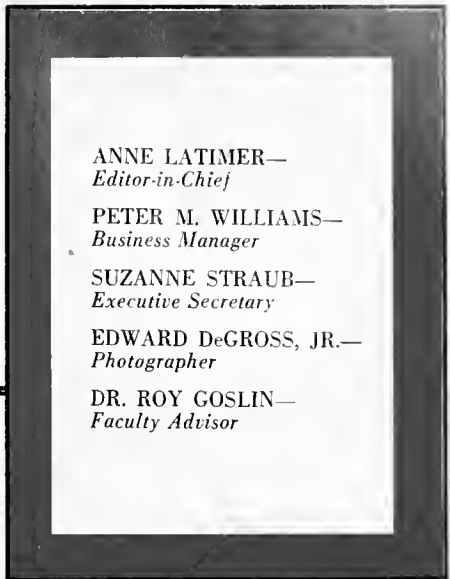
GEORGIA



*1
9
6
3*



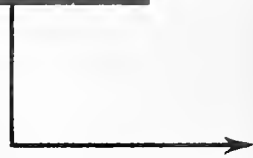
Yamacraw



UNIVERSITY



Presenting





Clock moves . . .



So move on



Oglethorpe students





Oglethorpe, a growing school . . .





*Atlanta, a growing city
dwell together in unity*

Atlanta is now enjoying a phenomenal growth and an exciting spurt of life that moves toward a bright future. The buildings that reach for the clouds, the highways that reach toward new horizons, the people who hold on to a fabled "southern hospitality" in spite of their rushed lives,

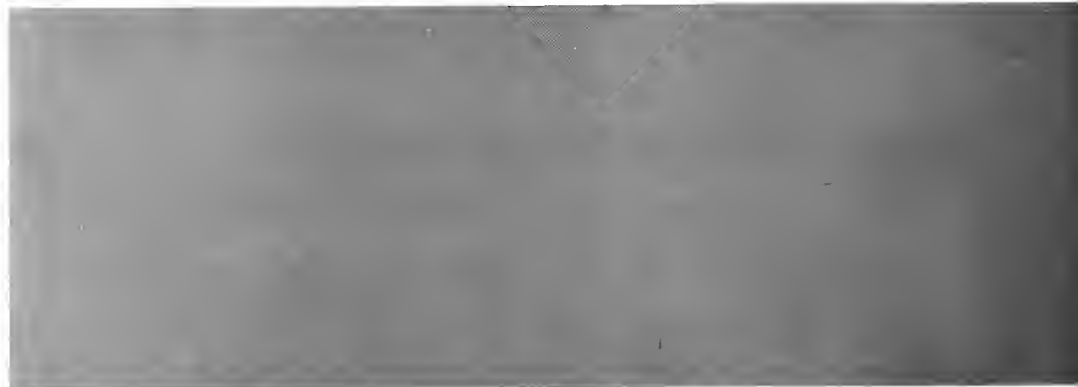
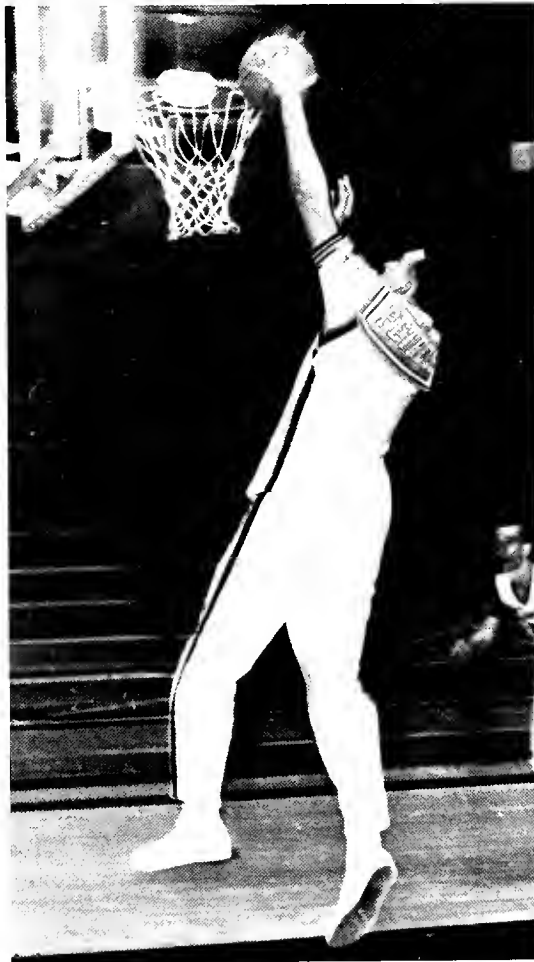
all speak of a dynamic city with a warm heart. Oglethorpe shares much with her mother city; their spirits are much the same. The University looks toward a more vital future, and her students are prepared to take their places in a modern world—in cities like ATLANTA.







*“Square round
and
let us closer be . . .”*





*and
so we live*





We the staff of the 1963 YAMACRAW and the students of Oglethorpe University, wish to honor someone whose interest stimulates our interest, whose caring inspires us to care, and whose guidance encourages our endeavor. Because she is as vital to Oglethorpe as the heart is to the body, we affectionately dedicate this publication to

Mrs. Bernice Hilliard



Foreword

Oglethorpe is embarking on a new chapter in her history in this year of 1963. From the days of "old Oglethorpe" in Milledgeville, the University has changed to meet the needs of the times. Today finds a new need, and Oglethorpe is preparing to meet it. An expanded student body with more adequate facilities are the goals toward which the school is now actively working.

In the midst of change our lives at Oglethorpe are caught in a familiar pattern of classes, basketball games, formals, and study. Ours is a school of many moods, and we are students of many faces. From the excited yell of a cheerleader to a solemn chorus of the Alma-Mater, our voices tell a story, changed and yet familiar. This year's YAMACRAW staff hopes to capture the moods and picture the faces so that the voices can be recalled tomorrow and in the years to come. As the cover suggests a movement from the familiar clock tower to the windows of the planned library, so the book is intended to take you through a year which looks to the future.

THE EDITOR

Contents

Introduction

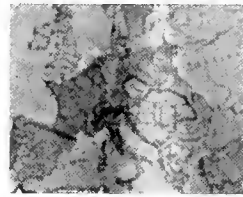
Faculty and Administration

Section edited by:
GEORGE HANDLEY



Classes

Section edited by:
MARY LOU ANDERSEN



Activities

Section edited by:
TOMMY PHILLIPS



Organizations

Section edited by:
JoANN SAGER



Sports

Section edited by:
KEN BORDEN



Honors

Section edited by:
CHERRY HODGES



Ads



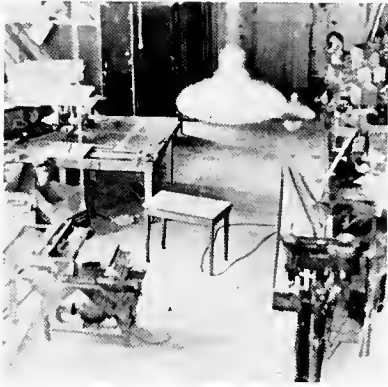
FACULTY and
ADMINISTRATION

"This self-study group



will now discuss the problems

of maintenance,



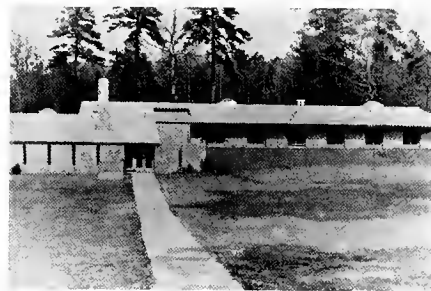
students' food,



needed raises for the Faculty, how to get money for our new library,



the need for better dormitory facilities,



and most important is . . .



how to make better coffee."

Oglethorpe University

Atlanta, Georgia

OFFICE OF THE PRESIDENT

OGLETHORPE - A GROWING SCHOOL IN A GROWING ATLANTA

There is no doubt about Atlanta's phenomenal physical growth. There is also no doubt about the growth of Oglethorpe, whose student body has more than doubled in the last five years and whose student body may double again in the next ten years. But growth is not a matter merely of physical extension. The growth of Atlanta involves a growth in responsibility for human values, and the growth of Oglethorpe implies a growth in the dedication of the faculty and students to the process of learning to achieve higher quality of educational aims.

Atlanta is rapidly becoming a cultural center with emphasis not only on the sciences but on the arts. It is becoming a civilized, cosmopolitan area. That there are growing pains involved in this process is understandable, but in the years to come it is believed that Atlanta will emphasize beauty in its buildings and parks and landscape. It will emphasize better recreational facilities. It will emphasize improved human relations. It will emphasize increased respect for law. It will emphasize political responsibility.

Oglethorpe University is proud to be a part of this process of growth. But Oglethorpe also has its responsibilities. In the years to come, Oglethorpe and Atlanta will be even more closely associated. The new circumferential highway, the other expressways, and the proposed rapid transit system will make Oglethorpe easily accessible to the whole metropolitan area.

The growth of a college is not merely an internal growth with emphasis upon the learning process, but it is an extension of people into the community - not only into Atlanta but the communities throughout the United States, and to some extent in other parts of the world. It is important that this extension shall be a worthy expression of the ideals of this institution so that our graduates may increase social responsibility, and increase the actual expression of humane ideals. Let us be sure that our growth is in keeping with the growth of Atlanta in all of these ways. We have confidence that this will be so.



DONALD C. AGNEW, A.B. Park College, 1929, M.A. Duke University, 1932, Ph.D. Duke University, 1936, is the President of Oglethorpe University. He has served in this capacity since 1957. Dr. Agnew, in addition to his many duties with the University, is a member of the Southern Society of Philosophy and Psychology.

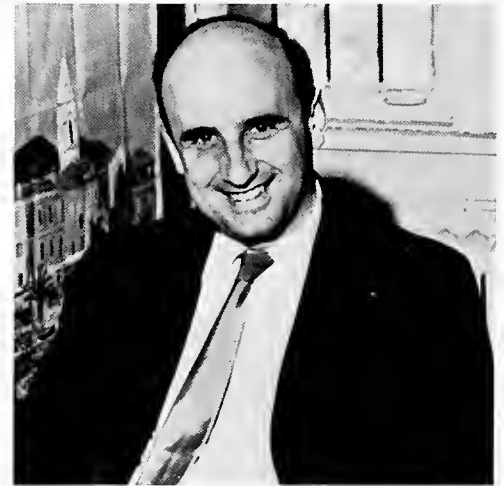
He is chairman of the Council of Presidents, University Center in Georgia, and also of the Board of Directors, Atlanta Chapter, American Association for the United Nations. He is Vice President of the Georgia Foundation for Independent Colleges and on the Executive Committee, Commission on Colleges, Southern of Colleges and Schools.

Division of



LUCILE Q. AGNEW, A.B., Furman University, M.A., Duke University, teaches Speech and Writing, Modern Literature and American Literature. One of Mrs. Agnew's many interests is organizing an active writers group on the Oglethorpe campus.

ARTHUR BIELER, B.A., New York University, M.A., Middlebury University, Docteur de l'Universite, Sorbonne, Paris, teaches Beginning French, Intermediate French, History of the French Language, Nineteenth Century French Literature, and Beginning German. When he is not infusing the spirit of language into his students, Dr. Bieler enjoys playing tennis and traveling in many countries of the world.



WENDELL H. BROWN, B.S., College of Puget Sound, M.A., Columbia University, with studies at the University of Paris, teaches the Sophomore sequence in Human Understanding, History of the Language, Understanding Poetry, and Speech and Writing. He is the advisor to the Players. Mr. Brown enjoys growing grapes and making wine.



RALPH L. CARNES, B.A., Emory University; M.A., Emory University, teaches Ethics, Introduction to Philosophy, Philosophy of Religion, Epistemology, History of Philosophy, and Humanities. Mr. Carnes is a member of the Georgia Philosophical Society and the Atlanta Astronomy Club. In addition to his skill with the Spanish guitar, he is interested in painting, flying, astronomy and electronics. At present Mr. Carnes is working on his Ph.D. at Emory University.

Human Understanding

WILLIAM H. COHEN, B.A., University of Florida; M.A., University of Florida, teaches Freshman English and the Sophomore sequence in the Division of Human Understanding. A member of the curriculum and library Committees, Mr. Cohen also is advisor to the Literary Magazine. A collection of his poems has been published under the title, "A House In The Country."



ELAINE G. DANCY, A.B., The University of South Carolina; M.A., The University of South Carolina, teaches classes in Speech and Writing and English Literature. She is interested in music and has directed several church choirs. Mrs. Dancy enjoys gardening and her garden club activities. She is a member of Phi Beta Kappa.



HARRY DOBSON, Institute of Musical Arts, N.Y., Study in Berlin, Fontainebleau, London, teaches Music Drama, Music and Western Civilization, History of Opera, History of the Symphony, Music of Spain, and Wagner.

CHARLYN B. HARPER, B.C.S., Georgia State, teaches Introduction to Philosophy. She has attended New York University and is now attending Emory University. In addition to teaching classes at Oglethorpe and going to school herself, Mrs. Harper finds time to read for relaxation.



Human Understanding

DUANE E. HANSON, B.A., Macalester College; M.F.A., Cranbrook Academy of Art, is giving a course in Art Structure. Mr. Hanson is a sculptor who has exhibited widely in this country and abroad.



CLAIRE HUBERT, A.B., Duke University; Universite d'Aix-Marseille; M.A., Emory University, teaches a class in Beginning French. Mrs. Hubert is a member of Phi Beta Kappa. She is presently preparing a dissertation on Gerard de Nerval and W. B. Yeats, a comparison of two heterodox mystics. She is currently candidate for the degree of Ph.D in comparative literature at Emory University.



INGE MANSKI LUNDEEN, University of Indiana, Curtis Institute and Metropolitan Opera Company, leads the Oglethorpe Chorus and teaches Voice Production. She has been a judge for the Metropolitan Opera Auditions and for the Miss Atlanta Contest. Mrs. Lundeen has directed "Amahl and the Night Visitors" at Oglethorpe and produced "The Old Maid and the Thief" at Emory University. She is a member of the SAI, an honorary music sorority.

GEORGE C. SEWARD, A.B., Amherst; Ph.D., Tuebingen, is Dean of the University. Dr. Seward teaches Life and Religion, Philosophy of Religion and Interpretation of History. He belongs to the Georgia Philosophy Society, the Georgia Mineral Society, the Kiwanis Club and the Georgia Academy of Science. Dr. Seward's present non-academic interests are mineralogy and lapidary work.



Division of Business

WILLIAM A. EGERTON, University of North Carolina, University of Tennessee Law School, instructs classes in Business Law, Introduction to Business, and Management Function. He is Management Consultant. Mr. Egerton is Director of the American Society of Training Directors. For pleasure and relaxation, Mr. Egerton likes to read.



JAMES R. MILES, B.S.N., C.B.A., University of Alabama; M.B.A., Ohio State University, is instructor of Accounting, Insurance, Finance, Marketing Principles and Business Mathematics. He is a member of the Hospitalization Committee, the Retirement Committee, and the Athletic Committee. Mr. Miles' favorite outside interests are fishing and boating.



AUSTIN C. SCHLENKER, JR., BBA, Texas College of Arts and Industries; M.S., Texas College of Arts and Industries, teaches Principles of Economics, American Economic History, Comparative Economic Systems, Economic Fluctuations, and Government and Business. He is also Probation Counsellor. Mr. Schlenker plans to begin work on his doctoral degree at Syracuse University and at the Federal Reserve Seminar.



Division of

MARTIN ABBOTT, A.B., Presbyterian College; M.A., Emory University; Ph.D., Emory University, is a professor of Western Civilization, American History, History of the Civil War, and the American South. He spent the academic year 1960-61 as a Fulbright lecturer and consultant at the Interpreters Institute in Germersheim, Germany. He is now the chairman of the self-study group at Oglethorpe. Among other things, one might say his hobby is the South.



LEO BILANCIO, A.B., Knox College; M.A., University of North Carolina, teaches Western Civilization, Renaissance and Reformation, and Europe Since 1918. Mr. Bilancio is now working on his Ph.D. at the University of North Carolina.



IDA MARTIN CHIARAVIGLIO, A.B., Berea College; M.A., Emory University; Ph.D., Emory University, teaches American Government, State and Local Government, Constitutional Law and Political Theory. She is a member of the Southern Political Science Association and the American Association of University Professors. In addition Dr. Chiaraviglio belongs to Phi Sigma Alpha and Pi Gamma Mu. She enjoys modern dance and swimming in her free time.



Citizenship



A. CHEEVER CRESSY, JR., A.B., Tufts; M.A., Fletcher School of Law and Diplomacy; Ph.D., Fletcher School of Law and Diplomacy, teaches International Relations, Comparative Government, American Diplomatic History, Europe in the 19th Century, Far Eastern Diplomatic History and Nationalism in Africa and Asia. One of Dr. Cressy's many interests is collecting campaign material of the National Elections.



GRADY L. RANDOLPH, B.S., Auburn University, M.A., University of Chicago; LL.B., Woodrow Wilson College of Law, is an instructor of Western Civilization. Mr. Randolph is also Vice-President of the United Nations Council in Atlanta. His hobby is collecting rare coins.



HAROLD M. SHAFRON, B.A., University of Alabama; M.A., University of Alabama, joins the economics staff at Oglethorpe as Assistant Professor. He has taught at the University of Alabama, Fairleigh Dickinson University, and at The College of Charleston. He served as economic aide in the Third Military Government Regiment during World War II where he worked with officials of war damaged industries in Germany and Austria.

Division of



ROBERT BOXER, B.S., Brooklyn College; Ph.D., Rutgers University, is an instructor of General Chemistry and Physical Chemistry. He is a member of the American Chemical Society. To pass the time, Dr. Boxer enjoys tennis and fishing.

JOSEPH M. BRANHAM, B.S., Florida State University; M.S., Florida State University comes to Oglethorpe as Assistant Professor of Biology. He is a member of Phi Sigma, American Institute of Biological Sciences, and The American Association for the Advancement of Science. His major interests are water sports, painting and photography. He is now working on his Ph.D. at Florida State.



ROY N. GOSLIN, B.A., Nebraska Wesleyan; M.A., University of Wyoming, instructs classes in Advance Physics, Advance Math and Man and the Universe. During World War II he served as a physicist on the Manhattan Project at Oakridge, Tennessee. Mr. Goslin has also been consultant to the Oakridge National Labs in 1948 and to the Southern Research Institute in Birmingham, Alabama. He has been acclaimed in science as the discoverer of the "Goslin Effect."



BERNICE HILLIARD, A.B., Oglethorpe University, M.Ed., Oglethorpe University, teaches Algebra, Trigonometry and Analytic Geometry. Most of her time is taken up with fulfilling her duties as Resident Counselor for Women, but her favorite pastime is walking with her two poodles.

Science

J. KENNEDY HODGES, B.A., Wofford College, M.A., Duke University, Ph.D., University of North Carolina, is professor of General Chemistry, Organic Chemistry and Quantitative Analysis. At Oglethorpe he serves on the Building and Grounds and the Curriculum Committees. Dr. Hodges is a member of the American Chemical Society.



GEORGE F. WHEELER, B.A., Ohio State University, M.S., California Institute of Technology, is an instructor of Mechanics, Electricity and Magnetism, Advanced Mechanics, Electricity, Light, and Optics, Wave Motion, Modern Wave Physics and Differential Equations. Now in his tenth year at Oglethorpe, Mr. Wheeler enjoys riding around campus in his black convertible.

LOIS WILLIAMSON, B.A., Oglethorpe University, M.A., Oglethorpe University, teaches General Botany, Invertebrate Zoology, Comparative Embryology, Comparative Anatomy, Plant Systemics and Man and the Universe. She acts as an advisor to high school science teachers and, in addition, is active in Girl and Boy Scout work.





GUNNAR H. BERG, B.S., University of Washington; M.A.; ED.D.; Teachers College, Columbia University, is the Resident Administrator for the American Humanics Foundation on the Oglethorpe campus. He teaches Public Relations, Field of Social Work, Case Work Methods, Institutional Relations and Group Dynamics. He is a member of Rotary, past president of the Board of Education, Phi Delta Kappa and is listed in Who's Who in American Education. His interests are travel, public speaking and working on extinct languages.

MIRRIAM JONES, B.S., Wisconsin University, M.S., University of Wisconsin, Ph.D., University of Wisconsin, is the only woman in Georgia who is a member of the American Educational Research Association. She is teaching Elementary Core and supervising student teaching.



ELGIN MacCONNELL, A.B., Allegheny College, M.A., New York University, teaches Introduction to Education, Curriculum, Materials, and Methods in Secondary Schools, Educational Psychology, and Elementary Core. He also supervises student teachers. Mr. MacConnell is also the Resident Counselor for Men. Some of his many activities include being faculty advisor to the Student Union Committee and serving on the Interactivity Committee.



PETER N. MAYFIELD, B.A., Emory University; M.A., Duke University; Ph.D., University of North Carolina, is an instructor of Psychology. He is a member of the American Psychological Association, the Southeastern Psychological Association, and the Georgia Psychological Association.

Community Service

GARLAND F. PINHOLSTER, B.S., North Georgia College; M.A., Peabody College, teaches physical education theory courses and freshman physical education. Coach Pinholster has written three books on basketball and plans to write additional books. Along with this busy schedule he does what he does best, turn out championship basketball with the Stormy Petrels.

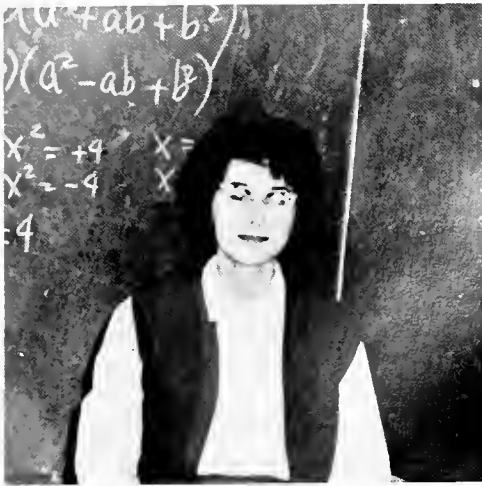


RICHARD M. RESER, A.B., King; M.A., Peabody; Ph.D., University of North Carolina, teaches classes in Sociology and Anthropology. He is chairman of the Adult Education Program and is a member of the Curriculum Committee. Dr. Reser is sponsor of the All Faiths Fellowship. He is also Vice-Chairman of the Greater Atlanta Council of Human Relations.

BARBARA S. UEHLING, A.B., University of Wichita; M.A., Northwestern University; Ph.D., Northwestern University, teaches General Psychology, Child and Adolescent Psychology, Social Psychology, Abnormal Psychology, and Experimental Psychology. She is advisor to the Debate Team, is Program Chairman of the Women's Club, and is a member of the League of Women Voters. Dr. Uehling is also a member of the Georgia Psychological Association and the American Psychological Association.



Night Division



PATRICIA A. HULL, B.S., Auburn University; M.A., Auburn University, is an instructor of advanced math courses, and Man and the Universe. In her free time Mrs. Hull likes to paint.



JOHN J. MALLET, B.A., Oberlin College; Ph.D., Duke University, is a Visiting Lecturer in General Psychology. He is a member of the American Psychological Association and the American Academy of Psychotherapists. Dr. Mallet enjoys the Fine Arts, travel, swimming, and hiking.



LOUIS J. MALOOF, A.B., University of Georgia; M.A., University of Georgia; Ph.D., University of Florida, teaches Introductory Sociology, Social Problems, The Community, The Family, and Criminology. He is a member of Phi Beta Kappa and Phi Kappa Phi. He is also a member of Alpha Kappa Delta a National Honorary Sociological Fraternity.



THEODORE R. McCLURE, JR., B.A., Marshall University; M.A., George Peabody College for Teachers, is teaching Speech and Writing at Oglethorpe University in the newly opened Night School.



IGNACIO MERINO, B.S.L., Havana Institute; Ph.D., Havana University, is a teacher of Spanish at Oglethorpe. He is a member of the Colegio Nacional De Doctores En Silofia Ey Letras and has received a Maestrio Normal from Spain. He likes to write poems, play the flute, and listen to music.



EDITHGENE B. SPARKS, B.S. in ED., Oglethorpe University; M.A. in ED., Emory University. She is an instructor in Elementary Education. She is working on her Ph.D. at the University of Georgia. She is a member of the National Education Association, Georgia Education Association and American Association of University Professors.

Administrative Staff

Mrs. Lenora T. Baldwin
College Nurse



Glenda Balowsky
Assistant Registrar



Joan Barton
Assistant Registrar



Arlene Brilliant
Receptionist



Billy W. Carter
Assistant Coach



Thomas W. Chandler, Jr.
Librarian



Mrs. June H. Conley
Cashier



Mrs. Jeanne B. Cressy
Secretary to the President



Ken Davis
Dorm Proctor



Robert Doyal
Dorm Proctor





George H. Doyle, Jr.
Director of University Relations



H. Lynn Drury
Dorm Proctor



Sewell P. Edwards
Campus Security Officer



Mrs. Janet K. Gay
Secretary to the Dean



Mrs. Ruth F. Lovell
*Manager of the Post Office
and the Bookstore*



Mrs. Marjorie M. MacConnell
Registrar



Mrs. Joyce B. Minors
Alumni Secretary



Robert J. Mohan
Field Representative

Louis Nash
Cafeteria Manager

John W. Otting
*Superintendent of
Buildings and Grounds*



Jo Payne
Receptionist

Stanley F. Pitcher
Business Manager



Mrs. Caroline Pinholster
*Physical Education
Instructor*

Mrs. Dorothy G. Richardson
Assistant Librarian



Mrs. Carol G. Tucker
Bursar

Tom Winn
Dorm Proctor





CLASSES

“ . . . and with the dawn of July 20th began the battle of Peachtree Creek.

On July 21st, Hood withdrew to inner fortifications



to

make plans for a second attack.



Sherman began

a wheeling movement . . . McPherson's flank was resting in mid air.



Hardee was to march south and then turn east to be in a position to attack

the flank and rear troops of McPherson by day-break.



When

Cheatam heard sounds of firing . . .”





seniors . . . seniors . . . seniors . . .

Senior Poem—1963

The dying embers of summer
 Kindled our class entrée
Alongside a multi-color Autumn,
 Scholarly attire of rodent paraphernalia
Distinguished our naive members,
 And labeled us as one.

Exams were our constant malady
 With nostalgia a plaguing nemesis
But, the heat of the fire returned
 Granting a grateful leave of absence.

The familiar ring of towered bells
 Sounded the return of our scattered ashes.
Our attire was shield and sword
 In expectation of forthcoming battle
But alas, Homer snuffed out his usual toll
 And the victorious few danced on
Towards the distant warmth.

At the death of summer
 And the conception of fall
We found less familiar faces to recall.
 Egotism and individualism encompassed our cliché
Week-ends, formals, ball games, etcetera
 Were cherished as if each were the last.
And the divorce of summer from spring
 Signaled the beginning of the end.

The initial tell-tale omens of fall
 Brought us together for the finale.
And soon after caps and gowns
 Fluttered in the autumn breeze
In anticipation of processional grandeur.
 Exams passed by the wayside
And days turned into nights
 And back again
And then—graduation and tomorrow.

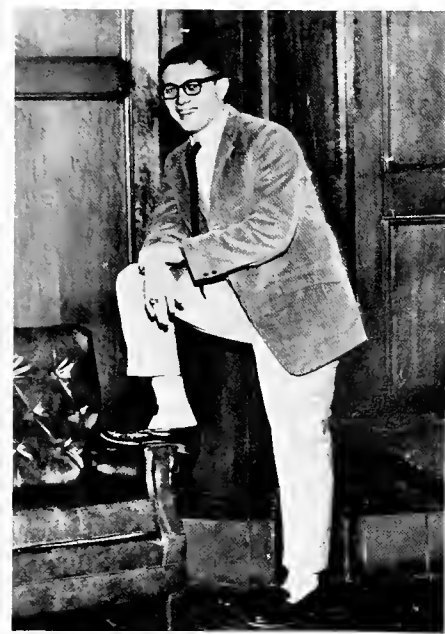
How rapidly the pages had been turned
 And, yet another chapter in our lives was passé.
And with envy in our eyes
 And tears in our hearts
We visioned a neophyte wind
 Blowing our ashes away,
But never our memories of Oglethorpe.

C. L. WHITE, Class of '63



seniors . . . seniors . . . seniors . . . se

Officers for Class of '63



Steve McMullen
PRESIDENT



Ed Moore
VICE PRESIDENT



Pete Butchart
PARLIAMENTARIAN



Carole George
SECRETARY



Tommy Phillips
TREASURER



BEVERLY POWERS ALEXANDER

Bennettsville, South Carolina

B.A.

Transfer: St. Mary's Junior College, Raleigh, North Carolina.

MARY LOU ANDERSEN

Forest Park, Georgia

B.A.

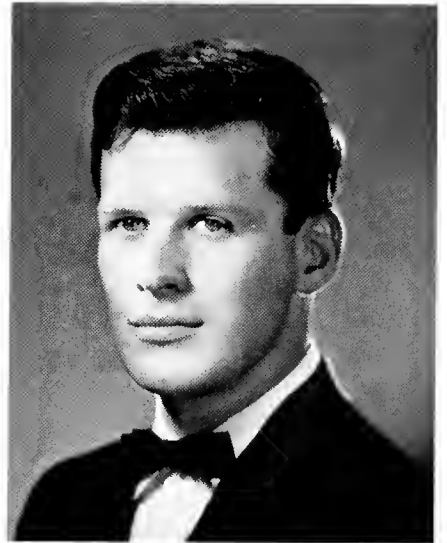
Players, 1, 2, 3, 4; Social Committee, 1, 2; B-Team Cheerleader, 1; Yamacraw Staff, 2, 3, 4, Organization Editor, 2, 3, Classes Editor, 4; Secretary, Sophomore Class, 2; Bowling League, 2, Secretary, 2; Stormy Petrel, 2, Secretary, 2; Rat Court, 2, 3, High Priestess, 3; Homecoming Queen, 3; Pep Squad, 2, 3; AFF, 2, 3; Sweetheart of Alpha Phi Omega, 3; Dorm Council, 4; Senior Class Project Co-Chairman; Lady Oglethorpe, 4.

ARNOLD WILLIAM BAKER

Hartwell, Georgia

B.A.

Humanics, 1, 2, 3, 4, Vice President, 3, President, 4; Libertarians, 1; Intramurals, 1, 2, 3, 4; Lord and Lady Oglethorpe Court.



GLENDA JEAN BALOWSKY

Hialeah, Florida

B.S.

Honor Court, 2, 3, 4; Duchess Club, 3, 4, Vice President, 4; LeConte Society, 3, 4, Secretary, 3, Vice President, 4; Who's Who, 4.



MARY JANE BOWMAN

Atlanta, Georgia

B.A.

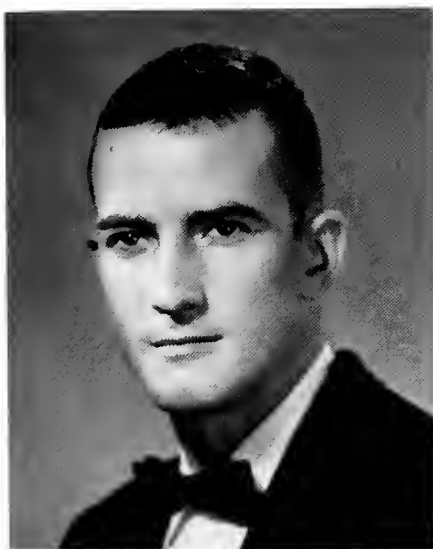
Newman Club, 1, 2, 3, 4; Duchess Club, 3, 4.

DAVID LEE BROWNING

Avondale Estates, Georgia

B.A.

Intramurals, 3, 4, (Softball and Football).

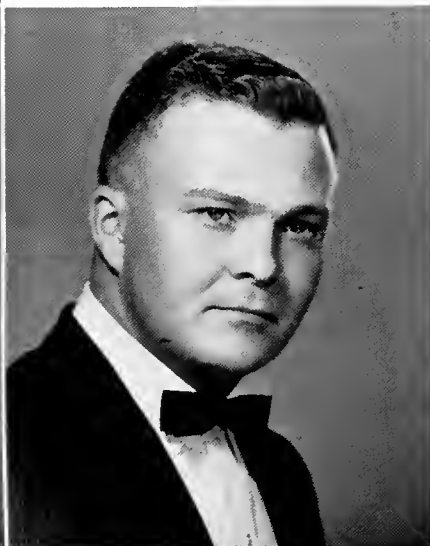


PETER THOMAS BUTCHART

Greensboro, North Carolina

B.A.

Gun Club, 1, 2; APO, 2, 3, 4; Circle K, 4.



CAROL SUE CLINES

Atlanta, Georgia

B.A.

Transfer: Barat College, Lake Forest, Illinois.

JOSEPH ALLEN CREA

College Park, Georgia

B.A.

Blue Key, 3, 4; Boar's Head, 3, 4.



SUSAN HOLLINGSLED DALTON

Bombay, India

B.A.

Social Committee, 1; Cheerleader, 1; Stormy Petrel, 1; Duchess Club, 4.

LEE BURDETTE DANIEL

Wake Forest, North Carolina

B.A.

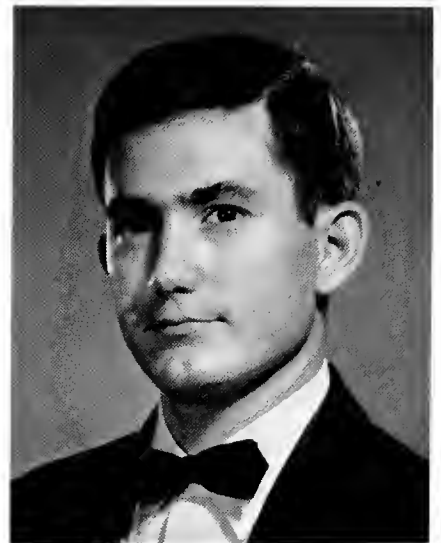
Transfer: Mars Hill College; Humanics, 3, 4, Vice President, 4; APO, 3, 4, Vice President, 4.

HILTON LYNN DRURY

Columbus, Georgia

B.S.

Stormy Petrel Staff, 1, 3, Associate Editor, 2; Honor Court, 1, Boar's Head Freshman Award; Saints, 1, 2, 3, 4; LeConte, 2, 3, 4; Blue Key, 3, 4, Secretary-Treasurer, 3; Boar's Head, 3, 4; Interactivity Committee, Chairman, 3; APO, 4; Joint Committee, Chairman, 4; Member of Steering Committee for Self-Study of Oglethorpe; Student Government Officer, 2, 3, 4, Treasurer, 2, Vice President, 3, President, 4; Who's Who; Lord Oglethorpe.



JAMES LOGAN EGERTON

Atlanta, Georgia

B.A.

Libertarian Society, 1, 2, 3, 4; Players, 1, 2; Debate Team, 3, 4; Junior Class Treasurer, 3.

MARY HELEN FORD

Atlanta, Georgia

B.A.

Transfer: Union University, Jackson, Tennessee, Zeta Tay Alpha Sorority.



PHYLLIS FIERMAN

Atlanta, Georgia

B.A.

Transfer: University of Wisconsin.

CAROLE PATRICIA GEORGE

Griffin, Georgia

B.A.

Players, 1, 2, 3, 4; B-Team Cheerleader, 1; Stormy Petrel Staff, 1, 2, 3, 4; News Editor, 3, Associate Editor, 4; Social Committee, 1, Public Relations Committee, 1; Honor Committee, 2. Yamacraw, 2. Administration Editor; Pep Squad, 2; Literary Magazine, 2; Bowling League, 2; Dorm Council, 3, President, 3; Senior Class Secretary, 4; Homecoming Court, 3.

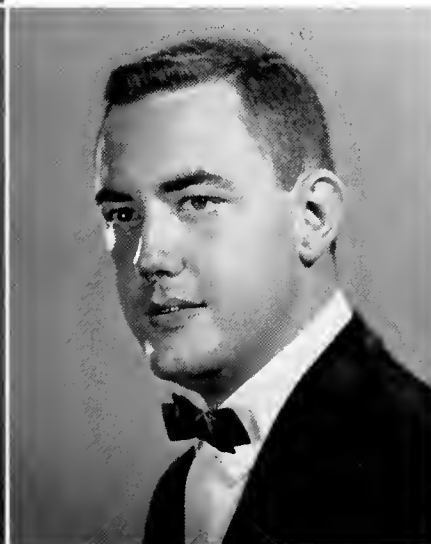


SARA MAC GERMANO

Atlanta, Georgia

B.A.

Secretary of Freshman Class, 1; Players, 1, 2; B-Team Cheerleader, 1; Most Outstanding Freshman Girl, 1; Lord and Lady Oglethorpe Page, 1; Student Government Officer, 2, Secretary, 2; Gun Club, 2; Junior Class Vice President, 3; Duchess Club, 3, 4, President, 4; Homecoming Court, 3; Who's Who, 4.



BARBARA DEXTER GUPTON

Fort Lauderdale, Florida

B.A.

Humanics, 1, 2, 3, 4, Secretary, 3; Gun Club, 1, 2, 3, Secretary, 1, Treasurer, 2, President, 3; Women's Rifle Team, 1, 2, 3; Intramural Rep., 1; Social Committee, 4.

JAMES CABOT GUPTON

Raleigh, North Carolina

Humanics, 1, 2, 3, 4, Exec. Committee, 4; APO, 1, 2, 3, 4, President, 2, 3, Publicity Chr., 4; Delegate to APO National Convention, 2, 4; Saints, 1, 2, 3, 4; Dorm Council, 1; Gun Club, 1, 2, Secretary, 2; Stormy Petrel, 1; Circle K, 4; Senior Class Project Committee, 1; Homecoming Committee, 2, 3.



MARCIA ANN HARTRICK

Decatur, Georgia

B.A.

Transfer: Pennsylvania State University;
Swimming Club: Leadership Club.

SUSAN ELLIN HARRIS

Atlanta, Georgia

B.A.

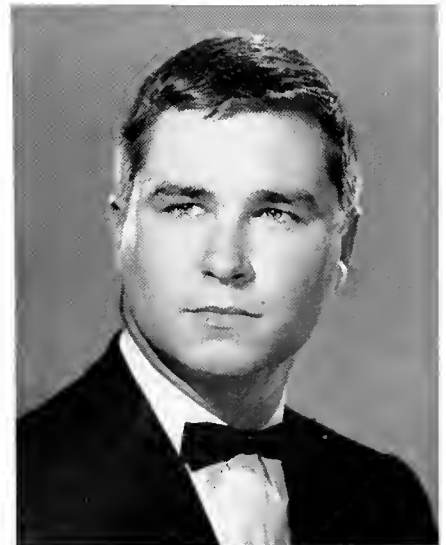
Transfer: Goucher College; AA Dorm Council,
Secretary, 1; WEEKly Staff, 1, 2; Play-
ers, 3.

TERRY A. INGERSON

Bellerose, New York

B.A.

Players, 1, 2, 3, 4, Business Manager, 2, 4,
Best Actor Award, 3; Gun Club, 1, 2; Rat
Court, 2; Vice President of Sophomore Class;
Stormy Petrel Staff, 2, 3, Managing Editor,
2, Editor-in-Chief, 3; Inter-Activity Committee,
3, Saints, 1, 2, 3, 4; Bowling League, Presi-
dent, 3.



MARTHA KAY KILPATRICK

Atlanta, Georgia

B.A.

Players, 1, 2, 3, 4; Math Club, 1, President;
Stormy Petrel, 1, 2, 3, 4; Humanics, 1; Class
Officer, 2, 3, Treasurer, 2, Secretary, 3;
Duchess Club, 4; Lord and Lady Oglethorpe
Court.

STUART LLEWELLYN LYNN

Atlanta, Georgia

B.A.

Libertarian Society, 1; APO, 2, 3, 4; Bowl-
ing League, 2; Humanics, 2, 3, 4; Circle K, 4;
Student Union, 4; Soccer Team Manager;
Gun Club, 4.

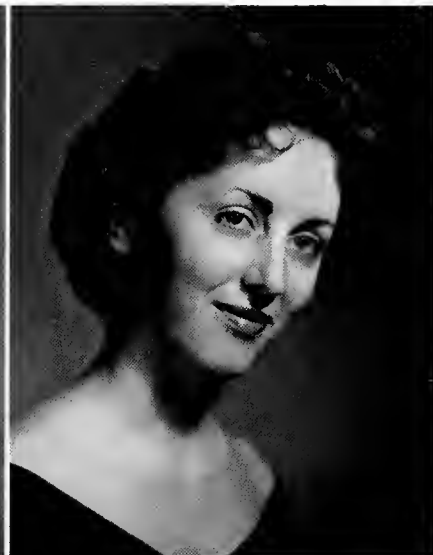


NELLE ANNE LATIMER

Augusta, Georgia

B.A.

Lord and Lady Oglethorpe Page, 1; Social Committee, 1, 2, 3, 4; Chapel Committee, 1, 2; Public Relations Committee, 1, 2; AFF, 1, 2, 3, Secretary, 2; Players, 2; Gun Club, 2; International Student Club, 2; Inter-Activity Committee, 3, 4; Chorus, 1, 2; Libertarians, 1, 2; Stormy Petrel, 2, 3; Yamacraw, 1, 2, 3, 4, Honors Editor, 2, 3, Editor-in-Chief, 4; Dorm Council, 3, 4, Vice President, 3, President, 4; Class Officer, 1, Secretary; Homecoming Queen, 4; Lord and Lady Oglethorpe Court, 4; Senior Banquet Chairman, 4; Duchess Club, 4; Rat Court, 4, High Priestess, 4; Pep Squad, 2, President, 2; Cafeteria Committee, 4; Student Union Committee, 3, 4; Who's Who, 4.



PATRICIA ANN McMICHEN

Atlanta, Georgia

B.A.

Chorus, 1.



HERBERT STEVENS McMULLEN

Jacksonville, Florida

B.A.

Humanics, 1, 2, 3, 4, Treasurer, 4; APO, 2, 3, 4, Historian, 3, President, 4; Basketball Statistician, 3, 4; Rat Court, 4, High Priest.



CORWIN MOORE METCALF

Atlanta, Georgia

B.A.

Transfer: Georgia Tech; Dorm Council Vice President, 1; Lambda Chi Alpha, 1; Honor Committee, 2, 3, Chairman, 3; APO, 2, 3, 4; Players, 2, 3, 4; Stormy Petrel, 2, 3; Literary Magazine, 2.

MARY WILL MILES

Atlanta, Georgia

B.A.



JOAN P. MILLAR
Atlanta, Georgia
B.A.

MARTHA HEWLETT MOBLEY
Atlanta, Georgia
B.A.
Transfer: Young Harris College.

CHARLES EDWARD MOORE
Jacksonville, Florida
B.A.

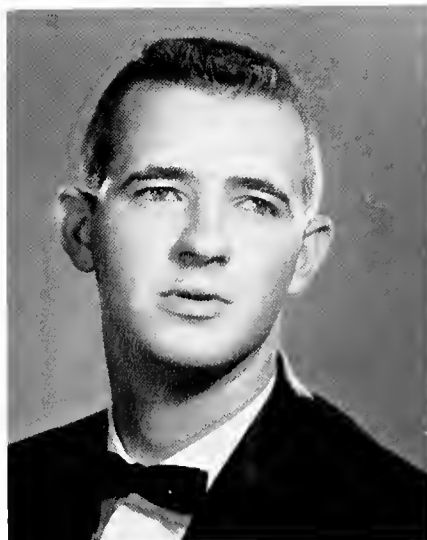
Transfer: Jacksonville University, Band, Kappa Kappa Psi; Saints, 2, 3, 4; Bowling League, 2; Humanics, 2, 3, 4; Social Committee, Co-Chairman, 3, 4; Yamacraw Staff, 3; Circle K, 4, Vice President; Lord and Lady Oglethorpe Court, 4.



GEORGE EDDIE MORRIS
Alpharetta, Georgia
B.S.

MADGE HENSON MOSTELLER
Roswell, Georgia
B.A.

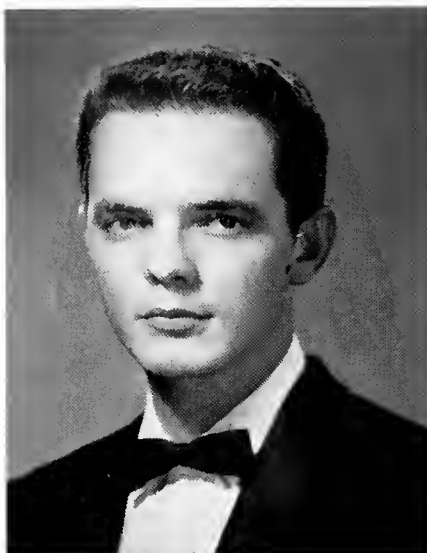
Stormy Petrel, 1; Libertarians, 1, 2, 3, 4; Players, 1, 2, 3, 4, Best Actress, Single Role, 1.



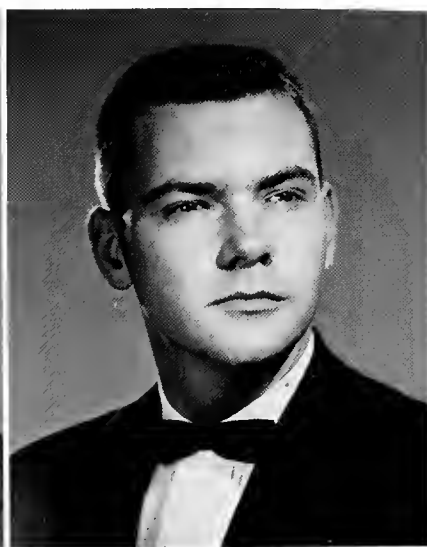
WALTER EARL MUSIC
Atlanta, Georgia
B.S.

BOBBY THOMAS NANCE
Resaca, Georgia
B.A.

Basketball, 1, 2, 3, 4; Baseball, 1; Tennis
1, 2, 3, 4.



YASUKO KUZUSAKA NISHIMURA
Tokyo, Japan
B.A.
Transfer: Asbury College, Wilmore, Kentucky.



THOMAS WILSON PHILLIPS
Atlanta, Georgia
B.S.

Stormy Petrel, 1; APO, 1; Yamacraw Staff,
1, 2, 3, 4, Activities Editor, 2, 3, 4; Student
Government Officer, Treasurer, 3; LeConte,
3, 4, President, 4; Circle K, 4, President, 4;
Interactivity Committee, 3; Lord and Lady
Oglethorpe Court, 4; Who's Who, 4.

JACKIE WAYNE POWELL
Durham, North Carolina
B.A.

Transfer: East Carolina College; Theta Chi
Fraternity, 1, 2; Rifle Team of AFROTC.



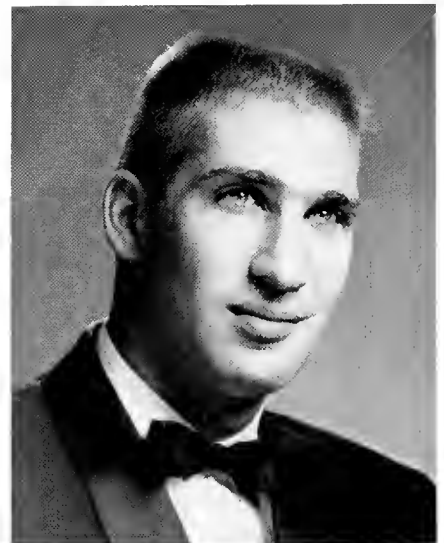
BRENDA ANN ROSENTHAL
Savannah, Georgia
B.A.

Transfer: University of Georgia; Yamacraw,
3, 4; AFF, 3, 4.

LINDA SMITH RUTLEDGE
Atlanta, Georgia
B.A.

ERIC MATISON SCHARFF
Atlanta, Georgia
B.A.

Class Officer, 1, 2, Parliamentarian, 1, President, 2; B-Team Basketball, 1, 2; Sports Statistician, 1, 2, 3, 4; Interactivity Committee, 1, 2, 3; Yamacraw Staff, Business Manager, 2, Editor-in-Chief, 3; Student Government Representative; Circle K, 4.



ROSEMARY SCRAGGS
Hapeville, Georgia
B.A.

Honor Court, 3, 4; Duchess Club, 3, 4, Secretary-Treasurer, 4.

JUDITH ELAINE SEIDENSPINNER
Decatur, Georgia
B.A.

Transfer: Bryan College; Varsity Cheerleader, 1, 2; Varsity Tennis Team, 1, 2; Athletic Club, 2, Secretary, 2; Intramural Tennis Champion, 4.



ROSELYN ELAINE SHIFLETT

Atlanta, Georgia

B.A.

Chorus, 1, 2, 3, 4.

JUDY MONTGOMERY SKILES

Atlanta, Georgia

B.A.

Players, 1; Duchess Club, 3, 4; Lord and Lady Oglethorpe Court, 4.



ELIZABETH ANN SYLVESTER

Atlanta, Georgia

B.A.

Transfer: Spring Hill College, Mobile, Alabama.



JACK EARL TEBEAU

Marietta, Georgia

B.S.

B-Team Basketball, 2; Circle K; LeConte Society, 4.

WILMER JACK TURPIN, JR.

East Point, Georgia

B.A.

APO, 1, 2, 3, 4, Vice President, 3; Humanics, 1, 2, 3, 4, Treasurer, 3; B-Team Basketball, 1, 2, 3, 4; Intramural Sports, Soccer Team, 3, 4; AFF, 1.

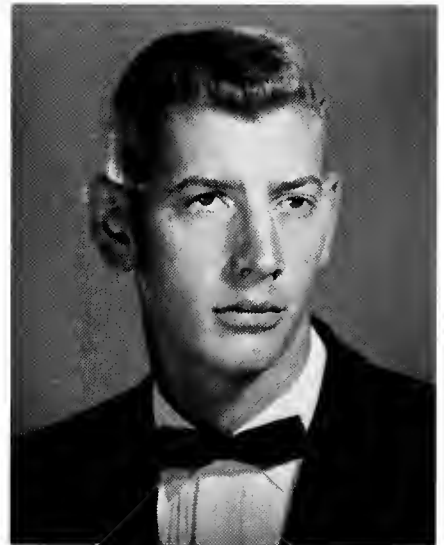


BETTE WALL
Doraville, Georgia
B.A.

THOMAS DONNELL WARTERS
Atlanta, Georgia
B.A.
Rifle Club, 1; APO, 2, 3, 4, Officer, 3.

CHARLES LYNN WHITE
Hooversville, Pennsylvania
B.A.

APO, 1, 2, 3, 4, Secretary, 2; B-Team Basketball, 1, 2, 3; AFF, 1, 2, 3, 4; Intramurals, 1, 2, 3, 4; Humanics, 1, 2, 3, 4; Circle K, 4; Author of Senior Poem.

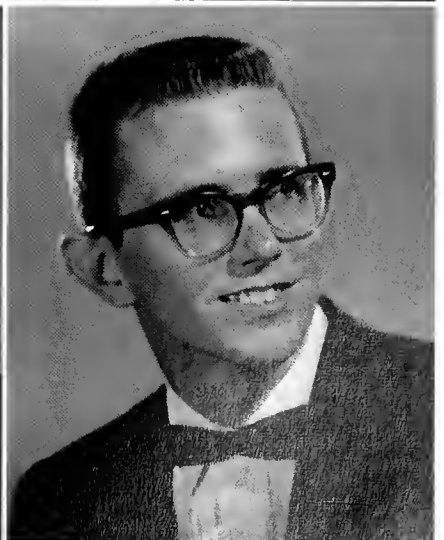
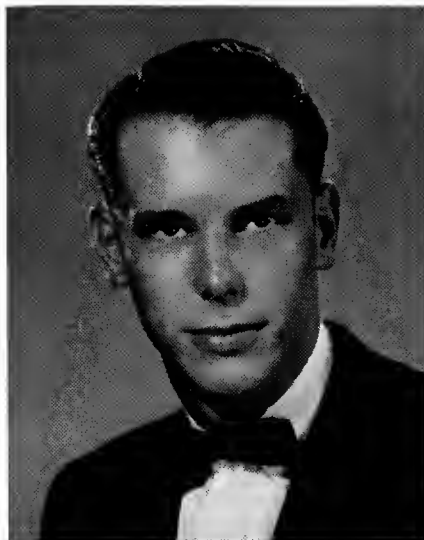


PETER MICHAEL WILLIAMS
Atlanta, Georgia
B.A.

Benjamin Parker Law Award, 1; Public Relations Committee, 1, 2; Hay Ride Committee, 1; Honor Court, 2, 3, Chairman, 3; Chorus, 3, 4; Yamacraw, 4, Business Mgr., 4.

THOMAS L. WINN
Fort Lauderdale, Florida
B.S.

Newman Club, 1, 2, 3, 4, Treasurer, 3; Sports, Statistician, 1, 2, 3, 4; AFF, 1, 2; B-Team Basketball, 1, 2, 4; Stormy Petrel, 2; Junior Class President; Student Council Rep., 3; LeConte Society, 3, 4; Dorm Proctor, 4; Student Government Parliamentarian, 4.



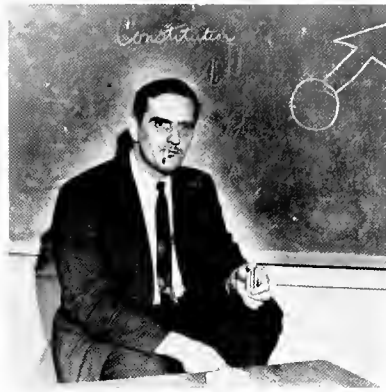


*Officers for
the Class of '64*



PRESIDENT: Bob Calvert
 VICE PRESIDENT: Steve Figler
 SECRETARY: Joan Fisher
 TREASURER: Larry Harbin
 PARLIAMENTARIAN: Jayne Archer

juniors . . . juniors . . . juniors . . . juniors . . . j



iors . . . juniors . . . juni

ors . . . ju

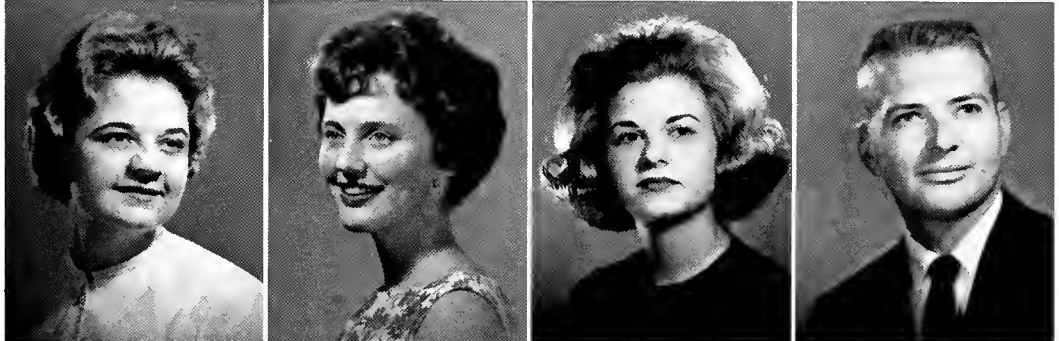
Phyllis Jean Abner
 William Aitken, Jr.
 Jane Albrecht
 Charles Andrews



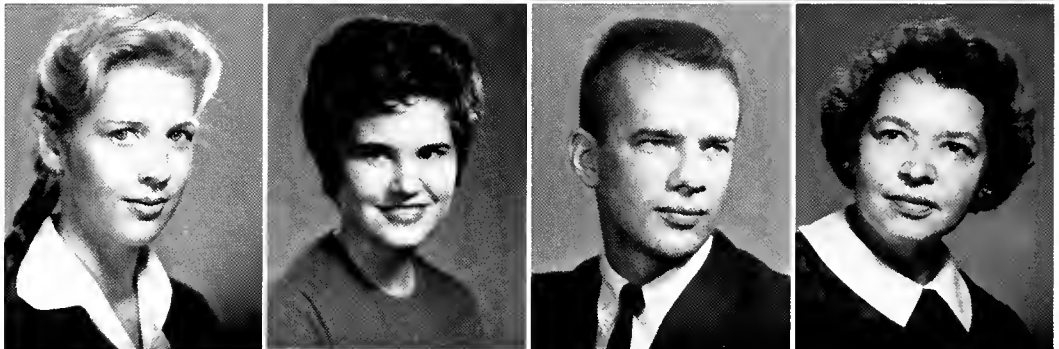
Jayne Archer
 Richard Aultman
 Hallie Beasley
 Carol Ann Blair



Connie Boggs
 Virginia Bremer
 Ann Brown
 Stephen Burdette



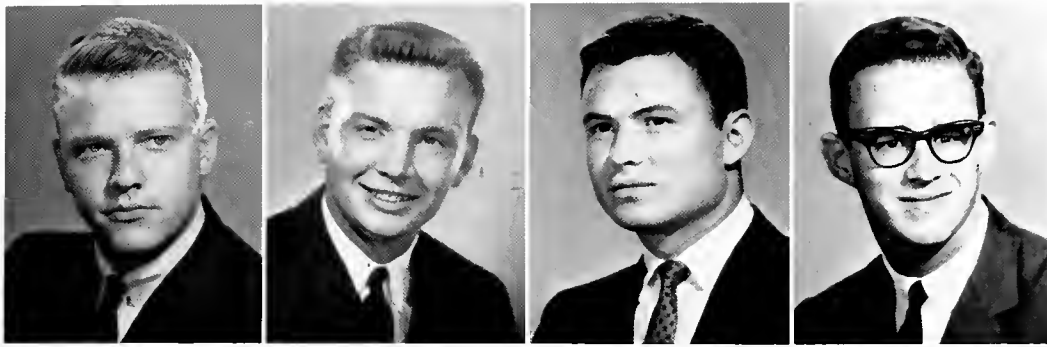
Joan Burkick
 Donna Calvert
 Robert Calvert
 Joanne Carmon



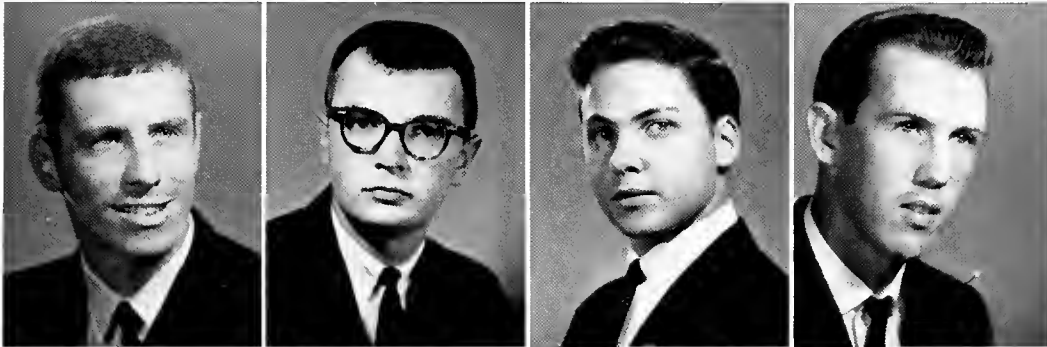
Dick Cenzalli
 Linda Chesnut
 Gloria Clark



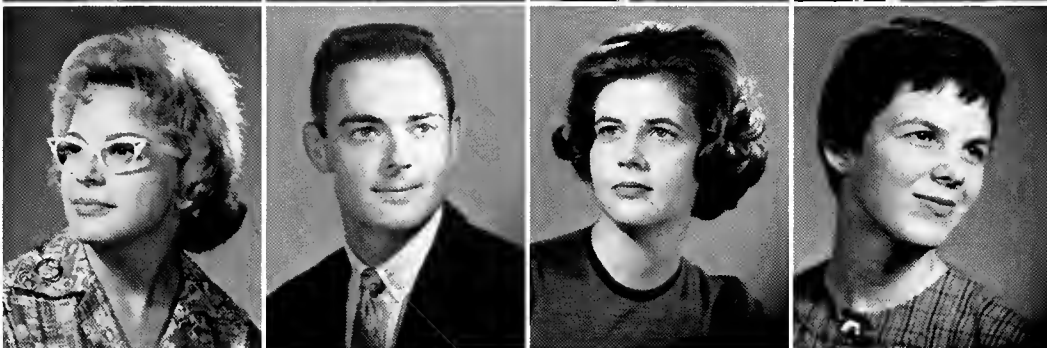
Linda Robertson Clark
 Marsha Clifton
 Paula Coker



Ned Young
 Dan Cowart
 Sam Cunningham
 Ken Davis



Larry Davis
 John Day
 Edward DeGross, Jr.
 Paul Roger Donald, Jr.

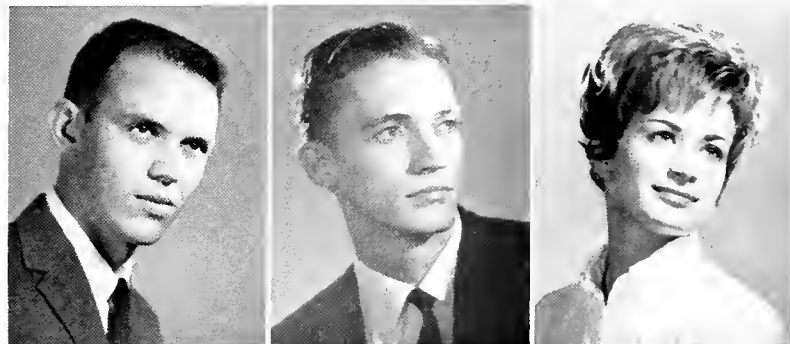


Gloria Early
 Stephen Figler
 Joan Fisher
 Marti Gilreath

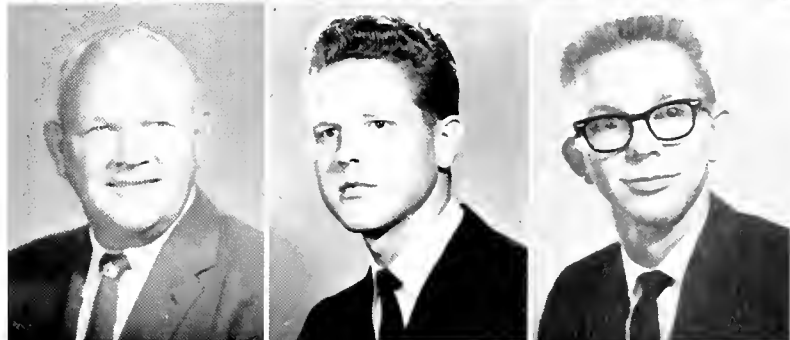


Blanche Goffney
 Becky Green
 Jerilyn Hamby
 George Handley

Larry Harbin
 William Harrison
 Faye Haver



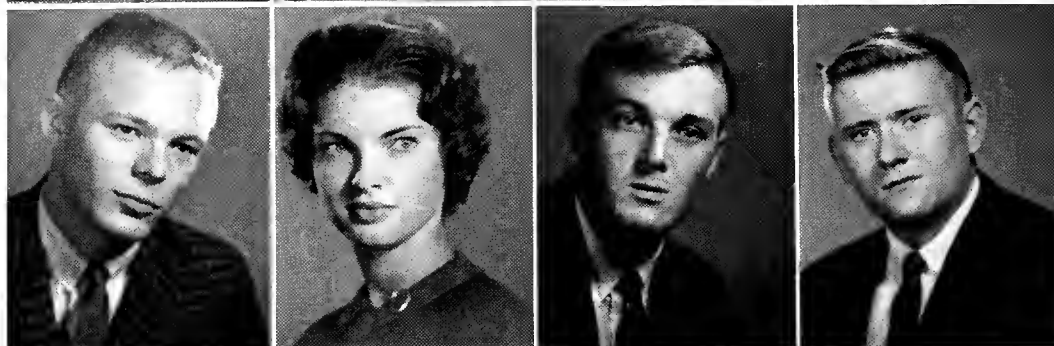
Jesse Huffman
 Joseph Ivey
 Dennis Kerr



Bambi Klein
 Diane Leonard
 Irene Levy
 Jane Lincoln



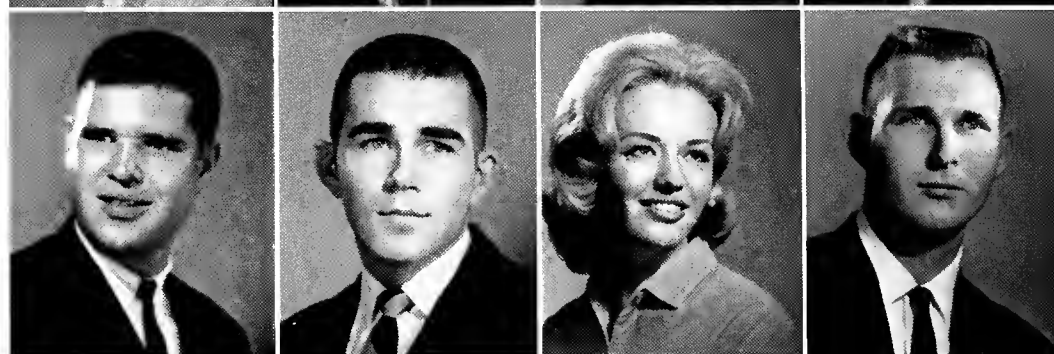
John Lipham
 Carolyn Loughborough
 Bob McMains
 Robert Manning



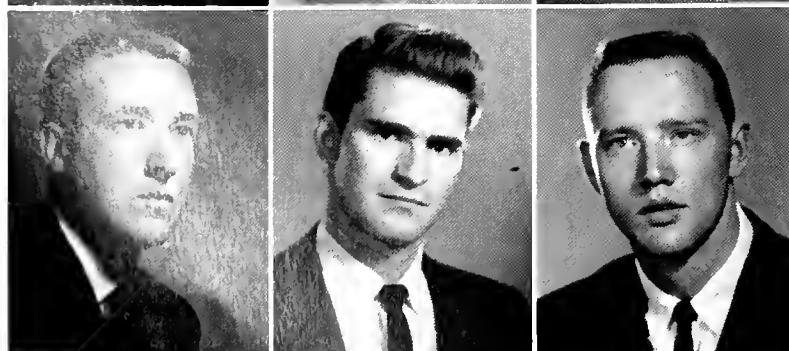
Pauline Metcalf
 Richard Patrick
 Nellie Jo Payne
 Jim Pendlan



Barry Percival
 Wayne Darrell Perry
 Elizabeth Peryam
 Jon Preu



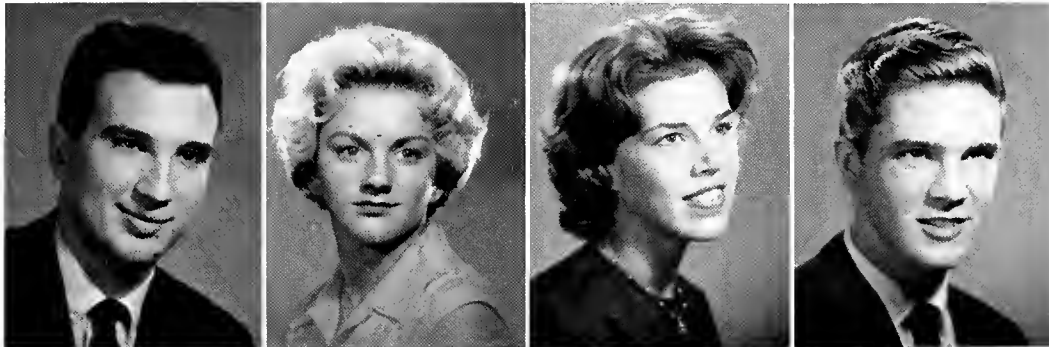
Glenn Painey
 Cynthia Maxine Robinson
 B. J. Rutland



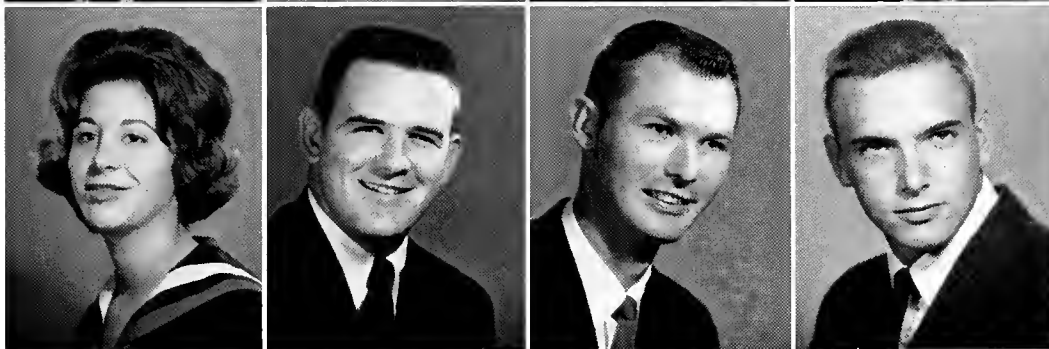
Conan Rudd
 Benjamin W. Sellers, Jr.
 Robert Sexton



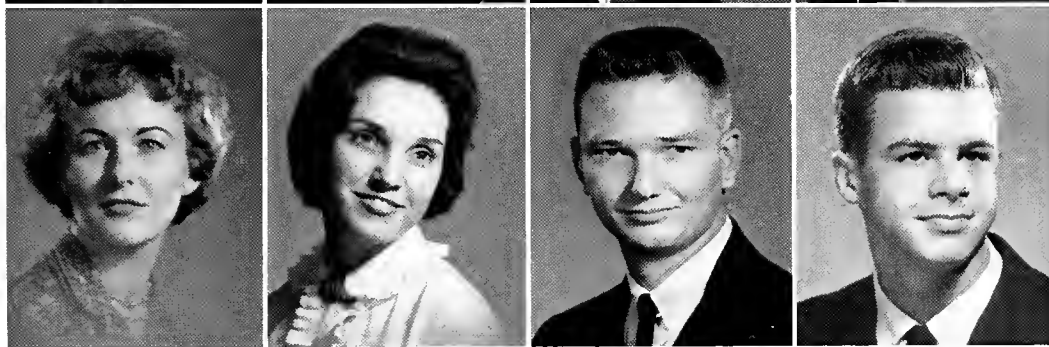
Bonnie Shepard
Leslie Shtetzen
Cebie Smith
Charlotte Smith



John Smith
Elizabeth Stafford
Gretchen Stevens
Orlan Swennes

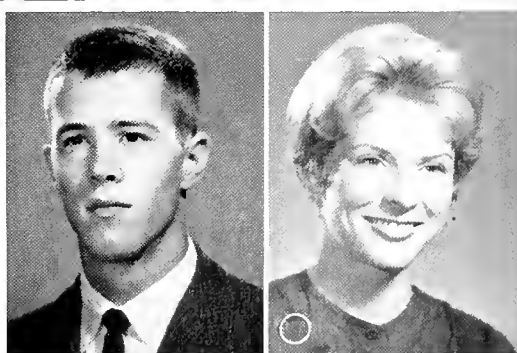


Lenore Talansky
Jimmy Taylor
Charles Vance
Hoyt Wagner

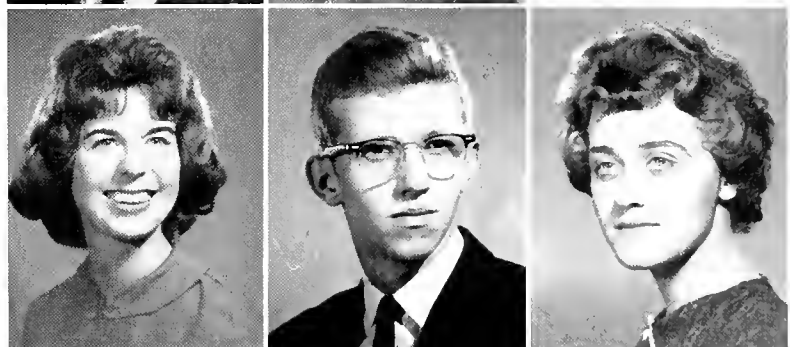


Susan Warrell
Rebecca Whatley
C. D. Willis
Ben Wilson

John Winsness
Sandra Wolsey



Joan Womack
Jon Wordell
Janet Yose





*Officers for
the Class of '66*



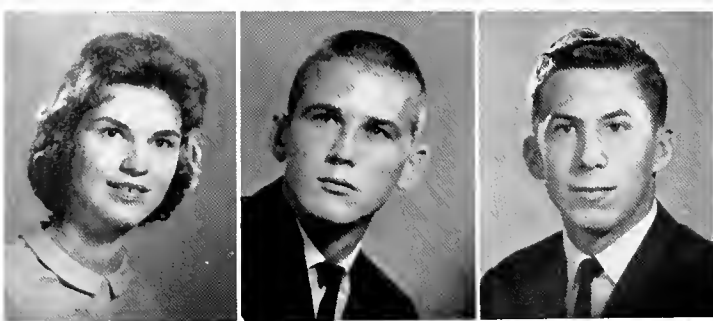
PRESIDENT: Tommy Crouch
VICE PRESIDENT: Jack Grubb
SECRETARY: Eleanor Yedvob
TREASURER: Ben Hargrove
PARLIAMENTARIAN: Linda Sanders

sophomores . . . sophomores . . . sophomores .

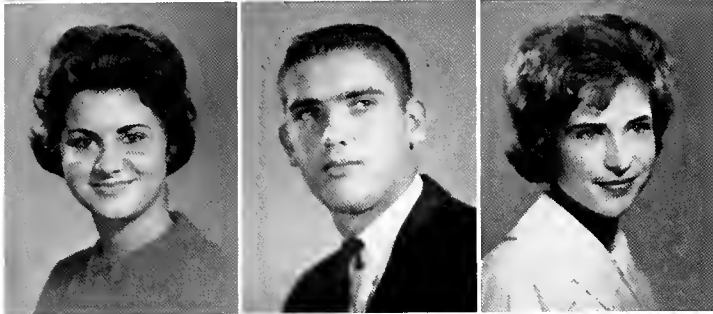


sophomores . . . sophom

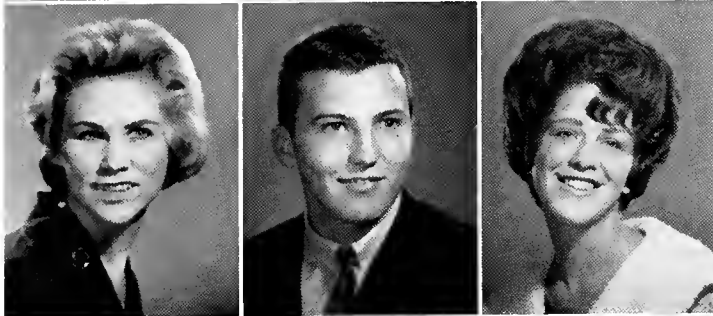
. sophomore



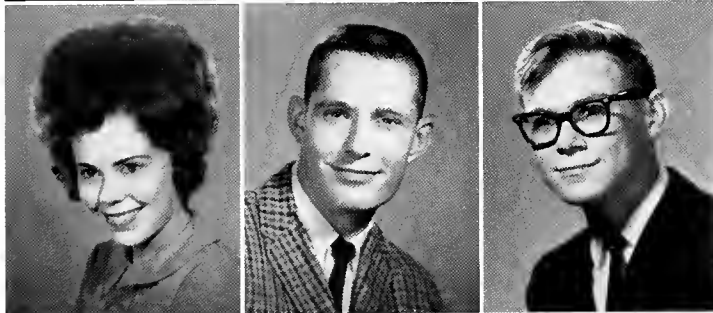
Patricia Abbott
Larry Abner
George Alexander



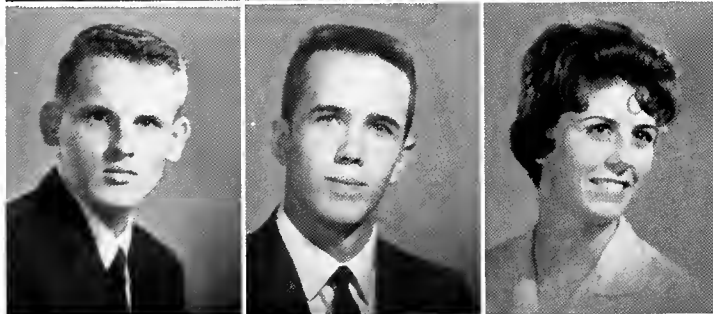
Renee Alhadeff
Lanier Bagwell
Harriet Beardin



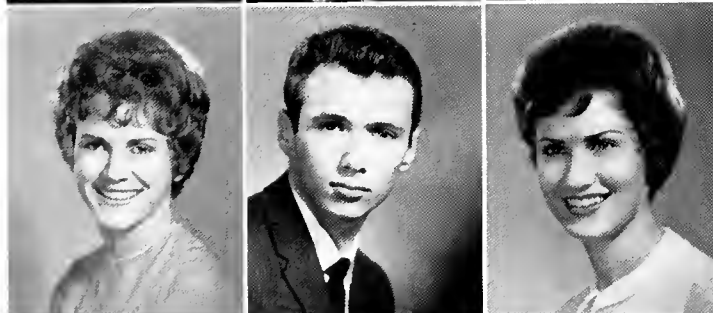
Carlee Bell
Steve Blake
Arlene Brilliant



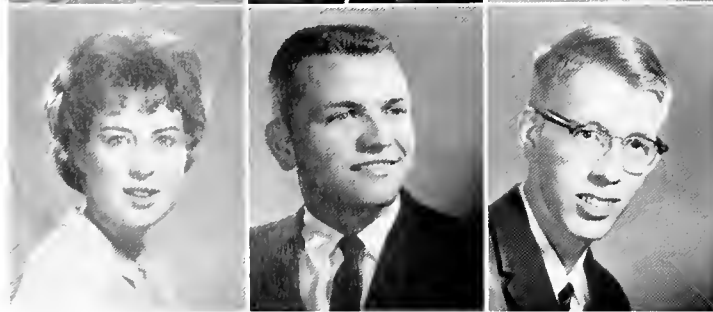
Mary Browne
David Max Bryant
Vernon Caine



James Carroll
Joe Carter
Juanita Casteel



Glenda Castleberry
Steve Cole
Jane Lee Conner



Jacqueline Cook
Roy Cowart
Tommy Crouch

Douglas Crozier
Sally Daily
Marre Dangar



Dave Davies
Gloria Dial
Jeanie Franco



Sharon Friedrich
Larry Garmon
Jeri Gates



Carolyn Godwin
Vivian Gray
Jack Grubb



Benjamin Hargrove
James Hartlage
Judy Hayden

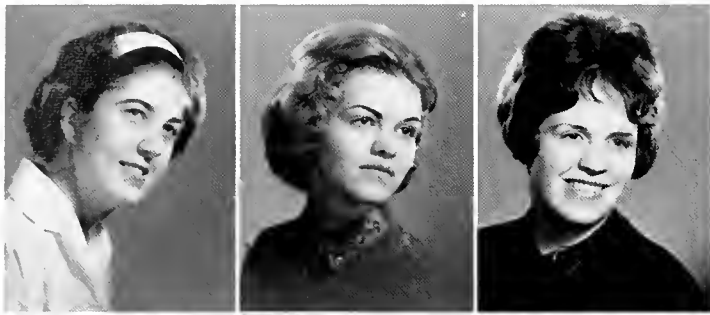


Vincent Benjamin Hill
Martha Cherry Hodges
Sue Howard



Norman Hurd
Robert Hutchins
William Jordan

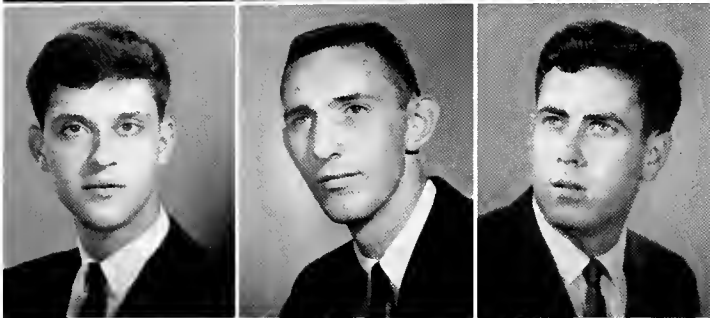




Carol King
Jimmy Ann Langdon
Glenda Largin



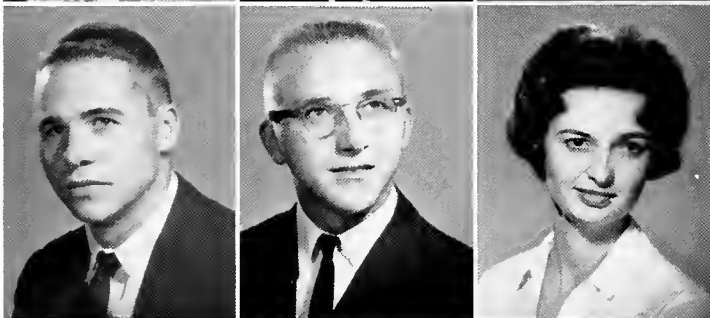
Errol Leifer
Edna Maleson
Maxine Moffitt



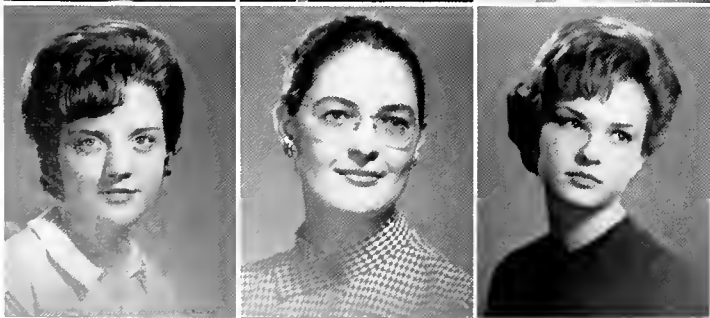
Cee Noto
William Parker
William Mitchell Pate



Annie Primm
Clark Raby
William Grady Reid



Jimmy Rippy
Glen Rose
JoAnne Sager

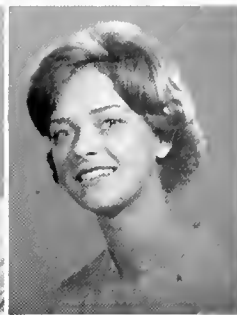
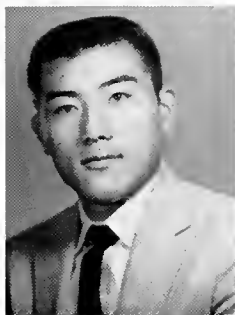


Linda Sanders
Ethel Rhodes Scott
Lynne Schaefer



Annette Schroeder
Kathy Shirley
William M. Smith

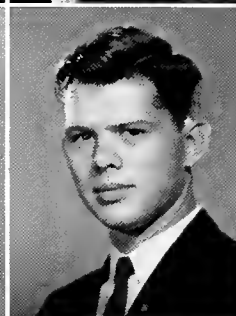
Perrin Kwan Sok
Carol Speir
Peter James Stelling



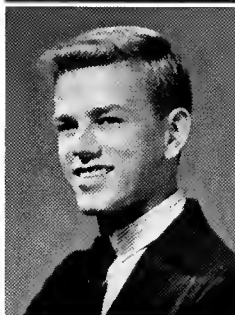
Carolyn Stemples
John Stevens
William Stewart



Suzy Straub
Rona Surenko
David F. Taylor



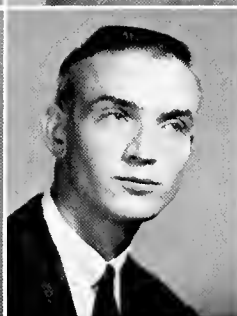
Ralph Thomas
Ray Thomas
Gloria Thomason



Joyce Anne Tropea
Patricia Turner
Jeffery Wallen



Peggy Anne Warrell
Earl Waters
Lynn Watkins



Beverly White
Eleanor Yedvob
Thomas Young



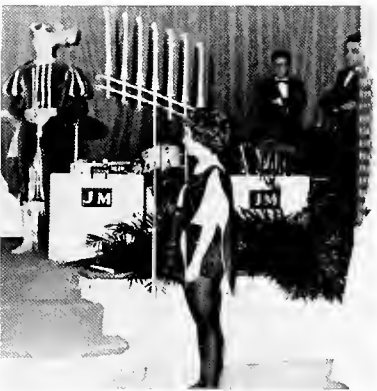
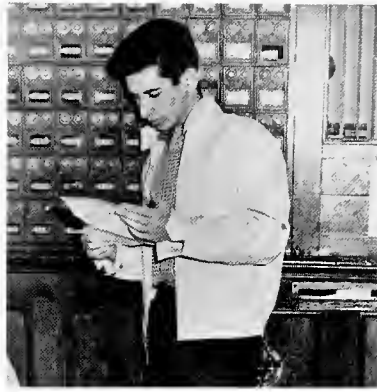


*Officers for
the Class of '67*



PRESIDENT: Bob Husbands
VICE PRESIDENT: Bill Pate
SECRETARY: Kate Mcneil
TREASURER: Larry White
PARLIAMENTARIAN: Elliot Schwartz

freshmen . . . freshmen . . . freshmen . . . fresh

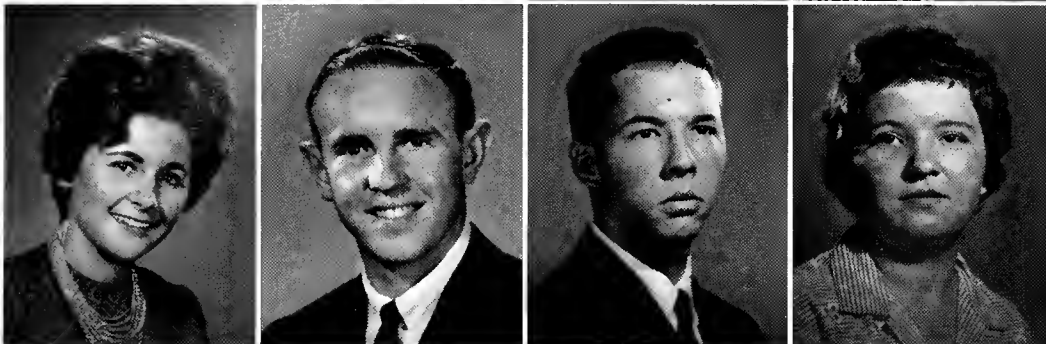


en . . . freshmen . . . fre

men . . . fres



Carolyn Adams
Shideh Ahmadzadeh
James Anderson
James Beeson



Lisa Bishop
Robert Blacketter
Woody Brooks
Glenda Broten



Virginia Bruce
Richard Burman
Cheryl Lee Butterfield
Gwyn Cannon

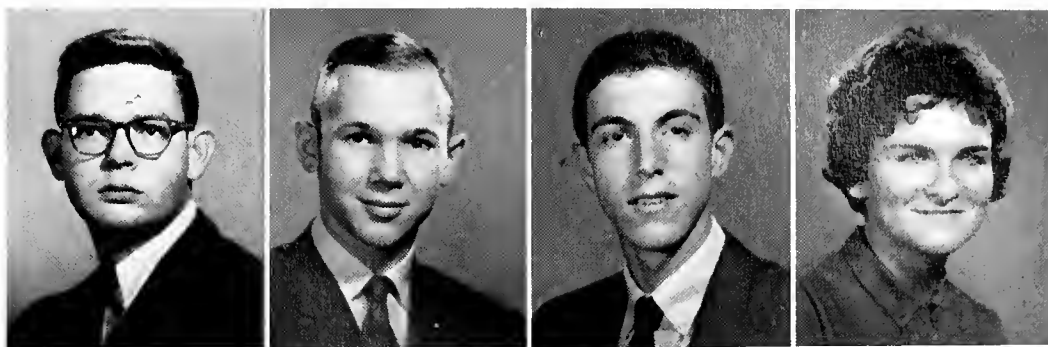


William Carter
John Cason
Ronald Cenzalli
Lennie Christie

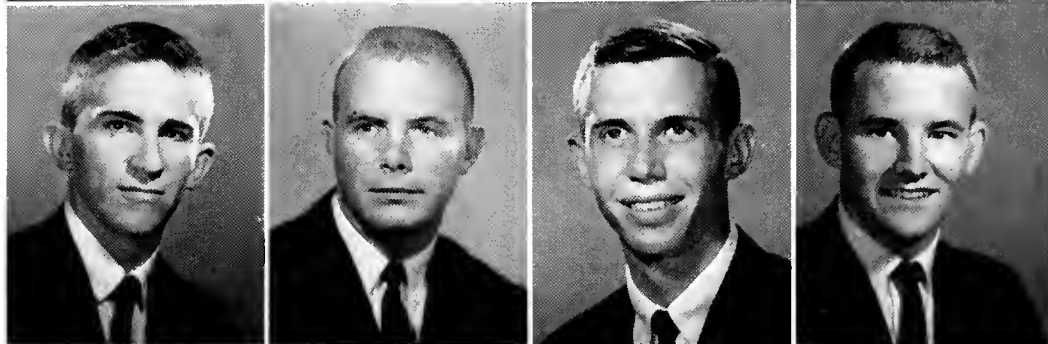


Theodore Cochran
Edith Coleman
Joe Couch
Thomas W. Cowan, III

Robert Curry
 Ronald Darrocott
 Carl Dinerman
 Cynthia Doran



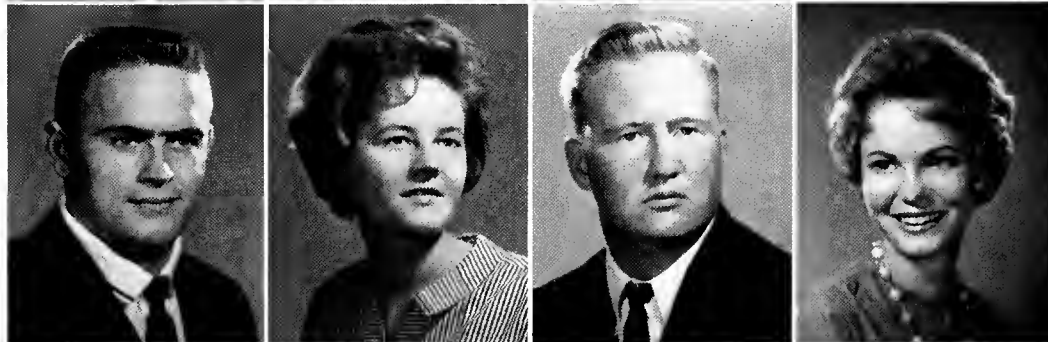
Robert Douglas
 Kurt Dowd
 Thomas Eldridge
 Michael Esther



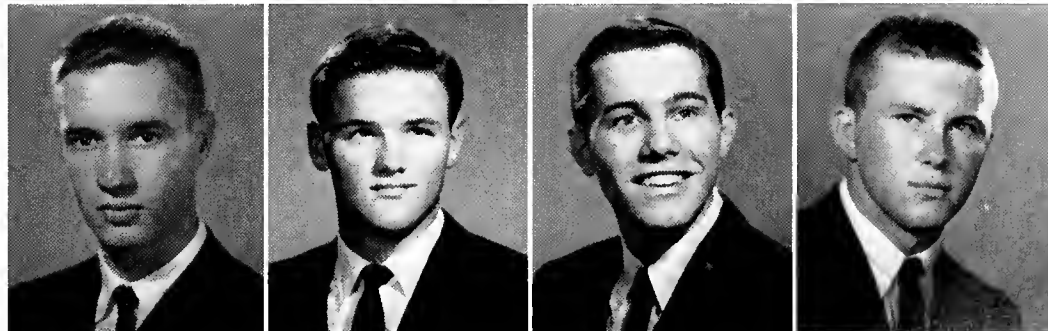
Novarro Faircloth
 Beryl Odylle Folsom
 William Garrigan
 Barbara Ann Forman



Johnny Gosdin
 Susan Goodchild
 Stanley Hall
 Joan Grice



Jimmy Graves
 William Hartshorn
 Robert Hamrick, Jr.
 Jeffrey Hayden





Walker Heard
Barney Howard
Robert Hughes
Nick Hurder



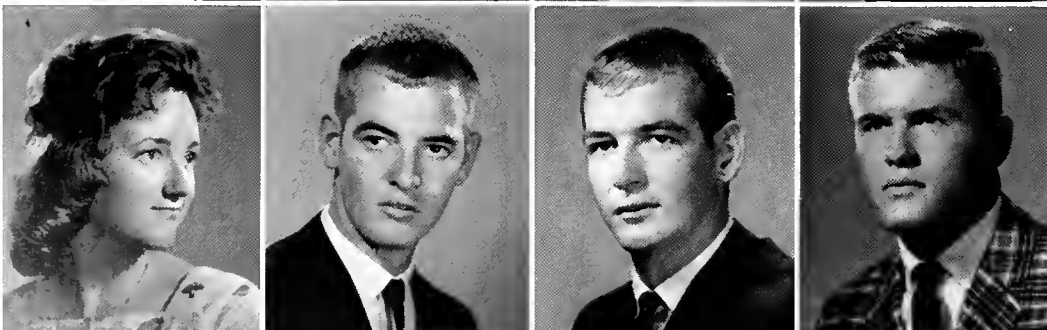
Robert Husbands
Rebecca Kirkland
William Landham, III
Edna Lawson



Martin Lenger
Ronald Mattox
Katharine McNeil
Pat McPherson



Michael Wing
Carole Moore
Suzy Mulford
Jackie Nelson

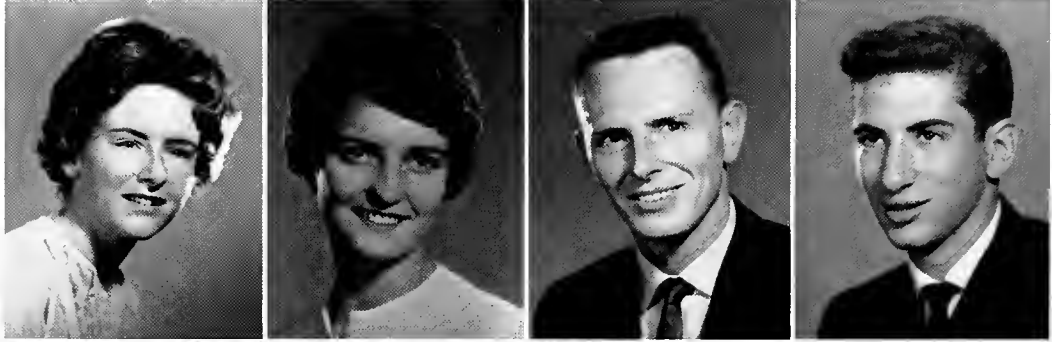


Rita Noesworthy
Donald Owens
Ronald Owens
Peter Outhwaite

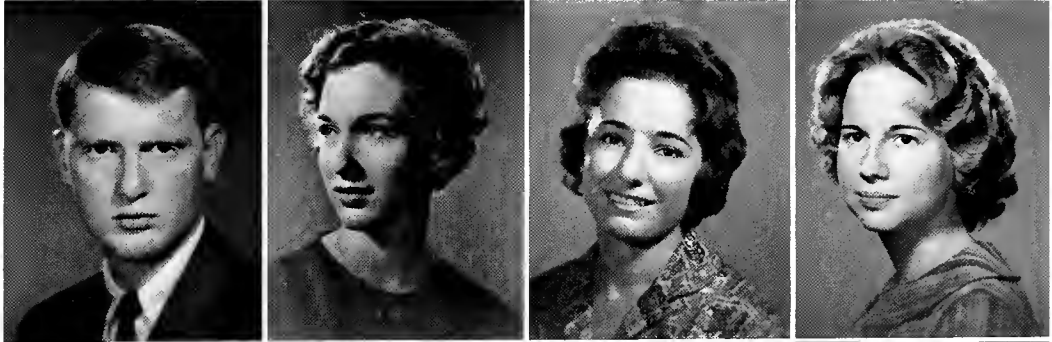
Alan Parker
 Kemal Pamir
 Jimmy Porterfield
 Marilyn Roberts



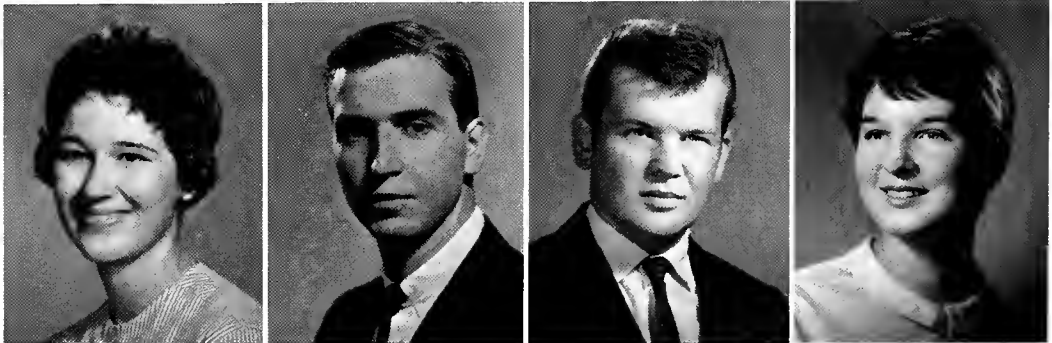
Mary Anne Ryan
 Linda Ryner
 Roger Schlenker
 Elliott Schwartz



Steve Sealy
 Linda Kay Shore
 Enid Siffri
 Karen Ann Smith



Roberta Spindler
 Gary Stowers
 Joseph Strenk
 Sally Anne Tully



Thersa Tarrant
 Larry White
 Arlene Williams
 Mary York





ACTIVITIES

The Fall days brought cries of "run, rats"



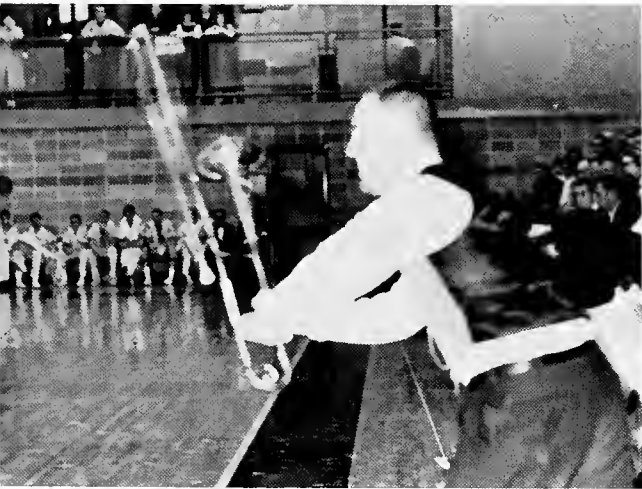
and

the sound of Seniors singing the Alma Mater at the Capping Ceremony.



As the weather turned from crisp coolness to wintry breezes, the Ghost Stories.

The Kingston Trio, the Christmas Formal, and Homecoming kept the students busy.



Basketball games created an excited atmosphere.

Singing around the fire, playing cards, and the Lord and Lady Oglethorpe Ball helped



to pass the dreary days of winter until the long awaited Spring arrived.

Softball games on the lawn, couples strolling down dogwood covered paths marked the . . .

Capping



The Seniors line up and await their capping. The school year officially begins.



Mrs. Hilliard lends a hand.

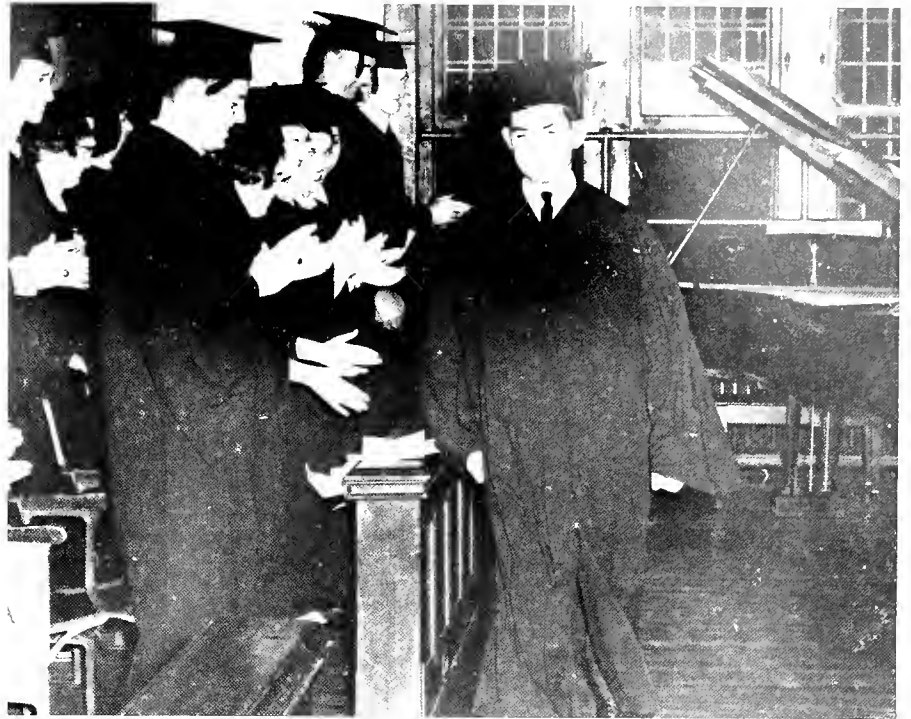


The Faculty, too, dons the scholarly attire.

Ceremony



The robed Faculty and Class enters.



Lynn Drury goes to be capped for the Class.



"We're Seniors at last!"

Rat Week



Welcome to RAT WEEK.



Something fishy about this?



Smile. Rats. smile!



Eggs. anyone?



No, don't jump . . .



Ahhh! English Leather!



The Line-up

Rat Week is as much a part of Oglethorpe as the granite stone walkways. Each year brings a new batch of "rats" to begin their college careers. The common experience of Rat Week acquaints the newcomers with their surroundings and molds them into a visible unit—The Freshman Class. The eggs, shouts, air-raids, and court sessions are dreaded at first but are remembered fondly.

Tired, Rats?





Don't look so sad, rat!



Have some . . . egg à la vaseline.



Wonder where the yellow went!



Need a tooth pick?



Out of the fall-out shelter.



Line up, rats!



Anyone for Rat Court?



With a puff of smoke the goblins appear to entertain a startled audience.



Halloween finds weird moods.

Ghos



Mr. Cohen spins a tale of fear.



Bobbie Foreman gets a trick instead of a treat.



... and another victim is sought.

Stories



"Double double toil and trouble"



The Hunchback of Oglethorpe.



The Rev. Jack Turpin assumes the role of Marrying Sam.

Sadie



Billy Parker as Li'l Abner



Jane Archer
as Daisy Mae



Oglepatchers



With this chain, I thee wed.



Milking?



Hoedown



Pappy Moore

Hawkins



Sadie Hawkins in full swing (but the boys are not running).

Kingston Trio at



"Hang down your head, Tom Dooley! Po' boy you're bound to die!"



"Kinda hurts my fingers."



John and Nick stall while Bob fixes one of his broken strings

the O.U. Field House



“... and I don't like anybody very much!”



The trio warm-up before the big show.



John Stuart



Nick Reynolds



Bob Shane



Carole George and Woody Sellers give professional

“Monique”



Larry Davis and Terry Ingerson



Martha Gilreath plays an appealing role.



"Monique," an entertaining murder mystery kept everyone on edge of their seats from beginning to end.

The entire cast gave a splendid performance!

performances in THE PLAYERS' production of "Monique."



A moment of suspense holds the audience.



Steve Cole as the comic gardener.

Christmas



Lynn and Sandy with lots of Christmas spirit.



What's so funny, June?



Paradox: Black and White at the Christmas Formal.

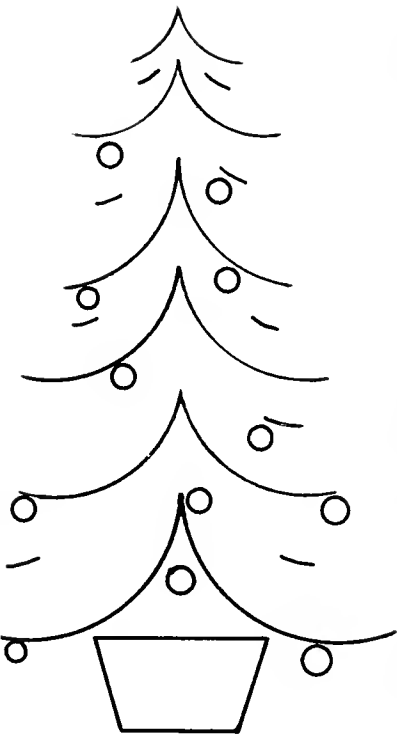


Ralph Carnes mystically detached with help of Scotch friend.

Formal



First chance to be normal at O. U.'s Christmas Formal.



The Georgian Terrace Twist.



Let's twist again like we did last summer!

Homecoming

1962-63



Last year's Queen, Miss Paula Hoffman, escorted by Mr. Steve Schmidt.



Representing the Student Council, Ken Davis escorts Phyllis Hynes Abner.



Bob Calvert escorts the Junior Class representative, Miss Paula Coker.



Miss Anne Latimer, the YAMACRAW nominee, is escorted by Pete Williams.

The annual Homecoming festivities on the Oglethorpe campus this year began with the lively Christmas Formal where the Queen received her crown, and lasted through a weekend of activities such as the Homecoming Game and Dance. Two weeks before the election of the Queen and her Court, school organizations nominated those girls whom they felt best represented Oglethorpe in spirit of cooperation, leadership, friendliness, and neatness of appearance. From the nominees, five lucky girls were chosen by the Student Body to make up the Homecoming Court.



Miss Judy Skiles representing the Senior Class is escorted by Steve McMullen.



The Intramural Council's nominee, Miss Sandy Wolsey is escorted by Ken Borden.



The Queen is crowned.



A royal dance.



Congratulations from a former Queen.

Homecoming Queen 1962-63



MISS ANNE LATIMER

The Court



MISS PAULA COKER



MRS. PHYLLIS HYNES ABNER



MISS SANDY WOLSEY



MISS JUDY SKILES

Lord and Lady



Social Committee members ready Peachtree Gardens for the royal Ball.



Bobbie Gupton decorates the tables.

The long awaited LORD AND LADY was held in a joyous atmosphere at Peachtree Gardens Country Club. The royal Court enjoyed a fine band, lively dances, and a lovely ceremony in which the Lord and Lady received their crowns. Faculty members and students alike welcomed the chance to put on their formal togs and step out for an evening of fun.

Oglethorpe Ball



The Senior Cocktail Party precedes the dance.



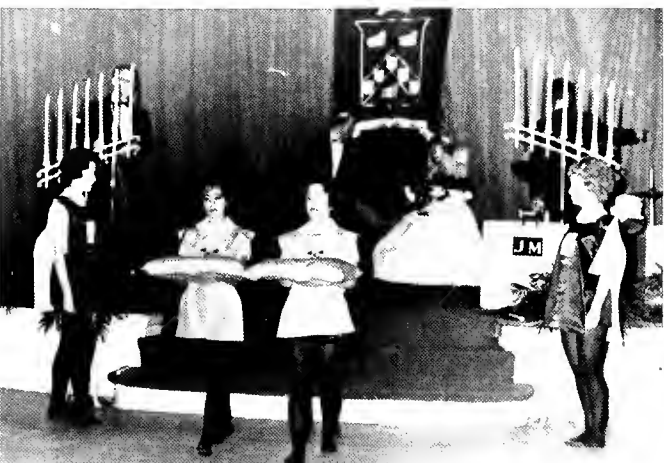
Eric Scharff and Mickey Metcalf enjoying themselves.



Rosemary and Harold take a break.



Bambi Klein shows her enthusiasm for the twist.



The Pages: Carol Adams, Karen Smith, Marilyn Roberts, and Enid Siffri.

Court Members



The Court Dances



ANNE LATIMER — ED MOORE



KAY KILPATRICK — TOMMY PHILIPS



JUDY SKILES — ARNOLD BAKER

*Lord and Lady
Oglethorpe*



MISS MARYLOU ANDERSEN and MR. LYNN DRURY

The Arts Festival

The Arts Festival included such events as a student art exhibit, a jazz concert, a modern dance concert, a lecture on art, a presentation of Broadway music by the Oglethorpe Chorus, and the Beaux Arts Ball. The variety of entertainment provided something of interest for all students.



Virginia and Bill view the paintings.



Flappers Steve and Sally do the Charleston at the Ball.



Ken Davis sings from "West Side Story."



The Chorus presents their version of "West Side Story."



A modern dance creation



Romans Barry Percival and Joan Fisher



Visit to a Small Planet



"You must be tired after your long trip. Sit down here, sir."



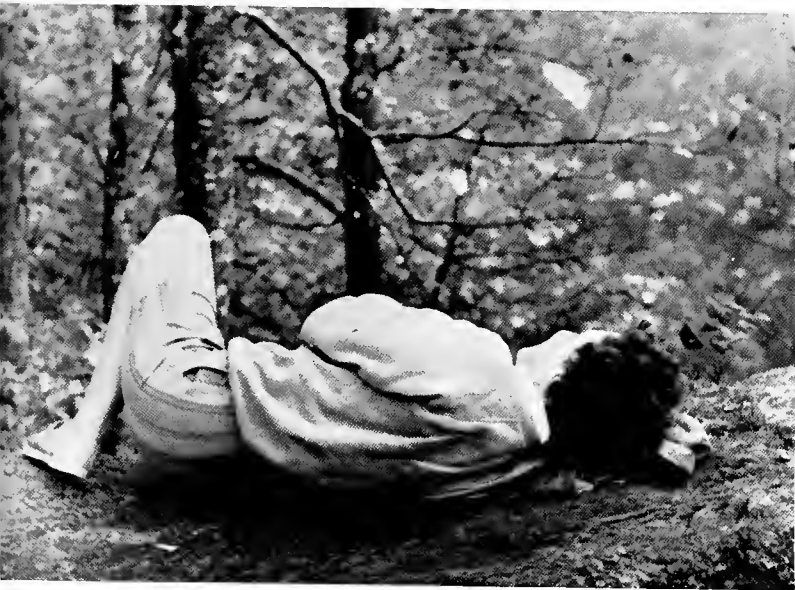
"Whatever it is, it's real. Registers on your radar!"



"You mean, you can talk to Rosemary?"

Weekend Activities

This year's Student Council initiated a program in which various clubs on campus sponsored school-wide activities each weekend to provide more entertainment for the students. Such activities as the Student Union Committee sponsored Pajama Party, The Players' sponsored horror movie, and the A.F.F. sponsored trip to the mountains, added a great deal to the social life on the O.U. campus. Here are some pictures of one of the enjoyable events . . . the trip to the mountains.



Kate McNeil takes a nap . . . on the side of the mountain.



Carl Dinerman jumps a mountain stream.



A lovely view.



Jo Payne has a snack.

The Black . . .



An excellent band played for the annual Freshman sponsored BLACK AND WHITE.



The Faculty table

. . . and White



The Americana was the scene of this year's BLACK AND WHITE.



Diane celebrates her birthday in the gala setting.



Ed and Glo . . . "some enchanted evening" 99

Spring Varieties



Joan Fisher concentrates on directing the rehearsals.



Steve McMullen acts as Master of Ceremonies.



Bonnie Shepard . . . "Whenever I'm Depressed"



Ann Burton displays her talent.

. . . *in Rehearsal*

A juggler, a ballerina, modern dancers, a singing group, a comic dancer, pianists, a soprano, magicians, and three majorettes were among those talented students who gathered on the Oglethorpe stage to organize a show. Try and try again . . . Rehearsals were strenuous and tiring, but slowly the rough edges were smoothed. An able and determined Joan Fisher insisted that every performer do his or her part to create an evening of enjoyable entertainment.

The results of hard work were seen in a polished performance of the Student Council sponsored SPRING VARIETIES. An enthusiastic audience applauded the fine display of talent.



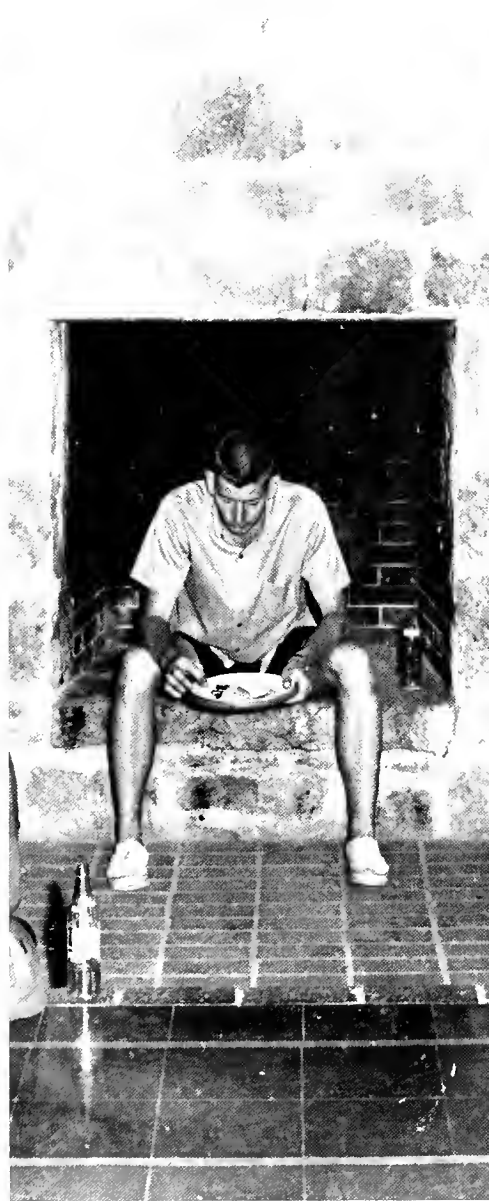
Senior Morris Mitchell practices juggling.



Lynn Drury whistles a happy tune.

SENIORS MORRIS MITCHELL AND LYNN DRURY REVEAL HIDDEN TALENTS.

Round



Campus





Goodman Hall has a "bull session"!



The Saints go marching in!



The tug of war

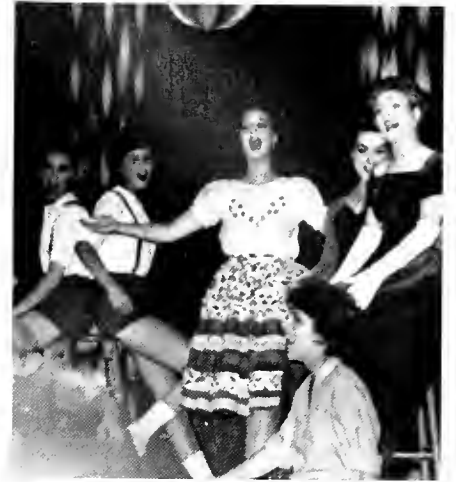


And then I said . . .

*Snap
Shots*



Mr. Schlenker and Dr. Seward at the Christmas Formal.



"Another opening . . ."



"Is that a real beard?"



Eat, drink and be merry!



Bridge, anyone?



Well . . .



ORGANIZATIONS



"I'd like to schedule a meeting of Circle K for eleven

o'clock, Monday in the Student Lounge." . . . "A.P.O. will be in charge of dec-

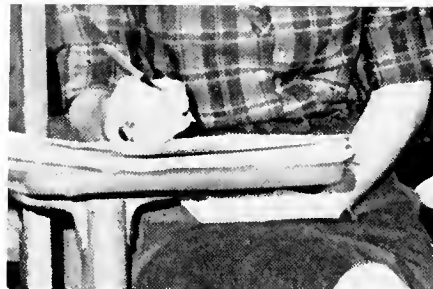
orating for the Beaux Arts Ball. Members should be in the Old Gym Saturday at ten



to paint."

. . . "An Assembly is on the calendar for

Wednesday at free period."



"The Players are rehearsing

for 'Visit to a Small Planet' and will need the auditorium every night this month."



Members of the cast should be on stage promptly at . . .

Student Council



Members of the STUDENT COUNCIL are Lynn Drury, Ken Davis, Dennis Kerr, Steve McMullen, Joan Fisher, Bob Husbands, Tom Winn and Tommy Couch. Bob Calvert is not pictured.

PRESIDENT: Lynn Drury



VICE PRESIDENT: Ken Davis



SECRETARY: Joan Fisher

The STUDENT COUNCIL consists of five officers, elected by the student body, and the four class presidents. This governing organization is designed to serve as the unifying and coordinating body for all student activities and events.



TREASURER: Dennis Kerr



PARLIAMENTARIAN: Tom Winn

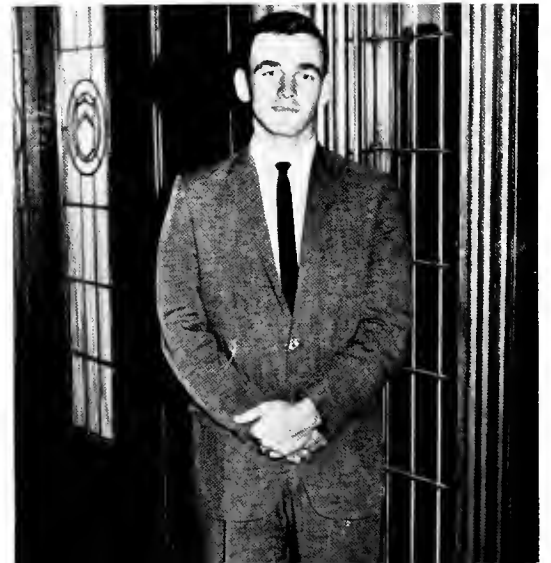
Honor Court



Members of the HONOR COURT are Beryl Folsom, freshman; Rosemary Scraggs, senior; Linda Clark, junior; JoAnn Sager, sophomore; Larry Davis, junior; John Cason, freshman; and Hank Alexander, sophomore. Not pictured is Glenda Balowsky, senior.

HONOR COURT judges all cases of alleged violations of the Honor Code brought before it and has the power to impose punishment on those who are judged guilty of violating the Code. It is composed of two elected representatives from each class and a chairman, appointed by the previous chairman with the approval of the Student Council.

CHAIRMAN: Ken Borden



Honor Committee



HONOR COMMITTEE members are Bill Garrigan, freshman; Charlotte Smith, junior; Patsy Turner, sophomore; and Jack Tebeau, senior.

HONOR COMMITTEE is composed of representatives from each class and a chairman. Its function is to investigate alleged violations of the Honor Code.

CHAIRMAN: Barry Percival
ADVISOR to Honor Court and Committee: Mr. Austin Schlenker



Interactivity Committee



Members of the COMMITTEE are (first row) Diane Leonard, Cherry Hodges, Patsy Turner, Arnold Baker, Larry Davis and Ken Davis, chairman; (second row) Ed Moore, George Handley, Arlene Brilliant and Tommy Phillips; (third row) Steve McMullen, Anne Latimer, Conan Rudd, Mr. MacConnell, Advisor, Carlee Bell, and Tommy Crouch.

The INTERACTIVITY COMMITTEE is a standing committee of the Student Government set up to coordinate the activities of the various campus organizations. The committee, with the Vice president of the Student Council as its chairman, schedules the meetings and activities of the groups on campus. A major function of the Committee has been to promote more and better social activity on the weekends.



Chairman of the INTERACTIVITY COMMITTEE, Ken Davis, checks the calendar of events for the year with Mr. Elgin MacConnell, Faculty Advisor, and Cherry Hodges, Secretary.

Social Committee



"Workers" on the COMMITTEE are Glo Thomason, George Handley and Anne Latimer.

The SOCIAL COMMITTEE plans and organizes entertaining activities for the student body, faculty, alumni and others who are interested in Oglethorpe affairs. These social gatherings add sparkle to an otherwise academic life.

SOCIAL COMMITTEE members are Arlene Brilliant, Donna Williams, Ed Moore and Conan Rudd, chairman.



Student Union Committee



Members of the COMMITTEE are Janet Yose; Conan Rudd, chairman; Jane Lincoln; Anne Latimer; and George Handley.

STUDENT UNION, a service organization, supports all extracurricular activities and has sponsored improvements in the gameroom.



Intramural Council

The INTRAMURAL COUNCIL, composed of representatives from each class, plans and coordinates athletic activities within the college community.



Class representatives on the Intramural Council are (*sitting*) Linda Ryner, freshman; Ken Borden, senior; Sandy Wolsey, junior; (*standing*) Steve Figler, junior; Jeff Hayden, freshman; and Ben Hargrove, sophomore.



Intramural Football Champs.

All Faiths Fellowship



ALL FAITHS FELLOWSHIP assists its members in understanding the religions of the world. It acquaints them with the traditions and customs of other religions. Social problems are dealt with in this discussion group.

Officers of A.F.F. are Jane Lincoln, Vice President; Dr. Reser, Advisor; Dave Davies, President. Not pictured are Carol King, Chaplain; and Patsy Turner, Secretary.



A.F.F. members are Berta Spindler, Janet Yose, Dave Davies, Jo Payne, Joyce Tropea, Lynn White, Jane Lincoln and Dr. Richard Reser, Advisor.

Oglethorpe Chorus



Members of the CHORUS are: (first row) Jan Hardin, Marti Gilreath, Carol Moore, Joyce Tropea, Elizabeth Love, B. J. Rutland, Berta Spindler, Vivian Grey, Connie Boggs, Jo Payne; (second row) Gwyn Cannon, Susan Warrel, Theresa Tarrant, Sharon Fredericks, Sally Kerr, Gloria Early; (last row) Larry White, Bill Aitken, Pete Williams, Ed Moore, Conan Rudd, Bob Hamrick, Jerry Scarborough, Ken Davis, Ed DeGross and James Beeson.

The OGLETHORPE CHORUS provides musical programs for assemblies and special events on campus. They also sing for various civic, religious and other local organizations. The Chorus has a broad repertoire ranging from classical to popular music.

Vivian Grey, Secretary-Treasurer; Mrs. Lundeen; Conan Rudd, President; and Mrs. Peggy Youngblood, Accompanist.



Inge Manski Lundeen: DIRECTOR





HUMANICS ASSOCIATION members are (*first row*) Patsy Turner, Jane Lincoln, Carolyn Stemples; (*second row*) Larry White, Janet Yose, Joyce Tropea, Gloria Early; (*third row*) Lynn White, Sam Cunningham, George Handley, Arnold Baker, Jack Turpin, Gloria Thomason; (*fourth row*) Cabot Gupton, Stuart Lynn, Bobbie Gupton, Steve McMullen, Ken Davis, Lee Daniels, John Day, Dave Davies, Risk Taylor, Barry Champion, Ed Moore, Dr. Berg, and Berta Spindler.

The HUMANICS STUDENT ASSOCIATION serves as a focal point to enlighten Humanics students in their profession of working with young people. These students will have much influence on many future citizens.

Humanics Association



The weekly meeting of the Executive Committee.



An evening at Mom's.



Executive officers are (seated) Dr. Gunnar Berg, Resident Administrator; Arnold Baker, President; (standing) Janet Yose, Secretary; Steve McMullen, Treasurer; George Handley, Second Vice President; and Lee Daniels, First Vice President.

Oglethorpe Players

The OGLETHORPE PLAYERS produce three plays a year, presenting a selection of comedies, mysteries and dramas. The group promotes an interest in the theater arts and provides those with dramatic inclinations an opportunity for developing their talents.



Officers of PLAYERS are Foxy Stafford, Secretary; Larry Davis, President; Terry Ingerson, Business Manager; and Conan Rudd, Stage Manager.

DIRECTOR: Mrs. Charles Honce



PLAYERS are (first row) Larry Davis, JoAnn Sager, Carole George, Sharon Friedrich; (second row) Woody Sellers, Marti Gilreath, Lou Andersen, Beryl Folsom, Mickie Tully; (third row) Dan Cowart, Joyce Tropea, Tom Dallinger, Kay Kilpatrick, Terry Ingerson; (last row) Conan Rudd, and Peter Stelling.

Newman Club

The NEWMAN CLUB is the Catholic student organization on campus. This is a discussion group whose purpose is to gain more insight into their religion.



Officers of the Newman Club are (*standing*) Mary Anne Ryan, Recording Secretary; Susan Warrell, Corresponding Secretary; Joyce Tropea, Vice President; (*seated*) Ed DeGross, Parliamentarian; Patsy Turner, President; and Peggy Warrell, Treasurer.

Members of the club seated on the floor are Ronnie Cenzalli, Kate McNeil, and Ed DeGross. Behind them are Joyce Tropea, Father Felix McGrath, O.F.M., Patsy Turner, Susan Warrell, Mary Anne Ryan, and Peggy Warrell.



Alpha Phi Omega



FRATERNITY members are (*first row*) Ed DeGross, Bill Pate, Elliott Schwartz, Ken Davis, Larry Davis, Jeff Wallen, Cabot Gupton, George Handley; (*second row*) Joe Strenk, John Stroud, Ben Vincent, John Cason, Dave Davies, Lee Daniels; (*third row*) Dennis Kerr, John Winsness, Rick Taylor, Barry Percival, Larry White; (*fourth row*) Jack Turpin, Larry Harbin, Lynn Drury, Steve McMullen, George Alexander, and Tommy Crouch.

ALPHA PHI OMEGA is a national service fraternity composed of college and university men who have been previously connected with the Boy Scouts of America. This organization, by volunteering to do service for Oglethorpe University, shows respect and concern for its future.



A.P.O. officers are: Larry Harbin, Secretary; Cabot Gupton, Sergeant at Arms; Larry Davis, Historian; Dennis Kerr, Treasurer; George Handley, Second Vice President; Steve McMullen, President; Lee Daniels, First Vice President.



A.P.O. party at the Atlanta Cabana



A.P.O. birthday party

SWEETHEART: Miss Jayne Archer



Yamacraw Gun Club



Officers of GUN CLUB are (*kneeling*) Hoyt Wagner, Vice President; Larry Harbin, Range Executive; (*standing*) Foxy Stafford, Range Executive; Dan Cowart, President; Cherry Hodges, Secretary; Ed DeGross, Range Executive; and Peggy Warrell, Treasurer.

The YAMACRAW GUN CLUB provides its members with training in the skill of shooting rifles and pistols. Members of the Gun Club who are also on the rifle and pistol teams participate in shooting matches with other colleges.



GUN CLUB members are (*sitting*) Virginia Bremer, Diane Leonard, Foxy Stafford, Bambi Klein, Gretchen Stevens, Berta Spindler; (*second row*) Ed DeGross, Vivian Grey, Cherry Hodges, Peggy Warrell, Patsy Turner, Larry White, Hoyt Wagner; (*third row*) Bill Aitken, Jack Tebeau, Ben Vincent, Dan Cowart and Larry Harbin.

Circle K



CIRCLE K members are: (*first row*) Tommy Phillips, Ed Moore, Eric Scharff, John Day: (*second row*) Wayne Perry, John Stroud, Dennis Kerr: (*third row*) Jack Tebeau, Orlan Swennes, Delmar Brinkley, Dan Cowart; (*fourth row*) Kurt Dowd, Pete Williams, Larry Harbin, (*fifth row*) Bob McMains, Larry Davis, and Conan Rudd.

CIRCLE K is a service organization sponsored by Kiwanis International. It was revived on the Oglethorpe campus this year after an absence of several years. This club is part of a larger association which has over 6,000 members in 400 clubs in the United States and Canada, founded on ideals of service to others with the motto: "we build."

Officers are: Jack Tebeau, Vice President; Tommy Phillips, President; Ed Moore, Secretary; John Stroud, Treasurer; John Day, Parliamentarian.

Tug of War with A.P.O.



Literary Magazine



Editors of the Literary Magazine, Virginia Bremer and Linda Clark, discuss the magazine with Mr. Wendell, Advisor.

The LITERARY MAGAZINE brings to light the hidden talents of Oglethorpe's students, faculty, and alumni. It exemplifies their skills in writing poetry, short stories and essays.



CO-EDITOR: Sandy Wolsey

Joint Committee



The JOINT COMMITTEE is composed of Dr. Agnew, Dr. Seward, Mr. Bilancio, Mr. MacConnell, Lynn Drury, Student Council President, Ken Davis, Student Council Vice President, and the Vice Presidents of each class, Ed Moore (senior class), Steve Figler (junior class), Jack Grubb (sophomore class) and Bill Pate (freshman class).

The JOINT COMMITTEE is the only official organizational group with representatives from the administration, faculty and student body. Its function is to consider problems and proposals regarding conflicts within the three groups, keeping the best interests of the University in mind.

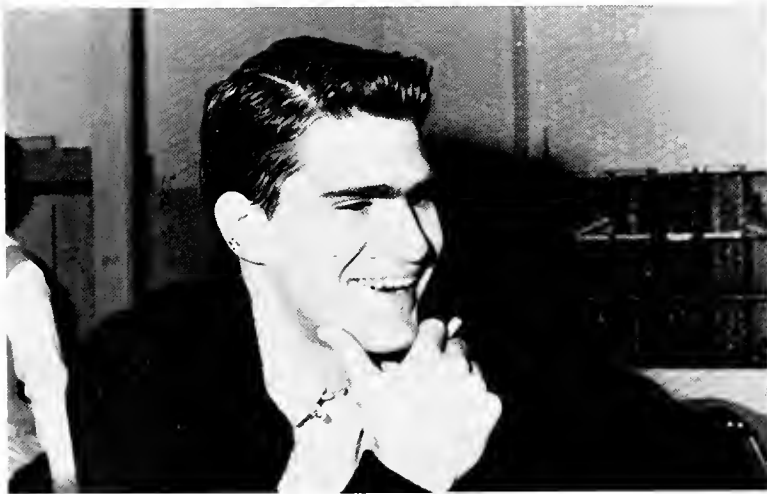
Stormy Petrel



EDITOR: Diane Leonard



ASSOCIATE EDITOR: Carole George



MANAGING EDITOR: Woody Sellers



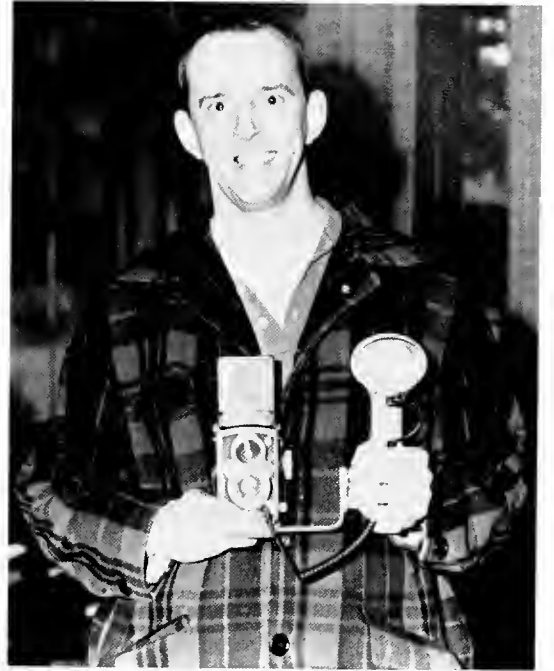
BUSINESS MANAGER: Barry Percival



COLUMNISTS: Larry Davis, Carlee Bell and Dave Bauman.



SPORTS STAFF: Ken Borden and Ken Davis. Also on the staff are Sandy Wolsey and Steve Figler.



PHOTOGRAPHER: Blair Protzman

The *STORMY PETREL*, student newspaper of Oglethorpe University, reports and interprets campus and non-campus news. The *PETREL* provides an important means of expression for the students and faculty. It acts as an ever-present stimulus for thought and provocation.



Members of the staff are Arnold Baker, Judy Skiles, Es Aviles, Jacque Cook and Jane Lee Conner.

Yamacraw



EDITOR-IN-CHIEF: Anne Latimer



BUSINESS MANAGER: Pete Williams



EXECUTIVE SECRETARY: Suzy Straub



CLASSES EDITOR: Lou Andersen



FACULTY EDITOR: George Handley



PHOTOGRAPHY COORDINATOR: Vivian Grey



Representative from Taylor Publishing Company: Ed Jones

The YAMACRAW is the Oglethorpe University year-book. Like all other annuals, it finds its value in the future. In days to come when its covers are opened, clouds of forgetfulness will be erased, and sunny events of the past will again shine.



SPORTS EDITOR: Ken Borden



PHOTOGRAPHERS: George Handley and Ed DeGross



HONORS EDITOR: Cherry Hodges



ORGANIZATIONS EDITOR: JoAnn Sager



ACTIVITIES EDITOR: Tommy Phillips

GENERAL STAFF members are Jane Lee Conner, Judy Hayden, Larry Davis, and Carlee Bell. Not pictured are Bob Husbands, B. J. Rutland, Brenda Rosenthal, and Arnold Baker.



FACULTY ADVISOR: Mr. Roy N. (Doc) Goslin



SPORTS

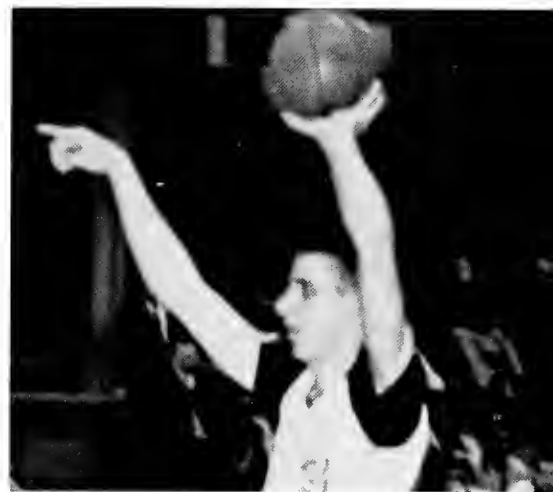
Athletics teaches loyalty to a goal with each participant



giving his best for the common good.

Athletics teaches leadership with each person given

equal opportunity to develop his abilities and potential.



Even though school spirit includes much more



than athletics, athletic competition gives

a focal point for a concrete expression of

the valuable intangibles of spirit.

Athletics teaches dedication to a task; players learn



that they get out only what they put in.



CHAMPIONSHIP DRIFTERS



Dan Cowart administers aid to stricken Drifter, Jack Grubb.



The Heroes and their fair Lady.

Intramurals

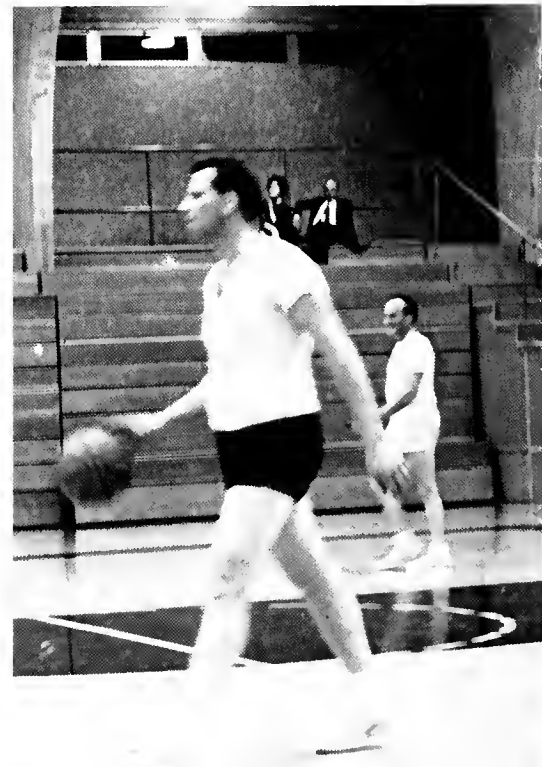
This year's version of Intramurals has provided some fine thrills and excellent athletic talents. Fall quarter saw Ray Thomas capture the boy's tennis trophy and Judy Seidenspinner took the girl's honors. The Drifters became the new football champions with a 6-0 record after unseating the defending Lions. Basketball brought the big surprize as the Sophomores ended the Senior win streak at 21 and then went on to take the crown. Girls sports proved somewhat of a disappointment when insufficient participants made a continuous program impossible. Spring brought on softball and at present the Sophomores seem a good bet with strong competition from the freshmen.



FOOTBALL STANDINGS

<i>Team</i>	<i>Won</i>	<i>Lost</i>
Drifters	6	0
Lions	4	2
Rats	2	4
Colts	0	6



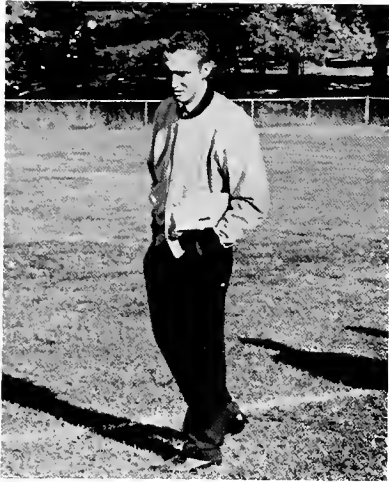


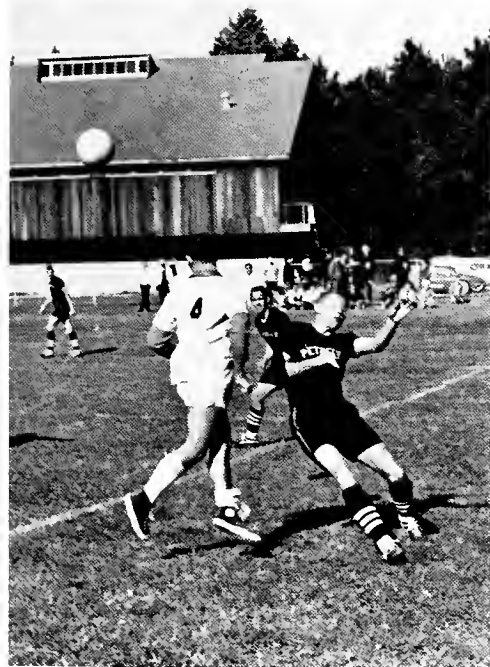
BASKETBALL STANDINGS

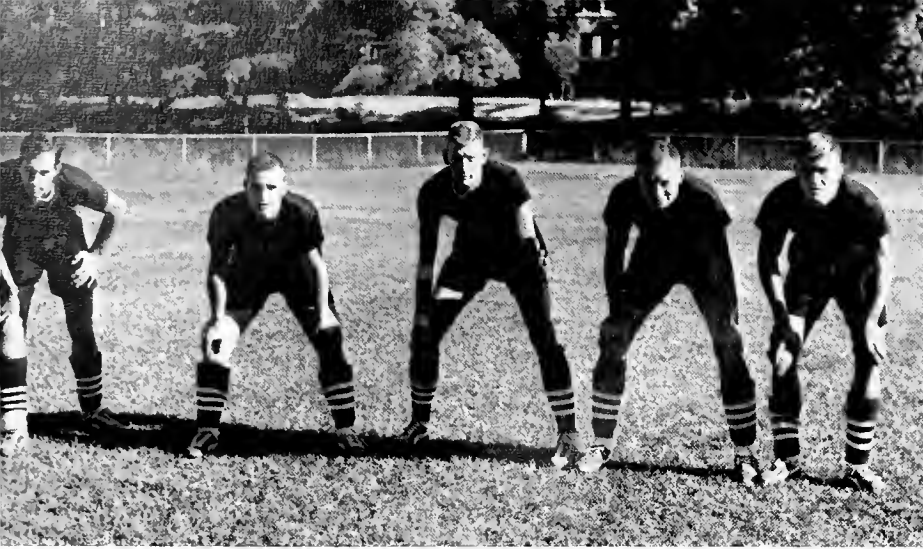
	<i>Won</i>	<i>Lost</i>
Sophomores	5	1
Seniors	4	2
Freshmen	3	3
Juniors	0	6
Faculty	Non-league games	



Soccer







HALFBACKS



Injured player, Ken Borden, and Manager, Stuart Lynn



FORWARDS



GOALIE

FULLBACKS





SOCCER TEAM: *Kneeling, left to right:* Benton Greenleaf, Jeff Hayden, Kwan Perrin, Errol Liefer, Ben Hargrove, Kim Pamir, Hoyt Wagner; *Standing:* Stu Lynn, Ronnie Cenzalli, Steve Figler, Tom Dallenger, Niel Erby, Lynn White, Lainer Bagwell, Bob Calvert, Perry Cash, Pete Outhwaite, Bill Vaughan.



Captain Perry Cash flips with Georgia Tech Captain.

Rifle Team



Left to right: Bambi Klein, Vivian Gray, Diane Leonard, Foxy Stafford, Berta Spindler.



Co-Captain Foxy Stafford and Captain Diane Leonard

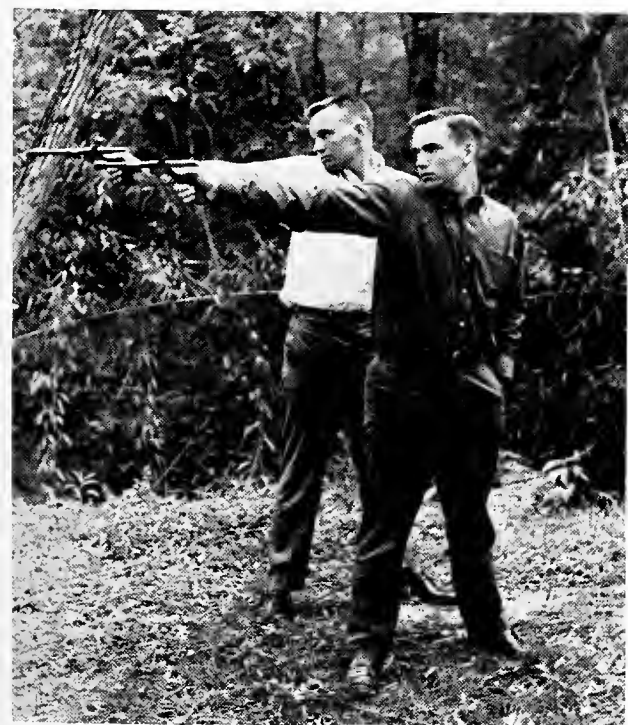
The girls' rifle team extended its victory string to three years. To date the Petrel's fair sex has won 33 matches. Top shots are Foxy Stafford, Vivian Gray, and Diane Leonard.



Larry and Jack take aim.



Front to back: Larry White, Ed DeGross, Hoyt Wagner, Steve Figler, Larry Harbin, Dan Cowart, Ben Vincent.



Captain Dan Cowart and Co-Captain Hoyt Wagner

The boys' pistol team in its second year of competition won six of twelve matches. Victories were won over many major foes.

Chief Sewell Edwards deserves much praise for his work as coach of this fine team.

Pistol Team



INSTRUCTOR: Chief Sewell Edwards



OGLETHORPE SHOT AGAINST:

- Arlington State College
- U.S. Naval Academy
- U.S. Military Academy
- Michigan State University
- Rutgers State University
- Royal Military College of Canada
- California Maritime Academy
- University of Oklahoma
- San Jose State College
- University of Illinois
- Massachusetts Institute of Technology
- Brown University

Oglethorpe University
Atlanta, Georgia

May 2, 1963

The athletic program at Oglethorpe is of course best known in the field of basketball. Since the record here speaks for itself I would prefer to call attention to other aspects of our program, pointing out the diversity of opportunity available to our students.

In addition to basketball we are engaged in intercollegiate competition in baseball, soccer, tennis, and riflery.

We also have intramural programs in touch football, basketball, softball, and tennis.

In intercollegiate tennis for 1963 the record to date is 10 wins and no losses. This includes wins over Stetson University and University of Kentucky.

The riflery team has a rather spectacular record having won 33 and lost 0 over a period of 3 years.

Soccer, which is relatively new as an intercollegiate sport at Oglethorpe, has so far accumulated a record of 5 - 2.

We are proud of our various athletic programs and expect to see a continued expansion of sports available and student participation in these sports.

G. F. Wheeler,
Chairman of the Athletic Committee



Basketball



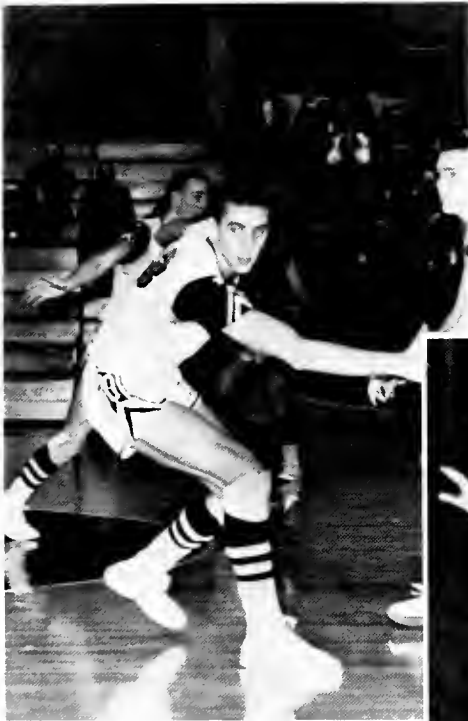
BOB NANCE



BILL GARRIGAN



DARREL WHITFORD



BILL STEWART

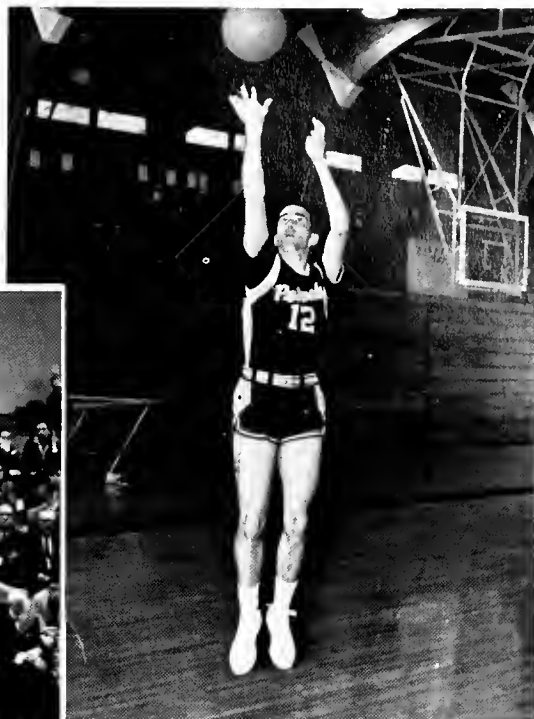


RAY THOMAS

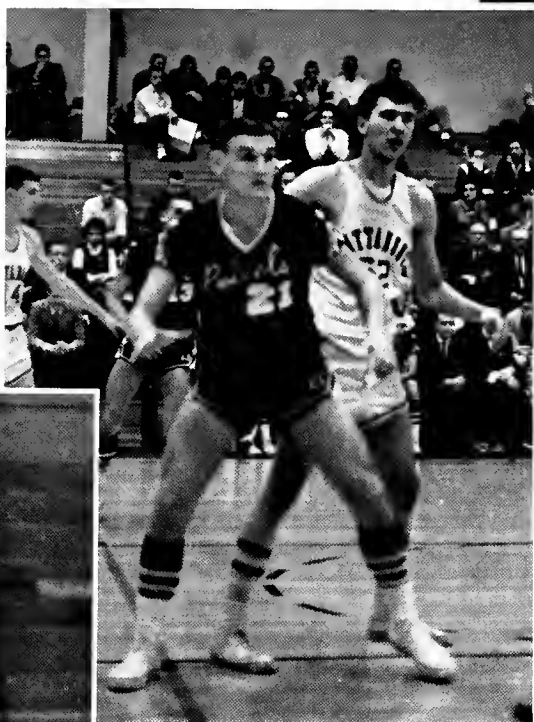


RONNIE OWENS

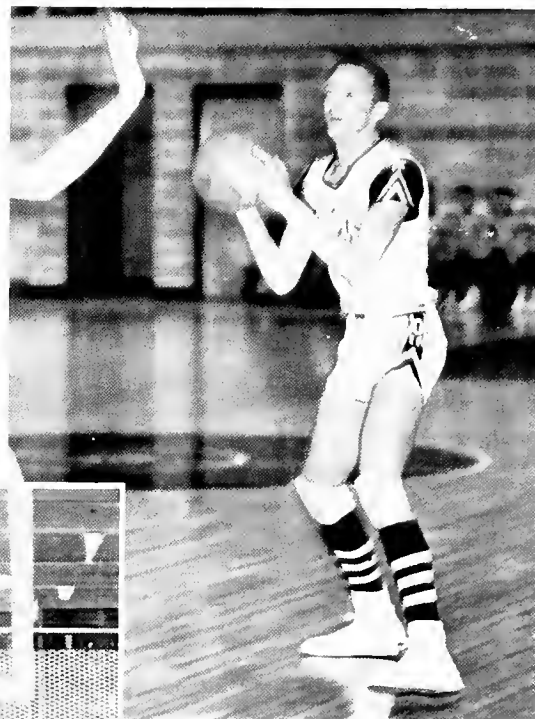
JOE CARTER



JIMBO HARTLAGE



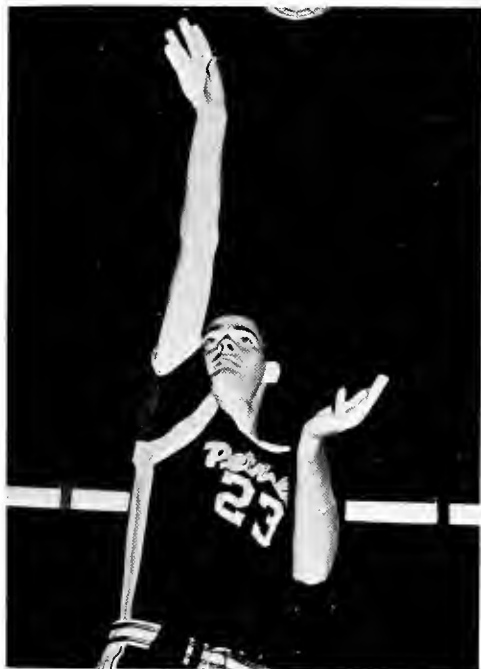
BOBBY SEXTON



MORRIS MITCHELL



BILL PARKER



DONNIE OWENS



1. Petrels beat St. Peter's in New York
2. Petrels win NCAA Regions at Louisville
3. Petrels third in NCAA Finals at Evansville
4. Bob Nance and Coach Pinholster are Small College All-Stars in Kansas City
5. Coach Pinholster heads U.S. Pan-American team in San Paulo, Brazil
6. Coach Pinholster leads U.S. in world games at Rio De Janeiro



Cheerleaders



Left to right: Kathy Shirley, Paula Coker, Linda Sanders, Sandy Wolsey, Jacque Cook, Marsha Clifton, Jane Lincoln.



Captain—PAULA COKER



Co-Captain—JANE LINCOLN

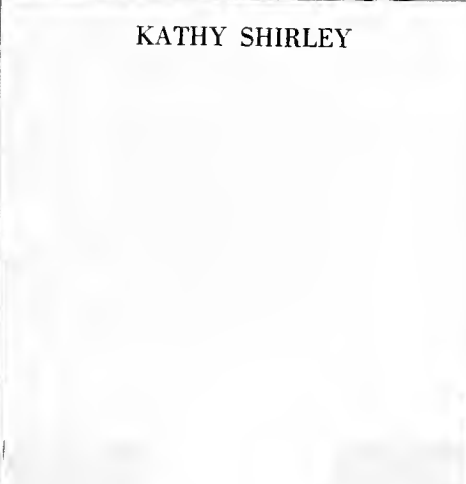
MARSHA CLIFTON



JACQUE COOK



KATHY SHIRLEY



SANDY WOLSEY



LINDA SANDERS

Saints



Cabot gets roused up.



Left to right: Cabot Gupton, Conan Rudd, John Cason, George Alexander, and Alan Parker.



Music. Man, Music



The Saints go Marching In.

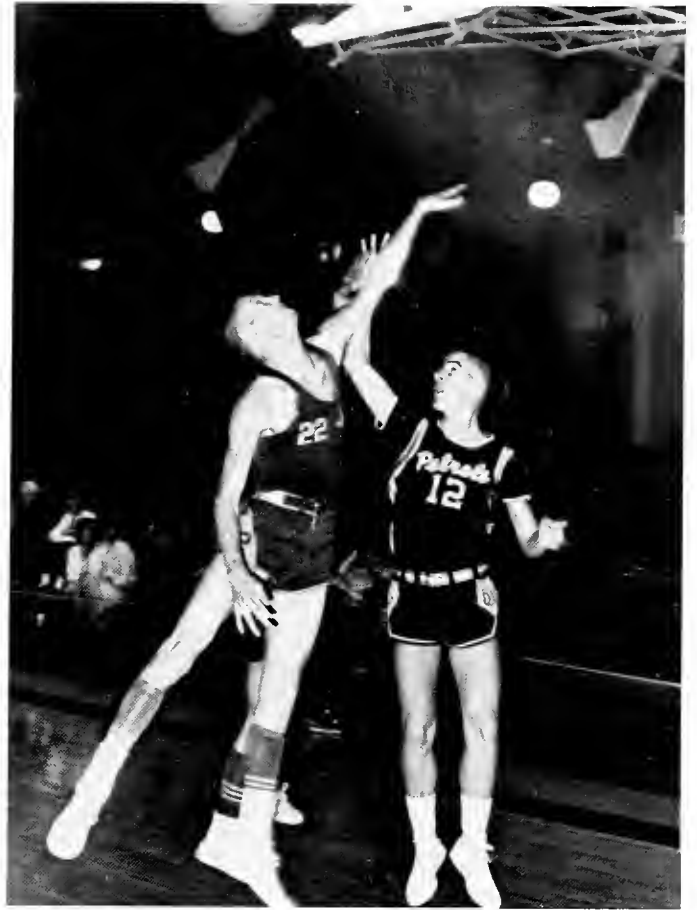
Ed Moore leads "Old Black Joe"



B-Team



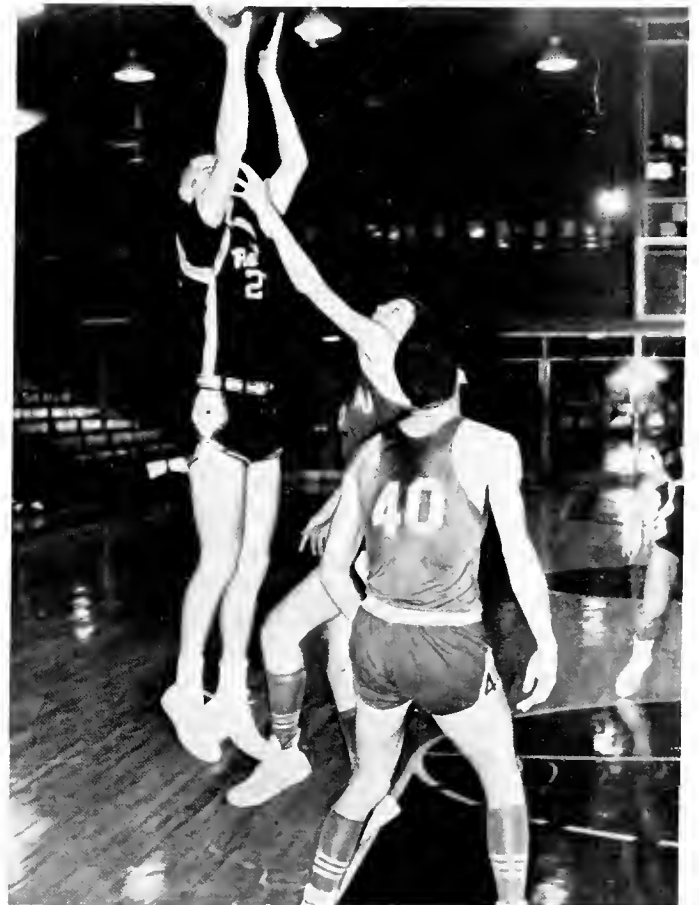
Coach Carter gives instructions.



Owens has his man all the way.

The B team was composed entirely of freshmen and sophomores off the varsity. The future Petrel stars gained invaluable experience in the highly disciplined Oglethorpe pattern.

These boys put the go in the Oglethorpe team with their constant encouragement and pressure of the varsity. More regular players will readily admit they would rather play anyone than the "2p's squad." These boys make Oglethorpe's future look bright.



Petrel takes finger in nose.

B-Team



GLORIA DIAL



ELEANOR YEDVOB

JANE LEE CONNER



CARLEE BELL



Cheerleaders



JUDY HAYDEN



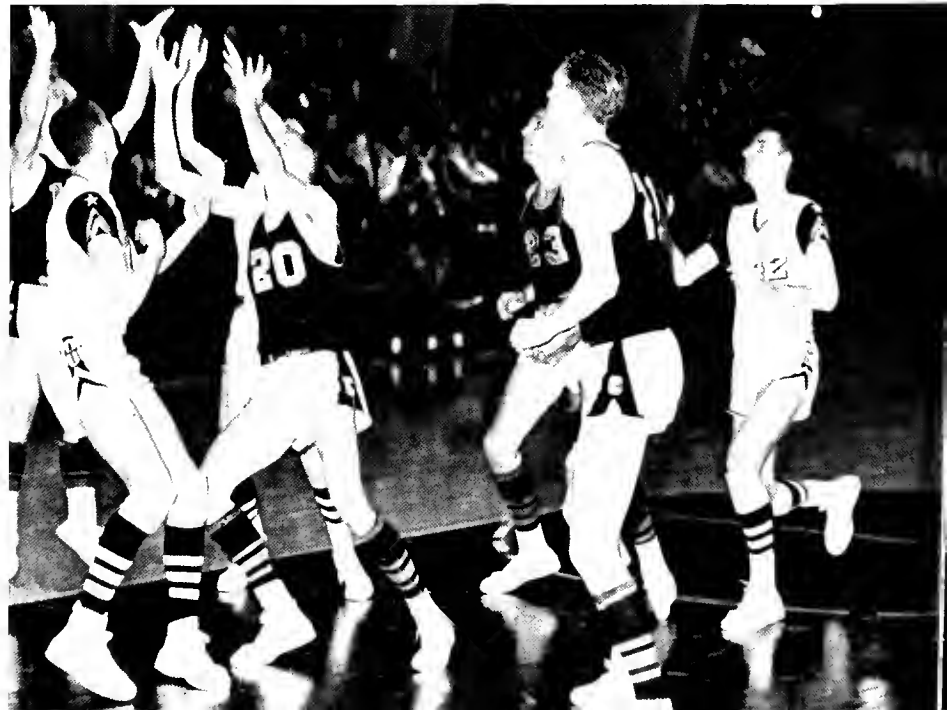
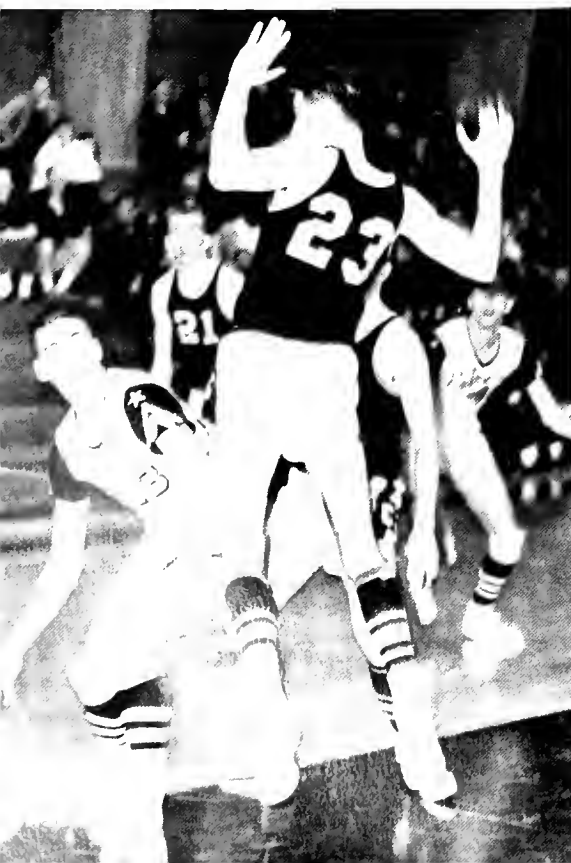
BAMBI KLEIN

ESMERELDA AVILES



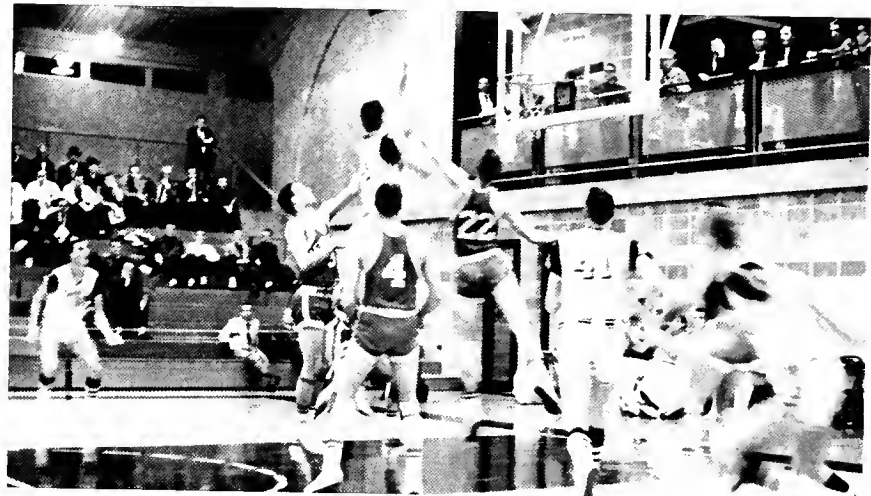
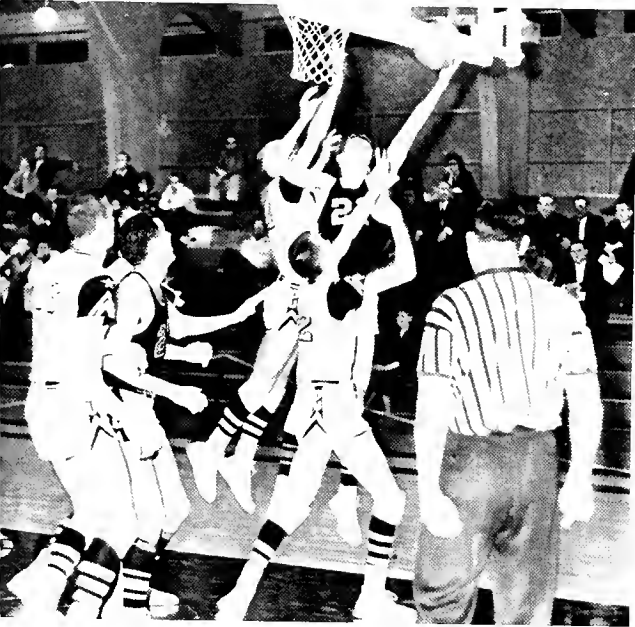
KAREN SMITH

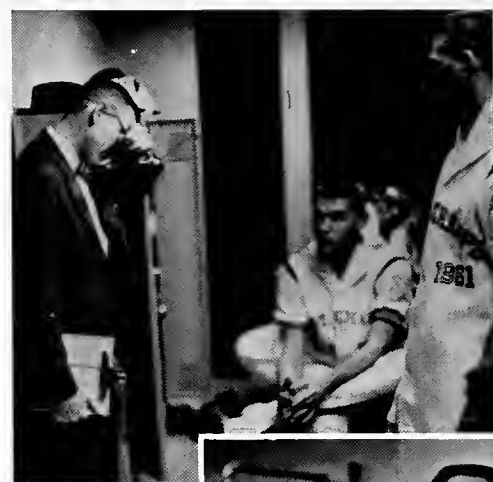






Statisticians: Tom Winn, Ken Broden, Steve McMullen, Eric Scharff





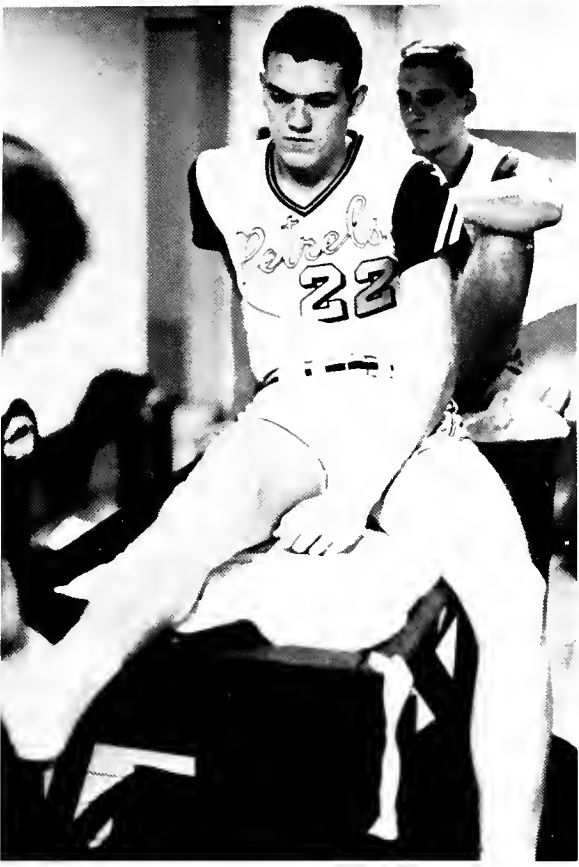
Coach displays many sides in leading Petrels to unexcelled heights . . .

<i>O.U.</i>	<i>Opponents</i>	<i>They</i>
77	Piedmont	42
45	Murray	50
66	Carson Newman	44
71	Cumberland	56
63	Newberry	56
56	Valdosta State	42
87	Paris	37
68	St. Peters	57
63	New Hampshire	46
49	Piedmont	20
60	Ga. Southern	42
56	Centenary	67

<i>O.U.</i>	<i>Opponents</i>	<i>They</i>
32	East Carolina	34
47	Chattanooga	61
63	East Carolina	34
80	St. Bernard	59
76	Rollins	56
40	Carson Newman	49
76	Chattanooga	64
70	Campbell	46
68	Belmont Abbey	41
41	Ga. Southern	58
80	Athens	53

NCAA REGIONAL TOURNEY		
57	Bellarmino	49
55	Tennessee State	51

NCAA NATIONAL FINALS		
36	Phila. Textile	34
37	Wittenburg	46
68	Southern Ill.	64



Ankles can be vital spots.



Coach Pinholster lectures to fans as players demonstrate.



Bobby tense before O. U. Invitational Tournament.



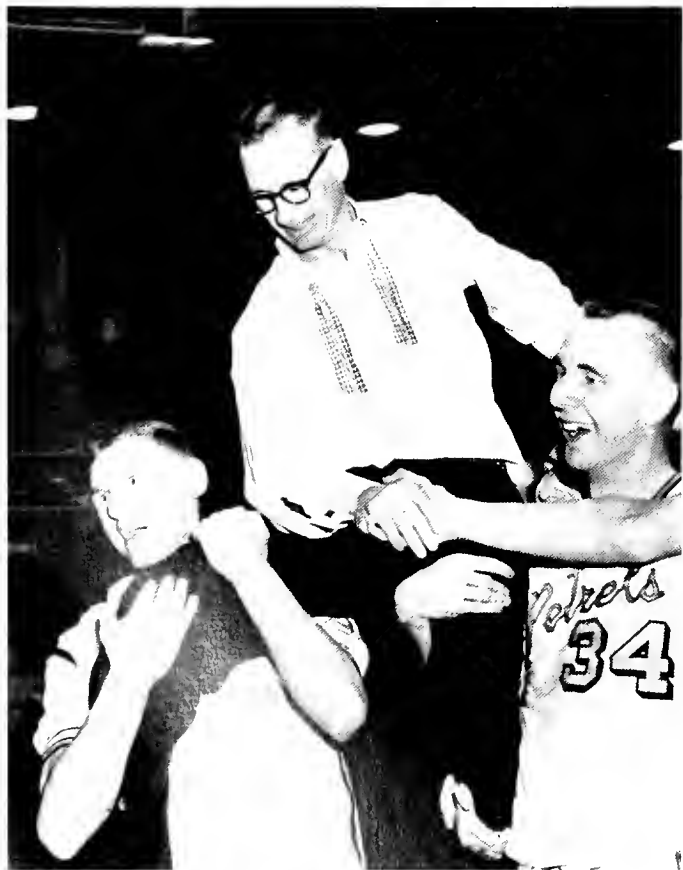
Players relax on the Road.



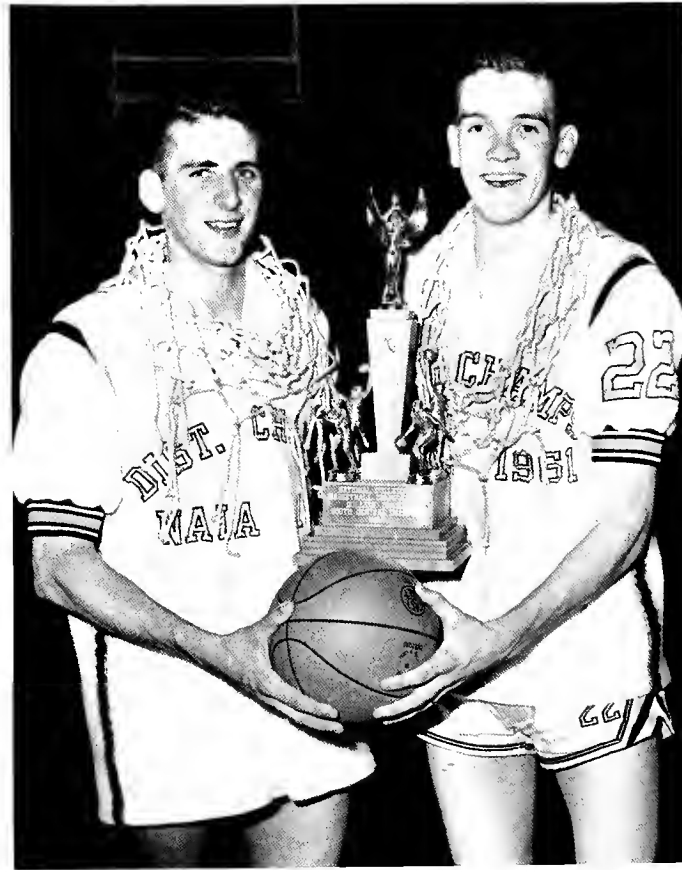
Coach Carter goes over defense for Chattanooga.



OGLETHORPE UNIVERSITY ACCEPTS REGIONAL FIRST PLACE TROPHY.



Jimbo struggles to keep victorious Coach aloft.



Captains Bob Nance and Darrell Whitford celebrate with Trophies and Winning nets.



Tense moment at Louisville



Cheerleader and students welcome home their heroes.

NUMBER THREE TEAM IN THE NATION ARRIVES AT THE ATLANTA AIRPORT.





Baseball

The evil eye has plagued the Petrel baseballers all this spring. Many Players got a late start due to basketball success and weren't ready to answer the opening bell effectively. Pitching and catching both have proven dark spots. Sore arms have plagued three of the five Petrel moundsmen and the burden fell on too few shoulders. Eligibility and injuries have eliminated four catchers. Inexperience in this key position has really hurt. On bright spot, however, was the 8-7 victory over the University of Georgia.





RONNIE OWENS



BILL GARRIGAN



BEN HARGROVE

JAMIE HYMAN



BOBBY SEXTON





KEN BORDEN



STEVE FIGLER



BOB MORELAND



ROY COWART



MORRIS MITCHELL



ROBERT TILLERY



DARRELL WHITFORD



DONNIE OWENS



COACH BILL CARTER



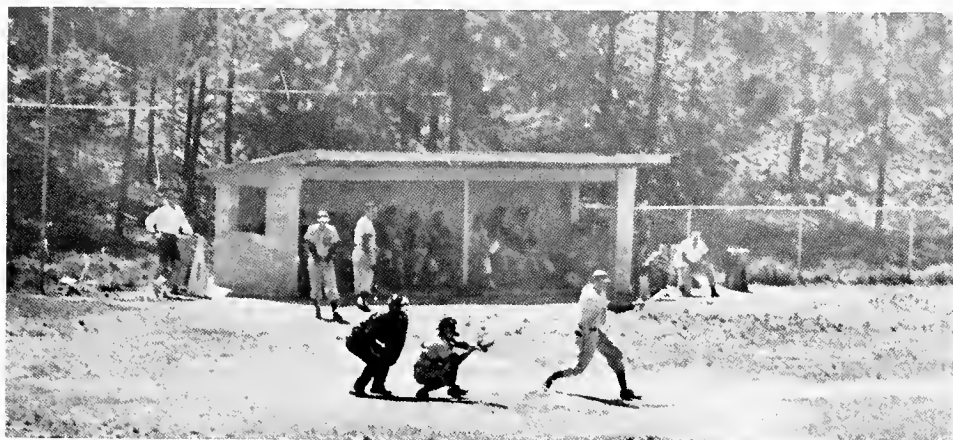
LARRY ABNER



Petrels Push Runner into Scoring Position.



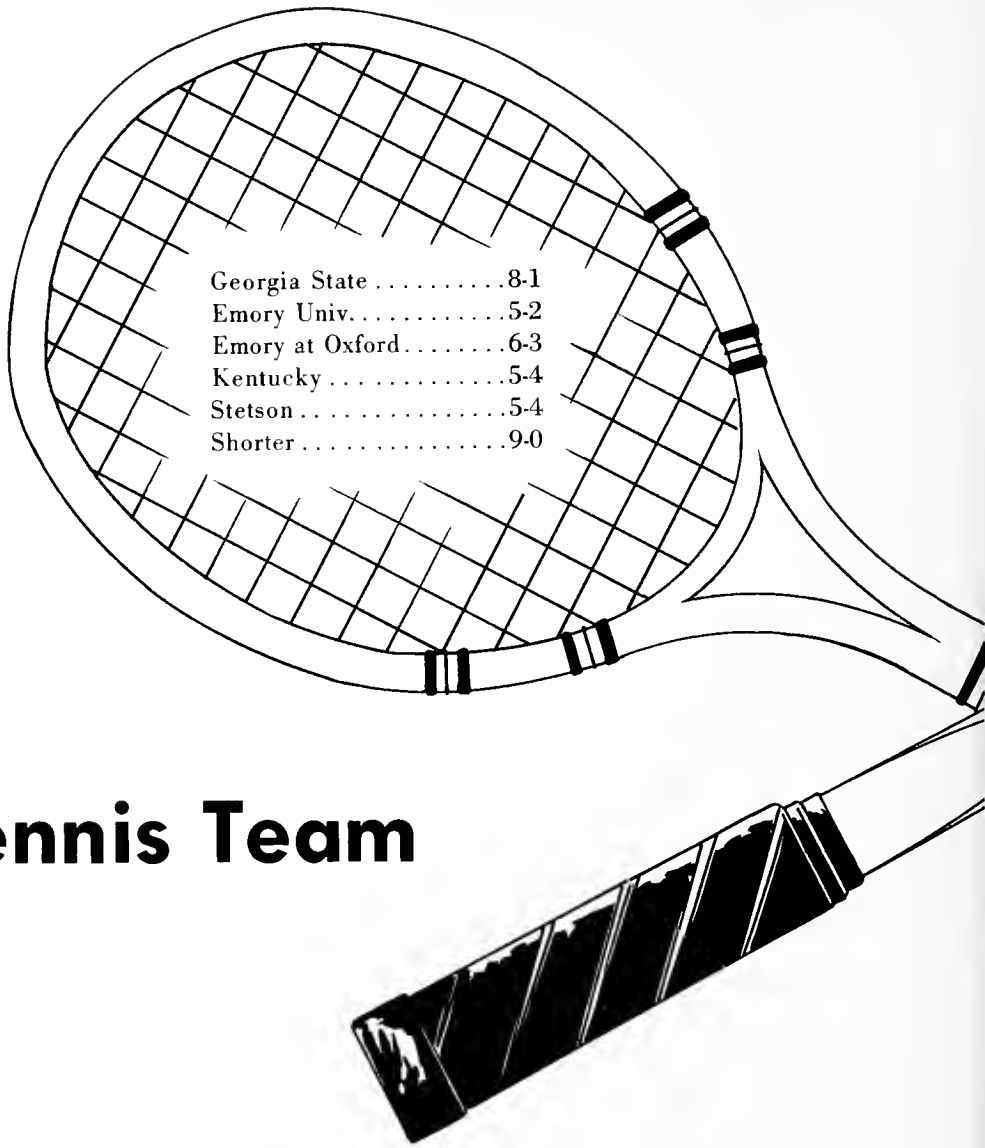
Petrels Make Sacrifice to Baseball God.



Players Look on as Teammate Takes Healthy Cut.

Season's Results

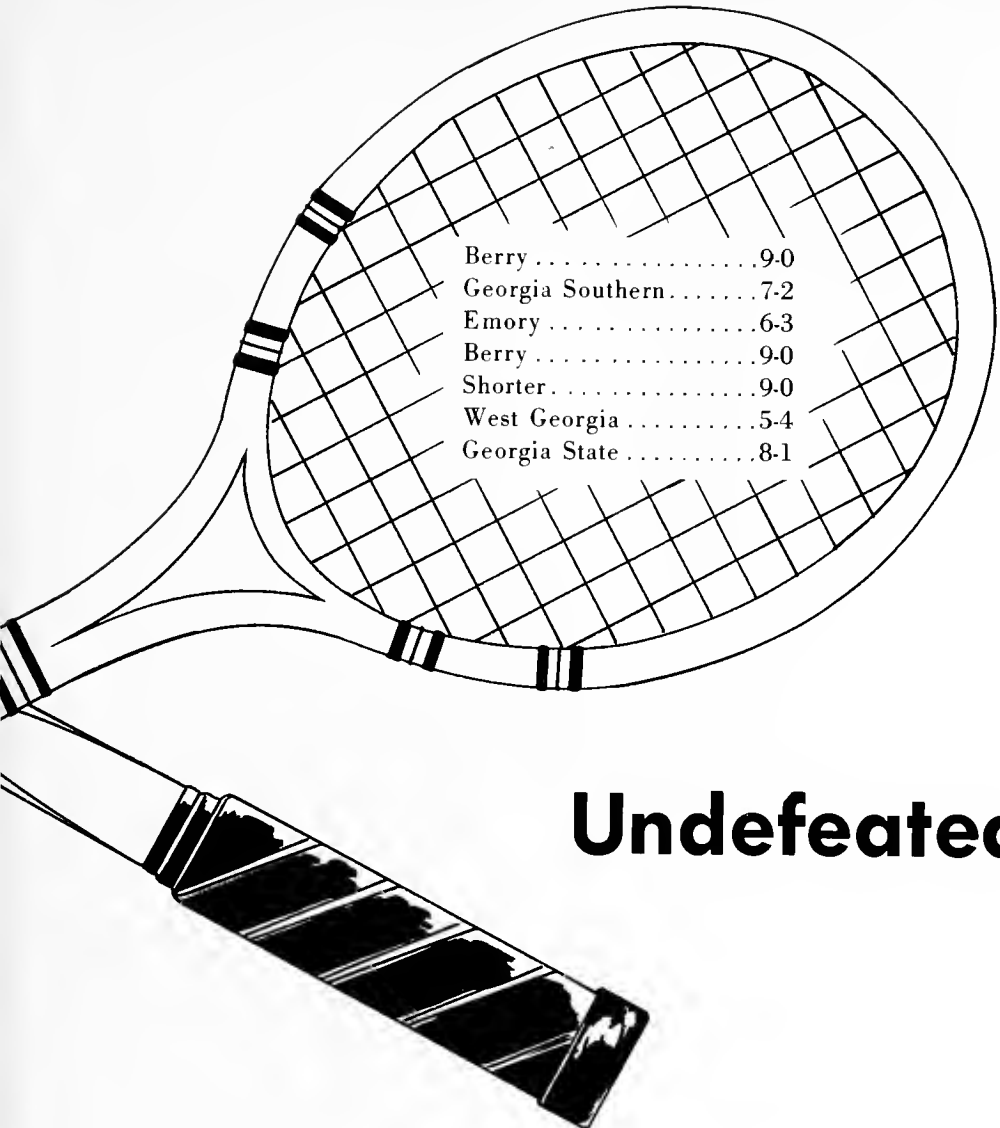
<i>OPPONENTS</i>	<i>WE</i>	<i>THEY</i>
VMI	1	4
Carson Newman	3	16
Carson Newman	0	12
Georgia	8	7
Berry	3	2
Berry	9	10
Wake Forest	3	13
Mercer	10	9
Wheaton	2	4
Piedmont	4	5
Shorter	1	4
St. Bernard		
Shorter		
Georgia		
Union		
Union		
Piedmont		
Mercer		
Piedmont Mercer		



Georgia State	8-1
Emory Univ.	5-2
Emory at Oxford	6-3
Kentucky	5-4
Stetson	5-4
Shorter	9-0

Tennis Team





Berry	9-0
Georgia Southern	7-2
Emory	6-3
Berry	9-0
Shorter	9-0
West Georgia	5-4
Georgia State	8-1

Undefeated in '63





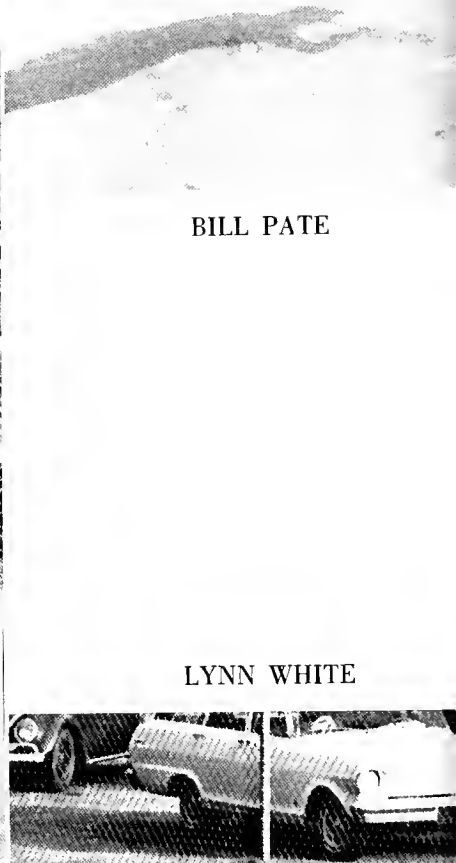
RAY THOMAS



BILL PATE



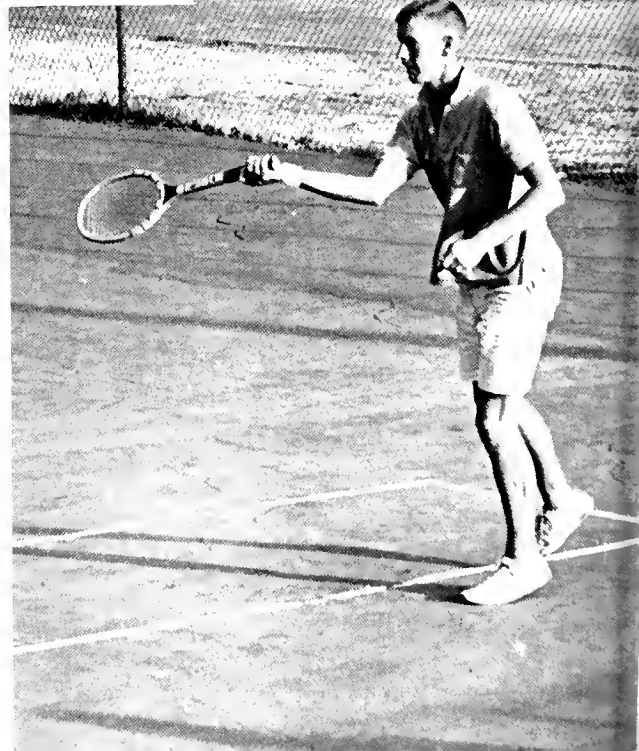
BOBBY NANCE



LYNN WHITE

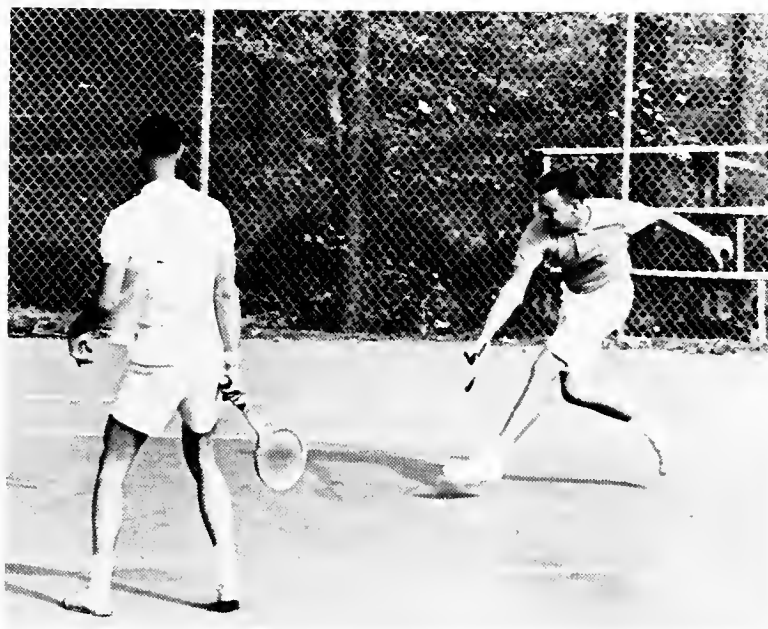


DAN COWART

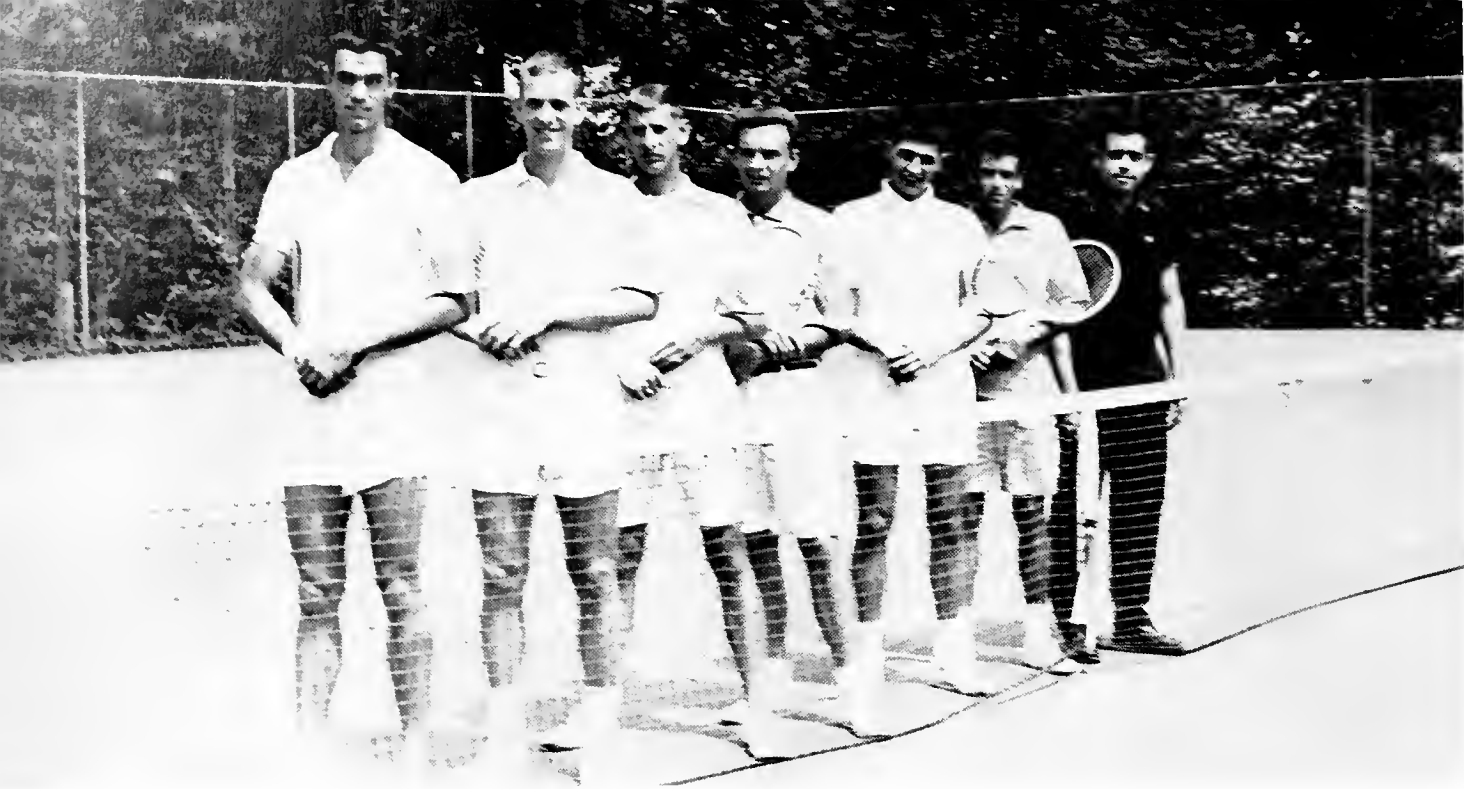




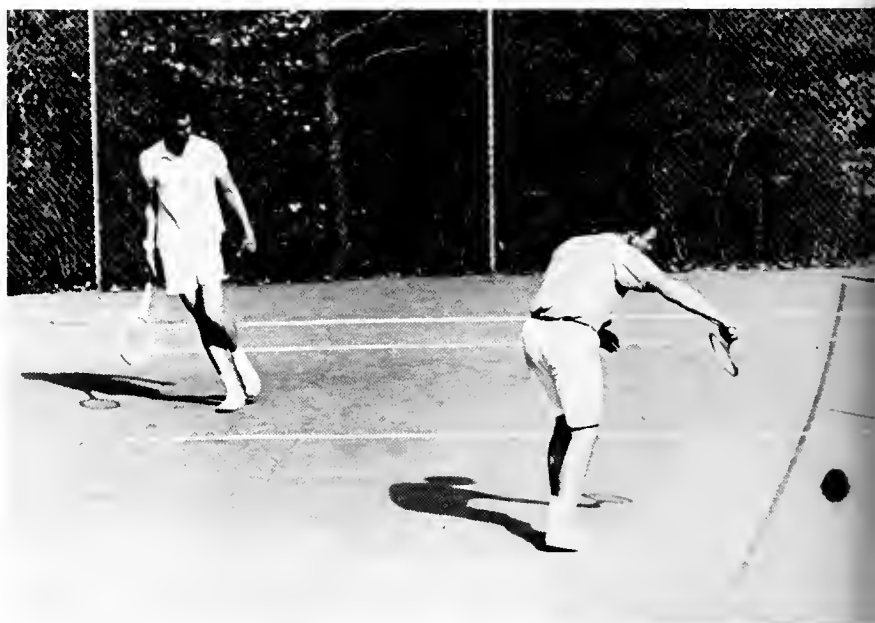
BILL STEWART

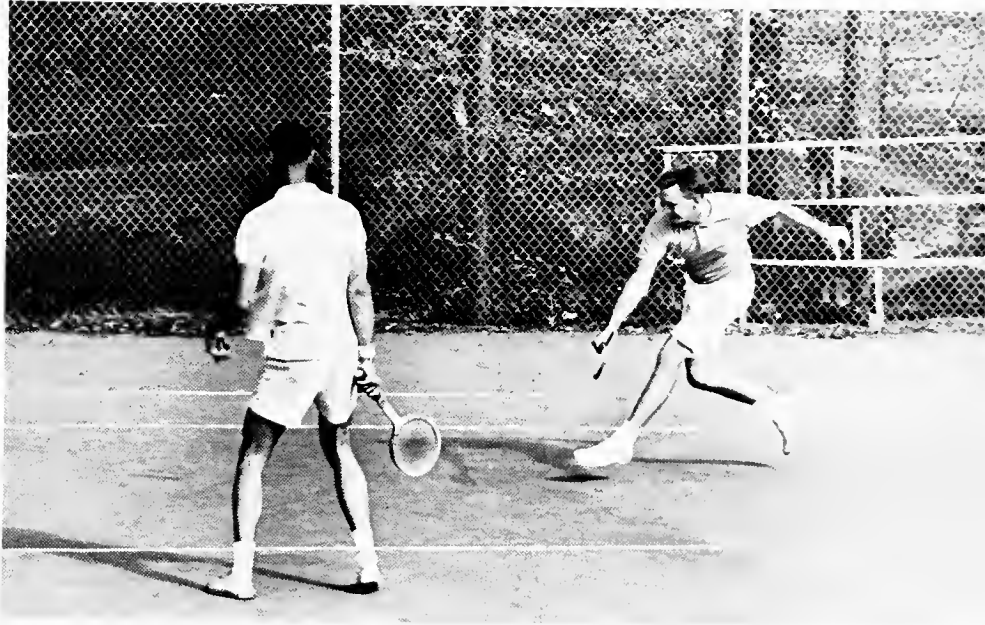
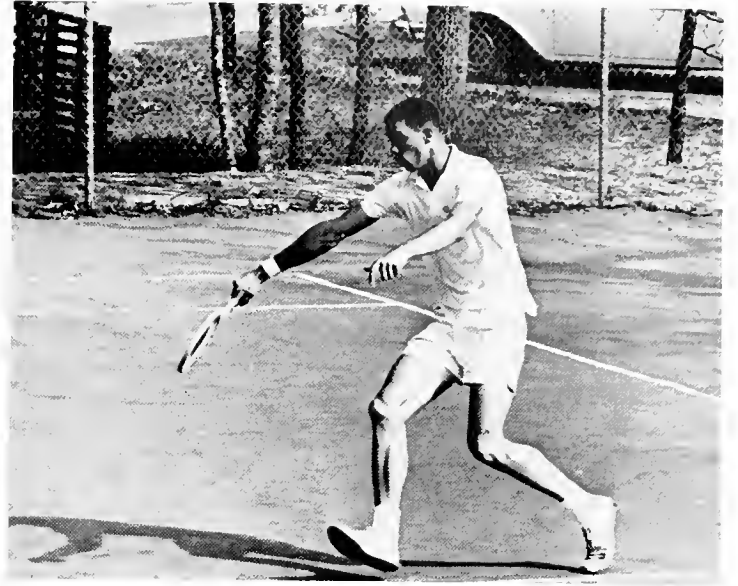


The tennis team under the direction of tennis great Crawford Henry has reached unparalleled heights this spring. To date the Petrel netters are undefeated, numbering Stetson, Kentucky and Emory among their victims. Bill Pate and Ray Thomas have been outstanding as the number one and two players this year. The sports staff hopes that this year's team is setting a new precedence.



Left to right are the members of the Tennis Team: Bill Stewart, Ray Thomas, Lynn White, Dan Cowart, Tom Dalinger, Bill Pate, and Coach Crawford Henry.







HONORS

... your Senior year. Your rat cap has been traded for Mortarboard and tassel.



The hard work and service has come to a culmination. Scholarship and participation

will be rewarded. Those students who give so much



are recognized.



The Oglethorpe ideal is to create a love of learning,

to encourage future study and to provide a background which will enable a useful life.



The awards received at school are token symbol of the intangible rewards to be

achieved by continuing to use what has been learned from four years at Oglethorpe.

Yamacraw Awards



Conan Rudd
*Nominated by All Faiths Fellowship
and Duchess Club*



Glenda Balowsky
Nominated by the LeConte Society



George Handley
Nominated by Yamacraw Gun Club

Yamacraw Awards were initiated by the 1963 *Yamacraw* staff as a new means of recognizing students who are thought worthy of representing the Oglethorpe ideals. Each club nominated one boy and one girl; the executive staff of the *Yamacraw* and their advisor chose by a majority vote the seven whom they believed were the most highly qualified. The qualifications that were used as guides by both the clubs and the staff in choosing these people were that they possess school spirit, integrity, an interest in the school, leadership, dependability, and that they also be conscientious in an academic sense.



Larry Davis
Nominated by the LeConte Society



Anne Latimer
*Nominated by Alpha Phi Omega and
Boar's Head Chapter of Blue Key*



Lynn Drury
*Nominated by Alpha Phi Omega and
Boar's Head Chapter of Blue Key*



Carole George
Nominated by THE STORMY PETREL

Duchess Club

The DUCHESS CLUB is an honor society for Junior and Senior women who have maintained an outstanding scholastic record and who have participated actively in campus extracurricular activities. This club was founded in 1920 to unite its members in a cooperative effort for assistance in campus activities. It was hoped that this organization would help to integrate the ideals of academic proficiency and service.



First row: Donna Williams, Rosemary Scraggs, Sara Mac Germano, Glenda Balowsky, Judy Skiles, Charlotte Smith, Carol Ann Blair; *Second row:* Joan Fisher, Mary Jane Bowman, Betty Jane Rutland, Virginia Bremer, Key Kilpatrick, Linda Clark, Anne Latimer, Diane Leonard, Jayne Archer, Donna Calvert.

In addition to their many receptions, Duchess Club sponsors an Easter egg roll for the faculty children.



Duchess Club Award

Gwyn Cannon

The Duchess Club Women's Society honors with this award, the Freshman girl who best exemplifies the ideals of the Duchess Club in scholarship and campus activities. The recipient of the Duchess Club Award has shown that she embodies those attributes which characterize the best in an Oglethorpe student.

Boar's Head Chapter of Blue Key

The purpose of BOAR'S HEAD is to recognize those junior and senior men who have exhibited outstanding scholarship, leadership, and participation in the activities of the University. By recognizing the top students, it is the goal of Boar's Head to foster an attitude of scholastic achievement and to promote the ideals of academic freedom and excellence.

Boar's Head chapter of Blue Key attempts to stress its ideal of academic excellence, therefore, setting it apart from any and all social extracurricular activities. At the same time it recognizes the importance of the well rounded student in considering students for membership in its ranks.



First row: John Lipham, Dr. Cressy—Faculty Advisor, Ken Davis, Bob McMains; *Second row:* Larry Harbin, Barry Percival, Bobby Sexton, Ken Borden, David Bauman, Lynn Drury.



Bob Calvert:
BOAR'S HEAD PRESIDENT

Boar's Head Award

Bill Pate

The Boar's Head Honorary Fraternity presents this award to the Freshman boy whom they feel deserves recognition for his scholastic achievements and his active participation in other school functions. This boy not only upholds the ideals of the Boar's Head Fraternity in scholastic superiority, participation in campus activities, and leadership ability, but he is representative of the best in an Oglethorpe student as well.



LeConte Honorary Society

The LeCONTE SOCIETY is an honorary organization for outstanding science students who have a genuine interest in the progress of scientific endeavors. Any upperclassman who has attained an average of 85 in science courses and 80 in other academic subjects is eligible for membership. Its membership is not limited to any single science field, but rather it includes a wide range of scientific pursuits.



Members: *First row:* Tom Winn, Jayne Archer, Linda Sanders, Bob McMains, Larry Davis, Charlotte Smith, Glenda Balowsky, Renee Alhadeff; *Second row:* Bobby Sexton, Ken Borden, Tommy Phillips, John Lipham, Dennis Kerr, Lynn Drury.

LeCONTE OFFICERS

Treasurer—
John Lipham

Secretary—
Charlotte Smith

Vice President—
Glenda Balowsky

President—
Tommy Phillips



LeConte Award

Tommy Phillips

Each year the LeConte Society chooses the Senior science student who has contributed the most to the field of science at Oglethorpe.

Players' Awards



BEST ACTOR: Terry Ingerson
BEST ACTRESS: Kay Kilpatrick
BEST SUPPORTING ACTOR: Larry Davis
BEST SUPPORTING ACTRESS: Marti Gilreath
SENIOR WHO HAS DONE THE MOST FOR PLAYERS':
Terry Ingerson



BROWN AWARD FOR THE PERSON WHO HAS DONE THE MOST FOR PLAYERS': Charles Minors

MacConnell Award

Ed Moore

The Charles M. MacConnell Award is given by the Sophomore Class to the Senior whom the class feels to have participated in many phases of campus life without having received full recognition. With dedication to the ideals of Oglethorpe University ever in view, this Senior has given services without thought for the furthering of his personal reputation.





Ben Parker Law Award

Jeff Wallen

The Ben Parker Law Award is given yearly to the student who shows the most promise in the field of law. The recipient of this award is chosen by the Oglethorpe Business Division.

Chemical Rubber Publishing Company Award

The Chemical Rubber Publishing Company awards are given to students who show outstanding achievement in freshman courses in the various scientific fields.

MATHEMATICS: Frank Fort
CHEMISTRY: Carl Dinerman,
Jeff Hayden
PHYSICS: Dennis Kerr



Sally Hull Weltner Scholarship Award

Sara Mac Germano

The Sally Hull Weltner Award is presented by the Oglethorpe University Woman's Club to the Senior Woman who has achieved the highest average of any woman in the graduating class.

The attaining of this average shows scholastic excellence to which this student aspires.





Faculty Scholarship Award

Walter Earl Music

The Faculty Scholarship Award is given each year to the Senior man who has attained the highest scholastic average of any man in the graduating class. By the awarding of this honor the faculty recognized the scholarly pursuits which it endeavors to stimulate in the entire student community.

Oglethorpe Cup

H. Lynn Drury



The James Edward Oglethorpe Award is given by the faculty to the Senior man who has best realized the ideals of an Oglethorpe education. This senior has shown his ability in all phases of campus life.

Oglethorpe Cup

Sara Mac Germano

The James Edward Oglethorpe Cup is given to the Senior Woman who, in the opinion of the Oglethorpe Faculty, has best realized the ideals of an Oglethorpe education. This award is given annually to the woman who has participated actively in the life and growth of the University.



Who's Who *in American Colleges and Universities*

This honor recognizes those members of the Senior class who are officially recommended by the Student Government and the Faculty Council and who meet the requirements of the National publication, *Who's Who in American Colleges and Universities*.

These students are those who are felt to have realized the highest standards of an Oglethorpe education and who have shown outstanding participation in all school activities, as well as holding positions of leadership and responsibility.



GLENDAL BALOWSKY



KEN BORDEN



LYNN DRURY



SARA MAC GERMANO



ANNE LATIMER



TOMMY PHILLIPS



David Hess Award

Bob Nance

The David Hess Award is presented to a Senior who has won a letter in an intercollegiate sport in the year in which the award is given and who has shown the ability to face failure and success with the same gracious attitude. The recipient also must show support of the athletic ideals of Oglethorpe through participation and assistance in the overall athletic program.

“Pop” Crow Humanics Award

Arnold Baker

The Humanics Award is given to the student who possesses a firm commitment and great promise in the field of youth work. This student must exemplify the four avenues of preparation and service as indicated on the Humanics Emblem by the Torch, the Book, the Lamp, and the Helping Hand. He must also be conscientious in academic endeavors.

The recipient of this award was voted on by the Oglethorpe Humanics students and recommended by the Local Humanics Organization and the Administration of Oglethorpe. His selection was also confirmed by the National Humanics Administration.





YAMACROW



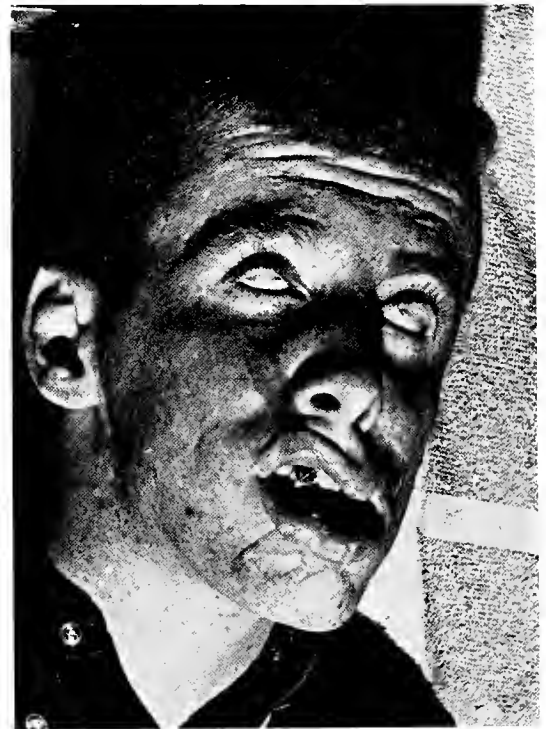
THE THEME



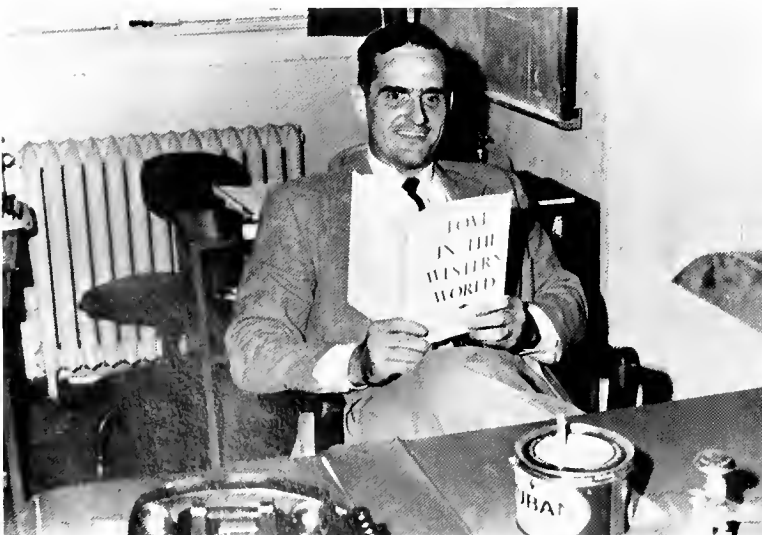
DEDICATION: Pierre L'Agneau



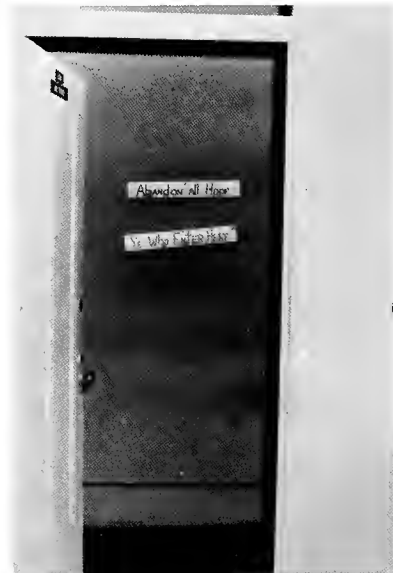
BUSINESS MANAGER: Stanlet Scrooge



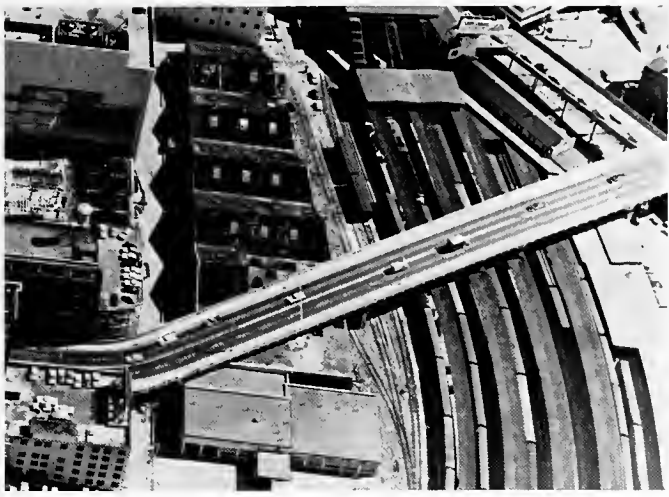
EDITOR: O. U. Phinque



FACULTY ADVISOR: Phil. Morals



STAFF OFFICE



Burma Road paved at last.



"The radiation count just went down half a point!"



"Don't trade a headache for an upset stomach."



Mother, please, I'd rather do it myself.



"This warm response overwhelms me."



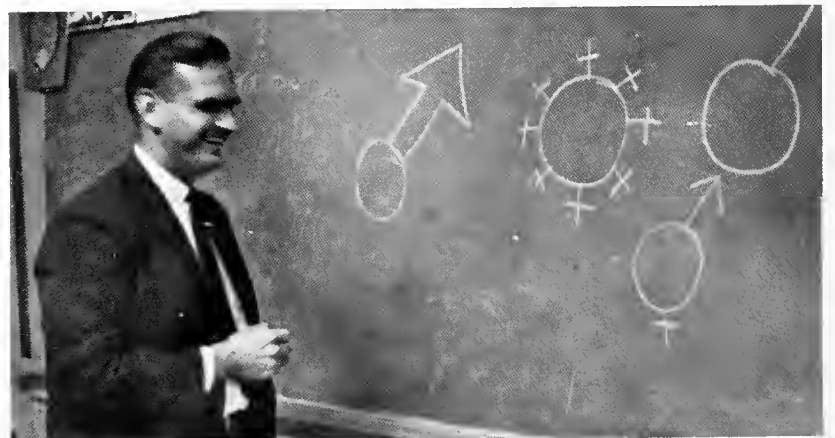
"And then he stabbed me."



"Just think, me assisting Ben Casey."



FAST, FAST, F-A-S-T RELIEF



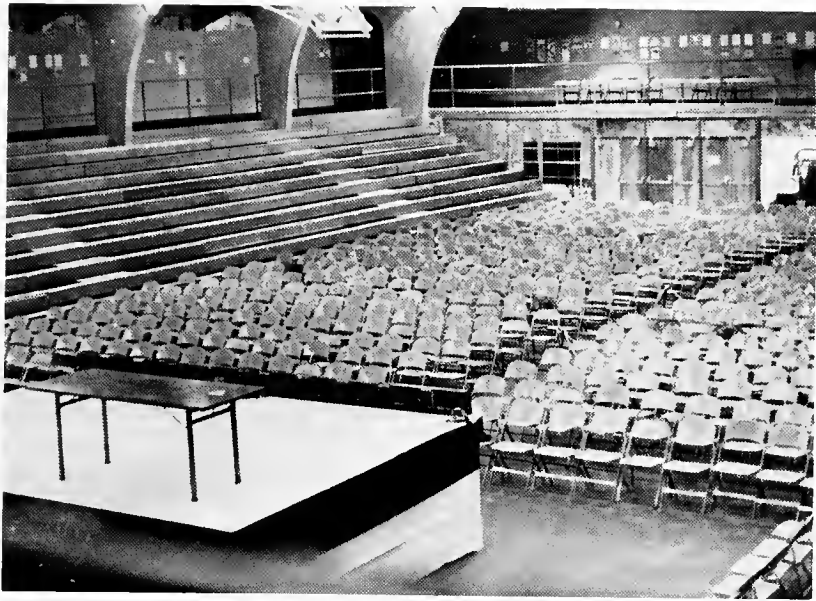
"According to the latest Kinsey Report . . ."



Shoplifting?



Always late to class.



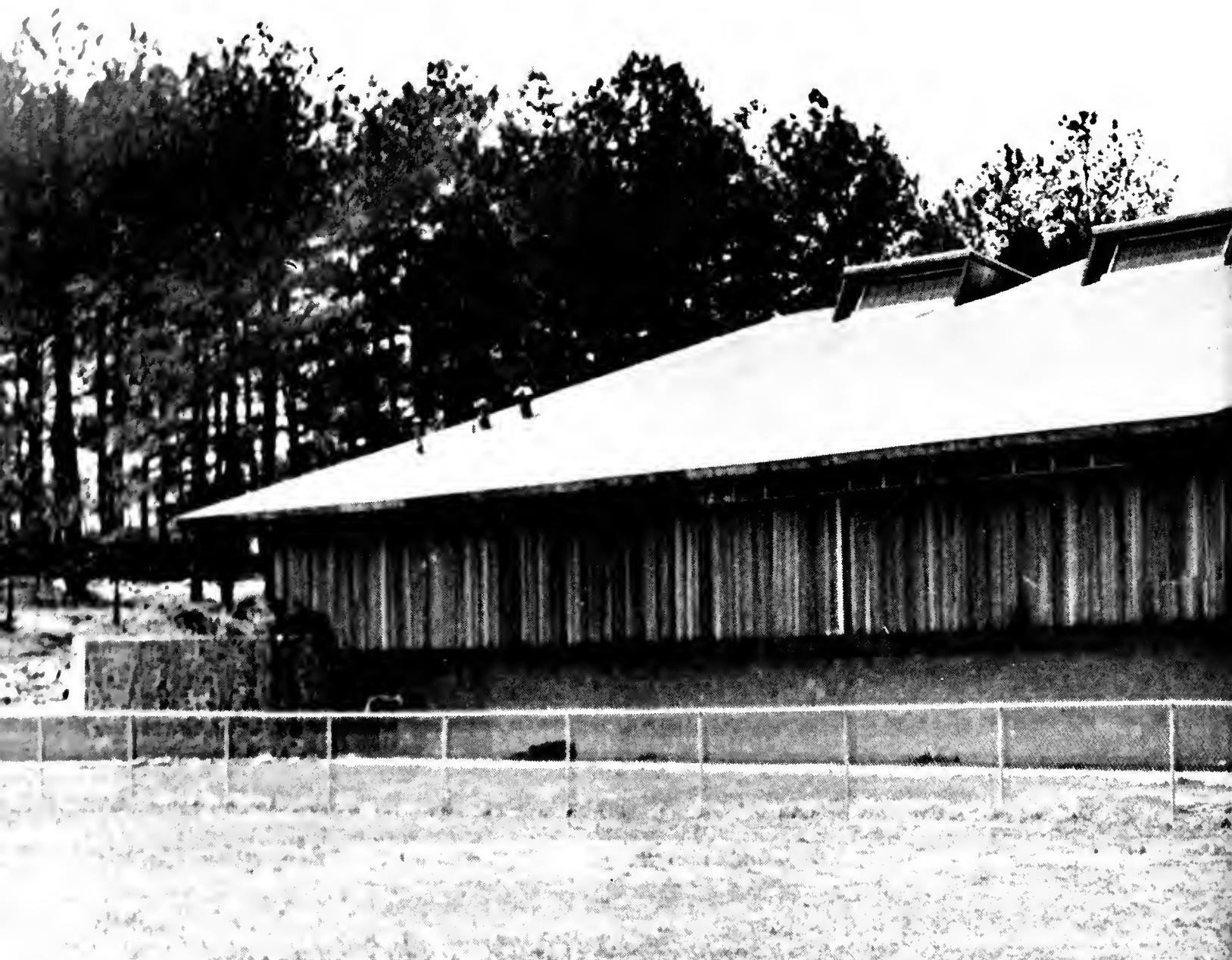
"Will the student body meeting please come to order?"



"Now you two cut that out!"



"But Dr. Abbott said that the South won the War!"



PREPARATION, GROWTH, ACHIEVEMENT—these are the processes which will enhance individual adaption to the world in which one finds himself.

We the members of the BOOSTER CLUB, congratulate the class of 1963 in the progress you have made in your college career. It is hoped that we have contributed in some way to your education by supporting and emphasizing the physical as mental aspects of growth.

We welcome you into our organization and look forward to your support of Oglethorpe's activities and the upholding of her ideals.





**CARTER
THEATERS**

BUCKHEAD THEATER

3110 Roswell Rd.

Northside Home of all first
run hits



2835 Peachtree Rd.

What is Success?

It's struggling on with the will
to win, but taking loss with a
cheerful grin; it's sharing
sorrow and work and mirth,
and making better this good
old earth; it's serving, striving
through strain and stresses; it's
doing your noblest.

That's success.

Best Wishes from

**L. G. BALFOUR
COMPANY**

Office:
3330 Peachtree Rd., N.E.
Atlanta 5, Georgia
Representative — Hollis Britt



**GAY'S
SERVICE STATION**

American Oil Company
Atlas Tires, Batteries and
Accessories

4045 Peachtree Rd., N.E.
CE 3-9221, CE 7-5255

Compliments of
and
Best Wishes from

**LOVABLE BRASSIERE
COMPANY**

2400 Piedmont Road, N.E.
at Garson Drive
Atlanta 5, Georgia
PHONE: CE 7-1671

**DEKALB SPORTING
GOODS**

1237 Clairmont Road
DR 8-7588

Sporting Goods and Equipment
of All Types Is Our Specialty
— PETREL UNIFORM DESIGNERS —

Call on us for your sporting goods needs.
Let us serve you as we serve Oglethorpe.

Compliments of

**BROOKHAVEN
PHARMACY**

4005 Peachtree Road

Serving all North Atlanta
with
Excellent Service
and Fine Goods

TOM COLLINS

TOWN &
COUNTRY

CLEANERS

Compliments of

**UNDERWOOD'S
TEXACO
SERVICE**

4406 Peachtree Road, N.E.
Atlanta 19, Georgia
CE 3-6651
MAX UNDERWOOD

Compliments of

**PEACHTREE
ROAD
PHARMACY**

Prescription Druggists
4062 Peachtree Road, N.E.
N. Atlanta 19, Ga.
CE 7-6466



BOTTLING COMPANY OF ATLANTA

OSCAR BALL
PRINTING CO.



WING'S
FAST
PHOTO



BOTTLED UNDER AUTHORITY OF THE COCA-COLA COMPANY BY
THE ATLANTA COCA-COLA BOTTLING COMPANY

864 SPRING STREET, N.W., ATLANTA 8, GEORGIA

VAN'S

Cleaners — Laundry

247 Buckhead Ave. CE 3-2133

1954 Howell Mill Rd. TR 4-7224

3625 Peachtree Rd. CE 7-3882

Briarcliff-Lavista ME 4-7515

4208 Peachtree Rd. CE 7-6636

CONGRATULATIONS TO STUDENTS
OF OGLETHORPE ON YOUR 1963 YAMACRAW

We were proud to be a part of it.

CLIFF AND EBBA JUNE HARDEN



HARDEN HOUSE OF PHOTOGRAPHY

1769 Cheshire Bridge Rd., N.E.

Atlanta, Georgia

(Negatives of all class pictures will be kept
on file for future re-orders)

FOREMOST DAIRIES, INC.

MILK

ICE CREAM

2711 Piedmont Road, N.E.
CEdar 3-9431

FRITO-LAY, INC.

4950 Peachtree
Industrial Boulevard
CHAMBLEE, GEORGIA



MONTAG PAPER

for all occasions

Montag's

writing papers
that create an impression
MONTAG'S
Atlanta, Georgia

ALUMNI ASSOCIATION of OGLETHORPE UNIVERSITY

A Message to the Class of '63

Soon you will leave Oglethorpe University bearing a diploma sought by many, but received by a few. The memory of the campus may wane, but the warm, friendly spirit found here will remain with you always. We hope you will return for frequent visits to rekindle this school spirit, to keep in touch with your classmates.

As an Oglethorpe graduate you will have received the finest undergraduate education obtainable — for a purpose. You have an obligation to yourself and to society to apply your attained skills, understanding and ethical values to improve the lot of mankind.

You are not alone in this task. More than five thousand alumni who have preceded you share this responsibility for bettering the social process. They make themselves available to you should you need them.

We congratulate you for your academic achievement and welcome you to the swelling ranks of the National Alumni Association of Oglethorpe University.



COMPLIMENTS
of

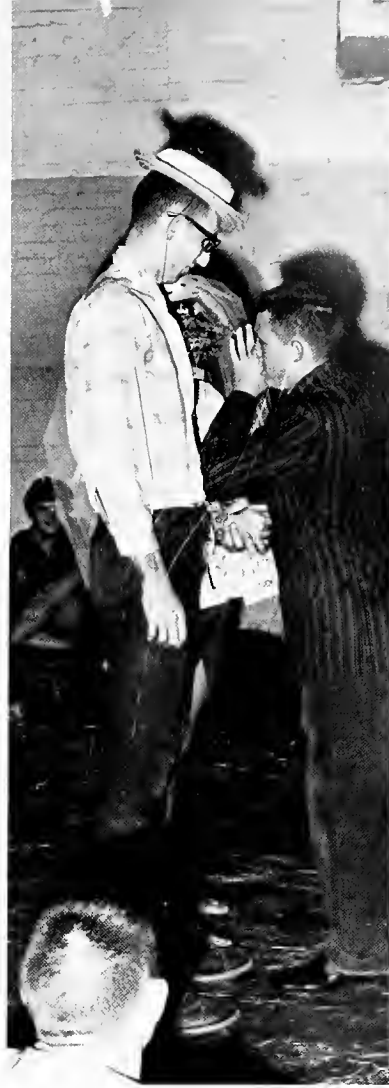
ALEX
HAIR
STYLES

ORKIN

WORLD'S LARGEST
PEST CONTROL
COMPANY

SCIENTIFIC
PEST
CONTROL

SURETY BONDED
TERMITE CONTROL



OGLETHORPE
PHARMACY

"For all your medical and
drug supplies . . ."
Serving North Atlanta with

EXPERT
PRESCRIPTION
SERVICE
AND
FREE DELIVERY

Open Daily From
8:30 A.M. Until 10:30 P.M.
2150 Johnson Ferry Road
GL 7-4436

COMPLIMENTS OF

A FRIEND

COMPLIMENTS OF

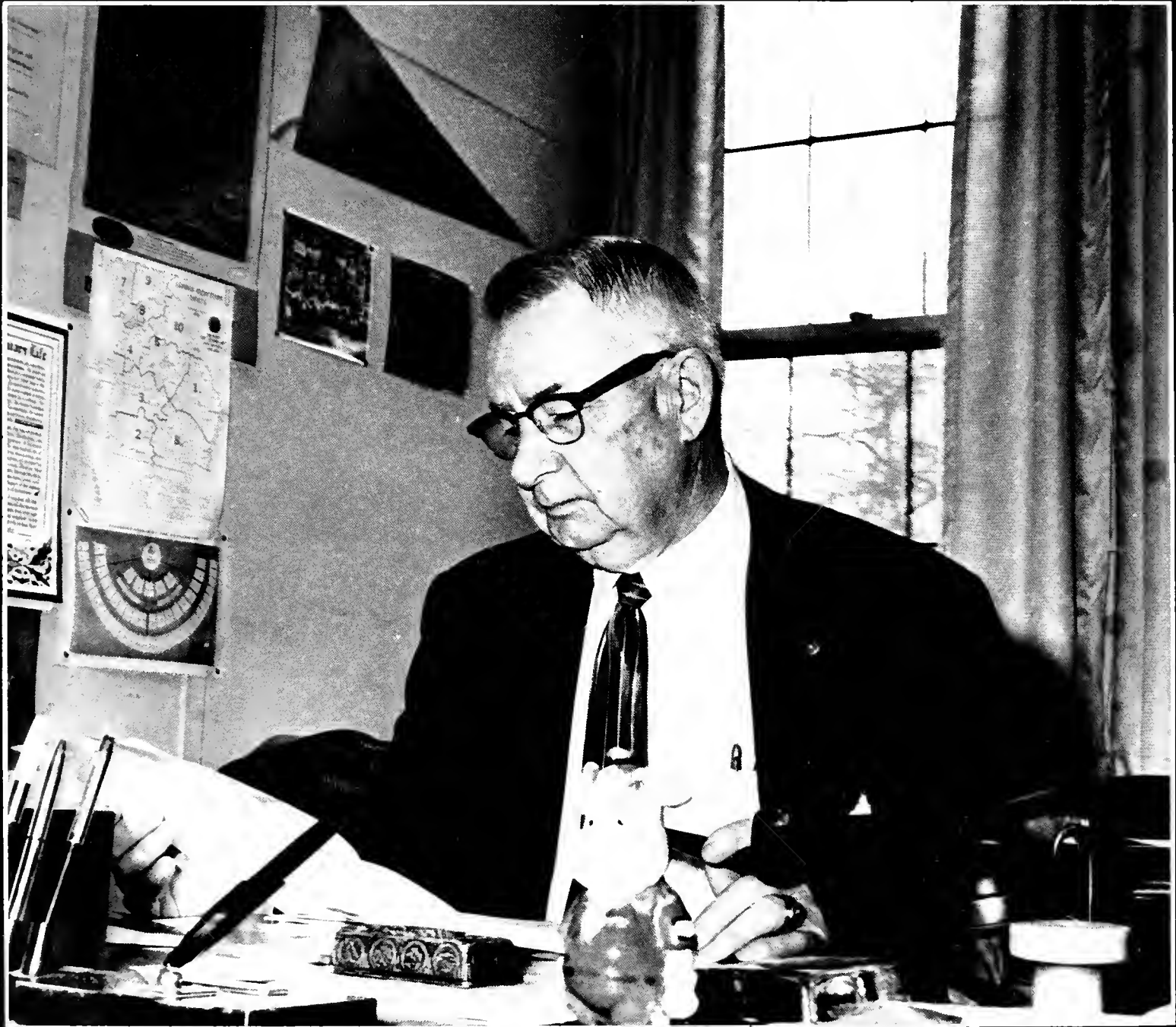
A FRIEND

In Appreciation



Unknown to our Editor, we the staff have reserved this space in order to express our sincere appreciation to our editor—Anne Latimer.

From working long hours in the dark room to drawing up layouts, Anne has contributed far more than her share to the publication of this book.



L. "Pop" Crow

In Memoriam

He will be lastingly remembered for his sincere interest in and concern for the students of Oglethorpe. He taught by the example of his own life the principles of human kindness. No words can say what the heart feels, but the lives of those who knew him can pay him tribute in following his lead.





