



a step forward

a step backward

YAMACRAW





Digitized by the Internet Archive
in 2010 with funding from
Lyrasis Members and Sloan Foundation

<http://www.archive.org/details/yamacraw198554ogle>



YAMACRAW
OGLETHORPE UNIVERSITY
ATLANTA, GEORGIA

Oglethorpe University began in 1838 in Midway, GA, (near Milledgeville). The main buildings on the campus were Thalian Hall, Central Hall, and the twelve dorm buildings. Central Hall was completed in 1840 by Joseph Lane, Sr. at a cost of \$38,000.00. Thalian Hall was completed in 1860 by Joseph Lane, Jr. as a dormitory and meeting hall for the Thalian Society. The Society began in 1839 to promote "oratory, declamations, debating and other literary pursuits." It is one of the two remaining buildings at Midway now. The Midway campus flourished until the early 1860's when it had to close down due to the Civil War. Oglethorpe University attempted to reopen at Midway in 1866 but it could not maintain at that time and so closed its doors once again. Then in 1871 it was decided that it would be advantageous to relocate Oglethorpe in Atlanta, the new cap-

itol, since Milledgeville was no longer going to be the hub of Georgia. During its relocation in Atlanta in 1871 Oglethorpe stayed in the present day Atlanta City Hall building. This revival attempt unfortunately also did not last. Finally the school was moved to Atlanta in 1915.

The first building erected was Hearst Hall. Hearst Hall has served in many capacities. Its third floor was once dormitories. Its basement, where the present day Bookstore is, was the old cafeteria. Lupton Hall also served as many different things. It had an indoor pool which spanned the length of the present day pit and the business office. Its third floor also served as dormitories for awhile. Lowry Hall was probably the most diverse in range of uses. It served as both boys' and girls' dorm rooms, at different times, and its top floor served as an apartment for the Men's Housing director



Thalian Society Hall is one of the two remaining buildings of the old campus at Midway. This building served as a dormitory during the years Sidney Lanier attended Oglethorpe.

The third floor of the Thalian Hall was used by the Society for its meetings and social affairs. The plaster medallion on the ceiling from which a candle chandelier was hung dates back to the building's completion in 1860.



Something Old, Something New And Something From the Future?



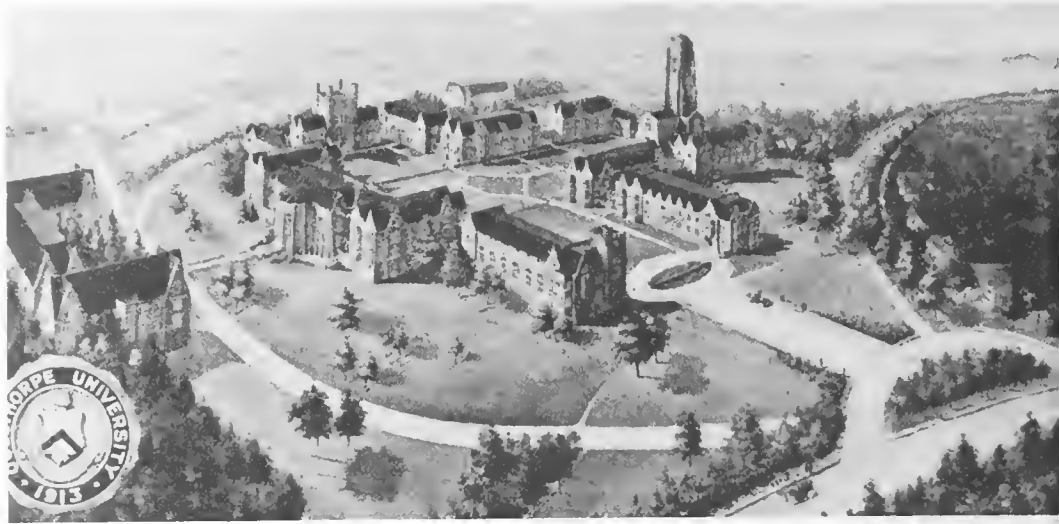
This memorial marking the site of old Oglethorpe University was erected in 1931. The stones used in the base of the marker were foundation stones from the old university.



Central Hall was the main campus building at Midway. It contained a large Chapel which was surrounded by faculty offices, classrooms and a library. It also contained a museum in its basement.

A far cry from present day Oglethorpe dorms, this is the only remaining one of the original twelve two-room dorms at Midway. Formerly there was no door in the center. Each room measured 18 feet by 18 feet. There were six of these dormitories in a row on either side of the campus, in front of Central Hall.

The future Oglethorpe? No, but it could have been as of the plans drawn in 1913 for the expansion of the campus. Lupton, Hearst, Lowry and part of Faith were built before these plans were abandoned.

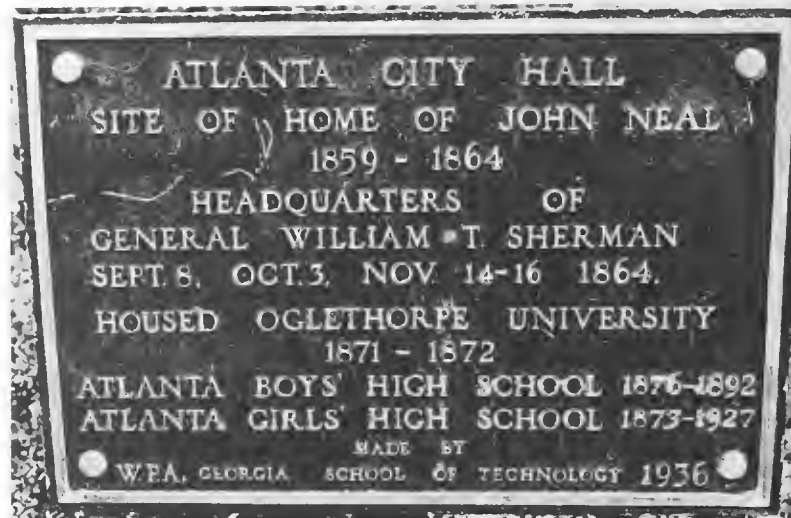


Married student housing? A natatorium? Community Faculty housing? This couldn't be Oglethorpe, could it? These were the plans for expansion drawn up in the 1940's.

Realizing that Milledgeville was no longer going to be the hub of Georgia, the present administrators tried unsuccessfully to relocate Oglethorpe into Atlanta in 1871. It was eventually moved successfully to Atlanta in 1915.



MASTER PLAN
SHEETZ AND BRADFIELD ARCHITECTS
EDWARD J. DAUGHERTY
TRAFFIC PLANNING ASSOCIATE





Ever wondered why you have to go outside to get from the financial office to the Career department? When James Lupton gave money in 1920 for the building he had it erected in three parts. The part with the bell tower was to be in memory of his mother, the middle part was in honor of his wife and the third part was to be an inspiration to his son.

The main campus as it stood in 1963 with the temporary science building and no Traer.

who also happened to be a faculty member. Its basement was used for the Medical School at Oglethorpe and was later used for the science facility until the temporary wooden structure was erected for the science department. The addition of the buildings was completed with Goslin Science building in 1971. There have been many plans to expand the present campus but as it stands now the campus will probably remain the same forever.

Something Old, Something New And Something From the Future?

The Rich and Famous

William Randolph Hearst made several donations which totaled to be more than \$330,000.00 to Oglethorpe over a thirty-four year span. During Hearst's last trip to Atlanta Dr. Thornwell Jacobs presented him with the honorary degree of Doctor of Laws on May 22, 1927. On this same day Hearst delivered the Baccalaureate address which dealt with "the great discoveries and inventions of the nineteenth century." One of Hearst's sons, John Randolph, attended Oglethorpe in 1927, and 1928. Dr. Jacobs went to see Hearst in California to ask for assistance in the purchase of the Silver Lake property. Hearst's response was, "Certainly, I shall take pleasure in giving it to you." Silver Lake was renamed Lake Phoebe in honor of Hearst's mother.

Following his mother's advice, Sidney Clopton Lanier began his studies at Oglethorpe at the age of 15. In 1860, he graduated from Oglethorpe and was valedictorian of his class. After graduation, Lanier worked as a tutor in ancient languages at Oglethorpe from 1860-61. While tutoring at Oglethorpe Lanier began to make plans to study in Germany like his professor, James Woodrow. The Civil War changed these plans. In 1861, he joined the Macon Volunteers. After returning home from the Civil War Lanier worked as a tutor, a hotel clerk and in 1868 he returned to Macon, Georgia, to read law in his father's office. In 1873, Sidney Lanier moved to Baltimore, Maryland. After moving to Baltimore Lanier played the flute in the Peabody Symphony Orchestra and served as a lecturer at Johns Hopkins University. While living in Baltimore, Lanier also spent time writing. Some of his most famous poems were written during this time. They were "Song of the Chattahoochee" and "The Marshes of Glynn," which were about his home state of Georgia.

A native of Cuba, New York, Harry Putman Hermance came to Atlanta in 1916, as an executive in the F.W. Woolworth Company. Hermance was elected as a trustee of Oglethorpe in 1917. One day several members of the football team approached Harry Hermance to ask for his assistance in developing the athletic program at Oglethorpe. Mr. Hermance's response was, "Boys, I don't know how much I'll be able to help but I'll sure do my damndest." Mr. Hermance told a group at a meeting on December 4, 1919, that he "had found a family" which would contribute \$5,000.00 a year for the next ten years for the building of a stadium. Harry Hermance was referring to his family. In 1926, Dr. Jacobs presented Harry Hermance with an honorary degree of Doctor of Commercial Science.



Mr. George Stewart photographed this bronze bust of Sidney Lanier at the Milton S. Eisenhower Library, Johns Hopkins University. The bust was modeled by Ephraim Keyser.





When Ernest Hartsock came to Oglethorpe in 1928, from Georgia Tech he brought with him the **Bozart Press**. Hartsock was the editor of the **Bozart Contemporary Verse**, which was published bimonthly. This literary magazine had a wide circulation which included more thirty states, England, France and Canada. Hartsock was made professor of poetics at Oglethorpe. This distinction had never been used previously anywhere in the United States. Referring to Ernest Hartsock, Thornwell Jacobs said, "He had the heart and instinct of a true poet, and his love for poetry had completely mastered his life."



John Thomas Lupton was one of the early benefactors of the Oglethorpe established in Atlanta. Dr. Thornwell Jacobs spoke at the First Presbyterian Church in Chattanooga, Tennessee, on November 1, 1914. He told the congregation about his efforts to reestablish Oglethorpe University. After the service a man came up to Jacobs and offered to pledge \$10,000.00 to the resurrection of Oglethorpe. This man's name was John T. Lupton. Mr. Lupton practiced law, served as the president of the First National Bank of Chattanooga and was the vice president and treasurer of the Coca Cola Bottling Co. Dr. Jacobs presented Mr. Lupton with the honorary degree of Doctor of Laws. John T. Lupton gave a total of \$1,018,000.00 to Oglethorpe.



James Woodrow was appointed as professor of natural science at old Oglethorpe in 1853. After earning a Ph.D. at the University of Heidelberg he returned to Oglethorpe. With this degree Woodrow became the first teacher in the history of the state of Georgia to hold a Ph.D. While at Oglethorpe he gained a reputation as an inspiring teacher. In 1861, he left Oglethorpe to chair a position at Columbia Theological Seminary. James Woodrow became interested in evolution and finally concluded that it was probably true; although, he continued to believe in divine inspiration.

Frank B. Anderson, a graduate of the University of Georgia, came to Oglethorpe in 1917. While at Oglethorpe he served as an assistant professor of mathematics and as Athletic Director. In 1941, he was made Dean of Men. Frank Anderson left Oglethorpe in 1942, after several successful years as a winning coach and a professor.

Joseph Mackey Brown was a member of the last graduating class from old Oglethorpe.

After graduation in 1872, Brown spent several years associated with the Western and Atlantic Railroad. In 1909 he became governor of Georgia. He served a second term as governor from January 25, 1912, to June 28, 1913. After his career in politics Brown spent the rest of his life writing "cards" on such things as the Leo Frank case, World War I and the draft, women's suffrage, mob law, Bolshevism, religious matters and Americanism.

Joseph LeConte, who received international fame for his published works on evolution and religion, physiological optics and geology, served as a professor at old Oglethorpe for one year beginning in January 1852. He was responsible for teaching a wide variety of classes. Among some of these were mechanics, physics, chemistry, geology and botany. In his teaching LeConte used scientific methods that were considered modern for his day. Although LeConte only stayed at Oglethorpe a short time, he said that his variety of teaching responsibilities gave him "excellent training" which increased his "interest in all departments of science."

Colonel Robert James Lowry came to Atlanta from South Carolina about the time of the Civil War. He and his father established the banking house of W.M. and R.J. Lowry. After the death of his father in 1887, Robert Lowry founded the Lowry Banking Company. Col. Lowry left his fortune to his wife, Mrs. Emma M. Lowry, to be converted to a memorial fund. Mrs. Lowry died in 1923, leaving \$275,000.00 to Oglethorpe to found the Robert James and Emma Markman Lowry School of Banking and Commerce.

Governor Roosevelt of New York was awarded an honorary degree by Oglethorpe University in May of 1932, before he delivered the commencement address.



Mayor of Atlanta, Ivan Allen received his honorary degree from Oglethorpe President Thornwell Jacobs.



This fall Sir Kenneth Dover of Corpus Christi College in Oxford, England spoke at Oglethorpe's convocation and received an honorary degree.

Oglethorpe's Honorary Degrees went exclusively to women during the 1935 commencement. Among this group are Martha Berry, founder of Berry Schools, Caroline Miller, author of Pulitzer winning novel, "Lamp In His Bosom," Mrs. Sidney Lanier, and Mrs. Amelia Earhart Putnam.





Samuel K. Talmage
1841-1865



Thornwell Jacobs
1913-1943



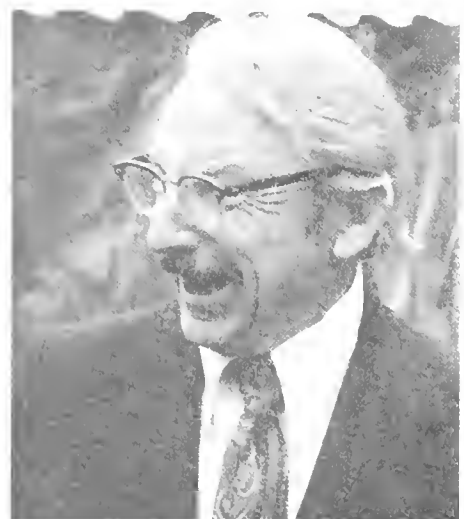
Philip Weltner
1944-1953



Donald Wilson
1956-1957



Paul R. Beall
1965-1967



Paul K. Vonk
1967-1975



President J. Whitney Bunting (1953-1955) and George Seward (acting President in 1956 and 1964) greet friends of Oglethorpe at a reception.

- Carlyle Pollock Beman, 1836-1840
- Samuel Kennedy Talmage, 1841-1865
- William M. Cunningham, 1869-1870
- David Wills, 1870-1872
- Thornwell Jacobs, 1913-1943
- Philip Weltner, 1944-1953
- James Whitney Bunting, 1953-1955
- Donald Wilson, 1956-1957
- Donald Charles Agnew, 1958-1964
- George Seward, *Acting*, 1964-1965
- Paul Rensselaer Beall, 1965-1967
- Paul Kenneth Vonk, 1967-1975
- Manning Mason Pattillo, Jr., 1975-

Oh What They Wore!

Dress styles have changed a great deal through Oglethorpe's history. With an all male student body at the school's opening in 1835, the dress was typical of the period with dark suits, top hats and capes. From this point onward, Oglethorpe's dress styles basically followed trends in the country's fashion. We had flappers in the Roaring Twenties, "Sweater Girls" in the Fifties, bell-bottomed jeans, mini-skirts, peasant dresses and long hair through the Sixties and the Seventies. Oglethorpe has seen changes in style, an evolution that has brought us to dress as we do now.

Men in the 1800's dress in dark suits, often with striped pants. Accessories include capes and top hats.

Women's dress in the early 1920's is characterized by large hats, calf-length skirts and wraps made of fox—the entire fox!



The 1930's bring in feminine flower-print dresses with drooping skirts, tilted hats worn over carefully curled hair, and gloves.

Later in the 1920's women's hemlines rise higher, revealing rolled stockings. Hair is cut short and is shingled.



Knit sweaters and narrow skirts become the rage in the 1950's for girls who admire Lana Turner, the "Sweater Girl."

Conservative, double-breasted suits and neat, creased trousers characterize the men's style of the 1950's.

Ankle strap shoes make their first showing in the 1940's.



The Mini—the most shocking fashion trend to hit America.



The Rolling Stones are models of men's fashion in the 1960's, including tight pants, worn low on the hips, brightly colored shirts and shoulder-length hair.



Fashion becomes unisex with the popularity of denim shown here in bell-bottomed jeans and bush shirts.



Some clothes are an ethnic medley—patterned after combinations of Indian, Asian, Mexican and Eastern styles of dress, accompanied by jewelry.

Love for simplicity and nature in the 1960's and 1970's increases the popularity of peasant dresses like those made by Laura Ashley.

Patterned pants, knee-high boots, culottes, t-shirts, felt hats and fringed leather purses are all fashionable in the 1960's and 1970's.

Oglethorpe Odd Facts

Did You Know?

*In the early 1930's, Oglethorpe had a radio station, WJTL, which was the first campus radio station in the United States and the first to conduct classes over the air.

*Hermance Stadium was originally supposed to be a coliseum but is incomplete because its financier, Harry Hermance, lost his money in the Stock Market Crash.

*The original library was located in Lupton Hall and consisted entirely of the registrar area, the admissions offices and the Dean's offices and was not relocated until 1972.

*The Crypt of Civilization located in Hearst Hall contains a Donald Duck doll.

*The Crypt will be opened in the year 8113.

*General David Sarnoff, who spoke at the closing of the Crypt, is the founder of RCA.

*Thornwell Jacobs wanted to be buried under Lupton Hall according to his poem, "My Last Request".

*Oglethorpe had its own printing press during the 1930's and the 1940's.

*John Thomas Lupton bottled Coca-cola in Chattanooga.

*The lower part of Hearst Hall was known as the "Passion Pit" when it was a dormitory.

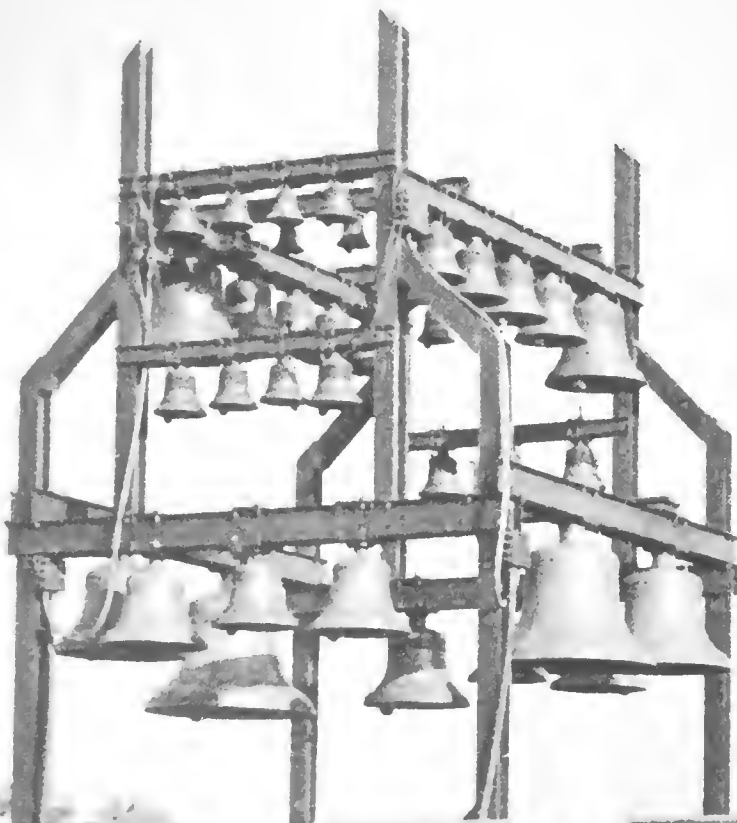
*There's a sun dial on Hearst Hall.

*Sailing class was taught in the "pit" of Lupton Hall.

*Thornwell Jacobs went to England to find General Oglethorpe's body and bring it back to the Oglethorpe campus but dropped the idea because of a controversy between Jacobs and the people of Savannah, who wanted the body buried in Savannah.

*Original entrance requirements for freshman included examinations in Caesar, Cicero's Select Orations, Greek Testament and the ability to speak Latin and Greek fluently.

*Oglethorpe once had a rule that specifically





stated: that no person or persons would be allowed on the roof for any reason.

*There was once a rule that expressed that during hours of relaxation, no student had permission to go more than one mile from the college without permission.

*In the early 1940's the circus came to town and its elephant got sick and died. Medical students at Oglethorpe asked for its body and it was brought to the campus by Dr. John Barnard. The body is buried somewhere between Lowry and the Emerson student center.

*Dr. Harry Dobson, noted music professor during the 1950's, lived in the top floor of Lowry when it was a men's dorm and owned 35 cats at the time of his death. It is rumored that you can still smell a cat litter odor in the library (Mr. Stewart).

*That Dean Mac's mother played "I Love You Truly" on the bells when two students became engaged on the traditional Senior bench one evening. She also used to play Oglethorpe favorites every Saturday after basketball games at Coach Pinholster's request.

Oglethorpe University is named in honor of General James Edward Oglethorpe, founder of Georgia, and modeled after Corpus Christi College in Oxford England which Oglethorpe attended.

When General Oglethorpe first came to Georgia, he landed on Yamacraw Bluff near Savannah, hence the name of the yearbook.



TABLE OF CONTENTS

18	<i>Student Life</i>
38	<i>Organizations</i>
84	<i>Classes</i>
122	<i>Faculty</i>
154	<i>Sports</i>
180	<i>Advertisements</i>
190	<i>Index</i>
196	<i>Closing</i>



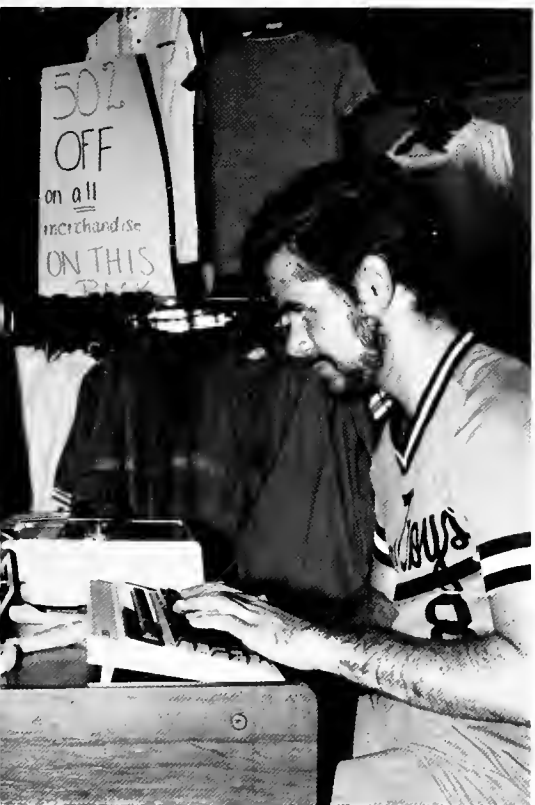
The Black and White Formal was the first event of the spring quarter in 1961. **The freshman rats** of 1970 had to dress up as the opposite sex.

Student Life

TABLE OF CONTENTS

Rush	20
Getting Settled	22
O.U. Life	24
Traditions	26
Fashion	28
Atlanta	30
Weekends	32
Fall Semester Activities	34
Homecoming	36



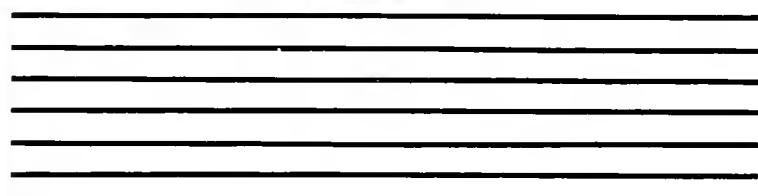


Amy Glover receives advice from Ralph Beard about her future at Oglethorpe.

The Epson computer on display in the bookstore provided an opportunity for students like Dan Noble to become familiar with the latest technology.

Veronica Maldonado, Karen Poe, and Deda Walker show their enthusiasm for their fall semester classes.

Connie Duque and Antonio Dahl share in a conversation while enjoying the Delta Sigma Phi Beach Party.



Wearing matching Hawaiian shirts to the Delta Sig Beach Party are Harry Frazier and his friend, Michon Hall.

Rush week began with a coat and tie dinner at Dr. Pattillo's house. Kurt Alexander and Andrew Nash discuss Kappa Alpha Fraternity with a prospective pledge.

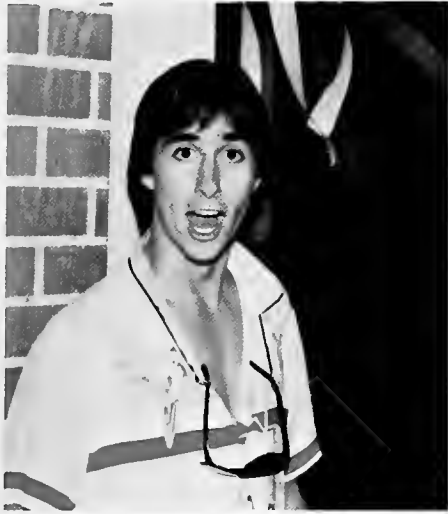
Chi Phi Guy Scott Einbinder enjoys the music of the Swinging Richards at their open party during rush week.

Chi Omega and Sigma Alpha Epsilon have various joint activities during the year. Ray Lucas, Marlene Rudy, Naomi Hamby, Bob Balkcom, Sue Bamford, and Ralph Beard get together during rush week.

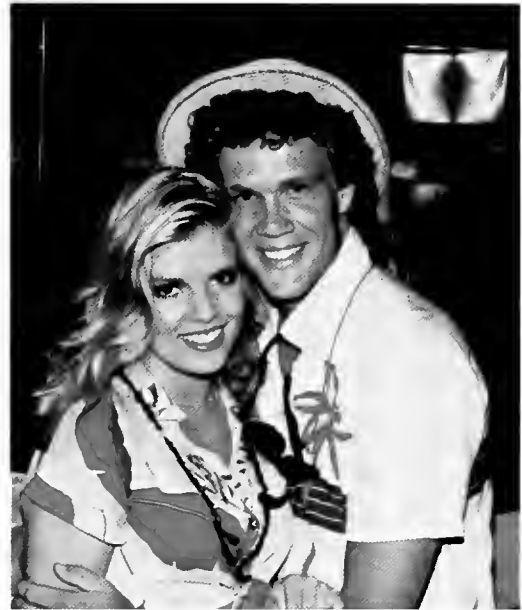
SAE Little sister Catherine Gay tells a prospective pledge about the advantages of fraternity life.



Rush Week Highlights



The fall rush of 1984 was a great time for all involved. Chi Omega and Delta Zeta had a week full of rush activities the week before the men's rush. All four of the fraternities had successful dinners and parties, and gained many new pledges. The parties, of course, were unforgettable. Sigma Alpha Epsilon treated the students to a "Fallout Party," continuing in their tradition of great themes. Delta Sigma Phi had a beach party, while Chi Phi and Kappa Alpha sponsored their own diverse, yet fun activities. All things considered, Rush 1984 was a great success.



Dan Duncanson was one of the charter members who helped reactivate Delta Sigma Phi this year.

End of the world survivors Amy Glover, Tom Johnson, and Rhonda Hickman dress up for an SAE rush party.

Summer attire worn by Mick Rathjens and Annette Hansen were right in style at the Delta Sig Beach Party.

Greeting students at the first Delta Sig party were Jennifer Perry, Hank Bunnell, Courtney Joye, and Mark Knautz.

Larry Frank, Stewart Keller and Reggie Frye hurry to the Student Center to check their mail and eat lunch after a morning of science classes.



Alonso Borrero and Connie Duque enjoy dancing to the music at the Welcome Back Dance.



Freshmen gather in Lupton Auditorium for Freshman Seminar, a class designed to orient students to college life.

Dan Duncanson and Mick Rathjens enjoy the late summer weekends by relaxing in front of their dorm room.



Kathleen McDermott poses for her year-book picture, one of the many steps a student must go through to register.



Getting Settled Into Student Life



Laura Brian and Pam Galamek find time to compare their class schedules during Registration.

The first week at Oglethorpe each year proves to be a busy and interesting one for both new and returning students. Dorms were opened to resident students on Sunday, September 2, 1984. The freshmen and their parents enjoyed lunch in the cafeteria before attending afternoon meetings. The new students learned about the clubs and organizations at the Activities Fair. The clubs and organizations were represented by a speaker and a display table. On Sunday evening Dr. and Mrs. Pattillo gave a reception for the freshmen and their parents. The upperclassmen spent their Labor Day in a leisurely manor while the freshmen took placement tests. Registration was done differently this year as the freshmen registered on Tuesday before the upperclassmen. Classes began on Thursday. The first week of school came to a close with the Welcome Back Dance on Friday night.



Tim Bates and **Wendy Baker** help out with the registration process.

At the President's Reception Dr. Pattillo greets students and parents.



Having dinner outside of the cafeteria gives Dean De Cencio, Deda Walker, Ilene Baylin and Brett Sleight a chance to visit.

Life After Class



Girls at OU just wanna have fun as seen by Donna Baker and her "Z-Style."
On the borderline of insanity, third year science majors Marty Eastlack and Ray Lucas approach the edge.

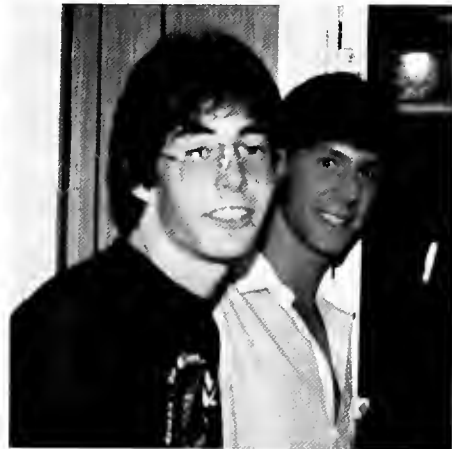


An everyday end to an O.U. day, Michelle Gazes, Shelley Alford, and Cathy Roberts wind down in their own way.



Silence is rare in the men's dorms, yet Doug Dubay manages to utilize one such moment.

Tom and Chris learn what it takes to survive O.U. dorm life in Weltner.



An old hand on campus John Schattenfield shows Anne Mills and David Frost one way to spend their leisure time.

Casey Chosewood breathes a sigh of relief after a Doc A. Quant. lecture.

Traditions of the Past

Many traditions have come and gone or undergone change on the Oglethorpe campus. Some of the more well known traditional events that are no longer a part of Oglethorpe are Rat Week, The Black and White Ball, The Senior Capping, Ghost Readings and The Masquerade Ball.

The underlying purpose behind Rat Week was to, "bind the members of the Freshmen Class in a spirit of comradeship and unity." It also gave the freshmen a chance to become better acquainted with their peers. All freshmen were regarded as rats from the first day they arrived on campus until the Black and White Formal. A rat was required to wear their rat cap everywhere during Rat Week. They were also required to wear an identification badge with their first and last names, hometown and major. The Rats of 1968 were required to know 1) How to sing the Alma Mater, 2) The "O" Book from cover to cover, 3) The Petrel Fight Song, 4) The History of Oglethorpe, 5) The Rat Code, 6) Saying over doorways, 7) Facts about tunnel, sun dial, crypt, bells, swimming pool, old gym etc. Ron Few, Library Assistant, was a freshmen rat in 1971, the last year that Rat Week was held. He remembered Rat Week as being, "A way of breaking the ice."

The Black and White Ball was a dance sponsored by the freshmen class. At the Black and White the Rat Court, which was composed of upperclassmen, announced King and Queen Rat.

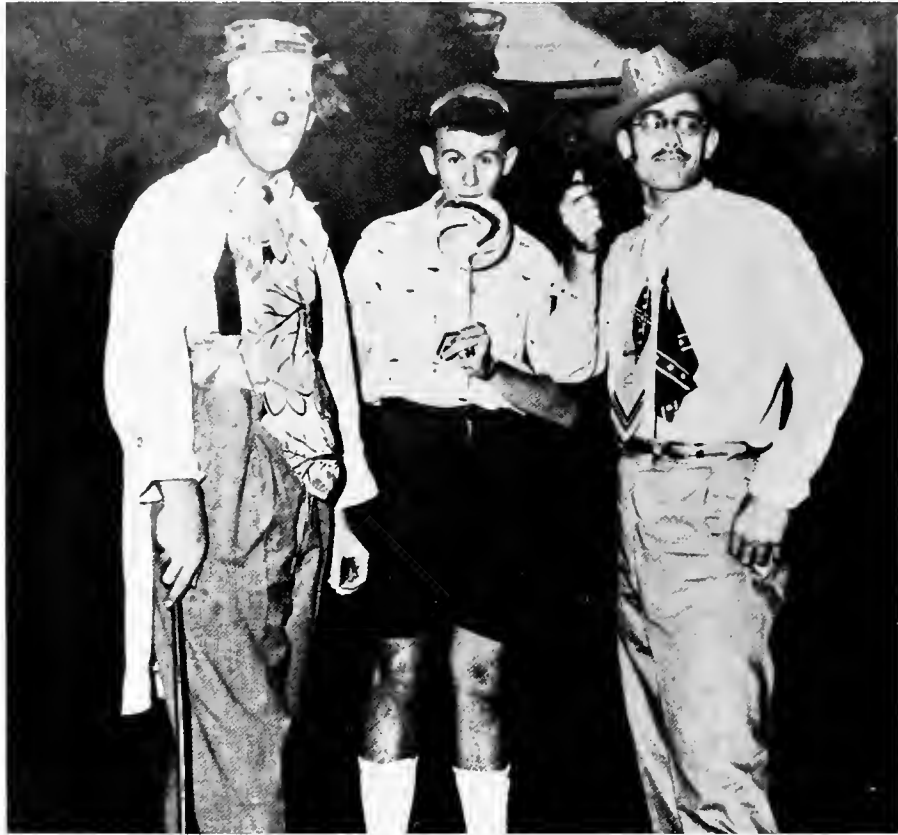
The Senior Capping Ceremony marked the beginning of the academic year. The president of the senior class recieved his mortar board symbolically for his class from the Dean.

During the Halloween season the Lupton Auditorium became the home of ghosts, haunts and goblins. The Oglethorpe Player sponsored a reading of spooky stories for students and faculty.

At one time the title of Lord and Lady Oglethorpe was limited to seniors. The winners were the male and female senior who best exemplified the Oglethorpe spirit.

Costumes worn at Masquerade Party
1957

Lord and Lady Oglethorpe with their Royal
Court in 1961





Ghost Readings by candle light 1965

Court proceedings at Rat Week 1961

Enthusiastic Rat of 1970

Senior Capping Ceremony 1965

While at a party. Selena Scott shows that hats are back and black and white are big in fashion



Rebecca Green and Yvonne Hamby find that brightly colored T-shirts and sweatshirts are fun, comfortable and perfect for parties.



Forever in style are comfortable, well-worn Topsiders such as Ross Lipman's which are held together by tape.

Cropped pants, spiked heels, big vests and blouses, leather, and velvet are at the top of the fashion scale for Pauline Robinson and Michelle Payne.

Sitting pretty in pink and comfortable in sweats are freshmen Kelly Moran and Wendy McKelvey.



What's in style?

Purchases for the fashion conscious can be made at Lenox Square, one of Atlanta's many shopping malls.



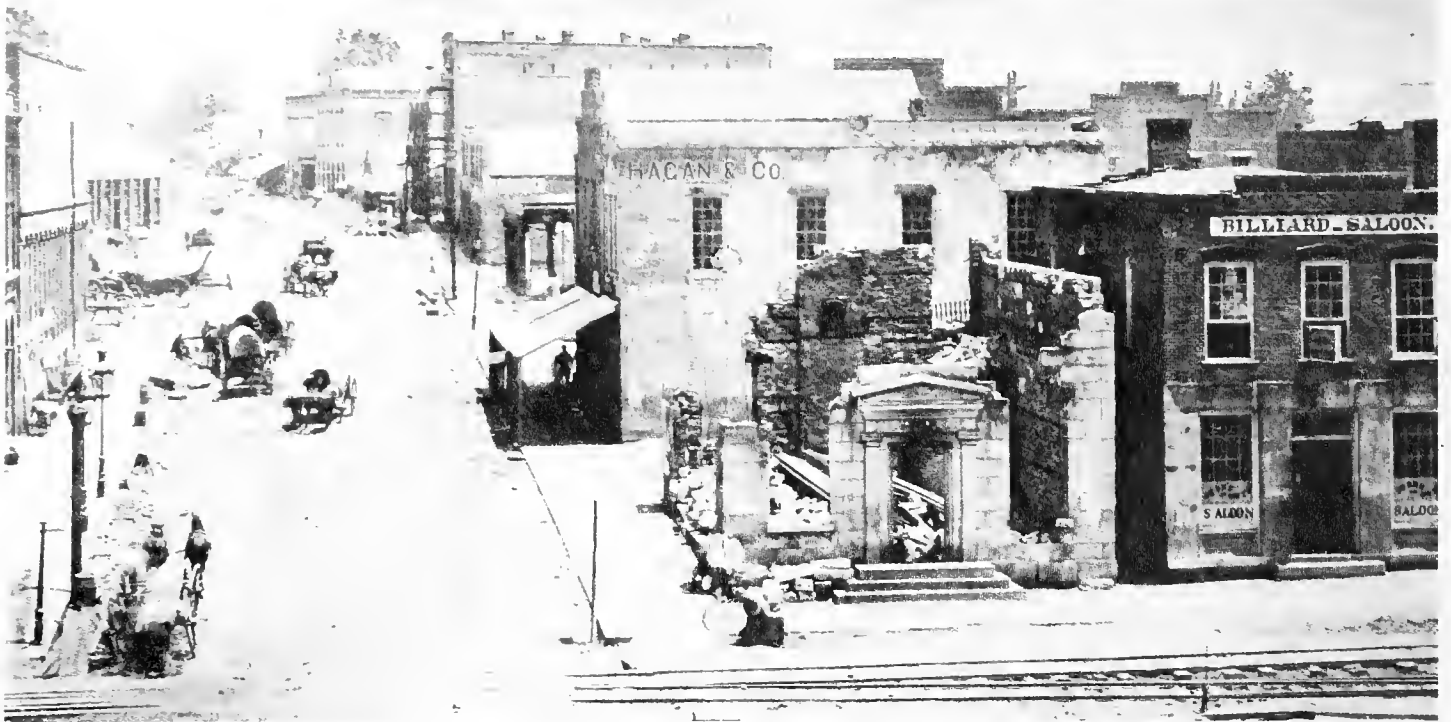
Isn't that dress a little old?
—Not old; classic baby! Vintage clothing!
—You mean other people wore those?!
Yucko!
—Hey, did her pants shrink?
—Shrink?! No, they're cropped. They're supposed to be short.
—And her shoes! My mother wore heels like that when she was our age!
—Pumps are in—especially spiked heels and bright colors.
—You want colors? Check out that psychedelic plaid!
—Don't you love it?! Fluorescent pink, yellow and green!
—That guy's dark jacket and narrow tie are great!
—Yeah, but I prefer the casual look—jeans, button down shirts, sweaters and Topsiders. Especially the sweater because I can wear it!
—A girl wearing a guy's sweater? Strange.
—No, comfortable! Like these sweats—I live in 'em!
—Well, everyone's dressed so differently, how do I know what's in style?
—It all is! Just wear what you like and make it your own style!

Fading into the background bushes, Mark Feiring and Kathy King display the use of camouflage in clothing.

Rainy days don't get Kathleen McDermott down as she dons her hot pink raincoat to brave the wet weather.

Summer McNair's argyle and loafers prove that preppies are still present at Oglethorpe.

ATLANTA . . . PAST



Above: Reconstruction after the Civil War, 1870 Nearing the turn of the century, 1890

AND PRESENT

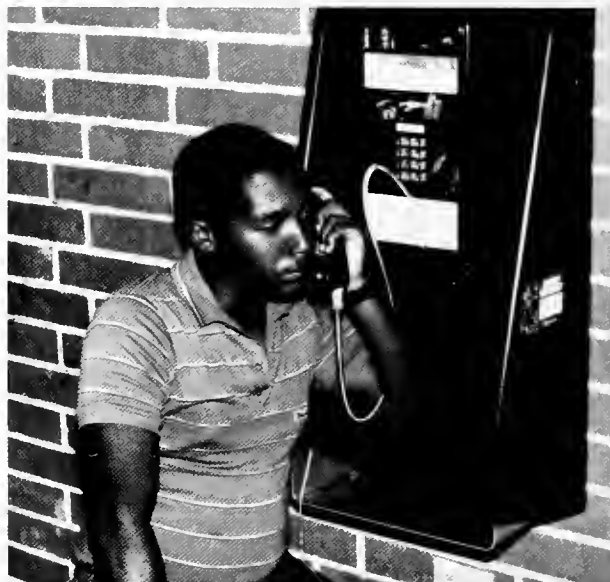
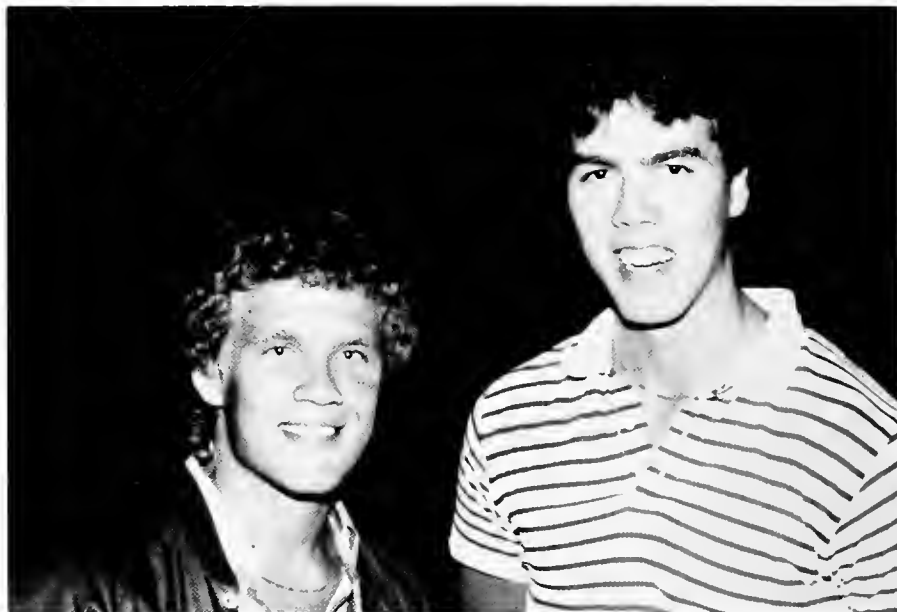


Atlanta . . . she has survived the tragedy of war, the drama of everyday life, and the horror of depression, but still she emerges as a beautiful and respected city. Gone are the days of reconstructing a burned ruin, but still the city constantly changes her architecture, which includes an exciting new skyline. Atlanta should be proud of her accomplishments.



Weekends are made for...

It's Friday, the bell tower signals that it is eight o'clock. The students here at Oglethorpe have forty-eight hours to recover from the past week and prepare for future ones. How can forty-eight hours make up for one hundred and twenty hours of frustration? Different people have different ideas to answer that question. The conservative student spends his weekend doing laundry and typing his English paper. The moderate student goes to see a movie and reads a good book. The other 99.5% of the students do only one thing—PARTY!



Mick Rathjens and Rich Fischer share in a conversation while socializing at one of the numerous fall parties.

Silver Lake has provided a place for entertainment at O.U. since the campus moved to Atlanta.

Robert Miller from Florida takes advantage of the lower weekend rates to call home.

Spectators at a soccer game argue over a controversial call.





Nathaniel "Dingo" Lowe spends another exciting weekend doing his laundry.

The Limelight is a popular hangout for the more adventuresome O.U. student.



Rick checks out a listing of local activities around Atlanta.



Kenny Hines works out his frustrations of the week in the weight room.

F a l l F e s t i v i t i e s

The International Dinner provided a wonderful night of entertainment for all who attended. Members of the International Club contributed to the various food dishes that were served. Elise Witt and the Small Family Orchestra performed folk music and selections written by members of the orchestra.

What is your roommate's worst habit? Who does your roommate invite over often that you do not like? These are questions similar to those asked of contestants in the Roommate Game. Based on the television show "The Newlywed Game," the questions test the knowledge roommates have of one another. The event, sponsored by OSA, gave students a comic relief during the semester.



Kathy Messina, Jon Van't Riet, Jennifer Sierra, and Eyo Eyo enjoyed the food and entertainment at the International Dinner, which was held on November 10, 1984, in the cafeteria.

Mike Cheek captivates polo players, Deda Walker and Jill Rossen, with his officer and a gentleman charms.

Scott Soloway, emcee for the Roommate Game, is applauding for one of the many interesting responses given by one of the contestants.



The Halloween Dance, sponsored by the OSA and APO, was an opportunity for everyone to take a mid-semester break. Among all of those research papers, tests, lab experiments, and all night study sessions, students could put on their most outrageous costumes and dance the night away. Creativity and originality of costumes made an interesting topic of conversation for meeting exciting and interesting people. The music was provided by the Swinging Diamonds.



This group never clowns around. Enjoying the conversation are Beatriz Lopez, Fred De Loach, Cile Hardwick, and Randy Wade.

And The Winner Is . . .



Appearing jubilant and excited, Bonnie O'Harrow receives a hug from Mary Howard after hearing her name announced as the 1985 Miss Yamacraw.

And the winner is . . . These are the words that preceded Miss Bonnie O'Harrow's name at the Miss Yamacraw pageant, which was held on December 6, 1984. Excitement mounted throughout the pageant as the girls were judged on interviews, talent, and fashion. The talent ranged from dancing to singing to fashion design. In the end, the results were tabulated and the winners were as follows: Second runner up—Misty Reid, First runner up—Marsha McGuigan, and the 1985 MISS YAMACRAW—BONNIE O'HARROW.

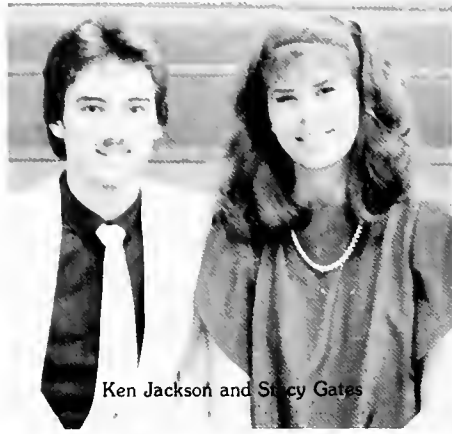
Misty Reid, who was sponsored by the Chi Phi Fraternity, did a jazz dance to "Body Rock," a popular song from the movie of the same name.

The Student Education Club sponsored Marcia McGuigan, who played Alumbblatt OP. 117. on the piano which helped her to be selected as the First runner up.



Entertaining the audience while the curtain was closed, Mick Rathjens and Dan Duncan served as emcees for the pageant.

At one time Lord and Lady Oglethorpe was a more significant event involving crown bearers and a royal court.



Ken Jackson and Stacy Gates



...as and M... Eastlan



r and



Chris Erckert and Sue McCue



J.C. McElroy and Susan Street



Darrel ... and ... Nach

A Gala Event



That night at the basketball game Monday, January 28, started off Homecoming Week. Sunglasses, buttons, and bandanas could be seen on the more spirited students during the week. The cold damp weather on Friday forced the bonfire to be moved into Goodman lounge fireplace and students to coverup their black and gold outfits. But nothing could dampen the spirits of the students, faculty, and alumni on Saturday night. During halftime at the basketball game the cheerleaders performed a pom-pom routine to a song from Prince's "Purple Rain" album.

Dan Duncanson then introduced the Homecoming Court and the three final couples who were Frank Russo-Alesi and Terri Abernathy sponsored by Delta Sigma Phi, Chris Erckert and Sue McCue sponsored by Sigma Alpha Epsilon, and Ken Jackson and Stacy Gates sponsored by Alpha Phi Omega. Kappa Alpha won the banner contest, Delta Sigma Phi won the attendance contest and O.U. won the basketball game over Shorter.

After the students had a chance to enjoy some music at the dance Frank and Terri were named Lord and Lady Oglethorpe.

TABLE OF CONTENTS

OSA	42
Dorm Council	48
Athletics	49
Clubs	50
APO/RUDD	54
Greeks	56
Honoraries	64
Career Clubs	71
Religious Clubs	75
Entertainment	76
Publications	79



ORGANIZATIONS





CANDIDS





OGLETHORPE STUDENT ASSOCIATION



Ray Lucas—Vice President, Tim Bates—Parliamentarian, Rusty Mabrey—Sophomore Class President, Chris Erckert—Treasurer, Sue McCue—Secretary, Dan Duncanson—President, Becky Gess—Junior Class President, Bill Fair—Freshman Class President, Barb Bessmer—Senior Class President

SENATE



Phil Deal, Jay Floyd, Larry Frank, Harry Frazer, Bret Sleight, Doug Schmitt, Ray Lucas, Rod Johnson, Marlene Rudy, Janice Marshall, Jessica Bagley, Marty Eastlack, Risé Nachman, Dee Pickett.

ACADEMIC COMMITTEE



John White, Maureen Rowe, Carolyn Nowell, Jay Floyd, Barbara Shadomy, Bonnie Boles, Jessica Bagley, Dan Noble, Harry Frazer, Sharon Petty, Chris Erckert

FOOD COMMITTEE



Chris Erckert, Bill Fair, Jennifer Perry, Mike Rathjens, Ruth Ryan, Dan Duncanson, Barb Bessmer, Jackie Liberman, Sean LaPides, Stacey Bronstein, Naomi Hamby, Daine Dubay, John White

COUNCIL OF CONCERNED STUDENTS



Doak Patton, J.C. McElroy, Rod Johnson, Cindy Bjurmark, Susan Street, Amy Young, Laura Rankin

CAMPUS LIFE COMMITTEE



Sue McCue, Dr. Brad Stone, Barb Bessmer, Dean Edd Wheeler, Marcia McGuigan, Rich Fischer, Marty Eastlack, Dr. Robert Moffie, Larry Frank, Marshall Nason

EXECUTIVE ROUND TABLE



Bob Balkcom, Phil Deal, Stewart Keller, Dan Duncanson, Doug Schmitt, Laura Rankin, Brett Sleight, Penni Reid, Larry Rollins, Doug Dubay, Rich Fischer, Ralph Beard, Larry Frank, Eric Drick, Scott Soloway, Jackie Woodard, Kathy Messina, Sue McCue, Marlene Rudy, Reggie Frye, Sue Bamford, Julie Quickmire, Naomi Hamby, Mike Rathjens, Dee Pickett, Risë Nachman, Kim Hudgens, Bonnie O'Harrow, Rod Johnson, Jackie Liberman, Maureen Rowe, Helen Bourne, Stacey Bronstein, Diane Dubay, Lise Shade, Barb Bessmer, Charlotte Christian



Mark Stephens—Sunkist, Dr. Philip Zinsmeister, James M. Christain—Ciba-Geigy, Lew Jachob, Wayne Stahn—OEI Business Forms, James E. Copeland—DHS, Dr. Philip Neujar, Dr. Mike Rulison, Fred Carter, Edward O'Harn, Steven Brown—The Fortune Group, Trippe Blade, Lloyd Nick, Dr. Manning Pattillo

DORM COUNCIL

Womens



Anjie Rupe, Becky Gess, Mary Howard, Stacey Bronstein, Cathy Gay, Guynelle Brown, Penni Reid, Naomi Hamby, Kelly Moran

Mens



Chip Wuerz, Mark Knautz, John Winecker, Doug Schmitt, John Mastroianni

OFF CAMPUS COMMITTEE



Barb Bessmer, Marcia McGuigan, Veronica Maldonado, Mirvat Irab, Joseph Parson, Maureen Whalen, Laura Laframboise, Betti Scott, Mark Blankenship, Marc Cash, Deidre Parker, Kim Reid, Charlie Woodford, Eric Mehnert, Vicki Vietor, Cindy Downey, Manolis Platanis

YOUNG REPUBLICANS



Joanne Jarosz, Barbara Shadomy, Michelle Harrison, Bonnie Boles, Beatriz Lopez, Brad Baldwin, Dee Pickett, Ross Lipman, Jessica Bagley, Chris Erckert, Rusty Mabrey, Kevin Southern, Robert de Matheu

INTERNATIONAL CLUB



Connie Duque, Suzy Komin, Jennifer Sierra, Marshall Nason, Kazuhiko Okubo, Alfian Tansil, Amy McIlveen, Mauricio Amaya, Eyo Eyo, Yoshiaki Kurokawa, Aripin Tansil, Armando Kohn.

"Rosa Virginia Peletier" orphanage
Ilopango, El SALVADOR



BLACK STUDENT CAUCUS



Fran Flowers, Kim Reid, Lisa Barnes, Kecia McGlothan, Paula Cornish, Christine Gilmore, D. Tolbert, Sharen Wilcox, Willie Lawton



Rod, Marshall, and Mauricio with some of the things collected for the Salvadorian orphans

OUTDOORS CLUB



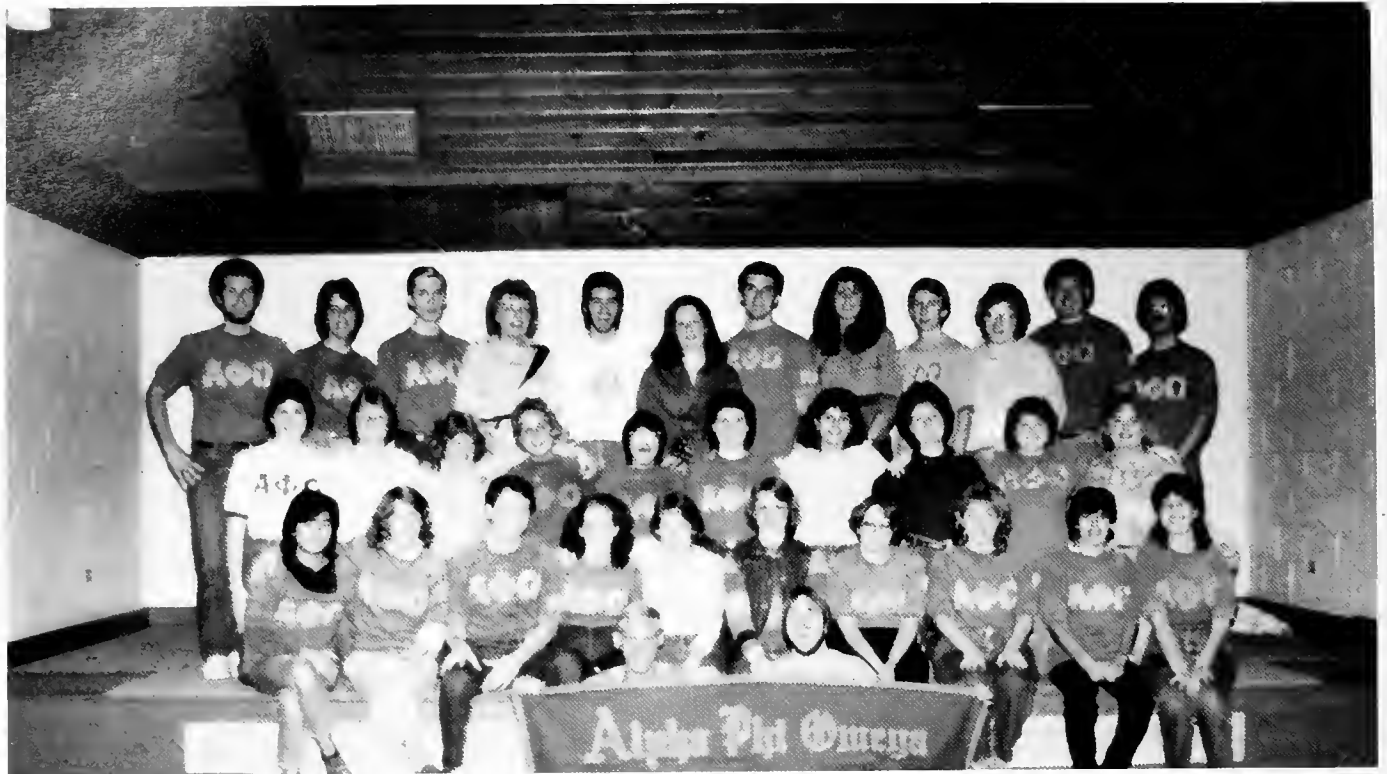
Michelle Harrison, Dawn Skelton, Jim Tuten, Marty Eastlack, Guynelle Brown, Suzy Schobert, Doug Dubay, Harry Frazer, Ruth Ryan, Dee Pickett, Jennifer Perry, Rusty Mabrey

KARATE CLUB



David Robertson, Brian Buzzeo, Gary Ford, Mac Van't Riet, Guynelle Brown, Frank Lawton, Suzy Schobert, John White

ALPHA PHI OMEGA



John Green, Trina Crowder, John Jarrard, Denise Enneking, Ken Jackson, Mary Howard, Phil Deal, Stacey Gates, Joe Helwig, Brenda Mullis, Casey Chosewood, Terry Brooks, Maureen Whalen, Karen Poe, Janice Marshall, Rhonda Hickman, Biya Kahn, Diane Dubay, Dee Pickett, Susan Butler, Maureen Rowe, Maria Jordan, Emily Yen, Theresa Ryan, Doug Dubay, Cindy Bjurmark, Cyndi Crawford, Irene La Vita, Joanne Jarosz, Elena Franco, Anne Kohl, Mark Bryant, Larry Rollins



RUDD



Terry Brooks, Larry Frank, Bruce Benton, Dave Holcomb, Reggie Frye, Stewart Keller, Anjie Rupe, Becky Gess, Renee Byland, Margaret Meyer, Paul Sykes



INTRAFRATERNITY COUNCIL

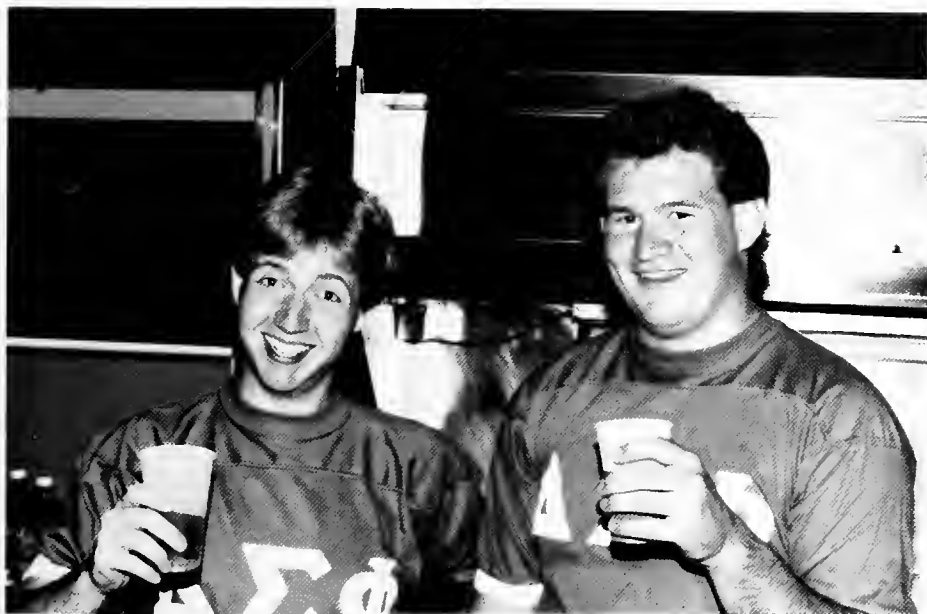
Bud Granger, Mike Rathjens,
Mark Feiring, Jonathan
McLeod, Ross Lippman, Mike
Wywra, Scott Soloway



PANHELLENIC COUNCIL

Jackie Liberman, Naomi
Hamby, Kelli Heitt, Ai-
leen Pratt, Margaret Tur-
cotte, Courtney Joy,
Shelly Alford, Dr. Ann
Wheeler. Pictured: Jack-
ie Liberman, Margaret
Turcotte, Courtney Joy





In the 150 year history of Oglethorpe the Greeks have under gone a great number of changes. In the late thirties and early forties, the number of Greek organizations numbered around fifteen. Of these there were eight Fraternities and Sororities. Then a period came in which these Greeks were asked to leave the campus. For a long time the school had no active Fraternal organizations. It was not until the late sixties that the Greek system was allowed to resume on OU's campus. From then on the Fraternities have continued to grow and improve. The latest of these improvements was the return of Delta Sigma Phi after a forty year absence. This trend will hopefully continue and cause the Greek system to be as strong as it once was. On the Sorority side of this all, things have not been going as well. The outlook, however, seems to bring a brighter side to the future of the sororities here at Oglethorpe.



DELTA ZETA



Cathy Preiser, Jill Ashton, Michelle Anderson, Cathy Steiner, Shelly Alford, Aileen Pratt, Helen Peterson, Jackie Liberman, Kathy Roberts, Hassana Adamson.

CHI OMEGA



Margaret Turcotte, Charlotte Christian, Renee Byland, Kelli Heitt, Kim Hudgens, Traci Bell, Dorothy Saltmer, Michelle Harrison, Maria Paterson, Jacqueline Hernandez, Sherry Sing, Susan Street, Naomi Hamby, Lise Shade, Julie Quickmire, Martha McCardel, Courtney Joy, Leslie Martin.

SIGMA ALPHA EPSILON



Bob Balkcom, Sean LaPides, Greg Steele, Ross Lipman, Joe Del Rocini, Mark Feiring, Scott Soloway, Thair Hanaway, Ray Lucas, Ralph Beard, Guy Samuels, Harris Targovnik, Dave Turner, Ron Kraynik, Gary Ford, Mac Van't Reit, Jill Ashton, Chris Erckert, Tom James, Jennifer Francik, Maureen Murphy, Beatriz Lopez, Cathy Gay, Gale Gallagher, Sue McCue



DELTA SIGMA PHI



Richard Briggs, Stewart Keller, Reg Frye, Frank Russo-Alesi, Mark Knautz, Bill Sharpe, Bret Sleight, Greg Hightower, Brad Baldwin, Frank Lawton, Brian Buzzeo, Fred Long, John Greene, Casey Chosewood, Dave McCollam, David Tucker, Sandra Sasson, Mike Rathjens, Dan Duncanson, Steve Kim, Rusty Mabrey, Hank Bunnell, Jeanne Carolan, Terri Wall, Ruth Ryan, Theresa Ryan, Harry Frazer, Doug Dubay, Michon Hall, Jennifer Perry, Annette Hansen, Sharon Petti



KAPPA ALPHA



Kurt Alexander, Cathy Preiser, Eric Drick, Samantha Woods, Jerry Garcia, JC McElroy, Selena Scott, Victor Guisto, Sherry Rosen, Andrew Nash, Alicia Bullard, Glen Dubrowsky, Sarah Hunter, Cheryl Lerner, Viana Falune, Marc Naef, Mike Wyrwa, Neil Seiwel



CHI PHI



Bill Cottone, Jim Kuchinski, Rich Wallace, Jon Rawls, Tim Ray, Bud Granger, Carlos Duque-Estrada, Scott Einbinder, Andy Weiller, Mike Gates, Keith Nabb, Jeff Petree, Kenny Hines, Tommy Johnson, Ron Vaughn, James Leggat, Robin Porter, Becky Gess, Lil Klien, Jackie Liberman, Anjie Rupe, Theresa Norton, Cece Mullings, Lenni Bunin, Ilene Baylin, Cathy Shattenfield, Naomi Hamby, Michelle Gazes



WHO'S



Kenton Baggs



Jessica Bagley



Barbara Bessmer



Guynelle Brown



Casey Chosewood



Diane Dubay

Douglas Dubay
Daniel Duncanson
Marty Eastlack



WHO



Jay Floyd



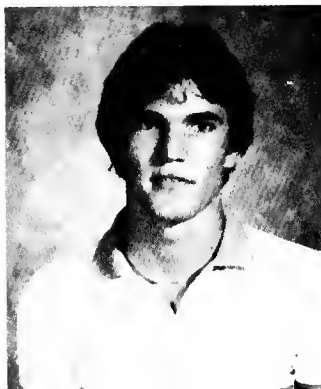
Brad Gadberry



Ellen Gadberry



Gabriel Grasso



Ray Lucas



Janice Marshall



Frank Russo-Alesi



Lise Shade



Paul Sykes

OMICROM DELTA KAPPA



Ellen Gadberry, Brad Gadberry, Kenton Baggs, Richard Williams, Dr. Key, Casey Chosewood, Dean Waldner, Paul Sykes, Ray Lucas, Sue McCue, Lise Shade, Marshall Nason, Guynelle Brown, Diane Dubay, Dan Duncanson, Janice Marshall, Jay Floyd

BOAR'S HEAD CEREMONY



PHI ALPHA THETA



Becky Gess, Juliette Johnson, Tony Petty, Eileen Murphy, Dr. Key, Scott Solway, Richard Scott, Shari Booth

POLITICS—PRELAW

Dee Pickett, Kevin Southern, Dr. Neujar, Brad Baldwin, Gabriel Grasso, Chris Erckert, Jessica Bagley, Robert De Matheu



BETA OMICRON SIGMA



Dr. Bill Shropshire, Dr. Carlton Jones, Dr. Bruce Hetherington, Jill Shimmack, Dominic DeSantis



A speaker sponsored by Phi Beta Lambda

ALPHA CHI



Frank Russo-Alesi, Jill Schimmack, Rhett Laurens, Nina Hammond, Marie Wesley, John Green, Evelyn Bowyer, Sally Shin, Richard Scott, Jay Floyd, Dr. Mike Rulison, Kenton Baggs, Henry Hartje, Robert Strozier, Rhoda Williams, Dr. Barbara Clark, Guynelle Brown, Diane Dubay, Tammy Chaffin

SIGMA ZETA

Jennifer Perry, Guynelle Brown, Lise Shade, Bonnie Boles, Jay Floyd, Dan Duncanson, Casey Chosewood, Dr. Malcolm Amerson, Dr. John Cramer, Dr. Philip Zinsmeister, Paul Sykes, Tammy Chaffin, Bret Sleight, Dr. Keith Aufderheide, Dr. Mike Rulison, Dr. Monte Wolf, Mauricio Amaya



ENGLISH CLUB



Pat Maerker, Jerri Newman, Jeffrey Portnoy, Dr. Linda Taylor, Mary Carol Geddis, Penni Reid, Dr. Barbara Clark, Hank Bunnell, Brad Gadberry, Ellen Gadberry, Dr. William Brightman

STUDENT EDUCATION ASSOCIATION



Dr. Ann Wheeler, Katherine Conrad, Angela Wilson, Marcia McGuigan, Martha McCardel, Jeannie Carolan, Gwen Kendrick, Sonja Holcombe, Donna Rothstein, Alice Hilger

ACCOUNTING CLUB

Dr. Keith Baker, Jill Schimmack, Dominic DeSantis, Ken Jackson, Trish Shelton, Juliette Johnson



PHI BETA LAMBDA



Carol Johnston, Michelle Harrison, Helen Bourne, Barbara Shadomy, Diane Dubay, Janice Marshall, Lisa Barnes, Charlotte Christian, Trish Shelton, Luann Sands, Eileen Murphy, Ken Jackson, Bonnie Patterson, Kecia McGlothan

PSYCHOLOGY/ SOCIOLOGY CLUB



Kenny Gould, Laura Rankin, Laura Trittin, Kevin Hall, Jerrie Thompson, Mike Rathjens, Nina Hamond, Margaret Meyer, Robert Strozier, Cheryl Lerner, Rod Johnson, Dr. Robert Moffie, Dr. Nancy Kerr, Dr. Brad Stone

AMERICAN CHEMICAL SOCIETY



Paul Sykes, Larry Frank, Dave Holcomb, Dr. Monte Wolf, Bret Sleight, Pat Capes, Stewart Keller, Reg Frye, Frank Russo-Alesi, Denise Enneking, Irene La Vita, Kari Spangler, Deda Walker, Eric Mehnert, Ruth Ryan, Lisa Quinn, Kim Rouleau, Bonnie Boles, Mark Wilson, Joey Masdon, Rich Fischer, Guynelle Brown, Debney Moore, Mark Knautz

ATHLETIC COUNCIL

Coach Berkshire, Doug Schmitt, Scott Smith, Diane Dubai, Renee Byland, Veronica Malnado



POOR BOYS

John Winecker, Mike Cheek, Dean DeCencio, Doug Schmitt, Eric Garvey, John Salamone, Tony Lentini, Bruce Crain, Mike Harrison, Kevin Southern



OGLETHORPE CHRISTIAN FELLOWSHIP



Bob Pickney, Dr. Monte Wolf, Sabrina Williams, Ken Jackson, Robin Bishop, Cathy Messina, Kenton Baggs, Ruth Ritch, John Win-ecker, Maureen Rowe, Diane Du-bay, Debney Moore, Joe Helwig, Ralph Gunn, Mary Hauk, Jay Floyd, Gary Pearson, Casey Chosewood, Tony Petty, Stacey Gates, Penni Reid, Richard Wil-liams and Katherine, Aripin Tansil

ROMAN CATHOLIC STUDENT ASSOCIATION



Frank Lawton, Tomas Hernandez, Bill Sharpe, Rich Fischer, Frank Russo-Alesi, Mark Knautz, Brian Buzzeo, Theresa Ryan, Mary Howard, Jessica Bagley, Ruth Ryan, Cindy Bjurmark, Jeannie Carolan, Michelle Waschak, Carolyn Nowell

SINGERS



Larry Rollins, Trina Crowder, Casey Chosewood, Lizabeth Harkey, Mark Bryant, Helen Maddox, Bill Fair, Maureen Rowe, Doug Dubay, Diane Dubay, John Jarrard, Charis Andrews, Joe Helwig, Cindy Crawford, Ken Jackson, Bill Porter, Donna Adair, Elena Franco, Rob Boggus, Helen Bourne, Janice Marshall, Ralph Gunn, Yvonne Hamby

TOWER



Brad Gadberry—Editor-in-chief



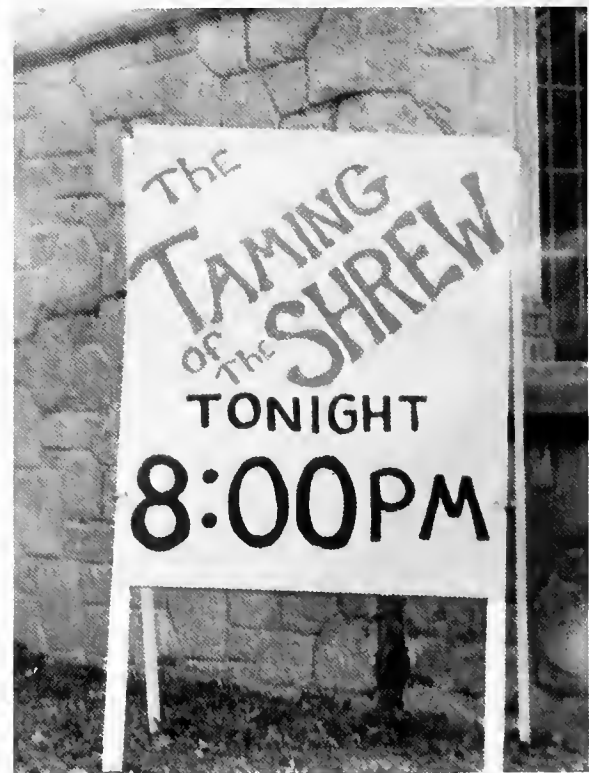
Dr. Linda Taylor—Advisor



Jessica Bagley—Publicity, Hank Bunnell—Assistant editor

PLAYERS

Jessica Bagley, John White, Darryl Wade, Lane Anderson, Harry Frazer, Bonnie O'Harrow, Mark Wilson, Mike Rathjens, Joey Masdon, Kelly Moran, Chris Erckert, Peg O'Neil, Veronique Cauquil, Michelle Waschak, Sharon Petti, Deidre Parker, Lisa Quinn, Rhonda Hickman, Risë Nachman, Ann Groover, Kim Rouleau, Robin Rose, Leslie Taylor



STORMY PETREL



Mike McCracken, Larry Rollins, Jessica Bagley, Terry Brooks, David Tucker, Gabriel Grasso, Diane Dubay, Kaylen Biggins, Gary Pearson, Robin Bishop, Margaret Meyer, Helen Bourne, Ryan McMullun

YAMACRAW



John White—layouts, John Jarrad, Ken Jackson, Kevin Bradley, Jessica Bagley, Jackie Woodard—Co-Editor of Student Life, Darien Ogburn—Editor of Sports, Laura Lafromboise—Editor of Classes, Bonnie Paterson, Diane Dubay—Editor-in-chief, Marty Eastlack—Assistant editor-in-chief, Barbara Shadomy, Joanne Jarosz—Editor of Faculty, Laura Brian, Stacey Bronstein—Editor of Organizations, Angela Wilson—Editor of Student Life

CANDIDS



Cathy Schattenfield, Linda and Kenneth are having some fun during the OSA's service project.



APO's pledge class's slumber party.

Some of the food present at the International Club dinner.





Casey Chosewood shows how much fun he is having during some games.



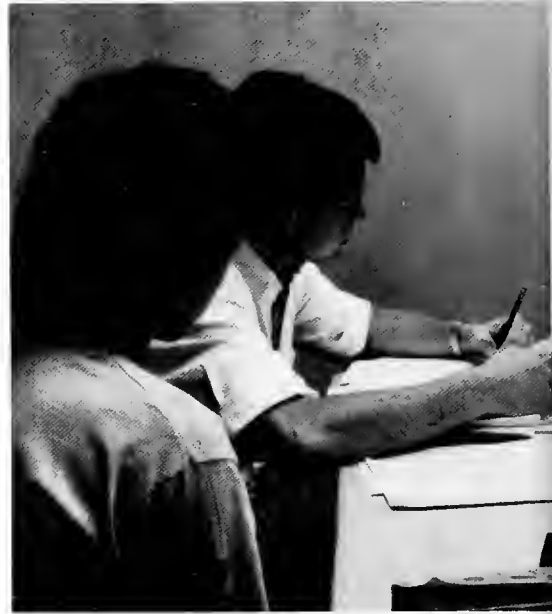
Here some of the people present at Night of the Arts sample the food which was put out for intermission.



Some OU students show what they are really like during the Halloween Dance here at school.

TABLE OF CONTENTS

Seniors	86
Underclassmen	96



CLASSES





SENIORS

Pam Adams
Decatur, Ga.
Education—early

Nancy Arnold
East Point, Ga.
Medical Tech.

Kenton Baggs
Jasper, Ga.
Education—secondary



Tim Bates,
Islip, NY.
Political Studies

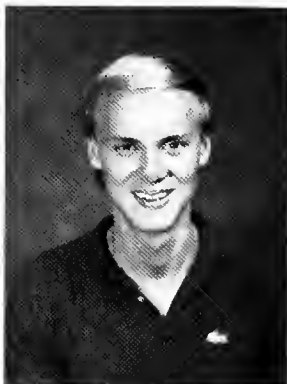
Ralph Beard
Nashville, Tn.
Business/Economics

Barb Bessmer
Dunedin, Fl.
Economics

Rob Boggus
Conyers, Ga.
Business and Behavioral Sciences



In 40 years, a lot of things have changed. One of the more noticeable, has been students' appearances.



Maxeen Brown
Atlanta, Ga.
Sociology

Sheryl Brown
Atlanta, Ga.
History

Mark Bryant
Marietta, Ga.
Business Administration



Tammy Chaffin
Hampton, Ga.
Mathematics

Charlotte Christian
Atlanta, Ga.
Business Administration

Marohn Callins
Cedartown, Ga.
Business Administration



Joey Damiano
Marietta, Ga.
History

This 1948 graduate, is typical of the style of that era.

Phil Deal
Chickamauga, Ga.
Biology



George Dippel
Atlanta, Ga.
Business Administration



Eric Drick
Atlanta, Ga.
Business Administration

Doug Dubay
Norcross, Ga.
Business and Behavioral Sciences



Dan Duncanson
Hollywood, Fl.
Biology

Alan Fann
Decatur, Ga.
Psychology

Seniors Sherry Rosen and Bonnie O'Harrow toast to their success at the Christmas mixer, honoring the December graduates.





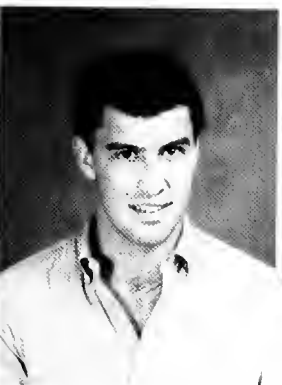
A rare warm day in December finds Senior Robin Rose outside studying for her management final.



Jay Floyd
Baltimore, Md.
Biology

Ellen Gadberry
Atlanta, Ga.
Education—secondary

Howard Gelb
Coral Springs, Fl.
Individually Planned Major



Christine Gilmore
Baltimore, Md.
Accounting

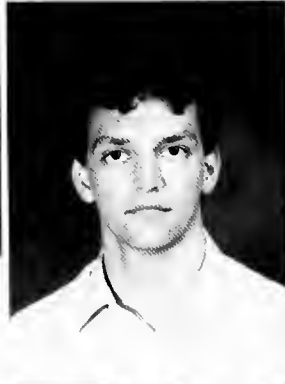
Kenny Gould
Rockville, Md.
Psychology

Charles Granger
Miami Beach, Fl.
Business Administration

Ann Groover
Dalton, Ga.
Biology



Ralph Gunn
Marietta, Ga.
Business Administration



Kevin Hall
Atlanta, Ga.
Psychology

Nina Hamond
Norcross, Ga.
Psychology



Michael Hays
Atlanta, Ga.
History

Greg Hightower
Atlanta, Ga.
Chemistry

Kelly Hodges
Atlanta, Ga.
Business Administration



Sonja Holcombe
Alpharetta, Ga.
Education—early

David Hwang
Kuching, Sarawak; Malaysia
Mathematics—dual major



Juliette Johnson
Atlanta, Ga.
International Studies

Rod Johnson
Atlanta, Ga.
Sociology

Anne Kohl
Roswell, Ga.
Business and Behavioral Sciences



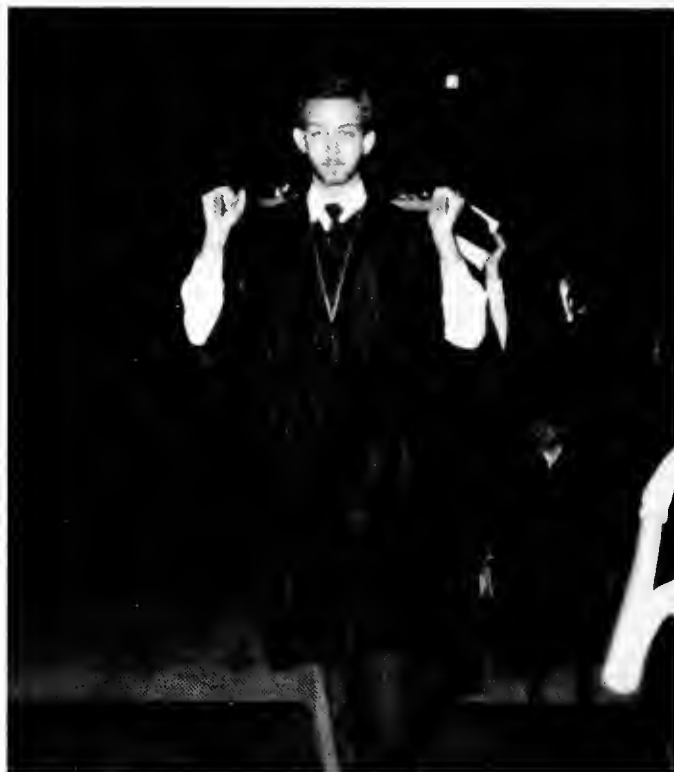
Rhett Lawrens
Lithonia, Ga.
Accounting

Cheryl Lerner
Philadelphia, Pa.
Psychology

Hsiao-Yun Liu
Taiwan, Republic of China
Accounting



Senior Class President Barb Bessmer enjoys the Christmas Student/Faculty mixer along with Michon Hall and Naomi Hamby. Barb arranged the mixer to honor the December graduates.

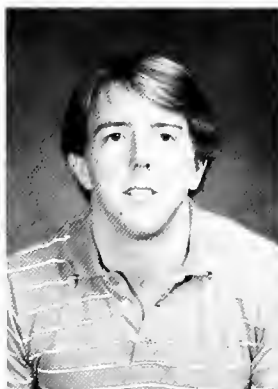


The Boar's Head Ceremony, one of Og-
lethorpe's annual events gives Senior
members of ODK such as Paul Sykes, a
chance to carry the actual boar's head.

Nan Loftis
Atlanta, Ga.
Individually Planned



Jeff Lowman
Atlanta, Ga.
Business Administration



Janice Marshall
Lilburn, Ga.
Business Administration



Karen McAmis
Norcross, Ga.
Political Studies



Martha McCardel
Albany, Ga.
Education



Mike McCracken
Dunwoody, Ga.
Political Studies





Ann McGuffey
Riverdale, Ga.
Political Studies

Greg Meyer
West Palm Beach, Fl.
International Studies

Margaret Meyer
Chevy Chase, Md.
Business and Behavioral Sciences



Chris Moore
Marietta, Ga.
Accounting

Eileen Murphy
Tampa, Fl.
International Studies

Maureen Murphy
Savannah, Ga.
Political Studies



Carolyn Nowell
Mauldin, SC.
Math

Bonnie O'Harrow
Stone Mountain, Ga.
Business and Behavioral Sciences

Sharon Petti
Bridgeport, Ct.
Biology

Luis Prado
Atlanta, Ga.
Business Administration



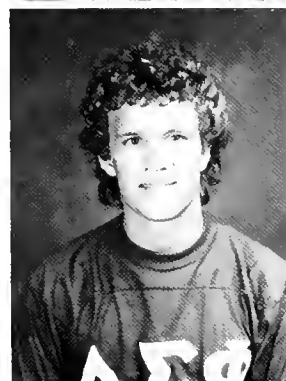
Aileen Pratt
Edison, NJ.
Economics



Ellis Ragland
Dunwoody, Ga.
Individually Planned Major



Michael Rathjens
Miami, Fl.
Psychology



Cheryl Rella
Norcross, Ga.
Accounting



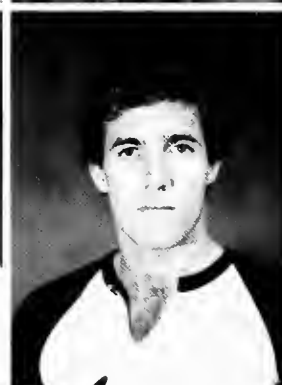
Robin Rose
Cranford, NJ.
Business and Behavioral Sciences



Donna Rothstein
Atlanta, Ga.
Education—early



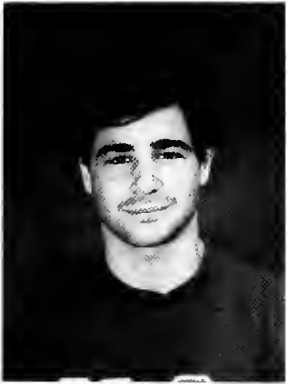
John Schattenfield
Atlanta, Ga.
Business Administration



Richard Schwartz
Hillside, NJ.
Individually Planned major



SENIORS



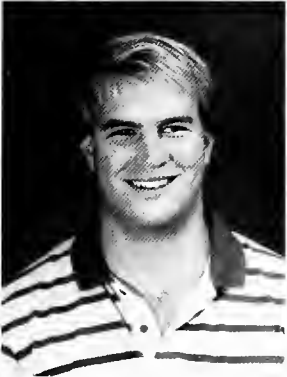
Jonathan Spanier
Marietta, Ga.
Business & Behavioral Sciences



Cathy Steiner
Atlanta, Ga.
Business & Behavioral Sciences



Yvonne Turner
Atlanta, Ga.
Business Administration



Richard Williams
Orange Park, Fl.
English



John Winecker
Clinton, NJ and Fl.
Business & Behavioral Sciences



Chip Wuerz
Winterpark, Fl.
Dual Degree/Engineering.



Happy to be graduating but sorry to be leaving her friend Bonnie Patterson behind, Senior Eileen Murphy relishes a rare moment with her roomie.

UNDERCLASSMEN

Donna Adair
Kevin Adams
Robin Adams
Shelly Alford



Mauricio Amaya
Sonya Anderson
Charis Andrews
Asdrubal Arvelo



Jill Ashton
Omid Atlassi
Vicki Autrey
Jessica Bagley



John Bailey
Donna Baker
Wendy Baker
Scott Baldwin



Sue Bamford
Colin Bannerman
Lisa Barnes
Suzanne Bartholomae

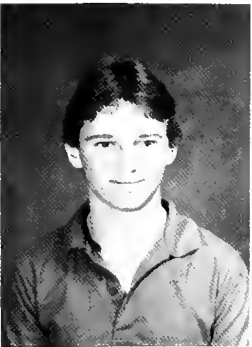




Karen Bates
 Frank Beaty
 Traci Bell
 Babette Bennett



Brent Bishop
 Lauren Bishop
 Robin Bishop
 Lisa Bitoun



Cindy Bjurmark
 Mark Blankenship
 David Boisvert
 Chris Bolden



Taking advantage of the last bit of warm weather, Christine Green, Amy Glover and Joe Helwig do some necessary studying.

Any day is Tie day when the basketball team has a game for players Rich Fischer and Bill Sherwood.

Another day, another storm. Trying not to be late to class, Sue Bamford traverses one of Oglethorpe's reoccurring rivers.



Bonnie Boles
Annette Boling
Shari Booth
Helen Bourne



Scott Boynton
Timothy Bracy
Kevin Bradley
Laura Brian



Richard Briggs
Stacey Bronstein
Marcie Brooks
Terry Brooks





Carolyn Brown
 Guynelle Brown
 Robbin Brown
 Martin Bucci



Hank Bunnell
 Chitrada Burapachaisri
 Susan Butler
 Brian Buzzeo



Renee Byland
 Felix Cabrera
 Pat Capes
 Jeanne Carolan



Chris Carter
 Veronique Cauquil
 Mike Cheek
 Karen Cheole



Margaret Chin
 Casey Chosewood
 Michael Clance
 Tom Clements

Cindy Cobbaert
 Paula Cornish
 Bill Cottone
 Bruce Crain



Cindy Crawford
 Trina Crowder
 Ann Crump
 Steven Cumbee



Thomas Danisi
 Rhonda Davie
 Guinan Dawson
 Dean De Cencio



Making use of the Traer lounges, Jackie Leiberman and Lil Klein study for their midterms.





Robert de Mattheu
Dominic De Santis
Joe Del Rocini
Mara Delaney



Chrissy Di Benedetto
Cindy Downey
Glen Dubrowsky
Diane Dubay



Matt Duggan
Terria Duncan
Wayne Duncan
Richard Dunn



Eduardo Duque-Estrada
Marty Eastlack
Shawn Edwards
Chris Eidson



Sheri Eleswich
Uta Eltester
Denise Enneking
Jane Ensor

Young Eom
 Chris Erckert
 Angela Espejo
 Hollis Ewing



Eyo Eyo
 Bill Fair
 Mark Feiring
 Sheri Fields



Richard Fischer
 Penny Fisher
 Gary Ford
 Alan Fountain



John Fox
 Elena Franco
 Larry Frank
 Harry Frazer



Betsey Freiburger
 Charlotta Friday
 David Frost
 Reggie Frye





Anne Foster



Gloria Early



Ursula B. Bailey



Time changes and so do fashions as can be seen by these O.U. students of the 50's-70's.

Leticia Galan
Pam Galanek
Don Galbraith
Mia Gallagher



Mike Galyean
Christine Garrido
Stacy Gates
Catherine Gay

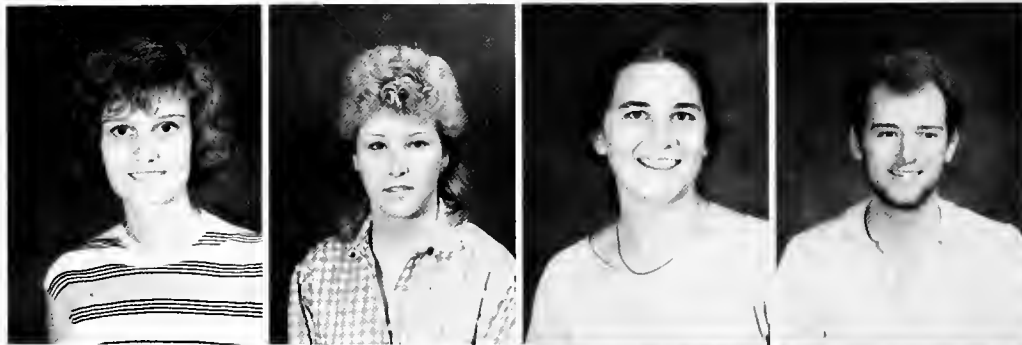


Michelle Gazes
Andy Geeter
Becky Gess
Victor Giusto

David Goldberg
 Tracy Goldman
 Eileen Gomez
 Christine Graf



Antonella Grandi
 Sandee Gray
 Christine Green
 John Green



Rebecca Green
 Wayne Gregory
 Jay Cee Groce
 Walter Gunn

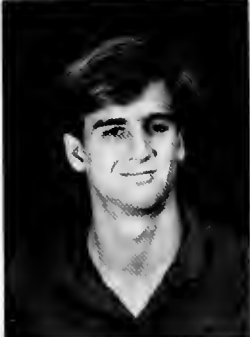


Clarifying some lecture notes, Mike McCracken and Gabe Grasso stay after class to talk to Dr. Neujahr. The campus affords many places to get away, Jon Spanier chooses to use one of them to catch up on his reading.





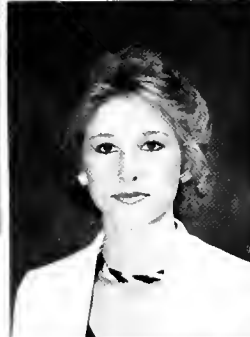
Beth Guntner
 Michon Hall
 George Hall
 Naomi Hamby



Thair Hanaway
 Richard Hans
 Annette Hansen
 Cile Hardwick



Marie Harkey
 Darryl Harper
 Richard Harris
 Terri Harris



Ginny Harrison
 Michelle Harrison
 Joe Helwig
 Christy Hendrix



Sonja Henry
 Karen Herfurth
 Jacqueline Hernandez
 Rhonda Hickman

Jo Dee Hicks
Tomonari Himeno
Ralph Hodge
Amy Hoffland



David Holcomb
Khalil Hourani
Mary Howard
John Huber



Kim Hudgens
Michelle Hughes
Eiji Igarashi
Islamiat Ipaye



Brad Isaacson
Humberto Itriago
Maria Itriago
Ken Jackson

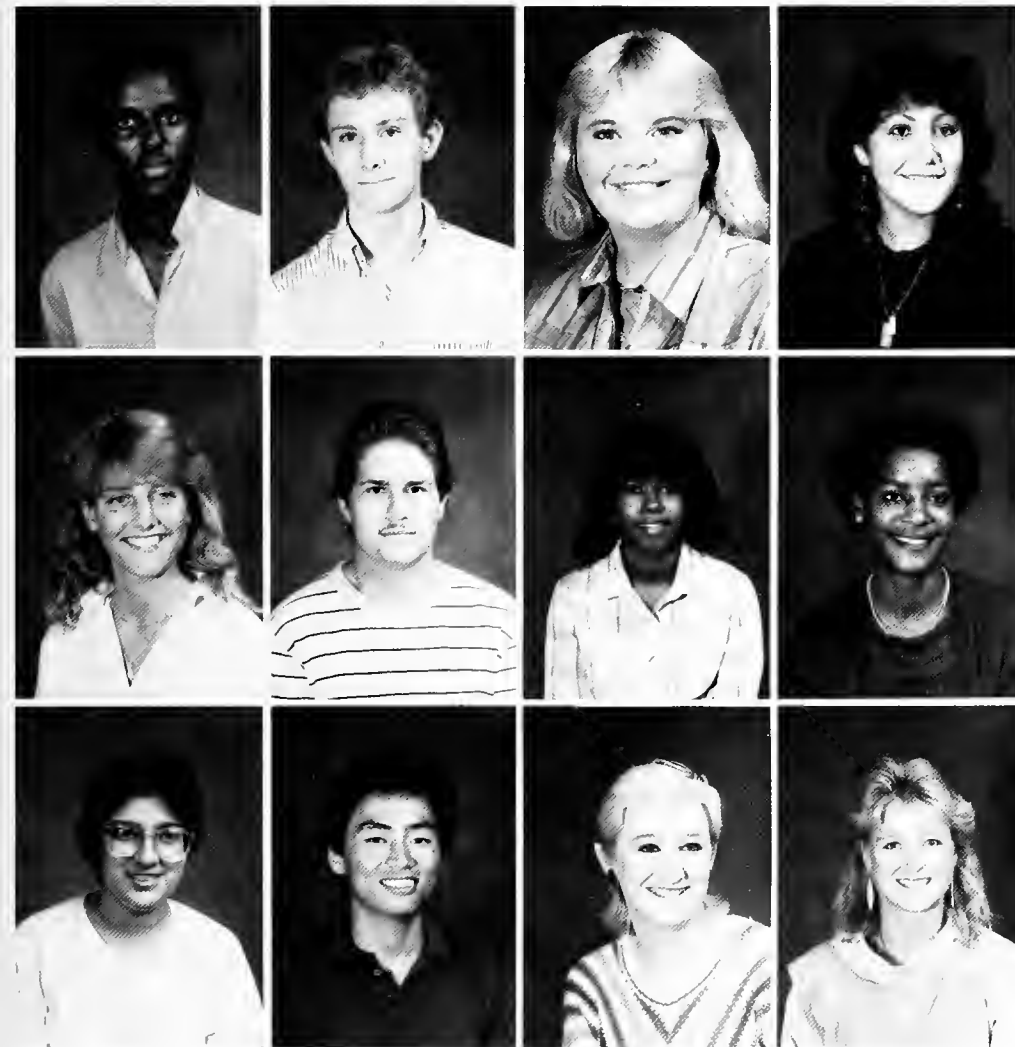
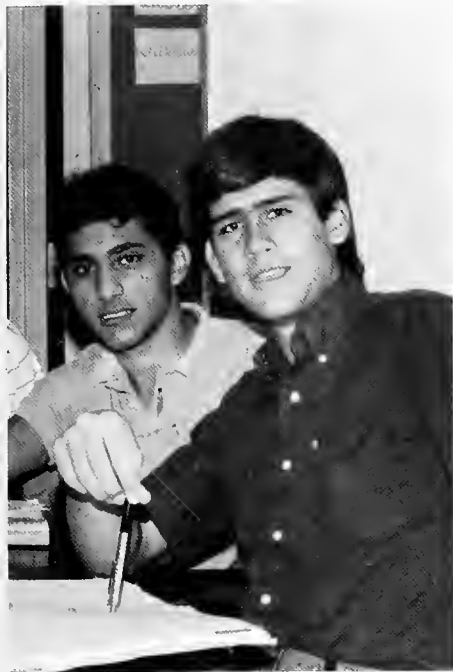


Tom James
Joanne Jarosz
John Jarrard
Cecilia Jenkins



Overflow from the Snack Shop, these international students Eduardo Duque-Estrada and Nicolas Vasconez spend their free time out in the hall in the basement of Lupton Hall.

As the off campus student's refuge, the Snack Shop offers a place for Kazuhiko Okubo and Eiji Igorashi in between classes.



Greg Johnson
Thomas Johnson
Maria Jordan
Mirvat Jrab

Jill Kaminski
Stewart Keller
Gwen Kendrick
Awilda Kennedy

Biya Khan
Stephen Kim
Kathy King
Elizabeth Klein

After Organic lab, Bruce Heissler walks Sunny White back to the dorms.



Mark Knautz
Ray Koepsell
George Koether
Susan Komin



Georgianna Krause
Ronald Kraynick
Marianne Krill
Ritesh Kuvadia



Onikepo Kuye
Laura LaFramboise
Andrew Lampros
Todd Lane





Carol Lanier
Kim Laurel
Irene Lavita
Reid Lawson



Frank Lawton
Willie Lawton
Gina Leathers
Seoung Geun Lee



Sung Suk Lee
Tony Lentini
Liliem Levy
Tammy Locklear



Fred Long
Beatriz Lopez
Rusty Mabrey
Helen Maddox



Veronica Maldonado
Natalia Martin-Leyes
Lonnie Masdon
Jeff Masso

John Mastroianni
 Gwen Mathews
 David McCollam
 Sue McCue



Kathleen McDermott
 J.C. McElroy
 James McFarland
 Meg McGinness



Kecia McGlothan
 Amy McGowan
 Marcia McGuigan
 Amy McIlveen



Wendy McKelvey
 Jonathan McLeod
 Ryan McMullen
 Summer McNair



Eric Mehnert
 Hassan Mehser
 David Methven
 Lisa Millman





Anne Mills
 Judy Mitcham
 Kathy Mitchell
 Stephanie Mitchell



El-Hosin Mohamed
 Debney Moore
 Kelly Moran
 Angie Morrison



Cecilia Mullings
 Brenda Mullis
 David Murdico
 Maureen Murray



The new Psych lab provides a place for senior Nina Hammond to conduct her Honors program experiment.

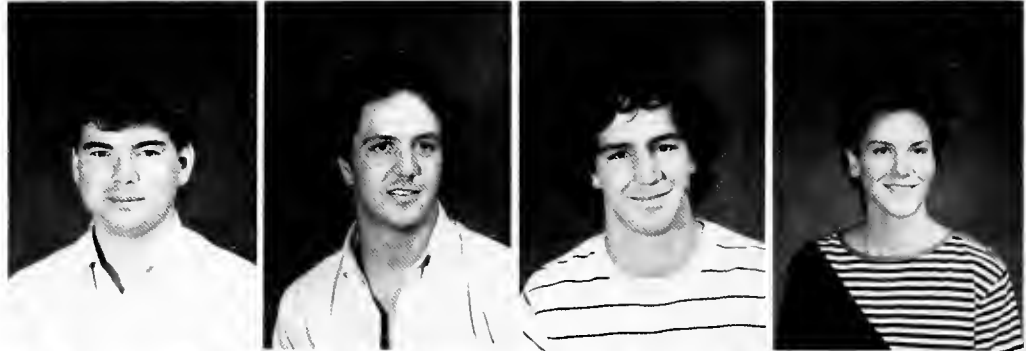
Timothy Murray
Keith Nabb
Rise Nachman
Marc Naef



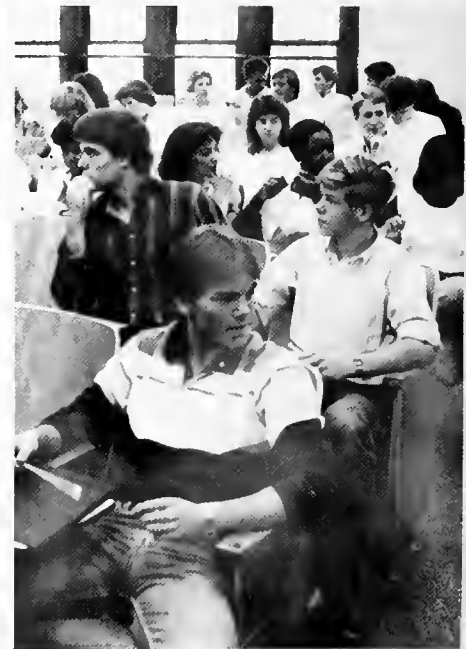
Chris Neild
Tom Nesbitt
Susan Nicholas
Dan Noble



Tim Noto
Andy Nye
Jimmy Nye
Peg O'Neal



Signs help the unfamiliar summer students find their way around Oglethorpe. Freshmen gather at the beginning of the year to take their placement tests in Lupton Auditorium.





Darien Ogburn
Charles Okoh
Kazuhiko Okubo
Agustin Olmos



Janice Ott
Lance Owen
Carmen Papp
Deirdre Parker



Linda Parkinson
Joe Parsons
Bill Patton
Gary Pearson



Tony Petty
Dorothea Pickett
Kerstin Pierce
Bob Pinkney



Manolis Platanis
Karen Poe
Bill Porter
Cathy Preiser

Jeff Provissiero
 Andrew Provost
 Phil Qualter
 Julie Quickmire



Lisa Quinn
 Laura Rankin
 Jon Rawls
 Tim Ray



Kimberly Reid
 Penni Reid
 Sandra Reyes
 Keith Rieders



Elaine Riordan
 Ruth Ritch
 Amy Ritchason
 Wade Roach

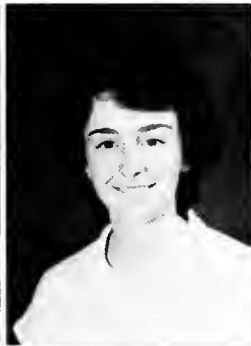


Donald Roberson
 Kathie Roberts
 Jon Robinson
 Pauline Robinson

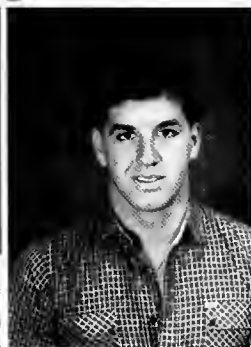




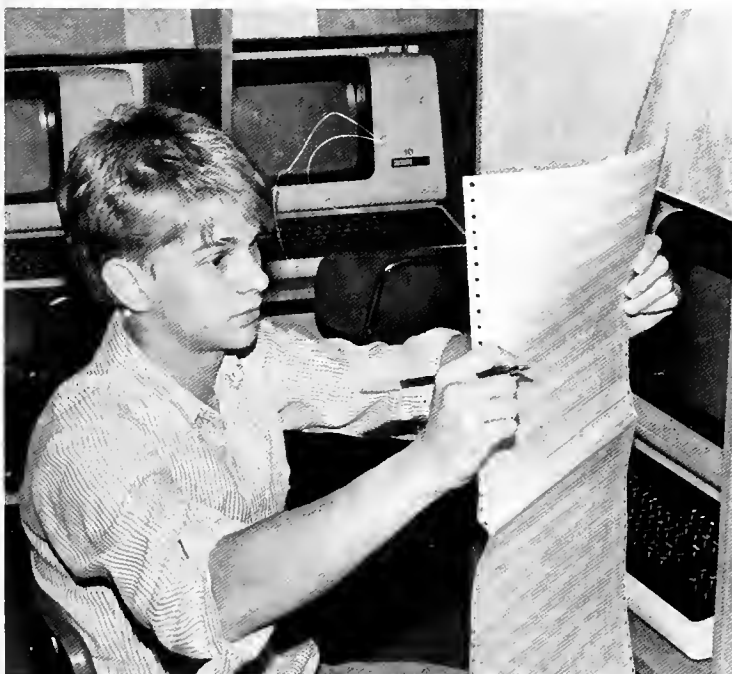
Martine Rochat
 Doris Rojas
 Larry Rollins
 Jill Rossen



Tracy Roth
 Kim Rouleau
 Maureen Rowe
 Alan Royalty



Marlene Rudy
 Frank Russo-Alesi
 Ruth Ryan
 Theresa Ryan



John Salamone

A late night or early morning for Rusty Mabrey as he once more cranks out another print out of his program to see if it is finally debugged.

Dorothy Saltmer
 Guy Samuel
 Jane Samuel
 Audrey Sanchez-Salazar



Luann Sands
 Robert Sasovetz
 Levie Satisfield III
 Melissa Sauer



Cathy Schattenfield
 Gretchen Schmidt
 Doug Schmitt
 Susan Schobert



Kimberly Scott
 Laura Scott
 Judy Seamens
 Neil Seiwel



Lisé Shade
 Barbara Shadomy
 Bill Sharpe
 Trish Shelton



Giving a little boost in freshman English, Dr. Fusillo stays after class to help a student collect his thoughts before his next paper.

Using those last minutes before class, Judy Mitcham jots down some notes to get prepared for class discussion.



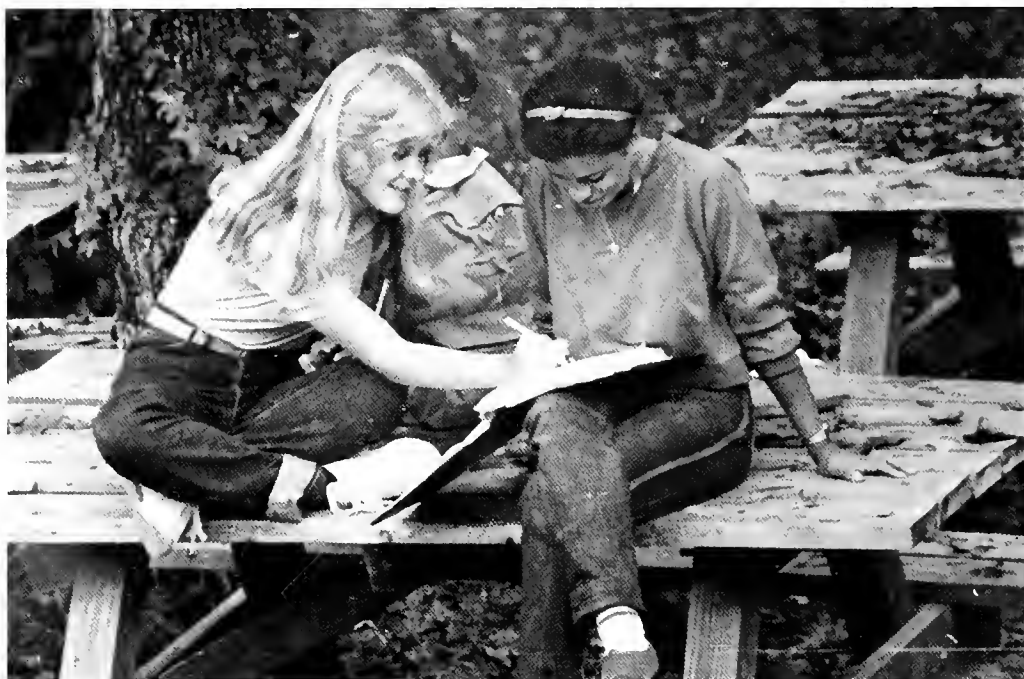
Bill Sherwood
John Shuttleworth
Jennifer Sierra
Mark Sikorski



Scott Silvas
Sherry Sing
Katherine Sjoblom
Dawn Skelton



Burdette Sleight
Andy Smith
David Smith
Faith Smith

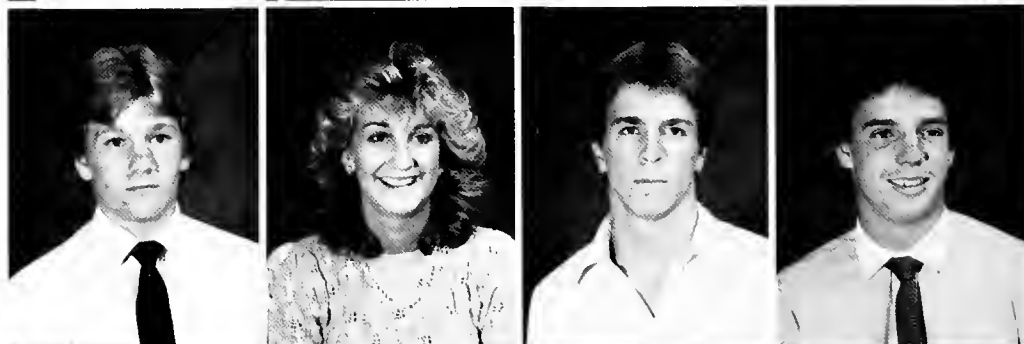


Sharing her thoughts about the subject at hand, Laura Tritten helps Jerrie Thompson think of all the possibilities before she starts writing her paper.

Lizabeth Smith
 Scott Smith
 Scott Soloway
 Jennie Soria



Kevin Southern
 Kari Spangler
 Scott Spooner
 David Stallings



Victoria Stevens
 Lisa Striano
 Wally Strom
 Robert Strozier

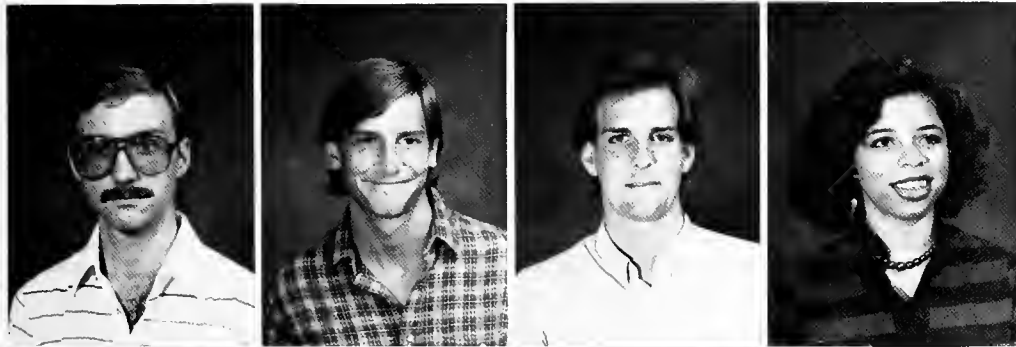




Steven Sugg
Polsak Sukying
Bob Swanson
Mike Szalkowski



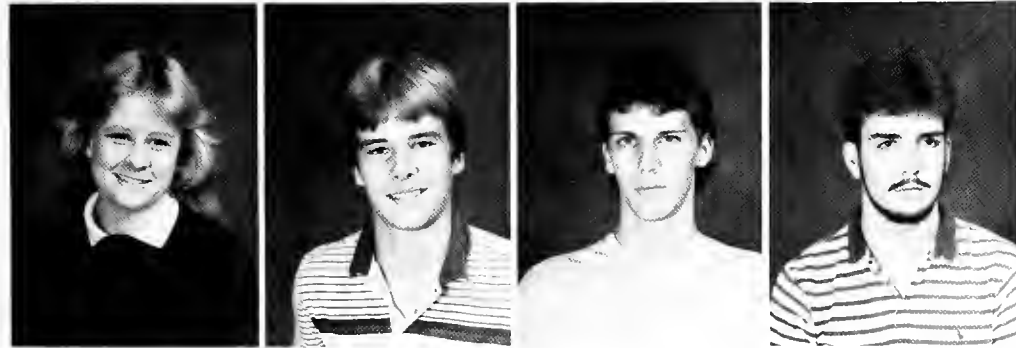
Alfian Tansil
Aripin Tansil
Harris Targovnik
Leslie Taylor



Ernie Thomason
Walter Thomason
David Thompson
Jerrie Thompson



Dale Tobias
Deidre Tolbert
Ricky Traylor
D.J. Treas



Laura Trittin
David Turner
Jim Tuten
Jeff Tuttle

Katie Tyndell
 Steve Underwood
 Osagie Uzzi
 Mack Van't Riet



Nicolas Vasconez
 Ron Vaughn
 Vicki Vietor
 Darryl Wade



Randy Wade
 Rodney Wade
 Deda Walker
 Teri Wall



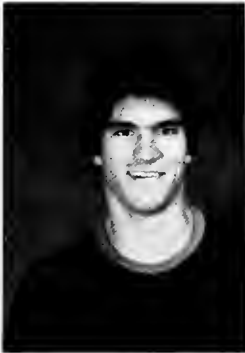
George Walters
 Michelle Ward
 Michelle Waschak
 Andrew Weiller



Maureen Whalen
 Johnny White
 Sunny White
 Tina White



UNDERCLASSMEN



Sharen Wilcox
Byron Wilde
Cindy Williams
Todd Williams



Angela Wilson
Hope Wilson
Julie Wilson
Mark Wilson



Jackie Woodard
Samantha Woods
Todd Wucik
Emily Yen



William Yorks
Gina Yuille

What class section would be complete without a picture of an empty chair in an empty classroom.

TABLE OF CONTENTS

Administration	124
Staff	126
Instructors	142



FACULTY







Manning M. Pattillo
President of the University



Paul Dillingham
Acting Vice President of Development



John Knott
Vice President for Administration



J. Bradford Sargent
Dean of Admissions and Financial Aid



John Thames
Dean of Continuing Education



George Waldner
Dean of the Faculty



Edd Wheeler
Dean of Community Life

Betty Amerson
Controller



Karen Bender
Assistant Supervisor of the Bookstore



Jack Berkshire
Director of Athletics



Bonnie Bertolini
Admissions Receptionist



Patsy Bradley
University Nurse



Linda Bucki
Assistant Dean of Administration





Claire Carroll
Continuing Education Administrative
Assistant



Fred Carter
Director of Financial Aid



Julie Chapin
Admissions Counselor



Tom Chandler, long-time librarian of the University, announced his intention to retire at the end of this year. At this time, he will have been at Oglethorpe for 24 years. Mr. Chandler came to Oglethorpe in 1961 after receiving a Master of Librarianship degree at Emory and heading the Acquisitions department at Georgia State University. Tom Chandler has been an asset in strengthening our library system here at Oglethorpe.





Teri Cobb
Accounts Receivable Supervisor



Carol Duffy
Community Life Office Manager

William Erickson
University Doctor



Jack Ferrey
Data Processing

Fran Flowers
Assistant Librarian





Kathleen Ganey
Director of Women's Housing,
Volleyball Coach



William Gates
Assistant Dean of Continuing
Education



Janice Gilmore
Payroll Supervisor



Prudy Hughes takes a break from her work to visit with Cheryl King in the Faculty Secretary's office.



Carol Duffy displays her talent at the Night of the Arts.



Cle Hall
Associate Registrar



Nest Hovey
Secretary for Development



Marlene Howard
Associate Dean of Continuing
Education



Prudy Hughes
Faculty Secretary



Jonathan Jay
Director of Admissions



Carol Johnston
Director of Placement



Michelle Lent
Assistant Manager of Epicure



Sheryl Manley
Director of Annual Support



Carolyn Matthews
Secretary for Continuing Education



Dennis Matthews
Admissions Counselor



Anne McGinn
Director of Public Relations



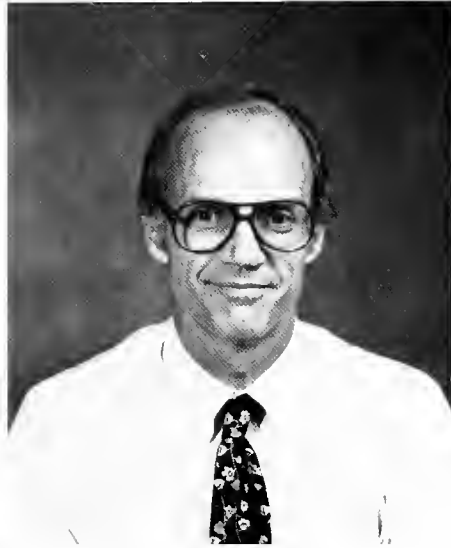
Marilyn Merrifield
Admissions Assistant

Elgin F. MacConnell, former Dean of Services, took the Director of Security position after semi-retiring in August. He has been on the staff or faculty at Oglethorpe for 25 years. Only Mr. Hood has been here longer. "He has become an institution to generations of students and colleagues." Stated Dr. Patillo in a recent memo to the faculty and staff. His responsibilities over the years have included Associate Professor of Education, Dean of Students, Director of Libraries, and Chairmen of the Community Service Division. However, he is most commonly and affectionately known to the students as "Dean Mac".





Gloria Moore
Receptionist



Marshall Nason
Associate Dean of Community Life



Anders Nilsen
Associate Director of Financial Aid



Jim Owen
Director of Men's Housing



Bud Payne
Superintendent of Buildings and
Grounds

Byrd Perkerson
Director of Non-Credit Courses



Mary Ellen Perkins
Graduate Admissions Counselor



Polly Perry
Alumni Director



Michael Petty
Library Assistant



Bucky Reynolds
Assistant to Director of Admissions

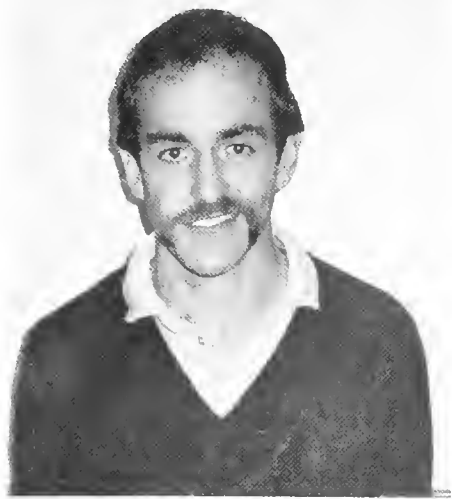




Marshall Nason and Greg Hightower are enjoying conversation during a Men's Rush party at President Pattillo's home.



Adrina Richard
Bookstore Manager, Purchasing



Phil Ritchie
Tennis Coach



Penny Rose
Library Assistant



Tom Seitz
Assistant Basketball Coach



Carolyn Simpson
Secretary to the President



Ann Sincere
Secretary for Alumni-Public
Relations



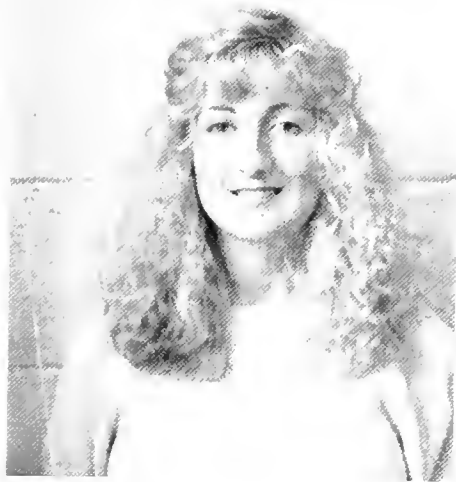
Marshall Nason and Senior ODK member Paul Sykes decorate the entrance to Hearst Hall in preparation for the Boar's Head Ceremony.



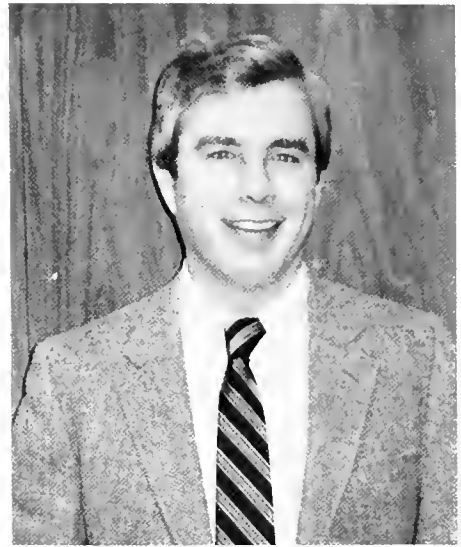
Pamela Tubesing poses with her Christmas friend.



Alan Sloan
Epicure Manager



Linda Sloan
Epicure Bookkeeper



Randy Smith
Associate Director of Admissions



George Stewart
Assistant Librarian

Pam Tubesing
Secretary to Dean Waldner



Mary Ellen Warrick
Secretary to Vice President of
Development

Betty Weiland
Secretary to Dr. Knott



Julie Weyer
Financial Aid Office Manager



Chuck Wingo
Assistant Manager of the Bookstore



Anders Nilsen keeps busy making direction
signs for the campus.





Maintenance and Grounds

Mr. John Hood, the most senior employee of the University, retired on December 18, 1984. Mr. Hood came to Oglethorpe in 1934 and was a member of the staff for fifty years, leaving only for military service in World War II. In recent years Mr. Hood was the custodian of Goslin Hall. Mr. Hood was here when the infamous elephant died and was in charge of burying it behind Lowry Hall. Mr. Hood spoke kindly of Oglethorpe and the staff. He also said that "Oglethorpe has treated me fine."





Epicure Food Service

Mike Robinson
Security Guard



Harold Johnson
Security Guard



Rhoda Allen (1984)
Instructor of Computer Science
M.B.A.—Georgia State University
B.B.A.—Georgia State University
Assoc.—Floyd Junior College



Dr. G. Malcolm Amerson (1968)
Professor of Biology
B.S.—Berry College
M.S., Ph.D.—Clemson University

Lane Anderson (1983)
Drama Director
B.A.—Berry College
Graduate work: National Shakespeare
Conservatory



Daniel Anglin (1979)
Instructor of Business Administration
B.A.—Oglethorpe University
J.D.—Emory University School of Law

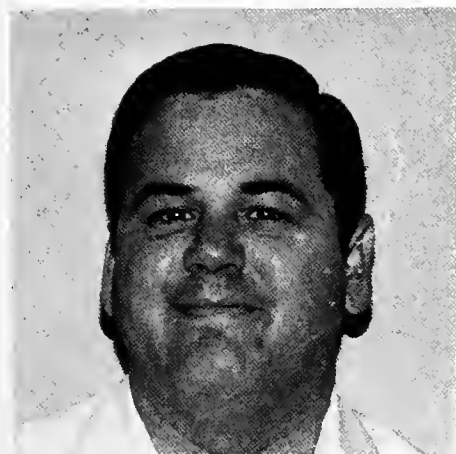
Since his arrival on the Oglethorpe campus in 1958, Mr. Leo Bilancio has been admired and well-liked by both faculty and students. The picture to the right was taken three years after his arrival. Mr. Bilancio has continued teaching and 23 years later is still teaching History, as can be seen in the picture below.





Dr. Keith H. Aufderheide (1980)
Associate Professor of Chemistry
B.S.—Wilmington College
Ph.D.—Miami University

Keith E. Baker (1983)
Director of Accounting Studies
B.S.—Youngstown State University
M.A.—University of Florida



Patrick Berry (1983)
Assistant Professor of Accounting
M.B.A.—Rutgers University
B.S.—East Carolina University

Leo Bilancio (1958)
Professor of History
B.A.—Knox College
M.A.—University of North Carolina

Throughout the years, Oglethorpe has seen many changes, from a change in location of the campus and new buildings, to changing presidents and hiring new professors, but it seems that

Some Faces Never Change

“Oglethorpe is not the same university anymore, but the situation changed for the better. The education has always been top quality, but the admission standards have been upgrading for the past ten years,” told Dr. George Wheeler, the longest employed professor on campus.

“I am the survivor,” added Wheeler, “When I came here there were only

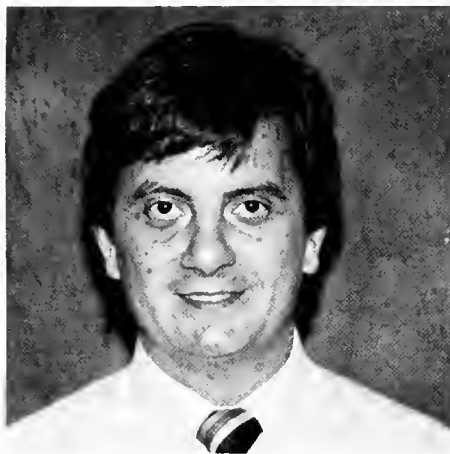
165 students enrolled here. The buildings were all different too. Lowry had dorms on the top floor along with the science rooms on the second and first. Chemistry was the only science class taught out of Lowry Lowry. They set up a ram-shackle wooden building for all chemistry classes.”

When asked to recall an event that really stood out in his mind he said

“When Paul Vonk was president, the university almost became Baptist affiliated. The faculty and others objected, and the school made the decision to stay secular.”

Mr. Leo Bilancio, a professor of history since 1958, feels that the school has gone through many changes “When I first began teaching at O.U.,
(continued on next page)

James Bohart (1972)
 Assistant Professor of Music
 B.S.—Northern Illinois University
 M.M.—Northern Illinois University



Dr. F. Eugene Brasher (1982)
 Director of the University Singers
 B.M.—Stetson University
 M.S.M.—New Orleans Baptist Seminary
 Ph.D.—Florida State University



Dr. William L. Brightman (1975)
 Associate Professor of English
 A.B.—University of Washington
 Ph.D.—University of Washington



Dr. Barbara R. Clark (1971)
 Professor of English
 B.A.—Georgia State University
 M.A.—University of Kansas
 M.P.A.—Georgia State University
 Ph.D.—University of Georgia



Some Faces Never Change cont'd

the atmosphere was that of a closely knit family. There were only 186 students when I started here and it seemed as if everyone knew everyone else. Now there isn't that family feeling as before; the population of the university and the time period has changed that."

"Another drastic change," he added, "in the past 25 years has been in the constructive organization. Lupton housed the library, a swimming pool, a gymnasium, auditorium, faculty offices, student dorms, and a number of

classrooms. Phoebe Hearst Hall was the girl's dormitory with the cafeteria located in the basement. At one point, faculty members lived in the second floor.

"The best change of the system which I can find is that the students seem to be more serious about their education, and though student/teacher relations are more formal now than ever. Oglethorpe still holds a close, friendly, small college atmosphere."



Dr. John Cramer (1980)
 Associate Professor of Physics
 B.S.—Wheaton College
 M.A.—Ohio University
 Ph.D.—Texas A&M University



Nell D. Crowe (1978)
 Lecturer in English
 B.A.—Georgia State University
 M.A.—Emory University



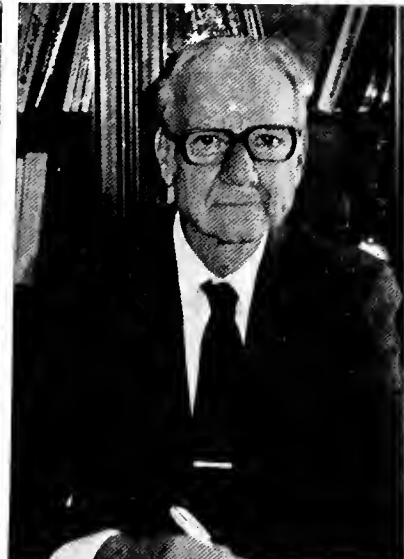
Dr. Joseph N. Fadyn (1981)
 Assistant Professor of Mathematics
 B.A.—Lehigh University
 M.A., Ph.D.—Lehigh University



Dr. Robert J. Fusillo (1966)
 Professor of English
 A.B., M.S.—Fort Hays Kansas State College
 Ph.D.—The Shakespeare Institute (Stratford-upon-Avon), University of Birmingham, England



"I think I'm the soul survivor." No one can disagree that after 31 years of teaching at Ogleshorpe University, Mr. George Wheeler has indeed survived all of the changes throughout the years. A contrast between the George Wheeler of 1956 and that of 1984 is pictured.



Old Habits are Hard to Break

for some Oglethorpe students, so after graduation they return to Oglethorpe University with their newly found talents to contribute to the campus as a whole . . .

Hippies, hitchhikers, flower children, anti-war demonstrations and Vietnam enter the mind when one thinks of the late 60s and early 70s. It seems almost impossible to imagine Oglethorpe during that time period. But to Paul Hudson, Ronald Few and Dan Anglin, that period was Oglethorpe as they knew it as students.

"During the age of the Hippies you either joined college or you were drafted—needless to say the universi-

ty's enrollment increased very rapidly," told Paul Hudson. "O.U. wasn't as radical as many schools. We held demonstrations at Piedmont Park, but for the majority, students didn't protest much," Hudson added.

Hudson, now the Assistant Registrar, attended Oglethorpe from 1968 to 1972. While here, Hudson had many unique experiences; "In 1969 we saw the original Fleetwood Mac in concert at the Fieldhouse."

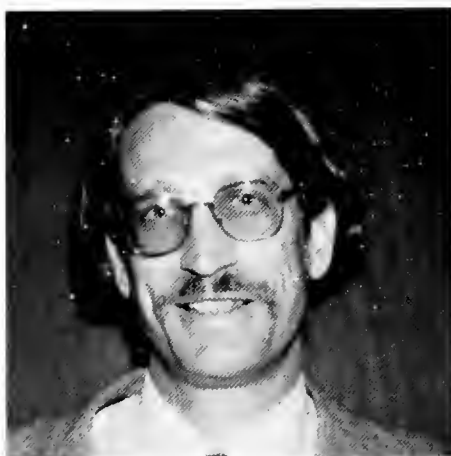
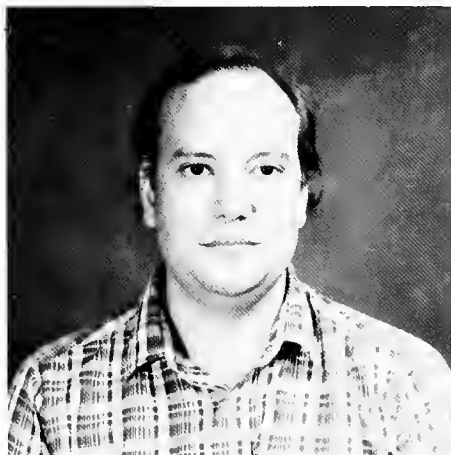
Dan Anglin, Professor of Business Law, also attended Oglethorpe. "If I had to do it again, I would definitely come back. Oglethorpe is doing something right! Students can come here and compete with students at the Ivy League Schools. Oglethorpe has changed and so has its students; both have increased in quality and in standards."

Dr. Bruce W. Hetherington (1980)
Associate Professor of Economics
B.B.A.—Madison College
M.A., Ph.D.—Virginia Polytechnic Institute

C. Norman Hollingsworth (1981)
Lecturer in Economics
B.S.—University of South Carolina
M.B.A.—Georgia State University

Paul Hudson (1982)
Lecturer of History
B.A.—Oglethorpe University
M.A.—University of Georgia

Walter S. Jenkins (1984)
Assistant Professor of Biology
B.A.—Emory University
M.A.—Emory University



Mr. Paul Hudson, graduate of the 1972 class of Oglethorpe University, has since returned to his alma mater to once again become involved with the Oglethorpe community. When not playing tennis, Mr. Hudson works in the registrar's office and teaches history.



Mr. Ron Few, another alumni of Oglethorpe University (class of 1975), has also returned to campus and is working as the assistant librarian, as well as taking a few classes.



Dr. Charlton H. Jones (1974)
Professor of Business Administration
B.S.—University of Illinois
M.B.A., Ph.D.—University of Michigan

Dr. Nancy H. Kerr (1983)
Assistant Professor of Psychology
B.A.—Stanford University
Ph.D.—Cornell University



Dr. J. Brien Key (1965)
Professor of History
A.B.—Birmingham-Southern College
M.A.—Vanderbilt University
Ph.D.—The John Hopkins University

Dr. Robert Moffie (1979)
Associate Professor of Psychology
B.A.—University of California
M.A., Ph.D.—University of Notre Dame

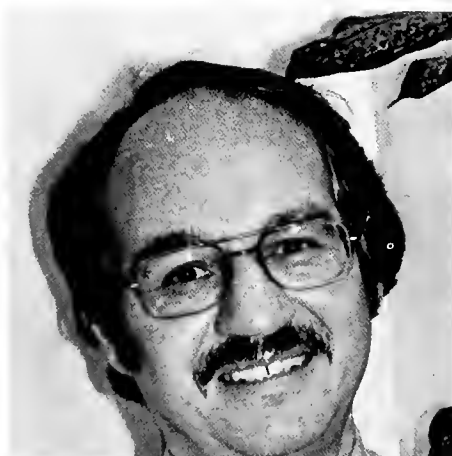


Dr. David K. Mosher (1972)
Professor of Mathematics
B.A.—Harvard University
B.S.A., Ph.D.—Georgia Institute of
Technology



Dr. Phillip J. Neujahr (1973)
Professor of Philosophy
B.A.—Stanford University
M.Phil., Ph.D.—Yale University

Lloyd Nick (1983)
Lecturer in Art
B.F.A.—Hunter College of the City of
New York
M.A.—University of Pennsylvania



Dr. Ken Nishimura (1964)
Professor of Philosophy
A.B.—Pasadena College
M.Div.—Asbury Theological Semi-
nary
Ph.D.—Emory University

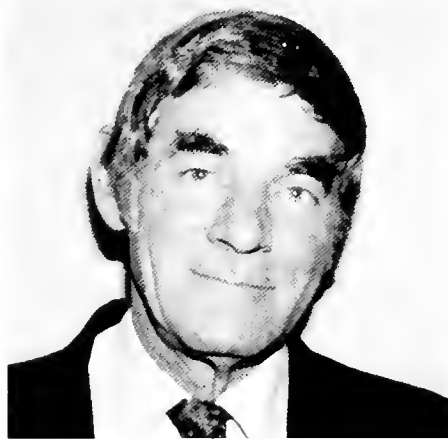


The reestablishment of the Art Gallery not only enhanced the idea of a Liberal Arts Education but also gave the Oglethorpe Community

A Touch of Class

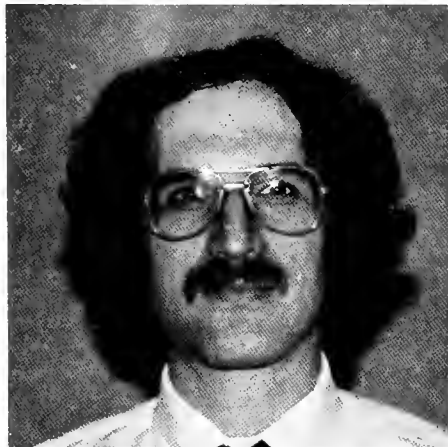
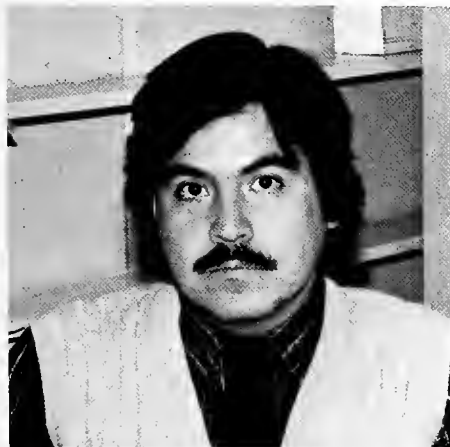
Striving to enhance the cultural environment of the Oglethorpe student and community, Oglethorpe University advanced the articular setting of the Art Gallery, located in Lowry Hall. By promoting exhibits in malls, Mr. Lloyd Nick managed to provoke the curiosity of many people in the Atlanta area. The interest of the Atlanta community was necessary to expand the gallery program. The terrific response received, along with the increased interest and support, had been very encouraging.

Nick stated that the main goals of the gallery were to not only bring in art that had not been shown previously in Atlanta, but also to present absolutely original exhibits never shown before. He hoped the Oglethorpe gallery would be the originating site of many future traveling exhibits that would go on tour to other universities across the nation. No one can argue the fact that the gallery at Oglethorpe has "definitely added a different dimension to the university."



Dr. John Orme (1983)
Assistant Professor of Political Studies
B.A.—University of Oregon
M.A., Ph.D.—Harvard University

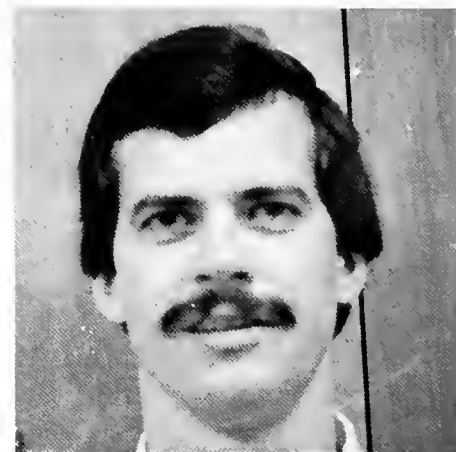
Philip F. Palmer (1964)
Professor of Political Studies
A.B.—University of New Hampshire
M.A.—University of New Hampshire



Dr. Luis Peña (1983)
Assistant Professor of Spanish
B.A.—Universidad de Monterrey
M.A.—Arizona State University

Jeffrey Portnoy (1983)
Instructor of English
B.A.—The State University of Iowa
M.A.—Emory University

Tad D. Ransopher (1981)
Lecturer in Business Administration
B.A.—Indiana Central University
M.B.A.—Stetson University
J.D.—Woodrow Wilson College of Law



Dr. Michael K. Rulison (1982)
Assistant Professor of Physics
B.S.—University of Illinois
M.S., Ph.D.—University of Georgia

Dr. Daniel L. Schadler (1975)
Professor of Biology
A.B.—Thomas Moore College
M.S., Ph.D.—Cornell University



Dr. William O. Shropshire (1979)
Professor of Economics
B.A.—Washington & Lee University
Ph.D.—Duke University

Dr. John C. Stevens (1975)
Professor of Education
A.B.—University of Denver
M.Ed., Ed.D.—University of Georgia

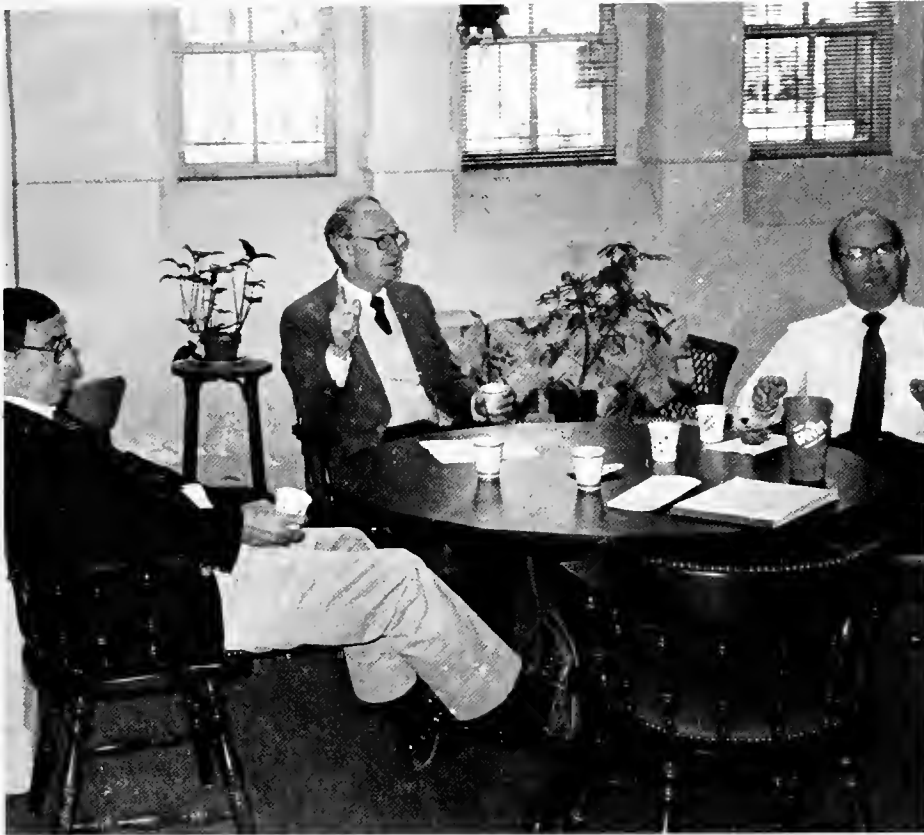


Dr. Brad L. Stone (1982)
Assistant Professor of Sociology
B.S., M.S.—Brigham Young University
Ph.D.—University of Illinois

William Straley (1982)
Lecturer in Business Administration
B.S., M.S.—Georgia State University
Ph.D.—Auburn University

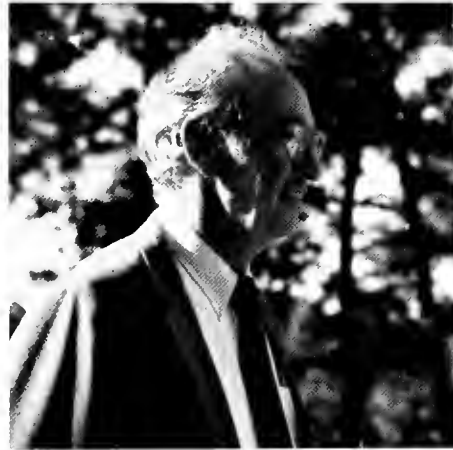


Dr. T. Lavon Talley (1968)
Professor of Education
B.S., M.S.—Auburn University
Ed.D.—Auburn University



Dr. Amerson, Dr. Thomas and Dean Knott taking a coffee break in the administrative lounge in the basement of Lupton Hall.

Demonstrating that he is as proficient at microwave cookery as he is with evaluating economic theories, Dr. Bruce Hetherington patiently waits for his lunch to be cooked in the faculty lounge.



Dr. Linda J. Taylor (1975)
 Professor of English
 A.B.—Cornell University
 Ph.D.—Brown University

Dr. David N. Thomas (1968)
 Professor of History
 A.B.—Coker College
 M.A., Ph.D.—University of North Carolina



Dr. John E. Tully (1981)
 Professor of Business Administration
 A.B.—Harvard University
 M.B.A.—Emory University
 D.B.A.—Georgia State University

Dr. Louise M. Valine (1978)
 Professor of Education
 B.S.—University of Houston
 M.Ed.—University of Georgia
 Ed.D.—Auburn University

Dr. Martha H. Vardeman (1966)
 Professor of Sociology
 B.S., M.S.—Auburn University
 Ph.D.—University of Alabama



Dr. Victoria L. Weiss (1977)
 Associate Professor of English
 B.A.—St. Norbert College
 M.A., Ph.D.—Lehigh University

Dr. Ann M. Wheeler (1979)
 Associate Professor of English
 B.S.—University of Nebraska
 M.S., Ph.D.—Florida State University



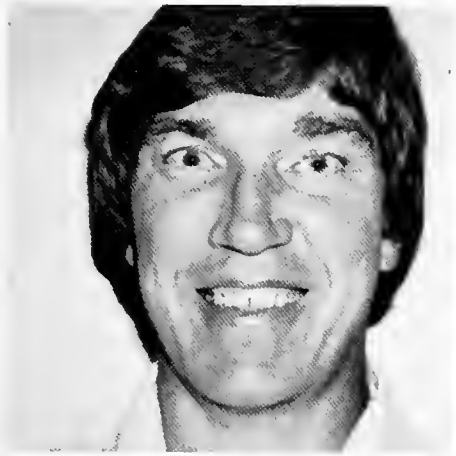
Dr. George Wheeler (1953)
 Professor Emeritus of Physics
 A.B.—Ohio State University
 M.A.—California Institute of Technology



Dr. Schadler recruiting help from the organizations on campus to assist him with the flower show that he is involved with.

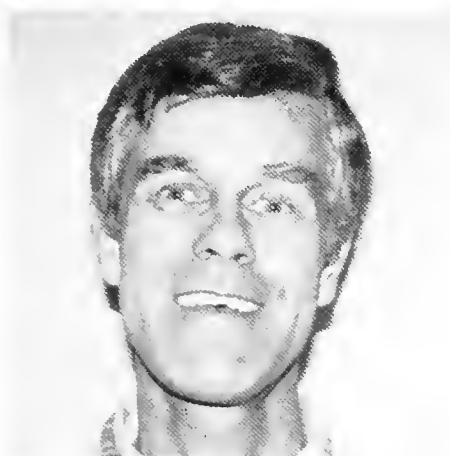


Dr. Neujahr discussing the "Existence of God," the topic of one of his more thought-provoking papers, with one of his students.



William Whitten (1984)
 Instructor of Business Administration
 M.P.A.—Georgia State University
 M.B.A.—Southern Mississippi University
 B.S.—Auburn University

Paul Wiebe (1983)
 Instructor of English
 B.A.—Texas Christian University
 M.A.—Emory University



Dr. Monte Wolf (1978)
 Associate Professor of Chemistry
 B.S.—University of California
 Ph.D.—University of Southern California

Dr. Philip Zinsmeister (1973)
 Professor of Biology
 B.S.—Wittenburg University
 M.S., Ph.D.—University of Illinois



Not only is Dr. Bruce Hetherington showing his Halloween spirit and youthfulness, but he is also demonstrating yet another way of making economics interesting by masquerading as the Democratic Party of 1984 (Mondale/Ferraro).

Picture not available for: Dominique Bennett, Robert E. Bergman, Marjorie Blum, Ronald L. Carlisle, Claire Coles, George Dupuy, Jane K. Hayes, Richard Kustin, Keith Leggett, Janie J. Little, Martha Loring, Daniel McClure, Edward Metcalf, Vanya Nick, and Deborah Sitter.

TABLE OF CONTENTS

Soccer	156
Volleyball	160
Tennis	162
Cheerleaders	164
Basketball	166
Intramurals	170
Cross Country	180



SPORTS

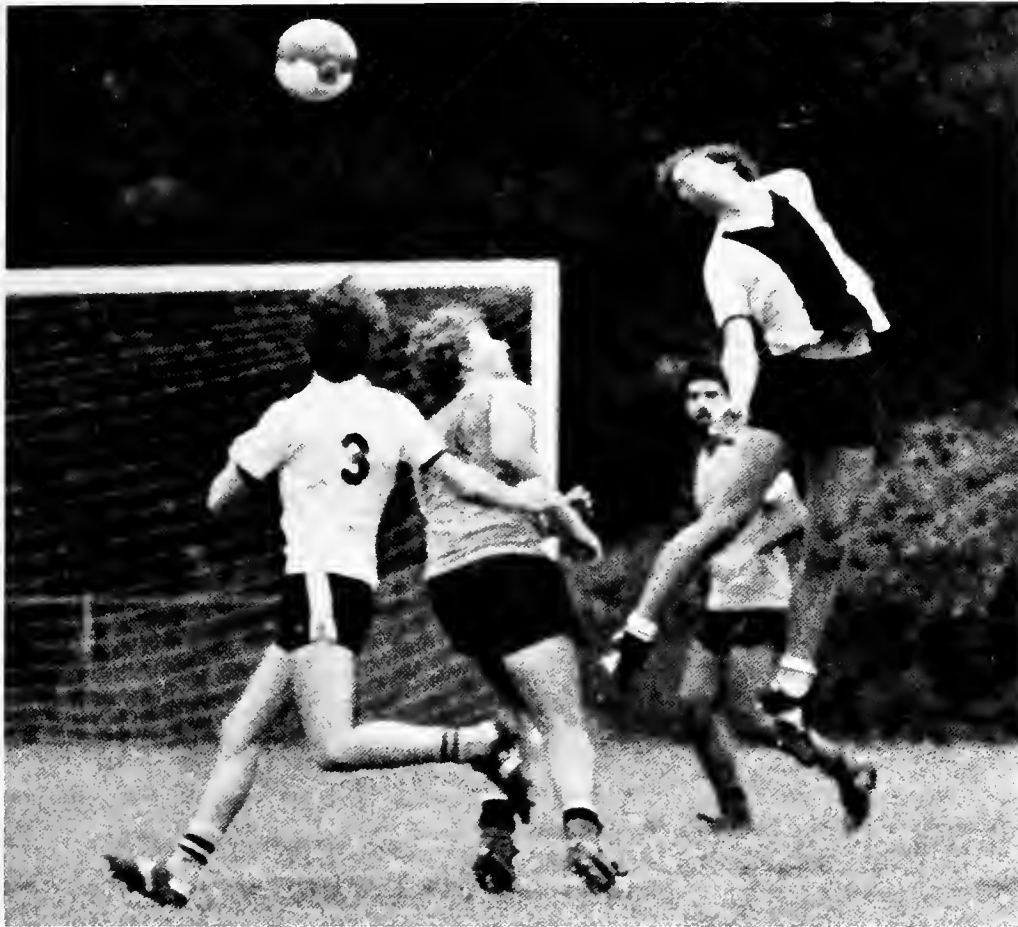






Front: Kevin Southern, Chris Carter, Tony Murphy, Andy Geeter, Mike Galyean, Rob Boggus, Omid Atlasi. Second: Hassan Mehsen, Augustin Olmos, Matt Duggan, Walter Gunn, Harry Frazer, Bruce Cram, Jon Van't Riet. Back: Mack Van't Riet, Mauricio Amaya, Mark Knautz, Doug Schmitt, Bucky Reynolds, Rich Hans, John Salamone, Mike Cheek, Dean DeCencio, Eric Garvey.





OU	2	Greensboro	0
OU	0	Eckerd	1
OU	2	High Point	5
OU	0	Withrop	7
OU	1	Maryville	2
OU	2	Mercer-Macon	5
OU	2	Tenn. Wesleyan	0
OU	2	Lander	3
OU	3	Birmingham	1
OU	1	Berry	5
OU	0	Emory	6
OU	1	Ga. College	0
OU	2	Kennesaw	1
OU	2	U. Of South	3
OU	5	Limestone	5
OU	2	N. Georgia	1
OU	0	Presbyterian	4





With Young players and very intense competition the soccer team still managed to have their 100th win.

One Oglethorpe tradition since 1961 has been a soccer team. The 1984-1985 school year brought about a new tradition. For the first time in Oglethorpe's history there was a junior varsity soccer team. The varsity team was relatively young, with only two seniors out of twenty-two players.

The team faced one of it's toughest schedules, Coach Bucky Reynolds said, "It's the toughest they've had since I've been here." The team's record was 6-11-1. Coach Reynolds said, "The biggest problem on O.U.'s part was our lack of scoring." He expects next year's team to be more experienced. Although Oglethorpe's team was young, they had several outstanding accomplishments. Some players received awards of high recognition and this season, the team won their 100th game. "John Salamone," Reynolds said, "was all district and a good contender for all southern." Two other players received honorable mention for all district; Doug Schmitt and Eric Garvey. This year's captain was Rob Boggus and the co-captains were Mike Cheek and Eric Garvey.



Volleyball



1984-1985 Girl's Varsity Volleyball Team Back row: Coach Kathleen Ganey, Maria Tovar, Angie Rupe, Wendy McKelvey, Julie Quickmire, Lil Klein, Hope Wilson, Kathy Messina. Front row: Guynell Brown, Diane Dubay, Jenny Soria, Leticia Galan.





The 1984 Lady Petrels was THE Team that clinched the District 25 championship. With six returning players and four newcomers, the team worked hard to set-up a reliable, synchronized bump, set, spike offense. Kathleen Ganey, in her first year of coaching, worked hard to train everyone to work together as a team and to build skill and confidence among the players. As demonstrated by their 9-0 record in Division Three play, the OU volleyball team showed that cooperation and hard work can pay off. The weaker competition in the first half of the season put the Petrels at a disadvantage when faced with Division One teams. The lack of team morale, and tension on the court near the end of the season kept the team from playing up to their potential.

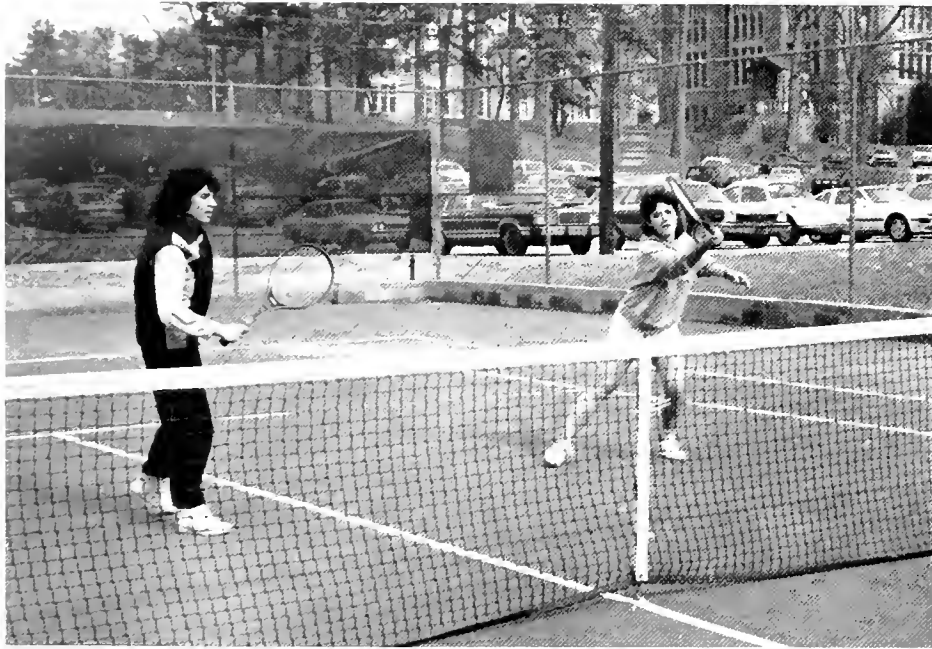
The team had planned to play in the NAIA Conference playoffs, but the players were disappointed when they were disqualified due to a technical error.

With the majority of the team returning next year, they are looking forward to an even stronger finish.





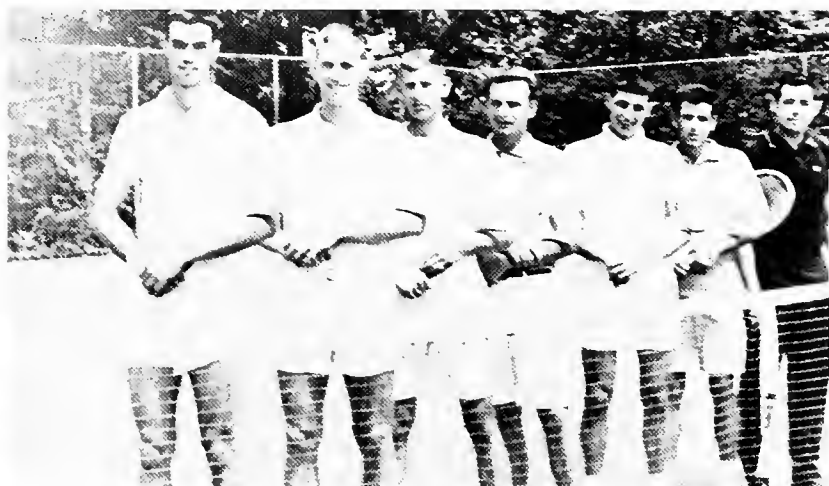
Coach Phil Ritchie, Tom Clements, Andy Provost, Bill Fair, Walter Thompson, Jon Van't Riet, Scott Smith.



Tennis



Tennis has been a longstanding tradition at Oglethorpe. It is one of the few sports to survive the decline in the sports program.



Coach Phil Ritchie, Sharon Wilcox, Summer McNair, Lil Klein, Tracy Goldman, Jennifer Perry, Veronica Maldonado.

The men's and women's tennis teams put in a lot of time and hardwork preparing for a busy spring schedule under Coach Philip Ritchie. The nice weather made it possible for the team to practice quite extensively during the fall semester.

Despite the cold weather, the team began practicing at the start of spring semester to prepare for a full schedule of 29 matches for the men and 22 matches for the women.

Senior player Kenny Gould had been plagued with injuries in past years. With treatment, his hamstring has become 80% stronger in just one semester. Coach Ritchie believes his team will do quite well this spring if they stay healthy. He is hoping several might qualify for NCAA nationals.



Misty Reid, Missy Sauer, Renee Byland, Deda Walker, Traci Bell, Lise Shade, Chris Andrews, Kathleen McDermott





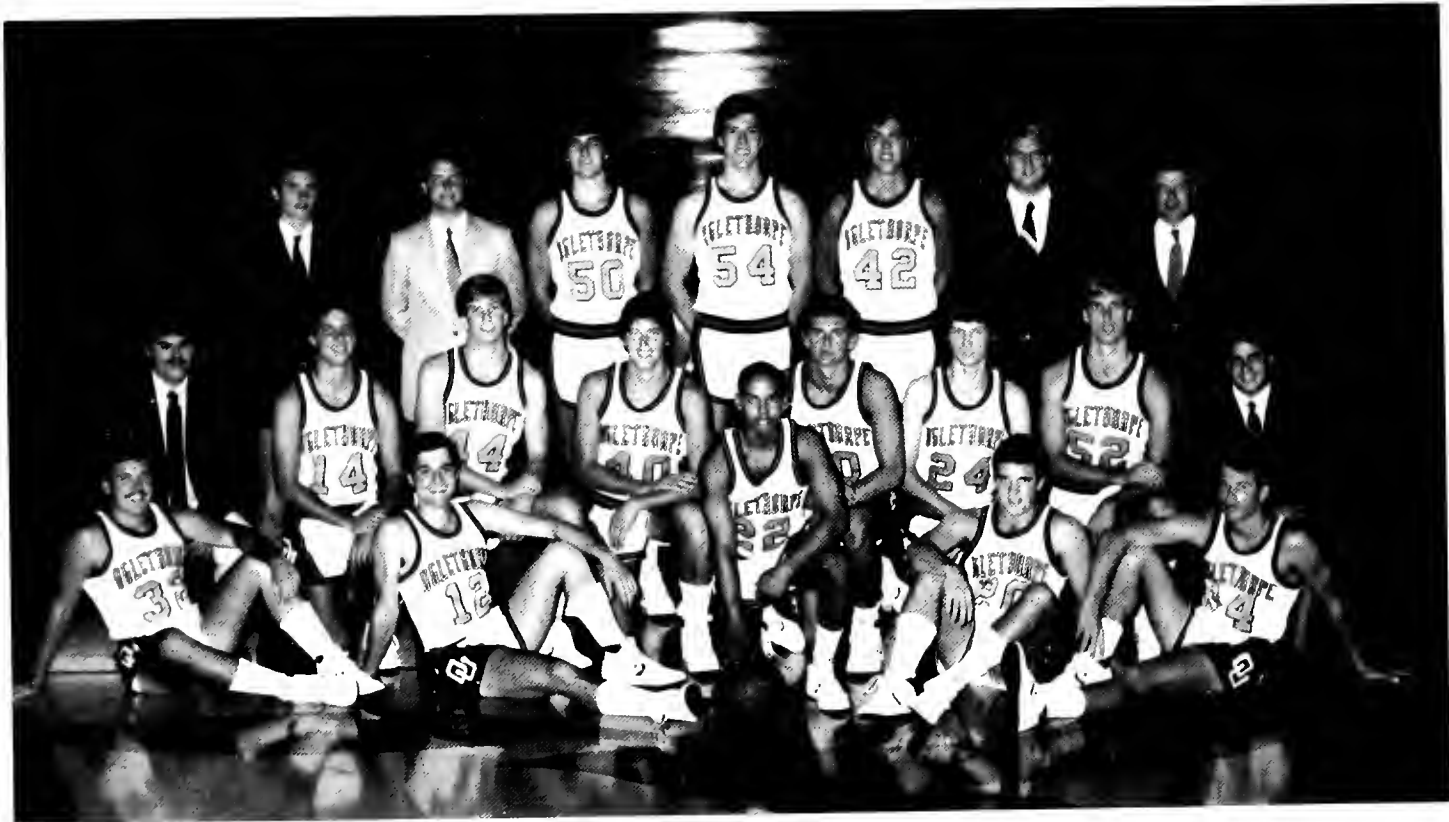
Cheerleaders

The 1984-85 basketball season was one of dedication and hard work for the cheerleaders. The long hours began in late September with tryouts. The cheerleaders practiced for several weeks before the first game. Captain Reneé Byland said that for the Homecoming game's routine, the squad practiced six days a week for two weeks.

This year's squad saw four new faces as well as four returning cheerleaders. This combination gave the squad a productive balance of experience and fresh ideas. First year cheerleader Traci Bell stated, "I couldn't have done it without the experienced girls to help me. They treated me as an equal and were always asking for new ideas."

The cheerleaders' busy season included cheering at all the home games, some away games, making signs, decorating the locker room and planning Homecoming activities, such as spirit week and the bonfire. Reneé Byland summed up the season, saying, "All the cheerleaders are great! This is the most spirited squad we've had in the three years that I've been here. We've done a lot for the school."

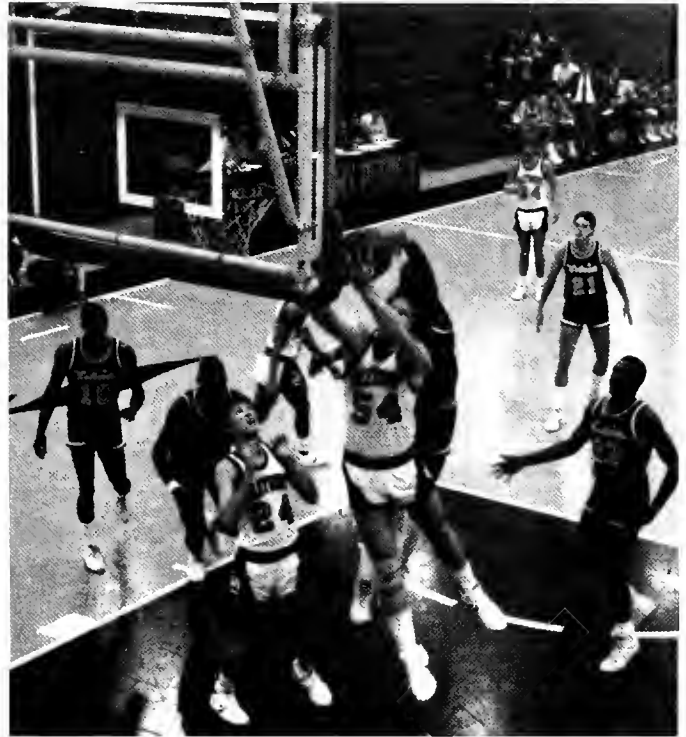




Donnie Roberson, Alan Royalty, Willie Lawton, Ken Ozment, Scott Boynton, Tony Lentini, David Stallings, Bill Sherwood, Ricky Traylor, Joe Granger, Wayne Duncan, Kitt Steppe, Larry Frank, Tom Seitz, Jim Owen, David Boisvert, Bruce Benton, Rich Fischer, Rich Williams and Coach Berkshire



Basketball



A glimpse of the past petrels who were as hard as opponents then as we are now.

Basketball

After Christmas break Oglethorpe's basketball team basically started over with a new team. Transfers Kitt Steppe and Joe Granger became eligible to play during the winter break, O.U.'s team won six of its first seven games during second semester. Both players became strong rebounders. Freshmen—Alan Royalty moved into the starting line up second semester and has made important contributions to the team according to Coach Jack Berkshire.

The team has changed a lot but Coach Berkshire believes they are playing better.

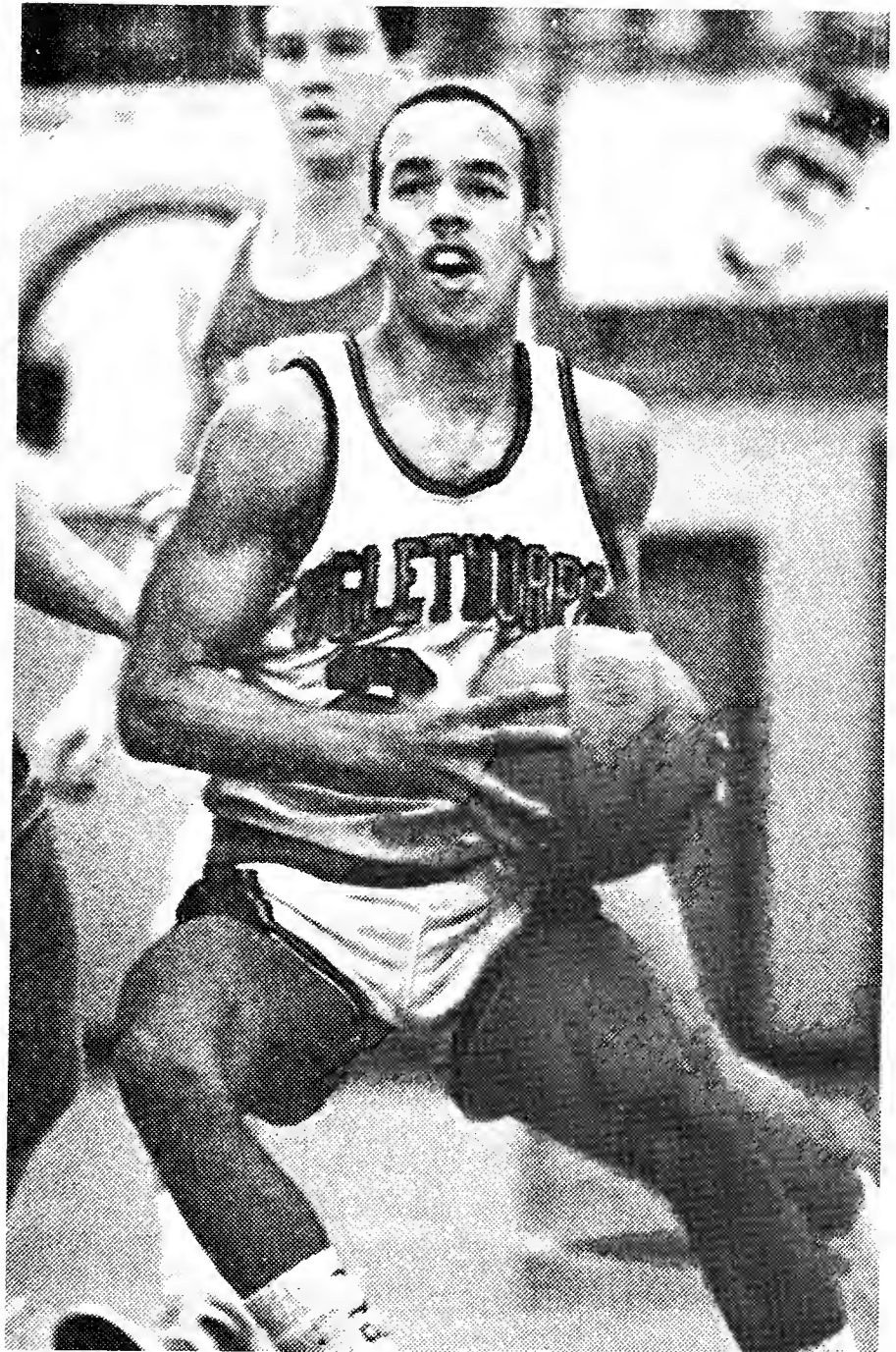
Willie Lawton has been playing well and moved up to be the leading scorer during the second half of the season.

The other Senior player, Bruce Benton, was bothered by a thumb injury and missed a week due to a flu late in January. Bill Sherwood moved into the starting position and did quite well according to Coach Berkshire.

"Bruce will be important to us down the stretch," added Berkshire. Although he didn't start for a while, he will be playing a great deal. Reserve guards Ken Ozment and Scott Boynton were both very important to the team, especially in the first part of February.

O.U. was looking to finish in the top four teams in the district. A crucial game came late in the season against Georgia Southwestern on the road.







Chi Omega

Guynelle Brown, Naomi Hamby, Suzie Schobert, Doug Schmitt, Kelli Hiatt, Marlene Rudy, Michon Hall; Renee Byland, Sherry Sing, Julie Quickmire, Lisé Shade.



Raiders

Kenton Baggs, Murray Brinson, Tomas Hernandez, Chris Bolden, Jeff Provissiero, Bob Brown, Jason Freeman, Frank Russo-Alesi, Jim Owen.



Independents

Jill Kaminski, Joann Bertone, Leticia Galan, Juliet Johnson, Wendy McKelvey, Becky Gess, Anjie Rupe, Cathy Schattenfield, Jenny Soria, Lauren Bishop, Tomas Hernandez.



Poor Girls

Anne Johnson, Kathy Messina, Lil Klein, Hope Wilson, Kari Spangler, Deda Walker, Sharon Wilcox, Cec Mullings, Jill Rosen.

Football		
Men's		
	W	L
1. Raiders	8	0
2. Chi Phi	6	2
3. Poor Boys	5	3
4. Delta Sigma Phi	3	5
5. Kappa Alpha	3	4
6. Rudd	1	6
7. Sigma Alpha Epsilon	0	7
Women's		
	W	L
1. Poor Girls	5	0
2. Independents	3	2
3. Chi Omega	1	3
4. Delta Zeta	0	4



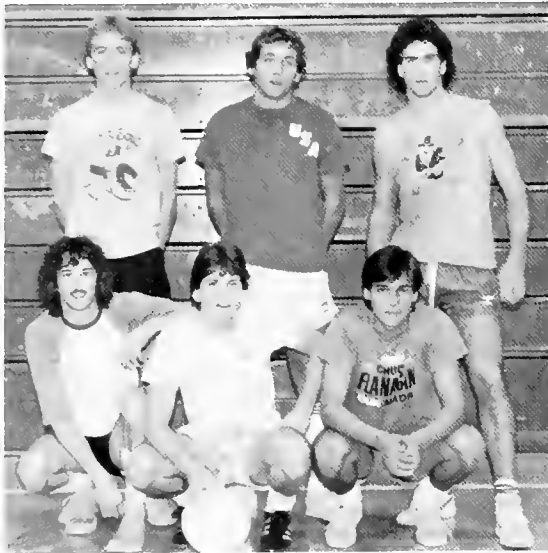
Chi Phi

Carlos Duque-Estrada, Scott Einbinder, Brad Isaacson, Rich Hans, George Dippel, Tim Ray, Rich Wallace, Dave Murdico, Marty Bucci, Keith Nabb, Andy Weiller, Tony Murphy, Kenny Hines.



Trailblazers

Coach Philip Ritchie, Julie Quickmire, Anjie Rupe, Jeff Portnoy, Jim Owen, Chris Eidson.



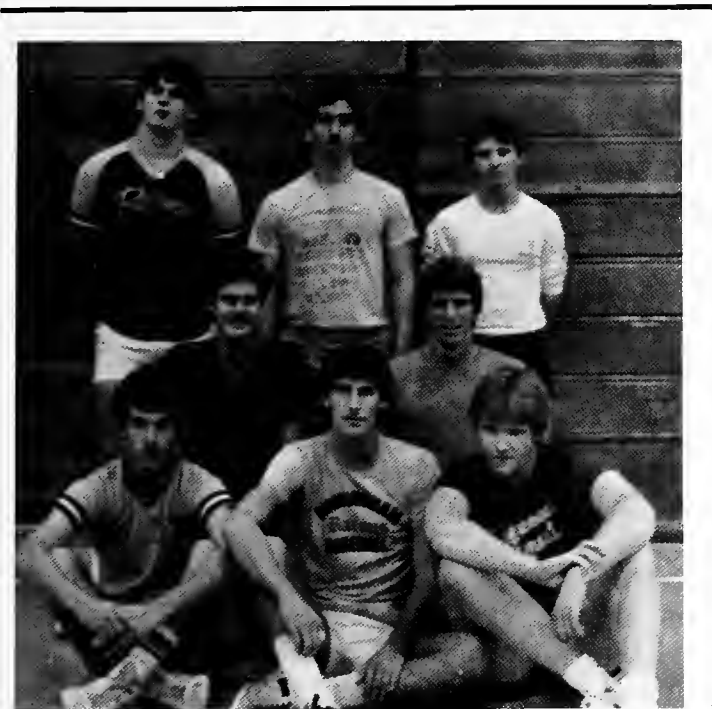
Poor Boys

John Winecker, Eric Garvey, Dean DeCencio, Doug Schmitt, Mike Cheek, John Salamone.



International

Armagan Ozgorkey, Asdrubal Arvelo, Yunasao Murata, Marty Bucci, Maria Tovar, Lil Klein, Leticia Galan.



Raiders

Bob Brown, Mike Szalkowski, Steve Underwood, Gary Pearson, Scott Spooner, Murray Brinson, Tomas Hernandez, Chris Bolden.



Sigma Alpha Epsilon

Mack Van't Riet, Ray Lucas, Joe Del Rocini, Thair Hanaway, Guy Samuels, Ron Kraynik, David Turner, Harris Targovnik, Tom James, Ross Lippman.



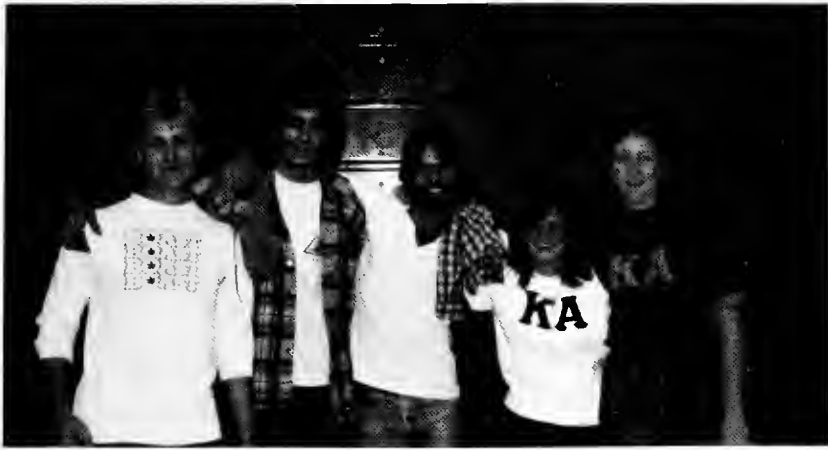
Rudd

Chris Carter, David Holcomb, Paul Sykes, Larry Frank, Stewart Keller, Reggie Frye, Kevin Bradley.



J-Gang

Bret Johnson, Darryl Wade, Bill Fair, Gus Almos, Scott Smith, Jon Van't Reit, Johnny White.



Kappa Alpha

Jon McLeod, Victor Guisto, Kurt Alexander, Cheryl Lerner, Sarah Hunter.



A-Team

Harry Frazer, Steve Kim, Dan Duncanson, Seoung Guem-Li, Bill Sharpe, Mark Knautz, Frank Russo-Alesi.

Volleyball
Men's

	W	L
1. Trailblazers	8	0
2. Poor Boys	8	2
3. Delta Sigma (A)	9	1
4. Raiders	5	2
5. International	4	4
6. J-Gang	4	3
7. Chi Phi	2	4
8. Sigma Alpha Epsilon	3	6
9. Rudd	1	4
10. Delta Sigma (B)	0	5
11. Kappa Alpha	0	4
12. Alpha Phi Omega	0	5

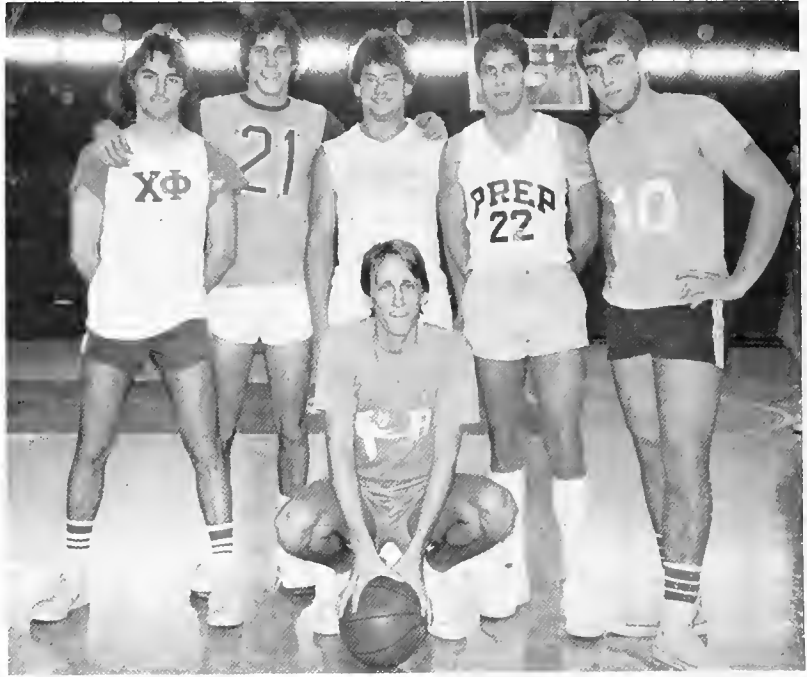
Women's

	W	L
1. Independents	7	0
2. Chi Omega	4	3
3. Alpha Phi Omega Women	2	2
4. Delta Sig Little Sisters	0	4
5. Delta Zeta	0	2
6. Poor Girls	0	2

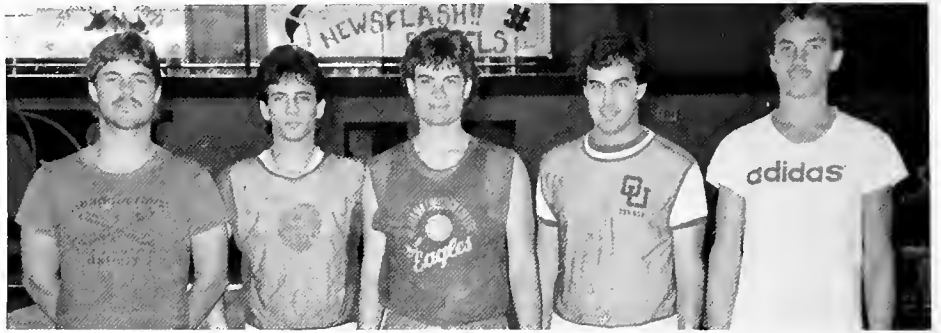


Alpha Phi Omega

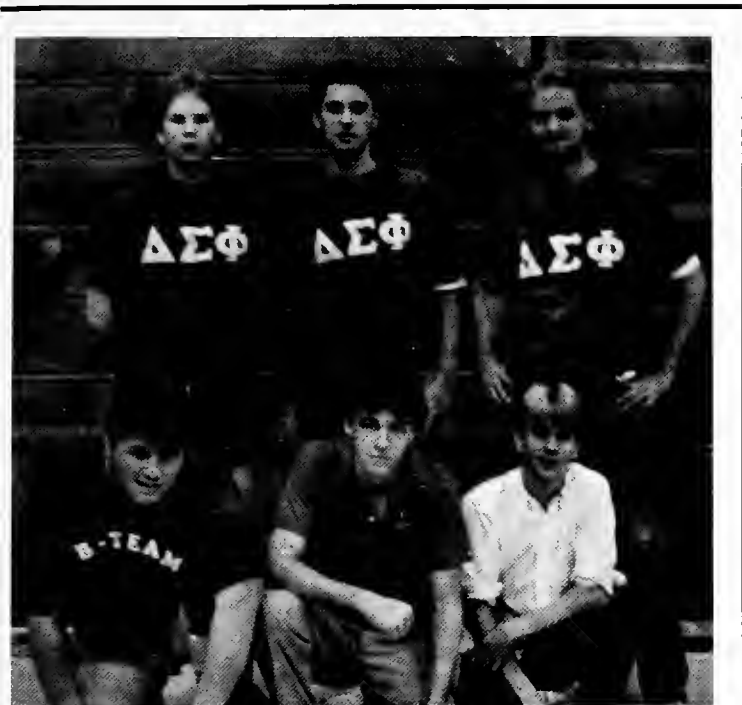
John Green, Diane Dubay, Ken Jackson, Casey Chosewood, Doug Dubay, Kenton Baggs.



Chi Phi
 Tim Ray, Brad Isaacson, Kenny Hines, Scott Einbinder, Rich Wallace, Rich Hans.

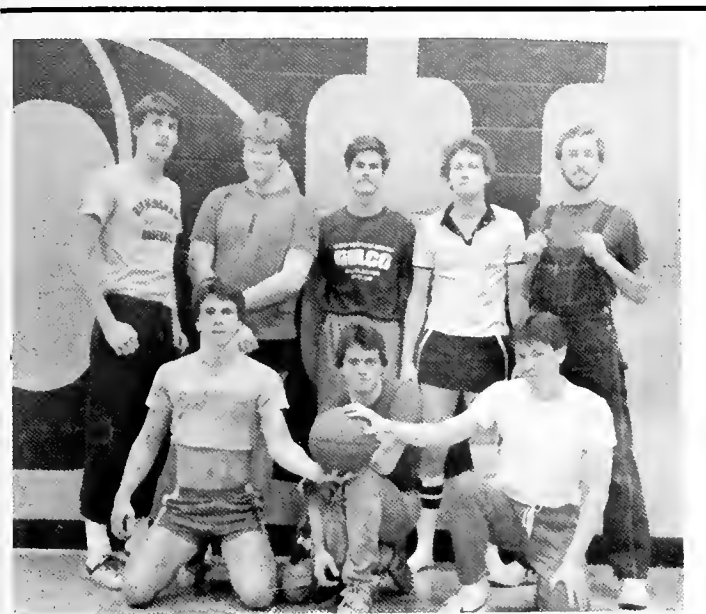


Celtics
 Todd Lane, Jeff Provissiero, Tom Clements, Kenny Gould, Tom Seitz.



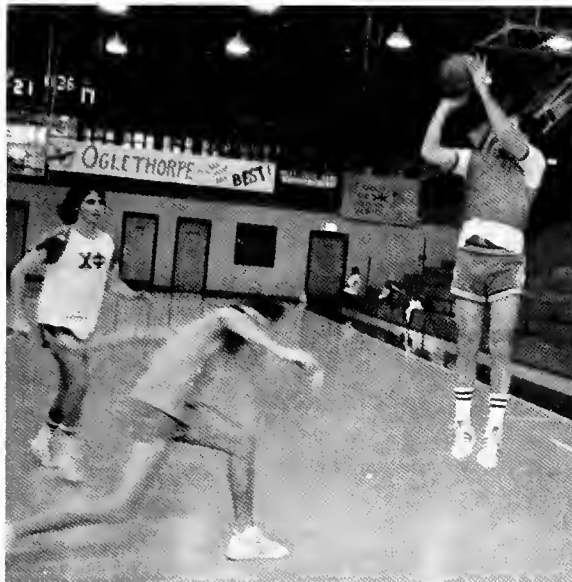
B-Team

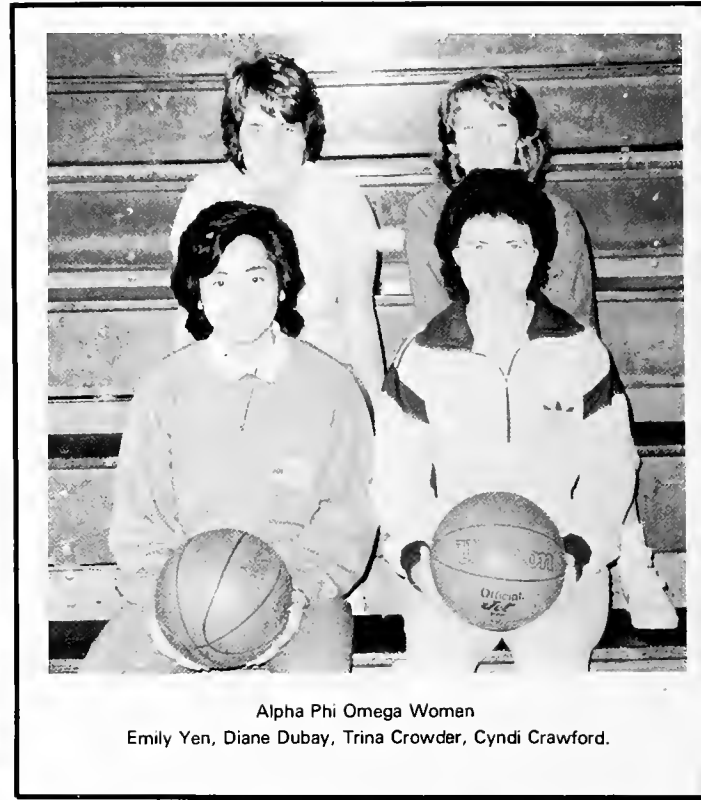
Fred Long, Jay Cee Groce, Bret Sleight, David McCollum, Frank Lawton, Rusty Mabrey.



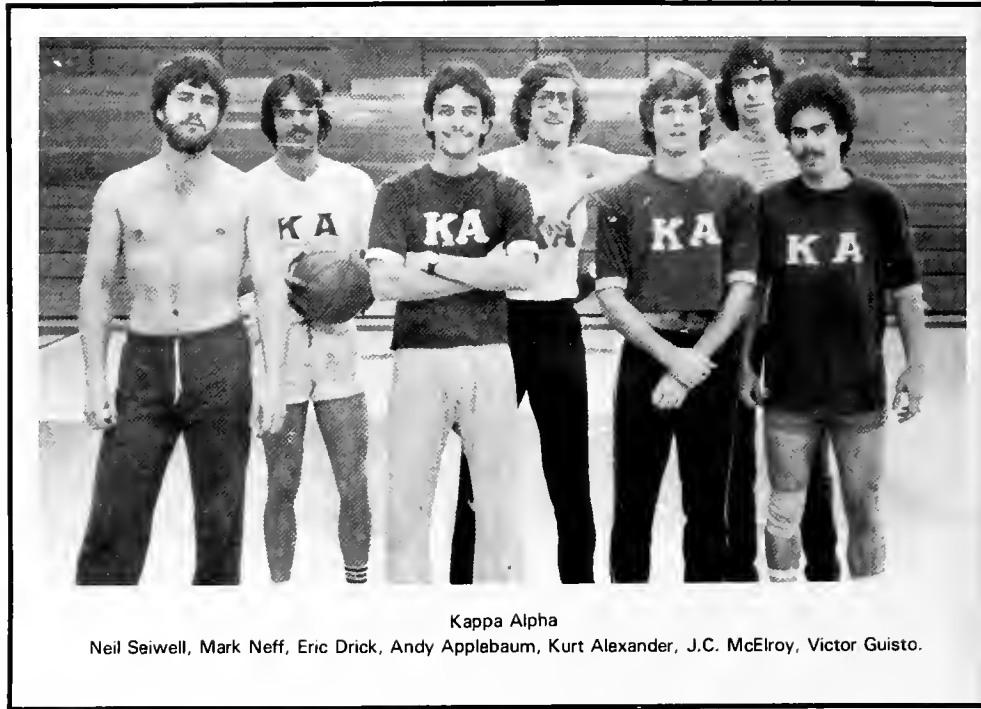
Trojans

Scott Spooner, Adam Petty, Doak Patton, Mike Szalkowski, Steve Underwood, Gary Pearson, Kevin Bradley, Paul Sykes.





Alpha Phi Omega Women
Emily Yen, Diane Dubay, Trina Crowder, Cyndi Crawford.

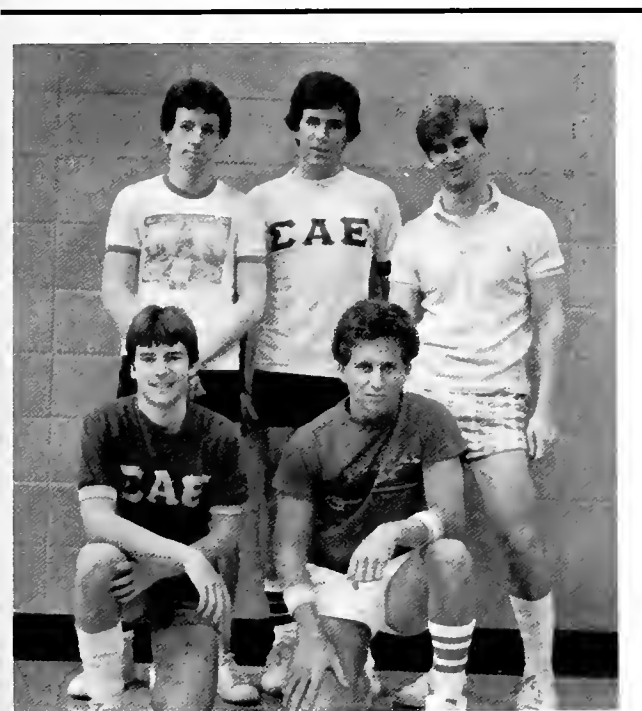


Kappa Alpha
Neil Seiwel, Mark Neff, Eric Drick, Andy Applebaum, Kurt Alexander, J.C. McElroy, Victor Guisto.



B-Team

David McCollum, Hank Bunnell, John Green, Brian Buzzeo, Seoung Guem-Li, Frank Lawton.



Sigma Alpha Epsilon

David Turner, Harris Targovnik, Ron Kraynik, Greg Steele, Thair Hanaway.





Past Petrels

O.U.'s diversified past included such sports as the rifle team, pistol team and baseball. None of these sports made it past the Seventy's, but the memories of these past athletes linger on.



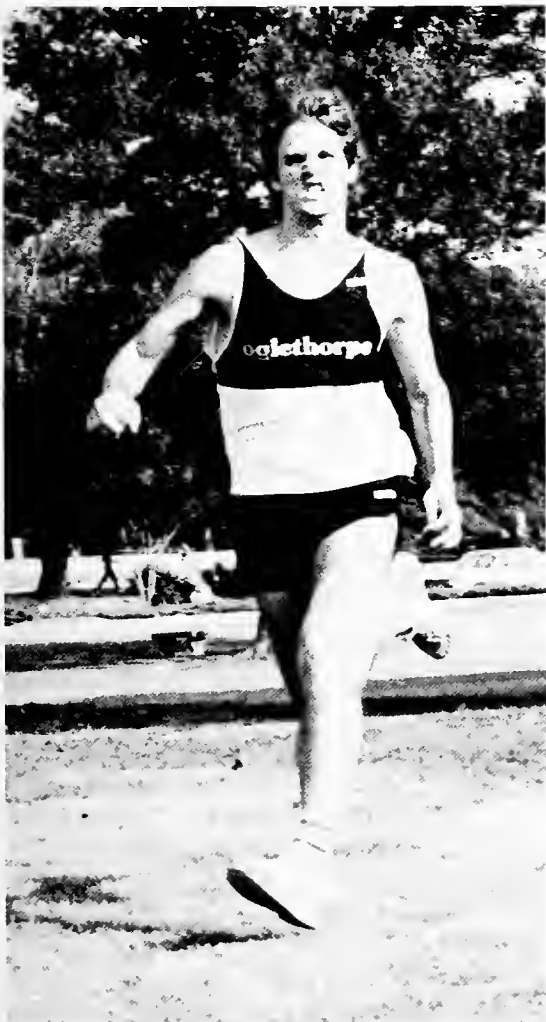
Cross Country

This year's cross country team was a team that was comprised of many hard workers. Marshall Nason, Cross Country Coach, said of the team, "They were a good bunch."

The O.U. team had only two Seniors this year and were relatively inexperienced. One team member, Freshman Richard Briggs, went to NAIA nationals. Nationals were held in Kenosha, Wisconsin, on November 17. The team's best times were at NAIA district 25 championships. The team showed their best effort, according to Nason, at the O.U. invitational.



Wally Strom, Phil Qualter, Glen Dubrowsky, Eric Drick, Greg Hightower, Richard Briggs, Ron Vaughn, Marshall Nason





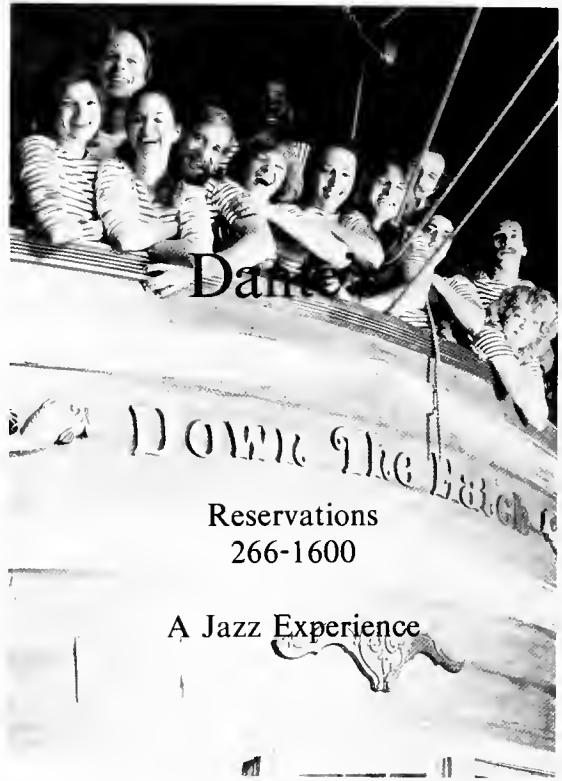
NISSAN/DATSUN

**GA'S #1 VOLUME DEALER
1982, 1983, 1984
NEW & USED CARS**

**SALES • SERVICE • PARTS
LEASING OF ALL MAKES**

5211 Peachtree Ind. Blvd.
Chamblee, Georgia

455-1122



**Reservations
266-1600**

A Jazz Experience

Hinton Apothecary

3652 Chamblee-Dunwoody Rd
Atlanta, Georgia

455-1144



**Compliments
of
EPICURE**



LATEST MILITARY
CLOTHING FAD
OLD SARGE
ARMY NAVY SURPLUS



Hunting, Fishing
Camping, Climbing,
Backpacking, Boots

5316 BUFORD HWY.
DORAVILLE, GA 30340
451-3377 / 451-6031

MORROW IND. BLVD.
MORROW, GA
968-1774

PRECISION PHOTO

25% Discount
Off Our Usual Low Price Of
Photo Processing
With Student I.D.

CHAMBLEE PLAZA 458-1078

Enlargements
5x7 to 11x14
In 20 Minutes At
Northlake Location

NORTHLAKE TOWER
FESTIVAL

496-0313

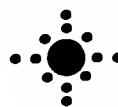


COMPLETE AUTOMOTIVE
REPAIR AND SERVICE
GA STATE INSPECTION

CAMBRIDGE SQUARE SHELL

3500 Ashford Dunwood Rd.
Atlanta, Ga. 30319

CLYDE TATE, Owner Bus. 455-9346



Enoch and Associates

ELEGANT PHOTOGRAPHY

- PORTRAITS
- WEDDINGS
- OLD PHOTOS COPIED &
RESTORED
- INSTANT PASSPORTS

SUITE 12A - MERCHANTS FESTIVAL
EAST COBB 971-0200



3976 Peachtree Rd.—Brookhaven
261-0761

9 Convenient locations

Rusty Scupper

RESTAURANT

3285 Peachtree Road, N.E.
Atlanta, Georgia 30305

Phone (404) 266-0944

2 Miles South of Oglethorpe

Congratulations
to the
Class of 1985

Compliments of

**Stephen and Jeanne
Schmidt**

Open a fiscal fitness package.



Uncover these Fulton Federal benefits:

Interest earning checking and bill pay by phone; 24-hour teller transactions; savings accounts; VISA; home and auto loans; retirement plans; plus, a number of other services. Ask your Fulton Federal Savings Counselor about the Fiscal Fitness Package.

Main Office
21 Edgewood Ave., NE
586-7283



OLDSMOBILE



ROLLS ROYCE



ISUZU

*One Dealership brings together
the best of three countries*

AMERICA ENGLAND JAPAN

Mitchell Motors Inc.

• SALES • SERVICE • LEASING

We lease all makes & models

5675 Peachtree Industrial Blvd.
Chamblee, Georgia 30341
458-5111



Red Lobster

For the seafood lover in you.

Seafood lovers call:

CHAMBLEE

458-3176

5347 Peachtree
Industrial Dr.

Most Major Credit Cards Accepted

GUNS

JEWELRY

PW
AND

233-8533

**PAWN
SHOP**

4276 PEACHTREE ROAD, N.E.
ATLANTA, GEORGIA 30319

BUYS & SELLS ALMOST EVERYTHING

Located Directly South of Oglethorpe

WADE PALMES BOBBIE PALMES



Alinor Shafer

**PEACHTREE
FLOWERS**

4280 Peachtree Rd.
Atlanta, Georgia 30319
(404) 266-8800

AWARDS

TROPHIES PLAQUES

Gifts I. D. Bracelets

Jewelry Engraving

Engraving . . .

Makes gifts more gracious

Possessions more prized



GRAPHIC ENGRAVING CO.

5415 BUFORD HWY. DORAVILLE, GA 30130
678-258-0254

LOCATED IN TREASURE VILLAGE SHOPPING CENTER

Oglethorpe Bookstore



Good Luck To
O.U. from

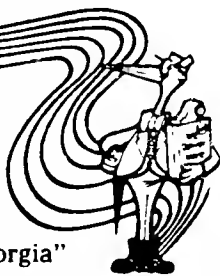
Bob and Ray

Brookhaven Liquor Store
4200 Peachtree Road
1 mile south of campus

We deliver more than just a car

**SPREEN
TOYOTA**

"Oldest Toyota Dealer in Georgia"



We're a Full Service Dealership

- Sales
- Rental
- Used Cars
- Service Dept.
- Leasing
- Parts & Body Shop

OPEN ON SATURDAYS FOR SERVICE!

**SPREEN
TOYOTA**

4856 Buford Hwy.
Chamblee
458-8601

**BROOKHAVEN
PHARMACY**

4001 Peachtree Rd
Atlanta, Georgia
233-6701

GENERAL HARDWARE

4218 PEACHTREE ROAD
ATLANTA, GEORGIA 30319
404 237 5209

BROOKHAVEN
OGLETHORPE

"ANYTHING IN HARDWARE"

Color Image



Jean Simmons

Professional Color and Make Up Consultant
(404)-953-2254

659 Fern Street

Marietta, Georgia 30067

Congratulations
to the

**Class of
1985**



DRYCLEANING
SHIRTS • STORAGE

Brookhaven Cleaners

½ Mile From Oglethorpe
10% OFF WITH AD

231-4771

4246 PEACHTREE RD
ATLANTA, GA 30319

**GEORGIA ARMY NATIONAL GUARD SALUTES
THE STUDENTS OF OGLETHORPE UNIVERSITY**

We have challenging, good paying part-time jobs for qualified men and women. You may also qualify for generous financial assistance and many other benefits to help you complete your education. The Georgia Army Guard offers an opportunity to serve your state and nation while helping yourself. Call 656-6254 in Atlanta.



Let It Snow!



Aa

Terri Abernathy 36
Donna Adair 76, 78, 96
Kevin Adams 96
Pam Adams 86
Hassana Adamson 58
Robin Adams
Kurt Alexander 20, 62, 175, 178
Shelly Alford 24, 56, 58, 96
Rhoda Allen 142
Gus Almos 174
Mauricio Amaya 50, 70, 96, 151
Betty Amerson 126, 151
G. Malcolm Amerson 70, 142
Michelle Anderson 58
Lane Anderson 142
Sonya Anderson 96
Charis Andrews 78, 96, 164
Daniel K. Anglin 142
Andy Applebaum 178
Nancy Arnold 86
Asdrubal Arvelo 96
Jill Ashton 58, 60, 96
Omid Atlassi 96
Keith Aufderheide 70, 143
Vicky Autrey 96

Bb

Kenton Baggs 64, 66, 70, 86, 170, 175
Jessica Bagley 43, 44, 49, 64, 66, 68,
76, 78, 80, 96
John Bailey 96
Donna Baker 24, 96
Keith E. Baker 72, 143
Wendy Baker 23, 96
Brad Baldwin 49, 61, 68
Scott Baldwin 96
Bob Balkam 20, 46, 60
Sue Bamford 20, 46, 96, 98
Colin Bannerman 96
Lisa Barnes 51, 72, 96
Sue Bartholomae 96
Karen Bates 97
Timothy Bates 23, 42, 86
Ilene Baylin 23, 63
Ralph Beard 19, 20, 46, 60, 86
Frank Beaty 97
Traci Bell 59, 97, 164
Babette Bennett 97
Bruce Benton 55, 166, 168
Barb Bessmer 42, 44, 45, 46, 49, 64,
86, 91
Karen Bender 126
Patrick Berry 143
Jack Berkshire 126, 166, 168
Bonnie Bertolini 126
Joann Bertone 171

Brent Bishop 97
Lauren Bishop 97, 171
Leo Bilancio 142, 143
Lisa Bitoun 97
Cindy Bjurmark 44, 54, 97
Mark Blankenship 49, 97
David Boisvert 97, 166
Chris Bolden 97, 170
Rob Boggus 76, 78, 86, 159
James Bohart 144
Alonso Bohart 144
Bonnie Boles 44, 49, 70, 73, 98
Annette Boling 98
Shari Booth 98
Helen Bourne 46, 72, 76, 78, 98
Eve Bower 70
Scott Boynton 166, 168
Timothy Bracy 98
Eugene Brasher 144
Kevin Bradley 80, 174
Patsy Bradley 126
Laura Brian 80
Richard Briggs 61, 181
William Brightman 71, 144
Murray Brinson 170
Stacey Bronstein 45, 46, 48, 80, 98
Marc Brooks 98
Terry Brooks 54, 55, 98
Bob Brown 170
Carolyn Brown 98
Guynelle Brown 48, 52, 53, 66, 70, 73,
99, 160, 170
Maxeen Brown 87
Robbin Brown 99
Sheryl Brown 87
Mark Bryant 54, 76, 79, 87
Martin Bucci 99, 171
Linda Bucki 126
Hank Bunnell 21, 61, 71, 79, 99, 179
Alecia Bullard 62
Chitrada Burapachaisri 99
Leni Bunin 63
Susan Butler 54, 99
Brian Buzzeo 53, 61, 179
Renee Byland 55, 59, 99, 164, 170

Cc

Felix Cabrera 99
Marohn Callins 87, 100
Marc Cash 49
Pat Capes 73, 99
Ronald Carlisle
Jeanne Carolan 61, 71, 99
Claire Carroll 127
Chris Carter 99, 174
Fred Carter 47, 126
Veronique Cauquil 99
Tammy Chaffin 70, 87
Thomas Chandler 127, 195, 197
Julie Chapinn

Mike Cheek 34, 99, 159
Karen Cheole 99
Margaret Chin 99
Casey Chosewood 25, 54, 61, 64, 66,
76, 78, 83, 99, 175
Charlotte Christian 46, 59, 72, 87
Michael Clance 99
Barbara R. Clark 70, 71, 144
Tom Clements 99, 162
Cindy Cobbaert 100
Claire Coles 100
Katherine Conrad 71
Paula Cornish 51, 100
Terri Cobb 128
Bill Cottone 63, 100
Bruce Crain 100
John Cramer 70, 145
Cindy Crawford 54, 56, 76, 78, 100,
178
Trina Crowder 54, 76, 78, 100, 178
Nell D. Crowe 145
Ann Crump 100
Steven Cumbee 100

Dd

Antonio Dahl 19
Joe Damiano 87
Thomas Danisi 100
Rhonda Davie 100
Guinan Dawson 100
Phil Deal 43, 46, 54, 88
Dean De Cencio 23, 100
Joe De Franks
Robert De Mattheu 49, 68, 101
Mara Delaney 101
Fred DeLoach 35
Joe Del Rocini 60, 72, 101
Dominic Desantis 69, 101
Chrissy Di Benedetto 101
Paul Dillingham 124
George Dippel 88, 171
Cindy Downey 49, 101
Eric Drick 46, 62, 179, 178
Diane Dubay 44, 46, 54, 64, 66, 70,
72, 78, 80, 101, 160, 175, 178
Doug Dubay 25, 46, 53, 54, 62, 64, 76,
78, 88, 175
Glen Dubrowsky 62, 101, 181
Carol Duffy 128, 130
Matt Duggan 101
Terria Duncan 101
Wayne Duncan 101, 166
Dan Duncanson 21, 22, 34, 35, 37, 42,
44, 46, 61, 64, 66, 70, 88, 175
Richard Dunn 101
Carlos Duque-Estrada 63, 171
George Dupuy 153
Connie Duque 19, 22, 50
Eduardo Duque-Estrada 101

Ee

Marty Eastlack 24, 36, 43, 45, 52, 64, 66, 80
Shawn Edwards 101
Chris Eidson 101
Scott Einbinder 20, 63, 171
Sheri Eleswich 101
Uta Eltester 101
Denise Enneking 54, 73, 101
Jane Ensor 101
Young Eom 102
Chris Erckert 36, 37, 42, 44, 49, 60, 68, 102
William Erickson 128
Angelo Espejo 102
Hollis Ewing 102
Eyo Eyo 34, 50, 102

Ff

Joseph N. Fadyn 145
Viana Faline 63
Bill Fair 36, 42, 44, 76, 78, 102, 162, 174
Alan Fann 88
Ron Few 147
Mark Feiring 29, 56, 60, 102
Jack Ferrey 128
Rich Fischer 32, 45, 46, 73, 98, 102, 166
Penny Fisher 102
Fran Flowers 51, 128
Jay Floyd 43, 44, 65, 70
Gary Ford 53, 60, 102
Alan Fountain 102
John Fox 102
Elena Franco 54, 78, 102
Jennifer Francik 60
Larry Frank 22, 43, 45, 46, 55, 73, 102, 166, 174
Harry Frazer 20, 43, 44, 53, 61, 102, 171, 175
Jason Freeman 170
Betsey Freiburger 102
Charlotta Friday 102
David Frost 25, 102
Reggie Frye 22, 46, 55, 61, 73, 162
Robert J. Fusillo 145

Gg

Brad Gadberry 63, 65, 71, 76, 79
Ellen Gadberry 63, 65, 71, 89
Leticia Galan 103, 160, 171
Pam Galanek 23, 103
Don Galbraith 103

Mia Gallagher 60, 103
Jerry Garcia
Mike Galyean 103
Kathleen Ganey 129, 160
Christine Garrido 103
Eric Garvey 159
Stacy Gates 36, 37, 103, 154
William Gates 63, 129
Catherine Gay 20, 60, 48, 103
Michelle Gazes 24, 63, 103
Mary Carol Geddis 71
Andy Geeter 103
Howard Gelb 89
Becky Gess 42, 48, 55, 63, 68, 103, 171
Christine Gilmore 51, 89
Janice Gilmore 129
Victor Giusto 62, 103, 175, 178
Amy Glover 19, 21
David Goldberg 104
Tracy Goldman 104, 163
Eileen Gomez 104
Kenny Gould 73, 89, 163
Christine Graf 104
Antonella Grandi 104
Joe Granger 166, 168
Charles Granger 56, 63, 89
Gabriel Grasso 65, 68, 104
Sande Gray 104
Christine Green 104
John Green 54, 70, 104, 175, 179
Rebecca Green 28, 61, 104
Wayne Gregory 104
Jay Cee Groce 104
Ann Groover 90
Seong Guem-Li 175, 179
Ralph Gunn 76, 78, 90
Walter Gunn 104
Beth Guntner 105

Hh

Cle Hall 130
Michon Hall 61, 91, 105, 170
George Hall 105
Kevin Hall 73, 90
Naomi Hamby 20, 44, 46, 48, 56, 59, 63, 76, 91, 105, 170
Yvonne Hamby 28, 78
Nina Hamond 70, 73, 90, 111
Thair Hanaway 60, 105, 179
Richard Hans 36, 105, 171
Annette Hansen 21, 61, 105
Cile Hardwick 35, 105
Marie Harkey 76, 79, 105
Darryl Harper 105
Richard Harris 105
Terri Harris 105
Ginny Harrison 105
Henry Hartje 70
Michelle Harrison 49, 52, 59, 72, 105

Jane K. Hayes 146
Michael Hays 90
Joe Helwig 54, 79, 105
Bruce Heissler 109
Christi Hendrix 105
Sonja Henry 105
Karen Herfurth 105
Jacqueline Hernandez 59, 105
Tomas Hernandez 170, 171
Bruce W. Hetherington 69, 146, 151, 153
Rhonda Hickman 21, 54, 105
Jo Dee Hicks 106
Kelli Hiatt 56, 59, 170
Greg Hightower 61, 90, 135, 181
Alice Hilger 71
Tomonari Himeno 106
Kenny Hines 33, 63, 171
Ralph Hodge 106
Kelly Hodges 90
Amy Hoffland 106
David Holcomb 106, 73, 55, 174
Sonja Holcombe 90, 71
C. Norman Hollingsworth 146
John Hood 140
Khalil Hourani 106
Nest Hover 130
Mary Howard 48, 54, 106
Marlene Howard 35, 130
John Huber 106
Sarah Hunter 62, 175
Kim Hudgens 46, 59, 106
Paul Hudson 146, 147
Michelle Hughes 106
Prudy Hughes 131
David Hwang 90

Ii

Eiji Igarashi 106, 107
Islamiat Ipaye 106
Brad Isaacson 106, 171
Humberto Itriago 106
Maria Itriago 106

Jj

Jonathan Jay 131
Ken Jackson 36, 37, 54, 72, 78, 80, 106, 175
Tom James 60, 106
Joanne Jarosz 49, 54, 81, 106
John Jarrard 54, 78, 80, 106
Cecelia Jenkins 106
Walter Jenkins 146
Anne Johnson 171
Bret Johnson 174

Greg Johnson 107
Harold Johnson 141
Juliette Johnson 68, 72, 91, 171
Rod Johnson 43, 45, 46, 51, 73, 91
Thomas Johnson 21, 63, 107
Carol Johnston 72, 131
Charlton Jones 69, 147
Maria Jordan 54, 107
Courtney Joye 21, 56, 59
Mirvat Jrab 49, 107

Kk

Okubo Kazuhiko 107
Jill Kaminski 107, 171
Stewart Keller 22, 46, 55, 61, 73, 107, 174
Gwen Kendrick 107
Awilda Kennedy 107
Nancy H. Kerr 73, 147
J. Brien Key 68, 136, 7
Biya Khan 54, 107
Stephen Kim 61, 107, 175
Kathy King 29, 107
Elizabeth Klein 63, 101, 107, 160, 163, 171
Mark Knautz 21, 48, 61, 73, 108, 175
John Knot 124, 151
Ray Koepsell 108
George Koether 108
Ann Kohl 54, 91
Susan Komin 50, 108
Georgiana Krause 108
Ronald Kraynick 60, 108, 179
Marianne Krill 108
Jim Kuchinski 63
Richard Kustin
Yoshiaki Kurokawn 50
Ritesh Kuvadiah 108
Onikepo Abi Kuye 108

Ll

Laura Laframboise 49, 80, 108
Andrew Lampros 108
Todd Lane 108
Carol Lanier 109
Sean Lapides 44, 60
Kim Laurel 109
Rhett Laurens 70, 91
Irene Lavita 54, 73, 109
Reid Lawson 109
Frank Lawton 55, 61, 109, 179
Willie Lawton 51, 109, 166, 168
Gina Leathers 109
Seong Lee 109
Jackie Liberman 44, 46, 56, 58, 63, , 101

Sung Lee 109
Michelle Lent 131
Tony Lentini 109, 166
James Leggat 63
Cheryl Lerner 63, 73, 91, 175
Liliem Levy 109
Ross Lipman 28, 49, 56, 60
Janie J. Little 154
Hsiao-Yun Liu 91
Tammy Locklear 109
Nanette Loftis 92
Fred Long 61, 109
Beatriz Lopez 34, 49, 53, 60, 109
Martha Loring
Nathaniel Lowe 33
Jeff Lowman 92
Ray Lucas 20, 24, 42, 43, 60, 65

Mm

Rusty Mabrey 42, 45, 49, 52, 61, 109, 114
Helen Maddox 78, 109
Patt Maerker 71
Veronica Maldonado 19, 49, 109, 163
Sheryl Manley 131
Janice Marshall 43, 54, 65, 66, 72, 76, 78, 92
Leslie Martin 59
Natalia Martin-Leyes 109
Lonnie Masdon 73, 109
Jeff Masso 109
John Mastroianni 48, 110
Carolyn Mathews 131
Gwen Mathews 110
Dennis Mathews 132
Daniel McClure
Marcia McGuigan 71, 110, 34, 35, 45, 49
Ann McGinn 132
Karen McAmis 92
Martha McCardel 59, 71, 92
David McCollam 61, 110, 179
Mike McCracken 104
Sue McCue 36, 37, 42, 45, 46, 60, 66, 110
Kathleen McDermott 22, 29, 110, 164
J.C. McElroy 36, 45, 62, 110, 178
James McFarland 110
Kecia McGlothan 51, 72, 110
Amy McGown 110
Anna McGuffey 93
Amy McIlveen 50, 110
Wendy McKelvey 28, 160, 171
Jonathan McLeod 56, 110, 175
Ryan McMullen 110
Summer McNair 29, 110, 163
Eric Mehnert 73, 49, 110
Hassan Mehse 110
Kathy Messina 34, 46, 160, 171
Edward Metcalf

David Methven 110
Greg Meyer 93
Margaret Meyer 55, 73, 93
Robert Miller 32
Lisa Millman 110
Anne Mills 25, 111
Judy Mitcham 111
Kathi Mitchell 111
Stephanie Mitchell 111
Robert Moffie 45, 73, 147
El-Hosin Mohamed 111
Debney Moore 73, 111
Gloria Moore 133
Chip Moore 93
Chris Moore 93
Kelly Moran 28, 48, 111
Angie Morrison 111
David K. Mosher 148
Cecilia Mullings 111, 171
Brenda Mullis 54, 111
David Muridico 111, 171
Eileen Murphy 66, 68, 72, 93
Maureen Murphy 93
Tony Murphy 171
Maureen Murray 111
Timothy Murray 112

Nn

Keith Nabb 63, 112, 171
Risè Nachman 36, 46, 112
Marc Naef 62, 112, 178
Andrew Nash 20, 62
Marshall Nason 45, 50, 66, 133, 135, 179, 181
Chris Neild 112
Tom Nesbitt 112
Phillip J. Neujahr 47, 68, 148, 152
Jerri Newman 71
Susan Nicholas 112
Lloyd Nick 47, 148, 197
Vanya Nick 153
Anders Nilsen 133, 139
Ken Nishimura 148
Dan Noble 19, 44, 112
Theresa Norton 63
Tim Noto 112
Carolyn Nowell 44, 93
Andy Nye 112
Jimmy Nye 112

Oo

Bonnie O'Harrow 34, 35, 46, 88, 93
Peg O'Neal 112
Darien Ogburn 113
Charles Okoh 113
Kazuhiko Okubo 50, 113
Agustin Olmos 113

John D. Orme 129, 149
Janice Ott 113
Jim Owen 133, 166, 170
Lance Owen 113
Ken Ozment 166, 168

Pp

Phillip F. Palmer 149
Carmen Papp 113
Deirdre Parker 49, 113
Linda Parkinson 113
Joe Parsons 49, 113
Maria Paterson 59
Bonnie Patterson 72, 80, 95
Manning M. Pattillo 7, 47, 124
Bill Patton 113
Doak Patton 45
Bud Payne 133
Michelle Payne 28
Gary Pearson 113
Luis Peña 149
Byrd Perkerson 134
Mary Ellen Perkins 134
Jennifer Perry 21, 44, 52, 53, 60, 70, 163
Polly Perry 134
Helen Peterson 58
Jeff Petree 63
Sharon Petti 44, 60, 93
Michael Petty 134
Tony Petty 68, 113
Dee Pickett 43, 46, 49, 52, 54, 68, 113
Kerstin Pierce 113
Bob Pinkney 113
Manolis Platanis 49, 113
Karen Poe 19, 54, 113
Bill Porter 76, 78, 113
Robin Porter 63
Jeffrey Portnoy 71, 149
Luis Prado 94
Aileen Pratt 56, 58, 94
Cathy Preiser 58, 62, 113
Jeff Provissiero 114, 170
Andrew Provost 114, 162

Qq

Phil Qualter 114, 179, 181
Julia Quickmire 46, 59, 114, 160, 170
Lisa Quinn 73, 114

Rr

Ellis Ragland 94
Laura Rankin 45, 46, 73, 114
Tad D. Ransopher 150

Mick Rathjens 21, 22, 32, 35, 44, 46, 56, 60, 73, 94
Jon Rawls 63, 114
Tim Ray 64, 114, 171
Kimberly Reid 49, 51, 71, 114
Misty Reid 34, 35, 164
Penni Reid 46, 48, 71, 114
Cheryl Rella 94
Sandra Reyes 114
Bucky Reynolds 134, 158, 159
Adrina Richard 135
Keith Rieders 114
Elaine Riordan 114
Ruth Ritch 114
Philip Ritchie 135, 162, 163
Amy Ritchason 114
Wade Roach 114
Donald Roberson 114, 166
Cathie Roberts 24, 58, 114
Jon Robinson 114
Mike Robinson 141
Pauline Robinson 28, 114
Martine Rochat 115
Doris Rojas 115
Larry Rollins 46, 54, 76, 78, 115
Penny Rose 135
Robin Rose 89, 94
Sherry Rosen 62, 171
Jill Rossen 34, 88, 115
Tracy Roth 115
Donna Rothstein 71, 94
Kim Rouleau 73, 114
Maureen Rowe 44, 46, 54, 76, 78, 115
Alan Royalty 115, 166, 168
Marlene Rudy 20, 43, 46, 115, 170
Michael K. Rulison 47, 70, 151
Angie Rupe 48, 55, 63, 160, 171
Frank Russo-Alesi 36, 60, 65, 70, 73, 115, 170, 175
Ruth Ryan 44, 52, 60, 115

Ss

John Salamone 115, 159
Dorothy Saltmer 59, 116
Guy Samuel 60, 116
Jane Samuel 116
Audrey Sanchez-Salazar 116
Luann Sands 72, 116
J. Bradford Sargent 125
Robert Sasovetz 116
Sandra Sasson 60
Levie Satisfield III 116
Missy Sauer 116, 164
Daniel L. Schadler 151, 152
Cathy Schattemfield 63, 82, 116, 171
John Schattenfield 25, 94
Jill Schimmack 69, 70, 72
Gretchen Schmidt 116
Doug Schmitt 43, 46, 48, 116, 159, 170

Suzi Schobert 52, 53, 116, 170
Richard Schwartz 70, 94
Kimberly Scott 28, 116
Laura Scott 49, 116
Richard Scott 70
Selena Scott 62
Judy Seamens 116
Tom Seitz 136, 166
Neil Seiwel 62, 116, 178
Lisè Shade 46, 59, 65, 66, 70, 116, 164, 170
Barbara Shadomy 49, 72, 80, 116
Bill Sharpe 60, 116, 175
Trish Shelton 72, 116
Sally Shin 70
Bill Sherwood 98, 116, 166, 168
William O. Shropshire 69, 151
John Shuttleworth 117
Jennifer Sierra 34, 50, 51, 117
Mark Sikorski 117
Scott Silvis 117
Carolyn Simpson 136
Ann Sincere 136
Sherry Sing 59, 117, 170
Katherine Sjoblom 117
Dawn Skelton 52, 117
Bret Sleight 23, 43, 46, 60, 70, 73, 117
Alan Sloan 137
Linda Sloan 137
Andy Smith 117
Randy Smith 138
David Smith 117
Faith Smith 117
Elizabeth Smith 118
Scott Smith 118, 162, 174
Jennie Soria 118, 160, 171
Kevin Southern 49, 68, 118
Kari Spangler 73, 118, 171
Jonathan Spanier 95, 104
Scott Spooner 118
David Stallings 118, 166
Greg Steele 60, 179
Cathy Steiner 58, 95
Mark Stephens 47
Kitt Steppe 166, 168
John C. Stevens 150
Victoria Stevens 150
George Stewart 6, 138, 195
Brad L. Stone 45, 73, 150
William Straley 150
Susan Street 36, 44, 59
Robert Strozier 70, 73, 118
Steven Sugg 119
Polsak Sukying 119
Bob Swanson 119
Paul Sykes 55, 65, 66, 70, 73, 92, 121
Mike Szalkowski 119

Tt

T. Lavon Talley 150

Alfian Tansil 119
 Aripin Tansil 50, 119
 Harris Targovnik 60, 119, 179
 Leslie Taylor 119
 Linda Taylor 71, 77, 79, 151
 John Thames 125
 David N. Thomas 119, 151
 Walter Thompson 119, 162
 David Thompson 119
 Jerrie Thompson 73, 118, 119
 Dale Tobias 119
 Deidre Tolbert 51, 119
 Maria Tovar 160
 Ricky Traylor 119, 166
 D.J. Treas 119
 Laura Trittin 73, 118, 119
 Pamela Tubesing 137, 138
 Dave Tucker 60, 80
 John E. Tully 151
 Margaret Turcotte 56, 59
 Dave Turner 60, 179
 Yvonne Turner 95
 Jim Tuten 52, 119
 Jeff Tuttle 119
 Katie Tyndell 120

Uu

Steve Underwood 120
 Osagie Uzzi 120

Vv

Louise M. Valine 151
 Mack Van'T Riet 53, 60, 120, 174
 Jon Van'T Riet 34, 162
 Martha H. Vardeman 152
 Nicholas Vasconez 107, 120
 Ron Vaughn 63, 120, 179, 181
 Vicki Viotor 49, 120

Ww

Darryl Wade 36, 120, 174
 Randy Wade 34, 120
 Rodney Wade 120
 George Waldner 66, 125, 129, 136
 Deda Walker 19, 23, 34, 73, 120, 164, 171
 Teri Wall 60, 120
 Rich Wallace 63, 171
 George Walters 120
 Michelle Ward 120
 Mary Ellen Warrick 138
 Michelle Waschak 120
 Betty Weiland 139
 Andrew Weiller 62, 120, 171
 Victoria Weiss 153
 Marie Wesley 70
 Julie Weyer 139
 Andy Weyler 63
 Maureen Whalen 49, 54, 120
 Ann Wheeler 56, 71, 152
 Edd Wheeler 45, 125
 George Wheeler 145, 152
 Johnny White 44, 53, 80, 120, 174
 Sunny White 109, 120
 William Whitten 153
 Tina White 120
 Paul Wiebe 153
 Sharon Wilcox 51, 121, 163, 171
 Byron Wilde 121
 Richard Williams 66, 95, 166
 Rhoda Williams 70
 Cindy Williams 121
 Todd Williams 121
 Angela Wilson 71, 80, 121
 Hope Wilson 121, 160, 171
 Julie Wilson 121
 Mark Wilson 73, 121
 John Winecker 48, 95
 Chuck Wingo 139
 Monte Wolf 70, 73, 153
 Jacqueline Woodard 46, 80, 121

Charles Woodford 49
 Samantha Woods 62, 121
 Todd Wucik 121
 Chip Wuerz 48, 95
 Mike Wywra 56, 62

Yy

Emily Yen 54, 121, 178
 William Yorks 121
 Amy Young 45
 Gina Yuille 121

Zz

Philip Zinsmeister 47, 70, 121, 153

A Special Thanks goes to:

Marty, who was more like a co-editor than an assistant editor. Without her hard work and dedication, this book would not have been possible.

Angela, for putting together the new Student Life section with *Jackie*, for drawing the ad section layouts, and especially for doing so much to improve the quality of the Miss Yamacraw Pageant.

Stacey, for putting together the Organizations section for the second year in a row almost single handedly.

Joanne, for doing an excellent job with the instructors layouts and helping with the index.

Johnny, for his willingness to help in every way he could.

Terry and Kaylen, for taking pictures.

John, for taking care of the survival kits.

Sue and Jackie, for their help with the Miss Yamacraw Pageant.

Art Williams our Herff Jones Yearbook Representative.

My Mother and Father for their help and support.

Diane Dubay—Editor

Dedication



Mr. Chandler with his Rolls Royce.



Mr. Stewart at the library.

This yearbook is dedicated to our librarians, Mr. Chandler and Mr. Stewart. The Yamacraw staff greatly appreciates all the assistance that these men gave us when we were preparing the historical sections of this yearbook. We are indebted to them for the time and effort they spent locating books, information, and pictures for us. We also thank them for their cooperation and understanding ways.

150 years of excellence celebrated with style





Oglethorpe University proudly celebrated 150 years of excellence on February 13. The activities had originally been scheduled for February 12, but an unexpected snow storm forced the event to be rescheduled.

Although some of the distinguished guests were not able to be present on the thirteenth, the O.U. players performed *The Oglethorpe Story* to a near capacity crowd. After the play, the cast and crew, as well as many distinguished and honored guests gathered in Emerson Student Center for a luncheon, where they were entertained by the University Singers.

Lloyd Nick and Mr. Chandler seemed pleased as many guests, students and faculty members proceeded to Lowry Hall for the opening of an art exhibit depicting the history of old and new Oglethorpe.



