

Assembly



Yamachan 1996

OGLETHORPE UNIVERSITY
LIBRARY

Digitized by the Internet Archive
in 2010 with funding from
Lyrasis Members and Sloan Foundation

<http://www.archive.org/details/yamacraw199665ogle>



Table of Contents

| | |
|---------------|-----|
| Student Life | 12 |
| Performances | 36 |
| Establishment | 42 |
| Students | 54 |
| Organizations | 78 |
| Greeks | 102 |
| Sports | 120 |

Yearbook 1996

Oglethorpe University
Atlanta, Georgia

Dunn: A Dedication

Oglethorpe is intimacy. Oglethorpe is blurred boundaries. Dunn Neugebauer is Oglethorpe. Dunn's closeness to his players and his integral role in campus community blur the boundaries between coach and player, teacher and student. As guide and friend, as boost or crutch, as flirt or confidant, for the past five years Dunn has brought enthusiasm and passion to everything he has done for Oglethorpe. In addition to coaching tennis Dunn goes the extra miles to help with basketball and soccer, announcing starters at home and traveling by planes, trains (MARTA), and minivans to keep stats on the road. Dunn is a columnist who cannot be captured in print. He is a disc jockey who broadcasts love even when the WJTL transmitter is down. Like the crosswords he is fond of, Dunn is a puzzle: a grown man who lives in a dorm and eats cafeteria food with college kids voluntarily.

Dunn Neugebauer ...
only at OU.







Above: Big Brother is watching.
Right: Sidewalk architects on acid.

Anomaly

An anomaly is something unusual, peculiar, different. In this edition of the *Yamacraw*, the staff wishes to feature the anomalies of Oglethorpe which give the University its character. Each day in class we encounter questions. Some have concrete answers; others only have theories attached to them: most we are left to ponder. In pondering the character of Oglethorpe, many questions arise: Who named the Ho Chi Minh Trail? Is there an elevator in Goslin? If Dr. Neujahr knows the meaning of life, why won't he tell us what it is? Why do athletes sit on the left side of the cafeteria? Are the academic quad and upper quad actually quadrangles? In this yearbook, you may find an answer to these questions; for some you may find only theories. Most, however, you will be left to ponder.

Left across the top: Let's play ident-a-can!

Below: Neither great nor a hall.



Left: Life. A long passage with some beautiful things to look at and ponder. However, the Oglethorpe Museum misleads us. The end of our means is not the Buddha himself, but the enlightenment he found and the release from the circle of life.

History

We may take strength from the gray stone, but men and women have invested the might in the mortar. Before a school was named Oglethorpe, a man was named James Edward. Before a building was named Hearst, a woman was named Phoebe. Before a road was named Lanier, a man was named Sidney. Like the Pattillo Oak, Oglethorpe's roots continue to grow deeper as her branches reach higher. Each Petrel has the opportunity to define what Oglethorpe is, and what Oglethorpe will be. Like Hermance Stadium, Oglethorpe is beautifully incomplete, a monument to ambition, impediment, and adaptation. Class after class adds its own chapter to Oglethorpe lore and legend. Three hundred years have passed since the birth of General Oglethorpe. Over a century and a half have passed since Oglethorpe University's birth in Midway. As Oglethorpe approaches a new millennium in Atlanta, she flies teeth to the winds of a volatile world with resolve in her breast and a proud past at her back.



Above: Damn Black Monday!

Right: The Crypt of Civilization lurks in Hearst.





Left: A portrait of our university's namesake, James Edward Oglethorpe, hang in the Great Hall.

Below: May we make noble use...



Above: Read the damn sign.

Left: Enclosed: one elephant.

Question: Why is Oglethorpe an Anomaly?



Burke Scott

"If a school with such a large number of tattooed bodies and pierced clitori along with courses like Great Ideas in Modern Mathematics is not an anomaly, I don't know what is."



Stephanie Giles

"What other school would pay you \$5-an-hour to watch a gate? If I weren't here I wouldn't get the experience of being a human watch dog. It's a fascinating place to be."



Tolliver Williams

"I think it's just great that we have so many people doing 'their own thing' on campus. Thank goodness Petrels are not satisfied with normalcy. If prospective students want to do things by the book, they needn't bother coming to Oglethorpe."

Photo Poll



From gatehouse walls to padded walls--it's a short trip.



Ashish Thakur

"Intense core curriculum and Table Top Football national champions, school and fun -- what else could you want?"



Brent Latham

"It's all those wordly and open-minded continuing ed. students you meet in the night classes. The learning environment would not be the same without them."



Melissa Drouin

"There is only one Bruce Hetherington and he's right here at Oglethorpe. If you've ever had a class with him you know what I mean."

1995-96

Below: Olympic paraphernalia in the bookstore

Jamie's corpse in Cranham decayed long ago, but no worm can claim nor compost contain the persistent spirit of our University's namesake. Opal's wrathful winds and rain could not quench three hundred resilient cake candles. While Atlanta was conquering Cleveland in a savage contest, Oglethorpe was nobly topping the nation in table football. MARTA cartographers and Honduran carvers marked Oglethorpe's prominence with timeless strokes. When the world detains at a stop named OU we will welcome it with open mahogany doors.

What is so anomalous about 1996?

The Olympics gave us a chance to prove our true identity, even if Olympik never asked.



Above: Renovation of Lupton Hall

Right: Dorkiest Olympic symbol in history.



Left: One thing we all learn as part of our sojourn at Oglethorpe is committing crimes at this establishment. Beginning with the bribing of our elders and continuing until we, at the height of our career of crime, create art for the purposes of misrepresentation.

Below: The champions Patrick Floyd and Hal Robinson flanked by their coach, the Hot Rod, and manager Jay Williams



Above: James Edward Oglethorpe turned 300 this year, however, owing to his death 211 years ago, he was unable to attend the party.

Left: The New Dorm, still under construction.

Oglethorpe University is a 100-acre farm of mental cultivation where well developed people are the desired crop. Straight, well-organized rows of geeks, freaks, greeks, and athletes have all been sown with the seeds of commonality and friendship. These rows all receive the daily sunshine of comraderie and the periodic watering of academic rigor. Events such as Geek Week, Stomp the Lawn, Greek Week, and athletic contests act as fertilizer, enriching the soil which holds and nurtures communal roots. With this mixture of sunlight, water, and nutrients, the individual grows strong with time. Soon the field is teeming with vigorous individuals each striving to be his personal best. This community of various living creatures, growing and attaining their lives' goals while at the same time affecting the lives of those around them, is truly flourishing. We find that, upon reaching full maturation, these individual rows have disappeared and all that is left is a solid field of brilliant, lively green: our Oglethorpe University community.



Student Life



Right: Room 22 proves why, as far as Jacobs goes, the lights are on but nobody is home.

Below: Linnea Dyer and Angela Satterfield. Two peas. One pod. Lots of teeth. Look sassy. Perfect!



Above center: Jeff Bates studies for a challenging week of classes, further demonstrating that he does everything "better in bed."

Above: Christopher Y. Smith brags about his ornate couch.

Dorm Life

Below: When the spaciousness of the dorm fails to yield enough room on the floor, the only place left to put rugs is on the wall. Hence, we have a mosaic of posters, pictures, newspapers, magazines, and, the newest of all wall art, rugs.



The dorm room is a fundamental element of the college experience. Warmth and comfort play no part in the charm of dorm life. Power outages, cockroaches, cold water, flooding, cramped quarters--these are what we enjoy. They instill a sense of community among the residents. The suite-style buildings are designed to resemble apartments, and they come dangerously close to removing the community element which defines the dormitory. Fortunately, we have paper-thin walls so that our conversations (particularly in upper-quad bathrooms), are not completely private. Thanks to these walls, the residents are also able to share their musical preferences with their neighbors, thus enriching the connection. And just in case the community spirit begins to topple, nothing replenishes the spirit of dorm living like a nice fire drill at two in the morning. Yes, this is the life we have come to love, the land where roaches are not afraid to charge, showers are too small to shave your legs, and RAs try in vain to keep men out or Traer. In dorm life, suffering is the one, lasting charm.

Left: "Jenna, for a girl, you sure are sloppy."



Left: While the parents are away, the kiddies will play. The freedom allowed by four years of college allows all students to choose their own paths in life and room decor, as exemplified by Alumni 14.

Dining Hall Etiquette

Most students are familiar with basic rules of etiquette by the time they enter college, but upon arriving at Oglethorpe, they must learn new rules which apply only to the Oglethorpe dining hall. As freshmen, all students automatically take trays, but after only a few weeks, most women forego the tray and make separate trips later for salad or dessert. This aids efforts to fit far too many people at one table, because trays take up so much room. Seating being the most important element of dining hall etiquette, one selects a table based on the design of the table itself, and on the table's location. Pedestal-style tables are in great demand owing to their vast seating capacity, while those with the troublesome knee-level bars underneath are to be avoided. As for location, certain social groups always sit in the same area of the cafeteria (see diagram). Most students are monogamous in their seating preferences, but some students refuse to submit to a seating label, and join different groups at different meals. Oglethorpean culture, you see, revolves around dining hall etiquette.

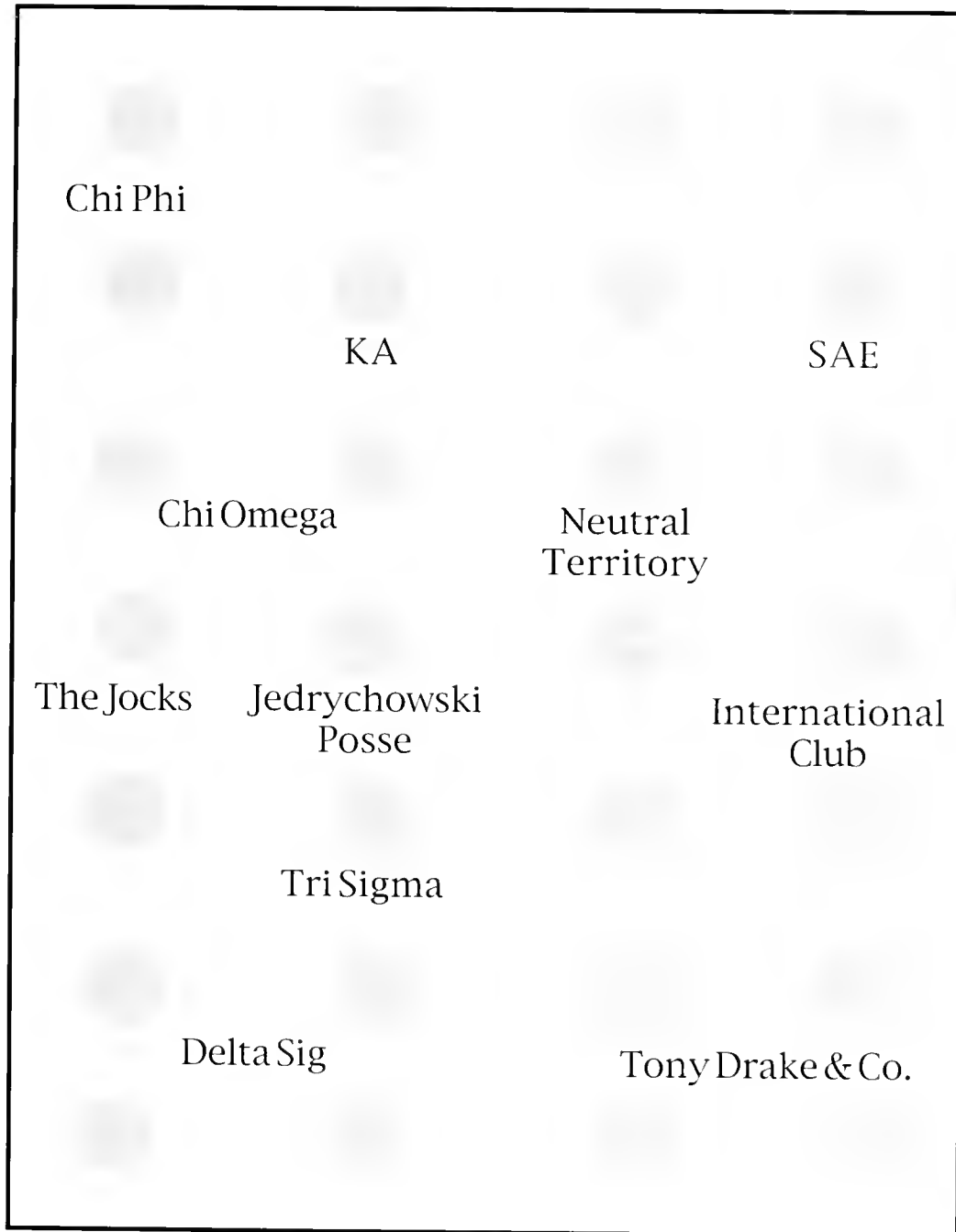


Right: Kim Mohr will murder Kristen Buoy for taking this picture of her.

Below: Randy Roberson is not picking his nose. Really. He's not.



Seating Territories





Top right: Opal created a lovely but threatening archway over the path from the upper quad to the Student Center.

Top right: Several trees crashed the party on the ΣAE deck.

Above: Schmidt turned out to be pretty sturdy, as no serious damage was incurred when a large tree fell on it.

Right. When security sort of evacuated Greek row, students had to walk among falling trees to get to the upper quad.

Opposite page: When the road through campus was blocked, only Reuben could move the offending trunk.

Hurricane Opal

Atlantans don't usually worry about Hurricane season, but this fall Hurricane Opal challenged their sense of security. The storm hit in the middle of the night. At first the howling of the wind merely made it difficult to sleep, but as the storm worsened, the power went out, windows began to rattle, and trees started to fall. Security told many of the Greek residents to go to the upper quad because so many trees were falling behind the houses. Meanwhile, on the upper quad, students had found an opportunity to party. A fair number of students gathered in the

quad in the middle of the storm. Every time a large gust of wind roared through the quad, they screamed.

The next morning revealed many fallen trees and some structural damage, but the problem was that the power was still out. Classes were cancelled, and the power remained out for four more days. Then the hot water went out, and life on campus became ugly. The dining hall served sparse meals by candlelight, so many students drove down to Lenox, which had electricity and hot food. But hey, we survived.



Night of the Arts

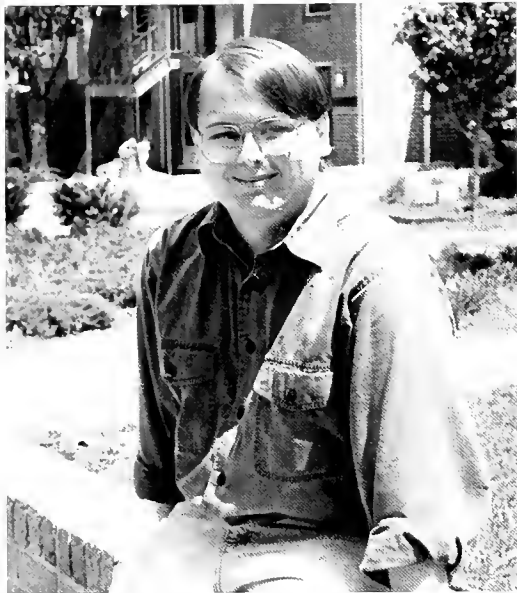
The Night of the Arts is an opportunity for students and faculty to share their gifts in the arts with the Oglethorpe community. Favored by students are Dr. Taylor's contributions of poetry and songs. Another faculty performance revealed that Dr. Orme plays the piano quite brilliantly. The Night of the Arts is consistent with Oglethorpe's recognition of the importance of dance, tune, word, and song. The participation of the faculty demonstrates their connection to the students through appreciation of the arts and our liberal tradition.





Top right: Dr. Linda Taylor singing and playing guitar.
Top right: Elizabeth Stockton--she could stand still and do nothing and we would still applaud.
Left: Christing Heslop performing.
Above: Dr. Orme looks almost surprised by the applause, but he shouldn't.

Opposite page: Matthew Farley and Scott Stagg prove that amplifiers, too, have their place in the arts.



Top left: First place individual winner Dave Leach.
Top right: Second place individual winner Ben Leggett.
Above: Competitors Amanda Green, Bennett Weaver,
and Tonya Gibson.

Right: Third place individual winner Patrick Floyd.

Opposite page, top: The Geek Week t-shirt.
Opposite page, bottom: The winning team, Ben Leggett,
David Cheung, Nicole Spencer, and Dave Leach.

Geek Week

Confounding Noah Webster, no carnival wild men bit the heads off live chickens or snakes. Instead, Leaches hit buzzers, Dominicans threw airplanes, and a Stagg built a bridge. Geek Week participants were looking for more than a commemorative t-shirt, designed by Matt Barnhill and Troy Dwyer. Intellectual prestige, a year's worth of bragging rights, and fabulous prizes were at stake. With Cooper coordinating instead of competing and Stockton drifting westward, the field was wide open. Sorry Charlie, #\$\$@?! took first.



Oglethorpe Day

"Oglethorpe" is a name--a word to illustrate an inspiration, an aspiration. But Oglethorpe Day isn't just about the General, it's about the specific. A day meant to commemorate the shared experience and ideals of our community of learners could go by other names. Chapman Day, Faasse Day, Fulton Day, even Jedrychowski weekend--any of these could focus our attention on who we are and whom we strive to be. So we give Jamie the card, the cake and candles, but we'll make our own wishes when we blow out his candles.





Top left: A bagpiper entertained and led the procession from Lupton to lunch at the Student Center.

Top right: Our guest speaker dazzled us with Oglethorpe history and his "ten myths about James Edward Oglethorpe."

Left: Brent Lathem and Bruce Wilkes in the Petrels of Fire race.

Above: Chanda Creasy's solo highlighted the Singers' performance

Opposite page: Who said Oglethorpe Day isn't a spiritual event?
(For a "normal" picture the cake, see page 45.)



Top left: Shannon Beehan and Homecoming organizer Merryl Feld.
Top right: Lady and Lord Oglethorpe Cathy Skinner and Kevin Huitt.

Above: There's the dance floor. There's one beer visible. It has to be Buoy's.

Above: Perhaps Stacey Rasmussen and Erin O'Brien have their fists clenched to avoid grabbing those heavenly desserts.

Opposite page: The dance floor in the main room of the Fernbank Museum.

Homecoming

February 26, 1996, was truly a high water mark on the sounding line of the river of this year's events. The excitement sprung forth as students gathered together in pools of tailgaters. As current students and alumni renewed old friendships, homecoming excitement began to build. Soon to crowds flowed into the basketball arena, where the excitement did not ebb until the last second had ticked off the game clock.

As the day passed by, people began to prepare for the Homecoming dance at the Fernbank Science Museum. Despite some initial

problems with transportation, the dance was eventually under way. Almost the entire student body arrived in their Sunday best and ready to celebrate until the early morning hours. Homecoming reached a fevered pitch when Cathy Skinner and Kevin Huitt were crowned Lord and Lady Oglethorpe.

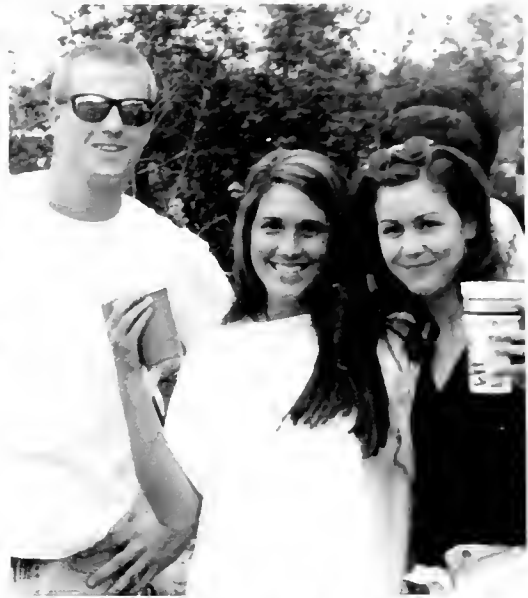
After consuming all of the fun that was to be had at Fernbank, the student body returned to campus and continued the Homecoming celebration in the familiar environment inside the Oglethorpe gates.



Springfest

Springfest is that three day event during which prospective students flock to campus to get a taste of what Oglethorpe is never really like. During Springfest we have better food in the dining hall, better parties, and this year, we had Drivin' and Cryin' play at Stomp the Lawn. For three days we came across looking as Oglethorpe would in a parallel yet slightly cooler universe. Stomp the Lawn was a chance to get a tan, listen to some music, and buy some t-shirts. Alas, the disillusioned `festers had a wonderful time.





Top left: Susie Polyak, Debbie Arrietta, and Linnea Dyer.
Top right: Hope Lebeau, Kerry Winsness, and, is that a Springfester?

Left: Pedestal jousting and sumo wrestling. What more could you want?

Above: Pedestal jousters at play.

Opposite page: A view from above reveals that winter had already stomped the lawn.

Below: Laura Sinclair, Troy Dwyer, and others enjoy the bouncy thing on the Lawn.

Right: Check out that crowd.

Bottom: Drivin' and Cryin'--here--at Oglethorpe--really!





Top left: Kim Mohr and Kristen Bouy: friends one minute...
Top right: wrestlers the next.
Left: Jennifer Johnson, that hardly seems fair.
Above: Front row, dancing right by the stage.

Commencement

The following is an excerpt from the 1996 Commencement address given by Sir Keith Thomas PBA President of Corpus Christi College, Oxford, James Edward Oglethorpe's honorary alma mater.

I suggest that what we should remember about General Oglethorpe on this occasion is that he was the product of the same sort of liberal education which you yourselves have enjoyed. His life is relevant to you because it shows the diverse uses to which a liberal education can be put.

For Oglethorpe was both a scholar and a man of action. He had a distinguished military career, fighting with the Austrians against the Turks and defending Georgia against the Spaniards. He was a member of parliament for over thirty years and a social reformer who exposed the ghastly conditions in the gaols where people were imprisoned for debt. He envisaged Georgia as a place where well-to-do debtors (or rather, debtors who had once been well-to-do) might start a new life. He planned it as a model society, though I am afraid that it did not entirely stay that way; and he lived to see the colony gain its independence.

During this very active life, Oglethorpe kept up his scholarly interests. He read widely in the history of the ancient Greeks and Romans, which he had studied at Corpus. He spoke French and German and wrote polished Latin verses. He was a Fellow of the Royal Society, England's leading scientific academy; he helped to found the British Museum; and he accumulated a splendid personal library. When he retired from public life, he spent much time in the company of the most cultivated people of the age, like Dr. Samuel Johnson and his biographer, James Boswell; the writers, Horace Walpole and Oliver Goldsmith; the painter Sir Joshua Reynolds; and the orator Edmund Burke.

So Oglethorpe's liberal education made a great deal possible for him and your time at this university will

do the same for you. You may not think that now, but before you decide too quickly that Oglethorpe University made no difference to your lives, I urge you to remember what the Chinese leader, Chou-en-Lai, said when they asked him what he thought the effect of the French Revolution had been on world history. It was, he said, too soon to tell.

I am afraid that there are still some people who don't think much of a liberal education. They say of the study of history or literature that it merely teaches you to despise the money that it prevents you from making. In fact, higher education, even in a subject like history, is a good thing economically and helps to make us more prosperous. But that's not its primary purpose. If you chose to study here because you thought it would help you to earn more money later, you did the right thing, but for the wrong reasons. You are like the man who won a fortune in a lottery by repeatedly backing the number twenty-three. When they asked him why he had chosen twenty-three, he explained that he had a dream. "I dreamed the number seven. And the second night, I dreamed the number seven. And the third night, I dreamed the number seven. So I said, this must mean something. Three sevens are twenty-three..."

The real object of a liberal education is to develop skills and attitudes which will enrich your life. You learn to inquire, to analyze and to evaluate; to be aware of the past, of different societies, of how things could be other than they are. A liberal education is something which stays with us. The last portrait we have of Oglethorpe shows him as an old man of eighty-eight perusing a volume at the sale of Dr. Johnson's books, interested in learning until the end.



Top: The sea of graduates.
Left: The thrill of small-talk with Dr. Stanton.
Above: Wayne Davis appears to be taking this marching stuff a little too seriously. Relax, it's only graduation.

Below: The Commencement Choral.
Right: Baby Chandler was very happy to see Mom graduate.
Bottom: Some people say you can tell alot about a person by the tilt of his or her hat. Some people say stupid things.





Above left: Jennifer Johnson is very concerned about making proper use of this champagne as soon as possible.
Above right: Matt Barnhill graduated. Really, he did.
Left: Maxine Atkinson in line for her diploma.
Above: Aw, isn't that sweet?

At its best Oglethorpe is intimate and ambitious. Oglethorpe's dramatic performances reflect the best of Oglethorpe University. No member of the audience is far from the performers. Directors and performers take special pains to bring the Oglethorpe community, as well as the many outside advocates of the arts that frequent many of the performances, into the very heart and soul which is Oglethorpe drama. Only a school based around the dramatic ideals of a man like Thornwell Jacobs can truly embrace the art of performance. Oglethorpe does embrace this art, and the art community, in turn, embraces Oglethorpe. Senior Michael Billingsley puts it best when he says, "No school is an island, but with the shows that our drama department puts together, if Oglethorpe were an island, I wouldn't mind being stranded there one bit."



Performances



Right: The Queen, played by Alison Wilbur, awaits her silver goblet.

Below: Michael Billingsley and Claire Buzzard in the Alpha Psi Omega show.



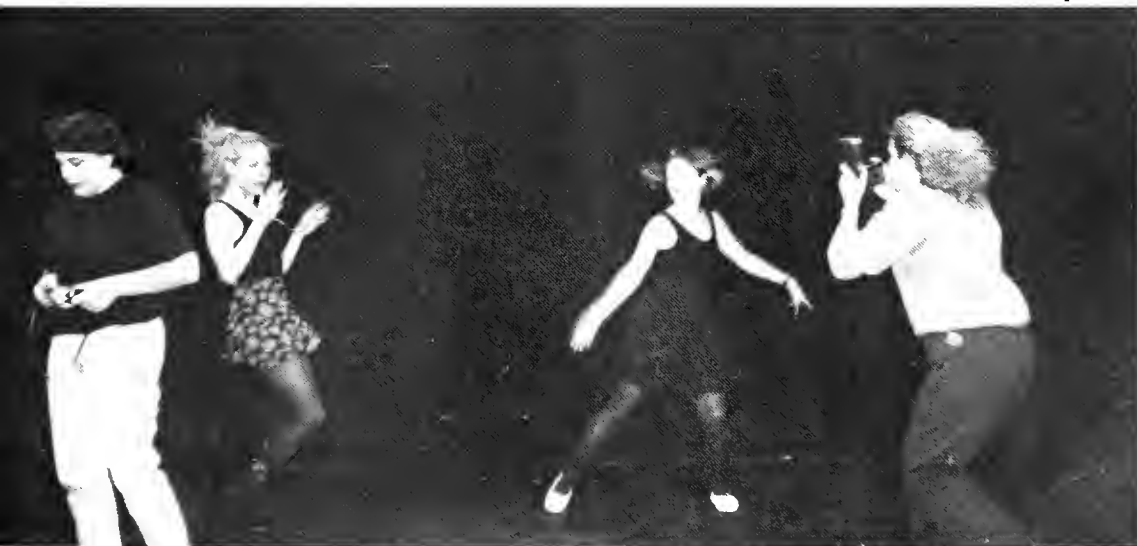
Above: Chris Paragone in *Sleeping Beauty*.

Right: Jerry Portood kisses the hand of the lovely Christine Bernier in *Sleeping Beauty*.



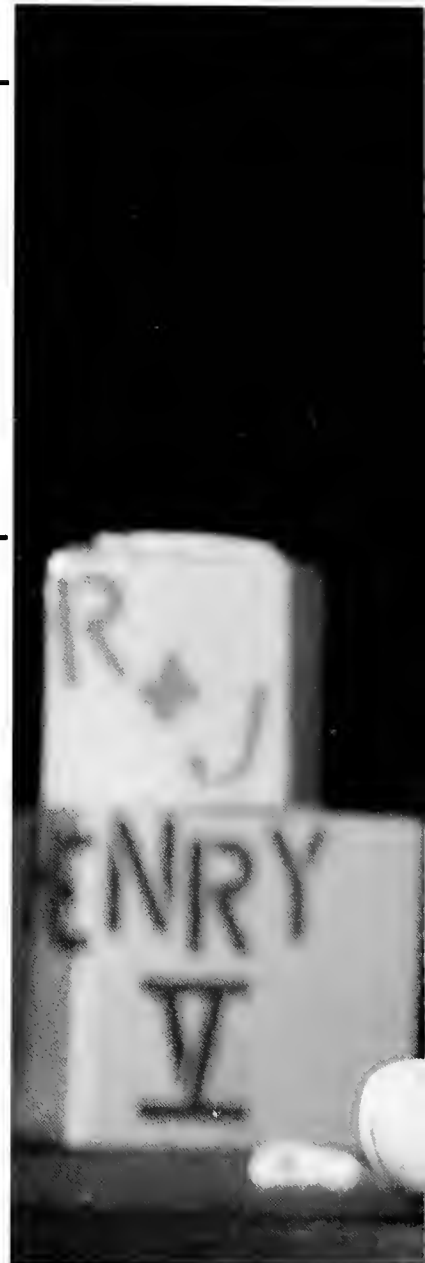


Playmakers' president Shaunna Graf in the Alpha Psi show.



Kim Worley photographs the funky dancing in the Alpha Psi show.

Below: Heidi Blackwell and Alison Wilbur in
The Curate Shakespeare.



Above: Christine Bernier and
Shaunna Graf in *Sleeping
Beauty.*

Right: Shaunna Graf scaring
young children.





Kim
Worley
sings a solo
in *The
Curate
Shakespeare*



It is unfortunate this photo is in black and white, because Jerry Portwood's pants are a shimmering gold.

Not pedagogues in ivory towers or lecturers droning before seas of unfamiliar faces, the Oglethorpe faculty are individuals we know, advisors to whom we listen, and intellectuals from whom we draw inspiration. The third floors of Hearst and Lupton, and the second floor of Goslin contain the peculiar havens of these personalities--the faculty offices. The name plates on the doors read like a list of classmates. Some names are only vaguely familiar, others conjure memories of core classes freshman year. Every once in a while, though, the name is of a good friend, and the doorway beckons. Passing through it into the office, you find yourself surrounded by countless volumes of works crammed onto inadequate shelving. You may be there to discuss an assignment or an internship, or to ask for an extension, but you would feel just as comfortable dropping by to chat.

The Oglethorpe faculty humanizes the college experience. Students try not to miss class, not just because they need the notes, but because the professors will notice they are gone. As mentors and friends, the faculty teach us to think, to write, and to work. Although as time passes our names and faces may be slowly forgotten, theirs surely will not. The influence they have had on us has shaped who we are.

The

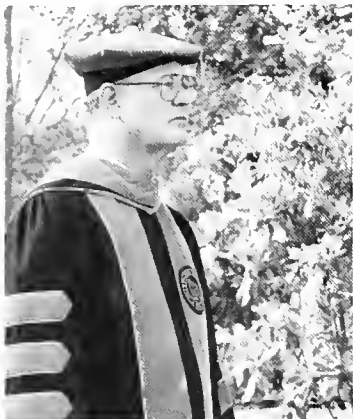


Establishment



Dr. Tiu, Dr. McClure, Dr. Kaiser, and Dr. Amerson serve "midnight" breakfast to students during exams.

Administration & Housing



Donald S. Stanton
President



Anthony S. Caprio
Provost



John A. Thames
Dean of Continuing Education



Donald R. Moore
Vice President for Student
Affairs/ Dean of Community
Life



Paul Hudson
Registrar



Robert Buccino
Vice President for Development



John B. Knott, III
Executive Vice President



Marshall Nason
Assistant Dean of Community
Life



Above: Marshall Nason and Andy Altizer light James Edward's Birthday cake.



Andy Altizer
Director of Housing



Pari Smart and Gingi Duff
Area Coordinators



The Traer RAs



The Upper Quad RAs

English Department

What's anomalous about the Oglethorpe University English department? Hmmmm...maybe EVERYTHING? It's a well-known fact that our English department--the professors, the courses, the students--are, well, kind of different from the other departments here at Oglethorpe. So what is it that makes them so different? To find out the truth, we went to those who should know best--the English majors. We begged them to let everyone in on the secret by sharing just a drop of their ever-flowing creative juices. Their task: to describe the English Department in one word. So take a while to ponder these most interesting word choices and decide if

the English majors did indeed shed any light on the anomalous nature of the department or decided to keep it enshrouded in darkness once again.

soulful...supercool...eccentric..."nothing"...eclectic...
Oedipal...lusty...grotesque...self...all-encompassing...hippie...inquisitive...erudite...
deep...divergent...charismatic...why?...Brightman...
...Truthful...carnal...ambiguous...



G. Malcolm Amerson
Professor of Biology



Keith H. Aufderheide
Professor of Chemistry



Keith E. Baker
Director of Accounting Studies



Robert A. Blumenthal
Professor of Mathematics



James A. Bohart
Associate Professor of Music



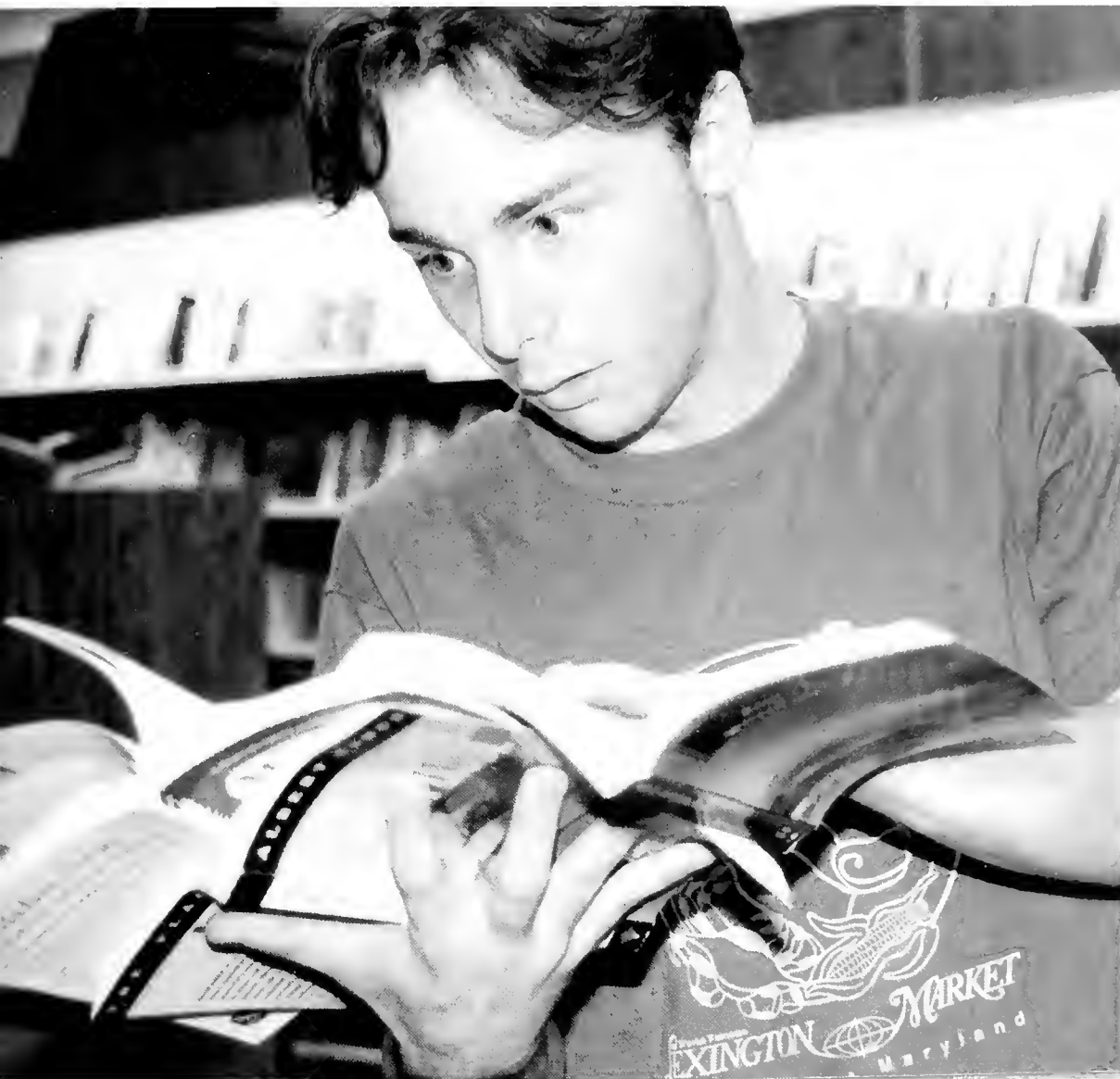
William L. Brightman
Professor of English



Ronald L. Carlisle
Professor of Computer Science
and Mathematics



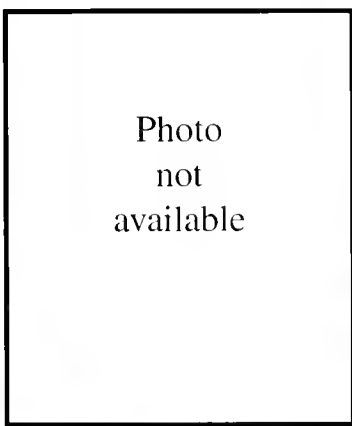
Barbara R. Clark
Professor of English



Jeremy Jeffra consults the classics in search of one word to describe the English department.



John A. Cramer
Professor of Physics



Patricia D. Daniel
Visiting Assistant Professor of
Education



Timothy H. Hand
Associate Professor of
Psychology



Bruce W. Hetherington
Professor of Economics



Dr. Schulz and Thibaud frolic in the hallway where those crazy business majors hang out.



Raymond J. Kaiser
Assistant Professor of
Mathematics



Nancy H. Kerr
Professor of Psychology



Joseph M. Knippenberg
Associate Professor of Political
Studies



Lee C. Knippenberg
Director of the Theatre Program

Business as Usual

A student entering Lupton Hall for the first time would expect to see quiet halls and classes with students working furiously at business problems. At first glance that is what she would see. Then Dr. Schulz's dog would run by and the student would begin to notice the real chaos reigns in Lupton with the line of students outside Dr. Baker's office and one or more of Dr. Middleton's (Mother Mary to Accounting majors) children running down the hall to get some candy from Dean Tucker. (I haven't seen it, but I wonder what happens when the kids and the dog meet), Dr. Hetherington will have at least

one KA in his office, and Dr. Straley can always be counted on as a diversion whether in class or roaming the halls. Each of the professors in the Business and Economics departments has a distinct personality that students will either love or hate, but this personality makes Oglethorpe a unique place to get a business degree.



Robin M. LeBlanc
Assistant Professor of Politics



Alexander M. Martin
Assistant Professor of History



Michael F. McClure
Assistant Professor of English



Douglas McFarland
Assistant Professor of English



Jennifer D. Merkle
Visiting Assistant Professor of
French



Mary M. Middleton
Associate Professor of
Psychology



Philip J. Neujahr
Professor of Philosophy



Lloyd Nick
Director of Art Programs and
Director of O.U. Museum

Goslin Goop?

You've seen Dr. Wolf's pink flamingo shining from the top floor of Goslin, you were never certain what Dr. Amerson was sipping on in Human Biology, and you've seen Dr. Matthews' technicolor goggles, but these are only a few of the things that make the science department at Oglethorpe unique. Here are some other facts you may not be aware of:

- Goslin Hall was named for Dr. Roy N. Goslin who served Oglethorpe as Professor of Physics and Mathematics and later as Director of Admissions.
- Buckets of a mysterious substance known as "Goslin Goop" can be found in storage closets of Goslin. The goop is rumored to be left over from Dr. Wheeler's (professor 1954-1985) Principles of Science Lab and no

one is quite sure exactly what is in it.

- Dr. Amerson was Dean of Academics at Oglethorpe before he decided teaching biology was more fun.
- Dr. Cramer once found some radioactive material stored in the basement of Goslin. Ask him about the experience sometime.
- Dr. Schadler grows chrysanthemums as a hobby. You may have seen his plants decorating several offices around campus.
- Only two brave souls are graduating in May 1996 with a Chemistry major--Stephanie Carouthers and Natalia Baranovskaya.
- In 1993 AT&T® gave Oglethorpe a grant to add a computer lounge in Goslin.



Sandra Nicks
Visiting Assistant Professor of
Psychology



Caroline R. Noyes
Assistant Professor of
Psychology



John D. Orme
Professor of Political Studies



Viviana P. Plotnik
Assistant Professor of Spanish



W. Irwin Ray
Director of Musical Activities



Michael K. Rulison
Professor of Physics



Daniel L. Schadler
Professor of Biology



William C. Schulz
Assistant Professor of Business
Administration



Mixing up some new Goslin goop.



William O. Shropshire
Professor of Economics



W. Bradford Smith
Assistant Professor of History



Robert Steen
Assistant Professor of Japanese



Brad L. Stone
Professor of Sociology



Sociology gurus Dr. Woolfolk and Dr. Stone contemplate the origins of commencement ceremony rituals.



William F. Straley
Associate Professor of Business
Administration



Linda J. Taylor
Professor of English



David N. Thomas
Professor of History



Philip D. Tiu
Assistant Professor of
Mathematics

Social Psychology

Social Psychology analyzes the individual in the context of the society in which he or she lives. For example, if you wanted to analyze the individuals who teach sociology and psychology at Oglethorpe, you would find that their individual personalities and peculiarities fit together remarkably well into a cohesive subculture of the professoriate. First, a look at Dr. Stone. He is so organized that his study questions and class handouts have been known to spill over into his colleagues' classrooms. Fascinating and inspirational though he is, if you cut off his arms, he simply could not teach. Now Dr. Kerr. We love her because we fear her, and we

fear her because she is a cognitive psychologist, and she knows how we think. Dr. Woolfolk epitomizes the role of the college professor--immaculate, intellectual, surprisingly entertaining--and yet unable to set down his jacket without first turning his jacket lining-side out. Then we have Dr. Hand. He teaches classes which are quite scientific, and yet always mixes current issues with the molecules. Students learn more about the actual workings of delta-9-tetrahydrocannabinol in his classes than we are able to discover on the weekends. The subculture these professors create is another Oglethorpe anomaly.



J. Dean Tucker
Associate Professor of Business
Administration and Economics



James M. Turner
Visiting Assistant Professor of
Accounting



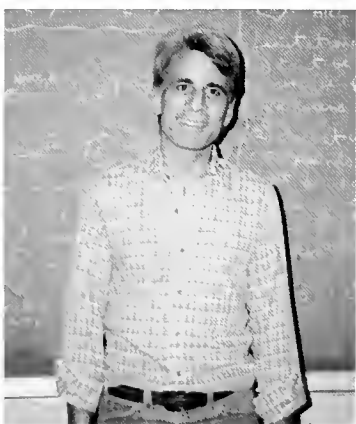
Vienna K. Volante
Associate Professor of
Education



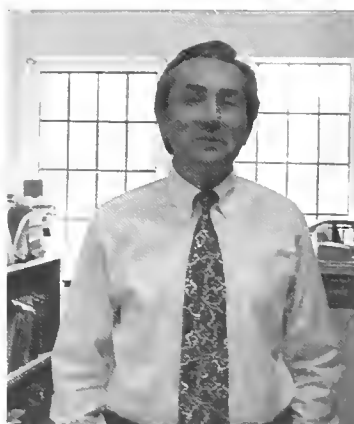
Victoria L. Weiss
Professor of English



Jason M. Wirth
Visiting Assistant Professor of
Philosophy



Monte W. Wolfe
Professor of Chemistry



Alan N. Woolfolk
Associate Professor of
Sociology



Philip P. Zinsmeister
Professor of Biology

Joe Ancis once said, "The only normal people are the ones you don't know very well." That explains a great deal about Oglethorpe. For years people have been marveling at the collection of weird, eccentric, troubled, and maniacal people who comprise the Oglethorpe student body. One student asked if weird people are drawn to Oglethorpe, or if people come here and then become weird. Perhaps neither is true. It may be a result of the school being so small, and the fact that everyone knows everyone a little too well, which leads us to the impression that Oglethorpe students are so strange. Gossip travels with mesmerizing speed, washing over dorms and down hallways as only a flood of half truths and bad information can. In the rest of the world, individuals can conceal a few eccentricities, forget a few mistakes. The Oglethorpe memory, however, is unforgiving, and nothing perpetrated on campus can remain unknown. What is anomalous about the Oglethorpe student body is not the character of its members, but the fact that we are all acquainted.

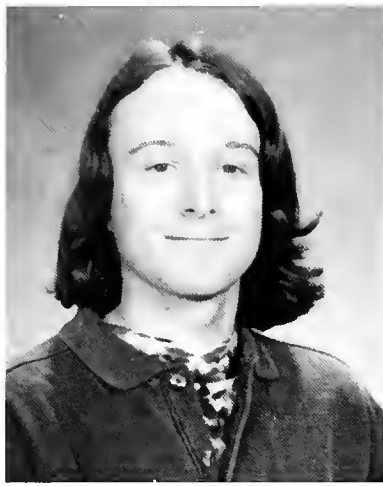


Students





Carrie Adkins



Shawn Amick



Heather Andrews



Maxine Atkinson



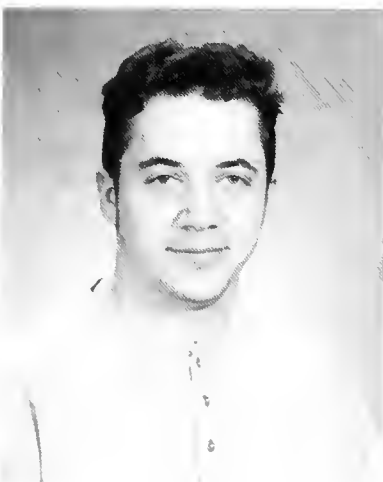
Natasha Baranovskaya



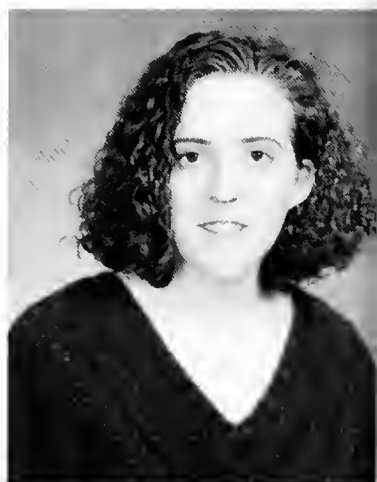
Matt Barnhill



Paola Barrera



Clay Barrineau



Alison Bess

Seniors Seniors Seniors Seniors Seniors Seniors Seniors Seniors Seniors Seniors



Mark Bingham



Mitzi Brasseaux



Christy Breen



Claire Buzzard



Joel Cameron



Heather Carlen



Stacey Chapman



Casey Chestnut



David Cheung

Seniors Seniors Seniors Seniors Seniors Seniors Seniors Seniors Seniors Seniors



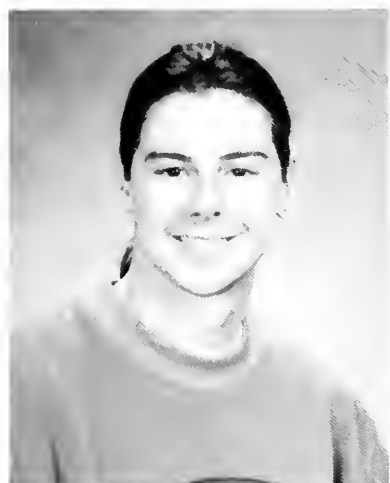
Stephen Cooper



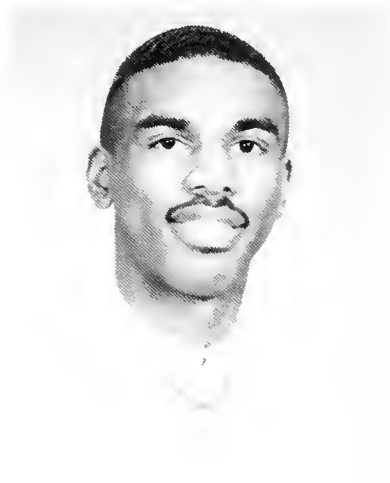
Todd Covington



Chanda Creasy



Wayne Davis



Craig Dennis



Claire Dionne



Tony Drake



Isaiah Embry



Stephanie Everett

Seniors Seniors Seniors Seniors Seniors Seniors Seniors Seniors Seniors Seniors



Jim Faasse



Donna Findling



Jennifer Fowler



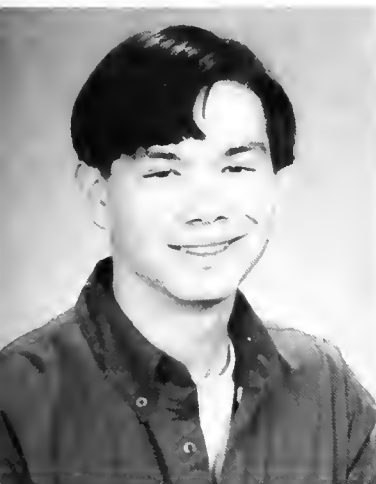
Justin Gisel



Marquis Glenn



Shaunna Graf



James Green



Katherine Griffin

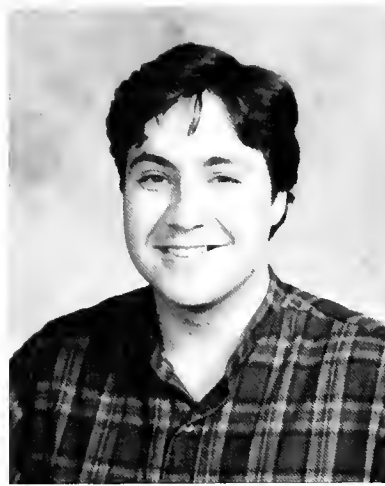


Glennis Grimwood

Seniors Seniors Seniors Seniors Seniors Seniors Seniors Seniors Seniors Seniors



Christing Heslop



Richard Hibbets



Tracy Hicks



Colleen Hill



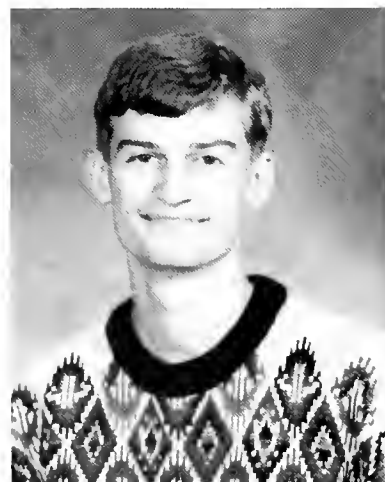
Heather Holmes



Reed Horsley



Stella Huang



Simon Hukin



Thomas Ison

Seniors Seniors Seniors Seniors Seniors Seniors Seniors Seniors Seniors Seniors



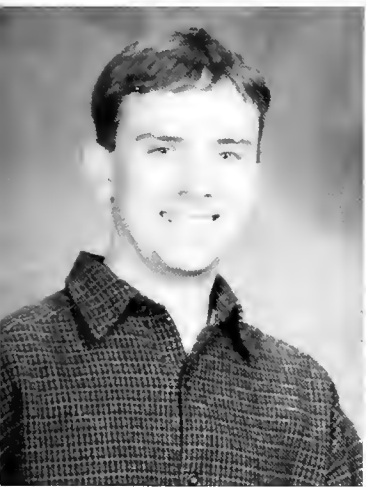
Christine Jabs



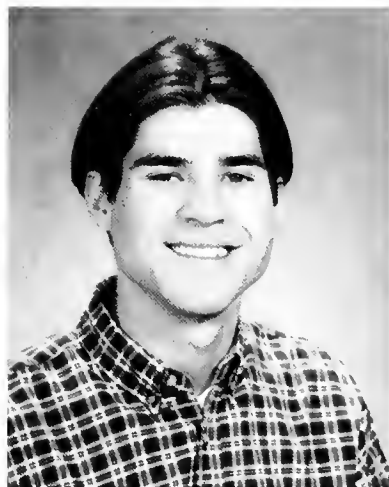
Laura Jackson



Karmin Keiser



Kevin Kendrick



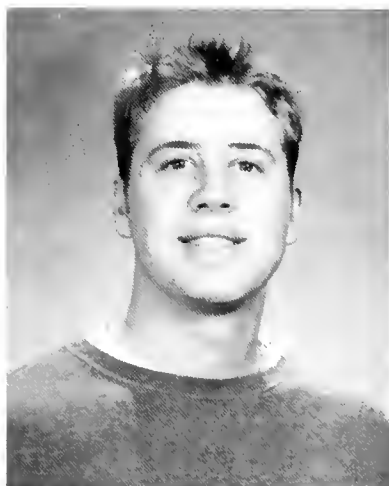
Joseph Kidd



Dennis Kiernan



Chip Kohlweiler

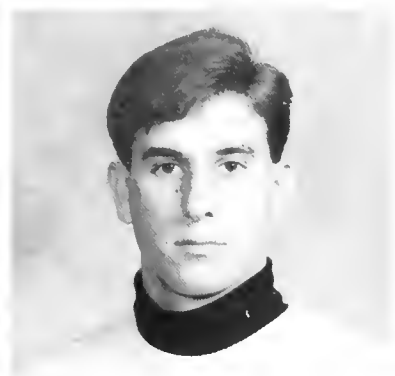


Joseph Lee



Michael Lipari

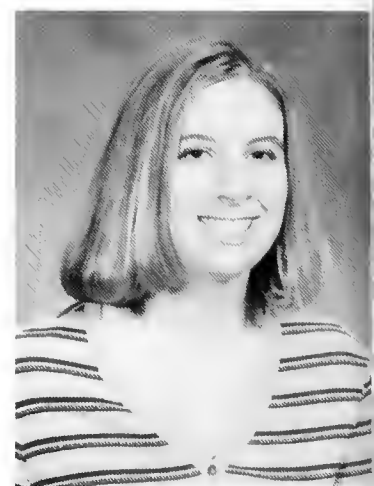
Seniors Seniors Seniors Seniors Seniors Seniors Seniors Seniors Seniors Seniors



Jason Luginbuhl



Rachel Maki



Stephanie Mannis



Kelly Moynes



Rachel Noble



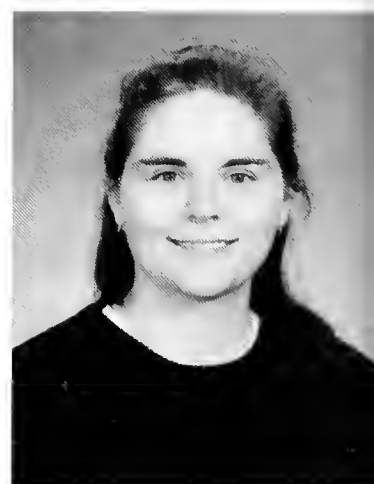
Lin Odom



Brian Parker



Jenifer Parks



Melanie Peerboom

Seniors Seniors Seniors Seniors Seniors Seniors Seniors Seniors Seniors Seniors



Mark Pellegrino



Jane Perkins



Mary Poteet



Alisa Purify



Ryan Queen



Laurie Ranne



Stacy Rasmussen



Kristi Roberts

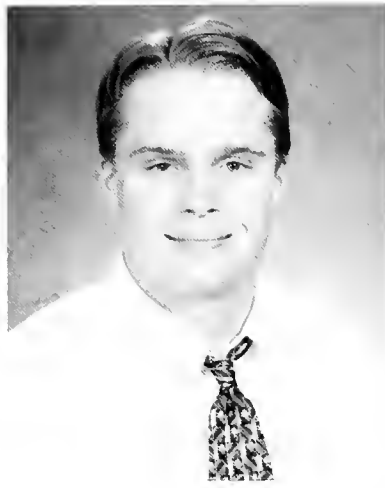


Daniel Rosenthal

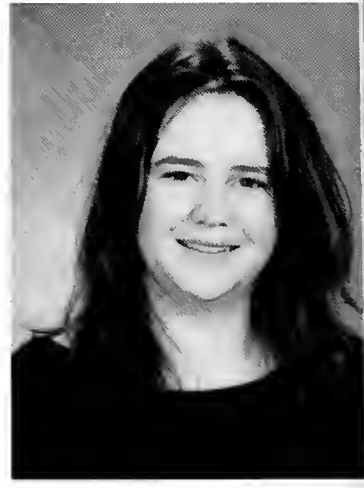
Seniors Seniors Seniors Seniors Seniors Seniors Seniors Seniors Seniors



Daniel Sandin



Jeremiah Schultz



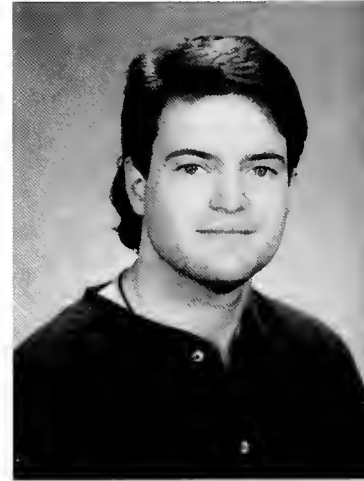
Tonia Sellars



Kaye Shelnett



Susan Shirley



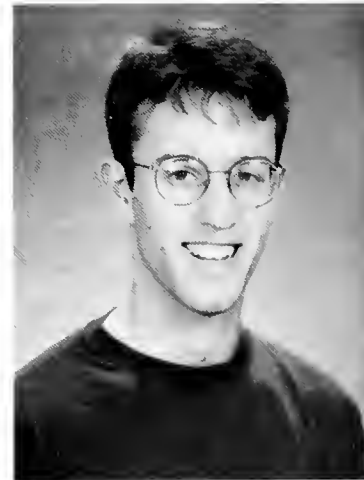
Rod Smith



Troy Smith



Shira Spector



Scott Stagg

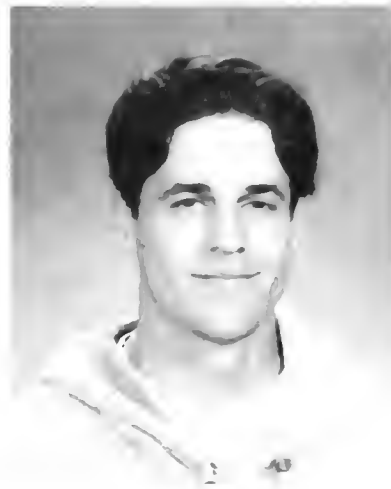
Seniors Seniors Seniors Seniors Seniors Seniors Seniors Seniors Seniors Seniors



Elizabeth Stockton



Beth Taylor



Stephen Taylor



Jennifer Trevisan



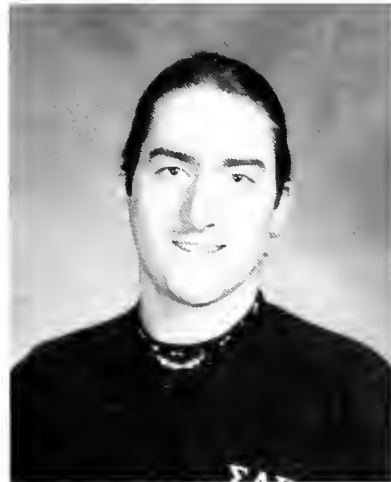
Heather Tyler



Patricia Villavicencio



Miriam Whaley



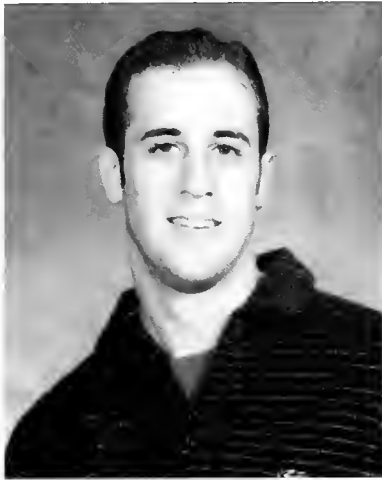
Jeff White



Wade Wilson

Seniors Seniors Seniors Seniors Seniors Seniors Seniors Seniors Seniors

Last but not least...



Jared Wiskind

Class Officers

Senior Class President--Chanda Creasy

Junior Class President-- Merryl Feld

Sophomore Class President-- Laura Butts

Freshman Class President-- Roderick Underwood

Seniors Seniors Seniors Seniors Seniors Seniors Seniors Seniors Seniors Seniors





Julie Agster

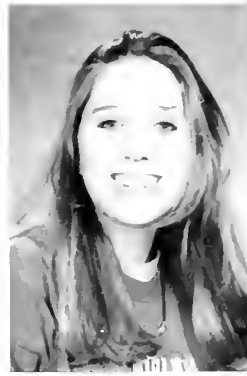
Amy Allen

Cheryl Allen

Liesl Allen

Eric Andersen

Karen Anderson



Ivan Annikov

Charles Barousse

Angela Bartlett

Jeffrey Bates

Shannon Beehan

Todd Bemby



Terrence Bennett

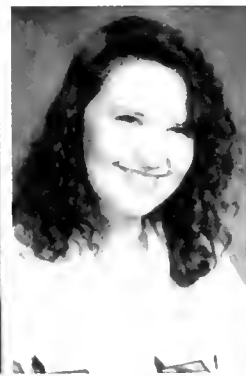
Julien Berche

Christine Bernier

Heidi Blackwell

David Bond

Catherine Borck



Laura Borderieux

Dustin Bost

Jennifer Bowers

John Boyle

Jennifer Bozeman

Jason Breitfeller

Undergraduates

Undergraduates

Undergraduates

Undergraduates

Undergraduates



Hillary Brennan



John Breton



Daniel Brown



Ryan Brown



Timothy Brown



Edward Brumby



Kristen Buoy



Christina Burnham



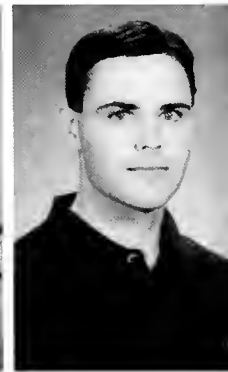
Laura Butts



Cathryne Callaway



Cheryl Calupas



Troy Campbell



Brandi Camron



Pete Cannizzaro



Matthew Carlisle



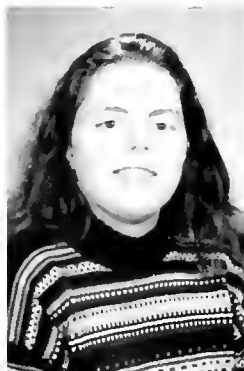
David Carroll



Brett Cave



Marlene Chadwick



Jennifer Chaves



I. Ping Chung



Jennifer Clayton



Peter Clement



Denisa Clifford



Lori Collins

Undergraduates Undergraduates Undergraduates Undergraduates Undergraduates



Nancy Collins

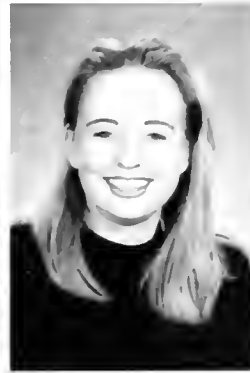
Kathryn Cook

William Combs

Lanier Coulter

Joe Cox

Lisa Cunningham



Patricia Curtis

Tessa Daly

Gregory Daspit

Karina de Almeida

Elizabeth Debroux

Pauline Dekkers



Patrick di Cicco

Natalie Dietz

Michelle Dinova

Catherine Doles

Casey Dryden

Jacob Eckmann



Julie Ehlers

Justin Eleff

Karen Elumbaugh

Randy Everette

Whitney Farrow

Katharine Feros

Undergraduates

Undergraduates

Undergraduates

Undergraduates

Undergraduates



Audrey Fillop



Jason Fisher



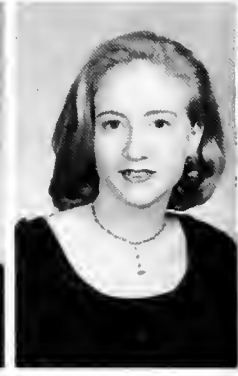
Katie Fletcher



Patrick Floyd



Caroline Folkesson



Kimberly Fowler



Katherine Fox



Allison Gatliff



Adam Gellert



Stephen Gerber



Stephanie Giles



Neil Graf



Josh Gramling



Amanda Greene



Jeremy Greenup



Colleen Grogan



Natalie Haggmann



Carol Hall



Lori Hallford



Derek Hambrick



Kelly Hampton



Clinton Harris

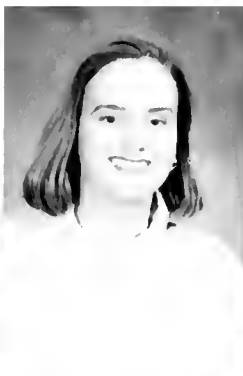


Peter Haug



Jennifer Hedgepeth

Undergraduates Undergraduates Undergraduates Undergraduates Undergraduates



Rebecca Hester

Kristin Herbert

Kelly Holland

Valerie Holshouser

Thomas Hopkins

Jeremy Horsefield



Matt Hout

E-Chia Huang

Terri Hughes

Kevin Huitt

Christina Humphries

Shannon Hutcheson



Matt Hutz

Joseph Hyder

Carla Hyman

Aya Isoya

James Jaehnig

Jaime Jedrychowski



Jenny Jedrychowski

Jeremiah Jeffra

Lynnita Jimenez

Jena Jolissaint

Harley Jones

Jason Karnes

Undergraduates Undergraduates Undergraduates Undergraduates Undergraduates



Amy Katz



Adam Kearney



Tiffany Kelsey



Creche Kern



Farah Khatoun



Kimberly Kuni



Stacey Lackey



Christophe Lamor



Jon Lampkin



Kristine Lawrie



Le Le



Dave Leach



Hope LeBeau



Ben Leggett



Kara Leibig



Deborah Leighty



Russell Lind



Theresa Linebarger



Robyn Lucas



Penn Mattison



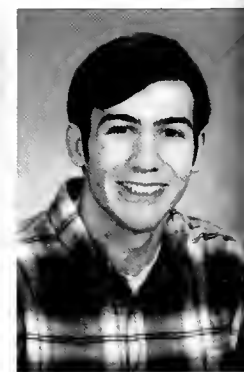
Amy McGhee



Heather McNeill



Brian McNulty



Andy Milford

Undergraduates Undergraduates Undergraduates Undergraduates Undergraduates



Coy Miller

LaShonda Miller

Stephanie Miller

Alisa Mobley

Sharon Mohabir

Kathrina Mooney



Rachael Moss-Solomon

Matt Mozzotta

Jessica Muhlfelder

Jennifer Nanek

Jorge Navarro

Yvette Nemeth



Pedro Niembro

Andy Noble

Kate Nolan

Alexandre Oliveira

Patrick O'Rourke

Yuka Ota



Jennifer Ovdenk

Robert Pace

Sam Palmer

Christopher Paragone

Elizabeth Parra

David Pass

Undergraduates

Undergraduates

Undergraduates

Undergraduates

Undergraduates

Students:

73



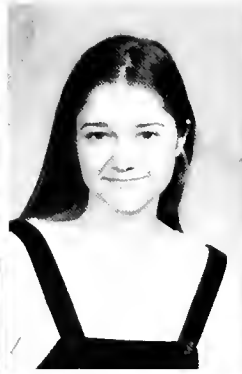
Alexia Petrakos



Rok Petric



Katherine Petrizzo



Sarah Phillips



Jessie Pierce



Denise Pittman



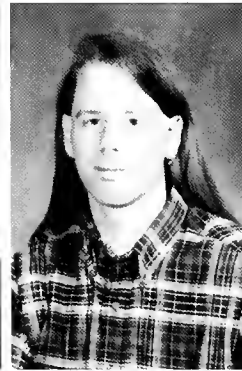
Adam Polakov



Mike Pompilio



Jerry Portwood



Jeff Pyron



Jeanette Randall



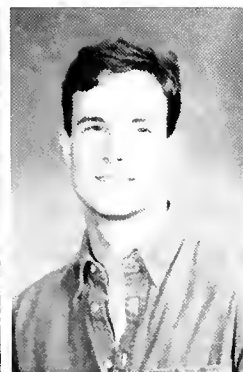
Jason Reese



Matt Reeves



Amanda Regnier



James Rissler



Thomas Ritter



Matt Rivenbark



Randy Roberson



Chelsie Roberts



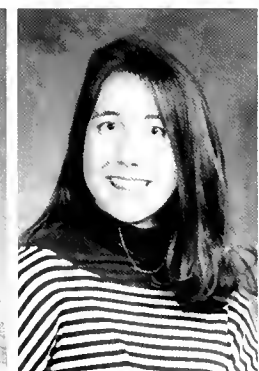
Amy Robertson



Gareth Robertson



Harrell Robinson



Darla Rook



Diana Rothe

Undergraduates Undergraduates Undergraduates Undergraduates Undergraduates





Zandra Ruiz

Kiley Ryba

Abna Sagrera

Eric Salus

Erum Sattar

Angela Satterfield



Zane Scarborough

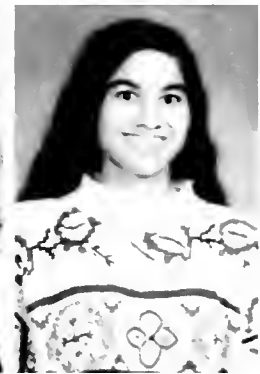
Ann Schewe

Jenni Schillinger

Pauline Schilpzand

Zachary Schwab

Melanie Scott



Nicole Scott

Jennie Scowcroft

Sylvia Seidel

Rosa Serulle

Keabii Shaw

Arathi Shenoy



Deempal Sheth

Laura Sinclair

Jenny Slater

Ilana Slutzky

Brandon Smith

Christopher Smith

Undergraduates Undergraduates Undergraduates Undergraduates Undergraduates



MEXICO
Matthew Smith



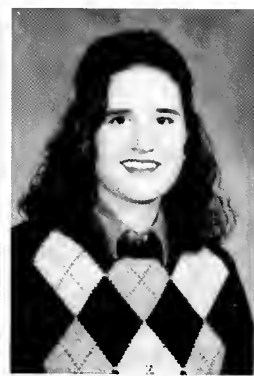
Nathan Sparks



Nicole Spencer



Jason Stackhouse



Danielle Stelling



Jennifer Stelson



Tharius Sumter



Neetu Tawney



Jennifer Taylor



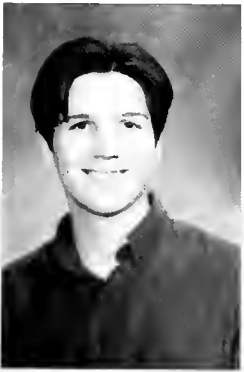
Ana Tchaplinskaya



Chanda Thomas



Jeffrey Thomas



Matthew Thompson



Aimee Thrasher



John Tole



Maria Topczij



Kathleen Trucksis



Yuri Tsukada



Roderick Underwood



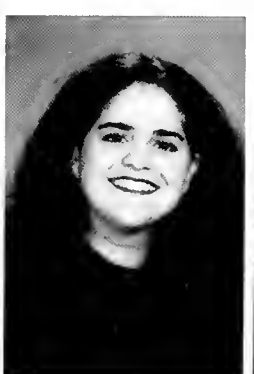
Tanja van der Krabben



Ellen van der Veen



Eric van Winkle



Julie Vazquez



Michael Vickers

Undergraduates Undergraduates Undergraduates Undergraduates Undergraduates



John Waggener

Gloria Wagner

Matthew Wallace

Megan Walters

Mark Watson

Bennett Weaver



Heather Weichold

Rob Wesley

Matthew White

Michelle Why

Brandi Wieberg

Allison Wilbur



Matthew Wilcox

Lauren Wilkerson

Bruce Wilkes

Vicky Wilkinson

Christie Willard

Kimberly Williams



Laura Williams

Dawn Wirt

Daniel Wood

Eddie Yates

Angela Zaballa

Vincent Zimmerman

Undergraduates

Undergraduates

Undergraduates

Undergraduates

Undergraduates

Being a member in an organization is more than just a way to occupy your time. At Oglethorpe, membership defines who you are.

"Oh, you know Mary what's-her-name. She's in APO, writes for the *Petrel*..."

Suddenly recognition dawns, "Oh, yeah, that Mary." A student is not merely Mary or John. She or he is Kashima Mary or International Club John. Just as organizations have an impact on an individual's identity, a handful of individuals can easily change an organization's identity. Organizations at Oglethorpe are best characterized as very small and subject to turbulent change. Leaders beg and scramble for more members; members stretch the demands of several organizations at once. Everyone is more and more involved and yet leaders are always talking about how apathetic their members are. The act of balancing one organization with another, and all organizations with studies, is a stressful task. It is easy to focus on one organization, one piece of your identity, such that other groups are neglected. Oglethorpe has so many organizations and so few students that there are never enough members to suit anyone's needs.



Organizations



Jeanee Ledoux and the rest of the *Petrel* staff get to play with dry erase markers.

Academic Team

The 1995-96 team boasted three veteran players: Stephen Cooper, Elizabeth Stockton, and Susan Shirley. All three had played for four years at Oglethorpe. The first team, along with seven other Oglethorpe players, participated in six tournaments as nearby as Georgia Tech and as far away as Mississippi State. The team's best showing was at the Berry tournament, where it placed third in a twelve team field. Stephen Cooper was the team's top scorer and was selected for several tournament all star teams. In addition, OAT sponsored a high school tournament, the second annual Stormy Petrel Academic Tournament (SPAT) in October. SPAT drew about twenty high schools from Georgia and South Carolina.





First team:

Stephen Cooper
Elizabeth Stockton
Susan Shirley
David Leach

Black Student Caucus

The Black Student Caucus is an organization that promotes Afro-American awareness on campus. The organization works hard throughout the year to plan activities to keep up the campus' awareness. This year the Black Student Caucus organized an on-campus free-for-all party, and most importantly, planned and presented numerous activities for Black History Month. Two of the most memorable events of that month were the candle light vigil and the key-note speaker Benjamin Chavis. The Black Student Caucus is open to all students.





Leaders:

Craig Dennis
Vincent Zinnerman
Chanda Thomas
Kelli Solomon
Stephanie Carouthers
Keabii Shaw

French Club

A hundred years ago French was the language everyone learned as part of becoming an educated person. Even the Russian royalty spoke French at court. Today, however, as America gains power in the international realm, and France is no longer the colonial power it once was, the popularity of the French language is fading from American life. As the old joke goes, a person who speaks two languages is bilingual, and a person who speaks three languages is trilingual. What do you call a person who speaks one language? American. Le Circle Francais is seeking to reverse this cultural backsliding by keeping the use of French alive in the university setting. After all, a language as beautiful as French should never be forgotten, not even in America.





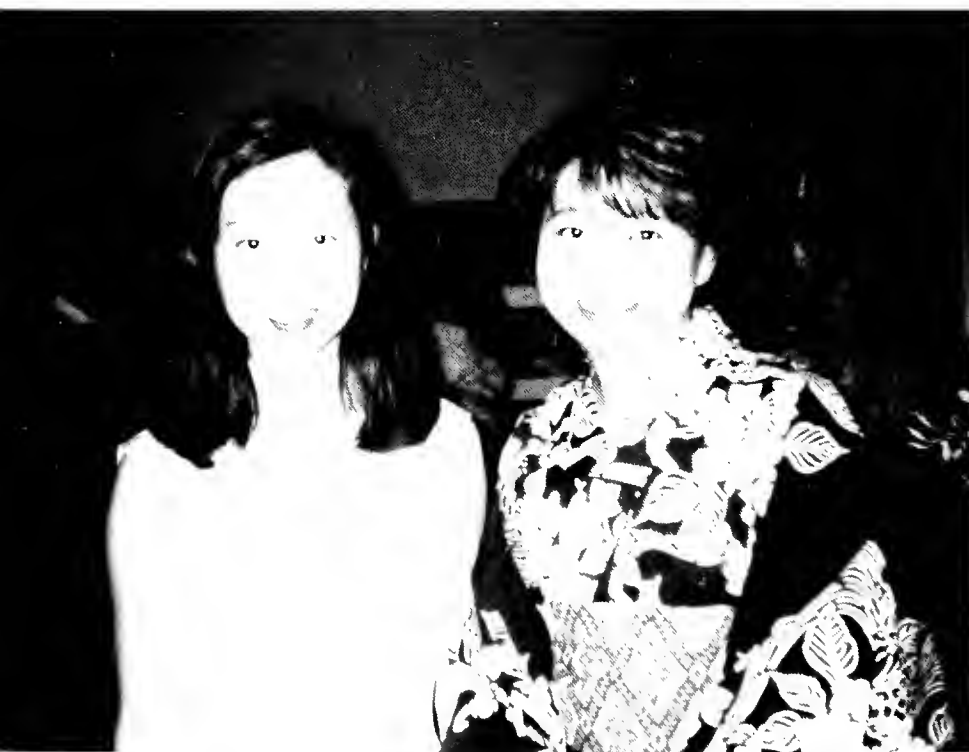
Leaders:

- Simon Hukin
- Rok Petric
- Valerie Holshouser
- Amy Barigalupi
- Christophe Lamor

International Club

"Donde esta el bano?" wonders one of Oglethorpe's internacionales. Another student celebrates the foreign customs of a far-off land, while yet another Petrel exchanges international recipes during one of the many international days in the small dining room. But learning how to make French toast is just one of the many reasons Oglethorpe's popular International Club continues to draw members from all over campus. A celebration of diversity is too mild a description for a club that teaches us that what is most exciting about being different is our innate sameness. It is the very sameness of our Oglethorpe that provides the backdrop for the world of diversity that is all around us. It is this contrast that is the main goal of the International Club as they forge forward to share and entrust in us the cultures of the world; that, and they eat a lot of French toast.



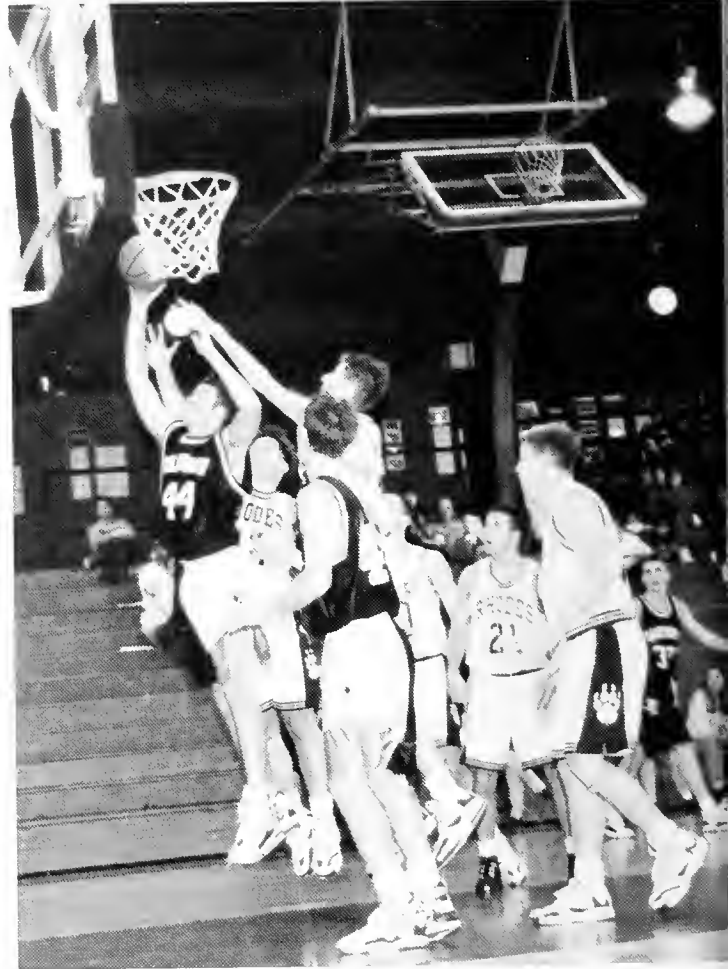


Leaders:

- David Pass
- Deempal Sheth
- Farah Khatoon
- Matt Hoult
- Pauline Schilpzand
- Erum Sattar

"O" Club

Who are those people you see wearing black, long-sleeved t-shirts with a gold petrel on the back? Most likely they are "O" Club members, but they could be sneaky roommates who borrowed the coveted shirts. "O" Club members earn the right to wear the Petrel by lettering in a sport for two years. Their job is to support and promote athletics at Oglethorpe. Activities include aiding in recruiting and on visitation days for high school seniors. They also sponsor a college basketball Final Four party in the Bomb Shelter. The "O" Club also purchased some equipment for the Schmidt Center. In the future, when you see some golden petrels, help them support Oglethorpe athletics and take pride in your Petrel teams.





Oglethorpe Ambassadors

This year the Ambassadors gave 150 tours, housed 30 prospective students overnight, called 560 students, and smiled at dozens of people on visitation days. No one is truly an Ambassador, though, until he or she has survived a Tour from Hell. Yes, in the course of meeting many sweet families and intelligent students, one is bound to encounter that anomaly among tours which amounts to forty-five minutes of misery. Tours from Hell come in several varieties. There's the silent tour. Not even the best anecdotes, quips, and follies can induce these people to speak. Then there's the paranoid tour group, including the protective dad and the psycho mom who want to discuss campus security, locked windows, and visitation hours the whole time. Even in the face of Tours from Hell, however, Ambassadors keep smiling, keep talking, and keep their fingers crossed when assuring Dad that campus security is tight.





Leaders:

Tiffany Kelsey
Rebecca Hester
Yvette Nemeth
Roderick Underwood
Stewart Hall
Jeanette Randall

Oglethorpe Student Association

The Oglethorpe Student Association masterminds the expenditure of the controversial student activity fee. They have a colossal sum of money to spend on entertainment and other programs for the students. This year they organized such events as the fall carnival and Springfest. The elected members of OSA have all the power. All the money. All the fame and glory. Yes, sometimes it seems they are the only students who matter. The rest of us students wander helplessly through our college years attending the grand events that OSA plans for us. We are like children and they our keepers, our benefactors, our wardens. Damn, they don't belong in the Organizations section of this book, they belong with the Establishment. They are the Establishment. The Entertainment Establishment of Oglethorpe. And they're good at it, too.





Pictured above:

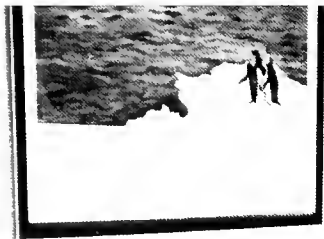
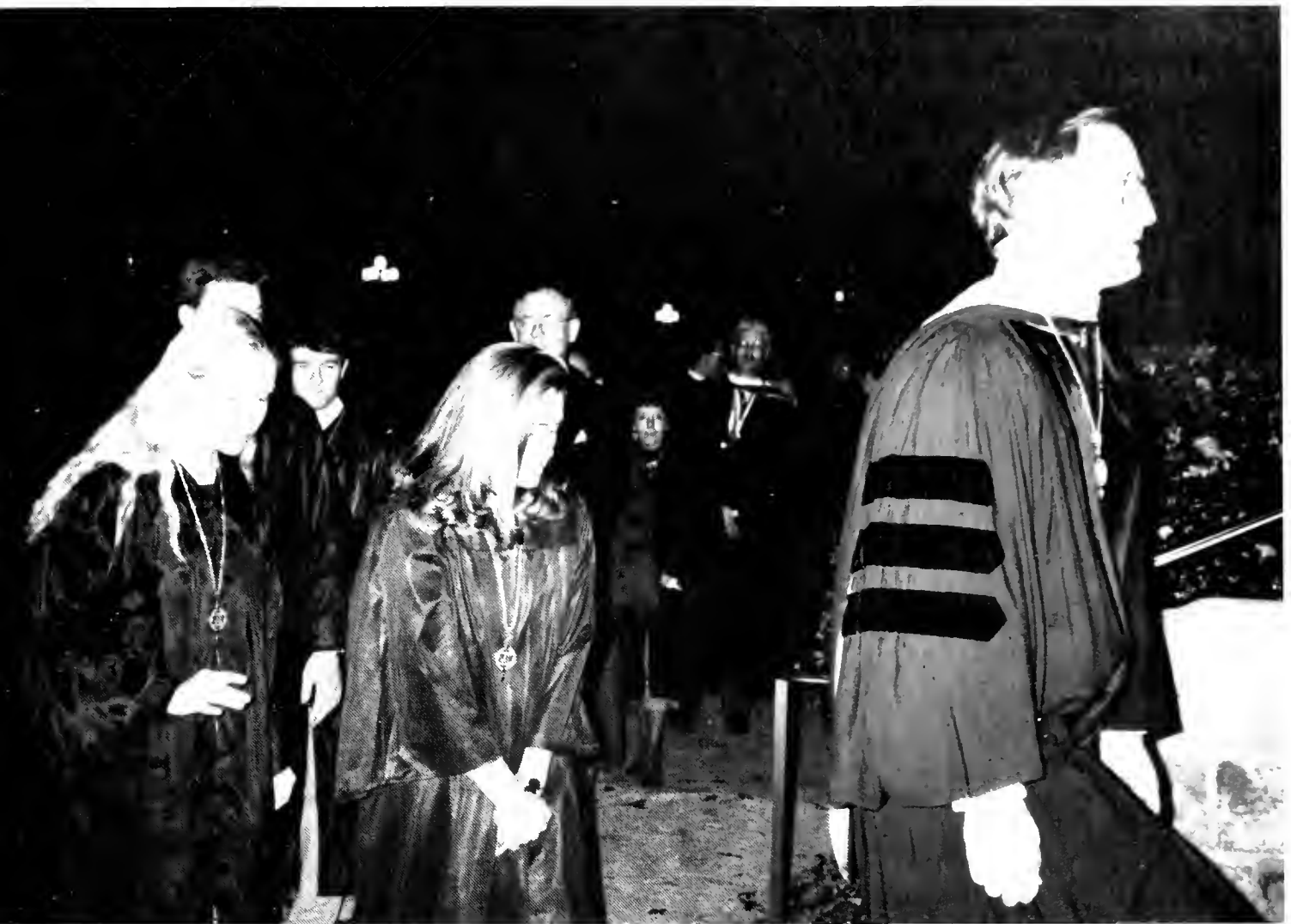


Top Row: Jeremy Jeffra, Jay Matthews. Second row: Laura Butts, Carla Hyman, Kim Worley, Merryl Feld, Randy Roberson, Shannon Beehan, Kelly Holland. Third row: Jennifer Fowler, Catherine Borck, David Pass. Front, center: Chanda Creasy.

Omicron Delta Kappa

ODK invites academic leaders into its circle. The selective honor fraternity attempts to bring Oglethorpe's finest students, faculty, and staff together. Following a careful and mysterious selection process, new members are tapped on the shoulder in class and invited to join the robed procession. At Boar's Head new inductees got a mouthful of swine snout to accompany an earful of Cramer. ODK activities included a successful Geek Week and a faculty-staff appreciation reception.





New Initiates:

- Jeff Bates
- Becky Ellis
- Kelly Moynes
- Mary Poteet
- Randy Roberson
- Michael Shirley
- Tharius Sumter
- Tinnie Waterston
- Miki Williamson

Faculty Initiates:

- Phillip Neujahr
- Katherine Nobles

The Stormy Petrel

The print below the masthead proclaims, "Above and Beyond Oglethorpe University," and the dedicated staff and editors of *The Stormy Petrel* try to achieve this lofty goal on a bi-weekly basis. Striving to inform, enlighten, and entertain, the student-run newspaper works feverishly for a fortnight to produce a quality paper. Though they occupy Oglethorpe's minds and conversations, even the finest efforts of the *Petrel* meet neglect as the timely and compelling becomes irrelevant and obscure. Like 1100 ice sculptures in 11-point font, each issue of Oglethorpe's primary publication poses the question: where does the *Petrel* go after the storm?



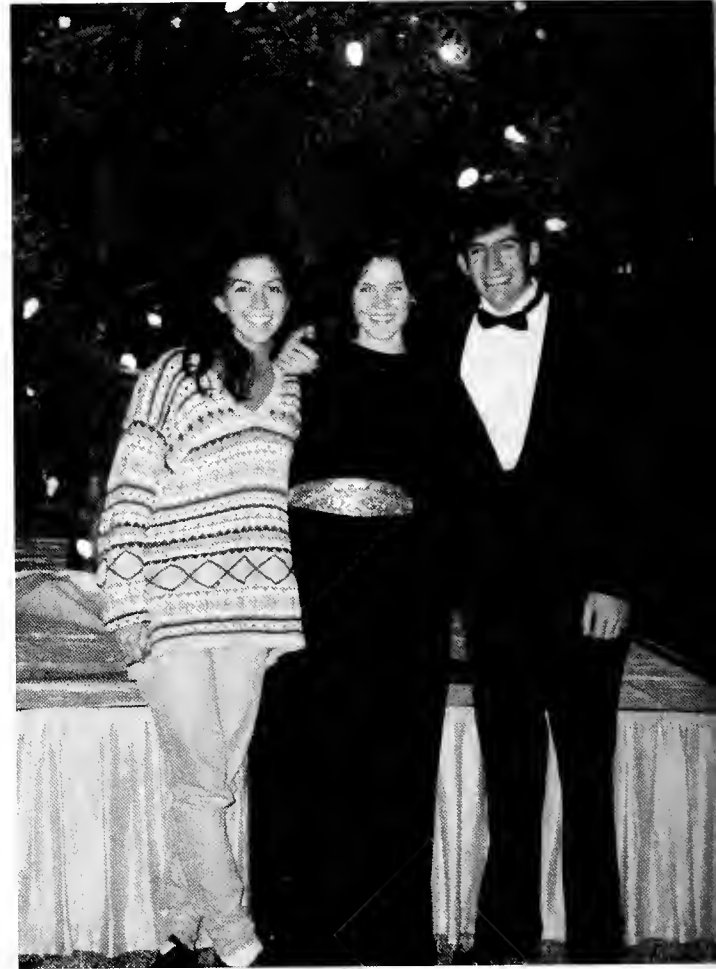


Editors:

Kelly Holland
Chris Smith
Jeremy Greenup
Christopher Paragone
Laura Jackson
John Knight
Daryl Brooks
Jason Thomas
Amy Katz
Jeanee Ledoux
Katherine Fox
Kate Schindler
Jenni Stossel
Ryan Brown

University Singers

The University Singers love to use their talents in service of the Petrel spirit. Spangled golden belts and somber black evening attire added that touch of formality to Boar's Head, Oglethorpe Day, and the Honors Convocation. The Singers braved bored high school students in Cartersville, entertained an old man in Chattanooga, and delighted sleepy Baptists in Nashville, despite Carrie Adkin's pink eye and the pressure of papers and exams. As a finale, the University Singers and alumni filled Lupton Auditorium with the lilting songs of Sydney Lanier.





Stephen Cooper
Chanda Creasy
Jenifer Parks
James Rissler
Heather Andrews
Mark Boyt

Best Buddies

Leaders:

Creche Kern
Warren Knape
Vicy Wilkinson
Christing Heslop
Paul Maxwell



Psychology-Sociology Club

Pictured left to right:

Stacey Lackey
Samantha Cruff
Rachel Noble
Jenny Ovdenk
Cynthia Coleman
Dr. Woolfolk.



Society of Physics Students



Pictured top row:

Mark Caprio,
Eleanor Fulton
Dr. Rulison
Gregory Daspit
James Jaehnig
Jon Lampkin
Nicole Spencer
Tiffany Kelsey

Bottom row:

Dr. Cramer
Sean Higgins
Tony Drake

The Tower



Pictured top row:

Michael Lipari,
Rachel Noble
Nicole Roszko
Emily Butler
Melanie Peerboom
Jeanee Ledoux

Bottom row:

Casey Dryden
Elizabeth Debroux
Jessie Pierce

If Thucydides were called upon to give a reliable account of a Greek life in 1996, his response would include descriptions of groups, letters, siblings, cafeteria placement, houses, theme parties, formals, mixers, party-flavored parties, colors, connection, fall rush, bids, pledges, and Greek Week. Doubtless the classical historian would see connections between modern interfraternity rivalries and the commotion which he observed in his own time during the Peloponnesian War. How much Oglethorpe's six Greek organizations resemble Helen or hoplites is intriguing and inconsequential. Whether antiquity could appreciate the boom and bump and grind of a frat party is a question for the ages.



Greeks



The Chi Omegas at Homecoming.

Greek Week

Greek Week 1996 was marked by some of the closest competition in recent memory, but more important than winning and losing is the fun Greeks have, not only with their own brothers and sisters, but also with the brothers and sisters of other fraternities and sororities. The bonding that takes place among the members of each fraternity or sorority could arguably make Greek Week one of the best brother- or sisterhood building events that each fraternity and sorority take part in all year.

Some of the Greek Week events are softball, football, field events (including the doughnut eating contest), the best dressed Greek, and the skit competition. This year Delta Sig truly had cause to celebrate, though, as they won Greek Week following a five year winning streak by ΣAE. Despite the arguing and bickering inevitably brought about by competition, everyone comes away from Greek Week feeling fulfilled (often with doughnuts) and closer to everyone involved.



Top: Sarah Phillips and Jeremy Greenup are indeed well-dressed Greeks. Right: A scene from ER in the entertaining ΣAE skit.





Top: The great doughnut eating contest.
Left: Julie Agster, Shannon Beehan, Evie Goldberg, Jill Smith, Kiley Ryba, and Sam Rasnake in costume for the ΣΣΣ skit.
Above: Jason Reese and Tommy Ison representing Chi Phi in the egg toss.



Top: Jean Kasperbauer, Saphire Espinoza, Jena Jolissaint, Tracy Vax, and Karmin Keiser spending the night in the house. Above: Kristy Pelletier getting ready for Rush. Right: Allison Cool, Rebecca Bowers, Susan Benhayon, Kim Kuni, and Jennifer Hedgepeth at the Mellow Mushroom.

XΩ



Above left: Emily Sirey and Julie Shuman all dressed up.
Above: Ahna Sagrera and Liesl Allen hanging out in a luxurious Traer dorm room.
Left: The sisters of Chi Omega together at a dance.

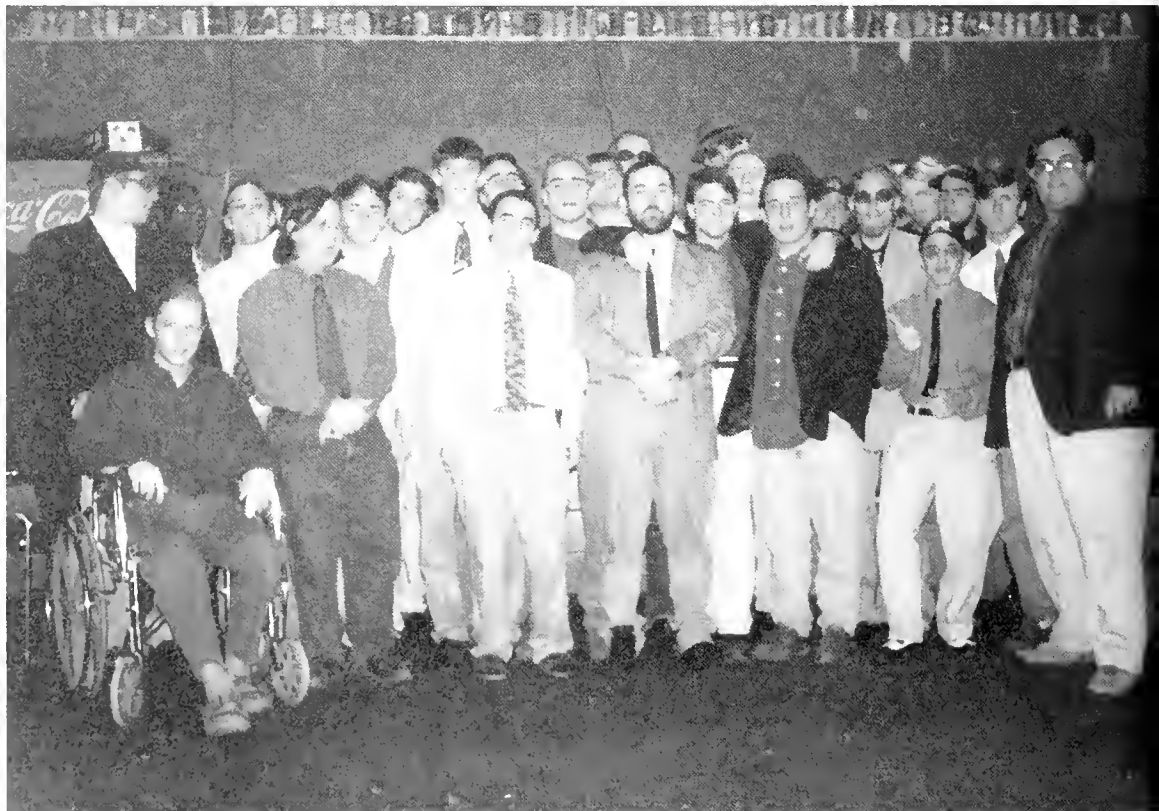
XΦ



Above: Tommy Ison, Eric Andersen, and Rod Smith on their best behavior.

Above right: Chi Phi adviser Dr. Smith congratulates Rod Smith.

Right: The brothers of XΦ.



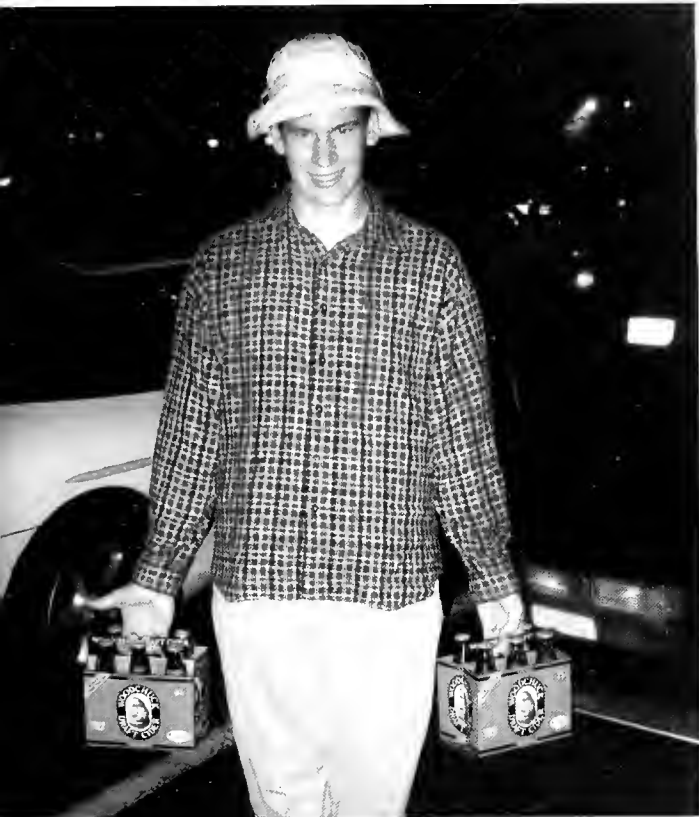


Top: Not even the flash from taking this picture could ruin the Blackout Party
Left: A little drinking, a little bowling.
Above: Hey, look. Strecker's awake. It must be night time.

Steve Taylor advertizes Delta Sig's Greek Week win, ending a five year winning streak by ΣΑΕ.



ΔΣΦ



Top left: Jesse Peters being forced to hold some beer which actually belongs to someone who is 21. Above: Joel Cameron and Jill Smith at the house. Left: Bill Davis auctions off the high-priced and scantily clad John Tole at the rent-a-Delta Sig event.

KA



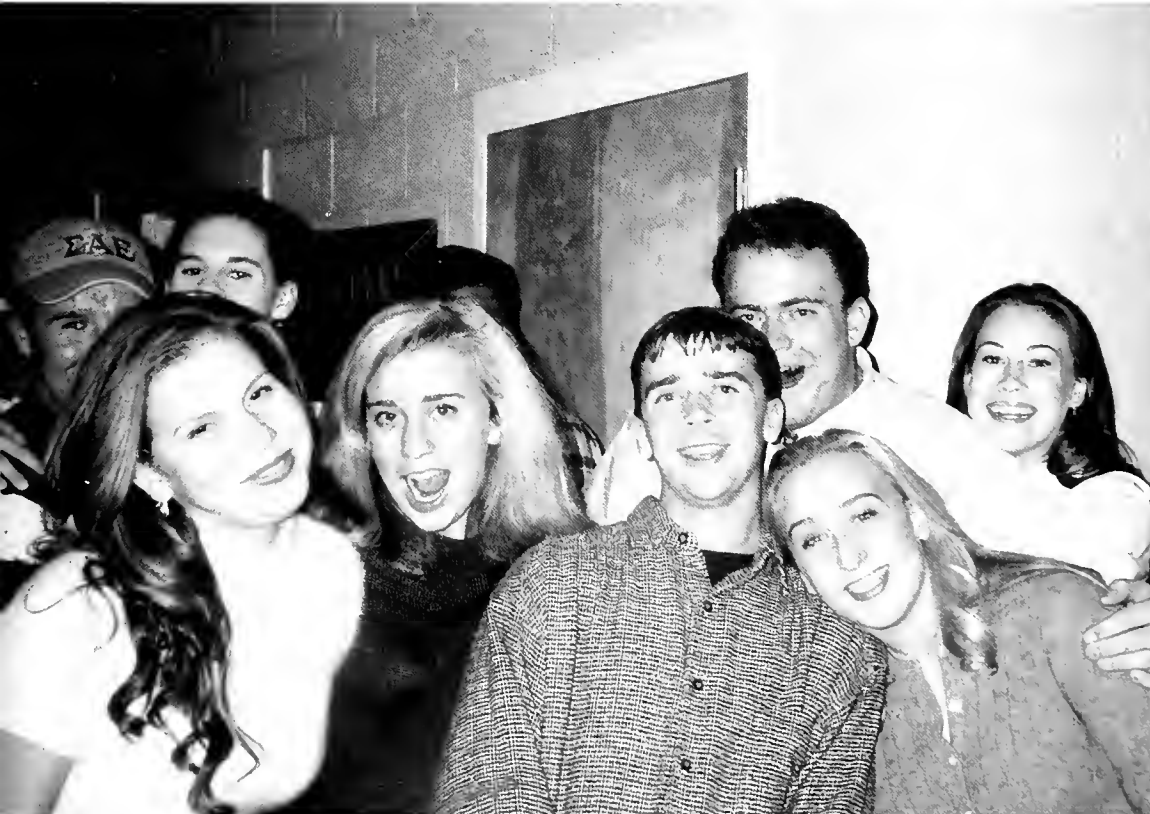


These photos may look familiar. They were used in last year's yearbook as well. We regret that we were unable to obtain any photos of K.A from this year.



Top: Stewart Hall runs Jeff White and Anthony Wilson's attempt to look tough. Above: George Killian himself frequently hangs around in the ΣAE bathroom. Right: Andy Noble, Patrick O'Rourke, Jeff White, Jeanette Randall, and Zane Scarborough at the house.

ΣΑΕ



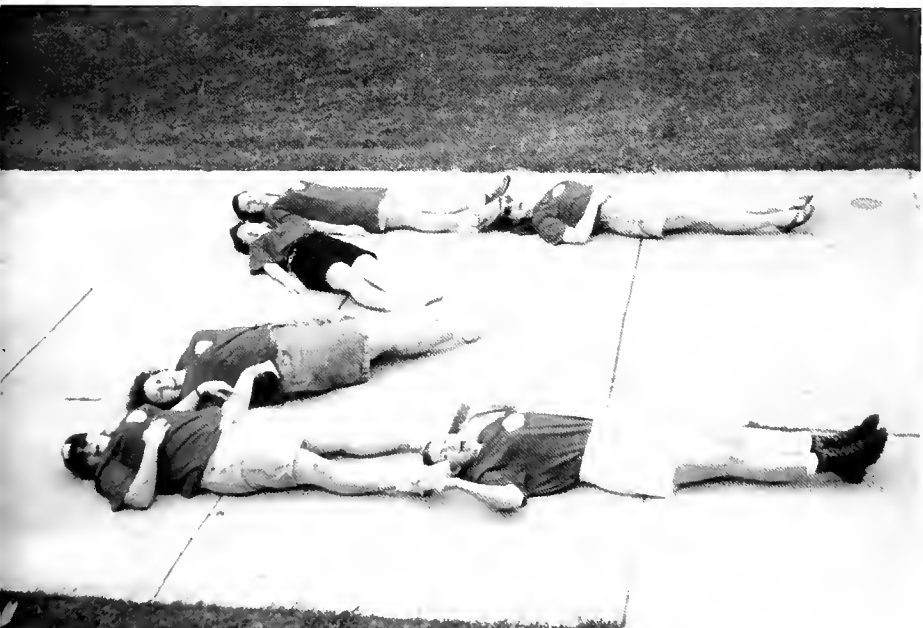
Above left: Kim Williams and HEY look. Coy Miller is actually smiling in a photograph! Above: The ever-popular Penn Mattison. Left: Jason Fisher, Holly Harmon, Jean Kasperbauer, Liesl Allen, James Martin, Big John Breton, Kim Kuni, and Jennifer Hedgepeth at an ΣΑΕ party.

ΣΣΣ



Above: Heather Weichold, Diana Rothe, and Kiley Ryba at the purple passion party. Above right: Kiley Ryba, Nancy Collins, and Sam Rasnake at Springfest. Right: Jenny Stelson and Jenn Taylor at Homecoming with a cool glass.





Top: The sisters and pledges on Bid Day. Left: Susan, Stephanie, Katherine, Nancy, Misti, and Jenny form a Sigma. Above: Jenn Taylor, Nancy Collins, and Patricia Villvecencio during fall Rush.

If the University of Georgia competes against Mississippi State, anyone who cheers for the Bulldogs cancels himself out. When Louisville matches up against Stanford, things can get confusing. In Division III athletics and beyond, a cheer for the Stormy Petrels can mean only one thing. No one roots for Stormy Petrels without rooting for Oglethorpe. Even an Audubon Society member celebrating the most determined and inspiring of seabirds will likely distinguish himself from a die-hard Oglethorpean; the Audubon Society member will probably say it wrong (though perhaps he should get an \bar{e} for effort). Ornithologists should know best how the bird's flight, feet near the ocean, earned the Petrel its name (an allusion to St. Pēter's walking on water). And if the same ornithologist were to watch an Oglethorpe sporting contest, he would see that the Pētrels are nobody's pēt.



Athletics



Women's Soccer





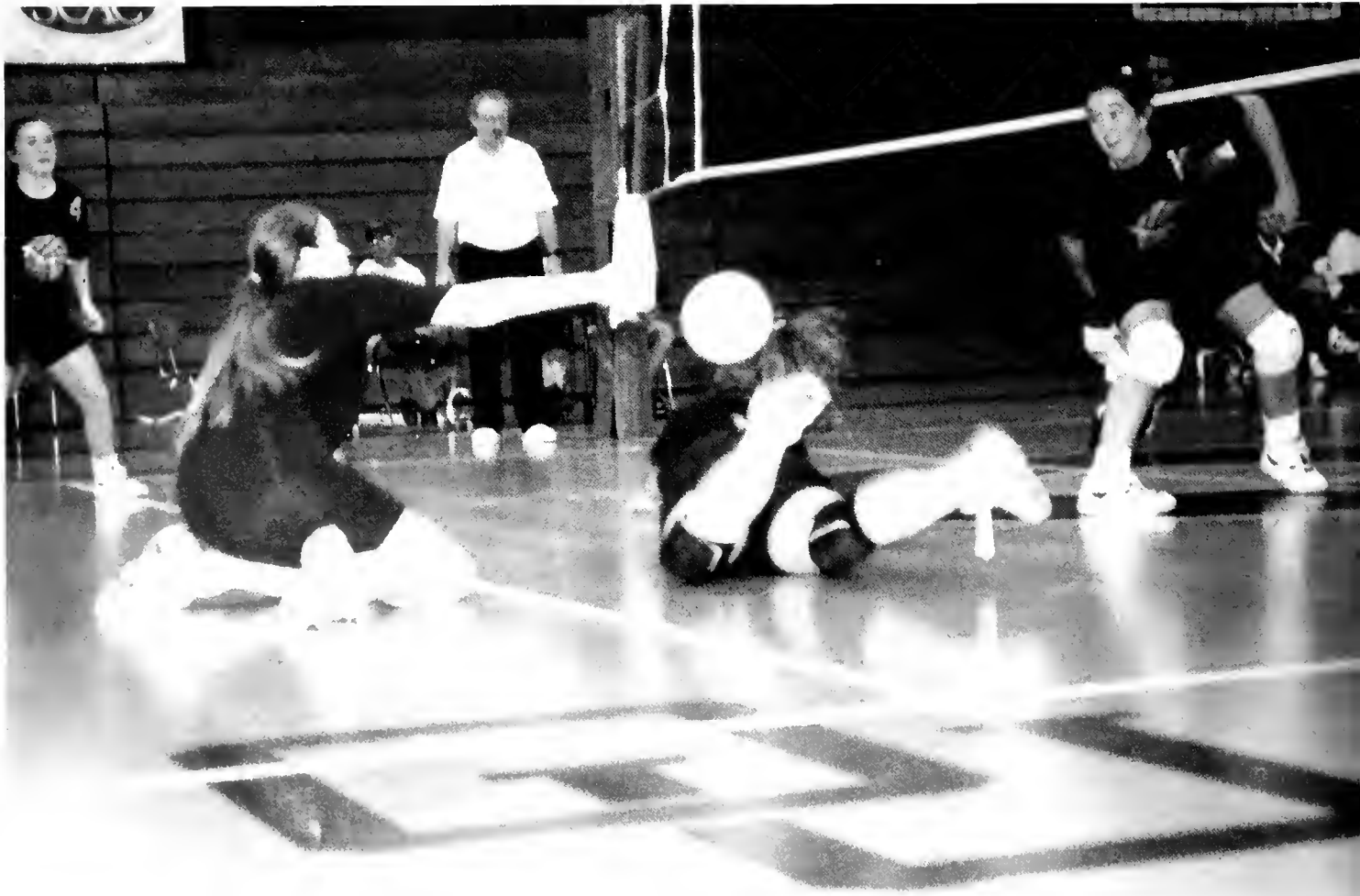




Men's Soccer



Volleyball





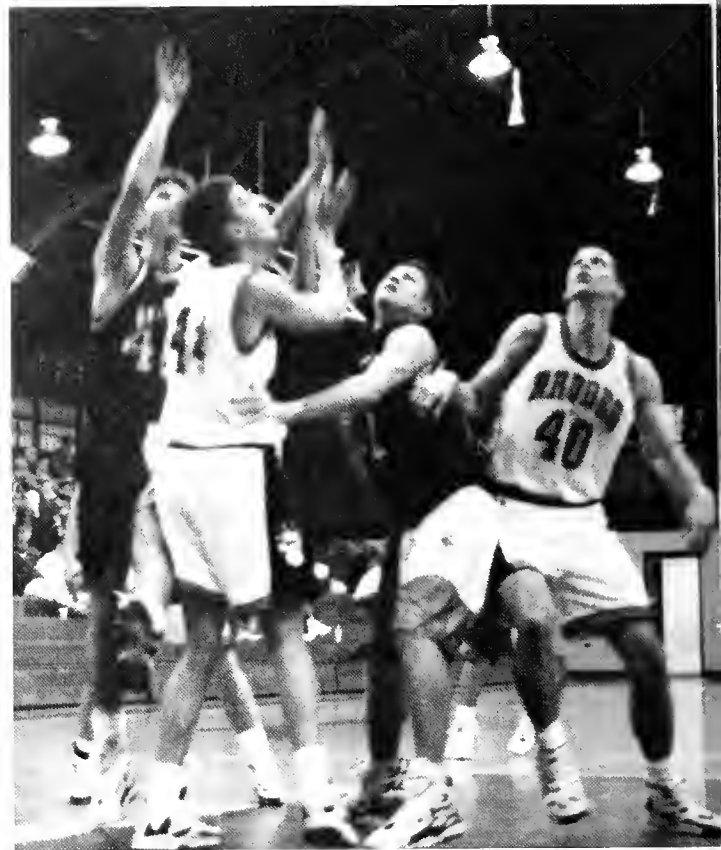




Cross Country



Men's Basketball









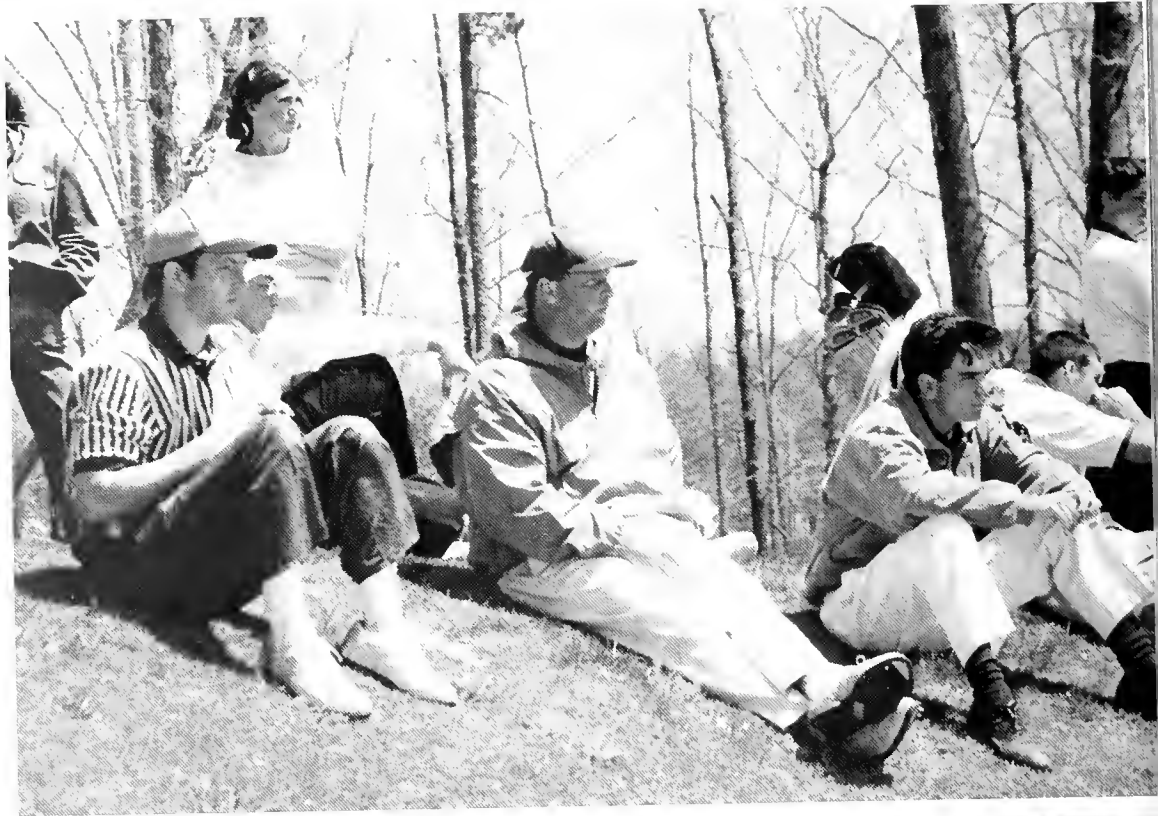
Women's Basketball



Track & Field









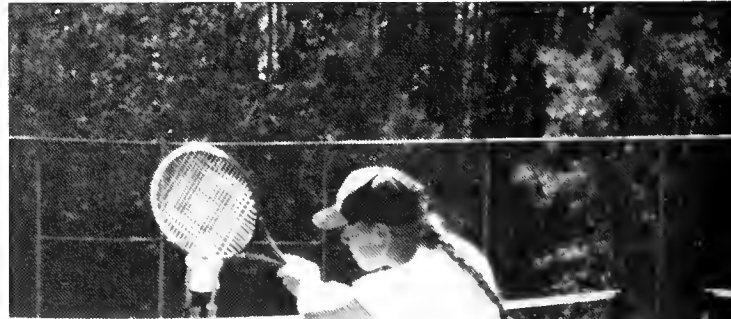
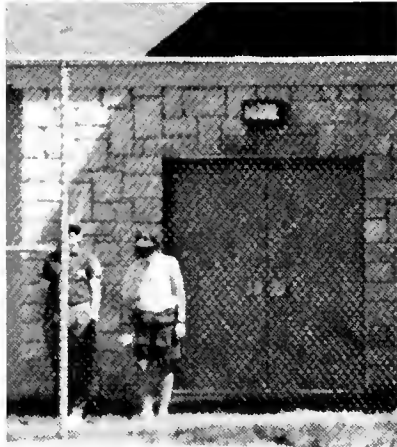
Golf



Baseball







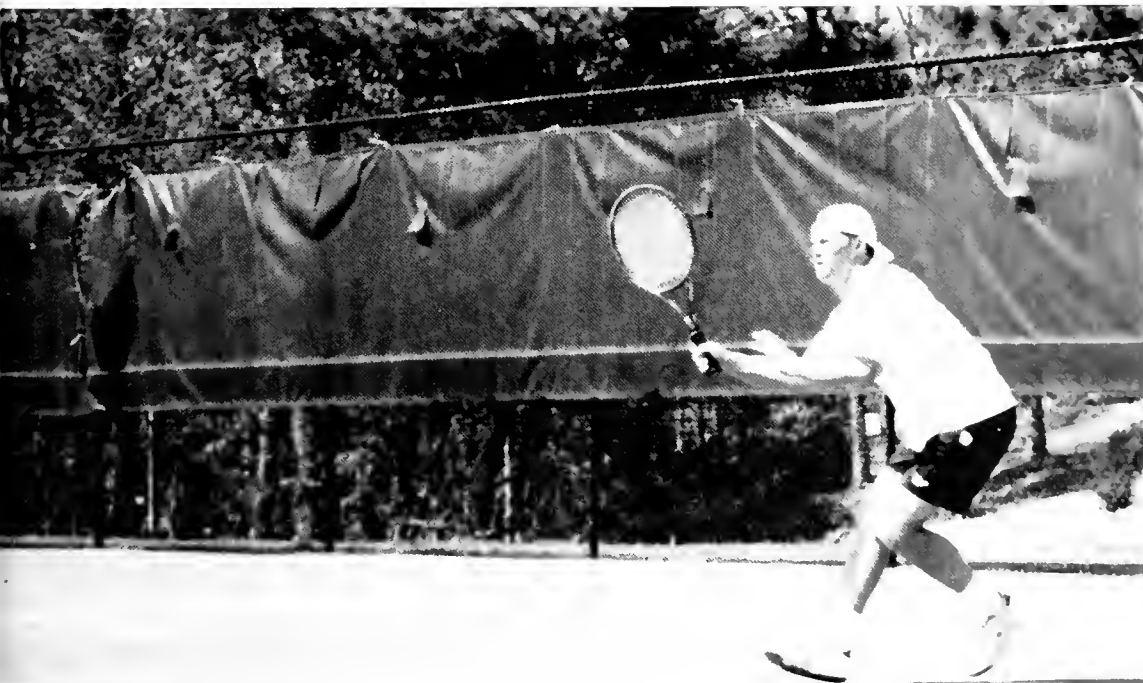


Women's Tennis



Men's Tennis





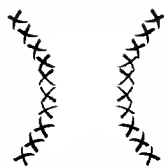
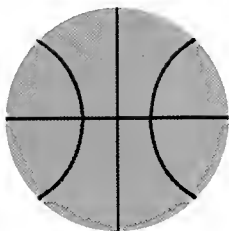




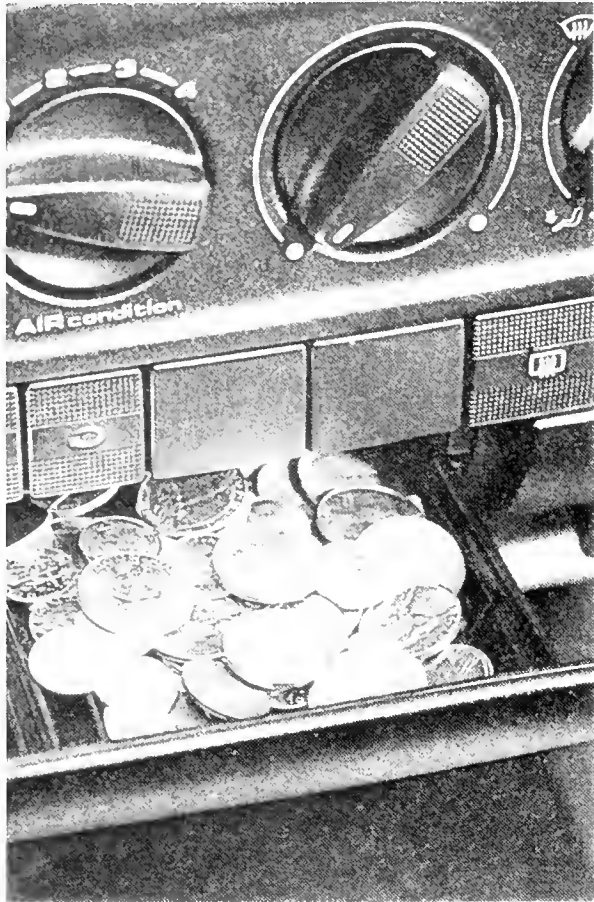
Cheerleading



Intramurals



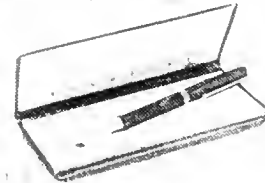




Where Will You Find The Money To Afford A JustChecking Account From SouthTrust? We're Confident You'll Dig It Up Somewhere.

Now you can have a **JUSTCHECKING** account and under you get unlimited check writing, an ATM card and no minimum balance requirement. So stop by any conveniently located SouthTrust Bank and ask about JustChecking. Because when it comes to checking accounts, you'll dig it up.

99¢



SouthTrust Bank 

Member FDIC. Member of the SouthTrust Financial Group. Another Bank.

PARTIES

Congratulations Class of 1996

from the

OGLETHORPE UNIVERSITY NATIONAL ALUMNI ASSOCIATION

We are proud to welcome our newest members! We look forward to your active involvement in your Alumni Association.

But no need to wait until graduation for that....

All you future alumni, let us get to know you now! The OSA president, senior class president and one student appointed each year serve as student representatives on the alumni board – share your thoughts and ideas with us.

Alumni Office
Second Floor, Lupton Hall
(404) 364-8326

FUN
&
FRIENDS

Amy D. Zickus '94
Alumni Director
(404) 364-8439

SPORTING EVENTS





Brookhaven Station 4060 Peachtree Rd. Atlanta, GA
phone: 404-261-1500/fax: 404-261-1753

CONGRATULATIONS TO THE CLASS OF 1996!

HOUSWORTH PARKER • CHERRY ROBERTS

ARCHITECTURE, PLANNING, INTERIOR DESIGN

IS PLEASED TO BE ASSOCIATED WITH
A GREAT ATLANTA UNIVERSITY

Physicians and Staff
of
The Emory Clinic
at Perimeter
Congratulate
the 1996 graduating class of
Oglethorpe University

The Emory Clinic is pleased to support Oglethorpe University by providing physicians for the Student Health Center. For more information about The Perimeter Clinic and its services, please call (404) 778-6100.

EMORY UNIVERSITY
SYSTEM OF HEALTH CARE
The Emory Clinic at Perimeter



Congratulations
to the
Class of `96

Come see us 7 days a week
and bring your student advantage card!

Jocks & Jills of Brookhaven
4046 Peachtree Road, NE, Atlanta, GA 30319
404-816-2801/Fax: 404-816-2871/www.jocks-frankies.com

Congratulations!

Oglethorpe students
on your decision to attend the
best university in Georgia!

Oglethorpe University.
Providing Connections to the
World in a World Class City.

Donated by an Anonymous Supporter



THE SPHINX BOOKSTORE
ATLANTA'S OLDEST SOURCE
FOR METAPHYSICAL BOOKS
AND SUPPLES

1510 PIEDMONT AVENUE
IN ANSLEY SQUARE
404-875-2665
VIANA BASTACKY-OWNER
CLASS OF 1985

CONGRATULATIONS!

**from,
Campus Dining Services**



Congratulations
and Good Luck to the
Class of 1996

from the
Community Life Staff

The Oglethorpe University Book Store

congratulates the

Class of 1996

Your Shopping Center on Campus

Dorm and Fashion Accessories -- Best Sellers

Gifts -- Cards and Stationery -- School Supplies

Monday-Thursday 8:30 to 6:30

Friday 9:00 to 5:00

Saturday 9:30 to 12:30

364-8361

(Textbooks too!)



DIXIE

SEAL & STAMP CO.

Congratulations to the Class of 1996

Steve & Jeanne Schmidt

Mac-Gray Co., Inc.

(The Laundry Professionals)

Proudly Supports Oglethorpe Students

Service ▲ Accountability ▲ Quality



*Congratulations
to the
Class of 1996*

*Wallace Printing Co.
(770) 458-4532*



**All American Vending
& Office Coffee Service, Inc.**

WISHES TO THANK THE FACULTY, STAFF,
AND STUDENTS FOR YOUR PARRONAGE.

WE APPRECIATE YOUR BUSINESS



Chin Chin II
Chinese Restaurant

Open Hearth Kitchen

Witness Art of Chinese Cooking While You Enjoy Your Meal

Special Entrees Include

Crispy Soft Shelled Crabs with Peking Sauce ▲ Hong Kong Style Farmington
Sizzling Black Pepper Salmon ▲ LOW Calorie Health Dishes also available
All Meat & Fish USDA Inspected

Mon - Thurs 11:30 am - 10:30 pm; Fri & Sat 11:30 am - 11:00 pm
Sundays & Holidays 3:00 pm - 10:30 pm

699 Ponce de Leon Ave #18

881-1511

GENERAL HARDWARE

4218 PEACHTREE ROAD
ATLANTA, GA 30319
404-237-5309

BROOKHAVEN ▲ OGLETHORPE

"OVER 35,000 HARD TO FIND ITEMS IN STOCK"

*Best wishes to the
students and faculty of
Oglethorpe University
from your friends at
SunTrust Bank.*

SUNTRUST

Member FDIC / © 1996 SunTrust is a registered service mark belonging exclusively to SunTrust Banks, Inc.

MEL Appreciates your business!



Mellow Mushroom Pizza
4058 Peachtree Rd.
Atlanta, GA 30319
404-266-1661
Fax 404-266-1664
E-Mail Meloshrom@AOL.Com



MAIL BOXES ETC.®

**TO ALL THE STUDENTS,
FACULTY AND STAFF,
WE APPRECIATE
YOUR BUSINESS.**

It's not What We Do. It's How We do It.™

ALEXANDER O'NEILL & HAAS & MARTIN

Alexander O'Neill Haas & Martin, Inc., offers a full array of comprehensive fund-raising consulting services, including development assessment studies, campaign planning studies, campaign counsel and management, leadership training, and campaign marketing materials. It also offers new Windows®-based campaign management software and instructional videos.

With more than 100 years of combined experience as professional fund-raising consultants, AOH&M serves nonprofit educational, cultural, and social service institutions nationwide. It was the first AAFRC member headquartered in the Southeast.

Alexander O'Neill Haas & Martin
181 Fourteenth Street, NE
Mayfair Royal, Suite 500
Atlanta, GA 30309-7603

(404) 875-7575
(800) 490-8039
Fax (404) 875-2992
e-mail address: frcounsel@pipeline.com



MIBA

Finish the journey where it began.

Need 30 more hours to sit for the CPA exam? Get your MBA degree at the same time.

Want to improve your job prospects? Improve your resume with a graduate degree.

Not sure what to do with your degree? This program is designed for all liberal arts majors.

You know the quality instructors, you know the convenient location, you'll probably know some of your classmates and you even already know where the library is. And you may be surprised by its affordability. Earn your degree in less than two years in the familiar setting of your own alma mater. Ask your advisor, the admission office or a Division V faculty member about Oglethorpe's MBA program.

The Master of Business Administration program at Oglethorpe University
A fast, affordable way to earn a quality graduate degree.



Cecil Malone Company
General Contractor
Since 1946

Is proud to be associated with Oglethorpe University in
constructing their new

**GEORGIA SHAKESPEARE FESTIVAL
PERFORMING ARTS CENTER**

700 Antone Street
Atlanta, Georgia 30318

404-351-3991

Fax 404-351-2716

E-Mail: cmalone@mindspring.com

Internet Address: www.mindspring.com/~cmalone


Where You Want Us, When You Need Us.

Deposits, withdrawals, loans and more. When you need the services of a bank, you want them right now. So convenience is very important. Which is a big reason you'll find nearly 1,800 NationsBank banking centers and over 1,600 24 Hour Banking machines across the South.

At NationsBank, we want it to be easy for you to get to us. Because we believe we've got the right financial services to fit any need you might have. But you have to get to us first. And that's easy. Just stop by the NationsBank banking center near you today. With so many locations and so many of the services you want, we've got the power to make a difference in the way you bank.

NationsBank

The Power To Make A Difference.™

© 1992 NationsBank Corporation. NationsBank subsidiary banks are members FDIC and Equal Housing Lenders. 



Index

- Adkins, Carrie 56
Agster, Julie 67, 104, 105
Allen, Amy 67
Allen, Cheryl 67
Allen, Liesl 67, 107, 115
Amick, Shawn 56
Andersen, Eric 67, 104
Anderson, Karen 67
Andrews, Heather 56, 99
Annikov, Ivan 67
Arrietta, Debbie 29
Atkinson, Maxine 35, 56
Baranovskaya, Natasha 56
Barigalupi, Amy 85
Barnhill, Matthew 35, 56
Barousse, Charles 67
Barrera, Paola 56
Barrineau, Clay 56
Bartlett, Angela 67
Bates, Jeffrey 67, 95
Beehan, Shannon 26, 67, 93, 105
Bembry, Todd 67
Benhayon, Susan 106
Bennett, Terrence 67
Berche, Julien 67
Bernier, Christine 38, 40, 67
Bess, Alison 56
Billingsley, Michael 37, 38
Bingham, Mark 57
Blackwell, Heidi 40, 67
Bond, David 67
Borck, Catherine 67, 93
Borderieux, Laura 67
Bost, Justin 67
Bowers, Jennifer 67
Bowers, Rebecca 106
Boyle, John 67
Boyt, Mark 99
Bozeman, Jennifer 67
Brasseaux, Mitzi 57
Breen, Christy 57
Breitfeller, Jason 67
Brennan, Hilary 68
Breton, John 68, 115
Brooks, Daryl 97
Brown, Ci Ci 158
Brown, Daniel 68
Brown, Ryan 68, 97
Brown, Luke 68
Brumby, Edward 68
Buoy, Kristen 26, 31, 68, 158
Burnham, Christina 68
Butler, Emily 101
Butts, Laura 68, 93
Buzzard, Claire 38, 68
Callaway, Catheryne 68
Calupas, Cheryl 68
Cameron, Joel 57
Campbell, Troy 68
Camron, Brandi 68
Cannizzaro, Pete 68
Carlen, Heather 57
Carlisle, Matthew 68
Carouthers, Stephanie 83
Carroll, David 68
Cave, Brett 68
Chadwick, Marlene 68
Chapman, Stacey 57
Chaves, Jennifer 68
Chestnut, Casey 57
Cheung, David 22, 23, 57
Chung, I. Ping 68
Clayton, Jennifer 68
Clement, Peter 68
Clifford, Denisa 68
Coleman, Cynthia 100
Collins, Lori 68
Collins, Nancy 116, 117, 69
Combs, William 69
Cook, Kathryn 69
Cool, Allison 106
Cooper, Stephen 58, 81, 99
Coulter, Lanier 69
Covington, Todd 58
Cox, Joseph 69
Creasy, Chanda 25, 58, 93, 99
Cruff, Samantha 100
Cunningham, Lisa 69
Curtis, Patricia 69
Daly, Tessa 69
Daspit, Gregory 69, 101
Davis, Bill 111
Davis, Wayne 33, 58
De Almeida, Karina 69
DeBroux, Elizabeth 69, 101
Dekkers, Pauline 69
Dennis, Craig 83, 58
Di Cicco, Patrick 69
Dietz, Natalie 69
Dinova, Michelle 69
Dionne, Claire 58
Doles, Catharine 69
Drake, Tony 58, 101
Dryden, Casey 69, 101
Dyer, Linnea 29
Eckmann, Jacob 69
Ehlers, Julie 69
Eleff, Justin 69
Ellis, Becky 95
Elumbaugh, Karen 69
Embry, Isaiah 58
Everett, Randy 69
Everett, Stephanie 58, 117
Faasse, Jim 45, 59
Farley, Matthew 21
Farrow, Whitney 69
Feld, Merryll 26, 93
Feros, Katharine 69
Fillop, Audrey 70
Findling, Donna 59
Fisher, Jason 70, 115
Fletcher, Katherine 70
Floyd, Patrick 22, 70, 81, 158
Folkesson, Caroline 70
Fowler, Jennifer 59, 93
Fowler, Kimberly 70

Fox, Katherine 70, 97
 Fulton, Eleanor 101
 Gatliff, Allison 70
 Gellert, Adam 70
 Gerber, Stephen 70
 Gibson, Tonya 22, 45
 Giles, Stephanie 70
 Gisel, Justin 59
 Glenn, Marquis 59
 Goldberg, Evie 105
 Graf, Neil 70
 Graf, Shaunna 39, 40, 59
 Gramling, Joshua 70
 Green, James 59
 Greene, Amanda 22, 70
 Greenup, Jeremy 70, 97, 104
 Griffin, Katherine 59
 Grimwood, Glennis 59
 Grogan, Colleen 70
 Hagmann, Natalie 70
 Hall, Carol 70, 158
 Hall, Stewart 91, 114
 Hallford, Lori 70
 Hambrick, Derek 70
 Hampton, Kelly 70
 Harmon, Holly 115
 Harris, Clinton 70
 Haug, Peter 70
 Hedgepeth, Jennifer 70, 106
 Herbert, Kristin 71
 Heslop, Christing 21, 60, 100
 Hester, Rebecca 45, 71, 91
 Hibbets, Richard 60
 Hicks, Tracy 60
 Higgins, Sean 101
 Hill, Colleen 60
 Holland, Kelly 45, 71, 93, 97
 Holmes, Heather 60
 Holshouser, Valerie 71, 85
 Hopkins, Thomas 60
 Horsefield, Jeremy 71
 Horsley, Reed 60
 Hoult, Matt 71, 87
 Huang, E-Chia 71
 Huang, Stella 60
 Hughes, Terri 71
 Huit, Kevin 26, 71
 Hukin, Simon 60, 85
 Humphries, Christina 60
 Hutcheson, Shannon 71
 Hutz, Matt 71
 Hyder, Joseph 71
 Hyman, Carla 71, 93
 Ison, Tommy 60, 105
 Isoya, Aya 71
 Jabs, Christine 61
 Jackson, Laura 61
 Jaehnig, James 71, 101
 Jedrychowski, Jaime 71
 Jedrychowski, Jenny 71
 Jeffra, Jeremiah 47, 71, 93
 Jimenez, Lynnita 71
 Johnson, Jennifer 31, 35
 Jolissaint, Jena 71
 Jones, Harley 71
 Karnes, Jason 71
 Kasperbauer, Jean 115
 Katz, Amy 72, 97
 Kearney, Adam 72
 Keiser, Karmin 61
 Kelsey, Tiffany 72, 91, 101, 158
 Kendrick, Kevin 61
 Kern, Creche 72, 100
 Khatoon, Farah 72, 87
 Kidd, Joseph 61
 Kiernan, Dennis 61
 Knape, Warren 100
 Knight, John 97
 Kohleweiler, Chip 61
 Kuni, Kimberly 72, 106, 115
 Lackey, Stacey 72, 100
 Lamor, Christophe 72, 85
 Lampkin, Jon 61, 101
 Latham, Brent 25
 Lawrie, Kristine 72
 Le, Le 72
 LeBeau, Hope 29, 72
 Leach, David 22, 23, 81, 72
 Lee, Joseph 61
 Ledoux, Jeanee 79, 97, 101
 Leggett, Benjamin 22, 23, 61
 Leibig, Kara 72
 Leighty, Deborah 72
 Lind, Russell 45, 72
 Linebarger, Theresa 72
 Lipari, Michael 61, 101
 Lucas, Robyn 72
 Luginbuhl, Jason 62
 Maki, Rachel 62
 Mannis, Stephanie 62
 Martin, James 115
 Matthews, Jay 93
 Mattison, Penn 72, 115
 Maxwell, Paul 100
 Mazzotta, Matt 73
 McGhee, Amy 72
 McNeill, Heather 72
 McNulty, Brian 72
 Milford, Andy 72
 Miller, Coy 73, 115, 158
 Miller, LaShonda 73
 Miller, Stephanie 73
 Mobley, Alisa 73
 Mohabir, Sharon 73
 Mohr, Kim 16, 31
 Mooney, Kathrina 73
 Moss-Solomon, Rachael 73
 Moynes, Kelly 62, 95
 Muhlfelder, Jessica 73
 Nanek, Jennifer 73
 Navarro, Jorge 73
 Nemeth, Yvette 73, 91, 158
 Niembro, Pedro 73
 Noble, Andy 73, 114
 Noble, Rachel 62, 100, 101
 Nolan, Katherine 73
 O'Brien, Erin 26
 O'Rourke, Patrick 73, 114
 Odom, Lin 62
 Oliveira, Alexandre 73
 Ota, Yuka 73
 Ovdenk, Jennifer 73, 100
 Pace, Robert 73
 Palmer, Sam 73
 Paragone, Christopher 38, 73, 97
 Parker, Brian 62
 Parks, Jenifer 62, 99
 Parra, Elizabeth 73
 Pass, David 73, 87, 93
 Peerboom, Melanie 62, 101
 Pellegrino, Mark 63
 Perkins, Jane 63
 Peters, Jesse 111
 Petrakos, Alexia 74
 Petric, Roc 74, 85
 Petrizzo, Katherine 74, 117
 Phillips, Sarah 74, 104

Pierce, Jessie 74
 Pittman, Denise 74
 Polakov, Adam 74, 158
 Polyak, Susie 29
 Pompilio, Michael 74
 Portwood, Jerry 37, 38, 41, 74
 Poteet, Mary 45, 63, 95
 Purify, Alisa 63
 Pyron, Jeff 74
 Queen, Ryan 63
 Randall, Jeanette 74, 91, 114
 Ranne, Laurie 63
 Rasmussen, Stacy 26, 63
 Rasnake, Sam 105, 116
 Reese, Jason 74, 105
 Reeves, Matt 74
 Regnier, Amanda 74
 Rissler, James 74, 99
 Ritter, Thomas 74
 Rivenbark, Matthew 74
 Roberson, Randy 45, 74, 93, 95
 Roberts, Chelsie 74
 Robertson, Amy 74
 Robertson, Gareth 74
 Robinson, Hal 74
 Rook, Darla 51, 74
 Rosenthal, Daniel 63
 Roszko, Nicole 101
 Rothe, Diana 74, 116
 Ruiz, Zandra 75
 Ryba, Kiley 75, 105, 116
 Sagrera, Ahna 75, 107
 Salus, Eric 75
 Sandin, Daniel 64
 Sattar, Erum 75, 87
 Satterifeld, Angela 75
 Scarborough, Zane 75, 114
 Schewe, Ann 75
 Schillinger, Jennifer 75
 Schindler, Kate 97
 Schlipzand, Pauline 75, 87
 Schultz, Jeremiah 64
 Schwab, Zachary 75
 Scott, Burke 64
 Scott, Melanie 75
 Scott, Nicole 75
 Scowcroft, Jennie 75
 Seidel, Sylvia 75
 Sellars, Tonia 64
 Serulle, Rosa 75
 Shaw, Keabii 75, 83, 158
 Shelnutt, Kaye 64
 Shenoy, Arathi 75
 Sheth, Deempal 75, 87
 Shirley, Michael 95
 Shirley, Susan 64, 81
 Shuman, Julie 107
 Sinclair, Laura 30, 75
 Sircy, Emily 107
 Skinner, Cathy 26
 Slater, Jennifer 75
 Slutzky, Ilana 75
 Smith, Brandon 75
 Smith, Christopher 75, 97, 158
 Smith, Jill 105, 111
 Smith, Matthew 76
 Smith, Rod 64, 104
 Smith, Troy 64
 Solomon, Kelly 45, 83
 Sparks, Nathan 76
 Spector, Shira 64
 Spencer, Nicole 23, 76, 101
 Stackhouse, Jason 76
 Stagg, Scott 21, 64
 Stellin, Danielle 76
 Stelson, Jennifer 76, 116
 Stockton, Elizabeth 21, 65, 81
 Stossel, Jenni 97
 Strecker, Eric 109
 Sumter, Tharius 76, 95
 Tawney, Neetu 76
 Taylor, Beth 65, 158
 Taylor, Jennifer 76, 117
 Taylor, Stephen 65, 110
 Tchaplinskaya, Ana 76
 Thomas, Chanda 76, 83
 Thomas, Jason 97
 Thomas, Jeff 76
 Thompson, Matthew 76
 Thrasher, Aimee 76
 Tole, John 76, 111
 Topszj, Maria 76
 Trevisan, Jennifer 65
 Trucksis, Kathleen 76
 Tsukada, Yuri 76
 Tyler, Heather 65
 Underwood, Roderick 76, 91
 Van der Krabben, Tanja 76
 Van der Veen, Ellen 76
 Van Winkle, Eric 76
 Vazquez, Julie 76
 Vickers, Michael 76
 Villavicencio, Patricia 65
 Waggener, John 77
 Wagner, Gloria 77
 Wallace, Matthew 77
 Walters, Megan 77
 Waterston, Tinnie 95
 Watson, Mark 77
 Weaver, Bennett 22, 77
 Weichold, Heather 77
 Wesley, Rob 77
 Whaley, Miriam 65, 158
 White, Jeff 65, 114
 White, Matthew 77
 Why, Michelle 77
 Wieberg, Brandi 77
 Wilbur, Allison 38, 40, 77
 Wilcox, Matthew 77
 Wilkerson, Lauren 77
 Wilkes, Bruce 25, 77
 Wilkinson, Vicy 77, 100
 Willard, Christie 77
 Williams, Kim 77, 115
 Williams, Laura 77
 Williamson, Miki 95
 Wilson, Anthony 114
 Wilson, Wade 65
 Winsness, Kerry 29
 Worley, Kim 39, 41, 93
 Wurt, Dawn 77
 Wiskind, Jared 66
 Wood, Daniel 77
 Yates, Eddie 45, 77
 Zaballa, Angela 77
 Zimmerman, Vincent 77, 83

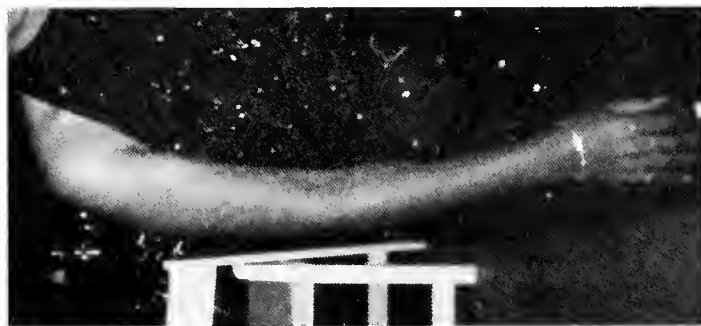
Staff



Tiffany Kelsey
Editor



Kristen Buoy
Photography Editor



Miriam Whaley
Co-Layout Editor

CiCi Brown
Co-Layout Editor

Patrick Floyd
Copy Editor

Chris Smith
Photographer

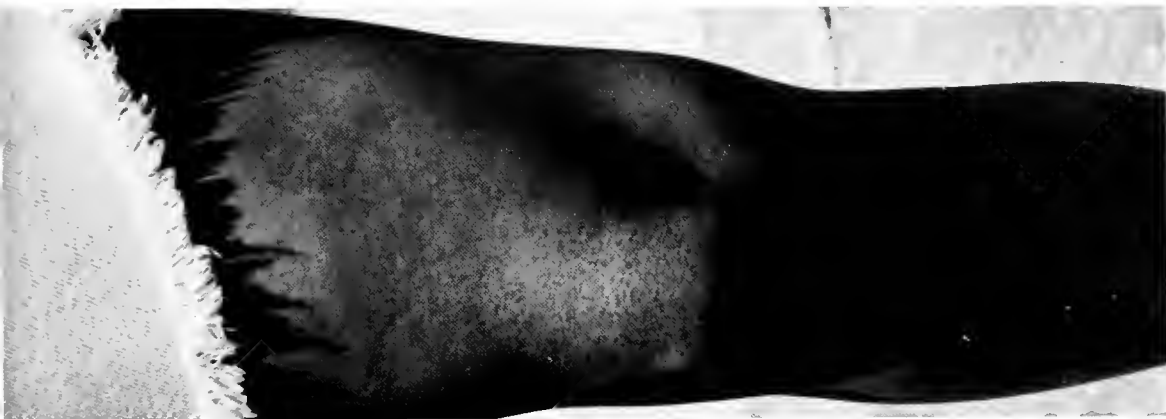
Coy Miller
Editor at large

Carol Hall
Business Manager

Yvette Nemeth
Advertising Editor

Staff:
Adam Polakov
Keabii Straw
Beth Taylor

Adviser:
Dr. Robin LeBlanc



A
N
O
M
A
L
Y



Oglethorpe University Alma Mater

L. Taylor/J. Brahms

Our dear *Alma Mater*, to you we sing our praise.
Your gray stone and mortar give strength for the coming days.
Then like the Petrel, feet near the ocean, we'll rise through wind and rain.
Yes, Oglethorpe, you're here to remind us: *Nescit Cedere*.



3 1002 1013 3772 2

FOLIO LD4191 .O465 Y3 1996 c.2
Yamacraw / issued by the first senior
class of the Oglethorpe University.



