

LIPTON HALL



OGLETHORPE

UNIVERSITY

YAMACRAW 2008



Digitized by the Internet Archive
in 2010 with funding from
Lyrasis Members and Sloan Foundation

<http://www.archive.org/details/yamacraw200875ogle>



Dedication



Every year, the Yamacraw staff dedicates its book to faculty or staff who have somehow transformed or tremendously made Oglethorpe a place in which to "make a life, make a living, and make a difference" to all of us.



This year, we dedicate the 2007-2008 yearbook to the newly retired Professor of Music, Dr. James Bohart, Professor of Philosophy, Dr. Philip Neujahr, and Professor of English, Dr. William Brightman, for their many years of hard work and amazing dedication to this school, our bubble, and for four years or more, our way of life.



Thank you.
The Yamacraw Staff

Retrospective





<u>Table of Contents</u>	
Dedication	01
Retrospective	02
Students	04
Professors	62
Clubs/Organizations	73
Sports	126

SENIORS



Congratulations!



Cynthia Aby

Class of 2008



Akalework Akalework

Class of 2008



Fauzia Amlani

Class of 2008



Jessica Anderson

Class of 2008



Richard Anderson

Biology/Sociology

Phi Delta Epsilon. Phi
Eta Sigma. Society of
Physics Students -
Publicity Chair. Sigma
Zeta National Science
Honor Society -
President. Alpha Chi.
B.E. Hammock
Memorial Scholar.
Prseidential Scholar.



Max Arrechea

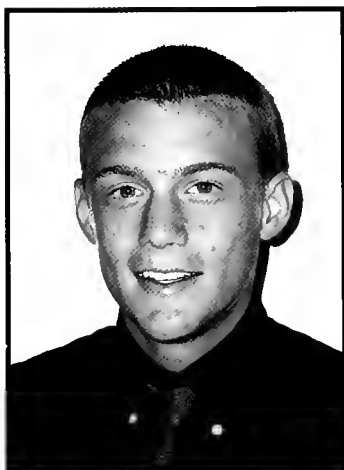
Psychology

Class of 2008

Congratulations!

Zachary Atkinson

Class of 2008



Terry Bailey

Class of 2008



Leah Weston Balch

Studio Art

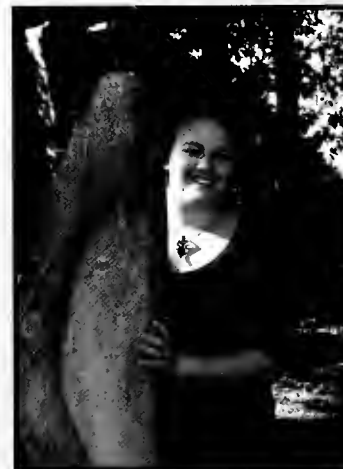
Sigma Sigma Sigma.
The Process.



Trish Baldwin

Biology

Vice President of Senate.
President - Alpha Sigma
Tau. ODK. Order of
Omega. Phi Delta
Epsilon. Resident
Assistant. Admissions
Ambassador.



Reeve Barbour

Spanish (Pre-med)

"I am who I am; living
each day with many lives
at a time."



Catherine Barson

English

"Normality is an excuse
made up by the
creatively uninspired to
justify their existence."



Congratulations!



Jacqueline D. Bass
Theatre

Class of 2008



Abi Berwager
English

Alpha Phi Omega. Feed America Music Foundation. The Stormy Petrel.

"What if everything around you isn't quite as it seems? What if everything you think you know is an elaborate dream?" ~Trent Reznor



Patricia Bolton

Class of 2008



Jessie Bonham

Class of 2008



Gillian M. Brady
Communications

Cross Country. Women's Track Team.



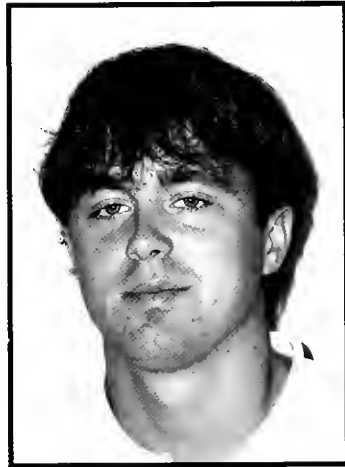
Grayson Briggs

Class of 2008

Congratulations!

Matthew Brisendine

Class of 2008



Lauren Byrd

Studio Art

Illegitimi non
Carborundum.

Sigma Sigma Sigma.
The Process. Stormy
Petrel. Being Awesome.



Laura Callender

English

"In whose interest is it
for you to feel like
nothing you could do
would make any
difference?"
~Dr. Hyman



Megan Campbell

Biopsychology

Omicron Delta Kappa.
Psi Chi. Phi Delta
Epsilon. Resident
Assistant.



Taylor Cannon

Business Administration

Chi Phi Sweetheart - "I
love you guys!"



Miriam Cash

English

Class of 2008

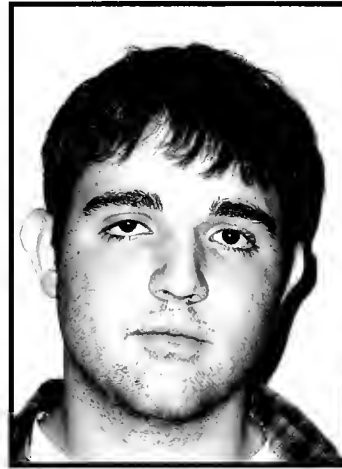


Congratulations!



Devane Casteel
Politics

Alpha Sigma Tau. OU
Dancers.



Brian Chimiklis

Class of 2008



Kemoy Clarke

Class of 2008



Courtney Clayton

Class of 2008



Eric Cohen-Greenberg

Class of 2008



Millicent Cone
Psychology

Alpha Sigma Tau. OU
Cheerleaders.

Congratulations!

Taryn Cooksey
History

Class of 2008



Ashley Cooper

Class of 2008



Jason Cree

Class of 2008



Bruna da Silva Bartsch

Class of 2008



Sarah Darby

Class of 2008



Stephanie M. Darden
*International Studies with
Asian Concentration*

Study abroad at Otaru
Univeristy in Japan for a
year.



Congratulations!



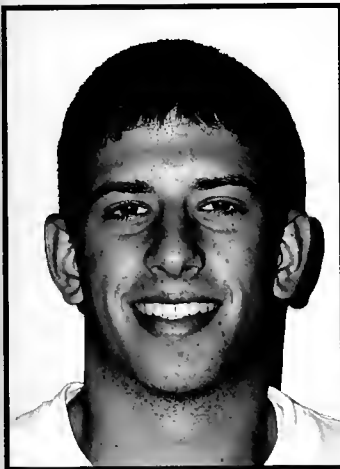
Mallory Jane Davis
*Visual Communication
and Rhetoric Studies*

Editor-in-Chief - The
Stormy Petrel. ODK.
Sigma Sigma Sigma.
Alpha Chi. Phi Eta
Sigma. OSA. Phi Delta
Epsilon. Honors
Program. CORE
Committee. Penguin
Collecting.



Constance Davis

Class of 2008



Thomas Davis

Class of 2008



Varietta Davis

Class of 2008



Tiffany Desrosiers

Class of 2008



Antonette Diao
Biopsychology

Circle K. Phi Delta
Epsilon. International
Club.

Congratulations!

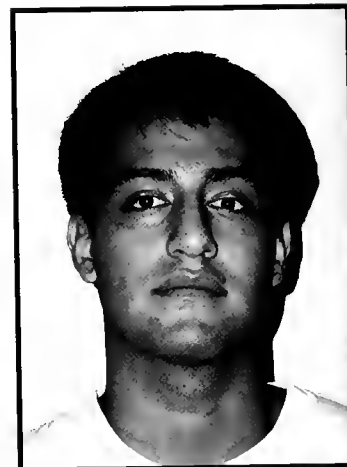
Jamie Dillon

Class of 2008



Luis Dominguez

Class of 2008



Stephanie Dunnigan

Accounting

Class of 2008



Ariane Dyson

Class of 2008



John Esterline

Economics

Tennis. Kappa Alpha
Order. '08 for OU Senior
Campaign.

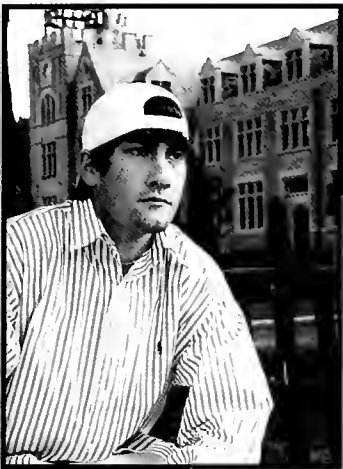


Megan C. Fabick

Class of 2008



Congratulations!



Brickford Faucette
Business Administration

Varsity Tennis - Captain.
Stormiest Petrel. Kappa
Alpha Order - President.
Petrel Council. FCA.



Lily Fincher

Class of 2008



Eric Fladland
Accounting

Chi Phi.



Francesca Funderburk

Class of 2008



Sarah Fuqua
English

"Don't tase me, Bro!"



Julia Adele Gates
Business Administration

OU Women's Golf -
Team Captain. OU
Dancers - Team Captain.
Alpha Sigma Tau.

Congratulations!

Krystal Gayle
Psychology

OU Gospel Choir.
Circle K.

"I can do all things
through Christ who
strenghtens me."
~Phillipians 4:13.



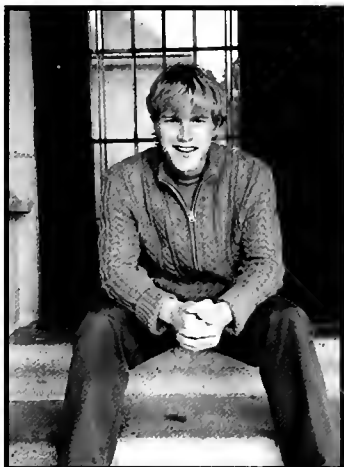
Salamewet Gebremeskel

Class of 2008



Stephen Germany
*French, Spanish,
Religious Studies*

ECOS. Vasa Dranger.
University Singers.
OUMA Advisory Board.



Stephanie Gill
Art History

Class of 2008



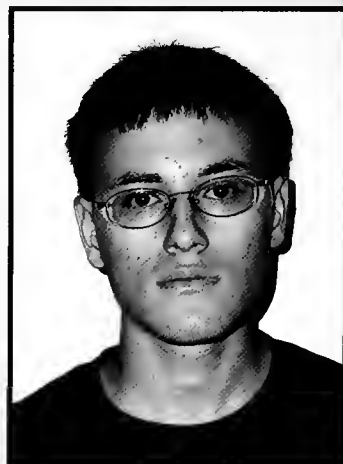
Irasema Gonzalez

Class of 2008



Benjamin Grad

Class of 2008



Congratulations!



Jessica Graner
Psychology

Omicron Delta Kappa.
Alpha Phi Omega. Psi
Chi. Alpha Chi.



Keith Griffin
Art History

Senior Class President.
ODK - President. OU
Singers - President.
Resident Assistant. Chi
Phi. Admissions
Ambassador. Order of
Omega. Chairman -
Senior Campaign. Alpha
Chi. Phi Eta Sigma.
Fresh Focus Mentor.



Carly Hallman

Class of 2008



Meagan Hanes
Biology

Alpha Sigma Tau. Order
of Omega. Alpha Sigma.



April Harris
Economics

"Life is God's gift to you.
What you become is your
gift to God."



Christopher Harvin
*Behavioral Science and
HR Management*

Resident Assiantant.

"If we speak today, then
we speak tomorrow. Stay
true to your friends;
there's no room for
sorrow." ~King of Traer.

Congratulations!

Stephanie Henschel

Class of 2008



Rachel Paige Hensler

History

"SPUFT!"



Kenneth R. Hobbs

History

"Early to bed, early to
rise, work like hell, and
advertise."
~Ted Turner



Lydia Marie Hofstetter

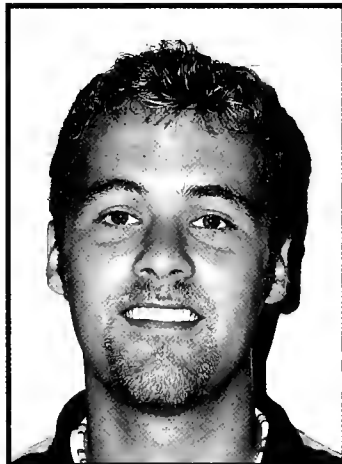
History

Chi Omega. Oglethorpe
Student Association.
Panhellenic Council. Cross
Country.



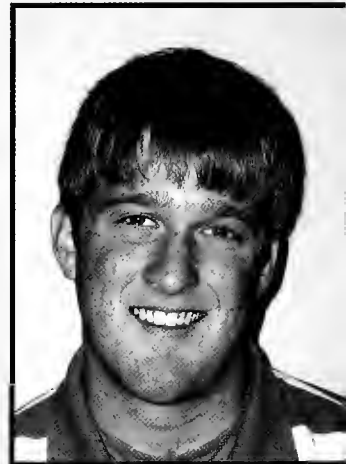
William Horton

Class of 2008



Jacob Hoyer

Clas of 2008

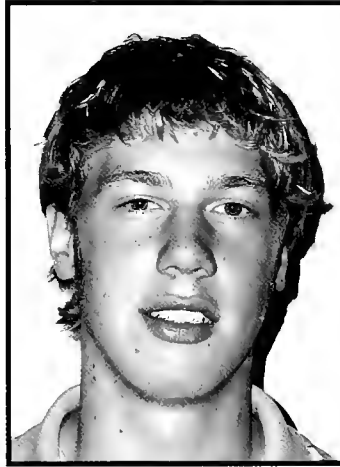


Congratulations!



Stephanie Huffstutler

Class of 2008



Adam Humar

Class of 2008



Craig Jackson

Class of 2008



Jailyn Johnson

Class of 2008



Shanae Johnson

Class of 2008



Katherine Johnston
Psychology

"Peace will come when
the power of love
overcomes the power of
power." ~Jimi Hendrix

Congratulations!

Tiffanie Jones

Class of 2008



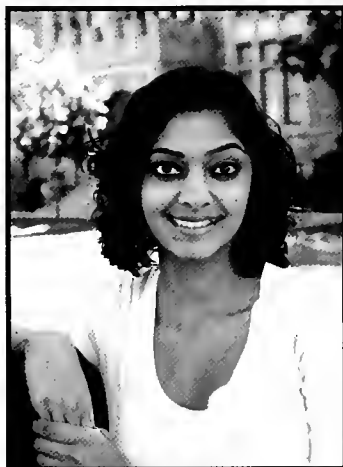
Noelle Jozefowicz

Class of 2008



Soumya Kantemni
Politics

President Pro-Temp of
OSA's Senate.
International Club.
Students for Barack
Obama. Save Darfur
Coalition.



Bryan Kennicott

Class of 2008



Weston Kirk

Class of 2008



Ausrine Klicius

Class of 2008



Congratulations!



Kelly Korell
Economics

Sigma Sigma Sigma -
Treasurer. Economics
Club.



Russell Kramer

Class of 2008



Michael Krueger

Class of 2008



Katherine Kuhn

Class of 2008



Thomas Layman

Class of 2008



Luciana Lazzarino

Class of 2008

Congratulations!

Phu-Tho Le

Class of 2008



Jessica Lewis

Class of 2008



Beth Lindahl

Class of 2008



John Lombardy
Business Administration

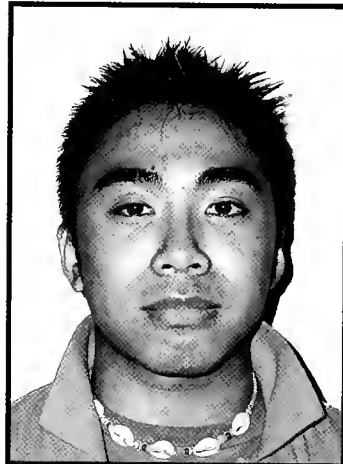
Chi Phi Brother.

"Let them hate, so long
as they fear." ~Caligula



Soubanh Louangvilay

Class of 2008



Wendy Madill
Classical Studies

"insert pretentious quote
here"

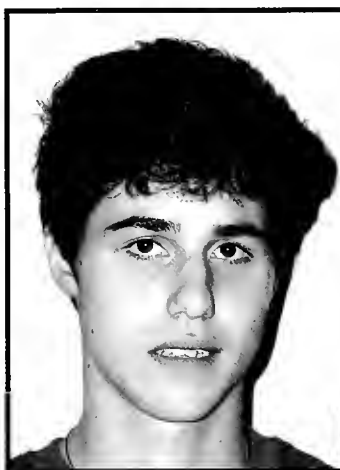


Congratulations!



Halley Malison

Class of 2008



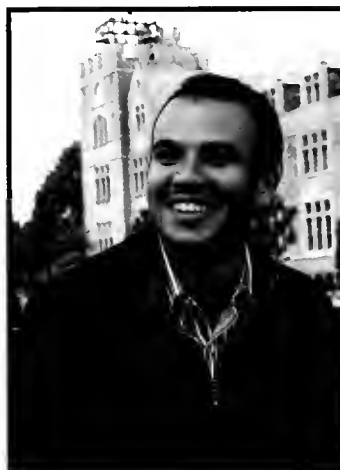
Charles Marie

Class of 2008



Elliot Martin

Class of 2008



George Matter

Class of 2008



AJ McCarthy

Psychology

Chi Phi.



Phillip McCrary, Jr.

Class of 2008

Congratulations!

Robert McGee

Class of 2008



Laura Lea Miller

English

Feed America Music Foundation. The Stormy Petrel. Oglethorpe Students for Life. Oglethorpe Songwriters and Poets Society.



Jeffanne Millien

Biology

Circle K. Phi Delta Epsilon. Crusade for Christ. Voices of Inspiration. Alpha Chi. Phi Eta Sigma. Omicron Delta Kappa. IT Services Student Technician Assistant.



Sumbul Mirza

Class of 2008



Camesha Mitchell

Class of 2008



Ashley Anne Money

Economics

"Life is about choices and making the most of the choices you made."
~my Daddy

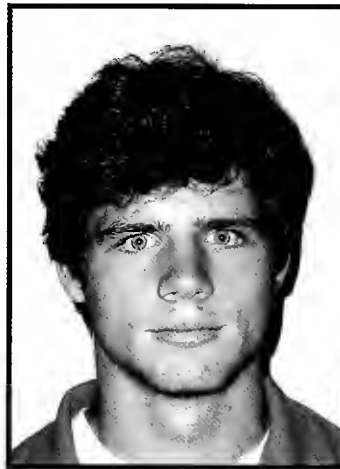


Congratulations!



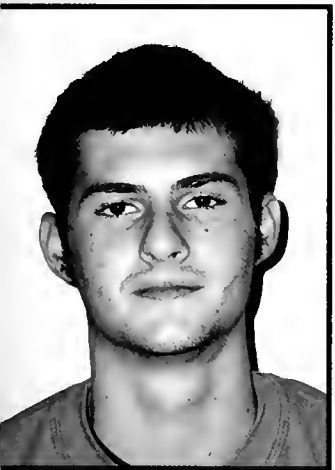
Jessie Morris

Class of 2008



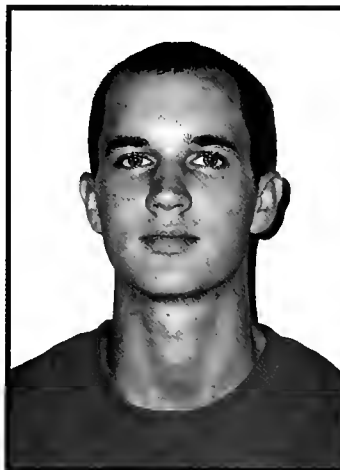
William Mueller

Class of 2008



Gwinn Nixon, III

Class of 2008



Brian Norman

Class of 2008



Ashley Obregon

Class of 2008



James E. Oglethorpe
History, Classical Studies

"That's a good joke, but we do it much better in England."

Congratulations!

Anne Oredeko

Class of 2008



Ligia Padilla

Biology

"In the middle of
difficulty lies
opportunity." ~Albert
Einstein

Circle K - Social Chair.
International Club. Phi
Delta Epsilon. APO.
Campus Crusade for
Christ. ECOS.



Travis Palladino

Class of 2008



Hubert Dramane Pare

Biochemistry

"If a man wants
something he never had,
he has to do something he
has never done. "

"Don't follow your
dreams, chase them."



Zack Parris
English Literature

Class of 2008



Sundeep Patel
Business Administration

"That rat bastard."



Congratulations!



Aimee Paulk

Class of 2008



Derin Pekin

Class of 2008



Robert Peterson

Class of 2008



Jorge Pinto

Accounting

OU Bookstore.
Accounting Society.
Resident Assistant.



Caitlyn Post

Class of 2008



Carly Reed

Class of 2008

Congratulations!

Kiera Eileen Robbins
Theatre

"This is the strangest life
I've ever known."
~Jim Morrison



Natina Roberts
Psychology

"If you always do what
you've always done, then
you'll always get what
you've always gotten.
The me I see is the me
I'll be; if it is to be, it is
up to me."



Sunny Rodgers
Class of 2008



James Adam Rowe
Psychology
Class of 2008



Victoria Ruth
Class of 2008



Lauren "La" Schaffer
Studio Art
Class of 2008



Congratulations!



Joy Schambach
Chemistry

Alpha Phi Omega.
Omicron Delta Kappa.
Order of Omega. Alpha
Sigma Tau.



Deyonna Scott

Class of 2008



Ahmad Shaheed
Accounting

Men's Basketball Team.
Accounting Society.
Muslim Student
Association.



Robert M. Smith
Psychology

"Keep God first in
everything you do."

University Singers. OU
Gospel Choir. Phi Delta
Epsilon. Campus
Crusade for Christ.



Steven Sorci

Class of 2008



Paul Springman

Class of 2008

Congratulations!

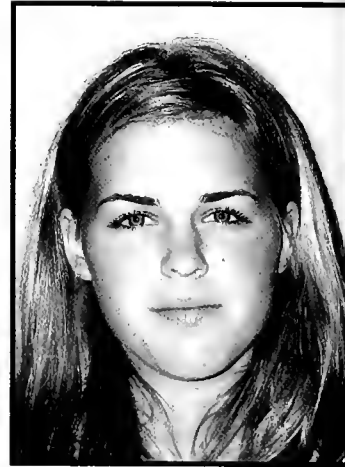
Matthew Suggett

Class of 2008



Mallory Summers

Class of 2008



Ashley Taylor

Class of 2008



Cara Tillotson

*Communications and
Rhetoric Studies*

Sigma Sigma Sigma -
President. Order of
Omega. Phi Delta
Epsilon. Alpha Chi.
Omicron Delta Kappa.



Sara Troficanto

Theatre

"On ne voit bien qu'avec
le cour. L'essentiel est
invisible pour les yeux."

Chi Omega. Omicron
Delta Kappa. Alpha Chi.
Rehearsal Room C.



Nathan Tyre

Class of 2008

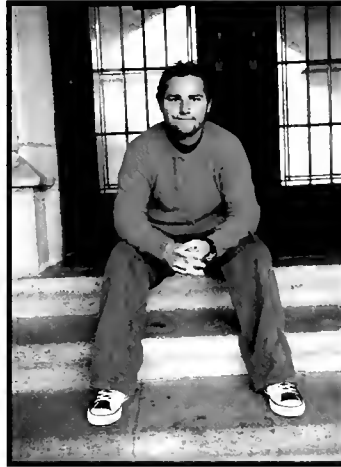


Congratulations!



Taylor Armstrong Urbanski
Accounting

Men's Golf Team. Sigma Alpha Epsilon. 1st Team All-American. Academic All-American.



Eckhardt can der Linde
*Psychology,
Communications*

"Wars of nations are fought to change maps, but wars of poverty are fought to map change."
~Muhammad Ali

Men's Tennis. Stormy Petrel - Sports Editor.



Nicole Varner
Politics

"It's so pretty... not me, the campus!"



Julian Vega
Biology

Class of 2008



Andrea Vinson

Class of 2008



Tresa Washington

Class of 2008

Congratulations!

An'Renae Watkins
*Sociology, concentration:
Social Work*

"It does not matter where
you come from; it only
matters where you are
going and how you plan
to get there."



Katherine Weisz

Class of 2008



Jaime White

Class of 2008



Johana Vega-Whitehill

Biology

Researcher at Georgia
Tech.



Hannah Wiles

History

University Singers.
Sigma Sigma Sigma.
Yamacraw Yearbook.

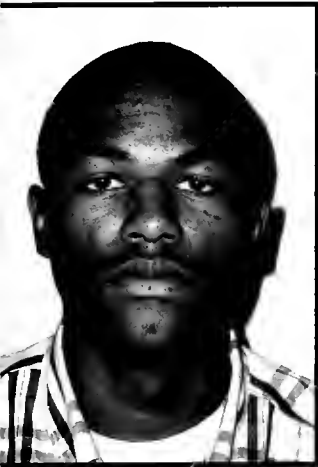


Kim Wilkerson

Class of 2008



Congratulations!



Justin Willard

Class of 2008



Adrienne Woodall

Class of 2008



Susan Yi

Class of 2008



Duo Zhou

Accounting

Circle K. Oglethorpe
Accounting Society.

Not pictured:

Jamie An

Charlotte Eliscu

Jennifer Fisher

Brian Gomez

Abigail Hammond

Maryam Jeddi

Deborah Lubbe

Christina MacRosty

Samuel Murray

Rafael Ribeiro

Shanequa Shuler

Kelli Solomon-Mattox

Hillary Steele

Ingrid Wiggberg

John Williams

William Wotiz



UNDERCLASSMEN





Mustafa A. Abdullah
Katherine C. Allen
Daniel C. Allender
David S. Allison



Matthew L. Anderson
Tiffani C. Andrews
Andrew D. Anglin
Stephen J. Archer



Kathryn P. Armstrong
Ryanne A. Arola
Carmen M. Arriet-Mayorga
Kayla E. Atkins



Brittiny A. Bach
Adam H. Bailey
Kendra S. Bailey
Chelsea L. Baker



Ms. Taryn C. Baldwin
Thomas J. Barkas
LaDonna C. Barnes
Chelsea M. Baron

Elizabeth D. Barwick
 Frank R. Beall
 David Beazer
 Jacob Bein



Cynthia Belinga
 Travis Belton
 Austin Benedict
 Allen Bernhardt



Kelly-Jo Berry
 Jasenka Besic
 Lybia Bethel
 Bhagwati Bhakri

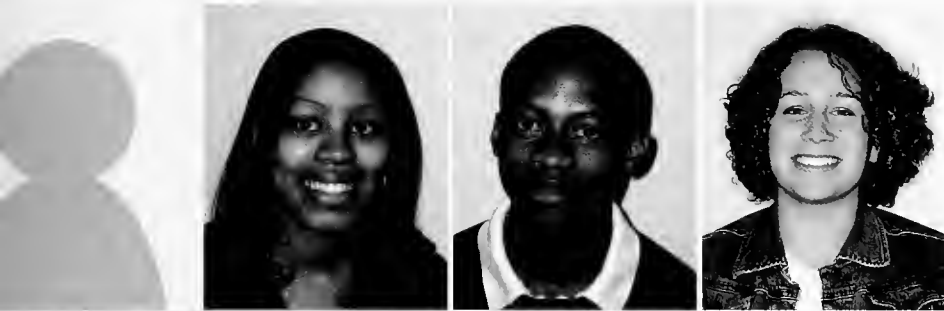


Mary Bidgood
 Kendra Billings
 Sara Blair
 Ashley Blake



Jeffrey Block
 Grace Boolukos
 Katherine Boone
 Madison Bopp





Pauline Boutchouang
Lamona Bowden
Mychal Boyd
Laura Braddick



Nicholas Brady
Bradley Brickhouse
Samuel Briend
Caitlin Brightwell



Quichelle Brimidge
Jacob Brisendine
Evan Britton
Jarrett Broadnax



Shaquitta Brookins
Hannah Brooks
Caylin Broome
Kathryn Brown



Ashlee Brown
Dustin Brown
Jessica Brown
Kendra Brown

Ariele Brown
 Arielle Brown
 Victoria Brown
 Daniel Brown
 Kaitlin Bryan
 Angela Bryant



Alexandra Bryant
 Sarah Bucey
 Edward Buckley
 Heather Bullard
 Alexandra Buonanotte
 John Burke



Bryan Burnick
 Alison Burt
 David Butler
 Jessica Cady
 Robert Cairns
 Alyson Calder



Jorgelina Camino
 Danyel Campbell
 Krystle Campbell
 Italo Cardoso
 Amanda Carpenter
 Kira-Marie Carr



Carlos Carthen
 Luka Cerenko
 Nekisha Charles
 Si Ting Chearn
 Justina Chearn
 Michelle Chelemer



Kasey Cheng
 Fatimazahra Chiadmi
 Leonardo Chonkan-Lios
 Matthew Chugden
 Matthew Claiborne
 Janita Clark



Lyndsey Clark
 Alex Clark
 Margo Clower
 Jeremy Coco
 David Cohen
 Daniel Cohl





Whitney Collins
Sloan Collins
Armanda Colson
Molly Colvard
Julie Comer
Dustin Comstock



Peggy Cooke
Laura Coon
Charles Coop
Zoe Cooper
Melissa Cooper
Genna Cooper



Justin Copeland
Brittany Corbett
Marilyn Corbin
Lydia Cornelius
Jennifer Cornelius
Matthew Cornwell



Annie Cowan
Callie Crabb
Courtney Craig
Tanya Crawford
Sherrie Crews
Phillip Crews



Sara Cross
Clifford Cross
Aaron Cross
Noel Curry
Hilary Curtis
Stephanie Dagesse



Tiffany Dail
Austin Dalbo
Katherine Dale
Rozaan Daniel
Jessica Daniel
Janessa Dauberman



Andrew Davenport
Andrew Davis
Mercella Davis
Magali De Bleeckere
Corin Deans
Jennifer deGive

Angela DeGroat
 Jose deJesus
 Dacian Dejeu
 Eric Demko



Heather DeVaney
 Kristina Devega
 Alimou Diallo
 Danielle Diamond



Jeffrey Diedrick
 David Dilibero
 Tasha Dillard
 Jessica Dossett



Shannon Dougherty
 Michael Draughon
 Alexandria Ducksworth
 Cassandre Dujour



Carter Dunn
 Anthony Dykes
 Shanelle Ebanks
 Chloe Edwards





Marcus Edwards
Erin Ernst
Molly Ernst
Roger Etherington



Patrick Falco
Andrew Farrey
Take Feenstra
Maria Ferguson



Sean Fernandes
Anna Findley
Mariya Finkelshteyn
Teresa Finn

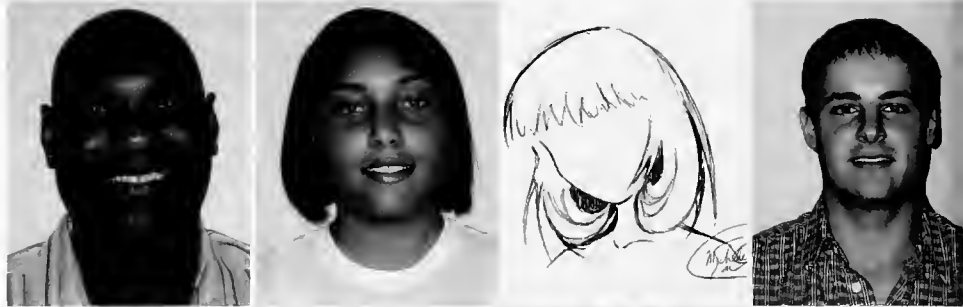


Eric Fladland
Max Flick
Lauren Folger
Zeus Forero



Antonia Forstmeier
Hanna Fortenberry-Henry
Emily Fortier
Clifford Foster

Terry Fowler
 Erin Fowler
 Elena Freeman
 Dominic Fried



Amanda Frotscher
 Ryan Fulgham
 Victoria Fuller
 Jessica Fuson



Sheedra Futrell
 Roberto Galletto
 Sam Garbe
 Alicia Garcia



Cynthia Gardner
 Melanie Garland
 Sarah Gault
 Frewieny Gebremeskel



Jude Gelman
 Russell Gelvin
 Cinsley Gentillon
 Tahnee Gerard





Stephen Germany
 Gia Gibbs
 Shinei Gibbs
 Lauren Gibson



Virginia Gibson
 Ander Giddens
 Stephen Gilbert
 Mary Claire Gillis



Tamara Glemaud
 Paul Golden
 Nathaniel Goldman
 Andrew Gottlieb



Ramika Gourdine
 Kristina Grace
 Jennifer Graham
 Matthew Gramling



Melissa Grammont
 Jhana Grant
 Brittany Gray
 Erica Gray



Kendra Grays
 Elijah Green
 Chelsia Green
 Nicholas Greenfield
 Whitney Griffin
 Jesse Gwin



Michael Hadjisimos
 Nelson Hague
 Elizabeth Hale
 John Hale
 Stephanie Hall
 Bryan Hamer

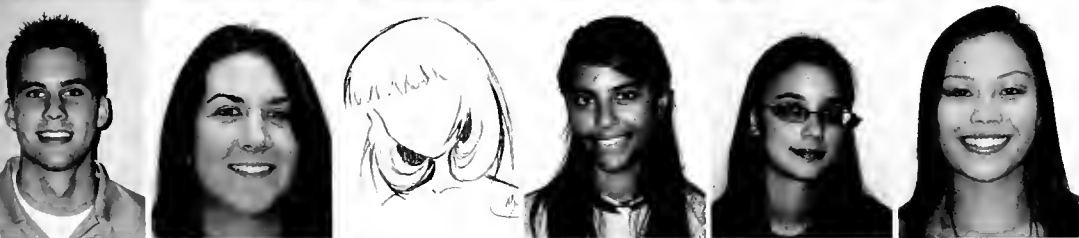


Zachary Hamilton
 William Hammond
 Laura Hammond
 Chelsea Harmon
 Martha Harris
 Arthur Harris





Brittney Harris
 Alexander Hasken
 Gabriel Henderson
 Christopher Hendrix
 Jennifer Hernandez
 Michael Hicks



Adam Higginbotham
 Julia Higgins
 Janet Hinerfeld
 Tracsen Hinz
 Marley Hirsch
 Hong Ho



Whitney Hockensmith
 Joseph Hoffman
 Mary Horton
 Robert House
 Reginita Howell
 Claire Hultin

Samuel Hutcheson
Justin Hutson
Alison Ibsen
Christopher Isbell
Aryka Ishmon



Pamela Iyere
Marian James
Elissa Jasso
Akele Jeffers
Jayne Jeter



Candice Johnson
Sylvia Johnson
Taymah Jones
Lawrence Jones
Jonathan Joseph



Sandhya Joshi
Roxanna Jozefowicz
Adolfo Kang
Eliyahu Kassorla
Samvel Kasyan



Howard Kaufold
Benoy Kazani
Alison Kearley
Jonathan Kelley
Chelsey Kendig





Spencer Kennedy
Joseph Kennedy
Stephanie Kerner
Charlotte Kilbourn
Yangkyu Kim



Clayton Kimbrel
Kathryn Kimrey
Julia Kincaid
Aleksey Kirillov
Robertas Kleiva



Jonathan Knope
David Knorr
Amel Komic
Samantha Korotkin
Joseph Kosciolk



Colin Kress
Casey Kuebler
Katie Kulavic
Kathryn Kurker
Elizabeth Lahoz



Christopher Lane
Walker Lane
Barry Langer
Christopher Latshaw
Stephanie Laubscher

Jansen Lawrence
 Andrey Lazar
 Rebecca Le Compte
 Garret LeBlanc
 Robert Lee



Macy Lee
 Noemie Lefebvre
 Daniel Lemus
 Matthew Lewis
 Jason Lewis



Michael Lewter
 Carl Lindburg
 Avery Livingston
 Thania Lloyd
 Jay Locke



Andrew Lofholm
 Kevin Logan
 Gloria Love
 Alexandra Love
 Christopher Lu



Christopher Lucas
 Robert Lyell
 Chelsea MacDonald
 Michael Malone
 Felix Mann





Alfonzo Mantilla
 Alycia Marotto
 RaShawn Marquetti
 Daniel Marsden
 John Martin



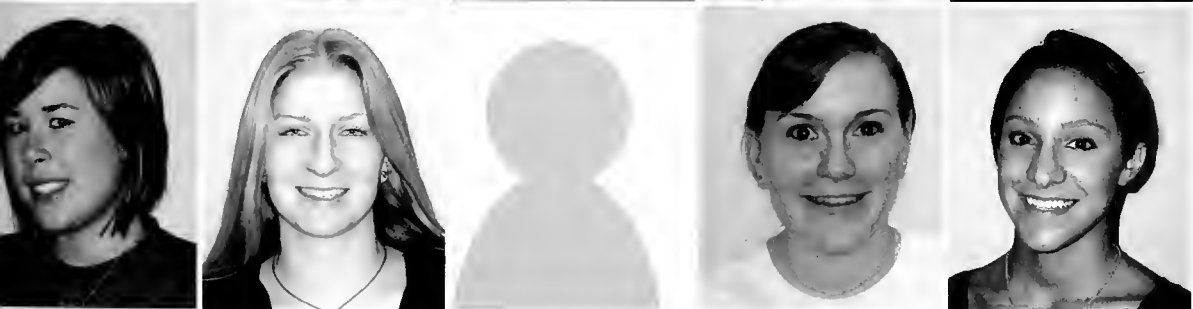
Katherine Martin
 Jessica Mason
 Chloey Mayo
 Caitlin Mazzarino
 Curtis McLeod



Rebecca McAlister
 Corina McCarthy-Fadel
 Jonathan McConnell
 Cathryn McCrimmon
 Kimberlee McGinty



Lynette McKinney
 Brandon McMichael
 Jennifer Meadows
 Josin Meagley
 Joshua Means



Meagan Meekin
 Ember Melcher
 Jena Messam
 Hilary Miller
 Stefanie Milligan

Alexandra Mistele
 Jason Mitchell
 Carisa Mitchell
 Brittany Monroe



Courtney Moor
 Alana Moore
 Cliff Moore
 George Morrison



Bonnie Morscheiser
 Ryan Moss
 Christopher Moua
 Mallori Muhlfelder



Kidest Mulat
 Michael Muller
 Carissa Murray
 Sarah Nania



Jose Navarro
 Brittany Nesmith
 Robert Nevins
 Que'Nique Newbill





Bethany Newman
Tyler Nichols
Zachary Nichols
Jessica Nilson



Nancy Nix
Ashia Nnorom
James Nuchereno
Max Nystrom



Hope O'Dell
Fredrik Oher
Ilana Olin
Christina Ongor



Jamie Osmanon
Larisa Ozeryansky
Christopher Page
Anthony Palladino



Eric Palmer
David Paperno
Cecile Parages
Thomas Paretta



Joseph Parillo
David Paris
Chong Park
Kyle Parker



Heena Patel
Trupti Patel
Timothy Paul
Rosa Perez



Reketta Peterson
Ashleigh Petro
Sarah Phaff
Joshua Phillips





Laura Picciarelli
Sydney Pigram
Brendan Pilger
Cameron Platt



Ricardo Pomales
Clayton Pond
Lache Pool
Rebekah Pound



Evan Price
Brittany Prince
Robert Pugh
Kayla Pulley

Allison Rains
 Vinash Ramtahal
 Nathaniel Ray
 Matthew Rebitch



Courtney Reed
 Zanna Reid
 Rachel Ribeiro
 Brandy Rich



James Richardson
 Rachel Richardson
 Alex Richey
 Elizabeth Richmann



Jennifer Riley
 Daniel Rinn
 Isabella Rivera
 Mario Rivera



Joseph Rizzo
 Jennifer Roberts
 Catherine Rocamora
 Angela Rodriguez





Ebony Rogers
David Ross
Zachary Rossman
Jennifer Rowe



Chelcie Rowell
Amanda Rowell
Anthony Rudd
Amy Russ



Jay Russell
Stephen Sabsowitz
Andrea Sagun
Elga Sanchez



Enrique Sanchez
Miguel Santiago
Shikha Saraswat
Leda Saylor



Kathryn Schambach
Laura Schiff
Jessica Scott
Anne Sexton

Samantha Shah
Safiya Shaikh
Trevor Sheffield
Alexander Sher



Nicole Shlomov
Emelia Short
David Shreve
Sarah Shrewsbury



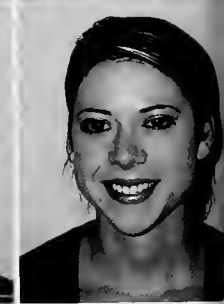
Patricia Shropshire
Brittany Silva
Devon Simons
Kimberly Smith

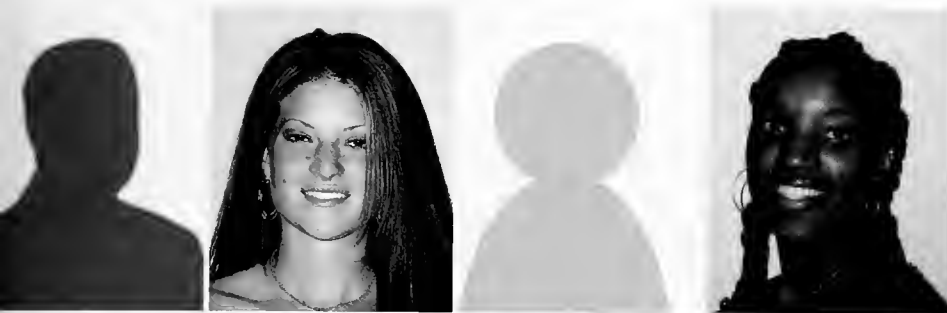


Chazely Smith
Thomas Smith
Stephanie Smith-Strickland
Jelani Snipes



Jason Soby
Grady Sonam
Udara Soysa
Sarah Sparks





Katherine Spence
Alix Stalnaker
Andrew Stanton
Rashida Starks



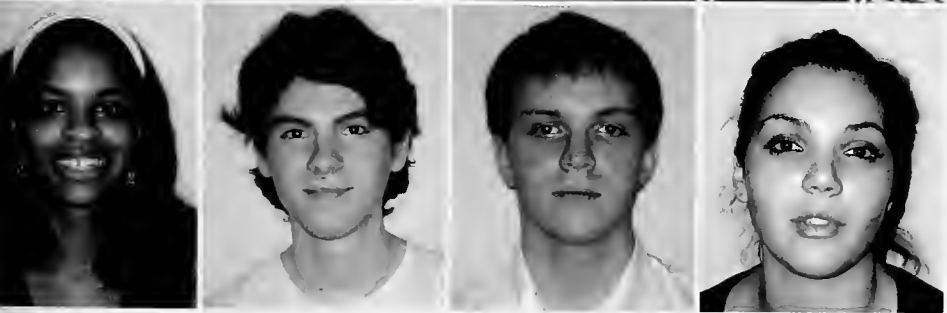
Theodore Stathakis
Natalie Stefano
John Stellbauer
Felisha Stevenson



Caroline Stewart
Nadia Stone
John Storz
Richard Stuppel



Daniel Suddes
Erin Summerlin
Lawrence Sweatman
Anta Sylla



Santina Takori
Thomas Talbott
Ramsay Talmadge
Marinella Taoushiani

Erica Taylor
 Chassidy Teal
 Ali Tecmen
 Alesha Tentinger
 Lauren Thompson



Kayla Thompson
 Rebecca Thompson
 Mallory Thomson
 Matthew Tokajer
 Adam Tomlin



Sarah Trammell
 Meiji Tran
 Michelle Trejo
 Stevie Tucker
 Shainna Tucker



Sharaya Tuttle
 Sean Tuttle
 Christina Tyler
 Sara Ugalde Ali
 Megan Van Doran



Susanna Varlan
 Oscar Vasquez Carvajal
 Julie Vaughan
 Bruno Vega
 Samantha Von Ende

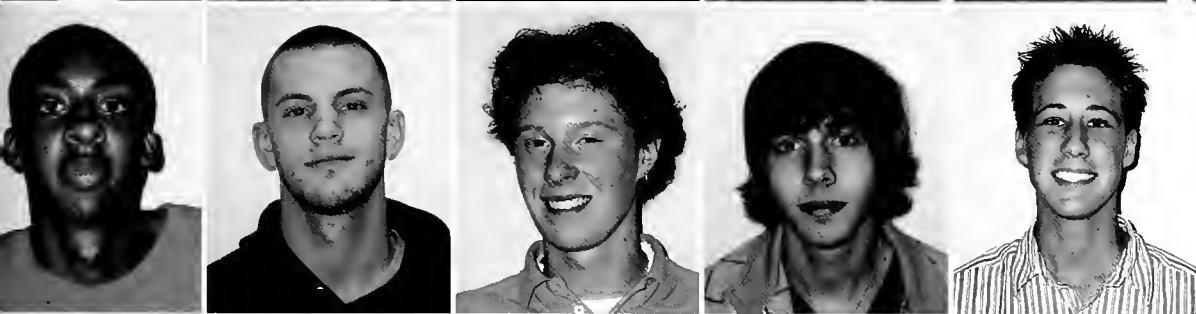




Timothy Von Gal
 Marc Von Mandel
 Tamara Voxnaes
 Campbell Walker
 Richard Walker



Gregory Wallace
 Vinessa Walls
 Andrea Walsh
 Emory Walton
 Keyong Wan



Theodore Ward
 Todd Ward
 Zachariah Warner
 Jordan Warren
 Samuel Waters



Nicholas Watterson
 Tammer Weems
 James Weldon
 Cassie Wells
 Bradley White



Malika Whitley
 Chad Williams
 Benjamin Williams
 Nicole Williams
 Christopher Williams

Lauretta Williams
 Amy Williamson
 Michael Willis
 Amaris Wilson



Brandi Wilson
 Arion Winfield
 Talia Witherspoon
 David Wolensky



Alexander Wolff
 Brett Wooten
 Molly Wootten
 Alexandra Woychek



Ashley Wrigley
 Michael Wysolovski
 Gonzalo Yahuitl
 Patrick Young



Stephen Youngblood
 Grace Yu
 Sonya Zafrani
 Christian Zavala





Miguel Zayas
Christina Zaytsev
Stephen Zellner
Luis Zimbron



Natalie Zimmerman
Susanna Zitz
Maddison Zulak







PROFESSORS



Dr. Keith H. Aufderheide
Chemistry



Dr. Charles L. Baube
Biology



Dr. Christian Y. Benton
Director of Accounting Studies



Dr. Krisitan Blaich
History



Dr. Robert A. Blumenthal
Mathematics



Dr. James A. Bohart
Music



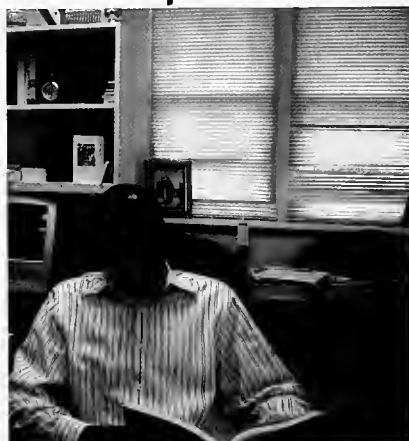
Dr. William Brightman
English



Dr. John A. Carton
Psychology



Dr. Mario A. Chandler
Spanish



Dr. Jeffrey Collins
Art History



Dr. Cassandra Copeland
Economics



Dr. John Cramer
Physics



Dr. Roarke E. Donnelly
Biology



Dr. Lynn Gieger
Education



Dr. Amanda Gray
Psychology



Dr. Nancy A. Herring
Accounting



Dr. Stephen Herschler
Politics



Dr. Bruce Hetherington
Economics



Dr. Robert B. Hornback
English



Dr. Elizabeth Johnson
Psychology



Dr. Kendra King
Politics



Dr. Joseph Knippenberg
Politics



Prof. Lee Knippenberg
Theatre



Dr. Peter J. Kower
Economics



Prof. Alan Loehle
Art



Dr. Jay Lutz
French



Dr. Nicholas B. Maher
History



Dr. Jeanne McCarthy
English



Dr. Douglas McFarland
English



Dr. Deborah Merola
Theatre



Dr. John C. Nardo
Mathematics



Dr. Philip J. Neujahr
Philosophy



Dr. John D. Orme
Politics



Dr. Richard Palmer
Film



Dr. Viviana Plotnik
Spanish



Dr. Irwin Ray
Music



Dr. Beth Roberts
Education



Dr. Anne Rosenthal
Communications and Rhetoric Studies



Dr. Michael Rulison
Physics



Dr. Daniel Schadler
Biology



Dr. Karen Schmeichel
Biology



Dr. Seema Shrikande
Communications and Rhetoric Studies



Dr. Bradford Smith
History



Dr. Robert Steen
Japanese



Dr. Brad L. Stone
Sociology



Dr. Linda J. Taylor
English



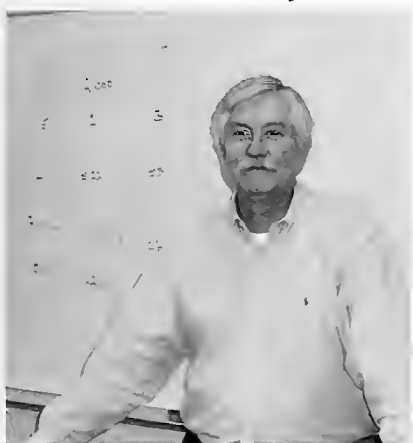
Dr. Phillip D. Tiu
Mathematics



Dr. J. Dean Tucker
Economics and Business



Dr. James Turner
Accounting



Dr. Victoria Weiss
English



Prof. Ginger Williams
Education



Dr. Monte Wolf
Chemistry



Not pictured:

Dr. Straley - Business & Mathematics
Dr. Simon Sparks - Philosophy





CLUBS AND ORGANIZATIONS

The Tower

The Tower is Oglethorpe's literary magazine, comprised of work by Oglethorpe students and designed, created, and printed on campus.

The Tower aims to provide an outlet for artistic expression in the Oglethorpe community. In addition to our publications, The Tower provides a regular workshop environment where student writers can meet to critique and encourage one another.

We are also responsible for running one event each year, entitled Night of the Arts. It is held each fall and is a chance for OU students, staff, and faculty to share their talents through performance. The evening includes a display of visual artwork as well as poetry, monologues, and musical composition.



Member Britt Prince



Co-Editor in Chief Chelsey Kendig



Co-Editor in Chief and Former Editor Catherine Barson and Kathleen Pedro

Night of the Arts



As in the past, the staff of Oglethorpe's resident literary magazine, The Tower, organized 2007's Night of the Arts. Scheduled during Parent's Weekend, the event allows students free reign to exhibit their talents both for students and visiting parents in Emerson's Talmage Room.

Audience members enjoyed the refreshments and Hitchcock-themed decorations as emcee Nick Etherington (playing Alfred Hitchcock) introduced the acts. Additionally, across the building in the TV Lounge, Dr. Alan Loehle displayed student artwork.

The Stormy Petrel

The Stormy Petrel has been Oglethorpe's student-run newspaper since 1919. We have gone through many revisions, from developing new layouts to creating new sections, as a long line of editors have tried their hand at running the paper. The 2007-2008 year brings us all the way to our 83rd volume. The purpose of The Stormy Petrel is to provide news to the Oglethorpe community, particularly the news that relates to what happens on our campus.

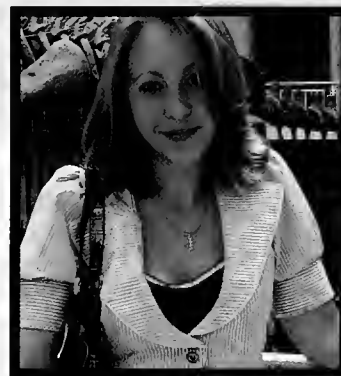
For the 2007 school year, there are 7 sections that complete The Stormy Petrel: News, Life in the Bubble, Global, Opinions, Arts and Entertainment, Sports, and Hindsight.



Ramika Gourdine



Chelcie Rowell



Editor-in-Chief Mallory Davis

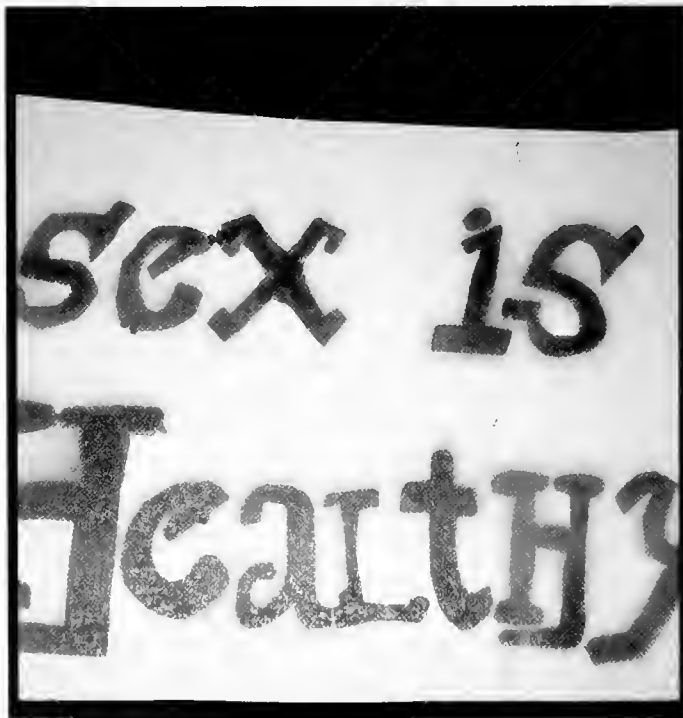
Petrel Purlers



The Petrel Purlers is a new club on campus that focuses on knitting for people in need. We meet once a week and help others who have an interest in knitting learn and grow. Our final knitting projects find a home at local hospitals, charities, and shelters that are in need.

The Process

Process, the only art club on campus, is geared towards those with an interest in Art, whether it is through the love of making, experiencing, or those who do either.



Artistic poster made by members of The Process



Founder and President Lauren Byrd

Rehearsal Room C



"We, the members of Rehearsal Room C, in order to develop talents in all aspects of theatre, to foster the cultural values we believe theatre develops, and to encourage cooperation and collaboration among members, do hereby form and establish Rehearsal Room C."

Economic Empowerment Initiative

The Economic Empowerment Initiative is an organization that seeks the financial well-being of others. Ultimately, EEI hopes to empower and create leaders who give back to the community with financial knowledge, service, and philanthropic giving.

By training members in practical financial management, they learn exactly how to budget, build credit, invest capital, buy a house/car/insurance, etc. Meeting successful executives & entrepreneurs provides members with perspectives and advice from qualified individuals for continuous self-growth. In addition, EEI organizes dynamic awareness events on campus to increase student activism. By giving leadership & management roles in planning events to interested members, with our support, members learn skills to become even more effective leaders. And finally, by involving members with community-oriented activities, EEI leads its members to become true contributors to society.



Students for Life



Students for Life is an organization that consist of Oglethorpe students who are Pro-life. We meet regularly to discuss any political actions being taken in the state of Georgia or around the nation. We also attend rallies that help promote the Pro-life movement.



Interfaith Council



Religious life at Oglethorpe has flourished the past three semesters. In Fall of 2006, almost simultaneously three new religious groups formed. The Jewish Student Union (JSU), the Muslim Student Association (MSA), and the Catholic Student Union (CSU) joined with the previously existing Campus Crusade for Christ (CRU) and, soon thereafter, all four joined to form the Interfaith Council of Oglethorpe University. This year the Interfaith Council hosted Dr. Darlene R. May, who spoke on the many roles of women in Islam. It hosted a joint Rosh Hashanah-Ramadan break-fast at which members of the various religious groups talked about the significance of fasting. Finally, members of the Atlanta World Pilgrims, an interfaith group that takes religious leaders and scholars of different faiths on trips around the world, came to Oglethorpe to speak about a recent trip to the Middle East. This has been a great semester for the Interfaith Council and it looks forward to many more.

Jewish Student Union

The Jewish Student Union, now in its second year on Oglethorpe's campus, is blossoming. After a successful inaugural year, the Jewish population has doubled, enabling a greater range of events. The year started out with High Holiday services with other local universities; shortly afterwards, Oglethorpe saw its first sukkah built as we celebrated the holiday of Sukkot. The highlight of the semester was our Shabbat dinner which garnered student, faculty and staff participation. The Second Annual Hanukkah Jewbilee was our final event and a great success with both Jewish and non-Jewish attendees. We are looking forward immensely to next semester with Passover, Purim and other great events.





Muslim Student Association

Founded in 2007, the Muslim Student Association was created to practice and promote the understanding of Islam within the Oglethorpe community under the philosophy of our Association.



Catholic Student Union



The Catholic Student Union is for students who are members of or are interested in the Catholic faith. We try to serve you through a system of Catholic collegians, providing networks, partners, and resources for its members.

OUTlet

OUTlet is Oglethorpes LGBTQ organization, participating in many events throughout the year, including National Coming Out Day, AIDS Walk, and National Day of Silence. We are a social and emotional support group for gay men, lesbians, bisexuals, and those questioning their identities on campus. We serve as an educational outreach and community service organization promoting education and equality for lesbian, gay, bisexual, and transgender people. Most of all, we are an active and positive image and voice for gays and lesbians on campus. As the old saying goes, "We're here, we're queer, and we won't disappear!"



Feed America Music Foundation



Feed America Music Foundation is a non-profit organization dedicated to helping raise money to supply grants to homeless shelters so they can keep offering their service to those who need it. FAMF raises money by compelling songs of lesser-known bands and musicians onto CDs and hosting shows and concerts that give a variety of artists an opportunity to show off their music to a greater audience.

Ultimately, Feed America Music Foundation hopes to raise awareness about the growing problem of homelessness, help supply funding to those who are trying to help homeless people, get a variety of lesser-known music out to more people and support both the arts and community service by taking a role in both.



Japanese Culture Club



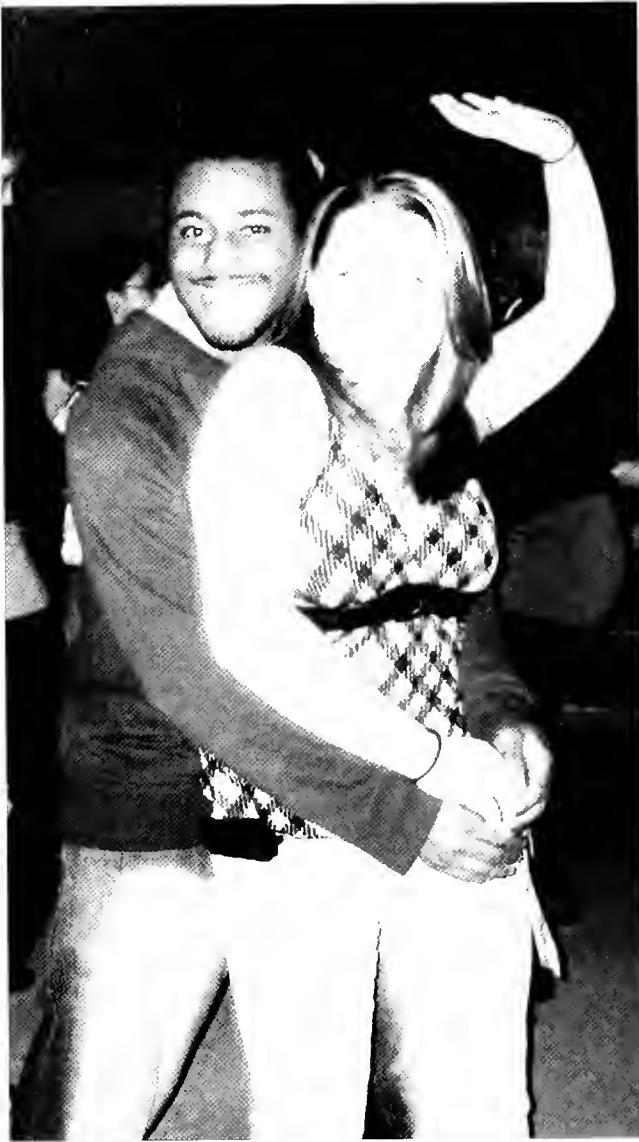
**The Japanese Culture Club:
Promoting the events, cultural aspects, and the all-around diversity
that is in Japan.**

International Club

International Club is a group meant to bring Oglethorpe students together: students of different races, ethnic backgrounds, and social groups. We throw lots of events throughout the school year (such as our ever-popular International Night) that give the student body a chance to explore their own cultures, as well as the cultures of their peers.







OU Street Team



The OU Street Team sponsors campus-wide events available to the OU community. Also, the OU Street Team helps different departments and organizations of Oglethorpe University by promoting the organizations' campus-wide events by offering incentives, posting flyers, and developing professional marketing plans. This is done to raise awareness of the different events and organizations on campus.

Black Student Caucus

The purpose of the Black Student Caucus is to unify the African-American community of Oglethorpe University with community service development, group discussions, activities, and events. The BSC is a caucus with a cause, and that cause is to be a support for black people and minority students who attend Oglethorpe University by providing unity, opportunity, and awareness. Its primary function is to help students with the adjustments and adversities they may face by attending a predominantly white university. This organization's goal is to provide academic and social guidance for its members and the community. The BSC will represent and protect the interests of African Americans and minority students on the Oglethorpe University campus, as well as the surrounding community. Also, the BSC will strive to increase the awareness of African American contributions, issues, and ideas on the campus as well as the community.



Center for Civic Engagement



Oglethorpes Center for Civic Engagement (CCE) was established in 2006 to expand and enhance Oglethorpes connections with the Atlanta community through service learning, volunteer projects, student internships and leadership development. Working with faculty, staff, students, alumni and community partners, CCE coordinates numerous projects and programs. Through Hands On Atlanta, the center utilizes AmeriCorps volunteers in the first collegiate collaboration of its kind in the nation.



Society of Physics Students



The Society of Physics Students is an organization for all people interested in science, particularly physics majors to meet and collaborate. Our goal is to encourage others to learn about science and physics. We are also a forum for science students to gain knowledge through the exchange of information and ideas.

Chess Club

The Chess club strives to allow and encourage the playing of chess and provide those interested with the necessary materials to do so. Furthermore, we intend to enlighten the Oglethorpe community through chess. Remember, mating is fun in chess that is!



Advisor Dr. Robert Steen



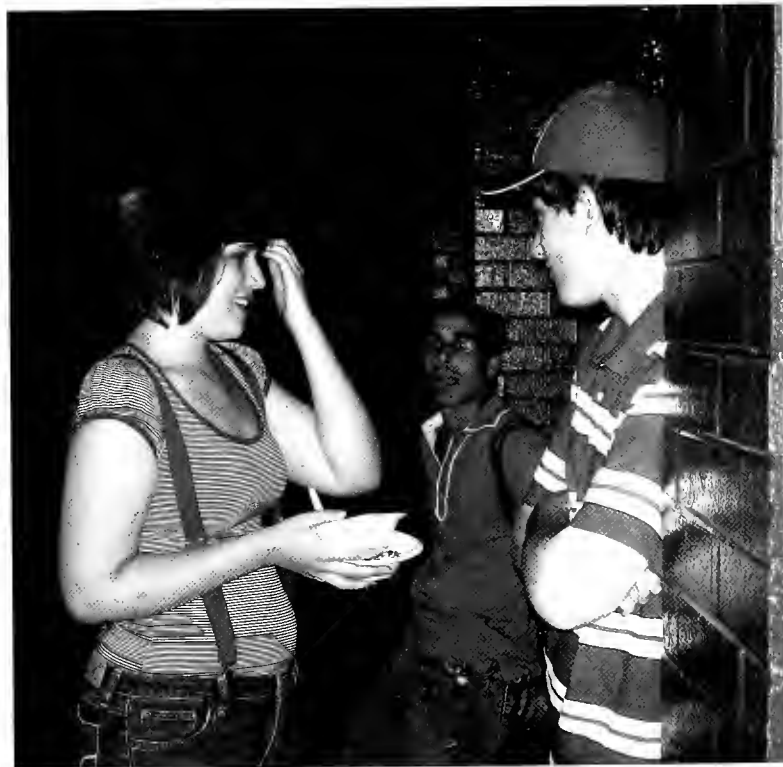
President Dallas Greene

University Singers



Oglethorpe University Singers is the primary musical organization at Oglethorpe University. The ensemble provides for the study and performance of significant choral literature within the liberal arts context of the University and is open to students of all disciplines. The mixed-voice concert choir of approximately thirty-five voices, under the direction of Dr. W. Irwin Ray, is in constant demand for performances in the community and often obliges.

The members of University Singers rehearse three hours each week and for their labor receive one hour academic credit and the pleasure of the activity itself. Their repertoire includes sacred and secular literature, both accompanied and unaccompanied, ranging from the fifteenth century to the present. It is likely not untrue to state that every member of University Singers, past and present, departs at the end of each year with some feeling of satisfaction in the work accompanied and the music created.



OU Dancers



The OU Dancers, which has been in existence in its current form since 1998, has taken pride in representing the best that OU has to offer. The dancers are well-rounded students who share a strong dedication to success and a love of dance.

The 2007-2008 dance team consisted of:
Zanna Reid, Nikki Parker, Brittany NeSmith, Devane Casteel,
Natascha Mauel, Brittany Gray, and Julia Gates.

OU Cheerleaders

Jump high. Petrels get off your feet! Fans of Stormy Petrels basketball take notice as the Oglethorpe University Cheerleaders pump the Petrels up to victory. Led by senior Millicent Mickki Cone and junior Lamona Bowden, the OU Cheerleaders jump, yell, and dance while promoting spirit for the team. These spirited students make it their goal to provide support for the men's and women's basketball teams while entertaining the crowd in the process. The squad, which also consists of Kayla Thompson, Ashlee May-wa Brown, and Ashley Blake, is proud to wear black, gold, and white! Go Petrels!



Khayos



Khayos Entertainment is an eclectic dance group that edifies the Oglethorpe Spirit Coalition. The dance team captivates audiences with its fierce dance moves. Performances are characterized by intricate hip-hop choreography and today's latest music. The team includes members from various states that gives the team a unique flair and edge.

Pictured above: Founder and Alumnus Sean Freeman, dancers Jennifer Cornelius and Ashley Taylor.

Thalian Society

The Thalian Society derives its name from Thales, whom is considered to be the first philosopher from Greece. Our Society is one of Oglethorpe University's oldest. This year, the Thalian Society has built up more momentum than it has had in years. We host weekly meetings on campus that are comprised mostly of Oglethorpe students. Once a month, there is a guest speaker. Students from a variety of majors are known to speak at meetings on topics that they find to be of personal interest. Members of the Thalian Society also travel to other universities within the state to listen to speakers. We encourage our members to work diligently on papers that are submitted to conventions across the nation. Through this process, Thaliens hope to improve the level of scholarship amongst our members and fellow schoolmates.





Omicron Delta Kappa

The Omicron Delta Kappa Society is the national leadership honor society for college students, faculty, staff, administrators, and alumni that recognizes and encourages superior scholarship, leadership, and exemplary character. Membership in ODK is the highest distinction and honor. Emphasis placed on the development of the whole person, both as a member of the college community and as a contributor to a better society.





Psi Chi

Psi Chi is the National Honor Society in Psychology, founded in 1929 for the purpose of encouraging, stimulating, and maintaining excellent scholarship, and advancing the science of psychology. Induction into Psi Chi requires standards of academic achievement for those majoring or minoring in psychology. Psi Chi functions as a federation of chapters located over one thousand senior colleges and universities in the United States and Canada. The Oglethorpe Chapter began in 1985 and within the past few years has worked to become more active on Oglethorpe's campus.



Phi Delta Epsilon



As in the past, the staff of Oglethorpe's resident literary magazine, *The Tower*, organized 2007's Night of the Arts. Scheduled during Parent's Weekend, the event allows students free reign to exhibit their talents both for students and visiting parents in Emerson's Talmage Room.

Audience members enjoyed the refreshments and Hitchcock-themed decorations as emcee Nick Etherington (playing Alfred Hitchcock) introduced the acts. Additionally, across the building in the TV Lounge, Dr. Alan Loehle displayed student artwork.

Alpha Phi Omega

Alpha Phi Omega is a National Co-ed Leadership and Service Organization based on the Scout Oath and Law. The Oglethorpe Chapter, the Mu Mu , began at Oglethorpe University in February 1958 and was re-chartered in 1976. Since then, we've been one of the largest organizations dedicated to serving the school, the community, the nation, and out organization an all-inclusive collegiate fraternity.

Alpha Phi Omega is committed to being the foremost student-run organization in developing lifelong leaders, instilling lasting friendships, and fostering a lifetime of service to all people. We do over 40 projects every semester, and have accumulated an average of over 1000 a year. Some of out major projects include: Trick or Treat in Traer, Red Cross, American Cancer Society, MedShare, ushering around campus, Goodwill, and much more.



Alpha Sigma Tau



The sisters of Alpha Sigma Tau stay busy throughout the year with chapter business, social activities, sisterhoods, philanthropy work, and having fun! The Delta Pi chapter has grown considerably since its arrival at Oglethorpe in 2000. AST sisters dedicate time and effort to working with philanthropies like the Pine Mountain Settlement School, Habitat for Humanity, the Susan G. Komen Breast Cancer Awareness Fund, and the Boys and Girls club of Atlanta. On campus, AST holds a pink baked goods sale every October during Pink Week to raise money for breast cancer awareness. Each year, the sisters get together for the New Member Retreat to strengthen old bonds and form new ones. The ideals of Alpha Sigma Tau are embodied in its open motto: active, self-reliant, and trustworthy.

Chi Omega

To value the talents of women, to encourage them to realizing their greatest potential - These are the principles upon which Chi Omega was founded in 1895 at the University of Arkansas. Today, Chi Omega is the largest womens fraternal organization in the world with 300,000 initiates and 169 collegiate chapters. Since its beginining, Chi Omega has nurtured its members by providing them with unique opportunities in leadership, in scholarship, and in life-long friendship. Ours is a distinguished history and our most vital role has been the preparation of young women to achieve their highest possible aspirations.

Now over a century later, these founding principles are just as relevant. Chi Omega Fraternity was founded at a time when women were just becoming visible on our nation's university campuses. These early collegiate women were destined not only to manage home and family, but they would establish a foothold as leaders in the community and the business world.



Sigma Sigma Sigma



Once long ago, in a far away town in Virginia lived eight beautiful ladies who stumbled upon the creation called the S.S.S. club. This club was not just for anybody but only for the most upstanding and virtuous women who went to Longwood College. Then on the fateful day of April 20, 1898, these eight women created what is known today as a sorority.

Twenty years ago, this now blooming violet organization found its way to Oglethorpe's campus. But these modern day members of the S.S.S. club could not be contained to the Oglethorpe Bubble; instead, they travel to visit ill children limited to their hospital walls. Whether to make a quick art project with them or embark on a Mardi Gras Parade, Sigmas were able to do and accomplish much more to children who rarely saw happiness.

Chi Phi

The Chi Phi Fraternity is a values-based organization founded on the basis of Truth, Honor, and Personal Integrity. These are timeless values, which guide the fundamental purposes of the Fraternity. Today, our crest and their badge are public symbols for the brothers of Chi Phi, symbols that are instantly recognizable to members, but still appropriately obscure to outsiders. They communicate our proud history without overt bragging.

Covert symbols and deeply rooted fundamentals of virtue and truth, honor, and integrity, bind us together in a brotherhood that is strong and timeless.



Delta Sigma Phi



The Alpha Nu Chapter of the Delta Sigma Phi Fraternity was originally founded in 1835 in Milledgeville, GA, and after both the Civil War and World War I, the chapter was reinstated at Oglethorpe. Today as we enter this new century, we at Alpha Nu are proud to carry the torch handed down by the brothers who came before us. Delta Sigma Phi is continuing to grow, and currently boasts a membership that is involved on campus and in the community. More importantly, the ideals of Delta Sigma Phi are alive in the hearts of every one of our brothers. Almost eighty years ago, a group of men with foresight and courage established the Alpha Nu chapter of the Delta Sigma Phi Fraternity at Oglethorpe University. Today, we follow in their footsteps, that the world may ever be convinced of the sincerity of our purpose.

Kappa Alpha

The Kappa Alpha Order was founded on December 21, 1865, at what is now Washington and Lee University. The mission of KA is to create a lifetime of experience, which centers on reverence to God, duty, honor, character, and gentlemanly conduct as inspired by Robert E. Lee, our spiritual founder. Parties have ranged in theme from Apocalypse Now to Mardi Gras. KA is an active participant in Greek Week and in the Inter-fraternity Council.



Sigma Alpha Epsilon



SAE is North America's largest social fraternity with more than 280,000 initiated members. Fraternal symbols include the lion, the phoenix, Minerva, and the fleur-de-lis. Sigma Alpha Epsilon was the first fraternity to establish a national headquarters (1929), a national Leadership School (1935), a national Men's Health Issues Committee (1980), and a career-development program entitled the Leading Edge (1990). Currently, the Fraternity offers a comprehensive member-education program called The True Gentleman Initiative. Sigma Alpha Epsilon at Oglethorpe strives to promote the highest levels of character, scholarship, and leadership, from its members and to serve as a prime example of the positive aspects of Greek life.

Oglethorpe Student Association

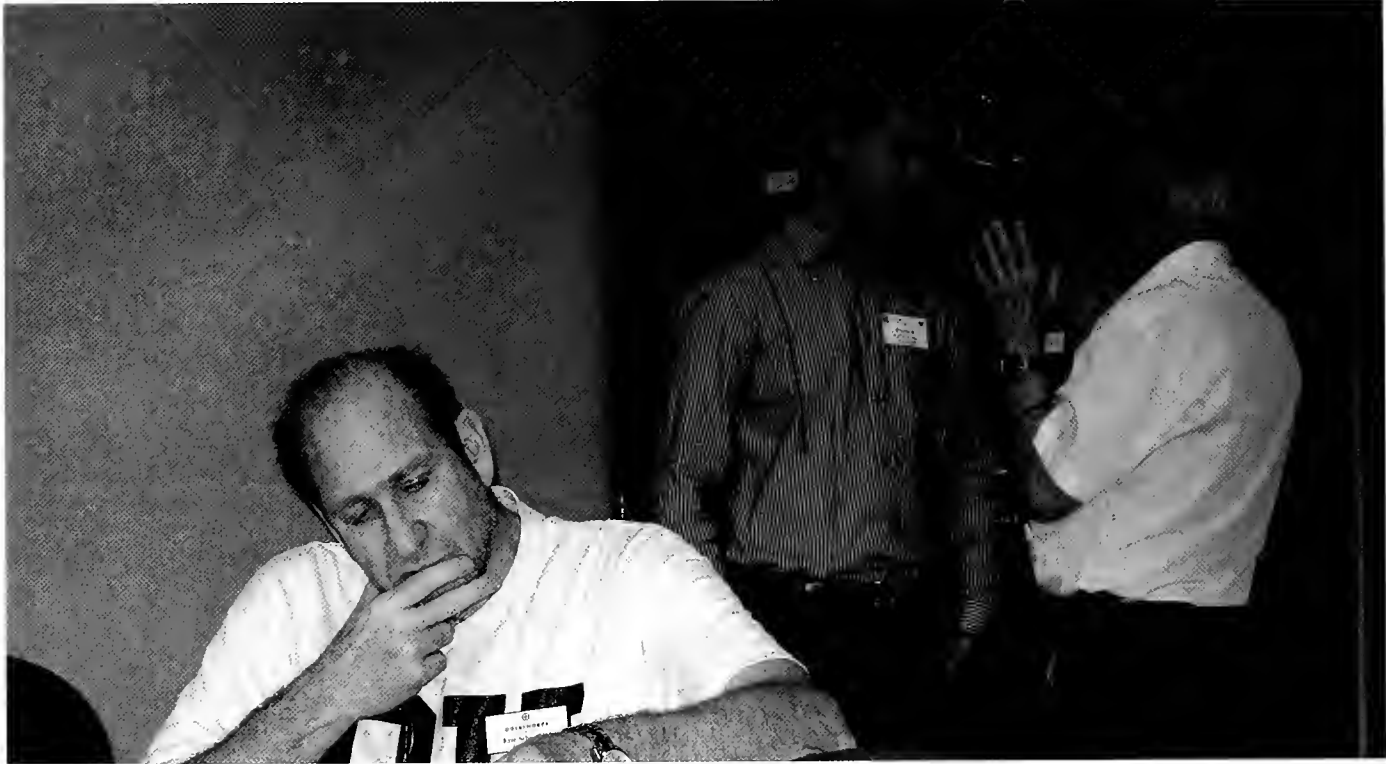
The Oglethorpe Student Association (OSA) is Oglethorpe's Student Government Association. The OSA strives to enhance the Oglethorpe experience by acting as advocates for student concerns, advancing relationships between students and administrators, providing events and programming to the campus, and by improving campus life for Oglethorpe students. In all action, OSA strives to fairly represent student body opinions and concerns.





Through the collection of the Student Activity Fee, the OSA has put on events such as Dead Days Eve at Loca Luna, Homecoming at the Hyatt Regency Atlanta, Quadfest, Stomp the Lawn, and other numerous events throughout the year.

Yamacraw Yearbook



Three different generations of editors at the Yamacraw Alumni Reunion, March 2008



Editor in Chief Dallas Greene and Advisor for the last year Mark Delong



Staff Photographer Marla Osti

Hello faithful reader,

I hope you are enjoying perusing the history of this wonderful school and all of its memories. I for one can tell you that the staff and I had an incredible time documenting them. This year was filled with a whirlwind of ups and downs, but in the end what matters is, we published a book that can stand the test of time and one that I will be infinitely proud of. This is a landmark year for the Yamacraw - we have now reached our 75th volume!! The Yamacraw has a long-standing history with Oglethorpe, and I am immensely honored to bring another year's events into OU's timeline.

I hope that you will enjoy this tangible memory for years to come and let it always bring a sweet smile to your face.

And here's to 75 more!

Sincerely,
Dallas Greene
Editor-in-Chief
Yamacraw 2008



Photographer Editor Matt Isbell

Homecoming 2008

Where: The Hyatt Regency in Downtown Atlanta

When: February 2008

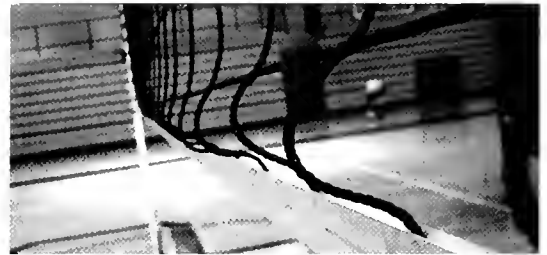
Theme: Mardi Gras

Fun Times: Absolutely

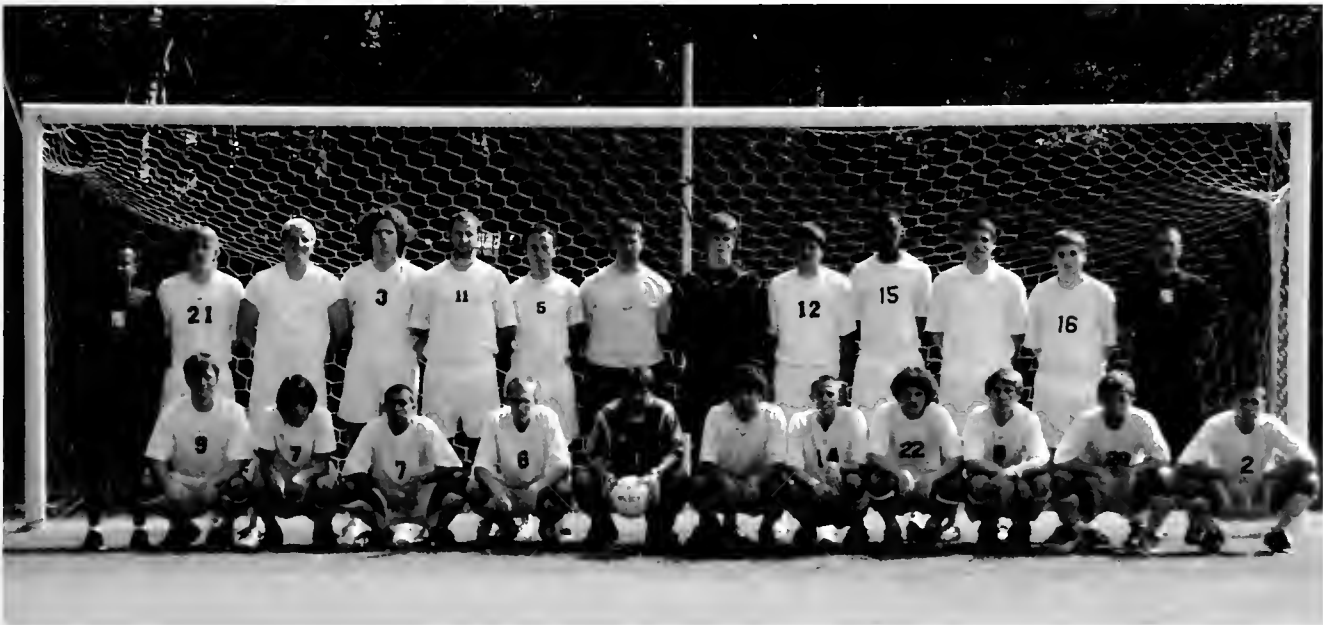




SPORTS



Men's Soccer



**Russell Kramer, Jonathan McConnell,
David Mueller, Michael Muller
John Kelley, Sean Fernandez
Italo Cardoso, Danner Mardsen
Daniel Brown, Michael Hadjisimos
Kofi Nketiah, Bryan Burnick
William Hammond, Evan Britton
Richard Stupple, Dustin Comstock
Zeus Forero, Brett Wooten
Marcus Edwards, Thomas Smith
Matthew Chugden, Jeffrey Diedrick
Matthew Brisdendine**

Women's Soccer

Amanda Carpenter, Julie Vaughan
Bonni Morscheiser, Rynne Arola
Carly Hallman, Jamie Dillon
Alix Stalnaker, Ashley Money
Kira Carr, Akele Jeffers
Elena Freeman, Sarah Nania
Chelsea Baron, Mary Horton
Erin Summerlin



Baseball



**Matt Anderson, Steven Archer
Austin Benedict, Bradley Brickhouse
Samuel Briend, Matthew Cornwell
Clifford Cross, Patrick Falco
Ben Giddens, Nick Greenfield
John Hale, Jonathan Joseph
Spencer Kennedy, Casey Kuebler
Andrew Llano, Andrew Lofholm
Chris Lucas, Brandon McMichael
Jason Mitchell, Anthony Palladino
Brenden Pilger, Mario Rivera
J.J. Rizzo, Theo Stathakis
Sean Tuttle**

Volleyball

Jessica Anderson, Alison Burt
Cassandra Dujour, Hong (Sandy) Ho
Mallori Muhlfelder, Marla Osti
Lynette McKinney, Sara Blair
Hilary Miller, Jennifer Graham
Trupti Patel, Mallory Thomson



Cross Country and Track



Women's Cross Country:

Gillian Brady
Wendy Madill
Lydia Hofstetter
Deborah Chandler Lubbe
Avery Livingston
Elizabeth Hale
Brandy Rich
Donyale Greenwell
Brittany NeSmith
Michelle Chelemer

Men's Cross Country:

Ryan Fulgham
Enrique Sanchez
Evan Price
Zachary Hamilton
Roberto Galletto
Christian Rethmeier
John Burke
Luis Zimbron
Stephen Zellner
George (Ben) Morrison
Que'Nique Newbill
Robert Cairns

Women's Golf

Jessica Bonham, Julia Gates
Amanda Carpenter, Kate Dale
Tracsen Hinz
Melanie Garland
Katherine Martin



Men's Golf



**Matthew Suggett
Taylor Urbanski
Robert (Scott) Pugh
David Dilibero
Ryan Peters
Michael Hicks
Christopher Lane
Matthew Rebitch
David Beazer
Hap Kaufold**

Women's Basketball

Katie Kulavic, Jamie Osmanson
Anna Findley, Hannah Brooks
Brittany Corbett, Tina Grace
Biz Richmann, Alana Moore
Courtney Reed, Erin Ernst
Molly Ernst, Shannon Dougherty
Chelsea MacDonald
Reginita Howell
Arielle Brown
Taymah Jones



Men's Basketball



**Nick Watterson, Craig Jackson
Eric Palmer, Gwinn Nixon
Ahmad Kareem Shaheed, Wade Weldon
David Allison, Eddie Buckley
Jeffrey (John) Block
Alex Richey
Joseph Kennedy
Robertas Kleiva
Sloan Collins
Chazely Smith
Todd Ward**

Women's Tennis

**Abby Hammond
Jamie Dillon
Ashley Cooper
Kim O'Dell
Katie Kuhn
LaDonna Barnes
Molly Colvard
Tamara Glemaud
Kayla Atkins
Whitney Hockensmith**



Senior Katie Kuhn



Team member
Ladonna Barnes

Men's Tennis



**Brickford Faucette
Gabriel Henderson
Carlos Carthen
Ricardo Pomales
Joseph Kosciolek
Bradley White
Derrin Pekin
David (Masen) Shreve
Frank Beall
Carl "Alex" Lindburg
Lawrence Sweatman
Felix Mann**





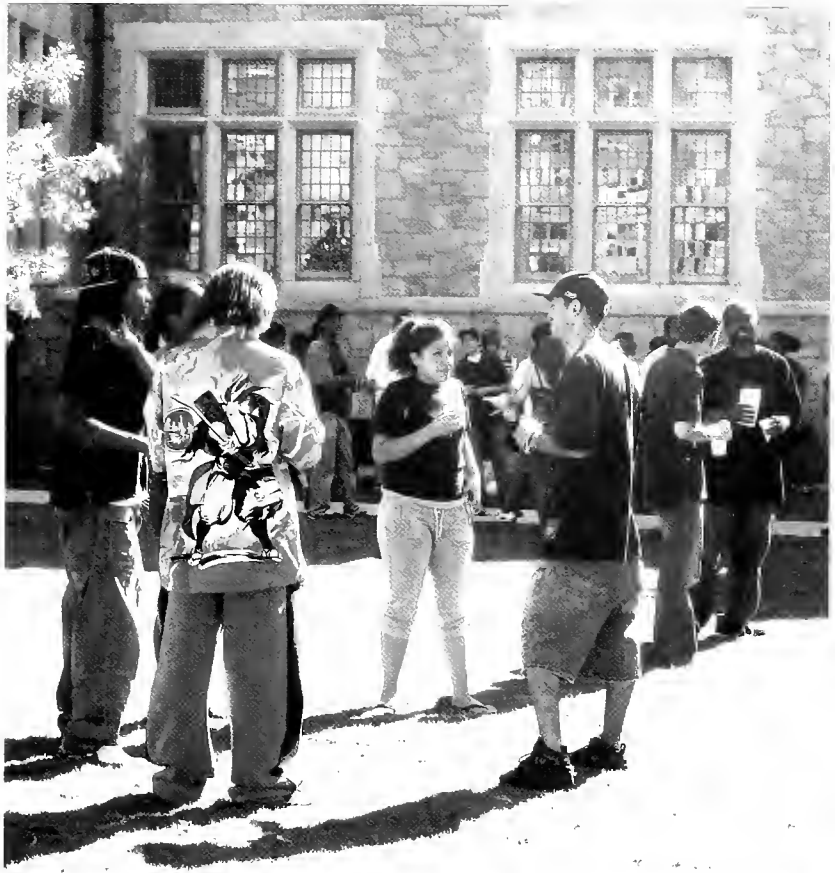














Fin.



