



ampas
1936

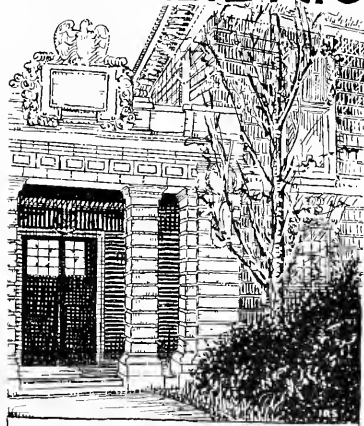


LIBRARY
of
BOSTON
STATE
COLLEGE

Margaret M. Bellamy



EX-LIBRIS



Margaret Sallaway

Margaret M. Sallaway

115

Digitized by the Internet Archive
in 2010 with funding from
Boston Library Consortium Member Libraries

<http://www.archive.org/details/yearbook1936teac>

LAMPAS 1936

PUBLISHED BY THE
SENIOR CLASS OF
THE TEACHERS COLLEGE
OF THE CITY OF BOSTON



THE CLASS OF 1936

takes pleasure in dedicating
its Senior Annual

THE LAMPAS

to

DR. MARY C. MELLYN

Assistant Superintendent of the Boston Public Schools

Dr. Mellyn has long been closely associated with The Teachers College,—first as a member of the Faculty and now its special "guide, philosopher, and friend" as Assistant Superintendent of Schools.

We honor Dr. Mellyn as an educator widely known and respected for her high professional ideals and achievement; an administrator who has filled with distinction many positions of responsibility and has accomplished work of great and lasting value; a scholar who is an example and an inspiration to every teacher; a woman,—kind, broadminded, and sympathetic,—wise in counsel,—a friend and a source of strength to beginners in her great profession.

"A perfect woman, nobly planned,
To warn, to comfort, and command."

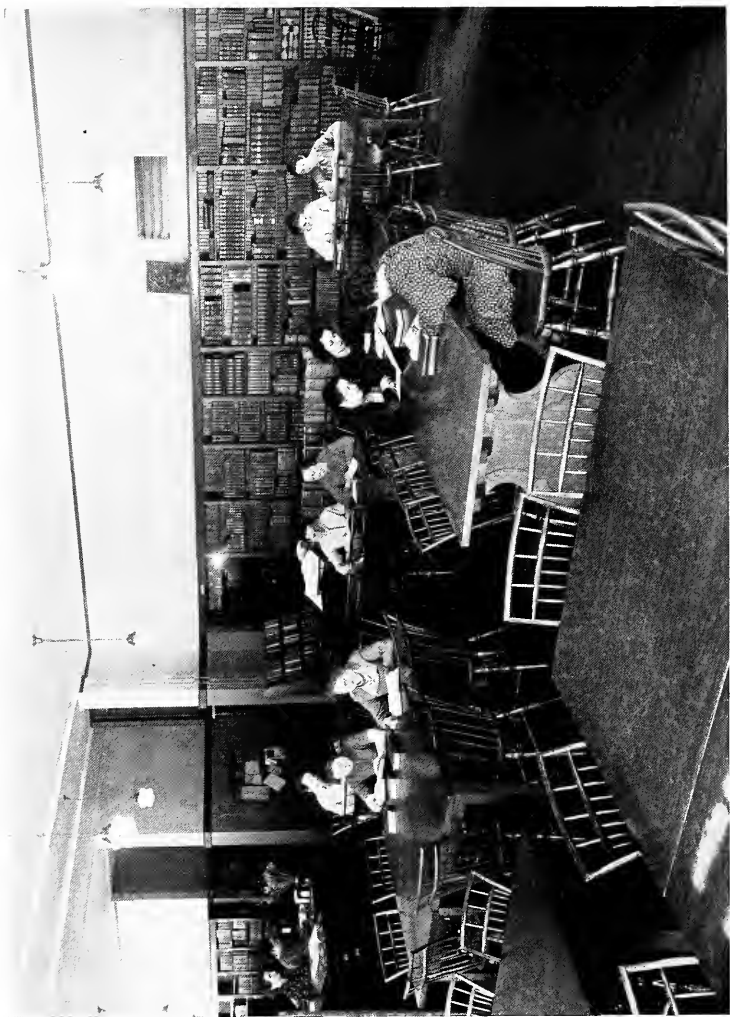


PROLOGUE

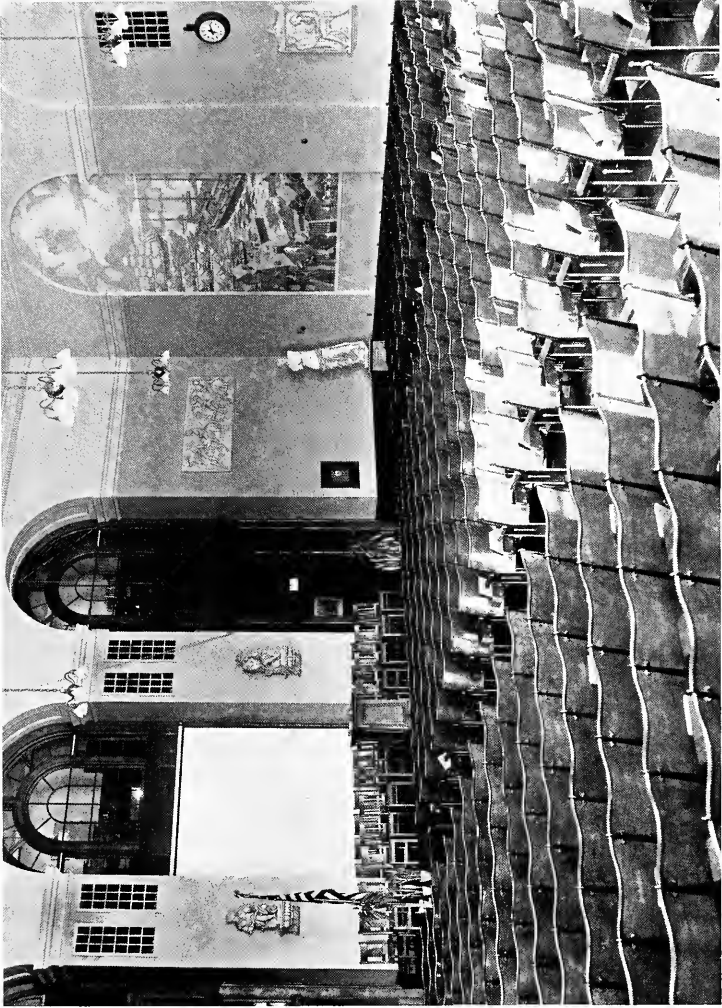
In this, the ninth edition of the Senior Annual, we, the editors, have attempted to record a pleasant chapter with a happy ending. The purpose of our year-book is to cherish the friendships of the Class of 1936 and to preserve its unity. Our LAMPAS is a challenge to Time in its inevitable attempt to make dim the memories of our college life.



Entrance in January

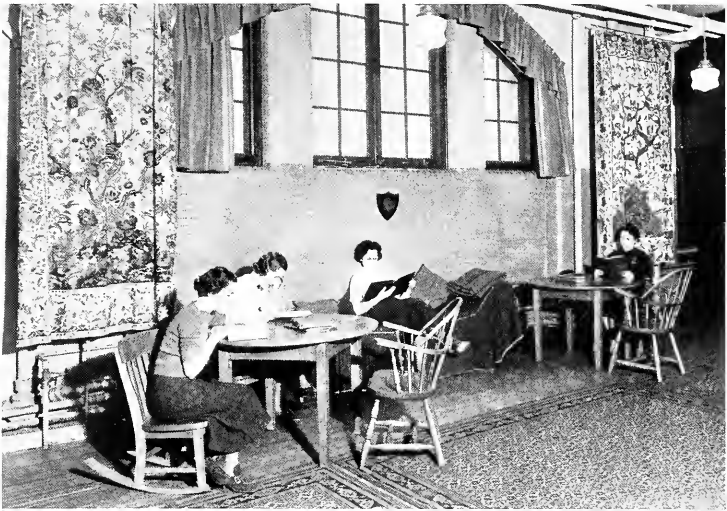


Reader in the library.



Assembly Hall.

Students' Room



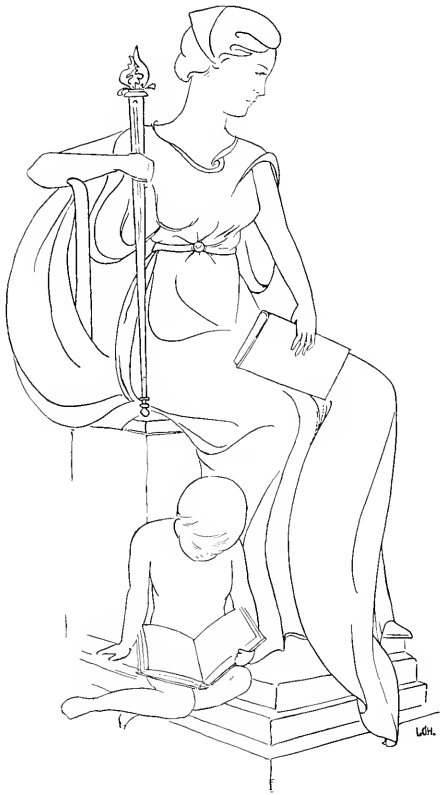
Corner of College Store

Adviser's Office



Lower Corridor Entrance.





ADMINISTRATION

THE FACULTY

We, the Class of 1936, dedicate this page of the LAMPAS as an expression of gratitude to the members of the faculty, whose sympathetic insight, wise guidance, and inspiring sincerity have created personal and professional ideals which we hope to keep always—a most valuable and significant gift.



DR. WILLIAM HENRY JOSEPH KENNEDY

In Dr. Kennedy, our President, we have had an inspiring leader, devoted to his profession and dedicated to the highest ideals of scholarship and personal ethics. His attainments, his quiet humor, and his dependable friendliness are salient characteristics of a leader whose actions are ruled by unselfish thought for the welfare of both students and teachers.



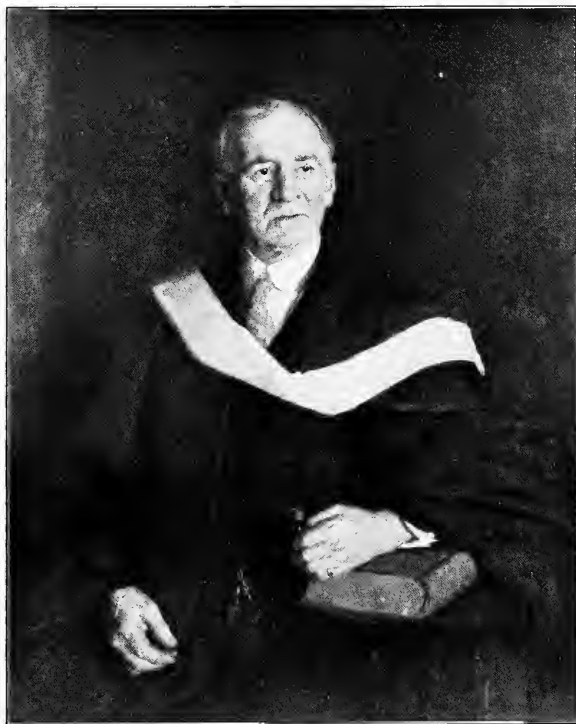
DR. WILLIAM FRANCIS LINEHAN

Dean Linehan always listens sympathetically to our problems and can be depended upon to offer a satisfactory solution. He seeks at all times what he thinks is best for students and teachers,—whatever will contribute most to their happiness.



MARGARET MARY SALLAWAY

We are grateful, indeed, to Miss Sallaway, our Adviser of Women. With keen insight and rare understanding she has guided our activities throughout our college course. We shall always remember her untiring devotion and complete unselfishness.



WALLACE C. BOYDEN

Although Mr. Boyden retired before our entrance into The Teachers College, we have always felt his interest and friendship. At the annual assembly in his honor, we rise in spontaneous tribute to him as a personification of those characteristics he recently named as necessary to a great teacher: enthusiasm for the work; a belief in the possibilities of the human soul; consecration to the truth and right; and willingness for self-sacrifice.



DEAN LINEHAN



DR. KENNEDY



MISS SALLAWAY



MISS AMMIDOWN



MISS BARR



MRS. BARRY



MISS BEAN



MR. BITZER



MISS BRENNAN



MISS BRICK



DR. BURNCE



MISS CALLAHAN



MISS CARNEY



MISS CLARK



MISS COVEHEY



MISS CRUMP



MISS DICKSON



MISS DONOVAN



MR. DRAKE



MISS DRISCOLL



MISS GAFFEY



MISS GARTLAND



DR. GERRY



DR. GILLIS



MISS GIVEN



MISS GRANDFIELD



MRS. GUILFORD



MR. HALEY



MISS HEARTZ



MR. HENNESSEY



DR. HORGAN



MISS HUBBARD



MISS KALLEN



MISS KEE



DR. KERRIGAN



MISS KEYES



MISS MANSFIELD



MISS MIDDLEY



DR. NASH



MISS O'BRIEN



MISS O'HARA



MR. O'MEARA



MR. PACKARD



MISS QUINLAN



MR. QUINN



MISS QUINNAM



MR. READ



MISS REGAN



MR. RYAN



MR. SHEA



MISS SHUTE



MISS STACK



MISS TROMMER



MR. VOSBURGH



MISS WADSWORTH



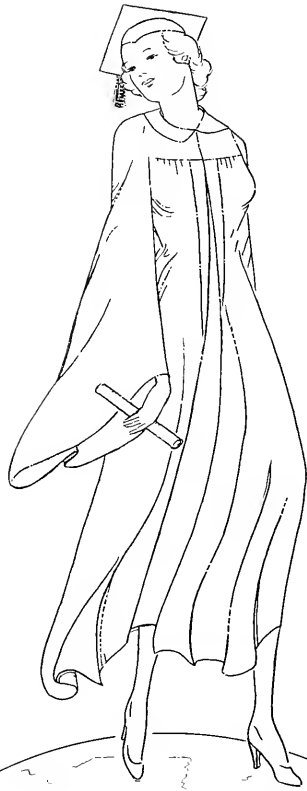
MISS WILKINSON

PARENTS

Our Senior Annual would not be complete without a loving
tribute to those who have made our
college course possible.

TO OUR FATHERS AND MOTHERS,

whose understanding has guided us, whose faith has strengthened
us, whose love has blessed us, we offer the loyal affection
of grateful hearts.



LCH.

SENIORS

FRANCES SULLIVAN
TREASURER.ROSE KIDNEY
PRESIDENTELEANOR LEE
VICE-PRESIDENTBETTY KELLEHER
SECRETARY

SENIORS

THE SENIOR CLASS

Here's to us! It may seem conceited to sing one's own praises, but we do not see how a student could spend four years as a member of our present Senior Class and not be proud of the class. Truly our accomplishments justify a certain pride. Consider the outstanding leaders we have given to the Self-Government Association, to clubs, and to classes; our social events exceptional in efficient management and successful completion; and finally our noteworthy scholastic record. What is the explanation for such success? It is plain that behind every activity undertaken by our class there has been sincere enthusiasm, steadfast determination to succeed, and an admirable spirit of cooperation and friendliness. Then, too, no small share of credit goes to our leaders. We are unanimous in our sincere appreciation of the class officers,—our president, Rose Kidney, who has covered herself with glory in so many fields, and to Eleanor Lee, Betty Kelleher, and Francis Sullivan who have given loyal support in the leadership of our class in its final year. With such a reputation to maintain, we may expect much in the future from the Class of 1936.

SYLVIA ABEL

"—All the swains commend her."

Like an exotic, vivid flower, Sylvia has bloomed in the somber conventional city. There is a certain calm poise in this beautiful, popular girl that enhances her charm. Indeed, poise has become so much a part of Sylvia's personality that one cannot picture her in a state of confusion. Moreover, "this daughter of the gods, divinely fair," combines intelligence with loveliness. An intense energy and zeal in matters scholastic have combined to keep her "right there." We extend the palm to Sylvia for blending her social and scholastic activities with masterly skill.

MAJOR: English. MINOR: General Science
Welfare Club; Athletic Association '33, '36; Drama
Club '33, '34, '35, '36; English Club '34, '35, '36.



SHIRLEY ABELOW

"Lady! you are with beauties so enriched

Of body and of mind,

As I can hardly find

*Which of them all hath most my heart be-
witched."*

Some girls are born to be leaders, to be successful in all their undertakings. Shirley is one of these few. Her simplicity, candor, and obvious efficiency inspire confidence, which is never misplaced. With all her talent for leadership, Shirley is always willing to cooperate with others; and she gives her best to all her work, even the tasks which carry with them no glory. Her delightful humor, contagious enthusiasm, and sympathetic understanding make her a friend among friends. A scholarly mind, social grace, and charming appearance are elements in her distinctive personality. Deep personal integrity, tolerance, and selflessness are combined in her splendid character.

MAJOR: Mathematics. MINOR: General Science
LAMPAS Staff; Welfare Club (Thanksgiving Group
Leader '35); Athletic Association '33, '34, '35, '36
(Secretary '35, Treasurer, '34); Drama Club '33, '34;
Mathematics Society '34, '35, '36 (Secretary '36);
Science Club '36.





ROSE ANGELINA AVERSA

*"A lovely being, scarcely formed or moulded,
A rose with all its sweetest leaves yet folded."*

Rose is so quiet and gentle for the most part, that only on rare occasions were her classmates allowed to raise the curtain, as it were, and see and appreciate the "spark of nature's fire" that is her inheritance. Witness Rose's adept playing of the violin with the College Ensemble at the Tea in Collins Hall and at Commencement in the Courtyard; also her lovely solos at the Cercle Français. We who are not so gifted musically admired her talent. Again she gained our admiration when, without fuss or fanfare, she proffered the French girls an original poem, so fine in Gallic fluency, so pointed in humor, and so poignant with pathos as to warrant its being read at the Cercle Français, where it achieved for its author the high praise—"C'est tres bien fait, ca!"

MAJOR: French. MINOR: Spanish
Self-Government Association (Councillor '33);
English Club '33; French Club '34, '35, '36; Spanish
Club '36.



MARY M. BADESSA

"Small of stature, but not of mind."

Demure Mary has given ample evidence that no task is too great for her small self to undertake. She proceeds with her work joyfully and serenely, completing it well; and she will be the ideal kindergarten teacher. Quiet and industrious, she is contented to be in the background, but she is so vital that her presence is always felt. Her calmness is that of "still waters," and her brightness that of "full many a gem."

KINDERGARTEN-PRIMARY COURSE
Welfare Club; Aquarium Club '35, '36; Athletic
Association '35, '36; Drama Club '34, '35; Music Club
'35, '36.

RUTH VERONICA BAILEY

"Some say thy grace is youth and gentle sport."

Vivacity plus! Thus we think of Ruth, the girl who mixes capability and frivolity in the correct measure to make the "all-round girl." She never permits herself a dull moment, and her energetic nature is always busy with some activity, social or scholastic. Serious moments she has, but far more familiar and pleasant are her moments of bubbling good humor and fun. Lightly will she go along life's pathway, making the journey brighter with her laughter.

KINDERGARTEN-PRIMARY COURSE

Self-Government Association (Treasurer '34); Welfare Club (Settlement-House Group); Athletic Association '33, '34, '35, '36; Drama Club '33, '34, '35; Music Club '35, '36.



ANNA BEATRICE BAYARD

"A sense of humor is the salt of life."

It is not in Anna's nature to be serious long over anything. She is full of zest for living. But beneath her carefree exterior is a reflective mind, of which we have all been aware. Her happy face would always dispel the gloom which might sometimes have fallen around us. No problem however difficult could ruffle Anna's calm or cast a shadow on her disposition. She is not talkative,—but when she speaks it is worth while to listen. We have a cordial, understanding friend in Anna.

KINDERGARTEN-PRIMARY COURSE

Welfare Club; Aquarium Club '35, '36; Drama Club '33, '34; English Club '33, '36; Le Cercle Français '33, '34; Music Club '35, '36.





ANNE BERKOWITZ

*"Who mixed reason with pleasure,
And wisdom with mirth."*

Fortune has indeed smiled upon Anne. She was born with a talent for art and for singing; she has acquired proficiency in flute-playing and tap-dancing. But Anne has kept these talents in her treasure chest, to be brought forth only on special occasions. She has all the marks of an excellent student, a first-rate athlete, and a conscientious worker. As president of the Athletic Association she sets the standard to the large club-membership for track and basket-ball. As a member of committees of importance she has done much to ensure the success of teas, plays, and dances. Particularly in the dances has Anne shown us that her social life, too, is not neglected.

MAJOR: General Science. MINOR: Art
Self-Government Association (Councillor '35);
LAMPAS Staff; Welfare Club (Aide '33); Art Club '35;
Athletic Association '33, '34, '35, '36 (President '36);
Science Club '36.



ELEANOR MARGARET BOGAN

*"In framing an artist, art hath thus decreed
To make some good, but others to exceed."*

Eleanor is the class artist both in talent and temperament. She draws and paints exquisitely, and oh! the clothes she designs and makes! Her accomplishments make us admire her, and, in an affectionate way, envy her. Eleanor's appearance and personality are as charming as one of her own drawings—sweet, subtle, and serene. She knows what she wants to accomplish and just how to carry out her plans. Accordingly, she is successful in everything she attempts. No wonder, then, that Eleanor gains the respect as well as the sincere affection of all those with whom she comes in contact.

MAJOR: Art. MINOR: Geography
LAMPAS Staff; Welfare Club (Executive Board '34,
'35); Art Club '34, '35, '36; Athletic Association,
'33; Drama Club '34, '35; Geography Club '35, '36.

GERARDINE ANNE BUCKLEY

*"Genteel in personage,
Conduct, and equipage."*

From her curly head to her trim feet, Jerry is full of life; indeed she is indefatigable. Never tired and ever eager to be doing something, Jerry, walking swiftly in the corridors, or running gaily to school with hair flying, seems energy personified. She is always full of interest and enjoyment in life. Her enthusiasm is most refreshing to weary students who relax in her presence and seem to take on a "new lease of life." Though in later years the memories of old days will be dim, the image of her smiling face will still give encouragement to her friends.

KINDERGARTEN-PRIMARY COURSE

Welfare Club; Art Club '35; Drama Club '35, '36;
Music Club '34, '35, '36.



ETTA BURMAN

"—A flame at which the tired heart can warm."

A flashing smile—a glimpse of pearly teeth—that is Etta. Indeed we are most grateful for the smile that has so often shown the sunnier side of an apparently serious situation. No account of this girl would be complete without saying that she has the brownest eyes. Briefly, she is a truly bright spot on our collegiate horizon. Light-hearted or grave, she is delightful. She will be the gay companion of brighter hours, or the diligent scholar of "midnight-oil" time. Her endowments and various accomplishments will ever make Etta a "friend indeed."

KINDERGARTEN-PRIMARY COURSE

Welfare Club; Aquarium Club '35, '36; Athletic Club '33, '34; Drama Club '33, '34; English Club '33; Music Club '35, '36.





CLAIRE ELIOT BURTON

*"Choose your course, pursue it grandly,
And achieve what you pursue."*

A rare combination of brains, beauty, and character, Claire stands forth as one of the shining stars of the class. She has a unique personality which combines a quick-thinking brain and a high-spirited nature. Claire's habit of rapid speech has been a source of enjoyment and amusement to all those classes which she has enlivened with recitations delivered with rapier-like swiftness. Then too, as is characteristic of the model college girl, she participates in many social activities both in and out of the College; and this variety of interests has enriched her personality.

MAJOR: Biology. MINORS: Chemistry, Physiology
Welfare Club; Biology Society '35, '36 (Treasurer '35; Secretary '36); Drama Club '35; Science Club '33, '34, '35.



RITA VERONICA CAHILL

*"Quiet she was, forsooth not vain,
If friends be credit, she hath much gain."*

We are fortunate, indeed, to have Rita as one of our classmates in the college. She is an outstanding student,—brilliant, conscientious, and versatile. She fills the position of President of the Classical Club with the quiet dignity and the poise characteristic of all her work. A keen sense of humor, a fun-loving disposition, and an even temper make Rita one of the most popular girls in the class. Everything she undertakes is efficiently brought to a successful conclusion. She will be remembered for her fine scholastic attainment, her charming personality, and her unusual versatility.

MAJOR: Latin. MINORS: Ancient History, French
Self-Government Association (Councillor '33, House Committee '35); Welfare Club; Athletic Association '33; Classical Club '33, '34, '35, '36 (Secretary '32; Treasurer '33; Vice-President '34; President '35); History Club '35.

HELEN F. CALLAHAN

"Blessed with that charm,—the certainty to please."

Self-confidence and poise seem to have come naturally to Helen, even before she became a dignified "Upper-classman." Never disturbed by an audience, she has deservedly earned a reputation as one of the best story-tellers the lunchroom, or any other spot popular for relaxation, has ever known. She is highly individual and you find yourself thinking about her long after she has left you. Perhaps it's because she speaks slowly, in an intriguingly husky voice; perhaps it's because of her fascinating appearance. More probably it's because of her *savoir-faire*,—the *je ne sais quoi*—which is an essential element in her personality.

MAJOR: General Science. MINOR: Geography
Welfare Club; Art Club '35, '36; Drama Club '33, '34; Science Club '35, '36.



OLIVE THERESA CAMPBELL

*"For thy sweet love remembered such wealth brings,
That then I scorn to change my state with kings."*

You like Ollie with no effort at all. Her friendships are a high tribute to a personality and character truly noble. We should be rich indeed had we the command of words—simple, sincere, harmonious—lofty enough to describe Ollie's nature and do her justice. Because she can outdo us all in gaiety, love of nonsense, exuberance of spirits when we're gay; because she can listen sympathetically to all our woes when we're gloomy; because she can reach the heights of loyalty, understanding, and goodness; because she is so sincere in her enthusiastic and unstinted praise of those she admires, she has earned for herself not only praise equal to that she gives, but the loyal devotion of many admiring friends.

MAJOR: General Science. MINOR: Mathematics
Welfare Club (Board '35); LAMPAS Staff; Mathematics Society '35, '36; Spanish Club '33, '34, '35 (Treasurer '34).





MARY ALTAGRACIA CARMODY

"Write me as one who loves his fellow men."

Mary, the friendliest person at the college, is the possessor of hosts of friends. She seems to have some magic power which draws loyal friends to her; perhaps it is that in her friendships she gives always more than she asks in return. Elected councillor again and again, she has fulfilled the demands of that office for the benefit of those she has represented, and has always won their approval. For someone to play with, someone to talk with, someone to study with, she is the answer. Life never is dull when she is near. A good friend, a "game" girl, Mary can always be depended upon to do her part and do it well.

MAJOR: General Science. MINOR: Mathematics
Self-Government Association (Councillor '35, '36);
LAMPAS Staff; Welfare Club (Aide '34); Athletic
Association '34, '35, '36; Science Club '35, '36 (Secretary '36).

AILEEN ELIZABETH CARPENTER

*"She was wild, and sweet, and witty
Let's not say dull things about her."*

In the midst of the crowd of timorous Freshmen, Aileen was perhaps the most conspicuous. Why? Her happy smile—and her broken arm. She remained conspicuous for her charm and talents and became one of the most outstanding members of our class. Her ability to be a thorough student and a pleasant, loyal friend was soon apparent. Her wit and exuberant humor brightened many a free hour. And how she delighted in a keen, logical argument! No farce or buffoonery in her altruism; rather, there is a sparkling pungency. Aileen has become an interested student of history and the literature of England and France. Her interest in college life and her enjoyment of all people and things are so intense that with Rostand we can say, "Elle fait de la grace avec rien."

MAJOR: French. MINOR: History
Self-Government Association (Councillor '34);
LAMPAS Staff; Welfare Club; Le Cercle Français '34,
'35, '36 (Secretary '35); History Club '35.



MARY FRANCES CATENACCI

*"She is pretty to walk with, witty to talk with,
And pleasant, too, to think on."*

A charming personality made up of a stimulating wit and a pleasant manner makes Mary a delightful companion. Fun-loving, vivacious, ever willing to cooperate in either social or scholastic affairs, she has been an efficient and loyal member of the class. Among her widely diversified interests are athletics, dancing, dramatics, and social work. Through her work in the Welfare Club, many of the Settlement Houses of the city have been ably assisted by Teachers College students. As president of the Spanish Club she insures the success of all its activities. Mary has won many friends with her arresting, throaty laugh and her sympathetic understanding. It will be interesting to watch her succeed in her career of teacher and club-woman.

MAJOR: Spanish. MINORS: European History, French Self-Government Association (House Committee '36); Welfare Club; Camera Club '34; Drama Club '35; El Circulo Castellano '33, '34, '35, '36 (President '35, '36); French Club '36; Science Club '34.



ETHEL ALMYRA COES

*"Along the cool, sequestered vale of life
She keeps the noiseless tenor of her way."*

Ethel is one of those quiet persons whose presence and activities make things run more smoothly. She is very conscientious and quite absorbed in her specific field. She has even gone to the length of choosing her pet typewriter from all the typewriters of the school. Of course, we remember her as one of the girls who so obligingly played the piano for our dancing (?) and marching in the gymnasium. Also Ethel can play the organ. She is fond of athletics and sports,—an interest that reflects her active, friendly, and social spirit. She is a typical all-round girl, beloved by all.

MAJOR: Shorthand—Typewriting
MINORS: Accounting, Commercial Geography
Self-Government Association (Councillor '35); Welfare Club; Aquarium Club '35, '36 (Treasurer '36); Athletic Association '33, '35, '36; Commercial Club '36.





DOROTHY E. COHEN

*"I've built my soul a pleasure house
Wherein at ease to dwell."*

Between the seriousness of some students and the excited agitation of others, Dor's unruffled calm stands like a bulwark which relieves the tenseness of scholastic endeavors. Her detachment from bewildering circumstances is at times infectious. Her love of clothes has created a model of what the well-dressed girl wears. Evidently at an early age she determined her aim in life—to enjoy life to its fullest. To achieve this end she has acquired the skill of seeing only the bright side of every situation. When the years part us, we shall still be certain that Dor is hurrying through the world, drawing joy and happiness from every passing hour.

ELEMENTARY COURSE

Self-Government Association (Councillor '36); Welfare Club (Settlement Group '33); Aquarium Club '36; Drama Club '33, '34, '35, '36; English Club '34, '35, '36; Music Club '36.



HILDA COHEN

"A friendly smile and a friendly way."

Hilda's constant calm serenity is indeed enviable. She is so easy-going and good-natured,—ever ready with a laugh even in those dark moments preceding examinations! The better one knows her, the richer a nature one discovers. Have you ever heard her discuss music, art, or recent literature? Of the latter she has a truly remarkable fund of knowledge, due, probably, to her experience as a librarian. She is a good mixer, and with her varied interests and witty conversation is welcome in any social group.

MAJOR: English Literature

MINORS: English Composition, English History
Welfare Club; Art Club '35; Biology Club '35;
Drama Club '33, '34, '35, '36; English Club '34, '35.

ROSALIND COHEN

*"With gentle yet prevailing force
Intent upon her destined course."*

Not long before mid-years Rosalind startled us by producing two beautiful paintings that she had done herself! Since then, she has confessed to the hobby of painting in oils and water colors. Moreover, she likes music, especially singing. We know her better as a serious, purposeful student who works persistently towards her goal. Outside of school she studies Hebrew, in which she is an accomplished scholar. In the future she will travel, but now she reads of adventure and of far-off places. It is safe to predict an interesting career for her.

Major: Commercial Geography

Minors: Accounting, Commercial Law

Welfare Club; Art Club '33, '34, '35, '36; Biology Club '36; Commercial Club '36; Drama Club '33; Geography Club '36; Music Club '36.



GRACE RUTH COLCHESTER

*"Heard melodies are sweet, but those unheard
Are sweeter."*

Charm, that intangible "je ne sais quoi" is inherent in Ruth. It is impossible to tell all the pleasant things we know about her because so many are the quiet, gentle qualities that are hard to define. Her voice alone bespeaks the varied harmonies of her character. Her well-modulated, smooth, even tones testify to a serene, pleasant, and likeable disposition. One needs to know Ruth outside of class, however, to learn that these gentle, subdued melodies can change to rollicking songs under the stimulus of an atmosphere of sociability. Wherever she may be, Ruth invariably gives the impression of perfect poise, and a gracious manner which leaves in our minds a serene and beautiful picture.

Major: Geography.

Minor: History

Welfare Club; Art Club '34, '35, '36; Athletic Association '34; Drama Club '35, '36 (Vice-President '36); Geography Club '33, '34, '35, '36 (President '36).





MARY ALBERTA COLLINS

"A friend may be reckoned the masterpiece of nature."

We all admire Mary as a loyal friend and fellow-student. One of the most talented members of the class,—a brilliant pianist and fine scholar,—she moves among us with queenly graciousness. Her cheerful, winning manner will make her remembered as one of our most popular girls. She is always among the capable leaders of class activities. As president of Le Cercle Français she guides its meetings with quiet dignity and efficient leadership. Loyal, versatile, and sincere, she readily wins the hearts of all who know her. Inevitably, her future will be bright.

MAJOR: French. MINORS: European History, Spanish Self-Government Association (House Committee '34; Councillor '35); Welfare Club; El Circulo Castellano '36; English Club '33, '34, '35, '36; Le Cercle Français '34, '35, '36 (Treasurer '35; President '36); Music Club '33.



EDNA ISABELLE CONNORS

She has the rare art of making friends and keeping them.

Connie—the girl to whom we turn to straighten out difficulties that require level-headed advice. Connie—the girl whose activities include a most delightful round of social, athletic, and scholastic events. Connie—the girl whose charm and personality are far too vivid to be portrayed adequately in words. Everyone knows her and everyone likes her; for she may truly be characterized as an "all-round" girl. In the classroom, in the gymnasium, in the ball-room, Connie has made her mark. In the hearts of her classmates that mark is indelible.

MAJOR: Mathematics. MINOR: General Science Self-Government Association (Councillor '35); LAMPAS Staff; Athletic Association '33, '34, '36; Drama Club '33, '34; Mathematics Society '34, '35, '36; Science Club '33, '36.

GRETCHEN KATHERINE CONNORS
*"Thoughtful, patient, helpful, kind,—
 Friends like these are hard to find."*

Gretchen's outstanding characteristic is essential goodness. Here we find no veneer of superficial sophistication. She exemplifies those fundamental basic qualities that make a person truly noble,—kindness, loyalty, generosity. Most loyal to her college and to her friends,—who has ever heard her say an unkind word about anyone? Her fine mind and high scholastic ability are evidenced by a four-year honor record. Through her efforts as chairman of the House Committee, the Assembly Hall, Students' Room, and Lunch Room were made pleasanter places. As an executive she is capable and conscientious. Gretchen is what we all should wish to be,—"a gracious lady."

Major: American History

Minors: Ancient History, European History
 Self-Government Association (Councillor '34;
 Chairman of House Committee '35), LAMPAS Staff;
 Aquarium Club '34; Classical Club '33, '34, '35;
 History Club '33, '34, '35, '36.



MARY THERESA COPPINGER

*"She is loyal of heart, high of purpose, and
 gentle of spirit."*

Mary is a vital, deep, and rather quiet girl. Those who majored in English know her to be a capable student and a clear thinker. Although she is naturally unassuming, she is a good leader, a fact which is proved by her work as president of the English Club during the past year. She is a conscientious and thorough worker and a gentle, sweet companion. In the warmth of the circle of her closest friends, her true nature unfolds itself so that she is recognized as a charming comrade and an interesting personality. A girl of sterling integrity, she has set up for herself standards to which she adheres with admirable force of character.

Major: English Literature

Minors: English Composition, English History
 Welfare Club; Drama Club '35; English Club '33,
 '34, '35 (President '36).





NOREEN MARIE CROWLEY

"Her merry life portrays a buoyant spirit."

Can you see our buoyant, bubbling, fun-loving Noreen as a student of social psychology at Harvard? Probably you cannot, and this suggests that we know less than we thought we did about this popular girl. We like her for her friendly, social nature and her quiet efficiency. This year she was president of a club outside of school, and doubtless she showed her capability in that position. Of course, she enjoys sports, such as skiing, skating, and ball-playing, and like most girls, she is very fond of dancing. She is a thoroughly good companion who livens things up wherever she goes.

MAJOR: Shorthand—Typewriting

MINORS: Accounting, Commercial Geography

Welfare Club; Art Club '35; Athletic Association '33, '36; Commercial Club '36; Geography Club '36.



RUTH MARY DANNAHY

"Wise to resolve and patient to perform."

Ruth, one of the famous "three musketeers," has lovely, naturally curly hair,—the envy of all her friends but the bane of her existence. Large soft eyes, twinkling with humor, reflect her warm-hearted, friendly nature; and her pleasant voice and manner reveal an even, sunny disposition. Her precision, neatness, and accuracy result in work of high quality in the typewriting class and make her a favorite helper. Though she is exceedingly feminine, she takes part in such active, vigorous sports as tennis, swimming, and skating, in all of which she is expert. Finally, she is very fond of driving. A typical modern girl, she will be remembered best for her genuine sympathy and her ready camaraderie.

MAJOR: Commercial Geography

MINORS: Accounting, Shorthand—Typewriting

Welfare Club (Aide '34); Commercial Club '36; Drama Club '33; Geography Club '35, '36.

CHARLOTTE MAY DAVIS

*"Age cannot wither her, nor custom stale
Her infinite variety."*

Charlotte is the happy possessor of the secret of true friendship. Those eternally beautiful words, "Do unto others as you would that they should do unto you" best express her lovely attitude toward her classmates. Truly, the "Golden Rule" is Charlotte's rule. Fortune has smiled kindly upon the students who have enjoyed her close comradeship. Her easy manner, another delightful characteristic, further enhances her personality. She has ever been a restful influence after a turbulent day. The world has unlimited possibilities of friendship for such a girl as Charlotte.

ELEMENTARY COURSE

Welfare Club; Athletic Association '34, '35, '36;
Music Club '36.



ALICE CAROLINE DE LOREY

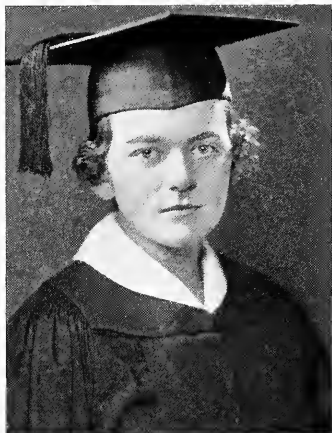
"Present mirth hath present laughter."

Alice radiates happiness and joy, whether she is at work or at play. Many times she has broken the monotony for us with a bright remark. Her capacity for cheerfulness seems inexhaustible; her eyes shine with a light reflected from her kind, joyous heart. Hers is not the insipid "Pollyanna sunshine," but the happy nature of a practical lass who knows that one must not travel Life's roads with a long face. Kind-hearted, sympathetic, and gay, she denies any relationship with Longfellow's "grave Alice."

KINDERGARTEN-PRIMARY COURSE

Welfare Club; Aquarium Club '34, '35, '36 (President '35, Secretary '36); Athletic Association '35;
Drama Club '33, '34, '36; English Club '33, '34;
Music Club '35, '36.





DOROTHEA MARIE DENVIR

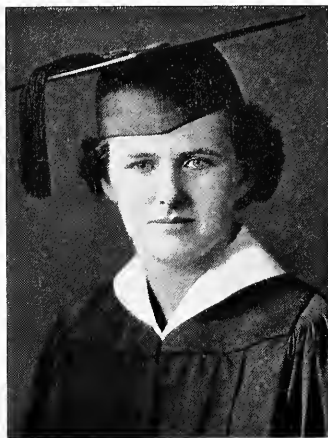
*"And a rainbow held out its shining band,
So what could I do but laugh and go!"*

Dot possesses the enviable qualities of genuineness, tolerance, and contempt for affectation. Her well-defined standards and unprejudiced outlook make her a keen critic, just as her whimsical humor makes her a clever punster. Every one is impressed by her charming diffidence which often melts away in spontaneous admiration for clever craftsmanship and beauty. Irrepressibly feminine, incorrigibly romantic, with a flair for satiric epigram and a talent for friendship, she goes her way in serenity and kindness, asking little and giving much. Although she is the least aggressive of persons, she has advanced in her chosen field because her obvious capability has won the recognition which she will not demand.

MAJOR: English Literature

MINORS: English Composition, English History

LAMPAS Staff; Welfare Club; Classical Club '33, '34, '35, '36; English Club '33, '34, '35, '36; History Club '34.



EILEEN ROBERTA DONOVAN

"The will to do, the soul to dare."

The insouciant charm of Eileen's personality is matched by her debonair appearance. Her sociability, her brilliant mind with its power of logical reasoning, and her whimsical humor have won her a host of friends who believe in her because she has proved competent, ingenious, and gracious as a class and club leader. Her abiding interest in the social sciences, the accuracy of her perspective make her a valuable History student. Eileen, with her disconcerting moments of inscrutability, her fine social poise, her dignity which amounts almost to aloofness, and withal, her talent for companionship and gayety, is a person not to be forgotten.

MAJOR: American History

MINORS: Ancient History, European History

Class Vice-President '33; President '34; LAMPAS Staff; Welfare Club (Aide '33); Drama Club '33, '34, '35, '36; English Club '33, '34, '35, '36; History Club '33, '34, '35, '36 (Secretary '33; Treasurer '34; Vice-President '35; President '36).

MARY CATHERINE DONOVAN

"And gentle in manner they do good things in a quiet way."

If Diogenes went forth again to seek for truth and sincerity, we feel certain that his search would end when he met Mary. He would recognize the gentle candor of her eyes, and the quiet capability of her actions. Gradually she would reveal her true worth to him, as she has to us who have the privilege of knowing her intimately. He would nod with approval at the girl who gives unsparingly of time and energy, and who is willing to go to endless trouble to help others; he would, perhaps, even smile understandingly at the low chuckles which bespeak Mary's sense of humor. He would steal away well pleased with the selflessness and the gentle kindness that makes Mary so valuable a friend.

KINDERGARTEN-PRIMARY COURSE

Welfare Club; Aquarium Club '33, '34; English Club '36; Music Club '35, '36.



HELEN MICHAEL DRACOS

*"My early and invincible love of reading
I would not exchange for the treasures of
India."*

We can mention few books that Helen has not read, and she is familiar with many that are mere names to us. She has often roused the class from lethargic acceptance of what is being said, to keener perception by her penetrating questions, and has surprised us frequently with her knowledge and application of philosophy. The latter subject, together with her attendance at concerts and good plays, occupies most of her spare time. Besides these pronounced intellectual activities she has her merry, light-hearted side. Though inclined to be serious, she can be witty and jolly. One could not wish for a better companion in a good argument, a hearty laugh, or a serious talk.

MAJOR: English Literature

MINORS: English Composition, English History

Welfare Club; Athletic Association '34; Drama Club '33, '34, '35, '36; English Club '35, '36; Geography Club '33; History Club '34.





CECILIA AGNES DUNPHY

"Wit to persuade and beauty to delight."

We all know Cis. She is the little girl whose "bright smile haunts us still." She is the fair young damosel who blithely asks "Que sais-je?" and proceeds to give you fascinating details of French history, the high spots in a novel, or the manifestations of genius in a bit of verse. If you are not well read, stay away from Cis, unless you are willing to admit that ignorance is bliss. But if you want entertaining company, if you enjoy contact with an alert mind, and if you won't be envious of her countless talents, you'll spend many happy hours with her and will cultivate her lasting friendship.

MAJOR: French. MINOR: American History
Welfare Club (Secretary '34); French Club '34,
'35, '36; History Club '35, '36.

ELIZABETH DUSTON

*"With such a comrade, with such a friend,
I fain would walk to journey's end."*

Betty is a study in contrasts with her ascetic brow, and her sensitive mouth; with her wit and her originality and sweetness; with her long deep thoughts and her pungent, clever speech. As Editor-in-Chief, her handling of the LAMPAS this year has been a step toward a great career in the field of literature. A keen and brilliant student, as editor of the first edition of the college handbook she was revealed as an efficient organizer. Her friends know that running like an odd thread through the varied pattern of her personality, is her love of an occasional dramatic gesture. Her sparkling wit and her talent for droll hyperbole make her a clever and amusing raconteur. May she continue to take life in her stride, coolly and nonchalantly, her loyalty to her chosen ideals unchanged.

MAJOR: English Literature
MINORS: English Composition, English History
LAMPAS Staff; Welfare Club; Dramatic Club '33;
English Club '33, '34, '35, '36 (Secretary '35).



ALICE ENG

*"And those that know thee, know all words
are faint."*

We can speak of Alice only in praise of her unselfishness and generosity. The warmth of her smile, the spontaneity of her expression invade the hearts of all those who know her. However crowded her time, she has the ability of adjusting it to suit the convenience of her classmates. This seems to be the truest evidence of good nature. There have been times when, distressed by the many difficult tasks which confronted us, we sought Alice, who, in her quiet and unobtrusive way, set our hearts at ease. She has a beautiful attitude toward human nature. She apparently sees only the good in everyone, while all faults disappear in her sympathetic understanding.

ELEMENTARY COURSE

Welfare Club (Aide '35); Art Club '35, '36; Athletic Club '35; English Club '33, '34; Alpha Circle '35, '36.



MARY B. EPSTEIN

*"She was made for happy thoughts,
For playful wit and laughter."*

Mary is our evidence that the best things come in small packages! And what do we find in this particular package? An irrepressible sense of humor, which makes life interesting for her companions, and which clears the atmosphere in moments of constraint is our first discovery. A toss of her head, a twinkle in her brown eyes, and an infectious laugh characterize Mary in a gay mood. But gaiety is not the only content of our package. Mary is calm, serious, sympathetic,—a sincere friend, an excellent companion, and (mirabile dictu!) a good listener. All of these qualities are contained in just five-foot-one of whimsicality and charm.

MAJOR: Music.

MINOR: English

LAMPAS Staff; Welfare Club; Aquarium Club '33; Athletic Association '34, '36; English Club '35, '36; Music Club '33, '34, '35, '36.





MILDRED EPSTEIN

*"A smooth and steadfast mind,
Gentle thoughts and calm desires."*

Mildred has a keen mind, full of valuable ideas. With calmness and sophistication she handles each new, difficult situation, and yet she worries over such minor matters as examinations. Like most of us, she hopes to travel; but, unlike us, she has visited many places along the Atlantic Coast and in the South-east. Life is serious to her, though she is full of fun at the right time. She is very talented in sewing (makes most of her own clothes) and is interested in the piano and aesthetic dancing. Then, too, she has her more intellectual interests,—satisfied by her college work and by such lecturers as Ludwig. Her desire for knowledge leads her into many interesting paths.

MAJOR: Shorthand—Typewriting
 MINORS: Accounting, Commercial Geography
 Welfare Club; Art Club '33, '34, '35; Athletic Association '35, '36; Commercial Club '36; Drama Club '33, '34, '35, '36; English Club '33, '34; Geography Club '36; Music Club '33, '34.



GERALDINE PATRICIA FERRIS

"Fair, kind, and true."

We know her as "Jerry", and it seems as though no other name would be so suitable for this natural, unaffected girl, whose twinkling blue eyes and smiling face testify to her keen enjoyment of life. Calmness is her salient quality, and she is as calm in her enjoyments as she is in her work. Very few matters could make a ripple in her easy-going, placid nature. Perhaps you've heard of the girl with the dreamy eyes,—allow us to introduce the girl with the very blue eyes, which we shall recall vividly whenever we hear the name "Jerry."

KINDERGARTEN-PRIMARY COURSE
 Welfare Club; Art Club '35, '36; Athletic Association '33; Drama Club '34, '35; Geography Club '33, '34; Music Club '35, '36.

HELEN LILLIAN FITZGERALD

*"A charming voice, a bonny eye,
A passing pleasing tongue."*

To know Lillian is to love her. She is a veritable life-saver in class recitations; but, better still, she is the angel of the locker room. Many are the girls that she has saved from starvation at four o'clock on Tuesday afternoons by producing treasures of cake and fruit from her locker. She is always entertaining, cheerful, and easy to get along with. She likes dramatics and must have some interesting experiences from her dramatic "career." As a Girl-Scout Lieutenant she has kept in close contact with young girls such as she will reach later. She is an admirably fun-loving, many-sided, evenly-balanced girl.

MAJOR: Shorthand—Typewriting

MINORS: Accounting, Commercial Geography

LAMPAS Staff; Welfare Club (Settlement House Worker '35, Aide '36); Aquarium Club '34, '35, '36; Athletic Association '34; Commercial Club '36.



LILLIAN ELIZABETH FOLEY

*"Good sense and good nature are never
separated."*

Clever, satiric, and witty, Lil provides us with such lively entertainment that we never have a dull moment when she is present. Always vivacious and full of fun, she glows with vitality and enthusiasm. She is a fine conversationalist and a clever bridge partner. She has a very marked individuality, with a strong capacity for likes and dislikes. Of course, as one would expect of such a person, Lillian is very active socially both in college and outside. One may safely say she will live a full, rich, interesting life.

MAJOR: Commercial Geography

MINORS: Accounting, Commercial Law

Welfare Club; Athletic Association '34; Geography Club '33, '34, '35, '36; History Club '34.





HELEN ELIZABETH FORSLUND
*"Her very frowns are fairer far
 Than smiles of other maidens are."*

Helen's is the sort of personality which is immediately labeled attractive. She bubbles over with gaiety, vivacity, and love of fun, while underneath is a calm seriousness not at first apparent. She is friendly, thoughtful, courteous, sweet;—in short, she possesses all the traits which go to make up a lovable disposition. Whatever it is that makes her so pleasing may be very hard to define, but to prove its existence you need only witness the spontaneous and sincere enthusiasm with which her friends unanimately declare, "Helen's a peach!" Although we cannot express our esteem for you, Helen, we can and do wish you all the happiness in the world; you deserve every bit of it!

KINDERGARTEN-PRIMARY COURSE

Welfare Club (Third Vice-President '36); English Club '33; Le Cercle Français '34, '35, '36; Music Club '33, '35, '36.



SYLVIA FOX
*"That humor was the only test of gravity, and
 gravity of humor."*

One never thinks of Sylvia without smiling genially. An unrivalled sense of humor and a ready wit are her precious gifts. No group of which she is a member could remain serious for long,—she sees a funny side to even the dullest subjects. Her originality makes her unwilling to follow the ordinary procedure of the group;—rather, she likes to do things a little differently. Beneath her light and carefree manner is a conscientious and serious attitude toward her work, which makes her well-fitted to have been chosen our councillor for two years. A fine mind, a keen sense of humor, and a kind and loving heart, are qualities in her personality which should assure Sylvia's success as a teacher.

SPECIAL CLASS COURSE

Self-Government Association (Councillor '35, '36); Welfare Club '32, '36; Athletic Association '32, '33; History Club '35; Music Club '36.

HELEN FRANCES FREEMAN

"The heart to conceive, the understanding to direct, and the hand to execute."

Helen is well known among her classmates for her distinguished appearance and efficient leadership. Whatever she undertakes is carried through definitely and successfully. Willing in spirit and gracious in manner, she gives freely of her talents. Everyone admires her poise and dignity, yet she herself does not like to be reminded of these attributes. We admire her, too, for her school spirit, and appreciate the time and energy which she has given to college projects. Yet only those who know her well are fully conscious of her exceptional talents and achievements. Those with whom Helen comes in contact honor her for her sincerity and are grateful for her friendship.

SPECIAL CLASS COURSE

Welfare Club (Thanksgiving Group Leader '33, '34; President '35); Music Club '36; Spanish Club '33, '35, '36.



ELEANOR FRIEDBERG

"The finest of companions, the best of friends."

Eleanor seems to be smiling at all times, and she often cheers us up with her keen humor. At the same time let no one forget that she is a serious and conscientious student. She goes about her tasks in a business-like way. Here is no procrastination, but rather direct, immediate attack on the thing to be done. Outside of class she is very much interested in sports, and is also the director of a club. Geniality, common sense, adaptability, and leadership are a few of Eleanor's qualities, all of which unite to make her a pleasant, likeable, and much-admired girl.

MAJOR: Shorthand—Typewriting
 MINORS: Accounting, Commercial Geography

Welfare Club; Art Club '36; Athletic Association '33, '34, '35; Commercial Club '36; Drama Club '35; Geography Club '36.





BEULAH LUCILLE FRUEAN

*"Your fair discourse hath been as sugar,
Making the hard way sweet and delectable."*

Beulah's is a dynamic personality. Her minutes are vital and full—her keen mind can probe and solve a problem more quickly than many of us. During free time she relaxes so completely that she seems a different person. Echoes of her laughter will linger in such familiar haunts as the lunch room and the students' room. Her eyes have the brightness of one intensely interested in, and fascinated by, life. We have seen Beulah in many moods—filled with joy and even quite disconsolate. But we find her always charming,—this girl who has the gift of laughter and the gift of tears.

KINDERGARTEN-PRIMARY COURSE

Welfare Club (Settlement Work); Athletic Club '33; Drama Club '33; Music Club '35, '36.



HELENE JEANETTE GARDNER

*"Wise enough, but not too rigid—
Gay, but not too lightly free."*

Helene is our girl artist who has the talent but, fortunately, not the temperament of an artist. Gaiety and seriousness mingle to give us a pleasant companion and classmate. Helene is ready for any emergency—and would it be amiss to say any argument? Of course, all in fun,—and it is fun to see her holding her own against an opponent. Serious and determined in her work, she could always make time for a bit of humor. She is a true friend, with the warmth of genial courtesy and the calm of self-reliance.

KINDERGARTEN-PRIMARY COURSE

Welfare Club; Athletic Association '33, '34, '35; Drama Club '33, '34; Music Club '35, '36.

EDITH PATRICIA GLEESON

*"—And still their wonder grew
That one small bead could carry all she
knew."*

Edith is five feet of enthusiasm and bubbling eagerness, drawing happiness from each day. Her diminutiveness does not lessen her capabilities. Every phase of school life has her interest—clubs, dances, teas—not to mention ever-present studies. Always ready to lend a hand where help is needed, she has won the friendship of all. We who have been in close association with her for four years remember gratefully little things she has done and perhaps forgotten, but which have served to endear her to us.

KINDERGARTEN-PRIMARY COURSE

Welfare Club; Drama Club '34, '35; History Club '34; Music Club '33, '34, '35, '36.



JUNE FRANCES GOLDBERG

*"Success treads on the heels of every right
effort."*

June's four years at the college are characterized by fine scholastic attainment and the admiration and respect of many friends. A brilliant scholar, with a pleasing personality and quiet self-confidence, she has already gone far along the road to success. Her even disposition and friendliness make her popularity assured. Conscientious, industrious, and efficient, she possesses those traits so necessary in her chosen profession. In addition, a spontaneous cheerfulness arising from her sense of humor gives her a well rounded personality. Her aim is high, and we are confident that she will attain it.

Major: Chemistry. Minors: Mathematics, Physics

Welfare Club; Drama Club '33, '34; Mathematics Society '35; Music Club '35; Science Club '33, '34, '35, '36.





SARA FANNY GOLDBERG

*"The fairest garden in her looks,
And in her mind the wisest books."*

To Dolly, Nature has given the unusual combination of a pleasing countenance and a keen mind. She has sparkling eyes, curly brown hair, a sylph-like figure; her apparel is always the essence of fashion and good taste. The capacity of her mind to conquer our most difficult texts makes her the pride and joy of every professor. Her conscientious devotion to duty is unexcelled and will without doubt remove any obstacle to future achievement. A pleasing countenance and an ambitious spirit seem to assure success.

ELEMENTARY COURSE

Welfare Club; Athletic Club '33; Drama Club '34, '35, '36; English Club '36; Music Club '33, '34, '36 (Secretary '33).



AGNES REGINA GRANT

"She is herself of all best things the collection."

We can never think of Agnes without remembering her exquisite taste — in clothes, in speech, in manners. She was ever alert in the classroom; yet somehow one realized instinctively that she also had vital interests outside the college. She invariably gives one the feeling that she does well whatever she attempts. This feeling is justified; for Agnes is one of those fortunates who know just what to do, how much to do, and when to do it. She has a quiet but acute sense of humor, and a leisure half-hour or more spent with Agnes (it would usually be spent with Winifred, too) is always both enjoyable and profitable.

MAJOR: English.

MINOR: Clerical Practice
Athletic Association '33; Drama Club '33, '34;
English Club '34, '35, '36.

MADELINE GERTRUDE GREEN

"A sound mind in a sound body is a short but full description of a happy state in this world."

Gifted with a remarkable intelligence, a calm and winning disposition, and enviable perseverance, Madeline has reached the peak of success in college. Moving quietly among us, she unassumingly disguises her talents, thus increasing our admiration for her. Faithful to the college, loyal to all that it stands for, and sincere in her every undertaking, Madeline will be remembered as an esteemed member of the class. Her calm composure continually amazes her more excitable classmates, and her sunny disposition makes her a most welcome member of every group. Certainly her outstanding achievement in her college career points toward success in life.

Major: Spanish. MINORS: European History, French Welfare Club; Spanish Club '33, '34, '35, '36.



ELIZABETH VALERIE GRISÉ

"And she obtained favor in the sight of all that looked upon her."

Keen intelligence, a loyal heart, willing hands, enthusiasm, capability, and a pleasing personality—put all these together and they spell Elizabeth. Honored for her scholarship, lauded for her versatility and pleasing disposition, and respected for her sterling character, she makes the most favorable impression on all who know her. And what is more, she is always willing to serve unselfishly and efficiently. Admired by all, Elizabeth strides forward, a competent figure, while her classmates "gaze and gaze and still their wonder grows that one small head can carry all she knows!"

Major: Chemistry. MINORS: Mathematics, Physics Self-Government Association (Councillor '34); LAMPAS Staff; Welfare Club; Athletic Association '34; Drama Club '33, '34; Music Club '35; Science Club '33, '35, '36.



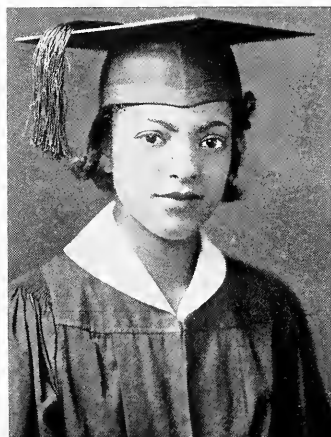


GOLDEN LILLIAN GRODBERG

"An abridgment of all that is pleasant in woman."

Hers is not a conscious wit, yet when she speaks, whether in public or private, one stops perforce to listen, not only because of what she says, but also because of the way she says it. Yet, in spite of being an excellent "talker," she possesses the rare accomplishment of being a good listener,—sympathetic and discerning. In dramatics she excels; she made a great success of our production of *The Tempest* by her intelligent characterization of Caliban. But, best of all, is her happy ability to keep cheerful, not boringly so, but just enough to keep about her an aura of pleasantness. In every respect she will leave pleasant thoughts with her classmates, who will reluctantly forego her daily companionship.

MAJOR: General Science. MINOR: Mathematics
Athletic Association '33, '34, '35, '36; Drama Club '33, '34, '35, '36; Mathematics Society '34, '35, '36; Science Club '36.



AGATHA EMMA GUILFORD

"Light of step and heart was she."

Dancing feet and laughing eyes—that's Agatha! By her loyalty and sincerity she has won our confidence and kept it. Her steady, careful work has already placed her on the road to success. Unassuming she may be, but her friendliness and cheerful spirit have made many friends. Life runs smoothly for those who meet it bravely, and it is this confidence in life and satisfaction in work well done that make Agatha so cheerful, happy, and serene.

SPECIAL CLASS COURSE
Welfare Club; Aquarium Club '33; Camera Club '33, '34; Classical Club '33, '34; Music Club '36.

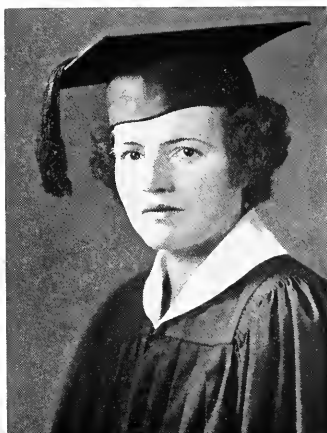
MARY F. HALLIGAN

*"Like to the damask rose you see,
Or like the blossom on the tree."*

For all her happy light-heartedness, Mary is capable and always ready to undertake difficult assignments, characteristically saying, "Oh, it's nothing at all!" Her's is a three-in-one personality. She can be the diligent student, the bustling worker, or the joyous idler with equal grace and spontaneity. Everything is done with a will and good cheer that seem to melt any obstacles encountered. With all these virtues she combines generosity and vivacity, and so is a friend we will long remember.

KINDERGARTEN-PRIMARY COURSE

Welfare Club; Athletic Association '33, '34, '35, '36; Drama Club '33, '34, '35; Music Club '36.



CATHERINE B. HEALY

"How far that little candle throws its beams!"

Kay very definitely proves the statement that it's the little things in life that count! Soft-spoken and demure, she nevertheless makes her presence felt by the sweetness of her personality. Though she is small, her ability and dependability are a match for anyone. Whatever the task, she faces it and carries it through with a spirit that would be creditable in a six-footer. To work and pleasure she gives the same eager attention. Kay has an earnestness and sincerity of character that will make her a valued friend always.

KINDERGARTEN-PRIMARY COURSE

Welfare Club; Athletic Club '33, '34, '35, '36; Drama Club '35; Music Club '35, '36.





MARY LOUISE HOLLAND

"She came, she saw, she conquered."

Louise is a truly fascinating person with her humor, her tact, and her subtle comments. Despite her apparent nonchalance in matters of school work, she is an excellent student and the recognized class authority on disputed points in geography. Hers is a truly sparkling nature, radiating charm and vitality. Her friends are impressed by her loyalty and sympathy. Louise leaves with us the picture of a typical modern girl keenly interested in college and social life.

MAJOR: Commercial Geography

MINORS: Accounting, Economics

Welfare Club (Aide '34); Athletic Association '33;
Geography Club '33, '34, '35, '36.



ALICE LOUISE HUMPHREY

"She is a maid of artless grace."

A true friend and a real comrade—that is our "Al." Beneath her shy reserve is a most magnetic and pleasing personality. At all times her sunny manner and bubbling sense of humor brighten the day for those around her. Besides having these and many more fine traits, Alice is particularly the envy of all her classmates for her stately carriage and trim attire. Her neatness of appearance is an index of Alice's well-ordered mind and precise thinking. Success and every happiness are our wishes for "Al."

KINDERGARTEN-PRIMARY COURSE

Welfare Club; Art Club '36; Athletic Association
'33, '34, '35, '36; Geography Club '33, '34; Music
Club '35, '36.

ELEANOR JUNG

"Patience is a necessary ingredient of genius."

Those who know Eleanor well admire her keen understanding and her interest in the activities of others. Eleanor always extends a sympathetic hand to those who need it. She is welcomed into any group because she fits in perfectly. Perhaps we recall her best as Lady Patience; in fact, her classmates never heard her complain nor saw her disturbed. Certainly, this is a record worthy of any senior, but one of which few can boast. This calm exterior hides a sense of humor, an interesting variation in a fine personality. Her whole-hearted sincerity and good-fellowship have endeared her to all of us.

SPECIAL CLASS COURSE

House Committee '34, '35; Welfare Club; Music Club '36; Science Club '32, '33; Spanish Club '33, '34, '35, '36 (Treasurer '34, '35).



HELEN MARJORIE KARLSSON

"Who bears music feels his solitude peopled at once."

Helen has many friends because of her pleasantness, good humor, and friendly smile; yet she is quick in defense of a just cause. Generous in spirit, she helps others whenever she can. She loves the fine arts, especially music, and is an excellent pianist. A good scholar, she does not live wholly in her books but enjoys athletics and frequent walks with her pet dog. Her keen sense of humor is shown in crisp, witty remarks. With clear vision she sees to the root of matters. A fine mind and a fine spirit are her salient characteristics.

MAJOR: English Literature

MINORS: English Composition, English History

LAMPAS Staff; Welfare Club (Aide '34); Athletic Association '33, '34, '35; Drama Club '33, '34; English Club '36; Mathematics Society '34, '35.





ELIZABETH MARY KELLEHER

*"And all that's best of dark and bright
Meets in her aspect and her eyes."*

Betty is a perfect pal. Her friendliness and her appreciation of a joke, even on herself, endear her to everyone. There is a quiet dignity about her which impresses all who meet her, and her calm poise and capability have won her several responsible positions in class activities. A sweet strain of naiveté runs through her personality and presents a strange contrast to her striking modernity. Her energy and enthusiasm are unlimited. Her boundless sympathetic understanding places her always at the service of her many friends. Yet Betty herself prefers to work out her own problems and rarely asks others for help. Initiative, good-humor, and helpfulness make up her charm.

Major: Shorthand—Typewriting

Minors: Accounting, Commercial Geography

Self-Government Association (Councillor '35); Class Secretary '36; Welfare Club (Aide '34); Commercial Club '36; Drama Club '33; English Club '33, '34, '35; Geography Club '36; History Club '34, '35.



MARGARET PATRICIA KELLEY

*"She hath a mind which happily blends
Grave sense and fancies lighter."*

Sweet, helpful, and sincere—"Peggy" is a staunch, dependable friend and a thorough and conscientious student. Her tact is a recognized virtue, and her sparkling blue eyes and spontaneous humor are absolutely irresistible to her friends. Classmates have found Peggy a gay companion—always willing and anxious to join in the college activities, whether they be sports, dancing, or parties. Moreover, she usually offers to share the work connected with such entertainments. Her lovable qualities will endear her to those fortunate people who are to know her in the years to come.

Major: Shorthand—Typewriting

Minors: Accounting, Commercial Geography

Self-Government Association (Councillor '33); Class Vice-President '35; LAMPAS Staff; Welfare Club; Commercial Club '36 (Secretary); Drama Club '33; English Club '33, '34; Geography Club '36.

EILEEN KELLY

*"Good humor only teaches charms to last,
Still makes new conquests and maintains the
past."*

Eileen's is a sparkling personality, bubbling over with fun and friendliness. Her wide circle of friends includes many undergraduates as well as her entire class. She has an endless supply of amusing anecdotes which she relates to group after group of girls as she stops to chat with them. In class she dares defend her own convictions, and does so very dramatically. Her facile pen produces anything from a jolly jingle to an interesting examination paper. Her ability to tell fortunes by reading the cards, palms, or tea leaves entertains us all admirably. The quality of frankness is note-worthy in Eileen. There is no pretense, but unflinching honesty, merriment, and friendliness.

KINDERGARTEN-PRIMARY COURSE

Class Secretary '35; LAMPAS Staff; Welfare Club; Art Club '36; Classical Club '33, '34, '35, '36; Drama Club '34, '35; English Club '33; Music Club '35, '36.



KATHERINE LOUISE KENNEDY

*"The smiles that win, the tints that glow
But tell of days in goodness spent."*

Gifted with a philosophical serenity, a gracious manner, and a brilliant mind, Kay is one of the most charming girls in the class. They are fortunate, indeed, whom nature equips with such a combination of brains and beauty. In time of stress, Kay exhibits a calm which is the envy of her friends. Her loyalty, cheerful spirit, and congeniality explain her popularity. With characteristic ease, Kay has completed her college course with commendable records. The many and varied talents of her charming personality seem to guarantee that her future will be bright with success. It can truly be said of Kay, "We would not wish thee otherwise."

MAJOR: French. MINORS: European History, Spanish Welfare Club; Drama Club '33; El Circulo Castellano '36; Le Cercle Français '34, '35, '36.





ANNE KENNY

"Serene as a summer's sea."

Few of us have the ability to remain as calm and reserved in troublesome situations as does Anne. In fact, Anne exerts a quieting influence upon any group of which she is a member. She has light-heartedly pursued her way through college, with never-failing cheerfulness. Since she has the ability to think clearly, to remain open-minded, and to show always a friendly and helpful nature, her entrance into the teaching profession is most auspicious.

SPECIAL CLASS COURSE

Welfare Club; Drama Club '33, '34; Science Club '34.

FLORENCE PAULINE KESSLER

"Elegant as simplicity, and as warm as ecstasy."



From Florence we have learned the advantages of being sweet-spirited and sunny-tempered, of diffusing an atmosphere of good cheer, of being ever ready in a generous, unselfish manner to help others. Sometimes we find her in a joyous humor; sometimes in serious meditation. Her thoughts are voiced with a delicate frankness. A pleasing personality, however, is not her only charm. Many a pressing difficulty is solved by her logical mind. Sound judgment enables her to sense what is important in life. She clearly distinguishes work from play, and her simplicity of manner is admired by all. We shall ever remember her genuine sincerity—the gift of true friendship.

ELEMENTARY COURSE

Welfare Club (Aide '33); Aquarium Club '34, '35, '36; Drama Club '36; English Club '35; French Club '33; Music Club '36; Alpha Circle '35, '36.

ROSE PATRICIA KATHERINE KIDNEY

*"A mind wherein all virtues rest,
And take delight to be."*

Gifted with keen intelligence, remarkable versatility, laudable sincerity, and a most attractive personality, Rose has been one of the most outstanding leaders in the college for four years. Her fine mind, supplemented by her willingness to serve, has insured the success of the college's intellectual as well as social activities. Many an audience has been left spell-bound by the presentations she has rendered with her singularly beautiful speaking voice. She fills the position of President of the Senior Class with an enthusiasm, poise, dignity, and efficiency that make her a model for all fellow students. One cannot think of Rose without visualizing the success that must be hers, for her life is synonymous with the term "Excelstior!"

MAJOR: Physics. MINORS: Chemistry, Mathematics
Self-Government Association (Treasurer '34; Secretary '35); Class President '33, '36; Welfare Club; Drama Club '33, '34, '35, '36.



WINIFRED JOAN KINCADE

*"Comrade blythe and full of glee,
Who dares to laugh out loud and free."*

Win, the personality girl, as she is aptly called, is well known for her lively manner and her winsome, contagious smile. Add to these a keenly logical mind, as evidenced by very high scholastic attainments, and you have the well balanced Win whom we all admire. Her gay outlook on life radiates cheer to all who have the pleasure of knowing her. Brilliant, vivacious, enthusiastic, optimistic, and blessed with a splendid sense of humor, Win is a composite of those characteristics which make a popular classmate and a desirable friend. In the spirit of Carlyle we may say of her, "Oh, give us the man who sings at his work, for there is no greater every-day virtue than cheerfulness."

MAJOR: French. MINORS: European History, Spanish
Class Treasurer '33; Welfare Club; El Circulo Castellano '36; Le Cercle Français '34, '35, '36.





GERTRUDE MARY KINSMAN

"They are never alone that are accompanied by noble thoughts."

Many times during our college days we welcome the companionship of a true friend. Such a friend we have found in Gertrude Kinsman, who has shared her talents willingly with all of us. She has always been conscientious and earnest in her work. Her special interest lies in helping those less fortunate than herself. She impresses her classmates as being reticent by nature; indeed it is her unassuming manner that makes her so attractive. Certainly we all wish her success.

SPECIAL CLASS COURSE

Welfare Club (Aide '34); Classical Club '33; Drama Club '34; Music Club '36; Science Club '33.



DOROTHY RUTH KOVITZ

"Cheerfulness is the offspring of goodness and wisdom."

Dorothy is an endearing combination of good humor, wit, enthusiasm, and—last but not least—intelligence. Her vivacious spirit and keen sense of humor give zest to her every undertaking. A fine scholar, she commands the admiration of her college mates. We love her for her evident enjoyment of life and for the Puckish humor which has brightened many of our classes. Willing to serve and generous with her many talents, Dot is a beloved member of the class. Her intellect and her charm will go far to surmount any obstacle to success. The best wishes of all her classmates go with her.

MAJOR: Chemistry. MINORS: Physics, Mathematics
Welfare Club; Athletic Association '33, '34; Drama Club '33, '34; Science Club '35, '36.

PAULINE LAPIDUS

"Charm to strike the sight, and merit to win the soul."

Artistic hands, exquisite taste, a lovely voice, a charming smile—possibly exterior qualities, yet all indicative of that inner refinement so characteristic of Pauline. She makes friends by her charm of personality; she keeps them with her sympathy and understanding. Her love of beauty, appreciation of humor, sincerity in scholastic pursuits mark her as the superior type of college girl. To sing her praises, to place her upon a pedestal, and to surround her blond coronet with a nimbus would be like gilding the lily. To us who know her she will ever be remembered, charming and sweet, sincere and kind.

KINDERGARTEN-PRIMARY COURSE

Self-Government Association (Councillor '36); Welfare Club; Drama Club '33; Le Cercle Français '34, '35, '36; Music Club '35, '36.



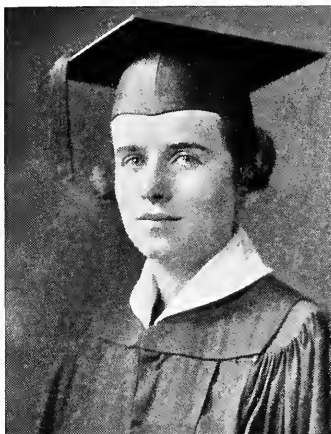
CARMELA FRANCES LAURO

"Of charming airs and winning ways."

Carmela is as petite, lovable, and sincere a girl as one would ever know. An ever-present calm and an enviable poise dominate her every act. Who has not been amazed by the consistent composure and philosophical serenity she has exhibited before and after the many exams we have experienced? Carmela enters into the social life of the college with the grace and enthusiasm characteristic of the modern college girl who can divide her time equally between study and play. She will be remembered as a most charming person—and so to her we say: "Stay as sweet as you are; don't let anything ever change you."

MAJOR: Latin. MINORS: Ancient History, French Welfare Club; Classical Club '33, '34, '35, '36 (Second Vice-President '36); History Club '35.





MARGUERITE EILEEN LAVIN

"Some are born great."

Peg is a person with whom one feels immediately at ease. Her fun-loving vivacity springs from a wholesome attitude towards life; her earnestness and loyalty are based on the fundamental sincerity of her nature. When Peggy is asked to do a favor, she responds willingly and as if she really feels it her duty to help. Friendship counts much with her, as her friends well know. To wish Peg success would be superfluous, for she possesses diligence, reliability, humor,—all the qualities that, in her chosen profession, will lead to fine achievement.

SPECIAL CLASS COURSE

Welfare Club; Drama Club '33; Music Club '36; Spanish Club '33, '34, '35.



ELEANOR LOUISE LEE

*"A wonderful woman! A woman of reason,
Never grave out of pride,
Never gay out of season."*

Eleanor's disposition is every bit as sunny as her hair. Indeed the bright sheen of those titian locks is surpassed by the brighter twinkle in her eyes. She never fails us. For our happier hours she beguiles us with many a merry remark,—for sadder hours she is a source of sympathetic understanding. Who could ever imagine Eleanor at a loss for ways to spend free hours? Entirely adaptable, she is equally at ease reciting in class, or presiding at tea. In our minds she will ever stand for charm, poise, and delightful cheerfulness.

KINDERGARTEN-PRIMARY COURSE

Self-Government Association (Councillor '35); Class Vice-President '36; Welfare Club; Athletic Association '34; Music Club '35, '36; Science Club '33.

RITA LeROY

*"Then beauty flow'd; then wisdom, honour,
pleasure."*

Rita, with her flashing smile, sparkling beauty, and active, vigorous character, is one of the most serious students among us,—one of the very few who really plan their work and study ahead of time for examinations. As a result her work is as uniformly good as her disposition is evenly sunny. Because of her dependability she is entrusted with such positions as that of President of the Commercial Club. However, Rita is not only conscientious and ambitious but sociable and fun-loving as well. Her keen wit,—subtle, dry, and always to the point,—is a joy to her friends. Rita is a girl active in body, mind, and spirit,—a delightful member of the Class of 1936.

MAJOR: Shorthand—Typewriting
MINORS: Accounting, Commercial Geography
Self-Government Association (Councillor '34);
LAMPAS Staff; Welfare Club; Athletic Association
'36; Commercial Club (President '36); Geography
Club '36.



MARY LOCKE

*"Her air, her manner, all who saw admired;
Courteous though coy, and gentle though re-
tired."*

Mary will be remembered by her college mates for her pleasant personality, her beautiful speaking voice, and her scholastic attainments. For four years, she has quietly but efficiently labored among us, radiating perpetual good cheer. Her graceful figure becomes in the gym a flashing threat to opposing teams. A fine sense of humor, a cheery nature, and at times, a whimsical manner make Mary a popular member of the college. Her soft, mellow, musical voice makes her recitations delightful. The serenity which characterizes her every act will help her to meet calmly the problems of life.

MAJOR: Chemistry. MINORS: Mathematics, Physics
Welfare Club; Athletic Association '33, '34, '35
(Second Vice-President '35); Drama Club '33, '34;
Science Club '35, '36.





PATRICIA MARY LYONS

"Her air had a meaning, her movement a grace."

The very fact that we call Patricia "Pat" is an indication of the affection we feel for her. She has the rare gift of being a friend to all. The gracious manner and pleasing personality that make her such a lovable friend also enhance her powers as an admirable executive. Ever tactful and efficient, she has a natural dignity of bearing which we should all like to possess. She combines ease with dignity and is the personification of poise. Pat is our example of the truly ideal modern girl, even though she has not lost the gentle art of blushing.

Major: Music. Minor: Geography
 Self-Government Association (First Vice-President '36); Class President '35; Athletic Association '33, '34; Drama Club '34, '35, '36; Geography Club '35, '36; Music Club '34, '35, '36.



MARY MACARTHUR

"And laughter learnt of friends and gentleness."

Mary presents a striking picture of surface shyness underlaid with sophistication and poise. She is extremely well read, especially in modern literature. One of her hobbies is book-collecting, which she pursues with all the keen enjoyment of the true book lover. Her intimate friends know her as an interesting conversationalist, with whom one could "talk down the night into the sky," and carry away a high heart and a renewed faith. Her uncompromising honesty, unswerving devotion, and amazing gift for service, have won for her a popularity unequalled in the class. Mary's reserve, her passion for service, her keen mind, and her friendliness insure success in the future.

Major: American History
 Minors: Ancient History, European History
 Self-Government Association (House Committee); Welfare Club; Classical Club '33, '34, '35, '36; English Club '33, '34, '35, '36; History Club '33, '34, '35, '36.

MARY VERONICA MARTIN

"Wit is the salt of conversation, not the food."

Mary will tell you dryly that "Cogito ergo sum" may prove for Descartes that we exist, but she prefers to be pinched; it requires less effort on her part and is just as convincing. This apparent levity will deceive no one who knows her well, for Mary is not one to skim the surface of thought. No better description of her wit can be found than, "the salt of conversation," for her quick retorts truly give a delightful flavor to her every expressed thought and bring out in sharp relief many a fine and new idea. But this dry wit accentuates Mary's profound scholarliness, keen intelligence, and lovable personality. In brief, she has succeeded so well in combining probity of character with a keen sense of humor and a well-trained mind that it becomes a pleasure and a privilege to have her for a friend.

MAJOR: French. MINOR: American History
Welfare Club; Le Cercle Français '34, '35, '36
(Vice-President '36); History Club '35, '36.



RITA MARTIN

*"A face with gladness overspread,
Soft smiles by human kindness bred."*

Rita spreads cheer far and wide with her famous "Martin laugh," which is so contagious that hearing it no one can be down-hearted. She likes sports, active gayety, and above all the company of good friends. Though not often in a serious mood, and never so for any length of time, she completes all her work as well as anyone, and worries less. With surprising nonchalance she offers valuable suggestions in both intellectual and social questions. Her style of telling a humorous anecdote is unique as those of us will testify who have waited breathlessly for the "coup de grace." Indeed she is a perfect antidote for the "blues."

MAJOR: Shorthand—Typewriting
MINORS: Accounting, Commercial Geography
Welfare Club; Aquarium Club '34, '36 (Treasurer
'35); Athletic Association '34; Commercial Club;
Drama Club '33; Geography Club '36.





FLORENCE ELAINE MCCARTHY

*"Elaine the fair, Elaine the lovable,
Elaine the lily-maid."*

Florence is one of those people we encounter infrequently in a world where only a few are favored with beauty and brains and a charming personality. One may sit with her, planning an exchange of ideas and be soon overwhelmed by the common sense and the sound reasoning propounded by this "slip of a girl." Instructors, too, have always found her a student of ideas, and have been interested to let her present them to her section. We, in turn, listen eagerly to her words, and gaze admiringly at her beauty. Tall, blond, and slim, Florence is one of the flowers adorning our class.

MAJOR: General Science. MINOR: Mathematics
Welfare Club (Aide '33, '35; Second Vice-President '36); Athletic Association '33, '35, '36; Drama Club '33, '34, '35, '36; Science Club '33, '35, '36 (Treasurer '36).



MARGARET RITA MCGILICUDDY

*"Her gestures, motions, and her smile,
Her wit, her voice, my heart beguile."*

Rita's amazing popularity is due to an appealing combination of quietness and gayety. Her beauty, charm, and ability have contributed to the success of many of the college social activities. Because of her humor and her easy camaraderie, she is a welcome member of every group. Besides being a delightful companion, she is a capable student. Her prowess as an athlete culminated in her guiding the activities of the Athletic Association this year. Friendliness, capability, and charm seem to insure Rita's success.

MAJOR: Shorthand—Typewriting
MINORS: Accounting, Commercial Geography
Welfare Club (Second Vice-President '35); Athletic Club '35, '36 (Vice-President '36); Commercial Club '36; Drama Club '33, '34, '35, '36; Geography Club '36.

JANE McLAUGHLIN

*"So unaffected, so keen a mind,
So firm, so sweet, so strong,—
Yet so refined."*

To us who know Jane all words are faint, for who can describe a person so charmingly composed? A keen mind, a gay spirit, a rapier-like wit, and a deep, mellow voice are all combined in the fascinating and lovable paradox which is Jane. Her flair for dramatics and impersonations bespeaks a soul sensitive to the moods and feelings of others. Jane, so nonchalant and yet so versatile, will always endear herself to people because of her integrity, her charm, and her sociability. "A memory—this golden girl."

KINDERGARTEN-PRIMARY COURSE

LAMPAS Staff; Welfare Club; Classical Club '33;
Drama Club '34, '35; Music Club '35, '36.



PEARL MILLER

*"And something more than melody
Dwells ever in her words."*

At first acquaintance one finds Pearl to be a rather dreamy, idealistic girl, with a gentle and sympathetic manner. Yet truly, "something more than melody dwells ever in her words." Beneath the quiet surface is a strong and serious character. She is greatly interested in the arts, particularly the ballet; yet she is very practical. She enjoys a good joke, although she is primarily of a serious turn of mind. She likes her good times, but never allows them to interfere with her work. In fact, she has achieved that nice balance of qualities for which we all strive.

MAJOR: English Literature

MINORS: English Composition, English History
Welfare Club (Settlement House Worker '33, '34);
Athletic Association '33, '34; Drama Club '33, '34;
English Club '35, '36; Mathematics Society, '34.





KATHERINE GERTRUDE MOGAN

*"True wit is nature to advantage dressed,
What oft was thought but ne'er so well expressed."*

Subtle wit, healthy humor, a broad outlook on life, and a dainty appearance combine to make our "Kay." Such a character as hers could command the fairest phrases. Alas for the day when the Mogan wit does not tickle our fancy, nor her well-balanced theories of Life challenge our narrow outlook! Brevity is the soul of her wit, and sincerity and intelligence are the essence of her personality. Quiet dignity, charm of manner, true appreciation of life's joys and perplexities—what more could one ask in a friend?

ELEMENTARY COURSE

LAMPAS Staff; Welfare Club; Junior Week Committee; Aquarium Club '34, '35, '36; Art Club '35; Athletic Club '33, '34; Drama Club '33, '36; Music Club '36; Alpha Circle '35, '36.



MARY ELIZABETH MULDOON

"Quiet is a creative element."

From Freshman days the members of the "Mary quartette," so often seen together, have seemed to vie one with the other in possession of all the fine characteristics which their name has always symbolized. This Mary has played no small part in upholding high standards of efficiency, graciousness, gentleness, kindness, loyalty, and a quiet but delightful sense of humor. Many have been the quips which have won for her that best recognition of wit, —a quiet chuckle or a quick smile. Mary has a calm and pleasant disposition. We shall always picture her maintaining the even tenor of her way and giving an impression of peace, calm, and refinement.

KINDERGARTEN-PRIMARY COURSE

Welfare Club (Aide '36); English Club '33; Music Club '35, '36.

MARIE MULLANE

*"Made up of wisdom and of fun,
Medley of all that's true and clear."*

Marie is our executive. One could picture her as the perfect secretary or as the very able and ever-busy clubwoman. She is willing to assume responsibility and is always ready to lend a helping hand. Her boundless energy, unruffled calm, and amazing generosity are the admiration of all. Her irrepressible practicality, her enviable tranquillity, and her good sportsmanship make her a charming companion. Her unsuspected artistic ability has enlivened many a dull hour for us. We shall always remember her as a loyal and sincere friend with an ever-bubbling sense of humor.

MAJOR: Shorthand—Typewriting
MINORS: Accounting, Commercial Geography
Class Treasurer '35; Welfare Club; Art Club '33, '34, '35; Commercial Club '36; Drama Club '33; Geography Club '36.



FRANCES ANNE MULLEN

"The ideal of courtesy, wit, grace, and charm."

Fran is best described as "the girl with the smile." Her outlook on life, as her manner indicates, is indeed a happy one. When Fran does anything, she does it well. She is always ready to offer her assistance and has proved herself an all-round good companion and true friend. Beneath all is a subtle humor which is revealed at the most unexpected moments. Her solution of life's problems is not to worry over trivial affairs. What other attributes could we demand in our friends? Success in your pedagogical career, Fran!

SPECIAL CLASS COURSE
Welfare Club; Athletic Association '34; Drama Club '33; Geography Club '34; Music Club '36.





LOUISE O'CALLAGHAN

"Thou art as fair in knowledge as in bue."

Louise has the happy faculty of knowing when to be serious and when to be gay, and is equally delightful in either mood. She possesses that enviable quality known as *savoir-faire*. Her bright blue eyes mirror her pleasant thoughts and sympathetic understanding. She typifies womanly poise and refinement; and as these are combined with her sunny disposition, all who know her admire her. This gracious, sincere friend will be pleasantly and affectionately remembered.

KINDERGARTEN-PRIMARY COURSE

Welfare Club; Athletic Club '33, '34, '35, '36;
Drama Club '33, '35, '36; Music Club '35, '36.



LILLIAN JOSEPHINE O'HARE

"Breathing forth an excellency of sweetness."

Lillian's individual attraction is a sweetness that is never cloying. It is surprising to discover that she, with slender artist's fingers that can draw "whate'er her soul designs," is first and foremost a realist. We have all envied the calm precision with which she solves the most difficult problems, and the ease and nonchalance with which she accomplishes all her work. There is something about Lillian! Perhaps it is her love of order and beauty; perhaps it is her talent for looking at everything with the clear, discerning eyes of an artist; perhaps it is her practicality and sense of perspective; whatever it is, there is no pleasanter companion than this charming blue-eyed girl.

MAJOR: Art.

MINOR: Geography

Self-Government Association (Councillor '34);
LAMPAS Staff; Art Club '34, '35, '36; Athletic Association '35, '36; Geography Club '35, '36.

MARGARET ANNE O'LEARY

"In youth and beauty, wisdom is but rare."

In her friendly fashion, Peg could win a heart of stone, for any granite she might encounter would be melted by her radiant smile. She has what is called "a way about her," and so, whenever we wanted a special favor (or a special bargain) we sent Peg, who could always get it for us. And Peg—with a characteristic grin—would always be only too glad to help out. Her infectious good spirits and sense of camaraderie win her countless friends, and every one of them benefits by the association.

MAJOR: General Science. MINOR: Mathematics
Welfare Club; Athletic Association '35, '36;
Drama Club '34, '35, '36; Science Club '35, '36 (President '36).



KATHLEEN GEORGIA OXLEY

"An inextricable mixture of sense and nonsense."

Some people have that elusive Will-o-the-Wisp quality that defies analysis or description. The infinite variety of Kay's personality places her in that category. It is not that Kathleen is enigmatic, but rather that we find her an intriguing mixture of quiet and gayety, silence and song, reserve and good fellowship. This paradoxical combination catches our imagination and makes us think of her as unfathomable. In describing Kay we might dwell on her delightful, Barrie-like whimsicality; we might hint at a combination of artistic temperament and hair of "a goodly color;" or we might point out her idealistic faith in others. But, why analyze her? We all know Kay is just—Kay!

MAJOR: Music. MINOR: English
Welfare Club; Athletic Association '34; English
Club '35, '36; Music Club '33 (Treasurer '34; Vice-
President '35; President '36).





CLARA RUTH RAPPAFORT

"A tiny, pretty, witty, charming, darling she."

In the course of school activities, a charming girl leaves pleasant thoughts in the memories of her associates. Such a girl is Clara. Her charm is characterized by piquancy of manner, petiteness of form, a musical voice, and both wit and poise. Her piquancy is a stimulation to the more plodding among us. Whether in a humorous or serious vein, her conversation is a delight to the ear, for her thoughts are conveyed in a rich melodious voice. Her sparkling humor has often lightened the discouragements of the day. Her unique combination of poise and humor make her one of the girls you would like to know all your life.

ELEMENTARY COURSE

Welfare Club; Aquarium Club '34, '36; Art Club '35; Drama Club '33, '36; Music Club '33, '34; Alpha Circle '35, '36.



HELEN MARIE REDDING

"She has friends because she is one."

It has, indeed, been a happy privilege to have enjoyed Helen's quiet refinement and gentle amiability. Her sweetness of countenance and fineness of spirit win the friendship of everyone she meets. Her unassuming modesty creates a deeper appreciation of her capabilities. Helen's artistic tendencies are expressed not only in the art class but also in her dress. She has a naive straightforwardness all her own. As the years pass, this pleasing girl will undoubtedly walk the road to success; and she will always have a host of sincere and admiring friends,—life's greatest blessing.

ELEMENTARY COURSE

Self-Government Association (Councillor '35); Welfare Club (Aide '36); Art Club '34, '35, '36 (Vice-President '35); Athletic Club '34; Drama Club '34, '35, '36; English Club '33; Geography Club '33; Alpha Circle '35, '36.

PHOEBE REED

"—*She was very pretty; as graceful as a bird,
and graceful in much the same way.*"

Her voice and manner might make one believe she was born a century or so too late,—but Phoebe on the contrary is a modern among moderns, while preserving an aura of old-fashioned gentility. Small, pretty, dainty Phoebe—how well her name suits her! Her shy classroom air still clings to her outside of college. But there is a difference; her voice need never be raised, her appearance never lose its unruffled calm, yet she can be a vital part of an active group. She has, in fact, a paradoxical personality, and we could never decide which aspect of Phoebe is the more charming.

MAJOR: Art.

MINOR: History

LAMPAS Staff; Athletic Association '33; Art Club '33, '34, '35, '36 (Treasurer '35); History Club '35, '36.



SARA NORMA RIVKIND

"*Learned without affectation.*"

Those of us who have been in close association with Norma know her as a thoroughly conscientious student. She is always willing to impart some of her information to anyone less fortunate in the possession of "gray matter." A hard worker and diligence personified, she is also an understanding and helpful friend, enjoying life to the full. She has many pleasing virtues and a pleasant hobby known to some of us—her love for a baseball game. If you are ever in need of calm thinking or level-headedness call on Norma.

KINDERGARTEN-PRIMARY COURSE

Welfare Club; Music Club '35, '36; Science Club '34, '35, '36.





ESTELLE SELMA ROSENTHAL

"Enlightened, social, and refined."

Estelle is a lady to her fingertips; modest and unassuming, dignified yet lively,—these qualities combine to give us a true friend. For all her grave appearance, she has a vein of real gaiety,—happy laughter which characterizes her lighter moments. She is alert and full of common-sense; yet the merry twinkle in her eyes belies some of her dignity. Reminiscent thoughts of Estelle will always be as pleasant as are our present thoughts and friendship.

KINDERGARTEN-PRIMARY COURSE

Welfare Club; Drama Club '33, '34, '35; Music Club '35, '36.



ROSE RUBIN

"Full of gentle kindness her looks and language are."

Gifted with a pleasing personality, a keen sense of humor, and a willingness to serve, Rose has earned the respect of all her classmates. During her four years at the college she has been a most unselfish, coöperative, loyal, and dependable student. Beneath her quiet exterior is a spirit brimming over with laughter and friendliness. The care with which she performs her many duties in and outside the college wins for her the praise and appreciation of all. Moreover, Rose is possessed of a modesty and sincerity which make her a person of whom it can truthfully be said: "Give to the world the best that you have, and the best will come back to you."

Major: American History

Minors: Ancient History, European History

Self-Government Association (House Committee '35); Welfare Club; History Club '34, '35, '36.

EMILIA M. RUBINO

"Thy modesty's a candle to thy merit."

Emilia is one of those rare persons who not only entertain but also practice the philosophy that "anything worth doing at all is worth doing well." Never was there such a person for being prepared down to the final dot of the final "i." Never was there such a girl for making the most of opportunities and of spare moments. Her classmates have long since recognized her sense of fair play, her quiet capability, and her helpful cooperation; they have long admired the sense of humor that can appreciate a joke even if it is at her own expense. They will long remember her as a pleasant companion and a sincere co-worker.

MAJOR: Clerical Practice. MINOR: Mathematics
Welfare Club; Athletic Association '36; Music Club '35, '36.



JENNIE MARY RUSSO

*"So unaffected, so composed a mind,
So firm, so sweet, so strong, yet so refined."*

Strange that we cannot think of Jennie without conjuring up in our mind's-eye an inevitable association — Jenny-Wren! Her birdlike qualities—pleasantly melodious voice, small features, petiteness—will make her seem forever young. Can we ever forget the picture of Jennie skipping breathlessly along to keep up with the long steps of her friends? Likewise, we associate with her the expression "happy as a bird," for her cheery friendliness is her special charm. Add to this a spirit of helpfulness and cooperation, a true sense of values, and sincerity of purpose, and we have an epitome of those qualities that endear Jennie to her friends and classmates.

SPECIAL CLASS COURSE
Welfare Club; Drama Club '34; Geography Club '33; Music Club '36.





ISABEL REGINA SEFTON

"This life is most jolly!"

Never perturbed—Isabel meets every situation with unflinching good spirits. Her hosts of friends and acquaintances never wonder at her popularity, for surely if anyone deserves it, she does. Her care-free nature is never disturbed too seriously by the cares and troubles of college life. One of her most enviable characteristics is a delicious sense of humor. She never lacks an apt expression or a clever bit of repartee just when the occasion demands it. In parting, we'll miss Isabel's wit, but even more we'll miss her companionship.

MAJOR: Art. MINOR: General Science
Class Vice-President '34; LAMPAS Staff; Welfare Club (Executive Board '33); Art Club '33, '34, '35, '36 (President '36); Science Club '35, '36.



JOSEPHINE S. SILBERT

"You speak as one who fed on poetry."

Is there a senior who does not know Jo? We'll wager not, for what student is so active in welfare, athletic, and bridge circles, or so versatile in academic subjects? Discuss with Jo such eminent philosophers as Machiavelli or Spinoza, and you'll find yourself displaying the white flag of truce. You simply can't cope with her knowledge. She is a rare person, exceptionally gifted mentally and possessing a strong sense of honesty and fairness. Her enthusiasm can dispel our cares, and her versatility fills us with wonder. If asked to describe the sum-total of all Jo's qualities, we could do no more than say aptly, "She is alive with personality!"

MAJOR: English. MINOR: French
LAMPAS Staff; Welfare Club (Aide '32, First Vice-President '36); Athletic Association '33, '34, '36; Drama Club '34, '35; English Club '35, '36 (Vice-President '36); French Club '34, '35, '36.

VICTORIA J. SKWAREK

*"The reason firm, the temperate will,
Endurance, foresight, strength, and skill."*

From the very first "Vicky" has taken her place quietly and unassumingly, and with matchless efficiency has completed all kinds of difficult tasks. She is always busy. First it was having the responsibility of the mimeograph room; next it was the ordering and distributing of our caps and gowns; and finally, it was taking care of the photography for the LAMPAS. Only an unusually capable person would be chosen for such responsibilities. Withal, she is ever ready to answer our questions and to help us in any way. So in her calm, cheery manner she goes along, doing whatever duty is nearest. She is an invaluable member of our class and a priceless friend.

MAJOR: Shorthand—Typewriting

MINORS: Accounting, Commercial Geography

LAMPAS Staff; Welfare Club; Aquarium Club '34, '35, '36 (Vice-President '35); Art Club '34; Commercial Club '36; Geography Club '36.



BERTHA SOLOMON

"Silence sweeter is than speech."

Quiet, unassuming, yet with a great capacity for enjoyment, Bert enters into all of our activities with pleasant spirit. She is gentle both in voice and manner. She gives the impression of being exceptionally thoughtful, but further acquaintance reveals a delightfully warm personality. No one has ever seen Bertha in an unpleasant mood. She is an able student, a persevering and conscientious worker. With these characteristics, Bert will certainly have no trouble in reaching her goal.

SPECIAL CLASS COURSE

Welfare Club; Music Club '36; Spanish Club '33, '34.





BEATRICE ANN SULLIVAN

"Never idle a moment, but thrifty and thoughtful of others."

Actions, not words, are the criteria by which we judge Beatrice. When others are telling what they are going to do, lo and behold! Beatrice, in her quiet, conscientious, efficient way, has done it. A characteristic neatness and thoroughness stamps her every endeavor. But so gracefully are these qualities revealed that only through her deeds (such as her fine work in the Welfare Club) can she be really appreciated. Certainly she would be the last one to sing her own praises. Since these traits of dependability and selflessness are tempered with a steady good humor, innate charm, and delightful friendliness, it is easy to understand her popularity.

MAJOR: Clerical Practice. MINOR: Geography
Welfare Club (Treasurer '34); Aquarium Club '35, '36.



FRANCES LOUISE SULLIVAN

"She is as happy-bearted as the spring."

With apparent ease Frances has acquired an enviable mastery of her specific field. Indeed, such is her skill that we think she could succeed in the business world or the teaching profession with equal facility. Moreover, her fine work in the college store gave her much practice in accounting and led to her election as class treasurer, a position which she has filled with characteristic efficiency. A conscientious student, eager to succeed, she is also a charming companion. In allegedly "free" hours she delights her friends by telling jokes of the intellectual variety, and takes impish pleasure in taxing with riddles their already overburdened brains. Such a girl is inevitably popular.

MAJOR: Shorthand—Typewriting
MINORS: Accounting, Commercial Geography
Self-Government Association (Accountant of Store '35, '36; Auditor '35); Class Treasurer '36; Welfare Club (Aide '34); Art Club '35; Athletic Association '33, '36; Commercial Club '36; Geography Club '36.

MARGARET RITA SULLIVAN

"Having youth's fair gifts in which we take delight."

In every class there is usually one diminutive member. So it is with us. Peggy is our miniature, and a fine one at that. Beneath her carefree exterior, Peggy has a serious side. One never knows, however, just how earnestly she regards her work,—or life in general. In addition to having a gay disposition, Peggy also possesses a talent for musical expression. We loved to hear her sing and will always remember her for her musical ability. We think she will make a fine teacher, one who will surely succeed in the classroom.

SPECIAL CLASS COURSE

Welfare Club; Athletic Association '34; Drama Club '33; Geograph Club '34; Music Club '36.



MARJORIE THORNER

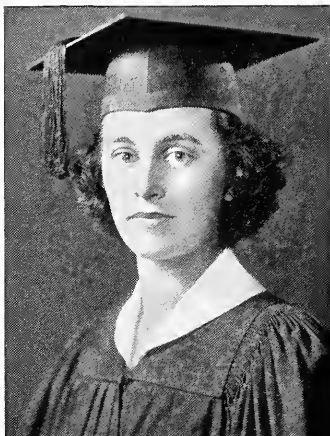
"—As thy presence is, gracious and kind."

Sweetness and firmness are combined harmoniously in Marjorie, a classmate who will be remembered for her calm, even disposition. When things go wrong, only a slight move disturbs the serenity of her features. Her quiet manner does not entirely hide from us her capabilities. Because she is so level-headed, her sound opinions have always been eagerly sought. We predict that her sweet nature will continue to endear her to many as it has made her beloved by her classmates.

KINDERGARTEN-PRIMARY COURSE

Welfare Club; Athletic Association '33, '34; Drama Club '33; Music Club '35, '36.





BEVERLY RUTH TRUNDY

"I heard her singing at her work."

All those who sing at their work are not endowed with such a pleasing voice as Beverly's. And, as though a lilting soprano voice were not blessing enough for any girl, Beverly is also the possessor of sparkling brown eyes, a flashing smile, and an infectious laugh. Her winsome charm and winning way have won her many friends, who have found her sincere, warmhearted, and lovable. There is also a very serious side to Beverly. She is studious and conscientious, and we are sure that she will be successful in the classroom.

KINDERGARTEN-PRIMARY COURSE

Welfare Club; Art Club '36; Athletic Association '33, '34, '35, '36; Drama Club '34; Geography Club '33, '34; Music Club '35, '36.



RUTH VAN NESS

Our Gracious Leader

Ruth is well known as the capable, charming president of our Self-Government Association, a role which she fills with all the poise and quiet dignity characteristic of the modern girl. She has a ready wit, a startlingly logical mind, and a delightfully off-hand manner which none of the minor tragedies of college life can dispel. If dignity and nonchalance are at all compatible, we find their combination in Ruth. A willing worker, an efficient executive, and a loyal member of the college, she is one of its outstanding leaders. Ruth will be remembered by all her friends for her charming fellowship, her refreshing naiveté, and her unlimited capabilities.

MAJOR: American History

MINORS: Ancient History, European History
Self-Government Association (Councillor '33; Second Vice-President '35; President '36); Class Secretary '34; Welfare Club; Camera Club '33, '34; History Club '34, '35, '36.

MARION LOUISE WAGNER

*"Her ways are ways of pleasantness,
And all her paths are peace."*

Marion is a good friend to comfort you in trouble, to amuse you with her jolly fun, or to inspire you by her capacity for studious concentration on translations, athletics, acting, and music. Those who know her well are familiar with her merry wit, both in the period of suspense before examinations and in the more carefree moments in the lunchroom and students' room where puns come thick and fast. But Marion is also a student, and so merits all the more praise for her ability to pursue many outside activities in which music plays a great part. All her friends will remember her for her irresistible charm, good nature, and versatility.

MAJOR: French. MINORS: European History, Spanish Self-Government Association (Councillor '36); Welfare Club; Drama Club '33; English Club '34, '35, '36; El Circulo Castellano '36; Le Cercle Français '34, '35, '36; String Ensemble '36.



KATHERINE ELIZABETH WALSH

"The greatest charm is variety."

One word describes Kay perfectly,—nonchalant. Her light, carefree attitude toward life is infectious, and no one could be downcast long with Kay as a companion. Laughing brown eyes and flashing smile add to her charm. Her conversation is never dull, but is as spritely and joyous as the girl herself. No problem was ever difficult enough to dampen her spirits. We are lucky to have basked in the sun of her friendship and to have been "joy-ranned" by it. She will go happily on her way, always looking on the bright side of life.

KINDERGARTEN-PRIMARY COURSE
Art Club '36; Athletic Club '33, '35; Drama Club '34; English Club '33; Geography Club '33, '34, '36; Music Club '34, '35, '36.





ELEANOR SYLVIA WEISS

"She looks a goddess, and she moves a queen."

Dignified, poised, and confident, Eleanor moves among us with a gracious, queenly air. One of the outstanding scholars of the class, she has always maintained the highest standards—a characteristic for which her classmates admire her. She has an extremely keen and logical mind, a consistent industry, and a well-rounded personality which supplements her many scholastic attainments. Eleanor has often earned the praise of her classmates for her courage in standing up for what she maintained was the greatest good for the greatest number. Loyal to the college, cooperative in its many undertakings both scholastic and social, Eleanor is an outstanding example of the capable modern college girl.

MAJOR: Mathematics MINOR: Mathematics
LAMPAS Staff; Welfare Club; Athletic Association '33, '34; Mathematics Society '34, '35, '36 (Secretary '35; Councillor '36).



DOROTHY ELIZABETH WELCH

*"O! bless'd with temper whose unclouded ray
Can make tomorrow cheerful as today!"*

One cannot think of Dorothy without visualizing a vivacious, fun-loving college girl who has laughed, danced, and sung her way into the hearts of her many friends. Her active life within the college and her many outside interests have added richness to her personality. She complies willingly when called upon either to play the dance accompaniments in the gymnasium or to sing at a college social. She has been a most willing and efficient member of many committees that have contributed to the success of college functions. A good student a loyal friend, and a cheerful worker, Dorothy will be remembered as one who typifies the line, "All's right with the world."

MAJOR: Latin. MINORS: Ancient History, French
Welfare Club; Classical Club '33, '34, '35, '36;
Drama Club '33; History Club '35; Le Cercle Français '36.

GERTRUDE WHELAN

"Still run the waters where the stream lies deep."

Beneath Gertrude's quiet and unassuming manner is a sparkling wit, a source of enjoyment to all those who are so fortunate as really to know her. Those who have penetrated her shyness readily recognize a magnetic personality. She has the ability to see beneath the surface of things and extract true values, to the envy of her classmates and the delight of her instructors. Her application and careful attention will carry her as successfully through life as they have through T. C. We expect great things from Gertrude!

KINDERGARTEN-PRIMARY COURSE

LAMPAS Staff; Welfare Club (Aide '34); Aquarium Club '34, '35, '36 (President '36); Athletic Club '35, '36; Music Club '35, '36.



ELVA RUSSELL WHITMAN

"—Set apart from the world's vulgar mass by a certain gentle stateliness."

Culture—what does it mean? We don't need a definition; we have Elva. In her we find culture that is not merely a veneer, but is rather the result of a fine background. Throughout her wide and varied activities she has maintained an open-mindedness and an independence of thought that are refreshing. A certain abstracted manner sometimes makes us wonder to what heights her mind may be soaring, and makes the very essence of her personality elusive and intangible. Hers is certainly an individual and appealing personality.

MAJOR: Art.

MINOR: English

LAMPAS Staff; Welfare Club (Aide '35); Aquarium Club '33; Art Club '33, '35; Drama Club '33, '34, English Club '33.





ROSE FRANCES WINTERSON

"It is tranquil people who accomplish much."

Rose has never been known well by many; she never tried to be. Happy to proceed along her way, accomplishing much in a quiet manner, she has been content to have a few particular and favored friends observe her triumphs. But the girl that seems shy and retiring to many of her classmates cannot be so, for patrons of college dances report Rose a frequent attendant, and always having a good time. We judge from such bits of knowledge sometimes quietly volunteered, that Rose will meet with success. She has our very good wishes.

MAJOR: Geography. MINOR: History
Welfare Club; Athletic Association '34; Geography Club '35; Music Club '33, '34, '35, '36.



JOSEPHINE MARY WIRHANOWICZ

"If there is a virtue in this world at which we should all aim, it is cheerfulness."

"Jo" always enlivens any group of which she is a member with her cheery wit and humor. To hear the musical ripple of her laugh is to identify its owner. Her grace and her sunny disposition make her an attractive person with a happy philosophy of life. Her constant readiness to be of service has endeared her to her friends and acquaintances. She is a popular member of the class, who will be remembered for her cheerfulness and her faculty for remaining unruffled during crises.

MAJOR: Chemistry. MINORS: Mathematics, Physics
Welfare Club; Music Club '35; Science Club '35, '36.

JOSEPHINE KATHERINE ZALESKI

"Honorable industry always travels the same road with enjoyment and duty."

Josephine,—or "Jo" as she is more frequently known, has earned the admiration and friendship of many by her seriousness and her conscientious regard for her duties. Beneath a rather sober mien is a gay, loving personality. Her keen mind and her remarkable memory for detail have contributed to her success in her chosen field. She and "Jo Worry" make up an inseparable pair—familiar in corridor, classroom, and lunchroom. Her classmates will remember her as a sincere friend and a tireless worker. She is a most worthy representative of the college.

MAJOR: Biology. MINORS: Chemistry, Physiology
Welfare Club; Biology Society '35, '36; Drama Club '34; Music Club '35; Science Club '35, '36.



TO THE CLASS OF 1936

"Yours the task
Noblest that noble minds can ask—
Of you the growing mind demands
The patient care, the guiding hands,
Through all the mists of morn.
And knowing well the future's need,
Your prescient wisdom sows the seed
To flower in years unborn."

1936

LAMPAS

FORMER MEMBERS OF THE CLASS OF 1936

RAY BOHRER
FLORENCE CROCKER
ESTELLE SULLIVAN
ELEANOR VIENNEAU

In loving memory of
Elizabeth Delude
(Died—June 29, 1933)

Eighty-six



RECORDS

SENIOR WEEK

FACULTY RECEPTION	Thursday, June 4	
ADDRESS BY THE DEAN	Friday, June 5	
Rita McGillicuddy, <i>Chairman</i> ; Mary Coppinger, Rita LeRoy, Louise O'Callaghan		
CLASS DAY	Saturday, June 6	
Marshall, Shirley Abelow		
<i>Assistant Marshall</i> , Noreen Crowley		
MARCH	String Ensemble	
SALUTATORY	Shirley Abelow	
PIANO SOLO	Kathleen Oxley	
CLASS ESSAY	Claire Burton	
VOCAL SELECTION—Double Trio		
Clara Rappaport	Sara Goldberg	Patricia Lyons
Mary Carmody	Beverly Trundy	Anne Berkowitz
	Helen Forslund, <i>Accompanist</i>	
CLASS POEM		Madeline Green
VOCAL SOLO		Mary Epstein
	Mary Muldoon, <i>Accompanist</i>	
PRESENTATION OF CLASS GIFT		Frances Sullivan
CLASS SONG	Words: Mary Epstein, <i>Conductor</i> Music: Mary A. Collins, <i>Accompanist</i>	
<i>Courtyard Exercises</i>		
DAISY CHAIN		Class of 1936
PLANTING OF IVY		Class Officers
IVY ORATION		Rose Kidney
<i>Alma Mater</i>		Assembly
CLASS NIGHT PROMENADE		Saturday, June 6
Mary Carmody, <i>Chairman</i> ; Eleanor Bogan, Olive Campbell, Alice Humphrey, Winifred Kincade, Estelle Rosenthal.		
CLASS OUTING		Monday, June 8
Margaret Kelley, <i>Chairman</i> ; Eileen Kelly, Mary MacArthur, Marie Mullane, Lillian O'Hare.		
ALUMNAE DINNER		Tuesday, June 9
Eleanor Weiss, <i>Chairman</i> ; Cecilia Dunphy, Alice Eng, Sylvia Fox, Pauline Lapidus.		
"POPS"		Wednesday, June 10
Anne Berkowitz, <i>Chairman</i> ; Ruth Bailey, Gretchen Connors, Helen Karlsson, Florence Kessler, Jennie Russo.		
CLASS BANQUET		Thursday, June 11
Eleanor Lee, <i>Toastmistress</i> Betty Kelleher, <i>Chairman</i> ; Alice DeLorey, Eileen Donovan, Helene Gardner, Victoria Schwarek, Marion Wagner.		
COMMENCEMENT		Friday, June 12
<i>Speaker</i>		Professor Charles Swain Thomas

CLASS HISTORY

SEPTEMBER, 1932 TO JUNE, 1936

An attractive woman of middle age reclines in a gaily-striped deck-chair on the shady veranda of her Spanish villa overlooking the sparkling blue waters of the Pacific. Her hair shows touches of gray, yet her face has not lost its youthful loveliness. She seems not to see the white sails dotting the blue bay, nor to hear the surge of the surf as it breaks in long foamy rollers on the yellow sand. There is a look in her eyes as though she thought of long-ago, far-distant things. She half-smiles, now and again, as she reads the letter in her hand.

Jan. 31, 1961

Dear Elizabeth, (it reads)

Happy birthday to you across the country and across the years! How little we thought when, at our T. C. commencement, we made our school-girl promise that we would either see each other or write to each other on our birthdays, that the promise would be kept for a quarter of a century! We could not then foresee that California would soon claim you, so that for many years our letters would cross the continent.

Rummaging through an old desk the other day, I came upon my T. C. diary that I kept so faithfully during our four years at college and that you so often laughed at. Its yellowed pages held me enthralled for hours, and brought back many memories. Would you enjoy recalling some of the things I read? Hitherto I have always sent you the latest news of the "girls," but this letter will be full of, "Do you remember?" and, "What a wonderful time we had!" At our age, however, reminiscences are pleasant, and I know you will enjoy turning back the pages of Time.

Do you remember the day we began our college career—the hottest September morning on record? How we were kept until half-past four that first day, receiving sections and programs, and being given eye-and-ear tests, so that except for the pleadings of our Sophomore sisters, we might have given up then.

That Intelligence Test on our second day! How we endeavored for the next four years to discover our I.Q.'s, but this secret remained safely hidden within the safe in the President's office. I wonder if we could find out today!

Do you remember the Acquaintance Party? How silly we felt following the mile-long line around, and meeting all the faculty members, of whom there seemed to be at least three hundred. And then our first party, when the Sophomores broadcast from a radio station, and we, naive babes, gazed from beneath piles of *Frazier and Armentrouts* in open-mouthed awe.

What great success we had in decorating the Gym for our first Christmas party—under the direction of our officers! Do you remember who they were? The diary says, Rose Kidney, President; Eileen Donovan, Vice-President; Claire Burton, Secretary; Winifred Kincade, Treasurer. And shall we ever forget that first beautiful Christmas Assembly, when we beheld the tableau of the Nativity in the upper windows of the hall?

February found us pale and hollow-eyed after the harrowing mid-years. We spent the rest of the year absorbing the history of the world as outlined in the little blue book; reciting solemnly, "How now, brown cow, why do you look so sad?"; spending late afternoons in the library, making interminable outlines for dreaded special talks; dashing into the Model School to discover we were twenty seconds late; dashing out again to get in the front of the long curving line to reserve a *Hayes and Moon* or a *Klapper*.

Yet somehow June arrived—we were through the year safely. We had great fun exchanging parties with other classes; and, we were always comforting ourselves with the reflection, "The first year is always the hardest!"

Do you remember how, as Sophomores, we felt that the college was ours? How we escorted the now well-known faculty members to the Acquaintance Party and gazed pityingly at the trembling Freshman? My diary reports that our new officers were Eileen Donovan, President; Isabel Sefton, Vice-President; Ruth Van Ness, Secretary; and Ruth Bailey, Treasurer.

At Christmas we donned various disguises and acted as Santa Claus's reindeer or other strange characters, to the amazement of the faculty children. What a wonderful entertainment they thought it!

Ah, that was a winter indeed! Many a night we spent leaning over the dining-table, painting borders on innumerable art sheets and creating original "title pages." On sunny Sunday afternoons we remained indoors and let the strains of symphonies full of "secret murmurings" stir our innermost being, only to confuse Mozart with Tchaikovsky at the next class. How we pored over *Cameron* and *Woodworth*, tracing the neuronc connections, and read page after page of good old *Manly!* Up on the third floor we spied through "handle-with-care" microscopes on the private affairs of unsuspecting amoebae. Our social life was spent engaging in strenuous dances such as "The Snowflake" and "Reap the Flax," and wandering through the Arboretum, gazing at what had been autumn flowers before the killing frosts.

Mid-years,—winter sports,—spring in the air,—candy-sales,—serving at Teas,—Finals! In June after exams, came the first big social event of our class as a whole,—the Sophomore-Freshman Prom at Belmont Springs Country Club, where, in the warm spring air, in delicate pastel evening dresses, we danced amid lovely surroundings, and wandered along broad verandas. This party was a delightful finale to our second year at the College. What a wonderful time we had! Shall we ever forget it?

September, 1934, came, and we were upper classmen. We now chose our special field; but whether we preferred "pioneer work" in the kindergarten-primary level, or the "interesting age" in the elementary grades, or the problems of the adolescent in the junior high school, or work with sub-normal children in the "special class" group, or intensive specialization in one subject for the high school, our Class was firmly welded with bonds of friendship, common interests, and ideals.

We cared tenderly for our Freshmen, and proudly steered their quaking frames along the imposing Faculty line at the Acquaintance Party, gave them a party in the form of a Mock Trial, and subjected them for a week to various mild indignities.

The good old diary reminds me that Patricia Lyons was our Junior President; Margaret Kelley, Vice-President; Eileen Kelley, Secretary; and Marie Mullane, Treasurer. Surely you remember the dance at the Somerset! But we seem to have spent most of our time writing long papers on individual differences, learning the law of supply and demand, or begging from door to door for old magazines that we might procure colored pictures for our kindergarten classes.

And then comes a record of the crowning event of this year, the long-awaited, much-heralded *Junior Week*, in February. Oh! that cold sunny Sunday, when the class attired in gayly colored ski-suits, and laden with skis, skates, and toboggans, boarded the snow-train at the crack of dawn, and spent a gorgeous, carefree day on the snow-covered hills of New Hampshire, returning tired and windburned late that night! And on Wednesday, the theatre party at the Shubert! How we enjoyed Dame Sybil Thordike in *The Distraff Side!*

As a climax of the week, came the Junior Prom at the University Club, at which we gamboled with youthful abandon, pinned on our delightful little favors, and were proud that we were Juniors.

Classes,—exams,—Teas,—*Iolanthe*,—so my record runs, as the tide of Time swept us along until another year had ended.

October 1, 1935—Seniors at last! Of course you remember the question heard a thousand times on Thursday afternoons,—"How is it out?" "Marvelous! How is it in?" Of course, by *out* and *in* we meant *in* college and *out* observing.

Caps and gowns—our futile attempts to disguise the real thrill we received in first walking out of the Assembly Hall attired in our academic costume! Those caps would tip down over one eye, no matter how severely straight we put them on.

The diary says it was in January that you and I had our pictures taken. What an ordeal it was beneath those ghastly, glaring, blue lights! We refused to recognize ourselves when the horrible proofs were submitted,—but at last we saw ourselves as others see us,—and what a blow to our pride that was!

Can you quote a line from *Snedden* today? And yet for half a year we quoted him verbatim. We learned, too, that a good test was harder to make than to take, and discovered for the first time the difficulties of giving gym commands so that all members of the group would do the same thing at the same time.

Our LAMPAS Bridge is my next record, and the diary tells that it ended with an impromptu fashion-show by the check-room girl.

The announcement that there would be no mid-year period thrilled us, until we learned that each teacher planned to give a one-hour exam each week in January,—so that the entire month was spent with one horrible test after another.

February 1st, and you and I were "out." (This item sounds like a debutante's debut.) My next records are the LAMPAS Bridge and supper in town, and a most successful LAMPAS Tea a little later.

The day of the Senior Prom! The news headlines screaming "Worst Blizzard in Twenty Years—All Traffic Stopped—Snow Four Feet Deep!" No member of the Class of '36 will ever forget how, ignoring all warnings about certain failure to reach the hotel, undaunted, we waded through huge drifts and arrived safely, though tardily, at the Kenmore, with ski-pants over our evening dresses, and proceeded to enjoy one of our happiest social affairs. What a glorious evening that was!

Gold in the Hills or *The Dead Sister's Secret*! Certainly the funniest melodrama ever presented! The temptations of Nell, the deep-dyed villainy and the honest-heartedness of the senior and the boy-co-ed actors made it uproarious. As I write this I seem to hear you laughing.

Onward sped the year; another dance, final exams, Beacon Street exams for some of us, and we ended our college career with the joys of *Senior Week*.

How hard our officers worked to make it a success! Rose Kidney, Eleanor Lee, Betty Kelleher, and Frances Sullivan,—a capable quartette!

We had the honor of being the first class to be invited to the Alumnae Dinner, and were formally received into the Association that we might all work together to keep the name of our college in the front rank.

At the Faculty Reception, looked forward to for four years, our teachers seemed nearer to us than ever before, and despite the lighthearted mood of the evening, we felt a pang to think our college days would be over soon.

In the Baccalaureate Address, the Dean spoke words of kindness and wisdom, advising us how to succeed in our future careers. How little we knew then how varied those careers would be! You so soon to become a Californian, I to remain a dyed-in-the-wool Bostonian!

Class Day next! The crowning event of any college girl's life! Wearing delicate pastel gowns, we met, and before our proud parents, added our contributions to the history of the college, forming the beautiful daisy-chain in the court yard. In the evening, we concluded Class Day with the traditional dance in Collins Hall, almost unrecognizable under its decorations.

Laugh at the next comment in my diary! "The frolic and fun at the outing almost made us feel *young* again." We were then all of one-and-twenty! What a good time we had at the "Pops," the next evening! Truly *Senior Week* was a wonderful whirl of activity.

Do you remember how at the Class Banquet in the midst of all the good humor and light-hearted fun you whispered to me, "Only a few days now and we shall all be parted, never to meet again as the Class of 1936!"

Commencement—the beginning of something—we knew not what. I can shut my eyes and see once again the long line of Seniors in academic garb—their precious degrees tightly clasped—descending from the platform.

How young we were, how full of ambition and ideals! I think we may say that we have kept them through the crowded years, and that our college may well be proud of the Class of 1936.

How the old diary has brought back the happy past and memories of long ago, when I was as I am today

Your loving friend,

EILEEN DONOVAN

CLASS POEM

On silver wings the years have fled,
 Youth's golden days have swiftly sped;
 The longed-for goal we see at last,
 The goal we dreamed of in the past.

With courage, hope, and worthy pride,
 We face the future yet untried,
 And yet how sad the parting day
 When each must go a separate way!

O, Alma Mater, hear our song!
 O, Mother,—faithful, wise and strong!
 We sing in accents clear and free
 The love thy children have for thee.

Thy noble precepts have inspired—
 Thy high ideals have ever fired
 Our souls, to render service true,
 Our daily task with joy to do.

Serene before thy shrine we kneel,
 And gladly, proudly, raise thy seal,—
 The seal which bears the golden line,
 A call to service, great and fine.

O, let thy lofty purpose lead
 The youthful novice who has need
 Of guidance, just, unerring, wise,—
 A shining star in cloudy skies.

Thy worthy children may we be,
 Fresh laurels may we win for thee,
 Preserve untarnished thy fair fame
 By lives that glorify thy name.

And as the years roll on apace,
 May God give unto us His grace
 That we may ever serve the right,
 And keep the torch of Truth alight.

MADLINE G. GREEN

IVY ORATION

"Who are these Olympian white
Butterflies of flame,
High upon Sun Mountain? . . .
Who are these Olympian white
Butterflies of flame,
Full of a holy grace?"

"This is a chosen people,
This is a separate race, . . .
These are the darlings of my heart,
These are the young!"

As we meet here today, inspired with a strong spirit of fellowship, rightful pride in our achievements, and happy enthusiasm for the future, we feel the vivid beauty of Vachel Lindsay's lines. On this, our Class Day, so long waited and worked for, we say with uplifted hearts, "We are the young; the world is before us!"

But there is a sense of sadness, too, at leaving our college, our teachers, and our classmates. Our school-days are nearing an end and soon will be only a fond memory.

Today, we stand where the brook and river meet; we are leaving the narrow stream of preparation and setting out on the broad whirling river of responsibility. In the swift current of life, let us strongly and courageously breast the waves, so as to avoid both the rapids of too easy accomplishment and the shallows of discouragement.

We are the young, and the essential quality of youth is enthusiasm. If we bring joyful ardor to our work, the hardest tasks will become easy; the most irksome, pleasant. Certainly we can never win success without it, and with it wonders can be accomplished.

There can be no real enthusiasm unless it is founded upon intense interest in our profession. We must have faith in ourselves and in our abilities, brave hope that cannot contemplate discouragement or failure, and a joyous fervor that will lighten the most prosaic task. The person who is truly enthusiastic can never be colorless, ineffective, or futile, but will always stand out from the crowd.

Then, too, enthusiasm is contagious; one eager and enthusiastic worker can arouse a large group to finer effort and greater achievement. No other quality is so important in a teacher.

Everyone, at some time or other, feels an absorbing eagerness, a powerful interest in his work. But spasmodic zeal is not true enthusiasm, which must be accompanied by perseverance. Like a plant it must be carefully cultivated and nurtured.

An enthusiastic spirit is especially necessary for the young people of today, who are going out into a world of limited opportunity and great competition. We must not allow gloom or discouragement to dim our vision of the joy, the goodness, and the beauty of life. In every hard situation we must see not the dark clouds of failure, but the rainbow of hope.

This will demand courage,—and courage, the other great characteristic of youth, is born of enthusiasm. Courage will enable our spirits to soar to great heights; it will act as an impregnable, protecting shield against the vicious darts of uncertainty and despondency. In every hard situation the truly brave soul will conquer discouragement and reach its noblest heights.

In accordance with collegiate tradition we have planted the Class Ivy. Even as it grows and flourishes, so too may our professional ideals aspire ever upward. Armed with faith in our ability and hope for the future, we today say farewell to our college, and go forth bravely to meet Life's responsibilities. A world lies before us,—a world to be conquered by the enthusiasm and courage of Youth!

ROSE KIDNEY

CLASS ESSAY

THE VISION

"Where there is no vision, the people perish."

As we glance over history's pages, we see clearly that all progress, both material and spiritual, has come from the inspired vision of some men or group of men,—men endowed beyond their fellows, wise beyond their times, and unselfish in their labors and self-sacrifice. All these see-ers of visions have had from time immemorial, the same high aim—to bring the world a little nearer to perfection, perhaps by making it a more beautiful place in which to live, perhaps by making it a better place in which to live.

Vision does not know the limits of time or race; it is not the sole gift of generations past, nor generations to come. It belongs to humanity and to Eternity. The whole history of man's progress is the story of a kingly succession of great men who saw visions and brought them to a realization in their labors for humanity. Every age has known them. Nations rose and fell, but

*"The dreams their children dreamed,
These remain."*

Moses, the great leader of the Hebrew race, inspired by a God-sent vision, strove constantly for his people's deliverance. Through long weary years he struggled on, guiding their faltering footsteps until they reached the Promised Land, "the land flowing with milk and honey."

In other ages and nations we see other visions. Consider the famous civilization that rose out of the sapphire Aegean! Here an entire people devoted their supreme efforts to reaching the goal of physical perfection and beauty. As we gaze at the white, slender, inspiring columns of the Parthenon, exquisite by moonlight, soul-stirring by sunlight, we see the embodiment of another great ideal and are stirred by the spirit of ageless beauty. Through the long sweet silence of the ages these temples stand, belonging to all time, an eternal prayer to Beauty immortal.

Let us turn from the glory that was Greece to the grandeur that was Rome,—Rome, where "Caesar dreamed him a world ruled well." Rome, too, had her vision—a vision of a perfect law and perfect government, two great contributions to future civilization. The Rome of the Caesars is an empire fallen, but the influence of Roman law and government is strong and living throughout the modern world. In time, a new vision of government lighted the minds of those who embodied in our Constitution their ideal of a government of the people, by the people, and for the people. After a long struggle, a government offering equal opportunity to all, a government whose watch-words were "Liberty, Equality, and Fraternity," was achieved. The philosophy of the brotherhood of man, a new idea to a world weary of class distinction, was welcomed by the thinkers of the age. They foresaw a better and happier world; every inch gained brought man a little nearer the Utopia of their ultimate hopes.

But the vision of perfection in law and government was not the only or the greatest vision the world has known. In the Middle Ages, a spirit of faith and worship pervaded all Christendom. The great cathedrals—"sculptured music, poetry in stone"—were built, and Europe "put on her white robe of churches." They remain today witnesses to the living faith which inspired their erection. Their spires rise toward Heaven like prayers made visible. Ages have passed, but the cathedrals endure, an everlasting memorial to the vision of their builders.

With the dawn of the Renaissance came new dreams. Discoverers and explorers, led by a vision of lands yet unknown, left the security of home to sail the trackless oceans. Columbus ventured beyond the Azores, beyond the Gates of Hercules, his faith in undiscovered countries conquering the fear and superstition of the ages.

*"He gained a world!
He gave that world its grandest lesson,
On, sail on!"*

Consider, too, the wonder and triumph in the hearts of the Spanish explorers, when, weary and discouraged, they mounted "a peak in Darien" and, speechless, beheld the limitless stretches of the blue Pacific.

Even as explorers enlarged the world, great humanitarians improved it. There have always been men whose ideal has been to leave the world a better place than they found it. Many great souls have helped their own age and posterity by humanitarian and social work. Pasteur, the pioneer in modern bacteriology, made contributions to man's physical health and well-being that revolutionized the science of medicine. Ridiculed by his contemporaries, he rose far above their scorn. Today he remains one of the greatest benefactors of humanity, whose vision now lights the entire world. Another pioneer in this field was Walter Reed, who offered himself as a sacrifice in order that disease and ignorance might be conquered. The history of medicine abounds with stories of brave men and heroic sacrifice.

The missionary life also has its honor-roll of heroes. Father Damien, his heart full of sympathy and compassion for the wretched lepers of Molakai, willingly assumed a life of desolation and the certainty of a slow and horrible death. Even when he fell a victim to leprosy, his inspiring vision of aiding the hopelessly unfortunate grew brighter and stronger. Today, Belgium, his native land, is paying honor to his memory, for "Greater love hath no man than this, that he lay down his life for his friend." Father Damien is only one of the many brave missionaries who "lost their lives to find them."

The humanitarians made the world better; the artists have made it more beautiful. They have given it a blessed legacy of beauty and sweetness, making for man's happiness. In the fine arts—poetry, music, painting—we find this magic gift. Egypt, Greece, Rome, and the Eastern countries, each has made its individual contribution to the world's treasury of beauty.

The artists of the Renaissance reawakened the world with their exquisite paintings, their lovely landscapes, their beautiful Madonnas. Michelangelo, Raphael, Titian, and many another have left a priceless heritage of the splendor and glory which their souls beheld.

Music has inspired men from earliest times. We read of Timotheus and of St. Cecilia; by the magic power of music "he raised a hero to the sky, she drew an angel down." Who can fail to appreciate and be stirred by the surging majesty of a Beethoven symphony, the indescribable beauty of a Wagnerian opera?

Closely allied to Music is its sister art, Poetry. All true poets have an understanding deeper, broader, and truer than that of other men. How often the clear vision and human sympathy of a poet have cheered and uplifted a lonely heart! It may have been Shakespeare with his keen perception of life, his strange insight into the soul of man, and his wise philosophy. It may have been Milton, with his austere idealism and epic grandeur. Or we may with Longfellow say,

"Read from some humbler poet
Whose songs gushed from his heart,
As showers from the clouds of summer
Or tears from the eyelids start.
Such songs have power to quiet
The restless pulse of care,
And come like the benediction
That follows after prayer."

Each of us if we would live truly must have vision. By its magic light we shall see a world full of loveliness, not only the loveliness of Nature, but the greater beauty of goodness, kindness, and truth. Then drab existence will be transformed into inspired living; then shall we have manna for the soul. Let us never lose the vision splendid, for "where there is no vision the people perish."

CLAIRE ELIOT BURTON

CLASS SONG

Hail, Alma Mater, O Goddess of Light!
 Leader and guide through our youth's golden days!
 Hark as our voices are lifted in praise,—
 Song that will tell of thy power and might,
 Fond tribute pay to thy power and might,
 Rise in a far-sounding paean of praise,
 Singing thy glory, O Guide of our days!
 Hail, Alma Mater, O Goddess of Light!

Joyous we meet, at this altar of thine,
 Bearing the gifts richly given by thee;
 Beauty's vast wealth is unlocked by thy key,
 Wisdom revealed in her deep-hidden shrine.
 Let us then worship at Wisdom's fair shrine,
 Beauty's vast wealth, let us ope with thy key.
 Gratefully offering laurels to thee,
 Sadly we part, at this altar of thine.

Hail and farewell to thee, Goddess of Truth!
 Grant as we ever thy standards acclaim,
 Pow'r to inspire with the light of thy fame
 Visions of beauty and wisdom in youth,—
 Lighting with beauty and wisdom our youth,
 Making our service e'er true to thy fame.
 Bearing thy torch, we raise joyous acclaim,
 Hail and farewell to thee, Goddess of Truth!

Words—MARY B. EPSTEIN
 Music—MARY A. COLLINS

CLASS WILL

WE, the Guardians of the Class of 1936 of the Teachers College of the City of Boston, being of age (C.A. or M.A.?) and of sound minds, do hereby declare this to be our last will and testament, hereby revoking any and all former wills by us heretofore made. After our just debts (class dues) are paid, together with the expenses of the administration of our estate, we bequeath the following gifts:

To Dr. Kennedy:

A set of boy-scout flags with which to wig-wag the number of the hymn in case any emergency pianist should be visual.

To Dean Linehan:

A pair of well-trained hunting dogs to search for the *Lost Clod*.

To Miss Salloway:

A system of trap-doors by which she can more quickly empty her office of suppliant pupils.

To the English Department:

A framed motto saying, "To er-er-er is human."

To the History Department:

As the basis for a history museum—one of the lies that George Washington never told.

To the Foreign Language Department:

A Funicular rail-road.

To the Geography Department:

A Foreign and Domestic Exchange Bureau through which they can trade winds.

To the Mathematics Department:

A flashing electric sign which will direct visitors to its remote quarters.

To the Science Department:

A troupe of jugglers to help balance aquaria.

To the Health Education Department:

A padded cell in which artificial respiration may be demonstrated without injury to the vicrim.

To the Commercial Department:

An opportunity to get experience in mimeographing.

To the Physical Education Department:

A mechanical piano which will *not* play *East Side West Side*.

To the Art Group:

Berets and smocks to make the members look more convincing.

To the Music Group:

Several farmhands to pick the cherries. They've been ripe so long.

To the Kindergarten-Primary Group:

A gallery in which they can display with pride the pictures collected so painstakingly for two years.

1936

LAMPAS

To the Elementary Group:

Private secretaries with experience in arranging Activity Units.

To the Special-Class Group:

A rule which requires them—à la Madame Defarge—to take all their notes in knitting.

To Dr. Gerry:

A plastic substance with which to thoroughly mend all split infinitives.

To Miss Mansfield:

A special volume of Cameron's talks with a thumb-index showing their relation to Snedden.

To Mr. Read:

An automatic device which will silence all unruly members who call his third-year course "Methods."

To the Graduates:

Our Salute to their Thespian talents.

To the Seniors:

A wardrobe mistress to keep them well-groomed despite their lightning changes from gym suit to academic robes to hat-coat-and-rubbers.

To the Juniors:

A third volume of the Economics text which will explain the first two in words of one syllable.

To the Sophomores:

We merely lend them our ears for music.

To the Freshmen:

Our advice that the first four years of college are the hardest.

ELIZABETH DUSTON and DOROTHEA DENVIR
Guardians of the Class of 1936

Witnesses:

O.K. Manly
O.U. Hegner
O.O. Snedden

Signed and sealed at the office of
FOX AND ABELOW
Attorneys-at-Law
Huntington Avenue, Boston

CALENDAR

1935-1936

College opened	October 1
Freshman Acquaintance Tea	October 14
Club Assemblies	October 15-18
Caps-and-gowns first worn to Assembly	October 23
Parents' Day Tea. Assembly speakers: Dr. Kennedy, Rurh Van Ness	November 12
Self-Government Day. Assembly speakers: Mary Reilly, Elinor Cullen	November 13
Dean's Day. Assembly speakers: Dean Linehan, Virginia Davis, Rose Kidney	November 14
Superintendent's Day. Assembly speakers: Supt. Patrick T. Campbell, Ruth Van Ness	November 15
Assembly—Miss Guyton, "Basic English"	November 25
Assembly—E. R. A. Chorus	December 2
Assembly—Celebration of 2000th birthday of Horace by the Classical Club	December 9
T. C. at <i>Midsummer Night's Dream</i>	December 10
Biology Society Sale	December 10-12
Self-Government Alumnae Dance. French Club Play	December 13
Spanish Club Assembly	December 16
Christmas Play by English and Classical Clubs	December 19
Faculty Children's Party. Senior Bridge, Collins Hall	December 20
Christmas Assembly	December 23
Assembly—Miss Kerrigan	January 6
Mid-year Examinations for Juniors, Seniors, and Graduates	January 29-31
Welfare Club Assembly	February 3
LAMPAS Bridge, Foodcraft Shop	February 5
Junior Week	February 3-7
Assembly—Lincoln and Washington Memorial Exercises	February 10
Senior Promenade, Hotel Kenmore	February 14
Assembly—E. R. A. Orchestral Concert	March 2
LAMPAS Tea	March 17-19
Assembly—Safety Education	March 23
Senior Play, <i>Gold in the Hills</i>	March 27
Art Assembly	March 30
Sophomore Roller-skating Party	April 3
Self-Government Assembly	April 6
Freshman Carnival	April 17
Game-meet	May 1
Informal Senior-LAMPAS Dance, Collins Hall	May 2
Health-Day Assembly	May 4
Assembly—Music Club Concert	May 11
Boston Examinations	May 12-14
Special Class Exhibit and Tea	May 19
Self-Government Spring Dance	May 22
Memorial Day Address, Dr. Kennedy	May 25
Senior Examinations	May 29
Senior Week	June 4-12
Commencement	June 12

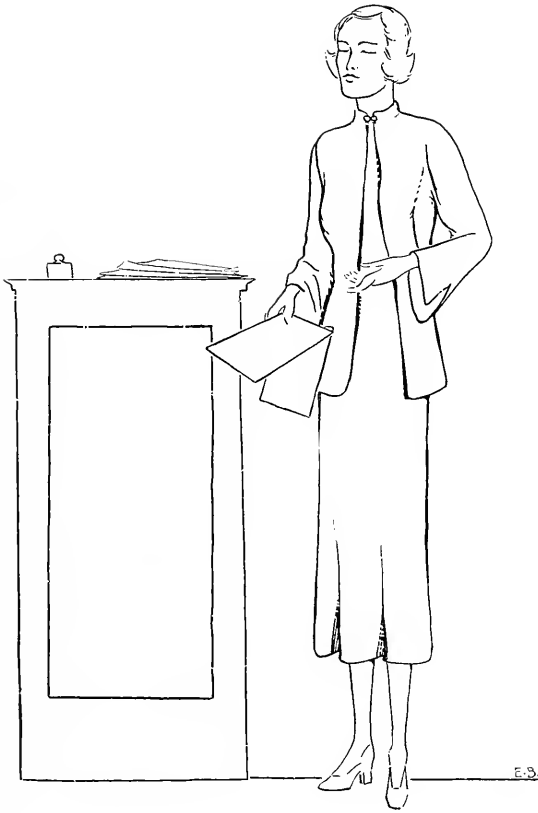
TO ALMA MATER

When we came, Alma Mater, to thee in our youth,
When we lifted our eyes, full of trust, to thy face,
When we felt there thy spirit, and saw there thy grace,
We desired then thy wisdom, we longed for thy truth.

As the years have flown by with their toil and their joy,
Thou hast quickened our ears, thou hast opened our eyes,
Till the hill and the plain, till the seas and the skies,
Are all throbbing with beauty no hand can destroy.

Thou hast shown us the world with its splendor and might,
Its desire and its need thou hast given us to see;
Mother, grant us thy passion for service that we
May lead youth with its ardor to seek for the light.

KATHARINE H. SHUTE



ORGANIZATIONS



SYLVIA AEFLOW
ASSOCIATE EDITOR



ELIZABETH DUSTON
EDITOR-IN-CHIEF



DOROTHEA DENVIR,
LITERARY EDITOR



ELEANOR WEISS
ASSOCIATE BUSINESS MANAGER



OLIVE CAMPBELL
ASSOCIATE BUSINESS MANAGER



RITA LEROY
ASSOCIATE BUSINESS MANAGER



AILEEN CARPENTER,
PROOFREADING EDITOR



MARY EPSTEIN
ASSOCIATE LITERARY EDITOR



PHOEBE REED
ART ASSISTANT



ISABEL SEFTON
ART ASSISTANT



LILLIAN THARE
ART EDITOR



ELEANOR BOGAN
ART ASSISTANT



ELVA WHITMAN
ART ASSISTANT



HELEN FREEMAN
PROOFREADING EDITOR



GERTRUDE WHELAN
ART PHOTOGRAPH EDITOR



VICTORIA SWAZEK
PHOTOGRAPH EDITOR



LILLIAN FITZGERALD
ART PHOTOGRAPH EDITOR



ANNE BERKOWITZ
ART ASSISTANT



MISS KEE
FINANCIAL ADVISER.



DR. NASH
LITERARY ADVISER.



MR. SHEA
ART ADVISER.



EDNA CONNORS
ADVERTISING MANAGER.



ELIZABETH GRIZE
ADVERTISING ASSISTANT.



EILEEN DONOVAN
CLUB EDITOR.



EILEEN KELLEY
ADVERTISING EDITOR.



MARGARET KELLEY
ADVERTISING ASSISTANT.



MARY CARMODY
ADVERTISING ASSISTANT.



GRETCHEN CONNORS
SECTION EDITOR.



HELEN KARLSSON
SECTION EDITOR.



JOSEPHINE SILBERT
SECTION EDITOR.



KATHERINE MOGAN
SECTION EDITOR.



JANE McLAUGHLIN
SECTION EDITOR.



SYLVIA FOX
SECTION EDITOR.



SELF-GOVERNMENT ASSOCIATION

SELF-GOVERNMENT OFFICERS

RUTH VAN NESS	<i>President</i>
PATRICIA M. LYONS	<i>First Vice-President</i>
GERTRUDE M. AHEARN	<i>Second Vice-President</i>
CATHERINE GILLIGAN	<i>Secretary</i>
BARBARA BACIGALUPO	<i>Treasurer</i>

THE SELF-GOVERNMENT ASSOCIATION

The Self-Government Association this year celebrates its tenth anniversary as an organization in the college. In recognition of their status as collegians and as intelligent adults, the privilege of self-government was conferred on the students. A decade of distinguished success, with harmony and efficiency, bears witness to the wisdom of this action. The keynote of the Self-Government Association has always been cooperation,—a fact of which its members have ever been mindful. Nor do they forget that the success of this organization has been due largely to the tireless and unselfish efforts of its officers and the vital interest and wise counsel of Dr. Kennedy, Dean Linehan, Miss Salloway, and the faculty members of the Council—this year Dr. Kerrigan and Dr. Burnce.

Many of the college activities are carried on under the auspices of the Self-Government Association. The social year opens with a tea and reception at which the Freshman are formally presented to the Faculty by their Sister-class, the Juniors.



SENIOR COUNSELLORS

MARION WAGNER
 ETHEL COES
 MARY CARMODY

DOROTHY COHEN
 PAULINE LAPIDUS
 SYLVIA FOX

The charm and dignity of this occasion are repeated in the Self-Government Association's two outstanding contributions to the College social calendar—the Christmas Promenade, a formal dance in the true holiday spirit, and the Annual Dance and Reunion in the Spring, at which the Association welcomes back its former members.

The Self-Government Association is active in the intellectual life of the College, also. During National Education Week, it conducts a series of assemblies in which a representative of each class speaks on some phase of education. Again, on the annual Self-Government Day, the Association presents an inspiring assembly at which student speakers develop an appropriate theme and relate it to various phases of life today.

Many minor events important to our college life, such as teas, parties, and a luncheon and convention in February, are sponsored by the Association.

The Class of 1936 may well be proud of Ruth Van Ness and Patricia Lyons, the charming, unselfish, and competent President and Vice-President whom it contributed to the list of distinguished officers of the Self-Government Association.



WELFARE CLUB

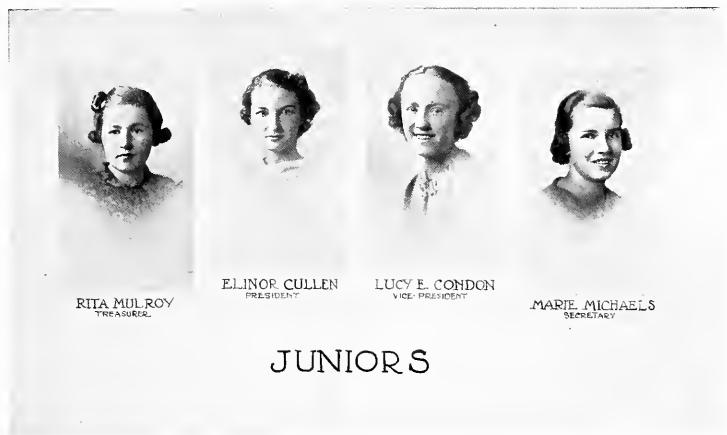
"Education for service; service for education."

HEDWIG NATH '37	President
JOSEPHINE SILBERT '36	First Vice-President
FLORENCE McCARTHY '36	Second Vice-President
HELEN FORSLUND '36	Third Vice-President
CAROLINE OBER '38	Secretary
ELEANOR McMANUS '38	Treasurer
DR. NASH, MISS SHUTE	Faculty Advisers

Nearly twenty years ago, a group of kindergarten-primary students, realizing the needs of many of the children in the schools throughout the city, organized, in the old Boston Normal School, a club to give material help. From small beginnings the organization has grown throughout the years, until now the Welfare Club, its membership comprising all the faculty and students of the college, is able generously to fulfill its blessed task of aiding the less fortunate.

The Club, understanding that children do better scholastically when they are well-nourished, warmly clad, and free from remediable physical defects, strives to achieve the realization of these happy conditions by supplying many children with a daily supply of milk, with shoes and warm clothing, and with eye-glasses. Many families that would otherwise spend a cheerless holiday are made happy each year through the efforts of the Club in furnishing Thanksgiving baskets. At Christmas time the Club, with the assistance of the faculty children, is able to play Santa Claus to many boys and girls who might without this help lose faith in the age-old story.

Our reward?—Far greater than a monetary one! It lies in the heart-felt thanks, in the happy smiles, and in the improved physical condition and scholastic standing of those to whom we have rendered assistance. The members of the Club may well be proud of their work, for they have remembered the words "Faith, Hope, and Charity, these three,—but the greatest of these is Charity."



THE JUNIOR CLASS

Pray when do the gay young Juniors find time to study? We staid and steady Seniors can only gasp as we watch them fly with increasing energy from one activity to another. And still we gaze, and still our wonder grows as we see them not only enthusiastically busy, but accomplishing tremendous tasks with apparent ease and unconcern. Surely we owe a tribute to leaders who can inspire such effort, and who have so much fun doing it. It would be hard to find a class able to compete with the Juniors in friendliness, liveliness, or accomplishment. We are forced to confess ourselves somewhat envious of this happy group, but we pass on to them the proverbial torch, not only without misgivings, but with confidence that the flame will be kept burning brightly.



THE SOPHOMORE CLASS

As adversity strengthens the soul, so keen competition has strengthened the Sophomore Class; for out of the exciting struggle of their last election, they emerged with flying colors, a promising future, and thoroughly capable and responsible leaders. It has always been a mystery that each succeeding class seems to start on its road toward success where its predecessors left off. At this rate we may be prepared for the early arrival of the millenium. These precocious Sophomores have absorbed all the spirited determination, vigor, and joie-de-vivre of the illustrious Juniors. We tremble to think that some day they may even put to shame a no less imposing body than the Seniors themselves. As it is, if a girl is the life of the party, if she's bubbling over with exuberance, if she radiates personality, confidence, and independence, hat's off!—she's a Sophomore (provided, of course, she isn't a Senior). Our parting cheer to our sister class then,—“En avant.”



THE FRESHMAN CLASS

The Freshmen this year have been distinguished for the helpful and willing spirit usually displayed by the entering class. Moreover, whole-hearted coöperation is by no means the only commendable trait to be found in our youngest group. Even at this early stage they have shown exceptional independence and initiative. With firm self-confidence they set about to conquer the world in general and in particular those never-to-be-forgotten pages of *Hayes and Moon*. Their wisdom and energy have not been confined to scholarly pursuits, however, but have been evident in their choice of leaders and in the lively interest shown in college gayeties. It is trite to say that they have great promise, and even more trite to exhort them to continue the good work. Yet they must have heard that repetition is the mother of learning, and also that Seniors are privileged to preach. So we leave them with the advice which they so often have tried to recite with the proper inflection, "To strive, to seek, to find, and not to yield!"

THE GRADUATES

BAZOLL, GOLDIE	B.S. in Ed.	Teachers College '35
BECK, ANN E.	B.S. in Ed.	Teachers College '35
BOSELLI, ESTELLE	B.S. in Ed.	Teachers College '35
BRADLEY, IRMA	B.S. in Ed.	Teachers College '35
BROW, FRANCIS V.	A.B.	Boston College '34
BURKE, JOHN E.	A.B.	Boston College '35
BYRNE, MARY R.	A.B.	Emmanuel College '34
CAHALAN, MARGUERITE L.	B.S. in Ed.	Teachers College '35
CARROLL, GEORGE T.	A.B.	Harvard College '32
CHRISTENSEN, LILLIAN C.	B.S. in Ed.	Teachers College '35
CLARE, KATHRYN T.	B.S. in Ed.	Teachers College '35
COHN, CHARLES B.	A.B.	Clark University '35
COLLERAN, MARY P.	B.S. in Ed.	Teachers College '34
COURTNEY, FRANCES E.	B.S. in Ed.	Teachers College '35
CRESSILOV, ARSENE B.	A.B.	Mount Holyoke College '35
CRONIN, FRANCES C.	B.S. in Ed.	Teachers College '35
CUDDY, CATHERINE M.	B.S. in Ed.	Teachers College '35
CUNNINGHAM, MARY M.	B.S. in Ed.	Teachers College '35
DEVENNY, MARY M.	A.B.	Emmanuel College '35
DOHERTY, GRACE M.	A.B.	Emmanuel College '35
DOHERTY, MARY E.	B.S. in Ed.	Teachers College '35
DOLE, HELEN T.	B.S. in Ed.	Teachers College '35
DONOVAN, MARY K.	B.S. in Ed.	Teachers College '35
FALLON, MARY S.	B.S. in Ed.	Teachers College '35
FEINBERG, ABRAHAM E.	B.S.	Mass. State College '35
GALVIN, FRANK J.	A.B.	Boston College '35
GAMER, ADELINE	B.S. in Ed.	Teachers College '35
GARDNER, ERIC F.	A.B.	Harvard College '35
GEISINGER, BENJAMIN	A.B.	Harvard College '35
GILLIGAN, ELIZABETH	B.S. in Ed.	Teachers College '35
HALLIGAN, EDWARD G.	A.B.	Boston College '34
HANOPI, BERNICE J.	B.S. in Ed.	Teachers College
HAYES, WILLIAM V.	Ph.B.	Boston College '34
HEFRON, EILEEN G.	B.S. in Ed.	Teachers College '35
HESSION, JOHN J.	A.B.	Harvard College '35
HOAR, DOROTHEA E.	A.B.	Emmanuel College '35
HOCKNELL, DOROTHY C.	B.S. in Ed.	Teachers College '35
JOYCE, STEPHEN J.	A.B.	Boston College '35
KELLEHER, ETHEL M.	A.B.	Emmanuel College '35
KELLEY, ANNE R.	B.S. in Ed.	Teachers College '35
KENNEY, MARY J.	A.B.	Emmanuel College '34
KILSTEIN, SARRA	B.S. in Ed.	Teachers College '35
KNARR, HELEN G.	B.S. in Ed.	Teachers College '35
LANE, BARBARA C.	B.S. in Ed.	Teachers College '35
LARSON, KATHLEEN T.	B.S. in Ed.	Teachers College '35
LEAMAN, LOUIS	A.B.	Harvard College '35
LEVENSON, ABRAHAM S.	A.B.	Harvard College '32
MACKENZIE, EDNA G.	B.S. in Ed.	Teachers College '35
MAGUIRE, ESTHER	B.S. in Ed.	Teachers College '35
MANEY, CATHERINE M.	B.S. in Ed.	Teachers College '35
MCCARTHY, CHARLES L.	A.B.	Boston College '35
MCCARTHY, WILLIAM J.	A.B.	Boston College '35
MCCUE, RUTH A.	B.S. in Ed.	Teachers College '35
MCDAVITT, MARY B.	B.S. in Ed.	Teachers College '35
MCDERMOTT, MADELENE	B.S. in Ed.	Teachers College '35
MCDONALD, MARY A.	B.S. in Ed.	Teachers College '35
MCGETTRICK, HELEN M.	A.B.	Emmanuel College '35
MEYERS, DAVID	B.S. in Ed.	State Teachers College, Bridgewater '35
MONDLICK, MAURICE	A.B.	Brown University '35
MORRISSEY, GERTRUDE A.	B.S. in Ed.	Teachers College '35
MULHOLLAND, ANNA M.	B.S. in Ed.	Teachers College '35
MURPHY, HELEN E.	A.B.	Emmanuel College '35
NEMSOFF, DAVID	B.S. in Ed.	Boston University '34
NEWMAN, RICHARD W.	A.B.	Boston University '35
O'BRIEN, LAURENCE A.	A.B.	Boston College '34
O'MALLEY, MARGARET M.	B.S. in Ed.	Teachers College
PHANEUF, ALICE M.	A.B.	Radcliffe College '34
PHILLIPS, AGNES C.	B.S. in Ed.	Teachers College '35
PORTER, JAMES F.	A.B.	Boston University '35
POWER, CATHERINE E.	B.S. in Ed.	Teachers College '35
ROSEN, REUBEN	A.B.	Harvard College '34
RUSO, ROSE A.	B.S. in Ed.	Teachers College '35
SCHLAFMAN, DORIS	B.S. in Ed.	Teachers College '35
SHLIFER, SAMUEL	A.B.	Harvard College '34
SIMONS, BERNICE S.	B.S. in Ed.	Teachers College '35
SMALL, RUTH S.	A.B.	Radcliffe College '35
SMITH, ESTHER G.	B.S. in Ed.	Teachers College '35
SULLIVAN, EDWARD T.	A.B.	Boston College '35
TARUTZ, LEO	B.S. in Ed.	Boston University '35
TASSINARI, LOLA S.	B.S. in Ed.	Teachers College '35
TONOUGAR, MARY A.	B.S. in Ed.	Teachers College '35
WEINFELD, MARION E.	B.S. in Ed.	Teachers College '35



CLUBS



AQUARIUM CLUB

GERTRUDE WHELAN '36	<i>President</i>
ANNE LARKIN '38	<i>Vice-President</i>
ALICE DE LOREY '36	<i>Secretary</i>
ETHEL COES '36	<i>Treasurer</i>
DR. KERRIGAN	<i>Faculty Adviser</i>

Brightly-colored fish flashing amidst graceful aquatic plants, miniature mossy glades, feathery ferns swaying beneath tropical water,—all these scenes are familiar to those students who belong to the Aquarium Club. The Club aims to disseminate knowledge of plant and animal life not only to the college students, but also to pupils throughout the Boston school system. Information about aquaria and terraria, and supplies for setting them up, may be obtained by any school. The Club's yearly program includes lectures by people of prominence in the world of science; trips to scientific laboratories, such as the Harvard observatory; and field trips for the gathering of mosses, lichens, and other materials. The annual exhibit at the Flower Show is one of the major events of the year. The Club displays water-plants, terraria, dish gardens, and desert gardens. The proceeds from the sales of supplies, and the money prizes won at the Flower Show enable the Club to furnish scientific books for the Lillian J. MacRae Memorial Library. For those who are interested in the beauties and wonders of aquatic life, the Aquarium Club provides an attractive means of gaining knowledge in this branch of science.



THE ART CLUB

ISABEL R. SEFTON '36	President
BARBARA F. WALSH '37	Vice-President
ALMA ELLIS '37	Secretary
BERLAH BLACKWOOD '37	Treasurer
MR. SHEA	Faculty Adviser

The main purpose of the Art Club is to discover and develop in its members any talent which otherwise might never be brought to light. In the pleasant atmosphere of the bi-monthly meetings in the studio, work representing various phases of art, appreciative and creative, is undertaken. In addition to the interests pursued within the Club, the members take part in many activities of the college promoted by the Coöperative Arts Group. On such occasions as Hallowe'en, Thanksgiving, and St. Valentine's Day, the Art Club adds to the color and artistry of seasonal productions. Christmas gives the Club an opportunity for presenting a religious tableau, which is considered one of the most beautiful and inspiring presentations given in the College. The Art Club sales of attractively designed hand-blocked Christmas cards and of other handiwork of the members are events eagerly awaited by students and faculty alike. In these interesting ways, the Art Club fosters the talents and avocations of its members. All in all, the members agree that the Art Club is one of the most interesting and beneficial organizations in the College.



THE ATHLETIC ASSOCIATION

"A game for every girl and a girl for every game."

ANNE BERKOWITZ '36	<i>President</i>
M. RITA MCGILICUDDY '36	<i>First Vice-President</i>
RITA DONNELLY '37	<i>Second Vice-President</i>
MARIE E. MAGUIRE '37	<i>Secretary</i>
G. WINNIFRED PEATFIELD '38	<i>Treasurer</i>
MISS DONOVAN, MISS QUINLAN	<i>Faculty Advisers</i>

The Athletic Association is one of the largest clubs in the college. Its popularity is due to the variety of activities it offers for the interest and enjoyment of every girl. Basketball, captainball, and baseball are our most popular sports. Each year at the close of the season inter-class competition is held in these games. One of our most important events is the Annual Game Meet. The enthusiastic attendance and the cheers and songs which are composed for the occasion attest to its widespread appeal. As Freshmen, the Class of 1936 was the happy and proud winner of the Game Meet and this did much to elevate us in the eyes of the upper classmen. As Sophomores we lost by one-and-a-half points! For outside activities we participate in hiking, bowling, ice-skating, swimming, roller-skating, and bicycling. Houghton's Pond and Cedar Hill have been the scenes of several never-to-be-forgotten hikes. Who can forget the glorious skating at Cedar Hill or the happiness and content as we sat around the fire in the Bowling Alley feasting on toasted frankfurts and hot cocoa? Our final meeting is in the form of a gala party at which our members show their talent as entertainers. At this meeting the Class of '36 leaves the "A.A." with the hope that the under-classmen will carry on the interest and enthusiasm which have always made the Club so successful. We shall all recall the happy hours of play, hours spent with our classmates in defeat and victory; but above all we shall remember what the "A.A." stands for,—clear thinking, faithfulness, honesty, and courage. One phrase sums up all we have learned—Good Sportsmanship.



THE BIOLOGY SOCIETY

GOLDIE BAZOLL '35	President
MARGUERITE GRAY '31	Vice-President
CLAIRE BURTON '36	Secretary
CATHERINE GILLIGAN '37	Treasurer
MISS AMMIDOWN	Faculty Adviser

Although only in the second year of its existence, the Biology Society has grown and flourished beyond the greatest expectations of its founders. It has rapidly achieved a prominent place among the extra-curricular activities of the college, for it serves as an excellent *outlet* for scientific interest and expression, as well as a splendid *in-let* to replenish the treasury. Whether we really become very serious and technical as we follow a detailed lecture on "The Evolution of the Secondary Xylem," or merely amuse ourselves by running around busily with tea kettles and coffee urns, there is always something so vital about the Biology Society that an uninterested member is a rare or non-existent creature. Of course, the annual Biology Sale was by far *the* activity of the year. We did not limit ourselves to beautiful bowls of narcissi, delicately-scented sachets, or delicious cakes and tempting candies. No indeed we presented handsomely stuffed elephants, cunning little red hens, and window-sill gardens beautiful enough to bring spring to any classroom. If even a germ of truth exists in the trite proverb, "Nothing succeeds like success," we guarantee that the Biology Society has many more joyous, prosperous years awaiting it.



EL CIRCULO CASTELLANO

Junta directiva.

MARY CATENACCI '36	<i>Presidenta</i>
MADÉLINE GREEN '36	<i>Vice-presidenta</i>
ANNA ÁNDLER '37	<i>Secretaria</i>
SYLVIA FREEDMAN '37	<i>Tesorera</i>
MISS BARR	<i>Consejera</i>

El Círculo Castellano existe para dar a las que se preparan para el profesorado del español la ocasión de emplear esta lengua en la conversación corriente, y para fomentar la amistad entre estudiantes de intereses comunes. En las reuniones se habla español y así, divirtiéndose, las socias aprenden a hablar con mayor facilidad y gusto la lengua que han de enseñar.

Los programas son interesantes y variados. Hay conferencias sobre viajes, estudios en España, u otro asunto. Este año una de las más interesantes fué la de la señorita Reardon, antigua alumna de esta escuela, que contó sus experiencias en San Sebastián durante el verano de 1935. Este año también celebramos en la asamblea general de la escuela el tercer centenario de la muerte de Lope de Vega, con un programa muy aplaudido escogido de sus obras poéticas y dramáticas. Ofrecimos selecciones calculadas a ilustrar el genio prodigioso de Lope en la comedia chispeante y divertida, sus agudas observaciones sobre la vida y las costumbres de su tiempo, su gran talento lírico, y su idealismo.

Además, hay a veces tertulias, con juegos de naipes, conciertos, visitas al Museo de Bellas Artes, juegos infantiles, comedias en un acto, y otras diversiones; y cada dos años se representa una comedia más importante, a la cual asisten los estudiantes de español de las escuelas de Boston.

Así aprendemos muchas cosas que no forman parte del curso regular de estudio, aunque sí de la vida española. Nos divertimos mucho y cultivamos al mismo tiempo el gusto a las cosas españolas.



CLASSICAL CLUB

"Haec olim meminisse iuvabit."

RITA CAHILL '36	President
PATRICIA CALLANAN '37	First Vice-President
CARMELA LAURO '36	Second Vice-President
AILEEN BROUGHAM '38	Treasurer
MARY HEALY '39	Secretary
MISS GIVEN	Faculty Adviser

The happy memories of the "Anniversary Year" (1934-1935) of the Classical Club brought about a change in its membership. The Alumnae, who were associate members in the past, have become regular, active members, attending and taking part in the meetings. In this way the aim of the Club, to promote good fellowship between the college students and the teachers in service, has been more fully realized.

The program for the year centered about a deeper knowledge of Horace, whose birthday in December was celebrated with an Assembly in which for the first time many were introduced to the genial, lovable poet, who has lived in the hearts of men for two thousand years. In November, Miss Munroe, a guest speaker, gave an illustrated talk on her interesting experiences on the Horatian cruise. Other meetings throughout the year presented Horace to the Club members in many different and entertaining ways.

Other activities of the Club included the presentation in December of an impressive liturgical play celebrating the coming of the Magi, and lectures by Mr. McKenny on "The Classics in Radio" and by Dr. Kennedy on "Roman Coins." The climax of the year was the annual banquet, which proved once more the value of the Classics as a bond of fellowship.



THE COMMERCIAL CLUB

RITA LE ROY '36	<i>President</i>
CAROLYN DACEY '37	<i>Vice-President</i>
MARGARET KELLEY '36	<i>Secretary</i>
FLORENCE ROONEY '37	<i>Treasurer</i>
MISS REGAN, MR. BITZER	<i>Faculty Advisers</i>

We are honored that the formation of the long-awaited Commercial Club took place during our senior year. Our graduates, both those working here for their graduate degree and those who are now teaching as substitutes, are regular members, as well as the seniors and juniors of the Commercial Department. The substitute-teacher group, which includes the Misses Cassone, O'Neill, M. Thompson, W. Thompson, Rodgers, and Yurenas, gave us enlightening accounts of their teaching experience, which we feel sure will assist us in our own efforts and prevent some errors in our teaching. As the main object of our meetings during the year, we sought information about those aspects of our future work which were little known to us. At our first meeting, Mr. Fish, the Director of Commercial Education, spoke to us of the history and status of commercial teaching in Boston. At the January meeting, Dr. James E. Downey, Head Master of the High School of Commerce, gave us a talk upon the commercial training of boys. Other speakers contributed very helpful information concerning the teaching of secretarial machine work in college, in a corporation school, and in a private business school. In membership, enthusiasm, and the earnest cooperation of the commercial students and their faculty advisers, we consider our Club's first year to have been crowned with success.



DRAMA CLUB

ELEANOR TWOMEY '37	President
G. RUTH COLCHESTER '36	First Vice-President
ELEANOR NOONAN '37	Second Vice-President
JOSEPHINE MARTIN '37	Secretary
MILDRED BEERY '38	Treasurer
MISS CLARK, MISS GAFFEY	Faculty Advisers

The Drama Club offers to its members varied means of exercising their talents and satisfying their desire for aesthetic expression and entertainment. The meetings are not formal, but every second and fourth Monday those girls who desire to enjoy themselves and help entertain others assemble in Collins Hall. As the Club is a part of the Coöperative Arts Course, every girl,—whether she desires to make scenery, to act, to direct, or to write plays,—has a chance to exercise her particular gifts. Each meeting of the Club is made interesting and different. At Thanksgiving time, the first open meeting,—a Harvest Festival,—is held. Here many novel and original ideas are carried out. The Drama Club, with the assistance of the Art and Music Clubs presents the Christmas Assembly, which is considered by all members of the college, to be one of the most beautiful and inspiring productions of the college year. *The Other Shepherd* was the play given last Christmas. An annual Valentine party, a gay spring meeting, and various holiday celebrations, combine to make each year outstanding in the history of the Club. The most important production of the Club is its biennial reproduction of a Shakespearian play,—an event eagerly looked forward to. With the presentation of *The Taming of the Shrew* in May of this year, the Drama Club has brought to a successful climax a season of valuable work and play.



THE ENGLISH CLUB

MARY T. COPPINGER '36	<i>President</i>
JOSEPHINE S. SILBERT '36	<i>Vice-President</i>
LILLIAN KANTROVITZ '37	<i>Secretary</i>
DOROTHY A. MARTIN '38	<i>Treasurer</i>
MRS. GUILFORD, MISS BRENNAN	<i>Faculty Advisers</i>

The charm of tea-table companionship, the warmth of congenial conversation, the pleasure of stimulating entertainment contribute to the popularity of the English Club. The members of the Club have always had the opportunity of hearing distinguished guests speak on literature and allied subjects, but this year we were able to share with the entire college the pleasure of hearing Miss Mary L. Guyton, State Supervisor of Adult Alien Education, speak on Basic English. The Club also invited all the students to its traditional Christmas presentation of the *Second Shepherd's Play*, in which the members reproduce not only the story itself, but the spirit of medieval miracle plays. Original writing is encouraged by the Club, and one of its most delightful meetings is one at which the members read their own poetry, essays, short stories, or criticisms. Theatre parties, choral readings, literary games, and book reviews are a few of the additional activities by which the English Club entices the experience of its members.



LE CERCLE FRANÇAIS

MARY A. COLLINS '36	<i>President</i>
MARY MARTIN '36	<i>Vice-President</i>
ROSE PEREZ '37	<i>Secretary</i>
RITA CONROY '38	<i>Treasurer</i>
MISS GARTLAND	<i>Faculty Adviser</i>

Le Cercle Français offre aux étudiants de Teachers College qui s'intéressent au français l'occasion de parler et d'entendre parler français, aussi bien de connaître davantage les coutumes et la civilisation françaises. Cette année nos séances ont été très intéressantes au point de vue d'instruction et de divertissement. Aux réunions on nous présente des comédies, des jeux, ou des conférences littéraires ou artistiques. Nous jouons au bridge; nous écoutons des causeries sur des voyages en France; pour la dernière séance de l'année nous assistons à un concert à Symphony Hall.

Selon la coutume de jouer une pièce tous les deux ans, nous avons présenté, au mois de décembre, la comédie contemporaine, *Poil de Carotte*, par Jules Renard. Les membres qui ont tenu les rôles ont pu perfectionner leur accent tout en se divertissant. En somme, cette année nous a offert des réunions agréables, des membres enthousiastes, des heures de camaraderie cordiale, de sorte que les séances de notre Cercle Français tiendront toujours une place spéciale parmi les bons souvenirs de notre vie à Teachers College.



THE GEOGRAPHY CLUB

G. RUTH COLCHESTER '36	President
MARY B. HUTCHINSON '37	Vice-President
EVA M. McLEOD '37	Secretary
ANN C. FLINN '37	Treasurer
MISS DRISCOLL	Faculty Adviser

Our club should be called the Travel Club, or, better still, the Sight-seeing Club, for at each meeting we go vicariously on very interesting tours by means of maps and pictures. Places of interest along the way are described by members of the faculty and our own students who have been fortunate enough to spend their vacations traveling. Another way we travel is by moving pictures usually of "lands we have always longed to see." These pictures are interpreted and made more interesting by our Adviser, Miss Driscoll. We also give the club members an opportunity to participate in the meetings by devoting one or two meetings each year to the discussion of current events. Instead of joining the navy to see the world, the students of The Teachers College join the Geography Club.



THE HISTORY CLUB

"History hath triumphed over time."

EILEEN DONOVAN '36	President
M. GERALDINE SULLIVAN '37	Vice-President
MARY CONNOLLY '39	Secretary
ANGELINA GRAMOLINI '38	Treasurer
MISS HUBBARD	Faculty Adviser

The History Club has meant much to its members during their four years in the College. History has been presented to those who attended the meetings as a dramatic pageant of life through the ages. We have considered history at many different periods and places from ancient time to the present. At our Christmas meeting, we learned of Christmas customs throughout the ages; in November our members burlesqued the landing of the Pilgrims and various scenes from early American life. At our January meeting, we considered current history in the making, when Mr. Daniel O'Leary gave a most vivid and dramatic talk on the "Present Day Situation in Ethiopia,"—a topic of general and timely interest. This year in February, as always, the History Club presented an Historical Assembly, commemorating the birthdays of our two greatest statesmen.

Our minds wander back to other years with the Club: to Miss Hartz's talk on ancient England; to our meetings with the Classical Club; to our debates; to our open meeting in the Junior year, when Dr. W. J. Macdonald told us of his experiences in the East during the War. We have had lectures, slides, dramatizations, projects; each has been valuable to us in a different way, and each has helped to make history live. We are sure that long after we have been graduated, the History Club will continue to enrich the lives of its members with knowledge and appreciation of times, past and present, and of human nature then and now.



MATHEMATICS SOCIETY

ELSIE McHALE	President
HELEN HARTFORD '34	Vice-President
SHIRLEY ABELOW '36	Secretary
RUTH SCHIFFERDECKER '38	Treasurer
MR. VOSBURGH	Faculty Adviser

Do you know how small your chances are for receiving the "perfect" bridge hand? Do you know where the superstition against seating thirteen at dinner originated? You do if you belong to the Mathematics Society! Annual reports by the graduates of previous years on their theses bring to the members of the Club odd bits of information and sidelights on many phases of mathematics. A different speaker at each meeting heightens the interest and ensures a full attendance. Chief among the speakers this year have been Professor D. J. Struik of the Massachusetts Institute of Technology and Professor E. V. Huntington of Harvard. Professor Struik gave his impressions of the school systems in Mexico, Holland, and Russia. Professor Huntington, by means of graphic slides, pointed out fallacies in the present system of representation in Congress and propounded a simple way of correcting this much-discussed evil. Moving pictures presented by Mr. Hennessey and available for use in teaching geometry made that subject clearer and more interesting even to many who have been teaching geometry. Another interesting feature of each year's program is the presentation by the Juniors, in costume, of an original historical sketch portraying the life and achievements of one of the great mathematicians. In May comes the annual banquet. Good company, good games, and good food result in silent vows to rejoin the Mathematics Society next year.



THE MUSIC CLUB

KATHLEEN G. OXLEY '36	<i>President</i>
MARIE H. B. MICHAELS '37	<i>Vice-President</i>
ELEANOR DWYER '39	<i>Secretary</i>
BEATRICE FLASHNER '38	<i>Treasurer</i>
MISS BRICK	<i>Faculty Adviser</i>

The Music Group of the Coöperative Arts Course, consisting of about fifty active members, has met during the year on the second and fourth Wednesdays of each month under the guidance of Miss Brick. The meetings were generally occupied with rehearsing the various programmes presented during the year. Although the Club has coöperated with its sister organizations on many occasions, it has also made independent contributions to the college activities. Most of these presentations took the form of incidental music for the various assemblies of the school year. At the two most important club activities of the year, the Christmas Assembly and the dramatic presentation, the Club gave incidental music, thus adding the pleasure which only music can offer. A concert was given also at the Alumnae Tea in Collins Hall. Probably the greatest contribution came in the Spring, when the Club presented its Assembly in Music Week. Then the members were given an opportunity to display their individual talent in a programme of solos and duets. Through the year the Club has proved itself an organization capable of giving something worth while to the College and has maintained its usual high standards.



THE SCIENCE CLUB

"Science for Service."

MARGARET O'LEARY '36	President
LOUISE McLEOD '37	Vice-President
MARY CARMODY '36	Secretary
FLORENCE McCARTHY '36	Treasurer
MR. QUINN	Faculty Adviser

The aim of the Science Club is to develop an appreciation of science, a branch of knowledge especially essential in the rapid progress of modern times. Since its inception, the Club has become a flourishing organization. The meetings, which are both professional and social, widen the scientific horizons of the members. Mr. Quinn's talk on infra-red photography introduced a new field of interest. A lecture by Mr. Ford on the geological history of Boston and its surroundings was instructive as well as fascinating. Dr. Finn delivered a profitable lecture on the recent epidemic of infantile paralysis. The Club's activities are extended to practical observations. The inspection of soap and rubber factories gave us a better understanding of the practical applications of science. The climax of the Club's activities for the year was the dramatization of the events leading up to the invention of wireless. Science, which is so closely connected with the ordinary affairs of life, has captivated public interest, and the Science Club strives to supply its members, and indirectly the public, with worthwhile satisfaction of this interest. The members have many pleasant memories of club meetings. May the association continue to grow and prosper.



THE STRING ENSEMBLE

<i>Viola</i>	MARION WAGNER '36
<i>Violins</i>	FLORENCE ROONEY '37; DOROTHY DOWD '39; JOAN EARLY '39; RUTH GORDON '39; ROSE ILGODSKY '39; EILEEN NORTON '39
<i>Cello</i>	RUTH VINCENT '39
<i>Double Bass</i>	PAULINE GLEN '39
<i>Pianist</i>	HELEN SNAPHY '37
<i>Faculty Adviser</i>	MR. DRAKE

This is the first year that a String Ensemble has existed at The Teachers College. The Club began rehearsals at the first of the college year and continued its practice until June. The first public appearance of the Ensemble came during Education Week, when it played selections daily before and after the Assembly. Later, in November, at the Tea given by the Teachers College Alumnae Association, the Ensemble took part in the musical program and also played during the Tea. At the Christmas Assembly the *Adeste Fideles* and *Nazareth* were played. During the second semester, the Ensemble contributed to the programme at several assemblies and took a prominent part in the Music Assembly which came during the celebration of Music Week. The Ensemble had also the honor of playing at the Commencement exercises.



GOLD IN THE HILLS or THE DEAD SISTER'S SECRET

Cast

<i>Speaker of the Prologue</i>	JOHN HESSION
<i>Lizzie Jones, a housekeeper</i>	ROSE KIDNEY
<i>Barbara Stanley, Nell's younger sister</i>	GERALDINE FERRIS
<i>Hiram Stanley, an honest farmer</i>	WILLIAM HAYES
<i>Nell Stanley, his daughter</i>	ELEANOR BOGAN
<i>John Dalton, a son of the soil</i>	LAURENCE O'BRIEN
<i>Richard Murgatroyd, from the city</i>	WILLIAM MCCARTHY
<i>Sam Slade, his shadow</i>	FRANCIS GALVIN
<i>Jenkins, a constable</i>	STEPHEN JOYCE
<i>A Derelict</i>	STEPHEN JOYCE
<i>Big Mike Slattery, a cafe proprietor</i>	SAMUEL SHLIFER
<i>Pete the Rat</i>	WILLIAM HAYES
<i>Old Kate</i>	MARY CARMODY
<i>Slick Steve</i>	WILLIAM HAYES
<i>Little Tommy</i>	ANNE BERKOWITZ
<i>Dolly</i> } dancers	{ PATRICIA LYONS
<i>Daisy</i> }	{ ELEANOR LEE
<i>Chuck Connors, Bowery guide</i>	STEPHEN JOYCE
<i>Reginald Vanderlop, an uptown swell</i>	JOHN HESSION
<i>Mrs. Vanderlop</i>	ISABEL SEFTON
<i>Edith Vanderlop</i>	HELEN CALLAHAN
<i>Pearl</i> } two little girls in blue	{ MARY EPSTEIN
<i>Irene</i> }	{ CLARA RAPPAPORT
<i>Rose Robinson, a favorite songstress</i>	BEVERLY TRUNDY

One hundred twenty-eight



HUMOR

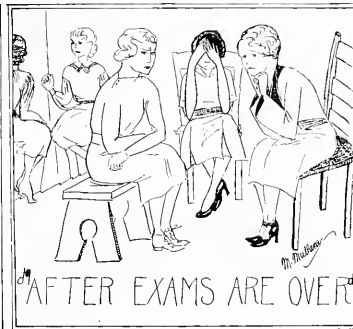
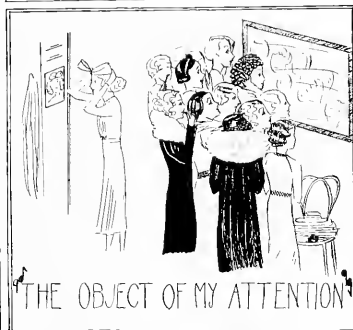
1936

LAMPAS



MARCH OF TIME

One hundred thirty



THE TEACHERS COLLEGE OF THE CITY OF BOSTON

Final Examination

Senior Class

June, 1936

I. MULTIPLE CHOICE

Directions: Draw a design in axial balance around the correct answer.

- | | |
|--|--|
| 1. The color of exam books is
a. blue;
b. blue;
c. appropriate. | 4. The Freshman history text was
a. Haze;
b. Hayes;
c. Gillis. |
| 2. Furniture moving is
a. an elective;
b. an extra-curricular activity;
c. an organized charity. | 5. Soap in the locker rooms is
a. a hygienic necessity;
b. an obsolete custom;
c. an awful shock. |
| 3. Designing borders for art sheets resulted in
a. genuine aesthetic satisfaction;
b. designing more borders for art sheets;
c. writer's cramp. | 6. The T. C. emblem is
a. a torch;
b. a hickory-stick;
c. a taffy apple. |

II. TRUE—FALSE

Directions: If the statement is true, place a *t* or *f* before or after.If the statement is false, place an *f* or *t* after or before.

- Mock Turtle Soup in the lunch room carries the mockery too far.
- Room Five is in the Temperate Zone.
- The tea cups in the second act of the Senior Play added just the right touch of atmosphere.
- In order that a girl who drops her books in the Assembly Hall may not be embarrassed, all the girls in her section should immediately drop their books.
- Yellow slips on the "mail-box" are a sign of Spring.
- All girls wear rubbers when leaving the building.
- A thesis is the reason one takes a four-year course.
- There is a sign in the Library which says "Silence."
- Running Teas is an easy way to get rich quick.
- T. C. is the only college which graduates reindeer.

III. COMPLETION

Directions: Fill in the blank spaces if you want to.

- Professors are disconcerted by the faces of their pupils.
- Teachers College students say of *Snodden*: quote,
! End of quotation.
- is appalling.
- The ideal situation is a tardy book.
- At the end of a 9:00 to 4:00 day, the mind is

IV. ESSAY SECTION

- In the space allowed, write a comparison of Classic and Romantic Symphonies using specific examples from the Sophomore music course.
(Write in this space)
- By a diagram of the neuro-muscular system, explain what takes place when one catches a chiffon stocking on the rung of a chair.

EVERYONE JOIN IN THE CHORUS

When the professor says: "I don't think we shall have a test this week"—*I've Got a Feelin' You're Foolin'.*

When you look for a permanent appointment—*You're All I Need.*

When you take a Jamaica Plain car for a nine o'clock class—*Double Trouble.*

When you think of Dr. Thorndike's lecture at art school—*Isn't It a Lovely Day to Be Caught in the Rain.*

When you carry a golf club out to the athletic field—*Swing It.*

When you hold post-mortems after mid-year exams—*It Never Dawned On Me.*

When you are choosing the subject for your thesis—*Everything's Been Done Before.*

When you go out to lunch—*Clouds.*

When the signal is given for a storm holiday—*Goody-Goody.*

When your training teacher observes your demonstration lesson—*How Do I Rate With You?*

When the significance of the Oral Expression course bursts upon you—*If I Had Rhythm in My Nursery Rhymes.*

When the zero hour of the Sophomore music exam arrives—*What's the Name of That Song?*

When you strut proudly, arrayed for the first time in academic costume—*Got a Bran' New Suit.*

When you decide to spend your free hour studying in the Students' Room—*Loafin' Time.*

When the end of a four o'clock day comes—*It's Been So Long.*

AN OLD, OLD SONG

The world is fair and young, lad,
And all the trees are green;
But I must stay in class, lad,
'Tis plainly to be seen.
For though the spring is here, lad,
And trees are green today,
Too soon exams will come, lad,—
Will come in flowery May!

The world will romp and play, lad,
But I must work you know.
Yes, I must study hard, lad,
The Fates have willed it so.
So run along your way, lad;
Exams are coming soon,—
But come back, won't you please, lad,
About the last of June?

JOSEPHINE SILBERT

COMPENSATION

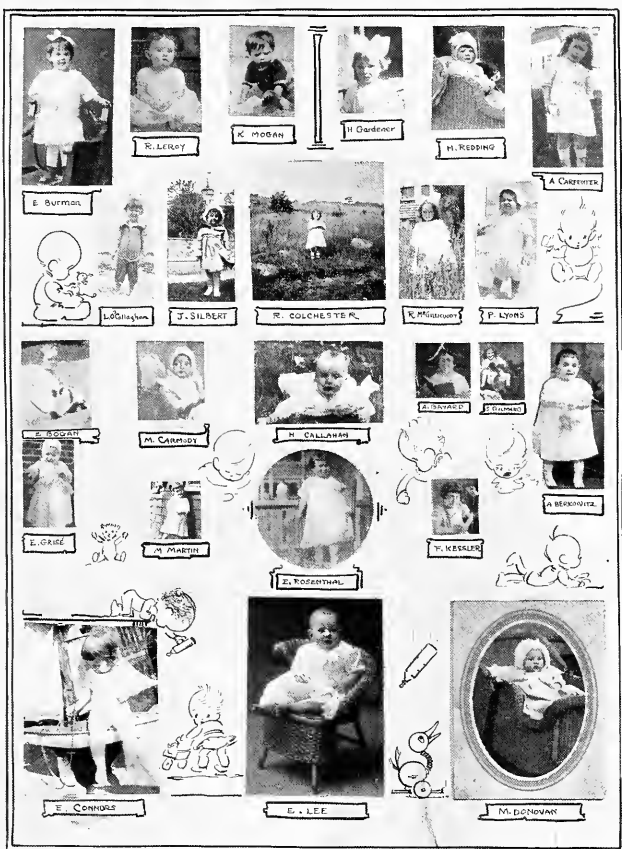
She sighed.
She had to get up for school.
She cried.
The street car is slow as a mule.
She paid.
She was late for her first-hour class.
She prayed.
Blue-books were being passed.
She groaned.
Oh, why was I such a fool!
She moaned.
Oh, why didn't I learn that rule?
She pondered.
The hour was nearly over.
She wondered.
The whole class had already left her.
She wept.
She wanted only to die.
She smiled.
A co-ed was passing by.

SYLVIA FOX

1936

LAMPAS





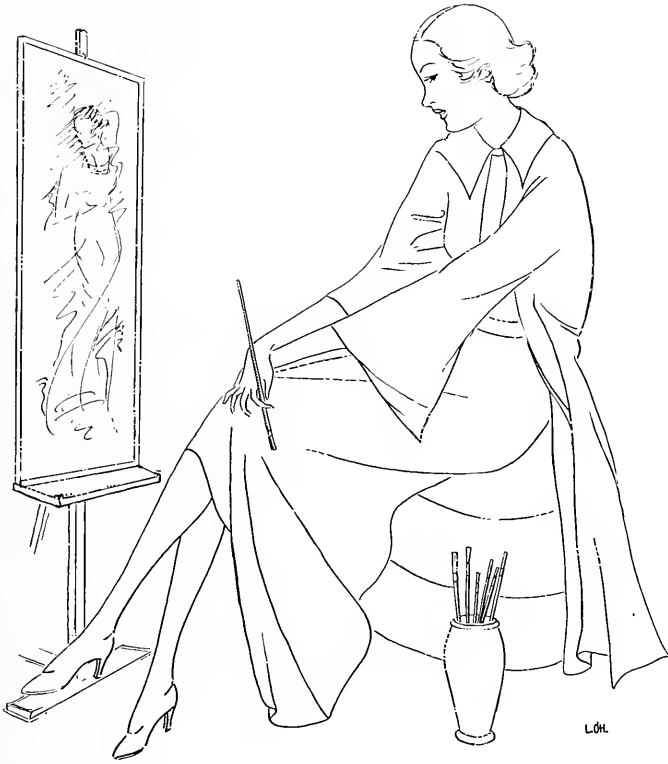
DIRECTORY

Abel, Sylvia I.	11 Brookledge Street, Roxbury
Abelow, Shirley	31 Wabon Street, Roxbury
Aversa, Rose A.	135 Rowe Street, Roslindale
Badessa, Mary M.	52 Dickens Street, Dorchester
Bailey, Ruth V.	40 Hancock Street, Dorchester
Bayard, Anna B.	94 Bloomfield Street, Dorchester
Berkowitz, Anne S.	259 West Fifth Street, South Boston
Bogan, Eleanor M.	249 River Street, Mattapan
Buckley, Gerardine A.	28 St. Albans Road, Roxbury
Burman, Etta E.	32 Oakwood Street, Dorchester
Burton, Claire E.	9 Eliot Street, Jamaica Plain
Cahill, Rita V.	32 Longfellow Street, Dorchester
Callahan, Helen F.	28 Turner Street, Brighton
Campbell, Olive T.	42 Juniper Street, Roxbury
Carmody, Mary A.	21 Wabeno Street, Roxbury
Carpenter, Aileen E.	20 Dalrymple Street, Jamaica Plain
Catenacci, Mary F.	156 Boylston Street, Jamaica Plain
Coes, Ethel A.	138 Cushing Avenue, Dorchester
Cohen, Dorothy E.	53 Hazelton Street, Mattapan
Cohen, Hilda	22 Oakley Street, Dorchester
Cohen, Rosalind	421 Blue Hill Avenue, Roxbury
Colchester, G. Ruth	17 Whitten Street, Dorchester
Collins, Mary A.	27 Codman Hill Avenue, Dorchester
Connors, Edna I.	28 Parsons Street, Brighton
Connors, Gretchen K.	67 Sydney Street, Dorchester
Coppinger, Mary T.	90 Bennett Street, Brighton
Crowley, Noreen M.	162 Hillside Street, Roxbury
Dannahy, Ruth M.	77 Standard Street, Mattapan
Davis, Charlotte M.	48 Wenham Street, Forest Hills
De Lorey, Alice C.	16 Dunwell Street, West Roxbury
Denvir, Dorothea M.	38 Hooker Street, Allston
Donovan, Eileen R.	30 Oakview Terrace, Jamaica Plain
Donovan, Mary C.	51 Holborn Street, Roxbury
Dracos, Helen M.	70 Waldeck Street, Dorchester
Dunphy, Cecelia A.	51 Maxfield Street, West Roxbury
Duston, Elizabeth	121 Hewlett Street, Roslindale
Eng, Alice	16 Hudson Street, Boston
Epstein, Mary B.	20 Glenburne Street, Roxbury
Epstein, Mildred	21 Pasadena Road, Dorchester
Ferris, Geraldine P.	47 Iroquois Street, Roxbury
Fitzgerald, Lillian H.	49 Georgia Street, Roxbury
Foley, Lillian E.	81 Homes Avenue, Dorchester
Forslund, Helen E.	38 Rugby Road, Mattapan
Fox, Sylvia P.	102 Rosseter Street, Dorchester
Freeman, Helen F.	18 Treadway Road, Dorchester
Friedberg, Eleanor	142 Rosseter Street, Dorchester
Fruean, Beulah L.	132 Rosseter Street, Dorchester
Gardiner, Helene J.	9 Symphony Road, Boston
Gleeson, Edith P.	83 Foster Street, Brighton
Goldberg, June F.	28A Cobden Street, Roxbury
Goldberg, Sara F.	135 Homestead Street, Roxbury
Grant, Agnes R.	42 Belfort Street, Dorchester
Green, Madeline G.	1399 Commonwealth Avenue, Allston
Grisé, Elizabeth V.	26 Bateswell Road, Ashmont
Grodberg, Golden L.	43 Bicknell Street, Dorchester
Guilford, Agatha E.	77 Holworthy Street, Roxbury
Halligan, Mary F.	19 Samoset Street, Dorchester
Healy, Catherine B.	12 Everett Avenue, Dorchester
Holland, M. Louise	374 Arborway, Jamaica Plain
Humphrey, Alice L.	269 Savin Hill Avenue, Dorchester

Jung, Eleanor S.	76 West Walnut Park, Roxbury
Karlsson, Helen M.	36 Queensberry Street, Boston
Kelleher, Betty M.	74 Farquhar Street, Roslindale
Kelley, Margaret P.	377 South Huntington Avenue, Jamaica Plain
Kelly, Eileen J.	37 St. Albans Road, Roxbury
Kennedy, Katherine L.	44 Codman Hill Avenue, Dorchester
Kenny, Anne L.	131 Maple Street, West Roxbury
Kessler, Florence P.	51 Greenbrier Street, Dorchester
Kidney, Rose P. K.	31 Bushnell Street, Dorchester
Kincade, Winifred J.	15 Elmdale Street, Dorchester
Kinsman, Gertrude M.	37 Iroquois Street, Roxbury
Kovitz, Dorothy R.	15 Havald Park, Roxbury
Lapidus, Pauline	127 Howland Street, Roxbury
Lauro, Carmela F.	4 Atherton Place, Roxbury
Lavin, Marguerite E.	21 Dunlap Street, Dorchester
Lee, Eleanor L.	33 Iroquois Street, Roxbury
Le Roy, Rita E.	33 Bogandale Road, West Roxbury
Locke, Mary J.	10 Hartwell Street, Roxbury
Lyons, Patricia M.	666 Columbia Road, Dorchester
MacArthur, Mary C.	15 Bayard Street, Allston
Martin, Mary V.	46 Bullard Street, Dorchester
Martin, Rita J.	614 River Street, Mattapan
McCarthy, Florence E.	475 Ashmont Street, Dorchester
McGillicuddy, Rita M.	141 Nottinghill Road, Brighton
McLaughlin, Jane	28 Princ Street, Jamaica Plain
Miller, Pearl	7 Arbutus Street, Dorchester
Mogan, Katharine G.	291 Havre Street, East Boston
Muldoon, Mary E.	47 Holbrook Street, Jamaica Plain
Mullane, Marie T.	71 Spring Park Avenue, Jamaica Plain
Mullen, Frances A.	122 D Street, South Boston
O'Callaghan, Louise	30 Surgis Road, West Roxbury
O'Hare, Lillian J.	79 Milton Avenue, Dorchester
O'Leary, Margaret A.	426 Bunker Hill Street, Charlestown
Oxley, Kathleen G.	737 East Broadway, South Boston
Rappaport, Clara R.	4 Vinal Street, Brighton
Redding, Helen M.	19 Clementine Park, Dorchester
Reed, Phoebe	360 Park Street, West Roxbury
Rivkind, Norma S.	27 Page Street, Dorchester
Rosenthal, Eselle S.	6 Wabens Street, Roxbury
Rubin, Rose	2 Howland Street, Roxbury
Rubino, Emilia M.	14 Eulita Terrace, Brighton
Russo, Jennie M.	3 Tolman Place, Roxbury
Sefton, Isabel R.	101 Lasell Street, West Roxbury
Silbert, Josephine S.	4 Waterlow Street, Dorchester
Skwarek, Victoria J.	67 School Street, Roxbury
Solomon, Bertha C.	8 Ingleside Street, Roxbury
Sullivan, Bearrice A.	15 Playstead Road, Dorchester
Sullivan, Frances L.	100 West Selden Street, Mattapan
Sullivan, Margaret R.	36 Rosa Street, Hyde Park
Thorner, Marjorie	11 Whittemore Terrace, Dorchester
Trundy, Beverly R.	1 Arbor View Road, Jamaica Plain
Van Ness, Ruth	234 Vermont Street, West Roxbury
Wagner, Marion L.	52 Farquhar Street, Roslindale
Walsh, Katherine E.	3 Bancroft Street, Roxbury
Weiss, Eleanor S.	837 Blue Hill Avenue, Dorchester
Welch, Dorothy E.	44 Ivy Street, Boston
Whelan, Gertrude F.	21 Ivory Street, West Roxbury
Whitman, Elva R.	14 Dorrance Street, Charlestown
Winterson, Rose F.	128 Conant Street, Roxbury
Wirhanowicz, Josephine	21 Adams Street, Roxbury
Zaleski, Josephine K.	23 Galena Street, Roxbury

EPILOGUE

And so with regret, we turn the page which ends this chapter. Heeding the clarion call of Service, we shall go our separate ways. But as members of the Class of 1936, we take with us from our College a noble heritage of courage in our hearts, of wisdom in our minds, of truth in our souls.



ADVERTISEMENTS

WAID STUDIO

136 BOYLSTON STREET

BOSTON

Telephone HANcock 0193



CLASS PHOTOGRAPHER

· 1936 ·

Gowns, Hoods and Caps

for ALL DEGREES

Quality and Service at a Low Price



Chas. W. Broadbent Co.

Six Sixty-Five Huntington Avenue

BOSTON, MASS.

Established 1879

**FREDERIC J.
CROSBY**

Incorporated

Funeral Service

10-12 Warren Street

867 Beacon Street

COMPLIMENTS

of

**HARVARD DRUG
COMPANY**





COMPLIMENTS

of

**UPTOWN
LUNCHEONETTE**

MRS. F. BUHRIG

Typewriters

Office Supplies

**Samuel Narcus
Stationer**

TWO STORES

92 Washington St. 230 Washington St.
CAPitol 8720 LAFayette 1038
BOSTON, MASS.

LONGwood 9159 Open Sundays and Holidays

**KAY'S
Delicatessen and Lunch**

Quality and Service Always
646 Huntington Ave. at Longwood
Boston

**D. W. BRENNAN
... JEWELER ...**

8 Scollay Square
Boston, Mass.

Grade "A" Market

High Grade Meats and Provisions

615 BROADWAY

Tel. SOUTH Boston 3383

Compliments of

A FRIEND

Sparr's Drug Store, Inc.

Roxbury's Reliable Prescription Pharmacy

635 Huntington Ave., cor. Longwood
Roxbury, Mass.

Other Stores: Allston and Brighton, Mass.

Compliments of

E. F. P. BURNS CO.

Caps and Gowns
— and —
Dress Clothes for Hire

125 Summer Street
Boston

Compliments of

ROBERT J. PATON

and his
ORCHESTRA

Compliments of

THE CLASSICAL CLUB

COMPLIMENTS

— of —

The Art Club

COMPLIMENTS

— of —

The Mathematics Society

COMPLIMENTS

— of —

The Athletic Association

COMPLIMENTS

— of —

The Science Club

COMPLIMENTS

— of —

The Biology Society

COMPLIMENTS

— of —

Le Cercle Français

COMPLIMENTS

— of —

The Music Club

COMPLIMENTS

— of —

The Spanish Club

COMPLIMENTS

— of —

The English Club

MISS NILSSON'S CANDIES

335 Walnut Avenue

Roxbury

Mass.

DAVEY'S MARKET

444 Dudley Street

Roxbury, Mass.

Tel. HIGHlands 6543-6544

GRADE A ICE CREAM

REGISTERED TRADE MARK
MADE BY

DUTCHLAND FARMS

EST. 1897

REG. U.S. PAT. OFF.
INC.

BROCKTON, MASS.

763 Memorial Drive

Opposite Magazine Beach

Ambrose Press

founded 1895

Norwood . and . Boston

Massachusetts



BOOKS · CATALOGUES · SCHOOL AND COLLEGE YEAR BOOKS
MEMORIAL AND PRIVATE EDITIONS · BROCHURES
FOUR COLOR REPRODUCTIONS

COMPLIMENTS

— of —

THE
FRESHMAN
CLASS

COMPLIMENTS

— of —

THE
JUNIOR
CLASS

COMPLIMENTS

— of —

THE
SOPHOMORE
CLASS

NIPPON ROOM



BEFORE or AFTER
THEATRE

**Delicious Dinners
Supper Specials**
MUSIC, SMORGASBORD
LUNCHEON 50c-75c
DINNER \$1-\$1.25
A. K. Panton, Mgr.

HOTEL VENDOME
Commonwealth Ave.—Just off Copley Sq.

NO COVER OR MINIMUM CHARGE

COMPLIMENTS

— of the —

BOSTON TEACHER'S CLUB

COMPLIMENTS

— of the —

BOSTON NORMAL SCHOOL
and
TEACHERS COLLEGE
ALUMNAE ASSOCIATION

COMPLIMENTS

— of —

THE
BOSTON ELEMENTARY
TEACHERS CLUB

COMPLIMENTS

— of the —

GRADUATE
CLASS

COMPLIMENTS

— of —

THE
BOSTON INTERMEDIATE
TEACHERS CLUB

COMPLIMENTS

— of the —

HIGH SCHOOL WOMEN'S
CLUB
of Boston

Compliments of the

Masters' Assistants' Club

**The Invisible Textile Mending
Co.**

192 Boylston Street
Boston, Mass.



**OTHER SEILER
ORGANIZATIONS**

Seiler's 1812 House
Framingham Centre
Route 9

Seiler's at
Wellesley

Seiler's 1775 House

Luncheons . . . Teas . . . Dinners
Lexington, Mass. — Route 2

Seiler's Ten Acres

Delightful Dining . . . Jack Marshard's Music
Wayland, Mass. — Route 20

Seiler's Recreation Grounds at Ten Acres
Catering Office: 110 Norway St., Boston, Com. 2422

APPRECIATIONS

The Class of 1936 sincerely thanks those who have contributed to the production of this edition of the LAMPAS. We are particularly grateful to:

Dr. Nash, through whose guidance, inspiration, and generosity of time and energy the Senior Annual was made possible.

Miss Kee, who so willingly gave us the advantage of her wisdom in business and financial matters.

Mr. Shea, who gave us invaluable help in the artistic arrangement of our book.

Miss Lulu Clark, for her generous and able assistance in the typing of copy.

Miss Cobin, for coöperation in the art work.

Miss Gaffey, who so capably coached the Senior-Lampas play.

