



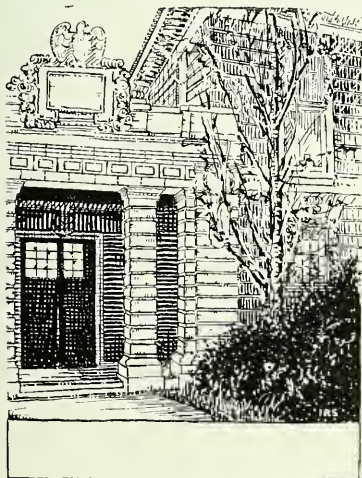
ampas  
11937



Eleanor Noonan  
1916 - 1987



EX-LIBRIS



TEACHERS COLLEGE  
OF THE  
CITY OF BOSTON



LAMPAS  
OF THE  
CLASS OF 1937





*Four*



THE CLASS OF 1937

takes pleasure in dedicating

THE LAMPAS

to

THE ALUMNI

of

THE BOSTON NORMAL SCHOOL

and

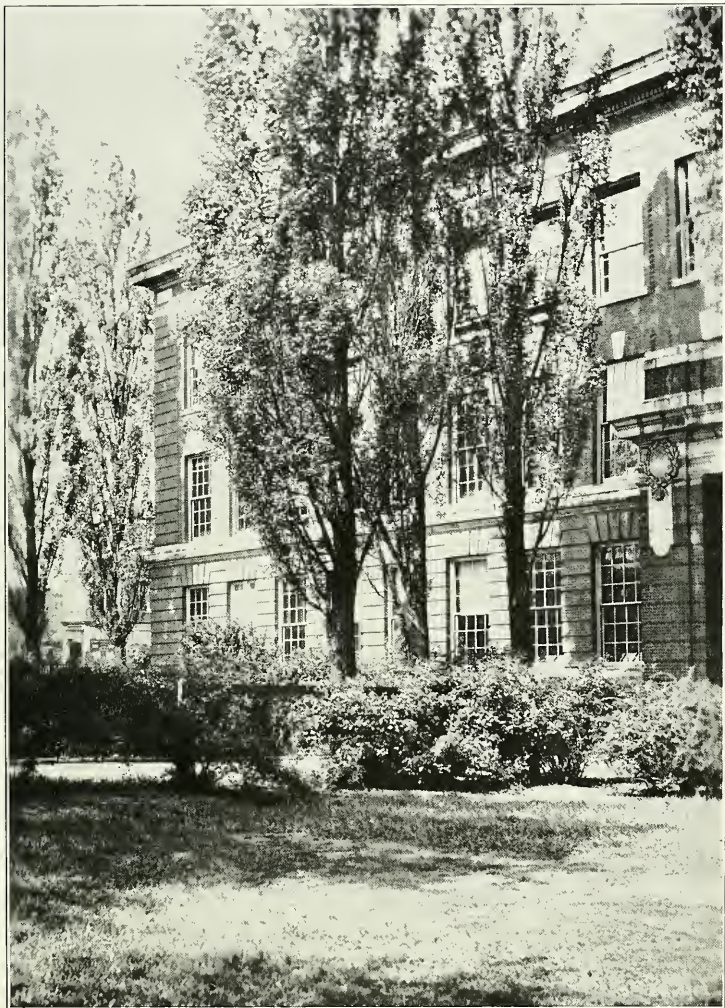
THE TEACHERS COLLEGE OF THE  
CITY OF BOSTON

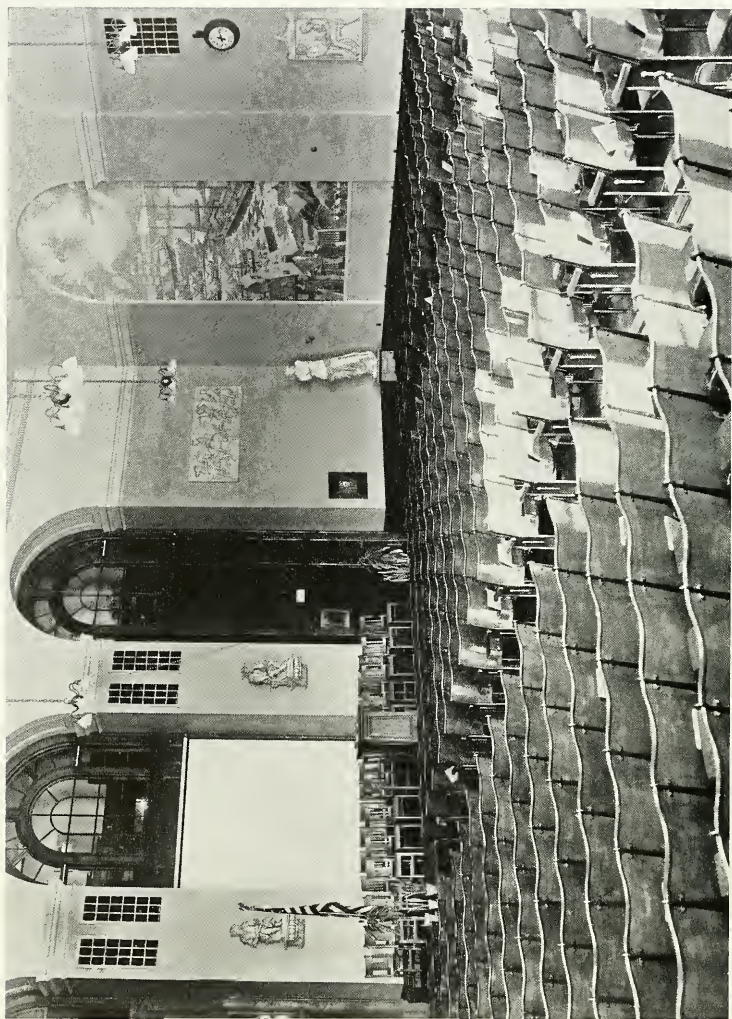
The Alumni of our College have always upheld its ideals and principles; they have ever maintained a close interest in their Alma Mater. We are proud to dedicate our Senior Annual to our predecessors, who have given constant proof of their loyalty to Teachers College.

## PROLOGUE

*“Thy word is a lamp to my feet,  
And a light to my paths.”*

We set forth soon on a journey into strange lands, feeling a sense of loss because of the absence of good friends with whom we have passed many happy days. May this, our *Lampas*, serve not only as a beacon to guide our steps but as a light to give us hope and courage in the years to come.

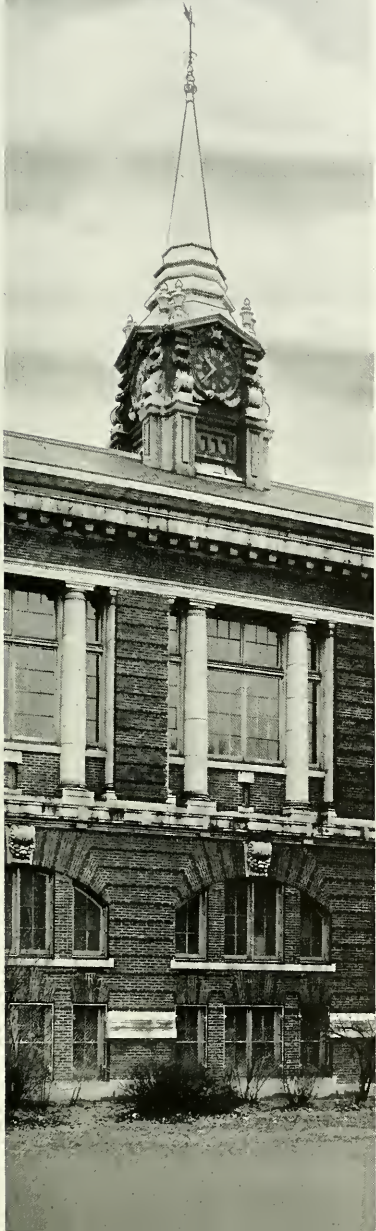






*Nine*





# ADMINISTRATION

## THE FACULTY

To the Faculty, whose teaching has led us to the realization that "Truth is beauty, beauty truth," we dedicate this page in our Senior Annual. Your high ideals have spurred us on to greater endeavors, and your enthusiasm has made the search for knowledge a joyous undertaking. Keeping alight the torch, you pass it on to us. May we fulfil your trust and realize your hopes.

For your sympathetic interest in us and in our progress, the Senior Class extends to you its heartfelt gratitude.





DR. WILLIAM HENRY JOSEPH KENNEDY

The strong leadership and wise guidance of our President, Dr. Kennedy, is an influence of inestimable value in the life of every student in the college. His depth of insight, his rich cultural background, his high educational standards, and broad human sympathies have won our respect and admiration. In him we see personified a professional ideal.



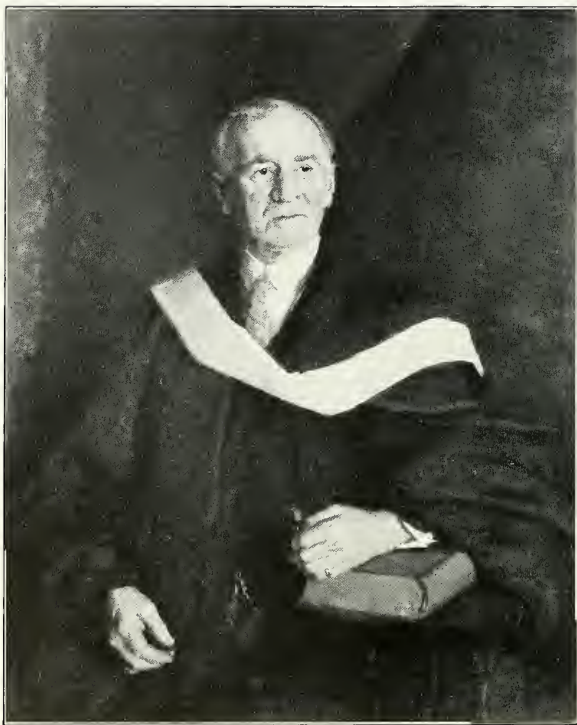
DR. WILLIAM FRANCIS LINEHAN

Dean Linehan has won our lasting friendship by his sincere personal interest in every individual. We admire him for the efficiency with which he discharges his many administrative duties, and for his unfailing thoughtfulness in meeting the needs of students and faculty alike.



MARGARET MARY SALLAWAY

To an invaluable friend and counsellor, Miss Sallaway, we express our deepest gratitude and loyalty. For the countless times we have received her wise advice, for the unfailing sympathy with which she has ever greeted our confidence, and for her many gracious and charming qualities, we shall always be grateful.



WALLACE C. BOYDEN

*President-Emeritus*

Each year we welcome the visit of Mr. Boyden to the College, because of his keen interest in its activities, his sane and wholesome outlook on life, and his warm friendliness.



DEAN LINEHAN



DR. KENNEDY



MISS SALLOWAY



MISS AMMIDOWN



MISS BARR



MISS BARRETT



MRS. BARRY



MISS BEAN



MR. BITZER



MISS BRENNAN



MISS BRICK



DR. BURNCE



MISS CALLAGHAN



MISS CARNEY



MISS CLARK



MISS COVENEV



MISS CRUMP



MISS DICKSON



MISS DONOVAN



MR. DRAKE



MISS DRISCOLL



MISS GAFFEY



MISS GARTLAND



DR. GERRY



DR. GILLIS



MISS GIVEN



MISS GRANDFIELD



MRS. GUILFORD



MR. HALEY



MISS HEARTZ



MR. HENNESSEY



DR. HORGAN



DR. HUBBARD



MISS KALLEN



MISS KEE



DR. KERRIGAN



MISS KEYES



MISS MANSFIELD



MISS MIDGLEY



DR. NASH



MISS O'BRIEN



MISS O'HARA



MR. O'MEARA



MR. PACKARD



MISS QUINLAN



MR. QUINN



MISS QUINNAM



MR. READ



MISS REGAN



MR. RYAN



MR. SHEA



MISS SHUTE



MISS STACK



MISS TROMMER



MR. VOSBURGH



MISS WADSWORTH



MISS WILKINSON



**In Memoriam**  
**Superintendent Patrick T. Campbell**  
**February 12, 1937**

His life was gentle, and the elements  
So mix'd in him that Nature might stand up  
And say to all the world, "This was a man!"





SENIORS



BERTHA BAYARD  
TREASURER



ELEANOR TWOMEY  
PRESIDENT



LUCY CONDON  
VICE-PRESIDENT



MARIE MICHAELS  
SECRETARY

## SENIORS

### SENIOR CLASS OFFICERS

Seldom do we have occasion to praise ourselves. However, we may justly give ourselves credit for the selection of class officers for our Senior year. Our president, Eleanor Twomey, is an executive who leads without being officious; who never makes a request unless she plans to share the labor entailed; who cooperates completely not only with the other class officers but with the leaders of other groups. She strives to meet the demands of all, to satisfy the class without displeasing others. She has not labored in vain, for we all agree that she has been a gracious executive with charming personality, and also a sincere friend to us all. Many of the memories of our Senior year are brilliant and lasting because of Eleanor's tireless zeal.

It is true that Eleanor could not have accomplished so much this year without the assistance of the other class officers. The vice-president, Lucy Condon, has proved to be not only an able helper but an efficient substitute during the second semester.

As a support to these two leaders, Betty Bayard, class treasurer, has devoted much time and effort to her work. Financial matters always present problems. Few of us could have coped with these difficulties in the calm, effective, business-like manner that was Betty's.

Our secretary, Marie Michaels, has also been an ardent assistant in leading the class. To Marie we entrusted the task of keeping our class records. She has not disappointed us.

In years to come, we shall look back on our happiest year, our Senior Year, with fond memories and sincere appreciation of the valuable work of our class leaders.

## GERTRUDE MARIE AHEARN

*"Such a one as everyone should wish to be."*

The many offices Gertrude has held prove that she is one of the most popular members in the class. As an executive she is poised and dignified; as a student, earnest and ambitious; as a friend she is all one could wish. A casual acquaintance with her arouses the desire for a more intimate friendship. Her ready wit and her hearty laugh have helped smooth many an awkward moment. Gertrude will succeed in whatever she undertakes, not only because of her ability but also because of her gracious personality.

*Major:* English Literature

*Minors:* English Composition, English History

Self Government Association (Councillor '34, Secretary '36); Class President '35; *Lampas* Staff; Athletic Association; English Club (President '37); Mathematics Society; Welfare Club.



## MARGARET THERESA AIETA

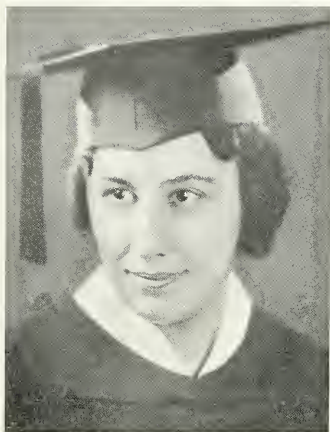
*"Trusty, dusky, vivid, true—"*

Peggy is so filled with the joy of living that it shines out on her mobile face and from her expressive, sparkling eyes. Her carefree spirit is balanced by the happy faculty of realizing that there is a time and place for fun, and a time and place for work. The fact that she has duties to fulfill never detracts from her enjoyment of the moment, and yet those duties are always carried out to a perfect conclusion. Her gay little laugh is often heard from some merry group. For her taste in clothes, her skill in art, and her sociability, Margaret has gained a permanent place in our memories.

*Kindergarten-Primary Course*

Self Government Association (Councillor '36, '37); *Lampas* Staff; Art Club; Athletic Association; English Club; Music Club; Welfare Club.





### CONCETTA CLARE ALIBRANDI

*"Love, sweetness, goodness, in her person shined  
So clear as in no face with more delight."*

No one who ever knew "Cetta" failed to admire her for her high ideals and her unswerving devotion to them. Her classmates cherish her for the cheerfulness with which she meets each day's tasks, her unflinching readiness to aid in all activities, social or scholastic, and her gentle and gracious demeanor. She has shown her great love for music in her enthusiastic participation in the work of the Music Club, and her deep appreciation of literature in her active part in the English Club. We can think of no higher tribute to "Cetta" than the fact that she has never made an enemy, nor ever lost a friend.

*Major:* Music

*Minor:* English

*Lampas Staff; English Club (Vice-President '37); Music Club; Welfare Club (Aide '36, Third Vice-President '37).*



### ANNA ANDLER

*"Her eyes were deep as some unfathomed sea."*

Behind Ann's quiet and unassuming manner are ability and perseverance. A good worker, Ann never spares herself in her desire to do everything well. She has diligence which inevitably brings success. To balance these serious characteristics is a love of fun which makes her a pleasant companion. Generosity is outstanding in Ann, and she never hesitates to offer much-desired material to one who has missed it. Throughout her years at Teachers College, she has shown herself proficient in whatever she has undertaken. Her ability is shown notably in her Spanish Club activities. Though Ann is a tiny girl, she has fine qualities, which will stand her in good stead in the future.

*Special-Class Course*

*El Circulo Castellano (Secretary '36); Welfare Club.*

## BERTHA BAYARD

*"Her ready wit and cheery smile  
Proclaim to all a friend worth while."*

Betty is the gay, friendly, vivacious type of person who makes herself beloved by all. With her ready wit and attractive smile she naturally draws friends to her, so that where Betty is, there is a happy smiling group. She is lighthearted, but not "light-headed," for she has proved herself dependable, steady, and responsible at all times. Her classmates' recognition of these traits can be seen by her election to club and class offices. In short, Betty is an all-round, well-balanced person,—a good scholar, a fine executive, a gay comrade, and a loyal friend.

*Major:* Mathematics

*Minor:* Mathematics

Class Treasurer '34, '37; Athletic Association; Drama Club; English Club; Mathematics Society, Self-Government Association (Councillor '35, '36); Welfare Club.



## HELEN GORDON BELL

*"There is a fair behavior in thee."*

Helen's life is dominated by high ideals, fine discrimination, and a wholesome philosophy. She has shown her class how to meet a student's daily obligations to herself and to those around her in a charming and intelligent manner. Her cheerfulness when all around her are complaining; her calmness when excitement rages everywhere; her silent enjoyment of many a situation—for these we remember and admire her. Her ability to lead has found expression in her work as section councillor and member of dance committees. Helen has pursued her studies with an enviable success which we all hope sincerely will follow every undertaking in the future.

*Major:* Shorthand-Typewriting

*Minors:* Accounting, Commercial Geography

Self Government Association (Councillor '36, '37); Commercial Club; English Club; Geography Club; Welfare Club.





## BERLAH MAY BLACKWOOD

*"Oh white soul of youth  
So amorous of duty!"*

In her quiet manner, Berlah never failed to take her part in college affairs and to be faithful to every duty. She greeted all with a friendly smile which, with her sincerity, won her a place in the hearts of her classmates. As head of the Poster Committee of the Self-Government Association during her Junior year, she helped the activities of the different clubs and classes by keeping the school informed about any events that were to take place. Her faithfulness and her artistic ability gave her office in the Art Club for two years and made her a member of the *Lampas* Staff.

*Major:* Art

*Minor:* English

*Lampas* Staff; Art Club (Treasurer '36, President '37); English Club; Welfare Club.



## EVE BRANDER

*"Elegant as simplicity,  
And warm as ecstasy."*

Do good things always come in little packages? Eve suggests an affirmative answer to this question. A girl of vivacity, smiles, and activity, she sees her objective and makes straightway for it. Having conquered, she proceeds on to higher and yet higher accomplishment. So may you continue, Eve! Our best wishes go with you!

*Major:* History

*Minor:* Geography

Drama Club; Geography Club; History Club; Music Club; Welfare Club.

## RITA BERNADETTE BUCKLEY

*"A merry heart doeth good like a medicine."*

"Sparkle" is the very word that describes Rita. She has made a definite niche for herself in the hearts of all who know her. Her infectious laughter and vivacious personality have gladdened us many a time. One cannot associate with Rita without catching some of her good spirits. Hers is a generous and impulsive nature; yet she has a goodly amount of poise and self-assurance. Always dressed in the best of taste and perfectly groomed, she presents a pleasing picture. Her ability to manage a class and to win the respect of her pupils is something to marvel at. Truly a gifted teacher, she is bound to be a success in her chosen field.

*Kindergarten-Primary Course*

Athletic Association; English Club; Music Club; Welfare Club (Aide).



## JEANNETTE CAGAN

*"It is good  
To lengthen to the last a sunny mood."*

Because of her constant and earnest efforts during her college years, we all feel certain that Jeannette will win success in her future work. Her interest in geography will, no doubt, lure her to far lands and make of her a great traveler. Jeannette is a good student, too, of history. Perhaps it is her study of history that has developed the democratic ideals which make for a strong champion in defending whoever or whatever she thinks right. Her fine executive ability has been valuable in club activities. Jeannette's cheerful face and merry laugh will long be remembered by her classmates.

*Major: Geography*

*Minor: History*

Athletic Association; English Club; Geography Club; History Club; Welfare Club.





### MARGARET MARY CALLAHAN

*"The secret of success is constancy to purpose."*

How many people looking at quiet "Peggy" are aware of the business-like activity which characterizes her to those who know her? Purposeful determination combined with keen intelligence has won for her a fine place on the honor roll throughout her college course. As the very capable president of the History Club in her Senior year, she has contributed much to the enjoyment and interest of that organization. Her unselfish nature and her loyalty make her a friend to cherish; her droll sense of humor and engaging naiveté make her a friend to love.

*Major:* American History

*Minors:* European History, Ancient History

*Lampas Staff;* Athletic Association; Classical Club; Drama Club; History Club; (President, '37); Mathematics Society; Welfare Club.



### MARY JACQUELINE CALLAHAN

*"I love her for her smile—her look—her way  
Of speaking gently."*

Although she is quiet and reserved in manner, Mary is one of the friendliest of classmates and truest of friends. Her readiness to aid in the performance of any task and her talent in achieving work smoothly have been noticeable in all our class activities. As a loyal member of the Music Club she has taken delight in the fascinating programs which that club has presented to the college. Mary has a happy faculty of doing anything graciously and pleasantly. Alert and keen in her intellectual pursuits, easy and courteous in her social contacts, steadfast and joyous in her chosen companionships, Mary has gained the admiration and love of all.

*Special-Class Course*

Athletic Association; Classical Club; Music Club; Welfare Club.



## PATRICIA CALLANAN

*"Wit to persuade and beauty to delight."*

"Pat" is a constant joy to her friends for her amazingly contradictory personality. We are aware of her sincere appreciation of the best in literature, her abiding love for the finest in music, the penetrating quality of her mind; and yet it is the refreshing youthfulness of her attitude toward life that sets her apart from the rest of the group. "Pat" has none of the false blasé pose of the so-called sophisticate, but finds joy in the smallest of the day's activities. Her unflinching enthusiasm, her infectious gaiety revealed by a humorous remark and a mirth-provoking chuckle, and particularly her evident pleasure in the society of her classmates make her the most delightful of companions, the most satisfactory of friends.

*Major:* English Literature

*Minors:* English Composition, English History

*Lampas Staff;* Athletic Association; Classical Club (Secretary '34, First Vice-President '36); Drama Club; English Club; Welfare Club.



## LUCY ESTELLE CONDON

*"It is a friendly heart that has plenty of friends."*

From her Freshman year Lucy has been active in the government of the class. She has true executive ability, the ability to make others work for her and to coordinate this work into a perfectly-organized whole. Eager, alert, and full of lively and spontaneous conversation, Lucy is a much sought-after member of any group. She can always be relied on to lend a willing and able hand to any enterprise, no matter how large or how small. Her classmates will remember her capable work in the offices she has held, nor will her friends fail to recall her warm interest and sincere enjoyment of their companionship.

*Kindergarten-Primary Course*

Class Vice-President '36, '37; Athletic Association; Drama Club; English Club (Treasurer '34); Science Club; Welfare Club.





### MARION GERTRUDE CONNOLLY

*"Wherever she stayed, joy would stay."*

Marion is one of the most friendly and sociable girls in the class. No one derives more satisfaction and happiness from her work, no one brings to it a greater love or a finer mind than Marion. Her faultless grooming and distinctive taste in clothes add to the charm of her personality. Yet we shall always remember best her unfailing good-nature. Gay, humorous, with a twinkle in her eyes and a pleasant word on her lips, Marion will never lack companionship, for she has within herself the spirit of joy.

*Kindergarten-Primary Course*

Classical Club; Drama Club; Music Club; Welfare Club.



### CARMELA EILEEN CONROY

*"Her ways are ways of pleasantness,  
And all her paths are peace."*

Carmela is one of those quiet and reserved girls who reveal the most fascinating qualities in the small circle of their select friends. Many of us have seen her performing the tasks of the day calmly and efficiently, and have remained unaware of the vivacity that underlies her tranquility of spirit; but to her chosen companions she has shown the merriness and love of laughter that are so truly hers. We all value Carmela for her integrity of character; we respect her for her intellectual powers; but we love her for her never-changing good nature and her sincere loyalty to her friends.

*Major: Shorthand-Typewriting*

*Minors: Accounting, Commercial Geography*

Commercial Club; English Club; Geography Club; Welfare Club (Aide '35).

## ELINOR PATRICIA CULLEN

*"A sweet, attractive kind of grace."*

Elinor's poise and charming appearance make her a perfect choice for any executive position. As President of the Junior class, she showed her ability to cooperate as well as to supervise, and made every girl proud of her class and willing to work for it. Her conversation is full of thought provoking ideas enlivened by a quizzical smile and dry humor. She is a stimulating member of any class because of her interest in her work and her ability in accomplishing that work. Her efficiency as an officer of the Self-Government Association has been proved by her able direction of its activities. A delightful acquaintance, a loyal friend, and a classmate to be proud of is Elinor.

*Major:* Art

*Minor:* English

Self-Government Association (Vice-President '37); Class President '36; *Lampas* Staff; Art Club; English Club; Welfare Club.



## CAROLYN FRANCES DACEY

*"A face with gladness overspread—"*

"Dot" has never attempted a task which she did not carry out to completion with speed and skill. As a student she has shown a diligence and a sincerity of effort that were a definite assurance of her success. To her social life she brought an ease and graciousness of manner born of a genuine interest in the achievements of others and a delight in good company. But to most of us "Dot" will be remembered for the youthful zest with which she approached all tasks. Somehow that gayety and liveliness were contagious, and we eagerly sought her company to enjoy the refreshing outlook on life that never found anything dull or uninteresting.

*Major:* Shorthand-Typewriting

*Minors:* Accounting, Commercial Geography

Class Secretary '34; Commercial Club (Treasurer '36, President '37); Drama Club; Geography Club; Welfare Club.





### MARGARET MARY DIXON

*"As merry as the day is long."*

"Peg" is one of the gayest, sprightliest, prettiest girls we have ever known. Filled with the joy of living, she faces all things with an optimism and confidence that recognizes no obstacles. We have no doubt that "Peg" will find success in her field, for her love of children and her adequate knowledge of her subjects give assurance of that. No place is ever dull when graced by this girl, for her vivid charm fascinates all with whom she comes in contact. Nor will this merriness ever cease to enchant us, for she has a genuine capacity for sincere friendship that grows with the years.

*Special-Class Course*

Athletic Association; Drama Club; English Club; Music Club; Welfare Club.



### RITA BARBARA DONNELLY

*"Laugh and the world laughs with you."*

Twinkling Irish eyes and the wit that goes with them are only two of Rita's claims to fame. For four years, she has held offices in the Athletic Association,—offices dependent not only on popularity but on scholarship as well. Recognition of her fine qualities won her a place on the *Lampas* Staff, where she demonstrated her energy and efficiency. Rita has the happy faculty of participating in all college and social activities, and yet she is never too rushed to join her friends in conversation,—or even in giggles. A hard worker when there is work to be done, and an equally hard player at other times,—a gay companion at all times, that's Rita.

*Special-Class Course*

*Lampas* Staff; Athletic Association (Director '34, Treasurer '35, Second Vice-President '36, President '37); Drama Club; English Club; Welfare Club.

## MARIE CECILIA DOUGHERTY

*"Would I were steadfast as thou art!"*

To be able to approach any duty with a clear understanding of the responsibility which it entails, to perform that task with competence and a minimum of worry, and to maintain at all times calmness and cheerfulness are Marie's gifts. Yet she is not merely an efficient organizer, but a gay companion simply bubbling over with joy on all occasions. She looks forward with glad anticipation to all that each tomorrow holds. We hope, Marie, that you will never lose your zest for life, and that you will face each problem with the courage which you have shown in college.

*Major:* Shorthand-Typewriting

*Minors:* Accounting, Commercial Geography

Self-Government Association (Councillor '35); Athletic Association; Commercial Club; Drama Club; English Club; Welfare Club.



## ALICE MAUDE DWYER

*"In action faithful and in honor clear."*

Alice has one of the most piquant natures we have known. Because she is shy, not everyone is aware of her vast fund of unusual humor. It is rich in its variety, subtle in its implications, and is directed as readily against herself as against others,—that is a true sense of humor! Those with whom she is intimate know also her loyalty, devotion, and generous spirit. Alice's presence adds much to the enjoyment of a class, for her emotions are mirrored in her expressive face, showing in rapid succession laughter, gravity, enthusiasm, dissension, agreement, thoughtfulness,—by which the trend of the lesson can be traced. Alice is going to get much joy out of life because she puts so much originality into it.

*Major:* Shorthand-Typewriting

*Minors:* Accounting, Commercial Geography

Commercial Club; English Club; Geography Club; Welfare Club.





### ALMA GRACE ELLIS

*"A cheerful life is what the Muses love."*

Life for Alma will never be dull. The ability to see and enjoy the humorous side of things brightens all she does. While her enthusiastic nature and vivacity make Alma an amusing companion, her sincere loyalty endears her to her friends. We feel sure her artistic ability will insure her success in her chosen field. May you never lose your unforgettable characteristics,—a tendency to quote Shakespeare, a love for superlatives, and an impish twinkle and smile.

*Major:* Art

*Minor:* English

*Lampas* Staff; Art Club (Secretary '35); Athletic Association; Welfare Club.



### ANNE CATHERINE FLINN

*"I had rather seal my lips, than  
Speak that which is not."*

From the day of her entrance into college, Anne has taken her place in all class activities with a poise and dignity that make her the pride and envy of her classmates. She has a rare quality of social ease that assures her filling any position with charm and grace. We feel instinctively that Anne is a born executive,—a girl who takes a genuine delight in arranging the details that make any affair run smoothly. But to her friends Anne shows a completely unexpected quality,—an impish Puck-like humor that finds expression in a ready wit, a merry twinkle in her lovely eyes, and a delightful quirk of her lips. A fine intellect, a warm charm, a lovely face, and a steadfast soul—how rich are Anne's endowments!

*Major:* Commercial Geography

*Minors:* Shorthand-Typewriting

Commercial Club; Drama Club; English Club; Geography Club (Secretary '35, Treasurer '36, President '37).

## ROSE MARIETTA FODALE

*"Demure and dignified is she,  
But full of fun as she can be."*

Rose is petite, yet she carries herself so well that she gives the appearance of stateliness; and she always has a happy smile. Sincerely loyal to her many friends, she is ever willing to help them in any way she can. There is an air of romance and joy about her. Her fine ability to act adds to her versatility. She is often called "the Duchess," because of the manner in which she carries herself. Quick and graceful, she is the personification of the ideal American college girl as she enthusiastically participates in all sports. Serious though Rose may be during serious hours of the day, she sparkles with joy and glee in her lighter moments.

*Major:* French

*Minor:* Spanish

Athletic Association; Drama Club; English Club; Le Cercle Français; Science Club; El Circulo Castellano; Welfare Club



## SYLVIA FREEDMAN

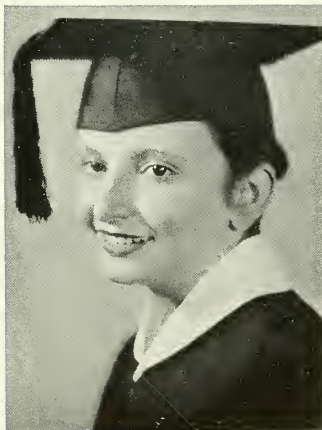
*"To strive, to seek, to find, and not to yield."*

Sylvia is one of the most alert and progressive girls in the class. Nothing is too small to capture her whole-hearted interest; nothing is too large to be conquered by her indomitable spirit. Her energy seems boundless, and she carries out each assignment with the same tirelessness whether it be at the beginning of the day or after a strenuous program. Sylvia's interests are many; she was a prominent member of the cast of the plays given by El Circulo Castellano, she has been an enthusiastic member of the Science Club, and her great interest in athletics is well known. It has been a stimulating experience to know such a dynamic personality as Sylvia.

*Major:* General Science

*Minor:* Art

Athletic Association; Drama Club; Science Club; El Circulo Castellano (Treasurer '36); Welfare Club.





### ELEANOR CORNELIE FREELEY

*"All the world's a stage!"*

No Drama Club meeting was ever complete, no play ever assured of success, unless Eleanor was present to contribute her keen knowledge of the drama and her whole-hearted efforts to the activities. She has such an enthusiasm for this art that she inspires all those with whom she comes in contact with a desire to know more about it. But her interests are not confined to the drama. Eleanor is a good student, an excellent dancer, and an able executive in club activities. We who know her best have a deep affection for her, because of her quick wit, her fund of bright anecdotes, her scorn of shirking any of the routine duties of committees, and her staunch loyalty to her friends.

*Major:* Commercial Geography

*Minors:* Shorthand-Typewriting

Athletic Association; Commercial Club; Drama Club; English Club; Geography Club; Welfare Club (Aide '35).



### DORIS ANNE GABULSON

*"Fair, and learn'd, and good as she—"*

"Dot," in her own quiet, unassuming way, has endeared herself to us as a true friend and a faithful student, as well as an active participant in extra-curricular activities. She is a model well worthy of imitation. Not only has she been very successful in school work, but she has shown some of us the grace and skill with which she dances. As a faithful member of the Commercial Club, Doris was always willing to lend a helping hand wherever it was needed. We wish you the best of luck, Doris, and may you go through life with the same charm and grace which were yours in college days.

*Major:* Shorthand-Typewriting

*Minors:* Accounting, Commercial Geography

Commercial Club; Drama Club; History Club; Welfare Club.



## CATHERINE GILLIGAN

*"A good mind possesses a kingdom."*

This year's president of the Self-Government Association deserves an A-1 rating on her ability to lead, her scholarship, and her likeableness. Catherine's earnestness, sincerity, and intelligence make her popular with her teachers, but her delightful sense of humor which is marked by some remarkable punning, and her real talent for friendship endear "Giggy" to her classmates. Natural ability explains to a great extent her success in school and in extra-curricular activities, such as the Girl Scouts, the Biology Society, and the Science Club, but hard work, resourcefulness, and consideration for others are additional reasons. We are all proud of this outstanding member of the class and wish her the best of luck.

*Major:* Chemistry

*Minors:* Physics, Biology

Self-Government Association (Second Vice-President '36; President '37); Class Vice-President '34; Athletic Association, Biology Society (Secretary '36); English Club; Science Club (Secretary '35); Welfare Club.



## ARLINE BEATRICE GLEN

*"May her radiant smile and friendly chatter remain ever the same."*

No matter how hard the task that confronts Arline, she is always ready, heart and soul, to do her part. Equipped with the talents of the born teacher, she has that quality which is the basis of all true instruction,—a deep and lasting love for children,—a love which they return in full measure. Arline's skill in hand work is well known, for her swift knitting-needles have produced lovely articles that are distinctively hers. Her efficient and cheery manner, her winning smile, and her staunch loyalty to her friends have made Arline a beloved classmate.

*Major:* History

*Minor:* Geography

Athletic Association; Geography Club; History Club; Welfare Club.





### LENORE ESTELLE GORDON

*"Simplicity is the keynote of her character."*

Lenore has a very quiet, simple manner, yet to know her is to admire her. Though she is so quiet, she cannot conceal her virtues from us. Beneath the appearance of reserve, we find that Lenore is coöperative and friendly. Though she never intrudes on anyone, she is always present when there is an opportunity to do something for others. These traits of Lenore's character make her a valued member of our class.

*Kindergarten-Primary Course*

Athletic Association; English Club; Music Club; Welfare Club.



### MARY ELIZABETH GRAHAM

*"'Tis good to be merry and wise."*

One of the most vivacious girls in the class, Mary unites with a well-informed mind and a clear understanding the capacity and desire for friendship. She has much to offer her friends. She is a master of the art of pleasant banter. Her sunny smile and buoyancy of spirits give piquancy to her personality. It is not the cheeriness of her nature alone that wins her friends. Generosity, sympathy, loyalty and discernment mark Mary as a rare companion. We admire her integrity, but more important, we are grateful for her eager willingness to share in our interests and activities.

*Major: Shorthand-Typewriting*

*Minors: Accounting, Commercial Geography*

Commercial Club; Drama Club; English Club; Welfare Club.

## MARY GREEN

*"A merry heart maketh a cheerful countenance."*

One of the most agreeable members of the class is this pleasant girl. Possessed of a highly idealistic nature, Mary is happiest in the realms of the poets, particularly Wordsworth, Tennyson, and Robert Frost. Also she writes with a lyrical pen when duly inspired. Her great love for human nature finds expression in a very understanding and sympathetic personality. She is an enthusiastic participant in sports, performing admirably in all. Finally, not the least among her diverse interests is her joy in fine music, for by song or symphony Mary's spirit is uplifted to the heights.

*Major:* English Literature

*Minors:* English Composition, English History

Athletic Association; Drama Club; English Club; Welfare Club.



## SADIE MURIEL GREENBERG

*"Heaven such grace did lend her,  
That she might admired be—"*

Serene, gracious, easy in manner, and graceful in carriage, Sadie is a picture of the poised and cultured college girl. With fine discernment she has assimilated all that a real college life should give, and stamped it with the mark of a vivid personality. There is never an occasion when she does not know exactly what to do and how to do it. Yet this poise is accompanied by a happy, friendly demeanor that reveals the youthful quality of her charm. Sadie loves a pleasant chat with a congenial group, and a group gains much by her presence. A rare combination of dignity and youthful high spirits,—that is Sadie.

*Kindergarten-Primary Course*

Lampas Staff; Music Club; Welfare Club (Group Leader '36)





### EVELYN DOROTHEA GRIFFIN

*"I am the master of my fate."*

Evelyn will be remembered as a fun-loving girl with a happy smile and a hearty laugh. Combined with a vivacious spirit was a strong will which caused her to defend her views at all times, no matter what the opposition might be. Her frank and amusing way of telling just what she thought was refreshing and entertaining to her classmates. Her artistic ability has led her to choose to teach in the field of art, and has made her an Assistant Art Editor on our *Lampas* Staff.

*Major:* Art

*Minor:* English

Self Government Association (Councillor '35); *Lampas* Staff; Art Club; English Club; Welfare Club.



### YVONNE ALICE HABERT

*"Made up of wisdom and of fun,  
Medley of all that's true and clear"*

Fortune has indeed smiled on Yvonne, for she has been showered not only with the talents, but with the ambition and perseverance that spur her on to make the best use of her abilities. She has a mind that reaches the heart of a problem and reasons it out to a successful conclusion; and the unflinching spirit that keeps that mind ever refreshed. Her dramatic instinct, her witty remarks, her supreme good nature, and her simple friendliness have made her stand out as one of the best-liked members of the class. Yvonne's achievements will not end with her graduation, but through her radiant personality she will go on to greater fields of accomplishment.

*Major:* Biology

*Minor:* Chemistry

Aquarium Club; Athletic Association; Biology Society (Secretary '37); Drama Club; Le Cercle Français; Welfare Club (Aide '35, Group Leader '36).

## IRENE ANNE HENNESSEY

*"Gentle in manner, firm in reality,"*

Irene's life is full, for her interests are many. She is an excellent scholar, and yet she delights in all forms of out-door activity. Her skill in handling a sailboat is a cause of great admiration on the part of her friends. Her readings and interpretations of French poetry are remarkable. Her gay manner has made her the center of a small group of intimate friends, and her quiet and gentle dignity has assured her a high place in the class. Serenity, poise, and forward-looking thoughts will make Irene's success in the years to come as great as it was in the class.

*Major:* French

*Minor:* Spanish

Athletic Association; English Club; Le Cercle Français; El Circulo Castellano; Welfare Club.



## MARY PATRICIA HERNON

*"With a light word she took  
Our hearts in thrall."*

Mary is one of the most stimulating and charming members of the class. She has achieved the rare quality of balance in her personality. She blends perfectly the seriousness and the gaiety, the sociability and the reserve, the self-confidence and the humility that make for the truly all-round individual. Mary is the supreme raconteuse of the class. Her inimitable tales are characterized by a lively wit that provokes laughter yet never wounds, and a serious expression that is belied by a voice which seems to have difficulty in suppressing that mirth with which she is so full. Her graciousness and poise, her sincerity as a friend and cheerfulness as a comrade, have gained Mary a secure place in our hearts.

*Major:* Shorthand-Typewriting

*Minors:* Accounting, Commercial Geography

Commercial Club; Drama Club (Treasurer '36); English Club; Welfare Club.



## MARY BORGIA HUTCHINSON

*"She is gay and gladsome,  
Has a laughing face  
And a heart as sunny,"*



No member of the class deserves her widespread popularity more than "Hutchie," for no one has been so gay and happy in the midst of many duties. Perhaps she had moments of discouragement, but she never failed to have a pleasant word or a sunny smile for whomever she met. Her class has shown its confidence in her reliability and faithfulness by placing her in charge of Photography for the *Lampas*. In this position Mary excelled. Her cheerful answers to our innumerable questions and her helpful advice made her a favorite with us all. We shall remember you, "Hutchie," as one who knew how to be jolly and when to be serious.

*Major:* Commercial Geography

*Minors:* Shorthand-Typewriting

Self-Government Association (Councillor '34); Class Vice-President '35; *Lampas* Staff; Commercial Club; Geography Club (Treasurer '34, Vice-President '36); Welfare Club.

## ANNETTE NAOMI KANTER

*"How sweet and gracious even in common speech"*



Annette is one of those quiet members of our class who is so integral a part of the class. Possessed of outstanding scholarship, Annette forges ahead toward a given objective with perseverance and courage. Yet in her ambitions she does not neglect to reveal the cheerful and pleasant side of her nature, a side that wins her countless loyal friends. Her kindness, her tolerance, her willingness to help, and her rich sense of humor have radiated to everyone with whom she has come in contact. We feel sure that Annette's accuracy and precision of knowledge, with her graceful and easy manner, will go far to gain her success in her teaching.

*Major:* Shorthand-Typewriting

*Minors:* Accounting, Commercial Geography

Athletic Association; Commercial Club; Drama Club; English Club; Welfare Club.

### LILLIAN KANTROVITZ

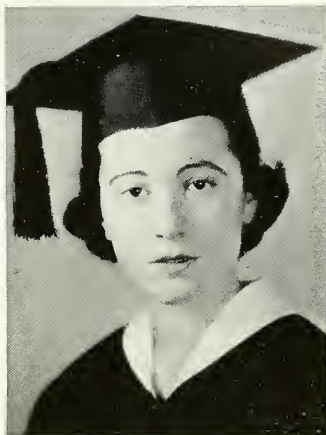
*"Time shall not extinguish the flame  
of her enthusiastic spirit."*

With an intense interest in current literature, drama, politics, and world relationships; with an ability to form definite opinions and to defend them sincerely; with the driving force of a serious purpose and conscientious effort, Lillian is our representative of those who want the best in life and education and are anxious and willing to share it. Lillian's creed may well be, "Let me speak my mind," but it is a mind that has been ever alert and receptive, a mind that has weighed and balanced, then assimilated.

*Major:* American History

*Minors:* Ancient History, European History

Athletic Association; Classical Club; Drama Club; English Club (Secretary '36); Le Cercle Français; History Club.



### ADELE ROSE KAPLAN

*"None named thee but to praise."*

Clothes with an air of sophistication; a smart, well-groomed appearance; a quiet dignity;—all this, and more, stands for Adele as we know her. Her quiet manner and sunny smile make her a very likeable girl,—a person with whom to seek friendship. In her calm, quiet way, she is always ready to do the task set before her. Her poise and perseverance are qualities to be envied. With her business-like efficiency, and her fine sense of humour, she is certain to meet with success in any field of endeavor.

*Kindergarten-Primary Course*

Athletic Association; English Club; Music Club; Welfare Club.





### RITA MARIE KELLEY

*"She was active, stirring, all fire—  
Could not rest, could not tire."*

Everyone who knows "Kell" has admired her for the persistence and energy she has displayed in all her undertakings, from her entrance into the college through her busy Senior year. No matter what she was asked to do, she was always ready. Her outstanding quality of sincerity in giving her best has been shown in her efficient work on various committees, especially as a Welfare Club aide, in which capacity she did some remarkable work. We admire also her fine sportsmanship in the A. A. Those of us who knew her intimately were amazed at her indomitable energy in extra-curricular activities. Rita, with her steadfast friendliness, generous willingness to cooperate, and, most of all, her comradely spirit, has been a real friend and a loyal classmate.

*Major:* Shorthand-Typewriting

*Minors:* Accounting, Commercial Geography

Athletic Association; Commercial Club; Drama Club; English Club; Music Club; Welfare Club (Aide '37).



### KATHERINE MARY KELLY

*"Her gesture, motion, and her smile,  
Her wit, her voice, my heart bequile."*

Who among us has not had some personal contact with Kay's sparkling personality and strong leadership? Whether she were directing a play, running a dance, or working out plans for a club meeting, her charm, her efficiency, and her ever-present sense of humor always were evident. In her studies, too, she has shown her ability to carry a thing through successfully, giving her best efforts to the task at hand. With her versatile talent and her sincere interest in the welfare of her class, she has been one of the outstanding girls of the Class of '37. Surely she will go far on the road to happiness and success, and with her go our best wishes.

*Major:* Shorthand-Typewriting

*Minors:* Accounting, Commercial Geography

Athletic Association; Commercial Club; Drama Club; English Club; Welfare Club.



## EILEEN MARIE KILDUFF

*"With thy clear keen joyance, languor cannot be."*

There is an old ballad which says that "in the lilt of Irish laughter you can hear the angels sing." That's our Eileen, whose merry laughter has brightened many a dull day. Generous to a fault, sympathetic, conscientious, loyal, and gracious is our Eileen. Only those who know her best can appreciate and pay tribute to her depth of character and her fine courage. May she continue to brighten the lives of her friends and associates wherever she goes!

*Major:* Shorthand-Typewriting

*Minors:* Accounting, Commercial Geography

Athletic Association; Commercial Club; Drama Club;  
Music Club; Welfare Club.



## DOROTHY JEANNE LANDERS

*"Learned without affectation."*

For four years we have sought in vain to analyze Dorothy's charm, and we discover that she grows ever more elusive. We are warmed by her friendliness; we are baffled by her reticence. She sits among us, quiet and unobtrusive, and then startles us with a vivid point drawn from her vast reading, or inspires us with wonder at the matchless ease with which she expresses her thoughts in writing. And yet we remember these talents only as the background of that quality which is the source of her charm,—that delightful humor, so delicate in its whimsy, so pungent in its flavor, so rapier-like in its keenness, and above all, so mellow in its understanding. "Other women cloy the appetities they feed; but you make hungry where most you satisfy."

*Major:* English Literature

*Minors:* English Composition, English History

Lampas Staff; Classical Club; English Club; Welfare Club.





### FRANCES ROBERTA LAPPIN

*"She gave with zest, and she gave her best."*

It was evident from Frances' first days in our college that she would choose to teach in the kindergarten-primary school, and a worthy choice it is, for she is loved dearly by the younger children and is well adapted to teach them. Her outstanding abilities in dramatics, music, and dancing give her a fine equipment with which to work in the lower grades. Motivated by her intense interest in children and in finding the best methods of teaching them, she has proved to be a most dependable and conscientious student. Among her friends Frances will be remembered as a gay, laughing girl who delighted in dancing and skipping about through class-rooms and corridors after study time was over.

*Kindergarten-Primary Course*

Athletic Association; Drama Club; Music Club; Welfare Club.



### GENEVIEVE LAWLER

*"Whatever is worth doing at all,  
is worth doing well."*

Throughout her college life, "Gen" has taken an interested and spirited part in all class activities. Possessed of fine executive ability, she has been a capable organizer of teas, Welfare Club work, and other important functions. Her definite flair for smart clothes, her rapid and decisive speech, her appealing, low, husky voice, all have made "Gen" stand out as a distinctive personality. We shall miss that ardent enthusiasm combined with fine ability which made her contribution to the class so unusual. We know, however, that her fine talents will assure her success in the work which she has chosen.

*Kindergarten-Primary Course*

Geography Club; Music Club; Welfare Club (Aide '34, Group Leader '35, '36, Executive Board '37).

## DOROTHY KENDRICK LENNON

*"There was a soft and pensive grace  
A cast of thought upon her face."*

Dorothy is one whose unassuming attitude and sweet simplicity have endeared her to all who know her,—a shy little girl whose innate modesty and even temper are outstanding attributes. She is a girl with a charm all her own,—a gentle charm that will long be remembered by her friends. With all these attributes she has an amazingly keen sense of humor, a slow drawl, and quaint gestures that make her anecdotes unique. Inclined to be reserved and retiring, never forward or boisterous, "Dot" is a quiet-natured person whose high ideals of generosity and unselfishness are never lowered. Angelic of face and with a disposition to match,—that's Dorothy.

*Major:* English Literature

*Minors:* English Composition, English History

Drama Club, English Club, History Club; Science Club; Welfare Club.



## ESTA BEATRICE LEVINE

*"Thoughtful, patient, helpful, kind—  
Friends like these are hard to find."*

Her carefree manner, always tempered by thoughtfulness for others, makes Esta a person in whose company one is always happy and at ease. No task, however difficult, can disturb her serenity. She is always willing to lend a hand, ever ready to aid when an occasion arises. Her capacity for work is exceeded only by her delight in performing that work. Her helpfulness is an expression of her innate generosity. She radiates friendliness with the smile in her dark eyes. Times may change, but Esta remains unchanged, with the same steady and reliable traits of character she brought to the school when she first entered, but now deepened and more firmly established.

*Major:* French

*Minor:* Spanish

Athletic Association; Drama Club; English Club; Le Cercle Français; History Club; El Circulo Castellano; Welfare Club.





## MARGARET CAROLINE LIMMER

*"To those who know thee not, no words can paint  
And those who know thee, know all words are faint."*

Margaret is one of those rare people who are fortunate in possessing a proper sense of values. Her scholastic achievements have been outstanding, but marks are not her objective. She is rather reserved in a large group, so that some, perhaps, do not wholly appreciate her; but with her friends she exhibits a delightful sense of humor, and an infectious enthusiasm for everything she does. An intelligent appreciation of contemporary literature and politics, no small musical talent, and an ever-ready stock of information on almost any subject are merely a few of the characteristics of Margaret's versatile personality. She has charmed us all with her fascinating chuckle and the lovely red hair which seems to emphasize her refreshing zest and spirit.

*Major:* Chemistry

*Minors:* Physics, Mathematics

Self-Government Association (Councillor '37); Science Club (Secretary '35); Welfare Club (Aide '35).



## DORIS GERTRUDE LORD

*"A maid of grace and complete majesty"*

Whenever Doris is near you may hear her soft voice asking, "May I help you?" Whether it be assisting in planning a Self-Government affair, or just pinning an obstinate collar on a gown, Doris is always on hand to lend her gracious and skilled aid. She is a delight to look upon, for her taste in clothes and her graceful carriage make her stand out in any group. Dependable, generous, courteous,—Doris has considered all her fellow classmates as friends, and in doing so has taken care never to injure their feelings by any unkind word or deed. For this kindly consideration she has won the respect and love of all.

*Major:* Shorthand-Typewriting

*Minors:* Accounting, Commercial Geography

Athletic Association; Commercial Club; Drama Club; Music Club; Welfare Club.

## ROSE RITA LYNCH

*"'Tis the songs you sing and the smiles you wear  
That make the sunshine everywhere."*

On first meeting Rose, one could not help being attracted by her bright eyes. In them one saw signs of the quick, brilliant mind which made it so easy for her to grasp her school studies. Her deep love of music and her lovely voice made it possible for her to give happiness and entertainment to her classmates. Aside from the enjoyment which she conferred through her musical ability, Rose's keen wit, frankness, and dry manner of making humorous remarks brought many a moment of mirth to those around her. Her earnestness and desire to do her best will mean a great deal in making her life a success.

*Major:* Music

*Minor:* Mathematics

Classical Club; Mathematics Society; Music Club; Welfare Club.



## ROSALIE PATRICIA MACKLE

*"Zealous yet modest"*

Although Rosalie has been among us for four years, she always has been so unassuming that few of us have had the opportunity to appreciate her true wit and humor. To all who have had the good fortune to be associated with her, she has proved herself a staunch friend and a pleasant companion. Her interest in the Science Club is revealed by her ready willingness to participate in its activities at all times. We shall remember Rosalie for her loyalty to the best ideals of her chosen profession, and for the simplicity of a fine spirit and a quiet charm.

*Major:* General Science

*Minor:* Mathematics

Athletic Association; Mathematics Society; Science Club; Welfare Club.





### MARIE BEATRICE MAGGIORE

*"A friendly smile and a friendly way"*

One has to know Marie to appreciate fully her friendly personality. Sincerity and sympathetic understanding are qualities which mark not only her teaching but her friendships. Modest and unassuming, Marie has nevertheless gained a definite place in class activities. Her presence is a soothing influence on an excited group, for her serene calm is rarely ruffled or lost. Marie has a sweet voice which was heard to advantage in the operetta, *Iolanthe*, given in our Sophomore year. May you always retain that tranquility of spirit so unusual in this rushing world, Marie.

*Kindergarten-Primary Course*

French Club; Music Club; Welfare Club.



### MARIE ELIZABETH MAGUIRE

*"Thy honor doth stand as firm as faith,  
Thy soul is wise and virtuous."*

All who know Marie heartily agree that she is one of the most genuine of girls. A capable student, a great lover of sports, an able executive, Marie has proved her versatility and her enthusiasm along many lines. There is something so fine about Marie's attitude of responsibility toward anything which she undertakes, so gentle and modest in the success which has been hers, so unflinchingly true in her relations with her classmates, that we unconsciously look up to her as a shining example of the best in modern girlhood. Marie's cheerful and sunny disposition and her willing coöperation have gained her many devoted friends.

*Major: Shorthand-Typewriting*

*Minors: Accounting, Commercial Geography*

Athletic Association (Secretary '36, First Vice-President '37); Camera Club; Commercial Club (Secretary '37); Drama Club; English Club; Science Club; Welfare Club.

## MARJORIE KATHERINE MAGUIRE

*"Sincerity and truth are the basis of every virtue."*

Throughout her college years, Marjorie's cheerful, quiet manner has been evident. She might well be called a "power behind the throne," for she always seemed to be present at the right moment. Even if the responsibility was not hers, she was always willing to help. Wherever there was work to be done, Marjorie could be found,—whether it were washing dishes at a Self-Government Tea or cutting cake at a Commercial Club meeting. Class affairs would not be complete without Marjorie's ready wit and helping hand. Her even disposition, and calm, cool manner will long be remembered and admired.

*Major:* Shorthand-Typewriting

*Minors:* Accounting, Commercial Geography

Athletic Association; Commercial Club; Drama Club; Welfare Club.



## HELEN GENEVIEVE MAHONEY

*"The pure influence  
That dwells in a girl's heart  
And beams from her quiet eyes."*

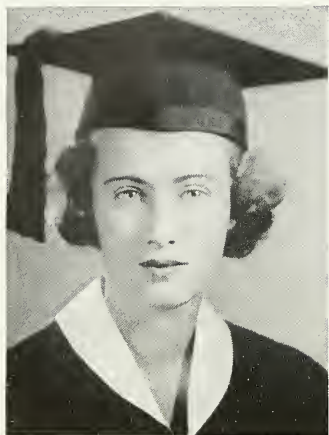
Helen belongs to the group of girls in the class who were outstanding for their quiet accomplishment of the duties of the day. Her face is lighted, however, by one of the most appealing smiles, that begins with a twinkle in her eyes and ends with a humorous quirk of her lips. She is always on the alert to answer the questions of both her fellow classmates and her instructors. Whatever the occasion, Helen can be depended upon to enter into it with whole-hearted enthusiasm. The keenness of her humor is evident in the rapidity of her retorts,—such lively wit being a distinct surprise in view of her reserve. Helen's fine scholarship and her excellent artistic ability have made her an invaluable member of the *Lampas* Staff.

*Major:* Art

*Minor:* History

*Lampas* Staff; Art Club; Welfare Club.





### MARIE FRANCES MAHONEY

*"And she was fair as fair could be."*

Marie is so blessed with many talents that it is difficult to capture the essence of her personality in a few words. She combines in just the right proportions the skill of the artist with the precision of the scientist, the seriousness of the scholar with the gayety of a madcap. Her outward fairness is given added richness by an inward fineness of character that finds expression in the highest ideals of conduct. Her pleasing voice, her gentle actions, and her warm humor make Marie a pleasant companion; her loyalty and understanding make her a true friend. She is, indeed, "lovely to look at, delightful to know."

*Major:* General Science

*Minor:* English

Art Club; English Club; Science Club; Welfare Club.



### AGNES MARY MARSH

*"One who saw life steadily, and saw it whole"*

In Agnes we recognize the rare gift of perfect harmony. Natural ability combined with conscious effort place her high in scholastic attainment. Reliable and smoothly efficient in every undertaking, she compels our whole-hearted admiration. If our admiration is tinged with envy, it is because Agnes possesses the quality which we have all striven to attain,—graciousness. Beneath her dignified exterior is an irrepressible spirit of mirth, revealing itself in an infectious laugh and in an aptitude for humorous imitations. Gracious, lovely, and gifted, Agnes will find high place in whatever profession she chooses.

*Major:* English Literature

*Minors:* English Composition, English History

Self-Government Association (Councillor '36); *Lampas* Staff; Drama Club; English Club; Geography Club; Welfare Club.



## JOSEPHINE ANN MARTIN

*"Light of step and heart was she."*

One of the busiest and most active girls, "Jo," as an officer in the Drama and in the Welfare Club, and an outstanding member of the Commercial Club, has proved that initiative and responsibility are among her foremost qualities. Her quickness is as noticeable in the classroom as on the athletic field. There is no faltering or hesitancy in "Jo," for she gains her objectives with the most direct and skilled methods possible. Notwithstanding her great abilities, she has an agreeable and modest demeanor. Her infectious smile, with her eyes "all crinkled up," will be recalled as the outward sign of an inward good nature.

*Major:* Shorthand-Typewriting

*Minors:* Accounting, Commercial Geography

Self-Government Association (Councillor '35); *Lampas* Staff; Athletic Association; Commercial Club; Drama Club (Secretary '36); Music Club; Welfare Club (Second Vice-President '37).



## ELEANOR FRANCES McEENEY

*"She is pretty to walk with, and witty to talk with,  
And pleasant, too, to think on."*

Eleanor is so filled with exuberant spirits, so delighted with a variety of pursuits, that we are irresistibly drawn to her. We have never been disappointed, for whether it be in the solution of a difficulty or in the carefree exchange of pleasant chat, Eleanor has entered into the spirit of the occasion with all the keenness of mind and liveliness of humor that are hers. In truth, it is with some degree of surprise that we realize the depth of Eleanor's knowledge of the classics, for she has a vivacity and simplicity which are the mark of youthfulness. Perhaps the secret of her attractiveness lies in the possession of that charm with which "you don't need to have anything else."

*Major:* English Literature

*Minors:* English History, English Composition

Classical Club (Treasurer '34, '35); English Club; Welfare Club.





### HELEN PATRICIA MCKAY

*"A dancing shape, an image gay,  
To haunt, to startle, and waylay"*

With a keen and inquiring mind, a deep and abiding loyalty toward her friends, and a vivacious personality that has added zest and joy to any occasion, Helen has found a secure niche in the memories of our class. Her quick rush of words, her sparkling wit and infectious chuckle, and her mobile and expressive face make her the spirit of Youth incarnate. Somehow she has brought gayety and ardor to all her activities, and her friends are warmed and stirred by her glowing interest in life in general. Helen's disarming candor is a bit startling at times, but her eagerness and friendliness express the quick sympathy and the fine understanding that mark her as an individual. Our class would miss the brilliant, vivid, warm charm of Helen,—the laughing and provocative "Peter Pan."

*Major:* Shorthand-Typewriting

*Minors:* Accounting, Commercial Geography

*Lampas Staff;* Commercial Club; English Club; Welfare Club.



### EVA MAY McLEOD

*"Who mixed reason with pleasure,  
and wisdom with mirth"*

Our Eva is generous of herself. She cannot do enough for those who are fortunate enough to be numbered among her friends. In her own quiet way she has won a place in our hearts forever. We shall never forget the merry laugh, the gracious spirit, the gentle charm of this girl who has proved to be not merely a good student but a true and loyal friend. All success to you, Evie, for we know you will go far in the profession you have chosen.

*Major:* Commercial Geography

*Minors:* Shorthand-Typewriting

Athletic Association; Commercial Club; Geography Club (Secretary '35); Welfare Club.

## LOUISE WATERMAN McLEOD

*"The quiet mind is richer than a crown."*

Louise welcomes each day's work with an enthusiasm that often puts the rest of us to shame. Whatever may be the problem she gives to it the untiring zeal of a lively mind. The crown of her achievements is, however, on the modesty with which she completes her work. There is no trace of the arrogantly successful in Louise, but rather the quiet simplicity of the truly gentle soul. She sees what is to be done and does it without expecting any public acclaim. For her ability, her unfailing courtesy and friendliness, and her reserved charm, Louise has won the respect and high regard of her class.

*Major:* General Science

*Minor:* Mathematics

*Lampas Staff; Drama Club; Mathematics Society; Science Club (Vice-President '36, President '37); Welfare Club.*



## MARIE HELEN MICHAELS

*"And still her voice is in my dreams  
To witch me more and more."*

Marie is one of the most talented members of the class. Her scholastic attainments are of a high order, and her initiative and executive ability have received recognition both in club work and in class offices. To these qualities she adds a voice of such charm and sweetness that the college will be the poorer when she no longer graces the Music Club programs and operettas. Her willingness to share her gifts, her gay and vivacious manner, her ever-present fund of tales, and her frank enjoyment of the company of others have made her a valued member of our class.

*Major:* Music

*Minor:* Mathematics

*Class Secretary '36, '37; Music Club (Secretary '34, Treasurer '35, Vice-President '36, President '37); Welfare Club (Aide '34, Treasurer '35).*





### GERTRUDE MIKELS

*"It's easy to be nice, when you're naturally nice."*

We shall always find joy in recalling "Gert," who has been, throughout her college life, a pleasant, helpful classmate, with no affectations of any sort. Sincerity and frankness characterize her, and she is not only admired but envied for her ability always to be herself. She is a girl of high ideals, who works conscientiously towards her goal. Moreover, she is versatile, for her scholastic ability is enriched by an active social life, which includes directorship at camps and clubs. Those who have known "Gert" well, know that she will remain a true friend!

*Major:* English

*Minor:* American History

*Lampas Staff; Athletic Association; Drama Club; English Club; Le Cercle Français; Welfare Club.*



### MARGARET MARY MORANVILLE

*"Always the quiet, modest worker with a willing heart"*

Margaret has been an outstanding student throughout her college career, as well as an efficient worker on the *Lampas* Staff and the capable buyer for the college store. Despite these responsibilities, she still finds time to engage in the athletic activities she enjoys. Although a quiet, reserved girl, Margaret will always have a large circle of friends who admire her for her reliability, who love her for her sincerity, and who enjoy her friendliness. We, who have benefited from our association with her, wish her all success in her chosen vocation.

*Major:* Mathematics

*Minors:* Mathematics, Physics

*Lampas Staff; Athletic Association; Mathematics Society; Welfare Club.*

## BEULAH FORDHAM MORSE

*"With such a comrade, such a friend,  
I fain would walk to journey's end."*

There is something in Beulah's quiet, friendly manner that invites confidence in her ability to understand the problems of others and to give ready assistance in the solution of these perplexing questions. Those who have seen the ease with which she masters the most intricate phases of higher mathematics know Beulah's intellectual powers; those who have observed her agility and skill in basketball will long remember her athletic achievements. The fortunate few who have been numbered among her intimate friends will never forget her warm sympathy, her mellow humor, and above all, the straightforwardness that makes Beulah a rare companion.

*Major:* Mathematics

*Minor:* Mathematics

*Lampas Staff; Athletic Association; Mathematics Society; Welfare Club.*



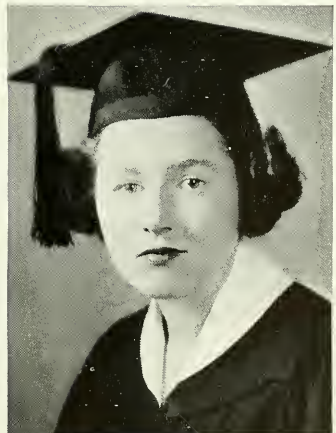
## RITA JANE MULROY

*"More brightly shalt thy spirit shine  
Since grace and beauty are also thine."*

Rita is a girl loved by all for her high spirits and sociability. She is ever ready for fun and is full of the love of living. Her happy smile and contagious laugh are a joy to all who know her. But to balance Rita's light-heartedness, she has a quick, keen mind, able to cope with any difficult problems that may confront her. We shall always remember Rita as one of a quintet of congenial students. Bright is the word for Rita,—her lovely hair, her gay smile, and her cheerful disposition.

*Special-Class Course*

*Class Treasurer '36; Athletic Association; English Club; Music Club; Welfare Club.*



## KATHLEEN ELIZABETH MURPHY

*"A face with gladness overspread"*

Quick in repartee, alert to the humor of any situation, ever ready to burst into genuinely merry laughter, Kathleen is the very spirit of good nature. However, her volatile spirits are but a small part of one of the most generous and sympathetic characters in the class. No one ever found her lacking in the role of an understanding listener, nor failing in the more material acts of generosity. Kathleen simply radiates friendliness; spontaneously she becomes a gay member of any group, for she loves companionship. Such a happy soul must be indeed the reflection of a clear and straightforward view of life.

*Major:* Shorthand-Typewriting  
*Minors:* Accounting, Commercial Geography  
Athletic Association; Commercial Club; Drama Club;  
Music Club; Welfare Club.

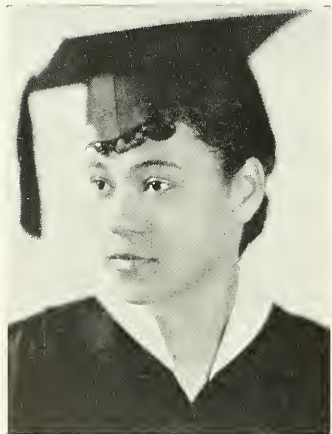


## CELESTINA MYRICK

*"A true friend is forever a friend."*

Friendly, sincere, and conscientious, "Celes" has taken her place quietly among us. We have found her eager for service and always willing to cooperate. She has been faithful and earnest in giving her best to her work, even to those duties and tasks which bring no apparent reward. Intensely loyal to her intimate friends, "Celes" shows her friendliness by her warm smiles and generous attitude. She will remain in our memory for the enthusiasm with which she meets every undertaking and for her cheerful manner and happy smile.

*Major:* General Science  
*Minor:* Spanish  
Science Club; El Circulo Castellano; Welfare Club.



## ELIZABETH KATHERINE NAGLE

*"Her voice was ever soft, gentle, and low."*

Some voices attract our attention, first by their unusualness of sound, and second by the suggestion of unusualness in the person possessing them. Such a voice is Betty's. Its full resonant quality is characteristic of her hearty good nature. Her ready throaty laughter indicates that she enjoys everything wholeheartedly. There is no timidity, no half-way manner about her actions. She has always been direct, enthusiastic, and responsive. That is why she is welcomed everywhere as the merriest of companions. Her success in her studies and her ability as a social leader, shown by the many dances she has helped to arrange, prove her capability and give her an "all-round" personality.

*Major:* Shorthand-Typewriting

*Minors:* Accounting, Commercial Geography

Athletic Association; Commercial Club; Drama Club; Welfare Club.



## HEDWIG MARIE NATH

*"Nothing great was ever achieved without enthusiasm."*

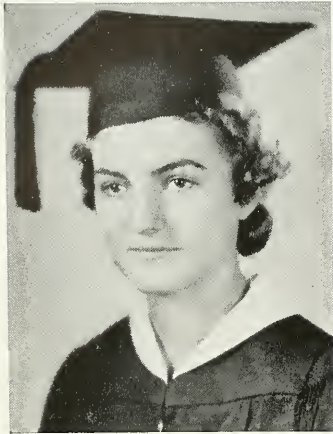
Enthusiasm is in itself a valuable asset, but when combined with sincerity, capacity for friendship, an appreciative sense of humor, and genuine executive ability, the result is a combination that is truly enviable. As President of the Welfare Club, Hedwig has had definite opportunities to prove her powers of leadership as well as her deep sympathetic understanding of the less fortunate. Through her many "Scout" activities she has been able to transmit to younger girls a fine sense of values. Pleasant in her manner, pointed in her speech, modest notwithstanding her talents, Hedwig epitomizes the idea that a friend worth having is a friend worth keeping.

*Major:* Biology

*Minor:* Chemistry

Athletic Association; Biology Society; Welfare Club (President '36).





### DOROTHY SARAH NOONAN

*"Earnest, active industry is a living hymn of praise."*

Though reserved in manner, Dorothy has a definite place in our college life. As a student she reveals the perseverance and diligence that are the marks of one who seeks perfection in all undertakings. Her gentle manner and pleasant voice will make her loved by the children she will teach. Because of her modest demeanor, few of us have really penetrated her reserve to appreciate her true individuality. We do know, however, that the class will miss Dorothy's friendly and serene influence.

*Kindergarten-Primary Course*

Athletic Association; Music Club; Welfare Club.



### ELEANOR NOONAN

*"The glory of a firm, capacious mind"*

We shall always remember Eleanor for her love of good fun, which is tempered by a keen sympathy and understanding. Hers is a well-rounded life, for though she maintains a high scholastic standing through diligent application, yet she manages to have a full social life by being present at all the "proms" and club meetings. Her executive ability is evidenced by her fine work as the Vice-President of the Drama Club, and as the Associate Editor of the *Lampas*. Eleanor's life will always be full, because she puts all the power of a fine intellect, the energy of a healthy body, and the enthusiasm of an ardent spirit into whatever she does.

*Special-Class Course*

Self-Government Association (Councillor '36); *Lampas* Staff; Drama Club (Second Vice-President '35, First Vice-President '36); Welfare Club (Aide '34, Secretary '35).



## SARA CECILY OGINZ

*"There is likewise a reward for faithful silence."*

Quiet, unobtrusive, serious of purpose, farsighted, Sara will achieve success, accompanied by the satisfaction and peace of mind that come only to those who are willing to work steadfastly and honestly. Everything she does reflects her careful consideration of others. Those who belong to her intimate circle of friends enjoy the benefits of a genuine friendship into which enter loyalty, sincerity, and sympathy. Hers is the power to plan the right thing, and the will to execute it with precision and finish. Indeed it may be said that hers is the will to succeed.

*Major:* English Literature

*Minors:* English Composition, English History

Athletic Association; Drama Club; English Club; Le Cercle Français; Music Club; Science Club; Welfare Club.



## STELLA RUTH OGONIK

*"Sobe, steadfast, and demure—"*

One of the most diligent workers, one of the truest friends, and one of the most even-tempered girls in the class is Stella. We have never known her to lose her cheerful spirit nor to express any complaint. Instead, she goes her way, meeting each obstacle with courage and conquering it with perseverance. Stella is inclined to be retiring, but anyone who has ever asked her to do anything understands her lively interest in class activity. We trust, Stella, that you will keep that coöperative spirit and tranquil, undisturbed nature in all your work.

*Kindergarten-Primary Course*

El Circulo Castellano; Science Club; Welfare Club.





## RUTH REINNE ONIGMAN

*"To know her is to love her."*

One has to know Ruth well really to understand her. To a casual acquaintance she presents a seemingly impenetrable wall of reserve. Her friends, however, realize that she has a strong, forceful personality. She adds to the gift of friendship that of perfect good breeding, as she is polite and tactful under all circumstances. Can we wonder then that Ruth is a centre around which many friends cluster? Despite her social activities, Ruth's level head and sincere conscientiousness have caused her to complete thoroughly every task assigned to her. A combination of sincerity, courtesy, and conscientiousness foretells a happy career.

*Kindergarten-Primary Course*

Athletic Association; Music Club; Welfare Club.



## DORIS ORKIN

*"Life has no glory like a faithful friend."*

How well this applies to Doris! Sincerity is one of the beautiful traits of Doris' character; yet sincerity alone does not make her our cherished friend. Intelligence and integrity, joviality, and congeniality are also outstanding among Doris' fine qualities. Her pleasant temper is indicated by the merry laugh that has relieved many a tense situation. Because of her love for children Doris will undoubtedly find pleasure in her work as a kindergartener.

*Kindergarten-Primary Course*

Athletic Association; Drama Club; Music Club; Welfare Club.

## LILLIAN KEARNEY PEARSON

*"Grace was in all her steps."*

Lillian! At times, a light-hearted, merry will-o-the-wisp! With her we laugh, sing, revel in gayety and excitement. And then, a sudden change! Studious and intense, she follows the path of the trained scholar, pursuing her school work with a diligence in proportion to her depth of intellectual endowment. Gone are the care-free moods; here are quiet, reflective hours, spent either in solitude or in the quiet company of her classmates. She compels our admiration, wins our love, and never commands our understanding. But life with such a person,—so elusive, so gay and happy, yet pensive and serious,—has been and always will be satisfying and stimulating.

*Major:* Shorthand-Typewriting

*Minors:* Accounting, Commercial Geography

Aquarium Club; Commercial Club; Welfare Club.



## ROSE PEREZ

*"I love tranquil solitude, and such society  
As is quiet, wise, and good."*

Some persons we all know; others we wish to know; but there are some whom it is a privilege and an honor to know. Such is Rose. What a remarkable mind behind that gracious, retiring, and modest personality! Only the chosen few can share her quick wit, delightful humor, clever word, and measured phrase. She is ever a source of pleasure and comfort to us, her friends. Never shirking, ever willing, our Rose with her linguistic ability will aspire to the heights of ambition. In the future, as now, we shall cherish the thought that we may say "She is our friend."

*Major:* French

*Minor:* Spanish

English Club; Le Cercle Français (Secretary '36, President '37); El Circulo Castellano; Welfare Club.





### MARY KATHLYN PRENDERGAST

*"Her best things are done in the flash of a moment."*

Mary, our young Bio-Chemist, early gave herself to the sciences, and if present indications are true, her name will be set down as one who has made an original contribution. As a "third-floor inhabitant" Mary has been outstanding for her whole-hearted interest and the thoroughness and accuracy with which she carries on her work in the laboratory. Although in biology she has the persevering spirit that keeps her at the microscope long after others have given up, it is the unexpectedness of her moods and remarks which delights her friends. The gift of the "soft answer which turneth away wrath" is hers, and the power to enlighten a dull or serious occasion with her flashing wit.

*Major:* Biology

*Minor:* Chemistry

Athletic Association; Biology Society; Mathematics Society; Welfare Club.



### GERTRUDE PROLMAN

*"He that ruleth his own spirit is greater than he who taketh a city."*

Self-contained yet friendly, able yet modest, Gertrude has won the high esteem of her classmates. Never was there an occasion on which she did not offer her willing aid. Her quiet manner has been in some ways rather misleading, for it masks as lively and refreshing a spirit of fun as may be found anywhere. Among Gertrude's admirable traits is that of self-mastery; she never becomes flustered or upset when things do not go exactly right. We consider it a privilege to have known this charming and reserved girl, for she has given us much in her own modest way.

*Major:* Shorthand-Typewriting

*Minor:* Accounting, Commercial Geography.

Commercial Club; Welfare Club.

## MARGARET MARY QUINN

*"A mind at peace with all below  
A heart whose love is innocent"*

Margaret presents a paradoxical nature, for although she retains the delightful, old-fashioned charm of gentle courtesy and womanly refinement, yet she is one of the most intensely modern girls in the class. Sensitive to the finer things of life, gracious in manner, and sincere in devotion to the highest ideals in her daily living, Margaret represents the best type of college student. She is deeply loved by her friends for her unflinching amiability, her quaint and engaging drawl, and her unselfish loyalty to them. Never critical of others, Margaret faces any situation secure in her faith in humanity, and in the realization that she is loved by all who know her. What a rare personality is hers!

*Major:* Shorthand-Typewriting

*Minors:* Accounting, Commercial Geography

*Lampas Staff;* Commercial Club; English Club; Welfare Club.



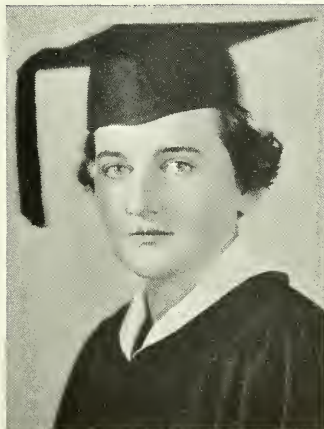
## CATHERINE REDICAN

*"It's good to be merry and wise,  
It's good to be honest and true."*

One feels that "Cay" can always be relied upon to lend cheerful and helpful assistance in any perplexing question that arises. Sincere and unaffected, she is a welcome member in any group. We feel that half of our problem is solved when we relate it to "Cay," for no more sympathetic or patient listener ever lived. Not only is she our solace in troubles, but her appreciative chuckle has made many a gay tale seem more amusing and her warm smile has given zest to our joyousness. She has proved her worth in her efficient activity in the Welfare Club, and has been honored by her section in being chosen as senior councillor. Her many friends are sufficient proof of her charm.

*Special Class Course*

Self-Government Association (Councillor '37); *Lampas Staff;* Athletic Association; Art Club; Welfare Club (Aide '36).



## JOSEPHINE THERESE ROCHE

*"Courage and sturdy heart were there,  
The will to do, the soul to dare."*

Jo is one of the most candid girls in the class. She has no half-way measures; her friends are assured of a vigorous champion of their causes, for she is loyal with every fibre of her nature. It has been a joy to watch the dispatch with which she achieves every goal which is set for her, and yet Jo is one of the most modest and unaffected members of our class. Her merry sense of humor and her laconic and dry wit make her sure of a warm welcome in any group. Fidelity to ideals, generosity to friends, and courage in any enterprise have helped to make Jo not only an esteemed classmate but an eagerly sought companion.

*Major:* General Science

*Minor:* Art

Class Treasurer '35; *Lampas* Staff; El Circulo Castellano; Science Club; Welfare Club.



## FLORENCE CLARKE ROONEY

*"Your wit makes others witty."*

Light-hearted and cheery, Florence trips along without ever being really worried over the problems that harass other Seniors. Perhaps this insouciance is prompted by the inner conviction that she is equipped with a quick and alert mind, perfectly capable of solving problems or unusual situations that may confront her. Florence is very independent, but her independence does not prevent her from forming lasting friendships; and her sincerity, loyalty, and good nature assure the continuance of these friendships. We feel that she will always have the courage to face life frankly and confidently. As a violinist she has aided materially in making the String Ensemble the popular and accomplished group that it is. We have grown to love this merry and true friend.

*Major:* Shorthand-Typewriting

*Minors:* Accounting, Commercial Geography

Athletic Association; Commercial Club (Treasurer '36); English Club; String Ensemble; Welfare Club (Aide '37).



## MARY AGNES ROONEY

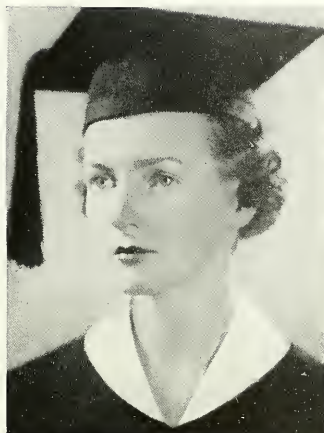
*"Magnificence and grace—excellent courtesy"*

Looking back on Mary, we shall remember a girl whose face was lit up by sparkling blue eyes, a girl who was always well-groomed and most tastefully dressed. Her air of quiet dignity was in direct contrast with an incorrigible sense of mischief which was not above playing a prank on her friends. Her quiet wit entertained her classmates on many an occasion. No social affair was ever complete unless graced by Mary's presence. May you continue as you have begun, Mary, to perform each act with the skill and ease born of a knowledge of true social values.

*Major:* General Science

*Minor:* Mathematics

Mathematics Society; Science Club; Welfare Club.



## FREDA SHULMAN

*"Those eyes affectionate and glad"*

It is rightly said that a good listener is much better company than one who dominates the conversation. Freda's charm rests partly on her ability to listen with interest and sympathy. She plans but does not order; she gives but does not force her help; therefore she pleases all. Her cheerful personality is reflected in smiling eyes and a joyous expression. A happy heart will win for Freda a contented life.

*Major:* History

*Minor:* Geography

Athletic Association; Welfare Club.





### CALLIE SMITH

*"The reason firm, the temperate will,  
Endurance, foresight, strength and skill."*

Gentle and quiet, unpretentious and unassuming, Callie has established herself in the hearts of her classmates as a girl to be admired by everyone. Though of a retiring nature, she has shown her worth in all the school activities, pursuing with equal diligence both class and other interests. Her ability to see a thing through from beginning to end, letting no obstacles deter her from her object, has been a lesson in perseverance to those who have studied with her these four years. With the combination of good intelligence and the ambition which she has shown she possesses, we predict that Callie will go far as a responsible and admirable member of the teaching profession.

*Major:* Shorthand-Typewriting

*Minors:* Accounting, Commercial Geography

*Lampas Staff; Athletic Association; Commercial Club;  
El Circulo Castellano; Welfare Club.*



### HELEN MARIE SNAPHY

*"The force of her own merit makes her way."*

Helen's outstanding distinction during her college years was, without question, her fine musical talent. Called upon on many occasions, Helen would play the piano in our String Ensemble or accompany vocal or instrumental soloists at many of our Teas. She always did a task that interested her with a quickness and a perseverance which brought success in its accomplishment. These qualities will mean a great deal in her endeavors in future years. One cannot think of Helen without remembering her deep loyalty and her sincere devotion to her college friends.

*Major:* Music

*Minor:* Mathematics

*Athletic Association; Music Club; String Ensemble; Welfare Club.*



### MARION EVELYN STEINBERG

*"An outward and visible sign of an inward and spiritual grace"*

Marion is quiet, unassuming, and reserved, but whenever there is anything to be done, she is right there, with no pretensions, but ready to give a helping hand. In class she is very quick in reaching correct solutions of puzzling problems. Marion works with one great ideal in mind,—successful achievement. We have a deep admiration for her perseverance, and we feel certain that now she is on the threshold of success and will pass through the portals to win further honors.

*Major:* General Science

*Minor:* Mathematics

Athletic Association; Drama Club; Science Club; Welfare Club.



### ANITA STELLAR

*"Life without laughter were a dreary blank."*

Gay, intelligent, cooperative, frank,—these are only a few of the many adjectives that can be used to characterize Anita. Her happy spirit and merry laughter are contagious; her intelligent attitude gives her an important place in class discussions; her willingness to cooperate shows a truly friendly spirit, and her frankness is a part of her good sportsmanship. In short, Anita is a girl whose friendship is valuable.

*Kindergarten-Primary Course*

Athletic Association; Music Club; Welfare Club.





## BARBARA MARY STOCKS

*"A light heart lives long."*

Barbara has for these four years quietly and efficiently pursued her way toward her elected life-work. So simply has she accomplished all that she set her heart on, that many have been unaware of her deep love of life and merriment. With fine discrimination she has chosen her friends and kept them. Their unwavering loyalty and unswerving devotion to her show the power of her charm and the integrity of her character. Her responsiveness to the demands of true college life, the courtesy and grace that marked her social contacts, and the quiet friendliness of her attitude toward her classmates reveal her as an individual of many gifts.

*Special-Class Course*

Athletic Association; Music Club; Welfare Club.

hsoci



## CHRISTINE MARIE SULLIVAN

*"Serene will be her days and bright."*

To her classmates Chris has been an excellent example of the charm of a quiet and restful personality; to her close friends she has been a stalwart aid in overcoming the many petty and annoying cares of the day. Steady and reliable in her class work, sane and wholesome in her outlook on life, Chris is one of those people who can always be depended on to do the right thing at the right time. If she is ever worried, we do not know it, for she maintains a cheerful and happy disposition on all occasions. We are confident that she will never lack companionship, for she will attract to her all those who seek the joy of a gentle friend and guide.

*Major:* American History

*Minors:* Ancient History, European History

Geography Club; History Club; El Circulo Castellano; Welfare Club.

## HELEN FRANCES SULLIVAN

*"She says with her eyes what others bother to put into words."*

Let us watch the ever-changing kaleidoscope of this colorful personality, and enjoy again its vivid play. Here is friendship coupled with an unselfish interest and a ready understanding and sympathy; here is wit generously meted out to its possessor; here is purpose and dignity giving promise of greater abundance to come; and here is charm of countenance, and dress, and graciousness of manner. Helen has been a friend without peer, and we who have worked beside her during our college life will never forget her whole-hearted participation in all our activities.

*Major:* Shorthand-Typewriting

*Minors:* Accounting, Commercial Geography

Commercial Club; Drama Club; English Club; Geography Club; Welfare Club.



## IDA ELIZABETH SULLIVAN

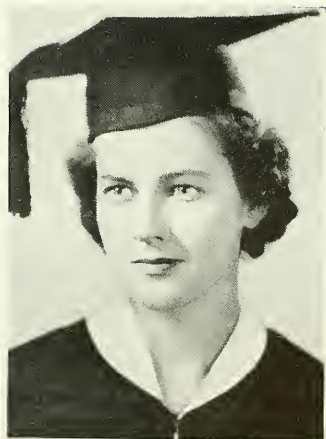
*"Your wit ambles well; it goes easily."*

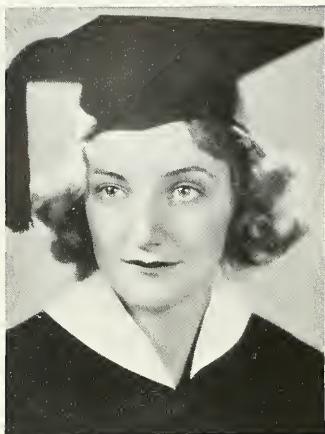
Here are gaiety and high spirits; here are laughter and merry jesting; here, in short, is the very embodiment of good fellowship. How often has the locker-room rung with laughter at some droll and unexpected quip which Ida has uttered with an expressive lift of her eyebrow and that enchanting smile which is hers alone! Nor is this jollity the sole reason for her charm. A keen, analytic mind, the power of succinct expression, ready willingness to aid in all activities, remarkable agility on the athletic field, smooth grace in dancing,—all attest to Ida's versatility. For those who know her, Ida's great zest for life has made her a matchless companion.

*Major:* Biology

*Minor:* Chemistry

Athletic Association; Biology Society (Treasurer '37); Drama Club; Welfare Club.





### KATHLEEN FRANCES SULLIVAN

*"So full of summer warmth, so glad—"*

Kathleen is a girl with whom association brings enrichment. Although she has a charming appearance, it is the beauty of the inner spirit that wins her friends. She is gentle, sympathetic, wise, in a way that denotes deep thought; yet she can also be nonchalant and gay. Kay appears to be a contradiction, but her diverse qualities are blended in such perfect harmony as to produce that warmth, that cleverness, that all-round likeableness that we have enjoyed so much, particularly in her activities in the Drama Club. We shall not soon forget her unselfishness, her unassuming way of accepting her various honors, and her endearing sincerity.

*Major:* Shorthand-Typewriting

*Minors:* Accounting, Commercial Geography

Commercial Club; Drama Club; Welfare Club.



### MARY GERALDINE SULLIVAN

*"A truthful nature free from all pretense"*

Mary G., as she has been known from her Freshman year, to distinguish her from the five other Sullivans, has always been a very efficient worker and a real comrade. Her activity in the class has been marked by an unswerving devotion to duty and a willing acceptance of responsibility. She has held offices in the History Club, has been an interested member of the Geography Club, and an earnest and indefatigable worker on the car-check committee. Only those who know her intimately realize her courage and cheerfulness. For her willingness to help, her efficiency in the performance of every task, and above all for her genial smile, Mary will long be remembered.

*Major:* Commercial Geography

*Minors:* Shorthand-Typewriting

Commercial Club; Drama Club; Geography Club; History Club (Treasurer '34, Vice-President '37); Welfare Club.

## MARY THERESA SULLIVAN

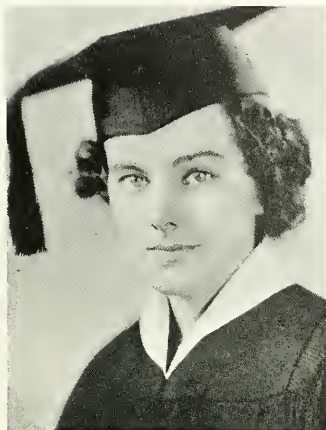
*"In quietness and confidence shall be your strength."*

Gentle in manner, modest in demeanor, and sweet in disposition, Mary has quietly taken her place in our group. She has the courtesy and quiet charm that are the distinctive marks of an inner tranquility of spirit. Her work reveals the fine thought, careful planning, and efficient achievement that are the products of an able mind. The capability with which she accomplishes her tasks, and her friendly albeit reserved attitude, have made her an indispensable member of the class. Her friends still cherish the memory of her deep sincerity, her loyalty, and, above all, her serene nature.

*Major:* American History

*Minors:* Ancient History, European History

Geography Club; History Club; Welfare Club.



## MARJORIE ANN THOMPSON

*"You have a nimble wit."*

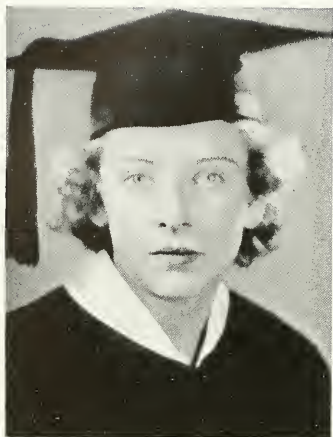
Those who have been so fortunate as to have listened to her rambling discussions on "shoes and ships and sealing wax," told with that vivid and pungent flavor so characteristic of Margy, or who have chuckled in glee at her sudden sallies of keen wit, will treasure the memory of one of the gayest and liveliest personalities in the Class of '37. Nature bestowed her gifts most lavishly on Margy: —the sureness and deftness with which she expressed herself in Art; the power to evoke fascinating melodies from the piano in an easy, effortless manner; the command of clear-cut, incisive English, —all these revealed the indelible mark of her unusual individuality. Her charm and friendliness will not be soon forgotten.

*Major:* Art

*Minor:* English

Lampas Staff; Art Club; English Club; Welfare Club.





## MARION VIRGINIA TOOHEY

*"A merry heart goes many a mile."*

A girl whose vivid personality is welcomed everywhere; whose sense of humor and discerning wit are recognized by all; whose fastidious taste is applied not only to her appearance, but to the exquisite fitness of anything she does; whose keen mind has evolved from life a philosophy which guides her along a joyful path—that is Marion. We all have noticed how a classroom is brightened by her mere presence, and how much fuller our school day is if Marion is there to flavor each daily occurrence with her individual brand of humor. Yet those who know her well are aware that she has serious thoughtfulness that elevates her far above the merely frivolous. Marion has, in her happy balance of qualities, the key to living most happily and successfully.

*Major:* Shorthand-Typewriting

*Minors:* Accounting, Commercial Geography

Commercial Club; Drama Club; Welfare Club.



## ELEANOR GRACE TWOMEY

*"Magic in her every glance  
Grace in her every motion"*

An intriguing combination of quiet reserve and effervescent gaiety, Eleanor's is a somewhat paradoxical personality. Her serene dignity and poise on the platform, her amazing speed and agility in "gym," her airy grace on the dance floor, her efficiency in the smooth execution of her duties, —whether it be as chairman of a dance, President of the Drama Club, or President of the Senior Class,—show her versatility. Her histrionic ability, her high scholastic standing, her sudden disarming smile, and her winsome friendliness have gained for Eleanor the admiration of her classmates, and the abiding love of her intimate friends.

*Major:* English Literature

*Minors:* English Composition, English History

Class President '37; Drama Club (Secretary '35, President '36); English Club; Welfare Club.

## BARBARA FRANCES WALSH

*"No coward soul is mine,  
No trembler in the world's storm-troubled sphere."*

"Fran" is one member of the class who faces each day with a fearless mind, ready to meet every challenge with the courage born of confidence in her own powers. A casual and nonchalant manner, a keen intellect, and a marvelous skill with the brush are undoubtedly hers. We shall always remember her humor; she has the most fascinating way of uttering absurd statements in an off-hand manner, and then the next moment uttering a quip which for polish and point could not be equalled by many so-called "wits." Yet the trait which is most outstanding in "Fran" is her hatred of sham in any form, and her friends are proud to think that she has chosen them for their frankness and honesty.

Major: Art

Minor: English

Lampas Staff; Art Club (Vice-President '36); English Club  
Welfare Club.



## EDITH WEISBERG

*"No gems, no gold, she needs to wear,  
She shines intrinsically fair."*

Her quiet, friendly manner makes "Edie" easy to know and to like. We all admire the practicality of this girl who not only knows what to do but does it. Moreover, she brings to her work foresight, intelligence, and level-headedness. Her willingness to help others shows her to be a true, unselfish friend. Flashing black eyes indicate a lively nature. An ever-ready smile reveals an optimistic, kindly spirit. Joy and friendliness have been the portion of those who have had the pleasure of knowing "Edie."

Kindergarten-Primary Course

Athletic Association; English Club; Music Club; Welfare Club.



## ANNE WEISTHAL

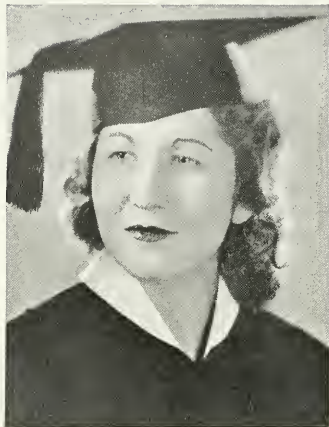
*"A form more fair, a face more sweet,  
Ne'er hath it been my lot to meet."*

Versatile indeed is the person who can dance beautifully, swim gracefully, cook well, and write poetry charmingly. But if to these attainments you add sober judgment when dignity demands, gaiety when frivolity reigns, capacity to do worth-while things quietly, an unexcelled sense of fitness in widely different situations, and an unruffled demeanor—you simply increase our admiration and appreciation of Anne. Unaffected, tolerant, efficient, Anne personifies college life at its best. Those who see her casually are drawn to her, and those who know her best honor her for her qualities of mind and heart.

*Major:* English

*Minor:* History

Self-Government Association (Councillor '36, '37); *Lampas* Staff; Athletic Association, English Club, Welfare Club.



## GRACE ROSE WHITTAKER

*"Thou must be true thyself  
If thou the truth wouldst teach."*

To find one's whole philosophy in sincerity, to build from that philosophy a personality so markedly individual that words are powerless in description; to be able to lead efficiently and yet without officiousness; to be able to follow graciously and well; to form friendships strong because of understanding, sympathy and a sense of humor; to be master of the words of common men and the thoughts of the wise is to achieve the character and individuality which we admire in Grace.

*Major:* English Literature

*Minors:* English Composition, English History

Class Secretary; '35; *Lampas* Staff; English Club; Geography Club; El Circulo Castellano; Science Club; Welfare Club.





## GLADYS SARAH WOOD

*"Few things are impossible to diligence and skill."*

With tireless energy and patience Gladys has pursued her studies in an effort to attain the high goal she has set for herself. Modest and unassuming, she has gained the affection of all by her gentle manner and quiet charm. Those who are privileged to know her well are amazed at the keenness of her mind, the skill of her drawing pencil, the depth of her knowledge and appreciation of fine music, and the beauty of her penmanship. The fact that Gladys never parades her talents makes her doubly likeable. Her classmates will long remember her pleasant, serene personality.

*Major:* General Science

*Minor:* American History

Athletic Association; Geography Club; History Club; Science Club; Welfare Club.



## RAE LILLIAN WYMAN

*"Infinite riches in a little room"*

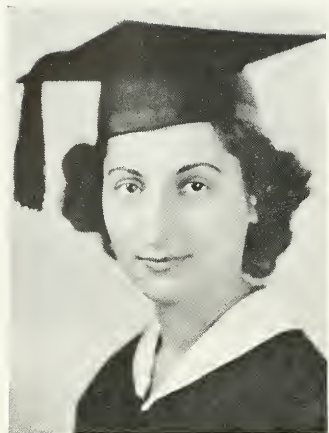
One has a deep admiration for Rae with her independent yet cooperative spirit. She has set for herself a high goal of achievement in academic work, and has made a good scholastic record. She has also attained a reputation in the field of sports, especially as a tennis player. We are amazed at her energy and enthusiasm; certainly anyone who has had an opportunity to vie with Rae in the gymnasium knows that this little lady can be the master of trying situations. We sincerely hope that she may carry the success of her college years into her classroom.

*Major:* General Science

*Minor:* History

Athletic Association; Drama Club; History Club; Science Club; Welfare Club.





## IDA YOUNG

*"Her eyes were deeper than the depth  
Of waters stilled at even."*

Whatever Ida sets her mind on she will inevitably attain, for she possesses the dynamic driving power of imagination with the steadiness of indomitable will and persistence that are requisite for real achievement. Her chief interest is science, but she does not allow this interest to become all-absorbing. Her participation in sports, her great love for the theatre, her skill in shopping,—all are proof of her versatility. To her friends she brings a mind alert to the changes going on about her, a soul imbued with the highest ideals of conduct, and a heart that is merry as well as understanding. Her lively spirit of fun has brightened more than one dull situation, and for this gaiety she has gained the gratitude of her class.

*Major:* Biology

*Minor:* Chemistry

Biology Society; Welfare Club.

## FORMER MEMBERS OF THE CLASS OF 1937

HARRIET BERMAN  
RUTH HELLER  
IRENE KONIKOW  
NORMA McCORMICK  
CATHERINE MEALEY  
ANNA OLSON  
MARY SAMUELIAN  
RUTH STIEFEL  
MYRTLE WORTHY

## PARENTS

What tribute can we offer to the mothers and fathers who have given us the last full measure of love and devotion? We can never repay them, but may we ever be worthy of them—their ideals and their hopes. May they always retain their tender pride in our achievements and may we never cause their happy dreams to fade. To our parents—our deepest love!

## In Memoriam

Dora Williams

February 21, 1937

Miss Williams was for many years a teacher in the Boston Normal School and the Teachers College. She will be long and lovingly remembered for her gracious charm, broad sympathies, and vivid personality.

"Age could not wither her, nor custom stale  
Her infinite variety."

## In Loving Memory

Ruth Winters

June 23, 1934

Jane Lindsay

October 21, 1935

"They shall not grow old  
As we that are left grow old.  
Age shall not weary them,  
Nor the years condemn.  
At the going down of the sun  
And in the morning  
We will remember them."

T. C. RECORDS



RECORDS

## SENIOR WEEK

FACULTY RECEPTION	Thursday, June 3	
ADDRESS BY THE DEAN	Friday, June 4	
Anne Flinn, <i>Chairman</i> ; Annette Kanter, Margaret Quinn, Mary Rooney		
CLASS DAY	Saturday, June 5	
<i>Marshal</i> , Gertrude Ahearn		
<i>Assistant Marshal</i> , Rita Buckley		
<i>Chairmen</i> : Concetta Alibrandi, Helen Bell, Peggy Callahan, Marion G. Connolly, Carolyn Dacey, Margaret M. Dixon, Yvonne Habert, Josephine Roche		
MARCH	String Ensemble	
WELCOME	Gertrude Ahearn	
PIANO SOLO	Helen Snaphy	
CLASS ESSAY	Catherine Gilligan	
VOCAL SELECTION—Double Trio		
Rose Lynch	Margaret Dixon	Sadie Greenberg
Frances Lappin	Margaret Aieta	Genevieve Lawlor
	Marion G. Connolly, <i>Accompanist</i>	
CLASS POEM		Anne Weisthal
VOCAL SOLO		Marie Michaels
	Dorothy Noonan, <i>Accompanist</i>	
PRESENTATION OF CLASS GIFT		Bertha Bayard
CLASS SONG	Words: Concetta Alibrandi, <i>Conductor</i> Music: Helen Snaphy, <i>Accompanist</i>	
<i>Courtyard Exercises</i>		
DAISY CHAIN		Class of 1937
PLANTING OF IVY		Class Officers
IVY ORATION		Eleanor Twomey
<i>Alma Mater</i>		Assembly
CLASS NIGHT PROMENADE		
Marjorie Thompson, <i>Chairman</i> ; Evelyn Griffin, Marie Maguire, Josephine Martin, Ruth Onigman, Marion Toohey.		
CLASS OUTING		Monday, June 7
Rita Donnelly, <i>Chairman</i> ; Alma Ellis, Katherine Kelley, Eileen Kilduff, Adele Kaplan.		
CLASS BANQUET		Tuesday, June 8
Agnes Marsh, <i>Chairman</i> ; Mary Callahan, Margaret Limmer, Doris Lord, Eva McLeod, Kathleen Murphy, Edith Weisburg; Lucy Condon, <i>Toastmistress</i> .		
"POPS"		Wednesday, June 9
Helen Snaphy, <i>Chairman</i> ; Rose Lynch, Irene Hennessey, Dorothy Landers, Dorothy Noonan.		
ALUMNAE DINNER		Thursday, June 10
Patricia Callanan, <i>Chairman</i> ; Carmela Conroy, Doris Gabulson, Hedwig Nath.		
COMMENCEMENT		Friday, June 11
Speaker—Louis J. A. Mercier, Litt.D., Professor of French and Education, Harvard University.		

# FACT AND FANCY

—1962—

## SCENE I

In the President's office of The Great American Steel Corporation a woman, smartly dressed, sat at a desk. Her trim appearance and quick movements denoted the efficient business executive. All her problems for that day were settled, thank goodness! But there was still the late afternoon mail. Why, here was a letter with a Florida postmark! From Dot, of course! Business was forgotten. How quickly time had passed, and what changes had come in their lives! She, Katherine K—, president of an important corporation, and Dot D—, a society woman of leisure! As she picked up the letter, her mind went back to the summer day when she received the letter notifying her of her admission to Teachers College. What happiness and joy!

"How vividly that first year comes to my mind!" she mused. "I remember so clearly how eager and enthusiastic we were to get into the gay routine of college life. That first assembly, our meeting with our Junior sisters, and Freshman Week! How we enjoyed ourselves! Escorted to the Acquaintance Party and introduced to the faculty by our Juniors, entertained by the Sophomores, and made to feel welcome by all the upperclassmen! The green and gold badges which we wore during that week made us feel important rather than conspicuous. Finally the gala party given us by the Juniors, where, dressed as babies, we were made to romp and frolic! Shall we ever forget the Judge, with his large glasses and stern tones, who courtmartialled those of us who had refused to do tasks assigned us?"

Soon we were swept into the more serious side of college life. Education Week! How proud we were of our speaker! Studies! Waiting at the library for *Hayes and Moon*, struggling with Health Education and short stories! Our mid-semester examinations! But thoughts of these faded with the coming of our first Self-Government Dance. What a grand time we had on that cold winter night of snow and sleet!

Christmas! The party for the faculty children, where we Freshmen had charge of decorations, and what an artistic piece of work we did! The Christmas Assembly, the Carols, the play, and the marvelous vision in the windows above the Assembly Hall—one of the most beautiful things I had ever seen.

Then came our mid-years, closely followed by that fateful day, awaited with fear and trembling, when we received our report cards. However, we passed this barrier happily and turned our attention to our class activities under the leadership of our class officers, Katherine Mealey, Catherine Gilligan, Carolyn Dacey, and Bertha Bayard, an enthusiastic group. What fun we had at our snow party at Cedar Hill, romping in the deep snow, skiing, and tobogganing! And the pictures we took! What memories they bring back! We returned the kindness of the upperclassmen by entertaining them, every member of the class co-operating wholeheartedly.

Self-Government Week! Each Class President spoke on an ideal of Self-Government, and as in Education Week we invited our parents to meet our teachers and classmates and to see our college.

How quickly the year passed! With May came our annual Gym Meet. What enthusiasm and spirit pervaded the college for this inter-class competition! How well I remember the cheering and Eleanor Noonan's victory song, which we sang so lustily. Star performers! And oh, the disappointment when we were beaten by the Juniors!

But the crowning event of our Freshman year was the Freshman-Sophomore Dance after our final examinations in June. We were so proud because we were the first Freshmen allowed to have a dance with Sophomores, and we felt it to be a deserved mark of recognition. What a wonderful time we had at the Belmont Springs Country Club that evening! Shall we ever forget how it rained and thundered as if the elements were as excited as we were! And so our Freshman year passed.

"What happy times we had!" Kay murmured, as coming back to her desk and to the present, she opened her Florida letter, eager for news of Dot.

## SCENE II

On the sands of DeLeon Beach, the fashionable Florida winter resort, a handsome middle-aged woman sat in a beach chair. Waving to her two stalwart sons as they ran toward the water, she took up a book with a gayly-colored wrapper. The year's best seller, written by her classmate of T. C. '37, Grace W—. "Yes, Grace was always good in English," she reflected, as her mind went back to happy college days.

"Why," she mused, "I remember our Sophomore year as if it were yesterday! How we struggled to read *Manly* and understand it! And then that Biology course! Dissecting frogs and naming them Oscar or Hepzibah to make them pleasanter and a little less ugly!

Yes, we entered our second year at college proud and confident of continued success. Led by our energetic class officers, Gertrude Ahearn, Mary Hutchinson, Grace Whittaker, and Josephine Roche, we entertained the Freshmen as we had been entertained the year before. How well I remember the riotous entertainment and the way we belittled the poor Freshmen! Then came the activities of Education Week, the Christmas Assembly, and Self-Government Week. And weren't we proud of our class and our representatives!

How we enjoyed the Supper and Bridge which we held for our Lampas fund! Marie Michaels had charge, I remember, and entertained us with her lovely singing. I wonder how many of us still have the little green pencils given as a remembrance of the occasion. Did we play bridge, or was it "Pig"?

With June came the Sophomore-Freshman Dance at the Woodlawn Country Club. What a beautiful summer night it was, and how lovely all the girls looked in their dainty evening gowns! The golf links were very popular that evening. So was the moon! This ended our Sophomore year, and eagerly we looked forward to being Juniors."

With a sigh she brought herself out of her reverie and began to read the book which had brought back such vivid memories.

## SCENE III

Grace W—, author of the year's best seller, settled down on the divan in her suite in the Waldorf-Astoria. What a busy day she had had! Her unprecedented success in the literary world meant interviews with publishers, endless dinners, persistent autograph hunters. How glad she was to be alone! As she picked up a copy of the *Boston Transcript*, featuring the story of her life, she saw the headlines, "Catherine G— Elected First Woman Superintendent of Schools in Boston." How wonderful! As she read, her mind went back to college days, when she and Catherine were classmates at Teachers College.

"Our Junior year was a happy one," she thought. "Catherine and I were great chums,—full-fledged upperclassmen with Freshmen sisters to entertain and take care of. We were entering the second half of our college course and had chosen the fields in which we were to major. How well I remember our fine class officers: Elinor Cullen, Lucy Condon, Marie Michaels, and Rita Mulroy.

Besides the usual college events, we had a week entirely devoted to the Juniors. Junior Week! The most important undergraduate event in college! Carolyn Dacey was general chairman and a very capable one, too. The fun began with a class banquet, at which each member of the class received a pendant as a remembrance. Speeches, toasts, and a class song all contributed to make the evening a memorable one. Then on Wednesday evening, the class attended the *End of Summer* starring Ina Claire. On Friday came our Junior Prom, that glamorous event in the life of an undergraduate. Who will forget the Grand March, and the fun in the "Captain's Cabin" on that unforgettable evening! Junior Week ended all too quickly, but we still have the memories.

Next was our Gym Meet. How exciting it was that year, even if again our class was beaten by a few points! June with our final exams! This was one of two times in the year when every girl studied her hardest. Our last event as Juniors was a dance for the Lampas fund. What a happy year it was!"

As Grace recalled her college days, the telephone startled her from dreams of 1932 to reality of 1962.



## SCENE IV

Catherine G—, the newly elected Superintendent of Schools in Boston, sat at her desk in the new Administration Building amid congratulatory letters and baskets of flowers. At last she was alone. She held three letters in her hand. Her smile showed how much they pleased her. They were from Kay, Dot, and Grace, her old classmates and chums at Teachers College.

"Yes," she thought, "how well I remember our last year together. Our senior year was wonderful, yet there was a feeling of sadness to think that this was to be our last year as undergraduates. Some of us would return as graduates, it was true, but for others it was the final year of college. Also, half of the class were out in the schools teaching. This caused a separation, and we came together as a whole class only a few times before Commencement.

Our first Senior activities were given for our Lampas fund. How we worked for their success! We held Teas, had sales of lucky elephants, and ran parties—all for dear old *Lampas*. With November came our Tea and Fashion Show at Filene's. Then we had our first chance to hear of the experiences of the girls who were "out." In January we held an electrola dance in Collins Hall. Can we ever forget the balloons, the novelty dances, and the music!

And our officers of that year! Eleanor Twomey, Lucy Condon, Marie Michaels, and Bertha Bayard. A fine quartette!

Soon came February and the beginning of my practice teaching. I will remember that first trembling day before the class and my nervous anticipation of "visits."

In March we had a Tea, at which we elected Class Marshals. How excited we were at this important occasion!

At last came the "Senior Play," *Ladies of the Jury*, which was so eagerly awaited by the College. Seniors and Graduates proved marvelous actors and actresses. Who will forget the romancing of Cynthia and Alonzo and Tony and Mayme!

How quickly the year was passing! Our Senior Prom was held in April at the Parker House,—the gayest of dances, with the bright printed gowns of the girls and the high spirits of all the dancers.

Soon we were rehearsing for Class Day, and the two "halves" came together again. In May, the Operetta, *The Gondoliers*, was given, and the College Spring Formal Dance followed.

Too soon, yet awaited with eager anticipation, came Senior Week with its round of activities. How happy we felt to be nearing our goal, yet sad, too! We were entertained royally by our teachers at the Faculty Reception. On the next evening, Dean Linehan gave us our baccalaureate address. Well do I remember that solemn occasion, in academic robes.

Class Day! The day of days! How lovely all the girls looked in their dainty gowns! How proud we were! And how beautiful was the formation of the Daisy Chain. That evening we had our dance in Collins Hall, which was all decorated for the festive occasion. Few were the corners one could seek out!

Then came the Class Outing where once again we felt like Freshmen. The Class Banquet, so much our own "get-together," when we received our Year-books. Our night at Pops and the Alumnae Banquet, which we all so enjoyed! Senior Week comes back so vividly as one of the happiest weeks in my life as a college girl.

Commencement—what a conflict of emotions—happy, proud, sad! Our goal was reached! And the Class of 1937 had gained their degrees."

Back in the present once more, the Superintendent of the Boston Schools put the three letters into her bag. With a far-away look in her eyes she murmured, "Yes, the Class of 1937 was the Class of Classes!"

—Marie Maguire.

## CLASS POEM

### OUTWARD BOUND

We're outward bound over billowing seas!  
Oh, proudly our sails we unfurl to the breeze,  
And laying our course with the stars as a guide,  
We seek for new worlds, for lands strange and untried.  
Our cargo is precious,—of faith, hope, and truth  
So freely bestowed by the friends of our youth,  
Who shared their rich gifts in most bountiful measure,  
Who gave of their wisdom—the mind's golden treasure.  
Their trust is our beacon—a clear glowing light  
To lead us to knowledge, to duty, and right.

We're outward bound under heaven's arched blue!  
We leave our loved haven; it fades from our view.  
Our hearts and our spirits are ardent and high,  
Our banners of courage—how gayly they fly!  
We carry to others the wealth that is ours,  
To share with the needy our God-given powers.  
The service of Youth is our heavenly trust,  
To live for a duty that's noble and just.  
May God bless our voyage, His love calm our fears;  
His wisdom will guide us through all the long years.

Anne Weisthal.

## IVY ORATION

*"We have built a house that is not for Time's throwing."*

Fair and shining we have reared our "House of Life," not on the shifting sands of fancy and caprice, but on the solid rock of work and honest endeavor. Staunch and permanent it stands, well braced against the storms of Time and the winds of Chance. Mighty pillars uphold it, a support for its strength and beauty. Like the palace in Elizabeth Barrett Browning's poem, it rests on four beautiful columnar marbles.

The first of these columns we have dedicated to knowledge. Our education has embraced the best in the fields of literature, science, and the arts. We have been carefully trained in special fields so that our professional work may be thorough. We are about to receive our Bachelor degrees; some of us will go on to acquire a Master's degree. The attainment of these scholastic honors does not mean that our education is finished or complete; it means rather that we have the strongest incentive to grow in strength and wisdom. Let us hope that our education has given us, not merely an interest in intellectual pursuits but a keen enjoyment in study, so that it may be said of us, as of Chaucer's Clerk of Oxenford, "and gladly wolde he lerne and gladly teche."

Next we have raised a lofty column of noble character and high ideals. The men and women who have had charge of our professional training have striven to give us strong moral courage to meet the difficulties of life, and faith that with the sword and shield of truth and honor we can conquer nobly. May the high ideals they have shown us ever continue to guide us, so that we may always "follow the gleam!"

Not only have we intellectual and moral strength to uphold our House of Life, but a third pillar shining and splendid commemorates our love of the beautiful. Beauty lies all around us, have we but eyes to see. "Life has loveliness to sell." The loveliness of nature,—a floating cloud, a fragrant rose, a singing bird, the thrill of music, a haunting melody, the challenge of art, the joy of books,—all these make life richer and finer.

Lovingly and carefully have we erected the fourth column,—to friendship. The bonds of sympathy and understanding formed by the common interests and ideals of college life are firm and enduring. Though our pleasant daily companionship is now ending, the friendships we have formed will live and grow stronger and dearer with the lapse of time.

This, then, is our House of Life, with its four noble columns of knowledge, character, appreciation of the beautiful, and friendship. "We have built a house that is not for Time's throwing."

On this, our Class Day, we have planted the ivy, the traditional symbol of closing college days. Long after we have left the halls of Teachers College, our ivy will continue to grow, a living memorial to the Class of 1937. Like the ivy may we, too, aspire ever upward to reach our ideals. Let us hope that we may broaden in wisdom and understanding, and that our lives may always be deep rooted in honor and integrity. The time has come when we must say a fond farewell to our classmates, with memories of all the happy days of the past, and faith and courage for the future.

—Eleanor Grace Twomey.

## CLASS ESSAY

### THE QUALITY OF GRACIOUSNESS

When we consider the qualities that characterize both a *great woman* and a *great lady*, the paramount essential appears to be *graciousness*. Our beloved superintendent, the late Patrick T. Campbell, on the last occasion when he addressed our class, urged the students to cultivate graciousness, the attribute he considered most necessary for the successful teacher.

Graciousness may be viewed in two ways: as a superficial charm and as a fundamental virtue.

Superficially, graciousness implies a pleasant manner, poise, ease in conversation, and politeness and urbanity in the give and take of social life. These qualities smooth the path of their possessor and mark the difference between the well-bred and the ill-bred person. In his *Life of Johnson*, Boswell says, "The difference between a well-bred and an ill-bred person is this: One immediately attracts your liking and the other your aversion. You love the one till you find reason to hate him; you hate the other till you find reason to love him." Often indeed an unfortunate demeanor detracts from an otherwise admirable personality and hides an individual's real worth. Amy Lowell's brusqueness and domineering manner led a critic to say, "She is the kind of person whom you find yourself answering in a much louder tone of voice than is necessary." Graciousness is a powerful magnet; it attracts and never repels; it is a touchstone to the best treasures of life.

But graciousness is more than outward charm. Dr. Campbell surely implied more by the term than mere exterior characteristics. He used the word *graciousness* in the deeper meaning of a fundamental virtue. The derivation of the word suggests this more profound meaning. *Grace* in its ultimate significance is perhaps the most beautiful word in our language, referring as it does to the free gift of God's love and favor to man. The gracious personality must therefore be characterized to some extent by God-like attributes of the spirit and the mind.

The first of these gifts is a loving heart. This implies an affectionate regard for those with whom we come in contact, and a genuine unselfish interest in all our fellow men. Such an attitude can come only from a generous spirit,—a power to see beyond our own problems and to understand the needs of others.

Always the loving person is the kind person. The Bible emphasizes the close union between love and kindness in the beautiful expression, "loving-kindness." And Lowell pays tribute to "loving-kindness" in the lines,

"She doeth little kindnesses  
Which most leave undone or despise,  
And nought that sets one heart at ease  
Or giveth happiness or peace  
Is low esteemed in her eyes."

Forgetfulness of self in the generous service of others, the noblest attribute of human nature, inspires not only the "little kindnesses" which make our daily living pleasanter, but has found its perfect expression in the lofty spiritual grandeur of a St. Francis of Assisi.

The gracious person possesses not only the loving heart and the kindly spirit, but another God-given gift, sympathy, one of humanity's greatest needs. The sympathetic person rejoices with us in our happiness and grieves with us in our sorrow. Sympathy expresses itself in many ways:—the kindly handclasp, the gentle word, the helpful deed, the timely letter, the friendly assistance in diffi-

culty or trouble. Probably there is nothing which we so deeply regret as the opportunity for kindness which we lost forever because of neglect or indifference. Sympathy has its part, too, in the God-like attribute of mercy, that virtue which far transcends justice.

Love, kindness, and sympathy are qualities of the heart, but does not graciousness imply also traits of the mind? Without intelligent understanding, kindly, well-intentioned interest can accomplish little. As Edward Rowland Sill says,

“These clumsy feet still in the mire  
Go crushing blossoms without end,  
These hard well-meaning hands we thrust  
Among the heart strings of a friend.”

Moreover, the person who looks deeply into the motives of others never makes harsh judgments. “To know all is to forgive all.” Breadth of view and sympathy make us tolerant, giving us the power to respect the capabilities and achievements of others. The tolerant person recognizes the truth of Emerson’s philosophy,

“All are needed by each one,  
Nothing is fair or good alone.”

And so we may conceive of graciousness as a combination of outward charm and noble qualities of heart and mind.

The value of a gracious personality is self-evident. The very nature of its attributes makes every one long to possess them.

Happily, graciousness is not the prerogative of any particular class; nor is it denied to any class. People of leisure often devote much effort to acquiring social ease, but sometimes their charm lacks depth and genuineness. On the other hand the mother whose sweet, unselfish solicitude is merely an outward expression of her loving nature and broad human understanding, is a truly gracious person.

Of course, the surface manifestations of graciousness can be assumed, but the deeper qualities of mind and heart cannot be counterfeited. They are part of the fibres of one’s being. We all have potentialities of graciousness. How much lovelier life would be if we would but foster and develop them!

Particularly does the teacher need to develop graciousness. We often see uncomplimentary representations of the typical teacher as a person devoid of charm. Perhaps the great need of graciousness in our profession makes the lack of it conspicuous. The teacher is in constant association with many groups,—her pupils, her fellow-workers, the parents, and the community. The ability to adapt one’s self to all these groups is proof of a gracious personality. Loving interest, sympathy, kindly helpfulness, intelligent understanding make the relation between teacher and pupil pleasant and valuable to both. Lack of these qualities in a teacher may not only antagonize a pupil toward school, but ruin his entire life as well.

Also, the teacher’s relations with her confreres must be pleasant and cooperative if she is to be an effective member of her organization. The ideal school and the ideal community are characterized by mutual good feeling and trust.

In brief, the quality of graciousness more than any other is the determining factor in the ultimate happiness and success of our lives, because both happiness and success depend upon our relations with other people. If, as in the old folk-tales, a fairy godmother would bestow a blessing on a child, let her leave at its cradle the magic gift of graciousness, a jewel beyond price.

—Catherine Gilligan.

## CLASS SONG

We come, thy children, on this day,  
To bid a fond farewell to thee,  
With treasured mem'ries of the past  
And hopeful dreams of days to be.  
We'll cherish in the future years  
The friendships of our happy youth,  
Thy golden gift of wisdom shared,  
Thy high ideals of faith and truth.

A shining light thou lifted high  
To lead us on the path of right;  
Oh may it be our guiding star  
To keep thy honor fair and bright!

We thank thee for thy tender care,  
For all the gracious wisdom taught,  
For constant faith and loving trust,  
And kindly deeds so nobly wrought.  
Oh, Alma Mater, wise and strong,  
With grateful hearts we sing thy praise.  
And pledge with loyal hearts and true  
To serve thee well through all our days.

A shining light thou lifted high  
To lead us on the path of right;  
Oh may it be our guiding star  
To keep thy honor fair and bright!

Words—CONCETTA C. ALIBRANDI

Music—HELEN SNAPHY

## CLASS WILL

WE, the Class of 1937, being in our usual state of mind and therefore liable for anything, do hereby proclaim this our last Will and Testament. Court proceedings will be useless, as our composite I. Q. is adequate defense.

A will, we realize should never jest,  
A funeral note is considered best.  
    But as the Class of '37,  
    Now draws near Alumnac Heaven,  
Just remember our years of fun and play,  
Forget that we soon must "pass away,"  
Let our parting be merry and full of jest.  
Listen well to our last request!  
And carry out each generous bequest!

---

And now our greatest problem must be,  
Our gifts to the Dean and Dr. Kennedy.

We could suggest, Dr. Kennedy,  
A door to your office with a stout key,  
To protect you from student imposition,  
And aid in preserving your kind disposition!

On you, Dean Linehan, we might bestow,  
A phonograph record sweet and low,  
Which in Assembly would say, "Ladies, please,"  
And thus help you keep that well-known "throat-ease."

To Miss Sallaway, we bequeath a collection of brand-new excuses to be used as follows:

So, you were late? How, why, and when?  
I've heard that one, time and again!  
Please use this book of new ones you see,  
Compiled by the Senior Class for me!

This collection is to be shared, on request, with Miss Barr.

To Miss Midgley, a new Oral Expression exercise which we guarantee will be said with real feeling by any Freshman.

I'm stooped, and I droop,  
My back's in a loop,  
As I drag home all my books.  
Tardy rules are cruel,  
When you're late for school,  
Just blue slips and unkind looks!

To the English Department:

To the English department, a plea to be "aisy,"  
Lest your assignments drive us all crazy.

To Miss Clark, her secret wish:

The secret's out, and all is known,  
We're giving you your dream come true,  
In Collins Hall, by the Drama Club,  
An A-1 production of *Hamlet* for you!

To Miss Gaffey:

You've made costumes out of rags,  
Even dressed shepherds in burlap bags,  
Our wish is this, may it some day come true,  
A whole set of Drama Club costumes for you!

To Mr. Shea:

A year without a Christmas sale,  
Is the gift we have in view;  
Those charming cards we love to mail  
Mean so much work for you.

To Miss Trommer, Editor-in-Chief of the *Newsletter*.

Burdened deep in correspondence,  
Note her air of sad despondence;  
Perhaps a mail-box in the room,  
Would bring her joy and banish gloom!

To Mr. O'Meara:

To the chemistry Prof, a new volatile gas,  
That will raise up our marks and thus help us to pass.

To the Health Education Department:

To the Health Ed. Department a new Mr. Bones,  
The one that you have has just told us with groans,  
He's on his last leg, and can't stand any more,  
And fears every day that he'll fall on the floor.

To Miss Dickson, a new and marvelous invention:

Rushing, rushing, busy but gay,  
Classes, visits, all the day.  
Often such your hurry that  
You really can't remove your hat.  
Let's hope this hat-remover may,  
Ease you in the midst of a busy day!

To Miss Driscoll:

It must be specific, it can be terrific,  
It shouldn't be mystic, but should be statistic,  
What are your guesses? We'll give you two,  
It's a perfect geography class for you!

To the History Department:

To the History Department, a word of advice,—  
The incoming Freshmen are really quite nice,  
But their nerves will get jangled and all out of tune  
With a too-steady diet of dear *Hayes and Moon*.



To Dr. Nash and Miss Shute:

Welfare Club leaders, you try to supply  
Eyeglasses, milk, and new shoes.  
We give you the gift you really need,  
A student body that likes paying dues!

To the rest of the faculty, we leave no bequest,  
We couldn't decide just what you'd like best.  
So may we extend, from the Senior Class,  
Our heartiest thanks for letting us pass!

To the Freshmen:

And now to the long-suffering Freshies, we say,  
"Be patient and wait, you'll be Juniors some day.  
And white-stockinged Freshies will act very meek,  
And carry your books during Baby Week!"

To the Sophs—the Freshies of yesterday:

We give you our Senior sophistication,  
The proper response to syncopation,  
And all a Formal's fascination—  
Now, little Sophomore, don't you cry,  
For you'll be a Senior by and by.

To the Juniors:

You soon will be the Senior Class,  
Full of knowledge and lore,  
And as our heirs to you we pass  
Our booth in a nearby store.

---

Our worldly gifts are now bestowed,  
As wisely as may be,  
We've nothing left, but deepest love,  
For our college, dear T. C.

Signed this day (with my long-suffering fountain pen)  
and Sealed (with my class-ring)

ELEANOR NOONAN,

*Attorney-at-Law.*

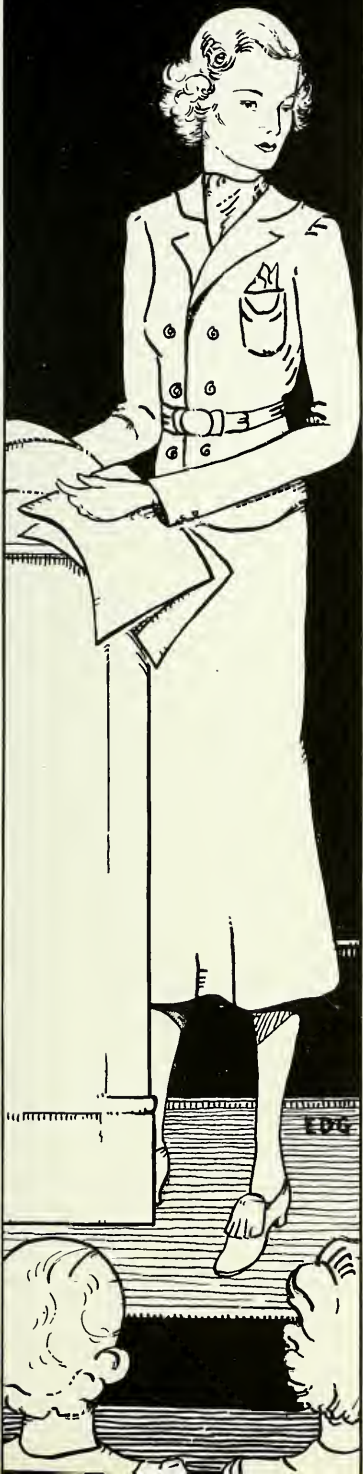
*Witnesses:*

Stimulus Response  
Reflex Action

# CALENDAR

1936-1937

College Opened . . . . .	September 10
Freshman Acquaintance Tea . . . . .	September 21
Junior-Freshman Party . . . . .	September 25
Club Assemblies . . . . .	September 28—October 2
Caps and gowns first worn to Assembly . . . . .	September 28
Welfare Club Assembly . . . . .	October 5
Senior and Freshman Party . . . . .	October 23
English Club Assembly—Maurice Leahy . . . . .	October 26
Street Fair . . . . .	October 26
Senior Tea and Fashion Show at Filene's . . . . .	October 28
Seniors take Teacher's Oath . . . . .	October 29
Junior Hallowe'en Dance . . . . .	October 30
Lampas Teas . . . . .	November 2, 3, 4
Education Week . . . . .	November 9-13
Parents' Tea . . . . .	November 9
E. R. A. Concert . . . . .	November 30
Welfare Club Tag Day . . . . .	December 2
Art Club Sale . . . . .	December 9
Self-Government Dance . . . . .	December 11
Biology Club Sale . . . . .	December 15
Faculty Children's Party . . . . .	December 18
Christmas Assembly . . . . .	December 21
Lampas Victrola Dance . . . . .	January 29
Junior Week . . . . .	February 1-5
Junior Promenade . . . . .	February 5
Freshman Party to Juniors . . . . .	March 5
Senior Play— <i>Ladies of the Fury</i> . . . . .	March 19
Safety Education Assembly . . . . .	March 22
Self-Government Day—Mr. Boyden . . . . .	March 29
Sophomore Victrola Dance . . . . .	April 9
Senior Formal Dance . . . . .	April 16
Art Week Assembly . . . . .	April 26
Health Week . . . . .	May 3
Operetta— <i>The Gondoliers</i> . . . . .	May 7, 8
Kindergarten Centennial . . . . .	May 10
Boston Examinations . . . . .	May 11, 12, 13
Classical Club Dinner . . . . .	May 13
Self-Government Dance . . . . .	May 14
Oral Expression Assembly . . . . .	May 17
Memorial Day Program . . . . .	May 24
Faculty Reception . . . . .	June 3
Senior Week . . . . .	June 4-11
Commencement . . . . .	June 11



## ORGANIZATIONS



BEULAH MORSE  
BUSINESS MANAGER



ELEANOR NOONAN  
ASSOCIATE EDITOR



GRACE WHITTAKER  
EDITOR - IN - CHIEF



AGNES MARSH  
LITERARY EDITOR



GERTRUDE AHEARN  
ASSISTANT LITERARY EDITOR



CONCETTA ALIBRANDI  
ASSISTANT LITERARY EDITOR



MARGARET MCMANVILLE  
ASSISTANT BUSINESS MANAGER



KATHERINE KELLY  
ASSISTANT BUSINESS MANAGER



LOUISE McLEOD  
ASSISTANT BUSINESS MANAGER



JOSEPHINE MARTIN  
ADVERTISING MANAGER



ANNE FLINN  
EDITORIAL SUPERVISOR



GENEVIEVE LAWLER  
ASSISTANT ADVERTISING MANAGER



JOSEPHINE ROCHE  
ASSISTANT ADVERTISING MANAGER



SADIE GINSBERG  
ASSISTANT BUSINESS MANAGER



MARY HUTCHINSON  
PHOTOGRAPHY EDITOR



RITA DONNELLY  
ASSISTANT PHOTOGRAPHY EDITOR



RITA MULROY  
ASSISTANT PHOTOGRAPHY EDITOR



CALLIE SMITH  
ASSISTANT PHOTOGRAPHY EDITOR



MARGARET CALLAHAN  
SHARPSHOOTER EDITOR



MISS KEE  
FINANCIAL ADVISER



DR. NASH  
STYFANY ADVISER



MR. SHEA  
ART ADVISER



MARJORIE THOMPSON  
ART EDITOR



BERLAH BLACKWOOD  
ART ASSISTANT



ELINO CULLEN  
ART ASSISTANT



ALMA ELLI  
ART ASSISTANT



EVELYN GRIFFIN  
ART ASSISTANT



HELEN MAHONEY  
ART ASSISTANT



BARBARA WALSH  
ART ASSISTANT



PATRICIA CALLANAN  
CLUB EDITOR



MARGARET QUINN  
ASSISTANT CLUB EDITOR



GERTRUDE MIKELS  
ASSISTANT CLUB EDITOR



DOROTHY LANDERS  
SECTION EDITOR



HELEN MCKAY  
SECTION EDITOR



ANNE WEJTHAL  
SECTION EDITOR



MARGARET ALETA  
SECTION EDITOR



CATHERINE REDICAN  
SECTION EDITOR



ALICE CASEY  
SECRETARY



ELINOR CULLEN  
FIRST VICE-PRESIDENT



CATHERINE GELLAN  
PRESIDENT



BARBARA BACIGALUPA  
SECOND VICE-PRESIDENT



RUTH KELLY  
TREASURER

## SELF-GOVERNMENT ASSOCIATION

During our college years we, the Class of 1937, have seen the Self-Government Association, which was established in 1926, grow steadily more influential. It is our most important student organization, and we realize that everyone must coöperate if it is to be efficient and enduring. The fundamental principle of Self-Government helps to develop the characters of our students by the spirit of coöperation and honor which it fosters. Each year, in order that the ideal of nobler living through character development may be strongly emphasized, a day is set apart for this definite purpose. Speakers are chosen to represent each class in the Assembly program, and each speaker discusses some phase of the main theme. This year the subject was "A Sense of Values," and the related topics included tolerance, adaptability, honor, humor, appreciation, and discretion. By this direct method the Association strives to give its members an increased knowledge of those virtues which should form the basis of their daily actions.

The organization of the Student Council makes provision for Self-Government officers selected from the three upper classes, the presidents of the classes, a councillor from each section in the College, and two faculty advisers. Various committees are appointed by the Council to assume responsibility for the College Store, the Students' Room, the Lunch-room, and the Lost and Found Department. Besides taking charge of the every-day affairs of our college, the Self-Government Association also manages many social activities during the year. Two formal dances, one in December and the other in May, are the chief social events of the year.



The exercises of Education Week, held in November, are conducted under the general supervision of the Self-Government Association, special attention being devoted to the Tea on Parents' Day. The Tea is a custom fostered by the Association to bring about a pleasant understanding between the home and the college, an understanding which is of great benefit to the students. The Christmas Party for the children of faculty members is also directed by the Association. In April the anniversary of Self-Government is observed by an assembly in which the representatives of each class speak on a subject chosen at the annual February vacation luncheon of the Association.

Our choice of officers has always proved most happy and satisfactory. In our president of 1936-1937, Catherine Gilligan, we have had a conscientious and able chairman who led Self-Government forward to greater achievements. Assisted by her fellow officers and the faculty advisers, she has added another successful year to the history of Self-Government.



## WELFARE CLUB

ELEANOR McMANUS  
 CAROLINE OBER  
 JOSEPHINE MARTIN  
 CONCETTA ALIBRANDI  
 RUTH KROCK  
 MARY FLANELLY  
 MISS SHUTE, DR. NASH

*President*  
*First Vice-President*  
*Second Vice-President*  
*Third Vice-President*  
*Secretary*  
*Treasurer*  
*Faculty Advisers*

*Education for service; service for education*

The Welfare Club, as its name implies, exists to further the well-being and happiness of those in need of a helping hand. Its special interest is the service of little children. The Club includes in its membership every student as well as every faculty member. Since the entire college cannot be present at the semi-monthly meetings, each section appoints an Aide to represent it. Under the guidance of the club officers, the faculty advisers, the group leaders, and the club aides, numerous phases of welfare work are carried on. The various needs of the Club are advertised by posters made by the students.

A "milk-fund drive," held early in the year, made it possible for the Club to supply milk daily to many under-nourished children in the Boston schools. Other children were provided with eye-glasses, and with shoes, sweaters, coats, and various articles of clothing. At Thanksgiving needy families, who would otherwise have had no holiday dinner, were sent turkeys and "all the fixings." Students deem it a privilege and a profitable experience to spend a few hours a week directing activities at the various settlement houses, or tutoring pupils in need of special help in their school-work. Toys, provided by the Welfare Club, and by the children of faculty members, brought holiday cheer at Christmas time to little ones in the City Hospital and the settlement houses. Contributions of money are sent annually to such charities as the Floating Hospital, the Community Health Association, and the Community Fund. Whatever and wherever the need, the Welfare Club tries to be of service.





RITA GLEAVY  
TREASURER



HELEN HIGGINS  
PRESIDENT



HENRIETTA STATHACOPOULOS  
VICE-PRESIDENT



MARY CURRAN  
SECRETARY

## JUNIORS

We have always felt particularly close to this class, which will soon take our place as next year's Seniors. They have shared our interests, and by their co-operation have won our respect and admiration. Their poise and general ability have brought them success in scholastic as well as in social activities. We are happy to pass the torch on to such a group,—to girls who will hold it high, and who will preserve the traditions of our college. Inspiring class-mates and gay companions—success to you, Juniors!



KATHLEEN McNULTY  
TREASURER



ELEANOR GEISHECKER  
PRESIDENT



MARGARET MULLEN  
VICE-PRESIDENT



RUTH KROCK  
SECRETARY

## SOPHOMORES

In our memories the Sophomores will always be the Freshmen sisters of our Junior year. They amaze us with their remarkable talents and by the spontaneous fun-loving spirit with which they participate in all college activities. We are proud of our young sisters and hope this eager, interested class will reach even greater heights of success. May they continue as they have begun, and thereby bring greater glory to Teachers College.



MARGUERITE BARRY  
TREASURER



ELSE JUNKER  
PRESIDENT



MARY SULLIVAN  
VICE-PRESIDENT



PHYLLIS MURPHY  
SECRETARY

## FRESHMEN

The Class of 1940 is composed of girls whom it has been a great pleasure to know. Typical Freshmen, they fascinated us by their youthful exuberance, their amusing innocence, and their inspiring enthusiasm. The interest they have taken in all the college activities has already proved their loyalty to our Alma Mater. We are fortunate in having such a group to carry on our ideals. To the Class of 1940, good luck!

## GRADUATES

ATTRIDGE, HELEN M.	A.B.	Emmanuel College '35
BERRY, FREDA	B.S. in Ed.	Salem Teachers College '35
BOGAN, ELEANOR M.	B.S. in Ed.	Teachers College '36
BURTON, CLAIRE E.	B.S. in Ed.	Teachers College '36
CAHILL, RITA V.	B.S. in Ed.	Teachers College '36
CAMPANA, JOHN P.	A.B.	Harvard College '36
CARROLL, GEORGE T.	A.B.	Harvard College '32
COES, ETHEL A.	B.S. in Ed.	Teachers College '36
COHEN, HILDA	B.S. in Ed.	Teachers College '36
COHEN, ROSALIND	B.S. in Ed.	Teachers College '36
COLLINS, MARY A.	B.S. in Ed.	Teachers College '36
CONNORS, GRETCHEN K.	B.S. in Ed.	Teachers College '36
COPPINGER, MARY T.	B.S. in Ed.	Teachers College '36
CROWLEY, NOREEN M.	B.S. in Ed.	Teachers College '36
DALEY, JOHN T.	A.B.	Boston College '36
DANNAHY, RUTH M.	B.S. in Ed.	Teachers College '36
DELEO, RITA J.	A.B.	Emmanuel College '36
DENVIR, DOROTHEA M.	B.S. in Ed.	Teachers College '36
DEVORE, WILLIAM	A.B.	Harvard College '33
DONOHUE, CHARLES K.	A.M.	Boston College '34
DONOVAN, EILEEN R.	B.S. in Ed.	Teachers College '36
DUSTON, ELIZABETH	B.S. in Ed.	Teachers College '36
EPSTEIN, MILDRED	B.S. in Ed.	Teachers College '36
FERGUSON, BARBARA A.	A.B.	Emmanuel College '36
FITZGERALD, LILLIAN H.	B.S. in Ed.	Teachers College '36
FRIEDBERG, ELEANOR	B.S. in Ed.	Teachers College '36
GARDNER, DOROTHEA M.	A.B.	Emmanuel College '36
GARTLAND, HENRY J.	A.B.	Boston College '36
GOLDBERG, JUNE F.	B.S. in Ed.	Teachers College '36
GOODWIN, HELEN T.	A.B.	Emmanuel College '36
GREEN, MADELINE G.	B.S. in Ed.	Teachers College '36
GRISE, ELIZABETH V.	B.S. in Ed.	Teachers College '36
GUARINO, CARMELA A.	B.S. in Ed.	Teachers College '35
HARMON, RICHARD P.	B.S.	Harvard College '35
HAYES, WILLIAM	Ph.B.	Boston College '34
KARLSSON, HELEN M.	B.S. in Ed.	Teachers College '36
KEAN, WILLIAM A.	A.B.	Boston College '35
KELLEHER, M. ELIZABETH	B.S. in Ed.	Teachers College '36
KELLEY, MARGARET P.	B.S. in Ed.	Teachers College '36
KENNEDY, KATHERINE L.	B.S. in Ed.	Teachers College '36
KIDNEY, ROSE P.	B.S. in Ed.	Teachers College '36
KINCADE, WINIFRED J.	B.S. in Ed.	Teachers College '36
KOLODNY, JOSEPH G.	A.B.	Harvard College '35
KOVITZ, DOROTHY R.	B.S. in Ed.	Teachers College '36
KUPINSKY, HERBERT	A.B.	Boston University '36
LAURO, CARMELA F.	B.S. in Ed.	Teachers College '36
LEROY, RITA E.	B.S. in Ed.	Teachers College '35
LOCKE, MARY J.	B.S. in Ed.	Teachers College '36
MACARTHUR, MARY C.	B.S. in Ed.	Teachers College '36
MARTIN, RITA E.	B.S. in Ed.	Teachers College '36
MCGILLICUDDY, M. RITA	B.S. in Ed.	Teachers College '36
MILLER, PEARL	B.S. in Ed.	Teachers College '36
MULLANE, MARIE T.	B.S. in Ed.	Teachers College '36
O'HARE, LILLIAN J.	B.S. in Ed.	Teachers College '36
RILEY, BARBARA M.	A.B.	Radcliffe College '36
RIORDAN, JOHN J.	A.B.	Boston College '36
RUBIN, ROSE	B.S. in Ed.	Teachers College '36
RUDIN, EDWARD	A.B.	Harvard College '29
SEGALOFF, PETER	B.B.A.	Boston University '35
SKWAREK, VICTORIA J.	B.S. in Ed.	Teachers College '36
SULLIVAN, FRANCES L.	B.S. in Ed.	Teachers College '36
SULLIVAN, RITA A.	A.B.	Radcliffe College '36
WAGNER, MARION L.	B.S. in Ed.	Teachers College '36
WEISS, ELEANOR S.	B.S. in Ed.	Teachers College '36
WELCH, DOROTHY E.	B.S. in Ed.	Teachers College '36
WHITE, ALBERT S.	A.B.	Harvard College '35
ZALESKI, JOSEPHINE K.	B.S. in Ed.	Teachers College '36
ZOLL, HERBERT	A.B., A.M.	Harvard College '28, '29



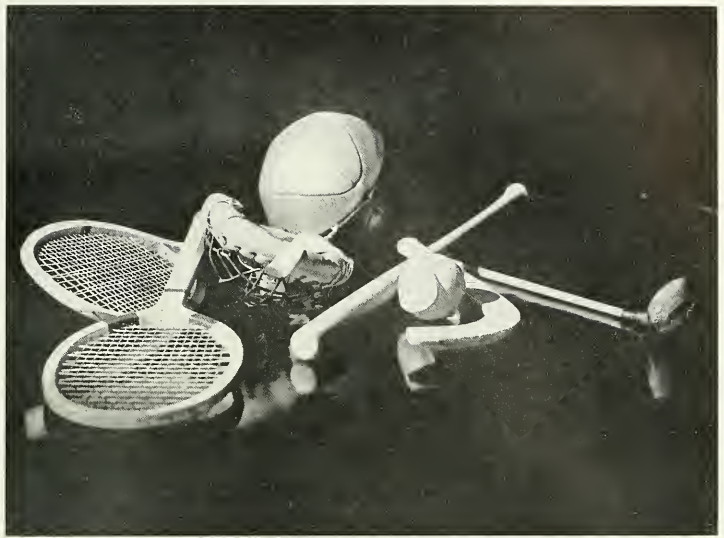
## CLUBS



## ART CLUB

BERLAH BLACKWOOD . . . . .	<i>President</i>
ANNA DAMIANO . . . . .	<i>Vice-President</i>
ETHEL HURWITZ . . . . .	<i>Secretary</i>
ELEANOR LYNCH . . . . .	<i>Treasurer</i>
MR. SHEA . . . . .	<i>Faculty Adviser</i>

The Art Club was formed to aid and inspire creative work. It offers wide opportunities for those interested in painting (in oil, water colors, and pastels), sculpturing, modeling, and other artistic fields. The Club, as a member of the Co-operative Arts Group, assists in the Christmas Assembly by providing the scenery and the tableau. Although the Christmas Assembly and the sale of hand-blocked Christmas cards are the two main activities of the club, it also supplies the scenery for the Operetta and for the many plays given by the college. Posters for the college dances and other extra-curricular activities are made by the members of the Art Club. During the year various interesting speakers have addressed the Club on different phases of artistic endeavor, and visits have been made to fascinating art galleries in and around Boston. As the final activity of the year, there is an exhibition of the work done in the special art classes.



## ATHLETIC ASSOCIATION

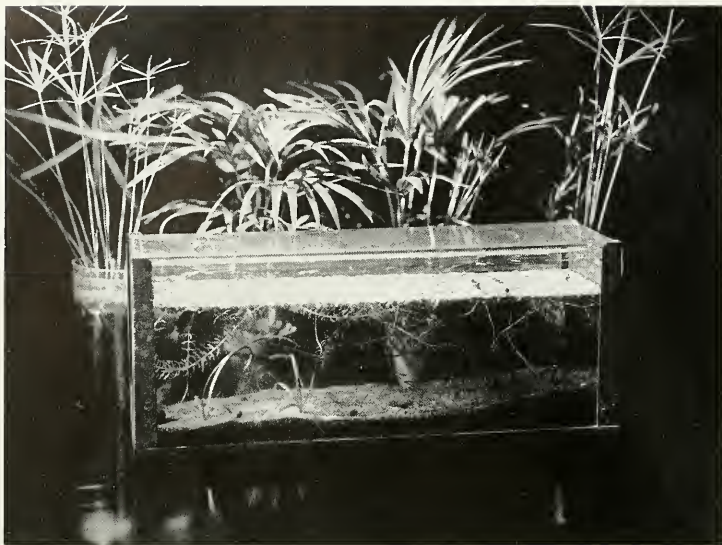
RITA DONNELLY . . . . .	President
MARIE E. MAGUIRE . . . . .	First Vice-President
WINIFRED PEATFIELD . . . . .	Second Vice-President
RITA CAMPBELL . . . . .	Secretary
RUTH GORDON . . . . .	Treasurer
MISS DONOVAN, MISS QUINLAN . . . . .	Faculty Advisers

*"A game for every girl, a girl for every game."*

The Athletic Association has been one of our most enthusiastic clubs during the past four years. It boasts of a large membership, but more than that, it fosters and strengthens friendships founded on a love of sport and the out-of-doors. At our Athletic Association meetings we play basketball, captainball, and squash baseball. At the end of each season, inter-class games are held in these sports, each student being eager to defend the honor of her class. The class of '37 has always played hard and well. As Freshmen, we were runners-up for the inter-class title in basketball, and as upper classmen we have always been near the top. The chief event of the year is our Annual Game Meet. At this time cheers and songs are composed, enthusiasm is at a high peak, and each class does its best to win. As Freshmen, we were beaten by our Junior sisters by a mere two points. For outside activities we participate in bowling, hiking, ice-skating, tennis, bicycling, and swimming. We have been on many enjoyable hikes to Houghton's Pond and Cedar Hill. We shall never forget the glorious skating and tobogganing at Cedar Hill nor the friendly warmth of the fire as we gathered around it, singing and toasting frankforts. What fun we had!

Our final meeting for 1937 was in the form of a party. Here we forsook our strenuous sports and indulged in social life, entertained by the talent of our own members. At this time, we handed down to our under-classmen, the interest and enthusiasm we have had during the past four years.

We have enjoyed our sports, made many new friends, but above all, we have learned what the Athletic Association stands for—Good Sportsmanship.



## AQUARIUM CLUB

ANNA LARKIN

KATHERINE LAURANO

HELEN HOLMES

KATHERINE FRIZONE

DR. KERRIGAN

*President*

*Vice-President*

*Secretary*

*Treasurer*

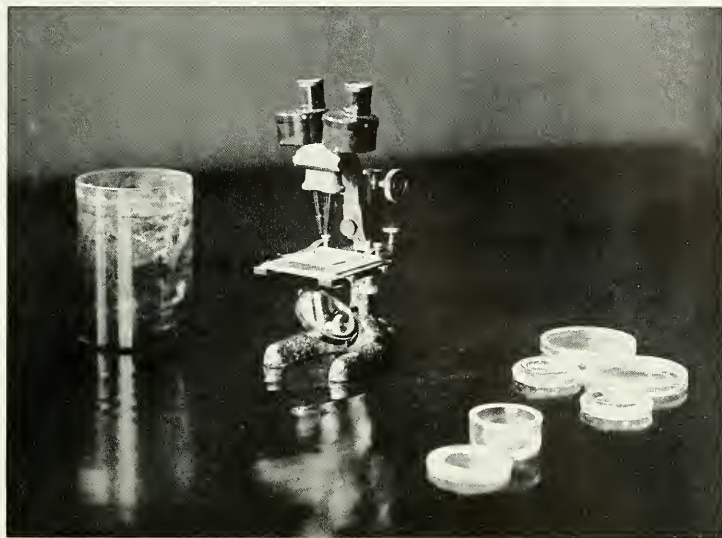
*Faculty Adviser*

The Aquarium Club seeks each year to increase the interest in balanced aquaria; therefore, it opens its membership to all students in the college, not restricting it to science majors and minors. Club members endeavor to further the interest in and increase the knowledge of aquaria, not only among their fellow club-members, but particularly among teachers in the Boston schools.

The Club urges active participation in its activities on the part of all the members, and for this reason contributions of terraria and aquaria to the Spring Flower Show are the composite work of the members.

Aquarium Club members not only care for aquaria in the College, but they also set up terraria and aquaria which they sell. The demonstrations on correct set-ups given by the girls to classes in the Elementary and Junior High schools are excellent for their value as teaching experience. With Dr. Kerrigan as its faculty adviser, the Club has the advantage of her research and experience with aquaria. Out of its revenue each year the Club contributes to the Lillian J. MacRae Memorial Library Fund.





## BIOLOGY SOCIETY

CLAIRE BURTON . . . . .	<i>President</i>
MARGUERITE GREY . . . . .	<i>Vice-President</i>
YVONNE HABERT . . . . .	<i>Secretary</i>
IDA SULLIVAN . . . . .	<i>Treasurer</i>
MISS AMMDOWN . . . . .	<i>Faculty Adviser</i>

As far as age is concerned, the Biology Society is still a toddling infant. A study of its achievements, however, leads to the conclusion that this club must be an infant prodigy. Founded in 1934 under the able direction of Miss Ammdown, the Biology Society immediately proved itself a social and financial success. Its members, Biology teachers in service, major and minor student groups, as well as certain recommended sophomores, gather in Room 32 on the last Tuesday of each month to enjoy illustrated lectures given by prominent guests, informal talks by fellow members, or friendly discussions of field-trip plans. Good fellowship and cooperation are characteristic of the Biology Society. These attributes are shown to great advantage each December at the annual Christmas sale, the big event of the Biology Society's year. Luscious chocolate cake, steaming hot tea, snowy white covers, gleaming urns, tall beautifully-scented narcissi, delicately-perfumed sachets, cheery green plants in gayly-colored pots,—even gingham animals are displayed by the smiling busy helpers. The major part of the proceeds from this sale is devoted to college activities, including the Science Library and the College Fund. The standards set for social and financial achievements in that first year of its founding have been maintained, for the Biology Society continues to prove that "Nothing succeeds like success."



## CLASSICAL CLUB

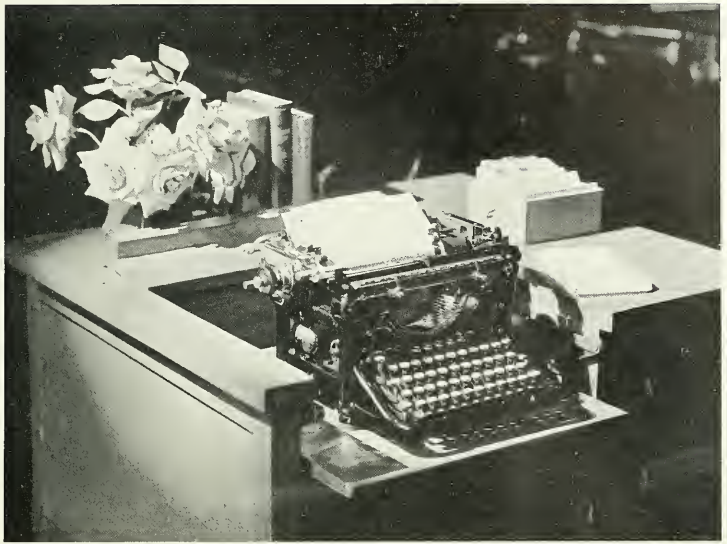
RITA CAHILL	President
MARY CONNOLLY	First Vice-President
FLORENCE THOMPSON	Second Vice-President
MARGARET O'HARE	Treasurer
GLADYS KLINE	Secretary
MISS GIVEN	Faculty Adviser

*"Haec olim meminisse iuvabit."*

This year the Classical Club entered upon its twelfth year of existence with the hope and ambition of continuing to fulfil its principal aim and purpose,—to promote good fellowship between college students and teachers in service.

The Alumnae, as well as the girls in college, are regular, active members attending and taking part in the meetings; and every class since 1924, when the Club was first organized, is represented in the Club membership.

The program of the Classical Club included this year a trip to the Art Museum, where we became better acquainted with Greek and Roman Art, a lecture by Miss Finn on her interesting trip to Rome, one by Mr. Granfield on Greek and Roman architecture, and other varied and entertaining meetings. In addition were two events which have become traditional with the Classical Club,—namely, the impressive liturgical play celebrating the coming of the Magi, presented each year at Christmas time, and the annual banquet, the climax of our year, which proved once more the value of the Classics as a bond of fellowship.



## COMMERCIAL CLUB

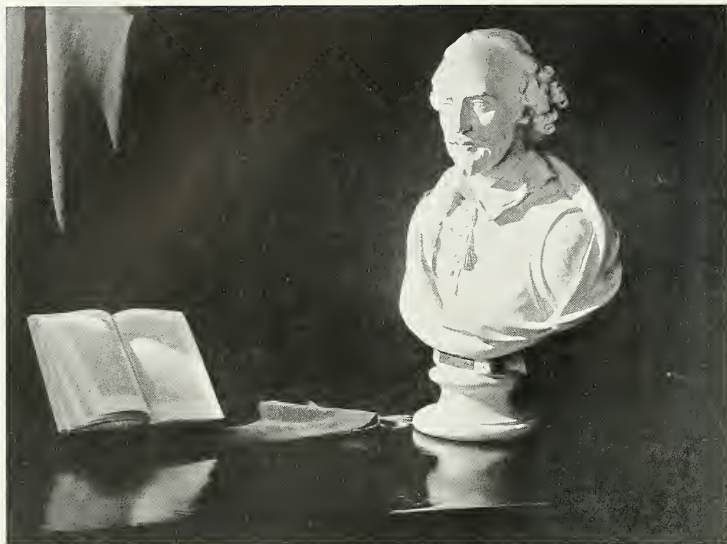
CAROLYN F. DACEY	President
FRANCES A. QUINN	Vice-President
MARIE E. MAGUIRE	Secretary
ELIZABETH DOHERTY	Treasurer
MISS REGAN, MR. BITZER	Faculty Advisers

The purpose of the Commercial Club is to give extra-curricular information to its members and to provide pleasant social relations among the commercial students. In its second year, the Commercial Club has increased its membership and widened its activities. There have been talks by college teachers of secretarial subjects and by business office workers, as well as research reports given by club members.

This year we stressed, as our main subject, the history of shorthand. Our graduate students gave us very interesting talks on this theme. Graduates, now teaching, also gave us enlightening accounts of their teaching experience. For our social activity we had an interesting travel talk, shorthand games led by members of the club, singing, and plays.

A new feature, inaugurated this year, was the appointment of chairmen who aided the officers in planning the meetings: Social Chairman, Katherine Kelly; Educational Chairman, Josephine Martin; and Rules Chairmen, Rita LeRoy and Margaret Kelley. A Group Skill Contest, in which members of the three classes competed, excited a keen spirit of rivalry among the girls for the improvement of their secretarial skills.

We feel that the Commercial Club has made real progress this second year, because of the steady attendance of the members, and their cheerful cooperation in furthering the plans of the executive board of students and faculty advisers.



## DRAMA CLUB

MARIE FORTUNATI	<i>President</i>
ELEANOR NOONAN	<i>First Vice-President</i>
MARIE BARRY	<i>Second Vice-President</i>
DOROTHY THAIN	<i>Secretary</i>
MARY HERNON	<i>Treasurer</i>

The Drama Club of the Teachers College was formed with many aims. Its organization meant bringing together girls whose bond was an eager interest in the drama. The members are taught the technicalities of drama, which will be useful to them in coaching and presenting plays in their future work. Also, the Club fosters the love of the best dramatic art. With the club motto: "The Play's the Thing" vividly in mind, we begin our year's activities with the Harvest Festival. This is a gay, informal party which gives the entire college a good time and also introduces the Club for those interested in becoming members. Our second production is the Christmas Play, which is presented at the special Christmas Assembly. This is always remembered for its beauty and spiritual dignity. Each alternate year comes the major production, usually a Shakespearean or an old English play. Last year, however, an experiment was made. A tournament of plays between the classes was held, and the audience voted on the play it liked best. An award was given to the girls in the play which won the tournament. This innovation proved a great success. This year in order to give as many students as possible an opportunity to have experience in acting or producing, a play is given every month at the regular meeting. At our February meeting, we have a Valentine party, to which the entire college is invited. This year we are planning to have a dinner to conclude our year's programme. In addition to these regular activities, theatre parties are organized whenever there is a worth-while production to be seen.



## ENGLISH CLUB

GERTRUDE AHEARN	.....	President
CONCETTA ALIBRANDI	.....	Vice-President
FLORENCE THOMPSON	.....	Secretary
KATHERINE GODFREY	.....	Treasurer
MRS. GUILFORD, MISS BRENNAN	.....	Faculty Advisers

The English Club unites those students who share a love of literature. The formal atmosphere of the classroom is exchanged for a pleasant social group where friendships are strengthened and self-expression encouraged. Here the prospective writer has ample opportunity to exercise her literary talents or to talk about her favorite author. Although active participation is the aim of this group, many students come to listen and to glean interesting suggestions for reading. The appeal of the English Club to the college at large is evidenced by the number of active members who find a constant source of enjoyment in friendly companionship and common literary interests.



## GEOGRAPHY CLUB

ANNE FLINN	President
ANNA CUSSEN	Vice-President
ANN MCCARTHY	Secretary
MARY KENNEY	Treasurer
MISS DRISCOLL	Faculty Adviser

The Geography Club takes its members not only to places of world-wide fame, but also to regions usually unknown to the every-day person. The travelogues given by members of the faculty and other guest speakers, are often accompanied by moving pictures, which make them more vividly interesting. For example, at our first meeting this year, an alumna, Mrs. Nathaniel J. Young, gave a very interesting talk on her tour to Mexico City. Technicolor pictures showed the beauty of Mexico's scenery and many of its historic and artistic landmarks. A Mexican costume, bright colored baskets, Mexican coins and souvenirs added realism to the lecture. The meetings are not, however, confined to vicarious travel. Some meetings each year are devoted to the discussion of current events. Also, we are forming a book club which not only promises to be a source of enjoyment, but will widen our field of knowledge. At the meetings set aside for the Book Club the members give book reviews; thus each one will have an opportunity to participate in the club activities. In this way, the Geography Club hopes to fulfil its aims,—to provided recreation, promote good fellowship, and create a greater interest in the world about us.



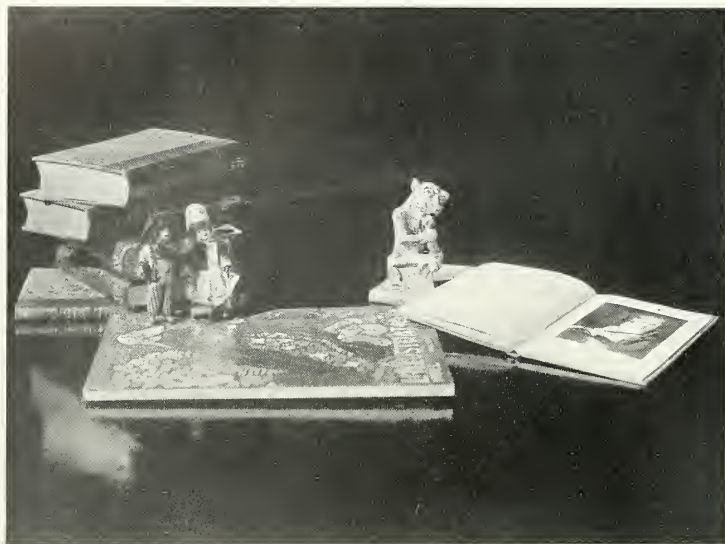
## HISTORY CLUB

MARGARET M. CALLAHAN	<i>President</i>
DORIS FLINN	<i>Vice-President</i>
CHARLOTTE FELLMAN	<i>Secretary</i>
ELIZABETH GUELL	<i>Treasurer</i>
MISS HUBBARD	<i>Faculty Adviser</i>

The primary purpose of the History Club is to instil into the minds of all members a vital interest in world progress. The Club aims to develop an appreciation of the struggles and triumphs of heroic men of past and present, and an understanding of world affairs from an international point of view. To accomplish this, open-forum discussions of current events play a prominent part in the club program. The club strives to keep up with the rapid march of events in world history and to discuss these incidents intelligently in order to foster an understanding of their significance.

Visiting speakers present original views on current topics, such as "The Ethiopian Crisis" in 1936 and "The Social Significance of Security" in 1937. Our own girls frequently present reports on historical novels or essays on important events. For fun-loving members we have games revolving around historical characters, charades, and farcical pantomimes. These activities are intended to socialize membership and to promote a spirit of friendliness and mutual interest.

As a fitting climax to the club calendar, a historical tour to some historic site near Boston is planned. With that, our club year will end, having, successfully we hope, fulfilled its aims of social stimulation and historical study.

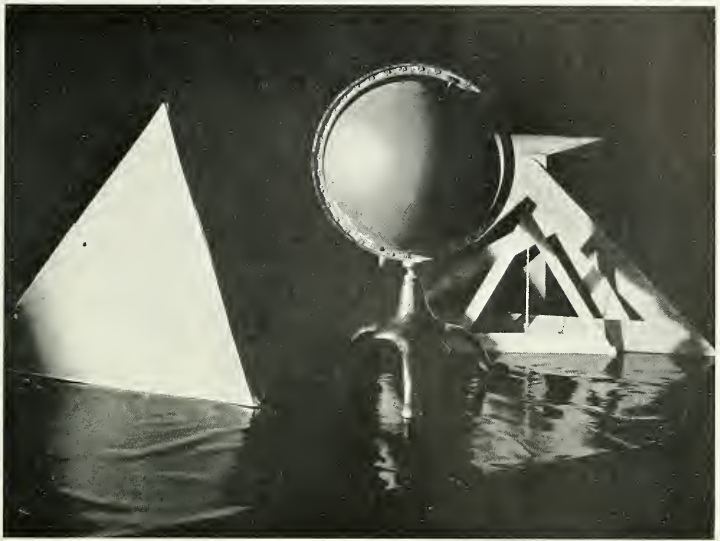


## LE CERCLE FRANÇAIS

ROSE PEREZ . . . . .	<i>President</i>
SARA SUGARBERG . . . . .	<i>Vice-President</i>
ELIZABETH CUNNINGHAM . . . . .	<i>Secretary</i>
ADELINE DELL'ARIA . . . . .	<i>Treasurer</i>
MISS GARTLAND . . . . .	<i>Faculty Adviser</i>

Le Cercle Français est un club de celles qui étudient le français, et qui veulent avoir l'occasion de le parler souvent. Le cercle a le double but de donner aux membres l'occasion de parler souvent français et de les mettre au courant de la vie et de la civilisation française par la représentation de petites pièces, par des causeries, des récits de voyages, des jeux, et des disques de musique française. Pour terminer le programme de l'année, les membres du cercle écoutent la musique française à Symphony Hall. Tous les deux ans, le Cercle Français donne une représentation dramatique pour les élèves des écoles supérieures de Boston. L'année passée nous avons joué "Poil de Carotte," comédie en un acte de Jules Renard.



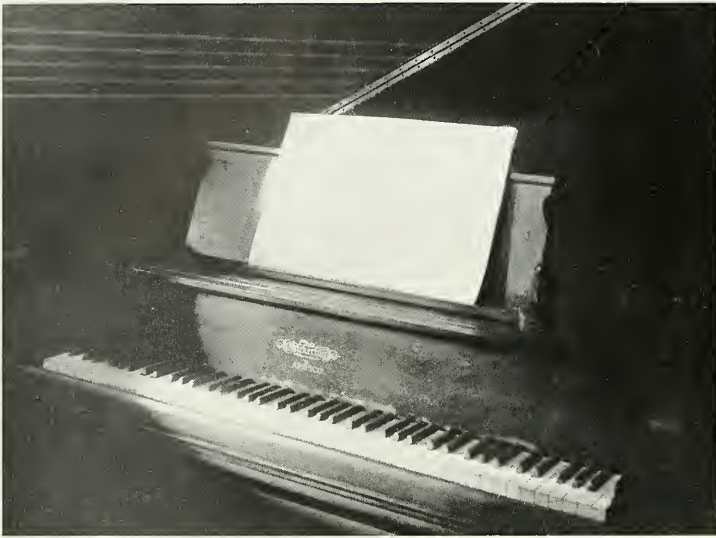


## MATHEMATICS SOCIETY

BERNICE O'DONOGHUE . . . . .	<i>President</i>
EDNA CONNORS . . . . .	<i>Vice-President</i>
RUTH SCHIFFERDECKER . . . . .	<i>Secretary</i>
SHIRLEY ABELOW . . . . .	<i>Treasurer</i>
MR. VOSBURGH . . . . .	<i>Faculty Adviser</i>

The Mathematics Society has a three-fold aim: (1) to promote a spirit of friendship among those graduates and under-graduates of the Teachers College who have a special interest in mathematics; (2) to bring to undergraduates a knowledge of real experiences in the teaching of the subject by those already in the profession; and (3) to further the cause of the teaching of mathematics in the Boston schools.

This three-fold aim is well carried out in the varied program of the society. At some meetings we are addressed by visiting speakers—prominent mathematicians from neighboring schools and colleges. These people give very interesting talks on their special phase of the subject, and afford us an opportunity to learn something about such topics as relativity, ancient mathematics, and unusual aspects of algebra and arithmetic. At other times the program is provided by our own members, and we hear, perhaps, from the graduates of previous years, who give reviews of their theses. Again some under-graduates present short plays based on their courses here. Lest we give the impression that this society is a very serious one, let us add that at the end of the year we have a very gay banquet at which all join in the fun,—faculty members, teachers-in-service, and under-graduates.



## MUSIC CLUB

MARIE MICHAELS	. . . . .	<i>President</i>
MARJORIE McDONNELL	. . . . .	<i>Vice-President</i>
RUTH HEERDE	. . . . .	<i>Secretary</i>
JOSEPHINE SNAPHY	. . . . .	<i>Treasurer</i>
MISS BRICK	. . . . .	<i>Faculty Adviser</i>

The Music Group of the Coöperative Arts Course, one of the largest club in the school, is chosen from the entire college. It affords an opportunity for the members to practice choral and solo singing, and its meetings are welcomed as a splendid addition to the college activities. This year meetings were held on Wednesday of each week, under the direction of Miss Brick, and were devoted to rehearsing the many and varied programs to be presented during the year. The Club provides incidental music on occasions such as Education Week, Parents' Day, the Christmas Assembly, Self-Government Day, Graduation, and at the meetings of other organizations in the college. In the Music Assembly program the members present a project based upon works of a certain composer, or worthwhile poems which have been set to music. Thus many members are given an opportunity to perform, as conductor, pianist, or vocalist.

Each alternate year the Club presents an operetta, and this year *The Gondoliers* by Gilbert and Sullivan was chosen, because it gives opportunity to a large cast.

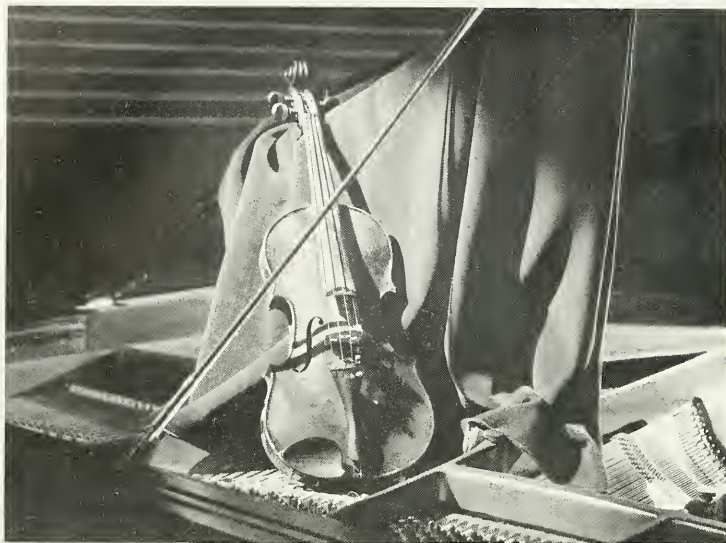
Throughout the year, the Club has successfully proved that it is an organization valuable to the college, and it has lived up to its usual high standards.



## SCIENCE CLUB

LOUISE MCLEOD . . . . .	<i>President</i>
CAROLINE OBER . . . . .	<i>Vice-President</i>
RITA M. KELLEY . . . . .	<i>Secretary</i>
HELEN WUSTENEY . . . . .	<i>Treasurer</i>
MR. QUINN . . . . .	<i>Faculty Adviser</i>

Those of us who are fascinated by the most recent developments in atom-smashing, radio-activity, astronomy, physics, and other branches of pure and applied science may satisfy our scientific interests at the Science Club. Under the helpful guidance of Mr. Quinn, the Club aims to unite in its membership, those girls majoring in science, or studying its astounding advances merely as an intellectual interest. Stimulating lectures have been given by speakers who have an intimate connection with some phase of science applied to industry, crime detection, radio, or public facilities. One of the most interesting talks was given by a lieutenant of the State Police, who described the two-way radio system now functioning so efficiently in his department. A motion picture from the General Electric Company instructed us in the scientific principles and intricate mechanisms which unfailingly supply ice-cubes on every demand. The Science Club, as in the past, will undoubtedly continue in the future to impress on its members the tremendous significance of the application of science to industry. This will be accomplished by affording the girls an opportunity to visit large manufacturing plants and observe the processes in actual operation. The Science Club, through its activities, aims to keep informed of some of the countless phases of modern science in its progress to a more efficient civilization.



## STRING ENSEMBLE

<i>Violins</i>	JOAN EARLY, RUTH GORDON, ROSE ILGOVSKY, FLORENCE ROONEY
<i>Cello</i>	RUTH VINCENT
<i>Contra-bass</i>	PAULINE GLEN
<i>Pianist</i>	HELEN SNAPHY
<i>Faculty Adviser</i>	MR. GRANT DRAKE

In the String Ensemble, we have a group of girls who enjoy the production of good music and also bring enjoyment to others. They give practical expression to our college motto, "Education for Service," for they serve their college through the musical education they have received.

Although the String Ensemble is a comparatively new organization, having been formed in the fall of 1935, the students depend on this talented group to supply incidental music at our college teas and special assemblies. It has become so popular that it is called upon by members of our faculty to play at affairs outside the regular college curriculum.

We of the college especially thank the members of the String Ensemble and their adviser, Mr. Drake, because theirs is a voluntary service generously given without thought of the time and effort it demands.



## VISION OF WISE MEN

*Cast*

*Mary*  
*Angels*

*Wise Men*

*Shepherds*

ESTHER RASK  
RUBY MCGINNIS  
EILEEN BOWERS  
VIRGINIA NOONAN  
ANNABELLE O'CONNOR  
AGATHINA DI BELLA  
ANNA DAMIANO  
ELEANOR LYNCH  
BEATRICE DE LORY

Presented by the Art Club

## THE LOST STAR

*Cast*

*The Wise Men*

*Gaspar*

*Melchior*

*Balthasar*

*Amrah—Hebrew Prophetess*

*Ashtar—A Parthian Girl*

*Omar—A Wandering Merchant*

*Omar's Wife—An Arab Woman*

*Hemar—An Enemy of Balthasar*

*David—A Captive Jewish Boy*

*Three Arabs—Captor of David*

ANNE CONNELLY  
CAROLYN HEDSTROM  
MARIE FORTUNATI  
ANNE HIGGINS  
ELEANOR MCMANUS  
ANNE LAVERTY  
ANNE MCGINLEY  
RITA McLAUGHLIN  
DOROTHY THAIN  
MARIE BARRY  
KATHERINE GODFREY  
MARIE LEEN

Presented by the Drama Club

*One hundred twenty-one*



## LADIES OF THE JURY

### Cast

<i>Mrs. Livingston Baldwin Crane</i>	KATHLEEN SULLIVAN
<i>Spencer C. Dazey</i>	WILLIAM REID
<i>Lily Pratt</i>	MARIE MAGUIRE
<i>Jay J. Pressly</i>	FRANK BROW
<i>Mayme Mixter</i>	ELEANOR MCELENEY
<i>Tony Theodopholus</i>	JOHN CAMPAGNA
<i>Cynthia Tate</i>	KATHERINE KELLY
<i>Alonzo Beal</i>	RICHARD HARMON
<i>Mrs. Duce</i>	HELEN SULLIVAN
<i>Steve Bromm</i>	EDWARD SULLIVAN
<i>Mrs. Maguire</i>	MARJORIE MAGUIRE
<i>Andrew MacKaig</i>	JOHN DALY
<hr/>	
<i>Judge Fish</i>	EDWARD MCCRENSKY
<i>Halsey Van Stye</i>	WILLIAM KEAN
<i>Rutherford Dale</i>	EDWARD RUDIN
<i>Mrs. Yvette Gordon</i>	YVONNE HABERT
<i>Evelyn Snow</i>	ELEANOR TWOMEY
<i>Waitresses</i>	KATHLEEN MURPHY
	DORIS LORD
<i>Officer</i>	JOSEPH KOLODNY
<i>Clerk of Court</i>	ANNE FLINN



## THE GONDOLIERS OR THE KING OF BARATARIA

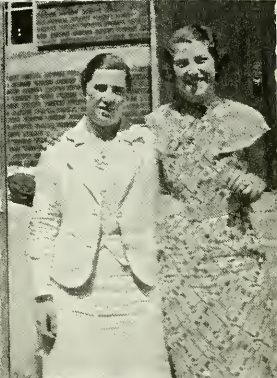
Gilbert and Sullivan

*Cast*

<i>The Duke of Plaza-Toro</i>	Eleanor Dwyer
<i>Luiz (his Attendant)</i>	Rose Lynch
<i>Don Alahmbra Del Boleo (Grand Inquisitor)</i>	Genevieve Lawler
<i>Mario Palmieri</i>	Marie Michaels
<i>Guiseppe Palmieri</i>	Rose Ilgovsky
<i>Antonio</i>	Harriet Cohen
<i>Francesco</i>	Frances Kabachnick
<i>Giorgio</i>	Ruth Heerde
<i>Duchess of Plaza-Toro</i>	Rose Di Pasquale
<i>Casilda</i>	Jeanette Levin
<i>Gianetta</i>	Pearl Stern
<i>Tessa</i>	Concetta Alibrandi
<i>Fiametta</i>	Dorothy Martin
<i>Vittoria</i>	Eileen Norton
<i>Giulia</i>	Ann Marcus
<i>Inez</i>	Marion Connolly







## ALMA MATER

When we came, Alma Mater, to thee in our  
youth,  
When we lifted our eyes, full of trust, to thy  
face,  
When we felt there thy spirit, and saw there  
thy grace,  
We desired then thy wisdom, we longed for  
thy truth.

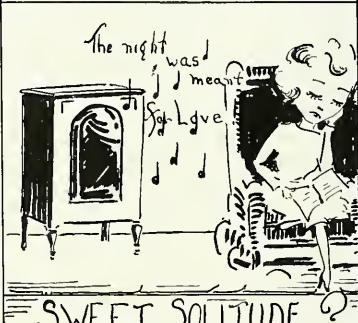
As the years have flown by with their toil  
and their joy,  
Thou hast quickened our ears, thou hast  
opened our eyes,  
Till the hill and the plain, till the seas and  
the skies,  
Are all throbbing with beauty no hand can  
destroy.

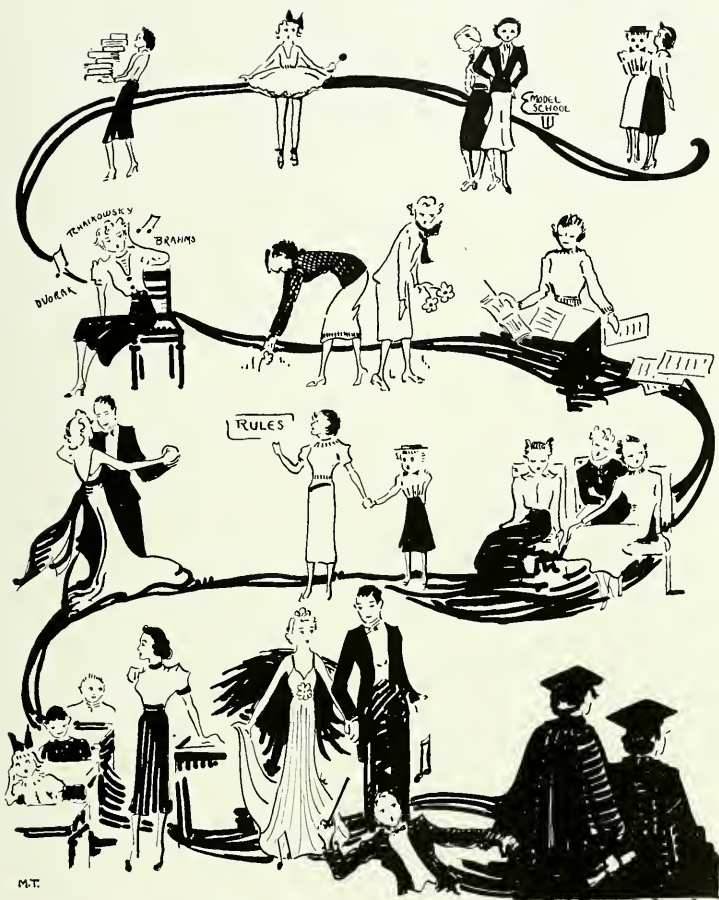
Thou hast shown us the world with its splendor  
and might,  
Its desire and its need thou has given us to see;  
Mother, grant us thy passion for service that  
we  
May lead youth with its ardor to seek for the  
light.

Katharine H. Shute.



HUMOR





# MARCH OF TIME

THE CHARGE  
OF  
THE LIGHT-HEADED BRIGADE

Half a flight—half a flight,  
Half a flight downward  
All in the Lunchroom charge,  
    Ran the poor Freshies.  
Forward the Freshmen ranks!  
If anything's left, give thanks.  
Into the Lunchroom, at large  
    Galopped the Freshmen.

Forward the noble raid!  
Is there a Freshie dismayed?  
    Will any eat today?  
Down fall the laggards—  
Theirs not to try to talk,  
See, they can hardly walk,  
But can a Freshman balk?  
    Into the Lunchroom  
Onward they staggered!

Seniors to right of them!  
Juniors to left of them!  
Sophies in front of them!  
Their struggles still renew—  
Hemmed by the upper class,  
Boldly they rallied to pass,  
Into the height of the turmoil,  
    Into the angry mass,  
Went the courageous few!

Flashed then their money bright,  
Smiled they in midst of fight,  
Feeling their cause was right,  
    Gallant—but Freshmen!  
Plunged into deepest fray,  
They will not eat today,  
There's just an empty tray,—  
    Hopeless—poor Freshmen!  
Shattered and worn they turned,  
They have their lesson learned,  
Gone that for which they yearned,  
    Noble,—but Freshmen!

When can their glory fade?  
Oh, the wild charge they made!  
    Brave hopeful Freshies!  
Honor the Freshman raid,  
Honor the Unafraid,  
    Poor gallant Freshies!

## IN TUNE WITH OUR TIMES

### Music

*Sophisticated Swing*—Penmanship for Seniors!  
*You're Laughing At Me*—and Dr. Gerry returned the papers!  
*Boo-Hoo*—Aching muscles after a gym lesson!  
*Easy To Remember*—Everything but *Snedden*!  
*When My Dream Boat Comes Home*—by degrees!  
*Too Marvelous For Words*—We made it!!!  
*Who's Sorry Now*—It can't be the Faculty!  
*He Ain't Got Rhythm*—I hope you didn't take him to the Senior Prom!  
*Swing High—Swing Low*—Just *one* of the playground activities.  
*Where Are You*—on the list?  
*They Can't Take That Away From Me*—the memory of the struggle!  
*Close To Me*—Anything but *Gregory* and *Odell* will do!

### Books

*The Gods Arrive*—The first day you wore cap and gown to Assembly.  
*The Hundred Years*—before appointment.  
*Persuasion*—Obtaining an excuse slip from Miss Sallaway.  
*It Can't Happen Here*—The prayer of an observer in charge of a large study hall.  
*We Are Not Alone*—Just look at those lists!  
*Freedom Farewell!*—The day after vacations.  
*Lost Horizon*—Permanent appointment!  
*White Banners*—Gym blouses!  
*Tomorrow Never Comes*—A car check “ ’til tomorrow”!  
*The Good Earth*—Come on down to it!  
*If I Had Four Apples*—I'd know I was a school teacher.  
*Little Man, What Now*—or little woman, what next?  
*Gone With The Wind*—The resolutions you made while practice-teaching.  
*If This Be I*—That feeling after exams.

## SNEDDEN SAYS

*Dedicated to the mythical ogre of the Senior Class*

You may talk of *Hayes and Moon*  
Or other texts which were your doom,  
And the way they tantalized in different ways,  
But the one that "done me wrong"  
Tho' I am a Senior strong,  
Was that awe-inspiring terror—"Snedden Says"!

When a Freshman,—I'll ne'er forget—  
*Frasier and Armentrout* I met  
And realized that a book has power to harm;  
But imagine my dismay  
To discover yesterday,  
That a *Snedden* could upset my Senior calm!

It was *Snedden, Snedden, Snedden!*  
Oh, I can't forget that *Snedden*.  
You've haunted me throughout these weary days,  
And though I've thumbed your many pages,  
And studied you for ages—  
You're a better man than I am, "Snedden Says."



## STANDARD TEST NO. 131313

This test was standardized by Dr. I. Q. Lowe of the Hoot Owl College. Norms are, as usual, normal.

### Directions:

If you have finished reading *Gone With the Wind*, read the test through carelessly. Then with the aid of "eeny, meeny, miny, mo," go through the test marking all true statements F and all false statements T. Just ignore anything equivocal. In the multiple choice section, check the wrong answers once and the correct answers twice. If you have time to think, you are at liberty to do so. Score your own paper in any way you desire.

1. Cross-word puzzle experts and music appreciation instructors are not in harmony.
2. The Reception Room is a place reserved for guests and never frequented by idle students.
3. The senior Locker Room is the most spacious and well-lighted room in the building.
4. "I'll get by" is not an oft-expressed hope of all students.
5. Class picnics are always held in good weather.
6. *Manly*, to a Teachers College student, means the ideal boy-friend.
7. The Lunch Room is a place—
  - a. to eat lunches,
  - b. to practice penmanship,
  - c. to indulge in long conversations.
8. Miss Sallaway hides her attendance plan at Assembly—
  - a. up her sleeve,
  - b. under her hat,
  - c. behind her hymn book.
9. Specific determiners have something to do with—
  - a. the Specific Ocean,
  - b. patent medicines,
  - c. gravity.
10. Sociology students use as their basic text—
  - a. Snedden,
  - b. Emily Post,
  - c. Paula Patterson.

## DIRECTORY

Ahearn, Gertrude	12 Hinckley St., Dorchester
Aieta, Margaret	5 Longfellow St., Dorchester
Alibrandi, Concetta	29 Maywood St., Roxbury
Andler, Anna	77 Wayland St., Roxbury
Bayard, Bertha	94 Bloomfield St., Dorchester
Bell, Helen	84 Gainsboro St., Boston
Blackwood, Berlah	3 Fountain Sq., Roxbury
Brander, Eva	51 Holworthy St., Roxbury
Buckley, Rita	298 Bunker Hill St., Charlestown
Cagan, Jeannette	95 Maxwell St., Dorchester
Callahan, Margaret	130 Belgrade Ave., Roslindale
Callahan, Mary	1666 Commonwealth St., Brighton
Callanan, Patricia	175 West Brookline St., Boston
Condon, Lucy	249 Bunker Hill St., Charlestown
Connolly, Marion	36 Melville Ave., Dorchester
Conroy, Carmela	31 Moraine St., Jamaica Plain
Cullen, Elinor	50 Orchard St., Jamaica Plain
Dacey, Carolyn	24 Landseer St., West Roxbury
Dixon, Margaret	236 Lake St., Brighton
Donnelly, Rita	53 Paul Gore St., Jamaica Plain
Dougherty, Marie	134 Fisher Ave., Roxbury
Dwyer, Alice	20 Easton St., Allston
Ellis, Alma	2 Greenleaf St., Boston
Flinn, Anne	19 Walter St., Roslindale
Fodale, Rose	33 Pitts St., Boston
Freedman, Sylvia	26 Holborn St., Roxbury
Freeley, Eleanor	7 Everton St., Dorchester
Gabulson, Doris	108 Ardale St., Roslindale
Gilligan, Catherine	14 Alcott St., Allston
Glen, Arline	190 Warren St., Allston
Gordon, Lenore	9 Brinsley St., Dorchester
Graham, Mary	32 Wenham St., Forest Hills
Green, Mary	78 Dakota St., Dorchester
Greenberg, Sadie	39 Pasadena Rd., Roxbury
Griffin, Evelyn	26 Florida St., Dorchester
Habert, Yvonne	27 Circuit St., Roxbury
Hennessey, Irene	38 Norton St., Dorchester
Hernon, Mary	27 Union Ave., Jamaica Plain
Hutchinson, Mary	49 Grampian Way, Dorchester
Kanter, Annette	69 Southern Ave., Dorchester
Kantrovitz, Lillian	3 Wigglesworth St., Roxbury
Kaplan, Adele	48 McLellan St., Dorchester
Kelley, Rita	25 Walton St., Dorchester
Kelly, Katherine	6 Marlowe St., Dorchester
Kilduff, Eileen	176 School St., Jamaica Plain
Landers, Dorothy	6 Tappan St., Roslindale
Lappin, Frances	965 Blue Hill Ave., Dorchester
Lawler, Genevieve	11 Eliot St., Jamaica Plain
Lennon, Dorothy	15 Crawford St., Roxbury
Levine, Esta	33 Jones Ave., Dorchester
Limmer, Margaret	15 Melrose St., Boston
Lord, Doris	30 Bateswell Rd., Dorchester
Lynch, Rose	569 Gallivan Blvd., Dorchester
Mackle, Rosalie	277 Gallivan Blvd., Dorchester

Maggiore, Marie . . . . .	26 Teragram St., East Boston
Maguire, Marie . . . . .	61 Topliff St., Dorchester
Maguire, Marjorie . . . . .	49 South St., Jamaica Plain
Mahoney, Helen . . . . .	61 Hamilton St., Dorchester
Mahoney, Marie . . . . .	164 Beech St., Roslindale
Marsh, Agnes . . . . .	1 Cobden St., Roxbury
Martin, Josephine . . . . .	67 Saratoga St., East Boston
McEleny, Eleanor . . . . .	186 Amory St., Jamaica Plain
McKay, Helen . . . . .	281 Belgrade Ave., Roslindale
McLeod, Eva . . . . .	342 Park St., Dorchester
McLeod, Louise . . . . .	38 Alpha St., Dorchester
Michaels, Marie . . . . .	65 Bennett St., Brighton
Mikels, Gertrude . . . . .	51 Brunswick St., Roxbury
Moranville, Margaret . . . . .	30 Church St., West Roxbury
Morse, Beulah . . . . .	10 Pomfret St., West Roxbury
Mulroy, Rita . . . . .	62 Wyman St., Jamaica Plain
Murphy, Kathleen . . . . .	15 Fairmount St., Dorchester
Myrick, Celestina . . . . .	41 Haskins St., Roxbury
Nagle, Elizabeth . . . . .	52½ Washington St., Charlestown
Nath, Hedwig . . . . .	129 Old Harbor St., South Boston
Noonan, Dorothy . . . . .	59 Clifton St., Dorchester
Noonan, Eleanor . . . . .	35 Fenwood Rd., Roxbury
Oginz, Sara . . . . .	284 Cambridge St., Boston
Ogonik, Stella . . . . .	33 Worcester St., Boston
Onigman, Ruth . . . . .	298 Lincoln St., Allston
Orkin, Doris . . . . .	14 Balsam St., Dorchester
Pearson, Lillian . . . . .	701 Hancock St., Dorchester
Perez, Rose . . . . .	99 Bennington St., East Boston
Prendergast, Mary . . . . .	26 Columbia Rd., Dorchester
Prolman, Gertrude . . . . .	18 Johnston Rd., Dorchester
Quinn, Margaret . . . . .	17 Wakullah St., Roxbury
Redican, Catherine . . . . .	30 Vassar St., Dorchester
Roche, Josephine . . . . .	13 Sharon St., Boston
Rooney, Florence . . . . .	27 Woodward Park St., Dorchester
Rooney, Mary . . . . .	248 Arborway, Jamaica Plain
Schulman, Freda . . . . .	600 Saratoga St., East Boston
Smith, Callie . . . . .	71 Warwick St., Roxbury
Snaphy, Helen . . . . .	14 Stellman Rd., Roslindale
Steinberg, Marion . . . . .	32 Bowdoin Ave., Dorchester
Stellar, Anita . . . . .	89 Georgia St., Roxbury
Stocks, Barbara . . . . .	67 Wyman St., Jamaica Plain
Sullivan, Christine . . . . .	16 Sargent St., Dorchester
Sullivan, Helen . . . . .	11 Herbert Rd., Forest Hills
Sullivan, Ida . . . . .	43 Train St., Dorchester
Sullivan, Kathleen . . . . .	87 Wallingford Rd., Brighton
Sullivan, Mary G. . . . .	77 Ardale St., Roslindale
Sullivan, Mary T. . . . .	15 Manthorne St., West Roxbury
Thompson, Marjorie . . . . .	27 Moraine St., Jamaica Plain
Toohy, Marion . . . . .	27 Seldon St., Dorchester
Twomey, Eleanor . . . . .	18 Paris St., East Boston
Walsh, Barbara . . . . .	52 Beaumont St., Dorchester
Weisberg, Edith . . . . .	119 Lucerne St., Dorchester
Weisthal, Anne . . . . .	3 Carol St., Allston
Whittaker, Grace . . . . .	73 Dwinell St., West Roxbury
Wood, Gladys . . . . .	9 Whiting St., Roxbury
Wyman, Rae . . . . .	96 Devon St., Roxbury
Young, Ida . . . . .	7 Brinsley St., Dorchester

## EPILOGUE

May the memories evoked by these pages continue to shine through years to come, and so recall to us the pleasant companionships and days spent in the pursuit of wisdom that marked our years together. It is sad to part, but we go with the faith and valor that says—"Tomorrow to fresh woods and pastures new."

SENIOR  
DANCE



ATA  
1937



BB.

ADVERTISEMENTS

---

COMPLIMENTS

— of —

**The Art Club**

---

COMPLIMENTS

— of —

**The English Club**

---

COMPLIMENTS

— of —

**The Music Club**

---

COMPLIMENTS

— of —

**The French Club**

---

COMPLIMENTS

— of —

**The Athletic  
Association**

---

COMPLIMENTS

— of —

**The Biology Society**

---

COMPLIMENTS

— of —

**The Mathematics  
Society**

---

COMPLIMENTS

— of —

**The Drama Club**

---

# The Nippon Room

Food just a bit better . . .  
 atmosphere a lot different . . .  
 service decidedly unique . . . explain why the NIPPON ROOM is still Boston's favorite for

LUNCHEON • DINNER  
 SUPPER • COCKTAILS

*Mod. rate Prices*



**HOTEL VENDOME** *Commonwealth* AVENUE

Typewriters

Office Supplies

## Samuel Narcus Stationer

TWO STORES

92 Washington St.  
 CAPitol 8720

230 Washington St.  
 LAFayette 1038

BOSTON, MASS.

Established 1874 Tel. PARKway 6405

WARREN D. WHITTEMORE  
 BELLEVUE DAIRIES

Pasteurized Milk and Cream

*Deliveries:*

Mt. Hope, Roslindale,  
 West Roxbury

235 Beech St.  
 Roslindale, Mass.

Open Evenings Tel. GARRison 3732

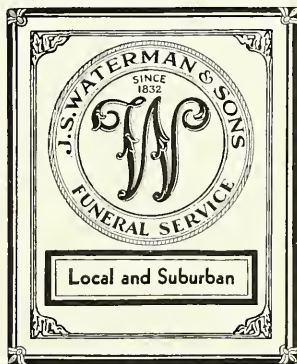
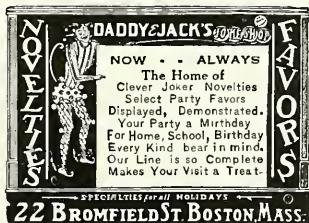
ANNA PRIVES

Millinery

Molding and Remodeling

608 Blue Hill Avenue

Roxbury, Mass.



---

COMPLIMENTS

— of —

**The  
Freshman  
Class**

COMPLIMENTS

— of —

**The  
Sophomore  
Class**

---

COMPLIMENTS

— of —

**The  
Junior  
Class**

---

COMPLIMENTS

— of —

**Harvard Drug  
Company**

---

Gowns, Hoods, and Caps  
For All Degrees

QUALITY and SERVICE  
at a LOW PRICE

**Charles W. Broadbent Co.**

665 Huntington Ave.,

Boston, Mass.



---

COMPLIMENTS

— of —

THE

**Boston Intermediate  
Teachers Club**

---

COMPLIMENTS

— of —

THE

**Boston Elementary  
Teachers Club**

---

COMPLIMENTS

— of —

THE

**Boston Teachers  
Club**

---

COMPLIMENTS

— of —

**St. Cecelia's Club**

Member of the  
FEDERATION OF COLLEGE  
CATHOLIC CLUBS

COMPLIMENTS

— of —

**High School Women's  
Club of Boston**

---

COMPLIMENTS

— of —

**Boston Normal School  
and  
Teachers College  
Alumnae Association**

---

COMPLIMENTS

— of —

THE

**Masters' Assistants' Club**

---

COMPLIMENTS

— of —

**The Classical Club**

---

**Sparr's Drug Store, Inc.**

*Roxbury's Reliable Prescription Pharmacy*

635 Huntington Ave., cor. Longwood  
Roxbury, Mass.

Other Stores: Allston and Brighton, Mass.

---

---

**THE WARREN KAY VANTINE  
STUDIO, Inc.**



**Official Photographer  
of  
THE CLASS OF 1936 - 1937**



**160 Boylston Street**

**Boston . . . . . Massachusetts**

Telephones HIGHLands 6000  
KENmore 1089

Established in 1879

## Frederic J. Crosby

FUNERAL DIRECTOR

8-12 Warren Street      867 Beacon Street  
Boston

## Roslindale Coal & Ice Co.

214 Florence Street  
Roslindale, Mass.  
Tel. Parkway 2812 or  
Parkway 0743

Telephone HIGHLands 1853

REARDON—WOODWARD Inc.

FORD DEALERS

1890 Columbus Avenue  
Roxbury, Mass.

COMPLIMENTS

— of —

HOWARD J. BUCKLEY  
CONTRACTOR

COMPLIMENTS

— of —

A FRIEND

## WARREN PRESS

160 Warren Street

Boston

PRINTERS OF THIS BOOK

F. W. HOLBROW  
Florists

301 Harvard Street, Dorchester, Mass.  
GENEva 2095

CIRcle 8325      Floral Designs

ARTHUR MIKELS

Florist

*"The Finest in Flowers"*

159A Massachusetts Avenue, Boston, Mass.



OTHER SEILER  
ORGANIZATIONS

Seiler's 1812 House  
Frammingham Centre  
Route 9

Seiler's at  
Wellesley

Seiler's 1775 House

Luncheons -o- Teas -o- Dinners  
Lexington, Mass. — Route 2

Seiler's Ten Acres

Delightful Dining      Jack Marshall's Music  
Wayland, Mass. — Route 20

Seiler's Recreation Grounds at Ten Acres

Catering Office: 110 Norway Street, Boston, Tel. Com. 2422

COMPLIMENTS

— of —

## The Graduate Class

Meledones Bros., Market

873 South Street  
Roslindale, Mass.

Telephone: Parkway 1240

COMPLIMENTS

— of —

Leon Mayer  
and  
HIS MUSIC

## ACKNOWLEDGMENTS

The Lampas Staff wishes to express its deep appreciation to all those who in any way contributed to making our Year Book a success. In particular we wish to extend our thanks to—

*Dr. Nash*, without whose experience and generous aid we should never have realized our plans for a Senior Annual.

*Miss Kee*, for her capable advice regarding the management of our finances.

*Mr. Shea*, whose artistic ability was an invaluable aid in the art work and the arrangement of the book.

*Miss Trommer*, for her ready willingness to give both time and skill in making our snapshot page outstanding.

*Miss Gaffey*, for her capable coaching of the Lampas Play.

*The Seniors and Graduates*, who gave their talents as members of the cast of the play.

*Miss Lulu Clark*, for her cheerful kindness in the typing of material.

*Miss Cobin*, for her co-operation in preparing the photographic work.

*Mr. Blanchard* of the *Warren Press*, *Mr. Colebaugh* of *Donovan and Sullivan*, and the *Vantine Studio*, for valuable co-operation and efficient service.

*Our advertisers*, for their generous assistance.







