

ampas
1940



LIBRARY
of
BOSTON
STATE
COLLEGE

Margaret M. Sallaway





EX - LIBRIS

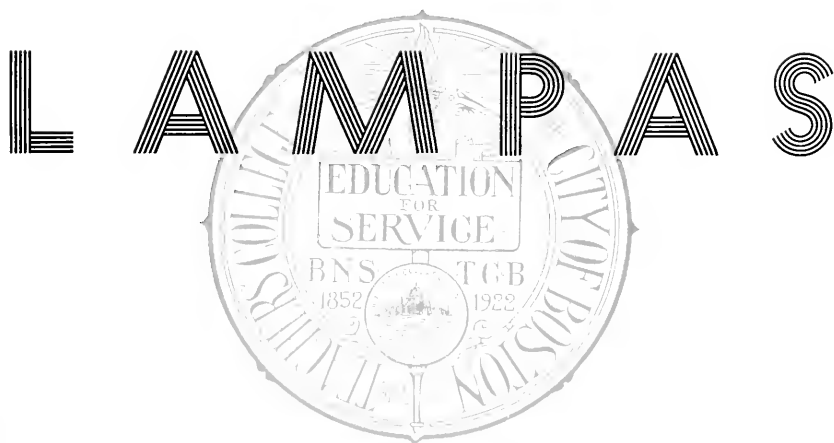
Margaret M. Sallaway

Education for Service; Service for Education.



Digitized by the Internet Archive
in 2010 with funding from
Boston Library Consortium Member Libraries

<http://www.archive.org/details/yearbook1940teac>



1940

THE TEACHERS COLLEGE
OF THE CITY OF BOSTON

The Class of 1940

IS PROUD TO DEDICATE

THE LAMPAS

TO

GRANT DRAKE

TRUE MUSIC LOVER, INSPIRED MUSIC MASTER, AND
BELOVED MUSIC TEACHER

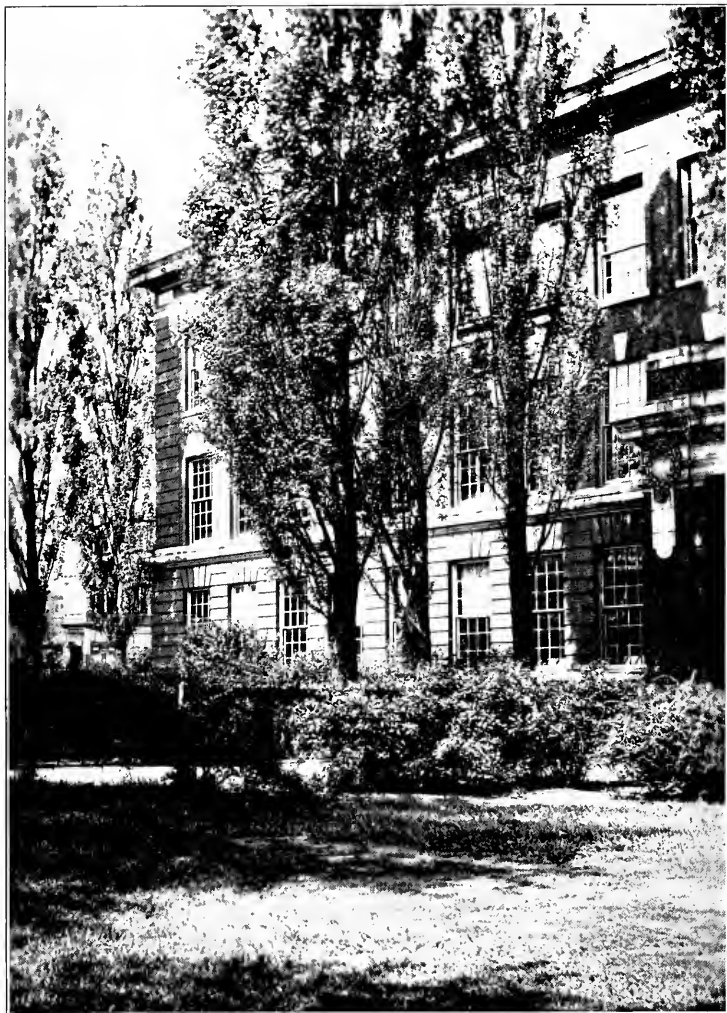


GRANT DRAKE

PROLOGUE

OUR college days are drawing to a close. They have been filled with study and dreams, with discussion and laughter, with the joyous comradeship of companions who share our memories of the past and our hopes for the future. In the pages of our *Lampas* our college days will live again for us. We shall never lose the gladness of our youth, for

“Remembered joys are never past;
At once the fountain, stream, and sea,
They were, they are, they yet shall be.”





"The frolic architecture of the snow."



"The great gate swings."



"Great is truth, and mighty above all things."



*"Lo, what wonder the day hath brought,
Born of the soft and slumbrous snow!"*



*"And tidings do I bring, and lucky joys,
And golden times, and happy news."*



*"So let the mind some relaxation take,
To come back to its task with fresher heed."*



*"True friendship's laws are by this rule expressed:
Welcome the coming, speed the parting guest."*



*"The love of learning, the sequestered nooks,
And all the sweet serenity of books."*



*"Blue be the sky and soft the breeze,
Earth green beneath the feet."*



"Where are the snows of yester-year?"



ADMINISTRATION

TO OUR FACULTY

WITH deep gratitude and sincere appreciation, we dedicate this page of the *Lampas* to our faculty whose unfailing loyalty, constant friendliness, earnest devotion, and high ideals of service have awakened in us the true spirit of our profession,—a desire to lead others in “the search for truth.”



DR. WILLIAM HENRY JOSEPH KENNEDY

Dr. Kennedy, our President, will always represent for us the highest ideals of a teacher. His sympathy and understanding, his kindly and helpful guidance, his scholarly achievement and professional ideals will remain one of the inspiring memories of our college days.



DR. WILLIAM FRANCIS LINEHAN

For his sincere interest in us and our work, for his wise counsel and friendly coöperation, we are deeply grateful to our Dean, Dr. Linehan.

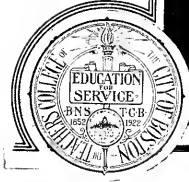


MISS MARGARET MARY SALLAWAY

We shall remember Miss Sallaway, our Adviser, for her dignity and gracious charm, for her unfailing sympathy and encouragement, and for the friendly helpfulness she has given us during our college years.

COLLEGE

1936



DEAN LINEHART



MISS AMMIDOWN



MISS BARR



MRS BARRY



MISS BEAN



MR BITZER



MISS BRENNAN



MISS BRICK



MISS DRISCOLL



MISS FITZGERALD



MISS GAFFEY



MISS GARTLAND



DR. GERRY



MISS GIVEN



MISS GLEN



MISS KALLEN



MISS KEE



MISS KERRIGAN



MISS KEYES



MISS LAWLER



MISS MANSFIELD



MISS MIDGLEY



MR QUINN



MISS QUINNAM



MR. READ



DR. REGAN



MR. RYAN



MISS SALLAWAY



MR. SHEA

FACULTY



DR. KENNEDY



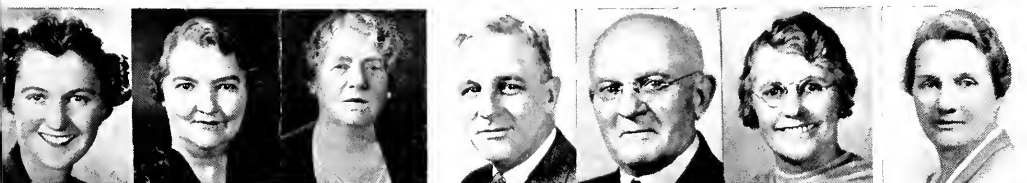
1940



DR. BURNGE MISS CALLAGHAN MISS CARNEY MISS CLARK MISS COVENEV MISS DICKSON MISS DONOVAN



MRS. GUILFORD MISS HEARTZ MR. HENNESSY MISS HOLLAND DR. HORGAN DR. HUBBARD MRS. HUTCHINGS



MISS MUTCH DR. NASH MISS O'BRIEN MR. O'MEARA MR. PACKARD MISS PETTEE MISS QUINLAN



MISS STACK MR. TIERNEY MISS TROMMER MR. VOSBURGH MISS WADSWORTH MISS WEISTHAL MISS WILKINSON

FORMER FACULTY MEMBERS

The Class of 1940 dedicates this page of the *Lampas* to the members of the faculty who have this year left the college to take up new lines of work in the Boston school system. Their inspiration still lives among us, and they will ever remain in our memories as teachers and friends of our college days.

Our loss of Dr. Kerrigan has been the gain of the Dorchester High School for Girls, and we are confident that as Head of the Department of Science there she will be respected and admired as she was here.

We congratulate the Department of Elementary Supervision on the appointment of Miss Keyes and Miss Wilkinson. Miss Keyes's position in the Health Education Department brought her into contact with every student in the college, and she endeared herself to all. The able and conscientious work of Miss Wilkinson in the Reading Center won the commendation of everyone who knew of these classes.

We have missed this year the friendly presence of Miss Stack and Miss Cobin in the Art Department. Miss Stack is now devoting all her time to her supervisory duties, but we hope that in the future she may resume her work in the Teachers College. To Mrs. Saul Dopkeen (Miss Cobin), whose helpful cooperation was unflinching, we wish all happiness in her marriage.

Mr. Hennessey has been appointed Supervisor of the Department of Visual Education. We extend to him our congratulations and our best wishes for continued success in this line of work, which he inaugurated in the Teachers College.

We have all missed this year the genial spirit of Mr. Quinn, but we are glad that as Head of the Department of Science at the Public Latin School he will still teach the subject he loves.

To all of these instructors we say, "Ave atque Vale!"

TO OUR PARENTS

WORDS are inadequate to express our tribute to our parents. We offer them love, gratitude, esteem, devotion. We dedicate to them our hopes, our visions, our ideals, for all the happiness and success of our college years are ours because of the love and devotion of our parents. We pray that they, each and every dearly-loved one of them, may enjoy to the last full measure the joy that comes from the realization of a dream. May our future achievements be worthy of their faith and trust!



SENIOR CLASS

MARY SULLIVAN
 MILDRED KATZ
 ANNA DOWD
 SELMA YOUNIS

President
Vice-President
Secretary
Treasurer

"O young Mariner,
 Down to the haven,
 Call your companions,
 Launch your vessel,
 And crowd your canvas,
 And, ere it vanishes
 Over the margin,
 After it, follow it,
 Follow The Gleam."

Tennyson



EVELYN JANE ABDALAH

*"Let us do our work as well,
Both the unseen and the seen."*

Evelyn is one of those girls who possess the fundamental essentials for true and lasting friendship. She is the type of person to whom one turns for help when troubled over coming exams or other difficulties. She is a serious student, anxious to do well in her chosen field and willing to work hard to attain desired success. Her sympathetic understanding, cheerful optimism, and frank common sense will be valuable assets in her career as a teacher.

Elementary-School Course
Welfare Club; Classical Club; History Club; Alpha Circle.



JOAN DOROTHY ADLER

*"A cheerful mood,
A pleasant smile,
A winning wit
Our hearts beguile."*

Whom do we all envy because of her beautiful brown, curly hair and laughing eyes? Who greets us each day with a face shining with health and happiness? Joan, of course! We have never seen Joan when she has not been in a cheerful mood, and we are sure we never shall. In addition to her pleasant disposition, Joan has an amazing energy which she applies to any and all of the college activities with equal success. All her classmates agree that she is a worthwhile friend and a pleasant comrade.

Elementary-School Course
Welfare Club; Art Club; Geography Club; Alpha Circle.

MILDRED LOUISE ALCOTT

*"And seldom in hall or court are seen
So queenly a form and so noble a mien."*

In her warm brown eyes one sees the reflection of Millie's poise and serenity. These are the qualities which, together with her competence and sense of responsibility, have brought her success in the many offices she has held. Then, too, she has a friendly charm that has made her a vital part of all our proms and other social activities. She can always be depended upon to support with enthusiasm the plans of her co-workers. Best wishes for success to a charming girl who deserves to attain her desired goal!

Elementary-School Course

Self-Government Association (Councillor '37); Class Treasurer '38; Class Vice-President '39; Welfare Club; Athletic Association; Drama Club; Mathematics Society; Alpha Circle.



ELAINE HARRIET BARKIN

*"In thy dark eyes' splendor,
Where the warm light loves to dwell"*

"What was that?" A lovely head is tilted in a questioning attitude, dark brows contract in a thoughtful frown, and Elaine is in pursuit of some elusive bit of information. Keen observation and careful regard for detail have brought Elaine enviable success, not only as a student but also as Business Manager of our Lampas. Her efficiency might awe us if it were not coupled with unruffled good-nature and warm friendliness. Elaine is one of those fortunate girls who are endowed not only with the qualities necessary for successful scholarship, but also with those that make her a pleasant companion and friend.

Major: Shorthand-Typewriting

Minors: Accounting, Commercial Geography
Self-Government Councillor '39; Lampas Staff; Welfare Club; Commercial Club; Drama Club.





MARGUERITE PIERCE BARRY

*Naïve prettiness,
Demure charm,
Lovable Peg!*

The possessor of a perfect disposition, Peg has won the hearts of the entire class. Her natural sweetness blended with her womanly charm makes her popularity universal. Whether as a teacher, a student, or a classmate Peg's pleasing personality is enjoyed by everyone. Her gay laughter and her two pretty dimples lightened many a serious gathering; her willingness to help aided many a social activity. For sunny hours of fun and frolic, for enjoyable hours of work and study, Marguerite has proved herself to be a valuable member of our class.

Special-Class Course

Self-Government Association Councillor '38; Class Treasurer '37; *Lampas* Staff; Welfare Club; Aquarium Club (Vice-President '39); Athletic Association; Drama Club; Literary Club.



NAOMI BAZOL

*"Heeding truth alone, and turning
From the false and dim"*

If you were to name qualities that would assure success in life, you would probably mention a high idealism, a determination to win, and a keen sense of humor. Now, for such a combination, you need look no farther than our Naomi. One has only to see her directing the work of youngsters in camp, at a neighborhood center, or in the classroom, to recognize her unusual ability. She has still another quality requisite for success—a capacity for true and lasting friendship.

Elementary-School Course

Lampas Staff; Welfare Club; Aquarium Club; Art Club; Drama Club; Science Club (Secretary '38); Associated Science Clubs; Alpha Circle.

DOROTHY KATHERINE BECKER

*"Her words are clad with wisdom's majesty;
Her words do show her wit incomparable."*

As an antidote to cynicism we prescribe Dorothy. Her absolute sincerity, her appreciation of the best in everyone, her warm sympathy and cheery wit combine to banish gloom. Dot is the Good Samaritan of our class, ever ready to help anyone in distress. Her sparkling sense of humor is shown by her clever witticisms and amusing couplets. This humor is the leaven of a rich, busy life. A wide range of interests and an unusual versatility result in making Dot simultaneously a clever dressmaker, a sports-lover, a voracious reader, an entertaining poet, a successful student, and an excellent librarian.

Major: English

Minor: Mathematics

Self-Government Association (Councillor '37); *Lampas* Staff; Welfare Club; Athletic Association; Drama Club; Literary Club; Mathematics Society; Science Club.



AGATHINA LUCY di BELLA

*"Smile awhile, and while you smile
Another smiles, and soon
There's miles and miles of smiles,
And life's worth while because you smile."*

Tina is one of those rare and fortunate individuals endowed with the gift of doing everything well. Whether it is as an efficient editor of the *Spotlight*, as a serious dramatic actress in *Mary of Scotland*, or as a demure cherub in the Art Pageant, Tina plays her part with honors. Her more serious qualities of steadfastness, perseverance, and good common sense are balanced by her effervescent humor. The sparkling vivacity that brightens all her tasks makes her a co-worker as pleasant as she is competent. Tina will undoubtedly find the road to success and travel on it continually throughout life.

Major: English

Minor: Art

Lampas Staff; Welfare Club (Chairman of Publicity '38, '39); Athletic Association; Art Club (Treasurer '39); Drama Club (Editor of *The Spotlight* '39); Literary Club (President '40).





LOUISE CECILE BURKE

*"A violet by a mossy stone,
Half-hidden from the eye,
Fair as a star when only one
Is shining in the sky"*

When Wordsworth was writing these lines, he might well have had Louise as his inspiration. The modest unassuming nature which endeared her to us in Freshman days has developed into a sedate, serene charm which we all admire. Louise is ever willing to assist in both studies and extra-curricular activities, and her skill as a pianist has aided many a class event or assembly announcement. We all envy Louise her untiring perseverance, which is bound to make her truly successful.

Elementary-School Course
Welfare Club; Geography Club; Music Club; Alpha Circle.



DOROTHEA THERESE CALLAHAN

*"From you, Ianthe, little troubles pass
Like little ripples down a sunny river."*

Dorothea's dimpling smile and hearty laugh are the expression of her sunny disposition. In fact, her infectious laugh was so highly appreciated when Dot played the rôle of the hyena at our annual Christmas party that she was called upon for a return engagement the following year, much to the delight of both adult and juvenile members of the audience. In addition to her cheerfulness, Dorothea possesses those sterling qualities of eagerness to help and a coöperative spirit in any situation. We shall always remember her as a steadfast worker for the Class of 1940 and for the Teachers College.

Kindergarten-Primary Course
Welfare Club; Aquarium Club; Athletic Association; Drama Club; Music Club.

BLANCHE MADELINE CAMIA

*"About binomial theorems
I'm teeming with a lot o' news—
With many cheerful facts about
The square of the hypothenuse."*

Do you remember when Blanche broke our hearts as the handsome, dashing Earl of Bothwell? But it is not only in dramatics that Blanche is at her best; she excels in sports as well. We shall always remember her as one of the most valuable members of the basketball team and as the best punter in our gym games. Blanche's outside activities have not interfered with her college work, for she is a fine student, especially in mathematics and art. Her keen sense of humor and her ever-helping hand contribute to her popularity.

Major: Mathematics

Minor: Art

Lampas Staff; Welfare Club; Art Club; Athletic Association; Drama Club; Mathematics Society.



EVALYN VICTORY CHANNEN

*"Then doth thy sweet and quiet eye
Look through its fringes to the sky,
Blue—blue—as if that sky let fall
A flower from its cerulean wall."*

Even as a first-year student, fresh from the College Board exams, Evalyn was a model of poise and capability. From the day she entered college, she took her place as one of the most interesting personalities of our class. Extremely well-read, very clever with pencil or paint brush, and an intelligent, witty conversationalist, she excels in anything to which she turns her talents. Possessed of decided originality; a facile, vivid style of writing, and a wealth of material, Evalyn is the girl most likely one day to represent the Class of 1940 on the Best Seller List.

Major: English

Minor: Art

Lampas Staff; Welfare Club; Art Club; Literary Club; Le Cercle Français.





MARGARET WINIFRED CONNELLY

*"In youth the heart exults and sings,
The pulses leap, the feet have wings."*

A slow, sweet smile, a flash of white shining teeth, a hearty, happy laugh! There you have Peg! We are sure that she has thoroughly enjoyed her college days, because she has found the secret of blending study and social activities in just the right proportion. When not engaged in study, Peg spends much of her time in active sports, particularly roller-skating in which she excels. We must mention also her taste for music and her interest in the classics to give you a correct idea of Peg's versatility.

Elementary-School Course
Welfare Club; Athletic Association; Classical Club; Music Club; Alpha Circle.



HELEN FRANCES CURLEY

" 'Tis good to be merrie and wise!"

Whatever Helen sets out to do she will inevitably accomplish, for she possesses the full measure of steadiness and constant persistence—qualities which are requisite for success. Her efficient work as a councillor is a proof of her diligent, enthusiastic application to club and class activities. This is but one phase of her well-rounded personality. Helen's love of fun has made her a popular participant in all class dances. Her willingness to help others shows her to be a sincere, unselfish friend. Helen's charming manner and true comradeship will never be forgotten.

Elementary-School Course
Self-Government Association (Councillor '39); Welfare Club; Art Club; Literary Club; Geography Club; Music Club; Alpha Circle.

LORETTA WILFREDA CURRAN

*"Be gone, dull care!
Thou and I shall never agree."*

At one moment Loretta is quiet, calm, and serious; then with a lift of an eyebrow and a gay smile she becomes the girl who keeps us always laughing. Her witty ditties have livened many a free hour, and when Loretta laughs in her own happy way it's impossible to keep a straight face. An energetic worker, always ready to cooperate, Loretta is a joy to any committee chairman. Tolerant, broad-minded, and fair, she is one of the most loyal friends we could desire.

Elementary-School Course
Lampas Staff; Welfare Club; Athletic Association; Drama Club; Mathematics Society; Alpha Circle.



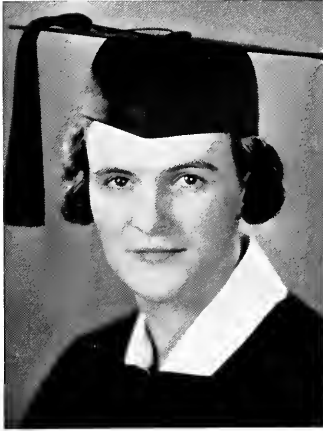
ANN CUTLER

*"The star of the night
And the lily of the day,
Fairy belle, the queen of the dell,
Long may she revel in her bright, sunny way."*

The teaching profession was fortunate to attract Ann from other fields to which her varied talents might have taken her. Dancing is her first love, and those of us who saw her in *Evangeline* can appreciate her inspiring performance. Her art work can usually be seen adorning the walls of our corridors, and her histrionic ability was evidenced when she played the despicable James Stuart in our history-making presentation, *Mary of Scotland*. Add to these talents a flair for cooking and a gift for making and holding friends, and you have Ann. Fate has stacked the cards so that Ann is bound to win success in more than one field.

Major: Art
Minor: English
Self-Government Association (Chairman of House Committee '39); *Lampas* Staff; Welfare Club; Athletic Association; Art Club (Vice-President '39); Drama Club.





MARY CATHERINE DONOVAN

*"Music as sweet as the music
Which seems
Breathed softly and faint in the
Ear of our dreams."*

Mary to us means Music, for she excels in that branch of the Fine Arts. She not only plays the violin beautifully but is a capable pianist as well. Last but not least, she has a lovely singing voice which has added much to Music Club activities. Another of Mary's talents is her ability to gain friends. Her personality, quiet and refined, has a charm which is as unpretentious as it is irresistible. Mary, by her nature as well as by her music, has brought harmony into our college years.

Major: Music
Minor: General Science
Self-Government Association (Councillor '38, '40); Welfare Club; Music Club; Science Club; String Ensemble.



ANNA TERESA DOWD

*"A roguish smile, a merry jest,
A depth of heart you'd never guess."*

Since our freshman year Anna has played an important part in making our college activities successful. She has that rare combination of extreme efficiency and lovely graciousness which makes her a valuable committee member. Like most active students, Anna shines in all her classes as well as at social affairs. Her wholesome sense of humor, her desire for fair play, her sincere friendliness, and her love of fun are but a few of the reasons for her popularity. Because she is such a lovable girl, we are sure that our wish for her success will come true.

Major: Biology
Minor: Physiology, Chemistry
Class Secretary '40; Welfare Club (Secretary '38); Associated Science Clubs; Athletic Association; Biology Society; Drama Club; Literary Club (Secretary '39); Science Club (Secretary '39).

AGNES GERALDINE EARLEY

*"With the comrade heart
For a moment's play,
And the comrade heart
For a heavier day,
And the comrade heart
Forever and aye"*

Dashing about from here to there, Agnes is characterized by whirlwind entrances and exits. Her presence in any place is proclaimed by laughter or a chorus of giggles from that section. This lovely colleen has beautiful long-lashed blue eyes which are not only lovely in laughter but also beautiful when their expression is serious. An excellent student, an enthusiastic basket-ball player, a sympathetic friend, Agnes will go on her merry way capturing hearts with her disarming smile.

Elementary-School Course
Lampas Staff; Welfare Club; Athletic Association (Vice-President '39, '40); Drama Club; Alpha Circle.



VIRGINIA MARIE EGAN

*"You forget my special magic,
In a high dramatic sense,
Lies in situations tragic—
Undeniably intense."*

A born leader and director, tall, poised, and self-possessed, Virginia is one of the most distinctive members of our class. Her individual and very attractive style of dress and coiffure bears witness to an unusual personality. Virginia's dramatic ability, as displayed by her portrayal of Mary, Queen of Scots, is only one of her outstanding talents. A strong desire to travel to mysterious and unfrequented parts of the world, a decided penchant for the reading of biographies, and an enthusiasm for music, classical as well as popular, are but a few of the interests of this universally popular classmate.

Major: Geography
Minor: History
Self-Government Association (Councillor '37); Class President '39; *Lampas* Staff; Welfare Club; Art Club; Drama Club (First Vice-President '40); Class Marshal.





MARGUERITE JOSEPHINE ESART

*"A countenance in which did meet
Sweet records, promises as sweet"*

Naturalness is the keynote of Peggy's very attractive personality. Quite the mistress of any situation, she is remarkable for her poise, her crisp cool manner, and her sincerity. The Fine Arts claim her special attention; she delights in beauty whether it be of handwork or of music. Like all well-rounded people, she is gay and fun-loving, quick to appreciate humor and to join in a good time. We are sure that life will never become a perplexing problem for Peggy, since nothing can ruffle her cool composure.

Special-Class Course
Welfare Club; Music Club.



ELEANOR JOSEPHINE FARRY

*"Sense is the diamond, weighty, solid, sound;
When cut by wit, it casts a brighter beam;
Yet, wit apart, it is a diamond still."*

Whenever geography or anything relating to natural phenomena is mentioned, we note a look of keen interest in Eleanor's dark eyes. History in any phase, be it in a textbook, a newspaper, or the latest novel, also awakens her ardent enthusiasm. In her more frivolous moments she likes nothing better than to listen to the latest phonograph selections, especially if Artie Shaw wields the baton. In our years together we have found Eleanor to be a girl of wide interests, keen mind, and an engaging personality.

Major: Geography
Minor: History
Welfare Club; Geography Club; History Club

CHARLOTTE FELLMAN

*"There's music in the sighing of a reed;
There's music in the gushing of a rill;
There's music in all things, if men had ears:
Their earth is but an echo of the spheres."*

Who was the eighth wonder of our Sophomore symphonic course? With one voice the senior class will answer—"Little Charlotte." Whose competent hands directed the Madrigal Singers? Who played the title rôle of the operetta, *Patience*, with keen dramatic as well as exceptional musical power? Charlotte, again. Not only did she receive honor grades consistently, but she was one of the most dependable and capable girls in the Music and the History Clubs. Always a pleasing writer, Charlotte was editor of our history paper, *The Courier*, and is associate editor of our *Lampas*. Her intimate friends respect her for her modesty and love her for her sincerity and loyalty.

Major: Music
Minor: History

Class Secretary '38; *Lampas* Staff; Welfare Club; Art Club; Drama Club; History Club Secretary '37, Treasurer '38, Vice-President '39); Music Club; String Ensemble.



RITA FRANCES FITZGERALD

"Little deeds of kindness, little words of love"

In an era of athletic college girls who often can show their brothers how to shoot a basketball or hit a home run, Teachers College takes pride in presenting the charmingly feminine Rita,—a dainty, demure girl who makes no claim to prowess in masculine fields of endeavor. But despite her utter femininity, Rita is not the "clinging-vine" type. She has a wealth of common sense, a strength of determination, and sound reasoning powers that make her a valuable as well as an enjoyable friend.

Elementary-School Course

Welfare Club; Aquarium Club; Athletic Association; Geography Club; Alpha Circle.





FRANCES LOUISE FLAHERTY

*"She is a winsome wee thing,
She is a handsome wee thing,
She is a bonnie wee thing."*

The poet who wrote of "sugar and spice and all things nice" must have had Frances in mind. She is as appealingly attractive as a dainty piece of Dresden China. Petite, fastidious, and charming, she is very feminine. Her unassuming manner, her unfailing courtesy, and the even tenor of her temperament win for her many friends. Her loyal, efficient assistance in college activities is gratefully remembered. The spice of her personality lies in her frankness, her enthusiastic approval of things modern, and her love of sports. Frances has chosen her field of teaching well. Some kindergarten will be richer because of her understanding and love.

Kindergarten-Primary Course
Welfare Club (Aide '39); Music Club.



ESTHER RACHEL FREEDMAN

*"Her air has a meaning, her movements a grace,
You turn from the fairest to gaze on her face."*

Esther is a diminutive, dark-eyed, elfin girl. Zeal and industry keep her at her books, and quietly and independently she goes about gathering bits of information which later add much to our class discussions. Yet she cannot be said to be merely "bookish." Sometimes she will suddenly change into the spirit of youth itself and become, like Peter Pan, an irresistible sprite. We value Esther as a member of our class, for her quiet charm is a constant source of pleasure.

Special-Class Course
Welfare Club; Art Club.

MARGARET HELEN GABRIEL

*"Far may you seek,
Ere you shall find
One so courteous, so kind,
As merry Margaret."*

A gay, fun-loving spirit and an earnest, capable studiousness are two of Peggy's outstanding characteristics. There is a determined air of persistence about her which marks her as the type of person who will succeed in spite of any difficulties. Peggy's work is characterized by an economy of time and effort that is especially unusual when one considers the fine quality of her work. A cheerful, friendly person, she is always eager to enter into the spirit of any undertaking. For this reason, she is welcomed into every group, social and scholastic alike, with equal enthusiasm.

Elementary-School Course
Welfare Club; Drama Club; Alpha Circle.



WINIFRED LOUISE GALLANT

*"She's pretty to walk with,
And witty to talk with,
And pleasant, too, to think on."*

Winifred is an ideal college senior,—intelligent, discerning, quietly competent. Her remarkably coöperative spirit and her outstanding ability made her successful not only as a student but also as president of the Welfare Club. Imagine a combination of friendly charm and merry winsomeness,—a girl with light brown curly hair topped by a tiny bow,—a girl chock full of songs for firesides, hikes, for lazy spring days. There is our masterpiece—Winkie! In her, we see poise, seriousness, and charm blended to just the right degree. A toast to our Winkie!

Major: Shorthand-Typewriting
Minors: Accounting, Commercial Geography
Lampas Staff; Welfare Club (Secretary '38, President '39);
Athletic Association; Commercial Club (Vice-President '39,
President '40); Drama Club.





VIRGINIA MARIE GALLIGAN

*"You have such a happy look—
Such a very merry manner."*

Ginny is a delightful girl whose sparkling eyes and cheery words have added to our enjoyment of all the college proms. Her geniality, her pleasant smile, and her vivacity have won for her as many friends as there are students in the Class of 1940. Her soft, sweet voice has afforded many enjoyable hours of entertainment for her classmates. Do you think it impossible for so petite a person to harbor all these delightful characteristics? Ginny proves that it can be done.

Elementary-School Course
Welfare Club; Music Club; Alpha Circle.



JOSEPHINE AGNES GILCHRIST

*"Pert as a college girl well can be,
Filled to the brim with girlish glee."*

To think of Jo is to remember the happiest part of our college life. Blonde, lovely, vivacious,—sincere in her honest enthusiasm for life, she comprises all that is best in the American girl. Her sunny outlook and hearty laugh have livened many a dull hour. With her keen wit and love of fun are blended a gentleness and fairness that make her one of the finest persons we have known. As chairman, she made our Junior Week a grand success. Her true friendliness has placed Jo among the best-loved members of our class.

Elementary-School Course
Chairman of Junior Week '39; *Lampas* Staff; Welfare Club;
Athletic Association; Drama Club; Alpha Circle.

ANNE GILMAN

*"A beautiful and happy girl
With step as light as summer air,
Eyes glad with smiles, and brow of pearl
Shadowed by many a careless curl."*

Anne is outstanding for her charming youthfulness and vivacity, her fluffy hair, bright sparkling eyes, and delightful air of wholesomeness. Her work reflects her bright spirit. Gay and friendly, she has won a host of friends. A favorite among her classmates, Anne has always been a leader in planning the fun with which our more serious moments were brightened.

Special-Class Course
Welfare Club; Athletic Association; Science Club.



BERTHA GLAZER

*"We'll charm their senses
With verbal fences,
With ballads amatory
And declamatory."*

Reserved but not remote, quiet but never taciturn—such is Bertha. It does not take long to discover that behind Bertha's retiring, unobtrusive manner and shy smile there lurks a gentle humor. You see it in her dancing eyes; you hear it in a droll aside. Always sweet, helpful, and congenial, Bertha is a friend to be remembered. In her work in the commercial department she has shown another unexpected side to her personality. Her shyness gone, she demonstrates business-like efficiency and remarkable competence.

Major: Shorthand-Typewriting
Minors: Accounting, Commercial Geography
Welfare Club Aide '40; Associated Science Clubs; Commercial Club; Drama Club; Music Club.





CHARLOTTE DOROTHY GOLDSTEIN

*"I was taken by surprise,
By a pair of roguish eyes."*

Charlotte is a madcap. No other word can describe her so well. Her twinkling eyes, her wide frank smile, and her irrepressible good humor have endeared her to all of us. Yet beneath her joviality, we have found her to be a serious and earnest student in her chosen field. Were we casting a play, we should offer Charlotte the rôle of the serio-comic, for that is the rôle she portrays in life. Charlotte is humorous enough to be ever cheerful, and serious enough to be truly sincere.

Special-Class Course
Welfare Club, Athletic Association; Literary Club.



WINIFRED MARIE GRAVES

*"In her smile and in her eyes
The golden light of friendship lies."*

Beneath Winifred's air of quiet reserve is a truly friendly spirit. Music is her great love, and she has contributed her talent to the class on more than one occasion. Her accordion serenades have been the source of much pleasure at numerous club and class gatherings. In addition to being one of the most talented seniors, Winnie is also one of the best loved. Her willingness to help, her even disposition, and her quiet thoughtfulness have earned her well-deserved popularity.

Kindergarten-Primary Course
Welfare Club; Geography Club (Treasurer '33); Music Club.

MARGARET ELIZABETH GREEN

*"How fair! how modest! how discreet
How bashfully demure!"*

Two deep dimples, a shy smile, and an engaging blush are Peggy's chief charms. These characteristics, coupled with an inquiring studiousness, a love for sports, and a capacity for unselfish friendship, have won for her a large group of devoted well-wishers among her classmates. Peggy's warm-hearted personality, based upon high ideals of loyalty and sincerity, makes her especially suited to the teaching profession. We can depend upon her always to maintain the ideals of the Teachers College, as expressed in the motto, "Education for Service."

Elementary-School Course
Welfare Club; Athletic Association; Drama Club; Alpha Circle.



CATHLEEN ELIZABETH HANNON

*"So gay she is,
And with such pretty words,—
So like a child for play,
A queen for grace."*

Vivacity and an ardent love of life, a winsome smile, a refreshing naturalness are combined in Kay's charming personality. An outstanding student, an enthusiastic prom-goer, and a devotee of the drama, she is an excellent example of the nice balance between study and social life which is the aim of every college student. Kay holds a secure place in the hearts of her classmates, for not one of us can resist the charm of this very attractive girl.

Special-Class Course
Self-Government Association (Councillor '39); *Lampas* Staff; Welfare Club (Aide '40); Aquarium Club; Athletic Association; Drama Club; Geography Club.





CAROLYN RUTH HEDSTROM

*"With such a comrade,
Such a friend,
I fain would walk
To journey's end."*

Cal is a very energetic person, who goes through life at top speed; yet she always has time for the many activities, scholastic and social, which make up college life. On one side we have the serious student, Carolyn; then presto! the mood changes and we see the gay Cal, ready and eager for fun. Capable and coöperative, Cal has proved herself an able executive in the various official positions she has held. Her many friends admire her for her versatility and love her for her loyal friendliness and fun-loving spirit.

Major: English Literature

Minors: English Composition, English History
Self-Government Councillor '38; *Lampas* Editor-in-Chief;
Welfare Club (Milk Fund '38); Athletic Association; Classical Club; Drama Club (Vice-President '39); Literary Club.



MARY AGNES HEDSTROM

*"If the world's a vale of tears,
Smile 'til rainbows span it."*

Sparkling enthusiasm and enormous pleasure at being alive are revealed by Mary's constant good humor and happy smile. Never bored, she enters into an argument with the eager intensity of a child,—yet always is ready to see the other person's side. A clever raconteur, illustrating her tales with eloquent gestures and expressive glances, she has often caused the laughter heard from the students' room or lunch room. Yet, she is kind and gentle,—the one her close friends go to for sympathy, advice, or reassurance. Is it any wonder that she has a host of friends?

Kindergarten-Primary Course

Self-Government Association (Councillor '39, '40); *Lampas* Staff; Welfare Club; Athletic Association; Drama Club; Music Club.

RUTH MARIE HEERDE

*White sails on a blue sea;
Swiftly skimming skis over snow.
Dancing, laughing, loving Ruthie!*

In Ruth are combined a real gaiety, a flashing smile, an attractive grace, and a deep, rich voice. Is it any wonder that we envy her personality? Whether she is skiing down New Hampshire's slopes, heading a dance committee, or teaching an excellent lesson, Ruth shows real enthusiasm. Her energy and her capacity for getting things done are limitless. One of the most popular girls of our class, Ruth will be remembered as a friendly, merry companion who has made our college years richer.

Kindergarten-Primary Course

Self-Government Association (Chairman of Dance Committee '38); Welfare Club; Athletic Association; Music Club (Secretary '37, Treasurer '38, Vice-President '39, President '40).



DOROTHY MARTHA HOUSTON

*"Who in the song so sweet?
Who in the dance so fleet?"*

You may have been impressed by her poise and debonair charm at the Junior Prom or by her active enthusiasm at the A. A. Meet, but you will always remember the gay, contagious laughter which brightens every gathering of which she is a part. She is noted, too, for her attractive appearance which we all admire; she is tall and slim, with lovely brown eyes, and a pretty coiffure. Everyone speaks well of Dot, and such unanimous praise is a compliment indeed.

Elementary-School Course

Welfare Club; Athletic Association; Literary Club; Le Cercle Français; Music Club; Alpha Circle.





ELSE JENNIE JUNKER

*What made th' assembly shine?
What made the ball so fine?
Else was there!*

Of all the adjectives which could be used to describe Else, *graceful* seems the most appropriate. Her carriage, erect and poised, and her manner, courteous, efficient, and gracious, made her the natural choice of the student body when the office of President of the Self-Government Association was to be filled. Else has many talents besides leadership. She is a fine skater, a dancer of unusual grace, and an artist as well. With such a variety of gifts it is not surprising that she has won great popularity among her classmates. We consider Else a worthy representative of our class, and we are sure that she will always maintain the highest standards of the college.

Major: English
Minor: French

Self-Government Association (Treasurer '38; Second Vice-President '39, President '40); Class President '37; Welfare Club; Art Club; Drama Club; Literary Club; Le Cercle Français.



EDNA MAY KAHN

*"This world is not so bad a world
As some would like to make it;
Though whether good, or whether bad,
Depends on how we take it."*

Life for Edna will never be dull, for her irrepressible sense of humor comes to the fore on every occasion. Many a class has been brightened by her impulsive, naïve responses. Another source of delight to us has been Edna's lovely clothes and unique jewelry. She has the knack of choosing clothes that are different enough to be individual, but simple enough to be conservative. One of the pleasantest girls in our class, Edna has earned the title of class optimist.

Elementary-School Course
Welfare Club; Athletic Association; Literary Club; Science Club; Alpha Circle.

MILDRED ELEANOR KATZ

*"The tripping measure in her dance
The friendly pleasure in her glance,
Are our delight."*

"Hold it!" Millie is taking another picture! In addition to being an enthusiastic camera fan, Millie is an expert in the latest dance steps, a skillful knitter, an ardent reader of all the best sellers, and a veritable mine of information about the movie and stage stars. In spite of her many outside interests, Millie's college work has not suffered in the least. In every one of her activities, whether it is the performance of some important class duty or the creation of a new coiffure for a classmate, Millie maintains the serenity and charm which have added so much to our enjoyment of her company.

Major: Shorthand-Typewriting

Minors: Accounting, Commercial Geography

Class Vice-President '40; Welfare Club; Athletic Association
Commercial Club; Science Club.



GLADYS JESSIE LYDIA KLINE

*"A maiden fair to see,
The pearl of minstrelsy,
A bud of blushing beauty."*

Gladys has for these four years quietly and efficiently pursued her way toward a very promising career. Her curly red hair, perfect posture, and faultless grooming are characteristics which distinguish an outstanding member of our class. She has been persevering in studies as well as in club activities. The Welfare and Classical Clubs have both profited by her assiduous work in their behalf. We consider it a privilege to have known this capable, friendly girl.

Elementary-School Course

Welfare Club (Aide '39, '40 ; Classical Club (Secretary
'37); Music Club; Alpha Circle.





ISABELLE ANN KOURY

*"And on that cheek and o'er that brow,
So soft, so calm, yet eloquent,
The smiles that win, the tints that glow,
But tell of days in goodness spent."*

Unobtrusive, shy, serious of purpose, Isabelle has quietly but surely attained success in her work at college. Extra-curricular activities have also claimed her attention. She has taken advantage of the many opportunities offered and is an active member of several clubs. Her soft brown eyes mirror her quiet, gentle nature, and her sweet smile bespeaks her ready sympathy. By penetrating her reserve, one is rewarded with a friendship that is loyal and sincere.

Elementary-School Course

Welfare Club; Athletic Association; Drama Club;
History Club; Alpha Circle.



SYLVIA KRAMER

*"Then to Sylvia let us sing,
For Sylvia is excelling!"*

A quiet efficiency, an unassuming yet business-like manner, an essentially serious nature with a gleam of humor, a rippling laugh, a charming coiffure—put them all together and Sylvia stands before you. Capable and energetic, she has achieved an enviable standing in the commercial field. Her work is not the only outlet for Sylvia's energy, however, for she is an enthusiastic participant in the various activities of the Athletic Association. We wish for Sylvia all the success that her ability and industry will insure for her.

Major: Shorthand-Typewriting

Minors: Accounting, Commercial Geography

Welfare Club; Associated Science Clubs; Athletic Association; Commercial Club; Science Club.

MERLE CONSTANCE LAGAMASINO

*"I am a maiden frank and simple,
Brimming with joyous roguery;
Merriment lurks in every dimple,
Nobody breaks more hearts than I."*

Merle is the essence of femininity and charm. What is her secret? Dark eyes, dimples, a happy laugh, and enviable poise make part of the answer. A great deal of Merle's attraction also lies in her ability to make friends and to hold them. Some of us like Merle for her sincerity, some for her friendliness, others for her humor, and still others for her loyalty. Most of us like her because she is a happy combination of all of these qualities.

Elementary-School Course
Welfare Club; Drama Club; Alpha Circle.



MARY VIRGINIA LEAVER

*Merry laughter,
Endearing ways;
Whirling, effervescent Ginny!*

Right in the midst of fun and frolic—that's where Ginny may be found. Sweaters, pearls, and plaid skirts! Feet that start dancing whenever the "Swing" Music is heard! Ginny is what we think of as the typical college girl. When the time comes to be serious, however, she takes a keen interest in her chosen profession. Dependable, conscientious, and capable, —or gay, rollicking, and witty, Ginny is a pleasant companion and a staunch friend.

Elementary-School Course
Welfare Club; Athletic Association; Classical Club; Drama Club; Geography Club; Music Club; Alpha Circle.





EVA LIBERMAN

*"When darkly looms the day,
And all is dull and gray,
To chase the gloom away,
On thee I'll call."*

The picture of Eva that will always remain in our memories is that of a smiling girl, who always added to the cheery spirit of our class. Her readiness to review an assignment, her willingness to help in any class or club activity, and her general good spirit have made Eva popular among her friends. We are sure that her friendly coöperation and her consideration for others will bring her deserved success.

Major: Shorthand-Typewriting
Minors: Accounting, Commercial Geography
Welfare Club; Athletic Association; Commercial Club;
Drama Club.



MILDRED CECILE LIEF

*"Beautiful dreamer,
Wake unto me;
Starlight and dewdrops
Are waiting for thee."*

To the casual observer, Millie presents a pleasing picture—beautiful coloring, gleaming hair, clear blue eyes, and a tall, slender figure. Yet her charm is still greater to her friends, who know her warm-hearted loyalty and her deep sincerity. Millie appreciates the finer things in life,—art, literature, drama, and, most of all, music. These varied interests, combined with a keen, alert mind, make her personality invigorating and refreshing. We, her classmates, love her for her friendliness and admire her for her high ideals.

Major: English
Minor: Art
Welfare Club; Art Club (Treasurer '40); Literary Club;
Music Club.

ANNA DENISE MacARTHUR

*"Her brow is like the snowdrift,
Her neck is like the swan,
Her face it is the fairest
That e'er the sun shone on."*

"A happy girl with a pleasant smile" best describes Anna. We have found, too, that her winning manner is supplemented by an ability to work willingly and efficiently. An outstanding proof of this lies in her fine record as Vice-President of the Welfare Club. Anna's performance in the rôle of a dashing dragoon in *Patience* revealed her versatility as well as her capability. Her natural sweetness and her sympathetic nature will go far towards making her teaching career a success, as even the shyest child will respond quickly to Anna's bright cheerfulness.

Kindergarten-Primary Course
Welfare Club (Vice-President '39, '40); Music Club.



LOUISE PHYLLIS MADDEN

*"Of all the young ladies I know,
This pretty young lady's the fairest:
Her lips have the rosiest glow,
Her eyes are the richest and rarest."*

Although she is one of the smallest members of our Class, Phyllis seems to have more energy and executive ability than most people twice her size. She has been found a willing worker, dependable and capable, not only in college activities but in outside club work as well. Phyl always has time for a friendly smile or a pleasant word. Her puns are famous! For making our college life more pleasant, and showing true comradeship to all, we are grateful to Phyl.

Kindergarten-Primary Course
Lampas Staff; Welfare Club (Executive Board); Aquarium Club (President '39); Athletic Association; Drama Club; Music Club.





CATHERINE AGNES MAHONEY

*"For you are such a smart little craft,
Such a neat little, sweet little craft,
Such a bright little, slight little,
Trim little craft."*

If you wish to know a splendid classmate, an entertaining companion, and a true friend, then let me introduce the inimitable Katie. Her eager desire to serve, her willing ability to follow, and her great efficiency to lead make her a splendid classmate. Kay's ready wit, sparkling with a delightful, wholesome humor (as exemplified by whimsical puns and facetious cartoons), and her pleasingly friendly personality make her an entertaining comrade. A deep loyalty, a fine sense of honor, and an inspiring idealism make her a perfect friend, enjoyed, admired, and loved by all who know her.

Major: English

Minor: French

Lampas Staff; Welfare Club; Le Cercle Français; Literary Club.



BERNICE URSULA McBRIDE

*"Sweet blue her eyes do shine,
Soft gold her locks entwine."*

A bit of sophistication, a dash of humor, interests that range from social service to the social whirl,—there you have Bernice! We've watched with envy as she tripped the light fantastic at our many proms; we've laughed at her delightful stories. Then we've asked ourselves, when we thought of her ability as a scholar, "Is there no end to the girl's talents?" The classmates with whom she has worked know that her cooperation and enthusiasm are endless,—she is a true class worker. We shall all remember happy hours shared with Bernice in true friendliness and good-humored joking.

Major: Shorthand-Typewriting

Minors: Accounting, Commercial Geography

Self-Government, Councillor '37, '38; *Lampas* Staff; Welfare Club; Athletic Association; Commercial Club; Drama Club.

RITA NORA McCAULEY

*"Teach me half the gladness
That thy brain must know."*

As mischievous as a sprite and just as lovable, Rita goes her gladsome way bringing joy and laughter to all who know her. Glowing with health, vitality, and good nature, she has a personality as refreshing as a tangy sea-breeze. She combines a little girl's naivete, light-heartedness, and love of a joke with the dependability, coöperation, and efficiency of a mature young woman. The former qualities have added to the enjoyment of our college life, the latter to its success. Rita is our ideal of determination and persistence. Her sincerity, her frankness, and her interest in people enable her to retain the friends so easily attracted by her happy laugh.

Major: Biology

Minors: Chemistry, Physiology
Self-Government (Councillor '40); *Lampas* Staff; Welfare Club; Aquarium Club; Treasurer '39, '40; Associated Science Clubs; Biology Society; Literary Club; Music Club; Science Club.



DORIS EMMA McCAUSLAND

*"A maiden fair
With light brown hair
And a sweet and gentle smile—"*

A gentle and unassuming manner, a deep concern for others, poise and dignity are the qualities that make Doris our ideal lady. Industry, thoroughness, and perseverance have made her a successful scientist. The growth of the newly-organized Associated Science Clubs has been due in large part to Doris' untiring efforts and enthusiasm. All of us who have heard her eulogize the beauty and appeal of nature know how contagious her enthusiasm can be. With such earnestness and sincerity, she cannot fail to attain her goal in life.

Major: Biology

Minors: Chemistry, Physiology
Welfare Club; Aquarium Club; Associated Science Club (President '40); Biology Society (Treasurer '39); Mathematics Society; Science Club.





GENEVIEVE GRACE McCREEDY

*"I dream of Jeanie with the light brown hair
Borne like a vapor on the summer air."*

A favorite member of our class, Jeanne always has something different and unexpected to say. Any group which includes her is invariably a hilarious one, as she sees the humorous side of every situation. Jeanne's position as style expert is unchallenged, as she has a definite flair for clothes. Her cheerfulness, vitality, and enthusiasm make her an ardent supporter of proms, plays, and other social events; the more serious side of her nature is evidenced in the classroom. Vivid and sparkling, Jeanne's personality is one we shall not easily forget.

Major: Geography

Minor: History

Welfare Club; Geography Club; History Club.



HELEN MARGARET MORAN

*"And here's a hand, my trusty friend,
And gie's a hand o' thine,
We'll take a cup o' kindness yet,
For auld lang syne."*

Combine the charm and dignity of a First Lady with an unexpected touch of humor; add an amazing capability and the warmth and understanding of a true friend—there you have Helen. In our four years together we have come to know her as a girl whose interests extend from the management of the Self-Government Association to the study of Braille. In spite of her many activities, however, Helen has always found time to be a pleasant and entertaining companion. That is why she has won not only high class and club honors but also a particular spot in the hearts of her associates.

Major: Shorthand-Typewriting

Minors: Accounting, Commercial Geography

Self-Government Association (First Vice-President '40);
Class Vice-President '38, Secretary '39; Welfare Club;
Athletic Association; Biology Society; Commercial Club;
Geography Club; History Club; Science Club.

PHYLLIS ANNE MURPHY

*"The rarest fun and the rarest fare
That ever fell to mortal share!"*

Like every good Celt, Phyl is very eloquent in argument, relishing a discussion on any subject be it profound or trivial. She is never at a loss for a spontaneous quip or a perfect retort. Her roguish glance is ever present, whether she is awing us with her typing speed, shooting a basket, stealing a scene in a play, or keeping the students' room in an uproar with her priceless songs. In pursuit of laughter, Phyl finds it for herself and for everyone.

Major: Secretarial Studies

Minors: Accounting, Commercial Geography

Class Secretary '37; Welfare Club; Athletic Association Secretary '39, President '40; Classical Club; Commercial Club (Secretary '40); Drama Club.



MARGARET LOUISE MURRAY

*"Sport that wrinkled Care derides,
And Laughter holding both his sides."*

A Bunsen burner, an amazing array of test tubes, important-looking jars of chemicals, interesting specimens in various stages of preservation, a large notebook bulging with formulae—these are objects dear to Margaret's heart. But even her absorption in her work cannot hide the spirit of fun lurking in her hazel eyes and deep dimples. It is this lively humor, tempered by warmth and understanding, that has made Margaret a welcome companion in all our college activities. May she never lose that love of fun which adds so much to the joy of living!

Major: Biology

Minors: Chemistry, Physiology

Lampas Staff; Welfare Club; Aquarium Club; Associated Science Clubs (Director of Biology Group '40); Biology Society; Drama Club; Literary Club; Science Club.





LILLIAN FANCHON NATION

*"A miniature of loveliness; all grace
Summ'd up and closed in little."*

As dainty as a tiny watch, as sparkling as a rhinestone clip, Lillian is a marvel in miniature. Merry eyes and an impish smile are outward signs of her gaiety and enthusiasm for living. But don't think that Lillian is an asset only at social gatherings, for she is one of the most energetic workers our dance committees have ever known, and she has shown herself a capable student as well. Some of the happiest hours of our college life have been those spent with Lillian as our pleasant and sympathetic companion.

Major: Shorthand-Typewriting
Minors: Accounting, Commercial Geography
Welfare Club; Athletic Association; Commercial Club.



VIRGINIA CATHERINE NOONAN

*"As I've justified promotion
In the histrionic art,
I'll submit to you my notion
Of a first-rate part."*

Virginia's variety of interests has been one of the reasons for her unusual success at the college. Members of the Drama Club will remember her for her work as an efficient officer and her realistic portrayal of Elizabeth in *Mary of Scotland*. The Athletic Association will remember her as the "streak of lightning" on the basket-ball team. Ginny has not let these outside activities interfere with her school work. Her scholastic record is something of which she can be justly proud. These talents added to a vivacious personality have made her one of the most popular girls in the Class of 1940.

Elementary-School Course
Lampas Staff; Welfare Club (Aide '37); Art Club; Athletic Association; Drama Club (Treasurer '39, Vice-President '40); Alpha Circle.

LUCILLE VIOLA NORMAN

*"She sings to the meadows,
And she carols to the streams;
She laughs in the sunlight
And smiles in her dreams."*

Humor is the word for Lucille, for was there ever such a delightful mirth provoker? Will any of us ever forget her stirring rendition of dramatic monologues and beautiful poetry, her clever piano accompaniments, and her intricate dance steps? And how she can wield a paint brush! Flashing eyes, a brilliant smile, and a spirit of camaraderie,—these are Lucille's charms. She well deserves the honors her talents have already received, and she will go on, we are sure, gathering many more laurels.

Major: Shorthand-Typewriting
Minors: Accounting, Commercial Geography
Lampas Staff; Welfare Club (Aid: '3); Art Club; Commercial Club; Drama Club.



ESTHER MARIE NUGENT

*"A face with gladness overspread,
Soft smiles by human kindness bred."*

Esther is an exceptional person who has extensive rather than intensive tastes. She has no passionate attachment for any one activity but a wholesome enjoyment of many. She can as readily enjoy wielding a tennis racket as listening to symphonic music. Esther is meticulous about her appearance. She has our endorsement as one of the best-groomed girls in the class. She is blessed with all the qualities that kindle true friendship. Her sincerity, kindness, and consideration make hers an admirable personality.

Elementary-School Course
Welfare Club; Athletic Association; Music Club; Alpha Circle.





CLAIRE HELEN O'BRIEN

*"A friendly girl with manners sweet,
The kind of girl you like to meet."*

Quick, efficient, thorough, intelligent,—all of these words could be used to describe Claire. Witness her fine contribution to the success of the Classical Club. The Athletic Association also will remember her as an eager and enthusiastic member. Like good silver, Claire has sterling qualities which have been tried, tested, and found true. Pleasantly serene, she solves her problems logically, capably, and quietly. A willing worker and a fine leader, Claire has the essential characteristics for a successful future.

Special-Class Course

Welfare Club (Aide '39); Athletic Association; Classical Club (Treasurer '38, Vice-President '39, President '40).



ANNABELLE CATHERINE O'CONNOR

*"Haste thee, Nymph, and bring with thee
Jest and youthful jollity."*

Are you looking for Annabelle? Why don't you try the art room? She may have lured a willing friend in to have her portrait painted. Or perhaps she is sketching some unsuspecting students as they read or study in Collins Hall. If peals of laughter resound from any room, Annabelle will be there. If there is excitement in the gym, she is probably in the midst of a lively game. Perhaps she isn't in the building. Then you should try the theater ticket offices, especially if Maurice Evans is in town. Wherever you find Annabelle, you will be sure to receive the pleasant smile and cheerful greeting that have brightened many a classroom or club meeting.

Major: English

Minor: Art

Welfare Club; Art Club (Secretary '39); Athletic Association; Drama Club; Literary Club.

RUTH OPPENHEIM

*"Her hair like the thistledown is borne
on the air,
And her heart, like the humming birds',
is free from every care."*

Ruthie, petite and curly-haired, will always be remembered for her sweet, quiet friendliness, her chic hats, and her gorgeous Florida sun-burn in March. She is one of those serene persons who meet life with a smile and help others to smile at life, too. Always well-groomed, Ruth looks as if she had just stepped out of a band box labeled "Paris." Perhaps that is why she speaks French so fluently and is such a joy to the French Club. It is a pleasure to see Ruthie and a far greater pleasure to know her.

Major: English

Minor: French

Welfare Club; Le Cercle Français (President '40); Literary Club.



JULIA MARGARET PEZZUOLO

*"O Julia, O Julia fair,
With brow of snow."*

Her gentle voice and quiet demeanor have led many of Julia's classmates to think of her as shy and ever-serious. This idea is quickly dispelled, however, when a smiling flash of Julia's dark eyes gives us a glimpse of the fun-loving spirit that supplements her seriousness. We all know Julia as a conscientious worker, a successful student, and a sincere friend. Gaiety and seriousness mingle to give us a pleasant companion with whom we have enjoyed studying.

Kindergarten-Primary Course

Welfare Club; Athletic Association; Music Club.





CONSTANCE GRACE PULVIRENTI

*"Hadst thou lived in days of old,
O what wonders had been told
Of thy lively countenance,
Of thy lovely eyes that dance!"*

What is it about Connie which everyone finds so attractive? Is it her captivating smile, her perfect poise, her gracious manner? Is it her sympathetic nature, her high ideals, or her conscientious work which is so appealing? Perhaps the fact that Connie combines all of these qualities accounts for the popularity she has achieved among her fellow students. Thoroughly dependable and sincerely interested in school affairs, Connie has attained in her college career that success which will surely be hers in later life.

Special-Class Course

Self-Government Association (Councillor '40); Welfare Club (Welfare Board '39); Classical Club (Treasurer '39, Vice-President '40).



CLARINA ANTOINETTE RUSSO

*"Her eyes as stars of twilight fair,
Like twilight, too, her dusky hair."*

Efficient—capable—competent. These are the adjectives which best describe Clarina, as is clearly shown by her work, which is an inspiration to her classmates. Willingness to spend the time and energy necessary to complete any worth-while task is the secret of her success. Scholastic achievement is not the only field of endeavor in which Clarina excels. Her kind, sincere nature has drawn many loyal friends to her. Truly she has profited from her college years, both in the attainment of knowledge and in the gaining of true friends.

Elementary-School Course

Welfare Club; Art Club; Literary Club; Geography Club; Music Club, Alpha Circle.

ELEANOR PEARL SALL

*"She golfs, she punts, she rows, she swims,
She plays, she sings, she dances, too!"*

Ellie is gifted with an extremely keen sense of humor and a very lucid mind. No matter what the discussion, Eleanor can be depended upon to come through with colors flying. Her personality mingles the witty and the serious with very pleasing results. And do you recall how, one day in our Junior year, she surprised us by singing (and beautifully, too) the rôle of Lady Angela in *Patience*. Like Isolde of legendary fame, Ellie has lovely hands and perfect teeth; unlike Isolde, she has one dimple. She is the fortunate possessor of charm, wit, and personality.

Major: English

Minor: History

Lampas Staff; Welfare Club; Art Club; Literary Club; Le Cercle Français; History Club; Music Club.



MARY ELIZABETH SANTRY

*"And like music on the waters
Is thy sweet voice to me."*

Mary's personality is a delightful combination of the practical and the artistic. Her dependability and efficiency were a constant joy to the editor of the *Spotlight*, who could always count on the accuracy and punctuality of her interesting play reviews. The *Lampas* also profited by her able work as photographic editor. The practical side of Mary's character is complemented by a love and appreciation of the arts, —literature, the drama, and, above all, music. The children who come under Mary's direction will find in her a capable teacher and a sympathetic friend.

Major: Music

Minor: English

Lampas Staff; Welfare Club; Drama Club; Music Club.





SHIRLEY ELAINE SARGENT

*"She was good as she was fair,
None—none on earth above her!
As pure in thought as angels are:
To know her was to love her."*

Much can be said of Shirley's high scholastic record, her friendliness, and her loyalty. But important as these qualities are, her appealing personality is based upon something deeper than these. The slightest acquaintance with Shirley reveals the high idealism which directs all her actions. Her unflinching courtesy, cheerful manner, and sympathetic nature are the results of the highest possible standards. The fineness of Shirley's character is reflected in her avocations, literature and music, in both of which her taste is excellent. We consider our friendship with Shirley to be one of the most valuable gifts of our college years.

Major: English

Minor: History

Welfare Club; Drama Club; Literary Club; Le Cercle Français; History Club.



MARIA RITA SARNO

*"There are pioneer souls that blaze their paths
Where the highway never ran."*

Marie's expressive countenance gives a hint of her individual personality—a personality that has won her many firm friends and staunch admirers. None of her varied outside interests has interfered with her work at the college, for she has always been unflinchingly faithful to her studies. We shall probably remember Marie best for her original ideas. When consulted, she expresses definite opinions formed after careful but rapid thinking. Her ideas are not stereotyped but show wit, insight, and keen practical judgment.

Elementary-School Course

Welfare Club; Classical Club; Drama Club; History Club; Alpha Circle.

VERONICA MARIE SHEA

*"Many were the sweet notes her merry voice
would sing,
Many were the blithe birds that warbled
them o'er."*

No prom or class dance was ever complete without Veronica, and we all were interested to watch her exhibition of the latest dance steps. Vera's energy was very effectively employed in her untiring work on prom committees every year. Her originality was evidenced by her clever announcements in the hall. An inexhaustible vitality, a delightful sense of humor, and a cheery friendliness endeared her to all her classmates. Her sunny disposition, her love of life, and her sparkling personality make Vera one of our most popular girls.

Major: English

Minor: Art

Welfare Club; Art Club; Athletic Association; Drama Club;
Literary Club.



CHARLOTTE ESTELLE SHEINGOLD

*"With her dimpled cheeks aglow,
Fairer flower was never seen;
All the flowers in the dell
Seem'd to own her for their queen."*

Quiet of manner, happy of disposition, charming in appearance, Charlotte has won a host of friends in the college. We all love to hear her laugh—such a deep, happy laugh that it spreads real joy throughout the group. Charlotte has distinguished herself as a careful, persevering student, a dependable worker, and a loyal friend. Her earnestness and friendliness will mean a great deal in making her life a success.

Elementary-School Course

Welfare Club; Literary Club; Science Club; Alpha Circle.





ROSLYN ADELE SHIEF

*"When a merry maiden marries,
Sorrow goes and pleasure tarries."*

A burst of merry laughter, the click of high heels, and there is Roslyn! Her twinkling eyes and gay manner have gained her a special place in the hearts of her classmates. Rozie's cheeriness is such a good influence on the class as a whole that we view with alarm the appearance of a serious expression. But invariably the smile reappears and she is again the sunny person we like so much. June marks for Roslyn not only the end of a happy college career, but also the beginning of a bright future. We wish her all happiness and success.

Major: English

Minor: Spanish

Welfare Club; Literary Club; Spanish Club (Vice-President '39).



MILDRED RUTH SILVERMAN

*"Every muse asserts a claim
To place her on the road to fame."*

After four years of association with Mildred, we are still amazed at her apparently effortless versatility. Her dancing has enriched many a class production; her violin has charmed many a college gathering. Not the least of her many accomplishments is her artistic talent which has brought us countless posters that we have admired and, perhaps, envied. Yet with all her undeniable talent, Mildred has remained a quiet, unassuming member of our class, content to let her successes speak for themselves. We can say without hesitation, "There is a girl who will succeed."

Major: Art

Minor: English

Lampas Staff; Welfare Club (Aide '37, '38, '39, '40); Art Club; Athletic Association; Classical Club; Drama Club; Literary Club; String Ensemble.

GERTRUDE SPIEGEL

*"Let us, then, be up and doing,
With a heart for any fate."*

The murmur of voices of serious seniors is heard as they discuss problems of momentous importance. First comes a muffled giggle and then a hearty laugh. Gertrude, the connoisseur of humor, has found something to make her laugh. Her sparkling eyes agleam with fun and her happy smile increases the enjoyment of the whole group. Her gay, fun-loving nature is supplemented by a steadfast seriousness in her school work, which makes her one of our top ranking students. Geniality and scholarship so well blended are bound to make Gert a success in any undertaking.

Elementary-School Course

Lampas Staff; Welfare Club; Athletic Association; Le Cercle Français; Science Club; Alpha Circle.



MARY JOAN SULLIVAN

*"I see her tripping where the bright streams play,
Happy as the daisies that dance on her way."*

From her first day as a Freshman to the glorious climax of her college career, Mary has been an active worker in the interests of her class and college. Trivial matters and important undertakings all receive a share of her time and valuable advice. Mary's cordial graciousness and her charming appearance have made us all very glad to claim her as a friend. The Senior Class proud of its pleasant, capable leader, wishes Mary the success which we all know will be hers.

Elementary-School Course

Self-Government Association (Secretary '39); Class Vice-President '37; Class President '38; Class President '40; Welfare Club (Aide '37); Athletic Association; Drama Club; Literary Club; Geography Club, Alpha Circle.





LILLIAN TAUB

*"Whose high endeavours are an inward light
That makes the path before her always bright."*

A splendid student and a loyal friend, Lillian is an ideal classmate. Coöperative in all class and club activities, she demonstrated well the efficiency and dependability of her work as co-chairman of the Senior play. The deep earnestness of purpose that brought her success in her studies is enlivened by a cheerful buoyancy of spirit that has made her always a favorite companion. Such a combination of determination, devotion to her work, friendly charm, and unruffled good-nature indicates for Lillian a future bright with success and happiness.

Major: Shorthand-Typewriting

Minors: Accounting, Commercial Geography

Welfare Club (Aide '39); Associated Science Clubs; Commercial Club; Drama Club; History Club.



MARY LOUISE TURLEY

"Thy purpose firm is equal to the deed."

Industry is in itself an asset, but when combined with sociability, efficiency, and charm, it results in a personality that is as attractive as it is dependable. Among Mary's varied interests, art takes a prominent part, and she finds great enjoyment in drawing and painting. Sports and dramatics are also included in her list of preferences, as her active membership in the Athletic Association and Drama Club indicates. Throughout her college years she has proved herself a conscientious student, a steadfast friend, and a pleasing companion.

Elementary-School Course

Welfare Club; Athletic Association; Drama Club; Alpha Circle.

SOPHIE BLANCHE URBAN

*"There is sweet music here
That softer falls
Than petals from blown roses
On the grass."*

The gay, fast music of a Polish dance mingles with bright-colored costumes to create a scene of beauty and movement. Sophie is one of the dancers. The clear sweet music of a violin holds the attention of an appreciative audience and is rewarded by a burst of applause. Sophie is the musician.—A sunny classroom filled with eager children combines an atmosphere of enjoyment with an air of industrious study. Sophie is the teacher. These are but three of the many scenes in which Sophie proves the capability and versatility which, combined with her modesty, make her so well loved.

Elementary-School Course
Welfare Club; Geography Club; String Ensemble; Alpha Circle.



IRENE BERNICE WEBBER

*"Her glossy hair
Is clustered o'er a brow
Bright with intelligence,
And fair and smooth."*

We shall probably remember Irene best for her shining chestnut ringlets. She is so charming, so wonderfully sympathetic and understanding, that we can easily imagine her the center of an adoring class of youngsters. She is dainty and feminine to her fingertips; yet she has such mental clarity that many a time we have been deeply impressed with her clear technical explanation of obscure points. "Webbie" is a girl we love, and we wish her all possible happiness.

Elementary-School Course
Self-Government Association (Councillor '40); Welfare Club; Le Cercle Français (Treasurer '38); Science Club; Alpha Circle.





GERTRUDE WEINBERGER

*"Let us grasp the situation,
Solve the complicated plot—
Quiet, calm deliberation
Disentangles every knot."*

With the mind of a scientist and the heart of a humanitarian, Gertrude represents an amazing combination of cold logic and warm sympathy. Her keen, clear mind, her determination, and her quiet efficiency have brought her success as a student of the sciences, as an executive of the Science Clubs, as a member of the *Lampas* Staff, and as an amateur photographer. Her warm heart and her serene, thoughtful nature have endeared Gertrude to those who know her. Fortunate, indeed, is the girl who can call her "friend."

Major: Chemistry

Minors: Biology, Physics

Lampas Staff; Welfare Club; Aquarium Club; Biology Society; Drama Club; Science Club (Treasurer '38, Vice-President '39); Associated Science Clubs (Director Science Group '40).



ANITA ESTHER WEISMAN

*"Take a pair of sparkling eyes,
Hidden ever and anon,
In a merciful eclipse."*

Dark, shining, well-groomed hair; soft, pretty sweaters; and the most contagious laugh in S 1—no need to go further to describe Anita. Her cheery optimism is like a tonic, for, no matter how dark the cloud, Anita can always discover the silver lining. She approaches her work with an earnest interest and a serious intent to succeed; she completes it with an efficiency characteristic of a capable student. We can safely predict a successful future for one who is both an earnest worker and a pleasant companion.

Major: Shorthand-Typewriting

Minors: Accounting, Commercial Geography

Lampas Staff; Welfare Club; Commercial Club; Drama Club; History Club.

LILLIAN ESTHER WERNICK

*"I'm very well acquainted, too,
With matters mathematical;
I understand equations
Both simple and quadratical."*

Who was the "spark plug" of our basketball team last year? Who was one of our most enthusiastic workers in numerous class projects? Who was the class math wizard? Who else but Lillian! Small and slim, but energetic and abounding with enthusiasm, she willingly contributed her share of work on numerous committees. Yet, regardless of all her extra-curricular activities, she was a serious, sincere student doing her best work at all times. We truly believe that Lillian will attain satisfaction and success in the profession she has chosen.

Major: Mathematics

Minor: General Science

Self-Government Association (Councillor '39); Welfare Club; Athletic Association; Mathematics Society (Secretary '39, Treasurer '40); Science Club.



MARY AGNES WINSTON

"A sweet attractive kind of grace."

Five-foot-five of graceful charm, good humor, and sympathetic understanding,—that's Mary. Her ability to "wear" clothes, and her unusual taste make her a model for what the well-dressed college girl is wearing. Having a faculty for giving quick, appropriate rejoinders to whatever is being said, Mary is a definite asset to any conversation. Though usually gay, Mary has another side—serious, quiet, and sincere. In a discussion of the latest literary works, her up-to-date knowledge of books is apparent. Socially and academically Mary should go far.

Major: English

Minor: Art

Lampas Staff; Welfare Club; Art Club; Athletic Association; Literary Club; Assistant Class Marsnal.





SELMA YOUNIS

*"Braid the raven hair,
Weave the supple tress—
Deck the maiden fair,
In her loveliness."*

Originality is the keynote of Selma's personality. Out of a piece of crêpe paper she forms a doll, a flower, or some party favor. Vivacious, sparkling, and exhilarating, she typifies the gypsy personality. Practical as well as artistic, Selma certainly filled the coffers of the class treasury. Hence she is our nominee for the first woman Secretary of the Treasury at Washington. Selma's efficiency in handling money finds its counterpart in her ability to handle a basketball. Her interest in athletics, drama, art, and other fields has made her a stimulating and interesting companion.

Major: Mathematics

Minor: Art

Class Treasurer '39, '40; Welfare Club; Art Club; Athletic Association; Drama Club; Mathematics Society.

FORMER MEMBERS OF THE CLASS OF 1940

Helen Dullea
Norma Fortier
Irene Glogowski
Bernice Goldman
Alice I. Kittredge
Josephine Leto
Jeannette Levin
Elizabeth Murray
Ora Richmond
Harriet Schneider

ALMA MATER

When we came, Alma Mater, to thee in our youth,
When we lifted our eyes, full of trust, to thy face,
When we felt there thy spirit, and saw there thy grace,
We desired then thy wisdom, we longed for thy truth.

As the years have flown by with their toil and their joy,
Thou hast quickened our ears, thou hast opened our eyes,
Till the hill and the plain, till the seas and the skies,
Are all throbbing with beauty no hand can destroy.

Thou hast shown us the world with its splendor and might,
Its desire and its need thou hast given us to see;
Mother, grant us thy passion for service that we
May lead youth with its ardor to seek for the light.

Katharine H. Shute



JUNIOR CLASS

ELINOR KENDRICK, *President*

IMELDA HACKETT, *Vice-President*

ANITA LIEF, *Secretary*

ISABEL SMART, *Treasurer*

"Yours the task

Noblest that noble minds can ask—
Of you the growing mind demands
The patient care, the guiding hands,
Through all the mist of morn.
And knowing well the future's need,
Your prescient wisdom sows the seed
To flower in years unborn."

Abramson, Esther R.
Aicardi, Hazel H.
Alexander, Mildred
Aronson, Pearl
Beede, Doris H.
Bishop, Elinor G.
Bowe, Margaret L.
Boyle, Margaret M.
Breen, Bernadette A.
Brooks, Anne M.
Callahan, Geraldine J.
Carroll, Dorothy L.
Corcoran, Anne M.
Coyle, Eleanor E.
Cucugliato, Sylvia
Daly, Frances A.
Dellamano, Sylvia J.
Deveau, Agnes M.
Donovan, Agnes G.
Drislane, Dorothy A.
Farren, Ruth M.
Fitzpatrick, Geraldine M.
Glasser, Adeline F.
Gouzoule, Katherine
Hackett, Imelda
Hamrock, Teresa A.
Healy, Miriam K.
Heerde, Eleanor
Hernon, Catherine T.

Hill, Faith E.
Hines, Teresa L.
Hocknell, Irene M.
Horbliit, E. Marie
Jenmotte, Doris M.
Johnston, Elizabeth M.
Jones, M. Dorothy
Jones, Frances C.
Kelly, Mary L.
Kendrick, Elinor L.
King, Sophie
Lally, Catherine V.
Lampke, Hinda M.
Lief, Anita G.
Lindsay, Grace A.
Luke, Marguerite
Mahoney, M. Paula
Malenbaum, Shirley
Maniates, Annie
McCarthy, Agnes F.
McCarthy, Mildred F.
McKernon, Catherine F.
McLaughlin, Rita A.
Michaeldeles, Irene
Mills, Grace L.
Mockus, Aldona A.
Nestor, Ellen T.
Neville, Isabella V.
Nicholson, Mary H.

Nollman, Esther F.
Nordos, Marian J.
Noxon, Mildred F.
Olsen, Barbara A.
O'Brien, Mary L.
Palder, Sylvia V.
Pasquale, Eva R.
Peyton, Kathleen P.
Roach, Virginia L.
Ryan, Mary F.
Schulman, Suzanne B.
Shea, Helen P.
Shea, Joan B.
Smart, Isabel D.
Spady, Elizabeth H.
Spelfogel, Madelyn M.
St. Martin, Jane A.
Sullivan, Elizabeth A.
Sweeney, Isabel E.
Sweeney, Mary R.
Taylor, Emma E.
Towhill, A. Jean
Trabucco, Elena V.
Turcotte, Marie E.
Vernon, Dorothy
Warwick, D. Lorraine
Wellington, Muriel L.
White, Ruth C.



SOPHOMORE CLASS

VIRGINIA BOLGER, *President*

BARBARA BRAWLEY, *Vice-President*

ANNE STERNBERG, *Secretary*

ANNE DOYLE, *Treasurer*

"How beautiful is youth! how bright it gleams
With its illusions, aspirations, dreams!
Book of Beginnings, Story without End,
Each maid a heroine and each man a friend!
All possibilities are in its hands,
No danger daunts it, and no foe withstands;
In its sublime audacity of faith
'Be thou removed!' it to the mountain saith;
And with ambitious feet, secure and proud,
Ascends the ladder leaning on the cloud!"

Longfellow

Baron, Mildred
Bayard, Dorothy
Berkovich, Sylvia E.
Bolger, Virginia F.
Boudreau, Vivienne F.
Brawley, Barbara
Brown, Frances K.
Burton, Dorothea R.
Casey, Elinor E.
Cole, Helen M.
Cowley, Anne B.
Doyle, Anne M.
Filene, Edith L.
Fowles, Natalie
Fox, Mary E.

Frank, Adele C.
Gruenewald, Janet
Hallahan, Marie J.
Hambleton, Ruth O.
Harding, Genevieve M.
Harnish, Madelyn C.
Harrington, Kathleen M.
Henderson, Estella R.
Herlihy, Helen G.
Kates, Edith
Kenefick, Mary E.
Kerrigan, Margaret M.
Kornetsky, Sophie
Lyons, Anne M.
Magat, Mildred

McPhee, Loretta T.
McSheffrey, Imelda V.
Montanari, Rose M.
Morris, Rita M.
Mulcahy, Dorothy M.
Murphy, Mary
O'Brien, Virginia L.
Rosenfield, Norma A.
Rubinovitz, Sarah
Shedrick, Louise A.
Sternberg, Anne D.
Weinstein, Ethel G.
Westwater, Agnes C.



GRADUATE CLASS

Helen M. Anzalone, B.S. in Ed., Teachers College
 Vincenza M. Baglioni, B.S. in Ed., Teachers College
 Mary A. Barossi, B.S. in Ed., Teachers College
 M. Eileen Bowers, B.S. in Ed., Teachers College
 Mary J. Broderick, A.B., Regis College
 Helen F. Carey, B.S. in Ed., Teachers College
 Ann L. Carroll, B.S. in Ed., Teachers College
 Mary F. Carroll, B.S. in Ed., Teachers College
 Mary C. Coleman, B.S. in Ed., Teachers College
 Anna M. Connolly, B.S. in Ed., Teachers College
 Mary A. Connolly, B.S. in Ed., Teachers College
 Helen R. Cotter, B.S. in Ed., Teachers College
 Mary T. Cronin, A.B., Emmanuel College
 Edith A. De Angelis, B.S. in Ed., Teachers College
 Beatrice R. De Lorey, B.S. in Ed., Teachers College
 Harriet A. Dennison, B.S. in Ed., Teachers College
 Margaret M. Donnelly, B.S. in Ed., Teachers College
 Paul F. Dunigan, A.B., Boston College
 Rhoda I. Engleman, B.S. in Ed., Teachers College
 Winifred T. Farrell, B.S. in Ed., Teachers College
 William V. Feeney, A.B., Boston College
 Adeline Galzerano, B.S. in Ed., Teachers College
 Eleanor R. Geishecker, B.S. in Ed., Teachers College
 Katherine C. Godfrey, B.S. in Ed., Teachers College
 Harold Goorvich, B.S. in Ed., Boston University
 Ruth A. Gordon, B.S. in Ed., Teachers College
 John W. Haverty, A.B., Boston College
 Mary W. Healy, B.S. in Ed., Teachers College
 Saunders E. Jacobstein, A.B., Harvard University
 Martha M. Jianos, B.S. in Ed., Teachers College
 Mary J. Johnston, B.S. in Ed., Teachers College

Eleanor M. Kelley, B.S. in Ed., Teachers College
 Ruth L. Kelly, B.S. in Ed., Teachers College
 Mary E. Kenney, B.S. in Ed., Teachers College
 Lillian F. Kredentser, B.S. in Ed., Teachers College
 Ruth Krock, B.S. in Ed., Teachers College
 Marie B. Leen, B.S. in Ed., Teachers College
 Julia M. Manning, B.S. in Ed., Teachers College
 Marion M. Manter, B.S. in Ed., Teachers College
 Marion E. MacEwen, B.S. in Ed., Teachers College
 Ann R. McCarthy, B.S. in Ed., Teachers College
 Elizabeth M. McCauley, B.S. in Ed., Teachers College
 John H. McCormick, B.S. in Ed., Harvard University
 Anna V. McGinley, B.S. in Ed., Teachers College
 Mary R. McLaughlin, A.B., Wellesley College
 Kathleen C. McNulty, B.S. in Ed., Teachers College
 Rita R. Mooney, B.S. in Ed., Teachers College
 Dorothy L. Morris, B.S. in Ed., Teachers College
 Paul J. Murphy, A.B., Harvard University
 Mary P. Nolan, B.S. in Ed., Teachers College
 John J. O'Hara, A.B., Harvard University
 Mary E. O'Leary, B.S. in Ed., Teachers College
 Doris M. Phillips, B.S. in Ed., Teachers College
 Margaret E. Powell, B.S. in Ed., Teachers College
 Doris M. Pratt, B.S. in Ed., Teachers College
 Helen E. Rooney, B.S. in Ed., Teachers College
 Maxwell A. Shapiro, A.B., Clark University
 Josephine N. Snapfy, B.S. in Ed., Teachers College
 Dorothy C. Thain, B.S. in Ed., Teachers College
 G. Claire Tighe, B.S. in Ed., Teachers College
 Gertrude I. Walsh, B.S. in Ed., Teachers College
 A. Dorothea Wool, B.S. in Ed., Teachers College



RECORDS



CAP AND GOWN DAY

SENIOR ACTIVITIES

ALUMNI BANQUET Wednesday, May 15

Mary Santry, *Chairman*; Eva Liberman, Vera Shea,
Marie Sarno, Winifred Graves, Esther Freedman

FACULTY RECEPTION Tuesday, May 28

ADDRESS BY THE DEAN Friday, May 31

Ruth Heerde, *Chairman*; Anne Gilman,
Shirley Sargent, Constance Pulvirenti

CLASS DAY Saturday June 1

Marshal: Virginia Egan
Assistant Marshal: Mary Winston
Margaret Murray, Lillian Wernick, Mary Donovan, *Chairmen*;
Isabelle Koury, Julia Pezzuolo, Gladys Kline, Clarina Russo

PROGRAM

March	String Ensemble
Welcome	Virginia Egan
Piano Solo	Mary Santry
Class Essay	Agathina di Bella
Double Trio:	
Mildred Alcott	Virginia Galligan Ruth Heerde
Margaret Connelly	Eleanor Sall Anna MacArthur
	<i>Accompanist</i> : Louise Burke
Class Poem	Virginia Noonan
Presentation of Class Gift	Selma Younis
Acceptance of Class Gift	Dr. Kennedy
Class Song	Words and Music; Charlotte Fellman, <i>Conductor</i> <i>Accompanist</i> : Mary Donovan

COURTYARD EXERCISES

Daisy Chain	Class of 1940
Courtyard Song	Mary Hedstrom
Planting of the Ivy	Class Officers and Marshals
Ivy Oration	Mary Sullivan
Alma Mater	Assembly
Class Night Promenade	
	Ann Cutler, <i>Chairman</i> ; Mildred Lief, Esther Nugent, Joan Adler, Rita Fitzgerald, Mary Turley, Irene Webber

CLASS OUTING Monday, June 3

Genevieve McCready, *Chairman*; Lillian Nation,
Eleanor Farry, Dorothy Becker, Annabelle O'Connor,
Charlotte Goldstein, Charlotte Sheingold

CLASS BANQUET Tuesday, June 4

Loretta Curran, *Toastmistress*; Edna Kahn, *Chairman*;
Merle Lagamasino, Virginia Leaver, Doris McCausland,
Phyllis Murphy

COMMENCEMENT Thursday, June 6

SPEAKER: Samuel Hazzard Cross, Professor of Slavic Languages and Literatures, Harvard College

CLASS POEM

JOURNEY'S BEGINNING

Today we come to journey's end;
We've reached the goal we longed to win.
But lo! A bright torch gleams ahead
Where new roads lead, new tasks begin.

Loud trumpet calls of life inspire,
We'll follow bravely, vanquish fears.
The challenge of the path before us
We'll meet with courage through the years.

The way that we have trod till now
Was eased by Guidance, lit by Truth.
Wise Knowledge calmed our childish fears,
While sage Experience spared our Youth.

Ideals of duty we've been given,
And taught that we must heed Life's call,
Devoted to the noble motto,
"Service to others, Love for all."

Go forth and teach,—guide youthful footsteps
To mountain tops of radiant light;
Fulfil the mission thus intrusted,
And keep the torch of knowledge bright.

Journeys end in new beginnings.
Unfurl the banners, start today
To face the future bravely, nobly,
And trust that God will bless the way.

Virginia C. Noonan

CLASS HISTORY

A Fantasy

High above the clouds in a northern corner of Ancient Attica, rise the windy heights of Mount Olympus, eternal home of the immortals. From bards of old we learn of its lordly inhabitants: the almighty Zeus, whose thunderbolts have been hurled at the earth since man first recognized the wrath of the gods; the incomparable Aphrodite, symbol of all that is beautiful and unattainable; the sceptered Athena, who sprang, precociously enough, full-grown from the head of Zeus; the relentless Poseidon, whose capricious trident has been ever the bane of the mariner. Splendid were the glories of Elysium, upon which human eye had never gazed! Yet it happened not so very long ago, that the finely-wrought gates of Mount Olympus swung open, admitting to the sanctum of the eternal, another group of the darlings of the gods.

It is a beautiful June day. Ceremonial gowns flapping gently in the soft breeze, green-and-gold ribboned certificates of immortality clutched firmly in our hands, we, the Class of 1940 of the Teachers College of the City of Boston, turn away from the frivolities of the world, to take our places among the honored of Olympus. Suddenly, as the great gates swing closed behind us, a thought flashes through our minds. We, like the mighty gods about us, no longer mortal, are endowed with omniscience. "The why and how of all things past, present, and forever more," are within our understanding; all time is as one to us. Our past selves as well as our present selves are within our ken.

Shades of Athena! Lo! there before our eyes, emerging from the shadows are the astral bodies of our earth-born selves. Unbelievable, but nevertheless true! Before us stand ourselves as Freshmen away back in 1936. How young, how inexperienced, how bewildered we appear! Just look! *Frasier* and *Armentrout* burden our frail young shoulders. Downcast eyes bespeak the humiliation we feel in the realization of our inability to speak our own language correctly. From our pallor, health education is evidently a purely objective study. As if all these misfortunes are not enough to try the patience of our most docile Job, here come the Juniors whooping along the warpath, eyes alight with mischief. White cotton stockings we wear during Freshman Week, and baby costumes at the Party. What a blow to one's ego! Yet with prophetic vision we see these seemingly Mephistophelean Juniors as our friends and guides in the years to come.

As we Olympian neophytes stand about the Foyer of Education, eyes fixed on the scene before us, that ever-to-be-remembered September day four years ago rises from the mists, and we watch the formal introduction of the new class to the faculty. To us now, Dr. Kennedy, Dean Linehan, Miss Sallaway, and our former instructors have long been old and true friends, whom we have known for years; yet we can realize the timidity and the uncertainty of our young shadow-selves at this, their first formal meeting.

Magically the year unrolls before our eyes. The long-awaited party for our friendly Junior rivals comes and goes, though even on Olympus the hilarity of the "famous" Model School parody still produces the effect of "laughter holding both his sides." Tradition is as strong among the immortals as it is among the earth-born, and the Freshman preparation of the daisy chain is carried on with all the dignity and solemnity of an Olympian festival. And now, as the gay, sophisticated youngsters, with Else Junker, Mary Sullivan, Phyllis Murphy, and Mar-

guerite Barry in the vanguard, sway to the rhythm of the Muses at their Freshman-Sophomore Prom, our Freshman alter-egos fade away into the past.

With all the charm and savoir-faire of Sophomores, our counterparts of '37 now appear on the magic stage; disguised as young naturalists, their arms laden with wild flowers and gaily-tinted leaves, they are led by Diana of the Hunt. As the procession, marshalled by Mary Sullivan, Helen Moran, Mildred Alcott, and Charlotte Fellman, continues in the background, our attention is attracted to what appears to be some sort of carnival. Santa Claus is Santa Claus wherever you are, and his appeal is not lessened even on Olympus. Our Sophomore selves have for the moment discarded all vestiges of academic decorum, with *Manly* and *Hegner* and *Cameron* into the bargain, and are going through the queerest antics in the most ridiculous costumes, much to the delight of a crowd of merry youngsters. It does not take long to realize that this is the Christmas Party, but what puzzles us is—Where is the famous T. C. dignity?

Hark! what is this? Feasting has ever been the favorite pastime of all, gods and mortals alike, and now we gaze upon a particularly gay supper party. Such "a sound of revelry by night," and a grand addition to the *Lampas Fund!*

Look ye, now, yonder, toward the conservatory! Can it be other than Selma Younis presiding over a bower of daffodils and violets and bachelor buttons? What a flood of perfectly brilliant color! On such heavenly beauty, mortal eye never rested, except at the Sophomore Flower Sale.

And so we watch another year's events at the Citadel of Athena recede into the shades of the past. Irresistible strains from Orpheus' lute delight our ears as the last of the procession dances by, and the dreamed-of Freshman-Sophomore Festival at the Temple of the Springs is over.

With something approaching "the wild surmise" of Cortez as he gazed at the Pacific, we late mortals view these scenes of our youthful triumphs and mourn the passing of so bright a year. Our pensive mood is short lived, however, for soon we are enthralled by the vision of the festivities of another Freshman Week, culminating in a Baby Party. The pervading spirit of fun is tempered only by the memory of our own freshman days, but oh, the difference!—For *we* as Juniors now assume the rôle of hostesses at the Faculty Tea.

Time rolls his ceaseless course. From another of the green and gold halls in the shadowy land of yesterday comes the sound of more feasting. The *Lampas* is again being fêted, and many a toast is offered to the new leaders of the class,—Virginia Egan, Mildred Alcott, Helen Moran, and Selma Younis!

Although the gods and goddesses have given us a royal welcome to Olympus, yet they evince little interest in the passing events at which we are gazing spell-bound. But our Junior Week Celebration disturbs even Olympian serenity. Chariots charge about; minstrel bands suddenly appear, and then are heard no more; halls are decorated; even thunderbolts are hurled—and the first day of Junior Week finally dawns. In the Temple of the Midday Repast, the familiar boards and benches reminding us of days of yore, we see again the Junior Banquet, the gods of revelry holding forth on this night of nights. "Then to the well-trod stage, anon" troops the joyous clan (though to be quite accurate, the famous learned sock of Jonson's was noticeably missing in the Hub of the Universe that week). Hearken! what soft Lydian airs are these, emanating from the Temple of Parker? Who are the fair young gods and goddesses who sway before the altar of the Muses at this Junior Promenade? And among the Graces do we not recognize Eros? "On with the dance! Let joy be unconfined!"

Junior Festivities come and go, and now the Halls of Learning echo the sounds of cutting and pasting and sewing. The disciples of Athena have turned domestic, and the successful Doll Sale is the result—dolls of every land to gladden the hearts of all who care to help the *Lampas*.

By the beards of Gilbert and Sullivan! Nota bene! A milkmaid among our scholarly shadows! "What means this interference of this bold girl?" And dragons and aesthetic maidens and long-haired poets! "'Tis *Patience*!" Long may her triumph be remembered!

Once again comes a pause in the familiar pilgrimage upon which we gaze—a pause that prepares us for the climax of our four years' journey. Heralded by Mary Sullivan, Mildred Katz, Anna Dowd, and Selma Younis, the procession enters the lyceums. Projects and lesson plans and courses of study fill the air,—and the teachers of tomorrow take up their share in the tradition of the service, "to lead youth with its ardor to seek for the light."

All, however, is not pedagogical dignity. Now we are witnessing the October *Lampas* Dance; now the Senior Thespian Festival. As the year unfolds before us, it appears as though one fair maiden there amongst the shadows is possessed of the touch of Midas, for every goblet of nectar (cup of tea), and every morsel of ambrosia (sandwiches) seem to turn to gold beneath her fingers,—a mighty triumph for the great god, *Lampas*!

Now turn your gaze hither, O gods of eld, and ye newly-arisen, too, for the glorious Promenade of Athena's and Aphrodite's elect is on! "O Youth and Beauty, loved of all"! The music of the spheres competes with the melodious hum of the golden shafts of Eros. Even we, on the heights of Olympus, are touched by the beauty of the scene before us.

Thus the fleeting year approaches its end. The Herculean labors are executed,—brilliantly, of course. Celebration and festivity in honor of the god of Completion and Fulfilment reign supreme. A reception by the gods and goddesses of Olympus opens the Senior Week festivities, followed by a solemn baccalaureate ceremony. Class Day brings with it the colorful procession of the chosen, the graceful daisy chain which magically traces the figures 1940 upon the green turf, the gay and gracious Promenade where Hebe and Aphrodite again share the honors. This is a day that will truly live in our hearts forever. Now to the seashore, as guests of the venerable Poseidon, crowds the fun-bent troop, for a day of careless frolic in the sunshine. Then a last convivial evening of feasting fills the cup of happiness to overflowing.

On the afternoon of June sixth, the solemn ceremony of Commencement takes place not far from the Oracle of Athena, and "the prize we sought is won!" Zeus himself is on the podium, the most exalted gods of the heavens assisting. The elect of Olympus, uncertain at first, but gaining confidence at every step, begin their inspired march along the untrodden path to immortality. Slowly and thoughtfully, with hope and expectation in their hearts, the Class of 1940 of the Teachers College of the City of Boston turn away from the frivolities of the world, to take their places among the honored of Olympus.

The shades of yesterday begin to dissolve in the bright summer sun. Is this really Olympus?

Was it a vision, or a waking dream?
Fled is that music:—Do I wake or sleep?

Eleanor Sall

CLASS SONG

I

The parting hour is drawing near,
When friends must say farewell;
Of college days of joy and cheer
In years to come we'll tell.

Once more we sing with voices clear,
In halls we love so well.
Once more we sing with voices clear,
In halls we love so well.

II

Too swiftly sped the golden days,
The short sweet years have flown.
O mem'ry, in thy shining rays
Keep bright the joys we've known!

Though paths may follow varied ways,
True friends remain our own.
Though paths may follow varied ways,
True friends remain our own.

III

God give us courage to maintain
Each noble impulse born;
Our banners bless, our faith sustain,
With truth our lives adorn.

Then let us sing in gladsome strain
To greet a fair new morn.
Then let us sing in gladsome strain
To greet a fair new morn.

Charlotte Fellman



CLASS ESSAY

OPTIMISM

What is the future that youth faces today? Europe is in the throes of a great war; America is struggling valiantly with serious problems of unemployment, relief, and budget balancing; youth is confronted by a future more uncertain, more chaotic than it has been for many a year. To all of us comes the problem of tomorrow. Each of our tomorrows will be different; each will present difficulties which we shall have to solve alone. Yet we know that each will hold an abundance of blessings, which, with God's grace, we shall use wisely and share generously with others, remembering always that these blessings are only a part of God's great plan. We grow nearer the Great Ideal not by pleasures enjoyed, but by trials endured, temptations resisted, evils conquered; every difficulty we overcome, every hill we climb, every stream we cross, will make us stronger, nobler, Godlier. What happens in our tomorrows is unimportant; what is important is the manner in which we meet what happens. We cannot fail, we shall not be bowed down in the dust of despair, if we but keep the optimistic outlook, the courage that in life's darkest hour says,

"I am the master of my fate,
I am the captain of my soul."

We speak of the *optimistic outlook*, but what is the meaning of this rather vague term? Unfortunately, optimism has been popularly typified by Pollyanna, that exponent of sweetness and light, or by Mr. Micawber with his cheerful philosophy of "something will turn up!" Then again, optimism has been ridiculed as a state of mental unconsciousness to the disconcerting elements in life, like that of the Duchess in *Alice in Wonderland*. But being an optimist does not mean being a Pollyanna, a Mr. Micawber, or a Duchess. True optimism is very different from the attitude of these characters toward life and its problems.

Pollyanna believed in the goodness of life, yes—but to her everything and everybody were good, no pain or strife or evil existed. The true optimist, mature in mind, recognizes the grief and suffering that life exacts, but to him, life, no matter what the cost, is worth the price we all must pay. Is it not this that Sara Teasdale had in mind when she said,

"Spend all you have for loveliness,
Buy it and never count the cost;
For one white singing hour of peace
Count many a year of strife well lost."

And how simple, how free to us all are the beauties of which she sings, "Blue waves whitened on a cliff"—"Soaring fire that sways and sings"—"Music like a curve of gold"—"Scent of pine trees in the rain"—"Children's faces looking up, holding wonder like a cup."

Truly, "life has loveliness to sell," but the pity of it is that we often are blind. We have eyes, but we see not. We let a momentary discouragement, an unmerited rebuke, an unforeseen obstacle close our eyes to the beauty that is

everywhere around us,—in nature, in literature, in art, in music, in our fellow man. We do not need to go out of our own homes or our own college to find those who have unselfishly dedicated their lives to the patient, helpful, sympathetic guidance of youth. That beautiful word, *magnanimous*, may fittingly be applied to these great-souled, great-spirited, great-hearted friends of ours.

Looking back across the years, we see now what, perhaps, we may have failed to see before,—the undying devotion, the uncomplaining toil of those who have helped us reach our goal. Their faith in us, their aid in our weakness,—these are not things isolated, apart, remote from daily living. All the world over, the great beauty in human character is the chief encouragement and support of many a weary struggle. It is oftentimes the inspiration that makes possible the fulfillment of our ideals. Yes, evil exists; but the good and the beautiful in life are forces of overwhelming power. True optimism is not the belief that everything in life is good, but simply the intense realization that there is good in life, and that the good in life overbalances the pain and the evil.

Dear Mr. Micawber! Dickens has drawn his portrait so skillfully that the cheery fellow has earned for himself a place in the hearts of the world, but, for all that, he still remains a silly old sentimentalist. Indeed he does possess a cheerful temperament, a decidedly hopeful outlook. He always says that "something is bound to turn up," and for that something he is eternally waiting. Waiting! The true optimist does not wait for life to favor him with her blessings. He takes the cheerful and hopeful temperament and makes it work for him. He uses hope to find a way through the problems that beset him. He believes that something is bound to turn up only if he goes forth and turns it up! It takes courage to look an obstacle squarely in the face, to say to it, "You exist, and I know that you exist; but I will not let you defeat me without a struggle." Disappointments are bound to come. Life is full of bitter ironies. Let us not permit them to rob our hearts of joy. Let us face life with cheerfulness and courage, hope and faith, for these are the elements of which true optimism is made.

Another essential element of optimism is a sense of humor. It is a panacea for the ills of the world, for the wear and tear of daily life. It is a divine gift that enables us to see the infinitesimal minuteness of ourselves as compared to the infinite universe and to eternity. It is a rod by which we may gauge the pettiness, the fleeting transiency of many of our most distracting problems. For us particularly, engaged as we shall be in the guidance and education of children, and struggling daily with the thousand-and-one problems of the school-room, a sense of humor can mean the difference between success and failure. It is a good balance-wheel for life.

One of the unforgettable scenes of *Alice in Wonderland* is that in which the Duchess, totally unconscious of the well-aimed pots and pans which the cook is throwing at her, and completely ignoring the howling of the baby that she holds in her arms, converses calmly with Alice. Most people regard the Duchess only as an excruciatingly funny character, and few of us would care to be like her. Yet some of the world's greatest men, possessing this same quality of concentration, were able to ignore, or at least to minimize, the adverse conditions that might have kept them from success. Their sublime confidence in their great aims enabled them to disregard and even to ignore discouraging factors that

would impede their progress. Lincoln in his fight for a nation unified with freedom for all, Goethals in building the canal that could not be built, Lindbergh in flying across an ocean alone for the first time in the history of civilization, by optimism accomplished what seemed the impossible.

Optimism, however, soars on silvery wings not by its belief in the beauty and goodness of life, its doctrine of courage and hope in the face of despair, its sublime confidence which will not envision defeat, but rather by its divine origin, a firm faith in God. No matter what happens to us, if we believe with Browning that "God's in his heaven," how can we face life with an outlook that is other than optimistic? How can we despair?—for as Arthur Hugh Clough says,

"It fortifies my soul to know
That though I perish, Truth is so;
That, howso'er I stray or range,
Whate'er I do, Thou dost not change.
I steadier step when I recall
That, if I slip, Thou dost not fall."

All of us need the optimistic outlook both for our own sakes and for the sake of other people. There is no more tedious person than the pessimist. We came into the world to live life; let us live it with cheer and hope and vision, with firm belief in the goodness of God, and deep gratitude for His blessings.

Getting a start in our profession will probably be a long pull and a hard one. Endurance will undoubtedly be a factor in our success. But there is no power like a sunny disposition to dispel gloom and to help us to keep on trying, for laughter is contagious. As a poet of long ago said,

"A merry heart goes all the day,
A sad one tires in a mile-O!"

Let us, therefore, make optimism our password to success,—the password that will help us to find the place in life for which we were intended. Let us, seeing always the silver lining of even the darkest cloud, press onward and upward to the new goals we set today,—this day that marks a milestone in our lives.

Browning, the keynote of whose life was optimism, gives us an inspiring message for the years to come, in the noble lines,

"One who never turned his back but marched breast forward,
Never doubted clouds would break,
Never dreamed, though right were worsted, wrong would triumph,
Held we fall to rise, are baffled to fight better,
Sleep to wake."

Agathina L. di Bella

COURTYARD SONG

I

Daisies and ivy winding today
Our lives are binding, though far we stray;
Memories come winging as we are singing,
Flowers all fair we're bringing:

To this happy day our thoughts will stray
 as time passes,
And joy will fill our hearts;
We end our college years with farewell tears
 to our classes,
But joy is in our hearts;
Work and fun were mingled together,
And mem'ries sweet will linger forever;
Our goal is far ahead; still may we tread
 paths of glory—
And joy be in our hearts.

II

Daisies and ivy winding today
Our lives are binding, though far we stray;
Memories come winging as we are singing,
Flowers all fair we're bringing:

Daisies fresh and fair will always bear
 happy memories
Of Alma Mater, dear;
We part with friends today; now must we say
 fond farewells to
Our Alma Mater, dear;
Onward go with strong courage fired,
Our hearts aglow with deep love inspired,
And ever as we go, to thee we'll show
 our fond homage,
O Alma Mater, dear!

Mary Agnes Hedstrom

IVY ORATION

The planting of the ivy is the traditional ceremony that marks the closing of our college career. To us the ivy has something of the significance that the laurel had in classic times. It is the symbol of past attainment and the prophecy of future achievement.

With its firmly established roots, its ever-spreading branches, and its climbing tendrils the ivy vividly symbolizes for us the necessity for a strongly grounded character, an open-minded search for knowledge and truth, and the fulfilling of high aspirations and ideals.

Just as the ivy year by year sends its roots deeper into the soil, so should the principles that form our characters grow ever stronger and firmer. Life demands of each one of us fine principles of honor, courage, and integrity, that we may never follow false standards, but always fight bravely for the right.

The spreading of the ivy suggests that our search for knowledge should be never ending. It is significant that the ceremony at which we receive our degrees be called Commencement, a name which should remind us that our education is not completed, but only beginning. Our desire for knowledge should not be entirely for its own sake, but for the power it gives us to be of service to others. Our obligation is twofold,—we must cherish our own love of learning and try also to inspire and develop it in others. Knowledge will show us man's great potentialities and make us more understanding and tolerant.

As the ivy keeps its freshness and vigor, so should we endeavor to retain our youthful enthusiasm and interest, never to be satisfied that our education is completed. Only by continued effort can we develop our own powers and increase our ability to help others.

The intellectual life is a continual search for truth. We must first find truth in our own souls. Shakespeare says,

"This above all: to thine own self be true,
And it must follow as the night the day,
Thou can'st not then be false to any man."

It is especially necessary for the teacher to be true, for it is this inner integrity that gives her the power to lead and inspire others.

As the ivy grows, its tendrils reach ever higher and higher, so should we in our ideals and aspirations seek always the best and noblest in life. May we never be satisfied with what is cheap and easily attained. "Not failure, but low aim is crime."

We are about to take our first independent step in life. Let us pray that the years may bring to each of us the happiness of heart and the peace of soul that come only through "work done squarely and unwasted days."

Mary Joan Sullivan
Class President

CLASS WILL

The time has come the Seniors know,
When their worldly goods they must bestow.
But before we bequeath specifically,
There's a general gift to the faculty.
Our gratitude we leave en masse
For all you've done for the Senior Class.
And now our heirs we wish to warn,
If you our simple gifts should scorn,
Remember no matter what you find it,
The gift doesn't count; it's the thought behind it.

Our first bequest is to Dr. Kennedy:

Our hearty thanks we leave with you
For all the times you've seen us through.
When things looked black and hope was gone
You gave us leave to "carry on."

Dean Linehan:

Shakespeare's works we leave to you,
And we hope you'll read them through,
So when Seniors the regular question bring,
You'll promptly say,—"The play's the thing!"

Miss Sallaway:

How to express our appreciation
We've finally found with much elation.
A perfect class is our gift to you—
They'll never ask to give a Revue.

To the History Department:

Justice used a scale, so we
Leave this instrument to thee,
With the hopes that you will soon
Place upon it *Hayes and Moon*;
Then add *Breasted*, till it's plain
Why we've never been quite sane.

To the Health Education Department:

We would not hurt your reputation
But are compelled upon observation,
With a successor to endow
The skeleton in your closet now;
For the one you've got is just a riot,
He didn't get a balanced diet.

To the Biology Department:

Since you left us without illusions,
We leave you the sum of our conclusions:
Frogs pickled in formaldehyde
With lunch, we find, don't coincide.
As for passing marks—we've lost all hope;
They couldn't be found with a microscope.

To the English Department:

Not lacking in appreciation
But believing in eye conservation,
An edition of *Manly* we leave to you,
With larger print, and pictures, too.

To the Education Department:

With I. Q.'s working we devised
A test that's really standardized.
First answer's *true*—three *false*, and then
Back we go to *true* again.
This ratio of one to three
Will raise the median you'll see.

To the Chemistry Department:

When hydrogen-sulphide permeates,
An aversion within us it creates,
But any objection will not do,
So Mischa Auer we leave with you.
The class's opinion he's promised me
He'll tell you confidentially.

To the Geography Department:

Our gift to you took preparation—
We gathered all our information
About the sun and the equator,
Reflections cast, and other data,
The book we wrote—the class bestows;
It's name?—Why just *The Shadow Knows*.

To Miss Clark:

Dear Miss Clark we here endow
With a wonderful gift,—you will allow.
Her eyes will sparkle when she sees
The Indian tribe of Cherokees,
Who'll show her classes one by one
The corn dance as it should be done.

To Miss Trommer:

To our Miss Trommer a contribution
We make in fullest retribution
For all the times, we sadly state,
We mailed that letter, but sometimes *late*;
A carrier pigeon we give to you
Who'll see for certain the mail goes through.

To Mr. Shea:

Our thanks the Senior Class bestows
For the "glamour" you gave us in many a pose,
And when Hollywood sees and claims us—then
You'll proudly say: "I knew them when."

To Miss Kallen:

Our gift to you we surely trust
Will cure the Seniors of wanderlust.
It's a cruise-car which without hesitation
Will take them to their destination.

To Mr. Read:

The gift which we to you have sent
Is the other side of the argument.
We *left* it to you for we despaired
Of making you see it unimpaired,
And we *sent* it because if we came too,
You'd find a third side and argue it through.

To Miss Donovan and Miss Quinlan:

A carton of wheaties we leave in your care,
Which you must with your classes share,
They really need them more than you,
For you can keep the box tops, too.

To Miss Midgley:

The Senior Class with indiscretion
Decided to write on Oral Expression.
The book to Miss Midgley our gift will be,
We can't show it all—but a preview you'll see.
"She left her book, she felt her doom,
She took three paces through the room,
Her poem she'd learned not—alas—alack!
She turned and sadly stumbled back."

To Miss Wadsworth and Miss Callahan:

Library slips of a morbid blue
For overdue books we leave to you.
Please use them, for you realize
That with our mood they harmonize.

To our dear underclassmen—

The Juniors:

To get you in practice for observation
We leave to you without reservation
Each discipline case in our classes of yore,—
While we go out and look for more.

The Sophomores:

A special gift to you we've made—
An announcer from the Hit Parade,
Who'll always know, you may rely,
Just who the swing arrangement's by.

The Freshmen:

Though this year you haven't been much in view
We haven't forgotten—we leave with you
A wish that there will always be
Waiting to greet you, our dear T. C.
Now from these portals we're about to pass,
So say goodbye to the Senior Class.
Though we depart we leave behind us
Signs that help our friends to find us:
An open locker—a battered sneaker,
A set of excuses, growing weaker,
An underlined *Snedden*—one notebook ring,
And even the notebook tied with string.
And last of all our hearts we leave
That you may not unduly grieve,
But if you find it too hard forgetting,
Just look us up—we'll be cadetting.

Virginia Noonan
Attorney-out-Lawed

Witnesses:

C. A. Low
M. A. Lower
I. Q. Lowest

Signed and Sealed at the offices of
Susie Snedden and Lotta Assembly
Huntington and Longwood Avenues

CALENDAR 1939-40

Opening of College	September 7
Cap-and-Gown Day Exercises	September 22
Assembly—Opening lecture in a series on Current Events— Dr. Kennedy	September 25
Club Assemblies	September 25–29
Senior Lampas Dance	October 20
Education Week	November 6–10
Parents' Tea	November 6
Self-Government Dance	November 24
Art Club Sale	December 4–7
Associated Science Clubs Sale	December 11–14
Literary Society— <i>Second Shepherd's Play</i>	December 14
Faculty Christmas Party	December 15
Christmas Assembly	December 18
Mid-Year Examinations	January 24–26
Senior Class—Three One-Act Plays	February 2
Alumni Fashion Show	February 8
Safety Conference	March 11–12
Lampas Teas	March 12–14
Professor Bagley's Address at Assembly	March 14
Junior Week	March 25–29
Welfare Club Roller-skating Party	March 26
Lampas Flower Sale	March 27
Reading Tests Administered	April 10
Self-Government Day	April 11
Senior Prom	April 12
Lampas Supper	May 6
Alumni Banquet	May 15
Drama Club— <i>Twelfth Night</i>	May 16, 17
Senior Examinations	May 23–28
Senior Week	May 31–June 6
Commencement	June 6



ORGANIZATIONS



SELF-GOVERNMENT ASSOCIATION

ELSE JUNKER	<i>President</i>
HELEN MORAN	<i>First Vice-President</i>
ELIZABETH SULLIVAN	<i>Second Vice-President</i>
ANNE BROOKS	<i>Secretary</i>
FRANCES BROWN	<i>Treasurer</i>

One lesson, Nature, let me learn of thee,
 One lesson which in every wind is blown,
 One lesson of two duties kept at one
 Though the loud world proclaim their enmity,—

Of toil unsevered from tranquillity!
 Of labor,—that in lasting fruit outgrows
 Far noisier schemes,—accomplished in repose,
 Too great for haste, too high for rivalry!

Arnold



RITA McCAULEY	<i>Councillor S1</i>
MARY DONOVAN	<i>Councillor S3</i>
IRENE WEBBER	<i>Councillor S5</i>
MARY HEDSTROM	<i>Councillor S6</i>
CONSTANCE PULVIRENTI	<i>Councillor S7</i>
DR. HUBBARD, MISS GARTLAND	<i>Faculty Advisers</i>

The Self-Government Association is the nucleus of all student activities at the Teachers College. The Association was founded and is carried on by students. All club and class activities are discussed and approved at the bi-monthly meetings of the Self-Government Council.

The Association also sponsors those committees which are so vital to the welfare of the student body,—the house committee with its numerous branches, and the store committee.

The Council conducts several social events in the course of the college year,—teas, the Self-Government Association Dance, and the February Luncheon.

Although the members of both the executive and legislative bodies of the Self-Government Association vary from year to year, the aim of that Association remains unchanged. The Association was founded for the purpose of developing leadership, self-reliance, and initiative among the students—in short, to make each and every girl a better citizen of our college democracy.

LAMPAS



CHARLOTTE FELLMAN



CAROLYN HEDSTROM



ELAINE BARKIN



RITA McCAULEY



CATHERINE MAHONEY



MARY SANTRY



ANNE CUTLER



NAOMI BAZOL



GERTRUDE WEINBERGER



MARGARET MURRAY



VIRGINIA EGAN



CATHLEEN HANNON



PHYLLIS MADDEN



MERLE LAGAMASINO



LORETTA CURRAN



SYLVIA KRAMER



LUCILLE NORMAN



ELEANOR SALL



ANITA WEISMAN

STAFF 40



MISS KEE



DR. NASH.



MR. SHEA.



VIRGINIA NOONAN



GERTRUDE SPIEGEL



AGNES EARLEY



WINIFRED GALLANT



MARGUERITE BARRY



DOROTHY BECKER



JOSEPHINE GILCHRIST



MARY HEDSTROM



BERNICE M. BRIDE



AGATHINA DiBELLA



BLANCHE CAMIA



Evalyn CHANNEN



ANNABELLE O'CONNOR



VERONICA SHEA



MILDRED SILVERMAN



MARY WINSTON

LAMPAS STAFF

EDITOR-IN-CHIEF

Carolyn Hedstrom

ASSOCIATE EDITOR

Charlotte Fellman

LITERARY EDITOR

Catherine Mahoney

BUSINESS MANAGER

Elaine Barkin

ASSISTANTS

Naomi Bazol

Loretta Curran

Sylvia Kramer

ASSISTANTS

Agathina di Bella

Winifred Gallant

Margaret Murray

ADVERTISING MANAGER

Virginia Noonan

ASSISTANTS

Virginia Egan

Cathleen Hannon

Phyllis Madden

ART EDITOR

Ann Cutler

ASSISTANTS

Blanche Camia

Annabelle O'Connor

Vera Shea

Evelyn Channen

Mildred Silverman

Mary Winston

SNAPSHOT EDITOR

Agnes Earley

PHOTOGRAPH EDITOR

Mary Santry

ASSISTANTS

Merle Lagamasino

Rita McCauley

Gertrude Weinberger

CLUB EDITOR

Gertrude Spiegel

ASSISTANTS

Lucille Norman

Eleanor Sall

Anita Weisman

SECTION EDITORS

Marguerite Barry

Dorothy Becker

Josephine Gilchrist

Mary Hedstrom

Bernice McBride

FACULTY ADVISERS

Miss Kee

Dr. Nash

Mr. Shea

ANN CUTLER *President*

MARGARET M. BOYLE
Vice-President

SUZANNE B. SCHULMAN *Secretary*

MILDRED LIEF *Treasurer*

MR. SHEA *Faculty Adviser*



ART CLUB

"Art is man's nature; nature is God's art."

The Art Club, having for its aim the development of artistic ability outside of the regular college program, offers its members pleasure and instruction in this fascinating field. Experiments in varied techniques, illustrated lectures, and visits to current art exhibits are the high lights of the year's activities. The sale of hand-blocked Christmas cards and the inspiring Nativity tableau presented each year are convincing proofs of the Club's constructive work. As part of the Coöperative Arts Group, the Art Club aids the Drama and Music Clubs in their productions by planning and arranging scenery, costumes, and lighting. Thus, through a program wide in scope and interesting in content, the Club creates an environment where latent talent may be discovered and encouraged.



DORIS McCAUSLAND *President*

CATHERINE GILLIGAN
Vice-President

MARGUERITE LUKE *Secretary*

RITA McCAULEY *Aquarium Director*

MARGARET MURRAY
Biology Director

GERTRUDE WEINBERGER
Science Director

MISS AMMIDOWN, MR. O'MEARA,
MISS MUTCH *Faculty Advisers*

ASSOCIATED SCIENCE CLUBS

"Science, like virtue, is its own greatest reward."

This year, the Aquarium Club, the Biology Society, and the Science Club united to form the Associated Science Clubs, membership in which is open to all students of the college who are interested in science. The Association sponsors also a special interest in the making of aquaria and in photography. The directors, one for each division of the Association, work together in conducting the club meetings, and separately in their own divisions. All members coöperate for the annual sale at Christmas, the proceeds of which are used to benefit the college. Meetings take the form of demonstrations, field trips, or lectures in special fields. The Clubs make a further contribution to the college by providing scientific reference books which are at the disposal of the entire student body.

PHYLIS MURPHY *President*
AGNES EARLEY *First Vice-President*
HELEN AICARDI
Second Vice-President
ADELINE GLASSER *Secretary*
MARY FOX *Treasurer*
MISS QUINLAN, MISS DONOVAN
Faculty Advisers



ATHLETIC ASSOCIATION

"A girl for every game and a game for every girl."

The purpose of the Athletic Association is to provide the program of recreational activities necessary in an ideal college curriculum. In addition to basketball, volleyball, swimming, skating, and bicycling, games suitable for small groups have been introduced: namely, ping-pong, deck-tennis, and quiet table games. The members of the Athletic Association receive college letters and numerals according to their accomplishments in the various activities. These awards are presented at the final meeting of the year, which is always a joyous social get-together. The advantages derived from the Athletic Association are particularly valuable. Individual and group participation contributes physical and social benefits, besides developing qualities of educational leadership.



CLAIRE O'BRIEN *President*

CONSTANCE PULVIRENTI
First Vice-President

MARY CARROLL
Second Vice-President

ANNA M. LYONS *Secretary*

VIRGINIA O'BRIEN *Treasurer*

MISS GIVEN *Faculty Adviser*

CLASSICAL CLUB

"Haec olim meminisse iuvabit"

Birthdays have a way of coming back very quickly, even when they are celebrated only every five years. November 16, 1939, the fifteenth birthday of the Classical Club, has become a Red Letter day in its calendar. Seventy former members, including several who were present at the first meeting, recalled their activities at Teachers College as they met old friends and turned the pages of the Club's "Memory Book." A telegram from the first president, letters from members unable to come, and even a box of candy from a member of the faculty made the event a real birthday celebration. The Club was particularly honored by having Mrs. Kennedy present.

Though the November celebration stands out in the 1939 activities, the year's program included also the annual picnic in September, the Saturnalia and Christmas observance, the presentation of "Valentines Old and New," and, best of all, a talk by Dr. Kennedy on "Old Friends from the Classics." The annual banquet, always the climax of the year, cemented anew the bonds of friendship, reawakened the love of the Classics, and reminded all how modern the ancients were.

WINIFRED GALLANT *President*

AGNES DONOVAN *Vice-President*

PHYLLIS MURPHY *Secretary*

ELIZABETH JOHNSTON *Treasurer*

DR. REGAN, MR. BITZER
Faculty Advisers



COMMERCIAL CLUB

*"Business could not make dull:—
Who saw life steadily and saw it whole."*

This, the sixth year of the Commercial Club, has been marked by the unusual interest of its meetings and the exceptionally coöperative work of its members. Thus the Club fulfilled its primary aims—the presentation of professional information and the fostering of friendships for those whose preferences extend into the business field. Among the speakers whose presence has given enjoyment to the meetings were Assistant Superintendent Muldoon and many former members of the group, who lectured on Commercial Teaching in the High Schools. Other worthwhile features were a discussion of modern advertising for the Christmas season and the observation of accounting machines in operation. As has become traditional, the year was rounded out by a Club reunion held in conjunction with the Alumni dinner.



ESTHER NOLLMAN *President*

VIRGINIA EGAN *First Vice-President*

RUTH WHITE *Second Vice-President*

VIVIENNE BOUDREAU *Secretary*

RUTH HAMBELTON *Treasurer*

MISS CLARK, MISS GAFFEY
Faculty Advisers

DRAMA CLUB

"Speak the speech, I pray you, trippingly on the tongue."

This year's program confirmed the success of the Drama Club's new "Workshop" policy—a policy which only last year materialized from a nebulous idea into a practical reality. As the name "Workshop" implies, this innovation made costuming, lighting, staging, and make-up major problems, calling for trained committees for the Drama Club productions. This new field of endeavor has proved invaluable, since it gives its members an opportunity to secure experience in all phases of dramatic work.

RUTH OPPENHEIM *Présidente*
ISABEL SWEENEY *Vice-Présidente*
SARAH RUBINOVITZ *Secrétaire*
MARIE HALLAHAN *Trésorière*
MLLE. GARTLAND *Conseillère*



LE CERCLE FRANCAIS

"Rien de plus utile; rien de plus intéressant."

Se perfectionner dans la langue française et se documenter sur la vie et sur la tradition française, voici les buts du Cercle Français. En ne parlant que le français, on s'accoutume à employer la langue avec facilité et avec confiance. Aux réunions, on fait des causeries sur des sujets français, profitant ainsi de l'occasion de prendre la parole en français, et donnant aux autres l'occasion d'écouter la langue, aussi bien que d'apprendre des choses intéressantes. Quelquefois c'est une ancienne élève qui nous parle de ses expériences. Quelquefois, aussi, nous faisons visite au Musée des Beaux-Arts pour mieux connaître l'art français. Ainsi, les membres du Cercle Français s'instruisent en s'amusant.



AGATHINA di BELLA *President*

ELEANOR GEISCHEKER
Vice-President

RUTH FARREN *Secretary*

MARY HEALY *Treasurer*

MISS BRENNAN *Faculty Adviser*

LITERARY CLUB

*"May I a small house and large garden have;
And a few friends and many books."*

The Literary Club was established for all those who love books and like to talk about them. Discussion, however, is not the only activity of the group. Among the highlights of this year's program have been Professor Robert Gay's survey of poetry, the traditional Christmas presentation of the *Second Shepherds' Play*, studies of the long poems of Edwin Arlington Robinson, Celtic poetry, the letters of literary men, and a review of the new books of the year. As in former years, the June meeting was held at a literary shrine,—this time in Concord.

HELEN LARKIN	<i>President</i>
RUTH KROCK	<i>Vice-President</i>
LILLIAN WERNICK	<i>Treasurer</i>
HELEN AICARDI	<i>Secretary</i>
MR. VOSBURGH	<i>Faculty Adviser</i>



MATHEMATICS SOCIETY

"Plato said that God geometrizes continually."

The Mathematics Society, consisting of undergraduate and graduate students of the college, and also teachers in service, invites each year well-known lecturers to address its meetings. The realms of abstract and practical mathematics are thus brought closer to us. The vital and infinite influence of mathematics, not only in our own profession, but in others as well, is shown. Real experience in the teaching of mathematics, presented by those already in the profession, helps our understanding of the problems involved. The climax of the Society's activities is an annual banquet which is attended by all the members. Thus the Mathematics Society provides pleasure as well as intellectual profit.



RUTH HEERDE *President*

MARY KELLY *Vice-President*

MARGARET BOWE *Secretary*

RITA MORRIS *Treasurer*

MISS BRICK *Faculty Adviser*

MUSIC CLUB

"Music must take rank as the highest of the fine arts—as the one which, more than any other, ministers to human welfare."

For those girls who are not members, the Music Club has been the chief source of musical appreciation during their college years. For those who have taken part in the Club activities, this organization has accomplished its purpose of developing an appreciation of music through personal participation. Although this was not an "operetta year," the Music Club has had ample opportunity to give enjoyment and entertainment. The pleasure and interest of many a special assembly has been heightened by the Club choruses. The traditional choral procession, together with incidental music during the play, greatly enriched the Christmas Pageant. The Music Club by its participation in the Commencement exercises brings to a fitting and dignified climax the year's activities.

MARY DONOVAN	Violin
MILDRED SILVERMAN	Violin
VIRGINIA GALLIGAN	Violin
SOPHIE URBAN	Violin
MARY SANTRY	Piano



STRING ENSEMBLE

*"Music resembles poetry; in each
Are nameless graces which a master hand
Alone can reach."*

We take great pride in our String Ensemble. This talented group contributes greatly to our enjoyment throughout the year by adding the charm of music to many college events. The ensemble does much to heighten the impressiveness of such solemn occasions as the Education Week observances and the Commencement Exercises, while the incidental music provided for less formal events, such as the Parents' Day Tea and the Senior Plays, adds an enjoyable note to the festivities. Aside from lending assistance to their classmates, the members of the group obtain both social and intellectual benefits. With an increased musical knowledge each member acquires the spirit of coöperation and helpful friendliness which characterizes the group.



WELFARE CLUB

ELEANORE HEERDE	<i>President</i>
ESTHER NOLLMAN	<i>First Vice-President</i>
ANNE McARTHUR	<i>Second Vice-President</i>
AGNES EARLEY	<i>Third Vice-President</i>
ELEANOR CASEY	<i>Secretary</i>
EDITH FILENE	<i>Treasurer</i>
DR. NASH, MISS MANSFIELD	<i>Faculty Advisers</i>

*"And now abideth faith, hope, and charity, these
ihree; but the greatest of these is charity."*

The Welfare Club, as its name implies, is dedicated to service,—especially to the service of children in the Boston schools. The Club, which comprises in its membership both the faculty and the student body, endeavors to make practical application of its motto, "Education for Service; Service for Education." Whatever and wherever the need, the Club tries to help.

At Thanksgiving, dinners are sent to homes where holiday cheer would otherwise be lacking; and at Christmas, toys and books, contributed by the Boston kindergarten teachers and by the Club members, go to the Children's Ward of the City Hospital, to orphanages, and to settlement houses. Milk is supplied for the school-luncheons of undernourished children; and clothing, shoes, and eye-glasses are provided for needy pupils. Another activity of the Club is the service given in various settlement houses, where Teachers College students conduct classes in music, sewing, dramatics, athletics, and the like. Also contributions are made each year to the Community Fund, the Junior Red Cross, and other worthy causes.

Amid the many activities of busy college days, the Welfare Club helps us all to remember that "the greatest of these is Charity."



THE CHRISTMAS TABLEAU

Madonna
Else Junker

Angels
Mary Winston

Mary Sullivan

Cherubs
Margaret Boyle
Selma Younis
Veronica Shea

Agathina di Bella
Agnes McCarthy
Faith Hill



SENIOR PLAYS

ENTER THE HERO

A Farce

CAST

<i>Ruth, a romanticist</i>	Naomi Bazol
<i>Anne, in love with love</i>	Ann Cutler
<i>Harold, the hero</i>	Paul Dunigan
<i>Mrs. Carey, a fond mother</i>	Virginia Noonan

THE PRINCE OF COURT PAINTERS

A Romantic Comedy

CAST

<i>Mary</i>	Agathina di Bella
<i>Mary Romney, who lives alone</i>	Charlotte Fellman
<i>Lucy, a neighbor child</i>	Blanche Camia
<i>Romney, a beggared artist</i>	

THE SISTER WHO WALKED IN SILENCE

A Mystery

CAST

<i>Roba, the girl with no fear</i>	Virginia Egan
<i>Maria, afraid but loyal to Roba</i>	Phyllis Murphy
<i>The Girl</i>	Selma Younis
<i>The Woman</i>	Sylvia Kramer



TWELFTH NIGHT

CAST

<i>Orsino—Duke of Illyria</i>	Virginia Noonan
<i>Sebastian—Brother to Viola</i>	Blanche Camia
<i>Antonio—A sea captain</i>	Selma Younis
<i>A Sea Captain—friend to Viola</i>	Miriam Healey
<i>Valentine Gentlemen attending</i>	Ruth Hambelton
<i>Curio</i> } <i>the Duke</i>	Virginia Bolger
<i>Sir Toby</i> } <i>Belch—Uncle to Olivia</i>	Jean Towhill
<i>Sir Andrew Aguecheek</i>	Mildred Silverman
<i>Malvolio—Steward to Olivia</i>	Teresa Hamrock
<i>Feste</i> } <i>Servants</i>	Ann Cutler
<i>Fabian</i> } <i>to Olivia</i>	Mary Kenefick
<i>Olivia</i>	Katherine Gouzoule
<i>Viola</i>	Agathina di Bella
<i>Maria</i>	Anne Brooks
<i>Officer</i>	Cathleen Hannon
<i>Sailors, Ladies-in-Waiting</i>	

TO TEACHERS COLLEGE

The *Lampas* is burning with truth gleaming bright,
The goal we have sought comes at last into sight;
Our hearts filled with gladness, our voices unite

To sing in thy praise, Alma Mater, so dear,
To sing in thy praise, Alma Mater, so dear!

Thou wisest of teachers, thou mother most kind,
With love thou hast guided the eager young mind,
Ideals great and noble thou taught us to find.

We sing in thy praise, Alma Mater, so dear,
We sing in thy praise, Alma Mater, so dear!

May we, Alma Mater, true daughters e'er be,
And hold high the torch we have taken from thee
That youth in its light Truth and Justice may see.

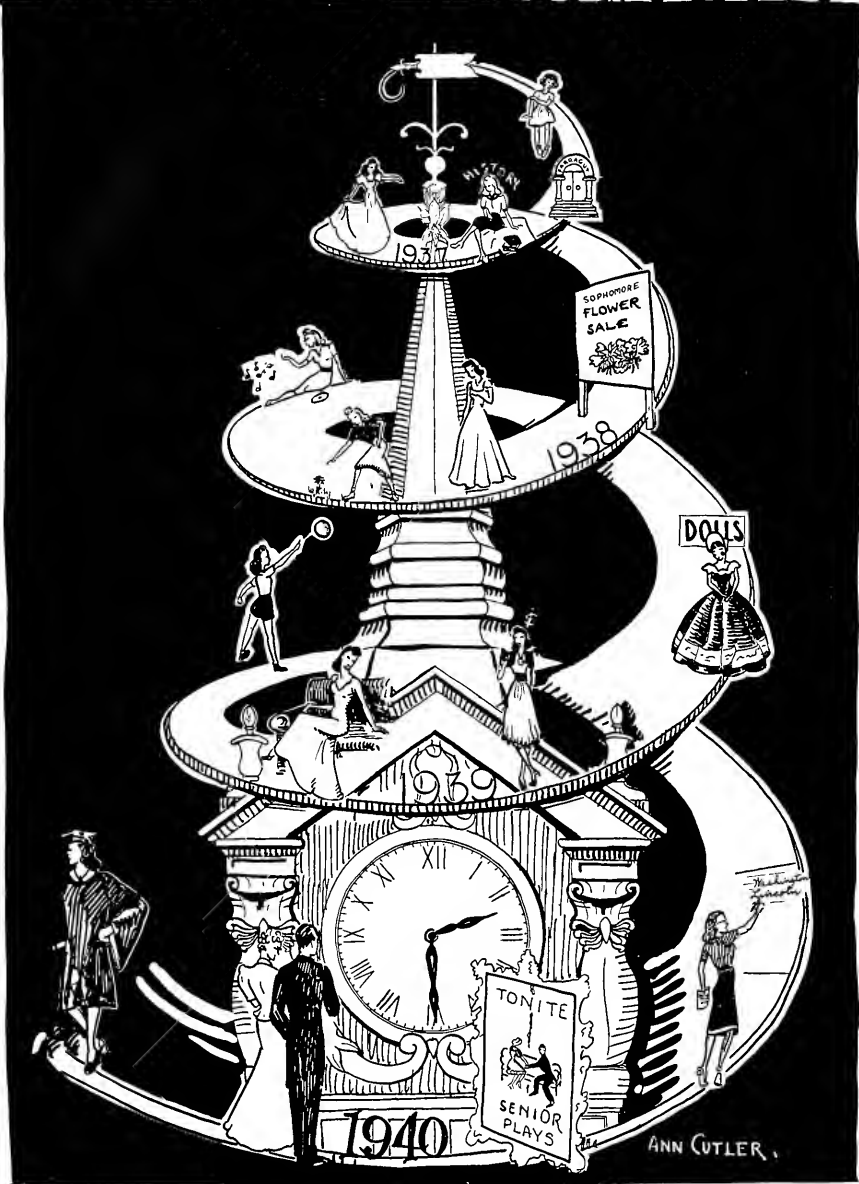
We sing in thy praise, Alma Mater, so dear,
We sing in thy praise, Alma Mater, so dear!

Dorothy Becker



SNIP AND SNAPS

YEARS IN REVIEW



MEMORIES

1

Have you forgotten so soon?
Those maps we used to make,
The skeleton we dressed,
The pranks of Junior sisters
Whose authority impressed;
"Ho, strike the flagstaff deep!"
With rib-swing and the rest—
Have you forgotten so soon?

2

Have you forgotten so soon?
The frogs with funny names,
The heads that used to ache,
Biology and *Manly*,
And exams so hard to take,
Penmanship, arm movement,
The grade we'd never make,—
Have you forgotten so soon?

3

Have you forgotten so soon?
The Junior maiden fair,
With little time for Ed.,
The Junior Week, the Supper,
And the Prom filled all her head.
Oh! all the pleasant leisure,—
"A *light* year," so they said,—
Have you forgotten so soon?

4

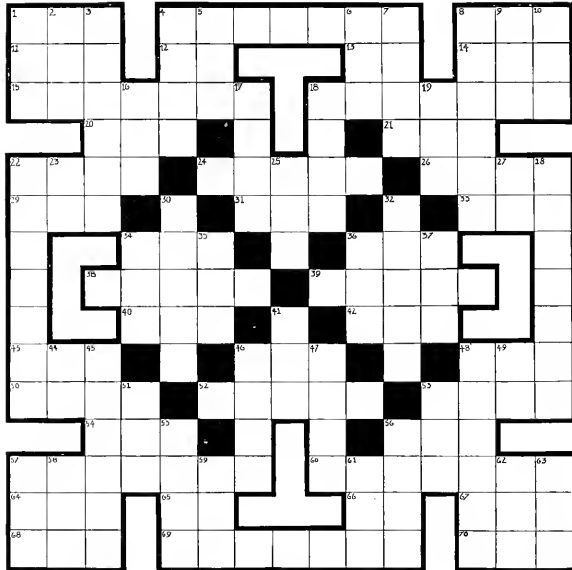
Have you forgotten so soon?
The thrill of cap and gown
That stirred each senior lass;
Sociology discussions—
There were riots after class.
All are happy memories,
The years too quickly pass—
No, we won't forget them soon!

Mary A. Hedstrom





Teachers College Crossword Puzzle



HORIZONTAL

1. College cheer
4. Given name of a famous President
8. It is sacred in Massachusetts
11. Sign of the Zodiac
12. He composed *The Rosary*
13. Homonym for two, too
14. Girl's name
15. I am one, you are one, and a Prince in Heidelberg was one
18. We all aspire to be one, "and a good one too!"
20. To do away with
21. Digit
22. "O—West Wind, thou breath of Autumn's being"
24. First name of one of our own crossword-puzzle experts
26. This type of composition often brings forth amazing revelations
29. Slippery
31. Before
33. Harvard's rival
34. Our ancestor? I hope not.
36. The sun
38. Girl's name
39. Sigmund Spaeth had hundreds of them
40. "—of Good Feeling"
42. Columbus once used one to prove a point
43. Exclamation (on solving a problem)
46. In this one you abbreviate the answer.
48. "—Black Sheep"
50. We made many a one in classes at T. C.
52. The Teachers College "Music Master"
53. He "said it with flowers" to the Indians
54. Found in a horse's mouth
56. He gave his name to a "Law" of electricity
57. Higher institution of learning
60. Exalted members of the student body
64. Metal in a natural form
65. Pen name of Irish poet
66. Heroine of *The Rivals*
67. Reverence
68. White-bearded author—"always belittlin'"
69. Ambassador of learning at T. C.
70. "Ring out the old, ring in the—."

VERTICAL

1. Famous author
2. Of the age (L)
3. How classes at T. C. are held
4. Plant plentiful in our home-made terraria
5. *Tales of a Wayside*—
6. Consumed
7. Protective ditch for medieval fortress
8. To stick together
9. Unit
10. Famous society
16. Accomplished
17. Ripped
18. Mr. Drake appreciates good ones.
19. Bird note
22. Given name of our Dean
23. "The Sage of Paducah"
25. Noah built the first one
27. The "Rail-Splitter"
28. Here's our Dean, again!
30. Music
32. More music
34. American humorist
35. Highest note of Guido's scale
36. Abbreviate the "Black-Eyed—"
37. In the Victorian Era it was delicately referred to as a *limb*
41. She had a milk-white lamb
44. The all important pronoun at Proms
45. Walks at a leisurely pace; as of the Senior Class
46. Eighteenth-century English composer of *Rule Britannia*
47. Are you an expert on them?
48. To lament (Remember those Biology exams)
49. Article
51. "—for the Lamps of China"
53. The Greeks had a letter (oh, fie!)
55. Wood for the tables of China
56. "—a Rose"
57. A tooth
58. Poetic name for an eye
59. Exclamation common among youngsters
61. "Stand like Druids of—"
62. The "Sage of Concord"
63. To unite with needle and thread

(See page 141)

STANDARD TEST NO. 13

Copyright by
Professors Will U. Flunk and O. F. Course

Directions: Consider each question with the consideration it deserves before answering. If you have time to think, you are at liberty to do so.

PART I.—Eeny Meeny Miny Mo Type

Directions: Mark all eeny questions *X*, all meeny questions *O*, and all miny mo questions *unfair* to organized students.

1. Dr. G—instilled in us all a love for the beauty of a good test.
2. We shall all be permanently appointed immediately after Commencement.
3. The appeal of "the Greeks" lies in the classic connotation.
4. Long assemblies are inspiring.
5. Five 9:00 a.m.—4:00 p.m. days a week make a pleasing program.
6. The yellow of library cards lends a cheery note to the Bulletin Board.
7. *Manly* to a Teachers College student means the ideal boy friend.
8. The Reception Room is a place reserved for guests and never frequented by idle students.
9. The Senior locker room is the most spacious and well-lighted room in the building.
10. A fugue is a traditional quarrel between clans or families.
11. Georgian architecture is a technical name for the floor plan of cafeterias.
12. Teacher insanity begins during the years of preparation.
13. The doctor's bell is the signal for bored students to take their daily promenade.
14. Unexcused tardy slips are blue in cause and effect.
15. All and sundry tried-and-true, fool-proof, infallible alibis have been overworked by our predecessors.
16. Education is broadening.
(Compare Freshman and Senior notations in a certain section of the Health card.)

PART II.—Free Choice Test

Directions: Since this test aims to give the individual an opportunity to express herself, mark any answers in any way you desire.

1. The supplementary text in Sociology is
 - a. Snedden
 - b. Snedden
 - c. Snedden
2. Dr. Gerry's pet aversion is
 - a. To always split infinitives
 - b. To always split infinitives
 - c. To always split infinitives
3. Joan of Arc is
 - a. a rendezvous
 - b. a book rest
 - c. a land-mark
4. The maximum service of a freshly-laundered gym blouse is
 - a. one period
 - b. one semester
 - c. debatable
5. The capacity of the students' room couch is
 - a. one girl
 - b. more than one girl
 - c. limitless
6. Teachers College students spend their free time
 - a. eating in the lunchroom
 - b. eating at the drugstore
 - c. eating at Johnson's
 - d. eating

For Scoring Key: Apply to I. M. Cran-key
I. O. Lowe College

Abnormal norms I.Q. — 1940
M.A. — 1940 $X \frac{(S1 \quad VS5)}{(S3 \quad)}$ 89

$\frac{(S6) (S7)}$



SONG OF A SENIOR

You may talk o' socks and bows
And how much a Senior knows—
Or perhaps the dignity of caps and gowns.
But as Commencement Day draws near
And our minds are full of cheer,—
We'll stop a sec to take you o'er the grounds.

It was books, books, books—
In every nook and cranny there were books.
There was *Beowulf* and *Gordy*,
And millions more—O lordy!
I hope I never see another book.

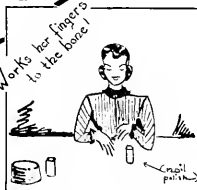
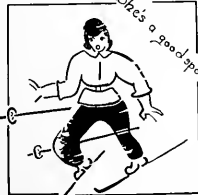
Biology came next,
And even tho' we had no text,
There was always piles of work for us to do.
But bugs were not enough—
We had all that *Manly* stuff
To read and learn and know for each review.

Then in quick succession came
The men well-known to fame,—
There was Froebel and McMurry and Rousseau.
And so three years flew by,
And in the twinkling of an eye
We were lordly seniors, don't you know!

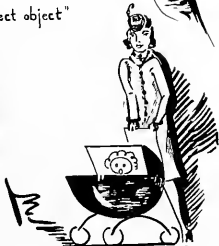
Our story now is done
And with it schoolday fun;
But soon our new careers we shall begin.
Our comments now must end—
Looking forward is the trend,
And our college days we leave with merry grin.

Loretta Curran

Introducing TEECY



Her "direct object"



"Education for Service"



Loves MarKind



Weights her problems & carefully

SEVEN CARDINAL PRINCIPLES

COMMAND OF THREE R'S

WORTHY USE OF LEISURE

VOCATIONAL TRAINING



HOME MEMBERSHIP

HEALTH

ETHICAL TRAINING

CIVIC TRAINING







Teachers College Dictionary

- Tardy Book: Any senior's four-year diary.
Hospital Room: Private ward for patients suffering from sleeping sickness.
Students' Room: A laboratory wherein weights and measures are tested by means of one long-suffering couch.
Yellow Card on Bulletin Board: Quarantine sign (keep away!)
Library: A place which considers others in silence.
St. Alpnonsus Street: Private race-track (9:00 A.M.- 9:04½ A.M.)

Variations On Some Themes

Freshmen:	<i>Back in Those Baby Days</i>
Sophomores:	<i>Dig, Dig, Dig! Well, All Right</i>
Juniors:	<i>Sophisticated Lady</i>
Seniors:	<i>Sitting on Top of the World</i>
Graduates:	<i>You're Devastating and So Far Above Me</i>
Biology:	<i>Lost in a F(r)og</i>
Art Appreciation:	<i>She's Pretty as a Picture</i>
Music Appreciation:	<i>I Can't Remember</i>
Penmanship:	<i>I'm Gonna Sit Right Down and Write Myself a Letter</i>
Economics:	<i>But, Honey, Are You Making Any Money.</i>
Health Education:	<i>Button Up Your Overcoat</i>
Educational Measurement:	<i>Ah, Sweet Mystery of Life</i>
Gym:	<i>When they Danced the Polka</i>
Monday Morning:	<i>Don't Wake Me Up, I'm Dreaming</i>
Friday Afternoon:	<i>There's a Faraway Look in Your Eyes</i>
Rest of the Week:	<i>Scatterbrain</i>
In the Library:	<i>Still as the Night</i>
Free Hours:	<i>Drifting and Dreaming</i>
At a Lecture:	<i>Many Brave Hearts Are Asleep in the Deep</i>
Assembly:	<i>Let's All Sing Like the Birdies</i>
Before the Prom:	<i>My Man!</i>
After the Prom:	<i>Just a Memory</i>
During Finals:	<i>Even Bravest Hearts May Fail</i>
Practice Teaching:	<i>An Apple for the Teacher</i>
Commencement:	<i>When You Wish Upon a Star</i>
And After Commencement:	<i>Beyond the BLUE Horizon</i>

Acknowledgements

The Class of 1940 takes this opportunity to thank all those who have in any way helped in the preparation of the *Lampas*. We are particularly indebted to:

Dr. Nash, for her sympathetic guidance, judicious counsel, and generous contribution of time and energy to the production of our *Yearbook*.

Miss Kee, for her competent judgment and leadership in all our business and financial affairs.

Mr. Shea, for his indispensable aid in planning the artistic phases of our book.

Miss Mutch, for her expenditure of time and talent in coaching the Senior *Lampas* play.

Miss Lulu Clark, for her kind and helpful coöperation in typing copy.

Directory

Abdalah, Evelyn	35 Heron Street, West Roxbury
Adler, Joan	39 Landseer Street, West Roxbury
Alcott, Mildred	6 Arcadia Street, Dorchester
Barkin, Elaine	11 Boulevard Terrace, Brighton
Barry, Marguerite	543 Fifth Street, South Boston
Bazol, Naomi	182 Callender Street, Dorchester
Becker, Dorothy	192 Highland Street, Roxbury
di Bella, Agathina	20 Woodbine Street, Roxbury
Burke, Louise	700 Hyde Park Avenue, Roslindale
Callahan, Dorothea	6 Samoset Street, Dorchester
Camia, Blanche	18 Norton Street, Dorchester
Channen, Evalyn	8 Goodale Road, Mattapan
Connelly, Margaret	436 E. Sixth Street, South Boston
Curley, Helen	86 Kenwood Street, Dorchester
Curran, Loretta	49 Brown Avenue, Roslindale
Cutler, Ann	35 Revere Street, Boston
Donovan, Mary	188 Highland Street, Roxbury
Dowd, Anna	89 Clifton Street, Dorchester
Earley, Agnes	16 Westville Street, Dorchester
Egan, Virginia	31 Sanborn Avenue, West Roxbury
Esart, Marguerite	44 Eastbourne Street, West Roxbury
Farry, Eleanor	300 Hyde Park Avenue, Jamaica Plain
Fellman, Charlotte	34 Wentworth Terrace, Dorchester
Fitzgerald, Rita	44 Hillside Street, Roxbury
Flaherty, Frances	566 E. Fifth Street, South Boston
Freedman, Esther	14A Holborn Street, Roxbury
Gabriel, Margaret	12 Peters Street, South Boston
Gallant, Winifred	11 Paisley Park, Dorchester
Galligan, Virginia	82 Litchfield Street, Brighton
Gilchrist, Josephine	31 Johnswood Road, Roslindale
Gilman, Anne	41 Lucerne Street, Dorchester
Glazer, Bertha	28 Angell Street, Dorchester
Goldstein, Charlotte	58 Angell Street, Dorchester
Graves, Winifred	38 Kittredge Street, Roslindale
Green, Margaret	78 Dakota Street, Dorchester
Hannon, Cathleen	5 Louise Park, Roxbury
Hedstrom, Carolyn	465 Columbia Road Dorchester
Hedstrom, Mary	465 Columbia Road, Dorchester
Heerde, Ruth	26 Greaton Road, West Roxbury
Houston, Dorothy	74 Bailey Street, Dorchester
Junker, Else	10 Mellen Street, Dorchester
Kahn, Edna	35 Lawrence Avenue, Roxbury
Katz, Mildred	620 Warren Street, Roxbury

Kline, Gladys	68 Topliff Street, Dorchester
Koury, Isabelle	212 Austin Street, Hyde Park
Kramer, Sylvia	63 Evans Street, Dorchester
Lagamasino, Merle	7 Blackinton Street, East Boston
Leaver, Virginia	59 Dewey Street, Dorchester
Liberman, Eva	26 Angell Street, Dorchester
Lief, Mildred	10 Train Street, Dorchester
MacArthur, Anna	15 Bayard Street, Allston
Madden, Phyllis	101 Gallivan Boulevard, Dorchester
Mahoney, Catherine	52 Stanley Street, Dorchester
McBride, Bernice	100 Redlands Road, West Roxbury
McCauley, Rita	114 Park Street, Dorchester
McCausland, Doris	47 Beaumont Street, Dorchester
McCready, Genevieve	22 Peter Parley Road, Jamaica Plain
Moran, Helen	9 Vinson Street, Dorchester
Murphy, Phyllis	64 Radcliffe Street, Dorchester
Murray, Margaret	5 Lamartine Terrace, Jamaica Plain
Nation, Lillian	62 Floyd Street, Dorchester
Noonan, Virginia	35 Fenwood Road, Roxbury
Norman, Lucille	97 Harrishof Street, Roxbury
Nugent, Esther	1 Ellis Street, Roxbury
O'Brien, Claire	102 Wheatland Avenue, Dorchester
O'Connor, Annabelle	269 East Cottage Street, Dorchester
Oppenheim, Ruth	741 Morton Street, Dorchester
Pezzuolo, Julia	9 Alpine Street, Roxbury
Pulvirenti, Constance	30 Auburn Street, Boston
Russo, Clarina	16 Copenger Street, Roxbury
Sall, Eleanor	82 Astoria Street, Mattapan
Santry, Mary	840 E. Broadway, South Boston
Sargent, Shirley	6 Castlegate Road, Dorchester
Sarno, Marie	32 Prince Street, Boston
Shea, Veronica	22 Birchoft Road, Hyde Park
Sheingold, Charlotte	28 Gaston Street, Roxbury
Shief, Roslyn	63 Hartford Street, Dorchester
Silverman, Mildred	43 Bowdoin Street, Dorchester
Spiegel, Gertrude	4 Balfour Street, Roxbury
Sullivan, Mary	31 Manthorne Road, West Roxbury
Taub, Lillian	353 Norfolk Street, Dorchester
Turley, Mary	132 Homes Avenue, Dorchester
Urban, Sophie	60 Homes Avenue, Dorchester
Webber, Irene	10 Wilmore Street, Mattapan
Weinberger, Gertrude	10 Johnston Road, Dorchester
Weisman, Anita	48 Hazelton Street, Mattapan
Wernick, Lillian	177 Walnut Avenue, Roxbury
Winston, Mary	275 La Grange Street, West Roxbury
Younis, Selma	30 Upton Street, Boston

EPILOGUE

SAYING farewell to our college days, we
turn to meet the challenge of a new world.
Our wealth of memories will be an inspira-
tion and encouragement to us in the future.

“What is to come we know not. But
we know
That what has been was good.”



ADVERTISEMENTS

PURDY



PURDY
BOSTON

Official Photographer
of
THE CLASS OF 1940
Boston Teachers College

Compliments of
THE
SOPHOMORE
CLASS

Compliments of
THE
JUNIOR
CLASS

Compliments of
THE
GRADUATE
CLASS

Compliments of
THE
SELF GOVERNMENT
ASSOCIATION

Compliments of
The
BOSTON INTERMEDIATE
TEACHERS' CLUB

Compliments of
The
BOSTON ELEMENTARY
TEACHERS' CLUB

Compliments of
The
BOSTON TEACHERS'
CLUB

Compliments of
The
HIGH SCHOOL WOMEN'S
CLUB OF BOSTON

Compliments of
BOSTON NORMAL SCHOOL
and
TEACHERS COLLEGE
ASSOCIATION

Compliments of
The
MASTERS' ASSISTANTS' CLUB

Compliments of
The
BOSTON KINDERGARTEN CLUB

Compliments of
THE CLASSICAL CLUB

Compliments of
The
NEWMAN CLUB OF
BOSTON TEACHERS COLLEGE

Distinctive Printing —

WARREN PRESS

. . . 160 Warren Street
Boston, Massachusetts

Printer of the LAMPAS

Typewriters

Office Supplies

SAMUEL NARCUS

Stationer

Two Stores

92 Washington St.
CAPitol 8720

230 Washington St.
LAFayette 1038

BOSTON, MASS.

Compliments of

HARVARD DRUG COMPANY, INC.

CAPS, GOWNS, and HOODS

for

RENTAL and SALE

T. J. NOONAN

46 Forsythe Street

Boston, Mass.

KENmore 4212

Compliments of
THE ART CLUB

Compliments of
THE MUSIC CLUB

Compliments of
THE DRAMA CLUB

Compliments of
LE CERCLE FRANÇAIS

COMPLIMENTS
of
THE ASSOCIATED SCIENCE CLUBS

Compliments of
THE MATHEMATICS SOCIETY

Compliments of
THE LITERARY CLUB

Compliments of
The
P.C.T.C.'s of 1940



CAP AND GOWN
RENTING
READ & WHITE CO.
111 Summer Street
BOSTON, MASS.
Tel. LIBerty 7930

Compliments of
THE AVUKAH CLUB

Compliments of
CHARLES ST. CLAIR

Compliments of
HOTEL WESTMINSTER
Copley Square Boston, Mass

BRIGHAM CIRCLE FLORIST
Flowers for all Occasions
4 Francis Street Roxbury, Mass.
At Brigham Circle Tel. LONGwood 9758

LARSON AND ERICKSEN CO.
CATERERS
Banquets, Teas, Dinners, Suppers
278 Highland Avenue Somerville
SOMerset 8533

Compliments of
A FRIEND

Compliments of
HOWARD JOHNSON
620 Huntington Avenue

Hotel Sheraton
91 Bay State Road, Boston
Permanent and transient ac-
commodations. Every facility
for small and large functions.
Sheraton Roof Open May 24
Spencer L. Lawyer Telephone
General Manager KENmore 2960

Compliments of
THE 12:20 CLUB
F. W. Holbrow Co., Florists
301 Harvard St. Dorchester, Massachusetts

Symphony Flower Shop
Flowers for the Graduate
240 HUNTINGTON AVENUE
Opposite Christian Science Church
BOSTON, MASS.

Compliments of

A FRIEND

Compliments of
The
**BOSTON ASSOCIATION
OF
GEOGRAPHY TEACHERS**

Tel. ARNold 3560 Res. ARNold 2815

J. F. SHEA

Florist

Flowers and Floral Designs For Every Occasion

751 Centre Street Jamaica Plain, Mass.

Compliments of

A FRIEND

Official Jeweler

for

Boston Teachers College

**Trophies, Cups, Prizes for all
Sports. See our line on display.**

DORRETY OF BOSTON

387 Washington Street

Boston

Massachusetts



Compliments of

THE COMMERCIAL CLUB

Please Patronize Our Advertisers

Teachers College Cross-word Puzzle

Solution

Horizontal

1. Rah
4. William
8. Cod
11. Leo
12. Ethelbert Nevin
13. To
14. Ona
15. Student
18. Teacher
20. Rid
21. Toe
22. Wild
24. Grant
26. Oral
29. Icy
31. Ere
33. Eli
34. Ape
36. Sol
38. Adele
39. Tunes
40. Era
42. Egg
43. Aha
46. Ans.
48. B-a-a
50. Memo
52. Drake
53. Penn
54. Bit
56. Ohm
57. College
60. Seniors
64. Ore
65. A. E.
66. Lydia Languish
67. Awe
68. G. B. Shaw
69. Kennedy
70. New

Vertical

1. Robert Louis Stevenson
2. Aet.
3. Hourly
4. Weed
5. Inn
6. Ate
7. Moat
8. Cohere
9. One
10. D. A. R.
16. Did
17. Tore
18. Tone
19. Coo
22. William
23. Irvin Cobb
25. Ark
27. Abraham Lincoln
28. Linchan
30. Opera
32. Songs
34. Ade
35. Ela
36. Sue
37. Leg
41. Una
44. He
45. Ambles
46. Arne
47. Skis
48. Bemoan
49. An
51. Oil
53. Phi
55. Teak
56. Only
57. Cog
58. Orb
59. Gee
61. Eld
62. R. W. Emerson
63. Sew

Autographs







MARGARET M. SALLAWAY