



1966



LIBRARY
of
BOSTON
STATE
COLLEGE

Alice H. Linneman
ILLUSTRATED BY



Digitized by the Internet Archive
in 2010 with funding from
Boston Library Consortium Member Libraries

<http://www.archive.org/details/yearbook1966stat>



Editor in Chief
Bob Hilliard
Assistant Editor
Louise Quinn
Managing Editor
Joan Fahey
Art Editor
Janet D'Angelo
Photography Editor
Mary Petrone
Photographer
Martin Kullen
Layout Editors
Donna McCarthy
Jim Samson
Literary Editor
Sue Doherty
Office Manager
Cathy White
Business Manager
Bill Martin
Advertising Manager
Richard Kalp
Circulation Manager
Joe Grace
Faculty Adviser
Dr. William Kenney





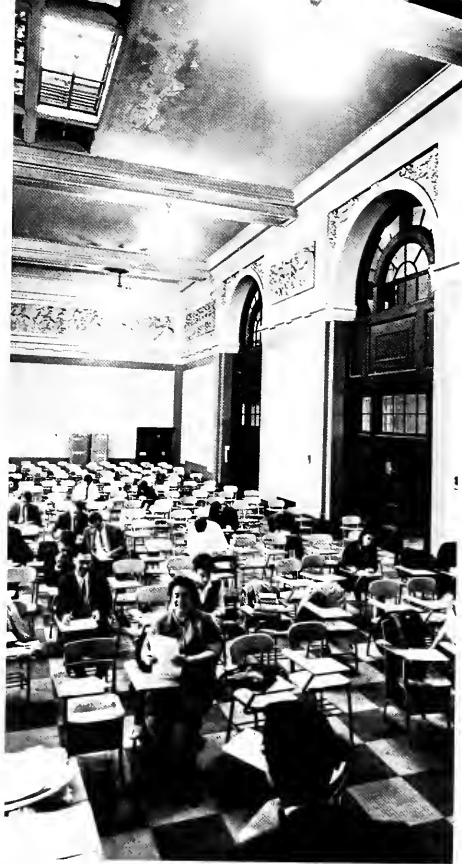
LAMPAS '66
BOSTON STATE COLLEGE
HUNTINGTON AVENUE
BOSTON, MASS.

















BASKETBALL TEAM—*Seated:* Mackay, Stevenson, McMullen, Cotter, Karll, Spirito. *Standing:* Menovich, Maloney, Buckley, Jackson, Casey, Orlando, Gilbert, Forbes, Manning.





FACULTY
AND
ADMINISTRATION

PRESIDENT'S MESSAGE



My sincerest best wishes go to you, the Class of 1966, on the completion of your undergraduate careers at the State College at Boston. You have been outstanding in many ways: in your enthusiastic desire to learn, in your spirited support of college functions, in your excellent attitude toward the Administration, the faculty, and one another. I am sure that a bright future stretches before each one of you.

In the period you have spent with us, you have witnessed the dynamic expansion of the College. You have seen the completion of the science building, the introduction of a trimester program, the growth of the student body and faculty. I believe that you have enjoyed being a part of these exciting times.

May the fine spirit of friendliness, co-operation, and loyalty that you have always shown continue in your support of the Alumni Association. By actively participating in its functions, we hope that you will keep in contact with the College and with one another.

Through the bounty of God, may your lives be fruitful, happy ones.

William F. Looney, *President*



SGA OFFICERS—Thomas Feenan, President; Joseph Sullivan, Corresponding Secretary; Carole Burns, Recording Secretary; Ronald Areglado, First Vice-President; Lawrence Gillis, Executive Vice-President; Robert O'Keefe, Treasurer.



CLASS OFFICERS—Joseph Cady, President; Edith Haynes, Vice-President; Virginia Lerner, Secretary; Kevin McMullen, Treasurer.

ADMINISTRATION



DR. ROBERT J. BOND
Academic Dean



EDWARD J. O'DONOGHUE
Assistant to the President



FRANCIS P. O'HARA
Dean of Graduate Studies



HERBERT G. REGAN
Registrar



DR. GEORGE F. AHERNE
Director of Admissions



JOHN J. KELLY, JR.
Dean of Men



DR. ALICE F. LINNEHAN
Dean of Women



JEREMIAH J. DONOVAN
Associate Registrar



EDWARD A. ZALESKAS
Associate Director of Admissions



CHARLES P. DEMAKES
Associate Dean of Men



ROBERT F. DUNBAR
Associate Dean of Men



BEATRICE P. EATON
Associate Dean of Women



THOMAS J. LALLY
Associate Dean of Men



KATHERINE A. MURPHY
Associate Dean of Women



ELEANOR G. POWERS
Associate Dean of Women



THOMAS A. DUNGAN
Director, Program of
Continuing Studies



GERARD M. O'MEARA
Associate Director,
Program of Continuing
Studies

FACULTY

ART

Chairman



Vincent J. Tringale



John V. Cody



Donald Deveau



Joseph F. Fiorello



Clifford Wrigley

BIOLOGY

Chairman



Dr. Mary E. Lynch



Anna B. Gesmer



Dr. Rita N. McCauley



Elizabeth A. O'Doherty



Pauline Parsons



Francis J. Veale



Dr. John T. Woodland

EDUCATION



Dr. Lawrence J. Newell
*Chairman, Elementary
Education*



Dr. William J. Fitzpatrick
*Chairman, Secondary
Education*



Myrna S. Clancy



Margaret D. Delaney



Mary C. Donahue



Mary C. Durant



Eloise R. Fitzgerald



Moira Galvin



Dr. Ann M. Gavin



Sylvette Giorgio



Helen Moloney



Dr. Perry Miller



Francis Murphy



Philip W. Natale

ENGLISH

Chairman



Dr. William H. Marnell

Co-Chairman



Richard S. Tyrell



Rosanna Alfaro



Robert Bufalini



Dr. James A. S. Callanan



Dorothy C. Connor



Frederick E. Danker



Elliot R. Ernest



Joan M. Farrell



Alice F. Gormley



Henry L. Gormley, Jr.



James L. Hofford



Marjorie F. Holt



Dr. Ann R. Howe



William A. Kean



Mary I. Kelly



Dr. William Kenney



Dr. Charles K. Kenosian



Dr. John Lerch



Vincent P. Malahan



Clare L. Marnell



Clare A. McDonnell



Linda P. Morley



M. Arnold Shaw



George E. Thornton

FOREIGN LANGUAGE

Chairman



Richard W. Newman



Margaret E. Adams



Ruth L. Dayag



Dr. Alfred Pouinard



Dr. Anthony J. Simeone



Mary Walsh



Lewis B. Ware

Chairman



Dr. James P. Jones

GEOGRAPHY



Dr. Nirmala Bidani



James A. Dooling



Dr. Michael G. Mensioan



Robert W. Spayne

HISTORY

Chairman



Dr. Laureat Bernard



Mary S. Cavanagh



Dr. Thomas A. Dunlea



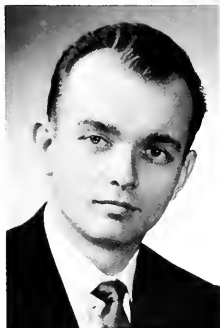
Elizabeth D. Flynn



Maurice P. Foley, Jr.



Aaron Jacobs



Ronald Kowalski



Ralph E. Ladd, Jr.



Ann Lake



J. Bradley Lentz



John E. Moon



Thomas O. Power



Geoffrey Prentiss



Daniel Rudsten



Dorothy Scanlon



Charles Shively



Dr. David L. Sudhalter



Paul G. Sullivan



Richard C. Thorne



William K. Tinkham



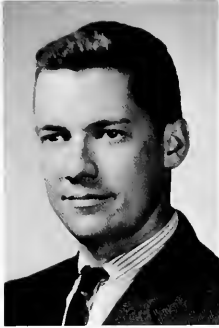
John Weston

MATH

Chairman



Dr. William E. Perrault



John Callahan



Margaret V. Gibbons



Ronald B. Loring



Albert W. Wallace

Chairman

MUSIC



Elizabeth A. O'Brien



Dr. Edward J. Fitzpatrick



Arthur H. Hauge



Alfred Hoose



Mary M. Morrissey

PHILOSOPHY

Chairman



John J. O'Neill



Michael Fiorillo, Jr.



Ellen W. Harding

PHYSICAL EDUCATION



Marie I. Farrell
Chairman



James P. Sullivan
Chairman



Theresa M. Corcoran



Martha E. Cummings



Edith G. DeAngelis



Isabel Elbaum



Alice Quinn



James J. Tedesco

**PHYSICS AND
CHEMISTRY**

Chairman



Dr. Francis W. McCarthy



Sabino W. Caputo



Dr. Peter E. Gordon



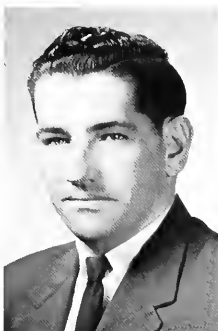
William J. Hooper



Nicholas J. Lembo



Benjamin Liberfarb



James H. McCue



Maurice Temple

PSYCHOLOGY

Chairman



Dr. J. Edward Conners



Dr. Wilfred E. Calmas



Dr. Raymond R. Gilbert



Robert A. Goodale



Thomas J. Godin, Jr.



David Haughey



Marcia Kagnoff



Dr. M. Martin Kostick



Hubert J. Powderly



Dr. Harold E. Shapiro



Kenneth A. Wolkon

NURSE



Anne L. Linskey



Ellen E. Richwagen
Head Librarian

LIBRARY



William J. Doherty

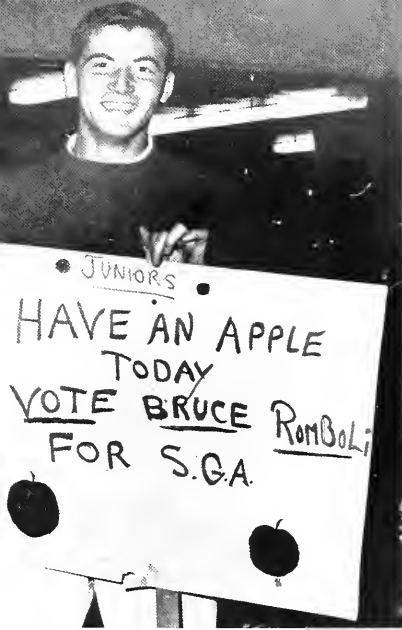


William J. Talbot





ACTIVITIES



STUDENT GOVERNMENT ASSOCIATION





Handling over \$115,000, acknowledging the constitutions and budgets of the college's new clubs, and successfully organizing at least nine all-college functions, the Student Government Association's influence continues to grow organically with the growth of the college.

These mammoth responsibilities were well handled under the leadership of Tom Feenan. This year's cohort of able organizing "Warrior's" included: Larry Gillis, Executive V.P.; Ron Areglado, First V.P.; John Shea, College Coordinator; Joe X. Sullivan, Corresponding Secretary; Bob O'Keefe, Treasurer; and Carole Burns, Recording Secretary.

During the heat of our first trimester, Mary Lou Stewart, Eddie Romkey and Joe Sullivan helped us prevail with a "Clam Bake," Mystery Trip to the Carousel, and the Highwaymen in our courtyard.

Those annual functions which have become so much a part of our college memories were more successful than ever. Affairs and committee chairmen were: the All-College Banquet, Mike Hart, Dick Kalp; the Holiday Ball, Joyce McCarthy, Chris Cuneo; the One-Act Play Contest, the college musical "My Fair Lady," Sid Liberman; the Scholarship-Dinner, Bruce Romboli; Green and Gold Dance, Nancy Pishkin.

The guards have changed,
but its excellence prevails!



*SUMMER
TRIMESTER*





*ALL COLLEGE
BANQUET*





SEMI-FORMAL





MY FAIR LADY



Henry Higgins: Sid Liberman
Eliza Doolittle: Sue Lilly

Alfred Doolittle: John Davin



Colonel Pickering: Paul Kelly





Producer: Mike Hart

Makeup Director: Kathy Walsh





FRENCH CLUB

Led by president Eleanor McMahon, le Cercle Français provided more time this year for all interested students to "parler français" in a more relaxing, social atmosphere. The new program included many enjoyable activities. In October a French version of "I've Got a Secret" got under way. In November a "Promenade à travers de la France" was conducted by Parisian Professor Pouinard. Finally, a spirited discussion centering about the existentialist Albert Camus and a gala "fête de Noël" closed the year's activities. Outside ventures included a night at the French Opera and a performance of La Bohème. Members of the French Institute of Boston were invited by the club to share in these evening concerts.

Because of the club's constant activity, the thirty active members and steady faculty following attest to its growing popularity.

SPANISH CLUB

The Spanish Club opened its 1965-1966 season with the introduction of Mr. John Staulo, a new member of the Foreign Language Department, as its advisor for the year. The newly-elected officers also were presented: Neil LaVita, president; Arlene Lavin, vice-president; and Nancy Thompson, secretary-treasurer. During this hour Mr. Staulo provided a lively Spanish-phrased lecture on the art of bullfighting.

Highlights of the year included various cultural meetings and guest speakers, among whom was the consul-general of Spain, a performance of the Mexican Ballet, and a visit to the Spanish exhibit at the Museum of Fine Arts.

The club wishes to express its appreciation to Mr. Staulo for the stimulus he provided in assuring a most successful season.





One of the newer organizations on campus is the Chess Club. Founded in 1963, it competes with other college chess clubs in regularly scheduled meets. The club defeated teams from Harvard, Tufts and MIT during the past season. The club holds weekly practice sessions and meetings during which members prepare for upcoming meets.

The club is headed by President Tom Loyte, Vice President Al Patrick, and Team Captain Edward Baxter. The club recently achieved membership in the Metropolitan League, a league in which the club will meet even greater challenges.

ART CLUB

The Art Club, under the direction of a new faculty member, Clifford Wrigley, has greatly advanced in stature. During the holiday season a festive window display was presented on the foyer window of the science building. This was a first for both the club and the building. There is hope this may become a tradition for the Art Club.

Other activities of the club were learning the silk screen process and ceramics. Among the members were seniors Joel Handorf and James Samson (treasurer). Another function of the members is to select a work of art from a museum-showing each year to add to a collection for a future gallery here at B.S.C. The department and the student body are greatly expanding, a fact which makes the future of the club look quite prosperous.



SCIENCE CLUB

Along with the growth of the college this year the Science Club has experienced its growing pains. Meeting weekly in the Kennedy building, it initially planned a working program for the future. Activities were soon undertaken, and the most outstanding ventures were trips to the Science Museum and to the Planetarium. Perhaps the most interesting feature of this Club is its numerous film presentations, which included such interesting topics as evolution, the Gemini IV flight, and oceanography.

In January 1966, the Science Club split into three sections for more specialization. These divisions included 'Biology,' 'Physics,' and 'Chemistry.' Each of these areas has been carefully analyzed by Club members, and many projects have been undertaken to display the findings of the groups. Because of the establishment of the new Science Building as well as the availability of more modern scientific equipment, the Science Club has greatly expanded and has served as a great benefit to the State College at Boston.



PSYCHOLOGY CLUB

The Psychology Club was formed in 1964 to satisfy the desires of many students who sought to learn more about the science of behavior than what was offered in the limited number of courses. Among the many topics discussed by the group are subjects like "Menticide" and "A Scientific Approach to Hypnosis." The Club has sponsored many worthwhile endeavors including special work with the patients of the Medfield State Hospital and projects on creativity in many Boston high schools. The Club also made a special trip to the Boston State Hospital.

The Psychology Club has progressed greatly in the past years and is now in the process of being affiliated with Psi Chi, National Honorary Society in Psychology. It is quite evident that a club which takes such an interest in helping others and spreading good is a great asset to both the State College at Boston and its student body.





MUSIC CLUB

From Beethoven to Hendrick, all the music lovers of the college find something of interest in the program established by the Music Club. This organization explores the many facets of music, especially the choral and instrumental. This Music Club performs at many social and school functions. The major productions of the Club are the annual performances of Handel's 'Messiah' and 'An Evening with the Music Club.' The members of the club have often delighted in taking trips to see productions by the Metropolitan Opera Company.

Members of the Class of 1966 who have participated in the Music Club activities include Elizabeth Baublis, who is past president, and current secretary of the organization. Other contributors to the Club's fine work are Ann Boden and Frances Sumski, as well as Rita Castignoli, who wrote the lyrics for the class song, Carole Baungart, Patricia Bradley, and Virginia Czmur, who lend their vocal support to the Club, are also members of our class of whom we can be justly proud.

Balancing the soprano voices of the aforementioned women are the baritone pitches of Bruce Goodwin and Joseph Sullivan. A third male contributor to the Club is Victor Lospennato, who is the great improviser for the group.





GUN CLUB



The Gun Club is relatively new to the college. It was formed in order to teach firearm safety and it offers to all the students the opportunity to become familiar with firearms both in the home and in hunting. No prerequisite exists in order to join the club—one need not be an excellent shooter nor a male. The club is open to anyone, male or female, who desires to learn how to shoot. More and more co-eds are becoming aware of this fact and are taking advantage of the opportunity that the club offers to the students.

Some of the activities engaged in this year were matches with the U.S. Naval Academy, the Air Force Academy, the Coast Guard Academy, Lehigh University, and St. Bonaventure. Another match was played against Howard University of Washington, D.C., when Boston State was victorious with Joe Savignano, '66, president of the club, taking first place, and Dennis Tutten, also a senior, taking second place. The club has had speakers from the National Rifle Association as well as films from that organization which exhibited the importance of safety when firearms are used. A project that the club is involved in at the moment is a program which will give certification to some of its members as the National Rifle Instructors.

Several members of the club have won medals for their excellence in shooting. Among the seniors, Tony Trodella received a medal for big bore shooting, Joe Savignano for shot-gun shooting, and Dennis Tutten won the medal for small bore shooting.

The Gun Club promises to become a very popular club as it grows in membership and skill. President Joe Savignano is optimistic about the progress of the club and believes that, "We will be a real rough club to contend with in the future."

YOUNG REPUBLICANS

Not until early 1965, when the Young Republicans was formed, was there a political club on campus. Keeping pace with the new trend in Massachusetts Republicanism, interested young students banded together to break with tradition and form the first partisan organization at State. The original organizer was Maureen O'Keefe from the class of '67. The first President was John Tieso, class of '68, and the first Treasurer was Bob Hilliard, class of '66.

The first year of operation brought such people as Governor John A. Volpe and Senator Parker of Taunton, now Chairman of the Republican State Committee, to Boston State. The reigns of control for the academic year of '65-'66 switched to Kevin Farrell.

The late 60's will see a new concept of Republicanism rise, and people such as Boston State's Young Republicans have provided the impetus.



YOUNG DEMOCRATS

The purpose of the Young Democrats is to serve as a center of information for all interested students concerning the Democratic party. The club has various discussions about current legislation and presents influential members of the Democratic party to the student body to explain the stand of the party on legislation. Past speakers included Francis X. Bellotti, Endicott Peabody, and Edward J. McCormick.

With a fine first semester behind us, we are looking forward to a most informative and highly successful future.



DRAMA CLUB



Thornton Wilder's "The Skin of Our Teeth" highlighted the Drama Club's role as the theatre on campus for 1965-66. Starring two illustrious actresses of the Senior Class, Kathy Butler and Marianne Pollard, with John Regan as their male counterpart, "Skin" was a remarkable production. Jim Samson, as set designer and stage manager, assisted by Richard Bruno and Ken Haddock, made this Major Production a success.

Open to all students interested in theatre, the Drama Club offers the chance to participate in other activities offered by the S.G.A. such as the Musical and One-Act Play Contest.

In last year's One-Act Play Contest the entry of the Class of 1966, "Scrambled Eggs," directed by Sid Liberman, starring Kathy Butler, captured all awards. The work of Jim Samson, Larry Menovich, Richard Bruno, and Ken Haddock in the One Act Play Contest has been invaluable for the past four years.

The officers of the Drama Club, Jim Roche, President; Flo Dodge, Vice President; Sally Arico, Secretary; and Philip Jones, Treasurer, have tried to present a balanced program.

The Spring Trimester was highlighted by Theatre Parties, and of course, the participation of Drama Club members in the One-Act Play Contest and the S.G.A. Musical.

The Drama Club is affiliated with the National Honor Dramatic Society, Alpha Psi Omega. Rho Beta, State's chapter is opened to students who have actively participated in the theatre during their college years. The Senior Class members of the Society are: Flo Dodge, John Flood, Joel Handorff, Sid Liberman, and Marianne Pollard.







LECTURE SOCIETY





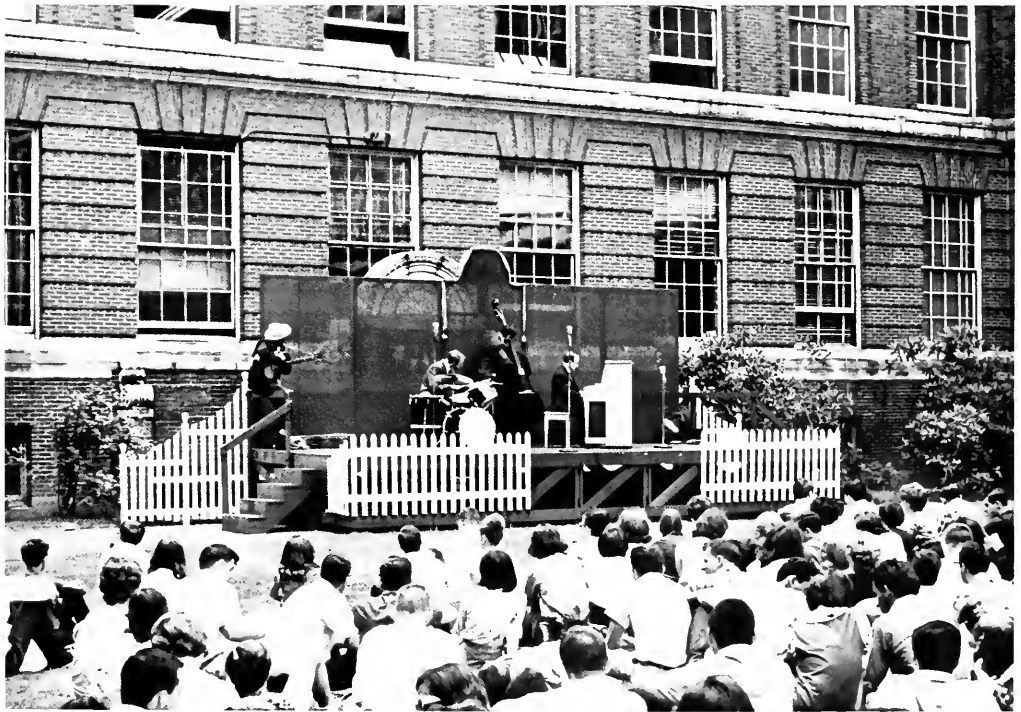
The Lecture Society may be considered Boston State's most far-reaching club.

Its purpose is to present outstanding speakers from the fields of journalism, literature, politics, and entertainment.

Beginning the new summer trimester John Dobbins of the *Boston Traveler* discussed cartooning as it is today. He ended his lecture by caricaturing members of the Lecture Society.

On the political side the club hosted Senator Ted Kennedy. In the entertainment field, a program entitled "Jazz or Folk; Melody or Word" was featured.

We are confident that the future of the Lecture Society will mirror its efforts of the past.



INTERNATIONAL RELATIONS CLUB



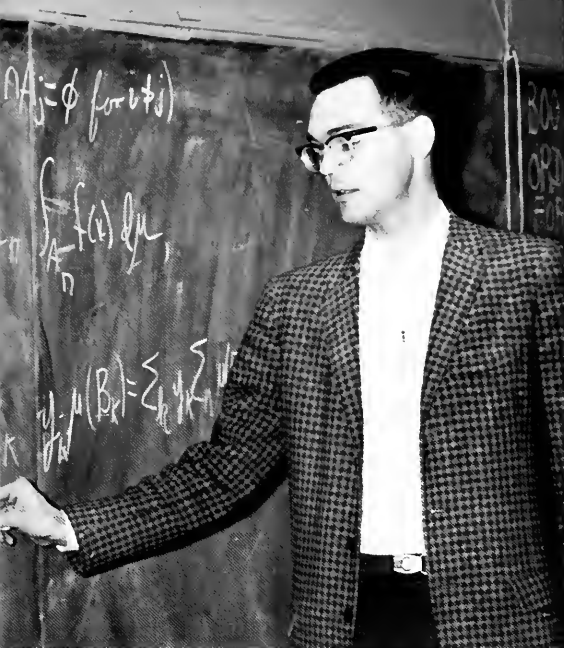
The I.R.C. was revitalized this year until it became the largest club on campus. Operating on a \$900 budget, the club was able to present many speakers from various countries.

The Bulgarian ambassador to the U.N. and ambassadors to the U.S. from New Zealand, Finland, Nigeria, and Yugoslavia were met by a large turnout. The consul-generals from West Germany, France, Union of So. Africa and Israel were also presented to the enthusiastic followers of the club's lecture series.

The club attained its marvelous rebirth under president William McDonough and faculty advisor Mr. George Levy. The Club's main purpose is to instill in the students a better understanding of world affairs.

Special thanks are due to seniors John Curran and John Hogan, who helped in getting the infant club on its feet.





MATH CLUB

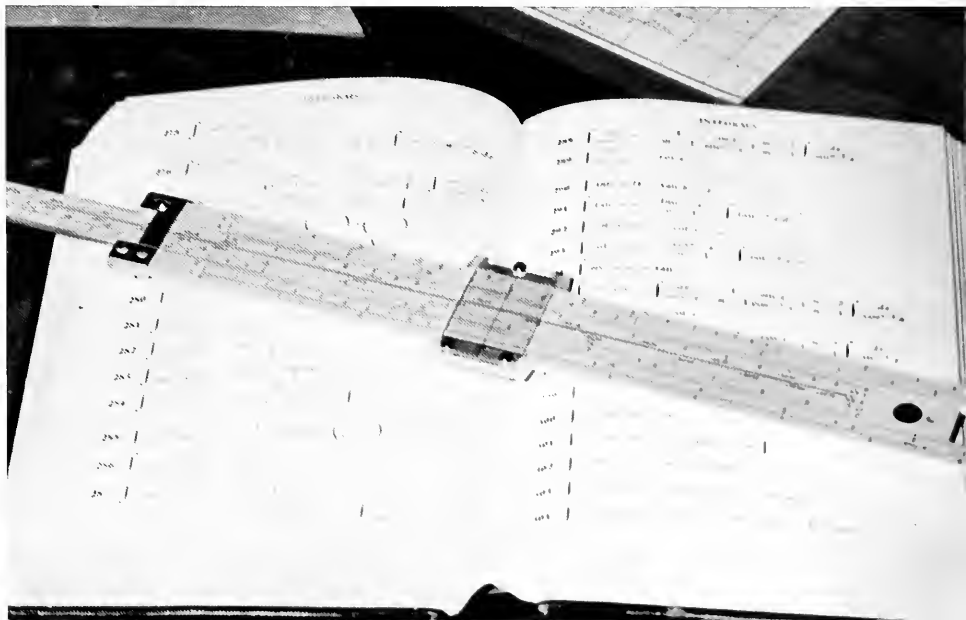
The Math Club has only been in existence for two years. Its reorganization is due to Ed Romkey, the club's president, and Mr. Loring, the club's advisor.

The club hour is spent in discussions, field trips, lectures, and problem-solving.

One lecture was given by the famous Jesuit, Fr. Stanley Bezuska, an expert on modern math.

Math Club members went on a special field trip to M.I.T. to observe the computer program.

Surprisingly, a large number of students belong to this club. Among the senior members are: Kathy Burne, Kitty Maloney, John Compton, Kevin Gorman, Ursula Sawicki, Kathy Cahill, and Tommy Earhart.



GOLD



TORCH

The Gold Torch Society was founded in 1963 to honor those students who have contributed significantly to extra-curricular activities while maintaining a high academic average. The members are nominated by the class officers and elected to membership by those members of the organization enrolled in the college. Membership is permanent, with graduating members returning each year for installation of new members.

The Class of 1966 played a leading role in the formation of this society. It was formed by the S.G.A. on a motion presented by class President Charles Martin during the sophomore year. William Martin became the Society's first Vice President last year and has served as its President during the current year. The Society is proud to honor those who have served the college so well during their tenure in it.

ATKINSON, Patricia
BOURGET, JoAnne
BROWN, Judy
BUCKLEY, John
BURKE, Daniel
BYRNE, Kathleen
CADY, Joseph
DALY, Patricia
D'ANGELO, Janet
DODGE, Florence
FEENAN, Thomas
FAHEY, Joan
GILLIS, Larry
HART, Michael
HARVEY, John
HILLIARD, Robert
KALLENBERG, Helen
KELLEY, Nancy
LARNER, Virginia
LAWRENCE, Patricia
LIBERMAN, Sidney
MARTIN, Charles
MARTIN, William
McMULLEN, Kevin
NOWAK, Kathleen
PALMIERI, Richard
PISHKIN, Anne
POLLARD, Marianne





Chalkdust

VOL. XII - NO.7

STATE COLLEGE AT BOSTON

DECEMBER 22, 1965

Chalkdust, our college newspaper, has steadily improved in quality and content during our years at Boston State. This year, it has given an outstanding contribution to the college by regular circulation and excellent coverage of school events.

Such seniors as feature writer Sid Liberman, and artist Jim Samson, have worked to improve the paper and have set a fine example for the underclass staff.

Chalkdust has grown in so many ways. Dan Kelliher, Maureen O'Keefe, and John Tieso have written pertinent editorials. Over sixty staff writers have been

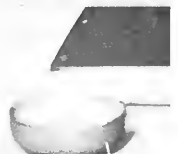
everywhere gathering news. Photographers Marty Kulen, Kevin Farrell, John Flood, and Paul O'Donnell have worked hard to make the newspaper one of which we can be proud. Larry Menovich has expanded the sports section as the college athletic department increases its activities. The drama productions have been competently appraised by drama critic Jim Roche.

The whole staff has worked in unison to improve the paper, and provide for continued growth in the coming years. They have made *Chalkdust* representative of the evergrowing Boston State.









LAMPAS

We work out of 201, thirty-seven people crowded into a twelve by twelve office. You discuss layout. How would you like this picture placed? Upside down? Someone shouts, "That's where the editorial should be!" You look, you think, and then you realize you're not a newspaper. It doesn't apply.

Meetings, meetings, mad confusion. How can I tell my people from theirs? Layout chaos, deadlines, deadlines. Who ever makes them anyway. "We're late, we're late," echoes through my frame. I'm beginning to feel like the rabbit in Lewis Carroll's Tale.

"But wait! I'm not a rabbit either. Some say I'm something else again."

It's only late at night that I get time for peaceful reflection. From 8:30 A.M. until 10 P.M., I'm bound to hear a hurried step at the door, a quick switch of the light, and someone rustling vigorously through my files shouting, "... but I saw it here an hour ago."

Then when my people and those others have left, I get a chance to discuss the more philosophical questions with my fellow occupant.

Time and again I have tried to convince my roommate that it is far more important and permanent to be the product of a year's hard labor than a mere monthly fad. But just as I think I have won my point my friend is shipped out and replaced by a green recruit.

They lose pictures, they find pictures, but somehow they manage to pull me together.

As father time (my staff) steps quietly out on that final day, I see a fellow at the end who keeps saying, "If I knew then ... It sure would be a lot easier!"

As I make my debut during Senior Week, may I introduce myself as ...

Lampas "66"



201





Editor-in-Chief Bob Hilliard



Managing Editor Joan Fahey
Asst. Editor-in-Chief Louise Quinn



Literary Editor Sue Doherty



Co-Layout Editor Jim Samson



Business Manager Bill Martin



Advertising Manager Dick Kalp



Photography Editor Mary Petrone



Asst. Advertising Manager Jim Martin



layout staff at work



VOLUNTEER SERVICE BUREAU





The Volunteer Service Bureau of our college has a nine-semester-long history of genuine "Service for Others."

Since the earliest days of volunteering in 1960, the V.S.B. has seen over 1,500 student volunteers give over 60,000 hours to more than 115 various agencies such as:

Community Centers
Settlement Houses
Y.M.C.A.'s and Y.W.C.A.'s
Tutorial Agencies
Hospitals
Homes for the Retarded.

One of the many new services offered by V.S.B. is a Workshop for Volunteers, initiated in 1965. It offers, to the more selfless student, training in sports and games, arts and crafts, rhythms and dances, dramatics and informal story telling.

The depth of experience that our volunteers obtain cannot be measured, but it can be well described-for . . .

*"There is a destiny
that makes us brothers
None goes his way alone:
All that we send
into the lives of others
Comes back into our own."*

Edwin Markham





WOMEN'S RECREATION ASSOCIATION

WRA offers the students at Boston State opportunity to enjoy a varied program of activities away from the hectic grind of class schedules. In the gym or rink, on the court or field, time has little meaning for these students whose every other action is governed by a bell or alarm. Each afternoon, the WRA offers something different to its diversion-seeking participants; every season finds something new and exciting on the WRA agenda; every year the organization offers a varied program suited to the needs of the college woman.

Memorable . . . for quiet moments lend themselves to memory . . . and these very moments are found in the stillness of reflection . . . and seen in four years filled with the laughter, the striving, the fond friendships.

Gone forever these days all folded into years . . . and memory.

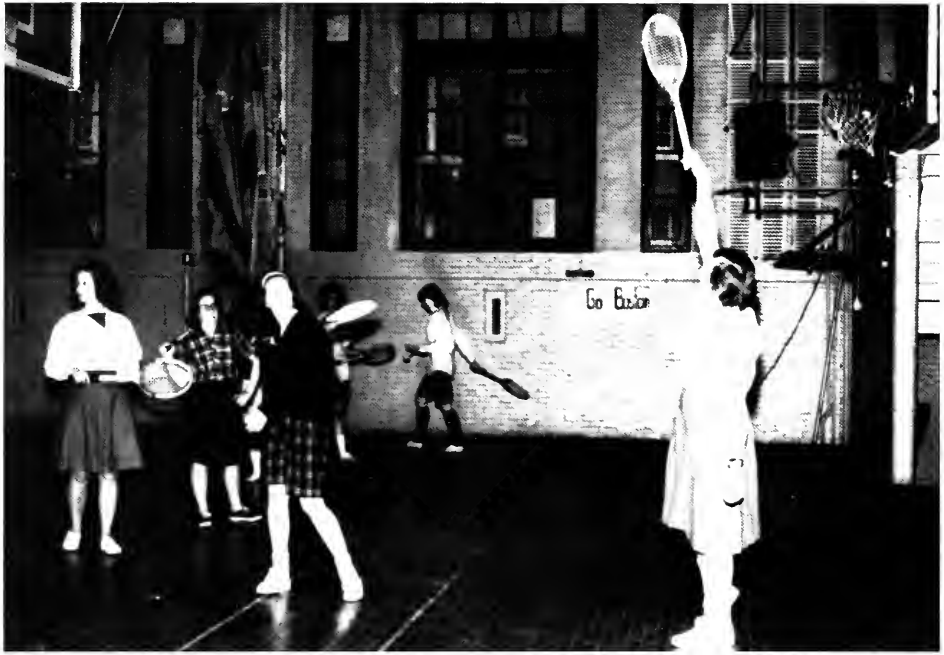
WRA means time to spend with friends together . . .

WRA emphasizes recreation rather than skill . . .

WRA offers something for everyone every season of the year . . .













HILLEL

B'nai B'rith Hillel provides religious, social, and counseling services for the Jewish students at State College at Boston and at the same time seeks to further the members' knowledge of their long and glorious Jewish heritage.

Meetings sometimes have a guest speaker, a film or just a discussion period, but one can always be sure that the Executive Board has worked hard on whatever is being done. The State College at Boston Councilorship is programatically and financially independent, but its members are eligible to participate in and use the facilities of its sister society at Boston University.

Therefore, the Jewish student receives not only counseling and social contacts with others of similar background but also receives and makes friendships which could be very helpful in later life.





NEWMAN

Revitalization is the keynote of the programs presented by the Newman Club. Through the establishment of a new constitution and through the efforts of Rev. Robert W. Bullock, Newman is attempting to assist each student redefine his allegiance to God in adult terms. Its primary stimulus is a series of discussions centering around such controversial issues as "The Council and Marriage" and "Freedom of Conscience." Perhaps a most singular feature of the club is its sponsoring an eight-year-old Korean War orphan, Betsy. Newman also provides a communion breakfast, a retreat, a blessing of class rings, and socials each year.

With an eye to the future and the expanding enrollment of students, this club is seeking to meet the needs of Boston State by initiating a similar trimester program. Thus, through continuity will Newman become a living organization.



ORTHODOX CLUB



The Orthodox Student Organization showed this past year a definite upswing in membership and in activities. Under the leadership of Father Elia Katre, the organization's keynote became a blend of both the quietly spiritual and the actively social. Students sought material on the tenets of their faith from the St. Andrew's Orthodox library and then examined its spiritual concerns. However, highlights of the season were its outside projects. A November pastry sale, a clean-up day in redevelopment areas, and a spring dance all were enthusiastically promoted.

Members hope to retain the spirit of their club and to expand along with the college.

PROTESTANT STUDENT ASSOCIATION

Under its new head, Lewis Gaffen, the '65-'66 Protestant Student Association effectively presented a number of controversial moral and religious issues to the student body.

Lecturers came from areas as near as M.I.T. from as far away as Taiwan. They spoke on such timely subjects as L.S.D., Evolutionary Religion, the Nationalist Chinese View of Vietnam, anti-semitism, and existentialism.

Among seniors who perceived its worth and worked actively toward its excellence were John Shaw, Richard Smith, and Susan Olt. It and other college organizations committed to the purpose of making the student body more morally and religiously aware are to be commended, for:

"Yours is the praise, if mankind
Hath not as yet in its march
Fainted, and fallen, and died!"

Arnold







SALE
11

SALE
1

ATHLETICS

TRACK

The track team is in the midst of another fine season. The records and trophies won are not as impressive as last year's production; but, there is an excellent reason, a step up in class. With Boston State's entrance into the E.C.A.C. next year the competition will be even tougher.

One of this year's best accomplishments was Frank McCarthy's 600 victory in the New England A.A.U. meet. Frank is finishing a fine career which saw him begin as virtual unknown and finish as one of the finest middle, distance runners in New England. Another boy completing a fine college career is Al Siegal who again buoyed a solid cross country team. Other notable performances came from the relay team which looked very good in the B.A.A. mile relay (especially anchor man Louis Dittami) and in the K of C meet in the Gardens.

Track is one of State's brightest spots and is still climbing.

B.S.C.

23
15
24
21
17

19
18
17
12½
16
53

Closest Opp.

Bryant 54
Barrington 50
Bentley 48
Tufts 37
Assumption 58

Colby Invitational
Gorham State 41

N.E.S.C.A.C.
Gorham 66

N.A.I.A.
Lyndon 38

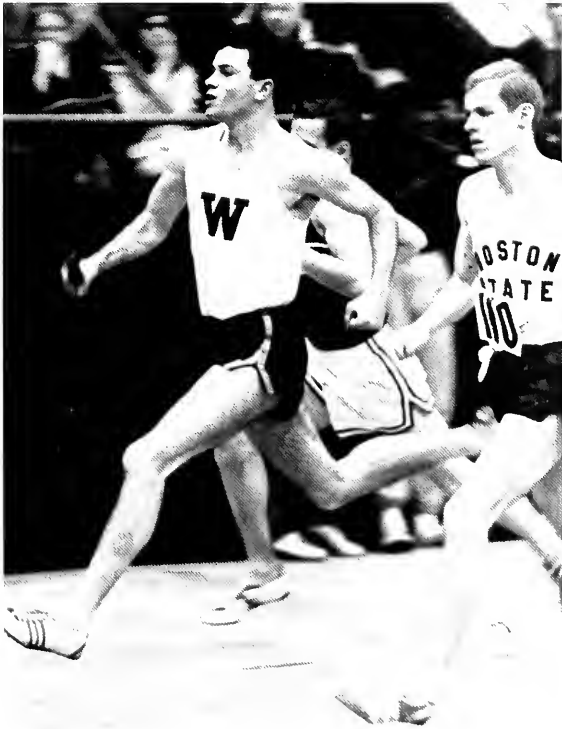
N.E.A.A.U.
Harvard 12

B.A.A.
B. U. 5
U. of Vermont 59

Amherst relays first place in two mile relay
first in sprint

RELAY SQUAD—Frank McCarthy, Don Murphy, Coach Squires, Bryan Jones, Louis Dittami, Jerry Blake.





BASKETBALL

Coach Jim Loscutoff's basketball team started fast by winning the "Paul Bunyan" tip-off tourney in Bangor, Maine, and never looked back, finishing in second place in league play with an overall record of 21-3. The team received an invitation to the N.A.I.A. regional tourney in Connecticut with a chance to go to Kansas City if successful there.

Both John Buckley and Kevin McMullen ended fine careers. Buckley finished with more than 1500 points and McMullen personally pulled out two games in the closing seconds.

Only disappointments of the year were two losses to Salem but as Junior George MacKay said, "We'll see them in the playoffs."

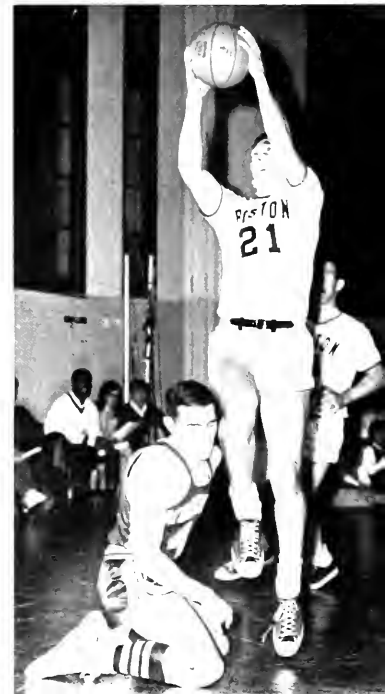
B.S.C.

103	Maine Maritime	75
79	Bloomfield College	76
79	Salem St.	89
114	Keene St.	83
64	Lowell St.	52
101	Plymouth St.	89
105	Gorham St.	76
95	Willimantic St.	73
100	Johnson St.	53
85	Sacred Heart (Conn.)	72
93	Fitchburg St.	78
81	Gorham St.	68
80	North Adams St.	67
88	North Adams St.	73
92	Worcester St.	73
71	Salem St.	74
116	Worcester St. (3 O.T.)	112
97	Lowell St.	67
52	Westfield St.	51
93	Plymouth St.	77
65	Fitchburg St.	67
67	Bridgewater St.	42
72	Rutgers (Newark)	60
81	Westfield St.	74









HOCKEY

The hockey team finished the 1966 season with a perfect 20-0 record. Biggest wins came over A.I.C., University of Vermont, and Ohio University.

Bob Quinn, the ex-Nationals player, again led the way, winning the unofficial college scoring title for the second straight season with 71 points. Senior Captain Bob Ghilani finished a fine career as a defenseman. Wayne Petrovek, Bob Donovan, and Frank Kelley each turned in another excellent year of hockey.

Coach Eddie Barry says he has seven players who could skate for any team in the area. With Boston State moving into the E.C.A.C. next season these boys will meet the improved competition they rate and receive the recognition due them.

B.S.C.		Opp.
11	Burdett (Jamboree)	3
13	New Haven	3
9	Pennsylvania	2
9	Holy Cross	0
5	American International	4
16	Notre Dame	2
4	Ohio University	3
5	Salem	3
13	Pennsylvania	1
7	Western Michigan	3
8	Western Michigan	3
15	Lowell Tech.	0
8	University of Vermont	3
11	Lowell Tech.	0
8	University of Vermont	3
8	Holy Cross	4
5	Ohio University	3
7	Ohio State U.	1
4	American International	3
9	Ithaca	4
5	Salem	3









BASEBALL

With the return of Kevin Lyons, Kevin McMullen, and Don Cotter (although the latter pair are considering retirement) Coach Ray Sine should have a good nucleus. Some help behind the plate and on the mound would make this a strong club. Last year Sine's nine showed real potential when they beat Central Connecticut, a most formidable ball club.

On the deficit side for the 1966 season is the loss of last year's co-captains Paul Rappoli and Jim Melzar. Rappoli was a powerful right-hand hitter and Melzar was perhaps the best all-around college baseball player in the area.

<i>B.S.C.</i>		<i>Opp.</i>
4	Southern Connecticut (11 inn.)	4
4	Bridgewater St.	7
4	Fitchburg St.	3
1, 4	Salem St. (2)	2, 6
	Lowell St. (Rain)	
	Stonehill (Rain)	
3	Worcester St.	5
4	Plymouth St.	3
19	Lowell St.	12
1	Worcester St.	10
3, 1	Central Connecticut (2)	1, 9
4	Plymouth St.	10
13	Bridgewater St.	7
2	Stonehill	6
	Keene (Rain)	





WRESTLING

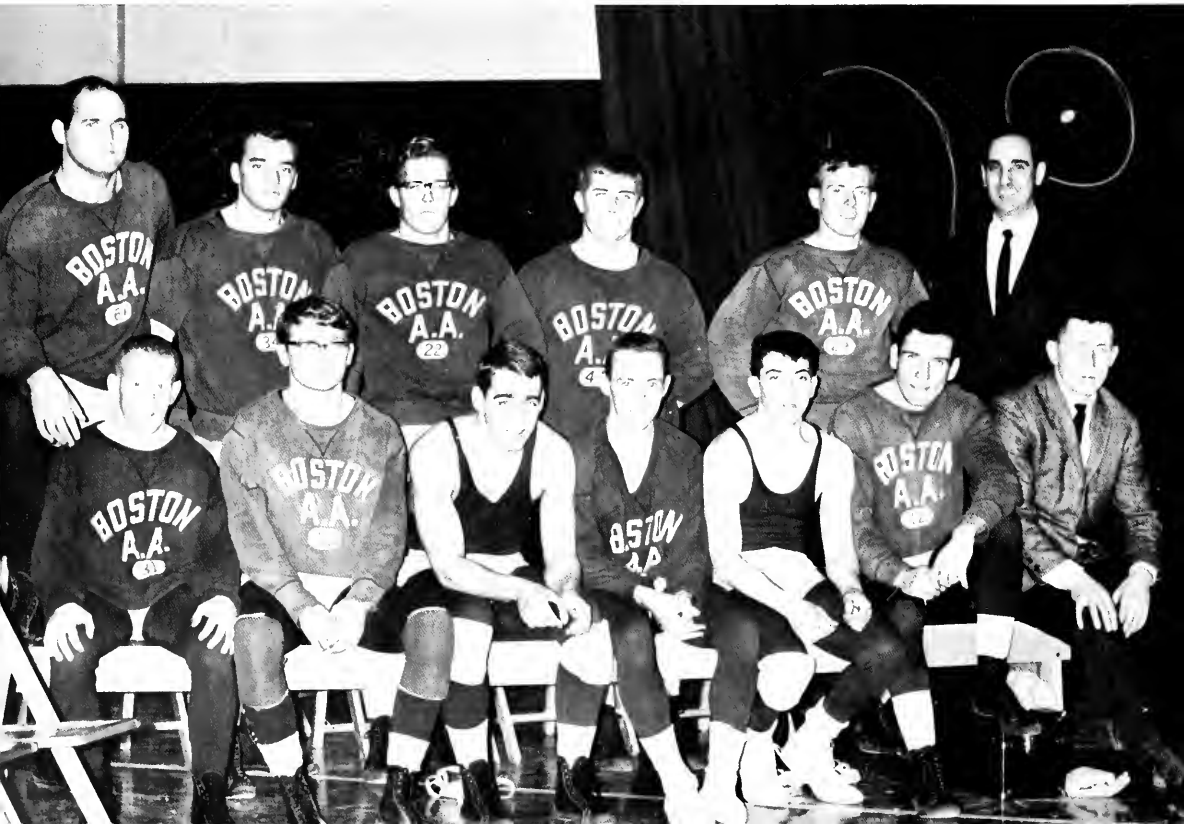
Boston State added a new varsity sport this year, and an exciting one at that, wrestling. Under Coach Jim Tedesco the team had a successful first year with a win over Brandeis the brightest highlight.

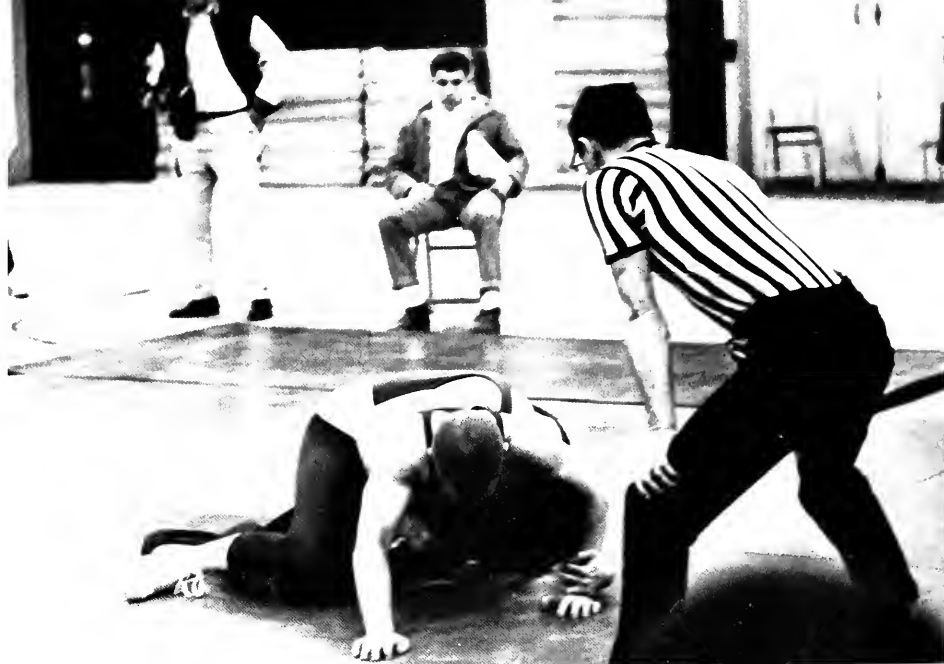
Coach Tedesco feels he has some prospects in Al Lewando, Paul Hogan, and Dick Finn. Depth is his most immediate need since injuries to key personnel proved costly in more than one match, especially the one at Boston College.

Anyone who has ever seriously played any sport can easily appreciate the stamina and strength required for this grueling sport.

<i>B.S.C.</i>		<i>Opp.</i>
19	Emerson	20
35	Leicester	10
38	Lowell St.	10
25	Emerson	14
11	Rhode Island Col.	28
45	Leicester	0
5	Boston College	35
23	Lowell St.	18
25	Brandeis	18
15	Holy Cross	30

WRESTLING TEAM: *Seated:* T. Shaugnessy, R. Smith, W. McCarthy, J. Heffernan, R. Kaplan, A. Lewando, R. Finn, Co-captain; *Standing:* G. Brown, J. Divver, Co-captain; P. Willis, J. Reynolds, T. Driscoll, J. Tedesco, Coach.







JUNIOR WEEK





MOONLIGHT CRUISE





THE BARN DANCE





OUR NIGHT AT THE POPS





*JUNIOR
BANQUET*









*RAPHSODY
IN
BLUE*







SENIORS

FROM THE CLASS OF '66

ESSAY

Two to Triumph

Idealism and realism are two attitudes which we must balance within ourselves. One guides us toward making a wise decision while the other gives us the inspiration to put it forth.

Application of these two viewpoints is continuous in the field of education. We future teachers attempt to serve our students realistically by guiding them toward intellectual maturity as well as idealistically by inspiring them with zeal and enjoyment of learning.

In teaching, two facets, content and method, are considered. Ideally we wish that all our pupils would reach a high level of achievement; however, reality dictates a wide range of individual abilities within one classroom. Occasions occur when it is necessary to modify the curriculum to suit the pupils. Therefore, we must be realistic in regard to capacities, interests, and present needs of all students if we are to progress.

Through our student teaching we have realized that the method used is as important as the content. Regardless of the time and effort we devote to selecting a lesson, if the presentation is ill-attuned to the intellectual level of the students, it is fruitless. Teaching, as well as learning, is action involving not the donor-recipient relationship, but mutual participation by both teacher and pupil.

Let us remember that both realism and idealism contribute in countless ways to our effectiveness as teachers if we possess them in equilibrium.

Jeannette Baillet
Class of '66

POEM

R ealism!
E very day it courses to the fore.
A nother question to be posed and faced and solved
L ike all the other questions that have come and gone before.
I s ours the place to work for truth, for light?
S ome say it's not and yet—to leave the ring
M ay one day cause us grief and sorrow, great despair
and make us question strongly—were we right?

I dealism!
D aily comes the task of polishing anew
E ach standard that we follow, we believe in.
A s beliefs are questioned, challenged—can we stand
L ike Druids strong of years gone by, both true and bold?
I s life so ruled by others' dictates and commands,
S o ordered that our answers, our decisions are
M ade for us? Let us rise and realistically order our ideals!

Marianne R. Pollard

SONG

To Boston State we came
One bright September day.
Four years have passed since then—
How swiftly slipped away!

The seeds of knowledge sown
Have into wisdom grown.
The friendships we have made
Will not through lifetimes fade.

We learned, we danced, we sang.
We cheered our athletes on.
With joy our voices rang,
Our spirits light as dawn.

The classroom bell falls silent.
Hushed are the halls we knew.
The time for parting has drawn near.
O Boston State, adieu!

Atir



*CAP and GOWN
CEREMONY*





JUDITH ALDEN
Elementary



JEANETTE BAILET
Elementary



SHARON BANDLOW
Elementary



JANET F. BARIL
Elementary



SUSAN E. BARNES
Elementary



MARIE A. BATTISTA
Elementary



ELIZABETH V. BAUBLIS
Elementary



CAROLE BAUMGART
Elementary



JAMES G. BEATON
Liberal Arts



DAVID C. BENDIX
Secondary: Science



DOROTHY M. BERARD
Secondary: French



LORRAINE M. BERGERON
Elementary



CLAIRE M. BIONDO
Secondary: French



MARION R. BLACKDEN
Elementary





ANN V. BODEN
Elementary



JOAN BONNER
Elementary



DIANE C. BOTTE
Elementary



JOANNE M. BOURGET
Elementary



PATRICIA A. BRADLEY
Elementary



JOAN E. BRAMBILLA
Elementary



JANET M. BRENNION
Elementary



FRANCIS L. BRINK, JR.
Elementary



MARIE C. BRODERICK
Elementary



JUDITH A. BROWN
Secondary: Mathematics



KATHLEEN P. BROWNE
Secondary: English



RICHARD J. BRUNO
Secondary: History



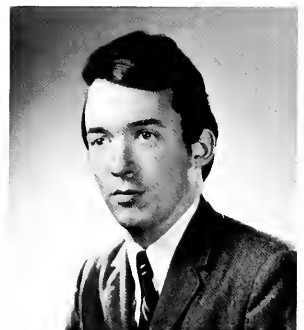
DIANE E. BUCCI
Elementary



JOHN T. BUCKLEY
Elementary



DANIEL R. BURKE
Secondary: Mathematics



EDWARD J. BURKE
Secondary: Mathematics



SALLY J. BURNS
Elementary



JANET K. BUSCANERA
Elementary



KATHLEEN M. BUTLER
Elementary



MARY A. BUTLER
Elementary



KATHLEEN M. BYRNE
Elementary



MARY A. BYRNE
Elementary



JAMES T. CADY
Elementary



JOSEPH M. CADY
Secondary: Science



KATHLEEN T. CAHILL
Secondary: Mathematics



MARGARET A. CALLAGHAN
Elementary



JOHN CAMPANA, JR.
Secondary: History



JOHN CANNEY
Secondary: History



NANCY CANNING
Elementary



RUTH A. CANNON
Elementary



NANCY E. CAREY
Primary



PETER N. CARROLL
Elementary



ROBERT J. CARTY
Secondary: History



RITA L. CASTIGNOLI
Elementary





ANNE F. CHARLTON
Elementary



VIRGINIA C. CHIAMPA
Elementary



EDWARD U. CHRISTOPHER
Secondary: History



MARJORIE J. CHRISTENSEN
Secondary: English



CYNTHIA M. CHRISTMAS
Liberal Arts



MARGUERITE L. CIAVARDONE
Elementary



SUSANN R. CIULLA
Elementary



PAULA J. CLORY
Secondary: Mathematics



JEANNE M. COLLERAN
Primary



CECELIA A. COLLINS
Elementary



SUSAN E. COLLINS
Elementary



JUDITH A. CONCANNON
Elementary



PAUL R. CONNELL
Secondary: English



FLORENCE M. CONDRY
Secondary: English



BARBARA L. CONNOLLY
Elementary



JAMES M. CONNOLLY
Secondary: History



DANIEL V. CONNORS
Secondary: Geography



EILEEN M. CONNORS
Secondary: English



JOSEPH D. CONNORS
Secondary: History



STEPHEN J. CONROY
Secondary: History



JONNA R. CONSENTINO
Secondary: Mathematics



PAUL CORRIGAN
Secondary: Spanish



FAITH CORWIN
Elementary



CHARLES P. CRIVELLARO
Elementary



JOHN F. CROMPTON
Secondary: Mathematics



CHRISTINE F. CUNEO
Secondary: English

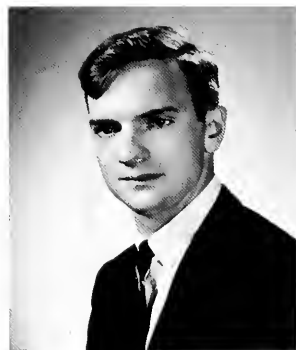


MARGUERITE L. CURLEY
Elementary



NANCY M. CURLEY
Secondary: English





JOHN CURRAN
Secondary: History



VIRGINIA N. CZMUT
Elementary



JANET P. D'ANGELO
Elementary



PATRICIA M. DALY
Secondary: English



ANTHONY DAMIANO
Elementary



PATRICIA A. DAUGSIEWICZ
Elementary



RO-ADRIENNE DAVIDSON
Secondary: English



DOMINIC DeBELLIS
Secondary: English



DIANA DeMARCO
Secondary: History



BOOKER T. DeVAUGHN, JR.
Secondary: History



GEORGETTE B. DERANEY
Secondary: French



CASSANDRA M. DESMOND
Secondary: Geography



JUDITH L. DILLON
Secondary: English



FLORENCE M. DODGE
Secondary: English



ALICE I. DOHERTY
Elementary



FRANCES R. DOHERTY
Elementary



SUSAN F. DOHERTY
Secondary: English



MARY F. DONAHUE
Elementary



LAURENCE M. DONNELLY
Secondary: History



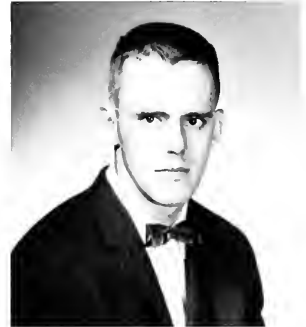
MARY T. DONNELLY
Secondary: English



BARBARA M. DONOGHUE
Elementary



MARGARET A. DONOVAN
Secondary: Mathematics



VINCENT J. DONOVAN
Secondary: English



ELAINE M. DREW
Elementary





PATRICIA A. DULLAHAN
Elementary



EDWARD R. EAGAR, JR.
Secondary: Geography



BETTY J. ELINGS
Secondary: History



BETTYANN EPPS
Secondary: French



MARILYN EPSTEIN
Secondary: English



THOMAS FRANCIS ERHARD
Secondary: Mathematics



JOAN M. FAHEY
Secondary: English



LAURENCE FALLON
Secondary: Mathematics



KEVIN FARRELL
Secondary: History



THOMAS G. FEENAN
Secondary: History



GERALDINE M. FEENEY
Liberal Arts



MARGARET T. FEENEY
Secondary: History



MARIA J. FILOSI
Elementary



JOHN F. FLAHERTY
Secondary: History



JOHN H. FLOOD
Secondary: English



JOHN J. FOLEY
Secondary: Science



MARGO A. FONTES
Elementary





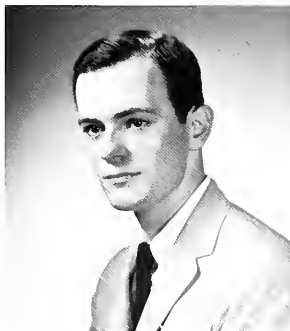
MARY LOU FORD
Elementary



FREDERICK F. FORESTEIRE
Elementary



MAUREEN R. FRASER
Primary



PETER GALLAGHER
Secondary: English



ANTHONY M. GAMBOA
Secondary: History



CAROL A. GEEZIL
Elementary



GERALDINE M. GERAH
Elementary



LUCILLE A. GERALD
Liberal Arts



ROBERT GHILANI
Secondary: English



JOHN J. GIBLIN
Secondary: Geography



DANIEL P. GILLIS
Secondary: History



LAURENCE GILLIS
Secondary: English



ELEANOR GILMORE
Elementary



JEANNE M. GLENNON
Elementary



SUSANLEE GOLOB
Elementary



DIANE GOODHUE
Elementary



BRUCE S. GOODWIN
Secondary: English



KEVIN GORMAN
Secondary: Mathematics



JOSEPH C. GRACE
Elementary



DAVID A. GRADY
Secondary: History



MARYTE T. GRINKEVICIUS
Elementary



JOAN C. GROSS
Primary



KENNETH C. HADDOCK
Secondary: Geography



JOEL HANDORFF
Secondary: Spanish



KATHLEEN HARRIS
Secondary: English



MICHAEL R. HART
Secondary: History



JAMES HARTEL
Elementary



JOHN HARVEY
Elementary



JOANNE HATZIS
Elementary



EDITH E. HAYNES
Secondary: Mathematics



RICHARD HEGARTY
Secondary: Chemistry



DAVID J. HEIDT
Secondary: Physics

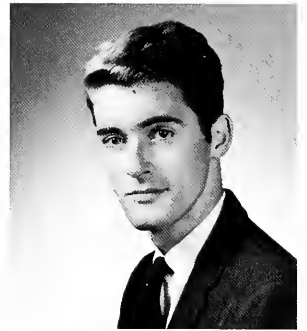


FRANCINE D. HERLIHY
Elementary





JOHN E. HICKEY
Secondary: History



EDMUND HILL
Secondary: Mathematics



ROBERT HILLIARD
Elementary



JUDITH M. HOHMANN
Elementary



ROBERTA P. HOLTZMAN
Elementary



NANCY E. HOOD
Elementary



JANET E. HOUNSELL
Secondary: Mathematics



CAROL E. HOUSE
Secondary: Mathematics



CHARLOTTE A. HUNTE
Elementary



MARY T. HURLEY
Secondary: English



SYLVESTER G. INGEME
Secondary: English



KAREN R. ISENBERG
Elementary

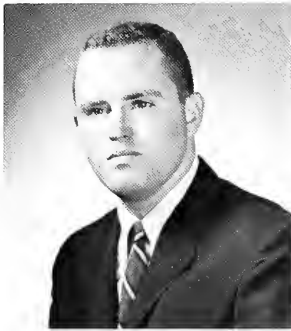


ELIZABETH JASON
Secondary: French



RUTH L. JASUS
Elementary





RICHARD L. JENKINS
Elementary



SUSAN JENNINGS
Primary



GERALD JOHNSON
Secondary: History



MAUREEN C. JONES
Elementary



CATHERINE M. JOYCE
Elementary



CAROL A. JUSZKIEWICZ
Elementary



DENCY KAISER
Secondary: History



HELEN M. KALLENBERG
Elementary



RICHARD M. KALP
Secondary: Political Science



ALICE LOUISE KANE
Primary



MAUREEN KANE
Elementary



JANET L. KARACEK
Elementary



MARY LOUISE KARAHALIS
Secondary: English



ARNOLD K. KAUFMAN
Elementary



PATRICIA KAUFMAN
Secondary: Mathematics



MARGARET T. KEARNEY
Elementary



RENA M. KELLER
Elementary



EDWARD F. KELLY
Secondary: History



KATHLEEN E. KELLY
Secondary: English



NANCY KELLEY
Elementary



WALTER P. KENNEY
Secondary: History



CATHERINE KENT
Secondary: English



ROSALIE KINGSTON
Secondary: Mathematics



MARGARET KINSELLA
Primary





KATHLEEN KIRKE
Secondary: History



KATHERINE A. KLIMAS
Secondary: Geography



RITA M. KRAL
Primary



A. MARTIN KULLEN
Secondary: Science



JUDITH A. LANE
Elementary



VIRGINIA LARNER
Secondary: English



ARLENE F. LAVIN
Secondary: Spanish



NEIL J. LAVITA
Secondary: Spanish



PATRICIA LAWRENCE
Secondary: English



JOHN C. LEAVIS
Elementary



MARY E. LEDWICK
Elementary



CAROLINE A. LEE
Elementary



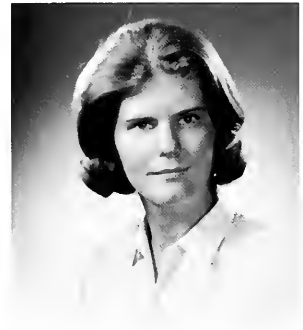
GEORGE F. LESSARD, JR.
Secondary: Science



ESTELLE H. LEVETIN
Secondary: Science



LINDA LEWIS
Elementary



PATRICIA ANN LEWIS
Elementary



SIDNEY LIBERMAN
Secondary: History



SHIRLEY LOOMIS
Elementary



VICTOR A. LOSPENNATO, JR.
Elementary



ALEXANDER A. LUCEY
Secondary: Mathematics



MARIA A. LUONGO
Elementary



SHEILA A. LYNCH
Secondary: English



KEVIN LYONS
Secondary: Mathematics



CLAIRE MCCARTHY
Elementary



DONNA MCCARTHY
Elementary



FRANK MCCARTHY
Secondary: English





JOYCE McCARTHY
Secondary: English



KATHLEEN McCARTHY
Secondary: English



MARTHA McCARTHY
Secondary: English



MAUREEN McCARTHY
Elementary



WILLIAM H. McCARTHY
Elementary



SHEILA McCRUDDEN
Elementary



STEPHEN McDONOUGH
Secondary: History



WILLIAM McDONOUGH
Elementary



MARY C. MCGILVERY
Elementary



PAUL MCGUIRE
Elementary



JOAN McKEON
Elementary



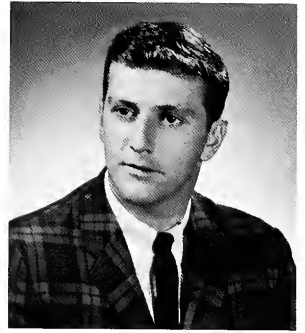
JERILYN McLAUGHLIN
Elementary



KAREN F. McLAUGHLIN
Secondary: English



STEPHEN McLAUGHLIN
Elementary



HERBERT W. McLUCAS
Secondary: English



CATHERINE E. McMAHON
Secondary: Science



KEVIN J. McMULLEN
Secondary: History



JAMES McNIFF
Secondary: English



ELLEN J. McNULTY
Elementary



FRANCIS McNULTY
Elementary



WILLIAM A. McQUILLEN
Secondary: History



DONALD B. MACLEA
Elementary



JOHN W. MACCHI
Secondary: English



PETER M. MAGUIRE
Secondary: History





JOHN S. MALATESTA
Secondary: Science



JUDITH C. MANNING
Primary



REGINA MARSOLINI
Elementary



ELAINE MARINOS
Secondary: History



CHARLES E. MARTIN, JR.
Elementary



JAMES M. MARTIN
Secondary: History



WILLIAM B. MARTIN
Secondary: History



LEO T. MAVRELES
Elementary



MAUREEN MAYOTTE
Secondary: Natural Science



JAMES MELZAR
Elementary



ANN G. MEHRHOFF
Elementary



LAWRENCE S. MENOVIH
Secondary: Mathematics



ANNA VERONICA MICELI
Elementary



JACQUELINE MILLER
Elementary





NANCY M. MILLER
Elementary



PAULINE F. MILLS
Elementary



JAN M. MINES
Secondary: French



ZIVILE M. MOCKUS
Elementary



WILLIAM F. MOHAN
Secondary: History



KATHERINE MOLONEY
Secondary: Mathematics



PAULA LEE MONDLICK
Elementary



PHYLLIS MOONEY
Primary



JOHN W. MOREY
Secondary: Physics



MARY C. MORONEY
Elementary



SUZANNE B. MOTZKIN
Secondary: French



ANNE MARIE MULLEN
Secondary: English



DONALD E. MURPHY
Secondary: History



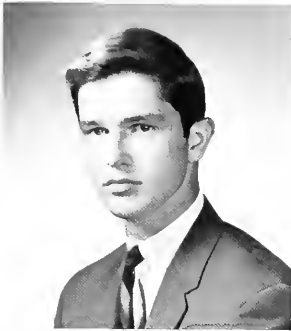
VIRGINIA M. MURRAY
Elementary



WILLIAM T. MURRAY
Elementary



EDWARD J. NABRESKI
Secondary: General Science



JOSEPH G. NEARY
Secondary: English



PATRICIA A. NICHOLSON
Elementary



KATHLEEN NOWAK
Secondary: Mathematics



CHRISTOPHER W. O'BRIEN
Secondary: History



MARY T. O'BRIEN
Secondary: English



MARYANNE O'CONNELL
Secondary: Mathematics



THOMAS N. O'DONNELL
Liberal Arts



LINDA A. O'LEARY
Elementary



ROBERT M. O'MALLEY
Secondary: History



KEVIN P. O'MALLEY
Secondary: English





GRACE O'NEIL
Secondary: English



PATRICIA A. O'NEILL
Elementary



GERALD F. O'REILLY
Liberal Arts



KEVIN F. OLIVER
Elementary



JUNE E. OLSON
Secondary: English



JONATHAN R. OMAN
Secondary: History



RICHARD P. PALMIERI
Secondary: Geography



RICHARD PAUL
Secondary: Mathematics



CAROL PENNEY
Primary



MARY ELLEN PETRONE
Elementary



ANNE M. PISHKIN
Secondary: English



MARIANNE R. POLLARD
Secondary: English



ANITA PORTMAN
Secondary: English



MARILYN (FIRGER) PREISKY
Primary





EDWARD J. PRICE
Secondary: English



DENNIS PAUL QUINN
Secondary: English



LOUISE QUINN
Elementary



SUSAN QUINN
Elementary



CHARLES A. RAFFONI
Secondary: English



PAULA J. REARDON
Secondary: French



THOMAS F. REYNOLDS
Secondary: English



JOYCE M. RICCI
Secondary: English



LOIS RICCI
Elementary



DEENA RICE
Elementary



BRUCE H. ROMBOLI
Elementary



EDWARD ALAN ROMKEY
Secondary: Mathematics



NICHOLAS RUBINO
Secondary: Science



DOROTHY RYAN
Secondary: Spanish



MICHELE RYAN
Secondary: History



JAMES SAMSON
Elementary



MARIE SANDS
Primary



MARYANN SANFORD
Elementary



JOSEPH P. SAVIGNANO
Elementary



URSULA SAWICKI
Secondary: Mathematics



VINCENT A. SCADUTO
Elementary



BARBARA A. SCANLON
Secondary: Mathematics



MARYELLEN P. SCANNELL
Elementary



ROSARIO C. SCARCELLA
Secondary: Geography





MAUREEN R. SCULLY
Elementary



JOANNE M. SEMPOLINSKI
Secondary: History



SHEILA M. SENNOTT
Elementary



DOROTHY M. SHACK
Elementary



JOHN C. SHAW
Liberal Arts





MARYANN E. SHEEHAN
Elementary



ROBERT SHEEHY
Secondary: English



FRANCES SHERLOCK
Elementary



MIRIAM SHUMAN
Elementary



ALAN G. SIEGAL
Secondary: French



WILLIAM SILK
Elementary



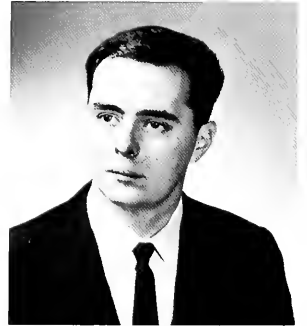
CAROLE SILVESTRI
Elementary



BARBARA J. SIMS
Elementary



RICHARD L. SMITH
Secondary: Political Science



ARTHUR A. SNYDER
Secondary: Geography



MARGARET M. SNYDER
Primary



M. ELAINE SPELLMAN
Elementary



CAROLYN E. SPINA
Elementary



JUDITH A. STEVELMAN
Secondary: Spanish



MARYLOU STEWART
Primary



LINDA J. STONE
Elementary



JOSEPH P. SULLIVAN, JR.
Elementary



FRANCES D. SUMSKI
Elementary



STEPHEN A. SUTERA
Liberal Arts



ARTHUR R. SWANSON
Elementary





CAROL TAYLOR
Primary



NANCY M. THOMPSON
Secondary: French



JOSEPH M. TIERNEY
Secondary: English



MARY J. TOMPOSKI
Primary



CAROL TRACY
Secondary: French





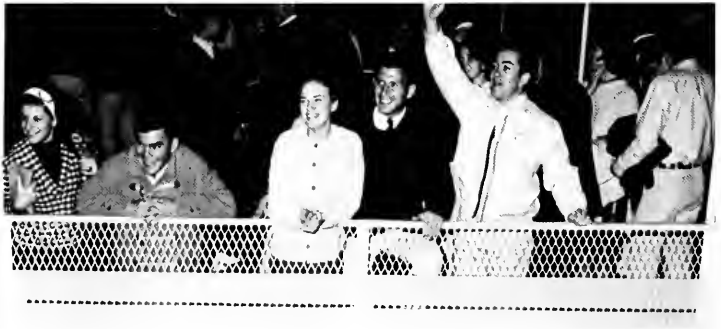
ANTHONY R. TRODELLA
Elementary



KATHLEEN M. TROY
Elementary



DENIS S. TUTTEN
Elementary



ELENA URBSAS
Elementary



MARINA VASCONCELLOS
Primary



JANET M. WAGNER
Elementary



KEVIN WALKER
Secondary: History



ROBERT J. WALLACE
Secondary: Mathematics



LARRAINE WEBBER
Elementary



LAWRENCE D. WHALEN
Secondary: Natural Science



KATHLEEN T. WHITE
Elementary



ANN M. WHITNEY
Secondary: Mathematics

JUDITH ALDEN
40 Central Drive
Stoughton
Psychology Club

RICHARD PAUL ALLEN
140 Newland St.
Malden
French Club 2,3, Pres. 2
Lecture Society 2,3, Sec. 3

JEANETTE RUTH BAILET
452 Norfolk St.
Mattapan
V.S.B.; Exec. Comm. 3,4
V.S.B. Training Workshop 3
Hillel 1
Usher at Class Day and Graduation
1,2
Christmas Party 3
Student Exchange Meeting 1,2,3
President's List 1,2,3

SHARON ANNE BANDLOW
5 Reddy Avenue
Hyde Park
Newman Club 2,3,4

JANET BARIL
4 Pleasant Garden Road
Canton
P.S.A. 1

SUSAN BARNES
65 Dudley St.
Cambridge
Christmas Party 3
Newman 1,2
Young Democrats 4
Pops Committee 4

MARIE BATTISTA
140 Hull Street
Boston
Newman Club 1,2,3
Christmas Party Comm. 3
Young Democrats

ELIZABETH V. BAUBLIS
145 Farragut Road
South Boston
V.S.B. 2
Music Club 1,2,3,4, Pres. 3, Sec. 4
Honors Program 3,4

CAROLE L. BAUMGART
456 Waltham St.
Lexington
Newman Club 1
Music Club 2,3,4

JAMES G. BEATON
41 Parkman St.
Gun Club 3,4
S.G.A. Budget Comm. 3
Cruise Comm. 3

DAVID C. BENDIX
80 Narragansett Road
Quincy

DOROTHY M. BERARD
175 Elm St.
Lawrence
French Club 2
Newman Club 1
Co-op. Tea 1,2,3
V.S.B. 4
Lampas 4

LORRAINE M. BERGERON
49 Fifth Road
Roslindale
Spanish Club 1
V.S.B. 2
Lecture Society 3,4, Sec. 3,4

CLAIRE BIONDO
103 Colberg Ave.
Roslindale
French Club
Spanish Club
Newman Club
Literary Club

MARION BLACKDEN
11 Verdun St.
Dorchester
Christmas Party 3
Newman Club 1,2,3,4
V.S.B. 1,2,3,4
Music Club 2
Dean's List 3

ANN BODEN
76 Forest St.
Roxbury
Newman Club 1
Music Club 2,3,4

JOAN BONNER
400 Massachusetts Ave.
Arlington

DIANE BOTTE
166 Perkins St.
Melrose
Newman Club 2,3,4
Music Club 2
V.S.B. 2,3,4
Christmas Party 3
W.R.A. 1,2,3,4
Lampas 4
Dean's List 3

JOANNE M. BOURGET
18 Pond St.
Jamaica Plain
College Co-ordinator 3
Gold Torch Society 2,3,4
Newman Club
National Teacher's Convention 3
Chairwoman for Co-op. Teacher's
Tea 2
Chairwoman for Freshman Parent's
Tea 4
V.S.B. 2
Freshman Orientation 3
Bridgewater Conference 3
Dean's List 4

PATRICIA BRADLEY
20 Birch Road
Norwood
Newman Club 1,2
Music Club 2,3,4
W.R.A. 1,2,3,4
Psychology Club 1
V.S.B. 2
Bowling Club 1

JOAN BRAMBILLA
6 Kerma Road
West Roxbury
Newman Club 1
Lampas 4

JANET BRENNION
24 Wampatuck Road
Quincy
Rifle Club
Psychology Club

FRANCIS L. BRINK, JR.
31 Massasoit St.
Mattapan

JOSEPH C. BRODERICK
144 Minot St.
Dorchester
S.G.A. Budget Comm. 3
Cruise Committee 3
Newman Club

MARIE BRODERICK
144 Maida Terrace
Hyde Park
Bowling Club 1,2,3
One Act Play 1
Dean's List 1,3
President's List 2

JUDITH A. BROWN
96 Milton St.
Dorchester
Newman Club 1,2,3
S.G.A. Rep. 1,2, Rec. Sec. 3
Co-Chairman Green and Gold 4
Co-ordinator of Lecture Society 4
Math Club 4
Gold Torch Society 3,4
Literary Club 3
Princess of Winter Carnival 2
All College Banquet 3
Dance Committee 1,2
Co-op. Teachers' Tea 3
State Colleges S.G.A. Conf. 3
Conference for Eastern Teachers 3
Orientation 3
Freshman Parents' Tea 2,3
Junior Parents' Tea 2
Mimeograph 2,3
Election Committee 3

KATHLEEN P. BROWNE
16 Cedar St.
Somerville

RICHARD BRUNO
33 Newbury St.
Revere
Newman Club 1
One Act Play 3
Drama Club 3,4

DIANE BUCCI
69 Grove St.
West Medford
W.R.A. Fencing Club
V.S.B.
Newman Club

JOHN THOMAS BUCKLEY
206 Shurtleff St.
Chelsea
Varsity Basketball 1,2,3,4
Gold Torch Society
Dean's List
Newman Club
Varsity Club
Intramural Football
Freshman Orientation 3

DANIEL BURKE
62 Chickatawut St.
Dorchester
V.S.B. 2,3,4
Gold Torch Society 3,4
Math Club 4
Chess Club 3,4
Freshman Orientation Comm.
Chairman

EDWARD J. BURKE
94 Hawthorne St.
East Weymouth

SALLY BURNS
31 Wellesley Parkway
Dorchester
V.S.B. 1,2,3,4
Music Club 2
Dancing Club 4
W.R.A. 1,2,3,4
Newman Club, Executive Board
1,2,3
Swimming Club 3

JANET BUSCANERA
92 Ten Hills Road
Somerville
Newman Club 1,2; Activities Comm.
2
Spanish Club 1,2,3, Sec.-Treas. 2
V.S.B. 2

KATHLEEN BUTLER
37 Richie Road
Quincy
Newman 1
Drama Club 1,2,3,4
Alpha Psi Omega 4
Horseback Riding Club 2
Freshman Parents' Tea 3
V.S.B. 1,3
One Act Play Contest 1,2,3, Best
Actress 3
"The Curious Savage" 3
"The Skin of Our Teeth" 4

MARY AGNES BUTLER
37 Richie Road
Quincy
Bowling Club 3
Newman Club 1,2,3,4
V.S.B. 2,3
Freshmen Orientation 3

KATHLEEN MARIE BYRNE
7 Bacon St.
Arlington
S.G.A. Asst. Treas. 1, Sec. 3
Newman Club 1,2
Chairman of Mimeograph Comm. 3
Math Club 3
One Act Play Co-ordinator 3
Curriculum Committee 3
Gold Torch Society 3,4
Dean's List 3,4
Leadership Dinner Chairman 3

MARY A. BYRNE
317 Alenfe Brook Parkway
Somerville

JAMES T. CADY
13 Marimon St.
Jamaica Plain

JOSEPH M. CADY
447 Grove St.
Canton
Newman Club 1,2
Class President 3,4
Gold Torch Society 4
Commencement Exercises 3
Senior Cap and Gown Ceremony 4
Freshman Parents' Tea 2
Dedication of Kennedy Building 3

KATHLEEN T. CAHILL
353 Main St.
Charlestown
Dean's List 1

S.G.A. Elections 2
"Oklahoma" 3
One Act Play Contest 3
Chalkdust 3
Math Club 4

MARGARET CALLAGHAN
126 Maple St.
West Roxbury
Newman Club 1,3

JOHN CAMPANA, JR.
9 Arizona Terrace
Arlington
Psychology Club 1
Bowling Club
Newman Club 1,2,3,4
Intramural Football

NANCY CANNING
15 Becket St.
Dorchester
Newman Club 1,2,3,4, Exec. Board
3,4
Music Club 2
W.R.A. 1,2,3,4
V.S.B. 2,3,4
Christmas Party 3
Chairman of Handbook Comm. 4
Lampas 4
S.G.A. Publicity Comm. 3

RUTH CANNON
849 Cummins Highway
Mattapan
Newman Club 1

NANCY E. CAREY
106 Clapp St.
Milton
Music Club 2
Cheerleading 3,4
Psychology Club 1
W.R.A. Dance Club 4
Newman Club 1,2

JOHN F. CARNEY
4 Morton Place
Roxbury
Intramural Basketball 1,2,3,4
Intramural Football 1,2,3,4

PETER NATHAN CARROLL
30 Maple St.
Walpole

ROBERT CARTEY
23 Wycliff Ave.
West Roxbury
Intramural Basketball 1,2
Intramural Football 1,2
Psychology Club 1

RITA CASTIGNOLI
44 Pitman St.
Somerville
Music Club 2,3,4
Newman Club 1

WALTER CAVANAGH
14 Wesley St.
Somerville

ANNE F. CHARLTON
125 Summer St.
Somerville

HELEN J. CHERKERZIAN
40 Jamaica Way
Jamaica Plain
Junior Christmas Party

VIRGINIA CHIAMPA
63 Russell St.
Charlestown
Newman Club 1

EDWARD CHRISTOPHER
45 Mapleton St.
Brighton
Intramural Basketball 2,3

MARJORIE J. CHRISTENSEN
2 Briscoe Road
Groveland
Dean's List 1,2,3
Honor Program 3,4

CYNTHIA MARIE CHRISTMAS
152 Bunker Hill St.
Charlestown
Graduation Usher 2

MARGUERITE L. CIAVARDONE
33 Aberdeen Rd.
Somerville

SUSANN R. CIULLA
249 Vine St.
Everett

PAULA J. CLORY
117 Bartlett Ave.
Belmont
W.R.A. Executive Comm. 1,2,3,4
Math Club 3,4

JEANNE COLLERAN
81 Farragut Rd.
South Boston
Newman Club 1
V.S.B. 2,3,4
W.R.A.
Dean's List 3

CECELIA A. COLLINS
35 Partridge Ave.
Somerville
Newman Club
Young Democrats
Christmas Junior Party
Banquet Committee

SUSAN COLLINS
120 Lake Shore Drive
Westwood
Newman Club Rep. 1
Sailing Club
Lecture Society
Cap and Gown Day Co-chairman
Oklahoma 3
Co-op. Teachers Tea

JUDITH A. CONCANNON
509 Centre St.
Milton

FLORENCE CONDRY
121 Glenellen Rd.
West Roxbury
Drama Club
Newman Club

PAUL CONNELL
15 Dix St.
Dorchester
Chalkdust 1,2
Music Club 1
Literary Society 2

BARBARA CONNOLLY
179 La Grange Street
West Roxbury
Newman Club
Volunteer Service Bureau
W.R.A.
Drama Club
Junior Christmas Party

JAMES M. CONNOLLY
233 "17" Street
South Boston
Newman Club 1,2,3,4
Math Club
Intramural Athletics

THOMAS F. CONNOLLY
1 Chardon Road
Winchester

DANIEL V. CONNORS
6 Prichard Avenue
Somerville
Basketball 1,2,3,4
Baseball 1

EILEEN M. CONNORS
277 Beech Street
Roslindale
Newman Club 1
Literary Club 3
Chalkdust 2
Dean's List 1,3,4
President's List 2

JOSEPH D. CONNORS
85 Linden Road
West Roxbury
Dean's List 1,2,3,4
Honors Program
Newman Club 1

STEPHEN J. CONROY
4 Radcliffe Road
Somerville
Junior Christmas Party
Chess Club
Intramural Football 1,2,3
Intramural Basketball 1,2
Baccalaureate Exercises
Lampas

JOANNA R. CONSENTINO
687 Puritan Street
Whitman

PAUL CORRIGAN
141 East Cross Street
Norwood

FAITH CORWIN
20 Bailey Street
Dorchester

CHARLES P. CRIVELLARO
53 Oak Street
Hyde Park
Gun Club 3,4
Newman Club 3,4

JOHN F. CROMPTON
24 Linden Street
Norwood
Intramural Football 1,2,3
Intramural Football 3,4

CHRISTINE F. CUNEO
112 Murdock Street
Brighton
Newman Club 1
Co-op. Teachers Tea Comm. 2
Literary Club 2, V.P. 3,4
One-Act Play Comm. 3
Holiday Ball Chairman 3,4
Lampas 4
Dean's List 1,2,3,4

MARGUERITE CURLEY
73 Draper Street
Dorchester
Newman Club 1
Tennis Club 1
Psychology Club 1

NANCY M. CURLEY
109 Willow Street
West Roxbury
Newman Club 1

JOHN CURRAN
159 Forest Hills
Jamaica Plain
Newman Club
International Affairs Club

VIRGINIA N. CZMUT
82 Sycamore Street
Boston
Volunteer Service Bureau 1,2,3
Archery 1,2
Music Club 2,3,4

PATRICIA DALY
33 Woodleigh Road
Watertown
S.G.A. Rep. 1,2,3
Spectrum Reading Board 2
Spectrum Editor 3
Election Committee 2
Newman Club 1,2
Young Christian Students 3,4

ANTHONY DAMIANO
26 Margaret Street
Boston

JANET P. D'ANGELO
84 Tyler Street
Quincy
Cheerleading 1,2,3, Capt. 4
Gold Torch Society 3,4
Lampas Art Editor 4
Handbook Comm. 4
Junior Prom Chairman 3
V.S.B. 2,3,4
Newman Club 1,2
W.R.A.
Publicity Comm. Chairman 3

RO-ADRIENNE DAVIDSON
139 Harrishof Street
Dorchester
All College Banquet Comm.
Chairman 3
S.G.A. Award 3
Music Club 1

JOHN DAVIN
30 Dwight Street
Boston
Chess Club V.P.
All College Banquet Entertainment
Junior Banquet Entertainment

PATRICIA DAUGSIEWICZ
16 Waldo Avenue
Somerville
W.R.A.
Newman Club
V.S.B.
W.R.A. Rep.
Chalkdust
Tennis Club
Modern Dance Club

DOMINIC DeBELLIS
27 Shore Drive
Somerville
Varsity Basketball 1,2,3
Chalkdust
Lampas Sports Editor

DIANA DE MARCO
193 Broadway
Somerville
V.S.B. Executive Comm. 2,3,4
Newman Club 1
Co-op Teachers Tea 1,2,3
Lampas 4
Freshmen Orientation
One Act Play 3

GEORGETTE B. DERANEY
77 DeSoto Rd.
West Roxbury
President's List 1,2,3
French Club
Spanish Club
Orthodox Club
Literary Society

CASSANDRA M. DESMOND
787 E. 4th St.
South Boston
Social Co-ordinating Comm. Co-chairman 4
Junior Banquet Comm. 3
Junior Cruise Comm. 3
Newman Club 1,2,3,4
Mimeograph 3
Lecture Society 4
Cafeteria Comm. 3
Dance Committee 1
Holiday Ball Comm. 2

BOOKER T. DeVAUGHN, JR.
18 Mayfair St.
Roxbury
Junior Christmas Party
P.S.A.

WILLIAM DEVER
11 Benthan Rd.
Dorchester
Intramurals

JUDITH DILLON
21 Sterling St.
Somerville
Young Democrats
Banquet Comm.
Dean's List 1

FLORENCE M. DODGE
150 Rosseter St.
Dorchester
Alpha Psi Omega 2,3,4, Sec. 4
Drama Club 1,2,3,4, V.P. 4
Literary Club 3,4
S.G.A. Musical 1,2,3
One Act Play 2,4
Annual Drama Production 2,4
W.R.A. Executive Board 3,4
Junior Banquet
Gold Torch Society 4
Newman Club 1,2,3,4
Co-op. Teacher Tea
Math Club 4
S.G.A. Rep. 4
Freshmen Orientation

ALICE DOHERTY
23 Heard Rd.
Arlington
Newman Club 1
Dean's List 3

FRANCES RITA DOHERTY
30 Minot St.
Dorchester
Newman Club 1,2,3,4
W.R.A. 1,2,3,4
Democratic Club 3,4
Freshman Dance Comm.
Senior Week
All College Banquet 3
Dean's List 3
Sophomore Dance Comm.
Christmas Party Comm.

SUSAN DOHERTY
76 Edwin St.
Quincy
V.S.B. 2
B.S.C. Rep. to Eastern States
Exposition College Queen Contest 3
Junior Week Comm. Chairman 3
Presidents List 1,2,3
Honors Program 3
Lampas Literary Editor 4
Psychology Club 3
Graduation Day Comm. 4

MARY DONAHUE
20 Aldrich St.
Roslindale
Newman Club 1,2,3
V.S.B. 2,3
Young Democrats 3,4
Dean's List 3
Art Club 1,2

LAWRENCE M. DONNELLY
19 Perkins Ave.
Hyde Park

MARY T. DONNELLY
79 Potomac St.
West Roxbury
Newman Club 1,2,3,4
Literary Club 3,4
Chalkdust 3,4
Freshmen Orientation 3

BARBARA DONOGHUE
55 Mercier Ave.
Dorchester
Bowling League 1,2,3
Dean's List 1,3
President's List 2
One Act Play 1

MARGARET DONOVAN
9 Vogel St.
West Roxbury

VINCENT DONOVAN
31 Hilltop St.
Dorchester
Newman Club
Chalkdust Sports Editor
Hockey

ELAINE DREW
104 Menfield Rd.
Mattapan
Dean's List 2,3,4
V.S.B. 2,3,4
Freshmen Parents' Tea 3
Bowling Club 3
Newman Club 1,2

PATRICIA DULLAHAN
119 Kenrick St.
Brighton
V.S.B. 2
International Affairs 4
Young Democrats 3,4
Deans List 3,4

EDWARD R. EAGAR
761 E. Broadway
South Boston
Intramural Football 1,2,3,4
Honors Program 3
Newman Club 1
S.G.A. Rep. 1

BETTY ELINGS
138 Pine St.
Cambridge

HENRY ENGE
54 Neponset Ave.
Dorchester
History Club 4
Newman Club 3,4
Intramural Football 4
Intramural Basketball 4

BETTYANN EPPS
83 Clifton St.
Dorchester
French Club 1,2
P.S.A. 1,2

MARILYN EPSTEIN
18 Livingston St.
Dorchester
Hillel 1
V.S.B. 2
W.R.A. 2

THOMAS FRANCIS ERHARD
15 Winstead Ave.
Dedham
Math Club
Newman Club

JOAN M. FAHEY
56 Barrett St.
Revere
Newman Club 1,2
Literary Club 2
W.R.A. 2
S.G.A. Musicals 2,3,4
Sophomore Dance Comm. 2
Junior Banquet Chairman 3
Lampas Managing Editor 4
President's List 1,2,3
Honors Program 3
Gold Torch Society 4

LAWRENCE FALLON
34 Howe St.
Dorchester

KEVIN FARRELL
46 Ferncroft Rd.
Milton
Newman Club 1,2,3,4
Chalkdust 3,4
Young Republicans 3,4, V.P. 4
Election Committee 1,3
Lampas Photographer
Wrestling Team 3

THOMAS G. FEENAN
29 Freeland St.
Mattapan
Newman Club 1,2,3,4
Intramural Basketball 1
S.G.A. Rep. 2,3
Holiday Ball Chairman 3
Junior Cruise Chairman 3
Junior Week Comm. 3
S.G.A. President 4

GERALDINE M. FEENEY
83 Blueledge Dr.
Roslindale
Newman Club 1,3
Golf Club 1

MARGARET THERESA ANN
FEENEY
41 Harvard St.
Brookline
Psychology Club 1,2,3,4, V.P. 3,4
Freshmen Parents Tea Comm. 3
Senior Week Comm.
Newman 1,2
Dean's List 2,3
S.G.A. Musical 4

MARIA FILOSI
19 Sartwell Ave.
Somerville
Spanish Club 1
V.S.B. 2, Executive Comm. 3,4
Music Club 3,4

JOHN F. FLAHERTY
150 W. 3rd St.
South Boston

JANE F. FLEMING
49 Idaho St.
Mattapan
Newman 1,2,3,4
V.S.B. 2
International Relations Club 4
Senior Christmas Fair 4
S.G.A. Musical 2,3

JOHN H. FLOOD
89 Fletcher St.
Roslindale

JOHN J. FOLEY
38 Roseclair St.
Dorchester
Hockey Team 1,2,3
N.E. State Champion Discus
Thrower 3
Intramural Football 2,3
Intramural Basketball 2,3
Track Team 3

MARGO FONTES
40 Rector Rd.
Mattapan
Newman Club 1,2,3,4
Psychology Club 3
W.R.A. 1,2,3,4
V.S.B. 2
Bowling 2

MARY FORD
38 Hill Top St.
Dorchester
V.S.B. 2
Newman Club 1
Music Club 2

FREDERICK F. FORESTEIRE
30 Harding Ave.
Everett

MAUREEN R. FRASER
10 Ballou St.
Quincy
Bowling Club
Music Club

PETER GALLAGHER
24 Cerro St.
Winthrop

ANTHONY M. GAMBOA
385 Blue Ledge Dr.
Roslindale
Literary Club Treas. 3
Lampas
Newman Club 1,2,3,4
Social Coordinating Comm.
Chairman 4
All College Banquet Comm. 4
All College Banquet Entertainment 1
Election Comm. 2
Prom. Comm. 4
Chalkdust 2

CAROL A. GEEZIL
23 Allison St.
Dorchester

GERALDINE MARIE GERAH
16 Bunton St.
Milton
Newman Club 1,2,3
W.R.A. 1
Psychology 3
Spanish Club 1
Dean's List 1,3,4
President's List 2

LUCILLE A. GERALD
103 Highland St.
Roxbury
Math Club
Bowling Club

ROBERT GHILANI
30 Edgewood Ave.
Natick
Hockey 3,4

JOHN J. GIBLIN
76 Hillside Street
Roxbury
Intramural Football 1,2
Philosophy Club 2
Spectrum, Business Manager 2,3
Lecture Society 2,3

DANIEL P. GILLIS
103 Vernon Street
Norwood
Dean's List 3

LAURENCE GILLIS
319 Washington Street
Dorchester
S.G.A. Representative 1,2,3, Exec.
V.P. 4
Chalkdust 3
"Curious Savage" 3
Cafeteria Comm. Chairman
Election Comm.
Handbook Comm.
Constitution Comm.
AM-FM Comm. Chairman
Gold Torch Society
Freshman Parents' Tea Comm.
Hootenanny Comm. Chairman

ELEANOR B. GILMORE
Old Main Street
Marshfield Hills
Newman Club 1,2
W.R.A. Basketball 1

ROBERT GLAUDEL
28 Harding Avenue
Everett

JEANNE GLENNON
20 Ponkapoag Way
Canton
Newman Club 1,3
V.S.B. 2
Freshman Orientation Comm. 3
Freshman Parents' Tea 3
Lampas 4

SUSANLEE GOLOB
5 Poyson Street
Quincy
Hillel
V.S.B.

DIANE GOODHUE
18 Dysart Street
Quincy
Newman Club 1,2
V.S.B. 2
Chalkdust 3
Lampas 4

BRUCE S. GOODWIN
31 Willis Street
Dorchester
Music Club 2,3,4
Intramural Sports 1,2,3

All-College Banquet 3
Prom Committee 4
"My Fair Lady" 4

ELIZABETH A. GORMAN
63 Wiseval Road
Newton

KEVIN J. GORMAN
77 Empire Street
Boston
President's List 1,2
Dean's List 3
Intramural Basketball 3
Newman Club 1,2
Honors Program
Math Club 3,4

JOSEPH C. GRACE
590 Centre Street
Jamaica Plain
Dean's List 1,2
Chalkdust, Layout 2, Circulation
Manager 3
Elementary Curriculum Comm.
Chairman 3
Young Democrats 3,4
P.S.A. 3,4
Lampas Circulation Manager 4

DAVID A. GRADY
52 Sherwood Road
Boston
Newman Club 1,2,3,4
Christmas Party 3
Chess Club 3,4
Intramural Football 2,3
Lampas 4
Baccalaureate Day Comm
Budget Comm. 3

JOAN C. GROSS
27 Fyndale Street
Roslindale
Newman Club 1
V.S.B. 2,3,4
Psychology Club 3
Dean's List 3

MARYTE T. GRINKEVICIUS
468 East 7th Street
South Boston
W.R.A.
Newman Club
V.S.B.

KENNETH C. HADDOCK
128 Sylvia Street
Arlington
Rifle Club Equipment Manager 3
One-Act Play, Stage Crew
"My Fair Lady," Stage Crew

ALICE E. HALL
87 Rockland Place
Newton

JOEL HANDORFF
102 Grove Street
Chelsea
Hillel
Drama Club
Spanish Club
"Guys and Dolls" 1
"L'il Abner" 2
"Oklahoma!" 3
One-act Play Contest 1,2,3
Alpha Psi Omega 3,4

KATHLEEN HARRIS
41 Newburg Street
Roslindale
Newman Club 1,2,3
Art Club 2
Lampas 4
International Relations Club 4

MICHAEL R. HART
10 West Selden Street
Mattapan
All-College Banquet Co-Chairman 4
Chalkdust 4
Constitution Comm. Chairman 4
Curriculum Comm. 3
Election Comm. 3,4
"Guys and Dolls" 1
Hillel 1
Intramural Basketball 1,2
"L'il Abner" 2
S.G.A. Rep. 3, Parliamentarian 4
Student-Faculty Comm. Chairman
3,4
Senior Banquet Chairman 4
"My Fair Lady" 4
Gold Torch Society 4

JAMES HARTEL
96 McBride Street
Jamaica Plain
Psychology Club 1
Chalkdust 3

JOHN J. HARVEY
111 Wilmington Avenue
Dorchester
Chalkdust, Editor-in-Chief 3, Layout
3
Editor 3
Gold Torch Society 4

JOANNE HATZIS
178 Sherrin Street
Hyde Park
Music Club 3,4

EDITH E. HAYNES
16 Wabon Street
Roxbury
Class Vice-President 1,2,4
S.G.A. Rep. 3
W.R.A. Intercollegiate Basketball
1,2,3
All-College Banquet Chairman 3
One-Act Play Contest 2
Leadership Dinner Chairman 4
Junior Event Chairman 3

RICHARD F. HEGARTY
59 Fuller Street
Dorchester
Wrestling
Spanish Club
Lecture Society

DAVID J. HEIDT
46 Bailey Road
Arlington
Honors Program
V.S.B.
Math Club

FRANCINE D. HERLIHY
126 Darrow Street
Quincy
Sailing Club
Newman Club
Rifle Club Sec. 3

JOHN E. HICKEY
14 Dowse Street
Everett
S.G.A. Rep. 1
Cross-Country 2,3
Track 3
V.S.B. 2

LEO B. HIGGINS
26 Ronan Street
Dorchester

EDMUND HILL
164 Pleasant Street
Cambridge
Bowling Club
Honors Program
Math Club

ROBERT W. HILLIARD
201 Summer Street
Somerville
Dean's List 1,3
Young Republicans Treas. 3,4
Lecture Society, Publicity Chairman 3
Chalkdust 3,4, Business Manager 3
S.G.A. Rep. 4
Curriculum Comm. 3
Constitutional Comm. 3,4
Budget Comm. 3
Gold Torch Society 4
Graduation Day Comm. 4
Lampas Editor-in-Chief 4

JUDITH M. HOHMANN
139 Maple Street
West Roxbury
Newman Club 1,2,3,4
W.R.A. 1,2,3,4
V.S.B. 2
Bowling Club 2
Psychology Club 3

ROBERTA P. HOLTZMAN
39 Woolson Street
Mattapan
Christmas Party 3
W.R.A. 2
Dean's List 2,3

NANCY HOOD
45 Samost Street
Dorchester
V.S.B. 2
Music Club 2
Newman Club 1
Bowling Club 3

Dancing Club 4
Christmas Party 3
W.R.A. 1,2,3,4
Dean's List 3

JANET E. HOUNSELL
276 Spring Street
West Roxbury
Newman Club 1
Math Club 3,4
Freshman-Parents Tea Co-Chairman 3

CAROL HOUSE
2 Pleasant Place
Cambridge
Lampas 4

CHARLOTTE A. HUNTE
92 Maple Street
Dorchester
Lecture Society 3
Newman Club 1
Psychology Club 3
Spanish Club 1,2

MARY T. HURLEY
14 Talbot Street
Malden
Newman Club 1
Dean's List 2,3
Lampas 4

SYLVESTER G. INGENE
11 Albion St.
Medford
Newman Club 1
Psychology Club 1

KAREN R. ISENBERG
8 Wellington Hill St.
Mattapan
Archery Club

ELIZABETH JASON
7 Newton St.
Cambridge
Lampas 4

RUTH L. JASUS
825 Saratoga St.
East Boston

RICHARD L. JENKINS
49 Cheever St.
Milton
Intramural Basketball
Intramural Football

SUSAN JENNINGS
57 Groveland Street
Dorchester
Co-operating Teachers' Tea
Newman Club
V.S.B.

GERALD JOHNSON
41 Prospect St.
Watertown

MAUREEN C. JONES
22 Grace Dr.
Wilmington
Newman Club
V.S.B.

CATHERINE M. JOYCE
66 Saint Gregory St.
Dorchester
Music Club 1
Newman Club 1
Psychology Club 1
W.R.A. Rep. 1,2

CAROL A. JUSZKIEWICZ
17 Keswick St.
Boston

EUGENE KACTOWKA
83 Bird St.
Dorchester

DENCY KAISER
72 Page Rd.
Newtonville

HELEN M. KALLENBERG
5 Blanford Rd.
Jamaica Plain
Cheerleader 3
Christmas Party Chairman 3
V.S.B. 2

RICHARD M. KALP
56 Kingsdale St.
Dorchester
Hillel 1
Bowling Club 1

Constitution Comm. 2,3,4
Dance Comm. 2
Election Comm. 2,3
Junior Christmas Party 3
Junior Hootenanny Comm. 3
Victory Supper Chairman 3
Student-Faculty Comm. 3,4
Curriculum Comm. 3,4
Cafeteria Comm. 3
Junior Banquet 3
Junior Class Outstanding Service Award
All-College Banquet Co-Chairman 4
Lampas Advertising Manager 4
Senior Banquet 4
Student-Faculty Tea Chairman
S.G.A. Student Council 4

DOROTHY F. KAMISON
23 Springlax Cir.
Braintree

ALICE-LOUISE KANE
22 Dewey St.
Watertown
Literary Club
Music Club
Newman Club

MAUREEN L. KANE
21 Shannon St.
Boston
Junior Christmas Party, Decorations

JANET L. KARACEK
26 Gardner St.
Chelsea
Hillel 1,2,3, Corr. Sec. 2
W.R.A. 1,2,3

MARY LOUISE KARAHALIS
32 Bird Rd.
Norwood
Literary Club
Newman Club

ARNOLD KAUFMAN
200 Congress Ave.
Chelsea
S.G.A. Rep.
Sophomore of the Year Award 2
Psychology Club
Intramural Football
Intramural Basketball
Senior Week Comm. 4
Lil' Abner 2
Author of State College News for Boston Globe

PATRICIA KAUFMAN
30 Faure St.
Mattapan
Music Club Pianist
Graduation Week Exercises
Newman Club 1

SIDNEY CARL KAUFMAN
91 Esmond St.
Dorchester
Lampas 4
Hillel 4
V.S.B. 4
Young Democrats 4
Psychology Club 4
Literary Club 4
All-College Banquet Comm. 4

MARGARET T. KEARNEY
706 Adams St.
Dorchester

RENA M. KELLER
23 Arborcrest Terr.
Mattapan
Hillel 1,2
French Club 1

EDWARD F. KELLY
122 Ward St.
Roxbury

KATHLEEN E. KELLY
40 Puritan Dr.
Quincy
Newman Club 1,2
Literary Club 3
V.S.B. 3,4

NANCY KELLY
59 Flynt St.
North Quincy
Winter Carnival Chairman 1
Newman Club 1,2,3
Cheerleader 1,2,3,4, Co-apt. 4
V.S.B. 1,2,3
W.R.A. Executive Board 4
Gold Torch Society 4 Sec.
Handbook Comm. 3

WALTER P. KENNEY
16 Alicia Rd.
Dorchester
Newman Club 1,2, Officer 1
Hockey Team 2,3,4 Mgr.
Gun Club 3,4
Pops Night Comm. 3
International Relations Club 4
Green and Gold Dance Comm. 4

CATHERINE KENT
2 Kane Cir.
Dorchester
Lecture Society
Literary Club
Guys and Dolls 1
Entertainment at College Banquets

ROSALIE KINGSTON
159 Bowdoin St.
Dorchester

MARGARET KINSELLA
76 Westglow St.
Dorchester
Music Club 2
Cheerleader 3

KATHLEEN KIRKE
12 Rose Rd.
Revere
W.R.A., Sec. 3, V.P. 4
Pop's Committee 3
Cap and Gown Ceremony Chairman 3
Newman Club 1,2,3,4
Tennis Club 1,2
Golf Club 1,2,3,4
Swimming Club 3,4
Basketball 1
Dance Club 3,4
Teacher Teas 1,2,3

PAULET M. KIRLEY
26 Riverside Dr.
Mattapan

KATHERINE A. KLIMAS
6 Vine St.
Randolph
Psychology Club 1
S.G.A.
Tennis Club 4
Spectrum 3
My Fair Lady 4

RITA M. KRAL
717 Walk Hill St.
Mattapan
Newman Club 1,2,3,4
W.R.A. 1,2,3,4
V.S.B. 2
Spanish Club 1
Bowling Club 1

A. MARTIN KULLEN
34 Rugby Rd.
Mattapan
Lampas Photographer 4
Chalkdust Photography Editor 3,4
Newman Club 1
Basketball Mgr. 1,2
Baseball Mgr. 3
Science Club 4
Graduation Day Comm. 4

JUDITH A. LANE
15 Austin St.
Milton
Archery 1,2
V.S.B. 2
W.R.A. Rep. 2
Newman Club 1,2
Drama Club 3
Literary Club 3
Young Democrats Club 3

JOSEPH LANGONE
23 Harvard St.
Charlestown
Dean's List
Drama Club

THOMAS P. LARKIN
231 Park St.
West Roxbury

VIRGINIA LARNER
119 King St.
Dorchester
Dean's List 1,2,3,4
Honors Program 4
Class Secretary 3,4
Gold Torch Society 3,4
Newman Club Executive Board and Social Comm. 2
Literary Club 3,4

Newman Club 1,2,3,4
Lampas Staff 4
Orientation Comm. 3
The Curious Savage 3
Oklahoma 3
Drama Club 1
One-Act Play Contest, Stage Crew 3,4
Co-op. Teachers Tea 2
Dedication Comm. 4

ARLENE F. LAVIN
273 Parker Hill Ave.
Roxbury
Newman Club 1
Spanish Club 3,4, V.P. 4

NEIL J. LAVITA
49 Farragut Ave.
Medford
Spanish Club Pres. 3,4
Newman Club

PATRICIA LAWRENCE
169 Monticello Ave.
Dorchester
W.R.A. Treas. 2
W.R.A. 2nd V.P. 3
Varsity Basketball, Volleyball, Tennis, Archery, Softball 1,2,3,4
Chalkdust 4
Music Club 1,2,3,4
V.S.B. 2,3,4
"Guys and Dolls" 1
"Lil' Abner" 2
Newman Club 1
Massachusetts Athletic Recreation Federation of College Women Sec. 4

JOHN C. LEAVIS
119 Rogers Ave.
West Somerville
V.S.B. 1,2,3,4
Young Republican Club 3,4

MARY E. LEDWICK
9 Elm St.
Hyde Park
Coop. Teachers' Tea
Newman Club
Music Club
V.S.B.

CAROLINE A. LEE
108 Norway St.
Boston
Protestant Student Association 1
Volunteer Service Bureau 2,3
Deans' List

GEORGE F. LESSARD, JR.
396 Court St.
Brookton

ESTELLE H. LEVETIN
51 Wilcock St.
Dorchester
Hillel 1
Spanish Club 1
W.R.A. Rep. 2
V.S.B. 2
Coop. Teachers' Tea 2
Math. Club 3
Science Club 3,4, V.P. 4
Honors Program 3,4

LINDA LEWIS
36 Riverside Rd.
Lynn
Dean's List 3

PATRICIA ANN LEWIS
235 Freeman St.
Brookline
Protestant Student Assoc. 1
W.R.A. Basketball, Rep. 1
Deans' List 3
W.R.A. Softball 1,2

SIDNEY LIBERMAN
104 American Legion Hwy.
Dorchester
Alpha Psi Omega 3,4, Pres. 4
Drama Club 1,2,3,4
"Oklahoma" 3
"The Importance of Being Ernest" 2
Hillel 1, 2, Religious Chairman 2
Chalkdust 3,4, Drama Editor 4
Gold Torch Society 3,4
"My Fair Lady" Producer 4
One Act Play Contest 2,3, Director and Award 3
Lampas 4
Lecture Society, Business Manager 3,4

Curriculum Comm. 3,4
Student-Faculty Comm. 3,4
Deans' List 3
Election Comm. 3
Dedication Ceremony 3
Senior Class Banquet 3

JAMES T. LODGE
114 Gordon Ave.
Hyde Park
French Club 1
Literary Club 2,3

SHIRLEY LOOMIS
104 Magazine St.
Cambridge

VICTOR A. LOSPENNATO, JR.
145 Suffolk Ave.
Revere
Music Club 2,3,4
Deans' List 3

ALEXANDER A. LUCEY
31 Chardon Rd.
Medford

MARIA A. LUONGO
5 Crockett Ave.
Dorchester
Volunteer Service Bureau 2
Newman Club 1
Music Club 3,4

CHARLES W. LYNCH
77 Willard St.
Quincy
Newman Club 1,2

SHEILA A. LYNCH
61 Crown St.
Milton
Newman Club 1
V.S.B. 2

KEVIN LYONS
47A Hillside St.
Roxbury
Baseball 1,2,3,4, Capt. 4
Intramural Basketball 1,2
Varsity Basketball 3,4
Intramural Football 1,2

JOHN WILLIAM MACCHI
336 Swan Hill Ave.
Dorchester

DONALD B. MACLEA
223 Neponset Valley Pkwy.
Roslindale
Intramural Football 1,2,3,4
Christmas Party 3
Junior Banquet Comm. 3

PETER MICHAEL MAGUIRE
24 Antrim St.
Cambridge
Newman Club 1

JOHN S. MALATESTA
58 Hancock St.
Watertown

JUDITH C. MANNING
61 Arlington St.
Hyde Park
Music Club 3
Junior Banquet Entertainment
Comm. 3
All College Banquet Entertainment
Comm. 3
Newman Club 1
Deans' List 1,2

REGINA MARSOLINI
305 Cummins Hwy.
Roslindale
Newman Club 1,3
Volunteer Service Bureau 2,3

ELAINE MARINOS
109 Forest Hills St.
Jamaica Plain
W.R.A. 1,2
Orthodox Club 1,2,3,4
V.S.B. 3,4

CHARLES E. MARTIN, JR.
8 Freeman Rd.
Chelmsford
S.G.A. Rep. 1
Class President 2
Lampas Assistant Editor 4
S.G.A. Publication Comm. 4
Leadership Dinner Comm. 4
Gold Torch Society 3,4
Intramural Football 1,2
Intramural Basketball 1,2

Junior Banquet Comm. 3
Winter Carnival Comm. 1
Newman Club 1,2
Psychology Club 1
Class Dance Comm. 1,2
Freshman Orientation Comm. 3
Senior Graduation Usher 1,2,3
Constitution Comm. 2,3
Dedication Ceremony Usher 3
S.G.A. Cafeteria Comm. 2

JAMES M. MARTIN
91 Buttonwood St.
Dorchester
Sailing Club 1,2
Newman Club 1,2
Lampas 4
Chalkdust 1,2
Leadership Dinner Comm. 4
S.G.A. Rep. 3
Holiday Ball Comm. 4

WILLIAM B. MARTIN
91 Buttonwood St.
Dorchester
Deans' List 1,2,3
Honors Program 3,4
Gold Torch Society 3,4, V.P. 3,
Pres. 4
S.G.A. Treas. 2, 2nd V.P. 3
Student Advisory Council 4
Lampas Business Manager 4
Election Comm. 2, Chairman 3
Leadership Dinner 2,3, Chairman 4
Senior Capping Ceremony Chairman 4

S.G.A. Budget Comm. 1,2,3,
Constitution Comm. 1,2,3,
Curriculum Comm. 2,3
Newman Club 1,2,3,4
Science Club 1,2,3
Sailing Club 1,2
Chalkdust 1,2
V.S.B. 3,4
Massachusetts State College
Convention Del. 2,3
Eastern Seaboard College
Convention Del. 2
NETPA Convention Del. 2,4
Dedication Ceremony 3
Graduation Usher 1,2,3

LEO T. MAVRELES
82 Beechcroft St.
Brighton
Gun Club 3
Psychology Club 2
Lecture Society 1
Orthodox Club 1,2,3,4

MAUREEN CRONIN MAYOTTE
20 Sawyer Terr.
Allston
Newman Club 1,2,3,4
W.R.A. 1,2,3,4
Music Club 2

CLAIRE MCCARTHY
46 Larchmont St.
Dorchester

DONNA MCCARTHY
60 Ellison Ave.
Dorchester
Newman Club 1,3
Freshman Parents Tea Chairman 3
V.S.B. 2
Lampas 4
President's List 1,2,3
Mimeograph Comm. 3

FRANCIS MCCARTHY
34 Walden St.
Cambridge
Track 2,3, Co-Capt. 3
Cross Country Co-Capt. 3
Intramural Basketball
Intramural Football

JOYCE E. MCCARTHY
38 Belfort St.
Dorchester
Deans' List 1,2,3,4
Newman Club 1
French Club 1
Literary Club 2,3 Pres.-Treas. 3
Co-op. Teachers' Tea 2
One Act Play Contest 3
Holiday Ball Chairman 3,4
Mimeograph Comm. 3

KATHLEEN MCCARTHY
87 Walter St.
Roslindale
Newman Club 1,2,3,4
Spectrum 3
Literary Club 1
Lampas 4

MARTHA MCCARTHY
381 Franklin St.
Reading
Newman Club
Library Comm.

MAUREEN A. MCCARTHY
115 Channing Rd.
Boston

WILLIAM H. MCCARTHY
51 Lyman Rd.
Milton
Lampas 4

SHEILA MCCRUDDEN
8 Pierce St.
Revere

STEPHEN McDONOUGH
31 Pearl St.
Medford, Mass.
Young Democrats Treas. 4
Newman Club 4
Intramural Basketball 4

WILLIAM McDONOUGH
7 Pratt St.
Revere

Psychology Club 1,2
Intramural Football 1,2
Intramural Basketball 1
Newman Club 1,2,3,4
Young Democrats 3,4

MARY C. MCGILVERY
1598 Dorchester Ave.
Dorchester
Newman Club 1,2,3
V.S.B. 2

PAUL MCGUIRE
18 Ticknor St.
South Boston

GEORGE W. MCGINNIS
95 Shirley St.
Winthrop
Intramural Basketball 1,3
Math Club 1,3 Pres. 3
Chess Club 3,4
Freshman Parents' Tea 3

JOAN M. MCKEON
14 Asticou Rd.
Jamaica Plain
Newman Club 1,2,3
Junior Christmas Party 3

JERILYN McLAUGHLIN
2 Allston St.
Dorchester
Newman 1,2,3,4

KAREN F. McLAUGHLIN
585 Careswell St.
Marshfield, Mass.
Newman Club 1,2,3,4
Drama Club 3,4
S.G.A. Musical 3,4
Cap and Gown Ceremony 3
Co-Operating Tea 2
One Act Play Contest 2,3,4
Chalkdust Staff 3,4, Editorial Board 3

STEPHEN McLAUGHLIN
343 School St.
Watertown, Mass.
Intramural Football 1,2
Intramural Basketball 1
Junior Banquet Comm. 3
Chalkdust Summer Trimester 3
Music Club 3
Lampas Business Staff 4

HERBERT W. McLUCAS
162 Sumner St.
Somerville, Mass.
Baseball 1,2
International Relations Club 4

CATHERINE McMAHON
141 Larch Rd.
Cambridge, Mass.
Newman Club 2,3
Psychology Club 3,4, Pres. 4
Y.C.S. 4
Deans List 3

KEVIN J. McMULLEN
19 Melville Ave.
Newtonville, Mass.
Intramural Football 1,2,3,4
Basketball 1,2,3,4

Baseball 1,2,3,4
Class Treasurer 1,2,3,4
S.G.A. Musical 2
Gold Torch Society 3,4

JAMES M. McNIFF
685 8th St.
South Boston
Drama Club 1,2,3,4, Treas. 2
Chalkdust 1,2, Cir. Mgr. 1, Bus.
Mgr. 2, CSPA Convention 2
S.G.A. Musical 1,2,3
Major Productions 1,2,3
One Act Play Contest 3
Lampas 4

ELLEN J. McNULTY
31 Park Ave.
Wakefield, Mass.
W.R.A.
Freshman Dance Comm. 1
Junior Christmas Party Comm. 3
Newman Club 4
Freshman Parents' Tea 2

FRANCIS McNULTY
95 Corey St.
W. Roxbury, Mass.
Gun Club 3,4

WILLIAM A. McQUILLEN
24 Sheffield Rd.
Roslindale, Mass.
Newman Club 1
Junior Week, Chairman of Pops
Nite 3
Chalkdust Sports Writer 4

JAMES MELZAR
47 Lake St.
Wilmington, Mass.
Baseball 1,2,3,4, Co-capt. 3,4
Bowling Club 2

ANN G. MEHRHOFF
21 Philbrick St.
Roslindale
Newman Club 1,2
Co-op. Teachers' Tea 3
V.S.B. 1,2
Lampas 4

LAWRENCE S. MENOVICh
48 Addison St.
Chelsea
Chalkdust 2,3,4
Hillel 1,2,3,4
Drama Club 1,2
Varsity Basketball 2,3,4
Young Democrats 3,4
Math Club 4
Freshman Orientation 3
S.G.A. One Act Play Contest 1,2,3
Intramural Basketball 2,3,4

ANNA VERONICA MICELI
209 Willow Ave.
Somerville
Newman Club 1,2
Modern Dance Club 1
Junior Christmas Party 3

JACQUELINE MILLER
174 Bay State Rd.
Boston
Hillel 1,2,3,4
Spanish Club 1,2
Psychology Club 1,2,3,4
Lecture Society 2,3,4
V.S.B. 2,3,4
W.R.A. 2,3,4

NANCY M. MILLER
19 Columbus Ave.
Somerville
Deans List 1,2,3
French Club

PAULINE F. MILLS
17 Buckman St.
Woburn
Newman Club 1

JAN M. MINES
6 Sacramento St.
Cambridge
French Club

ZIVILE M. MOCKUS
862 East Fourth St.
South Boston
Spanish Club 1
Newman Club 1
V.S.B. 2

WILLIAM F. MOHAN
16 Parkhurst St.
Milford, Mass.
Intramural Basketball
Young Democrats Pres.

KATHERINE MOLONEY
116 Marcella St.
Roxbury
Newman Club 1
W.R.A. Splash Party Co-Chairman 2
W.R.A. 2,3,4
Math Club 3,4

PAULA LEE MONDLICK
160 Audobon Rd.
Milton
Hillel 1,2,3,4, V.P. 3
French Club 1
V.S.B. 3
Psychology Club 4

PHYLLIS MOONEY
80 Tyndale St.
Roslindale, Mass.
Newman Club 1
Archery Club 2
V.S.B. 2,3,4, Rec. Sec. 3,4, Treas. 4,
Co-Chairman 4

JOHN W. MOREY
390, the Riverway
Boston, Mass.
Sailing Club 1
Deans List 1
Honors Program 3,4
Chess Team 4

MARY C. MORONEY
157 Metropolitan Ave.
Roslindale, Mass.

SUZANNE B. MOTZKIN
99 Granville Ave.
Malden
French Club
Spanish Club
Deans List 3
Newman Club

ANNE MARIE MULLEN
260 Green St.
Weymouth, Mass.
Newman Club 1,2
Literary Club 3
V.S.B. 3,4

DONALD E. MURPHY
77 Evans St.
Boston

VIRGINIA M. MURRAY
6 Yorktown St.
W. Roxbury
Freshman Dance Comm. 1
W.R.A.
Newman Club
Junior Christmas Party Comm. 3
Freshman Parents' Tea 3

WILLIAM T. MURRAY
1195 Morton St.
Dorchester
Freshman Parents' Tea 3
Junior Prom Co-Chairman 3

EDWARD J. NABRESKI
70 Stearns St.
Westwood, Mass.
Newman Club 1,2,3, Co-Chairman
9th Annual Boston Province
Convention
Boxing Club 3
Science Club 4

JOSEPH G. NEARY
4 Auburn St.
Brookline
Newman Club 1,2,3,4

PATRICIA A. NICHELSON
11 Center St.
Watertown
Newman Club 1,2
Psychology Club 1,2
Literary Club 1,2

KATHY NOWAK
44 Allston St.
Medford
Class Secretary 1,2
Class Vice-President 3
Newman Club 1,2
W.R.A. Basketball 3
S.G.A., Curriculum Comm. 3,
Musical 3, One Act Play Contest
2,3,4, Outstanding Service Award
3
Lecture Society Chairman 4
Gold Torch Society 3,4

CHRISTOPHER W. O'BRIEN
24 Peterboro St.
Boston

MARY T. O'BRIEN
268 Broadway
Cambridge
Newman Club 1
S.G.A. Rep. 2
Junior One Act Play 3
Chalkdust Staff 3
Spectrum 3

MARYANNE O'CONNELL
Medford
11 Summer Terr.
Dorchester
Newman Club 1
Math Club 3,4
Deans List 1,2,3

THOMAS N. O'DONNELL
27 Pleasant St.
Charlestown
Newman Club 1,2,3
Literary Club 3

LINDA A. O'LEARY
14 Centre St.
Watertown
Spectrum Staff 3
Newman Club 1
Deans List 3

KEVIN F. OLIVER
50 Curtis Ave.
Somerville
S.G.A. Rep. 3
Lampas Staff 4
Young Democrats Pres. 3
Cafeteria Comm. 3
Constitution Comm. 4
Sanitary Comm. Chairman 3
Student-Faculty Comm. 3
Curriculum Comm. 3
Election Comm. 3
Poster Comm. Chairman 4

JUNE E. OLSON
7 Speridakis Terr.
Cambridge
Young Democrats 3,4

KEVIN P. O'MALLEY
10 Southbourne Rd.
Boston

ROBERT M. O'MALLEY
26 Frothingham St.
Milton
Class President 1
World Affairs Club Pres. 2,3
Dean's List 1,2,3
Honors Program 4

JONATHAN R. OMAN
77A Revere St.
Boston

GRACE M. O'NEIL
10 Verdale Rd.
Milton
Newman Club 1,2
Spanish Club 1
V.S.B. 2
Psychology Club 3
Lampas Assistant Literary Editor 4
Senior Week Comm. 4
Honors Program 3
President's List 1,2

PATRICIA A. O'NEILL
15 Upland Rd.
W. Somerville
Music Club 1,2,3
Psychology Club 1
Newman Club 1,2,3,4
W.R.A. 3,4
Volunteer Service Bureau 2
Literary Club 2,3,4
Philosophy Club 4

GERALD F. O'REILLY
75 Baystate Rd.
N. Quincy
Science Club 4

RICHARD P. PALMIERI
15 Thelma Rd.
Dorchester
Honors Program 3,4
Lecture Society
Drama Club
V.S.B. 3,4
Protestant Student Association
Constitution Comm. 4
Major Drama Production 3

S.G.A. Musical 3
One Act Play Contest 3
Junior Banquet Comm. 3
Junior Christmas Party 3
Gold Torch Society 4

BARRY P. PALSON
247 Columbia Rd.
Dorchester
Young Democrats 4
Intramural Basketball 4

CAROL PENNEY
25 Mabelle Ave.
Medford
Bowling Club 1
Protestant Student Association 1
V.S.B. 1,2

MARY ELLEN PETRONE
9 Colebrook St.
South Boston
Newman Club 1,2,3,4
Literary Club 3
V.S.B. 2,3
Co-op. Teachers' Tea 2,4
Lampas Staff 4

ANNE M. PISHKIN
26 Bowman St.
Dorchester
S.G.A. Rep. 3,4
Young Democrats Corr. Sec.
Freshman Parents Tea 3
Senior Prom Comm. 4
Green and Gold Dance 4
Constitution Comm. 4
Newman Club

MARIANNE R. POLLARD
40 Osborne Rd.
W. Medford, Mass.
Dean's List 1,2,3
Honors Program 3
Alpha Psi Omega 3,4
Gold Torch Society 3,4
Bowling Club 1
W.R.A. 1,2,3,4 Rep. 1, Executive
Board 2,3, Pres. 4, Publicity 2,3,
Student Instructor, Fencing 1,2,3
Collegiate Basketball 2
V.S.B. 2,3,4, Executive Board 2, Co-
Chairman 3,4, Publicity 2,3,4
Annual W.R.A.-V.S.B. Banquet
Comm. 3,4, Toastmistress 3
Freshman Parents' Tea 2
Drama Club Major Production
1,2,3,4
Annual One Act Play Contest 3
One Act Play Comm. 4
Freshman Orientation Comm. 3
Junior Class Christmas Party Comm.
3
Junior Week Comm. 3
Delegates: New England Teacher
Preparation Assoc. Conference,
Boston 4
S.G.A. Rep. 4
Graduation Comm. 3
Dedication Comm. 3
Lampas Literary Staff 4
Graduation Comm. 4

ANITA PORTMAN
11 Truro Lane
Milton
Dean's List 1,2,3
Honors Program

THOMAS M. POWELL
3 Orient Ave.
E. Boston, Mass.
Newman Club 1,2,3,4
Chalkdust

MARILYN FIRGER PRENSKY
22 Orkney Rd.
Brookline
Hillel 2,3,4, V.P. 2, Pres. 3, Senior
Advisor 4
Psychology Club 1,3
Drama Club 1,2
Honors Program 3,4
Dean's List 1,2,3

EDWARD J. PRICE
734 Columbia Rd.
Dorchester

ROGER L. PUPP
118 Dean Rd.
Brookline

DENNIS P. QUINN
104 Russett Rd.
W. Roxbury

LOUISE QUINN
111 Summer Rd.
Brookline
Newman Club 1,2,3,4
Literary Club 3
V.S.B. 2
Co-op. Teachers Tea 2,4
Lampas 4
Chalkdust 4

SUSAN QUINN
246 Blue Hills Pkwy.
Milton
Newman Club 1,2,3,4
W.R.A. 2,3,4

CHARLES A. RAFFONI
644 W. Roxbury Pkwy.
W. Roxbury
Newman Club 1
M.A.A. 1,2
Literary Club 2
All-College Musical Comm. 2
Junior Week Banquet Assst.
Chairman 3
Lampas Staff 4
All College Musical 4
Dean's List 1,2

PAULA J. REARDON
81 Pearl St.
Somerville
Newman Club 1
Co-op. Teachers Tea 1,2,3
V.S.B. 2,3,4
French Club 2
Dedication Ceremony 3
Freshman Orientation 3
Young Republicans 3,4
Lampas Staff 4

JOHN A. REILLY
51 Capen St.
Dorchester
Newman Club 1,2,3,4
M.A.A. 1,2
All College Musical 2,3
Spanish Club 1,2
Psychology Club 1,2
Junior Week Comm. 3
Lampas Staff 4

THOMAS F. REYNOLDS
63 Woodlawn St.
Jamaica Plain
Newman Club 1,3,4
Dean's List 1,2,3

JOYCE T. RICCI
54 Homer St.
E. Boston
Newman Club 1,2
Literary Club 3,4
Chalkdust 3,4

LOIS RICCI
609 Waltham St.
Lexington
Spanish Club
Newman Club
W.R.A. 1,2,3,4
Christmas Decoration Comm. 4

DEENA RICE
1615 Commonwealth Ave.
Brighton

BRUCE H. ROMBOLI
32 Prospect St.
Everett
S.G.A. Banquet Chairman 3
S.G.A. Student Award Recipient 3
S.G.A. Rep. 3,4
Junior Class Social Chairman 3
Boxing Club 2
Rifle Club 3
Junior One-Act Play 3

EDWARD A. ROMKEY
31 Carver Rd.
Watertown
Newman Club 1,2
Math Club 3,4, Pres. 4
Intramural Basketball 1,2,3,4
Intramural Football 1,2,3,4
Chairman, "Mystery Trip" Comm. 4
Chairman, Masquerade Ball Comm.
4
S.G.A. Advisory Council 4
Junior Christmas Party Comm. 3

DOROTHY RYAN
20 Fairlawn Rd.
No. Weymouth
Newman Club 1,2,3,4
Spanish Club 1,2,3,4

MICHELE RYAN
50 Ainsworth St.
W. Roxbury
Newman Club 1
Co-op. Teachers Tea 2
Freshman Parents' Tea 3
All College Banquet Comm. 4

JAMES R. SAMPSON
66 Florida St.
Dorchester
Drama Club Business Manager
1,2,3,4
Major Drama Production 1,2,3,4
Drama Club Workshop Productions
1,2,3,4
One Act Play Contest, Stage
Manager Set Design 1,2,3,4
Newman Club 1,2,3,4
S.G.A. Musical 3,4
Philosophy Club 2
Junior Class Christmas Party 3
Chalkdust Art Editor 4
All College Banquet Comm. 4
Art Club Treas. 4
Lampas Staff 4
Graduation Comm. Chairman 4
Handbook Comm. 4

MARIE SANDS
78 Wright Ave.
Medford
Newman Club
V.S.B.

MARYANN SANFORD
92 Ballou St.
Milton
Newman Club 1
Freshman Club 1
Spirit Comm. 2
S.G.A. 2,3
"L'H Abner" 2
Junior Christmas Party 3
Freshman Orientation 3

JOSEPH P. SAVIGNANO
1107 Webster St.
Needham
Gun Club Pres. 3,4

URSULA SAWICKI
95 Essex St.
Chelsea
Newman Club 1,2
V.S.B. Club 2
V.S.B. 2,3,4
Math Club 3
Student-Faculty Tea 4
Cap & Gown Comm. 4

VINCENT A. SCADUTO
77 Dent St.
West Roxbury
Newman Club 1,2,3,4
Rifle Club
Junior Christmas Party
Chalkdust
Psychology Club

BARBARA A. SCANLON
77 Farragut Rd.
South Boston
Newman Club 1
Math Club 3,4
Cap & Gown Comm. 4

MARYELLEN P. SCANNELL
377 Summer St.
Weymouth
Newman Club 1,2
Bowling Club 3
Freshman Parents Tea Co-Chairman
3
V.S.B. 1,2

ROSARIO G. SCARCELLA
615 E. Sixth St.
South Boston
Newman Club 1,2
Intramural Football 1,2,3,4
Intramural Basketball 2,3

DOROTHY P. SCHNETZER
97 Milton St.
Dorchester

MAUREEN SCULLY
38A Porter Ave.
Somerville
Glee Club 1

JOANNE M. SEMPOLINSKI
11 Sumner St.
Dorchester
Newman Club 1

SHEILA MARIE SENNOTT
2610 Centre St.
West Roxbury
V.S.B.
Newman Club 1
W.R.A.
Freshman Parent's Tea 3

DOROTHY M. SHACK
10 Valley Rd.
Woburn

DENIS R. SHAUGHNESSY
70 the Fenway
Boston

JOHN C. SHAW
684 Edgell Rd.
P.S.A. 2,3, Pres. 3

MARYANN E. SHEEHAN
32 Columbia Rd.
Arlington
Newman Club
W.R.A.
Christmas Party Decorations

ROBERT SHEEHY
54 Newton St.
Belmont
President's List 1,2
Dean's List 3
Honors Program 3,4

FRANCES SHERLOCK
1939 Dorchester Ave.
Dorchester
V.S.B. 2,3,4
Newman Club 1,2
Freshman Parent's Tea 3
Lampas 4
College Musical 4
Bowling Club 3
Co-op. Teacher's Tea 2

MIRIAM SHUMAN
12 Tennis Rd.
Mattapan
Hillel
V.S.B.

ALAN G. SIEGAL
23 Hansborough St.
Dorchester
Track Team Capt.
Cross Country Capt.
S.G.A. Rep.
One-Act Play Contest
French Club
Psychology Club

MILLICENT SILVERSTEIN
198 Moss Hill Rd.
Jamaica Plain
High School Day Moderator 2

CAROLE SILVESTRI
20 North Ave.
Norwood
Newman Club
Christmas Party Decorations 3
V.S.B.
Dean's List 2,3

BARBARA J. SIMS
9 Milton Ave.
Dorchester

RICHARD L. SMITH
91 Robin St.
West Roxbury
P.S.A. 1,2,3,4, V.P. 3

ARTHUR A. SNYDER
71 Beach St.
Wollaston

MARGARET MARY SNYDER
173 Brookway Rd.
Roslindale
Newman Club 1
Music Club 3

PAULA SNYDER
155 Ames St.
Sharon

M. ELAINE SPELLMAN
78 Sanborn St.
West Roxbury
Newman 1,2
Young Democrats 3,4

CAROLYN E. SPINA
215 Lexington St.
East Boston

JUDITH A. STEVELMAN
196 Greenfield Rd.
Mattapan

MARYLOU STEWART
549 Essex St.
Weymouth
J.V. Cheerleader Capt. 1
Psychology Club 1
W.R.A. Softball 1
Handbook 1, Co-Chairman 3
Drama Club 1,2
S.G.A. Service Award 1,2
Newman Club 1,2,3
Dance Comm. Chairman 1,2,3
S.G.A. Rep. 2, 2nd V.P. 3
Co-ed Badminton 2,3
V.S.B. 2
Major Production Make-up 2,3,4
Election Comm. Chairman 3
Banquet Co-chairman 3
Freshman Parent's Tea Chairman 3
Gold Torch Comm. 3
S.G.A. Musical 3
Clambake Comm. Chairman 4
S.G.A. Advisory Council 4
Lampas 4

LINDA JOYCE STONE
53 Evelyn St.
Mattapan
Hillel 1,2

JOSEPH P. SULLIVAN, JR.
50 Roberts Rd.
Cambridge
Intramural Football 1,2
Intramural Basketball 1,2
Junior Week Entertainment 3
Music Club 3,4

FRANCES D. SUMSKI
8 Covington St.
South Boston
Newman Club 1
V.S.B. 2
Music Club 3,4
Freshman Parent's Tea 3
Co-op. Teacher's Tea 2

STEPHEN A. SUTERA
30 Harvey St.
Everett
Track 3
Intramural Basketball
Intramural Football

ALAN SUTHERLAND
1162 Boylston St.
Brookline
Hockey 1,2,3

ARTHUR R. SWANSON
88 Winchester St.
Medford

CAROL TAYLOR
110 M St.
South Boston
Newman 1,2,3,4
Bowling Club 2,3
Psychology Club 3
Co-op. Teacher's Tea 1,2,3
Freshman Parent's Tea 3
Music Club 3

NANCY M. THOMPSON
92 Ashmont St.
Dorchester
French Club 3,4
Spanish Club Sec.-Treas. 3,4
Co-ed Badminton 2
W.R.A.
Freshman Orientation
Commencement Ball Comm. 4
S.G.A. Spirit Comm. 2

JOSEPH M. TIERNEY
28 Sagamore St.
Dorchester
Athletic Association
Newman Club
Intramural Basketball
Intramural Football

KATHERINE ANN TOMASELLO
733 Washington St.
Brighton
Newman Club
Young Democrats
Psychology Club

MARY JAY TOMPOSKI
33 Dartmouth Terr.
Brockton
Music Club 2,3
S.G.A. Musical 3
W.R.A. Dance Club 4
V.S.B. 2
Psychology Club 1
Newman Club 1,2,3,4

CAROL TRACY
11 Southmere Rd.
Mattapan
French Club

ANTHONY R. TRODELLA
34 Oliver St.
Wattstown
Gun Club 3,4
Newman Club

KATHLEEN M. TROY
43 Shirley St.
Quincy
S.G.A. 3
Newman Club 1,2,3,4
Young Democrats
Psychology Club
Lampas
W.R.A. Dance Club

DENIS S. TUTTEN
19 Villa Ave.
Windrop
Dance Comm. 1,2
Drama Club
Gun Club 3,4
Rifle Team 4

ELENA URBSAS
575 E 8th St.
South Boston
W.R.A.
V.S.B.
Modern Dance Club

MARINA VASCONCELLOS
157 Newbury St.
North Quincy
Newman Club 1,2,3,4
Bowling 1,2,3
Psychology Club 3
Freshman Parent's Tea 3
Co-op. Teacher's Tea 2,3

JANET M. WAGNER
63 Crickett Rd.
Brockton
Newman Club 1
Spanish Club 1
V.S.B. 2
Junior Prom Comm. 3
Junior Christmas Party

ROBERT J. WALLACE
209 Weld St.
Roslindale
Math Club
Dean's List

LARRAINE WEBBER
125 Lanark Rd.
Brighton
Dean's List 3
Cheerleading 3
Lampas 4
V.S.B. 2,3
Junior Banquet Comm. 3

LAWRENCE D. WHALEN
16 Walnut Rd.
Somerville
Science Club 4
Newman Club 1

KATHLEEN T. WHITE
5 Byron St.
Randolph
Psychology Club 1
Literary Club 2,3
Newman Club 1,2,3,4
Tennis 2
Lampas 4

ANN M. WHITNEY
21 Webster St.
South Weymouth
Tennis 1
Newman 1,2
Math Club 1,2,3,4

PATRONS

Miss Ann Marie Aho
Mr. Lawrence N. Aiello
Mr. and Mrs. Charles R. Atkinson
Mary N. Bendix
Mr. and Mrs. Edmund Berard
Mr. and Mrs. Stephan Biondo
Mrs. Mary L. Boden
Corrine Boffa
Mr. and Mrs. Henry W. Botte
Mr. and Mrs. Francis J. Bradley
Mr. and Mrs. Carl Brennian
Mr. and Mrs. Emmett C. Burke
Mr. Vincent Buscanera
Mrs. John B. Byrne Jr.
James A. Cady
Mr. and Mrs. Joseph M. Cady
Mr. and Mrs. Robert J. Cahill
Mr. and Mrs. Joseph Cannon
Mrs. Louise Castignali
Mrs. Patricia W. Chiampa
Mrs. Mildred Christophe
Mr. and Mrs. Edward J. Clary
Mr. and Mrs. Francis Colleran
Mr. and Mrs. James P. Collin
Mr. and Mrs. C. J. Collins
Mr. and Mrs. Paul J. Connell
Mr. John J. Connolly
Mrs. Margaret Connors
Mr. Thomas Creed
Mr. and Mrs. Martin Curley
Mr. and Mrs. Walter J. Czmut
Kathleen Daley
Miss Alice Daniszewska
Mr. and Mrs. Patrick A. D'Angelo
Anthony Damino
Mr. and Mrs. Michael Dausgilwicz
Mr. and Mrs. Dominic De Bellis
Mr. and Mrs. Michael De Marco
Peter R. Doherty
Mr. and Mrs. Ignatius J. Donnelly
Mrs. Helen F. Drew
Thomas F. Driscoll Jr.
William J. Dullahan
Mr. John F. Dunn Jr.
Mr. and Mrs. Edward R. Eagar
Mr. Joseph Epstein
Mr. and Mrs. Edward F. Fahey
Mr. and Mrs. Thomas J. Farrell
Mr. and Mrs. Thomas G. Feenan
Mr. and Mrs. Anthony Fantès Sr.
Mr. and Mrs. Leo B. Fraser
Mr. and Mrs. Carroll A. Gallagher
Mr. and Mrs. Arthur Gerald
Mrs. Anna G. Gerali
Anne Giblin
The Glennons
Mrs. Dorothy B. Goodwin
Mr. and Mrs. Charles D. Haddock
Mr. Paul Handorff
Mr. and Mrs. James D. Harris
Mr. and Mrs. Milton H. Hart
Mr. and Mrs. J. F. Herlihy
Mr. and Mrs. L. P. Hilliard
Mr. and Mrs. John W. Hohmann
Mr. and Mrs. Simeon Hunte
Mr. and Mrs. Lawrence J. Jenkins
Mr. and Mrs. Ernest Johnson
Frank J. Joyce
Mr. and Mrs. Samuel H. Kalp
Mrs. Margaret Kane
Mr. and Mrs. Charles W. Kaufman
Mr. and Mrs. Eli Kaufman
Mr. and Mrs. John Keller
Thelma Keller
Mr. and Mrs. Edward Q. Kelly III
Mr. and Mrs. Lawrence T. Kinselle
Mr. and Mrs. John G. Klimas
Mr. and Mrs. Arthur Kullen
Mr. and Mrs. Redmond Lanner
Mrs. John P. Lavin
Alice K. La Vita
Mr. and Mrs. S. Joseph La Vita
Mr. and Mrs. Allyn Leaves
William C. Levine
Mrs. Bertha Lewis
Mr. and Mrs. A. A. Lucey
Mr. William D. Lydon
Mr. Joseph A. Macchi
Mrs. Lena Marsalini
Mr. and Mrs. Charles E. Martin
Mr. and Mrs. John R. Martin
Mrs. Evelyn H. Mazzaro
Mr. Paul McCarthy
Mr. and Mrs. James H. McDonough
Mr. James A. McLaughlin
Mr. and Mrs. George McMahon
Mr. and Mrs. Archie McMullen
John J. McNulty
Mrs. Catherine McQuillen
Mr. and Mrs. Salvatore B. Miceli
Mr. and Mrs. Alexander Miller
Mr. and Mrs. Robert R. Miller
Mr. Charles Moloney
Mr. and Mrs. James J. Mooney
Mrs. Mary Moroney
Mrs. W. J. O'Connell
Mr. and Mrs. Q. J. Oliver
Mrs. Ellen Olson
Mr. and Mrs. Daniel J. O'Neil
Miss Maria Paterina
Mr. Herbert S. Patter
Mr. and Mrs. Stephen Patter
Mr. and Mrs. Anthony Petrone
Mr. and Mrs. Vincent F. Pollard
Mrs. Michael Quinn
Miss Jane Rabs
Mr. Timothy J. Reardon
Mr. and Mrs. Forrest J. Regan
Mr. and Mrs. Louis Ricci
Mr. and Mrs. Frederick L. Romkey
Mrs. Alice Samson
Mr. and Mrs. Edward Sands
Mr. and Mrs. Conrad J. Sanfack
Mr. and Mrs. Walter Sawicki
Mr. and Mrs. Louis Simpalski
"The Shaefer's"
Mr. and Mrs. Louis A. Silvester
Mr. and Mrs. Charles Stone
Mr. and Mrs. Arthur L. Swanson
Mr. Albert Vasconcellos
Mrs. Harold I. White
Mr. Gilbert S. Wallace

CONGRATULATIONS
AND
BEST WISHES

TO THE CLASS OF 1966
FROM THE

FACULTY CLUB

Dr. and Mrs. William F. Looney

Mrs. Margaret E. Adams
Dr. and Mrs. George F. Aherne
Mr. John W. Alexander Jr.
Mrs. Rosanna Alfaro
Mr. Donald Andreini
Mr. Robin A. Ault
Dr. and Mrs. Laureat J. Bernard
Dr. Nirmala D. Bidani
Miss Barbara Blazyk
Miss Carole C. Bocasky
Dr. and Mrs. Robert J. Bond
Mr. Ronald V. Book
Miss Judith R. Borne
Mr. and Mrs. Robert L. Bowles
Mr. and Mrs. Miles Bradbury
Mrs. Joan Brenner
Mr. Robert S. Bufalini
Mr. and Mrs. John J. Callahan
Dr. James A. S. Callanan
Dr. and Mrs. Wilfred E. Calmas
Mr. Edward L. Canner
Mr. and Mrs. Sabino W. Caputo
Miss Mary S. Cavanagh
Mr. and Mrs. Carl Cedargren
Miss Myrna S. Clancy
Mr. and Mrs. John V. Cody
Dr. and Mrs. LeBaron C. Colt Jr.
Dr. and Mrs. J. Edward Conners

Miss Dorothy C. Connor
Miss Theresa A. Conroy
Miss Theresa Corcoran
Miss Martha E. Cummings
Mr. Frederick E. Danker
Mrs. Ruth Dayag
Miss Margaret D. Delaney
Miss Judith DeLassovszky
Mr. and Mrs. Charles P. Demakes
Mr. and Mrs. Donald P. Deveau
Mr. and Mrs. Robert DiGiovanni
Mr. William Doherty
Miss Mary C. Donahue
Mr. and Mrs. Jeremiah J. Donovan
Mr. James A. Dooling III
Miss Anne E. Drinkwater
Mr. and Mrs. Robert P. Dunbar
Mr. and Mrs. Thomas F. Dungan
Dr. Thomas A. Dunlea
Mr. and Mrs. Mary C. Durant
Miss Beatrice P. Eaton
Mr. and Mrs. Truman Egleston Jr.
Mrs. Isabel Elbaum
Mr. Elliott R. Ernest
Miss Lillian Fagerholm
Miss Joan M. Farrell
Miss Marie Farrell
Mr. and Mrs. Joseph F. Fiorello

Mr. and Mrs. Michael Fiorillo Jr.
Miss Eloise R. Fitzgerald
Dr. and Mrs. Edward J. Fitzpatrick
Dr. and Mrs. William J. Fitzpatrick
Mrs. Elizabeth D. Flynn
Mr. Robert Flynn
Mr. Joseph J. Foley
Mr. and Mrs. Maurice P. Foley
Dr. and Mrs. Elvin M. Fowell
Dr. Ann M. Gavin
Miss Moira A. Galvin
Mrs. Anna B. Gesmer
Miss Margaret V. Gibbons
Dr. and Mrs. Raymond R. Gilbert
Mrs. Sylvette Giorgio
Mr. and Mrs. Thomas J. Godin
Mr. and Mrs. Robert A. Goodale
Dr. Peter E. Gordon
Mr. and Mrs. Henry L. Gormley Jr.
Miss Ellen W. Harding
Mr. and Mrs. Arthur H. Hauge
Dr. and Mrs. David W. Haughey
Mr. James L. Hofferd
Miss Marjorie F. Holt
Mr. and Mrs. William J. Hooper Jr.
Mr. Alfred Hoose
Dr. Ann R. Howe
Mr. and Mrs. Aaron F. Jacobs
Dr. and Mrs. James P. Jones
Mr. and Mrs. Marcia Kagnoff
Mr. William A. Kean
Mr. John Keating
Mr. and Mrs. John J. Kelly Jr.
Miss Mary I. Kelly
Mr. and Mrs. Harry G. Kemelman
Dr. William Kenney
Dr. Charles Kenosian
Dr. and Mrs. Max Kostick
Mr. and Mrs. Ronald Kowalski
Mr. and Mrs. Ralph E. Ladd
Dr. and Mrs. Lake
Mr. Thomas J. Lally
Mr. Robert H. Leibman
Mr. and Mrs. Nicholas Lembo
Mr. and Mrs. Jacob Bradley Lentz
Dr. John H. Lerch
Mr. George B. Levy
Dr. Alice F. Linnehan
Mrs. Ann L. Linskey
Mr. William F. Lipchitz
Mr. and Mrs. Ronald J. Loring
Mr. and Mrs. James Loscutt Jr.
Dr. Mary E. Lynch
Mr. and Mrs. Vincent P. Malahan
Mr. Henry A. Mariani
Dr. and Mrs. William H. Marnell
Mr. and Mrs. Bronis Martus
Dr. and Mrs. Eugene H. Masse
Dr. Michael G. Mensoian
Dr. Perry Miller
Miss Helen D. Moloney
Mr. and Mrs. John Moon
Miss Linda P. Morley
Miss Mary M. Morrissey
Miss Elaine S. Morse
Mr. Francis E. Murphy Jr.
Mrs. Katherine A. Murphy
Mr. Eugene F. McCarthy

Dr. and Mrs. Francis W. McCarthy
Dr. and Mrs. Robert V. McCarthy
Dr. Rita McCauley
Mr. James H. McCue
Dr. and Mrs. Paul McDonagh
Miss Clare A. McDonnell
Mr. Thomas A. McMullen
Mr. and Mrs. Philip W. Natale Jr.
Mr. and Mrs. John R. Nee
Dr. and Mrs. Lawrence J. Newell
Dr. and Mrs. Richard W. Newman
Miss Elizabeth A. O'Brien
Miss Elizabeth O'Doherty
Dr. and Mrs. Francis P. O'Hara
Mr. and Mrs. Gerald M. O'Meara
Mr. John J. O'Neill
Dr. Peter Pappas
Mrs. Helen F. Parker
Mrs. Pauline Globisch Parsons
Dr. and Mrs. William E. Perrault
Dr. and Mrs. Alfred Antonin Pouinard
Mr. and Mrs. Hubert J. Powderly
Mr. Thomas O. Power
Miss Eleanor G. Powers
Mr. and Mrs. Geoffrey Prentiss
Mrs. Alice Quinn
Mr. and Mrs. Herbert G. Regan
Miss Ellen E. Richwagen
Mr. Daniel Rudsten
Mr. and Mrs. Weston Sanford
Dr. Dorothy T. Scanlon
Mr. and Mrs. Bruce A. Scott
Mrs. Maureen L. Scott
Mr. and Mrs. Myron Segelman
Mr. and Mrs. Harold Shapiro
Mr. and Mrs. Arnold M. Shaw
Mrs. Agnes M. Shea
Mr. Charles Shively
Dr. and Mrs. Anthony J. Simeone
Mr. and Mrs. Raymond L. Sine
Mr. and Mrs. Robert W. Spayne
Mr. and Mrs. William J. Squires
Mr. and Mrs. John Staulo
Dr. and Mrs. David L. Sudhalter
Mr. and Mrs. James P. Sullivan
Mr. Paul Sullivan
Mr. William J. Talbot
Mr. and Mrs. James J. Tedesco
Mr. and Mrs. Maurice Temple
Mr. and Mrs. James M. Tomkins
Mr. and Mrs. Richard C. Thorne
Mr. George E. Thornton
Mrs. Marie T. Tierney
Mr. and Mrs. William K. Tinkham
Mr. and Mrs. Vincent J. Tringale
Mr. and Mrs. Richard S. Tyrell
Mr. and Mrs. Francis Veale
Mr. and Mrs. Albert M. Wallace
Miss Mary Walsh
Mr. and Mrs. Lewis B. Ware
Mr. and Mrs. Richard D. Warren
Dr. Robert Weiner
Mr. and Mrs. John Weston
Mr. and Mrs. Kenneth A. Wolkon
Dr. John T. Woodland
Mr. Clifford Wrigley
Mr. and Mrs. Henry N. Young
Mr. Edward A. Zaleskas



It is our pleasure to
serve the students
and faculty of State
College at Boston



St. Clair's

FOOD SERVICE MANAGEMENT

A DIVISION OF RESTAURANT & WALDORF ASSOCIATES, INC. New England Office 48 SUMMER STREET, BOSTON, MASS.

Get it at—

SPARR'S DRUG STORE

635 Huntington Ave. Cor. Longwood
Roxbury, Mass.

TEL. LO 6-8948

"Everything for the student"

Agent for

College Outline Series Books

Monarch

Hymarx

Barnes & Noble

Schaums

also complete line of:

School Supplies
and
Stationery

BUCKY WARREN, INC.

"Athletic Supplies for All"

151 Pearl Street, Boston

426-2187

SPECIAL THANKS

TO

NOREEN GALVIN
ELLEN O'MALLEY

MARY NICKERSON
KATHY ROYS

JACK WHIPPEN

UNDERGRADS WHO HELPED THE BUSINESS STAFF

FITZPATRICK BROTHERS INC.

CATERERS

Since 1920

"Catering for every occasion"

342 Pearl Street
Malden, Mass.

Tel. 322-1520

"The play's the thing"

Shakespeare

**THE
DRAMA
CLUB**

"Art is nothing more than the shadow of humanity."

Henry James


CONGRATULATIONS

**THE
ART
CLUB**


Compliments of

WINROX VENDING

Serving State College at Boston



*Congratulations to
the class of '66*



The GRACE M. ABBOTT Teachers Agency
120 BOYLSTON STREET • BOSTON, MASS. 02116 • HA 6-7664

SUCCESSFUL TEACHER
PLACEMENT SINCE 1917

Compliments of

**BOSTON STATE COLLEGE
ALUMNI ASSOCIATION**

**WARREN KAY VANTINE
STUDIO, INC.**

Official photographer
for the
1966 LAMPAS

132 Boylston Street
Boston, Massachusetts

Fa-3-4300

SCHOLASTIC JEWELERS

INCORPORATED

Official Jeweler

Class of 1966

John F. Lynch, President

5174-78 Washington Street

Boston

ERRICO STUDIO

PHOTOGRAPHERS

Schools—Proms—Weddings

286 BROADWAY, WINTER HILL

SOMERVILLE, MASS.

Compliments of

THE LECTURE SOCIETY

Chairman

Kathleen Nowak

Advisor

Mr. Ralph E. Ladd

“I want a laity, not arrogant, not rash in speech, not disputatious, but men who know their religion, who enter into it, who know just where they stand, who know what they hold, and what they do not. Who know their creed so well that they can give an account of it. Who know so much of history that they can defend it. I want an intelligent, well instructed laity.”

John Henry Cardinal Newman

OUR BEST HOPES AND WISHES . . .

NEWMAN

Best Wishes to the
SENIOR CLASS
From the

FRESHMAN CLASS

President

Frank Conley

Vice President

Mary Warren

Secretary

Paula Gurney

Treasurer

Bob Kelley

Congratulations to the

CLASS OF '66

From the

SOPHOMORE CLASS

President

Arthur Cody

Vice President

Eileen Bernstein

Secretary

June Zalewski

Treasurer

Marie Skane

*"Knowledge advances by steps
and not by leaps."*

Macaulay

Best Wishes
from the

CLASS OF 1967

President

William T. Lydon

Vice President

Kathleen A. Kelley

Secretary

Kathleen M. Walsh

Treasurer

Florence C. Giulana

CHALKDUST

Best Wishes

VOLUNTEER SERVICE BUREAU

A CREED

There is a destiny that makes

us brothers

None goes his way alone.

All that we give into the

lives of others

Comes back into our own.

Edwin Markham

Best Wishes
to the
CLASS OF 1966

ATHLETIC ASSOCIATION

Basketball—Baseball—Track—Golf—Hockey—Wrestling

COACHES

James P. Sullivan

James Tedesco

Raymond Sine

William Squires

James Loscutoff

Edward Barry

Richard Maloney

Sincerest wishes for health, happiness
and success in the future

WOMAN'S RECREATION ASSOCIATION

Best Wishes

from

THE STUDENT GOVERNMENT ASSOCIATION

STATE COLLEGE AT BOSTON

President

Executive Vice President

First Vice President

College Coordinator

Corresponding Secretary

Recording Secretary

Treasurer

Tom Feenan

Larry Gillis

Ronny Areglado

John Shea

Joe Sullivan

Carole Burns

Bob O'Keefe

1965—1966

Compliments of

THE BOOKSTORE

PENNANTS

DECALS

SWEATSHIRTS

A Few Books



This book printed by VELVATONE, a special process of lithographic printing. Sole producers: Wm. J. Keller Inc., Buffalo, N. Y.
No other printing firm is authorized to use the Velvatone method.







