



Cl.
300
A35
v.8
Invent. 7001

Miss M. J. Rathbun.
GENERAL

CARDED 1945

DIVISION OF WORMS

ILLUSTRATIONS
OF THE
ZOOLOGY
OF THE
ROYAL INDIAN MARINE SURVEY SHIP
INVESTIGATOR,
UNDER THE COMMAND OF
COMMANDER T. H. HEMING, R.N.

FISHES.—Part VI, Plates XXV—XXVI.
CRUSTACEA.—Part VII, Plates XXXVI—XLV.

UNDER THE DIRECTION OF
A. ALCOCK, M.B., C.M.Z.S., SUPERINTENDENT OF THE INDIAN MUSEUM, FORMERLY
SURGEON-NATURALIST TO THE INDIAN MARINE SURVEY.



Published under the Authority of Captain W. S. Goodridge, R.N.,
Director of the Royal Indian Marine.

CALCUTTA:
OFFICE OF THE SUPERINTENDENT OF GOVERNMENT PRINTING, INDIA.
1899.

1901

1901

Q1
309
A35
V8

Invert Zool.

Alcock, Alfred

Zoology of The Royal Indian Marine Survey Ship Investigator

1899



EXPLANATION OF PLATE.

—◆—
FISHES.
—◆—

PLATE XXV.

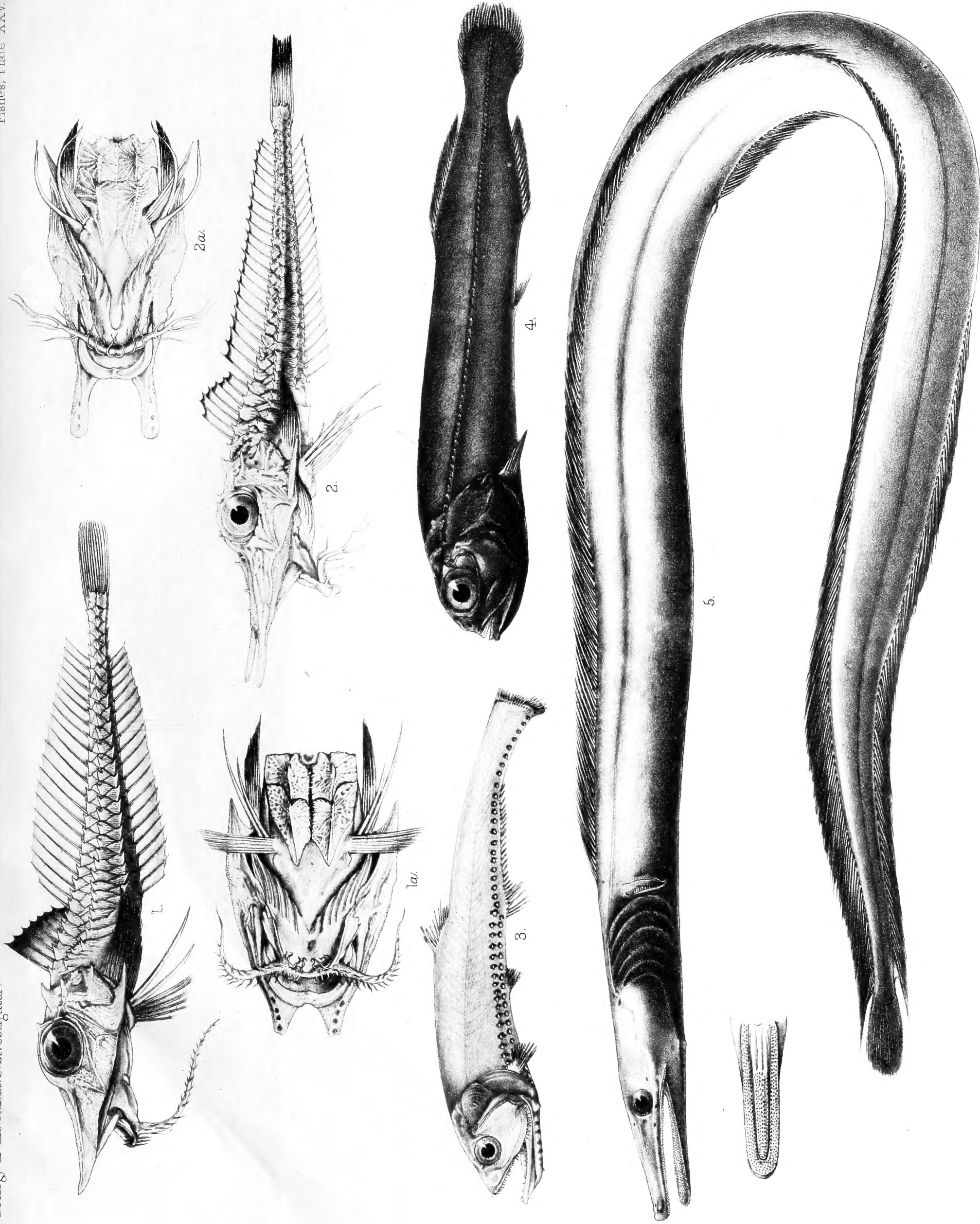
Figs. 1, 1a.—*Peristethus investigatoris*, Alcock, Annals and Magazine of Natural History, August, 1898, p. 152.

Figs. 2, 2a.—*Peristethus serrulatum*, Alcock, *tom. cit.*, p. 153.

Fig. 3.—*Diplophos corythæolum*, Alcock, *tom. cit.*, p. 147.

Fig. 4.—*Xenodermichthys squamilaterus*, Alcock, *tom. cit.*, p. 148.

Fig. 5.—*Nettenchelys Taylora*, Alcock, *tom. cit.*, p. 150.



1. *Peristethus investigatoris*. 2. *Peristethus serrulatum*. 3. *Diplophos corythaeolum*. 4. *Xenodermichthys squamiferus*. 5. *Nettenchelys taylori*.

A. C. Chowdhary, del.

Photogravure - Survey of India Offices, Calcutta, August 1899.

EXPLANATION OF PLATE.

FISHES.

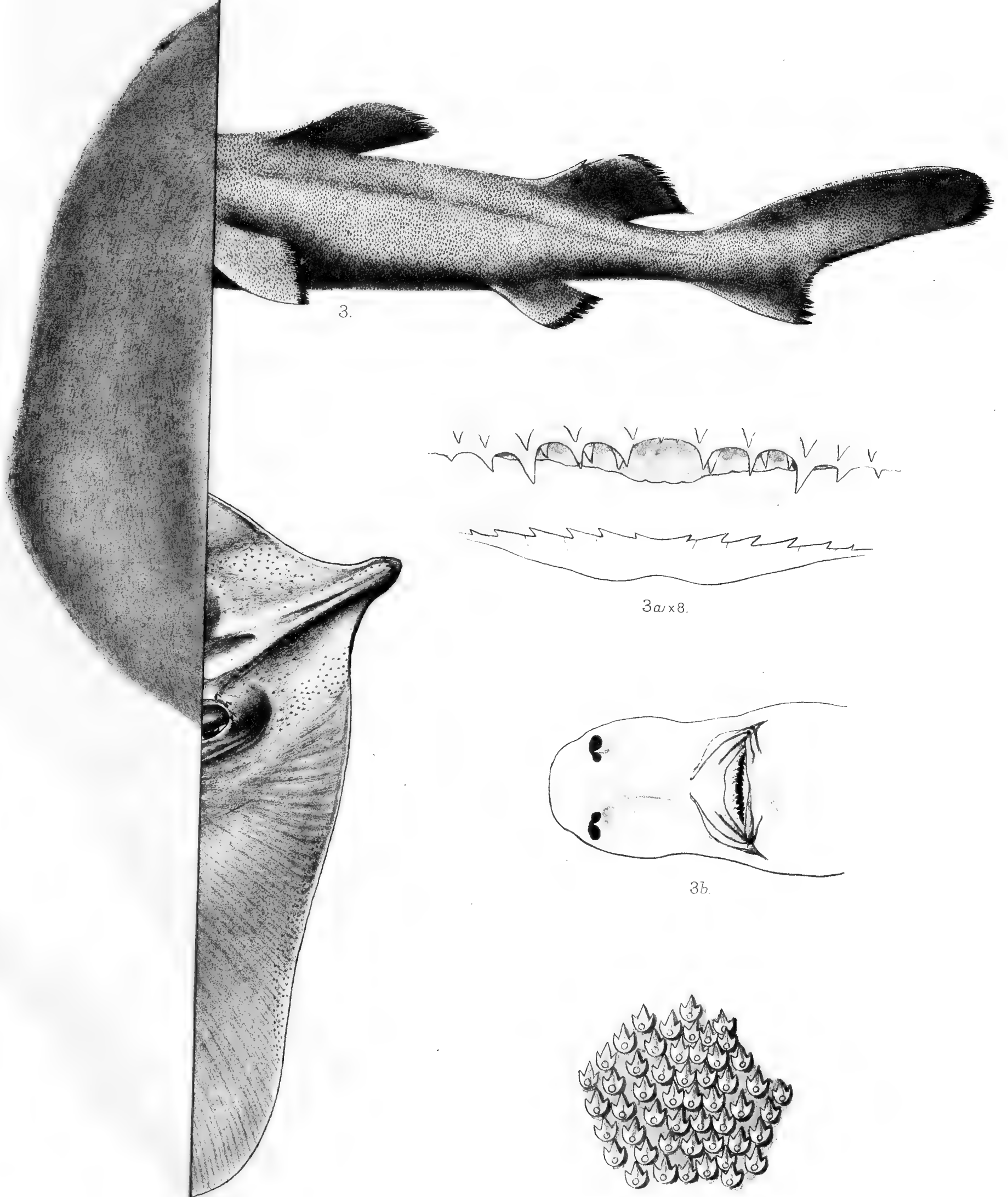
PLATE XXVI.

Fig. 1.—*Benthobatis Moresbyi*, Alcock, Annals and Magazine of Natural History, August, 1898, p. 145.

Figs. 2, 2a.—*Diplacanthopoma raniceps*, Alcock, *tom. cit.*, p. 154.

Figs. 3, 3a, 3b, 3c.—*Centrophorus Rossi*, Alcock, *tom. cit.*, p. 143.

Fig. 4.—*Raja Powellii*, Alcock, *tom. cit.*, p. 145.



3.

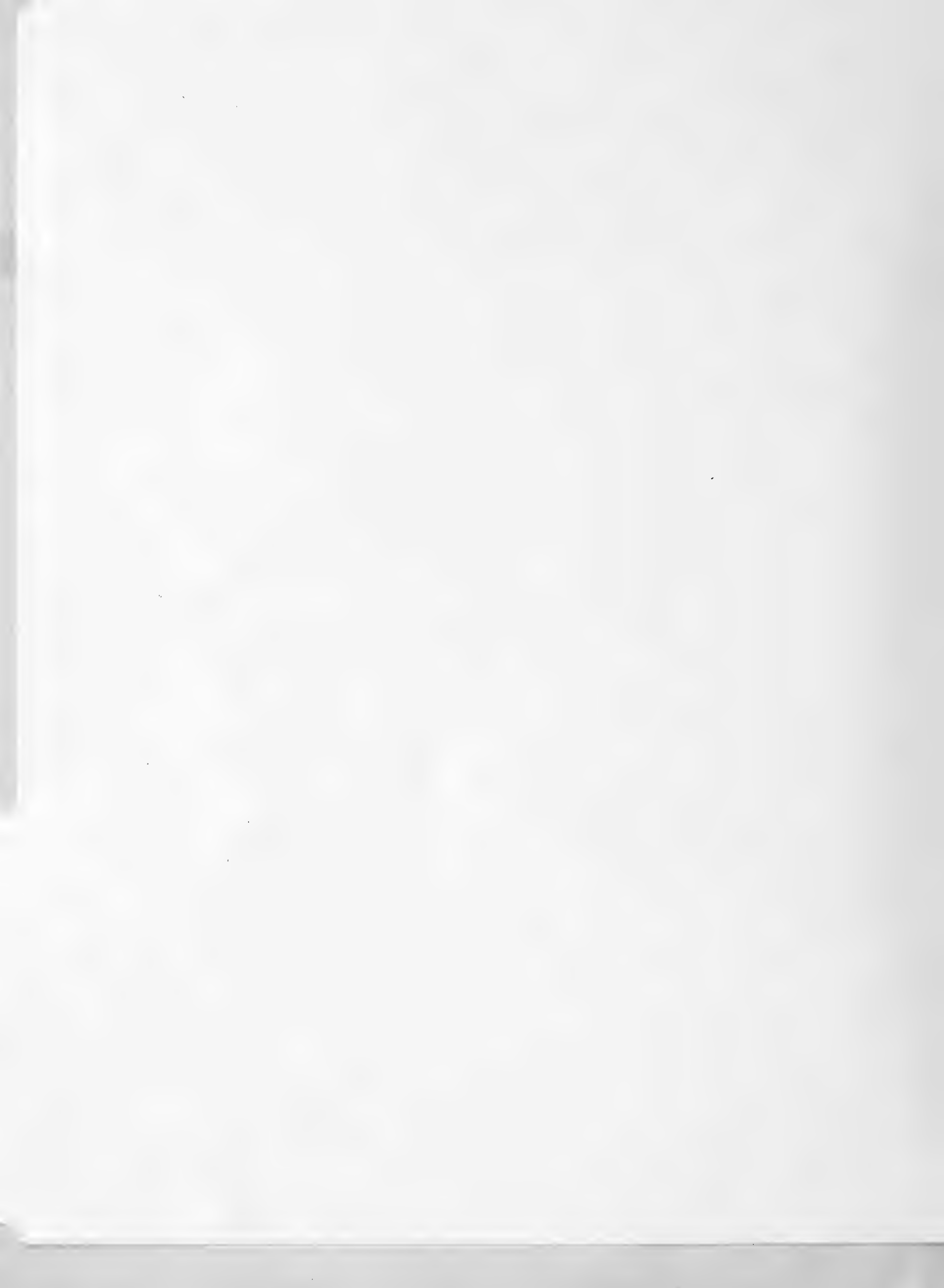
3a x 8.

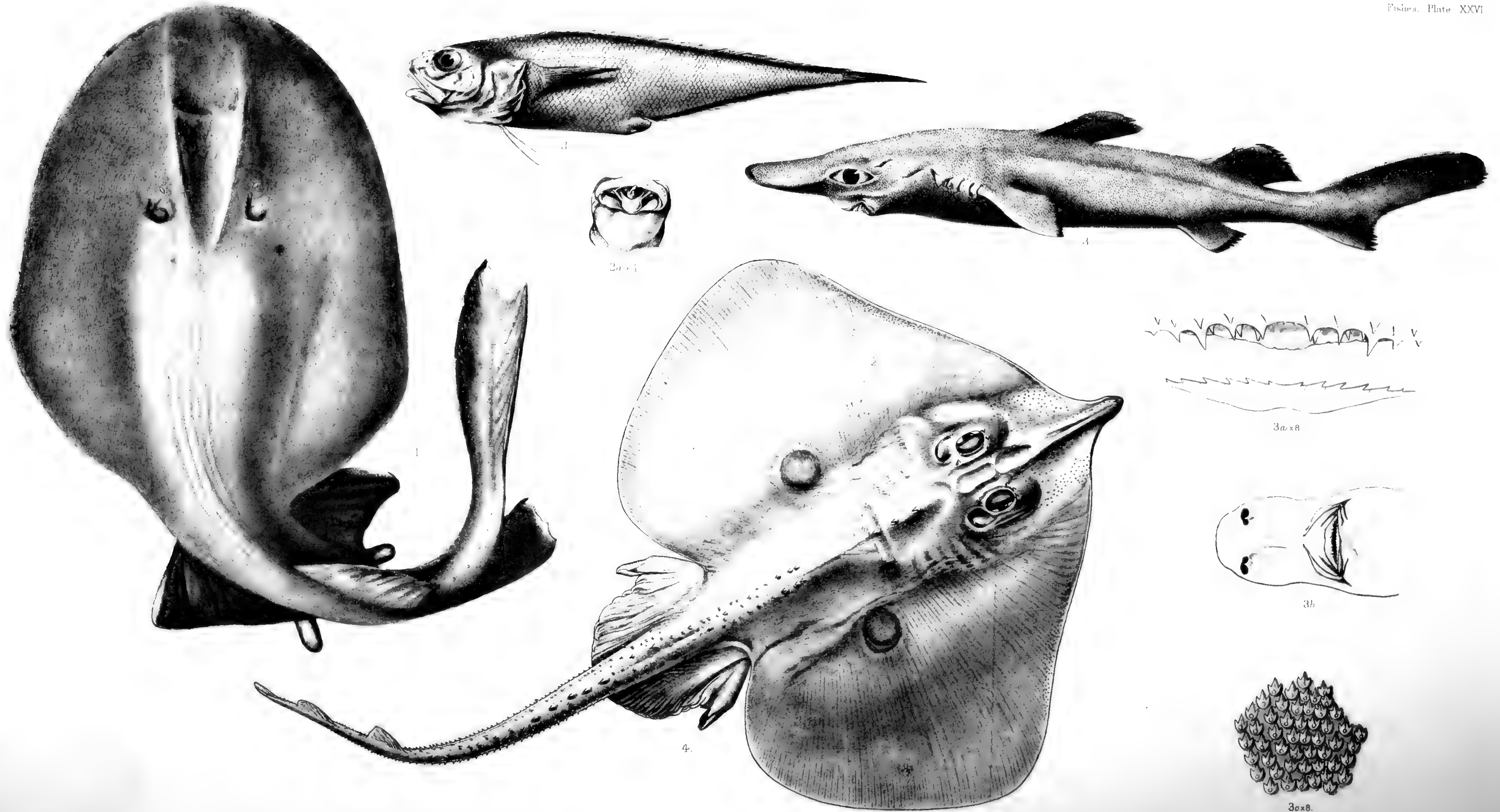
3b.

3c x 8.

A.C. Chowdhary. del.

powelli.





1. *Benthobatis maresbyi*. 2. *Diplacanthopoma raniceps*. 3. *Centrophorus rossi* 4. *Raja powelli*.



EXPLANATION OF PLATE.

—♦—
CRUSTACEA.
—♦—

PLATE XXXVI.

Fig. 1.—*Leptodius euglyptus*, Alcock, Journal, Asiatic Society of Bengal, Vol. LXVII, pt. 2, 1898, p. 121.

Fig. 2.—*Carpilodes lophopus*, Alcock, *tom. cit.*, p. 84.

Fig. 3.—*Lioxantho tumidus*, Alcock, *tom. cit.*, p. 91.

Fig. 4.—*Carpilodes pediger*, Alcock, *tom. cit.*, p. 83.

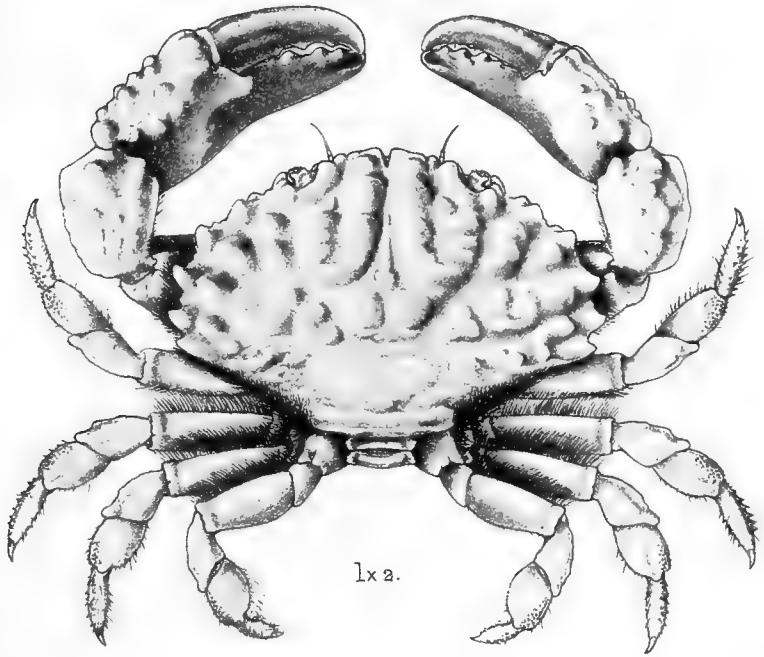
Fig. 5.—*Liomera sodalis*, Alcock, *tom. cit.*, p. 88.

Fig. 6.—*Lophactæa corallina*, Alcock, *tom. cit.*, p. 102.

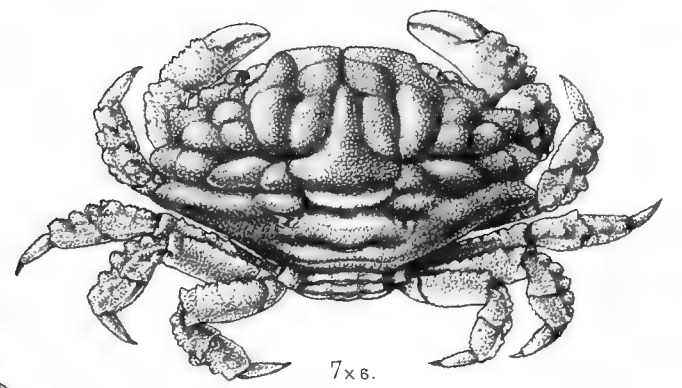
Fig. 7.—*Carpilodes cariosus*, Alcock, *tom. cit.*, p. 86.

Fig. 8.—*Orphnoxanthus microps*, Alcock, *tom. cit.*, p. 128.

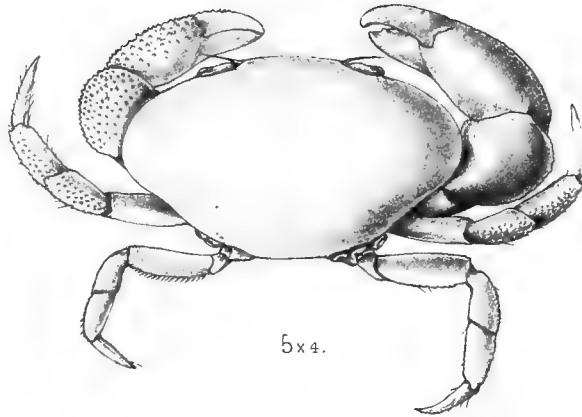
Fig. 9.—*Lioxantho asperatus*, Alcock, *tom. cit.*, p. 92.



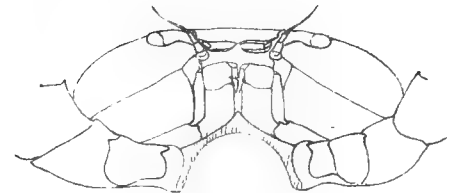
1x2.



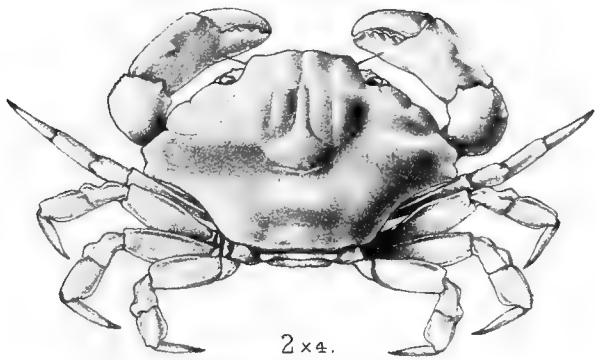
7x6.



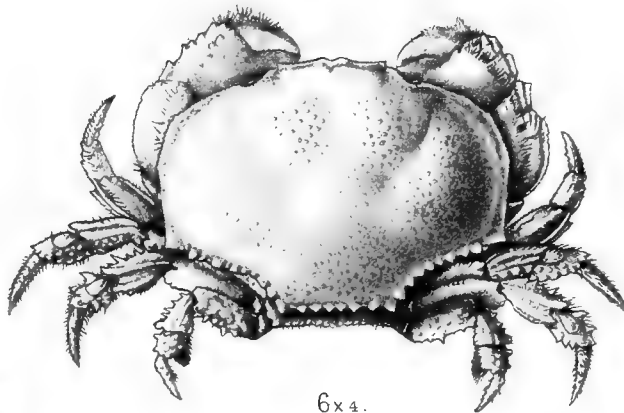
5x4.



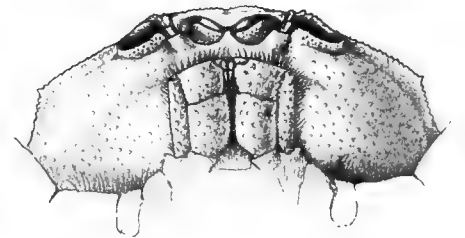
5ax4.



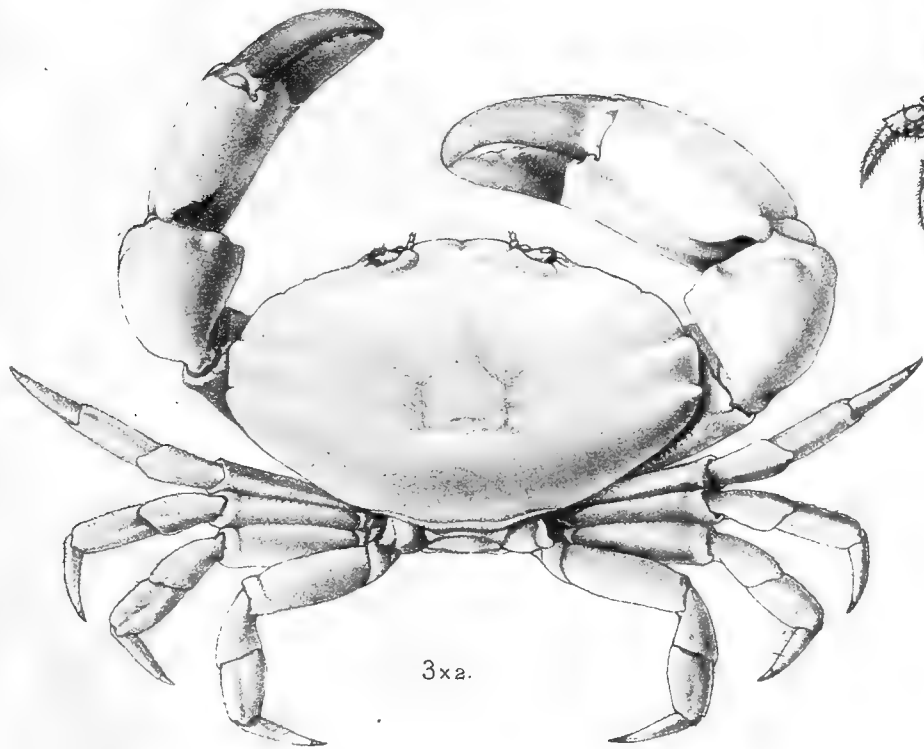
2x4.



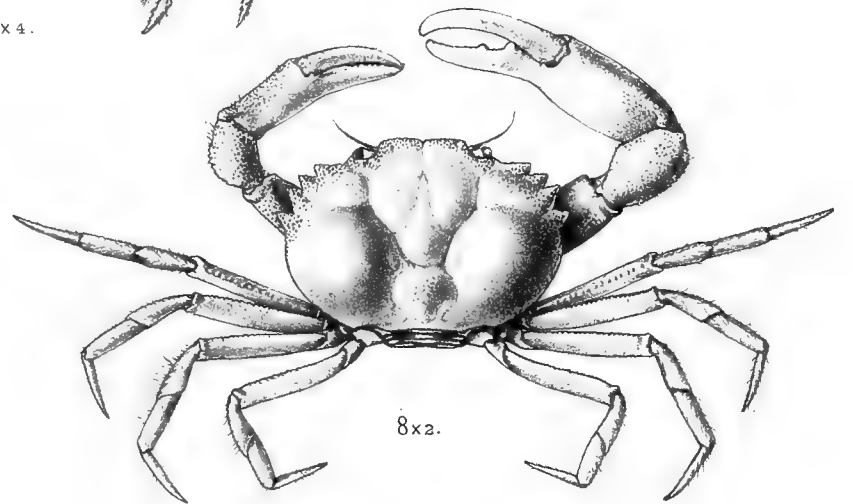
6x4.



6ax5.



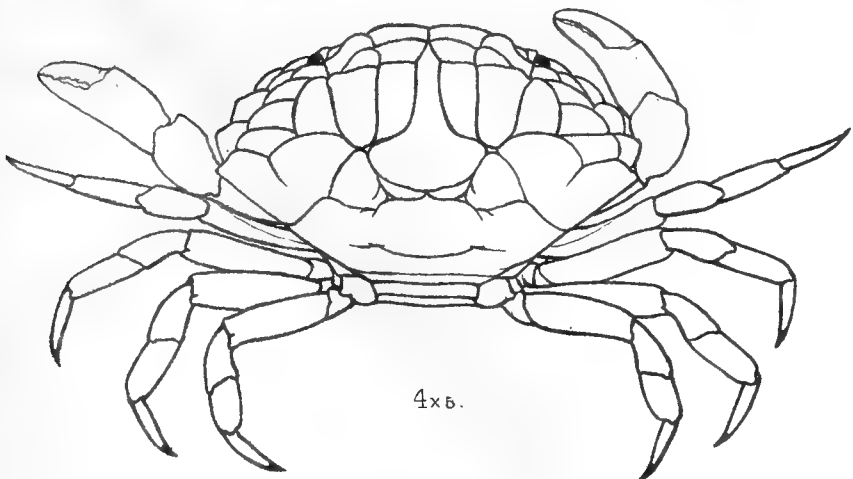
3x2.



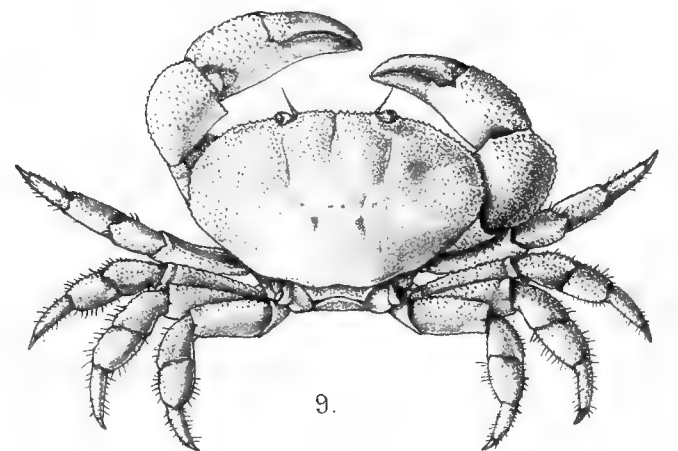
8x2.



4ax4,6.



4x5.



9.

1. *Leptodius euglyptus*, A.A. ♂. 2. *Carpilodes lophopus*, A.A. ♀. 3. *Liioxantho tumidus*, A.A. ♂. 4. *Carpilodes pediger*, ♀, A.A. 5. *Liomera sodalis*, A.A. ♀. 6. *Lophactæa corallina*, A.A. ♀. 7. *Carpilodes cariosus*, A.A. ♀. 8. *Orphnoxanthus microps*, A.A. ♂. 9. *Liioxantho asperatus*, Alc. ♂.

EXPLANATION OF PLATE.

CRUSTACEA.

PLATE XXXVII.

Figs. 1, 1a.—*Hoploxanthus Hextii*, Alcock, Journal, Asiatic Society of Bengal, Vol. LXVII, pt. 2, 1898, p. 126.

Fig. 2.—*Actæa nodulosa*, var. *bullifera*, Alcock, *tom. cit.*, p. 149.

Fig. 3.—*Actæa echinus*, Alcock, *tom. cit.*, p. 149.

Fig. 4.—*Actæa flosculata*, Alcock, *tom. cit.*, p. 151.

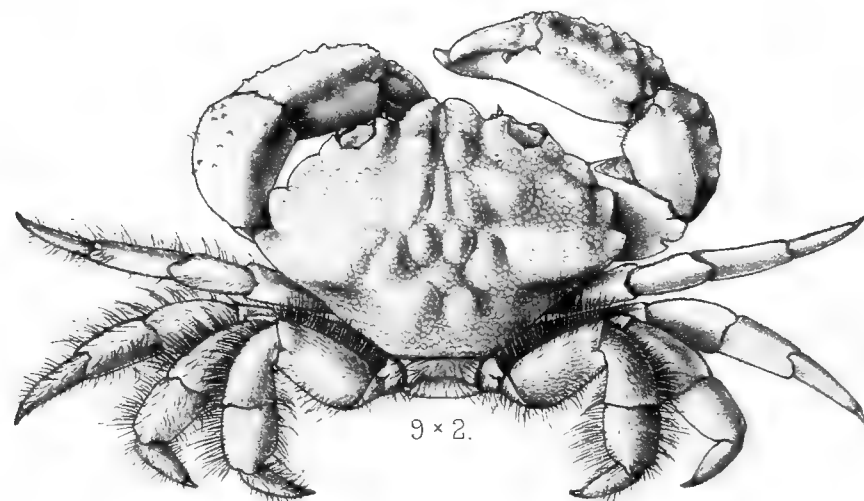
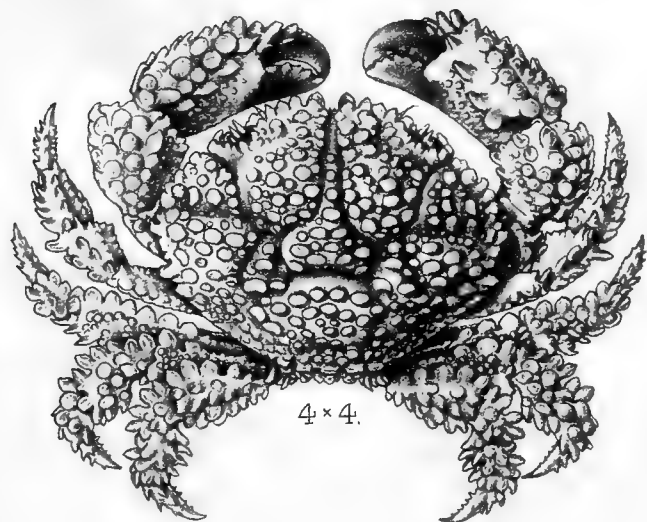
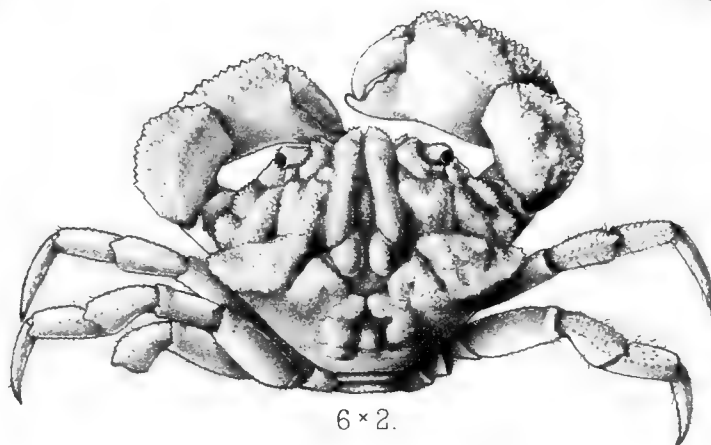
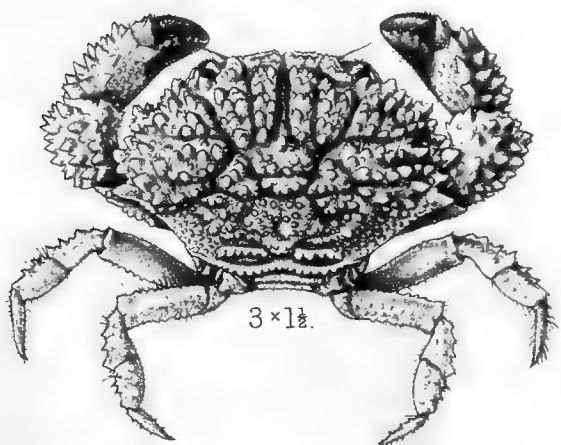
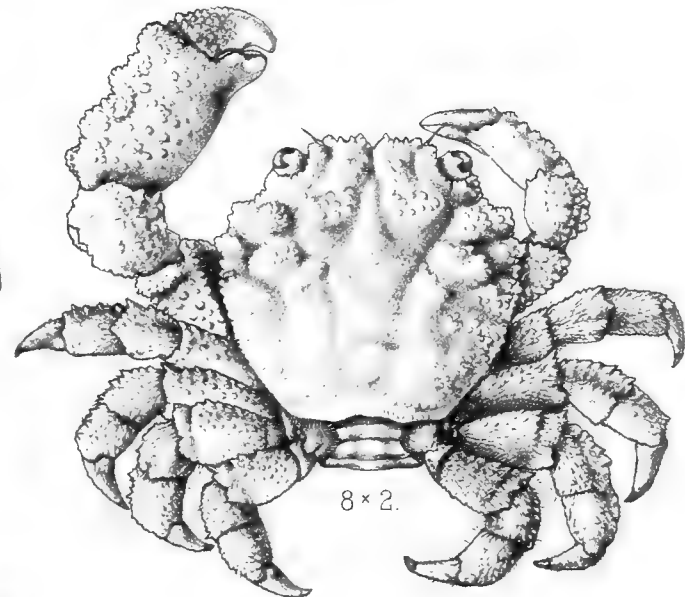
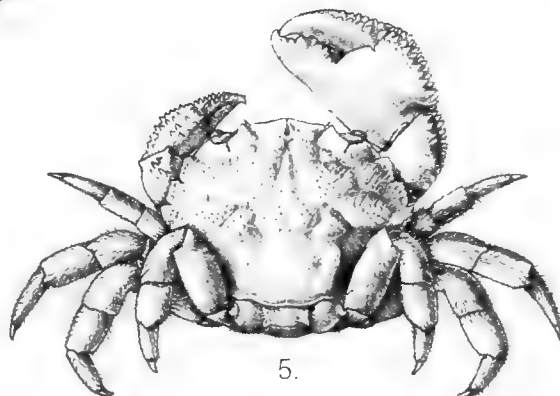
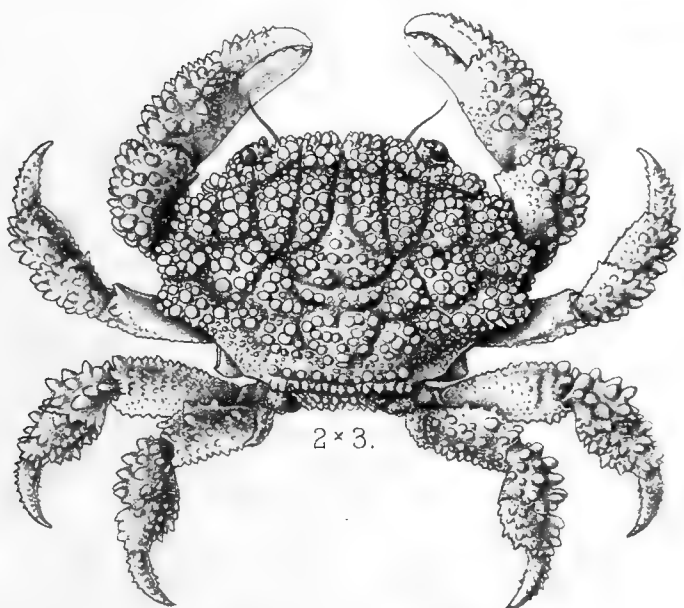
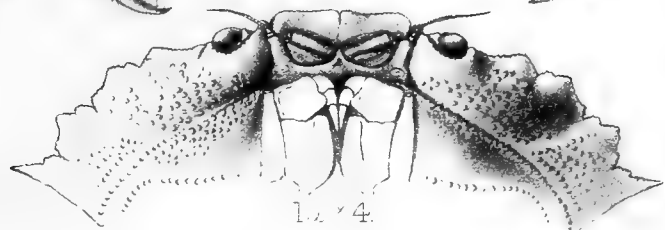
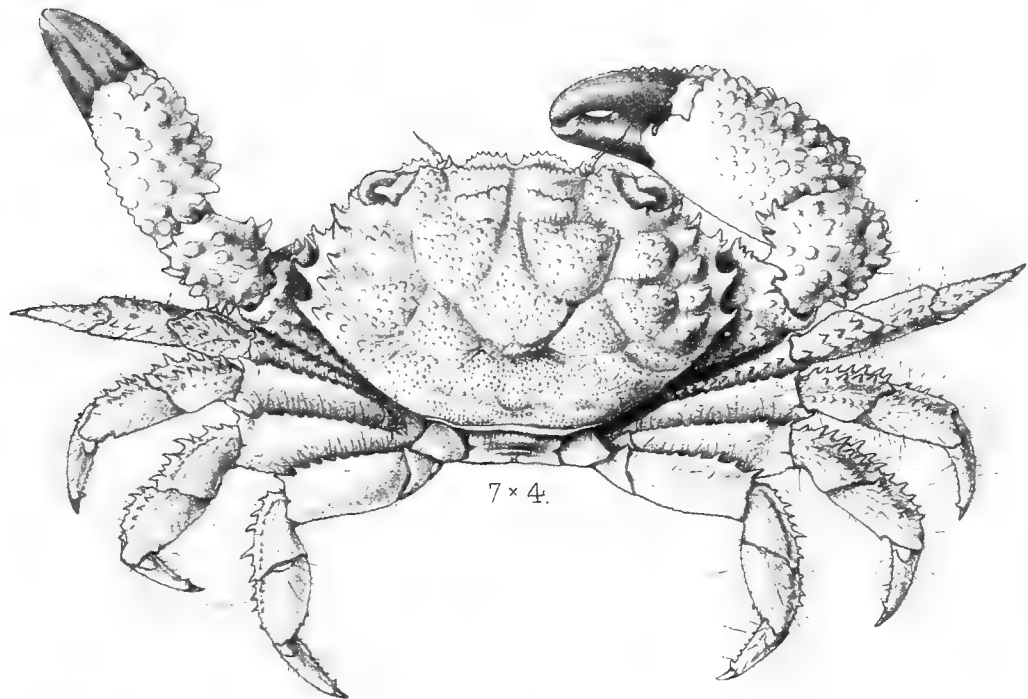
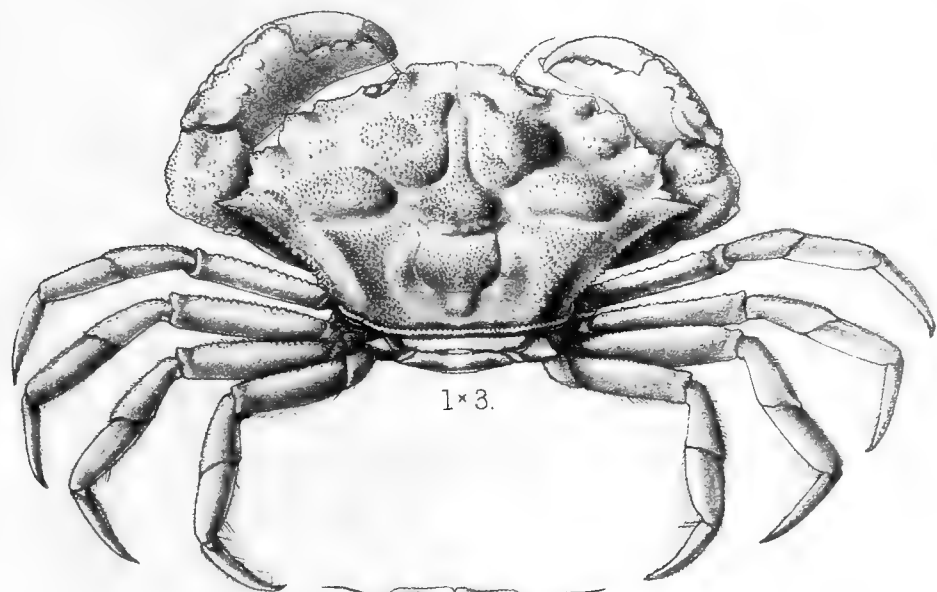
Fig. 5.—*Actumnus fissifrons*, Alcock, *tom. cit.*, p. 204.

Fig. 6.—*Actumnus arbutum*, Alcock, *tom. cit.*, p. 205.

Fig. 7.—*Chlorodopsis Wood-Masoni*, Alcock, *tom. cit.*, p. 170.

Fig. 8.—*Cymo quadrilobatus*, Miers, Zoology of H. M. S. "Alert," p. 533: Alcock, *tom. cit.*, p. 175.

Fig. 9.—*Actumnus tessellatus*, Alcock, *tom. cit.*, p. 205.



1. *Hoploxanthus hextii*, ♀ A.A. 2. *Actaea nodulosa* var. *bullifera*, ♂ A.A. 3. *Actaea echinus*, ♂ A.A.
 4. *Actaea flosculata*, A.A. ♂ 5. *Actumnus fissifrons*, A.A. ♀ 6. *Actumnus arbutum*, Alc. ♂
 7. *Chlorodopsis wood-masoni*, A.A. 8. *Cymo quadrilobatus*, ♀ Miers. 9. *Actumnus tessellatus*, A.A. ♂



EXPLANATION OF PLATE.

—
CRUSTACEA.
—

PLATE XXXVIII.

Fig. 1.—*Quadrella boopsis*, Alcock, Journal, Asiatic Society of Bengal, Vol. LXVII, pt. 2, 1898, p. 227.

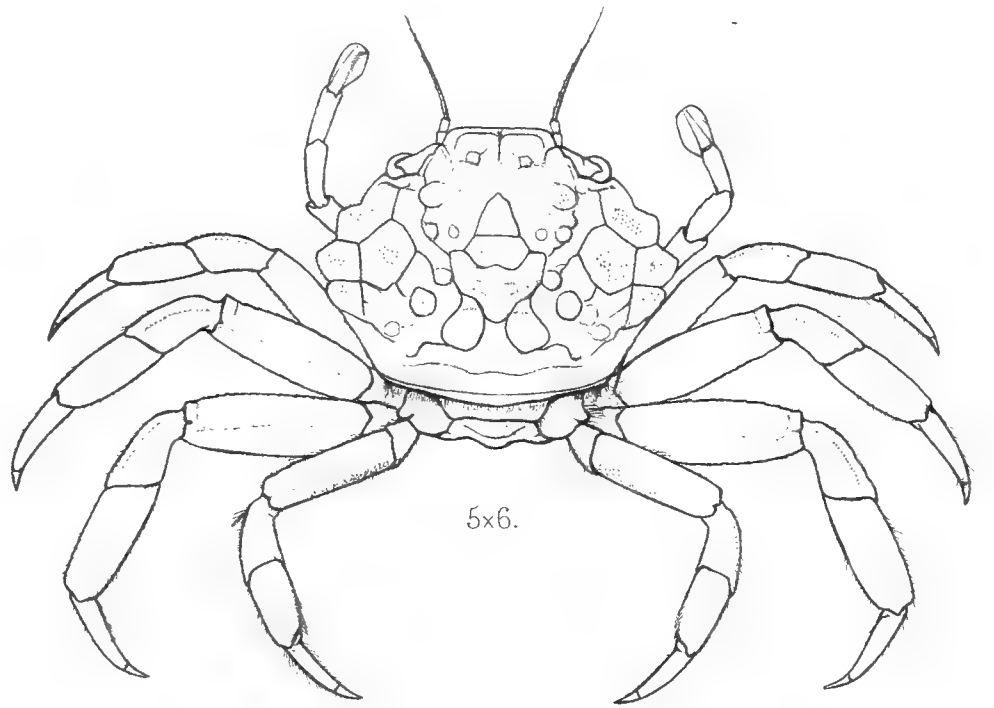
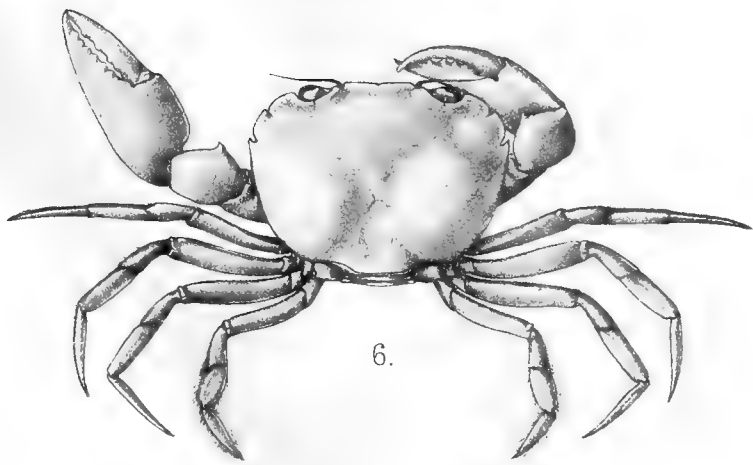
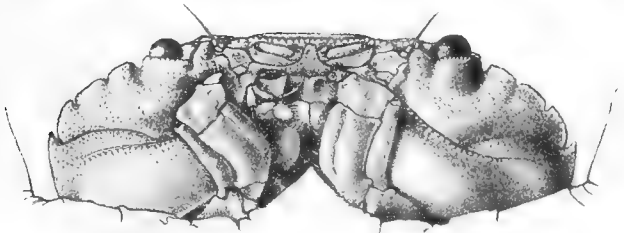
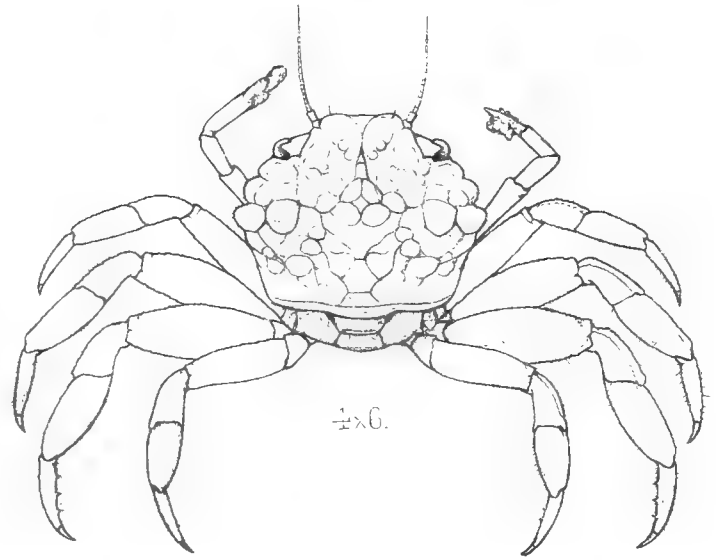
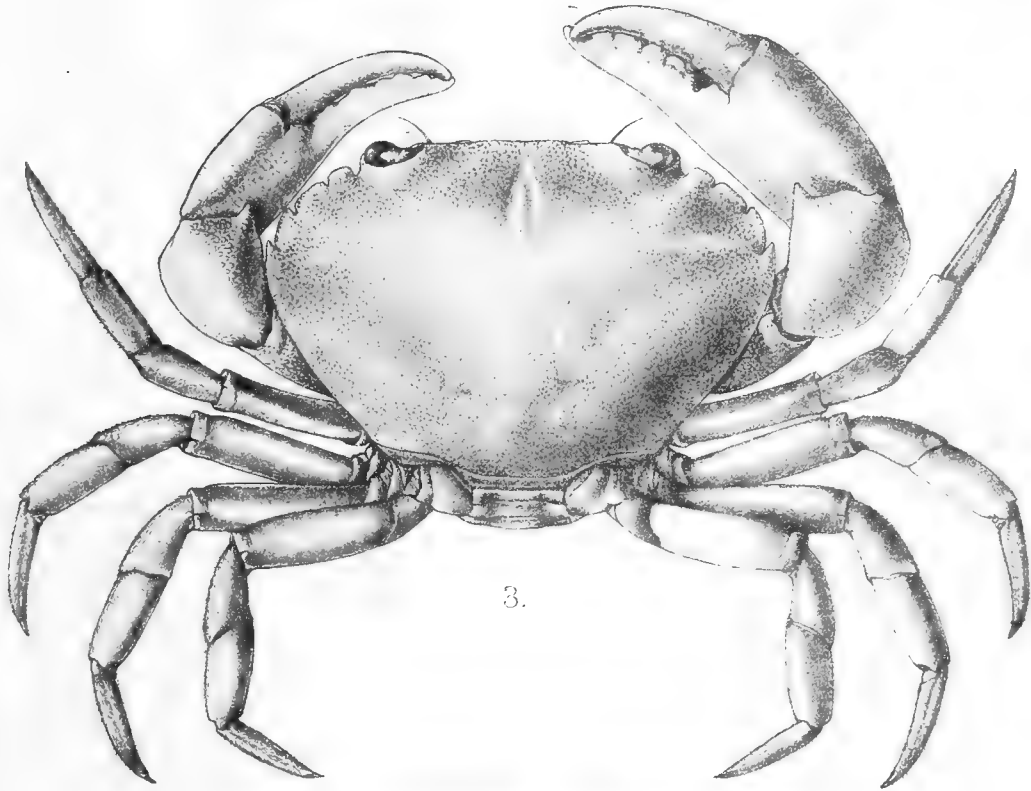
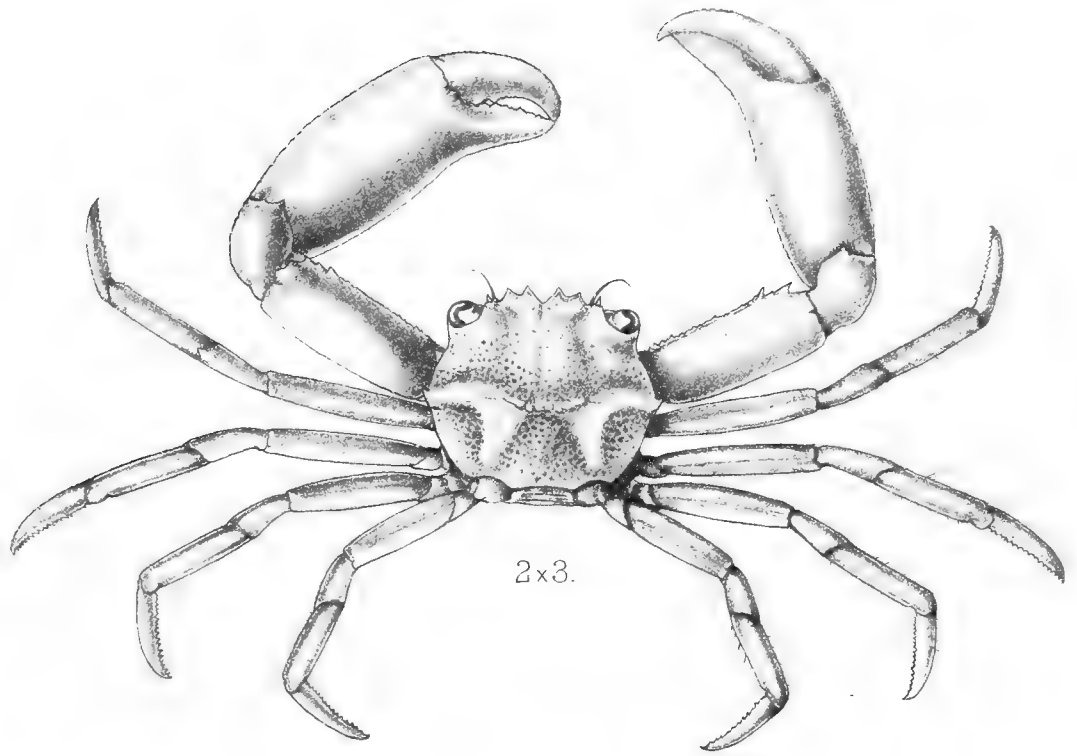
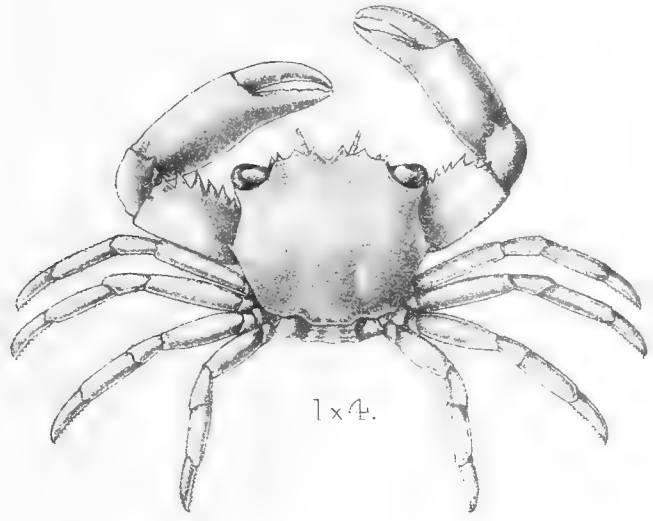
Fig. 2.—*Quadrella coronata*, var. *maculosa*, Alcock, *tom. cit.*, p. 226.

Fig. 3.—*Baptozius vinosus*, Milne Edwards, Histoire Naturelle des Crustacés, I., p. 422 : Alcock, *tom. cit.*, p. 189.

Fig. 4.—*Melia cæstifer*, Alcock, *tom. cit.*, p. 231.

Fig. 5.—*Melia pugil*, Alcock, *tom. cit.*, p. 231.

Fig. 6.—*Nectopanope rhodobaphes*, Wood-Mason, Annals and Magazine of Natural History, March 1891, p. 261 : Alcock, *tom. cit.*, p. 213.



1. *Quadrella boopsis*, ♀ A.A. 2. *Quadrella coronata* var. *maculosa*, ♂ A.A. 3. *Baptozius vinosus*, Edw. ♀
4. *Melia cæstifer*, A.A. ♂ 5. *Melia pugil*, A.A. ♀ 6. *Nectopanope rhodobaphes*, W.M. ♀



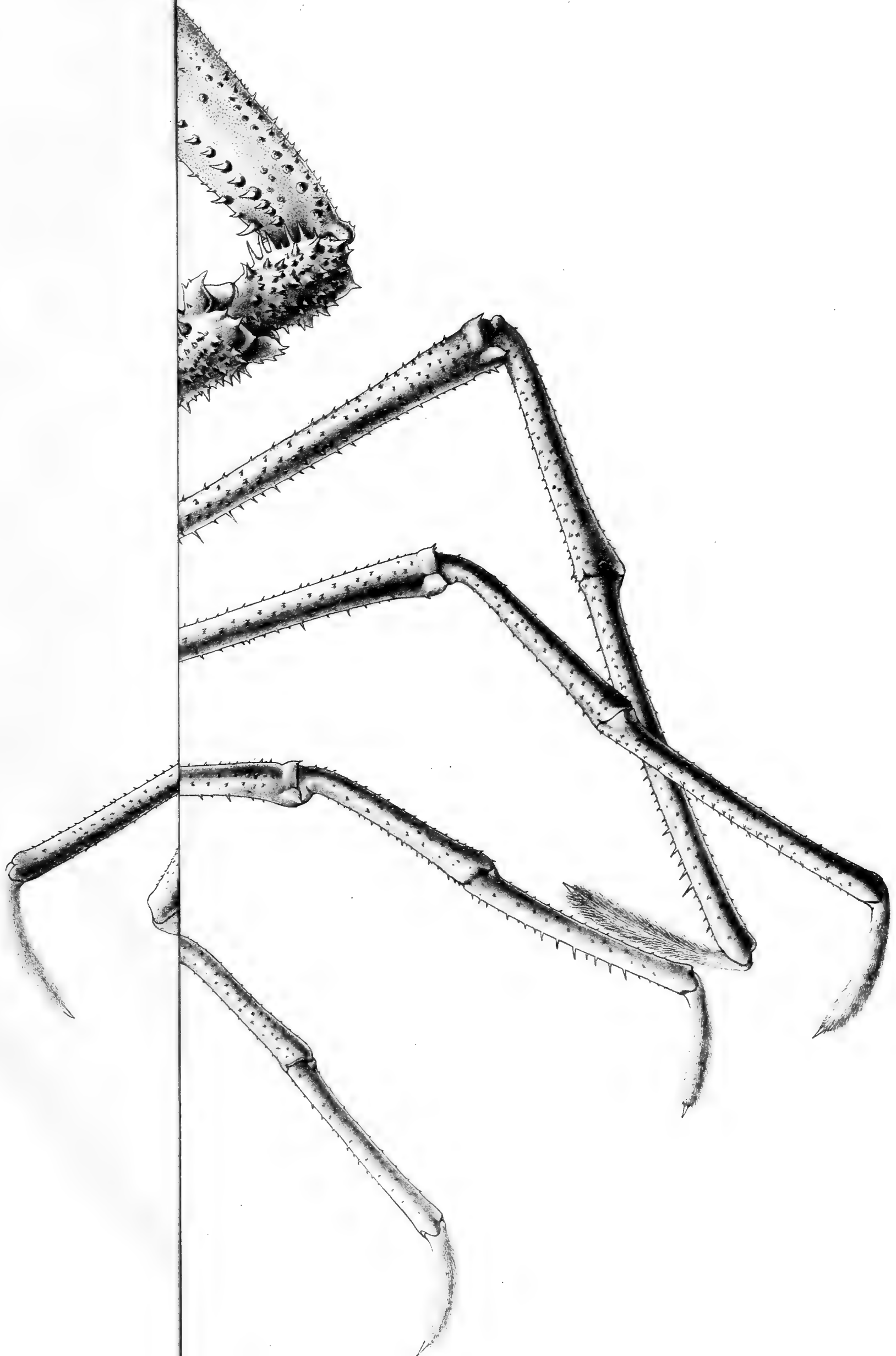


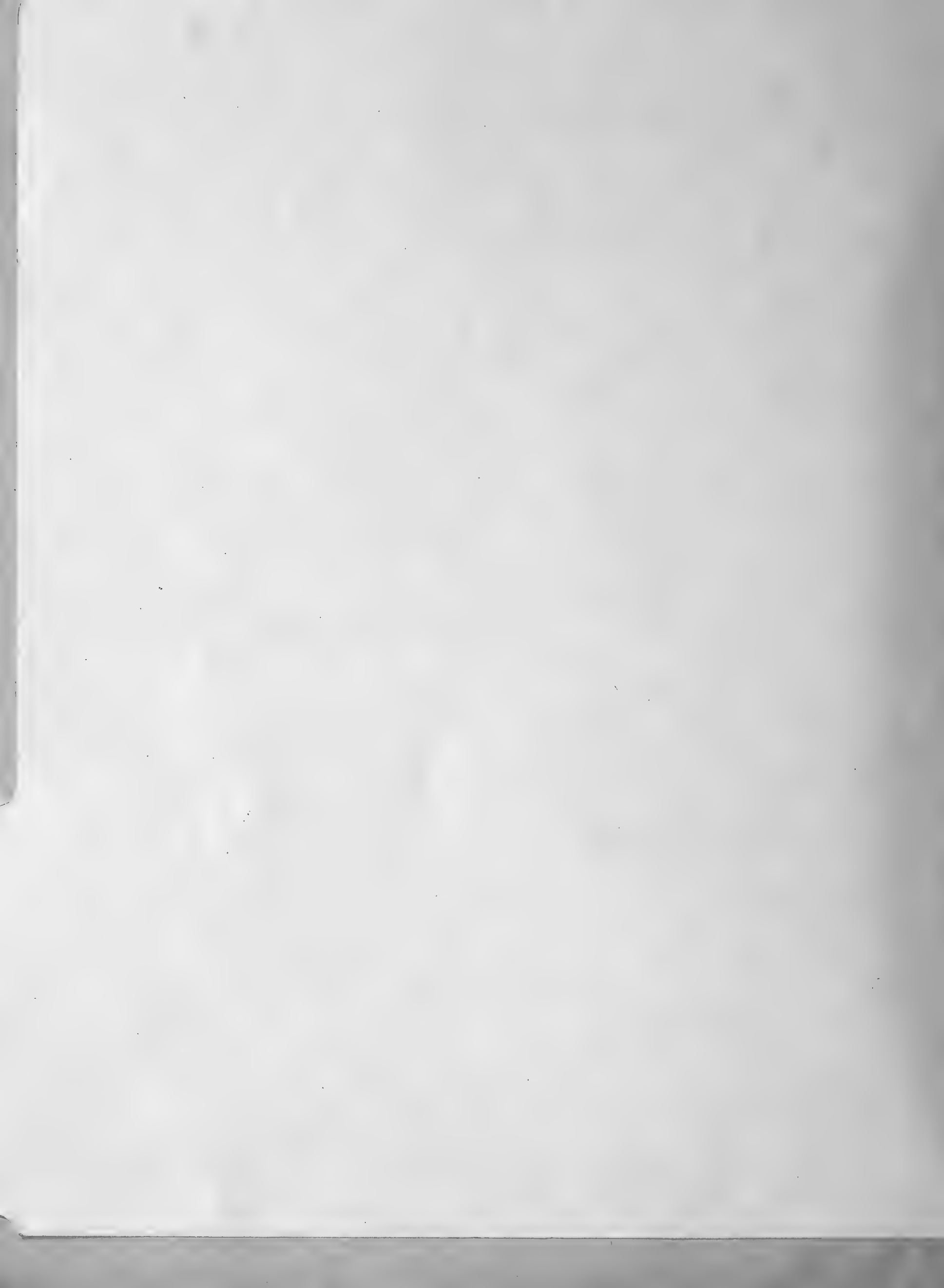
EXPLANATION OF PLATE.

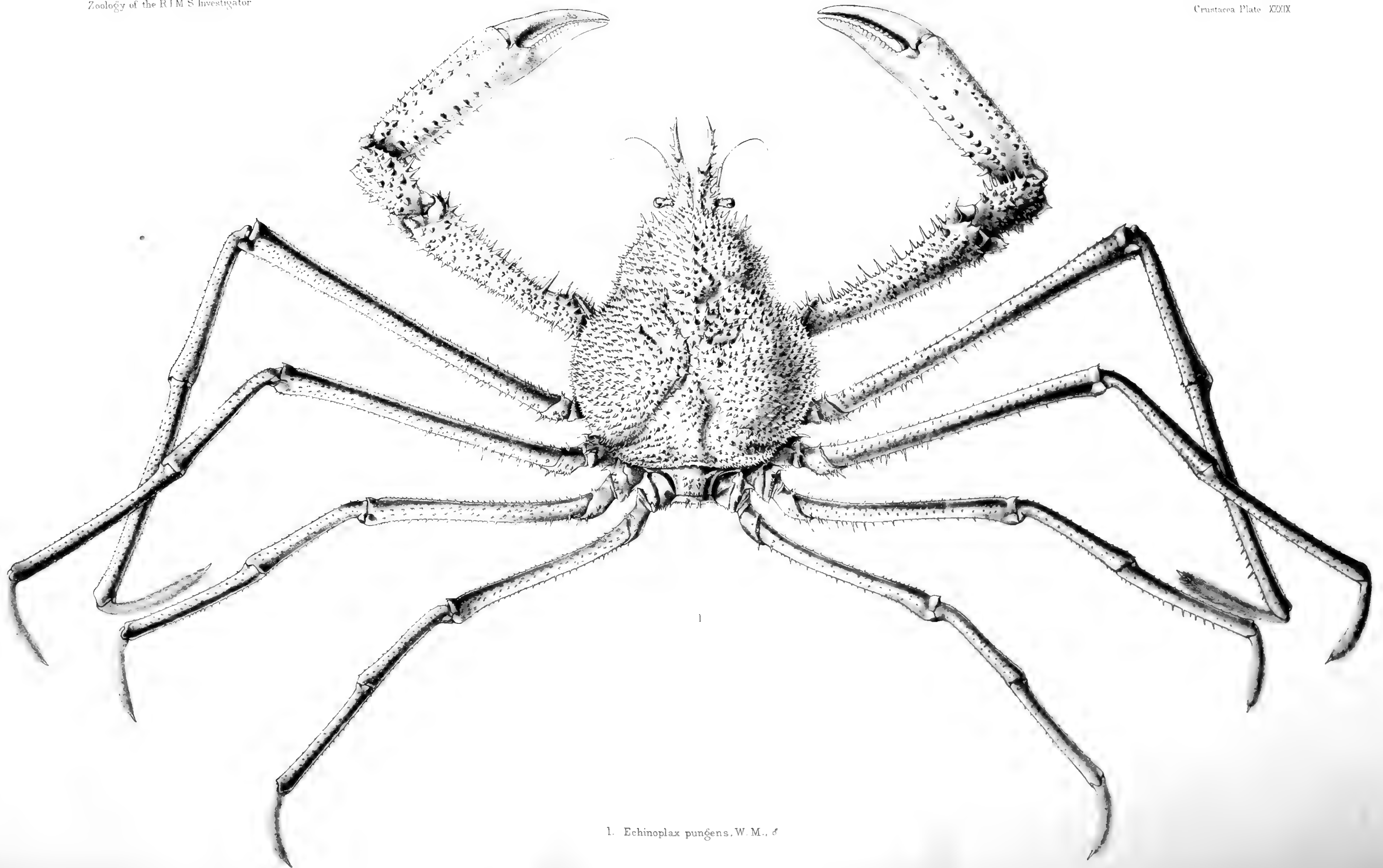
CRUSTACEA.

PLATE XXXIX.

Echinoplax pungens, Wood-Mason. Male, natural size. Wood-Mason, Annals and Magazine of Natural History, March 1891, p. 259. Alcock, Journal, Asiatic Society of Bengal, Vol. LXIV, pt. 2, 1895, p. 179: Illustrations of the Zoology of the Investigator, Crustacea, plate xvii, fig. 1 (adult female): and "Investigator" Deep Sea Brachyura, p. 43.







1. *Echinoplax pungens*. W. M., ♂



EXPLANATION OF PLATE.

—+—
CRUSTACEA.
—+—

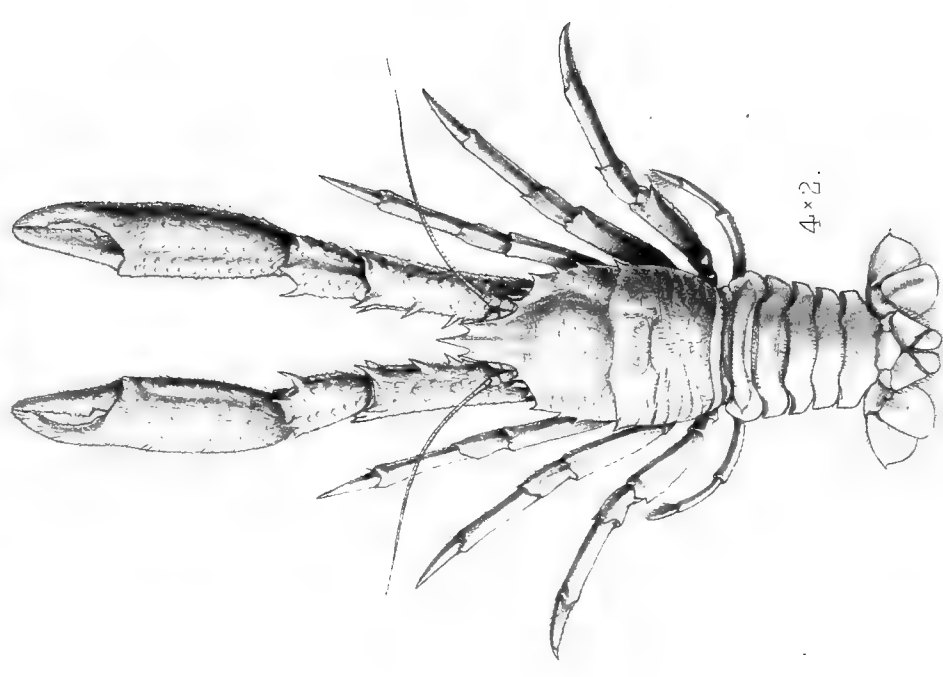
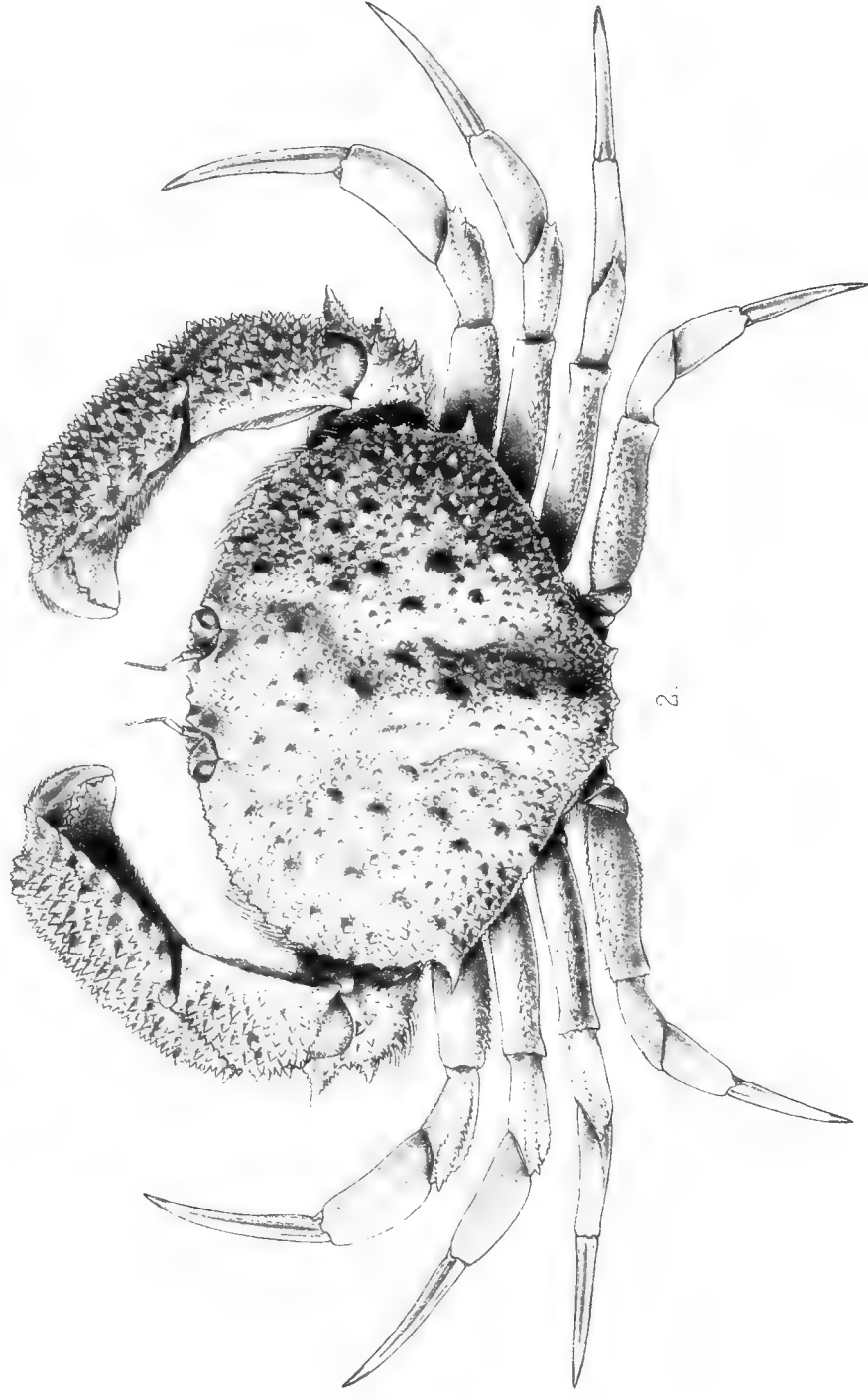
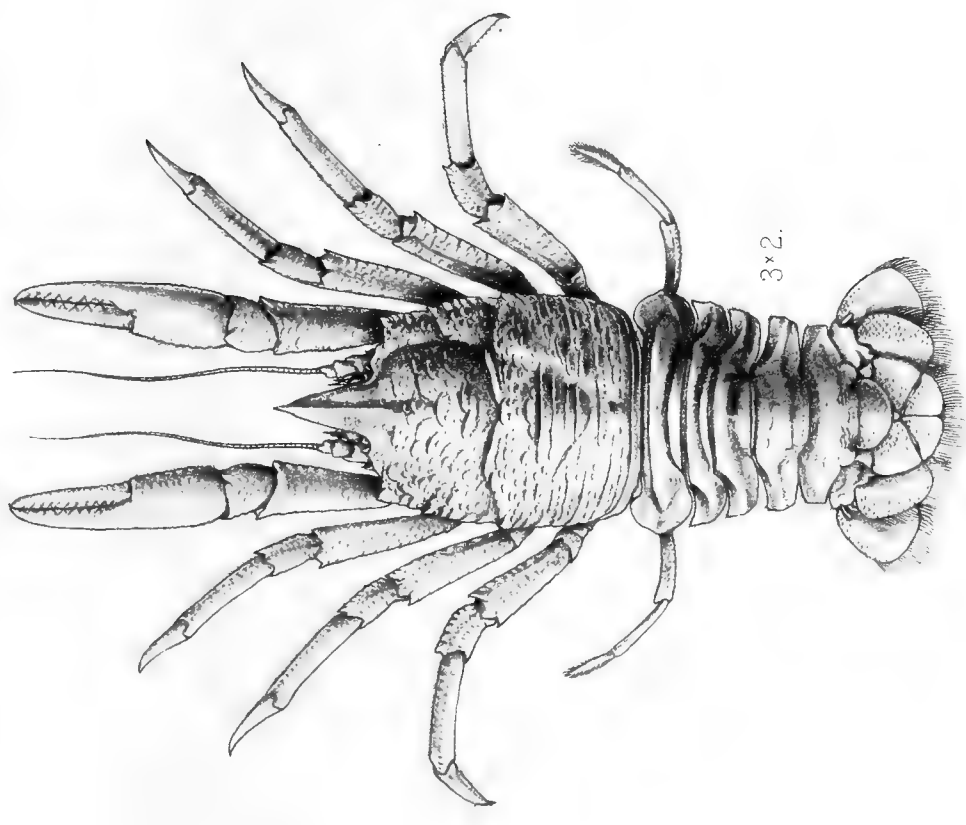
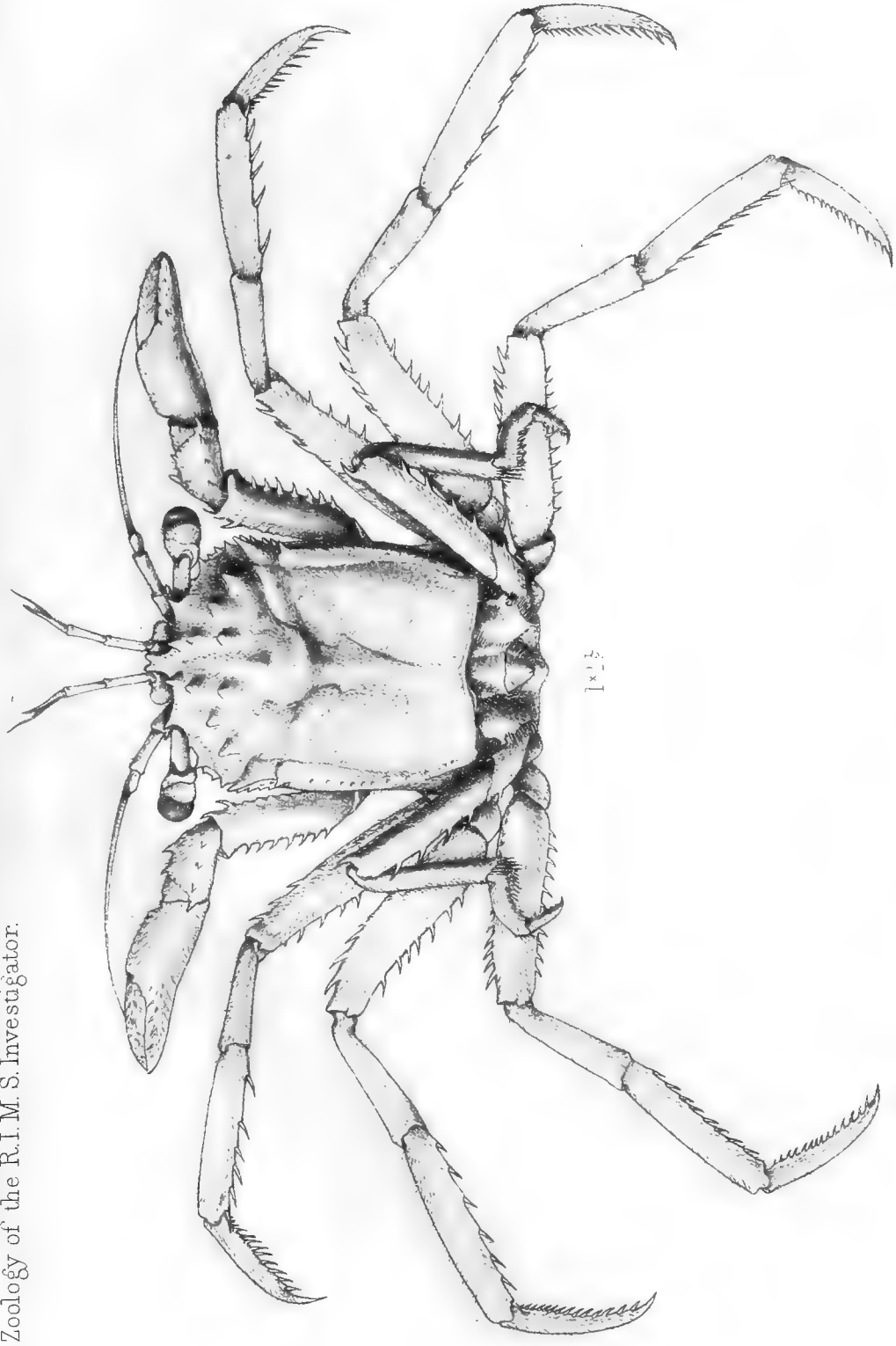
PLATE XL.

Fig. 1.—*Homola andamanica*, Alcock, An Account of the Investigator Deep Sea Brachyura, p. 7.

Fig. 2.—*Mursia aspera*, Alcock, *op. cit.*, p. 24.

Fig. 3.—*Munidopsis Moresbyi*, Alcock and Anderson, Annals and Magazine of Natural History, January, 1899, p. 22.

Fig. 4.—*Munidopsis rosacea*, A. Milne Edwards: Alcock and Anderson, *tom. cit.*, p. 19.



1. *Homola andamanica*. 2. *Mursia aspera*. 3. *Munidopsis moresbyi*. 4. *Munidopsis rosacea*.



EXPLANATION OF PLATE.

—♦—
CRUSTACEA.
—♦—

PLATE XLI.

Figs. 1, 1a, 1b.—*Parapeneus investigatoris*, Anderson, Annals and Magazine of Natural History, April 1899, p. 279.

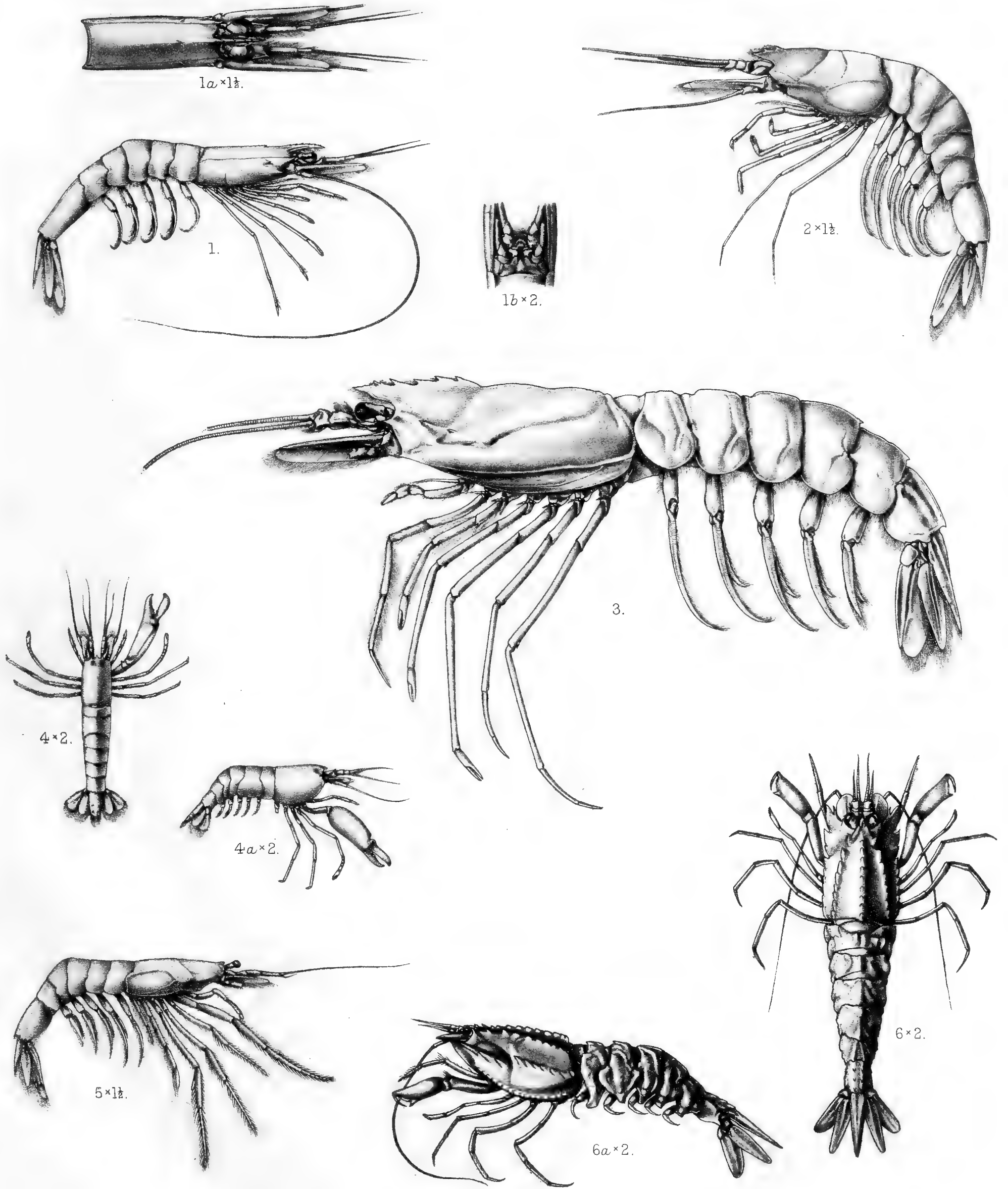
Fig. 2.—*Benthesicymus investigatoris*, Anderson, *tom. cit.*, p. 282.

Fig. 3.—*Haliporus taprobanensis*, Anderson, *tom. cit.*, p. 280.

Figs. 4, 4a.—*Alpheus Shearmeri*, Anderson, *tom. cit.*, p. 283.

Fig. 5.—*Sergestes rubroguttatus*, Wood-Mason, Annals and Magazine of Natural History, November, 1891, p. 354.

Figs. 6, 6a.—*Pontocaris media*, Alcock, Annals and Magazine of Natural History, April, 1899, p. 282.



1. *Parapeneus investigatoris*. 2. *Benthescymus investigatoris*. 3. *Haliporus taprobanensis*.
 4. *Alpheus shearmeri*. 5. *Sergestes rubroguttatus*. 6. *Pantocaris media*.





EXPLANATION OF PLATE.

—
CRUSTACEA.
—

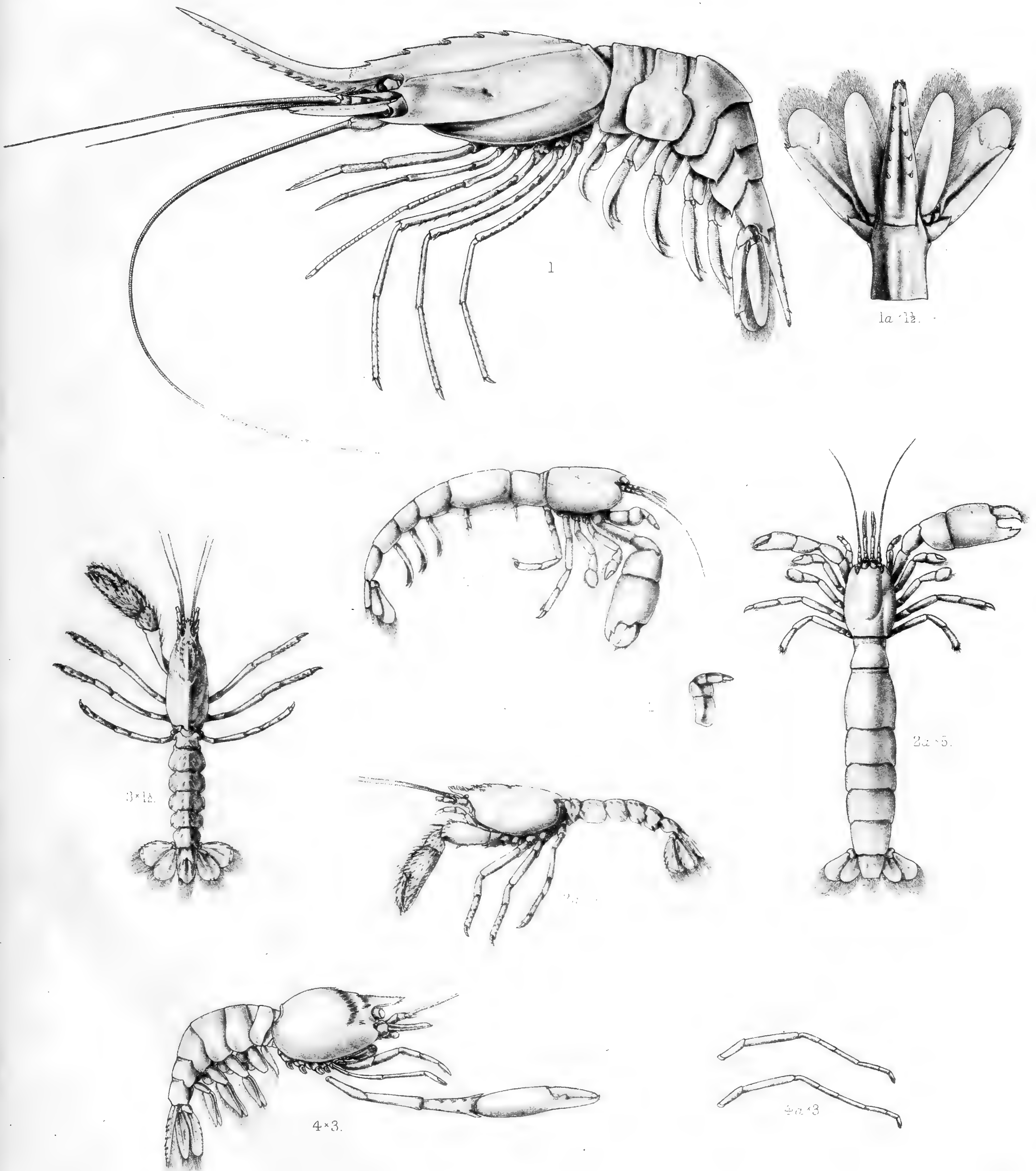
PLATE XLII.

Figs. 1, 1a.—*Heterocarpus laevigatus*, Spence Bate, Challenger Macrurous Crustacea, p. 636, pl. cxii., fig. 3: Anderson, Annals and Magazine of Natural History, April 1899, p. 285.

Figs. 2, 2a, 2b.—*Callianassa lignicola*, Anderson, Annals and Magazine of Natural History, April 1899, p. 288.

Figs. 3, 3a.—*Calastacus felix*, Anderson, *tom. cit.*, p. 287.

Figs. 4, 4a.—*Richardina spongicola*, Alcock and Anderson, Annals and Magazine of Natural History, April, 1899, p. 291.



1 *Heterocarpus laevigatus*. 2. *Callianassa lignicola*. 3. *Calastacus felix*. 4. *Richardina spongicola*.



EXPLANATION OF PLATE.

—♦—
CRUSTACEA.
—♦—

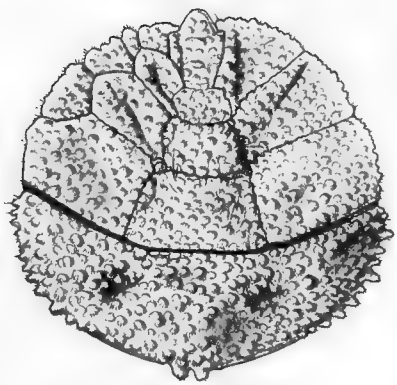
PLATE XLIII.

Figs. 1, 1a.—*Paralomis investigatoris*, Alcock and Anderson, Annals and Magazine of Natural History, January, 1899, p. 17.

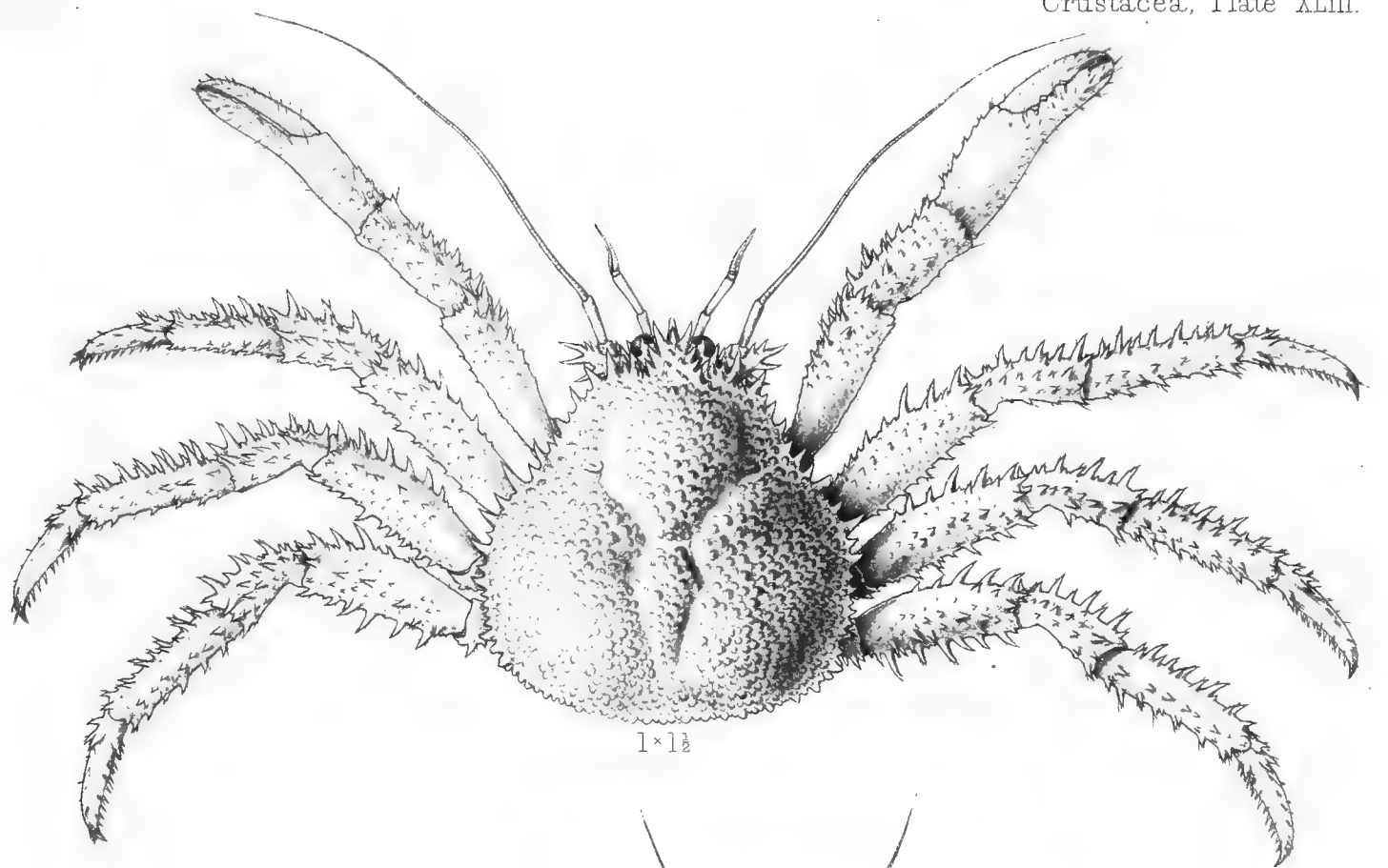
Figs. 2, 2a.—*Paralomis indica*, Alcock and Anderson, *tom. cit.*, p. 15.

Fig. 3.—*Munida comorina*, Alcock and Anderson, *tom. cit.*, p. 18.

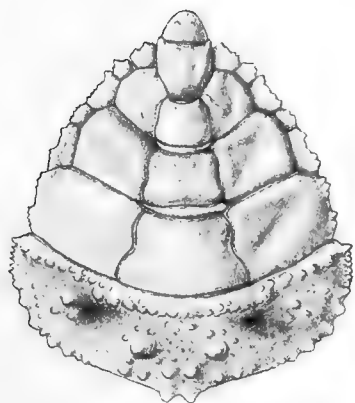
Figs. 4, 4a, 4b.—*Fylocheles Miersi*, Alcock and Anderson, *tom. cit.*, p. 14.



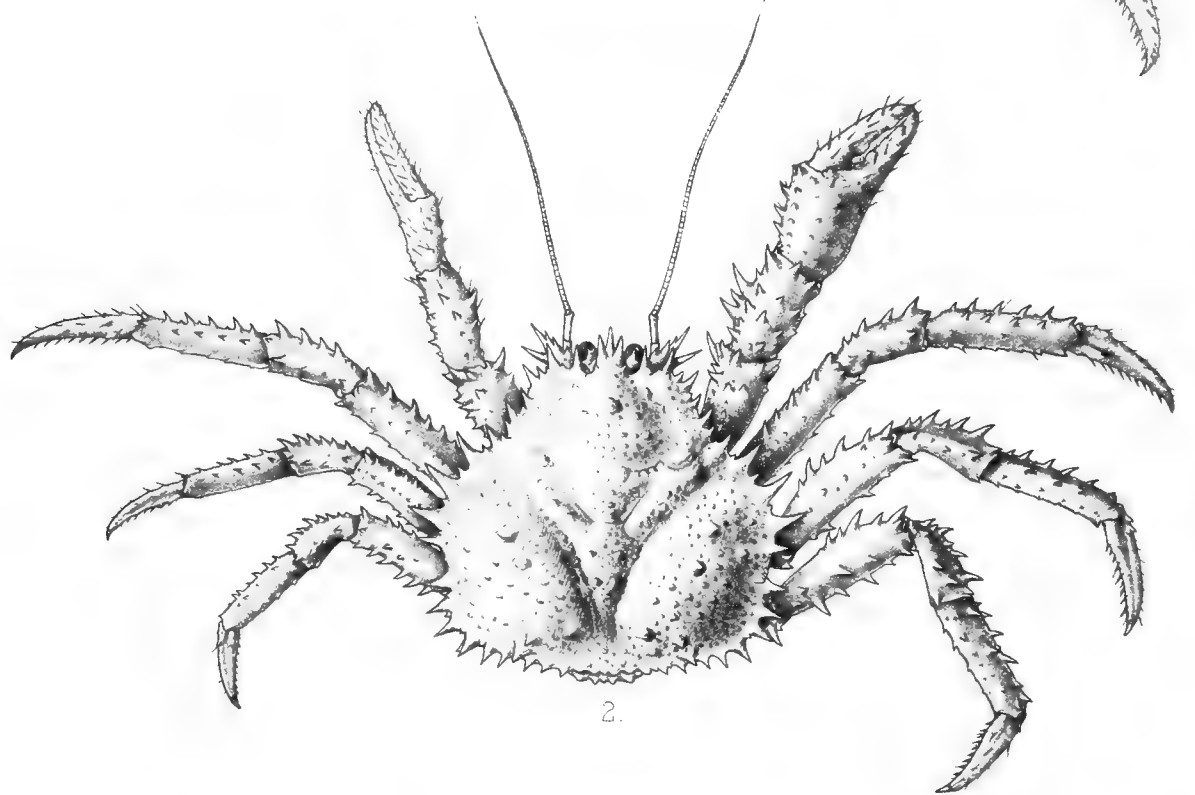
1a x 2.



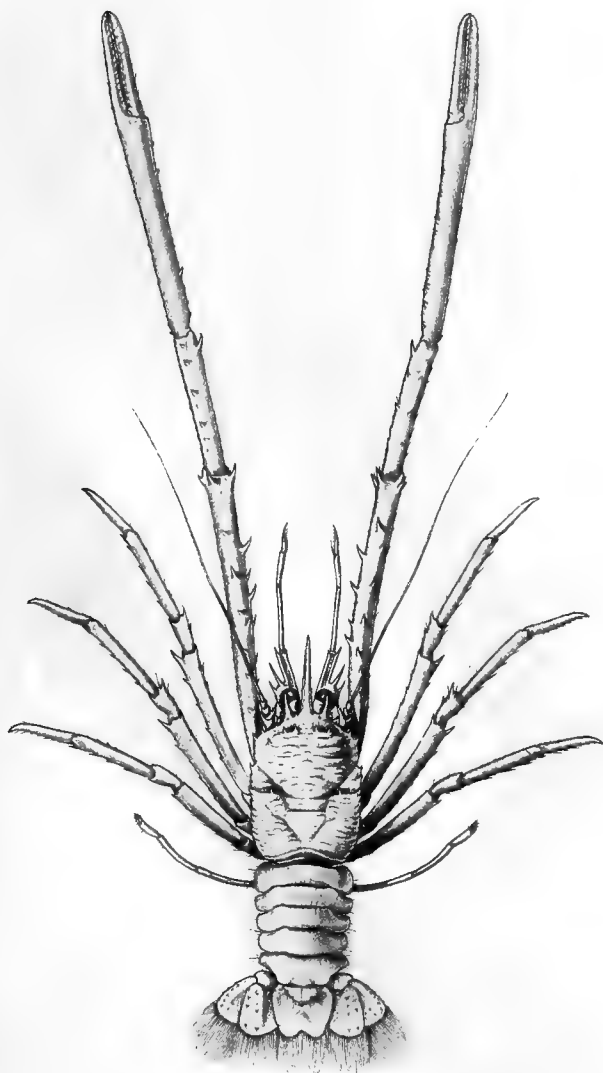
1 x 1 1/2



2a x 1 1/2.

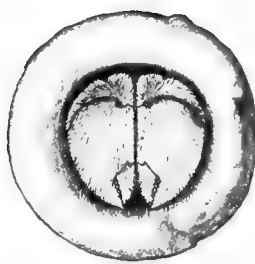


2.

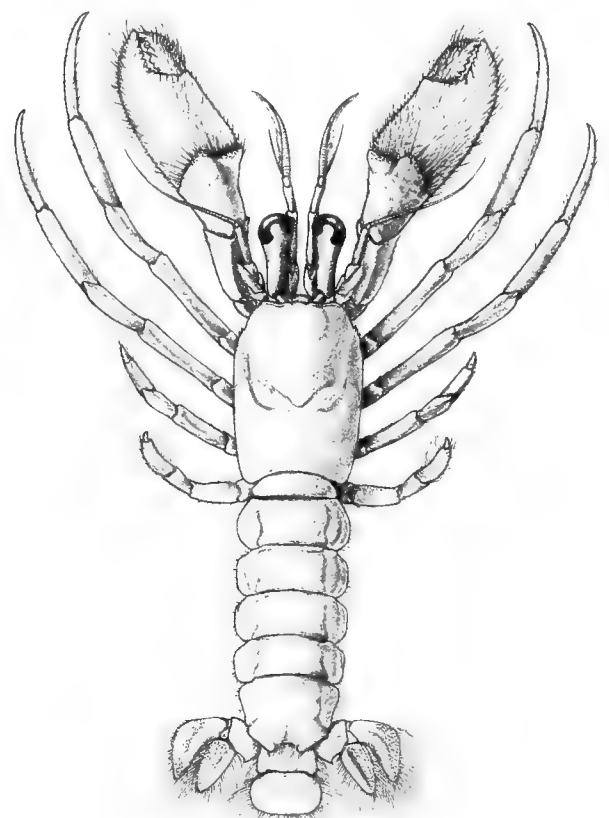


3 x 3.

4a x 2.



4b x 4



4 x 2.

1. *Paralomis investigatoris*. 2. *Paralomis indica*. 3. *Munida comorina*. 4. *Pylocheles miersi*.





EXPLANATION OF PLATE.

—◆—
CRUSTACEA.
—◆—

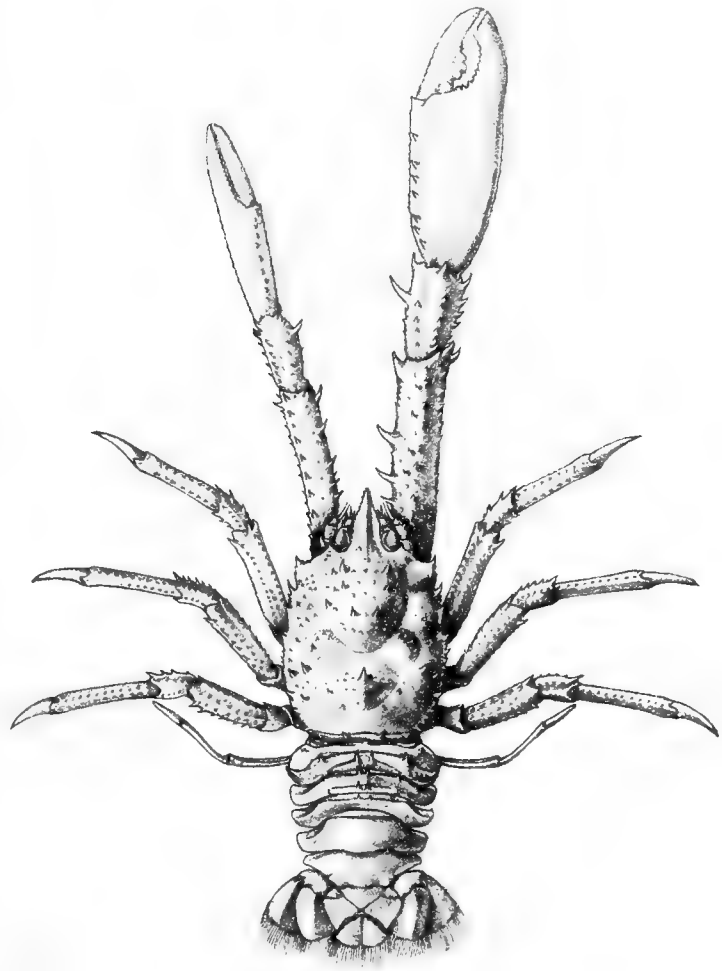
PLATE XLIV.

Figs. 1, 1a, 1b.—*Munidopsis iridis*, Alcock and Anderson, Annals and Magazine of Natural History, January 1899, p. 20.

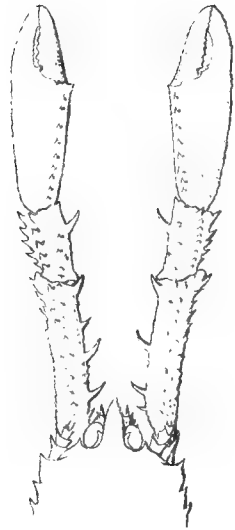
Fig. 2.—*Munidopsis Goodridgii*, Alcock and Anderson, *tom. cit.*, p. 21.

Fig. 3.—*Uroptychus cavirostris*, Alcock and Anderson, *tom. cit.*, p. 26.

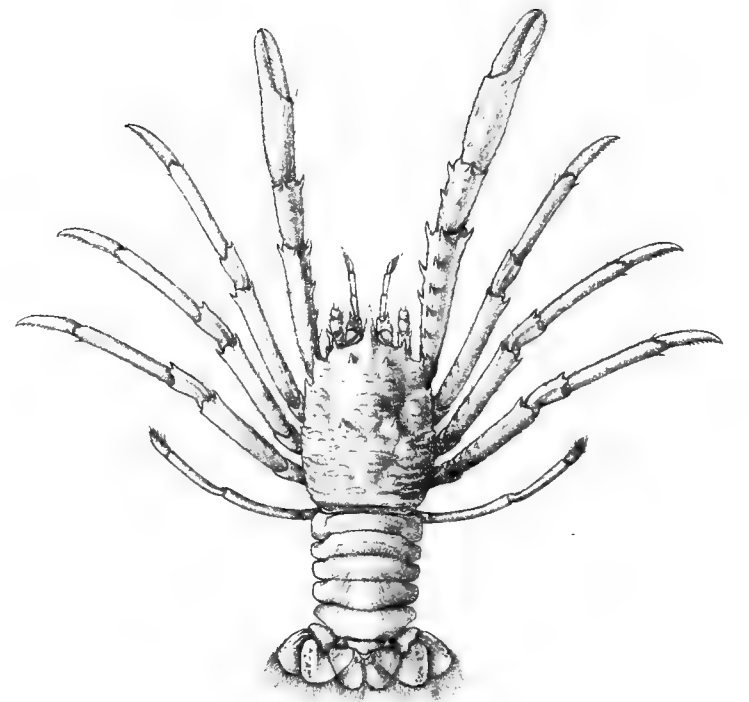
Fig. 4.—*Uroptychus fusimanus*, Alcock and Anderson, *tom. cit.*, p. 26.



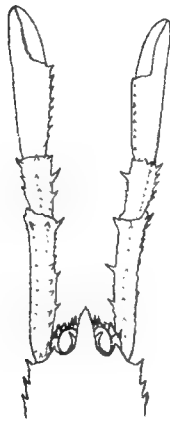
1x2



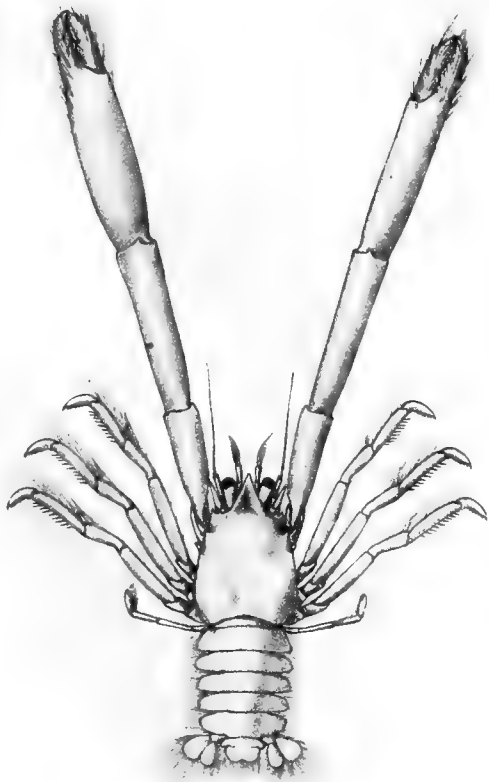
1ax2.



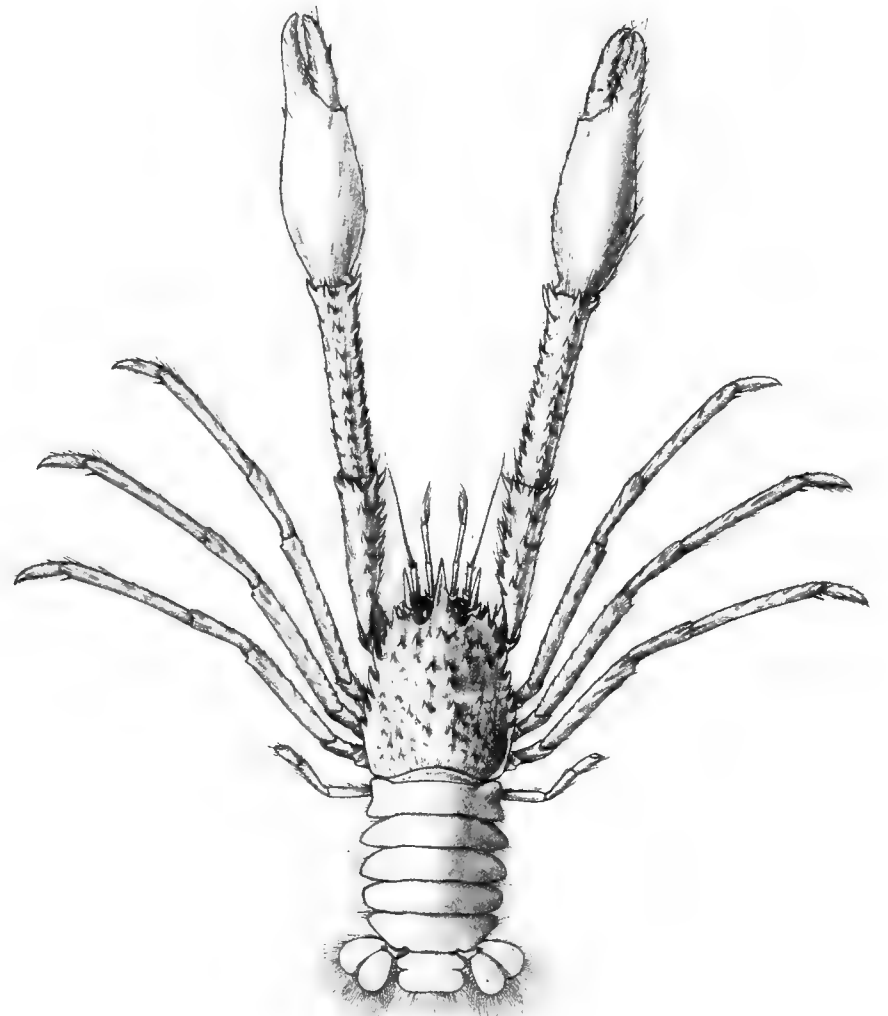
2x2.



1bx2.



3x2.



4x1½.

1. *Munidopsis iridis*. 2. *Munidopsis goodridgii*. 3. *Uroptychus cavirostris*. 4. *Uroptychus fusimanus*.



EXPLANATION OF PLATE.

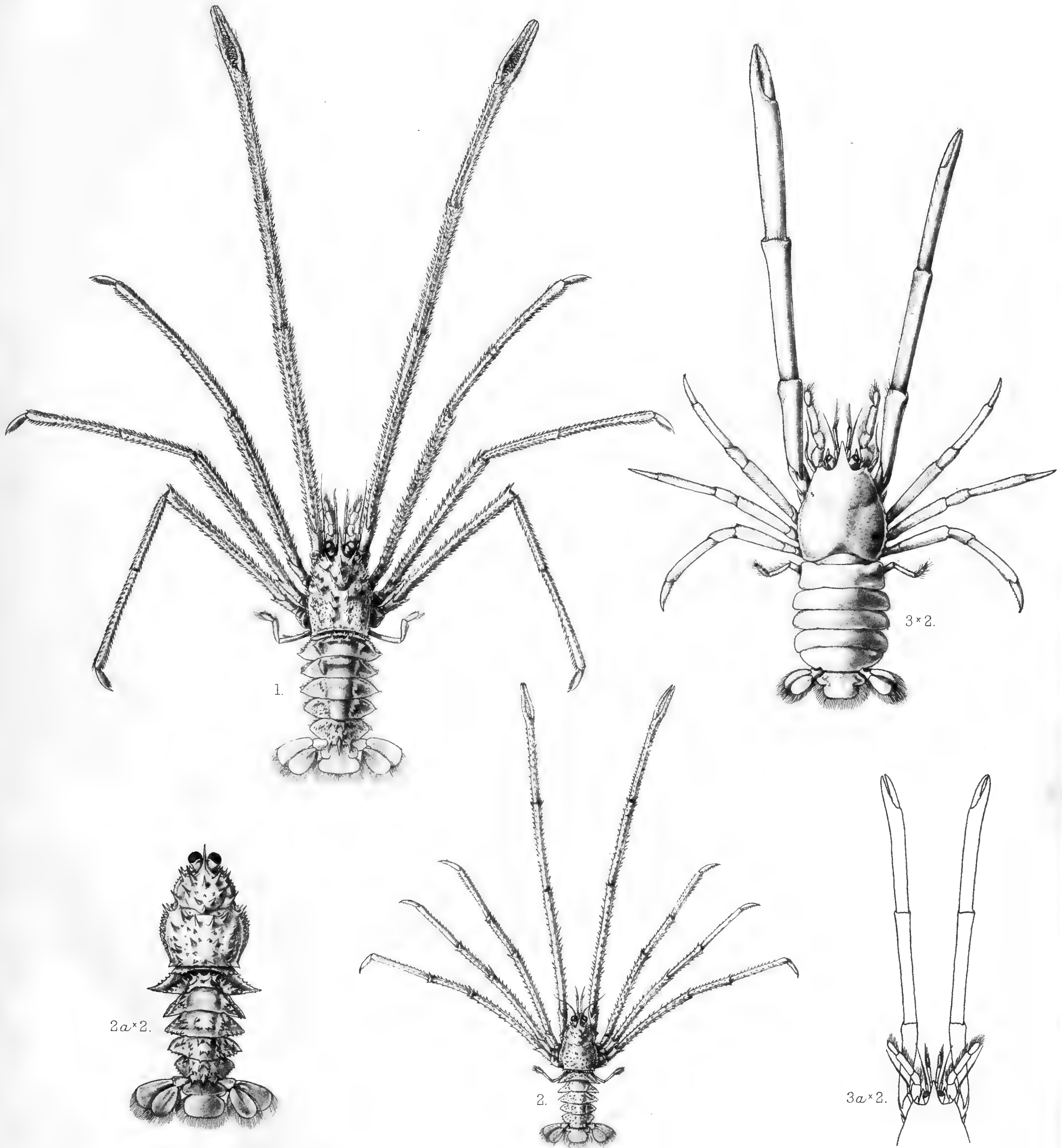
—♦—
CRUSTACEA.
—♦—

PLATE XLV.

Fig. 1.—*Ptychogaster investigatoris*, Alcock and Anderson,
Annals and Magazine of Natural History, January 1899, p. 24.

Figs. 2, 2a.—*Ptychogaster Hendersoni*, Alcock and Anderson,
tom. cit., p. 23.

Figs. 3, 3a.—*Uroptychus bacillimanus*, Alcock and Anderson,
tom. cit., p. 25.



1. *Ptychogaster investigatoris*. 2, 2a. *Ptychogaster hendersoni*. 3, 3a. *Uroptychus bacillimanus*.



SMITHSONIAN INSTITUTION LIBRARIES



3 9088 00920 8455