

Historic, archived document

Do not assume content reflects current scientific knowledge, policies, or practices.

62,37

1938 Planters Guide

Superior Strains
True-to-Name
FRUIT TREES
SMALL FRUITS • STRAWBERRIES
HI-QUALITY ORNAMENTALS
Your Assurance of Success



Golden Jubilee Peach
See page 21

Yellow Delicious Apple
It's golden

See page 9

Harrison's
NURSERIES, INC.
Berlin, Maryland

INDEX

Apples	5-17	Hedges	60
Apricots	31	Hollies	50
Asparagus	35	Lilacs	51
Azaleas	48	Nectarines	31
Blackberries	39	Nut Trees	34
Boysenberry	39	Peaches	18-30
Boxwood	49	Plums	31
Broadleaf Evergreens	50	Pears	34
Cherries	32, 33	Quinces	34
Dewberries	39	Raspberries	38
Evergreens	52-57	Roses	64-66
Figs	34	Shade Trees	61-63
Flowering Trees	51	Strawberries	40-47
Flowering Shrubs	58, 59	Vines	57
Grapes	36, 37		

**"LARGEST GROWERS OF FRUIT TREES
IN THE WORLD"**

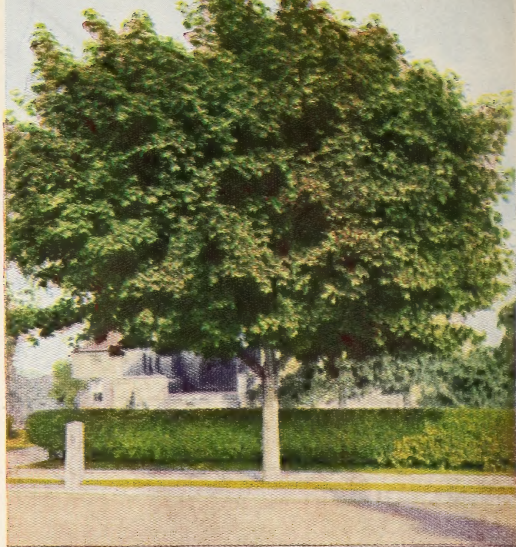


TREES of Grandeur



Oriental Plane

See page 61.



NORWAY MAPLE

Unsurpassed as a street and ornamental tree. Grows 30 to 40 feet tall with a large, round, compact head and leaves which cast a dense shade—they are popular. **6 to 8 ft., \$1.50 each; 2 for \$2.70.** See page 62.

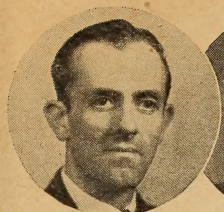
ORIENTAL PLANE

Quick growing symmetrical tree. Withstands smoke and dust and thrives in city streets. Has beautiful heart-shaped leaves. **6 to 8 ft., \$1.00 each; 2 for \$1.80.** See page 61.

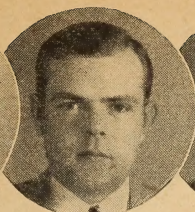
See
page
43.



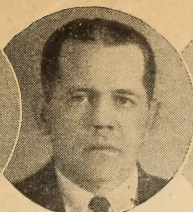
FAIRFAX—A Strawberry Supreme in Flavor and Beauty. See page 43
100 plants for 75c; 200 plants for \$1.30; 300 plants for \$1.80.



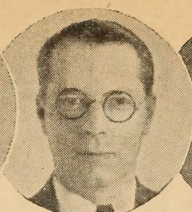
ORLANDO HARRISON, JR.



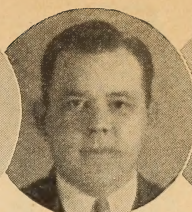
JOHN L. HARRISON



JOSEPH G. HARRISON



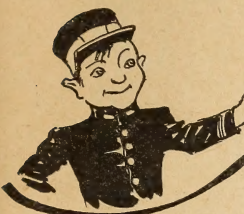
G. HALE HARRISON, Gen. Mgr.



BURBAGE HARRISON



HENRY L. HARRISON



Message From HARRISONS'

OUR GUARANTEE

Every Customer is assured of Harrisons' Hi-Quality Trees and Plants at all times. Expert growing on proper soils, careful digging and packing is Harrisons' policy on every order. Every tree and plant we ship is guaranteed to be strictly first class, free from injurious diseases and insects and to reach you in good condition.

Any time trees or plants are received that do not meet these standards they will be replaced free of charge or your money refunded.

Continued growth depends on soil, weather conditions, planting and after care. After ten days it is mutually understood that the nursery stock is satisfactory; however, we will replace nursery stock that dies from unavoidable causes at half price, if notified within six months after its arrival.

HARRISONS' NURSERIES, INC.

Dear Friends:

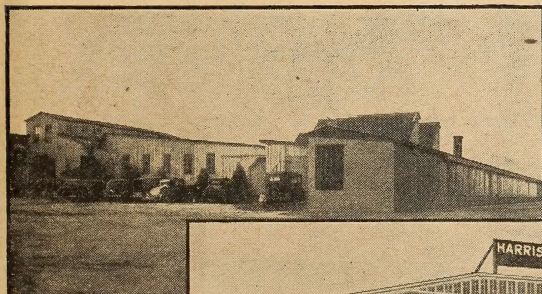
Fifty-four years ago Harrisons' Nurseries were started by our grandfather. Within a short time our fathers, Orlando and George A., entered the business. From a humble beginning of a few acres of fruit trees, strawberry plants and ornamentals our organization has grown until today we have several thousands of acres of fruit trees, small fruits, strawberries, shade trees, evergreens, roses, shrubs, and a general line of ornamentals, as well as commercial orchards.

Our well-balanced organization enables us to give employment to hundreds of men and women throughout the fifty-two weeks of each year.

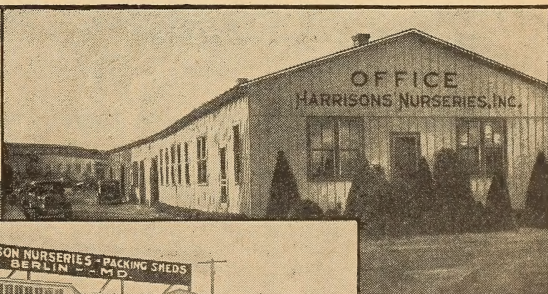
By entrusting your needs with a scientifically and practically trained organization, you are assured the best quality nursery stock obtainable and your order, whether large or small, will be greatly appreciated.

Sincerely yours,

HARRISON BROTHERS.



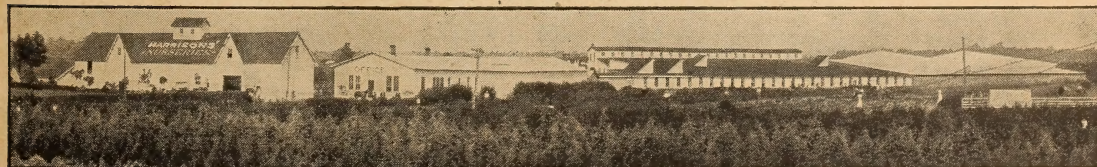
Front Entrance to Mammoth Packing Houses



Main Office—You Are Always Welcome



Side View of Packing Houses with Private Railway Siding Holding 35 Freight Cars



General View of Harrisons' Modern Packing House with Up-to-Date Facilities Which Enable Us to Properly Grade, Pack and Ship Thousands of Packages of Harrison Grown Products Daily

From the **PROFIT** ANGLE
HARRISON'S
 "BUD SELECTED"
 IS YOUR BEST BET
Large Production Scale
LOWER PRICES!

1. Super-Selected Strains Only.
2. Early to Bear.
3. True to Name.
4. High-Colored Strains.
5. Big Crops Every Year.
6. Practical and Profitable In Our Own Orchards of 1750 Acres.

MONEY IN FRUIT GROWING

Leading Orchardists Prefer Harrison Grown Fruit Trees

Alive Healthy Fruit-Bearing Trees Depend on the Heredity

Many, many years ago the Harrisons introduced a new method of propagation that was later to revolutionize the industry. Seeking out a better method of propagation in the interest of securing dependability in true-to-name varieties, we selected new budding stock from our own orchards, taking only those trees that were stamped "super-quality."

These new bud selections of known origin were later to become new orchards, and so through a desire to make more profits, we were able to help our fellow orchardists in cashing in on our experience.

You Pay No More for Harrisons' "Bud-Selected" Trees

The "bud-selection" method to propagate fruit trees is very expensive—but whatever the expense they are the trees that give satisfaction.

With 1750 acres of bearing orchards and a trained organization operating twelve months a year, we are organized on a large production basis, which reflects lower prices both for the commercial grower and the home owner.



TODAY FRUIT GROWING is making inroads on the big farms—little orchards lead the way to a profitable and worth-while fruit market.

Dependable Nurserymen Propagate from Bearing Orchards

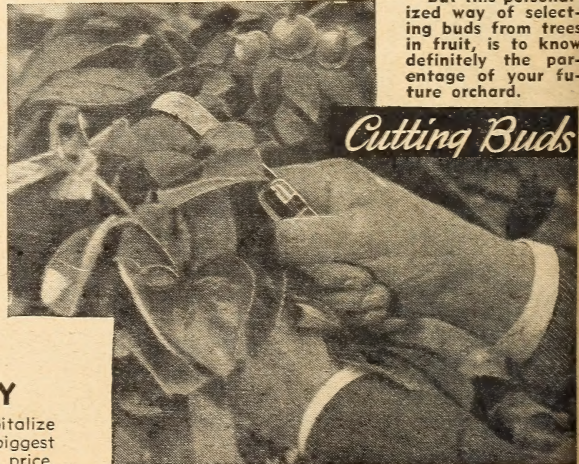
If fruit trees are continuously propagated from the nursery rows, as practiced now by a large percentage of nurserymen, because it is cheaper, fruit trees begin to degenerate, and when the original was a poor type, the nurseryman, without knowing it, continues to reproduce poor, undesirable, small type fruit. Incidentally, in case there was a mixture in the nursery rows, how could a nurseryman propagate true-to-name trees successfully. We are orchardists and nurserymen, and nothing can compare with our own scientific method of "bud selections"—it always gives complete satisfaction and spells profit for the fruit farm.

Harrisons' "Bud Strains"

Some fifty years ago, and almost every year since, Harrisons' have planted orchards, not alone for fruit but principally to secure the type of parent fruit tree that was characteristic of a "variety" dominant in bearing qualities coupled with health, vigor and ability to withstand changeable climatic conditions. This type of tree became the parent supplying the budding sticks for future orchards in America and true-to-name varieties were assured.

It's Slower Of Course

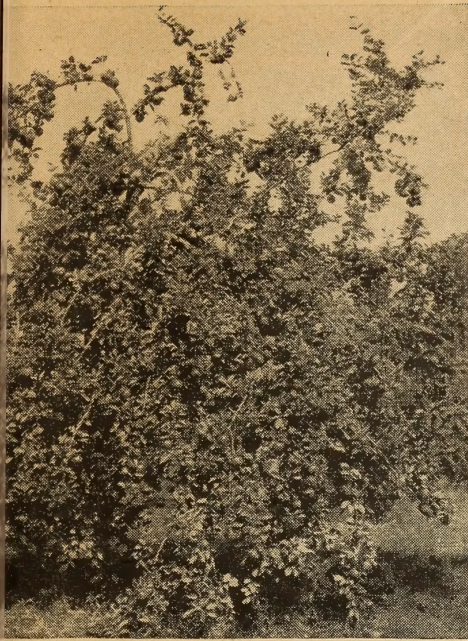
But this personalized way of selecting buds from trees in fruit, is to know definitely the percentage of your future orchard.



Cutting Buds

GET YOUR ORDER IN EARLY

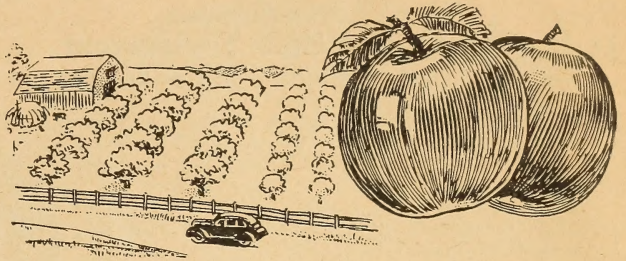
Growers with a vision to the future should capitalize now by planting new orchards. You get the biggest dollar's worth from Harrisons', both in quality and price.



An 8-Year "Bud Selected" McIntosh Red

Harrisons' APPLE Trees

FOR THE FRUIT INDUSTRY



Apple Growing pays profits

BUT in order to get these profits, it is necessary to start with the best trees and the most desirable varieties. Harrisons' Nurseries have been, and are still growing, at Berlin, Maryland, the finest and best Apple trees of superior merits it is possible to produce. Harrison grown Apple trees are propagated on whole root stock, insuring an unusually large root system which is the basis of plant growth. Our Apple trees are scientifically budded and grafted from selected heavy bearing strain trees of the variety desired, using the bud selection system. Today we believe that we have more of the improved and best strains of Apples in our nursery than any other nursery concern in America.

Do not allow a few cents per tree to keep you from buying Harrison grown Apple trees, being the finest and by far the best quality produced on the North American Continent.

PRICES OF HARRISONS' GROWN APPLE TREES

(Except as otherwise noted)

True to Name	One-Year Trees	1 to 9 trees	10 to 49 trees	50 to 299 trees	300 to 599 trees	600 or more trees	True to Name
	1 to 2 ft.	\$0.30	\$0.25	\$0.22	\$0.18	\$0.15	
2 to 3 ft.35	.30	.25	.22	.20		
3 to 4 ft.40	.35	.30	.27	.25		
4 to 5 ft.50	.45	.40	.35	.30		
5 to 6 ft.60	.50	.45	.40	.35		
	Two-Year Trees						
3 to 4 ft.40	.35	.30	.27	.25		
4 to 5 ft.50	.45	.40	.35	.30		
5 to 6 ft.60	.50	.45	.40	.35		

(Can be assorted Apples or other Fruit Trees)

Red Yorking. 15c per tree extra.

Large Transparent (Lodi). 10c per tree extra.



A Portion of a Block of 750,000 One-Year Apple Trees

HARRISON
High-Quality
Trees

Certified or Inspected

Harrison Grown Apple Trees are all certified or inspected for truthness to name by Dr. J. K. Shaw, Research Professor of Pomology of the Massachusetts State College, Amherst, Massachusetts.



Buy "Bud-Selected" Super-Strain Fruit Trees

A New Summer Apple Large Transparent

(Lodi)

—first of the year

Ripens
Very
Early

Destined to replace the
ever-popular
Yellow Transparent
Price 10c per tree extra



LARGE TRANSPARENT (Lodi)
You can depend on bumper crops. Plant Harrison's
"Bud Selected" Strain

We believe there is a big future for this new summer Apple. Our commercial friends should lose no time in anticipating the future demand for an Apple of this type.

Somewhat of a dwarf grower, bearing very young, it makes an excellent filler. The skin is a clear yellow, white flesh, of medium size.

Listen! Early Apple Growers Make More Money With Large Transparent

Yes, actual profit, that's what we mean. It can be done — here's why. Yellow Transparent Apples are always the first on the market and generally they bring good profits when they attain the proper size. Size on Yellow Transparent is hard to get, but easily on its Big Brother, "Large Transparent," which ripens at the same time.

**Large Transparent Apples
Average up to 1/2 Inch Larger
Than Yellow Transparent.
This Means 35c to 50c per
Bushel Extra**

Expert horticulturists claim in Large Transparent there is no noticeable difference in the appearance, color, shape or taste from its parent Yellow Transparent.

Our Large Transparents were propagated from bearing trees.

HARRISON'S
Super Selected Trees, with their unusual substantial root system, are proving again and again that "bud selected" strains spell yearly profits to orchardists and commercial planters.

Yellow Transparent

—the familiar
Harvest Apple

Its popularity as an excellent cooking Apple is unrestricted from North to South. In Georgia it is extremely successful and does equally

as well in the cold climes of Canada.

Ripens early in July, flesh white, flavor slightly acid, of medium size. Develops where a fine soil is not necessary.

Harrisons' Are Commercial Growers, Too — 1750 Acres of Orchards

The success of our orchards is paramount; profit is essential to operate, and unless we plant the right kind of "budded" fruit trees we gamble with future results. Large Transparent looks good to us, so we are repeating another orchard planting of Large Transparent (Lodi) this year.

ECONOMY Apple Tree Offer No. 625

Your chance to make a big saving — they ripen continuously throughout the season

- 1 Yellow Transparent
 - 1 Williams' Early Red
 - 1 Early McIntosh
 - 2 McIntosh Red
 - 2 Harrisons' Red Delicious
 - 2 Yellow Delicious
 - 2 Jonathan
 - 2 Grimes Golden
 - 2 Cortland
 - 2 York Imperial
 - 2 Winesap
 - 2 Red Rome Beauty
 - 2 Turley
 - 2 Stayman Winesap
- 25 Healthy, 1-2 ft. trees
For Only **\$5.50**

Expert Nursing

Literally 54 years of experimentation acclimating and "expert nursing" are behind the fruit trees developed and grown at the—

**HARRISON'S BIG
NURSERIES**

These world famous super-selected trees are definitely superior.

Harrisons' Prices are Still Low

Superior Strains-Sturdy Ancestry-Maximum Yields



LIKE THE 1ST. ROBIN

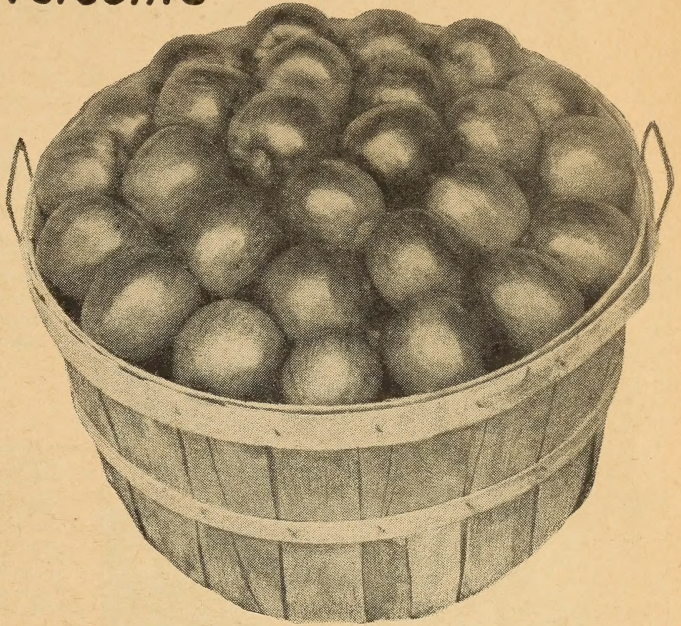


WILLIAMS' EARLY RED

Gets A Cordial Welcome

as a Big Red Apple in Eastern Markets

Just at the time when people are hungry for a fresh, new red Apple, this superb sort comes into market. In New York, Boston, Philadelphia and other eastern cities the fruit sells about as quick as it hits the market-house or dealer's store. It holds its own anywhere and has proven to be—



WILLIAMS EARLY RED—Ready for Market when folks just get hungry for apples

The Most Profitable Summer Apple

The rich dark red fruit catches the buyer's eye and is ordered at a price that yields the grower a good profit. The Apple is large, with tender, crisp, white flesh, juicy and slightly tart. The trees come to bearing when quite young, producing freely and steadily. Fine for a filler or permanent tree, and being hardy, can be successfully grown in New England states

and Canada. All commercial orchards should include Williams' Early Red. (Small, 1-year trees only).

Other Summer Varieties

Leading Orchardists Prefer Harrison-Grown Fruit Trees

ROADSIDE MARKET SPECIAL APPLE TREE Offer No. 860

Apples from July to frost, enough to supply your own needs and plenty to sell

- 5 Yellow Transparent
- 5 Williams' Early Red
- 5 Harrison's Red Delicious
- 5 Yellow Delicious
- 5 Jonathan
- 5 Grimes Golden
- 5 Stayman Winesap
- 5 Turley

40 Thrifty, 3-4 ft. trees For Only **\$12.00**

DUCHESS (Duchess of Oldenburg). Medium size, red striped, flesh white, juicy and good flavor. Unusually heavy bearer, very dependable cropper. Trees are dwarf growers and require small root and branch space. (1-year trees only).

EARLY HARVEST. Very early, not a good keeper; fruit medium size, pale yellow, tender, juicy, sub-acid. Fine for home orchard because of its merit as a cooking and dessert fruit. Tree is a vigorous grower and bears early and regularly.

EARLY MCINTOSH. Red, attractive, good size, flesh white, fine, tender, juicy and fine flavor, being similar to McIntosh Red. Tree vigorous, hardy, healthy and productive.

MILTON. A very handsome new Apple of the McIntosh type. Fruit a beautiful pinkish red with tender, crisp, white flesh of excellent flavor. Trees hardy and vigorous. Ripens a month ahead of McIntosh Red. (Small, 1-year trees only).

RED JUNE (Carolina Red June). Medium size, conical, dark red, juicy, fairly good flavor, very productive.

RED ASTRACHAN. Medium size, yellow with dark red patches; flesh decidedly acid and juicy; excellent for cooking, satisfactory for home plantings, but on account of its poor shipping qualities and irregular bearing not advisable for commercial orchards. Tree very hardy, vigorous and a good heavy bearer every other year.

STARR. Large, yellowish smooth skin; sometimes marked with a faint blush and numerous russet dots; flesh yellow, very tender, crisp, juicy, aromatic and fine quality, brings high prices. Recommended for nearby markets; a poor long distance shipper. Popular in Southern New Jersey. (1-year trees only).

SWEET BOUGH. Large, pale yellow; tender, sweet. (Small 1-year trees only).

SUMMER RAMBO. Large, yellowish green, splashed with red, crisp and tender. Very good.

WILSON RED JUNE. Fairly large, red; good quality. Popular in New Jersey. (1-year trees only).



Buy "Bud-Selected" Super-Strain Trees. Best Grown

HARRISON'S
HI-QUALITY
TREES

McIntosh Red is America's Highest Priced Apple

*That's Gold
in the*

MCINTOSH RED APPLE



*Excels in N. Y., Michigan
and New England States*

An exceedingly valuable, hardy, attractive Apple; medium large size; nearly covered with red. Flesh white, fine, tender, juicy, sub-acid and refreshing, and generally considered as the highest and best flavored Apple grown; splendid appearance, which sells it on sight. Demand always exceeds the supply of McIntosh Red and commands the highest prices of any Apple on the leading American markets. The best box and bushel Apple grown, and a good shipper.

A Canadian Apple Exceedingly Hardy

McIntosh Red is a Canadian Apple, keeps long, but is mellow and good to use from the time it is picked and if kept in cold storage, until the next crop comes. Tree is exceedingly hardy, vigorous, a very prolific bearer, consistent bumper crop producer, a sure annual cropper. Comes into fruiting early. This splendid Apple can be grown from Nova Scotia to North Carolina. Growers in New York, New England, Michigan and Canada have long grown McIntosh Red for big profits. Ask any experienced Apple grower, if you are not acquainted with the McIntosh Red, and he will praise it as highly as we do.

Harrisons' Strain of McIntosh Red is 100% red color when ripe.
Harrisons' Improved Strain is very hardy and produces bumper crops each year.

Other Autumn Varieties

FAMEUSE (Snow). Popular in northern states. Deep red; flesh snowy white, juicy and tender, size medium round. (Small, 1-year trees only).

GRAVENSTEIN. Extra large, perfect in form. Coloring orange-yellow overlaid with broken stripes of light and dark red; flesh yellowish, firm, crisp, tender, juicy, fine flavor. Good for cooking, extra vigorous tree, comes into bearing rather early and bears profuse crops regularly. Grown extensively in California and commands good price.

KENDALL. A McIntosh seedling. Handsomely colored over entire surface. Dark red, with the same fine characteristics of the McIntosh. (Small, 1-year trees only).

KING DAVID. A beautiful deep dark red Apple, resembling Jonathan as to size and shape, but not quite as good flavor. Splendid shipper and keeper. Tree hardy, and comes into bearing young. (Small, 1-year trees only).

KING (King of Tompkins County). Extra large, very red, with a tint of yellow, flesh yellow, crisp, juicy, sub-acid, good quality. Tree slow grower and not a big producer. Generally planted in New York.

LOBO. Prominent in a number of fruit districts due to the high coloring and many McIntosh characteristics. The season of Lobo begins a little earlier than McIntosh, but it keeps about as long. The earlier coloring enables growers to pick Lobo in advance of McIntosh. It hangs on the tree better than McIntosh.

MAIDEN'S BLUSH. One of the most beautiful; pale lemon and crimson cheek; flesh white, tender and crisp. Tree vigorous and good bearer.



← A Bud Selected McIntosh Red

Mr. Burbage Harrison says they picked 47¼ bushels from this tree

Buy "Bud Selected" Super-Strain Fruit Trees



Not Magic **YELLOW** Our famous **DELICIOUS** as Nature made it—a **GOLDEN YELLOW**

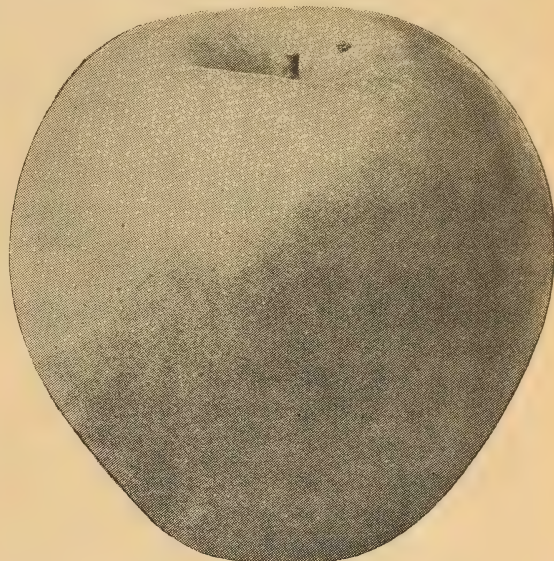


A golden yellow Apple with decided "Delicious" characteristics. Yellow Delicious has a remarkably good flavor, and is most popular for eating during the fall and winter months. Late September and January finds the flavor and condition at its best. Many people think it superior to the famous Delicious.

Yellow Delicious is a national favorite. No other Apple has such an appeal to the appetite. Folks cannot resist buying them when displayed for sale.

A Prolific Cropper at an Early Age

The Yellow Delicious tree is very thrifty, hardy, and a vigorous grower. It is renowned for its heavy bearing of fruit at a very early age. You can depend on a good yield of ripened fruit each year.



Plant Yellow Delicious as a filler with other varieties in your orchard on account of its early bearing habits

A Gleaming Golden Yellow With Alluring Beauty Invest in Harrison's Super Selected **YELLOW DELICIOUS**

BECAUSE:

- 1—A Practical Money-Maker
- 2—Appetite Appeal
- 3—Highest Prices
- 4—Grows in 33 States
- 5—Disease Resistant—Vigorous
- 6—Bears Young—Grows Fast
- 7—Big Crops Every Year
- 8—An excellent Pollenizer

A Golden Apple Which Has Won Its Fame as an Outstanding Commercial Variety

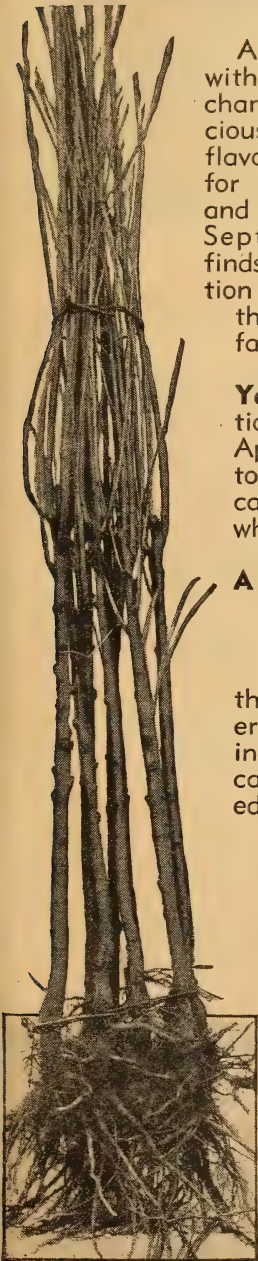
54 PER CENT LESS APPLE TREES IN ORCHARDS

Says New York State College of Agriculture at Cornell University

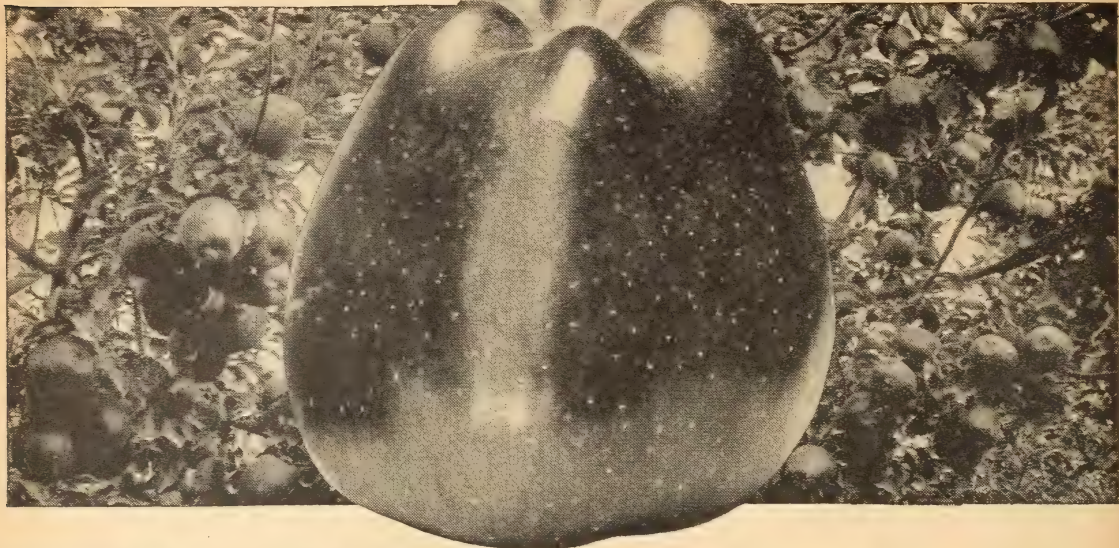
Fifty-four per cent less Apple trees of bearing and non-bearing age in the United States during 1935 as compared with the fruit tree census taken in 1910, according to an article printed in the Produce News, November 27, 1936.

Now is the Opportune Time to Plant.

Leading Orchardists Prefer Harrison Grown Fruit Trees.



TWO-YEAR APPLE TREES
Superior Strains, Straight Stems, Well Branched Heads, Fibrous Roots



HARRISONS'

Red Delicious

**Blue Blooded
Aristocrats
of the
Dining Table
Brilliant
Crimson-Red
Large Size
Extra Fancy**

This Apple was introduced by us several seasons ago and since introduced it has been bought and fruited by the tens of thousands by leading fruit growers throughout the country. It is a "bud sport" of pronounced superior merits. Being **triple-red** colored and the earliest red coloring strain known.

Colors Much Earlier Than Ordinary Delicious

Harrisons' Red Delicious colors up weeks earlier than the ordinary strain. By coloring earlier the fruit can be picked while it is firm and it keeps better in storage.

Size and Taste

Size is all anyone could desire, as it runs from large to extra large. The large size, solid red color and characteristic five-knob end make it attract buyers in every market.

Taste will be found on a par with its other points of advantage. The flavor is rich, slightly sub-acid, with an individuality which makes the palate call for more. You'll have no trouble with repeat sales for this variety.

Ships and Keeps Well

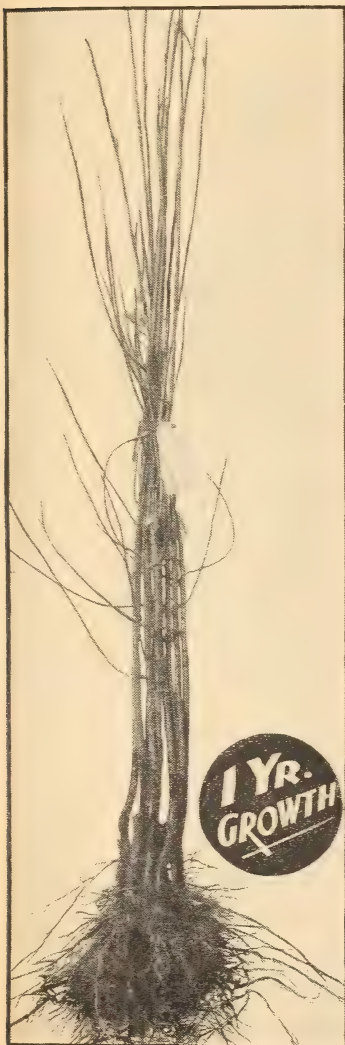
Harrisons' Red Delicious ships without bruising. In fact it ships better than the ordinary Delicious because its earlier coloring permits it to be picked when the fruit is more firm. Its large size makes it easy to pack attractively and the uniformity of size guarantees a good appearance.

Large Profit Maker

The ordinary Delicious is a proven profit maker and our Harrisons' Red Delicious is destined to outclass its predecessor due to the fact that it will produce more highly colored fruit and as most every fruit grower knows, color plays an important part in the price the fruit sells for.

One-Year Harrisons' Red Delicious Apple Trees

Stout stems and strong fibrous roots.



Harrisons'

RED DELICIOUS

The World's Most Profitable Apple

Sells at Highest Prices on Every Market
—GET YOUR ORCHARD STARTED THIS YEAR



Our Method of Propagating Insures Big Crops.
 Harrison Grown Apple Tree in Bearing Two Years After Planting

REASONS FOR PLANTING THIS REMARKABLE APPLE:

1. Most Profitable Apple grown.
2. Succeeds Nearly Everywhere.
3. Bears Young.
4. Rich Flavor.
5. Large Size.
6. Earlier Coloring.
7. Triple Red Color.
8. Attractive Shape.
9. Big Crops.
10. Good Keeper.
11. Easily Grown.
12. More Extra Fancy Fruit.

SOLID BRIGHT RED COLOR

STARTS COLORING DURING EARLY AUGUST — ONE MONTH BEFORE RIPENING

Ideal for Home Orchards

Harrisons' Red Delicious is not only a commercial Apple but it is every bit as well adapted to the home grounds. Whether you wish to plant a thousand or if you have room for only one tree, Harrisons' Red Delicious will give full value.

Why pay premium prices for improved strains of Red Delicious when trees of Harrisons' Red Delicious, the earliest coloring, triple red, heavy producing type can be bought from Harrisons' at a lower cost.

For prices, see page 5.

LEADING FRUIT GROWERS PROCLAIM HARRISONS' RED DELICIOUS IS SUPERIOR TO OTHER STRAINS

Leading orchardists and fruit men of the country who have seen the Harrisons' Red Delicious in fruiting claim it is superior to any of the other several new double red earlier coloring strains of Red Delicious such as Starking, Richared Delicious, Shotwell Red Delicious and others.

This past season our Harrisons' Red Delicious colored weeks earlier than the ordinary Red Delicious. Growers expressed amazement at the difference in color of these two distinct strains. Trees looked like they were loaded with balls of fire, each apple solid bright red in color.

Avoid Disappointments—Save Money

Buy Harrisons' "Bud-Sport" Selected Strain Harrisons' Red Delicious
 Plant Jonathan as a pollinizer



One of the Famous Harrisons' Apple Orchards in Bloom

Harrisons' Red Delicious is the World's Greatest Apple



GRIMES GOLDEN
An Orchard Preference as a Pollenizer

Grimes Golden

A Yellow Winter Apple

Medium sized, golden yellow, tender, rich, aromatic, sub-acid, delicious, possibly the best flavored apple known, and a good keeper. No better variety exists for eating raw or for cooking. Tree is very hardy and one of the heaviest bearers known, producing extra large crops annually. Excellent variety for a filler, as it comes into bearing very early. Grimes Golden is the best pollenizer known, especially for Stayman Winesap, Turley, Baldwin, Cortland, Rome, Winesap, McIntosh and others. Be sure to include Grimes Golden in your orchard.

Other Fall Apples

NORTHWESTERN GREENING. Large, round, greenish yellow; juicy, firm, good quality; splendid keeper, ships well. Attractive apple when packed in bushels, demands good prices, excellent baking apple. Should not be planted extensively, because crops are not so certain, due to blossoming early. Trees are extremely hardy, vigorous, bear very young. (1-year trees only).

RED GRAVENSTEIN. This red sport is more attractive than Gravenstein. It differs from Gravenstein only in the solid dark red fruit.

SMOKEHOUSE. Large apple of super-fine flavor, excellent for eating, yellowish green mottled with dull red and with many russet dots; flesh firm, crisp, juicy and aromatic. Tree large, vigorous and reliably productive.

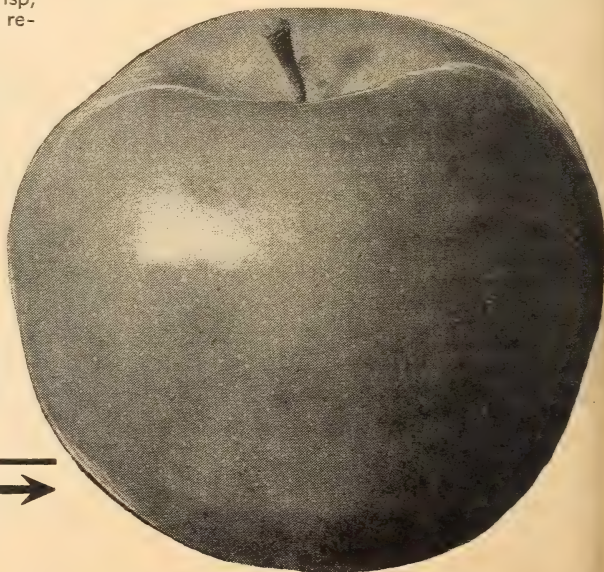
SPITZENBERG (Esopus). A very showy, large red apple, conical in shape, good quality. (Small, 1-yr. trees only.)

WEALTHY. Medium to large size; round almost solid red; flesh white or a little stained; tender, crisp, juicy, fine grained, aromatic and very good flavor. Relatively good keeper. One of the most profitable commercial apples. Tree is very hardy, withstanding unusually cold climates, vigorous, fruits at early age, bears regular and abundant crops. Tree somewhat dwarf, making a fine filler.

Delicious

Preferred by Many Orchardists

Of peculiar and distinctive shape; brilliant dark red, flesh fine grained, juicy, crisp and melting, flavor sweet, with a slight acid taste, with a delightful aroma, very highest quality. Excellent for eating, and the most popular fruit stand apple. Packs well in boxes and bushels, always bringing high prices on the leading markets, and in strong demand by the best trade. Tree is hardy, vigorous grower and a good, dependable cropper when properly pollinated. Suggest planting Yellow Delicious and Jonathan as pollenizers with Delicious.



DELUXE Apple Tree

Offer No. 368

Highest Quality Apples
For Eating or Cooking

- 1 Yellow Delicious
- 1 Grimes Golden
- 1 McIntosh Red
- 1 Jonathan
- 1 Harrisons' Red Delicious
- 1 Red Rome Beauty
- 1 Stayman Winesap
- 1 Turley

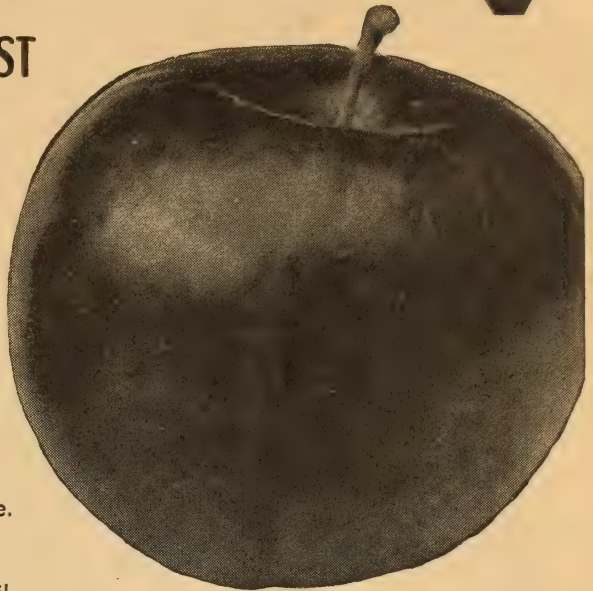
Eight Big 2-yr., 5 to 6 ft.
size trees, for **\$4.00**
only

NORTHWESTERN GREENING →
an excellent baking apple

Pioneers in Better Orchard Trees



Both EAST and WEST
Jonathan
APPLE
A Prime Favorite
WITH APPLE LOVERS



A Superior
HARRISON
"Red Strain"

Skin cherry-red, very thin and tough; flesh white. Size medium to large. Ripens early fall.

Keeping Qualities Are Good

Without much care, Jonathan may be kept until February, or possibly a bit later. When particular care has been paid to the packing and selection of perfect fruits, it will be found a most desirable variety for the holiday season.

Jonathan Stands Shipping Well

Many apples are excellent to the eye and to the taste, but fail to stand up under the handling which they must get, and therefore do not enjoy real commercial success. Jonathan in this sense is exceptional, for it seems able to stand much handling without ill effects. The skin is thin but tough.

JONATHAN
Keeps Until February—It's a Real Commercial Variety

Trees Are Long Lived

although they bear fruit quite young. Jonathan is more consistent with its crops from year to year than many other varieties, as it will produce good crops practically every year. In the West, Jonathan has long been a standard commercial variety and has proven itself to be one of the leading commercial varieties of the East. Harrison's super-strain of Jonathan has been produced by "bud selection," being a very high, brilliant red color.

Other Winter Varieties

ALBEMARLE PIPPIN or YELLOW NEWTOWN. Famous in section around Crozet, Va., and sections of Oregon and Washington. Large, round, ribbed and somewhat irregular. Tree a slow grower and light bearer in poor soils, but right soil and care bring a world-beater when it will thrive.

ARKANSAS BLACK. Dark red, good keeper. (Small, 1-year trees only).

BALDWIN. Large, round, bright red, crisp, juicy and rich; good late keeper, esteemed as an eating apple and for cooking. Quick and large grower; yields big crops. A wonderful shipper, standing long distances very successfully.

The best northern Apple for packing in barrels, fine cold storage Apple, strong demand for car-load shipments of Baldwins to European and South American markets. Brings high prices on foreign markets; is also popular on the New Eng-

land and Northern States market. Grows to perfection in New England, New York, Pennsylvania, Michigan, and Canada, but should not be planted south of the Mason-Dixon line. Baldwin is a leading commercial variety in the Northern States.

BEN DAVIS. Fine looking, large, round; yellow with red stripes; flesh white, juicy, sub-acid, coarse. Good for cooking, but on account of poor flavor not desirable for fresh eating. Finest keeper known. Can be kept in cold storage until July. Excellent shipper, usually packed in barrels. Tree is a rapid grower, healthy, vigorous, bears at an early age, heavy cropper and a sure bearer. (1-year trees only).

CORTLAND. A new variety resulting from cross pollenization of McIntosh Red and Ben Davis, and inheriting the good qualities of each parent. Beautiful red apple, approximately the same size and fine flavor of the McIntosh, but ripens 3 weeks or a month later. Good keeper.

GALLIA BEAUTY. A Rome Beauty type of apple identical in every respect, except its earlier coloring qualities; recommended for commercial planting.

BIG APPLE OFFER
Collection No. 210
Excellent Heavy Rooted
First Class Trees
1 Stayman Winesap
1 Jonathan
1 Harrison's Red
Delicious
1 Red Rome Beauty
Four 2 yr., 4 to 5 ft. trees
For Only **\$1.80**

We Highly Recommend you to plant Jonathan in a commercial orchard as well as your home orchard.

Stayman Winesap

*A Premium Apple
The Public Prefer*

Color Deep Wine-Red — It's Harrison's OWN Strain

The Most Popular Apple

During the past ten years the popularity of the Stayman Winesap has risen by leaps and bounds, and the buying public now realize this is a premier variety of par excellence.

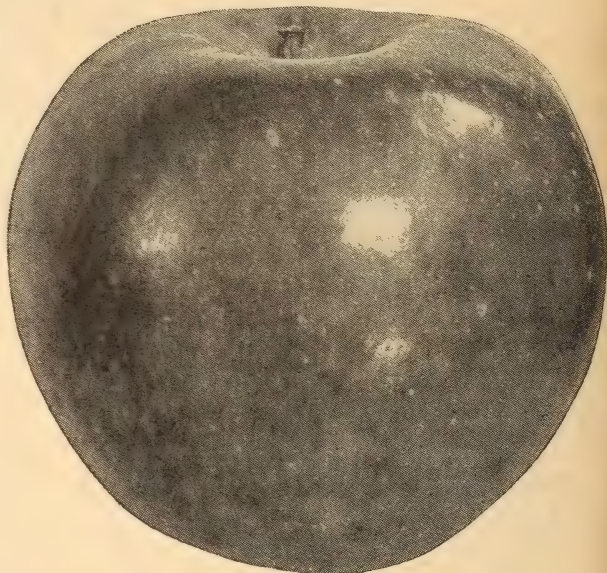
A READY MARKET AT TOP PRICES

Stayman Winesap is the best general purpose Apple grown in any Apple district. You can always sell Stayman for good prices and there is always a buyer for this famous variety. The general average selling price for Stayman Winesap during the past ten years has been very high, practically at the top.

EASTERN GROWERS PLANT STAYMAN WINESAP IN NEW ORCHARDS

They realize that this Apple will produce as good results and do it on poorer ground. Naturally, not so much capital is required for the investment.

With the old Winesap, the fruit tends to decrease in size as the tree ages; with the Stayman it is generally as large and attractive as ever. A strong grower and comes into bearing at early age. Being nationally known for its bumper crops of superb Apples.



A Photo of Harrison Strain Stayman Winesap Picked in Orchard, October 5, 1937—100 per cent Red Color Super Strain Double Red

"IT IS ALWAYS DEPENDABLE"
—Say Harrison's Customers

Many varieties of Apple trees have a good year and an "off year"; that is, they will give a large crop one year and next season produce very little. While this cannot always be blamed upon the variety, since climate, temperature and other causes enter into the question, yet Stayman Winesap seems to ripen a very uniform crop, and letters from our

customers inform us that the regularity of crop is remarkable. This is naturally a valuable qualification, and, in part, accounts for the choice of many Eastern orchardists. The taste and appearance tell the rest of the story. For a pollenizer plant Grimes Golden.

HARRISONS' OWN ORCHARDS

We have in our own commercial orchards several thousand trees of Stayman Winesap and we have selected for our parent trees the finest, deepest colored, annual bearing trees. Our selected super-strain is far superior to several new strains being offered by some nurserymen.

TURLEY ~ A Type of Stayman

This variety is an offspring of Winesap, which it resembles. Fruit rounded conical in shape, as large as Stayman Winesap, smoother skinned, deeper and richer in color; juicy and rich flavor. Tree very hardy and comes into bearing early. Planted extensively in Indiana and Ohio along with Stayman Winesap, to prolong shipping season.

— Save 5% by Sending Remittance with Order —

Qualifications

- 1 Thrives On Poor Soil
- 2 Puts Idle Land to Work
- 3 Popular Commercial Variety
- 4 Sells On Sight at High Prices
- 5 Skin Solid Bright Blood-Red
- 6 Size Large
- 7 Ships Well Good Keeper
- 8 Excellent Flavor

Buy "Bud Selected" Super-Strain Fruit Trees



Another Sport
— the new

RED SPY

**Strong and Vigorous Like
Its Parent Northern Spy**

This new variety has the same characteristics as Northern Spy, except that it is a more pronounced red, with the same "eye appeal" of Harrison's Red Delicious. For large Apple growers in the northern states and folks who like home orchards, Harrison's recommend this outstanding new RED SPY.

Winesap

An Apple Favorite in Virginia

Sometimes called Old Winesap and Virginia Winesap. Medium size, oblong, smooth, and a fine dark red—one of the best red colored Apples grown; flesh yellow, crisp, tender, very juicy, aromatic, firm and excellent flavor. Very long keeper and considered the best cold storage variety, keeping until July. A strong grower; comes into bearing early and is remarkable for its regular and abundant crops.

Other Good Winter Apples



ONE-YEAR APPLES

Mr. E. B. Bradford, farm foreman, proudly shows some 6-ft. specimens grown in Berlin

GANO (Black Ben). A handsome, large Apple of perfect shape, smooth, glossy, deep red skin; flesh white, slightly tinged with yellow, firm, rather coarse, crisp, mild, sub-acid flavor. Gano is one of the most popular export apples for the South American trade. Excellent keeper, standing long shipments, usually packed in barrels. A sure money-maker for the export trade. (Small 1-year trees only).

LOWRY. Beautiful mahogany red, good, medium size, round oval shape, nearly sweet, mild sub-acid; excellent flavor, good shipper, long keeper, and sells at fancy prices in export as well as domestic markets. New popular commercial variety in Virginia. (1-year trees only).

MAMMOTH BLACK TWIG (Paragon). Extra large in size and round; skin smooth, yellowish covered with deep red, the general effect being dark red; flesh tender, tinged with yellow, crisp sub-acid, aromatic, fine flavor, of excellent quality, long keeper of great value. An important commercial variety in the East. Tree is vigorous and healthy, yields big crops. Plant Delicious or Jonathan as a pollinizer.

MACOUN. Similar quality and texture as McIntosh Red, although it ripens 2 to 3 weeks later than Cortland. (Small, 1-year trees only).

NERO. An Apple which has received far too little attention from planters of Eastern orchards. Deep red, with handsome shading; medium large size, of good quality and excellent flavor; one of the longest keepers, one of the best cold storage Apples. Apples are graded and packed easily, do not show bruises and hold up well in storage.

NORTHERN SPY. Large, bright scarlet-red, with yellow markings. Flesh juicy, rich, crisp, tender, aromatic and highly flavored. Tree a strong, erect grower, very healthy, extremely hardy and a free producer. Blossoms are produced late in the spring, thus escaping frosts. Trees are slow in coming into bearing, but the quality of the fruit largely over-balances this difficulty. Popular old commercial variety in northern states. Should not be planted south of Southern Pennsylvania. Northern Spy is one of the best varieties on which to top bud or top graft certain weaker growing varieties. (Available in 1-2 ft., 2-3 ft., and 3-4 ft. sizes only).

OPALESCENT. Very handsome dark crimson Apple. (1-year trees only).

PARAGON. For description see Mammoth Black Twig.

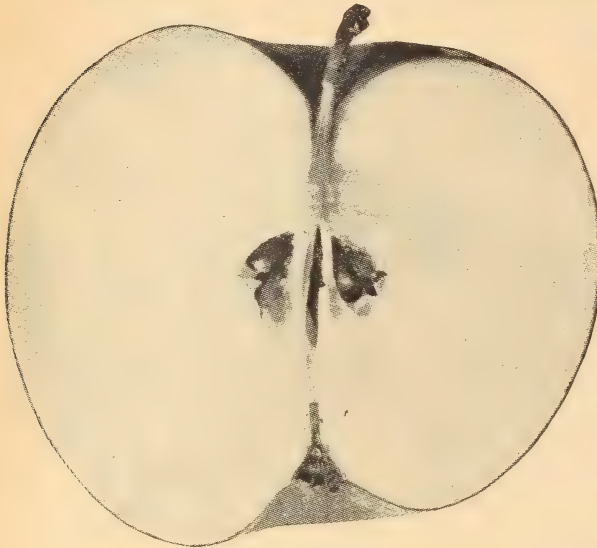
ROME BEAUTY. Large, round; mottled and striped in different shades of red; flavor and quality way above the average; appearance and size are its valuable points; always in strong demand and brings highest prices. Keeps in good condition until May and June. With an established reputation due to real merit, Rome Beauty is a variety eastern orchardists should plant. Good, hardy, strong grower; blooms late; bears heavily every year; is adapted to a wide range of soils, elevations and conditions. Reliability, due to being frost-proof, strong growing, sure bearing, unusual demand, with high prices on the leading markets, especially from the chain stores, make it a favorite with the growers. Fine quality and long keeping for use and for handling make it popular with consumers and dealers. Most attractive when packed in boxes and bushels.

Buy "Bud Selected" Super-Strain Fruit Trees



Red Rome Beauty

A FAVORITE WITH THE GROWERS



RED ROME BEAUTY
A 100 per cent Red—
Flesh exceptionally white and fine grained

Renowned for Bearing at an Early Age

An improved Rome Beauty, identical in vigor and production. Color of fruit much darker and solid red. Produces much higher percentage of fancy Apples and also superior in quality to the ordinary strain of Rome Beauty. Red Rome Beauty is renowned for bearing at a very early age, producing bumper crops of large size Apples. The tree is a vigorous, strong grower, exceedingly hardy.



Harrisons' strain of Red Rome Beauty is the best of all Rome Beauty types and because of its improved and early high red color characteristics, will eventually replace the Rome Beauty. Already the Red Rome Beauty is a star among leading commercial varieties of winter Apples. It pays to grow them.

**Yes! — It's
HARRISONS'
Superior
Strain**

Other Good Winter Apples

ROXBURY RUSSET. Large, firm, moderately tender, juicy, sub-acid, good flavor. Skin almost smooth, but covered with greenish to yellowish brown russet, long keeper. Most popular russet Apple; tree hardy, strong grower, and a prolific bearer. (1-year trees only).

RHODE ISLAND GREENING. Large, greenish yellow; flesh crisp, juicy, quite acid, firm, fine grained, tender, and of very fine flavor and quality. An excellent keeper, a popular barrel Apple; brings good prices. Generally planted in New England, New York, Michigan and Canada, but not advisable to plant south of the Mason-Dixon line.

STARK. Long keeper and a reliable commercial sort. Fruit large, round, greenish yellow, with red stripes; flesh yellow, crisp and mildly acid. Excellent baking Apple, preferred by the larger baking concerns and hotels. A good variety for the commercial orchard because the tree is hardy, thrifty, healthy and very productive. Good trees to top work other sorts on.

TWENTY OUNCE. Very large, yellow striped with red; fine quality, good keeper. (Small, 1-year trees only).

WOLF RIVER. Very large, handsome, bright yellow, skin mottled and blushed with deep red and broad stripes of bright carmine, fair quality, long keeper and excellent for cooking. (Small, 1-year trees only).

WINTER RAMBO. Medium size, greenish yellow color; thick skin. (1-year trees only).

WAGENER. A large Apple of beautiful bright red; fine texture, high flavor and excellent quality. Tree bears early; a reliable cropper. (1-year trees only).

WINTER BANANA. Extra large, golden yellow, and beautifully shaded with bright crimson-red; firm, fine grained, rich, sub-acid. The name suggests the high flavor. Tree thrives nearly everywhere. Should be packed in bushels or boxes and sold soon after picking. (1-year trees only).

YELLOW BELLFLOWER. Large, yellow; good flavor.

CRAB APPLES

Fine for Jelly

HYSLOP. Deep crimson, large size, sub-acid and of good quality. Fine for all kinds of preserving, canning, etc., and good to eat fresh. Tree handsome.

TRANSCENDENT. Yellow striped with red; good for eating fresh and fine for preserving. Best of all Crab Apples. Tree large; quick grower.

ALL-SEASON APPLE TREE

Offer No. 169

- 1 Yellow Transparent
- 1 Williams Early Red
- 1 Early McIntosh
- 1 McIntosh Red
- 1 Harrisons' Red
- 1 Delicious
- 1 Yellow Delicious
- 1 Stayman Winesap

Seven 2 to 3 ft. trees
For
Only **\$2.10**



Buy it by Mail at Harrisons' It's Convenient and Economical

RED YORKING

TRADE MARK REG. U. S. PLANT PATENT No. 125

It's Flaming Red

THIS NEW GLORIFIED YORK IMPERIAL

**A Winner—
because it
comes into
the market
3 to 5 weeks
ahead of its
parent.**

An Exalted York Imperial

The Red Yorking is a "bud sport", being a mutation of the famous York Imperial. This "bud sport" originated on a tree, grown with other York Imperial trees, in Harrison's Nurseries and later sold to Mr. W. H. Allison, near Shippenburg, Penna., for use in planting a large orchard about twenty-five years ago.

Early Coloring Means 100% Perfect Extra Fancy Grade

The Red Yorking is similar in size and shape to York Imperial, but is characterized by the abundant red coloring that completely covers the fruit. A vigorous grower and an abundant producer.

You Can Get No Finer Apple Trees for Commercial or Home Orchards

Red Yorking is truly a practical Apple to grow because it requires much less spraying than others; they thrive with little attention, and produce good crops year after year.

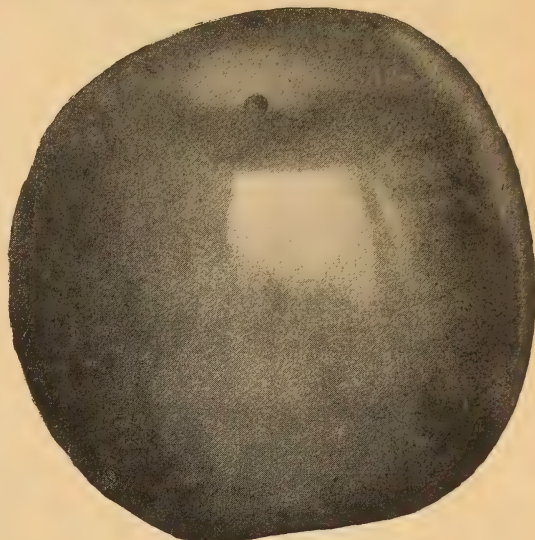
A Harrison Tip—

Plant Red Yorking this year. It is destined to be a money maker of the future.

Prices of Red Yorking only 15c per tree higher than standard varieties. See page 5 for sizes and prices.

Warning!

It is unlawful for anyone to propagate and sell Red Yorking, U. S. Plant Patent No. 125, Apple trees without obtaining written permission from the owners. The Government has protected the owners of the Red Yorking against infringements by the U. S. Plant Patent Laws for a period of 17 years.



"RED YORKING"

United States Plant Patent No. 125
FOR PRICES OF ALL APPLES SEE PAGE 5

York Imperial

*a favorite for Southern Pa.,
Maryland, W. Va. & Va.*

Medium to large size, round, irregular, greenish yellow overlaid with bright red; flesh tender, firm, crisp, and of high flavor; wonderful keeper. Can be kept in cold storage until June. Tree is a vigorous grower, strong and healthy; an unusually heavy bearer.

Other varieties may fail to set fruit and suffer from off years, but York Imperial with proper cultural methods, will bear consistently from year to year. York Imperial is a popular winter variety for cooking; also good for eating. A wonderful Apple for packing in bushels for the domestic trade. The best known and most popular export apple in barrels.



YORK IMPERIAL

BACK YARD SPECIAL APPLE TREE OFFER No. 212

- 1 Harrison's Red
Delicious
- 1 Yellow Delicious
- 1 McIntosh Red
- 1 Grimes Golden
- 2 Stoyman Winesap

Six Big 5-6 ft. size heavy
bearing trees, **\$3.00**
for only



Buy "Bud Selected" Super-Strain Fruit Trees--It Pays

Peaches

*A bright and PROFITABLE CASH FUTURE
Plant a PEACH ORCHARD
this Spring*

The Peach grower has a bright and profitable cash future—we advise you to plant a Peach orchard this spring, as the number of Peach trees in bearing is the smallest of any time during the past fifty years. Harrisons' are the largest commercial Peach orchardists in the East, and we will plant additional Peach orchards this spring.

Grown on the "Brink" of the Atlantic Real Hardy Grown Stock You Can Depend on

Our favorable climatic conditions, being located only eight miles from the Atlantic Ocean, with our rich soils of various types, coupled with the latest scientific and practical methods, as well as an unusually large number of experienced nurserymen, with ample facilities,

SALES \$1150

from 1000 Red Bird Cling Peach trees which bore a crop when trees had been planted in orchard only two years—averaging 1/2 bushel per tree. 1-year, 6 to 7 ft. Peach trees were planted.

FRUIT GROWERS

Look at fruit trees in other nurseries, then come to Berlin and see the superior quality of Harrisons' true-to-name varieties at attractive prices. See the fruit trees growing in the nurseries—know what you buy. No agents — you save the agent's commission.

enables Harrisons' to grow America's foremost, finest and best quality, true-to-name fruit trees, with superior merits and extra heavy annual bearing habits, which we guarantee, with proper care, will produce bumper crops in any fruit-growing section of the U. S.

Finest Strains—True-to-Name

Harrisons' "bud selection" of propagating direct from bearing trees of known sturdy ancestry, superior strains, bearing the highest coloring of fruit, with extra heavy bearing habits, has made the greatest contribution in directing and fixing the characteristics of the yield; of perfecting color; increasing the size of the fruit and the volume, as well as regularity of the crop.

PRICES OF HARRISONS' GROWN PEACH TREES

(Except Rio Oso Gem and Hale-Haven)

	1 to 9 trees	10 to 49 trees	50 to 299 trees	300 to 599 trees	600 or more trees
June Buds:					
6 to 12 in.	\$0.15	\$0.12	\$0.08	\$0.07	\$0.06
12 to 18 in.18	.15	.10	.08	.07
18 to 24 in.20	.17	.12	.10	.09
One Year:					
1 1/2 to 2 ft.25	.20	.15	.12	.10
2 to 3 ft.30	.25	.20	.17	.15
3 to 4 ft.35	.30	.25	.22	.20
4 to 5 ft.40	.35	.30	.27	.25
5 to 6 ft.50	.40	.35	.32	.30
6 to 7 ft.60	.50	.40	.37	.35

(Can be assorted Peaches or other fruit trees)

Hale-Haven. Add 10c per tree to above prices.

SOME COMMERCIAL GROWERS BUY THE INEXPENSIVE "JUNE BUDS"

A wonderful planting of 500,000 of Peach "June Buds," showing the Harrisons' distinguishing "Root System," as dug Oct. 12, 1937. Get your order in early—they will go fast.



Harrisons' Method of Propagation Insures Big Bodied, Heavily-Rooted "June Bud" Peach Trees

Red Bird Cling Peach

A Real Productive Variety

Also known as "Early Wheeler." The first Peach of large size to ripen. White, cling, with a crimson cheek and yellowish white undertone; very hardy, will thrive in any peach growing district.

PLANT RED BIRDS — THE FIRST OF THE EARLY PROFITS



RED BIRD CLING

Earliest large Peach commanding high prices

**One
Thousand
Trees
Yield
A Half
Bushel
Per Tree
Only Two
Years Old**

June Elberta

a new variety

A big, handsome red and gold Peach, highly colored, excellent quality and a dandy shipper. Being one of the earliest of the good yellow-fleshed Peaches, this semi-freestone variety quickly returns cash dividends before later varieties reach the market.

Very Early Varieties

GREENSBORO. White, freestone, extra large for such an early Peach. One of the handsomest, being a large, yellowish white with crimson cheek; flesh is white and of average quality. Exceedingly hardy, being an extra heavy, prolific bearer and adapted for wide variations in Peach regions.

MAYFLOWER. White, cling, small size with red all over.

MOUNTAIN ROSE. White, medium large, freestone, juicy, rich tender, sweet. Old-time favorite. (June buds only).

UNEEDA. Cling, skin creamy white with red blush; heavy bearer.



**HARRISONS' SUPER STRONG GRADED
One-Year Peach Trees, True-to-Name**



A Sectional View of Harrisons' Two Million Peach Trees Growing at Berlin, Maryland

YOUNGER BEARING

Do you want your trees to come into bearing at an early age? It is a recognized fact that trees propagated direct from bearing trees will commence to fruit at an earlier age than trees that are propagated from non-bearing scions. Harrison Grown Fruit Trees, due to the fact they are propagated from bearing trees, will produce profit paying crops in the earliest possible time.

Plant Large-Size Peach Trees for Quick Results



EARLY ROSE — from the World's Finest Nurseries



A Peach That Only Harrison's' Can Provide

Another Favorite Commercial Peach

Early, white, cling, medium large size for an early peach, high bright red skin, sweet, delicious flavor. Good shipper, making it a new favorite among commercial varieties. Hardy—been known to produce ten bumper crops of fruit without a miss. The tree is strong, sturdy, being a prolific grower and withstands exceedingly cold weather.

Sure to Please

Ripens several days later than Red Bird Cling and ripens at a date thus not competing with any other important commercial variety. Early Rose brings highest prices on leading markets and is being planted commercially in several Peach districts.



EARLY ROSE

Another new favorite with our commercial growers because year after year you can depend on a satisfactory crop of saleable peaches

Other Early Varieties

CARMAN. Semi-freestone, medium size, attractive and luscious, oval-shaped, yellowish white with bright red cheek; flesh creamy white, spicy and good flavor. Hardy, strong grower; heaviest producer of the earliest varieties. A sure cropper.

CUMBERLAND. White, semi-freestone, new variety introduced by the New Jersey Experimental Station.

ECLIPSE. Yellow, freestone, new variety introduced by the New Jersey Experimental Station.

MAMIE ROSS. White, freestone, large, covered with a beautiful delicate carmine—red blush; firm, juicy, good flavor, excellent shipper. Mamie Ross is about one-third larger and ripens two days later than Carman.

VALIANT. A promising seedling of Elberta. The fruit is large, roundish oblate, yellow blushed with red, with firm, juicy flesh of very good quality. Freestone. The trees are productive and it ripens about two weeks ahead of Elberta. Highly flavored.

VEDETTE. A seedling of Elberta. Ripens a few days before Valiant and about three weeks before Elberta. The tree is productive and fruit is large, roundish oval, yellow flesh and freestone. Very highly colored.

Utility Peach Collection No. 200

Luscious Fruit in 2 Years

Put Your Vacant Land to Work; Small Plot Requires 40' x 30' Space Only

Uneeda. White; very early.

Hiley. White; early.

Early Elberta. Yellow; early midseason.

Belle of Georgia. White; midseason.

Elberta. Yellow; midseason.

Salwey. Yellow; very late.

6 Big Trees
6 to 7 ft.

for **\$3** only

peaches

a profitable future

The Peach grower has a bright and profitable cash future—we advise you to plant a Peach orchard this spring, as the number of Peach trees in bearing is the smallest of any time during the past fifty years. Harrison's' are the largest commercial Peach orchardists in the East, and we will plant additional Peach orchards this spring.



Buy "Bud Selected" Super-Strain Fruit Trees—It Pays

Golden Jubilee "OK" say our Commercial Friends

For Prices, See Page 18

Another Blue-Blood Aristocrat of the Peach Family

Recommended by Harrison's'

Harrison's' were the first nurserymen to give Golden Jubilee wide publicity among the fruit growers of America. We recommend to every Peach grower north and west of North Carolina to plant this variety. We, ourselves, have planted several thousand trees in our own orchards and feel confident that you will be satisfied by planting the Golden Jubilee for home use or commercial planting. Our strain of Golden Jubilee is the original strain being originated and introduced by the New Jersey Experiment Station.

Commercial Peach Orchardists

for a century have been looking for an early Peach of high quality, fine flavor, yellow, freestone, attractive color, firm texture and a good shipper, and eventually they have found it in the marvelous Golden Jubilee. This variety is a sensation of recent introduction of new varieties and is by far better than any variety of commercial importance which has been introduced since the Brackett.

Golden Jubilee ripens about four or five days ahead of Carman; the latter variety at one time was of commercial importance, but in recent years it has only been grown in a limited way commercially and is quickly fading away in view of the competition from Mamie Ross.

Tried and Proven

There are numerous bearing Golden Jubilee Peach orchards throughout the United States and the variety has been tested by practical fruit men who have unanimously pronounced it as a worthy member of the preferred commercial list. It has been planted by tens of thousands in every Peach producing region and has given good results; therefore, we all must congratulate the New Jersey Experiment Station, New Brunswick, N. J., for breeding and originating the Golden Jubilee.

A Proven Money Maker

Last summer was a banner year for the Golden Jubilee as it bore huge crops of fancy fruit which sold at premium prices on the markets throughout the United States. Many fruit growers never saw the Golden Jubilee until last summer on the city markets and all spoke of it with great praise and pronounced it as the most outstanding and the most profitable Peach for the early season group of yellow, freestone fruit.



GOLDEN JUBILEE Ripens 4 Days Ahead of Carman

Fruit is of Good Size

In most localities the fruit of the Golden Jubilee will attain extra good size for an early Peach. One of its most remarkable features is that it is very hardy in fruit bud and withstood the bitter cold weather of last winter as well as any other variety known. It is a cross between the famous Elberta, and the hardy Greensboro, which is a very early variety. Golden Jubilee, fortunately, through the cross inherited the finest qualities of both the Elberta and Greensboro.

GIANT PEACH TREE
Collection No. 255
 Luscious Fruit in Two Years
 2 June Elberta, Yellow, very early.
 2 Golden Jubilee, Yellow, early.
 2 Elberta, Yellow, midseason.
 Six Big, 6-7 ft. trees For Only **\$3.00**

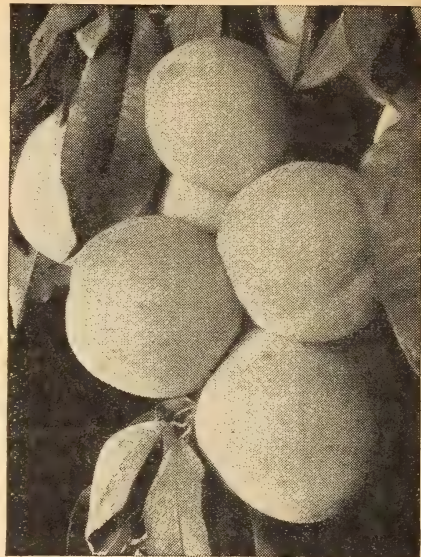
EARLY SEASON PEACH OFFER
No. 75
 1 Red Bird Cling
 1 Early Rose
 1 Golden Jubilee
 1 Hiley
 1 Early Elberta
 2-3 ft. trees—all five for **\$1.25**

It Pleases Harrison's' to Please You



HILEY *A White* *Freestone*

White, freestone, medium size, highly red colored, very firm, being an exceedingly handsome creamy white Peach with a delightful red cheek; flesh is white, fine texture, aromatic, very juicy, and of the highest flavor. Tree is strong grower, very healthy and a heavy bearer. Being an excellent shipper, with the stamina to withstand very long hauls under refrigeration, together with its beautiful, most appetizing appearance, and being easily, attractively packed in six-gallon carriers, bushels and half-bushels, along with its recent high reputation and favor with the buying public, has made Hiley a strong contender as the highest general average priced Peach. Many of our varieties are propagated direct from the original strain, and Hiley is no exception, as our late Mr. George A. Harrison cut the buds from the orchard of Mr. Eugene Hiley of Marshallville, Georgia, the originator of Hiley, then known as Early Belle, and later as Hiley Early Belle, now known as Hiley. The Harrison Bros. have frequently visited Georgia and also cut buds from trees being propagated direct from the original strain of Hiley from the famous Hiley orchards of Rumph Brothers of Marshallville, Georgia. **Add Harrison's Strain of Hiley to your commercial plantings for real profit.**



SOUTH HAVEN

Midseason Varieties
CRAWFORD'S EARLY. Yellow, freestone, large size, juicy, sweet flavored, highly prized for canning. Tree strong grower and prolific bearer. One of the old-time commercial varieties, which has been extensively planted in years past, but now mainly a home market fruit.

SLAPPEY. Yellow, freestone, medium to large size, beautifully red colored, rich and extra good flavor. Good commercial variety for nearby markets and one of the best early yellow freestone Peaches.

VETERAN. Fruit is large, round, yellow flesh, freestone and superior to the well known Elberta in flavor. Ripens about ten days earlier than Elberta.

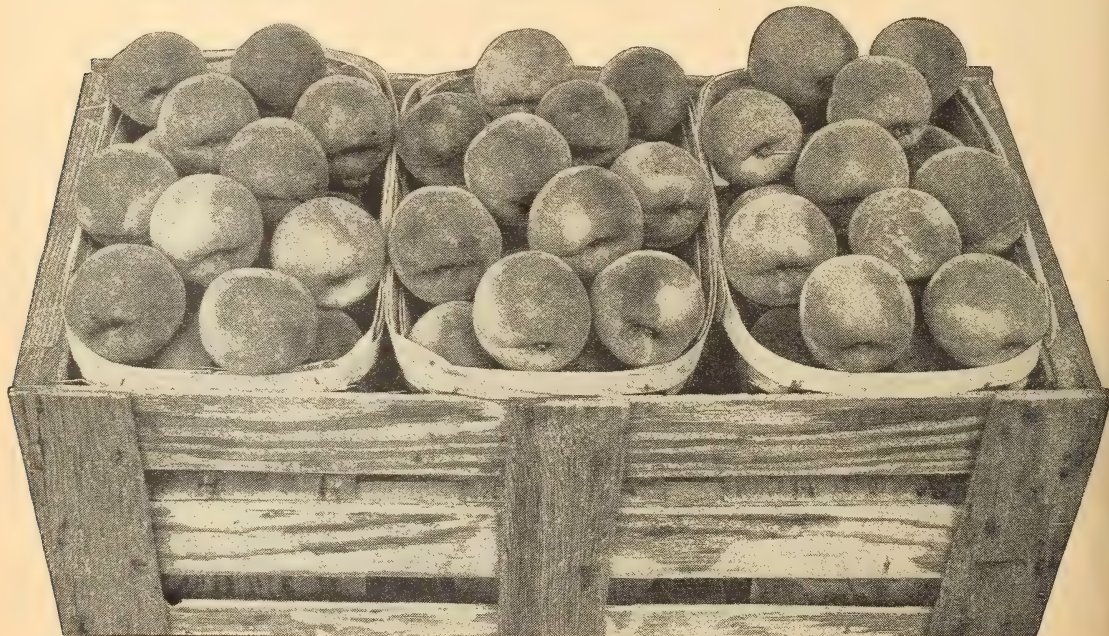
EARLY HILEY

A NEW STRAIN of Hiley from the South; ripens a few days earlier and is slightly larger. Our strain is from a prominent Georgia orchardist. Hiley growers—try a few trees of this new strain; it may be what you have been looking for. We offer June Bud Trees only.

South Haven

deep yellow, red cheek

Large, handsome, yellow, freestone Peaches of uniform size, delicate in flavor. Ripens about 15 to 18 days ahead of Elberta. Trees are very hardy and productive. Adapted to cold climates and produce bumper crops in mild climates. A new variety we highly recommend.



HILEY—Ships Like a Bullet—Withstands Long Hauls

Two Famous Peaches Join hands



**Definitely
A Red Color
Before
Ripening**

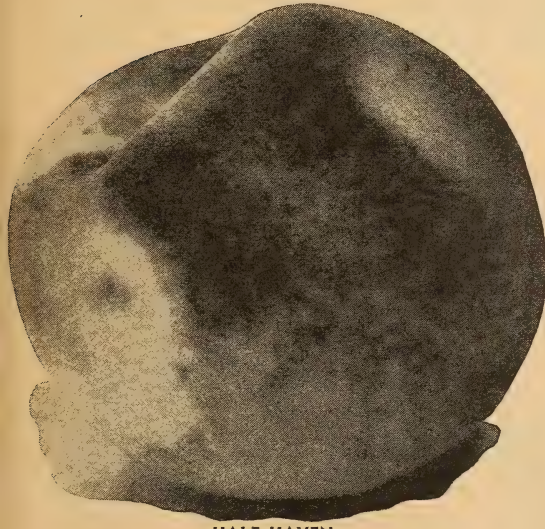
**A Real
Quality
Variety**

Yellow, freestone, large, high red color, firm, good flavor. It takes on red color early and the peaches show good red color several days before ripening, which gives it a distinct advantage for marketing. Very hardy in fruit bud and a heavy bearer. Ripens about 2 weeks before Elberta. Hale-Haven is a new variety, being a cross between the famous J. H. Hale and the well known new variety, South Haven, being originated by the Michigan Experimental Station.

**Very Early
Yellow
Freestone**

**Heavy
Bearer**

**10c Per Tree
Extra**



HALE-HAVEN

CHAMPION

a good home peach

White, freestone, very large, creamy white with red cheek, sweet, juicy; very high flavor. Champion has lost its past commercial importance because it will not carry satisfactorily under refrigeration, but as a home garden or a roadside Peach, it is one of the best. Tree is hardy, large grower and productive.

**Leading Orchardists
Prefer
Harrison Grown
Fruit Trees**

**ECONOMY
PEACH TREE
Offer No. 49**

- 1 Golden Jubilee
- 1 Hiley
- 1 Rochester
- 1 South Haven
- 1 Champion
- 1 Elberta
- 1 Brackett

7 Thrifty 12 to 18
inch trees — all
for **\$1.00**



Your fruit fortune is in your hands. Don't gamble—buy Harrison's true-to-name super selected "budded" trees, backed by three generations of practical experience.

The photograph below shows a typical peach orchard, with a specimen tree, showing habit of growth.



Harrisons' Genuine

Early Elberta



*a golden
yellow
blending
into rich red
on the
sunny side*

**Ripens 7 to 10 Days
Ahead of Elberta**

Once planted, Harrison trees readily take root and develop very rapidly—they are quality bred, ready for early fruiting

Rochester

**Popular Midseason Variety
Excels in Western New York and Michigan**

Yellow, freestone, large, covered with mottled red blush; flesh yellow stained with red at pit, very good quality, prolific bearer. One of the best early midseason yellow freestone Peaches for nearby markets, and highly desirable for canning. Our buds came direct from the original tree from Mr. A. H. Heberle of Rochester, New York, the originator. Popular in Western New York and Michigan.

Other Midseason Varieties

OLD MIXON FREE. White, freestone, large with bright red cheek, tender, rich, excellent flavor.

RAY. White, freestone, large, most attractive red blush of delicate shade, juicy, delicious, tender and excellent flavor. Trees are exceedingly strong growers, shapely and symmetrical, a regular bearer of big crops and generally considered as the heaviest, most consistent cropper known. Plant Ray for nearby markets and roadside stands, as its fine, attractive appearance and high flavor sell it on sight.

ROADSIDE MARKET COLLECTION PEACH TREES Offer No. 500

A balanced assortment of Quality Peaches that ripen throughout the season.

- 10 Uneedo
- 10 Red Bird Cling
- 10 June Elberta
- 10 Champion
- 10 Crawford Late
- 10 Early Elberta
- 10 Elberta
- 10 Golden Jubilee
- 10 Greensboro
- 10 J. H. Hale
- 10 Rochester
- 10 Salwey
- 10 South Haven
- 10 White Heath Cling
- 10 Wilma

150 Trees, Heavily Rooted, 3 to 4 ft.
For Only **\$37.50**

Early Midseason

Yellow, freestone, large, lemon-yellow with a dark cast, blush with vivid red. Beautiful appearance, high quality, being somewhat similar to Elberta, although a trifle better flavor; rich golden tender flesh, yet firm and has a delightful flavor; excellent for canning. Hardier in fruit bud than Elberta, tree is a good grower, bears very young and is a heavy producer. Ripens about a week or ten days earlier than Elberta and is being planted quite extensively in commercial orchards; excellent home orchard peach. Due to its earliness, and being Elberta type of peach, it brings high prices on the leading markets.

*Early Elberta is
Fine for Canning*



Buy by Mail at Harrisons' **It's Convenient and Economical**

Belle of Georgia *It's Hardy*

[Belle]

(NOTE: For Prices See Page 18)



Its Popularity Never Wanes

Ripens early August. Color creamy white with red cheek. Flesh white, red near pit. Size large, freestone. Belle of Georgia, for some time, has been recognized as the best all-around white Peach on the market. It is easily the best shipping white Peach of its season, ranking almost with Elberta in this respect. Because of its many desirable qualities, it has become standard in the large commercial orchards, and you can find few orchardists of any importance who do not have a block of Belle in their orchards. These men know from experience just what varieties pay best.

Bears Bumper Crops Every Year

The tree is an exceedingly strong grower and has established heavy producing records throughout the East. It withstands sub-zero temperature much better than most varieties in its season. By bearing heavy crops when other varieties were light, it has made its growers large profits in the past years.

Prosper North and South

Few Peaches are as well adapted to different soils and climatic conditions as Belle of Georgia. Although it originated in the South and still produces large crops for many southern orchardists, it has been equally successful in the North and West, and we highly recommend it as a profitable variety.

Withstands Coldest Winters

The tree is a strong grower with an open top; very vigorous. Bears heavy crops when very young, even at three years. Tree is very hardy in fruit bud and will bear a bumper crop when other varieties fail.

Plant Harrison's' Super-Strain Belle of Georgia Trees

Harrisons, in their commercial Peach orchards over a long period of years, have grown a larger number of carloads and truckloads of Belle of Georgia Peaches than any other orchardist in the nation. Through the process of "bud selection" Harrisons, over a period of many years, have been able to aid Nature, consequently have developed from the original strain which we received from Mr. L. A. Rumph, Marshallville, Georgia, originator of this famous variety, insuring in our famous Harrison's' Super-Strain Belle of Georgia Peach trees, which is the finest type, the hardiest and the most productive available. Elicits praise from all who know it because of the great beauty of its fruit at its best—it is one of the glories of the Peach World.

Best Peach for Home Gardens

If you grow Peaches for market purposes, or if you wish several Peach trees in the garden plot near your home, you will find Belle of Georgia the best Peach for this purpose. To the commercial grower it offers a white Peach maturing before Elberta, which ships well and brings good prices. To the man with a home orchard it means big, luscious, white Peaches—Peaches you can be proud to show your neighbors. There is only one best argument for the Belle of Georgia—eat one, and you'll know immediately what it is.

Best All-Around White Peach

During the past four years numerous orchardists in the sections which were visited by the bitter sub-zero winters of more or less duration, found in several cases that Belle of Georgia was the only variety of Peach which came through the winter with sufficient number of live fruit buds to insure a commercial crop. These orchardists were lucky in having Belle of Georgia as they received high prices for their Peaches, making Belle of Georgia a good cash profit variety, whereas many other varieties were a failure.

COMMERCIAL PEACH ORCHARD Collection No. 999

Your chance to establish a big orchard at a big saving

- 100 Early Rose. Early, white.
- 100 Golden Jubilee. Early, yellow.
- 100 Hiley. Early midseason, white.
- 100 South Haven. Early midseason, yellow.
- 200 Elberta. Midseason, yellow.
- 100 Brackett. Late, yellow.

700 Sturdy, Big-Rooted, June Bud Trees, 6 to 12 inches, enough to plant about 7 acres. Plant trees 20x20 feet.

700 Peach Trees as offered at the special reduced price **\$35.00** of

We cannot change varieties on collection.



Harrison's' Peach Trees Yield Bigger and Better Crops

Since the HORSE and BUGGY DAYS

Elberta Peaches

reign Supreme



GREATER PROFITS

from

Harrisons' Original "BUD" Strain

Plant Harrisons' Superior Strain

and Reap the Cash Benefits

Yellow Freestone — Midseason

Fruit is large to extra large; golden yellow with brilliant shades of red; firm, juicy, rich, sweet and good flavor. Elberta has the greatest international reputation of any peach. It has been the standard for all other peaches almost since the date of its introduction. The coloring of Elberta is practically perfect. The rich, yellow skin is almost entirely covered with dark red blush upon the sunny side. This attractive appearance and the uniform large size serve to sell it almost on sight.

Stamina • Uniformity • Best Canning Premium Prices • Public Demand

The large fruit, being uniform in size and shape, along with its high attractive red color and firmness, also its ability to stand shipments of three thousand or more miles under refrigeration in cars for two or three weeks before being consumed, but with stamina enough to still look its best, has won Elberta the reputation of being a peach without a peer and the variety which is always in favor and strong demand with the buying public, therefore demanding the highest possible market prices. Elberta is by far the best canning peach.

In Our Own Commercial Orchards

we have tens of thousands of these trees, which are the best strain of Elberta obtainable. It was procured from the original tree grown by the late Samuel H. Rumph of Marshallville, Georgia, the originator of Elberta, and budded in our own nurseries.

There are many different types of Elberta, and the "Best Strain" is the cheapest and most profitable for the long-time investment.

We recommend devoting 35% of your commercial orchard to Elbertas.



The Best Commercial Variety - Elberta

Tree is vigorous, very hardy, sturdy, thrives in widely different localities. Elberta is hardier in bud than most varieties, and is a uniform prolific bearer. You can always depend on Elberta as a sure cropper.

The Sensational **ELBERTA**

The World's Greatest Money-Making Peach

HARRISONS' 31-YEAR OLD COMMERCIAL ORCHARD IS OLDEST IN AMERICA

America's oldest commercial peach orchard of approximately 2000 trees produced a large crop of U. S. No. 1 Grade Elbertas last August. This orchard has never missed a heavy crop. Thousands of our customers in the peach growing sections of the Union tell us that we have the finest and the most profitable strains of Elberta in America.

The buds from which our 31-year-old Elberta orchard was propagated were cut personally by our late Senator Orlando Harrison while visiting the late Samuel H. Rumph, of Marshallville, Georgia, the originator of Elberta, and were brought in person by the Senator to be budded in our own Harrison Nurseries.



ELBERTA
Original Strain

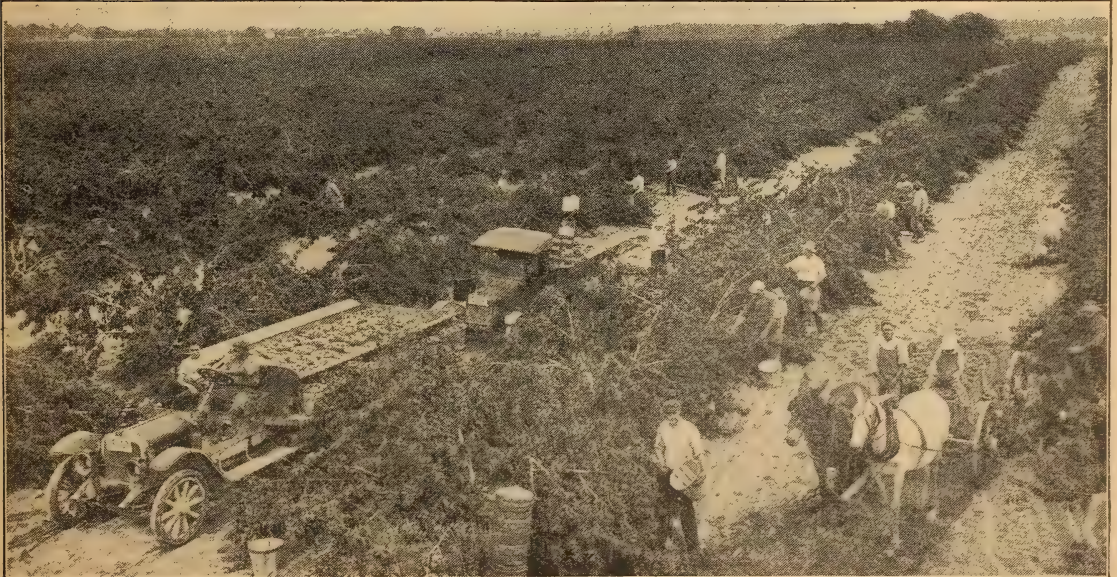
**OUR
FAVORITE PEACH
Collection No. 100**

- 1 Early Rose. White.
- 1 Golden Jubilee.
Yellow.
- 1 Carman. White.
- 1 Hiley. White.
- 1 Champion. White.
- 1 Elberta. Yellow.

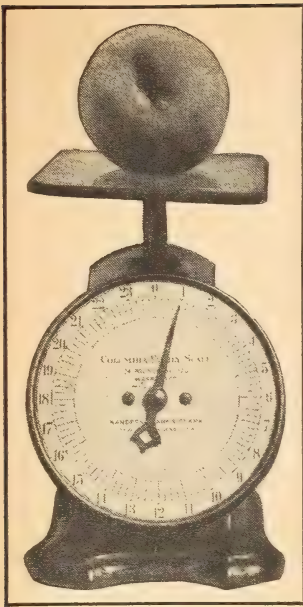
All Six Big,
4-5 ft. trees,
For
Only **\$2.10**



ELBERTA
One-year budded, 6 to 7 feet,
the largest and best size peach
tree grown



Harrisons' peach trees are propagated direct from bearing trees of superior strains and extra heavy bearing habits. This is the best type that is true-to-name and will bear fruit at an age of two years under proper care.



NATIONAL *Reputation*

J. H. HALE

originated by the late PEACH KING

Original Strain J. H. HALE

Our Hales are propagated direct from the original strain, the variety being originated by the late J. H. Hale of South Glastonbury, Connecticut and Fort Valley, Georgia, who at one time was the Peach King of America.

There are many types and strains of J. H. Hale grown, but the only one worthy of commercial importance is the original strain, which is the extra large, round, highly colored Peach. The original strain necessitates cross-pollination and it is necessary, for proper results, to plant a few Belle of Georgia or Hiley along with Hale for cross-pollination.

The tree is somewhat dwarf, a moderate grower and should be planted on the richest, best, well-drained soil available. The Hale needs more cultivation and fertilization than most varieties.

Hale is the second most extensively planted yellow Peach, being surpassed only by Elberta. Hale is a

ranking member of the five greatest peaches in America.

Extra Large Size Yellow, freestone, extra large, beautiful red coloring, firm and of the highest quality and enticing flavor. J. H. Hale ripens about 2 or 3 days prior to Elberta.

Hales are too large to properly pack in 6-gallon carriers, but they make the most attractive and commanding appearance when packed ring-faced in bushel and half-bushel baskets. The Hale quickly made a national reputation and is a strong competitor of the Elberta, being just about as good a shipper as Elberta.

Brings Highest Market Prices Prices on J. H. Hale and Elberta with a large national crop are about the same, but on a short crop year Hales usually sell from 25c to 50c and sometimes 75c more per bushel on large wholesale markets.

Midseason Late Varieties

CRAWFORD LATE. Yellow, freestone, superb in size and shape; splendid yellow, with broad dark red cheek; flesh deep yellow, juicy and melting, rich, winy flavor. One of the best late sorts. Tree vigorous, hardy and sure bearing. Coming at a time when the midseason peaches are over, this variety is eagerly bought up for canning and preserving, and brings highest prices. Being such a remarkably good shipper, it reaches the market in first class condition. An old commercial favorite.

WILMA. Yellow, freestone, large, good red color, somewhat similar to its parent, Elberta.

SHIPPERS' LATE RED. Yellow, freestone, large, round, bulkier than Elberta, with an attractive red coloring which is catchy to the eye. Flesh is yellow, juicy, sweet and of pleasing flavor. Trees are very hardy, good growers, bear young, sure croppers, and prolific bearers. Promising new late commercial variety and excellent home sort.



J. H. HALE, a Peach of High Quality

ALL SEASON COLLECTION PEACHES No. 79

- 1 Early Rose.
- 1 White, early.
- 1 Golden Jubilee.
- 1 Yellow, early.
- 1 Hiley, White, early midseason.
- 1 J. H. Hale, Yellow, midseason.
- 1 Elberta, Yellow, midseason.
- 1 Brackett, Yellow, late.

Six Healthy Trees,
2 to 3 ft.
For Only **\$1.50**



Save Money by Growing Your Own Fruits

Brackett

Mid-Season
Late

A THREE POINT



WINNER

- 1. QUALITY
- 2. SIZE
- 3. COLOR

Peach

A New Commercial Variety slightly later than Elberta

Brackett is a comparatively new commercial Peach in some sections but wherever tried it has given uniformly good results. During the past twenty years we have planted many thousands of this variety in our own orchards and they have given good results.

The fruit is rich yellow, with dark carmine cheek. The size runs fully as large or larger than Elberta and fruits weighing five to six ounces are common. Flesh is deep

yellow, extremely juicy and is absolutely freestone. Fruit is much better flavored than Elberta.

Popular on the Markets

Brackett commands unusually high prices on the market and often outsells Elberta twenty-five to fifty cents per bushel. We know that the grower who needs a Peach that ripens slightly later than Elberta will make no mistake in planting Brackett.

Plant Harrisons' Original Strain

HARRISONS were the first to popularize this great variety and distribute it throughout the Peach-growing sections. We offer trees that are propagated direct from the original strain and they are sure to produce results.



BRACKETT

LATE VARIETIES

BEER'S SMOCK. Yellow, freestone, large, oval, skin orange-yellow mottled with red; high flavor.

BERK'S FAVORITE. White, freestone; new variety.

FOX SEEDLING (Fox). White, freestone, large; white with whole side red, melting, sweet, high quality and high flavor. Good for roadside market and canning.

IRON MOUNTAIN. White, freestone, large, generally planted in New Jersey.

SALBERTA. Yellow, freestone, large, being a satisfactory cross between Elberta and Salwey. Salberta inherited the size, quality and productiveness of Elberta, and inherited the lateness in season of Salwey. This new variety is being planted commercially more or less in Ohio and Michigan.

VERY LATE VARIETIES

KRUMMEL'S (Krummel's Late October). Yellow, freestone, extra large, round, deep yellow with a blush of carmine on the sunny side—fine flavor. Good shipper, and ripens late in the season.

SALWEY. Yellow, freestone, large, beautifully mottled with red and a brownish cheek; the flesh is yellow, firm, rich, juicy and sugary, and particularly fine for canning and preserving. Generally grown in the mountain districts, good shipper, desirable for the fancy trade.

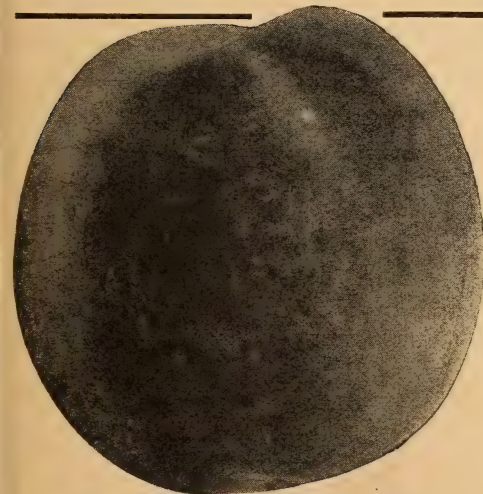
WHITE HEATH CLING (Heath). White, sometimes called Mammoth Heath Cling, extra large, round, with red blush, flesh is firm, white, exceedingly juicy, and ripens fully to the pit. Favorite for canning and pickling. Be sure to include it in your family orchard.

ROBERTA

(Augbert)

A comparatively new variety of great merit. Resembles the Elberta in many respects, but ripens about a week to ten days later. An excellent sort to prolong the Elberta season.

A Late Commercial Variety



ROBERTA—A Late Commercial Variety

Harrisons' Peach Trees Yield Larger and Better Crops



We Present The World's Largest Peach RIO OSO GEM



*A New Late
Peach comes
to the Fore*

It's a future money maker because it follows close on the heels of Elberta. The greatest find in a century.

Larger Than J. H. Hale

The Rio Oso Gem is a perfect freestone; form is globular, slightly elongated, of extremely large size, averaging in diameter from 2 $\frac{3}{4}$ to 3 $\frac{3}{4}$ inches; deep yellow flesh, very fine grain, firm texture, with very excellent flavor, being rich, juicy, sweet and slightly spicy. The coloring is unique, being a beautiful dark crimson-red, running out to lighter crimson and into a rich mottle of crimson over the orange-yellow ground color. It is a good transcontinental shipper.

Bears Heavier Than Elberta

Rio Oso Gem is an extremely heavy bearer and on account of its prolific set of fruit, it is necessary to practice extremely heavy thinning. It has hardy, vigorous fruit buds, which insure it being a heavy annual bearer. The tree bears young.

Ripens Two Weeks Later Than Elberta

The Rio Oso Gem would be a Peach of commercial importance when ripening at any time during the Peach season, but it is very fortunate that it ripens two weeks later than Elberta, which puts it at a time when there is no other variety of commercial importance as a competitor, and fills a long looked-for gap in commercial production, ripening when the markets are clamoring for Peaches—this variety has sold at very much higher prices than Elberta and J. H. Hale. To prolong your Peach shipping season, we highly recommend to you planting the Rio Oso Gem. Harrisons have planted several thousand Rio Oso Gem in their own famous orchards. We have the utmost faith in the Rio Oso Gem, and we will also make future plantings of this remarkable Peach.

ROADSIDE MARKET COLLECTION PEACH TREES Offer No. 1000

Cash in on the huge demand for Peaches during the entire summer. We have chosen the varieties that will make you money on your roadside stand.

- 5 June Elberta
- 5 Red Bird Cling
- 5 Greensboro
- 5 Early Rose
- 10 Golden Jubilee
- 10 Hilley
- 10 Champion
- 10 South Haven
- 10 Early Elberta
- 10 Belle of Georgia
- 10 J. H. Hale
- 10 Elberta
- 5 Brackett
- 5 Wilma

Planted 20x20 feet apart requires 1 acre.

110 Thrifty, 3 to 4 ft.

Peach Trees — All

For **\$24.20**

We cannot change varieties on collections.

Fruit Men were amazed at the high prices Rio Oso Gem brought on the market. They sold in the New York City Wholesale Market at \$2.50 per half-bushel.



RIO OSO GEM
—World's Largest Peach

PROTECTED BY U. S. PLANT PATENT No. 84

The Rio Oso Gem has been protected by the Government against infringements by U. S. Plant Patent laws for a period of 17 years from the date patent was granted, being November 28, 1933. It is unlawful for any one to propagate and sell the Rio Oso Gem, U. S. Plant Patent No. 84, Peach trees without obtaining written permission from the owner.

Exclusive Propagation and Sales Rights of the Rio Oso Gem in the Following States Granted to Harrisons:
Alabama, Arkansas, Connecticut, Delaware, District of Columbia, Florida, Georgia, Kansas, Kentucky, Louisiana, Maryland, Maine, Massachusetts, Mississippi, New Hampshire, New Jersey, New York, North Carolina, Oklahoma, Pennsylvania, Rhode Island, South Carolina, Tennessee, Texas, Vermont, Virginia and West Virginia.

PRICES OF RIO OSO GEM: U. S. Plant Patent No. 84

	1 to 9	10 to 49	50 or more
June Buds:	trees	trees	trees
6 to 12 in.	\$0.40	\$0.30	\$0.20
12 to 18 in.55	.40	.30
18 to 24 in.65	.50	.35
One-Year:			
2 to 3 ft.70	.55	.40
3 to 4 ft.75	.60	.45
4 to 5 ft.80	.65	.50
5 to 6 ft.85	.70	.55
6 to 7 ft.90	.75	.60

Prices apply only to the quantities of Rio Oso Gem Peach trees ordered and cannot be assorted varieties of other Peaches and other fruits.

Supply of Rio Oso Gem Peach Trees is Limited.



Save Money by Growing Your Own Fruits

Plums — Apricots — Nectarines

— Extra Good Fruits for the Home Orchard

PLUMS

Plums are easy to grow, few people realize how easy it is to grow luscious, edible Plums. They thrive and bear readily on most any land that is not too wet. Below is a selected list of varieties chosen for their size, appearance, and flavor of their fruit, as well as hardiness and strong growing characteristics of the trees.

We have some exceptionally good Plum trees to offer this year, all budded on whole root seedlings. With our low prices it will pay you to set out a few.
ABUNDANCE. Early, large, lemon-yellow, hardy, productive.

BURBANK. Midseason, large, cherry-red with thin lilac bloom. Flesh amber-yellow with rich sugary flavor; high quality and very productive. A product of Burbank, the master plant breeder. Should be in every orchard.

BRADSHAW. Midseason, large, dark violet-red, juicy, excellent flavor. One of the best for home orchards.

GERMAN PRUNE. Late, large, dark purple, sweet. Good for canning and drying.

ITALIAN PRUNE (Fellenberg). Late, medium size, dark purple, delicious. Fine for drying.

RED JUNE. Very early, medium size, deep vermilion-red. The best early variety.

SHROPSHIRE DAMSON. Late, medium size, dark purple, the popular old-fashioned Damson variety.



BRADSHAW —
A Fine Canning Variety

WICKSON. Late, very large, deep maroon-red covered with white bloom, flesh firm, meaty, yellow, rich, aromatic, cling.

APRICOTS

The Apricot is one of the most delightfully luscious fruits grown, when eaten fully ripe and fresh from the tree. It is remarkable that such a rich and beautiful, golden, sweet fruit is not planted more, especially since it ripens just after the early cherries and before the best early peaches.

ALEXANDER. Early, prolific, freestone, orange with red blush; very juicy and sweet flavor.

A large prolific bearer that will withstand adverse weather conditions. This variety deserves greater popularity.

EARLY GOLDEN. Small, pale orange in color, good flavor.

SUPERB. Medium size, light salmon colored fruit. Hardy.

NECTARINES

There is a mistaken idea that the nectarine is a cross between the peach and something else, while it is really nothing more or less than a smooth skinned peach. The melting, juicy texture of the nectarine and its delicious flavor furnishes one of the most delightful fruits for eating during the summer. Plant a few trees in your home orchard this year.

QUETTA. One of the newer nectarines that is being tested for commercial possibilities in the East. Fruit large, greenish white, splashed with red. Plant some out this year. **10c per tree extra.**

SURE CROP. Very vigorous and productive. The fruits are large, roundish, white and overlaid with very attractive red. Very pleasing flavor.

**GROW
YOUR
OWN
FRUIT**

**—It's Easy with
HARRISON'S
HI-QUALITY
TREES**



QUETTA NECTARINE

PRICES OF PLUMS, APRICOTS AND NECTARINES

	1 to 9 trees	10 to 49 trees	50 or more trees
6 to 12 in.	\$0.30	\$0.25	\$0.20
1 to 2 ft.40	.35	.30
2 to 3 ft.50	.45	.40
3 to 4 ft.60	.50	.45
4 to 5 ft.70	.60	.55
5 to 6 ft.80	.70	.65

(Can be assorted Plums, Apricots, Nectarines or other Fruit Trees).

FAMILY SPECIALTY FRUIT OFFER No. 105

- 1 Quetta Nectarine
- 1 Sure Crop Nectarine
- 1 Burbank Plum
- 1 Shropshire Damson
- 1 Early Golden Apricot

5 Heavily Rooted, 6 to 12
Inch size trees —

For
Only **\$1.25**

Buy "Bud-Selected" Super-Strain Fruit Trees - It Pays



CHEERRIES



MONTMORENCY

SOUR CHERRIES

Sturdy Well-Branched Trees

They Will Never Miss a Crop

For Home and Market

A good cherry orchard is a very profitable investment. On account of the rapidly increasing demand for fruit juices, there is a great outlook for the cherry grower. Cherries are easy to grow and are very heavy annual bearers. We have a good supply of the leading varieties and they are priced in the reach of every grower.

MONTMORENCY (Large Montmorency). Midseason, sour, large, red, slightly acid; flesh very tender, good quality, being the best variety of sour cherry grown. The best shipper of all sour, which with its wonderful carrying ability for long distance shipments always commands the highest market prices, either on the city markets or from the commercial canneries. Montmorency is famous in Wisconsin, Michigan, New York and West Virginia for canneries.

DYHOUSE. Very early summer, ripening ten days prior to Early Richmond; medium size, sour, good quality, heavy bearer.

EARLY RICHMOND. Early summer. Very sour, medium size, bright red, valuable and popular cherries, unsurpassed for cooking purposes. A good old variety which yields such marvelously heavy crops. Tree is the most hardy of all cherries, being uninjured by the coldest winters; slender in growth and very productive.

ENGLISH MORELLO. Midseason. Fruit sour, large, elongated, almost blackish red when fully ripe; very rich, acid, juicy and good.

MAY DUKE. Very early, sour, large, red, juicy, rich, its acidity pleasantly tempered to the advantage of sensitive teeth, superior quality, very productive.

RICHMORENCY. A Montmorency type that ripens a week or more earlier than Large Montmorency. Produces heavy crops and the size of the fruit is large.

PRICES OF SOUR CHERRIES

	1 to 9 Trees	10 to 49 Trees	50 or More Trees
1 to 2 feet	\$0.40	\$0.35	\$0.30
2 to 3 feet	.50	.45	.40
3 to 4 feet	.60	.50	.45
4 to 5 feet	.70	.60	.55

(Can be assorted Cherries or other fruit trees)

HOME CHERRY ORCHARD

Offer No. 248

You'll be delighted with this Sweet and Sour Cherry Collection

- 1 Black Tartarian, Sweet.
- 1 Napoleon, Sweet.
- 1 Yellow Spanish, Sweet.
- 2 Montmorency, Sour.
- 1 Early Richmond, Sour.

Six Healthy, 3-4 ft. trees
For **\$3.00**



Harrisons' Super Strain Sour Cherry Trees
Grown at Berlin

8 Leading Sweets

HARRISON'S SUPER-STRAIN CHERRY TREES ONLY

What fruit is more pleasing than a sweet Cherry? The ideal fruit to plant in the back yard. We have a good supply of first class trees in the following varieties:

BING. Very large, dark brown, almost black; flesh firm, sweet, rich and delicious.

BLACK TARTARIAN. Very large, sweet, purplish black color, juicy, rich flavor, heavy bearer and most profitable sweet variety grown.

GOVERNOR WOOD. Large, light yellow, marked with red, sweet flavor.

LAMBERT. Extra large, sweet, jet black, very popular.

NAPOLEON (Royal Ann). Large, pale yellow with bright red cheek, sweet excellent flavor, prolific bearer. Famous canning variety of the Pacific coast.

SCHMIDT (Schmidt's Bigarreau). Large, sweet, deep black, tender, fine flavor.

WINDSOR. Large, sweet, almost black, fine quality. Valuable late variety.

YELLOW SPANISH. Large, sweet, yellow with red tinge. One of the most beautiful and popular of the light colored Cherries. Heavy bearer.



BLACK TARTARIAN
—It's Sweet

SPECIAL SWEET CHERRY

Offer No. 199

- 1 Black Tartarian
 - 1 Governor Wood
 - 1 Napoleon
 - 1 Yellow Spanish
- Four Big, 4-5 ft. trees

For Only **\$2.40**

PRICES OF SWEET CHERRIES:

	1 to 9 trees	10 to 49 trees	50 or more trees
1 to 2 ft.....	\$0.40	\$0.35	\$0.30
2 to 3 ft.....	.50	.45	.40
3 to 4 ft.....	.60	.50	.45
4 to 5 ft.....	.70	.60	.55
5 to 6 ft.....	.80	.70	.65

(Can be assorted Cherries or other fruit trees)

*Prolific Croppers
Succeed Everywhere*



A Young Montmorency Cherry Tree. Always Loaded with Fruit

Harrison Grown Cherry Trees

Budded from bearing commercial orchards of superior strains. All Cherries are budded on hardy grown, whole root seedlings, which, in our most favorable soil, form a large, fibrous, well proportioned root system, which is exceedingly important for the proper growth of Cherries. Highest quality at most attractive prices.

CHERRY Collection No. 33

- 1 Montmorency
- 1 English Morello
- 1 Black Tartarian
- 1 Napoleon

4 Super-Selected trees only
Size 1 to 2 feet **\$1.40**



Make Your Garden More Fruitful - It Pays

Fancy BARTLETT PEARS

ALWAYS TOP the MARKET



BARTLETT

- 1—Superb Quality
- 2—Heavy Cropper
- 3—For Home or Commercial Grower
- 4—For Eating and Canning
- 5—Bear Early
- 6—A Harrison Specialty

For home, for canning, for market, the best. A golden-colored Pear, with red cheek. Bartlett mellow and is excellent for eating very early in the fall, yet when picked a week before it is ripe and properly stored, will keep till late. Flavor delicious and musky; flesh buttery, rich, juicy. One of finest Pears that grows to eat raw.

Fancy Fruits Bring Highest Prices. Bartlett Pears always sell on the market even when other sorts are not in great demand. The fruit is so handsome and appealing that it pays to pack it in fancy containers. Bushels or bushel boxes are best adapted. The fruit ought to be carefully sorted and graded, wrapped in tissue paper, and arranged in the container practically the same way that you pack Apples.

Other Varieties of Pears

ANJOU. Large, green in color, somewhat yellow when ripe, buttery, melting, rich vinous, good flavor. Tree vigorous, hardy, prolific bearer.

BUERRE BOSCH (Bosc). Large size, fine quality, brings highest prices.

CLAPP'S FAVORITE (Clapp). Very large, long, lemon-yellow with brown dots; richly flushed with russet-red on sunny side; fine texture, melting, buttery, juicy, with a rich, sweet, delicate, vinous flavor. Thrives where other varieties fail. Tree hardy and very productive.

SECKEL. A beautiful and delicious little Pear known everywhere and an old-time favorite; skin yellowish brown with deep brownish red cheek; flesh very fine grained, sweet; one of the richest and highest flavored Pears grown. Tree rather dwarf, slow, stout and erect, bears prolific crops.

DOUGLASS. Very resistant to blight. A winter pear of wonderful quality, golden yellow with a faint blush on the cheek. Bears early.

DUCHESS (Duchess d'Angouleme). Very large, dull greenish yellow, spotted russet, flesh white, rich, buttery, juicy; excellent flavor. Tree somewhat dwarf, but a most dependable bearer. Profitable commercial Pear.

KIEFFER. Fruit large to very large; skin yellow, with light vermilion cheek. Flesh brittle, very juicy. Most popular canning Pear. Keeps well.

SHELDON. Medium size, flesh slightly coarse, melting, juicy.
WORDEN-SECKEL. Offspring of Seckel, equal in quality and productiveness; decidedly superior in size, color, and form.

PRICES PEAR TREES	1 to 9 trees	10 to 49 trees	50 or more trees
6 to 12 inches.....	\$0.30	\$0.25	\$0.20
1 to 2 ft.....	.40	.35	.30
2 to 3 ft.....	.50	.45	.40
3 to 4 ft.....	.60	.50	.45
4 to 5 ft.....	.70	.60	.55

(Can be assorted Pears or other Fruit Trees)

NUT TREES Are Ornamental and Profitable
PAPER SHELL PECAN. Medium to large nuts; oblong, thin shell, rich flavor. Good grower. The best type Pecan grown. 2 to 3 feet, \$1.25 each; 2 for \$2.00.

BLACK WALNUT (Juglans nigra). Rapid grower, spreading branches, large, delicious nuts, prolific bearer. 6 to 8 feet, \$2.00 each.

ENGLISH WALNUT (Juglans regia). Thin shelled, large, delicious nuts, producing heavy crops and demanding good prices. Most popular walnut grown. 2 to 3 feet, \$1.50 each; 2 for \$2.75.

QUINCES Sought after for canning, preserving and for jellies. It gives a delicious flavor to the Apple, cooking in any manner. Plant ten to sixteen feet apart on deep, rich soil.

ORANGE. Late, large, bright yellow, excellent flavor, productive, and rarely fails to produce a crop. Best canning variety. Popular Wayne County (New York) strain. 4 to 5 ft., \$1.00 each.

FIGS BROWN TURKEY. Medium to large size; copper-brown skin, flesh white. Not hardy North. 2 to 3 ft., 75c each; 10 for \$6.50.



A Fig Tree at Hills Point, Md. Variety, Brown Turkey



— Save 5% by Sending Remittance with Order —

ASPARAGUS

is a profitable crop

Being the first vegetable to come in the spring it always brings a high price on the markets. Stocks being delicious and very healthful, every garden should have a generous supply and when properly set and cared for will last a lifetime.

The Famous Mary Washington—Plant This Pedigreed Strain

There is no variety of Asparagus as good as Mary Washington and whether you are growing for home use only or for market you cannot afford to grow any other. This wonderful new Asparagus was developed and introduced by the U. S. Department of Agriculture and although it is just a recent introduction it has become famous the country over.

Rust Resistant—Profitable

Growers everywhere are discarding all other varieties in favor of the famous Mary Washington, because it is earlier, the stalks are larger, more tender and more productive than any other variety and more highly immune to rust, which means that one planting will produce profitable crops for many years.



MARY WASHINGTON

Large—Early—Tender—Juicy

Asparagus buyers now demand Mary Washington and are willing to pay fancy prices to get it. The demand for Mary Washington is tremendous because when it is once eaten, no other variety will give satisfaction. The stalks are purplish green color, large, tender and juicy. A very rapid grower which means many cuttings.

How to Grow Asparagus

Asparagus is easy to grow and should be in every garden because it thrives everywhere. Spring is the best time to plant as soon as the soil can be worked into good condition. Dig or plow a trench ten inches deep, place the plants in this trench and spread the roots, then cover with two inches of soil, when the new growth comes through fill in two more inches and continue until trench is full. For garden culture Asparagus may be planted eighteen inches apart each way, but for field culture plant two feet apart in the row with the rows four feet apart. Cultivate and hoe frequently.

Commercial Planters Prefer 1-Year Roots

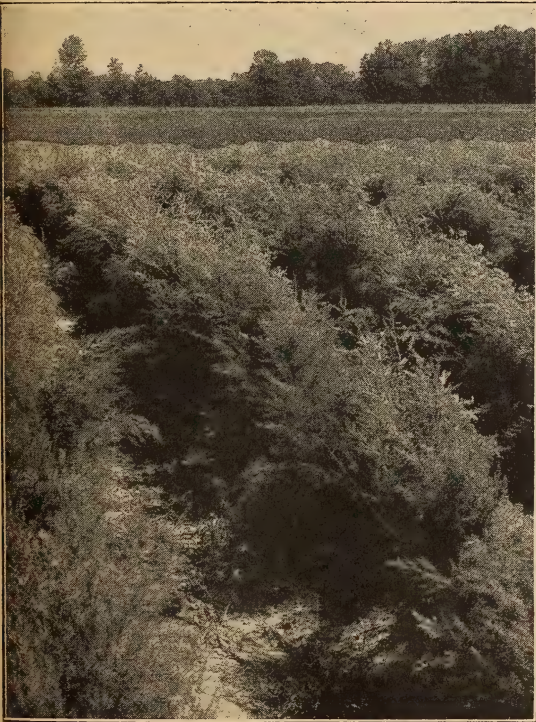
The majority of commercial growers of asparagus prefer 1-year roots, they cost less and are much easier to plant. By liberal application of fertilizer and manure heavy yields of asparagus can be had after one or two years.

Plant Harrison's' Pedigreed Roots

We have made a specialty of growing asparagus roots for over 40 years and have supplied plants for some of the finest asparagus beds in the country. The growing, handling, and shipping of millions of asparagus roots has taught us many things and today we are in position to supply you with quality roots at low cost. All our crowns were grown direct from the original strain of seed.

We Recommend Two-Year Roots for Home Gardens

Experience has taught us that 2-year roots give better results for garden planting than 1-year roots. The 2-year roots are much larger and have more food stored up which causes them to make more growth and yield larger crops of asparagus sooner than the 1-year roots.



Asparagus in the Nursery Rows

Prices of Genuine Pedigreed Mary Washington Asparagus Roots—Selected

	25	50	100	250	500	1000	5000
1-year, No. 1	\$0.40	\$0.60	\$1.00	\$2.00	\$3.25	\$5.50	\$22.50
2-year, No. 160	.90	1.50	2.75	4.25	7.50	32.50

What a Strain! / *THAT SUPER* CONCORD GRAPE

HARRISON'S Magnificent SUPER STRAIN

Every Vine Reflects Care and Skill in Growing

DECIDING FACTORS

- 1—America's Favorite
- 2—Delightful to Eat
- 3—Bears Large, Compact Branches
- 4—Make Best Jelly and Grape Juice
- 5—Extra Heavy Vines
- 6—Always in Demand
- 7—Once Planted, Will Continue to Furnish Fruit for Years to Come.

Harrisons' Extra Strong 1-Year Grape Vines

Ready to demonstrate their record bearing qualities in your own garden. A Harrison tested feature.

HOME GARDEN OFFER
No. 125
Grow Your Own Grapes

- 1 Agawam
- 1 Catawba
- 1 Concord
- 1 Delaware
- 1 Moore's Early
- 1 Niagara
- 1 Worden

All 7, Big 2-year Vines, Only **\$1.05**



1938
 Is Your Opportunity
 to
 Plant These
 Extra Selected
CONCORDS

CONCORD

A pinnacle of success for ages. The fine flavored Concord stands as a monument. It's the favorite in every large vineyard as well as the small garden.

It adapts itself to varying conditions and is grown in most every State in the Union. Large compact bunches of dark purplish black colored berries. The berries are covered with a rich bloom, skin is tender, but is sufficiently firm to carry to distant markets; flesh is juicy, sweet and tender.

EXCEPTIONALLY HEAVY YIELDS

Concord is a very vigorous grower, hardy and very productive. It will live and grow and bear large crops of fine quality in almost every section of the United States. It ripens during midseason and is rated as the best money-making commercial variety. For home use it is unsurpassed by any other variety.

Here's the Answer to your Grape Problem?

1938 brings to Harrison's customers one of the finest crops of fruit trees and grapevines we have ever had. Climatic conditions this year were exceptional, resulting in root growths for which every planter will gladly pay premium prices.

The soil on which our vines are grown is especially adapted to root growth. Our propagating stock is selected from healthy, vigorous, heavy bearing vines. This results in a vine that will give you 100 per cent satisfaction in your vineyards.

Growing Grapes Profitably

The increasing demand for grape juice and other extracts makes this a big money crop for the farmers. Get your vineyard started now and be ready for the increased demand for grapes. For commercial vineyard Concord is by far the best.

Other Varieties

AGAWAM. Large, dark red or brown berries, thick skin, aromatic flavor. The vine is a strong rank grower, hardy and productive. Ripens with Concord.

CATAWBA. Large bunches of dark red berries, flesh pulpy with rich vinous flavor. Best quality for table use. Late.

DELAWARE. Bunches medium size, full of large berries, which are sweet and of extra good quality. Late.

IVES. Compact bunches of blue-black color, very healthy, hardy, vigorous and productive. Ripens with Concord.

MOORE'S EARLY. Extremely dark purple, almost black. Bunches medium size, but berries are large. Flavor and quality are very much like Concord but ripens much earlier.

NIAGARA. The best of the standard, light colored grapes. Bunches of large greenish white berries, changing to a pale yellow when fully ripe. Ripens about the same time as Concord or a little earlier.

PORTLAND. New white grape. Ripens earliest of all grapes. Large berries, beautiful color. Has all the good qualities desired in grapes.

SALEM. Dark, red berries, large bunches, very sweet and tender, fine flavor. Good keeper, vigorous and productive. Ripens with Concord.

WORDEN. Large bunches of black colored berries, very highly flavored and of large size, excellent for table use. Ripens five to ten days earlier than Concord.

HARRISON'S HI-QUALITY GRAPE VINES A SPECIALTY WITH US

	1 to 9 vines	10 to 49 vines	50 to 299 vines	300 to 599 vines	600 or more vines
CONCORD. Dark purplish black. Most popular grape grown.					
2-yr. No. 1	\$.05	\$.12	\$.08	\$.06	\$.05
1-yr. No. 1	.10	.07	.05	.04	.03
AGAWAM. Red.					
2-yr. No. 1	.20	.15	.10	.08	.07
1-yr. No. 1	.15	.12	.08	.06	.05
CATAWBA. Red.					
2-yr. No. 1	.20	.15	.10	.08	.07
1-yr. No. 1	.15	.12	.08	.06	.05
DELAWARE. Red.					
2-yr. No. 1	.25	.20	.15	.10	.08
1-yr. No. 1	.20	.15	.10	.08	.06
IVES. Purple.					
2-yr. No. 1	.20	.15	.10	.08	.06
1-yr. No. 1	.15	.12	.08	.06	.05
MOORE'S EARLY. Black.					
2-yr. No. 1	.20	.15	.10	.08	.07
1-yr. No. 1	.15	.12	.08	.07	.06
NIAGARA. White.					
2-yr. No. 1	.18	.13	.09	.07	.06
1-yr. No. 1	.15	.12	.08	.06	.04
PORTLAND. White.					
1-yr. No. 1	.25	.20	.15		
SALEM.					
1-yr. No. 1	.20	.15	.10		
WORDEN. Purple.					
2-yr. No. 1	.20	.15	.10	.08	.07
1-yr. No. 1	.15	.12	.08	.06	.05

RED, WHITE AND BLUE GRAPE OFFER No. 49

2 Concord. Blue.
2 Niagara. White.
2 Agawam. Red.
All Six, Big 2-year Vines For Only **\$80c**

GRAPE ARBOR COLLECTION

EXTRA HEAVY VINES

4 Concord. Blue.
4 Agawam. Red.
4 Niagara. White.
12 VINES FOR **\$150**



One of the Many Famous Vineyards Planted with Harrison-Grown Grape Vines

A Home Vineyard Will Feast Your Family



The Giant Red Raspberry

LATHAM



LATHAM

The sensational yields of this variety have attracted the attention of growers everywhere, and everyone who has given it a trial are praising the many unusual features they have found in Latham. After thoroughly testing Latham we find it a remarkable variety in every respect; you will be both delighted and surprised after giving it a trial.

Tremendously Productive; Large Berries. Latham is a tall, vigorous grower, the canes are extra heavy, well able to support the load of fruit. The foliage is healthy dark green, tough and leathery, highly resistant to insects. Latham ripens with Cuthbert. Covers a longer fruiting season. The berries are beauties and will cause a sensation wherever they are shown. Many are over an inch in diameter and they hold this size to the end of the season. Color dark rich red.

A Blue Ribbon Winner for the Home and Commercial Grower. A first grade Raspberry past the experimental stage. It simply cannot be equalled.

CUMBERLAND

Midseason to late. This is the most popular Blackcap at the present time, because of its great size, firmness, and productiveness. The fruit is the largest of the Raspberry family, and is of such handsome appearance that it is sure to bring the top prices on the market.

A BIG CROP EVERY YEAR

Cumberland has never been known to fail to produce a big crop every year. This variety is perfectly hardy and tremendously productive, the bushes are vigorous, upright and healthy. Berries are glossy black in color, not equalled by any other variety in quality, flavor and appearance. It's good to eat and good to sell.

The most popular Black Raspberry

PRICES RED RASPBERRIES—SELECTED PLANTS

	1 Year, No. 1					
	12 plants	25 plants	50 plants	100 plants	250 plants	500 plants
Chief	\$0.75	\$1.25	\$2.00	\$3.50	\$6.50	\$12.00
Latham	.75	1.25	2.00	3.50	6.50	12.00
Newburgh	.90	1.40	2.50	4.00	7.50	14.00
St. Regis	.75	1.25	2.00	3.50	6.50	12.00

Other Black Raspberries

NEW LOGAN. A new Black Raspberry variety; probably its two most noteworthy characteristics are that it ripens about a week earlier and is more resistant to the virus diseases. A very productive variety and fruit of good size and quality. If an early berry is desired, it is one of the best. It does not crumble.

PLUM FARMER. Very popular with many growers on account of its earliness of ripening. Plum Farmer has the ability to mature its customary big yield in a very short time, generally 15 to 20 days. The plants are healthy, canes strong growing. Ripens a week earlier than Cumberland.

PRICES BLACK RASPBERRIES—SELECTED PLANTS

	1 Year, No. 1 Tips					
	12 plants	25 plants	50 plants	100 plants	250 plants	500 plants
Cumberland	\$0.50	\$0.85	\$1.40	\$2.50	\$4.75	\$8.50
New Logan	.55	.90	1.50	2.60	5.00	9.00
Plum Farmer	.55	.90	1.50	2.60	5.00	9.00

Other Red Raspberries

CHIEF. A new Red Raspberry that is destined to challenge the supremacy of Latham, originated by the Minnesota State Breeding Farm and has been given rigid tests over a wide area. It has proven hardy, resistant to disease, a heavy cropper of large excellent quality berries that will withstand shipments to market.

ST. REGIS. There is a demand for this fine fruit in the late summer and fall. Growers make exceptionally large profits when grown for markets. However, if you do not grow them for market, by all means plant a few bushes for home use. St. Regis produces a big crop of fruit during the regular season and then continues bearing all summer and fall on the new canes.

NEWBURGH. The new Red Raspberry which is gaining popularity rapidly. Bright red, excellent shipper, high quality. Earlier than Cuthbert. A new commercial leader.



CUMBERLAND

SMALL GARDEN RASPBERRY OFFER

No. 149

- 12 Cumberland
- 12 Plum Farmer
- 12 Latham
- 12 Chief

48 plants, All for \$1.68

BIG VALUE RASPBERRY OFFER

No. 242

- 25 Cumberland, Black.
- 25 Plum Farmer, Black.
- 25 Latham, Red.
- 25 Chief, Red.

100 plants, all for \$3.00

In Blacks it's ELDORADO

*A Heavy Yielding
Blackberry that
Spells Success
Everywhere*

The Heavy Yielding Variety. The heavy producing quality of Eldorado has placed it first among Blackberries. Every good quality possessed by other Blackberries is emphasized in Eldorado. Its berries are of enormous size, shiny jet black, sweet pleasing flavor.

For Home or Commercial Planting. It is valuable for all purposes, both home and commercial, being so firm that it will remain in good condition for three and four days, and can be sent to distant markets where it always commands the highest price. This variety is making big money for other growers and it will do the same for you.

Other Blackberries

ALFRED. A comparatively new Blackberry that has given good results wherever planted. Immense sized berries practically coreless, heavy producers and very hardy. Worthy new commercial variety, ripens over a long period of time.

EARLY HARVEST. Black, very early, excellent quality, good size, ripens 10 days to two weeks before any other. Favorite commercial berry in Middle Atlantic States.

MERSEREAU. Brilliant black, late, very large berries, extra good quality. Heavy producer, extra strong grower.



A Quality Blackberry Eldorado

Harrisons' Family Small Fruit Garden

- 12 Latham Red Raspberry
- 12 Cumberland Black Raspberry
- 12 Eldorado Blackberries
- 12 Lucretia Dewberries
- 6 New Boysenberry

54
SMALL FRUIT
PLANTS FOR
ONLY **\$2²⁸**

The New Boysenberry

The New Mammoth Berry that Will Revolutionize the Berry Growing Industry
Boysenberry 2 Inches in Length

The New Boysenberry is truly a glorified Youngberry. We offer it this year for the first time because of the tremendous large size of the berries, because of its very prolific fruiting and lastly because we think that it has the highest qualities of all bramble fruits.

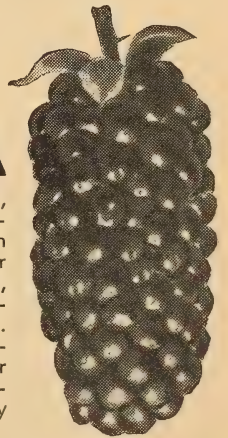


They are just as easy to grow as blackberries. They produce a larger crop, not because there are more berries, but because each berry is so much larger. Has a rich, tangy flavor all its own. The few seeds are scarcely noticeable. Plant 6 feet apart in rows 6 feet across. You will be surprised at the berries you can get from a dozen plants. We know after giving this variety a trial, you will agree with us that they are the finest berries you have ever tasted, either fresh, canned, in jams, jellies or pies.

PRICES OF NEW BOYSENBERRY: 15c each; 10 for \$1.20; 25 for \$2.75; 50 for \$5.00; 100 for \$9.00; 250 for \$20.00; 500 for \$35.00; 1000, \$60.00.

The Mammoth Dewberry LUCRETIA

Long, mammoth Blackberries, recognized as the leading variety. Incomparably better in every way than any Blackberry you have ever seen or tasted. Lucretia is a very early bearer, ripening from a week to ten days before even the earliest Blackberries. Big uniform size makes them topnotchers in price on any market. For real profits and for home and commercial growing, Lucretia is the only variety of importance.



	DEWBERRIES—1 YEAR, No. 1 TIPS						
	12 plants	25 plants	50 plants	100 plants	250 plants	500 plants	1000 plants
LUCRETIA	\$.045	\$.075	\$1.40	\$2.50	\$4.50	\$8.00	\$15.00
	BLACKBERRIES—SELECTED PLANTS—1 YEAR, No. 1						
	12 plants	25 plants	50 plants	100 plants	250 plants	500 plants	1000 plants
ALFRED	\$.075	\$1.25	\$2.00	\$3.25	\$6.00	\$11.00	\$21.00
ELDORADO	.70	1.10	1.85	3.15	5.75	10.50	20.00
EARLY HARVEST	.75	1.25	2.00	3.25	6.00	11.00	21.00
MERSEREAU	.75	1.25	2.00	3.25	6.00	11.00	21.00

Make Your Garden More Beautiful and Fruitful—It Pays



54 Years of Progress

Harrisons' are known far and wide for high grade nursery stock. During our 54 years of business dealings, we have established a record of dependability and customer confidence of which we are duly proud.

In this, our 1938 Strawberry selections, we are giving you a preferred list of the leaders which have proven most satisfactory for the commercial and home grower in this country.

Yes! A Living in Strawberries

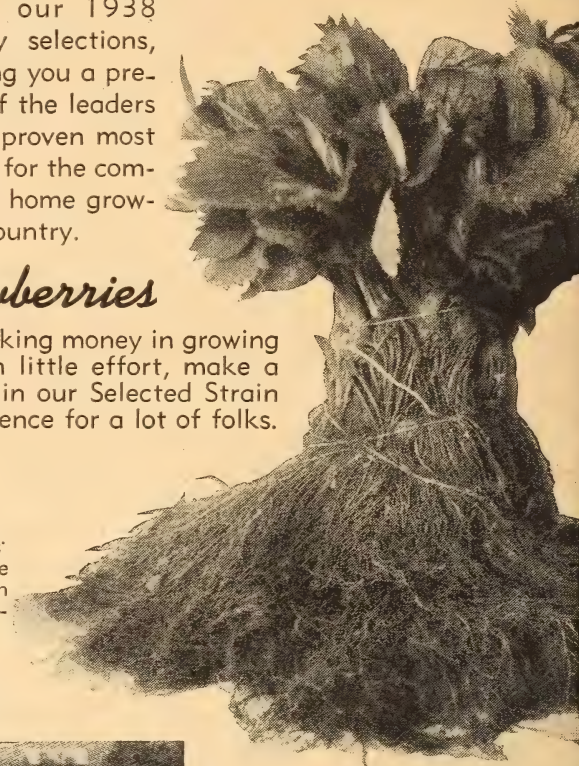
Today there are big opportunities for making money in growing strawberries. Some of our customers, with little effort, make a nice living from one or two acres planted in our Selected Strain berries—it's the way to financial independence for a lot of folks.

Harrisons' 12 Best "Double Red" Strawberries

Recommended as Best Profit Varieties

Commercial growers know the value of Harrisons' "Double Red" Strawberry Plants. They know that the best results come from selected strains of proven parentage. For 1938 we recommend such outstanding varieties as—

Blakemore	Fairfax	Gem
Catskill	Premier	Mastodon
Chesapeake	Big Joe	Senator Dunlap
Dorsett	Aroma	Missionary

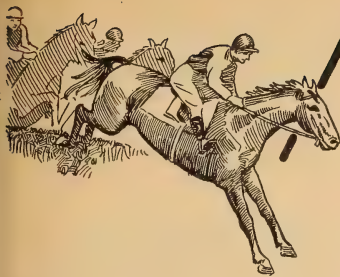


Long, Fibrous Roots

With proper soil conditions in the development of long, fibrous, bearded root system, our customers may be assured of the kind of plants that will be readily established in a new location. It's the Harrisons' Super Selected Strains that bring you bumper crops.

Facts Worth Reading

It's to your advantage to buy Harrisons' "Double Red" super strains, even though they may cost a few cents more. Remember you are getting the best grown plants money can buy. We will not knowingly sell our customers "culls" or second rate plants simply to make the prices attractive.



Pick a Winner **PREMIER**

WHILE new varieties of Strawberries are now being introduced, our old friend Premier still challenges the merits of the newcomer. The volume of sales is maintained year after year, indicating its popularity both with the commercial and home grower.

The First Berries on the Market

If you plant Harrison's Premier, you can depend on having the first berries in market, and the first cash returns on the new Strawberry crop.

In Premier we offer you the greatest early Strawberry of all time. However, the early ripening of this variety is just one of its many good features. It is immensely productive, and unlike other early ripening Strawberries, the fruit produced by Premier is of the finest quality, color, texture and flavor. The berry is well-proportioned, of uniform size and shape, making it supreme for eating, canning and preserving.

For prices, see page 47

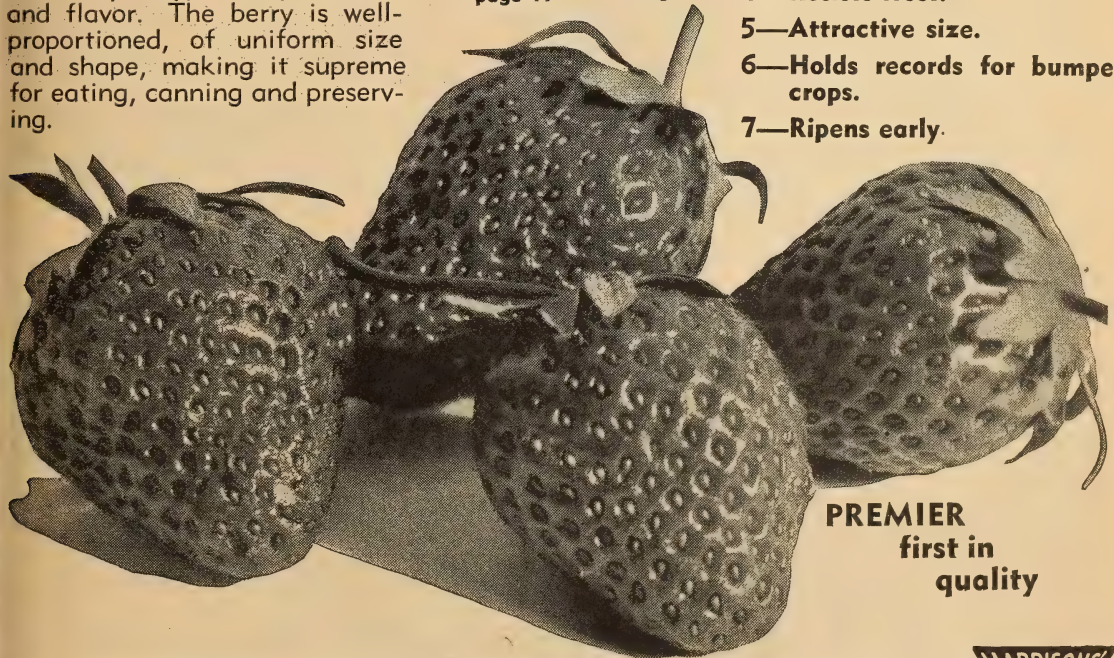
The Race for Leadership includes

- PREMIER**
- DORSETT**
- FAIRFAX**

All mighty good berries with distinctive characteristics.

PREMIER Characteristics

- 1—Color—a showy red.
- 2—Extra firm, long distance shipper.
- 3—Healthy foliage. Grows successfully anywhere.
- 4—Resists frost.
- 5—Attractive size.
- 6—Holds records for bumper crops.
- 7—Ripens early.



PREMIER
first in
quality

Make your Garden more beautiful and fruitful-It pays



DORSETT ~ early

the Premium Priced Strawberry

**GET ACQUAINTED
STRAWBERRY
PLANT OFFER**

No. 15

Try Harrison's plants, get acquainted with their quality

50 Dorsett 50 Fairfax
For Only **75c**

Despite drought, excessive rain, cold or heat, DORSETT comes through year after year with large crops of fancy, "Double Red" berries.



A product of the master plant breeders of the U. S. Dept. of Agriculture. The commercial growers are receiving it with great satisfaction, because of its unusual strong selling appeal.

Get the Harrison's' Super Selected Strains of this most famous variety; make more money than you have ever made before. DORSETT is making profits as high as \$1,100 per acre, and made those profits even in 1934 and 1935, when prices were low.

The berries are very large, all finely shaped, and cover a long extra early to late fruiting time.

— Prices of plants on page 47 —

DORSETT—

The new champion of Strawberry producing sections.

HARRISONS' recommend that every commercial grower try Dorsett at once. Home gardeners should do likewise.

A Friendship Founded on Business is a Good Deal Better than a Business Founded on Friendship.—J. D. R.



Utilize Your Orchard by Planting Strawberries and Other Small Fruits.

Better buy Fairfax



Harrisons' Selected Strain — of course

Another New Strawberry Introduction That Is a Companion of DORSETT

As a double guarantee for bumper crops, many growers plant both sorts extensively. They are both topnotchers on the market, and little difficulty is experienced in selling the "load".

Fairfax is the famous team-mate of Dorsett, and is as good a variety in every respect but slightly later. Unlike many other berries, Fairfax does equally well in all parts of the country, and for this reason it is a general utility variety, which is

Honestly, Bob —

Even if it costs a few cents more, it's a good idea—to place all our nursery business with Harrisons'. We are gambling in the right direction, because they not only operate 3500 acres of nursery but 1750 acres of commercial orchards. It's our best bet for reliable stock.

Early — Frost-Proof

Uniform in size and shape, deep red clear to the center, firm and a bi-sexual that does not require matting.

FAIRFAX—
THE STRAWBERRY
SENSATION



FAIRFAX

[43]

TASTY GARDEN COLLECTION

Offer No. 84

100 Dorsett

100 Fairfax

100 Catskill

300 Plants

For
Only **\$1.75**

BLAKEMORE

Favorite Early

The U. S. Dept. of Agriculture Recommends It

The Blake-
more berries
are slightly
blunted, with
broad shoul-
ders and slim neck.

The color a bright glossy red, with a tough skin, firm flesh, and a mild flavor, which make a wonderful market and shipping berry. Plants make runners freely and you are sure of getting a good fruiting row. They should be set about 24 inches apart. Otherwise, if close, they will get too thick.

Yes—it's one week earlier than the popular Premier.

Excels in
New Jersey
Pennsylvania
and
Southern
States



BLAKEMORE

EARLY SEASON
STRAWBERRY
GARDEN OFFER

No. 55

25 Blakemore

25 Dorsett

25 Premier

25 Fairfax

100 plants,
for only 70c

Clermont

A cross between Premier and Marshall, being introduced by the New York Experimental Station. It is recommended for New England, and for New York, Pennsylvania, Ohio, Indiana, Illinois and Michigan. It bears a heavy crop of large, smooth, bright, glossy red berries with an attractive green calyx. The plants are strong, vigorous growers producing a large fruiting bed.

SENATOR DUNLAP Mid-Season

Sometimes Called Dr. Burrill

Senator Dunlap is an old standard variety that is dependable. It has made more crates and more dollars for berry growers than any other one variety. It's the toughest variety known. Plants are healthy, fast growers and make new plants freely. Berries very dark red, wonderful for canning, excellent for preserves. Require little attention, and by all means include it in your list of preferred varieties.

— For Prices of Plants, see page 47 —

3 Winners in Southern States

Southland

Very early. Adaptable to the southern states, it excels as a local market berry. Bright red with a glossy surface, flavor sweet, excellent for shortcakes and preserves.

A promising new variety. Give it a trial.

Missionary

Some folks say this is the best southern berry. It reigns supreme in Florida and is extensively grown in Georgia, North Carolina, South Carolina, and Texas. The berries are well colored, firm, large, holding their size throughout the season.

Klondyke

Early. Preferred in Louisiana, North and South Carolina, Alabama, Tennessee, and on the Pacific Coast. Plants make a remarkable growth, are tall and compact with light green leaves. Uniform shape and size, delicious mild flavor and striking dark red color.



Save Money by Growing Your Own Fruit

Catskill
The
MAMMOTH
NEW
MID-SEASON
VARIETY

CATSKILL

Awarded Medal by

**MASSACHUSETTS
HORTICULTURAL
SOCIETY**

**The Fine Qualities of Premier
and Marshall are United to
Bring You this Prize Winner.**

Acclaimed by Strawberry experts the country over, as one of the three outstanding new varieties which include Dorsett and Fairfax. The commercial grower can make no better selection than this powerful trio of heavy producers, combining quality, beauty and sales appeal.

Three Good Midseason Varieties

ABERDEEN Grown extensively in Pa., N. J., Ohio, Illinois, Indiana, W. Va., N. Y., and the New England States. A very productive variety, unusually free from disease. Light in color, somewhat acid, above average in size. Excellent shipper.

BIG JOE It is a worthy companion for Dorsett, Fairfax and Premier, the best early berries, and Chesapeake, the best late. When grown for local or nearby markets, Big Joe is one of the best money-makers. Commands top market prices.

Large Yield—Fancy Fruit

Big Joe is a heavy producer of large, brilliant red berries of extra fine flavor and is firm enough to withstand long shipments. The plants are good growers and heavy yielders. This variety succeeds on all types of soil but does extra well when given good care and fertility. Be sure to include some Big Joe in your planting this spring.

CULVER A long midseason variety. Attractive dark red berries, firm, fine for preserving. Plants are healthy and vigorous and produce quite heavily.

**Harrisons' Grown
Strawberry Plants
Are Finest Obtainable —
Dependable and
Profitable**

**BACK YARD
STRAWBERRY
GARDEN OFFER**

No. 96

- 50 Dorsett
- 50 Fairfax
- 50 Big Joe
- 50 Catskill
- 50 Chesapeake
- 50 Gandy
- 50 Mastodon

350 Selected
Strain Plants

All
For **\$1.95**

Harrisons' selected strains give you only the best in recognized Hi-Quality Strawberry plants.

3 Late Bearing Strawberries

Dependable and Popular

AROMA. Clean, healthy, hardy growing plants, does well on most soils. Fruit large, deep red, excellent quality for home use or market.

GANDY. The favorite late berry in many localities. Large size and handsome appearance make it command highest prices on the market. Not quite as productive as some of the other berries, but its appearance and quality offset this. Good for either home use or commercial planting.

WM. BELT. An extra good quality late berry for home use or market. Its flavor is extraordinarily good, the berries are medium to large size, ideal for home use.

SURPLUS STRAWBERRY PLANTS

**A Real Buy for Those Who Enjoy Strawberries
and Are Not Particular as to Variety**

Each day we dig thousands of plants to fill our orders, sometimes we dig too many plants of certain varieties, and rather than hold them over to fill our future orders, we are offering these to our customers at reduced prices. Each and every one of these surplus plants are freshly dug and sure to please. On account of the extraordinary low prices we are offering these plants, we cannot give you any particular variety, but each variety shipped will be labeled as to name.

- 1,000 Surplus Plants \$2.75 per 1,000
- 2,000 Surplus Plants 2.70 per 1,000
- 3,000 Surplus Plants 2.65 per 1,000
- 4,000 Surplus Plants 2.60 per 1,000
- 5,000 or more Surplus Plants . . . 2.50 per 1,000

(Not less than 1,000 Surplus Plants sold)

— Prices of All Plants on page 47 —

Harrisons' — Famous for Quality and Service



CHESAPEAKE

An Excellent Late Berry
Commercially Dependable

BERLIN GROWN - AMERICA'S FINEST

The Favorite Late Berry

All growers seem to make money on this variety, especially when grown under conditions suitable for it. Chesapeake grows to perfection on most any highly manured soil.

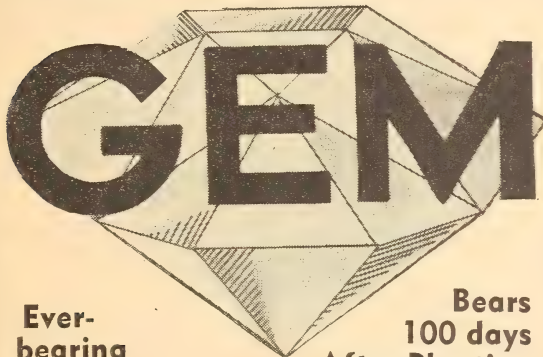
Very Large Berries of Supreme Quality

It is a good producer of very large berries that hold their shape well until the end of the season. It does not yield as many berries per acre as some of the early varieties but the size and quality of its fruit enables it to sell for a much better price which offsets this disadvantage. The berries are firm enough to ship to distant markets and to arrive in first class condition. An exceedingly valuable commercial berry but equally adapted for home planting.



CHESAPEAKE

MILLIONS OF HEALTHY SELECTED STRAINS TRUE - TO - NAME STRAWBERRY PLANTS GROWN BY THE HARRISON BROS. ARE IN OUR NURSERIES AWAITING YOUR ORDERS.



Ever-bearing

Bears 100 days After Planting

A New Companion for Mastodon—It's Real

Get Your Berry Patch Started This Season

QUICK PROFITS WITH GEM

Gem will start to bear the first season planted and will bear large crops until frost. These berries bring the highest prices in the markets or on a roadside stand. There is a great opportunity for making money by planting Gem. Get your patch started this season; they will give you enough berries for your own family and some to sell to your neighbors or ship to the city markets.



All the varieties of Strawberries which we offer are self fruitful and do not require other varieties to pollinate them.

Other Late Varieties

LUPTON'S — A Table Delight. The heaviest sales are made in Penn., N. Y., Mich., W. Va., and Ohio. A favorite for years, because of its large size and attractive "double red" color. They demand top prices because of their appetizing appeal.

NEW YORK — A Real Home Garden Berry. It is one of the few Strawberries we know of that gets sweet before it gets red. The plant is a vigorous grower, producing a moderate number of large, healthy plants. Every garden should plant this worth-while berry.

SAMPLE. Like old "Faithful" this variety has been with us for a long time and it is still one of the most popular varieties in the Middle and Northern States. Plants are vigorous growers and very productive. Berries are uniform in shape, medium to large in size, and very attractive.

BIG YIELDING GARDEN OFFER
No. 79
 25 Blakemore
 25 Dorsett
 25 Fairfax
 25 Big Joe
 25 Catskill
 25 Chesapeake
 25 Mastodon
175 Plants—All For Only \$1.15

Giant Everbearing MASTODON

A Triple Yield

1. Plant this Spring, 1938.
2. Pick 1st Crop July to Frost 1938.
3. Pick 2nd Crop June 1939.
4. Pick 3rd Crop August to Frost 1939.

3 REAL CROPS — 3 BIG PROFITS
Bears in 90 days, and, too, it's the best Family Garden Strawberry.

Loads of Big Berries in 90 Days

Unlike the other varieties Mastodon begins to bear big luscious berries three months after planting and bears three big crops in eighteen months. Customers have reported yields as high as three quarts per plant the first fall.

Why Wait a Whole Year?

Plant Mastodon this spring and grow your own berries this summer and fall instead of buying them. If you have more than you can use, they are easily disposed of in the nearby community, where they will always bring top prices.

Prices of HARRISONS' Hi-Quality Selected Strains — True-to-Name Strawberry Plants

(EARLY)	25 plants	50 plants	100 plants	200 plants	300 plants	400 plants	1000 plants	3000 plants	5000 plants
BLAKEMORE	\$.25	\$.40	\$.65	\$1.10	\$1.50	\$1.75	\$3.75	\$10.65	\$16.25
CLERMONT	.30	.45	.70	1.20	1.65	2.00	4.50	12.90	20.00
DORSETT	.30	.45	.70	1.20	1.65	2.00	4.50	12.90	20.00
FAIRFAX	.30	.45	.75	1.30	1.80	2.20	5.00	14.40	22.50
KLONDYKE	.30	.45	.70	1.20	1.65	2.00	4.50	12.90	20.00
MISSIONARY	.25	.40	.60	1.00	1.35	1.60	3.50	9.90	15.00
PREMIER	.30	.45	.70	1.20	1.65	2.00	4.50	12.90	20.00
SENATOR DUNLAP	.30	.45	.70	1.20	1.65	2.00	4.50	12.90	20.00
SOUTHLAND	.30	.45	.70	1.20	1.65	2.00	4.50	12.90	20.00
(MIDSEASON) —									
ABERDEEN	.30	.45	.70	1.20	1.65	2.00	4.50	12.90	20.00
BIG JOE	.30	.45	.70	1.20	1.65	2.00	4.50	12.90	20.00
CATSKILL	.30	.45	.70	1.25	1.75	2.10	4.75	13.65	21.25
CULVER	.30	.45	.70	1.20	1.65	2.00	4.50	12.90	20.00
(LATE) —									
AROMA	.30	.45	.70	1.20	1.65	2.00	4.50	12.90	20.00
CHESAPEAKE	.30	.45	.75	1.30	1.80	2.20	5.00	14.40	22.50
GANDY	.30	.45	.70	1.20	1.65	2.00	4.50	12.90	20.00
LUPTON	.30	.45	.70	1.20	1.65	2.00	4.50	12.90	20.00
NEW YORK	.30	.45	.75	1.30	1.80	2.20	5.00	14.40	22.50
SAMPLE	.30	.45	.70	1.20	1.65	2.00	4.50	12.90	20.00
WM. BELT	.30	.45	.70	1.20	1.65	2.00	4.50	12.90	20.00
(EVERBEARING) —									
GEM	.35	.55	1.10	1.80	2.40	3.00	7.00	20.40	32.50
MASTODON	.35	.55	1.10	1.80	2.40	3.00	7.00	20.40	32.50

Our quantity production of Quality plants enables us to quote special prices on large quantities, write us today. No cash discount on Strawberry plants.

Strawberry Plants can be shipped Parcel Post at following extra cost:

Distance from Berlin	25 plants	50 plants	100 plants	200 plants	300 plants	400 plants	1000 plants
1st and 2nd zones, up to 150 miles.....	\$0.08	\$0.09	\$0.12	\$0.16	\$0.19	\$0.22	\$0.38
3rd zone, 150 to 300 miles.....	.10	.12	.15	.23	.29	.33	.63
4th zone, 300 to 600 miles.....	.12	.16	.21	.35	.45	.52	1.05
5th zone, 600 to 1,000 miles.....	.15	.21	.27	.49	.64	.75	1.55
6th zone, 1,000 to 1,400 miles.....	.18	.26	.33	.61	.82	.96	2.01
7th zone, 1,400 to 1,800 miles.....	.22	.32	.41	.77	1.04	1.22	2.57

Lower express rates from Berlin, Maryland make it more economical to ship by express all orders that contain more than 500 strawberry plants. Please add enough postage according to the above rates, otherwise they will be shipped by Express or C.O.D. for the amount of postage due.

GARDEN OFFER

No. 4444

Plenty of berries for family use and some to sell to your neighbors.

- 250 Dorsett
- 250 Fairfax
- 250 Catskill
- 250 Mastodon

1000 Plants, For Only **\$5.35**

Ornamentals

Improve the Appearance
of YOUR HOME GROUNDS

**HARRISON'S
GROWN**



REMEMBER!

Houses are Cold and Un-inviting Until the Marvel of Growing Things Transforms Them Into Real Homes.

Nursery Stock a Good Investment. Is there any other thing about your home that grows in value, interest and beauty each succeeding year like trees and plants? Most other things are wearing out with use and age and constantly depreciating in value. That is why we say our nursery stock is a permanent and cumulative investment. What is that shade tree that cost you two or three dollars a few years ago now worth to your place? If you are contemplating a planting, not for years have you had such an unusual opportunity to secure plants of Harrison's quality at such low prices.

Quality Stock at Lowest Prices. With one of the finest growing seasons and prices lower than in years, landscape architects and garden lovers are taking advantage by purchasing their planting material now.

As in all buying, it pays to know what you are getting in buying nursery stock—you can't afford to take chances. When you buy from Harrison's Nurseries you know that a strong established organization with over fifty successful years of experience is behind every transaction. Harrison's stand back of the quality of every plant they send out.

SPECIAL AMERICAN BOXWOOD OFFER

No. 98
20 American Boxwood,
3 to 4 inches—for only

\$2.60

Enough to make a 20-foot hedge—plant them now, let them grow on, you will be delighted with the results.

AZALEA—A Miracle of Loveliness

Every Woman's Heart Has a Place for this "Prince of the Orient"

Azalea Hinodegiri

DEEP CORAL-PINK FLOWERS

Plant Azalea Hinodegiri this spring and a few weeks after planting it will be a blaze of color. No other hardy evergreen plant can compare with the color produced by this remarkable variety.

DEEP CORAL BLOSSOMS — HOLLY-LIKE EVERGREEN FOLIAGE

Everyone is highly enthusiastic about its color, in comparison with other Azalea varieties it is far superior. In addition to its superb bloom, it also has evergreen foliage which makes it so attractive when it is out of bloom.

A DWARF GROWER — GOOD FOR SHRUB PLANTING

Azalea Hinodegiri is a dwarf grower and is ideally suited for planting around the foundation of homes or adding color in front of evergreens. As each season goes by, the plant gets larger and larger. More than one thousand flowers have been counted on a single plant.

AZALEA AMOENA. A dense, dwarf-growing shrub with slender branches and semi-double flowers of a bright, rosy purple color. Blooms in early spring and retains its foliage all year.

AZALEA MACRANTHA. Large, single salmon-red flowers. Blooms very late in the season. A very compact, flat, quick-grower with dark green, glossy leaves.

SPECIAL AZALEA Offer No. 132

2 Azalea amoena,
4 to 6 inch.
2 Azalea macrantha,
4 to 6 inch.
4 Azalea hinodegiri,
4 to 6 inch.

All
For **\$2.00**



AZALEA HINODEGIRI — A profusion of all-over deep coral-pink at blooming time

PRICES OF HARRISON'S HI-QUALITY AZALEAS

	Each	2 for	10 for
4 to 6-inch spread, B&B	\$0.35	\$0.60	\$2.50
6 to 8-inch spread, B&B	.50	.90	4.00
8 to 10-inch spread, B&B	.70	1.20	5.00
10 to 12-inch spread, B&B	1.00	1.80	8.00
12 to 15-inch spread, B&B	1.25	2.20	9.50
15 to 18-inch spread, B&B	1.75	3.20	14.50
18 to 21-inch spread, B&B	2.50	4.50	20.00



America's Favorite Evergreen Shrubs

BOXWOOD *steps out ahead*

—the real Aristocrat of the Evergreen family
 YOU CAN SECURE THE FINEST SPECIMENS IN AMERICA FROM HARRISONS'

Possibly no evergreen shrub has been so much used for marking the boundaries of formal gardens, to outline flower beds, for low hedges, and for other ornamental purposes. The plants will adapt themselves to almost any situation and climate, and by judicious pruning can be trained to many forms.

Let's Plant More

American BOXWOOD

(*Buxus Sempervirens*)

A BROTHER OF
 "YE OLDE ENGLISH" BOXWOOD
 —It Grows Much Faster

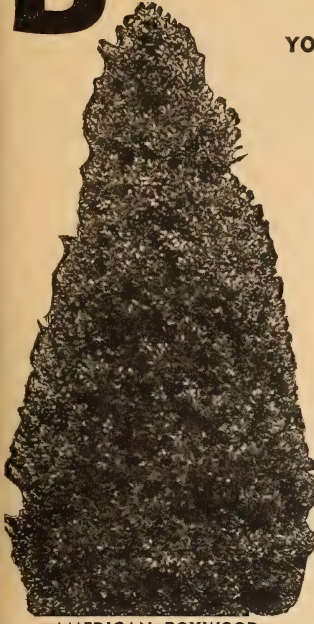
Compact—Deep Glossy Leaves

Our Boxwood has deep glossy green leaves. They are dense, compact specimens, having been sheared many times. The leaves on this variety are small and resemble the dwarf English Boxwood. This variety is a dwarf grower, but it makes much faster growth than the English Boxwood. For those who want large Boxwood plants in a few years, this is the best variety to plant.

PRICES OF AMERICAN BOXWOOD

	Each	2 for	10 for	100 for
3 to 4 inches	\$0.25	\$0.40	\$1.50	\$13.00
4 to 6 inches30	.50	2.00	18.00
6 to 8 inches, B&B40	.60	2.50	23.00
8 to 10 inches, B&B50	.90	4.00	38.00
10 to 12 inches, B&B60	1.00	4.50	43.00
12 to 15 inches, B&B80	1.40	6.00	55.00
15 to 18 inches, B&B	1.00	1.80	8.00	
18 to 21 inches, B&B	1.50	2.70		

(50 or more at 100 rate)



AMERICAN BOXWOOD

They Live for Centuries

DWARF English Boxwood

(*Buxus Sempervirens Suffruticosa*)

A widely known and popular form of dwarf Boxwood. It has small deep green dense leaves which hold their bright color throughout the winter months. Suitable for very low hedges and edgings, can be trimmed in various forms.

Easy to Grow

Dwarf English Boxwood is easy to grow, will thrive in most every type of soil. After this plant once becomes established it does not require any particular attention. It is practically immune from all diseases and insects. Can be planted in the full sunlight and semi-shady locations.

Large Specimen Plants Sell at High Prices

Dwarf English Boxwood has been called the "Century" plant due to its ability to live over a hundred years. A few years ago large plants sold for fabulous prices, many selling for hundreds of dollars.

PRICES OF DWARF ENGLISH BOXWOOD

	Each	2 for	10 for	100 for
3 to 4 inches	\$0.25	\$0.40	\$1.50	\$13.00
4 to 6 inches30	.50	2.00	18.00
6 to 8 inches, B&B50	.90	4.00	38.00
8 to 10 inches, B&B70	1.20	5.00	48.00
10 to 12 inches, B&B	1.00	1.80	8.00	75.00
12 to 15 inches, B&B	1.50	2.70	12.00	110.00

(50 or more at 100 rate)



DWARF ENGLISH BOXWOOD

YOUR CHANCE FOR AN ENGLISH BOXWOOD HEDGE AT LOW COST

50 Dwarf English Boxwood, 3 to 4 inches. . \$6.50

Buy English Boxwood Today You Save Money





Bush Arbutus—*Abelia Grandiflora*

BROADLEAF EVERGREENS

*Their foliage
stays all
winter*

BUSH ARBUTUS (*Abelia grandiflora*). One of our most beautiful, popular and satisfactory Broad-leaved Evergreens. The graceful, drooping stems and branches are covered with dark, glossy leaves, which in winter assume a metallic sheen. From the middle of June until frost, this plant produces an immense quantity of tubular-shaped white flowers tinged with pink, about an inch long, which are born in clusters. Good for shady locations.

6 to 9 inches—30c each; 2 for 50c; 10 for \$2.00
9 to 12 inches—40c each; 2 for 70c; 10 for \$3.00
1 to 1½ feet—50c each; 2 for 90c; 10 for \$4.00
1½ to 2 feet—75c each; 2 for \$1.40; 10 for \$6.50

HOLLY-LEAVED MAHONIA (*Mahonia aquifolium*). Bright glossy green, holly-like leaves, turning rich red and bronze in autumn. Clustered racemes of attractive yellow flowers in spring.

12 to 18 inches—75c each; 2 for \$1.30.
18 to 24 inches—\$1.25 each; 2 for \$2.20.

LIGUSTRUM LUCIDUM. Large, thick, shiny dark green leaves; white flowers, black berries in winter. Will thrive in shady locations.

18 to 24 inches—\$1.25 each; 2 for \$2.20.
2 to 3 feet—\$1.50 each; 2 for \$2.70.
3 to 4 feet—\$2.00 each; 2 for \$3.70.

LEATHERLEAF VIBURNUM (*Viburnum rhytidophyllum*). Large oblong, crinkled, deep green leaves. Flowers yellowish white, berries deep red.
9 to 12 inches—50c each; 2 for 90c.

MOUNTAIN LAUREL (*Kalmia latifolia*). Most effective in June, when the clusters of pink flowers open. Good foliage, likes shady locations.
2 to 3 feet, \$1.50 each.

CHERRY LAUREL (*Laurocerasus*). A broad-leaved evergreen with dark green glossy foliage, compact and symmetrical in form. Very desirable.
9 to 12 inches—40c each; 2 for 70c.
12 to 15 inches—70c each; 2 for \$1.20.
15 to 18 inches—\$1.00 each; 2 for \$1.80.

GREEN EUONYMUS (*Euonymus japonica*). Green glossy evergreen foliage, upright grower. Thrives under adverse soil conditions. Ideal for planting at seashores.

9 to 12 inches—30c each; 2 for 50c.
12 to 18 inches—50c each; 2 for 90c.
18 to 24 inches—75c each; 2 for \$1.30.

HARDY CHERRY LAUREL. An improved form of cherry laurel, much hardier, slightly dwarfed grower.
9 to 12 inches—40c each; 2 for 70c.
12 to 15 inches—70c each; 2 for \$1.20.

BERBERIS JULIANAE. A beautiful and rare evergreen variety. It stays perfectly green during the winter and blends well with other evergreens and broad-leaved evergreens.

9 to 12 inches—40c each; 2 for 70c.
1 to 1½ feet—75c each; 2 for \$1.30.
1½ to 2 feet—\$1.25 each; 2 for \$2.20.



Real Holly Trees *that breathe of Christmas*

AMERICAN HOLLY (*Ilex opaca*). The Christmas Holly. Its bright green, spiny leaves and brilliant red berries make it one of our handsomest plants. We offer the Howard strain, grown from grafts.

15 to 18 inches—\$1.25 each; 2 for \$2.20.
18 to 24 inches—\$1.75 each; 2 for \$3.20.

JAPANESE HOLLY (*Ilex crenata*). A much branched evergreen shrub with oval crenate leaves. Clusters of black berries form during the fall. Makes a splendid specimen plant. We offer two types, small or large leaf.

9 to 12 inches—40c each; 2 for 70c.
12 to 15 inches—70c each; 2 for \$1.20.
15 to 18 inches—\$1.00 each; 2 for \$1.80.
18 to 24 inches—\$1.50 each; 2 for \$2.70.



Save 5% by Sending Remittance With Order

AMERICA'S FINEST

Ornamental Lawn Trees

PURPLE-LEAVED OTHELLO PLUM.

Upright grower, foliage brilliant reddish purple, holding its color throughout season. Prolific bearer, with crimson fruit producing ornamental effect.

FLOWERING PEACH. Very beautiful, large, double blooms in the spring-time. The ideal low-priced flowering tree. We can supply the flowering Peach in three colors: white, red, or pink.

PRICES OF FLOWERING PEACH AND OTHELLO PLUM

	Each	2 for
2 to 3 feet	\$0.40	\$0.70
3 to 4 feet50	.90
4 to 5 feet60	1.00

BECHTEL'S FLOWERING CRABS. The only genuine double-flowered Crab. When in bloom, appears to be covered with delicate pink, perfectly double small roses of delicious fragrance.

18 to 24 inches—50c each; 2, 90c.
2 to 3 feet—60c each; 2, \$1.00.

Dwarf Flowering Varieties for Limited Spaces; They Take Up Little Ground Area

RED FLOWERING DOGWOOD (*Cornus florida rubra*). One of the most popular small ornamental trees. Handsome red flowers in early spring. Makes an attractive lawn specimen.

18 to 24 inches — \$1.00 each; 2 for \$1.80.
2 to 3 feet—\$1.50 each; 2 for \$2.70.

WHITE FLOWERING DOGWOOD (*Cornus florida*). One of the native spring flowering small trees, with white flowers and bright red berries in fall.

3 to 4 feet—80c each; 2 for \$1.40; 10, \$6.00.
4 to 5 feet—\$1.00 each; 2 for \$1.80; 10, \$8.00.
5 to 6 feet—\$1.50 each; 2, \$2.70; 10, \$12.00.

JAPANESE FLOWERING CHERRY. Double white. A handsome variety that flowers profusely in the spring.

2 to 3 feet—65c each; 2 for \$1.10.
3 to 4 feet—80c each; 2 for \$1.40.
4 to 5 feet—\$1.00 each; 2 for \$1.80.



FLOWERING PEACH



DOGWOOD BLOSSOMS

BEAUTY SHRUB COLLECTION Offer No. 75

- 1 Pink Weigela
- 1 Spirea Anthony Waterer
- 1 Forsythia
- 1 Deutzia, Pride of Rochester
- 1 Red-Branched Dogwood
- 1 Pink Tartarian Honeysuckle

Six Big, 1 1/2 to 2 ft. well rooted shrubs For Only **\$1.20**

LILACS

BELLE DE NANCY. Satiny rose-colored flowers in large clusters.

COMMON PURPLE LILAC. Old-fashioned variety so familiar in old gardens.

HUGO KOSTER. Purple flowers; best one of all purple Lilacs.

LUDWIG SPAETH. Single, very rich dark purplish red.

MADAME ABEL CHATENAY. Double white.

MARLEYENSIS. Red.

MICHEL BUCHNER. Dwarf, double, beautiful trusses of pale Lilac color.

PERSIAN PURPLE LILAC (*Syringa persica*). A tall-growing shrub with slender branches; bloom in May and June.

PRESIDENT GREY. Double, bright blue.

ROTHOMAGENSIS. Dark red flowers in large panicles.

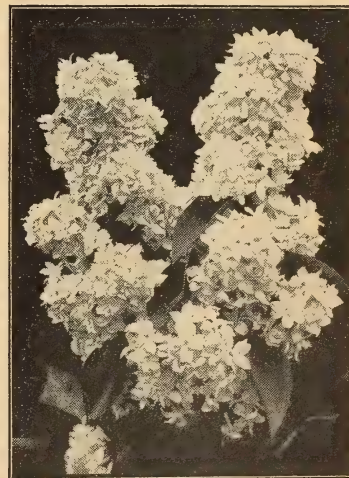
RUBRA DE MARLEY. Single flowers of light red.

VILLOSA. Fragrant purplish white blooms.

1 to 1 1/2 ft., 40c each; 2 for 70c;
10 for \$3.00.

GARDEN LILAC OFFER No. 98

- 1 BELLE DE NANCY
 - 1 LUDWIG SPAETH
 - 1 MICHEL BUCHNER
 - 1 PERSIAN PURPLE
 - 1 PRESIDENT GREY
 - 1 ROTHOMAGENSIS
- All 6 Husky 12 to 18-inch size for **\$1.80**



MICHEL BUCHNER LILAC



BECHTEL'S CRAB—Very hardy and colorful

Make Your Garden a Show Place

In making the selections offered here, the trees, shrubs and roses will give you a distinctive garden such as your neighbors cannot duplicate with ordinary material. This is your opportunity to enjoy the finest creations of the horticultural world—trees and flowers that are unusual in form and color. Make up your order now from the super-quality offerings contained in this planting guide.

Take Advantage of Our **LIFETIME EXPERIENCE** in Growing Evergreens

Decorative Evergreens

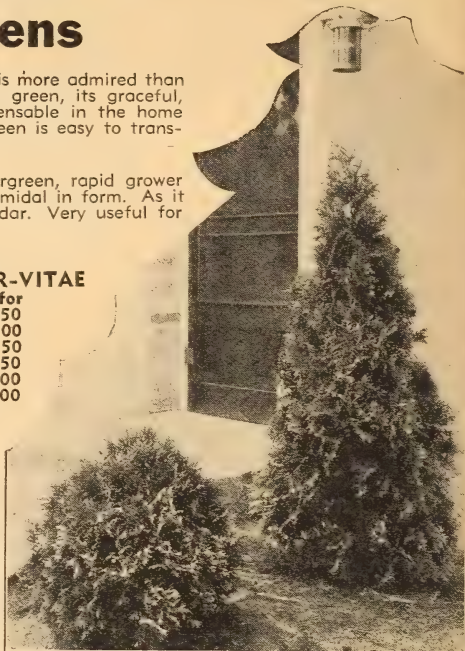
AMERICAN ARBOR-VITAE (*Thuja occidentalis*). Probably no evergreen is more admired than the American Arbor-vitae with its beautifully carved foliage of deep green, its graceful, refined habits and its artistic shape. These features make it indispensable in the home foundation groups and in the lawn and garden plantings. This evergreen is easy to transplant and grows under adverse weather conditions.

CHINESE ARBOR-VITAE (*Thuja orientalis*). An attractive, upright evergreen, rapid grower with bright green foliage. When young it is compact and rather pyramidal in form. As it becomes older it assumes the habit of a rather loose-growing Red Cedar. Very useful for screening purposes because of its rapid growth.

PRICES of AMERICAN ARBOR-VITAE and CHINESE ARBOR-VITAE

	Each	2 for	10 for
15 to 18 inches	\$0.60	\$1.00	\$4.50
18 to 24 inches90	1.60	7.00
2 to 3 feet	1.25	2.20	9.50
3 to 4 feet	1.75	3.20	14.50
4 to 5 feet	2.50	4.50	20.00
5 to 6 feet	3.50	6.50	30.00

PYRAMIDAL ARBOR-VITAE (*Thuja occidentalis pyramidalis*). A really beautiful evergreen that should be included in every planting. It grows tall and narrow, requires no trimming and retains its bright green color throughout the whole year. A pair of them placed at the entrance or at the corner of a home makes a superb showing. Our Pyramidal Arbor-vitae are grown with extreme care and each one is a specimen.



COMPACT GLOBULAR AMERICAN ARBOR-VITAE ARBOR-VITAE

	Each	2 for	10 for
15 to 18 inches ..	\$0.80	\$1.40	\$6.00
18 to 24 inches ..	1.10	2.00	9.00
2 to 3 feet	1.50	2.70	12.00
3 to 4 feet	2.00	3.70	17.00
4 to 5 feet	3.00	5.50	25.00
5 to 6 feet	4.00	7.50	35.00

COMPACT GLOBULAR ARBOR-VITAE (*Thuja occidentalis compacta*). Natural compact, globe-shape, dark green foliage. The ideal low-growing plant for massing against the taller evergreens in foundation plantings.

	Each	2 for	10 for
12 to 15 inches ..	\$0.60	\$1.00	\$4.50
15 to 18 inches ..	.80	1.40	6.00
18 to 24 inches ..	1.25	2.20	9.50
2 to 2½ feet	1.75	3.20	14.50

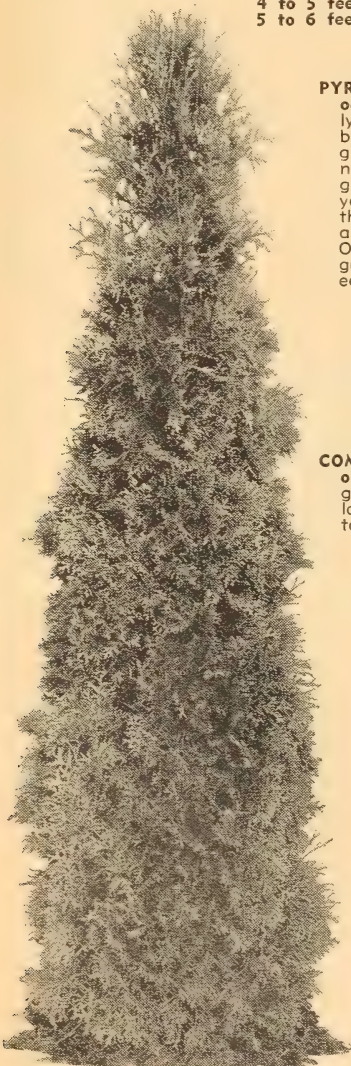
Round the House

Evergreen Collection
No. 490

- 2 American Arbor-Vitae,
15 to 18 inches.
- 2 Chinese Arbor-Vitae,
15 to 18 inches.
- 4 Compact Globular Arbor-Vitae,
12 to 15 inches.

8 Evergreens \$360

All Evergreens are balled in earth.



PYRAMIDAL ARBOR-VITAE



CHINESE ARBOR-VITAE

Junipers That Excel

PFITZER'S JUNIPER (*Juniperus chinensis pfitzeriana*).

The most popular of all spreading Evergreens. Its peculiarly graceful, distinctive manner, plus an unusually hardy nature, makes it particularly fascinating and desirable for foundation planting.

SAVIN JUNIPER (*Juniperus sabina*). Handsome, dark green foliage, spreading branches forming irregular vase-shaped bush. One of the most attractive spreading Evergreens grown. The ideal plant to use for low foundation plantings. Can be kept trimmed to any desired height.

ANDORRA JUNIPER (*Juniperus communis depressa plumosa*). A low-spreading Juniper of an unusually good color. During spring and summer it is a bright green, turning to a rich purple-bronze color in fall and winter. Unusually good for planting along slopes and places where grass will not grow.

Prices of PFITZERS, SAVIN and ANDORRA JUNIPERS

	Each	2 for	10 for
18 to 24 inches	\$1.75	\$3.20	\$14.50
2 to 2½ feet	2.50	4.50	20.00
2½ to 3 feet	3.50	6.50	30.00

IRISH JUNIPER (*Juniperus communis hibernica*). Forms a narrow and dense column, compact, bluish green foliage. Most attractive when planted around the foundation of a home, at corners and entrances. Widely used in formal gardens.

SWEDISH JUNIPER (*Juniperus communis suecica*). Tall columnar habit, dense fairly broad foliage, drooping tips. Resembles the Irish Juniper but is somewhat slower growing and lighter in color.

PRICES OF IRISH AND SWEDISH JUNIPERS

	Each	2 for	10 for
15 to 18 inches.	\$0.60	\$1.00	\$4.50
18 to 24 inches.	.90	1.60	7.00
2 to 3 feet	1.25	2.20	9.50
3 to 4 feet	1.75	3.20	14.50
4 to 5 feet	2.50	4.50	20.00
5 to 6 feet	3.50	6.50	30.00

ALL EVERGREENS ARE BALLED IN RICH EARTH

SPINY GREEK JUNIPER (*Juniperus excelsa stricta*). A tall grower of upright columnar habit and bluish green foliage. The growth is so slow that the tree is well adapted for foundation plantings and other situations requiring dwarf trees.

VIRGINIA BLUE JUNIPER. Broadly conical form and beautiful glaucous blue foliage make it one of the choicest Evergreens.

CANNART JUNIPER (*Juniperus virginiana cannarti*). Handsome, compact columnar habit, rich dark green foliage and bluish, bloomy fruits.

MEYER JUNIPER. Handsome irregular growing type, foliage is thick, pointed and prickly, of rich shining blue color varying in intensity.

VARIEGATED SPINY GREEK JUNIPER. Similar to Spiny Greek Juniper, but has yellow spots throughout the foliage.

COLUMNARIS JUNIPER. A tall narrow growing variety, extra good green color in the winter.

PRICES OF THE ABOVE JUNIPERS

	Each	2 for	10 for		Each	2 for	10 for
18 to 24 in.	\$1.50	\$2.70	\$12.00	3 to 4 ft.	\$3.00	\$5.50	\$25.00
2 to 3 ft.	2.00	3.70	17.00	4 to 5 ft.	4.00	7.50	35.00

— Quality Plants at a Low Price —



PFITZER'S JUNIPER



IRISH JUNIPER



SPINY GREEK JUNIPER

Immediate Results are Secured with Harrison's Hi-Quality Evergreens



SAVIN JUNIPER

Evergreens Famous for Quality, Vigor, and Beauty



Retinosporas

Dainty and Feathery—So Picturesque in the Foundation or Rockery



JAPANESE GOLDEN PLUME-LIKE RETINOSPORA

JAPANESE PLUME-LIKE RETINOSPORA (*Retinospora plumosa*). A handsome Evergreen from Japan, with feathery, light green foliage, more beautiful than a fern. Excellent for foundation plantings; can be kept pruned to any desired height.

JAPANESE GOLDEN PLUME-LIKE RETINOSPORA (*Retinospora plumosa aurea*). Golden yellow color throughout the summer, compact habit of growth, similar to the Japanese Plume-like Retinospora except in color. Makes an ideal background plant in foundation planting.

VEITCH'S JAPANESE RETINOSPORA (*Retinospora squarrosa veitchi*). Foliage silvery blue, feathery and dense, giving a soft woolly appearance. Broad pyramidal outline, can be kept to any height by trimming. One of the best Retinosporas.

JAPANESE HINOKI RETINOSPORA (*Retinospora obtusa*). Compact; pyramidal form, slightly drooping tips, beautiful dark green, flat foliage.

JAPANESE THREAD-LIKE RETINOSPORA (*Retinospora filifera*). Has long, stringy, droopy branches, bright green foliage; slow grower, very attractive.

JAPANESE SAWARA RETINOSPORA (*Retinospora pisifera*). Light green lacy like foliage, bluish beneath. Quick grower, loosely pyramidal.

JAPANESE GOLDEN SAWARA RETINOSPORA (*Retinospora pisifera aurea*). Habit of growth like the Sawara Retinospora, but its color is bright golden.

PRICES OF ALL RETINOSPORAS

	Each	2 for	10 for		Each	2 for	10 for
18 to 24 inches....	\$1.10	\$2.00	\$ 9.00	4 to 5 feet	\$3.00	\$5.50	\$25.00
2 to 3 feet	1.50	2.70	12.00	5 to 6 feet	4.00	7.50	35.00
3 to 4 feet	2.00	3.70	17.00				



VEITCH'S JAPANESE RETINOSPORA

NORWAY SPRUCE (*Picea excelsa*). A lofty, noble tree of open, pyramidal habit. Very popular and effective in Evergreen groups and one of the best Evergreens for hedges. Its color is normally a good, rich, dark green, but when the new spring growth lights up the branches, the tips are silver-blue. Same price as Retinosporas.

JAPANESE CEDAR (*Cryptomeria japonica lobbii*). A fine novelty, of slender habit, leaves deep green. Fine for a specimen plant, grows tall, and is ideally adapted for formal plantings.

	Each	2 for		Each	2 for
18 to 24 in.	\$1.50	\$2.70	3 to 4 ft.	\$3.00	\$5.50
2 to 3 ft.	2.00	3.70	4 to 5 ft.	4.00	7.50

INDIAN CEDAR (*Cedrus deodara*). Feathery blue-green foliage, graceful drooping branches, tall growing. Ideal to use as a specimen in the corners of lawns.

	Each	2 for
4 to 5 feet	\$4.00	\$7.50
5 to 6 feet	5.00	9.00
6 to 7 feet	6.00	11.00

A REAL BARGAIN ASSORTMENT OF FINE EVERGREENS

POPULAR EVERGREEN COLLECTION

No. 560

- 2 Irish Junipers, 3 to 4 ft.
- 2 Savin Junipers, 15 to 18 in.
- 2 Compact Globular Arbor-Vitae, 15 to 18 in.
- 2 Veitch's Japanese Retinospora, 18 to 24 in.

All Eight Evergreens For **\$8.00**



Irish Juniper

American Arbor-Vitae—Top
Mugho Pine

Pyramidal Arbor-Vitae
Compact Globular Arbor-Vitae

Savin Juniper

Evergreens

That Are Not Expensive



MUGHO PINE



COLORADO BLUE SPRUCE

VERVAENE ARBOR-VITAE (*Thuja occidentalis vervaeniana*). More compact than American Arbor-Vitae, good green foliage, slightly variegated.

PRICES OF ABOVE ARBOR-VITAE'S

Evergreens Will Give You Everlasting Beauty at a Small Expense.

	Each	2 for	10 for
18 to 24 inches	\$1.10	\$2.00	\$9.00
2 to 3 feet	1.50	2.70	12.00
3 to 4 feet	2.00	3.70	17.00
4 to 5 feet	3.00	5.50	25.00

MUGHO DWARF PINE (*Pinus montana mughus*). A picturesque dwarf pine that forms a bushy, compact ball growing as broad as it does tall, seldom reaching a height of 4 feet. Foliage is dark, rich green; needles long and stiff.

	Each	2 for
18 to 24 inches	\$1.75	\$3.20
2 to 2½ feet	2.50	4.50

COLORADO BLUE SPRUCE (*Picea pungens glauca*). Foliage blue and sage-green, that distinct color which is so rare in the East. As a specimen tree on the lawn or planted in groups in front of darker colored Evergreens, the Blue Spruce is at its best. No planting of Evergreens can be effective without this splendid variety.

	Each	2 for
15 to 18 inches	\$2.00	\$3.70
18 to 24 inches	3.00	5.50

BALSAM FIR (*Abies balsamea*). A very erect regular pyramidal tree assuming a conical shape even when young. Dark green foliage, grows into a large tree.

	Each	2 for
18 to 24 inches	\$3.00	\$5.50
2 to 3 feet	4.00	7.50

Arbor-Vitae

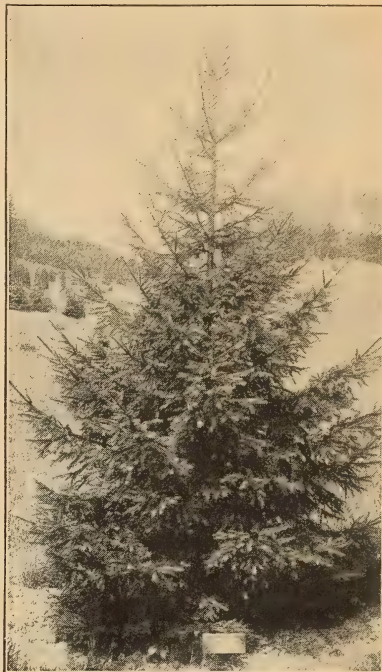
ELLWANGER'S or TOM THUMB ARBOR-VITAE (*Thuja occidentalis ellwangeriana*). A low, broad pyramidal form of Evergreen with slender branches and feathery foliage.

SIBERIAN ARBOR-VITAE (*Thuja occidentalis sibirica*). Dark green color, broadly pyramidal, very hardy and holds green color during the winter.

LEE GOLDEN ARBOR-VITAE (*Thuja occidentalis elegantissima*). Compact, pyramidal plant, golden green foliage; dependable, hardy and vigorous in growth.

FERNLIKE ARBOR-VITAE (*Thuja occidentalis filicoides*). Pyramidal in shape, dark green whorled foliage.

GEORGE PEABODY ARBOR-VITAE (*Thuja occidentalis lutea*). A beautiful variety, the gold marking diffusing more deeply into the foliage than in any other tall growing Evergreen.



NORWAY SPRUCE (See page 54)



See how we grow bushy, symmetrical Arbor-Vitae specimens

There is no finer windbreak than Norway Spruce





IRISH·YEW *taxus baccata Hibernica*

Fine Soft Lustrous Foliage

An ARISTOCRAT from OLD IRELAND

IRISH YEW (*Taxus baccata hibernica*). This Evergreen is the aristocratic member of the Yew family. It grows tall and narrow with stout, crowded branches and spirally arranged leaves which are dark green in color. This Yew is very scarce, but everyone who sees it is enthusiastic about it. Formerly it was imported from Europe, but after all importations were discontinued by the Federal Government, American nurserymen were unable to supply their customers. Fortunately, we had some specimen plants in our nurseries from which we were able to propagate.

	Each	2 for	10 for
12 to 15 inches	\$1.25	\$2.20	\$ 9.50
15 to 18 inches	1.50	2.70	12.00
18 to 21 inches	2.00	3.70	17.00
21 to 24 inches	2.75	5.00	23.50
2 to 2½ feet	3.50	6.50	30.00
2½ to 3 feet	5.00	9.00	40.00

JAPANESE SPREADING YEW (*Taxus cuspidata*). The beautiful Yew of moderate bushy growth, the spreading branches densely clothed with short leaves of dull green. Hardest of all Yews. Grows in semi-shady locations.

SPREADING BACCATA YEW (*Taxus baccata*). Upright spreading grower, with dark, glossy green foliage.

PRICES OF JAPANESE AND SPREADING BACCATA YEW

12 to 15 inches	\$1.00 each;
2 for \$1.80; 10 for \$8.00.	
15 to 18 inches	\$1.50 each;
2 for \$2.70; 10 for \$12.00.	
18 to 21 inches	\$2.00 each;
2 for \$3.70; 10 for \$17.00.	
21 to 24 inches	\$2.50 each;
2 for \$4.50; 10 for \$20.00.	
2 to 2½ feet	\$3.50 each;
2 for \$6.50; 10 for \$30.00.	

Plant Yews

THEY ARE DISTINCTIVE AND LONG LIVED

DeLUXE EVERGREEN COLLECTION No. 575

2 Upright English Yews, 18 to 24 in.
 2 Irish Yews, 15 to 18 in.
 2 Japanese Spreading Yews, 12 to 15 in.
 2 English Spreading Yews, 12 to 15 in.

All plants are balled in the rich earth in which they grew.

All Eight Evergreens For Only **\$9.00**



We Present

Miss Buttercup

and her 24-inch **IRISH YEW**

Yes, a real Evergreen Novelty, something to be proud of in your own garden. Each Evergreen is balled and burlapped, ready to grow and thrive in a new location.



JAPANESE SPREADING YEW
—Exceptionally Hardy

Yews Now Down to a Price Where You Can Afford to Plant Them!

UPRIGHT ENGLISH YEW (*Taxus baccata capitata*). Upright grower, dense, green foliage, makes a most attractive specimen plant when fully matured.

	Each	2 for	10 for
12 to 15 inches	\$1.00	\$1.80	\$ 8.00
15 to 18 inches	1.50	2.70	12.00
18 to 24 inches	2.00	3.70	17.00
2 to 2½ feet	3.00	5.50	25.00
2½ to 3 feet	4.00	7.50	35.00
3 to 4 feet	5.00	9.00	40.00

DWARF JAPANESE YEW (*Taxus cuspidata nana*). An excellent dwarf form of Japanese Yew with fine spreading branches and rich deep green short leaves. Highly recommended.
12 to 15 inches—\$1.25 each; 2 for \$2.20.

HICKS YEW (*Taxus media hicksii*). A narrow columnar growing form. Dark green leaves. Fast grower.
15 to 18 inches—\$1.25 each; 2 for \$2.20.

SPREADING ENGLISH YEW (*Taxus baccata repandens*). A form of English Yew, dwarf growing, dark glossy green foliage, slightly drooping habit. One of the best Yews.

	Each	2 for	10 for
12 to 15 inches	\$1.25	\$2.20	\$ 9.50
15 to 18 inches	1.75	3.20	14.50
18 to 21 inches	2.50	4.50	20.00
21 to 24 inches	3.50	6.50	30.00

Estate and Landscape Gardeners!

Over 500,000 Evergreens in 50 Varieties. Special Prices in Quantity Lots.



The Modern American Arborvitae Evergreen Hedge

A BEAUTIFUL EVERGREEN HEDGE

American Arborvitae — The Truly Fine Evergreen Hedge Plant

1. Long Life
2. Dense Green Foliage
3. Beauty the Year Around
4. Compact to the Ground
5. Low Priced
6. Hardy
7. Thrives Under Adverse conditions
8. Easy to Plant
9. Makes a High or Low Hedge
10. Trim Once a Year

At A Low Cost

Quantity production enables us to sell these remarkable American Arborvitae Evergreen Trees at the following low prices:

	Each	2 for	10 for	50 for	100 for
2 to 3 ft.	\$1.25	\$2.20	\$ 9.50	\$40.00	\$ 70.00
3 to 4 ft.	1.75	3.20	14.50	62.50	100.00
4 to 5 ft.	2.50	4.50	20.00	87.50	150.00

For thick hedge plant in a single line with plants three feet apart.



Chinese Wisteria

Hardy Vines *Nature's Draperies*

CHINESE WISTERIA. A rampant growing, clinging vine. Blue flowers in large drooping clusters during May and June.

2-yr., 40c each; 2 for 70c; 10 for \$3.00.

ENGLISH IVY (*Hedera helix*). The most popular evergreen vine; large, deep, green glossy foliage. Excellent for covering walls. Useful for shady locations.

2-yr., 25c each; 2 for 40c; 10 for \$1.80; 50 or more, 15c each.

BOSTON or JAPANESE IVY (*Ampelopsis veitchi*). A popular climber, clinging firmly to brick, stone or other material; deep, glossy, green, ivy-shaped foliage which turns to cream and gold color in autumn.

2-yr., 30c each; 2 for 50c; 10 for \$2.30.

HALL'S JAPANESE HONEY-SUCKLE. Dark, glossy green foliage; fragrant flowers from July to fall.

2-yr., 25c each; 2 for 40c; 10 for \$1.80.

SWEET AUTUMN CLEMATIS (*Clematis paniculata*). A splendid climber for covering porches and trellises. Flowers snowy white; produced in immense quantities during late summer and autumn.

2-yr., 40c each; 2 for 70c; 10 for \$3.00.

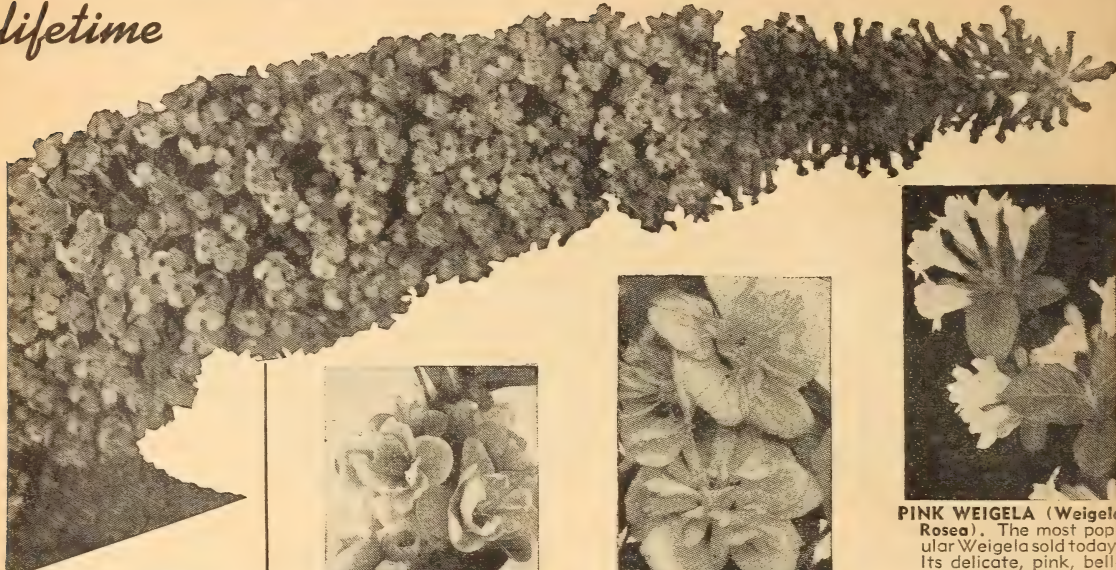


Boston or Japanese Ivy



Sweet Autumn Clematis

These beautiful shrubs, once planted, will last a lifetime



Buddleia Magnifica

New and undoubtedly the finest of all the summer-flowering Butterfly Bushes. Large bright lavender panicles. Flowers do not sunburn as do other varieties. Foliage heavy rich dark green. Very hardy.



JAPANESE FLOWERING QUINCE (Cydonia Japonica). Scarlet flowers in April and May. No doubt one of the most attractive spring blooming shrubs.



ALTHEA, or ROSE OF SHARON (Hibiscus syriacus). The double and single flowers are formed in varying colors. We can supply double pink, red, white with crimson center.



PINK WEIGELA (Weigela Rosea). The most popular Weigela sold today. Its delicate, pink, bell-shaped flowers are borne in great profusion along arching branches.



DEUTZIA, PRIDE OF ROCHESTER. Double white flowers, which are slightly tinged with rose, appear in mid-June.



GARLAND or SWEET MOCK ORANGE (Philadelphus Coronarius). Of upright habit, and produces in June a wealth of white fragrant flowers.

RED BRANCHED DOGWOOD (Cornus Alba Sibirica). Bright red bark, white flowers, blue fruit; rapid grower; beautiful winter effect.



TARTARIAN HONEY-SUCKLE (Lonicera Tartarica). Very attractive in blossom, producing an abundance of flowers followed by red fruit. Endures partial shade. We offer pink and white varieties.

JAPANESE BUSH HONEY-SUCKLE (Lonicera Morrowi). Early white flowers in June, followed by red berries.

AFRICAN TAMARIX (Tamarix africana). Feathery gray-green foliage, very showy.



GOLDEN BELL (Forsythia). Vigorous, upright grower; profusion of yellow flowers in April. One of our best early blooming shrubs.



SPIREA ANTHONY WATERER. Crimson flowers in large, flat clusters. Blooms early and continues till fall.

Prices

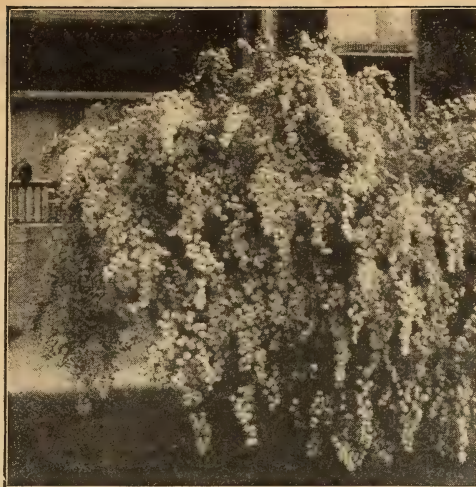
Big, 1 1/2 to 2 feet, 30c each; 3 for 75c; 10 for \$2.00.

Largest, 2 to 3 feet, 40c each; 3 for \$1.05; 10 for \$3.00.

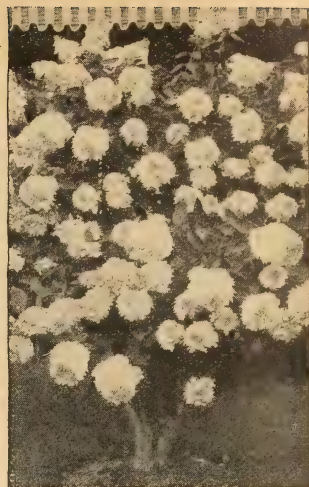
This colorful shrub planting adds that "bit" of beauty so necessary to the home. Each variety should be carefully selected and planted to get the proper place and correct balance. These shrubs blossom intermittently from April until frost.



PUSSY WILLOW



SPIREA VAN HOUTTEI



HYDRANGEA P. G.

Harrisons' Lifetime Shrubs To Beautify Your Home

EVERYWHERE people are making their homes more livable, more attractive. A little planning, a little planting. And what joy and satisfaction in having a home framed with beautiful trees and a well-kept lawn planted to shrubs and flowers.

GOLDEN TWIG DOGWOOD (*Cornus stolonifera flaviramea*). Dwarf grower, branches are golden in color; most attractive in winter.

1 to 1½ feet, 30c each; 2 for 50c.

HYDRANGEA PEE GEE (*Hydrangea paniculata grandiflora*). Large flowers; first snowy white, then pink changing to reddish-bronze in the fall. Blooms midsummer to fall.

1 to 1½ feet, 30c each; 2 for 50c.
1½ to 2 feet, 40c each; 2 for 70c.
2 to 3 feet, 50c each; 2 for 90c.

HYDRANGEA, PINK or BLUE (*Hydrangea otaksa*). Old favorite Southern Hydrangea. When winters are severe we suggest heeling in. Large balls of pink or blue flowers; very attractive large leaves. Color depends on acidity of soil.

Field grown 60c each; 2 for \$1.00.

CREPE MYRTLE (*Lagerstroemia indica*). Small, green, glossy leaves; very beautiful showy flowers during midsummer to fall; noticeable object in any landscape. Not hardy north of Mason-Dixon line, but most popular southern shrub. Pink and red varieties. State color desired.

1 to 1½ feet, 75c each; 2 for \$1.30.

PUSSY WILLOW (*Salix caprea*). A very interesting shrub or dwarf tree, producing many furlike catkins, 1 to 2 inches long, up and down upright stems. Quite often these pearl-gray catkins have a touch of pink, and are delightful in winter bouquets. The branches can be cut any time in December, January or February; then, if placed indoors in a vase of water, they will quickly burst forth into bloom. Remove from the water when in full bloom, and they will retain their loveliness for months. 6 to 10 feet at maturity.

1½ to 2 feet, 25c each; 2 for 40c.
2 to 3 feet, 35c each; 2 for 60c.
3 to 4 feet, 50c each; 2 for 90c.

SPIREA VAN HOUTTEI. The most popular shrub. It is valuable as a specimen in groups, in border planting and for hedges. The branches are slender, drooping, covered with white flowers in April or early May. It grows 6 to 8 feet and is unsurpassed in gracefulness and beauty.

	Each	2 for
1 to 1½ feet	\$0.15	\$0.25
1½ to 2 feet20	.35
2 to 3 feet25	.45
3 to 4 feet30	.50
4 to 5 feet40	.70

NANDINA DOMESTICA. A beautiful upright growing shrub with numerous reed-like stems springing from the same root. Leaves deep, glossy green, when young tinged with red. In winter beautiful coppery tones are assumed. White flowers produced in long panicles are followed by masses of small bright red berries which are retained all winter.

9 to 12 inches, 35c each; 2 for 70c.

FIRETHORN. A beautiful shrub covered with a profusion of white flowers in early spring, followed by bright orange berries which hang on all winter.

9 to 12 inches, 35c each; 2 for 70c.

12 to 15 inches, 50c each; 2 for 90c.

15 to 18 in., 75c each; 2 for \$1.30.

1½ to 2 feet, \$1.00 each; 2 for \$1.80.

WEIGELA EVA RATHKE. Very attractive deep carmine-red flowers, making a very showy shrub.

1½ to 2 feet, 40c each; 2 for 70c.

2 to 3 feet, 50c each; 2 for 90c.

SNOWBALL FRAGRANT (*Viburnum carlesii*). The fragrant, spicy flowers are borne in May and June. Buds before opening are an attractive pink, developing to pure white flowers.

12 to 18 in., 75c each; 2 for \$1.30.

COMMON SNOWBALL (*Viburnum opulus sterile*). The old fashioned snowball, large globular clusters of snow white flowers in May and June.

12 to 18 inches, 35c each; 2 for 70c.

18 to 24 inches, 50c each; 2 for 90c.



FRAGRANT SNOWBALL

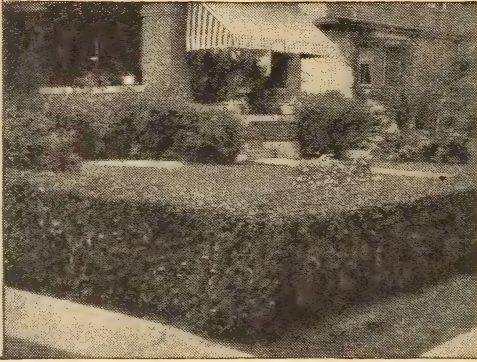


Beautify
your
home
this
year



WEIGELA, EVA RATHKE

HEDGES *Beautiful living fences*



CALIFORNIA PRIVET

CALIFORNIA PRIVET (*Ligustrum ovalifolium*). We grow California Privet by the mile. Most popular hedge plant; can be trimmed to any desired shape. For planting long hedges, this is the most economical variety. Quick grower.

Prices per each plant:	1 to 9 plants	10 to 49 plants	50 to 299 plants	300 or more plants
8 to 12 inches	\$0.05	\$0.04	\$0.03	\$0.02
1 to 1½ feet	.07	.05	.04	.03
1½ to 2 feet	.10	.07	.06	.05
2 to 3 feet	.15	.12	.10	.08
3 to 4 feet	.20	.17	.15	.12

JAPANESE BARBERRY (*Berberis thunbergii*). Best low dense hedge plant grown. Its abundant, small, light green leaves, which turn to rich colors in autumn, and its wealth of scarlet berries make it very attractive. Extremely hardy and requires but little pruning. Ornamental and graceful the whole year.

Prices per each plant:	1 to 9 plants	10 to 49 plants	50 to 299 plants	300 or more plants
9 to 12 inches	\$0.12	\$0.07	\$0.05	\$0.04
12 to 15 inches	.15	.09	.07	.06
15 to 18 inches	.20	.15	.10	.09
18 to 24 inches	.25	.20		



SPIREA VAN HOUTTEI
Always makes an attractive hedge



JAPANESE BARBERRY — Green in the summer, turning to a brilliant coppery red in late fall, a protection against small animals, because of the sharp thorns. This type of hedge is practical and inexpensive.

**Strong, Hardy,
Well-Rooted Plants
for Quick and
Permanent Hedges
Harrisons'
Hi-Quality Grown**

RED-LEAVED BARBERRY (*Berberis thunbergii atropurpurea*). A highly important introduction among shrubs, giving us for the first time

a practical, easily grown shrub of medium height, with good, distinctly red foliage. This must prove a boon to all types of landscaping, where studied contrasts are to be worked out with the shrub foliage depended on for colors.

Prices per each plant:	1 to 9 plants	10 to 49 plants	50 or more plants
9 to 12 inches	\$0.20	\$0.15	\$0.13
12 to 15 inches	.25	.20	.18
15 to 18 inches	.30	.25	.23

BOX BARBERRY (*Berberis thunbergii minor*). A dwarf form of Japanese Barberry. Small leaf. Ideal for making a dwarf hedge.

Prices per each plant:	1 to 9 plants	10 to 49 plants	50 or more plants
9 to 12 inches	\$0.15	\$0.12	\$0.10
12 to 15 inches	.20	.17	.15
15 to 18 inches	.27	.23	.20

SPIREA VAN HOUTTEI. Beautiful in or out of bloom, and the medium tall, broad, compact screen it makes, is protective as well as ornamental. It is always hardy, growing anywhere and will do well in partial shade. Even when trimmed and kept low, it is a splendid hedge, dense to the ground.

Prices per each plant:	1 to 9 plants	10 to 49 plants	50 to 299 plants	300 or more plants
12 to 18 inches	\$0.15	\$0.10	\$0.07	\$0.06
18 to 24 inches	.20	.15	.12	.09
2 to 3 feet	.25	.20	.15	.12
3 to 4 feet	.30	.25	.20	.16
4 to 5 feet	.40	.35	.30	.24

Superior SHADE TREES

Rapid Growing
Vigorous
Straight Trunks
Shapely Tops

*Popular Trees
from Harrison's'*



AN AVENUE IN COUNTRY TOWN OF SILVER MAPLES

ORIENTAL PLANE (*Platanus orientalis*). A rapid, upright, clean growing shade tree, long lived, beautiful dense foliage. A superb tree of gigantic proportions, which is very hardy. The Oriental Plane, being originally an imported tree during the past generation, has rapidly won high popularity in recent years due to its many merits, which have made it the most useful and the most sought for shade tree for lawns, parks, streets and highway plantings. Harrison's Nurseries are specializing in growing Oriental Planes and we are the largest growers in America.

SILVER MAPLE (*Acer dasycarpum*). The name comes from the color of leaves. Underneath, these are the same shade as new, bright silver; on top they are light green. Many of them are carried on their edges, and when wind blows the trees are alive with silver and green flashes. In the fall the leaves fade to pale yellow. Growth is faster than that of any other Maple, and probably faster than that of any other shade tree. Branches are slim and dainty rather than heavy, and the form of growth is spreading. Gets very large eventually—as high as 120 feet sometimes—and does well over nearly all the United States. Makes splendid quick screens or quick shade. On streets and in parks is extensively planted, and is very fine.

AMERICAN ELM (*Ulmus americana*). A noble native tree of great size, wide spreading, gracefully curving branches, growing up in a form like the outline of long-stemmed flowers in a tall vase. The handsomest American tree for lawns, avenues and parks.

AMERICAN PLANE (*Platanus occidentalis*). A very rapid growing tree for yard and street planting. The bark is grayish green and peels off during the winter.

Not as desirable as the Oriental Plane, but is a much more rapid grower.



ORIENTAL PLANE

CATALPA SPECIOSA

Rapid grower. Large heart shaped leaves and panicles of white flowers tinged with violet.

**THINK OF THE FUTURE —
PLANT YOUR TREES NOW**

Popular Prices for Hi-Quality SHADE TREES

	Each	2 for	10 for
6 to 8 ft. . .	\$1.00	\$1.80	\$8.00
8 to 10 ft. . .	1.25	2.20	9.50
10 to 12 ft. . .	1.75	3.20	14.50
12 to 14 ft. . .	2.50	4.50	20.00

Special SHADE TREE

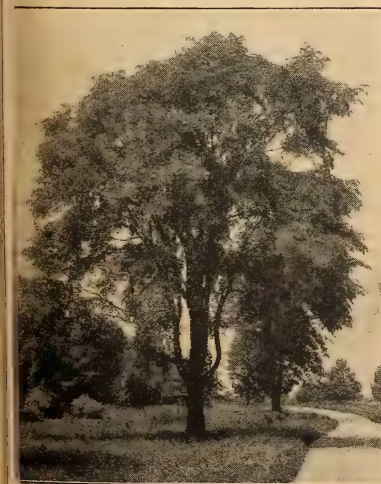
Collection Offer
No. 320

- 2 Oriental Planes
- 2 Silver Maples
- 2 American Elms

6 Big 6 to 8 ft.
shade trees for

\$4⁸⁰

Shade trees cannot be shipped
by Parcel Post.



AMERICAN ELM

Friends of Mankind

SUPERIOR SHADE TREES



NORWAY MAPLE

NORWAY MAPLE (*Acer platanoides*). Typical Maple leaves, large and bright green, fading to gold in the fall. Trunk and branches are sturdy and strong, lending an effect of ruggedness. Growth is fast. Branches and foliage are thick and compact, and the head, which is round-topped, begins to branch not far above the ground. The tree is large—towering 50 feet high when fully grown. Splendid trees, most beautiful and desirable. For lining the sides of lanes and roads, for a lawn, to protect the house from sun and weather, for shade, for beauty and satisfaction, and for real permanent worth in all landscape planting there are no other trees in its class. Norway Maples are at home in the mountains, but will thrive at any elevation, and in nearly any soil to be found in this country.

PIN OAK (*Quercus palustris*). The daintiest and most graceful of the oaks, with deeply cut, bright, fresh green foliage; beautiful autumn effect. A very graceful tree for the lawn and fine for streets or roadsides.

SWEET GUM (*Liquidambar styraciflua*). A shapely tree with slender, corky-ribbed branches. Leaves are bright green and lustrous; in autumn they change to a pleasing tone of crimson color.

MOLINE ELM Grows into a dense conical specimen.

EUROPEAN LINDEN (*Tilia platyphyllos*). Pyramidal in form, its abundant foliage forms a dense shade, flowers fragrant.



PIN OAK

RED or SCARLET MAPLE (*Acer rubrum*). Brilliant autumn coloring, eventually grows into big tree size. Do not confuse with Japanese Blood Leaf Maple.

SYCAMORE MAPLE

(*Acer pseudoplatanus*). Very similar in growth to the Norway Maple, but is much faster grower.

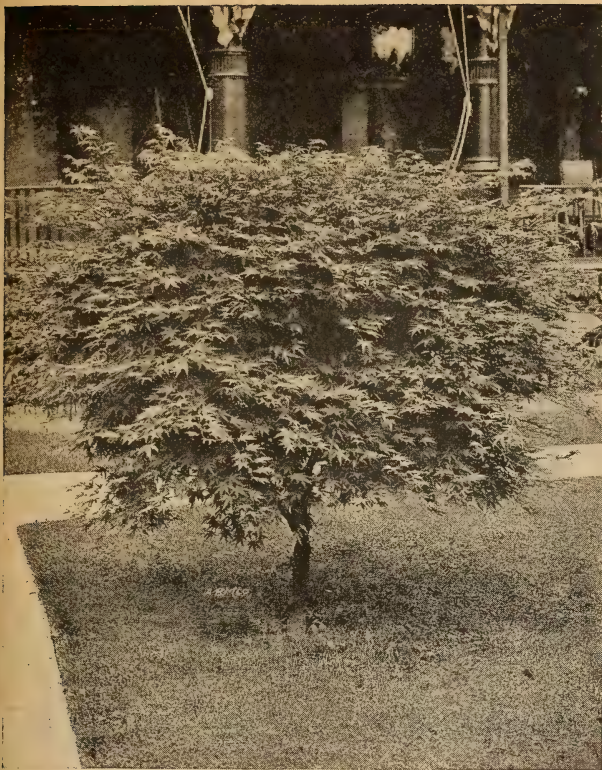
PRICES

	6 to 8 feet	
Each	\$1.50
2 for	2.70
10 for	12.00
	8 to 10 feet	
Each	2.00
2 for	3.70
10 for	17.00
	10 to 12 feet	
Each	2.50
2 for	4.50
10 for	20.00
	12 to 14 feet	
Each	3.50
2 for	6.50
10 for	30.00



EUROPEAN LINDEN

— SAVE 5% BY SENDING REMITTANCE WITH ORDER —



JAPANESE BLOOD-LEAF MAPLE

Japanese
ALL BLOOD-RED
Maples

*Again at Exceptionally
 Low Prices*

JAPANESE BLOOD-LEAF MAPLE

(*Acer palmatum atropurpureum*). A very picturesque Maple for use in landscape schemes, as an individual specimen or to add color to your planting. Very conspicuous, medium size bush with blood-red foliage. A wonderful addition to any lawn. Best color in sunny locations.

	Each	2 for
18 to 24 inches.....	\$1.50	\$2.70
2 to 3 feet.....	2.25	4.00

CATALPA BUNGEI or *Umbrella Tree*, Umbrella-shaped heads without pruning. Hardy, have large, glossy green leaves; usually planted in pairs on opposite sides of an entrance or walk.

	Each	2 for
3 year heads, 5 to 7 feet stem....	\$1.50	\$2.70

LOMBARDY POPLAR (*Populus nigra italica*). A tall, spire like tree used for screens and formal plantings. It is fast growing, distinctly ornamental and beautiful.

	Each	2 for	10 for	100 for
6 to 8 feet.....	\$0.80	\$1.50	\$7.00	\$65.00
8 to 10 feet.....	1.00	1.80	8.00	75.00
10 to 12 feet.....	1.25	2.20	9.50	85.00
12 to 14 feet.....	1.50	2.70	12.00	110.00

GOLDEN BARK WEeping WILLOW. Similar in habit and growth to the Babylon Weeping Willow, except the bark is of golden color, making a showy effect in the winter time.

BABYLON WEeping WILLOW (*Salix babylonica*). A rapid-growing, hardy tree, thriving in any moist soil. The Willows are valuable and interesting subjects on account of their graceful aspect.

PRICES OF ABOVE WILLOWS

	Each	2 for	10 for
6 to 8 feet.....	\$1.25	\$2.20	\$9.50
8 to 10 feet.....	1.50	2.70	12.00
10 to 12 feet.....	2.00	3.70	17.00

EUROPEAN MOUNTAIN ASH (*Sorbus aucuparia*). Valuable for a small lawn; orange-scarlet berries. 6 to 8 feet, \$1.50 each; 2 for \$2.70.

CHINESE ELM (*Ulmus pumila*). This tree is of recent introduction in this country. It is a very rapid grower, typical Elm-like foliage, adaptable to most every kind of soil and condition. It develops into a splendid shade tree, its vigorous growth making it very desirable where quick shade is desired. Order early as our stock on this variety is somewhat limited. 6 to 8 feet, \$1.50 each; 2 for \$2.70.

Special Chinese Elm Offer No. 175

10 Chinese Elms 2 to 3 feet— **\$250**
 Well rooted trees for



LOMBARDY POPLAR



CATALPA BUNGEI

Better Climbing Roses for Smart Landscaping

Grow them on arbors, trellises, fences or walls, porches or garages. These Harrison hardy quick growing climbers are real jewels in the garden.

ALL EXTRA STRONG PLANTS THAT WILL BLOOM FREELY THIS YEAR

Prices: 40c each; 3 for \$1.10; 6 for \$2.00; 12 for \$3.60; 50 or more, 25c each.

American Pillar. Large clusters of single rosy pink flowers, with yellow shadings. Rank climber.

Dorothy Perkins. Full, double, shell-pink flowers in large clusters. A very attractive climber.

Dr. W. Van Fleet. Light shell-pink to silver-flesh color blooms; double climber.

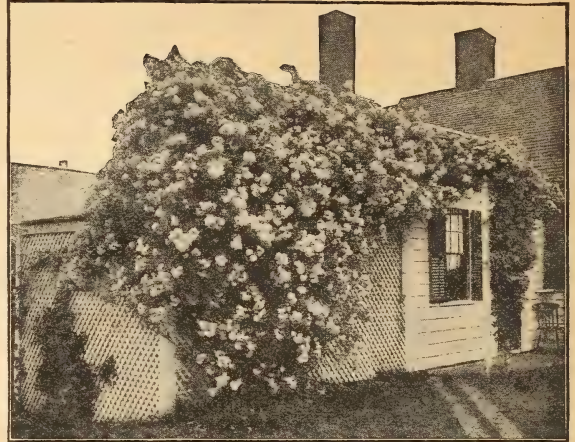
Gardenia. Small yellow buds, opening to creamy white; very fragrant climber.

Harrisons' Yellow. Bright golden yellow; very hardy.

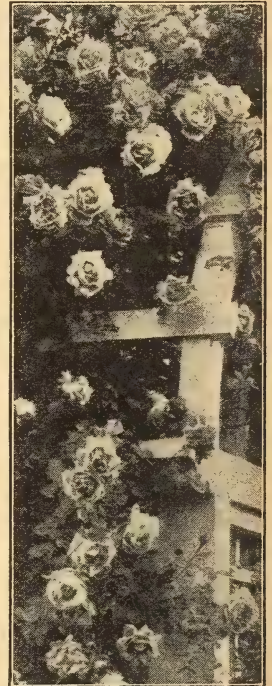
Primrose. A hardy, unfading primrose-yellow Climbing Rose, double flowers. Vigorous.

Paul's Scarlet Climber. Large intense scarlet-colored blooms; freely produced. It is strong and perfectly hardy. The most popular Climbing Rose.

Scorcher. A new Rose from Australia with enormous ruffled blooms of vermilion-red. Very free bloomer. Grows rapidly to a height of ten feet or more. No other climber like it.



DOROTHY PERKINS A Typical Climber



DR. W. VAN FLEET

Hybrid Perpetual Roses Extra Size

Largest of all Roses—Very Hardy and Brilliant

Prices: 45c each; 3 for \$1.20; 6 for \$2.20; 12 for \$4.00; 50 or more, 30c each.

We recommend these Roses for extremely cold climates. They produce more blossoms at one time than any other type, and are the easiest to grow of the Rose family.

Frau Karl Druschki. Enormous pure white.

General Jacqueminot. Fragrant, perfectly formed blossoms of scarlet-crimson.

Magna Charta. A rosy pink, full rounded, globular Rose of marked fragrance.

Mrs. John Laing. Soft pink, beautifully formed large, double blossoms.

Paul Neyron. The well known H. P. Immense pink flowers.

Ulrich Brunner. Brilliant scarlet-crimson.



PAUL'S SCARLET



AMERICAN PILLAR



PRIMROSE

47 IN TONES of Roses

Overblooming Hybrid Tea Varieties

ORANGE · FLESH
BUFF · VERMILLION
PINK and FLAME
TINTS

*they Flower
Abundantly*

PRICES Of all varieties, nursery grown, 2-year budded Hi-Quality Hybrid Tea Roses, 50c each; 3 for \$1.35; 6 for \$2.40; 12 for \$4.44; 50 or more, 35c each.

BETTY UPRICHARD. Salmon-pink inside, carmine-red outside. Very beautiful.

BRIARCLIFF. Flowers silvery pink. Very fragrant.

COLUMBIA. Upstanding garden Rose. Bright pink flowers, stiff petals.

CALEDONIA. Opens ivory, changing to pure white. Exquisite long buds on great stems, opening to a large fully double Rose of great beauty, soft velvety texture.

CRUSADER. Rich velvety crimson of bright hue and massive form, extremely double.

DUCHESS OF WELLINGTON. An old standby with exquisitely beautiful buds of rich saffron-yellow, deep tinged with orange.

ETOILE DE FRANCE. An old favorite, sparkling red. Very desirable.

ETOILE DE HOLLANDE. Bright red; fragrant.

E. G. HILL. It constantly produces beautiful buds on long stems, opening into large, double, fragrant flowers of shining red. Belongs in every garden.

EDITOR McFARLAND. A very fine brilliant pink Rose, destined to great popularity.

EDITH NELLIE PERKINS. Exquisite two-toned pink. Always in bloom.

FRANCIS SCOTT KEY. Large, double, perfectly formed flowers of crimson-red.

GRUSS AN TEPLITZ. Medium deep maroon, blooms in clusters—very fragrant.

INDEPENDENCE DAY. A brilliant orange-copper Rose that is always in bloom. Admired by all.

JOANNA HILL. A fine yellow rose; fragrant.

KAISERIN AUGUSTE VICTORIA. Creamy buds which develop into absolutely perfect blooms of dazzling snow-white, tinted slightly with lemon-yellow at center.

LOS ANGELES. Very popular brilliant salmon-pink.

LUXEMBOURG. One of the South's favorite yellow roses. Becoming more popular in the North every year.

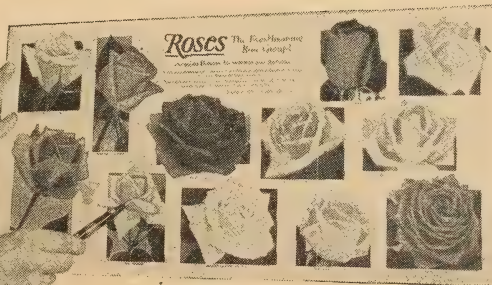
MME. BUTTERFLY. Light pink, faintly tinted with gold near base of petals. Richly perfumed.

MRS. CHAS. BELL. Shell-pink; free bloomer; very fragrant. Should be in every garden.

MRS. PIERRE S. DU PONT. It's a glorious sight from early summer until freezing weather, always a mass of bloom, a rich golden yellow. We consider it the best yellow Rose.

— SEE BACK COVER PAGE FOR PICTURE OF ROSES IN COLORS —

Everblooming ROSE GROUP No. 650



Assorted Roses

Every one
a different
color

for
\$4.44

12 Real Roses

They Will Bloom
This Year Until
Frost

We offer you Harrison's own grown everblooming Roses. Wonderful in color and fragrance, this collection No. 650 costs you only \$4.44 for 12 different varieties.

- 1—McGredy's Scarlet. Vivid rose.
- 2—Mrs. Pierre S. du Pont. Golden yellow.
- 3—Briarcliff. Silvery pink.
- 4—Edith Nellie Perkins. Two toned pink.
- 5—Talisman. Multiple red, gold and orange.
- 6—Vaterland. Deep red.
- 7—Caledonia. Velvety white.
- 8—Mme. Butterfly. Delicate shell-pink.
- 9—Mme. Edouard Herriot. Orange-red and salmon.
- 10—Souv. de Claudius Pernet. Dandelion-yellow.
- 11—E. G. Hill. Red, fragrant.
- 12—Pres. Herbert Hoover. Cerise-red, toned orange.

These Roses have bloomed in the Nursery

THEY ARE READY TO BLOOM IN YOUR GARDEN THIS YEAR

MME. EDOUARD HERRIOT. Brilliant orange-red and salmon-flame; always in bloom.

MARGARET McGREDY. The most popular red Rose. Always in bloom; a thrifty, healthy, vigorous grower. One of the finest of all Roses.

MEV. G. A. VAN ROSSEM. An exceedingly fragrant Rose of orange and bronze, beautifully veined. Fine for cutting.

McGREDY'S SCARLET. Free bloomer, beautiful flowers of deep vivid rose-red.

MRS. LOVELL SWISHER. Freely produces immense flowers of light salmon-pink on long stems.

PINK RADIANCE. Succeeds everywhere and all summer produces lovely pink, fragrant blooms. Most popular pink Rose and should be planted everywhere.

PRES. HERBERT HOOVER. One of the outstanding Roses. A glorious new Rose of vivid cerise-red toned with yellow, orange and scarlet, richly perfumed and free flowering.

RAPTURE. Glowing pink, fine for cutting.

RED RADIANCE. America's favorite red Rose; hardy, healthy, free blooming.

ROSELANDIA. It's a golden rose, freely producing flowers of fine fragrance. A garden dependability.



A TYPICAL HYBRID EVERBLOOMING ROSE

ROSLYN. A new Rose; deep yellow shaded orange.

SOUV. DE GEORGES PERNET. Magnificent blooms; brick-red.

SOUV. DE CLAUDIUS PERNET. A real yellow.

SUNBURST. Yellow shaded orange. Handsome.

SENSATION. Dark velvety scarlet-crimson.

TALISMAN. Flowers of brilliant red, gold and orange are freely produced all season.

VATERLAND. Dark red Rose and very double; strong grower.

VILLE DE PARIS. A fine yellow Rose.

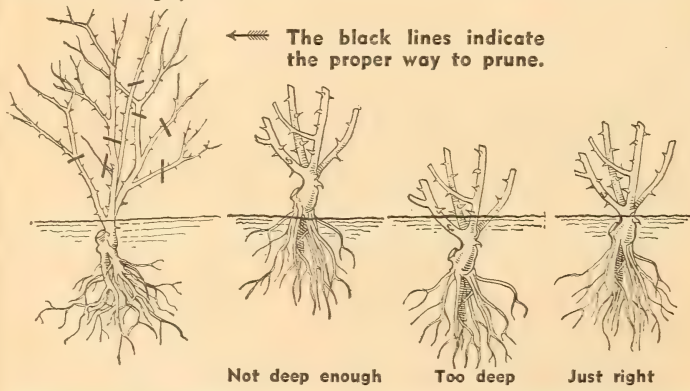
For prices, see page 65.

PLANTING AND CULTURE OF ROSES

All Roses except climbers and Persian Yellow should be pruned severely in the spring. They bloom on the new season's wood, so old wood should be cut back one-half or more and all weak shoots cut out. Be sure to plant with union of root and stock at least three inches below the surface of the ground. Roses like clay or a medium heavy soil.

SELECT AND PREPARE ROSE BEDS WITH CARE

The Rose bed should be placed where it will have plenty of sunshine. See that it is in a well drained position. Prepare the bed by deep spading. Three feet is not too deep. This will allow for a layer of stones to help drainage if needed. Fill the bed with alternate layers of dirt and well-rotted manure, which should be thoroughly mixed and allowed to settle.



Not deep enough

Too deep

Just right

MONEY BACK In the event that any nursery stock sold by us should prove untrue to name under which it is sold, we hereby agree, on proper proof of such untruthfulness to name to replace the original order or to refund the purchase price. Except for such liability, and in respect to all nursery stock sold by us, we give no warranty, expressed or implied, as to description, quality, productiveness or any other matter.

—HARRISON'S NURSERIES, Inc.

Note.—Any money overpaid by customers will be promptly refunded.

TERMS: F.O.B. BERLIN, WORCESTER COUNTY, MARYLAND

We allow 5 per cent discount for cash with order or prior to date of shipment (except strawberry plants). Otherwise Terms Net. If small shipment is desired by parcel post, add 10 per cent to your remittance.

EACH SHIPMENT IS ACCOMPANIED BY AN INSPECTION CERTIFICATE.

Harrisons'

BETTER FRUITS Bud-Selected Strains Productive • Dependable



**Rio Oso
Gem Peach**

World's Largest Peach. U. S. Patent No. 84. See page 30.



Red Yorking Apple. U. S. Patent No. 125
Don't delay planting this new variety. See page 17.

True-to-Name Fruit Trees

Every customer is assured of Harrisons' Hi-Quality trees and plants at all times.

For the home garden, orchardist or large commercial grower. Thousands of customers continue to buy from us since 1884.

**Napoleon
(Royal Ann)
Cherry**

A choice light colored Sweet Cherry variety. The pick of the "Sweets."
See page 33.



Red Rome Beauty Apple

It's a red fellow. Picked September 22, 1937, in our own orchard. We sell them by the carload. See page 16.



**Mary
Washington
Asparagus**
100 2-year roots for \$1.50
See page 35

Harrison's

NURSERIES, INC.
BERLIN, MARYLAND

Growers of Hi-Quality Fruit and
Ornamental Nursery Stock Since 1884

HARRISONS' "SUPREME" Everblooming Outdoor Grown Roses

Dominating varieties, with striking color harmonies. These lovely roses are always a sensation wherever grown, outstanding as prize winners at all the shows.

Every bush is a hardy two-year nursery grown plant and has already bloomed in the nursery. Every Harrison Rose bush is ready to bloom in your garden from June until winter.

PRICES OF ALL ROSES ON THIS PAGE

50c each; 3 for \$1.35; 6 for \$2.40; 12 for \$4.44;
50 or more, 35c each

For complete description, see pages 64-66



Red Radiance



Mev. G. A. Van Rossem



Mrs. Pierre S. du Pont

HARRISONS' "SUPREME" Everblooming Outdoor Grown Roses

Dominating varieties, with striking color harmonies. These lovely roses are always a sensation wherever grown, outstanding as prize winners at all the shows.

Every bush is a hardy two-year nursery grown plant and has already bloomed in the nursery. Every Harrison Rose bush is ready to bloom in your garden from June until winter.

PRICES OF ALL ROSES ON THIS PAGE

50c each; 3 for \$1.35; 6 for \$2.40; 12 for \$4.44;
50 or more, 35c each

For complete description, see pages 64-66



Pink Radiance



Mrs. Charles Bell



Edith Nellie Perkins



Columbia



Etoile de Hollande



Betty Uprichard



Caledonia



Editor McFarland



Etoile de France



President Herbert Hoover



Roslyn



K. A. Victoria



Talisman