

Historic, archived document

Do not assume content reflects current scientific knowledge, policies, or practices.

62,37

World's Largest Growers
of Fruit Trees

Harrison's

Offer

RIO-OSO-GEM PEACH

(U. S. Plant Patent No. 84)

Our Greatest Selling Variety

10 STAR FEATURES

- ★ MOST BEAUTIFUL—THE GLORIFIED PEACH
- ★ LATE YELLOW FREESTONE
- ★ GIANT SIZE—EXCELLENT FLAVOR
- ★ EASY TO GROW—HARDY—BEARS HEAVY CROPS
- ★ COLORS MONTH BEFORE RIPENING
- ★ SENSATIONAL BIG MONEY MAKER
- ★ BEST LONG DISTANCE SHIPPER
- ★ LONGEST PICKING SEASON
- ★ SUCCEEDS EVERYWHERE
- ★ BEST LATE VARIETY EVER INTRODUCED TO THE AMERICAN PUBLIC

GENUINE RIO-OSO-GEM
"Nature's Choice Peach"
Trees Grown and Sold
Only by Harrison's in
Numerous States



1948

Our Sixty-Fourth
Year

Growers
of
**AMERICA'S
BEST QUALITY
FRUIT TREES**

SUPERIOR STRAINS
EARLIEST TO BEAR
TRUE TO NAME

Harrison Brothers NURSERIES

BERLIN • MARYLAND

**New! Exclusive!
Sensational!**

RIO OSO GEM



Destined to be
America's Leading
Commercial Peach.

Sample of RIO-OSO-GEM Grown in Harrison's Orchards at Berlin, Maryland.
Sold only by Harrison's Nurseries in numerous states.

**THE RESPONSIBLE
HARRISON'S NURSERIES**
have been in continuous business since 1884, at Berlin, Maryland. The Harrison's own and operate more than five thousand acres of land in Worcester County, Maryland.

**CUSTOMER AND BANK
REFERENCE**

For customer references—we refer you to any fruit grower in America who has planted Harrison-Grown fruit trees any time during the past 63 years.

For bank references—Union Trust Company of Maryland, Baltimore, Maryland; Calvin B. Taylor Banking Co., Berlin, Maryland; Exchange and Savings Bank, Berlin, Maryland.

a New
**LATE
PEACH**
*the perfect
Running
Mate for
Elberta*

RIO-OSO-GEM

**Ideal for Home Orchards
TWO WEEKS LATER THAN ELBERTA**

The Rio-Oso-Gem would be a Peach of commercial importance when ripening at any time during the Peach season, but it is very fortunate that it ripens two weeks later than Elberta, which puts it at a time when there is no other variety of commercial importance as a competitor, and fills a long looked-for gap in commercial production, ripening when the markets are clamoring for Peaches—this variety has sold at very much higher prices than Elberta and J. H. Hale. To prolong your Peach shipping season, we highly recommend to you planting the Rio-Oso-Gem. Harrison's have planted twelve thousand Rio-Oso-Gem in their own famous orchards. We have the utmost faith in the Rio-Oso-Gem, and we will also make future plantings of this remarkable Peach.

MOST BEAUTIFUL PEACH ON EARTH

1948 PRICES OF RIO-OSO-GEM
U. S. Plant Patent No. 84.

One-Year Budded Trees:

	1-9 Trees	10-49 Trees	50 or more Trees
5 to 6 ft., 11/16 to 7/8 in. caliper ...	\$2.25	\$1.90	\$1.60
4 to 5 ft., 9/16 to 11/16 in. caliper ...	2.00	1.65	1.35
3 to 4 ft., 7/16 to 9/16 in. caliper ...	1.75	1.40	1.10
2 to 3 ft., 5/16 to 7/16 in. caliper ...	1.50	1.20	.90
2 to 3 ft., 1/4 to 5/16 in. caliper ...	1.25	1.05	.80
1 1/2 to 2 ft.	1.10	.90	.70
1 to 1 1/2 ft.	1.00	.80	.60

The World's Largest Peach

An amazing feature of the Rio-Oso-Gem is, it will take on a good bright red color and yellow background two weeks before ripening, and even ten days before actual ripening time the percentage of bright red color is decidedly more than most other varieties. When Rio-Oso-Gem is ready to pick and ship it has practically a solid red color. There is no other Peach known that carries such a high percentage of red color on the fruit as this marvelous Rio-Oso-Gem.

EXPERT FRUIT GROWERS SAY O. K.

Rio-Oso-Gem has now fruited in practically every Peach district of the Union. Veteran Peach growers of the nation are loud in their praise of this startling variety. Rio-Oso-Gem has passed the experimental stage and proven an outstanding commercial variety, superseding the famous Elberta of the Victorian era.

BIGGEST PEACH ON EARTH

The Rio-Oso-Gem is a perfect freestone, form is globular, slightly elongated, of extremely large size, averaging in diameter from 2 3/4 to 3 3/4 inches, deep yellow flesh, very fine grain, firm texture, with very excellent flavor, being rich, sweet and slightly spicy. The coloring is unique, being a beautiful dark crimson-red, running out to light crimson and into a rich mottle of crimson over the orange-yellow ground color. It is a good transcontinental shipper.

LARGER THAN J. H. HALE

Rio-Oso-Gem is a larger Peach than J. H. Hale and yields bumper crops, larger than Elberta. In our own and other orchards, Rio-Oso-Gem bears at a younger age than any of the other yellow varieties.

TRAVELS 3500 MILES

One striking feature of Rio-Oso-Gem is the unusually firm texture of the fruit. It will stand up and ship in excellent condition in standard refrigerator cars for long transcontinental hauls of 3500 miles in A-1 shape for the markets.

**Harrison's Maryland Grown
Peach Trees are the
Finest Quality in the World**



PROLIFIC BEARER—RIO-OSO-GEM PEACH



Harrisons' Peach Trees are Propagated Direct From Bearing Trees of Superior Strains and Extra Heavy Bearing Habits—This is the Best Type That is True-to-Name and Will Bear Fruit at an Extra Early Age



Rio-Oso-Gem—The Outstanding Profit Making Peach—THE BEST PEACH

Bears Heavier Than Elberta

Rio-Oso-Gem is an extremely heavy bearer and on account of its prolific set of fruit, it is necessary to practice extremely heavy thinning. It has hardy, vigorous fruit buds, which insure it being a heavy annual bearer. The tree bears young.

Ripens Two Weeks Later Than Elberta

The Rio-Oso-Gem would be a Peach of commercial importance when ripening at any time during the Peach season, but it is very fortunate that it ripens two weeks later than Elberta, which puts it at a time when there is no other variety of commercial importance as a competitor, and fills a long looked-for gap in commercial production, ripening when the markets are clamoring for Peaches.



COMMERCIALY TESTED
America's Highest Price Peach
PLANT NOW!

OUTSELLS OTHER GOOD VARIETIES

Because of their superiority, Rio-Oso-Gem outsells other good varieties on the nation's markets at a premium price of 75c to \$1.50 per bushel.

Protected by U. S. Plant Patent No. 84

Exclusive Propagation and Sales Rights of the Rio-Oso-Gem in the Following States Granted to Harrisons':

Alabama, Arkansas, Connecticut, Delaware, District of Columbia, Florida, Georgia, Kansas, Kentucky, Louisiana, Maryland, Maine, Massachusetts, Mississippi, New Hampshire, New Jersey, New York, North Carolina, Oklahoma, Pennsylvania, Rhode Island, South Carolina, Tennessee, Texas, Vermont, Virginia, and West Virginia. Also sales rights in Ohio, Indiana, Illinois, Missouri.



A Beauty—And What Peaches

There is a brilliant future in store for the progressive orchardist who plants Rio-Oso-Gem Peach trees.

FRUIT TREES SHIPPING SEASON OCTOBER 15 UNTIL MAY 15 — ORDER EARLY

Harrisons' — The Nation's Fruit Tree Nurseries

JUMBO

Fruit Trees Big Roots—Bear Early

Best
Trees

OBTAINABLE—



Plant Jumbo Size Trees and Pick Large, Juicy Apples in a Surprisingly Short Time

PLANT THE BEST IN 1948

SAVE TWO TO THREE YEARS
BY PLANTING SUPER-SIZE FRUIT
TREES HAVING JUMBO GROWTH

Carefully Selected Specimen Trees

It takes years to develop these super selected Jumbo size, heavily branched, thickly rooted, early bearing trees and they are the selection of hundreds of thousands of trees in our nurseries.

Even with our expert scientific propagation methods, second to none in the country, coupled with ideal soil and climatic conditions, all varieties and kinds do not develop the same each season, for this reason we can only supply these Jumbo trees in the kinds and varieties listed here this season. Order early.



GUARANTEE ON JUMBO TREES

You take no chances when you buy Jumbo trees from Harrison's. If they are not satisfactory your money will be cheerfully refunded in full, providing they are properly packed and returned within 24 hours after receipt.

Harrison's
Jumbo
Trees
Are
Superior

Home Grown
Tree Ripened
Peaches are
Superior in Flavor

NOW, Everyone can grow extra large, rich colored, extra rich flavored, healthful VITAMIN PACKED FRUIT in your own back yard

SAVE TWO TO THREE YEARS BY PLANTING SUPER-SIZE FRUIT TREES HAVING JUMBO GROWTH

Best Trees Obtainable—Carefully Selected—Specimen Trees

Time is money, therefore, for the additional expense of a few cents per tree you can plant Jumbo size fruit trees and eat the fruit from them surprisingly soon after planting. The Super-Size fruit trees, being especially grown as Jumbo trees, are the strongest growers. They are exceedingly vigorous, very hardy, and produce tremendous crops of fruit. These are ideal trees for the home garden.

ALL VARIETIES LISTED IN ORDER OF RIPENING

APPLES. Large Transparent (Lodi), Red Gravenstein, Triple Red Delicious, McIntosh Red, Bright Red Jonathan, Grimes Golden, Yellow Delicious, Scarlet Red Stayman, Cortland, Red Spy, Baldwin, Rhode Island Greening. Prices: Jumbo Size, 6 to 7 ft., heavily branched Apple trees, \$3.00 each; 3 for \$8.70; 6 for \$16.50; 10 for \$25.00; 25 for \$58.75; 50 for \$100.00; 100 for \$175.00.

PEACHES. Red Bird, Redhaven, Golden Jubilee, Rochester, Champion, South Haven, Hale-Haven, Golden East, Hiley, Sullivan's Early Elberta, Belle of Georgia, Elberta, Brackett, Lizzie, Krummels. Prices: Jumbo Size, 6 to 8 ft., heavily branched Peach trees, \$3.00 each; 3 for \$8.70; 6 for \$16.50; 10 for \$25.00; 25 for \$58.75; 50 for \$100.00; 100 for \$175.00.

PEARS. Koonce, Bartlett, Kieffer. Prices: Jumbo Size, 5 to 7 ft., heavily branched Pear trees, \$3.75 each; 3 for \$10.95; 6 for \$21.00; 10 for \$32.50.

PLUMS. Red June, Abundance, Burbank, Santa Rosa, Methley, Satsuma, Wickson, Stanley Prune, Big Mackey Damson, Grand Duke Prune, Shropshire Damson, Italian Prune (Fellenberg). Prices: Jumbo Size, 6 to 8 ft., heavily branched Plum trees, \$3.75 each; 3 for \$10.95; 6 for \$21.00; 10 for \$32.50.

CHERRIES. Black Tartarian, Napoleon, Montmorency (Sour), Schmidt, Windsor. Prices: Jumbo Size, 5 to 7 ft., branched Cherry trees, \$3.75 each; 3 for \$10.95; 6 for \$21.00; 10 for \$32.50.

APRICOTS. Alexander, Early Golden, Superb. Prices: Jumbo Size, 5 to 7 ft., heavily branched Apricot trees, \$3.75 each; 3 for \$10.95; 6 for \$21.00; 10 for \$32.50.

NECTARINES. Hunter, Sure Crop. Prices: Jumbo Size, 6 to 7 ft., heavily branched Nectarine trees, \$3.75 each; 3 for \$10.95; 6 for \$21.00; 10 for \$32.50.

PEARS WITHIN
18 MONTHS
AFTER PLANTING



Extra
GOOD
for
HOME
Orchards

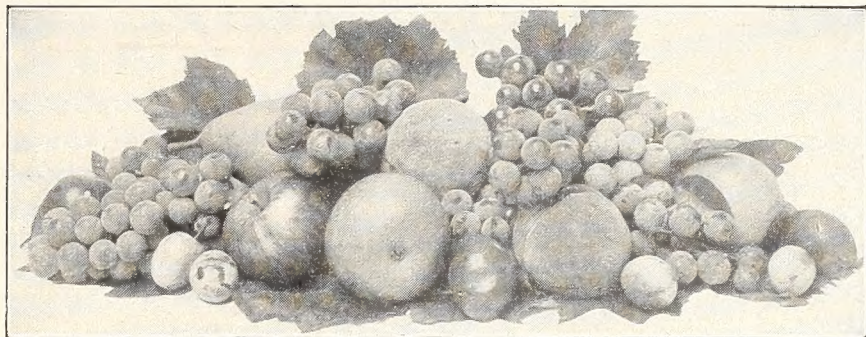
Harrisons' Jumbo Size Fruit Trees and Plants are Definitely Superior

JUMBO RASPBERRY PLANTS FRUIT FIRST SEASON

Plant Harrisons' Big, Healthy Raspberry plants and enjoy fruit the first year. We are offering only the two best varieties: Cumberland (black), and Latham (red).

PRICES:

Jumbo Raspberry Plants	
6 for	\$ 2.50
12 for	3.90
25 for	6.15
50 for	10.60
100 for	18.50



Grow Your Own Fruit—Save Money SPECIAL JUMBO SIZE BLUEBERRY PLANTS

Have already fruited in the nursery. Ready to bear big crops of luscious berries on your own grounds and are as easily grown as a shrub or Rose bush. You can pick delicious berries the first season planted, and each year they will produce a larger crop with very little attention. We only have a few hundred of these jumbo sized plants to offer. Can supply in the following varieties only: Cabot, Rancocas, Concord, Rubel, and Jersey.

Prices: Jumbo size, 4-year-old, 2 to 3 ft., \$4.25 each; 3 for \$12.00; 10 for \$37.50.

For Quick Crops Plant JUMBO GRAPE VINES

Big crops of luscious Grapes, some the first season planted. No other fruit bears so much for so little attention. Our Jumbo Grape Vines have already fruited in the nursery.

We can furnish the following varieties only in Jumbo size; listed in their order of ripening: Fredonia, Worden, Concord, Agawam, Niagara, Catawba.

Prices: 90c each; 3 for \$2.40; 6 for \$4.20; 10 for \$6.50; 25 for \$13.75; 50 for \$25.00.

SAVE SEVERAL YEARS!

Special Mammoth Bearing Size Peach and Plum Trees

This season, for the third time, we have a few extra early bearing mammoth size, 8 to 10 feet, heavily branched Peach trees to offer. These trees are the best we ever grew. Can supply a limited quantity in the following varieties only: Redhaven, Golden Jubilee, Rochester, Hale-Haven, Champion and Lizzie.

This season for the first time, we have a few extra early bearing mammoth size, 8 to 10 feet, heavily branched Plum trees to offer in following varieties only: Abundance, Burbank, Santa Rosa, Satsuma and Stanley Prune.

Prices: Mammoth bearing size Peach and Plum trees, \$5.00 each; 10 for \$45.00.



*Fruit is
Food...
Grow
Your Own*

It's easy with
Harrisons'
Superior
EARLY-TO-BEAR
Fruit Trees and
Plants

Replanting
Bearing
Orchards

Use Jumbo
Size and/or
Mammoth
Bearing Size
Fruit Trees
for the
Quickest
and Best
Fruiting
Results

**Why Waste Space with
Missing Trees?**



Mammoth Peach Tree With One Summer's Growth

A Jumbo Size Apple Tree Will
Furnish You Fruit and Shade, Too

**Bud-Selection
THE KEY TO
BETTER FRUITS**



Cutting Buds

Harrisons' "Bud Strains"

Some sixty years ago, and almost every year since, Harrisons' have planted orchards, not alone for fruit but principally to secure the type of parent fruit tree that was characteristic of a "variety" dominant in bearing qualities coupled with health, vigor and ability to withstand changeable climatic conditions. This type of tree became the parent supplying the budding sticks for future orchards in America and true-to-name varieties were assured.

Save Years of Waiting

Bud-Selection Plus Whole Root Propagation Gives Harrisons' Trees Year Ahead Start

The root is the heart of a tree. It enables nutrients in the soil to reach the tops and branches, causing growth. Every fruit tree we sell and grow is scientifically propagated on whole root seedlings, resulting in extra vigorous top and fruit growth. It costs more to grow trees by this method but results are what count. You can count on Harrisons' Trees to give you bumper crops of Quality Fruits years ahead of ordinary trees.

Growing practices do make a difference.

Now is the Time to Plant

U. S. Government authorities are urging a large increase of Family Tree Plantings to take care of the alarming decline of fruit production.

Health authorities recommend eating twice as much vitamin-packed fruit. Many well known authorities predict that within a few years fruit production will be so low that only those who grow their own will have enough to supply their family requirements.

Make your planting this season. Use Harrisons' early-to-bear trees and plants.

Buying Fruit Trees is an Act of Confidence

Your future success and profit from your investment depends on factors you cannot see—the skill and experience of the nurseryman, the type of parent tree that is used in propagation, the willingness of the nurseryman to stand back of every one of his claims.

For 64 years the Harrison organization has been supplying fruit trees to an ever-widening circle of customers, until today Harrisons' Nurseries are the largest growers of fruit trees in the world. This demand we believe is due to the profit-producing proven heavy yielding, bud selected strain fruit trees we are producing plus absolute dependability and square dealings. Thousands of reports from enthusiastic customers, hundreds of year-in-and-year-out customers, are proof that you can depend on Harrisons' Fruit Trees. You buy them without risk and with assurance they will yield you the greatest possible profit.

**PLANT HARRISONS' SUPER-STRAIN SELECTED TREES
GROWN AT BERLIN, MARYLAND**

TRIPLE CERTIFICATION

By U. S. Government, State of Maryland, in addition to other horticultural inspectors. Your order insures Harrison Grown, healthy, clean nursery stock. Free from diseases and insect pests. Certificate of Inspection accompanies each shipment.



A Message
From HARRISONS'



Dear Friends:

For sixty-four years the business of the Harrisons' has been to grow Fruit Trees, Roses and Ornamental Nursery Stock, also commercial fresh fruit growers—this business has grown and developed only through a thorough understanding of the science of horticulture in all its phases with practical use.

When it comes to fruit trees, you can buy them at most any price, but the trees that will produce the biggest crop of really worth-while and saleable fruit, cannot be expected from undernourished trees produced in a haphazard manner with the sole idea of seeing how cheaply they can be grown, thus disregarding standard grades, sizes and specifications and careless as to their parentage.

Now when you buy nursery stock—remember all of it is a living plant—the pedigree, or parents, play an important part in the future results of the very tree you buy—the "hidden value" is the inborn inheritance that becomes the final quality, type, strain, size, color and productiveness so necessary in the future performance—and right here is the very feature which makes HARRISON grown nursery products have superior merits.

HARRISONS' Fruit Trees and Small Fruits are true to name, earlier to bear, and yield larger crops because they are scientifically propagated from SUPER SELECTED STRAINS. Likewise, the parent plants used for propagating our Ornamentals are of the finest types for their respective varieties.

In closing, may we personally take this opportunity of thanking our many, many customers for their continued confidence, for which we are sincerely grateful.

Sincerely yours,

**HARRISONS' NURSERIES,
HARRISON BROTHERS, PROPS.
G. HALE HARRISON, GEN. MGR.**

64 YEARS
LEADERSHIP

OVER 4000
ACRES

This is Your PROTECTION

Every customer is assured of Harrisons' Hi-Quality Trees and Plants at all times. Expert growing on proper soils, careful digging and packing is Harrisons' policy on every order. Every tree and plant we ship is guaranteed to be strictly first class, free from injurious diseases and insects and to reach you in good condition.

Any time trees or plants are received that do not meet these standards they will be replaced free of charge or your money refunded.

Continued growth depends on soil, weather conditions, planting and after care. After ten days it is mutually understood that the nursery stock is satisfactory; however, we will replace nursery stock that dies from unavoidable causes at half price, if notified within two months after its arrival.

HARRISONS' NURSERIES

OVER FIFTY YEARS' DEPENDABLE DEALINGS.



Fruit is Food

Grow Your Own

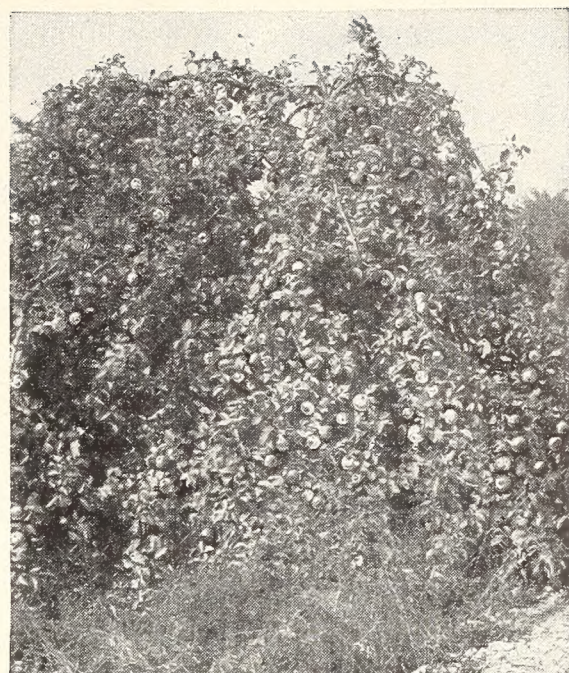
Harrisons' Specialties

Fruit Trees, Strawberry Plants, Grape vines, Asparagus Roots, Small Fruits, Roses, Evergreens, Shade Trees, Boxwood, Shrubs, Peonies, Vines, Hedge Plants, Azaleas.

From the **PROFIT** ANGLE
HARRISONS
 "BUD SELECTED"
**FRUIT TREES ARE YOUR
 BEST BET**

Because They Are

- Absolutely True to Name
- Healthy — Vigorous
- Disease free
- Hardy — Budded fruit trees are superior to grafted
- Properly hardened off before digging
- Propagated from bearing trees of selected strains
- Come into bearing earlier
- Yield bigger crops of better fruits
- Have larger roots
- Take hold quickly in new locations
- The best trees for less money



TODAY FRUIT GROWING is making inroads on the big farms—little orchards lead the way to a profitable and worth-while fruit market.

Dependable Nurserymen Propagate From Bearing Orchards

If fruit trees are continuously propagated from the nursery rows, as practiced now by a large percentage of nurserymen, because it is cheaper, fruit trees begin to degenerate, and when the original was a poor type, the nurseryman, without knowing it, continues to reproduce poor, undesirable, small type fruit. Incidentally, in case there was a mixture in the nursery rows, how could a nurseryman propagate true-to-name trees successfully? We are orchardists and nurserymen, and nothing can compare with our own scientific method of "bud selections"—it always gives complete satisfaction and spells profit for the fruit farm.

Profits in Pollinization

All varieties of Apples, Pears, Plums and Sweet Cherries must be cross-pollinated to insure a full set of fruits, especially in a season when the weather is cool, cloudy, or raining during the blooming time. Plant at least 1 or 2 trees as pollinizers for every 20 trees of a single variety. A moderately self-fertile variety will produce a much larger crop, if a few trees of pollinating varieties are inter-planted at intervals. For the slightly self-sterile and self-sterile varieties, two or more pollinating varieties inter-planted will make the difference between a financial **success** or failure of your orchard.

MONEY IN FRUIT GROWING

Leading Orchardists Prefer Harrison Grown Fruit Trees

Alive, Healthy Fruit-Bearing Trees Depend on the Heredity

Many, many years ago the Harrisons introduced a new method of propagation that was later to revolutionize the industry. Seeking out a better method of propagation in the interest of securing dependability in true-to-name varieties, we selected new budding stock from our own orchards, taking only those trees that were stamped "super-quality."

These new bud selections of known origin were later to become new orchards, and so through a desire to make more profits, we were able to help our fellow orchardists in cashing in on our experience.

You Pay No More for Harrisons' "Bud-Selected" Trees

The "bud-selection" method to propagate fruit trees is very expensive—but whatever the expense they are the trees that give satisfaction.

With 1750 acres of bearing orchards and a trained organization operating twelve months a year, we are organized on a large production basis, which reflects lower prices both for the commercial grower and the home owner.

Northern Growers take no risk in buying Harrisons' Superior Fruit Trees, Berry Plants and Ornamentals.

We absolutely guarantee Harrisons' Berlin-grown fruit trees, berry plants and ornamentals, variety for variety, are as hardy as any stock grown in any locality north of us.



Fast Fruiting Strains of Apples

Harrisons Offer the Greatest Selection of Dependable Fruit Varieties in America

Peaches

*A bright and PROFITABLE CASH FUTURE
Plant a PEACH ORCHARD
this Spring*

HARRISONS' HARDY PEACH TREES

We absolutely guarantee Harrison-grown Peach trees, variety for variety, to be as hardy or hardier than trees grown in any locality north of us.

The peach grower has a bright and profitable cash future—we advise you to plant a peach orchard this year, as the number of peach trees in bearing is the smallest of any time during the past fifty years.

Fruit Growers

Look at fruit trees in other nurseries, then come to Berlin and see the superior quality of Harrisons' true-to-name varieties at attractive prices. See the fruit trees growing in the nurseries—know what to buy. For best results, plant dependable Harrison-grown trees.

THE REASONS BACK OF GROWING SUPERIOR STOCK

- A—Our organization has over 64 years experience.
- B—Every step in growing under the personal supervision of the Harrison Brothers.
- C—One hundred and fifty thousand trees in Harrison Brothers orchards from which our propagating trees are selected.
- D—Use of modern methods for planting, cultivating and digging.
- E—Over 4,000 acres of various types of soil.
- F—Ideal soil and climatic conditions.
- G—Co-operation with leading horticulturists and experimental stations all over the world.

ALL-SEASON PEACH COLLECTION Offer No. 8

- | | |
|--------------------|-----------------------------|
| 1 Redhaven | 1 Elberta |
| 1 Golden Jubilee | 1 Brackett |
| 1 Hale-Haven | 1 Rio-Oso-Gem
(Patented) |
| 1 Belle of Georgia | |

7 3 to 4 Ft.,
Sturdy Trees,
for Only **\$6.95**

Harrisons' Maryland Grown
Peach Trees are the
Finest Quality in the World

*Plant Big Peach Trees
for Quickest and
Best Results*

PRICES OF HARRISONS' HIGH QUALITY PEACH TREES

Pages 9 to 15 (Except as Noted)

Propagated Direct from "Verified" Varieties of Super-Selected Strains
Certified 100% Healthy

True-to-Name One-Year, Budded Trees:	1 to 9 Trees	10 to 49 Trees	50 or more Trees
5 to 6 ft., 11/16 to 7/8 in. caliper ..	\$1.85	\$1.55	\$1.25
4 to 5 ft., 9/16 to 11/16 in. caliper ..	1.45	1.20	.90
3 to 4 ft., 7/16 to 9/16 in. caliper ..	1.20	1.00	.75
2 to 3 ft., 5/16 to 7/16 in. caliper ..	1.05	.90	.60
2 to 3 ft., 1/4 to 5/16 in. caliper85	.70	.45
18 to 24 inches70	.55	.35

May be assorted varieties of Peach Trees. For Jumbo Peach Trees, see page 4.

Grown on the "Brink" of the Atlantic

Our favorable climatic conditions, being located only eight miles from the Atlantic Ocean, with our rich soils of various types, coupled with the latest scientific and practical methods, as well as an unusually large number of experienced nurserymen, with ample facilities, enables Harrisons' to grow America's foremost, finest and best quality, true-to-name fruit trees, with superior merits and extra heavy annual bearing habits, Which we guarantee, with proper care, will produce bumper crops in any fruit-growing section of the United States.



A Sectional View of Harrisons' Nurseries Peach Trees Growing at Berlin, Maryland



PLANT BIG TREES for QUICKEST and BEST RESULTS



REDHAVEN PEACH—They Taste as Good as They Look



The Sensational **REDHAVEN**

Tops All Extra Early Peaches, Earliest Yellow Freestone Peach

THE NEW EARLY RIPENING YELLOW PEACH THAT RIPENS ABOUT TEN DAYS BEFORE GOLDEN JUBILEE

The most promising early ripening yellow freestone Peach ever introduced. A cross between Hale-Haven and Kalhaven made at the South Haven, Michigan, Experimental Station. Brilliant red color with creamy yellow background, smooth skin, almost fuzzless. Reddens before it ripens. Bears heavy crops and should be thinned for best results. Every grower should try REDHAVEN. We have a good supply of genuine Redhaven trees this season. The demand for this variety is heavy, so order early.

RED BIRD

EARLIEST OF ALL PEACHES

Most Popular Extra Early Market Peach

Bright glowing color—"red as fire"—on a background of creamy white.

Handsome. Large—as large as Elberta. Ripens about 45 days before Elberta. Clingstone. Good to eat and fine for pies, cobblers and Peach pickles. Quality good, especially when left on the tree until they get fully ripe.

"Break all young-bearing records." "Break all bearing records." "One crop paid for my whole orchard." "Most profitable early Peach." "Sell fast as can ship." "Better shipper than Elberta."



RED BIRD PEACH

YOUNGER BEARING

Do you want your trees to come into bearing at an early age? It is a recognized fact that trees propagated direct from bearing trees will commence to fruit at an earlier age than trees that are propagated from non-bearing scions. Harrison Grown Fruit Trees, due to the fact they are budded from bearing trees, will produce profit-paying crops in the earliest possible time.

HARRISON'S Super-Selected Strain Varieties Bear Bigger and Better Crops of Peaches.

INCREASES YOUR PROFITS AT NO EXTRA COST



EARLY HALE-HAVEN PEACH

(U. S. Plant Patent No. 325)

EARLY HALE-HAVEN

(U. S. Plant Patent No. 325)

RIPENS A WEEK EARLIER THAN HALE-HAVEN

A bud sport of the well known Hale-Haven, retaining all its characteristics such as large size, high red color before ripening, extra fine flavor and yet ripening a week earlier. Tests show it will keep as well as Hale-Haven.

A very promising new commercial variety. We recommend every grower to plant a few trees so as to compare its merits with other varieties ripening at the same time. We are confident that you will like Early Hale-Haven and that it will be a profitable Peach for you to grow. Our trees were propagated from the original strain. **10c per tree extra.**



GOLDENEAST PEACH—One of the Best

Hale-Haven

Early midseason. Ripens just after Golden Jubilee has been harvested and about 14 days ahead of Elberta. Yellow freestone, large, high red color, firm flavored. It takes on red color early and the Peaches show good red color several days before ripening, which gives it a distinct advantage for marketing. When allowed to ripen fully upon the trees its flavor is undoubtedly the best of any yellow Peach. Tree is an extra strong grower and produces a bumper crop of fruit each season. Very hardy in fruit bud. One of its parent is J. H. Hale, from which it inherits its large size and fine color. The other parent is South Haven from which it attains hardiness, large crops yearly and strong growth. It is the best variety ripening between Golden Jubilee and Elberta and should be planted in every orchard.



GOLDEN JUBILEE PEACH—Yellow, Excellent Quality

Goldeneast

(N. J. 87)



Developed by the Master Plant Breeders of New Jersey

VERY LARGE—FIRM—ATTRACTIVE

Ripens early midseason, very large oval, firm, high color, yellow flesh, freestone, smooth, nearly fuzzless like J. H. Hale, one of its parents. Colors several days in advance of its ripening. This, combined with its very slow rate of softening, makes it an ideal Peach for commercial growers. Hangs well to the tree after the Peaches become firm ripe. This is a distinct advantage to the grower who sells locally and ships short distances. Goldeneast, as grown in New Jersey, is distinctly superior to the older varieties that ripen at its same season. Quality of its fruit is very good.

A REAL PROFIT MAKER

GOLDENEAST has been fruited commercially in New Jersey and Maryland for several years. During this time it has topped all varieties in price on the New York and Philadelphia markets for several days at a time. Growers with a vision should plant Goldeneast. Our trees were propagated direct from bearing trees in New Jersey.

BUY
DIRECT
FROM
GROWER

BETTER
TREES
FOR LESS
MONEY

PRICES
ON PAGE 8

JUMBO
SIZE TREES,
PRICES ON
PAGE 4



HALE-HAVEN PEACH—Extra Large, Fine Flavored

Golden Jubilee

Early. The supreme early yellow Peach. Commercial Peach orchardists for a century have been looking for an early Peach of high quality, fine flavor, yellow, freestone, attractive color and firm texture, and eventually they have found it in the marvelous Golden Jubilee. This variety is a variation of recent introduction of new varieties and is by far better than any early variety of commercial importance which has been introduced in many years. It ripens about ten days ahead of Hale-Haven.

LEADING ORCHARDISTS PREFER HARRISON GROWN FRUIT TREES

Belle of Georgia

The Queen of Flavors

THE BEST WHITE MID-SEASON VARIETY

Ripens midseason. Color creamy white with red cheek. Flesh white, red near pit: Size large, freestone. Belle of Georgia, for some time, has been recognized as the best all-around white Peach on the market. It is easily the best shipping white Peach of its season, ranking almost with Elberta in this respect. Because of its many desirable qualities, it has become standard in the large commercial orchards, and you can find few orchardists of any importance who do not have a block of Belle in their orchards. These men know from experience just what varieties pay best and endorse it highly.

- Fruit Large
- Delicious Flavor
- Attractive
- Big Crops
- Very Hardy
- Easy to Grow



Stark Early Elberta

Early midseason. Yellow, freestone, large, lemon-yellow with a dark cast, blushed with vivid red. Beautiful appearance, high quality, being somewhat similar to Elberta, although a trifle better flavor, rich golden, tender flesh, yet firm and has a delightful flavor; excellent for canning.



BELLE OF GEORGIA—The Finest Flavored Peach

SULLIVAN EARLY ELBERTA

An early Ripening Red Bud Sport of Elberta
MIDSEASON YELLOW — FREESTONE

Here is the early ripening strain of original Elberta growers have been wanting. Discovered by Mr. Sullivan in a Georgia orchard. Identical to Genuine Elberta in every characteristic except it ripens about seven days earlier. Yellow freestone, firm, juicy, rich, good flavored. Equally attractive as Elberta and is a good keeper. Good for either home or commercial planting.

10 OUTSTANDING REASONS FOR PLANTING SULLIVAN EARLY ELBERTA

- 1—Size: Large to Extra Large.
- 2—Yellow Freestone.
- 3—Rich, Sweet Flavor.
- 4—Brilliant red Colored with Golden Yellow Background. Excellent Long Distance Shipper
- 5—Tree Vigorous Grower.
- 6—Bears Large Crops Annually.
- 7—Colors a Week Earlier Than Elberta.
- 8—Ripens Slowly After Being Picked.
- 9—Brings Highest Market Prices.
- 10—Completely Tested.

RIPENS A WEEK EARLIER AND IS IDENTICAL WITH THE PARENT IN SIZE, SHAPE, QUALITY AND PRODUCTIVENESS

ATTENTION! Commercial Growers

Lengthen out your ELBERTA type Peach shipping season. Plant 25% SULLIVAN EARLY ELBERTA; 50% ORIGINAL STRAIN ELBERTA; and 25% BRACKETT.



SULLIVAN EARLY ELBERTA PEACH—The Best New Midseason Variety

Little
Peach
Orchards
make more
profit than
Big Farms

Elberta TOPS PEACH SALES

Sensational
Standard Peach
of the World

It's the Greatest Money Maker

(Original Strain) **ELBERTA**

Internationally Famous—The Standard by Which All Other Peaches are Judged

Midseason. Yellow, freestone. Fruit is large to extra large; golden yellow with brilliant shades of red; firm, juicy, rich, sweet and good flavor. Elberta has the greatest international reputation of any Peach. It has been the standard for all other Peaches almost since the date of its introduction. The coloring of Elberta is practically perfect. The rich, yellow skin is almost entirely covered with dark red blush upon the sunny side. The attractive appearance and uniform large size serve to sell it almost on sight. We offer original strain trees which is the best strain obtainable.

Greater Profits

Plant
Harrison's
Original
"BUD"
Strain

Plant
Harrison's
Superior
Strain
and Reap
the Cash
Benefits

Save Disappointment—Plant Only Harrison ORIGINAL STRAIN Elberta

Today, there are more than seven distinct types and strains of Elberta, bearing fruit in the orchards of this country. To compare the various sizes, shapes, texture and red coloring of these Elberta with those grown "on original strain trees" gives sufficient reason why they sold this year at a premium of \$1.00 to \$2.00 per bushel on the New York and other leading fruit markets.

They Cost No More

Why plant degenerated strains of Elberta when you can plant Harrison's heavy yielding original strain trees. They can be purchased at the lowest price that high quality trees can be produced for. It is true trees, size by size, can be produced cheaper by budding them from non-fruiting trees in the nursery row, but this method causes degeneration. Trees grown in this manner will be lighter croppers and require a longer time in coming into bearing.



ELBERTA
Original Strain
The Leading Peach
America's No. 1 Peach—Elberta. There are more Elberta Peach trees in bearing than any other variety on earth.
FOR JUMBO PEACH TREES, SEE PAGE 4.

It's a Yellow Freestone—Midseason

Stamina—Uniformity—Best Canning—Premium Prices—Public Demand

The large fruit, being uniform in size and shape, along with its high, attractive red color and firmness, also its ability to stand shipments of three thousand or more miles under refrigeration in cars for 2 or 3 weeks before being consumed, but with stamina enough to still look its best has won Elberta the reputation of being a Peach without a peer and the variety which is always in favor and strong demand with the buying public, therefore demanding the highest possible market prices. Elberta is by far the best canning Peach.

Thousands Acclaim the Superiority of Harrison-Grown Trees

Harrison's pride themselves in propagating from the original Elberta strain, buds of which were personally cut by the late Senator Orlando Harrison from the original Elberta mother tree in the Rumph orchard in 1889.

We have two commercial orchards, now 51 years old, of these wonderful original strain Elberta. Besides yielding bumper crops annually, they are the source of our present supply of original strain buds for the new young trees.

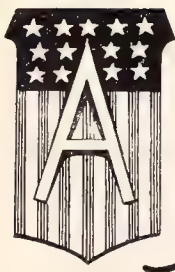
For years our Elberta Peaches have been the background of handsome Peach profits. You can do the same if you plant Harrison's original strain Elberta—it's your best bet

*The Best
Variety - Elberta
Commercial*

Tree is vigorous, very hardy, sturdy, thrives in widely different localities. Elberta is hardier in bud than most varieties, and is a uniform prolific bearer. You can always depend on Elberta as a sure cropper.

Prices on Page 8.

America's No. 1 Peach—Elberta. More Elberta Peach trees in bearing than any other variety on earth.



NATIONAL J. H. HALE *Reputation*

Originated by the late PEACH KING

MIDSEASON—Ripens 2 to 3 days before Elberta.

Original Strain J. H. HALE

Our "Hales" are propagated direct from the original strain, the variety originated by the late J. H. Hale of South Glastonbury, Connecticut and Fort Valley, Georgia, known as the

Peach King of America. There are many types and strains of J. H. Hale grown, but the only one worthy of commercial importance is the original strain, which is the extra large, round, highly colored Peach. The original strain necessitates cross-pollination and it is necessary, for proper results, to plant a few Belle of Georgia or Elberta or Hiley or any other variety of Peaches along with Hale for cross-pollination.

Extra Large Size Yellow, freestone, extra large, beautiful red coloring, firm and of the highest quality and enticing flavor. J. H. Hale ripens about two or three days prior to Elberta. Prices on page 8.



J. H. HALE
Giant Size,
Enticing Flavor

Harrisons' Peaches ARE A COLLECTION OF THE WORLD'S BEST



Brackett
is an
Excellent
Type of
Elberta

Prolong
the Elberta
Picking
Season
with
Brackett

BRACKETT
Size—Color—Quality

Brackett

Mid-Season
Late

1. Size
2. Quality
3. Color

A Profitable Commercial Variety Slightly Later Than Elberta

Brackett is a comparatively new commercial Peach in some sections but wherever tried it has given uniformly good results. During the past thirty years we have planted many thousands of this variety in our own orchards and they have given good results.

The fruit is rich yellow, with dark carmine cheek. The size runs fully as large or larger than Elberta and fruits weighing five to six ounces are common. Flesh is deep yellow, extremely juicy and is absolutely freestone. Fruit is much better flavored than Elberta. Good shipper.

Popular on the Markets

Brackett commands unusually high prices on the market and often outsells Elberta twenty-five to fifty cents per bushel. We know that the grower who needs a Peach that ripens slightly later than Elberta will make no mistake in planting Brackett.

Plant Harrisons' Original Strain

HARRISONS were the first to popularize this great variety and distribute it throughout the Peach-growing sections. We offer trees that are propagated direct from the original strain and they are sure to produce results.

"Bud-Selected" Super-Strain Trees



HARRISONS'
HI-QUALITY
TREES

Peaches

OTHER VERY EARLY VARIETIES

DIXIRED. Very early, yellow, cling, medium size, round, bright attractive red blush; good flavor; prolific bearer. Ripens two weeks earlier than Golden Jubilee or about three days later than Red Bird. A new variety originated and introduced by the U. S. Department of Agriculture, Beltsville, Maryland. Its most outstanding commercial feature is that it is a good shipper and has been planted extensively in Georgia to meet the demands for the very early Peach market.

GREENSBORO. White, freestone, extra large for such an early Peach. One of the handsomest, being a large, yellowish white with crimson cheek; flesh is white and of average quality. Exceedingly hardy, being an extra heavy, prolific bearer and adapted for wide variations in Peach regions.

JUNE ELBERTA. A big, handsome red and gold Peach, highly colored, excellent quality and a dandy home Peach, being a new variety. One of the earliest of the good yellow-fleshed Peaches, this semi-freestone variety quickly returns cash dividends before later varieties reach the market.

CUMBERLAND. An outstanding favorite early white Peach. Is a comparatively new, white, nearly freestone variety that was developed by the New Jersey Experimental Station. The fruit resembles Belle of Georgia, both in appearance and quality, although it ripens about the same time or a little before Golden Jubilee.

DIXIGEM. Early, yellow, semi-freestone, red blush, medium size, good quality. Ripens a few days sooner than Golden Jubilee. A new variety originated and introduced by the U. S. Department of Agriculture, Beltsville, Maryland. Extensively planted in Georgia.

TRIOGEM (N.J. 70.) Early, yellow, freestone, oval, red all over, medium large. Ripens two days later than Golden Jubilee. One of the outstanding New Jersey varieties.



HARRISONS' SUPER STRONG GRADED
One-Year Peach Trees, True-to-Name



DIXIRED—Very Early Yellow

OTHER EARLY MIDSEASON VARIETIES

CHAMPION. A Good Home Peach. White, freestone, very large; creamy white with red cheek, sweet, juicy, very high flavor. Champion has lost its past commercial importance because it will not carry satisfactorily under refrigeration, but as a home garden or a roadside Peach, it is one of the best. Tree is hardy, large grower and productive.

ROCHESTER. Early midseason. Yellow, freestone, large, covered with mottled red blush; flesh yellow stained with red at pit, very good quality, prolific bearer. One of the best early mid-season yellow freestone Peaches for nearby markets, and highly desirable for canning.

VEDETTE. Early yellow freestone. Globular; large; good red color; good flavor. Canadian variety of the Elberta type. Ripens about six days later than Golden Jubilee. Adapted to Southern as well as Canadian Peach districts.

SUNHIGH. (N.J.82.) A large, red, bright, smooth Peach which colors well all over before it ripens, softens slowly, making it a good commercial Peach. Flesh inclines to adhere to the pit when hard ripe. The variety seems to do best in hilly sections and requires thorough summer spraying. The fruit is large, roundish, thick-skinned, very uniform in size. Color deep yellow with red cheek. Stone is free. Ripens approximately eighteen days before Elberta, at a time to bring high market prices.

HILEY. White. Early midseason. Bears huge crop of fancy Peaches. Freestone, medium size, highly red colored and is a very handsome Peach of exceptionally good flavor. Tree is strong grower, very healthy and an extra heavy bearer. You can depend on Hiley to bear heavy crops year after year. The marvelous color and wonderful flavor have made it popular on the markets. Hiley resembles Belle of Georgia but ripens about 10 days earlier.

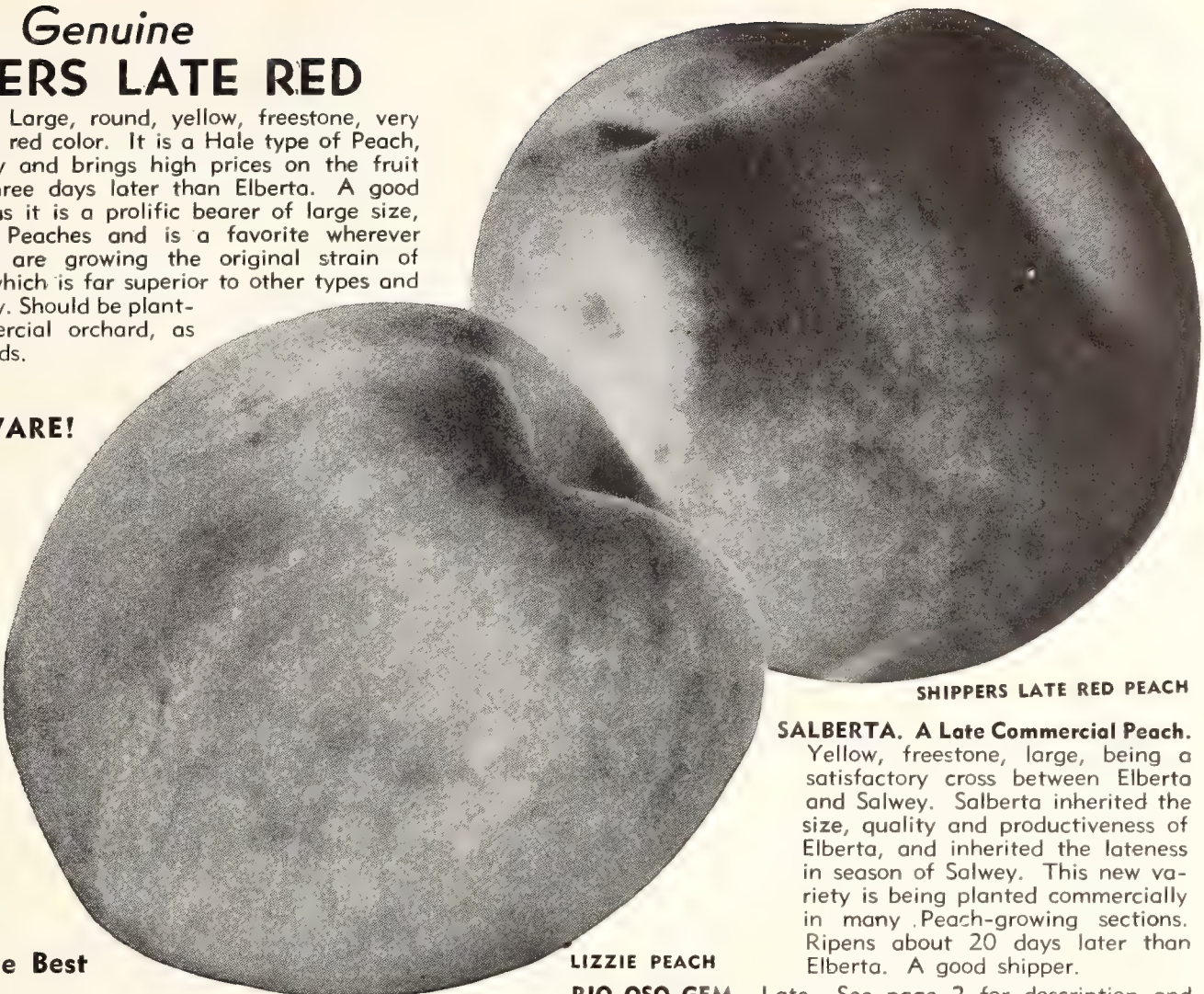
SOUTH HAVEN. Early midseason. Yellow, freestone, large, handsome, uniform size, delicate flavor, ripens about 15 to 18 days ahead of Elberta. Tree is very hardy, good grower and a consistent heavy bearer, adapted to cold climates; produces bumper crops in mild climates.

VALIANT. Early midseason. Seedling of Elberta. Yellow freestone, productive. A new Canadian variety.

SUMMERCREST (N.J.94.) Midseason, yellow, freestone, large with red blush and sweet flavor. Trees exceptionally vigorous, fruit ripens the same time as Belle of Georgia, which is a few days earlier than Elberta. Popular in New Jersey where it is known.

Genuine SHIPPERS LATE RED

Midseason-Late. Large, round, yellow, freestone, very attractive with high red color. It is a Hale type of Peach, having good quality and brings high prices on the fruit markets. Ripens three days later than Elberta. A good commercial Peach as it is a prolific bearer of large size, highly red colored Peaches and is a favorite wherever planted. Harrisons are growing the original strain of Shippers Late Red which is far superior to other types and strains of this variety. Should be planted in every commercial orchard, as well as home orchards.



SHIPPERS LATE RED PEACH

PLANTERS BEWARE!

**1-Year Budded
Peach Trees
Are Far
Superior,
Very Much
Hardier,
Stronger
Growers,
Live Longer,
Also Producing
Much Larger,
Better Crops
Than "June
Buds"**

Plant Only the Best

Late Ripening Varieties

LATE ELBERTA (Gemmer's Late Elberta). Late, yellow, freestone, large, high red color, fine quality, good shipper. Is a typical Elberta in fruit and tree characteristics, but ripens 8 to 12 days later than Elberta of the original strain.

LIZZIE. Late, distinct type of Elberta, very large, freestone, yellow, which ripens 24 to 26 days later than Elberta, having same prominent coloring characteristics as its parent.

SALBERTA. A Late Commercial Peach.

Yellow, freestone, large, being a satisfactory cross between Elberta and Salwey. Salberta inherited the size, quality and productiveness of Elberta, and inherited the lateness in season of Salwey. This new variety is being planted commercially in many Peach-growing sections. Ripens about 20 days later than Elberta. A good shipper.

LIZZIE PEACH

RIO-OSO-GEM. Late. See page 2 for description and prices. Starts to ripen 14 days later than Elberta.

AFTERGLOW (N.J. 84). Late midseason. Yellow, freestone, large, round with high red blush, ripens about 3 to 4 days later than Elberta.

VERY LATE RIPENING VARIETIES

KRUMMEL'S (Krummel's Late October). Yellow, freestone; extra large, round, deep yellow with a blush of carmine on the sunny side—fine flavor.

SALWEY. Very late. Yellow, freestone.

WHITE HEATH CLING. Large, late cling, fine flavor, good home Peach.

PRICES OF HARRISONS' HIGH QUALITY PEACH TREES

Pages 8 to 15. (Except as Noted)

Propagated Direct From "Verified" Varieties of Super-Selected Strain — True-to-Name, One-Year Budded Trees:	Certified 100% Healthy.		
	1 to 9 Trees	10 to 49 Trees	50 or more Trees
5 to 6 feet, 1 1/16 to 7/8 inch caliper	\$1.85	\$1.55	\$1.25
4 to 5 feet, 9/16 to 11/16 inch caliper	1.45	1.20	.90
3 to 4 feet, 7/16 to 9/16 inch caliper	1.20	1.00	.75
2 to 3 feet, 5/16 to 7/16 inch caliper	1.05	.90	.60
2 to 3 feet, 1/4 to 5/16 inch caliper85	.70	.45
18 to 24 inches70	.55	.35

May be assorted varieties of Peach Trees. For Jumbo Peach Trees, see page 4.

Harrison Grown Fast Fruiting Strains of the Best Peaches

Harrisons' volume production has enabled us to supply you with high quality nursery products at low prices. All varieties are within reach of any home planter and fruit grower and priced to save you money. We ship everywhere. State and Federal inspected.



Harrisons' APPLE TREES

for the APPLE INDUSTRY

APPLE GROWING PAYS PROFITS

BUT in order to get these profits, it is necessary to start with the best trees and the most desirable varieties. Harrisons' Nurseries have been, and are still growing, at Berlin, Maryland, the finest and best Apple trees of superior merits it is possible to produce. Harrison-grown Apple trees are propagated on whole root stock, insuring an unusually large root system which is the basis of plant growth. Our Apple trees are scientifically budded from selected heavy bearing strain trees of the variety desired, using the bud selection system. Today we believe that we have more of the improved and best strains of Apples in our nursery than any nursery concern in America. Do not allow a few cents per tree to keep you from buying Harrison-grown Apple trees, the finest and by far the best quality produced on the North American Continent.

TRUE TO NAME

The World's Foremost Fruit Variety Identification Specialists Have Examined Harrison-Grown Trees and Pronounced Them True to Name.

In addition to carefully selecting the propagating wood from bearing trees of superior strains, we have also employed the services of the world's most eminent authorities on tree identification of the Massachusetts Trueness-to-Name Inspection Service.

To Whom It May Concern:

All of the one- to three-year-old Apple, Plum, and one-year Pear and Sweet Cherry varieties propagated and now growing in the nurseries of Harrison Brothers Nurseries, Berlin, Maryland, have been examined by the Massachusetts Trueness-to-Name Inspection Service. To the best of our knowledge, these trees are true-to-name as they now stand in the nursery rows.

J. K. SHAW

Best Trees for Less Money



BUY
DIRECT
FROM
GROWER
NO
AGENTS

HARRISONS' HARDY APPLE TREES

We absolutely guarantee Harrison-grown apple trees, variety for variety, to be as hardy or harder than trees grown in any locality north of us.

Harrisons' Super-Selected Trees

with their unusual substantial root system, are proving again and again that "bud selected" strains spell yearly profits to orchardists and commercial planters.



One of the Famous Harrisons' Apple Orchards in Bloom

HARRISONS' HIGH QUALITY APPLE TREES

Pages 16 to 23.

True-to-Name—Certified 100% Healthy

	1 to 9 Trees	10 to 49 Trees	50 or more Trees
5 to 6 feet	\$1.85	\$1.55	\$1.25
4 to 5 feet	1.45	1.20	.90
3 to 4 feet	1.20	1.00	.75
2 to 3 feet	1.05	.90	.60
18 to 24 inches	.85	.70	.45
12 to 18 inches	.70	.55	.35

May be Assorted Varieties of Apple Trees.
For Jumbo Apple Trees, See Page 4.

RESULTS COME SEVERAL YEARS HENCE

No one can measure in advance the future results of a newly planted orchard. A few years must come and go before the trees bear fruit. A good inheritance immediately qualifies it as a money-maker, fruit is large and true-to-name. Poor trees at any price never give satisfaction.

Sixty-four years of dependability and square business dealings finds Harrisons' today the best place in America to buy truly dependable trees.

Millions of Harrisons' "bud selected" fruit trees planted throughout the years are today the very backbone of a profitable and dependable fruit business in all sections of the country.

HARRISONS' TREES HAVE A GOOD RESERVE OF PLANT FOOD

Harrisons' trees are scientifically nurtured so that the trees will absorb the different latent plant growth elements so vitally necessary in the successful growth of trees after transplanting. This stored-up energy is one of the many reasons why Harrisons' trees prove successful wherever planted.

Alarming Apple Orchard Shortage

U. S. Department of Agriculture census figures reveal—"146,000,000 fewer Apple trees on U. S. farms and orchards NOW than in 1910, although the population of the United States has increased by 59,000,000! And of the trees now on U. S. farms and orchards, many are trees that will rapidly pass out of profitable production!"



Plant "Bud-Selected" Super-Strain Trees

BETTER RESULTS Right From the Start with HARRISONS' HI-QUALITY APPLE TREES

LARGE TRANSPARENT (LODI)

A New Summer Variety

Ripens Very Early—Destined to Replace the Ever Popular Yellow Transparent

We believe there is a big future for this new summer Apple. Our commercial friends should lose no time in anticipating the demand for an Apple of this type.

Somewhat of a dwarf grower, bearing very young, it makes an excellent filler. The skin is a clear yellow, white flesh, of medium size. A good pollinizer.

EARLY APPLE GROWERS MAKE MORE MONEY WITH LARGE TRANSPARENT

Yes, actual profits, that's what we mean. It can be done—here's why: Yellow Transparent Apples are always first on the market and generally bring good profits when they attain proper size. Size on Yellow Transparent is hard to get, but easy on its big brother, "Large Transparent," which ripens at the same time.

Large Transparent Apples Average Up to 1/2 Inch Larger Than Yellow Transparent. This Means \$1.00 to \$2.00 Per Bu. incl Extra.



LARGE TRANSPARENT (Lodi)
You Can Depend on Bumper Crops—
Plant Harrisons' "Bud Selected" Strain

SUMMER APPLES

Renowned for Bearing at an Early Age

YELLOW TRANSPARENT. Medium size, greenish yellow, very heavy bearer. Most widely planted yellow early variety.

RED GRAVENSTEIN. Much better color than the original Gravenstein. Has practically replaced the old strain of well known Gravenstein. The coming red summer Apple for export.

RED SUMMER RAMBO. A new earlier coloring solid red strain means much greater profits for growers everywhere.

SUMMER RAMBO. Large, splashed with red.

EARLY RED DUCHESS. Highly colored early Apples bring premium prices, this bud sport colors red all over early in the summer. Excellent pollinizer for Red Gravenstein.



WILLIAMS EARLY RED

Ready Early When Folks Just Get Hungry for Apples

WILLIAMS' EARLY RED

The Big Red Home or Market Apple

Just at the time when people are hungry for a fresh, new red Apple, this superb sort comes into market. In New York, Boston, Philadelphia, and other eastern cities as well as middle western and southern cities, the fruit sells as quick as it hits the market-house or dealer's store. It holds its own anywhere and has proven to be—

The Best Summer Apple

The rich bright red fruit catches the buyer's eye and is ordered at a price that yields the grower a good profit. Apple is large, with tender, crisp, white flesh, juicy, slightly tart. The trees come to bearing when quite young, producing freely and steadily. Fine for a filler or permanent tree, and being hardy, can be successfully grown in New England states and Canada. All orchards should include Williams Early Red.

A good pollinizer for Red Yorking and Red Rome Beauty Apple trees.

Plant Summer Apples and Get the Big Cash Profits Before the Autumn and Winter Varieties Ripen

Budded Apple Trees are Far Superior to Grafted Apple Trees

RED GRAVENSTEIN
It's Solid Red



ALL-SEASON APPLE COLLECTION Offer No. 17

1 LARGE TRANSPARENT	1 YELLOW DELICIOUS
1 WILLIAMS EARLY RED	1 GRIMES GOLDEN
1 TRIPLE RED DELICIOUS	1 SUPER RED McINTOSH
1 SCARLET RED STAYMAN	

7 Sturdy Trees, 3 to 4 Ft., for Only **\$6.85**

HARRISON'S
Triple Red
Delicious

KING OF ALL RED

APPLES



TRIPLE RED DELICIOUS—Finest Flavored, Best of All

This Apple was introduced by us several seasons ago and since its introduction has been bought and fruited by the tens of thousands by leading fruit growers throughout the country. It is a "bud sport" of unusually superior merits, being **triple-red** colored and the earliest red coloring strain known.

Colors Much Earlier Than Ordinary Delicious

Harrisons' Triple Red Delicious colors up weeks earlier than the ordinary strain. By coloring earlier the fruit can be picked while it is firm and it keeps better in storage.

Size and Taste

Size is all anyone could desire, as it runs from large to extra large. The large size, solid red color and characteristic five-knob end make it attract buyers in every market.

Taste will be found on a par with its other points of advantage. The flavor is rich, slightly sub-acid, with an individuality which makes the palate call for more. You'll have no trouble with repeat sales for this variety.

Ships and Keeps Well

Harrisons' Triple Red Delicious ships without bruising. In fact, it ships better than the ordinary Delicious because its earlier coloring permits it to be picked when the fruit is more firm. Its large size makes it easy to pack attractively and the uniformity of size guarantees a good appearance.

Large Profit Maker

The ordinary Delicious is a proven profit maker and our Harrisons' Triple Red Delicious is destined to outclass its predecessor due to the fact that it will produce more highly colored fruit and as most every fruit grower knows, color plays an important part in the price the fruit sells for.

FINEST FLAVORED RED APPLE IN THE WORLD

Harrisons' Maryland Grown
Apple Trees are the
Finest Quality in the World

A NATIONAL SCARCITY OF FRUIT TREES

There is a drastic shortage of fruit trees throughout the nurseries of the United States; as a matter of fact, the smallest supply available for 1948 orchard plantings that there has been at any time during the past fifty years. A recent national survey shows that fruit trees will even be more scarce during the next two years than now. Play safe—act quick—place your order now while trees are available.

Blue Blooded
Aristocrats
of the
Dining Table.

Brilliant
Crimson-Red,
Large Size,
Extra Fancy

SOLID BRIGHT RED COLOR

Starts Coloring During Early August—One
Month Before Ripening

GLORIFIED RED APPLE OF THE WORLD
Ideal for Home Orchards

Harrisons' Triple-Red Delicious is not only a commercial Apple, but it is every bit as well adapted to the home grounds. Whether you wish to plant a thousand or if you have room for only one tree, Harrisons' Triple-Red Delicious will give full value.

Why pay premium prices for other improved strains of Delicious when trees of Harrisons' Triple-Red Delicious, the earliest coloring, heavy producing type, being superior to all others, can be bought from Harrisons' at a lower cost.

**LEADING FRUIT GROWERS PROCLAIM
HARRISON'S TRIPLE-RED DELICIOUS IS
SUPERIOR TO ALL OTHER STRAINS**

Leading orchardists and fruit men of the country who have seen the Harrisons' Triple-Red Delicious in fruiting claim it is superior to any of the other several new double red earlier coloring strains of Red Delicious such as Starking, Richard Delicious, Shotwell Red Delicious, and others.

This past season our Harrisons' Triple-Red Delicious colored weeks earlier than the ordinary Red Delicious. Growers expressed amazement at the difference in color of these two distinct strains. Trees looked like they were loaded with balls of fire, each Apple solid bright red in color.

Must be Pollinized—Interplant With a Few Trees of Jonathan or McIntosh Red



Buy "Bud Selected" Super-Strain Fruit Trees



HARRISON'S Triple Red Delicious APPLES

HARRISON'S TRIPLE-RED DELICIOUS
Best Red Strain Developed From Bud Selection—Dependable—Plant for Better Cash Profits

REASONS FOR PLANTING THIS REMARKABLE APPLE:

- | | |
|-------------------------------|---------------------------|
| 1—Most Profitable Apple grown | 7—Triple-Red Color |
| 2—Succeeds Nearly Everywhere | 8—Attractive Shape |
| 3—Bears Young | 9—Big Crops |
| 4—Rich Flavor | 10—Good Keeper |
| 5—Large Size | 11—Easily Grown |
| 6—Earlier Coloring | 12—More Extra Fancy Fruit |

What men everywhere are telling their fellow fruit growers: "Why pay more when Harrison's Triple-Red Delicious is the best type and superior strain of any Delicious grown."

Plant Three or More Varieties of Apples for Cross-Pollination, Insuring a Set of Fruit.

EYE APPEAL—SELLS ON SIGHT. GET YOUR ORCHARD STARTED THIS YEAR

DELICIOUS. Red, large, very high flavored. One of the most popular and highest priced Apples grown. The original strain Stark Delicious.

Harrison's Are Commercial Growers, Too—1750 Acres of Orchards

The success of our orchards is paramount; profit is essential to operate, and unless we plant the right kind of "budded" fruit trees we gamble with future results.



**YELLOW
DELICIOUS
APPLE—It's Golden**

Prices
on Page
16

Jumbo Size
Price Page 4

YELLOW DELICIOUS

A golden yellow Apple with decided "Delicious" characteristics. Yellow Delicious has a remarkably good flavor, and is most popular for eating during the fall and winter months. Late September and January finds the flavor and condition at its best. Many people think it superior to the famous Delicious.

Yellow Delicious is a national favorite. No other Apple has such an appeal to the appetite. Folks cannot resist buying them when displayed for sale.

A PROLIFIC CROPPER AT AN EARLY AGE

The Yellow Delicious tree is very thrifty, hardy, and a vigorous grower. It is renowned for its heavy bearing of fruit at a very early age. You can depend on a good yield of ripened fruit each year.

A Gleaming Golden Yellow With Alluring Beauty. Invest in Harrison's Super-Selected YELLOW DELICIOUS

BECAUSE:

- | | |
|---------------------------|-------------------------------|
| 1—A Practical Money-Maker | 5—Disease-Resistant; Vigorous |
| 2—Appetite Appeal | 6—Bears Young; Grows Fast |
| 3—Highest Prices | 7—Big Crops Every Year |
| 4—Grows in 33 states | 8—An Excellent Pollenizer |

A Golden Apple Which Has Won Its Fame as an Outstanding Commercial Variety.

Best Strain Obtainable Regardless of Price



GRIMES GOLDEN—Big Crops, One of the Best

Make Money With Harrisons,
Super Red McIntosh
 Earlier Coloring—Solid Red Strain

A new strain of McIntosh Red that starts coloring earlier and produces a larger percentage of extra fancy fruits. Super-Red McIntosh, when allowed to mature on the trees, is slightly darker in color than our regular improved McIntosh Red. Has all the best qualities of ordinary McIntosh and will mean larger profits for growers who have been unable to get sufficient color. McIntosh has been the favorite in the North; this new strain extends the planting area farther south. The most highly colored solid red strain available, regardless of price. We have some exceptionally good one-year trees and a few two-year trees to offer this season. Plant McIntosh strain of Apples for big profits, equally as good in home orchards as it is commercially.

McINTOSH RED. Medium large size, generally considered highest and best flavored Apple grown. Splendid appearance which sells it on sight.



BRIGHT RED JONATHAN—A Treat to Eat

Harrisons' Famous GRIMES GOLDEN

Selected "Big Yield" Strain
 BEST HOME ORCHARD APPLE

Autumn, medium sized, golden yellow, tender, rich, aromatic, sub-acid, delicious—possibly the best flavored Apple known, and a good keeper. No better variety exists for eating raw or for cooking. Tree is very hardy and one of the heaviest bearers known, producing extra large crops annually. Excellent variety for a filler, as it comes into bearing very early. Grimes Golden is the best pollenizer known, especially for Stayman Winesap, Lowry, Baldwin, Cortland, Rome, Winesap, McIntosh and others. Be sure to include Grimes Golden in your orchard. **IT IS EASY TO GROW.**

Little Orchards Make More Profit Than Big Farms

YOUNGER BEARING

Do you want your trees to come into bearing at an early age? It is a recognized fact that trees propagated direct from bearing trees will commence to fruit at an earlier age than trees that are propagated from non-bearing scions. Harrison Grown Fruit Trees, due to the fact they are budded from bearing trees, will produce profit-paying crops in the earliest possible time.



SUPER RED McINTOSH—A Northern Favorite

Prices on
 Page 16

Jumbo Size
 Page 4

BRIGHT RED Jonathan
 SOLID RED COLOR
 ALL OVER

**A Great Improvement Over the
 Ordinary Jonathan**

We searched the country over to find a strain of Jonathan that had more color than our selected Big Yield Strain Jonathan. After thousands of miles of travel inspecting all of the new strains of this famous variety we found the one we had been looking for. It colors solid red several days earlier, otherwise it is identical with ordinary Jonathan. Growers who want more, deeper colored Apples will find our Bright Red Jonathan the best colored strain obtainable.

JONATHAN. Medium to large, red, juicy. Good keeper and an excellent shipper. Excellent pollenizer for Triple Red Delicious, Mammoth Black Twig and other varieties.

It's Flaming Solid Red

THIS NEW GLORIFIED YORK IMPERIAL

RED YORKING

U. S. PLANT PATENT No. 125
Prices of Red Yorking same price
as standard varieties. See page 16
for sizes and prices.

**Early Coloring
Means 100%
Perfect, Extra
Fancy Grade**

The Red Yorking is similar in size and shape to York Imperial, but is characterized by the abundant red coloring that completely covers the fruit. A vigorous grower and an abundant producer.

The Appalachian Winner

RED YORKING

WITH TEN TESTED REASONS

- 1—York Imperial has long been the commercial leader and money-maker in Virginia, West Virginia, Maryland and Southern Pennsylvania, but with the discovery of a "bud sport" strain from a Harrison-grown York Imperial planted near Shippensburg, Pennsylvania, the new "Red Yorking," U. S. Plant Patent No. 125, will eventually replace its famous parent.
- 2—Leading fruit growers were astounded and now proclaim that Red Yorking is the ideal commercial Apple for the Appalachian region.
- 3—Red Yorking, by actual comparison, has proven to be far superior to any other so-called red strain of York Imperial.
- 4—Color: Every Red Yorking Apple being SOLID RED is a tremendous advantage.
- 5—Colors very early—being able to pick and ship Red Yorking from three to five weeks earlier than York, due to its 100% solid red color before the Apple is fully ripe.
- 6—Will bear bumper crops each year under modern up-to-date orchard management, and Red Yorking is a more prolific bearer than its parent.
- 7—Red Yorking can be easily packed U. S. Fancy grade from three to four weeks sooner in the fall than you can possibly pack York Imperial to meet the requirements of U. S. No. 1 grade.
- 8—All Apples of Red Yorking will run U. S. Fancy grade and U. S. No. 1 grade as to color requirements, whereas you always have a varied percentage of York Imperial that will fail to meet even U. S. No. 1 color specifications.
- 9—For export trade, Red Yorking can be sold and shipped at premium high prices long before York Imperial is ready to pick.
- 10—For cold storage purposes, Red Yorking does not "scald," even when held until June; whereas York Imperial must be sold during the winter to avoid "scald" and other cold storage troubles.

YORK IMPERIAL. Red, medium to large size. Widely planted in Appalachian area. Good pollinizer for mid-season and late blooming varieties of Apples.



SCARLET RED STAYMAN—Tops With Many Growers



RED YORKING—Big Crops

Scarlet Red Stayman

BRILLIANT COLOR

We offer to the public the greatest strain of Stayman Winesap ever discovered. It is a true bud sport found in a Stayman Winesap orchard. Scarlet Red Stayman takes on bright red color weeks earlier than ordinary Stayman. Its ripening date is the same but can be picked earlier if desired.

A READY MARKET AT TOP PRICES

Scarlet Red Stayman is the best general purpose Apple for planting in the East. Its solid scarlet-red color and its bright attractive finish causes it to command highest market prices. The fruit is large and it produces bumper crops each year.

KEEP CRISP AND JUICY UNTIL LATE SPRING

Because this new strain takes on solid red color weeks earlier, allows it to be picked when it is hard ripe, thereby making it keep much better during the winter and spring.

NO INCREASE IN PRICE OVER OTHER VARIETIES

We grow Scarlet Red Stayman Apple trees by the tens of thousands and improved methods of production and low selling costs enable us to sell you the very best strain of Stayman at no increase in price over ordinary varieties. Most nurseries ask more for their so-called improved varieties, but you can plant the improved Scarlet Red Stayman with our assurance that it is the best strain of Stayman available regardless of price. Pollinize with Grimes Golden and Red Yorking.

STAYMAN WINESAP

BIG YIELD STRAIN

Without a doubt the heaviest yielding strain of Stayman Winesap obtainable. This strain yields bumper crops year after year. It colors to a good bright red and gets nearly solid red colored when allowed to stay on trees until fully ripe. This is an improved strain and is preferred by many growers in the East. Tested and time-proven by thousands of growers.

MAMMOTH BLACK TWIG (Paragon). Extra large, dark red; good flavor. Must be pollinized with Jonathan.

RHODE ISLAND GREENING. The Popular Northern Apple. Large, greenish yellow; flesh crisp, juicy, quite acid, firm, fine grained, tender, and of very fine flavor and quality. An excellent keeper, a popular barrel Apple, brings good prices. Generally planted in New England, New York, Michigan and Canada, but not advisable to plant south of the Mason-Dixon Line. Pollinize with Cortland



Red Rome Beauty

A FAVORITE WITH THE GROWERS



RED ROME BEAUTY—Quality and Appearance

This is a Flaming Triple Solid Scarlet-Red "Bud Sport"

Renowned for Bearing at an Early Age

An improved Rome Beauty, identical in view and production. Over 100 fruit much brighter and solid red. Produces much higher percentage of fancy Apples and one season in quality to the original strain of Rome Beauty. Red Rome Beauty is renowned for bearing at a very early age, producing bumper crops of fancy size Apples. The tree is a vigorous, strong grower, especially in Florida.

Superior to All Other Tested Strains of Rome

More and more people are turning to the early and late Rome Beauty trees and strains. In its improved and early high red color characteristics, will eventually replace the Rome Beauty. Already the Red Rome Beauty is a star among leading commercial varieties of winter Apples. It pays to grow them.

Red Rome Beauty is easy to pack. It is Rome Beauty with most strains of Rome Beauty have just enough color to pass the rigorous government inspection grade. Excellent pollinizer for Red Yorking and Williams Early Red.

Yes!—It's HARRISON'S Superior Strain, Being the Famous Solid Bright Scarlet-Red Super-Strain From the Pacific Northwest

RED LOWRY. Red bud sport strain, identical with its parent Lowry in all respects with the exception that it has very much higher red color and when matured full red color. It can be picked 2 to 3 weeks earlier than Lowry, due to its earliness in season and color. Interplant a few Grimes Golden.

SMOKEHOUSE. Large Apples of superfine flavor, excellent for eating; yellowish green mottled with dull red and with many russet dots; flesh firm, crisp, juicy and aromatic. Tree large, vigorous and reliably productive.

SOLID RED WINESAP

Old Winesap generally has plenty of color when planted in most sections, but for those growers who want a more solid red colored Winesap, we recommend our new strain.

WINESAP. Medium size, dark red, high flavor. One of the best and longest keepers.

Expert Nursing!

These world famous super-selected trees are definitely superior. Literally 64 years of experimentation, acclimating and "expert nursing" are behind the fruit trees developed and grown at the—

HARRISON'S BIG NURSERIES BERLIN, MARYLAND

PLANT A HOME ORCHARD NOW

ROME BEAUTY. Large, round, red, flavor and quality above average.

GALLIA BEAUTY. A Rome Beauty type of Apple identical in every respect, except its earlier coloring qualities; recommended for commercial planting. Harrison's have the genuine original strain of Gallia Beauty.

LOWRY. Beautiful mahogany-red, good, medium size round oval shape, nearly sweet, mild sub-acid; excellent flavor, good shipper, long keeper, and sells at fancy prices in export as well as domestic markets. New popular commercial variety in Virginia.



RED LOWRY APPLE—A Favorite in the Virginias



SOLID RED WINESAP—Fine Flavored, Long Keeper

Harrison's Red Bud Strains of Apples Are the BEST Prices on Page 16



ANOTHER SPORT the New RED SPY

A new "bud sport" from New England. Identical with the ordinary Northern Spy in fruiting habits. Extra large size fruit, strong, vigorous, hardy trees. Comes into bearing earlier than the ordinary strain. Colors early, nearly every Apple being solid red in color. We recommend it for commercial and home plantings in northern states. Pollinize with Red Rome Beauty or Williams Early Red.



DOUBLE-RED BALDWIN—An Old Favorite in a New Dress

DOUBLE-RED BALDWIN. Although the common Baldwin is being gradually replaced by other varieties this Double-Red strain will bring new profits to the grower of Baldwins. Must be pollinated. Use Wealthy, Jonathan or Cortland.

OTHER SUMMER APPLES

STARR. Large, attractive with bright yellowish, smooth skin; sometimes marked with a faint blush and numerous russet dots; flesh yellow, fine, very tender, crisp, juicy, aromatic and of extra fine quality, bringing highest prices. Recommended to those with nearby markets, but a poor long distance shipper. Popular in Southern New Jersey.

DUCHESS OF OLDENBERG. Large, striped, tender, juicy, sub-acid, good; regular and abundant bearer. One of the hardiest. Best pollinizer for early blooming varieties.

TWENTY OUNCE. Very large, fine quality, yellow striped red.

WEALTHY. Medium to large size; round, almost solid red; flesh white or a little stained, tender, crisp, juicy, fine grained, aromatic and very good flavor. Relatively good keeper. Old variety most extensively planted in North. Tree is very hardy, withstanding unusually cold climates, vigorous, fruits at early age, bears regular and abundant crops. Tree somewhat dwarf, making a fine filler.

EARLY McINTOSH. Resembles its McIntosh parent in appearance, but is less aromatic. An attractive, uniform red color, good size, flesh white, tender, and juicy. The trees are vigorous, hardy, healthy, productive, and bear annually if thinned early and severely. The shape and framework of the tree, especially the heavy-butted branches, are like those of McIntosh. The crop ripens ten days later than that of Yellow Transparent. The fine flavor is similar to that of famous McIntosh Red.



RED SPY—A Favorite in New York and Michigan

OTHER AUTUMN APPLES

CORTLAND. A new variety resulting from cross pollenization of McIntosh Red and Ben Davis, and inheriting the good qualities of each parent. Beautiful red Apple, approximately the same size and fine flavor of the McIntosh, but ripens three weeks or a month later. Good keeper.

NORTHWESTERN GREENING. Large, round, greenish yellow; juicy, firm, good quality; splendid keeper, ships well. Attractive Apple when packed in bushels, demands good prices; excellent baking Apple. Should not be planted extensively, because crops are not so certain, due to blossoming early. Trees are extremely hardy, vigorous, and bear very young. Pollinize with Duchess

Harrisons' Fast Fruiting Strains



HYSLOP CRAB APPLE

Grown by
Harrison Brothers
Berlin, Maryland

CRAB APPLES

Priced on page 16
Double Purpose—An Ornamental
and Fruit Tree Combined

HYSLOP. Deep crimson, large size, sub-acid and of good quality. Fine for all kinds of preserving, canning, etc., and good to eat fresh. Tree handsome.

For Real Profit Plant Harrisons' Selected Strain Trees
Scientifically Propagated by America's Best Fruit Tree Growers

The Sensational New STANLEY PLUM

PRUNE TYPE

(European.) Mid-season-late. A comparatively new variety which has given consistently great results wherever planted. The fruit is of the Plum type, excellent for cooking or eating out of hand. Tree healthy, vigorous and produces full crops annually. The fruit is large in size, dark blue with most common flesh greenish yellow. Juice has good acidity, firm, sweet (pleasant) quality and is very good, stone free. This variety is becoming a valuable commercial variety.

ITALIAN PRUNE

(FELLENBERG)

(European.) Late. Moderately large fruit, purplish blue above and greenish yellow below, changing to yellow, juicy, firm, somewhat slightly aromatic, delicious flavor, green flesh. Good for drying, and when allowed to become fully ripe is excellent for eating. Tree unusually large, hardy, very productive, well formed and bears regularly. The world's best line Italian Shipping Prune. We have the genuine strain of Italian Prune, sometimes called Fellenberg, which is now America's leading commercial variety, but is being challenged by Stanley.

ABUNDANCE. Early, large; color pinkish red changing to darker red with thin bloom. Yellow flesh. Very juicy, sweet and tender, pleasantly aromatic. Hardy, very productive. Adaptable to a wide variety of soils and climates.

GRAND DUKE PRUNE. Late. Commercial variety. Purplish black, juicy, sweet, excellent for cooking.

METHLEY A recent introduction which is rapidly gaining popularity due to its fine quality and handsome appearance. The fruit is medium to large in size, reddish purple in color with red flesh. It is juicy, sweet and of distinctive flavor. The tree is vigorous and upright in growth habit. Does well on most types of soil and is a heavy annual bearer.

Plant Three or More Varieties of Plums for Pollination, Insuring Better Annual Crops



SANTA ROSA
PLUM
Exceptionally
High Quality

It's a
Winner
Everywhere



STANLEY PRUNE PLUM—Equally Good for Cooking or Eating
FOR JUMBO SIZE PLUM TREES, SEE PAGE 4

Tested Reasons—For Planting Stanley

- Large, juicy, sweet
- Exceptionally fine quality
- Healthy annual bearer
- For cooking or eating fresh
- Outstanding in commercial plantings

LOMBARD. Midseason. Medium size, showy purplish red fruit, excellent quality for canning, cooking, preserving or spicing. Prolific cropper.

RED JUNE. Early, medium size, garnet-red color, thin bloom, flesh light yellow, somewhat meaty, sweet, aromatic. Trees are healthy, hardy and productive. An early market Plum.

SANTA ROSA. Early. Fruit very large size, round, purplish red flesh reaches near skin, firm, juicy and has a pleasant tart flavor, of exceptionally high quality.

WICKSON. Midseason. Extra large size, color dark red, thin bloom, flesh amber-yellow, firm, sweet.

YELLOW EGG. Late. Large, golden yellow. Good for cooking. Largest and handsomest of yellow Plums.

TRUE-TO-NAME

The World's Foremost Fruit Variety Identification Specialists
Have Examined Harrison-Grown Trees and Pronounced Them True-to-Name

In addition to carefully selecting the propagators with true fruit strains, we have also employed the services of Dr. A. P. Fisher, Dr. O. C. Roberts and others, Fruit and Horticulture, Massachusetts State College, Amherst, Mass. These men are the world's foremost fruit identification specialists and have pronounced our trees true-to-name.

HARRISON-GROWN PLUM TREE PRICES

Propagated Direct From "Verified" Varieties of Super-Selected Strains
True-to-Name—Certified 100% Healthy

	1 to 9 Trees	10 to 49 Trees	50 or more Trees
BUDDED TREES:			
5 to 6 feet	\$2.20	\$1.80	\$1.30
4 to 5 feet	1.90	1.60	1.10
3 to 4 feet	1.70	1.40	.95
2 to 3 feet	1.45	1.20	.85

May be Assorted Varieties of Plum Trees.
For Jumbo Size Plum Trees, See Page 4.

Harrison Grown

BIG MACKY DAMSON

PLUM

Late. Largest and best Damson, being an improved strain of Shropshire Damson. Freestone. Deep purple, juicy, rich flavor; small stone. Fine for preserving. Easy to grow, produces immense crops. Should be planted in every orchard. Large size fruit makes ideal jams, preserves and jellies. An excellent variety for fresh fruit shipments to city markets, always demanding high prices.

SHROPSHIRE DAMSON. Late, medium size, dark purple. Very productive. The best for preserving. The popular old-fashioned Damson variety.

BURBANK. Early, about one week after Abundance. Large, Cherry-red with thin lilac bloom. Flesh amber-yellow with rich, sugary flavor; high quality and very productive. A product of Burbank, the master plant breeder. Should be in every orchard.

FORMOSA. A midseason variety of excellent and prolific bearing qualities. Large greenish yellow, overlaid with red. Alternate bearer. Heavy cropper.

MONARCH. Very large, bluish purple. Juicy, golden green flesh. Bears early and abundantly. Excellent for market.

SATSUMA. Midseason. Best flavored semi-freestone, blood-flesh Plum known. Large size. Flesh dark purplish red, juicy, sweet, possessing an alluring aroma. Originated by Luther Burbank.



BIG MACKY DAMSON PLUM



BURBANK PLUM
Rich Sugary Flavor

NECTARINES

Delicious for Eating

There is a mistaken idea that the Nectarine is a cross between the Peach and something else, while it is really nothing more or less than a smooth-skinned Peach. The melting, juicy texture of the Nectarine and its delicious flavor furnishes one of the most delightful fruits for eating during the summer. Plant a few trees in your home orchard this year.

HUNTER. Large, round, yellow, freestone.

SURE CROP. Very vigorous and productive. The fruits are large, roundish, white and overlaid with very attractive red. Very pleasing flavor.

PRICES ON NECTARINE TREES

Budded, True-to-Name,
Certified 100% Healthy Trees

	1 to 9 Trees	10 to 49 Trees	50 or more Trees
5 to 6 feet	\$2.20	\$1.80	\$1.30
4 to 5 feet	1.90	1.60	1.10
3 to 4 feet	1.70	1.40	.95
2 to 3 feet	1.45	1.20	.85

May be Assorted Varieties of Nectarine Trees.
For Jumbo Size Nectarine Trees, See page 4.



ALL-SEASON PLUM COLLECTION Offer No. 25

1 ABUNDANCE 1 WICKSON
1 BURBANK 1 STANLEY
1 BIG MACKY DAMSON

5 Sturdy Trees, 3 to 4 Ft., for Only \$6.90



SURE CROP
NECTARINE

Fancy BARTLETT PEARS

ALWAYS TOP

- 1—Superb Quality
- 2—Heavy Cropper
- 3—For Home or Commercial Grower
- 4—For Eating and Canning
- 5—Bear Early
- 6—A Harrison Brothers Specialty

BARTLETT

For home, for canning, for market, the best. Ripens during summer.

A golden colored Pear, with a red cheek on most specimens. Bartlett mellows and is excellent for eating very early in the fall, yet when picked a week before it is ripe, and properly stored, will keep till late. Flavor delicious and musky; flesh buttery, rich and juicy. One of the finest Pears that grows, to eat raw. A mingling of the flavor of Bartlett Pear and Quince gives about the finest taste of any food this world's folks have. Bartlett trees bear early, produce enormous crops, and are not nearly so subject to damage by insects and disease as some other sorts. The trees do especially well with high culture.

BARTLETT PEAR
So Full of Juice
You Can Eat
Them With
a Spoon

Fancy Bartletts Bring Highest Prices

Bartlett Pears always sell on the markets even when other sorts are not in great demand. The fruit is so handsome and appealing that it pays to pack it in fancy containers. Bushels or bushel boxes are best adapted. The fruit ought to be sorted and graded, wrapped in tissue paper, and arranged in the container practically the same way that you pack Apples. Pears are sometimes packed in Peach carriers, and sell to advantage. Plain fruit can be sold without wrapping, in small baskets or boxes.

One or two Bartlett Pear trees in the city yard will furnish a considerable amount of fruit; a half dozen will supply the family with fresh fruit and a surplus for preserving

An orchard of Bartlett Pears is a source of abundant income. The trees are sturdy, and bear heavy loads of delicious fruit which is easily sold.

Grown by
HARRISON BROTHERS
BERLIN, MARYLAND

OTHER FAMOUS PEAR VARIETIES

BEURRE BOSCH. Large size, fine quality, brings highest market price. Late.

BEURRE D'ANJOU. Large, green in color, somewhat yellow when ripe; buttery, melting, rich, vinous, good flavor. Tree vigorous, hardy, prolific bearer. Very late.

DOUGLAS. Very resistant to blight. A winter Pear of wonderful quality, golden yellow with a faint blush on the cheek. Bears early.

DUCHESS. Very large, dull greenish yellow. Tree somewhat dwarf but a dependable bearer. Late.

KOONCE. One of the earliest Pears, free from blight, does not rot at the core like many early Pears. Fruit is yellow, medium to large, delightful flavor. Very productive.

WORDEN SECKEL. A seedling of Seckel. Superior in size and color. Midseason.

Plant Three or More Varieties of Pears for Pollination, Insuring Better Annual Crops

Clapp's
Best Favorite
Early Pear



CLAPP'S FAVORITE PEAR

Large size, hardy and very productive. Thrives where other varieties fail. Very early.

A NATIONAL SCARCITY OF FRUIT TREES

There is a drastic shortage of fruit trees throughout the nurseries of the United States; as a matter of fact, the smallest supply available for 1948 orchard plantings that there has been at any time during the past fifty years. A recent national survey shows that fruit trees will even be more scarce during the next two years than now. Play safe—act quick—place your order now while trees are available.

Budded Pear Trees are Far Superior to Grafted Pear Trees

PRICES ON HARRISON-GROWN PEAR TREES

Budded on Blight-Resistant Roots—True-to-Name

BUD SELECTED—BIG YIELD HI-QUALITY STRAINS	1 to 9 Trees	10 to 49 Trees	50 or more Trees
4 to 5 feet	\$2.05	\$1.75	\$1.25
3 to 4 feet	1.85	1.55	1.10
2 to 3 feet	1.60	1.35	.95
1 to 2 feet	1.35	1.15	.80

May be Assorted Varieties of Pear Trees.
For Jumbo Size Pear Trees, See Page 4



Harrisons' Berlin, Maryland Grown Fruit Trees ARE HARDY IN ANY CLIMATE

Harrison Grown Pear Trees

Bear Bigger and Better Crops

The value of this fruit is being more and more appreciated by the people who really have become acquainted with it. On the leading markets during the past few years Pears have been bringing good prices. If growers would specialize in this fruit they would be well repaid for their efforts as high prices are always obtainable for choice Pears. This year we have a large supply of first-class trees in all the leading varieties; in fact, these trees are among the finest we ever grew. All our Pear trees are budded on whole root, blight-resistant seedlings.



SECKEL
The Sugar Pear

SECKEL

A beautiful and delicious little Pear. One of the richest and highest flavored Pears grown. Tree dwarf, bears prolific crops. Late.

ALL-SEASON PEAR COLLECTION
OFFER No. 27
1 CLAPP'S FAVORITE
1 BARTLETT
1 KIEFFER
1 BEURRE D'ANJOU
Sturdy Trees, 3 to 4 Feet.
4 for only \$5.95

KIEFFER

SURE CROPPER EASY TO GROW

Of all the Pears, Kieffer is the most easily grown. Trees are vigorous, exceptionally hardy and thrive on varied soils in any climate. Kieffer is the only Pear that can be successfully grown in such southern states as Alabama, Mississippi, Louisiana, etc., and yet it is the leading commercial Pear in Canada. Kieffer is blight-resistant, and can be successfully planted in large orchards.

This fruit is large to very large size; skin yellow, with light vermillion cheek; flesh yellowish white, very juicy. Noted for being a long-time keeper. Most popular canning Pear.

A Leading Commercial Variety. New method of storing enables Kieffer Pears to have as good flavor as other varieties.



KIEFFER
The Giant Pear

YOU TAKE NO CHANCES IN PLANTING HARRISONS' TREES

If fruit trees are continuously propagated from the nursery rows, because it is cheaper, fruit trees begin to degenerate, and when the original was a poor type, the nurseryman, without knowing it, continues to reproduce poor, undesirable, small type fruit. Incidentally, in case there was a mixture in the nursery rows, how could a nurseryman propagate true-to-name trees successfully? We are orchardists and nurserymen, and nothing can compare with our own scientific method of "bud selections"—it always gives complete satisfaction and spells profit for the fruit farm.

QUINCES

The Quince is of late attracting a great deal of attention as a market fruit. It is hardy and compact in growth and requires but little space. It is productive if handled properly and gives regular crops, coming into bearing in about two or three years and continues productive, if well managed, for forty years or more. The fruit is much sought after for canning, preserving and for jellies. It gives a delicious flavor to the Apple, cooking in any manner. They should be planted ten to sixteen feet apart on deep, rich soil.

ORANGE. Late, large, bright yellow, excellent flavor, productive, and rarely fails to produce a crop. Best canning variety. Popular Wayne County (New York) strain.

PRICES OF QUINCE TREES: 3 to 4 feet, \$2.50 each.



ORANGE
QUINCE

Harrisons' Trees Live Longer



The Great CHERRY

MONTMORENCY Selected Strain

The most popular sour Cherry grown in America. It ripens mid-season, is large, red, slightly acid, flesh very tender, good quality. The best shopper of all sour Cherries, always commands the highest market prices in city markets or commercial enterprises. When preserved at home or commercially, it is always attractive in appearance and of extra good quality.

Montmorency trees are strong, disease-resistant, very hardy, generally starting to bear fruit in two years.

The superior strain which Harrison's grow is a bud-selected strain from Montmorency (Ordinaire). There are several different types and strain of Montmorency which is often confusing to the public. We have experimented over a long period of years and have selected the best type and strain. You can depend on our superior strain of Montmorency, which is a real money-maker for the commercial orchardist.

EARLY RICHMOND. Exceedingly hardy and productive.

ENGLISH MORELLO. Large, blackish red Cherry. Hardy and productive. Very late.

PRICES ON SOUR CHERRY TREES

True-to-Name, Certified 100% Healthy, Budded Trees	Trees 1-9	Trees 10-49	Trees 50 or more
4-6 ft., 11/16- 7/8 in. cal.	\$2.25	\$1.85	\$1.30
4-5 ft., 9/16-11/16 in. cal.	1.95	1.65	1.10
3-4 ft., 7/16- 9/16 in. cal.	1.75	1.45	1.00
2-3 ft., 5/16- 7/16 in. cal.	1.50	1.25	.90

May be Assorted Varieties of Sour Cherry Trees. For Jumbo Cherry Trees, see page 4.

MONTMORENCY SOUR CHERRIES

You're Sure of the Highest Quality When You Plant Harrison-Grown Sour Cherry Trees

Grown by Harrison Brothers Berlin, Maryland

HANSEN'S IMPROVED Bush Cherry

An ornamental shrub producing delicious fruit. Very easy to grow, highly productive and hardy. The fruit is large, black and sweet, wonderful to eat right from the bush. Introduced by Dr. Hansen of the South Dakota Experimental Station. Leaves are silvery green, turning to red in autumn. Attractive white blossoms add to landscape effect. 3-Year Bushes, Bearing Size, \$1.50 each; 10 for \$13.00.



Branch of Hansen's Bush Cherry

SPECIAL CHERRY-APRICOT COLLECTION Offer No. 28

1 HANSEN'S BUSH CHERRY
 1 MONTMORENCY CHERRY
 1 BLACK TARTARIAN CHERRY
 1 EARLY GOLDEN APRICOT

4 Strong, Sturdy, 3- to 4-Ft. **\$5.90**
 Trees, for Only



Hansen's Bush Cherry—Beautiful in Spring Flower

Harrisons' Luscious SWEET CHERRIES

What fruit is more pleasing than the Sweet Cherry? The ideal fruit to plant in the back yard. We have a limited supply of first-class trees in the following varieties:

- BING.** Very large, dark brown, flesh firm, sweet. Midseason.
- BLACK TARTARIAN.** Very large, sweet, purplish black color, juicy, rich flavor, heavy bearer and most profitable sweet variety grown. Early.
- GOLDEN WAX.** Large, yellow, fine flavor. Bears bumper crops. Easily grown. Midseason.
- GOVERNOR WOOD.** Large, light yellow, marked with red; sweet flavor.
- NAPOLEON (Royal Ann).** Large, pale yellow, bright red cheek; sweet; excellent flavor; prolific bearer. Midseason.
- SCHMIDT (Schmidt's Bigarreau).** Large, sweet, deep black, tender, fine flavor. Midseason.
- WINDSOR.** Large, sweet, almost black, fine quality. Valuable late variety.
- YELLOW SPANISH.** Large, sweet, yellow with red tinge. One of the most beautiful and popular of the light colored Cherries. Heavy bearer. Midseason.

PRICES ON SWEET CHERRY TREES

True-to-Name Budded Trees:	Certified 100% Healthy	1 to 9 Trees	10 to 49 Trees	50 or more Trees
4 to 5 feet	\$2.35	\$1.95	\$1.60
3 to 4 feet	1.95	1.65	1.35
2 to 3 feet	1.60	1.35	1.10

May be Assorted Varieties of Sweet Cherry Trees.
For Jumbo Sweet Cherry Trees, See Page 4.



BLACK TARTARIAN SWEET CHERRIES—Juicy, Rich Flavored

Plant Three or More Varieties of Sweet Cherries for Pollinization, Insuring Better Annual Crops



NAPOLEON (Royal Ann)

Sweet Cherry

Extra Good Fruits for the Home Garden

APRICOTS

The Apricot is one of the most delightful luscious fruits grown, when eaten fully ripe and fresh from the tree. It is remarkable that such a rich and beautiful, golden, sweet fruit is not planted more, especially since it ripens just after the early Cherries and before the best early Peaches.

- ALEXANDER.** Early, prolific, freestone, orange, with red blush; very juicy and sweet flavor. A large, prolific sort that will withstand adverse weather conditions. This variety deserves greater popularity. The best.
- EARLY GOLDEN.** Pale orange, juicy and sweet. Is a hardy, prolific bearer; ripens first of July.
- SUPERB.** Very good quality. Fruit is beautiful, light salmon colored, best of the older varieties. Tree is large, very thrifty, hardy and is extremely productive in fruit.
- MOORPARK.** Midseason. Large, freestone; flesh yellow, sweet, juicy. Good for canning or drying. Dwarf type, medium size tree.

APRICOTS CAN BE GROWN ANYWHERE PEACHES SUCCEED

PRICES ON APRICOT TREES

Budded, True-to-Name Certified 100% Healthy Trees	1 to 9 Trees	10 to 49 Trees	50 or more Trees
4 to 5 feet	\$2.05	\$1.75
3 to 4 feet	1.85	1.55
2 to 3 feet	1.60	1.35
1 to 2 feet	1.35	1.15

May be Assorted Varieties of Apricot Trees.
For Jumbo Size Apricot Trees, See Page 4.



ALEXANDER APRICOTS—Illustration Two-Thirds Actual Size

Grow Finer Flavored Berries

With Harrison's ² Select Certified Raspberry Plants

LATHAM

WORLD'S LEADING RASPBERRY

The immediate yields of this variety have attracted the attention of growers everywhere, and all those who have given it a trial are praising the many unusual features they have found in Latham. After personally testing Latham we find it a remarkable variety in every respect; you will be both delighted and surprised after giving it a trial.

Large Berries— Tremendously Productive

Latham is a tall, vigorous grower, the canes are extra heavy, well able to support the load of fruit. The foliage is healthy, dark green, tough and leathery, highly resistant to insects. Latham ripens with Cuthbert, covers a longer fruiting season. The berries are beauties and will cause a sensation wherever they are shown. Many are over an inch in diameter and they hold this size to the end of the season. Color dark, rich red

A Blue Ribbon Winner for the Home and Commercial Grower. It simply cannot be equalled.



LATHAM—The Big Red Raspberry

PRICES OF RED RASPBERRIES—ALL VARIETIES

Selected Plants, 1-Year, No. 1 Grade					
6 Plants	12 Plants	25 Plants	50 Plants	100 Plants	250 Plants
\$1.90	\$2.80	\$4.40	\$7.60	\$13.20	\$28.50

Harrison's "SELECTED STRAIN" Raspberry Plants. Triple Inspected, Disease Free. Preferred by Growers in Every State in the Union.

For Jumbo Size RASPBERRIES See page 5.

CUMBERLAND



The Most Popular Black Raspberry

CUMBERLAND

Mid-season to late. This is the most popular Blackcap of the present time, because of its great size, firmness, and productiveness. The fruit is the largest of the Raspberry family, and is of such handsome appearance that it is sure to bring the top prices on the market.

A BIG CROP EVERY YEAR

Cumberland has never been known to fail to produce a big crop every year. This variety is perfectly hardy and tremendously productive, the bushes are vigorous, upright and healthy. Berries are glossy black in color, not equalled by any other variety in quality, flavor and appearance. It's good to eat and good to sell.

PLANT ONLY DISEASE-FREE PLANTS

A good patch of Black Raspberries yields big profits, but in order to get profitable yields it is absolutely necessary to set only vigorous, disease-free plants. Harrison's selected-certified Black Raspberries are the best plants to be had. Under ordinary conditions they will yield from 1500 to 3000 quarts per acre, whereas weak or run-down diseased plantings only yield around 400 to 800 quarts per acre. The best plants are cheapest in the long run.

NEW LOGAN. A new Black Raspberry variety; probably its two most noteworthy characteristics are that it ripens about a week earlier and is more resistant to the virus diseases. A very productive variety and fruit of good size and quality. If an early berry is desired, it is one of the best. It does not crumble.

PRICES OF BLACK RASPBERRIES—SELECTED PLANTS

All Varieties, 1-Year, No. 1 Tips					
6 Plants	12 Plants	25 Plants	50 Plants	100 Plants	250 Plants
\$1.80	\$2.60	\$4.10	\$7.10	\$12.35	\$26.80

INCREASE YOUR PROFITS WITH



New the Sensational Boysenberry

**HARRISON
BROTHERS**
BERLIN,
MARYLAND

The New Mammoth Berry That Will Revolutionize The Berry-Growing Industry

Two Inches in Length

The new Boysenberry is truly a glorified Youngberry. We offer it again this year because of the tremendous large size of the berries; because of its very prolific fruiting; and lastly, because we think that it has the highest qualities of all bramble fruits.

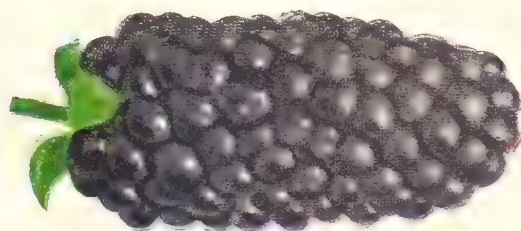
They are just as easy to grow as Blackberries. They produce a larger crop, not because there are more berries, but because each berry is so much larger. Has a rich, tangy flavor all its own.

No. 1 plants: 3 for \$1.35; 6 for \$2.40; 12 for \$3.50; 25 for \$5.50; 50 for \$9.50; 100 for \$16.50; 250 for \$35.00.

LUCRETIA DEWBERRY

Long, mammoth black berries, recognized as the leading variety. Incomparably better in every way than any Blackberry you have ever seen or tasted. Lucretia is a very early bearer, ripening from a week to ten days before even the earliest Blackberries. Big, uniform size makes them top-notchers in price on any market. For real profits and for home and commercial growing, Lucretia is the only variety of importance.

No. 1 Plants: 6 for \$1.20; 12 for \$1.75; 25 for \$2.75; 50 for \$4.75; 100 for \$8.25; 250 for \$17.80.



LUCRETIA DEWBERRY

CURRENTS

NEW RED LAKE. Biggest, sweetest, finest improved Red Currant on the market. Large bunches, produced in profusion. Extra hardy.

WILDER. One of the strongest growers and most productive. Bunch and berry large, bright, attractive red color.

Large, 1-yr. bushes, \$1.00 each; 3 for \$2.85; 6 for \$5.40; 10 for \$8.00.



NEW RED LAKE CURRANT

ELDORADO Blackberry

*A Heavy Yielding Blackberry
that Spells Success Everywhere*

For Home or Commercial Planting. It is valuable for all purposes, both home and commercial, being so firm that it will remain in good condition for three and four days, and can be sent to distant markets where it always commands the highest price. This variety is making big money for other growers and it will do the same for you.

PRICES OF BLACKBERRIES: Selected plants, 1-yr., No. 1 grade, 6 for \$1.70; 12 for \$2.45; 25 for \$3.85; 50 for \$6.65; 100 for \$11.55; 250 for \$25.00.

GOOSEBERRIES

RED JACKET. Big, roundish oblong berries with a mild sweet flavor. Delicious for fancy desserts, salads, preserves, pies, etc. Bushes lovely as shrubs. Small, yellow bloom.

DOWNING (Green). Large greenish yellow variety favored for shipping and canning. Highly flavored.

Large, 1-yr. bushes, \$1.00 each; 3 for \$2.85; 6 for \$5.40; 10 for \$8.00.

HARRISON BROTHERS
NURSERIES
BERLIN, MARYLAND



DOWNING
GOOSEBERRY



ELDORADO BLACKBERRY

BOYSENBERRIES—A Real Treat, Easy to Grow

NEW GIANT Cultivated Blueberries

- Profitable to Grow
- Delicious Berries
- Very Ornamental

Once Planted Lasts a Lifetime

Blueberries are not only the largest money makers of all berry plantings, but are also one of the easiest fruits to grow. The berries bring up to 75¢ per quart—\$400.00 per acre in the third year. They are exceptionally mild, sweet and delicious and bring highest prices in the market. The demand for Blueberries is practically unlimited. A planting lasts a lifetime with proper care and the plants will pay for themselves their first crop. A few bushes planted in the shrub border and in the garden will be sufficient to supply you with berries for years.



BLUEBERRIES—Ornamental as Well as Fruitful
Jumbo Size—Bear First Year Planted

Blueberries—Easy to Grow

Set the bushes 5 by 7 feet apart in moist, acid soil. If your soil is sweet, it may be made acid by mixing with it a little quantity of acid peat, rotted leaves and pine needles, or similar material. Fruit ripens over a period of several weeks. Plant two or more varieties so as to insure proper pollenization.

Very Ornamental

As an ornamental shrub the Blueberry cannot be surpassed. Full of lovely pink blooms, which open to bell-shaped, white flowers in June. Plants are compact, low growing, having waxy green leaves which turn red during the fall. Twigs are reddish brown and very showy during the winter.

SPECIAL JUMBO SIZE BLUEBERRY PLANTS

Have already fruited in the nursery. Ready to bear big crops of delicious berries on your own grounds and are as easily grown as a shrub or rose bush. You can pick delicious berries the first season planted, and each year they will produce a larger crop with very little attention. We only have a few hundred of these Jumbo sized plants to offer. Can supply in the following varieties only: Cabot, Rancocas, Concord, Rubel and Jersey.

Prices: Jumbo size, 4-year-old, 2 to 3 ft., \$4.25 each; 3 for \$12.00; 10 for \$37.50.

1948 PRICES OF ALL BLUEBERRIES

	Each	1948 PRICES OF ALL BLUEBERRIES			
		3 to 9 Plants	10 to 29 Plants	30 to 99 Plants	100 or More Plants
2-yr., 4 to 12 in.	\$1.40	\$1.15	\$1.00	\$0.85	\$0.75
2-yr., 12 to 18 in.	1.85	1.55	1.35	1.15	1.00
3-yr., 18 to 24 in.	2.75	2.35	2.00	1.75	1.50

LEADING BLUEBERRIES Listed in Order of Ripening

CABOT. Plants will be exactly three feet in height and make a broad, low bush. The color of the new growth in winter is a light red over olive. The large berries have a delicious, luscious flavor.

RANCOCAS. The form of berries is perfect, upright habit rarely surpasses five feet in height. The winter twigs are a dark red. The berries are somewhat larger than those of Rubel and begin to reach several days earlier.

CONCORD. The color of the young growth in winter is bright red. The berries are large, productive, ripen in three-quarters of an inch in diameter. They usually ripen a few days earlier than Rubel and are fine in flavor and appearance.

RUBEL. A superbly productive variety. Well developed bushes stand six feet high and the winter color of the young wood is a rich red. The large berries of fine color are usually ready to pick the first week in July. Best commercial variety.

JERSEY. The bush is of vigorous habit and grows very large. The winter color of the young growth is a light red over aspen brown. The berries are the largest of any here listed, light blue and ripen about the same time as Rubel.

Grown by
Harrison Brothers,
Berlin, Maryland



Grow Your Own
DELICIOUS! NUTRITIOUS

ASPARAGUS *It's Easy with*

Harrisons' "Big Yield Strain"

MARY WASHINGTON

Highly Profitable and Easily Grown

Being the first vegetable to come in the spring it always brings a high price on the markets. Stalks being delicious and very healthful, every garden should have a generous supply and when properly set and cared for will last a lifetime.

The Famous True-to-Name Mary Washington

Plant This Pedigreed Strain

There is no variety of Asparagus as good as Mary Washington and whether you are growing for home use only or for market you cannot afford to grow any other. This wonderful new Asparagus was developed and introduced by the U. S. Department of Agriculture and although it is just a recent introduction it has become famous the country over.

Rust-Resistant—Profitable

Growers everywhere are discarding all other varieties in favor of the famous Mary Washington, because it is earlier, the stalks are larger, more tender and more productive than any other variety and more highly immune to rust, which means that one planting will produce profitable crops for many years.

Large—Early—Tender—Juicy

Asparagus buyers now demand Mary Washington and are willing to pay fancy prices to get it. The demand for Mary Washington is tremendous because when it is once eaten, no other variety will give satisfaction. The stalks are purplish green color, large, tender and juicy. A very rapid grower, which means many cuttings.

Prices of Genuine Pedigreed Mary Washington Asparagus Roots

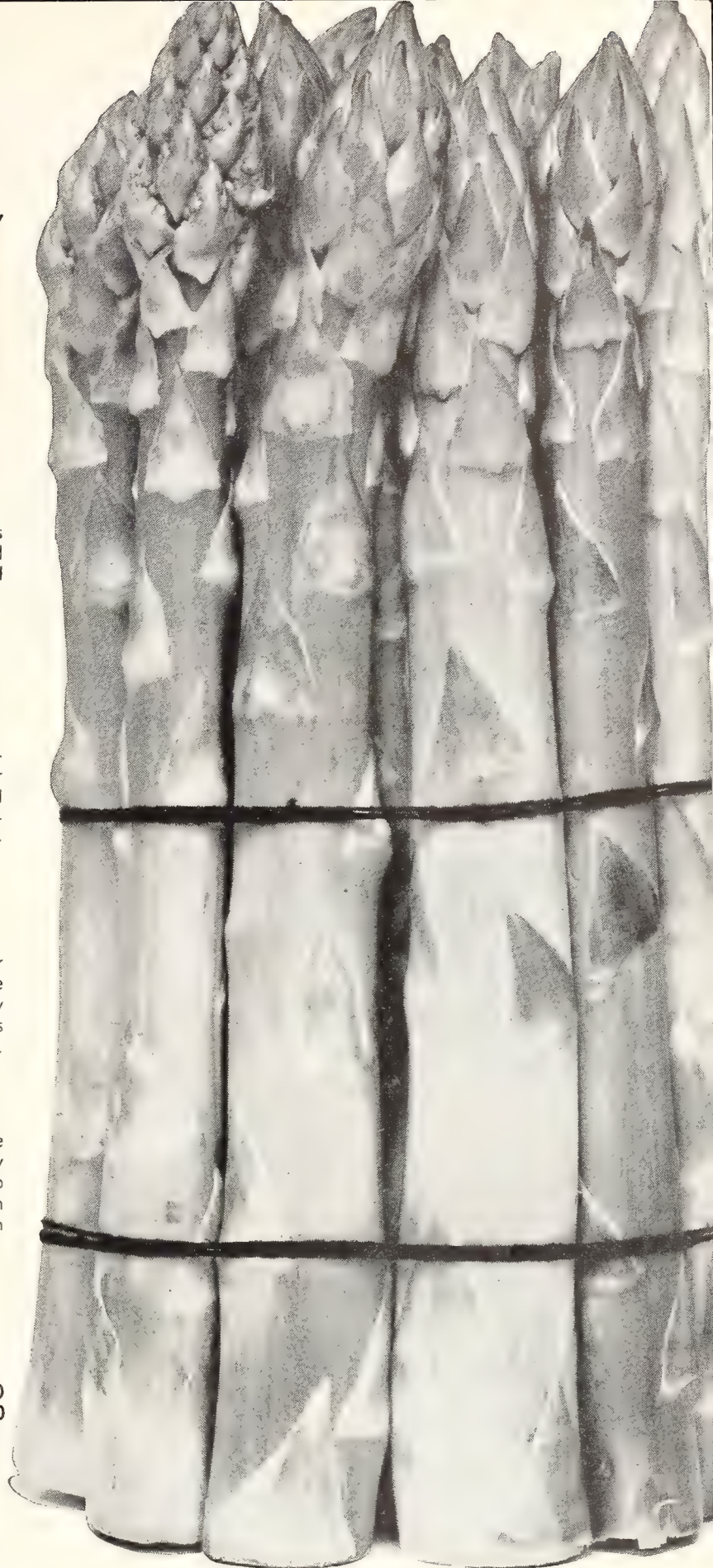
	25 Roots	50 Roots	100 Roots	250 Roots	500 Roots	750 Roots	1000 Roots
2-Yr. No. 1	\$2.35	\$3.75	\$6.00	\$12.00	\$18.75	\$24.75	\$30.00
1-Yr. No. 1	1.50	2.50	4.00	8.00	12.50	16.50	20.00

New Gigantic Red MacDonald Rhubarb

If you want something different, something delicious in garden fruits, then plant some of this grand new MacDonald Rhubarb.

Stalks are of giant size on mature plants, and a rich rosy red in color. This beautiful color carries through the stalk. Sauce made from it has the red color of a dish of Strawberries. Flavor is mild and pleasing. This new Rhubarb does **not** send up seed stalks and never becomes tough or stringy. Just cut in small chunks and cook. Do **not** remove the tender skin; it cooks right up with the stalk.

Heavy plants: \$1.00 each; 6 for \$5.40.



SAVE A YEAR! PLANT JUMBO THREE-YEAR

Mary Washington Asparagus Roots

Yes, you can grow your own delicious tender Asparagus quick by planting our jumbo size roots. These roots are the cream of our three-year-old crop and have already borne large, early, tender, juicy Asparagus in the nursery. This is the selected pedigreed Mary Washington strain and is far superior to other kinds.

PRICES FOR JUMBO ASPARAGUS			
25 for	\$ 3.75	250 for	\$20.00
50 for	6.25	500 for	31.25
100 for	10.00	750 for	\$41.25
		1000 for	50.00

Plant Nut Trees



For Edible Foods and Landscaping

CHINESE CHESTNUTS

Now You Can Grow Chestnuts!
Blight-Resistant Chestnut Trees

Only two years from this fall, right in your own grounds, you can pick big, fat, tasty Chestnuts from the trees you plant this year! Remember gathering Chestnuts in the good old days—haven't you felt sorry for your children because they couldn't? The devastating blight that stripped our forests of the native Chestnut was an American tragedy! Now these hardy, blight-resistant Chestnut trees will bring them back. More than that, you need not wait 15 to 20 years for nuts—they'll bear year after year!

Plant in abundance Harrison's strain of Chinese Chestnut Trees

PRICES: 2 to 3 ft., \$4.00 each.



CHINESE CHESTNUTS



AMERICAN FILBERTS

AMERICAN FILBERT (Hazel Nut)

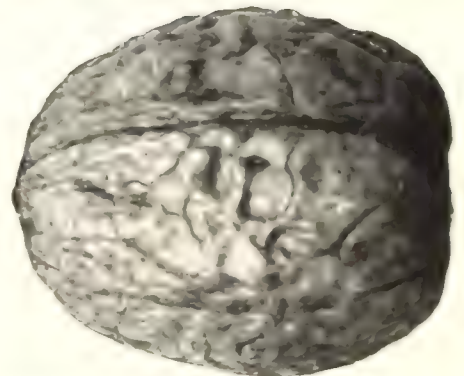
Old family favorite. Small, attractive bush, yielding abundant crops of tasty, round nuts. Bears very young.

PRICES: 2 to 3 ft., \$4.00 each.

ENGLISH WALNUT (Juglans Regia)

Thin shelled, large, delicious nuts, producing heavy crops and demanding good prices. The most popular Walnut grown.

PRICES: 2 to 3 ft., \$4.00 each.



ENGLISH WALNUT

Plant Paper Shell PECAN TREES for Shade and Nuts

PAPER SHELL PECAN

Medium to large nuts; oblong thin shell; rich flavor. Good grower. The best type Pecan grown. 2 to 3 ft., \$3.00 each. 3 to 4 ft., \$4.00 each. 4 to 5 ft., \$5.00 each.

BLACK WALNUT (Juglans nigra)

Rapid grower, spreading branches, large delicious nuts, prolific bearer 2 to 3 ft., \$2.00 each.



PECANS—Abundant Nuts in Winter

BROWN TURKEY FIG

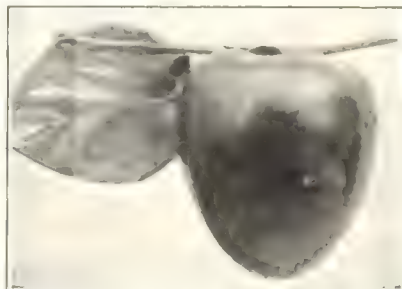


The Southerner's Favorite

FIGS

To Tempt the Appetite

BROWN TURKEY. Medium to large size; copper-brown skin, flesh white. Not hardy North. 2 to 3 feet, \$1.75 each; 10 for \$15.00



Harrison Brothers, Berlin, Maryland

PECAN



← AMERICAN PERSIMMON

Small trees highly ornamental and producing an abundance of pleasingly astringent, spicy fruits, highly prized when gathered after the frosts. 2 to 3 feet, \$3.00 each.

Nut Trees are a Lifetime Investment - Buy the Best

HARRISONS' BIG YIELD STRAWBERRY PLANTS

Increase Your Profits at No Extra Cost With Harrisons' "BIG YIELD" Strain Plants



Field Fresh Strawberry Plants

Dependable - Hardy - True-to-Name

Harrisons' Selected Strain "Big Yield" Strawberry Plants Are Better

- 1—Sixty-four years experience in growing, propagating and handling Strawberries.
- 2—Every plant propagated by Harrison is the offspring of a selected plant that is outstanding in vigor and productivity.
- 3—Absolutely free from diseases and insects.
- 4—Grown on specially nurtured high ground soil.
- 5—Our method of digging enables us to get all the roots.
- 6—Clean, graded and packed in modern packing house.
- 7—Absolutely true to name.
- 8—Prompt service.
- 9—Better plants for less money.

It Pays to Plant Our Selected "Big Yield" Strains

Ordinary Plants
Produce
*2500 Quarts
Per Acre

(*Based on Government reports)

Harrisons' Selected Big Yield Plants
Produce
*5,000 to 10,000
Quarts Per Acre

(*Based on reports from growers using our plants)

Yes! A Living in Strawberries

Today there are big opportunities for making money in growing Strawberries. Some of our customers, with little effort, make a nice living from one or two acres planted in our Selected Strain berries—it's the way to financial independence for a lot of folks.

BECAUSE WE GROW MORE PLANTS UNDER MODERN PRODUCTION METHODS, WE CAN SELL THEM FOR LESS MONEY.

WE GUARANTEE SAFE ARRIVAL NO MATTER WHERE YOU LIVE

Extra precaution is taken at digging time to keep all the roots in field-fresh condition from the time they are lifted from the ground, until they are ready to be packed. Enough experienced labor enables us to freshly dig, grade, and ship your plants at the time you desire.

All plants are securely packed in damp moisture-retaining material, and we guarantee our plants to reach you in good growing condition, no matter where you live.

NEW STRAWBERRY COLLECTION Offer No. 35

- 25 New Streamliner. Everbearing.
 - 25 New Temple. Outstanding.
 - 25 New Red Star. Outstanding.
 - 25 New Evermore. Everbearing.
- TOTAL 100 PLANTS**

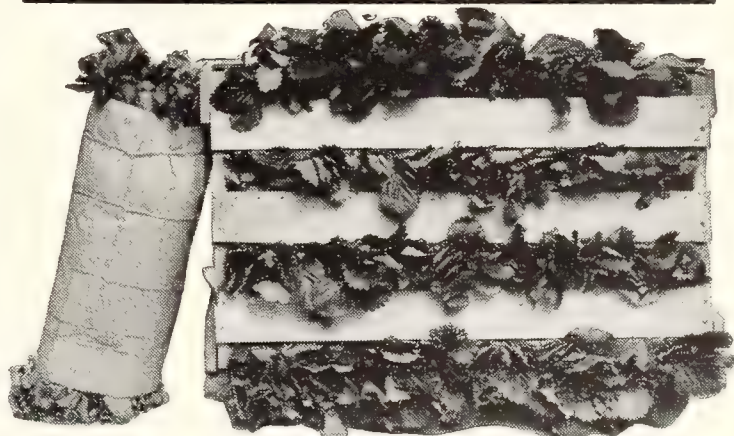
Catalog Price If Bought Separately, \$7.05.

SPECIAL OFFER PRICE \$4.95

Long, Fibrous Roots

With proper soil conditions in the development of a long, fibrous, heavy root system, our customers may be assured of the kind of plants that will be readily established in a new location. It's the Harrisons' Super-Selected strains that bring you bumper crops.

Triple Inspected—By U. S. Government and State of Maryland inspectors; also by Harrisons' expert Strawberry plantmen. All Strawberry plants are guaranteed to be free from all diseases and insects.



Our Big Yield Plants Packed Ready for Shipment to Our Customers All Over the Country



WE GROW THE STRAWBERRY PLANTS WE SELL—HARRISONS' BIG YIELD STRAIN WILL YIELD YOU GREATER PROFITS

Strawberry Plant Shipping Season, November 1st Until May 15th, Parcel Post and Express

Harrison Brothers, Berlin, Maryland

Pick World's Finest Strawberries From Your Own Plants



Harrisons' Everbearing MASTODON

A TRIPLE YIELD

- 1—Plant this spring, 1948.
- 2—Pick first crop, July to frost, 1948.
- 3—Pick second crop, June, 1949.
- 4—Pick third crop, August to frost, 1949.

3 REAL CROPS — 3 BIG PROFITS

Bears in 90 Days, and, too, it's the Best Family Garden Strawberry—Loads of Big Berries in 90 Days

Unlike the other varieties, Mastodon begins to bear luscious berries 3 months after planting and bears three big crops in 18 months. Customers have reported yields as high as three quarts per plant the first fall.

WHY WAIT A WHOLE YEAR?

Plant Harrisons' "Big Yield" Mastodon this spring, and grow your own berries this summer and fall, instead of buying them. If you have more than you can use, they are easily disposed of in the nearby community, where they will bring top prices.

HARRISONS' BIG YIELD STRAWBERRY PLANTS

	25	50	100	250	500	750	1000
EARLY:	Plants	Plants	Plants	Plants	Plants	Plants	Plants
Blakemore	\$0.90	\$1.50	\$2.40	\$4.80	\$7.50	\$9.90	\$12.00
Dorsett	1.00	1.70	2.70	5.40	8.45	11.15	13.50
Fairfax	1.05	1.75	2.80	5.60	8.75	11.55	14.00
Premier	1.05	1.75	2.80	5.60	8.75	11.55	14.00
MIDSEASON:							
Big Joe	1.00	1.70	2.70	5.40	8.45	11.15	13.50
Catskill	1.05	1.75	2.80	5.60	8.75	11.55	14.00
Midland	1.15	1.90	3.00	6.00	9.40	12.40	15.00
Temple	1.00	1.70	2.70	5.40	8.45	11.15	13.50
LATE:							
Chesapeake	1.15	1.90	3.00	6.00	9.40	12.40	15.00
Red Star	1.15	1.90	3.00	6.00	9.40	12.40	15.00
EVERBEARING:							
Mastodon	1.90	3.15	5.00	10.00	15.65	20.65	25.00
Gem	1.90	3.15	5.00	10.00	15.65	20.65	25.00
Evermore	2.25	3.75	6.00	12.00	18.75	24.75	30.00
Streamliner	2.65	4.40	7.00	14.00	21.90	28.90	35.00

STRAWBERRY PLANT SHIPPING SEASON: November 1st to May 15th.
PRICES: F.O.B. Berlin, Maryland.

Harrison Strawberry Plants Are Bred Up for Bigger Yields and Tell the Story at Harvest Time.

A Big Profit From Your Own Back Yard

Everybody prefers the flavor of vine-ripened Strawberries. They are more delicious and sweeter than any other berries. Customers pay premium prices for berries from Strawberries and everbearers raised and marketed by Harrison Brothers.

Whether you have a small garden or several acres, you can make a big extra profit annually by planting Harrisons' "Big Yield" Strawberries. Others are sorry to say that you. It costs only a few dollars to get started.

MIDLAND. New early ripening variety in the Premier family. Vigorous grower, prolific bearer with large to very large berries of excellent quality. Fruit of uniform shape. Strong 1800 slugger berry combination. Berry of near unprecedented firmness. Fruit is firm variety for the market as well as for home use. U.S. Pat. 2,175,000. Originated by the United States Department of Agriculture, Beltsville, Maryland.

The New TEMPLE HARRISON BROTHERS, BERLIN, MARYLAND

Bred for heavy yields and resistance to disease. Named after Prof. C. E. Temple of the University of Maryland, whose efforts started the work of cross-breeding Strawberries for disease resistance. Temple is not only a heavy yielder of fine looking berries but they are of the highest quality and are suitable either for home or commercial production. One of the easier varieties to grow as it thrives on soil that is not too rich.

EVERMORE (Minnesota 1166) New Everbearer

BEARS IN 90 DAYS

No long waiting for delicious Strawberries. Evermore is a rugged everbearer, originated in the North. It can stand cold winters, dry summers and light soils.

Big, dark-red-all-the-way-through berries, sweet and not too acid. You will like them. A new variety—heavy producer of good berries.

Gem Everbearing

Gem will start to bear the first season planted and will bear large crops until frost. These berries bring the highest prices in the markets or on a roadside stand. There is a great opportunity for making money by planting Gem. Get your patch started this season; they will give you enough berries for your own family and some to sell to your neighbors or ship to the city markets.

BEARS 100 DAYS AFTER PLANTING



Evermore Everbearing

EVERY HOME GARDEN SHOULD HAVE EVERBEARING STRAWBERRIES

Strawberry Plants Are Scarce—Buy Now

Triple Inspected—By U. S. Government and State of Maryland Inspectors; also by Harrisons' expert Strawberry plantmen. All Strawberry plants are guaranteed to be free from all diseases and insects.



A Field of Harrisons' Selected Strawberry Plants

Four Undisputed Strawberry Leaders



PREMIER King of the Early Berries

Too well known to need much description. The standard early berry by which all other varieties are judged. Holds all records for big crops and big profits. Premier has filled more crates, made more dollars, and brought joy to more Strawberry growers than any other variety ever grown.

Adapted to All Soils—Heavy Yields. It thrives on most any type of soil and is a rampant plant maker. Premier fruits extra early when berries are selling at a high price. It is a big yielder of big, bright red berries of fine flavor. For home gardens, local markets, or for shipping moderate distances it has out-classed all the other varieties.

FAIRFAX, Early

The Sugar-Saving Berry

Color is a deep, full red; its rich, sweet flavor brings buyers back for more. Fairfax berries are exceptionally firm, making it an ideal shipper. Superior to all for home use, equal to any for commercial planting.

CHESAPEAKE The Favorite Late Berry

It is a good producer of very large berries that hold their shape well until the end of the season. It does not yield as many berries per acre as some of the early varieties, but the size and quality of its fruit enables it to sell for a much better price which offsets this disadvantage. The berries are firm enough to ship to distant markets and to arrive in first class condition. An exceedingly valuable commercial berry but equally adapted for home planting. We offer a selected "Big Yield" strain.

BLAKEMORE

No Strawberry has become so popular so quickly as Blakemore. It is the most popular variety in all America. Ripens several days before Premier and is equally dependable, producing big crops every year. The plant is healthy and stands up well during drought. The berries are large, firm, an attractive red and good quality. Fine for canning and preserving because it holds its color and shape so well.

DORSETT, Early

Large Fruit—Vigorous Grower—Heavy Crops

Dorsett berries average large size, considerably larger than the Premier; in fact, their size is comparative with Chesapeake, which is the outstanding late berry. Plant growth is exceedingly vigorous, being far more vigorous than most other varieties. Dorsett yields large crops of fancy, light red berries.

STRAWBERRY GARDEN OFFER No. 21

25 BIG JOE 25 PREMIER
25 FAIRFAX 25 CHESAPEAKE
ALL FOR \$3.75

BIG JOE The Old Reliable Mid-Season Variety

LARGE YIELD—FANCY FRUIT—FINE FLAVOR

Big Joe is a heavy producer of large, brilliant red berries of extra fine flavor and is firm enough to withstand long shipments. The plants are good growers and heavy yielders. This variety succeeds on all types of soil but does extra well with good care and fertility. Be sure to include Big Joe in your planting this spring. Our big yield strain insures big crops.

CATSKILL Mid-Season

A mid-season berry that will produce the largest crops of bigger berries of any mid-season variety. Catskill is entirely satisfactory as to firmness, quality, color and attractiveness, season of ripening and climatic adaptation. The highest record of marketable berries was made with this variety. In shipping respects it ranks with Chesapeake and Lupton. It is rated equally as attractive as Fairfax or Dorsett. The berries are borne on rather long fruiting stems which makes it easier to get at in picking.

RED STAR HERE'S A NEW ONE Extra Good—Very Late

This is the other new one by the U.S.D.A., and a cross between the Chesapeake and Fairfax. This is the late one. Berries are large, and are borne on short, stout stems that stay well under the leaves, thus protecting them from late frosts. Makes a good fruiting row, and plenty of money can be made from growing this one, as late berries always bring a high price.

Extra!

STREAMLINER



The Greatest Everbearing Strawberry

SWEET AS HONEY — EXTRA LARGE
EXCELLENT FOR EATING FRESH OR FREEZING
MAKES HEAVY FRUITING BED

• Berries in 90 days or less. No need to wait several months. Plants planted in March or April will commence bearing in early July and bear until frost.

• Three Big Crops From One Planting. Streamliner needs no nursing along as some everbearers do. They are thrifty growers, and do not require exacting soil requirements. Pick your first crop this summer and fall, second crop next June, third crop the following summer and fall.

• It costs less to grow your own berries if you plant Streamliner. Easy to grow, just space them 12 to 15 inches apart in the row with the rows 2½ to 3½ feet apart.

• Profitable to raise. Grow all the berries you need for your own use and sell the rest to your neighbors.



HEDGES *Beautiful living fences*

PLANT NOW!
1948



**California Privet is the
Leading Low Cost Hedge Plant**

CALIFORNIA PRIVET

Ligustrum Ovalifolium)

This is the universal hedge in the East, a fact proving that Privet has greater merit under ordinary conditions for this purpose than any other plant. For live fences at village, town and country homes it is the very best of all materials. On public grounds of all kinds, parks and cemeteries, along roads and paths, on factory grounds, and on newly subdivided areas near towns, nothing else can be used in its place, and in this place it is indispensable. It is the best of all hardy hedge plants. Can be easily kept at any height desired; has glossy, deep green leaves, and holds them until late fall. Its strong, quick, upright growth makes it useful for screening out unsightly objects.

HOW TO PLANT

California Privet grows faster than any other hedge plant. For a thick hedge close to the ground the plants must be set close together, about 6 to 12 inches apart. Plow or dig a trench about 1 foot deep and 1½ to 2 feet wide. The plants should be planted deep enough so that the soil covers the first three inches of the lowest branches. Fill around the plants with top soil and firm the soil. Water thoroughly after planting. Cut plants back to about 4 inches from the ground after planting; this will result in a dense hedge at the bottom of the plants. After hedge reaches desired height it can be kept trimmed so as to remain at that height.

SPIRAEA VAN HOUTTEI

This grand shrub has done more to beautify the homes of America than any other variety. It is valuable as a specimen in groups in border planting and for hedges. The branches are slender, drooping, covered with white flowers in April or early May. It grows in any place either in full sunlight or partial shade. Disease resistant, hardy, thrives under adverse conditions. Ultimate height 6 to 8 feet but can be kept lower by trimming. The most popular shrub. We have an extra fine supply of first class plants this year and are pricing them especially low.

	Each	3	10
18 to 24 inches	\$0.70	\$1.95	\$6.00
2 to 3 feet	.80	2.25	7.00
3 to 4 feet	1.00	2.85	9.00

RED-LEAVED BARBERRY

(Berberis Thunbergi Atropurpurea)

A highly important introduction among shrubs, giving us for the first time a practical, easily grown shrub of medium height, with good, distinctly red foliage. This must prove a boon to all types of landscaping, where studied contrasts are to be worked out with the shrub foliage depended on for color. Red berries during winter.

	1 to 9 Plants	10 to 49 Plants	50 or more Plants
12 to 15 inches	\$0.45	\$0.40	\$0.30
15 to 18 inches	.60	.50	.40

SPECIAL OFFER No. 39

5 Red-Leaved Barberrry, 12 to 15 Inch,
for only \$2.00



GREEN BARBERRY HEDGE

GREEN BARBERRY

(Berberis Thunbergi)

The best low, dense hedge plant grown. Its abundant, small, light green leaves, which turn to rich colors in autumn, and its wealth of scarlet berries make it very attractive. Extremely hardy and requires but little pruning. Ornamental and graceful the whole year.

PRICES PER PLANT

	1 to 9 Plants	10 to 49 Plants	50 or more Plants
12 to 15 inches	\$0.40	\$0.30	\$0.25
15 to 18 inches	.50	.40	.35
18 to 24 inches	.60	.50	.45

**Strong, Hardy, Well-Rooted
Plants for Quick and Permanent
Hedges --- Harrison's' Hi-Quality**



AMERICA'S
FINEST
FLOWERING

Trees

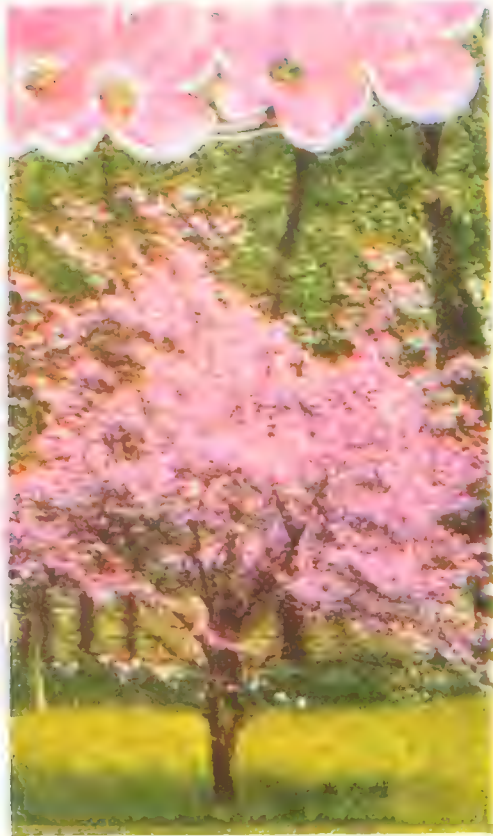
FOR
YOUR GARDEN

Grown by
HARRISON
BROTHERS,
BERLIN,
MARYLAND



MAGNOLIA SOULANGIANA NIGRA

Small tree or bush with large, 9-petal dark pink flowers before the leaves in the spring. One of the most beautiful flowering plants. Price: 1 1/2 to 2 feet, \$4.00 each.



RED FLOWERING DOGWOOD
Here is the Showiest Tree of All

RED FLOWERING DOGWOOD

(Cornus Florida Rubra)

One of the most popular small ornamental trees. Handsome red flowers in early spring. Makes an attractive lawn specimen.

Each \$3.50
1 1/2 to 2 feet

The Best Selections for 1948
Plantings, Grown by Harrison Bros.
Nurseries at Berlin, Maryland

**WHITE FLOWERING
DOGWOOD** (Cornus Florida)
One of the native spring flowering small trees with white flowers and bright red berries in fall. Each

3 to 4 feet	\$1.50
4 to 5 feet	2.00
5 to 6 feet	2.75



DOUBLE RED FLOWERING PEACH

FLOWERING PEACHES

DOUBLE RED FLOWERING PEACH

During early spring the flowering Peach are covered with a mass of beautifully formed and high colored double flowers. Highly recommended. Perfectly hardy, thriving in any soil in which other Peaches grow. We make a speciality of growing Flowering Peach trees and have several hundred to offer. We offer Double Red. Each

3 to 4 feet	\$1.75
4 to 5 feet	2.00
5 to 6 feet	2.25

GENUINE DOUBLE WHITE FLOWERING CHERRY TREES

One of the most lovely spring flowering trees. Large, double, pure white blossoms that envelop the entire tree. The best and easiest flowering Cherry tree to grow. No planting is complete without one or more of this remarkable variety. Widely used for planting along streets and avenues.

	Each	4 to 5 feet	\$2.75
3 to 4 feet	\$2.25	5 to 6 feet	3.25

PURPLE-LEAVED OTHELLO PLUM

Upright grower, foliage brilliant reddish purple, holding its color throughout season. Prolific bearer, with crimson fruit producing ornamental effect.

	Each	4 to 5 feet	\$2.00
3 to 4 feet	\$1.75	5 to 6 feet	2.25

"The Rare FRANKLINIA"

(Franklinia Altamaha)

It blooms and blazing fall foliage to any planting. Flowers start in July-August and continue until late September. Flower buds appear like small white flowers with whitish green satin; when they open the petals emerge satiny white and pleated. This is a fine choice, 3 inches in diameter and of piquant irregularity, holds a sumptuous mass of the rich orange-golden color. It has a delicate balmy fragrance and unfolds a delicate bronze-gold at maturity by about 100 days. It is a rich dark green with red veins. In autumn the whole tree blazes with a rich warm color. Produces a beautiful effect. Planting, 2 to 3 ft., \$3.50 each.



BECHTEL'S FLOWERING CRAB APPLE

Only genuine double-flowered Crab. When in bloom, appears to be covered with delicate pink, perfectly double, small roses of delicate fragrance. Best Flowering Crab Apple.

Each \$1.50
1 1/2 to 2 feet



DOUBLE WHITE FLOWERING CHERRY



PURPLE-LEAVED OTHELLO PLUM

NORTHERN STRAIN

◆ CHINESE ◆
E L M

Grows 20 Feet in Four Years

Because of its beauty and extremely rapid growth, Chinese Elm has become a leading shade tree of America. It is planted in every state, and like its native country of Korea, withstands intense cold and extreme heat. It makes excellent shade in five short years, averaging about 5 feet growth annually. It is by far the fastest growing hard-wooded shade tree. It resembles the American Elm except that leaves are smaller, with the gracefulness of a Cut-Leaf Birch. **Prices: 6 to 8 ft., \$2.25 each; 8 to 10 ft., \$3.00 each.**



CHINESE ELM—Quickest Growing Tree in the World

ORIENTAL PLANE

(*Platanus Orientalis*)

A rapid, upright, clean growing shade tree, long lived, beautiful dense foliage. A superb tree of gigantic proportions, which is very hardy. The Oriental Plane, being originally an imported tree during the past generation, has rapidly won high popularity in recent years due to its many merits, which have made it the most useful and the most sought for shade tree for lawns, parks, streets and highway plantings. Harrison's Nurseries are specializing in growing Oriental Planes and we are the largest growers in America. **Prices: 6 to 8 ft., \$3.50 each; 8 to 10 ft., \$5.00 each; 10 to 12 ft., \$7.00 each; 12 to 14 ft., \$11.00 each.**



ORIENTAL PLANE
 The Famous Light Bark Tree

**ALL HARRISON'S
 BERLIN, MARYLAND
 GROWN
 SHADE TREES HAVE
 BIG ROOTS,
 SHAPELY TOPS,
 AND GIVE
 IMMEDIATE EFFECT
 AFTER PLANTING**

PIN OAK

America's Favorite Oak Tree

The tree of trees—no other tree is more beautiful—once planted the Pin Oak continues to grow for a lifetime. Some of the finest, most attractive plantings depend almost entirely on the stately Pin Oak for their landscape appeal.

Beautiful Bronze Color During Autumn

Deeply cut, bright, fresh green foliage during the summer, turning to a bright bronze color during autumn. The most graceful tree for the lawn, equally as desirable for street or roadside planting.

YOU'LL NEVER REGRET PLANTING PIN OAKS

Prices: 8 to 10 ft., \$7.00 each; 10 to 12 ft., \$11.00 each; 12 to 14 ft., \$15.00 each.

NORWAY MAPLE

(*Acer Platanoides*)

Typical Maple leaves, large and bright green, fading to gold in the fall. Trunk and branches are sturdy and strong, lending an effect of ruggedness. **Prices: 6 to 8 ft., \$5.00 each; 8 to 10 ft., \$7.00 each; 10 to 12 ft., \$11.00 each; 12 to 14 ft., \$15.00 each.**

**BABYLON
 WEEPING WILLOW**

(*Salix Babylonica*)

A rapid growing, hardy tree, thriving in any moist soil. The Willows are valuable and interesting subjects on account of their graceful aspect. **Prices: 5 to 6 ft., \$1.50 each; 6 to 8 ft., \$2.25 each.**

LOMBARDY POPLAR

(*Populus Nigra Italica*)

A tall, spirelike tree used for screens and formal plantings. It is fast growing, distinctly ornamental and beautiful. **Prices: 5 to 6 ft., \$1.00 each; 6 to 8 ft., \$1.25 each; 8 to 10 ft., \$1.75 each.**



LOMBARDY POPLAR
 Tall and Stately



BABYLON WEEPING WILLOW

HARRISONS' DECORATIVE EVERGREENS

Our Splendid Trees Embellish the Grounds of Beautiful Homes the Country Over



HANDSOME IRISH YEW



COMPACT GLOBULAR ARBOR-VITAE



JAPANESE SPREADING YEW
Exceptionally Hardy

IRISH YEW (Taxus Baccata Hibernica)

This evergreen is the aristocrat member of the Yew family. It grows tall and narrow with stout, crowded branches and spirally arranged leaves which are dark green in color. This Yew is very scarce, but everyone who sees it is enthusiastic about it. Formerly it was imported from Europe, but after all importations were discontinued by the Federal Government, American nurserymen were unable to supply their customers. Fortunately, we had some specimen plants in our nurseries from which we were able to propagate

PRICES:	Each	Each	Each
12 to 15 inches\$2.50	2 to 2½ feet\$5.00
15 to 18 inches 3.00	2½ to 3 feet 6.50
18 to 24 inches 4.00	3 to 4 feet 8.00

Spreading Yew

(Taxus Cuspidata)

The beautiful Yew of moderate bushy growth, usually grows wider than tall, starts branching from the bottom, developing into a bush form. The spreading branches are densely clothed with short leaves of dull green. It is the most attractive spreading evergreen, will grow in semi-shady locations. Hardest of all Yews. By trimming the side branches the plant can be made to grow semi-upright and likewise by trimming the top branches the plant can be made to develop lower to the ground. Can also be trimmed into globe shape. Prices: 12 to 15 inch, \$2.50 each; 15 to 18 inch, \$3.00 each; 18 to 24 inch, \$4.00 each.

Compact Globular Arbor-Vitae

(Thuja Occidentalis Compacta)

Natural compact, globe-shaped, dark green foliage. The ideal low-growing plant for massing against the taller evergreens in foundation plantings. Prices: 12 to 15 inch, \$1.75 each; 15 to 18 inch, \$2.25 each.

ALL EVERGREENS MOSS BALLED

All evergreens are taken up expertly to secure the tender roots, the soil removed, and then the roots dipped in Transplantone and balled in wet moss and wrapped. By this method we are now able to eliminate 50 to 60 pounds of soil, making low cost express shipments possible. This method also insures excellent growth and quicker root action. In planting remove wrapping and use moss in hole around roots. If desired balled in soil and burlap, add \$1.50 per plant to cover additional handling and special packing.

Veitch's Silver Retinospora

(Retinospora Squarrosa Veitchii)

Foliage silvery blue, feathery and dense, giving a soft, woolly appearance. Broad, pyramidal outline, can be kept to any height by trimming. One of the best Retinosporas. Price: 18 to 24 inch, \$2.75 each.



VEITCH'S SILVER RETINOSPORA

Pyramidal Arbor-Vitae

(Thuja Occidentalis Pyramidalis)

A really beautiful evergreen that should be included in every planting. It grows tall and narrow, requires no trimming, and retains its bright green color throughout the whole year. A pair of them placed at the entrance or at the corner of a home makes a superb showing. Our Pyramidal Arbor-Vitae are grown with extreme care and each one is a specimen. Prices: 18 to 24 inch, \$2.25 each; 2 to 3 ft., \$3.00 each; 3 to 4 ft., \$4.25 each.



PYRAMIDAL ARBOR-VITAE

Hicks' Yew

(Taxus Cuspidata Hicksii)

Another form of Yew that is very similar to the Irish Yew, but is a much faster grower. The branches ascend almost vertically, generally growing with many stems. Its rich dark glossy green makes it much more attractive than Arbor-Vitae or Junipers. We can unhesitatingly recommend it for planting in all sections. It has proven to be perfectly hardy. If extremely narrow effect is desired it can be obtained by trimming the sides of the plant when it is small. This variety is extensively used for making high class evergreen hedges.

	Each
12 to 15 inches\$2.50
15 to 18 inches 3.00
18 to 24 inches 4.00
2 to 2½ feet 5.00



HICKS' YEW



Beautify Your Home Grounds With Harrison's Evergreens



DISTINCTIVE SHRUBS



ALTHEA (Rose of Sharon)



DEUTZIA, PRIDE OF ROCHESTER



SYRINGA (Mock Orange)



HYDRANGEA PEE GEE

Gardens Burst Into Glory

With blooms of **Harrisons' Berlin, Maryland, grown Hi-Quality Flowering Shrubs.**

PRICES (Except as noted)

	Each	3 for
1 1/2 to 2 feet	\$0.70	\$1.95
2 to 3 feet	.80	2.25
3 to 4 feet	1.00	2.85

ALTHEA or ROSE OF SHARON (Hibiscus Syriacus). The double and single flowers are formed in varying colors. We can supply double red, white with crimson center, and double white.

Buddleia Magnifica. New and undoubtedly the finest of all the summer-flowering Butterfly Bushes. Large, bright lavender panicles. Flowers do not sunburn as do other varieties. Foliage heavy rich dark green. Very hardy.

DEUTZIA, PRIDE OF ROCHESTER. Double white flowers, slightly tinged with rose, appear in mid-June.

DOGWOOD, RED-BRANCHED (Cornus Alba Sibirica). Bright red bark, white flowers, blue fruit; rapid grower; beautiful winter effect.

GOLDEN BELL (Forsythia). Vigorous, upright grower; profusion of yellow flowers in April. One of the best early blooming shrubs.

HONEYSUCKLE, BUSH (Lonicera Morrowi). Early white flowers in June, followed by red berries.

HYDRANGEA PEE GEE (Hydrangea Paniculata Grandiflora). Large flowers; first snowy white, then pink, changing to reddish bronze in the fall. Blooms midsummer to fall. 18 to 24 inches, 90c each.

SPIREA BILLIARDI. A hardy type of Spirea that grows exceedingly well in dry places. Long, fluffy flower spikes. We offer two colors: white and pink.

SYRINGA, SWEET MOCK ORANGE or GARLAND (Philadelphus Coronarius). Of upright habit, and produces in June a wealth of white, fragrant flowers.

SWEET-SCENTED SHRUB (Calycanthus Floridus). Hardy native with many double, chocolate colored flowers in May. Flowers, leaves and even the wood have a spicy fragrance.

TAMARIX, AFRICAN (Tamarix Africana). Feathery gray-green foliage; very showy.

TARTARIAN HONEYSUCKLE (Lonicera Tatarica). Very attractive in blossom, producing an abundance of flowers followed by red fruit. We offer pink and white varieties.

WEIGELA, PINK (Weigela Rosea). The most popular Weigela sold today. Its delicate pink, bell-shaped flowers are borne in great profusion along arching branches.



GOLDEN BELL (Forsythia)



TAMARIX—Feathery Foliage



TARTARIAN HONEYSUCKLE

Harrisons'

HARDY VINES

Nature's Draperies

BOSTON or JAPANESE IVY (Ampelopsis Veitchi). A popular climber, clinging firmly to brick, stone or other material; deep, glossy green, ivy-shaped foliage which turns to cream and gold in autumn. **Price: 75c each.**

CHINESE WISTARIA. A rampant growing, clinging vine. Blue flowers in large, drooping clusters during May and June. **Price: \$1.25 each.**

ENGLISH IVY (Hedera Helix). The most popular evergreen vine; large, deep green, glossy foliage. Excellent for covering walls. Useful for shady locations. **Price: 75c each.**

HALL'S HONEYSUCKLE. Deep glossy green foliage; fragrant flowers from July to fall. **Price: 60c each.**

SWEET AUTUMN CLEMATIS (Clematis Paniculata). A splendid climber for covering porches and trellises. Flowers snowy white; produced in immense quantities during late summer and autumn. **Price: 75c each.**

SILVER LACE VINE (Polygonum Auberti). Will rapidly grow 20 feet or more. Forms cloud of lacy, misty white, shot with tints of cream and pale rose. Green foliage, lightly bronzed at tips. **Price: \$1.00 each.**

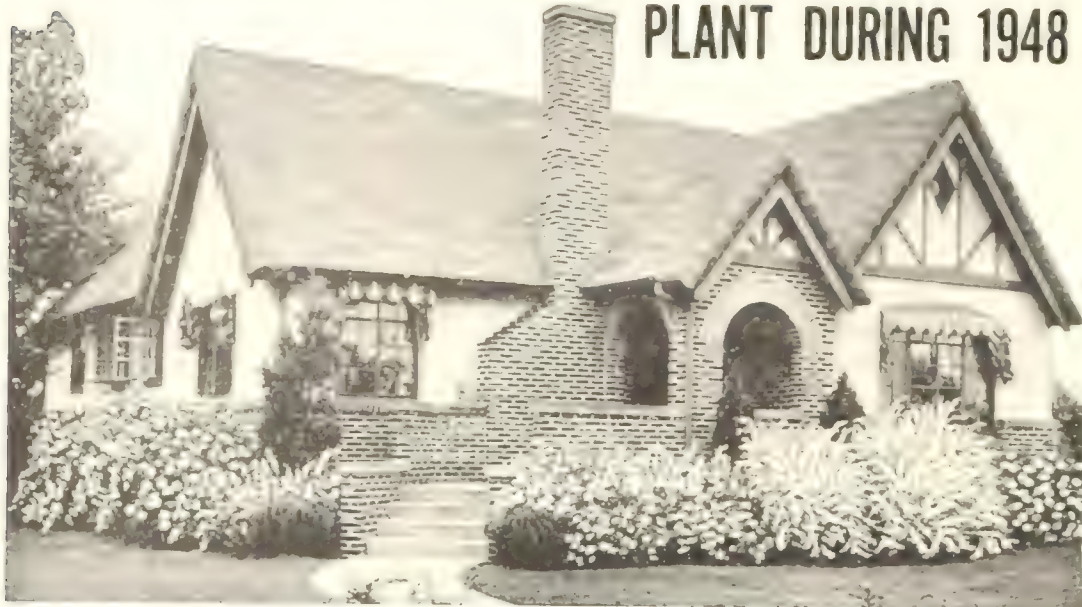
GORGEOUS LILACS

Lilacs are marvels of beauty and elegance. They are one of the first plants to bloom in the spring. Perfectly hardy in any locality. We can supply the following colors: White, Purple, Pink and Blue. State color desired. **Prices: Field-grown plants, \$1.50 each; 2 for \$2.80; 10 for \$13.00.**



ENGLISH IVY—Evergreen

Lifetime Shrubs To Beautify Your Home



PLANT DURING 1948

MAKE YOUR HOME A SHOW PLACE WITH HARRISONS' HI-QUALITY ORNAMENTAL SHRUBS

Everywhere people are making their homes more livable, more attractive. A little planning, a little planting. And what joy and satisfaction in having a home framed with beautiful trees and a well kept lawn planted to shrubs and flowers.

ORDER

BY

MAIL

with

Confidence

from

Harrisons' Nurseries

HARRISON BROTHERS, Props.

Berlin,

Maryland

The Colorful PEONIES

THEY RIVAL THE ROSE

Once planted they last for years. There should be several planted in every yard. Their large, bright colored flowers during May and June furnish an abundance of flowers for the home. Can supply the following colors:

WHITE PINK RED
State color desired.

Prices: 75c each; 3 for \$1.95;
10 for \$5.50.



CROSS NATION PACKING

Our method of packing enables us to ship our nursery stock thousands of miles with the stock arriving in field-fresh condition. We guarantee safe arrival no matter where you live.

HARRISON BROTHERS
Berlin, Maryland

CREPE MYRTLE (*Lagerstroemia Indica*). Small green, glossy leaves; very beautiful showy flowers during mid-summer to fall, noticeable object in any landscape. Not hardy north of Mason-Dixon line, but most popular southern shrub. Pink and red varieties. 1½ to 2 ft., \$1.50 each.

QUINCE, FLOWERING (*Cydonia Japonica*). Scarlet flowers in April and May. No doubt one of the most attractive spring blooming shrubs. 1 to 1½ feet, \$1.00 each.

SPIREA ANTHONY WATERER. Crimson flowers in large, flat clusters. Blooms early and continues till fall. 15 to 18 inches, \$1.00 each.

WEIGELA, EVA RATHKE. Very attractive deep carmine-red flowers, making a very showy shrub. 1½ to 2 ft., \$1.00 each; 2 to 3 ft., \$1.25 each.

BEAUTY BUSH. Pink tubular flowers, heavy bloomer, hardy. 2 to 3 ft., \$1.25 each.



SPIREA VAN HOUTTEI—What a Beauty!

THE GLORIOUS SPIREA VAN HOUTTEI

This grand shrub has done more to beautify the homes of America than any other variety. It is valuable as a specimen, in groups, in border planting, and for hedges. The branches are slender, creeping, covered with white flowers in April or early May. It grows in any place either in full sunlight or partial shade. Disease resistant, hardy, thrives under adverse conditions. Ultimate height 6 to 8 feet but can be kept lower by trimming. The most popular shrub. We have an extra fine supply of first class plants this year and are pricing them especially low.

	Each	3	10
1½ to 2 feet	\$0.70	\$1.95	\$6.00
2 to 3 feet	.80	2.25	7.00
3 to 4 feet	1.00	2.85	9.00

YOU CAN PLACE YOUR ORDER WITH US WITH COMPLETE CONFIDENCE. It is our earnest desire that each and every one of our customers be fully satisfied in their dealings with us. If you are not and feel that it is our fault in any way, please write to us. No transaction is complete unless you are completely satisfied.

Terms—Net Cash

Remittance with order, by check, money order or draft. We will ship C. O. D. provided a deposit of one fourth amount of purchase price is sent with order. All nursery stock priced f. o. b., Berlin, Maryland.

Money Back

In the event that any nursery stock sold by us should prove untrue to name under which it is sold, we hereby agree, on proper proof of such untruthfulness to name, to replace the original order or to refund the purchase price. Except for such liability, and in respect to all nursery stock sold by us, we give no warranty, express or implied, as to description, quality, productiveness or any other matter. HARRISONS' NURSERIES, Harrison Brothers, Props., Berlin, Maryland.

Note: Any money overpaid by customer will be promptly refunded.

Harrisons' Bush Arbutus

(ABELIA GRANDIFLORA)

By Far the Best Evergreen Shrub
Thousands of Blooms the
First Season

HARDY — THRIVES EVERYWHERE

One of our beautiful, popular and satisfactory broad-leaved evergreens. The graceful, drooping stems and branches are covered with dark, glossy leaves which in winter assume a metallic sheen. From the middle of June until frost, this plant produces an immense quantity of tubular-shaped white flowers tinged with pink, about an inch long, which are borne in clusters. Good for shady locations.

	Each	10
1 to 1½ feet	\$1.50	\$12.50
1½ to 2 feet	2.00	17.00
2 to 3 feet	2.50	21.00
3 to 4 feet	3.00	25.00



BUSH ARBUTUS—Everblooming

FLOWERING ALMONDS

(Prunus)

PRUNUS GLANDULOSA ALBOPLENA (Double White Flowering Almond). Nearly always seen in old-fashioned gardens, and in early spring is covered with little white, Chrysanthemum-shaped flowers. May 1 to 10.

	Each
18 to 24 inches	\$1.50
2 to 3 feet	2.00

PRUNUS GLANDULOSA ROSEAPLENA (Double Pink Flowering Almond). Similar to preceding except that the blossoms are pink. May 1 to 10.

	Each
18 to 24 inches	\$1.50
2 to 3 feet	2.00



ALMOND, DOUBLE PINK

ROYAL BLUE HYDRANGEA

(Hydrangea Otaksa)

Old favorite southern Hydrangea. When winters are severe we suggest heeling in. Large balls of blue flowers and attractive large leaves. Color depends on acidity of soil. Field grown plants, \$1.50 each; 2 for \$2.80.



ROYAL BLUE HYDRANGEA

AZALEA HINODEGIRI

Deep Coral-Pink Flowers

Azalea Hinodegiri is a dwarf grower with evergreen foliage. In the spring it produces a profusion of deep coral colored blossoms, completely hiding the foliage. Ideally suited for planting around the foundation of homes or adding color in front of evergreens. Grows well in the shade or sunlight.

	Each
4 to 6 inches	\$1.00
6 to 8 inches	1.50
8 to 10 inches	2.00
10 to 12 inches	3.00
12 to 15 inches	4.00

DOUBLE PINK FLOWERING PLUM

PRUNUS TRILOBA PLENA.

A vigorous grower, every branch producing double, pink flowers, an inch or so in diameter, early in May.

	Each
18 to 24 inches ..	\$1.50
2 to 3 feet	2.00

Grown In an Ideal
Climate with the Best
Soils by
Harrison Brothers
Nurseries,
Berlin, Maryland



AZALEA HINODEGIRI—The Spring Beauty

Paul's Scarlet Climber

Large, intense scarlet blooms freely produced. It is strong and perfectly hardy. The most popular climbing Rose. Same price as other varieties of Roses.



PAUL'S SCARLET CLIMBER



PINK RADIANCE



GOLDEN CHARM



PRES. HERBERT HOOVER



ETOILE DE HOLLANDE



EDITOR MCFARLAND

Harrisons' "Bud Selected" Exhibition Roses

EVERBLOOMING HYBRID TEAS

PRICES

All Varieties True-to-Name

EVERBLOOMING HYBRID TEAS, NURSERY GROWN, BUDED ON MULTIFLORA JAPONICA UNDERSTOCKS

Super Selected Grade:	Each	3 for	6 for	10 for
2-Year Big Bushes	\$1.25	\$3.60	\$6.90	\$10.00

CONDESA DE SASTAGO. Marvelously colored Rose with large cupped flowers of coppery red inside and rich yellow outside. A profuse bloomer at all times, keeps well when cut, and is spicily fragrant. Compares with the Radiance Rose in vigor and hardiness.

EDITOR MCFARLAND. A very fine brilliant pink Rose, destined to great popularity.

GOLDEN CHARM. All that its name implies. Deep golden buds opening to clear golden yellow. One of the best yellow Roses, and grows successfully throughout the nation.

GOLDEN DAWN. Considered the finest yellow Rose. Blooms of soft lemon-yellow tinted with old rose markings, long-lasting fragrance of real tea scent. Hardy, bushy, medium height, and very vigorous.

GROWN WHERE ROSES SUCCEED THE BEST

GROWN BY HARRISON BROTHERS, BERLIN, MARYLAND, WHERE THE SOILS AND CLIMATE ARE IDEAL FOR PRODUCING EXTRA FINE QUALITY ROSES



Every Rose Will Bloom This Year



ETOILE DE HOLLANDE. At present considered most popular of crimson Hybrid Teas. Velvety scarlet-crimson with delicious fragrance, and enormous petals. It charms continuously with its delightful color, vigorous growth, and well formed flowers on long stems. Faultless.

KAISERIN AUGUSTE VIKTORIA. Perfect creamy white bloom, slightly tinged with lemon, large and full. Long, shapely buds to full petaled, deliciously scented bloom. An old favorite that even today has not been surpassed.

PINK RADIANCE. A brilliant carmine-pink with yellow shading at base of petals, having a light silvery tone on the inside, and deeper on the outside. Vigorous, free bloomer, parent of Red Radiance. Among the oldest Roses, it has made good everywhere.

POINSETTIA. Brilliant rich scarlet-red. Huge; ideal long, pointed buds; glorious flowers. Vigorous, tall grower, long stems, and richest scarlet-red. Grand, being a very fine Rose. Should be planted in every Rose garden.

PRESIDENT HERBERT HOOVER. One of the outstanding Roses. A glorious new Rose of vivid cerise-red toned with yellow, orange and scarlet, richly perfumed and free flowering.

RED RADIANCE. A sport of the famous Radiance and identical in all characteristics except color. A brilliant cerise-red color, and intensely fragrant. Tall and bushy, healthy foliage and excellent blooming qualities. The favorite red Rose of America's millions.

TALISMAN. A multi-colored, glorious combination of orange, yellow and rose-red. They simply eclipse other Roses in autumn. Fine for decoration and cutting. The triple-tone flowers are produced all season.

WHITE RADIANCE. A genuine white sport of the ever popular Pink Radiance. Very vigorous, tall and bushy. Thrives extra well; intensely fragrant. Should be in every garden.

RED RADIANCE

WHITE RADIANCE

TALISMAN

GOLDEN DAWN

Harrisons' Bud-Selected Roses Are Hardy Maryland Grown Near the Atlantic Ocean

FOR BETTER BLOOMS BUY HARRISON'S "BUD" SELECTED BIG ROSE BUSHES AT REASONABLE PRICES

Offer No. 47
Radiance Rose Collection
 1 PINK RADIANCE 1 RED RADIANCE
 1 WHITE RADIANCE
 The Surest Bloomers and the Sturdiest Growers. All 3 Roses, 2-Year, Super Selected Grade,
for only \$3.30

Harrisons' Nurseries

1948

Founded 1884

HARRISON BROTHERS, PROPS.

Berlin, Maryland

Growers of
MODERN FRUITS
and Ornamentals



Beautiful Lawns and Fruitful Gardens Make Happier Homes