

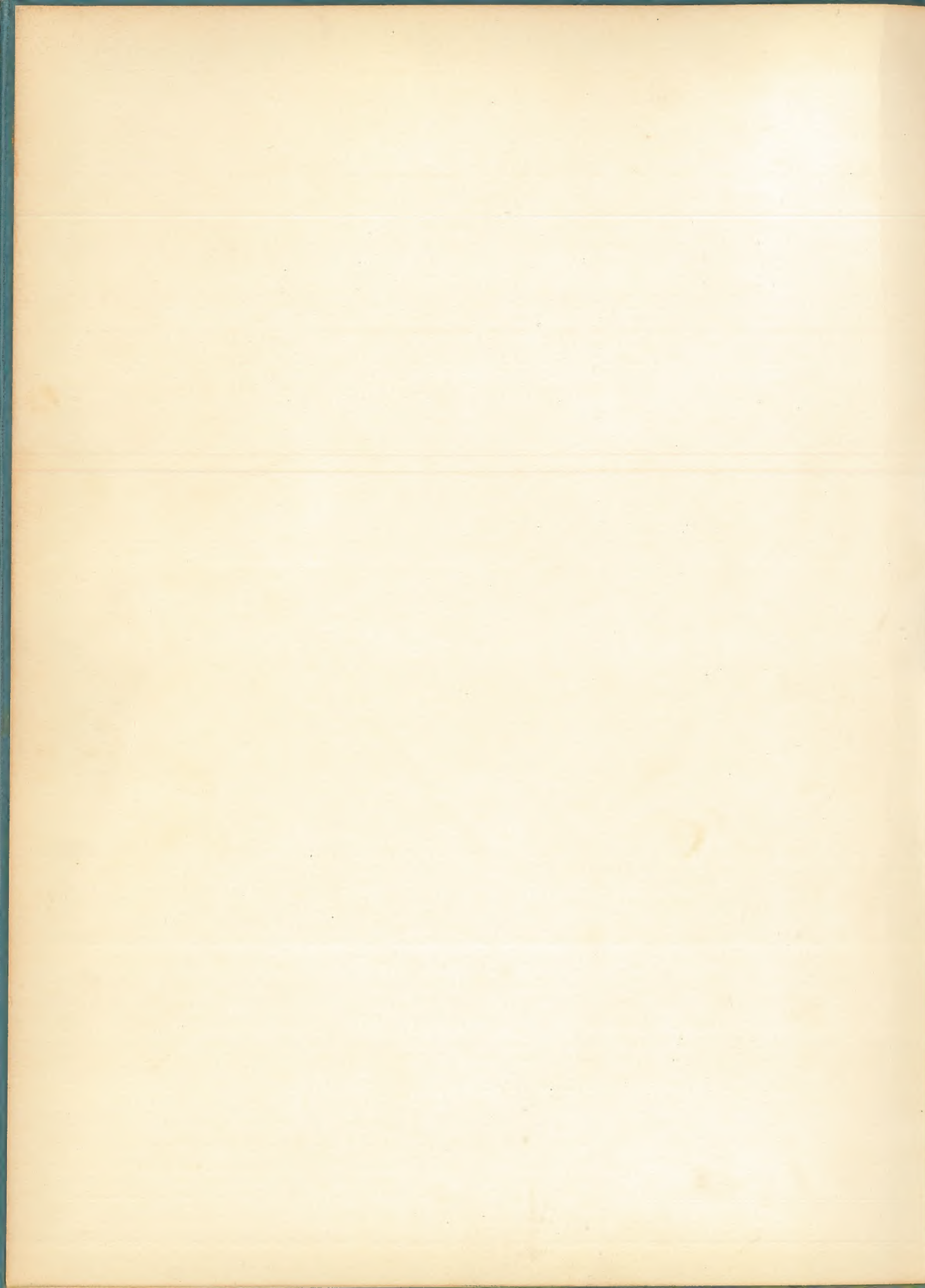
the Nushka

1955

Presented to Glenwood High School  
with the compliments and good  
wishes of the Senior Class of 1955

PROPERTY  
GLENWOOD HIGH SCHOOL

PROPERTY  
GREENWOOD HIGH SCHOOL





The  
Senior Class  
of  
Glenwood High School

Presents

The 1955

Nushka

PROPERTY  
GLENWOOD HIGH SCHOOL

D  
e  
d  
i  
c  
a  
t  
i  
o  
n



MRS. DORA B. HOWELL

This, the 1955 Nushka, is a token of appreciation to a teacher dear to all of us. We are eternally grateful for her kind helpfulness, her gentle understanding of our every problem, and her sincere desire to see all of us succeed. She has firmly, but kindly, set our wandering feet continually on the path to higher ideals and ultimate success. Fortunate we are to have so fine a personality in our midst to help us, to guide us, and to inspire us to make the most of what we yet may be. So, we, the Senior Class of Glenwood High School, with deep gratitude, dedicate this 1955 volume of the Nushka to MRS. DORA B. HOWELL.

# Foreword

As we, the Senior Class of Glenwood High School, come to the close of our final year it becomes our privilege to prepare a chronicle of this school year. This seventh volume of the Nushka is compiled and edited with the hope that it will, in future years, bring back the warmth and happiness of school days spent at Glenwood. If, when turning these pages, your memory is shifted backward for just a few moments of joy, we will feel that our purpose has been achieved, for school days are the happiest days of life, particularly school days at Glenwood.

What could be more fitting in a foreword than these words from our school song?

"She is the best school in the land we  
know and perhaps that's why we love her so,  
for you can search this whole world far and  
wide and never find a school like Glenwood  
High."

.....And now without further ado, we proudly present for all to view.....

PROPERTY  
GLENWOOD HIGH SCHOOL

The 1955

# Nushka







## ANNUAL STAFF



EUGENE WOODBY  
Co-Editor



MRS. WILMA B. GREENE  
Sponsor



ELOISE BERRY  
Co-Editor



First Row, Seated: Wilma Poteat, Advertising Assistant; Eloise Berry, Co-Editor; Eugene Woodby, Co-Editor; Eugene Holland, Advertising Assistant. Second Row, Standing: Freddie Jackson, Advertising Manager; Billy Greer, Class Historian; Stanley Vess, Advertising Assistant; Thurston Haynes, Class Prophet; Shirley Cable, Class Testator; Mrs. Wilma B. Greene, Sponsor; Lila Hollifield, Class Poet. Absent: Jewell Morris, Business Manager.



Faculty



OUR BELOVED PRINCIPAL - MR FRANK W HOWELL

### LOCAL SCHOOL BOARD



MR MELVIN H. TAYLOR  
*Superintendent*



MRS MARY THOMPSON, MR M. R. NANNEY  
MR. T. A. HILTON, MR. ERNEST W. ROSS

## HIGH SCHOOL FACULTY

MRS MABEL TATE BRADSHER  
 Woman's College University of N C  
 University of North Carolina  
 Home Economics, French  
 Mathematics

WARREN A ELLIS  
 Lees McRae College, East  
 Tennessee State Teachers College  
 Science

PAUL EDWIN FLACK  
 Appalachian State Teachers' Col.  
 University of N. C.  
 Social Studies, Physical Education



MRS. WILMA B. GREENE  
 Mars Hill Junior College  
 Appalachian State Teachers' Col.  
 English, Dramatics

MRS. DORA B. HOWELL  
 East Tennessee State Teachers'  
 College, University of N. C.  
 English, Creative Writing

MISS RACHEL A. HUNT  
 Lenoir Rhyne College  
 Public School Music



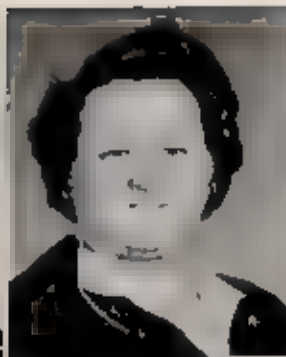
WILLIAM SCOTT LUCAS  
 Gardner Webb Junior College  
 North Carolina State College  
 Vocational Agriculture

WILLIAM CRAWFORD LYNCH  
 Wake Forest College  
 Southern Seminary  
 Mathematics, Geography

MRS. MARGARET B. NORRIS  
 Montreat College, Appalachian  
 State Teachers' College  
 Commercial



## ELEMENTARY FACULTY



MISS EMMA MCGALLIARD  
*First Grade*

MRS. EDNA HEMPHILL  
*First Grade*

MRS. BARBARA ELLIS  
*Second Grade*



MRS. RUTH HAWKINS  
*Second Grade*

MRS. CLARA RAYBURN  
*Third Grade*

MRS. LAURA BROWN  
*Fourth Grade*



MRS. GENOESE PYATT  
*Fourth Grade*

MISS IVAREA FLACK  
*Fifth Grade*

MRS. DESSIE LAWING  
*Fifth Grade*



MRS. CHARLINE TEAGUE  
*Fifth and Sixth Grades*

MISS CHARLENE HEMPHILL  
*Sixth Grade*

MRS. EUNICE ELMORE  
*Seventh Grade*



WILLIAM ELMORE  
*Seventh and Eighth Grades*

ZEYLAND MCKINNEY  
*Eighth Grade*

SAMUEL J. WALKER  
*Eighth Grade*



# Classes

# Seniors

## OFFICERS

Charles Eugene Holland..... *President*  
 James Eugene Woodby..... *Vice-President*  
 Jewell McCraw Morris ..... *Secretary*  
 Lois Smalley ..... *Treasurer*



**LURA ELOISE BERRY**

Home Economics 1,2; Student Council 2,3,4; Glee Club 1,2,3,4; Safety Patrol 1,3,4; Secretary 4; Dramatics Club 1; F. T. A. 3,4; President 4; Junior Marshal; Co-Editor Nushka 4; Superlative 4; Spotlight Staff 4; Folk-Dancing Club 1,2; Creative Writing & Speech 4; Beta Club 4; 4-H Club 1,2,3,4; President 3,4; Mass Hi Mass 4; Delegate to State 4-H Club Week 2; Glee Club Operetta 2,3; Honor Student



**GLEN EDWARD BOWMAN**

F. F. A. 1,2,3; String Band 3,4; Glee Club 1; Aeronautics 1; Superlative 4



**REVONDA JEAN BROOKSHIRE**

Superlative 4; Glee Club 1,2; Basketball 2,3,4; Co-Captain 3; Home Economics 1,2; Folk-Dancing Club 2,3; 4-H Club 1,2; Dramatics 4; Softball 1,2; Junior Play; Public Speaking 2; Hobby Club 2; Science Club 1.



# Seniors

**BILLIE JO CABLE**

Home Economics 1,2; Superlative 4, Spotlight Staff 4; Creative Writing and Speech 4, Glee Club 4

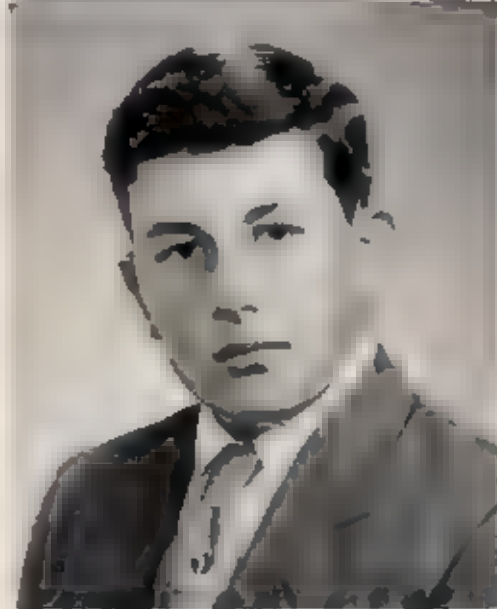


**SHIRLEY ANN CABLE**

Home Economics 1,2,3; Student Council 4; Glee Club 1,2,3,4, Vice-President 4, 4-H Club 1; Dramatics Club 1; F.T.A. 4; Nushka Staff 4; Superlative 4; Spotlight Staff 4; Folk-Dancing Club 1,2; Glee Club Operetta 2; Creative Writing and Speech 4; Treasurer 4, Beta Club 4.

**ERNEST LYNN CHRISTY**

F.F.A. Club 1,2,3; Bus Driver 3,4, 4-H Club 1; Superlative 4; Aeronautics Club 2.



**SARA ANNE CRAIG**

Home Economics 1,2; Glee Club 1,2; Folk-Dancing Club 2,3; Superlative 4; Dramatics 4; Cheerleader 3,4; Public Speaking 2; Hobby Club 2.

**MIMI JOAN CRANFORD**

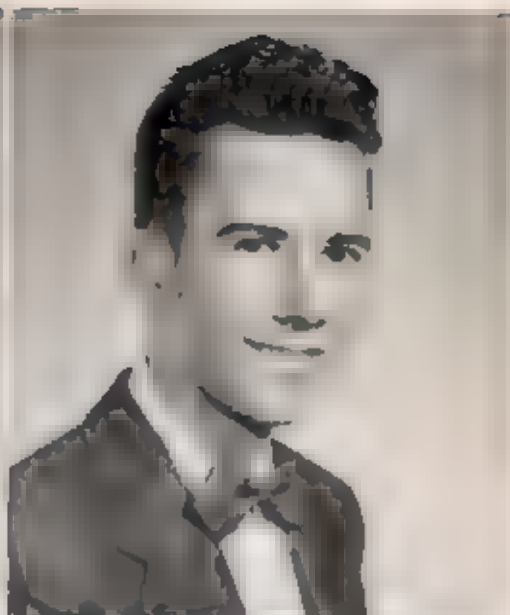
Superlative 4; Glee Club 1,2,3,4; Beta Club 3,4; Secretary 4; Dramatics 2,4; Library Club 4; Cheerleader 3; F.T.A. 4, 4-H Club 1,2; Junior Marshal; Winner in County Banker's Contest 3; Junior Play; Glee Club Operetta 2,3, Usher; Hobby Club 2; Creative Writing and Speech 4, Spotlight Staff 4; Folk-Dancing 1,2; Home Economics 2,3; Secretary Class 2; Toastmaster Mother-Daughter Banquet 2, So. S. S. 4; Winner Word Peace Contest.



**JOHN WILLIAM GREER**

4-H Club 1,2,3; Junior Play; Basketball 3,4; Baseball 3; F.F.A. Club 1,2,3, Safety Patrol 1,2; Superlative 4; Folk-Dancing Club 2; Dramatics Club 4, Student Council 1,2, Vice-President 3, President 4, Public Speaking 1.

# Seniors



**FRANK JUNIOR GREER**  
F.F.A. Club 1,2,3,4; Superlative 4; Safety Patrol 2; Bus Driver 3, Baseball 3.

**THURSTON GUY HAYNES**  
P.F.A. Club 2,3,4; Science Club 1; Superlative 4; Bus Driver 4; Glee Club 3, Nushka Staff 4.



**LILA LEE HOLLIFIELD**  
Home Economics 1,2; Science Club 2; Hobby Club 1; Safety Patrol 3,4; Creative Writing and Speech 4; Dramatics Club 4; Glee Club 4; 4-H Club 3; Spotlight Staff 4, Superlative 4.

**CHARLES EUGENE HOLLAND**  
4-H Club 1,2,3,4, Secretary 3; Bus Driver 4; Science Club 1,2; Junior Marshal, Glee Club 2,3; Safety Patrol 1,2,3; Student Council 3,4; Beta Club 3,4; Aeronautics Club 1; President of Senior Class; Junior Pay; Baseball 1,2,3; Superlative 4; Spotlight Staff 4; Nushka Staff 4; Junior Class Officer; Creative Writing and Speech 4; Folk-Dancing Club 1,2; Glee Club Operetta 3; Honor Student 4.



**FREDDIE CARTER JACKSON**  
Superlative 4; Dramatics 4; Substitute Bus Driver 4; Glee Club 3; Folk-Dancing Club 2; Science Club 1; Aeronautics Club 2; Nushka Staff 4.

**EVELYN JORDAN**  
Glee Club 2,3,4; Folk-Dancing Club 1,2; Hobby Club 1,2; Library Club 4; Creative Writing and Speech 4; 4-H Club 1,2,3; Spotlight Staff 4; Superlative 4; Home Economics 1,2; Glee Club Operetta 2,3

# Seniors

**HUGH CECIL LEDBETTER**

4-H Club 1,2,3,4; Bus Driver 3,4, Safety Patrol 1,2; F. F. A. Club 1,2,3; Science Club 1,2; Superlative 4; Spotlight Staff 4.

**JAMES DONALD LEDBETTER**

Bus Driver 4, Safety Patrol 3; Superlative 4; 4-H Club 4; Folk-Dancing Club 3; Dramatics 4; Junior Play; Glee Club 3; Baseball 2



**ROY WAYNE LONON**

Astronaut as Club 2; Junior Play; Bus Driver 4; F. F. A. Club 1,2,3; Safety Patrol 3; Science Club 1; 4-H Club 1,2,3,4; Superlative 4.

**JACK DUANE LUSK**

F. F. A. 1,2,3,4; Superlative 4; Astronauts 2; 4-H Club 1,2,3; Folk-Dancing Club 2



**MARCELLE MARY MARTIN**

Home Economics 1,2; Glee Club 2,3,4, 4-H Club 1,2,3; Safety Patrol 4, Captain 4; F. T. A. Club 3,4, Treasurer 4; Beta Club 4; Folk-Dancing Club 1,2; Superlative 4; Spotlight Staff 4; Usher Junior Play; Glee Club Operetta 2,3, Creative Writing and Speech 4, Vice-President 4.

**RACHEL DARLINE McNEELY**

Superlative 4; Glee Club 2,3,4; Hobby Club 2, Folk-Dancing Club 1,2; Home Economics 1,2; Cheerleader 3; 4-H Club 2; Usher Junior Play; Usher Glee Club Operetta 2,3, Creative Writing and Speech 4, Spotlight Staff 4; Softball 1.



# Seniors



**JEWELL McCRAW MORRIS**  
Glee Club 1, 2, 3, Dramatics 1; Science Club 1; Home Economics 1, 2; Class Secretary 1, 2, 3, Newspaper Staff 2, 4; Bus Patrol 2, 3, 4, Captain 3; Beta Club 3, 4, President 4; Junior Play; Junior Marshal; Toast Mistress Junior and Senior Banquet 3; F.T.A. 3, 4, Secretary 4; Nushka Staff 4; Speech and Writing 4.



**DORA LOU PENDLEY**  
Home Economics 1, 2; Glee Club 1, 2, 4; F. T. A. Club 4; Folk-Dancing Club 2, Superlative 4; Spotlight Staff 4; Creative Writing and Speech 4; Library Club 4; Junior Play, Hobby Club 2.



**WILMA GENE POTEAT**  
Home Economics 1, 2; Beta Club 4; Glee Club 1, 2, 3; Folk-Dancing 2, 3; 4-H Club 1, 2, Vice-President 3; Superlative 4; Dramatics 4; Cheerleader 3, 4, Junior Marshal, Junior Play, Participated in Christmas Parade 3, Harvest Festival Queen 3, 4, Science Club 1; Vice-President Sophomore Class; Nushka Staff 4; Softball 1, 2, 3.



**BETTY LOU PYATT**  
Glee Club 1, 2, 3, 4; Hobby Club 1; Student Council 3, 4; Library Club 3; Home Economics 1, 2; 4-H Club 2; Junior Play; Glee Club Operetta 2, 3; Creative Writing and Speech 4; Superlative 4.



**LOIS SMALLEY WATKINS**  
Home Economics 1, 2; Safety Patrol 2, 3, Librarian 2; Beta Club 3, 4; President 4; Spotlight Staff 4; Glee Club 1, 3; Junior Marshal; Superlative 4, F. T. A. Club 3, 4, Dramatics 4, Senior Class Treasurer, Folk Dancing 1, Creative Writing and Speech 4, President 4; Hobby Club 3; Art Club 1; Honor Student 4.

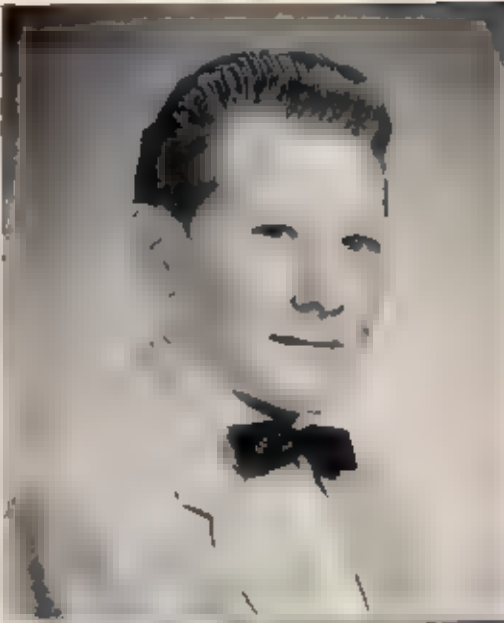


**JAMES EVERETTE SUMLIN**  
F. F. A. 1, 2, 3; Safety Patrol 1; Bus Driver 3, 4; Sophomore Class President; Vice-President Junior Class, Baseball, 1, 2, 3, Basketball, 1, Superlative 4.

# Seniors

**STANLEY HACK VESS**

F. A. Club 1,2,3; Glee Club 1,2; Folk-Dancing Club 2,3; Junior Play, Superlative 4, Nushka Staff 4; Basketball 3,4, Baseball 3, Safety Patrol 1,2,4; Hobby Club 2; Dramatics 4; President Junior Class; Toast Master Junior-Senior Banquet 3; Aeronautics Club 2.



**SHIRLEY LEE WELLBORN**

Glee Club 1,2,3,4; Folk-Dancing Club 1,2; Dramatics 2,4; Spotlight Staff 4; Safety Patrol 4; Home Economics 1,2, Creative Writing and Speech 4, Library Club 3; 4-H Club 2,3, Reporter 3; Superlative 4; F.T.A. Club 4; Lahar Junior Play, Science Club 1.



**JEAN ELIZABETH WILLIAMS**

Home Economics 1,2; Glee Club 1,2, Safety Patrol 1; F.T.A. Club 4, Folk-Dancing 2, Superlative 4; Spotlight Staff 4; Creative Writing and Speech 4; Library Club 3; Hobby Club 2.



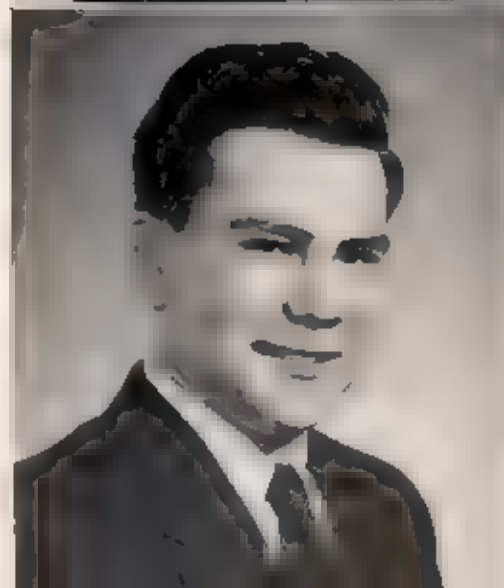
**WILLIAM RAY WILLIS**

F. A. Club 1,2,3,4; Superlative 4, Aeronautics Club 2; 4-H Club 1,2.



**JAMES EUGENE WOODY**

Home Economics Club 1; 4-H Club 1, President 1, Safety Patrol 2,3, Glee Club 3, Beta Club 3,4, Treasurer 4; Glee Club Operetta 3; Superlative 4; Chief Marshal 3; Dramatics 4, Creative Writing and Speech 4, Spotlight Staff 4; Junior Play, Co-Editor Nushka 4, Vice-President Senior Class, Valedictorian



**KATHLEEN SUE WOODY**

Home Economics 1,2; Glee Club 1,2, F.T.A. Club 4; Beta Club 4, Folk-Dancing Club 2; Superlative 4; Spotlight Staff 4; Creative Writing and Speech 4; Library Club 4; Hobby Club 2; Glee Club Operetta 2





## MASCOTS

GARY ARROWOOD  
Son of  
Mr. and Mrs. Robert Arrowood

MAXINE CRAWLEY  
Daughter of  
Mr. and Mrs. Vernon Crawley

## CLASS POEM

Beautiful springtime is here  
The time to be alive  
Yet there's a tinge of fear  
For the class of '55.

Always each springtime before  
We've wished the time to arrive  
But it's will be no more  
For the class of '55

For Graduation is here  
And soon we'll say good-bye  
Each eye will shed a tear  
For this class of '55

Glenwood High we love thee best  
Your teachings will survive  
We feel that you have blessed  
The class of '55.

To each beloved teacher and friend  
Who has kept our hopes alive  
Sincere are our thanks to you  
From the class of '55

By-gone days of youthful times  
Memories will keep alive  
In our hearts they'll live sublime  
For the class of '55

Tomorrow's future dreams drew  
At last time has arrived  
To make all dreams come true  
For the class of '55

L. LA HOLLIFIELD  
Class Poet

## CLASS MOTTO

"EDUCATION IS A SEARCH FOR TRUTH"

## CLASS COLORS

WHITE and GOLD

## CLASS FLOWER

ROSE

# History

One hazy day in August, 1943, there appeared on the horizon of Ganwood campus a new army of prospective learners, who were eventually to be known as the class of '55. Standing at the portal to greet us was Miss Estelle Washburn, who took us under her wings and sheltered us from the fears of our first year.

Then we started on the journey through the grades with Mrs. Ellen Crawford, Mrs. Mary Cothran, Mrs. Clara Rayburn, Mrs. Richard Shaw, Miss Charlene Hemphill, Mr. Ray Shytie, and Mr. and Mrs. William Elmore, respectively, each polishing, refining, and sending us on our way to a higher level of achievement.

At the beginning of the eighth grade our class enrollment was increased by Eugene Holland, Jimmy Ledbetter, Hugh Ledbetter, Shrey Cable, Eloise Berry, Billie Cable, Jack Lusk, Roland Rees, Haskell Reel, Martha Anderson, Frances Reel, and Deal Lowng--coming from Sugar Hill, Marcelle Martin, Lois Smokey, Everette Sumlin, Lynn Christy, Roy Lonon, Eugene Woodby, Mary Arrowood, Lilian Arrowood, Doris Ann Buchanan, Camille Arrowood, Elbert Mensley, and Hoyle Blankenship--coming from Dysartsville.

Then began our high school journey. Probably our most horrifying experience in the Freshman year was changing classes. Pushing our way through the narrow corridor upstairs with Juniors and Seniors lowering over us and casting their contemptuous glances, we trudged our weary way to face the reprimand of teachers if we were late to classes. Miss Noleto Williams and Mr. G. D. Wigley were our homeroom sponsors that first year in high school, the parties and the picnic at Old Fort Picnic Grounds--and sometimes our classes--made this a memorable year.

Before we realized it, we were Sophomores, wiser but happier, for our "adjustment" was now completed. Again Miss Williams and Mr. Wigley were our sponsors. Biology and World History were the chief worries of our otherwise happy year. One bright spot in the year, however, was our class picnic to Crabtree Meadows.

When we entered our Junior year Mrs. Doris Howell, as our homeroom sponsor, was there to welcome us. It was then that we thought we were getting to the top of the ladder in the field of learning, but Algebra II and American History made us realize how little we knew. Typing and shorthand caused us some sleepless nights. The highlight of our Junior year was the Junior-Senior Banquet. The beautiful setting in a tranquil rose garden, where the wishing well invited us to make known our wishes, will always remain in our memories. Will they all come true? History will tell. Then, there was the Junior play, "Happy Holiday," with a mixture of laughs, thrills, and romances. How hard we worked for Wilma Potest and Jimmy Ledbetter to be the Harvest Festival King and Queen! They beat the seniors to the throne. That was our supreme accomplishment.

A most suddenly our Senior year had begun. Mrs. Howell was again our homeroom teacher. Class rings, orders for caps and gowns, invitations, and diplomas meant that our goal would too soon be reached. One highlight of this year was the winning again of the Harvest Festival. Wilma Potest and Thurston Haynes reigned as King and Queen. The most cherished memory was our class Christmas party in the Community Building, given by Mr. and Mrs. Howell.

Ahead are yet many things to look forward to before the year is over--the Junior-Senior Banquet, our first train ride, for most of us, carrying us to our long-anticipated trip to Washington, and then graduation--the saddest and the happiest of all our experiences.

# Last Will and Testament

State of North Carolina  
County of McDowell  
Glenwood High School

To Whom It May Concern:

We, the Senior Class of 1955, being about to pass out of this sphere of education, in sound mind (?) and body, do make and publish this, our last will and testament.

## ARTICLE I

We give and bequeath to the dear faculty, who have done their duty, our deepest appreciation for their help and guidance throughout the past years.

## ARTICLE II

To our beloved principal, Mr. Frank W. Howe I, we leave our sincere affection, our deepest reverence, our heartiest gratitude, all due to his faithful instructions.

## ARTICLE III

To our parents, who for twelve long years have given us their unselfish love and sacrificial help, we leave our deepest gratitude.

## ARTICLE IV

To the remaining high school students we leave our ability to complete the final year.

## ARTICLE V

To our homeroom teacher, Mrs. Dara B. Howell, the profound admiration and ever-enduring friendship of the class of 1955.

## ARTICLE VI

We, the senior class, make the following individual bequests to the members of the senior class:

- 1. Wilma Poteat, will my ability to go steady and to ride in Chevrolets to Peggy Eplee.
- 1. We, Eloise Berry and Shirley Cable, will our ability to stick together to Jack and Jerry Silver.
- 1. Thurston Haynes, will my flirtatious ways to Donald Cannon and Donald Westmoreland.
- 1. Shirley Walborn, will my love for Ford cars to Gail Williams.
- 1. Jean Williams, will my mischievous ways and ability to skip classes to Arlene Poteat and Charline Reel.
- 1. Ravonda Brookshire, will my love for basketball to Josephine Cable and Mary Jo Walker.
- 1. Marcejo Martin, leave my love for tall, dark, and handsome boys to Maxine Westmoreland and Marie Bowman.
- 1. Darline McNeely, leave my love for Physical Education Class to Mildred Hall, Mildred Goforth, and Hazel Mashburn.
- 1. Mim Crowford, will my love to go places anytime to Gayle Elliott.
- 1. Lois Smalley, bequeath my title, Best Personality, and my admiration for floxed-haired boys to Eunice Haynes and Margie Memphis.
- 1. Hugh Ladbetter, leave my love for the sophomore girls to Billy Thomas.
- 1. Betty Lou Pyatt, will my ability to go with one senior boy a year to Luella Mae Morgan.
- 1. Evelyn Jordan, will my ability to get all the boys from Yancy County to Zora and Nora Estes.
- 1. Anne Craig, leave my title, "Cutest Girl" to Irene Kayler.
- 1. Lynn Christy, leave my ability to pick the lock on bus no. 50 to anybody who thinks he can get by with it.
- 1. Junior Greer, leave my ability to go to town anytime during the day to Wayne Poteat and Daniel Lancaster.
- 1. Eugene Mallond, will my lock and key for sbe bus 26 to anyone who has the money to buy it.
- 1. Billy Greer, leave my shortness to Billy Gene Reel.
- 1. Roy Willis, leave my quiet ways to Troy Lee Baker, Eloise Parker, and Betty Jean Bledsoe.
- 1. Stanley Vess, will my good looks to Grody Parham.
- 1. Lila Holstead, will my ability to smile and be happy to Faye Frody, Willie Morgan, and Margaret Pace.
- 1. Billie Cable, leave my ability to get along with everyone to Wilma Ray, Alma Lowing, and Lorene Morgan.
- 1. Everette Sumlin, will my ability not to speed and pass buses to Mildred Kiser.
- 1. Roy Lohan, leave my ability to borrow all my paychecks to Dier Poteat.
- 1. Jack Lusk, leave my friendly ways to Joe Taylor, Franklin Holstead, and Furman Buckner.
- 1. Lee Parker, leave my Asheville girl friends to Jack Parker.
- 1. Jimmy Ladbetter, will my ability to get in trouble anytime and anywhere to Robert Williams.
- 1. Dara Pendley, leave my title "Most Likely to Marry" to Rosa in Cox.
- 1. Kathleen Woody, will my title as "Most Courteous" to Shirley Taylor and Dorothy Vaughn.
- 1. Eugene Woodby, leave Glenwood High School!
- 1. Freddie Jackson, will my "brains" and "Talent" to anyone who'd dare take them.

In witness whereof, we, the said class, do hereunto set our hand and seal to this will the second day of February in the year of our Lord one thousand nine hundred and fifty-five.

Signed--  
SHIRLEY CABLE



# Prophecy

As I gaze once more on the faces dear  
Of my old pals all gathered here,  
I seem to see them as they used to be,  
Even in this year of '73.  
A class reunion we all attend  
And talk to each classmate, each buddy, each friend  
Ah! Eugene Woodby, you're a doctor I see  
With your lit e satchel and such dignity  
Your fame has spread both near and far,  
You aimed for--and made it--to your lucky star  
Roy Willis and Shirley Cable partners in Alaska,  
With a big trading post, what more, now I ask yo?  
Jean Williams, a nurse, and one of the best,  
Jewell Morris, married, how her home is blest;  
And Mimi Joan Cranford's an actress so great;  
Darline McNeely, a teacher, her fate.  
Hugh Ledbetter coaches at the great school Cornell,  
Where Eugene Holland plays ball very well.  
Billie Cable is secretary to Governor Billy Greer,  
While Everette Sumlin is a steen patrolman, I hear.  
Anne Craig, who always like to fly so high,  
Now is a hostess way up in the sky,  
And Stanley Yess the wit-up high is ha--  
Not in an airplane--but on TV  
Who a two buddies chose, they enlisted here,  
Made Navy their goal--a success--a career,  
Roy Lanon and Freddie Jackson friends of mine,  
Glad you made it boys, thank it is fine.  
E also Barry, 4-H leader;  
And Jimmy Ledbetter, a racing car speeder,  
Blonde Shirley Wellborn ranks high as a WAC,  
Also Glen Bowman, a Navy man from way back,  
Revonda Brookshire has a beauty so on,  
And Jack Lusk 'round the world he travels on;  
Lynn Christy, a bus driver, he surely does go,  
Lisa Holfield's a stand-in for Marilyn Monroe.  
Wilma Poteat--so popular--so full of life--  
Is doing fine as a missionary's wife;  
And Betty Lou Pyott--so quiet, so a col,  
A piano player, who takes off the roof  
Marcelle Martin with the beautiful hair  
Is a famous model--she's doing fair  
Evelyn Jordan is an archaeologist's wife;  
She finds it interesting, plans it for life,  
Junior Greer is a judge in a great big city  
Helping the people on every committee.  
Dora Pendley's manager of a great hotel,  
From all accounts she's doing very well  
Lois Smalley has gone far--she has her own store  
On Park Avenue, and is planning on more.  
Kay Woody, an artist, whose fame is well known,  
Flew in from Hollywood, where she has her home.  
So all my old classmates--both far and near--  
We've to ked over old times, as we've gathered here  
It makes me feel younger to gaze on your faces,  
You're grand--each one--and you've certainly gone places  
But who gets the credit? It's plain to be seen--  
We couldn't have gone far without Mrs. Wilma Greene.  
She's kind and helpful, we make this confession--  
She's at the top in the teaching profession.  
And Mrs. Dora Howell, her time she has spent  
To make the '55 class one hundred per cent;  
She's tops in teaching as we knew she'd be  
Thus brings us to the year of '73.  
Good-bye old pals--each classmate--each friend,  
This prophecy, like all things, must come to an end  
And in case you're wondering--and still don't know it--  
The one writing here is Eager Alley Post

THURSTON HAYNES  
Class Prophet

# Senior



**MOST LIKELY TO SUCCEED**

Eugene Woodby - Mimi Cranford



**MOST MISCHIEVOUS**  
Hugh Ledbetter - Jean Williams



**NEATEST**

Ray Willis - Darlene McNeely



**QUIETEST**

Billie Cable



**MOST ATHLETIC**

Everette Sumlin - Revonda Brookshire



**CUTEST**

Stanley Vess - Anne Craig



**MOST COURTEOUS**

Kathleen Woody



**BEST LOOKING**

Jimmy Ledbetter - Shirley Wellborn



**BEST ALL ROUND**

Eugene Holand - Jewell Morris

# Superlatives



**MOST VALUABLE TO SCHOOL**

Billy Greer - Eloise Berry



**BEST PERSONALITY**

Lynn Christy - Lois Smolley



**MOST LIKELY TO MARRY**

Junior Greer - Dora Pandley



**MOST POPULAR**

Eburaton Haynes - Wilma Poteat



**MOST TALENTED**

Freddie Jackson - Betty Lou Pyatt



**MOST STUDIOUS**

Shirley Cobia



**MOST DEPENDABLE**

Marcelle Martin



**WITTIEST**

Roy Lanon - Evelyn Jordan



**FRIENDLIEST**

Incy - Jack - Lug Hollifield



## SENIOR SNAPSHOTS

1 Mrs and Mrs, 2 March Flower, 3 Ready for the banquet, 4. The gang, 5 Two Cherokees??  
 6 Would be Senior, 7 Dressed for the ball, 8 Hi, Sailor, 9 Pretty car, 10 Sparkling eyes  
 11 Au d Long Syne, 12 Three Stooges, 13 Prospective Sen or, 14 Pa s, 15. Al he wants for Christ  
 mas 16 Specia occasion, 17. Liberace?? 18. Where's Jimmy???



## UNDERCLASSMEN OFFICERS



### SOPHOMORE GIRLS

BARBARA HARR S  
*President*  
PAT BARTLETT  
*Vice-President*  
MAXINE HOLL F ELD  
*Secretary Treasurer*  
BETTY MORGAN  
*Reporter*  
ROMELDA WESTMORELAND  
*Reporter*

### SOPHOMORE BOYS

BILLY BARBER  
*President*  
HUGH ROBBINS  
*Vice-President*  
EDWARD ARDWOOD  
*Secretary Treasurer*  
SAMMY MARLOWE  
*Reporter*



### FRESHMAN GIRLS

HAZEL POTEAT  
*President*  
JOYCE DOCKERY  
*Vice President*  
BARBARA HARR S  
*Secretary*  
BETTY WESTMORELAND  
*Treasurer*

### FRESHMAN BOYS

JIM PYATT  
*President*  
JACK MARLOWE  
*Vice-President*  
BOBBY BOWMAN  
*Secretary Treasurer*



### JUNIORS

FURMAN BUCKNER  
*President*  
PEGGY PLEE  
*Vice-President*  
MARY IO WALKER  
*Secretary Treasurer*



# JUNIORS



TROY LEE BAKER  
BETTY JEAN BLEDSOE  
MARIE BOWMAN  
FAYE FRADY



FURMAN BUCKNER  
JOSEPHINE CABLE  
DONALD CANNON  
ROSAL E COX



GAIL ELL OTT  
PEGGY EPLEE  
NORA ESTES  
ZORA ESTES



MILDRED GOFORTH  
MILDRED HALL  
EUNICE HAYNES  
MARGIE HEMPHILL



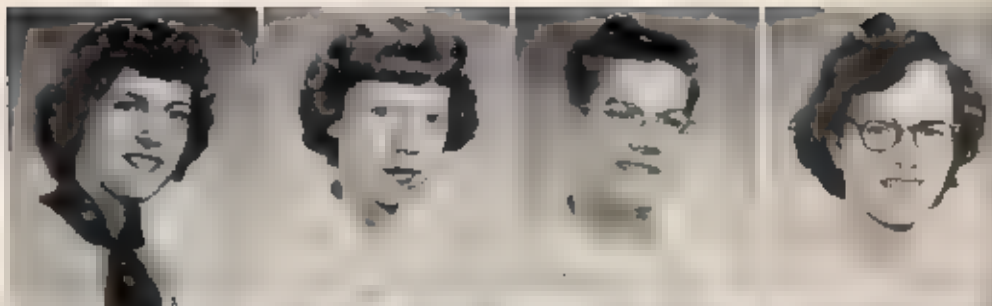
FRANKLIN HOLLAND  
IRENE KAYLOR  
MILLARD K SER  
DANIEL LANCASTER



ALMA LAWING  
HAZEL MASHBURN  
LJLA MAE MORGAN  
WILLIE FAYE MORGAN

# JUNIORS

LORENE MORGAN  
MARGARET PACE  
GRADY PARHAM  
ELOISE PARKER



JACK PARKER  
ARRENA POTEAT  
WAYNE POTEAT  
OLEN POTEAT



WILMA RAY  
CHARLENE REEL  
BILLY GENE REEL  
JACK SILVER



JERRY SILVER  
SHIRLEY TAYLOR  
JOE TAYLOR  
BILLY THOMAS



DOROTHY VAUGHN  
MARY JO WALKER  
MAXINE  
WESTMORELAND  
DONALD  
WESTMORELAND



GAIL WILLIAMS  
CHARLES WILLIAMS  
ROBERT WILLIS



# SOPHOMORES



Leana Aldredge  
Carl Aldredge  
Hugh Anderson  
Edward Arrowood  
Jack Arrowood  
Billy Barber  
Patricia Bartlett  
Bonnie Bradby

Elen Buckner  
Beulah Cable  
Bobby Cable  
Marlene Colhoun  
Horace Crawley  
Ronald Dack  
Gann Emore  
Edith Ferguson

Larry Gordon  
Barbara Harris  
Charlotte Hays  
Irene Hawkins  
Harold Hawkins  
Irene Hensley  
Jeanette Hensley  
Alvin Holland

Maxine Hofield  
Doris Hunter  
Junior Hunter  
Hazel Huskins  
Cecil Kaylor  
Claude Kiser  
Patsy Lawing  
Jerry Lawing

Benny Ledbetter  
Don Ledbetter  
Linda Ledford  
Norm Maness  
Kathryn Marawa  
Sam Matson  
Peggy Mashburn  
Evelyn Mitchell

Betty Morgan  
Elizabeth Morgan  
Betty Mosely  
Betty Newton  
Donald Pateat  
Floyd Pyatt  
Wima Radford  
Russell Radford

Betty Reel  
Kayree Rea  
Hugh Robbins  
Barbara Ross  
Mary Rumlolt  
Bobby Simmons  
Queen Smalley  
Dorothy Smith

Jeanette Smith  
Carlton Sparks  
Shirley Sumlin  
Dana Swann  
Verga Tye  
Peggy Voss  
Howard Voss  
Roma Westmoreland

Genel Whelan  
Martha Wigby  
Earl Woody  
NOT PICTURED  
George Cable  
Imogene Mu  
Jane Marlowe



# FRESHMEN

W C Anthony  
Wayne Arrowood  
Bobby Barnes  
Wayne Bartlett  
Charles Barrett  
Johnny Blankenship  
Vevy Bladson  
Jayce Buchanan

Richard Buchanan  
Shelby Cable  
Mack Cable  
Barbara C Lewis  
Ives Connor  
Ze da Connor  
Barbara Dixon  
Pear Duval

Julia Ann Elliott  
Charles Englund  
Dean Evans  
Tommy Freedy  
Christine Gibbs  
Norma Giam  
Ray Greer  
Jo Ann Guyton

Gracie Hall  
Barbara Harris  
Mabel Harriss  
Jean Haynes  
David Hensley  
Mertha Hill  
Ronald Howell  
Frank Howell

Blanche Jones  
Loraine Jordan  
Jean Kiser  
Barbara Lancaster  
Marie Laughridge  
Betty Lawing  
Kathryn Lawing  
Edna Leabatter

Robert Little  
Jack Marlowe  
Hannah McIntosh  
Kathryn Morgan  
Hoke Morgan  
Clyde D. Morgan  
Cyde L. Morgan  
Wade Nanney

Georgia Painter  
Carl Parker  
Perry Parker  
Melvy Pennington  
Hazel Poteat  
Walter Poteat  
Lorna Price  
Reece Price

Virginia Price  
Louise Proctor  
Jim Pyatt  
Donald Ramsey  
Lucile Reel  
Joyce Riddle  
Trula Mae Roberts  
Bill Rumble

Jo Ann Smith  
Jayce Stacy  
Mildred Stacy  
Olene Stevenson  
Pat Taylor  
George Taylor  
Betty Westmore  
Harold Whitesides

Frances Willis  
Betty Wilson  
Bruce Young  
NOT PICTURED:  
Coy Boyek  
Bobby Bowman  
Joyce Dockery  
Jasper Tranter



## UNDERCLASSMEN SNAPSHOTS



1 Happy Birthday 2. Young Sophomore; 3 Poor Kitty, 4 Young chicks, 5 Dancing Dollars and Tumbling Tiles; 6. What's he reaching for? 7 Four Musketeers, 8 Drive Safely, 9 They look happy 10. Whose ring? 11 Look out, bubbles burst! 12. First formal! 13. Isn't diagraming fun? 14 Attention 15. Ain't somebody lucky? 16. Those Juniors 17 Cousins, 18. Sure y does taste good



# Activities

# Beta



# Club



First Row, Sitting: Peggy Eplee, Rosalie Cox, Eunice Haynes, Eugene Woodyby, Mimi Cranford, Lois Smalley, Eugene Holland, Eloise Berry, Kathleen Woody, Jean Williams. Second Row Standing: Wilma Poteat, Gail Williams, Lura Mae Morgan, Frank'n Holland, Mercedes Martin, Mary Jo Walker, Arrena Poteat, Shirley Cable, Mrs. Wilma B. Greene, Sponsor

First Row, Sitting: Betty Lou Pyott, Peggy Eplee, Eloise Berry, Jane Taylor, Gaye Greene, Billy Greer, Furman Buckner, Rosalie Cox, Hazel Poteat, Shirley Cable, Barbara Harris. Second Row Standing: Mrs. Doro B. Howell, Sponsor, Franklin Holland, Jim Pyott, Eugene Holland, Alvin Holland, Billy Barber



# Student



# Council

# Future



# Teachers



First Row, Kneeling, Dara Pendley, Dorothy Smith, Gene Whitson, Shirley Wellborn, Mildred May, Shirley Cabell, Eloise Berry, Lela Smokey, Mary Rumfelt, Betty Morgan. Second Row, Standing: Zora Estes, Romelda Westmore and, Marjorie Bowman, Eloise Parker, Rosalie Cox, Jean Williams, Lorena Morgan, Kathleen Woody, Shirley Taylor, Mimi Cranford, Maxine Hallifield, Marcelle Martin, Mrs. Dara B. Howell Sponsor

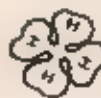
First Row, Sitting: Jean Kiser, Diane Stevenson, Margie Hemphill, Barbara Harris, Betty Morgan, Shirley Taylor, Jean Williams, Romelda Westmore and, Patricia Bartlett, Irma Mansley, Mrs. Wilma B. Greene, Sponsor. Second Row Standing: Jo Ann Guyton, Dara Pendley, Floy Pyatt, Joyce Riddle, Irene Hawkins, Jo Ann Smith, Kathleen Woody, Evelyn Jordan, Martha Wigley, Mimi Cranford, Nora Estes, Shirley Wellborn, Mary Rumfelt, Dorothy Smith, Melvy Penland, Zora Estes.

# Library



# Club

# Senior



## 4-H Club

First Row: Ray Greer, Jo Ann Guyton, Betty Wilson, Mildred Stacy, Margie Hemphill, Glen Elmore, Elaine Berry, Sammy Mat-  
 ows, Melba Harris, Cecil Kaylor, Wayne Bartlett. Second Row: Barbara Dixon, Virginia Price, Trula Mae Roberts, Barbara  
 Lancaster, Jean Kiser, Diane Stevenson, Jo Ann Smith, Joyce Riddle, Frances Willis, Irene Kaylor, Pearl Duya, David Hens-  
 ley. Third Row: Gail Elliott, Mildred Hal, Jean Haynes, Barbara Crews, Betty Westmoreland, Eloise Parker, Jerry Siyar,  
 Edna Ledbetter, Joyce Stacy, Richard Buchanan, Kathryn Morgan. Fourth Row: Hannah McIntosh, Billy Barber, Hugh Ledbetter,  
 Eugene Holland, Roy Lonon, Jimmy Ledbetter, Claude Koser, Hugh Anderson, Jack Silver, Donald Westmoreland.

First Row: Alice Anderson, Ray Mull, Tressie Westmoreland, Jane Taylor. Second Row: Helen Buchanan, Joanne Christopher,  
 Max Holland, Babbie Poteat, Lela Suttie, Wayne Clark, Linda Haynes, June Hughes, Charlotte Sparks, Margie Newton, Irene  
 Hal, Aileen Kaylor, Texie Bartlett, Gladys Reel, Robert Taylor, Harold Pace, Ruth Hawkins. Third Row: Bionnie Gilliam,  
 Eula Clark, Philip Gardner, Rebecca Greene, June Franklin, Brenda Tyo, Eugene Morgan, Donald Frady, Kenneth Newton, Le-  
 roy Reel, Billy Anderson, Babbie Farley, Earl Cable, Dean Smith, Carolyn Mull, Connie Poteat, Patsy Coulter, Josephine  
 Burton, Frances Radford, Ann Tyo, Thomas Hensley, Leroy Stephenson, Mrs. Eunice Elmore, Sponsor. Fourth Row: James  
 Rumpfalt, Clyde Connor, Carroll Lewis, J. D. Practor, Patsy Westmoreland, Betty Parker, Frances Anderson, Eddie McFalls,  
 Alan Duncan, Dean Morgan, Lela Mae McCraw, Howard Woody, Jerry Blankenship, Lucy Lowing, Thelma Washburn, Helen  
 Mitchell, Donald Hunter, Billy Westmoreland, Donald Martin, Bryant Jackson, James Mastellar, Grace Bartlett. Fifth Row:  
 Eugene Sumlin, Carol Hemphill, Katherine Moody, Barbara Cranford, Billy Anderson, Ethel Ledbetter, Barbara Bowman, Dora  
 Burton, Brenda Poteat, David McIntosh, Charles McFalls, Marie Loftis, Juanita Wiseman, Patsy Allison, Jimmie Buchanan,  
 Jimmy Bright, Shirley Harvey, Louise Christopher, Ervin Waycaster, Geneva Williams. Sixth Row: Gerald Thomas, Joe Poteat,  
 Ronald Houck, Louise Cunningham, Anne Lowing, Pat Parker, Christine Martin, Laura Robinette, Dallas Taylor, M. G. Fox,  
 Sammy Young, Jerry Cosby, Reba Robinette, Josephine Kaylor, Glenna Cable, Shirley Lytle, Arvin Clark, Cecil Clark, Betty  
 Ward, George Duncan.

# Junior



## 4-H Club

# Creative Writing

# and Speech



First Row, Left to Right: Dora Pendley, Kathleen Woody, Darlene McNeely, Eugene Woodby, Lila Hallfield, Eunice Haynes.  
 Second Row: Betty Lou Pyatt, Billie Cable, Shirley Cabe, Eloise Barry, Margie Hemphill, Hugh Ledbetter, Marcella Martin.  
 Third Row: Jean Williams, Eugene Holland, Lois Smalley, Rosalene Cox, Evelyn Jordan, Shirley Wellborn, Mimi Cranford.  
 Standing: Mrs. Dora B. Hawes, Sponsor.

CREATIVE WRITING  
 HIGH SCHOOL

First Row, Sitting: Jean Williams, Mimi Cranford, Rosalene Cox, Eugene Holland, Hugh Ledbetter.  
 Standing: Billie Cable, Betty Lou Pyatt, Eloise Barry, Shirley Cabe, Dora Pendley, Kathleen Woody, Marcella Martin, Darlene McNeely, Eunice Haynes, Mrs. Margaret B. Narr, Sponsor, Shirley Wellborn, Mrs. Dora Hawes, Sponsor, Lila Hallfield, Eugene Woodby, Lois Smalley, Jewel Morris, Margie Hemphill.

## Spotlight



## Staff

# Safety



# Patrol

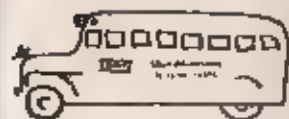


First Row: Mr. Frank W. Howe! Sponsor; Barbara C. Lewis, Blanche Jones, Gracie Hall, Dorothy Smith, Marcia E. Martin, Maxine Hallfeld, Eloise Berry, Marjorie Loughridge, Shelby Cable, Irma Hensley, Doris Hunter. Second Row: Barbara Ross, Ellen Buckner, Shirley Sumlin, Angelina Smith, Peggy Vass, Shirley Weiborn, Jack E. Smith, Alice Anderson, Betty Jean Bedsoe, Ambrose Radford, Theima Mashburn, Louise Wilks, Christine Gibbs. Third Row: Charlotte Harris, Trula Mae Roberts, Katherine Cowing, Martha Hill, Katherine Marlowe, Mary Rumpfelt, Mable Harris, Jevelina Hensley, Betty Wilson, Mildred Stacy, Edna Ledbetter, Jayce Stacy, Louise Proctor. Fourth Row: Ear Cable, Walter Poterat, Bobby Simmons, Lila Hollifield, Lucille Reel, Jack Arrowood, James Rose, Olen Smalley, Stanley Vass, Raymond Roper.

Left to Right: Grady Parham, Mildard Kiser, Olen Poterat, Hugh Ledbetter, Ray Logan, Lynn Christy, Everette Sumlin, Jimmy Ledbetter, Thurston Haynes, Billy Gene Reel, Eugene Holland.



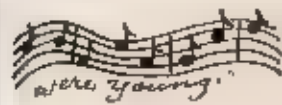
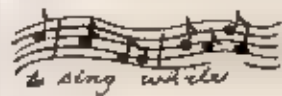
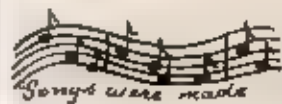
# Bus



# Drivers



# Glee



# Club



First Row: Joyce Buchanan, Marie Laughridge, Joyce Dockery, Fley Pyatt, Pear Duval, Barbara Harris, Mildred Stacy, Blanche Jones, Ma ba Harr s, Shalby Cable, Zora Estes, Peggy Mashburn, Jo Ann Guyton, Miss Rachel A. Hunt, Sponsor  
 Second Row: Barbara Dixon, Ima Price, Jean Kiser, Betty Rea, Margie Hemphill, Glens Stevenson, Joyce Stacy, Irene Hawkins, Eunice Haynes, Virginia Price, Imogene Mul, Billie Cable  
 Third Row: Gracie Hall, Trula Mae Roberts, Christine Gibbs, Louise Proctor, Eaise Berry, Naomi Mainer, Willie Morgan, Shirley Taylor, Jean Haynes, Barbara Ciew s, Jo Ann Smith, Joyce Riddle, Betty Wilson  
 Fourth Row: Shirley Cable, Larry Gordon, Mildred Ha , Nora Estes, Edna Ledbetter, Shirley Wellborn, Mimi Cranford, L isa Hallifield, Betty Lou Pyatt, Barbara Ross, Marie Bowman, Alma Lawing  
 Fifth Row: Darline McNew y, Rosalie Cox, Gail Elliott, Lorene Morgan, Laraine Jordan, Glenn E more, Bobby S mmons, Evelyn Jordan, Marce le Martin, E aise Parker, Charlotte Harris

First Row: Lois Smalley  
 Second Row, Back to Front: Lorene Morgan, Lula Mae Morgan, Mary Jo Walker, Arrena Potat, Wilma Potat, Char ne Rea, Maxine Westmoreland  
 Third Row: Marg e Hemphill, Mor e Bowman, Shirley Taylor, L isa Hallifield, Eugene Woodby, Irene Koy or, Ga . E ott, Robert Willis, Stanley Vess  
 Fourth Row: Freddie Jackson, Grady Parham, Peggy Ep ee, Gail Williams, Mildred Hall, Elaise Parker, Zora Estes, Anne Craig  
 Fifth Row: Billy Graer, J mm e Ledbetter, Dana d Westmoreland, Jack S iver, Wayne Potat, Jerry Si ver, Franklin Halland, Revonda Breakshire. Standing Mrs. Wilma B. Graens, Sponsor. Not Shown: Rosalie Cox, Mimi Cranford, Jewell Morris, B eey Gene Ree, Shirley Wellborn.

# Dramatics



# Club

# Future



# Farmers

First Row: Carlton Sparks, Danc Lancaster, Charles England, Joe Taylor, Alvin Holland, Howard Voss, Furman Buchner, Dean Evans. Second Row: Mr. W. S. Lucas, Sponsor, Paul Pannel, Olen Potrat, Russell Radford, Thurston Haynes, Charles Williams, Coy Balick, Milard Kiser, Junior Greer, Junior Hunter, Donald Cannon, Jennings Smith, Harold Hawkins, Bill Thomas, Jack Lusk. Third Row: Carl Parker, Pat Taylor, Jack Parker, Hugh Robbins, Wayne Arrowood, Troy Lee Baker, Ray Willis, Carl Aldredge, Earl Woody, David Manslay, Walter Guffay.

Front Table: Left to Right: Betty Wilson, Marlene Cashoun, Julia Elliott, Martha Hill, Melvy Penland, Barbara Harris, Mildred Stacy. Second Table: Jo Ann Smith, Virginia Price, Wilma Radford, Hazel Huskins, Barbara Dixon, Ives Connor. Standing: Mrs. Mabel T. Bradsher, Sponsor.

# Handicraft



# Club

# Home



# Economics

## I

First Row: Julia Elliott, Jo Ann Guyton, Zelda Connor, Norma Gilliam, Joyce Dockery, Barbara Harries, Ima Price, Mable Harries, Mildred Stacy, Virginia Price, Shelby Cabie, Betty Wilson, Marie Laughridge, Joyce Buchanan. Second Row: Mevy Penland, Betty Long, Edna Ledbetter, Christine Gibbs, Betty Westmoreland, Barbara Clewis, Lorraine Jordan, Hannah McIntosh, Jean Haynes, Frances Willes, Georgia Panter, Ives Connor, Lucile Reel, Pearl Duva, Mrs. Mabel T. Bradsher, Sponsor. Third Row: Jo Ann Smith, Joyce Riddle, Olene Stevenson, Barbara Lancaster, Grace Hall, Joyce Stacey, Jean Kiser, Louise Proctor, Truella Mae Roberts, Hazel Pateat, Barbara Dixon, Kathryn Morgan, Blanche Jones, Martha Hill, Kathryn Lawing.

First Row: Mrs. Mabel T. Bradsher, Sponsor, Imogene Moore, Peggy Mashburn, Foy Pyatt, Leona Adridge, Doris Hunter, Peggy Voss. Second Row: Hazel Huskins, Elizabeth Morgan, Genell Whitson, Wanda Radford, Marlene Calhoun, Charlotte Harris, Maxine Halford, Kayree Ree, Barbara Harris, Mary Rumpf, Bootsie Cabie. Third Row: Betty Ree, Naomi Mainer, Linda Ladford, Shirley Sumlin, Betty Morgan, Ellen Buckner, Irene Hawkins, Ramelda Westmoreland, Jeanne Hensley, Kathryn Marlowe, Patsy Lawing.



# Home



# Economics

## II

**HARVEST FESTIVAL KING AND QUEEN**  
**High School**



**KING: THURSTON GUY HAYNES**

**QUEEN: WILMA GENE POTEAT**

**HARVEST FESTIVAL KING AND QUEEN**  
**Primary and Elementary**



**PRIMARY KING and QUEEN**

**QUEEN: ANN BROOKSHIRE**  
**KING: ARTHUR COX**

**ELEMENTARY KING and QUEEN**

**QUEEN: JENNIE WARD**  
**KING: EUGENE ELMORE**



### **LUNCHROOM PERSONNEL**

*Left to Right.* Mrs. Fred L. Morris, Mrs. J. C. Holland, Mrs. Lewin Westmoreland, Mrs. Harvey Morgan, Mrs. K. M. Eplee.



### **CUSTODIANS**

*Left to Right:* Stanley Williams, Alvrn Clark, Mrs. Ross Williams, Mr. Ross Williams





LEONA ALDREDGE

BEYONDA BROOKHIRE

PEGGY EPLEE

HANNAH MCINTOSH

PAT BARTLE

JOSEPHINE CABLE

IRENE TAYLOR



BASKETBALL PLAYERS

CHRIS MORGAN

HARVEY POTEAU

BOBBY BOWMAN

MARY JO WALKER

EULA MAE MORGAN

MARRENA POTEAU

MAE



GAIL WILLIAMS

ANNIE

MARTHA WIGLEY

BILLY BARBER

WESTMORELAND

BETTY

WESTMORELAND

JACK LAROCHE

MR. WARREN, Coach





DONALD CANNON

FRANKLIN HOLLAND

CECIL KAYLOR

CLAUDE RISER

BILLY GREER

RONALD HOLLAND

MILLARD K...

GRADY FARHAM



BASKETBALL PLAYERS

OWEN POTTEAT

DONALD POTTEAT

FRANK...

BILLY G. REEL

JERRY SILVER

JACK SILVER

JENNINGS SMITH



STANLEY VESS

HOWARD VESS

DONALD WESTLAND

ROBERT MILLIS

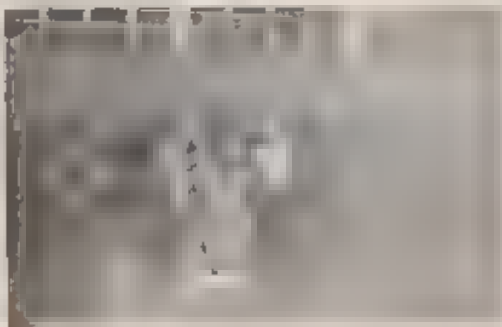
MR. PAUL LACK, Coach

JOE TAYLOR, Manager

## CHEERLEADERS



Left to Right: Sammy Marlowe, Olene Stevenson, Wilma Poterat, Mrs. Barbara E. I. s. Sponsor, Anne Craig, Zora Estes, Daniel Lancaster



SEEN AROUND THE GAMES!



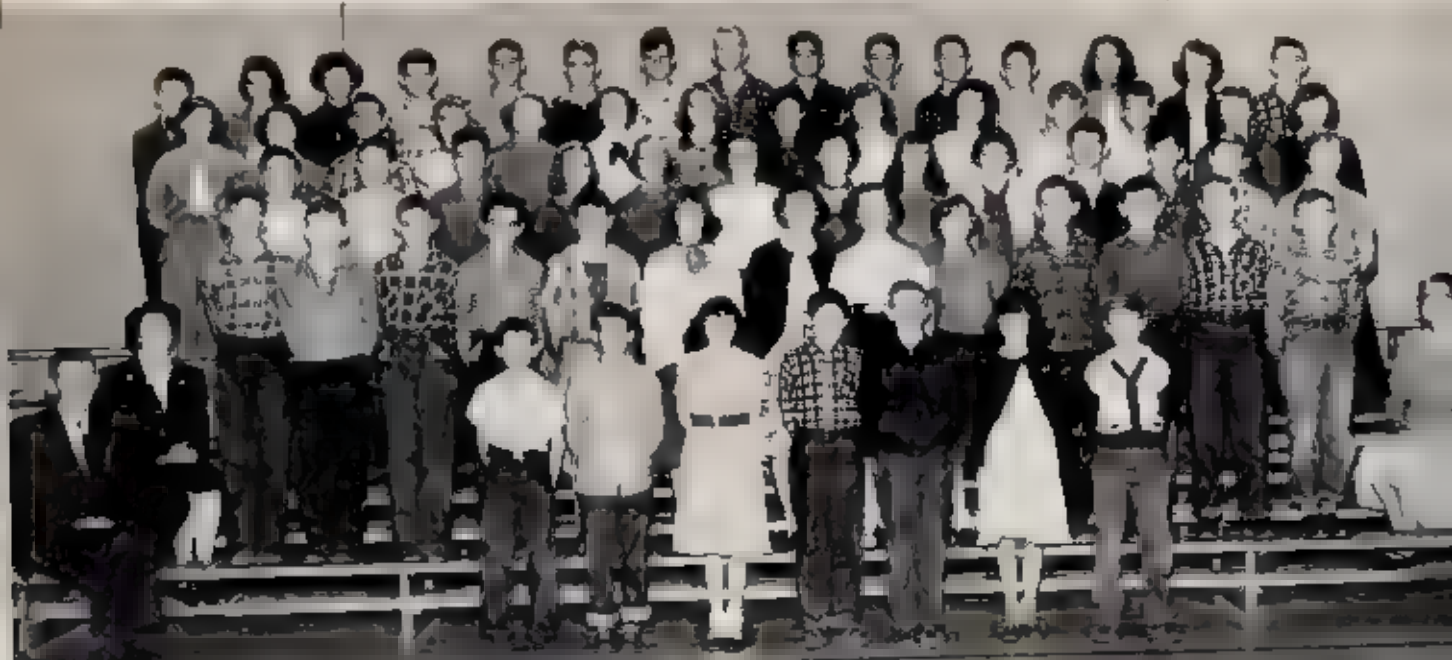


## EIGHTH GRADE

**First Row:** Mr. Samuel Walker, Jerry Gordon, Carroll Hamphill, Eugene Cabale, Glenn Greer, Helen Mitchell, Thelma Mashburn, Geneva Williams, Betty Jean Parker, Cecil Buchanan, Emerson Jackson, Donald Frady, Charles Arrowood, Earl Cabale, Mr. Wilma Elmore. **Second Row:** Tammy Dennison, Reba Robinette, Ethel Ledbetter, Ruby Robinson, Eugene Sumlin, Raydee Arrowood, Leroy Reece, David Tony, Alvin Newton, Dean Morgan, Lela Mae McCraw, Christine Martin, Mary Greer, Patsy Allison, Mr. Zey and McKinney. **Third Row:** Daimar Wigley, Angelina Smith, David McIntosh, Billy Anderson, Donald Adredge, Gaye Greene, Glenda Carswell, Lee Hensley, Karene Poteat, Charles McFall, Boyce Lawing, Philip Guffy, Jimmy Bright, Dara Burton, Gerald Thomas. **Fourth Row:** Joe Lanning, Bobby Connor, Linda Mashburn, Sylvia Loftis, Ambeane Radford, Josephine Kayor, Bonnie Lawing, Jean Rhom, Janice Cabale, Phyllis Kaane, Pat Parker, Shirley Parker, Betty Jo Reece, Juanita Wiseman, Alvin Clark, Iris Jean Galison. **Fifth Row:** Sammy Young, Jerry Cosby, Shirley Lytle, Mary Joyce Holland, Wade McCraw, Donald Bolck, Harold Childers, James Rose, Ollie Baker, Ray Mull, M. G. Fox, Alice Anderson, Leroy Wilkerson, Dillie Lawing, Dalice Taylor.

## SEVENTH GRADE

**First Row:** Mr. William Elmore, Harold Pace, Max Holland, F. Sie Connor, Charles McKinney, Buddy Vaughn, Margaret Rhom, Thomas Hensley. **Second Row:** Mrs. Eunice Elmore, Howard Woody, J. D. Proctor, Earl Reece, Donald Hunter, Robert Marlowe, Verna Gitman, Ruth Bartlett, Lucy Lawing, Patsy Authen, Harvey Ferguson, Jerry Blankenship, Junior Lawing, Clifford Harris. **Third Row:** Gene Holland, Cec Parker, Eugene Morgan, Carolyn Warkins, Jeanette Morgan, Jeanette Hall, Shirley Arrowood, Peggy Lane, Haze Smith, Woodrow Wyatt, Donald Painter, Howard Johnson, Glenda Rayburn. **Fourth Row:** Marie Loftis, Carolyn Jamison, Joe Wigley, Frances Rhom, Barbara Bowman, Jane Taylor, Louise Wilis, Elizabeth Rhom, Kayree Morgan, Dorothy Farley, Raymond Roper, Ronald Hollfeld, Tressie Westmoreland, Jayce Rhom. **Fifth Row:** Eugene Elmore, Glend Cable, Frances Price, Cecil Clark, Harold Dean Suttle, Arnold Jordan, Graver Kiser, Bobby Evans, Graver Lewis, Lonny Condry, Joe Poteat, Ronald Houck, Jeannie Ward, Ann Lawing, George Duncan.



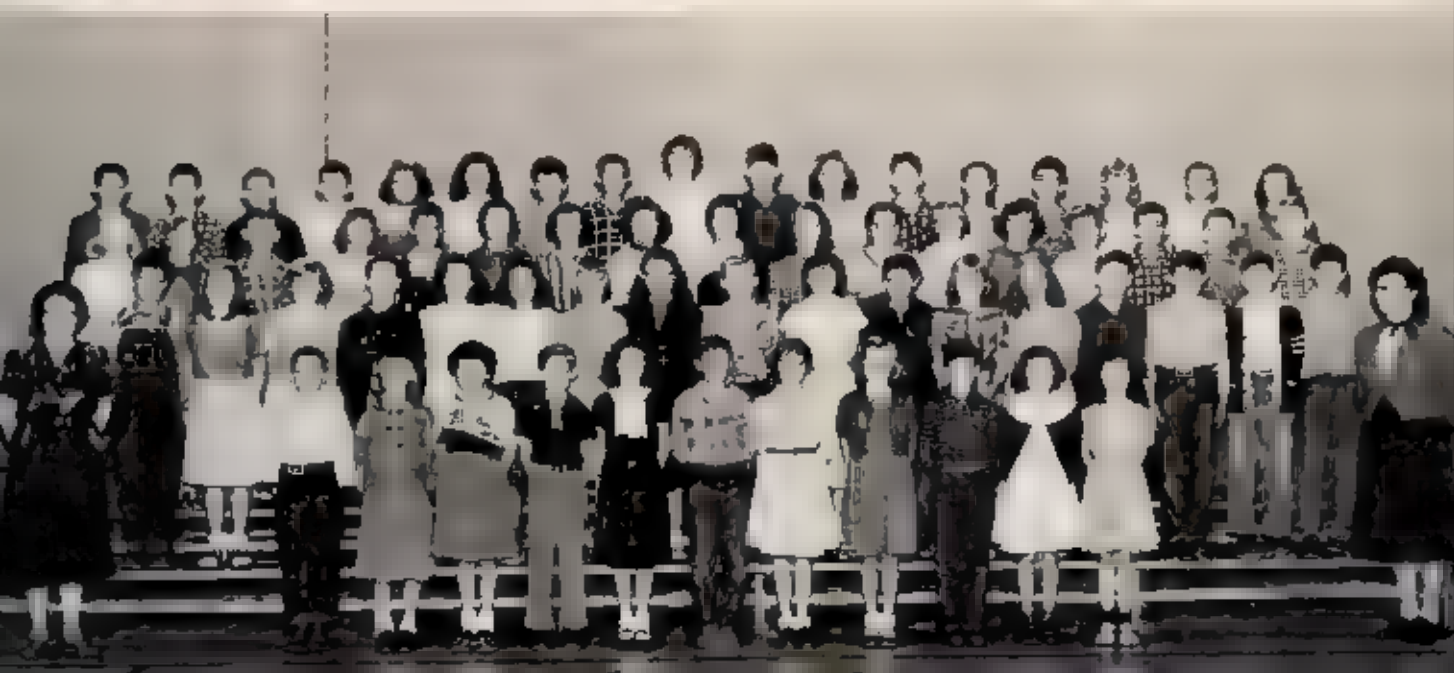


## SIXTH GRADE

First Row: Charles Radford, Reid Morgan, Linda Haynes, Jess Cable, Irene Hall, Helen Buchanan. Second Row: Miss Charlene Hemphill, Ailene Kaylor, Donald Barnes, Rebecca Greene, Jimmy Morgan, Bryant Jackson, James Rhom, David Huffman, Clyde Connor, Robert Barnes, Evella Clark, Jack Elliott, Rita Panter, Mrs. Charlene Teague. Third Row: Billy Anderson, Dean Smith, Carol Lewis, Brenda Tye, Carolyn Mull, Billy Westmoreland, Shirley Harvey, Carl Whitson, Vernon Morgan, Larry Tye, Frances Anderson, Kenneth Newton, Philip Gardner, James Rumble. Fourth Row: Ervin Waycaster, Lorene Radford, Barbara Cranford, Leonard Wiggins, James Buchanan, David Proctor, Betty Ward, Herman Poteat, Thelma Radford, Laura Robinette, Donald Wgley, Louise Cunningham, Clarence Lewis, Buddy Parker, Mack Bradley.

## FIFTH GRADE

First Row: Miss Lyarea Fack, Robert Poteat, Texie Bartlett, Betty Harvey, Robert Taylor, Donna Aldridge, Richard Gardner, Gladys Roe, Lola Suttle, Larry Cable, Ruth Hawkins, Janice Rumble, Mrs. Dessie Lawson. Second Row: Billy Ray Ramsey, Lucille Parker, Louise Christopher, Grace Bartlett, Margie Newton, Ann Tye, Bonnie Gilliam, June Hughes, J. B. Williams, Vera Holmes, Wayne Clark, Gonda Cannon, Jeanette Rumble, Jimmy Rayburn, Bobby Farley, Leroy Stevenson, L. D. Henderson. Third Row: Shirley Watkins, Elizabeth Moore, Kermit Elliott, Charlotte Sparks, Warren Ramsey, Josephine Burton, Frances Radford, Lois Arrowood, Louise Marlow, Freda Lewis, Lucille Mathis, Patay Westmoreland, Vera Price, James Mastaler, Everette Lee Stevenson, Bobby Cooke, Ronald Webb. Fourth Row: Donald Martin, Richard Young, Jerry Bedsoe, Jim Conroy, Jannie May Bowman, Katherine Moody, Frank Proctor, Harold Morgan, Brenda Poteat, Hubert Williams, Joanne Christopher, Allan Duncan, June Franklin, Eddie McFalls, Shirley Smith, J. C. Laws, Connie Poteat.





## FOURTH GRADE

First Row: Mrs. Laura Brown, Bunny Laughridge, John McMahan, Linda Morgan, Estelle Parker, Shirley Arrowood, Shirley Mathias, Charles Davis, Wilma Gardner, Mrs. Genevieve Pyatt. Second Row: Bobby Beam, Billy Jarret, Vivian McCraw, Martha Barnes, Edna Hunter, Edna Cranford, Glenn Pace, Gloria Conroy, M. Fred Connor, Judy Ledford, Eugene Clark, Jean Mull. Third Row: Leray Morgan, Naomi Wiggins, Donnie Hayes, Bryan W. Gay, Charles Connor, Rita Lawing, Troy Hilton, David Deaton, Grace Myers, Howard Ferguson, John Lefts, Ralph Kaylor, Wayne Rhom, Barbara Jamison. Fourth Row: Douglas Carswell, Ernest Vaughn, Jerry Nelson, James Causby, Jacka Smith, Elizabeth Duncan, Reidy McNesly, Marie Smith, Alice Lewis, Robert Lee Rash, Jimmy Blankenship, W. L. Wiseman, Royce Mansley, James Rhom. Fifth Row: Nancy Ross, Barbara Ann Barber, Daris Clewis, Paul Woodby, Larry Lowing, Wayne Cole, Don Cable, Michael Duckery, Jason Willis, Ronald Radford, Donald Elliott, Ann Parker, Robert Greene, Patsy Smith, William Hawkins.

## THIRD GRADE

First Row: Etta Mae Vaughn, Danny Webb, Shirley Ledford, Danny Willis, Betty Painter, John Swann, Mickey Berge, Johnny Ramsey, Ronny Willis, Robert Bartlett, Linda Marlowe, Mrs. Clara Rayburn. Second Row: Kay Merle McKinney, Maxine Ramsey, Nelie Potrat, Car Radford, Doris Grissom, Truitt Woodby, Katrina Jackson, Johnny Gibbs, Michael Parker, Billy Smith, Pauline Connor, Mary Ann Hawkins. Third Row: Brenda Parker, Nea Cannon, Scotty Willis, Dean Simmons, Rebecca Young, Shirley Jean Creech, Gerald Williams, Virginia Gardner, Gayle Houck, Charles Ward, Benny Morgan.





## SECOND GRADE

First Row: Mrs. Ruth Hawkins, Gary Gibbs, Harold Elliott, Bobby Holland, Jimmy Parker, Billy Dover, Leo Mathis, Jimmy Rhom, Alice Arrowood, Ph Poteat, Eddie Hawkins, Ann Brookshire, Mrs. Barbara Ellis Second Row: Margaret Bledson, David Aldredge, Lester Welch, Wilma Coble, Donny Cagle, Carolyn Davis, Larry Carver, Phyllis Barnes, Branda Duncan, Billy Smith, Willie Fack, Mary Helen Holifield, David Farley, Arthur Cox, Billy Ray Dowdie, Glenda Morgan. Third Row: Rebecca Simpson, Irene Jamison, Billy M. Wood, Georgia Gardner, Eric Hinton, Danna Green, Gary Byrd, Marvin Mostellar, Gary Creech, Sandra Laughridge, Bobby Proctor, James Clark, Harce Ferguson, Eugene Gardner, Barbara Arrowood, Carolyn Ward, David Owens, Eugene Rhom. Fourth Row: Corlas Coble, Gale Brown, G. D. Frank, Pamela Clark, Jimmy Masteller, Shirley Nelson, Robert Cole, Joe Lawing, Harry Holland, Sandra Lucas, Michael Smith, Norma Cable, Jerry Reel, Kenneth Frisbee, Gail Haynes

## FIRST GRADE

First Row: Miss Emma McGaird, Tony Green, Troy Henderson, David Webb, Rita Rhom, Barbara Parker, Sherry Flock, D. Z. Lawas, Nina Masteller, Susie Tye, Roger Conner, Arnold Sparks, Penita Bango, Ronnie Dover, Wayne Buchanan, Paul Barnes, Mrs. Edna Hemphill. Second Row: Margaret Clark, Mary Goins, Gail Radford, Judy Cole, Bruce Radford, Jimmy Mock, Glenda Garland, Marie Reel, Grayson Hamand, Charles Jamison, Frances Hayes, Judy McIntosh, Ceo Wilts, Marion Farley, Richard Bowman. Third Row: Linda Warren, Justin Poteat, Branda Evans, Ruby Suttle, Juanita Carver, Linda Finley, Phyllis Cole, Freddie Hensley, Gene Morgan, Dean Woodby, Mickey O'Quinn, Gerald Conner, Franko Vass, Ann Reel. Fourth Row: Freddie Hauck, Gerald Webb, Charles Collins, Joan Anderson, Norman Arrowood, Branda Lawas, Jimmy Haynes, Wanda Hogan, Maude Burgin, Barbara McFall, Timmy Buchanan, Carolyn Radford, Barbara Fender, Donald Wyatt





1, Pretty Backcase 2 Oh no 3 Smile 4 Always on the job 5, Shame! Shame! 6, Hurrying the clock 7 Talking? To whom? 8 Thanks, Beta Club 9 Santa must have been here?, 10 Gab sessions, Cha Beur 11 Real students; 13, Watch that ball boy; 14, Time for the bell, 15, Thirsty Twins.





# Advertisements

**Congratulations to the Class of 1955**

# **Drexel Furniture Company**

Marion North Carolina

**Compliments of**

# **Marshall Lumber Company**

Marion North Carolina

**Suburban Rulane Gas  
Co. of N. C., Inc.**

COOKING—HEATING  
WATERHEATING

Phone 2154

P O Box 648

**F. D. GLENN & SON**

GRADING  
and  
HAULING  
CONTRACTORS

Dial 8441 or 6155

**American Thread  
Company**

SEVIER PLANT

Sevier, N. C.

**SNIPES MOTORS, INC.**

Marion, North Carolina

DODGE & PLYMOUTH CARS  
DODGE JOB-RATED TRUCKS  
ALLIS CHALMERS FARM  
EQUIPMENT

East Court Street

Compliments of

# Biltmore Dairy Farms

Marion, North Carolina

# Old Fort Finishing Plant

(Division of United Merchants and Manufacturers, Inc.)

DYERS AND FINISHERS OF RAYON FABRICS

OLD FORT

NORTH CAROLINA

# R. L. James & Son

MANUFACTURERS

HOSIERY FOR MEN

Marion, North Carolina

Compliments of

# Marion Manufacturing Co.

Marion, North Carolina

# Clinchfield Manufacturing Co.

WIDE PRINT CLOTH

MARION

NORTH CAROLINA

# Westmoreland and Hawkins

FUNERAL SERVICE

S J WESTMORELAND, Mgr      Mrs. S J WESTMORELAND, Lady Asst

HOWARD T. HAWKINS & T. WALTON CLAPP, JR., Embalmers

Day Phone 2161 — Night Phone 2161

20 South Main Street

Marion, North Carolina

## **Mode Service Station**

MODE BROTHERS, Props  
GROCERIES FRESH MEATS  
GAS AND OIL

Phone 3170

Glenwood, N C

Compliments of

## **PHILLIPS MOTOR CO.**

MERCURY SALES & SERVICE  
PH LCO HOME APPLIANCES  
414 E. Court St., Marion, N C  
Dial 7321

Compliments of

## **Big Dollar Food Center**

P O Box 675 Phone 2-3921  
N Main St Marion, N C

1908

1954

## **McCall's Funeral Home**

AMBULANCE SERVICE

Day Phone 2120 — Night Phone 3671

Marion, N C

Compliments of

## **SKYLAND MOTOR CO.**

All Makes of Cars New & Used

1 Mile West of Marion, N C  
Dial 2-2784 Highway 70

5. Garden St

Phone 4391

## **BUILDER'S SUPPLY, INC.**

"Everything to Build Anything"

Marion, N. C

Compliments of

## **ETTA PAPER BOX CO.**

Marion, North Carolina

Compliments of

**A. BLANTON  
GROCERY COMPANY**

WHOLESALE GROCERIES

Dial 8421

Marion, N. C.

Compliments of

**ALLISON'S DUTCH GRILL**

Compliments of

**JIMESON'S HARDWARE**

S. Main St.

Marion, N. C.

**ROSELAND FLORIST**

Day Phone 7371 — Night Phone 7421

Marion, N. C.

Compliments of

**BEAMAN LUMBER CO.**

Marion, N. C.

**MORROW'S JEWELRY, INC.**

Diamonds—Watches—Retail Jewelry  
Watch Repairing

Dial 6211 26½ S. Main St.

Marion, N. C.

Compliments of

**PYATT OIL COMPANY**

Marion, N. C.

Compliments of

**ROWE'S MARKET**  
FRESH MEATS & GROCERIES

Marion, North Carolina

Compliments of

**SMITH BARBER SHOP**

FLOYD E. SMITH, Prop.

Marion, N. C.

**MARION F. C. X. STORE**

FEEDS — SEEDS — FERTILIZERS

Marion, North Carolina

Compliments of

**MARION BARBER SHOP**

W. Henderson St., Marion, N. C.

P. O. Box 657 Phone 8281

**LAMBETH LUMBER CO.**

R. G. LAMBETH, Owner  
Marion, N. C.

Compliments of

Route 1 Marion, N. C.

**J. B. MORGAN**

SERVICE STATION — GROCERIES  
Mud-Cut Station

## **PROCTOR'S FEED STORE**

**"Chesterfield Feeds"**

Dial 3421

**"Better Feeders Feed Chesterfield"**

## **Laughridge Furniture Company**

J. L. LAUGHRIDGE, Mgr.

Furniture Ranges Household  
Goods Hardware —Frigidaire &  
Electric Ranges

Marion, N. C.

## **Cowan's Variety Store**

Dial 8402

Highway 70  
Marion, N. C.



# **WBRM**

LAKE CITY BROADCASTING CORPORATION  
MARION, N. C.

- MUSIC
- NEWS
- PUBLIC SERVICE

## **MARION MACHINE COMPANY**

Marion, N. C.

Compliments of

## **GORDON FURNITURE COMPANY**

Marion, N. C.

## **Marion Dry Cleaners**

If Your Clothes Are Not Becoming  
to You They Should Be Coming  
to Us

Opposite Post Office Dial 4471

FOR GOOD BUYS IN SCHOOLWEAR

See

## **THE BARGAIN STORE**

Marion, N. C.



Compliments of

**GORDON F. MORRIS**

DEALERS IN WHOLESALE CANDY

"Sweetly Yours"

Marion, N. C.

Compliments of

**Robinson's Clothing  
Store**

"The Friendly Store"

Dial 2 3781 — 13 W. Court Street

Marion, N. C.

Compliments of

**TROY'S CAFE**

Marion, N. C.

Compliments of

**ALLISON'S DUTCH GRILL**

Compliments of

**LAKE TAHOMA STEAK  
HOUSE**

Highway 70

Compliments of

**ECKENROD'S STUDIO**

Marion, N. C.

Compliments of

**ROSE'S 5-10-25c STORE**

Compliments of

**SARAH'S BEAUTY NOOK**

112 State St., Marion, N. C.

**WELL'S GROCERY**

3 Miles South of Marion, N. C.

Highway 26-221 Phone 6153

**FORD GUM & MACHINE  
COMPANY**

G. T. JONES, Owner & Operator  
Marion, N. C.

Compliments of  
**CITY TIRE & APPLIANCE  
COMPANY**

Marion, N. C.

Compliments of

**BETTY JEAN BEAUTY SHOP**

Phone 8291

Marion, N. C.

**HOME LAUNDRY & DRY  
CLEANING**

Dial 2112 Sanitone Service  
Marion, North Carolina

**MAY DAY  
BEAUTY SHOP**

Dial 3281

Marion, N. C.

## YOUNG'S SHOE STORE

Good Shoes at Reasonable Prices

Marion, North Carolina

## Ballew Motor Co., Inc.



439 E. Court St

Marion, N. C.

"Where Friend Meets Friend"

Compliments of

## East Court Motor Co.

PONTIAC



GMC

Dial 4241

Marion, N. C.

## HOLLAND'S

INDEPENDENT SERVICE STATION

GAS & OIL — FEED & FLOUR

Route 1

Marion, N. C.

## R. V. HORTON & SON

MEATS — GROCERIES — GAS & OIL

Dial 8461

West Marion, N. C.

## J. R. HOLLAND

GAS & OIL — GROCERIES & FEED

Glenwood, N. C.

Compliments of

## CLYDE W. RAYBURN

GENERAL MERCHANDISE

Glenwood, N. C.

## FIRST NATIONAL BANK

Member Federal Reserve System

Member Federal Deposit Insurance

Corporation

Marion, N. C.

Compliments of

**WORKMAN'S**

Marion, N. C.

Compliments of

**SMITH FURNITURE CO.**

Marion, N. C.

Compliments of

**MARION BUICK CO.**

Marion, N. C.

Compliments of

**FIRESTONE**

HOME & AUTO SUPPLY STORE

Marion, N. C.

**CITY MOTOR CO.**

CLEAN USED CARS

111 North Garden Street

Marion, N. C.

"Say It With Flowers"

**HUNTER FLORIST**

128 South Main Street

Dial 4291

Marion, N. C.

Compliments of

**LOVEN FURNITURE CO.**

6-8 Main Street

Dial 8211

Marion, N. C.

**TAINER'S**

PRESCRIPTION HEADQUARTERS

Four Registered Pharmacists to Serve  
You

Phone 2133

Marion, N. C.

Compliments of

## DUKE POWER COMPANY

SERVING THE PIEDMONT CAROLINAS

Compliments of

## OTIS L. BROYHILL

FURNITURE COMPANY

MANUFACTURERS OF BEDROOM FURNITURE

Marion, North Carolina

Compliments of

## HUGHES DEPARTMENT STORE

"We Sell the Best Shoes in the County"

Old Fort, N C

Compliments of

## MARY-LYN SHOPPE

## WESTERN AUTO ASSOCIATE STORE

Marion N C

## HAYNES JEWELERS

For Watches—Diamonds—Costume  
Jewelry

GUARANTEED WATCH REPAIRING  
18 W Court St Marion, N C

## McCALL-BURGIN HARDWARE COMPANY

RADIO'S — PAINTS ELECTRICAL  
SUPPLIES

Dial 8351

Marion, N C

Compliments of

## CURTISS CANDY DISTRIBUTOR

Compliments of

## 3-POINT SERVICE STATION

J. R. NANNEY, Owner  
Dial 6151 Marion, N C

Compliments of

## DIXIE CLEANERS

PICK-UP AND DELIVERY

31 W. Court Street  
Marion, N. C.



## McDOWELL CEMENT PRODUCTS CO., INC.

READY MIXED CONCRETE  
BUILDING BLOCKS

Phone 6861  
Marion, N. C.

## H. E. KELLY

WATCH MAKER AND JEWELER

Expert Repairing Engraving

Diamonds & Costume Jewelry

ALL WORK GUARANTEED

107 S. Main Street  
Marion, N. C.

**MARION MOTORS, INC.**  
**YOUR FRIENDLY FORD DEALER**  
1011 E. Court St. Phone 2106  
Marion, N. C.

**DAVIS SISTERS**  
FEMINE APPAREL OF DISTINCTION  
AND DISTINCTION  
Dept. 3511  
Forest City, N. C.

## GENE HOLLAND'S GROCERY

FEEDS — FLOUR — GAS — OIL

Highway 221

Compliments of  
**TIPTON'S SHOE SHOP**

Marion, N. C.

## BELK-BROOME CO.

Your Home of  
Better Values  
For Over 23 Years



MARION, N. C.

"Always Shop Your  
Home Stores  
First"

Compliments of

**YELTON MILLING CO.**

MANUFACTURERS OF HIGH GRADE

FLOUR, MEAL & FEEDS

Rutherfordton, N. C.

Compliments of

**TEAGUE'S MARKET**

Marion Cash Store

Marion, N. C.

Compliments of

**W. M. GLADDEN**

REAL ESTATE

Marion, N. C.

Compliments of

**ECONOMY AUTO SUPPLY**

Marion, N. C.

Compliments of

**EAST COURT BARBER SHOP**

Marion, N. C.

Compliments of

**HALL'S BARBER SHOP**

"For the men who care"

W. Court St.

Marion N. C.

So we come to the end of another—the last for some of us—year. We wish to express our thanks to each person who had a hand in the making of this yearbook, and, above all, we express our deepest appreciation to the local merchants and manufacturers without whose financial help this book would never have gone to press.

\* \* \* \* \*

By means of turning these pages we have looked back upon the past. Now we slowly close our book and with heavy heart, sadly lay it aside . . . . . c'est fini.

THE EDITORS

# Autographs

PROPERTY  
GREENWOOD HIGH SCHOOL

# *Autographs*



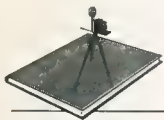
# Autographs

# *Autographs*

# Autographs

PROPERTY  
CINDYWOOD HIGH SCHOOL

*A product of*



**hunter's** *Yearbook*  
SERVICE

YEARBOOK PUBLISHERS  
SCHOOL PHOTOGRAPHERS

PHONE 4-7851

1318 SOUTH HAWTHORNE ROAD  
WINSTON-SALEM, NORTH CAROLINA

PROPERTY,  
GLENWOOD HIGH SCHOOL

PROPERTY  
GLENWOOD HIGH SCHOOL

PROPERTY  
GLENWOOD HIGH SCHOOL

