

Historic, archived document

Do not assume content reflects current scientific knowledge, policies, or practices.

62

Na

National Agricultural Library
RECEIVED
FEB 23 1966
Department of Agriculture

1966 LIST

PERENNIALS

EVERGREENS

LILACS

TREES

SHRUBS

VINES

LILIES

ANNUALS



F. H. HORSFORD NURSERY-INC.

CHARLOTTE, VERMONT 05445

Pretty soon now we'll be starting up the wood stove in the nursery office and firing up our greenhouse boiler because the 1966 growing season is approaching rapidly.

We're looking forward to welcoming you this season either at the nursery in Charlotte or at the Green Tree Garden Center in South Burlington. If you can't make it to see personally what we have to offer you this year, here is our 1966 Catalog.

We've tried to make this new catalog the easiest to read and work with in our 73-year history. Look it over—there is something in it for you.

Last year undoubtedly was one of the toughest on record for gardening success in Vermont. Nearly four years of drought was culminated in May with barely one-half inch of rain—when it was needed the most. That coupled with a rare open winter with no snow cover made it unusually severe, especially when you consider that with a snow cover the temperature can be 20 below zero above ground but the soil temperature a foot or so down is nearly 55 degrees warmer. Robbed of that snow protection many Vermonters last year lost shrubs, evergreens, and perennials. Happily, in August, rains came and as this is written climatic conditions are more normal. The 1966 season looks promising.

So, if you postponed any planting last year or want to replace winter-lost plants why not start planning now and let our experienced staff help you? F. H. Horsford Nursery, Vermont's oldest, features nursery stock grown in Vermont, by Vermonters, for Vermonters . . . or would-be Vermonters.

Perhaps you have been considering a landscaping plan for your home. Nothing increases the value of your property more—shrubs and trees increase in value every year. And did you know that landscaping can be financed through your local



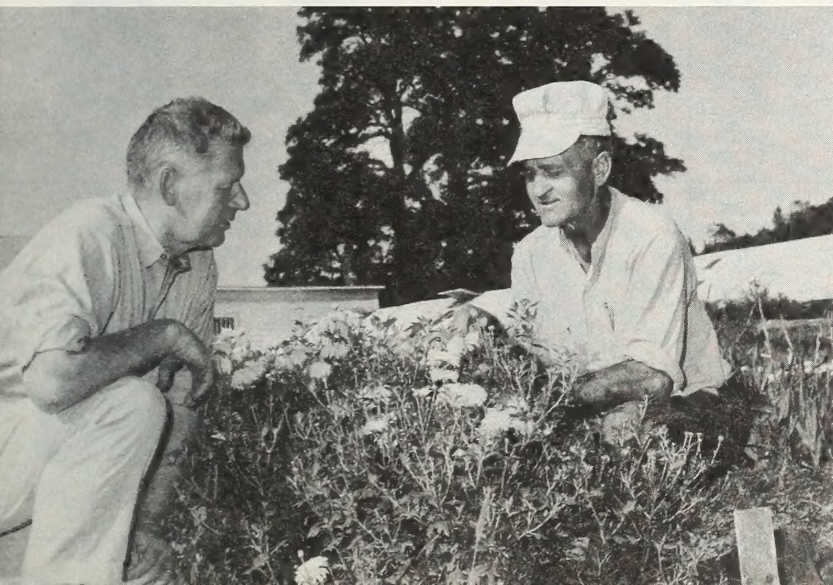
The packing house and office—just off route U.S. 7 in Charlotte.

bank with an FHA loan? Not only can our competent staff consult with you but you can select your own stock at the nursery and our experienced crew will plant it for you.

This year at the nursery we will start work on several new projects. Because our soil is ideal for growing lilacs we will be propagating our own stock so that in the future we will be featuring lilacs more prominently. We are also designing our own display garden to include a majority of the many varieties listed in this catalog. Overlooking this garden we plan a covered terrace where our drop-in customers can relax, sip some coffee, and enjoy the surroundings while their orders are being packed.

Because this catalog includes our complete listing we will not publish our usual fall supplement. Nevertheless, along in August you will get a little reminder from us mentioning a few specials on those varieties best planted in Autumn.

Shown on the left is our General Manager, Stan Wollaston, inspecting some Chrysanthemums with Field Superintendent, Leon Theoret, a staff member for 20 years.



And finally we should tell you that Lois Horsford Arkley, after many long years with the nursery, has retired. She and her husband now live in Waterbury where Lois this year will start enjoying her well deserved retirement years. When Spring comes, knowing Lois, we are sure she will be busy in her own new garden. As the new owners of the nursery we wish her well and much happiness.

*Sallie + Gardner
Soule*

P.S. Your comments and suggestions are always welcome
—please feel free to write us anytime.

EVERGREENS . . . "Do it yourself" planting or by our own experienced crew

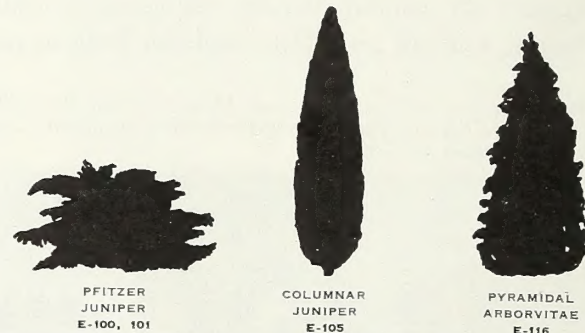
FOR BANKS, FOUNDATIONS, AND LOW ACCENTS

STK. #	VARIETY	COMMON NAME	ULT. HT.	SIZE	PRICE
E-103	Juniper Horiz. Plumosa	Andorra Juniper, rich or poor soil		15-18"	\$ 6.50
E-108	Pinus Montana Mughus	Mugho Pine, needs sun		15-18"	7.50
				18-24"	9.50
E-110	Taxus Cuspidata Nana	Dwarf Japanese Yew	4' max.	15-18"	9.00
				18-21"	11.00
E-113	Thuja Occid. globosa	Global Arborvitae		1½-2'	5.00
				2-2½'	6.00
				2½-3'	7.00



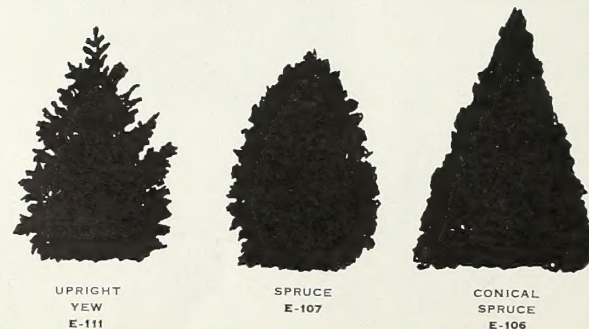
FOR MEDIUM TO TALL ACCENTS

STK. #	VARIETY	COMMON NAME	ULT. HT.	SIZE	PRICE
E-100	Juniper Pfitzeriana	Pfitzer's Juniper, spreading	6-8' max.	15-18"	\$ 6.50
E-101	J. Glauca Hetzi	Gray green	6-8' max.	24-30"	8.50
				15-18"	6.50
				18-24"	7.50
E-104	J. Sabina	Savin Juniper	10' max.	18-24"	6.50
E-105	J. stricta	Columnar Juniper	20' max.	2-2½'	7.50
				3-4'	8.50
E-112	Taxus Hicksi	Hicks Yew, columnar		15-18"	7.00
				18-24"	8.50
				2-2½'	10.00
				2½-3'	13.00
E-114	Thuja Occid. v. nigra	Year round dark green arborvitae		2-3'	6.00
				3-4'	7.50
E-116	T. occid. pyramidalis	Pyramidal Arborvitae, bright green		3-4'	7.50
				4-5'	10.00
				5-6'	13.00



FOR BACKGROUNDS AND LARGE LAWN SPECIMENS

STK. #	VARIETY	COMMON NAME	ULT. HT.	SIZE	PRICE
E-106	Picea pungens	Colorado Green Spruce, tall conical		4-5'	\$ 9.00
E-107	P. pungens glauca	Colorado Blue Spruce, symmetrical		2-3'	12.00
				3-4'	13.50
E-109	Taxus cuspidata	Spreading Japanese Yew, rich dark green		15-18"	6.50
				18-24"	8.00
				24-30"	9.50
E-111	Taxus c. capitata	Upright Japanese Yew, pointed	20' max.	18-24"	10.00
E-117	T. occid. wareana	Siberian Arborvitae, bushy pyramidal		1½-2'	5.00
				2-2½'	6.00
				2½-3'	7.00
				3-4'	8.00
E-118	Tsuga canadensis	Canadian Hemlock, dark green	60' max.	3-4'	11.50



FOR HEDGES—We suggest these stock varieties: E-110, 111, 112, 114, 116, 118 as listed above.

TREES . . . Nothing can give your home more stature than a thriving Horsford tree

STK. #	VARIETY	COMMON NAME	ULT. HT.	CULTURE	REMARKS	SIZE	PRICE
T-500	Acer dasycarpum	Silver Maple	80'	Sun	Brittle, but fast growing	6-8'	\$ 5.00
T-501	Acer ginnala	Amur Maple	25'	Average soil	Shrub form; rosy-red early fall	4-5'	6.00
T-502	Acer platanoides	Norway Maple	90'	Rich soil	Gives dense shade	6-8' 8-10'	10.00 12.00
T-503	Acer plat. schwedleri		90'	Rich soil	Dense shade; wine foliage	6-8'	8.00
T-504	Acer rubrum	Red Swamp Maple	120'	Damp soil	Brilliant red foliage; spring and fall	6-8'	9.50
T-505	Acer Crimson King	Schwedleri Maple			Maroon foliage	6-8'	13.00
T-506	Acer saccharum	Sugar Maple	125'		Brilliant fall foliage	6-8' 8-10' 10-12' 12-14' 14-16'	10.00 12.00 15.00 18.50 22.00
T-522	Acer weirs	Cut Leaf Maple	50'		Easy growing	6-8'	10.00
T-507	Betula alba pendula	Cut-leaf Weeping Birch	60'	Poor, sandy soil		6-8' 8-10'	8.00 10.00
T-508	Betula papyrifera	Canoe Birch	60'	Poor, sandy soil	Bark turns white in time	5-6' 6-8'	6.50 9.00
T-509	Chionanthus virginicus	White Fringe Tree	18'	Lime soil	White tassel-like flowers; blue-black fruit	2-3'	4.00
T-510	Ginkgo biloba	Maidenhair Tree	75'	Rich soil	Fern-like foliage; stately and clean	6-7'	11.00
T-511	Gleditsia triacanthos	Honey Locust	60'		Round, symmetrical head; gives light shade	6-8'	7.50
T-523	Gleditsia t. inermis	Imperial Locust	30'		Few or no thorns, slender graceful tree	6-8'	10.50
T-512	Malus Arnoldiana	Arnold's Flowering Crab	25'	Same as for apple trees	Very compact; hybrid	4-5'	3.75
T-513	Malus bechteli	Bechtel's Flowering Crab	25'	Same as for apple trees	Double pink	4-5'	4.50
T-514	Malus floribunda	Japanese Flowering Crab	25'		Pink opens white; late bloom	4-5'	3.00
T-521	Malus hopa	Hopa Crab	15'		Hardy, good street tree	4-5'	3.50
T-516	M. zumi calocarpa	Zumi Crab	20'		Large pink flowers, red fruit	4-5'	3.50
T-518	Salix blanda	Wis. Semi-weeping Willow	45'	Average soil; moderate moisture	Will thrive in almost any exposure	6-8'	3.50
T-519	Salix niobe	True Weeping Willow	50'	Moist soil	Golden bark	6-8'	4.50
T-520	Sorbus aucuparia	European Mountain Ash	30'	Rich soil	Beautiful orange fruit; good on small lawn	6-8'	7.50

REMEMBER — Horsford's experienced crew will plant your selections — write or phone for details.

LIST OF HARDY PERENNIALS

75c EACH, 3 OF SAME VARIETY — \$2.10, 10 FOR \$6.50

STK. NO.	VARIETY	COMMON NAME	COLOR	HT. FEET	FLOWERING SEASON
P-603	AQUILEGIA chrysantha	Columbine	Yellow	3-3½	June-July
P-605	ARTEMESIA vulgaris lactiflora	Mugwort	Creamy white	3-4	Aug., Sept.
P-605-A	Silver King		Silver gray	2-3	June-Sept.
P-606	ASTILBE Spirea	Gladstone	White	1½-2	July
P-607	BOCCONIA cordata	Plume Poppy	Buff	5-6	Aug.
P-608	CAMPANULA carpatica (r)	Bellflower	Blue	½	June-Aug.
P-608-A	carpatacia alba (r)		White	½	June-Aug.
P-608-B	persicifolia		Blue	2	June
P-608-C	persicifolia alba		White	2	June
P-610	CHELONE lyoni	Pink Turtlehead	Purple red	3-4	Aug., Sept.
P-611	CHRYSANTHEMUM Maximum	Shasta Daisy	White	2-3	July, Aug.
P-611-A	Double Shasta Daisy		White	2-3	July, Aug.
	CHRYSANTHEMUM—	"Aster Flowered," field grown			
P-612-A	Abundance		Gold to bronze	2	Sept.
P-612-B	Algonquin		Yellow	1½	Sept.
P-612-C	Amelia New Red		Red	1½	Sept.
P-612-D	Amvet		White, gold center	2½-3	Aug.
P-612-E	Avalanche		White, fluffy	1	Sept.
P-612-F	Dean Kay		Deep pink	2	Sept.
P-612-G	Dean Ladd		Red-bronze	2	Sept.
P-612-H	Early Bronze		Bronze	1½	Aug.
P-612-I	General Bradley		Apricot	2-3	Sept.
P-612-J	General Marshall		Raspberry	1½	Sept.
P-612-K	Granite Bronze		Bronze	2	Sept.-Oct.
P-612-L	Granite Pleasure		Rose-red	2	Sept.
P-612-M	Redgold		Scarlet-gold	1½	Aug.
P-612-N	Robert Brydon		Garnet	1½	Sept.
P-612-O	Quicksilver		Silver-white	1½	Sept.
P-612-P	Wayzata		Yellow	2	Oct.
	CHRYSANTHEMUM—	"Cushion Type"			
P-613-A	Bronze Queen		Walnut bronze	1½	Sept.
P-613-B	Major Cushion		Large salmon	1½	Sept.
P-613-C	Minnipink		Radiant rose	1	Sept.
P-613-D	Yellow Cushion		Yellow	1½	Sept.
P-614	DELPHINIUM belladonna		Turquoise-blue	5-6	June
P-614-A	bellamosum		Deep blue	5-6	June
P-614-B	grandiflorum chinense		Dark blue	1½	June
P-614-C	grandiflorum chinense album		White	1½	June
P-614-D	Pacific Hybrids		Mixed colors	5-6	June
P-614-E	Galahad		White	5-6	June
P-615	DIANTHUS caesius	Cheddar Pink	Pink	1	May-July
P-615-B	plumarius	Pheasant's Eye Pink	Pink and red	1	June
P-616	DICENTRA spectabilis	Bleeding-Heart	Crimson	2	May, June

OUR GREENHOUSE OPENS IN LATE MARCH . . . FOR A PREVIEW OF SPRING STOP IN AND SEE OUR SELECTION OF CHOICE ANNUALS.

(r) Variety suitable for Rock Garden.

STK. NO.	VARIETY	COMMON NAME	COLOR	HT. FEET	FLOWERING SEASON
P-617	DICTAMNUS rubra	Gas Plant	Reddish purple	2	June
P-617-A	alba		White	2	June
P-618	DIGITALIS ambigua	Yellow Foxglove	Yellow	2-3	June
P-619	ECHINOPS ritro	Globe-Thistle	Blue	4-6	Aug., Sept.
	GAILLARDIA grandiflora maxima				
P-623-A	Aura Pura _____		Pure gold	3	June-Sept.
P-623-B	Burgundy _____		Deep red	3	June-Sept.
P-623-C	Portola Hybrid _____		Metallic red gold tipped	3	June-Sept.
	GYSOPHILA paniculata	Baby's Breath			
P-624-A	Bristol Fairy		White	2	July, Aug.
P-633	HEUCHERA sanguinea	Coral Bells	Coral-red	1½	June-Aug.
P-636	IBERIS sempervirens (r)	Candytuft	White	1½	June
P-638	LAVANDULA vera (r)	Munstead	Blue	½-1	July
P-640	LUPINUS polyphyllus	Lupine	Blue	2-3	June
P-640-C	Russell Lupines		Mixed	2-3	June
P-641	LYTHRUM	Morden's Pink	Pink	3-4	June-Sept.
P-643	MERTENSIA virginica	Virginia Bluebells	Blue	1-2	May
P-644	MONARDA didyma	Oswego Bee Balm	Cardinal-red	3	July
P-644-A	Mauve Mixture		Mauve to violet	3	July
P-645	OENOTHERA missouriensis	Ozark Sundrops	Yellow	½-1	July, Aug.
	PHLOX paniculata (Decussata)	Hybrid Phlox			
P-648-A	Africa _____		Carmine	2-3	Aug.
P-648-B	Apple Blossom _____		Soft pink	2-3	Aug.
P-648-C	Blue Boy _____		Violet blue	2-3	Aug.
P-648-D	Flash _____		Crimson red	3-3½	Aug.
P-648-E	Frau Anton Buchner _____		Classic white	2-3	Aug.
P-648-F	Mia Ruys _____		White	2-3	Aug.
P-648-G	Painted Lady _____		Silver pink, red eye	2-3	Aug.
P-648-H	Prime Minister _____		White, crimson eye	2-3	Aug.
P-648-I	Purple Heart _____		Deep purple	2-2½	Aug.
P-648-J	Rynstrom _____		Deep pink	2-3	Aug.
P-648-K	World Peace _____		Best pure white	3-3½	Aug.
P-650	PLATYCODON grandiflorum	Balloon Flower	Blue	1½-2	Aug., Sept.
P-650-B	grandiflorum album		White	1½-2	Aug., Sept.
P-651-A	PRIMULA polyanthus	Hybrid Primrose	Yellow	½	May
P-652	PYRETHRUM hybridum	Painted Daisy	Red, white, pink	2	June
P-652A	Golden		White, gold center	...	June, July
P-652-B	James Kelway		Scarlet	2	June, July
P-652-C	roseum		Deep pink	2	June, July
P-653	SALVIA azura grandiflora	Great Azure Sage	Azure-blue	2-3	Aug.
P-656	VALERIANA officinalis	Garden Heliotrope	White	3-4	July
P-659	VIOLA	Miniature Pansy	Mixed	½	July

OUR MANY VARIETIES OF CHOICE ANNUALS ARE SOLD AT THE NURSERY AND THE GREEN TREE GARDEN CENTER IN SO. BURLINGTON . . . STARTING IN MID-MAY.

(r) Variety suitable for Rock Garden.

HEMEROCALLIS, Daylilies

DAY AND EVENING-BLOOMING VARIETIES, THROUGHOUT SUMMER

P-626	Crystal	Shell pink on parchment
P-627	Enchantress	Large light yellow
P-628	Matador	Mahogany
P-629	Pink Charm	Ochre red
P-630	Rosea	Rosy-pink
P-631	Thunbergi	Pale Yellow

FULL-SEASON GLORY IN THE GARDEN

P-632-A	Amaryllis	Light yellow	2½'	July
P-632-B	Autumn Pioneer	Peach	3'	Aug.
P-632-C	Bagdad	Rich red	3'	June-July
P-632-D	Bay State	Deep yellow	2-3'	July-Aug.
P-632-E	Cinnebar	Bronze-red	2'	July-Aug.
P-632-F	Dauntless	Pale yellow		
P-632-G	Imperator	Buff copper	3-4'	July-Aug.
P-632-H	J. A. Crawford	Apricot yellow	4'	June-July
P-632-I	Margaret Perry	Red and yellow	3-4'	Aug.
P-632-J	Mikado	Fragrant deep yellow	3'	Aug.
P-632-K	Modesty	Pale yellow	2'	July
P-632-L	Ochraleuca	Citron yellow	2-3'	July
P-632-M	Peachblow	Yellow, brushed coral	2½'	July
P-632-N	Talisman	Pink on yellow	2-3'	June-July
P-632-O	Vesta	Coral red	1½'	June

75c EACH, 3 OF SAME VARIETY \$2.10; 10 FOR \$6.50

PEONIES, IRIS AND THE
CLASSIC MADONNA LILY
APPEAR ON PAGE 12

HORSFORD'S LILIES

FAVORITE HYBRIDS, CLASSIC SPECIES

L-701 AURELIAN HYBRIDS. *Golden Sunburst Strain*. Star-shaped flowers, gold-yellow. Petals, very slightly recurved. Graceful sprays 5 to 8 ft. 7-8 in. bulbs. August to September. \$1.25 each.

L-702 BRIGHT STAR. *Sunburst type*. Silver-white petals shine in contrast to an orange star in center of the flower. 4-6 ft. July. \$1 each.

L-704 CANDIDUM, MADONNA LILY. This exquisite wax-white cascade requires fall planting. See page 12.

L-705 GREEN MOUNTAIN HYBRIDS. Large trumpets of white with yellow or green coloring in the throats. 3-5 ft. high with a three- to four-week flowering season in mid-summer. \$1.25 each, 3 for \$3.50.

L-706 HARLEQUIN HYBRIDS. *New Strain*. Colors vary through ivory-white, pale lilac, old rose, violet, salmon, amber-pink. 4 in. diameter. Turk's cap. June-July. \$1.00 each.

L-707 HENRYI. Heights will vary with soil and growing conditions, but we've honestly seen this Lily 9 ft. high. Easy to grow, too. Graceful sprays of brilliant apricot yellow. August, September. 75c each.

L-709 PRIDE OF CHARLOTTE. This stately offspring of *L. sargentiae* is more rugged than its parent. Long, white funnel-shaped flowers with yellow throat and sometimes marked externally a deep reddish brown. 3 to 4 ft. July. \$1.00 each.

L-710 REGALE. A truly Regal beauty, and the best behaved queen of the lot. Parade her before a royal curtain of Delphinium to show off her best advantage. White, slightly suffused with pink, shading to beautiful shade of canary yellow at the throat July. Large bulbs 85c each, 3 for \$2.25.

L-711 ROYAL GOLD. *Golden Regal*. This beautiful flower is identical with the best regal except for its glistening quality and its golden color. July. 3-5 ft. 8-9 in. bulbs. \$1.10 each, 3 for \$3.00.

L-712 SPECIOSUM RED CHAMPION. Delicate pink with deep crimson dots. Oregon grown and disease free stock. July-August. \$1.75 each, 3 for \$4.75.

L-713 SPECIOSUM WHITE CHAMPION. A variety from the favorite "rubrum lily" but crystal white. July-August. \$1.25 each, 3 for \$3.50.

L-714 SUPERBUM. America's handsomest native Lily, in our opinion, with its immense, pyramidal cluster of blooms right up high where you can admire them. Brilliant orange-red shading to yellow and spotted brown. July. 3 to 6 ft. 75c each, 3 for \$1.95.

L-715 TENUIFOLIUM (*Pumilum*). A small slender Lily, bright coral flowers and recurved petals. As dainty a Lily as is in cultivation. 12-18 in. June. 50c each, 3 for \$1.25.

CULTURAL DIRECTIONS ARE SENT WITH EACH ORDER

EASY-TO-GROW FERNS

FOR DRY, SHADY PLACES

Under trees, in the shade of buildings where the soil is too dry for blooming plants, these Ferns may adapt themselves or if not all, some may. Dry shade is one of the gardener's hardest problems.

- F-814 9 *Aspidium marginale*, 1½-2 ft.
- F-802 9 *Dicksonia punctilobula*, 1-2 ft.
- F-800 9 *Osmunda claytonia*, 2-3 ft.
- F-812 9 *Polystichum acrostichoides*, 1 ft.

36 Ferns for \$10.00

FOR THE OPEN BORDER

Mostly tall Ferns with bold, broad foliage, and imposing appearance. They are adapted to sunshine but need the shelter of adjacent plants about the base of the fronds. Plant them in mixed groups among low shrubs.

- F-800 6 *Osmunda claytoniana*, 2-3 ft.
- F-801 6 *Onoclea struthiopteris*, 3-4 ft.
- F-802 18 *Dicksonia punctilobula*, 1-2 ft.
- F-803 6 *Asplenium felix-foemina*, 1-3 ft.

36 Ferns for \$10.00

FOR MOIST, SHADY PLACES

The wealth of plants which will flourish in moist, shady places is embarrassing. Ferns are no exception. Choose those of relatively low stature, among which to mingle blooming plants such as bog orchids.

- F-810 6 *Adiantum pedatum*, 1-1½ ft.
- F-811 6 *Aspidium cristatum*, 1 ft.
- F-812 6 *Polystichum acrostichoides*, 1 ft.
- F-813 6 *Aspidium spinulosum*, 1½-2 ft.
- F-814 6 *Aspidium marginale*, 1½-2 ft.
- F-815 6 *Asplenium acrostichoides*, 3 ft.
- F-803 6 *Asplenium felix-foemina*, 1-3 ft.
- F-816 6 *Phegopteris hexagonoptera*, 1 ft.
- F-817 6 *Asplenium angustifolium*, 2-3 ft.

54 Ferns for \$16.00

FOR WET, OPEN GROUND

No trouble at all to find ordinary plants for wet, open ground but not many Ferns are adapted to the sunshine. Use rushes or flowering plants freely in such situations.

- F-804 12 *Onoclea sensibilis*, 1 ft.
- F-805 12 *Osmunda regalis*, 2-3 ft.

24 Ferns for \$6.50

Any of the above Ferns 40c each, 6 for \$2.00, \$4.00 per doz.

WHY NOT LANDSCAPE THE FAMILY CEMETERY PLOT? — A LIVING TREE IS ALWAYS A FITTING MEMORIAL.

VINES, TRAILERS and GROUND COVER

STK. NO.	VARIETY	COMMON NAME	CULTURE—COLOR	REMARKS	PRICE EACH
V-200	Ampelopsis quinquefolia	American Woodbine Virginia Creeper	Twines, loose and open foliage	Dark green in summer, crimson in fall. Covers trellis or walls quickly	\$ 7.50 per 10 .80
V-201	Ampelopsis engelmanni	Engleman Ivy	Clean, closer foliage, harder than Boston Ivy	Refined form of creeper, will cling to brick, stone or cement	2 year \$ 7.50 per 10 .80
V-202	Ampelopsis tricuspidata	Boston Ivy	Better in warmer protected exposure	Clings flatly to walls. Grows quickly	2 year 1.25
V-203	Ajuga reptans	Bugle Plant	Partial or full shade. Grows under adverse conditions	Useful in rock gardens or where grass won't grow	\$ 3.50 per 10 .40
V-204	Celastrus scandens	American Bittersweet	Sun or part shade	Vigorous twiner, fine for stone wall cover or stone heap	2 year 1.15
V-205	Clematis paniculata	Japanese Clematis	Strong, climbing vine. Needs sun	Very handsome, fragrant white flowers	2 year 1.25
V-206	C. Countess Bouchard		Large flowering pink		2 year 1.75
V-207	C. Fairy Queen		Large flowering white		2 year 1.75
V-208	C. Jackmanni		Full sun; neutral or alkaline soil	Violet-purple, 5-7" flowers. Most desirable	2 year 1.75
V-209	C. Crimson Star		Crimson		2 year 1.75
V-210	Euonymus fortunei colorata	Winter Creeper	Easy culture. Foliage purple thru fall and winter	Clings to walls, rocks or trees. Rapid grower	3 year 1.25
V-211	E. radicans vegeta	Evergreen Wintercreeper	Red-berried, shiny leaves	A semi-shrub, quick rooting	3 year 2.50
V-212	Lonicera heckrottii	Honeysuckle	Adaptable culture, fast growing	Flame colored, yellow-lined	2 year 1.25
V-213	Pachysandra	Japanese Spurge	Shade, thrives with little care	Evergreen spreader, good on thin soil in tree shade	\$ 3.50 per 10 .40
V-214	Polygonum auberti	Chinese or Silver Fleece Vine	Fast growing, even in adverse conditions	Mass of white and fleece-like flowers. Foliage is bronze, then green	2 year 1.75
V-215	Vinca minor caerulea	Myrtle	Shade or partial shade	Violet-blue flowers. Shining leaves, that are practically evergreen	\$ 3.50 per 10 25.00 per 100 .40
V-216	Wisteria chinensis	Wisteria	Slow to bloom	Once started, grows luxuriantly with panicles of orchid-pink	2 year 1.75

FOR A LIVING GIFT — BUY AN F. H. HORSFORD GIFT CERTIFICATE — SEE PAGE 14

SHRUBS — FOR ACCENT, HEDGES — ADDED COLOR

STK. NO.	BOTANICAL NAME	COMMON NAME	ULT. HT.	BLOOMS	CULTURE	REMARKS	SIZE	PRICE
S-400	<i>Amygdalus rosea</i>	Flowering Almond	5-6'	May-June	Sun	Flowers before leaves	3-4'	\$ 2.00
S-401	<i>Berberis thunbergii</i>	Japanese Barberry	3-6'		Sun or shade	Red berried in fall, good barrier	2-2½'	1.50
S-402	<i>B. atropurpurea</i>	Red leaved Barberry	4'			Red-purple foliage	1½-2'	1.50
S-403	<i>Cornus sibirica</i>	Coral Dogwood	10'	May	Sun or shade	Bluish berries, coral branches in winter	2-3'	1.50
S-404	<i>Cydonia japonica</i>	Japanese Quince	4'	Apr.-May	Sun	Coral shell-like flowers, yellow fruit	2-2½'	1.75
S-405	<i>Deutzia gracilis</i>		3'			Pure white flowers	1-1½'	1.75
S-406	<i>Eleagnus angustifolia</i>	Russian Olive	20'		Sun, sandy-clay soil	Attractive gray foliage— excellent windbreak	2-3'	1.50
S-407	<i>Euonymus alatus</i>	Winged Euonymus	6-8'	May	Sun, in well- drained soil	Good form for specimen planting	2-3'	3.00
S-408	<i>E. alatus compactus</i>	Dwarf Winged Euonymus	4-5'		Sun or shade	Excellent for accent in front of other shrubs, or for hedge	2-2½'	3.50
S-409	<i>E. yeodensis</i>	Burning Bush	12-14'		Well-drained soil	High and wide in form. Vivid fruit, foliage	2-3'	1.75
S-410	<i>Forsythia ovata</i>	Golden Bell	3-5'	Apr.-May	Sun or shade— any soil	Oval shape—very hardy. Yellow	1½-2'	1.75
S-411	<i>Hydrangea arborescens</i>	Hills of Snow	10'	July	Sun or shade	Good for mid-summer bloom; flowers fade to green	2-3'	1.75
S-412	<i>H. paniculata graniflora</i>	P. G. Hydrangea	25'	Autumn	Sun or shade	Tree form. White to pink and bronze	2-3'	1.75
S-413	<i>Ilex verticillata</i>	Winterberry	8'	July	Sun, wet soil	Red fruit	2-3'	2.00
S-414	<i>Kolkwitzia amabilis</i>	Vermont Holly Beauty Bush	8'	June	Sun, good drainage	Upright, covered with pink bloom for 2 weeks	2-3'	2.00
S-415	<i>Ligustrum amurense</i>	Amur Privet	15'		Sun or shade	Neat for hedge, may be trimmed as desired	2-3'	.75
S-417	<i>Lonicera tatarica</i>	Tatarican Honeysuckle	12'		Sun, any soil	White and pink flowers; red berries attract birds	2-3'	Per doz. 7.50 1.25
S-418	<i>L. zabeli</i>		5-7'	May-June	Sun, average soil	Upright, compact; blue- green foliage	2-3'	1.75
S-419	<i>Philadelphus aureus</i>	Dwarf Golden Syringa	3'	June	Sun	Golden foliage	1-1½'	2.50
S-420	<i>P. coronarius</i>	Mock Orange	10'	June		White—very fragrant	2-3'	1.50
S-421	<i>P. virginal</i>		5-9'	July		Snow-white double	2-3'	2.00
S-422	<i>Spiraea bumalda</i>	Spiraea	3'	July	Sun	Bright crimson flower, low, graceful	1½-2'	1.50
S-423	<i>Anthony Waterer S. van houttei</i>	Bridal Wreath	8'	June	Sun	Arching sprays of white bloom	2-3'	1.50
S-424	<i>Symphoricarpos albus</i>	Snowberry	6'	Aug.	Semi-shade, lime and clay soil	Pink flowers; white balls in August	2-3'	Per doz. 15.00 1.75
S-425	<i>S. orbiculatus</i>	Coralberry	4'		Shade	Red fruit; good for holding banks	2-3'	1.25
S-426	<i>Viburnum trilobum</i>	American Cranberry	12'	May	Sun or shade	Flat clusters white flowers; good for background	2-3'	2.25
S-427	<i>V. carlesi</i>	Mayflower Viburnum	6'	May	Sun	Pink buds, fragrant	3-4'	5.50
S-428	<i>V. sieboldi</i>		30'	May	Sun, moist soil	Fragrant white flowers, attract birds	2-3'	2.00
S-429	<i>V. tomentosum</i>	Snowball Viburnum	9'			Sun white flowers on horizontal branches	2-3'	2.00
S-430	<i>Weigelia rosea</i>	Bouquet Rose	12'	June	Sun and well- drained soil	Fragrant pink trumpet flowers; strong growth	2-3'	1.50
S-431	<i>W. Bristol Ruby</i>		5'	June	Sun and well- drained soil	Tyrian-rose trumpets, very hardy	2-3'	1.50

FOR FALL PLANTING

GLORIOUS PEONIES . . . BEST PLANTED IN AUTUMN

No other plant can give such masses of brilliant green and such smashes of white, pinks, and reds — and all for very little care. Full, yet simple planting instructions sent with every shipment.

SINGLE PEONIES

NAME	COLOR	SEASON	PRICE
Albert Crousse	Shell pink	Late	\$1.25
Avalanche	Creamy white	Late	1.25
Auguste Dessert	Rose-red, silver edge	Midseason	1.25
Clemenceau	Deep rose	Med. late	1.25
Edulis Superba	Old rose, fragrant	Early	1.25
Festiva Maxima	White, red-flecked	Early	1.25
Kelway's Glorious	Lacy white	Midseason	2.50
Longfellow	Fadeless red	Early	2.00
Madelon	Silvery pink	Midseason	1.25
Mary Brand	True red	Midseason	2.00

NAME	COLOR	SEASON	PRICE
Mme. Emile Lemoine	White, tiny crimson flks.	Late	\$1.25
Mons. Jules Elie	Silvery rose	Early	1.25
Mons. Martin Cahuzac	Darkest red	Early to mid.	2.50
Sarah Bernhardt	Apple blossom pink	Mid. to late	1.25
Therese	Highest rated pink	Early	1.25

DOUBLE PEONIES

NAME	COLOR	SEASON	PRICE
Petit Louise	Deep red	Early	\$1.25
Tyrian Rose	Rose pink	Midseason	1.25
Virginia Dare	White	Midseason	1.25

THE MADONNA LILY

(LILUM CANDIDUM)

10"-12" Bulbs, 65c each, 3 for \$1.75

This exquisite waxy white cascade requires early fall planting (August 15-September 15)

Some gardeners worry about the difficulty of growing lilies. True, they do need proper care, but we send concise, complete directions, based on over 70 years' experience, with every shipment and the simple care required is easily understood.

Of course, the number of flowers and the size of plant depends a great deal on the quality of bulb you plant. You will find our bulbs all firm and healthy.

OTHER LILIES LISTED ON PAGE 8

**THIS PAGE REPLACES OUR USUAL
FALL SUPPLEMENT**

IRIS . . .

NAME	COLOR	EACH	THREE
Amandine	Cream and lemon	\$.75	\$2.00
Cahokia	Fine blue	1.00	2.50
Carabella	Salmon pink	.75	2.00
Caribou Trail	Gold-brown, bright violet, shirred	2.00	5.00
Cliffs of Dover	White	1.50	4.00
Dream Castle	Orchid pink	.75	2.00
Easter Bonnet	Pink, edged gold	.75	2.00
Elmohr	Rich mulberry	1.00	2.50
First Violet	Violet	2.00	5.00
Garden Glory	Bordeaux red	.75	2.00
Hit Parade	Ruffled pink	.75	2.00
Lothario	Lavender and violet	.75	2.00
Mattie Gates	Waxen yellow	.75	2.00
May Magic	Orchid pink	1.50	4.00
Midnight Blue	Deepest blue	1.00	2.50
Ola Kola	Deep yellow, ruffled	.75	2.00
Pacemaker	Fine red	1.00	2.50
Paradise Pink	Flamingo pink	.75	2.00
Ranger	Large crimson	.75	2.00
Rocket	Orange self	.75	2.00
Rosabella	Deep rose, chrome	.75	2.00
Sable	Violet blue	.75	2.00
Sky Ranger	Sky blue	.75	2.00
Thotmes III	Glisten golden tan—bronze beard	1.00	2.50
Velvet Dusk	Blue-brown	2.00	5.00
Wabash	White and blue	.75	2.00

LILACS

"FRENCH HYBRID LILACS on their OWN ROOTS" means non-grafted stock whose side shoots grow true to name. They have finer range of colors in longer panicles of bloom which are more evenly arranged on the attractive specimen-shaped shrubs.

STK. NO.	VARIETY	COLOR
S-432	Adelaide Dunbar	Semi-double; deep purple
S-433	Katherine Havemeyer	Semi-double; bluish-lilac
S-434	Louvois	Single; violet
S-435	Marechal Lannes	Double; violet
S-436	Michael Buchner	Double; lilac pink
S-437	Mme. Casimer Perier	Double; white
S-438	President Grevy	Double; clear blue
S-439	Mrs. Edward Harding	Double; carmine

The above varieties \$3 each in 1½-2' size; \$4 in 2-3' and \$5 in 3-4'

S-441 MIXED FRENCH HYBRIDS 2-3' @ \$3.50
 3-4' @ 4.50

Other Lilacs

STK. NO.	VARIETY	COMMON NAME	SIZE	EACH
S-442	Syringa japonica	Japanese Tree Lilac; creamy white. Late	3-4'	\$4.00
S-443	S. josikaea	Hungarian Lilac	4-5'	2.50
S-444	S. villosa	Pale pink; late flowering	4-5'	2.50
S-445	S. vulgaris	Common Purple Lilac; for hedges or screen	2-3' 3-4'	1.50 2.00
S-446	S. vulgaris alba	Common White Lilac	2-3' 3-4'	1.50 2.00

POSTPAID ORDER FORM

QUANTITY	STK. NO.	VARIETY	SIZE	PRICE

GIFT CERTIFICATE ORDER FORM ON REVERSE SIDE. DONOR SIGNS BELOW.

CHECK ENCLOSED

PLEASE BILL

POSTAL CHARGES ▶ _____

PLEASE BE SURE TO ADD POSTAGE CHARGES
SEE PAGE 14

TOTAL ▶ _____

IF NEW ADDRESS
PLEASE CHECK

SHIP TO

NAME _____

ADDRESS _____

CITY _____ STATE _____ ZIP _____

GIFT CERTIFICATE ORDER FORM

PLEASE SEND GIFT CERTIFICATE IN THE AMOUNT OF \$
AND A COPY OF YOUR CATALOG TO

NAME _____

STREET _____

CITY _____ STATE _____ ZIP _____

DONOR SHOULD SIGN REVERSE SIDE AND GIVE BILLING ADDRESS
IF CHECK IS NOT ENCLOSED.

FOLD HERE—TAPE OR STAPLE OPEN END

No
Postage Stamp
Necessary
If Mailed in the
United States

Postage
Will Be Paid
by
Addressee

FIRST CLASS PERMIT NO. 1—CHARLOTTE, VT.

F. H. HORSFORD NURSERY, INC.

CHARLOTTE, VERMONT

05445

CUT ALONG THIS LINE

OUR WARRANTY

Our plants are hardy in Northern Vermont under congenial cultural conditions, but need protection against winter heaving from alternate freezes and thaws. We are responsible for filling your order with stock true to name and in good condition. If not received in good condition, complaint must be made at once.

We cannot assume responsibility for cultural failures beyond our control nor for failures due to drought and winter losses.

TERMS: Net 30 days; FOB Charlotte or South Burlington, Vermont

Postal charges are added to your invoice. If you send a check with your order please include postal charges, estimated at 20% of total order for shipment East of the Mississippi River; or 30% of the total order for shipment West of the Mississippi. Minimum postal charge—50c.

Lilacs must be shipped by Express collect unless called for either at the nursery or the GREEN TREE Garden Center. Nominal charge for delivery to homes in the Greater Burlington, Vermont Area.

All stock will be shipped at the appropriate time for planting.

NEW FOR THE BURLINGTON METROPOLITAN AREA . . .

For Your
LAWN and
GARDEN
SUPPLIES

1277 WILLISTON ROAD
SO. BURLINGTON, VERMONT
PHONE 862-1951

**THE
Green
tree**
GARDEN CENTER

THOMAS H. MURRAY, Manager



TURF BUILDER — LAWN SEED

BURPEE SEEDS

VEGETABLE AND FLOWERS

TRUE TEMPER GARDEN TOOLS

ACME PESTICIDES & FUNGICIDES

MELNOR SPRINKLERS

CORENCO FERTILIZERS



In keeping with the F. H. Horsford reputation for quality we have opened our Green Tree Garden Center in South Burlington. We believe it to be the finest store of its type in Northern New England—one visit will tell you why.

Here is one stop shopping for everything for your lawn and garden . . . where only the best, top quality lines are sold. We feature the famous Scott's line of Turf Builder and lawn seeds. In fact, our manager has been trained in the Scott's school in Marysville, Ohio and is qualified to answer all your questions on lawn care and can recommend the right Scott's product to control weeds and improve your lawn. Remember that Scott's guarantees a greener lawn or your money back.

Here in May and June we sell our wide selection of choice annuals grown in our Charlotte greenhouse. Under the adjoining lath house you will find evergreens in the display beds. Nursery stock ordered here or in Charlotte can be picked up at the garden center although we will be glad to deliver direct to your door for a nominal charge.

All year long, but especially during the off-season, the store sells Pets and Pet supplies. Bring your family—it's like a trip to the Zoo! It is the largest and most complete pet center in Vermont, and our suppliers tell us it's one of the finest in the entire Northeast.

THE GREEN TREE GARDEN & PET CENTER IS OWNED & OPERATED BY F. H. HORSFORD NURSERY, INC.

COME SEE US!

You are always welcome at the nursery where you can browse through the fields and select your own stock. From April through mid-November we are open daily, hours: 8-12; 1-4:30, except Sunday. Our phone is 825-2811.

You will find us down in the hollow just off U.S. 7 in Charlotte, only 15 minutes south of Burlington. You can enter either from U.S. 7 or from North Greenbush Road, which runs north from the center of Charlotte. There are signs at both entrances. Our office and greenhouse are midway between U.S. 7 and North Greenbush Road.

Let us help you with your landscape or garden problems. We suggest you bring with you a photograph of your home or the area to be planted. Our field staff will be glad to assist you at any time, but if you wish to confer with one of our consultants it is best to write or phone ahead so we can be expecting you. Time gets a little precious along about May so we are always glad to arrange a pre-season conference in your home or our winter office at the Green Tree Garden Center. Please contact our General Manager, Stanwood Wollaston, who will be happy to serve you.



**1966 — OUR 73rd SEASON
VERMONT'S OLDEST NURSERY**

F. H. HORSFORD NURSERY, INC.
CHARLOTTE, VERMONT 05445

BULK RATE
U. S. POSTAGE
PAID
CHARLOTTE, VT.
PERMIT NO. 1

Library USDA
Bibliography Div.
Washington 25 DC 20000