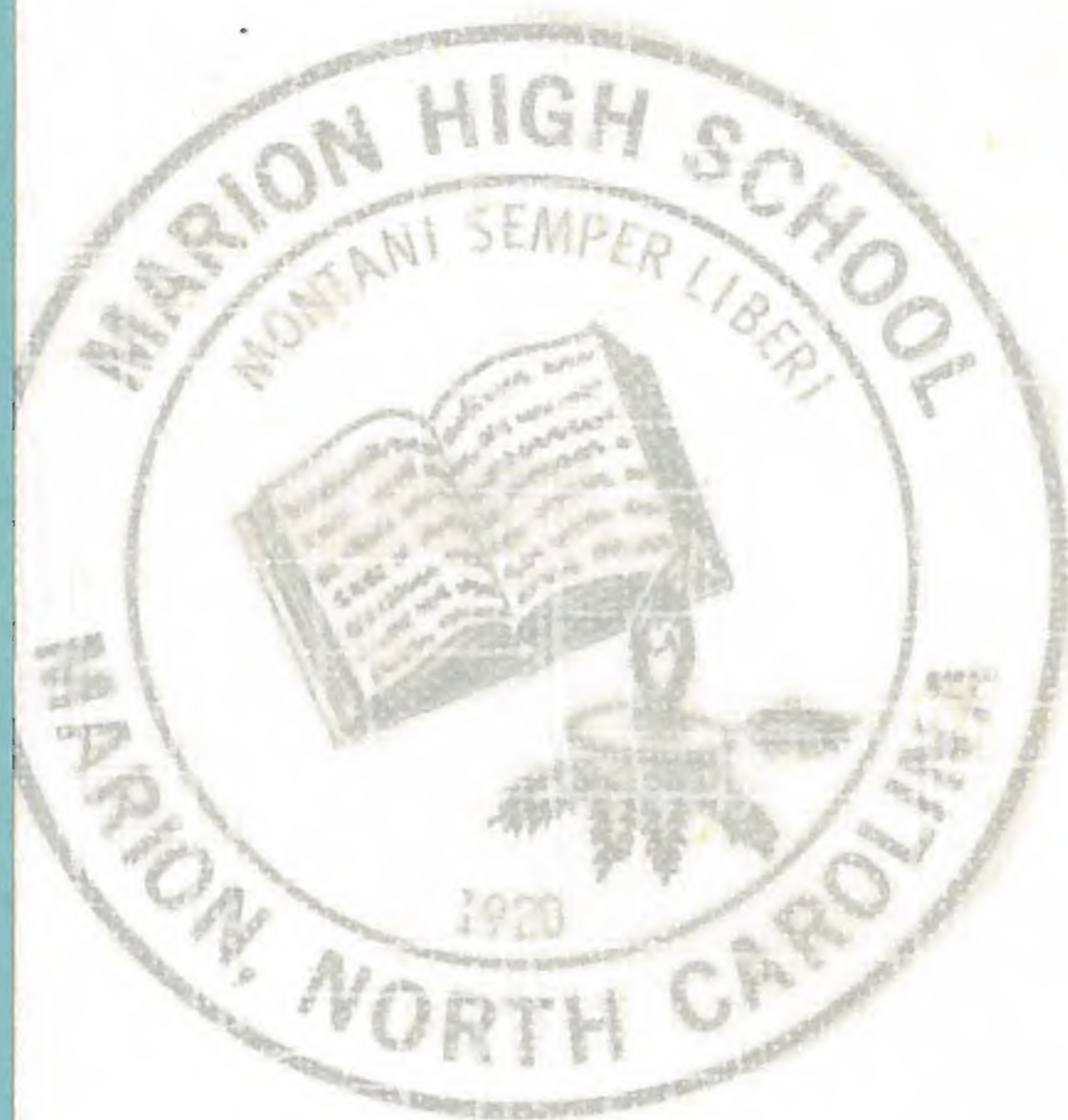
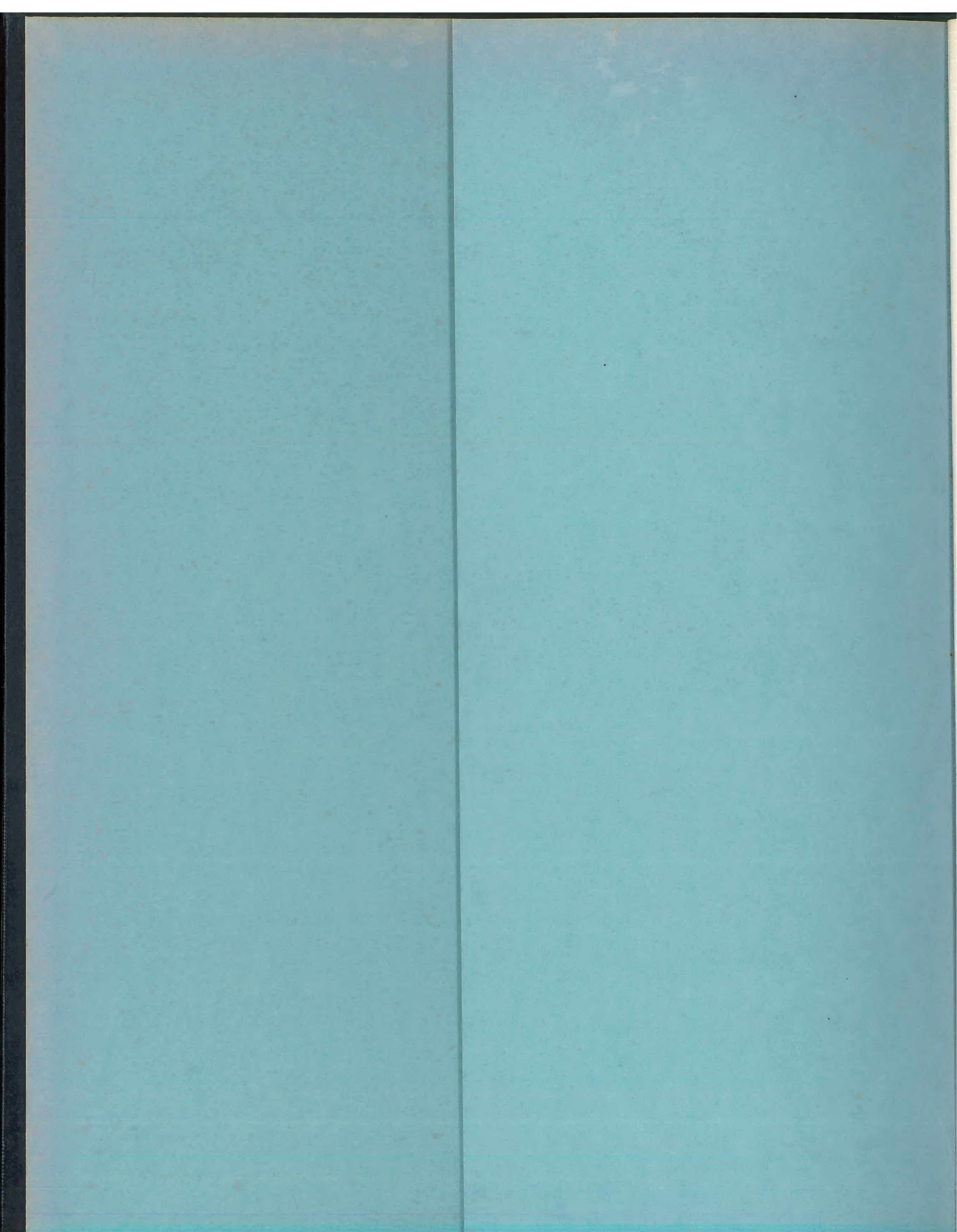


The Hylander



PRESENTS

MCDOWELL COUNTY PUBLIC LIBRARY
66 WEST COURT STREET
MARION, NC 28752

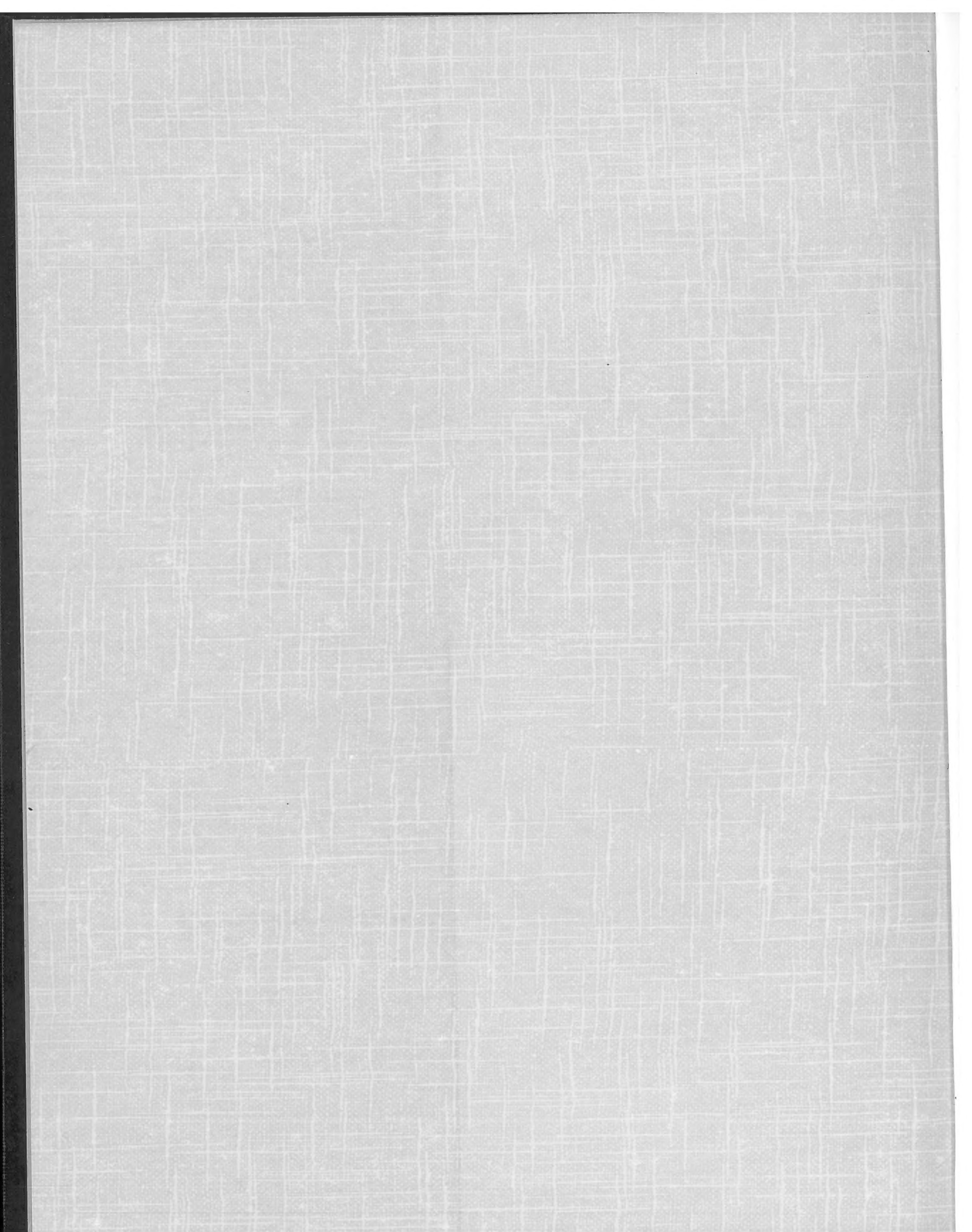


The Hylander



PRESENTS

MCDOWELL COUNTY PUBLIC LIBRARY
80 WEST COURT STREET
MARION, NC 28752



The Hylander



PRESENTS

MCDOWELL COUNTY PUBLIC LIBRARY
90 WEST COURT STREET
MARION, NC 28752



MARION HIGH SCHOOL



On the city's eastern border, Reared against the sky;
Proudly stands our Alma Mater, As the years go by.
May it ever be our watchword, Conquer and prevail.
Hail to thee our Alma Mater, Dear ole' Marion Hail!



Marion, North Carolina

Summer's independence lost . . .

A whole new experience before us . . .

A life of new people . . .

A life of warm joys—of bitter disappointments . . .

Autumn brings us freshness, spirit, parades, football games, and a time to settle down.

Winter brings a briskness in the air . . . exchanging ideas . . . voicing fears . . . a total experience.

Spring brings warmth, happiness, anticipation, and the end is near.

Marion High School 1968-69 took on a newness of destiny.

We were a part of it and now it has become a part of us.



CONTENTS



Leadership



Classes



Organizations

Features



Sports

Advertisements



The Success Of M. H. S. Lies In Its Students Being Part Of A Crowd



Alone In A Crowd



Taking Part In Activities



Find Quietness On A Warm Afternoon . . .



Leadership





ADMINISTRATION



Mr. Ted Freeman
Principal



Mr. Culver Dale
Superintendent



Mrs. Dale, Mrs. Ed Miller—Secretaries to Superintendent



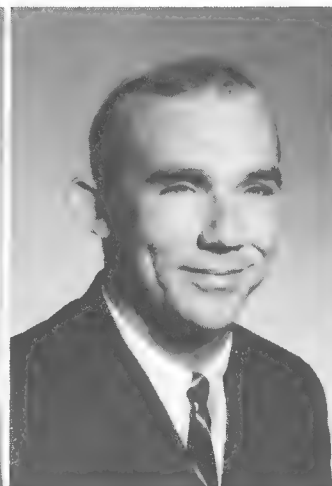
Mrs. Gayle Payne—Secretary to Mr. Freeman



Miss Catherine Alley
Math and Algebra



Mrs. Margaret Anderson
Home Economics
and FHA Advisor



Mr. John Anderson
US History, Coach,
Key Club Advisor



Mrs. Dorothy Baldwin
Biology, Health Careers

FACULTY



Mr. Louis Bean
Band Director,
Assistant Principal



Mr. Bob Brackett
Science, Assistant Coach



Mrs. Marilyn Brackett
English II



Mr. Thomas Broyhill
Current History and
Geography
Assistant Coach



Mrs. Madge Bean
English IV, Senior Advisor



Mr. Ken Brackett
Math, Basketball Coach



Mrs. Peggy Broyhill
Civics and World History
Cheerleader Advisor



Mr. V. E. Carson
Science and Assistant Principal



Mrs. Edith Davis
Math and Algebra I,
FTA Advisor



Mr. Earl Duncan
Counselor



Mrs. Betty Freeman
Commercial and
Marionette Advisor



Miss Joan Freeman
Spanish

FACULTY



Miss Mildred Glenn
Librarian, Library Assistants



Mr. Jerry Greene
Physical Education,
Asst. Coach, Basketball Girls'



Mr. Robert Howell
Distributive Education
Yearbook Advisor



Mrs. Mary Laughridge
Economics and World History



Mrs. Marguerite Gilkey
Latin and English II,
Student Council Advisor



Mr. William Harrill
Industrial Cooperative Training



Mrs. Dorothy Hoots
English I



Mrs. Kate Lindsay
Math and Geometry
National Honor Society Advisor



Mr. James Mackey
Driver Education,
Pep Club Sponsor



Mrs. Barbara McKinney
English III



Miss Lala McKinney
English III and IV

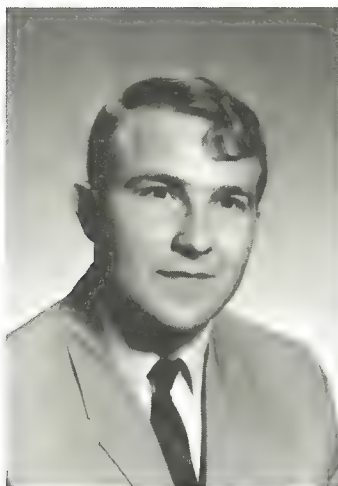


Mrs. Emily Morris
Commercial

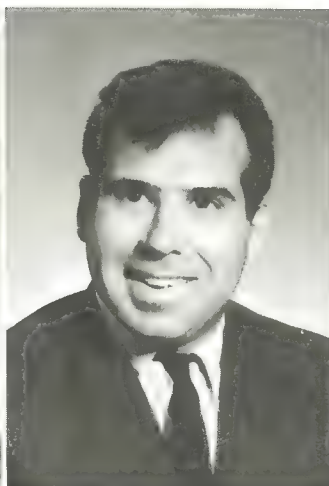


Mrs. Bobbie Norman
Library Assistant

FACULTY



Mr. Glenn Pharr
French,
Student Council Advisor



Mr. David Ramsey
US History and Economics
Assistant Coach



Mrs. Joy Wilson
Physical Education



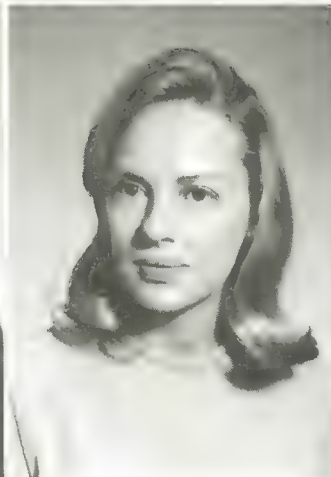
Mr. Jim Wiseman
TPT, Vica Advisor



Mrs. Willa J. Poteat
Home Economics



Mr. William Rogers
Industrial Arts



Mrs. Jenny Wise
Special Education



Mrs. Mary Van Dyke
Chemistry, Physics,
General Science

Classes





SENIORS



OFFICERS

Bobby Elledge	President
Bobby Love	Vice President
Jane Parker	Secretary
Fran Quinn	Treasurer



John Allen



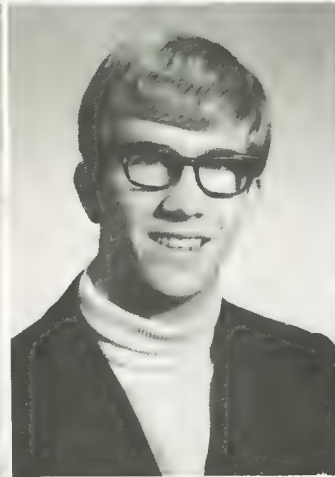
Charles Anderson



Harold Arrowood



Sandra Arrowood



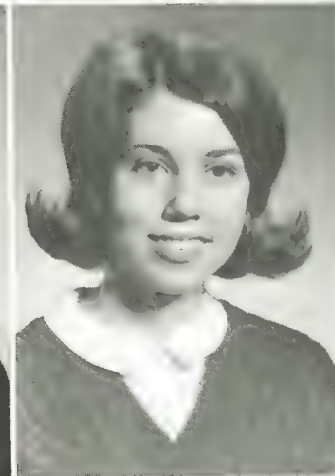
Cliff Autrey



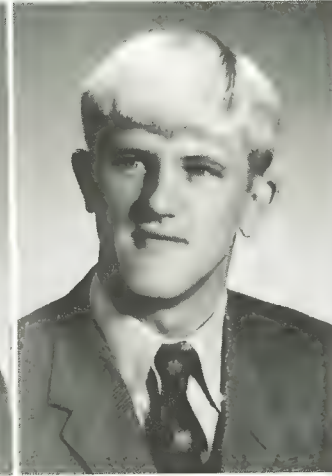
Susan Bean



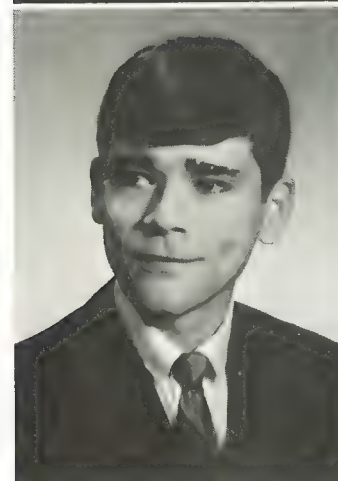
Glenda Biggerstaff



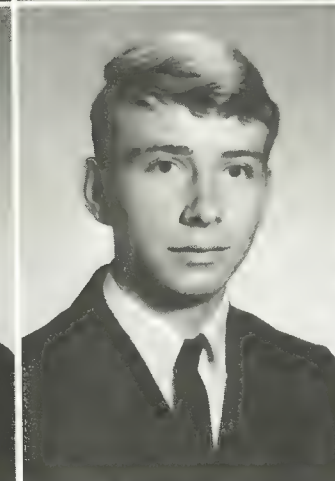
Phyllis Blackledge



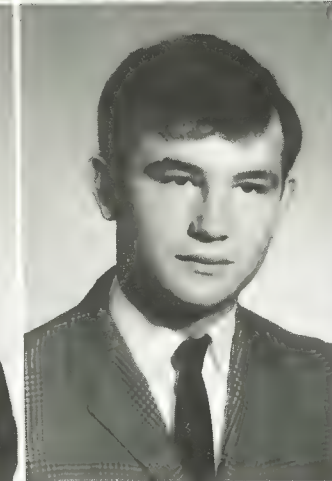
Bob Blankenship



Dennis Bradley



Daniel Bright



Leon Brookshire

Carolyn Burleson

Joyce Burleson

Cindy Byrd



Phil Caldwell

Jerry Carroll

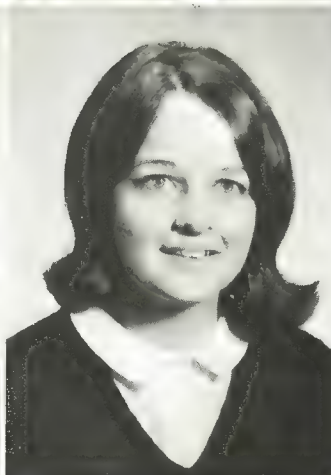
Brenda Carson



Glenda Carson

Jenna Clontz

Jo Cordell



Diane Corn

Michelle Cowan

Billy Coward

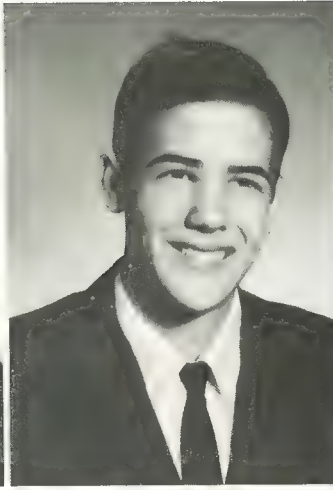




Melissa Cranford



Debbie Creson



Wayne Creson



Bonnie Crisp



Kelly Cross



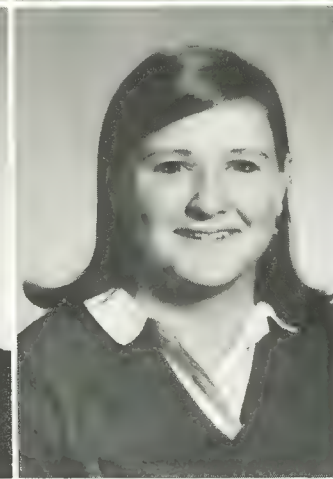
Bill Davis



Glenna Deal



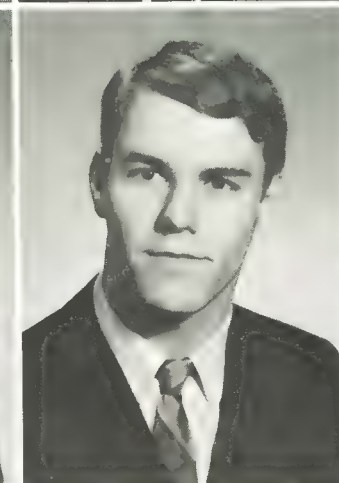
David Ditt



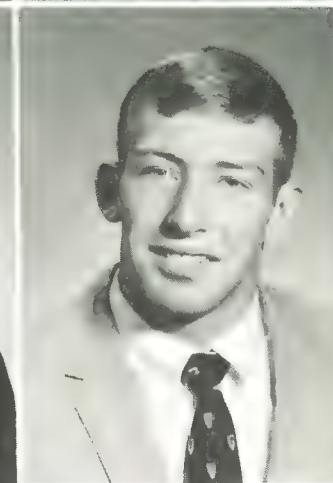
Ellen Dixon



Francis Duncan



Kenneth Duncan

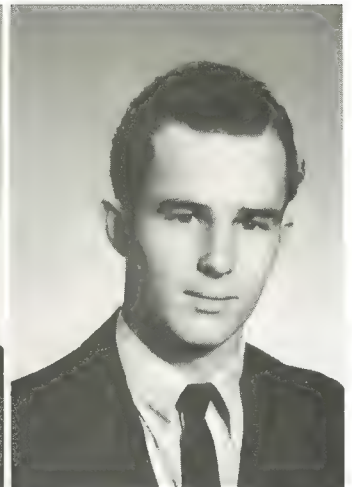


Steve Early

Nelma Effler

Margaret Elliott

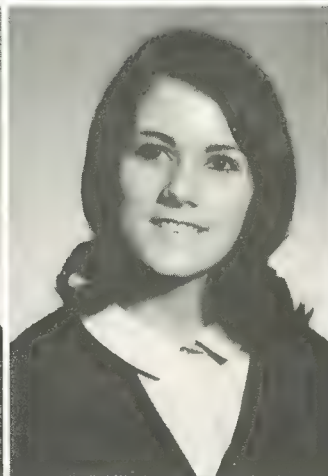
R.G. Evans



Ray Finley

Cebelle Forrester

Ann Fortenberry



Jimmy Forney

Vernice Francis

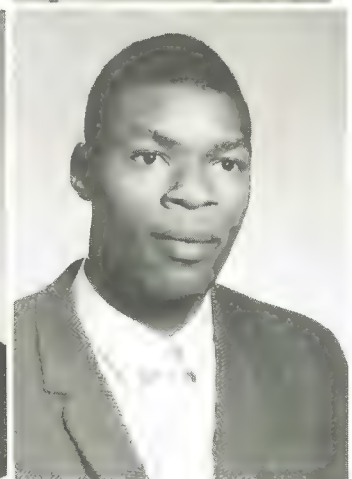
Sue Franklin

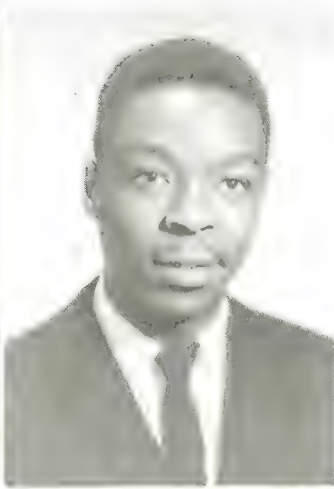


Betty Sue Freeman

Mike Gaddy

Earl Gilmore

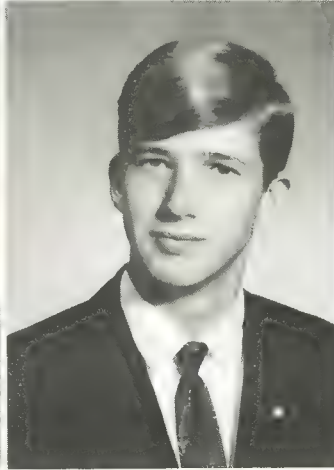




Jackie Goode

Larry Green

Ronnie Greenlee



Janice Greeson

Keith Guffey

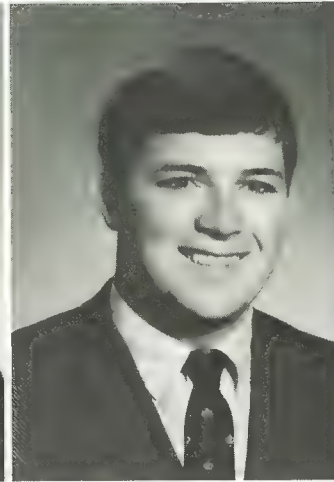
Tommy Hall



Jane Harris

Margaret Harris

Marie Helms



Theresa Helms

Anna Hensley

Joe Hester

Kit Hicks



David Hodge



Doris Holland



Kenny Holland



Chuck Hollifield



Pamela Howell



Ben Hughs



Rachel Jackson



Roger Jaynes



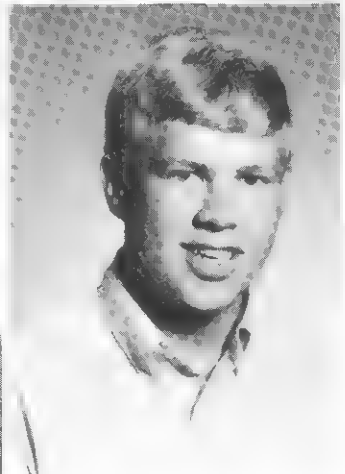
Jerry Jimerson



Debbie Johnson



Dennis Johnson





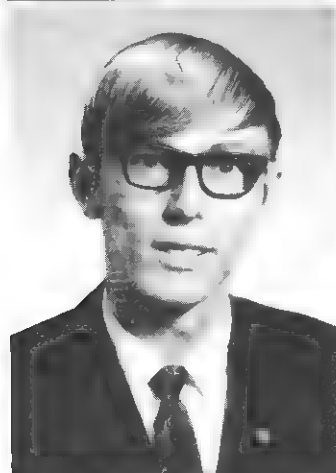
James Johnson



Sharon Johnson



Ralph Justice



Rex Kates



Donna King



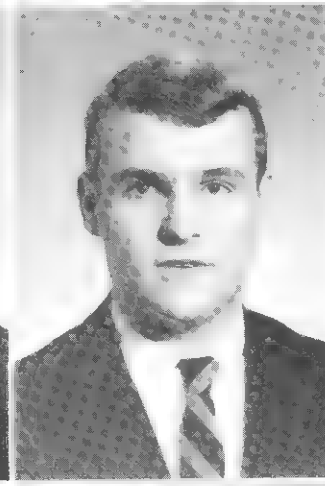
Sandy Krause



Pat Lail



Gray Laughridge



Mack Laughridge



Daniel Laws



Irma Lawing



Lynda Ledbetter

Johnny Lee



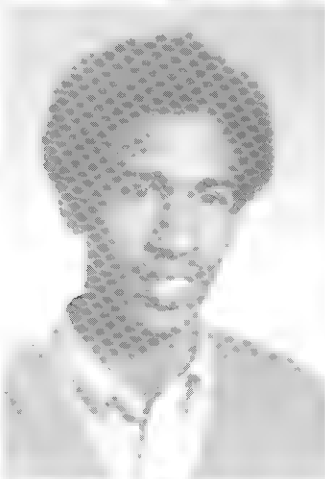
Quince Lewis



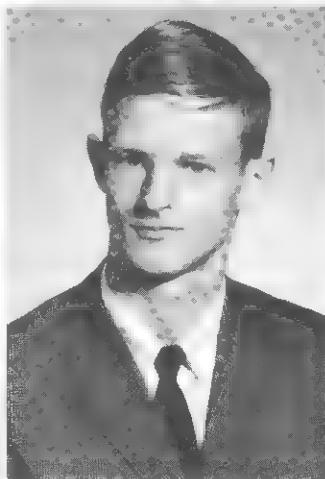
Donna Little



Clark Logan



Steve Long



James Lonon



Bobby Love



Diane Lowery



Dorothy Lowery



Gail Manis



Lois Mathis



Mack McClure





Charles McCall



Iris McCormick



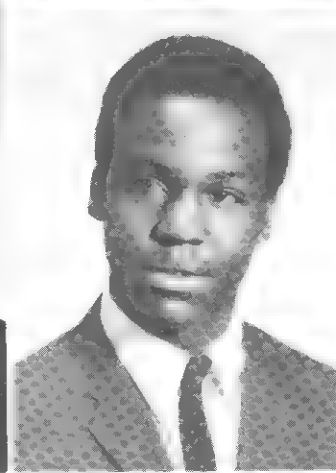
Kathy McCoy



Helen McCoy



Donald McIntoch



Willie McKesson



Vernon McCurry



Billy Miller



Clifford Miller



Jackie Miller



Janice Morris



Danny Nash

Jane Parker

Joe Parker

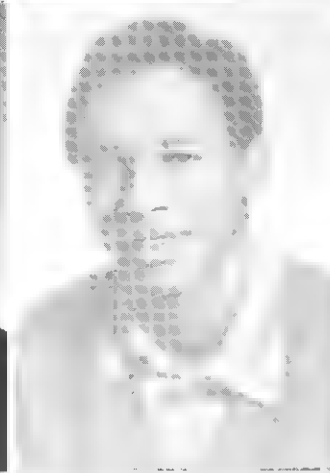
Keith Parker



Nick Payne

Billy Pearson

Bruce Pearson



Penny Pendergraft

Keith Poplin

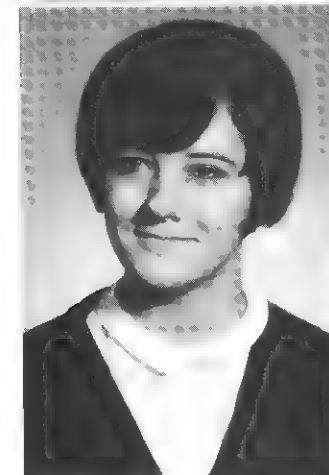
Curtis Poteat



Diane Price

Ginger Pugh

Tommy Queen





Fran Quinn



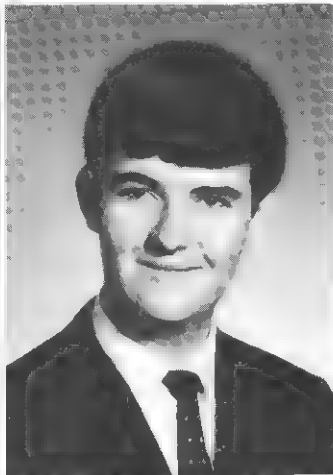
Freddy Rabon



Wylie Ramsay



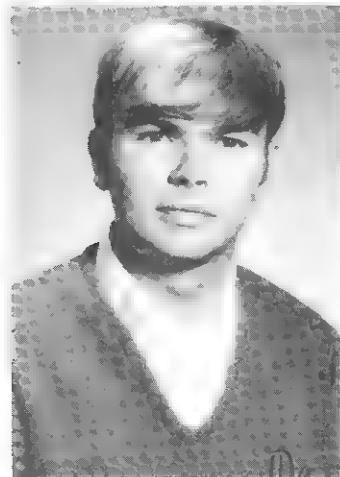
Jerry Ray



Ray Reel



Roger Revis



Danny Rhinehart



Debbie Robinson



Tommy Rockette



Jerry Roper



Diana Ross



Lanny Ross

Larry Roland

Bill Simmons

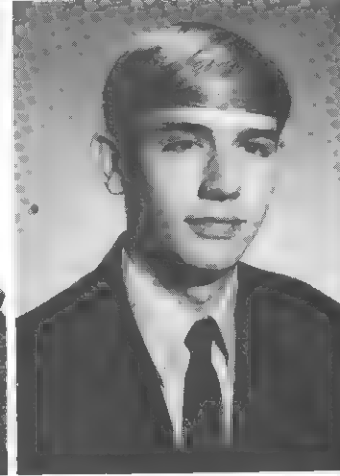
Barbara Sluder



Peggy Smith

Fanny Kay Stronach

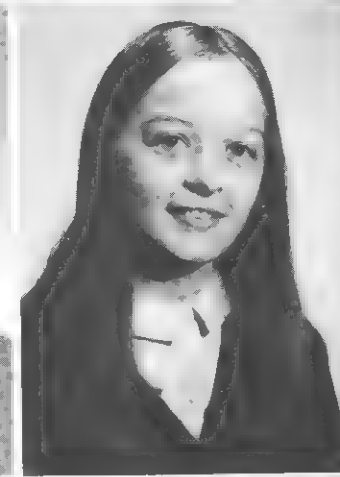
Chuck Suttles



Rex Taylor

Pocher Teeter

Carole Thorton



Theresa Vaughn

Sherri Walker

James Ward





Kaye Ward



Bobby Webb



Sandra Webb



Lyn Whitely



Terry Wilson



Jack Woods



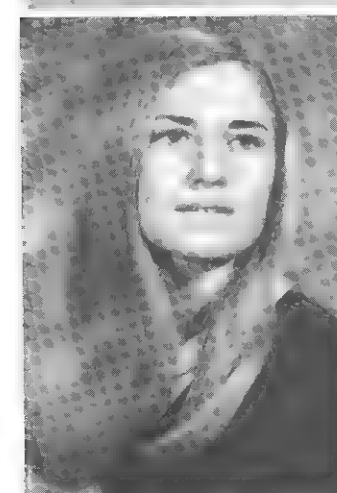
Diana Womick



Terry Workman



Phyllis Worley



Mae Wylie



Rachel Young



Mike Young



SENIORS — College . . . Big Orange Country . . .
Privileges . . . Green Stones . . . Psychodelic
Jr.-Sr. . . . Big Frank . . . Pierced Ear . . . Shrine
Bowl . . . Casket hunting . . . Drum-Dropping . . .
Ray's Chemistry Water . . . "Kiss-Kiss" . . . Never
to be forgotten . . .



SENIOR DIRECTORY

John Allen

Band 1, 2, 3, 4; Pep Band 1, 2, 3, 4; Sci-Math Club 1; Latin Club 1, 2; Pep Club 2, 3, 4; Marionette Staff 1, 2, 3, 4; Shorts Editor 3, 4; Photography Club 2, 3, 4; Junior Marshal 3; Beta Club 3, 4; National Honor Society 3, 4; Vice-President 3, 4; Interact Club 3, 4; Secretary 3; Drama Club 4.

Charles Lee Anderson

Secretary of Sophomore Class; Pep Club 1, 2, 3, 4.

Sandra Arrowood

F.T.A. 2, 3, 4; Band 1, 2, 3, 4.

Cliff Autrey

Band 1, 2, 3, 4; Latin Club 2; Pep Club 2, 3, 4; Art Club 4; Spanish Club 4; DECA 4.

Susan Lea Bean

Band 1, 2, 3, 4; Art Club 1, 2, 3, 4; Drama Club 4; Pep Club 1, 2, 4; Latin Club 1; French Club 2, 3; Homecoming Sponsor 4; Senior Superlative; Homeroom Officer 1.

Sharon Black

Pep Club 1, 2, 3, 4; Band 3, 4; Senior Superlative; F.H.A. 2, 3, 4.

Glenda Biggerstaff

Upper House of Student Council 1; Lower House of Student Council 1; F.T.A. 2, 3, 4; Pep Club 1, 2; J.V. Cheerleader 1; Varsity Cheerleader 2, 3; Editor of Hylander; Hylander Staff 2, 3, 4; F.C.A. 2, 3; Beta Club 3, 4; Latin Club 1, 2; Office Worker 4; Homecoming Sponsor 4

Phyllis Blackledge

Latin Club 1; Band 1, 2, 3, 4; Pep Band 3, 4; Sec. Homeroom 3; Sec. Beta Club 3; Treasurer Beta Club 4; National Honor Society 3, 4; Junior Marshal 3; Band Sponsor 4.

Bob Blankenship

F.F.A. 1, 2; Pep Club 1, 2, 3, 4; Baseball 1, 2; Monogram Club 1, 2, 3, 4; Key Club 1, 2; Office Staff 2; Varsity Basketball 1, 2, 3; Captain of Basketball 2.

Dennis Bradley

Pep Club 1; Secretary of Junior Class

Leon Brookshire

Baseball 2; Bus Driver 4.

Joyce Ross Burleson

F.H.A. 1, 4; Pep Club 4; Cauldron Staff 4; (Morganton).

Cindy Byrd

Band 1, 2, 3; Art Club 1; Latin Club 1; Majorette 2, 3; Pep Club 4.

Brenda Carson

Spanish Club 1; F.H.A. 2; Dramatics Club 3; (Mountain View).

Jenna Clontz

Art Club 1; Pep Club 1, 2, 3, 4; Fellowship of Christian Athletes 2, 4; J.V. Cheerleader 2; Varsity Cheerleader, Captain 4; Senior Superlative.

Jo Cordell

Art Club 1; Pep Club 1, 2, 3, 4; F.C.A. 2; Latin Club 1, 2; Spanish Club 4; Homecoming Sponsor-Pep Club; Homeroom Officer 4.

Diane Corn

Chorus 3, 4; Pep Club 3, 4; F.H.A. 2, 3, 4.

Michelle Cowan

Spanish Club 4; Art Club 4; Pep Club 1, 3, 4.

Melissa Cranford

Cheerleader 1, 2, 3; F.C.A. 1, 2, 3; F.H.A. 1, 2, 3; Pep Club 1, 2, 3; Hylander Staff 2, 3, 4; Editor of Hylander 4; Homeroom Treasurer 2, 4; Homecoming Sponsor 4; Nominee for Homecoming Queen 4; Library Club 2, 3.

Kelly Cross

Marionette Staff 1, 2, 3, 4; Key Club 1, 2, 3, 4; Beta Club 3, 4; National Honor Society 3, 4; Photography Club 1, 2, 3; (Vice-President 1, 2, Pres. 3); Latin Club 1; President of Junior Class; Student Council 3, 4; Vice-Pres. 4; Drama Club 4; Director 4; French Club 1, 2, 4; Pep Band 1, 3, 4; Homeroom Vice-pres. 3; Junior Marshal 3; Senior Superlative.

William Alexander Davis

Tennis Club 3, 4; Football 1, 2, 3, 4; Pep Club; F.C.A.; Latin Club.

Glena Deal

Pep Club 1, 2, 3, 4; Sec.-Treas. 3; F.H.A. 1, 2, 3; Hylander 2, 3; Cheerleader 1, 2, 3; Freshman Attendant for Homecoming; Key Club Sweetheart 3; Football Sponsor 2; Marionette Revue 2; Drama Club 4; Latin Club 1; Art Club 1, 2; F.C.A. 1, 2, 3.

David Ditt

Varsity Football 2, 3, 4; Golf Team 3, 4; Key Club 2, 3, 4; President 4; Treas. 3; Student Council 4; French Club 1, 2, 3, 4; F.C.A. 2, 3, 4; Pep Club 1, 2, 3, 4; Wrestling 4; Track 4.

Kenneth Duncan

Vica 4; Latin Club 1; Track 3; Senior Superlative; Pep Club 1.

Steve Early

Key Club 1, 2, 3, 4; 450 Club 3, 4; Baseball 1; Basketball 1, 2, 3, 4; F.C.A. 1, 2, 3, 4; J.V. Football; Varsity Football 3, 4; Track 3, 4; Student Council 3, 4; Student Body President 4.

Nelma Effler

Latin Club 1, 2; Pep Club 1, 2; F.T.A. 1, 2, 3, 4; DECA Club.

Bobby Elledge

Rep. Student Council 1, 2, 3; Homeroom Pres. 2, 3, 4; Interact Club 1, 3; President 4; Sci-Math Club 1, 2; Senior Class President.

Margaret Elliot

Pep Club 1, 2, 3, 4; F.H.A. 2, 3, 4; Reporter 4; French Club 1, 2; F.T.A. 2, 3, 4; Treas. 4; Health Careers Club.

Vernice Francis

F.H.A. 1, 2; Miss F.H.A. 1; Cheerleader 1; DECA Club 3; Student Relations Club 4; Drama Club 4.

Betty Freeman

Art Club 2; F.H.A. 2, 4; Pep Club 1, 2, 3, 4.

Cebelle Forrester

Latin Club 1; Student Council 1; J.V. Cheerleader 1; Pep Club 1, 2, 3, 4; Sci-Math Club 1; Photography Club 2; Office Worker 4; Maid of Honor Homecoming 4; Senior Superlative.

Mike Gaddy

Vica 3; Band 1, 2, 3, 4; Deca 4; Pep Band 3, 4; French Club 3.

Jackie Goode

Latin Club 1; Band 1, 2; Pep Club 2, 4; Deca 3, 4; Bus Driver 3, 4.

Ronnie Lee Greenlee

Vica 4; Band 1.

Thomas Hall

French Club 1, 2, 3; F.C.A. 1, 2; Basketball 1, 2; Pep Club 1, 2, 3, 4; Drama Club 4; Interact Club 1, 2, 3, 4; Board of Directors for Interact 3.

Jane Harris

Latin Club 1; Pep Club 1, 2; F.H.A. 1, 2; DECA 4.

Marie Helms

F.H.A. 2, 4; Pep Club 1.





Teresa Helms

F.H.A. 1; Office Workers 4.

Anna Hensley

Band 1, 2; Spanish Club 1; Homecoming Sponsor for Spanish Club; Art Club 1, 2; F.H.A. 1; Latin Club 1, 2; Band Librarian 1, 4; Photography Club 1; Drama Club 1.

Joe Hester

Football 1, 2, 3, 4; Track 3, 4; Wrestling 1, 4; Pep Club 1, 2, 3, 4; Spanish Club 4; Student Council; F.C.A. 1, 2, 3, 4; Senior Superlative; Basketball 1.

Kit Hicks

F.T.A. 1; Spanish Club 1; Band 3; Band President 4; Pep Club 1; Pep Band 2; Hylander Staff 4.

David Hodge

Football Manager 1; Baseball 3, 4; F.C.A. 1, 3, 4; Homeroom Officer 1, 2; Pep Club 2, 3, 4; Latin Club 2.

Doris Holland

Band 1, 2, 3, 4; F.H.A.

Kenneth Holland

Latin Club 2; Bus Driver 3, 4; F.C.A.

Chuck Hollifield

Latin Club 1, 2; F.C.A. 1, 2, 3, 4; DECA Club 3, 4; F.T.A. 2; Pep Club 1, 2, 3, 4; Student Council 2, 3; Basketball 1; Football 1, 2, 3, 4.

Pam Howell

Drama Club 4, Sec.; Homecoming Sponsor 4; Photography Club 1, 2, 3, 4; F.H.A. 1; Pep Club 4; Senior Superlative; Debate 1; French Club 3, 4; Latin Club 2; Art Club 2, 3.

Jerry Jimison

Football 1, 2, 3, 4; Basketball 1, 2; Track 3, 4; French Club 1, 2, 3, 4; DECA 4; F.C.A. 1, 2, 3, 4.

Debby Johnson

Band 1, 2, 3, 4; Majorette 2, 3, 4; Head Majorette 4; Latin Club 1; French Club 2, 3; Spanish Club 4; (Tres.) Marionette Revue 2; Drama Club 4; Junior Class Sponsor Homecoming; Pep Club 4; Marionette Staff 2; Photography Club 2; Debate Club 1

Sharon Johnson

McKenzie High School, Oregon; Ski Club 1; Pep Band 1; Pep Club 1; F.T.A. 1; Science In The Future 1; Girls League 1; Student Council Rep. for Freshman Class; Sophomore, McKenzie High and Nebo High; Glee Club 2; Pep Club 2; Skie Club 2; Phi 2; (McKenzie); Science Club 4; Sub Deb 4.

Ralph Justice

J.V. Basketball 1; Jr.-Sr. Waiter 3.

Donna King

Latin Club 1, 2; F.C.A. 1, 2, 3; Basketball 1, 2, 3, 4; Basketball Captain 4; J.V. Cheerleader 1, 2; Pep Club 1, 2; Drama Club 4; Senior Superlative.

Sandie Krause

Pep Club 1, 2, 3, 4; Library Assistant 4.

John Mack Laughridge, Jr.

Golf 1, 2, 3, 4; Pep Club 1, 2, 3; Basketball 1, 2; Latin Club 1, 2; F.C.A. 1, 2, 3, 4; Interact Club 2, 3, 4.

Lynda Ledbetter

F.H.A. 1, 2, 3; Chorus 2, 3, 4; Pep Club 3, 4.

Donna Little

Band 1, 2, 3, 4; Band Council 2, 3, 4; French Club 2, 3.

Irma Lawing

Homeroom Treasurer 1; J.V. Cheerleader 1, 2; DECA Club President 4; Chorus 3; Pep Club 1, 2, 3; Office Worker 4; Latin Club 2; F.H.A. 4; VICA Club Sponsor 4.

Bobby Love

Student Council 1, 2, 3, 4; Homeroom Officer 1, 2, 3, 4; Marionette Staff 1, 2, 3, 4; Key Club 2, 3, 4; Basketball 1; Football 1; F.C.A. 1, 2, 3, 4; Latin Club 1, 2; Vice-Pres. 1, 2; Pep Club 1, 2, 3, 4.

Diane Lowery

Band 1, 2, 3; Majorette 2, 3; Tar Heel Twirling Camp 1, 2; French Club 1, 2; Library Club 2, 3; F.H.A. 4; Pep Club 1, 2, 3, 4; Drama Club 4; Marionette Staff 2, 3, 4; Marionette Revue 3.

Gail Manis

Latin Club 1, 2; F.T.A. 2, 3, 4; J.V. Cheerleader 1, 2; Captain 2; F.C.A. 1, 2; DECA Club 3; Rep. for Homecoming; Hylander Staff 4; Office Worker 4.

Lois Mathis

Latin Club 1, 2; Pep Club 1, 2, 3; F.T.A. 2, 3, 4; Health Career's Club 2, 3, 4; Vice-Pres. 3, Pres. 4; F.H.A. 4; Drama Club 4; Homecoming Sponsor for Health Careers Club; Homeroom Officer 2.

Iris McCormick

F.H.A. 1, 2; (Nebo High School) Glee Club 1, 2, 3; Junior Marshal; F.T.A. 2; Spanish Club 4.

Kathy McCoy

F.C.A. 1; F.H.A. 1, 2; Pep Club 1, 2, 3, 4; F.T.A. 2, 3, 4; Basketball 1; Chorus 4; Library Club 4; Health Career's Club 2.

Donald McIntosh

Freshman Basketball 1; Fellowship of Christian Athletes 1; French Club 1, 2, 3; Key Club 1, 2, 3, 4; Marionette Staff 1, 2, 3, 4; Beta Club 3, 4; Pres. 4; National Honor Society 3, 4; Treas. 4; Junior Marshal; Morehead Nominee.

Willie Ray McKesson

Band 1; Chorus 1, 2; Football 3; Basketball 1, 2, 3; VICA Club.

Bill Miller

Drama Club 4; Interact Club 4; Latin Club 1.

Janice Morris

Pep Club 1, 2, 3; F.T.A. 2, 3, 4; Vice-Pres. 4; F.H.A. 4; Latin Club 4; Classical Club 3; Beta Club 3, 4; Marionette Staff 4; Typist; Drama Club 4; Science Club 4; Health Career's Club 2, 3, 4

Jerry Owensby

DECA 3, 4.

Jane Parker

President of Homeroom 2, 3; Treas. of Band; Latin Club 1, 2; French Club 1, 2; President of Beta Club 3; Vice-Pres. of Beta Club 4; Sec. of National Honor Society; Pep Band 2, 3, 4; Feature Editor of Marionette 2, 3, 4; Student Council 2, 4; Junior Marshal; Miss Marion High 4; Senior Superlative.

Keith Parker

French Club 3, 4; Sub Deb Club 2, 3, 4; French Club Sponsor 4; Homeroom Sec. 3; Marionette Staff 2, 3, 4; Senior Superlative.

Penny Pendergraft

Latin Club 1, 2; Pres. 2; Cheerleader 1, 2, 3; Pep Club 1, 2, 3, 4; F.H.A. 4; Hylander Staff 2, 3, 4; Drama Club 4; Interact Club 2; Senior Superlative.

Keith Poplin

Pep Club 1, 2, 3, 4; Latin Club 3; F.C.A. 3, 4; Tennis Team 3, 4; "Most Valuable Player, 1968"; Interact Club 2, 3, 4.

Curtis Poteat

F.F.A.; DECA; Library Club; VICA; Pep Club 3, 4.

SENIOR DIRECTORY

Ginger Pugh

Band 1, 2, 3, 4; National Honor Society 3, 4; Beta Club 3, 4; French Club 1; Pep Band 4; Sec. of Homeroom-1 yr.; Junior Marshal-1 yr.; National Honor Society; Sponsor for Homecoming.

Tommy Queen

Pep Club 1, 2, 3, 4; Latin Club 1, 2; Spanish Club 4; Football 2; F.C.A. 2, 4; Tennis team 3, 4.

Fran Quinn

Basketball 1, 2, 3; Beta Club-Sec. 3, 4; Latin Club 1, 2; F.C.A. 1, 2, 3; Senior Class Sec. 4; Homeroom Pres. 2; Junior Treas.; Senior Superlative.

Freddy Rabon

Latin Club 1, 2; National Honor Society 3, 4; Beta Club 3, 4; Junior Marshal 3; Morehead Nominee 4; Football 1, 2, 3, 4; Track 3; Baseball 1, 2; Homeroom Officer 3; Interact Club 3, 4.

Wylie Ramsey

Student Council 3, 4; Homeroom Pres. 1, 3; Senior Representative 4; Football 1, 3, 4; Football 1, 2; Basketball 1, 2; Golf 1, 2, 3, 4; Captain 4; Latin Club 1, 2; French Club 3, 4; Key Club 2, 3, 4; Pep Club 1, 2, 3, 4; F.C.A. 1, 2, 3, 4.

C. Keith Randolph

Art Club 1, 2, 3, 4; Track 4; Public Relations Club 4; Pep Club 4; Senior Superlative; Band 1, 3.

Ray Reel

Marionette Staff 4; Band 1, 2, 3, 4; Photography Club 1, 2, 3, 4; Latin Club 1; French Club 2, 3; Pep Band 4; Drama Club 4; Science Club 4.

Danny Rhinehart

Basketball 1; F.C.A. 1; Pep Club 1, 2, 3, 4; Latin Club 1, 2; DECA 4.

Debbie Robinson

French Club 1, 2, 3; Art Club 1, 2; F.H.A. 4; Band 1, 2, 3, 4; Majorette 2, 3, 4; Sophomore Attendant 2; Miss Marion High 2, 3; Homecoming Queen 4; Senior Superlative; Drama Club 4.

Larry Thomas Rockette

Basketball 1; F.C.A. 1; Pep Club 1, 2, 3, 4; Latin Club 2, 3; Interact Club 3, 4; Senior Superlative.

Diana Ross

Vice-Pres. of Freshman Class; Homeroom President 1, 2; French Club 1, 2, 3, 4; Pres. of French Club 3; Band 1, 2, 3, 4; Pep Band 2, 3, 4; Sec. of Band 2, 3, 4; Beta Club 2, 3, 4; Sub Deb Club 2, 3, 4; Marionette Staff 2, 3, 4; Feature Editor 3; Editor 4; Chief Marshal 3; Pres. of National Honor Society 4; French Club Sponsor for Homecoming 3; Senior Superlative.

Lanny Ross

Baseball 2, 3, 4; Manager 2, 3, 4; (Football, Basketball) F.C.A. 2, 3, 4; Student Council 2; Senior Superlative.

Larry Rowland

Latin Club 1; Pep Club 1, 2, 3; Interact Club 3, 4; Baseball 3, 4; Senior Superlative.

Bill Simmons

Inter-Club Council 2; Drama Club 4; Marionette Staff 2; Hylander Staff 3; Latin Club 1; Photography 1, 2, 3, 4; Pres. 3; Art Club 1, 2, 3, 4; Band 1, 2, 3, 4; Pep Band 4; Sec.-Treas. 2, 3.

Fanny Kay Stronach

Band 1, 2, 3, 4; Latin Club 1, 2; Beta Club 3, 4; National Honor Society 3, 4; Sponsor for Beta Club for Homecoming; Junior Marshals; Pep Band 2, 3, 4; Marionette Revue 2, 3; Marionette Staff, Feature Staff 1, 2, 3, 4; Homeroom Officer 1, 2, 3; Sub Deb Club 2, 3, 4; Pres. 4; Sec. of Freshman Class; Drama Club 4.

Chuck Suttles

Band 1, 2, 3, 4; Vice-Pres. 4; Director of Band 4; Interact Club 2, 3, 4; Sec. of VICA Club 4; Senior Superlative; Stage Crew 2, 3, 4; Hylander Staff 4.

Porcher Teeter

Band 1, 2, 3, 4; Pep Band 1, 2, 3, 4; Key Club 1, 2, 3, 4; Beta Club 3, 4; National Honor Society 3, 4; Homeroom Officer 1, 2, 3; Student Council 3; Latin Club 1, 2; Sci-Math Club 1, 2; Junior Marshals; Morehead Nominee; Marionette Staff 2, 3, 4; Photographer 4; Photography Club 1, 2, 3; Vice-Pres. 3.

Teresa Vaughn

F.T.A. 2, 3, 4; F.H.A. 1, 2, 3, 4; Secretary 3; Pep Club 1, 2, 3, 4; Library Club 4.

Sherri Walker

Art Club 1; Pep Club 1; F.H.A. 2, 3, 4; J.V. Cheerleader 2; F.C.A. 2; Chorus 4; Latin Club 1; Homeroom Officer (Sec.) 4.

Kaye Ward

Latin Club 1, 2; F.H.A. 1, 2, 3, 4; F.T.A. 2, 3, 4; Pep Club 1, 2, 3, 4; Beta Club 3, 4; National Honor Society 3, 4; Junior Marshals 3; Homecoming Sponsor; Library Assistants 4.

Sandra Webb

French Club 2; F.H.A. 4; F.T.A. 1, 2, 3, 4; Beta Club 3, 4; National Honor Society 3, 4; Junior Marshal 3; Office Worker.

Lynn Whitely

J.V. Cheerleader; Varsity Cheerleader 4; Pep Club 1, 2, 3, 4; F.C.A. 1, 4; F.H.A. Vice-Pres. 3, Pres. 4; Marionette Revue 3; Hylander Staff 4; Homecoming Sponsor 4; Office Worker 4; Library Worker and Club 4; Maiden High School 2.

Terry Wilson

Lower House of Student Council 1, 4; Football 1, 2, 3, 4; Basketball 1, 2, 3, 4; Track 3; Key Club; Beta Club; National Honor Society; Junior Marshals; French Club.



Diana Womick

Secretary of Homeroom 1, 2, 4; J.V. Cheerleader 1, 2; Varsity Cheerleader 4; Sponsor 4; Library Assistant 1, 2, 3, 4; Chorus 2, 3, 4; President 4; Marionette Revue 3; F.C.A. 1, 2, 4; Pep Club 1, 2, 3, 4.

Phyllis Worley

F.H.A. 2, 3, 4; Secretary 4; Pep Club 1, 2, 3, 4; Art Club 2; Library Club 4.

Mae Wylie

Latin Club 1, 2; F.T.A. 2, 3, 4; Art Club 1, 2, 3, 4; Pres. 3; Pep Club 1, 2, 3, 4; J.V. Cheerleader 2; F.H.A. 2, 3, 4; DECA 4; Hylander Staff 4; Homeroom Officer 2.

Jack Wood

Pep Club 1, 2, 3, 4; DECA 4; Latin Club 2.

Rachel Young

Latin Club 1; Chorus Club 2, 3; Pep Club 1, 2, 3, 4; Art Club 3, 4; F.H.A. 1; F.T.A. 1; Drama Club 4; Treas. of Chorus 1.

JUNIORS



OFFICERS

Kathy Noyes	President
Fred Abromitas	Vice President
Susan Jordan	Secretary
William Huffstetler	Treasurer

Fred Abromitas
Eddie Anderson
Steve Bailey
Paul Baker
Aletha Ballew



Doug Barlowe
Bruce Beam
Carrie Bean
Francis Beatty
Kenneth Best



Tommy Biddix
Bobby Blake
David Bobo
Chuck Bolden
Ellen Bolick



Anita Borders
Mary Bowman
Shirley Boyce
Marasha Boyd
Marianne Bradburn



Steve Bradburn
Marsha Bradley
Danny Briggs
Wilma Brooks
Regina Bruner



David Bryant
Debbie Bulman
Brenda Burgin
Glenda Burgin
Danny Burleson





Eugene Burleson
Nancy Burnett
Bobby Byrd
Wilma Cable
Lovie Carson



Mac Carter
Steve Clarkson
Herbert Childers
Hayne Coleman
Butch Compton



Chuck Cordell
Mike Corn
Lane Cross
Jerry Dalton
Terry Dalton



Penny Davis
Rhonda Davis
Ronald Dobbins
Lila Kay Durham
Kathy Early



Debra Freshour
Sharon Fox
Marilyn Forney
Ricky Ford
Freddie Franklin



Mary Filbeck
Terrill Finley
Delores Fender
Mica Elliott
Sandra Early

Jerry Gentry
Nancy Goodram
Mitch Goodson
Mitzi Graham
Danny Graybeal



Donna Grose
James Hall
Jan Hall
Elaine Harlee
Judy Helms



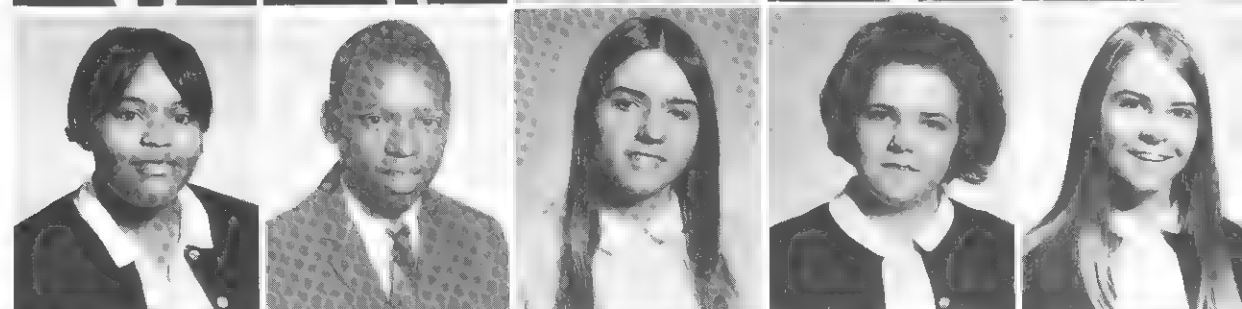
Ronnie Hensley
Charles Henson
Alice Hobbs
Anne Hood
John Hooper



Eugene Honeycutt
Keith Huffman
William Huffstetler
Brenda Hughes
Steve Issacs

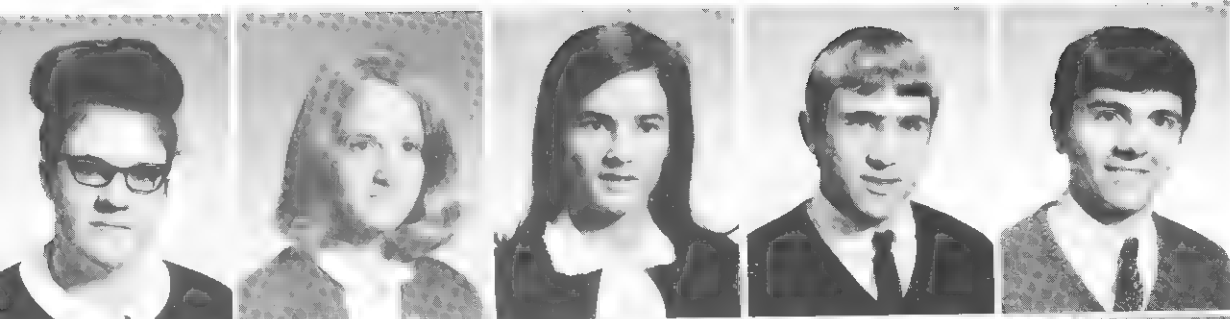


Ann Jackson
Warren Jackson
Susan Jordan
Kathy Jones
Rita Lamb



Sharon Laney
Norma Lawing
Gary Ledbetter
Peggy Ledford
Cathy Leverette





Barbara Lockman
Martha Lonon
Lucy Lowder
Bill Mace
Ronnie Manney



Dennis McCoy
William McKesson
Allan Medford
David Miller
Doug Miller



Sam Morgan
Debra Neighbors
Sandra Noles
Donnie Norton
Kathy Noyes



Pat Owens
Mike Parker
Howard Parkins
Gary Patton
Judy Plemmons



Diane Poteat
Bill Presnell
Charles Presnell
Keith Price
Butch Proctor



Lisa Prichard
Kaye Quinn
Kathy Ragaz
Tom Rector
Betty Reel

Gail Reed
 Louella Ravis
 Diane Robertson
 Lyn Robinson
 Mary Ann Rowe



Janice Roland
 Jerry Rumfelt
 Susan Rymer
 Chris Seagle
 Larry Seagle



Joyce Simpson
 Mary Alice Simmons
 Bill Smith
 Donnie Smith
 Cathy Smith



Lamar Smith
 Pat Smith
 Tommy Smith
 Judy Sprouse
 Tommy Stafford



Linda Stevenson
 Harold Stewart
 Charles Trinks
 David Turnbull
 Debra Turnbull



Chris Weant
 Mike Walker
 David Wall
 Doug Webb
 Peggy Webb





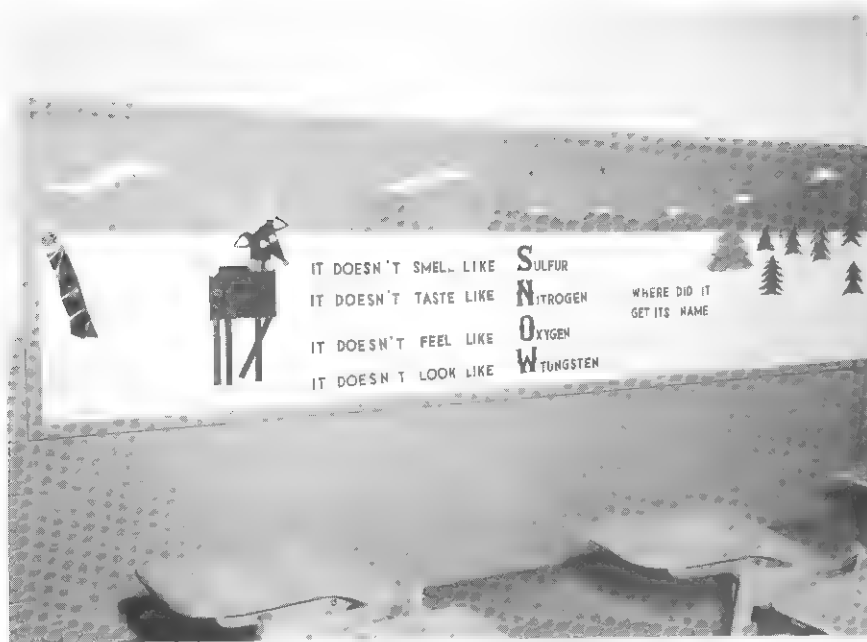
Archie Williams
 Danny Willis
 Brenda Wilson
 Jerry Womick
 Elaine Wood



Shelia Wyatt
 Beatrice Young



JUNIORS—Teenage Pop Tester . . . One MPH . . . College Night . . .
 Battle of the Bands . . . Infinitesimal . . . Yellow Sunken . . .
 Horn-Blower . . . Pumpkin Teeth . . . “Well, kick me!” . . . The M-L
 Stare . . . Lucy’s Party Doll . . . Hood’s Hangout . . . One more year
 to go!



SOPHOMORES



OFFICERS

James Johnson	President
Janice Robinson	Treasurer
Harriett Allen	Secretary
Robby Burgin	Vice President

Chrystal Adkins
 Hariett Allen
 Jack Arrowood
 Carol Ballew
 Linda Baker



Marilyn Biggerstaff
 Gladys Blackwell
 Bill Blankenship
 Michael Bolick
 Julian Bowditch



Paula Bradley
 Teddy Brooks
 Jerry Broome
 Margie Brown
 Pam Brown



Patricia Brown
 Loreen Bunting
 Noreen Bunting
 Robert Burgin
 Marietta Burleson



Becky Byrd
 Arron Cable
 Eugene Callahan
 Francis Calhoun
 Andy Carnes



Becky Clapp
 Walton Clapp
 Sammy Clark
 Theresa Collins
 Carolyn Conley

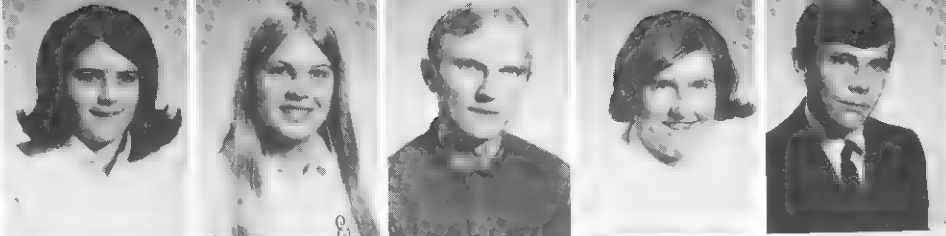


Ollie Conley
 Jan Cooper
 Roberta Cornet
 James Cox
 Gail Crisp



Dennis Curtis
 Beth Davis
 Cindy Davis
 Judy Davis
 Eddie Duram





Debra Elliot
Sandy Elliot
Mike Estes
Debra Finley
Roger Fortune



Mary Fowler
Deena Fox
Nancy Gouge
Coy Gibson
Thomas Gilmore



Beverly Glenn
Jane Goode
Robert Gourley
Charles Greeson
Leonard Griffin



Lydia Hagna
Shirley Haney
Jane Harkey
Fred Harris
Margaret Hawes



Robert Hawkins
Curtis Hawkins
Carla Helms
Kay Helms
Mike Henline



Doug Hensley
Ricky Hensley
Jean Hill
Linda Hollifield
Carl Hooper



Doug Hughes
Dwight James
Elizabeth Jenkins
Becky Johnson
David Johnson



George Johnson
James Johnson
Peggy Johnson
Paul Jolly
Debra Justice

Janet Krause
Shannon Krigger
Chuck Laney
Vernon Laney
David Laws



Brad Ledbetter
Shirley Lee
Carolyn Lewis
Brenda Marlowe
Connie Martin



Susie McClure
Lester McCormick
Judy McCoy
John McFadden
Hilda McGee



Archie McIntosh
Vera McKesson
Jean McKinney
David McPeters
Alan Milam



David Miller
Keith Miller
Donette Mills
Sarah Nanney
Jane Neal



Eddie Nelson
Marjorie Noyes
Dean Ollis
Tess Parker
Kathy Phillips



Donald Plemmons
Jane Powell
Billy Proctor
Gail Proctor
Pam Pugh



Boyd Pyatt
Billy Quinn
Anne Queen
Carol Ratledge
Walter Reel



Mike Reel
Teresa Ricketts
Jancie Robinson
Sabra Robinson
Floyd Robinson



Bobby Roberts
Elizabeth Roper
Kay Roper
Kenny Rowland
Ray Rumfelt



Phyllis Rutherford
Gary Rhymer
Kenny Shirley
Della Sisk
William Smart



Brenda Smathers
Marie Smith
Roy Sowers
Paulette Sprinkle
Bobby Stacey



Danny Stone
Kenny Street
Mike Swepson
Glenda Tedder
Kathy Thomas



Beatrice Thompson
Kathy Thorton
Wilma Townsend
Charles Turner
Jimmy Turner



Danny Tuttle
April Walker
Beverly Wall
Steve Wall
Sandra Ward



Joseph Watson
Gary Webb
Kathy Westmoreland
Steve Westall
Aresa Williams





Arthur Williams
Tommy Wilson
Wanda Wylie
Marilyn Young



SOPHOMORES -- Quarterback . . .
Sophomore Tests (Friends come in
handy) . . . T.W.S. . . . P.P. trying
to fit in . . . Folksinger . . . Chemis-
try? . . . Red Hair . . . A.M.'s a good
basketball player . . . And the years
of adolescence are over.

FRESHMEN



OFFICERS

Debbie Church	President
Susie Lowder	Vice-President
Carolyn Forney	Secretary
Marge Gilkey	Treasurer

Janice Asa
Eddie Atkins
Ruby Bailey
Elizabeth Ballew
Danny Barnes



Ronnie Barnett
Tony Barr
David Bartlett
Gary Bass
Emmanuel Beatty



Rachel Berge
Teresa Bivins
Bill Blasko
Maria Bolick
Roger Bolick



Kay Booher
Phyllis Borders
Ricky Bowman
Henry Boyce
Beverly Boyd



Beulah Bright
Derick Brooks
Glenda Brookshire
Ann Brown
Phillip Brown



Brenda Buchanan
Nora Buchanan
David Buff
David Buff
Chris Byrd



Denise Burnett
Lindsay Burleson
Dah Bulman
Sherri Cable
Kenneth Cagel



Larry Carroll
Wanda Caldwell
Donald Cable
Cathy Cable
Ronnie Church





Eddie Clark
Ann Clapp
Debbie Church
Jerry Clontz
Frank Codgill



Cindy Collins
Elaine Corpening
Linda Coutoure
Mac Cranford
Debbie Crisp



Semie Cross
Carolyn Davis
Tracy Davis
Susan Duncan
Rickey Davis



Jack Deyton
Archie Duncan
Bobby Duncan
Debbie Early
Becky Edwards



Sue Effler
Larry Elliott
Kay Elliott
Mike Elliott
Pattie Emery



Larry Frady
Tommy Flemming
Allen Freshour
Carolyn Forney
Larry Fox



Billy Gardens
Joanne Goins
Randy Griffin
Eddie Griffin
Kathy Greene



Revonda Glen
Jay Glenn
Marge Gilkey
Tommy Geouge
Danny Gaddy

Steve Hall
Robert Hawkins
Chuck Henline
Virginia Hester
Jim Hollifield



Marie Hollifield
Alice Honeycutt
Marsha Holmes
Donald Honeycutt
Donald Honeycutt



Teddy Honeycutt
Day House
Kenny Huffstetler
Johnny Hughes
Jerry Huffman



Nancy Hunt
Tryon Jackson
Willie Jackson
Homer Jenkins
Vera Jackson



Keith Jenkins
Thomasina Jenkins
Ann Johnson
Juanita Jones
Marilyn Jones



Mike Jordan
Dorothy Justice
Lyle Justice
Ray Justice
Paul Kelly



Woody Killough
Danny Krause
Sandra Lamb
Denise Laney
Andy Laughridge



Mary Lawing
Keith Ledbetter
Billy Ledford
Wanda Ledford
Wilburn Lee





Bruce Leverette
Chuck Lindsey
Johnny Lindsey
Burt Logan
Robert Logan



Susie Lowder
Danny Lowdermilk
Beth Mace
Sandra Mace
Barbara Maney



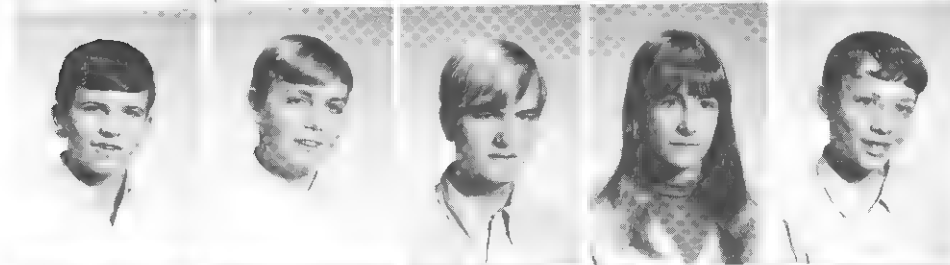
Sue Manis
Mary Marlowe
Billy Martin
Nadeen McCormick
Donna McDaniels



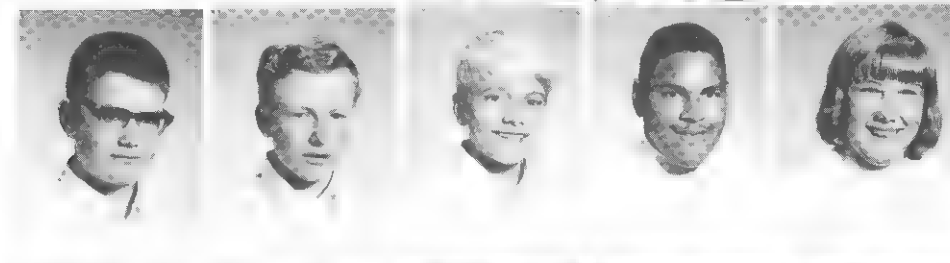
Betty McLoughlin
Tommy McMahan
Linda McKinney
Susan Menish
Kenneth Mitchell



Marie Morris
Charles Mostello
Bill Neal
Judy Noles
Debbie Newton



Jerry Norton
Roger Owens
Wayne Owensby
Judy Padgett
Lloyd Parker



David Parkins
Gary Payne
Kirby Pendergraft
Glen Petty
Dianne Philipps



Michael Pittman
Rita Porter
Linda Price
Sammy Proctor
Cathy Quinn

Patrick Ramsey
Terry Randolph
Dottie Rector
Chris Reep
Kenneth Revis



Richard Revis
Mike Robertson
Wanda Roland
Barbara Roper
Bill Ross



Debra Rutherford
Rose Sellers
Ricky Rymer
Leigh Sentelle
Kathy Shehan



Linda Shehan
Glen Shirlen
Troy Silvers
Charles Smith
Elizabeth Smith



Gary Sowers
Lynn Sprinkle
Bonnie Stacy
Sharon Stevens
Tommy Stone



Tony Styles
Debbie Styles
Debbie Styles
Troy Smith
Bill Surratt



Todd Swepson
Larry Tate
Hank Taylor
Kathy Thomas
Betty Thompson



Glenda Trinks
Theresa Turnbill
Mike Turner
Ray Turner
Pam Tuttle





Harold Walker
Betty Wall
Steve Waters
Donnie Webb
Harold Webb



Henrietta Webb
Kathy Webb
Mike White
Pattie Whitely
James Whiteside



Debbie Wilkinson
Lovie Wilkerson
Joyce Williams
Donna Willis
Gail Wilson



David Wornick
Johnny Woods
Shirley Wrong
Linda Wyatt
David Young



Jean Young
Pam Young
Patricia Young
Molly Zullo





FRESHMEN — Inferior . . . All faith lost in the human race . . . Confusion . . . Exams . . . Initiations . . . What third floor? . . . S.C. gets 84 in Band . . . Finding what it's all about . . .

Organizations





Student Council



Steve Early
President



Kelly Cross
Vice President



Janice Greeson
Secretary



Archie McIntoch
Treasurer

Student Council



E.L. Carter Chapter—Beta Club



OFFICERS

Donald McIntosh	President
Jane Parker	Vice-President
Phyllis Blackledge	Secretary
Fran Quinn	Treasurer



Glenda Biggerstaff and Milissa Cranford – Editors

The Hylander Staff each year works together for many months to bring us our annual. Hard work goes into trying to capture the many moods and experiences of Marion High, and to bring you a more comprehensive view of our school and its purpose. Credit is due to all the staff and sponsors.



Hylander Staff

Glenda Biggerstaff
Editor



Melissa Cranford
Editor



Class Editors
Charles McCall
Gail Manis(Not Pictured)



Class Editors
Kathy Earley
Janice Roland

Class Editor
Harriet Allen



Class Editor
Marie Morris



Literary Editors
Donna Grose
Jan Hall



Typist
Lynn Whitely



Photographer and
Layout Staff
Kit Hicks

Business Staff
Roger Jaynes
Carrie Bean
Kathy Noyes
Charles Greeson
(Not Pictured)

Robert Howell, Advisor



National Honor Society

OFFICERS

Diana Ross	President
John Allen	Vice-President
Jane Parker	Secretary
Donald McIntosh	Treasurer

Office Workers

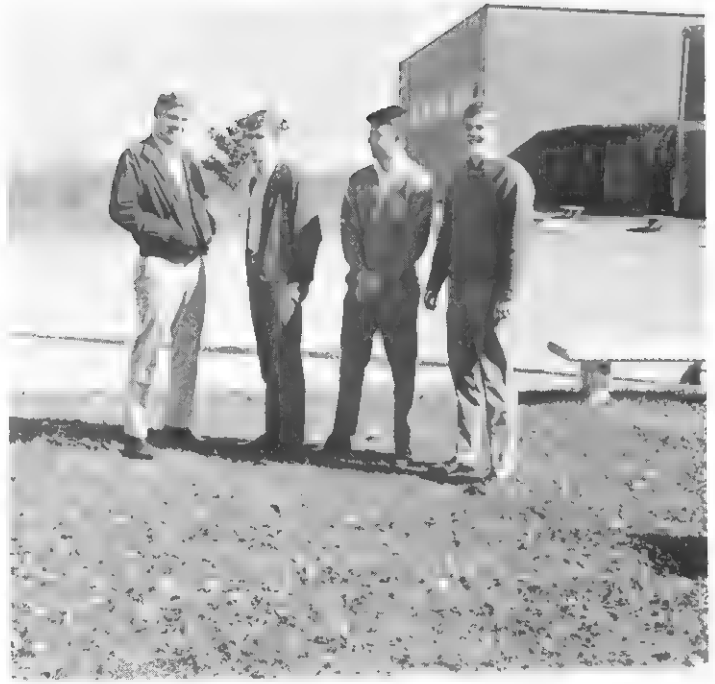


Cebelle Forrester, Glenda Biggerstaff, Irma Lawing, Teresa Helms, Lynn Whitely, Jackie Good, Sandra Webb.

Key Club



Miss Aletha Ballew Key Club Sweetheart



Officers: Rex Taylor, Terry Wilson, David Ditt, Fred Abromitas



Marionett Staff



Teamwork, enthusiasm, and competency go together in making your paper. Getting the highlights of Marion High is hard work — hard work that is very well accomplished by the editor and her staff.

Editors: Jane Parker, John Allen, Keith Parker, Diana Ross-Editor-in-Chief, Donald McIntoch, Janice Greeson.





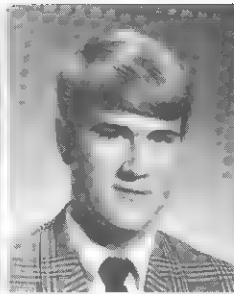
Diana Ross
Editor



Janice Greeson
News Editor



Jane Parker
Feature Editor



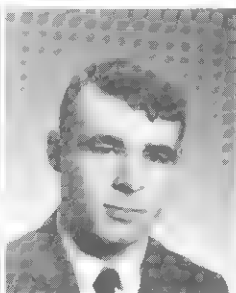
John Allen
Sports Editor



Keith Parker
Business Manager



Donald McIntoch
Business Manager



Porcher Teeter
Photographer



Tom Rector
Cartoonist



Janice Morris
Typist



Mitzi Graham
News Staff



Debbie Bulman
News Staff



Frances Beatty
News Staff



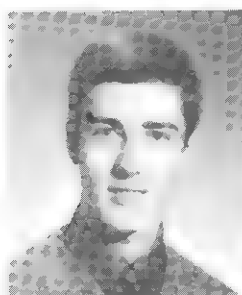
Phyllis Blackledge
News Staff



Sharon Laney



Fanny Kay Stronach
Feature Staff



Kelly Cross
Feature Staff



Mary Bowman
Feature Staff



Marianne Bradburn
Feature Staff



Bobby Love
Sports Staff



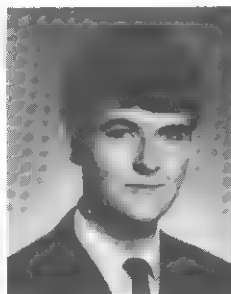
Bobby Byrd
Sports Staff



Eddie Nelson
Sports Staff



Glenda Burgin
Business Staff



Ray Reel
Business Staff



Ann Fortenbery
Business Staff



Dianne Lowery
Business Staff

Pep Club



Pep Band

Interact Club

OFFICERS

Bobby Elledge
Robby Burgin
Danny Greybeal



French Club



OFFICERS

Pat Smith	President
Sharon Laney	Vice-President
Sandra Noles	Secretary-Treasurer

ICT



Art Club



Mac Carter, Rita Lamb, Nick Payne, Mae Wylie, Kit Hicks.

Photo Club



Ken Shirley, Kelly Cross, Joe Hester, John Allen, Ray Reel, Aletha Ballew, Roger Jaynes.



Officers: Margaret Elliott, Sandra Noles, Janice Morris, Kaye Ward.

Future Teachers of America



OFFICERS

Lynn Whitely	President
Janice Roland	Vice-President
Phyllis Worley	Secretary
Jane Powell	Treasurer

Future Homemakers of America

DECA Club



OFFICERS

Irma Lawing	President
Chuck Suttles	Vice-President
Steve Pendergrass	Secretary-Treasurer

V. I. C. A.



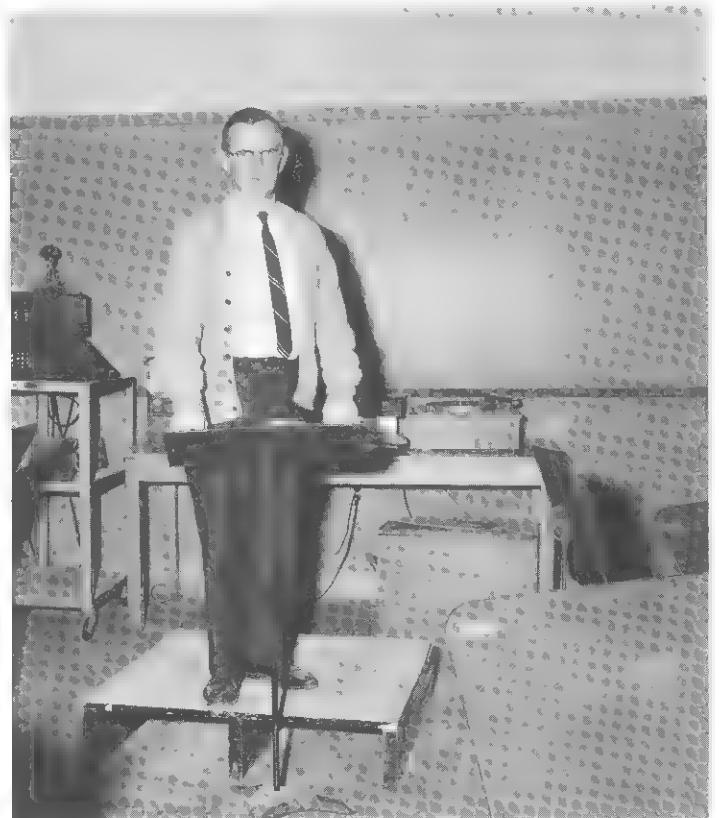
OFFICERS: Jerry Dalton, Jerry Carroll, Jerry Ray, Bob Rowe, Jerry Roper, Frankie Evans.



Symphonic



Mr. Louis Bean, Band Director



Mr. Landon Walker, Assistant Band Director, Chorus Director



Band



OFFICERS

Kit Hicks	President
Chuck Suttles	Vice-President
Jan Hall and Diana Ross	Secretaries
Jane Parker	Treasurer
Tom Rector	Custodian

Concert Band



Mary Alice Simmons, Drum Majorette



Debbie Johnson, Head Majorette



Connie Martin, Debbie Robinson, Kathy Earley, Aletha Ballew, Nancy Laughridge

Chorus



Health Careers



OFFICERS

Lois Mathis	President
Donna Grose	Vice-President
Lynn Robinson	Secretary
Alice Hobbs	Treasurer

Library Assistant



OFFICERS

Diana Womack	President
Diane Price	Vice-President
Dorothy Lowery	Secretary
Kaye Effler	Treasurer

Spanish Club



OFFICERS

Larry Seagle	President
Marianne Bradburn	Vice-President
David Miller	Secretary
Debbie Johnson	Treasurer

F. C. A.





Stage Crew

Tommy Rector
Charles McCall
Chuck Suttles
Walton Clapp

Bus Drivers



Dennis Johnson, Charles Presnell, Larry Cox, Gary Ledbetter, Leon Brookshire, Jackie Goode, Kenny Holland, James Johnson.

Features





Miss Marion High



Miss Jane Parker, Miss Marion High





Aletha Ballew—First Runner-up; Miss Marion High—Jane Parker; Kathy Earley -Second Runner-up.

1968 Marionette Review

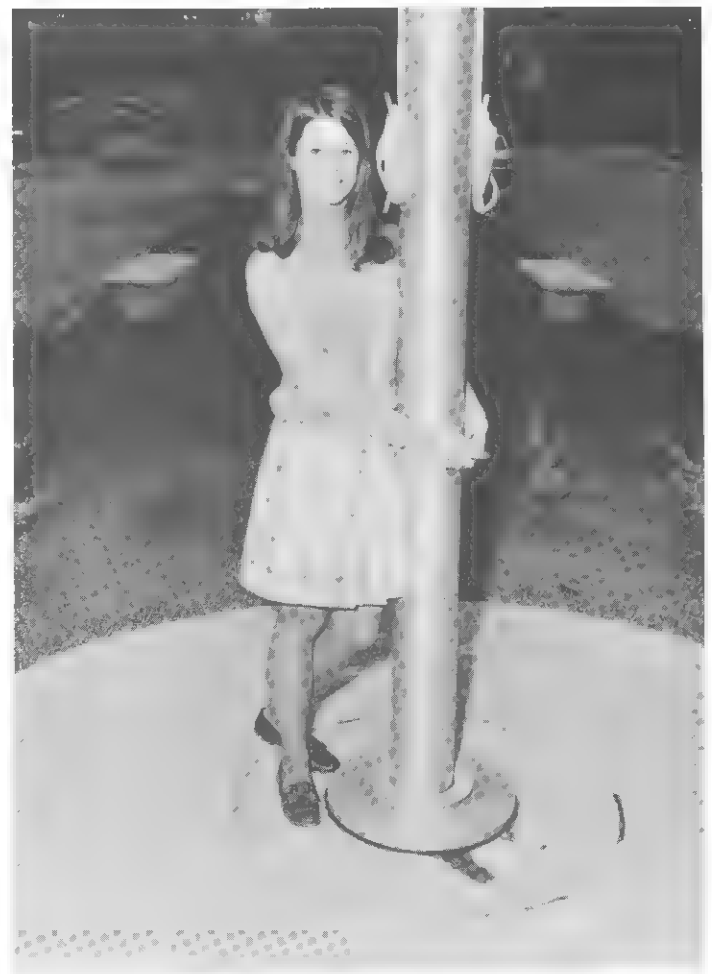


Fanny Kay Stronach, Margaret Twiggs, Jan Hall, Kathy Earley, Penny Pendergraft, Mary Alice Simmons, Miss Marion High—Jane Parker, Diane Lowery, Aletha Ballew, Mary Ann Bradburn, Lyn Whitely, Janice Greeson, Diane Womick.

Homecoming Queen



Miss Debbie Robinson—Homecoming Queen



Homecoming Court



Cebelle Forester, Maid of Honor



Sandra Noles, Junior Attendant



Hariette Allen, Sophomore Attendant



Donna McDaniels, Freshman Attendant



Jo Cordell, Pep Club



Keith Parker, French Club

Sponsors



Irma Lawing, VICA Club



Fanny Kay Stronach, Beta Club



Bonnie Crisp, DECA Club



Janice Greeson, Student Council

Sponsors



Ginger Pugh, National Honor Society



Susan Bean, Art Club



Ann Fortenbery, Marionette Staff



Penny Pendergraft, Interact Club

Sponsors



Lois Mathis, Health Careers



Diane Price, Library Assistants



Lyn Whitely, F.H.A.



Diane Womick, Chorus

Sponsors



Pam Howell, Photography



Glenda Biggerstaff, Office Workers



Phyllis Blackledge, Band



Aletha Ballew, Key Club

Sponsors



Carrie Bean, Hylander Staff



Kaye Ward, F.T.A.



Rhonda Davis, Football Sponsor



Anna Hensley, Spanish Club

Sponsors



Melissa Cranford, ICT Club



Senior Superlatives



John Allen, Jane Parker
Most Likely to Succeed



Joe Hester, Pam Howell
Biggest Flirt



Steve Early, Donna King
Most Athletic



Janice Greeson, Bobby Elledge
Best Leaders



Larry Roland, Keith Parker
Friendliest

Susan Bean, Billy Miller
Most Original





Sharon Black, Lanny Ross
Most Dependable



Chuck Suttles, Diana Ross
Most Talented



Phyllis Blackledge, Keith Randolph
Best Dressed



Kelly Cross, Debbie Robinson
Best All Around



Terry Workman, Bonnie Crisp
Cutest



Cebelle Forester, Tommy Rockett
Best Looking



Charles McCall, Jenna Clontz
Most School Spirit



Fran Quinn, Kenneth Duncan
Most Courteous



Rex Taylor, Penny Pendergraft
Most Popular



Mr. Senior of 1969
Kelly Cross



Miss Senior of 1969
Diana Ross

Outstanding Seniors



Diana Ross
Miss D.A.R.



Kelly Cross, John Allen
Moorehead Scholarship
Nominees



Junior Marshals

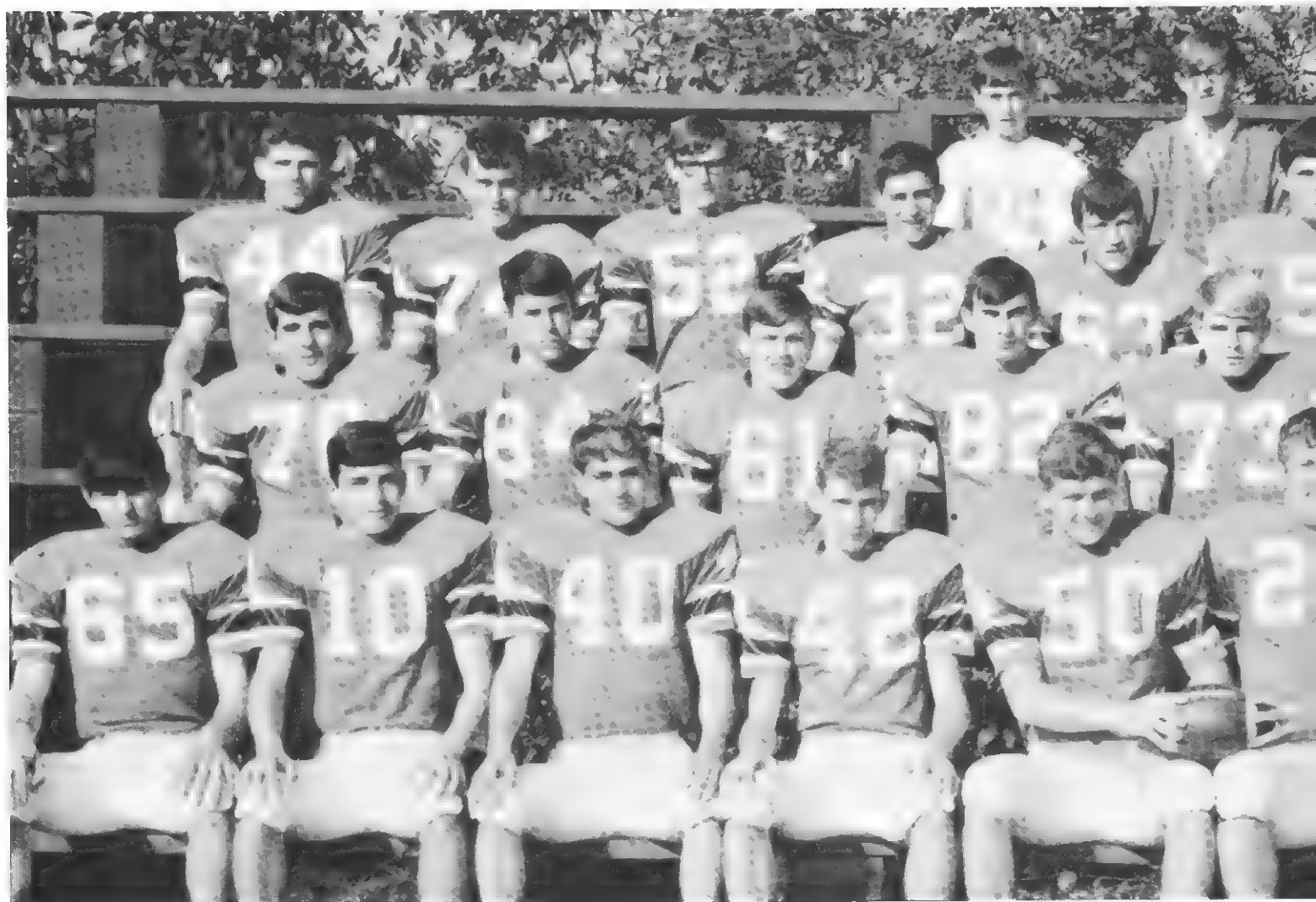


Sports





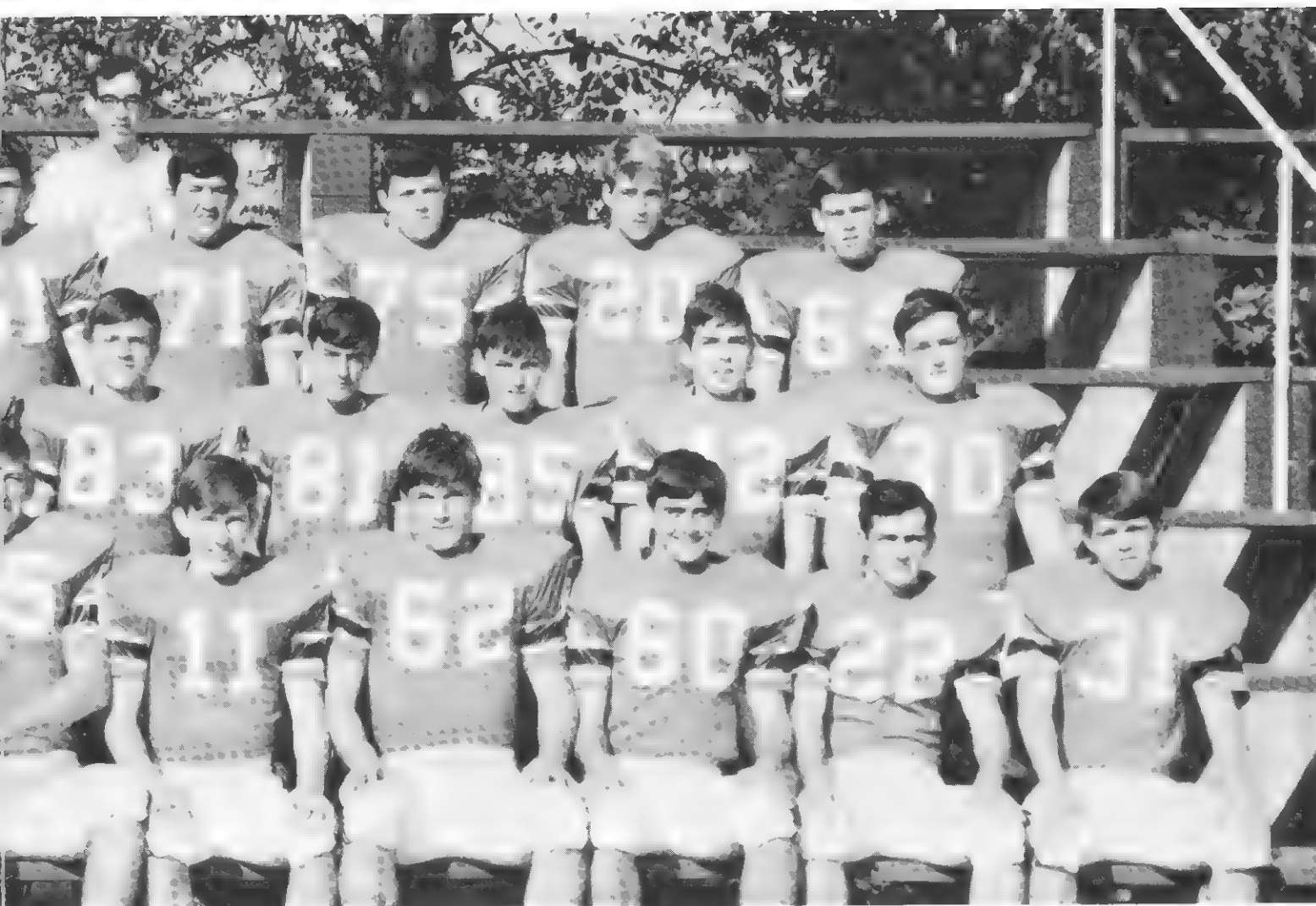
Varsity Football



FIRST ROW: Eddie Nelson, Jerry Womick, Jerry Dalton, Terry Wilson, Rex Taylor, Steve Early, Freddie Rabon, William Huffstetler, Freddie Franklin, Chuck Bolden, Chuck Hollifield. SECOND ROW: Lane Cross, David Ditt, Coy Gibson, Jerry Jimerson, Nick Payne, Donnie Norton, Brad Ledbetter, Doug



1968 Football Coaching Staff: Tom Broyhill—Freshmen Football, David Ramsay—J.V. Football, Jerry Greene—Assistant Varsity Football, Johnny Anderson—Head Football Coach, Bob Brackett Assistant Football Coach.



Johnson, Brad Gorey, Wylie Ramsey. THIRD ROW: Allen Milam, Paul Baker, Bobby Love, Aaron Cable, Bobby Blake, Joe Hester, James Hall, Richard McKinney, Terry Dalton, Doug Johnson. FOURTH ROW: Jerry Clontz, Lanny Ross, Eddie Nelson – Trainer.



Steve Earley, Rex Taylor
1968 Football Captains
Rhonda Davis
Football Sponsor



Steve Early—Sr. 6'3" 210 End & LB



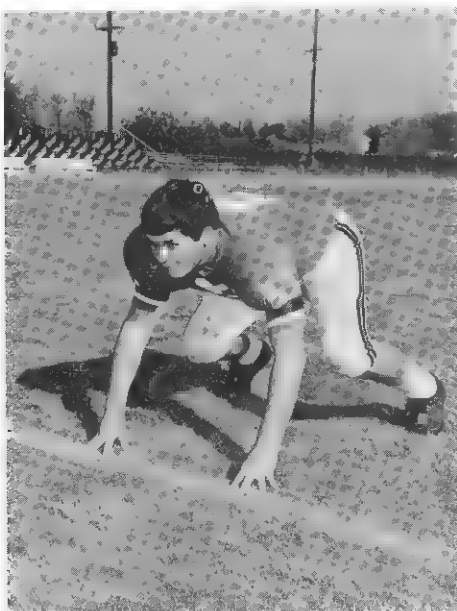
Rex Taylor—Sr. 6'1" 205 Center



David Ditt—Sr. 5'11" 165 Halfback



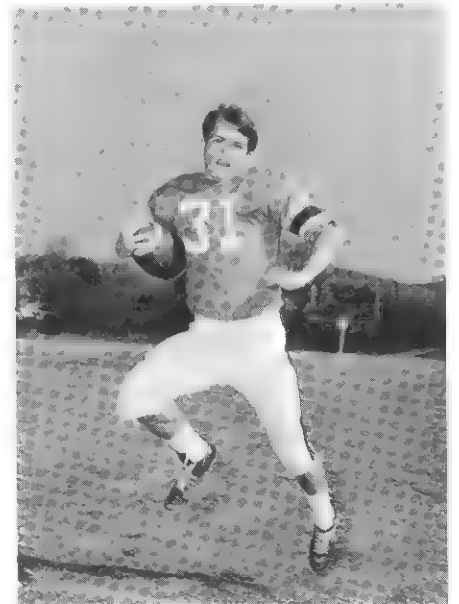
MHS	7	Wilkes Central	6
MHS	18	Valdese	6
MHS	56	Avery Central	0
MHS	17	Taylorsville	0
MHS	7	Watauga	14



Joe Hester—Sr. 6'1" 210 Tackle



Wylie Ramsay—Sr. 6' 200 Fullback



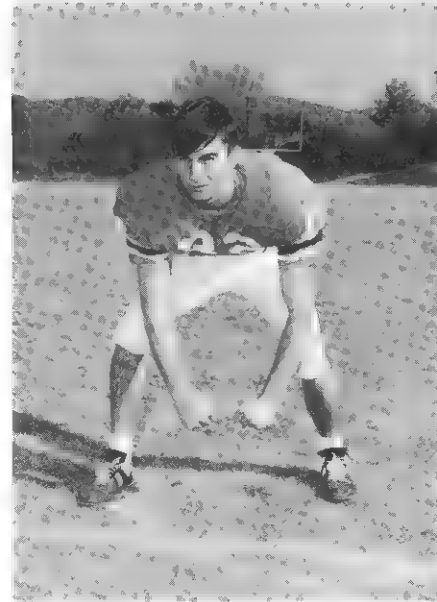
Chuck Hollifield—Sr. 5'10" 170 Halfback



Freddie Rabon--Sr. 5'6" 155 QB



Nick Payne--Sr. Guard

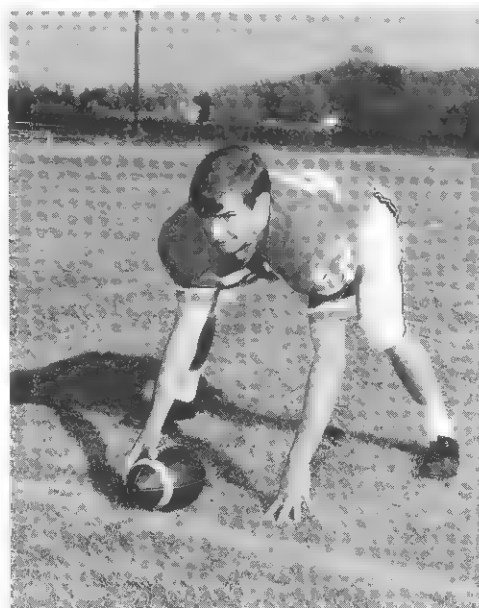


Jerry Jimison--Sr. 6'2" 180 End

MHS	6	Lenoir	8
MHS	7	Newton Conover	0
MHS	20	Morganton	0
MHS	20	Spruce Pine	7
MHS	13	Hudson	0
MHS	0	Shelby	21



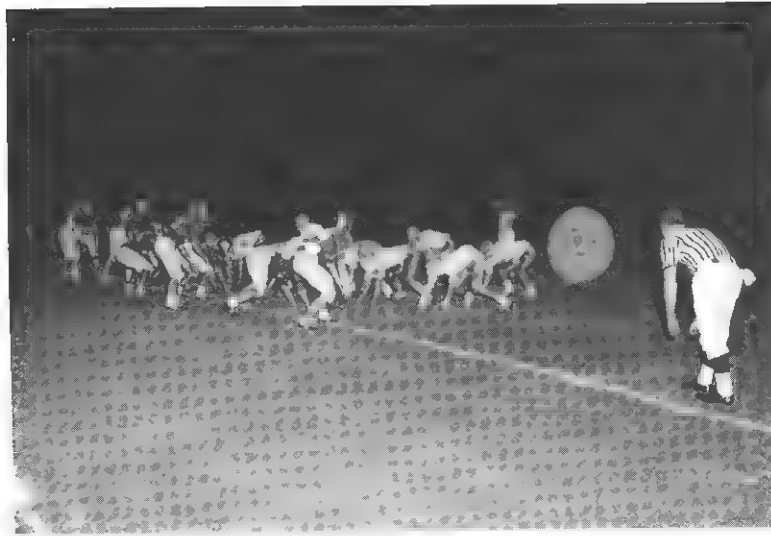
Terry Wilson--Sr. 5'10" 165 Halfback



Bobby Love -Sr. 6' 175 Center



Lanny Ross--Varsity Manager



Ripper's tough action leads them to conference title.



J. V. Football



Coach David Ramsay, Simmie Cross-Todd Swepson—Captains, Tom Broyhill—Coach.

FIRST ROW: Tommy Stone, Gary Bass, Bill Ross, Gary Bolic, Bill Ledford, Ricky Davis, Bruce Leverette, Mack Cranford, Larry Tate, Harrold Walker. SECOND ROW: Derrick Brooks, Homer Jenkins, David Womick, Keith Jenkins, Paul Brooks, Johnny Woods, Ricky Rhymer, Chuck Henline, Walter Siler, Glen Petty. THIRD ROW: Mike Elliott, Dan Bulman, Robert Logan, Allen Freshour, Jack Deaton, Jerry Huffman, John McKesson, Jerry Norton, Chris Reep, David Barnette, Henry Boyce.

J. V. Cheerleaders



Elizabeth Ballew, Mary Lawing, Pattie Whitely, Debra Rutherford, Donna McDaniels, Debbie Church.

Varsity Cheerleaders



Janie Fowler, Diane Womick, Janice Robinson, Carol Ballew, Lyn Whitely, Jane Harkey.



Carla Helms -Co-Captain, Jenna Clontz -Chief

J. V. Basketball



Coach Tom Broyhill, Manager Eddie Nelson

Bill Ross, Billy Blankenship, Coy Gibson, Todd Swepson, Brad Ledbetter, Chris Weant, Curtis Hawkins, Harold Webb, Donald Plemmons, Gary Webb, Robby Burgin, Teddy Brooks, Lester McCormick.

Freshman Basketball



Billy Garden, Andy Laughridge, Derrick Brooks, Johnny Woods, Gary Bolick, Chuck Henline, Glen Petty, Mach Cranford, Larry Tate, Tommy Stone, Bill Neil, Mickey Jorden, Keith Ledbetter.

Basketball



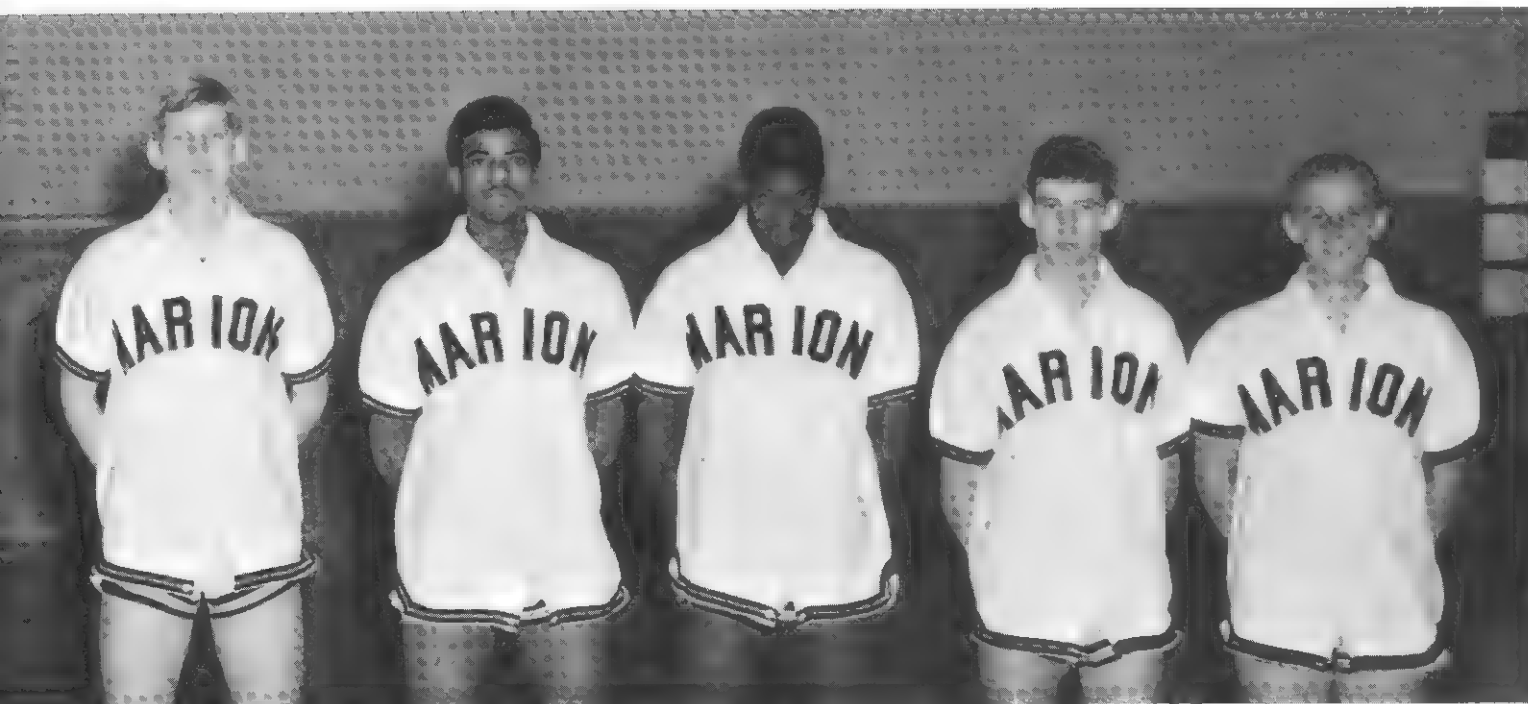
Phillip Swepson, Chuck Cordell, David Miller, Archie McIntosh, Earl Gilmore.

December	5	R.S. Central	Home	January	3	R.S. Central	Away
	10	Watauga	Away		10	Newton Conover	Away
	13	Lenoir	Home		14	Hudson	Away
	17	Morganton	Away		17	Taylorsville	Home
	20	Wilkes Central	Home		21	Avery Central	Home



Steve Early — Captain





David Bobo, Frank Gilmore, James Blocker, Terry Wilson, James Johnson

January	24	Valdese	Away	11	Newton Conover	Home
	28	Watauga	Home	14	Hudson	Home
	31	Lenoir	Away	18	Taylorsville	Away
February	4	Morganton	Home	21	Avery Central	Away
	7	Wilkes Central	Away	25	Valdese	Home



Terry Wilson – Senior



Earl Gilmore – Captain

Starting Lineup



Starting Lineup — Archie McIntosh, Earl Gilmore, Steve Early, David Bobo, Chuck Cordell.





Girls Basketball



FIRST ROW- Donette Mills, Nancy Laughridge, Kathy Cable. SECOND ROW: Judy Helms, Donna King, Donna Willis, Susan Lowder, Revonda Glenn, Anita Borders, Kathy Noyes.

December	5	R.S. Central	Home	January	3	R.S. Central	Away
	10	Watauga	Away		10	Newton-Conover	Away
	13	Lenoir	Home		14	Hudson	Away
	17	Morganton	Away		17	Taylorsville	Home
	20	Wilkes-Central	Home		21	Avery Central	Home



Coach-Jerry Greene, Donna King-Captain



Donna King--Sr. Captain



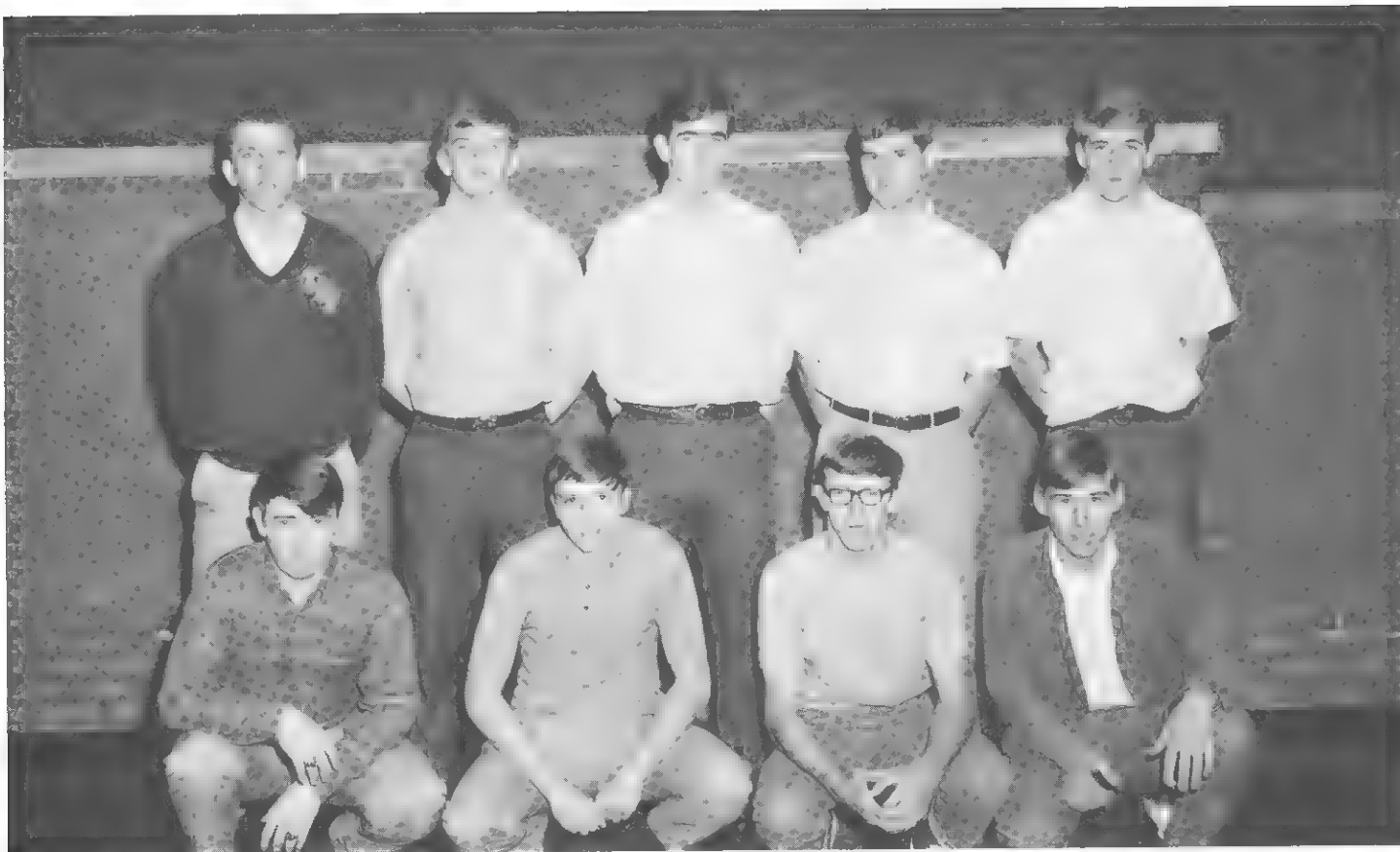
FIRST ROW: Kathy Quinn, Marilyn Forney, Rose Marie Sellers. SECOND ROW: Aletha Ballew, Lucy Lowder, April Walker, Debra Young, Wanda Ledford, Phyllis Borders.

January	24	Valdese	Away	February	11	Newton Conover	Home
	28	Watauga	Home		14	Hudson	Home
	31	Lenoir	Away		18	Taylorsville	Away
February	4	Morganton	Home		21	Avery Central	Away
	7	Wilkes Central	Away		25	Valdese	Home





Baseball



FIRST ROW: David Hodge, Donald Plemmons, Lanny Ross, James Johnson. SECOND ROW: Doug Webb, Donnie Norton, Chuck Cordell, William Huffstetler, Jerry Dalton.



Coach
Jerry Greene



Pitchers and Catchers—Donnie Deaton, Doug Webb, Lanny Ross



Outfield—James Johnson, William Huffstetler, David Hodge



Infield—Chuck Cordell, Jerry Dalton, Donald Plemmons, Donnie Norton

Golf



Wylie Ramsay, Roger Jaynes, David Ditt, David Bobo, Mack Laughridge, Bill Neal, Bruce Leverette, Mitch Goodson, Coach David Ramsay.



Wylie Ramsay in superb stance.

Tennis



Keith Poplin, David Miller, Keith Guffy, James Lonon, Bobby Byrd



Poplin volleys the serve.



Byrd goes up to catch a slam to right court.

Track



James Hall, Freddie Rabon, Charles Greeson, Eddie Nelson, Jerry Womick, Lemar Smith, Aaron Cable, Joe Hester, Jerry Jimison, Charles Turner, Rex Taylor.



Track Coach
Bob Brackett

Athletic Honors



Charlotte News All-State Team

Steve Early—Charlotte News All-State Team, Shrine Bowl, All-State, All Southern Team, Greensboro All-State, All American High School football player, Rex Taylor—Shrine Bowl, Honorable Mention for all state, Charlotte News All-State.



Steve Early, William Huffstetler, Rex Taylor, Brad Goree—All conference Football



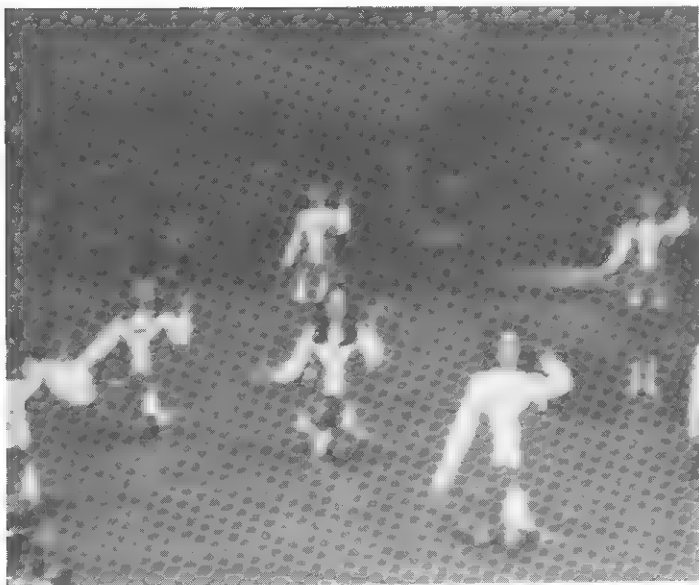
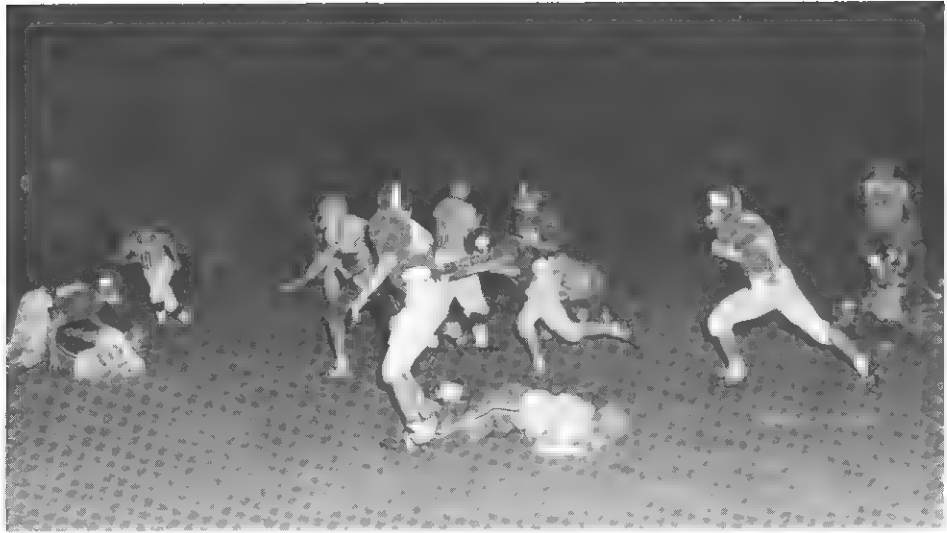
450 Athletic Club Keith Price, Aaron Cable, Terry Wilson, Bobby Love, William Huffstetler, Jerry Womick, Steve Early.



Terry Dalton All Conference Baseball







Advertising





AMERICAN THREAD

MARION
NORTH CAROLINA

MARION MANUFACTURING COMPANY

EXCELLENCE – in Fabrics

700 Baldwin Avenue

Marion, North Carolina

MARSHALL LUMBER COMPANY

MARION
NORTH CAROLINA

CROSS COTTON MILLS

MARION
NORTH CAROLINA

•

COCA-COLA BOTTLING COMPANY



MARION
NORTH CAROLINA

OLD FORT FINISHING

OLD FORT
NORTH CAROLINA

WASHINGTON MILLS

MARION
NORTH CAROLINA

COMPLIMENTS OF

COLLINS AIKMAN

OLD FORT PLANT

Belk



BELK BROOME CO., OF MARION, NORTH CAROLINA IS NOW IN THEIR
38TH YEAR, SERVING THE PEOPLE OF THE AREA.
IT WAS YOUR HOME OF BETTER VALUES IN 1931 IT IS STILL
THE SAME IN 1968-69.

**DREXEL FURNITURE
COMPANY**

**LEDBETTER OIL
COMPANY**

HOUSE THEATRE

BALLEW MOTOR CO.

Highway 70 West

Phone 697-1157

Where Friends Meet Friends

WESTERN CAROLINA TELEPHONE COMPANY

**SMOKEY MOUNTAIN
HOSIERY MILLS**

AIR PRE HEATER

GARDEN CITY, N. C.

TATE'S MUTUAL INSURANCE

**SERVICE
PHARMACY**

Bill Jordan John Lowder

Builders of Better Health

**BRADBURN
OIL CO.**

Distributor of Esso Products

Phone: Bus. 695-5464
Phone: Res. 724-4282

Wayne Bradburn

•
908 E. Court St.
Marion, N. C.

**LAUGHRIDGE
FURNITURE
COMPANY**

West Henderson

Marion, N. C.

**McCALL'S
FUNERAL HOME**

**JONES
RESTAURANT**

715 East Court Street

Specializing in
"Home Cooked Food"

Lee Jones Phone 695-5803

**VILLAGE
JEWELRY**

Home of Quality Jewelry

Diamonds – All Kinds

Watches

Gifts

Proprietor:
Thomas A. Page

**R. L. JAMES
&
SON**

**CLINCHFIELD
MANUFACTURING
CO.**

"A Good Place to Work"

Subsidiary

BURLINGTON
INDUSTRIES, INC.



Sure to win!



MARION
OIL
COMPANY

H & S TIRE CO.

Proprietor:

Max Hemphill

MARION MACHINE
COMPANY

F. D. GLENN
AND SON'S

PILOT HOUSE RESTAURANT

T. C. Suttles

Hwy. 221 and 226 N.

"Excellent Food"
"Everyone Welcome"

BILL GRIFFITH JEWELERS

Class Rings 6 Week Delivery

any color Stone
solid back

white or yellow gold
inlaid initials

ROBINSON'S HOME IMPROVEMENT

15 West Henderson Street Marion, N. C. 28752

Phone Office 697-1410 Home 697-5761

JIMESON'S HARDWARE STORE

Marion, N. C.

RICE AND WHITE FURNITURE CO.

Marion, N. C.

RAMBLE RACK

Hwy. 221

**JUMBO
BAR
AND
GRILL**

Hwy 70 West
Marion, N. C.

**ETTA
PAPER BOX
COMPANY**

Marion, N. C.

**TAINTER'S
DRUG
STORE**

Jim Segars Harry Patton
Bobby Ross

Compliments of

**HAGNA
AND
FIELD**

Records
Stereo Tapes
Cards
School Supplies

**MARION
MOTORS**

Hwy. 70 West

Marion, N. C.

Compliments

of

THE HYLANDER STAFF

Marion, N. C.

**WHITE'S
GULF
STATION**

301 Rutherford Road

Marion, N. C.

U-Haul Rentals
Minor Auto Repairs



**SUBURBAN RULANE GAS
COMPANY**

MARION, N. C.

BROWN BROTHERS

East Court St.

Marion, N. C.

**YOUNG'S
SHOES**

S. Main St.

Marion, N. C.

Compliments of

DR. PEPPER

**B. C. MOORE
AND
SON**

YOUTHLAND

136 South Main
Marion, N. C.

"Nothing but the best
for our youth"

**FULLER'S
JEWELRY**

34 South Main St.

Marion, N. C.

EAST COURT

MOTOR COMPANY

**ALMAN AND
HOGAN
FLORIST**

S. Main St.

Marion, N. C.

**MARION
AUTO PARTS**

NAPA Quality

Auto Parts

**CATAWBA
SKATE LAND**

**SMITH'S
FURNITURE
COMPANY**

**CUE AND
CUSHION**

Managers
Mrs. Al Hensley & Mrs. Clyde Greene

Marion

**NATION WIDE
INSURANCE**

Jack Randolph
Ted Lowery
Brad Brooks

TASTEE FREEZE

Marion
North Carolina

**RABB'S EAST
COURT CITGO**

**MAIN STREET
GULF**

**LOWE'S
OF
MARION**

Walker Supply Co.

Marion, N. C.

**HAWKINS
LUMBER
COMPANY**

**McDOWELL
TIRE AND RECAPPING**

**BURGIN
PLUMBING
AND
HEATING**

**CECIL SMITH
BARBER
SHOP**

**TAYLOR'S OFFICE
MACHINES**

25 State Street

Phone 697-4655

Marion, N.C.
28752

**LITTLE BUCK
GRILL**

**MARION
BUICK
COMPANY**

**ROBINSON'S
TEXACO**

Hwy. 70 West

**WISEMAN
MOTOR
COMPANY**

**CITY MOTOR
COMPANY**

**LANDIS
REAL ESTATE**

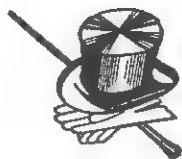
Phone 697-6891

509 Baldwin Ave. Marion, N. C.

**ROBINSON'S
CLOTHING
STORE**

Formal Renting

Everette Clark



**PROCTOR
FEED STORE**

A FRIEND

**LANEY'S
FLORIST**

114 East Court Street
Marion, N. C.

Clell Laney
Owner

Phone 697-9881
Phone 695-1501

**BURGIN
HARDWARE**

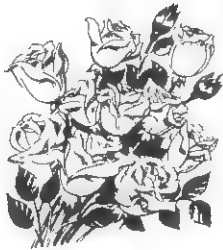
9 N. Main Street

Marion, N. C.

Phone 724-4511

Phone 695-2090

**SINCLAIR
NORTH MAIN**



**ROSELAND
FLORIST**



Quality Flowers Plus Personal Attention

Phone 697-1176

210 N. Main St.

Marion, N. C.

**HARVEST
DRIVE-IN
RESTAURANT**

Hwy. 70 West

**GREESON'S
AUTO SUPPLY**

117 West Henderson St

Marion, N. C.

**WALDENSIAN
BAKERIES**

BURAND'S

Marion, N. C.

ROSE'S

**GEOUGE PAINT
AND GLASS**

South Main

Marion, N. C.

**CLAUDETTE'S
BEAUTY SHOP**

**CUT-RATE
FURNITURE**

WALL'S CAFE

**HALL'S BEAUTY
AND BARBER**

**BERRYHILL
SHELL STATION**

**VILLAGE
FLORIST**

**THE HYLANDER STAFF
GRATEFULLY APPRECIATES
THESE SUPPORTERS**

High School is potted meat between classes,
Touchdown passes,
Cram exams,
Studies,
Buddies,
Squealing pipes,
Campus gripes,
Things to do,
A point of view . . .

Teachers,
Books,
Labs,
Essay questions
(make a stab)
English themes,
Dramatic screams,
Softball teams,
Impossible schemes.

. . . hard work
home work,
slow work,
no work.

Listening, talking,
thinking, walking,
seeing, being . . .
this is high school, this and more,

High school, perhaps, is many doors.

Why of all books, must textbooks be so ugly? Books should be beautiful . . . the act of learning should be beautiful, and maybe it is, but studying is not.

Studying is a bent back and hunched shoulders and sore eyes. It's loneliness. It's humility, it's arrogance, it's patience, it's push.

It's the grind.

It's a dog barking at three a.m. It's an empty coffee cup and a full ashtray.

It's procrastination ———

followed by despair
and sometimes—
just sometimes—

Studying is something near Joy
when a pattern, an apology appears,
and understanding occurs.

I fly, soar, swing, bless everything —
I am spring ——— simply because, because
I am! The Kid, the King, Poet, Scientist,
Philosopher . . . Winner of pillow fights,
bull sessions, water battles, all bets, and
wooer of beautiful women.

I am nerve ends, ganglia, squeezed, compressed. I must stiffen, toughen, yet stay flexible. I want to be steel, I am afraid of becoming stone.

I drift in limbo.

Sucking in fact, while I long for truth. As I turn over I seem to be shrinking ——— or am I coiling for a leap?
and to where?

I am supposed to be a microcosm; I am merely chaos, in little, and I am not made cunningly. •

Yesterday I caved in a little; today I think I will burst, I will surely die tonight.

Was it that week before Commencement
or while I sat in the hot white sun,
a prickle of sweat
under the commencement gown,
or in those few empty days at home?
Anyway,
all at once I knew a little bit about why.

I was out from under the suffocating mass of knowledge;
there was direction to go,
a way to do it and I knew the way.
I did know, had learned
There was the door, the handle to turn, the latch to lift—
all those years I had been finding,
acquiring, filling my pockets with keys.
Already the doors are opening.

Through how many shall I finally pass?

NC REF 371.8 MAR 1
Marion High School

37810435135982 JUN 05 2013

MCDOWELL COUNTY PUBLIC LIBRARY
90 WEST COURT STREET
MARION, NC 28752

MCDOWELL COUNTY LIBRARY



3 7810 43513598 2

MCDOWELL COUNTY PUBLIC LIBRARY
90 WEST COURT STREET
MARION, NC 28752

