

SB  
484  
C3453  
1967

Biological  
& Medical  
Series

The St. Lawrence Parks Commission

3 1761 11682872 4

Annual  
Report.



For Period Ending  
December 31st  
1967




THE ST. LAWRENCE PARKS COMMISSION

ANNUAL REPORT

TO DECEMBER 31, 1967.

DEPARTMENT OF TOURISM AND INFORMATION

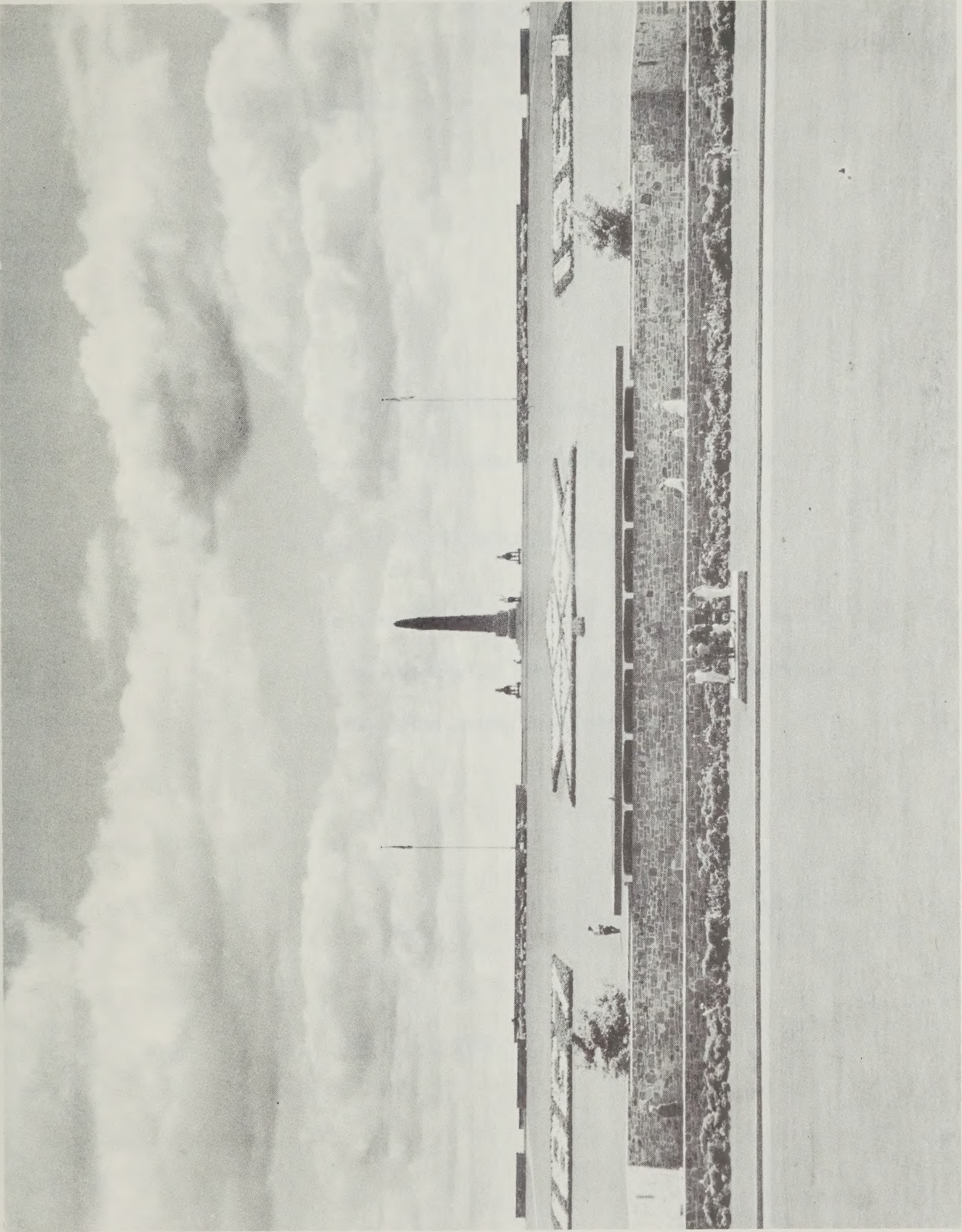
HONOURABLE J. A. C. AULD, MINISTER



Digitized by the Internet Archive  
in 2024 with funding from  
Ontario Council of University Libraries

<https://archive.org/details/31761116828724>





FLORAL DISPLAY - MEMORIAL MOUND  
CHRYSLER FARM BATTLEFIELD PARK







Minister of Tourism and Information

The Honourable W. Earl Rowe,  
Lieutenant-Governor of the Province of Ontario.

MAY IT PLEASE YOUR HONOUR:

The undersigned is pleased to present to Your Honour  
the annual report of The St. Lawrence Parks Commission  
for the period ending December 31st, 1967.

Respectfully submitted,

*James Auld*  
J. A. C. Auld,  
Minister

February 26, 1968







THE ST. LAWRENCE PARKS COMMISSION - BOX 340 - MORRISBURG, ONTARIO

Honourable J. A. C. Auld,  
Minister of Tourism and Information,  
185 Bloor Street East,  
Toronto 5, Ontario.

Honourable Sir:

I have the honour to submit  
to you the Annual Report of The St. Lawrence Parks  
Commission as at December 31st, 1967

Respectfully submitted,

A handwritten signature in cursive script that reads "Fern Guindon".

Fern Guindon, M.P.P.,  
Chairman.

February 23, 1968



# CONTENTS

	<u>Page</u>
PREFACE	
MEMBERS AND OFFICERS	1
PART I - ORIGIN AND DEVELOPMENT	
The Canada - Ontario Agreement	2
The St. Lawrence Parks Commission Act	3
Priority in Power Pool Area	3
Extension of Area of Operations	4
Highlights of Development	6
PART II - REPORT FOR 1967	
Highlights	9
Executive Changes	17
Statement of Attendance at all Sites	18
Report by Sites	
Upper Canada Village	19
Parks	21
Wildlife	22
Old Fort Henry	23





## PHOTOGRAPHS

Floral Display - Memorial Mound Crysler Farm Battlefield Park	Frontispiece
Flower Beds at Information Centre Entrance to Crysler Farm Battlefield Park	Following Page 8
Inspection of the Guard and Military Display Crysler Farm Battlefield Park	12
Battle Sequence - Fort Henry Guard	13
Honouring Former Chairman	14
King's Highway at Upper Canada Village	18
Horse-powered Sweep, Upper Canada Village	19
Crysler Beach	20
Canada Geese, Wildfowl Sanctuary, Nairne Island	22





## PREFACE

The Report for the Year 1967 is contained in Part II.

Part I explains the origin of the Commission, its connection with the St. Lawrence Power Project, and reviews highlights of the year of development.



## THE ST. LAWRENCE PARKS COMMISSION

Chairman	Fernand Guindon, M.P.P.	(Stormont)
Vice-Chairman	A. K. Farlinger	Morrisburg
Members:	Lt.-Col. H. LeRoy Babcock	Napanee
	Mrs. L. C. Kennedy	Williamstown
	Mrs. T. W. J. Lane	Ingleside
	Lee McKnight	Prescott
	Dr. J. A. Phillips	Cornwall
	Brig. C. D. Quilliam	Kingston
	Mrs. J. T. Smith	Alexandria

---

D. M. Peacock  
General Manager

Head Office: Morrisburg, Ontario





## PART I - ORIGIN AND DEVELOPMENT

### Canada - Ontario Agreement re Electrical Power

On December 3rd, 1951, an Agreement was made between the Government of Canada and the Government of Ontario respecting the generation of electrical power in the International Rapids Section of the St. Lawrence River.

Article XV of the Canada - Ontario Agreement provided that:

"Ontario will establish a Commission to supervise the execution of such works as may be appropriate consistently with the execution of the works, to safeguard and enhance the scenic beauty of and historic associations with the International Rapids Section."

This Agreement was approved by the Legislature of Ontario on April 10th, 1952.





### The St. Lawrence Parks Commission Act

The St. Lawrence Parks Commission was originally incorporated as The Ontario - St. Lawrence Development Commission, with royal assent being received in March 1955. This title was retained until March 1964 at which time the Act was amended to read - "The St. Lawrence Parks Commission". Under the original Act, the Commission was given the prime duty "to develop, control, manage, operate and maintain the Parks -----". "Parks" were defined as "all lands in the Counties of Glengarry, Stormont, Dundas, Grenville and Leeds hereafter listed in or placed under the control of the Commission, including highways, roads and boulevards, and any interest in land." In May 1958 a further amendment was made to the Act, extending the area of operation to include the Counties of Frontenac and Lennox and Addington.

### Priority in Power Pool Area

The Commission's task was formidable. At the outset it did not control any existing parks. The extent of surplus lands to be transferred from Ontario Hydro as a by-product of the Power Project was not clear for some time. (Eventually they comprised 5,300 acres.)

Land in the counties of Glengarry, Stormont, Dundas and most of Grenville is flat to the point of monotony, except for rolling country along the St. Lawrence River. The only outstanding scenic feature--



and a magnificent one -- was the River itself. The St. Lawrence River, however, was destined to be changed drastically. In a 27-mile stretch, the roaring rapids were to disappear as the power pool was created by the construction of control dams at Massena and Iroquois and the power house at Cornwall. In the course of the work, not only established communities, the historic canal system and a few local parks disappeared, but a number of beautiful islands were wholly or partially inundated.

The Commission's first priority, therefore, was the planning and development of scenic park areas in the International Rapids Section and the preservation of some of the history of that area.

#### Extension of Area of Operations

Additional responsibilities soon were added. On April 1st, 1957, the Commission took over from the Department of Highways a partially-developed park at Brown's Bay, eleven miles west of Brockville. As this site had a long natural sandy beach but only 28 acres of land, the adjoining farm consisting of 159 acres was purchased. In December 1957, a 22-acre property was acquired in the Township of Lancaster, Glengarry County, six miles west of the Quebec border.

On May 27, 1958, The Ontario - St. Lawrence Development Commission Act, 1955, was amended to extend the area of



operation to the counties of Frontenac and Lennox and Addington. This enabled the Commission to accept from the Department of Highways an outstanding historic site and tourist attraction, Old Fort Henry, at the same time adding to its staff personnel experienced in the restoration and operation of historic sites. Adolphustown Park, including the historic Loyalist Cemetery, 31 miles west of Kingston, was transferred from the Department of Lands and Forests, and some adjoining properties were purchased to provide a park area of 70 acres. From the Township of Charlottenburgh, the Commission purchased Charlottenburgh Park, consisting of 193 acres. The Department of Highways in 1959 made available to the Commission two parcels of land, one adjacent to Union Park, seven miles west of Brockville, and the other 41 acres at the entrance to the Thousand Islands Bridge. In 1962, the Commission bought a farm of 135 acres just east of the new Johnstown-Ogdensburg Bridge. This site has been designated as Grenville Park and is now developed.

West of Kingston there have been important acquisitions aside from Adolphustown Park. Two most generous gifts of property were received by the Commission from the Fairfield Family during 1959. The late Dr. W. H. Fairfield and Miss Elizabeth Fairfield deeded the historic "Fairfield White House" on Highway 33, ten miles west of Kingston.





This, the first large frame home to be built in the Kingston district, has been occupied and preserved by members of the Fairfield Family since its erection in 1792. Dr. Fairfield's sister, Mrs. W. H. Gutzeit, conveyed to the Commission her beautiful home, "The Fairfield Place", in the Village of Bath. Included in this contribution were interesting and valuable items of furniture and furnishings. These houses will be maintained by the Commission as historic sites in keeping with the representations of historic and other organizations in the area.

In conjunction with the diversion of Highway 33 to the north of the Fairfield White House, the Department of Highways has deeded to the Commission the old right-of-way. Shore frontage was obtained by acquisition of two other properties and these parcels, together with a small acreage surrounding the White House, provide an attractive picnic site.

#### Highlights of Development

The years from 1956 to 1961, despite numerous difficulties, constitute a record of solid achievement. With the official opening of the system in June 1961, the Commission had in operation fourteen locations, including two of the major historic sites on the North American continent, Upper Canada Village and Old Fort Henry.



Actually, most of the development and construction was carried out in five years, as the only project which would be commenced in 1956 was the Long Sault Parkway.

On several occasions the Commission has taken advantage of special circumstances to create scenic and recreational features at less than normal costs. In the early months of planning, it was seen that on the mainland north of the Long Sault Rapids there were high contours which would become new islands with the raising of the power pool, and that some of these high points were so located that it was feasible to connect them by a scenic drive. Before flooding occurred, three bridges and a number of causeways were constructed to provide access to ten of these new islands.

When Ontario Hydro undertook to carry out a major shore improvement in front of Chrysler Farm Battlefield Park, the Commission arranged with Hydro to use part of the soil excavated to construct a mound on which to re-erect the monument to the British and Canadians who defended Canada at the Battle of Chrysler's Farm.

The intake for the water system to provide fire protection and irrigation for Upper Canada Village and the memorial area of Chrysler Park was installed 'in the dry', the work being rushed to completion just before Lake St. Lawrence was formed on July 1, 1958.





A few months before flooding, when it was discovered that after all the construction under the St. Lawrence Power Project and Seaway, some deposits of sand still remained in the area to be flooded, the Commission moved substantial quantities of this sand at a moderate cost to create sand beaches at Mille Roches and Woodlands Islands in the Long Sault Parkway Chain. These are now the most heavily used parks in the system.

Also many thousands of cubic yards of topsoil were removed from the lands to be flooded and stockpiled for subsequent use.

Honourable Leslie M. Frost, the then Prime Minister of Ontario, declared the parks and Upper Canada Village officially open at Chrysler Farm Battlefield Park on Sunday, June 24, 1961. The Canadian Government was represented by the Honourable D. S. Harkness and the British Army by Field Marshal Sir Gerald Templer. Among other distinguished guests was Colonel Sir John Johnson, Sixth Baronet of New York, who unveiled memorials to the Loyalist American Regiments and to his illustrious ancestor, the first Sir John Johnson, Loyalist Leader.





FLOWER BEDS AT INFORMATION CENTRE  
Entrance to Crysler Farm Battlefield Park



## P A R T I I

Report for 1967

## HIGHLIGHTS

The Highlight of the 1967 season was the large increase in attendance at all sites operated by the Commission. In the Parks Division the attendance for 1967 reached a total figure of 3,182,116, an increase of 572,896 over 1966. In the Historic Sites Division, Old Fort Henry recorded a total figure for 1967 of 234,885, an increase of 21,567 over 1966. At Upper Canada Village, a total attendance of 352,949 was reached, 125,195 more than in 1966.

There is no doubt that Expo '67 played a large part in increasing the number of visitors to the Commission's operating area. Our proximity to Montreal was certainly a factor in attracting visitors to Upper Canada Village, Old Fort Henry and the Parks system.

The increased attendance had been anticipated and with the provision of additional facilities mentioned elsewhere in this report all sites were able to accommodate the record number of visitors.

The outlook for 1968 is encouraging. Many visitors have indicated that they intend to return.

Some of the major events of the 1967 season are set out in more detail in the following pages.





### Maple Sugar Camp

The 1967 season in the Maple Sugar Camp was one of moderate success. The camp opened on March 19 and closed on April 16. Unseasonably mild weather reduced the flow of sap. Consequently, maple syrup production fell to 238 gallons, a reduction of 70 gallons from the 1966 figure. Visitors in 1967 totalled 12,500, an increase of 916 over 1966. The displays showing the development and improvement of maple sugar manufacture in the last century and a half appeared to be of real interest to almost everyone who attended.

### Upper Canada Regatta

The Fifth Annual Upper Canada Regatta was held on May 27 -28 at the Stormont Yacht Club, Long Sault, Ontario. This was a new site and course for the regatta, designed to provide a greater margin of safety for the competitors. In previous years the regatta course traversed the main navigation channel in Lake St. Lawrence, creating both risk and inconvenience for the sailing craft and commercial vessels. Participants in the regatta enjoyed excellent weather throughout the weekend. Although the number of entries was less than in 1966 the two day event went very smoothly. Present indications are that the 1968 Regatta will be perhaps the most successful in its six year history.



### International Bowfishing Derby

The Fourth International Carp Bowfishing Derby proved to be the most successful since its inception in 1963. Sponsored by the Seaway Valley Archers' Association in co-operation with the St. Lawrence Parks Commission, the Derby is held annually in the waters of Lake St. Lawrence between Chrysler Farm Battlefield Park and Long Sault. The 1967 Derby took place on the weekend of June 3 - 4 with some 95 contestants, double the 1966 entries, taking part. A total of 10,782 lbs. of carp were harvested as compared with 3,500 lbs. in 1966. This event is becoming one of the largest of its kind in Canada and it seems probable that it will continue to increase in popularity.

### Canadian and American Museums Association

During the first week in June the Canadian and American Museums Association held a joint meeting in Toronto. Following the meeting, on June 3rd, delegates toured Old Fort Henry and Upper Canada Village as guests of the Commission. At Upper Canada Village special displays, a reception and dinner were arranged for 115 delegates. The visit provided an opportunity for the Commission to show a senior museums group the achievement of the past seven years through the creation and operation of Upper Canada Village.



### Air Show, Crysler Farm Battlefield Park

On Friday, June 9, the Commission, in co-operation with Wing 424, Royal Canadian Air Force Association, sponsored an appearance by the RCAF Golden Centennaires. The Memorial Mound in Crysler Park provided an excellent vantage point for about 6000 spectators to witness the one hour-long programme.

### Airport Opening, Crysler Park

At 12.00 noon on Saturday, June 10, 1967, the Honourable Irwin Haskett, M. P. P., Minister of Transport, officially opened the Crysler Park Airport. Located on the north side of Highway No. 2 west of the golf course, this grass landing strip, 1,600 feet long and 200 feet wide, is designed for use by light aircraft.

As part of the official opening the Flying Farmers of Ontario staged a fly-in with fifteen to twenty members attending. This was approximately half the number expected and was attributed to flying conditions in Western Ontario. The visitors were entertained at a reception and luncheon followed by a tour of Upper Canada Village.

During the remainder of the summer many aircraft used the landing strip. As the strip becomes better known, it is anticipated that a marked increase will result in the use of the airport by visitors to Upper Canada Village, the Golf Course and the surrounding recreation area.







INSPECTION OF THE GUARD AND MILITARY DISPLAY

Crysler Farm Battlefield Park, July 23, 1967



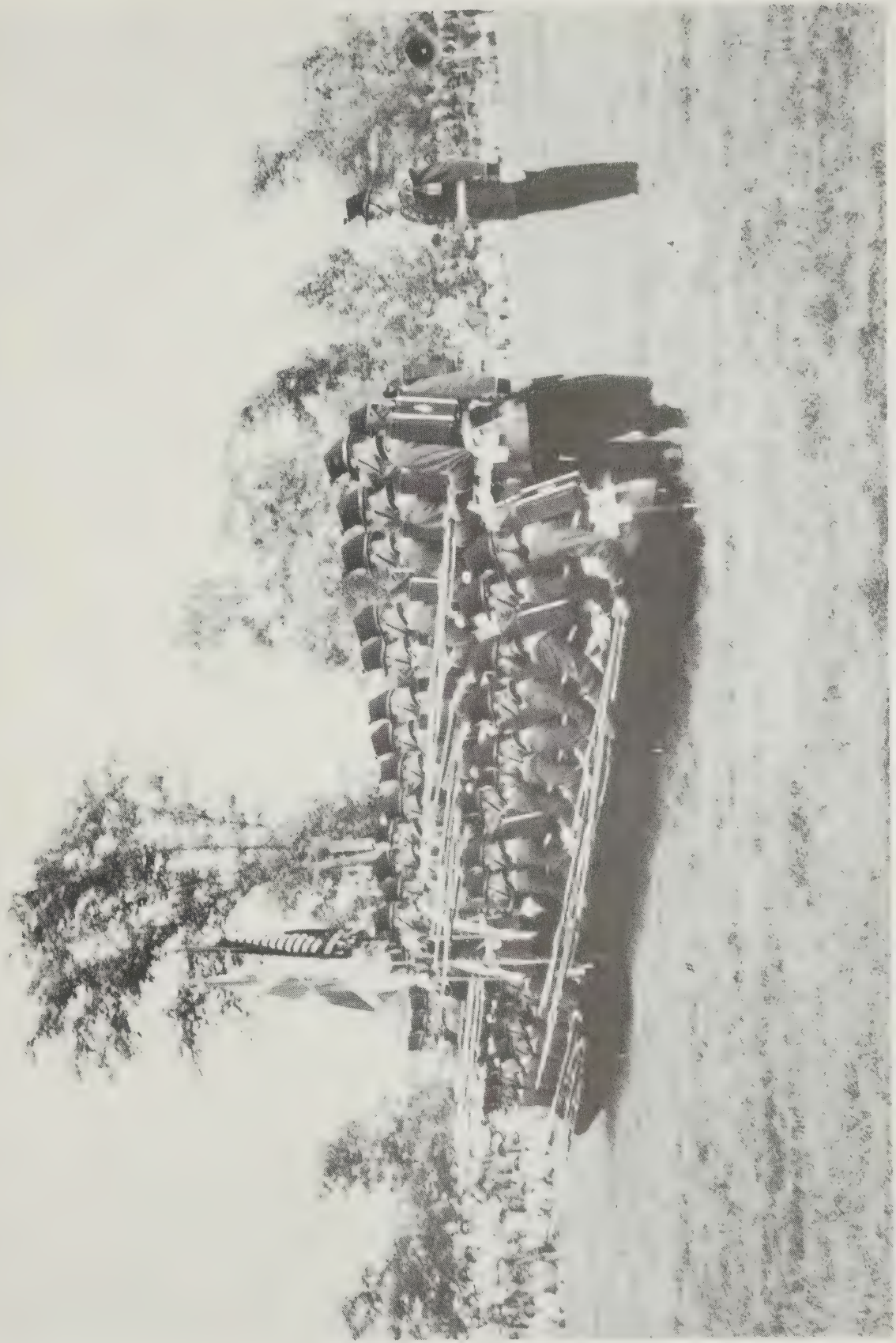
### National Heritage Camp

As a result of planning which started in 1962 the St. Lawrence Parks Commission turned over Morrison and Nairne Islands to the Girl Guides of Canada for the month of July. The occasion was the National Heritage Camp, a Centennial Project of the Girl Guides of Canada. Almost overnight the two islands became a tented city providing accommodation for 1,600 Girl Guides and a staff of approximately 300. Girl Guides from Canada, United States, England, France, Germany, Israel and Sweden were in attendance. The Commission was pleased to have been able to assist in making this Heritage Camp a success.

### Military Display, Crysler Farm Battlefield Park

Sunday, July 23, saw a colourful military ceremony on the mall in Crysler Park. The Governor General's Footguards of Ottawa and the Stormont, Dundas and Glengarry Highlanders of Cornwall carried out a Changing of the Guard ceremony. The programme was of approximately one hour's duration, followed by a band concert by the band of the Governor General's Footguards. In the evening the Pipes and Drums of the S.D.&G. Highlanders played a Retreat Ceremony, lowering the flags on the Memorial Mound. The day's events were sponsored by the Commission in co-operation with the Department of





BATTLE SEQUENCE

Fort Henry Guard during display for National  
Heritage Camp, Nairne Island, July 22, 1967





National Defence as part of the Centennial Programme. Attendance for the afternoon programme was approximately 4,000 and for the same evening 2,000.

#### Water Ski Show, Chrysler Marina

Appearing for the third consecutive year, the Collins Bay Water Ski Club thrilled some 2,500 spectators on Sunday, August 13, with a dazzling display of precision and trick ski-ing. Also included were displays of jumping, demonstrations of water safety, and boat handling. The club, only four years old, has increased in membership from some fifteen persons to a current membership of 125. Their prime objective is to interest both young and old in a healthy sport, while stressing safety on the water. The Club directs any profits from their ski shows to the support of Retarded Children. The Commission is pleased to present this show as a public service.

#### Canadian Museums Seminar - September 23 to 29, 1967

For the first time since the Village opened in 1961 it became the site of a training seminar in the museum field. Twenty-six delegates, members of the Canadian Museums Association, along with members of the Royal Architectural Institute of Canada, gathered on







#### HONOURING FORMER CHAIRMAN

The former Premier of Ontario, Leslie M. Frost, addressing gathering on occasion of the unveiling and dedication of the Challies plaque. Seated behind Mr. Frost is the Honourable Fern Guindon, Chairman, and Mr. George H. Challies, former Chairman, the St. Lawrence Parks Commission; and the Honourable J. A. C. Auld, Minister of Tourism and Information.



September 23 to discuss "Historic Buildings - Their Restoration and Management". The delegates, from as far west as Fort Steele, B. C., to as far east as Louisbourg, N. S., agreed that the interchange of ideas was invaluable. The highlight of the week was a dinner and reception. The guest speaker for this occasion was Professor Charles Peterson, Columbia University.

Challies Day - September 23, 1967

On Saturday, September 23, the St. Lawrence Parks Commission honoured the former Chairman of the Commission, George H. Challies. On this occasion a plaque, honouring Mr. Challies for his work in the creation of the St. Lawrence Parks and Upper Canada Village, was unveiled. Officiating at the unveiling of the plaque, as well as being the principal speaker, was the former Premier of Ontario, the Right Honourable Leslie M. Frost, Q.C. Also in attendance were the Honourable James A. C. Auld, Minister of Tourism and Information, Honourable Fern Guindon, Chairman of the St. Lawrence Parks Commission, members of the Commission, and many friends of Mr. Challies. Following the unveiling ceremony, some 75 guests attended a reception and dinner.



### Plaque Unveiling, Grenville Park

Grenville Park was the scene, on Sunday, October 1, of the dedication and unveiling of two plaques. The first plaque and the "Avenue of Maples", 80 maple trees representing the Citizens of Grenville County who paid the supreme sacrifice in World War II, were dedicated to their memory. Following this a plaque was dedicated to the memory of the late Carl Reilly, a former Commissioner. During his time as Commissioner Mr. Reilly had been largely responsible for the early development of Grenville Park. Chairman for the afternoon's activities was Mr. A.K. Farlinger, Vice-Chairman of the Commission. Officiating at the unveiling ceremonies was Mr. F.M. Cass, Member of the Provincial Parliament for Grenville - Dundas. Prayers of dedication were given by the Reverend Canon Payne, Chaplain to the Prescott Branch, Royal Canadian Legion. Also in attendance were Mrs. Jean Wadds, M. P., representatives of the Canadian Legion, Lt.-Colonel E. Reilly, brother of the late Carl Reilly, members of the Commission, and many citizens of Grenville County.





EXECUTIVE CHANGESGeneral Manager

Mr. D. M. Peacock, previously with the Department of Lands and Forests, was appointed General Manager of The St. Lawrence Parks Commission, and took office on April 1st, 1967.

x x x x x x x



ATTENDANCE FIGURES

Location	Total Attendance 1962 - 1966	Average Yearly Attendance	1966 Attendance	1967 Attendance
OLD FORT HENRY	961,409	192,282	213,318	234,885
UPPER CANADA VILLAGE	1,151,381	230,276	227,754	352,949
ADOLPHUSTOWN	423,428	84,686	57,012	69,308
FAIRFIELD	173,580 (1)	43,395	46,172	36,252
IVY LEA	207,508	41,502	39,004	59,960
BROWN'S BAY	604,620	120,925	140,148	190,360
GRENVILLE	193,648 (2)	48,412	81,292	80,128
RIVERSIDE	807,256	161,451	223,120	191,124
CEDAR	- - (3)	- -	- -	38,004
CRYSLER PARK	643,322 (4)	321,661	503,820	807,280
CRYSLER BEACH	465,004	93,001	155,160	180,852
MORRISON AND NAIRNE	360,088	72,018	62,224	80,308
FARRAN	406,752	81,350	101,468	162,428
LONG SAULT PARKWAY WEST	980,640	196,128	252,516	271,816
WOODLANDS	835,040	167,008	214,120	252,112
LONG SAULT PARKWAY EAST	2,316,320	463,264	626,440	623,076
MILLE ROCHES	1,342,092	268,418	337,888	282,620
CHARLOTTENBURGH	499,184	99,837	130,300	236,052
GLENGARRY	654,700	130,940	190,544	155,168

(1) Opened - 1963

(2) Opened - 1963

(3) Opened - 1967

(4) Figures for 1962-1963-1964 Not Available





KING'S HIGHWAY AT UPPER CANADA VILLAGE

A scene typical of most days in the summer of 1967.



## UPPER CANADA VILLAGE

In addition to the major events which took place at Upper Canada Village and which have been mentioned under Highlights of 1967, there are a number of other activities which warrant brief description.

### Craft Shop

The Craft Shop addition to the Entrance Store was constructed during the winter months by Village craftsmen and was completed in time for the mid-May opening. This much-needed addition provided space for a greater variety of craft items, more effective merchandising techniques and led to increased sales.

### Entrance Store Addition

Construction of a large addition to the Entrance Store began early in the spring of 1967. The ground floor addition was completed and occupied early in August. Work continued on the second floor during the balance of the summer and was completed in early October.







HORSE-POWERED SWEEP

Operating Drag-saw, Sawmill Area, Upper Canada Village



### Demonstrations

The increased emphasis on the development of Agriculture drew many favourable comments from visitors in 1967. In particular, the display depicting early pioneer clearing was of special interest.

In the sawmill area, the shingle saw and the broad-axing displays attracted large and attentive audiences.

### Future Developments

During the 1968 season a number of changes and improvements will be made in the Agricultural display to better portray the developments in both techniques and equipment during the past century







CRYSLER BEACH

Picnic and Recreation Area with Lake St. Lawrence in the background



P A R K S

As was expected, 1967 was a year of increased attendance in all Parks operated by the Commission. The normal improvement programme was continued. The following is a resume of these activities:

1. A permanent lavatory building is under construction in the new campsite area at Glengarry Park.
2. An additional lavatory building is under construction in the new east section of McLaren Campsite.
3. Work is continuing on the improvement of campsites at Snetsinger Island and the Wales campsite.
4. A sewage dumping station for trailers has been completed on Long Sault Parkway.
5. A sewage lagoon and dumping station has been completed on the Morrison and Nairne Island Road.
6. Extensive shore improvement and clean-up was carried out in front of the Cedar Park campsite.
7. At Grenville Park additional acreage was purchased for development of more beach and picnic facilities. Shore improvement work at this park has provided additional area for campsites which have been laid out and are ready for use in the 1968 season.





8. At Brown's Bay an additional lavatory building is under construction in the campsite area. A sewage dumping station is partially completed.

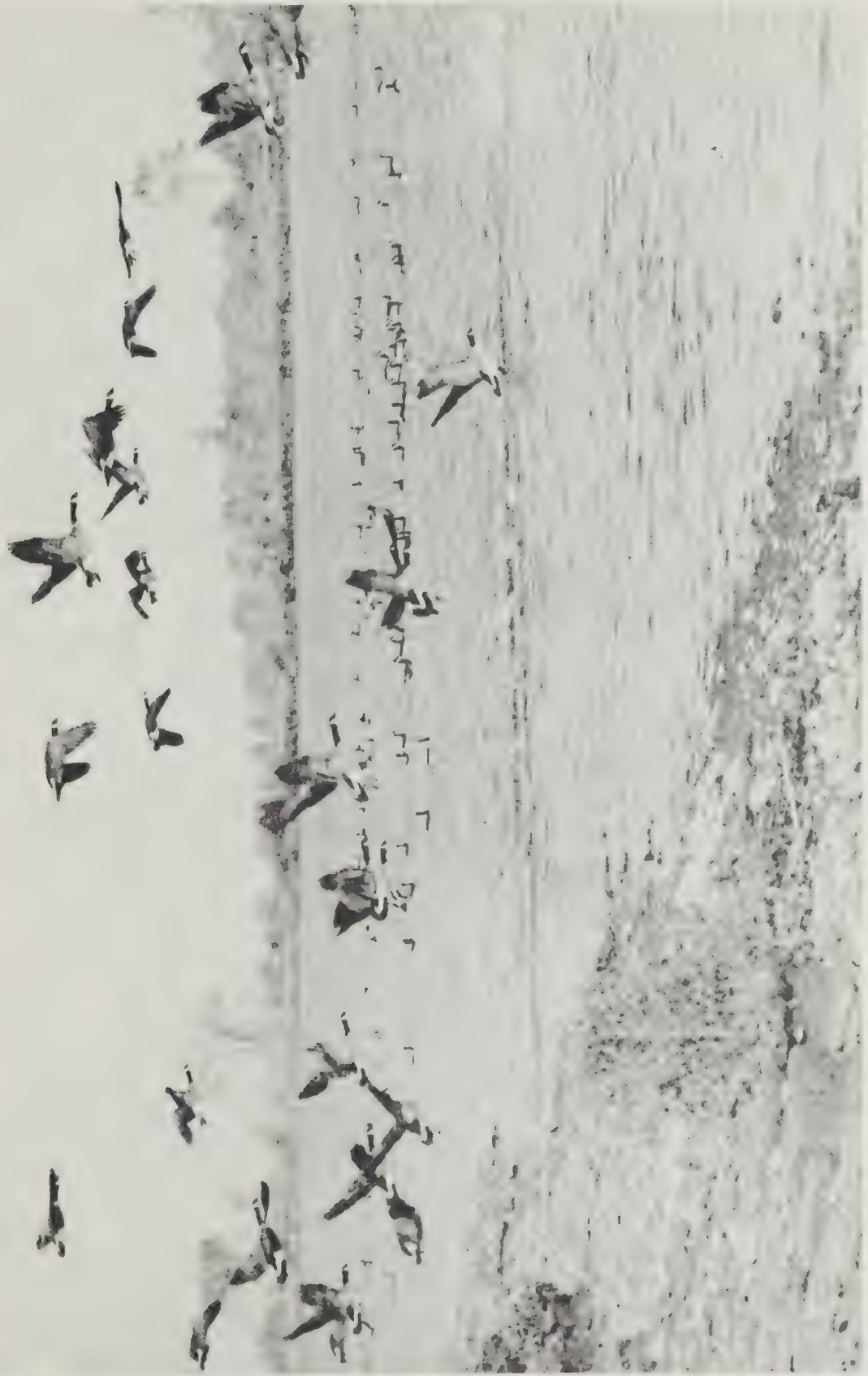
### Wildlife

The estimated resident flock of Canada Geese in the sanctuary remains at 1,200, about the same as in 1966. The count of migrant geese reached a peak of 4,500 during the second week in November, 1967. In July a total of 188 geese were banded. During the nesting season 34 goose nests were located in the sanctuary. Twenty-nine of these contained one or more goslings. Additional nesting facilities are being constructed each year.

Approximately 55 acres of corn was raised and 40 acres of land used as pasture. In November the geese were fed each day at 4.00 p.m. This program was advertised by signs at the entrance and in the local newspapers. This attracted large numbers of visitors, particularly on the weekends.

Improvements and additions to the Nature Trails were carried out in 1967.





CANADA GEESE

Wildfowl Sanctuary, Naimé Island



## OLD FORT HENRY

As anticipated, the 1967 season was a busy one for the Fort Henry Guard. In addition to their daily duties at the Fort, the Guard was called on to make many appearances outside Fort Henry. The schedule of special appearances was as follows:

- |                 |   |
|-----------------|---|
| June 24         | Guard of Honour for the Lieutenant-Governor of Ontario, at the official opening of a museum in the Blockhouse at Merrickville, Ontario. |
| July 3          | The complete Guard appeared in Cornwall as part of the Civic Holiday Ceremonies.  |
| July 13-16      | The complete Guard appeared daily at Place des Nations, Expo '67.   |
| July 22         | The Guard performed its full sequence for the National Heritage Camp of the Girl Guides of Canada at the Nairne Island Campsite.        |
| August 5        | The Guard was featured in the Ontario Day celebrations at Place des Nations, Expo '67.  |
| August 19       | The Guard, along with the Royal Canadian Mounted Police, led the Warriors Day parade at the Canadian National Exhibition.               |
| July and August | Every Friday the Fifes and Drums appeared at the Ontario Pavilion, Expo '67.  |





One of the Highlights of the year was the Retreat Ceremony at Old Fort Henry on August 30, 1967. Taking part in the programme along with the Fort Henry Guard, were the Compagnies Franches de la Marine, the Fraser Highlanders, the First Maryland Regiment and the Trumpet Band of the Royal Canadian School of Signals. Each unit put on demonstrations of drill, battle tactics and music. The programme ended with all units taking part in a massed Retreat Ceremony.





