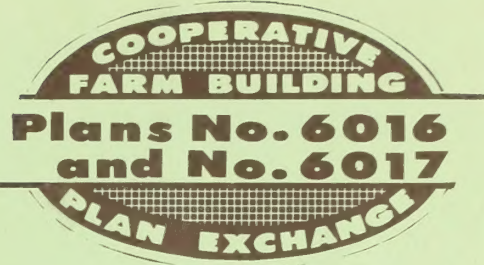


Historic, archived document

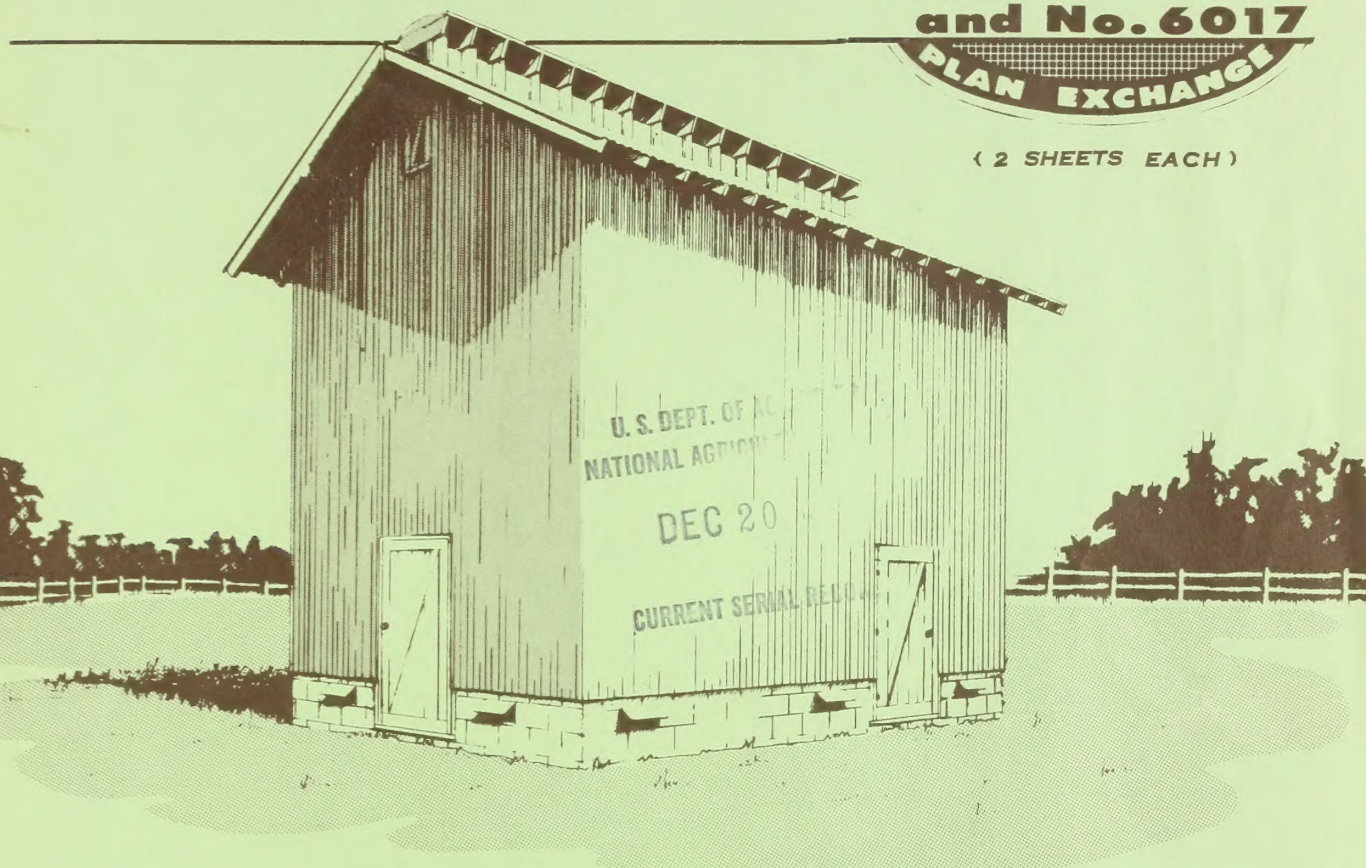
Do not assume content reflects current scientific knowledge, policies, or practices.



4- & 5- room TOBACCO BARN



(2 SHEETS EACH)

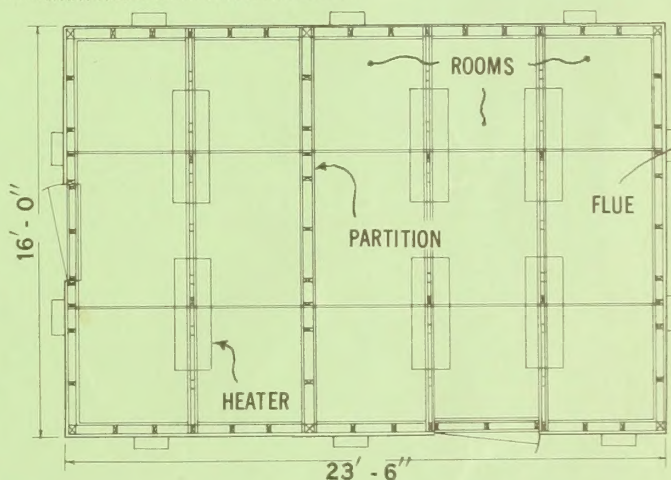


The plans for these tobacco-curing barns were developed specifically for a tobacco research unit at the University of Florida Agricultural Experiment Station and were placed in the Cooperative Farm Building Plan Exchange by the Southern Region Plan Committee.

Since flue-cured tobacco is grown rather extensively and since the majority of growers prefer this process, several curing barns were designed for this purpose. Design simplicity makes these barns fairly easy to build; therefore, they can be constructed by farm labor.

Construction of both the 4-room and the 5-room barns is the same except for the sizes. Plans are available for both—Plan No. 6016 is a 4-room barn; Plan No. 6017 is a 5-room barn.

The plans show frame construction with metal roof and sidewalls and masonry unit foundation or base.



PLAN NO. 6017

Washington, D.C.

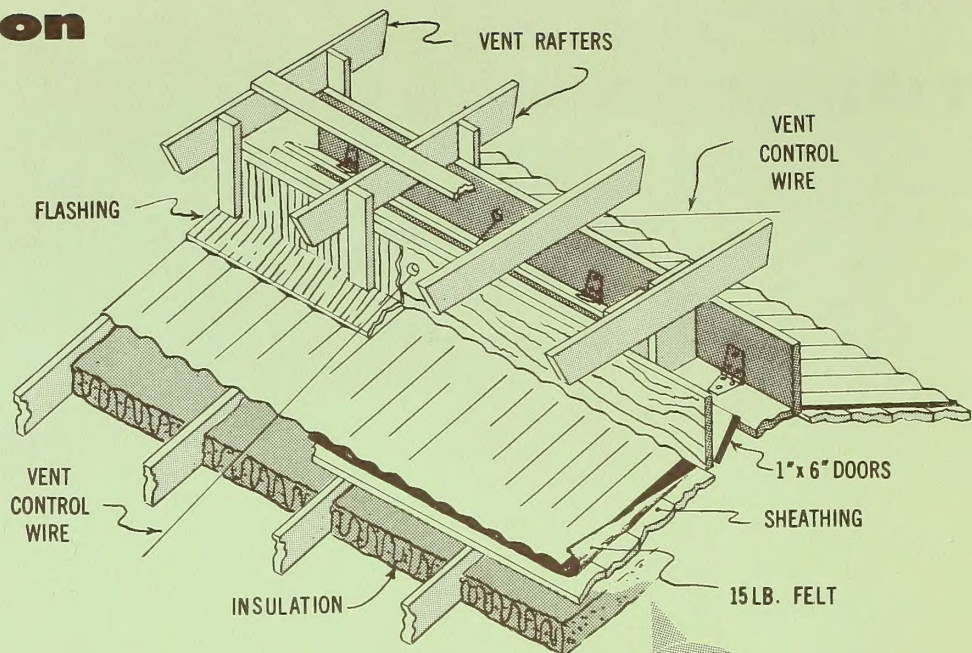
Issued October 1968

UNITED STATES DEPARTMENT OF AGRICULTURE

Miscellaneous Publication No. 1101

For sale by the Superintendent of Documents, Government Printing Office
Washington, D.C. 20402 · Price 5 cents

construction features

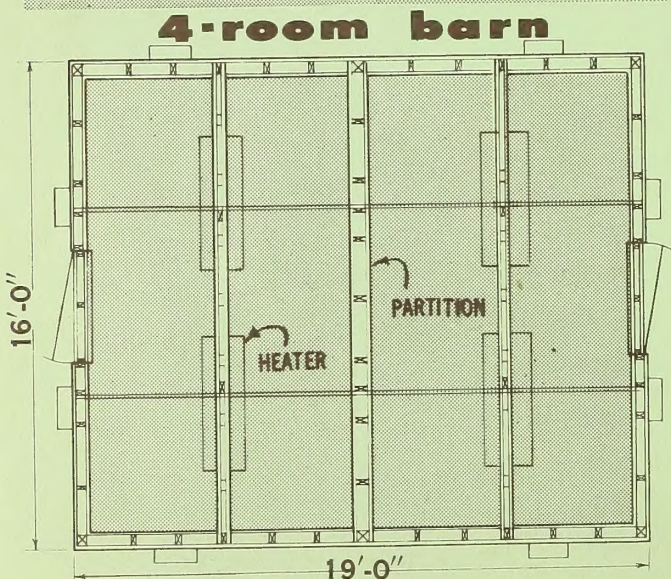
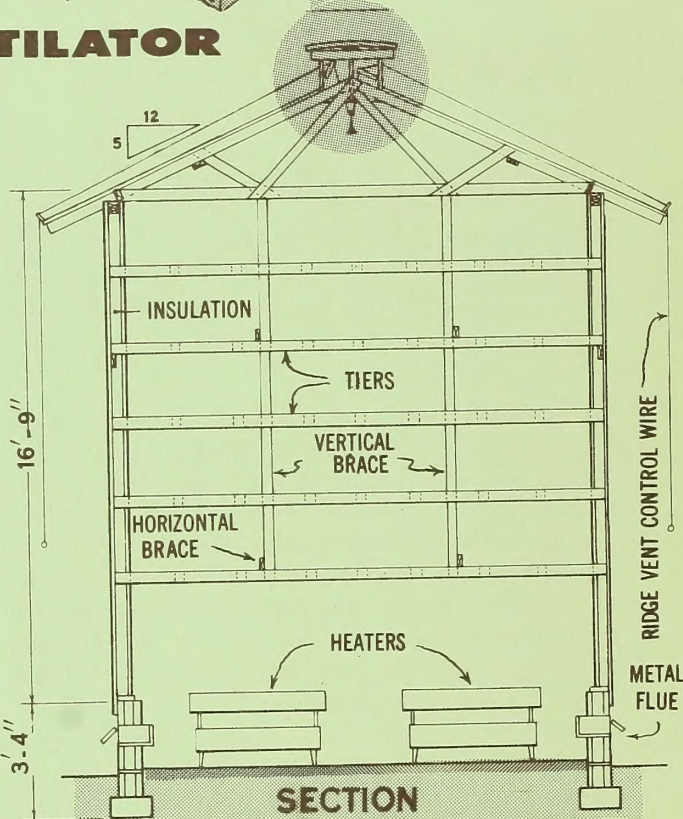


RIDGE VENTILATOR

The tops of the lower tiers are 6 feet 5 inches above the earth floor with a vertical distance of 2 feet 6 inches center to center between the tiers.

The ridge ventilators on the roof and the metal flues located near the floor are adjustable.

The barns may be heated with fuel oil or bottled or natural gas. Under proper management, this type of heating should prove economical because the barns are well insulated and have ventilation controls.



PLAN NO. 6016

Complete working drawings of each plan may be obtained from the extension agricultural engineer at your State university. There may be a small charge to cover cost of printing.

If you do not know the location of your State university, send your request to Agricultural Engineer, Federal Extension Service, U.S. Department of Agriculture, Washington, D.C. 20250. He will forward your request to the correct university. (These plans may be ordered separately.)

ORDER PLAN NO. 6016-4-ROOM TOBACCO BARN
OR NO. 6017-5-ROOM TOBACCO BARN

4

