

62.01

DUPLICATE

1408

Jackson  
Vine



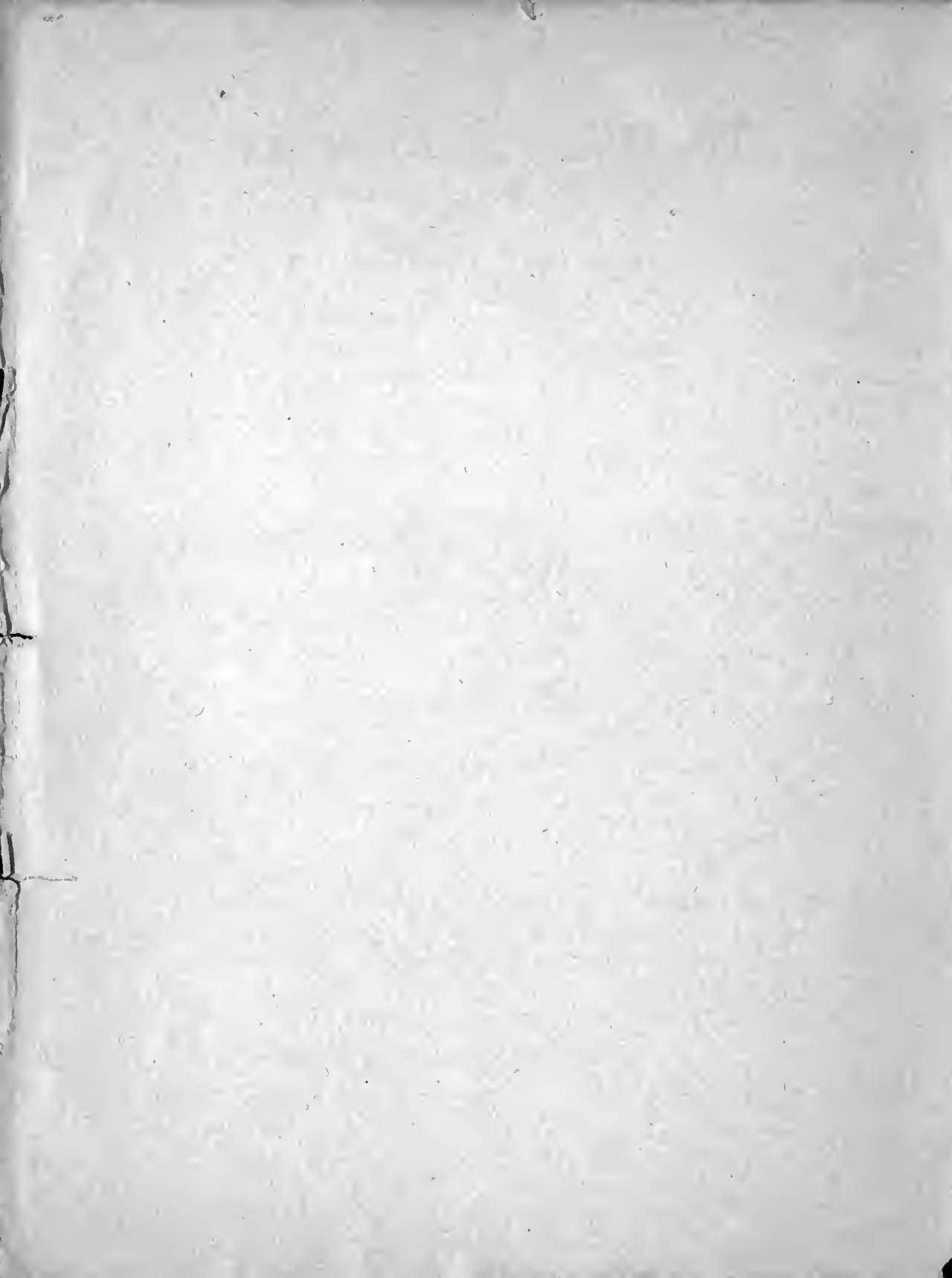
**ALABAMA  
NURSERY CO.**

INCORPORATED

1900  
1901

Huntsville  
Alabama

Annual catalogue



# To Our Customers

## OLD AND PROSPECTIVE



**I**N PREPARING this, our first regular, priced catalogue, it has been our aim to avoid lengthy, flowery descriptions, and to present the varieties to you in a concise manner, to give you only facts that are worthy the consideration of every purchaser. For convenience we have used the simple alphabetical arrangement of varieties, making reference to any one variety simple and complete, thereby giving assistance to you in making up your orders.

It is our desire and intention to furnish only stock that is strictly first-class in every respect, and at prices very low for the quality of goods offered. We grade our trees **to the highest standard** and only thrifty, well-rooted, well-headed trees will reach our customers. Every precaution is used to put the stock in your hands *true to name and absolutely right in every respect*. Our equipment for digging, handling and packing stock is the best the day affords.

Any information we may be able to give, any assistance in selection, or if we may be of service in any way, we shall be pleased to put ourselves at your disposal. Our business is the growing of trees, and we aim to be thoroughly posted on all matters pertaining to successful growing and fruiting. We will spare no pains to put you in close touch with the proper methods of care and culture, if you so desire.

For your information as to our reliability and financial standing, our methods, our successes, we are pleased to refer you to any bank or business house, the express and railway agents, postmaster of this city, or Dun's and Bradstreet's Agencies. As you get no results in bloom or fruit until after you have paid your money, you should know with whom you do business when buying.

We appreciate the liberal patronage that has come to us through small effort on our part, and trust that the future, aided by our best efforts to please and satisfy each patron, will continue to give us the consideration of our old **customers** and will add many to our list of **friends**.

Yours very truly,

**ALABAMA NURSERY COMPANY**

Season 1900-1901

HUNTSVILLE, ALABAMA

# *Read Before Ordering*

## **OUR LOCATION, ACREAGE, ETC.**

Our business is the growing of Nursery Products exclusively. We are located two and a half miles northwest of Huntsville. The officers of our company are Ethan A. Chase, President, Herbert S. Chase, Treasurer, Henry B. Chase, Secretary. Our office, packing houses, residences, store, box shop, blacksmith and repair shop, tool houses, barns, etc. are all located on the premises. The various departments are connected with the office by telephone; long-distance telephone connects the office with Huntsville and all long-distance points. Telegraphic orders come direct to our office by 'phone and are usually shipped the same day they are received. We now have 610 acres in cultivation, employ eighty to one hundred and thirty men the year around, and use twenty-two mules for cultivating. Visitors are always welcome. June is about the most desirable month for visiting our grounds.

**SELECTION OF STOCK** suited to the different localities can often be made by us better than by the purchaser. We will always be glad to help you make selections, if you wish, and will cheerfully furnish additional information about any variety.

**NO EXTRA CHARGE FOR PACKING**, bales or boxes; the prices quoted are for trees and plants packed and ready for shipment.

**LADIES** will please sign Miss or Mrs., that we may direct our answers properly.

**HOW TO SEND MONEY.**—By Bank Draft, Post Office Order, Express Money Order, or Registered Letter.

**COST OF EXPRESS AND FREIGHT.**—The express companies give a special rate on trees and plants, the cost being 20 per cent less than on merchandise. **We pay express** or freight on all orders of \$5 or more.

**PRICES AND QUANTITIES.**—Fifty trees at the prices quoted per 100; 500 trees at the prices quoted per 1,000. If you want over 1,000 trees of one sort, write us for estimates.

**GUARANTEE.**—We guarantee all plants and trees to be **true to name** and to reach you in good condition, and will refund money paid or replace free of charge, as you wish, in case they should be otherwise; but is mutually agreed between the purchaser and ourselves that we shall not at any time be liable for any amount greater than the original price of the goods.

**SUBSTITUTION.**—In case we are sold out of varieties ordered, **we do not substitute another sort** unless you request us to do so. **Your money will be sent back.** If you want us to send a similar variety, or one we know to be as good, say so and we will do it.

**ERRORS.**—In filling orders we use every precaution against errors, but in the rush of the packing season accidental errors may occur, which we will correct promptly and with pleasure.

**A LESSON IN PRUNING.**—If you wish, we will prune one tree (root and branch) ready for planting, to show you how the others should be pruned. (See below.)

**PLEASE REMEMBER** that this Catalogue quotes prices on one uniform grade of **first-class, fine, healthy trees.** Do not confound such trees with weak, under-sized, poorly rooted, poorly dug trees.

## ALABAMA NURSERY CO.

Huntsville, Alabama

# Just How to Plant so that Your Trees Will Live and Grow

**The soil** for an orchard should be well drained (trees will not thrive where there is stagnant moisture), and as rich and as well prepared as for a crop of corn. You should plow with a two-horse plow and follow with a two-horse sub-soil plow, then pulverize with a harrow. Have your land ready before the trees come, if possible.

**When trees come,** dip the roots into water, and keep them protected from sun and wind with damp straw, moss or wet coverings, and plant at once if you are ready. If you cannot plant at once, the trees should be "heeled in." To do this, dig a trench where the ground is moist, well drained and pulverized; the trench should be about a foot deep; throw all the earth on one side of the trench; open the bundles, so that you can put the trees in one at a time; lean the bodies of the trees over against the bank of earth, shovel fine, fresh earth over and around the roots until they are covered; pour on water enough to dampen the earth around the roots, then fill up the trench until the roots and a few inches of the body of the tree are covered, and pack the earth with the feet; then throw on a few shovels of loose earth to prevent baking. Your trees will keep perfectly.

**Prune before planting.**—Many trees are planted with the tops all on, just as they are sent out from the nursery; this is a great mistake. Some of the tops of all trees should be cut away before planting, which lessens the demand on the roots, as there is not as much top to support in early spring, and the whole force of the tree is thrown into the growth of the remaining buds, with the result that you have **more growth,** and a **better and larger tree** at the end of the second season, and a **tree that will bear earlier.**

The tops of Peach trees should be almost all cut away, leaving a trunk about 3 feet tall, with a few short stubs, 2 or 3 inches long, for limbs.

Apple, Plum, Pear, etc., should have about one-half or more of the length of limbs cut away, leaving the trunk with a few branches less than half of their original length, the center limb or "leader" to be a little longer than the others.

Cut all broken or bruised roots back to **sound, clean wood**. Always use a sharp knife. If you wish, we will prune one or two trees as a sample for you to work by.

**Time to plant.**—The roots of trees grow during the winter. If you plant in November or December, the tree will make root-growth, and before spring have a firm hold on the ground, and make a fine growth when spring opens. Plant as early as you can after the first heavy frost. Trees can be transplanted as late as during March, but you can be more sure of success if you plant in the fall or early winter.

Wait until after the severe winter weather to plant the tender Tea Roses.

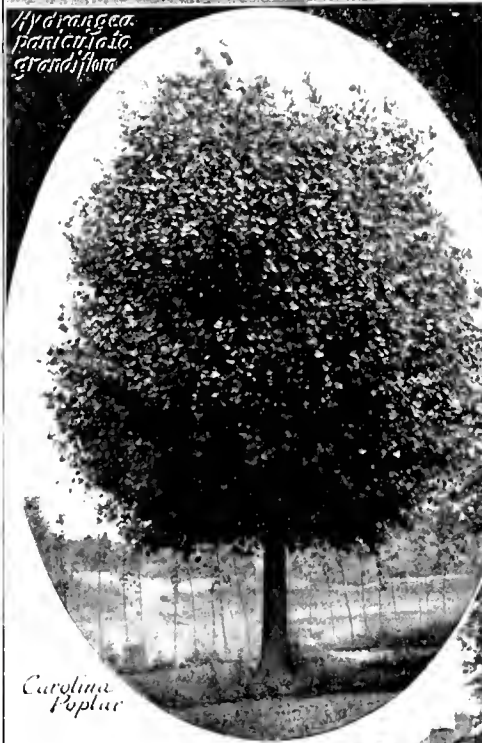
**Planting the tree.**—Dig the hole large enough to admit the roots in their natural position without turning or crowding, not less than 2 feet across and fully 2 feet deep. Fill in 8 to 10 inches of the bottom of the hole with **rich top-soil**; or well decomposed manure, put in the bottom of the hole and mixed with top-soil, covered with at least 3 inches of top-soil so that the roots cannot come in contact with the manure, will be of great help to the tree. Spread out the roots and cover with fine top-soil, working the soil in around all the roots by hand; when the hole is half or more full, tramp the soil to **firm the tree**, then fill up the balance of the hole with fine top-soil, but do not tramp it, leaving the soil in good condition to receive rains. Do not set the tree too deep; about the same depth as it stood in the nursery is right.

**Mulching.**—If you can put around the tree as far as the roots extend and a foot beyond, 5 or 6 inches of rough manure or litter, it will be of great benefit to the tree. This is especially desirable for trees planted in the spring; it prevents the ground from baking, and maintains an even temperature about the roots.

**Two-year-old trees.**—You may be told that trees three, four or five years old are best to plant because they will bear earlier after transplanting; *this is an error*; such trees do not transplant as well, are more apt to die and, if they do live, will not bear as early, by one or two seasons, as a first-class, healthy, two-year-old. **We know** about these things.

**We invite** anyone who may receive this Catalogue to feel perfectly free at all times to write us for any information upon such horticultural subjects as they may be interested in. We may not be able to answer all questions to your entire satisfaction, but you are freely welcome to such knowledge as we possess.

**ALABAMA NURSERY CO., Huntsville, Ala.**

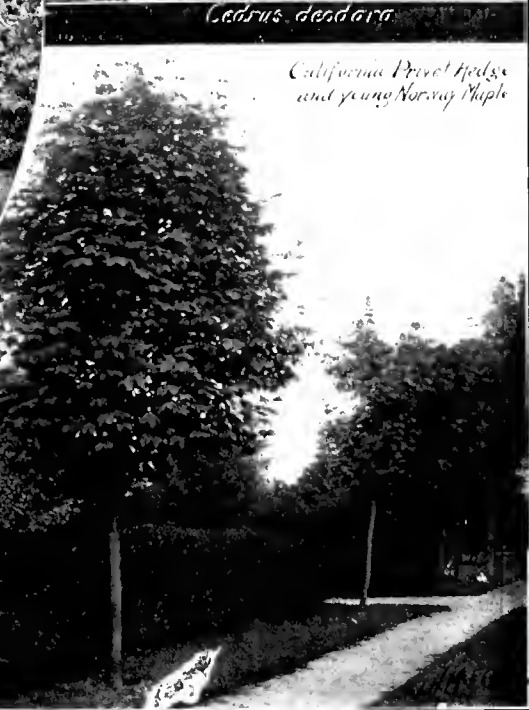


*Hydrangea  
paniculata  
grandiflora*

*Carolina  
Poplar*



*Cedrus deodara*



*California Privet Hedge  
and young Norway Maple*



Looking across a block of plum trees—Office among the trees, Packing-House at right.

### VISITORS ARE ALWAYS WELCOME.

**I**T doesn't matter what time of the year you come, you will be welcome; but if you want to see our Nursery in prime condition, come in May or early June, when the roses are in bloom and nature is at her best. At any time, however, you will see an extensive and well-fitted Nursery, conducted on modern lines, producing healthy and uniform trees and plants.

These pictures show but a very small portion of our Nursery, for we have 610 acres in cultivation, employing 80 to 130 men all the year round. We have every facility for handling orders with the least possible delay, as all our departments are connected with the office by telephone, and it is very rarely that an order is not filled the same day it is received. See page 2 for further particulars.



Huntsville and Monte Sano, from the Office of the Alabama Nursery Co.



# APPLES

**W**HILE the number of varieties suitable for and adapted to the southern climate is, to an extent, limited, there are enough of the finest varieties to well cover the season of ripening so that our Southland may be benefited by this staple and valued fruit. The varieties that have been originated in the South are, naturally, best adapted in all ways, but experience proves that such of the particular northern sorts as we list herewith give general satisfaction where planted. The Apple is not suited to the extreme South, but the Middle South shows very fine results with it.

Plant 25 to 35 feet apart each way.

Prices, except where noted, 2-year-old, 5 to 6 feet, well-branched trees on whole roots, 20 cents each, \$1.75 for 10, \$12.50 per 100; special quotations on greater quantity

## SUMMER

**Carolina Red June.** Medium, oblong, deep red; tender, subacid, pleasing; very productive. Well known throughout the South. Middle of June to end of July. A handsome and showy Apple.

**Early Harvest.** Medium to large, yellow; tender, juicy, delicately flavored. A fine market variety, ripening ten days later than Red Astrachan.

**Early May.** Earliest to ripen; ten days ahead of Yellow Transparent, and valuable because earliest. Good bearer; not large; green-yellow; quality fair. Ripens here last of May.

**Horse (Yellow Horse).** A true southern Apple, and well known through all the southern states. Large; acid; a remarkable bearer. July and August.

**Red Astrachan.** The red companion of Yellow Transparent. Thrifty grower; bears abundantly. Large; yellow, overspread with deep, rich crimson; flesh rich, tender, juicy, acid. June. A splendid Apple.

**Sweet Bough.** Large, yellow, sweet, tender, juicy. A fine Apple for dessert or baking. End of June.

**Yellow Transparent.** Unquestionably the most valuable of early Apples. Early, abundant bearer; good size; skin white, turning to a pale yellow when fully ripe; flesh crisply tender, juicy, subacid. June. It and Red Astrachan make a beautiful pair.

## AUTUMN

**Buckingham (King, No Plus Ultra, Kentucky Queen, Bachelor).** Very large, yellow, with bright red cheek and crimson stripes; flesh yellow, subacid, very rich and juicy. Vigorous grower and very productive. Ripens end of September and lasts into November.

**Carter's Blue (Lady Fitzpatrick).** Very large, clover-red, covered with thick blue bloom. Crisp, sugary flesh, with a rich aroma. Originated in middle Alabama. September.

**Rebel (America).** Good size; yellow ground, striped with red; juicy, crisp, tender, subacid. An excellent Apple. Fine keeper. September.

## WINTER

**Ben Davis (New York Pippin, Kentucky Streak).** Large; yellow, often entirely overspread or splashed with red; flesh white, subacid; quality fair. More grown for market than any other five varieties. Prolific bearer and, because of its fine appearance, commands ready sale in market.

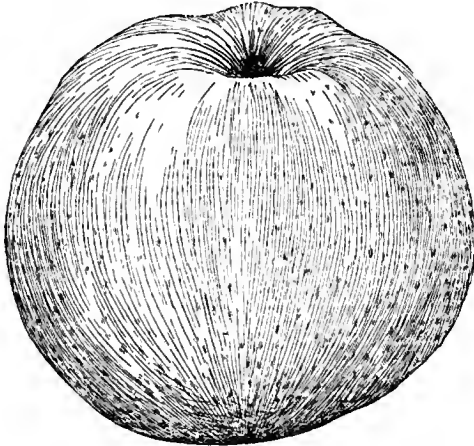
**Black Twig (Paragon).** A seedling of Winesap; originated within 30 miles of this nursery. Large to very large; subacid, pleasant flavor. Thrifty, strong grower, bearing plentifully; a fine keeper.

**Grimes' Golden.** Medium to large; golden skin, sprinkled with gray dots; flesh crisp, tender, juicy, of delightful flavor.

**WINTER APPLES, continued**

**Kinnard's Choice.** Medium to large; dark, rich red; flesh yellow, crisp, tender, very aromatic. A fine early winter Apple.

**Red Limbertwig.** Medium; dull, rusty red; brisk subacid; of fine quality when ripe. One of the best and latest keepers. Sold here often as late as May.



Bismarck Apple

**Royal Limbertwig.** Large; pale yellow, striped with red; flesh yellow, rich, juicy. An improvement on the well-known Limbertwig.

**Shockley.** A native of Georgia. Medium, conical; yellow, with cheek of bright crimson; flesh firm, subacid, almost sweet. Bears early; very productive. While not strictly first quality, is readily the most popular winter sort in the South. Crops are large and regular. The fruit is uniformly of fine size and of beautiful appearance.

**Winesap.** Small to medium; fine dark red; flesh crisp, vinous, juicy. A fine dessert Apple, and makes probably the best cider of any Apple grown in the South. An excellent keeper.

**NEW AND RARE**

**Bismarck.** "The little tree with the big Apples." Originated in New Zealand. Very large, and especially handsome; yellow ground, well covered with a showy shade of red; yellow flesh; first quality. Very hardy and an exceedingly early bearer, trees of two years often being laden with fruit. Promises to be of great value. 50 cents each.

**PEARS**

**T**HE varieties we offer are those which tests have proven best for the needs of the South, and which will give good results. This fruit, perhaps more than any other grown in the South, should receive care and attention to attain the best. Market value, canning and shipping qualities, flavor, productiveness, each is considered for points by which to judge of their right to mention in our list. The varieties cover the entire season.

Plant 25 feet apart each way; 20 will do if you are crowded for space.

Prices, except where noted, extra, 2-year-old, 5 to 6 feet, well-branched trees, 40 cts. each, \$3 for 10; \$25 per 100. Special quotations for greater quantity

**SUMMER**

**Bartlett.** Large; buttery, melting, richly flavored. The standard of excellence. Last of July.

**Clapp's Favorite.** Large; pale yellow; fine-grained flesh, juicy, melting, rich. Excellent. Ripens before Bartlett.

**Early Harvest.** Very early; medium size; quality poor; very showy; a strong growing tree and most productive. June 25 to July 5.

**Garber.** Much resembling Kieffer, a little earlier. Tree a very strong grower, good producer. This has grown to be one of the standard Pears of the South. August.

**SUMMER PEARS, continued**

**Howell.** Good size; light, waxen yellow; handsome; excellent quality, juicy, sweet and melting. About August 1.

**Koonce.** The earliest and best of all early Pears. Medium size; straw color, with brown dots. Ripens sound to the core. A good shipper, and in demand in market. Two weeks ahead of Early Harvest.

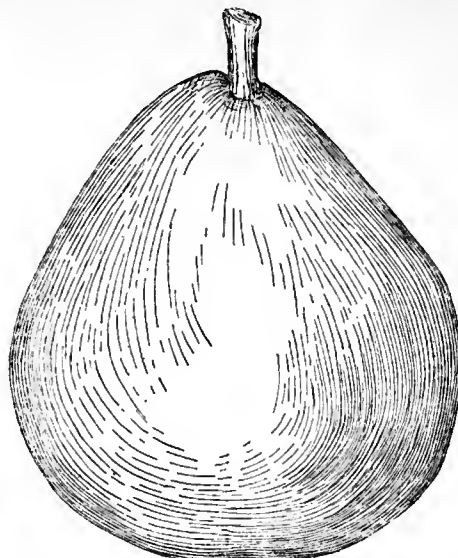
**Lawson (Comet).** Very early; showy; large and handsome. Slow to come into bearing, but productive. A good shipper.

**Le Conte.** Large; bell-shaped; rich, creamy yellow. Tree vigorous and productive. Best adapted to southern Georgia. Ripens about with Bartlett.

**Seckel.** "Much in Little." Small, but with exceptionally fine flavor; yellowish russet, with red cheek; very juicy, melting. Known as the standard for flavor. Heavy bearer. August.

**Sheldon.** Large; rounded; russet; very juicy, sweet, melting, vinous. Fine grower and bears well.

cheek tinged with vermilion; flesh brittle, juicy and sweet, with a distinct, musky aroma. Left on the tree until nearly ripe, the quality is very pleasing. A very prolific bearer. Matures in September and lasts well into October.



Koonce Pear

**AUTUMN AND WINTER**

**Beurre d'Anjou.** A handsome Pear, of large size; juicy, melting, rich. September.

**Duchesse d'Angouleme.** Very large; tender, juicy and well flavored. Succeeds well as a standard Pear, but its highest perfection is reached as a dwarf (on quince roots).

**Japan Golden Russet.** A heavy bearer and free from blight or disease. Fruit is of good size; beautiful golden russet. Makes the finest of preserves; not of great value otherwise. Fruit remains on the tree perfectly sound until November.

**Kieffer.** Large to very large; yellow, with

**Lawrence.** Large; melting, juicy, sweet and aromatic; quality good. September and October.

**Lincoln Coreless.** Originated in Lincoln county, Tennessee. Remarkable for three points—its size, absence of core and seed, and keeping qualities. Yellowish green, slightly bronzed red cheek. At its best in midwinter. A valuable Pear, without which a garden or orchard is incomplete.

**DWARF PEARS**

Dwarf Pears are grown on quince roots. Many varieties, entirely successful as standards (on Pear roots), do not succeed in the South on quince roots. Many years of testing have shown us that the best and surest results obtain from the Dwarf Duchesse d'Angouleme, which is the only dwarf Pear we confidently recommend for southern planting. We can supply other varieties if wanted. 25 cts. each, \$2 for 10.

## JAPAN PLUMS

WITH the introduction and dissemination of the Japan Plum has come an era of Plum-culture in the South such as the limited list of varieties adapted to this climate heretofore prevented. As a class they are distinct. Fruit large, of most pleasing appearance, excellent in flavor, in productiveness and vigor fully the equal of our native varieties, offering to the planter a Plum that will give the results of profit, and offering to the home garden a fruit that will add much in variety and please the palate of all who eat of them. Our list of varieties comprises the most desirable of the "Japs."

Plant 15 to 20 feet apart each way.

Prices, except where noted, first-class, well-branched, 4- to 6-foot trees, 25 cents each, \$2 for 10, \$15 per 100; special quotations on larger quantities

**Abundance** (*Botan*). Tree bears as the name implies, in abundance. A 2-year-old tree here in our nurseries bore 90 specimens on a single limb 4 feet long. Requires thinning to secure the best size and quality. Under color yellow, overspread with purplish red, turning darker in the sun; flesh yellow, firm, juicy, subacid; clingstone. A fine shipper. Excellent market Plum. Ripens end of June.

**Burbank**. Characteristics similar to Abundance; flavor and quality rather alike, Burbank perhaps richer. Color cherry-red, with yellow mottlings; more globular than Abundance. Ripens 10 to 15 days later.

**Berckmans**. Very productive; large; green, nearly covered with dull purple; firm, yellow flesh, somewhat coarse; quality good; freestone. Middle of June to middle of July.

**Chabot** (*Bailey*). Medium to large; oblong; orange-yellow ground over-washed with red. Fair quality.

**Kelsey**. Very large; heart-shaped; greenish yellow, well covered with reddish purple, with delicate bloom; flesh firm, yellow, rich and juicy; fine flavor; small-pitted; semi-clingstone. Excellent shipper. Matures middle of July. Lasts 3 to 4 weeks.

**Georgeson** (*Hatankio*). Medium; golden yellow; flesh yellow, firm, sweet, with Gage flavor; clingstone. Early July.

**Hale**. Large; round, heart-shaped, generally lopsided; orange ground, mottled with cherry red; flesh yellow, juicy, soft, yet a good keeper and shipper, with most palatable slightly tart peach flavor; rather sour skin; clingstone. Ripens in August. One of the newer "Japs," and worthy a place in orchard or garden. Excellent in quality, and it's there when the others are gone.

**Juicy**. "This new Plum is a cross between Abundance and Robinson. The fruit is the size of the former and of perfect shape; skin thin and transparent, light yellow underlaid with scarlet; as beautiful as wax. Quality high; tree a hardy, rank, luxuriant grower, blooming so late in the spring that it escapes the frosts that often injure the early blooming Plums." This Plum has not yet been fruited here. The above description is given by the introducer of this variety.

**Normand**. Medium to large; slightly conical; yellow skin; flesh tender, juicy, good. Freestone. Ripens after Abundance.

**Ogon**. Medium size, round, solid golden yellow; flesh yellow, firm, subacid; good quality. Freestone. Matures middle of June.

**Red June** (*Red Nagate*). Very early and prolific, showy and attractive. Medium size; pointed; thick skin of purple red color; flesh yellow, solid, a bit coarse-grained, juicy,

---

We recommend the planting of Red June, Abundance, Burbank and Chabot for the Middle and Lower South.

## JAPAN PLUMS, continued

subacid. Clingstone. A fine market sort, in large demand because early and a good shipper. About June 15.

**Satsuma** (*Blood Plum*). Large; dark purplish red, spotted with bluish bloom; flesh blood-red, firm, juicy, excellent quality. Fine for canning. Matures middle of July.

**Wickson**. Large to very large; obconical; deep maroon-red, covered with white bloom; flesh of fine texture, firm, sugary, delicious. Very valuable as a keeper and shipper. Last of July.

**Willard**. Very early. Medium size; dark clear red, minutely dotted with yellow; flesh rather firm, yellow, sweet and of fair quality; freestone. Ripens before Red June, and a most satisfactory Plum to grow.

**Prunus Simoni** (*Apricot Plum*). Large, flat, tomato-shaped; a beautiful, rich red; flesh yellow, firm and very juicy, with a peculiar aromatic flavor, pleasing and refreshing to many. A distinct species from China, and altogether is an acquisition which will prove valuable. A very "shy" bearer.

## IMPROVED CHICKASAW PLUMS

Plums of this type are best ripened, and their best qualities are brought out by ripening, in the house. Pick as they commence coloring. The trio we offer below are considered the finest of the type, so well adapted to each other that, planted together, they bring out all that is best in each.

**Milton**. From seed of the Wild Goose. Large, somewhat oblong; an attractive dark red skin; flesh firm, quality good; clingstone. Productive and an excellent market sort. End of June.

**Sophie**. Large, slightly pear-shaped; deep, rich red; flesh juicy, tender, good; semi-

clingstone. Very productive when pollinated properly. Early July.

**Wild Goose**. Medium to large; skin bright vermilion, covered with blue bloom, richly acid; flesh juicy and sweet; quality good; clingstone. One of the oldest of the native American Plums. End of June.

## EUROPEAN PLUMS

Experience proves this type of Plum especially well adapted to the Northern states, but rarely a success in the South—the long, hot summer is against them. Not successful in this section (Huntsville). Some people call for them, and so we list a few varieties which we know will give fair satisfaction in some sections, and in favorable seasons will amply repay planting.

**Bradshaw**. Large; reddish purple, white bloom. July.

**Lombard**. Medium; a peculiar violet-red; flesh yellow, juicy, pleasant. Late July.

**Shropshire Damson**. Larger than the old Blue Damson; dark purple; good quality. While European Plums do not do well in the South, this variety will prove good. August.

Wickson blooms too early to plant for a "sure thing;" late spring frosts almost always damage, if not utterly cut it off. In quality it is the finest of them all, we think.

We PREPAY Express or Freight Charges on all orders of \$5 or more.

## PEACHES

**O**UR Peach seedlings are grown from native seed gathered for us in the mountains of Tennessee and North Carolina, a section where diseases of the Peach are unknown. Regular pruning each spring, shortening the previous year's growth, keeps the head round, full and well furnished with bearing wood. The true southern fruit and the large list offers range of choice that leaves no section which need be without its full share of this delightful fruit.

Plant 20 to 25 feet apart each way.

Prices, except where noted, well-branched, first-class, 4 to 5 feet stock, 15 cts. each, \$1.25 for 10, \$10 per 100, \$75 per 1,000. Special quotations covering larger quantity

**Admiral Dewey.** New. Originated by Mr. J. D. Husted, Vineyard, Ga. Medium in size, globular; deep yellow, with red blush; flesh yellow, firm, juicy, melting; freestone; excellent quality. Very productive. Ripens about 25th of June. 25 cents each.

**Amelia.** Very large, round-oblong; pale yellow, shaded and marbled with crimson; white flesh, sweet, juicy, melting, vinous; freestone. Middle to last of July.

**Amsden** (*Amsden June*). Medium; greenish white, almost covered with light and darker red, often mottled; good quality. Middle to end of June.

**Alexander.** Medium to large; greenish white, well covered with deep rich red; juicy, sweet, melting. Ripens last of May—ten days later than Sneed. Clings slightly to stone. Arkansas Traveller, Briggs' May, Hynes' Surprise, Waterloo are identical with, or resemble Alexander very closely.

**Belle of Georgia.** Very large; white skin, with attractive red cheek; flesh white, firm, excellent; freestone. Same type as Gen. Lee, and a very prolific bearer. Ripens end of June.

**Blood Cling** (*Indian Blood*). Large; dark claret, deep red veins; flesh deep red, very juicy, good. Middle to last of August.

**Carman.** New. Large, resembling Elberta in shape; skin tough, creamy white with deep blush; flesh tender, very juicy, fine flavor. Middle of June.

**Chinese Cling.** Very large; yellowish white, mottled with carmine; flesh white, red at the pit, melting, juicy, rich. End of July.

**Champion.** Recent. Very large, often measuring ten inches in circumference; creamy white, with red cheek; sweet, rich and juicy. July 15.

**Crosby.** Medium; light golden yellow, quite downy; flesh yellow, firm, good; freestone. Middle to last of July.

**Captain Ede.** Recent. Originated in southern Illinois and highly regarded by orchardists. Very large; yellow; fine quality. A good shipper. Ripens ten days earlier than Elberta.

**Crawford's Early.** Very large; yellow with red cheek; flesh yellow, sweet, rich, luscious. One of the best early yellow Peaches, and very productive. July 1 to 15.

**Crawford's Late.** Usually larger than Crawford's Early, of similar quality and appearance; two weeks later.

**Early Belle.** New. A cross between the Belle of Georgia and Early Tillotson, originated at Fort Valley, Ga. Retains the size and shipping qualities of "The Belle," and ripens five days earlier than Early Tillotson. Has the deep red color of the Tillotson, and is fully the equal of both parents in flesh and flavor. A valuable addition to Peach varieties.

**Early Rivers.** Large; very thin, greenish white skin; white flesh, juicy, with delicate subacid flavor; freestone. June 10 to 15.

---

A Montgomery, Alabama, customer writes under date of May 20, last year: "I sold Sneed Peaches this week for 50 cents per dozen—wish I had more trees."

## PEACHES. continued

**Early Tillotson.** Medium; white, partially hidden with attractive red; excellent flavor; freestone. A valued market sort; fine shipper. Ripens about June 20.

**Emma.** New. Large; yellow, with brightly reddened cheek; yellow flesh, juicy, firm, of excellent quality. One of the best for market. Ripens last of July.

**Elberta.** Standard of excellence. Its exceptional flavor and shipping qualities have made it known the country over. Thousands of trees are in bearing in the large Peach-growing centers, some orchards containing as many as 75,000 of this variety alone. Large; yellow, slightly overspread with red, red cheek; flesh yellow, rich, juicy, melting, fine; freestone. Middle of July.

**Everbearing.** New, and a novelty—tried and good. One of the most desirable for the family garden. Begins to ripen about the 1st of July, bearing continually until into September. Medium to large; skin creamy white, streaked and mottled with reddish purple; flesh white, veined with red just under the skin; very juicy, rich, finely flavored; freestone. 25 cents each, \$2 for 10.

**Fleitas, or Yellow St. John.** Large; yellow, with red cheek; flesh yellow, sweet and juicy; freestone. Ripens with Early Tillotson but lasts longer.

**Foster.** A large yellow Peach, much like Crawford's Early, but somewhat earlier; red, very deep in the sun; flesh yellow; freestone.

**General Lee.** Medium in size; flesh finely grained, melting, very juicy; clingstone. A seedling of Chinese Cling and an improvement on the parent, both in quality and habit of growth. Ripens July 1 to 10.

**Globe.** Large; rich golden yellow, with blush; flesh yellow, rich, excellent quality; freestone. Fine shipper. About July 20.

**Greensboro.** Largest and most beautifully colored of all the early sorts. Considerably larger than Alexander; ripens at same time. Bright red over yellow; flesh white, juicy, good.

**Hale's Early.** Excellent for home use, too tender for shipping. Above medium in size; red cheek over white ground; flesh white, melting, good; freestone. Ripens June 5 to 10, lasting two weeks.

**Heath Cling.** Very large; creamy white; flesh white, juicy, vinous, rich. September.

**Japan Blood Dwarf.** Good size; quality fair to good; flesh deep red, juicy; compact, dwarf habit of growth. Ripens about with Alexander. Freestone.

**Lady Ingold.** Very similar to Crawford's Early, somewhat better quality, and ripens a few days earlier. Freestone.

**Levy's Late (Henrietta).** Very large; yellow, with deep crimson colorings; productive. Clingstone. September.

**Lemon Cling.** Large, resembling a lemon in shape; golden yellow skin, slightly tinged with red; flesh yellow, just reddening at the stone, rich, subacid. Middle to end of August.

**Lemon Free.** Like the cling, except that it is a freestone, and a little earlier.

**Matthews' Beauty.** New. Large; yellow skin, beautifully colored with red; excellent quality. A showy and superior shipper. Three weeks later than Elberta.

**Mountain Rose.** Large; white ground, well covered with carmine; flesh white, tinged with pink; juicy, vinous, well flavored; freestone. Of value in market. June 25.

**Oldmixon Cling.** Large; oblong; white, with bright red coloring; good flavor, juicy. Ripens about July 25.

**Oldmixon Free.** Like the cling, but is later and a perfect freestone.

**Picquet's Late.** Very large; red, over a ground of yellow; flesh yellow, rich, sweet, highly flavored; freestone. August 25 to September 10.

**Sneed.** The earliest. Originated near Memphis, Tenn., supposedly a seedling of Chinese Cling. Excellent shipper, ripens perfectly to the seed. Earlier than Alexan-

---

A card from one of our customers in Houston, Texas, January 8, last, says: "Your Sneed Peach is all right for Texas. I have nothing else. I began marketing from TWO-YEAR-OLD TREES last year on May 14, and they were fine."

## PEACHES, continued

der by ten days. The first Georgia shipments are always Sneeds. This year, a late season, the first shipment left Georgia May 23—they were Sneeds.

**Stonewall Jackson.** Very similar to Gen. Lee in size and quality; about one week later.

**Susquehanna.** Large; yellow, with red cheek; flesh yellow, rich, juicy, fine flavor. Fine for canning. Ripens last of July.

**Stump the World.** Very large, white, with bright crimson cheek; flesh white, juicy, well flavored; freestone. An excellent market sort. August 1 to 10.

**Stinson's October.** Large; white, with red cheek; flesh white and of good flavor; clingstone. The last to bear and one of the very best late Peaches. Middle of October.

**Thurber.** Large; white, with crimson cheek; flesh very juicy, vinous, with a delicate aroma. A seedling of Chinese Cling,

but a freestone, resembling the parent in size and beauty. Middle to last of July.

**Triumph.** Recent. An early, yellow-fleshed freestone (when fully ripe) Peach. Medium to large; skin orange-yellow, well covered with a rich carmine; flesh juicy, melting, slightly subacid; good quality. Ripens with Alexander. Of particular value as a shipper because, aside from its carrying well, its yellow color, well marked with carmine, and very attractive appearance, make it well received in market among the early Peaches.

**Wager.** Large; yellow-fleshed, of fine flavor; a valuable variety for canning. Ripens last of July.

**Wheatland.** Large; golden yellow with crimson coloring in the sun; flesh yellow, firm, juicy, sweet, excellent; freestone. Ripens about July 10.

**Wonderful.** Very large; yellow flesh, firm, good; good shipper for late market; freestone. End of August.

## CHERRIES

**T**HE Duke and Morello varieties are well adapted to northern Mississippi, Alabama, Georgia, the western Carolinas, Kentucky and Tennessee; farther South they are a failure. In the territory mentioned they are very profitable, almost always bearing a full crop and finding ready sale. The Hearts and Bigarreus are very uncertain, and we do not recommend them. All varieties ripen here during May into the middle of June.

Prices, first-class, well-branched, thrifty trees, 4 to 5 feet, 25 cents each, \$2 for 10, \$15 per 100; special quotations on larger quantities

## HEARTS AND BIGARREAUS

**Black Eagle.** Large; black; tender, rich, and juicy.

**Black Tartarian.** Very large; purplish black; pleasant flavor.

**Governor Wood.** Good size; clear, light red; tender and fine.

**Napoleon.** Very large; light yellow, with a bright red cheek; firm, juicy, sweet.

**Windsor.** Large; liver-colored; flesh firm; quality fine.

**Yellow Spanish.** Large; pale yellow, with bright red cheek; excellent.

---

A sample of Governor Wood Cherry was sent us May 30 from Mission Ridge, near Chattanooga, that was very fine. Color high, large size. Very handsome.



## DUKE AND MORELLO CHERRIES

**Early Richmond.** Medium; early; light red; acid; excellent for cooking purposes.

**Empress Eugenie.** Large; dark red; juicy, rich.

**Late Duke.** Large; light red; late; fine quality.

**May Duke.** Large; dark red; juicy, subacid, rich.

**Large Montmorency.** Large; red; fine flavor.

**English Morello.** Large; blackish red; tender, juicy, acid, rich.

**Olivet.** Large; deep, shiny red; tender, rich, subacid; excellent flavor.

**Reine Hortense.** Large; bright red; tender, juicy, almost sweet.

## QUINCES

Thrive best in a deep, rich soil, with clean, high cultivation. Well-attended spraying will produce a crop surprising for size, cleanness and beauty. Plant 12 feet apart each way.

Price, trees 3 to 4 feet, 25 cents each, \$2 for 10

**Champion.** Fruit averages larger than the Orange, more oval in shape, equally fine in quality, and a late keeper. Ripens late.

**Meech's Prolific.** Large; orange-yellow, beautiful and fragrant. Unsurpassed for cooking qualities.

**Orange (Apple).** Fruit large; bright yellow; of excellent flavor. One of the old standard sorts, and retains its popularity.

**Rea's Mammoth.** A seedling of Orange, averaging considerably larger, of the same form and color.

## APRICOTS

This fruit is so uncertain, generally, throughout the South that we do not recommend planting, unless it might be with a knowledge of what it is liable to do and with a hope that a tree or two will occasionally produce some of its most excellent fruit. Where protected by buildings the trees may occasionally give a crop. This season some trees planted in this section fruited fairly. Delicious when they do come. We grow many for Northern and Western planting, and so are able to offer the following varieties.

Price, 25 cents each, \$2 for 10

### VARIETIES

Alexander,  
Alexis,  
Budd,

Early Golden,  
Gibb,  
Harris,

Moorpark,  
Peach,  
Superb.

We price only ONE GRADE OF TREES—the very BEST. In orchard-planting, where you are handling trees in hundred or thousand lots, we recommend the planting of a medium or light grade, especially of Peach. If you are planning on a heavy planting, advise us as to about the quantity of stock wanted, and we will figure special prices on the light grades.

The advice of the old Scotchman to his son was sound—"Keep planting a tree, Jock; 'twill grow while you are sleeping."

## JAPAN PERSIMMONS

**D**ECIDEDLY successful and perfectly hardy throughout the Southern states. Not to be compared with the Native, or "Coon 'Simmons;" the Native suffers by comparison every time. The fruit of the Japan Persimmon is from three to five times as large and of higher quality. The trees bear remarkably early, usually producing a full crop the second or third year. Do not allow them to overbear; thin the fruit, leaving only such quantity as the tree can readily mature without injury to itself.

Fruit commences to color when hardly half grown, but should hang on the tree until just before a frost strikes, to be house-ripened and kept long at their best. A touch of frost improves the quality, but prevents keeping more than a few days afterward.

We offer only the cream of the varieties, only those that are thoroughly tested and known to be the best.

Price, 30 cents each, \$2.50 for 10

**Hyakume.** Large; yellow skin; dark brown flesh, sweet, crisp, and delicious; not astringent, good while still rather hard. Fine.

**Okame.** Large; skin orange-yellow, changing to brilliant carmine, with delicate bloom and waxy, semi-transparent appearance; light clear flesh when ripe, light brown center around seed, of which it has several; loses astringency as soon as it begins to ripen; fine quality; strong bearer. The most beautiful of them all.

**Tane-Nashi.** Very large; skin bright red when fully matured; flesh yellow, seedless; quality very fine; perhaps the most highly esteemed of the light-fleshed kinds. Tree is vigorous and bears well.

**Yemon.** Large; flat, tomato-shaped; skin light yellow, changing to dull red, mottled with orange-yellow; distinct coloring; flesh deep, dull red, brown around the seeds; no astringency after fruit begins to soften; quality excellent and sweet, and is edible while solid, but improves as it becomes soft.

## MULBERRIES

Every farmer should plant Mulberry trees where the hogs and poultry can have access to them. As the fruit matures and falls to the ground new fruit seems to take its place; in the tree there is half-formed green and ripe fruit at the same time. Producing season lasts three or four months. We consider Hicks' the most valuable and best.

Prices, trees 5 to 7 feet, 25 cents each, \$2 for 10, \$15 per 100

**Downing.** Large; blue-black; juicy, sub-acid. Large of leaf, distinct from other varieties.

**Hicks' Everbearing.** Exceedingly prolific;

fruit sweet, insipid. Valuable and fine as feed for the hogs or hens.

**New American.** Equal to Downing in all respects. Very productive.

---

Stephen Girard said, "If I thought I was going to die tomorrow, I should plant a tree, nevertheless, today."

## FIGS

Fig-culture is most successful in the southern end of Louisiana, Alabama, Mississippi, Georgia, and all of Florida, although plantings as far North as Huntsville have brought good results. They do not require extreme cultivation, and all cultivation should be shallow, for the roots run near the surface.

Price, 20 cts. each, \$1.75 for 10;

**Brown Turkey.** Medium size; brown; very sweet; very prolific and hardy. Is reliable farther north than most of the other sorts.

**Blue Genoa.** Medium size; bluish black. Sweet and tender.

**Celestial.** Medium to small; pale violet, with delicate bloom; sweet, excellent quality. For all round use the best and the hardiest.

**Lemon.** Medium to large; yellow; sweet. A profuse and early bearer; very desirable.

## NUT TREES

### ALMONDS

Extremely unreliable north of Florida. We grow a few of the fine soft-shelled sorts for a small demand.

Price, 25 cts. each, \$2 for 10

### CHESTNUTS

Price, 25 cts. each, \$2 for 10; 5 to 7 feet, 40 cts. each, \$3.50 for 10

**American Sweet.** The well-known variety of the forest; sweet; good. While the nuts are small they are of the finest quality and very tender.

**Spanish.** Nuts very large; not as sweet as the American, but a better seller, because of its size. Bears very young. Strong, rapid grower. Valuable for shade.

### WALNUTS

Price, 25 cts. each, \$2 for 10

**Black.** Planted particularly for its possibilities in timber, though the nuts are of good value and "help out" while the trees are making the timber growth.

**English.** The Madeira nut of commerce. Many large orchards of these trees have been

planted in the South, with exceptionally good results.

**Japan.** Nuts are borne in clusters; bears very young and is very productive. A fine appearing tree, valuable as an ornamental. Easily transplanted, easy to grow; very hardy.

---

We do not aim to be the lowest-priced house in the country, but we do aim to give our customers the best stock possible to produce—none better at any price—and our prices are as low as this grade of stock can be sent out for by any reputable firm.

## PECANS

Throughout all the Southern states there has been great interest manifested in the planting of this nut for several years. Pecan culture is profitable, the nuts find a ready market, and the established trees are great annual yielders. Trees commence bearing at six to eight years old; two to four bushels of good, commercial nuts are often produced from a tree of ten years; the annual crop of a tree in full bearing will run from five to twenty bushels. Takes a little longer time of waiting for them to get "up to their mark" than it does with a fruit tree, but the returns make it well worth while.

Many persons have an idea that the **tap-root** of a Pecan should be left whole, thinking the cutting of tap-root on a small tree injures its bearing qualities or tends to shorten its life. We quote from Mr. Geo. Tyng, of Texas: "Much stress has been laid upon the tap-root in transplanting young Pecan trees, and to avoid injury to that precious root. All nut seedlings make, the first year, a tap-root three to five or six times as long as the sprout. A smooth cutting of this root **does not** injure young trees, **but does** induce the multiplying of other roots."

Our trees are grown from extra, selected, large-sized, thin-shelled nuts, and are sold at two years old from the seed. We dig about 15 inches of tap-root and, before planting, the root should be cut back to about 12 inches, making a smooth cut with a sharp knife. Dig a hole 2 feet deep and 2 feet across; fill in the bottom with rich top soil or soil mixed with old stable manure (with care to keep the manure from contact with the root); plant the tree in the center, no deeper than it stood in the nursery row, and press the earth firmly about the root. To secure the best results, manure, care and cultivation must be bestowed on the trees. Plant not less than 40 feet apart; on strong soil, a distance of 60 feet would be better.

We strongly recommend planting trees not over 2 to 3 feet in height.

**Prices, trees 1 to 2 feet, 20 cts. each, \$2 for 10, \$15 per 100; 2 to 3 feet, 25 cts. each, \$2.25 for 10, \$20 per 100**

---

**JUST HOW TO PLANT.**—See first page for full, though concise instructions, which, if carefully noted and followed, will insure success in planting.

We are always glad to add to our mailing list the names of parties who are interested in trees, vines, etc., and will appreciate addresses of such parties. If you are pleased with your purchases from us, mention the fact to your friends.

## BLACKBERRIES

**T**HE improved cultivated Blackberry is of greater size, sweeter, finer flavor, has fewer seeds than the wild sorts, and will produce fruit to perfection and in profusion wherever the wild ones are found. The earlier sorts ripen within a week of the end of strawberry season, and the other varieties give a long season by maturing at intervals for six weeks or more.

The new canes, which grow in May and June, grow the fruit of next summer. In July cut the tops of new canes to about 3 feet, so they will thicken up and prepare for the crop to be borne next season. In the late fall cut out the old canes that fruited the past season. Plant in rows 4 feet apart and 3 feet apart in the row.

Prices, 25 cents for 10, \$1.50 per 100

**Early Harvest.** The earliest; medium size; very firm; productive. About May 25.

**Erie.** Large, early berry of good quality. Hardy and productive.

**Kittatinny.** An old and popular variety; large; handsome, and of the best quality. Ripe as soon as black.

**Rathbun.** A new variety of great promise; extra large, jet-black berry, of excellent quality. Makes few suckers and propagates mostly from the tips.

**Snyder.** Medium in size; very sweet; a great producer. Particularly valuable for northern growing, as it does not winter-kill.

## DEWBERRIES

Low-growing, trailing Blackberries

**Austin's Improved.** A variety from Texas having great merit. Large; glossy black; sweet and melting; fine quality; an early, heavy bearer. 50 cents for 10, \$2 per 100.

**Lucretia.** Large, tender, juicy and luscious; a profuse bearer; ripens before the earliest Blackberries, and continues for three weeks. 25 cents for 10, \$1.50 per 100.

## RASPBERRIES

Plant in rows six feet apart, four feet apart in the row. As soon as the crop is harvested cut out all the canes that bore fruit, and cut back the new canes to about two feet, so they may branch and become self-supporting ready for the next season's crop.

Prices, 50 cents for 10, \$2 per 100

**Cuthbert.** Red. One of the best and most reliable of Red Raspberries for the South. Large; excellent quality and very prolific. Ripens here end of May and continues several weeks.

**Gregg.** Black. The standard "Black

Cap" for market and garden. Berries good size; firm; fine flavor; very productive.

**Golden Queen.** Yellow. Large; beautiful golden yellow; a seedling of the Cuthbert, and has many of the parent characteristics. A good berry.

---

This year we marketed Lucretia June 5, just at the close of the strawberry season, when the market was bare of berries. The demand was great—10 cents per quart being realized for our entire crop.

## CURRENTS AND GOOSEBERRIES

From our own experience and through reports from various sections of the South, we do not recommend the planting of either. They are not successful. However, if they are wanted, we can supply them.

Price, 15 cents each, \$1 for 10

### CURRENTS

Cherry. Red.  
Fay's Prolific. Red.  
White Grape. White.

### GOOSEBERRIES

Downing. Pale green.  
Houghton. Pale red.  
Industry. Dark red.

## RHUBARB (Pie Plant)

Our long, hot summers are too much for this excellent material for pie or sauce. From the mountains of Tennessee and North Carolina we have had reports that occasionally it develops properly, making good, strong growth. Outside these sections we do not recommend it for general planting.

We can supply roots at 50 cents for 10

## ASPARAGUS

One of the very best things for the garden and one of the easiest plants to grow. Every garden in the South should include a bed or a few rows of Asparagus. The cost is almost nothing, and one planting will give you a supply of this very desirable plant for years after. Best grown in rows 5 feet apart and 1 foot apart in the row. Open the rows deep and wide, about ten inches deep, to allow enriching if soil is poor. Fill in 4 inches of rich top soil, if mixed with **well-rotted stable manure** (one-third manure, two-thirds soil), so much the better. Firm the roots into the soil and cover 2 inches, leaving the other 4 inches of open furrow to be filled in by summer cultivation. The crowns we send out are two years old and will give some good plants for cutting the first year. **Do not cut this first growth**, however. Let it stand until frost, then cut all stalks even with the ground, rake off the bed and spread a mulching of **well-rotted manure** all over it to a depth of 2 inches. The winter rains will carry this mulching down into the soil where it will do the most good. The second year your Asparagus bed will be a pleasure to you, and with but little attention thereafter—keeping it free from weeds and giving it a mulching every third year is all it will require—will produce heavily for years.

Prices, 40 cents for 10 Crowns; \$2 for 100 Crowns; \$6 for 1,000 Crowns

VARIETIES.—Columbian Mammoth White, Conover's Colossal.

---

The collections on page 32 are especially adapted to town and city lots, do not require a great space, but are arranged to give the buyer the best returns from the space used.

## STRAWBERRIES

**A** LITTLE "patch" of this luscious small fruit will furnish a table with a delightful dish for many days, and at an early time in the season when one's appetite refuses to relish the long winter diet of canned fruits. Small space, a few moments' care now and then, and many meals rounded out with the excellently flavored fruit.

The Strawberry will succeed in any soil that is adapted to ordinary farm or garden crops. Prepare the soil thoroughly to a good depth. For home use plant in beds, if crowded for space, setting the plants 20 inches apart each way, leaving 30 inches between every third row. Keep the weeds out and let the runners root until the bed is evenly set with plants 6 inches apart, then allow no more to set. In the early spring stir the ground about the plants slightly with a fork, and mulch with fine straw or hay to protect the berries from the ground and keep them free from grit. After the season is ended cultivate with hoe, cutting out the surplus runners to transplant into a new bed. For field culture plant in rows 3 feet apart and 12 inches apart in the row.

The varieties designed "Imperfect" are pistillate or destitute of stamens, and must be planted near the "Perfect" or staminate varieties, so their flowers may be fertilized. This fact must be noted when ordering. In field growing every third row should be of "Perfect" varieties. Our list includes only standard, tested varieties, which we know are successful.

Prices, 50 cents per 100, \$4 per 1,000

**Bubach.** Imperfect. Large to very large; handsome, bright red; moderately firm; good to very good; early.

**Clyde.** Perfect. Large, conical; light scarlet; firm; good quality, enormously productive.

**Crescent.** Imperfect. Medium; bright red; good flavor. An abundant producer when planted near "perfect" varieties.

**Excelsior.** Perfect. New. Bright red; excellent quality, fine rich flavor; not as large as Lady Thompson but earlier. Bears profusely. One of the most promising varieties.

**Gandy.** Perfect. One of the best flavored of late varieties; large and firm; bright crimson; very uniform in size and shape.

**Haverland.** Imperfect. Large; long and handsome; very productive. Fair quality.

**Hoffman.** Perfect. Early; very dark red; firm; a heavy yielder; good flavor. A valuable market sort of fine appearance.

**Jessie.** Perfect. Early, ripening just after Hoffman; medium in size; a great producer.

**Lady Thompson.** Perfect. Large, round; light scarlet; firm; sweet and of best quality; early; bears well.

**Sharpless.** Perfect. Large to very large; of irregular shape; deep red; sweet and fine flavor; excellent bearer.

**Tennessee Prolific.** Perfect. Medium to large, flattened; bright red; fine flavor; productive.

**Warfield.** Imperfect. Medium; very dark red; firm and solid through and through. An excellent berry of delicious flavor.

---

The Chattanooga Strawberry growers consider Lady Thompson one of the very best money-makers. The Excelsior is well liked where it has been fruited in the South. Reports from Grand Junction, Tenn., are very favorable to it. At that point in '99 Lady Thompson and Clyde gave best results in a very dry season.

## GRAPES

**G**RAPES require a dry, mellow, well-drained soil, deeply worked and enriched. In planting give the roots ample room; spread them out just deeper than they stood in the nursery row, and press the soil firmly around them. Plant 8 to 10 feet apart, except Scuppernong and Thomas, which should be planted 20 to 30 feet apart. For vineyard make rows 8 feet apart.

**Prices, except where noted specially, 2-year-old vines, 15 cents each, \$1.25 for 10; 10 best varieties, our selection, \$7.50 per 100. Where 100 vines or more of one variety are wanted, write for special prices**

**Agawam** (*Rogers' No. 15*). Large; dark red; flesh tender and juicy; vine a good grower, bears well.

**Brighton**. Medium bunch; large berry; thin skin, coppery red like Catawba, which it resembles very much; quality excellent; an early, good bearer.

**Concord**. Large bunch; large berry; blue-black, with thin bloom; flesh sweet, pulpy, tender; good quality. One of the most popular market grapes.

**Catawba**. Large bunch; berry above medium; coppery red; rich, juicy, vinous; slightly musky. An excellent wine Grape.

**Delaware**. The standard of Grape excellence. Bunch small to medium; berries below medium; thin but tenacious skin, light red, covered with thin, whitish bloom; sweet, tender, juicy, rich, refreshing. See note below as to its needs.

**Ives' Seedling**. Bunch medium to large; berry medium, slightly oblong; dark purple, turning quite black when fully ripe; flesh sweet and juicy when ripe, but decidedly foxy and rather pulpy. A very desirable wine Grape.

**Martha**. A white seedling of the Concord. Bunch medium; berry medium; round; greenish white when fully ripe, pale yellow covered with white bloom; thin skin; flesh tender and remarkably sweet. Very productive. Ripens before Concord.

**Moore's Diamond**. The best white Grape for home use, but not as good shipper as

Niagara because of its thin skin. Bunch large, handsome; berry full medium size; a delicate greenish white, with amber tinge when fully ripe; flesh tender, juicy, sweet, refreshing. Ripens about a week before Concord.

**Moore's Early**. An early Concord. Resembles the parent in all but bearing—two weeks earlier. A desirable Grape.

**Niagara**. The leading white market Grape. Bunch medium to large; berry large, roundish; skin thin, but tough; pale green at first, changing to pale yellow with whitish bloom when fully ripe; flesh soft, tender, sweet and pleasant. Ripens about with Concord.

**Norton's Virginia**. The leading red wine Grape of the country. Bunch long, compact; berry small, black, with dark, bluish red juice; almost without pulp when fully ripe; sweet and brisk. Too many seeds for a table Grape.

**Perkins**. A very early market Grape. Bunch medium to large; berry medium; greenish white at first, of a fine pale lilac or reddish color, with a thin white bloom when fully ripe; flesh rather pulpy, sweet, juicy, with a strong fox or musk flavor. Not excellent as a keeper, but a regular and prolific bearer. Ripens before Delaware.

**Salem**. Bunch full medium to large; berry large; dark chestnut-colored; flesh tolerably sweet and tender; quality of the best. Ripens about with Concord.

---

The Delaware requires more fertilizer and more pruning than other grapes. In the opinion of our state Entomologist, Prof. Earle, it is one of the best grapes for planting in the general South.



## G R A P E S , continued

**Scuppernong.** Muscadine type. Bunch or cluster usually consists of four to six large, thick-skinned, pulpy berries; color yellowish, somewhat bronzed when fully ripe; pulp sweet, juicy, viuous, with a musky scent and flavor. A native Southern Grape. The Grape par excellence for Southern growing. The vine is free from diseases and insects, and the fruit never decays before maturity. Ripens during August and September.

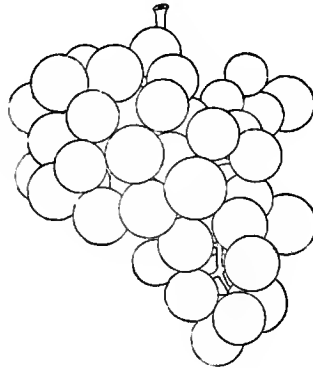
**Thomas.** Of same type as Scuppernong. Bunch, from six to ten large, slightly oblong berries, of a slight violet color, quite transparent; pulp tender, sweet, of a peculiar, delicate vinous flavor. Ripening about with Scuppernong.

**Worden.** A seedling of Concord. In character and appearance like its parent, only a few days earlier, and in quality quite distinct, having a peculiar, superior flavor.

---

We are always glad to answer questions. May not be able to do so intelligently in all cases—we do not “know it all,” by any means—but will do our best to help you over any perplexing point. Command us at any time.

Our Nurseries are free from Scale, Peach Yellows, or diseases of any kind. See Entomologist's certificate on back cover.



## ORNAMENTAL TREES

**B**YOND question, nursery-grown shade trees are much superior to forest trees. They have more and finer roots, having been transplanted at least once, some varieties two or three times, in the nursery. The same-sized tree grown in the forest, never having been transplanted, will have but one or two coarse, woody roots, and is slower to start growth when transplanted to a lawn or garden. It must make its fibers, or feeders, after transplanting.

**We pack only well-shaped, strongly-rooted Ornamentals. Average height, varying with different varieties, is about 7 feet, unless otherwise noted**

**ASH, European Mountain.** Not desirable for shade. Even, upright growth; foliage cut. Produces bright red berries, which grow in clusters and hang on from July to December. 50 cents each.

**American White.** Rapid in growth; late to start in spring, but holds its foliage late into the fall. One of the best shade trees. Successful throughout the South. 50 cents each.

**European White.** This is one of the very best shade trees for the South. A perfect grower, dense shade, fine shape. Grows through the hot summers without a blemish; foliage holds its rich, dark green beauty until the frosts interfere. We think so highly of it that we have increased our planting each year for the past four years, and now have a fine stock to offer. Specimen trees on our grounds five years planted are now 4 inches in diameter, with a fine spread of branches. One of the best. 50 cts. each.

**ELM, English.** Erect, lofty, rapid, compact growth; small, regularly cut leaf, bright green. A valuable and attractive tree. 50 cts. each.

**EUONYMUS (*Strawberry Tree*).** A very ornamental, showy, small tree, its chief beauty consisting of its brilliant, rose-colored berries, which hang in clusters from the branches till midwinter, or later. 50 cents each.

**LINDEN, American (*Basswood*).** A beautiful, rapid-growing tree of large size; very large leaves and fragrant flowers. The bloom furnishes food for honeybees from which an excellent, delicately

flavored honey is obtained. 50 cents each.

**European.** A fine, pyramidal tree of large growth; large leaf and fragrant bloom. 50 cents each.

**MAGNOLIA acuminata (*Cucumber Tree*).** Pyramidal growth; makes a large tree; long, bluish green leaves; bearing a yellow, purplish tinted flower. 50 cents each.

**fuscata.** See shrubs.

**grandiflora.** Its beautiful, large, pure white flower and thick, glossy green leaf are known throughout Dixie. Extra fine, twice-transplanted trees. 3 to 4 feet, 50 cents each, \$4 for 10; 4 to 5 feet, 75 cents each, \$6 for 10.

**tripetala.** A native tree of medium size, with immense leaves and producing large, white, fragrant flowers 4 to 6 inches in diameter. 50 cents each.

**MAPLE, Norway.** From Europe. Very popular on account of its clean, large leaf of deep, rich green; stout, vigorous growth. A beautiful tree, and makes a dense shade. 50 cents each.

**Rock, or Sugar.** A native tree, well known, its fine, clean, pyramidal growth and rich, bright green foliage make it very desirable. Valuable for its wood as well as its sugar-production. One of the finest shade trees. 50 cents each.

**Sycamore.** European origin. A handsome tree, making rapid, upright growth; large, dark green leaf. Hardly satisfactory in South because of long term of warmth. 50 cts. each.

## ORNAMENTAL TREES, continued

**MAPLE, Silver.** A native variety. Is the most rapid growing of the Maples, a habit which, combined with size, form, grace and beauty, gives it great value. The foliage is light green, with silvery white reverse. It is a very graceful tree, hardy, and is valuable for street planting, or in locations where a rapid spreading tree is needed. Specimen trees set out here on our grounds 8 years ago are 25 feet high and measure 6 to 7 inches in diameter at the butt. We have an exceptionally fine stock of these trees,



Weir's Cut-Leaf Maple

trim, straight, clean-bodied, which we offer in several sizes to fit the need. 5 to 7 ft., 35 cts. each, \$3 for 10; 6 to 8 ft., 50 cts. each, \$4.50 for 10; 8 to 10 ft., 75 cts. each, \$7 for 10.

**Weir's Cut-Leaf.** A variety of the silver. One of the most remarkable and beautiful of trees, with lance-cut leaves, about as rapid of growth as the Silver, with new shoots slender and drooping, giving

it a wonderfully graceful appearance. An abundance of the slender-lobed leaves, set on stalks tinted with red on the upper side, gives a rich light green ground in which an occasional dash of red is seen, making the whole decidedly attractive. We are enabled to offer this variety in the same sizes and at the same prices named on the Silver Maple. 5 to 7 ft., 35 cts. each, \$3 for 10; 6 to 8 ft., 50 cts. each, \$4.50 for 10; 8 to 10 ft., 75 cts. each, \$7 for 10.

**POPLAR, Carolina.** The most rapid grower of them all. Makes good shade in three years. Foliage a beautiful, glossy green. Valuable for street or lawn; also excellent for screen or wind-break. 50 cts. each.

**Lombardy.** A well-known variety, remarkable for its tall spire-like form, and erect, rapid growth. Grows to height of 100 to 150 feet. 50 cts. each.

**Tulip.** Like all the family, a rapid grower. Broad, light green leaf gives it a very attractive appearance, which is enhanced during the early spring by its variegated orange and yellow flowers. 50 cts. each.

**PRUNUS PISSARDI** (*Purple-Leaved Plum*). A distinct and desirable ornamental. Dwarf habit, well shaped, an attractive sight on any lawn. Foliage a dark purple, and unlike most of the purple-leaved trees, it is easily grown in the South. Holds its color during the entire season. 4 to 5 ft., 40 cts. each.

**Triloba** (*Double-Flowering Plum*). Flowers semi-double, delicate pink, closely set along the slender branches. Blooms in the early spring. Very desirable and very attractive. 3 to 4 ft., 25 cts. each.

**PEACH, Double-Flowering.** Red and White. Flowers very double and produced in great profusion. Blooms very early. 25 cts. each.

**RED BUD, or JUDAS TREE.** Medium in growth and size; very ornamental; with deep, glossy green, heart-shaped leaves. Before the leaves appear the tree is hidden in a wealth of delicate pink flowers, from which fact is derived the name, Red Bud. 50 cts. each.

## ORNAMENTAL TREES. continued

**SWEET GUM, or LIQUIDAMBAR.** A native tree, medium in size, moderate in growth. Beautiful glossy green leaf, somewhat resembling the maple leaf in shape, which turns to a deep purplish crimson in the fall. One of the most satisfactory trees to grow, and its rich crimson autumn dress makes it a beautiful sight. 50 cents each.

**SALISBURIA, or MAIDENHAIR.** Japanese origin. Medium in size, rapid of growth, with beautiful fern-like foliage, shaped somewhat like a Maidenhair fern. 50 cents each.

**UMBRELLA.** China. A rapid-growing umbrella-shaped tree of beautiful proportions. Perfectly hardy throughout the South. It is not a very long-lived tree, but while growing is a splendid sight, and gives most grateful shade even the first year. 25 cents each.

**WILLOW, Babylonica** (*Common Weeping Willow*). Of Asiatic origin. Too well

known to require extended description. Much used for cemetery planting. 25 cents each.



Texas Umbrella Tree.

## EVERGREENS

**ARBOR-VITÆ, American.** Sometimes known as White Cedar. Excellent for hedges; makes rapid, dense growth. Specimens 3 to 4 feet, 50 cents each, \$4 for 10; 30 to 36 inches, 40 cents each, \$3.50 for 10; 24 to 30 inches, 30 cents each, \$2.50 for 10; 18 to 24 inches, 20 cents each, \$1.50 for 10.

**Columbian.** Same characteristics of growth. Branches beautifully tipped with silver. Specimens 18 to 24 inches, 50 cents each, \$4 for 10.

**Chinese.** Arbor-vitæ characteristics; rich, deep green. Specimens 18 to 24 inches, 35 cents each, \$3 for 10.

**Chinese Golden.** Interior ground a rich green, shading outward toward the tips to a beautiful golden green. Specimens 18 to 24 inches, 50 cents each, \$4 for 10.

**Evergolden** (*Semper aurescens*). Exquisitely gold-tipped branches. Specimens 18 to 24 inches, 50 cents each, \$4 for 10.

**Hoveyii** (*Hovey's Golden*). Small, globular in form; foliage compact, light green, tinged with yellow. Specimens 18 to 24 inches, 35 cents each, \$3 for 10.

**Lobbii Semper Aurea** (*Lobb's Evergolden*). A rich golden at the tips. Specimens 18 to 24 inches, 35 cents each, \$3 for 10.

**Pyramidalis.** A superb, hardy sort of very compact habit, growing in a perfect column; rare and beautiful. Largely planted in cemeteries, owing to small space it occupies. Specimens 18 to 24 inches, 50 cents each, \$4 for 10.

**BIOTA ROSEDALE.** A cross between Arbor-vitæ and Retinospora. A beautiful silvery green, rather small and pyramidal in form. It is soft and feathery to the touch, and is very striking and attractive. Retains the same bright, healthy appearance summer and winter, and will prove an ornament wherever planted. Specimens 24 to 30 inches, 75 cts. each; 18 to 24 inches, 50 cts. each.

## EVERGREENS, continued

**CYPRESS, Lawson's.** A rare California Evergreen. Fine, compact, feathery foliage, vivid green, slightly shaded with a silvery tint. Specimens 30 to 36 inches, \$1 each, \$8 for 10; 24 to 30 inches, 75 cents each, \$6.50 for 10; 18 to 24 inches, 50 cents each, \$4 for 10.

**CEDRUS DEODARA** (*Himalayan Cedar*). A fine tree of pyramidal form; foliage glaucous green, feathery; branches with spreading growth. One of the choicest Evergreens. Specimens 30 to 36 inches, \$1 each, \$8 for 10; 24 to 30 inches, 75 cents each, \$6.50 for 10; 18 to 24 inches, 50 cents each, \$4 for 10.

**FIR, Balsam** (*American Silver*). Very regular, symmetrical, conical form; foliage dark green above, silvery beneath. Very desirable. Specimens 18 to 24 inches, 25 cents each.

**JUNIPER, Irish.** Erect, dense, conical growth; a pillar of silvery shaded green. Specimens 3 to 4 feet, 75 cents each, \$7 for 10; 30 to 36 inches, 50 cents each, \$4 for 10; 24 to 30 inches, 40 cents each, \$3.50 for 10; 18 to 24 inches, 30 cents each, \$2.50 for 10.

**RETINISPORA plumosa** (*Plume-Leaved Japan Cypress*). Rapid in growth, with slender branches and exquisite green

foliage. Specimens 18 to 24 inches, 50 cents each, \$4 for 10.

**plumosa aurea.** Like Plumosa, but with a beautiful, golden green foliage. Specimens 18 to 24 inches, 50 cents each, \$4 for 10.

**ericoides** (*Heath-Leaved Japan Cypress*). Compact, slightly oval growth, with silvery green foliage. Specimens 12 to 18 inches, 50 cents each, \$4 for 10.

**SPRUCE, Colorado Blue.** A rare, beautiful tree, with rich blue foliage. Of all the Spruce family the most distinct and striking. A great addition to a lawn. Specimens 18 to 24 inches, \$1 each.

**Hemlock.** Pyramidal growth, with drooping branches and delicate, dark foliage. Beautiful for the lawn, and makes a very ornamental hedge. Specimens 30 to 36 inches, 50 cents each, \$4 for 10; 24 to 30 inches, 35 cents each, \$3 for 10; 18 to 24 inches, 25 cents each, \$2 for 10.

**Norway.** European origin. Lofty and rapid grower, pyramidal in form, with graceful, drooping branches as it gets age. Popular for single specimen or for hedge. Also for planting in masses for shelter. Specimens 30 to 36 inches, 50 cents each, \$4 for 10; 24 to 30 inches, 35 cents each, \$3 for 10; 18 to 24 inches, 25 cents each, \$2 for 10.

## ORNAMENTAL SHRUBS

**ALTHEA** (*Rose of Sharon*). The European Altheas are of late introduction. We believe our collection embraces the choicest varieties. No shrubs are more satisfactory, blooming, as they do, two or three months in the year, and producing large, beautifully shaded flowers in great number. Worthy of a place on every lawn and in every collection of shrubbery. 35 cents each, \$2 for 10.

**amplissima.** Much like Pompon Rouge, not quite as double; petals more quilled, a shade lighter, nearly pink; hardly as vigorous; dwarf.

**ardens.** Double violet, 2½ to 3 inches across; beautiful double flowers, much quilled. Very vigorous in growth.

**Pompon Rouge.** Large; 3½ to 4 inches across flower; light rose color; outer petals broad with cardinal base; inner petals quilled. Distinct and fine.

**Boule de Feu.** Large; 3½ to 4 inches across flower; very double, well formed; light red, petals flecked with cardinal at base; one of the finest reds; vigorous.

**Leopoldi.** 2½ to 3 inches across flower; very double, deep red; vigorous.

**pulcherrima.** Large, 3½ to 4 inches across flower; double white, shaded to pink; outer row of petals broad and show cardinal base; inner petals quilled. The finest in the collection. Strong grower.

**totus albus.** Single; pure white; very attractive.

## ORNAMENTAL SHRUBS, continued

- ALMOND**, Double-Flowering. Red and white. Blooms very early in the spring, before peach-buds begin swelling. 50 cents each, \$3.50 for 10.
- BARBERRY** (*Berberis Thunbergii*). Japanese species, dwarf in habit; small foliage, turning to beautiful coppery red in autumn. 25 cents each, \$2 for 10.
- CALYCANTHUS** (*Sweet Shrub*). Fragrant wood, rich foliage, rare chocolate-colored flower, with a peculiar, agreeable odor. Blooms early and at intervals through the season. 25 cents each, \$2 for 10.
- CITRUS trifoliata** (*Japan Hardy Orange*). See Hedge Plants.
- DEUTZIA gracilis**. Dwarf; introduced from Japan. Pure white flowers; blooming earliest of the Deutzias. Excellent for pot-culture, flowering well in rather low temperature in winter. 25 cents each.
- Pride of Rochester**. Large, double white flower, tinted slightly with rose on under side of petals. Blooms profusely. A distinct improvement on the ordinary Deutzia.
- EXOCHORDA grandiflora** (*Pearl Bush*). Fine, large shrub, producing an abundance of slightly bell-shaped flowers early in the spring. Excellent. One of the finest shrubs to grow. 25 cents each.
- FORSYTHIA viridissima** (*Golden Bell*). Deep green leaves and bark, deep yellow blooms; early. Very attractive. 25 cents each.
- GOLDEN GLOW** (*Rudbeckia*). One of the best hardy plants introduced. Flowers are produced in enormous quantities on long stems. In color they are golden yellow. Attains a height of 4 to 6 feet each season. Roots are not injured by the winter. One of the best Perennials. 15 cents each, 40 cents for 3.
- HONEYSUCKLE** (*Upright*). See also Climbers. 35 cents each.
- Red Tartarian**. Bright flowers, delightful fragrance.
- White Tartarian**. Creamy white, fragrant flowers.
- HYDRANGEA paniculata grandiflora**. Flowers are produced in large, pyramidal-formed bunches; pure white; strong grower; very attractive and showy. Blooms latter part of July and lasts several weeks. No lawn complete without one or more specimens. Extra strong plants, 50 cents each; medium plants, 35 cents each.
- HYPERICUM Moserianum** (*St. John's Wort*). Dwarf habit; produces a profusion of large, single yellow flowers during the summer. 35 cents each.
- petalum**. Fine in flower and foliage; blooms late. 35 cents each.
- LILAC**, Common White and Common Purple. 25 cents each.
- PRIVET**, California. See Hedge Plants.
- SYRINGA** (*Philadelphus*). Vigorous, hardy, handsome shrub, producing a great profusion of beautiful flowers. 25 cts. each.
- coronarius**. Well known; early to bloom; white flowers, highly scented.
- grandiflora**. Very large, showy bloom, slightly fragrant.
- SNOWBALL**, Common. A favorite, well-known shrub, large in size, producing globular clusters of white flowers in early spring. 25 cents each.
- Japan**. Moderate growth; leaves plicated, handsome; globular clusters of pure white flowers. More valuable than the "Common" in many respects; better habit, handsomer foliage, whiter and more delicate flowers. 35 cents each.
- SPIRÆA** (*Meadow Sweet*). Ease of culture, length of blooming season, etc., make these particularly desirable for parks, lawns and drive borders. 25 cents each.
- aurea**. Golden yellow tint on foliage; double white flowers.
- Billardii**. Deep pink flowers in spikes; season of bloom covers a large part of the summer.
- Thunbergii**. Dwarf, of rounded, graceful form. Narrow golden green foliage, with small white flowers. Of the earliest to bloom.
- Van Houttei**. Unquestionably the best of the collection. Graceful in form; early to bloom, covering the plant with a mass of large white flowers. Beautiful.



Hoeing  
plum seedlings  
six weeks  
after planting.

## JACKSON VINE.

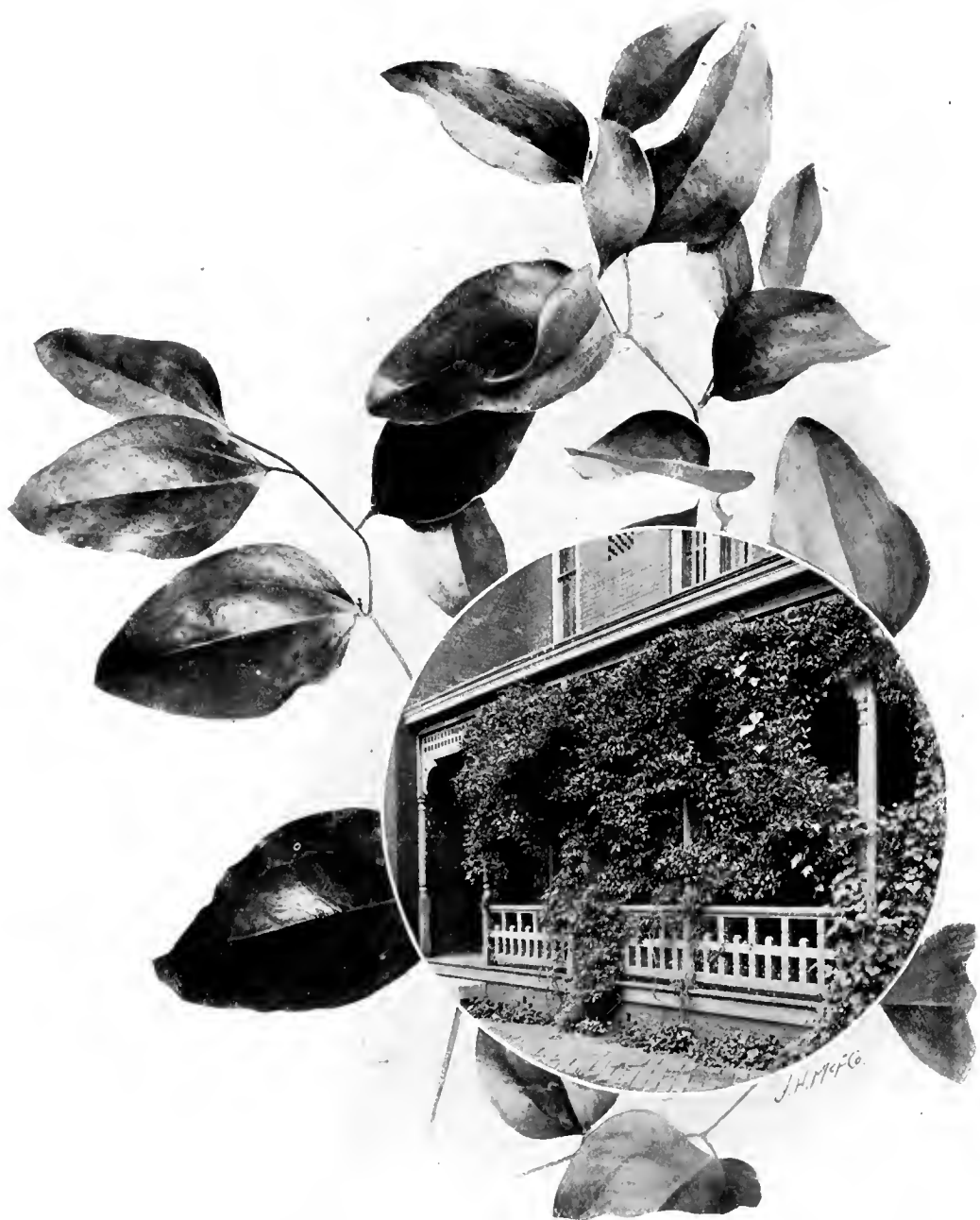
**T**HE PICTURE on the other side shows the detail of the Jackson Vine, and also the handsome appearance it makes when twining its graceful branches over a porch. The leaves in the picture are reduced to about one-half their natural size, and show their smilax characteristics very plainly. It is hard to imagine a more useful porch-covering than this magnificent vine, as its foliage is dense enough to give a grateful shade in summer, and the evergreen qualities cause it to give a delightful touch of color to the home even in the coldest winter.

It is perfectly hardy as far north as Washington, and when fully known, it will supplant almost all other vines used for similar purposes. See page 27 for further description and prices.



Main driveway  
leading into our  
grounds.

**ALABAMA NURSERY  
COMPANY,  
HUNTSVILLE, ALA.**



Our great specialty—Jackson Vine. View of the Dement porch, Huntsville, in circle.



## ORNAMENTAL SHRUBS. continued

**WEIGELA amabilis.** Robust habit; large foliage, pink blossoms; flowers freely in the fall. 25 cents each.

**candida.** Vigorous, erect, making large plants; early blooming, and continues during the summer, producing a profusion of pure white flowers. 25 cts. each.

**WEIGELA rosea.** A beautiful variety, showing an abundance of fine, rose-colored flowers. Considered of the best. 25 cents each.

**variegated.** Foliage rich green, bordered with yellow, changing to white. Deep rose colored flower. 35 cents each.

## ORNAMENTAL CLIMBERS

**AMPELOPSIS Veitchi** (*Boston Ivy*). Small leaves, overlapping to form a solid front of green. Rapid of growth and clings with tenacity. Its beautiful summer green changes, with the autumn, to a rich scarlet-crimson. Attractive and valuable to cover brick or stone walls, masonry, etc. 25 cents each.

**quinquefolia** (*American Ivy*, or *Virginia Creeper*). An old, well-known variety of strong and rapid growth. Leaves turn to a beautiful crimson in the autumn. 25 cents each.

**CLEMATIS Henryii.** Very large, creamy white bloom of fine form. Grows well and blooms quite heavily. 50 cts. each.

**Jackmanni.** Large; rich, velvety violet-purple. Free of growth and bloom. 50 cents each.

**Madam Edward Andre.** Large blossoms of a bright red; rich and velvety. Abundance of growth and bloom. 50 cts. each.

**paniculata.** A new Japanese Clematis, producing single white, star-shaped flowers. Hardy and very desirable. A distinct addition to a collection. 25 cents.

**HONEYSUCKLE** (*Woodbine*). See also Ornamental Shrubs. 25 cents each.

**Hall's Japan.** Almost an evergreen. Pure white bloom, changing to yellow; in flower about three months. Very fragrant.

**Japan Golden.** Foliage distinct; mottled or variegated with bright yellow.

**Chinese Twining.** Holds its foliage a good portion of the winter; fragrant bloom, lasting most of the summer.

**Scarlet Trumpet.** Bright scarlet, trumpet-shaped flower; not fragrant, but decidedly handsome. Strong, free grower.

**Yellow Trumpet.** With yellow trumpet-like flower. Well known.

**WISTARIA, Chinese White and Chinese Purple.** Long, pendulous clusters of pale blue or white flowers in profusion. Very rapid in growth, often making 15 to 25 feet in a single season. 35 cts. each.

## JACKSON VINE

(*Smilax lanceolata*)

Often called Southern Smilax, Bamboo Vine, and Green Nut Vine

## ONE OF OUR SPECIALTIES

We think we are the only firm advertising this very desirable evergreen vine. It has been known for years in and around Huntsville, though not widely known in many sections. When once established it makes a wonderful growth each year. Its habit of growth is peculiar in that it sends up one new shoot from below the surface each spring. The previous year's growth does not suffer during the winter months; the foliage remains a dark, rich, glossy green the year round, and is largely used for decorative purposes, especially in the winter months. It takes some time to establish a plant nicely. Those we send are 3 years old, and by the time they have been planted 2 years they will make a good show and will increase rapidly each year. Many of the old Huntsville homes have beautiful specimens of it. The illustration is from a photograph of the Dement residence, Huntsville. This vine has often furnished decorative green for weddings, fairs, etc., in winter, when material of this kind is almost impossible to get.

For a permanent porch shade plant 6 feet apart. Soil should be enriched with well-rotted stable manure. Plant the hulk or root about 3 inches below the surface, firming it well into the soil. Planting can be done at any time from November to March. Three-year-old vines, 50 cents each, \$2 for 6

## ORNAMENTAL HEDGE PLANTS

**CITRUS trifoliata.** Vigor, bardiness, stout thorns, resisting qualities, and ease with which it may be confined to a small space, make it a particularly desirable Hedge for the Lower South, where it attains its perfection. Whether in leaf or bare of foliage, it is always peculiarly attractive because of the vivid green of the bark. Two-year-old plants, 75 cents for 10, \$6 per 100.

**PRIVET, California.** One of the best Hedge plants known. Does not sucker or fill up with dead wood; grows almost anywhere; makes even, handsome Hedge second year from planting. Excellent for dividing-lines, borders, etc. More of an ornamental than a defensive Hedge. Nearly an evergreen here, new leaves forcing off the old. Dark, glossy green foliage. May be sheared at any season. Specimens 18 to 24 inches, 75 cents for 10, \$5 per 100; 12 to 18 inches, 50 cents for 10, \$3 per 100.

## ROSES

**A**LL Roses in our list are two years old, field-grown, on their own roots, and have been in bloom here in the nursery one season. There is no question but that plants on their own roots are the best. Every branch or shoot from the roots will produce blooms that are like the Rose you buy from us. Budded Roses send up shoots or "suckers" from the wild root, which none but an expert can distinguish from the fine variety, and these shoots often drown out the fine variety, leaving a poor plant with small, worthless flowers.

Please do not confound the first-class, No. 1 plants which we offer with the little plants for which you pay a small price and have to grow one season yourself before you get the blooms you want.

In the list those Roses marked H. P. are Hybrid Perpetual; T., Teas; H. T. Hybrid Teas; P., Polyantha; M., Moss. Tender varieties—Tea's and Hybrid Teas—will give better results if planted in the spring—February 15 to March 1.

Prices, except where noted: 35 cents each, \$2 for 6, \$3 for 10

**American Beauty.** (H. P.) At its best under glass; grown out of doors it is poor in color and small. Perfection in the greenhouse. Deep, brilliant pink, shaded with rich carmine-crimson.

**Anne de Diesbach.** (H. P.) Known also as the Glory of France. A rich, beautiful shade of carmine; large and fragrant bloom; free.

**Alfred Colomb.** (H. P.) A very fine red rose, large and full; good bloomer, retaining its color in a remarkably satisfactory manner.

**Baltimore Belle.** Prairie. A strong-growing pillar or climbing Rose, often growing 15 feet in one season. During the early

summer it is covered with clusters of beautiful pale blush flowers, changing to white; blooms in the early summer only. A desirable sort for screens, etc. 25 cents each.

**Bon Silene.** (T.) Deep salmon-rose, illuminated with carmine; bigly fragrant; a free bloomer.

**Bride.** (T.) Buds and flowers unusually long and tapering, large and perfect in shape, and deliciously perfumed. The most beautiful and popular clear white rose yet introduced.

**Captain Christy.** (H. T.) Delicate flesh color, deepening in shade towards the centre; medium size, full; distinct, beautiful foliage.

## ROSES, continued

**Catherine Mermet.** (T.) Silvery rose; large, well formed; very beautiful in bud; delightful perfume.

**Clothilde Soupert.** (P.) Pearl white with rose center; blooms in clusters, and a constant bloomer.

**Crested Moss.** (M.) Deep pink buds, surrounded with a mossy fringe and crest; a fragrant, very beautiful rose.

**Crimson Rambler.** (Japanese.) A climbing rose; vigorous, strong, rapid grower, handsome, shiny foliage and produces in wonderful abundance clusters of bright crimson, semi-double roses. A thing of beauty and of great value.

**Duchess of Albany.** (H. T.) A sport from La France; form and fragrance very like La France, but a deeper, richer color. Known also as "Red La France."

**Etoile de Lyon.** (T.) Large, full; deep, canary yellow; a strong grower and constant bloomer; one of the finest.

**Fisher Holmes.** (H. P.) Similar to Gen. Jac. but a shade darker and richer; flowers are fuller and more freely produced. Regarded as an improvement on the "Jack."

**General Jacqueminot.** (H. P.) A very brilliant crimson; very fragrant; one of the best known sorts and in favor everywhere.

**Her Majesty.** (H. P.) Very large, bright silvery rose-colored flowers; one of the most beautiful in form and shade; beautiful foliage; vigorous grower.

**John Hopper.** (H. P.) Bright rose, with carmine center, large and full, semi-globular; light red thorns, stout bushy growth; a free blooming, standard sort.

**La France.** (H. T.) Silvery rose, changing to pink, very large, full, globular; a most constant bloomer and the sweetest of all roses. No garden complete without it.

**La Marque.** (Noisette.) White with sulphur center, sometimes pure white, very large, full, somewhat fragrant. A superb climbing rose, quite too much neglected.

**Louis Van Houtte.** (H. P.) Crimson-maroon, medium size, highly perfumed. Well and favorably known.

**Madam Caroline Testout.** (H. T.) Hardy; constant, free bloomer; color a brilliant

satiny rose, deepening at center to clear red. Most beautiful in bud, which is very large.

**Madam Gabrielle Luizet.** (H. P.) A beautiful silvery pink, slightly fragrant; a free bloomer, both summer and fall.

**Madam Georges Bruant.** (Rugosa type.) Pure white, fragrant and produced in clusters at intervals during the summer. Foliage a heavy, dark green, and unlike other sorts; in the bud state is long and pointed; semi-double in full bloom.

**Madam Plantier.** (Hybrid China.) During the season of bloom it is covered with pure white, very double flowers of medium size, and full, flat form; blooms very early in the summer; small foliage; perfectly hardy; it is a fine sort for hedging or massing. 25 cts. each.

**Magna Charta.** (Hybrid China.) Pink, suffused with carmine, large, full globular; a fragrant, excellent variety.

**Margaret Dickson.** (H. P.) Bloom of magnificent form, very large, rivaling Paul Neyron in size and late-blooming qualities. A beautiful, rich, shiny white; hardy and very desirable.

**Marechal Niel.** (Noisette.) Its fame is world-wide. It is unquestionably the very best ever-blooming climbing rose, with no fear of a successful rival. Deep, rich yellow, and of the most delightful and lasting fragrance; perfect in form, both bud and flower. Strong plants, 50 cts. each.

**Marie Van Houtte.** (T.) Pale yellow, the edges of petals often lined with rose, well formed, of good habit and in every respect a most charming sort.

**Meteor.** (H. T.) A rich, dark, velvety crimson color; constant bloomer; very fragrant; flowers very double and borne on long stems. A beauty.

**Niphetos.** (T.) White, sometimes tinged with yellow; long, large, pointed buds, the petals thick and durable. A very beautiful variety under glass, hardly suited for the open air.

**Papa Gontier.** (T.) Fragrant and sweet, perfect shaped buds, and of the deepest glowing crimson color; profuse bloomer; keeps longer after being cut than most any other sort.

## ROSES, continued

**Paul Neyron.** (H. P.) Deep pink, very full, somewhat fragrant; immense size, often measuring five inches across the flower, the largest rose in general cultivation. Wood has few or no thorns.

**Perle des Jardins.** (T.) Canary yellow, large, full, well formed, stiff stems, very free. A superb well for forcing and also fine in the open air.

**Queen of Prairie.** (Prairie.) Rosy red, frequently with white stripe, medium size, double; foliage large, good, strong. 25 cts.

**Reine Marie Henriette.** (Climbing T.) A pure shade of cherry red, large, double, somewhat fragrant; beautiful but rather less productive than others.

**Salet.** (M.) Light rose, beautiful in the bud.

**Souvenir de la Malmaison.** (Bourbon.) Creamy flesh color, lasting; flowers large and very double; free bloomer.

**Wm. Allen Richardson.** (Noisette.) A very pretty climbing rose; color copper yellow,

flushed with carmine; flowers large, full and fragrant; free bloomer.

**White La France.** (H. T.) A fine grower, reasonably hardy, a profuse and constant bloomer and of splendid fragrance. Both bud and flower extra large, full, double and beautifully formed; color a delicate, soft white, lightly tinged with blush at the centre.

**White Moss.** (M.) Good size, pure white.

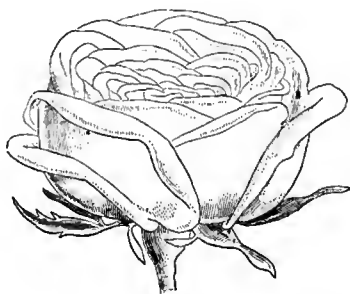
**White Rambler.** Small or medium, daisy-like, pretty white flowers in large clusters, fragrant; foliage very attractive and ornamental.

**Yellow Rambler.** A climbing rose with rich glossy green foliage producing medium sized flowers, yellow in the bud, opening white, tinged with yellow at the centre; vigorous, free bloomer; hardy; pretty and of good value.

**Ulrich Brunner.** (H. P.) A seedling of Paul Neyron. Distinct, beautiful, brilliant cherry-red; the half open buds are very beautiful. A free, strong grower.

---

"A pleased customer is our best advertiser." We firmly believe this, and handle all orders accordingly.



# BULBS

Chinese Sacred Lily, Gladiolus, Hyacinths and Tulips are for fall and winter planting only. Cannas, Caladiums and Tuberose should be planted in the spring.

## CANNAS

**Charles Henderson.** Grows to a height of about 4 feet, green foliage, crimson flowers. Good for bedding. 15c. each, \$1.50 per doz.

**Italia.** Very strong grower, green foliage, 5 to 6 feet; one of the best Yellows. Flowers are very large, very rich in appearance. The upper petals show patches of bright crimson; very desirable. 20 cents each, \$2 per doz.

**Mad. Crozy.** About 3½ feet, green foliage, very large in flower, deep vermilion in color, with golden rim around each petal. 15 cents each, \$1.50 per doz.

**Florence Vaughan.** The Canna for which Mr. Vaughan paid a great price to the originator. One of the best and should be in every Canna-collection. Flowers are a rich golden yellow, dotted with brightest red. 15 cents each, \$1.50 per doz.

**Inglewood.** Grows 5½ feet high, foliage rich plum-purple. Flowers large, of a clear deep vermilion. Fine for foliage. Good to use with green foliage varieties for contrast. 20 cents each, \$2 per doz.

**Paul Marquant.** Height 4 feet, green foliage; flowers of deep salmon. 15 cents each, \$1.50 per doz.

Write for special prices on Cannas in 100 lots

## CALADIUMS (Elephant's Ear)

Planted in deep, rich soil they make enormous leaves, and attain a height of 4 to 5 feet. A very striking plant for the lawn. Thrive best if they get lots of water. The variety we handle is **Esculentum**. 20 cents each, \$2 per doz.

## CHINESE SACRED LILY

It is said that good luck follows the household that has this flower in bloom on New Year's morning. Grown in water in shallow dish. Put in a few small pebbles to hold the bulb firmly, cover bulb about two-thirds with water and set away for ten days in a dark closet. Start bulbs last of November. 15 cents each, 75 cents for 6.

## GLADIOLUS

One of the very easiest flowers to grow and one that should be grown everywhere. There is no end to the different combinations of color and shade produced. We sell no named varieties but assort them as follows:

	Doz.	100
All Colors, Mixed .....	\$0 30	\$1 80
Striped and Variegated .....	40	2 25

## HYACINTHS

Holland-grown bulbs carefully graded and in prime condition. We assort by colors; do not handle named varieties.

	Doz.	100
All Colors, Mixed .....	\$0 75	\$5 00
Pure White .....	75	5 00
Yellow .....	75	5 00
Red and Rose .....	75	5 00

## TUBEROSE

Too well known to require description. The Double Pearl is the best variety. Our bulbs are strictly first size. 7½ cents each, 60 cents per doz.

## TULIPS

All colors, mixed. 30 cents per doz., \$1.50 per 100.

### NUMBER OF TREES OR PLANTS ON AN ACRE

3 ft. apart each way ..	4,840	10 ft. apart each way ..	430	20 ft. apart each way ..	110
4 " " " " ..	2,729	12 " " " " ..	325	25 " " " " ..	70
5 " " " " ..	1,742	15 " " " " ..	200	30 " " " " ..	50
6 " " " " ..	1,200	18 " " " " ..	135	40 " " " " ..	27
8 " " " " ..	680				

RULE.—Multiply the distance in feet between the rows by the distance the plants are set apart in the row, and the product will be the number of square feet for each plant or hill; which divide into the number of square feet in an acre (43,500), and you have the number of trees or plants per acre.

## COLLECTIONS

We have grouped the following selected varieties into Collections, more especially for the town and city buyer, who has only a small space for trees, etc., and for the busy man who cannot take time to hunt out a collection from the many varieties described in a catalogue. All these are adapted to planting in the general South. When orders for these Collections come from Florida, lower Texas, or sections where, in some instances, other varieties may be better adapted, we will make the change, sending the purchaser only such sorts as ARE adapted to HIS SECTION.

### OUR "CITY HOME COLLECTION"

- |   |   |
|---|---|
| 3 Apples—Yellow Transparent, Buckingham, Tull.              | 1 Apricot—Superb.   |
| 4 Peaches—Sneed, Admiral Dewey, Elberta, Stinson's October. | 1 Nut Tree—Pecan thin-shelled (plant for shade).                                  |
| 3 Plums—Abundance, Burbank, Wild Goose.                     | 20 Berry Plants—10 Cuthbert Raspberry, 10 Snyder Blackberry.                      |
| 2 Pears—Koonce, Kieffer.                                    | 6 Grape Vines—Concord, Delaware, Moore's Early, Moore's Diamond, Niagara, Worden. |
| 1 Cherry—Early Richmond.                                    |   |

The above 41 Trees, Plants and Vines cover the fruiting season—early to late. The entire Collection for \$5, Express Prepaid.

### OUR "ORNAMENTAL COLLECTION"

- |   |   |
|---|---|
| 2 Evergreens—Arbor-vitæ Evergolden, Lawson Cypress. | 2 Shade Trees—Silver Maple, Carolina Poplar.                          |
| 2 Hydrangea Paniculata grandiflora.                 | 4 Roses—Crimson Rambler, Paul Neyron, Magna Charta, Marie Van Houtte. |
| 2 Climbing Vines—Jackson Vine, Ampelopsis Veitchi.  |   |

The above 12 Plants and Trees for \$4.75, Express Prepaid.

### OUR "SMALL-FRUIT COLLECTION"

- |   |   |
|---|---|
| 100 Strawberries—50 Lady Thompson, 50 Gandy.        | 20 Blackberries—10 Snyder, 10 Eldorado, 10 Lucretia Dewberry. |
| 40 Raspberries—20 Cuthbert (red), 20 Gregg (black). | 100 Asparagus—Columbian White.                                |

The above 270 Plants for \$4.50, Express Prepaid.

### OUR "LUCKY SEVEN ROSE COLLECTION"

- 7 Hardy Roses, out-door grown, 2 years old. All will stand the winters without protection:
- |                  |                      |                        |
|------------------|----------------------|------------------------|
| Crimson Rambler, | General Jacqueminot, | Paul Neyron,           |
| Magna Charta,    | La France,           | Mad. Gabrielle Luizet, |
|                  |                      | Duchess of Albany.     |

For \$2.75, Express Prepaid.

---

With the exception of these Collections, we DO NOT Prepay Express Charges unless the order is for \$5 or more.



No. \_\_\_\_\_

100

Space above this line is for the Postmaster's record, to be filled by him.

# Application for Money Order.

Amount \_\_\_\_\_ Dollars \_\_\_\_\_ Cents.

**Sent to** \_\_\_\_\_  
Alabama Nursery Co.,

City or town \_\_\_\_\_  
HUNTSVILLE,

Street and No. \_\_\_\_\_

State \_\_\_\_\_ Alabama.

**Sent by** \_\_\_\_\_

Address of sender : No. \_\_\_\_\_ Street. \_\_\_\_\_

Use this application when sending us money.  
Take the application to your Postmaster and procure a Money Order.

# Fees Charged for Money Orders

For payment in United States, in Cuba, in Porto Rico,  
and the Philippines.

For Orders for sums not exceeding \$2.50	.....	3 cents.
Over \$ 2.50 and not exceeding \$ 5.00	.....	5 cents.
Over \$ 5.00 and not exceeding \$ 10.00	.....	8 cents.
Over \$10.00 and not exceeding \$ 20.00	.....	10 cents.
Over \$20.00 and not exceeding \$ 30.00	.....	12 cents.
Over \$30.00 and not exceeding \$ 40.00	.....	15 cents.
Over \$40.00 and not exceeding \$ 50.00	.....	18 cents.
Over \$50.00 and not exceeding \$ 60.00	.....	20 cents.
Over \$60.00 and not exceeding \$ 75.00	.....	25 cents.
Over \$75.00 and not exceeding \$100.00	.....	30 cents.

~~is~~ The war tax is not a part of the fee, but is collected (two cents for each order, whatever its amount) from the remitter, in the place of a revenue stamp, which stamp is not required on a Postal Order.

---

## Memoranda of Issuing Postmaster :

.....

.....

.....

---

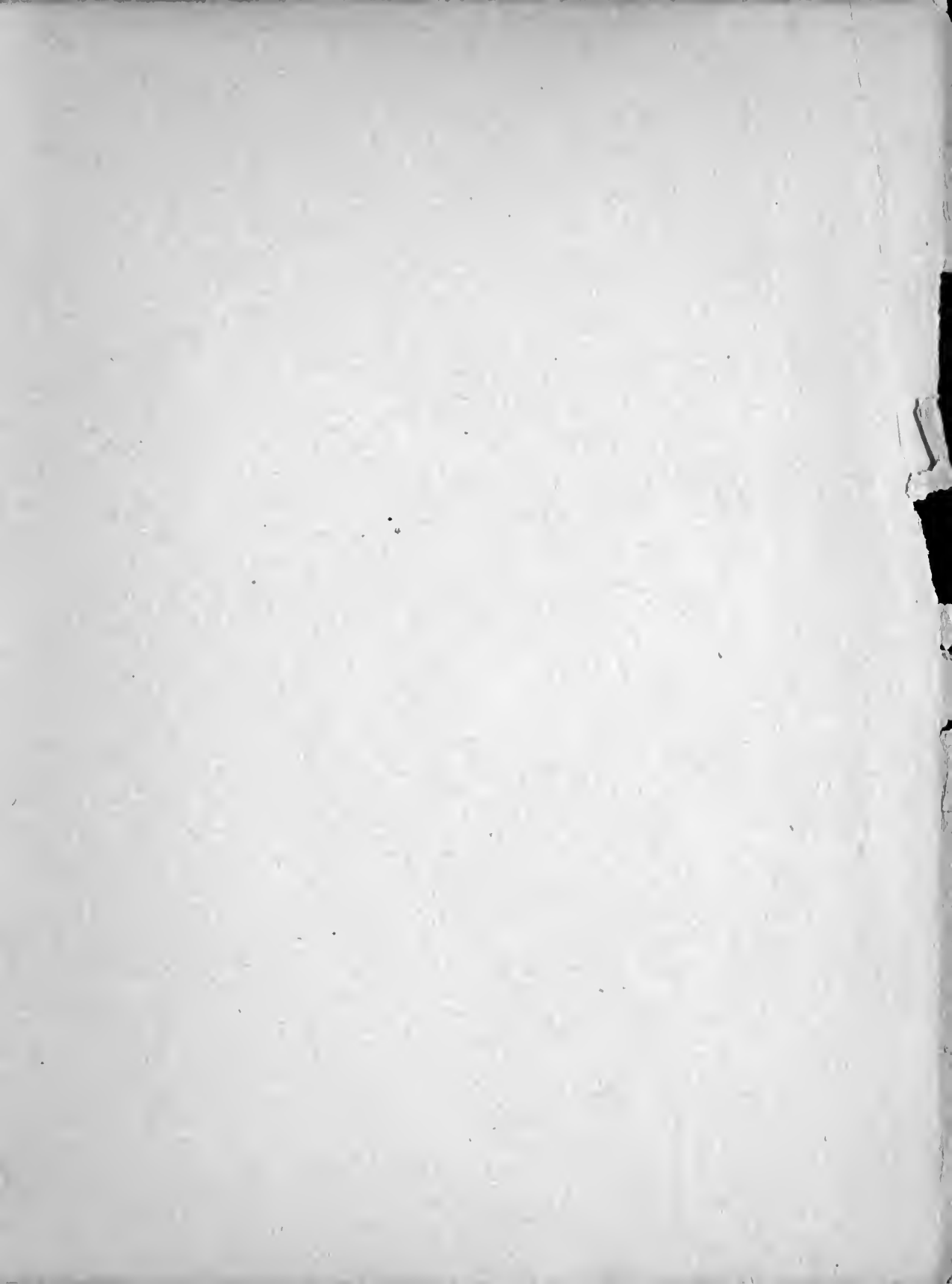
NOTE.—The maximum amount for which a single Money Order may be issued is \$100. When a larger sum is to be sent, additional Orders must be obtained.

Applications must be preserved, at the office of issue, for four years from date of issue.









## Entomologist's Certificate

Huntsville, Alabama, June 19, 1900.

This is to certify that I have this day examined the nurseries of the Alabama Nursery Company, and have found their stock apparently free from San Jose Scale, Peach Yellows, Rosette, or other pernicious insects or contagious plant diseases.

(Signed)

**F. S. EARLE**

Acting State Entomologist