



8813. Nest of Bananaquit,  
Coereba flaveola bonairensis.  
Slagbaai, Bonaire, N.A.  
February 3, 1969.



8814. Nest of Bananaquit,  
Coereba flaveola bonairensis.  
Slagbaai, Bonaire, N.A.  
February 3, 1969.



8815. Location of Bananaquit  
nest (center).  
Slagbaai, Bonaire, N.A.  
February 3, 1969.

8816. Northern side of  
Gotomeer, near entrance to  
Slagbaai, Bonaire, N.A.  
February 5, 1969.



8817. Brandaris, with ancient salt pond in foreground. Slagbaai, Bonaire, N.A. February 5, 1969.



8818. Brandaris, from the road near the houses. Slagbaai, Bonaire, N.A. February 5, 1969.



8819. Brandaris, from the  
road near the houses.  
Slagbaai, Bonaire, N.A.  
February 5, 1969.



8820. Salifña lagoon, from the  
road near the houses.  
Slagbaai, Bonaire, N.A.  
February 5, 1969.





8821. Aletta Beaujon, Carlos  
van Leeuwen, Bea, Nouel van  
Leeuwen.  
Fontein, Ponaire, N.A.  
February 8, 1969.



8822. Aletta, Carlos, Bea,  
Nouel.  
Fontein, Ponaire, N.A.  
February 8, 1969.

8823. Nouel and the Cortina  
at the entrance to Fontein,  
Bonaire, N.A.  
February 8, 1969.



8824. Near the entrance to  
Fontein, Bonaire, N.A.  
February 8, 1969.





8825. Street in Rincón,  
Bonaire, N.A.  
February 8, 1969.

8826. "Touristical Road",  
above Rincón, Bonaire, N.A.  
February 8, 1969.



8827. Main highway above  
Rincón, Bonaire, N.A.  
February 8, 1969.



8828. Locked gate at entrance  
to Slagbaai, Bonaire, N.A.  
February 8, 1969.







8829. Old road back of  
Brandaris, Slagbaai,  
Bonaire, N.A.  
February 9, 1969.

8830. Road back (north) of  
Brandaris, Slagbaai, Bonaire,  
N.A.  
February 9, 1969.





8831. Road back (north) of  
Brandaris, Slagbaai, Bonaire,  
N.A.  
February 9, 1969.

8832. Bush north of Brandaris,  
Slagbaai, Bonaire, N.A.  
February 9, 1969.



8833. Dry salina south of  
Brandaris, Slagbaai, Bonaire,  
N.A.  
February 9, 1969.



8834. Dry salina south of  
Brandaris, Slagbaai, Bonaire,  
N.A.  
February 9, 1969.





8835. Bush along trail south  
of Brandaris, Slagbaai,  
Bonaire, N.A.  
February 9, 1969.

8836. Caracara on organ  
cactus, north of Brandaris,  
Slagbaai, Bonaire, N.A.  
February 9, 1969.





8837. Caracara on organ  
cactus, north of Brandaris,  
Slagbaai, Bonaire, N.A.  
February 9, 1969.

8838. Saliña south of Bran-  
daris, Slagbaai, Bonaire, N.A.  
February 9, 1969.



8839. The bay, Slagbaai,  
Bonaire, N.A.  
February 9, 1969.



8840. Aletta Beaujon, Bea,  
Carlos and Nouel van Leeuwen.  
Slagbaai, Bonaire, N.A.  
February 9, 1969.





8841. Road to Rincón from  
Slagbaai, Bonaire, N.A.  
February 9, 1969.

8842. Rincón, Bonaire, N.A.  
February 9, 1969.





8843. Ancient flamingo nest  
turrets at Pekelmeer,  
Bonaire, N.A.  
February 12, 1969.

8844. Flamingo nest turrets  
of 1968 at Pekelmeer, Bonaire,  
N.A.  
February 12, 1969.







8845. Older nest turrets,  
probably of 1967, at Pekel-  
meer, Bonaire, N.A.  
February 12, 1969.

8846. Older nest turrets,  
probably of 1967, at Pekel-  
meer, Bonaire, N.A.  
February 12, 1969.





8847. Older nest turrets,  
probably of 1967, at Pekel-  
meer, Bonaire, N.A.  
February 12, 1969.



8848. Older nest turrets,  
probably of 1967, at Pekel-  
meer, Bonaire, N.A.  
February 12, 1969.

8849. Boca Onima, Bonaire,  
N.A.  
February 13, 1969.



8850. Looking toward the  
cave at Boca Onima, Bonaire,  
N.A.  
February 13, 1969.

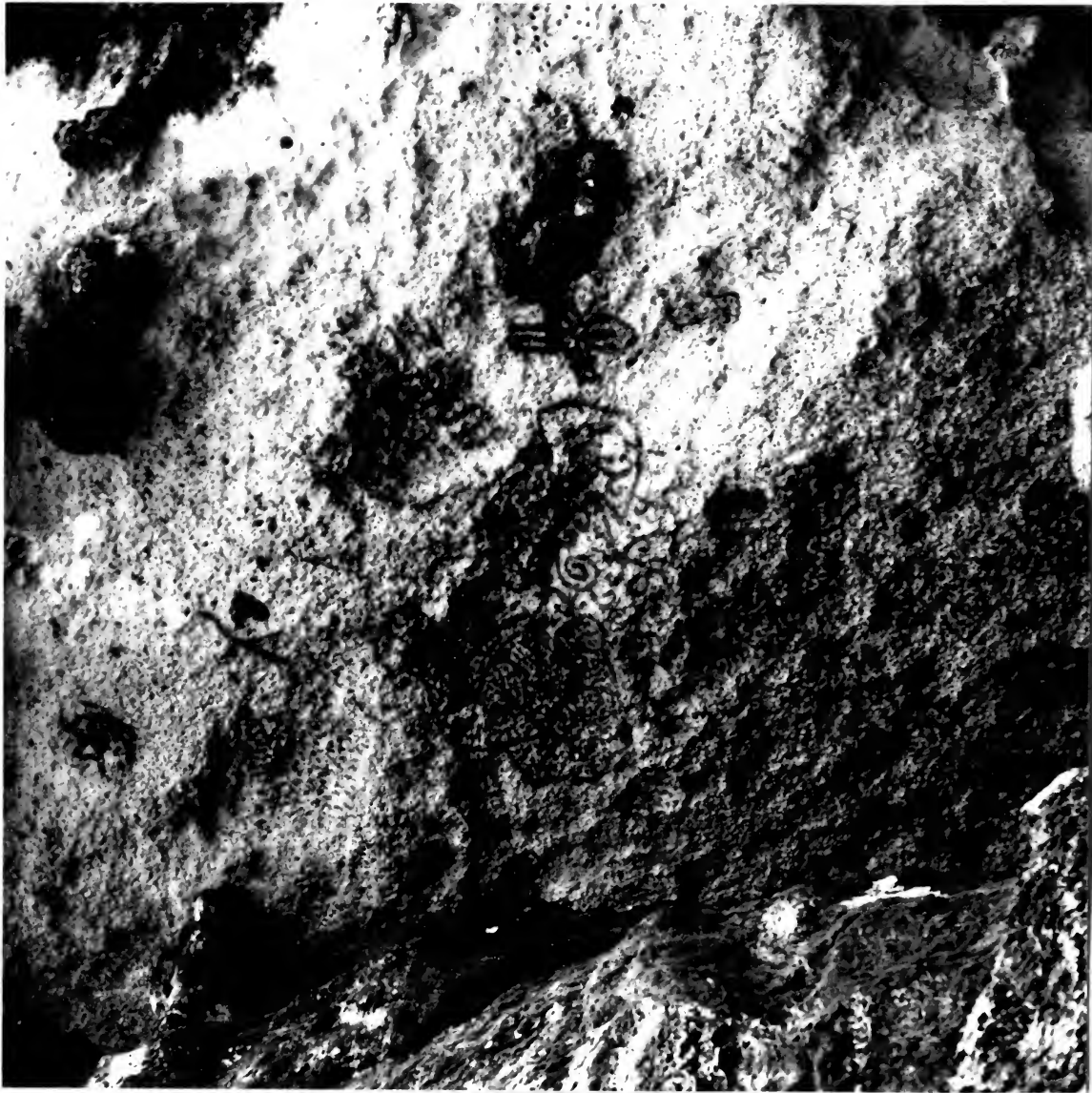




8851. Road leading north  
toward Washington National  
Park, at Eoca Onima,  
Bonaire, N.A.  
February 13, 1969.



8852. Indian inscriptions  
in "ceiling" of cave, Onima,  
Bonaire, N.A.  
February 13, 1969.



8853. Indian inscriptions in  
ceiling of cave at Onima,  
Bonaire, N.A.  
February 13, 1969.

8854. The "Cortina" at the  
cave in which Indian inscrip-  
tions are found. Onima,  
Bonaire, N.A.  
February 13, 1969.





8855. Our house on Slagbaai  
Plantation, Bonaire, N.A.  
February 13, 1969.

8856. Ancient salt warehouse  
and other buildings on Slag-  
baai Plantation, Bonaire, N.A.  
February 13, 1969.



8857. The bay at Slagbaai.  
Bonaire, N.A.  
February 13, 1969.



8858.  
Saliña Playa Frans, Brasiel,  
Bonaire, N.A.  
February 14, 1969.



8859. Saliña Playa Frans,  
Brasiel, Bonaire, N.A.  
February 14, 1969.



8860. Saliña Playa Frans,  
Brasiel, Bonaire, N.A.  
February 14, 1969.







8861. Old salt evaporating  
ponds, Salina Playa Frans,  
Brasiel, Bonaire, N.A.  
February 14, 1969.

8862. Old salt evaporating  
ponds, Salina Playa Frans,  
Brasiel, Bonaire, N.A.  
February 14, 1969.





8863. Dry margin of Saliña  
Playa Frans, Brasiel,  
Bonaire, N.A.  
February 14, 1969.



8864. Old well at Labra, Brasiel,  
Bonaire, N.A.  
February 14, 1969.



8865. Salt lagoon at Slag-  
baai Plantation, with  
flamingos.  
Bonaire, N.A.  
February 14, 1969.



8866. Main buildings at Slag-  
baai Plantation. Bonaire, N.A.  
February 14, 1969.



8867. Flamingos on salt lagoon at Slagbaai. Brandaris in background. Bonaire, N.A. February 14, 1969.

8868. Flamingos and main buildings, Slagbaai, Bonaire, N.A. February 14, 1969.





8869. Flamingos at Slagbaai,  
Brandaris in background.  
Bonaire, N.A.  
February 14, 1969.

8870. Organ cactus lining  
road on Slagbaai Plantation.  
Bonaire, N.A.  
February 16, 1969.





8871. Organ cactus lining  
road on Slagbaai Plantation.  
Bonaire, N.A.  
February 16, 1969.

8872. Fontein, Bonaire, N.A.  
February 18, 1969.



8873. Fontein, Bonaire, N.A.  
February 18, 1969.



8874. Fontein, Bonaire, N.A.  
February 18, 1969.





8875. Flat-pad cactus,  
Fontein, Bonaire, N.A.  
February 18, 1969.

8876. Flat-pad cactus,  
Fontein, Bonaire, N.A.  
February 18, 1969.





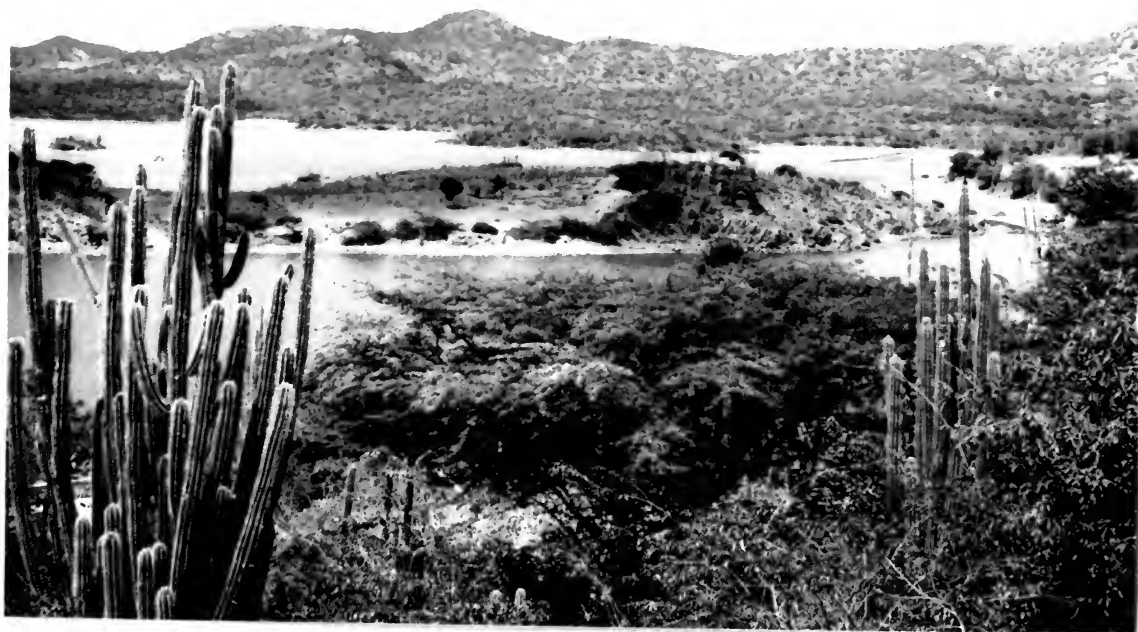


8877. Piedra Bonaire, a  
pinnacle rock, north of  
Onima, Bonaire, N.A.  
February 18, 1969.

8878. Goto Meer, taken from  
the south. Erandaris in back-  
ground. Bonaire, N.A.  
February 20, 1969.



8879. Island in Goto Meer.  
Bonaire, N.A.  
February 20, 1969.



8880. Elsie Zeppenfeldt and  
Dea at Goto Meer overlook.  
Bonaire, N.A.  
February 20, 1969.



8881. Elsie Zeppenfeldt and  
Bea at Goto Meer overlook.  
Bonaire, N.A.  
February 20, 1969.



8882. A.W. at Goto Meer over-  
look. Bonaire, N.A.  
February 20, 1969.



8883. A.W. watching flamingos  
on Slagbaai Lagoon. Bonaire,  
N.A.  
February 21, 1969.



8884. A.W. watching flamingos  
on Slagbaai Lagoon, Bonaire,  
N.A.  
February 21, 1969.



8885. Flamingos on Slagbaai  
Lagoon. Bonaire, N.A.  
February 21, 1969.



8886. A.W. watching flamingos  
on Slagbaai Lagoon. Bonaire,  
N.A.  
February 21, 1969.



8887. A.W. watching flamingos  
on Slagbaai Lagoon, Bonaire,  
N.A.  
February 21, 1969.



8888. Bea watching flamingos  
on Slagbaai Lagoon, Bonaire,  
N.A.  
February 21, 1969.





8889. Lizards feasting on  
watermelon rind. Slagbaai,  
Bonaire, N.A.  
February 22, 1969.

8890. Lizards on our porch,  
feasting on watermelon rind.  
Slagbaai, Bonaire, N.A.  
February 22, 1969.





8891. Lizards eating water-  
melon rind on our porch.  
Slagbaai, Bonaire, N.A.  
February 22, 1969.



8892. Lizard and watermelon  
rind on our porch. Slagbaai,  
Bonaire, N.A.  
February 22, 1969.



8893. Brandaris, with evaporated salt in foreground.  
Slagbaai, Bonaire, N.A.  
February 25, 1969.



8894. Playa Funchi, Washington, Bonaire, N.A.  
February 26, 1969.





8895. Old house at Playa  
Funchi, Washington, Bonaire,  
N.A.  
February 26, 1969.

8896. Old road north of Playa  
Funchi, Washington, Bonaire,  
N.A.  
February 26, 1969.





8897. Pichi Lang, from the road between Playa Funchi and Playa Bartol. Washington, Bonaire, N.A. February 26, 1969.

8898. The end of the hills called Pichi Lang, north of Playa Funchi, Washington, Bonaire, N.A. February 26, 1969.



8899. Playa Bartol, Washing-  
ton, Bonaire, N.A.  
February 26, 1969.



8900. Playa Bartol, Washing-  
ton. Black-necked stilts in  
the water. Bonaire, N.A.  
February 26, 1969.



8901. Brandaris from the  
north, Washington, Bonaire, N.A.  
February 26, 1969.



8902. Brandaris from the  
north, Washington, Bonaire,  
N.A.  
February 26, 1969.





8903. The south end of Slagbaai Bay, taken from the escarpment back of our house. Bonaire, N.A. February 26, 1969.

8904. Pelican flying from rock just beyond our house at Slagbaai, Bonaire, N.A. February 26, 1969.



8905. Brandaris from the  
northwest. Bonaire, N.A.  
February 26, 1969.

8906. Lighthouse at south  
end of Pekelmeer. Bonaire,  
N.A.  
February 28, 1969.





8907. Ancient slave huts  
near Pekelmeer, Bonaire,  
N.A.  
February 28, 1969.

8908. Ancient slave huts  
near Pekelmeer, Bonaire, N.A.  
February 28, 1969.







8909. National Museum of  
Curaçao, Netherlands Antilles.  
March 2, 1969.



8910. National Museum of  
Curaçao, N.A.  
March 2, 1969.



8911. Entrance gate to  
National Museum, Curaçao, N.A.  
March 2, 1969.

8912. Sign on Museum gate.  
Curaçao, N.A.  
March 2, 1969.





8813. HotelAmericano, Curaçao, N.A. March 2, 1969.  
(Completely burned down during riots on May 30, 1969).

8914. Harbor entrance,  
Curaçao, N.A.  
March 3, 1969.



8915. The bridge across  
harbor entrance. Curaçao, N.A.  
March 3, 1969.



8916. The bridge swinging  
open to permit ship traffic.  
Curaçao, N.A.  
March 3, 1969.



8917. Tanker and tugboat  
entering the harbor. Curaçao,  
N.A.  
March 3, 1969.



8918. The bridge beginning  
to open for ship traffic.  
Curaçao, N.A.  
March 3, 1969.



8919. The bridge closed, with cars crossing. Curaçao, N.A. March 3, 1969.



8920. The bridge open, with a ferry crossing. Curaçao, N.A. March 3, 1969.





8921. Ferries crossing the harbor. Brionplein in foreground. Curaçao, N.A. March 3, 1969.

8922. The bridge closed, with view of harbor entrance. Governor's Palace and old Protestant Church in background. Curaçao, N.A. March 3, 1969.





8923. The bridge beginning  
to open. Curacao, N.A.  
March 3, 1969.